

"Mail-Me-Monday"

A BOOKKEEPING AND TAX SERVICE BY MAIL

Phone 2182 Odessa, Texas Box 1241

VETERANS LEARN ACCOUNTING
Accountancy offers almost unlimited opportunities. Intensive course from simple beginning through C.P.A. problems. Urgent demand for graduates of handsome incomes. Approved for G.I. training. Get free book, "Careers That Pay," Draughon's College, Abilene or Lubbock.

Pioneer President To Represent Air Group

DALLAS—Robert J. Smith, of Pioneer Air Lines, has been named as one of 10 men in the nation to represent the aviation industry at the forthcoming national convention of the United States Chamber of Commerce.

Notification of the appointment came from Robert Ranspeck, executive vice-president of the Air Transport Association. The meeting will be held in Washington, D. C., April 28 to May 1.

Australia shipped more than 2,000,000 bushels of apples overseas during 1946.

APPROPRIATION IS ASKED FOR EAST TEXAS FORESTS

WASHINGTON—(AP)—Representative Pickett (D-Texas) has asked for \$20,000 in additional funds for forestry research in East Texas.

He asked a House Appropriations subcommittee to grant the additional funds to the Nacogdoches Forestry Station and declared it would greatly increase the center's value to owners of timber here and in Louisiana. An original appropriation of \$30,000 was proposed for the station.

ADMIT MEXICAN WORKERS

HIDALGO—(AP)—U. S. Immigration officers have announced that 107 Mexican farm workers were admitted to the United States Tuesday without a single rejection for reasons of health.

Decker Rites Are Scheduled Thursday

Funeral services for Mrs. Nellie Jewell Decker, 31, who died Tuesday in a Monahans hospital of injuries received in an automobile accident, were scheduled at 2 p. m. Thursday at Ellis Funeral Chapel.

Pall bearers at services were to be: Elmer Schultz, Oscar Crawford, Aristin Copeland, William Moore and Orvil Moore.

Mrs. Decker was born June 12, 1915, at Luikin. The accident in which she was injured occurred last Saturday night.

Among survivors are: her parents, four children, three sisters, and a brother.

Farm-Ranch Laborers From Mexico Available

J. W. Reed, Border Patrol inspector, said Thursday the new program to obtain farm and ranch laborers from Mexico now is in effect, and many West Texans are taking advantage of it.

Application blanks for the laborers may be obtained from the Border Patrol Office, Federal Building, Pecos.

The applicants do not have to post bond under the new program which applies only to farmers and ranchers, Reed said.

TO HAVE RUMMAGE SALE

The Children's Service League will have a rummage sale Saturday in the Heidelberg Inn on East Highway 80.

Motorists Asked Not To Leave Coins For Over-Time Parking

Police Chief Jack Ellington said Thursday traffic policemen have been instructed to discontinue the practice of depositing, in parking meters, nickels left under windshield wipers by motorists who leave their cars parked longer than the allotted one and two hour periods.

He asked the cooperation of motorists, and urged them to discontinue the practice of leaving coins for additional parking time. The practice was started soon after the meters were installed.

Many youngsters, the chief said, have made a practice of "collecting" the nickels left by motorists.

The leaving of coins for continued parking defeats the purpose of the meters, which is to provide more parking space in downtown Midland, Ellington said.

VFW To Install New Officers Thursday

An installation ceremony for new officers of Midland's unit of the Veterans of Foreign Wars will be held at 8:30 p. m. Thursday in the IOOF Hall.

Organization activities for the year also will be mapped at the business meeting following the ceremony. All VFW members are urged to attend.

MARFA PIONEER DIES

EL PASO—(AP)—William Thomas Jones, 88, prominent Marfa rancher for the past 62 years, died Wednesday in an El Paso hospital after a lingering illness.

NEW INDIA RIOTS

NEW DELHI, INDIA—(AP)—Shops were closed Thursday, paralyzing business in the old city section of this capital, after a fresh rash of stabbings involving hostile religious communities. At least two persons were killed and eight injured.

Friday, April 25th at 9 A.M.

Grand Opening

In Midland, Of...

FRANKLIN'S

At The Corner Of Main And Wall

A Popular Store With Popular Prices

For Women, Misses And Juniors!

● BLOUSES

From \$2.29 to \$6.99

● SKIRTS

From \$2.99 to \$4.99

● SLACKS - SLACK SUITS

From \$2.99 to \$9.95

● PLAY SUITS

From \$7.99 to \$10.95

● SWIM SUITS

From \$5.99 to \$7.99

You'll adore our up-to-date fashions. Shop our dress department for exciting prints, delicate pastels and cottons... expensive looking clothes at bargain prices.

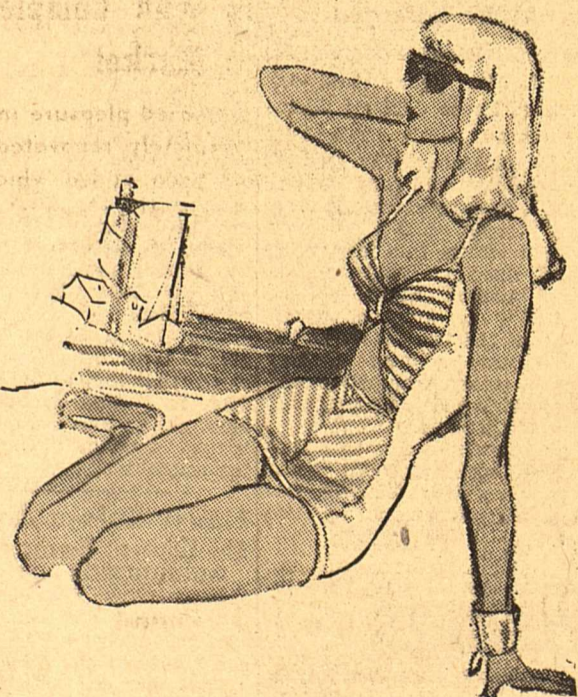
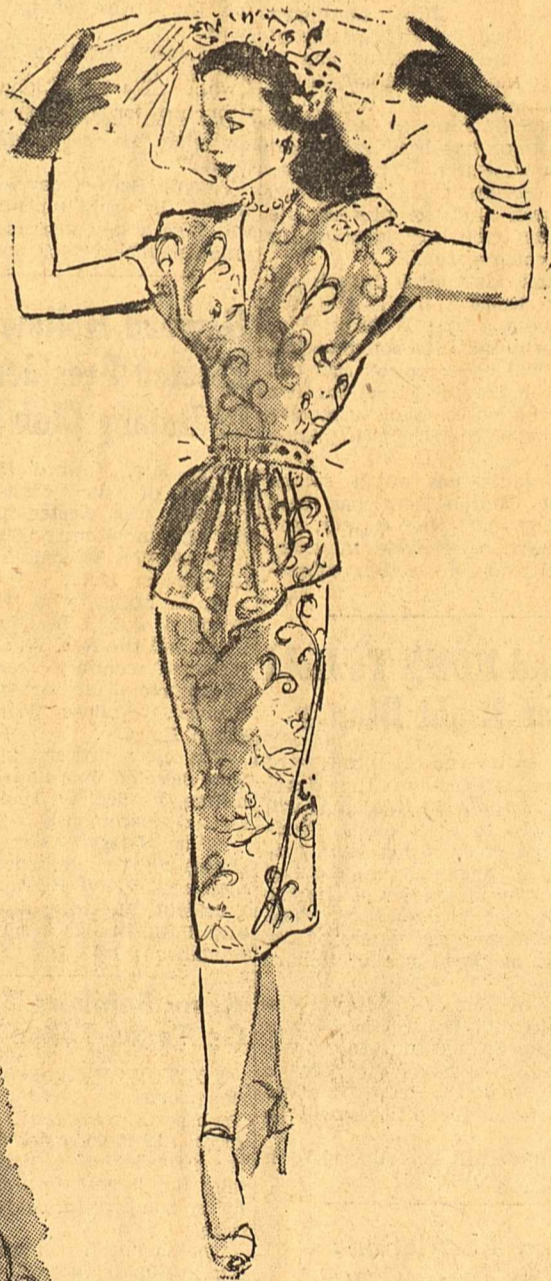
\$3.99 to \$22.95

NYLON HOSE

\$1.15 to \$1.55

RAYON HOSE

59¢



● SLIPS From \$1.99 to \$8.95

● HALF SLIPS From \$1.59 to \$3.99

● GOWNS From \$2.99 to \$12.95

● GIRDLES From \$1.50 to \$4.99

● BRASSIERS

From \$1.00 to \$2.99

● PANTIES

From 49¢ to \$1.19

● PAJAMAS

From \$2.99 to \$5.99

● Hostess Coats, Gowns

From \$3.99 to \$19.95

● BED JACKETS

From \$2.99 to \$3.99

HAND BAGS

\$1.99 to \$7.50

Franklin's To Open In Midland Friday

Featuring a complete line of popular priced merchandise for women, misses and juniors, Franklin's will open its new store at the corner of Wall and Main streets here Friday.

Miss Viola Carlson of Lubbock, district supervisor, who is in Midland to open the store, said it will be one of West Texas' finest.

The firm will carry a complete line of dresses, sportswear, lingerie and hosiery. A large stock of merchandise is on hand for the opening.

Attractive and modern blondwood fixtures and carpeted floors add to the appearance of the new business establishment. The store has an all-glass front, with spacious display windows.

Miss Margaret Stephenson will manage the store until a Midland woman is employed for the position.

Residents of Midland and of the Permian Basin area are invited to visit the store on its opening day.

Pioneer West Texan Buried At Monahans

MONAHANS—Funeral services were held here Monday for Mrs. Armita Madeline Sewell, 78, pioneer West Texan, who died at the home of a daughter, Mrs. Madeline Slaven, in Kerrville last Friday.

Mrs. Sewell came to Texas with her parents in 1882, residing a number of years in Coleman County. She was married to P. W. Sewell in 1883. The couple moved to Schleicher County in 1902 and Mrs. Sewell had resided there since that time.

Survivors include four daughters, Mrs. H. V. Carr, Monahans; Mrs. Vergie Harrington and Mrs. Olga Conley, both of Los Angeles, and Mrs. Slaven; two sons, R. V. Sewell, Sonora, and R. H. Sewell, Odessa; five sisters, nine grandchildren and 10 great-grandchildren.

TRUMAN TO VISIT CANADA
WASHINGTON—(AP)—The White House said Thursday that President Truman is planning a visit to Canada—perhaps about June 10. Presidential Secretary Charles G. Ross told newsmen a trip to Canada and a visit to Princeton University, June 16, to receive a degree constituted the President's only definite travel plans at this time.

Our truck will be in Midland each Wednesday. Leave calls at MIDLAND FUR. & FUR. CO. or BARROW FUR. CO.

Superior RUG CLEANERS

Help-Your-Self
Robinson's Washateria
Plenty of Hot and Cold Soft Water and Steam
OPEN 7 A. M. TO 5 P. M.
Thursday Open Till 8 P. M.
Saturday 7 A. M. Till Noon
505 So. Baird Phone 88

STAR TIRES

QUALITY BUILT
FOR LONG SERVICE

MICKY TIRE CO.
Phone 689 511 W. Texas

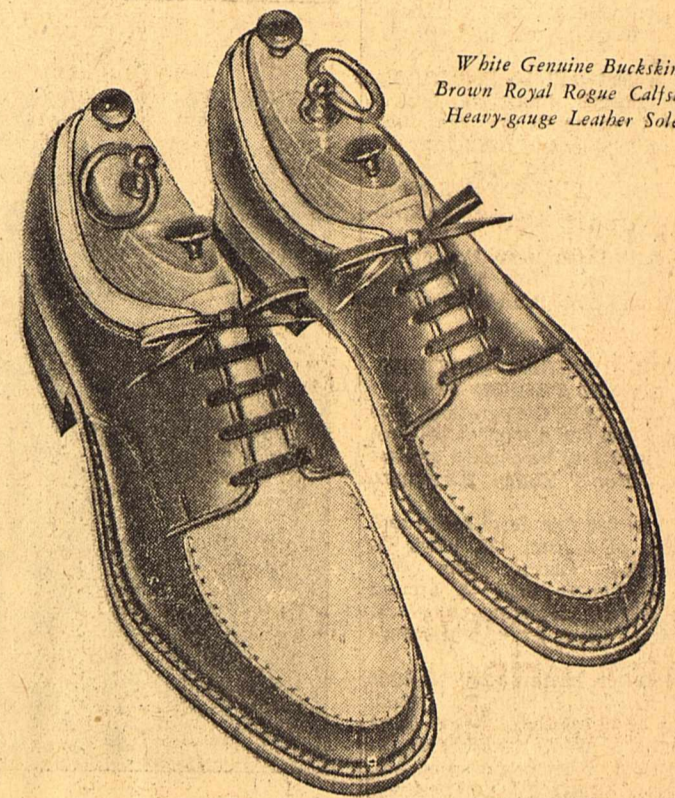
SPENCER individually designed
SUPPORTS and breast supports for Style and Health to smooth away bulges, improve posture, relieve tired back.
Doctor's prescriptions accurately filled.
OLA BOLES 1706 W. Missouri Phone 1613-R

FLOWERS SAY IT BETTER!

When you have a special message of love... send a box of exquisite roses. They can express your feelings far better than any of your words might.

Vestal Flowers
1501 W. Wall Phone 408

It's a FREEMAN Shoe



Sportiest moccasin proposition a man could ask for. Come

in and test its luxurious leathers and the easy-fitting moccasin last on your feet. Look over the superb shoemaking that makes these Royal Rogues look better longer... and you'll agree that Freeman Shoes are finer shoes.

S & Q Clothiers

BLAKE DUNCAN CO.
114 N. Main St.

Welcome Neighbor!

The New
CHAS. A. HAYNES CO.
Department Store

IS ANOTHER
PROGRESSIVE STEP
FOR MIDLAND!

WE ARE PROUD TO HAVE
THIS FINE, NEW STORE
AS A NEIGHBOR!

CAFFEY APPLIANCE COMPANY

● FRIGIDAIRE ● BENDIX
● STROMBERG-CARLSON
DEALER

219 North Main

Phone 1575

BACK FROM SAN ANTONIO
L. T. Sledge has returned from San Antonio, where he attended the Fiesta of San Jacinto.

Edward Byrd discovered the first oil in Indian Territory about 1889, west of Chelsea, Okla.

GIRLS! WOMEN! TRY THIS IF YOU'RE NERVOUS

On 'CERTAIN DAYS' of The Month!
Do female functional monthly disturbances make you feel nervous, fidgety, cranky, so tired and 'dragged out'—at such times? Then do try Lydia E. Pinkham's Vegetable Compound to relieve such symptoms. It's famous for this purpose! Taken regularly—Pinkham's Compound helps build up resistance against such distress. And that's the kind of product you should buy. Thousands have reported benefit! Worth trying.

Lydia E. Pinkham's VEGETABLE COMPOUND

WELCOME!

TO THE NEW

CHAS. A. HAYNES CO.
Department Store

and

FRANKLIN'S

ON THEIR OPENING FRIDAY

"WISHING YOU
THE BEST
OF SUCCESS"

Dunlap's

SOCIETY

4—THE REPORTER-TELEGRAM, MIDLAND, TEXAS, APRIL 24, 1947

Fellowship Night Scheduled By CYF

A fellowship night, the first planned by the newly organized Christian Youth Fellowship, will be held Thursday at 7 p. m., in the First Christian Church.

A pot-luck supper will precede the program.

The Rev. LeRoy Castle, associate pastor of the church, will speak on "Twentieth Century Christians." The talk will be followed by committee meetings.

A brief discussion period will follow the reassembling of the committees and a report of chairmen. The fellowship will be concluded with group singing and a devotional by Mrs. Delbert Downing, sponsor.

Coming Events

FRIDAY
Ex-students and Alumni of Texas Technological College in this area will be entertained with a dinner dance in the Log Cabin Inn at 7:30 p. m.

Intermediates of the First Methodist Church will have a party at 7 p. m. in the Scharbauer Educational Building.

The Midland County Museum will be open from 2:30 to 5 p. m.

Mrs. George Abell, Mrs. Harry Pryor, and Mrs. William L. Kerr will be hostesses for the party day luncheon of the Ladies Golf Association of the Country Club at 1 p. m.

The Children's Service League will meet in its workroom at 2 p. m. followed by a business meeting in the home of Mrs. Ralph Witting, 605 West Cuthbert Street.

The St. Ann Altar Society of the St. George's Catholic Church will sponsor a game party at 8 p. m. in the Crystal ballroom of the Scharbauer Hotel.

The Belmont Bible Class will meet at 3 p. m. with Mrs. Frank Simpson, 404 East New York Ave.

SATURDAY
The Youth Canteen at the Midland High School gymnasium will be open from 2 to 5 p. m. and 7 to 11 p. m.

Children's Theater Group 1 will meet at 10:30 a. m. and Group 2 will meet at 1:30 p. m. The Junior Workshop of the Community Theater will meet at 3:15 p. m.

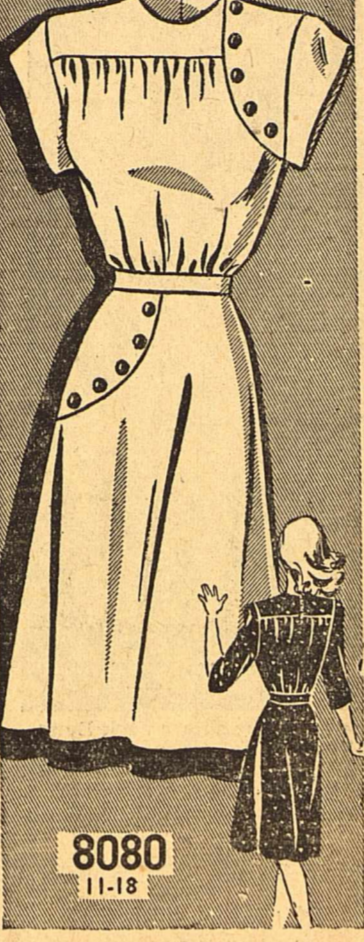
The Midland County Museum will be open from 3:30 to 5 p. m.

The Junior Choir of the First Presbyterian Church will meet at 9:30 a. m.

FORMER MIDLANDER HERE
Fisher Pollard, Fort Sumner, N. M., former deputy tax assessor-collector, is visiting in Midland.

RANEY'S
Help-Yourself
LAUNDRY
Soft Hot Water and Steam
607 E. NEW YORK

Junior Special



8080
11-18

By SUE BURNETT
An unusual button trim highlights this stunning junior frock. Brief cap sleeves are a fashion pet, and note the youthful high neckline. Three quarter sleeves are also provided in the pattern.

Pattern No. 8080 comes in sizes 11, 12, 14, 16 and 18. Size 12, cap sleeve, 3 1/8 yards of 35 or 39-inch.

For this pattern, send 25 cents, in COINS, your name, address, size desired, and the PATTERN NUMBER to Sue Burnett, Midland Reporter-Telegram, 530 South Wells Street, Chicago 7, Ill.

Don't miss the Spring issue of FASHION—it's filled with bright ideas for every woman who sews for herself and her family. Styles by well known designers, easy to make patterns, a free gift pattern printed inside the book. 25 cents.

UNDERGOES TONSILLECTOMY
D. Johnson, son of Mrs. Lucile Johnson, Midland County clerk, underwent a tonsillectomy Monday in a hospital in Lubbock. Mrs. Johnson is in Lubbock with her son.

Congratulations To

Mr. and Mrs. W. J. Mashburn on the birth, Thursday, of a son, Larry James, weighing six pounds, 13 ounces.

OZARKA WATER CO. welcomes these new arrivals. Phone 111 and a bottle of OZARKA will be delivered to you free.



WE ARE ANNOUNCING A NEW ADDITION TO OUR STAFF OF OPERATORS
Pet Best - Damie Young; Marie Burrage, Manicurist
These operators were formerly connected with the Noblitt-Fasson Beauty Shop, and they invite your patronage.

PHONE FOR YOUR APPOINTMENT
SCHARBAUER BEAUTY SALON
MILDRED MYERS — Owners — DORA EVANS
Mezzanine Floor, Scharbauer Hotel ... Call 664

NOW OPEN

BERTHA JOHNSON
BEAUTY SHOP
709 W. Ohio Phone 1608

21 years experience ...
Formerly owned American Beauty Shop.

We Specialize in
PERMANENTS and FACIALS.

It's New—It's Different!

MOTH INSURANCE

INSURED Moth-Proofing! It's the biggest, newest idea in the cleaning world today! Besides making your clothes immaculately clean, we also make them absolutely moth-proof — and insure them against moth damage for six months. Most important of all, this unusual new service costs not one cent more than ordinary cleaning!

FASHION CLEANERS
A. B. McCAIN, Owner
412 W. Texas and 510 S. Main

Progressive Study Club Has Meeting

Mrs. E. A. McCullough read a paper on "American Interprise Abroad" when members of the Progressive Study Club met Wednesday afternoon in the home of Mrs. John Porter, 205 South G Street.

Mrs. Lindley Latham, president, directed the meeting and read a paper concerning the Naval peacetime reserve.

Mrs. John L. Hart read the club constitution.

Announcement of the May 10 federation luncheon meeting in the Crystal Ballroom was made by Mrs. John H. DeFord.

Present were Mrs. R. J. Hickman, Mrs. A. A. Jones, Mrs. W. C. Kimball, Mrs. C. W. Ledebur, Mrs. J. M. Thomas, Jr., Mrs. John B. Norman, Mrs. John A. Porter, Mrs. W. C. Mitchell, Mrs. Cecil Waldrep, Mrs. George J. Byrne, Mrs. V. M. Cummings, Mrs. C. B. Yarbrough, Mrs. Frank True, Mrs. W. H. Pomerooy, Jr., Mrs. David Cole and Mrs. L. Otis Baggett.

Mother's Day Play Practiced At Meeting Of Prairie Lee Club
A Mother's Day play was practiced by members of the Prairie Lee 4-H Club at a meeting Tuesday in the Prairie Lee School.

Present were Paula Jane King, Johnnie May Nickle, Frances Dunn, Leana Marie Price, Anna Beth Graham, Ruth Bennett, Bessie Franks, Betty Franks, Essie Raggett, Mary Ruth Mathies, Wanda Pearl Elmo, Grace Marie Arnett and Mrs. J. W. Arnett.

St. Ann Altar Society To Sponsor Game Party

Tickets are on sale for a game party to be sponsored by the St. Ann Altar Society of the St. George's Catholic Church.

The party will be Friday at 8 p. m. in the Crystal Ballroom of the Scharbauer Hotel.

Mrs. Kenneth Coughlin is general chairman and Mrs. Gene Sweeney is co-chairman for party arrangements.

A cedar chest filled with linens, towels, and hand-embroidered items and other prizes will be given away.

The chest will be on display in the lobby of the Scharbauer Hotel Thursday and Friday.

Social Situations

THE SITUATION: You are invited to a shower for a bride-to-be, and on the day of the party you are ill and cannot attend.

WRONG WAY: Feel that since you are not going to the party you need not send a gift.

RIGHT WAY: When you tell your hostess you will be unable to attend the shower tell her you are sending your gift. If you have no way to send it, ask if she or another guest can pick it up.

MRS. MESSICK RETURNS
Mrs. Nettie B. Messick, Midland County home demonstration agent, returned Wednesday night from San Angelo, where she has been attending a training school for demonstration agents. The school was sponsored by the Texas A&M Extension Service.

Birds of prey wear feathered pantaloons, which serve to confuse the victim at which the bird is striking with its feet.

POSTAL INSPECTOR HERE

G. W. Morrow, Abilene, postal inspector, made a routine inspection visit to the Midland Post Office Thursday.

WELFARE SUPERVISOR HERE

Mrs. Winston Sherwood Lamesa, welfare supervisor for Area 34, which includes 11 West Texas counties, is a visitor in Midland.

Texas Techsans Plan Dine-Dance

A dinner dance for members and guests of the Texas Tech Club will be held Friday evening at the Log Cabin Inn.

All exes of the college are invited to attend.

During the war, 624 of London's 701 churches were bombed and 91 totally destroyed.

RETURN TO BALLINGER

Mr. and Mrs. M. B. Webb of Ballinger have returned to their home, after a visit with N. B. Beauchamp and family and Virgie Webb.

YOU'RE INFANTICIPATING...
We have original summer designs for mothers-to-be, fashioned carefully to keep your secret for months.

COOL, BREEZY SUMMER FABRICS
LINENS — CREPES — COTTONS

Every one with the inimitable flair that makes them a blessing to own, a joy to wear... before, during and after.

THE MOTHERS-TO-BE SHOP
1800 W. Texas — Mrs. Edna Rockwell

We extend a cordial
welcome to

Chas. A. Haynes Co.
DEPARTMENT STORE
opening at 213 N. Main

AND

Franklin's
Opening Corner Main and Wall

We offer best wishes
to these two new firms
and wish them the best
of success.

Virtue
DAY GOODS CO.

You Pay No More For Nationally Famous
Brands At Virtue's

Everybody's
Nationally Famous Fashions for Her

SISOL
SUNNER

Just for you . . .

Under the pretty gros-grain bow in the back is an adjustable feature that makes this hat fit exactly for you. Lovely knotted straw in natural, white and colors.

3.95 to 6.95

SPECIAL
Closing Out
FLOWERS
Bunch \$1

We Wish To Extend

A Neighborly Welcome

To Two New Businesses
Opening In Midland—

CHAS. A. HAYNES CO.

and

FRANKLIN'S

We think your coming to Midland was wise
on your parts and a good thing for Midland.
We're glad to have both of you among us.

GRAMMER-MURPHEY
Women's Wear

A Sincere Welcome . . .

To Midland's Two
Newest Stores

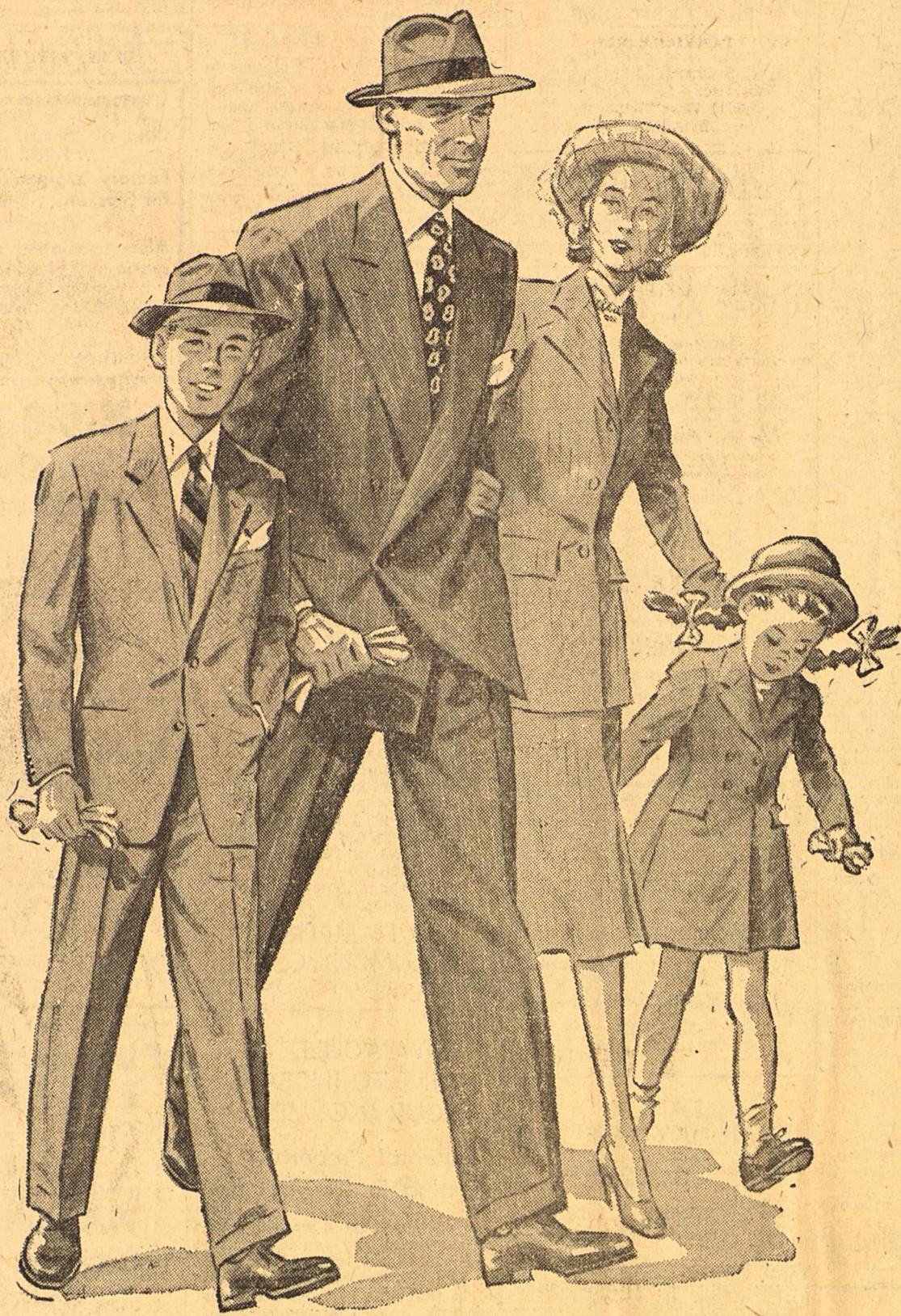
Chas. A. Haynes Co.
DEPARTMENT STORE

. . . and . . .

Franklin's

Both stores will be distinct assets to Midland
and will add materially to the shopping advantages of our city. We join in extending them a hearty welcome.

Everybody's
NATIONALLY FAMOUS FASHIONS FOR HER



You are cordially invited to attend our *Grand Opening*



THE ENTIRE STAFF WILL BE PRESENT TO WELCOME YOU TO . . .

CHAS. A. HAYNES CO.

MIDLAND'S FINEST DEPARTMENT STORE

213 N. Main

(Formerly USO Building)

Friday, April 25th, 9:00 a.m.

Chas. A. Haynes, owner, R. R. Price, manager, and the entire staff of CHAS. A. HAYNES CO., MIDLAND'S FINEST DEPARTMENT STORE, cordially invite you to attend their opening, Friday, April 25, 1947. They feel sure that you will be greatly pleased with the merchandise, the service, and the courtesy you will receive. You'll find many outstanding styles in both men's and women's and children's apparel PLUS many, many more items in which you will be interested! This fine department store will do everything possible to live up to its slogan, "The Modern Department Store That Gives You BETTER Merchandise."

MEN'S WEAR

At your service is our men's department that will feature quality merchandise, popular styles, and courteous service. We will endeavor to merit your patronage through these three services.

- Summer Robes
 - Pajamas
 - Sport Shirts
 - Slacks
 - Hats
 - Zelon Jackets
 - Undershirts and Socks
- AND A NUMBER OF OTHER QUALITY MEN'S ITEMS.

BOYS' WEAR

We have a complete boys' department that will give your youngster wearing apparel that he likes to wear . . . merchandise that will give him long service and handsome appearance.

- FEATURING:
- McGREGOR SPORTSWEAR**
- SLACK SUITS
 - SPORT SHIRTS
 - SWIMMING TRUNKS
- A Complete Selection Of Quality Boys' Apparel

LINGERIE

Never before in your life have you seen such quality lingerie . . . such beautiful lingerie. The widest choice we've been able to get. Lingerie in a variety of fabrics and colors. Tailored and lace trimmed.

NYLON HOSE

A COMPLETE DEPARTMENT

54 gauge, 15 denier.....	\$2.50
51 gauge, 20 denier.....	\$2.15
51 gauge, 30 denier.....	\$1.85
51 gauge, 30 denier (extra length).....	\$1.95
400 needle, 20 denier.....	\$1.70
45 gauge, 30 denier.....	\$1.60

SHEETS

INDIAN MAIDEN COMBED

PERCALE SHEETS

by Nashua

90 x 108.....	\$5.45
81 x 108.....	\$4.95
72 x 108.....	\$4.50

PIECE GOODS

You'll find every material that you've ever dreamed of in our material department. Lovely colors, lasting beauty, quality of the highest degree! A very complete department that will give you the finest materials that are available.

- SPUN RAYON PRINTS
- SHEERS
- BATISTE
- COMBED MUSLIN
- DOTTED SWISS
- ORGANDY
- SEERSUCKER
- TAFFETA
- DIMITY
- GINGHAM
- RAYON GABARDINE
- PIQUE
- SHEETING
- LINENS
- SHANTUNG

And a host of other fine materials

SHOES

LADIES' SHOES

"Tupper" Fashions

In all styles in black patents, red calf, russet calf, and many others! In sizes that begin with widths of AAAA to B, sizes 5 to 10.

CHILDREN'S SHOES

"Red Goose" Line

A famous line is at your disposal in our children's shoes. Among our sizes are very narrow widths in sandals, oxfords, shoes in whites and colors. Popular styles.

MEN'S SHOES

"John C. Roberts" Shoes

A high quality shoe that will give you combined handsomeness and comfort. A shoe recognized for its outstanding features. Prices are from \$9.95 to \$13.95.

CURTAINS

We have curtains that will add to the beauty of your home. Curtains that will give you pleasure and your home added attractiveness.

- COTTAGE SETS
- BATHROOM SETS
- BEDROOM CURTAINS

Organdy, Scrim, Small & Large Dots, Ninon

LADIES' WEAR

We've a smart collection of the latest styles for ladies. Up-to-date fashions for women who like fashion plus quality. A complete ready-to-wear department is here with everything to please you.

FEATURING:

"Weingarten" and "Baudette" original

- RAYON SHEERS
- BEMBERGS
- LIGHT WEIGHT CREPES

In our cotton dresses we've a number of beautiful numbers that you'll adore . . . we are . . .

FEATURING:

"Towndale" and "Darney" Frocks

- Chantungs
- Chambrays
- Seersuckers
- Muslins
- Tissue Gingham

JUNIOR WEAR

A large selection of junior dresses direct from the style centers of the country! Styles that the young miss will rave about! A complete line . . .

FEATURING:

"SEVENTEEN" and "JANIS-CONRAD"

in styles that will suit your fancy! Cute little numbers, dainty designs, cut for fullness and comfort. Styles that give the freedom necessary to the younger set!

SPORTSWEAR

for ladies and misses

A very smart selection of sportswear for your selection is here and now! You'll find the most popular styles and colors.

- Slack Suits
 - Shorts and Bra
 - Play Suits
 - Shorts
- And many other such apparel.

CHAS. A. HAYNES CO. — A MIDLAND OWNED AND OPERATED INSTITUTION!

THE MODERN DEPARTMENT STORE THAT GIVES YOU BETTER MERCHANDISE

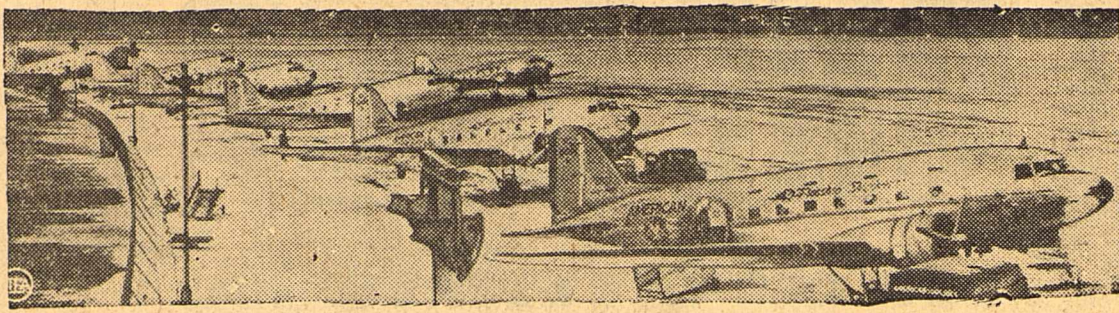
Airlines Suddenly Discover Limited Business Ceiling, And Air Travel Faces Reorganization To Lure Riders From Trains

By S. BURTON HEATH
NEW YORK—(NEA)—The honeymoon is over. The boom has come to an end. This country's domestic airlines are facing their day of reckoning. They must come down to earth—or else.

That is the composite opinion of several topnotch leaders in the industry. They have no doubt that air travel has a glorious future. But even the most progressive concede that the air lines misread the signs, expanded too fast, and now must pause and reorganize.

Last year the scheduled lines carried far more passengers more miles, in more planes on more flights, than ever before. They handled more cargo, took in more money, ordered more equipment, hired more employees, spent more, and wound up swimming in a sea of red ink.

Of 20 companies, only Eastern, United, National, Continental and probably Northwestern made good to fair profits. One or two others may have avoided loss. TWA probably lost more than \$8,000,000, the Capital Airline around \$2,500,000.



Planes Can't Fly On The Ground

Here are two down-to-earth pictures that clouded the airlines' rosy postwar dreams—adequate airports (above) that keep planes waiting on the ground after they're loaded; crowded, inadequate terminals (below) that discourage would-be customers.



Chicago & Southern and Western substantial amounts, and American a little.

Leaders consulted by NEA Service all agree, in varying words, with the explanation given by Carleton Putnam, president of Chicago & Southern:

"I believe that most airline managements were intoxicated by the feverish load factors of wartime

into supposing they could count on fantastic increases in postwar traffic."

W. A. Patterson, who has made United a contender for American's top position, is a middle-of-the-roader, less optimistic than C. B. Smith of American and less conservative than Eddie Rickenbacker of Eastern.

Saw Pie In The Sky

He points out that during the war the lines had few planes and enormous demands for space; their expenses were limited by scarcity and wage freezing, but incomes were held up by almost full loads on all flights the year around.

"Not only the public, but many in our industry, imagined that such demand would continue and could even be expanded. The sky seemed to be the limit."

The minute wartime controls went off, the industry bought planes, hired more help, begged for new lines, added schedules.

As late as 1944 the lines had only 228 planes, mostly two-engine DC-3's. At the end of 1946 they had 732 planes, of which at least a third were four-engine DC-4's and Constellations. The most recent check showed 684 new craft on order, ranging up to 80-passenger Boeing Stratocruisers.

Last fall's wave of air crashes probably cost the air lines about 636,000 passengers who would have traveled 300,000,000 miles at 4½ cents—a total revenue loss certainly above \$12,000,000 for the last four months of 1946.

This and the railroads' aggressive campaign—"If you must get there, go by rail"—have been blamed by some for the financial situation which, in the words of President Ralph Damon of American, "smells."

But the real trouble is not loss of patronage. In November, when the drop-off looked worst, the lines

carried half again as many paying passengers as in any other November in aviation history.

The trouble was—and is—that the lines provided new seats faster than customers were ready to fill them. They provided new services before there was business to support them.

They still are using airports that were inadequate in 1941. Terminal facilities are being improved, but still are disgraceful in many big cities. There are too many days when flying is washed out by weather.

Weather Big Curse

It is safer to fly now than ever before. If you flew last year, you had only one chance out of 125,000 of being killed. For every mile that you flew, according to Chairman James M. Landis of the CAB, you took less than half the chance of death you would have taken riding that mile in an automobile.

Many were frightened out of flying. But loss of these passengers was small compared with the loss from groundings by weather—and from a public impression that air service was not trustworthy "when you've got to get there."

There are winter months when up to 15 per cent of flights must be canceled. Some flights leave six, eight, 12 and even 24 hours late.

Except for very short trips a plane can start that late and still beat the train. But it makes for uncertainty. "This matter of unreliability," says Damon, "is our worst curse. It costs us plenty of busi-

ness. We must cut it to the bone."

Safety and reliability both depend upon landing and takeoff conditions. The \$38,500,000 Air Transport Association program, recommended to the federal government, is aimed at enabling planes to take off and

land safely, on time, under low ceilings and with limited visibility.

The airlines are spending \$850 each to equip most new planes with instrument landing system equipment. Soon they must replace that with a better set costing \$2,500 per plane. The program calls for ILS equipment at 160 airports. It would provide also ground controlled approach at 40 larger fields, and FIDO (fog dispersal) at the 10 major fields.

ILS transmits signals that, in an automatic pilot, can bring the

plane through any fog to within 50 feet of the runway for actual landing. GCA enables a ground crew to talk the pilot in.

Experts agree that no single war-developed invention is a cure-all. ILS, GCA, FIDO, high intensity approach and runway lights, very high frequency radio equipment, all work together.

With these installations Damon believes that inside of five years air travel can be made as dependable as travel on a well-run eastern (Continued on page 11)



Some of the big new airliners will have berths, like this one being demonstrated in a Stratocruiser. But berths cut down passenger capacity, make high fares a new problem.

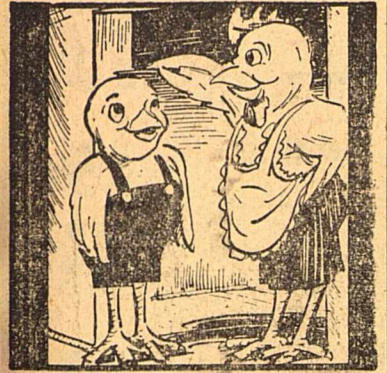
Lincoln - Mercury - Ford

SERVICE

Experienced Supervision
Trained Mechanics
Latest Equipment and Methods

Murray - Young Motors, Ltd.

223 E. Wall Phone 64



Get Rapid Growth by feeding **Paymaster**

GROWING MASH
Yes, PAYMASTER GROWING MASH really gets them to market in a hurry. Scientifically formulated and farm tested, PAYMASTER GROWING MASH provides your growing birds with the body-building nutrients they need to develop into early layers . . . and profit payers! Stop by today and get a supply.

MIDLAND CO-OP MARKETING ASS'N.
211 South Mineola
Phone 2150

WE'RE HAPPY ABOUT OUR NEW ARRIVALS

- SOLID WHITE WALLTEX
- ARTIST'S CANVAS by yard
- PASTEL PAPER, CHARCOAL PAPER and STENCIL PAPER ALSO CANVO BOARDS

YOUR HOME DECORATORS' **Simmons PAINT & PAPER CO.**

- PLASTIC WALL PROTECTORS 30"x40"
- "NO-BEND" WAX APPLICATORS AND MANY MORE!

206 S. MAIN
Phone 1633

GOOD YEAR TIRES

LET US **Smooth out YOUR ROUGH RIDE**

IT'S EASY AND INEXPENSIVE . . .

COME IN NOW AND HAVE YOUR **WHEELS BALANCED**

Those pavements pounding, out of balance wheels that are giving you a rough ride are rough on your pocketbook too—they're running up a future replacement or repair bill for you.

Out-of-balance wheels cause costly, needless wear of bearings, bushings and king pins. See us today for wheel balancing. See how much smoother your ride tomorrow.

See Us For Full Line Of **GOODYEAR TIRES, TUBES and ACCESSORIES**

RETREADING that will add thousands of miles to your tires

Midland Tire Co.
FRED GIRDLEY D.B. TOT WATLINGTON
LODI RETREADING AND VULCANIZING
Your Home Owned Tire Store—R. H. (Rusty) Gifford, Mgr.
108 N. Main St. Phone 108

If You Need A Hot-Water Heater NOW IS THE TIME

We Can Supply You With

- STANDARD • CRANE • MISSION
- DAY AND NIGHT • GENERAL

We Have A Good Stock Of PLUMBING FIXTURES . . . ANY MAKE

- KOHLER • CRANE • STANDARD or ELGER

HEATH and TEMPLETON PLUMBING COMPANY
Phone 2533 119 N. Weatherford

Motor Repair, Brake Service, Welding

We believe in doing the work RIGHT . . . and we don't believe in too high prices. We guarantee ALL our work.

SPECIALIZING IN BRAKE SERVICE and WELDING OF ALL KINDS

Texas Garage & Body Shop
Culp Bldg. on E. Highway 80 Phone 1155

Figure Your Own Savings On **Building Materials** At Chamber's

You'll find out why it's better to "Pay Cash and Save." Greater savings are here for you . . . See Chamber's today for your Building Materials!

LUMBER SPECIALS

2x4 and 2x6 FIR	\$6.95
OAK FLOORING	\$8.95
1x8 and 1x10 SHIPLAP	\$12.00
1x6 CENTERMATCH	\$12.00
OUTSIDE White Paint, In 5-gal cans	\$4.75 gal.
Outside Grey Paint	\$2.00 gal.
CEMENT	90¢ sack

CHAMBERS LUMBER CO.
Colorado at Front Phone 367

COUPON
Regular 10c **BRILLO**
5 Soap-Filled Pads in a Box WITH COUPON
2 FOR 15¢
(Limit 2)

1-ounce **SPIRITS OF CAMPHOR**
19¢

2-ounce **OIL OF WINTERGREEN (STYRETIOL)**
19¢
(Limit 1)

Giant Tube **COLGATE DENTAL CREAM**
41¢

Pound Pkg. **EPSOM SALT**
23¢
(Limit 1)

Pack 10 **GILLETTE BLUE BLADES**
49¢

4-ounce **MENNEN TALCUM FOR MEN**
23¢

Your Daily Health Insurance: **Potent VITAMINS**

Promote Sound Teeth and Bones

OLAFSEN'S Hi-Potency DICALCIUM PHOSPHATE with Viosterol Added
Rich in vitamin D, calcium, phosphorus . . . **1.09**
Bottle of 100 CAPSULES.

ONE-A-DAY (Brand) Multiple Vitamins, 25 capsules . . . **98¢**

OLAFSEN'S VITAMIN C Hi-potency 25-mg tablets 100 . . . **79¢**

UPIJOHN SUPER D Perles Cod Liver Oil capsules 100 for . . . **2.55**

OLEUM PERCOMORPHUM Olafsen's A and D drops, 10cc . . . **65¢**

IRRADOL-A FOR ABGD Parke Davis liquid 16 oz size . . . **99¢**

MIDLAND Walgreen Agency DRUG CO.

SPECIALS FOR THURSDAY P. M., FRIDAY AND SATURDAY

We Reserve The Right To Limit Quantities

DOAN'S PILLS 75¢ SIZE **49¢**
(Limit 1)

CUTICURA OINTMENT 25¢ SIZE **19¢**
(Limit 1)

\$1.25 SIMILAC BABY FOOD **94¢**
(Limit 1)

100 ASPIRIN TABLETS WALGREEN **33¢**

COUPON
10c **Vegetable BRUSH** WITH COUPON **8¢**
(Limit 2)

WE CARRY THE COMPLETE LINE OF FAMOUS WALGREEN PRODUCTS Drugs with a Reputation

33c Value **HYDROGEN PEROXIDE** **27¢** pt.
(Limit 1)

A BLESSED EVENT!

Sale of BABY NEEDS

A "blessed event" for thrifty mothers! We have all the many things you need for bringing up baby. Make our store your Baby Needs Headquarters—it's thrifty, practical . . . and so convenient!

BABY BOTTLES 4 or 8-oz. . . . **4¢**
10¢ DAVOL NIPPLES . . . **3 FOR 25¢**
DEXTRI-MALTOSE, pound . . . **63¢**
MENNEN BABY OIL, 50c size . . . **43¢**
BOTTLE CAPS, rubber . . . **2 FOR 9¢**
BORIC ACID POWDER, 4-oz. . . . **8¢**

Baby's **VITAMINS!** **Olafsen OLEUM PERCOMORPHUM** Economical 50c size . . . **2.59**
Easy to take drops . . . rich in A and D.

SAFETY PINS Card **5¢**

CHUX Large Pkg. **\$1.49**

Save! 15c Cakes **STORK CASTILE** **2 for 25¢**

Helps Encourage . . . **CURLS for BABY!** **NESTLE 98¢**

27 Cotton **SHOE LACES** 3 prs. **11¢**

Hard Wood **CLOTHES PINS** **10¢** doz.

ZIPPO LIGHTER **\$2.49**

5c **Tobaccos**
• Bull Durham
• Duke's Mixture
• Golden Grain
3 FOR 10¢

PHOTOGRAPHIC SUPPLIES

Eastman Kodak Film

120	33c
620	33c
116	38c
616	38c
35mm	81c

JUST ARRIVED . . .

Large Assortment Eastman Kodaks and Brownies

STOCK UP NOW FOR THAT SUMMER VACATION

Walgreen Agency Drug Store

ENGLISH DISCOVERY
Although an Englishman discovered the possibility of making dyes from coal in 1856, German companies developed the coal dye industry and remained preeminent in the field until World War I.

YOUTH IS WONDERFUL
ANADARKO, OKLA. —(AP)—D'n Jones, who is 85 years old, is looking forward to a long life. He says his mother lived to be 106, his father 108 and his grandmother 114.

Englishman Interpreter Is Voice Of Russia At UN Security Council

By LARRY HAUCK
LAKE SUCCESS, N. Y. —(AP)—The "Voice of Russia" in the United Nations Security Council is a 40-year-old Englishman who never has set foot on Soviet soil.
To Robert Daniel Hogg, a graduate of Oxford, generally falls the task of interpreting the speeches

of Soviet Deputy Foreign Minister Andrei A. Gromyko, Russia's council delegate.

The bespectacled Englishman, one of the veterans of the U. N.'s staff of some 30 official interpreters, can speak eight languages but it is his rendition of Gromyko's Russian into English which commands major attention.

Hogg considers Gromyko easy to interpret because of slow and precise language and clarity of thinking.

Takes Pride In Work

"We interpreters take a great pride in our work," Hogg said. "To do a good job we must sympathize with the views of the man for whom we speak. We must get the same feeling and force into the interpretation that he puts into his conveyer."

"Why, sometimes I deliver speeches directed against my own government. But we must put aside personal feelings. To lose the force and logic of a delegate's address in interpreting would lessen its effect on listeners."

International interpreting is almost a science and comes easily only to those with an excellent memory, a thorough background in history and a command of languages.

Hogg jots down key words in a sentence. Then by following closely the trend of the speaker's thoughts and dipping into a vast personal background in international affairs, he is able to put the words into another language with an exactness that amazes.

Before a man or a woman starts, he or she must know English and French, the U. N.'s two working languages. After that the interpreters, pick up as many as possible.

Because of a constant shortage of competent interpreters, these specialists never need worry about jobs. Their average salary in the U. N. runs around \$6,000, tax free, plus allowances.

Customer Buys His Wife 'Hare' Tonic

BILLINGS, MONT. —(AP)—A customer came into a store here, pointed at a window full of rabbits and said "I want to buy them. All of them."

Clerks dutifully crated the 15 bunnies along with packages of feed but curiosity prevailed and they asked the man what he wanted with so many bunnies.

"I'm going to take them home and turn them loose in the wife's kitchen," was the unamplified reply.

UNKINDEST CUT SENT BY MAIL

CEDAR FALLS, IOWA —(AP)—The Chamber of Commerce here is sending congratulatory letters to new mothers. At least one reply came back. It said: "Thank you very much for your kind letter but I merely had an appendectomy." It was signed, "Miss _____"

Give Baby Vitamin A the Easy Way... Serve Him HEINZ STRAINED SPINACH



Heinz Scientific Processing Insures Uniform Vitamin and Mineral Retention Not Possible in Usual Home-Cooking Methods

● Fresh dark green spinach, high in provitamin A, Vitamin C and iron, is rushed to Heinz kitchens and packed within a few hours of harvesting to make sure Heinz Strained Spinach is nutritious and savory! The leaves are cooked, then strained and sealed in the absence of air to protect against loss in vitamin C. Small wonder conscientious mothers insist on Heinz Strained Spinach! Serve it to your youngster!

Colorful, Savory, Smooth-Textured Heinz Strained Vegetables Also Include Heinz Strained Beets - Carrots - Peas and Green Beans. Don't Bargain with Baby's Diet! Serve Him These Nourishing Favorites

Look for the Complete line of

HEINZ BABY FOODS

CEREALS • MEATS • VEGETABLES • FRUITS • DESSERTS

WHAT? YOU GET BILLOWS OF SUDS IN THIS HARD WATER? JANE, HOW CAN YOU...!



"I USE NEW MARVENE SUDS! WHEN SOAP WON'T WORK, MARVENE WILL! JUST WATCH ME PROVE IT..!"

SEE, MARY... JUST A SPOONFUL OF WONDERFUL NEW MARVENE IN THE PAN... THEN I TURN ON THE WATER FULL FORCE.

AND SEE HOW FAST MARVENE SUDS FLOATS OFF COOKED-ON FOOD AND GREASE. DOES AWAY WITH SCRUBBING AND SCOURING!

THAT'S BECAUSE I DON'T WASTE TIME WITH A TOWEL WASHED IN MARVENE DISHES. DRAIN DRY SPARKLING CLEAN!

SAVES ALIVE. I'VE NEVER SEEN SUCH SUDS IN ALL MY DAYS!

NO WONDER YOU GET THROUGH DISHWASHING IN SUCH A JIFFY.

IT'S AMAZING, JANE! NO FILM... NO STREAKS... AND SUCH A FRESH SMELL! NOT LIKE SOAP AT ALL. IT'S MARVENE FOR ME... FROM NOW ON!

BILLOWS OF SUDS NOW POSSIBLE IN HARDEST WATER!

Dishes Drain Dry Sparkling... Clothes Come Snowier, Brighter and in Record Time!

Never before have women had anything like new MARVENE SUDS—for dishwashing, washing woollens, fine things, for general cleaning. New Marvene looks different... suds are finer. Feels different... makes water velvety, crystal-clear. Puts any soap, flakes or powder way out on a limb when it comes to washing dishes, dainties, woollens!

When Soap Won't Work, Marvene Will! In hard water where soaps can't suds or cleanse their best, new Marvene gives billows of hard-working, fast-cleansing suds! Yes, so much suds from so little Marvene that the big blue box lasts and lasts! Get new Marvene Suds today—a box for your kitchen, another box for your bathroom.



MANUFACTURED BY ALLIED HOME PRODUCTS CORP.

IN THE NEW BIG BLUE BOX

WE ARE YOUR ONE STOP SHOPPING CENTER

YOU CAN GET EVERYTHING YOU NEED HERE - IN JUST ONE STOP

BUTTER PLAINS GOLD Pound	65¢	SHORTENING CRUSTENE 3 Lb. Ctn.	\$1.29
COFFEE MONARCH Pound	44¢	Be Sure To Attend Our Radio Party SATURDAY — 11:00 to 11:30 a. m. Free Gifts To Ladies Interviewed — Bring The Children	
FLOUR GOLD CHAIN 10 Pounds	89¢	GREEN BEANS Monarch French Style, No. 2	19¢
APRICOTS CARUSO No. 2 1/2 Can	2 for 55¢	PI-DO AUNT ELLEN'S Makes Two Crusts—Package	11¢
Carrots	5¢ bunch	BLEACH RED LILY Quart	10¢
Radishes		SUPER SUDS Large Box	33¢
Green Onions		DOG FOOD PARD Dehydrated	2 for 25¢
ORANGES CALIFORNIA Dozen	25¢	SUNSHINE CRACKERS Pictsweet Cream Style	CORN
Lettuce Head	10¢	Avocados Each	11¢
Cabbage Pound	3¢	Potatoes IDAHO No. 1, Lb.	5¢
Potatoes NEW 2 lbs.	15¢	GREEN BEANS Lb.	19¢
		Vegetable Soup MONARCH Tall Can	13¢
		WHITE VALLEY TOMATOES No. 2 Can	2 for 25¢
		PORK and BEANS WHITE SWAN Tall Cans	2 for 25¢
		POST TOASTIES CIRCUS PACK 13 Oz. Pkg.	15¢
		SALAD DRESSING MONARCH Pint	47¢
		Grapefruit Juice White Swan No. 2 Can	11¢
		Chocolates SUNSHINE 1 Lb. Box	59¢
		MILK Tall Can	2 for 25¢
		MARVENE For DISHES WOOLLENS and FINE FABRICS Big Box	29¢

Quality MEAT VALUES

Feed your family on the quality meats that thrill the palate and build health!

★ FEATURING PAYTON'S FED BEEF ★

SIRLOIN STEAK Lb.	59¢
BEEF CHUCK ROAST Lb.	39¢
BEEF RIBS Pound	27¢
GROUND BEEF Lb.	27¢
FRYERS Fresh Dressed Pound	59¢
CHEESE LONGHORN Pound	52¢

RED CHERRIES Pkg.	33¢	FRESH APRICOTS Pkg.	29¢
FRESH GREEN BEANS Pkg	27¢	CLOVER LEAF ROLLS Pkg.	29¢
FRESH SPINACH Pkg.	27¢	FRESH BLACKBERRIES Pkg.	33¢

ENJOY Frozen Food Freshness

RED CHERRIES Pkg.	33¢	FRESH APRICOTS Pkg.	29¢
FRESH GREEN BEANS Pkg	27¢	CLOVER LEAF ROLLS Pkg.	29¢
FRESH SPINACH Pkg.	27¢	FRESH BLACKBERRIES Pkg.	33¢

S. & S. GROCERY

The Complete Food Market 605 WEST TEXAS ST.
DALE SLOAN -- ELMO BRISTOW
MIDLAND, TEX. PHONE 238

AMPLE PARKING SPACE

Airlines Discover Limited Business Ceiling -

(Continued from page 9)
 railroad, that has weather hazards to contend with. He is not sure that flight ever will be as reliable, time-wise, as travel on a well-run western road where weather is less of a problem.

The Air Transport Association believes that in five years U. S. airlines may capture two-thirds of the railroads' Pullman business and one-third of their intercity coach business.

United Airlines, a middle-of-the-road optimist, thinks the industry will do well to get from 16 to 18 per cent of the railroads' intercity business.

Pan-American talks about an overall business of 20 or even 25 billion passenger-miles by 1949. The Port of New York Authority mentions 17 billions. ATA and United seem to agree on around 10 billions. This smallest figure would represent almost a 70 per cent increase over 1946.

To get and handle that business the domestic lines have ordered more than \$350,000,000 worth of new planes. Except for Constellations, all are of types never yet flown in scheduled service. With rare exceptions they will discard the DC-3's and DC-4's, for which they already have paid millions to fill the gap between war and the future.

If they can fill those planes, they can attain at least the lesser goals they have set — and can make money. But to fill them, they must entice passengers away from railroads and buses, and make air enthusiasts out of millions who still are doubtful.

That is why some lines held back on the 10 per cent fare boost that the CAB now has granted. There



Eighty passengers just fill the new Stratocruiser, the cabin of which is shown above. But the problem of the airlines is to find paying customers to change places with these models.

so many lines in real distress, however, that the raise was made for their benefit. The basic air fare was 4.5 cents.

tion cruises around 330, the DC-6 is delivering around 310 miles on training flights. These and the Stratocruiser will be for main line, long haul schedules.

For local business, with hops of a few hundred miles, the new planes are Convair's 240 and Martin's 3-0-3 and 2-0-2. The first two cruise at 300, the other at 280 miles. Except for the 2-0-2, all new planes will have pressurized cabins.

Some Stratocruisers and some DC-6's are to have berths, but American and United both will discourage their use for the present. The same plane can carry only half as many in berths as in seats. So the fare would have to be much higher. No line has prepared tariffs for berths. An insider figures, however, that the berth itself would have to bring \$60, coast to coast, to pay its way. Since berths would be only on extra-fare flights, it would cost almost \$100, including government tax, for the privilege of lying down eight or nine hours. Aviation executives wonder how many passengers value their rest that high.

You have read about those twin marvels of postwar aviation, the 410-mile-an-hour Republic Rainbow and Consolidated's gigantic six-

engined 200-passenger CV-37. You probably won't see either for some time.

The CV-37 cannot be built until 5,000-horsepower power plants are available. These probably must be gas turbines. The biggest aviation engine now produces 3,500 horsepower. Work on turbines for air use is still in an experimental stage.

So the postwar planes in which you will fly, for the present, will be pretty conventional. They will, however, be much faster than the Douglas types that have carried the burden so long.

Most of the lines intend to plan schedules below the cruising speeds mentioned above. This will give pilots opportunity to make up lost time when necessary, and enable them to bring passengers in on time, which they cannot do when the schedule demands all the speed that a plane can produce.

Australian Sheep Do Not Get In Big Show

SYDNEY, AUSTRALIA—(AP)—Although Sydney's Royal Easter Show is called the largest agricultural show in the world and Australia has by far the greatest number of sheep (96,000,000) of any country in the world, no sheep are exhibited at the show. The Royal Easter Show disregards sheep because the annual sheep show held in Sydney in June demands a concentration of organizing energy and effort to make it the greatest sheep show in the world.

On July 1, 1946, there were 1,045,000 World War II veterans employed on farms in the United States.

Reporter-Telegram Want Ads Get Fast Results!

LAWNS and SHRUBS

Now is the time to fertilize and sow lawns and treat for worms. Plant shrubs and evergreens now. We do any kind of tree work. We have grass seed and St. Augustine sod.

Richardson's Nursery & Tree Surgery

1 block east Rankin Hwy. at City Limits
 1506 South Colorado Phone 520



Puckett & French

ARCHITECTS & ENGINEERS

Phone 741
 607 Petroleum Bldg.
 BIG SPRING, TEXAS

Nature puts the flavor IN...

PLAIN OR IODIZED

MORTON'S SALT

RHYMES OF REASON Words and Music By Service Drugs

FOR FOOD I HAVE AN AWFUL ZEST

I'M PARKED HERE FOR AN EATING FEST

NOW, WAITER—WHAT WOULD YOU SUGGEST?

IT PAYS TO DEAL AT Service Drugs

Featuring—

- SWIFT'S ICE CREAM
- NORRIS CHOCOLATES
- AIRMAID HOSIERY

Service Drugs

411 W. ILLINOIS PHONES 1161 1162

BABS BRIGHTENS UP WITH BUTTONS!

GOSH! I FEEL LEFT OUT! EVERYBODY'S WEARING COMIC BUTTONS BUT ME! I DON'T HAVE ANY!

CHEER UP, BABS! ASK YOUR MOM TO GET KELLOGG'S PEP. THERE'S A PRIZE BUTTON IN EVERY PACKAGE!

GEE! CAN I GET BUTTONS LIKE FAT STUFF DAISY AND WILMER?

SURE! WE'LL TRADE DUPLICATES WITH EACH OTHER!

WHAT A GRAND FOOD PEP IS! BETTER NUTRITION THAN WHOLE WHEAT—WITH THE DAY'S NEED OF SUNSHINE VITAMIN D IN A ONE-OUNCE SERVING!

PEP'S DELISH! AND THESE BUTTONS ARE SWELLI!

BOYS! GIRLS! START COLLECTING COMIC BUTTONS! ONE AS A PRIZE IN EVERY PACKAGE OF Kellogg's PEP!

18 FAVORITES FROM THE FUNNIES!

MA WINKLE
 MR. BIBBS
 WILMER
 B O PLENTY
 FAT STUFF
 DAISY
 DENNY DIMWIT
 WINNIE WINKLE'S TWINS
 GRAVEL GERTIE

UNCLE AVERY
 FLATTOP
 MAMA DE STROSS
 AUNTIE BLOSSOM
 TINY TIM
 ABRETHA BREZ
 LITTLE JOE
 SUPERMAN

There has been, and still is, a hot argument between aviation and railroads as to which is cheaper. If the roads do not get a raise, they will have a stronger talking point in this debate.

The railroads say that since one must sit up in a plane, comparison should be round-trip air fares against round-trip coach fares. But the airlines say it is one thing to sit up nine hours in a plane, coast to coast, and another to sit up 80 hours in a train.

The armed services accepted the airline viewpoint in the war. They made their comparisons of air cost against Pullman and lower berth. They count the pay for time spent in travelling as travelling expense.

On this basis the ATA figures that a \$60-a-week man would spend \$570.37 to ride a regular fare train from New York to Los Angeles, but only \$227.30 to make the same trip by plane. The faster the plane and the higher an executive's pay, the greater the differential.

The new planes now on order fall into three classes. At the top come the new Stratocruisers which may not appear before 1948. They are twin-deck civilian modifications of the Superfort. They will cruise around 350 miles an hour with 80 sitting passengers. Fare on them probably will be at a premium of about a cent a mile.

Behind them will come the Constellation, already in use, and the new Douglas DC-6. The Constella-

Ah-h-h! It's Lady Borden, the dream ice cream!



THESE ARE the wonderful things this dream ice cream, Lady Borden, is made of...

The smoothness of thick, golden cream... the quick, delicate delight of flavorings of rare excellence... the freshness of choice fruits and...

The skill and experience of Borden's,

America's most accomplished ice cream makers.

That's what makes Lady Borden the dream ice cream it is.

Ask for Lady Borden Ice Cream at your Borden Ice Cream dealer's. It costs a bit more, but very well worth it!

Try it and see!



Comes to you fresh as it's frozen, ready to dip out of its distinctive Burgundy-colored package.

LADY BORDEN ICE CREAM

FIT FOR A GOLDEN SPOON

GIGANTIC CANNED FOOD SALE

Every Buy — a Money-Saver

Be wise buy plenty of these

Check these Values

The More You Buy — The More You Save! Stock Up Today

APPLE	Musselman's No. 2 Can, 17¢	3 for 47¢	Pimientos	Tru-Tex 7 1/2-Oz. Can, 23¢	3 for 65¢	Juice	Sunny Dawn Tomato No. 2 Can, 13¢	3 for 35¢
Sauce	Highway, Halves No. 2 1/2 Can, 27¢	3 for 79¢	Soup	Heinz Tomato 11-Oz. Can, 12¢	3 for 33¢	Coffee	Airway 1-Lb. Pkg., 38¢	3 for \$1.12
Apricots	Red Sour Pitted No. 2 Can, 35¢	3 for 99¢	Veg-All	Mix Vegetables No. 2 Can, 17¢	3 for 49¢	Milk	Cherub Evaporated Toll Can, 13¢	3 for 37¢
Cherries	Green Bow No. 2 1/2 Can, 27¢	3 for 79¢	Peas	Lucas Fresh Blackeye No. 2 Can, 17¢	3 for 49¢	Olives	Gulf Port Stuffed No. 16, 1 1/2-Oz. Jar, 73¢	3 for \$2.14
Peaches	Clarksville No. 2 Can, 19¢	3 for 55¢	Beans	Phillip's Green and White, No. 2 Can, 23¢	3 for 65¢	Olives	Heinz Queen No. 16-10-Oz. Jar, 65¢	3 for \$1.89
Blackberries	Country Home, White No. 2 Can, 17¢	3 for 49¢	Chili	Van Camp 17-Oz. Jar, 31¢	3 for 89¢	Potatoes	Lusion Sweet No. 2 1/2 Can, 17¢	3 for 49¢
Corn	Highway Gold, Whole K. 12-Oz. Can, 15¢	3 for 43¢	Shrimp	Lopez, Medium 7-Oz. Can, 57¢	3 for \$1.69	Rice	Dinner, Royal Dutch 10 1/2-Oz. Can, 12¢	3 for 35¢
Corn	Rosedale Garden Sweet No. 2 Can, 19¢	3 for 55¢	Sardines	Avalon No. 1 Can, 17¢	3 for 49¢	Noodle	Dinner, Lynden Twistee 16-Oz. Jar, 14¢	3 for 39¢
Peas	Pictsweet, Big Tender No. 2 Can, 20¢	3 for 57¢	Mushrooms	Deluxe 7 1/2-Oz. Can, 27¢	3 for 79¢	Beans	Great Northern 2-Lb. Cello, Pkg. 30¢	3 for 85¢

Fresh Produce		Values Galore		Quality Meats	
Texas Valencia	Lb. 8¢	Apricots	Valley Gold No. 2 1/2 Can, 25¢ 3 for 73¢	Smoked HAMS	Center Slices Lb. 59¢
ORANGES	Lb. 8¢	Peaches	Castle Crest Half No. 2 1/2 Can, 27¢ 3 for 79¢	Sliced HAM	Center Slices Lb. 79¢
ONIONS	Bun. 5¢	Beans	Mountain Fresh, French Style Green, No. 2 Can, 12¢ 3 for 35¢	Pork Chops	Center Cuts Lb. 59¢
Grapefruit	Texas Marsh Seedless Lb. 4¢	Diced Beets	Lakeside No. 2 Can, 10¢ 3 for 27¢	Bacon	Sliced, Premium Star Certified Lb. 65¢
Lemons	California Sunkist Lb. 12¢	Snack	Morrell's 12-Oz. Can, 39¢ 3 for \$1.15	Dry Salt Bacon	Lb. 39¢
Cabbage	Louisiana Crisp, Green Lb. 3 1/2¢	Catsup	Red Hill Tomato 13 1/2-Oz. Bot., 17¢ 3 for 49¢	Ground Beef	Fresh Ground Lb. 35¢
Spinach	California Green, Pascal Lb. 15¢	White Rice	Water Maid 3-Lb. Pkg., 35¢ 3 for 99¢	Beef Stew	Short Ribs Lb. 29¢
Celery	with Tops Texas Bun. 12¢	Salt	Jefferson Island, Plain or Iodized, 26-Oz. Pkg., 4¢ 3 for 10¢	Spiced Luncheon	Lb. 55¢
Turnips	Crisp Red Bun. 5¢	Flour	Kitchen Craft Top Quality 25-Lb. Bag \$1.99	Wieners	Skinless No Waste Lb. 39¢
Radishes	Idaho Russet Potatoes 10-Lb. Mesh Bag 49¢	Flour	Gold Medal Kitchen-Tested 25-Lb. Bag \$1.99	Lunch Loaves	Asstd. Lb. 43¢
NEW POTATOES	Texas Bun. 7¢	Bread	Mrs. Wright's Extra Tender 24-Oz. Loaf 17¢	Cheese	Full Cream Cheddar Lb. 55¢
		Meal	Mammy Lou Yellow Corn 25-Lb. Bag \$1.33	Cheese	Dutch Mill Leaf Sliced or Piece Lb. 53¢
		Margarine	All Sweet Lb. 43¢	BACON	Corn King Sliced, Oricle Lb. 59¢
		Dressing	Duchess Saled 8-Oz. Jar 24¢	SAUSAGE	Pure Pork In Bulk Lb. 39¢



Evenings (except Saturday) and Sunday morning
112 West Missouri : : Midland, Texas

JAMES N. ALLISON.....Publisher

Entered as second-class matter at the post office at Midland, Texas,
under the Act of March 30, 1879.

Subscription Price
One Month\$.85
Six Months 4.75
One Year 9.00

Advertising Rates
Display advertising rates on
application. Classified rate 3c
per word; minimum charge, 35c.
Local readers, 20c per line.

Any erroneous reflection upon the character, standing or reputation
of any person, firm or corporation which may occur in the columns of
The Reporter-Telegram will be gladly corrected upon being brought
to the attention of the editor.

The publisher is not responsible for copy omissions or typographical errors
which may occur other than to correct them in the next issue after it is
brought to his attention, and in no case does the publisher hold himself
liable for damages further than the amount received by him for actual
space covering the error. The right is reserved to reject or edit all
advertising copy. Advertising orders are accepted on this basis only.

MEMBER ASSOCIATED PRESS

The Associated Press is exclusively entitled to use for publication all news
dispatches credited to it or not otherwise credited in this paper and local
news of spontaneous origin published herein.

Rights of publication all other matters herein also reserved.

Through wisdom is an house build; and by
understanding it is established.—Proverbs 24:3.

Confuse And Conquer

The nuisance value of the small Communist cell in
organized labor was demonstrated again at the protest
rally of CIO officials in Washington against labor bills
before Congress. The meeting also highlighted the con-
fusion which the issue of communism has created in high
CIO circles.

After CIO President Murray and other officers
blasted the proposed legislation and prophesied the
dawn of American fascism, Irving Potash arose. Mr.
Potash is vice president of the Fur Workers' Union.

"I speak to you as a Communist," he said. He didn't
get much further than that, according to newspaper ac-
counts of the meeting. Emil Rieve, the Textile Workers'
Union president, protested. So did A. R. Hardesty, a
Texas representative of the UAW.

But Richard Leonard, UAW vice president, objected
to Hardesty's statement that "We should say that we will
not align ourselves with the Communist Party in any
shape or form. We should say we do not seek such sup-
port."

Why did Potash bring up his Communist affiliation?
Communism is not an issue in the legislation under discus-
sion. There seemed to be no disagreement among the
250 CIO leaders as to their stand against that legislation.

We don't know what was in Potash's mind. But the
pattern of communistic technique is so familiar by now
that we feel safe in making this guess: Potash injected
Communism into the discussion because it is Communist
Party policy to promote dissension while preaching unity.
Dissension can be promoted best at the top, where it
counts. It is sure to spread to the rank and file, and with
it goes confusion. By trying to dictate CIO policy and by
aligning themselves with it, the Communists can muddle
the minds of union members.

If the Communists support CIO objectives, then can
Communism be so bad? If the government were to out-
law the Communists, wouldn't it also outlaw those who
agree with them on matters of union labor policy?

These are questions which the comrades are prob-
ably delighted to plant in as many minds as possible.
Doubt and confusion prepare the ground where the seeds
of subversion are sown. Then the Communists, through
organization, discipline, zeal and an ability to shout
louder than their opponents, have a chance of taking over.

It should be added that pro-Communist Michael
Quill, head of the Transport Workers' Union, had a few
confusing words to say at the CIO meeting. He said it
was "no accident that the American Veterans' Committee
is putting out Henry Wallace's speech by the thousands."

Veterans, attacks on American foreign policy, strikes
—are they all part of the same picture? Are they fore-
runners of the revolution? Or did Quill simply try to
make them appear so for confusion's sake?

Murray soothingly told the stormy meeting that "di-
vided opinions are one reason for the CIO's vitality."
Check. But when divided opinions involve divided alle-
giance between two countries and two systems of govern-
ment, a grave element of danger arises to trouble the CIO's
future.

New Line On Army-Navy Merger

A new argument against unification of the U. S.
armed services is rearing its head on Capitol Hill. The
line is that the Army-Navy merger bill now being consid-
ered by Congress creates a military dictatorship which
would be a threat to the traditional American democratic
form of government.

First to bring this argument out in the open have
been Republican Senator Styles Bridges of New Hamp-
shire and Democratic Congressman Carter Manasco of
Alabama. Real inspiration for the idea, however, comes
from a small number of Army and Navy officers who are
opposed to unification. They are fighting it under cover
because word has gone down from the top that there must
be no opposition to the President's announced policy favor-
ing unification.

If this fear of military dominance of the American
government came from left-wingers, it could be laughed
off as Communist propaganda aimed to keep the U. S.
militarily weak. The fact that it comes from conservative
Army and Navy officers and congressional reactionaries
makes it another matter.

Criticism of the merger bill may be a sincere concern
over the nation's future. On the other hand, it may be
the most sensational argument that could be thought up
to serve as a bind for the fear of Army Ground Force,
Navy, and Marine Corps officers that their services will
be swallowed up and made subordinate to the ambitious
Air Force. Or it may be just politics—anything to oppose
an idea favored by President Truman.

Whatever the motives for this opposition it is worth
bringing out in the open as a point of view. If there are
real dangers in unification, there is still time to amend the
merger bill. If the alarms are phony, they can be
shouted down.

Won't Be Long Now

A pleasing sign of Winter's retreat is the announce-
ment, by the U. S. Public Health Service, that influenza
cases decreased by 4,000 throughout the country in one
week.

Yes, Spring is on the way. And first thing we know
it will be the good old healthy summertime, when we
have nothing to worry about except sunburn, sunstroke,
polio, poison ivy, chiggers, mosquitoes, hay fever, drown-
ing, and other minor ills.

Hungry Rats And Hungry People Called Narrow-Minded

By RENNIE TAYLOR
AP Science Reporter

BERKELEY, CALIF.—The be-
havior of hungry rats running
through mazes of trick passageways
in search of food may hold a les-
son for statesmen seeking territory
or security for their respective
countries in the labyrinth of power
politics.

When an extremely hungry rat
is put into a maze through which
he must find the way to food, he
doesn't learn much about its zig-
zag tunnels and blind alleys, but if
not too hungry at the outset he gets
a broader picture of his surround-
ings, says Dr. Edward C. Tolman,
University of California psycholo-
gist.

Then if the original route to food

is blocked and a new one is made,
the rat with the broader learning
has little trouble in learning the
new path to his goal.

Applies to Nation

Similarly, Dr. Tolman sugges-
ted, a nation or its leaders should
be able to reach their goals by ra-
tional, roundabout methods rather
than by force or aggression if at the
outset they are not too hard-pressed
from within by some sort of hunger
or fear.

Dr. Tolman, who specializes in
animal behavior experiments for
whatever value they may have in
helping to form an understanding
of human conduct, told of the rat
tests in a special all-university lec-
ture.

The rat which is forced to learn

The grebe is a bird contortion-
ist. It lifts its legs out of the wa-
ter, shakes the moisture from
them, then folds them over the
back, under its wings.

American farmers reap about
1,000,000 tons of rice annually, but
domestic consumption is only one-
third of that; the balance is ex-
ported.

Eels once were believed to come
from the Shetland Islands, evolving
from the hairs of Shetland ponies.
Approximately 16,000,000 thunder-
storms occur annually throughout
the world.

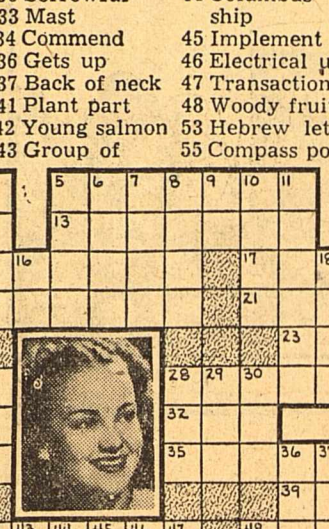
On the Air Waves

- HORIZONTAL**
- 1,5 Pictured radio star
 - 12 Great Lake
 - 13 Transferee
 - 14 Onager
 - 15 Long step
 - 17 Seine
 - 19 Native
 - 20 Type of dog
 - 21 Poem
 - 22 From
 - 23 Musical note
 - 24 Muse of poetry
 - 28 Hoarder
 - 31 Sesame
 - 32 Girl's name
 - 33 Rate of motion
 - 35 Fortification
 - 38 Fair (ab.)
 - 39 Sun god
 - 40 Swiss river
 - 42 Breathed heavily
 - 48 Clamp
 - 49 River (Sp.)
 - 50 Melodious
 - 51 Employ
 - 52 She is a
 - 54 Poker stake
 - 56 Everlasting
 - 57 Not as much
- VERTICAL**
- 1 Joker
 - 2 Gaelic
 - 3 Sloth
 - 4 Promontory
 - 5 Small wagon

Answer to Previous Puzzle



29 Fish Irish isles
30 Sorrowful 44 Columbus' ship
33 Mast
34 Commend 45 Implement
36 Gets up 46 Electrical unit
37 Back of neck 47 Transaction
41 Plant part 48 Woody fruits
42 Young salmon 53 Hebrew letter
43 Group of 55 Compass point



From where I sit... by Joe Marsh



"As Homelike As a Barn"

Cy Hartman finally got his new barn painted, but plenty of folks had a hand in it. Whenever someone got a free day, or a little extra time, they'd come over and help out with paint and brush.

And Cy, to show his appreciation, held a big "barn warming" Saturday—for all the folks who'd helped him (but not barring those who couldn't). Ma Hartman supplied sandwiches, and Cy rolled out a mellow keg of beer.

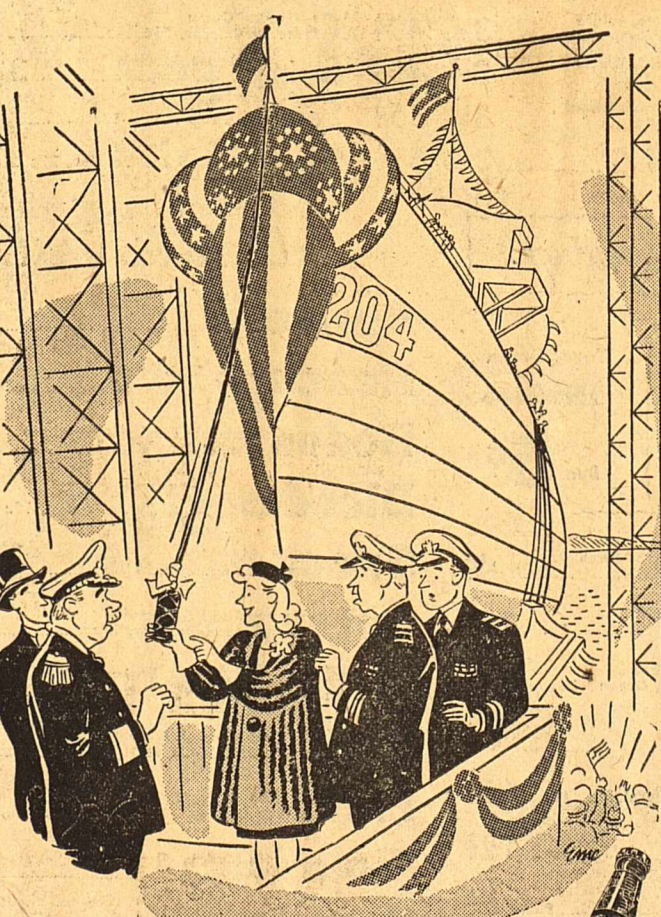
You'd never think of a barn as "homelike." But with those lanterns

hanging from the rafters: make-shift tables spread heavy with food; and Ed Carey's fiddle playing while the folks enjoyed their time, they'd come over and help out with paint and brush!

From where I sit, it's just about as appropriate to have a barn warming as a housewarming... if only because it's another chance to get neighbors together in a spirit of good fellowship.

Joe Marsh

Copyright, 1947, United States Brewers Foundation



"Make mine Berghoff"



A favorite any place where better beers are sold, and ON DRAFT at

TEXAN CLUB and SERVICE CLUB

Special Showing
— OF —
FINE LUGGAGE
Famous Brands
Including—

- OSHKOSH
- AMELIA EARHART
- DRESNER
- HALLIBURTON
- AND OTHERS

ON DISPLAY THURSDAY and FRIDAY
9:00 A. M. TO 6:00 P. M.
2nd FLOOR — SCHARBAUER HOTEL

Select Now For
Graduation Gifts

Use our convenient lay-away plan - - - a small deposit reserves your selection!

GRADUATES' COURTESY CARDS HONORED!

ANGELO LUGGAGE

THE MILKY WAY
MILK

NO MATTER WHAT YOUR WALK IN LIFE THIS GOOD MILK WILL HELP KEEP YOU IN STEP!

"Over-eating is the surest way to undermine your health and befuddle your intellect. Milk-drinkers are 100% ALIVE!"
—says Billy Break O'Day.

Ask for O'Neal Dairy Farm milk by name at your favorite food store.

O'NEAL Dairy Farm
PHONE 9013 F 3
GARDEN CITY HWY

BACK AGAIN!
in the superb quality you remember

Good news for coffee lovers! Flavor-famous White Swan Coffee is back on your grocer's shelf! If you used White Swan Coffee before the war, you'll remember its full-bodied richness and enticing aroma. But if you've never tried White Swan Coffee, don't wait to enjoy this hearty blend of finer coffees now once more available. Ask your grocer for White Swan Coffee, another White Swan Finer Food!

WHITE SWAN COFFEE

a MATCHLESS BLEND OF FINER COFFEES

WHITE SWAN Coffee

AMERICA'S BEST KNOWN BABY
Baby Week Specials

HEINZ BABY FOOD Can **8¢**
LIBBY'S BABY FOOD Can **8¢**

FURR'S FRESH CREAMERY

BUTTER
Solids Pound **62¢**
Quarters Pound **63¢**

Soup's on!!
Furr's Savings



DREFT RINSO
Large Pkg. **33¢**

Baby Food GERBER'S 3 CANS 23¢

APRICOTS Hunt's, Syrup Packed No. 2 1/2 Can **25¢**
CHERRIES Sun Pak Dark Sweet No. 2 1/2 Can **39¢**

Carnation MILK Large Can 13c

Soup CAMPBELL'S VEGETABLE CAN 15¢ CHICKEN CAN 17¢

TOMATO JUICE
STOKELY'S 46 Oz. Can **25¢**

SPAGHETTI
Franco American Can **16¢**

BLACKEYED PEAS
DEPENDABLE No. 2 Can **2 for 34¢**

Tomato Juice HUNT'S No. 2 Can 2 for ... 19c

CORN NATION'S PRIDE Whole Kernel, Can 15c

PEAS NEWPORT EARLY JUNE No. 2 Can **2 for 25¢**
ASPARAGUS SUN PAK Fancy All Green No. 2 Can **39¢**

HOMINY MEDINA No. 2 Can **3 for 29¢**
BEANS VAN CAMP'S IMPROVED No. 2 Can **2 for 37¢**

SPINACH TEXAS No. 2 Can **3 for 29¢**
SPINACH Sunny Garden, Fancy California, No. 2 1/2 Can **2 for 29¢**

PEACHES TRI VALLEY, Syrup Packed, No. 2 1/2 Can **25c**

KRAUT L'ART No. 2 1/2 Can 10c

TUNA FISH SEA HAVEN Fancy White Meat, 7 Oz. Can **51¢**
FLOUR GOLD MEDAL 10 Lb. Sack **93¢**
CREAM OF RICE Regular Package **25¢**

OYSTERS SEA COAST FANCY 7 Oz. Can **45¢**
APPLE BUTTER PALLAS 29 Oz. Jar **29¢**
HI-HO CRACKERS 1 Lb. Pkg. **29¢**

TAMALES GEBHARDT'S Can **19¢**
CATSUP CHB 14 Oz. Bottle **25¢**
PICKLES LIBBY'S SWEET Party Pack **39¢**

Fresh Fruits and Vegetables

CAULIFLOWER SNO WHITE Pound **17¢** **POTATOES** IDAHO RUSSETS No. 1's, Pound **5¢**

Green Beans SOUTH TEXAS Fresh, Crisp, Lb. **17c**

ORANGES CALIFORNIA SUNKIST Pound **11¢** **GRAPEFRUIT** TEXAS MARSH SEEDLESS, Pound **5¢**

New Potatoes FRESH and NICE, Lb. **7c**

Quality MEATS

STEAK LOIN Pound **63¢**
T-BONE Pound **69¢**

GROUND MEAT BEEF Pound **43¢** VEAL Pound **32¢**

BEEF ROAST CHUCK Pound **39¢**

CHEESE PROVOLONE Pound **39¢**

SALT PORK Pound **39¢**



CHEESE
Shefford 2 Pound Chevel **87¢** Longhorn Pound **49¢**

Bacon SWIFT'S PREMIUM, ARMOUR'S STAR, Lb. **65c** **LUNCH MEAT** ASSORTED Pound **39¢**

PRESERVES — JELLIES

APPLE JELLY, Ma Brown 16 Oz. Jar **25¢**
GRAPE JELLY, Ma Brown 16 Oz. Jar **37¢**
CRABAPPLE JELLY, Ma Brown, 16 Oz. Jar **31¢**
PINEAPPLE PRESERVES, Ma Brown, 16 Oz. Jar **35¢**
PEACH PRESERVES, Ma Brown, 16 Oz. Jar **38¢**
STRAWBERRY PRESERVES Test Taste, 16 Oz. Jar **49¢**

MRS. DALTON'S SALAD DRESSING 8 Oz. Jar **21¢**

Chicken Dinner MORTON'S NOODLE 16 Oz. Jar **45¢**

MARVENE NEW SUDS 16 Oz. Pkg. **31¢**

SWEETHEART Medium Bar **14¢**

FROZEN FOODS

Strawberries Polar, In Sugar 12 Oz. Pkg. **35¢**
Blackberries Dewkist, In Sugar 16 Oz. Pkg. **25¢**
Apricots Dewkist, In Sugar 16 Oz. Pkg. **25¢**
Corn Bridgford's 12 Oz. Pkg. **19¢**
Cauliflower Bridgford's 10 Oz. Pkg. **25¢**
Green Beans Four Winds 10 Oz. Pkg. **25¢**

DRUG SPECIALS

LADY ESTHER 4-PURPOSE CREAM \$1.25 Size **98¢**
WILDROOT CREAM OIL 60c Size **49¢**
CASHMERE BOUQUET TALC 15c Size **2 for 29¢**
Modart Shampoo **49¢**

CLOROX Pint Bottle **12c**

RETURN ENGAGEMENT

By Gwen Davenport

Copyright by Gwen Davenport; Distributed by NEA SERVICE, INC.

THE STORY: Salty and Vicky go sailing. Salty kisses her. They return to the Bagots to find Nell Choate, a childhood friend of Salty's, waiting for him. For the first time in her life, Vicky is jealous.

XVII
ARRIVING back at home, Vicky went into the library through the French windows from the veranda. In the drawing room Basil Vaslov was playing Bach's "Little G minor Fugue" on the piano, which was slightly out of tune but very sweet in tone.

Sophie was lying on the sofa listening to the music, arrayed in a rather startling magenta gown, ankle length—as always—because the van Eyck legs, concealed by the fashions of her heyday, had never been all that they might. Sophie's cheeks were flushed like a girl's under her rouge.

Vicky stopped. This was no time to talk to her grandmother. Sir Charles lay in his armchair, feet on the ottoman, and Marcel was stretched on the floor, nodding his head against the carpet in time to the music, his eyes closed appreciatively.

They were awaiting the arrival of Godfrey Mansbridge. Vicky went on upstairs to her own room. She lay face down on her white counterpane, thinking about Salty and his mother and Nell. She did not hear the taxi which brought Godfrey back to his love.

Madame van Eyck heard it, though, disturbing the gravel on the driveway just as Basil reached the end of the fugue and brought the melody out of the minor key into its triumphant major resolution. She clasped her hands together, pressing her rings into the white flesh, and turned her face toward the hall. There was a moment's silence as the music ceased, then the doorbell rang.

No one moved. "Sir Charles," Sophie whispered.

"Will you go to the door?" Basil and Marcel looked expectantly at the butler, who rose from his chair and moved slowly out of the room. Before he had reached the door the bell rang again, imperiously. The three waiting in the drawing room heard the door opened, and Godfrey's voice saying, "Ah—Charles!"

Sophie's eyes sparkled and she drew in her breath. "Godfrey!" she called, while Basil shivered with ecstasy at the pure beauty of her tone.

GODFREY appeared in the doorway, where he paused just long enough for effect. His six feet of well-proportioned height was still impressive and still showed traces of the figure which had thrilled a million women. His snow-white hair was thick and his eyebrows bushy. There was no denying the command of his presence or the resonance of his voice as he spoke his first line. "Good afternoon," he said. "I see everybody is waiting for me."

Gentle overcome with emotion, Sophie murmured his name again and shed a few tears. Godfrey stretched out his arms to her in a theatrical gesture which shot his raveled cuffs out of the sleeves of his shabby coat. He dropped his arms hastily and advanced with graceful gentility, bowing slightly and saying, "Sophie, my dear!"

On his way to her side he called back to the hall, "Charles, will you pay off the cab? And bring in my bags." Very much moved at sight of him, Sophie took his hands and rose from the sofa. They gazed at one another for a long time, during which Marcel had to turn away, trembling with indignation, to join Sir Charles in the doorway. Basil, on the piano bench, waited for his presence to be acknowledged.

"My dear," said Sophie at last, breaking away. She looked

around. "You remember Marcel, of course." Godfrey turned his head. "You didn't tell me he was still here." "I wouldn't have been," said Marcel quickly. "If I had known you were coming." "Then I'm sorry you didn't know," Godfrey said.

"Ah, please—" Sophie begged. "And Godfrey, I have a surprise for you. This is Basil. Basil Vaslov."

The two men bowed coldly. "Come," said Sophie, "let us all help Godfrey to get settled. We all want him to be happy, to feel he has a real home—" She took his arm and started him in the direction of the stairs. "Sir Charles, get the luggage, please."

Sir Charles moved with impressive features to do Madame's bidding. He paid off Clarence Hathaway, who had been taking in everything from the hall, and brought two suitcases to the foot of the stairs, setting them down.

"I'll carry one of them upstairs if you'll take the other," Sir Charles offered.

"Hold on a minute," said Godfrey. "Only one of those is mine." "You brought only enough things for a week-end?" asked Marcel hopefully.

"Perhaps your trunk is at the station," Sophie said. Godfrey coughed, unwilling to admit that everything he owned was in one suitcase. "I always travel light," he said, "like a good trouper."

"Then whose is this other one?" asked Sir Charles. "It was in the cab."

"It is mine," said Basil. He had left it at the station the day he arrived, in case an invitation was not forthcoming. When Godfrey had sent a postcard saying he was on this afternoon's train, Basil had called the station to have his suitcase sent out with Godfrey.

"Good!" cried Sophie. "Splendid! Then you will stay? Permanently?" For Basil had not yet indicated he was more than a brilliant bird of passage. "If you insist." "I do, indeed I do. We all do," said Sophie.

(To Be Continued)

McKENNEY ON BRIDGE

By WILLIAM E. MCKENNEY
America's Card Authority
(Written for NEA Service)

The Eastern States amateur pair event was won this year by William Fox of Hollis, L. I., and Walter Ollinger of Glendale, L. I. This event is termed the amateur pairs because players with 30 or more Master Points are not eligible to compete in it, but some very fine players will be found in this contest.

Some pairs went down on today's hand. The opening lead was won in dummy with the ten of clubs and the queen of hearts was led. South won, cashed the ace of clubs and led another club.

Now declarer had only eight tricks—two spades, four hearts and two club tricks.

When Fox and Ollinger played the hand, East won the first trick.

▲ Q 8 7 5 3
♥ 6 5 4
♦ Q 8 6
♣ A 2

▲ K 4
♥ Q 9
♦ K J 10 9
♣ 5 4
J 10 7

W E
S Dealer
N 10 8
E 3
S 7 2
W K Q 5

▲ J 9 2
♥ K 7 2
♦ A 3
♣ A 9 8 6 3

Tournament—Both vul.
South West North East
1 ♣ 1 ♦ Pass 2 N.T.
Pass 3 N. 2. Pass Pass
Opening—♣ 6 24

with the queen of clubs, and correctly reasoned that South must have the ace of diamonds to justify his vulnerable opening bid. East returned the seven of diamonds and South played low, but declarer confidently went up with dummy's diamond king. When it held, he led the queen of hearts and took the finesse.

The king of diamonds was the much needed ninth trick. If South had won the trick with the ace and then established his club suit, declarer would have taken the diamond finesse.

Even though North won the trick with the queen of diamonds, he would have nothing to return that would do any damage. Declarer could make four diamonds, two clubs, two spades and the ace of hearts.

SCIENTIFIC METHOD
If two cups of boiling water are stirred with a strip of metal, it is possible to tell which metal was used by examining the minute amount dissolved in the water by means of an electric eye.

PANAMA CANAL OUTSHADED
In normal years the Great Lakes locks at Saull, Ste. Marie (the "Soo") handle four to six times the tonnage that passes through either the Panama or the Suez canal.

Mims & Stephens

James W. Mims
Edwin L. Stephens
Established In 1923

INSURANCE

- Fire
- Casualty
- Automobile
- Bonds

PROPERTY LOANS REAL ESTATE

205 W. Wall Phone 21 & 673



Miss Flora Says:

Want To Get On The Good Side Of HER Mother?—

Say it with flowers from
Midland Floral Co.
Mary & Joe Koopler
1705 W. WALL • PHONE 1286
Midland's LEADING FLORISTS

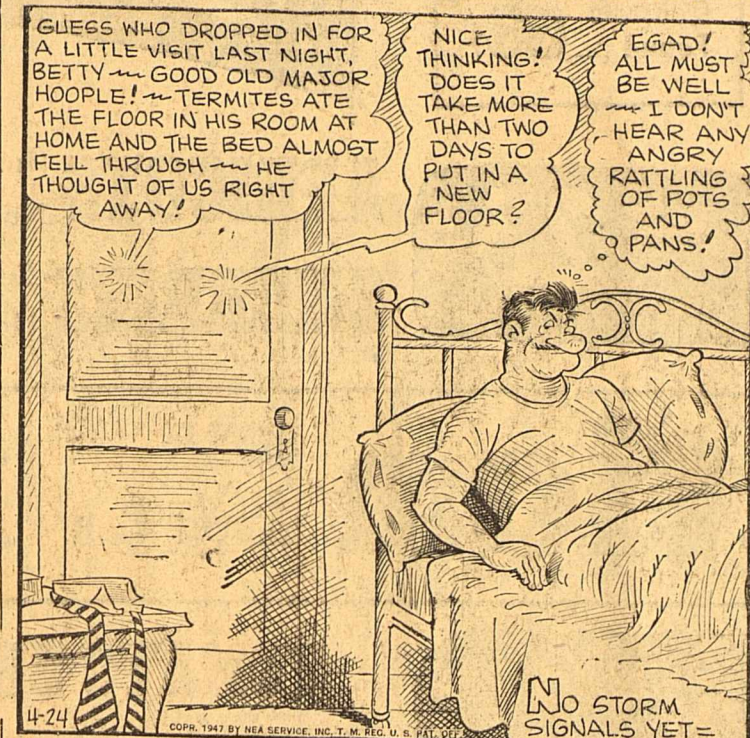
MOTHER'S DAY
SUNDAY, MAY 11th



OUR BOARDING HOUSE

with MAJOR HOOPLE OUT OUR WAY

—By J. R. WILLIAMS

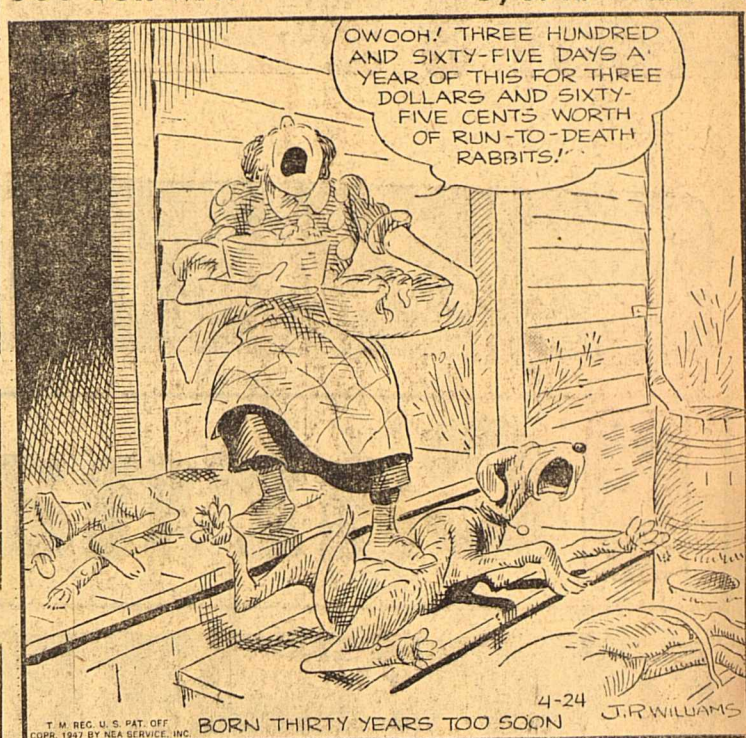


GUESS WHO DROPPED IN FOR A LITTLE VISIT LAST NIGHT, BETTY?—GOOD OLD MAJOR HOOPLE!—TERMITES ATE THE FLOOR IN HIS ROOM AT HOME AND IN HIS ROOM AT FELL THROUGH—HE THOUGHT OF US RIGHT AWAY!

NICE THINKING! DOES IT TAKE MORE THAN TWO DAYS TO PUT IN A NEW FLOOR?

EGAD! ALL MUST BE WELL—I DON'T HEAR ANY RATTLING OF POTS AND PANS!

NO STORM SIGNALS YET—

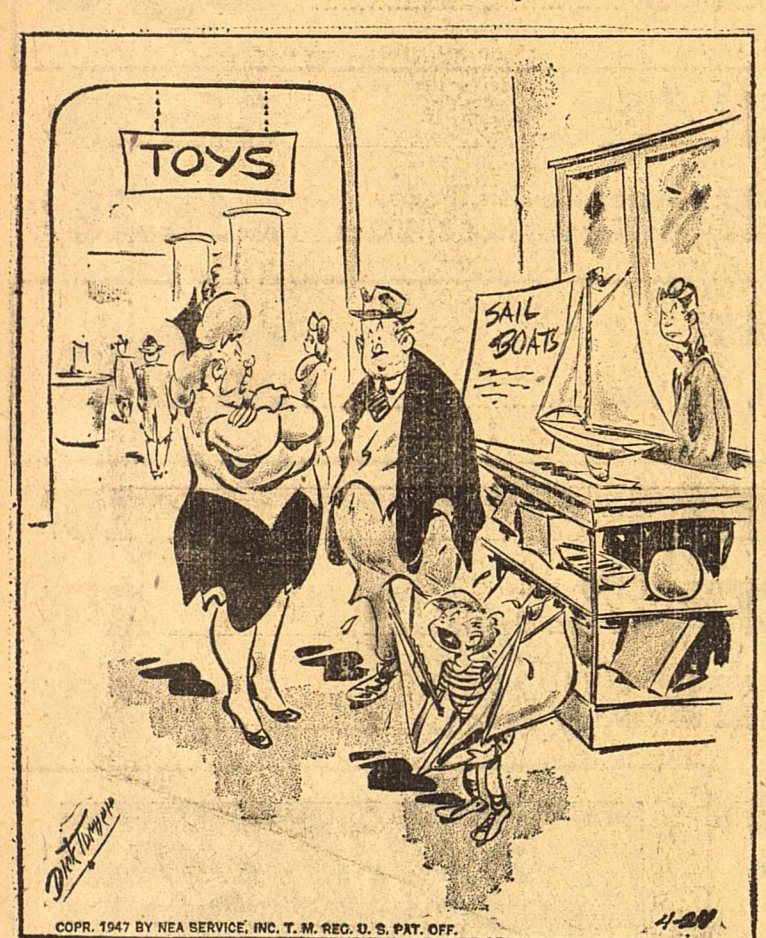


OWOOW! THREE HUNDRED AND SIXTY-FIVE DAYS A YEAR OF THIS FOR THREE DOLLARS AND SIXTY-FIVE CENTS WORTH OF RUN-TO-DEATH RABBITS!

BORN THIRTY YEARS TOO SOON

CARNIVAL

By DICK TURNER



"Now he's gotta have sea gulls!"

PHILCO RADIO PIONEER GENERAL STORE

511 West Wall Phone 1020

WANT TO BUY
NICE
CLEAN
COTTON
RAGS

(No overalls, quilts or trousers)

REPORTER - TELEGRAM

SIDE GLANCES



"But it's my first formal, mother, and I don't know how I appear at my best—shall I be vivacious or statuesque?"

BOOTS AND HER BUDDIES

—By EDGAR MARTIN



CLARA, MAYBE MAKING RED AND DUD GO TO THIS RECITAL ISN'T SUCH A HOT IDEA! THEY DON'T ACT VERY HAPPY!

LET 'EM SUFFER! THEY'LL HATE THE MUSIC, BUT THEY'LL LOVE BEING MARTYRS!

WHAT FINE PARENTS YOU HAVE, DAVID! GOING TO RECITALS RATHER THAN INDULGING IN WILD NIGHT LIFE! RECITALS ARE SO CULTURED...

JUST SO LONG AS I DON'T HAVE TO GO TO 'EM!

Buy SALLY ANN BREAD

MADE IN MIDLAND BY BLACKWELL'S BAKERY

WASH TUBBS

—By LESLIE TURNER



YOUR EYES ARE GROWING HEAVIER... YOU CAN... HARDLY KEEP THEM OPEN....

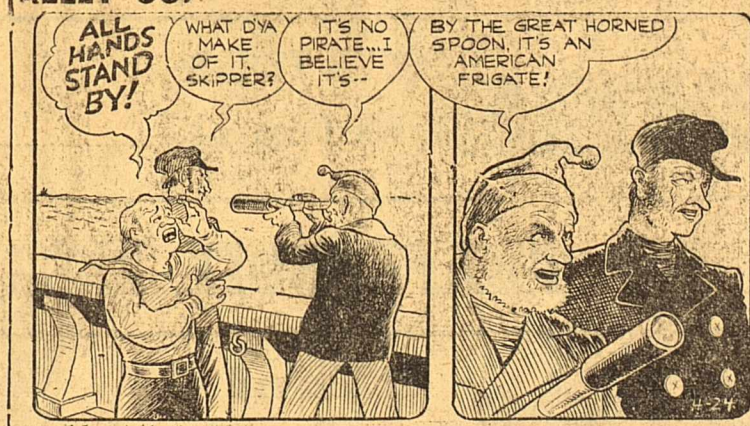
YOU CAN'T HYPNOTIZE ME AGAINST MY WILL... NEVER... YOU... YOU...

FINALLY! JUDAS PRIEST! FORTY MINUTES TO WEAR HER DOWN! BUT YOU DID IT, KELK!

NOW, MISS KRINGLE... YOU'RE GOING TO WRITE IN YOUR DIARY FOR TODAY... JUST AS I DICTATE. READY?

ALLEY OOP

—By V. T. HAMLIN



ALL HANDS STAND BY! MAKE OF IT, SKIPPER? IT'S NO PRATE... I BELIEVE IT'S--

BY THE GREAT HORNED SPOON, IT'S AN AMERICAN FRIGATE!

AHOY, BURLY BELLE? ARE YOU ALL RIGHT?

HEY, IF WE STILL WANTA JOIN TH' NAVY, MEBBE THIS IS OUR CHANCE! HEY! LET'S HAVE A GO AT IT!

RED RYDER

—By FRED HARMAN



LOCK THE PRISONERS IN THE CABIN FOR THE NIGHT AFTER YOU FEED 'EM.

YOU NEED-UM NO WORRY, MISSY MINERVA!

I'M KIDNAPED AND BEING HELD FOR RANSOM AND YOU TELL ME NOT TO WORRY!

SH-H! RED RYDER REALLY WORK FOR SHERIFF!

Polson ivy leaves differ greatly in shape, but they're always composed of three leaflets.

The Canary Islands, near the northwest corner of Africa, were named for "canis," Latin name for dog, not a bird.

Rex R. Russell • Clarence E. Nelson

Russell-Nelson Today

- In-sink-er-ator
- Air Conditioners
- Eureka Sweeper
- Tracy Stainless Steel Sink
- American Kitchen
- Glidden Paints
- Casting Rods and Reels
- Fly Rods and Reels
- Tennis Rackets, Covers, Presses and Balls
- Steel Lawn Chairs
- Chrome Faucets
- Lawn Mowers
- Garden Tools and Seeds

PHILCO REFRIGERATOR PIONEER GENERAL STORE

511 West Wall Phone 1020

EASY WASHER

at PIONEER GENERAL STORE

511 West Wall Phone 1020



Domestic and Imported WOOLENS from \$51.00 to \$110.00

CECIL ELROD'S Tailor-fine CLOTHES

TAILORING FOR GENTLEMEN and LADIES
113 N. Colorado

FRECKLES AND HIS FRIENDS

—By Merrill Blosser



THERE'S NOTHING IN WOMAN-HATING RULES ABOUT HOLDING A GUY FOR RANSOM!— BUT GO AHEAD— ANY MONEY YOU FIND ON ME, YOU CAN HAVE!

WHO SAID ANYTHING ABOUT MONEY? YOU GOT AN ICE-BOX, HAVEN'T YOU?



WHAT GOES, HILDA? ARE THEY PUNISHING LARD?

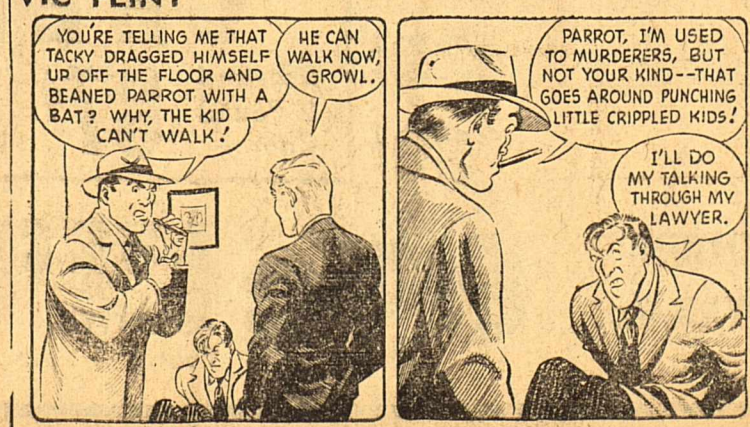


NO, THAT DOUBLE-CROSSING VOID COUPON IS DOING ALL RIGHT!

WHAT'S GETTING PUNISHED IS MRS. SMITH'S PEANUT BUTTER!

VIC FLINT

—By MICHAEL O'MALLEY and RALPH LANI

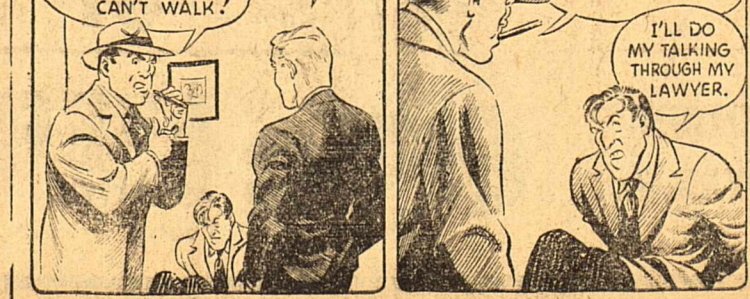


YOU'RE TELLING ME THAT TACKY DRAGGED HIMSELF UP OFF THE FLOOR AND BEANED PARROT WITH A BAT? WHY, THE KID CAN'T WALK?

HE CAN WALK NOW, GROWL.

PARROT, I'M USED TO MURDERERS, BUT NOT YOUR KIND— THAT GOES AROUND PUNCHING LITTLE CRIPPLED KIDS!

I'LL DO MY TALKING THROUGH MY LAWYER.



THAT'S WHERE YOU'RE SMART, BECAUSE I HAVE TO TELL YOU THAT ANYTHING YOU SAY MAY BE USED AGAINST YOU.

GOSH, IT'S INSPECTOR GROWL! ARE YOU ARRESTING PARROT?

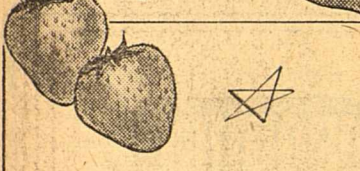
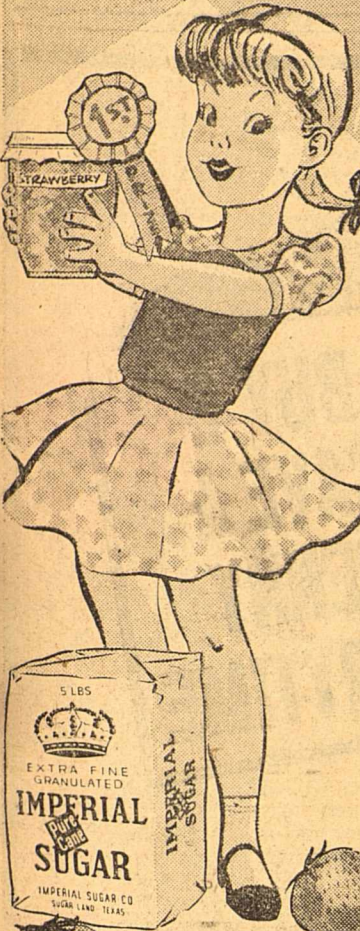
YOU SAID IT, TACKY— FOR KEEPS!

YOU SAID IT, TACKY— FOR KEEPS!

COAL BY-PRODUCTS

One ton of coking coal can produce up to 1,500 pounds of coke, 11,500 cubic feet of gas, 10 gallons of coal tar and 20 or more pounds of miscellaneous chemical products.

MAMA'S SUGAR IS YOUR PARTNER IN PRESERVING SUCCESS



USE A TESTED RECIPE LIKE THIS OLD STAND-BY... FOR STRAWBERRY PRESERVES

2 cups Imperial Pure Cane Sugar 2 cups strawberries Juice of 1/2 lemon

Combine and heat slowly to boiling. Boil 12 minutes, stirring to prevent sticking. Remove from fire, skim and allow to stand overnight. Pour cold, into sterilized jars and seal with paraffin.

BE SURE TO USE 100% PURE CANE SUGAR... IMPERIAL PURE CANE SUGAR

Housewives from all over Texas who put up prize winning preserves will tell you that you want pure cane sugar of finest quality. And for 3 generations Texas housewives have known that the sure way to get 100% Pure Cane Sugar of finest, quick-dissolving quality is to demand Imperial Pure Cane Sugar... the only sugar refined in Texas.

TEXAS' OWN IMPERIAL Pure Cane SUGAR

Some 'Land-Grant' Railroads Must Return Titles To U. S. Government

By The Associated Press
WASHINGTON — "Land-grant" railroads which charged the government full freight rates during the war are paying for the privilege in part by forfeiting their claim to thousands of acres in public lands. An Interior Department tabulation for 19 of the railroads listed the land upon which they must relinquish long-standing claims, under a recent Supreme Court decision, at some 55,992 acres. This amount remained from an original apportionment of 282,780 acres. Eight of the 19 railroads had tentatively claims to a total of 226,788 acres before the war and thus retain title to them.

Largest Excluded
The tabulation did not include a 20th line, the largest land-grant railroad of them all, the Northern Pacific. Interior Department officials said they could not even guess at the amount of land originally claimed by this company. They ventured only that "it must be hundreds of thousands of acres." The railroad and the department's Bureau of Land Management must check over huge volumes of records to determine this acreage. An earlier proposed study of Northern Pacific land-grant claims was cancelled as not worth the cost and tremendous amount of research involved.

Three-quarters of a century ago the government set out to encourage settlement of the vast, newly-acquired areas of the West and South. It did this by granting to railroad companies which would build lines into the area acreage estimated by some authorities at 134,303,668 acres—the equivalent of the Pennsylvania, New York and the New England States combined.

Settlers Move In
When the railroads got around to claiming the land that had been given them, they found large portions of it already occupied by newly-arrived settlers. Rather than displace these settlers, the government allowed the railroads to select other tracts, which became known as "lieu land"—lands in lieu of the original grants.

The original acts required the land-grant railroads to carry government goods and personnel free. Through judicial interpretations, the land-grant lines for half a century before 1940 carried government goods and personnel at half the standard commercial rates.

In the depression years, earnings declined and steps were taken to help the carriers. The Transportation Act of 1940 permitted land-grant roads to charge the government full commercial rates except on Army and Navy freight and personnel, on condition that they release any land claims they might have against the government.

Suit Pushed
After the war the Santa Fe Pacific Railroad sued to assert its rights to public lands in New Mexico and Arizona, on the ground that these were "lieu lands" not involved in the rate-increase release of claims. The District of Columbia Dis-

trict Court dismissed the suit, but the Circuit Court of Appeals reversed the lower court's decision. The Supreme Court upset the Circuit Court decision, sustaining an appeal by the secretary of the interior. The Supreme Court ruled that the 1940 transportation act defined an intent of Congress to wipe the slate clean of all such claims by any railroad which availed itself of the rate concessions.

The Bureau of Land Management says the forfeited land will remain in the public domain. Much of it is unfit for homesteading and some of it is claimed by Indian tribes. The eight railroads which pat-

ented claims before 1940: Florida Central and Peninsular Railroad, patented 92,525 acres; Central Pacific, 88,394; Union Pacific, 35,594; Santa Fe Pacific, 6,246 (lands other than those involved in Supreme Court case); Oregon Central, Military Road, 2,428; Chicago, Milwaukee and St. Paul, 800; Sioux City and Pacific, 162; Wisconsin Central, 40. Estimated forfeits of the other land-grant lines except for the Northern Pacific: St. Joseph and Denver City, 3,817; Memphis and Little Rock, 3,281; California and Oregon, 1,367; Coosa and Tennessee, 991; Southern Minnesota railway extension, 570; Atchison, Topeka

Virginia Judge Takes Teeth Out Of Law

RICHMOND, VA.—(AP)—The defendant faced the court, pleading guilty to a charge of being drunk. "I had four teeth pulled yesterday, Judge," he said. "I don't blame you for getting drunk," said Justice Carleton Jewett. "Case dismissed."

Corn plants in Guatemala are so big and stiff that the people use them for posts. and Santa Fe, 302; Vicksburg, Shreveport and Pacific, 279; Marquette, Houghton and Ontonagon, 84; Alabama and Chattanooga, 80; Chicago and Northwestern, 71; Cedar Rapids and Missouri, River, 40.

ROCKY FORD WAREHOUSE
MOVING STORAGE
LOCAL and LONG DISTANCE MOVING
STORAGE and CRATING—Direct Service to and from California
20 YEARS IN MIDLAND
ROCKY FORD MOVING VANS
Phone 400 Day or Night—Odessa Phone 2444—1111 West Wall



COME EARLY FOR THESE
BIG BARGAINS

West Bay Red Sour Pitted CHERRIES No. 2 Can 35¢	Hunt's FRUIT COCKTAIL No. 2 1/2 Can 35¢	Libby's Halves or Sliced PEACHES No. 2 1/2 Can 29¢	Monarch KADOTA FIGS No. 2 1/2 Can 49¢
--	---	---	---

HEINZ Baby Food
3 4 1/2 Oz Cans **23¢**

Heinz **Ketchup** 14 Oz. Bottle **27¢**

French's **Mustard** 9 Oz. Jar **13¢**

Lady Betty Salad **Dressing** Pint Jar **29¢**

PET MILK
2 Tall Cans **25¢**

Banner **Butter** Lb. **65¢**

Drett
Large Box **33¢**

Friendship **Peas** 2 No. 2 Cans **25¢**

Hominy No. 2 Can **10¢**

GOLD MEDAL FLOUR
5 Lb. Bag **49¢** 10 Lb. Bag **95¢** 25 Lb. Bag **\$2.10**

TOMATOES 25¢
2 No. 2 Cans

Meats and Poultry
Sliced Bacon Armour's Star, Lb. **69¢**
Sausage Pure Pork Bulk, Lb. **29¢**
Velveeta Cheese 2 Lb. Box **89¢**
Chuck Roast Cut From Hill Beef, lb. **45¢**
Pork Chops Center Cut Pound **55¢**
FRESH FISH — OYSTERS — HENS — FRYERS — LAMB
"RINK - ROY & JOE"

GARDEN FRESH FROZEN FOODS
Strawberries Pound Box **39¢**
Peaches Pound Box **26¢**
Broccoli 10 Oz. Box **29¢**
Green Peas 12 Oz. Box **25¢**

Mary Lee Taylor's Baked Corn With Cheese
Broadcast: April 26, 1947
1/4 cup finely cut green pepper 2 tablespoons hot shortening 1/2 cup Pat Nitts 1/2 cup corn liquid or water 1/2 cup diced American cheese
2 eggs, separated 1/2 cups soft bread cubes (day old) 1/2 cups drained, whole kernel corn, cooked or canned 1/2 teaspoon salt few grains pepper
Turn on oven; set at moderately slow (350° F.). Cook green pepper slowly 5 minutes in shortening. Add milk, corn liquid and cheese. Heat slowly until cheese melts. Stir slowly into slightly beaten egg yolks. Mix in bread cubes, corn, salt and pepper. Fold in stiffly beaten egg whites. Put into greased 1 1/2-quart baking dish. Set in pan containing about an inch of hot water. Bake about 45 minutes, or until firm. Serve hot. Makes 4 servings.
You Will Need:
Pet Milk 2 Small Cans 13¢
Whole Kernel CORN, No. 2 Can
AMERICAN CHEESE, lb.
EGGS, doz

VEGETABLES FOR VITAMINS
NEW POTATOES Pound **7¢**
CARROTS **3 bunches 10¢**
CABBAGE Pound **2 1/2¢**
LETTUCE Pound **12¢**
GRAPEFRUIT MARSH SEEDLESS Pound **3 1/2¢**
LEMONS SUNKIST Pound **12¢**

at Your Favorite Grocers
MEAD'S
Fine
BREAD
MEAD'S
Fine
CAKES

They are Fresh Every Day

PIPKIN'S PIGGLY WIG

MIDLAND

IT'S A CUP
A bi-partisan bill regulating campaign contributions and making it illegal to spend in excess of \$10,000 in any campaign will be introduced by Senator Elmer A. Anderson on Friday the measure has the backing of both Republicans and Democrats on the campaign expenditures which he headed. Anderson told a reporter the bill tightens existing provisions for reports of campaign contributions and expenditures, but (b) those limiting expenditures restricting donations by individuals.

Experts say that the plow pictured on the official seal of the U. S. Department of Agriculture is a left-handed one.

Of the 3000 kinds of lizards in the world, only two, the Gila monster and the Mexican beaded lizard, are poisonous.

BROOK'S SAVINGS

FOR FRIDAY AND SATURDAY

These Are Just Part Of Our Values

SWEET POTATOES No. 2 1/2 Can	19¢	Golden Yellow Bananas Lb.	15¢
GRAPEFRUIT JUICE 46 Oz. Can	19¢	Full Of Juice Oranges 8 Lb. Bag	50¢
American Beauty FLOUR 25 Lbs.	\$1.95	LETTUCE Lb.	11¢
DREFT Box	33¢	Onions Green 2 Bun.	15¢
Washo Granulated Soap 1 Lb. 8 Oz. Box	29¢	Lard Pure 4 Lb. Carton	\$1.29
Coffee Folger's Lb.	48¢	PEP Kellogg's Box	14¢
Juice Orange No. 2 Can	10¢	FRUIT Cocktail No. 2 1/2 Can	39¢
SUGAR Imperial 5 Lbs.	49¢	Whole Apricots No. 2 1/2 Can	29¢
Butter Plains Gold Lb.	67¢	OLEO Lb.	43¢
Baby Food Heinz Can	8¢		

CIGARETTES 2 for 35¢ Carton \$1.69

WILSON'S SLICED BACON	Lb.	55¢
SWIFT'S PICNIC HAMS	Lb.	43¢
SIRLOIN STEAK	Lb.	59¢
GROUND MEAT	Lb.	20¢

Watch Our Windows For Week Day Specials

BROOKS GROCERY and MARKET
120 South Main St.

Appropriations Must Be Cut, Says Jester

AUSTIN—(P)—Gov. Beauford H. Jester said it will now be necessary for the Legislature to reduce or omit some contemplated appropriations "in order to follow the mandate of the people that there shall be no new taxes."

Jester said he had no quarrel with the Legislature, commenting that it was the body's prerogative to pass any appropriations the comptroller will certify and also to enact any tax legislation it thinks proper, "just as it is the prerogative of the governor to disapprove it."

PUBLICITY-MINDED POLES

LODZ, POLAND—(P)—To popularize Polish textiles abroad, the central administration of the textile industry has instructed all manufacturers to stamp "MADE IN POLAND" on all shipments to foreign countries.

AIR TICKETS

Complete information on airlines to all points in U.S. and foreign countries. No extra charge to you for our service. Midland Travel Service, 107 W. Wall; Phone 1165

Auto Loans Autos Refinanced

Refinance Your Car And Reduce Your Payments.

Conner Investment Co.
209 E. Wall Phone 1373

Compare with all others—regardless of price

SEE, HEAR THE NEW

Magnavox Radio Phonograph

AND YOU WILL NEVER BE SATISFIED UNTIL YOU OWN ONE

Wemple's Next To Post Office Phone 1000

GOP Convention To Be Held In Philadelphia

KANSAS CITY—(P)—Philadelphia was chosen as the site of the 1948 Republican National Convention to be held during the week of June 20, 1948.

The "City of Brotherly Love" presented a certificated check for \$200,000 to National GOP Chairman B. Carroll Reece to outbid the offer of Chicago, the other serious contender.

On a roll call Philadelphia won almost three to one, 72 to 26, and the national committee promptly made the choice unanimous.

Magellan discovered the Philippines in 1520.

Stranger Bails Out All Of Jail's Drunks

HAGERSTOWN, MD.—(P)—A well-dressed stranger rose in the city police court just as four convicted drunks were led to their cells in default of fines and stopped the procession with the announcement: "I am bailing out all the drunks today." Magistrate Harry Snyder beckoned the spectator to his office for an explanation, but later Snyder would give neither the stranger's name or reason. But the man shelled out 40 dollars and 80 cents, walking away with the comment, "I just wanted to help the boys out."

In Illinois, more than 1,000,000 gallons of water are used daily, for all purposes.

SMOKES DEBANDED

DECATUR, ILL.—(P)—L. C. Scott claims the cigar band collecting championship of the world. In 21 years he has gathered 4,500 plain and fancy bands printed during the last century in the U. S., Mexico, South America, Cuba, England, France, Belgium, Russia and Germany.



Distributed by **Martin Distributing Co.**

TRIANGLE FOOD MARKET

Bill Davidson



"Scrutiny" Skaggs

Bob Grubb
South "A" At Missouri OPEN NIGHTS - - SUNDAYS Phone 280

SPECIALS FOR FRIDAY AND SATURDAY

Pictsweet Corn Whole Kernel	2 cans	37¢
Talker Sweet Corn Whole Kernel	2 cans	29¢
Full Flavor Sweet Peas	2 cans	29¢
Hart Apple Sauce	2 cans	37¢
Ireland's Blackeye Peas	2 jars	29¢
Fresho Spinach	2 cans	25¢
Grapefruit Juice World Over	2 46 Oz. Cans	31¢
Signet Fruit Cocktail	2 cans	77¢
H. G. Prince's Peaches	2 cans	57¢
Summer King Apricots	2 cans	53¢

Self-Service PRODUCE

GREEN BEANS	Pound	12¢
Puerto Rican Pineapple	Each	25¢
AVOCADOS Nice Size	2 for	19¢
TEXAS ORANGES	10 Lb. Mesh Bag	49¢
POTATOES	10 Lb. Mesh Bag	49¢

Quality Meats

SLICED BACON WILSON'S LAUREL POUND	56¢
PICNIC HAMS SWIFT'S "CIRCLE 5" POUND	45¢
CHEESE FULL CREAM LONGHORN POUND	47¢
BEEF ROAST CHUCK OR SEVEN POUND	35¢
FRANKS SWIFT'S PREMIUM POUND	39¢
Hot, Boneless BARBECUE FRESH DAILY POUND	79¢

DAIRY DEPT. MILK EGGS

"FOR EASIER SPRING CLEANING" USE ...

LUSTRWAX Quart 59¢

KELLOGG'S PEP Large Package 15¢

EGGS WOODY'S 49¢ Dozen

FRESH EGGS

— BUY IMPERIAL CANE SUGAR - - - Spare Stamp No. 11 Now Valid. —

Dog Food Head Start	3 cans	25¢
Dog Food Red Heart	2 boxes	25¢
Sunshine Crackers	1 Lb.	25¢
Baby Food Heinz	2 cans	17¢
DEL MONTE Vacuum Packed		
COFFEE Drip Perk Lb.	49¢	
FOLGER'S COFFEE	49¢	LB. ALL GRINDS

NO HARD WATER SCUM OR FILM use it for Dishes • Glassware Woolens • Fine Fabrics

MARVENE SUDS BIG BOX 21¢

Save Used Fats

MORRIS SYSTEM Complete Food Market

We Pay 6c Lb. For Used Fats

For Real Pleasure

Duncan's Admiration COFFEE

FOR GLASS COFFEE MAKERS MADE BY DUNCAN COFFEE CO., HOUSTON, TEXAS

The Coffee with Extra-Abundant Flavor, Aroma and Richness

DUNCAN COFFEE COMPANY • HOUSTON, TEXAS

ROASTERS ALSO OF MARYLAND CLUB & BRIGHT & EARLY COFFEE