

Robert Lee Observer

Vol. 89, No. 35

Robert Lee, Coke County, Texas (76945), Friday, March 2, 1979

Single Copy 15c

One New Candidate Out For R-Lee School Trustee

One new candidate has filed during the past week for school trustee in the election scheduled for April 7. Frankie Hood, beauty shop owner and operator has filed for a spot on the ballot for school board member.

As of Wednesday morning, no new candidates were reported for city alderman or hospital district director. Elections for these positions also will be held April 7.

Deadline for filing for school trustee and for city alderman is Wednesday, March 7, which is 30 days before the election. Candidates for hospital district director have a little more time, as they are required to file not less than 25 days before the election, which would be March 12.

Three school trustees' terms expire in April and four candidates have filed for the

Concert to Mark Schools Week

Public Schools Week will be observed in Robert Lee with a special program Monday night in the school auditorium. The Robert Lee School Bands will present the program.

Following the program of musical selections, the audience is invited to a reception in the school cafeteria where refreshments will be served.

The musical program will be under the direction of Band Director Mark Jenkins. He will present his Fifth Grade Band, Junior High Band and the High School Band.

Supt. Jimmy Bickley said that school patrons and friends are cordially invited to attend the special program. He added that visitors will be welcome to visit the school all during the week of March 5-9.

"Anybody is welcome to visit the school any time," the superintendent said, "but a special invitation is extended during Public Schools Week."

places. Incumbents who have filed for reelection are Joe B. Flowers and John Stephens. In addition to Mrs. Hood, Bobby Roberts is the other new candidate for trustee. Ben Bessent is the other trustee whose term expires, but he is not seeking reelection.

CITY ELECTION

Places of three city aldermen expire this year, including Allen Clendennen, F.W. (Pete) Prentice and Lewis Heuvel. Prentice and Heuvel have filed for reelection, but City Secretary Mrs. Edna Havins said Wednesday morning that Clendennen had not filed, nor had any other candidates.

Hospital directors whose terms expire this year are Vic Wojtek and Earl Lindsey. Hospital Administrator Carl Weaver was not in town Wednesday morning and no information on candidates was available.

Holdover officials for various positions are:

School board: Phil Ray, J.C. Wallace Jr., Wayland Drennan and Dub Metcalf.

City Council: Mayor Robert Vaughan and Aldermen Larry Anderson and Alice Beaty.

Hospital Director: Curtis Walker, Fern Havins and Larry Anderson.

Persons for candidates to contact to file for the coming vacancies are:

City Council: Edna Havins at City Hall.

Hospital Director: Carl Weaver at West Coke County Hospital.

School trustee: Supt. Jimmy Bickley at Robert Lee School.

HOST BIRTHDAY PARTY

Members of Alpha Kappa Pi gave this month's birthday party at the West Coke County Nursing Home.

The celebration was held Feb. 17 with the serving of cake and ice cream and showing films to those present.

Kristen Prather of Texas Tech in Lubbock spent the weekend with her mother Beth Prather.

RL Girls In Regional Meet; First Game at 2:30 Today

The Robert Lee High School girls basketball team is going on up the ladder of UIL competition and will play in the regional tournament this weekend at Stephenville.

The girls are scheduled to play today (Friday) at 2:30 p.m. when they will meet Huckabay. The regional games will be played on the campus of Tarleton State University.

Advancement in basketball play is nothing new to the girls of RLHS, as they are the defending Class A champions of Texas, having won that title in 1978, before going back into Class B competition.

The girls won District 21-B after a three-game playoff series with Bronte, then advanced to bi-district play for a game Tuesday night with Gorman, winner of District 22-B. They were able to down the Gorman lassies 57-39.

The win over came from participation of just about everybody of the squad. Eleven girls were credited with po-

ints. Lisa Devoll led the bunch with her usual fine shooting to account for 24; Cindy Walker had 8; Delight English 8; Debbie Askins 6; Karen Rasco,

Bank Displaying Bowen Sculpture

A collection of Western bronze sculpture is on display in Robert Lee State Bank, and the public is invited to come by and inspect the art.

The creations were made by Don Bowen, a rancher who lives between Robert Lee and San Angelo. Bowen has lived with ranching most of his life and his work depicts scenes which he knows best, including cowboys, horses, cattle, etc.

Those who have seen the artistic creations say that Bowen's detail and the exactness of his work make his bronzes truly outstanding.

Officers of Robert Lee State Bank invite everyone to come by to see these authentic creations.

Renea Flannagan, Jana Hood, Dianna Tinkler, Dee Anna Key and Karen Kay Flowers, 2 each; Elsa De La Pena 1.

Everyone who can make the trip is urged to go to Stephenville Friday and stay as long as necessary to help the girls in their efforts to take the regional title.

Girls Take Bronte 60-41 in Finale

The new gymnasium at Sterling City was full Saturday night when the Bronte and Robert Lee high school girls met in a decisive game to determine the District 21-A championship --as well as that mythical title of Coke County championship. The Robert Lee girls took the third and deciding game of the three-game playoff series, with a 60-41 win over the Longhorns.

The playoff was necessary after Robert Lee won the first half of district play and Bronte took the second half. Robert Lee took their first playoff game 38-34 in a good game played in Robert Lee. The second game was perhaps the thriller of the season. It was played at Bronte Feb. 20, and the Bronte girls took the 33-32 victory after two overtimes.

Scoring points for the RLHS girls Saturday night were Lisa Devoll with 28; Delight English 11; Renea Flanagan 9; Dianna Tinkler 5; Debbie Askins 4; Karen Rasco 3.

The victory in the third game against Bronte gave the Robert Lee girls a ticket to bi-district. They won that game Tuesday night, but that's in another story.

R.L. Flanagan is in Midland Memorial Hospital where he underwent knee surgery Monday, Feb. 19. He is reported to be doing satisfactorily but expected to be in the hospital until sometime next week.



BAND ROYALTY--Selected for special honors by the RLHS Steer Band were Band Beau Kevin Roe and Band Sweetheart Karen Rasco. Kevin is the son of Mr. and Mrs. Billy Wayne Roe and Karen is the daughter of Mr. and Mrs. Kenneth Rasco.



MEMBER
TEXAS PRESS ASSOCIATION

ROBERT LEE OBSERVER
PUBLISHED EVERY FRIDAY

Entered at the Post Office at Robert Lee, Texas 76945 as second class matter.

Editor and Publisher Ben Oglesby

Subscription Rates

Per Year in Coke County	\$3.00
Per Year Elsewhere in Texas	\$6.00
Per Year Outside of Texas	\$7.00

Any reflection on the character or standing of any person, firm or corporation is not intended and will be corrected upon notification

LETTERS TO THE EDITOR

Shaping up in the Legislature is an effort to give Texans the right of Initiative and Referendum.

As many of you know Initiative and Referendum was an important part of the "Taxpayers Bill of Rights" which the Governor proposed during the campaign.

Through the initiative process citizens in 26 states can now put on the ballot referendum issues like California's property tax limitation, Proposition 13. But not Texas!

We need this control on spending and taxation. And the Legislature may be hesitant to give the people this power! In fact, the Legislature hasn't looked kindly on Initiative and Referendum during the last two sessions.

Texans must have this protection against runaway spending and taxes.

We need your aid in generating public support for Initiative and Referendum. To get this passed the Legislature must know the people support Initiative and Referendum.

By March 9, we'd like to collect 100,000 signatures on petitions asking the Legislature to pass the Initiative and Referendum this session. We need at least 250 signatures in Coke County.

Please give us your all-important help on

this project. It would mean a lot to Texas for her citizens to be able to initiate laws and have them voted on by the people.

In Robert Lee petitions are being circulated, and also are at the Robert Lee State Bank, Bakers Grocery, West Way Grocery, and West Coke Co. Pharmacy. Please do your part.

In Bronte petitions are at the Hitchin' Post, Hurley Pharmacy and Bronte Enterprise.

MRS. KEITH LLOYD

Thank you for the foregoing letter. I think the right of initiative and referendum is a valuable tool for the people in a democracy.

In case some of our readers are not clear on what is involved, perhaps an explanation is in order:

The "initiative" part gives citizens the right to petition their government to bring a question before the electorate for a vote. The "referendum" part is the election to determine the will of the people on the question submitted for a vote. If a majority vote for a proposition, it becomes law.

To my way of thinking, initiative and referendum are very basic and are democracy in its purest form. --Editor.

Nonfat dry milk contains half the calories of whole milk and costs less, too.

County Agents News Column

By Sterling Lindsey

County farmers and ranchers who suffered financial hardship due to drought losses on 1978 crops must submit applications for the U.S. Small Business Administration (SBA) Physical Disaster Loan Program before March 6, according to information received from the Small Business Administration.

The SBA's 1978 drought disaster declaration now includes 125 Texas counties. Because producers in counties adjacent to these are also eligible, the SBA disaster loan program covers almost the entire state.

A number of Texas producers have been interviewed by SBA concerning 1978 crop losses caused by extreme drought conditions. Loan requests totalling nearly \$42 million have been received.

These disaster loans may be used to pay outstanding obligations and operating expenses and for production costs in the new crop year. However, they may not be used to refinance a Farmers Home Administration (FmHA) or other USDA loan.

Interest rates on SBA Physical Disaster Loans are 3 percent on the first \$250,000 and 6 5/8 percent on remaining amounts. Maximum maturity of the loans is 30 years, with terms based on repayment ability. The loans normally are repaid in equal annual installments including principal and interest. A producer may borrow only the amount of his actual losses, and SBA loans cannot duplicate other payments.

Producers who are able to obtain credit from other sources are still eligible for an SBA disaster loan, but they may want to check first with their local FmHA representative.

The SBA has 10 offices serving Texas agricultural producers. The office serving Coke County is located in Abilene. Persons who suffered losses to 1978 crops or pasture may want to check with the Abilene Office regarding this program. The office is in the Post Office Building, Suite 2211, 300 Pine Street. The number to call to talk to one of their representatives is 915-677-8537.

A meeting has been scheduled for Thursday March 1, at 7:30 p.m. in the Courthouse, Robert Lee. A representative from the Small Business Administration will be present with application forms. Anyone interested may receive an application and instruction on how to complete them at this time.

"If you already have an application form and need some help in completing the application, they will assist you," said County Extension Agent Sterling Lindsey.

News from West Coke Hospital

The following admissions and dismissals were reported by the West Coke County Hospital:

Feb. 20: Lela Ray McAdams admitted. Amanda Harmon dismissed.

Feb. 21: Marshall Freeman admitted. No dismissals.

Feb. 22: No admissions. A.J. Hinton dismissed.

Feb. 23: Bobby Roberts admitted. Lela Ray McAdams, Theodosia Snead dismissed.

Feb. 24: No admissions. Velma Winchester dismissed.

Feb. 25: No admissions. No dismissals.

Feb. 26: Roxie Reeves, Edythe Stout, Dola Wood, Gladys Pierce admitted. Bobby Roberts dismissed.

Pancake Supper Plans Go Ahead

Plans are continuing to be made for the Annual Pancake Supper to be held on March 16, Friday, at 6 p.m. The supper will be held in the Robert Lee School cafeteria and tickets for the event are \$2.00. They can be bought from any 4-H member in advance during the week of the pancake supper. Tickets will also be available at the door. Pancakes, bacon and coffee or milk will be enjoyed by those who attend plus the talent program and fun in the auditorium.

PARKER PLUMBING CO.
RESIDENTIAL & COMMERCIAL ALL TYPES PLUMBING REPAIRS

- NEW CONSTRUCTION
- REMODELING
- FIXTURES
- SEWER SERVICE

LICENSED MASTER PLUMBER
DIAL 473-2131
BRONTE, TEXAS

Income Tax Service
ALL TYPES INCOME TAX RETURNS

Bring Your Copy of 1977 Return with You
O. T. COLVIN
Phone 655-7683
Office Across Street South Of Courthouse
Open Mon., Tues., Fri. & Sat. 9 A.M. to 5 P.M.

MILLER LIQUID FEED SERVICE
32% PROTEIN BULK-LIQUID MOLASSES SUPPLEMENT
\$130 A TON

FREE DELIVERY IN YOUR FEEDER
CONTACT JAMES G. MILLER — 473-2811

SINCERE THANKS

We are thankful from the bottom of our hearts for all the help and concern of our friends which came as a result of the disastrous fire at our Western Auto Store.

We appreciate the work of the Robert Lee and Bronte Fire Departments. Without your help we could have saved nothing. We are also grateful to those who helped us with the clean-up operation, which was a mighty big job.

Not only do we appreciate all the physical help you gave us, but we also appreciate your words of concern and your encouragement to rebuild our store.

Coke County friends are the very best to have, and we are so very thankful for all of ours. Thanks to each of you.

BOB & PHELAN WRINKLE

WESTERN AUTO

ROBERT LEE

RANGEMASTER LIQUID Feeds
32% PROTEIN
20% NATURAL PROTEIN

\$129.00 Ton Cash Delivered Your Feeders

Call J. B. Pentecost for Delivery

453-2920
IF NO ANSWER PHONE 453-2856

AON MAKES PLANS FOR GOLF TOURNEY

Alpha Omicron Nu held their first meeting of February on Feb. 12, with Linda Link serving as hostess.

During the business meeting plans were made tentatively for the annual ABC Golf Tournament for the West Texas Rehab Center. Lynne McIver reported that a donation of \$25 was deposited in the Tommy Bryant Trust Fund.

Sheri Millican presented a short study of Franklin D. Roosevelt's presidency.

Members were served various snacks by the co-hostess, Gayle Bolding. Members attending were Lynne McIver, Sheri Millican, Nita Gaye Williams, Hazel Abbott, Linda Link, Vickie Yeager and Kathy Post.

The second regular monthly meeting of the sorority was held Feb. 26 at the home of Vicki Yeager.

Business discussed included a monetary donation to be sent to the Beta Sigma Phi State Project, a children's kidney dialysis machine.

A salad supper was planned for March 12 at Sheri Millican's home. A bake sale was planned for March 30. Further plans were made on the golf tournament to be held April 1.

Nita Gaye Williams presented the program, "How Happy Are You?" Members were asked to take a quiz to determine how happy their lives were.

Kathy Post served refreshments and members enjoyed fellowship following the meeting. Those attending were Kathy Post, Sheri Millican, Nita Gaye Williams, Hazel Abbott, Lynne McIver, Linda Link and Vicki Yeager.

There is little difference between the nutrients in sugar and honey, because the ratio of nutrients to calories is very low. A person who must avoid sugar will also need to avoid honey.

Sweetwater Rites For Mrs. Brashear

Mrs. Dessie Brashear, 81, of Sweetwater, sister of Mrs. J.L. Carwile, died at 8 p.m. Saturday, Feb. 24, in Hendrick Memorial Hospital in Abilene.

Services were at 2 p.m. Monday in the Fundamental Baptist Church with the Rev. Max Smiley officiating. Burial was in Sweetwater Cemetery. She was born Nov. 14, 1897, in Beeville and was married to W.V. Brashear Nov. 19, 1917, in Littlefield. They moved to the Sweetwater area in 1942.

Survivors include her husband; two daughters, Vivian Brashear of Sweetwater and Mrs. W.A. McGuire of Gladewater; a son, Kenneth Brashear of Dublin; six sisters, Wilma Carwile of Robert Lee, Bessie Stewart (her twin sister), Alene Conner and Fannie Brashear all of San Angelo; Mrs. L.R. Stuckey of Abilene and Loyce Latham of Miles; a brother, Buddy Stewart of San Angelo; six grandchildren and four great-grandchildren.

Lunchroom Menu

Monday, Feb. 5: Barbecue wieners; Baked beans; Cream potatoes; Hot rolls and butter; Pears; Milk.

Tuesday, Feb. 6: Vegetable beef soup; Peach half with cottage cheese; Crackers; Peanut butter brownies; Milk.

Wednesday, Feb. 7: Beans with meat; Turnip greens; French fries with catsup; Corn bread and butter; Fruit cobbler; Milk.

Thursday, Feb. 8: Sloppy Joes; Butter corn; Pickle slices; cup cakes; Milk.

Friday, Feb. 9: Fried chicken; Cream potatoes; Green beans; Hot rolls and butter; Peanut butter brownies; Milk.

M.A. Cox returned home Monday, Feb. 19, after two months visiting with his sons and families, Mr. and Mrs. Russell Cox at Houston, Mr. and Mrs. Jim Cox at Plano and Bill Cox at Houma, La.



- VIP Whole Green Beans 303 size can 39c
- VIP Cut Green Beans 303 SIZE CAN 3 for 89c
- VIP Golden Corn Whole or Cream 303 SIZE CAN 3 for 95c
- VIP English Peas 303 SIZE CAN 3 for 98c
- VIP Leaf Spinach 303 SIZE CAN 3 for 98c
- VIP Whole Peeled Tomatoes 303 SIZE CAN 3 for 98c
- VIP Tomato Sauce 8 OZ. SIZE CAN 5 for 98c
- VIP Tomato Sauce 300 SIZE CAN 3 for 89c
- VIP Apricot Preserves 18 oz. jar 79c
- VIP Grape Jelly 18 oz. jar 59c
- VIP Peanut Butter 18 oz. jar 89c



- DELMONTE CATSUP 32 oz. bottle 89c
- BULK SLICED BACON pound \$1.49
- 7-BONE ROAST pound \$1.49
- ARM ROAST pound \$1.59
- BONELESS STEW MEAT pound \$1.69

Facial Tissues Chiffon 200 Ct. Box 59c

- Delta Coronet Toilet Tissue 4 roll pkg. 79c
- DELTA TOWELS large roll 43c
- DIAMOND FOIL, reg. roll 2 for 89c



Coffee

Folger's 1 Lb. Can \$2.39

- HI C DRINK 46 oz. can 59c
- Williams Chili Seasoning, 1 oz. pkg. 2 for 59c

PRICES EFFECTIVE MARCH 2nd & 3rd

MEMBER INDEPENDENT GROCERS, INC. — WE SUPPLY OURSELVES



West Way Grocery



10TH & BISHOP

PHONE 453-2652



LIONS CLUB MEETING

1 - 3rd Tuesday of each month - 7 P.M. Lions Club Community Center

WORSHIP WITH US AT THE Southside Church of Christ

BIBLE STUDY 10:00 A.M. EVENING WORSHIP ... 6:00 P.M.
 WORSHIP 11:00 A.M. WED. BIBLE STUDY 7:00 P.M.

— THE FRIENDLY CHURCH —
 WHERE THE BIBLE IS TAUGHT

FHA Gong Show Draws Big Crowd

The Gong Show that climaxed FHA week was a success with 225 people attending the Friday night production. Award for the best dressed farmer was Charwayne Harris. Most irresistible was Lisa Devoll. Wesley Sawyer won the peanut-butter eating contest.

Judges for the Gong Show were Delight English, Roddy McIver and Susan Blassingame.

Announcer and score keeper:

Kathy Reyes
Chuck Barris:

Lori Robertson.
The Program included: Stage Band conducted by Mark Jenkins; R.G. and the Moolight Band:

Randy Gartmann, Stevie Ray, Cody Anthony and Jason Herring; Dance by Patty Jeffrey; Greece off Broadway-dance, Cody Anthony, Jo-Anna Service, Scott Ray, Ericka Clendennen, Clint Smith, Joel Herring and Mark Valdez.

Unknown Comic, Steve Hubbard; Tenielle, dance by Steve Hubbard
The Unlucky Vampire Killer, Neal Smith and Shane Smith; Vocalist - Kenda Rasco; Mike Torres on the drums.

Also community choir, Add Davis, Dee McCleskey, George Newby, Royce Wallace, Bill Matlock, Ruby Jones, Alice Wallace, Pauline Vaughan, Bonita Copeland, Floy Sawyer and Edna Havins; Lucille Bryan, accompanist; The California Creeps Band by Kevin Johnson, Mike Sanchez, Jim Bob Jacobs and Steve Gray. Ernie and Mary Ann Abalos,

First place winner of trophy was the Community Choir;

Second place winner was the dance number Greece off Broadway;

Third place winner was the dance number by Mary Ann and Ernie Abolas.

FHA members assisting with Gong Show were: Lori Robertson, Kathy Reyes, Vallery Deen, Paula Brock, Kathy Gloria, Martha Torres, Rosa Balderas, Mary Lou Torres, Pam Harris and Charwayne Harris. FHA advisor is Eloise Guerant and assisting was Laura Herford.

The FHA wishes to thank those participating in the show and those who attended.

TAMMY HAMBRIGHT IN HONOR FRATERNITY

Tammy Hambricht of Robert Lee has been inducted into the Psi Zeta chapter of Phi Theta Kappa at Western Texas College at Snyder.

Phi Theta Kappa is the only nationally recognized honor fraternity for students in junior colleges, and has more than 500 chapters in College across the nation.

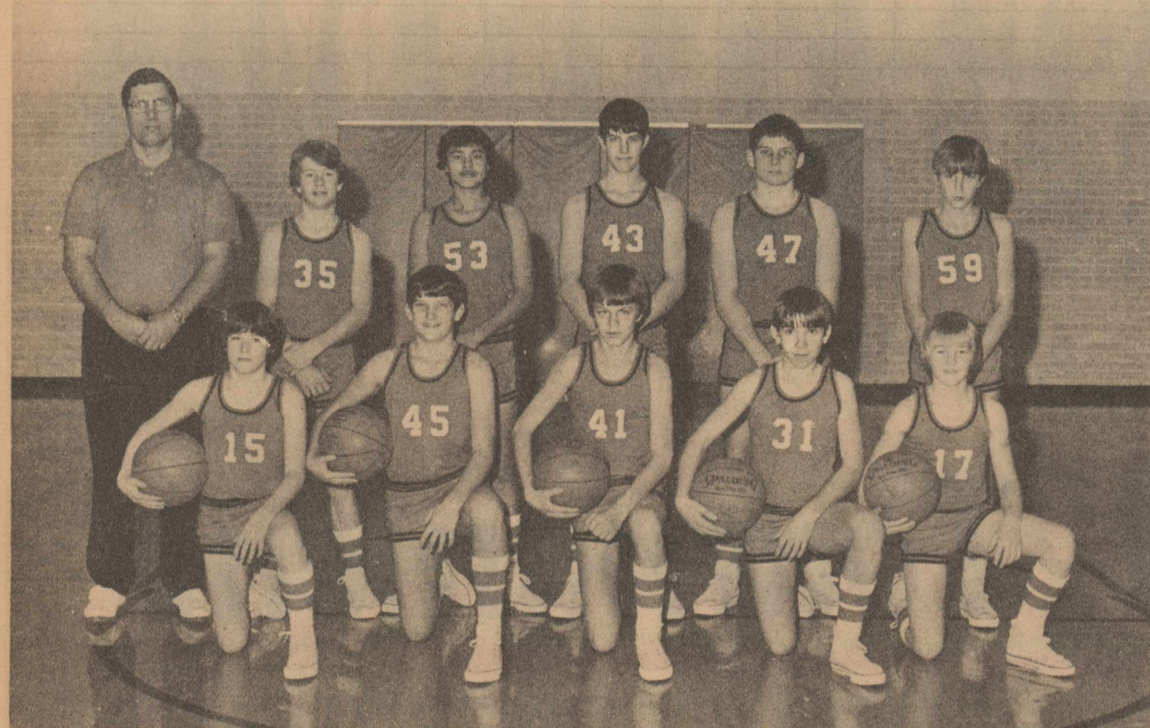
Membership is by invitation. To be eligible for membership, students must maintain a grade point average no lower than 3.2 while enrolled for at least 12 hours of college credit work.

Miss Hambricht, a graduate of Robert Lee High School, is the daughter of Mr. and Mrs. R.E. Hambricht. She is a legal secretarial studies major at WTC.

REPORT YOUR NEWS



WINNINGEST TEAM--The Robert Lee Junior High girls basketball team is the winningest team produced by the school this year. The girls have won 21 games with no defeats. They are, from left, standing, Coach Clyde Dukes, Carrath Metcalf, Martha Bickley, Leigh Ann Runnion, Cindy Gartman, Tracie Tomlinson and Amy Percifull; sitting, Mary Lara, Paula Sanders, Debbie Cummins, Sheri Ebenstein, Yolanda Torres, Sara De La Pena and Lupe Munoz.



JUNIOR HIGH VARSITY--Rounding out a successful season is the junior high varsity team. They are, from left, standing, Coach Max Anthony, Everett Wilson, Lupe Torres, Scott Stephens, Kyle Gibbs and David Hubbard; kneeling, Pat Percifull, Quint Anthony, Tom Bosworth, Terry Millican and Stanley Ray. The boys had a 16-5 season.



JUNIOR HIGH B--The junior high B team of Robert Lee School has finished the 1979 season and put away their basketball uniforms until next year. Team members are, from left, standing, Coach Max Anthony, Les Gray, Gilbert Abalos, Jimmy Skinner, Gary Naico and Brantly Robertson; kneeling, Jim Herring, Garry Palmer, Tom Jones, Larry Palmer and Eddie Hood.



A sour pickle has only 10 calories, but a raw cucumber has about 16.

EVERYONE IS INVITED TO COME BY AND VIEW A COLLECTION OF

Western Bronze SCULPTURE By Don Bowen

Now on Display in Our Lobby

We are very proud to present to you these works of Don Bowen who resides on his ranch between Robert Lee and San Angelo. His authentic creations reveal great detail of the subjects he knows so well — scenes of ranch life in this area of West Texas. We know you will enjoy and appreciate these splendid sculptures. Please come by and see them.

This invitation Extended by the Officers and Directors of

Robert Lee State Bank

Good Luck, Girls



AT THE

Regional Tournament

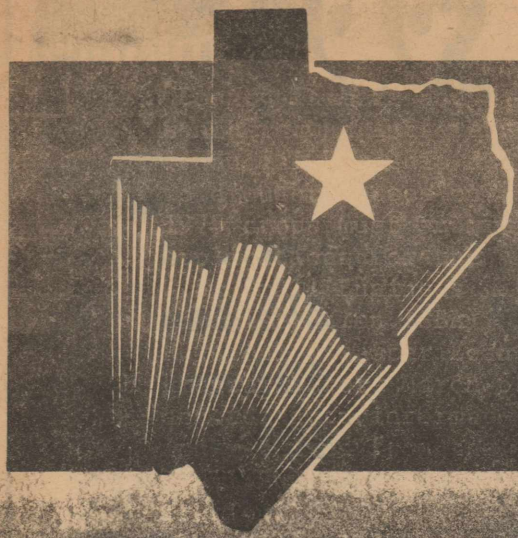
We are behind you all the way and are backing you for a return to state competition again this year. You have the ability to go all the way — so give it your very best effort.

We Are Your Fans and Boosters

ROBERT LEE STATE BANK
 ALLEN INSURANCE AGENCY
 ADAMS LAND & REALTY CO. and
 ADAMS ABSTRACT CO.
 WESTERN AUTO ASSOCIATE STORE
 BOB AND PHELAN WRINKLE
 DAWN FLORAL & SPECIALTY CO.
 MR. AND MRS. FINIS MILICAN AND SUE ANN
 IVEY MOTOR CO.
 VAUGHAN CHEVROLET CO.
 LITTLE FREEZER
 WEST WAY GROCERY
 BAKER'S GROCERY & MARKET
 BELL AUTO PARTS
 JIMMY AND BEVERLY BELL
 SKINNER'S GROCERY AND STATION
 MR. AND MRS. JIM SKINNER

ROSS CONOCO SERVICE STATION
 MR. AND MRS. BOB FIELDS
 MR. AND MRS. WELDON FIKES
 KEY FEED STORE
 DAVID'S BARBER SHOP
 MR. AND MRS. DAVID CHESHIR
 DINK'S EXXON
 ERNEST CLENDENNEN, INC.
 SILVER, TEXAS
 ROBERT LEE OBSERVER
 ROBERT LEE-SILVER LIONS CLUB
 TRIANGLE GROCERY & BAIT
 PAINT CREEK MARINA
 CHARLIE & LINNIE TRAVIS — JOE & BETTY BARRETT

THE ROADRUNNER GROCERY
 BRYAN CONCRETE CO.
 MATHEWS LUMBER AND HARDWARE
 COKE COUNTY PHARMACY
 ROACH'S DRY GOODS
 SHAFFER FUNERAL HOME
 MR. AND MRS. O. B. JACOBS
 MRS. WINNIE WALDROP, COUNTY CLERK
 COKE COUNTY SHERIFF
 J. LEE, MARSHALL, YVONNE
 THOMPSON BUTANE CO.
 J. R. AND MYRLDEEN THOMPSON
 J. D. HARMON, INC.
 EDITH COUNTRY CORNER



VISIT A PUBLIC SCHOOL DURING TEXAS ANNUAL PUBLIC SCHOOLS WEEK

March 5 through 9, 1979

ETERNITY SINGERS COMING MARCH 13

ETERNITY is coming to Robert Lee! This 18-member musical group will be performing in concert at the School Auditorium on Mar. 13, at 8 p.m.

These seven singers and ten band members, selected from national auditions, are under the direction of Rev. Joe Alessi. Based in Hollywood, Florida, ETERNITY travels 60,000 miles each year. In the past five years, their international tours have taken them throughout the United States, Canada, Mexico, Guatemala, Honduras, and El Salvador.

In addition to numerous television appearances, ETERNITY has appeared with renowned Christian musicians Dave Boyer, Doug Oldham, Evie Tornquist, and Merrill Womach.

ETERNITY spends one month a year on a missionary journey through Mexico and Central America performing concerts in Spanish. Whether they sing in a military college or in the presidential palace, ETERNITY proclaims the good news that God offers eternal life in heaven freely to all who trust Jesus Christ as Savior.

These musicians have 10 albums to their credit--nine in English and one in Spanish--all under Dynamic Media label.

ETERNITY'S concert is geared to all ages. For more information, contact Rev. Lyle Pierce 453-2417.

Save energy by letting dishes air dry. If your dishwasher does not have an automatic air-dry switch, turn off the control knob after the final rinse. Open the door a little and let the dishes dry faster.

Sheep and Goat Info Is Needed

In early March, many Texas sheep and goat raisers will receive a mailed questionnaire from the Texas Crop and Livestock Reporting Service asking for sheep and goat death losses by cause and other information. This survey is being conducted at the request of the Texas Sheep and Goat Raisers Association and will provide vital information that the industry can use in trying to secure wiser legislation concerning predator controls and formulating marketing policies.

It is extremely important that survey returns be received from all producers selected for this survey so that the information will be as reliable as possible. Prompt and accurate completion of the survey forms not only provides for more reliable estimates but also helps to reduce survey costs.

All individual reported data will be kept absolutely confidential and used only in combination with reports from other producers in preparing district and state estimates.

Preliminary results from this survey will be available about April 1 with a more detailed bulletin scheduled for release in late April. A copy of the bulletin will be mailed to all producers participating in the survey. Additional copies can be obtained from the Texas Crop and Livestock Reporting Service, P.O. Box 70, Austin, Texas 78767 or by writing Reagan V. Brown, Commissioner of Agriculture, P.O. Box 12847, Capitol Station, Austin, Texas 78711.

**REPORT YOUR
NEWS!**

Notes from the Extension Office

By Kathy Jobe
County Extension Agent

"Generic" or "unbranded" products--also known as "no-name" or "no-frills" labeling--offer consumers "another" choice.

Traditionally, retailers have sold two major types of brands--national or name brands and store or private label brands.

"Generic" products come in plain packages and carry no brand names or trademarks.

The labels are generally black and white with bold lettering, state only the basic name for each product--such as "sweet peas"--and the essential complementary information--such as ingredients, net contents and name of manufacturer or distributor.

Generic items carried by food stores number from around 10 to 100, but most stores carry between 25 and 50 of these products, according to USDA interviews with 15 chain stores and three wholesalers that handle generics.

Many retailers said they may slowly increase the number of items, but had no plans to extend beyond 45 or 50. Retailers generally carry only one size of any items.

Virtually all firms carry some type or style of canned corn, beans and peas.

Other popular food items are canned tomato products, canned fruits, canned fruit and vegetable juices and drinks, packaged macaroni and cheese dinners and larger sizes of dry pet foods.

Carried less frequently are ready-to-eat cereals, baking needs--including oils and shortening--tea bags, peanut butter, mayonnaise, cheese and packaged processed meats.

Most retailers place all generic products together in the store in one mass display.

Responses of retailers indicate that consumers can expect to save an average of 25 percent over national brands and about 15 percent over store brands. Savings can vary from no savings to over 50 percent, depending on individual product and retailer.

Sources of savings on cost of generics are product quality--cheaper ingredients--reduced advertising and promotion, and less expensive packaging and labeling.

The standard minimum specification for generic food items was USDA Grade C, with some Grade B to fill in where needed.

National brands and top-line store brands, on the other hand, use primarily Grade A and some Grade B.

All three grades are safe, wholesome and nutritious and are packed under the same sanitary standards.

The USDA Grades B and C are acceptable quality for table use, cooking and casseroles, sauces, tarts and puddings. Grade C products may have less uniform size, color, texture and maturity.

CONDITIONS FAVOR POISONOUS RANGE PLANTS---

A combination of conditions are favoring the development of poisonous range plants, points out a range specialist. Among these are late summer, fall and winter rains; prolonged drouth prior to the rains; poor range forage availability; and an extremely cold and wet winter.

Tuesday Services For J. L. Carwile

James Lowell Carwile, 63, was pronounced dead at 2 p.m. Sunday, Feb. 25, at Shannon Hospital in San Angelo. He had suffered a heart attack on Jan. 29 and returned to Robert Lee Feb. 14 from St. John's Hospital. He was taken to Shannon Hospital Sunday after suffering another attack.

Born Feb. 10, 1916, in Coke County, son of John Lucian and Fannie (Varner) Carwile, he married Wilma Stewart in Tennyson July 16, 1941. He was foreman of the Foster Price Ranch for over 37 years. He was a long-time deacon and Sunday School teacher in Robert Lee Baptist Church, as well as having served in many other capacities.

Survivors include his wife, Wilma; a daughter, Mrs. Eugene (Ann) Ward of Abilene; one granddaughter, Alyson Ann Ward; four brothers, Herman Carwile of Carlsbad, N.M., Homer Carwile, Henry Carwile and Wilson Carwile all of Robert Lee; and one sister, Effie Carwile of Robert Lee.

Funeral services were at 2:30 p.m. Tuesday in Robert Lee Baptist Church with the Rev. Roy Epperson, pastor, officiating. Burial was in Fairview Cemetery at Bronte directed by Shaffer Funeral Home. Pallbearers were Weldon Fikes, Glenn Waldrop, and Ed Bagwell of Robert Lee, Ralph Walker of San Angelo, Foster Price and Frank Price of Sterling City. Honorary pallbearers included the deacons, the members of the Men's Sunday School Class and other special friends.



The custom of throwing rice at a bride comes from India where it is considered good luck.

WANT ADS

CLASSIFIED ADVERTISING RATES

1st Insertion . . . Per Word 10c
(\$1.50 Minimum)
2nd and Subsequent
Insertions . . . Per Word 7c
(\$1.00 Minimum)
Additional 50c for Blind Ads
Cards of Thanks . Same Rates
Legal Notices . . . Same Rates

COPY DEADLINE

Class. Ads . . . 4 P.M. Tuesday
Display Ads . . 4 P.M. Tuesday

Classified ads and cards of thanks are payable in advance unless customer carries a regular account.

LAST CHANCE! My book, "From the Top of Old Hayrick," may still be reserved at \$10.95. After release, in about three weeks, price will be \$11.95. Order now! Send to Jewell G. Pritchett, 3101 S. 4th Street, Abilene, Texas 79605. 2tp-BP

STINEBAUGH TV SERVICE
At Robert Lee every Wednesday. No mileage unless out of town. For service, call San Angelo, 653-1118. All collect calls accepted.

FURNISHED APARTMENT For Rent. All bills paid. Call Ben Bessent, 453-2492 or 453-2632. 50-tfc

FAMILY MOVING TO Robert Lee area looking for a 3 bedroom 2 bath house or larger. If you would be interested in selling your home, call 453-2812. 28-tnc

TRAILER HOUSE FOR SALE, gas or all electric. Phone 453-2516 or 453-2473. 19-tnc

FOR RENT: 3 bedroom house in Robert Lee. 453-2996 before 12 noon. 34-2tc

LOST: Two Female Brittany Spaniels, north of Maverick. If found please call Add Davis, 453-2301. Reward offered. 1tp

WE BUY USED COLOR TVs. Bob Whipple TV, Phone 453-2262. 35-6tc

LOUVENIA K. REES

ACCOUNTING—INCOME TAX SERVICE
Experienced, Capable, Latest Training
1 Block West of Water Tower
Phone 915-473-3851
(Please Call for Appointment)
BRONTE, TEXAS

Ivey Motor Co. SPECIAL

WASH, GREASE AND OIL CHANGE

Includes checking all fluid levels and complete under the hood inspection.

\$19.95

PHONE 453-2715

LES GRAY'S AA-1 REPAIR SERVICE

PLUMBING REPAIR AND MAINTENANCE
RESIDENTIAL & COMMERCIAL
POWER ROTARY SEWERooter SERVICE

Mobile Home Repair Service
RECREATIONAL VEHICLE REPAIR
CALL MATHEWS LUMBER & HARDWARE

453-2711 or HOME 453-2775 or 453-2278

If No Answer Call After 6 P.M.
ROBERT LEE, TEXAS

FOR SALE

3 bedroom house, 1 bath, basement bomb shelter, outside storm cellar. Priced to sell. Located on large lot.

121.77 acres—90 acres cultivation, rest pasture—3 water wells, 3 bedroom brick house, approximately 1900 sq. ft. living space, 2 baths, all carpeted, two car garage, cement storm cellar. Has 144' x 30' barn and a welding shop. Located 6½ miles west of Robert Lee near Lake Spence.

3 bedroom brick house, 1½ baths, double car garage. Located on large corner lot. Priced to sell.

Combination Business and Dwelling. 3 bedrooms, 2 baths, fireplace, has carpets, recreation room upstairs. Located on corner lot. Front part of property former Froggy's Cafe. Owner will help the financing.

3 bedroom house, 1½ baths, large living room-dining area combination. Located on 3 corner lots. Priced in lower teens. Will rent subject to sale.

2 bedroom brickstone house located on corner lot. In excellent condition.

ADAMS LAND & REALTY CO.
Phone 453-2723 or 453-2757
or 653-9429

PUBLIC NOTICE

Bronte Independent School District is now taking applications for the position of Tax Assessor-Collector in the office of the Superintendent.

The school's Board of Trustees has set up the following qualifications for applications:

1. Must meet any education standards established by the School Tax Assessment Practices Board.

2. Must meet the minimum requirements established by the School Tax Assessment Examining Board.

3. Must be bondable.

4. Must provide own transportation.

5. Must be available for employment not later than May 1, 1979.

6. Must be willing to live within the boundaries of Bronte Independent School District. The salary is negotiable.

Anyone interested in this position should make application at the office of Supt. C.B. Barbee.

tfc-BP

IT'S A FACT!



...that our unemployment rate is nearly eight percent of the work force and almost twice what it was in 1965.

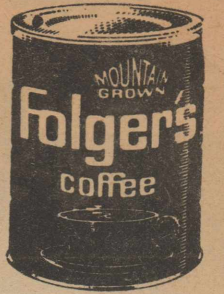


...that helping to keep the rate from rising as much as it might is careful government regulation of the trucking industry, protecting jobs and helping the many family-owned trucking businesses stay in business.

Coffee

Folger's
1 Lb. Can

\$2.29



DEL MONTE PINEAPPLE 15¼ oz. can 47c
VAL-VITA PEACHES, Sliced 2½ can 49c
BUTTERFIELD SWEET PEAS 303 can 27c
FRANCO-AMERICAN SPAGHETTI 300 can 27c



Gladiola Flour 5 Lb. Bag 89c

SWIFT'S VIENNA SAUSAGE 43c

V.I.P. CATSUP, Extra Fancy 14 oz. bot. 39c

Tuna Van Camp 6½ oz. can 69c

V.I.P. GRAPE JELLY 18 oz. glass 53c



DUNCAN HINES Cake Mix REG. BOX 73c

HI DRI PAPER TOWELS big roll 49c

NICE & SOFT BATHROOM TISSUE 4 roll pkg. 89c

Soft Oleo Meadowlake 1 Lb. Tub 59c

DOTTIE LEE BISCUITS 2 for 29c



Potatoes No. 1 10 Lb. Bag 99c

ORANGES, California Navel lb. 39c

GRAPEFRUIT, Texas Ruby Red 5 lb. bag \$1.09

Round Steak \$1.89

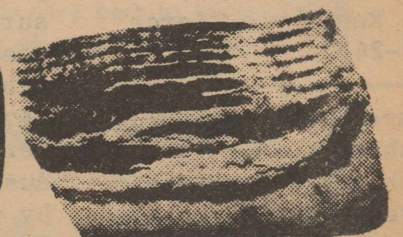
RUMP ROAST Lb. \$1.49



LB.

SLICED SLAB

Bacon lb. \$1.39



BAKER'S Groc. & Mkt.