

"By Helping Business You Help Yourself"

The Floyd County Plainsman

Floydada, Floyd County, Texas, Thursday, April 3, 1941

Number 17

VOLUME No. 12

County set Improvement Programs

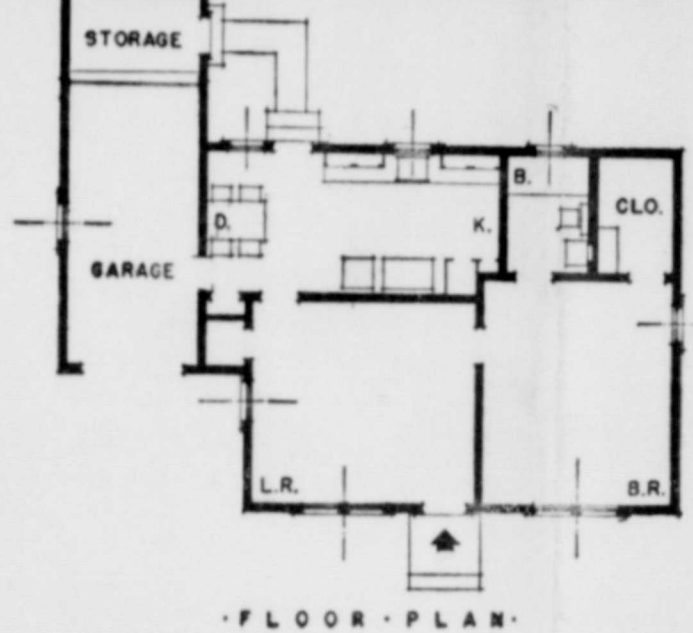
to the Plainsman: Every gin community in Floyd County has set up a permanent improvement organization...

Funeral Rites Held Sunday For Phillip Sims

Funeral services were held Sunday afternoon at 3 o'clock at the residence of W. C. Sims for his father, Phillip Sims, age 80 years...

Floydada Elects W. U. White as Mayor

Floydada voters Tuesday elected W. U. White mayor of the City of Floydada, over Glad Snodgrass...



Good planning and design produce minimum one-story houses of simple character. This small house of conventional design has a number of noteworthy features...



PLAYED FOR PRESIDENT

Older than the National Capital, the United States Marine Band can glimpse back over its stirring history of more than seven score years...

Highway Jobs Are Listed For Bids April 22

Austin, April 2.—Bids will be received April 22 on a majority of projects listed for construction at an estimated total cost of \$2,100,000...

George T. Merriwether of Lockney Dies April 1

Lockney, April 1.—George T. Merriwether, pioneer Lockney resident and prominent civic leader, died suddenly of a heart attack at his home here this morning...

Missionary society Meets at Presbyterian Manse

On Tuesday the Women's Missionary Society of the Presbyterian Church met at the home of Mrs. Rudolf A. Renfer...

350 Baptist Girls to Attend Plainview Gathering

Three hundred and fifty high school girls from the Panhandle are expected in Plainview Friday and Saturday for the eleventh annual District Nine Y. W. A. house party...

Five County Singing Convention Draws Large Crowd

The Five County Singing Convention held at Baker Sunday in an all day session was well attended. The convention has representatives from six counties which included Hall, Briscoe, Floyd, Crosby, Dickens, Motley, and Hale...

PANHANDLE COUNTIES TO GET FOOD STAMPS The federal food stamp plan will be put in operation in Briscoe, Donley, Gray, Wheeler and Collingsworth counties...

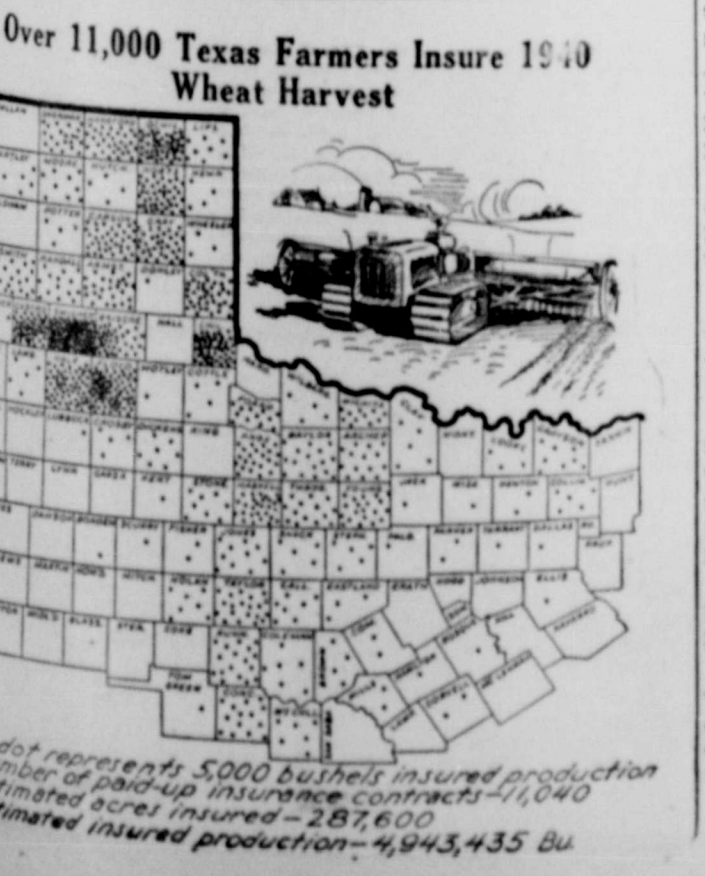
Floyd-Hale County One Valuation of 1940 received not only within its own area but also within its own area...

With less than six per cent of the world's land area and less than six per cent of the world's population, the United States has about 30 per cent of the world's railway mileage...

STUDENTS FROM SEVEN FOREIGN COUNTRIES ATTEND UNIVERSITY OF TEXAS Austin, April 2.—Good students, these foreign students at the University of Texas...

MORGAN WRIGHT THANKS VOTERS OF FLOYDADA I wish to express my appreciation for the many courtesies extended me throughout the campaign that has just closed and for the votes received at the polls in Tuesday's election...

DUNCAN THANKS VOTERS I wish to thank the voters of Floydada for their support in Tuesday's election, expressing their confidence in my ability to serve the City of Floydada for the next two years as their City Secretary...



Over 11,000 Texas Farmers Insure 1940 Wheat Harvest

MORE THAN 11,000 WHEAT FARMERS ARE INSURED Regardless of any disasters of nature, at least eleven thousand Texas wheat producers are assured of a crop this year...

HENDERSON THANKS VOTERS FOR SUPPORT I wish to thank each and everyone who so kindly supported me in Tuesday's election. I greatly appreciate the loyalty you have extended me...

COTTON GINNING REPORT Census report shows that 15,544 bales of cotton were ginned in Floyd County from the crop of 1940 prior to March 1st as compared with 10,147 bales for the crop of 1939.

ONE MAN'S ANSWER... by Herbert Johnson

A cartoon illustration showing a man in a suit talking to a man in a work shirt. The work shirt man says 'MR. FORD, I NEED SKILLED MECHANICS'. Below them is an advertisement for Henry Ford Trade School, stating 'HERE THEY ARE, UNCLE SAM, I'VE BEEN GETTING THEM READY FOR YEARS!' and 'HENRY FORD TRADE SCHOOL FOR TRAINING YOUNG MEN TO USE HEAD AND HANDS IN SKILLED TRADES. STARTED 25 YEARS AGO. 6000 GRADUATES.'



The Easter

FASHION PARADE



EASTER'S ON THE WAY—GET READY—Wondering what to wear for Easter? Of course you are! So we've collected the smartest of the new clothes that are slated for big fashion success! For your Easter Frocks you will want something feminine, flattering and beautiful—and we are just as anxious to fit you in the dress that will do the most for you. With a beautiful array of styles from the nation's foremost designers we are in a position to do just that.



"Three Cheers"

Three cheers for you when you wear this princess coat style in Rayon Rappelline! It has a large Naval insignia embroidered on rouse pocket, Naval buttons on the shoulders, and down the front. Sizes 11-15. Colors, Naval Blue, Victorian Blue, White. \$6.50

"Cherries are Ripe"

Something new and ripe to wear right now! Tiny scallops outline the square neck and short puffed sleeves of this Carol Ruff crease-resistant rayon dress. Bunches of embroidered cherries swing in the skirt and rest gently on the blouse. Sizes 9-15. Colors, Pebble Beach, Aqua, Nassau Rose. \$7.98

"Silhouette in Flowers"

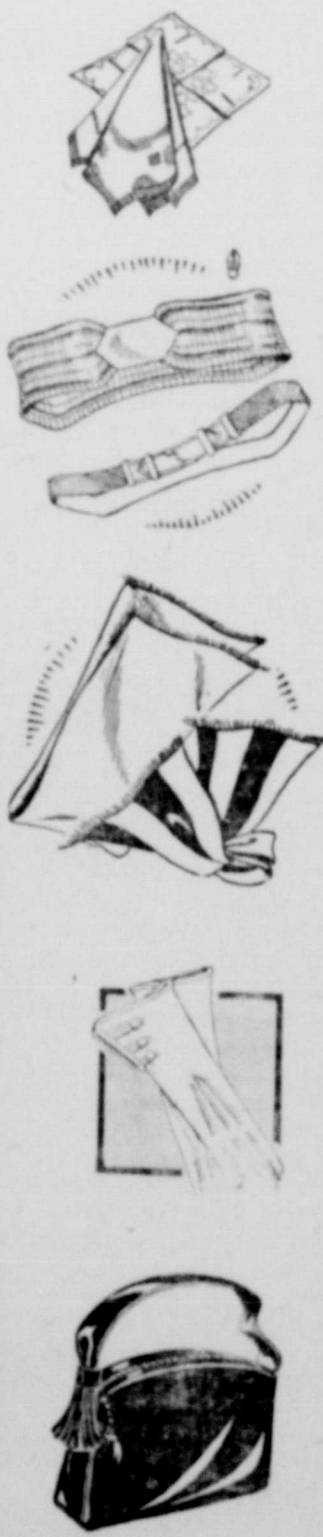
A Date-Time ensemble! An exciting white background Malibu Beach rayon print dress, under a princess coat that closes at the waistline. Sizes 11-15. Colors, Date Brown, Robinhood Green, Navy. Price... \$10.95

THE YOUNG CROWD MEETS IN OUR CAROLE KING SHOP



Beautifully tailored crease-resistant rayon Nub dress in a youthful sports style. Pockets and belt are trimmed with gold eyelets. Ten gored skirt with plenty of swing. Sizes 11-17. Colors, Chartreuse, Royal Blue, Sungold, California Earth, Nude, Malibu Blue

7 DAYS 'til Easter



New ACCESSORIES

All the little accessory touches that add so much fashion fun to your costumes! Pick yours now.



- Like magic, these beautiful silk hose end garter grieve and ruinous knee strain. Four magic strips at the top
- absorb strain
- check garter runs
- hold garters firm
- keep seams straight

No wonder so many of our customers prefer them. You will, too!

\$1.00

Style Shoppe

"ALWAYS SHOWING NEWEST THINGS FIRST"

MRS. MOLLIE A. MORTON, OWNER

TELEPHONE NUMBER SEVENTEEN



No. 1639. Go-to-town-and-date dress! A two-piece Shantelle rayon for the Spring parade! Every line in the blouse and skirt is new. The fitted jacket is full of appeal. Sizes 14-20. Colors, Palm Beach-Luggage Tan, Grey Blue-Navy, Teatime Rose-Navy. \$10.95.

No. 774. If you want classic distinction in half sizes, this dress of striped rayon is yours. It's a shoe-button shirt-frock and with its pleated skirt and chevron pockets, it's as tailored as a major's uniform. Sizes 16 1/2-22 1/2. Colors, Waterfall Aqua, Reseda Green, Rain Blue. \$6.50.

No. 1257. The Good Neighbor Policy reveals itself! A South American border stripe makes this dress a "must" for your wardrobe! Notice stunning new type belt of straw with a novelty cork trim, the simple square neck blouse, and the pleated skirt. Sizes 12-18. Colors, Brazilian Blue, Rio King, Plantation Green. \$7.95.



SPRING FELTS AND STRAWS
Snapped brim felts and flower trimmed styles
\$1.98, \$2.45, \$2.98

FLOYD COUNTY PLAINSMAN
Published Thursday Each Week
M. B. CAVANAUGH, PUBLISHER

Floyd County \$1.00; Outside Floyd County \$2.00
Second class matter June 23, 1930, at the post office at
Floydada, Texas, under the Act of March 3, 1879.

ADVERTISING RATES GIVEN ON APPLICATION

NOTICE!

Erroneous reflections upon the character, standing or reputation
of any person, firm or corporation which may appear in the columns of
the Floyd County Plainsman will be gladly corrected upon its being
brought to the attention of the publisher.

**Boy Turns Farmer—
Brings in the Harvest**



ARBORN, MICH. — He's
in weight, this Michigan
and 129 other lads from
streets have averaged
gain of 13 pounds by
from spring to fall un-
fruitful conditions.

They have just got in another
at Camps Legion and
Run and are figuring
profits on their season's

These two camps Henry
has been providing a spe-
cific opportunity for a certain
of under-privileged boys.

The boys for the most part
lected from applicants
are the sons of men who
our country in the army
during the last great
health or death among
veterans leaves their fam-
difficult circumstances.

Ford wanted to help
families by giving boys
18 and 19 years of age
to them, an oppor-
tunity to make more of their

Since the frost left the
last April these lads
been working two 320-
acts of farm land which

he provided for them. When
the last of the produce is sold
there will be approximately
\$18,000 in earnings to be split
in equal shares among the 130
youths, the director of the
camps estimates. This will be
in addition to the two dollars
a day, plus food and lodging
each boy received throughout
the season.

At camp the boys learn team-
work and self-reliance. Each
camp is governed by the boys
themselves. They elect a camp
leader, keep their own books,
market their own produce
through roadside stands and
wholesale channels.

Now that the season has
ended, the boys are free to do
anything they wish, but they
are offered an opportunity to
enroll in the school system at
the Rouge plant, or to do plant
work at regular salaries.

In starting the camps, Mr.
Ford acted in the belief that it
is up to business men and in-
dustrialists to accept as a social
responsibility the problems
facing boys who found them-
selves, through no fault of their
own, at loose ends.

**University of
Tex. Homecoming
April 4 to 6**

The latching will be out for
65,000 University of Texas ex-stu-
dents when the school's Texas Round
up annual homecoming swings into
full blast April 4-6, ex-student offi-
cials have announced.

Highlights of the three-day cele-
bration will be the annual Texas re-
lays on Saturday, and the Round-Up
Parade and the annual revue and
ball, then the co-ed "sweetheart"
of the University is named, on Friday.

One day will be set aside as
"Penick Day," to honor Dr. D. A.
Penick, veteran classical language
professor and oLaghorn tennis coach.

**Sam Houston
Letters Added to
Library**

A large quantity of Texas presi-
dential correspondence—21 longhand
letters written by the famous Sam
Houston—has been added to the Uni-
versity of Texas Library.

The collection represents the pe-
riod of Houston's second term and
includes letters to General Zachary
Taylor, later U. S. president; Cap-
tain Charles Elliott, British charge
d'affaires in Texas; and Count de
Saliguy, French charge.

Among the correspondence is a let-
ter to his "venerated friend," An-
drew Jackson; others to Southwest
Indian chiefs.

In a communication to his private
secretary, W. D. Miller, written
shortly after a Mexican army had
invaded the Republic and taken San
Antonio in 1842, Houston wrote:
"The people of Texas may rest
assured that I will never cease to
warr upon Mexico until Independence
is secured, or the nation is conquered.
Our cause is holy."

The Houston letters are to be ad-
ded to the University Library's well-
known Archives Collection, which
embraces two and a half million
documents relating to the history of
Texas, the Southwest and the South.

Dalton Jones, of Lubbock Tech,
spent the week end with his parents,
Mr. and Mrs. W. O. Jones.

**TO RELIEVE
MISERY OF COLDS**

LIQUID, TABLETS,
666 SALVE, NOSE DROPS
COUGH DROPS

Try "Rub-My Tism" — a Wonderful
Linctant

**Floydada Insur-
ance Agency...**

Insurance of all kinds. Your in-
quiries and business respectfully
solicited

**W. H.
HENDERSON**
OWNER

**Living Conditions
Will be Improved
Says Paul
Snodgrass**

Living standards of low income
cotton farmers in Floyd County will
be definitely improved if they take
part in the new cotton stamp pro-
gram, Paul Snodgrass, chairman of
the county AAA committee points
out.

"By further reducing the acreage
of cotton this year, the farmer not
only will keep down the cotton sur-
plus but will provide himself with
more cotton goods," the commit-
tee man said.

Under the provisions of the Sup-
plementary Cotton Program, pay-
ments of cotton stamps will be made
to farms on which the acreage plant-
ed to cotton in 1941 is reduced be-
low the 1941 allotment or the 1940
planted acreage, whichever is small-
er. The stamp payment will be
made at the rate of 10 cents per
pound on the normal cotton yield
for the reduced acreage. A farmer
interested in only one farm may earn
a maximum of \$25 in cotton stamp,
except that an operator with two or
more tenants or shareholders may
earn up to \$50. A farmer interested
in two or more cotton farms also
may earn up to \$50, but not more
than \$25 of this amount can be on
any one farm. Payments are divid-
ed in the same way as the Agricul-
tural conservation payments are di-
vided.

Equally as important as the stamp
payment is the opportunity the pro-
gram offers to offset nutritional dis-
eases and poor health conditions
among low income farmers by en-
couraging cotton growers to produce
more vegetables, fruit, dairy prod-
ucts and meat for home consump-
tion on acreage taken out of cotton
production, Snodgrass declared.

To encourage the production and
storage of food for home use, an
additional payment of \$3 can be
earned by farmers cooperating with
the Supplementary Program, the
chairman said.

Cotton order stamps, to be earned
by farmers for participating in the
Supplementary Cotton Program, will
be issued this summer as soon as
possible after performance is check-
ed under the 1941 AAA Farm Pro-
gram, according to Paul Snodgrass,
chairman of the Floyd County AAA
committee.

This means that in the early cotton
producing counties of Texas, issuance
of stamps may begin in late June,
with the bulk of the stamps expected
to be distributed during July and
August.

Snodgrass said this estimate is
based on past experience in check-
ing cotton performance during a
normal growing season. A late grow-
ing season in 1941 would, of course,
delay issuance of stamps to farmers
in the areas affected.

Cotton stamps will be issued to
farmers who make a further volun-
tary reduction in their cotton acre-
age in 1941. Stamps can be used to
purchase cotton goods in local retail
stores.

Farmers may earn stamps at the
rate of 10 cents a pound on the nor-
mal cotton yield of the acreage re-
duced. (A farmer interested in only
one farm may earn a maximum of
\$25 in cotton stamps, except that an
operator with two or more tenants or
sharecroppers may earn up to \$50.
A farmer interested in two or more
cotton farms also may earn up to
\$50, but not more than \$25 of this
amount can be on any one farm.)

**Farmers Short
Course to be Held
In July**

H. H. Williamson, director of Ex-
tension Service for A. and M. Col-
lege, announces that the week begin-
ning Sunday, July 13, through Fri-
day, July 18, has been selected as
the period for the 1941 Farmers'
Short Course at the College. Mon-
day and Tuesday for the farm men
and women's program; Wednesday
for agents' conferences; and Thurs-
day and Friday for 4-H boys' and
girls' programs.

Several nationally known men, in-
cluding Secretary of Agriculture
Claude Wickard, are expected to be
present and speak.

Director Williamson; D. L. Wed-
dington, executive assistant; Geo. E.
Adams, vice director and state agent,
and Mildred Horton, vice director
and state home demonstration agent,
comprise the executive committee.

The Short Course program com-
mittee consists of Roy Snyder, chair-
man; L. L. Johnson; Onah Jacks;
R. E. Callender; R. G. Burwell; Bess
Edwards; Mae Belle Smith and Myr-
tie Murray.

**NYA Boys, Girls
Assigned to U. S.
Sponsored
Projects**

Austin, April 2.—Approximately
fifteen hundred and girls in Texas
are assigned to NYA Projects spon-
sored by the United States Army,
according to J. C. Kellam, state NYA
administrator. Of this number 1,151
are boys and 269 are girls.

This work, which is non-military
in nature, consists of assisting in
sheet metal, motor, machine, and
electrical shops and of acting as help-
ers in carpentering, painting, brick-
laying, plumbing, refrigeration,
steamfitting, laundry, warehouses,
clerical work, and hospital work.
Through these NYA Projects the
regular army men are left free to
devote all of their time and energy
to strictly military duties.

**Special Class In
Machine Shop
Work at A & M**

A special class in machine shop
work started at Texas A and M
College April 1. The purpose of the
course was to prepare young men
for jobs in National Defense indus-
tries. The students must be between
the ages of 17 and 24, inclusive, and
not now in school. They must be
physically fit and mentally able to
learn the calculations required in a
machine shop.

The class will be in session from
3 to 10 p. m., five days each week
until July 1. Anyone interested
should write at once to Prof. C. W.
Crawford, department of Mechanical
Engineering, Texas A. & M. College,
College Station, Texas, and give his
age, grade in school completed, and
a list of any work experiences.

**PANHANDLE COUNTIES TO GET
FOOD STAMPS**

The federal food stamp plan will
be put in operation in Briscoe, Don-
ley, Gray, Wheeler and Collingsworth
counties in the immediate future, it
was announced this week by H. D.
Kreager of the regional food stamp
office at Dallas.

The plan will begin operating in
these counties as soon as details can
be worked out, he said.

**CLASSIFIED
ADVERTISING**

Our FLOWERS are FRESH and
are BEAUTIFULLY ARRANGED.
BOLLUMS, FLOYDADA FLORISTS

LANDS FOR LEASE
A few farm tracts to lease at re-
asonable prices for cash.

W. M. MASSIE & BRO
Floydada, Texas 11 tf

For best and cheapest monument-
either in marble or granite. See S. B.
McLESKEY 24 tf

We invite you to visit the green-
house. PARK FLORISTS—Mrs. W.
S. Goen. Phone 78. 46 tf

COTTON GINNING REPORT
Census report shows that 15,544
bales of cotton were ginned in Floyd
County from the crop of 1940 prior
to March 1st as compared with 10-
147 bales for the crop of 1939.

F. C. Harmon, Jr., of Dallas, spent
the week end with his parents, Mr.
and Mrs. F. C. Harmon.

LITTELL'S LIQUID
A Calcium Sulphurate Solution
for relieving the discomforts of
itching that frequently accom-
panies Minor Skin Irritations,
Prickly Heat, and the Bites of
Non-Poisonous Insects. Locally it
helps to allay the itching of ec-
zema. Price 50c per bottle.

WHITE DRUG COMPANY

SEVERAL GOOD USED CARS!

We have a few GOOD USED CARS which will go at a bargain
price. Come see us

SPECIAL CLOSE OUT PRICES ON TIRES.

FINKNER'S AUTO STORE
EVERYTHING AUTOMOTIVE

CLINE AND RAINER GARAGE

Where you can get everything for your car at one-stop.
Mobilgas, Mobiloil, Prestone, Mobile Freezone.

RADIATORS REPAIRED, Radiator Hose and Clamps. Heater
and Heater Hose. Parts of all kinds, Welding, Tires, Batteries. In
fact we have everything for your car.

We buy junk Batteries. Phone 37

SHORTY BARKER and CLAY ANDERSON, are in charge of
our shop, and will appreciate your next job.

CLINE AND RAINER
WESTERN AUTO ASSOCIATE STORE

**FIRST NATIONAL BANK
Floydada, Texas**

1903—TIME TESTED SERVICE—1940

Need a good Pick-up, see those

On the floor at our shop, in good condition, ready to demonstrate.

SPEARS & DANIELS

INTERNATIONAL TRUCKS AND PARTS AGENCY

Complete Automotive Repair and Replacement Service
Located Across Street from Post Office.

Buried City to Give Up New Treasures



coming early to the pic-
nic Kentucky hills, has sig-
nals the renewal of work at King
Wickliffe, Ky., where
ologists digging among the re-
of an ancient buried city ex-
of treasures yet found at
the metropolis of an un-
and forgotten people. Ex-
tential testing, according to
White King, state arche-
who with his wife, Blanche
King, ethnologist (inset) is
of the work, has disclosed
mysterious area at the Sig-

nal Mound, high point of ground
commanding the expanse of the
Mississippi and Ohio rivers. Here,
more than a year ago, was found
the remains of a single individual,
evidently a man of high rank in the
ancient city. It is the hope that the
newly located area may contain his
complete personal and family treas-
ures, buried with him as was the
custom in that civilization as with
the pharaohs of Egypt.

Work of excavating the buried
city was started nine years ago.
Since then, almost 200,000 artifacts

have been discovered. While the
work progresses, thousands of visi-
tors annually pass through the site
to view these remains of a lost civi-
lization—their burial tombs undistur-
bed for centuries, their dwell-
ings, their implements, their treas-
ures, jewels and ornaments, even
the white ashes of their ceremonial
fires—which science has discovered
and preserved. It is estimated that
complete excavation will take
other 10 to 20 years after which
it will be housed under permanent
stone buildings to preserve its rec-
ord for education and posterity.

Helpy-Selfy Laundry

DO YOUR OWN WASHING the quickest, easiest, cheapest way to do your laundry.

25c Per Hour.

PLENTY OF HOT, SOFT WATER.

Steam Laundry Charges—Rough Dry 4c

WET WASH washed and extracted ready to iron

2 Cents a Pound

Shirts 9c, in Thrift T and Rough Dry Bundles.

White Way Laundry

Formerly Floydada Steam Laundry

PHONE 141 FOR PICK-UP AND DELIVERY SERVICE! FLOYDADA, TEXAS

Star Cash Values !!

MEAL, Large Sack	45c
SPUDS, Whites, 10 pounds	15c
OATS, Large box	15c
LUX SOAP, 3 bars	19c
LIFE BOUY SOAP, 3 bars	19c
Hominy, No. 2½ size, 3 cans	25c
KRAUT, 13 ounce can	5c
DREFT, Giant box	59c
10c box Free	
MUSTARD, Quart Jar	10c
BACON, Wilsco, pound	25c
Apples, Washington Winesaps Dozen	15c
Time to fix your lawn—We have plenty seeds for your needs.	

Star Cash Grocery

Appointments Made By Santa Fe System

Appointments involving seven major officials of the freight traffic department of the Santa Fe System Lines, to become effective April 1, were announced this week by Paul P. Hastings, traffic vice president.

James J. Grogan, freight traffic manager, with headquarters in Chicago, is appointed general freight traffic manager. The following are appointed freight traffic managers: Robert M. Hittshew, assistant freight traffic manager in charge of solicitation; T. L. Bothwell, assistant freight traffic manager in charge of rates and divisions; M. C. Burton, assistant freight traffic manager at Topeka, Kansas; A. M. Reinhardt, assistant freight traffic manager at San Francisco, California; Guy L. Goin, assistant freight traffic manager at Los Angeles; and Elmer B. Johnson, general freight agent, Gulf, Colorado and Santa Fe Railway, at Galveston.

The appointments, Hastings said, are made in the general interest of facilitating and improving Santa Fe traffic service to shippers and receivers of freight.

Protect Plants And Trees From Frost

Beware frost these March days. There is always a chance it will appear suddenly and wreck hopes for peaches and tender vegetables just beginning to renew their life cycles.

Frost damages plants by freezing the water in the small cells which compose the leaves, buds and fruit, says J. F. Rosborough, Extension Service horticulturist at A. and M. College. Freezing, succeeded by thawing, breaks down the cell structure and may badly injure, or even kill the parts affected. Sudden thawing is as harmful as freezing.

General ways of protecting plants from frost are conserving heat; by stirring the air, and by adding heat. Soil releases heat at night, but if it is conserved there will be no damage. This may be done by covering the ground with various materials. Glass is one of the best known, since it allows the incoming rays of the sun to penetrate freely but is almost impervious to heat leaving the earth.

Rather heavy, closely woven cloth laid directly over garden truck or low growing plants is effective in protecting against moderate frost. Heavy paper, or several thicknesses of newspaper, laid over plants also protect. Spraying trees with water as protection against frost has been proved impracticable.

Heating the lower air to replace that lost by radiation is considered the most practical method of frost prevention. This generally is obtained from a large number of small fires scattered over the area to be protected. The fires definitely will warm the air within 40 feet of the ground as much as eight to ten degrees, provided high winds do not exist.

A large number of small fires is more effective than fewer large fires. A smudge pot to each tree, or a pile of burning wood to each tree is best.

Texas Farmers Sell Much During February

Austin, April 2.—Texas farmers sold \$16,326,000 worth of farm products during February, or more than 15 per cent more than in February a year ago, the University of Texas Bureau of Business Research reports.

Most of the income increase resulted from a rise in prices of livestock and livestock products, rather than an increase in marketings, Dr. F. A. Buechel, bureau statistician and associate director, pointed out.

Predicting still further price boosts, he also anticipated a rising volume of marketings, with a consequent wider margin of income during 1941 over 1940, thus giving the state a substantially improved rural spending power.

Agricultural income exclusive of government subsidies for the first two months of 1941 he estimated at \$37,740,000—up 21 per cent over the combined January and February receipts last year.

Income for January and February in the following crop reporting districts of the state was estimated by the University bureau as follows: 1-N (around Amarillo) 1941, \$3,197,000; 1940 \$3,086,000. 1-S (around Lubbock) 1941, \$4,133,000; 1940 \$3,004,000.

Miss Mary Emma Collins Wed to Ersel Mathews

Miss Mary Emma Collins, daughter of Mr. and Mrs. W. G. Collins and Ersel Mathews, son of Mr. and Mrs. A. H. Mathews, were united in marriage Sunday evening at 6 o'clock by Rev. Vernon Shaw. The couple left immediately for a weeks honeymoon and plan to return to Floydada Friday or Saturday.

Mrs. Mathews was reared in Floydada and finished high school with the class of 1938. Mr. Mathews also attended Floydada schools and after finishing here he attended Tech College at Lubbock, graduating from there in 1939. For the past year he has been employed at Greenville, South Carolina, in a textile mill. Mr. Mathews will be located in Texas in the same work, but has not definitely decided on their location.

Major Gen. James G. Harbord Visits In San Angelo

San Angelo, Texas, March 31.—Major General James G. Harbord, retired, former Chief of Staff of the A. E. F., arrived here today on a personal inspection tour of military territory in which he served along the border man years ago.

The noted soldier has long desired to revisit the region where he saw much activity prior to departure for France in 1917 as Chief of Staff to General John J. Pershing, with whom he had served in earlier campaigns. On the present trip he is accompanied by officials of the Santa Fe Railway, of which System he is a director.

General Harbord's military career is one of the most brilliant in annals of American military activity wherein he rose from private to

Major General and Chief of Staff during the first World War.

With Editor William Allen White he failed to secure entry to West Point. So he taught school in Butler County, Kansas, for awhile and then enlisted in 1889 as a private. He was commissioned 2nd Lieutenant in 1891. In the Philippines he was Colonel and Assistant Chief of Constabulary. In addition to the Philippines he served for two years in Cuba and the remainder on the

mainland.

When this country entered war with Germany in 1917 he was a Major of Cavalry and a student in War College. General Pershing took him to France as Chief of Staff in May of that year, and one year later he was ordered to the Marine Brigade and commanded it in action at Belleau Wood near Chateau Thierry. Upon conclusion of this successful action he was promoted to Commandant of the 2nd Division and three days

later the First U. S. Army French Morocco Division in the epic battle of Soissons. Commandment has been held since the end of the war.

Upon conclusion of the offensive he was placed in the Service of Supply for the which task terminated in 1919. President Wilson appointed him of a Military Mission to before he returned to America latter part of that year.



HERE'S THE EASY WAY TO A HAPPIER KITCHEN!

with a New 1941

Westinghouse Electric Range

HAPPINESS is the goal of every wife and mother. She ever strives toward harmony, cleanliness and charm. More than eager to SAVE MONEY... and accomplish MORE with less effort and cost... this is why the New Electric Ranges are so popular.



Investigate TODAY at your Local Electrical Dealer...

Texas-New Mexico Utilities Company

She'll be Delighted With Flowers For Easter

It will mean so much to her—She'll be so thrilled—if you remember to send her lovely flowers on Easter Morn! She's expecting them. Wife, mother, or sweetheart, will really appreciate your Easter gift of flowers from Hollums Floydada Florists selection—Come in today!



Potted Plants

HYDRANGES
PRIMROSES
LILIES
GARDENIAS
ROSES and others.

Corsages a Specialty.



HOLLUMS FLOYDADA FLORISTS

SPECIAL REDUCTION

ON ALL SPRING COATS AND SUITS FOR FRIDAY, SATURDAY AND MONDAY...

Taking advantage of this reduced price will save you money on your...

NEW EASTER COAT OR SUIT

Remember 3 days only

PRICED AS LOW AS \$6.49 to \$15.75

STYLE SHOPPE



"Always Showing Newest Things First"

Mrs. Mollie A. Morton, Owner Phone No. 17