

THE MIDLAND REPORTER

AND GAZETTE - EXAMINER

Volume XXII.

Midland, Texas, May 31, 1918

Number 34

EATING SHINNERY IS DANGEROUS

Animals Eat Excessive Amount Before Other Forage Comes On. Results Often Fatal

The following bulletin issued by the United States Department of Agriculture was forwarded to The Reporter by T. P. Martin, Jr., president of the Oklahoma Stock Yards National Bank, with a request to publish same. The bulletin follows:

It has been definitely proved that excessive feeding on oak leaves and buds causes stock poisoning. Reports of stock poisoning from Colorado, Utah, Texas, and New Mexico were investigated by specialists of the United States Department of Agriculture, and a study was conducted in certain districts where oak is the principal form of vegetation. It was found that the poisoning usually occurs in early spring before grasses and other suitable forage have developed sufficiently to furnish a supply of feed. The department specialists recommend, therefore, that cattle should not be turned on the summer range too early or that they be provided with some other feed until the grasses have a good start.

The losses from oak in America seem to be confined to cattle, although there have been unconfirmed reports of the poisoning of sheep. No cases are known among horses. The most noticeable symptom is extreme constipation; the affected animal becomes gaunt, its coat rough, its nose dry and cracked. The attitude is peculiar, the head being extended forward. Appetite is lost and weakness increases until the case is ended by death. These symptoms appear after rather long feeding upon the oak, not less than about a week, and the animal may die in two weeks or in some cases linger for an indefinite period.

Treatment of Oak Cases

While affected animals may be relieved by treatment (Epsom salt in 1 pound doses or given in small quantities in the drinking water), the sensible treatment is to prevent the trouble by proper feeding. It has been found experimentally that if a small quantity of hay is added to the daily ration no harm results from oak feeding. As small a quantity as 3 pounds of alfalfa hay daily with oak will provide a maintenance ration for a two-year-old steer. Oak may be considered a good forage when other feed is provided. In fact, cattle in Utah frequently come off the oak ranges in the fall in fine condition.

There is no doubt that in some localities cattle are admitted to the summer range too early. They frequently pass into the oak zone when there is practically nothing else, on the range and in their greed for green material they are forced to eat the young leaves. It has been shown by observation that they do not eat them by preference, but will take grass more readily if any is to be found. It is, therefore, more profitable in the end to feed a little longer and use the range only after the grasses have had a fair start. The exact time when this should be done can not be determined in advance, but should be fixed each year after a careful examination of the range.

SERGEANT HUNDLE SENDS SOUVENIRS FROM FRANCE

In a letter received this morning by Mrs. John Pliska and Miss Pauline Hundle from their brother, Sergeant James L. Hundle, in the Q. M. machine shop department of the American army in France, were enclosed two beautiful silk handkerchiefs, each bearing the inscription "Souvenir de Lorraine" and the French coat of arms exquisitely worked in colored silk. Hundle was promoted to the rank of first sergeant in January. He is a capable mechanic and is rendering valuable service to his country in France.

Prof. Walter L. Thompson expects to become a resident of Midland, having rented the Christian parsonage. He has announced that he will conduct a six weeks' course for students beginning about June 10th. Mrs. Thompson will offer a business course. She is a graduate of Bowling Green University and well equipped for her work.

MYSTERIOUS EXPLOSION FOLLOWED BY FIRE DESTROYS SIX BUILDINGS; MAN IS KILLED

As a result of an explosion which occurred last Monday night shortly after midnight, one man was killed, six brick store buildings on the west side of Main street are in ruins and property damage sustained to the amount of forty or fifty thousand dollars.

The cause of the explosion is a mystery. On Tuesday a court of inquiry was conducted by county and city officials, but so far as known nothing has developed that promises to solve the mystery.

The explosion occurred in a pool hall conducted by Henry Thompson. So far as known no explosives were kept in this or any of the buildings destroyed. The building was completely wrecked as were also those adjoining it. Fire followed the explosion, completing the work of destruction and it looked, for a time as if the entire block would be consumed.

Some two hours after the explosion occurred firemen engaged in fighting the fire discovered the lifeless body of Tom Carr, an employee of the pool hall, in the wreckage at the rear of the building. His face and hands were scorched by the explosion and his body badly crushed by the flying timbers and masonry. It is stated that Thompson and Carr closed the pool hall about midnight and went home in the former's car, the latter getting out of the car near his home. Why he came back to the building and how the explosion occurred will probably remain a mystery. Carr was 31 years of age and had been a resident of Midland for many years. He leaves a wife and one child. The body is being held by Undertaker Ellis pending the arrival of his father, S. B. Carr, of Miami, Arizona, and a brother, W. D. Carr, of Gallup, N. M. They are expected to arrive tomorrow, when the funeral will be held. The mother, sister and a brother of Mrs. Carr reached here yesterday from Paducah, Texas.

Parties who witnessed the explosion state that fire and debris were carried to a height of 200 or 300 feet. Timbers and some of the contents of the wrecked buildings were scattered over several blocks and much of it

deposited on the tops of adjacent buildings. Practically everything was blown out of the pool hall, the floor and sills being carried completely away by the force of the explosion. All plate glass and other windows in the nearby buildings in that block and in the block opposite were demolished and much damage was done in other blocks. Many windows were broken in the Llano Hotel in the block north and windows were broken in the P. & P. depot to the south. A number of telephone and light poles were broken off at the ground and hurled for some distance. The explosion was

felt in all parts of the city, many of the close in residents and occupants of hotels being almost thrown from their beds by the concussion.

Shortly after the explosion fire started in the building adjoining the pool hall on the north, occupied by W. H. Spaulding's garage and the Midland Storage Battery Company. What was left of it from the explosion was quickly consumed by the flames, as were also two other buildings north, one occupied by Towers' confectionery and the other by the Unique Theater. The fire was checked at the theater building but not until the entire

contents were consumed. The fire did not extend south as the wreck of the pool hall was so complete there was nothing left to burn. The building adjoining the pool hall on the south was also completely wrecked. This was occupied by the Coyle-Cordill Motor Company, but their stock of automobiles and accessories was only slightly damaged. The building on the south of it occupied by Andrews' market was badly damaged but did not fall and the north wall of this building supported one end of the roof of the Coyle-Cordill building preventing the cars from being crushed. The building occupied by the meat market was so badly damaged that it had to be vacated and it is doubtful if any of it can be salvaged. The market has been opened at its former location on Wall street.

The Coyle-Cordill Motor Company moved their stock to the Moran garage building near the depot. W. H. Spaulding announces that he has ordered a new stock and will re-open, though he has not yet decided upon a location. Mr. Spaulding was the heaviest loser on stock, he having carried an extensive line of tires and auto accessories which was only partially insured.

Buildings destroyed and names of owners are as follows: Robt. Currie the owner of the building occupied by the meat market; Mrs. Ida Mims owner the building occupied by the Coyle-Cordill Motor Company; the pool hall building was owned by J. W. Westmoreland; the Spaulding building was owned by Jno. M. Cowden; the one occupied by Mr. Towers was owned by Henry Rohlfing and the theatre building by Mrs. Josie Quebedoux, of El Paso. The Reporter did not learn the amount of insurance carried on these buildings. Mr. Towers saved his peanut roaster and a part of his stock and this he moved to a vacant building near the postoffice where he is doing business temporarily.

The fire boys were on the scene promptly and worked heroically for about five hours before the fire was checked. The efficient manner in which they handled the situation is

MEAT RATION NOW TWO POUNDS A WEEK

Confusion Arises From Order of Food Administration Limiting Meat to Two Pounds a Week.

Hotel and restaurant proprietors are perplexed on the issue of the meat ration of 2 pounds per person per week and many have expressed a wish to return to meatless days and meatless meals. More than the announcement that the nation is placed on a meat ration of 2 pounds per person per week, leaving it to the ingenuity and patriotism of the public eater and the house wife to meet the situation as to how, and in what quantities, the viands may be served; the Federal Food Administration has nothing more to add at the present time.

The meat ration corresponds to the sugar ration in that it stipulates a definite quantity to the individual, or three pounds of sugar per month per person. Before Texas went on a wheatless basis the flour ration was 6 pounds per person per month. At present the house wife may use what sugar she needs for preserving purposes, but all manufacturers using sugar are required to secure same by the use of certificates based on allotments.

It has been asked the Administration if the meat ration affected the butcher. The inference is that it affects the butcher in the same degree that the issuance of flour in stores did affect the retail grocer; and the sales of sugar now affects him. It seems logical, states a member of the Food Administration, speaking for Administrator Peden, now in Washington, that every butcher should come to understand the number in each family whom he serves and to make his sales to the families on that basis. This is by no means obligatory, but is regarded as a step which would simplify the distribution of meats inclusive of poultry were the ruling on meat advanced to meet military needs.

The two units per person per week of meat represents the weight of meat as purchased from dealer and not the weight of meat after excluding bones and trimmings.

deserving of special praise. Much credit also is due Manager Gaston of the Midland Light Company for his prompt work in getting the pumps going at the plant and keeping the big engine supplied with adequate water for successfully combatting the flames. The standpipe was drained in a very short time and prompt work at the pumping plant was necessary to save the entire business district from destruction. Mr. Gaston's forethought in cutting off the light current promptly in the affected district probably saved the lives of some of the workers as most wires in the neighborhood were torn down by the explosion.

Miss Eddie Taylor, daughter of Postmaster Taylor, was severely cut on the leg in her room at the Llano by a piece of flying glass from one of the shattered windows of the hotel. No other casualties have been reported.

WAR SAVINGS SOCIETY ORGANIZED BY CHILDREN

"Halt the Hun War Savings Society," is the name of a society organized this week by thirty-three Midland school children. Sue Terry, president, and Lora Eichelberger is secretary and the purpose of the organization, as indicated by its name, is to promote the sale of thrift stamps and otherwise assist in winning the war. The society will meet at the court house Saturday afternoon at 3 o'clock to perfect the organization, at which time all members and others desiring to join are requested to be present to sign pledge cards and receive their society pens.

Piano Tuning

Abilene, Texas, Oct. 3, 1916. To Whom it May Concern This is to certify that F. M. Denton was in our employ in 1913-14, and had charge of our tuning and repair department. We take pleasure in recommending Mr. Denton to the public as an efficient, first class tuner and repair man. Very truly,
Hall Music Co.,
per E. E. Hall, Mgr.



REV. O. J. HULL, New Pastor First Baptist Church

Special For Next Week

Boys' Summer Suits--Keep Kool Cloth

The thing for Summer wear
Sizes range from 5's to 17's

One lot only \$4.15—One lot only \$5.00

Neat Styles---Good Material

If your Boy needs a Suit, Don't miss this Opportunity

Midland Mercantile Company

"The Store that Saves you Money"

Grocery Phone No. 6

Dry Goods Phone No. 284



**For Summer Wear
The New Korrach Pre-Shrunk
Wash Skirts**

JUST IN

You cannot help but appreciate these new Summer Wash Skirts for their real value and style.

First, they are pre-shrunk, this means they will come from the tub just the same size. No shrinking, sagging and binding and the materials and styles are such that put them in a different class to the ordinary wash skirts. In fact they are, different because they are better than any wash skirts you have known before.

\$2.85 \$3.50 \$3.85 \$5.00 \$6.85

A New Pump

This week brought a new number in Pumps that you will be delighted with. A military heel, square throat, flexible welt sole, made of a beautiful soft chocolate leather that will give both wear and comfort. The pair **\$6.50**

Desirable merchandise of almost every kind is becoming more and more scarce every day and you will appreciate the store that is making every effort to keep and to have what you want. The wonderful business that this store is having is due to the fact that we are keeping our stock up and our prices down.

This Store Wants Your Business

Wadley - Patterson Co.
One Price--the Lowest--for Cash Only

**COMMENCEMENT AT
MIDLAND SCHOOLS**

Four Excellent Programs in Baptist Church Close Out Best Year in Our Schools

It seemed very fitting on last week for one of the best sessions our public schools have ever had to close out with the best programs, witnessed by the largest crowds, in the history of the schools. All of the programs were given in the auditorium of the Baptist church, where, in addition to the pleasant weather favoring the exercises, ample stage facilities were afforded or the large choruses, and where over 500 people were seated in comfort to witness the exercises each night.

Commencement Sermon

The commencement sermon was delivered by Rev. J. T. McKissick, of the Christian church, of our city, Sunday morning, May 19th. Bro. McKissick had selected for his theme, "The Uses of Failure," and he easily sustained his enviable reputation as a fluent, forceful and interesting speaker. His sermon, replete with quotations from the Bible and from general literature, was made more powerful by the force of the speaker's personality and the flow of his sparkling wit and genial humor. The program on this occasion was replete with some of the best music ever heard in Midland. The Midland Choral Club sang as a prelude, "The Vast Universe," and assisted the high school in rendering "O Praise the Lord," from Mendelssohn's "Athalie." Miss Frederick and Miss Luther rendered a beautiful offertory on violin and piano. All the pastors of the city and the president of Midland College took part in the program, which has been pronounced one of the best Midland has ever enjoyed on commencement sermon morning. As a postlude, the high school, the choral club and the audience joined in singing "The Star-Spangled Banner."

Grammar School

The grammar school graduating exercises were given Wednesday night. The program which was arranged in two parts, consisted of choruses by the grammar school departments of central and south wards, songs by the primary departments from both buildings, and essays and declamations by the honor pupils of the grammar schools and the first three years of the high school. The program, opening with the Star-Spangled Banner and closing with America, was patriotic throughout, four or five army songs being among the choruses sung by the different departments. Among the best choruses on the program, aside from these, were: Voices of the Woods, from "The Melody in F"; The Anvil Chorus from "Il Trovatore"; and The Soldiers' Chorus from "Faust." These were sung by about 120 voices. In the number of pupils participating in the program, in the economy of time, labor and costuming in its preparation, in its reflection of work of the year, and in the general excellence of the performance, this was pronounced one of the most successful and most delightful programs the grammar schools have ever given.

Class Day

Class day, the second program of the high school, was given in the same auditorium on Thursday evening. This program consisted of a poem by the high school, two choruses by the girls' choral club, two male choruses by the boys' glee club, the class song by the graduates, two army songs and a grand chorus by the entire high school, and individual numbers by the members of the class; a declamation by Virgil J. Shaw, a piano duet by Ellen Frances White and Frances Elizabeth Davis, class prophecy by Miriam Crossett, class giftorian exercise by Ida Mae Wiloughby, and the class will by Annie Ethel McKee. This program, in the spirit and quality of the music and in the personal tinge and the excellence of the individual numbers, was one of the best and most interesting of the week.

Graduation Night

The graduating exercises of the high school came Friday night in the same auditorium with one of the best and most attractive programs in the history of the institution. This program, which was excellent in every detail, consisted of the invocation by Rev. J. W. Cowan, a four part song by the girls' choral club, two male choruses by the boys' glee club, the senior song by the girls of the graduating class and five assistants from the high school, a poem read by the high school, three grand choruses by the high school chorus of 100 voices, individual numbers by members of the class and the literary address by Hon. Tom T. Garrard. The individual



There are times in the lives of successful men when **CREDIT** at the bank is of vital importance. But the time establish that credit is before its use is required. **Establish Your Credit with Us** now and in your time of need we will back you to the limits of Sound Banking Practices.

RELIABILITY - ACCOMMODATION - STRENGTH & SERVICE
THE MIDLAND NATIONAL BANK
OF MIDLAND

numbers by members of the class were, a soprano duet by Mittye Lydia Ingham and Lena Kate Baker, a piano solo by Hallie Rhea Jowell, and a declamation and valedictory by Clella Vitula Denton. All the numbers by the graduates for both nights were from memory, and they showed excellent training. The music was of a high order, Schubert's Serenade, in four parts and Italia from "Lucrezia Borgia," being sung graduation night.

Hon Tom T. Garrard

The literary address was delivered by Hon. Tom T. Garrard of our city. His subject was "What Will You Do With It?" His address, which was largely inspirational, dealt with the great problems which are coming to our new civilization and with the mental and mettle which will be required to meet them. He sustained his reputation for wit and eloquence on this occasion.

Honors, Medals, Etc.

After the literary address, the diplomas were presented by Supt. Lackey with appropriate remarks. The scholarships went to Clella Vitula Denton and Virgil J. Shaw, these being the highest girl and the highest boy respectively, and Lena Kate Baker being the salutatorian. The school board general excellence medal was won by Ruby Willis and was presented by H. A. Leaverton. The Arthur A. Everts scholarship medal and the Mrs. J. T. White scholarship medal were also won by her and presented by Mr. Leaverton. The R. M. Clayton, Jr. general excellence medal for boys was won by J. Wiley Taylor, Jr., and was presented by Pvt. J. Dale, recruiting officer for the U. S. army. The W. F. Cowden senior girls' declamation medal was won by Hallie Rhea Jowell and was presented by Judge J. M. DeArmond.

The Jno. M. Cowden junior boys' declamation medal was won by Cleve Baker and was presented by J. M. Caldwell.

The Linz bracelet watch, first prize in the dress contest, was won by Mittye Lydia Ingham and was presented by President F. G. Jones. The second prize, offered by the Woman's Wednesday Club, was won by Halle Rhea Jowell and was presented by the president of the club, Mrs. Clarence Scharbauer. The third prize, offered by Mrs. Clarence Scharbauer, was won by Frances Elizabeth Davis, and was presented by Hon. Tom T. Garrard. The second and third prizes were each a \$5 war certificate.

Principal J. E. Nelson of the high school read the names of 43 pupils who had neither been tardy a time nor absent a minute during the entire year. Their names appear in another column of The Reporter this week.

The vast audience came away after the exercises were over in much praise of the programs and of the work of the year of 1917-18.

—w.s.s.—

Do You Enjoy Life?

A man in good physical condition is almost certain to enjoy life, while the bilious and dyspeptic are despondent, do not enjoy their meals and feel miserable a good share of the time. This ill feeling is nearly always unnecessary. A few doses of Chamberlain's Tablets to tone up the stomach, improve the digestion and regulate the bowels is all that is needed. Try it. Sold by C. A. Taylor & Son. 1m

—w.s.s.—

The fact that the Racine tire sales have increased month by month, even in what some call hard times, is conclusive evidence of their superiority. W. H. Spaulding. adv 33-2t

How About It?

You may not contemplate any extensive building at this time, but there are always a few necessary repairs and little improvements that must be done.

Attention to Detail

We figure bills for the slightest repairs to the largest building contracts with the same painstaking care. We guard against mistakes, not alone for our protection but for yours.

May we not Figure
With You

Burton-Lingo Co.

**BIBLE CLASS SEND
LETTERS TO SOLDIERS**

The following is a facsimile of a letter written by the young people's Bible class of the Methodist church, to the Methodist boys at the front. Twenty of these boys represented by twenty stars on the service flag in the church have enlisted. They have been elected as honorary members of this class and it is the intention of the class to write at intervals to each a letter of encouragement:

"Dear.....: At a recent meeting of the Sunday-school class of young people of the Methodist church of Midland, you and the other soldiers and sailors from our church were elected as honorary members during your period of service for the government. We are pleased to have your name upon our honor roll and your star upon our flag. We feel that the class has conferred an honor upon itself by taking this step. "We are proud of the work our boys are doing at the front. You have made the sacrifice for us and we know that you will win. Our thoughts are always of you, our hearts with you, and our prayers for you. Every Sunday your names are mentioned and a prayer sent up in your behalf.

Midland has just completed a campaign to raise her quota for the third Liberty Loan and also for the Red Cross drive. We are glad to say that we went 'over the top' just as you are going to do when the time comes. "Midland has been blessed with two good rains recently, and our country will soon be worth living in again. "Remember while you are on the battle field, your friends are thinking

of and praying for you, and hoping that you will soon come home bringing victory.

"Eunice Allen, President, Edgar Lawrence, vice-president, Pearl McCormick, Secy, Dr. J. F. Haley, Teacher, Esther Klapproth, Arnie Smith, Alma Brunson, M. E. Byerley, Mrs. Bertha C. Byerley, Roe Pollard, Pope Snodgrass, Laura Johnson, Reba Nugent, Mack Cautchen, Luther Tidwell, Henrietta King, Joseph Fasken, Bess Prothro, Lois Prothro, Hester Stilwell, Christina Allen."

Legal Notice

Whereas an order was made by the commissioners' court of Midland County, Texas, sitting as a board of equalization in and for said county on the 18th day of May, A. D., 1918, that certain assessments of property rendered for taxation for the year 1918 be raised in accordance with the orders of said court and the valuation placed on said property as appears that the county clerk of Midland County be required to give notice to the owners of said property in accordance with the law, to appear before said court sitting as a board of equalization on the 10th day of June, 1918, and show cause why their valuation should not be raised.

This is therefore to notify all persons who have received written notice of the action of said court and all other parties interested in the assessment of said property which valuation has been raised for taxes for the year 1918, to be and appear before said court at the court house in the town of Midland, Midland County, Texas, at 10 o'clock a. m. on the 10th day of June, A. D., 1918, and show

cause why said valuations should not be raised.

W. J. Sparks, Clerk County Court, Midland Co., Tex. Given under my hand and official seal this 23rd day of May, A. D., 1918.

W. J. Sparks, Clerk County Court, Midland Co., Tex. —w.s.s.—

TEACHERS' EXAMINATION

I wish to notify all parties concerned that an examination for teachers' certificates will be held in Midland on June 7th and 8th. The schedule of examination will be as follows:

Friday forenoon—Physical Geography, Physiology, Composition, Arithmetic, Literature and Solid Geometry.

Friday afternoon—Texas History, Grammar, Descriptive Geography, Plane Geometry, Psychology, Book-keeping.

Saturday forenoon—Spelling, Writing, Methods and Management, Civics, Reading, Chemistry, History of Education.

Saturday afternoon—United States History, General History, Agriculture, Algebra, Physics, Plane Trigonometry.

Those desiring to participate in this examination will please qualify before me on or before the 7th day of June. J. M. DeArmond, County Judge, Midland Co., Texas. —w.s.s.—

Unless you own your limit of War Savings Stamps and unless you are buying them to the hilt of your ability, you are not performing the functions of a good American and you are letting the best opportunity you ever had for prosperity slip away.

Considerably over 40 per cent of all new cars being produced this year are Goodyear equipped. See Western Auto Supply Company. We have any size that you want. adv20tf —w.s.s.—

Bonds or taxes. Take your choice. Tax receipts pay no interest and they have no principal, but War Savings Stamps are fat with both principal and interest.

THANKS TO MIDLAND

Under stress of war and drouth, Midland College has made headway this year. The total attendance was slightly increased, fewer boys, more girls. The local attendance has grown and the boarding enrollment, about as last year. The number of special students in the commercial and fine arts is larger than before.

There has been more work for the students than last year and more willing work. The teachers in the college classes all held degrees from standard universities. One half of them held higher degrees. Every teacher set a high standard for his classes. The students responded nobly.

The degrees of the faculty are from the following universities and colleges: Harvard, Transylvania, University of Texas, T. C. U., Johnson College, Special, or graduate work in addition to these undergraduate courses have been credited in Chicago University, Rice Institute, University of Tennessee, University of Colorado, University of California, T. C. U., and the University of Texas.

The special teachers are all graduates of standard colleges in their special fields of work: Miss Holo-way, of Midland College, in both literary and expression, one year in the School of Expression and Physical

Culture, Battle Creek, Mich., and a graduate of the School of Expression, Boston.

Miss Holland is a graduate in piano of Kidd-Key, under Mickwitz, and of the Christian College, Columbia, Mo. She has had one summer course under Mickwitz at Chicago, and will take another the coming summer.

Miss Wilhite is a graduate of the business department of T. C. U. in book-keeping, shorthand, typewriting and office work.

Mrs. Twyman is a graduate of Carlton College in literary and art. Spent one year and has had special courses with the Chicago Art Institute and one summer in the Art School of Chautauqua, New York.

Miss Mary Wilhite receives the degree of bachelor of arts from T. C. U., June 7th. She had voice lessons under private teachers, voice training in Transylvania University one year, voice training in Midland College one year, summer course and voice culture the past session under one of the greatest teachers of voice in Texas, Mrs. Helen Fouts Cohoon, head of the voice department of T. C. U. The richness, accuracy and natural sweetness of her voice is known in Midland where Miss Wilhite was a favorite last year.

Midland College has been ranked first class by the State Department of Education and the Texas Association of Colleges.

First grade certificates are issued by the State superintendent to all students coming from an affiliated high school, who complete the first year of college work.

The harmonious co-operation between the public schools and college has resulted in the college's having become in effect a continuation of the high school course for two years of the college course. For graduates of the high school, there is a standard college course and excellent advantage in the fine arts, business and domestic arts, all at about one-fifth the cost of identical work in schools away from Midland. There has scarcely been an exception to the fact that all graduates of the Midland high school have done exceedingly well in the college. They are self-disciplined, ambitious to learn and successful.

In behalf of the faculty and board of directors of Midland College, I wish to thank the citizens of Midland for the moral support they have given to the college the past several years. I wish to express the gratitude of our students and teachers for the courtesies and financial aid that the splendid business men of the city have extended to the college enterprises and student interests. We appreciate deeply the kind words that have been said by our patrons and friends for the college and for the various public exercises of the college year. Especially does our board of directors thank the business men of Midland who, notwithstanding all their extra obligations due to the drouth and war, have just subscribed a substantial sum to aid the board in conducting the school next year.

Midland College will not be content until every man, woman and child of this community and county shall feel a personal and a civic pride in the presence and work of the institution in the city. We fervently desire the good will, the patronage and the co-operation of the entire citizenship, when this can be extended profitably to all concerned. We rejoice to see this sentiment growing every day and it augurs well for the life of our city and community.

It is our aim to build a great school in Midland, one that will enhance the fame of our city and section. We believe in the motto "A Western School for Western People." Money, Christian character and education rule the world. When the three are combined in one person, one institution, or one city, there are no moderate limits to the possibilities of such person, institution or community.

Slowly we are building up good financial support. Within the next year, we hope to pay our last dollar of indebtedness and to lay down the foundation of a liberal endowment. We are taking heed of what the President advises and keeping our school up to the standard in spite of the drouth and war. Practically all the faculty will return and the equipment will be increased. We have added strong support in securing the services of such men as Messrs. McKissick and Thompson. The self-sacrifice of Vice President McKissick in taking upon himself care for the finances of the school at home and elsewhere is deeply appreciated by all connected with the college. I must express thanks to all who have helped this progressive work and spirit.

Our fellow citizens and friends will naturally wish to know what of the future? They know that every line of business in the Midland Country has been embarrassed the past year or two, and they will inquire "What of Midland College?" This year has been critical, but thanks to friends in the city and throughout the State, our prospect was never better for a permanent prosperity. If our friends at home continue their loyal support and unseen difficulties do not arise out of the war situation, there is every reason to trust the future for growth and stability.

Our hearts were made glad on commencement day when we looked upon the faces of our twenty-five graduates. They were a fine body of young people more than a dozen from our city taking certificates or diplomas in literary, piano, voice, expression, business and art. We cordially invite our citizens to investigate the advantages offered by the college before they make other arrangements.

F. G. Jones.

SUMMER SCHOOL

In response to requests from pupils and parents, a summer school will be conducted in the high school building, beginning June 10th, 1918, and continuing for seven weeks, exclusive of days of examination. This school will be under the direction and supervision of the school authorities, and regular credit will be given for the work done. Pupils who are interested should see Miss Tanner, who will be the teacher in charge.

FINANCIAL STATEMENT OF ANDREWS COUNTY

IN THE MATTER OF COUNTY FINANCES IN THE HANDS OF R. M. YARBROUGH, Treasurer of Andrews County, Texas, COMMISSIONERS' COURT, Andrews County, Texas, in Regular Quarterly Session, May Term, 1918.

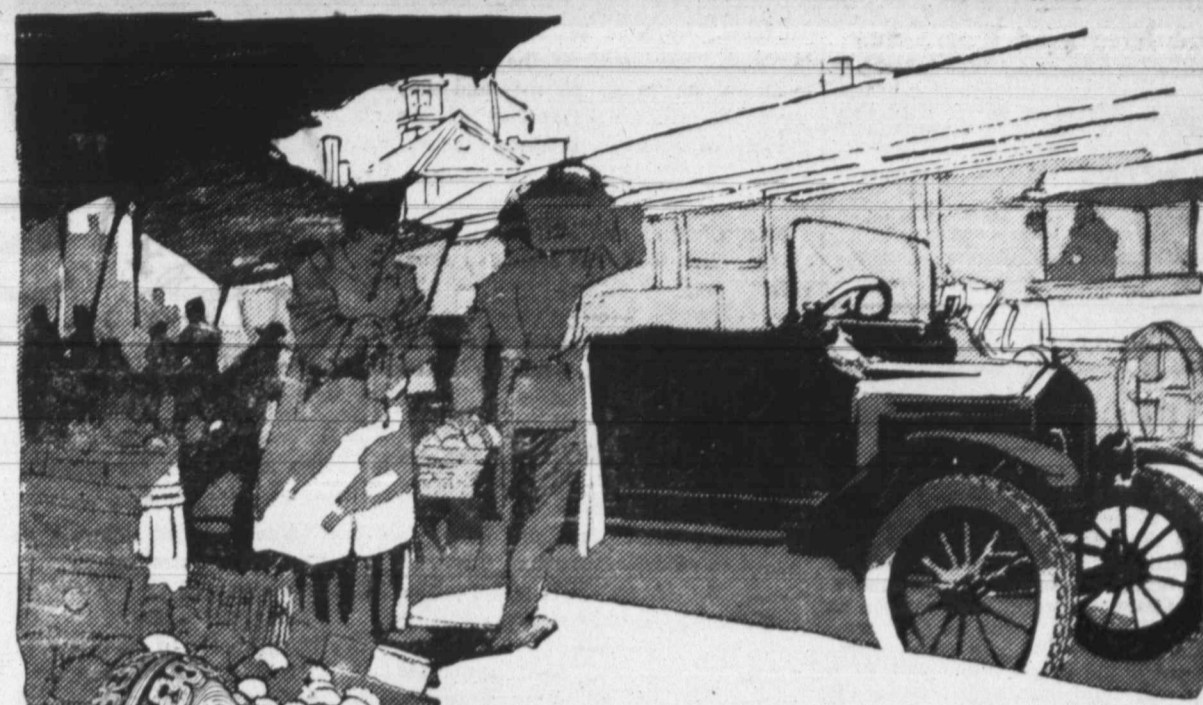
WE, THE UNDERSIGNED, as County Commissioners within and for said Andrews County, and the Hon. A. N. Brown, County Judge of said Andrews County, constituting the entire Commissioners Court of said county, and each one of us, do hereby certify that on this, the 13th day of May, A. D., 1918, at a regular quarterly term of our said court, we have compared and examined the quarterly report of R. M. Yarbrough, Treasurer of Andrews County, Texas, for the quarter beginning on the 11th day of February, A. D., 1918, and ending on the 13th day of May, A. D., 1918, and finding the same correct have caused an order to be entered upon the minutes of the Commissioners' Court of Andrews County, stating the approval of said Treasurer's Report, our said court, which said order recites separately the amount received and paid out of each fund by said County Treasurer since his last report to this court, and for and during the time covered by his present report, and the balance of each fund remaining in said Treasurer's hands on the said 13th day of May, A. D., 1918, and have ordered the proper credits to be made in the accounts of the said County Treasurer, in accordance with said order as required by Article 867, Chapter 1, Title XXV, of the Revised Statutes of Texas, as amended by an Act of the Twenty-fifth Legislature of Texas, at its regular session, approved March 20, 1897.

And we, and each of us, further certify that we have actually and fully inspected "the affidavit of A. H. Hall, cashier of Andrews State Bank, the County Depository, showing" all the actual cash and assets in hands of the said treasurer belonging to Andrews County at the close of the examination of said Treasurer's Report, on this the 13th day of May, A. D., 1918, and find the same to be as follows, to-wit:

Jury Fund	Dr.	Cr.
Balance on hand as shown by Treasurer's Report on the 11th day of February, 1918.....	\$514.54	
To amount received since said date.....	9.23	34.53
By amount disbursed since said date.....		489.24
By amount to balance.....		
TOTAL	\$523.77	\$523.77
Balance to credit of said Jury Fund as actually counted by us on the 13th day of May, A. D., 1918, and including the amount balance on hand by said Treasurer at the date of the filing of his report on the 11th day of February, A. D., 1918, and the balance between receipts and disbursements since that day, making a total balance of.....		489.24
Road and Bridge Fund		
Balance on hand as shown by Treasurer's Report on the 11th day of February, 1918.....	82.25	
To amount received since said date.....	60.39	143.32
By amount disbursed since said date.....		
By amount overdrawn.....	68	
TOTAL	143.32	143.32
Balance to credit of said Road and Bridge Fund as actually counted by us on the 13th day of May, A. D., 1918, and including the amount balance on hand by said Treasurer at the date of the filing of his report on the 11th day of Feb., A. D., 1918, and the balance between receipts and disbursements since that day, making a total overdraft.....		68
GENERAL FUND		
Balance on hand as shown by Treasurer's Report on the 11th day of Feb., 1918.....	\$556.60	
To amount received since said date.....	299.73	1130.24
By amount disbursed since said date.....		4526.09
By amount to balance.....		
TOTAL	6656.33	6656.33
Balance to credit of said General Fund as actually counted by us on the 13th day of May, A. D., 1918, and including the amount balance on hand by said Treasurer at the date of filing of his report on the 11th day of Feb., A. D., 1918, and the balance between receipts and disbursements since that day, making a total balance of.....		4526.09
County Special Fund		
Balance on hand as shown by Treasurer's Report on the 11th day of Feb., 1918.....	3856.94	
To amount received since said date.....	37.89	411.92
By amount disbursed since said date.....		3482.91
By amount to balance.....		
TOTAL	3894.83	3894.83
Recapitulation		
May 13, 1918. Balance to credit of Jury Fund on this day.....	\$ 489.24	
May 13, 1918. Balance to credit of Road and Bridge Fund on this day overdraft.....	68	
May 13, 1918. Balance to credit of General Fund on this day.....	4526.09	
May 13, 1918. Balance to credit of County special fund on this day.....	3482.91	
Total cash on hand belonging to Andrews County in the hands of said Treasurer as actually counted by us.....	\$8498.24	
Less O. D. R. & B. Fund.....	68	
	\$8497.56	

WITNESS OUR HANDS, OFFICIALLY, This 13th day of May, A. D., 1918.

A. N. Brown, County Judge. W. H. Howell, Com. Prec. No. 3.
 C. W. Hart, Com. Prec. No. 1. W. A. Meador, Com. Prec. No. 4.
 W. V. Gates, Com. Prec. No. 2.
 SWORN TO AND SUBSCRIBED BEFORE ME, By A. N. Brown, county judge, and C. W. Hart, and W. V. Gates, and W. H. Howell, and W. A. Meador, county commissioners of said Andrews County, each respectively, on this, the 13th day of May, A. D., 1918.
 Dora Douglas, County Clerk, Andrews County, Texas.



War-Time Responsibility—Yours and Ours

National necessity has put a new responsibility on every motorist. Utmost service is demanded—the highest usefulness of yourself and your car. Service and economy are your only considerations. Our responsibility goes hand in hand with yours. As the largest rubber manufacturer in the world, it is our duty to supply you with tires of un failing reliability and extreme mileage. United States Tires are more than making good in this time of stress. They are setting new mileage records—establishing new standards of continuous service—effecting greater economy by reducing tire cost per mile. There is a United States Tire for every car—passenger or commercial—and every condition of motoring. The nearest United States Sales and Service Depot dealer will cheerfully aid you in fitting the right tire to your needs.

United States Tires are Good Tires

OUR MARKET REPORT FROM KANSAS CITY

Kansas City Stock Yards, May 27.—Packers disregarded the fact that comparatively few fat cattle were in the run, and continued to depress prices, market weak to 10 lower, receipts 12,000 head, top \$17.25. Hog prices opened 5 lower, but finished 15 to 25 lower, top \$17.10, receipts 12,000 head.—Sheep and lambs sold 25 to 35 higher, top lambs \$20.25, receipts 7500.

Beef Cattle
 The supply of native fed steers was light, and the best of these sold around \$16.50. Various lots of pulp fed steers sold at \$16.50 to \$17.25. Seven cars of Gebhart steers brought the top in the pulp fed class, \$17.25, as compared with \$17.55 for some of them a week ago. Ten cars of South Texas cake fed steers weighing 937 pounds brought \$17.50. These cattle stopped in Fort Worth, and the bid on them there, was \$11.00. Arizona canners brought \$7.90 to \$8.25. Some low grade Arizona stockers, \$8.50, and some light Arizona fed steers 850 pounds brought \$12.50. Cows sold weak to 10 lower, at \$8.50 to \$14.00.

Stockers and Feeders
 Stockers offered, included 115 Pan-

handle steers weighing 397 pounds at \$13.25, and 208 Panhandle stock heifers weighing 389 pounds at \$12.25. These were from the dry district in Texas south of Amarillo, and there will be some big shipments from that section here later this week. Common Arizona stockers sold at \$8.50. Feeding steers reached \$16.00 last week, the highest price on record here.

Hogs
 Order buyers and speculators paid \$17.10 for light hogs, and \$17.05 for both medium and heavy hogs. These were 5 to 10 lower, but packers stood out for 15 to 25 lower prices and brought most of their hogs that way, stopping at \$17.00. Bulk of all sales ranged from \$16.80 to \$17.05. The usual June break is being enforced and will probably continue this week if receipts hold up. Pigs sold steady today, but considerably lower than last week. Good native stock pigs \$17 to \$17.25.

Sheep and Lambs
 The good advance made last week on lambs was continued today, prices 25 higher. Woolled lambs sold at \$19.75 to \$20.25, clipped lambs \$15.25 to \$16.85, and some common Arizona clipped lambs offered at \$15.50, but unsold at noon. Arizona clipped ewes 85 pounds average at \$13.50. Goats sold 25 higher and about 50 cents above the low time the middle of last

week. Good Angoras at \$9 to \$9.50, and Mexican goats weighing 86 lbs. at \$7.25.

Market Correspondent.
 J. A. Rickart.
 —w.s.s.—
 Goodyear now equip more new cars than any other make combined. Western Auto Supply Company carry a full line. adv20-1f
 —w.s.s.—
 The investment of \$91,000,000 in War Savings Stamps by December 31st. That's the job that Uncle Sam has cut out for Texans. How many do you own?
 —w.s.s.—
 Fresh shipment of tires and tubes just arrived at W. H. Spaulding, 33-2t. Don't fail to see me before you buy tires. W. H. Spaulding. adv 33-2t

 + MISS LYDIE G. WATSON +
 + who has been a Piano Student +
 + of the most eminent instructors of Galloway, Searey, Ark., +
 + Landon Conservatory, Dallas, +
 + and American Conservatory, of +
 + Chicago, Ill., now has her Stud- +
 + io open for the term 1917-18. +
 + The highest standards main- +
 + tained. Thoroughness the slo- +
 + gan. Study with definite aim +

PAY CASH

and Watch Your Bank Account Grow

If you trade with Smith Bros. you won't have to help pay somebody's bad account. We sell for Cash only, that's why we sell cheaper.

Smith Bros. Cash and Carry Store

CLASSIFIED ADVERTISEMENTS

FOR SALE—MISCELLANEOUS

FOR SALE CHEAP—One four-burner Quick Meal oil cook stove with detachable oven; one medium size modern refrigerator. Both good as new, used less than three months. See E. P. Harrison at Reporter office. 29-1f

FURNISHED ROOMS

FOR RENT—Furnished home for the summer. Bath, electric lights, city water and other conveniences. Apply to Mrs. W. N. Connell. 35-1f

FOR RENT—During June and July will rent my residence, furnished, at reasonable terms. Dr. C. H. Tigner.

ROOMS—For light housekeeping. Bath, electric lights, telephone, etc., only 1-2 block east of Llano Hotel on Wall Street. Mrs. Jemison, phone 224. 41-1f

BUSINESS NOTICES

ANNOUNCEMENT—Mr. Eriksen announces his shop open for all smithing and asks his friends to remember that he is neither too young or too old nor afraid to shoe any horse. 31-4t-pd.

Cold weather is coming. Don't crank your head off on that Ford Coleman & Allen have just installed a special machine for re-charging magnetos, and it does the work without you having to take down your motor. adv52-1f

FOR SALE—Practically new, latest model, five passenger Ford car, in first class condition, used less than a year. Address Walter L. Thompson, Odessa, Texas. 34-1f

TO LEASE

PASTURE—For 500 head of cattle, \$5 per season. Plenty of grass and water. Clay McKibben, Dodge City, Kan. 31-8t

MISCELLANEOUS WANTS

FOR SALE—Three spans of good young mules. Joe Jay, Midland, Texas. 31-2t-pd.

FOR SALE—Jersey cow giving 2-2 gallons milk per day. Price \$50. Mrs. Bert Ramsay. 1t

FOR SALE—One all-metal refrigerator, 100 pounds capacity, in good condition. Phone 353.

TOMATO PLANTS—McGee tomato plants 10c per dozen. Mrs. J. H. Epley, Phone 41.

FOR SALE—One good milch cow, three bred gilts, one brood sow, and five barrows; also some ponies, both for saddle and work. C. M. J. Stringer, phone 123. 33-1f

Notice—All notes and accounts due the old Midland Auto & Supply Company have been placed in the hands of our attorney, B. Frank Haag, for collection or adjustment. Please see him and make satisfactory arrangements. Western Auto & Supply Company, Kirby E. Nutt, president. adv 33-2t.

We would like to accommodate everybody, but can not possibly do so. Midland Fuel Company. adv16 1f

Frank Hobbs returned Wednesday from Mineral Wells, where he is a student in Carlisle Military Academy, to spend the vacation with his parents, Mr. and Mrs. J. V. Hobbs.

MISS DIETRICH SPOKE IN BEHALF OF COBB

Quite a representative audience assembled in the district court room last evening to hear Miss Louise Dietrich, of El Paso, speak in behalf of Z. L. Cobb, candidate for congress from this district. Miss Dietrich is a most convincing speaker and stated many facts that could not be denied. She is very enthusiastic over woman's suffrage and won the sympathy of all in her speech along this line.

No wood or coal will be unloaded unless paid for on delivery. Midland Fuel Company, phone 216 or 270.

Piano Tuning

I am frequently asked how often a piano should be tuned. This depends to some extent upon the piano itself, but much more upon the one who tunes it. The only answer possible is that a piano should be tuned whenever the tone becomes unpleasant or is below standard or international pitch. Most so-called piano tuners do not tune pianos at all; simply "smooth them up." After two or three years a great loss of tone quality is noticed and it often requires an experienced piano tuner to tell just what is wrong.

Having had more than twenty years experience tuning for factories, large piano houses, schools, colleges, convents, professional musicians, piano teachers, and a score or more great piano artists, I do not hesitate to guarantee perfect satisfaction with every tuning. I shall only be in Midland a few days this trip. Call me at Basham, Shepherd & Company, or at my residence, phone 359. F. M. Denton. adv

U. S. Must Cut Use Of Wheat by One-Half

America Consumed 42,000,000 Bushels Monthly. From Now Until Harvest Must Use Only 21,000,000.

RATION PER PERSON IS 1 1/2 POUNDS OF WHEAT PRODUCTS WEEKLY

Military Necessity Calls for Greater Sacrifice Here—Allied War Bread Must Be Maintained—Our Soldiers and Sailors to Have Full Allowance.

If we are to furnish the Allies with the necessary proportion of wheat to maintain their war bread from now until the next harvest, and this is a military necessity, we must reduce our monthly consumption to 21,000,000 bushels a month, as against our normal consumption of about 42,000,000 bushels, or 50 per cent. of our normal consumption. This is the situation as set forth by the U. S. Food Administration at Washington. Reserving a margin for distribution to the army and for special cases, leaves for general consumption approximately 1 1/2 pounds of wheat products weekly per person. The Food Administration's statement continues: Many of our consumers are dependent upon bakers' bread. Such bread must be durable and therefore, requires a larger proportion of wheat products than cereal breads baked in the household. Our army and navy require a full allowance. The well-to-do in our population can make greater sacrifices in the consumption of wheat products than can the poor. In addition, our population in the agricultural districts, where the other cereals are abundant, are more skilled in the preparation of breads from these other cereals than the crowded city and industrial populations.

With improved transportation conditions we now have available a surplus of potatoes. We also have in the spring months a surplus of milk, and we have ample corn and oats for human consumption. The drain on rye and barley, as substitutes, has already greatly exhausted the supply of these grains.

To effect the needed saving of wheat we are wholly dependent upon the voluntary assistance of the American people and we ask that the following rules shall be observed:

1. Household to use not to exceed a total of 1 1/2 pounds per week of wheat products per person. This means not more than 1 1/2 pounds of Victory bread containing the required percentage of substitutes and one-half pound of cooking flour, macaroni, crackers, pastry, pies, cakes, wheat breakfast cereals, all combined.
2. Public eating places and clubs to observe two wheatless days per week, Monday and Wednesday, as at present. In addition thereto, not to serve to any one guest at any one meal an aggregate of breadstuffs, macaroni, crackers, pastry, pies, cakes, wheat breakfast cereals, containing a total of more than two ounces of wheat flour. No wheat products to be served unless specially ordered. Public eating establishments not to buy more than six pounds of wheat products for each ninety meals served, thus conforming with the limitations requested of the householders.
3. Retailers to sell not more than one-eighth of a barrel of flour to any town customer at any one time and not more than one-quarter of a barrel to any country customer at any one time, and in no case to sell wheat products without the sale of an equal weight of other cereals.
4. We ask the bakers and grocers to reduce the volume of Victory bread sold, by delivery of the three-quarter pound loaf where one pound was sold before, and corresponding proportions in other weights. We also ask bakers not to increase the amount of their wheat flour purchases beyond 70 per cent. of the average monthly amount purchased in the four months prior to March 1.
5. Manufacturers using wheat products for non-food purposes should cease such use entirely.
6. There is no limit upon the use of other cereals, flours, and meals, corn, barley, buckwheat, potato flour, et cetera.

Great Wheat Stocks Isolated.

It's the shortage in ships that is putting the Allies and the United States on wheat rations. Great stocks of wheat are isolated in India, and Australia. At great sacrifice in ship space and use the Allies are forced to secure some wheat from Argentina.

On January 1, Australia had stored 100,000,000 bushels of wheat that was ready for export—but there were no ships. Then came the new crop with an exportable surplus of 80,000,000 bushels. Now Australia has approximately 180,000,000 bushels waiting for ships.

India, at the same time, had 70,000,000 bushels of wheat stored for export. During April 50,000,000 bushels more out of the new crop will be added to the pile.

Argentina closed the last shipping season with 11,000,000 bushels of wheat left in the stock available for export. The new crop will add 135,000,000 to the left over.

It is not a problem that the wheat does not exist in the world—it is entirely a problem of shipping, which has thrown on America the obligation of dividing our stock with the Allies.

ALLIED FOOD SHIPMENTS REACH LARGE TOTAL.

A general idea of the quantity of food sent to European allies by the United States from July 1, 1914, to January 1, 1918, is given by figures just announced by the U. S. Food Administration. In that period the United States has furnished complete yearly rations for 57,100,933 people. In addition there was enough extra protein to supply this portion of the diet for 22,194,570 additional men.

The total export of wheat and wheat flour to the three principal allies is equivalent to about 384,000,000 bushels. Pork exports for the 3 1/2 years amounted to almost 2,000,000,000 pounds. Exports of fresh beef totaled 443,484,400 pounds. The amount of food exported to Russia is negligible compared with that sent to the western allies.

★ ONLY AMERICA CAN HELP. ★

★ "On your side are boundless supplies of men, food, and material; on this side a boundless demand for their help."

★ "Our men are war-weary and their nerves have been strained by more than three years of hard, relentless toil."

★ "Our position is critical, particularly until the next harvest, but the United States can save us."

★ "You Americans have the men, the skill, and the material to save the allied cause."

★ SIR JOSEPH MACLAY, ★
★ British Shipping Controller. ★



TO-DAY IS BARGAIN DAY

FOR War Saving Stamps

The price goes up 1c on the first of next month. A penny saved is a penny earned

Lend this One to your



BUSINESS CARDS

DR. C. H. TIGNER
Dentist
Office
Second Floor
Gary & Burns Building.

WM. W. BODDIE
ATTORNEY-AT-LAW
Midland, Texas
OFFICE: FIRST NATIONAL BANK BUILDING
General Practice in the State and Federal Courts

Tom T. Garrard, Jr.
H. A. Leaverton
GARRARD & LEAVERTON
Lawyers
Practice in all the Courts
Phone No. 73
Midland, Texas

B. FRANK HAAG
Lawyer
Practice all the Courts
Phone No. 2
Midland, Texas

Dr. L. B. PEMBERTON
Dentist
Rooms 212-214 LLANO HOTEL
Office Hours
8 a. m. to 12 m., 1:30 to 5:30 p. m.
Phone No. 402

Dr. J. F. Haley
Physician
Office Gary & Burns Building
Phone No. 12.

Dr. L. C. G. Buchanan
Practice Limited to
DISEASES OF EYE, EAR,
NOSE, THROAT
GLASSES FITTED
Big Spring and Midland
Office with Dr. Tigner
Midland 2nd and 4th Saturdays
of each Month

L. J. FARROW
Painter and Paper Hanger
All Work First Class
Phone 90-b
Midland, Texas

NEWNIE W. ELLIS
FUNERAL DIRECTOR
AND EMBALMER
Room No. 103

LLANO BARBER SHOP
PUCKETT & JOHNSON
Proprietors
Courteous Expert Workmen
Sanitary Specialties
Your Patronage Solicited
PHONE 278

TIN SHOP and
PLUMBING
Call on Me for
TANKS,
SHEET METAL WORK,
PLUMBING AND REPAIRS
H. H. HOOPER
Phone 217

Stoves, Flues, Tanks,
Bath Room Fixtures
Pipe and Fittings
All in Stock at Anytime
WALTER JERDEN
Phones 19-J-19-Y

About Rheumatism

Rheumatism causes more pain and
suffering than any other disease, for
the reason that it is the most common
of all ills, and it is certainly gratifying
to sufferers to know that there is
a remedy that will afford relief, and
make rest and sleep possible. It is called
Chamberlain's Liniment. For sale
by C. A. Taylor & Son. adv lmt

NO. 4368

Report of Condition of the

First National Bank

At Midland, in the State of Texas, at the close of business on May 10, 1918

RESOURCES

Table with 2 columns: Resource Name and Amount. Includes Loans and Discounts, Overdrafts unsecured, U. S. Bonds deposited to secure circulation, etc.

LIABILITIES

Table with 2 columns: Liability Name and Amount. Includes Capital stock paid in, Surplus fund, Undivided profits, etc.

STATE OF TEXAS, County of Midland, ss:
I, W. R. Chancellor, Cashier of the above named bank, do solemnly
swear that the above statement is true to the best of my knowledge and
belief.

Correct—Attest:

NO. 6410

Report of Condition of the

Midland National Bank

At Midland, in the State of Texas, at the close of business on May 10, 1918

RESOURCES

Table with 2 columns: Resource Name and Amount. Includes Loans and discounts, Notes and bills rediscounted, U. S. Bonds deposited to secure circulation, etc.

LIABILITIES

Table with 2 columns: Liability Name and Amount. Includes Capital stock paid in, Surplus fund, Undivided profits, etc.

STATE OF TEXAS, County of Midland, ss:
I, B. C. Girdley, Cashier of the above named bank, do solemnly swear
that the above statement is true to the best of my knowledge and belief.

Correct—Attest:

W. H. BRUNSON,
J. R. DUBLIN,
J. V. STOKES,
Directors

LETTERS FROM OUR
SOLDIER BOYS

Mrs. Pearl C. Filler, Midland, Texas.

Dear mother and folks: I feel just
like a field lark, and hope you all feel
the same way. I got the package you
all sent me and if I ever was proud to
get anything, I was proud of that
package. I wrote you all the other
night that I supposed the pack-
age got misplaced, but I just got im-
patient. I haven't got fountain pen
tuned up yet, but I am proud of it just

the same. We haven't had very pleas-
ant work since we have been over
here, but I think maybe luck will
change pretty soon—it's time it is
changing. We haven't had trucks on-
ly about one month out of six. When
we had trucks I drove a Ford. The
one I had was a dandy. I saw some
exciting times while I had it and
hoped so much I could keep it, but
just as luck would have it, we gave
them up. Some of the boys had
Pierce Arrow trucks, but driving a
jitney is so much more like a touring
car and that is somewhat like being
at home. Well I'll try and write
again soon. Yours truly, Arthur.

PERFECT IN ATTENDANCE
FOR 1917-1918

The following pupils in our city
schools were neither tardy nor ab-
sent a minute during the term of
1917-18:

- Cleve Baker
Elsie Barron
Tennie Lee Bradshaw
Eleanor Connell
Susan Cowden
Hugh Crossett
Aaron Damron
Felice Dockray
Willie Pearl Dockray
Scharbauer Eldson
John Ellis
Carolyn Estes
Lois Lynn Estes
Van Lee Estes
Grace Funk
Fred Girdley
Dick Graves
Jessie Hale
Cora Mae Haley
James Harrison
Hazel Hollingsworth
Gordon James
Everett Klebold
Virgie Locklar
Irene Mabry
Bernice Norwood
Ethel Norwood
John Nugent
Rufus Lee Parks
Mary Jane Potter
Willie Preston
Viola Puckett
Jessie Ramsay
Thomas Schrock
Esten Shumate
J. Wiley Taylor
Hattie Mae Trammell
Ruby Willis
Pearl Wimberly
Wallace Wimberly
Clara Wright
C. W. Wulfsen.

HOTELS ARE FINED FOR
VIOLATING FOOD RULES

At a hearing held last week before
the Division of Enforcement, J. G.
Pulver, manager of the Rice Hotel;
and Frank Meleton, manager of the
Brazos Hotel, at Houston, were sum-
moned to show cause and make ex-
planation for excessive use of wheat,
flour and sugar, as shown in state-
ments submitted the Food Adminis-
tration. As a result of the hearings,
the Rice Hotel is required to pay
\$250 to the Red Cross and the Brazos
Hotel to pay \$100 to the Red Cross of
Harris County; both sums being a
paying back to the government of
food stuffs which rightfully belongs
to the government under its plan of
regulating the essential food stuffs.

GOOD CAUSE FOR ALARM

These Figures Will Make Midland
People Take Notice

Deaths from kidney disease have in-
creased 72 per cent in twenty years.
People overdo nowadays in so many
ways that the constant filtering of
poisoned blood weakens the kidneys.
Beware of fatal Bright's disease.
When backache or urinary ills sug-
gest weak kidneys, use Doan's Kidney
Pills, live carefully, take things easy
and avoid heavy eating. Doan's Kid-
ney Pills command confidence, for no
other kidney remedy is so widely used
or so generally successful. Home
endorsement is the best proof of merit.
Read this Midland resident's
story:
Mrs. H. Rohlfing, says: "My kid-
neys gave me a great deal of trouble
and my back always pained me. It
was weak and I had a constant dull
ache across my kidneys. At times
I suffered from sharp cutting pains.
My kidneys acted too frequently and
annoyed me. I had nervous head-
aches and always felt tired and lan-
guid. I used Doan's Kidney Pills for
this trouble and they have never failed
to relieve me. I get Doan's at
Taylor & Son's drug store.
Price 60c at all dealers. Don't sim-
ply ask for a kidney remedy—get
Doan's Kidney Pills—the same that
Mrs. Rohlfing had. Foster-Milburn
Co., Mfgs., Buffalo, N. Y. adv 34-2t

A number of American soldiers lost
their lives in Flanders today. Were
you responsible? Take a look at
your War Savings Stamp Certificate
and give answer.

Extra-Tested
RACINE
Country Road
and
Multi-Mile Cord
TIRES
"Extra-Tested" reflects the Racine Rubber
Company's sincere effort to lessen the cost of
using your automobile.
Inspection Your Protection
To make most value certain, these Extra-Tests
were devised. And actually, one inspector works
with every seven tire builders to see that each
tire meets each extra test.
Racine Country Road Tires—5,000 Mile
Guarantee—are the only tires
scientifically constructed and
Extra-Tested to resist the
wear of country driving.
Racine Multi-Mile
Cord Tires—cord
tire quality un-
matched at any
price.
For your own
protection, be cer-
tain to buy Racine
Tires. You'll get
the most
RACINE
RUBBER
CO.,
RACINE, WIS.
W. H. Spaulding
Midland, Texas

Cause of Headache
By knowing the cause, a disease may
often be avoided. This is particu-
larly true of headache. The most com-
mon cause of headache is a disordered
stomach or constipation, which may
be corrected by taking a few doses of
Chamberlain's Tablets. Try it. Many
others have obtained permanent re-
lief by taking these tablets. They are
easy to take and mild and gentle in
effect. Sold by C. A. Taylor & Son.
Which side of the fence are you on?
Do you own War Savings Stamps or
are you taking your patriotism out in
flag waving? There is little differ-
ence between extravagance and Ben-
edict Arnoldism.
For a Sprained Ankle
As soon as possible after the injury
is received get a bottle of Chamber-
lain's Liniment and follow the plain
printed directions which accompany
the bottle. For sale by C. A. Taylor
& Son. adv lmt

DON'T Slow Up
Advertising NOW

Never has there been a time when
the public looked more keenly for MER-
CHANDISING NEWS than now.

Never has there been a time more
auspicious for the enterprising trades-
man to secure his full share of trade
than now.

People must continue to eat, to wear
and to use.

The tendency is to cut out luxuries, and luxur-
ies are only a relatively small proportion of your
business. For every luxury cut out you have a
chance to increase your movement of staples.

How short-sighted is the policy of reducing ad-
vertising expense to "save money" You will only
lose trade. You will only lose prestige.

Advertise to increase sales and make more mon-
ey: don't cut it out to save money.

Study your advertising as you never did before
—do it wisely and well.

Be prosperous and let the people know that you
are prosperous.

Success was NEVER achieved by stopping ad-
vertising or by wearing old clothes and talking pes-
simism.

Be Wise---and Advertise
Stewart-Davis Advertising Agency, Chicago

THE WESTERN AUTO SUPPLY COMPANY
Automobile Supplies and
Accessories
Goodyear Tires and Tubes
First-Class Mechanics
in Repair Shop
Open Day and Night
Phone 46
C. J. KUYKENDALL, M'gr.

Friday, May
Prot
Porc
Porch f
receive l
any oth
the hou
Low
P
FLOC
will kee
well an
against
wear.
for outa
Sold re
cans of
Ask for
Bur
C
DES
Many Midlan
You can't s
With aches
When you
inary trouble
If the kidn
Set them w
Kidney Pills.
Here is Mi
it:
George W
ney Pills ha
to me for s
was at one t
It ached and
down, I coul
again. The
colored and t
in passage.
on that acco
haven't had n
I have notic
ever, I get I
drug store.
lieve me in a
Price 60c a
ply ask for
Doan's Kidn
Mr. Wein br
Mfgs., Buffa
Midland
W. W
Maest
Carbo
Phone
Re
Wh
Cardu
ionic,
have,
thous
actual
cine,
person
the it
other
years
family
give C
CA
The
Mrs
Culle
"Abol
suffer
with h
ing-d
ache,
would
almos
My h
After
bottle
arous
three
all my



Protect Your Porch Floors

Porch floors and steps receive harder wear than any other surface about the house.

Lowe Brothers PORCH FLOOR PAINT

will keep them looking well and protect them against weather and wear. Made especially for outside floors. Sold ready for use—in cans of convenient size. Ask for color card.

Burton-Lingo Company

DESTROYS SLEEP

Many Midland People Testify to This

You can't sleep at night With aches and pains of a bad back. When you have to get up from urinary troubles.

If the kidneys are at fault Set them working right with Doan's Kidney Pills. Here is Midland proof of their merit:

George Wein says: "Doan's Kidney Pills have been a wonderful help to me for several years. My back was at one time in a terrible shape. It ached and was weak. When I bent down, I could hardly straighten up again. The secretions were highly colored and too frequent and burning in passage. I had to get up at night on that account. I used Doan's and haven't had much trouble since. When I have noticed any symptoms, however, I get Doan's at Taylor & Son's drug store. They never failed to relieve me in a short time." Price 60c at all dealers. Don't simply ask for a "kidney remedy"—get Doan's Kidney Pills—the same that Mr. Wein had. Foster-Milburn Co., Mfrs., Buffalo, N. Y. adv 32-2t

Midland Bottling Works

W. W. WIMBERLY, Mgr.

Manufacturers of All Kinds of

Carbonated Drinks

Phones 26-Y and 26-J

Reasons!

Why you should use Cardui, the woman's tonic, for your troubles, have been shown in thousands of letters from actual users of this medicine, who speak from personal experience. If the results obtained by other women for so many years have been so uniformly good, why not give Cardui a trial?

Take

CARDUI

The Woman's Tonic

Mrs. Mary J. Irvin, of Cullen, Va., writes: "About 11 years ago, I suffered untold misery with female trouble, bearing-down pains, headache, numbness. . . I would go for three weeks almost bent double. . . My husband went to Dr. . . for Cardui. . . After taking about two bottles I began going around and when I took three bottles I could do all my work." E-80

WHAT THE RED CROSS IS DOING AND WHAT YOU CAN DO

JUNIOR MEMBERSHIP.

Salvage of waste materials which still have a market value appeals to young and old alike. Many Red Cross chapters are making large sums of money by collecting salvage and disposing of it at the best market price. This work is being done in the Southwestern Division by the Junior Red Cross.

Of the almost endless list of possible salvage the Bureau of Junior Membership has selected certain classes of waste material upon which it seems advisable to begin. The selected list includes only material which is really waste. No temptation must be placed before the children to get improperly any material which has not yet been condemned. Waste material to be handled by children must not be unsanitary or otherwise dangerous. It must not be subject to decay, it must not be too bulky, it must have a fair market value.

The authorized list is as follows:

- 1. Tin foil of all kinds.
2. Collapsible tubes which have contained tooth paste, cold cream, shaving cream, extract, vaseline and other toilet articles.
3. Old gold and silver and broken bits of jewelry for the "melting pot."
4. Silver-plated water pitchers, castors, teapots and trays.
5. Scrap zinc.
6. Clean dry-cell battery zinc.
7. Battery lead from storage batteries.
8. Rubber boots and shoes.
9. Arctica.
10. Rubber tire casing of all kinds.
11. Inner tubes.
12. Old wringers.
13. No old iron, glass of any kind, brass, copper, heavy lead, lead pipe or old clothing other than rubber will be received.

The tinfoil should be pressed firmly into bricks of 25 pounds' weight and wrapped in paper with the name of the auxiliary on the outside, and the weight.

The collapsible tubes should be packed as compactly as possible in a cigar or pasteboard box, wrapped in strong paper and tied and marked

plainly with the name of the school auxiliary and the exact weight of the material enclosed.

The old gold and silver and bits of jewelry should also be packed in a cigar or stout pasteboard box, wrapped in strong paper and tied and marked with the name of the school on the outside.

The proceeds of all these sales will go into the treasury of the Junior Red Cross chapter fund, to the credit of the auxiliary contributing.

Thousands of dollars should be realized from salvaging these three kinds of waste materials alone. Hardly a family can be found that does not have on hand broken or out-of-date jewelry that should be doing service in buying yarn to make into garments for the soldiers and sailors.

Each auxiliary should provide for the delivery of its own collections at the places designated. In case of inability to do so, assistance will be given by the chapter school committee.

For further information concerning the collection and sale of salvage apply to MRS. J. H. HOSKINS, Director of Salvage, 1617 Railway Exchange, St. Louis, Mo.

WORK OF RED CROSS IS DESPERATELY NEEDED

It is Up to the Civil Population to Determine Length of the War, George W. Simmons Says.

It is right up to the civil population of the United States to determine the length of the war.

This is the stirring message sent to the people of the Southwest by George W. Simmons, manager of the Southwestern Division of the American Red Cross, who is in France on a tour of observation for the War Council of that organization.

Simmons has been at the front with the American forces; he has seen what the boys from the Southwest and other portions of the country are doing; he has seen the work of the Red Cross "over there" and he sends back the message that if the people of the whole United States only will realize that this is a war of nations, not of armies; remember that the American army and navy will do their part, then we can make sure of a victory for America and her allies by acting as a nation, thinking as a nation, fighting as a nation. If we do that, Simmons says in his message to the Southwestern Division of the Red Cross, America will be the deciding factor in the war.

Nothing else matters if we do not win the war, Simmons says in a final appeal for further Red Cross work and more ships with which to transport our men and supplies and munitions.

WHAT RED CROSS GIVES TO HOSPITAL PATIENTS

The following are the contents of a Red Cross "patient equipment" and a Red Cross comfort bag. These are given each patient upon his entrance into a Red Cross hospital:

Patient's Equipment—Six shirts, four pillow cases, two hot-water bags, three suits pajamas, two pairs bed socks, four hospital shirts, four pairs socks, one pair slippers, one bathrobe, three washrags, four face towels, two bath towels.

Comfort Bags—One tube tooth paste, one toothbrush, one cake soap, three shirt studs, one spool black thread, one spool white thread, six package needles, one thimble, six clothes buttons, 16 pins, four safety pins, one handkerchief, one pipe, one pencil, one pad paper, six envelopes.

RED CROSS HOME SERVICE WORKERS GUARD SECRETS

Home Service workers for the Red Cross naturally learn much of the private affairs of those whom they assist. They guard these secrets closely and never talk or gossip about matters that concern them only in an official way. Instructions on this point are explicit and emphatic. A recent communication says:

"How long would your physician last in your community if he told even one person the confidential, private information his patients had revealed to him? As a Home Service worker you are, in a sense, a physician to your families; therefore, take heed and reveal not a thing! Keep the trust they give you and hold sacred the intimate family matters they tell you about. You absolutely must do it!"

JUNIOR RED CROSS IS DOING SPLENDID WORK HELPING TO WIN WAR

Hundreds of Thousands in Southwestern Division Are Telling for Men in the Trenches.

Hundreds of thousands of children in the Southwest are helping to win the war for America and her allies. There are not better patriots in the United States, in the whole world.

In cities and towns the children, a majority of whom are members of the Junior Red Cross, are working in thrift gardens, knitting sweaters, socks, etc., for our soldiers, turning old paper, rubber, metals and bottles into cash and investing the returns in Thrift Stamps and Liberty Bonds, making Thrift Stamps and Liberty Bonds, knitting and making refugee garments.

Schools Close to Aid Juniors. Many rural schools already have suspended until next fall and thousands of children have begun Spring and Summer campaigns which have for their purpose the doing of everything possible to win the war. In a majority of the towns and cities of the Southwest the schools still are in session and the children are taking their knitting to school with them and working on it at recess time and the noon hour, then doing other Red Cross work after school hours.

The pupils of 2,500 schools in the Southwestern division of the Red Cross have joined the Junior Red Cross since the membership campaign started early in February. More than 100,000 children of the St. Louis schools are on the Junior membership rolls and 225,000 will have enrolled before the end of the campaign. This will make St. Louis 100 per cent Junior Red Cross. In other words, every child of school age who is in school soon will be a member.

Counties Use Unique Plans. Tens of thousands more children will be enrolled outside St. Louis in the Southwestern division within the next few weeks.

Many counties in the division have enrolled every school, and many unique methods have been employed to raise the required membership fees. In Johnson County, Kansas, for instance, 6,000 children were enrolled as members of the Junior Red Cross. In order to raise money with which to pay the enrollment fees of the children, a cherry pie making contest and auction was staged. Hundreds of the good women of the county baked cherry pies. The pies were auctioned at a social, and \$2,500 was raised. A committee decided that the most delicious pie was the product of a woman 85 years old, who is ardently interested in Red Cross work. Her pie was bid in by a man, also 85 years old, for \$12.50.

IMPORTANT NOTICE TO REGISTRANTS

War Department Issues Statement as to Who Must Register on June 5th

The secretary of war authorizes the following:

With the signing by President Wilson of the bill and proclamation designating Wednesday, June 5th, as the day on which all men who have reached the age of 21 since last June 5th shall register for military service, Provost Marshal General Crowder's office immediately began preparations for the enrollment of the men. Instead of using the election machinery as was done last year, Gen. Crowder will call upon the local boards. It is believed that their experience during the past year has peculiarly fitted them to handle the new registration economically and efficiently.

Gen. Crowder has estimated that probably three-quarters of a million men will be added to the American army by the new registration. His estimate is based on the fact that almost 10,000,000 men registered last year. This number included all between the ages of 21 and 31, and statistics collected by Gen. Crowder's office show that a little more than 10 per cent of these men were 21 years old. On that basis it is estimated by draft officials that the total registration will exceed 1,000,000, of which 750,000 will be available for military service. This makes proper allowances for physical defectives, exemptions because of dependents, and other bars to military service.

The law provides that every young man in the United States who has reached the age of 21 years since June 5th, 1917, or will reach that age

to register on June 5th constitutes a misdemeanor punishable by imprisonment for one year, and may result, furthermore, in the loss of valuable rights and privileges and immediate induction into military service.

The Treasury Department looks to

the War Savings Campaign to underwrite the entire financial program of the war. Every loan to be floated in the future depends upon how well the lesson of thrift is learned. Are you a good student? War Savings Stamps give the answer.

ORGANIZED EIGHTEEN HUNDRED AND NINETY

First National Bank MIDLAND, TEXAS. Condition on Nov. 20th, 1917. Capital, Surplus and Undivided Profits \$229,832.23. Deposits \$928,639.01. Total Resources \$1,183,471.24.

We Will be Pleased to Have You Discuss Your Cattle Loan With Us. Capital \$100,000, coupled with other resources and unsurpassed connections, we feel amply able to take care of your needs, no matter how large. Small loans will also receive careful consideration. South Plains Cattle Loan Company. Office with the Midland National Bank. W. H. Brunson, President. Will A. Martin, Vice President. B. C. Girdley, Sec.-Treas.-Mgr.

GOOD EATS CAFE Grocery and Confectionery. A nice line of groceries delivered to any part of city. A modern, sanitary restaurant where the best the market affords, is served to eat. An up-to-date confectionery, where choice confections and soft drinks are dispensed. We Solicit Your Business. Lee Heard & Son, Props. Phone 147

Good Service Means promptness, accuracy, full weight, cleanliness, wholesomeness and a square deal all the time, according to our interpretation, and this is the kind of service we try to give. We appreciate your business. Cash Market & Bakery. J. A. ANDREWS, Proprietor. 300 PHONES 71

A Sleeping Porch

is a pleasure your family should not be deprived of. We shall be glad to plan and figure with you on yours.

We can furnish your Builders Hardware.

ROCKWELL BROS. & CO.

(Midland Lumber Company)

GERMAN ALIEN FEMALES REQUIRED TO REGISTER

Austin, Texas, May 28, 1918.—The registration of German alien females is fixed in this judicial district at 6 o'clock a. m. on Monday, June 17th, 1918, and to continue on each day successively thereafter, except Sunday, June 23rd, 1918, between the hours of 6 a. m. and 8 p. m., up to and including Wednesday, the 26th day of June, 1918, at 8 o'clock p. m.

All natives, citizens, denizens, or subjects of the German Empire, or of the Imperial German Government, being females of the age of 14 years and upwards, now within the United States and not actually naturalized as American citizens, are required to register as German alien females.

In cities which had by the Federal Census of 1910 a population of 5000 or over, the registration will take place in the police stations, and in such cities all persons required to register residing within the city limits must register at the office of the chief of police. In all other communities the registration will take place in the postoffices, and each registrant must register in the postoffice from which she receives her mail.

Each person when registering must furnish four unmounted photographs, not larger than 3x3 inches in size, on thin paper, with light background. These photographs must be of the shoulders and full face of the registrant, without hat or head covering.

Registration affidavits and cards will be furnished the registration officers by the United States marshal of the district of Austin, Texas.

All persons required to register are warned that failure to complete their registration within the time fixed

herebefore makes them liable to restraint, imprisonment, and detention for the duration of the war, and to other penalties, and any person in doubt as to whether she should register or not, should present herself before the proper registration officer, and determine whether or not she should register.

—w.s.s.—

UNIQUE THEATRE

While the fire last Monday night completely destroyed the winter quarters of the Unique, they still have the air dome with a full equipment and will go on showing like nothing had happened.

Tonight the regular special feature will be shown in the air dome and it is a dandy, also tomorrow night we will have another special feature and a scream of a comedy.

We wish to call special attention to the delightful comedy-drama "Her Country's Call," last Saturday night. This was a beautiful romance of an uneducated mountain girl who was born of high parentage but was abducted when an infant and grew up in the wilds of the mountains with a moonshiner who claimed to be her father. When the revenue officers at last caught him and he was sentenced to prison he sent a letter to the true father of the girl, who was a millionaire, confessing his deed. Thus ended a delightful story of romance, love and adventure with charming Mary Miles Minter in the leading role.

—w.s.s.—

Piano Tuning

For the next ten days I will thoroughly clean, free of charge, every piano tuned by me. Call me at Basham, Shepherd & Company, or at my residence, phone 359. F. M. Denton.

GROCCERS HELP IN 50-50 PLAN

SIGN PLEDGE TO CARRY OUT
FOOD ADMINISTRATION
PROGRAM.

POST CARDS IN STORES.

Explain New Wheat Ruling to
Thousands of Customers—In-
sures Greater Food Saving.

Grocers of the nation have accepted enthusiastically the 50-50 basis for the purchase of wheat flour and are doing their utmost to explain the new regulation to the housewife. This ruling by the U. S. Food Administration requires each purchaser of wheat flour to buy one pound of cereal substitute, one kind or assorted, for every pound of wheat flour. It was necessary to restrict the use of wheat flour in order that the Allies and our fighting forces abroad might be assured of an adequate supply of wheat to meet their vital needs. This supply must come from our savings because we have already sent our normal surplus.

Wheat saving pledge cards were forwarded by the Food Administration to all retail food merchants, and these are being signed and posted in stores throughout the country. This card states: "We pledge ourselves loyally to carry out the Food Administration program. In accordance with this order we will not sell any wheat flour except where the purchaser buys an equal weight of one or more of the following, a greater use of which in the home will save wheat:

"Cornmeal, corn flour, edible corn starch, hominy, corn grits, barley flour, potato flour, sweet potato flour, soy bean flour, rorerita flour and meals, rice, rice flour, oatmeal, rolled oats and buckwheat flour."

Some confusion has resulted on the part of the consumer in construing this "50-50" ruling to mean that an equal amount in value of substitutes must be purchased with wheat flour. This is a mistaken idea. The ruling states that the consumer in purchasing flour shall "buy at the same time an equal weight of other cereals."

One exception to this ruling is concerning graham flour and whole wheat flour, which may be sold at the ratio of three pounds to five pounds of wheat flour. This provision is made because approximately 25 per cent. more of the wheat berry is used in the manufacture of these flours than standard wheat flour.

Another exception is that concerning mixed flours containing less than 50 per cent. of wheat flour, which may be sold without substitutes. Retailers, however, are forbidden to sell mixed flours containing more than 50 per cent. of wheat flour to any person unless the amount of wheat flour substitutes sold is sufficient to make the total amount of substitutes, including those mixed in flours, equal to the total amount in wheat flour in the mixed flour. For instance, if any mixed flour is purchased containing 60 per cent. wheat flour and 40 per cent. substitutes it is necessary that an additional 20 per cent. of substitutes be purchased. This brings it to the basis of one pound of substitutes for each pound of wheat flour.

A special exemption may be granted upon application in the case of specially prepared infants' and invalids' food containing flour where the necessity is shown.

Some misunderstanding seems to exist on the part of consumers in assuming that with the purchase of wheat flour one must purchase the additional 50 per cent. purchase to one of the substitutes. This is not the case. One may select from the entire range of substitutes a sufficient amount of each to bring the total weight of all substitutes equal to the weight of the wheat flour purchased. For instance, if a purchase of 24 pounds of wheat flour is made a range of substitutes may be selected as follows:

Cornmeal, 8 pounds; corn grits, 4 pounds; rice, 4 pounds; buckwheat, 2 pounds; corn starch, 1 pound; hominy, 2 pounds; rolled oats, 3 pounds.

These substitutes may be used in the following manner:

Cornmeal, 8 Pounds.—Corn bread, no flour; corn muffins or spoon bread, one-fourth flour or one-third rice or one-third hominy; 20 per cent. substitutes in whole bread.

Corn Starch, 1 Pound.—Thickening gravy, making custard, one-third substitute in cake.

Corn Grits, 4 Pounds.—Fried like mush, used with meal in making corn bread.

Rollled Oats, 3 Pounds.—One-fourth to one-third substitutes in bread, one-half substitute in muffins; breakfast porridge, use freely; oatmeal cookies, oatmeal soup.

Buckwheat Flour, 2 Pounds.—One-fourth substitute in bread, buckwheat cakes.

Hominy, 2 Pounds.—Bolted for dinner, baked for dinner, with cheese sauce.

Rice, 4 Pounds.—One-fourth substitute in wheat bread, one-third substitute in corn bread, bolted for dinner (a bread cut), as a breakfast food, to thicken soups, rice pudding instead of cake or pie, rice batter cakes.

Several grocers have stated that their customers who strictly observe the 11 wheatless meals each week find it necessary to buy substitutes in addition to those ordered under the 50-50 plan.

For Summer Weather

Men's Cool Cloth Suits

We have some very good Palm Beach and Cool Cloth suits for men at prices that cannot be equalled today. If we cannot fit you, our tape line is ready for you. Come in and see us about your summer suit.

Boys' Cool Cloth Suits

Our sale on boys' suits continues, and there are still several good ones left in your size. You can save money and get the newest styles by getting your suit here.

Ready-to-Wear

Our stock of ladies ready-to-wear is somewhat reduced, but we have some excellent garments at very reasonable prices. All suits and dresses are priced at 1-3 off, and all skirts, waists and other garments are 1-4 off.

Summer Shoes

We have received an excellent new chocolate pump with the military heel, a very pretty one, at \$5.00.

Our line of men's oxfords cannot be equalled for quality and price in Midland

Buy at this Store and Save

EVERYBODY'S

J. H. BARRON, Prop.

Midland's Quality Store

SUNDAY AT THE CHURCHES

Methodist Church

The pastor being absent in attendance upon district conference at Mertzton, there will be no preaching services at the Methodist church Sunday morning and night. Sunday-school and young peoples' services will be held at the usual hours.

—w.s.s.—

Christian Church

Bible school meets at 9:45 a. m. Preaching at the usual hours. Subjects, "Walking With God" and "Conversion." All cordially invited.

J. T. McKissick, Minister.

—w.s.s.—

Presbyterian Church

Sunday-school at 10 a. m. Morning worship at 11 o'clock. Junior C. E. at 4 p. m. Evening worship at 9 o'clock. Prayermeeting Wednesday evening at 9 o'clock.

W. H. Foster.

—w.s.s.—

SERIOUS ACCIDENT AT SOUTH CAMP WEDNESDAY

Andrew Fasken, manager of the "C" ranch, was seriously injured on Wednesday while working with a gasoline engine. While attempting to throw a belt on the engine with a crowbar the implement was caught in the fly wheel and hurled with great force against the body of Mr. Fasken, breaking his nose and a leg and otherwise severely bruising him about the head and body. He was rendered unconscious for two or three hours and it was feared for a time that his injuries would prove fatal. His physician reported today, however, that his condition is considerably improved and he does not anticipate any serious consequences.

—w.s.s.—

Notice

As is generally known, I lost all my stock of Racine tires in the fire Monday night. I have orders out for new stock and will be open for business as soon as it arrives. In the meantime I can supply your needs on short notice by express. See me before you buy tires. Place of business will be announced soon. Thanking the good people of the Midland Country for past patronage and hoping to merit a continuance of same, I am yours for business,

W. H. Spaulding.

MEMORIAL DAY WAS OBSERVED TUESDAY

Our national Memorial Day this year has, by presidential proclamation, been designated as a day of public humiliation, prayer and fasting. The people are asked to gather in their places of worship and pray for victory of the American armies which will bring peace founded upon mercy, justice and good will.

All places of business closed Tuesday and a great crowd gathered in the Christian church and listened to appropriate speeches made by laymen and the clergy of our city. The service was very impressive throughout the day no doubt found their way to the Great White Throne.

Memorial services had previously been arranged for at the Presbyterian church before the idea of a union service was suggested. This was conducted by Pastor Foster and a good sized audience was present.

—w.s.s.—

Notice, Milk Customers

Notice is hereby given that all milk and dairy products from my dairy will be sold for cash only, on and after June 1st, 1918. This rule will apply to all alike.

T. A. Pritchett.

Watch the cars in Midland and note the Racine tires on them. There is a reason. See me the next time you need tires. W. H. Spaulding adv-33-2t

"BLOWED UP"

But Still in the Ring

While our building was completely wrecked in the explosion that occurred Monday night, our stock of cars and accessories was only slightly damaged. We are pleased to announce to our patrons and the public generally that we are

Now Open for Business in the Moran Building

near the depot, formerly occupied by Spaulding's garage, where we are amply prepared to take care of your wants in Buick and Dodge Automobiles and extras. Our machine shop in charge of expert mechanics is equipped for any kind of work. Come to see us in our new quarters.

Coyle-Cordill Motor Co.



What Holds You Spellbound Before a Great Singer?

Is it simply the musical sounds coming from between her lips? No, it is the artist's emotions, finding expression through her voice, and to which your emotions respond. Music without emotion is like a body without a soul.

The NEW EDISON

"The Phonograph with a Soul"



Official Laboratory Model

(and only the New Edison) Re-Creates the delicate emotional impulses of the human voice and brings them to you in all their natural purity and richness. That is why the music of the New Edison is real music—music that thrills and inspires.

Come to our store and hear the New Edison. You will find it a fountain of mental refreshment.

C. A. TAYLOR & SON, Dealers