

Permian Basin OIL & GAS LOG
James C. Watson
Oil Editor

The Midland Reporter-Telegram

THE BEST INVESTMENT FOR YOUR ADVERTISING DOLLAR

WEATHER
Partly cloudy in some areas of West Texas Thursday night and early Friday. Cooler in Panhandle and South Plains. Maximum temperature Wednesday 70 degrees. Minimum Thursday 48 degrees.

VOL. XX—NO. 302 (AP) Means Associated Press MIDLAND, TEXAS, THURSDAY, FEBRUARY 24, 1949 TWO SECTIONS—18 PAGES Price Five Cents

Flood Threat Shifts To Dallas Area



(NEA Telephone)
President Truman, left, speaking informally at a dinner given by the Reserve Officers Association, challenged anyone to try to unseat any member of his cabinet or staff by "some smart-aleck statement over the air." The purpose of the dinner was to honor Maj. Gen. Harry H. Vaughan, military aide to the President, who has been a frequent target for criticism in the press and radio. Left to right: General Vaughan; Mrs. Omar Bradley, wife of the Army chief of staff; Brig. Gen. E. A. Evans, executive director of the Reserve Officers Association, and President Truman.

Truman Says Reaction Good To 'Salty' Talk

WASHINGTON—(AP)—President Truman said Thursday the reaction to his use of the term "SOB" in lambasting critics was very satisfactory to him. The President laughed with reporters during questioning about the salty language he used in a speech Tuesday night at a dinner honoring Maj. Gen. Harry H. Vaughan, his military aide.

Truman said then he wasn't going to let any "SOB" tell him what government officials he should fire or hire. He spoke in defense of Vaughan, who had been criticized by Radio Commentator Drew Pearson for accepting a decoration from the Argentine government.

Wall Street Story Rehashed At First Zone Plan Hearing

The old Wall Street story—whether it should be opened for business west of A Street to the Andrews Highway—was reiterated time and time again at the City Zoning Commission's first public hearing Wednesday night on its proposed zoning ordinance in connection with a suggested Master Plan for Midland.

Mrs. Mary K. Moore, Long-Time Midland Resident, Dies Here

Mrs. Mary Katura Moore, 69, of 1507 South Pratt Street, died at 5:45 a. m. Thursday in a Midland hospital of a heart ailment. She was admitted to the hospital Friday.

Second Gilmer-Aikin School Measure Gets Approval In Senate

AUSTIN—(AP)—Both sides were shouting victory Thursday after the second of the embattled Gilmer-Aikin school bills was finally passed by the Senate and sent to the House.

Garden City Trip Scheduled Friday

A large delegation of Midlanders will be in Garden City Friday to attend the annual Glasscock County Livestock Show and Sale. Judging of stock is scheduled Friday morning with the sale to start at 1 p. m. A free barbecue will be served at noon.

H. E. Chiles Seeks Full Term In City Council Post

H. E. (Eddie) Chiles, president of The Western Company, Thursday filed for election to a full term in Place No. 2 on the City Council, subject to the April 5 election.

San Angelo Boosters Cancel Trip Here

The scheduled visit of San Angelo rodeo boosters here Thursday afternoon has been canceled, according to information received by the Midland Chamber of Commerce.

Accord On Pact Terms Is Reached

WASHINGTON—(AP)—The seven nations negotiating an Atlantic Security Treaty are understood to have reached substantial agreement on the draft of a defense clause, covering action in event of an attack.

'Axis Sally' Tells Of Love Life In Trial For Treason

WASHINGTON—(AP)—"Axis Sally" tearfully told in her treason trial Thursday that she had a love life during the war. Mildred E. Gillars, 48, who broadcast the "Axis Sally" programs for the Nazis during the war, described Max Otto Kolschitz as "my destiny." He, it developed, was a one-time teacher in Hunter College, New York, who was in charge of the American phase of Nazi radio propaganda.

Permian Village To Be Dismantled Soon

A detachment of 40 men and two officers from the 73rd Engineer Combat Battalion at Camp Hood, Texas, arrived here Thursday to dismantle the Permian Village. The village is a 500 dwelling type trailer located at the Permian Village, P.H.A. War Housing Trailer Camp No. 41-691, on the Andrews Highway.

'Constitution' Is Topic Of Address By Col. Perkins

Col. John Perkins, attorney, discussed the United States Constitution during an address to Rotarians at their regular meeting Thursday noon in the Scharbauer Hotel.

14 Indicted As Mindszenty Aides

BUDAPEST, HUNGARY—(AP)—Fourteen alleged accomplices of Josef Cardinal Mindszenty, charged with speculation in foreign currency, will go on trial before a "Workers Court" Monday.

Folsom Lashes Out At Ku Klux Klan

BIRMINGHAM, ALA.—(AP)—All law enforcement officers in Alabama have been directed to arrest persons driving automobiles with concealed license plates, such as have been reported in recent parades staged by the Ku Klux Klan.

Rain-Swollen Streams Fall Near Del Rio

By The Associated Press
Flood warnings were issued along the Upper Trinity River Thursday after North Central Texas received an overnight drenching. Nearly three inches of rain fell over the Trinity watershed and at Dallas the stream was out of banks at 32.02 feet, and still rising. Flood stage is 28 feet. The stream was well within its levees, but below Dallas lowlands were being flooded.

Palestine Armistice Is Signed

RHODES—(AP)—Egypt and Israel signed Thursday an historic armistice, hailed by the United Nations mediator as an epochal event fore-shadowing the early return of peace to the Middle East.

Axis Sally Tells Of Love Life In Trial For Treason

WASHINGTON—(AP)—"Axis Sally" tearfully told in her treason trial Thursday that she had a love life during the war. Mildred E. Gillars, 48, who broadcast the "Axis Sally" programs for the Nazis during the war, described Max Otto Kolschitz as "my destiny." He, it developed, was a one-time teacher in Hunter College, New York, who was in charge of the American phase of Nazi radio propaganda.

Copies Of Big Oil Progress Edition May Be Ordered Now

The Reporter-Telegram Sunday will publish the largest and finest edition ever printed in Midland—The 1949 Oil Progress Edition. A limited number of extra copies of the special edition will be available and orders now are being accepted by the Circulation Department.

Texas Pair Escapes From Arkansas Jail

HOT SPRINGS, ARK.—(AP)—Two Texans charged with grand larceny escaped from the Garland County Jail Thursday.

23 Persons Die In Chinese Plane Crash

HONG KONG—(AP)—A Cathay Pacific Airways passenger plane from Manila crashed and burned here Thursday, killing 23 persons. The airplane was en route from Manila to Hong Kong with 40 passengers and four crewmen were killed when the plane plunged into a rocky ravine.

Topics Announced For Thursday's Retailing Course

Topics for Thursday night's session of the retail selling course, "Selling Today," have been announced by Delbert Downing, instructor. They are "Discovering the Customers' Needs" and "Selling Through Showing."

Grand Jury Summons Russian Deportee

NEW YORK—(AP)—Anna Louise Strong, deported from Russia on espionage charges, arrived here by plane Thursday and promptly was summoned to appear before a federal grand jury probing Communism.

Hiawatha Makes Big Oil And Gas Leasing Deal In SW Scurry

Hiawatha Oil & Gas Company has acquired a one-year oil and gas lease on an undeveloped 200-acre tract in Southwest Scurry County for a cash bonus of \$75,000, plus other considerations.

Intex And Superior Slate Ellenburger Wildcat In Scurry

An Ellenburger wildcat is scheduled for extreme Northwest Scurry County by Intex Oil Company of Dallas and Superior Oil Company of Dallas. The well is 660 feet from east and 2,824 feet from north lines of section 579, block 97, H&TC survey, about three miles northwest of the town of Fluvanna.

North Snyder West Extension Completed

Humble Oil & Refining Company No. 1 Permian, one and one-half mile west extension to the North Snyder field of North-Central Scurry County, has been officially completed for a 24-hour, natural flowing potential of 241.03 barrels of 44.6 gravity oil, with gas-oil ratio of 446-1.

Cox & Hamon Finish Cochran Prospector

A commercial oil well has been developed at Edwin B. Cox and Jake L. Hamon of Dallas No. 1 D. C. Reed, Central-South Cochran County wildcat about two miles outside the proven limits of the Leveland field.

Abell-Silurian Has New Oil Producer

The third well in the Abell-Silurian field of extreme North Pecos has been completed by Wood River Oil & Refining Company, Inc., of Wichita, Kan.

San Angelo Boosters Cancel Trip Here

The scheduled visit of San Angelo rodeo boosters here Thursday afternoon has been canceled, according to information received by the Midland Chamber of Commerce.

Abell-Silurian Has New Oil Producer

The third well in the Abell-Silurian field of extreme North Pecos has been completed by Wood River Oil & Refining Company, Inc., of Wichita, Kan.

Toy Prints Are Easy On Budget



Toys inspire gay prints used for these inexpensive rayon dresses. Drummer-girl (left) poses in a swing-skirted dress which sports bright-printed replicas of her toy drum. Toy balloon which the model is tossing in air (right) is duplicated in miniature to make an all-over design.

By EPIE KINARD
NEA Fashion Editor

NEW YORK—Stop thinking that you have to break the piggy bank in order to add a smart print dress to your wardrobe.

Some of the gayest print dresses of the Spring season are priced at less than \$10 each. Credit for so much chic for so little cost goes to a series of toy-inspired print rayons, each of which outdoes the other for sprightly appeal. Scattered over pastel backgrounds in crayon-bright colors are china animals, buttons and bows, red shoes, butterflies, balloons, drums and drum-major hats.

So competent a job is done by these gay motifs in dressing up a dress that its design makes no attempt to compete with fabric interest. Although dress design is simple, its silhouette is soft and full-skirted, and the details that individualize styling are feminine to the last stitch.

A pale blue rayon shantung dress, which gives full play to an all-over print motif of toy-balloons in a contrasting wine-red color, keeps styling down to a minimum with unpressed pleats set into a midriff band, a plunging neckline and brief cap sleeves.

A drummer-girl print rayon for which drum and drum-major caps in bold colors dot a beige background makes a simply-styled short-sleeved dress with a swingy skirt, peg pockets and a pert little collar.

Greenwood 4-H Club Plans Easter Party In Business Session

Greenwood 4-H Club members, at a business meeting in the school building Tuesday afternoon, planned an Easter egg hunt for April 14 and discussed other club business. Ruth Bennett, president, was in charge. Also present were Marsha Heald, Bessie Franks, Betty Ford, Christine Brooks, Ada Meisner, Patay Patterson, Joyce Branham, Carolyn North, Gloria Aiford, Nethya Branham, Johnnie Nichols, Jannell Newsum, Georgia Gately, Essie Rargett and Sandra Roberts.

Hike To Greenhouse Taken By Brownies

A hike taken by girls of Brownie Troop 21 at their meeting Wednesday afternoon included a visit to a greenhouse. The girls were shown over the greenhouse and then chose a blooming plant to purchase for their leader, Mrs. Fred Burleson, who is ill.

Troop 17 Brownies Elect New Officers

Sue Lynn Gregory was elected president of Brownie Troop 17 for a six-week term at its regular meeting Wednesday afternoon in the West Elementary School.

Other officers are Andrea Bea Cole, vice president; Gretchen Melanheimer, secretary; and Penny May, treasurer.

Plans were made to observe the birthday of Girl Scouting with a special program March 10. Mothers of members will be guests at the event.

A flag ceremony, songs and games featured the Wednesday meeting. Members present were Sandra Kay Aycock, Betty Sue Bowman, Andrea Bea Cole, Lorraine Collins, Sharon Evans, Sally Glass, Sue Lynn Gregory, Janet Huffman, Marilyn Johnson, Patsy Kimball, Kay McCoy, Sessie Rinker, Kay Stall and Virginia Warren.

Continental TO Mardi Gras New Orleans Starts Feb. 25

Leave Arrive
5:34 P.M. (CT) 11:50 P.M. (CT)
ONLY \$48.90

CONTINENTAL AIR LINES

So they say

Our generation may well be the unhappiest that has ever lived in the history of Christianity. —Msgr. Fulton J. Sheen.

It is increasingly evident that communism cannot succeed with religion and cannot succeed without religion. This trial of Hungarian Cardinal Mindszenty will serve to bring about a better unity of all religions. —Harold E. Stassen, president, University of Pennsylvania.

The housing shortage is more than a postwar phenomenon. It is actually being growing during the last quarter century. —Dr. Edward U. Condon, head of National Bureau of Standards.

Doctors strongly object to my making any long journey. —Joseph Stalin.

Differences with American authorities, insuperable at the second level, were settled often in a few hours by direct contact at the top. My relations with the President (Roosevelt) gradually became so close that the chief business between our two countries was virtually conducted by these personal interchanges between him and me. —Winston Churchill, in his War Memoirs.

Social Situations

SITUATION: When you are a newcomer to a town a couple is helpful and friendly but later you make other friends you enjoy more.

WRONG WAY: Completely drop the people who were so friendly to you when you knew no one.

RIGHT WAY: Even though you don't see them as often as you once did, don't drop them completely, after having accepted their servitude of Pioneers Day in May. The next luncheon will be in April. Present Wednesday were Mrs. T. S. Edrington, Mrs. Herbert Hemphill, Mrs. Hugh Gilmour, Mrs. C. C. Thomas, Mrs. H. E. Davis and the hostess.

Alcohol and carbon dioxide are produced by yeast as by-products of the fungi's quest for oxygen to breathe.

To Play Friday



Devy Erlich, young violinist who will be presented in the Midland Civic Music Association's second concert Friday night, was a musical sensation in his native France at an early age, has played in most countries of Continental Europe, England, and in previous tours of the United States. His program in the high school auditorium here will start at 8 p. m. for members of the association.

Plans Outlined For Alumnae Convention Of Alpha Delta Pi

Plans for sending a delegate to the state convention of Alpha Delta Pi Alumnae groups in Dallas next month were discussed by members here at a luncheon meeting Wednesday in the home of Mrs. Earl J. Moran.

Members also planned for observance of Pioneers Day in May. The next luncheon will be in April. Present Wednesday were Mrs. T. S. Edrington, Mrs. Herbert Hemphill, Mrs. Hugh Gilmour, Mrs. C. C. Thomas, Mrs. H. E. Davis and the hostess.

Community Theater Tryouts Under Way

Tryouts started Wednesday night for the next Midland Community Theater production, George Bernard Shaw's "Pygmalion," in the City County Auditorium. Anyone interested in trying for a role in the play is invited to further sessions in the auditorium Thursday and Friday nights.

The play, to be directed by Art Cole, will be the second 1949 production of the Community Theater and will be presented in an unusual way. It is to be staged "in the round" rather than on a conventional stage. "The round" means the center of the auditorium floor, with the audience seated on all sides.

"Pygmalion" is one of the well-known Shaw comedies, and tells the story of a teacher who believed that speech, more than any other factor, marked the difference between classes in England, and proved his theory by turning a Cockney girl into a "lady" simply by teaching her to speak like one.

The title of the play is taken from the ancient Greek myth of the sculptor, Pygmalion, who created the statue of a woman so beautiful that he fell in love with the marble figure he had made.

Advertise or be forgotten.

Girl Scouts Slate Birthday Observance

During the week of March 6-12, which closes on the anniversary of the Girl Scout organization in the United States, all Midland Girl Scout and Brownie troops will have birthday parties. Each troop will sponsor a program commemorating the anniversary, and all will have identical birthday cakes.

Plans for the observance have been made by the program committee of the Girl Scout Association, of which Mrs. W. F. Pennebaker is chairman.

The Girl Scout organization actually started in England, where Sir Robert Baden-Powell began the Boy Scout program in 1908, and by the end of 1909 launched also the Girl Guides program. His sister, Agnes Baden-Powell, became its first president in England.

Soon the two organizations spread to other parts of the empire and to other countries—Finland, Sweden, Denmark and Poland.

On March 12, 1912, Juliette Low founded the Girl Scouts of America, modeling the organization on the Girl Guides. The organization started in Savannah, Ga. By the end of 1915 there were 3,000 Girl Scouts, by 1919 there were 84,061 members and today there are over a million Girl Scouts in the United States.

New Many Wear FALSE TEETH

With Little Worry Eat, talk, laugh or sneeze without fear of insecure false teeth dropping, slipping or wobbling. FASTEETH holds plates firmer and more comfortably. This pleasant powder has no gummy, gooey, pasty taste or feeling. Doesn't cause nausea. It's alkaline (non-acid). Checks "plate odor" (denture breath). Get FASTEETH at any drug store. (Adv.)

SOCIETY

SUE COLEMAN, Editor
2—THE REPORTER-TELEGRAM, MIDLAND, TEXAS, FEB. 24, 1949

Radio Singer Now Teaching In Texas To Appear Tuesday

John Seagle, baritone soloist of concert and radio fame, and teacher of voice in Trinity University, San Antonio, will be presented by the Civic Music Club on its annual Texas Day program Tuesday. The concert will begin at 8 p. m. in Midland High School auditorium.

Each year the club presents a program by a musician living in Texas or featuring the works of Texas composers. Last year's artist was Oscar Fox, well-known composer of the state.

Seagle is director of the Trinity Opera Workshop as well as an instructor in the voice department. He is also the director of the Seagle Colony for singers at Schroom Lake, N. Y. A son of the late Oscar Seagle, singer and teacher of voice, he studied with his father and also with Jean Verd, Jean de Reszke, Henri Pillois, Karl Kriz, Richard Hageman, Walter Golde and Clarence Dickenson.

Helen Sue Thompson Is Troop President

Officers for a six-week term were elected by Brownie Troop 24 Wednesday afternoon at a meeting in the North Elementary School. Helen Sue Thompson was named president; Carolyn Boles, secretary; Vera Lou Stinson, treasurer; Cecelia Hodges, vice president, and Joy Davis, reporter.

Mrs. Joe Dickson, leader, was assisted by Mrs. Bill Davis in directing the meeting. Mrs. A. G. Stinson served refreshments.

Girls present were the new officers and Vicki Anderson, Barbara Barber, Beverly Bradbury, Martha Marks, Susan Hills, Mary Glesey, Nancy Dickson, Norma Grimm, Gloria Webb, Dorothy Yeckel and Glenda Henderson.

RELIEF AT LAST For Your COUGH

Creomulsion relieves promptly because it goes right to the seat of the trouble to help loosen and expel germ laden phlegm and aid nature to soothe and heal raw, tender, inflamed bronchial mucous membranes. Tell your druggist to sell you a bottle of Creomulsion with the understanding you must like the way it quickly allays the cough or you are to have your money back.

EAT PLENTY AND TAKE OFF UGLY FAT

When you buy Barcostrite, you buy a preparation for taking off weight. You do not pay for any diet or for vitamins to fortify you against weakness while on a starvation diet. You need never know a hungry moment while taking this preparation. Barcostrite is the original grapefruit juice used for weight reduction.

Clothing Drive Of Girl Scout Troops Will Close Friday

Final delivery day in the clothing drive conducted by Girl Scout troops of Midland will be Friday, and representatives from each troop will take the garments collected by members to the children's Service League clothing room.

Mrs. Robert Payne, clothing drive chairman, will be at the room after school to receive the bundles. From 9 a. m. to 12 noon Saturday, girls from Senior Troops 5 and 8 will work in the clothing room, mending the garments, replacing buttons and fasteners, polishing shoes and inserting new shoe-laces.

Clothing contributed in the drive will be sorted and stored by the Children's Service League members, who will distribute it where it is needed among children of underprivileged families.

Greenwood 4-H Club Plans Easter Party In Business Session

Greenwood 4-H Club members, at a business meeting in the school building Tuesday afternoon, planned an Easter egg hunt for April 14 and discussed other club business. Ruth Bennett, president, was in charge. Also present were Marsha Heald, Bessie Franks, Betty Ford, Christine Brooks, Ada Meisner, Patay Patterson, Joyce Branham, Carolyn North, Gloria Aiford, Nethya Branham, Johnnie Nichols, Jannell Newsum, Georgia Gately, Essie Rargett and Sandra Roberts.

Hike To Greenhouse Taken By Brownies

A hike taken by girls of Brownie Troop 21 at their meeting Wednesday afternoon included a visit to a greenhouse. The girls were shown over the greenhouse and then chose a blooming plant to purchase for their leader, Mrs. Fred Burleson, who is ill.

Troop 17 Brownies Elect New Officers

Sue Lynn Gregory was elected president of Brownie Troop 17 for a six-week term at its regular meeting Wednesday afternoon in the West Elementary School.

Other officers are Andrea Bea Cole, vice president; Gretchen Melanheimer, secretary; and Penny May, treasurer.

Plans were made to observe the birthday of Girl Scouting with a special program March 10. Mothers of members will be guests at the event.

A flag ceremony, songs and games featured the Wednesday meeting. Members present were Sandra Kay Aycock, Betty Sue Bowman, Andrea Bea Cole, Lorraine Collins, Sharon Evans, Sally Glass, Sue Lynn Gregory, Janet Huffman, Marilyn Johnson, Patsy Kimball, Kay McCoy, Sessie Rinker, Kay Stall and Virginia Warren.

SEE with your own eyes!

THE DARING NEW DODGE

BUILT FOR TODAY'S BIGGER, TALLER, MORE ACTIVE AMERICANS

LOWER OUTSIDE . . . Higher Inside
SHORTER OUTSIDE . . . Longer Inside
NARROWER OUTSIDE . . . Wider Inside

It's the new Dodge!

NEW HEAD ROOM . . . No danger of knocking your hat off getting in or out . . . more head room whether you sit in front or rear seat, in the center or on the side.

NEW LEG ROOM . . . Real stretch-out room for long legs and tall people . . . and Dodge "knee-level" seats give them full support for relaxing day-long comfort.

NEW ELBOW ROOM . . . Wide, wide seats built for three passenger comfort. You can relax in natural, easy position with no shoulder cramping, no elbow hugging.

NEW PERFORMANCE . . . New "Get-Away" engine, plus Fluid Drive, squeezes extra miles from every tankful of gas . . . gives faster acceleration for safer passing.

When Army physical exams revealed that our wartime generation was far bigger, taller, Dodge started planning this great new car

ITS lower on the outside . . . higher on the inside! Shorter on the outside . . . longer on the inside! Narrower on the outside . . . wider on the inside! You will wonder how it was done!

Here's daring new design . . . distinctive new style . . . natural beauty that flows from truly functional engineering. Here's new elbow room, more leg room and more head room

—plus the amazingly s-m-o-o-t-h ride of Dodge All-Fluid Drive.

New styling . . . new "Get-Away" engine . . . new luxury and comfort . . . optional Gyromatic transmission . . . are only a few of the new things that'll thrill you. But see them all at your Dodge dealer's now. Learn first hand just what the daring new Dodge will do for you.

DODGE CORONET

gyrol Fluid Drive plus GYRO-MATIC frees you from shifting

MACKAY MOTOR CO. • 200 S. Loraine St. • Midland, Texas

Mrs. Katie Stevens Is Birthday Honoree

An informal dinner Wednesday night was a birthday surprise for Mrs. Katie Stevens. Mrs. Ed Stevens and the honoree's daughter, Mrs. L. D. Johnston, were the hostesses.

Red and yellow ranunculus and green candles made a colorful centerpiece for the table, which was covered with lace. The birthday cake was decorated with candles in green holders.

Guests were the honoree and Mr. and Mrs. E. D. Wesson and family, Mr. and Mrs. J. C. Stevens, Jr., and children, Jo Ann Hamilton, and the hostesses and their families.

SQUARE DANCE CLUB DUES RULED TAXABLE

DALLAS—(P)—Square dance club membership dues are subject to 20 per cent federal admissions tax. Joe H. Hooper, of the Internal Revenue Office here, said the agency has ruled dues, in effect, are admission prices.

Piles Hurt Like Sin! But Now I Grin

Thousands change groans to grins. Use a doctor's formula to relieve discomfort of piles. Sent druggists by noted Thornton & Minor Clinic. Surprising QUICK palliative relief of pain, itch, irritation. Tends to soften, shrink swelling. Use doctor's way. Get tube Thornton & Minor's Rectal Ointment or Rectal Suppositories today. Follow label directions. For sale at all drug stores everywhere. Midland at Camerons Pharmacy.

Maid Of Cotton's Togs Star New Slip-Cover Hat Style

Mazza To Speak For Xi Theta Chapter

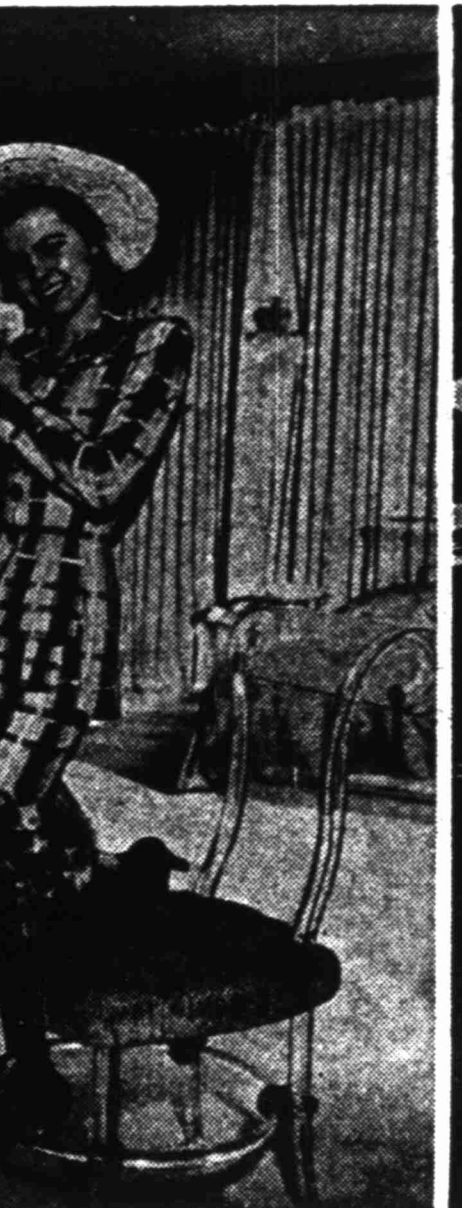
Rene Mazza, Dallas artist who is painting and teaching art classes in Midland this winter, will be the guest speaker for Xi Theta Chapter of Beta Sigma Phi at its meeting this week, which will be on Friday night instead of the regular day, Thursday.

The meeting will be in the home of Mrs. R. H. Fritzell, Jr., at 202 West Kansas Street, beginning at 7:30 p. m. Friday.

Pre-School Parent Study Group Meets In J. J. Black Home

Meeting in the home of Mrs. J. J. Black Wednesday morning, the Pre-School Parent Education Group sponsored by the Midland Parent-Teacher Council heard Mrs. L. W. Leggett present the topic, "Brothers and Sisters," and Mrs. J. H. Doran discuss "Body and Mind."

The next meeting of the group was set for March 9 in the home of Mrs. O. L. Stalcup, 600 North Marfield. Topics for that meeting will be "Playtime Is Growing Time," by Mrs. Carl Herndon, and "Freedom From Fear" by Mrs. J. B. Bain.



Sue Howell, 1949 Maid of Cotton, sets a style with a hat which has slip-covers to match her cotton wardrobe. She models the basic wide-brimmed white straw hat with the multi-colored plaid suit (center). Brown and white lace-printed voile ruffles slip-

By EPSIE KINARD
NEA Fashion Editor

NEW YORK—The "Maid of Cotton," who is off again on her annual gypsy jaunt, sets a style this time with a slipcover hat.

Besides the news-making hat of this year's "Maid"—Sue Howell of Bakersfield, Calif.—she carries a wardrobe as extensive as any movie star's. In it are Spring millinery, gloves, shoes, bags, luggage and cotton clothes which 30 leading American designers have contributed. This pick of the cotton crop will be modeled by the "Maid" in key U. S. cities, London and Manchester, England, and Paris, France.

The hat which is calculated to rivet eyes to the "Maid's" quick millinery changes is a basic white straw hat which "slip-covers" as ruffly as her petticoats have been concocted of eyelet organdy and lace-print voile.

Designer Mary Goodfellow, who conceived the ingenious idea of slip-covering a wide-brimmed hat by ringing it with ruffles, has created a series of these to harmonize with special costumes.

In its basic state, the white straw hat is worn with cotton suits. One of the most sophisticated of these is a Herbert Sondheim gingham of multicolor plaid overlaid with glistening satin stripes. This slim-jim suit with a long-torso jacket and tiered make-

BACKACHE, LEG PAINS MAY BE DANGER SIGN Of Tired Kidneys

When disorder of kidney function permits poisonous matter to remain in your blood, it may cause nagging backache, rheumatic pains, leg pains, loss of pep and energy, getting up nights, swelling, puffiness under the eyes, headaches and dizziness. Frequent or scanty passages with smarting and burning sometimes shows there is something wrong with your kidneys or bladder.

Don't wait! Ask your druggist for Doan's Pills, a stimulant diuretic, used successfully by millions for over 60 years. Doan's give happy relief and will help the 15 miles of kidney tubes flush out poisonous waste from your blood. Get Doan's Pills.

believe pockets is tailored to a "T" to set off the "Maid's" 5 feet, 7 1/2 inches of willow grace.

While her hat switches from suit to date dress, it takes on a slip-

SOCIETY

THE REPORTER-TELEGRAM, MIDLAND, TEXAS, FEB. 24, 1949—3

Home Is Topic Of Progressive Club Program

A study of "Woman's Part in World Progress," year's theme of the Progressive Study Club, has turned to women in various professions but Wednesday afternoon was focused on women's main career, as homemakers. The club met in the home of Mrs. John V. Norman, Jr.

Mrs. W. B. Yarborough, discussing "Home Decoration," displayed pictures and samples of various materials to illustrate her thesis of developing a decorative scheme from the colors in good painting, a piece of pottery or china, or a fabric.

Mrs. John L. Hart's topic was "Homemaking vs. Housekeeping," with emphasis on the homemaker's role in developing family solidarity and better living conditions.

Tentative plans were made for a rummage sale to be sponsored by the club on March 5 in the Benito Juarez Hall.

Members present were Mrs. Thomas M. West, Mrs. Cecil Waldrep, Mrs. Frank L. Truitt, Jr., Mrs. W. Thompkins, Jr., Mrs. Kenneth Newton, Mrs. E. A. McCullough, Mrs. L. Otis Baggett, Mrs. Sol Bunnell, Mrs. W. E. Cox, Mrs. Ralph J. Hickman, Mrs. J. W. Hunt, Mrs. A. A. Jones, Mrs. W. C. Kimball and Mrs. Lindley Latham.

Members present were Mrs. Thomas M. West, Mrs. Cecil Waldrep, Mrs. Frank L. Truitt, Jr., Mrs. W. Thompkins, Jr., Mrs. Kenneth Newton, Mrs. E. A. McCullough, Mrs. L. Otis Baggett, Mrs. Sol Bunnell, Mrs. W. E. Cox, Mrs. Ralph J. Hickman, Mrs. J. W. Hunt, Mrs. A. A. Jones, Mrs. W. C. Kimball and Mrs. Lindley Latham.

Public Invited To Hear Talks About Mission To Lepers

The public is invited to a program in the First Christian Church at 3:30 p. m. Friday, when Dr. and Mrs. Eugene Kellersberger of the American Mission to Lepers, Inc. will be presented by the Midland Council of Church Women.

Dr. and Mrs. Kellersberger, who have devoted many years to work in leper colonies and as administrators of the inter-denominational mission, will both speak of their experiences and describe the world wide program of the mission.

They served a number of years in the Belgian Congo, where Dr. Kellersberger was a medical missionary of the Presbyterian Church, before becoming associated with the mission to lepers. In Africa they worked together to found a leper colony.

The Rev. Matthew Lynn, pastor of the First Presbyterian Church, will introduce the speakers. The program Friday will begin with an organ prelude by Mrs. Van Camp. The opening prayer will be by the Rev. E. J. Snell, rector of the Trinity Episcopal Church; the Scripture reading by the Rev. H. H. Hollowell, pastor of the First Methodist Church; the offertory prayer by the Rev. Clyde Lindsley, host pastor; and the benediction by the Rev. Lennox Hester, pastor of the Asbury Methodist Church.

Music on the program will include hymns by the audience and a vocal solo, "Leave It With Him," Ellis, by Mrs. L. S. Melner.

Advertise or Be Forgotten

Be Kind to Your
KIDNEYS
Drink delicious Ozarka health water, free from chlorine and alum. "Of value in treatment of irritable conditions of the genito-urinary tract." Shipped.

Ozarka WATER CO.
Phone 111

cover hat brim (left) to match the dress which is tied with black velvet sash. Eyelet-embroidered ruffles which ring the hat's crown (right) are matched to the eyelet-floated petticoat which she models with a bare-topped Javanese print dress.

cover of eyelet embroidered or gandy ruffles—a removable and launderable ring of ruffles that circles the crown and falls lacyly over the brim. One date dress

with which these ruffles are slated to keep company is a Javanese print of dark multicolor stripes designed by Margaret Newman. This "Maid" wears with an eyelet floated petticoat that repeats the lacy look of her slip-covered hat. The unusual dress which justifies all of this hoop-la is bare-topped, boned and figure-fitting with a bustie back, and with it is worn a tiny bolero not much larger than a girl's bra.

Another slip-cover change for the "Maid's" hat—this time solidly paved with tiny ruffles of voile—exactly matches a brown and white lace-printed voile dress of Jerry Parrish' design. All of this sheer charm of ruffled hat and dress with pleated skirt, simple bodice and billowing sleeves is set off like a ribboned valentine by a streamer-tied black velvet sash.

Church Council To Send Delegates For State Convention

The Midland Council of Church Women will send delegates next week to a state convention of the United Council of Church Women in San Angelo, Mrs. L. G. Byerley, president, has announced.

One delegate from each church and the five council vice presidents are expected to attend the convention, which is scheduled for Monday, Tuesday and Wednesday. All who plan to go are asked to notify Mrs. Byerley by Sunday.

At the convention Mrs. Byerley will report activities of the Midland council for the past year. They include entertainment of the Eleventh District conference last fall; a World Community Day project of gifts for young people in displaced persons' camps of Europe and Asia; observation of the World Day of Prayer and May Fellowship Day, and a special program on mission work among lepers; a tea honoring high school graduates and a primrose party honoring oldest members.

Another project was to send discarded greeting cards, scrapbooks, paste and crayons to a mission center for children of migrant workers, and a project now under way is to send homemaking and fashion magazines to women of Japan, and to girls at the state school at Gainesville.

with which these ruffles are slated to keep company is a Javanese print of dark multicolor stripes designed by Margaret Newman. This "Maid" wears with an eyelet floated petticoat that repeats the lacy look of her slip-covered hat. The unusual dress which justifies all of this hoop-la is bare-topped, boned and figure-fitting with a bustie back, and with it is worn a tiny bolero not much larger than a girl's bra.

Another slip-cover change for the "Maid's" hat—this time solidly paved with tiny ruffles of voile—exactly matches a brown and white lace-printed voile dress of Jerry Parrish' design. All of this sheer charm of ruffled hat and dress with pleated skirt, simple bodice and billowing sleeves is set off like a ribboned valentine by a streamer-tied black velvet sash.

with which these ruffles are slated to keep company is a Javanese print of dark multicolor stripes designed by Margaret Newman. This "Maid" wears with an eyelet floated petticoat that repeats the lacy look of her slip-covered hat. The unusual dress which justifies all of this hoop-la is bare-topped, boned and figure-fitting with a bustie back, and with it is worn a tiny bolero not much larger than a girl's bra.

Guest Pastors Will Be Speakers Sunday

The Rev. G. H. Horton will be the guest speaker at the Sunday morning service of the First Free Will Baptist Church, 1000 South Mineola Street, the Rev. F. D. Spratt, pastor, has announced. The morning service starts at 11 o'clock.

For the night service Sunday, beginning at 8 p. m. the Rev. M. R. Gaines will be the speaker.

Mr. and Mrs. Gerry Graham, 1202 West Kansas Street, announce the birth of a daughter, Gloria Anne, on February 21. The baby weighed seven pounds, three ounces at birth.

Police were called to a South Colorado Street residence Wednesday to quiet a disturbance.

"Old at 40, 50, 60?"
— Man, You're Crazy

Figure your age thousands are peep at 70. Try popping up with OZARKA. Contains tools for wealth, making it feel like solely to body's lack of iron. Rich in many men and women call "old." Try OZARKA Tonic Tablets for pep, younger feeling, the 77 day, new "re-accustomed" size may look.

At all drug stores everywhere—in Midland, at Midland Drug.

Federated Clubs In Community Contest

AUSTIN—Mrs. John J. Perry, Sweetwater, president of the Texas Federation of Women's Clubs, reports that she has already received numerous entries in the "Build a Better Community" contest sponsored by the General Federation.

The purpose of the contest, open to women's clubs in the United States and Alaska which are members of the General Federation of Women's Clubs, is to encourage community leaders to develop community improvement programs.

The contest will run to January 15, 1950. Clubs entering will be judged on the basis of their project's value to the community, on thoroughness of organization, effort expended, results obtained, and the quality of the clubs' report on their community service activities.

Mrs. Perry listed eight classifications in which a majority of the projects will probably fall. They include health, youth, education and culture, fine arts, conservation and beautification, safety, housing and government.

ENTERS HOSPITAL

Mrs. Roy Parks, Jr. was admitted to Western Clinic Hospital Wednesday as a medical patient, attendants reported.

Yupodan
NATIONAL JAMBOREE
BARN DANCE
BAND & RECORDING STARS

MINNIE PEARL
presents
GRANDPAPPY JONES
UNCLE HENRY
SPIKE WILLIAMS
JIMMY DALE
and others
at the

Midland High School Auditorium

MONDAY FEB. 28
Doors Open 7:15 p.m.
Show Starts 8:00 p.m.

Admission \$1.00, tax incl.
No charge for children under school age.

Sponsored by
MIDLAND HIGH SCHOOL

Coming In Person
Orin TUCKER
SAT. MAR. 5
Reservations, Call 2642 - 62 per. m.

FOR GREATER Savings SHOP VIRTUE'S!

MEN'S DRESS SHIRTS
Sanforized, fast colors. Whites and Colors. Sizes 14 to 17.
\$1.99 Each



80 - SQUARE COTTON PRINTS
Washable, fast color. Sew and save with these high quality fabrics... for Spring and Summer — YARD
35¢

WASH CLOTHS
Hundreds of these fine quality wash cloths. Bright colors, check patterns. 12x12 size. Buy one or a dozen, as you need them. — EACH
8¢

★ **FRIDAY ONLY** ★
CURTAINS
There are only a few of these curtains in odds and ends. Be sure to shop early. Values to \$11.95 — EACH
\$2.00

★ **SPECIAL for Friday and Saturday** ★
MEN'S ARMY TWILL WORK SUITS
Sunton color, sanforized shrunken. Tested weaving quality. **SUIT OF SHIRT AND PANTS, only**
\$4.98

IT PAYS TO SHOP VIRTUE'S OFTEN FOR EVERYDAY SAVINGS... THROUGHOUT THE ENTIRE STORE.

Virtue's
MIDLAND, TEXAS

Sleek Saturns
SO - SO - FASHIONABLE
A splash of ribbon, a flash of a jewel on sleek little saturns that know no bounds—wear them with great chic against dark furs. Something very special at everyday prices.

CHAS. A. **Haynes** COMPANY

In the best of taste... tucked scrollery by **TEXTRON**

With rich garlands of flowers air-tucked right into it, this well mannered blouse has the nicest way with your prettiest skirts... and is all aglow about your face.

Of rich Textron® rayon crepe in hand washable Champagne, Blue China, Candy Pink, Crystal Aqua, Desert Sun, Minuet Green, Nickel Grey, Rose Geranium, and, of course, White.

Sizes 32 to 38.
\$5.95
CHAS. A. **Haynes** COMPANY

Plaid Poem
So bright... so right... so exactly yours for spring. Gay little weskit. Waist-whittling skirt with button-close pockets. Casually perfect worn with or without a blouse. Made of crash in bold, beautiful hues. Sizes 9-15.
1095

Everybody's
NATIONALLY FAMOUS FASHIONS FOR HER

Subscription Price and Advertising Rates table

Any erroneous reflection upon the character, standing or reputation of any person, firm or corporation which may occur in the columns of The Reporter-Telegram will be gladly corrected upon being brought to the attention of the editor.

The publisher is not responsible for copy omissions or typographical errors which may occur other than to correct them in the next issue after it is brought to his attention, and in no case does the publisher hold himself liable for damages further than the amount received by him for actual space covering the error.

MEMBER OF THE ASSOCIATED PRESS. The Associated Press is entitled exclusively to the use for republication of all the local news printed in this newspaper, as well as all AP news dispatches.

Rights of publication all other matters herein also reserved.

And thou sayest, How doth God know? can he judge through the dark cloud?—Job 22:13.

Planning Must Be Correct

A short while back President Truman made a speech in defense of economic planning. He granted that planning was a word that scared certain people.

Yet planning implies a preparation for action. And in a planned course of action there are components that must be directed in such a way that the action comes out according to plan.

It may be that Truman meant that a planned economy is one in which the government draws up a blueprint and private business voluntarily undertakes the action, with its accompanying controls.

This might explain the "stand-by controls" that Truman requested in his State of the Union message.

At any rate, we imagine that a planned and controlled economy might be acceptable to the great majority of Americans under certain conditions.

Nobody wants a depression, of course, because nobody gains anything by it in the long run.

Some government economists are worrying about a depressing drop in prices and employment.

There are all sorts of economic planning going on in government today. But who are the planners?

Deep Freeze

The Soviet government, which has been claiming that Russians invented practically everything since the wheel, now declares that Russian sailors discovered Antarctica 130 years ago.

The cold war isn't cold enough for the Kremlin. Now it wants to squabble over the South Pole.

All young daughters please note: A dishwasher in Kentucky inherited \$8,000.

Elongated Fish

Crossword puzzle grid with clues for elongated fish and other words.

Watch Out You Don't Bust Yourself, Mister



DREW PEARSON ON THE WASHINGTON MERRY-GO-ROUND

Drew Pearson says: Irish minister minces no words why Ireland won't join North Atlantic Pact; diplomatic dispatches reveal split in Politburo; Lie comment on pact irks State Department.

WASHINGTON — All the diplomats in Dublin can't persuade pugnacious little Ireland to join the North Atlantic Pact.

MacArthur is 100 per cent for Lapham's plan. In a secret huddle with Secretary of State Acheson the Senate Foreign Relations Committee the other day explored every comma and semicolon in the North Atlantic Pact.

Although the senators were pledged to strict secrecy, here are the highlights of that important meeting: Acheson promised to write into the pact a clear and expressed provision that this country cannot go to war without following the constitutional processes.

Some senators, led by Massachusetts' Henry Cabot Lodge, wanted the pact even more ironclad. On the other hand the question was raised whether a statement by the President wouldn't do just as well, warning that aggression against the Western Democracies would be considered an unfriendly act toward this country.

Florida's Senator Claude Pepper, on the other hand, expressed worry that the pact would be a precedent of regional alliances. He wanted to know whether other alliances in the Far East and Mediterranean might follow and tear the heart out of the United Nations.

These and other questions were left partly in the air. So much of the time was exhausted over technical points, such as whether the word "any" should be considered singular or plural, that Senator Fulbright finally pleaded that they get on to the main issue.

When there was only one mild flare-up — when Senator Brian McMahon of Connecticut warned that the issue would be raised again on the Senate floor that his country cannot pledge to fight, since it is up to Congress to declare war. This has already been brought up by Senators Tom Connally and Arthur Vandenberg.

Too much reiteration, warned McMahon, might create distrust in Europe. "What reiteration?" snapped Vandenberg, toughly. "Oh," shrugged McMahon, "I mean what the President has been saying."

Expansion Of Big Bend Park Approved

WASHINGTON — A bill which would add about 2,800 acres to the Big Bend National Park in Texas was approved Wednesday by the House Public Lands Committee.

Defendant In Street Shootings Is Placed Under Observation

DENTON, Tex. — Joe Allen Goforth, indicted for assault to murder, was in Wichita Falls at a state hospital for observation Thursday. He was transferred there Wednesday from the Denton jail.

W. O. Hodges, sheriff of Denton County, lost the sight of his right eye when struck by a shotgun charge during the running battle. He is in Dallas, where eye specialists are trying to save the sight in his left eye.



By EDWIN P. JORDAN, M. D. Written for NEA Service

One of the great triumphs of medicine of recent years is the conquest of an eye disease known as trachoma. This disease formerly afflicted many American Indians in whom it caused a great deal of blindness.

The cause of this condition is a virus which unlike ordinary germs is too small to see under the microscope. Among the other symptoms, pain and sensitivity to light may be severe.

The remarkable improvement in the outlook for the sufferer from trachoma comes from the use of the sulfa drugs or penicillin. This is one of the few virus diseases which respond to these preparations.

McLaren served five years in the U. S. Army Field Artillery during World War II, and now is a lieutenant colonel in the Reserves.

F. S. McLaren Joins Fitzgerald Company

The Fitzgerald Company Wednesday announced the association of Fredric S. McLaren, formerly of Fort Worth, as a partner in the firm.

McLaren served five years in the U. S. Army Field Artillery during World War II, and now is a lieutenant colonel in the Reserves.

Expansion Of Big Bend Park Approved

WASHINGTON — A bill which would add about 2,800 acres to the Big Bend National Park in Texas was approved Wednesday by the House Public Lands Committee.

McKenney on Bridge

By WILLIAM E. MCKENNEY America's Card Authority Written for NEA Service

There are two lines of thought in regard to supporting your partner's opening bid. We all know that if partner opens with a bid of one of a suit, next hand passes and you bid two of the same suit, you show a very weak hand.

The difference of opinion occurs in connection with a jump to three or four over your partner's bid of one of a suit. Most of the better players today use the jump to

Bridge hand diagram showing cards and dealer position.

Lesson Hand—Neither vul South West North East 5 Pass 6 Pass 7 Pass 8 Pass 9 Pass 10 Pass 11 Pass 12 Pass

three over one as a stronger bid than the jump to four over one. I do not like to jump to three unless I have control of two suits.

In today's hand many of you would open the bidding with one diamond, and I do not say that is not the correct bid. Nevertheless, when the hand was played, South did open the bidding with one heart.

Remember that when partner opened the bidding with a heart, North was undecided whether to bid three or four hearts. Having chosen the weaker bid of four hearts, when his partner shows a desire to try for a slam, North must take the strain off the hand by going to six hearts.

If North held six hearts to the queen-ten and five clubs to the nine-spot, his correct bid over one heart would be four hearts. Then when partner bids five diamonds, North would sign the hand off by bidding five hearts.

THE DOCTOR SAYS

Prompt Treatment Required To Aid Eye Disease, Trachoma

By EDWIN P. JORDAN, M. D. Written for NEA Service

One of the great triumphs of medicine of recent years is the conquest of an eye disease known as trachoma. This disease formerly afflicted many American Indians in whom it caused a great deal of blindness.

The cause of this condition is a virus which unlike ordinary germs is too small to see under the microscope. Among the other symptoms, pain and sensitivity to light may be severe.

The remarkable improvement in the outlook for the sufferer from trachoma comes from the use of the sulfa drugs or penicillin. This is one of the few virus diseases which respond to these preparations.

McLaren served five years in the U. S. Army Field Artillery during World War II, and now is a lieutenant colonel in the Reserves.

F. S. McLaren Joins Fitzgerald Company

The Fitzgerald Company Wednesday announced the association of Fredric S. McLaren, formerly of Fort Worth, as a partner in the firm.

McLaren served five years in the U. S. Army Field Artillery during World War II, and now is a lieutenant colonel in the Reserves.

Expansion Of Big Bend Park Approved

WASHINGTON — A bill which would add about 2,800 acres to the Big Bend National Park in Texas was approved Wednesday by the House Public Lands Committee.

WASHINGTON COLUMN

Questions On 'Point Four' Of Truman Talk Confuse Experts

By PETER EDSON NEA Washington Correspondent

WASHINGTON — A select group of working stiff in high government circles has run into 20 assorted kinds of complications. They have been trying to write the ticket to carry out Harry Truman's big idea for sharing American know-how with under-developed countries.

That's the way government works. Some hot shot at the top of the heap announces a new big headline policy in glowing terms. Then the technical experts are called in to figure out how to do it.

In the case of controversial "Point Four" of his inaugural address, the President apparently had no idea of how it would be carried out in detail. The job of planning it was assigned to Willard Thorp, assistant secretary of state for economic affairs.

They called in the experts from about 25 other government agencies and the wheels started to grind. To Be No New Marshall Plan. Main lines laid out in the President's speech were fairly clear.

But here the questions start to roll in. What kind of technical assistance will be the most helpful? What if any countries should be excluded? What is an "under-developed" country? How much self-help should be expected from U. S. technical assistance? What government measures will promote the flow of private capital to these countries?

Types of U. S. technical assistance given in the past include research projects, field missions, demonstrations, vocational education abroad, "in-training" of foreign technicians in the U. S. Which of these efforts are worth expanding and which are not?

So far, there has been no discussion with foreign governments on what they need or what they want. That will come later. Another series of questions has arisen over what the limits of this program be for? How long should the program be for? How can a roster of experts be built up?

The question of relationship to private organizations already in this work has arisen. Rockefeller Institute, Institute of International Education, various church, medical and school missions, and other international do-good foundations are old hands at this business.

Sheep And Goat Men Urge Price Support Program On Mohair

WASHINGTON — A Texas sheep and goat raisers are urging a price support program for mohair.

Spokesmen for the Texas Sheep and Goat Raisers Association were joined by Rep. Fisher (D-Texas) Wednesday in urging the program to Agriculture Secretary Brannan. Sayers Farmer, Junction, president of the association, led the group.

The group urged a base average price of 50 cents a pound for grown hair and 80 cents for kid hair. The association men said the number of Angora goats in the U. S. has declined from 4,544,000 in 1941 to 2,700,000 on Jan. 1, 1949.

POP Goes the QUEEN

By Bob Wade and Bill Miller

THE STORY: Quis Show Winner John Henry and his Conover, an actress-said vendor, were a weak reed owned by Mr. Barone, witness a murder. When the show business deep delved, they try to unravel the mystery. But Sin is nearly kidnapped by Gagner and Vernon, two of Barone's employes, and Johnny's struggle is a smashing smash where he was taken by Faye Jordan.

by the elbow and whirled her around. "Back to the hotel," he said under his breath. "Keep going!" "Gagner," she panted. "He might be there!" "The car then—" decided John Henry.

They shifted direction and trotted along the north wing of the hotel between a square-cut hedge and the stucco wall. When the hedge ended there was some clawing shrubbery and then they burst suddenly into the Las Dunas parking lot to run for their car. The Chevrolet was beautiful in familiarity.

John Henry halted his glad reach for the handle. He felt in his left-hand trousers pocket, then rummaged through all his other pockets. "What is it?" cried Sin.

"The keys. When Faye searched me, she stole the keys to our car!" Sin let out a wall of panic. John Henry gnawed his lips. Then he pulled her along the silent row of automobiles.

"Let's look for one with the keys in it," he snapped. The Conovers galloped down the double-parked row, glancing nervously in through car windows. They had rounded the row and were starting back toward the shrubbery on the other side when the shout came.

They stopped as if rooted. It was Gagner's voice and it came from the opposite side of the gallery of automobiles.

"Vernon," he was calling, "get a move on. You must be around here somewhere!"

SIN gave a little moan and sank toward the ground as if her legs had melted. John Henry held the face split into a pitying grin at the sight of the Conovers. He got to his feet.

JOHN HENRY hesitated only a second. Then he grabbed Sin

(To Be Continued)

+ Youth Center Chatter+

By JOYCE HOWELL and JUNE HAZLIP

The juke box was emptied last week and here are the figures of collections so far: 400 nickels, 2,000 pennies or 20,000 mills. This means we have listened to 1,200 minutes, 72,000 seconds, 360,000 "iffys" or 20 hours of music.

Plymouth Prexy Raps Oil Imports, Tidelands 'Grab'

BAKERSFIELD, CALIF.—(AP)—Nothing would be more perilous to our security than to become dependent upon foreign oil sources that would be inaccessible in time of war, Walter S. Hallanan, chairman of the National Petroleum Council and president of Plymouth Oil Company, declared here Wednesday night.

"Our national security demands that we continue to be self-sufficient in petroleum resources," he said in addressing a dinner meeting of the San Joaquin Valley Oil Producers Association here. "America must have an adequate supply of crude oil and it must have that supply here at home. Equally important, it must have a free and healthy industry to produce, process and transport that oil and its products."

Police Seek Clues In Murder Mystery

NEW ORLEANS—(AP)—Police, beset by blind alleys, cast about for shreds of clues Thursday in the two-day-old murder mystery of Virginia Millionaire James A. Mahoney. Twin leads set off a flurry of police investigation and questioning of persons picked up Wednesday in Mobile, Ala., and Pass Christian, Miss.

But acting Detective Chief John Jackson of New Orleans said later the leads had fizzled out and "we're back where we started at the beginning of this case."

The nude body of the slight, 55-year-old victim, beaten on the head and neck broken with a towel, was found by a bellboy in the French Quarter, Monteleone Hotel here Tuesday.

Suspects Released Jackson said two men and a woman picked up on his orders at the Mobile Airport, after flying there in a private plane, were cleared. He said they had aroused suspicion by a hurried departure from here.

The detective chief said two boys arrested in Pass Christian, after arriving there on a bus from New Orleans, apparently had no connection with the slaying.

However, Detective Captain Harry Daniels, who questioned the teenagers at length in a Mississippi jail at Gulfport, brought back two gray hairs found clinging to a pistol in the boys' possession.

Daniels intends to have the hairs compared with those of Mahoney.

All JayCeers, Past and Present Urged To Attend Meeting

All exhausted and active JayCeers are urged in special notices mailed Wednesday to attend the Friday noon meeting of the Junior Chamber of Commerce in Hotel Scharbauer when a program of special interest will be presented.

Ray Gwyn, program chairman, did not disclose the program numbers, but said the program will be a "surprise package" with fun and fellowship for all.

"Bring a guest and be one of the 100" is the slogan as members strive for a record attendance Friday.

Helbert and Helbert
Contractors
Concrete, Paving Breaking and Sand Blasting Work
All work guaranteed satisfactory
14 years in business in Midland
1900 S. Colorado Ph. 2520

Hear
General J. WATT PAGE
Warline State Selective Service Head
DR. GEORGE GRAINGER
State Osteopathic President
DR. EVERETT WILSON
Member State Medical Board
DISCUSS
The Basic Science Wedge
RADIO STATION
KCRS
MIDLAND
TONIGHT
8:15 P.M.
THURSDAY

No Coffee, Change From Beer Taverns

DETROIT—(AP)—The Municipal Street Car and Bus System looked to its dignity Thursday. Drivers got orders to quit patronizing taverns on quick stops for a refill of the coffee bottle or to replenish the money changer.

To avoid public "suspicion," Railway Commissioner Fred P. Slesion said stops would be limited to specified gasoline stations, cafes and other places.

Coyotes usually hunt in large packs.

Original Drawing To Adorn Cover Of Rodeo Programs

The front cover of the official souvenir programs to be distributed at this year's World Championship Midland Rodeo will bear a reprint of an original drawing selected from entries submitted in a contest sponsored by Midland JayCeers. R. M. Parker is chairman of the project.

A \$25 cash prize will be awarded the artist submitting the winning drawing. The contest opened Thursday and will continue until April 1. Contest entries should be mailed to Junior Chamber of Commerce, Box 135, Midland.

All artists, both amateur and professional, of Midland and vicinity are invited to enter the contest. A Western theme must be used. The entries should be 17 by 22 inches.

The drawings will be judged by JayCeers and members of the Rodeo Committee of Midland Fair, Inc. The Junior Chamber of Commerce is a strong supporter of Midland Rodeo and has the concession rights at the rodeo grounds.

The Midland Rodeo is scheduled June 1, 2, 3, 4 and 5.

Saint Francis Xavier, known as the "Apostle to the Indies," was a fun-loving son of a noble Spanish family when he met and was led into the Church by Ignatius Loyola, founder of the Jesuit order.

Four Children And Mother Die In Fire

ATLANTA—(AP)—Four young children and their mother died Wednesday night when flames from an oil stove explosion engulfed a frame two-family dwelling in suburban Riverdale.

The mother, Mrs. Harvey R. Wallace, gave her life in a futile attempt to save her children.

Michigan is called the Wolverine State because the animal once abounded in its forests.

Take the WHOLE FAMILY with you on PIONEER'S FAMILY 1/2 FARE plan! phone 2544
PIONEER Air Lines

PURCHASES OF \$10 OR MORE ON EASY TERMS!

4 MORE DAYS!
WHITE'S 18th ANNUAL FEBRUARY SALE!

LICENSE NEEDS!
JEWELLED BOLTS 5¢ EACH
BRACKET 69¢
FRAME 89¢

Guaranteed QUICK STARTS
Regular \$16.45, NOW ONLY **\$13.95** Exch.
Guaranteed 30 Months
INSTALLED FREE!

MUFFLERS AND TAIL PIPES
MUFFLER CHEVROLET MASTER 1935-1936 LIST \$6.95 **\$4.95**
TAIL PIPE FORD 1935-1938 LIST \$2.00 **\$1.69**

FLARE REFLECTOR
LIST PRICE \$9.50 NOW ONLY **\$3.89**
SET OF THREE!
A requirement for trucks, buses and trailers. Can be seen easily at a distance of 100 feet. Every passenger car owner will want a set at this unheard-of low price.

Lowest Price EVER for a PHILCO CAR RADIO
CUSTOM STYLED FOR YOUR CAR
A new 1949 Philco Car Radio that fits and matches your car as perfectly as though it were factory installed. In addition you get Philco's finer performance!
AUTOMATIC FOOT CONTROL
It's the greatest auto radio tuning convenience in years. Just step on it to tune in programs or to change stations. See it—try it—you'll want it with your new Philco.

Look! Sensational Value!
REGULAR \$93.50
FEBRUARY SPECIAL **\$59.50** CR. 8
EASY TERMS
• 8 TUBES PLUS RECTIFIER
• 7-INCH SPEAKER
• AUTOMATIC TUNING
• TONE CONTROL
• PROVISION FOR FOOT CONTROL
• AUTOMATIC VOLUME CONTROL
• BLUE-GREEN CASE
• FITS ALL CARS

SEALED BEAM ADAPTER KIT
CONVERT DIM HEADLIGHTS TO INSURE SAFER DRIVING
FORD '30-'34 REGULAR \$4.69 NOW ONLY **\$3.98**

FLOOR MATS
PREVENTS SEEPAGE OF EXHAUST FUMES TO FIT ALL CARS! 42"x51"x3/4" LIST PRICE \$4.85 NOW ONLY **\$2.79**
AVAILABLE FOR ALL MAKE AND MODEL CARS IN A FULL RANGE OF STYLES AND SIZES.

Chrome DRIVING LIGHT
6-INCH AMBER EASILY INSTALLED
REGULAR \$8.45 NOW ONLY **\$4.95**

DRESS-UP LAMP
RED, GREEN & BLUE
REGULAR \$1.95 NOW ONLY **79¢**

TIRE COST Cut!
WHITE'S "MULTI-MILE" 6.00 x 16 SIZE
REGULAR \$11.50 NOW ONLY **\$8.88** PLUS TAX
NO CHARGE FOR INSTALLATION
LIBERAL ALLOWANCE FOR YOUR OLD TIRES!
Let us prove to you that our prices are LOWER, that we have CUT tire cost... with FIRST QUALITY Multi-Mile Tires. We guarantee them to give satisfaction without limit to months or miles used.

ELECTRIC IRON FULLY AUTOMATIC
1,000 WATTS NOW ONLY **\$6.95**
NON-AUTOMATIC ELECTRIC IRON 500 WATTS REGULAR \$2.49, NOW **\$2.99**

MAIL BOX
• BLACK ENAMEL
• PADLOCK HASP
• WIRE PAPER HOLDER
REGULAR 69¢ FEBRUARY SPECIAL ONLY **57¢**

STOP AND TAIL LAMP
UNIVERSAL TO FIT ALL CARS REGULAR \$2.19 NOW ONLY **\$1.89**
Complete With Bulb

FEBRUARY CLEARANCE SALE
BOYS' OR GIRLS' FULL SIZE BICYCLE
REGULAR \$41.95 NOW **\$33.88**
EASY TERMS PAY ONLY \$1.25 WEEKLY
What a bike! What a value! Strong, full-size double bar frame. New Departure Coaster Brake and large padded saddle. Roller-bearing pedals. Kick-up parking stand. Many other BIG features.

BIG, FULL SIZE IRONING BOARD
REGULAR \$2.98 NOW ONLY **\$2.79**
IRONING BOARD PAD AND COVER REGULAR \$7.49 NOW ONLY **\$7.19**

WASH TUBS
NUMBER 2 ROUND—HEAVY GALVANIZED
REGULAR \$2.39 NOW ONLY **\$1.89**

FLASH LIGHT CASE
CHROME
Less Batteries **59¢**

RADIATOR HOSE
HEAVY DUTY 3-PLY
1 1/2-INCH 3-FOOT LENGTHS LIST 46¢ PER FOOT NOW ONLY **29¢**
CLAMPS UNIVERSAL FITS ALL CARS HEAVY DUTY METAL LIST 30¢ NOW ONLY **4¢**

WHITE'S Auto Stores
THE HOME OF GREATER VALUES
207 W. Wall Phone 1644

Office Building Captains In Red Cross Drive Named

Team captains who will direct solicitations in downtown office buildings during the annual Red Cross finance campaign starting March 1 were announced Thursday...

The assignments include: McClinch Building, John W. FitzGerald and George Byrnes; Superior Building, Art C. Castle; Honolulu Building, Leo Brady; First National Building, Hilton Kaderli...

Brownsville Starts Charro Days Fiesta

Brownsville, gaily decorated with bunting, led down its fair for its annual Charro Days Fiesta...

The fun of the International Charro Days Fiesta will run through Sunday in a program crammed with parades, dances, rodeos, carnivals, pageants and noise...

Gov. Beauford H. Jester and Mrs. Jester arrived Wednesday night. Cousins are guests. Mr. and Mrs. W. W. Gamble of San Diego, Cal. were guests of Mr. and Mrs. Guy W. Brennehan...

Cousins Are Guests

Mr. and Mrs. W. W. Gamble of San Diego, Cal. were guests of Mr. and Mrs. Guy W. Brennehan two days this week...

Advertisement or Be Forgotten

Rushman 49 Models Will mail parts, accessories - Repair Shop - Good Used Scooters For Sale - Toy Machine Works

CONTINENTAL HALF FARE FAMILY TRAVEL Monday, Tuesday, Wednesday If you buy a regular fare ticket...

TULSA 5 1/2 Hrs. \$33.60 DENVER 6 3/4 Hrs. \$37.40 SAN ANTONIO 2 1/2 Hrs. \$17.10

The Blue Skyway CONTINENTAL AIR LINES

Guaranteed Watch Repair 3-DAY SERVICE Palace Drug (Jewelry Dept.) 108 S. Main Phone 38

MAPS! L. T. BOYNTON CO. Midland Representative Southwest Mapping Company

Dr. Velma Scott is pleased to announce the association of Dr. J. Dow Scott, in the Scott Clinic 1300 WEST WALL PHONE 305

112 West Wall AUTO & TRUCK FINANCING NEW or USED

KEY INVESTMENT CO. Phone 486

Ramirez BROS. Boot Shop 407 North Mineola

Bill To License Chiropractors Gets Senate Panel Nod

AUSTIN —(AP)— A bill setting up a board to examine and license chiropractors sailed smoothly through a Senate Health Committee hearing Wednesday night...

Opposition faded when the Texas State Medical Association announced it would support the bill, by Senator Pat Bullock of Colorado City...

Geisler Is Building Association Director

Ralph H. Geisler, manager of the Petroleum and McClintic Buildings here, was elected director of the Texas State Association of Building Owners and Managers at its annual meeting this week in Dallas...

A. J. Gautreau of Port Arthur was named president of the association. Vice presidents are R. L. Buford of Austin and W. O. Hodges of San Angelo...

BAYLOR TO BENEFIT UNDER OGLVIE TRUST SAN ANTONIO —(AP)— Baylor University at Waco will benefit from the full community trust of the late Dr. H. H. Oglvie of San Antonio...

SOLDIER TERMINED ACCIDENT

SAN ANTONIO —(AP)— Officers here have decided the shotgun death of Pfc. Paul Lester Smith, 20, last Saturday was a freakish hunting accident, Oscar Warnke, chief investigator for the sheriff's office here, indicated...

INJURIES PROVE FATAL TO WAYLAND TEACHER

PLAINVIEW —(AP)— Injuries suffered in a fall last Friday proved fatal for James Z. Bishop, 33, Wayland College teacher...

1947 Sales—\$3,280,000.00 1948 Sales—\$4,200,000.00 An Increase of 28% GEORGE S. MAY COMPANY Business Engineering OFFICES IN PRINCIPAL CITIES

Powell Washateria SOFT WATER Hot and Cold Wet Wash • Rough Dry HOURS: Mon.-Wed.-Fri. Open 'til 6 p.m. Open 6 a.m. Daily Tues.-Thurs. Open 'til 8 p.m. Close 2 p.m. Saturdays. 505 S. Baird Phone 3793

Tony Holguin Is Mexican Open King MEXICO CITY —(AP)— Professional golf sang the praises Thursday of a smooth-swinging, steady-nerved newcomer—22-year-old Tony Holguin of Guadalajara, Mexico...

Morrow Foes Win Committee Action By 30-To-25 Vote AUSTIN —(AP)— Democratic leadership in Texas still is split wide open by the issue of who should be national Democratic committee man...

McMURRY INDIANS GINCH THIRD PLACE SHERMAN —(AP)— McMurry College of Abilene edged Austin College 57 to 54 Wednesday night and sewed up third place in the Texas Conference basketball race...

Phone 2185 DAVIS UPHOLSTERY CO. Replace that old worn out covering with new SLIP COVERS! 403 East Florida

COMPLETE FRONT END REBUILDING ALL MAKES OF CARS MIDLAND TIRE CO. 120 N. Main Phone 106

FOOT SPECIALIST DR. A. V. JOHNSON, JR. 306 N. Main CHIROPODIST Phone 856

Baseball At MHS To Start March 1

Baseball drills for the Midland High Bulldogs will begin March 1. Coach Garvin Beauchamp has announced. The Purple diamond corps will work at a practice field near Memorial Stadium until Indian Park is available...

Shellacking By Rice Kicks Texas Out Of NCAA Consideration

NEW YORK —(AP)— Texas, one of the brightest prospects back in December, is out of the running for the coming NCAA basketball elimination. The Longhorns, ranked twentieth in the most recent Associated Press basketball poll, were dumped Wednesday night by Rice 65-49...

Arkansas Mentor Heads Southwest NCAA Committee

CHICAGO —(AP)— The 1949 NCAA basketball selection committee, which will determine the eight teams picked for the championship tournament, was named Wednesday by Arthur "Dutch" Lombor, chairman of the NCAA basketball tournament committee...

Down SPORTSLANE With TANNER LAINE Sport Shorties Baseball's "Mr. Shortstop" celebrated 75 years of living Thursday...

Carver Basketeers Split Double-Bill

The Carver School Hornets of Midland split a double-header in basketball with San Angelo teams in the MHS gym Wednesday night. The boys' team beat San Angelo 29-23 and this was revenge for last week when San Angelo beat Midland in the district tourney...

Tom Adams Beaten In Gloves Meet

CHICAGO —(AP)— Two Texas Golden Glove punchers will fight in the semi-finals of the tournament of champions here. They moved into the semi-finals by quarter-final victories Wednesday night...

Rice, Arkansas To Tangle In Decisive Cage Tilt Saturday

By The Associated Press Rice and Arkansas play a crucial Southwest Conference game in Houston Saturday night. This game very well may determine the Conference championship...

Tom Adams Beaten In Gloves Meet

CHICAGO —(AP)— Two Texas Golden Glove punchers will fight in the semi-finals of the tournament of champions here. They moved into the semi-finals by quarter-final victories Wednesday night...

Schoolboy Cagers Head Into Second Rounds Of Playoff

By The Associated Press Second rounds of bi-district basketball championships begin in Class AA Thursday night. Dallas, meets Bonham at Bonham and Port Arthur plays Nacogdoches at Nacogdoches...

Arkansas Mentor Heads Southwest NCAA Committee

Down SPORTSLANE With TANNER LAINE

FOOT SPECIALIST DR. A. V. JOHNSON, JR. 306 N. Main CHIROPODIST Phone 856



Polo pony Cricket seems bewildered as Al Parsells appears to fear the toy bronco in a pre-game selection. Parsells, an eight-foot man, was named to play the No. 2 position for the New York All-Stars against the Miami, Fla., Stars in a Cancer Fund game at Manhattan's Squadron A Armory.

Down SPORTSLANE With TANNER LAINE

Sport Shorties Baseball's "Mr. Shortstop" celebrated 75 years of living Thursday. Bandy-legged, barrel-chested Bronco Wagner said he'd "stay in baseball as long as it will have me."

Arkansas Mentor Heads Southwest NCAA Committee

CHICAGO —(AP)— The 1949 NCAA basketball selection committee, which will determine the eight teams picked for the championship tournament, was named Wednesday by Arthur "Dutch" Lombor, chairman of the NCAA basketball tournament committee...

Morrow Foes Win Committee Action By 30-To-25 Vote

AUSTIN —(AP)— Democratic leadership in Texas still is split wide open by the issue of who should be national Democratic committee man...

Tom Adams Beaten In Gloves Meet

CHICAGO —(AP)— Two Texas Golden Glove punchers will fight in the semi-finals of the tournament of champions here. They moved into the semi-finals by quarter-final victories Wednesday night...

Rice, Arkansas To Tangle In Decisive Cage Tilt Saturday

By The Associated Press Rice and Arkansas play a crucial Southwest Conference game in Houston Saturday night. This game very well may determine the Conference championship...

Tom Adams Beaten In Gloves Meet

CHICAGO —(AP)— Two Texas Golden Glove punchers will fight in the semi-finals of the tournament of champions here. They moved into the semi-finals by quarter-final victories Wednesday night...

Schoolboy Cagers Head Into Second Rounds Of Playoff

By The Associated Press Second rounds of bi-district basketball championships begin in Class AA Thursday night. Dallas, meets Bonham at Bonham and Port Arthur plays Nacogdoches at Nacogdoches...

MARDI-GRAS FUN: GAYETY! Special Pullman excursion. Pullman is your hotel in New Orleans. 8 p.m. at 11 o'clock. Personally escorted Feb. 26-March 1. from \$89.25 106 No. Lorraine—3787 Other offices in Longview, Dallas. GENERAL TRAVEL CO.

Art Metal Files In Stock: Wood and Steel Decks, Carbon Papers, National Loose Leaf Supplies, Fine Printing. HOWARD SALES CO. 211 E. Wall Phone 2518

Basketball Scores By The Associated Press Rice 65, Texas 49. Baylor 47, SMU 38. McMurry 57, Austin College 54. East Texas State 68, Stephen F. Austin 67. Lafayette named his son George Washington Lafayette in honor of the American general.

From where I sit... by Joe Marsh How's Your Listening Time? Buck Howell and I were in Balleville last week. Dropped in at Bob's diner where some friends were sitting around talking about whether to sell hogs now or wait...

FORESIGHT MEANS Better EYESIGHT Expert EYE EXAMINATION and QUALITY GLASSES CREDIT... at no extra cost DR. W. G. PETTEWAY OPTOMETRIST with offices in Kruger Jewelry Company 104 North Main Phone 1103

★ DON'T GET 'SLUGGED' BY HIGH RENTS—BUY A HOME LISTED IN TODAY'S REPORTER-TELEGRAM CLASSIFIED ADS ★

EXTRA SPECIAL
1946 Dodge Custom 4-door sedan. Radio and heater. Seat covers, and auto-visor. Perfect condition. Will trade for cheaper car.
Conner Investment Co.
209 E. Wall Phone 1373

FORD
By far the cleanest
By far the best
By far the most reasonable in the West
1/3 Down
Easy Terms
We will pay off the balance on your car.

OUR ADS AIN'T SO FANCY BUT
Our Used Cars WILL SPEAK FOR THEMSELVES
COMPARE PRICES
Then See Us Before You Buy

Cars Of Value Trucks Of Value
That Warrant Your Inspection—Before You Buy
1946 Packard 4 Door
All extras—PAY DOWN \$600.

LARRY BURNSIDE, Realtor
Brick—new 3-bedroom home on paved street—priced to sell quick—\$14,000.00.
Duplex—Brick, new, 3 rooms and bath on each side—paved street, F. H. A.—constructed.

If You're a Gamblin' Man Or Woman
I'll match my time and gasoline against your time, and show you some good bets. If you really need a home, then read this—You're liable to find just the home you want.

KCRS
5,000 WATTS
TODAY STARTING AT 8 P. M.
6:30 NEWS ABC
6:35 ELBERT DAVIS ABC

540 HOMESITES
DEVELOPED OUT OF THE FAMOUS GIST RANCH. ONE OF THE FINEST PIECES OF RICH DEEP SOIL WE HAVE SOLD IN WEST TEXAS. YOU MUST SEE THIS NEW LOT IN ADDITION, EVERY LOT 90x140 FT. THEY ARE EXTRA LARGE LOTS, RICH SOIL.

PRICE
THERE IS NO ONE WHO CAN TELL THE PRICE OF THESE HOMESITES EVEN THE OWNERS. THEY WOULD GIVE MOST ANYTHING TO KNOW WE HAVE NEVER TAKEN A SALE TO SELL PROPERTY FOR ANY ONE, WITH A PRICE FIXED.

Only You
THE PUBLIC WILL SET THE PRICE. THE JUDGEMENT OF THE PUBLIC HAS ALWAYS BEEN FAIR. TO BE SURE AND DRI'E OUT. SEE THIS WONDERFUL NEW ADDITION SUNDAY FEB. 27th AND THEN ON MONDAY COME TO THE SALE, NOTHING WILL BE SOLD UNTIL MONDAY.

AUCTION
AUCTION IS THE OLDEST METHOD ON EARTH OF FAIR SELLING. IT IS THE ONLY METHOD WHERE THE BUYER SETS THE PRICE. IT'S ABOUT THE ONLY WAY, THIS DAY AND TIME WHERE THE BUYER HAS A CHANCE TO MAKE A PROFIT. WE DON'T GO WRONG ON A FEW OF THESE HOMESITES. SEE THEM SUNDAY, FEB. 27th.

CLOSE IN
SOUTH PARK ADDITION IS WITHIN WALKING DISTANCE OF THE BUSINESS DISTRICT TO MIDLAND. IN FACT, IT IS JUST THREE MINUTES BY AUTO FROM WALL ST.

CHURCHES
THERE ARE SEVERAL GOOD CHURCHES CLOSE TO THE PROPERTY AND GOOD SCHOOLS AND SHOPPING CENTERS, AND CITY PARK. SOUTH PARK IS JUST A WONDERFUL PLACE TO BUILD OR BUY YOUR HOME.

Good Soil
SOUTH PARK HAS WONDERFUL DEEP RICH SOIL. SEE FOR YOURSELF, YOU COULD NOT FIND BETTER DIRT ANYWHERE. DRIVE OUT, LOOK IT OVER TODAY.

Good Terms
YOU PAY ONE FOURTH YOUR BID PRICE AND THE BALANCE IN TWELVE EASY MONTHLY INSTALLMENTS.

Free Maps
AT OUR SALES OFFICE COME IN GET ONE FREE.

1946 FORD 2-DOOR sedan. R.&H. A good clean car. \$1,395.00
1946 PLYMOUTH 4-door sedan. Body little rough. \$1,065.00
1941 MERCURY 2-door sedan. R.&H. A one owner. This car is beyond perfection. \$1,195.00

1946 FORD 2-door. A good clean car, original. \$795.00
1940 OLDS 2-door sedan. Clean car. 76 Series. conventional shift. \$795.00
1936 FORD 2-door. Rough spring shake, broke fenders. You will go broke trying to fix it. \$65.00

Murray-Young Motors, Ltd.
Authorized FORD Dealer
223 E. Wall Phone 64

PLUMBING
Contracting & Repairs
Time Payment On New Plumbing or Destructed HEATH & TRIPLETON PLUMBING CO.
119 N. Westchester Ph. 2533

ADDING MACHINES
SERVICED REPAIRED
NEW AND USED
BOB PINE
605 W. Missouri Phone 935

RED CHAIN FEEDS
The Superior Feeds
Highly fortified with Vitamin A to insure a good calf crop.
BIRKHEAD FEED STORE
Corner E. Wall and Terrell Phone 427

Always A Good Deal Plus A Good Deal More
SPECIAL—47 Aeronca Chevrolet 46 Ford 4-door, radio and heater
46 Ford 2-door, radio and heater
47 Plymouth 4-door, radio and heater, white side wall's.

MICKEY TIRE CO.
105 N. Baird Phone 689

Spring Is Coming!
Convertibles Will Be Higher!
Buy new and save money on this practically new OLDSMOBILE "65" red convertible coupe, 1948 model, hydraulic drive, 18.000 miles. Can use late model cheaper car.

T. PAUL BARRON
Phone 128 or 691
INLAID LINOLEUM
BEAUTIFUL PATTERNS
INSTALLATION
GIBBS FLOOR COVERING and Shade Co.
Phone 2462 605 W. Missouri

WILLIS SALES CO.
Your Dealer for GMC Trucks-Packard-Jeep Tom Nipp, Mgr.
Baird at Missouri Phone 2435

TRAILER HOUSES
Largest stock of new and used trailers in the West. Terms 24 months to pay
MUZZY TRAILER SALES
West Hwy 80 Ph. 939 Midland, Tex.

It's For Sale
On Cuthbert Street near the Country Club, this 2-bedroom home has beautiful landscaping and many other features to make it the ideal home. Call for appointment.

W. R. Upham, Realtor
Telephone 2062-J

WES-TEX REALTY & INSURANCE CO.
REALTOR
509 W. Texas Phone 158

J. D. Henderson
Phone 2428
MODERN HOME
For sale. Large modern four-room house, almost new, partly furnished, situated on large lot. Chickened fenced with tile brooder house, garden spot, pressure pump, just outside city limits. A good poultry business. Must sacrifice because of ill health. PHONE 877.

W. F. Chesnut's Agency
Office Phone 2492 Res. 732-J
Large 5 Room Frame
For sale by owner, 1400 foot floor space, 1110 West Mo. St. 73x140 corner lot. On pavement. One of the best locations in the city, close to schools, bus stop in front of house, priced for immediate sale. Approximately \$2000.00 will handle.

Ride The City Bus To The Wigwam Skating Rink
Friday Night CARNIVAL ON SKATES
Bus Leaving Train At 7 p. m. - 8 p. m. - 9 p. m. - 10 p. m. and 11 p. m.

LOANS
Conventional F. H. A. Care Fire Life
HOMES! HOMES!
3-bedroom brick in West End annex with 1400 sq. ft. Ready for occupancy. Can be seen anytime.

STEVE LAMINACK
Petroleum Building Phone 2628
Lovely 3 Bedroom Brick Home
Large Lots—Paved street, highly restricted area, double garage, fenced yard, large playroom. Shown by appointment only. Sorry no telephone information can be given on this property.

NEELY AGENCY
Crawford Hotel
WHAT A BARGAIN!
Attractive 6-room white frame home at 804 S. Loraine, practically new. All rooms are nice size with plenty of closet space. Well constructed on concrete foundation. Located on east front lot just half a block off pavement. Owner is leaving town and can give immediate possession. Priced at \$10,000.00, reasonable terms. This is a good buy.

For Sale By Owner
Large 6 room brick veneer home and large glassed-in porch, wood-burning fireplace, two floor furnaces, tile cabinets, top, venetian blinds. Beautiful oak floors, plumbing for water softener, barbecue pit, yard enclosed 5 ft. tile, attached garage, nice lawn and shrubs. Located in highly restricted addition.

J. D. Henderson
Phone 2428
MODERN HOME
For sale. Large modern four-room house, almost new, partly furnished, situated on large lot. Chickened fenced with tile brooder house, garden spot, pressure pump, just outside city limits. A good poultry business. Must sacrifice because of ill health. PHONE 877.

COMPLETE LINE OF CARPETING STOREY Floor Covering Co.
402 S. Main Phone 2960

FHA—GI—HOME LOANS
LOANS MADE TO BUILD, BUY OR IMPROVE
KEY INVESTMENT CO.
112 W. Wall Phone 486

HOMES and LOANS
WE can build your home for less. 90% and 100% loans to veterans. 80% to 95% F.H.A. Loan to anybody. Get your plans and applications in NOW.

BUY IN FEBRUARY BE SETTLED BY SPRING
These homes are priced to sell. New 2-bedroom home in Highland addition, excellent location. This home must be seen to appreciate the many comforts to be enjoyed in its roomy bedrooms, spacious living room and large kitchen.

C. E. Nelson Mims & Stephens
118 1/2 S. Main Phone 673 or 3082-W

5 ROOM STUCCO
7x140 ft. lot. Recently decorated. Priced to sell. \$8,500
721 CUTHBERT

WEATHERSTRIP and SASH BALANCES EXPERT INSTALLATION
F. S. WEST
Box 1572 Phone 1539-J

HOMES TO LIVE IN
DRIVE NORTH ON BIG SPRING ROAD TO 2000 BLOCK TURN RIGHT THREE BLOCKS TO FIELD OFFICE, LET US SHOW YOU OUR LOVELY TWO-BEDROOM HOMES, IN

Loma Linda ADDITION
ITS NEW, OUR HOUSES ARE NEW AND DIFFERENT, LET US SHOW YOU MANY DESIGNS TO CHOOSE FROM.

F. H. A.
FOUR AND ONE-HALF PERCENT LOANS, LOW DOWN PAYMENT, LOW MONTHLY PAYMENTS. SEE MR. MAXON AT FIELD OFFICE, TELEPHONE ROOM APPOINTMENT IF YOU WISH. CALL 3924, IF NO ANSWER CALL 236.

HOMES
YOU WILL LOVE TO LIVE IN.

T. E. NEELY
INSURANCE LOANS
Phone 1850 Crawford Hotel

FOR SALE BY OWNER
2-bedroom FHA, almost new. In Midland's most desirable residential section. One block from Grandland. Insulated, landscaped, and equipped with venetian blinds. Ready for immediate possession. And priced to sell.

FOR SALE: New, practically completed house to be moved, \$1700.00. Owen B. Ingram, Box 242, Stanton, Texas.

FRANK GOODE PLUMBING CO.
Plumbing & Heating Contracting
109 W. Florida Ph. 1555-3185-W

BE CAREFUL!
DON'T FALL IN THAT DITCH!
We are sorry that you have to be inconvenienced by our work of installing utility lines in Loma Linda, but you may see the new 2-bedroom FHA houses if you don't mind walking around our construction work. See these houses today! Representatives on the tract to help you.

540 LARGE HOMESITES
with full mineral rights, and will be sold on good terms. Drive out Sunday, look them over. Nothing will be sold Sunday—inspection Sunday only. BE SURE AND SEE THIS PROPERTY.

PUBLIC AUCTION
SOUTH PARK ADDITION is the best piece of property ever sold at auction in Midland County—You should by all means see this new addition Sunday Feb. 27th, inspection only. The sale takes place on the property Monday Feb. 28th at two o'clock sharp.

Building Contractors
Special Attention will be given building contractors. Call for map at our sales office. Buy one lot—take the whole block—or even more if you like at the same price per lot.

Ted Thompson & Co.
McClintic Bldg.
Phone 823
ONLY \$2,500
extra nice 2 rooms and bath, large lot.

ONLY \$6,850
medium size 2-bedroom frame insulated, venetian blinds, floor furnace, and d rubber tile floor. Corner lot with tile fence. Hurry—must be a veteran.

ONLY \$11,500
large 2-bedroom brick veneer. Double garage with tool room on corner lot.

ONLY \$12,950
extra large new two-bedroom stucco. Large sleeping porch, extra large kitchen with separate dining room and ample closets.

ONLY \$15,800
extra large 2-bedroom. Brick veneer, attached garage, large lot, perfect location. 100% G. I. Loans or 80 to 95% F.H.A. to buy or build.

MONDAY 2 P. M. FEBRUARY 28th
Auction Sale takes place on the property—every lot will be sold Monday, Feb. 28th. ONE DAY ONLY—we expect to sell out Monday.

540 LARGE HOMESITES
with full mineral rights, and will be sold on good terms. Drive out Sunday, look them over. Nothing will be sold Sunday—inspection Sunday only. BE SURE AND SEE THIS PROPERTY.

SOUTH PARK ADDITION
COL. McCALL, AUCTIONEER and REALTOR OWNERS—J. R. Harrison—Chas. Edwards—and F. R. Spaulding. Office 112 W. Wall Telephone 3919

Tweedies
DURING FOOTWEAR®

FOOTWEAR FASHIONED IN SLENDER GRACE
AS INDIVIDUAL AS YOUR PORTRAIT

Two beautiful shoes for Spring done in taupe calf . . . to wear with navy, black and smartest high colors . . .

1495

GRAMMER-MURPHEY
Women's Wear

DUNLAP'S BIG FEBRUARY END O^F M^{ONTH} Clearance

Friday and Saturday

Two Days Only!

★ READY-TO-WEAR DEPT. ★

- **Formal Dresses—**
Only 7 left . . . In chiffon, crepes, and satins.
Formerly priced to \$39.95 **\$15⁸⁵** Formerly priced to \$59.50 **\$22⁸⁵**
E.O.M. Price _____ E.O.M. Price _____
Formerly priced to \$85.00 **\$35⁸⁵**
E.O.M. Price _____
- **Ladies' Raincoats—**
Plaids and solid colors. Satin finished and all wool gabardines.
Genuine rain repellent materials.
\$12.95 Values **\$8⁸⁵** \$16.95 Values **\$10⁸⁵**
Now _____ Now _____
\$25.00 Values **\$15⁸⁵** \$35.00 Values **\$23⁸⁵**
Now _____ Now _____
\$49.95 Values **\$35⁸⁵**
Now _____
- **Spring Gabardine Coats—**
All wool, full length coats. Back yoke with gores adding fullness. **\$34⁸⁵**
Colors: gray, beige and neon blue. Sizes 10 to 16. Regular \$39.95
- **One Rack Crepe Dresses—**
Good for early Spring wear. Sizes 11 to 44. Red, green, navy, black, gray and other pretty colors. Formerly to \$18.95, EOM Price **\$9⁸⁵**
- **One Rack Crepe Dresses—**
These are in half sizes, 14½ to 24½, in black, navy and red. \$14.95 values, EOM Price **\$3⁸⁵**
- **Tilly Tyler Shirtmaker Blouses—**
Adorable blouses that are made to fit. Plaids, stripes, small floral figures and pastels. E.O.M. Special **2 for \$3⁰⁰**

★ MEN'S AND BOYS' WEAR ★

- **Hart Schaffner & Marx Suits—**
Three special groups that mean real savings . . .
Regular \$54.50 and \$55.00 Values **\$39³⁵** Regular \$59.50 and \$65.00 Values **\$45³⁵** Regular \$75.00 and \$85.00 Values **\$54³⁵**
- **Special Group of Merit Suits—**
Reg. \$29.50 Values **\$17³⁵** Now _____ Reg. \$37.50 Values **\$19³⁵** Now _____ Reg. \$49.50 Values **\$34³⁵** Now _____
- **Two Other Groups Regular Men's Suits—**
\$45.00 to \$69.50 Values **\$34³⁵** \$75.00 to \$85.00 Values **\$54³⁵**
E.O.M. Price, Now _____ E.O.M. Price, Now _____
- **One Group Jackets—**
Included are suedes, corduroys, tweeds, poplin. Also 3 boys' sport jackets. Better shop early! **½ Price**
- **Grey Chambray Shirts—**
Sizes 14, 14½, 15 and 16. Formerly sold for \$4.50, E.O.M. Price **\$2⁹⁵**
- **Group Van Heusen Shirts—**
Men's dress shirts in all sizes. Formerly \$3.95, E.O.M. Special **\$2⁹⁵**
- **One Lot Men's Pajamas, 3 Groups—**
\$3.95 and \$4.50 **\$2⁹⁵** \$4.95 **\$3⁸⁵** \$5.95 and \$6.95 **\$4⁸⁵**
Values _____ Values _____ Values _____
- **Men's Broadcloth Shorts—**
Full cut, elastic backs. Snap fasteners. Special for E.O.M. Sale—Pair **95¢**
- **Men's Athletic Undershirts—**
White, panel ribbed. Sizes 34 to 46. E.O.M. Sale—Each **49¢**
- **One Group Men's Sweaters—**
These are all wool long sleeve sweaters. E.O.M. Clearance, Special **½ Price**
- **One Group Men's Sport Shirts—**
Includes corduroy, flannel, wool and rayon. They come in solid reds and plaids—E.O.M. Price **½ Price**
- **One Lot Boys' Sweaters—**
Long sleeve. Sizes, Medium and Large. E.O.M. Clearance **½ Price**

★ PIECE GOODS AND LINENS ★

- **Rayon Gabardine—**
42 inches in width in beige, red, gray, navy, orchid, kelly and rose—per yard **95¢**
- **Fast Color Prints—**
36 inches in width in plaids, small figures, florals and stripes—per yard **35¢**
- **Salyna Cloth—**
Washable and crease resistant. 40 inches in width. Colors: beige, luggage, blue, aqua, gold, yellow, natural, green, gray and black. End-of-Month price, per yard **\$1⁷⁵**
- **Slip and Blouse Material—**
A nice 39 inch rayon in colors of beige, yellow, white and teardrop. E.O.M., per yard **\$1²⁵**
- **Special Group of Material—**
A remarkable saving on a group of rayons, nylons and cottons priced up to \$1.95 yard—E.O.M., yard **85¢**

★ COSMETIC DEPARTMENT ★

- **Strange "Lanolin"—**
The newer skin care so necessary with Spring just around the corner. Regular 4 oz. \$1.50 bottle. Introductory offer.....(plus tax) **\$1⁰⁰**
- **Face Powder—**
The new powder for beauty—a whisper, soft veil of flattery. Exquisitely fragrant. Reg. value 3.50. Special E.O.M. price (plus tax) **\$2²⁵**
- **Lipstick Special—**
Lovely shades, mellow texture. Just the right protection during Spring winds and sun. Reg. value \$3.50. Special EOM price (plus tax) **\$2²⁵**

★ LINGERIE AND ACCESSORIES ★

- **Cotton Gloves—**
Hand sewed shorties, gauntlets, cuff and button trim. In brown, black and white. Regular values to \$3.50—Special E.O.M. price **\$1⁹⁵**
- **Ultra Sheer Nylon Hose—**
54 gauge, 51 denier in the new Spring colors of Romance Beige, Bronzelite, Naive Beige and Aperiitif. Regular values to \$2.50—Special E.O.M. price **2 Pairs \$2⁹⁵**
- **Crepe Slips and Petticoats—**
Fine petticoats and slips in white, navy and black. Junior sizes 7 to 15. Regular sizes 32 to 40. Regular values to \$7.90—Special E.O.M. price **\$3⁹⁵**
- **Ladies' Gowns—**
A lovely group of jersey, crepe and satin gowns in blue, white, pink, black and green. Lace and applique trim. Broken sizes and styles. Regular values to \$9.95—Special E.O.M. price **\$4⁹⁵**

★ IN THE SHOE DEPARTMENT ★

- **One Group Joyce Shoes—**
In green suede, green calf, tan calf, brown calf. 60 pairs of these shoes that sold up to \$12.95 **\$5⁹⁵**
- **One Group Women's Shoes—**
Dress and street shoes in black calf and brown calf. Only 89 pairs, that sold up to \$12.95—Now **\$3⁹⁵**
- **One Group Men's Shoes—**
Odds and ends. They will go fast. Only 27 pairs, that formerly sold up to \$17.50—Now **\$7⁹⁵**
- **One Group Children's Shoes—**
This is another group of odds and ends. There are only 23 pairs that sold up to \$4.95 per pair—Special E.O.M. price **\$1⁹⁵**

Fear Gulf Employee Is Drowning Victim

PALESTINE, TEXAS—(AP)—Fear has been expressed W. F. A. Lenz may have drowned in the Trinity River near here. Gulf Oil Company officials said Lenz, 24, of Houston, failed to meet a company car Tuesday night. He had been checking company communications lines in the river bottom on foot. More than 30 people searched all day Wednesday for Lenz, and the river bed was dragged with hooks.

Two-Price System For Cotton Sought

WASHINGTON—(AP)—A group of Texans are in Washington advocating a two-price system for cotton. A leading advocate of the plan is J. E. McDonald, Texas agriculture commissioner. Under the plan, American cotton growers would be guaranteed a fixed price for the part of their crop sold at home. That sold abroad would be sold on the world market. The government would set up domestic growth allotments. Farmers would be allowed to grow as much as they desired for the world market. Among the Texans here for cotton talks are Cleve Tandy, Brownsville; F. M. Vining, Weslaco, and James D. Ward, San Benito.

FORMER MEMBER OF PRISON BOARD DIES
GREENVILLE, TEXAS — (AP) — Barney L. Harrison, 55, former cotton dealer, died here Wednesday. He had served six years on the State Prison Board, ending February 1.

The wolverine is probably the most powerful creature for its size living.

YUCCA Ends Today

BETRAYAL! VIOLENCE! FEAR!
Nothing could shake his love!

PRODUCING ARTISTS, Inc. presents
ZACHARY LUISS
SCOTT HAYWARD
LYNNA SYDNEY
LYNN GREENSTREET
LUCILLE MARTHA
BREMER VICKERS

RUTHLESS

Added: "CANADA CALLS"

RITZ Ends Today
THE FAMILY TREASURE

DIAMOND JIM
Edward ARNOLD
Cesar ROMERO
Jean ARTHUR

Added: MUSICAL and NEWS

POWER Ends Today
A Gay Comedy of Love and Marriage!
LORETTA YOUNG
DAVID NIVEN
"Eternally Yours"
Added: "AERIAL HOT RODS"

Barney's Market
North Vault at Southern Ice Co.—Phone 1288

LOIN or
T-Bone Steak, lb. 70¢
ROUND STEAK, lb. 65¢
VEAL CUTLETS, lb. 80¢
Boneless
BEEF ROAST, lb. 60¢
Waste free, excellent for slicing
RUMP ROAST, lb. 48¢
PORK CHOPS, lb. 58¢
Center cut
Calf
SWEETBREADS, lb. 50¢
CALF HEARTS and TONGUES, lb. 39¢
SHORT RIBS, lb. 30¢
Excellent for barbecuing, nice and meaty
Prime
RIB ROAST, lb. 60¢
Round Bone
SHOULDER, lb. 55¢
Excellent for Swiss steak
SPARE RIBS, lb. 45¢
BACON
Swift's, lb. pkg. 55¢
Armour's Star, lb. 60¢
Slab Bacon, Armour's Star, de-rined, lb. 60¢
CHUCK ROAST, lb. 40¢
PORK ROAST, lb. 48¢
Boston Butts, waste free
Swift's
PICNICS, lb. 48¢
Cooked, ready-to-eat
Perigan's Red Nette
HAMS, lb. 65¢
SAUSAGE
Swift's Brookfield, lb. 55¢
1-lb. Rolls, lb. 40¢

Dunlap's
Midland's Complete Department Store

● **Ladies' Overnight Cases—**
A nationally advertised brand. Only 3 left. On sale at **½ Price**

MIDLAND

Walgreen Agency
DRUG CO.

SPECIALS THURSDAY P. M.—FRIDAY—SATURDAY
Right reserved to limit quantities.

We are never knowingly undersold... We meet or beat any price in Midland...



New beauty in less than 5 minutes!

The very first time you use this exquisite beauty treatment you'll be amazed! Tussy Creamy Masque helps brighten dull, drab complexions; makes your skin feel soft and smooth. Tussy Creamy Masque helps loosen blackheads, clears away surface impurities. Use it frequently to refresh your beauty! \$1.00 plus tax

TUSSY creamy masque

Miss Stella Smyth, special Tussy representative, will be in our toilet goods department from February 24th through February 26th to give personal beauty advice.

LUSTRE-CREME SHAMPOO
4-oz. jar... **69c**

75c Size ANACIN TABLETS
Bottle of 50... **59c**

60c ALKA-SELTZER TABLETS
Tube of 25... **49c**

3 1/2-oz. Size HALO SHAMPOO
Soap-less... **29c**

KOTEX Sanitary NAPKINS
Box of 12... **33c**

79c PAISLAYS SHAVE BOWL... 39c
75c BAUME BEN-GAY tube... 69c
BROMO-SELTZER regular size... 57c
75c ALOPHEN PILLS bottle 100... 49c
\$1.00 Italian Balm, 4-oz. 89c

GILLETTE BLUE SLADES
10 for **49c**

9c Cotton Wash Cloths
2 for **13c**
Limit four only.

9c SHINOLA Liquid Polish
Black, brown, tan (limit 2)... **9c**

Save Over Half 19c LATEX PANTS
Light! Comfy!... **9c**

50c CALOX TOOTH POWDER... 49c
B.F.I. ANTISEPTIC POWDER 3/4-oz. 25c
300 count
Kleenex Tissues... 2 for 53c
DR. SCHOLL'S ZINO-PADS... 33c
\$1.25 PETROGALAR 16-ounce... 98c

Save 6c a Bottle—15c SHINOLA Liquid Polish
Black, brown, tan (limit 2)... **9c**

Save Over Half 19c LATEX PANTS
Light! Comfy!... **9c**

50c CALOX TOOTH POWDER... 49c
B.F.I. ANTISEPTIC POWDER 3/4-oz. 25c
300 count
Kleenex Tissues... 2 for 53c
DR. SCHOLL'S ZINO-PADS... 33c
\$1.25 PETROGALAR 16-ounce... 98c

9c Cotton Wash Cloths
2 for **13c**
Limit four only.

Giant 80-Page '49 INCOME TAX GUIDE
Sample forms!... **50c**

70c PINEX COUGH MEDICINE... 59c
45c FLETCHER'S CASTORIA... 36c
33c CARTER'S PILLS Reg. size 29c
Mennen Shave Cream 1ge. 44c
Glass Wax, pint can... 59c

Famous Becton-Dickson \$1.50 Fever Thermometer
Oral type... **98c**

1001 DRUG SALE

VALUES GALORE THROUGHOUT EVERY STORE

79c PAISLAYS SHAVE BOWL... 39c
75c BAUME BEN-GAY tube... 69c
BROMO-SELTZER regular size... 57c
75c ALOPHEN PILLS bottle 100... 49c
\$1.00 Italian Balm, 4-oz. 89c

GILLETTE BLUE SLADES
10 for **49c**

60c ALKA-SELTZER TABLETS
Tube of 25... **49c**

3 1/2-oz. Size HALO SHAMPOO
Soap-less... **29c**

KOTEX Sanitary NAPKINS
Box of 12... **33c**

TOOTH PASTE 29c
IPANA, Regular 50¢ Tube—(Limit 1)

TIDE SUDS 27c
LARGE BOX—(Limit 1)

TENNIS BALLS \$1.39
PENNSYLVANIA, Can of 3, Vacuum Fresh

COCA-COLA 19c
CARTON OF 6—(with Bottles)

PONDS TISSUES 19c
300 COUNT—Package

10c BOWL DEODORANT, 2 for 13c!
Limit 4 only.

S.T. 37 SOLUTION 5-oz. size... 49c
FASTEETH POWDER med. size... 54c
10¢ Medicine Dropper only 7¢
PROPHYLACTIC BARBER COMB.... 25c
VICK'S POCKET-SIZE INHALER... 27c

LISTERINE TOOTH PASTE
With Dog Head Cap
There are six in all... **29c**

COUPON
10c PO-DO-MAY Shave Soap
With This Coupon
3 for 14c
(Limit 3)

33¢ Size EPSOM SALT - Lb.
16c
(Limit 1)

45c Size Medicinal GLYCERIN
3-oz. **29c**
(Limit 1)

Tussy Wind and Weather LOTION
Reg. \$1.00 **50c**

GEM LIGHTER FLUID
Reg. 19¢ **9c**
Bottle

BUY TWO and SAVE!

100 ASPIRIN TABLETS
43c SIZE
2 for 49c
Now Save 37c

PERFECTION HAND CREAM
42c JAR
2 for 59c
SAVE 25c

ORLIS MOUTH WASH
59c Pint
2 for 89c
SAVE 29c!

TIDY LIQUID DEODORANT
Regularly 49c
2 for 59c
SAVE 39c

DR. WEST TOOTH PASTE
50¢ Tubes
2 for 43c

33c MAGNESIA Tooth Paste
LARGE TUBES
2 for 33c

55c ANIDON TABLETS
BOTTLE OF 50
2 for 69c
SAVE 41c

1.59 OLAFSEN VITAMIN B1 TABLETS
10mg BOTTLE OF 100
2 for 1.89
SAVE 1.29

33c AYTINAL MULTIPLE VITAMINS
BOTTLE OF 100
2 for 2.98
\$5.38 Value
YOU SAVE 2.40

EXTRA SAVINGS!

FORMULA 20 CREAM SHAMPOO
Regular 89c Jar—4 Oz.
2 for 1.19
\$1.78 Value YOU SAVE 59c

25c TR. IODINE Strong, 7% 1-ounce... **2 for 29c**
49c CALAMINE LOTION, 8-ounce bottle... **2 for 59c**

Candy Specials

In Our Modern Candy Dept.

JUDSON CHOCOLATE COVERED MINTS, 1 lb. **59c**
MAYFAIR PEANUT CHOCOLATE CLUSTERS, reg. 69c **49c**
COCOANUT BON BONS regular 49c **39c**
RANCH GIRL PRALINES in mailing carton **\$2.00**
HERSHEY BARS Reg. 5¢ bars (limit 3) **3 for 10¢**
WRIGLEY GUM **3 for 10¢**
SUCHARD CHOCOLATE SQUARES, reg. 45¢ bag **29c**

FOR SMOKERS

Prince Albert • Half & Half • Velvet
TOBACCOS
2 for 21c

Box of FIFTY JOHN RUSKIN
Always fresh! **25c**

CIGARETTES Popular brands, Carton **\$1.69**
PRINCE ALBERT Tobacco, 1 lb. can **89c**
DUNHILL DE NICOTEA Cigarette Holders **\$2.00**
STAR TOBACCO Chew tobacco. Always fresh **12c**

8 Cup Aluminum Vacuum Coffee Maker
\$3.79

Parke Davis ABDOL with Vitamin C Caps
Regular **\$1.00**
\$3.25 Value

Chamberlains Hand Lotion
Regular **59c**
\$1.00

DOUBLE EDGE RAZOR BLADES
25¢ Pkg. SPECIAL WITH COUPON **9c**

20% Federal Excise Tax on Toiletries, Luggage and Billfolds

COUPON

Fire Prevention Pays Off For City

ELLSWORTH, MICH.,—(AP)—Because old Peter Wieland believes in getting in the first punch, the village of Ellsworth hasn't had a fire in nearly three years.

Wieland, the 74-year-old fire chief of this tiny Northwestern Michigan community, explains it this way: "Fighting fires is like boxing—the fellow that gets in the first hard punch usually wins. A small fire

is easier to put out than a big one, and preventing one is easiest of all. That's what we've been trying to do in Ellsworth—prevent fires."

Although Chief Wieland's aim is by no means unique, people of the village of Ellsworth proudly think his record is.

The last time this community of 550 population had a fire was May 9, 1946. That was 33 months ago. The village credits Wieland's hard work, caution, and planning.

The fire department carefully burns grass in all vacant lots each spring to prevent damaging grass fires.

To eliminate possible fire sources in homes or office buildings, the whole town enthusiastically pitches in with fire inspections; and then, if hazards are found, Wieland sees that the owners do something about them.

As a guard against the day when their record inevitably ends, Wieland and his crew keep their fire-fighting equipment in top shape.

Applications were filed for three new developments in each of Mitchell, Pecos, and Winkler Counties. Gaines County had two new ventures. The remaining locations were staked one each in Crane, Dawson, and Ward Counties.

ANDREWS COUNTY
Humble No. 31 J. E. Parker, 690 feet from south and west lines of section 21, block A-54, pal survey rotary, 8,500 feet depth, West Parker field, starting immediately.

Texas No. 2-V State of Texas, 661.5 feet from south and west lines of north half of section 23, block 12, University survey, rotary, 7,400 feet depth, Block 12 field, starting at once.

Superior No. 1-14-A University, 1-322.6 feet from east and 1,323.8 feet from north lines of section 13, block 14, University survey, cable, 3,200 feet depth, Shafter Lake-Gas field, starting immediately.

Superior & Texas No. 1 C. W. Logsdon, 690 feet from north and east lines of west half of section 2, block A-27, pal survey, rotary, 7-150 feet depth, Fullerton field, starting immediately.

Texas Pacific No. 3-F University, 760 feet from east and 660 feet from south lines of section 13, block 13, University survey, rotary, 10,000 feet depth, Shafter Lake-Devonian field, starting at once.

Sinclair Prairie Oil Company No. 1-170 University, 660 feet from west and south lines of section 14, block 14, University survey, rotary, 10,000 feet depth, Shafter Lake-Devonian field, starting at once.

COCHRAN COUNTY
E. Constantin, Jr., et al. No. 2 Lewis Phillips, 660 feet from north and east lines of lease in tract 29 acres of league 113, Potter CSL survey, rotary, 5,000 feet depth, Levelland field, starting immediately.

Gulf No. 1 N. S. De Loache, 440 feet from north and east lines of west 592.39-acres of south 3,554.4-acres of league 113, Potter CSL survey, rotary, 5,000 feet depth, Levelland field, starting at once.

Star Oil Company (Dallas) No. 1 and No. 1-A W. H. Siler: No. 1 is 467 feet from east and south lines of labor 5 and No. 1-A is 467 feet from south and west lines of labor 5, league 63, Midland CSL survey, rotary, 5,000 feet depth, Levelland field, starting immediately.

Anderson - Prichard No. 7 Leonard E. Lindsay, 660 feet from west

New Drillsites Show Slight Increase In Midland Oil Play

Oil activity in the Midland area increased the past week, as shown by records of the oil and gas division of the Railroad Commission of Texas. During the seven-day period, 62 applications to drill were filed—an increase of three over last week's total.

Seven wildcat locations were listed. These were distributed three to Pecos County, and one each to Howard, Kent, Scurry, and Yoakum Counties. Original applications on wildcats in Gaines and Pecos were amended.

Gaines, Hockley, and Loving Counties also had one amended application each. There were two amended applications for Pecos. All of the foregoing covered field wells.

Ector County gained 11 field projects. Drillsites were established for eight wells in Cochran County.

Andrews County gained six new explorations and Hockley had five. Applications for four new ventures were filed in Scurry County.

Applications were filed for three new developments in each of Mitchell, Pecos, and Winkler Counties. Gaines County had two new ventures. The remaining locations were staked one each in Crane, Dawson, and Ward Counties.

ANDREWS COUNTY
Humble No. 31 J. E. Parker, 690 feet from south and west lines of section 21, block A-54, pal survey rotary, 8,500 feet depth, West Parker field, starting immediately.

Texas No. 2-V State of Texas, 661.5 feet from south and west lines of north half of section 23, block 12, University survey, rotary, 7,400 feet depth, Block 12 field, starting at once.

Superior No. 1-14-A University, 1-322.6 feet from east and 1,323.8 feet from north lines of section 13, block 14, University survey, cable, 3,200 feet depth, Shafter Lake-Gas field, starting immediately.

Superior & Texas No. 1 C. W. Logsdon, 690 feet from north and east lines of west half of section 2, block A-27, pal survey, rotary, 7-150 feet depth, Fullerton field, starting immediately.

Texas Pacific No. 3-F University, 760 feet from east and 660 feet from south lines of section 13, block 13, University survey, rotary, 10,000 feet depth, Shafter Lake-Devonian field, starting at once.

Sinclair Prairie Oil Company No. 1-170 University, 660 feet from west and south lines of section 14, block 14, University survey, rotary, 10,000 feet depth, Shafter Lake-Devonian field, starting at once.

COCHRAN COUNTY
E. Constantin, Jr., et al. No. 2 Lewis Phillips, 660 feet from north and east lines of lease in tract 29 acres of league 113, Potter CSL survey, rotary, 5,000 feet depth, Levelland field, starting immediately.

Gulf No. 1 N. S. De Loache, 440 feet from north and east lines of west 592.39-acres of south 3,554.4-acres of league 113, Potter CSL survey, rotary, 5,000 feet depth, Levelland field, starting at once.

Star Oil Company (Dallas) No. 1 and No. 1-A W. H. Siler: No. 1 is 467 feet from east and south lines of labor 5 and No. 1-A is 467 feet from south and west lines of labor 5, league 63, Midland CSL survey, rotary, 5,000 feet depth, Levelland field, starting immediately.

Anderson - Prichard No. 7 Leonard E. Lindsay, 660 feet from west

By sending your CLOTHES to MASTER CLEANERS it's easy to keep "fit" with our fabric-deep cleaning and stay-put press.

RENEW YOUR FLOORS YOURSELF with our RENTAL FLOOR SANDERS! FLOOR WEAR AS ONLY "SKIN DEEP" \$2.50

FIRESTONE STORE

LUNCH BOX that Wakes up Appetites. EASY TO FIX WITH Morton Foods.

RELAX those tired, aching muscles with a modern HEAT LAMP. HERE'S SOOTHING HEAT that bakes out muscular aches and pains.

Germany's Romantic Bulletin Board



A Frankfurt, Germany, fraulein reads over the "love advertisements" posted on a bulletin board. The large ad in center reads: "Lonely gentleman wishes to make acquaintance of a young, vivacious lady, if possible with girl friend, to spend week-ends at a week-end house in romantic scenery near Frankfurt." Bulletin boards are to Germany what newspaper want-ads sections are in the United States.

English War Brides Meet At Party For One In Crane Home

CRANE—A pink and blue tea in the home of Mrs. Gessy Anderson on Friday afternoon was a surprise courtesy to Mrs. Ruby Palmer, formerly of England. The novel part was the meeting for the first time of the four English brides who are now making their homes in Crane and the fact that Mrs. Anderson was a native of Brazil.

Guests were Mrs. A. J. Klein, Mrs. Henry Hite, Mrs. O. C. Aron, Mrs. C. E. Clayton, Mrs. Clinton Carroll, Mrs. George Clark, Mrs. E. C. Palmer, Mrs. James Robnett, Mrs. W. K. Howthorne and Mrs. Dan Lively.

English Edition Of Mechanism Text Set. AUSTIN—A textbook revised by a University of Texas professor and already in use by colleges in the United States, Canada, and China, is scheduled for publication in Spanish.

Spanish Edition Of Mechanism Text Set. V. L. Doughtie, professor of mechanical engineering and author of the sixth revision of Schwamb, Merrill and James' "Elements of Mechanism," has been informed that M. Aguilar, Madrid, Spain, publisher, wants to translate and publish the book.

Advertisement for Miller-Bros. MILLER-BROS. PHONE 774-MIDLAND

Advertisement for Telephone Operators Wanted. Telephone operators play an important part in everyday life. Positions are open for qualified women in this permanent work.

SEAT COVERS MADE TO YOUR ORDER "THE BEST COSTS LESS" Everything for the Auto Trim: Seat Covers, Upholstery, Plastic, Cotton; Carpet, Mats, Head Lining, Wind Lace, Weather Strip, Art Leather, Sport Tops, Wool, Mohair, Fiber, Commercial Trucks, etc.

Telephone Operators Wanted. Telephone operators play an important part in everyday life. Positions are open for qualified women in this permanent work. Frequent pay increases, vacations with pay. Apply to chief operator.

John Winthrop, governor of the Massachusetts Bay Colony and a founder of Boston, belonged to landed gentry of England. Modern snowshoes differ in no way from those used by Indians when white men first came to North America.

GOOD EATING 3-MINUTE OATS. An advertisement for Minute Oats featuring a cartoon character.

THRIFT TIPS From Your Favorite Food Market! BELL PEPPERS, pound 25¢; YELLOW ONIONS, lb. 5¢; FLORIDA ORANGES, lb. 7 1/2¢; MARSHMALLOWS, 8 oz. pkg. 15¢; CRISCO, 3 lb. can 98¢; MONARCH COFFEE, lb. 49¢.

CONTEST THE GOLD RUSH OF '49. 10 GOLD WATCHES EVERY WEEK! 4 ROUND TRIPS TO CALIFORNIA! GOLDEN YELLOW MEADOLAKE MARGARINE 41¢. EGGS Local, fresh, large size, doz. 49¢; PECANS Paper shell Pound 29¢; BREEZE 2 Large Boxes 39¢.

A&M College Enrolls 7,450 For New Term. COLLEGE STATION—Final registration at Texas A&M College for the Spring semester is 7,450, according to H. L. Heaton, registrar. Of these, 1,200 are freshman students at the Bryan Air Field Annex. Registration for the 1949 Spring semester closed February 16. Advertise or be forgotten.

WELCH'S PRESERVES. You never tasted PRESERVES like these! QUALITY! FLAVOR! downright ENJOYMENT! WELCH'S GRAPE JUICE COMPANY WESTFIELD, NEW YORK.

Shrimp Chowder Is Lenten Item



Serve canned shrimp chowder New Orleans style, with rice.

By GAYNOR MADDOX
NEA Staff Writer

Large bowls of steaming hot shrimp chowder is a good Lenten menu suggestion. The price of canned shrimp is running about 20 per cent lower than last year. Canned peas, used in the recipe, are in the bargain list. And rice, served with the chowder, is inexpensive.

The shrimp are packed in 5-ounce

cans in jumbo, large, medium and small sizes.

Shrimp Chowder (4 Servings)

Four tablespoons butter or fortified margarine, 1/2 cup diced celery, 1 large onion, chopped, 1/4 cup chopped green pepper, one 5-ounce can shrimp, 1 No. 2 can peas, 1 No. 2 can tomatoes, 1/2 teaspoon chili powder, 1 bay leaf, 2 cups hot cooked rice.

Melt butter or margarine in saucepan. Add celery, onion and green pepper; cook until onion is tender but not brown. Drain liquid from shrimp and peas; measure and add water to make 1 1/2 cups. Add to saucepan with tomatoes, chili powder and bay leaf; cover and cook over low heat 20 minutes. Add shrimp and peas, cover and simmer 30 minutes or until slightly thickened. Serve in soup bowls with mounds of rice in center.

Shrimp And Rice Au Gratin (4-6 Servings)

Three tablespoons butter or fortified margarine, 3 tablespoons flour, 1 2/3 cups tomato juice, 1/2 teaspoon salt, 1/8 teaspoon tabasco, 1 cup grated American cheese, 1 5-ounce can shrimp, drained, 1 1/4 cups cooked rice, 1 cup soft bread crumbs, 2 tablespoons melted butter or fortified margarine.

Melt butter, blend in flour. Add tomato juice, stirring constantly and cook until thickened. Add salt, tabasco and grated American cheese; stir until cheese is melted. Add shrimp and rice. Place in 1-quart casserole and cover with crumbs which have been mixed with the melted butter or margarine. Bake in a moderate oven (375 degrees F.) 15 minutes, until crumbs are brown.

Mrs. Titus Hostess To Friendship Club

CRANE — The Friendship Club met at the Community Hall on Friday afternoon with Mrs. Shirley Nell Titus as hostess. "42" was played during the afternoon and high score was won by Mrs. Betty Phillips, with low score going to Mrs. Ida Whittenburg.

Refreshments were served to the following members: Nancy Slater, Louetta Vines, Ethel Neesley, Ha Gooch, Wilma Clark, Lucille Clark, Bessie Brent, Georgia Orr, Mrs. Clancy, Anna Green, Betty Phillips and Lillie Belle Lear.

Guests were Mavis Williams, Dorothy Earp, and Ida Whittenburg.

A short business meeting was called by the secretary, Georgia Orr, and Mrs. Jack Mathis was elected to membership in the club. It was also voted to have a party every three months for the husbands of the members.

It's Planting Time!

Choice Gladiolus

New, modern giants in every color from purest white to deepest purple. Healthy, vigorous bulbs of superior varieties will give you gorgeous blooms to glorify your garden and furnish you beautiful cut-flowers.

Cut-Flower Collection (Medium Size Bulbs)

100 bulbs for \$4.75
50 bulbs for \$2.50

Rainbow Collection (Top Size Bulbs)

100 bulbs for \$6.75
50 bulbs for \$3.60
25 bulbs for \$2.00

Illustrated Catalog On Request.

OPEN 3 to 6 P.M. DAILY MONDAY THRU FRIDAY

J. M. RATCLIFF

2307 W. Kentucky Midland

Mrs. McCasland Is Honoree At Shower

CRANE — Mrs. M. McCasland was honored at a pink and blue shower held at the Phillips recreation hall with Mrs. Vernon Bennett, Mrs. Homer Hunter, Mrs. H. O. True and Mrs. Leonard Chandler as hostesses. The guests registered in a tiny baby book and the centerpiece was a West Texas tumbleweed, sprayed with silver paint and decorated with pink and blue bows. The refreshments plate held ribbon sandwiches, olives, and Cokes served with straws tied with the bows. Favors were blue bassinets filled with candy.

Attending were Mrs. Jack Mathis, Mrs. Herb Schlittler, Mrs. Tommy Pheasant, Mrs. H. B. Terrell, Mrs. Bill Stark, Mrs. Steve Stone, Mrs. Frank Hall, Mrs. Victor Patterson, and the honoree and hostesses.

Headquarters of the national Women's Christian Temperance Union are in Evanston, Ill.

Teacher Shortage In 1953 May Be Acute

AUSTIN—Parents, your child may not have a school teacher in 1953! A survey of elementary teaching positions in Texas by Hollis A. Moore, Jr., University of Texas graduate student, indicates there will be a shortage of more than 20,000 teachers by 1953.

Moore, assistant to Dean L. D. Haskew of the College of Education, drew his figures from the Bureau of Vital Statistics and elementary enrollment data in the State Department of Education.

He found that Texas schools will require 29,844 new elementary teachers in the five-year period, 1949-50 through 1953-54, to replace experienced teachers who leave the classroom and to provide additional teachers for each 30 pupils due to increased enrollment. Less than 2,000 elementary teaching certificates of all kinds were issued in 1947-48, the survey indicated.



Washington and Lee University, Lexington, Va., will celebrate its 200th anniversary this year, and the government is honoring it with this three-cent commemorative stamp. The central design is a view of the university flanked by portraits of Generals Washington and Lee. The stamp will go on sale in Lexington on April 12.

Read Reporter-Telegram Classified Ads

Some theories hold that the core of the earth is made up of an alloy of nickel and iron, starting at a depth of about 2,000 miles.

The Women's Christian Temperance Union has more than 10,000 local branches and a membership of about half a million.

More people use Morton's

WHEN IT RAINS IT POURS



THIS WEEK AT SAFEWAY:

GROUND BEEF

offers good eating at a thrifty price

Our ground beef isn't ordinary "hamburger". It's a carefully prepared item, made according to rigid Safeway standard. It contains nothing but selected fresh beef—ground a few pounds at a time. Safeway ground beef holds its volume well during cooking because it contains no excess fat. No wonder it's such a popular favorite. Today's low price at Safeway: **lb. 45¢**

- | | | | |
|---|------------|---|------------|
| Pork Liver
Fresh, sliced—pound | 25¢ | Pork Chops
Lean center cuts—pound | 49¢ |
| Link Sausage
Pure pork—pound | 45¢ | Sliced Bacon
Corn King—pound | 39¢ |
| Beef Hearts
Govt. inspected—pound | 29¢ | Steaks
Govt. graded Beef, T-Bone, Club, Sirloin lb. | 56¢ |

Chuck Roast

U. S. Govt. graded Beef
Pound

39¢

Salad Dressing

Duchess—16 oz. glass **29¢**

Peanut Butter

Beverly Creamy or Chunk, 16 oz. **39¢**

Sandwich Spread

Lunch Box—16 oz. glass **35¢**

Tea Timers

Butter Crackers—16 oz. box **29¢**

Graham Crackers

Pirates Gold—3 lb. box **55¢**

Margarine

Sunnybank, Parkay, Allsweet—pound **29¢**

Fab

"with the super-wetting action" 2 boxes **45¢**

SUGAR

Fine granulated Beet
10 lb. bag

65¢

Peas

Sugarbelle sweet—No. 2 tin **19¢**

Tea Bags

Canterbury Orange Pekoe 16 count box **18¢**

Cheese

Dutch Mill American—2 lb. loaf **95¢**

Airway Coffee

ground as you like Pound **39¢**

Nob Hill Coffee

finest blended whole bean Pound **42¢**

Peaches

Highway sliced or halves in syrup, 2 1/2 can **25¢**

Catsup

Red Hill—1 1/2 oz. glass **15¢**

Ivory Soap

"It floats"—medium bar **9¢**

Duz

"Does everything"—20 1/2 oz. box **29¢**

Tide

Large box **25¢**

Supreme Cookies

Town House—7 1/4 oz. bag **30¢**

Furniture Polish

Old English—24 oz. glass **19¢**

Crisco

Vegetable shortening—3 lb. tin **95¢**

Snowdrift

It's "emulsorized"—3 lb. tin **95¢**

Royal Satin

Pure vegetable shortening—3 lb. tin **89¢**

Rich, Hard-Working Suds-in hardest water!

No Water Softener needed with.....

THE NEW PAR SOAP 23 oz. box **25¢**

MADE Fresh

SOLD Fresh

TASTES Fresh

Durkee's OLEOMARGARINE

Rushing from Factory-to-you insures Flavor that's Country-Fresh!

© Durkee's Yellow Margarine is naturally good, and energy-rich. Fifteen thousand units of Vitamin A per pound. Quartered, ready to serve too! Try it today!

Try Country-Fresh Flavor spread on bread or rolls.

Durkee's QUARTERED YELLOW MARGARINE

All the Charm of Fat and Firm

Top your vegetables with Country-Fresh Flavor.

FRESH FRUITS AND VEGETABLES

A colorful array of fresh foods to choose from. Our experts cover the country's growing areas, send to Safeway the "pick of the crops." Result: a complete selection of the nation's best produce within your easy reach.

- | | | | |
|--|------------|--|------------|
| Carrots
Clip top golden rods—pound | 10¢ | Cabbage
Firm green heads—pound | 5¢ |
| Apples
Northwest Red Delicious—pound | 19¢ | Cauliflower
Snowball heads—pound | 21¢ |
| Avocados
King of Salads—pound | 49¢ | Onions
Yellow globes—pound | 8¢ |

ORANGES

Texas sweet and juicy
5 lb. bag

29¢

Grapefruit

Texas Pinks, Pound

7¢

Potatoes

U. S. No. 2 Reds
10 lb. bag

49¢

Tomatoes

Firm red slicers
14 oz. tube

25¢

Be sure...shop **SAFEWAY**



Poland Expects Big College Enrollment

WARSAW, POLAND.—(AP)—Poland's ministry of education expects a 20 per cent boost in enrollment of students in colleges and universities during 1949.

The ministry estimated registrations would reach around 100,000, compared with the previous top post-war figure of 80,000.

The rapid reconstruction of educational institutions damaged or destroyed during the war is credited with steadily increasing facilities for expanded student enrollments.

New Drillsites Increase—

(Continued from page 2) Thompson survey, combination tools, 6,100 feet depth, Snyder field, starting immediately.

Star Oil Company, Inc., (Dallas) No. 1 E. Orcutt, 467 feet from south and west lines of labor 18, leaguis 43, 4,500 feet depth, starting immediately.

Amended: Hooper & Duke (Midland) No. 2 L. B. Taylor, 440 feet from north and west lines of lease in labor 21, Leaguis 44, Rains G&S survey, rotary, 4,905 feet depth, leveland field starting at once to deepen.

HOWARD COUNTY J. W. Muse No. 1 Bert Massingill, 478 feet from east and 487 feet from north lines of section 25, block 33, T-3-N, T&P survey, rotary, 7,800 feet depth, wildcat, 20 miles north of Big Spring, starting March 15.

KENT COUNTY Hawatha and M. E. Davis (San Antonio) No. 1 Bert Wallace, 660 feet from north and west lines of section 87, block 98, H&TC survey, rotary, 1,750 feet depth, wildcat, six miles southwest of Jayton, starting immediately.

LOVING COUNTY Amended: J. S. Grisham, et al. No. 2 J. S. Grisham, et al. west half of southeast quarter of section 2, block 56, T-2, T&P survey, combination tools, 3,320 feet depth, Tunstill field, starting at once. (corrected location).

MITCHELL COUNTY Magnolia No. 2 P. C. Coleman, 990

feet from north and 330 feet from west lines of section 80, block 97, H&TC survey, rotary, 2,900 feet depth, Coleman Ranch field, starting at once.

Falcon Company No. 2 and No. 3 R. J. Byrd: No. 2 is 330 feet from north and 1,598 feet from east lines section 19B; and No. 3 is 330 feet from north and 948 feet from east lines of section 19B, block 3, H&GN survey, cable, 1,750 feet depth, Sharon Ridge field, starting April 5.

PECOS COUNTY Amended: Magnolia No. 1-39 Eaton, 2,398.5 feet from south and 548 feet from east lines of lease in section 39, block 2, H&TC survey, rotary 10,000 feet depth, Pecos Valley wildcat, nine miles west of Imperial, to deepen. (This application filed to cover drilling below 9,000 feet. Project has been plugged at 9,526 feet).

E. C. Hubble No. 1 H. J. Eaton, 330 feet from north and south-west lines of north quarter of west quarter of section 27, block 3, H&TC survey, rotary, 1,750 feet depth, wildcat, 18 miles south of Imperial, starting at once.

E. C. Hubble No. 2 H. J. Eaton, 330 feet from southwest and northwest lines of south quarter of west quarter of section 27, block 3, H&TC survey, rotary, 2,000 feet depth, wildcat, 18 miles southeast of Imperial, starting immediately.

Messinger - Hadlock et al. (Royalty) No. 5 Magnolia - Byrns, 330 feet from north and east lines of south half of northwest quarter of section 30, block 10, H&GN survey, combination tools, 1,500 feet depth, Pecos Valley High Gravity field, starting at once.

Amended: Helmerich & Payne, Inc. Cardinal Division No. 57-E Tippett, 1,530 feet from north and 470 feet from east lines of section 40, block 1945, GC&SF survey, cable, to plug back to 400 feet, Toborg field, starting at once.

Amended: Helmerich & Payne, No. 62-E Tippett, 1,927 feet from north and 259.4 feet from east lines of section 40, block 1944, GC&SF survey, cable, to plug back to 380 feet, Toborg field, starting immediately.

Humble No. 6 Ernest Piggs, et al. 660 feet from north and west lines of section 2, block 114, GC&SF survey, rotary, 3,000 feet depth, Fort Stockton field, starting immediately.

Culbertson & Irwin, Inc., No. 1 San Pedro Land Company, 330 feet from north and west lines of section 3, block 213, M. J. Ashmore survey, rotary, 1,500 feet depth, wildcat, 12 miles southwest of Imperial, starting at once.

Gulf No. 87-To I. G. Yates, 115 feet from west and 3,960 feet from south lines of Runnels CSL survey 3, A-2180, cable, 536 feet depth, Toborg field, starting at once.

SCURRY COUNTY Magnolia No. 1 A. B. Eicke, 660 feet from south and west lines of section 209, block 97, H&TC survey, rotary, 7,000 feet depth, wildcat, four miles west of Snyder, starting at once.

Standard No. 2-4 Jessie W. Brown, 1,960 feet from north and east lines of section 440, block 97, H&TC survey, rotary, 7,000 feet depth, North Snyder field, starting immediately.

Thomas & Marvel (Midland) Mrs. W. R. Hamblitt, et al. Gulf Camp, 2 is 660 feet northeast of No. 1 Humphreys and 330 feet from east line of lease and No. 3 is 330 feet from south and west lines of lease in section 98, block 97, H&TC survey, cable, 1,900 feet depth, Sharon Ridge-1900 field, starting at once.

Rambo & Stephens (Midland) No. 6 Colorado River Bed, in river bed and 1,896 feet from west line of lot 18, block 1, J. P. Smith survey, cable, 1,800 feet depth, Sharon Ridge field, starting at once.

WARD COUNTY Magnolia No. 2 George Sealy, 330 feet from east and 660 feet from south lines of section 10, block F, G&MMB&A survey, rotary, 3,000 feet depth, Magnolia Sealy South field, starting immediately.

WINKLER COUNTY M. J. Bashara & Sons and Prothro (Wichita Falls) No. 4 M. J. Bashara Sons & Prothro fee, 440 feet from south and 1,320 feet from west lines of section 4, block B-2, psi survey, cable, 3,500 feet depth, Keystone-Colby field, starting in March.

M. J. Bashara Sons & Prothro No. 5-E and No. 6-E M. J. Bashara & Prothro fee: No. 5-E is 1,320 feet from south and west lines of south-west quarter and No. 6-E is 440 feet from north and 1,320 feet from west lines of southwest quarter of section 4, block B-2, psi survey, cable, 3,500 feet depth, Keystone-Colby field, starting in August.

YOAKUM COUNTY Republic Natural No. 1-A J. C. Sartin, 330 feet from north and west lines of lease in section 19, block C-34, psi survey, rotary, 7,200 feet depth, wildcat, two miles northwest of Segraves, starting at once.

Crane News

CRANE — Pvt. Fred Browning, son of the J. L. Brownings of Crane, has notified his parents that he has arrived in Tokyo, Japan, having been selected with a group of four out of 400 men to make the trip and be attached to the General Headquarters and Service Group with General MacArthur. The group left early in January. Fred is to remain in Japan for two years.

Mrs. B. E. Bolers and children, Bill and Karen, of Abilene are visiting with Mrs. Bolers sister, Mrs. George Chrans. County Attorney and Mrs. C. Bennett have moved into their new home in the new addition in the northwest part of Crane.

Mr. and Mrs. F. H. Wilmoth of Midland and Mrs. Ruth Baker and Mae Whitson, also of Midland visited in the Haydon Wilmoth homes last Sunday.

"Tornado Town" is the title of a 17-minute picture show and sound track that will be shown at the Red Cross Chapter in Crane.

Mr. and Mrs. Herb Schlittler and daughter Charlotte will leave this weekend to go to Tucson, Ariz., to visit with their daughter, Mrs. A. C. McDonald. They will bring Mrs. McDonald's four month old daughter back with them to stay until May when Mrs. McDonald will receive her masters degree at the University of Arizona.

Mr. and Mrs. C. A. Allen and daughter, Shirley, are in Baton Rouge, La., where Mr. Allen's mother is seriously ill. Little Judy Simmons, daughter of Mr. and Mrs. E. J. Simmons of the Gulf Camp store, was honored at a party on the occasion of her third birthday Sunday afternoon at the Gulf Hall.

Mrs. Viola Fisher a former Crandall but now living in Hobbs, N. M., spent Sunday in Crane with her brother, Sam Edwards and family. Curtis Henderson, Dick Modisett and David Williams spent Sunday in Odessa playing golf.

Cecil Virgil of Pyote drove to Crane on Sunday to visit with his sister, Mrs. Richard Modisett. The Intermediate Department of the Tabernacle Baptist Church met Friday evening at the home of Mrs. Raymond Dunn, sponsor, and later went to the church where they joined the adult choir members in practice. Later refreshments were served. Those present were Kathryn Smith, Peggy McCasland, Billy Don Ingram, Jackie Mackey, James Hopson, Lila Kinsey and LaVerne Taylor.

Raymond Dunn, pastor of the Tabernacle Baptist Church, attended a fellowship meeting last Thursday and Friday in Rowell, N. M. He drove to Rowell in company with the Rev. Bob Simmons of Monahans.

Mr. and Mrs. C. C. Leftwich, their daughter, Mildred, and their granddaughter, Ann, all of Lubbock, visited last weekend with the J. P. Posters in the Gulf Camp and the John T. Lowerys in the Texas-New Mexico Camp. Mrs. Leftwich and Mrs. Posters are sisters.

Mr. and Mrs. W. S. Shults of the Texas-New Mexico were visitors this weekend with relatives in Brownwood.

Mrs. E. Henderson of Abilene is visiting with her daughter, Mrs. W. R. Hamblitt, et al. at the Gulf Camp. Richard Modisett and her two youngest children will leave Sunday with Mrs. David R. Williams and her daughter to visit with Mrs. Williams' parents, Mr. and Mrs. W. A. Clerly, of Fort Worth.

The W. A. Pillers moved this week to their new home located in the

Open House Slated At Texas A&M Soon

COLLEGE STATION — Open house will be held at Texas A&M College May 7 and 8. The days have been designated as A&M Open House.

The educational facilities and the work of the teaching departments will be shown to the thousands of visitors. Student representatives from the departments of the school are planning the event.

There will be special events, including the Aggeland Follies at Guion Hall Friday and Saturday nights; the Little Southwestern Livestock Show, including riding, roping, cutting and judging, and other events.

Mother's Day will be observed at church services at Guion Hall at 11 a. m. following the pinning of flowers on the mothers by the students.

Toboggans probably were first used by Indians to carry food and supplies through winter woods.

ALCOHOLICS ANONYMOUS Closed Meetings, Tues. Night Open Meeting, Sat. Night Phone 9523 115 S. Baird St. P. O. Box 536

Geology Professor's Paper Published

LUBBOCK—A paper titled "Sediments at the Southern Termination of the Sangre de Christo Anticline" written by Dr. Raymond G. Sidwell, professor of geology at Texas Technological college, is included in the Journal of Sedimentary Petrology. Dr. Sidwell first gave the paper last year before the annual meeting of the American Association of Petroleum Geologists.

CHEVROLET Complete Engines—
 Passenger Car.....\$265 Truck.....\$295

CHEVROLET Block Assemblies—
 Passenger, 1936 to 1949.....\$155
 Truck, 1936 to 1949.....\$165

BUICK Engines—40-50 Complete,
 \$435 freight incl. \$560 freight incl.

OLDSMOBILE Block Assembly—
 6 cylinder, all late models.....\$220
 Complete line of accessories: Chevrolet, Buick, Oldsmobile

USE THE G.M.A.C. PLAN FOR MAJOR REPAIRS.

ELDER CHEVROLET COMPANY
 Radio Dept.—to the left as you drive in
 North Service Entrance.
 Phone 1700 701 W. Texas

BURTON LINGO CO.
 Building Supplies
 Paints - Wallpapers
 119 E. Texas Ph. 58

NOW OPEN! COMPLETELY REMODELED!
 SEATING CAPACITY ENLARGED
 OPEN 6 A.M. 'TIL 12 P.M.
CURB SERVICE

Featuring . . . PEYTON BLUE RIBBON STEAKS
 . . . FRIED CHICKEN . . . MEXICAN FOOD

PARK INN CAFE
 West Highway 80

STEERING GEAR FAILED!
 How's Yours?
Midland Brake Service
 108 W. Missouri Phone 478

SPEED UP CHICKEN CHORES



Chicken chores and other farm jobs can be done quicker and better with less labor when modern methods are used. Now is the time to add to your equipment so that you can have a really productive year and MIDLAND HARDWARE & FURNITURE COMPANY'S Farm Dept. is the place to come for everything you want. We can fill your needs and you get a square deal every time.

SPECIAL! CHICKEN BROODERS
 Reg. \$42.50 NOW \$29.95

500 CHICK CAPACITY
 All Galvanized Metal
 Electrically Operated

Poultry Supplies

Chicken Wire 150 per roll and up
 STEP UP PRODUCTION
 PREVENT DISEASE

WE HAVE MOVED
 TO
112 West Wall St.
KEY & WILSON INSURANCE AGENCY
 Phone 486

CHICKEN FEEDERS
30 cents and up
 FARM DEPT.
Midland Hardware & Furniture Company

MID-LAND FINANCE COMPANY
 J. H. Brock A. C. Caswell
 We appreciate your business.
 201 E. Wall Tel. 509

1949 Packard
 IMMEDIATE DELIVERY

The fashion car of the year . . . the car of distinction. See and Drive the Packard before you buy!

1949 Jeeps
 SEE THE COMPLETE LINE!

The Station Wagon—
 4 cylinder and 6 cylinder engines.

The Jeepster—
 As fine a small car as you could find. Gas mileage is 35 miles per gallon.

Pickups—
 See these today!

1949 GMC Trucks
 The truck of value . . . that fits every purse and purpose. 1-ton to 20-ton sizes available immediately!

Willis Sales Co.
 TOM NIPP, Mgr.
 PACKARD — JEEP — GMC TRUCKS
 Corner Baird and Missouri Phone 2435

Texas Retail Sales In January Off As Compared With 1948

AUSTIN—(AP)—Texas January retail sales, estimated at \$321,268,000 were six per cent under those for January 1948. The University of Texas Bureau of Business Research reported.

Apparel and combination stores with less than one per cent decreases, and nondurable goods and food stores, with less than two per cent declines, had the best records. Lumber and building materials sales tumbled 28 per cent from January 1948.

Greatest gains for 1949 were by family and men's and boys' clothing establishments—five per cent. Drug stores, florists and filling stations showed two per cent increases. General merchandise, eating and drinking places maintained nominal increases of less than one per cent over January 1948.

A "buran" is the name given in Siberia to a blizzard.

ROCKY FORD WAREHOUSE
 MOVING STORAGE
 LOCAL and LONG DISTANCE MOVING
 Established in Midland in 1926
 Agent for North American Van Lines serving 48 states.

Announcing

"GOOD NEWS"—The Father Aull Foundation Treatment is now available in Midland for those suffering from painful Sinusitis, Hay Fever and Crippling Arthritis . . . These are the same non-operative treatments which have been so successful in his Clinics in New Mexico, Arizona and California. This department is dedicated to the relief of those suffering from these painful afflictions. Come in and investigate.

YOU WILL BE GLAD YOU DID.

SCOTT CLINIC
 Phone 305 1300 W. Wall Midland, Texas

EXTRA COPIES of The Midland Reporter-Telegram Oil Progress Edition, Sunday, Feb. 27

Will Be On Sale At The Following News Stands and Drug Stores in Midland:

**CITY DRUG
 PALACE DRUG STORE
 SCHARBAUER COFFEE SHOP
 SCHARBAUER NEWS STAND
 WOODFORD'S DRUGS
 LEGGETT BLDG. NEWS STAND
 CAMERON'S DRUG
 CRAWFORD COFFEE SHOP
 MIDLAND DRUG
 POST OFFICE LOBBY NEWS STAND
 TULL'S DRUG
 PETROLEUM DRUG**

**McCLINTIC BLDG. NEWS STAND
 BUTLER HURLEY'S "THE SPOT" (Tower Bldg.)
 BUS STATION
 SOUTHSIDE DRUG STORE
 J & L DRUG (East Highway)
 NORTHLAND GROCERY (1411 North Big Spring)
 WESTLAND GROCERY (Andrews Highway)
 B & B GROCERY
 TRIANGLE GROCERY
 SERVICE DRUG**

and OUT-OF-TOWN:

North Cowden
 Richmond Grocery Co.

Notrees, Texas
 Don Turner, Agent, Grocery Store in Post Office.

Wink, Texas
 Johnnie Pitts, Agent, The City Drug Store.

Wickett, Texas
 Austin Baker, Agent.

Pyote, Texas
 Bill Ketchum, Agent, Pyote Army Air Base, Hq., at the Cafeteria.

Crane, Texas
 Mancell Coker, Agent, also City Drug Store.

McElroy Camp, Crane, Texas
 Richard Fralley, Agent.

Goldsmith, Texas
 Kenneth Waits, Agent and Club Cafe.

Gulf Camp, South of Goldsmith
 Kenneth Hailes, Agent.

Renkin, Texas
 Gene McCain, Agent, also Yates Hotel.

Stanton, Texas
 Ray Simpson, Hq. at REA Office next to Post Office. Halls Drug and City Drug.

Kermit, Texas
 Mrs. Henry Conder, Agent, Hq., Central Magnolia Service Station. City Drug Store, Post Office Drug.

Monahans, Texas
 Dan Mason, Agent, O.K. Barber Shop and Drug Stores.

Gulf Camp, Texas, West of Monahans
 T. O. McAuley, House No. 2235.

Mabee Camp
 Eddie Wesson, Agent.

McCamey, Texas
 Wanda Fowler, Agent, All Drug Stores and Bluebonnett Cafe.

Pecos, Texas
 Pecos News Stand.

Terminal, Texas
 Midland Airport, Mrs. Ann Pittman, Agent, Building No. 443, also Terminal Cafe.

All Midland Newspaper Boys, Drug Stores and Newsstands will have extra supply of the edition.

FURR'S Super Markets

Where Prices Are Low Every Day

SPRY 3 Lb. Can **89c**

OLEO TOP SPRED Pound **22c**

CORN Garden Patch, Vacuum Pack 12 oz. can 2 for **29c**

GRAPEFRUIT JUICE Texsun 46 Oz. Can **19c**

QUAKER OATS Regular or Quick Large Package **37c**

MARSHMALLOWS Sunshine 8 Oz. Pkg. **15c**

PINEAPPLE JUICE Libby's No. 2 Can **19c**

FOOD CLUB—**PANCAKE FLOUR** Large Pkg. **33c** Small Pkg. **17c**

PUMPKIN Utah Valley No. 2 1/2 Can **12 1/2c**

PEAS Rose Marie, Early June No. 2 Can **15c**

Frozen Foods
Corn Bridgford's 12 Oz. Pkg. **49c**
 Four Winds
Blackeye Peas 12 Oz. Pkg. **33c**
Broccoli Top Frost 10 Oz. Pkg. **39c**
 Starr, Packed In Heavy Syrup
Strawberries 16 Oz. Pkg. **53c**
 Top Frost
Brussel Sprouts 10 Oz. Pkg. **43c**

MILK Food Club Tall Can **11c**

CATSUP CHB Bottle **14c**

PEACHES Mission, In Heavy Syrup No. 2 1/2 Can **23c**

TISSUE Northern 3 Rolls For **25c**

Fresh Fruits and Vegetables

Oranges Texas 5 Lb. Bag **29c**

Tomatoes Pound **21c**

Broccoli Pound **19c**

ONIONS Yellow Pound **5c**

Carrots Crisp Bunch **5c**

Spinach Fresh Garden Package **19c**

PINEAPPLE

Libby's Sliced Flat Can **19c**

SALMON

Libby's Red Sockeye Can **73c**

CARAMELS

Kraft Pound **39c**

KRAUT

No. 2 Can **12c**

Vienna Sausage

Snack Time Can **15c**

Butter Beans

Brooks Tall Can **19c**

Market Specials

Picnics HALF OR WHOLE, Pound **39c**

Pork Chops SMALL and LEAN, Pound **55c**

PERCH FILLETS Pound **38c**

BACON ARMOUR STAR Pound **65c**

FRYERS Fresh Dressed, Pound **55c**

HENS Fresh Dressed, Pound **55c**

SHOULDER CUT—**PORK ROAST** Pound **39c**

Sausage

FURR FOOD

Pound Sack **35c**

TOMATO JUICE Curtis 46 Oz Can **25c**

APPLE SAUCE White House No. 303 Can **16c**

HOMINY Staff O' Life No. 2 Can **10c**

TOMATOES Reagan's No. 1 Can **9c**

PINTO BEANS Dorman No. 2 Can **14c**

BABY FOOD Libby's 3 Cans For **25c**

CORNER BEEF Hash, Libby No. 2 Can **35c**

PICKLES Alabama Girl Quart **29c**

BEETS Libby's Cut No. 2 Can **13c**

LUX FLAKES Large Package **33c**

RINSO Large Package **30c**

GOLD DUST Small Package **7c**

WOODBURY Soap Bar **12 1/2c**

SPAGHETTI Franco-American Tall Can **15c**

TAMALES Cesa Grande Tall Can **19c**

DOG FOOD Emperor Tall Can **9c**

NUWAY BLEACH Quart **12 1/2c**

CRACKERS Sunshine 1 Lb. Pkg. **25c**

WESSON OIL Pint **40c**

SNOWDRIFT 1 Pound Can **39c**

LIFEBUOY Soap, Bath Size Bar **15c**

SPRY 1 Pound Can **39c**

SWERL Large Package **29c**

WHITE KING Large Package **33c**

Furr's Does It Again!

First It Was Aluminum Cookware, NOW IT'S—

Silverware and Cutlery

— SILVERWARE —
 4 TABLE SPOONS without card \$1.75—with card **99c**
 4 ICED TEASPOONS, 4 SALAD FORKS, 4 BUTTER SPREADERS without card \$5.35—with card **\$2.99**
 4 KNIVES, 4 FORKS, 4 TEASPOONS, 4 DESSERT SPOONS without card \$8.00—with card **\$4.49**
 — CUTLERY —
 4 PIECE SET without card \$3.50—with card **\$1.99**
 6 PIECE SET without card \$5.65—with card **\$2.99**

KEEP THIS CARD

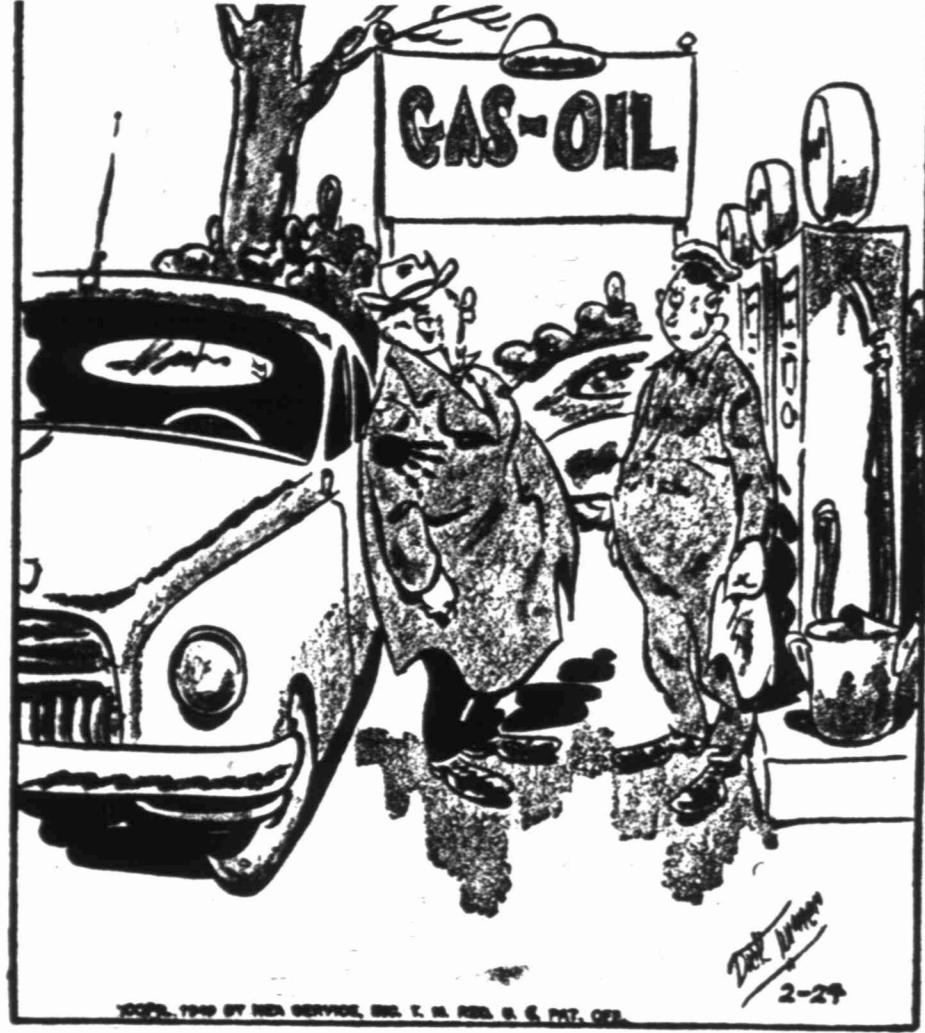
SAVE 40% WITH THIS CREDIT CARD



Made by one of the world's largest manufacturers of silverware.
 Beautiful! VOTED BEST OF MANY PATTERNS BY HOUSEWIVES THROUGH RESEARCH POLL.
 FURR'S SUPER MARKETS

- 10c
- 20c
- 40c
- 60c
- 80c
- 1.00
- 1.20
- 1.40
- 1.60
- 1.80
- 2.00
- 2.20
- 2.40
- 2.60
- 2.80
- 3.00
- 3.20
- 3.40
- 3.60
- 3.80
- 4.00
- 4.20
- 4.40
- 4.60
- 4.80
- 5.00

CARNIVAL



"After this, Humphrey, we'll do without the friendly clasp around the shoulder when I drive in!"

FUNNY BUSINESS



"I brought along a sentry—I heard you had a small brother!"

FRECKLES AND HIS FRIENDS



PRISCILLA'S POP



HOMER HOOPEE



DICKIE DARE



BUGS BUNNY



Still at It



Mary Rickert, whose diving catch of a line drive hit by Joe Gordon of the Cleveland Indians in the eighth inning of the final game was the individual fielding gem of the 1948 World Series, makes another. The Boston Braves' big outfielder took these steelhead from the Nisqually River, 10 miles from Olympia, Wash. They weigh 6 1/2, 9 and 14 pounds.

India Trades Tea, Jute For Wheat

NEW DELHI—(P)—India is trading tea and jute for badly needed wheat. A food ministry spokesman says India is negotiating with Russia for 100,000 tons of wheat, for which it would give 10,000 tons of tea. Last year India and Russia agreed to exchange 50,000 tons of wheat for 5,000 tons of tea. India hopes to get 700,000 tons of wheat from Australia in exchange for jute and cash.

Daddy Ringtail

Daddy Ringtail And The Monkeys Three

By WESLEY DAVIS
Sammy and Daddy Ringtail were sitting on the porch of the monkey house, up in the top of the very tall tree, right in the middle of the Great Forest. Daddy Ringtail was telling the story of the monkeys three. "There were three of them," Daddy Ringtail explained. "One, two, three monkeys."



pened. The three monkeys had heard. Daddy Ringtail said, that the world would be a happier place to live if there were no unhappiness in it. The three monkeys talked about what they should do, and at last they did it. One of the monkeys put his hands up over his mouth and kept them there. He did it so he would never say any unhappy word. No saying of unhappy words, no unhappy people, the first monkey thought. The second monkey put his hands up over his eyes and kept them there. He did it so he would never see an unhappy sight, no seeing of unhappy sights, no unhappy people, the second monkey thought. The third monkey put his hands up over his ears and kept them there. He did it so he would never hear an unhappy word. No hearing of unhappy words, no unhappy people, the third monkey thought. And so there they were together. One had his hands on his mouth, the other had his hands on his eyes. The last had his hands on his ears. They were never going to say an unhappy word, see an unhappy sight, or hear an unhappy word—all to make the world a happier place to live. "Silly boys," said Sammy. "Yes," Daddy Ringtail agreed. Eyes with mouth covered, eyes covered, and ears covered, no one can ever say, see, or hear the happy

things that should be said and seen and heard. And if the happy things are never spoken, or looked at, or listened to, how can people be happy? They can't, Sammy decided. And the job of everyone should be not to shut out the world, but to live in it with all the saying and seeing and hearing of happy things that we can do. Happy day!

(Copyright 1949, General Features Corp.)
The disagreeable cold wind, either dry or misty, which blows upon the Mediterranean from the Alps is called the "mistral."

OUT OUR WAY



OUR BOARDING HOUSE with MAJOR HOOPLE



VIC FLINT



—By MICHAEL O'MALLEY and RALPH LANE



WASH TUBS



—By LESLIE TURNER



RED RYDER



—By FRED HARMAN



BUY BALDRIDGE'S Sally Ann Bread
CHARLES AIKEN and ELVIS HUGHES, DISTRIBUTORS—PHONE 2219-J

ALLEY OOP



—By V. T. HAMLIN



BOOTS AND HER BUDDIES



—By EDGAR MARTIN



MISS YOUR REPORTER-TELEGRAM? IF SO, PHONE 3000 BEFORE 6:30 p.m. Weekdays and 10:30 a.m. Sundays... AND A COPY WILL BE SENT TO YOU BY SPECIAL CARRIER!

Crane Unit Honors P-TA Founders Day At Special Program

CRANE — Ken Spencer spoke on "Democracy in the Home" at the Founders Day program held by the Crane P-TA at the Community Hall on Thursday, the exact anniversary of the founding of this organization just 52 years ago. This is the first time that a regular meeting has fallen on that date.

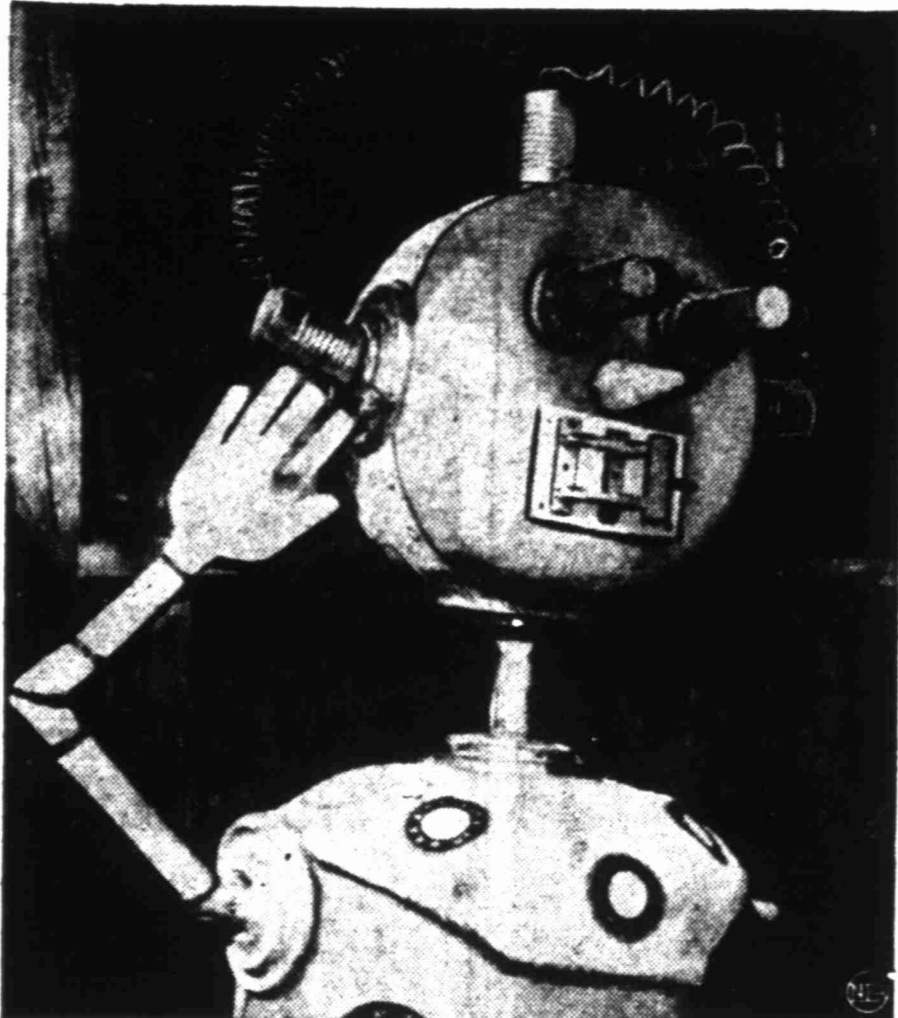
The business meeting was presided over by Mrs. P. O. Vines, president. The room count gave Mrs. B. Harolds' second grade room the prize for the primary grades, this room having won this coveted award each meeting for the entire year. Mrs. Underhill's sixth grade of the Elementary department and the tenth grade in the High School each were given like prizes.

Mrs. Hayden Wilmoth as program chairman had arranged, in addition to Spencer's address, the following program: Mrs. L. D. Hillins, president of the P-TA of the negro school gave the introductory remarks. Janie Neblett, teacher of the negro school, presented some of her pupils in a song, a prayer by Rev. T. J. Hollins of the Mt. Zion Baptist Church, other numbers by the children and a talk by Rev. Hollins.

Fred Westmoreland led the entire group in two numbers with Miss Mildred McReynolds accompanying at the piano. Refreshments were served to more than 100 guests attending.

Mrs. George Chrane is hospitality chairman and she was assisted by Mrs. W. R. Hamblett, Mrs. R. D. Shaffer, Mrs. W. D. Gooch and Mrs. J. D. Foster.

Salute to the Future



The people of Nice, France, are preparing for their annual carnival, one of the top features of the season on the French Riviera. Among the biggest attractions in the parade will be this "robot." The people of Nice will honor it, because they feel robots will be kings in the year 2000.

Fruit Salads Brighten Menu



Grapefruit and orange sections with avocado make a tasty, vitamin-filled winter salad. By GAYNOR MADDOX NEA Staff Writer

Sections of orange and grapefruit, combined with other fruits, such as apple, banana and avocado, put delight and needed vitamins into winter menus. Serve with your favorite dressing as a salad course. Or serve plain as a first course or as a refreshing dessert. These fruit cups

start the meatless meal well. Salmon And Potato Pie (6 Servings) Two cups medium white sauce, 2 cups canned salmon, flaked, 2 cups sliced boiled potatoes, 1/2 teaspoon salt, 1/4 teaspoon black pepper, 1 tablespoon minced celery leaves or parsley, pastry for casserole top, paprika.

Mix white sauce with the salmon and potatoes; season, add the parsley or celery leaves. Pour into a greased baking dish; sprinkle lightly with paprika; cover with pastry top. Gash the pastry decoratively to let the steam out. Bake in a hot oven (425 degrees F.) 25 minutes. Note: If mashed potato topping is used, bake only 15 minutes or long enough to brown the potatoes lightly.

Tuna With Macaroni One box macaroni (to serve 4), boiling water, 1 cup medium white sauce, 1/2 teaspoon mixed mustard, 1/2 teaspoon chives, 1/2 teaspoon salt, 1/4 teaspoon pepper, 1/4 teaspoon parsley, 1 1/2 cups canned tuna fish, flaked.

Cook the macaroni as directed on the package. Mix the white sauce with the mustard, chives, seasonings; combine with the macaroni. Pour half of the macaroni into a greased baking dish; cover with the tuna fish. Then pour the rest of the macaroni on top. Sprinkle with parsley. Bake in a moderate oven (375 degrees F.) until bubbly.

For FREE Removal of Unskinned Dead Animals

CALL COLLECT—Ph. 133, Big Spring, Texas Big Spring Rendering & By-Products Co.

BASIN SUPPLY CO.
For All Kinds of Yard and Garden Supplies

- Bermuda Grass Seed (Extra Fancy)
- White Dutch Clover
- Blue Grass
- Garden and Flower Seeds of All Kinds
- Spading Forks • Hoes
- Rakes • Shovels • Edgers
- and many other items too numerous to mention

RUM CAKES



COCOANUT RING CAKES
Covered with Baker's Cocoanut

THEY'RE DELICIOUS!
THEY'RE FRESH!

at your Food Store.

H. F. Webster's Terminal Bakery Terminal, Texas

Wednesday Club Meeting In Crane

CRANE — The Wednesday Bridge Club met with Mrs. B. E. McDonald with four guests joining in the games. High score was won by Mrs. Ray Frazer with second high going to Mrs. W. O. Walling, Jr., and bingo to Mrs. W. E. Morton. Others attending were Mrs. C. A. Shaffer, Mrs. R. V. Wilson, Jr., Mrs. S. F. Robinson, Mrs. R. V. Wilson, Sr., Mrs. J. E. Clark, Mrs. George Chrane and Mrs. W. R. Hamblett. Mrs. L. L. Pressley, a member, stopped in for a few minutes visit during the afternoon. Mrs. McDonald served a refreshment plate.

For Expert INCOME TAX and BOOKKEEPING SERVICE Phone 3718-W or 1795-R

HERE EVERYWHERE THERE it's PIGGLY WIGGLY for GREATER DAILY SAVINGS!
There's a friendly Piggly Wiggly near you!

APRIL SHOWER Medium Small Tender

PEAS 2 No. 300 Cans 29¢

SUNNY ACRES

TOMATOES 2 No. 2 Cans 27¢

GOLD COAST WHOLE

Spiced Peaches No. 2 1/2 Can 29¢

Champion Wax BEANS No. 2 Can 19¢

Libby's Pears No. 2 1/2 Can 45¢

Peach Preserves Hunt's—1 Pound Jar 20¢

Strawberry Preserves Bama—1 Pound Jar 39¢

Tiny Sweet Pickles Betty—Pint Jar 49¢

Plainsun Blackeye PEAS 2 No. 2 Cans 25¢

UNCLE WILLIAM LIMA BEANS No. 300 Cans 29¢

TEXSUN Grapefruit Juice 46 Oz. Can 17¢

IMPERIAL MINCE MEAT 9 Oz. Pkg. 9¢

Meats
Armour's Star, Peyton Del Norte BACON Pound 59¢
CLUB STEAK Pound 59¢
PORK SAUSAGE Fresh Made, Bulk Pound 39¢
CHUCK ROAST Choice Beef Pound 45¢
SWISS STEAK Shoulder Round Pound 59¢
BOLOGNA Pound 39¢
PORK ROAST Pound 55¢

Asparagus Winslow's, No. 1 Can 23¢
Spinach Del Monte, No. 2 Can 16¢
Onions House of George, No. 2 can 10¢
Pork & Beans Monarch, No. 2 Can 16¢
Yams Pine Grove, No. 2 Can 16¢
Potatoes Alma New, No. 1 Tall 11¢
Hominy Monarch, TWO No. 2 Cans 25¢
Bisquick 40 Oz. Box 47¢

Alma Cream Style Golden CORN No. 2 Can 18¢

Gold Tip GREEN BEANS 2 No. 2 Cans 27¢

Fill your baskets with FRESH PRODUCE

SHORTENING SNOWDRIFT 3 Lb. Tin 93¢
CRACKERS SUNSHINE KRISPY 2 Pound Box 52¢
PLAIN CHILI GEBHARDT'S No. 1 Can 35¢
TAMALES ARMOUR'S 10 1/2 Oz. Glass 19¢

CARROTS California Fancy Large Bunch 9¢
CAULIFLOWER Snowwhite Pound 10¢
AVOCADOS 36 Count Each 15¢

IDAHO RUSSETS POTATOES 10 lb. bag 59¢

YELLOW ONIONS Pound 5¢
GREEN BEANS Florida Valentine Pound 25¢

TEXAS VALENCIA ORANGES 8 Pound Mesh Bag 49¢

Corned Beef Armour's, 12 Oz. Can 49¢
Fricassee Swanson's Chicken, 1 Lb. 59¢
Potted Meat Red-Crown, 1/4 Can 9¢
Mackerel Eatwell, No. 1 Can 23¢
Delsey Tissue TWO Rolls 33¢
Crystal White SOAP—TWO Bars 17¢
Palmolive SOAP, Bath Size Bar 13¢
Trend TWO Large Boxes 35¢

Right is reserved to limit quantities.

LOWEST PRICES EVERY DAY PIGGLY WIGGLY CONVENIENT SHOPPING THE MODERN WAY

IT'S PURE MEADOLAKE!
THE GOLD RUSH OF '49 CONTEST
Nothing to Buy!

10 GOLD WATCHES EVERY WEEK!
This Week's Winners...

No cartons to send. Just write a letter: "I use and like Meadolake Margarine because..."; mail to Mrs. Tucker, Sherman, Texas, and you may become proud owner of a beautiful 17-Jewel Waltham Watch of 14-k. gold. If you win, your grocer gets a gold watch too!

4 Trips to California!
If you win one of weekly gold watches, your entry may be judged best for grand prize of 2 Round Trips to California. (Also 2 such trips for your grocer!)



Rome Utilities Cause Headaches

ROME—(AP)—If Signor Giuseppe Rossi and his lady are grumpy and short-tempered these days the wire was made in ancient days by beating strips of metal into rounded form.

LOANS
On Autos—Furniture—Appliances
CITY FINANCE CO.
O. M. Luton, Mgr.
801 E. Wall Phone 3218

state of their city's utilities may be partly to blame. There is not enough electric power to go around, and gas is low.
The result, in terms of the effects upon Mr. and Mrs. Average Roman: Signor Rossi finds his place of work dark from 7 a. m. to 6 p. m. two days each week. If he works in one of Rome's countless electric-powered shops, his machines are idle during those periods. Even on the days he has power, the current is so low and variable that much apparatus refuses to function. He

dare not ride elevators: all too often, they get stuck. The electrically-propelled omnibuses and streetcars on which he rides to work are fewer these days; those left are overcrowded. His favorite cafe may have no coffee, if it has no power to heat its pots.
Signora Rossi, if she cooks with electricity, also has the two powerless days to worry about. If she cooks with gas, she finds pressure often too low to boil water. If gas heats the hot water for her bathroom, as it does in many Rome houses, she and her family must bathe in cold, most days.
Stores are required to close early to save current. Their radio is so faint, often, that it is imperceptible; their phonograph turns out noises like "braaaaaaaaaw." Then-

ters are reduced to 60 per cent of their average consumption—which means one or more shows fewer each day.
Signora Rossi is now ordered to read her own power meters, and make sure she uses less electricity than she did last Fall. This means she must take her bills for September and October, add the totals, divide by nine to get the weekly average, and figure out how much current she may use to stay 15 per cent below last Fall's average consumption for lights and 35 per cent below that for other purposes. She must, too, post the figures beside her meters, and submit to weekly spot checks.
If she fails to do all that, woe unto her. She may have her power cut off. Or she may be fined.

Manna From Heaven Makes Bullseye



Snowbound Navajo Indians, in northeastern Arizona, needed help and the Air Force dropped them food packages. One package made a direct hit on this shack on the Indian reservation at White Mesa. It crashed through the tarpaper roof, but the inhabitants weren't hit. (U. S. Signal Corps photo from NEA-Acme.)

Barbed wire as a defense against attack was used extensively by General Weyer against the Cubans and later against Americans in the Spanish-American war.
James Wolfe, the conqueror of Quebec, was made a brigadier general in the British Army at 31. A year later, when he was killed in battle, he was a major general.

NOW! BIGGER SAVINGS THAN EVER
ON SHEER BEAUTIFUL **NYLONS**
for only **\$1** AND TWO COUPONS FROM WHITE SWAN FINER COFFEE



TRIANGLE FOOD MARKET
Bob Grubb "Scrutle" Skaggs
QUALITY VALUE SERVICE
South "A" at Missouri **OPEN NIGHTS - SUNDAYS** Phone 280

Congratulations

BROOKS GROCERY & MARKET

On Your Selection of

ED FRIEDRICH

OPEN VIEW REFRIGERATORS

The Very Finest!

Distributed By

Cannon Electrical Service

Dial 464

Odessa, Texas

FRESH COUNTRY EGGS Doz. 47¢
LIGHT CRUST FLOUR 10 Lbs. 79¢
WILSON'S COLORED OLEO Lb. 39¢
FOLGER'S COFFEE 1 Lb. Can 49¢

YOU EAT BETTER - SAVE MORE

Because
"Yours is the right to pick and choose."
DEMOCRACY WORKS HERE!
...without a free exchange of goods you cannot have a free people"
-THE SATURDAY EVENING POST

Nowhere else is the bounty of America's freedom and free enterprise better displayed than in a market of your own choosing—the one which you believe offers you most for your money. That's the way Democracy works—and because it works so well here, you eat better—save more. You're the boss in America, and we run our market to satisfy your demands for the finest foods at the fairest prices.

PIE FILLING Best, box 15¢
CRISCO 3 lbs. 98¢
VIENNA SAUSAGE Swift's Premium 2 cans 35¢
BABY FOOD Heinz, 3 cans 25¢
Preserves Reese Canadian Blueberry 1 Lb. Jar 51¢
Sunshine Crackers 1 Lb. Box 25¢
Ivory Soap Personal Size Bar 7¢
LARGE BOX WASHING POWDER 27¢
SUGAR IMPERIAL 10 Pounds 79¢

HI-HO CRACKERS, box 29¢
ARMOUR'S BUTTER, lb. 73¢
SNIDER'S CATSUP, 14 oz. bottle 21¢
IVORY SOAP, large bar 15¢
HUNT'S TOMATO JUICE, 12 oz. can 9¢

Northern Tissue 25¢ 2 rolls
SALAD DRESSING Kraft's Quart 59¢
Admiration COFFEE 1 Lb. Can 49¢

Farm-Fresh Produce

Grapes Red Emperor	15¢
Avocados Large	19¢
Pears Oregon	19¢
Yellow Onions 2 Pounds	11¢
Grapefruit Pink	9¢
Lemons Sunkist	15¢

We Have A Most Complete Selection Fresh Vegetables and Fruits



HERE IT IS, FOLKS! MIDLAND'S FIRST-COMPLETLY SELF SERVICE MEAT DEPARTMENT

We are especially proud to show these convenient refrigerated, self-service fixtures. It's the easiest way to make your meat selections. You can see what you get, every package individually cellophane wrapped. **COME IN AND SEE IT!** Tell us how you like the idea. We need your suggestions.

CHUCK ROAST	Pound	44¢
BEEF SHORT RIBS	Pound	33¢
CHOICE LOIN STEAK	Pound	69¢
Morrell's Yorkshire or Peyton's Ace SLICED BACON	Pound	49¢
LADY BETTY MINCE MEAT	15 Ounce Jar	10¢
PURE LARD	8 Lb. Pail	\$1.49
KIMBELL'S FLOUR	25 Pound Sack	\$1.79
PORK & BEANS	2 No. 1 Tall Cans	25¢
MISSION PEAS	2 No. 303 Cans	25¢
ADAMS ORANGE JUICE	2 No. 2 Cans	25¢

Our Fresh Vegetables
are now displayed in our new open-top refrigerator unit that makes self service easier for you and keeps your perishable foods in perfect condition.

3 MINUTE OATS	3 Lb. Box	35¢
BRIGHT AND EARLY COFFEE	Pound	43¢
CATSUP	C.H.B. 14 Oz. Bottle	19¢
SYRUP	Staley's Golden 5 Pound Can	59¢

WHAT'S YOUR PLEASURE FOR SUNDAY DINNER

HAMS Pear Shaped, Canned lb 79¢

BACON	Wilson's Corn King, Lb.	49¢
SAUSAGE	Pure Pork Pound	35¢
FRYERS	Fresh Dressed, Ea.	98¢
PORK ROAST	Lb.	49¢
BEEF SHORT RIBS	Pound	32¢
ROAST	Chuck Pound	49¢

Canned Fruits

Hunt's Whole Apricots, No. 2 1/2 can	25¢
Del Monte Fruit Cocktail, No. 1 tall	25¢
Dole Sliced Pineapple, No. 2 can	31¢
Monarch Peaches, No. 1 tall can	21¢
Boysenberries Monarch No. 1 tall can	33¢
Apples Comstock No. 2 can	21¢

Canned Vegetables

Corn Yacht Club Cream Style	2 No. 2 Cans	35¢
Monarch Alaska Peas, No. 2 can	21¢	
Lima Beans Green and White Oriole, No. 2 can	32¢	
Diamond Blackeye Peas with Bacon	9¢	
Richeleiu Artichokes Medium No. 2	45¢	

PAUL BROOKS
BROOKS GROCERY & MARKET
120 South Main Phone 867
WE DELIVER

Phone Your Order

— We Reserve the Right to Limit Quantities —
MORRIS SYSTEM
Complete Food Market
200 West Texas SPECIALS FOR FRIDAY AND SATURDAY Phone 1800