

# The Sudan Beacon-News

FIFTIETH YEAR NUMBER 21

SUDAN, LAMB COUNTY, TEXAS

THURSDAY, JULY 11, 1974

10 CENTS PER COPY

## WOODWORK



by dalton

REFLECTIONS on a fast trip without a map: A couple of us took a trip to Durant, Okla., last Saturday, returning Sunday. We never had been to Durant that we could remember, so we glanced at the map before we left, noting that it is somewhere north of Dennison, Texas. So off we went. About five miles down the road we realized we had left the map lying on the coffee table, but figured that was no problem — first time we needed to stop at a station for whatever traveling folks stop at stations for, we'd just pick up another Texas map. The main reason was that we couldn't remember what highway to take north out of Dennison.

We stopped at a restaurant in Seymour, but of course they don't have maps. And the station across the street was closed. No problem, though. We'd just pick one up when we get gas.

Pulled into a station at a place called Muenster, but they had no maps at all. Asked the guy what was the closest way to Durant, Okla. He said he never heard of it. He just moved in from California a few days ago, and didn't even know which way was north.

Finally we decided we'd better get one in Sherman, so we'd take the right road out of there. We pulled into a major super station there. He had maps of Michigan, Arizona and Eastern United States, but no Texas or Oklahoma maps. But he did know the way to Dennison, so we followed those directions, and saw signs which helped us to find Durant. So we found our way without a map.

Incidentally, while we were there, we played tennis with a couple of university professors, who twice apologized for it being so windy that day. We thought that pretty funny, since we hadn't noticed any wind until they mentioned it. It was, in fact, pretty calm compared to most days on the South Plains.

As a matter of principle we determined to acquire a map, so as we left to return home, and crossed the border into Texas, we spied a Texas Tourist Bureau sign promising maps, information and such, so we left the freeway to pull into the driveway of the neat building. It was closed.

Almost convinced that there were no maps of Texas left in Texas, we finally acquired one at an Enco station in Dennison. Actually, we picked up three, since there seemed to be such a shortage of them.

With the maps in hand, we promptly missed a turn and went 15 miles south of Sherman before we realized we hadn't turned back west. This made it possible for us to come back home by way of Rule and Old Glory.

## Circle Back Baptist To Observe Anniversary

The Circle Back Baptist Church is observing its fiftieth anniversary this year. In honor of the occasion a homecoming and anniversary has been planned for next Sunday, July 14. The program will start at 10:00 a. m. and will feature singing, special music, recognition of all former members and pastors, and a message by Dr.

Straus Atkinson, area missionary for the Caprock-Plains area. After the service a basket lunch will be served and the afternoon will be devoted to visiting and singing.

On Saturday night, July 13, an open house will be held for anyone wishing to visit and renew acquaintances. This open house will begin at 7:30 p. m.

"Everyone who has ever been a member of the church or has lived in the Circle Back community is invited to come and be with us at this time," according to the pastor, Douglas Gardner.

## S.S. CLASS TO HOST ICE CREAM SUPPER

Members of the Ruth Sunday School Class of First Baptist Church will have their husbands as guests at an ice cream and cake social Friday night. The gathering will be held in the church's fellowship hall at 8:00 p. m. with each member to bring either homemade ice cream or a cake. Games will be played following refreshments.

All members are urged to attend and bring their husbands.

## Personals

Miss Jane Newman from Dallas visited her parents Mr. and Mrs. B. W. Newman and other relatives last week.

Mr. and Mrs. Elgan Bac-cas returned home Friday after several months at their Lake Greenwood home.



1974 - 75 SHS CHEERLEADERS--Sudan High School Cheerleaders shown above attended the recent High Plains Cheerleading School at Lubbock Christian College from June 22-27. They received two superior ratings and two excellents for performances. They are: Top, Mary Ann Bellar, senior and head; second row, left, Phyllis Ray, senior, and Ann Nix, junior; middle, Chyrel Phillips, junior; front left, Pam Davison, sophomore, and Kelli Hargrove, freshman.

## FFA MEMBERS TO ATTEND STATE CONVENTION

Four members of the Sudan Future Farmers of America chapter will attend the 46th State FFA Convention in San Antonio, Texas, on July 10-12, 1974, in the San Antonio Convention Center. The theme for the 46th convention is "Preparing For Tomorrow's Agriculture."

Mr. Don Ham, chapter advisor, will attend the three-day meeting of representatives of over 860 FFA chapters from throughout the state which will include the awarding of advanced degrees, scholarships and awards to outstanding members of the

organization.

Mitch Chester, son of Mr. and Mrs. Glen Chester, and Tracy Bowling, son of Mr. and Mrs. Marvin Bowling will be voting delegates of the Sudan chapter to the state convention.

Gary Ham, son of Mr. and Mrs. Don Ham will be serving on the courtesy corps. Roger Swart, son of Mr. and Mrs. Wayne Swart will be assisting the Area I officer in his bid for state president.

Keynote speaker for the FFA convention will be "Knock 'Em Out John", Jerry Clowers of Yazoo City, Mississippi. Also to address the group will be Frederick

McClure, national FFA student secretary from San Augustine, Mr. Carl Morgan, Jasper and Mr. Joe Kelley Butler, Houston, members of the State Board of Education.

Bobby Tucker, state FFA president from Mineola, Texas, will preside during the convention.

One of the highlights of the convention will be the awarding of the Lone Star Farmer degree to Tracy Bowling of the Sudan chapter.

Among the important business matters to be transacted at the convention will be the election of a state president from ten state officer nominees who have been elected by members in the ten areas of the state. The state public speaking contest will be conducted. Voting delegates to the national FFA convention, Kansas City, Mo., in October, will be selected. In addition, delegates will elect a state sweetheart from the 10 candidates elected by each area and will select the top talent team in the state. More than 5,000 FFA members, advisors and guests are expected to attend the convention in the San Antonio Convention Center.

## TEACHERS HIRED

Tommy Laceywell was hired as local High School Principal and Jackie Stewart as Head Coach and Athletic Director at a meeting of the Board of Trustees of the Sudan Independent School District.

Laceywell is a former coach and teacher of the Sudan school system and comes back from Hale Center where he served as Head Coach. He and Mrs. Laceywell, who was also rehired here and who will teach English to juniors and seniors, have one son, Blake.

Stewart comes to Sudan from Slaton where he was

## DALE READ HIRED AT O'DONNELL

Dale Read, 37, Sudan High School Principal the past four years has been appointed Superintendent of the O'Donnell I. S. D.

Read is a graduate of Whiteface High School, has his B. A. in Secondary Education from Eastern New Mexico University, Master of Science degree in Mathematics from Southwestern State College, Okla., Ed. Specialist in Administration from ENMU. He has completed one additional year of graduate work at Texas Tech University in math and administrative work.

Read is a member of TSTA, NEA, THSCA, Lamb County Administrators Association, Phi Delta Kappa, and TASSP. He assumed his duties July 1.

## SENIOR CITIZENS SCHEDULE MEETING

Senior Citizens will meet in the Community Center at 2:30 p. m. on Friday, July 12. It will be sponsored by ESA. Everyone is invited to attend.

## S. C. OFFICERS ATTEND WORKSHOP

Officers of the Student Council at Sudan High School for 1974-75 school year are attending a workshop at W. T. S. U., Canyon this week. They left Monday and will return home Friday.

Attending the workshop are Phyllis Ray, Cindy Moss, Phil Kent, Gaylene Rogers and Rex Bac-cas. Mrs. Tommy Moss accompanied them as sponsor.

## BASEBALL ALL-STARS

# Tourney Plans Announced

The Almo Babe Ruth Baseball League completed the season last week and All-Stars were named. Littlefield won the league with the Sudan team, coached by Henry Tamplin and Kenneth Noles, in second place. The coaches of the eight teams met to pick All-Stars. They are as follows:

Littlefield - Kenny Owens, Kelly Pratt, Bill Turner and Don Richey.

Sudan - Don Noles, Richard Tamplin, Mark Hanna, and Carol Legg.

Morton - Billy Joyce and Ralph Mason.

Muleshoe - Gary White and Don Long.

Olton - Vic Alcoven and Allan Carson.

Dimmitt - Travis Hampton

and Kyle Broderson. Amherst - Richard Holley, Anton - Jim Parrish.

The All-Star Tournament has been set for July 17 at Lubbock. The first game for the Almo All-Stars will be at 6:30 with the field to be selected. All-Star coaches

The Almo Sr. Babe Ruth State Tourney begins Wednesday, July 17, and will continue through Saturday. The local team plays Wednesday at 6 p. m. with Northside San Antonio as their opponent. The winner will play Grsham at 8:30 p. m. Thursday (today) and the loser will take-on Lubbock Southside at 6 p. m. Thursday. Coaching the local team will be Mike Cotter, Littlefield; Kenneth Noles, Sudan, and Jack Richards, Olton.

\*\*\*\*\*

Saturday night, the Sudan team blanked Morton by a score of 6-0 with Don Noles at the mound for the locals. Mark Hanna hit a home run. In a make-up game at Muleshoe Sunday night, Muleshoe slipped by the locals 8-7 in an eight-inning game.

\*\*\*\*\*

Junior Babe Ruth All-Stars were also named at a recent meeting by coaches.

The 14 & 15-year-old Jr. Babe Ruth All-Stars are:

Sudan - Kyle Martin, Jerry Williams, Edgar Tamplin and Mat Hanna.

Anton - Lonnie Timms, Rex Jones; alternate, Steve Green.

Littlefield - Tommy Twitty, Norval Simington, James Kemp, Buckley Healy and Cowan (Security State); Rudy Avala, Dewayne Hays and Morelan, alternate (Roden Drug); Ralph Mendez, Stan Jackson (BGC).

Amherst - Ronnie Bearden, alternate.

This tournament will begin Monday, July 15, at Olton. A time schedule was not available at press time.

\*\*\*\*\*

On the 13-year-old Jr. Babe Ruth All-Star team from Sudan are Mike Read, Victor King and Billy Williams. This tournament begins Monday night at Dimmitt with Plainview winning over the locals 20-5. They came back Tuesday night in the double-elimination event to defeat Dimmitt All-Stars 18-6 with their next game on Wednesday with the loser of the Plainview-Olton game. Results were not known at press time.

\*\*\*\*\*

Rev. and Mrs. Eddie Freeman and children are vacationing this week.

\*\*\*\*\*

The Little League All-Stars Tournament is July 15-16 at Anton and the locals meet Plainview American Monday, July 15, at 6:00 p. m. Making up the team are: Amherst - Bud Enloe, Larry Young, Vic Read, Mark Cantrell (Cubs); Craig Serven Bearden, Clinton Sawyer, and Benny Jones (Spartans).

Sudan - John Chester, Troy Moss, Gary Bernal (Dodgers) and Carl Scott and Paul Couch (Angels).

\*\*\*\*\*



CECIE BANDY

## Miss Bandy Vies For Miss West Texas Title

Miss Cecie Bandy, who was selected July 1973 as the 1973-74 Miss Lamb County, was among the contestants vying last week for Miss West Texas at Odessa. At the contest where 19 beauties participated, Miss

Bandy won and was presented a trophy engraved with "Non-Finalist, Evening Gown Competition". The Miss West Texas Contest which is a preliminary

(Continued on Page 2)

## Dorothy Powell, County Agent

Mrs. Dorothy Powell of Jilvertton has been named the new Lamb County Extension Agent (Home Economics). The announcement was made by Lamb County Judge J. T. Sides and Mrs. Catherine B. Crawford of Lubbock, district agent for the Texas Agricultural Extension

Service. The new agent is a native of Duncan Oklahoma, and graduated from high school in Temple, Oklahoma. As a youngster, she was 4-H club member for four years. Mrs. Powell attended Lubbock Christian College and then transferred to Texas

(Continued on page 3)



# Milligan-Blume Wedding Solemnized At Parkview

Marcia Dianne Milligan and Emery Phelps Blume were united in marriage Friday night, June 21, in the sanctuary of Parkview Baptist Church, Littlefield.

B. W. Briggs of the Amherst Church of Christ officiated for the double ring ceremony.

Parents of the couple are Mr. and Mrs. E. D. Milligan of Littlefield and Mr. and Mrs. W. E. Blume of Amherst.

The bride was presented for marriage by her father. She wore a formal-length gown of white tulle, accented with an A-line skirt overlaid with lace appliqued miramist. A scalloped band of chantilly lace, edged with pearls, accented the hem line. The lace appliques and lace band were encrusted with pearls. The bodice and long tapered sleeves, which were lined with pearls, were made of imported, pearlized and re-embroidered chantilly lace. The bodice was fashioned with a portrait neckline and a pearl-edged scalloped high waistline.

Her three-tiered elbow-length veil of French bridal illusion was attached to a camelot style cap, outlined in pearls, and covered with satin and pearlized lace with scalloped edges.

Both the gown and head dress were designed and fashioned by the bride's grandmother, Mrs. Opal Haney of Claude.

She carried a bouquet of white roses, stephanotis and baby's breath with pink, blue and white ribbon streamers.

For "something old" she carried a gold bracelet belonging to her late maternal great-grandmother, Mrs. N. Ham. "Something new" was her wedding gown, "borrowed" was a string of pearls belonging to Miss Joella Lovvorn, and "something blue" was the traditional blue garter. For good luck, in her shoe she wore pennies minted in the years of their birth dates.

The maid of honor was LaNona Betts. She wore a princess style formal-length dress of floxed summer sheer over sea blue. The high waist belt was fastened in back with a self bow, and the bodice was fashioned with a high round neckline and short puffed sleeves.

She wore a wide brim white ruffled lace hat with a white satin ribbon tied around the crown.

Bridesmaids were Carolyn Milligan, sister of the bride, and Renee Haney of Claude, aunt of the bride. They wore dresses styled like that of the maid of honor, in a lighter shade of blue. They wore white lace hats also.

Each attendant wore short white gloves and carried white lace fans. Floral arrangements of pink and yellow rose buds, white carnations tinted pink and blue, were attached to the fans with white satin ribbon streamers.

Vows were exchanged beneath an arch of greenery entwined with assorted spring flowers, baby's breath and satin rainbow-colored bows. Flanking the altar were two spiral candelabras, entwined with greenery, holding white candles. To each side of the candelabras were white floor pedestal baskets of pink gladioli, yellow roses, white daisies tinted blue and pink. Baby's breath and greenery, tied with satin bows. Pews were marked with rainbow-colored satin bows.

The bride presented her mother and mother-in-law each with a long stem red rose.

Kenny Fisher of Sudan served as best man.

Groomsmen were Rodney Maxfield of Amherst and Ricky Humphreys of Amherst.

Ushers were Tommy Batson, nephew of the groom, and Ronald Milligan, brother of the bride. They also served as candlelighters.

The groom, all male attendants, ushers, and fathers of the couple wore light blue tuxedos, blue shirts trimmed in black, black bow ties and black pants.

Scott Sheppard sang "Twelfth of Never" and "Climb Every Mountain", as he was accompanied by Miss Jan Sisson at the organ. She also played the theme from "Romeo and Juliet" and "The Wedding March."

Linda Weaver registered the guests in the bride's book from a table covered with white lace over blue. Accenting the table was a blue bud vase with blue flowers, and a silver basket holding scrolls tied with ribbons, which were given to each guest as they registered.

For her daughter's wedding, Mrs. Milligan wore an aqua polyester formal-length dress, fashioned with a circle skirt topped by a sculpture designed bodice, long sleeves and stand-up collar. She wore a cymbidium orchid corsage and white accessories.

Mrs. Blume was attired in a formal-length dress of polyester with an A-line skirt of yellow and white checks, sleeveless, yellow bodice with a rolled neckline, topped with a long sleeved jacket of yellow and white checks, trimmed on the edges with bands of yellow Venise lace. She wore white accessories and a yellow cymbidium orchid corsage.

A reception followed the ceremony in the fellowship hall of the church.

Presiding at the bride's table were Linda Shirley and LaQuinta Clark, both of Littlefield, and at the groom's table were Darlene Weaver of Amherst and Glenna Batson of Littlefield.

Others in the houseparty were Mrs. Ed Altman, Mrs.

Charles Jones, Mrs. Leonard Cline, Misses Donna Davis, Sharla Grant, Sharise Cowan, and Regina Williams.

Miss Lana Weaver of Amherst played musical selections during the reception, and Misses Shelly Butler of Claude and Trina Baggett of Lubbock distributed the rice bags.

The bride's table was covered with a dacron lace cloth over white, and featured the three-tiered white wedding cake, topped with a white lace wedding bell surrounded by illusion and pearls, and decorated with pink roses. The cake was served with golden fruit punch, mixed nuts and assorted colored mints on crystal and silver appointments. A three-light silver candelabra with white candles stood behind a floral arrangement of pink snapdragons, yellow roses, pink mums and white daisies tinted blue.

The groom's table was laid with a hand-embroidered cutwork linen tablecloth featuring a blue and white floral centerpiece of daisies and gladioli with blue candles nestled between white turtledoves on each side. A two-layered chocolate cake, in the form of two hearts joined together, decorated in white with wedding bells and the names of the couple, was served with coffee from a silver coffee service. Mints were served from a silver dish, with blue and white ribbon sandwiches served from a round silver tray.

For their wedding trip to Red River, N.M., the bride was attired in a two-piece polyester navy and white dress. She wore a cymbidium orchid corsage and navy shoes.

The new Mrs. Blume is a 1974 graduate of Littlefield High School.

The groom graduated from Sudan High School, attended South Plains College and Texas Tech. He is presently employed with Calvin Price, CPA.

They are making their home in Littlefield.



MRS. EMERY PHELPS BLUME

## SPAG Grants Approved

AUSTIN -- Governor Dolph Briscoe has approved four grants totaling \$87,159 to the area served by the South Plains Association of Governments, Lubbock, for improving law enforcement and justice.

Largest of the grants, \$25,713, goes to SPAG for fourth-year funding of the regional law enforcement teletype network. The network permits communication with other agencies and provides access to computerized data from state and national information centers.

Gaza County will receive \$11,859 for second-year funding of adult and juvenile probation services.

Crosby County has been awarded a grant of \$11,687 for

second-year funding of a project providing social and personal rehabilitative services to juvenile and adult misdemeanant probationers.

A grant of \$37,900 will go to SPAG for criminal justice planning in the counties of Bailey, Cochran, Crosby, Dickens, Floyd, Garza, Hale, Hockley, King, Lamb, Lubbock, Lynn, Motley, Terry and Yoakum.

The money comes from the Criminal Justice Division of the Governor's Office. CJD administers the state's block grant from the Law Enforcement Assistance Administration under the Crime Control Act of 1973.

The local grants were among 50 approved by the governor totaling \$7.2 million.

## MISS BANDY PLACES---

to the Miss Texas and Miss America contests was sponsored by Odessa Jaycees.

During the week of events prior to finals on Saturday night, entries made T. V. presentations; attended a press party, and Jaycee luncheon; and were in the Fourth of July parade. Events were held each night of the week in preparation for competition in talent and swimsuit events on Thursday and Friday nights.

The top 10 winners of these two nights then competed Saturday night, July 6th, for the finals when five finalists were picked and then the winner.

Mary Ella Meek of Pecos won the Miss West Texas title and received a \$1000 wardrobe check. In the talent event, she sang "He's My Man". Other finalists received scholarships.

Miss Bandy presented a pantomime of a cleaning woman which she also presented in the Miss Lamb County event. She was sponsored in the Miss West Texas pageant by Littlefield Chamber of Commerce and Tau Chi chapter of Beta Sigma Phi of Littlefield.

Mrs. D. J. Bandy accompanied her daughter to Odessa, and her father joined them Wednesday night.

## FAMILY REUNION

The children and families of Mr. and Mrs. Curtis Savage met at their home for a week long reunion, June 29 - July 6.

Those attending were Morisene Allen of Baton Rouge, La.; Mr. and Mrs. C. D. "Smookey" Savage, Jay and Joel of San Antonio; Mr. and Mrs. Jack Kleimeyer, James, Paul and Tracy of Salt Lake City, Utah; Mr. and Mrs. Jim Savage, Chris and Brian of Newport News, Va.; Grandson Monte Pierce of Amherst.

Guests were Theresa Harris and Joly of Baton Rouge, La. On Thursday, July 4, Mr. and Mrs. Savage hosted a reunion at the Sudan Community Center for other relatives and friends.

Those registering were Claude Savage of Wellington, Mr. and Mrs. J. J. Palmer of Halfway; Mrs. Blanche (Savage) Schleman and Mrs. Lelia (Savage) Haygood, Ft. Worth; Mr. and Mrs. Frank Roberts, Joe and Sam of Albuquerque, N.M.; LaVerne (Savage) Seay of Littlefield; Theresa Harris and Joey of Baton Rouge, La.; Mr. and Mrs. Muggs Glazener, Jan and Gina, Roy Thompson, Mrs. Ernest Savage and Mr. and Mrs. Edward Mitchell, all of Spade.

Those dropping by to visit were Mr. and Mrs. Robert Deloach and children and

Jay Savage, son of "Smookey" Savage, stayed for a two week extended visit and will go to Newport News, Va. with his uncle, Jim Savage and family, for a visit prior to returning to San Antonio.

## New Oil Discovery



Gulf Oil Company-U.S. announced that a significant oil discovery has been made by this Mariner II semisubmersible rig in the Gulf of Mexico, 110 miles southeast of New Orleans. The discovery well is the first wildcat to be drilled on acreage leased by the Federal Government in December, 1973. Gulf (50%) and its partners-Texaco and Tenneco (25%) paid \$61 million for the lease on the 5,544-acre tract. The company said multiple oil bearing sands were logged and cored to a depth of 8,391 feet on the well which has been projected for 10,000 feet. Although development drilling on the tract will continue into 1975, Gulf said oil from the new discovery probably will not begin flowing to U.S. consumers before 1976, due to the long lead times necessary to build and install production facilities. The Mariner II rig is owned and operated by Sante Fe Drilling Company.

Mr. and Mrs. Durwood White and children.

Jay Savage, son of "Smookey" Savage, stayed for a two week extended visit and will go to Newport News, Va. with his uncle, Jim Savage and family, for a visit prior to returning to San Antonio.

Those dropping by to visit were Mr. and Mrs. Robert Deloach and children and

Jay Savage, son of "Smookey" Savage, stayed for a two week extended visit and will go to Newport News, Va. with his uncle, Jim Savage and family, for a visit prior to returning to San Antonio.

Those registering were Claude Savage of Wellington, Mr. and Mrs. J. J. Palmer of Halfway; Mrs. Blanche (Savage) Schleman and Mrs. Lelia (Savage) Haygood, Ft. Worth; Mr. and Mrs. Frank Roberts, Joe and Sam of Albuquerque, N.M.; LaVerne (Savage) Seay of Littlefield; Theresa Harris and Joey of Baton Rouge, La.; Mr. and Mrs. Muggs Glazener, Jan and Gina, Roy Thompson, Mrs. Ernest Savage and Mr. and Mrs. Edward Mitchell, all of Spade.

Those dropping by to visit were Mr. and Mrs. Robert Deloach and children and

Jay Savage, son of "Smookey" Savage, stayed for a two week extended visit and will go to Newport News, Va. with his uncle, Jim Savage and family, for a visit prior to returning to San Antonio.

Those registering were Claude Savage of Wellington, Mr. and Mrs. J. J. Palmer of Halfway; Mrs. Blanche (Savage) Schleman and Mrs. Lelia (Savage) Haygood, Ft. Worth; Mr. and Mrs. Frank Roberts, Joe and Sam of Albuquerque, N.M.; LaVerne (Savage) Seay of Littlefield; Theresa Harris and Joey of Baton Rouge, La.; Mr. and Mrs. Muggs Glazener, Jan and Gina, Roy Thompson, Mrs. Ernest Savage and Mr. and Mrs. Edward Mitchell, all of Spade.

Those dropping by to visit were Mr. and Mrs. Robert Deloach and children and

Jay Savage, son of "Smookey" Savage, stayed for a two week extended visit and will go to Newport News, Va. with his uncle, Jim Savage and family, for a visit prior to returning to San Antonio.

## Private Grant Helps Students Paint Murals

Youthful artists in Coming, N.Y., have painted colorful murals on walls of three public school buildings, according to the Business Committee on the Arts.

In a project financed by a series of Corning Glass Works Foundation grants, art students were given free creative reign. The results are works of art that brighten an old junior high school and two high school indoor swimming pools.

The foundation proposed the project in line with its interest in improved visual environment, especially in public places, and encouragement to young talent.

## Blumes Host Rehearsal Fete

A rehearsal dinner honored Miss Dianne Milligan, Phelps Blume, and members of their wedding party Thursday evening, June 20, at the Spot Restaurant in Levelland.

Mr. and Mrs. Emery Blume of Amherst, parents of the prospective groom, hosted the dinner.

The dinner table was in a U-shape with the honored couple and their attendants seated at the head table. Carrying out the bride-elect's chosen colors of blue and white was a floral arrangement of blue daisies, white gladioli, greenery, and blue satin bows topped with white turtledoves. The side tables were decorated with blue candles surrounded by daisy candle rings and white turtledoves.

Special guests were Mr. and Mrs. Earl Milligan of Littlefield, parents of the bride-elect, B. W. Briggs, minister

of the Amherst Church of Christ; Mrs. Opal Haney of Claude, maternal grandmother of the bride-elect; Mrs. Ray Milligan of Littlefield, paternal grandmother of the bride-elect; and Mrs. H. L. Phelps of Amherst, maternal grandmother of the prospective groom.

Members of the wedding party were LaNona Betts; Carolyn Milligan, sister of the bride-elect; Renee Haney of Claude, aunt of the bride-elect; Jan Sisson; Scott Sheppard; Kenneth Fisher; Ricky Humphreys; Rodney Maxfield; Ronald Milligan, brother of the bride-elect; and Tommy Batson, nephew of the prospective groom. Others attending were Mandy Coffey of Amherst, Linda Shirley, Mrs. Kenneth Fisher, Mrs. Ricky Humphreys, and Mrs. Rodney Maxfield.

## CHRISTIAN FELLOWSHIP CENTER

JESUS IS ALIVE TODAY

Ye stiffened and uncircumcised in heart and ears, ye do resist the Holy Ghost: As your fathers did, so do ye. ACTS 7:51

SAT. 7:30 P.M.

SHARING

SINGING

PRAYING

THE LAY WITNESS KSEL 28 SUNDAY 5:30-6:00 P.M.

## THE FIRST NATIONAL BANK

SUDAN, TEXAS

### STATEMENT OF CONDITION

THE CLOSE OF BUSINESS JUNE 30, 1974

	JUNE 30, 1973	JUNE 30, 1974
<b>RESOURCES</b>		
Loans and Discounts	\$1,599,767.80	984,419.06
Banking House	24,398.05	23,468.05
Furniture and Fixtures	23,326.62	26,591.85
Other Real Estate Owned	3,573.00	1.00
U. S. Government Bonds	1,086,734.38	830,347.38
Other Bonds and Warrants	89,136.38	52,534.79
Federal Reserve Bank Stock	7,500.00	7,500.00
Federal Funds Sold	300,000.00	2,500,000.00
Cash and Exchange	1,047,808.23	1,526,264.48
Other Assets	1,616.00	10,649.00
<b>TOTAL</b>	<b>4,183,860.46</b>	<b>5,961,775.61</b>
<b>LIABILITIES</b>		
Capital Stock (Common)	50,000.00	50,000.00
Surplus Fund	200,000.00	200,000.00
Undivided Profits	84,433.63	234,700.97
Deposits	3,849,426.83	5,477,074.64
<b>TOTAL</b>	<b>4,183,860.46</b>	<b>5,961,775.61</b>

Federal Deposit Insurance Corporation  
Federal Reserve Bank System  
IN OUR 51ST YEAR OF DEPENDABLE SERVICE

We carry \$1,250,000.00 Fidelity Coverage for our Customers Protection

### Officers

GUY H. WALDEN  
Chairman of the Board and President

JAMES P. ARNOLD  
Executive Vice President

SARA M. WOODS  
Senior Vice President

RONALD S. GATEWOOD  
Vice President - Cashier

MRS. VERA L. INGLE  
Assistant Vice President

MRS. ELIZABETH WALDEN  
MRS. ARLINE PROVENCE  
Assistant Cashiers

### Board of Directors

Chairman  
GUY H. WALDEN  
President

Vice Chairman  
JAMES P. ARNOLD  
Executive Vice President

GRADY FRANKLIN MAPLES  
Radio Broadcasting and Investments

FRANCES FURNEAUX  
Investments

JOE P. ELLISON  
Ginning and Investments

MRS. RUBY MILEUR  
Investments

GUY NICKELS  
Compress, Ginning and Investments

SARA M. WOODS  
Secretary of the Board



With a cassette recorder and your own ingenuity, you can find out something that most people never notice-how the world really sounds. Here are some ideas to start you thinking.

Groove on the beach-use a multi-purpose tape to record the sounds of waves, you gruntingly heaving a medicine ball, kids oohing about their sand castles.

Place your recorder in the middle of a pasture to record the croaks of frogs, the food-crunching of insects, the whistling of wind and grass-as only Mother Nature can express it.

Mr. and rchman services burg, near her uncle

Mrs. Ja the early in the hor Dawson P

Richard of Houston Sudan fr visited th grandpar J. C. W

Mrs. E daughter Colo. we in the R.

Mrs. Se bock was visitor Crouch home fr following with her: Bob Crou Marvin tient in a Visitors end of Jur of Mr. ar uchamp Jimmy Sa Rhoads a all of O

Other Beauchai and in th Mrs. Ben Mr. and Lou Ann, ren, and Gnadenh Cotten P and Rog Rhonda and Stev

Mr. an reen and by spent ton, N. Alan and Floyd C bad, N. l the Col last wee

Mr. an visited family i Their gr returned Vann his hom ing a Houston Vistin J. W. C Mr. and from Bu

How Like inventic Sharp, years s can att

When, mas thi were ei became penden product

Product Mns. I plemen income, delight her firs than sl month then ha

Her n ous. W first c full-tim day, as ager's agen l sometir per ps week s with a \$1,600.

What meant indeed, inner s is ever abl with Linda, ibility then th provem



**LOGSDEN RECEIVES DISTINGUISHED AWARD**



**BUDDY LOGSDON**

Buddy C. Logsdon of Littlefield, Lamb County Extension agent for the past eight years, has been named to receive the highest award given by the National Association of County Agricultural Agents—the Distinguished Service Award for 1974.

Logsdon, who has been a staff member of the Texas Agricultural Extension Service for the past 15 years, is one of the seven county agents in the state to be recognized.

The award is presented annually to the nation's county agents who have, over a period of 10 years or more, made outstanding contributions to agriculture and have improved rural living, according to Gonzales County Agent Frank M. Stockton, president of the Texas County Agricultural Agents Association.

The seven Texas winners will be recognized at the state association annual meeting Aug. 4-6 in Irving. Actual presentations will be made at the national meeting Oct. 20-24 in Tucson, Ariz.

"Lamb County has a highly diversified agricultural industry that has received strong leadership from Buddy Logsdon," began his citation as prepared by the Recognition and Awards Committee of the state association. "His outstanding result demonstration program has improved farming practices that have boosted income. He has also been responsible for forming a strong county program building committee and an outstanding 4-H adult leaders association."

Through his strong 4-H program, boys and girls under Logsdon's supervision have exhibited numerous champion livestock at area and state livestock shows and have won many scholarships.

In 1969 the county agent was named state winner in the soil fertility program sponsored by the Texas Plant Food Institute.

Logsdon has been active in the TCAAA, serving as district director and state chairman of the Extension Programs Committee.

He holds a B.S. degree in agricultural education and a master's degree in education from Texas Tech University. Logsdon began his career with the Extension Service as an assistant county agent in Moore County where he served three years before being named county agent for Mitchell County. After four years he was named to his present position.

and Debbie left this week for a vacation to southern states.

Visitors during the week-end of June 29th in the home of Mr. and Mrs. B. A. Beauchamp Jr. were Sue and Jimmy Saunders, and Wanda Rhoads and her two nieces, all of Oklahoma City, Okla.

Other visitors in the B. A. Beauchamp home last week and in the home of Mr. and Mrs. Ben Beauchamp were Mr. and Mrs. Russell Blind, Lou Ann, Carol, Jean, Larren, and Larry Campton of Gnadenthutte, Ohio, Mrs. Cotten Robertson, Radney and Roger of Farwell, and Rhonda Ketcherside, Jody and Steven of Clovis, N. M.

Mr. and Mrs. W. T. Vereen and Mrs. Billie Grigsby spent the 4th in Lovington, N.M. with Bill Ed, Alan and Melissa Scott.

Floyd Coleman from Carlsbad, N.M. was a visitor in the Coleman Terrell home last week.

Mr. and Mrs. J. W. Olds visited the J. P. Christal family in Amarillo Saturday. Their grandson, Joel Christal returned home with them.

Vann Wallace returned to his home last week after being a medical patient in a Houston hospital.

Visiting with Mr. and Mrs. J. W. Olds last week were Mr. and Mrs. Griff Roberts from Brookfield, Missouri,

Mr. and Mrs. Lynn Drum and Mr. and Mrs. Martin Maxwell were Monday luncheon guests in the home of Mr. and Mrs. Ed Ray. Also there visiting was Minnie Linville, Mrs. Ray's sister-in-law.

Mr. and Mrs. Ray Hamilton of Montana visited here recently in the home of her parents, Mr. and Mrs. Ray May and Reagan.

Mr. and Mrs. Ples Harper of Canyon were Sunday visitors in the home of Mr. and Mrs. Jno Milam.

Mr. and Mrs. Lynn Drum and Mr. and Mrs. Martin Maxwell were Monday luncheon guests in the home of Mr. and Mrs. Ed Ray. Also there visiting was Minnie Linville, Mrs. Ray's sister-in-law.

Vicki Knox is recuperating at home following a stay in Littlefield Hospital as a medical patient.

Mr. and Mrs. Jerry Morris and children who have been visiting here with his parents, Mr. and Mrs. E. Woods.

Mr. and Mrs. Ray Hamilton of Montana visited here recently in the home of her parents, Mr. and Mrs. Ray May and Reagan.

Mr. and Mrs. Kenneth Noles were in Austin over the weekend where he attended meetings.

Mr. and Mrs. Butch Hall

Green Underwood, Mr. and Mrs. Buford Walser, Mrs. Valda Bishop, Larry and Lisa, Mrs. Wayne Doty and Donald, Craig Doty, Mrs. J. C. Wells, Mr. and Mrs. Gayle Brown and children, and Mr. and Mrs. Pat Kent and children. Mr. and Mrs. Jeryl Bellar, Mr. and Mrs. Dorman Chester, Mr. and Mrs. Paul Chisholm, and Mr. and Mrs. Jolen Ballew and children.

MOVING DAY

**HOLIDAY FELLOWSHIP HELD AT LOCAL CHURCH**

Some 80 persons attended the "Faith and Freedom" fellowship activities Thursday night at First Baptist Church.

Calvin Vernon led in prayer prior to the basket meal. The pastor, Rev. Eddie Freeman, gave a devotional. Group singing followed with the pastor and Noble Dudgeon accompanists. Games of volleyball, croquet, pitching horseshoes, frisbee, golf and others were played.

Bro. Eddie Freeman gave the benediction.

**DOROTHY POWELL**—Tech University. She was graduated in 1971 with a bachelor's degree in home economics education.

During her college career, she was named to the Dean's List and also chosen for Phi Kappa Phi, a national academic honor society. Mrs. Powell is also a member of the American Home Economics Association and is an officer in the District 2 Association of Extension Home Economics.

In her new position, she will work with Extension agents Buddy Logsdon and Jim Kuykendall and specialize in conducting educational programs for homemakers and young people in home economics and related areas.

The new agent is the wife of William D. Powell, Jr. The couple will live in Littlefield.

Dr. Bennett Hutchinson, associate professor of Chemistry at Abilene Christian College, has been selected an "Outstanding Educator of America" for 1974. Selection of these to receive this award is based on professional and civic achievements.

Dr. Hutchinson joined the ACC faculty in 1965 after receiving the bachelor's degree from ACC in 1963, the master's degree from the University of Texas in 1965 and the doctorate from the Illinois Institute of Technology in Chicago in 1969. He is a member of the American Chemical Society and recently spoke to the Permian Basin Section of the ACS on "Far Infra Red Spectra of Metal Complexes".

**OUTSTANDING EDUCATOR DR. HUTCHINSON**

Those selected are honored for their exceptional service, achievements, and leadership in the field of education.

Dr. Hutchinson joined the ACC faculty in 1965 after receiving the bachelor's degree from ACC in 1963, the master's degree from the University of Texas in 1965 and the doctorate from the Illinois Institute of Technology in Chicago in 1969. He is a member of the American Chemical Society and recently spoke to the Permian Basin Section of the ACS on "Far Infra Red Spectra of Metal Complexes".

Dr. Hutchinson is the son of Mr. and Mrs. Earl B. Hutchinson of Sudan. He is married to the former Nancy Richardson of Peoria, Ill. The Hutchinsons and their

daughter, Amy 4, live at 710 Westview, Abilene. Dr. Hutchinson is among 13 ACC professors who have been selected "Outstanding Educators of America".

Those selected are honored for their exceptional service, achievements, and leadership in the field of education.

sharp knife cut away open section of design (leave handle intact). Scoop out watermelon meat with large spoon or melon ball scoop.

1 medium watermelon  
2 cantaloupes  
2 honeydew melons  
2 cups blackberries  
or dewberries  
2 cups fresh strawberries

Follow above directions to design basket. Cut edge of melon in saw-tooth design with sharp knife. Scoop out center with melon ball scoop, leaving about an inch of watermelon fruit intact. Cut cantaloupes and honeydew melons in half, remove seeds and scoop meat with melon ball scoop. Fill watermelon with prepared melon balls. Decorate with strawberries and blackberries or dewberries. Wrap and chill. Decorate with novelty picks. Yield: approximately 10 servings.

For additional recipes write John C. White, Commissioner, Texas Department of Agriculture, P. O. Box 12847, Austin, Texas 78711

**OBITUARIES**

**J. W. "BILL" STERR**

Services for John W. (Bill) Sterr, 53, of Decatur, Ark. were held Friday morning at 10:00 a.m. in the Callison McKinny Chapel in Bentonville, Ark. His body brought overland to Amherst by the Callison McKinny Funeral Home where Masonic graveside services were held in the local cemetery Sunday evening at 3:00 p.m.

The Rev. Mrs. Hazel House, pastor of the local First United Methodist Church officiated. Payne Funeral Home was in charge of the local services.

Sterr, a native of El Reno Oklahoma, died Wednesday at 5:30 p.m. following a heart attack at his home in Decatur.

Sterr moved to the Amherst area with his parents when he was two-years-old. He was a graduate of the Amherst High School and a veteran of World War II, and served in Japan one year.

He was married to Anna Lee (Toots) Nicholson in 1940. They were residents of Lamb County until 1969 when they moved to Decatur, Ark. where he was engaged in ranching.

Survivors include his wife Anna Lee (Toots) of the home, two daughters, Mrs. Billie Rhue Cole of Lewisville, Texas; Mrs. Judy Ward of Huffman; his parents, Mr. and Mrs. John Sterr of Bentonville, Ark., and five grandchildren.

**JOHNNY ARCE**  
Services for Johnny Arce, a former Amherst resident who drowned Thursday in Burlington, Colo., were held at 10 a.m. Monday in the Sacred Heart Catholic Church in Littlefield. Arce was 24 at the time of his death.

Burial was in the Amherst Cemetery under direction of Payne Funeral Home. Arce, a native Texan, lived in Burlington at the time of his death.

Survivors include his wife; a daughter, Mrs. Judy Butler of Lubbock; a son, Tim of Lubbock; three sisters, Mrs. Gladys Robison and Mrs. Jane Anne Byers, both of Littlefield, and Mrs. Georgia Hancock of Dallas; his grandmother, Mrs. Effie Tapley of Littlefield, and three grandchildren.

**DOYLE E. TAPLEY**

Doyle E. Tapley, 46, was dead on arrival at a Littlefield hospital about 1 p.m. Sunday after suffering an apparent heart attack on his farm near the Rocky Ford community.

Services were held at 10:30 a.m. Tuesday in the First United Methodist Church in Littlefield with the Rev. Wesley Daniel, pastor, officiating.

Burial and masonic rites were held in Littlefield Memorial Park under direction of Payne Funeral Home of Amherst.

Tapley was an active leader in the work of 4-H and Future Farmers of America, taking part in most of the organizations' stock shows.

Also active in square dance functions, Tapley was state president of the Federated Officers of Square Dance of Texas.

Born in Amherst in 1927, Tapley graduated from Amherst High School in 1944 and in January, 1945, married the former Mosele Useton in Amherst. He enlisted in the Navy and served during World War II. He was a mason and a Methodist.

Survivors include his wife; a daughter, Mrs. Judy Butler of Lubbock; a son, Tim of Lubbock; three sisters, Mrs. Gladys Robison and Mrs. Jane Anne Byers, both of Littlefield, and Mrs. Georgia Hancock of Dallas; his grandmother, Mrs. Effie Tapley of Littlefield, and three grandchildren.

**SAVE 7¢ on German-Style Sausage**

**GOOCH** German-Style Sausage

It's slow cured and hickory smoked, delightfully seasoned for a rich, hearty, old-world flavor you just won't believe - 'til you've tried it. Serve Gooch German-Style Sausage at your next cook-out - say tonight! And save 7¢ with the coupon below!

**7¢ OFF** with this coupon

**GOOCH GERMAN-STYLE SAUSAGE** 12 oz. package

TO THE DEALER: For each coupon you accept as our authorized agent, we will pay you the face value plus 3¢ for handling, provided you and your customer have complied with the terms of this offer. Any other application constitutes fraud. Invoices showing your purchase of sufficient stock to cover all coupons redeemed must be shown on request. Coupon expires Oct. 31, 1974.

292 IRRIGATION MOTOR \$850.00

**Baccus Chevrolet**

SUDAN, TEXAS  
Box 356 Phone 227-3501

**How Adversity Can Breed Prosperity**

Like that proverbial relationship between necessity and invention, adversity is often the mother of success. Linda Sharp, struggling on a North Carolina farm just a few years ago and now enjoying a fair share of prosperity, can attest to that.

When just before Christmas three years ago, funds were especially low, Linda became a part-time independent dealer selling the products of Stanley Home Products, Inc., of Westfield, Mass. Hoping merely to supplement her meager family income, to her surprise and delight she made \$200 on her first seven parties; more than she was earning in a month on a bank job she then had.

Her next choice was obvious. With the birth of her first child, she became a full-time Stanley dealer. Today, as a Branch Sales Manager's Assistant, she averages 10-15 parties weekly, sometimes earning \$30-\$35 per party. In one banner week she sold merchandise with a wholesale value of \$1,600.

What these earnings have meant to Linda are tangible indeed, but the security and inner satisfaction she feels is even more gratifying. "I am able to spend more time with my children," says Linda, "because of my flexibility of my hours." And then there are the home improvements that her sales

**9 99**

MINI SIZE WALLET CREATIVE COLOR PORTRAITS FOR ONLY

Extra Charge for GROUPS

NO LIMIT

GET PICTURES MADE OF BIRTHDAY, CHRISTMAS, HOLIDAY AND ALL THE SPECIAL OCCASIONS AT THESE SAME LOW PRICES

**SHUGART COLOR PHOTOS**

ASK About Our FREE 8x10 OFFER

**Clarke's**  
SUDAN, TEXAS

model **F-275** COMBINATION REPAIR UNIT REPAIR, REBUILD, CONSTRUCT EQUIPMENT AND MACHINERY

**MODEL F-275**

Without Built-in Charger. This unit is the same as the one except for the Charger. However, the Charger unit can be added in the future when required.

**1 & 2 HP TWIN CYL. 20-GAL.**  
8.2 to 16.5 CFM Displ. 4.9 to 5.6 CFM Free Air At 100/125"

**PORT. COMPRESSORS**  
PSI. Complete With Dayton Cap. Motor

COMPLETE LINE FORNEY WELDERS  
ROCKWELL POWER TOOLS, DRILLS, GRINDERS  
COMPLETE LINE WELDING EQUIPMENT

**G & C AUTO SUPPLY**  
PHONE 227-3212 SUDAN





# Baseball



SUDAN-AMHERST INTERCITY  
LITTLE LEAGUE TEAMS



SUDAN ANGELS



SUDAN DODGERS



AMHERST BRAVES



AMHERST CUBS

## WE'RE BOOSTING THE ALL-STARS

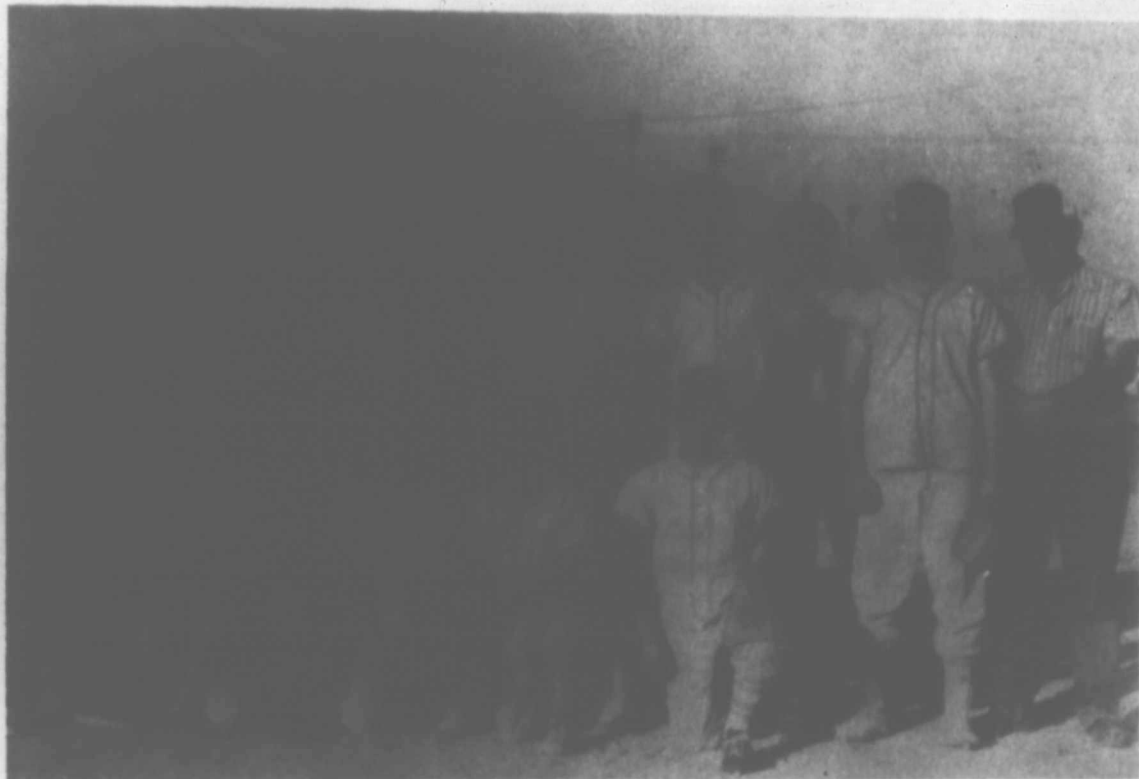
THE FAIRVIEW GIN	Norma's Beauty Salon	Sands Cafe
Sudan Dairy Bee	Sudan Automatic Laundry	Gordon's Gulf Service
Raymond Gage Gin	Marion Williams Ford	Provence Welding
Clarke's Dry Goods	Sudan Tire Service	Baccus Chevrolet
Williams Body Shop	The First National Bank	Sudan Beacon-News





# Baseball

BABE RUTH TEAMS



SUDAN JR. BABE RUTH



SUDAN SR. BABE RUTH



AMHERST SR. BABE RUTH

## TO TOURNAMENT VICTORIES

Helen's Beauty Shop

G & C Auto Supply	Nichols Insurance Agency	Nichols Oil Co.
Feeder's Grain, Inc.	Reed's Shamrock Service	Armes Equipment Company
Cardwell Flying Service	Lamb County Butane Co.	Pay & Save Food
Knox Texaco	Central Compress & Whse.	Farmers Co-op Gin
Hubert & Winifred Dykes	Bakers Deep Rock Station	Lance Insurance



# TREASURER'S QUARTERLY REPORT

STATE OF TEXAS  
COUNTY OF LAMB

Before me, the undersigned authority, County Clerk of Lamb County, Texas, on this day personally appeared G. T. Sides, County Judge; A. J. Spain, Commissioner of Precinct No. 1; T. L. Free, Commissioner of Precinct No. 2; Jack Peel, Commissioner of Precinct No. 3; and

Hubert Dykes, Commissioner of Precinct No. 4, constituting the Commissioners' Court of Lamb County, Texas, who, being first by me duly sworn, each upon oath severally stated:

"That they and each of them have fully complied with the Laws of the State of Texas relating to the matters set forth herein; that they

and each of them have fully inspected the quarterly report of the County Treasurer of Lamb County, Texas, submitted to them at the Regular Term of the Commissioners' Court, of Lamb County, Texas, held on the 8th day of July, A.D., 1974, which report covers the receipts, disbursements and ending balances of all county

funds for the years' quarter ending on the 30th day of June, A.D., 1974, and that they and each of them have actually counted and fully checked the amount of money and other assets in the hands of said treasurer and have found the amounts shown in such report, attached hereto, true and correct."

G. T. Sides  
G. T. Sides, County Judge

A. J. Spain  
A. J. Spain, Commissioner, Precinct No. 1

T. L. Free  
T. L. Free, Commissioner, Precinct No. 2

Jack Peel  
Jack Peel, Commissioner, Precinct No. 3

Hubert Dykes  
Hubert Dykes, Commissioner, Precinct No. 4

SWORN TO AND SUBSCRIBED before me this 8th day of July,  
A.D., 1974.

Mary Beth Willey  
Mary Beth Willey, County Clerk,  
Lamb County, Texas.

( S E A L )

TO THE COMMISSIONERS COURT OF LAMB COUNTY, TEXAS:

I, Mrs. Lucy M. Moreland, County Treasurer, of Lamb County, Texas, hereby submit for your inspection and approval, as provided by law, my report of Receipts and Expenditures and Ending Balances, of all moneys and assets coming into my hands to the credit of the Funds named below during the years quarter ending June 30, 1974.

<u>JURY FUND</u>	
Amount received during quarter -----	\$ - 0 -
Amount paid out during quarter -----	905.35
Balance 7-1-74 -----	4,741.39
<u>GENERAL FUND</u>	
Amount received during quarter -----	7,629.76
Amount paid out during quarter -----	35,142.16
Balance 7-1-74 -----	233,275.47
<u>OFFICERS SALARY FUND</u>	
Amount received during quarter -----	43,940.45
Amount paid out during quarter -----	56,770.34
Balance 7-1-74 -----	10,062.13
<u>LAW LIBRARY FUND</u>	
Amount received during quarter -----	306.67
Amount paid out during quarter -----	491.31
Balance 7-1-74 -----	1.42
<u>PRECINCT # 1</u>	
Amount received during quarter -----	25,860.41
Amount paid out during quarter -----	20,030.13
Balance 7-1-74 -----	63,896.69
<u>PRECINCT # 2</u>	
Amount received during quarter -----	23,053.50
Amount paid out during quarter -----	20,868.32
Balance 7-1-74 -----	40,465.18
<u>PRECINCT # 3</u>	
Amount received during quarter -----	26,588.63
Amount paid out during quarter -----	23,704.61
Balance 7-1-74 -----	15,753.33
<u>PRECINCT # 4</u>	
Amount received during quarter -----	24,117.78
Amount paid out during quarter -----	23,039.85
Balance 7-1-74 -----	90,426.60
<u>SOCIAL SECURITY FUND</u>	
Amount received during quarter -----	\$ 10,115.22
Amount paid out during quarter -----	10,131.47
Balance 7-1-74 -----	4,663.47
<u>GENERAL ROAD AND BRIDGE</u>	
Amount received during quarter -----	892.94
Amount paid out during quarter -----	5,399.69
Balance 7-1-74 -----	64,280.44
<u>LATERAL ROAD FUND</u>	
Amount received during quarter -----	627.09
Amount paid out during quarter -----	34.76
Balance 7-1-74 -----	59,441.38

<u>COURTHOUSE &amp; JAIL, SERIES 1953-A, I&amp;S</u>	
Amount received during quarter -----	352.65
Amount paid out during quarter -----	11.99
Balance 7-1-74 -----	586.89
<u>ROAD DISTRICT 1-A, SERIES 1960, I&amp;S</u>	
Amount received during quarter -----	41.72
Amount paid out during quarter -----	2.41
Balance 7-1-74 -----	1,272.74
<u>ROAD DISTRICT # 3, SERIES 1962, I&amp;S</u>	
Amount received during quarter -----	131.41
Amount paid out during quarter -----	5.78
Balance 7-1-74 -----	4,399.25
<u>ROAD DISTRICT # 4, SERIES 1962, I&amp;S</u>	
Amount received during quarter -----	517.59
Amount paid out during quarter -----	12.82
Balance 7-1-74 -----	37,150.24
<u>PERMANENT IMPROVEMENT FUND</u>	
Amount received during quarter -----	-0-
Amount paid out during quarter -----	-0-
Balance 7-1-74 -----	687.87
<u>RETIREMENT FUND</u>	
Amount received during quarter -----	\$ 9,345.72
Amount paid out during quarter -----	9,345.72
Balance 7-1-74 -----	101.82
<u>EMPLOYEES INSURANCE ACCOUNT</u>	
Amount received during quarter -----	8,867.72
Amount paid out during quarter -----	8,867.72
Balance 7-1-74 -----	194.33
<u>CRIMINAL JUSTICE PLANNING FUND</u>	
Amount received during quarter -----	1,545.00
Amount paid out during quarter -----	1,277.75
Balance 7-1-74 -----	1,497.97
<u>REVENUE SHARING FUND</u>	
Amount received during quarter -----	48,551.39
Amount paid out during quarter -----	34,841.71
Balance 7-1-74 -----	172,308.26
<u>ROAD DISTRICT # 6, I&amp;S</u>	
Amount received during quarter -----	1.88
Amount paid out during quarter -----	.02
Balance 7-1-74 -----	7.23

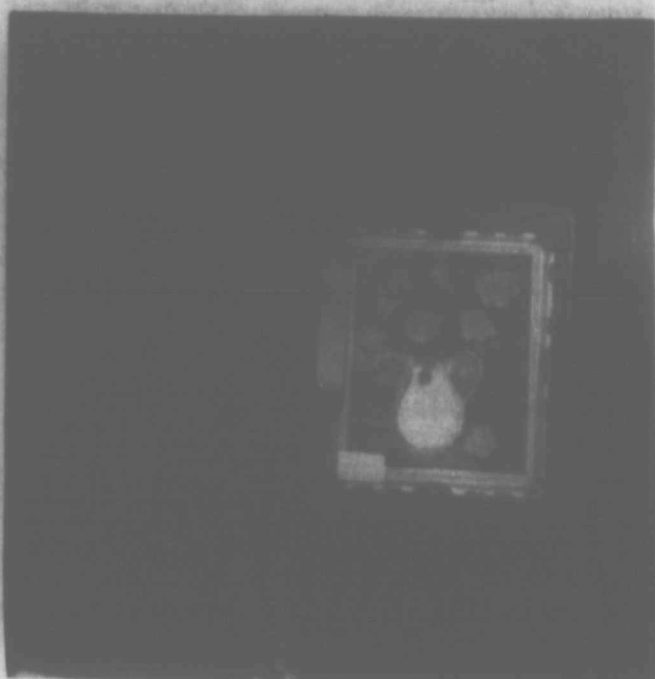
I hereby certify the above and foregoing to be a full, true, and correct statement of all matters to which the same relates, in testimony thereof, witness my hand this the 30th day of June, A.D., 1974.

Lucy M. Moreland  
County Treasurer, Lamb County, Texas





MRS. JOLEN BALLEW



MICHELLE BALLEW

### Local Artist Wins Blue Ribbon

Participating artists in the Twenty-third Annual Membership Show in Lubbock, opening Sunday, July 7, were honored that afternoon with a reception at Municipal Garden and Arts Center.

In addition to three winners and an alternate of the show, artists were named for City Circuit honors. Among these

were Brenda Ballew, Sudan, for "Sundown on the Chisholm Trail", an oil painting.

There were a total of 66 entries in a variety of media in the show. These paintings will be exhibited at the center through August 1.

Attending the reception were Mr. and Mrs. Jolen Ballew and children, Mr. and

Mrs. Paul Chisholm, and Mr. and Mrs. Jimmy Ford and children.

\*\*\*\*\*

Mrs. Jolen Ballew won the first place blue ribbon in the oil media division at the Muleshoe Art Association Annual Membership Exhibit in 5 p.m. ceremonies Thursday, July 4th, at 228 W. Main.

Mrs. Ballew's exhibit in watercolors at the show received honorable mention. She also tied with an area resident, Mrs. Dana Arnold for the public opinion award presented by Bobo Insurance.

Winning the student honors at the show was Miss Michelle Ballew, 10-year-old daughter of Mr. and Mrs. Jolen Ballew.

### TOPS Report

Eleven members were present Monday, July 8th, for the fourth anniversary meeting of Tops 634 in the Sudan Community Center.

The group repeated the Tops Pledge in unison and answered roll call with the number of pounds lost or gained. A total loss of 10 pounds was recorded. Letha Gordon was Queen of the week.

Awards were then presented for the year. They were: Rosabel Colidron, most weight lost; Kathy Gatewood, 10 pounds loss and halfway goal; Angela Eicke, halfway goal; Wynelle Williams, 10 pound loss. Past officers receiving awards were Verdie Gann, Rosabel Colidron and Oleta Reese.

Tops refreshments were then served.

\*\*\*\*\*

Tops 634 met Monday, July 1, with nine members present. After weighing in and the recording of weights, the meeting began by repeating the Tops Pledge in unison.

A treasurer's report was given by Wynelle Williams who also read the minutes of the last meeting. The group decided to sell all occasion

cards and to have a fellowship meeting July 1 at Mary Tollett's home following the weigh-in at Community Center. After singing Tops Fellowship Song, the meeting dismissed.

### Personals

Mr. and Mrs. Clyde Flowers, Dennis and Deanna have returned home from vacationing in New Mexico and Fun Valley, Colorado.

Mr. and Mrs. Homer Morris and their son and family, the Jerry Morris' of Grants, N.M., returned to Sudan Saturday night from a visit in Liberal, Kansas with their daughter and sister, Dr. and Mrs. Thurmon Bryant and children.

Jim Bob Hargrove returned home Monday from Lubbock where he had been a week with his mother and father, Mr. and Mrs. Jim Hargrove. Jim was a heart patient in ICU at St. Mary's Hospital a week. He has been moved to a room.

Miss Cheryl Harvey is now recuperating at home after a recent hospital stay in Amherst hospital. She was dismissed Monday.

Mrs. Lucille Fox and Mrs. Leonard Pierce attended funeral services in Portales Thursday for Mrs. Pearl McWilliams, Mrs. Pierce's aunt.

Visiting Monday, July 1, in the Leonard Pierce home was her brother, Mr. and Mrs. Harold Fox and boys of San Jon, N.M. Billy will remain for a longer visit.

### Central Government Has Central Number

Ever had a problem involving the federal government and not know where to call?

And then been given a run-around of referrals by persons who meant well but didn't know how to help?

The General Services Administration has set up a new answering service. The telephone number is (202) 755-8660. If one of the 10 information specialists in the center can't answer your question they'll find out who can.

The center will accept calls from 7:30 a.m. until 5:30 p.m. on weekdays.

### Students Hail Unprecedented Dialogue With President Luis Echeverria

MEXICO CITY—(Special)—President Luis Echeverria, in a 12-hour meeting with National Polytechnic Institute students, announced new programs designed to develop domestic technology and bring the benefits of Mexico's economic progress to the rural population.

The unprecedented dialogue with the students marks a milestone in President Echeverria's policy of facilitating participation and decision-making roles to the nation's youth in confronting the administration's number one priority: raising the living standard of the rural population and achieving a more balanced distribution of national wealth.

The President proposed setting up a monetary fund to establish cooperatives for developing technology to produce low cost articles. These cooperatives will be managed by professors and students.

"It is feasible to create a monetary fund to sponsor specific work projects and research as well as centers of productive activity where discussions can be held to decide what is needed, what human resources are available and to conduct market surveys," the President said.

These cooperatives will coordinate their research with such governmental agencies as the Petroleos Mexicanos (the government-operated petroleum industry) and the Federal Electricity Commission to determine what can be produced in Mexico and thereby reduce dependency on foreign imports.

Another program of great significance is the setting up of inter-disciplinary social service brigades which will start working in July to take technology to the least developed rural sectors. These sectors often possess natural resources but limited means for development.

Describing the function of these brigades, which will operate much in the manner as medical interns in the health field, the President said: "This will be a practical application of transfer of technology—a factor for development and not of personal gain."

It was also agreed the government should establish a Higher School of Tourism for the training of specialized personnel and to unify schools already operating in this field.

The President noted that tourism has been increasing at the rate of 11% annually and with Mexico's great scenic beauty and archeological treasures, the field has a tremendous potential for expansion.

"These factors make it necessary to provide better training for people at all levels of the tourism industry," he asserted.

Education has received high priority in the administration of President Echeverria and federal budget appropriations in this area exceed armed forces outlays by more than 300%. The Chief Executive indicated this policy will be continued.

"Despite pressures of population explosion, we are not going to improvise in this field. Rather we are going to train teachers properly for this vital function," he stated.

### CIVIL SERVICE COMMISSION ACCEPTS APPLICATIONS

The U. S. Civil Service Commission is now accepting applications for Border Patrol Agent positions. These positions are located with the Immigration and Naturalization Service, an agency of the U. S. Department of Justice. The Service hires approximately 100 Border Patrol Agents annually and offers good opportunities to men and women who are interested in immigration law enforcement and want to prepare themselves for positions of greater responsibilities through on-the-job and Service-offered training. All new appointees are assigned to positions located along the Southern United States border.

time of appointment, all agents must have a combination of abilities and skills such as the ability to learn law enforcement methods, ability to gather factual information, poise and self-confidence, tact and ability to deal with a wide variety of persons in all walks of life. In addition, agents must have the ability to learn to speak and read Spanish. Individuals selected receive instructions in speaking and reading Spanish as part of the basic training for Border Patrol Agents.

For additional information visit the Federal Job Information Center at:

1100 Commerce Street  
Dallas

Individuals selected for appointment enter on duty as Border Patrol Agents with the basic entrance salary of \$9,969 per year. At the

or call either of the following telephone numbers.

-- In Dallas: 749-3156  
-- Toll-Free in Texas: (800) 492-4400.

YOU ARE INVITED TO ATTEND SERVICES JULY 14, 1974 AT NEW HOPE BAPTIST, RECENTLY ESTABLISHED IN THE CHURCH OF GOD IN CHRIST BUILDING, SUDAN, TEXAS.

THE PUBLIC IS ALSO INVITED TO ATTEND OUR PREOPENING SERVICES JULY 16, 17, 18, 19, AND CLOSING OUT ON THE 21ST.

THE FOLLOWING CHURCHES ARE INVITED TO COME AND FELLOWSHIP WITH US.

- REV. JAMES POLLARD & CHURCH, CLOVIS, N. M.
- REV. C. GREEN & CHURCH, CLOVIS, N. M.
- REV. E. FREEMAN & CHURCH, SUDAN, TEXAS
- REV. THOMAS & CHURCH, SUDAN, TEXAS
- REV. A. LOUDERMILL & CHURCH, CLOVIS, N. M.
- REV. C. CLAY, CLOVIS, N. M.
- REV. F. R. WILLIAMS & CHURCH, CLOVIS, N. M.
- REV. STEPHEN AND CHURCH, CLOVIS, N. M.
- REV. A. HAYES & CHURCH, PROGRESS, TEXAS
- REV. I. S. ANSLEY & CHURCH, FRIONA, TEXAS
- REV. L. V. MAYS & CHURCH, HEREFORD, TEXAS
- REV. F. L. SLEDGE & CHURCH, DALHART, TEXAS
- REV. W. JHONSON & CHURCH, OLTON, TEXAS
- REV. A. ALEXANDER & CHURCH, DIMMITT, TEXAS
- REV. P. SMITH & CHURCH, EARTH, TEXAS
- REV. E. SMITH & CHURCH, SPRINGLAKE, TEXAS
- REV. E. M. MCFRAZIER & CHURCH, MULESHOE, TEXAS
- REV. N. JACKSON & CHURCH, LITTLEFIELD, TEXAS
- REV. A. HAYES & CHURCH, LITTLEFIELD, TEXAS
- REV. J. JENKINS & CHURCH, PLAINVIEW, TEXAS
- REV. C. CAMPBELL & CHURCH, AMARILLO, TEXAS
- REV. MORTON & CHURCH, FLOYDADA, TEXAS
- REV. COOKS & CHURCH, FLOYDADA, TEXAS
- REV. W. D. ANDERSON & CHURCH, MORTON, TEXAS
- REV. COLE & CHURCH, HART, TEXAS
- REV. PRYOR & CHURCH, ODESSA, TEXAS
- REV. MEDLOCK & CHURCH, ODESSA, TEXAS
- REV. BROWN & CHURCH, PLAINS, TEXAS
- REV. HOLLINS & CHURCH, ANDREWS, TEXAS

REV. WILLIE PRICE, Pastor — OLETHA JOHNSON, Sec.

### Make The Most Of Your Travel Dollars

Even a smart shopper can become confused about what (and how) to buy on a trip to foreign places, so these suggestions could become a real bargain when you try to buy a bargain abroad.

Go off-season. Europe in the winter, the Caribbean in the summer, can save you several hundred dollars. In addition, waiters, salesmen, and others aren't as rushed and can give you better service.

Visit the native markets. To haggle: start at a price a little lower than the one you want to pay—then go up at least once as the merchant comes down.

Ship gifts worth under \$10 home to your friends in packages marked "Gift Item—Value under \$10."

Find out the best buy in each country before you go. In Japan it's cultured pearls, tortoise shell, and sashes. In Austria it's leather goods. Pick Paris for fashion, umbrellas and handbags. In Munich you can snap up a good camera for

a pretty picturesque price. Silver shines as one of Mexico's best buys.

Don't be railroaded into excessive transportation costs. Look into the unlimited mileage of a Eurail pass. Many American tourists arrange to buy cars abroad, travel in them and bring them home.

Get accommodating accommodations that give you



the most for your money. For example, American standard rooms; American, local, and continental cuisine; phones; television; temperature-control; carpeting; swimming pools; free advance reservations; baby-sitters; doctors and dentists on call; baby beds; free parking and free accommodations for children in their parents' rooms can be had at Holiday Inns in over 40 countries around the world.

Get a good exchange rate on your currency for a change. Smart travelers check the financial news and buy foreign money in the United States while it's low.

Hopefully, you'll find these hints worth heeding they can make your money stretch around the world!

### FOOD PRESERVATION SEMINAR SET

Southwestern Public Service and Ball Jar Company will sponsor a home food preservation seminar in Levelland, Lubbock and Plainview. Foods preservation specialist Mary Lou Williamson from Ball Company and home service advisors from Southwestern Public Service will work together to present the newest ideas in canning, freezing and pickling. Valuable preservation packets will be given to all participants.

Sessions will be held in Lubbock at the Downtown Reddy-Room on July 15 at 7:30 p.m., July 16 at 2:00 p.m., in Levelland at the Reddy Room on July 23 at 2:00 p.m. and in Plainview at the Reddy Room on July 24th at 2:00 p.m. Meetings all open to all persons without regard to race, color, or national origin.

On the birde of Avignon, you're only a few miles from the Palace of the Popes, a Holiday Inn and the section of France Van Gogh went crazy over!

### The Less the Mow, The Mo' the Grass

Raise the height of cut one notch on your lawn mower. This not only reduces the power needed to cut the grass but the increased height of cut means less frequent mowings.

Taller grass is more drought resistant, Dr. James R. Watson, The Toro Company's agronomist, points out, thereby reducing the amount of water needed for sprinkling. Mowers should be properly adjusted and lubricated. Sharp blades, properly inflated tires, and clean combustion chamber and air cleaner, contribute to maximum efficiency and minimum fuel usage.

Tests by a major tire company show that tires inflated below the levels recommended in car owner's manuals can cost motorists as much as one mile per gallon in gas mileage.

Exports of domestic merchandise totaled \$43.5 billion in 1971; of this total, 83 per cent was manufactured commodities, the U.S. Bureau of the Census reports.

If farmers decided to save energy by abandoning their tractors, it would take 27 million horses and mules to replace them, according to Sperry New Holland Division of Sperry Rand Corp.

Average hourly earnings increased by about six per cent for non-farm workers during 1973, the Bureau of Labor Statistics reported, slightly higher than the salary increase registered by executives.

According to the quarterly survey of the Federal Reserve Bank of Chicago, the average value of good farm land in 1973 was 24 per cent over that of 1972.

Commerce Clearing House reports that U.S. citizens paid an average of \$522 in taxes to state and local governments in fiscal 1972—a jump of 362 per person as compared with the previous year.

### Quick Quiz!

1. MOST MAN-MADE LAKES AND PONDS SOON DEVELOP PLANT AND ANIMAL LIFE?  
TRUE  FALSE
2. NATURAL LAKES AND PONDS WITH YEARS OF WEED-FREE EXISTENCE OFTEN BECOME WEED-INFESTED WITHIN FOUR TO SIX YEARS OF HEAVY POPULATION BY MAN?  
TRUE  FALSE
3. MECHANICAL HARVESTERS ARE GENERALLY CONSIDERED THE MOST EFFECTIVE MEANS OF CONTROLLING AQUATIC WEEDS?  
TRUE  FALSE

ANSWERS: 1. TRUE. 2. TRUE. 3. FALSE.

FOR YOUR FREE PACKET OF ANSWERS OR HOW TO CONTROL WATER WEEDS WITHOUT HARMING FISH OR OTHER AQUATIC LIFE, SEND THIS QUIZ TO: AQUATIC WEEDS INFORMATION, P.O. BOX 100, WASHINGTON, DC 20540.

## ELECTRO-GRILL

\$112.50 Plus Tax

LAST CHANCE Offer Expires July 15, 1974

Patio Cart or Patio Stand

BUY EITHER ONE & GET THIS \$21.95

MOTORIZED, COMPLETE ROTISSERIE FREE!

There are two Electro-Grills... and each is three cookers in one! Flame barbecue with hood up, roaster or smoker with hood closed. Whether you choose the patio stand model or the patio cart model, you get a large stainless steel cooking grill with bun warming section and storage shelf to keep cooked foods hot. And either model moves easily so there's no need to change your plans to cook out just because the weather changes.

Buy Electro-Grill NOW and receive free of extra cost - this completely motorized rotisserie regularly priced at \$21.95. With a motorized rotisserie, large cuts of meat, whole chickens or turkey cook evenly to a sizzling turn any way you like them!

See Electro-Grill at The Electric Company office... and put it on your electric bill!

Dependable ELECTRIC Service

FOR 50 YEARS PEOPLE



Mr. and Mrs. Eddie Wilson are parents of an infant daughter, Jayma Michelle, born Monday, July 8 at Methodist Hospital, Lubbock, and weighed 9 lbs. 2 ozs. She was 21 3/4 inches long. Grandparents are Mrs. Dorene Harbin of Muleshoe and Mr. and Mrs. H. Wilson of Levelland.

The couple has another daughter, 3.

In Germany and Armenia, ashes were given to cattle to keep them from the plague!

### BEAUTY that uplifts

surrounds the visitor to our home. This atmosphere of serenity in our environment is a source of inspiration to the bereaved.

**HAMMONS FUNERAL HOME**

Phone 385-5121  
503 E. 5th  
LITTLEFIELD, TEXAS



### WANTED MY OUT!

**GARAGE SALE** - Four-family, Thursday and Friday at Barbara Flowers, 304 Furneaux from 9 a.m. to 7 p.m.; clothing, baby furniture, bicycles, and miscellaneous items.  
7-11-1tp

**FARM FOR SALE** - 84 acres with 4-bedroom brick home; joins City of Whiteface on Hwy. 1780. Contact C. L. Whiteley at 806-3101.  
7-4-2tp

**PIANO SALE** - Nearly new spinet piano. Concert approved. Tremendous Bargain. This is your chance to own a fine piano by assuming small payments. Write at once - McFarland Music Co., 1401 West 3rd, Elk City, Okla. 73644  
7-11-1tp

**FOR SALE** - Three-bedroom house/two baths; corner lots; 300 Wilson. Call 227-3031 after 3 p.m.  
6-20-tnc

**FOR SALE** - 1971, C-50 Chevrolet truck with 1970 model manure spreader. Call 227-4591 Mark Baker.  
7-10-tnc

**FOR SALE** - 1973 350 Honda; like new, 1600 miles. Call 227-6731 or 792-0146.  
7-11-tnc

**FOR SALE** - Kirby Vacuum Cleaners, service and parts at Clarke's Dry Goods.  
3-7-tnc

**FOR SALE** - 1970 Falcon, 4-door, good gas mileage, air-conditioned, good condition. Call 227-5791  
7-4-tnc

**ACREAGE FOR SALE** - 15 acres for sale on east side of Muleshoe adjacent to REA Pole Yard; 4" electric well; some improvements. Perfect location for your horses, a few cows or a pig or two. \$13,500.00. Call Earl Brock Real Estate, 647-3257, 647-3176 or 647-3490; Box 8, Dimmitt.  
6-13-tnc

### PERSONALS

Mr. and Mrs. Jim Bob Hargrove and children were in Lubbock over the weekend to visit his parents, Mr. and Mrs. Jim Hargrove. Jim was released from St. Mary's Hospital Saturday where he had been a heart patient for two weeks.

Ed Ray was honored with a luncheon June 30th on his 82nd birthday in the home of the Alvin Ray's of Spade. Attending were Mrs. Ray, co-hostess, Mr. and Mrs. Jerry Ray and children; Mr. and Mrs. Guy L. Blevins, Eddie and Terry of Lovington, N.M., Mr. and Mrs. C. C. Rendleman, Mr. and Mrs. Thurmond Haggard Mr. and Mrs. Bobby Bennett and Mr. and Mrs. Carl Ray, Mr. and Mrs. Billy Ray, Lubbock; Mr. and Mrs. Harvey Ray of Amarillo; Mr. and Mrs. Joe Ray, Mrs. Alma Hancock, and Mrs. Eula Owens of Portales, N.M.; and Mr. and Mrs. R. C. Blevins of Littlefield. Other visitors were Mrs. Ola Harvey of Spade and Bryan Nutton of Hollis, Okla., grandchildren and great-grandchildren.

Visiting this week in the home of Mr. and Mrs. John Burnett and Carl is a nephew, Eddie Swanson of Ventura, California.

Mrs. Leroy Young returned home Wednesday after visiting in Midwest City, Okla.

with her sister, Mr. and Mrs. Tom Parkey and family, and Canadian with her brother, Mr. and Mrs. Roy Dickinson and family.

Mr. and Mrs. J. B. Harper and Mr. and Mrs. Bill Tra-weed and Steven spent the holidays at Reklaw, Texas. The Traweeds returned to Birmingham, Ala. Carole and Steven had spent a month in Sudan with her parents. Miss Joanna McClure of Sacramento, Calif. has been visiting with her Grandmother, Mrs. R. S. Gatewood and Mr. Gatewood.

Mrs. Jerry Ray, Phyllis and Tanya and Mrs. Dale Hanna left last week for Arkansas where they will visit Mrs. Ray's mother, Mr. and Mrs. J. Thompson in Mulberry. Emery Blume entered Methodist Hospital in Lubbock Sunday afternoon where he was scheduled to undergo surgery on Monday.

Gwen Churchman of Lubbock and Mrs. Jerry Etheridge and Kay Lynn of Dimmitt, were visitors during the weekend in the home of their parents, Mr. and Mrs. G. C. Churchman and Scott. Mrs. Elray Rasco returned home July 1st after a trip to Armidale, Australia to visit her brother, Dr. and Mrs. Neil Walker. Her sister, Mrs. Wayne Monroe of Lubbock accompanied her. They left June 14.

**HONOR STUDENT** - Listed among honor students for the spring semester at Oklahoma State Tech, Okla. was Terry L. Obenhaus with a grade point average of 3.6 on a 4.0 grading system.

Obenhaus is majoring in diesel mechanics at the vocational branch of Oklahoma State University.

Mrs. Obenhaus is the former Betty Baker, daughter of Mr. and Mrs. Dexter Baker of Sudan.

# Shop in comfort and SAVE

STORES COOL... PRICES HOT!



In Addition to Money-Saving Values, We Give You Gunn Bros. Stamps as an EXTRA BONUS!

DOUBLE STAMPS TUESDAY & WEDNESDAY WITH \$2.50 OR MORE PURCHASE (EXCLUDING CIGARETTES)

PRICES GOOD FRIDAY, JULY 12 THROUGH TUESDAY, JULY 16

SPECIAL OF THE WEEK



**NESTEA**  
3 OZ JAR  
INSTANT TEA  
**99¢**

With \$5.00 or more in groceries excluding cigarettes.

PAY & SAVE  
Sudan, Texas  
WITH THIS COUPON

1 -pound  
Can of  
**Maryland Club**  
Coffee **94¢**

Without coupon **\$1.19**

Limit one per customer  
COUPON EXPIRES July 17, 1974



**MILK** 3 cans **89¢**

**PEACHES** Lb. **39¢**


**GRAPES** Lb. **49¢**

SHURFRESH  
**BISCUITS** CAN **10¢**

**BANANAS** Lb. **15¢**

SHURFINE FROZEN  
**ORANGE JUICE** 49¢  
2 - 6oz cans

**POTATOES** 10 lb. bag **99¢**



FOOD KING  
**FISH STICKS**  
**4 \$1** FOR

**Parkay**  
**Oleo** 2 lbs.  
**99¢**

Del Monte  
**TUNA** 2 Cans **99¢**

**JENO'S**  
**PIZZA**  
**69¢**

**PINE SOL**  
CLEANSER  
Buy 2 cans  
at regular price,  
get 1 can free.

SOFLIN  
**TOILET TISSUE** 10 ROLL **\$1.09**

**KOOL POPS** 8 assorted flavors **29¢**



**CLUB STEAK**  
**99¢**

Semi-boneless Halves or Pieces

SHURFRESH  
**BOLOGNA** 12 OZ PKG **59¢**

**HAMS** Lb. **99¢**

SURFRESH  
**FRANKS** 12 OZ **59¢**

**Luzier**  
**Cosmetics**  
THE ULTIMATE IN BEAUTY  
FOR PERSONAL  
CONSULTATION BY  
MRS. DUANE BEALE  
PHONE 933-2520  
Route 1 Box 191  
Sudan, Texas

**Joe's**  
**Shoe Repair**  
WE ARE NOW  
OPEN FOR BUSINESS  
**JOE MALLOUF**  
SUDAN, TEXAS

LATE MODEL  
USED CARS & PICKUPS  
Will Take Trade-In  
Financing on approval of  
your credit.  
**Williams**  
**Body Shop**  
Sudan, Texas  
227-3631

**NEW -**  
**OR**  
**USED**  
**CARS**

**TRUCK SEATS**  
EXCHANGE  
15 MINUTE SERVICE  
**McCormick's**  
**Upholstery**  
**CHARLES POWELL**  
Owner  
227 Phelps Ave.  
Phone 385-4555  
LITTLEFIELD, TEXAS

**Feeders Grain,**  
**Inc.**  
DAILY BUYERS FOR  
CATTLE FEEDERS  
Federal  
Storage License 3-445  
We Can Use Your Grain  
Have Semi-Lift - Lo Lift  
**SUDAN LIVESTOCK**  
&  
**FEEDING COMPANY**  
Phone 227-5311 Sudan

**Baccus**  
**Chevrolet**  
SUDAN, TEXAS  
Box 356 Phone 227-3501  
IF YOU DON'T KNOW  
CARS  
KNOW YOUR DEALER

**SUDAN**  
**ELEVATORS**  
SUDAN, TEXAS  
YEAR AROUND BUYERS  
OF ALL GRAINS  
We Can Handle Your  
Off-Grade and Moisture  
Grain at a  
NOMINAL DISCOUNT  
**J. H. VINCENT**  
Owner & Manager

**CESS POOL**  
**CLEANING**  
Cesspools pumped with a  
MUD-PUMP & treated  
with bacteria & enzymes  
to liquify solids & loosen  
sides for better drainage.  
Dipping vats drained and  
liquids hauled to your  
disposal pit. Grease pits  
drained & treated. Molasses  
pits drained.  
272-3677 or 272-3467  
**ELMER DAVIS**

**THOUGHT**  
Let you and me, my  
brother, be what  
we feel that we  
would want the other  
fellow to really  
truly be;  
Should I so much as  
mention what I  
would have you do,  
Unless I'm more than  
willing to do the  
same for you?  
**PAYNE**  
**FUNERAL HOME**  
ONE 6-3351  
ELK CITY, TEXAS

**SUDAN BEACON NEWS**  
Published Each Thursday At  
SUDAN, TEXAS 79371  
And entered as second-class mail matter at the  
post office in Sudan, Texas, June 26, 1924,  
under the Act of Congress of March 3, 1879.  
**J. W. HOUSE** **DALTON WOOD**  
Publisher Editor  
**SUBSCRIPTION RATES**  
Lamb County.....\$4.00 per year  
Elsewhere.....\$4.50 per year  
**CLASSIFIED RATES**  
5¢ per word, first insertion; 3¢ per word for  
subsequent insertions with minimum charge of  
\$1.00 per first insertion; cards of thanks \$1.00  
each.  
**DISPLAY RATES:** Upon request.  
Member  
1974  
**TEXAS PRESS ASSOCIATION**

**AFFILIATED**  
**Pay-n-Save**  
QUALITY AND SAVINGS  
GOOD  
GARTER  
BETTER  
QUALITY  
BEST  
FLAVOR  
**TenderCrest**  
**BREAD**  
We Give Gunn Bros. Stamps  
WE RESERVE THE RIGHT TO LIMIT QUANTITIES  
WE REDEEM AND GIVE STAMPS ON FOOD STAMPS  
WE SELL TRAVELERS EXPRESS MONEY ORDERS, PAYROLL CHECKS CASHED

