

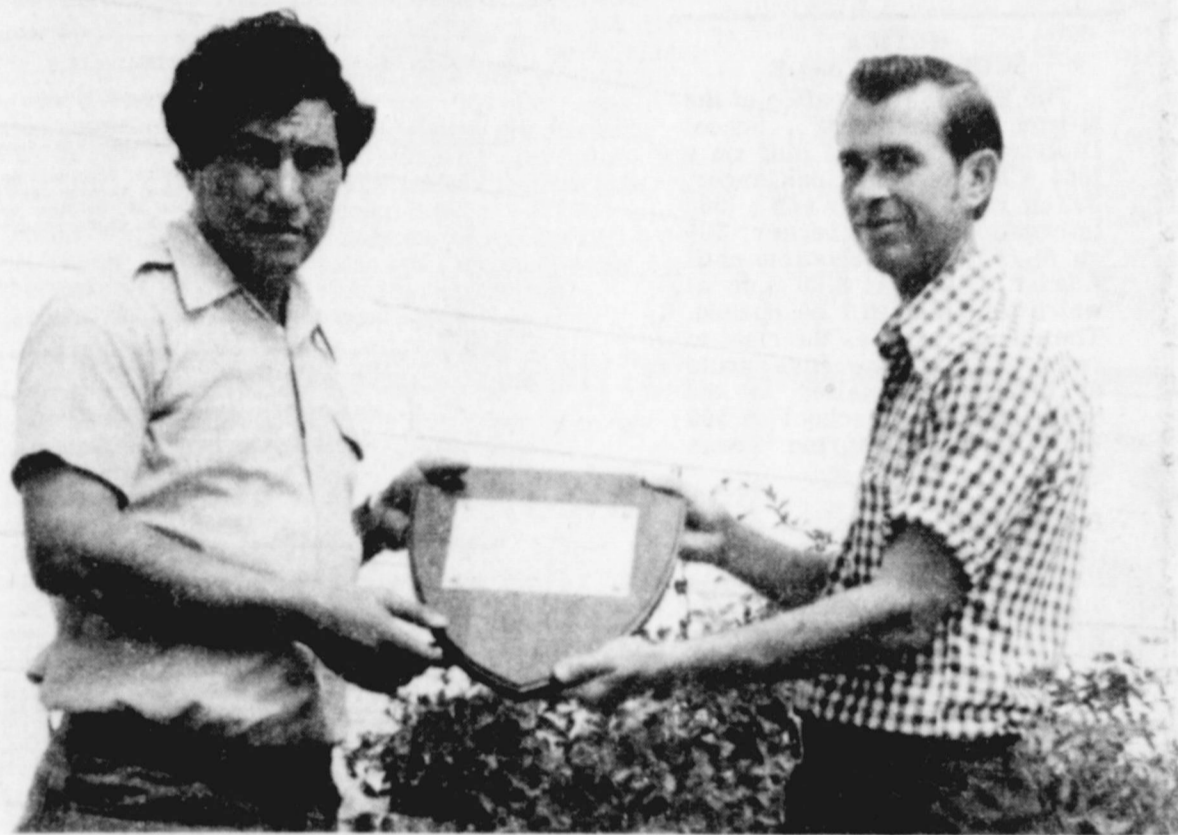
Morton Tribune

Volume 36, No. 41

Thursday, August 14, 1975 Morton, Texas

Fifteen Cents

Pipeline, Park projects near completion



HAPPY HAPPENING -- Bernardo Garcia, left, a partner in the Morton Manufacturing Corporation, appears justifiably proud as he is presented the Morton Area Chamber of Commerce Civic Pride Award for the month of August. The plaque is awarded each month to a business firm in Morton

that exhibits special pride in the appearance and operation of their business. Presenting the award, which will be retained by the company through the month of August, is Jerry Iley, chamber vice-president and chairman of the awards committee.

Federal funds finance projects

Two of the largest projects in the recent history of Morton were nearing completion this week.

The thirteen-mile natural gas pipeline linking the City of Morton with the El Paso Natural Gas Company line northeast of Whiteface needs only the finishing touches to call it complete. The entire line has been laid and tested and awaits only the acceptance inspection to make it complete.

The project for the improvement of Strickland Park is nearing its final stages, with a large amount of picnicking and playground equipment having been installed. It certainly is complete enough to suit the youth of Morton as they can be observed giving full utilization to some of the completed equipment even as others are being installed.

Completion of the park improvements is expected within 15-20 days.

These two projects are being funded by the federal government, the state government and the local level through the Economic Development Administration (EDA) which is administered through the South Plains Association of Governments (SPAG). The city of Morton is responsible for approximately 20 percent of the total project cost, which runs well above \$300,000.

The city has already received a total of \$270,584 from the federal government to be applied toward the cost of the project. This was in the form of two checks, one in the amount of \$150,584.00 and another in the amount of \$120,000.00, according to information furnished to the Tribune by Elra Oden, Morton City Manager.

Prime movers in obtaining the financial aid of EDA for these two projects and in ramrodding them through the approximately 18



EATING OUT OF THEIR HANDS--The friendliest--and the bravest--squirrels in the world can be found on the Grand Mesa in the Colorado Rockies, and just to prove it this photo was snapped as several of them were eating sunflower seeds from the hands of Chip and Chad Sayers who visited them last week on a trip through that state. Though they consumed a surprising number of the seeds, it is doubtful that they will deplete the reserves of the High Plains sunflower crop this year.

IN 'CLEAN' COUNTIES

Screwworm outbreaks reported

Texas state livestock officials noted this week that ranchers are once again being threatened by screwworms, some in areas that have been considered free of the

pest for a considerable length of time.

One Department of Agriculture official stated: "Once again it is time to be concerned about

screwworms. That pest is continuing to make inroads into many counties in the state which haven't had a confirmed case in two years or more.

As a livestock producer, if you're not already cooperating with the program, here is the recommendations again from the officials at the fly lab in Mission:

See SCREWORM Page 4

Federal funds increased

for school lunch programs

The U.S. Department of Agriculture (USDA) today announced an increase in its rates of payment to state education agencies to assist schools taking part in the

National School Lunch, School Breakfast, and Special Milk Programs. Also increased was the national minimum average value of commodities for the National School Lunch Program.

The increases for school lunches and breakfasts have been in effect since July 1. The law requires that these payment rates be adjusted twice each year, in line with changes in the food away from home series of the U.S. Department of Labor's Consumer Price Index (CPI). The adjustment announced today reflects the 3.97 percent increase for the period, December 1974 - May 1975.

In the National School Lunch Program, the national average payment to states, to be used by them to assist local school authorities help defray food costs of each lunch served, will be increased one-half cent, from 11.75 to 12.25 cents. Within that average, states are authorized to vary the rate of reimbursement to individual schools, subject to certain conditions, up to a maximum of 18.25 cents a lunch. Previously the ceiling was 17.75 cents.

The additional guaranteed average payment to states to assist local schools in the

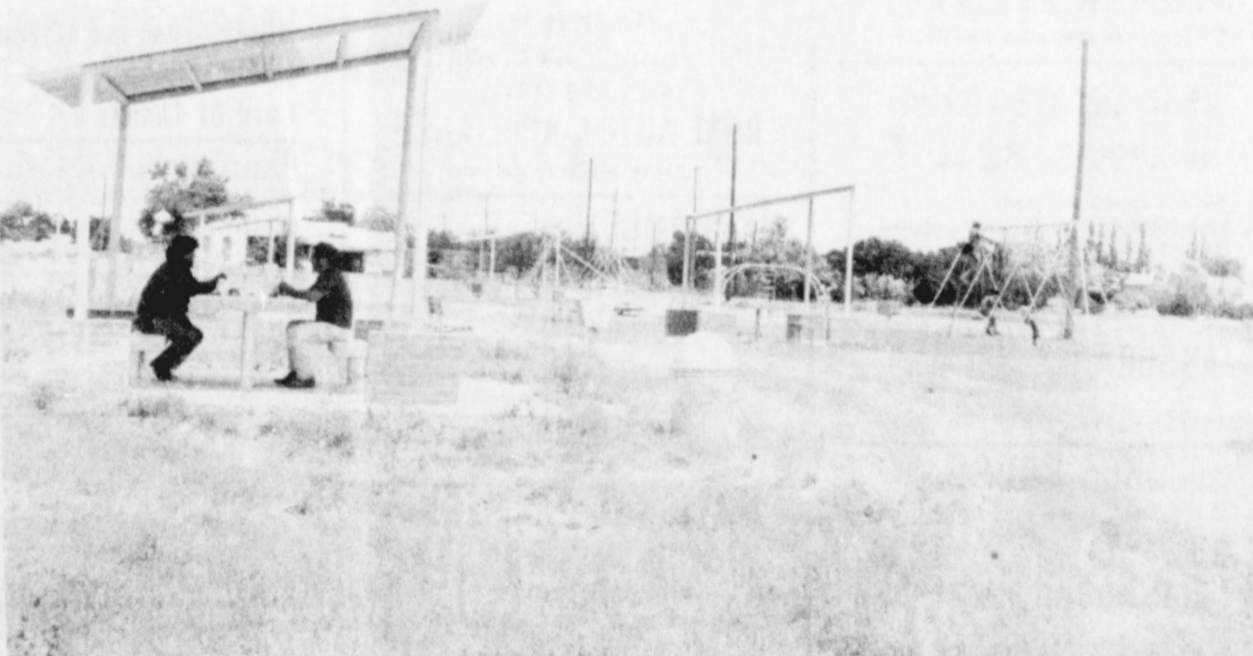
See FUND Page 4

Jaycee tractor pull seeking competitors

The Morton Jaycees are sponsoring a Tractor Pull Contest Saturday, August 23, at the Last Frontier Rodeo Arena in Morton.

Gates will open at 1 p.m. and eliminations will be held at 5 p.m. Classes are: 9,000 pound Non-Turbo, 9,000 pound open, 12,000 pound Texas Turbo, 15,000 pound Texas Turbo and 7,000 pound modified. Others will include 12,000 pound Non-Turbo, 12,000 pounds Super Stock and a special 9,000 pound class for Cochran County Tractors only.

Anyone wishing further information may call Roy Oxford 266-5557, Danny Wisely 266-8811 or Jerry Taylor 266-5262.



THE IMPROVEMENT PROJECT FOR STRICKLAND PARK was nearing completion this week, with several of the picnicking and playground facilities and equipment already installed and operating. As shown here, many of Morton's

children are taking advantage of the new facilities and are utilizing them as fast as they are installed. Completion date for the project was tentatively set by city officials for September 1.



County 4-H'ers compete in record book contest

Six 4-H'ers from Cochran County put their experience and hard work together in one neat package for district record book competition Monday in Lubbock.

Compiling their years of work into a binder complete with clippings, photos, and records of achievements, the senior 4-H'ers were competing for scholarships, plaques, government bonds, a trip to the National 4-H Congress in November, and other awards.

Also judged during the event were junior record books. Blue, red and white ribbons were awarded for these entries. Record book competition is the

critical measurement of achievements of these youths over the years. Records reveal their consistency in achieving goals, their experience in 4-H projects and activities, their experiences in leadership development, and their growth and development in personal, community and civic responsibilities.

Those entering Record books from Cochran County were: Mary Smith, Senior Clothing, participation ribbon; Pamela Neal, Junior Clothing, Red Ribbon; Ricky Neal, Junior Swine, Blue Ribbon; Kelly Hill, Junior Horse, White Ribbon; Thomas Blackstone, Junior Field Crops, Red Ribbon; and Shanna Blackstone, Jr. Food & Nutrition, Red Ribbon.

Population trends changing in many Texas counties

The 19 rural South Plains counties within District 2 of the Texas Agricultural Extension Service are showing a change in population movement, says William D. Benson, Extension area resource development specialist.

These counties include Bailey, Borden, Briscoe, Cochran, Crosby, Dawson, Floyd, Gaines, Garza, Hale, Hockley, Howard, Lamb, Lynn, Mitchell, Scurry, Swisher, Terry, and Yoakum.

While certain counties continue to reflect a declining population, it is at a much slower rate than had been recorded between 1960 and 1970, notes Benson. In addition, a recent U.S. Census Bureau report indicates a growth in the population base of

See COUNTY Page 4

Monumental problems faced Washington in forming a disciplined Army

Last week we mentioned the problems that George Washington faced in getting supplies and munitions for his troops. Two hundred years ago in August, his patience was also tried by the nature of the forces under his command.

Almost all the soldiers were minutemen or local militia. If they had any training at all it had consisted mostly of occasionally drilling and marching. In addition, military discipline did not exist. While he was attempting to hold the British in Boston and to supply his troops, Washington also had to begin a

training program that would make them ready for combat when it came.

Training problems were difficult enough, but they were compounded by the short enlistments of most of the soldiers, some of which were as short as three months. Obviously, very little could be done with soldiers in such a short time; even if they were trained, their enlistments would end shortly after training was completed.

The real issue was that these were citizen soldiers who had literally put down their hoes and

picked up their rifles to defend their colony. Now when a protracted war seemed obvious, these men had crops in the fields and families to support. Therefore, it was very common for soldiers to go home when they felt like it. From the beginning Washington had serious problems with desertion.

This whole matter was further complicated by the absence of any national patriotism. The colonies might be united on paper and in

the Continental Congress, but the citizen's loyalty was still in his home colony. The concept of

continental unity -- the idea of being an "American" -- was to

come later.

Probably a man with less patience and dedication than Washington would have given up very early. However, it is to his credit and the benefit of the future United States that Washington stayed with what appeared to be an impossible task.

In the Spanish Southwest, John Peyton and his associates also faced what appeared to be an impossible situation. Peyton and the crew of the "Swan" that had been captured in the Gulf of Mexico were considered to be French agents. At first they were held at the mouth of the Rio

Grande where several of the ship's crew died of disease and starvation. The only food provided was a small amount of parched corn and a little fruit. Many more would probably have died had they not been allowed to butcher and eat a crippled mule. Even though he was a "gentleman" from Virginia, Peyton reported that he had "never eaten anything so savoury and delicious."

After two weeks there, the men were informed that they were to embark on an 89 day journey to Santa Fe. The prospects for survival were very dim.

Morton Tribune

Published Every Thursday Morning at 113 W. Washington St., Morton, Texas 75401

OFFICIAL NEWSPAPER OF COCHRAN COUNTY
"TEXAS' LAST FRONTIER"

BILL SAYERS, Editor and Publisher

Entered as second class matter at the post office in Morton, Texas, under the Act of Congress on March 8, 1879

Subscription rates—In Cochran County and adjoining counties: Per year, \$4.50, six months, \$3.00. Outside Cochran County: Per year \$6.00, six months, \$3.50. To insure proper service, subscribers will please notify us promptly of change of address.

Member 1974
TEXAS PRESS ASSOCIATION

Classifieds

CLASSIFIED RATES

7c per word first insertion
6c per word thereafter
\$1.50 Minimum

FOR SALE

FOR SALE: Monuments — we can meet your needs. Jerry Iley, Call 266-5611.

FOR SALE: Coronet, good condition. Call 266-5787.

FOR SALE: Two new electric guitars. Call 927-5359.

FOR SALE: Three bedroom home, wall to wall carpet, double carport. Call 266-5672.

FOR SALE: 2 BR. house, living room, den, central heat, patio, storm cellar with additional 2 BR. rental house to help on payments. Call 266-5050, Judy Coleman.

GARAGE SALE: Clothes, misc. items, all day Thursday, Friday and Saturday, 715 W. Hayes.

FOR SALE: Exclusive listing: Country home, three bedroom, 2 bath, brick, 10 acres, 2 inch irrigation well, new carpet, 18 miles from Morton. Call Bob Cross 266-5730.

FOR SALE: 50 H.P. GE hollow shaft 3 phase electric motor, \$750. Guaranteed A-1 condition. Call 927-5331.

FOR SALE OR TRADE — for property in Lubbock, 5 lots on 2nd Street in Morton. French Shateau Realtors in Lubbock. Call 792-4345.

FOR SALE: Nice two bedroom home, clean, good carpet, carport, good location. See to appreciate. Call Glen McDaniel 266-5103.

FOR SALE: Nice two bedroom home with garage, exceptionally nice. Call Glen McDaniel 266-5103.

FOR SALE: 153 yards used wool carpet and padding. Mrs. Jack Wallace. Call 266-5382.

LADY JO PEA SHELLER attaches to portable mixer \$14.32 includes tax, postage, Lady Jo Sales, 4607 29th St., Lubbock, Texas 799-3968.

FOR SALE: All used. Treated posts 8" tops 9' long, Cedar posts 6" tops-extra long, Creosote posts, 8"x8", up to 16', three concrete water troughs, 1x12's, 2x4 frames for doorways, complete, a few hollow core doors and jams, one wall heater, two cast iron bath tubs. Call 525-4310.

FOR SALE: Grapes for canning, juice and jelly, 6 mi. north, 3/4 mi. east of Morton. W.B. Peterson, 927-5457 or 927-5411.

FOR SALE: Two ton Chev. truck, 167" wheel base, 350 V8 motor, four bar carb., Allison transmission, tinted glass, foam seats, west coast mirrors, 8000 lb. front springs, 23000 lb. rear springs, over load springs, power steering, two speed rear axle, tachometer, AM radio, tires 825x20, less than 38,000 mi. Morton Bi Products, call 266-8621.

BUSINESS SERVICES

SPOTS before your eyes — on your new carpet — remove them with Blue Lustre. Rent electric shampooer \$1. Taylor and Son Furn.

REMODELING SPECIALTY: One call does it all! Complete remodeling services, room additions, garage conversions, patios, carports, concrete, masonry. Good work, reasonable prices. Call 266-5372.

COCKROACHES, rats, mice, termites, gophers, and other household pest exterminated. Guaranteed, 15 years experience. 894-3824, Levelland, Texas, Davidson Pest Control. Reasonable rates.

CUSTOM PROCESSING beef, dressed weight, 12 cents per pound; hogs, live weight, 12 cents a pound, plus \$3. kill charge. Muleshoe Locker Company, call 272-4703 for appointment.

MATRESSES RENOVATED. Also new King and Queen Size. Pick up Mondays. Call Morton Tribune 266-5576.

NOTICE

IF YOU HAVE A DRINKING OR DRUG PROBLEM that's your business. If you want help that's our business. Call 266-5636, 266-5954 or 525-4432.

NOTICE SCHOOL BUS SALE

The Board of Education of the Morton Independent School District will receive bids on a 1965 Chevrolet, 48 passenger, 292 cu. in., 6 cylinder and a 1965 International 60 passenger, 304 cu. in., 8 cylinder school bus until August 18, 1975 at 8:00 p.m. at which time bids will be opened. The school reserves the right to reject any or all bids. Bids should be brought or mailed to the Superintendent of school at 500 West Buchanan, Morton, Texas 79346.

Bob E. Travis, Supt.

Published in the Morton Tribune July 31, August 7, August 14, 1975.

LOST: Army type tool box between Morton and FM 1585. Reward. Call 266-5262.

PUBLIC NOTICE

There will be a public hearing on August 25, 1975 at 10:00 A.M. in the County Commissioners Court Room, Cochran County Courthouse at Morton, Texas, regarding the letting of salaries for the fiscal year 1976.

The following salaries do include the amount of \$40.00 per month to compensate as a cost of living increase:

Auditor, \$10,140.96; County Judge, \$9,960.96; County Clerk, \$9,960.96; Assessor-Collector, \$10,140.96; Sheriff, \$9,960.96; Treasurer, \$9,960.96; Justice of Peace Prec. 1, \$6,429.60; Justice of Peace Prec. 2, \$5,723.40; County Attorney, \$9,960.96; County Attorney Sec., \$3,369.00; 1st Deputy Sheriff, \$8,601.36; Sheriff Office Deputy, \$6,129.60; 1st Deputy Clerk Office, \$6,835.80; 2nd Deputy Clerk Office, \$6,412.08; 1st Deputy Tax Office, \$6,835.80; 2nd Deputy Tax Office, \$6,412.08; 3rd Deputy Tax Office, \$5,808.60; County Judge Sec., \$6,193.80; Auditors Assistant, \$6,835.80; County Agent Sec., \$5,564.64; Prec. 1, 2, 3, & 4 — Road Motor Grades, \$8,248.20 Each; County Commissioner Prec. 1, 2, 3, & 4, \$8,996.76 Each; Courthouse Custodian, \$6,482.76; Activity Bldg. Custodian, \$6,129.60; County Park Custodian, \$5,070.36; Commissioners Court Travel \$1500.00 (1975) — \$1800.00 (1976).

Published in the Morton Tribune August 14, 1975.

Card Of Thanks

CARD OF THANKS: Wilburn and I would like to thank everyone for all the help we received after the loss of our house. We would especially like to thank the Morton Fire Department for their promptness and cooperation. Wilburn and Debbie Zuber

HORSESHOEING HORSEBREAKING
DARRELL MCKNIGHT
266-8638
Morton, Texas

THE STATE OF TEXAS

IN THE NAME AND BY THE AUTHORITY OF THE STATE OF TEXAS

To: _____

BUSINESS and PROFESSIONAL DIRECTORY

AUTOMOBILE DEALERS BILL WELLS CHEVROLET-OLDSMOBILE CO. Your Home-Town Dealer Serving You With Full Line of Cars and Trucks	JEWELRY ATCHISON JEWELRY Levelland Phone 894-3450 617 Ave. G WATCH REPAIR DIAMOND SETTING CUSTOM MOUNTINGS	APPLIANCES WHIRLPOOL APPLIANCES Automatic Washers, Dryers, Refrigerators, Dishwashers ROSE AUTO & APPLIANCE Phone 266-5959 Morton
SEED HARPOOL SEED-MORTON INC Specializing in High Quality Seed Wholesale and Processing Only See us for Contract Production Brad Johnson Mgr. — 266-5742.	REAL ESTATE GLEN MCDANIEL Buying or selling farms or city property Your Home-Town Dealer	SINGER SALES-SERVICE HOME FASHION CENTER 894-4250 702 Ave. H Levelland, Texas Service on All Makes
TIRE SUPPLY LUPER TIRE & SUPPLY COMPLETE TIRE SALES, SERVICE AND REPAIR Road & Farm Pit Stop Service 108 East Washington P.O. Box 1074 — Phone 266-5330 Morton, Texas	WESTERN ABSTRACT Call 266-5185 nites 266-5103	INSURANCE MORTON INSURANCE AGENCY Life-Health-Casualty-Fire "Your Independent Agent" Chris Bell, Owner Office 266-5561 Home 266-5918 1205E 1st Street
PUMP SERVICES CROCKET PUMP SERVICE Irrigation Sales & Service & Domestic 215 N.W. 1st, Morton Distributors of Simmons, HPC & Gould Phone Mobile: 927-3820 Office: 266-8610	REAL ESTATE LOANS WESTERN ABSTRACT CO. We can meet your needs with low cost farm and ranch loans. Your inquiry will be appreciated.	NATIONAL FARMERS UNION INSURANCE JOHN HUBBARD Agent for Bailey & Cochran Co. Life-Health-Casualty-Fire Real Estate 110 E. Madison, Morton-Ph. 266-8677 Bala-office 933-2392 Home 933-2321
Auto Service ED'S AUTOMOTIVE Complete Automotive Service Specializing in Front End Work, Air Conditioning, General Tuneups 219 SW 1st 266-5933 Morton	THE EQUITABLE LIFE ASSURANCE SOCIETY CALL 266-5185 266-5602	REMODELING REMODELING-ADDITIONS Call us for all your remodeling needs--Ceramic tiling, kitchen cabinets, painting, textoning or additions to your home. FRENCH CONSTRUCTION Call Whiteface 3942 after 6 p.m.
ANIMAL REMOVAL MORTON BI-PRODUCTS, INC. Dead Cattle Removed Day or Night 266-8621	BOB CROSS Real Estate, Life Ins and Hospitalization FARM AND RANCH LOANS Now Available Phone 266-5730	CONCRETE WORK AND LANDSCAPING Patio Drives, Sidewalks, Curbs. Specializing in Lava Rock and picturesque designs. Call 894-5843, Levelland Work Guaranteed B&L Construction Box 229 Levelland
HAVE YOUR ATTORNEY DRAW YOUR WILL NAME FIRST STATE BANK EXECUTOR AND TRUSTEE FIRST STATE BANK	DD WRECKING COMPANY We buy junk cars--scrap metal. Enochs Doug Brumble Call 927-9359	CONSTRUCTION CONCRETE WORK AND LANDSCAPING Patio Drives, Sidewalks, Curbs. Specializing in Lava Rock and picturesque designs. Call 894-5843, Levelland Work Guaranteed B&L Construction Box 229 Levelland

HELP WANTED: We still need a beauty operator, NuWay Beauty Salon. Call Mrs. Jack Wallace 266-5382.


CARD OF THANKS: The family of John Daniel wishes to thank everyone for the help we received after the loss of our house. We would especially like to thank the Morton Fire Department for their promptness and cooperation. Wilburn and Debbie Zuber

HELP WANTED: Applications are now being taken at All-sup's 7 till 11. Application blanks may be picked up at the store.

HELP WANTED: "Attention Demonstrators — Toys & Gifts. Work now thru December. FREE Sample Kit. No experience needed. Call or write Santa's Parties, Avon, Conn. 06001. Phone 1(203) 673-3455. Also Booking Parties."

HELP WANTED: We still need a beauty operator, NuWay Beauty Salon. Call Mrs. Jack Wallace 266-5382.

after you see your doctor.



bring your prescription to

Liners PHARMACY
MIKE LINER RPH
MORTON PH 266-8962

ART PLASTIC-PAINTS-SUPPLIES

DONNA'S MENAGERIE

306 E. WASHINGTON

WE HAVE PAINTED AND UNPAINTED PLASTER, DECOUPAGE AND MOD PODGE MATERIAL, PAINTS. . . . ALL YOU NEED TO START YOUR NEW HOBBY.

OPEN FROM 9:00-5:30
MONDAY THRU SATURDAY

Letter To The Editor

TO THE EDITOR:

Thanks to authorization by House Speaker Bill Clayton, one of the most important discussions in the history of this state occurred in the office of Congressman George Mahon on Friday, July 11, 1975.

After studying my notes and thinking several days on this meeting, I feel the best way I can convey the thrust is to write a simple summation which is basically fact, with an insertion of some of the strong opinions expressed by those present.

There is a drug problem in Texas today. Opinions vary as to the severity, but this we do know: drug arrests in Texas are increasing each year. In 1965 there were 1,094 arrests; 1970, 2,001 arrests; 1971, 12,309 arrests; 1972, 16,077 arrests; 1973, 24,403 arrests; and 1974, 31,512 arrests. These arrests are largely the victims.

The drug scene in Texas includes marijuana, amphetamines, barbiturates, heroin, glue, gasoline sniffing, paint and other hard drugs. The medical profession still offers a wide variance in opinion as to the effects of most drugs, but there is building evidence that hard drugs are closely related to the crime wave throughout the Nation, as well as in Texas.

Dr. Judianne Densen-Gerber, lawyer, doctor, and an authority in the field of drug abuse with such experience in the area concerning drug victims, states without reservation that she has reliable information which indicates the target market for heroin right now is all states along the Mexican border. It is the plan of the drug distributors to create as many addicts in New Texas as they have done in New York and other eastern cities, with concentration on the urban areas, and accent in colleges, high schools, junior high schools and even in elementary schools.

Dr. Densen-Gerber said Texas is on the threshold of an epidemic, and unless immediate and drastic steps are taken, 10 percent of our school children will be exposed to heroin this year. What it will cost this state in crime and violence will be literally millions upon millions of dollars, and the drug traffic will realize equal millions in profits they are now doing in the eastern cities.

There is little awareness among Texans concerning the enormity of the drug problem. As Chairman Mahon said, "We have great pride in our section of the country and hesitate to admit the presence of this problem until it hits us personally through a member of the family or a close friend." An evidence of our lack of awareness is the fact that Texas ranks 53rd among the fifty states and three territories in state funds to fight drug abuse. During the fiscal year, Texas appropriated \$103,000.00 for drug abuse treatment programs; local funds have increased from \$6,000 in 1971 to \$1,042,964.00 in 1973; and federal funds have increased from no funds in 1971 to \$6,148,716.00 in 1975.

As an elected official, I believe

we need to get into the meat of this program immediately. If Dr. Densen-Gerber is right, then the public must be aroused, and the problem attacked quickly with all resources available.

R.B. (Mac) McAlister
State Representative

Motocross set for Levelland

The Levelland Motorcycle Club is sponsoring a motocross on Aug. 17 beginning at 1:30 p.m. at the Prairie Dog Raceway, 1/4 mile south and 1/2 mile east of entrance Levelland Municipal Airport.

Practice begins at 12 p.m. Ribbons will go to the first eight finishers in each class. Classes are 0-100 cc, 101-125 cc, 126-250 cc, 251 cc open. All amateur riders are invited.

Admission for spectators is \$1 for adults and children under 12 admitted free.

Everyone is cordially invited to attend this exciting event says a club representative.

Mrs. Mendez rites held

Services for Mrs. Socorro Mendez were held at 10 a.m. Thursday, August 7, in St. Ann's Catholic Church with the Rev. Nicholas Schniders, pastor, officiating.

Interment was in the Morton Cemetery under direction of Singleton Funeral Home.

Mrs. Mendez, 38, a native of Mexico, died at 1 a.m. Monday in a Galveston hospital after a long illness.

Survivors include her husband, Eddie; a daughter, Mrs. Carlo Florez of Whiteface; nine sons, Eddie Jr., Alfred, Alvin, Ricky, Frank, Freddie, Gary, Jerry and Mike, all of Morton; her father, Renardo Lopez of Mexico; a sister, Mrs. Mary Rodriguez of Morton; a brother, Larry Lopez of Morton; and four grandchildren.

Mrs. Ola Cagle services held

Services for Mrs. Ola Lea Cagle were held at 2 p.m. Monday in the First Baptist Church. The Rev. Paul McClung, pastor officiated. Burial was in Morton Cemetery under direction of Singleton Funeral Home.

Mrs. Cagle, 78, was pronounced dead of natural causes at 12:20 p.m. Saturday at her home by Justice of the Peace Lena Gipson.

A native of Arkansas, she had lived in Cochran County since 1934.

Survivors include three daughters, Mrs. Nancy Dewbre and Mrs. Edna Lewis, both of Morton, and Mrs. Geneva Huff of Grand Prairie; a sister, Mrs. Merle Beshears of Arkansas; a brother, J.M. Mathis of

Bakersville, Calif.; and 15 grandchildren and 8 great-grandchildren.

Services held for Mr. Bennett

Services were held Friday for Sam Bennett at 2 p.m. in the First Baptist Church. The Rev. Paul McClung, pastor, officiated. Burial was in Morton Cemetery under the direction of Singleton Funeral Home.

Bennett, 71, was pronounced dead about 8:10 p.m. Wednesday, August 6, by Justice of Peace Lena Gipson. He died due to an apparent heart attack. Bennett had lived in Morton for about six months, moving here from Hart.

Survivors include his wife, Willie; two daughters, Mrs. Dorothy Hill of Holland and Mrs. L.D. Sexton of Morton; four sons, Elmer of Plainview, Elton of Hamilton, Bennie of Shamrock and Floyd of Levelland; a sister, Mrs. Lizzie Ethridge of Taylor; a brother, John of Bastrop; 14 grandchildren and one great-grandchild.

Hospital Notes

Patients admitted to Cochran Memorial Hospital August 5 through August 12 were: Myrtle Stegall, Ruby Jeter, Jose Cobarro, Marie Jackson, Thelma Smith, A.R. McDaniels, Cleytus Marks, Steven Clark, Lucces Vasquez, Sally Rodriguez, Don Seigler, W.J. Duncan, Sophie Young and Harold Reynolds.

Look who's new

Corey Wade, son of Mr. and Mrs. Billy Freeman of Kaufman. Corey arrived at Baylor Hospital in Dallas August 6 and weighed eight pounds.

Grandparents are Mr. and Mrs. W.G. Freeland of Morton and Mr. and Mrs. Alva Letbetter of Pasadena.

Ronald Jay Hope, Jr., son of Mr. and Mrs. Ronald Hope arrived at Killen Hospital August 3 at 1:38 p.m.

Grandparents are Mr. and Mrs. Ed Stevens and great-grandparents are Mr. and Mrs. Tom Stevens, both of Morton.

Amy Leann, daughter of Mr. and Mrs. Douglas Crockett. Amy arrived August 11 at 3:35 p.m. at University Hospital in Lubbock. She weighed 6 pounds and 9 ounces.

Grandparents are Mr. and Mrs. Jerry Winder and Mr. and Mrs. John Crockett. Great-grandparents are Mr. and Mrs. C.F. Winder, Mr. and Mrs. L.A. Short of Avondale, Arizona and Mrs. Maude Williamson of Childress.

Mrs. Kenneth Fox and children from Clovis, N.M. spent the weekend with her parents, the H.W. Garvins.

Mr. and Mrs. W.L. Welch spent the weekend in Phoenix, Arizona visiting his mother.

Mr. and Mrs. Lee Kimbrough from Albuquerque, N.M. spent last weekend visiting with their aunt, Mrs. Sally Robinson.

Three Way school will start next week with both Three Way and Bula students. We wish to welcome all new teachers and students to the community.

Mr. and Mrs. Joe Sowder spent Sunday in Muleshoe visiting their parents, Mrs. Opal Ruth Sowder and Mr. and Mrs. A.G. Taylor.

Mr. and Mrs. Buddy Cook and son from Dallas spent the past week visiting the D.S. Fowlers.

Mr. and Mrs. D.S. Fowler spent Saturday in Lubbock with the James Fowlers. Mrs. James Fowler and son came out to can beans Monday at the D.S. Fowler home.

Three Way News

Mrs. Jimmy Green and children from Tulia spent the week with her parents, the Jack Furgesons.

Mr. and Mrs. Wesley Dupler and Mr. and Mrs. Gib Dupler are on vacation this week.

IT'S Stock-Up Time

SPECIALS GOOD AUG. 15th THUR AUG. 21st.

CALM INVISIBLE POWDER ANTIPERSPIRANT 28 OZ. \$1.39



LISTERINE ANTISEPTIC 14 OZ. SIZE \$1.19

FAMILY SIZE AIM TOOTHPASTE 99c



MISS BRECK HAIR SPRAY 11 OZ. \$1.09

WHITE SWAN PEARS NO. 2 1/2 CAN 69c

WHITE SWAN 16 OZ. CAN TOMATOES 3 FOR \$1.00

WHITE SWAN 1 1/2 CAN ASPARAGUS TIPS 55c

BORDENS BUTTERMILK 1/2 GALLON 69c

BORDENS COTTAGE CHEESE 12 OZ. 49c

WHITE SWAN BEETS 16 OZ. CAN 3 FOR \$1.00

ALL FLAVORS 46 OZ. CAN HI C DRINK 2 FOR 98c



DEL MONTE 8 OZ. TOMATO SAUCE 6 FOR \$1.00

2 ROLL PKG AURORA TISSUE 2 FOR 93c

LIPTON MAKE A BETTER BURGER 3 OZ. ALL FLAVORS 45c

DEL MONTE 22 OZ. KOSHER DILL HALVES 49c



GIANT PUREX HEAVY DUTY DETERGENT 77c



AMERICAN BEAUTY RONI-MAC 24 OZ. 73c

GLAD 100 SQ. FT. ROLL PLASTIC WRAP 39c

20-16 OZ PKG. SOLO PARTY CUPS 67c

NABISCO FIG NEWTONS 16 OZ PKG. 67c

RUSSETT POTATOES 10 LBS BAG 79c

CALIF. CELLO BAG CARROTS 19c



PEACHES LB 39c

T-BONE STEAK LB \$1.59

DECKER JUMBO FRANKS 16 OZ. 89c

WRAP 3 LBS OR MORE IN PKG. GROUND BEEF LB. 79c

DECKER COLD CUTS 49c

PICKLE LOAF, LIVER LOAF, BOLOGNA, SALAMI 6 OZ PKG

100 EXTRA GOLD BOND STAMPS
With the purchase of \$5.00 or more at
RAMSEY'S FOOD STORE
Coupon Expires AUG. 7th. Limit One Per Family.

RAMSEY'S FOOD STORE

Carpe CB Radios-The one with everything. Fine Tuner-Mike Hitch-See These Before You Buy

Looking for a tire that will balance & drive right. See our Pharris Polyester Radial.

Wilmington Model 100 Auto. 179.95

Automatic Pea Sheller 11.95

Men's Waltham Watch 39.95

Truck Owners- We have a group of 900-20 & 825-20 Truck Tires with the money. Heavy Duty Commercial-Come Get Our Price

Photo 1/2 in. Drive Ratchet 8.95

Charger- Handles 20 miles 49.95

Garden Hose Onyx nylon reinforced 50 ft. 7.95

Roller Spray Pump 49.95

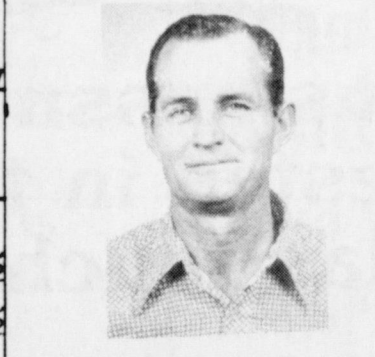
Cowboy Boots Men's & Childrens Boots at a reasonable price.

Rock your Dekalb Hybrid Wheat

Approved Scout 66 Wheat Seed 98 Germ

Save 1/2 on Good Second Tires All sizes 16.95-19.95 plus tax

LEWIS FARM & RANCH
310 N.W. 1st.
Phone 266-5461



Advantages of Trading At Our Store
30 day credit
Available at night, on week-ends & holidays
We support our local organizations, such as churches, fat stock show etc.
We pay taxes here in our town & county & also schools.
We are part of this community being locally owned & operated.
We know your name & interested in your problems.
We don't think the discount houses can offer you any of the above mentioned things
Try sometime to get into their place of business after hours, also try to buy something on 30 days time.
We sincerely appreciate your business & are here to serve you. Call us day or night, on Sundays or holidays.
We want your business & will do our best to treat you right on price & courtesy.

PIPELINE

FROM PAGE ONE

months they have been in the governmental mill are County Judge Glenn Thompson, Morton Mayor Marshall Letzell, Morton City Councilperson Bessie Tilger and City Manager Elra Oden. Many others, including the entire city council and county commissioners court, played substantial roles in getting the projects completed.

The new pipeline is expected to save the city of Morton many thousands of dollars per year in natural gas that was being lost through leakage by the old pipe which was deteriorated beyond repair. The old pipe was laid some 25-30 years ago and was second hand when it was installed, Oden told the Tribune.

Both city and county officials have stated repeatedly that there was no way that the city by itself could have financed the desperately needed pipeline, and that it was a great blessing that EDA came along when it was needed so badly. They consider these projects as an excellent example of how the taxpayers' money can be applied by the federal government to the local level in a highly beneficial manner.

It can also be said that this is an excellent example of how city and county governments can join forces and act positively for the benefit of their local citizens.

SCREWORM

FROM PAGE ONE

Check your livestock regularly; treat wounds on livestock with approved screwworm-control remedies; delay surgery on livestock as long as possible; submit suspected samples of screwworms to the fly laboratory at Mission.

Hopefully, this will be the last year in which producers will have to worry too much about the screwworm. A combined effort to eradicate screwworms from Mexico and the United States set to begin some time next year.

Meanwhile, official need to know their whereabouts of the screwworms so they can make plans to combat the usual Fall build-up of the pest as well as controlling the situation now.

FUNDS

FROM PAGE ONE

service of lunches to needy children will be boosted 2.0 cents -- 44.5 cents for each reduced-price lunch and to 54.5 cents for each free lunch.

The maximum reimbursement which states can pay to individual schools for free lunches is increased 2.5 cents. It can range as high as 71.75 cents for a reduced-price lunch and 81.75 cents for a free lunch. These maximum rates are arrived at by combining "general cash assistance," paid for all lunches

served, and "special cash assistance," paid for free or reduced-price lunches served to needy children.

The national average payment to states for each breakfast served to eligible children will be increased one-half cent, from 9.25 cents to 9.75 cents. The additional average payment to states for each reduced-price breakfast, which has been 17.50 cents, will be increased to 18.25 cents. The additional average payment to states for a free breakfast, which has been 23.25 cents, will be increased to 24.25 cents.

For cases of severe need, maximum rates of reimbursement remain at 40 cents for reduced-price breakfasts and 45 cents for free breakfasts.

The national average minimum value of commodities -- or cash in lieu of commodities -- per lunch to be made available under the National School Lunch Program for fiscal year (FY) 1976 will be 11 cents. This is a 9.99 percent increase over the fiscal year 1975 value of commodities, based on the percent increase in the food away from home series of the Consumer Price Index during the period June 1974 to May 1975.

The adjusted rate of reimbursement per half pint of milk served under the Special Milk Program will be 5.5 cents for paying children in fiscal year 1976, an increase of 9.9 percent over fiscal year 1975. The payment to institutions for milk served free to needy children will remain at the purchase price of the milk.

The rates of payment announced today are scheduled to appear in the Federal Register Wednesday, July 16.

COUNTIES

FROM PAGE ONE

many counties that had lost population during the 10-year period.

Although all 19 rural counties lost population from 1960 to 1970, seven of these gained an estimated 6,813 citizens from 1970 to 1973. These same seven counties lost a total of 15,700 people from 1960 to 1970.

District 2 rural counties lost 7.3 percent of their population or 20,333 individuals from 1960 to 1970.

Benson cites several examples of rural citizens working to improve the county situation to maintain the population or even attract new people.

Bailey County citizens are attempting to obtain fire protection equipment which is vital to their health and well being. Other counties are also working in the areas of people

building, economic development and community facilities, to name just a few.

Citizens of rural areas are realizing that if they want to progress, they must have a balanced community, points out the specialist.

So there is a definite turnaround in rural population trends which coincides with a growing desire by many citizens in this country to make rural areas or small towns their homes, believes Benson.

Amateur Golfer Scores As Pro

The first amateur winner of the Insurance Youth Classic, Eddie Pearce, has joined the ranks of top-rated golf professionals. Since he turned professional in 1972, he has amassed over \$150,000 in winnings. Thus far, in 1975, Eddie has earned over \$53,000.

Eddie began his career in Florida in 1968 by winning a trial tournament, the prototype of the Insurance Youth Classic. To prove that his victory wasn't a fluke, he went on to win the first Insurance Youth Classic, sponsored by the 33,000 member agencies of the National Association of Insurance Agents and 20 of the leading property and casualty insurance companies, at Columbus, Indiana in 1969.

There, Eddie carded a 36-hole total of 144, outscoring his amateur competitors from 18 states as well as nine of the professionals. The Indiana tournament also produced the IYC's first professional winner, Dan Sikes.

This year, Eddie Pearce will again compete in the IYC -- this time as a professional -- at the 1975 NAIA Insurance Youth Classic, being held on the Eisenhower Golf Course at the Air Force Academy at Colorado Springs, Colorado on August 8 through 12. Eddie will be competing against such pros as John Mahaffey, who lost in a sudden death playoff at the U.S. Open, the defending IYC champion, 1974 winner Grier Jones and former winners Bob Rosburg and Ron Funseth.

The Insurance Youth Classic is a showcase of America's top junior golfers, a tournament where 150 youths under 18 -- the cream of the more than 20,000 amateur entrants --

nationals. A two-day elimination determines the 60 finalists who compete for honors and the privilege to play alongside touring pros, talking with and learning from near-legendary sports figures. A new Eddie Pearce might emerge from the IYC and start on the road to golf fame.

FLORIDA ROULETTE

A filling station in Gulf Breeze, Florida has a sign in the window reading, "This station protected by an armed guard three nights a week. You guess the nights."

Weekend softball tourney scheduled

A weekend open softball tournament has been scheduled at the Star Route softball diamond. Play will begin at 1 p.m. Saturday.

Any team wishing to play is eligible to enter. Entry fee per team is \$25, plus one new ball. Individual and team trophies will be awarded to the winners.

Double elimination will start with the 1 p.m. game Saturday. The second game will be played at 5 p.m. and the third game at 7 p.m.

Games Sunday will also begin at 1 p.m.

Crop estimates Commodity crops estimates told

The revised estimates of major commodity crops for the state were recently released by the Texas Department of Agriculture and are as follows: Cotton, 4,550,000 acres, down 12 per cent from the 5,200,000 acres planted in 1974.

Sorghum, 8,000,000 acres, up seven per cent from the 7,500,000 acres planted in 1974.

Corn, 1,200,000 acres, an increase of 33 per cent from the 1974 acreage.

Wheat, 5,500,000 harvested acres, a 67 per cent increase compared to 1974. Wheat production in Texas this year is estimated to be 132,000,000 bushels, the largest on record.

Soybeans, 365,000 acres, a 33 per cent increase from 1974.

Rice, 555,000 acres, only about 10,000 acres less than 1974.

Peanuts, 310,000 acres, essentially the same as last year.

Senior Citizens

The Senior Citizens will meet at 2:30 p.m. today in the County Activity Building for an afternoon of visiting and games.

All senior citizens are invited to attend.

GET HOOKED!
THIS IS NO LINE... THERE ARE MORE FISHING LICENSES SOLD THAN MARRIAGE LICENSES --
MEET INTERESTING PEOPLE OWN AND OPERATE A TACKLE SHOP
INVESTMENT NEEDED ONLY \$6950.00
CALL Mr. PATRICK AT: 803/556-4970
OR WRITE TO: P. O. Box 10206 CHARLESTON, SC 29411

LOOKING FOR QUALITY SHOES AT REASONABLE PRICES? YOU WILL FIND THEM AT **BOTTOM DOLLAR SHOES** WEST SIDE OF SQUARE, LEVELLAND

PEST CONTROL AAA PEST CONTROL RATS, ROACHES, FLEAS TREES AND LAWNS
ALVIN STOVALL
112 AVE. L PHO. 894-7284
LEVELLAND, TEXAS

Custom Polysteel Radials 25% OFF
Save \$65 to \$100 per set of four double steel belted radial tires

40,000 MILE TIRES BUILT FOR NEW 1975 CARS THE TIRE THAT KEEPS ITS FEET EVEN IN THE RAIN

These Goodyear steel belted radials (1) save money, (2) use less fuel, (3) provide long mileage, and (4) help conserve America's resources. Now is the time to buy these "Custom Polysteel" radial tires that are original equipment on many 1975 new cars. Sale prices are in effect Thursday, Friday and Saturday. **Rain Check** -- If we sell out of your size we will issue you a rain check, assuring future delivery at the advertised price.

WHITEWALL SIZE	FITS MODELS OF	SALE PRICE	WHITEWALL SIZE	FITS MODELS OF	SALE PRICE
AR78-13	Vega, Pinto, Gremlin, Colt, Falcon, Toyota & others	\$48.50	HR78-14	Matador Wagon, Sportwagon, Vista Cruiser, LeMans Wagon, Charger Wagon & others	\$86.90
BR78-13	Vega, Colt, Dart, Pinto, Falcon, Mustang & others	\$52.08	JR78-14	Chevrolet Wagon, Olds 98, Pontiac Wagon, Chrysler Town and Country Wagon	\$70.12
BR78-14	Gremlin, Hornet, Rambler, Comet, Falcon & others	\$52.08	GR78-14	Buick, Dodge, Plymouth, Mercury, Chevrolet	\$82.13
CR78-14	Dart, Chevy II, Gremlin, Rambler, Falcon, Comet	\$52.95	GR78-15	Chevrolet, Polara, Galaxie, Monterey, Fury, Catalina & others	\$83.75
DR78-14	Gremlin, Hornet, Javelin, Valiant, Duster, Barracuda, Maverick & others	\$54.18	HR78-15	Buick, Chrysler, Dodge, Ford, Olds, Pontiac	\$88.47
ER78-14	Matador, Ambassador, Nova, Chevelle, Camaro, Dart, Mustang, Cougar & others	\$55.12	JR78-15	Ford, Mercury, Olds, Plymouth Wagon, Chrysler	\$71.06
FR78-14	Torino, Ambassador, Camaro, Cutlass, Chevelle, Challenger, Roadrunner, Charger & others	\$59.55	LR78-15	Buick, Cadillac, Chevrolet, Wagon, Plymouth, Pontiac & Lincoln Continental	\$73.90

Plus \$2.02 to \$3.46 F.E.T. per tire and old tire.

GOOD YEAR
Tire Sale Prices Remain In Effect Thursday, Friday & Saturday Only
See Your Independent Dealer For His Price. Prices As Shown At Goodyear Service Stores.



Mr. Businessman, interested in the Midas touch?

Any line of work needs the juice to spark success and light up continued growth. In our commercial capacity, we've given moguls large and small this modern Midas touch. We provide loans, services, and knowledge of current financial trends. Plus some very enterprising ideas. Come talk over your business with our business specialists. See if we aren't a solid gold live wire.

THE BANK WITH The Heart of Gold

FIRST STATE BANK
107 W. TAYLOR Close to you 266-5511 MORTON

LUPER TIRE & SUPPLY
108 E. WASHINGTON MORTON

Liner's PHARMACY

ON SALE THURSDAY, FRIDAY & SATURDAY

BIG CASH SAVING DISCOUNTS

Super Savings In Every Department

BUY NOW and SAVE
Charge It!
USE YOUR BANKAMERICARD
Your BANKAMERICARD welcome here

WHEN YOU SEE YOUR DOCTOR BRING YOUR PRESCRIPTION TO LINER'S

WELFARE PRESCRIPTIONS WELCOME

WALGREEN AGENCY
Top-Val-U
Panty Hose
In 4 colors. Fits 5' - 5'8"
100 - 160 lbs.
SALE PRICE 49c

ANACIN
100 Tablets
Fast Pain Relief I
(Limit One) **\$1.29**

MAX FACTOR
HAIR SPRAY
13-oz. spray can. (Limit 1) **79c**

SCOPE
Mouthwash and GARGLE
12-oz. bottle **\$1.09**

DRY TIME
ANTI-PERSPIRANT
Walgreens 7 oz. size. **98c**

MYLANTA
ANTACID
12-oz. Plastic bottle. Liquid. (Limit 1) **\$1.39**

Herbal Essence
Shampoo, 4-oz.
With natural protein. Adds natural body to hair & manageability.
BY CLAIROL ... **69c**

WALGREEN AGENCY
DAYS-EASE
Air Freshener
SALE PRICE 99c

WALGREEN AGENCY
envelopes 59
100 Personal Size
50 Business Size
YOUR CHOICE **49c** ea.

WALGREEN AGENCY
Book Matches
CARTON OF 50
SALE PRICE 25c

SCHOOL SALE!

Spree
the effortless pen
• Tungsten carbide ball point
• Liquid ink writes brilliantly
• 14,000 tiny glass beads feed the ink just right for rapid, smooth writing.
SALE PRICE 43c

Steno Notebook
Coilbound, narrow rule, 6 x 9-in. sheets. **39c**

SCOTCH MAGIC TAPE
SALE PRICED 4 FOR 99c

& THEME BOOKS
SALE PRICED 31c

BOX OF 100 Paper Clips 23c

3 FASTENER Report Holder 14c

PLASTIC or WOOD 12 in. Ruler 12c ea.

TWIN-POCKET Portfolio 29c

RULED or PLAIN Bond Tablet 33c

50 SHEET Assignment Book 31c

100 SHEET Scratch Pad 19c

Sanford's OPAQUE TEMPERA COLORS
Self-levelling. Pk. 6
SALE PRICE 97c

Liquid Crayons
10 bright, no bleed-thru colors. Non-toxic. Fine or broad type.
SALE PRICE 95c

10 PENCILS
SALE PRICED 29c

16 CRAYONS
SALE PRICED 33c

RADIO SHACK
CB RADIOS
IN STOCK

23 CHANNEL DELUXE \$159.95

6 CHANNEL \$79.95

COMPACT 23 CHANNEL \$109.95

23 CHANNEL DELUXE BASE/MOBIL \$229.95

23 CHANNEL SIDE BAND
12 WATT OUTPUT - 23 CHANNELS PLUS 46 SSB CHANNELS
\$249.95

PERCURL 3 IN 1
Steam Styler with attachments by Gillette
The great styling attachments
Moisturizing steam locks in curls
\$23.88

There's a small roller for small curls. Around the face, nape of neck, for bangs. Or for a whole, youthful tousled head of curls. Locked in with moisturizing steam.
There's a big roller with steam to make big curls. Just right when hair is longer, thicker. Perfect for flips and pageboys. And a super styler with steam it's unique. Use it to smooth, shape, add lift, even straighten your hair.

EKO BAKEWARE ASSORTMENT
Muffin, cake or pizza pan.
YOUR CHOICE 93c

1/2 GALLON CORY SERVING DECANTERS
SALE PRICE \$2.39

FOUND DESIGN
AM FM BATTERY ELECTRIC PORTABLE RADIO
Includes batteries, earphone and built-in AC line cord.
SALE PRICE \$22.99

Enochs-Bula News

by Mrs. J.D. Bayless

Those going to Falls Creek South Camp Monday till Saturday were Donnie Williams, Bryan Roberts, Danny Kemp, Robert Layton, Ronald and Renee Beasley, Brent and Marthan George, JaLyn Greer, and their sponsors, Rev. and Mrs. Charlie Shaw, Mr. and Mrs. Glynn Price and Mrs. E.N. McCall. They had charge of the services Sunday morning.

Mr. and Mrs. Quinton Nichols and sons, Richard and Mike, returned home Sunday from a week's vacation. They camped out at South Fork, Colo. and did some fishing. They came back through Mexico enroute home.

Mr. and Mrs. James Sinclair was honored with an appreciation party at the Bula Baptist Church Sunday night after church services. Ice cream and cake were served and they were presented a money tree. Mr.

Sinclair was superintendent of the Bula school before moving to Three Way recently.

Mrs. Terry Turner of Las Cruces, N.M. visited her parents, the Ray Seaglers, the past week and they went to Midland to visit a daughter and sister, Mr. and Mrs. Royce Lane and family, Thursday.

Mr. and Mrs. Chester Petree attended a reunion at the Midland City Park.

Visitors at the Baptist Church Sunday morning were Mr. and Mrs. Robert George, Brent and Marthan, Mrs. Don Vanlandingham and children, Christ, Kim and Kerry, all of Lubbock, Joe Clark and daughter, Anita, of Chico, and Danny Kemp.

Mrs. Henry Hardaway of Littlefield and her mother, Mrs. Winnie Byars, were in Clovis one

day last week and drove back by Friona and visited Mr. and Mrs. Tom Byars.

We wish to express our sympathy to Mrs. John Daniel and family in the loss of her husband, John, of Morton. Mrs. Daniel lived at Enochs for several years before moving to Morton. She is the sister of Mrs. J.O. Dane of Enochs.

Mrs. Bill Kay, Mrs. Perry Fort and Mrs. Bonnie Long drove to Portales, Sunday afternoon to visit Mrs. Annie Hulse who is 97 and in the Roosevelt Nursing Home.

Mr. and Mrs. Orbe Phillips left for Ute Lake last Thursday to do some fishing.

Mr. and Mrs. Tom Newton moved to Three Way where he will be Junior ball Coach and will also be teaching in the school.

Guests in the home of Mr. and Mrs. Bob Newton during the weekend were their sons, Mr. and Mrs. Dennis Newton and children Patrick and Cory from Stinnett, Mr. and Mrs. Tom Newton and Barry of Three Way and Mr. and Mrs. Steve Newton of Lubbock, also her sister, Mr. and Mrs. James Hooper of Brownfield, a

brother, Mr. and Mrs. Bobbie Fred, Janet and Mark of Denver City, a niece, Mrs. Connie Rogers and children, Connie and Roger of Levelland and her parents, the L.G. Freds.

Mr. and Mrs. Marion Walker of Mt. Vernon spent Sunday night with Mr. and Mrs. Bill Key.

Mr. and Mrs. Edward Crume will be moving their daughter, Diane to Rochester this week. She will be teaching in the school there.

Mr. and Mrs. Eddie Riley attended the pastors and wives retreat at Plains Baptist Assembly Friday and Saturday.

A.P. Fred is home after a long stay in the Methodist Hospital in Lubbock.

Those attending the last course in the Christian Life and Witness at Littlefield Friday night were: W.B. Peterson, Mrs. Chester Petree and Mrs. Bill Key.

Mr. and Mrs. E.C. Gilliam had her brother, Mr. and Mrs. Sherlie Scillian, and children, Jon and Lora Bee from Springfield, Mo. as their guests last Sunday till Tuesday. Her mother, Mrs. Sarah Scillian, of

Whiteface News

Willie Peters accompanied her son and family, Mr. and Mrs. Ralph Peters, to Oklahoma for a vacation. Ralph and family have been visiting with relatives in Whiteface.

Bill, Pam and Amy Beth Bowers returned to San Diego Sunday after visiting with Bill's mother, Ala Bowers, and his sister, Mary Casey. They also visited with Pam's parents, Mr. and Mrs. Lindsey Bates, and her sister, Beth Cagle.

Mr. and Mrs. Arch Woods left Monday for Odessa to visit a few days with relatives.

Mr. and Mrs. Arch Woods left Monday for Odessa to visit a few days with relatives.

Morton, visited with them Monday and Tuesday. They all had supper with Mr. and Mrs. Wayne Gilliam at Morton Tuesday night. Other guests were Mr. and Mrs. Dean Gilliam and son, and Mrs. Doyle Butler and Amanda of Morton.

Mr. and Mrs. Dennis Martin and Trina of Ruidoso, N.M. visited with his parents, George Martins, over weekend.

Mr. and Mrs. Jimmy Myers and children left Monday for Las Vegas, N.M. on a camping trip. They plan to return home the last of the week.

Visiting in the home of Mr. and Mrs. C.A. Kitchens Saturday were Mrs. Kitchens' sister and her husband, Mr. and Mrs. Alvin Wilton, of Broken Arrow, Okla. Also visiting were their son and family, Mr. and Mrs. Darrell Kitchens and Angela Dawn, from Smyer.

Mr. and Mrs. L. Gainer left Sunday for Red River, N.M. for a short vacation.

Visiting in the home of their grandmother, Mary Lou Martin over the weekend were Eric and Tonya Hearn, of Littlefield.

Johnny and Bobbie McClure went to Jayton Saturday to visit their daughter and family, Mr. and Mrs. Larry Williams.

ASSEMBLY OF GOD CHURCH
Whiteface
Pastor, Rev. Jim Myers
Sunday Services—
Sunday School 9:45 a.m.
Morning Worship 11:00 a.m.
Evening Worship 6:00 p.m.
Midweek Bible Study 6:30 p.m.

ST. ANN'S CATHOLIC CHURCH
Pastor Nicholas Schneiders C.P.
Mass Schedule:
Sunday 9:00-11:15 a.m.
Weekdays 7:30 a.m.
Wednesday Evenings 8:30 p.m.
First Fridays each Month 8:30 a.m.
8:30 p.m.
Sunday School 10:00-11:00 a.m.

NEW TRINITY BAPTIST CHURCH
Rev. W. D. Anderson
3rd and Jackson
Sundays—
Sunday School 9:45 a.m.
Morning Worship Second
and Fourth Sundays 11:00 a.m.
H.M.S. 4:00 p.m.
Wednesdays—
Prayer Service 7:00 p.m.

FIRST BAPTIST MEXICAN MISSION
Sundays—
Sunday School 10:00 a.m.
Training Union 6:30 p.m.
Evening Worship 7:30 p.m.
Wednesdays—
Prayer Service 7:00 p.m.

FIRST BAPTIST CHURCH, ENOCHS
Rev. Charley Shaw
Sunday School 10:00 a.m.
Morning Services 11:00 a.m.
Training Union 7:00 p.m.
Evening Services 8:00 p.m.

BLED SOE BAPTIST CHURCH
Rev. Henry Rhynes
Sunday Service 9:45 a.m.
Worship Service 11:00 a.m.
Training Union 6:00 p.m.
Evening Worship 7:00 p.m.
Wednesday Night Service 8:00 p.m.

CHURCH OF CHRIST
S.W. 2nd and Taylor
C.R. Mansfield, Preacher
Sundays—
Bible Class 10:00 a.m.
Worship 10:45 a.m.
Evening Worship 6:00 p.m.
Wednesdays—
Midweek Bible Class 8:00 p.m.

CHURCH OF GOD IN CHRIST
Rev. Johnny Evans, Pastor
719 N.E. 3rd
Sunday School 10 a.m.
Morning Worship 11 a.m.
Evening Worship 6 p.m.
Wednesday Night Service 6 p.m.

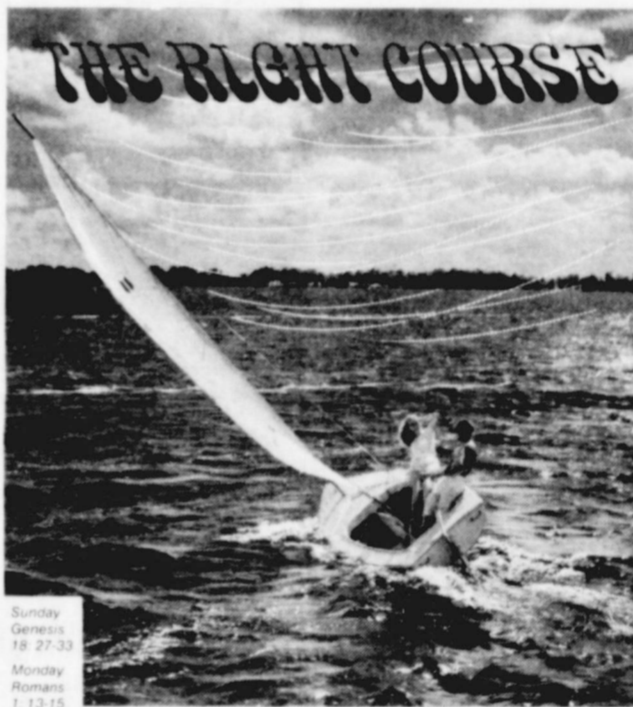
FIRST METHODIST CHURCH
Royce Womack, Pastor
411 West Taylor
Sundays—
Church School Session 9:45 a.m.
Morning Worship Service 10:55 a.m.
Evening Fellowship
Program 5:00 p.m.
Evening Worship 6:00 p.m.

WHITEFACE CHURCH OF CHRIST
Elmer Evans, Minister
300 Tyler Street
Sundays—
Bible Classes for all ages 10:00 a.m.
Worship and Communion 10:55 a.m.
Evening Worship 6:30 p.m.

Wednesday—
Bible Study & Prayer 8:00 p.m.

UNITED METHODIST CHURCH, ENOCHS
Rev. Robert Stone, Pastor
Services held 1st and 3rd Sundays
Sunday School 10:00 a.m.
Morning Services 11:00 a.m.
Evening Services 7:00 p.m.
4th Wednesday-Fellowship 7:00 p.m.

IS THE CHURCH PART OF YOUR LIFE?



Until I became interested in sailing, I thought boats simply drifted with the wind. It hadn't occurred to me that few sailors would ever reach port in this manner. And before I became earnest about church, I thought people's lives—their joys and disappointments, their achievements and failures—were largely a result of fate or fortune. Luck would bring ago have replaced religion if this were true. Now I know the thrill of sailing into the wind. Sure, tacking to port or starboard requires a zigzag course and when your craft heels over at that precarious angle, it takes skill to control her. But that's part of the adventure—making headway against a strong wind. Now, too, I know the thrill of believing in God . . . of setting a goal, of relying on His power, of devoting myself to reaching the destination. Making headway against adverse winds, heels us over—but it's a part of the adventure of being a Christian today.

HICKS CHAPEL BAPTIST CHURCH
Rev. Hugh Montgomery
Sunday School 10:00 a.m.
Morning Services 11:00 a.m.
Training Union 6:00 p.m.
Evening Services 7:00 p.m.

FIRST BAPTIST CHURCH WHITEFACE
Harold Harrison, Pastor
Sunday School 9:45 a.m.
Morning Worship 11:00 a.m.
Church Training 6:00 p.m.
Evening Worship 7:00 p.m.
Wednesday Prayer Meeting 7:30 p.m.

FIRST BAPTIST CHURCH
Paul McClung, Pastor
202 S.E. First
Sunday School 9:45 a.m.
Morning Worship 10:55 a.m.
Morning Service KRAN 11:00 a.m.
Training Union 6:00 p.m.
Evening Worship 7:00 p.m.

Tuesdays—
Helen Nixon W.M.U. 9:30 a.m.
Wednesdays—
Graded Choirs 7:30 p.m.
Prayer Service 7:30 p.m.
Church Choir Rehearsal 8:30 p.m.

TEMPLO GETSMANI ASSEMBLY OF GOD CHURCH
C.M. Pinon
Sundays—
Sunday School 10:00 a.m.

Evening Evangelistic Service 6:30 p.m.
Women's Mission 7:30 p.m.
Monday 7:30 p.m.
Wednesday 8:00 p.m.

EAST SIDE CHURCH OF CHRIST
Jammie Paden, Minister
704 East Taylor
Sundays—
Bible Study 10:00 a.m.
Worship 10:45 a.m.
Worship 6:00 p.m.

Wednesdays—
Midweek Service 8:00 p.m.

CHURCH OF CHRIST, MAPLE
Dannie Mize, Preacher
Bible Study 10:00 a.m.
Worship 11:00 a.m.
Night Worship 6:00 p.m.
Wednesday Night Services 8:30 p.m.

UNITED METHODIST CHURCH, BULA
Rev. Robert Stone, Pastor
Services 2nd and 4th Sundays
Sunday School 10:00 a.m.
Morning Service 11:00 a.m.
Evening Service 7:00 p.m.

THREE WAY BAPTIST CHURCH
Rev. Jack Dewitt
Sunday School 10:00 a.m.
Morning Worship 11:00 a.m.
Training Union 6:00 p.m.
Evening Services 7:00 p.m.

ASSEMBLY OF GOD CHURCH MORTON
Rev. G. Frank Estes
Sundays—
Sunday School 9:45 a.m.
Morning Worship 11:00 a.m.
C.A. Service 6:00 p.m.
Evangelistic Service 7:00 p.m.
Wednesdays—
Wednesday Services 7:30 p.m.

FIRST MISSIONARY BAPTIST CHURCH
Main and Taylor
Sunday School 9:45 a.m.
Morning Worship 10:45 a.m.
Training Service 6:00 p.m.
Evening Worship 6:45 p.m.
W.M.A. Circles
Monday—
Night Circle 7:30 p.m.
Tuesday—
W.M.A. 2:00 p.m.
G.M.A. 4:00 p.m.
Wednesday—
Midweek Service 7:30 p.m.
Edna Bullard 9:30 a.m.

This Feature Is Published With The Hope of Getting More People To Church By The Undersigned City Business And Professional People

Claunch Gin
Bula
Bailey County Electric
Co-Op Association
Phone 266-8600 - Whiteface Hwy.
Rose Auto and Appliance
107 E. Wilson Phone 266-5959
Bill's Furniture
and Appliance
102 S.W. 1st
Compliments of
Carl Griffith Gin
and
G & C Gin

Judge Glenn Thompson
L & B Supply
N. Main - Phone 266-5110
Cochran Electric Service - SUPPLY
317 W. Washington Phone 266-5455
Bill Wells Chev-Olds
133 E. Washington Morton, Texas
Farmer's Co-Op Gin of Enochs
927-3444
First State Bank
107 W. Taylor - 266-5511

Cochran County Grain Co.
Morton - Lehman
Griffith Equipment Cimpany
120 N.W. 3rd Phone 266-5555
Luper Tire and Supply
108 E. Washington 266-5330
Allsup's 7 till 11
602 Main Phone 266-8901
Ramsey's Food Store
Gerald Ramsey, Owner
210 South Main

West Texas Seed Co.
Roy OXFORD, Mgr.
Dora Hwy. 266-5557
Star Route Co-op Gin
St. Rt. 1 - Phone 927-3966
Higginbotham-Bartlett
201 W. Wilson 266-5255
Tic Toc Restaurant
Loma and Rob Richards
Levelland Highway -
Phone 266-8954
St. Clair's Department
Morton 266 5223
Liner's Pharmacy
Mike and Donna Liner

BACK TO SCHOOL SALE AT THE NEW YORK STORE



IN MORTON, TEXAS

OPEN 7 DAYS A WEEK

USE OUR
LAY-A-WAY PLAN.

STARTING FRIDAY AUGUST 15, 1975

WE ALSO LIKE TO REMIND YOU THAT WE HAVE A BIG SELECTION FOR SHOWERS AND GIFT ITEMS FOR ALL OCCASIONS: BLENDERS, ELECTRIC KNIVES, HAIR DRYERS, ELECTRIC CAN OPENERS, RADIOS, AND RADIOS FOR BICYCLES, WATCHES, CLOCKS, 8 TRACK TAPE PLAYERS AND CASSETT TAPE PLAYERS, FOR A LOW PRICE.

REGISTER FOR TWO FREE MERCHANDISE CERTIFICATES FOR THE VALUE OF \$30.00 DRAWING WILL BE AT THE NEW YORK STORE ON SATURDAY, SEPTEMBER 13, 1975

ALSO GET A FREE PILLOW WITH THE PURCHASE OF \$50.00 OR MORE. WE HAVE THE "CONVERSE" AND THE "KEDS" TENNIS SHOES IN ALL STYLES, TRACK SHOES LOW AND HI-TOP, FOOTBALL SHOES, ETC. ALL PRICES LOWER THAN ANYWHERE ELSE.

LADIES DRESSES

20% OFF

LADIES SHOES

10% OFF

PANTY HOSE

BY "SCANTY"

REG. \$1.25 A PAIR

2 PAIRS FOR \$1.00

LADIES SLACKS

FOR ONLY **\$7.98**

LADIES PANTS SUIT

REG. \$24.00 FOR ONLY

\$12.00

GIRL'S SHOES

2 PAIRS FOR \$5.00

BOYS SHOES

2 PAIRS FOR \$5.00

GIRL'S SLACKS

\$3.98 UP

GIRL'S BLOUSES

\$1.98

GIRL'S SHORT SETS

2 SETS FOR \$5.00

MENS LONG SLEEVES SHIRTS

\$2.00 OFF EACH SHIRT

MENS SHORT SLEEVES SHIRTS

3 SHIRTS FOR \$10.00

MEN LEVI'S COLORED PANTS

REG. \$18.98 FOR ONLY **\$6.00 A PAIR**

MEN WESTERN SHIRTS

\$2.00 OFF EACH SHIRT

CANVAS SNEAKERS

COLOR CHOICE. U.S. MADE

5-8 TODDLER

8 1/2 - 12 CHILDRENS

12 1/2 - 3 MISSES

5-10 WOMEN'S

\$1.89

LADIES SHOES

2 PAIRS FOR \$5.00

MEN DOUBLE KNIT PANTS

REG. \$14.00 for only **\$8.98**

MEN COWBOY BOOTS

FAMOUS BRANDS, BIG ASSORTMENT ON CLOSE OUT

SAVE

LADIES SHORTS

REG. \$5.00

for only **\$2.50**

LADIES AND GIRLS KNEE HIGH BOOTS

BLACK, RED & WHITE

REG. \$6.98 FOR ONLY

\$1.00 A PAIR

BOYS SHORT SLEEVES SHIRTS

2 SHIRTS FOR \$5.00

BOYS LONG SLEEVES SHIRTS

REG. \$5.00 FOR ONLY **\$2.98**

MEN AND BOYS WIND BREAKERS

\$4.98 UP

MEN "FRUIT OF THE LOOM" UNDERWEAR

3 BRIEFS OR 3 T-SHIRTS FOR **\$2.99**

BACK-

BYCENTENIAL T-SHIRTS

ALL SIZES, REG. \$3.98

2 FOR \$5.00



SCHOOL

SALE

GIRLS OR BOYS 2 PIECE SET LONG PANTS & TOP, SIZE 2 TO 6 FOR ONLY \$3.98

PILLOWS

REG. \$4.00

FOR ONLY **\$1.98**



THE NEW YORK STORE

MEN SUPER BELL JEANS, LEVI'S OR WRANGLER

\$1 OFF EACH PAIR

FOR A LIMITED TIME ONLY

Jaclyn Claye

has her say

DEAR JACLYN CLAYE: I know that your column is not a beauty column as such, but since you seem to have a lot of information on a variety of subjects perhaps you might be able to spread a little light on a fad that has taken our neighborhood by storm. It started at the local beauty shop, and although I have never used it, still before I do, I would like to hear your comments on it. What the ladies are doing is, using a well known hemorrhoidal ointment on (now get this) their faces. What it is supposed to do is tighten up the skin and remove the small wrinkles. And apparently it works. There is a lady here who ordinarily has skin like a cement sack and now she looks 100 percent better. But before I get into hemorrhoidal salves I would like to hear what you have to say on the subject. Signed, J.S.

DEAR J.S.: Anybody who uses that stuff on their face is really looking for trouble. I'll tell you how it removes those wrinkles and it will scare the dickens out of you. What it really does is to cause a slight swelling of the entire face and thereby puffing the skin and filling the wrinkles. Further, the effect is not at all permanent and they tell me that continued use of this product will start your skin into secondary scaling and the result will be more wrinkles than ever. It's really bad news. Don't do it. If the Good Lord had intended for hemorrhoidal ointments to be used on the face, the package would come labelled as such.

DEAR JACLYN CLAYE: I've got the worst problem of all. My parents expect me to be a genius at school, and I'm afraid I'm not. I receive very good grades at school and my parents are very proud of me, but I'm really afraid that it is too hard for me to maintain my parents school standards. I mean, I work all the time. I just study, study, study. And I'm getting so I hate it. Something will happen soon. Either my parents are going to have to learn that I'm by no means a genius like some of their friends' kids are, or else I'm going to have to fake going nuts. But I really don't think this can go on much longer. Signed, THIRD YEAR.

DEAR THIRD YEAR: Someone should put your parents straight. The fact is that most of the world's best achievers were only average, scholastically. But I admire your energy and resolve. And although I cannot know of the amount or depth of the pressure that you've been getting from your parents, still I think you're going to have to level with them, soon. It might very well be that your parents did not give birth to a genius when they brought you into the world, but I really believe that they have one heck of a good kid. But level with them. Truth is an amazing thing.

DEAR JACLYN CLAYE: Several months ago our only son was married. He had always been a good boy and for the most part, my husband and I really enjoyed raising young Bill. But the problem is this: Since he and his wife have been married, they have continued to spend their weekends, at our house. And it's a stay-over. They promptly arrive Saturday morning at 8:00 for breakfast and don't leave until Sunday evening at 8:00 with a "...see you next weekend". The truth is, my husband and I would like to have the weekends to ourselves but I cannot see how we can impress this upon them without spoiling a relationship that we really revere. It's a very touchy situation and we would like your thoughts on the matter. Signed, Me and Mel.

DEAR ME AND MEL: I would suggest you begin by breaking the patterns of those weekends by spending at least some of them away from home even if it means leaving on a Friday night. Bill and his wife have gotten into a very comfortable system of weekending and you've got to break the rhythm. Next time they visit, just tell them that if they come next weekend, you and Mel will not be there. It shouldn't be too difficult and I am sure they will get the message. Good luck.

Euell Gibbons gives bags of Knotty Pine Candy for Christmas.

Tonight On TV's Kung Fu Caine demonstrates how to give a pumpkin a concussion.



MR. AND MRS. PAUL ALBUS of Pep announces the engagement of their daughter, Beverly, to Craig Vinson, son of Mr. and Mrs. R.J. Vinson of Morton. Miss Albus is a 1974 graduate of Pep High School, attended South Plains College and is employed by C.R. Anthony's in Levelland. Vinson is a 1973 graduate of Morton High School and is employed by Cochran Power and Light. The couple plans to be married October 4 at 6 p.m. in St. Philips Catholic Church at Pep. Friends and relatives are invited to attend.

Farm-facts

A Weekly Report Of Agri-Business News

Compiled From Sources
Of The Texas Department of Agriculture
John C. White, Commissioner

August 15 is not far away, and that is the deadline for entry in the 1975 Texas Family Land Heritage Program. More than 100 entries have been received so far.

The program honors those families and descendants in Texas who have owned and operated the same piece of land for 100 years or more continuously. It is sponsored by the Texas Department of Agriculture.

Last year, a total of 560 families were honored. Their names are in the Texas Family Land Heritage. If you think you can qualify, write to the Texas Department of Agriculture, Austin, Texas 78711 and ask for a registration form or contact the county judge.

The form must be signed by the county judge in which the land is located. The Family Land Heritage Registry has already proven to be a valuable historical document as well as a token of recognition.

BRUCellosis continues to make news, too. A public hearing is being called September 4 by the Texas Animal Health Commission to discuss proposed changes in state provisions relating to federal regulations.

Federal authorities continue to intensify efforts to eradicate brucellosis from the nation. Less than one per cent of all herds in the nation are brucellosis-infected.

Brucellosis eradication in Texas will continue to affect livestock producers more and more in the future months as only 23 counties in the state are officially brucellosis-free.

WHIPLASH CASES UP

Doctors report treating an increasing number of cases of whiplash in recent years. Many are sustained by young men throwing their heads back to clear long hair from their eyes.

I got a real lemon when I bought my last car... the carpet was worn out in the trunk.

Ted Whillock continues his winning ways

Ted Whillock, making a habit of winning local golf tournaments, teamed with Gary Middleton in

About Local Folks

by Dutch Gipson

Mr. and Mrs. Ed Stevens spent the weekend in Killeen with their daughter and family, Mr. and Mrs. Ronald Hope. They were there to welcome their new grandson, Ronald Jay, Jr.

Mr. and Mrs. Dexter Nebhut, Terri and Barry, have returned from a vacation at Six Flags in Dallas. While there they visited with Mrs. R.C. Strickland. When they returned they attended orientation at Texas Tech University where Terri will be student this fall.

Vacationing in Alpine, Ariz. last week were Mr. and Mrs. E.R. Fincher, Faye Fincher and Bernice and Floyd Mesbitt and children, Kim and Glen. Joining them also were Mr. and Mrs. Jess Darland and sons, Gene and Bob and their families from Blythe, Calif. Glen Fowler is spending this week with his grandparents, Mr. and Mrs. Fisher.

Glen Green was honored with a

capturing the Morton Partnership by one stroke this weekend.

Earlier this summer, Whillock teamed with Gary's brother Steve to win another partnership tourney here.

The winners shot 3-under-par 67s both days to take the title from the duo of Mike Broussard of Levelland and John Ethridge of Lubbock, and the team of Leo Bleeker-Chico.

CHAMPIONSHIP FLIGHT
134—Ted Whillock-Gary Middleton. 135—Mike Broussard-John Ethridge, Leo Bleeker-Chico.

FIRST FLIGHT
146—Smiley Monroe-Danny Hall. 152—Don Lamar-Cecil Barker, Jim Middleton-Steve Middleton.

SECOND FLIGHT
162—Jones-Hedges. 163—Ronnie Leonard-Dee Brown. 164—Steve Stevens-Ron Glass.

birthday supper recently in the home of Mr. and Mrs. Bobby Adams. Attending were his dad, Don Green, and brother, Rob, his grandparents, Bro. and Mrs. George Green, Mr. and Mrs. W.R. Adams, Debbie Adams and Melody Crone.

Mr. and Mrs. W.D.G. Freedland were in Kaufman last weekend to welcome their new grandson, Corey Wade, son of Mr. and Mrs. Billy Freeman.

Guests in the Neal Rose home over the weekend were his brother, Mr. and Mrs. Maybelle Rose from Oklahoma City, Oklahoma and his mother, Mrs. Anna Peterson, of Lubbock.

Mr. and Mrs. Weldon Wynn, Max, Joe Bob and Kandi and Lowell Gibson spent the weekend in Dallas. While there they visited Six Flags, Seven Seas and the African Safari.

Alicia and Stephanie Angel of Lubbock spent last week with their grandparents, Mr. and Mrs. Hazel Hancock. Mr. and Mrs. Bruce Angel came for them Friday and all visited with his parents, Mr. and Mrs. Johnny Cox and sister and family, the Harold Laytons, of Enochs.

Visitors in the Hazel Hancock home over the weekend were Mr. and Mrs. Richard Hancock and Scott of El Paso, Mr. and Mrs. Herschel Hancock, Steven Russell and Kerry of Amarillo. Mr. and Mrs. Bruce Angel and girls of Lubbock, Mr. and Mrs. John Silhan and Kevin and Mr. Mrs. John Hancock, Kip and Buffy of Morton.

Mr. and Mrs. Russell Hudson and daughter, Mary Jo, left Friday for a vacation trip. Plans were to visit relatives in San Angelo and on to San Antonio to visit Mr. and Mrs. Betty Cadenhead and family, a foster son and family.

WEDDING PHOTOGRAPHY
PRICE THE REST--THEN GET
THE BEST FOR LESS MONEY
LEITZELL STUDIO

106 E. BUCHANAN 266-8949

LIGHT UP

...FOR Safety

A good outdoor lighting system is insurance against accidents and loss by theft. It also pays big dividends in time saved because it lets you take advantage of those hours before sunup and after sundown. With dusk- to dawn SECURITY LIGHTING you can stretch those daylight hours. We set the pole, furnish the wire and install the light. . .we furnish maintenance and electricity. . . all for a low monthly rental. Call 266-5541

FOR DETAILS

COCHRAN POWER & LIGHT

THERE'S MORE TO SEE ON CABLE TV!

CHANNEL LINEUP

LOCAL CHANNEL	LOCATION	CABLE CHANNEL
13	LUBBOCK	7
11	LUBBOCK	9
28	LUBBOCK	4
5	TEXAS TECH	5
10	ROSWELL, N.M.	10
12	CLOVIS, N.M.	12
	WEATHER	3
	SCAN	9

FOR SERVICE CALLS OR CONNECTS ON
CABLE CALL--TOLL FREE--LEVELLAND
ENTERPRISE 6-7509

MORTON CABLE TV

A RUGGED BOOT FOR RUGGED COUNTRY




For active farmers: Rugged, barnyard acid resistant uppers for extra-long wear on hardworking feet. Come try on a pair.

Red Wing
Cures
5 o'clock
Feet

RED WING


NICHOLS MENS STORE

Land Bank loan at work



Both pasture land and crop land qualify for a Federal Land Bank loan if properly managed. Remember that the Land Bank Association located right in your area is familiar with local conditions and local needs -- and will do everything possible to provide a long-term loan at reasonable cost.

**Refinancing could produce
this year's most
important "cash crop."**



**FEDERAL LAND BANK
ASSOCIATION**
JACK WILLIAMS, MANAGER
OF LEVELLAND

613 AVE. G 894-6155



BEN FRANKLIN HAS EVERYTHING FOR BACK to SCHOOL

Whether your school is near or far, we have what you're looking for!

VALUABLE COUPON

TAMPAX - 10's TAMPONS

While quantities last!

38¢

57¢ pkg. without coupon

Good only at BEN FRANKLIN

VALUABLE COUPON

225-YD SPOOL POLYESTER THREAD

While quantities last!

5 77¢

FOR 20¢ each without coupon

Good only at BEN FRANKLIN

Our Own ONWARD Quality

THEME BOOKS
100 Blank Pages
63¢
150 Count, 5 Dividers
Only **97¢**

300 SHEETS FILLER PAPER
Our low price **88¢**

LUNCH KITS

With 1/2-Pint Unbreakable Bottle

Keeps lunches hot or cold. Big selection of colorful designs, in metal, plastic, vinyl.

Choice **333** kit

Washable Vinyl! 2-Pc. LUGGAGE SET

Perfect for getting away. 21-in. Weekender and 25-in. Pullman. Both have molded fiber shells, pebble grain vinyl coverings.

19.99 set

Separately Available
Weekender **9.99**
Pullman **10.99**

TIMEX FASHION WATCHES

Dependable Quality. Men's, Women's Styles.

Choose from our big selection! Round, marquis, rectangular shapes, dress and sport styles. Some with day-date, calendar and sweep second hands. Expansion and leather strap.

Our low price **10.95** and up

12-Oz. Size EARTH BORN Shampoo

Fruit scented essences for beautiful, fully clean and shiny hair.

Our low price **1.27** each

VALUABLE COUPON

Kleeneex - Little Travelers FACIAL TISSUES

While quantities last!

16¢

15¢ each without coupon

Good only at BEN FRANKLIN

VALUABLE COUPON

ARRID - Extra Dry DEODORANTS

While quantities last!

97¢

\$1.37 each without coupon

Good only at BEN FRANKLIN

CRAYOLA CRAYONS

Box of 64 with built-in SHARPENER

Only **97¢**

BOX OF 24... only 41¢

WESTAB ORGANIZER

Great for keeping your school work straight!

Includes 8 Pockets

Our low price **1.99** each

Orlon Acrylic CREW SOCKS

Long wearing orlon stretch nylon socks with extra high heel reinforcement. Basic colors. Fit 10-13.

Now just **68¢** pair

BOYS' SIZES 7-11... **58¢**

Kath Barry PANTY HOSE

Super stretch hose in girls' 7 to 14 and Misses' P.M.M.T.

Our low price **2.99¢** PR.

Set of 10 LIQUID CRAYONS

Choice of fine or broad felt tip pens. 10 colors per set.

Our low price **77¢** set

VALUABLE COUPON

7-Oz. COLGATE TOOTHPASTE

While quantities last!

77¢

99¢ each without coupon

Good only at BEN FRANKLIN

BASKETBALL SHOES

Comfortable, low cut oxfords. Heavy duck upper, cushioned insole, molded arch support, rubber suction sole. White.

Our low price **2.99** pair

Boys' 10-1/2-2
Boys' 2-1/2-6
Men's 6-1/2-11

CANVAS SNEAKERS

Playful sneakers are 4-eye tie bal oxford style with cushioned insole, PVC sole. Machine washable. Color choice.

Our low price **1.99** pair

Children's 8-1/2-12
Misses 12-1/2-3
Women's 5-10

Golden Hanway UNDERWEAR

Shape-retaining dacron polyester and cotton in no-iron briefs and Tee shirts for men and boys. - White

Boys' XS-L **2.37** Pkg. of 3

Men's S-XL **2.97** Pkg. of 3

Juvenile GIRLS' KNIT TOPS & CORDUROY PANTS

Match a pair of cotton flare leg pants with a poly/cotton, long sleeve shirt. The pants have 3 button front, the tops are crew necks with screen print fronts. They're all machine wash and dryable. Sizes 4 to 6X.

Your choice **2.57** each

Juvenile BOYS' KNIT SHIRTS

Long sleeve, numeral front polo shirts have rib knit trim. Easy care poly/cotton machine wash. Sizes 4-6X.

2.57 each

CORDUROY SLACKS

Flare leg pants match to tops above. Machine wash and dry slacks have slant front pockets, zip fly. Sizes 4-6X.

2.97 each

DOUBLE KNIT Lightly Padded BRAS

Soft, flattering nylon double knit with 2 section fiberfilled cups. Sizes 32A to 40C.

2 \$3. For

Call Vinyl SHOPPER PURSE

Compact 5-in. frame purse with handy zipper compartments. Call vinyl grain. Colors.

Just **97¢** each

Ruth Barry SHEER KNEE-HI'S

Perfect under pants, super stretch nylon, sandal feet. One size fits 8 1/2-11.

Pkg. of **2 73¢**

BACK to SCHOOL SALE

THE SLICKER SYSTEM

For organizing all your school work! Handy 3 ring, 1/2-in. capacity binder with 8 1/2"x11-in. pad of paper and 6 filing pockets.

Our low price **1.47** each

Deluxe POCKET CALCULATOR

Full size features in a mini cabinet. 3.3/7x 7.8x2.3/8-in. size. 8 digit capacity with floating decimal, constant and percent keys. Overflow indicator.

Our low price **14.95** each

NC Model Extra... **3.95**

Slide Rule POCKET CALCULATOR

Multi function 8 digit calculator features keys to figure square root, squares, and Pi. Complete with case and batteries. AC/DC.

Our low price **19.95** each

HANDBAGS! New Fall Styles!

A pretty and practical fashion accessory. Dressy bags for fall in many styles.

Now only **4.97** each

WOMEN'S NYLON BRIEFS, BIKINIS

Nylon bikinis in sizes 5 to 7 or acetate tricot briefs with indestructible elastic in sizes 5 to 10. Colors.

Choice **58¢**

TRAC II Twin Injector Blades-5's

For close, smooth shaving comfort. Each blade has 2 edges.

Our low price **83¢** pkg.

Orlon Acrylic KNEE-HI'S

Fashion-right knee-hi's in the popular Pineapple stitch pattern. Stay-up elastic cuff.

Misses' Sizes 9-11 **83¢**

Girls' Sizes 6-9-1/2 **63¢**

BIG TOE KNEE-HI SOCKS

The latest in fun fashion - put your big toe in a "Big Toe" pocket! Fashion colors contrast.

Our low price **97¢**

48-Oz. LISTERINE ANTISEPTIC

The extra strength mouthwash. Lasts 2 times longer.

Our low price **1.97** each

8-Oz. Size ELMER'S GLUE

Choose School Glue or Glue All. Clean white, fast setting, safe.

Our low price **57¢** each

4-OZ. ELMER'S... **38¢**

SCHOOL BOXES

For neat storage of papers, pencils, all small items. Handy, cigar box size.

Only **33¢** each

POCKET THING

The "holder folder" with 8 pockets for organizing everything! Design choice.

Just **83¢** each

Report COVERS, 2-Pocket PORTFOLIOS

Handy portfolios for keeping assignments neat and covers for handing them in.

Choice **13¢** each

PUNCHLESS BINDER

Finger-tip press to open or close action eliminates hole punching. Holds to 175 pages.

Now only **77¢** each

3-PACK SCHOOL SPECIAL

A special value! 2 25¢ medium Bic's plus 1 49¢ fine point Bic ball pen.

Special price **41¢** pack

Gillette's SUPERMAX or MAX FOR MEN

Both have 650 watts of hair drying styling power! Max covers with 2 grooming attachments for styling and straightening. Supermax has 5 attachments and setting positions.

Your choice **16.47** each

BEN FRANKLIN

SHOPPING PLAZA - NO. 8 MAIN

Store Hours: Mon.-Sat. 9 A.M.-10 P.M., Sun. 12 Noon-6 P.M.

WE HONOR master charge THE INTERBANK CARD

200 SHEETS Typing Paper

Value price **88¢** each

Big value pack of 8 1/2"x11 in. size paper for typing neat and clean assignments.

Play **A B C D**
SIMPLE AS: **A B C D**

WIN UP TO **\$100.00** IN CASH

THESE PEOPLE HAVE WON **\$10000 EACH**

**IDA CRISTAN
 BARBARA COOPER
 ETHEL HARRIS
 MRS. W.L. DAVIS**

OTHER CASH PRIZES \$5-\$10 OR WIN \$50 IN TRADING STAMPS (500 STAMPS)

Doss Thriftway

400 S. Main Street, Morton, Texas
 Phone: 266-5375

THRIFTWAY PRESENTS "Back To School" & "Kids' Week"

SHURFRESH SELF-BASTING POP-UP TIMER 18-22 LB. AVG. **TURKEYS LB. 59¢**

SHURFRESH CANNED **HAM** 3 LB. CAN **\$4.79**

- SHURFRESH Bologna 12 OZ. PKG. **69¢**
- SHURFRESH BOLOGNA-P & P-OLIVE-SALAMI-SPICED Luncheon Meat 6 OZ. PKG. **39¢**
- HAM OR CHICKEN Shurfresh Salad 8 OZ. CTN. **79¢**
- SHURFRESH PIMENTO OR JALAPENO Cheese Spread 7 1/2 OZ. CTN. **79¢**
- SHURFRESH PIMENTO Cheese Spread 12 OZ. CTN. **\$1.19**

SHURFRESH VAC/PAC **BACON** LB. PKG. **\$1.59**

SHURFRESH **Franks** 12 OZ. PKG. **69¢**

- HOUSEHOLD NEEDS**
- SHURFINE BLUE OR ALL PURPOSE Detergent 49 OZ. BOX **99¢**
 - SHURFINE Cleanser 2 14 OZ. CANS **29¢**
 - SHURFINE Fabric Softener 32 OZ. BTL. **59¢**

SOFLIN WHITE-PINK-BLUE-BORDERED **PAPER TOWELS**

SHURFINE JUMBO ROLL **39¢**

WHITENS CLOTHES WHITER **SHURFINE BLEACH** HALF GALLON JUG **39¢**

Shur Fine

- QUALITY FROZEN FOODS**
- SHURFINE FROZEN WHIPPED Topping 10 OZ. CTN. **49¢**
 - SHURFINE FROZEN Fish Sticks 2 8 OZ. PKGS. **89¢**
 - SHURFINE MIXED VEGETABLES, GREEN PEAS OR Broccoli Spears 3 10 OZ. PKGS. **\$1.00**

- THRIFTWAY DAIRY ITEMS**
- SHURFRESH SWEETMILK OR BUTTERMILK Biscuits 4 8 OZ. CANS **49¢**
 - SHURFRESH HALFMOON LONGHORN Colby Cheese 10 OZ. PKG. **89¢**
 - SHURFRESH-IN QUARTERS SWEET CREAM Butter 16 OZ. PKG. **89¢**

SHURFINE FROZEN **ORANGE JUICE** 5 6 OZ. CANS **\$1.00**

IN QUARTERS **SHURFRESH MARGARINE** 3 16 OZ. CTN. **\$1.00**

SHURFINE FROZEN **HALVES STRAWBERRIES** 10 OZ. CTN. **39¢**

SHURFRESH SLICED AMERICAN **CHEESE FOOD** INDIVIDUALLY WRAPPED 12 OZ. PKG. **89¢**

HEY KIDS!
THE 1975 GREAT SOUTHWESTERN COLORING CONTEST
SIX GRAND PRIZES FIVE STORE PRIZES
 CHECK WITH YOUR LOCAL THRIFTWAY STORE THE DETAILS FOR ALL

NOTEBOOK PAPER
 500 CT. **89c**

- SHURFINE CANNED GOODS**
- SHURFINE Applesauce 4 16 OZ. CANS **\$1.00**
 - SHURFINE WHOLE OR STRAINED Cranberry Sauce 16 OZ. CAN **39¢**
 - SHURFINE ASSORTED FLAVORS Fruit Drinks 46 OZ. CAN **39¢**
 - SHURFINE CUT ALL GREEN SPEARS OF Asparagus 2 14 1/2 OZ. CANS **89¢**

QUALITY SHURFINE **FRUIT COCKTAIL** 3 16 OZ. CANS **\$1.00**

- SHURFINE C.S. OR W.K. Golden Corn 3 17 OZ. CANS **\$1.00**
- SHURFINE FRESH SHELLED Blackeyes 4 15 OZ. CANS **\$1.00**
 - SHURFINE WHOLE IRISH Potatoes 4 16 OZ. CANS **\$1.00**
 - SHURFINE Spinach 4 15 OZ. CANS **\$1.00**
 - SHURFINE Tomato Sauce 6 8 OZ. CANS **\$1.00**
 - SHURFINE Pork & Beans 4 16 OZ. CANS **\$1.00**

SHURFINE 3 SIEVE CUT **GREEN BEANS** 4 16 OZ. CANS **\$1.00**

- THRIFTY GROCERY BUYS**
- SOFLIN WHITE OR ASSORTED Paper Napkins 180 CT. PKG. **49¢**
 - SHURFINE WITH LOCK TOP Sandwich Bags 80 CT. BOX **39¢**
 - ENERGY CHARCOAL Briquets 10 LB. BAG **89¢**
 - ROXEY RATION Dog Food 8 15 1/2 OZ. CANS **\$1.00**
 - SHURFRESH-9 OZ. CHIPS FOR DIPS OR Potato Chips 9 9 1/2 OZ. PKG. **69¢**

- SHURFINE MACARONI & CHEESE Dinner 4 7 1/2 OZ. BOXES **\$1.00**
- SHURFINE Tomato Soup 6 11 OZ. CANS **\$1.00**
- SHURFINE STRAWBERRY Preserves 18 OZ. JAR **89¢**
- SHURFINE HAMBURGER Sliced Dills 32 OZ. JAR **59¢**

SHURFINE **SALAD OIL** 24 OZ. BTL. **79¢**

ORANGE-ROOT BEER-STRAWBERRY-CHERRY-CHERRY COLA-COLA-GRAPE-CREAM SODA-GINGER ALE-LEMON LIME **SHURFINE POP** 9 12 OZ. CANS **\$1.00**

SHURFINE **ENRICHED FLOUR** 5 LB. BAG **65¢**

SHURFINE **INSTANT TEA** 3 OZ. JAR **99¢**

FOOD KING **SALAD DRESSING** 32 OZ. JAR **69¢**

PECOS VINE RIPENED **Cantaloupe** LB. **15¢**

- ALL PURPOSE Russet Potatoes 10 LB. BAG **97¢**
- EXTRA FANCY LONG SLICERS Texas Cucumbers LB. **15¢**
- CALIFORNIA THOMPSON Seedless Grapes LB. **49¢**

A BETTER WAY TO SAVE

THRIFTWAY

SPECIALS GOOD AUG. 15-21, 1975