

# Morton Tribune

Volume 37, No. 2

Thursday, November 13, 1975, Morton, Texas

Fifteen Cents

## High Plains Farm Income Near \$1.5 Billion

★★★ ————— ★★★



A total of \$1,430,947,000 came to 25 High Plains counties in cash receipts from farm sales in 1974, down from what probably is the all-time high of \$1,799,103,000 from 1973 sales.

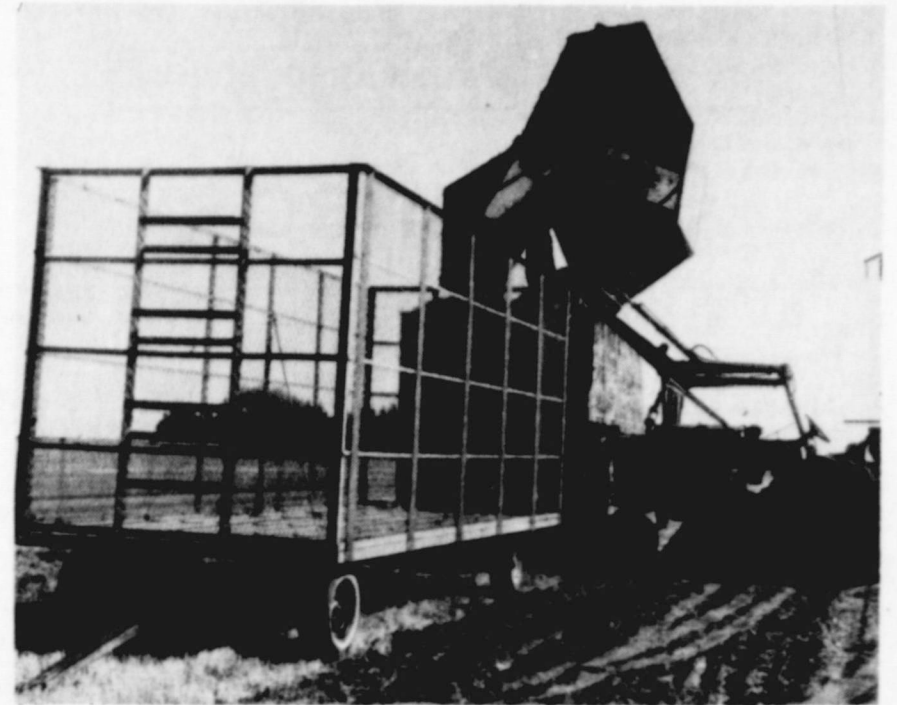
The totals were put together by Plains Cotton Growers, Inc., for the 25 counties represented by that Lubbock-based cotton producer organization, using as the source a statewide report from the Texas Crop & Livestock Reporting Service.

"The facts in this report emphasize the tremendous wealth that is agriculture in this area," notes PCG Executive Vice President Donald Johnson, adding "and the figures are even more impressive when it is considered that agriculture is the world's only source of new wealth."

The Texas totals for 1973 and 1974, respectively, were \$6,885,321,000 and \$5,999,942,000. The High Plains contribution to the State total for the two years came to 23.8 percent and 26.1 percent, respectively, with the Plains area having seven of the top ten income producing counties in the State for 1974.

Leading the State in 1974 farm marketings was Hidalgo County, with a total from crops, livestock and government payments of \$203,121,000. Deaf Smith,

See FARM Page 3



**THE VANGUARD IS IN THE FIELDS** — Day by day more strippers are entering the fields on the High Plains to begin bringing out a 1975 cotton crop which shows high promise both as to quality and quantity. It is expected to far outstrip the 1974 crop, but to fall substantially short of the near record harvest of 1973. The above rig was pictured a few miles east of Morton Tuesday afternoon.

## New Crop Cotton Market Slow, Prices Remain Steady

Grower prices were steady to firm during the week ending November 7, according to Paul R. Dickson, in charge of the Lubbock

Cotton Classing Office. The USDA's Agricultural Marketing Service reported trading was slow and growers offered small lots of new crop cotton in very light volume.

They sold small mixed new crop lots of mostly grades 31 and 41; staples 31 to 33; mike 3.0 through 3.2 for 39.00 to 40.00 cents per pound.

Demand was moderate to light. Most lots offered were 1974 crop cotton, Dickson said.

Prices paid growers for cottonseed ranged from \$85 to \$90 per ton.

Grades 41, 51, and 42 were predominate qualities in this week's classings. Grade 41 was 40 percent, grade 51-22 percent and grade 42-15 percent. Bark reductions were assigned to 14 percent of the samples classed.

Staples 30, 31, and 32 were  
See COTTON Page 3

## Marks Succeeds Thomas

### As State Conservationist

George C. Marks will succeed Edward E. Thomas as state conservationist for the USDA Soil Conservation Service effective November 2.

Thomas, as countians will know, was district conservationist at the SCS office in Morton from 1958 to 1963.

Marks, a native of Heidenheimer, Texas, is currently state conservationist for Arizona. He began his career with SCS at Rusk in 1950 as a soil scientist and later worked as a soil conservationist and district conservationist at Sulphur Springs, Winnsboro, Jefferson, New Boston, and Corsicana.

From 1964 to 1968, Marks was area conservationist at Temple. He then moved to Arkansas as an assistant state conservationist. In 1972, he was appointed state conservationist for Arizona. He  
See STATE Page 3

**HONORING OUR VETERANS** — Morton Jaycees and other interested persons are seen above as they placed a flag on each of the graves of veterans buried in Morton Memorial Cemetery. This ceremony, in which 108 veterans graves were decorated, began at 7:30 a.m. Tuesday, November 12, and was followed by a program over Radio

Station KLAN at 11 a.m. in observance of Veterans Day. The observance, formerly called Armistice Day until changed by Congress in 1954, was recently changed back to its original November 11 date from the last Monday in October, also by Congress, after strong urging by veterans organizations and other patriotic groups.

## 4-H AWARDS BANQUET

### Gillespie, Lynskey Win Gold Stars

Suzanne Gillespie, daughter of Mr. and Mrs. Frank Gillespie and the Lynskey, son of Mr. and Mrs. Don Lynskey were named 4-H Star Girl & Boy at the annual Cochran County 4-H Awards Banquet sponsored by Bailey

County Electric Cooperative. Approximately one-hundred-fifty 4-H members, leaders, parents and friends of 4-H attended the banquet held Monday, November 10, 1975 in the Morton School Cafeteria.

The Gold Star Awards were presented by Billy C. Gunter, District 2 Extension Agent, Lubbock. This award is the highest award a 4-H'er can receive.  
See STARS Page 4

## Individual Enterprise Claimed Flourishing In Cochran County

Results of grape variety research and commercial production efforts on the South

Plains may bolster the hopes of those with an eye to viticulture.

Dr. William N. Lipe, state grape project leader for the Texas Agricultural Experiment Station, says yield reports from leading varieties on the South Plains have been pegged at the 5- to 10-ton range with quality, sugars, acids and pH set at highly respectable ratings.

Lipe, who heads TAES grape research efforts for Lubbock and the surrounding area, says information accumulated over the past three years from Lubbock and Abernathy research vineyards indicates fresh market varieties most suitable to the home garden vineyard are Siebel 9110, Golden Muscat, Himrod seedless and Niagara.

"The more commonly known Thompson seedless variety and a new variety, Black Monuka seedless, are excellent in quality, but are somewhat susceptible to winter kill here on the South Plains," he explains.

See COCHRAN Page 3

## Food Show

The Cochran County 4-H Food Show will be held Saturday, November 15, 1975, at the Whiteface School Cafeteria.

Judging will begin at 10:00 a.m. and public viewing will follow immediately.

Everyone is cordially invited to attend the public viewing.

## Healthier' Indians Lose Out Season Against Chieftains

A much healthier and more refreshed Morton Indian football team will take the trial to Friona Friday night to take on the Chieftains in the season's finale of both teams.

They will be more healthy and refreshed because they enjoyed a last week which afforded them time to heal their wounds and come up to the windup clash in the physical shape they have attained since the very beginning of the season, Coach Winters informed the Tribune.

Tino Sabala will be back after  
See SEASON Page 4

## Band Meeting

There will be an important Band Boosters meeting tonight at 8 p.m. in the Band Hall.

The purpose of this meeting is to discuss new uniforms for band students.

All parents of band students are urged to attend.



**DR. WILLIAM N. LIPE** (left), state grape project leader for the Texas Agricultural Experiment Station, inspects one of the grapevine training procedures being tried by Don Bales, president of the Sandy Land Grape Growers, Morton. Bales

eight-acre vineyard is one of many vineyards in the South Plains area contributing information about which varieties will eventually be grown in commercial production.

## Ireland Put Up Strong Resistance To Helping England Fight The Colonies

Two hundred years ago this country with Britain was anxiously seeking soldiers to fight in America to put down the rebellion there. As already mentioned in an earlier column unsuccessful attempts had been made to secure assistance from the British. Negotiations were also underway with several German powers to employ mercenary soldiers.

Britain realized early that it would be very difficult to entice British soldiers to fight in America against people that were often relatives to many and certainly countrymen to all. Therefore, a possible alternative

was to hire soldiers from other countries.

Another possible source of troops was Ireland. However, then as now, Britain had trouble controlling Ireland and docile subservience was certainly not guaranteed. In November 1775 Britain proposed to the Irish House of Commons that 4,000 troops in Ireland be sent to America to be replaced by 4,000 German Protestant soldiers who would be hired for the purpose.

The debate in the Irish commons was intense. A number of Irish leaders not only resisted the suggested troop movement

but also protest the British action to crush the Americans. Lord Ponsonby is reported to have stated, "If we give our consent we

shall take part against America, contrary to justice, to prudence, and to humanity." Fitzgibbon also protested: "The war is unjust, and Ireland has no reason to be a party therein."

Despite the vocal opposition raised by friends of America Britain still had power enough that the measure to send Irish troops passed by a vote of 121-76. However, the resolution to

replace them with German Protestants failed.

By November 1775 Britain more clearly recognized that the submission of the Americans would probably not be as easy a task as originally assumed.

Meanwhile in Spanish Texas isolation was a fact of life. Located so far out on the northern frontier there was virtually no opportunity for the average citizen to have direct contact with Mexico or Spain.

Transportation was so limited that the occasional visitor who made the long journey northward

was welcomed as a special guest. Stories and news were eagerly

sought by a people who had cut themselves off for life from friends and relatives.

Despite the distance and the isolation the culture of Texas remained Spanish for some time and the resentment and resistance that developed on the Atlantic coast did not occur in Texas. Loyalty to the crown and the church remained strong even among the generations born in Texas. The later emigrants from the United States would be the ones who eventually decided to pull Texas away from the mother country.







GEORGE C. MARKS

for Texas since 1972, is being promoted to the position of assistant administrator for SCS in Washington, D.C. He entered SCS in 1954 as a soil conservationist at Lubbock and later served as district conservationist and area conservationist at various locations in Texas. In 1968, he was promoted to assistant state conservationist at Temple and to deputy state conservationist at Nashville, Tennessee in 1971. He was assigned to his present position one year later.

Thomas is a 1954 graduate of Texas A&M University where he was a member of the track team. He served as an army officer in Korea from 1954 to 1956.

**FARM**

FROM PAGE ONE

Parmer, Castro, Hale, Lubbock, Lamb and Swisher Counties — all in PCG territory — occupied the second through eighth spots, respectively.

In returns from crops alone, the High Plains also supplied seven of the top ten. Parmer County led the Plains area in this

category, but was second to Hidalgo County on a statewide basis.

The High Plains had only six of the ten counties producing highest income from livestock and livestock products. Deaf Smith County led the State, followed in the number two and three spots by Gonzales and Hopkins Counties.

It should be kept in mind that the figures are cash marketings for the calendar year, not to be confused with the crop year value of sales. The 1974 calendar year cash receipts result from some marketings of 1973 crops sold in 1974 as well as marketings of 1974 production, and 1973 receipts include the sale of some 1972 production.

Listed below are the 25 High Plains Counties represented by PCG, followed by each county's 1974 cash marketings of crops and livestock, plus the totals for both 1974 and 1973, including Government payments. Counties are listed in the order of total returns for 1974.

**COCHRAN**

FROM PAGE ONE

"Marvelli de Maleiga, Meyers 39-3 and G-255-10 appear to be the

best adapted 'Tokay' types."

Lipe says less information is available on wine types, although such dual purpose grapes as Siebel 9110 and Niagara are well adapted and very productive. Several other varieties are showing promise, but it is too early to predict which varieties will make the best wine, he adds.

"A number of prospective growers in the Lubbock-South Plains area are contributing to the variety evaluation picture," the researcher says. "About 90 to 100 acres of grapes are in their second year of growth on the Plains, and some are expected to be in production in 1976."

"Plantings by four private groups — Llano Estacado at Lubbock, Smith and Scioli at Ropesville, Lightfoot at Seagraves, and the Sandy Land Grape Growers Association at Morton and Whiteface — are all experimental and are contributing valuable information about which varieties will eventually be grown for wine production on the Texas South Plains."

A state-wide feasibility study conducted in 1973-74, indicated that the most promising areas for commercial grape production are in far West Texas, the South Plains and the Texas Hill Country

of the state.

Far West Texas is well suited for the French grape known as Vinifera. The Texas South Plains is suited to both Vinifera and French-American hybrids, while other areas of the state may be restricted to hybrids and other American types.

Lipe says East Texas may be better suited to the Muscadine types due to better disease resistance.

As a result of the feasibility studies, Lipe says, new plantings were begun in 1974 at the Texas Agricultural Experiment Station at Lubbock and El Paso and on a private farm near Junction. Each planting consists of 50 to 60 varieties on three rootstocks. Rootstocks include nematode and disease resistance and more vigorous types.

Plantings will come into production for the first time in 1976, Lipe says, and should yield important information for the developing grape industry in Texas. Plantings at Overton, Uvalde and College Station are expected to yield information on Pierce's disease resistance and Muscadine types.

The TAES scientist says variety research by the Texas Agricultural Experiment Station began in Abernathy (north of

Lubbock) first in 1968, where 239 varieties are under study and was expanded in 1974 to a state-wide effort with studies at Lubbock, El Paso, Junction, Uvalde, Stephenville, Overton, and College Station.

Of the 239 varieties evaluated at Abernathy, about 50 are being retained for further studies, with the remainder being discarded as that planting is phased out.

**COTTON**

FROM PAGE ONE  
predominate lengths accounting for 18 percent, 25 percent and 21 percent respectively.

Mike readings 3.5 through 4.9 amounted to 31 percent of the total. Mike group 3.3 through 3.4 accounted for 17 percent, 3.0 through 3.2 range 31 percent and Mike 2.7 through 2.9 was 19 percent.

Pressley tests indicated breaking strengths at Lubbock averaged 88,000 pounds per square inch.

Ginning increased throughout the South Plains and about 14,800 samples were classed by the Lubbock Classing Office during the week ending November 7. This seasons total stands at 22,700 samples compared to 629 on the same date a year ago.

received awards for outstanding work in 1967 and 1975. A 1944 graduate of Temple High School, Marks has a bachelor's degree from Texas A&M University, 1950. He served in the U.S. Air Force from February 1945 to August 1946. Thomas, state conservationist

WEDNESDAY, NOVEMBER 19

**9 99¢**

KING SIZE WALLET CREATIVE COLOR PORTRAITS FOR ONLY

ORDER PICTURES FOR CHRISTMAS NOW

Extra Charge for GROUPS

NO LIMIT

GET PICTURES MADE OF GRANDPA, GRANDMA, DAD, MOM AND ALL THE LITTLE ONES AT THESE SAME LOW PRICES!

**SHUGART COLOR PHOTOS**

DOSS THRIFTWAY  
400 SOUTH MAIN

ASK About Our FREE 8x10 OFFER

**SELL-OUT**

It is almost certain that Dekalb will sell out of all numbers of green bug resistant sorghum seed. IF YOU WANT SOME OF THIS GREEN-BUG RESISTANT SEED PLEASE GIVE US YOUR ORDER NOW DON'T WAIT

More Yield with GB Resistance

1974 Performance of Greenbug Resistant Susceptible Hybrids		
DEKALB Hybrid	Height, inches	lbs./acre
C-42a GBR*	41	4,838
C-42a	40	4,380
C-42y GBR*	51	7,511
C-42y	52	7,241
E-59 GBR*	49	7,705
E-59	49	7,504

These are identical hybrids except for GB Resistance in the one labeled GB

extra 458# per acre  
extra 270# per acre  
extra 207# per acre

WHY DOES GREEN BUG RESISTANT WORK??????????????

The following table gives insect count per stalk.

Location	Resistant		Susceptible
	Count	%	
Stone, Oklahoma	30	65	116% more
Monah, Texas	95	185	94% more
Wes, Texas	21	208	890% more
Wes, Texas	31	94	203% more
Wes, Texas	94	225	130% more
Wes Center, Texas	30	231	129% more
Lubbock, Texas	40	91	74% more
W. Deal, Texas	160	279	74% more
W. Deal, Texas	151	938	521% more

above are early reports from the scouts monitoring the sorghum situation. Note that the plants carrying resistance had fewer greenbugs per plant than the susceptible.

Also the toxin ejected by the green bug does not harm the plant as much as the non resistant plants.

Green Bug Resistant Sorghums will work. No increase in price from last year. Our supplies are limited, so come by car, walk, fly, ride you pogo stick or mount your ass & come on in but don't put it off. WE WILL SELL OUT & WE WANT YOU TO HAVE GREEN BUG PROTECTION.

LEWIS FARM & RANCH STORE  
310 NW 1st  
Morton, Texas  
Phone 766-5161

SPECIALS GOOD NOV. 14th THRU NOV. 20th

**THRIFTY FOODS** for THRIFTY SHOPPERS

<b>CARNATION SLENDER</b> 10 OZ. 2 / 83c	<b>RANCH STYLE BEANS</b> 15 OZ. 3 / 89c	<b>BACON DECKER</b> 12 OZ. PKG \$ 1 29
<b>LUX LIQUID DETERGENT</b> 20c OFF 32 OZ. 95c	<b>BURLESON'S HONEY</b> 24 OZ. \$ 1 29	<b>T-BONE STEAK</b> LB. \$ 1 49
<b>COMSTOCK CHERRY PIE FILLING</b> 21 OZ. 69c	<b>KEEBLER ZESTA CRACKERS</b> 2 LB PKG 99c	<b>LEAN GROUND BEEF</b> 3 LB PKG 79c LB. 1 LB PKG 89c
<b>DEL MONTE FRENCH SLICE GREEN BEANS</b> 16 OZ. 3 / \$ 1 00	<b>TOMATOES</b> VINE RIPE CELLO PKG. 39c	<b>KRAFT CHEDDAR CHEESE</b> 10 OZ PKG \$ 1 09
<b>POTATOES</b> ALL PURPOSE RUSSET 10 LB BAG 89c	<b>ASPIRIN BAYER</b> 100 COUNT \$ 1 09	<b>WHITE SWAN 32 OZ. SALAD DRESSING</b> 79c
<b>COLORADO RED DELICIOUS APPLES</b> 4 LB. BAG 69c	<b>CLOSE UP TOOTHPASTE</b> 15c OFF FAMILY \$ 1 09	<b>HUNTS PEACHES</b> 2 1/2 CAN 53c
<b>RAMSEY'S FOOD STORE</b>	<b>DESITIN HAND LOTION</b> 10 OZ. \$ 1 29	<b>WHITE SWAN TOMATO JUICE</b> 46 OZ. 57c
	<b>100 EXTRA GOLD BOND STAMPS</b> With the purchase of \$5.00 or more at <b>RAMSEY'S FOOD STORE</b> Coupon Expires Nov. 20th. Limit One Per Family	<b>DELSEY BATHROOM TISSUE</b> 2 ROLL PKG 2 / 89c
		<b>CURITY TODDLER DISPOSABLE DIAPERS</b> 24 CT. \$ 2 19

**STARS**

FROM PAGE ONE

receive on the county level and to recognize outstanding achievement, leadership and contributions to the County 4-H program.

Suzanne and Gene will participate in the District 2 Gold Star Banquet on Monday, November 24, 1975 beginning at 6:30 p.m. in Coronado High School Cafeteria.

Master of Ceremonies for the County event was Lynskey. Others on the program included Ricky Neal, invocation; Suzanne Gillespie, dinner music; Shirley Roberts, pledge of allegiance; Barry Zuber, 4-H motto and pledge. Joe Harbin, educational director for Bailey County Electric, brought the welcome with Nancy Wilkinson, Morton 4-H member, following with the response. Wyn Crone introduced the theme — "4-H '76 Spirit of Tomorrow," with a presentation giving the history of 4-H as well as some present accomplishments.

County medals were presented to the following 4-H members: Achievement Award — Leesa Bilbrey.

Agricultural Award — Thomas Blackstone, Scott Young, Jimmy Whitehead, Scott Wesley, Mark Dewbre, and Billy Roberts.  
 Beef Award — Steve Polvado, Debbie Polvado and Cody Dewbre.  
 Bread Award — Sara McClung, Nelda Flores, Sylvia Dutchover and Elvina Breaux.  
 Citizenship Award — Wyn Crone.  
 Clothing Award — Vonda Taylor, Traci Taylor, and Jay Lynn Ware.  
 Dress Revue Award — Pamela Neal.  
 Conservation of Natural Resources — Robin Polvado.  
 Electric Award — Suzanne Gillespie, Barry Zuber.  
 Food & Nutrition Award — Marleen Trejo, Shanna Blackstone, Shirley Roberts, Cynthia Dutchover, Lisa Zuber.  
 Horse Award — Kelly Hill, Renae Bell, Shani Stephens, Joann Whitehead, Sandy Coleman, Stephanie Coleman, Randy Coleman.  
 Leadership Award — Nancy Wilkinson, Gy Hall, Mary Smith, Jeff Groves.  
 Sheep Award — Bruce Crowley, Trey McClung, Billy Cadenhead.  
 Seine Award — Ricky Neal  
 Gene Lynskey, Todd Zuber,

Dawna Zuber, Deana Zuber.  
 Those presenting 4-H method demonstrations were also recognized:  
 Clothing Educational Activity — State Winner — Leesa Bilbrey.  
 Farm & Ranch Management — State participant — Gene Lynskey.  
 Natural Resources — State participant — Mary Smith, District winner — Robin Polvado and Debbie Polvado.  
 Safety & Emergency Preparedness — District Participants, Thomas Blackstone and Shana Blackstone.  
 Seine, Sheep or Goats — District Participants, Mike Dewbre and Jimmy Whitehead.  
 Share-the-Fun — District Participants, Gay Pruitt, Kristi Hodge, James Waltrip and Kent Flutt.  
 Special Horse Club Awards were presented to the following 4-H members:  
 Outstanding Sportsmanship — Trey McClung.  
 Outstanding Pee Wee Rider — Shay Stephens.  
 Most Improved Rider — David Clark.  
 Outstanding Adult Leader — James Whitehead.  
 State 4-H Horse Show Participants — Steve Polvado and Debbie Polvado.

**SEASON**  
FROM PAGE ONE

sitting out several games with strained ankle ligaments suffered in the Muleshoe contest. He should make a substantial contribution against the Chiefs, Winters contends.

Sam Johnson will be at full strength and a full-strength Sam Johnson can make quite a difference, the coach explained.

Larry Shaw, who played last week with a dislocated elbow is also fully recovered and will be expected to make his usual large contribution, Winters stated.

David Ramby, who has been sorely missed since he was injured in the Frenship game, is out for the season and will see no further action.

When asked what the prospects were for the Tribe to end the season on a winning note, Winters expressed optimism about the outcome, but is anything but taking Friona lightly. Though they have only won one game, they are a sound team fundamentally. They are well coached and have a reputation as "hitters" and we will have to be at our best if we are to come out winners. "The two teams are very evenly matched and I expect the outcome to depend on the turnovers and breaks," Winters concluded.

**Quail Hunts Slated On P&WD Management**

Four Texas Parks and Wildlife Department wildlife management areas — the Black Gap, Chaparral, Gene Howe and Matador — are open to quail hunting this fall and winter for the modest fee of \$1 per day.

The Chaparral Area west of Artesia Wells has been open since Oct. 11 and quail hunting continues Nov. 1-2, 8-9, 22-23, Dec. 6-7, 20-21, 1975; Jan. 3-4, 17-18, Jan. 31-Feb. 1, Feb. 7-8, 14-15 and 21-22, 1976.

The Gene Howe Area east of Canadian in Hemphill County is open Nov. 1-2, Dec. 13-14, 1975; Jan. 10-11, 24-25, Feb. 7-8 and March 6-7, 1976. The March weekend of hunting on the Gene Howe Area is the latest quail season anywhere in Texas.

Nov. 1-2 also marks the opening of quail hunting on the Matador Area in Cottle County, north of Paducah. Quail hunting continues on Nov. 8-9, 15-16, Dec. 6-7, 13-14, 20-21, 1975; Jan. 3-4, 10-11, 17-18, Feb. 7-8, 14-15, 21-

22, 1976.  
 In West Texas, the Black Gap south of Marathon is open Nov. 15-16, 22-23, Dec. 13-14, 20-21, 27-28, 1975; Jan. 3-4, 10-11, 24-25, Jan. 31-Feb. 1, 1976.

There are no restrictions on the number of hunters except on the Gene Howe Area, where a maximum of 30 hunters per day is allowed; the \$1 fee will be charged each hunter for each day of hunting. Bag limit is 12 birds per day with 36 in possession.

Quail hunting is free on the Pat Mayse Area northwest of Paris in Lamar County from Dec. 1-Feb. 15. Bag and possession limits are the same.

Only persons 12 years of age and older may hunt on the area and those under 17 must be accompanied on a one-to-one basis by a person 21 years of older.

**ASSEMBLY OF GOD CHURCH**  
 Whiteface  
 Pastor, Rev. Jim Myers  
 Sunday Services—  
 Sunday School . . . . . 9:45 a.m.  
 Morning Worship . . . . . 11:00 a.m.  
 Evening Worship . . . . . 6:00 p.m.  
 Midweek Bible Study . . . . . 6:30 p.m.

**ST. ANN'S CATHOLIC CHURCH**  
 Pastor Nicholas Schneiders C.P.  
 Mass Schedule:  
 Sunday . . . . . 9:00-11:15 a.m.  
 Weekdays . . . . . 7:30 a.m.  
 Wednesday Evenings . . . . . 8:30 p.m.  
 First Fridays each Month . . . . . 8:30 p.m.  
 Sunday School . . . . . 10:00-11:00 a.m.

**NEW TRINITY BAPTIST CHURCH**  
 Rev. W.D. Anderson  
 3rd and Jackson  
 Sundays—  
 Sunday School . . . . . 9:45 a.m.  
 Morning Worship Second and Fourth Sundays . . . . . 11:00 a.m.  
 H.M.S. . . . . 4:00 p.m.  
 Wednesdays—  
 Prayer Service . . . . . 7:00 p.m.

**FIRST BAPTIST MEXICAN MISSION**  
 Sundays—  
 Sunday School . . . . . 10:00 a.m.  
 Training Union . . . . . 6:30 p.m.  
 Evening Worship . . . . . 7:30 p.m.  
 Wednesdays—  
 Prayer Service . . . . . 7:00 p.m.

**FIRST BAPTIST CHURCH, ENOCHS**  
 Rev. Charley Shaw  
 Sunday School . . . . . 10:00 a.m.  
 Morning Services . . . . . 11:00 a.m.  
 Training Union . . . . . 7:00 p.m.  
 Evening Services . . . . . 8:00 p.m.

**BLED SOE BAPTIST CHURCH**  
 Rev. Henry Rhymes  
 Sunday Services . . . . . 9:45 a.m.  
 Worship Services . . . . . 11:00 a.m.  
 Training Union . . . . . 6:00 p.m.  
 Evening Worship . . . . . 7:00 p.m.  
 Wednesday Night Service . . . . . 8:00 p.m.

**CHURCH OF CHRIST**  
 S.W. 2nd and Taylor  
 C.R. Mansfield, Preacher  
 Sundays—  
 Bible Class . . . . . 10:00 a.m.  
 Worship . . . . . 10:45 a.m.  
 Evening Worship . . . . . 6:00 p.m.  
 Wednesdays—  
 Midweek Bible Class . . . . . 8:00 p.m.

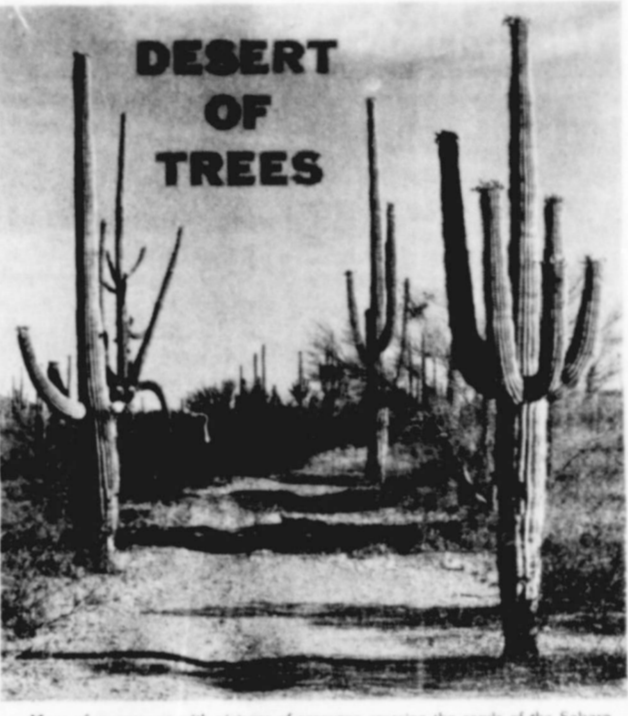
**CHURCH OF GOD IN CHRIST**  
 Rev. Johnny Evans, Pastor  
 719 N.E. 3rd  
 Sunday School . . . . . 10 a.m.  
 Morning Worship . . . . . 11 a.m.  
 Evening Worship . . . . . 6 p.m.  
 Wednesday Night Service . . . . . 6 p.m.

**FIRST METHODIST CHURCH**  
 Royce Womack, Pastor  
 411 West Taylor  
 Sundays—  
 Church School Session . . . . . 9:45 a.m.  
 Morning Worship Service . . . . . 10:55 a.m.  
 Evening Fellowship Program . . . . . 5:00 p.m.  
 Evening Worship . . . . . 6:00 p.m.

**WHITEFACE CHURCH OF CHRIST**  
 Elmer Evans, Minister  
 300 Tyler Street  
 Sundays—  
 Bible Classes for all ages . . . . . 10:00 a.m.  
 Worship and Communion . . . . . 10:55 a.m.  
 Evening Worship . . . . . 6:30 p.m.  
 Wednesdays—  
 Bible Study & Prayer . . . . . 8:00 p.m.

**UNITED METHODIST CHURCH, UNITED METHODIST CHURCH, ENOCHS**  
 Rev. Robert Stone, Pastor  
 Services held 1st and 3rd Sundays  
 Sunday School . . . . . 10:00 a.m.  
 Morning Services . . . . . 11:00 a.m.  
 Evening Services . . . . . 7:00 p.m.  
 4th Wednesday-Fellowship . . . . . 7:00 p.m.

**IS THE CHURCH PART OF YOUR LIFE?**



Many of us grew up with pictures of caravans crossing the sands of the Sahara. Those in the West know that the desert has many faces. One of our common mistakes in life is to assume that trees make a forest, flowers a garden, clothes a man — that appearances promise reality. One of the invaluable influences of Christianity upon society has been its distinction between the facade and the truth. Christ taught that men must be known by their faith. Lack of spiritual concern is the surest way to make the world a desert of trees — a society of people without a sense of responsibility. Woodlands cry out for reclamation. The Church Christ founded is reclaiming our society for Him. You need His Message.

Sunday	Monday	Tuesday	Wednesday	Thursday	Friday	Saturday
Zachariah	Daniel	Daniel	Psalm	Mark	Luke	Isaiah
9-9:10	1-8:16	1-17:20	6:9-13:36	6-7:11	10-30:42	32-6:7

**HICKS CHAPEL BAPTIST CHURCH**  
 Rev. Hugh Montgomery  
 Sunday School . . . . . 10:00 a.m.  
 Morning Services . . . . . 11:00 a.m.  
 Training Union . . . . . 6:00 p.m.  
 Evening Services . . . . . 7:00 p.m.

**FIRST BAPTIST CHURCH WHITEFACE**  
 Harold Harrison, Pastor  
 Sunday School . . . . . 9:45 a.m.  
 Morning Worship . . . . . 11:00 a.m.  
 Church Training . . . . . 6:00 p.m.  
 Evening Worship . . . . . 7:00 p.m.  
 Wednesday Prayer Meeting . . . . . 7:30 p.m.

**FIRST BAPTIST CHURCH**  
 Paul McClung, Pastor  
 202 S.E. First  
 Sunday School . . . . . 9:45 a.m.  
 Morning Worship . . . . . 10:55 a.m.  
 Morning Service KRAN . . . . . 11:00 a.m.  
 Training Union . . . . . 6:00 p.m.  
 Evening Worship . . . . . 7:00 p.m.

**TUESDAYS**—  
 Helen Nixon W.M.U. . . . . 9:30 a.m.  
 Wednesdays—  
 Graded Chorus . . . . . 7:30 p.m.  
 Prayer Service . . . . . 7:30 p.m.  
 Church Choir Rehearsal . . . . . 8:30 p.m.

**TEMPLO GETSMANI ASSEMBLY OF GOD CHURCH**  
 C.M. Pinon  
 N.E. Fifth and Wilson  
 Sundays—  
 Sunday School . . . . . 10:00 a.m.  
 Evening Evangelistic Service . . . . . 6:30 p.m.  
 Monday  
 Embajadores de Cristo . . . . . 7:30 p.m.  
 Wednesday  
 Concilio Misionerico Femenil . . . . . 8:00 p.m.

**EAST SIDE CHURCH OF CHRIST**  
 Bill Driscoll, Minister  
 704 East Taylor  
 Sundays—  
 Bible Study . . . . . 10:00 a.m.  
 Worship . . . . . 10:45 a.m.  
 Worship . . . . . 6:00 p.m.

**WEDNESDAYS**—  
 Midweek Service . . . . . 8:00 p.m.

**CHURCH OF CHRIST, MAPLE**  
 Dannie Mize, Preacher  
 Bible Study . . . . . 10:00 a.m.  
 Worship . . . . . 11:00 a.m.  
 Night Worship . . . . . 6:00 p.m.  
 Wednesday Night Services . . . . . 8:30 p.m.

**UNITED METHODIST CHURCH, BULA**  
 Rev. Robert Stone, Pastor  
 Services 2nd and 4th Sundays  
 Sunday School . . . . . 10:00 a.m.  
 Morning Service . . . . . 11:00 a.m.  
 Evening Service . . . . . 7:00 p.m.

**THREE WAY BAPTIST CHURCH**  
 Rev. Jack Dewitt  
 Sunday School . . . . . 10:00 a.m.  
 Morning Worship . . . . . 11:00 a.m.  
 Training Union . . . . . 6:00 p.m.  
 Evening Services . . . . . 7:00 p.m.

**ASSEMBLY OF GOD CHURCH MORTON**  
 Rev. G. Frank Estes  
 Sundays—  
 Sunday School . . . . . 9:45 a.m.  
 Morning Worship . . . . . 11:00 a.m.  
 C.A. Service . . . . . 6:00 p.m.  
 Evangelistic Service . . . . . 7:00 p.m.  
 Wednesdays—  
 Wednesday Services . . . . . 7:30 p.m.

**FIRST MISSIONARY BAPTIST CHURCH**  
 Main and Taylor  
 Sunday School . . . . . 9:45 a.m.  
 Morning Worship . . . . . 10:45 a.m.  
 Training Service . . . . . 6:00 p.m.  
 Evening Worship . . . . . 6:45 p.m.

**WMA Circles**  
 Monday—  
 Night Circle . . . . . 7:30 p.m.  
 Tuesday—  
 W.M.A. . . . . 2:00 p.m.  
 G.M.A. . . . . 4:00 p.m.  
 Wednesday—  
 Midweek Service . . . . . 7:30 p.m.  
 Edna Bullard . . . . . 9:30 a.m.

Rev. Phil Knott

*This Feature Is Published With The Hope of Getting More People To Church By The Undersigned City Business And Professional People*

<p>Judge Glenn Thompson</p> <p>L &amp; B Supply                  N. Main - Phone 266-5110</p> <p>Bailey County Electric                  Co-Op Association                  Phone 266-8600 - Whiteface Hwy.</p> <p>Rose Auto and Appliance                  107 E. Wilson Phone 266-5959</p> <p>Bill's Furniture                  and Appliance                  102 S.W. 1st</p> <p>Compliments of                  Carl Griffith Gin                  and                  G &amp; C Gin</p>	<p>Cochran Electric Service - SUPPLY                  317 W. Washington Phone 266-5455</p> <p>Bill Wells Chev-Olds                  133 E. Washington Morton, Texas</p> <p>Farmer's Co-Op Gin of Enochs                  927-3444</p> <p>First State Bank                  107 W. Taylor - 266-5511</p>	<p>Cochran County Grain Co.                  Morton - Lehman</p> <p>Griffith Equipment Company                  120 N.W. 3rd Phone 266-5555</p> <p>Luper Tire and Supply                  108 E. Washington 266-5330</p> <p>Allsup's 7 till 11                  602 Main Phone 266-8901</p> <p>Ramsey's Food Store                  Gerald Ramsey, Owner                  210 South Main</p>	<p>West Texas Seed Co.                  Dora Hwy. 266-5557</p> <p>Star Route Co-op Gin                  St. Rt. 1 - Phone 927-3966</p> <p>Higginbotham-Bartlett                  201 W. Wilson 266-5255</p> <p>Tic Toc Restaurant                  Loma and Rob Richards                  Levelland Highway -                  Phone 266-8954</p> <p>St. Clair's Department                  Morton 266 5223</p> <p>Liner's Pharmacy                  Mike and Donna Liner</p>
--	---	--	--

# 2ND ANNIVERSARY AT MARINA'S MINI-MART

**WHITE SWAN SALTINE CRACKERS** 16 OZ. BOX **2 FOR 89c**

**WHITE SWAN PEAS** 17 OZ. **3 FOR \$1**

**WHITE SWAN RED SOUR PITTED CHERRIES** 16 OZ. **49c**

**WHITE SWAN WHOLE NEW POTATOES** 16 OZ. **4 FOR \$1**

**OCEAN SPRAY GELLED CRANBERRY SAUCE** 16 OZ. **45c**

**WHITE SWAN BLACKEYE PEAS** 15 OZ. **4 FOR \$1**

**HUNT'S FRUIT COCKTAIL** 15 OZ. **39c**

**SUGARY SAM CUT YAMS** 22 OZ. **49c**

**WHITE SWAN PEACHES** 16 OZ. **39c**

**LIBBY'S PUMPKIN PIE MIX** 30 OZ. **69c**

**WHITE SWAN INSTANT TEA** 3 OZ. **\$1.15**

**WHITE SWAN SALAD DRESSING** 32 OZ. **75c**

**WHITE SWAN CUT GREEN BEANS** 15 1/2 OZ. **4 FOR \$1**

**LIGHT CRUST ALL PURPOSE FLOUR** 5 LB **79c**

**WHITE SWAN WK OR CS CORN** 17 OZ. **3 FOR \$1**

**JEWEL SHORTENING** 42 OZ. **\$1.29**

**WHITE SWAN SPINACH** 15 OZ. **4 FOR \$1**

**TIDE GIANT SIZE** **\$1.19**

**WHITE SWAN PEAR HALVES** 16 OZ. **39c**

**ZEE PAPER TOWELS JUMBO ROLL** **49c**

**32 OZ. PLUS DEP. COKE OR SPRITE** **\$1.79**

**DIAMOND ALUMINUM FOIL** 25 SQ. FT. **3 FOR \$1**

**FRESH PRODUCE**

**TEXAS ORANGES** 5 LB BAG **69c**

**CARTON TOMATOES** **39c**

**RUSSET POTATOES** 10 LB BAG **88c**

**CONTAC** 10 CAPSULES **\$1.29**

**ALCOHOL** 16 OZ. **29c**

**VASELINE INTENSIVE CARE LOTION** 10 OZ. **\$1.19**

**GLEEM II** TWO 5 OZ. TUBE **88c**

**BORDEN'S WHIPPING CREAM** PT **49c**

**BUTTERMILK** 1/2 GALLON **69c**

**SOUR CREAM OR DIP N' CHIP** **BUY ONE GET ONE FREE!!!**

**BUTTERBALL TURKEY'S BISCUITS** WHITE SWAN 8 OZ. CAN **10 FOR \$1**

**18X20 LB. 69c**

**WHITE SWAN TUB MARGARINE** 16 OZ. **49c**

**FROM THE FREEZER**

**MINUTE MAID ORANGE JUICE** 6 OZ. **3 FOR \$1**

**BIRDS EYE COOL WHIP** 9 OZ. **69c**

**JOHNSTON PIE SHELLS** **59c**

**HAVE A NICE THANKSGIVING!!!**

**REGISTER FOR FREE NOBILITY RADIO TO BE GIVEN AWAY NOV. 27, 1975**

NAME \_\_\_\_\_  
PHONE \_\_\_\_\_

**WE WOULD LIKE TO TAKE THIS OPPORTUNITY TO THANK ALL OUR FRIENDS AND CUSTOMERS FOR MAKING OUR 2nd ANNIVERSARY POSSIBLE**

**WE HAVE A FULL LINE OF PECANS, WALNUTS, ALMONDS, FILBERTS, AND BRAZIL NUTS FOR THE HOLIDAY SEASON.**

**SALE BEGINS NOV. 14, 1975, ENDS NOV. 27, 1975**  
**OPEN 7 DAYS 8 A.M. TO 10 P.M.**

Black Gap open Nov. 14, 20-21, 10-11, 24-27.  
Districts on 's except on 1, where a rs per day is e will be or each day is 12 birds session.  
e on the Pat st of Paris in Dec. 1-Feb. on limits are  
ears of age n the area 7 must be one-to-one 11 years or  
CHURCH ery 10:00 a.m. 11:00 a.m. 6:00 p.m. 7:00 p.m.  
RCH  
stor 9:45 a.m. 11:00 a.m. 6:00 p.m. 7:00 p.m. 7:30 p.m.  
RCH or  
9:45 a.m. 10:55 a.m. 11:00 a.m. 6:00 p.m. 7:00 p.m. 7:30 p.m.  
MANI GOD  
10:00 a.m. 6:30 p.m.  
10:00 a.m. 10:45 a.m. 6:00 p.m.  
8:00 p.m.  
1ST.  
cher 10:00 a.m. 11:00 a.m. 6:00 p.m. 8:30 p.m.  
eople  
d Co. 57  
p Gin -3966  
artlett 255  
rant rds  
ment  
3  
cy

# BACK THE INDIANS!



The season finale against Friona Friday night will spell "Finis" to the high school football careers of the above pictured seniors. They have contributed exemplary leadership to the younger and less experienced players and have maintained the squad in a high state of morale. They will be sorely missed when it comes time to begin anew next year. Front row, left to right, Larry Shaw, Tackle; Malcolm Coleman, Guard; Joey Bryan, Center; and Arnold Bautista, Guard. Second row, David Ramby, Tailback; Max Wynn, Tight End and Allen Steed, Split End.

## NEXT GAME

NOVEMBER 14 FRIONA AT FRIONA

## 1975 SCHEDULE OF MORTON INDIANS

SEPTEMBER 5 T	MORTON	0	—	PLAINS	0
SEPTEMBER 12 H	MORTON	0	—	TULIA	22
SEPTEMBER 19 H	MORTON	14	—	COOPER	10
SEPTEMBER 26 H	MORTON	22	—	FRENSHIP	14
OCTOBER 3 T	MORTON	6	—	IDALOU	7
OCTOBER 10 T	MORTON	17	—	MULESHOE	28
OCTOBER 17 H	MORTON	6	—	OLTON	25
OCTOBER 24 T	MORTON	0	—	LITTLEFIELD	54
OCTOBER 31 H	MORTON	0	—	DIMMITT	15
NOVEMBER 7			OPEN		
NOVEMBER 14 T	MORTON		—	FRIONA	

MORTON'S INDIAN  
**MARCHING BAND**  
 WILL PERFORM AT ALL GAMES



THIS PAGE SPONSORED BY

THE FOLLOWING INDIAN SUPPORTERS

- Bailey County Electric Co-op Association
- New York Store
- Leonard's Farm Supply-Red Barn Chemical & Fertilizer
- Reynolds Texaco Station and Wholesale Products
- Rose Auto and Appliance
- St. Clair's Department Store
- Morton Floral and Gift Shop
- Cox Auto Supply
- First State Bank
- Morton Insurance Agency
- Luper Tire and Supply
- Griffith Equipment Company
- Morton Bi Products
- Cochran Electric Service and Supply
- Bill Wells Chev.-Olds
- West Texas Seed Co.
- Morton Co-op Gin
- Bill's Furniture and Appliance
- McMaster Tractor Company
- Higginbotham-Bartlett Co.
- Farm Equipment Company
- Fralin Pharmacy
- Morton Delinting
- Tic Toc Restaurant
- Nowell Gin
- L & B Supply
- Silvers Butane Co.
- Morton Mfg.-John's Welding
- Harpool Seed-Morton Inc.
- Windom Oil and Butane
- G & C Gin
- Forrest Lumber Company
- Willingham Gins
- Crockett Pump Service
- Great Plains Natural Gas Co.
- Cochran County Grain-Morton-Lehman
- Liner's Pharmacy
- Morton Tribune
- Karl Griffith Gins
- Levelland Savings And Loan
- Rick's Radio & TV Sales & Service



BOB CARPENTER

## S-Sgt Bob Carpenter Area USAF Recruiter

Staff Sergeant Bob Carpenter, 38, has been appointed as the new U.S. Air Force Recruiting representative for the Lubbock area, officials announced recently. Sergeant Carpenter, a native of Duncanville, Texas is a former Inventory Management Specialist and a veteran of more than eight years Air Force service. He wears the Air Force Commendation Medal among his many decorations. He served

with the Air Force Cryptologic Depot at Kelly AFB, Texas prior to attending the Air Force Recruiting School at San Antonio, Texas this year. Sergeant and Mrs. Carpenter with their two sons, Chris 5, and Tim 4, will make their home in the Lubbock area during his tour of recruiting duty. He may be reached at 4206 50th Street in Lubbock or call 762-7601 for detailed information regarding Air Force careers. He

## Demonstration Club Meets In Fred Home

The Enochs Home Demonstration Club met Tuesday, November 11, at 2:30 p.m. in the home of Mrs. Zelma Fred with members answering roll call by giving a special Christmas remembrance.

Mrs. Dorothy Nichols gave a demonstration of how to cover boxes for special occasions and making attractive ribbons. Mrs. Bonnie Long played a tape recording of some of the Annual State THDA meeting and gave a report on the highlights of the meeting.

Club members discussed plans for Christmas at the nursing home. A report was given by Mrs. Dorothy Nichols, president, on the proceeds from the food that was served by the club at the Bula School auction.

Members attending were: Mmes. Alma Altman, Winnie Byars, Lillian Fort, Nichols, Fred, Long, Wilma Petree and Lillie Snitker.

## Elizabeth Greer Circle Meets

### In Lollar Home

The Elizabeth Greer Circle met in the home of Mrs. Bill Lollar Tuesday, November 11 and concluded their study of Southeast Asia by viewing slides of the Philippines shown by Mrs. Lollar.

The table centerpiece combined Thanksgiving and Veteran's Day commemoration.

A scripture lesson was given and members then joined in a circle and dismissed with prayer.

Members present were: Mmes. Dean Jackson, Royce Womach, W.W. Smith, D.E. Benham, Floyd Rowland, Owen Egger, Bobby Adams, James Whitehead, Leonard Groves and Allie Reeves.

may also be reached at the Cochran County Library every Monday between 10 A.M. and 12 noon.

## Morton Girls Competing For SPC Homecoming Queen

A Morton student is among a total of 24 candidates running for Homecoming Queen at South Plains College during the annual Homecoming and Parents' Day festivities, scheduled November 14-15.

Sophomore candidates and sponsoring organizations include Gayla Self, daughter of Mr. and Mrs. Max Self of Friona, Phi Theta Kappa; Crystal Moreland, daughter of Mrs. Sonja Moreland

of Lubbock, Frazier Hall; Mary Harris, daughter of Mrs. Verdie Harris of Lubbock, Press Club; Sharon Floyd, daughter of Mrs. Dorothy Floyd of Welch, SPC Radio Club; Mary Marina, daughter of Mr. and Mrs. Simon Marina of Morton, Gillespie Hall; Karen Awbrey, daughter of Mr. and Mrs. Bob Awbrey of Sundown, Student Senate; Lesa Bonner, daughter of Mr. and Mrs. John Bonner of Lubbock, Flaming

Spurs; and Cindy Caswell, daughter of Mr. and Mrs. D.C. Caswell of Levelland, El Pizzicato Club.

Other sophomore candidates include Terri Howard, daughter of Mr. and Mrs. Coy Howard of Whitharral, Office Education Association; Wanda Rosson, daughter of Mr. and Mrs. Sam Rosson of Idalou, Lamar Hall; Toni Germany, daughter of Mr. and Mrs. George Germany of Brownfield, Gamma Delta Nu; Sharlet Henderson, daughter of Mr. and Mrs. Roy Henderson of Levelland, Fellowship of Christian Athletes; Mary Marcom, daughter of Rev. and Mrs. Howard Marcom of Bovina, Kadettes; and Sherry Patton, daughter of Mr. W.T. Patton of Plains, South Sue Spencer.

The candidates will be voted on Nov. 12 and 13. The queen will be crowned during a pep rally at 10:30 a.m. Friday, Nov. 14. All candidates will be presented during halftime at the Homecoming game between the Texans and Lubbock Christian College junior varsity on Saturday, Nov. 15. The game is at 8 p.m. in Texan Dome.

## Beverly Bates Shower Honoree

Miss Beverly Bates was honored with a personal shower Wednesday, November 5, from 7 to 9 p.m. in the home of hostess, Debra Hayes with Jeanette Richards and Martha Choke assisting.

A blue candle centerpiece accented the refreshment table of white eyelet over blue. Guests were served cookies and blue punch.

The hostesses presented the honoree with a blue peignoir set with matching slippers.

Mrs. Lindell Bates, mother of the bride, was guest of honor. Approximately 20 guests registered.

Miss Bates, bride-elect of James Snitker, was also honored with a miscellaneous shower October 22 at 2 p.m. in the Levelland Savings and Loan Community Room.

Guests of honor were Mrs. Lindell Bates, mother of the bride and Mrs. J.C. Snitker, step-mother of the groom.

Miss Bates and her guests of honor were presented with blue

and white pom pom mums corsages accented with toy kitchen utensils. Her chosen colors of blue and white were carried out in the table decorations.

Hosting the event were: Mmes. M.A. Tanner, Hershall Tanner, Johnny Scoggins, Howard Scoggins, Lonzo Scoggins, L.E. Ruthardt, Ernest Ruthardt, Royce Dee Fred, Frank Estes, Jack Cartwright, W.A. Lewis and Danny Daniels.

Approximately 75 guests registered for the event.

**SHUGART COUPON**  
**WEDNESDAY, NOVEMBER 19**  
**DOSS THRIFWAY**  
 400 SOUTH MAIN

**9**

WALLET SIZE  
 COLOR PORTRAITS  
**99¢**

ASK  
 About Our  
**FREE**  
**8 x 10**  
 OFFER

Extra charge  
 for  
**GROUPS**



## FALL FABRICS

## CROCHET THREADS 10% OFF

3/4" AND 7/8

## NO ROLL ELASTIC

REG. 45c

**30c YARD**

## 100% POLYESTER KNITS

FIVE LARGE TABLES OF OUR BEST QUALITY

POLYESTER KNITS IN PRINTS, AND COORDINATEE D SOLIDS

REG. '3.88 NOW **\$2.88** YARD

REG. '2.88 NOW **\$2.29** YARD

ONE GROUP OF

## 100% POLYESTER DOUBLE KNITS

60" WIDE, PRINTS AND SOLIDS

**\$1.37** YARD

## FOOTBALL KNIT SHIRTS

**\$2.99**

## FOOTBALL MESH JERSEY SHIRTS

REG. \$4.99

**\$3.88**

## BROWN JERSEY GLOVES

**77c**

## JOHNSON'S DISPOSABLE DIAPERS

NEWBORN, DAYTIME, OVERNIGHT

**\$1.99**

## CANNON BLANKETS

72"X90"

REG. \$5.99

**\$4.99**

## "SPARKLE" YARN

4 PLY, 4 OUNCE

**99c**

## HOODED ZIPPED SWEATSHIRT

BOYS SIZES . . . \$4.99

MEN'S SIZES . . . \$5.99

## POLYESTER FIBER STUFFING

**\$1.00** BAG

## CONTROL TOP PANTY HOSE

REG. \$1.59

**99c**

## TUBE SOCKS WITH NUMBERS

ONE SIZE FITS 9 TO 14

**\$1.00**

## BUSTER BROWN CLOTHING

**10% OFF**

**BEN FRANKLIN**



# Three Way News

by Mrs. H.W. Garvin

Mr. and Mrs. George Tyson spent the past weekend visiting their son, Buck Tyson, and a daughter, Mr. and Mrs. Wendell Price, in Fort Worth.

The community had their first killing freeze Monday morning.

Mr. and Mrs. Kenneth Fox and children from Clovis spent Saturday night with their parents, Mr. and Mrs. H.W. Garvin. Sunday Mr. and Mrs. Fox and children and Mr. and Mrs. Garvin attended church in Lubbock with another daughter, Mr. and Mrs. James Gillentine and family, and attended a birthday dinner honoring Mr. Garvin and Sue White.

Mrs. Paul Wiley, accident victim in Methodist Hospital, is doing much better. Her room number is 254. She would appreciate cards and letters from friends.

Mr. and Mrs. A.O. Mitchell moved to Dimmitt Thursday. The Mitchell family have been residents of the community many years.

Three Way High School basketball teams played Christ The King at Lubbock Tuesday

evening. The Three Way girls won both games and the boys lost.

Mrs. Rayford Masten honored her mother-in-law, Mrs. Addie Masten, on her 84th birthday with a party Tuesday afternoon. Several friends came and brought gifts and cards.

Mr. and Mrs. E.B. Julian celebrated their 25th wedding anniversary Sunday in the Three Way Home Economics room.

Mr. and Mrs. Jack Reeves and children and Mr. and Mrs. D.S. Fowler visited the R.L. Reeves in Post Sunday.

Mr. and Mrs. Bobby Kindie and girls attended the Lemons family reunion at Portales, N.M. Sunday. 43 of the Lemons family were present.

Mr. and Mrs. Mark Bedington are the parents of a baby girl born in Portales, N.M. Thursday morning. Mr. and Mrs. A.O. Mitchell are the grandparents.

Cotton pulling is underway in the community with gins at Maple and Goodland busy.

# SPC Homecoming Features Full Round Of Activities

Homecoming and Parents' Day at South Plains College, scheduled Nov. 14-15, will feature a full round of activities for SPC students, their parents, alumni and faculty.

The "Mr. SPC Beauty Pageant," a lighthearted spoof of beauty contests, kicked off the festivities at 7:30 p.m. Tuesday, Nov. 11, in the SPC Auditorium. Friday's (Nov. 14) activities will feature coronation of the Homecoming Queen during a pep rally at 10:30 a.m. in the Women's Gym, followed by a bonfire at 6:15 p.m. that evening. The Texanettes, coached by

Gayle Nicholas, will open their season at 7 p.m. in Texan Dome against Angelo State University.

A day-long slate of activities is scheduled for Saturday, Nov. 15. Parents' Day registration in the Student Union Building and Texan Hall at 11 a.m. Saturday (Nov. 15) will precede a Parents' Day luncheon at 11:30 a.m. in Texan Hall.

Featured performers for the 1:15 p.m. Parents' Day program will be the Bakers Dozen, Stage Band, Blue Grass Ensemble, "Fresh Start," and Progressive Country Band.

Open house of all SPC facilities and a reception for faculty, students and their parents in the SUB will coincide from 2:30 to 4:30 p.m.

The Homecoming Queen and her court will be introduced at the pre-game activities beginning at 7:30 p.m. in Texan Dome. The Homecoming game between the Texans and the Lubbock Christian College junior varsity will start at 8 p.m. in the Dome.

Halftime activities for the game will include announcement of Parents' Day and dorm decoration awards and a performance by the Tex-Anns, women's drill and dance team at

# In Arkansas C.L. Leonard Rites Heid

Services for Casper Leo Leonard, 46, were held Saturday, Nov. 8 at 11 a.m. in the Edwards Funeral Chapel in Fort Smith, Arkansas with Edwards Funeral Home handling arrangements. Singleton Funeral home handled local arrangements. Burial was in Holy Cross Cemetery in Fort Smith.

Leonard was killed November 4 when his loaded grain truck crashed and burned on N.M. Hwy. 321 near the Texas-New Mexico border.

Survivors include his wife, Marlene; a daughter, Dawn, of the home; three sons, Stephen, of Burley, Calif., and Robert and Bob, both of Dallas; and one grandchild.



Look Who's New

Brandon Keith, son of Mr. and Mrs. Osmon Dakroub of Lubbock. Brandon was born Sunday, November 9 at 6:38 a.m. in University Hospital in Lubbock and weighed 6 pounds and 5 ounces.

Grandparents are Mr. and Mrs. Bill K. Sayers.

Shanon Lynn, daughter of Mr. and Mrs. Larry McClintock. Shanon was born Saturday, November 8 at 12:18 p.m. in Methodist Hospital in Lubbock and weighed 5 pounds and 11 1/4 ounces.

# Whiteface News

by Jean Bates

Visiting with Ed and Fay Jennings last week were Ed's parents, Mr. and Mrs. W.C. Jennings, of Tulia and Fay and Ed's daughters, Mr. and Mrs. Walker and son, Aaron, of Albuquerque, N.M. and Mr. and Mrs. Johnny McCoy of Fort Worth.

Jesse and Leesa Koontz of Arlington are visiting with Leesa's mother, Jean Bates, and sister, Beth Cagle. They plan to make their home in this vicinity.



The proportions of small rooms with high ceilings can be improved by painting the ceiling a strong bright color or covering it with wallpaper in a colorful, busy pattern.

SPC.

A Homecoming dance in the SUB and a reception for SPC alumni in the Sundown Room, both set for 10 p.m., will wind up the festivities. Music for the dance will be provided by "Easy."

Mr. and Mrs. Billy Wall and Monty visited with their parents, Mr. and Mrs. Loyd Wall and Mr. and Mrs. Charles Sanders, over the weekend.

Mr. and Mrs. Mike Codey of Hobbs, New Mexico visited with her parents, Mr. and Mrs. Jim McHam, over the weekend.

Mrs. Othel Giles is in Highland Hospital in Lubbock.

Mr. and Mrs. Lewis Sims and children have moved back to Whiteface. They have been in Bridge City the past few months where Lewis is employed with an oil company. Lewis will be working off shore for quite awhile. Lynda and the children will remain in Whiteface.

Tonya and Eric Hearn, children of Mr. and Mrs. Chris Hearn of Littlefield, visited with their grandmother, Mary Lou Martin, over the weekend.

Harold Harrison, Lindsey and Jean Bates and Mary Lou Martin completed a ten-week Emergency Medical Technician School at Lubbock Christian College in Lubbock this week.

## Special Blend Teas Make Their Point



Long known for its unique Constant Comment Tea, R. C. Bigelow Co. now produces an entire line of specially blended teas. Each tea has its own distinctive flavor, and the intriguing variety has created new interest among fine tea drinkers in the U. S. Use these special blends in a holiday tea tasting or in other holiday entertaining—and the collection of Bigelow special blends makes an ideal hostess gift or Christmas stocking stuffer.

The Bigelow special blend teas have intriguing names and exclusive flavors: Cinnamon Stick, Lemon Lift, Trade Winds, Rose Garden, Chinese Fortune, Plantation Mint, English Teatime, Irish Breakfast and Earl Grey.

So make your point as a host or hostess with the fine assortment of Bigelow specialty teas. They come in the same easy 24-bag canister as their close companion, the orange and spice flavored Constant Comment—best known of all premium teas.

# ELECTROGATOR®... the TOUGHEST HIDE of the business...

**20YR. WARRANTY**  
CHROME-NICKEL COPPER ALLOY  
**STEEL PIPE**

**lasts 3 times longer than galvanized pipe**

**DURABILITY BREAKTHROUGH!** Electroigator introduces a revolutionary steel alloy pipe to the irrigation industry. The improvements are worth your attention. This new alloy steel pipe resists corrosion from the atmosphere and fertilizers 3 to 5 times more than ever before. Electroigator's super-tough phenolic primer coating lasts twice as long now. This new 10 gauge alloy steel pipe is 36% stronger than conventional 10 gauge carbon steel pipe. You can shed 255 pounds in every 124' span (compared to 10 gal. carbon steel). And the best of improvements goes on and on. Like all Electroigator products, the pipe is a proven product. It is not our habit to practice on our customers. Quality control is important to you and to us. Electroigator's own "pipe-proofing" mill delivers the finished pipe ready for use. Investigate. You're speaking of success, isn't that what you're after? Investigate ELECTROGATOR today.

**AMERICA'S FINEST CIRCULAR IRRIGATION SYSTEM**

sold & serviced locally by:

**BOSS IRRIGATION**

Mike Hurst  
705 E. Buchanan  
Morton, Texas  
Phone 266-8889

Clovis Hwy. & Quaker  
Lubbock, Texas  
Phone 765-5559

A PRODUCT OF REINKE MFG. CO., INC. - DESHLER, NEBRASKA 68340

# MICHELIN STEEL-BELTED RADIALS ARE HERE!



## LUPER TIRE & SUPPLY

WE'RE YOUR AUTHORIZED DEALER FOR:  
"The 1st Steel Belted Radial Tire."

INVENTED BY MICHELIN IN 1948

# MICHELIN

- PUNCTURE PROTECTION FROM BELTS OF STEEL BENEATH THE TREAD.
- SUBSTANTIAL FUEL SAVINGS AND TWICE THE TREAD LIFE OF CONVENTIONAL BIAS PLY TIRES.
- PRECISE STEERING AND EASY HANDLING.
- 40,000 MILE WARRANTY.

**ASK US ABOUT 'EM!**

**40,000 MILE WARRANTY**  
\*Michelin's Warranty for X Radial Highway Passenger Tires and Michelin ZR Radial Passenger Tires shown here covers tread life, normal road hazards (excluding potholes, punctures and defects in workmanship and materials) for 40,000 miles when tire is used on passenger vehicles on normal service in continental United States, except Alaska. Credit or refund in Michelin's amount is equal to current actual selling price multiplied by percentage of warranted mileage not run on tire.

# LUPER TIRE & SUPPLY



## Study Club Meets In Ledbetter Home

The 1936 Study Club met Wednesday, November 5, in the home of Mrs. M.C. Ledbetter. Mrs. D.E. Benham presided at a short business meeting when Mrs. Marlin Dobbs was elected to membership. The resignation of Mrs. Chester Strickland was accepted with regret. A letter of gratitude for the help extended

for the recent District Board Meeting at Gristown was read from Mrs. Harold Green, District President. An invitation was extended by the Emlea Smith Study Club for all members to attend a Newcomers' Tea on Thursday, November 13, from 4 to 6 p.m. in the Levelland Savings and Loan

Building. The program was opened with Mrs. W.C. Benham leading in the salute to the flag and continued with further study of the Treasures of America.

Mrs. Ruth McGee spoke of American Art Treasures such as the painting, "The Spirit of '76" by Archibald Willard which was produced for the American Centennial in 1876. The figures in the painting were drawn from living faces and the painting is described as the most patriotic picture in America. It was purchased by General John Devereux and it hangs today in his native town of Marblehead, Mass. Another art object discussed by Mrs. McGee was the Marine Corp War Memorial in Arlington, Va. This masterpiece depicts the raising of the Stars and Stripes on Iwo Jima in World War II and is the largest sculpture ever cast in bronze.

## About Local Folks

By Dutch Gipson

Mrs. T.A. Rowland returned home last week after visiting several days in Miami, Florida with her daughter, Gayle, and grandson, Tom.

Terry, Mrs. Joe Gipson, Mr. and Mrs. Leonard Gandy, Mr. and Mrs. Russell Hudson and Mary Jo, Mr. and Mrs. Ralph Gardner, Forrest Baker, Lynn Gandy and Tommy Hudson.

Rev. and Mrs. Phil Knott of the Missionary Baptist Church and Beverly Crisswell left for Dallas Monday morning to attend the State Baptist Missionary Convention.

Mr. and Mrs. Terry Drennan and Chad of Jal, New Mexico are visiting her parents, Mr. and Mrs. Lindell Bates.

Mr. and Mrs. Frank Jones of Odessa visited briefly Monday in Morton with their daughter and family, Mr. and Mrs. Jimmy St. Clair, James and Chris.

Mr. and Mrs. A.D. Boatright of Thackerville, Oklahoma have been visiting in the home of their daughter, Mr. and Mrs. Lindell Bates.

Friends in Morton who attended the funeral services for Mrs. Wilma Morrison were: Mr. and Mrs. Bill Harris, Becky and

Mr. and Mrs. Danny Daniels have been visiting in Dumas with her parents, Mr. and Mrs. D.F. Steele.

Mrs. Iva Williams presented the musical treasures of America in the songs of George M. Cohen, the genius of American Theater as an actor, composer, playwright, director and producer. His more famous songs include "Yankee Doodle Boy," "Grand Old Flag," "Harrigan" and "Over There." Cohen died in 1942, the year James Cagney played in the movie version of his biography. Members attending were: Mmes. Joe Gipson, Gerhomer Holloway, Maurice Lewallen, Bill Sayers, W.W. Smith, Lois St. Clair, Glenn Thompson, B.H. Tucker, C.H. Silvers and one guest, Mrs. Reta Richards.

## Local Church To Participate In World-Wide Prayermeeting

Members of the First Assembly of God Church, Third and Jefferson, will participate in the "Revivaltime" World Prayermeeting, at 7:00 p.m. on Nov. 16, 1975 in their regular Sunday night service.

"Revivaltime" World Prayermeeting is recognized as the largest prayer meeting of its kind in the world.

received at the "Revivaltime" offices in Springfield, Missouri.

According to the Rev. G. Frank Estes, pastor, over 100,000 persons in some 1,500 churches are expected to join in prayer in pre-Thanksgiving services. The

The annual prayer effort is organized by "Revivaltime," international broadcast of the Assemblies of God, carried on approximately 650 radio stations. Listeners were recently invited to send in prayer requests. As a result, some 45,000 prayer needs have been

These needs have been compiled into lists and duplicated for distribution to the participating prayer groups. Every individual will be asked to pray for 15 to 25 specific needs. Such needs as physical healing, financial problems, and marital troubles are among the most frequent prayer requests.

## Good News for Cotton Growers

We Have the Means For Getting Your Cotton To the Gin Quicker, Safer and At Lower Cost



Star Route Co-op Gin has a substantial number of these 40'x10'x10' portable containers with which to haul your field-stored cotton to the gin or to park on your turnrow to store as you harvest and later pick up.

Our equipment includes a loader for transferring your ground-stored cotton into these containers for a quick trip to the gin.

Let Us Help You...

- \*Eliminate higher trailer costs
- \*Eliminate the road hazards of trailer operation
- \*Cut down on gin yard time by delivering much larger amounts per trip. These containers will store or haul up to eleven bales per load making it easier for you to schedule your crop through the gin.
- \*Cut down on time lost to weather due to less time waiting in the gin yard.

For Information or Service Call Vic Jackson at 927- 5571

### STAR ROUTE CO-OP GIN

Vic Jackson, Manager

West of Morton

Phone 927-5591



## Turn ink into liquid gold

GOOD AS GOLD CHECKING ACCOUNTS

make sure your budget's always in the black . . . when your penmanship's golden.

You'll find your cash flows brighter and more legible when you use our Good As Gold checking account. Simply write in the amount, sign your name—and you've just settled your bills, paid for a purchase downtown, or sent your nephew a birthday gift. And you have a clear record of everything, so you can



## FIRST STATE BANK

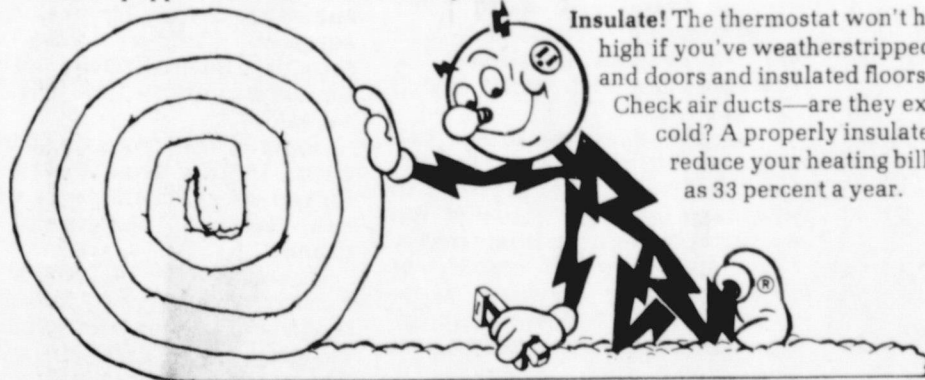
107 W. TAYLOR 266-5511

Doing the things good neighbors do

SM © 1977 Leon Shaffer Gonick Adv. Inc.

## Reddy's consumer tips on... heating

There are a number of different ways electric heat can keep you comfortable this winter, but no matter which system you use, why not make the most of it? Help Reddy do the job he's equipped to do—and save money, too!



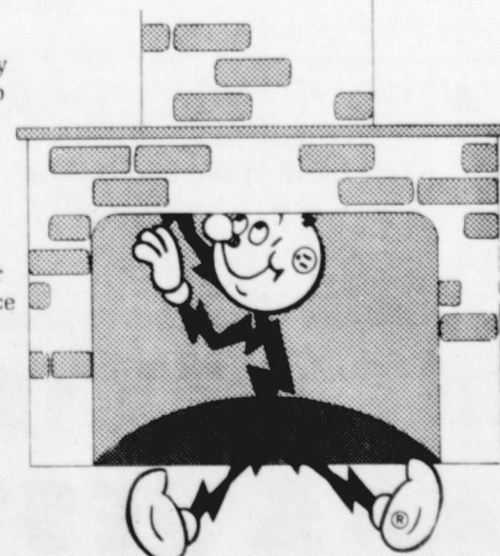
**Insulate!** The thermostat won't have to be as high if you've weatherstripped windows and doors and insulated floors and ceilings. Check air ducts—are they exposed to the cold? A properly insulated house can reduce your heating bill by as much as 33 percent a year.

**Don't fiddle with the thermostat.** Switching temperatures makes Reddy's job more difficult and, chances are, won't accomplish much anyway. Choose a comfortable setting and leave it there.

Does it have to be that high? Keep in mind that every degree above 70 degrees adds about three percent to your annual heating bill; each degree below saves about the same.

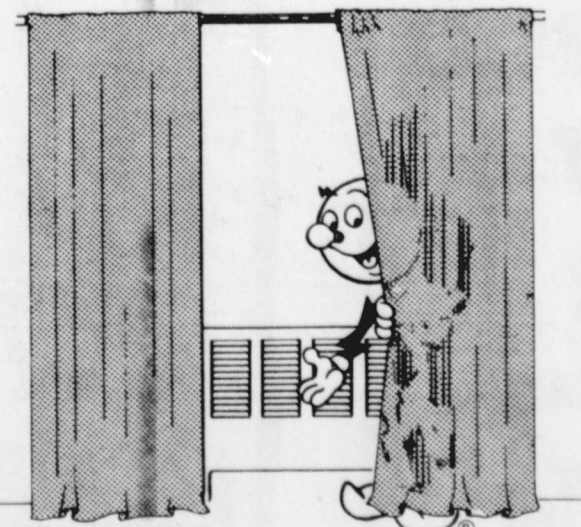
**Keep lamps away** from the thermostat; their heat causes an incorrectly high reading.

**Close that damper!** An open fireplace can draw up to 20 percent of the warm air out of the house per hour. Be sure the damper is closed when the fireplace is not in use.



**Arrange furniture, drapes and rugs** so that they are clear of grills and don't block the flow of heat from your system. And make sure filters in the system are clean.

Wishing you a warm and comfortable winter!



## COCHRAN POWER & LIGHT

# Jaclyn Claye

has her say .. . . .

DEAR JACLYN CLAYE: I'm writing this letter for my husband. We run a small appliance business and we have a problem that I am sure many small business people share. Example: We have a large number of relatives living in the area. The problem arises when some (not all) need an electrical appliance or radio or television set. By dealing with my husband our relatives would hope for a deal that somehow approaches a freebie. Last week we even had one item returned to us after it had been used for four months. My foolish husband took the item back because it was from a relative. I blew my stack but Jerry is much better natured than I am and now we have custody of a used combination television, radio and record home entertainment unit, up for grabs in our front window for 40 percent off, because it has been used. So Jaclyn, you can tell your readers that they can expect a fair and honest deal from any relative in the retail business, but please don't abuse. Signed, JANICE & JERRY

DEAR JANICE & JERRY: Janice, I think you'd better get on it; looks like Jerry would give the business away, for the wrong price, to the right people. But I know what you mean. In this world there are Givers and there are Takers. Unfortunately, there have always been more Takers than Givers. At last count, the Givers appeared out-numbered at about 50 to 1.

DEAR JACLYN CLAYE: You're going to think I'm crazy, but I'm jealous about my skinny sister. And she eats a lot more than I do. She even eats beef fat from the steaks. I watch my diet as much as I can and I usually eat just cereals and fruits but it doesn't seem to matter. I gain and she loses. It wouldn't bother me too much except that the "fat" season is coming up now with Thanksgiving and then Christmas and all that food. I watched my diet really closely all summer and got down about five pounds but I know I'll put it all on again this season and my sister if she is lucky will gain maybe two or three ounces. Did you have a problem like this when you were a young person growing up? Signed, Terri T.

DEAR TERRI T.: Yes, but I finally learned what had been causing it all: food. Of all the habits I have been able to conquer, the platter has been hardest to lick. I've been able to stop chewing my fingernails and smoking cigarettes and speeding through small towns, but I'm still wrestling with calories. For this coming festive season, however, I have told myself that I will partake of main courses only and forgo all those lovely extras.

### LOSE UGLY FAT

Start losing weight today or money back. MONADEX is a tiny tablet and easy to take. MONADEX will help curb your desire for excess food. Eat less - weigh less. Contains no dangerous drugs and will not make you nervous. No strenuous exercise. Change your life - start today. MONADEX cost \$3.00 for a 20 day supply. Large economy size is \$5.00. Also try AQUATABS - they work gently to help you lose water-bloat. AQUATABS - a "water pill" that works - \$3.00. Both guaranteed and sold by:

LINER'S PHARMACY

118 S.W. 1st

MAIL ORDERS FILLED

### WEDDING PHOTOGRAPHY

PRICE THE REST - THEN GET

- THE BEST FOR LESS MONEY

LEITZELL STUDIO

106 E. BUCHANAN

266-8949

## PEST CONTROL AAA PEST CONTROL

RATS, ROACHES, FLEAS

TREES AND LAWNS

ALVIN STOVALL

112 AVE. L

PHO. 894-7284

LEVELLAND, TEXAS

### Care to join me?

DEAR JACLYN CLAYE: I'm a young person who has been reading your column in the paper for some time now and I have always thought that you would be a terrific mother. I would like to know if you have any teenagers, and do they come to you for advice? Signed, In Chester.

DEAR I.C.: I have two daughters just entering their teens, and to answer the second part of your question: mostly, they read Ann Landers!

### Wilma Morrison Services Held In Chillicothe

Services for Wilma Morrison, 62, were held at 2 p.m. Sunday in the First Baptist Church in Chillicothe with burial in the Chillicothe Cemetery.

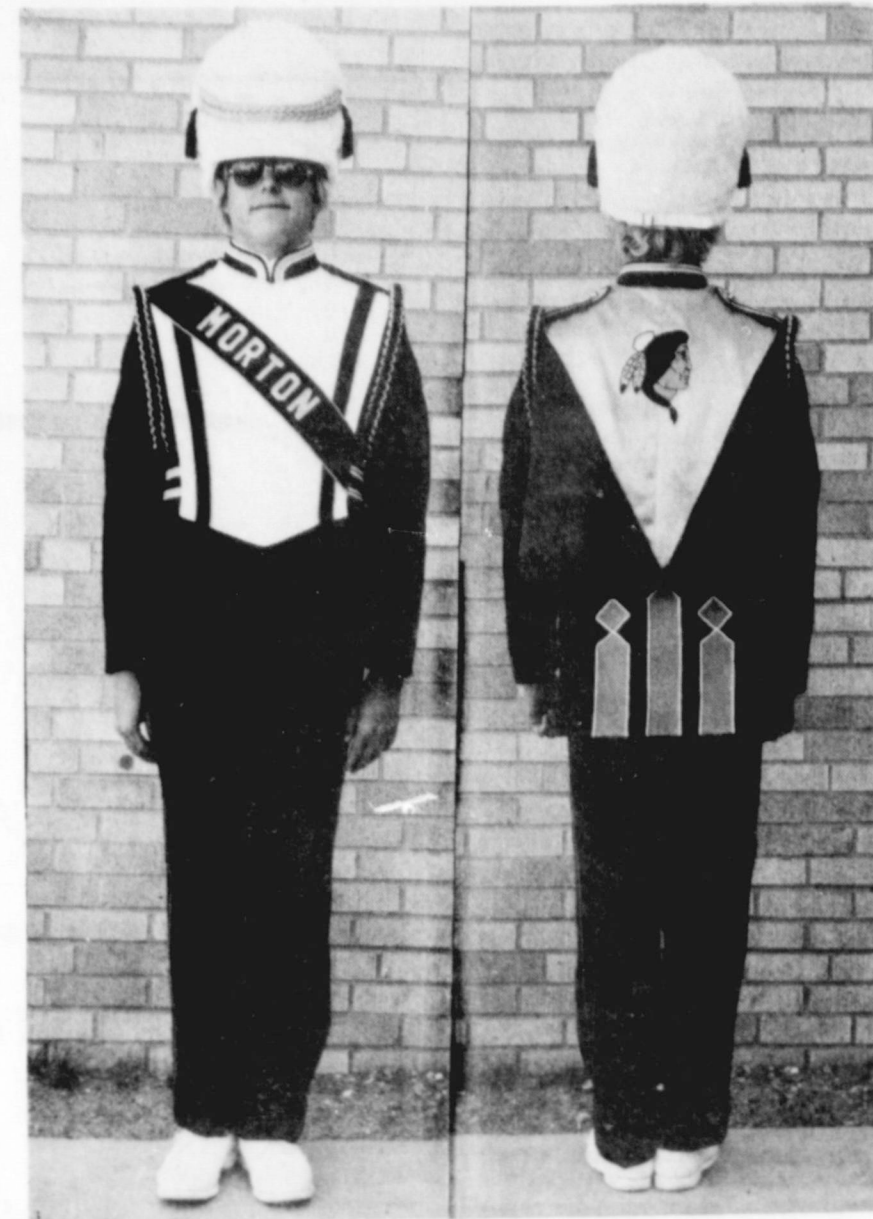
Mrs. Morrison, a former resident of Morton, died of an apparent heart attack Friday, November 7, after a brief illness.

Survivors include her husband, Fred; a daughter, Martha Dean Hamilton of Woodward, Okla.; a son, Tommy of Chillicothe; a sister, Mrs. Irma Clark; three brothers, Jack and "Shorty" Phillips of Chillicothe, and Ed of Vernon; and five grandchildren.

### USDA Extends Comment Period On Food Stamps

The U.S. Department of Agriculture (USDA) recently announced an extension of the comment period concerning three proposed alternatives to revise food stamp allotments.

The original comment period expired Oct. 6, but the deadline imposed by the U.S. Court of Appeals has now been extended. Thus the Department will extend the comment period through Nov.



THE FORE AND AFT OF IT — Morton High School bandsman Mike Williams models the fore and aft view of the proposed new band uniforms being considered for purchase by the Band Booster Club. The club will meet tonight at 8 o'clock in the band hall where Mike will once again model the uniform for the members' consideration.

13. The final regulation will then be issued within the next month, by Dec. 13 or earlier. The proposals are in response to the Court's decision in *Roadway v. United States Department of Agriculture*. The court ruled that USDA must devise new food stamp allotment procedures to allow virtually all food stamp recipients to purchase nutritionally adequate

### Comments On Conservation

BY SOLOMON HAMILTON

Erosion is a derivative of the word erode, which means to eat into or away from, to destroy by slow disintegration or to wear away. There are two types of erosion, wind and water. Our soils should be prepared to take the rains and bolstered to withstand the high winds which are to come.

The use of cover crops can prepare our soils for the fall rains and tie the soil together to withstand the high winds of the spring. A cover crop is one that is close spaced and is usually of small grain or legumes. It is usually grown for one year or less except where a permanent type cover such as grass or hayland is used.

The purpose of cover crops is to control erosion when major

crops do not furnish enough cover. Cotton is a major crop but it furnishes little protection against the wind. Grain sorghum is also a major crop but it provides protective cover for the soil by leaving residue on the surface following harvest. Grain sorghum residues also adds organic material to the soil and improve infiltration and soil aeration.

Some of the crops used for cover in this area are millet, forage and grain sorghum, wheat, rye, vetch, winterpeas and grass.

Cover crops plantings are usually drilled or broadcast. Some are flown on over seeding in existing crops such as cotton. The use of cover on blank or skip row crops will protect the blank middles and provide organic material for next spring crops.

Now is the time to prepare land for the blowing season. Cover crops can prevent soil losses, respiratory discomfort, and complaints from homeowners, merchants and county residents.

For more information contact your local Soil Conservation Office.

after you see your doctor.

bring your prescription to

**Liner's**  
PHARMACY  
MIKE LINER, R.P.H.  
MORTON - PH. 266-8965

## Looking Back

25 Years Ago

The Morton School System's new \$100,000 gym will receive its formal dedication at ceremonies to be held at 8 p.m.

The cafe located on the north side of the square formerly owned and operated by Bob Benefield opened under new management this week as Tex and Jean's Cafe.

Hume Russell, Willard B. Cox, Guy Sanders and Archie McBee left last week for a ten day big game hunt at Pagosa Springs, Colo.

Plunkett's Stage Show, featuring the 11 members of the Plunkett family, will make its annual appearance in Morton next week under the auspices of the Morton Volunteer Fire Department.

A devastating midnight fire at the Frank Bailey Grain Elevator in Whiteface almost completely gutted the elevator.

The first annual old-fashioned barn dance, sponsored by the American Legion, will be staged Friday night at Veterans Hall.

Miss Nell Brown will be crowned as Band Sweetheart during half-time activities at the Littlefield-Morton Football game Friday night.

Miss Martha Willis, daughter of Mr. and Mrs. Boyd Willis, and Clifford Wall were united in marriage in a double ring ceremony performed by Rev. B.B. Huckaby of Littlefield Saturday, October 14 at the home of the bridegroom's parents, Mr. and Mrs. O.C. Wall, Clovis, N.M.

15 Years Ago

John Tower, Republican candidate for U.S. Senate, came to Morton Tuesday and spoke briefly to a group of approximately 25 persons in the County Auditorium.

Three Morton women were among Texans who attended a Democratic Work Shop at the LBJ Ranch at Johnson City, Tuesday. Mrs. J.D. Hawthorne, Chairman of Cochran County Women Democrats; Mrs. H.B. Barker, Chairman of the County's Young Democrats; and Mrs. LeRoy Johnson were among the group that heard former President Harry S. Truman and Speaker Sam Rayburn blast the Republicans in a session which newsmen were barred.

Plans for the construction of a four-doctor private clinic at the rear of Memorial Hospital developed further Monday night at the meeting of the Board of Managers.

Lenore White is president for the Pep Squad this year. Other officers are Melba Cook, vice president; Carol Carter, secretary; and Cieta Love, treasurer.

Some grocery specials for November 1960: Sausage 2 lb. bag 59c, Salad Dressing qt. 39c, Apples lb. 12 1/2c, Flour 10 lb. bag 89c, Velveeta 2 lb. loaf 79c, Bacon lb. 49c, Snowdrift Shortening 3 lb. can 59c, Cherries no. 300 can 19c, Wesson Oil quart 49c, Chuck Roast lb. 39c, Green Beans no. 300 can 10c, Sugar 5 lb. 49c, King size Dr. Pepper 12 bottle carton 39c.



As a treat for Charles I of England, Queen Henrietta Maria had him served a pie containing a live dwarf.

diets.

Three alternatives are proposed to determine eligibility of nonassistance households and to determine stamp allotments for all households. Under the first two proposals, food stamp allotments would be based on the age and sex of each household member. Under the third proposal, the present method of providing allotments for all households would remain, but allotments would be raised for households of six or more persons.

Public comments are invited on the proposed regulation which

appeared in the Federal Register Friday, Sept. 19. Written comments may be mailed or delivered to Jack O. Nichols, Acting Director, Food Stamp Division, Food and Nutrition Service, U.S. Department of Agriculture, Washington, D.C. 20250, to be received not later than Nov. 13. A final rule will be issued on or before Dec. 13, 1975. Comments received will be open to public inspection.

## Better Grades & Turnouts Are the Answer In Ginning Cotton

And better grades and turnouts are the product of superior experience, equipment and know-how.

We feel we have all three at Nowell Gin, and we are proving it every day by the product we are turning out.

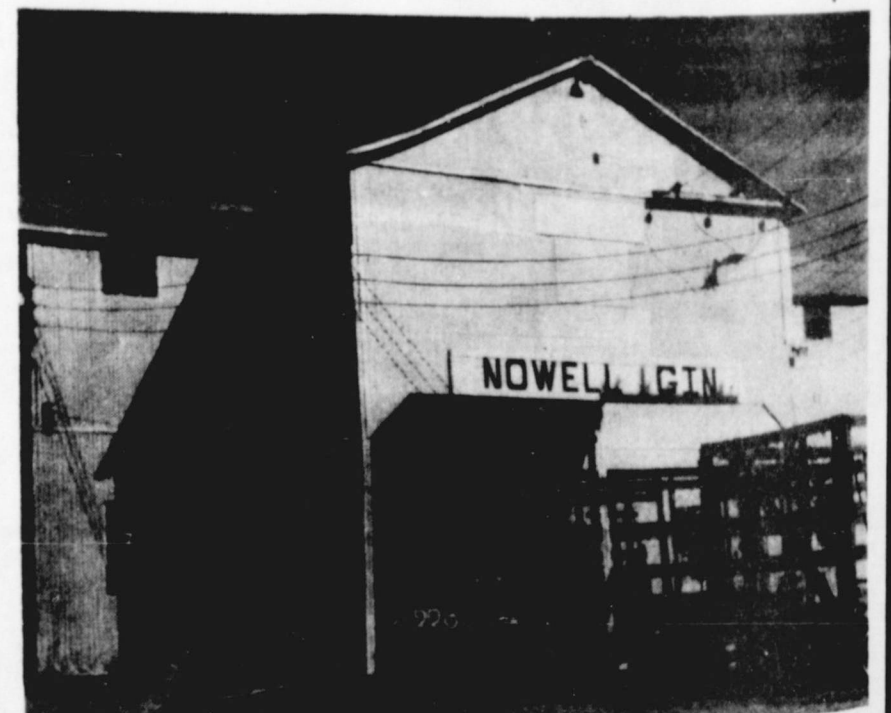
Our top four men combine 100 years of ginning experience with which to assure you of the best turnout.

Our equipment is either brand new or completely overhauled this fall which contributes greatly to the expert handling your cotton receives.

Our personnel are all experienced, know their business and are conscientious in their care and handling of your cotton.

## So, Enjoy All Three Advantages

Bring your crop to Nowell Gin and let Claude and his crew of experts give your cotton the care it requires for better turnout and more profits.



We Have Trailers To Loan To Our Customers

## NOWELL GIN

502 E. Madison, Morton

Phone 266-8615

# Farm-facts

Compiled From Sources Of The Texas Department of Agriculture  
John C. White, Commissioner

**HARVESTING OF MAJOR CROPS** and fall planting of others is nearing an end as farmers hurry to finish chores before winter arrives.

Recent rains have helped much of the wheat crop which has been planted. Wheat seeding for the state is virtually complete as is oat planting. With the recent moisture, these fields will be available for grazing. Livestock generally are continuing to hold up well despite short grazing and declining pasture conditions.

Much of the 1975 cotton crop has yet to be harvested. About a

third of the crop has been gathered thus far, which is about on schedule with recent years.

Most of the crop on the High Plains is ready for harvest. Completion in the Blacklands has been delayed by recent rains and cool weather.

The state's major commodities in grains — corn and grain sorghum — are nearing the final harvest stages.

Sorghum harvest is virtually finished, as is corn. One of the highest per acre corn yields in history will be recorded in Texas this year. Storage facilities for the crop had caused some

temporary delays.

Soybeans, still a fairly new crop for some areas of the state, are also making good progress; that crop is about two-thirds harvested. Good to excellent yields are reported in the High Plains and along the Upper Gulf Coast, but yields in the Blacklands have been short.

Meanwhile, in the Rio Grande Valley, the citrus crop is moving into higher harvest tempo. Grapefruit movement, however, has been slow due to a dull market. Quality of the crop continues to be good. Trees are in good to excellent condition.

**BRUCELLOSIS CONTINUES TO BE A MAJOR TOPIC** of conversation among livestock producers throughout the state. A quarantine of Texas livestock is threatened by federal

authorities. Several beef cattle organizations have requested a Congressional study of the federal brucellosis program.

**THIS YEAR WILL GO IN THE RECORD BOOKS** as one of those years in which the screwworm caused a lot of trouble. Freezing weather will wipe out the problem in the northern half of the state. But the pest will continue to be a headache for producers in South Texas.

Screwworm officials at the fly lab in Mission continue to remind livestock producers to check their cattle regularly, treat wounds on livestock with approved screwworm control remedies, delay surgery on livestock as long as possible, and continue to submit suspected samples of screwworms to the fly lab at Mission.

## QUICK BLUEBERRY COFFEECAKE

- 2 cups Rice Chex cereal (bite-size crispy rice squares) crushed to 1 cup
- 1/4 cup firmly packed brown sugar
- 1/4 teaspoon cinnamon
- 2 tablespoons butter or margarine, melted
- 1 can (8 oz.) refrigerated biscuits
- 1 can (15 oz.) blueberries, well drained

Preheat oven to 375°. Butter an 8-inch round cake pan. Combine cereal crumbs, brown sugar and cinnamon. Add butter. Mix well. Sprinkle half over bottom of pan. Arrange biscuits over crumb mixture. Top with fruit and then with remaining crumb mixture.

Bake 25-30 minutes or until tester inserted in center comes out clean. Serve immediately. Makes one coffee cake.

Send name, address and three proof-of-purchase seals from any Wheat, Rice or Corn Chex cereals to: Chex Recipe Book, P.O. Box 1033, Maple Plain, Minnesota 55359.



American Indians believed that jade could cure snakebite.

# BILL SMITH IS AT IT AGAIN!

THE BALMY FALL AIR HAS MADE HIM SO LIGHT IN THE HEAD THAT HE HAS SCHEDULED

## A GIANT 12 HOUR SALE

WITH PRICES YOU CAN'T REFUSE—TODAY, THURSDAY NOVEMBER 13 IS THE DAY.

FROM 12 NOON TO 12 MIDNIGHT

COME IN FOR A VISIT AND A "CUP"

AND SEE THE GREAT BARGAINS HE HAS IN STORE FOR YOU

new from Zenith!  
one-knob VHF and UHF  
channel selection!

1976 **ZENITH**  
100% SOLID-STATE  
**CHROMACOLOR II**  
25" GIANT SCREEN CONSOLE TV

USES UP TO 64% LESS ENERGY! Zenith's 100% Solid-State Chassis featuring the Zenith Patented Power Sentry Voltage Regulating System uses up to 64% less energy than previous Zenith giant-screen all-tube sets.



The LINFIELD G4746M  
Early American styled console with concealed casters. AFC. Simulated Wood Graining with Wood Veneer Top.

- Brilliant Chromacolor Picture Tube
- 100% Solid-State Titan 300V Chassis
- Patented Power Sentry Voltage Regulating System
- New Solid-State Electronic Tuning System
- Chromatic One-button Tuning



Introducing THE WEDGE!

The Wedge • Model G596W.  
Full 12 watts min. RMS per channel into 8 ohms from 40 Hz to 15 kHz with not more than 1/2% total harmonic distortion. Shown with Allegro 3000 speakers for deeper, richer bass. Includes built-in

8-track Tape Player; 3-speed Stereo Precision Record Changer with AM/FM/Stereo FM Tuner/Amplifier with Hi Filter, FM Mute, toggle switches and advanced new styling. Simulated wood cabinet with grained Walnut finish.

SEE THE BEST  
ZENITH COLOR PICTURE EVER IN  
YOUR CHOICE OF FIVE SCREEN SIZES  
NEW 1976 **ZENITH**  
100% SOLID-STATE  
**CHROMACOLOR II**  
PORTABLE AND TABLE TV



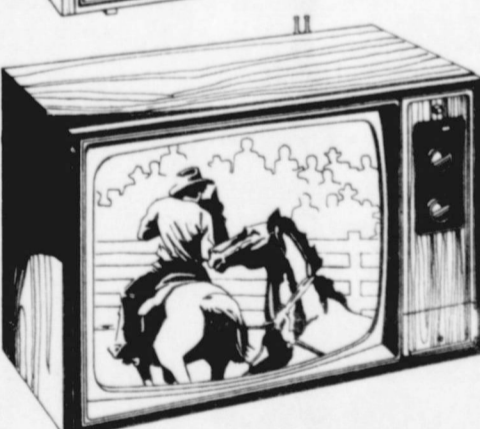
13" DIAGONAL  
The OCEANSIDE • G3410C

Slim-line portable with a trim silhouette made possible by use of Zenith's new, short 110" Chromacolor In-line Picture Tube. Ebony color cabinet with Silver color top and base. Solid-State Super Video Range Tuning System.



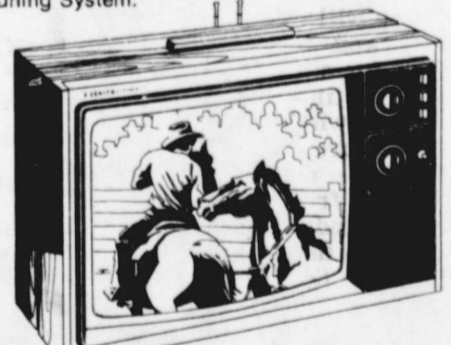
19" DIAGONAL  
The SOMERSBY  
G4025W

Distinctive, compact-size, simulated grained American Walnut color cabinet. Solid-State Super Video Range Tuning System.



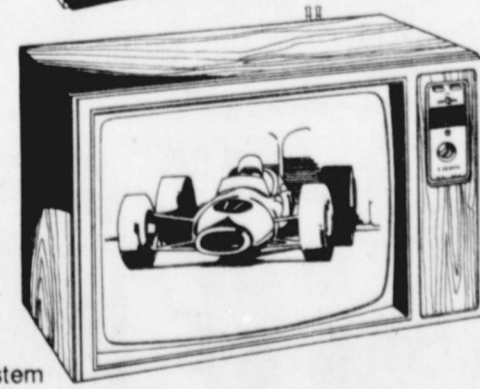
23" DIAGONAL  
The CARIBBEAN  
G4541W

Giant-screen table model with sturdy metal cabinet finished in simulated grained Walnut. Solid-State Super Gold Video Guard Tuning System.



17" DIAGONAL  
The GRENVILLE • G3855W

Compact, simulated grained American Walnut cabinet with White trim on top. Solid-State Super Video Range Tuning System.



25" DIAGONAL  
The HALIFAX  
G4740W

Giant-screen table model with sturdy metal cabinet finished in simulated grained Walnut. New Solid-State Electronic Tuning System. One-Knob VHF and UHF Channel Selection.

OUTSTANDING VALUE!  
FAMILY-SIZE  
23" COLOR TV  
1976 **ZENITH**  
100% SOLID-STATE  
**CHROMACOLOR II**

USES UP TO 64% LESS ENERGY!  
Zenith's 100% Solid-State Chassis featuring the Zenith Patented Power Sentry Voltage Regulating System uses up to 64% less energy than previous Zenith giant-screen all-tube sets.



The ASHBURY • G4543W

Contemporary styled low-boy console. Solid-State Super Video Range Tuning System. Synchronic 70-Position UHF Channel Selector. Chromatic One-button Tuning. AFC. Simulated Wood Graining.

- Brilliant Chromacolor Picture Tube
- 100% Solid-State Titan 300V Chassis
- Patented Power Sentry Voltage Regulating System

Choose ZENITH... your best color tv value!

**ENERGY-SAVING COLOR TV!** Zenith's energy-saving 100% solid-state chassis with its Power Sentry system of voltage regulation needs only 130 watts, or less, of power... less than two 75-watt light bulbs. Many color sets, four or more years old, use about as much power as five 75-watt light bulbs.

FAMOUS ZENITH QUALITY!  
FAMOUS ZENITH DEPENDABILITY!

# BILLS FURNITURE AND APPLIANCE

120 SW 1 ST

266-5201

**BLUE HERITAGE  
IRONSTONE DINNERWARE**

THIS WEEK ITEM:  
**SAUCER**  
EACH  
BASIC PLACE  
SETTING PIECE  
WITH EVERY \$5.00  
PURCHASE

**49¢**

**HOLIDAY SAVINGS FROM THRIFTWAY**

- STOVE TOP-RICE, CORNBREAD OR CHICKEN  
**Stuffing Mix** 6 OZ. BOX **55¢**
- CAMPBELL'S CREAM OF  
**Mushroom Soup** 4 TALL CANS **89¢**
- LINDSEY MEDIUM PITTED  
**Ripe Olives** 300 CAN **49¢**
- RED LABEL  
**Karo Syrup** PT. BTL. **49¢**
- LE SUEUR EARLY JUNE  
**Peas** 2 17 OZ. CANS **89¢**
- HEINZ  
**Tomato Ketchup** 26 OZ. BTL. **79¢**
- PRINCELLA  
**Cut Yams** 2 1/2 CAN **45¢**

**THANKSGIVING FEASTING!**  
AND HOLIDAY SAVINGS FROM THRIFTWAY



SHURFRESH GRADE "A"  
SELF-BASTING, BROAD BREASTED  
WITH POP-UP TIMER

**TURKEYS**  
18 TO 22 LB. AVG.  
**63¢**  
LB.

**FROZEN FOOD & DAIRY VALUES**

- SHURFRESH WHIPPING  
**CREAM** 3 HALF PINTS **\$1.00**
- SHURFINE FROZEN  
**Whipped Topping** 10 OZ. CTN. **45¢**
- PHILADELPHIA  
**Cream Cheese** 8 OZ. PKG. **45¢**
- SHURFRESH  
**Sour Cream** HALF PINT **39¢**
- JOHNSTON'S FROZEN  
**Pumpkin Pie** 32 OZ. CTN. **\$1.19**
- JOHNSTON FROZEN  
**Pie Shells** 2 PK. PKG. **49¢**



FOLGER'S  
MOUNTAIN GROWN  
**COFFEE**

**\$1.39**

LB. CAN



SHURFRESH GRADE "A"  
SELF-BASTING WITH POP-UP TIMER  
**TURKEY HENS**  
10 TO 14 LB. AVG. LB. **69¢**

2-LB  
STICK



**\$3.19**



SHURFRESH  
SLICED  
**BACON**  
1 LB. VACUUM PACKAGE **\$1.39**

- GRADE "A" 4-7 LB. AVG.  
**Baking Hens** LB. **65¢**
- KAHN'S-HALF OR WHOLE WATER ADDED  
**Boneless Hams** LB. **\$1.89**
- CENTER CUT  
**Ham Slices** LB. **\$2.19**
- RUDY'S FARM WHOLE  
**Hog Sausage** 1 LB. ROLL **\$1.69**
- RUDY'S FARM WHOLE  
**Hog Sausage** 2 LB. ROLL **\$3.37**
- STANDING  
**Rib Roast** LB. **\$1.49**



PURE VEGETABLE  
SHORTENING

**CRISCO**  
**\$1.59**

3 LB. CAN

**HEALTH & BEAUTY AID SPECIALS**

SHAMPOO-20¢ OFF LABEL  
**PRELL Concentrate** 7 OZ. **\$1.19**

**SECRET Deodorant** 6 OZ. **89¢**

ALKA TABLETS  
**SELTZER** 25 CT. BTL. **59¢**



SCHICK TWIN INJ. PLATINUM PLUS WITH FREE RAZOR  
**RAZOR BLADES** 4 CT. PKG. **69¢**

SCHICK TWIN INJ. PLATINUM PLUS WITH FREE RAZOR  
**RAZOR BLADES** 7 CT. PKG. **99¢**

**THANKSGIVING GROCERY SAVINGS**



BAKER'S ANGEL FLAKE  
**COCONUT**  
15¢ OFF LABEL  
14 OZ. PKG. **89¢**

SHURFINE MANDARIN  
**Oranges** 3 11 OZ. CANS **\$1.00**

TOPPING-15¢ OFF LABEL  
**Dream Whip** 6 OZ. BOX **89¢**

MONESUCH  
**Mince Meat** 9 OZ. SIZE **59¢**

LIBBY'S  
**Pumpkin** 303 CAN **29¢**

BAKER'S CHOC. FLAVORED  
**CHIPS**  
12 OZ. PKG. **69¢**



SHURFINE CRANBERRY  
**SAUCE**  
3 16 OZ. CANS **\$1**

JELLIED OR WHOLE

IMPERIAL POWDERED SUGAR OR STA-SOFT BROWN  
**SUGAR**  
2 LB. POLY BAG **69¢**



SHURFINE EVAPORATED  
**MILK**  
4 14 1/2 OZ. CANS **\$1**



SHURFRESH  
**OLEO MARGARINE**  
IN-QTRS. LB. PKG. **39¢**



MIRACLE WHIP SALAD  
**DRESSING**  
QT. JAR **99¢**



CALIFORNIA GREEN PASCAL  
**CELERY** LB. **19¢**



- SWEET  
**Yellow Onions** LB. **15¢**
- OCEAN SPRAY  
**Cranberries** LB. BAG **39¢**
- HOLIDAY FAVORITE  
**Large Walnuts** LB. **59¢**
- WASHINGTON RED OR GOLDEN  
**Delicious Apples** 4 LBS. **88¢**
- GARDEN FRESH  
**Portales Yams** LB. **25¢**

10¢ VALUABLE COUPON NO. 23204 10¢  
GOLD MEDAL KITCHEN TESTED  
**Flour** 5 LB. BAG **69¢**  
WITH THIS COUPON  
VOID NOVEMBER 27, 1975  
LIMIT ONE COUPON PER CUSTOMER  
10¢ **THRIFTWAY** 10¢

TENDER CRUST BROWN'N SERVE  
**ROLLS**  
3 12 CT. PKGS. **\$1.00**

LAUNDRY DETERGENT  
**AJAX**  
15¢ OFF LABEL  
GIANT BOX **99¢**

**PRESTONE II ANTI-FREEZE**  
GALLON **\$3.89**

- KEN-L-RATION  
**Dog Food** 5 16 OZ. CANS **\$1.00**
- GLADIOLA WHITE  
**Corn Meal** 5 LB. BAG **79¢**
- SCHILLING POULTRY  
**Seasoning** 1/4 OZ. SIZE **29¢**
- BETTY CROCKER LAYER ASSTD.  
**Cake Mixes** 18 OZ. BOX **59¢**

DO-IT-YOURSELF  
ENCYCLOPEDIA VOLUME NO. 13 EACH **\$1.79**

**THRIFTWAY**

SPECIAL GOOD NOV. 14-20, 1975