

Bailey County Journal

"The Community of Opportunity — Where Water Makes the Difference"

Published every Sunday at Muleshoe, Bailey County, Texas — 79347

VOL. 5 NO. 10

10 PAGES

SUNDAY, MARCH 10, 1968

Shares Being Sold in Project to Public

Laborer Housing Complex Planned

The steering committee of the Muleshoe Labor Housing Association met at 8:30 a.m. Friday at the Corral Restaurant to formulate plans for a 100-family housing unit project to be built in Muleshoe.

around  muleshoe

with the journal staff

Susan Leonard, Muleshoe music major at the University of New Mexico, Albuquerque, is among 55 students on the dean's honor list at the College of Fine Arts, UNM. She earned a 3.3 for Semester I, 1967-8. To qualify for the list, students must have a 3.1 grade point average or better for the semester, with a minimum program of 12 hours.

Three students from Bailey County are attending Tarleton State College this semester. They are as follows: Marsha L. Blackman, freshman liberal arts major; Jerry M. Lee, a senior general ag major; and Nancy A. Lee, a freshman elementary education major.

Billy Kelley had visiting with him over the weekend a student at West Texas University, Price Harp. Both boys were visiting here in the home of Kelley's parents, Mr. and Mrs. Roy Kelley.

Mr. and Mrs. Clayton Myers and Thurman recently returned from visiting Mr. and Mrs. Don Underwood and baby daughter in Gainesville.

Mr. and Mrs. M. D. Gunstream attended the memorial services of Mrs. Gunstream's brother-in-law, John Lamkin, in Memphis, March 2.

Neil Finley, son of Mr. and Mrs. Clifton Finley is home from WTSU for the weekend. Cont'd on Page 2, Col. 1

Clinton Kennedy, manager of the local FHA office said "Only one such project had been erected in Texas, the Dimmitt complex which was dedicated in ceremonies held there Friday, March 1. Muleshoe's unit could be the second one," he said. Kennedy and Arch Fowler, area FHA manager, informed the Muleshoe group of farmers and businessmen that the preliminary application for a \$550,000 loan had been approved and the formal application could be submitted. "The loan will be repayable in 33 years at five percent interest," Kennedy said.

The housing units are to be partially furnished and are expected to rent for from \$15 to \$20 per week with utilities paid and will be occupied by agricultural workers.

Jimmy Dale Black serves as chairman of the steering committee and presided at the meeting Friday to kick-off the local fund project which is in the amount of \$20,000.

"This is all Muleshoe needs to really start the 'ball rolling' on this project," a steering committee member said.

"We must put up this money, secure an option on the land and present a drawing of the complex and submit the bids for final approval from the Federal Housing Administration," he added.

First National and Muleshoe State Banks have been set up as depository for the local funds which have been set up on the basis of \$200 per share.

All persons who have committed themselves to purchase stock as well as others who wish to do so are urged to put their \$200 in escrow at either of the local banks by noon Wednesday, March 13.

Ralph Douglas has been retained as consulting engineer and Norman Bays as legal counselor.

This project has been in the planning stages for some time and is taking shape for the finalizing of plans to make it a reality.

"We feel that to be competitive in any respect with other cities of our size and over, we must have this housing unit. Else it will be obtained by other areas such as Dimmitt and farm labor will become increasingly harder to obtain for the area due to the housing factor," a committee member said.

Dr. Marvin L. Baker, president of South Plains College, met with various groups in Muleshoe at 8 p.m. last Monday in Muleshoe High School cafeteria and made a presentation for annexation of Bailey County into the South Plains College District. Approximately fifty percent of the required number of signatures to call an election was obtained before the meeting closed.

The plan met with enthusiastic approval of the majority of the groups which included: Muleshoe Chamber of Commerce Board, Industrial Foundation Board, Public School Board, City Council, County Commissioner's Court, American Association of University Women. Also present for the

meeting was Superintendent of Three Way Schools, Thomas V. Alvis.

Following Dr. Baker's presentation, Chamber of Commerce President Robert Hooten made a brief talk after which he asked the Boards to split into their respective groups and discuss the possibility of circulating a petition. Following this discussion, approximately 75 signatures were secured, which is one-half the requirement.

In Dr. Baker's presentation, he explained the benefits from the annexation which include: Low cost quality education; Guarantee students a college education; Vocational - Technical-Occupational training. He pointed out that a building for

800 students will be available. "We will limit admission on this school at 500, however, no in-district students will be cut off," he said. Also use of facilities including all building, library service, guidance and counseling; continuing education for adults; an Adult Education Building will be constructed in each county which will include closed circuit TV classes when it is in operation; Class conferences - doctors, lawyers, business, etc; Vocational training - business, secretarial, nursing, etc.; Bus service to and from college campus; Research facilities will be available on main campus to help citizens of the district; Work study Students will be available to work for public schools as janitors, P. E. instruction in elementary schools of county, library clerks, etc.

Also loan funds; scholarships; In-District Tuition. He stated that the college is now trying for a grant to establish a health center, guidance and counseling, marriage counseling. He pointed out that in-district people would have all of these services.

In discussing past and projected enrollments of South Plains College, Dr. Baker gave the following: "The college opened in 1958 with an enrollment of 202, with plant evaluation set at \$300,000. In the fall of 1967, a total of 1,509 were enrolled with plant evaluation set at \$5,000,000. Projected enrollment has been estimated in 1968 to reach: 1,250 Academic; 370 Vocational Tech-

Cont'd on Page 2, Col. 4

Cont'd on Page 2, Col. 5

Cont'd on Page 2, Col. 6

Cont'd on Page 2, Col. 7

Cont'd on Page 2, Col. 8

Cont'd on Page 2, Col. 9

Cont'd on Page 2, Col. 10

Cont'd on Page 2, Col. 11

Cont'd on Page 2, Col. 12

Cont'd on Page 2, Col. 13

Cont'd on Page 2, Col. 14

Cont'd on Page 2, Col. 15

Cont'd on Page 2, Col. 16

Cont'd on Page 2, Col. 17

Cont'd on Page 2, Col. 18

Cont'd on Page 2, Col. 19

Cont'd on Page 2, Col. 20

Cont'd on Page 2, Col. 21

Cont'd on Page 2, Col. 22

Cont'd on Page 2, Col. 23

Cont'd on Page 2, Col. 24

Cont'd on Page 2, Col. 25

Cont'd on Page 2, Col. 26

Cont'd on Page 2, Col. 27

Cont'd on Page 2, Col. 28

Cont'd on Page 2, Col. 29

Cont'd on Page 2, Col. 30

Cont'd on Page 2, Col. 31

Cont'd on Page 2, Col. 32

Cont'd on Page 2, Col. 33

Cont'd on Page 2, Col. 34

Cont'd on Page 2, Col. 35

Cont'd on Page 2, Col. 36

Cont'd on Page 2, Col. 37

Cont'd on Page 2, Col. 38

Cont'd on Page 2, Col. 39

Cont'd on Page 2, Col. 40

Cont'd on Page 2, Col. 41

Cont'd on Page 2, Col. 42

Cont'd on Page 2, Col. 43

Cont'd on Page 2, Col. 44

Cont'd on Page 2, Col. 45

Cont'd on Page 2, Col. 46

Cont'd on Page 2, Col. 47

Cont'd on Page 2, Col. 48

Cont'd on Page 2, Col. 49

Cont'd on Page 2, Col. 50

Cont'd on Page 2, Col. 51

Cont'd on Page 2, Col. 52

Cont'd on Page 2, Col. 53

Cont'd on Page 2, Col. 54

Cont'd on Page 2, Col. 55

Cont'd on Page 2, Col. 56

Cont'd on Page 2, Col. 57

Cont'd on Page 2, Col. 58

Cont'd on Page 2, Col. 59

Cont'd on Page 2, Col. 60

Cont'd on Page 2, Col. 61

Cont'd on Page 2, Col. 62

Cont'd on Page 2, Col. 63

Cont'd on Page 2, Col. 64

Cont'd on Page 2, Col. 65

Cont'd on Page 2, Col. 66

Cont'd on Page 2, Col. 67

Cont'd on Page 2, Col. 68

Cont'd on Page 2, Col. 69

Cont'd on Page 2, Col. 70

Cont'd on Page 2, Col. 71

Cont'd on Page 2, Col. 72

Cont'd on Page 2, Col. 73

Cont'd on Page 2, Col. 74

Cont'd on Page 2, Col. 75

Cont'd on Page 2, Col. 76

Cont'd on Page 2, Col. 77

Cont'd on Page 2, Col. 78

Cont'd on Page 2, Col. 79

Cont'd on Page 2, Col. 80

Cont'd on Page 2, Col. 81

Cont'd on Page 2, Col. 82

Cont'd on Page 2, Col. 83

Cont'd on Page 2, Col. 84

Cont'd on Page 2, Col. 85

Cont'd on Page 2, Col. 86

Cont'd on Page 2, Col. 87

Cont'd on Page 2, Col. 88

Cont'd on Page 2, Col. 89

Cont'd on Page 2, Col. 90

Cont'd on Page 2, Col. 91

Cont'd on Page 2, Col. 92

Cont'd on Page 2, Col. 93

Cont'd on Page 2, Col. 94

Cont'd on Page 2, Col. 95

Cont'd on Page 2, Col. 96

Cont'd on Page 2, Col. 97

Cont'd on Page 2, Col. 98

Cont'd on Page 2, Col. 99

Cont'd on Page 2, Col. 100

Cont'd on Page 2, Col. 101

Cont'd on Page 2, Col. 102

Cont'd on Page 2, Col. 103

Cont'd on Page 2, Col. 104

Cont'd on Page 2, Col. 105

Cont'd on Page 2, Col. 106

Cont'd on Page 2, Col. 107

Cont'd on Page 2, Col. 108

Cont'd on Page 2, Col. 109

Cont'd on Page 2, Col. 110

Cont'd on Page 2, Col. 111

Cont'd on Page 2, Col. 112

Cont'd on Page 2, Col. 113

Cont'd on Page 2, Col. 114

Cont'd on Page 2, Col. 115

Cont'd on Page 2, Col. 116

Cont'd on Page 2, Col. 117

Cont'd on Page 2, Col. 118

Cont'd on Page 2, Col. 119

Cont'd on Page 2, Col. 120

Cont'd on Page 2, Col. 121

Cont'd on Page 2, Col. 122

Cont'd on Page 2, Col. 123

Cont'd on Page 2, Col. 124

Cont'd on Page 2, Col. 125

Cont'd on Page 2, Col. 126

Cont'd on Page 2, Col. 127

Cont'd on Page 2, Col. 128

Cont'd on Page 2, Col. 129

Cont'd on Page 2, Col. 130

Cont'd on Page 2, Col. 131

Cont'd on Page 2, Col. 132

Cont'd on Page 2, Col. 133

Cont'd on Page 2, Col. 134

Cont'd on Page 2, Col. 135

Cont'd on Page 2, Col. 136

Cont'd on Page 2, Col. 137

Cont'd on Page 2, Col. 138

Cont'd on Page 2, Col. 139

Cont'd on Page 2, Col. 140

Cont'd on Page 2, Col. 141

Cont'd on Page 2, Col. 142

Cont'd on Page 2, Col. 143

Cont'd on Page 2, Col. 144

Cont'd on Page 2, Col. 145

Cont'd on Page 2, Col. 146

Cont'd on Page 2, Col. 147

Cont'd on Page 2, Col. 148

Cont'd on Page 2, Col. 149

Cont'd on Page 2, Col. 150

Cont'd on Page 2, Col. 151

Cont'd on Page 2, Col. 152

Cont'd on Page 2, Col. 153

Cont'd on Page 2, Col. 154

Cont'd on Page 2, Col. 155

Cont'd on Page 2, Col. 156

Cont'd on Page 2, Col. 157

Cont'd on Page 2, Col. 158

Cont'd on Page 2, Col. 159

Cont'd on Page 2, Col. 160

Cont'd on Page 2, Col. 161

Cont'd on Page 2, Col. 162

Cont'd on Page 2, Col. 163

Cont'd on Page 2, Col. 164

Cont'd on Page 2, Col. 165

Cont'd on Page 2, Col. 166

Cont'd on Page 2, Col. 167

Cont'd on Page 2, Col. 168

Cont'd on Page 2, Col. 169

Cont'd on Page 2, Col. 170

Cont'd on Page 2, Col. 171

Cont'd on Page 2, Col. 172

Cont'd on Page 2, Col. 173

Cont'd on Page 2, Col. 174

Cont'd on Page 2, Col. 175

Cont'd on Page 2, Col. 176

Cont'd on Page 2, Col. 177

Cont'd on Page 2, Col. 178

Cont'd on Page 2, Col. 179

Cont'd on Page 2, Col. 180

Cont'd on Page 2, Col. 181

Cont'd on Page 2, Col. 182

Cont'd on Page 2, Col. 183

Cont'd on Page 2, Col. 184

Cont'd on Page 2, Col. 185

Cont'd on Page 2, Col. 186

Cont'd on Page 2, Col. 187

Cont'd on Page 2, Col. 188

Cont'd on Page 2, Col. 189

Cont'd on Page 2, Col. 190

Cont'd on Page 2, Col. 191

Cont'd on Page 2, Col. 192

Cont'd on Page 2, Col. 193

Cont'd on Page 2, Col. 194

Cont'd on Page 2, Col. 195

Cont'd on Page 2, Col. 196

Cont'd on Page 2, Col. 197

Cont'd on Page 2, Col. 198

Cont'd on Page 2, Col. 199

Cont'd on Page 2, Col. 200

Cont'd on Page 2, Col. 201

Cont'd on Page 2, Col. 202

Cont'd on Page 2, Col. 203

Cont'd on Page 2, Col. 204

Cont'd on Page 2, Col. 205

Cont'd on Page 2, Col. 206

Cont'd on Page 2, Col. 207

Cont'd on Page 2, Col. 208

Cont'd on Page 2, Col. 209

Cont'd on Page 2, Col. 210

Cont'd on Page 2, Col. 211

Cont'd on Page 2, Col. 212

Cont'd on Page 2, Col. 213

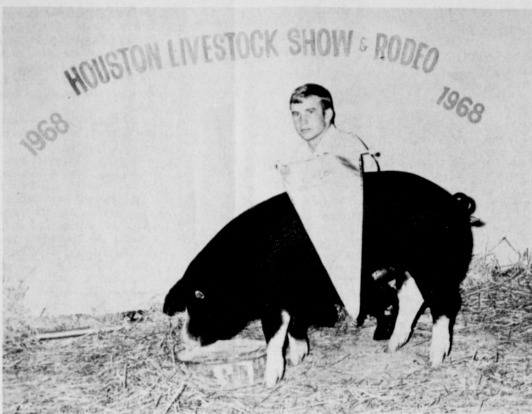
Cont'd on Page 2, Col. 214

Cont'd on Page 2, Col. 215

Cont'd on Page 2, Col. 216

Cont'd on Page 2, Col. 217

Cont'd on Page 2, Col. 218



RESERVE CHAMPION---Steve Black is pictured with a Poland China Barrow which was Reserve Champion in the Junior Division of the Houston Livestock Show.

Earth News

By Beulah Newton

Mrs. L. T. Smith was dismissed from Methodist Hospital in Lubbock Monday and is resting at her home. She is much improved.

Mrs. Ross Middleton was dismissed from Medical Arts Hospital in Littlefield Monday. She is feeling better.

Mrs. Jane Beavers and Mrs. Mae Hamilton visited friends in the Amherst hospital Sunday afternoon.

Mr. and Mrs. Donnie Thompson and boys visited in the home of Dr. and Mrs. C. T. Richardson Sunday afternoon.

Dr. and Mrs. C. T. Richardson visited in Portales Saturday with Mr. and Mrs. Warren Copeland and family.

David Foster, Eddie Sam Jones and Craig Barton, accompanied by their agriculture teacher, E. C. Gaston, were in Pampa Tuesday attending the judging contest.

Mrs. Gladys Goodwin returned home Sunday afternoon from a two week visit with her son and family, Loyd Ray Goodwin, in Fort Worth.

Mrs. R. C. Tate, mother of Mrs. R. C. Davis Sr., died in Dallas. Services were Wednesday morning at 10 in Dallas.

Springlake - Earth Junior Livestock Show annual meeting and barbeque.

The Springlake-Earth Junior Livestock Show and annual meeting was held March 4, in the school cafeteria. Sponsors were the members, honoring buyers and outstanding exhibitors.

Invocation was given by J. W. Dear. Barbeque, catered by Smokey's Barbeque of Plainview was served to approximately 70 members and guests.

Minutes of the 1967 annual meeting were read by the secretary, Tom Alair. Introduction of the board of directors and sales committee by the president, John Bridges.

J. D. Phipps and John Bridges were re-elected as directors and Thurman Lewis was elected to fill the unexpired term of Bob Wade. Eddie Jones gave the appreciation marks from exhibitors to buyers.

Doug Walden introduced the buyers and sale donors. Weldon Barton recognized the donors of trophies.

Kenneth Hinson recognized exhibitors and Tom Alair gave the financial report.

Gene Templeton made the special announcements and presented a check amounting to \$15,000 to Bill Mann, superintendent of schools and the school board for the purpose of building a new showarena, spectator space, snack bar and rest rooms at the present show barn.

This money was given by the Ewing Halsell Foundation. Board of directors for the building are Price Hamilton, Weldon Barton, Kenneth Hinson, Gene Templeton and John Bridges.

Land for the new building was donated by the Roping Club. Recognition was given to new exhibitor, Allen Hatfield; Lamb, Welda Barton; Calves, Bruce Bridges; Outstanding exhibitor or showmanship, David Foster in the barrow division; Lamb, Lonnie Dear; Champion, Lonnie Dear and reserve champion, Craig Barton.

The meeting adjourned after which checks were presented to the exhibitors.

Beulah Newton spent the night Tuesday night with her children, Mr. and Mrs. Garner Ball, Randy and Debra.

This news item might be of interest to some in this area. Dr. Lynn Fite is leaving Olton to join his brother, Dr. Jim Fite in a hospital and clinic in Beaumont.

Mr. and Mrs. Elmer Gray are new residents of Earth. Grey has recently been appointed as county deputy for this area.

Mrs. Grey is a nurse in the Community Hospital, Olton. They have a grandson living with them. He is attending school in Olton.

Our basketball girls won the game last night with Idalou, at Abernathy. The score was 78-60. They will play regional Saturday in Lubbock.

Brucellosis Law Would Work Hardship on Cattle Producers

Adoption of proposed stricter shipping regulations under the brucellosis law would "work an unwarranted hardship" on cattle producers in more than one-third of the counties in Texas, the Texas Farm Bureau charged this week.

In a statement filed with the U. S. Department of Agriculture, TFB President Sidney Dean of Victoria requested that the effective date of the proposed amendments, if adopted, be delayed until Texas has completed initial certification.

Changes proposed by USDA would put additional restrictions on movement of cattle from non-certified areas to modified certified brucellosis areas. USDA has given interested parties until March 18 to file statements regarding the proposals which were published in the January 18 Federal Register.

Dean said that Texas has been making as much progress as funds allowed since its brucellosis control program began in 1959. He charged it is unfair to penalize producers who have been willing to cooperate in the program. Control efforts were begun first in West Texas. Most of the non-certified counties are in East Texas.

Here are excerpts from the TFB statement: "Texas is a big state--254 counties, with a total cattle population of approximately 10,972,000 head. In 1959, the 56th Legislature of Texas passed an Act providing for the Livestock Sanitary Commission of Texas (now the Animal Health Commission) to enter into cooperative agreements with USDA for the control and eradication of brucellosis, and setting forth the necessary rules and regulations to reach the established goal."

"Appropriations to carry out the purposes of the Act were admittedly limited to begin with, but this was not due to any fault of livestock producers or the Animal Health Commission. Subsequent appropriations have been in larger and more appropriate sums, and have been

matched by a corresponding accelerated pace in the State's brucellosis eradication program.

"Nevertheless, the brucellosis eradication program in Texas has progressed as fast and as far as money, personnel and time would possibly allow. As of January 1, 1968, 157 counties were officially modified certified brucellosis counties. Another 61 Type II Control (test and slaughter) counties were being tested. This leaves a total of 36 counties where a control program has yet to be initiated.

"Adoption of the proposed amendment as set forth in 9

Greenbug Controls Outlined

COLLEGE STATION--Methyl parathion, applied by air in a water carrier, has been found to give excellent results in controlling the greenbug, reports the Texas Agricultural Experiment Station, Southwestern Great Plains Research Center in Bushland.

In testing the effectiveness of ultra-low volume and conventional sprays for greenbug control, Associate Professor Norris E. Daniels of the Bushland Center, recently reported the finding of his research last year.

"Malathion and dimethoate, applied as ultra-low volume aerial sprays, were not effective in greenbug control. Methyl parathion, applied by air in a water carrier, gave excellent control. Dimethoate and malathion, as well as other insecticides, applied as water-emulsion sprays with ground equipment gave satisfactory results," Daniels said.

The greenbug, which has been damaging Fankhülle wheat, was found susceptible to methyl parathion, parathion, malathion and phosphamidin insecticides applied with conventional methods, but ultra-low volume ap-

plied was found unsatisfactory in all instances, he said.

The ultra-low volume application gave insufficient coverage because the greenbugs were well protected by the plant leaves. The dosage differences seemed to make no difference in control, the specialist concluded.

"We, therefore, request that the effective date of the proposed amendment, if adopted, be delayed until Texas has completed initial certification."

Band Members Receive Rating

Solo and ensembles by members of the Muleshoe Mighty "M" Band entered UIL competition in Lubbock Saturday.

Those receiving a division I rating were Lyna Pitts, Debbie Burrows, Doris Horsley and Ann Douglass in a French horn quartet; Brent Tanner, David

Cupton, Delton Bass and Donna Locke in a drum quartet and Treena Bryant in a tenor saxophone solo.

These winners will be entitled to participate in the State UIL contest which will be held in Austin.



with "AutoMAGIC" Cycle!
You Are Always In Command With "AutoMAGIC!"

"AutoMAGIC" takes all the guesswork out of clothes drying! Revolutionary "AutoMAGIC" cycle has a built-in sensor that automatically turns off the dryer when your clothes are properly dry. "AutoMAGIC" eliminates over drying & wrinkling. Your fabrics will always keep their natural luster with even-flow, exact drying temperatures.

Ask About Free GRADUATE NOW! Drying Certificate.

Money Saving Certificate saves you an additional \$15 during March and April!

Your Reddy Kilowatt Dealer has a \$15 certificate for every Public Service customer who buys an electric dryer. Since electric dryers operate for only 5¢ a load - total cost, it's like getting 300 loads dried free.

Poyner's White Store, Inc.
303 Main

IRRIGATION ENGINES

See
CROW CHEVROLET CO.

1968 MOTOR VEHICLE LICENCES
are now available at:
BAILEY COUNTY TAX OFFICE
Court House, Muleshoe
CLAUNCH GIN, Bula
FARMER'S CO-OP GIN, Enochs
GOODLAND CAFE, Goodland
and must be on vehicle by **APRIL 1st.**
'Car inspection sticker must be on vehicle by April 15th.'

Be sure to bring 1967 Registration Receipt and Certificate of Title as it is strict requirement that information from both are shown on 1968 licence receipt.

Jean Lovelady
Bailey County Tax Assessor

Honor Students Named For Month

The National Honor Society met at the Corral Drive-In for their monthly breakfast on Thursday morning. This was the first breakfast for the new members who were initiated last week.

All of the new and old members were present.

The honor students of the month have been chosen and they are Winn Watson, senior; Debbie Burrows, junior; Darla Kendall, sophomore and Shirley Lang, freshman.

Tony Puente In Nurnberg

NURNBERG, GERMANY--Army Specialist Five Antonio L. Puente, 21, son of Mr. and Mrs. Roque L. Puente, Muleshoe, was assigned as a finance clerk with the 14th Finance Section, North Bavaria District near Nurnberg, Germany, February 6.

His wife, Eufelia, lives at 3310 Baylor St., Lubbock.



PARATROOPER----Leonard Nash, son of Mr. and Mrs. Leonard Nash, has been assigned to Fort Benning, Ga. where he will be in paratrooper training for several weeks. He completed basic training at Fort Polk, La. after enlisting here January 2. He was a former employe of Lang Transit before entering the service.

SINGLETON FUNERAL HOME
24 HOUR AMBULANCE SERVICE
PHONE 272-4574 MULESHOE

FASTEST SERVICE IN TOWN!



Well...Maybe not quite that fast.
WESTERN '66' CO.



YOUR ATLANTIC FULL SERVICE DISTRIBUTOR

Muleshoe 272-4556

Needmore 946-2271

Lazbuddie 965-2191

Miss Hall Married to Carroll Thomas



Mrs. Carroll Morgan Thomas (The former Georgia Lee Hall)

Miss Georgia Lee Hall became the bride of Carroll Morgan Thomas in an impressive double ring ceremony read in the Chapel of the First Baptist Church in Midland, March 9, 4 p.m.

Dr. Lindell O. Harris, chairman of the Division of Religion at Hardin-Simmons University, Abilene, performed the ceremony.

The bride is the daughter of Mr. and Mrs. Fred W. Hall, Circleback. Parents of the bridegroom are Mrs. Carroll L. Thomas and the late Carroll L. Thomas.

Escorted and presented in marriage by her father, the bride entered the Chapel amid two baskets of white gladiolus on pedestals and a pair of candelabras with white tapers and white satin bows.

For the wedding, the bride was attired in a floor-length gown of pure silk organza Peau de Soie, delicate Venice lace trimmed. The empire bodice, which featured contoured neckline and elbow length sleeves, with tiered silk organza ruffles, topped by a Dior bow, formed the back skirt and flowed from the A-line silhouette. Venice lace petals formed the bride's headpiece and was attached to a bouffant shoulder length veil of pure silk English illusion. She carried a bridal bouquet, a cascade of three white gardenias with white roses.

Carole Hall, sister of the bride and a student at Texas Tech, was maid of honor. She wore an A-line dress of hot pink dacron shantung, sleeve-

less with contoured neckline and empire bodice. Her corsage was a colonial bouquet of pale pink pom poms and pale pink streamers.

Candlelighters were John and David Hall, Muleshoe, brothers of the bride, Steve Thomas, brother of the bridegroom, a student at the University of Texas, served as best man. Seating the guests were John and David Hall, Muleshoe, and Clem Barnes of Midland.

Traditional wedding selections were rendered by Mrs. Jimmy Hoover of Wichita Falls and soloist was John Grady of Midland.

Members of the reception houseparty were Miss Vyneta Gill, Miss Ann Canon, Miss Judy Sanderlin and Miss Susan Osborne, all of Midland.

After a wedding trip to New Orleans, La., the couple will be at home after March 16, at 1605 Midkiff Road, Apartment 223, Midland.

The bride is a graduate of Hardin - Simmons University with a Bachelor of Business Administration degree and is a member of Epsilon Eta Phi, business sorority. She is presently employed as legal secretary of Shell Oil Company.

The bridegroom is a graduate from Texas Tech, with a Bachelor of Science and a Master of Science degree. He is a member of Alpha Tau Omega, social fraternity and Sigma Gamma Epsilon, honorary geological fraternity. He is working as geologist with Mobil Oil Corporation.

A rehearsal dinner was hosted by the bridegroom's mother at Midland Country Club.

A Mommie, Daddys' Cradle Shower Honors the Tanners



CRADLE SHOWER--Mr. and Mrs. Jackie Tanner are shown as they were honored at a "Mommie and Daddys' cradle shower in the home of Mr. and Mrs. Harrold White.

A pink and blue "Mommie and Daddy" shower was given in honor of Mr. and Mrs. Jackie Tanner Tuesday night, March 5, 8 p.m. in the home of Mr. and Mrs. Harrold White.

Approximately 50 guests were served by Miss Veneta King.

Among games played was one where three chosen fathers pinned a diaper on a baby. As each guest was welcomed by Miss King, they were named a special "baby" name for the night. If they were called by any other name, the person doing the talking had to put a penny in the baby's bank. Needless to say, everyone was always listening to make the offender fork over his money. A good collection for "baby" was the result and those in attendance had a good laugh. Among the names used were "Dimples," "Beautiful" and "Darling" - all men.

The centerpiece was a stork surrounded by pink and blue net diapers holding mints. Punch and coffee were served, along with cupcakes topped with miniature dolls.

While Mrs. Tanner opened her gifts, Jackie opened gifts from the daddies. Among gifts received by Jackie Tanner, was a "Survival Kit" for the waiting room, containing a comic book, crackers, peanut butter, cookies and other miscellaneous items. Hostess gift was a high chair.

Hosts were Mr. and Mrs. Harrold White and Mr. and Mrs. John Blackwell.

ETA Sorority Meets With Mrs. Max King

Delicious refreshments of pie, coffee and Russiantea were served to the following members: Mrs. Chester Yerby, Mrs. Charles Mayhugh, Mrs. Hugh Young, Mrs. Don Seals, Mrs. Willard Tibbels, Mrs. Max King, Mrs. David Gibson, Mrs. Eugene Howard, Mrs. Joe King, Mrs. Jack Rennels, Mrs. Roald Johnson, Mrs. Henry Stoneham, Mrs. Ernest Martin, Mrs. John Young and Mrs. J. Pat Wagon.

The Epsilon Sigma Alpha had its regular monthly business meeting in the home of Mrs. Max King, Tuesday, March 5, 8 p.m. Serving as co-hostess was Mrs. J. Pat Wagon.

A agenda of business included discussion of a bake sale to be held March 20 at Wagon Grocery, Cashway Grocery and Piggly-Wiggly Grocery, beginning at 9 a.m.

The nominating committee reported nominations for the following year as follows: Mrs. Roald Johnson, president; Mrs. Joe King, vice president; Mrs. J. Pat Wagon, secretary and Mrs. John Young, educational director. These nominees will be voted on at the next month's business meeting. The sorority voted to endorse a Junior College Extension Course from South Plains Junior College at Levelland.

A program of interest was enjoyed. Each member wrote and read a short autobiography. The refreshment table was gaily decorated with a green table cloth, little green Irish leprechauns with matching napkins to carry out a St. Patrick's theme.

Study Club Meeting Postponed

The Muleshoe Study Club called the meeting off because of bad weather which was to meet with Mrs. Agee.

Gifts were collected to send to the State Hospital at Wichita Falls.

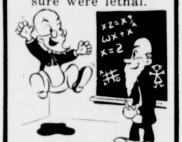
The next meeting will be in the home of Mrs. E. M. Pruitt, Thursday, 4 p.m.

Corrected Diagnosis At Atlantic City--"Mo says he ran into a vaudeville team who explained that they weren't working on account of sinus trouble."

"Yeah," said the sale half of the act, "nobody will sign us."

COMMENTS BY CALVIN & LILLIE MAE

By the time grandpa got around to changing his leotards each spring, they weren't thermal...but they sure were lethal.



CALVERT'S DRIVE-IN GROCERY
OPEN 7 AM THRU 9 PM
BEST SERVICE IN TOWN
1902 CLOVIS ROAD
MULESHOE

Hobby Club Meets With Verna Dement

The Muleshoe Hobby Club met in the home of Mrs. W. D. Dement March 7, 2 p.m. Co-hostess was Mrs. C. H. Gilles.

Twenty four members were present, with two guests, Mrs. C. O. LaRue and June Vinson. Ina Givens received a beautiful pin from her secret pin. The Hobby Club will have a luncheon at First Methodist Church on April 9.

Next meeting will be in the home of Mrs. Allie Barber with Zula Carlyle as co-hostess.

Some of the hobbies and collections of the members are: Ina Givens - crochet, knitting, collections of old fruit jars, bottles, sea shells and old stamps, also a rockhound.

Mabel Caldwell - Old fruit jars, bottles, (in plastic molds.

makes ashtrays, lampshades, figurines and plaques) and is a rockhound.

Bernice Amerson - collects antique furniture, lamps, dishes, old fruit jars, paints, crochets, knit and is also a rockhound.

Altha Hanks - Collects antique fruit jars, bottles, crochets and rockhound.

Ola Pesch - Collects miniature dogs (in china and plastic).

Jewel Barry - Handmade dolls, sock dolls, bed dolls and sews.

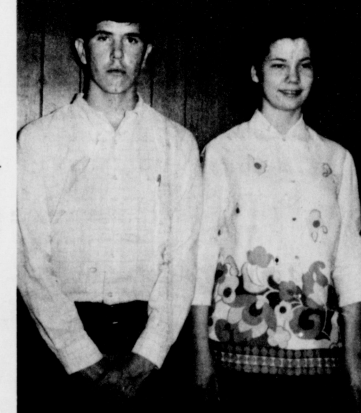
Allie Barber - Collects anything in colbat-bottles, some purple jars and bottles. Also paints dishes, quilts and melts down bottles into figurines.

Hattie Bristow - Hand sews and makes bed dolls.

Hi, World

CONGRATULATIONS TO:

Mr. and Mrs. C. E. Grant Jr., Route Two, Muleshoe, who are the proud parents of a baby girl born March 2, 6:53 p.m. in West Texas Hospital in Lubbock. Little Laurey Melissa Grant weighed six pounds, two ounces.



HALLMARK ART TALENT CONTEST---Jerry and Beth Black are local entries in the Hallmark Art Contest for high school seniors, sponsored by the General Federation of Womens Clubs. Local entries are sponsored by the Muleshoe Study Club, submitted in the district contest to be held in Lamesa, March 22.

YES! WE CAN FILL YOUR BEEF ORDERS.

MULESHOE LOCKER

"HOME OF VANCE'S COUNTRY STYLE SAUSAGE, BACON AND HAMS."

- Hamburger Patties..... 3 Lb. \$1.35
- Bacon..Home Cured.....Lb. 63c
- Family Steak.....Lb. 59c
- Hamburger..... 3 Lb. \$1.40

401 Main

Phone 272-4703

HEY, MOM LOOK!

A BEAUTIFUL VIGNETTE 8x10 PORTRAIT 79c

FOR ONLY....

VOGUE Studios of Lubbock will be in this store ONE DAY ONLY TUESDAY March 12th 9 A.M. to 6 P.M.

Anthony's Muleshoe

- No age limit. Adults & groups 79c per person.
- ALL children MUST be accompanied by a parent.
- You will see a selection of pictures IN LIVING COLOR!
- Your finished picture will be delivered at this store. no mailing or waiting.

REXALL ORIGINAL 1c sale STARTS THURS. MARCH 28th thru SAT. APRIL 6

Hundreds of items at 2 for the price of 1.. PLUS A PENNY!

Make every penny count SAVE! SAVE! SAVE!

DAMRON REXALL DRUG Muleshoe

WE INVITE YOU TO A SPECIAL SHOWING

of Custom Fabrics and Newest Fashions for Your Spring Wardrobe

SUITS • OUTERCOATS SPORTCOATS and SLACKS Tailored to your measure and precise build

••• "Large or small we fit them all" •••

COME IN AND MEET E. V. PRICE'S SPECIAL HOST

MR. J. ELLIOTT MONTGOMERY Ed. V. Price Representative

Mon. & Tues. March 11 - 12 THIS IS A SPECIAL TWICE-A-YEAR EVENT

OVER FIVE HUNDRED of the choicest suitings for Spring and Summer, from the world's finest looms, will be on display in tailor's swatches. The values are outstanding. Be sure to come in and see them.

REMEMBER YOU HAVE A DATE AT LAMBERT CLEANERS MULESHOE, TEXAS

Clothes Tailored by E. V. PRICE & CO.

have you heard? IT'S GIRL SCOUT WEEK

Sunday, March 10-16

You're invited to visit our official Girl Scout Shop during this national event! Be prepared to feast your eyes on everything a Girl Scout or Leader could want...a wonderful array of uniforms, sportswear, gift items and camping equipment.

Come in and browse around--you're always welcome!

ST. CLAIR'S

A Salute to Area Clubs and Presidents

Society News

KARLENE RAGLAND Society Reporter
Phone 272-4536

Study Club Plans District Convention



LAUREATE POETRY JUDGE --- Mrs. Horace Blackburn, District Poet Laureate of Federated Clubs, has judged the Poet Laureate Poetry contest and will present the award to the winning person at the convention of Federated Clubs, March 22 and 23 in Lamesa.

Women of the Muleshoe Study Club are making plans to attend the District Convention of Federated Clubs, March 22 and 23, to be held in Lamesa.

This is the official annual meeting of Caprock District and the president, Mrs. Louise Cummings of Plainview, will be the presiding officer. Host clubs are the Study Clubs of Lamesa, O'Donnell and Post, the theme is to be "Caprock Banners."

Mrs. Thurman White, winner of the local "Fashions For Fun" contest, will be in the District contest on Friday, the 22nd. Mrs. Rufus Gilbreath, Mrs. Cecil Cole and Mrs. Horace Blackburn will attend the Caprock District Board Branch at the Lamesa Clubhouse. Mrs. Blackburn has judged the Poet Laureate poetry contest and will present the award to the winning person.

Senior art students of Muleshoe High School will have entries in the Hallmark Art contest and several club members will have pictures in the District Art Display.

A large group from the Muleshoe Study Club is planning to attend the two-day convention, Cadettes to Hold Style Show

ture all teenagers. There will be 24 models participating, representing six stores.

Watch the next paper for more information concerning the show which is to be held March 22.

Port has quietly raised prices of pants.

Another in a series of our salute to area clubs and presidents. This week features Mrs. Don Harmon, president of the Mary DeShazo P-TA.

Mrs. Harmon and her family moved to Muleshoe from Lubbock in January of 1965. She is the mother of three children, Donnan, 9; Connie, 7 and Mark, 6. Her husband, Don, is the manager of Tri-County Saving and Loan Association. They are both graduates of Muleshoe High School.

Mrs. Harmon and her family attend the Church of Christ. She teaches a class of teenage girls on Wednesday night. She also serves as president of Lubbock Christian College Associates, president of the Lamb-Bailey Bi-County Council of P-TA and a member of MAWS, a branch of the chamber of commerce. Mrs. Harmon will be a nominee for the aide-to-the-president of District 14 P-TA at the spring conference, March 29.

Her hobbies include sewing and playing bridge.

Mary DeShazo P-TA meets the third Monday of each month during the school term. The objects of the Parent-Teacher Association are: "To promote the welfare of children and youth in home, school, church and community. To raise standards of home life. To secure adequate laws for the care and protection of children and youth. To bring into closer relation the home and the school, that parents and teachers may cooperate intelligently in the training of the child. And to develop between educators and the general public such united efforts as will secure for every child the biggest advantages in physical, mental, social and spiritual education."

While awaiting my order in a little tea garden in England, I noticed that the ash tray on the table had about half an inch of water in the bottom. This struck me as a good idea for extinguishing cigarettes, and when the waitress returned, I commented on the fact.

"Yes," she said with a twinkle "and it also discourages people from slipping them into their pockets as souvenirs."

WEST PLAINS HOSPITAL ADMISSIONS: Floyd Rutland, Mrs. Adlyn Swafford, Raymond Roubinek, Owen Powell, Roy Graves, Sylvia Gonzales, Lupe Gonzales, Mrs. Nettie Blackman, Bebecca Gonzales, Mrs. Diele Snitker, Mrs. Nancy Hines, Mrs. Bertie Black, Mrs. Phama Anderson, Mrs. Lena Casey, Mrs. Bertha Cross, Mrs. Ina Marshall and Robert Simmons.

DEMISSIONALS: Mrs. Carrie Wilhite, Mrs. Malisa Lawson, Albert Bell, E. K. Angeley, Sharon Blaylock, Syllie Gonzales, Mrs. Lola Bradley, Buck Williams, Mrs. Barbara Burdette, Roy Graves, Floyd Rutland, Mrs. Mary Evans and Mrs. Mildred McDaniel.

GREEN MEMORIAL HOSPITAL ADMISSIONS: Mrs. Neta Griffiths, Mrs. Preston Harri-

Neal Dillman Speaks To 4-H Club

The Pleasant Valley 4-H club met Monday, March 4, 5 p.m. in the Pleasant Valley Community building. Collin Platt presided at the meeting, with John Pitts leading and all joining in saying the 4-H motto. The roll call and minutes were read by Richard Fox.

Two turkey shoots were decided upon before Easter. Collin Platt appointed John Pitts, Richard Fox, Bobby Allison and Danny Caldwell, to serve on a committee to plan for the turkey shoots. They will be held on March 30 and April 6. It was

Jenny TOPS Club

The Jenny TOPS Club met at their regular meeting in Bailey County Electric Co-operative community room, on Thursday, March 7, 7 p.m. June Vinson, leader, was in charge of the meeting. The meeting was opened with the saying of the pledge: "I am an intelligent person, I will control my emotions and not let my emotions control me; Everytime I am tempted to do something that I know is wrong, I will remember, even though I eat in private, my excess poundage is for all the world to see what a fool I've been."

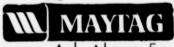
Lucille Harp was queen for the week with two and three-fourths pounds loss. Evelyn Johnson was second runner-up with two and one-fourth pounds loss, Selma Redwine and Rose Sain tied for second runner-up with two pounds loss.

Lucille Harp drew a gift from the gift box. It was a box of nice dishcloths. Several members volunteered to bring novelty gifts or souvenirs to be sent to the convention, as the club was asked to furnish 12. These gifts will be taken to the convention in April.

The queen of the month was celebrated at the meeting, also. The queen was Nina Redwine with eight and three-fourths pounds loss. Rose Sain was first runner-up with eight and one-fourth pounds loss and Pauline Houston was second with four and one-half pounds loss. The monthly queen received a fruit basket.

Super Deluxe Electronic CONTROL DRYER

One setting, no guessing with this Maytag Dryer. Clothes are treated to a gentle, soft circle of low temperature heat. Lets you dry all drable fabrics, without overbaking some and underdrying others. Special Permanent Press setting with time chime. Interior drum light. Safety door and start switch.



Ask About Free Drying Certificate.

GRADUATE NOW! Money Saving Certificate saves you an additional \$15 during March and April!

Your Reddy Kilowatt Dealer has a \$15 certificate for every Public Service customer who buys an electric dryer. Since electric dryers operate for only 5¢ a load - total cost, it's like getting 300 loads dried free.

Gordon Wilson Appl. 202 Main



Mrs. Don Harmon

Progress HD Club Met in Home of Mrs. Murrah

The Progress Home Demonstration club met Tuesday, March 5, in the home of Mrs. Gordon Murrah, President. Judy Roving, Secretary, and Laurie Smallwood, hostess, were present. Roll call was answered with "A Flower I Have Successfully Grown."

Landscaping was an interesting program, given by a former Muleshoe resident, Lee Ann Blaylock of Levelland. She and her husband own and operate Nurseries in Levelland and Clovis. She answered many questions on the subjects of flower, shrubs and trees suitable to this area. Also sprays and fertilizers were discussed.

The Commissioners supper will be at the Fellowship Hall of the First Methodist Church, March 15, 7:30 p.m. The Conservation Homemaker award will be presented by the Soil Conservation Service and each club will present an award to their outstanding member who has been elected by secret ballot and will be revealed at the supper.

Mistress of Ceremonies will be Council Chairman, Judy Roving. Decoration Committee members are Elzada Gullea, Kay Mardis and Faye and Patsy Poyner. Program Committee are Jauree Smallwood and Marilyn Wilson.

The menu will include fried chicken, salad, green beans, rice or cake, tea and coffee and

hot rolls. Club members will prepare the food.

Bailey County Council will meet Wednesday, March 13, at 2 p.m. in the First National Bank.

Kay Mardis recreation chairman, led recreation for the following members and guests: Lee Ann Blaylock, Eunice Crume, Veta Self, Lena Kello, Judy Roving, Sadie Baiso, Gerie Myers, Jauree Smallwood and the hostess, Ada Murrah.

Next meeting will be in the home of Judy Roving, March 19.

Hospital News

WEST PLAINS HOSPITAL

ADMISSIONS: Floyd Rutland, Mrs. Adlyn Swafford, Raymond Roubinek, Owen Powell, Roy Graves, Sylvia Gonzales, Lupe Gonzales, Mrs. Nettie Blackman, Bebecca Gonzales, Mrs. Diele Snitker, Mrs. Nancy Hines, Mrs. Bertie Black, Mrs. Phama Anderson, Mrs. Lena Casey, Mrs. Bertha Cross, Mrs. Ina Marshall and Robert Simmons.

DEMISSIONALS: Mrs. Carrie Wilhite, Mrs. Malisa Lawson, Albert Bell, E. K. Angeley, Sharon Blaylock, Syllie Gonzales, Mrs. Lola Bradley, Buck Williams, Mrs. Barbara Burdette, Roy Graves, Floyd Rutland, Mrs. Mary Evans and Mrs. Mildred McDaniel.

GREEN MEMORIAL HOSPITAL ADMISSIONS: Mrs. Neta Griffiths, Mrs. Preston Harri-



COME IN SOON Don't FIDDLE AROUND figuring your own INCOME TAX

There's only one way to handle your tax problem. GET IT DONE NOW! Best way to get it done is to TAKE IT TO BLOCK. We'll give you fast, accurate, guaranteed service at a cost no less than it costs to go up. See us today!

COMPLETE RETURNS \$5 UP

GUARANTEE We guarantee accurate preparation of every tax return. If we make any error that cost you any penalty or interest, we will pay the penalty or interest.

MR. B. BLOGG CO. America's Largest Tax Service with Over 2000 Offices 115 E. AVE. D Weekdays 9 A.M. - 6 P.M., Sat. 9 - 5 Ph. 272-4644 "No Appointment Necessary."

Mon. Thru Wed. "WHERE YOU ALWAYS BUY THE BEST FOR LESS"

GIBSON'S DISCOUNT CENTER

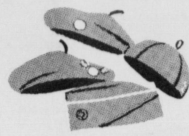
OPEN 9 A.M. to 8 P.M. Mon.-Sat. Muleshoe, Texas

Ladies' Cotton Half Slips \$1 Val. 67¢ S-M-L Shadow Panel front	IVORY FLAKES Detergent 19¢ Regular Size	CASCADE Dishwasher Soap Giant Size Gibson's Low Price
Spanish Designed--Corrida Bed Spreads 9.98 Val. \$6.57 EA. 100% Cotton-Full or Twin size	GILLETTE Techmatic Razors \$2.95 Value \$1.99	Thrill Liquid 62¢ Giant Size 38¢
Close-out--Insulated UNDERWEAR Values \$3.47 Pr. to 8.98	Gillette Techmatic Razor Band Cartridge 6's 1.00 Value 61¢	
Playtex Living Gloves 1.39 Val. 83¢	DERBY MEN'S T-SHIRTS 100% Cotton 3 in Package \$2.00 Value \$1.47	DASH DETERGENT JUMBO SIZE \$1.86
Ladies' Pixies Asst. Color \$1 Value 57¢ Pr.	Groom & Clean with free lip balm \$1.28 Value 54¢	Foil Wrap 43¢
	COME 'N GET 'EM Boy's long sleeve Sport Shirts Our Reg. \$1.87 97¢ Our Reg. \$2.87 \$1.27 EA.	Health and Beauty Aids AT DISCOUNT PRICES

POLIDENT... Economy Size 1.09 Val. 67¢
 CEPACOL MOUTHWASH... 14 oz. Size 1.09 Val. 57¢
 SUMMER BLONDE HAIR SPRAY... 13 oz. Size 99¢ Val. 53¢
 BAYER ASPIRIN... 100 Tablets 98¢ Val. 63¢
 BEN-GAY PENETRATING HEAT LOTION... 2.29 Value 1.37
 VICK'S VAPORUB... 6 1/2 oz. Size 1.69 Val. 1.06
 NOXZEMA MEDICATED COLD CREAM... 1.29 Value 74¢
 PERTUSSIS MEDICATED VAPORIZER... 10 oz. Size 1.89 Val. 99¢
 NOXZEMA INSTANT SHAVE... 11 oz. Size 1.29 Val. 76¢
 NEET LOTION HAIR REMOVER... 98¢ Value 59¢



TROOP 288---Girl Scout Troop 288 under the leadership of Mrs. Jimmy Black is pictured here. Doris Bartholf, Pam Cleavinger, Tammy Webb, Debbie Faust, Donann Harmon, Janet Hopper, Mary Perez, Yvette Tanguna, Sheryl Rasco, Mary Torres, Lashelle Lewis, Carol Brown, Yolanda Orozco, Sheryl Brown, Sherril Washington, Erna Kelly, Donna Bellar, Alice Gonzales, Debbie Kensemer and Mrs. Jimmy Black. (Morris Nowlin Photo)



Honoring The Girl Scouts



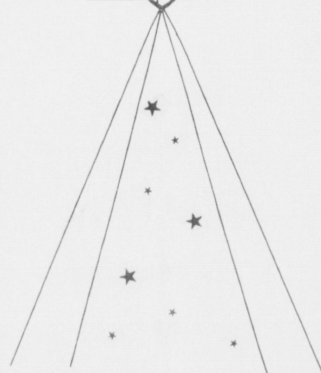
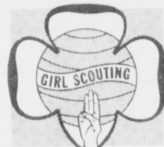
TROOP 66---The following girls are in Girl Scout Troop 66, Vickie McDaniel, Jeannie Wood, Marvina Barnhouse, Leesa Sanderlin, Brenda Weeks, Kim Clodfelter, Brenda St. Clair and Dana Lambert. They are under the leadership of Mrs. Clarence Weeks. (Morris Nowlin Photo)



TROOP 39---These scouts are members of Troop 39. They are (back row) Sandra Sims, Linda Vinson, Lizann Gunter, and Candice Gable. First row: Susan Foster, Melita King, Sheryl Burton and Cynthia Puckett. Mrs. Richard Puckett is leader. (Morris Nowlin Photo)



TROOP 103---Troop 103 is under the leadership of Mrs. Bonnie Nowlin, Jean Haskins and Mrs. Willie Reeder. The Brownies in the back row from left to right are Yvette Tanguna, Glenda Turner, Kimberly Sanderlin, Cynthia Isaac and Tammy Bruns. In the middle row from left to right are Alma Leal, Gwenolyn Reeder, Phyllis Campbell, Starla Magby and Geneva Madrid. In the front row from left to right are Kim Small, Cheryl Johnson, Teresa Scarbrough, Tanya Burton and Caren Floyd. (Morris Nowlin Photo)



Today is the beginning
of Girl Scout week.
All Girl Scouts and
Brownies are to attend
the church of their choice
attired in their uniforms.



TROOP 89---Brownie Troop 89 is posing with their Senior Scout Leader Penny Landers. Pictured (back row) is Marcie Rudd, Sharron Harris, Debbie Burchel, Beverly McCannish, Janice Dearing, Penny. Center row, Robbie Nesbitt, Rhonda Field, Sandra Briscoe, Judy Dearing, Cindy Knight, Carol Camp. First row, Lauren Hall, Sarah Patterson, Rhonda Stevenson, Mary Beth Dillman, Vickie Redwine. Their leaders are Mrs. L. B. Hall and Mrs. Wayland Harris. (Morris Nowlin Photo)



FIRST YEAR---These are members of a first year Brownie Troop with Mrs. Bobby Pena and Mrs. James Berry as leaders. They are (back row) Gloria Malouf, Vickie Williams, Morgan Pena, Jovannah Hawkins and Belinda Magby. Front row: Jamie Berry, Jolinda Hawkins, Denice Reeder and Rhonda King. (Morris Nowlin Photo)



TROOP 304---These are the girls in Brownie Troop 304, back row, Abbie Gail Harris, Dani Dunham, Loveta Block, Dayna Kinard, Anna Hernandez, (middle row) Gayla Redwine, Teresa Cline, Rena Ruthardt, Lora Burris, Tammie Hight. First row, Gaynell Williams, Cindy Harris, Glenda Rasco. Troop 304 leader is Mrs. A. F. Malouf. (Morris Nowlin Photo)



BROWNIES---This is another group of First Year Brownies who are directed by Mrs. Charles Green. They are Kelly Gregory, Elizabeth Isaac, Connie Harmon, Jamie. First row: Stentham Brantley, Tanya Webb, Charla Green and Patty Faust. (Morris Nowlin Photo)

Saluting The Girl Scouts of America

CELEBRATING THEIR 56th ANNIVERSARY



"VALUES TO HOLD —
WORLDS TO EXPLORE"
MARCH 10 TO 16 IS

GIRL SCOUT WEEK



We would like to recognize and thank the leaders and all who work so diligently with our young people. Above are - back row - Mrs. Bill Jim St. Clair, consultant and Mrs. Walter Bartholf, assistant Girl Scout leader. Front row - Mrs. Byron Gunter, neighborhood chairman and Mrs. A.J. Mallouf, Brownie leader. Not available when picture was taken were Mrs. C.W. Weeks, consultant and Mrs. W.M. Dean, troop organizer.

The first Girl Scouts pledged themselves to a way of life based on honor, integrity, courtesy and service. Today's Girl Scouts make the same promise. Their basic values and skills are as solid as they have always been. What's new are the broader horizons and the new worlds of adventure that Scouting offers. This is described in the theme: "Girl Scouting: Values to Hold — Worlds to Explore."

*This Message is Brought to You
by These Civic-minded Firms:*

- Cobb's**
- Dari-Delite**
- Ladd Pontiac**
- Western Drug**
- Johnson & Nix**
- Sweetheart Lane**
- First National Bank**
- Muleshoe Co-op Gins**
- Black Insurance Agency**
- Baker's Maytag Laundrette**
- Retail Merchants Association**
- Union Compress & Warehouse**

- Swap Shop**
- Dot's Shop**
- Central Texaco**
- Crossroads Cafe**
- BMG Motors, Inc.**
- Muleshoe Motor Co.**
- Richland Hills Texaco**
- Muleshoe State Bank**
- Higginbotham-Bartlett**
- First Methodist Church**
- Bratcher Motor Supply**
- Muleshoe Publishing Co.**

- Fry & Cox**
- Ray's Rocket**
- White's Cashway**
- West 6th Texaco**
- Dinner Bell Cafe**
- Art-Craft Printing**
- John's Custom Mill**
- Douglass Implement**
- Ready Mix Concrete**
- Eddie's Food Market**
- Custom Farm Services**
- West Plains Pharmacy**



MAIN STREET BEAUTY SALON
Bailey County Electric Cooperative Association



Bula News

By Mrs. John Blackman

Honor roll for Bula school for first six weeks of second semester as released by the school secretary, Mrs. Marion McDaniel.

First grade: A-Lynn Robertson; A and B-Eleta Buscher, Clifford Fleming, Jarrol Layton and Richard Nichols.

Second grade: A-Sherri Claunch; A and B-Cary Austin, Shannye Autry and Nanette Hill.

Third grade: A-Carolyn Stroud and Janice Tiller; B-Scott Hansen.

Fourth grade: A-Sam Flemings; B-Randy Hall.

Fifth grade: B-James Snitker, Jackie Tharp, Lisa Risinger and Honda Hall.

Sixth grade: A-Edward Clawson; B-Debbie Hansen and Craig McDaniel.

Seventh grade: A and B-Kenny Claunch.

Eighth grade: A and B-Larry Clawson.

Freshman: A-Diane Crume, Sophomore: A - Margaret Richardson; A and B-Iva Clawson, Judy Snitker and Donna Crume.

Juniors: A-Elaine Tiller and Patricia Grusendorf.

Seniors: A-Phillip Fleming, Mike Richardson, Glen Salyer and Dennis Newton, A and B-Linda McCamish, Sheryl Medlin, Joyce Sowder and Barbara Clawson.

Patricia Grusendorf, Sheryl Medlin and Elaine Tiller have been notified that they have qualified for their state degree in FHA work. This is the highest degree an FHA girl can achieve. They have been very active in FHA work for the past three years, making first their junior degree, then chapter degree and now their state degree. The girls will receive the degree award at the State FHA meeting in Austin April 18-20.

Friday, March 15, is the date set for the annual FFA banquet. This will be held in the school lunchroom. Horace McQueen, farm news reporter for channel

13 will be the featured speaker for the entertainment. Jack Tharp is the FFA chapter sponsor.

Bula FFA chapter will be showing four pigs in the South Plains Livestock Show on March 18-23. Jolene Cox, 14-year-old daughter of Mr. and Mrs. D. J. Cox and a freshman at Bula school, is an entry in the FFA princess contest.

Mrs. Lorene Cox was a dinner guest Sunday with Mrs. C. R. Seagler of Enochs; the ladies drove to Morton in the afternoon to the Morton rest home and made Mrs. S. A. Williams and Mrs. Smith a visit. Mrs. Williams is the mother of C. A. Williams of Bula and Mrs. Smith is the mother of Mrs. Seagler.

Mr. and Mrs. Richard Greer are proud parents of a seven pound girl born at 12:35 a.m. March 5, at the Littlefield Hospital. We don't know her name at this time, grandpa couldn't tell us. We want to say congratulations to Mr. and Mrs. A. P. Fred, this is their first grandchild. Also their third child for Mr. and Mrs. Greer, Mrs.

Greer is the former Phillis Fred.

Mr. and Mrs. W. R. Adams have been spending much time here of late with their son, Bobby of near Morton. Bobby is confined to his bed at home but is under the care of a doctor in Lubbock.

Jackie Tharp, daughter of Mr. and Mrs. Jack Tharp, had the misfortune of getting a sewing needle in her knee with a portion going into the kneecap and will necessitate surgery to remove it. Jackie, with her sisters, was sitting on the floor sewing old dresses and Jackie happened to let this knee fall on a needle with the point up. The needle was buried in the rug. She is confined in the Medical Arts Hospital.

Mrs. John Blackman visited Monday with Mr. and Mrs. F. C. Snitker at Muleshoe. They own land in our community and in recent years moved to Muleshoe. They enjoy having friends from here drop in for a visit with them.

Superintendent Marion McDaniel, Gordon McDaniel of Levelland and R. T. Newton and son, Dennis, drove to Bryan Saturday for a Career-Day at Texas Tech. Gordon plans to enter here in June. Dennis is a senior at Bula and wanting to get acquainted with the school and its campus life. He hasn't made up his mind where he might further his education.

Bula girls lost their bi-district game to Spade Monday evening in the Littlefield gym. A real thriller of a game, we are real proud of our girls as they fought hard and Bula fans really backed them. The final score being 55 to 60 for Spade. Joyce Sowder from Bula leading in scoring with 38 points.

The Tritones, composed of Patricia Grusendorf and Elaine Tiller, with Donna Crume at the piano, and superintendent McDaniel with some of his poetry readings were planned to guests of the Morton Chamber of Commerce dinner Wednesday.

Kenny Claunch and Forrest Simmons are still patients in the Medical Arts Hospital. Both are much improved and are being news writing time again, they will be home.

Mrs. Harold Fleming and small daughters, Elizabeth and Melissa, left Sunday for Houston where she will spend her sister a visit of several days. Mrs. B. J. Carter, Mrs. Fleming will be guest Friday evening at a banquet where she will have the privilege of hearing as speaker, the Rev. Dr. Vernon McGee of Los Angeles, Calif., pastor of the Church of the Open Door.

Mr. and Mrs. Thomas are a retired couple. He is retired from the Shell Oil Company. They are very active in their church work and in the community activities.

Jackie Tharp, daughter of Mr. and Mrs. Jack Tharp, had the misfortune of getting a sewing needle in her knee with a portion going into the kneecap and will necessitate surgery to remove it. Jackie, with her sisters, was sitting on the floor sewing old dresses and Jackie happened to let this knee fall on a needle with the point up. The needle was buried in the rug. She is confined in the Medical Arts Hospital.

Mrs. John Blackman visited Monday with Mr. and Mrs. F. C. Snitker at Muleshoe. They own land in our community and in recent years moved to Muleshoe. They enjoy having friends from here drop in for a visit with them.

Superintendent Marion McDaniel, Gordon McDaniel of Levelland and R. T. Newton and son, Dennis, drove to Bryan Saturday for a Career-Day at Texas Tech. Gordon plans to enter here in June. Dennis is a senior at Bula and wanting to get acquainted with the school and its campus life. He hasn't made up his mind where he might further his education.

Bula girls lost their bi-district game to Spade Monday evening in the Littlefield gym. A real thriller of a game, we are real proud of our girls as they fought hard and Bula fans really backed them. The final score being 55 to 60 for Spade. Joyce Sowder from Bula leading in scoring with 38 points.

The Tritones, composed of Patricia Grusendorf and Elaine Tiller, with Donna Crume at the piano, and superintendent McDaniel with some of his poetry readings were planned to guests of the Morton Chamber of Commerce dinner Wednesday.

Kenny Claunch and Forrest Simmons are still patients in the Medical Arts Hospital. Both are much improved and are being news writing time again, they will be home.

Mrs. Harold Fleming and small daughters, Elizabeth and Melissa, left Sunday for Houston where she will spend her sister a visit of several days. Mrs. B. J. Carter, Mrs. Fleming will be guest Friday evening at a banquet where she will have the privilege of hearing as speaker, the Rev. Dr. Vernon McGee of Los Angeles, Calif., pastor of the Church of the Open Door.

Junior High Lists Honor Students

A high number of students are listed on the honor roll for the fourth six weeks of school at Junior High School. The sixth grade has 40 students, the eighth grade has 36 students and the seventh grade has 33 on the list.

From the sixth grade, students are:

Nancy Blackstone, Steve Block, Terri Bryant, Mark Bruns, Kim Cowan, Rosita Gutierrez, Rejana Hardaway, David Hardgrove, Glenda Harlin, Susan Head, Susan Hensley and Lequice Herman.

Also Donna Herring, Gayla Hooten, Lorena Hufford, Viola Jackson, Mike Jones, Cynthia King, Fred Locker, Don Long, Maryann Madrid, Denette Mann, Sammye Mardis and Clifton Meyers.

Also Patti Nickels, Aubrey Pitts, Jeanie Putman, Laticia Rogers, Bonnie Sain, Leesa Sanderlin, Brenda St. Clair, Kelly St. Clair, Danita Throckmorton, Larry Torres and Brenda Weeks.

Also Tim Wheeler, Sheila Wilcox, Jeanie Woodall, Sharon Wrinkle and Phillip Yruegas.

From the seventh grade, students are:

Brent Blackman, Steve Bell, Stephanie Bryant, Terry Burchel, Chris Byrd, David Carter, LaDonna Caldwell, Janice Claybrook, Jan Cokrell, Tracy Cowan, Brad Davis and Jennifer Davis.

Also Christy Ford, Susan Foster, David Faver, Joe Bob Fudge, Donna Grimsley, David Harris, Kathy Howard, Lizann Gunter, Kathleen Jennings, Sharon Kelton, Linda Mason and Sharon Martin.

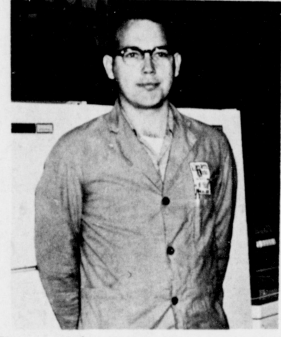
Also Tani Murrah, Kathy Pena, Cynthia Puckett, Marcu Puente, Chuck Smith, Vance Tucker, Jacque Turner, Larry Vinson and Terry Wheeler.

Eighth grade students are: Greta Barnert, Rand Baker, Mitz Bass, Bryan Brady, Peggy Carter, Martha Jane Chapman, Lee Clodfelter, Lon Ann Cole, Vicki Copley, Sue Darsy, Lonnie Ferris and Cynthia Gable.

Also Geraldine Gray, Monica Griffith, Bobba Hardaway, Johnny Hayes, Wesley Hufford, Jan Jinks, Brenda Kimbrough, Kathy Kinard, Gary King, Jimmy Lambert and Mark Long.

Also Glen Lowery, Helen Lucero, Deanna Mick, Linda Middlebrooks, Becky Milner, Patti Murray, Nicky Nickels, Ruby Nell Page, Marilyn Pool, Connie Redwine, Jolene Remppe, Mike Riley and Charlotte Wedel.

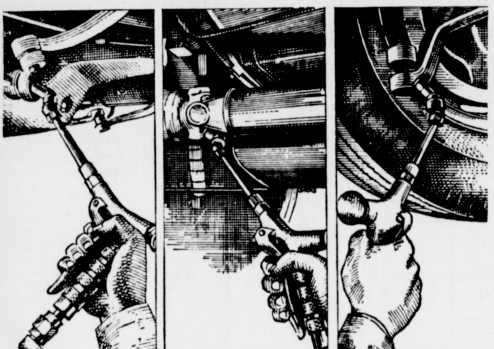
Fireman Of The Month



Fireman of the month is Harold Maxwell, 31 E. 3rd, who is an employee of Western Auto Store. He and his wife, Carolyn, have a two month old son, Kenneth Ray. They attend the Trinity Baptist Church. Maxwell has served with the Bailey County Fire Department about 1 1/2 years. We would like to salute Western Auto for consenting to his employee going on day time fire calls. In the event Maxwell is detained and fails to catch the fire truck going out, Mgr. Harris' cooperation is really evident and he takes Maxwell to the fire scene himself.

COURTESY OF:
Henry Insurance Agency
217 E. Ave. B

There's nothing "hit-or-miss" about our Texaco Marfak Lubrication



1. We lubricate by *chart*, not by chance—never miss a spot!
 2. We use Marfak, Texaco's tough, stay-on-the-job lubricant. Won't jar out, leak out, dry out. Resists washout, too.
- Come in for the *sure* protection of Marfak Lubrication—and drive more smoothly, more safely. Our other services are tops, too!

Trust your car to the man who wears the star

CENTRAL TEXACO
221 W. American Blvd.
***** Ph. 272-8944 *****

WEST 6th TEXACO
601 W. American Blvd.
***** Ph. 272-4633 *****

RICHLAND HILLS TEXACO
1914 W. American Blvd. Ph. 272-4856

John R. Hodges Assists Unit With Award

HONOLULU---Airman First Class John R. Hodges, son of Mrs. D. M. Thompson of Friona, is a member of the Military Air-lift Command's (MAC) 61st Military Airlift Wing which has earned the U. S. Air Force Outstanding Unit Award.

Airman Hodges, an aircraft mechanic with a unit of the 61st at Hickam AFB, Hawaii, will wear a distinctive ribbon to mark his affiliation with the wing, which was honored for exceptionally meritorious service during a one year period, with particular emphasis on its support of military operations in Southeast Asia.

This is the fourth time that the 61st has been so honored. The wing, with headquarters at Hickam, and its many units located throughout the Pacific and Southeast Asia, are charged with the MAC airlift responsibilities in an area from Hawaii west to Pakistan, and from Japan to Antarctica.

Statistics for the award period show that in the wing's area of responsibility 5,083,125 passengers and patients, and 617,618 tons of cargo and mail were airlifted, while 232,390 aircraft landings and takeoffs were logged.

To date the wing has amassed more than 750,000 accident free flying hours, a record dating back to June 1956 which is unsurpassed by any military organization.

The airman, a 1964 graduate of Friona High School, attended Texas Technological University and West Texas State University.

W. Q. Casey GENERAL INSURANCE

Let Our Complete Coverage Take Care of All Your Insurance Problems

Muleshoe State Bank Bldg. Ph. 272-4571

Welcome to Muleshoe



Mr. & Mrs. Jerry Mobley with daughter Kelle and their family pet "Baby".

We would like to extend a warm welcome to the Jerry Mobley family, newcomers to Muleshoe. They moved from Monahans. Mobley taught golf at Hardin-Simmons University and served six years with the Air Force. He is Muleshoe's new Golf Pro and resides at the Muleshoe Country Club. Mobley and his wife, Judy, have a daughter, Kelle, 3. They attend the Baptist Baptist Church.

The following firms extend a cordial welcome to the Mobleys:

BUSINESS SERVICES DIRECTORY

SEPTIC TANKS & CESSPOOL SERVICE
DRILLED - REPAIRED - INSTALLED

Cesspools - Pier Holes
Boat Pits - Storm Cellars
We Drill Up to 9' Ft. in Diameter & 45 Ft. Deep
Concrete Covers & Turnkey Jobs Available

WILSON DRILLING CO.
Dial 272-4180
NIGHT PHONE 272-3148
CLOVIS HWY. MULESHOE

MISS YOUR PAPER?
CALL CIRCULATION DEPARTMENT
Phone 272-4536

Weekdays 8 a.m. to 5 p.m.
Saturdays 8 a.m. to 12:00 noon

W. Q. Casey
GENERAL INSURANCE

Let Our Complete Coverage Take Care of All Your Insurance Problems

Muleshoe State Bank Bldg. Ph. 272-4571

Save Money On Auto Parts!
BRATCHER MOTOR SUPPLY
107 E. Ave. B - Dial 272-4288
CHARLES BRATCHER, Owner

BERRY ELECTRIC CO.

ELECTRIC WIRING AND REPAIRS
REFRIGERATION SERVICE

104 E. AVE. B
Phone 272-3375

Of All White's Dealer Stores... Texas' LARGEST
Tire & Battery Dealer!

Poynor's White Stores Inc.
Muleshoe

FOR FHA, GI and FARM LOANS AND THE **BEST INSURANCE** SEE **POOL INSURANCE CO.**

Phone 272-4531 W. M. Pool Jr. Muleshoe Lee R. Pool

Bookmobile Schedule

WEDNESDAY	Whiteface #1	9:30-10:30
	Whiteface #2	10:30-10:40
	Lehman	11:05-11:30
	Muleshoe	12:00-1:00
	Maple	2:15-3:30
THURSDAY	West Camp	9:15-10:15
	Lariat	10:30-11:30
	Bovina	12:00-3:30
FRIDAY	Lums Chapel	10:00-10:45
	Spade	12:00-1:30
	Hart Camp	1:45-2:30
	Fieldton	2:45-3:30
SATURDAY	Olton	9:15-11:45
	Littlefield	1:15-4:00

Smart Guy
"Why do you always take your wife to drive-in movies?"
"Mainly because I know where her shoes are when we start home."

CASHWAY GROCERY
402 MAIN Ph. 272-4244

DAMRON DRUG CO.
REXALL
308 MAIN Ph. 272-4210

JAMES GLAZE CO.
INSURANCE
REAL ESTATE
LOANS

MULESHOE STATE BANK
MEMBER FDIC

TRADE CLASSIFIED SELL BUY ADS LEASE

WANT ADS PH. 272-4536
CLASSIFIED RATES
 OPEN RATES
 First insertion, per word-6¢
 Second and additional insertions - 4¢
 NATIONAL RATES
 First insertion per word-8¢
 Second and additional insertion-5¢
 Minimum charge-5¢
 Card of Thanks - \$1.00 Double rate for blind ads
 Classified Display - 85¢ per col inch
 95¢ col. inch for reverses
DEADLINE FOR INSERTION
 Thursday's Muleshoe Journal - Noon Tuesday
 Sunday's Bailey County Journal - Noon Friday
 The Journals reserve the right to classify, revise or reject any classified ad.
 Check advertisement and report any error immediately
 Journals are not responsible for error after ad has already run once.

PERSONALS
 Income tax preparation, quarterly reports, and book-keeping service. Ph. 272-4676, 1-10s-3tc

FOR RENT: 15 and 16 foot campers. By week, Call 272-7163, 1-35s-3tc

KIRBY AUTHORIZED DEALER
 Sales and Service, New and Used Vacuum Cleaners. Ph. 272-4040, 1-45t-1tc

AM interested in making loans and buying first and second lien notes secured with farm or ranch lands. J. J. Steele, Citizens Bank Building, Clovis, N.M. Ph. 763-4396 or 763-6455, 1-9s-4tc

Lions Club
 meets each Tuesday at 12:30
FELLOWSHIP HALL
 Guy Kendall, Pres.

Muleshoe Rotary Club
 meets every Monday, 12 Noon
L. B.'S CAFE
 Jim Berry, Pres.

JUNIOR C of C
 meets every Monday, 12 Noon
L. B.'S CAFE
 Jim Berry, Pres.

Political Announcements

The following candidates have authorized the Journal to announce their candidacies for the offices indicated, subject to the action of the Democratic and Republican Primaries on May 4, 1968.

County Commissioner Precinct No. 1
 W.L.(Lewis)Middlebrooks
 Sherman Inman
 Matt Dudley
 Morris Killip
 Wayne Williams

County Commissioner Precinct No. 3
 L. E. (Bud) Warren
 W. H. Eubanks
 Wayland Altman

County Tax Assessor and Collection
 Jack Young

State Rep., Dist. 72
 Bill Clayton
 J. Frank Ford

Congressman 18th Cong. Dist.
 J. R. (Dick) Brown
Sheriff Bailey County
 Dee Clements
Constable
 Arthur L. Bolton
 Roy Bayless

REAL ESTATE FOR SALE
 FOR SALE new all-brick home, near completion, 1626 Ave. C, 1900 sq. ft. living area, 3 BR, 1 3/4 bath, den with fireplace, double garage. You may select carpet and light fixtures. Ph. collect, J. W. Willford, 806-983-5109, Floydada, 8-7t-1tc

ATTENTION FARMERS
 1032 acres located near Hereford, Tex. with 7-6" wells, underground tile, natural gas and excellent soil just developed. Established loan and owner will sell for 5% down, \$350 per acre. Contact Ralph Owens of Just Realty, Hereford, Texas, 364-2266, 8-9s-3tc

FOR SALE: Small tracts, good close to Muleshoe. Consider G. L.'s, Ph. 806-946-2147, 8-6s-1tc

WANTED: Responsible party to take up payment on nice 3 BR house. Carpeted throughout, 2 baths, paneled den and kitchen combination, double garage. Call D. L. Morrison, 3421 or Mobile Phone 965-2293, 8-47t-1tc

GI TRACTS, close in, 3 bedroom brick, 1901 Ave. H 30' x 100' Comm. Bldg. 119 W. 3rd., Below cost. Ph. 272-3496, L. H. (Alex) Adams 8-9s-1tc

FOR SALE 1/2 block of city property on American Blvd, See E. H. Hall Real Estate, 505 Austin. Ph. 272-4784, 8-8s-8tc

FOR SALE nice 4 room and bath, partly furnished, well located, small down payment. Nice 3 BR brick, well located, fenced back yard. Good loan available. **POOL INSURANCE AGENCY** 8-8t-1tc

FOR SALE two bedroom house, low equity and take up payments, 1425 Ave. C. See T. R. Hall, Rt. 2 or E. H. Hall, 505 Austin, Ph. 272-4784, 8-8t-1tc

FOR SALE three bedroom, two baths, brick home, low equity. 429 E. Dallas, Ph. 272-3572 after 4, 8-8s-4tc

FOR SALE OR RENT 2 bedroom and den or 3 bedroom, carpeted, fenced backyard, Le-nau Addition. Ph. 272-3084, 8-9s-3tc

FOR SALE OR RENT one-bedroom furnished house. Small down payment, W.13th, Ph. 4932, 8-6s-1tc

FOR SALE: Drug store, Good business, clean stock. Only fountain downtown. Ideal for man and wife. Box 477, Earth, Tex. 79031, 8-9s-2sc

FOR SALE: Section of State land located in New Mexico, 160 A. under cultivation, irrigated, 8" pump, Minneapolis Moline motor, propane, 30 A. wheat. Contact Frank Locke, Higgins-63169, Pep, N.M., 8-9t-4p

FOR SALE-furnished or unfurnished home, with garage apt. Utility room and basement. Located near schools. Be an excellent investment for rental property. 617 W. Ave. D, or call 272-4400, 8-33s-1tc

FOR SALE OR LEASE 4 acres land, bermuda grass, 2 BR home. Bill Jim St. Clair, Ph. 272-4630, 8-52s-1tc

FOR SALE: Three room house, 324 W. 11th, Call 4304, 8-7t-1tc

FOR SALE: 2 bedroom house, wall to wall carpet, central heat with 18x20 storage house. Low equity. Donald Prather, 218 E. Cedar, Ph. 272-4151 after 5, 8-10s-1tc

3 AUTOMOBILES FOR SALE
NEW 1968 PICKUP LADD PONTIAC
 FOR SALE 1964 - 4 door hardtop Oldsmobile, Ph. Ed Nickels, 272-3698, 9-9s-6tc

IN FARM EQUIPMENT
 FOR SALE: Good used aluminum pipe in 4"-5"-6"-7"-8" sizes, at good price. We also have the well known extruded ALCOA aluminum pipe in all sizes. We buy used aluminum pipe. Before you trade see STATE LINE IRRIGATION, MULESHOE - LITTLEFIELD - CLOVIS, 10-6s-1tc

FOR SALE: New TRI-MATIC sprinkler systems, used flow line, gated, and hand in o v e sprinkler pipe. Chapman Supply Co. Muleshoe Ph. 272-3473 10-7s-1tc

FOR SALE: 1800 ft. 5" main line, 30 ft. joint pierce cutlery. Ph. 946-2348, 10-8s-1tc

FOR SALE 6" and 8" pumps, Good shape, also butane motor. G. Williams, Box 661, Ph. 505-372-5541, House, N. M., 10-9t-8tc

FOR SALE: 8 rows of John Deere Flex Planter with or without tool bar. See or Call Leldon Phillips, 925-3510, 10-8t-1tc

FOR SALE or trade White's Store, 15 minute drive from Muleshoe. Phone Capitol 4-4320, Plainview, 11-43s-1tc

REPOSSSESSED 1967 Singer sewing machine in 4-drawer walnut cabinet. Will zig-zag, blind hem, fancy patterns, etc. Assume 4 payments of \$7.46. Must have good credit. Write Credit Manager 1114 19th St., Lubbock, Tex 12-3t-1tc

Blond baby bed for sale at \$17.50. Antique round table \$50. Ph. 272-4805 12-10s-2tc

FOR SALE: Large copper-tone washer and dryer combination. Bargain. Ph. 272-4443 12-10s-1tc

BRACE yourself for a thrill the first time you use Blue Lustre to clean rugs. Rent electric shampooer \$1. Higginbotham-Bartlett, 215 Main, 12-10s-1tc

FOR RENT: Building, 28 x 140, good location, 218 E. Ave. B. Will remodel to suit tenant. Call 272-4443, 13-7t-1tc

FOR Cash Lease 320 A. Irrigated, fully allotted. Phone 272-3168 - at night, 14-8s-1tc

FOR SALE: One new Remington 30,06 with scope \$75. Homer Millsap, Ph. 4994 or 3052, Muleshoe, 15-10s-1tc

For Sale, New and Used Tires, almost all sizes, Finns L.P. Gas, phone 272-4678, 15-29t-1tc

Boy: "Yes sir. When they get old enough the firm sends them out as salesmen."

CARD OF THANKS
 We would like to take this opportunity to express our thanks to all those who brought food, sent cards and other kindnesses shown during the passing of our father. During a time like this, we realize how much our friends really mean to us. Your expression of sympathy will always be remembered.
 "May God Bless You" is our wish.
 Mr. and Mrs. Owen Jones and boys
 Mr. and Mrs. Eldon Milstead and family
 10s-1tc

Friona Volley Ball Tourney
 Friona Athletics Booster Club will sponsor a volleyball tournament March 18-23. Entry fee has been set at \$6 and deadline for entering is March 14. Teams wishing to enter may write Jimmy Maynard, Box 224 or call him at Friona, 247-2552.



"On this farm you don't even hafta rotate the crops, the wind rotates the soil for you!"

TELEVISION SCHEDULE FOR THE MULESHOE AREA

WESTERN DRUG	KGNC-TV (4) Amarillo Muleshoe Cable 4	KVII-TV (7) Amarillo Muleshoe Cable 5	KFDA-TV (10) Amarillo Muleshoe Cable 6	KCBD-TV (11) Lubbock Muleshoe Cable 2	KLBK-TV (13) Lubbock Muleshoe Cable 3				
DAYTIME	6:30-Amar. Col. 7:25-News 7:30-Today Show 9:30-Snap Judge, 9:25-News 9:30-Concen, 10:00-Personality 10:30-Holly Sq, 11:00-Jeopardy 11:30-Eye Guess 11:55-News 12:00-News 12:10-Irriga, R. 12:15-Weather 12:20-Ruth Brent 12:30-Make Deal 1:00-Days of Lives 1:30-Doctors 2:00-Another W. 2:30-Don't Say 3:00-Match Game 3:25-News 3:30-Mike Douglas 5:00-News 5:30-H & B News 6:00-N/W/S	DAYTIME	6:30-Cartoons 9:00-D. Menace 9:30-Morning 10:00-Temptation 10:30-Mother-in-L, 11:00-Bewitched 11:30-Treasure Is. 12:00-Fugitive 1:00-Newlyweds 1:30-Baby Game 2:00-General Hos. 2:30-D. Shadows 3:00-Dating Game 3:30-Movie 5:00-Hazel 5:30-News 6:00-N/W/S	DAYTIME	6:30-Amar. Colle 7:00-Farm/Ranch 7:35-CBS News 8:00-Capt. Kang. 8:25-Report 8:30-Hillbillies 10:00-Andy G. 10:30-Coffee Time 11:00-Love of Life 11:25-News 11:30-Search 11:45-G. Light 12:00-N/W 12:30-Farm/Ranch 12:30-World Turns 1:00-Love Is 1:30-House Party 2:00-Tell Truth 2:25-News 2:30-E. of Night 3:00-S. Storm 3:00-D. VanDyke 4:00-Mr. Minkin 5:00-Mr. Ed 5:30-CBS News 6:00-N/W/S	DAYTIME	7:00-Headlines 7:35-Farm/Ranch 7:35-Weather 7:30-Today 8:25-Report 8:30-Today 9:30-Snap Judge, 9:30-Concen, 10:00-Personality 10:30-Holly, Sq. 11:00-Jeopardy 11:30-Eye Guess 11:55-News 12:00-News 12:15-Community 12:30-Make Deal 1:00-Days of Lives 1:30-Doctors 2:00-Another W. 2:30-Don't Say 3:00-Match Game 3:25-News 3:30-Dating Game 4:00-Lassie 4:30-Bewitched 5:00-Wells Fargo 5:30-H. & B. Re. 6:00-N/W/S	DAYTIME	6:00-Sun. Sem. 6:30-Farm/Ranch 7:00-Ag. Weather 7:30-Morn. Show 8:00-Capt. Kang. 9:00-Can. Cam. 9:30-Hillbillies 10:00-Andy G. 10:30-D. Van Dyke 11:00-Love of Life 11:25-News 11:30-Search 11:45-G. Light 12:00-News 12:30-World Turns 1:00-Love Is 1:30-House Party 2:00-Gen. Hos. 2:30-E. of Night 3:00-S. Storm 3:30-D. Shadows 4:00-Newlyweds 4:30-Cartoons 5:00-CBS News 5:30-H. & B. Re. 6:00-N/W/S
Prescriptions Drugs & Supplies	COSMETICS	for all your Veterinarian needs	Fountain Service	WIEDEBUSH & CHILDERS	BUTANE PROPANE MOTOR OIL AMALIE FRAM OIL FILTERS DIAL 272-4281				
MONDAY EVENING	6:30-Monkees 7:00-Movie 9:00-I Spy 10:00-News 10:15-Weather 10:25-Sports 10:30-Tonight 12:00-Sign Off	6:30-Cowboy in Af. 7:30-Rat Patrol 8:00-Felony Squad 8:30-Peyton Place 9:00-Big Valley 10:00-N/W 10:20-Comment 10:30-Joey Bishop	6:30-Gunsmoke 7:30-Lucy 8:00-Andy G. 8:30-Fam. Affair 9:00-Carol Burnett 10:00-N/W 10:25-Background 10:30-U. Pacific 11:00-News 11:05-Movie	6:30-Monkees 7:00-Laugh-In 8:00-D. Thomas 9:00-I Spy 10:00-News 10:15-Weather 10:25-Sports 10:30-Tonight	6:30-Daktari 7:30-Red Skelton 8:00-Morn. World 9:00-CBS News 10:00-N/W 10:25-Background 10:30-Panic 11:00-News 11:05-Movie	6:30-Daktari 7:30-Red Skelton 8:00-Hogan's 9:00-Carol Burn. 10:00-News 10:15-Weather 10:25-Sports 10:30-Tonight 11:30-Peter Gunn 12:30-Sign Off			
TUESDAY EVENING	6:30-I Dream 7:00-Jerry Lewis 8:00-Movie 10:00-News 10:15-Weather 10:25-Sports 10:30-Tonight S. 12:00-Sign Off	6:30-Gar. Gorillas 7:30-It Takes 8:30-N. Y. P. D. 9:00-White House 10:00-News 10:30-Joey Bishop	6:30-Daktari 7:30-Red Skelton 8:00-Morn. World 9:00-CBS News 10:00-N/W 10:25-Background 10:30-Panic 11:00-News 11:05-Movie	6:30-I Dream 7:00-J. Lewis 8:00-Movie 10:00-News 10:15-Weather 10:25-Sports 10:30-Tonight	6:30-Daktari 7:30-Red Skelton 8:00-Morn. World 9:00-CBS News 10:00-News 10:15-Weather 10:25-Sports 10:30-Tonight				
WEDNESDAY EVENING	6:30-Virginian 8:00-Special 9:00-Run for Life 10:00-News 10:15-Weather 10:25-Sports 10:30-Tonight S. 12:00-Sign Off	6:30-Avengers 7:00-Movie 10:00-News 10:20-Comment 10:30-Joey Bishop	6:30-Lost in Space 7:30-Hillbillies 8:00-G. Acres 8:30-He & She 9:00-J. Winters 10:25-Background 10:30-Medic 11:00-News 11:05-Movie	6:30-Virginian 7:30-Special 8:00-Special 9:00-Run for Life 10:00-News 10:15-Weather 10:25-Sports 10:30-Tonight	6:30-Debbie 7:30-Movie 10:00-News 10:30-Movie 12:00-Sign Off				

MISS YOUR PAPER?
 CALL CIRCULATION DEPARTMENT
 Phone 272-4536

BATTERIES-USED TIRES-FAST, EFFICIENT SERVICE
GOOD YEAR
VULCANIZING FLATS-ANY SIZE-NEW TIRES
Johnson-Pool Tire Co. MULESHOE Ph. 272-4594



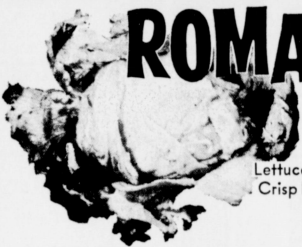
Rootin', Tootin'

PRODUCE SALE at Piggly Wiggly

These Values Good March 11, 12, 13 in MULESHOE We Reserve the Right to Limit Quantities.

Watch and play
SUPER BINGO
 8 FREE 34 56 66
WIN UP TO \$1000
 THIS IS WEEK #7
 Play PINK game cards only!

PIGGLY WIGGLY ULTRA SELECT PRODUCE IS DELIVERED DAILY FOR EXTRA FRESHNESS!



ROMAINE

Lettuce, Large Crisp Heads
 Pound

19¢

Apples Washington, Red Delicious Pound **25¢**

Oranges Texas, 5 Pound Bag Each **49¢**

Onions Green, Large, Crisp Bunches Each **8¢**

GRAPEFRUIT

Texas, Ruby Red
 Pound

12¢



PORK CHOPS

Family Pak, Full 1/4 Pork Loin

79¢

Pound

Lean, Individual Size for Frying

Cube Steak Pound **\$1.19**

Pork Steak Pound **59¢**

U.S.D.A. Choice

Sirloin Steak Pound **98¢**



SLICED BACON

Farmer Jones, First Quality, Lean Slices

65¢

Pound



SMOKED PICNICS

Small Lean, Hickory Smoked, Whole

33¢

Pound

GROUND CHUCK

Extra Lean, Dated to Assure Freshness

59¢

Pound

Icelandic, Plump, Juicy and Tender

Fish Cakes 12-Oz. Pkg. **39¢**

Farmer Jones, 100% All Meat

Sliced Bologna Pound Pkg. **59¢**

Lean Chunks of Choice Beef for Braising

Beef Cubes Pound **79¢**

Borden's, All Flavors

Save S&H Green Stamps Tool

Bakerite or Jewel

Save 20¢

MELLORINE 1/2-Gallon **39¢**

SHORTENING 3-Pound Can **48¢**

Peaches Hillsdale, Elberta in Syrup 4 No. 2 1/2 Cans **\$1**

Biscuit Mix Betty Crocker, Bisquick 4-Oz. Box **49¢**

Beans Ranch Style, Delicious Mexican Style 7 No. 300 Cans **\$1**

More outstanding values!

2 Lb. Kraft **Velveeta Cheese** **98¢**

Heinz Strained **Baby Foods** 4 Jars **39¢**

Qt. Jar Kraft **Miracle Whip** Jar **59¢**

Giant Box **Tide Detergent** Box **79¢**

Pride 1 Lb. Box **Crackers** Box **25¢**

Golden West **Coffee** 1 Lb. Can **68¢**

First-of-the-Week Specials!

Fresh, Ideal, Grade A Medium,

EGGS

Compare S&H Green Stamps Tool

34¢

Dozen

Detergent, Fab, Rinso

TIDE

Save 11¢

68¢

Giant Size

Frozen Selections for Your Freezer!

Banquet Apple

PIES
25¢

Family Size

Swanson, All Varieties

Meat Pies 8-Oz. Pkg. **25¢**

Libby, Chopped **Broccoli** 5 10-Oz. Pkgs. **\$1.00**

Sara Lee **Brownies** 14-Oz. Pkg. **85¢**

DOUBLE WEDNESDAY WITH A \$2.50 PURCHASE OR MORE

Health and Beauty Buy of the Week!

Liquid Prell, Regular 59¢ Retail

SHAMPOO **47¢**

More food for LESS... always at...

PIGGLY WIGGLY

No. 1 in Texas!

Health and Beauty Buy of the Week!

Large, Regular 69¢ Retail 25-Count Bottle

ALKA SELTZER **49¢**