

TO
ITOR
ll be here
Please send
n to Fun-
Box 943
x. 79586
H.G. B.

15¢
Per
Copy

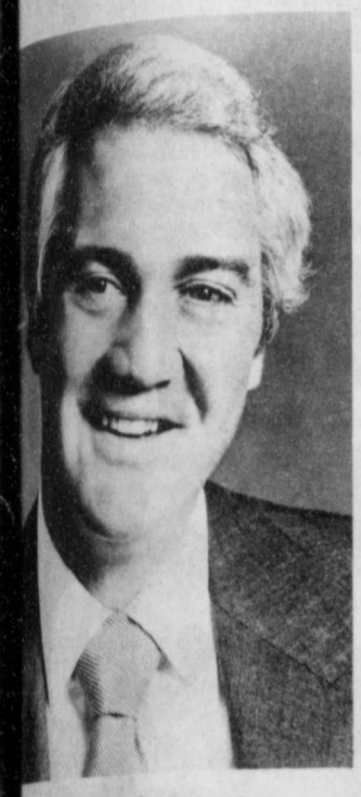
The Floyd County Hesperian



Floydada, Floyd County, Texas 7923 Sunday January 14, 1979 12 Pages in One Section Number 4

Good Crowd' Expected To Hear Summerall At Chamber Banquet

Have you ever seen this face? Anyone who fails to recognize Pat Summerall certainly is in the minority. The noted CBS sportscaster was chosen as the number one sportscaster in America last year.



PAT SUMMERALL

"We feel our speaker and our banquet will be second to none on the South Plains," Floydada Chamber of Commerce Manager Lance Barrow states.

Tickets are available from all chamber of commerce directors and at the C of C office. You'd better get your tickets early," Barrow advises.

Barrow points out that the banquet will give community residents "an opportunity to meet and talk with the man you see on TV each week. We feel this will be a big banquet for the chamber and the city. I encourage you to help fill Duncan Elementary Cafeteria for the banquet."

Summerall was the announcer last year when the Dallas Cowboys defeated the Denver Broncos in the Super Bowl. He also has worked the Masters Golf Tournament and the U.S. Open Tennis Tournament, as well as "all number one sports events carried by CBS."

The Floydada Chamber of Commerce Banquet speaker will cover the pre-game show for CBS at this year's Super Bowl.

Summerall has been nominated for an Emmy award in broadcasting.

He was well prepared for becoming an outstanding sportscaster. He played in the championship game "which people say brought professional football to its present standards". He kicked the field goal for the New York Giants which sent them into overtime against the Baltimore Colts in what developed into the second longest pro game in history.



CHECKING out his CB radio is Arnold Schwertner before joining the Tractorcade to Washington, D.C.

In Tractorcade

Schwertner Off For Washington

"If you eat, you are involved in agriculture," states a bumper sticker on the back of Arnold Schwertner's tractor.

That Case 1370 tractor and its 28-year-old owner left Lubbock Saturday morning enroute to Washington, D.C., in the American Agriculture Movement's Tractorcade. The Sand Hill man hopes to join thousands of other farmers in the nation's capitol to point out, for the second consecutive year, agriculture's plight.

"I'm sure your first question is 'why am I going'," Schwertner said during a late Thursday interview. The answer: "there is no one reason there are many reasons!"

"The farmers have to have a little say in what they do our policies have been dictated to us," he begins. One example stated was that during an agriculture policy session at Texas A&M in December "they planned to have no producer input, although several foreigners were invited."

MUST ACT NOW
"If we don't get in now, we won't have any say. We must establish precedent," the young farmer states.

"Another thing we want to do is become a major lobby group," believes the Sandhill man, who has spent "a lot of my own money" traveling in the interest of a stronger agricultural situation.

"Some farmers say 'I want to be dependent'," Schwertner related from a cold barn where he and his father, August, were double checking the tractor before the long trek. "Well, I want to be independent, too, but we

(farmers) have to work if we want to retain our independence."

The Floyd County man believes that agriculture policies are being formulated by persons who know little about the man on the farm. One "sickening experience" while he was in Washington last year was a question "who do they (farmers) need to heat the water." This statement came out during a discussion about mounting ag expenses.

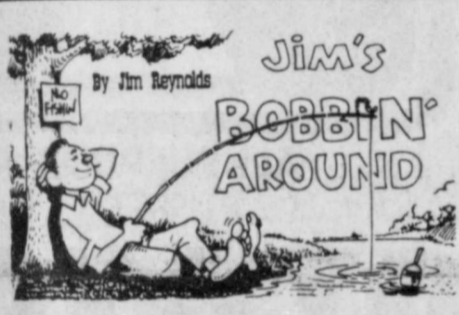
'LEARNED A LOT
Schwertner says "I really learned a lot" while spending "a little over a month — two weeks on two separate occasions" in Washington early last year.

One opinion he formed is that "subsidies (from the government) are not the answer. We proved to those people that parity will work."

"In 1941, farmers were receiving 54 per cent of parity. Then the Steigel Amendment was enacted (1942 to 1953), which raised our prices up to 90 per cent of parity. This raised our prices so we would at least receive our costs of production back."

"For every dollar the farmer receives

SEE SCHWERTNER PAGE 10



By Jim Reynolds

SORRY, GREG
I knew it would happen.....we would make a big goof in the first issue! Greg Jones, who just happens to be one of the area's top schoolboy footballers, was omitted from The Hesperian's story about the All-South Plains AA team. Tuesday and Wednesday were extremely hectic days and we just plain overlooked Greg.....even when we doublechecked (supposedly). Our apologies to Greg for the

oversight, and our most hearty congratulations to all four Whirlwinds recognized on the honor squad: Greg, Kary, Todd and Ricky.

DID YOU KNOW?
About one-sixth of all fatal traffic accidents occur on Friday or Saturday night between 10 p.m. and 3 a.m. It's time for extra caution when driving.

SEE JIM'S, PAGE 5

Farm And Ranch Page Anticipated
Tentative plans call for a "Farm and Ranch News" page to begin on a regular basis in the Sunday issue, starting Jan. 21. This agriculture feature will begin on that date if a sufficient number of sponsors can be secured. "Farm and Ranch News" will consist entirely of informational data for the agricultural industry.

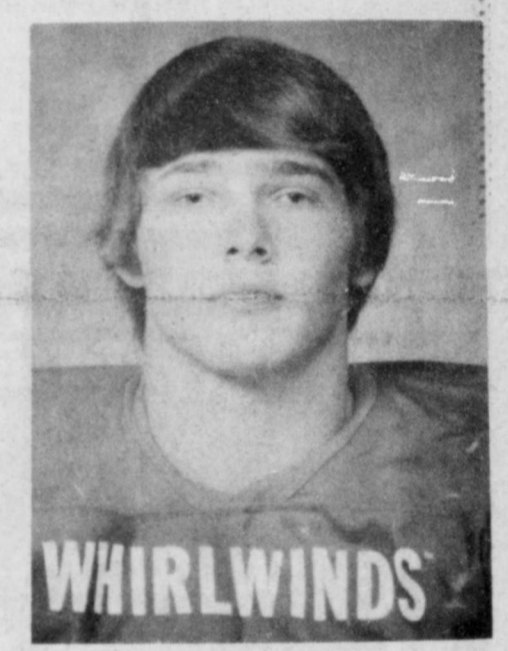
Winds' Greg Jones All-South Plains Grid Selection Football Selection

As a junior, Greg Jones earned honorable mention on the Lubbock Avalanche-Journal All-South Plains AA football squad. This year, the 5'11", 185 pound senior Whirlwind captain was the first linebacker chosen on the AA All-South Plains team.

He is the son of Mr. and Mrs. Wayland Jones.

Jones previously had been named to the all-district team.

Whirlwind end Kary Helms was picked on the All-South Plains AA offensive team. Given honorable mention were Floydada gridgers Todd Vickers at quarterback and Ricky Luna at linebacker.



GREG JONES

No Ordinary Storm . . .

Gene Ehler Family Remembers Lubbock Tornado

There is a loud roar. Your house starts to tremble. A piece of wood sails through your front window. The air is filled with flying rocks, bricks, wood.

Thoughts cloud your mind: concern about your family, fear, anxiety. And you are praying.....hard!

Moments later deathly silence prevails. Your house and its contents are gone, a pile of rubble here and there.

VISIONS OF EXPERIENCE
Visions of this harrowing experience will cloud the minds of the Eugene Ehler family every time a severe weather warning is posted this Spring... and for years to come.

The manager of Pioneer Natural Gas Co. in Floydada and his family lived the above-mentioned terror nine years ago this Spring, while Lubbock residents.

May 11, 1970, was a typical, hot day. Ehler came home from work to be greeted by his wife, Mary Etta, and two daughters, Suzie, five, and Sheila, four. The couple was expecting its third child in a month.

TYPICAL AFTERNOON
The tall, affable Ehler changed into Bermuda shorts and went into the yard of his north-east Lubbock home to continue his project of refurbishing a shotgun.

Clouds forming, not unusual for West Texas in May. A thunderstorm was developing. Ehler went inside. A weather watch was posted. But, so what, this happens virtually every other day, he thought.

"So many warnings are posted, we just don't pay much attention," remembers the personable Ehler.

Rain started coming down "literally in sheets." Hail stones were falling.... large stones. Ehler stuck rags under a kitchen door in the northeast section of the house and held the door shut. His spouse and daughters rushed to a southwest bedroom closet.

'DIFFERENT KIND OF STORM'
"Something told me this was a different kind of storm. Something — maybe it was a hail stone — came

through the picture window. Ehler felt a sharp pain in his right leg, but he thought little of it.

He reached the small bedroom closet which sheltered his family, scrambled inside, but the door would not shut completely. The piece of wood piercing

his leg was keeping the door from closing.

From the time he realized that a tornado was approaching until he reached his loved ones, Ehler says "no more than 10 seconds could have gone by."

WALL TUMBLES

Suddenly, the closet door and portions of a wall covered the parents, who were hovered over their young. The girls found themselves amid a mound of clothing, which "undoubtedly protected them from flying debris. In fact, the

door shielded all of us."

A closet carpet had rested under the young family. It was now gone.

So was the entire residence, except for a hall partition!

Ehler was bleeding profusely from the leg wound. His bare feet were cut. But, his wife and daughters escaped harm.

Wet and chilled, the foursome lay under what had been a living room carpet.

'STRANGERS' ASSIST

Within 15 minutes, "people we had never seen drove up, gave us clothing for warmth and took us to the home of their relatives, about a mile away. Coffee was made." Other tornado victims were there.

Another 45 minutes passed before members of the Lubbock Fire Department arrived to determine which of the injured most needed medical attention.

Mrs. Ehler was, by this time, experiencing labor pains. Her husband still was bleeding.

Two young men inquired from the fireman which route could be followed to a hospital. Others wishing to assist offered to keep the youngsters while their parents were away at the hospital. Ehler was having none of this: his family would stay together!

DETOUR TO HOSPITAL

So, the men transported the now-Floydadaites to St. Mary's Hospital, being forced to detour numerous times enroute.

Mrs. Ehler was admitted to the hospital. Her husband received stitches in the leg and was dismissed.

By this time, dozens of tornado victims lined the hospital walls. Others were streaming in.

The Pioneer Natural Gas Co. employee in Lubbock phoned an uncle in Slaton (his father was scheduled for surgery the following morning). The uncle carried his nephew and great-nieces to the elder Ehler's residence, four miles east of Lubbock.



SOUVENIR.....Gene Ehler holds a piece of brick which was removed from his right leg several months after May 1970 tornado destroyed his home.

★★★

★★★

THE LITTLE EXTRA THAT ADDS UP TO A LOT

WE MAKE THE EFFORT TO GIVE YOU A LITTLE EXTRA FOR A LITTLE LESS! AT THRIFTWAY!

TOTAL SAVER

GOOD QUALITY +

GOOD FOOD +

LOW PRICES +

GOOD SERVICE

WE RESERVE THE RIGHT TO LIMIT

PURE VEGETABLE COOKING OIL



CRISCO

\$1.99

48 OZ. BTL.

CHUCK QUALITY 81% LEAN **GROUND BEEF** \$1.59



TENDERCRUST HAMBURGER BUNS

HEAVY GRAIN FED BEEF BONELESS

CHUCK ROAST

\$1.49

LB.

- YOUR THRIFTWAY STORES SELL & FEATURE ONLY FINE QUALITY AMERICAN GROWN GRAIN FED BEEF, FRESH PORK, AND QUALITY POULTRY.
- HEAVY GRAIN FED BEEF LEAN **STEW CUBES** 1 LB. \$1.79
 - HEAVY GRAIN FED BEEF CENTER CUT BONELESS **CHUCK ROAST** 1 LB. \$1.99
 - BONELESS TENDERIZED **CUTLETS** HEAVY GRAIN FED BEEF 1 LB. \$2.19
 - HEAVY GRAIN FED BEEF BONELESS **ARM SWISS STEAK** 1 LB. \$1.99
 - OSCAR MAYER SLICED **BACON** 1 LB. PKG. \$1.99
 - OSCAR MAYER SLICED REG. BEEF/THICK **BOLOGNA** 8 OZ. PKG. 89¢
 - OSCAR MAYER **SMOKIE LINKS** 12 OZ. PKG. \$1.99
 - OSCAR MAYER LITTLE FRIARS PORK **LINK SAUSAGE** 1 LB. \$1.99

- SHURFRESH REG./BEEF **FRANKS** 12 OZ. PKG. 89¢
- SHURFRESH SLICED REG./BEEF **BOLOGNA** 12 OZ. PKG. 99¢

- TOTAL GROCERY SAVERS**
- MR. COFFEE **COFFEE FILTERS** 100 CT. BOX 79¢
 - HI-C ASSTD. **FRUIT DRINKS** 46 OZ. CAN 59¢
 - GREEN GIANT 1 1/2 REGULAR CUT **GREEN BEANS** 3 16 OZ. CANS \$1.19
 - SWIFT HOMEMADE ASSTD. **SOUP STARTER** EACH 89¢
 - FRANCO AMERICAN WITH LITTLE MEATBALLS **SPAGHETTIOS** 15 OZ. CAN 49¢
 - NABISCO CHOCOLATE SANDWICH **OREO COOKIES** 15 OZ. PKG. 99¢

Contadina **TOMATO SAUCE**

5.89¢

8 OZ. CANS

Hormel Cure 81%

HAMS

\$1.99

lb.

ALL GRINDS COFFEE

MARYLAND CLUB

\$2.29

1 LB. CAN

15¢ OFF LABEL **FAB DETERGENT** \$1.19

GIANT BOX

COLGATE'S CASH CLEAN-UP!

10¢ OFF LABEL LIQUID DETERGENT **PALMOLIVE** 22 OZ. BTL. 79¢

4¢ OFF LABEL POWDER CLEANSER **AJAX** 14 OZ. CAN 29¢

Gold **ALL PURPOSE GOLD MEDAL FLOUR**

5.73¢

LB. BAG

RUBY RED **GRAPEFRUIT**

19¢

LB.

ALL PURPOSE RUSSET **POTATOES**

\$1.29

20 LB. BAG

THRIFT KING ASSTD. **PAPER TOWELS** JUMBO ROLL 49¢

Folgers Flaked **COFFEE** 13 Oz. Can \$1.99

- GLOSSY BLACK **EGGPLANT** 1 LB. 39¢
- WASHINGTON D'ANJOU **PEARS** 1 LB. 39¢
- PURPLE TOP **TURNIPS** 1 LB. 39¢
- GREEN SLICERS **CUCUMBER** 1 LB. 29¢
- CALIFORNIA SUNKIST **LEMONS** 1 LB. 39¢
- CALIFORNIA SUNKIST **ORANGES** 1 LB. 39¢

- Bell **ICE MILK** 1/2 Gallon 99¢
- Bell Honey Boy Chum **SALMON** Tall Can \$1.49

- HEALTH & BEAUTY AID SAVINGS**
- VICK'S NIGHTTIME COLD **NYQUIL MEDICINE** 6 OZ. BTL. \$1.59
 - VICK'S FORMULA 44-D **COUGH SYRUP** 3 OZ. BTL. \$1.69
 - PERSONAL TOUCH **RAZOR KITS** EACH \$2.19
 - PERSONAL TOUCH **RAZOR REFILLS** EACH \$1.19

STONEWARE COFFEE CUP

69¢

ONLY EACH WITH EVERY \$3.00 PURCHASE

- DAIRY VALUES**
- LIGHT SPREAD **PARKAY MARGARINE** 2 LB. BOWL 99¢
 - SHURFRESH SWEETMILK-BUTTERMILK **BISCUITS** 3 8 OZ. CANS 39¢
 - SHURFRESH ORANGE **DANISH ROLLS** 13 OZ. CAN 69¢
 - KRAFT LIGHT 'N LIVELY **SINGLES** 12 OZ. PKG. \$1.29
 - Bell **BUTTERMILK** 1/2 Gallon 98¢

- FROZEN FOODS**
- MORTON MEAT BEEF/CHICKEN/TURKEY **POT PIES** 3 8 OZ. CTNS. 79¢
 - SHURFINE FROZEN **ORANGE JUICE** 6 OZ. CAN 39¢
 - SHURFINE FROZEN **CUT CORN** 20 OZ. BAG 69¢

S & H GREEN STAMPS EVERYDAY DOUBLE ON WED.

PAGES THRIFTWAY

PRICES EFFECTIVE JAN. 14-20, 1979

Willow Club in of the re Saturday wedding of Tyler Cook of (For th mony, of the 1 Tyler by W. Powe formal w an empir with lace and chap length la ted the g Maid o Ann Bile the bride son of 1 maid. Best

Alpha Mu Delta Sigma Phi 19 in the h es.

The meeting w er by V.P. P reported tl ning was co t pledges will

Hobby Club with Plains met Mrs. Fred Bla afternoon, Ja m. for the firs club in the nee ed Marble reat and Mrs. Le presided ove s meeting. Members paid r and election s held. New coming year ghton Teeple. s. Fred Marbl ent, and Mrs. otham is sec er of the club. mmittees consi by Mulder, M an and Mr: mming.

The meeting b meetings w ows: Februar ed Marble, h et at Mrs. J. ril meeting wil s. Keith Ma ating will be a Mrs. Murray J Wood will hc eing, July, a free months.

CLEA

Co We Ir

2 W. Po "Our FI

Weddings

Miss Biles, Robert Cook Married In Tyler



Society and Features

Willow Brook Country Club in Tyler was the scene of the reception following the Saturday evening (January 6) wedding of Laura Lynn Biles of Tyler and Robert Wayne Cook of Odessa.

For the double-ring ceremony, officiated at the home of the bride's parents in Tyler by the Rev. Dr. Paul W. Powell, the bride wore a formal white gown featuring an empire waistline accented with lace, high lace neckline and chapel train. A fingertip length lace veil complemented the gown.

Maid of honor was Brenda Ann Biles of Tyler, sister of the bride. Karla Kay Thompson of Dallas was bridesmaid. Best man was Tommy

DuWayne Spitzer of Lubbock. Groomsman was Dick Biles of Tyler, brother of the bride.

Jimmie Biles of Tyler, brother of the bride, served as usher.

Serving in the reception were Priscilla Cooper, Kelly Evans, Donna Fellers and Carolyn Biles.

The bride, daughter of Mr. and Mrs. Jimmie G. Biles of Tyler, is a graduate of Robert E. Lee High School and Texas Tech University.

The bridegroom, son of Mr. and Mrs. M.C. Cook Jr. of Lockney, is a graduate of Texas Tech and is employed by the N.L. McCullough Company.

After a trip to Mexico, the couple will be at home in Odessa.

Introducing



Mr. and Mrs. Kenneth Emert of Big Springs are the parents of a daughter, Jeanni Lynn, born November 8 in Big Springs weighing six pounds two ounces. She was 18 inches long at birth.

Grandparents are Mr. and Mrs. Erloy Emert and Mr. and Mrs. Charles Lewis of Nashville, Tenn. Great grandparents are Mr. and Mrs. Guy Boston of Lincoln, North Carolina and Mrs. Emily Lewis of Nashville, Tenn.; and great-great-grandmother is Mrs. Elsie Hoyle of Newton, North Carolina.

Wedding Gown Collection Exhibited At Tech

At about two minutes to 2 p.m. on June 12, 1910, a young Matador, Texas, druggist, spruced up in a tailor-made blue serge suit, waited for his 16-year-old bride whom he had courted for about a year.

When she appeared, the bridegroom may have had eyes only for hers, but guests must have been awed by the gown she wore, made by a Fort Worth dressmaker for the occasion.

The dress, now a part of an exhibit of wedding gowns at The Museum of Texas Tech University, was fashioned by a clever combination of various ivory embroidered nets with Cluny and Valenciennes laces.

The bride, Mary Louise Thomas Cammack, died in 1964, but her husband, Webster, who will celebrate his 93rd birthday next month (February), remembers the day as clearly as he does the first time he saw her come into Matador's City Drug Store to make a purchase. It was on that day that the store manager told Webster Cammack that Miss Thomas was the girl he ought to marry.

The dress was added to The Museum's Historic Costumes and Textile Collection by their five children, Tom N. of Hobbs, Mary Elizabeth Zellner of Midland, Margaret Bredthouer of Round Rock, Bud W. of San Angelo and John Cammack of (2905 76th) Lubbock.

Similar memories from many families have come with the 100 wedding gowns in the collection. Specialists, some of them Texas Tech University graduate students, have worked several weeks with conservation and restoration techniques to make their exhibit possible.

Most of the gowns are white or ivory. The most colorful is a street-length dress of ecru georgette trimmed with point d'esprit lace and large, shocking pink ribbon roses forming a belt in back and repeated at the

front neckline. It was worn for a morning wedding at home in the 1930s.

The oldest was made in 1868 of brilliantine, a combination of silk and wool, in brown tones with satin-bound scallops accenting the fitted bodice and full skirt. This gown was worn a second time in an 1891 Tioga, Texas, wedding.

Another early wedding dress was made by a French dressmaker for a Ft. Leavenworth, Kan., bride in 1882. Of fine silk brocade, the gown has a Queen Anne collar trimmed with peralized cut glass beads. Interest is brought to a fullness at the back of the skirt which falls into a short train, bordered with ivory satin pleating. A granddaughter of the bride for whom it was made wore in again in 1937, cinching her

body as her grandmother must have done to fit the 18-inch waist.

Other gowns on exhibit include a 1907 ivory satin dress with the Watteau pleat in back, a pleat that begins at the shoulder as a separate piece of fabric but becomes a part of the skirt and, in this dress, a part of the train.

A 1938 white marquisette wedding dress has satin flowers applied on the gown. A wreath of pearlized flowers formed the headpiece for this Lakewood, Ohio, bride.

The exhibit displays from 1941 a French brocade classic wedding dress with a sweetheart neckline and pleated ruching trim continuing along the border of the cathedral-length train.

A waltz-length wedding dress from 1950 has shadow

appliques on several layers of white organdy. The bride wears a Juliet lace cap. A full-skirted 1961 tulle wedding dress, embroidered with floss silk, was made by the mother of the bride. The most recent of the gowns is a braid-trimmed chiffon velvet, with a silk organza bodice under the velvet bolero. It was a dress of a 1970 bride.

Collection curator Betty Mills explained that each gown was selected for its dressmaker's artistry as well as for beauty of design.

"The dressmaker's art often is most finely demonstrated in wedding apparel," she said, "and the gowns we chose are unusually good examples of that art." Each also reflects the fashion trend of the bride's era, she explained.

Alpha Mu Delta Meets

Alpha Mu Delta Chapter of Sigma Phi met December 19 in the home of Joe...

The meeting was called to order by V.P. Pat Cates. It reported that Pledge Party was complete and pledges will take their

Ritual of Jewels Degree at a later date. Also, the Valentine sweetheart election will be completed at the next meeting.

Debbie Breed presented a program on preserving foods by dehydration.

Hostesses Doretta Carroll and Donna Anderson served

refreshments of hot spiced tea, cheese roll and crackers to Lu Ann Collins, Pat Cates, Sue Williams, Carrie Bertrand, Donna Henderson, Julie Hickerson, Debbie Beatty, Debbie Breed, Bama Coward, Kay Jones, Tonya Marble, Daphna Simpson and Debbie Bertrand.

Eating For Health

Dieters...eat "high-nutrient density" foods, but keep calories low.

Many dieters simply "give up" food to keep calories low, but that is dangerous. These dieters risk "giving up" needed nutrients, too.

CUT CALORIES, KEEP NUTRIENTS

Instead, to get enough nutrients, eat "high-nutrient density" foods that are low-calorie.

These are foods that five most needed nutrients each day—without an excess of unwanted calories.

MEAT GROUP CAN HELP

Meat-group foods are one example of "high-nutrient density" foods.

Choose low-calorie items from this group to stay slim-and healthy.

For example, choose lean-beef round cuts or a pork- loin chop.

Mrs. Blake Hostess To Hobby Club

Hobby Club members at the home of Mrs. Blake Wednesday afternoon, January 10, at the first meeting of the club in the new year. Mrs. Blake read the minutes and Mrs. Leighton Teeple presided over the business meeting.

Members paid dues for the year and election of officers was held. New officers for coming year are Mrs. Keith Marble, president; Mrs. Fred Marble, vice-president; and Mrs. Ruby Higginbotham is secretary-treasurer of the club. Telephone numbers consist of Mrs. Mulder, Mrs. Murray and Mrs. Kendall.

does not meet. September club will meet at Mrs. Ruby Higginbotham's, October will meet at Mrs. Richard Lyons, November meeting will be held at Mrs. E.J. Kinslows, and Mrs. Leighton will be hostess at a Christmas party in December.

Mrs. Blake served delicious refreshments of chips,

dips, cookies, hot punch and coffee. Those present at the meeting were Mmes. Fred Blake, Ruby Higginbotham, Murray Julian, E.J. Kinslow, Richard Lyons, Fred Marble, Keith Marble, Nathan Mulder, J.P. Taylor, Leighton Teeple and Arby Mulder. The next meeting will be held at Mrs. Fred Marble's home in South Plains.

THE WORLD OF FINE JEWELRY

Fine jewelry is a gift that anyone can appreciate and that anyone can give with discrimination.

Sometimes today jewelry signifies religious or superstitious beliefs.

In all cultures men, women and children have prized jewelry since prehistoric times. During the Stone Age men made jewelry of teeth and bones.

By Babylonian times, jewelers had learned to work with gold, and jewelry-making developed into a skilled craft. The Romans added gems to their gold and silver pieces.

BROWN'S Big January Clearance Sale

Continues

Brown's
DEPARTMENT STORE
106 NORTH MAIN LOCKNEY, TX.

JANUARY CLEARANCE TABLE

- ★ CHINA
- ★ GLASSWARE
- ★ JEWELRY

Come In and Browse
We Have Lots Of Other
Interesting Items

SCHACHT'S
Flowers, Jewelry & Gifts
102 W. Poplar, Lockney 652-2385
"Our Pleasure Is To Serve You!"

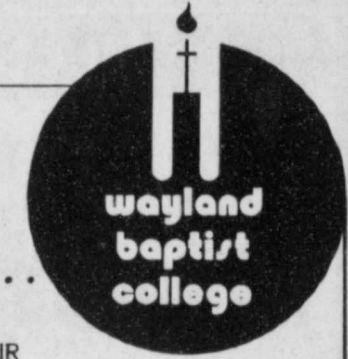
Bridge For Heart

Tickets Available

The Floyd County Heart Association will be sponsoring a Bridge for Heart luncheon February 20 from 10:00 to 3:30 at the Massie Activity Center at 513 W. Georgia in Floydada. In addition to the delicious spaghetti lunch, door prizes and bridge prizes will be given.

Everyone is invited and urged to attend this worthwhile, yet fun for everyone, day of bridge and food. Tickets for the event are \$5 and will be available at the door.

There's a lot to be said for a college like ours...



CONTACT US ABOUT YOUR EDUCATIONAL NEEDS!

SPRING REGISTRATION January 30, 1979

leading to liberal arts and vocational bachelor degrees.

"We'd like to tell you all about our exceptional academic programs."

WRITE ADMISSIONS COUNSELOR
WAYLAND BAPTIST COLLEGE
PLAINVIEW, TEXAS 79072

SHURFRESH MILK WE ACCEPT FOOD STAMPS

KIRTLEY'S MARKET AFFILIATED

316 N 2ND 933-3105 WE RESERVE THE RIGHT TO LIMIT

WE GIVE DOUBLE S AND H GREEN STAMPS ON WED. THESE SPECIALS GOOD JAN. 15 THRU JAN. 20 1979

Chili Meat
\$1.45 LB.

Bananas LB. 4/\$1.00

Cabbage LB. 11¢

1 LB. BAG Carrots LB. 2/49¢

Zesta Saltine Crackers
1 Lb Box 59¢

Mug-O-Lunch 45¢

Mortons Frozen Pot Pies
3/\$1.00

Bells Buttermilk 1/2 GAL. 99¢

Country Pride Fryers LB. 63¢

Wright Flavor Bacon LB. \$1.19

Wilson Franks 12 OZ. 89¢

Tonys Pizza
20¢ Off Reg Price

Pepsi 2 LITER 79¢

ON SALE THIS WEEK Spring Collection Stoneware CUP 69¢

SAVE 16¢

SAVE 20¢

SAVE 129¢

3 BEAUTIFUL PATTERNS ONLY 69¢ PER PRICE WITH EVERY 25¢ PURCHASE

LOT SERVICE
\$1.79
\$1.99
\$2.19
\$1.89
\$1.89
89¢
\$1.59
\$1.99

ND
9
ES
39¢
39¢
9¢
49

KEN/TURKEY
79¢

39¢
69¢

AMPS
D.

1979

FLOYD DATA
Mr. and Mrs. Thomas Warren and Mr. and Mrs. Ed Warren were in Weatherford Tuesday for the funeral of Alvie Miles, 50, who died of a heart attack Sunday.

He is survived by his wife, the former Nita Huckabee, a cousin of the Warrens; two daughters, Mrs. Karen Haynes and Mrs. Dani Petty; and son, Kerry Miles; one grandson; and his parents. He had been an employee of Southwestern Bell for 30 years.

Others relatives attending were Mr. and Mrs. Burl Huckabee and Mr. and Mrs. E.O. Chappell of Floydada, Mr. and Mrs. Earl Huckabee of Dumas.

FLOYD DATA
Mr. and Mrs. Elroy Emert had their children home for Christmas and New Years. They were Kenneth Emert of Big Springs, Mr. and Mrs. Anthony Emert of Floydada and their son Anthony, and Bryan Lee. Joining them for the holidays was Tom N. Emert from Houston.

American Heart Association

The Floyd County Heart Association held their regular meeting at King's Restaurant Tuesday January 9. Plans were launched for the February Heart fund raising events. Scheduled activities include the annual Heart Ball which will be February 10; Bridge for Heart on February 20; the teen Heart Dance on February 24 and the annual Businessmen's campaign throughout the month.

Launch Campaign



American Trends

A Clear Example Of Success
The future looks light when it comes to furniture and decorating accessories. In fact, much furniture seen

in showrooms featuring the latest designs is practically invisible—it's made of elegant, practical acrylic sheet, a material being used by many furniture designers who find it helps bring a feeling of spaciousness to today's smaller homes and apartments because it's transparent.



A distinguished Chinese artist of the 1920s, Huang Erh-nan, painted flowers and butterflies on fine silk paper—with his tongue.



LANA MOORE, ELAINE CLUCK and Lorrie Farris are making preparation for the Heart Ball which will be February. The event is part of a month long fund raising campaign sponsored by the Floyd County Heart Association.

Floydada Baptist Church Library NEWS & REVIEWS

Considering the lack of publicity plus the icy streets on January 3, the first Media Center Munch Bunch was a success. A special "thank-you" is due to Bob Kendrick for setting up the movie projector and getting the coffee ready. Present for the film "Creating with Watercolor" from the Floyd County Library were Jackie Walls, County Librarian, Nettie Ruth Whittle, Virginia Pyle, Thelma Crawford and Beth Pratt, FBC Media Center Director. Mark your calendar now for the first Wednesday, February 7 and join us with your sack lunch. The program will begin at 12:10 and conclude at 12:50 so that you may get back to work on time. We will probably show another film from the Floyd County Library and perhaps have a "mini" book review.

Few books live long enough to make a lasting mark upon the lives of men. Millions have found Hannah Smith's *THE CHRISTIAN'S SECRET OF A HAPPY LIFE* to open the door to the abundant life. Powerful, marred by petty bickering over faith's incidents, the book has swept men into ministry, selfish laymen into unselfish living at the feet of Christ. This is a quickly written "how-to" of truth as she found it. Quaker, rebel, list, Hannah Smith has a legacy for each succeeding generation. She took gloom from the Gospel and made life an unending joy. In addition to the reprint edition we have classic in large print.

Caprock Association Church Media Center Organization will meet Wednesday, January 17, at the Baptist, Floydada. Beth will teach "How to Advertise and Promote a Media Center", beginning 9:00 a.m. and continuing until 3:00 p.m. Participants will have a "dutch lunch" the Pizza Gold. Interested persons are welcome.

CAPROCK HOSPITAL NOTES

- | | | | | | | | | | | | | | | | | | | | |
|---------------------------------------|------------------------------|---------------------------|---------------------------------------|--|---------------------------------------|---|---------------------------|--------------------------------------|-----------------------------------|-----------------------------|---------------------------------------|----------------------------|---------------------------------------|--------------------------------------|----------------------------------|---------------------------------------|--|---|---|
| Zettie D. Byrd, adm. 12-22, dis. 1-2. | Julio V. Ibarra, adm. 12-26. | Leonard King, adm. 12-28. | Clara M. Murry, adm. 12-30, dis. 1-2. | William R. Hale, adm. 12-30, dis. 1-2. | Frances Powell, adm. 12-31, dis. 1-6. | Joe Anthony Marroquin adm. 12-31, dis. 1-2. | Jewell Jackson, adm. 1-3. | Mary Ann McNary, adm. 1-3, dis. 1-5. | Lupe Vega Sr. adm. 1-3, dis. 1-6. | Della G. Younger, adm. 1-4. | Ethel M. Collins, adm. 1-5, dis. 1-8. | Fannie M. Green, adm. 1-6. | Scott E. Robbins, adm. 1-6, dis. 1-9. | Opal P. Rogers, adm. 1-9, dis. 1-11. | Sally Rodriguez, adm. dis. 1-11. | Linda Williams, adm. 1-10, dis. 1-11. | Charles David Williams, Jr. 1-10, dis. 1-11. | Cynthia Ann Martin, adm. 1-10, dis. 1-11. | Juan Martinez, III, adm. 1-10, dis. 1-11. |
|---------------------------------------|------------------------------|---------------------------|---------------------------------------|--|---------------------------------------|---|---------------------------|--------------------------------------|-----------------------------------|-----------------------------|---------------------------------------|----------------------------|---------------------------------------|--------------------------------------|----------------------------------|---------------------------------------|--|---|---|

Breast-Feeding Loses To Bottle

A survey of poor Mexican-American women shows breast-feeding is losing out to bottles. Despite economic and health advantages of breast-feeding, the convenience of bottle-feeding seems to be the main consideration of many women.

In a survey of 150 Mexican-American women pregnant for the first time, 55 percent planned to use bottles and 38 percent planned to breast-feed. Two generations ago most women favored breast-feeding. A team at the University of Texas Health Science Center at San Antonio published these findings in the January issue of *Texas Medicine*, the Texas Medical Association's monthly journal.

Education, family influence and husband's attitudes were the major factors influencing the decision to breast-feed. A woman was more likely to want to breast-feed if she had finished high school, an influential relative used breast-feeding, and her husband approved of it.

Women favoring breast-feeding said they believed the baby would be healthier and happier if they used breast-feeding. Scientific fact backs these ideas up because breast milk contains substances that give a temporary protection against several germs. And breast-feeding can help develop a feeling of warmth and closeness between mother and baby.

Women who decided bottle-feed said it was embarrassing, more convenient and offered more freedom to go back to work school. Others feared possible side effects of breast-feeding.

The team said that fears about possible effects such as sore nipples and drooping breasts can be handled with proper counseling with medical personnel. These personnel also stress the safety and low cost of breast-feeding. Other positive factors included reduced chances of becoming pregnant while breast-feeding, using supplemental feedings to give the mother some freedom, and breast-feeding to avoid troublesome bottles, pans or other implements. The team suggested that medical personnel be available to answer questions on the advantages and disadvantages of breast-feeding.

WE RESERVE THE RIGHT TO LIMIT QUANTITIES
PRICES EFFECTIVE JAN. 15 THRU JAN. 20, 1979

THOMASON

VENTURE GROCERY & MARKET
PHONE 652-3346 LOCKNEY, TEXAS

DOUBLE STAMPS ON WEDNESDAY

DOUBLE STAMPS ON WEDNESDAY

DOUBLE STAMPS ON WEDNESDAY

Meat Specials

HEAVY GRAIN FED BEEF

Round Steak \$1.99 LB.

Compare Our Prices!

HEAVY GRAIN FED BEEF CENTER CUT Sirloin Steak LB. \$1.99	T-Bone Steak LB. \$2.39
--	-------------------------

CALIFORNIA LARGE

Avocados 5 FOR \$1

RUBY RED Grapefruit LB. 19¢	PORTALES SWEET Yams LB. 29¢
WASHINGTON D'ANJOU Pears 3 LBS. \$1	U.S. NO. 1 RUSSET Potatoes 5 LB. BAG 49¢

COLGATE'S CASH CLEAN-UP

4" OFF LABEL Ajax Cleanser 14 OZ. CANS 2 59¢	10" OFF LABEL Liquid Palmolive 22 OZ. BTL. 79¢	15" OFF LABEL Giant Fab 3 BOX \$1.29
--	--	--------------------------------------

Health And Beauty Aids

COLD CAPSULES Contac 20 CT. PKG. \$1.99	REGULAR, MINT Crest Toothpaste 5 OZ. TUBE 89¢
---	---

Dairy And Frozen Food

PET RITZ ASSTD. FRUIT Cobblers 26 OZ. PKG. \$1.19	PILLSBURY BM/PM Biscuits 5 7/8 OZ. CAN \$1
KRAFT Velveeta 1 LB. BOX \$1.39	KRAFT GRATED Parmesan 8 OZ. CAN \$1.69

Shelf Specials

FRANCO AMERICAN W/MEAT BALLS Spaghetti 16 OZ. CAN 53¢	PILLSBURY HUNGRY JACK BM Pancake Mix 2 LB. BOX 99¢
JOHNSON WAX Lemon Favor 12 OZ. CAN \$1.19	BREAKFAST CEREAL Cheerios 10 OZ. BOX 69¢

Grocery Specials

BETTY CROCKER SUPER MOIST

Cake Mixes 69¢ 18 OZ. BOX

All Flavors

Doritos Reg 89¢ 69¢

YOU SAVE MORE

ALL BRANDS Ketchup 32 OZ. BTL. 89¢	CASSEROLE Pinto Beans 2 LB. BAG 49¢
------------------------------------	-------------------------------------

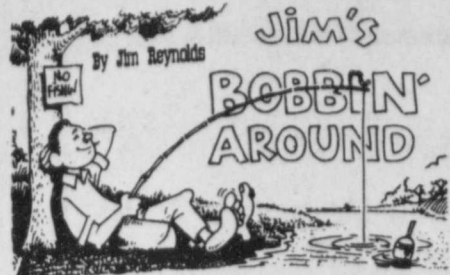
PAPER

Bounty Towels JUMBO ROLL 59¢

VEGETABLE SHORTENING

Pure Crisco 3 LB. CAN \$1.89

CONTINUE
AT'S ONE
Walls ct
District
last Thurs
are need
Wilson Bond,
over his eye a
fall on the
that he is
fatal.
Wilson d
Jordan, who
allowed the
might be neede
THE SUN SH
Wilma Gower
Pioneer Natu
happy all
of the sun
Wylene said w
did not d
in fact, I can
didn't welcome
edge of Winter.
FLOYDADA
A note from
Craig of the
complimentary
to share Ro
One of m
memories is of
early 1933's
Ador was at
ended me. I h
ood town."
We count i
personally kno
...all mos
ains publish
WHERE DO
ON AGRIC
Do we suppor
Movement



farm organization, we have been asked several times. The best way we can answer that is to say that we SUPPORT AGRICULTURE. This is the economic lifeblood of our community, and The Hesperian will publicize and help in any other way we can all segments of agriculture.

Whirlwinds Host Tulia Tuesday

FHS fans are encouraged to support the Winds and Whirlwinds by filling the FHS gymnasium Tuesday when Tulia comes to town. These will be district games.

Tipoff in the junior varsity boys match is scheduled for 5 p.m. Varsity girls then play and the tripleheader ends with the varsity boys tilt. Floydada cagers played Friday night in Lockney.

Local School Attendance 'Running Pretty Well'

School attendance "has been running pretty well considering the weather," Supt. Jerry Cannon said Thursday afternoon.

Attendance suffered during a seige of illness in December. Another low came Jan. 2, the first day after the holidays.

Supt. Cannon again points out that low attendance figures are detrimental to the school system because state funding is based partially on ADA (average daily attendance). Attendance checks are made the second period each day.

Teacher Of The Week



Roberta Hardin is Migrant teacher at Duncan Elementary in Floydada. Her family has long been involved with education and schools in Floyd County. She says "My grandmother, Mrs. Fannie Montague was a teacher in the Sunset School, north of Floydada in the 1930's. An aunt, Mrs. Wanda Jacobson, and a sister, Frances Garrett Lloyd, have also been teachers in the Floydada School District. Teaching is the fulfillment of a life long ambition on my part. I have never regretted that it is my chosen profession. It is exciting to watch children in the process of learning and humbling to realize the role a teacher plays in each student's life."

Roberta is married, and she and her husband Bill have one daughter, Rosemary, who is a freshmen at Wayland Baptist College. Bill is a Floyd County farmer. Bill and Roberta are members of the First Baptist Church, where Roberta teaches high school girls and is

assistant organist. Music is one of Roberta's primary interests. In addition, she has served this year as president of the local Texas State Teachers Association and has been studying for certification as a bilingual teacher.

A graduate of Floydada High School, Roberta attended Wayland Baptist College, Hardin Simmons University and has a B.S. from West Texas University. She has also done some graduate work at West Texas and Texas Tech.

Considering the fact that teaching as a profession is a challenging and awesome responsibility involving the shaping of young lives into becoming the well adjusted, productive citizens of tomorrow, Roberta says that "Floydada schools are doing a good job as they strive to meet individual student's needs, as well as keep up with the current demands of our society."

THE FLOYD COUNTY HESPERIAN
Published each Sunday and Thursday at 111 E. Mo. St., P.O. Box 700, Floydada, Texas 79235. Publication No. 202880. Jim Reynolds, editor, Subscription rates: Local \$10.50 a year, out-of-trade area \$11.50 a year. Second class postage paid at Floydada, Texas 79235.

TEXAS PRESS
MEMBER 1979 ASSOCIATION

WE WILL MEET OR BEAT ALL COMPETITORS!

- ★ TYPEWRITERS
- ★ CALCULATORS
- ★ DESK SETS
- ★ CALENDARS
- ★ BOOKKEEPING SUPPLIES

OFFICE AND ART SUPPLY CENTER

983-3914

Northside Of Square

Floydada

BASKETBALL

Floydada Varsity Whirlettes



Varsity Whirlettes are from left to right [bottom row]: Kelly Higginbotham, Jonna West, Judi Bean, and Darla Assiter. Standing are: Janie Guest, Beverly Vickers, Coach Tommy Baxter and Lori Bice. Not pictured are Rosemary Barnes, Kim Curry and Le Quita Davis.

Floydada Varsity Whirlwinds



Boys Varsity Whirlwind are: top row [left to right] Coach Mike Cocanougher, Tim Collins, Mac Collins, Neal Becker, Moody Younger. [bottom] Kary Helms, Jimmy Jackson, Troy Marquis and Todd Vickers.

THESE FLOYDADA MERCHANTS SPONSOR THE FLOYDADA BASKETBALL TEAMS:

- DON HARDY TRUCK & CAR WASH
- ADAMS WELL SERVICE
- BOB'S SHAMROCK SERVICE
- BAKER INSURANCE
- CORNELIUS CONOCO
- CITY AUTO INC.

- CITY TRIM SHOP
- DAIRY QUEEN
- HALE INSURANCE
- WEEM'S TEXACO STATION

- FLOYDADA TRAVEL CENTER STATION
- PLAINVIEW SAVINGS & LOAN
- HI-PLAINS VEGETABLE PACKING
- MARTIN & CO.
- NICHOL'S OIL CO.
- GODWIN'S SERVICE STATION

CALL CABLE TV OF FLOYDADA
983-2911
TODAY
FOR MORE AND BETTER TV!

RCA For The Best
Price & Service On RCA T.V.'s
See
MIZE PHARMACY & T.V.
 102 S. MAIN LOCKNEY 652-2435

WINTER SPECIALS
 ANTI-FREEZE INSTALLED GAL. \$4.00
 OIL FILTERS ALL MAKES AND MODELS REG \$5.95 \$3.50
 AIR FILTERS ALL MAKES AND MODELS REG \$8.90 \$4.85
983-2168 M&N AUTO 507 E. Missouri

SUNDAY 01/14/79

AM	WTCG CH. 17 Atlanta Cable 4	KTXT CH. 5 Lubbock Cable 5	PTL CH. 6 Charlotte Cable 6	KMCC CH. 28 Lubbock Cable 7	WGN CH. 9 Chicago Cable 8	KCBD CH. 11 Lubbock Cable 11	KLBK CH. 13 Lubbock Cable 13
7:00	Three Stooges	No Programs	Sunday Celebration	Praise the Lord Club	News Buyer's Forum	Jimmy Swagart Day of Discovery	This Is the Rebob
8:00	Lost in Space	"	Rex Humbard	Jimmy Swagart Prophecy Newsreel	Mass for Shut-Ins	Oral Roberts	James Robison Presents Amazing Grace
9:00	Hazel	"	Old Time Gospel Hour	Little Rascals I Love Lucy	Issues Unlimited	Rex Humbard	Old Time Gospel Hour
10:00	"	"	PTL Club	Best of Donahue	Tarzan	"	Sunday School
11:00	"	"	"	"	Cisco Kid	Better Life	Inquiry
12:00	"	"	"	"	Baptist Church	Lone Ranger	Women's Point of View
1:00	"	"	"	"	Wrestling	Movie: 'Sherlock Holmes and the Pearl of'	Challenge of the Sexes
2:00	"	"	"	"	Holy Spirit in the Now	"	NBA
3:00	"	"	"	"	Superstars	Death	Basketball: New York at Kansas City
4:00	"	"	"	"	Amazing Grace	Dolphin	"
5:00	"	"	"	"	Vicki Jamison Worship	International Championship Boxing	"
6:00	"	"	"	"	Service	"	Nashville Music
7:00	"	"	"	"	Beethoven Festival	Club PTL	Wide World of Sports
8:00	"	"	"	"	Firing Line	"	Forty Thieves
9:00	"	"	"	"	Hour of Power Singers	"	"
10:00	"	"	"	"	U.S. Postal Service: Can It Deliver?	Larry Jones Ministry	Lay Witness
11:00	"	"	"	"	"	"	Pop Goes the Country
12:00	"	"	"	"	"	"	Star Trek
1:00	"	"	"	"	"	"	News
2:00	"	"	"	"	"	"	Last of the Wild
3:00	"	"	"	"	"	"	CBS News

MONDAY 01/15/79

PM	WTCG CH. 17 Atlanta Cable 4	KTXT CH. 5 Lubbock Cable 5	PTL CH. 6 Charlotte Cable 6	KMCC CH. 28 Lubbock Cable 7	WGN CH. 9 Chicago Cable 8	KCBD CH. 11 Lubbock Cable 11	KLBK CH. 13 Lubbock Cable 13
6:00	Carol Burnett and Friends Sanford and Son	John Callaway MacNeil-Lehrer Rept.	Tammy Faye Show	News	Dick Van Dyke	News	News
7:00	Let's Go To The Races Last of the Wild	Solti Conducts	Hour of Power	Mork & Mindy	Carol Burnett and Friends Hogan's Heroes	Little House on the Prairie	Crusade
8:00	NCAA Basketball: Florida at	A Tribute to Martin Luther King Jr.	PTL Club	How the West Was Won	Movie: 'Time Limit'	Movie: 'Charleston'	"
9:00	Mississippi	"	"	"	"	"	"
10:00	Hogan's Heroes	Dick Cavett	Good News	News	News	News	News
11:00	Movie: 'Wild And'	Captioned ABC News	Abundant Living	Newlywed Game	Movie: 'Incredible'	Tonight Show	"
12:00	Wonderful	Sign Off	Accent on Music	Police Story	Shrinking Man	"	Sign Off
1:00	"	"	"	"	"	"	"
2:00	"	"	"	"	"	"	"
3:00	"	"	"	"	"	"	"
4:00	"	"	"	"	"	"	"
5:00	"	"	"	"	"	"	"
6:00	"	"	"	"	"	"	"
7:00	"	"	"	"	"	"	"
8:00	"	"	"	"	"	"	"
9:00	"	"	"	"	"	"	"
10:00	"	"	"	"	"	"	"
11:00	"	"	"	"	"	"	"
12:00	"	"	"	"	"	"	"

SUNDAY 01/14/79

PM	WTCG CH. 17 Atlanta Cable 4	KTXT CH. 5 Lubbock Cable 5	PTL CH. 6 Charlotte Cable 6	KMCC CH. 28 Lubbock Cable 7	WGN CH. 9 Chicago Cable 8	KCBD CH. 11 Lubbock Cable 11	KLBK CH. 13 Lubbock Cable 13
6:00	Star Trek	Lubbock Power Struggle	James Robison Presents	Hardy Boys	Program Cont'd	Wonderful World of Disney	60 Minutes
7:00	Movie: 'Munster Go Home'	Once Upon a Classic	Ralph Wilkerson Come on Rainbows	Battlestar Galactica	In Search of Hee Haw	'Centennial' Part 8	All in the Family
8:00	"	Masterpiece Theatre: The Duchess of Duke St.	"	Movie: 'Dallas Cowboy Cheer'	Hee Haw	"	Kaz
9:00	Edward the King Ruff House	Nova	"	leaders'	Lawrence W	Weekend	Dallas
10:00	Open Up	G. E. D.	Calvary Temple	News	News	News	News
11:00	"	"	"	Love, American Style	Movie: 'Plainsman'	Movie: 'Scott'	Bill Dance
12:00	"	"	"	Jewish Voice	Praise the Lord Club	Joplin: King of Ragtime	Movie: 'Damn the Defiant'
1:00	"	"	"	"	"	"	"
2:00	"	"	"	"	"	"	"
3:00	"	"	"	"	"	"	"
4:00	"	"	"	"	"	"	"
5:00	"	"	"	"	"	"	"
6:00	"	"	"	"	"	"	"
7:00	"	"	"	"	"	"	"
8:00	"	"	"	"	"	"	"
9:00	"	"	"	"	"	"	"
10:00	"	"	"	"	"	"	"
11:00	"	"	"	"	"	"	"
12:00	"	"	"	"	"	"	"

TUESDAY 01/16/79

PM	WTCG CH. 17 Atlanta Cable 4	KTXT CH. 5 Lubbock Cable 5	PTL CH. 6 Charlotte Cable 6	KMCC CH. 28 Lubbock Cable 7	WGN CH. 9 Chicago Cable 8	KCBD CH. 11 Lubbock Cable 11	KLBK CH. 13 Lubbock Cable 13
6:00	Carol Burnett and Friends Sanford and Son	Cinematic Eye	Tammy Faye Show	News	Dick Van Dyke	News	News
7:00	World at War	Soundstage	At Home With the Bible	Happy Days	Carol Burnett	Grandpa Goes to Washington	CBS Reports: The Best People
8:00	Movie: 'Lovers and Other Strangers'	Session	PTL Club	Three's Company	Movie: 'Horizons West'	Movie: 'Murder in Music City'	Movie: 'Sky Riders'
9:00	"	Consumer Survival Kit	"	Starky and Hutch	"	"	"
10:00	Hogan's Heroes	Dick Cavett	Good News	News	News	News	News
11:00	Movie: 'The Man Who'	Captioned ABC News	Christ Is the Answer	Newlywed Game	Medical Center	Best of Carson	Barnaby Jones
12:00	"	"	"	"	"	"	"
1:00	"	"	"	"	"	"	"
2:00	"	"	"	"	"	"	"
3:00	"	"	"	"	"	"	"
4:00	"	"	"	"	"	"	"
5:00	"	"	"	"	"	"	"
6:00	"	"	"	"	"	"	"
7:00	"	"	"	"	"	"	"
8:00	"	"	"	"	"	"	"
9:00	"	"	"	"	"	"	"
10:00	"	"	"	"	"	"	"
11:00	"	"	"	"	"	"	"
12:00	"	"	"	"	"	"	"

MONDAY - FRIDAY

AM	WTCG CH. 17 Atlanta Cable 4	KTXT CH. 5 Lubbock Cable 5	PTL CH. 6 Charlotte Cable 6	KMCC CH. 28 Lubbock Cable 7	WGN CH. 9 Chicago Cable 8	KCBD CH. 11 Lubbock Cable 11	KLBK CH. 13 Lubbock Cable 13
7:00	Leave it to Beaver	No Programs	Accent on Music	Good Morning America	Ray Rayner and Friends	Today in Texas Today	CBS Morning News
8:00	Lucy Show	Over Easy	Varied Programs	"	"	"	Captain Kangaroo
9:00	Green Acres	Dick Cavett Show	"	"	"	"	"
10:00	"	"	"	"	"	"	"
11:00	"	"	"	"	"	"	"
12:00	"	"	"	"	"	"	"
1:00	"	"	"	"	"	"	"
2:00	"	"	"	"	"	"	"
3:00	"	"	"	"	"	"	"
4:00	"	"	"	"	"	"	"
5:00	"	"	"	"	"	"	"
6:00	"	"	"	"	"	"	"
7:00	"	"	"	"	"	"	"
8:00	"	"	"	"	"	"	"
9:00	"	"	"	"	"	"	"
10:00	"	"	"	"	"	"	"
11:00	"	"	"	"	"	"	"
12:00	"	"	"	"	"	"	"
1:00	"	"	"	"	"	"	"
2:00	"	"	"	"	"	"	"
3:00	"	"	"	"	"	"	"
4:00	"	"	"	"	"	"	"
5:00	"	"	"	"	"	"	"
6:00	"	"	"	"	"	"	"
7:00	"	"	"	"	"	"	"
8:00	"	"	"	"	"	"	"
9:00	"	"	"	"	"	"	"
10:00	"	"	"	"	"	"	"
11:00	"	"	"	"	"	"	"
12:00	"	"	"	"	"	"	"

WEDNESDAY 01/17/79

PM	WTCG CH. 17 Atlanta Cable 4	KTXT CH. 5 Lubbock Cable 5	PTL CH. 6 Charlotte Cable 6	KMCC CH. 28 Lubbock Cable 7	WGN CH. 9 Chicago Cable 8	KCBD CH. 11 Lubbock Cable 11	KLBK CH. 13 Lubbock Cable 13
6:00	Carol Burnett and Friends Sanford and Son	Footsteps	Tammy Faye Show	News	Dick Van Dyke	News	News
7:00	Edward the King	The Talking Walls of Live From Lincoln	Rex Humbard	Eight Is Enough	Edward the King	Movie: 'The Egg and I'	Incredible Hulk
8:00	NCAA Basketball: North Carolina St.	Center	PTL Club	Charlie's Angels	"	"	One Day at a Time
9:00	at North Carolina	"	"	Vegas	"	"	Amazing World
10:00	Hogan's Heroes	Dick Cavett	Good News	News	News	News	News
11:00	Movie: 'The Stripper'	Captioned ABC News	Festival of Praise	Newlywed Game	Movie: 'The'	Tonight Show	Rockford Files
12:00	"	"	"	"	"	"	"
1:00	"	"	"	"	"	"	"
2:00	"	"	"	"	"	"	"
3:00	"	"	"	"	"	"	"
4:00	"	"	"	"	"	"	"
5:00	"	"	"	"	"	"	"
6:00	"	"	"	"	"	"	"
7:00	"	"	"	"	"	"	"
8:00	"	"	"	"	"	"	"
9:00	"	"	"	"	"	"	"
10:00	"	"	"	"	"	"	"
11:00	"	"	"	"	"	"	"
12:00	"	"	"	"	"	"	"

THURSDAY 01/18/79

PM	WTCG CH. 17 Atlanta Cable 4	KTXT CH. 5 Lubbock Cable 5	PTL CH. 6 Charlotte Cable 6	KMCC CH. 28 Lubbock Cable 7	WGN CH. 9 Chicago Cable 8	KCBD CH. 11 Lubbock Cable 11	KLBK CH. 13 Lubbock Cable 13
6:00	Carol Burnett and Friends Sanford and Son	Footsteps	Tammy Faye Show	News	Dick Van Dyke	News	News
7:00	Mission Impossible	Nova: A World of Difference	Old Time Gospel Hour	Mork & Mindy	Carol Burnett	Legends of the Superheroes	Waltons
8:00	NCAA Basketball: Wake Forest at	Palestine	PTL Club	Barney Miller	Movie: 'The Killers'	Quincy	Hawaii Five-O
9:00	"	"	"	Soap	"	"	"
10:00	"	"	"	"	"	"	"
11:00	"	"	"	"	"	"	"
12:00	"	"	"	"	"	"	"
1:00	"	"	"	"	"	"	"
2:00	"	"	"	"	"	"	"
3:00	"	"	"	"	"	"	"
4:00	"	"	"	"	"	"	"
5:00	"	"	"	"	"	"	"
6:00	"	"	"	"	"	"	"
7:00	"	"	"	"	"	"	"
8:00	"	"	"	"	"	"	"
9:00	"	"	"	"	"	"	"
10:00	"	"	"	"	"	"	"
11:00	"	"	"	"	"	"	"
12:00	"	"	"	"	"	"	"

Presto
 USDA Processing
 Wholesale Wrapp
 Frozen Beef
 Hwy. 70 652-

FRIDAY 01/19/79

PM	WTCG CH. 17 Atlanta Cable 4	KTXT CH. 5 Lubbock Cable 5	PTL CH. 6 Charlotte Cable 6	KMCC CH. 28 Lubbock Cable 7	WGN CH. 9 Chicago Cable 8	KCBD CH. 11 Lubbock Cable 11	KLBK CH. 13 Lubbock Cable 13
6:00	Carol Burnett and Friends Sanford and Son	Guten Tag	Tammy Faye Show	News	Dick Van Dyke	News	News
7:00	Night Gallery	Wash. Week in Review	Wall Street Week	Jimmy Swagart	"	"	"
8:00	Movie: 'House of the Seven Corpses'	Congressional Outlook	Turnabout	PTL Club	"	"	"
9:00	"	"	"	"	"	"	"
10:00	Hogan's Heroes	Dick Cavett	Good News	News	News	News	News
11:00	The Cellar	Sign Off	Account on Music	"	"	"	"
12:00	"	"	"	"	"	"	"
1:00	"	"	"	"	"	"	"
2:00	"	"	"	"			

**The Cable & Regular Television Programs
Schedule Will Appear In This Newspaper
Each Sunday
Sponsored By The Merchants
On These Pages!!!**

**Senator Farabee To Chair
Jurisprudence Committee**

State Senator Ray Farabee of the 30th Senatorial District has been appointed chairman of the Senate Jurisprudence Committee. "I am pleased to be appointed to chair a major committee which will provide an opportunity for greater leadership in the State Senate and greater service to the people of our area," Farabee said.

The Jurisprudence Committee considers the improvement of the judicial and court systems in Texas. As chairman of the committee, Senator Farabee will be concerned with legislation deal-

ing with law and order and the problems involved with the justice system.

Farabee was sworn in Jan. 9 to begin serving his second term as senator for the 30th District which include Floyd County. Farabee was also appointed by Lt. Governor Bill Hobby to serve again on the National Resources and Finance Committees.

The Natural Resources Committee monitors legislation dealing with agriculture and energy, both of which are essential to the economy of the District and the State. "This appointment will provide us in North and West

Texas with an important voice in shaping the policies affecting the energy resources in our area", Farabee stated.

The Finance Committee appointment affords Senator Farabee the opportunity to take an active role in setting the state budget and implementing tax relief. Farabee also serves on the Legislative Budget Board, comprised of four senators and four representatives, which sees that the State efficiently spends the taxpayers' dollars and keeps a lid on State spending.



THE TWELVE seats on the mini-bus which serves Floyd County residents are usually filled. Shown alongside the bus are: left to right, Francisco Granados, Pedro Vallejo, Andy Solla, driver Grady Freeman, driver Mabel Foster, Georgia Finley, Penny Edwards, Betty Fuller, Mae Jones, Ethel

Cross and Kathy Green, director of the Floydada Community Action Multi-Purpose Service Center. The bus operates Mondays and Wednesdays in Floydada, Tuesdays and Thursdays in Lockney and Fridays are open for out-of-town trips.

**Mini-Bus Available To Older
Floyd County Residents**

The mini-bus provides free transportation for Floyd County residents age 55 or older, Floydada Community Action Multi-Purpose Service Center

Director Kathy Green reminds the public. The bus may be contacted by phoning the Floydada Community Action Multi-Purpose Service Center at 983-3134 or the Lockney Community Action Multi-Purpose Center at 652-2639.

The buses operate on a "first-come, first-served" basis.

"Anyone with an appointment should call in advance so that a time can be set aside for them," Mrs. Green says.

The mini-bus operation is supported primarily by local funds. Floyd County Commissioners Court pays the gas and oil and City of Floydada pays the insurance premium.

Two persons drive the bus: Mrs. Mabel Foster and Grady Freeman. Mrs. Foster's salary is paid by the Green Thumb program and Freeman is employed by South Plains Association of Governments and Caprock Community Action.

BUS SCHEDULE

The schedule:
Monday: Floydada
Tuesday: Lockney
Wednesday: Floydada and Floydada Care Center, Wednesday afternoon.

Thursday: Lockney and Lockney Care Center, Thursday afternoon.

Friday: The bus is available for out-of-town trips for medical and other needs. "People should call and make an appointment for all out-of-town trips," Mrs. Green reminds.

**Summer Jobs Available
For Area Young People**

Congressman Charles V. Stenholm announces that several hundred summer jobs for high school graduates, college students, and faculty members are available for those who qualify under the Department of Transportation summer program. Jobs are available in professional, technical, and clerical positions. The summer work program starts in mid-May and extends to the latter part of September.

High school graduates and college graduates must apply for clerical positions by January 12. Persons seeking details concerning examination application procedures

should contact the U.S. Personnel Management Office nearest them.

A limited number of summer jobs for engineering, science, math and computer aids, and highway safety program technicians are available without a written test. Applications must be submitted between Feb. 15 and March 15.

For more information contact:

U.S. Department of Transportation
Central Employment Information Office, M-18
400 7th S.W. Room 2223
Washington, D.C. 20590
Phone: 202-426-2550

**So They Say . . .
Views of Other Editors**

HEADACHE, NOW

The Environmental Protection Agency has determined that Hereford's water, containing 2.4 milligrams of fluoride per litre is too much. It should be 1.8, where some parts of the country only 1.2 parts are allowed.

Apparently the EPA has never heard of Hereford's slogan "The Town Without A Toothache", much less read the intensive study carried out by the American Dental Association in the late 1930s.

A Hereford dentist, who by the way was a relative to Floyd Heard of Iowa Park, discovered and, with the assistance of the ADA, proved there were no healthier teeth in the world than those of Hereford natives.

The cause was determined to be the local underground source of water.

I attended school there right after the study was completed, and saw films made of the study. I know for a fact none of the children who were born and raised there ever had a toothache. For that matter, those who practiced the minimal dental care of daily brushing even developed cavities.

But it's apparently unhealthy to have healthy teeth.

If the city of Hereford fails to win its fight with the EPA, it will be forced to spend millions on equipment to remove the excessive amount of fluoride in the water.

I guess then those doctors who will be in excess can take additional dental training and move to Hereford, and take care of the teeth they'll have.

Bob Hamilton
Iowa Park Leader

HE DID COME BACK

"Friends" tell about a local resident's zeal for Dallas Cowboys football. The story goes that the fellow heard the final amen from the back door of the church.

But that's not all! He and his son drove away rapidly so they wouldn't miss the opening kickoff. Once at home, the Cowboy fan discovered something was missing: his wife.

The couple frequently drives to church in separate vehicles but had gone together that morning. So the fellow raced back for his church-bound wife and still returned home "in time to see the first touchdown."

The wife believes she was first missed when the husband and son were ready for their lunch!

Jim Reynolds,

USED EQUIPMENT SPECIALS

- Case Model 1175 Cab \$9,500
- Case Model 1370 Cab & Air..... \$13,000
- Case Model 1370 Cab & Air..... \$14,000
- Case Model 1370 Cab & Air..... \$15,000
- Case Model 1570 Cab & Air..... \$23,000

JANUARY IMPLEMENT SALE

- 7 Shank Ripper Plow..... \$1,700
- 19 Foot Tandem..... \$5,500
- 24 Foot Tandem..... \$6,500
- 31 Foot Tandem..... \$9,000

**INTEREST WAIVER ON ALL NEW
970-1070-1175-1370 & 1570
UNTIL 4-1-79**



**CASE POWER &
EQUIPMENT**

101 S. 12th

983-2836

Floydada

**ANNUAL
CLEARANCE**

SALE BEGINS MONDAY, JANUARY 15

"You've Been Wondering When, And Here It Is!"

- ★ Boots
- ★ Mens Wear
- ★ Felt Hats
- ★ Ladies Apparel
- ★ Childrens Clothing



**THE LOFT
WESTERN WEAR**

517 E. HOUSTON

FLOYDADA

983-2235

BUY'S DOUBLE ON WEDNESDAY	BUY'S DOUBLE ON WEDNESDAY
reston USDA Inspected, Wholesale, Frozen, Financing 652-3305	reston USDA Inspected, Wholesale, Frozen, Financing 652-3305
PTL CH. 6 Charlotte Cable 6	KCBK CH. 13 Lubbock Cable 13
Tammy Faye Show Happy Hour	News Joker's Wild
Jimmy Swaggart Transformed	Captain America
PTL Club	
Good News	News
Human Dimension	New Avengers
Account on Music	Movie: 'Sedwinder'
PTL CH. 6 Charlotte Cable 6	KCBK CH. 13 Lubbock Cable 13
Crossroads Let the Sunshine In	All-New Poppye Hour
Adventure Club Puppet Tree	Bugs Bunny/ Road Runner Show
Jot/Storyline Focus on Lister The Athletics	Tarzan and the Super
PTL Club	Seven
	Space Academy
Joy in My Time To Live Holy Spirit in the Now	Ark II 30 Minutes
	Capitol Eye Movie: 'Gung Ho'
Gerald Derstine	
Larry Lea Presents	Phoenix Open
Power Praise	CBS Sports Spectacular
Dan Griffin Show Jewish Voice	Ruff House Hee Haw Honeys
PTL CH. 6 Charlotte Cable 6	KCBK CH. 13 Lubbock Cable 13
Maranatha Concerts	Hee Haw
Heritage USA	White Shadow
PTL Club	Movie: 'W.W. and the Dixie Dancekings'
Larry Lea Presents	News Movie: 'Jason and the Argonauts'
Maranatha Concerts	News/Sign Off



A SINGLE WALL remained at the Gene Ehler residence following a May 11, 1970, tornado which ravaged Lubbock.

Ehler, his wife and two young daughters were sheltered in bedroom closet (arrow) which collapsed around them.

No Ordinary Storm . . .

Ehlers Remember Lubbock Tornado

CONTINUED FROM PAGE ONE

Dawn was only hours away. Ehler arose early and went to his former home. Only a refrigerator, deep freeze and dryer, plus a portion of the family's clothing, could be salvaged.

HEARTENING SIGHT

"But these were just things which could be replaced. What I saw made the entire picture seem brighter. There was my uncle, brother-in-law, brother, his boss, other relatives and friends there to help. They were concerned!"

Salvageable items were loaded onto pickups and trucks to be taken to the parents' home.

"They wouldn't even let me help. They sent me to the hospital to see about Mary Eita," related the tornado victim.

"My uncle had our color TV — less than a month old — completely repaired. And he wouldn't accept a nickel in return. Others took our clothes and

brought them back washed and ironed," explains Ehler, who adds: "This just proves that no man is an island. Man needs man."

"The most significant thing about the tornado has to be not the destruction but the way people responded to aid the victims, many times people they did not even know. Then there were relatives and friends."

THINGS 'LOOK UP'

From that point forward, things began to "look up" for the Ehlers. The son they had wanted was not born until June 28, two days before the family moved to Lockney. And that move meant that Pop had the managerial position he had trained for.

The Ehler family moved to Floydada in February 1975, when he became the PNG manager in Floydada. Suzie is now 14, Sheila is 13, and the son, Lance, is eight.

'THE LORD'S WILL'

Marveling aloud that "500 people

were't killed in Lubbock," the tall Floydadaian says. "The Good Lord didn't will it that way. I know of many cases where an entire house was destroyed except where the family was...under a bed, or in the bathtub."

After experiencing the tornado and losing only material "things," Ehler, who had a marble-sized jagged piece of brick, wood splinters and other foreign matter removed from his right leg by Dr. W.J. Mangold after moving to Lockney, offers two bits of advice in the event of severe weather:

"Listen to weather reports, but don't depend solely upon them. Use your own judgement. Seek shelter."

"Another thing, never stand during a tornado. You may be injured if you are sitting, but the likelihood is much less of being killed," due to flying debris.

Chances are the Ehlers observe both pieces of advice. They will get a new early in the basement which is an important part of their residence.

[The following article concerning the Ehler family appearing in the 'Lubbock A-J' the morning following the tornado.]

GOOD TO BE FOUND

St. Mary's hasn't handled maternity cases for a long time, but for a little while they were reviewing all necessary steps when it looked like the storm had brought them a case. But all went well and they didn't have to prove they "still know how."

A thing that touched Sister Maureen's heart were two little girls, a solemn-eyed 7-year-old. Caring for a younger sister, waiting for news of their father, who "had been bleeding all over the place" when he carried their mother in. Both parents were fine. "The relief on that little girl's face," was something to see, she said.

Good to be found, in the tornado, she believes, is the realization that man cannot live without man, that he is not an island to stand alone.

Baptists Set Bible Study

The First Baptist Church will conduct its annual January Bible Study beginning at 6 p.m. tonight and continuing through Wednesday. Dr. Floyd C. Bradley, pastor, will teach the book of Mark.

All Bible study sessions will be taught in the Chapel and the public is invited.

From Monday through Wednesday, the sessions will begin at 7 p.m. January Bible Study is an annual event among churches of the Southern Baptist Convention with studies alternating between books of the Old Testament and the New Testament.

Cotton Overproduction Would Spell Lower Price

If prospects continue for increased cotton plantings the rising cotton prices of 1978 seem certain to go in the opposite direction in 1979, say Cotton Incorporated economists.

Mother Nature cooperates and yields in 1979 are good, production in the U.S. could total 14 million bales, a third more than the expected 10.5 million bales from the 1978 crop.

If this occurs, Shaw adds, "U.S. producers may grow too much cotton relative to use," and prices are likely to decline.

Writing in the January issue of Cotton Incorporated's monthly publication, the Cotton Summary, Shaw says a producer might do well to lock in his prices early as decisions on planting are being developed.

"Fixing the price on a portion of the 1979 crop prior to planting may be the only way an individual producer can protect himself from the price distress which comes from overproduction," says the Cotton Incorporated economist.

"With the cotton trade fully aware of the prospects for overproduction, forward contracting may not look attractive to producers now, but in the end it may prove to be the wise choice. Producers who feel comfortable and knowledgeable about the futures market may be better off using futures as a direct hedge."

Circumstances that influence the cotton market are discussed in detail in the Cotton Summary, which is published by Cotton Incorporated to provide cotton producers with information to help them make their best planting and marketing decisions. Cotton Incorporated, the fiber company of American cotton producers, conducts a wide range of re-

search and marketing programs with per bale assessments from the nation's cotton producers.

During 1978, world cotton prices rose from 62 cents for 1 1/16-inch cotton delivered in Northern Europe to a high of nearly 81 cents on November 27. Prices received by U.S. producers rose from 48 cents in January to 61 cents in November and December.

The key to the stronger prices over the course of the year was more world cotton consumption, combined with a smaller world crop.

He says Cotton Incorporated expects consumption to be 61.6 million bales in the 1978/79 marketing year, an increase of 400,000 bales from the previous year. Production, on the other hand, will fall 4 million bales, according to Shaw.

"With about a two million-bale gap between consumption and production, world carryover on August 1, 1979, will drop below 21 million bales," adds Shaw. "The prospect of low world cotton carryover August 1, 1979, has been the underlying factor in market strength in 1978."

However, he points out, cotton prices have weakened somewhat during the last month.

"The reason for the shift from rising prices to softer prices," says Shaw, "is probably due to a switch from concern about the carryover of cotton on August 1, 1979, to concern about the level of supplies on August 1, 1980."

In the last five years, the Cotton Incorporated economist says, U.S. cotton producers have been extremely

responsive to changes in the price of cotton. Depending on the prices prevailing at planting time, the acreage planted to cotton in the United States has fluctuated from 9.5 million acres to 14 million acres.

With 1978 leaving a legacy of relatively favorable prices for cotton, all indications point to a bigger U.S. crop in 1979, Shaw adds. While production of cotton in foreign countries does not show the same direct response to price that it does in the United States, better yields in China and Russia and a small

increase in acreage lead to a rise in production from 49 million bales in 1978 to 50 million bales, he says, adding "world cotton production could then top 64 million bales."

Economic conditions between now and mid-1980 will determine world consumption, Shaw notes, whether or not the business downturn in the world carryover of August 1, 1980, seems to rise as world production exceeds consumption from million to 2.5 million

PUBLIC NOTICE CITY OF FLOYDADA HOUSING AND COMMUNITY DEVELOPMENT PROGRAM

The City of Floydada is currently making plans to participate in the U.S. Department of Housing and Community Development Community Development Block Grant program. Two important elements in planning for this program are citizens participation and evaluation of the City's performance on housing and community development activities.

The City of Floydada Citizen Advisory Committee on Housing and Community Development programs will be holding a public hearing to present the City's proposed Citizen Participation Plan and to obtain your views on the plan prior to its official adoption by the City Council. The hearing will also provide citizens an opportunity to comment on the City's past performance in carrying out housing and community development programs. General information on CDBG programs will also be available.

This public hearing is scheduled for 2 p.m., Wednesday, January 24, 1979 in the Council Meeting Room at the City Office, 114 W. Virginia St., Floydada, Texas. Handicapped individuals who may have difficulty attending this hearing should contact the City Office to arrange for assistance.

The City seeks your views both on Citizen Participation in its past performance in housing and community development activities. If you cannot attend this hearing, comments may be presented at the City Office at any time prior to the public hearing.

For further information contact Wm. A. Feuerbacher, Manager, City Office, Telephone No. 983-2834.

"If we make an error, we pay the penalty. And the interest."



Henry W. Block H&R Block preparers are carefully trained. But if we should ever make an error that costs you additional tax, you pay only the tax. Block pays any penalty and interest. We stand behind our work. That's another reason why we should do your taxes... whichever form you use, short or long.

106 W. Missouri Floydada, Texas 983-5233

H&R BLOCK THE INCOME TAX PEOPLE

USDA Seeks Public Opinion On Competitive Food In Schools

Assistant Secretary of Agriculture Carol Tucker Foreman withdrew an agriculture department proposal to restrict "competitive foods" in schools and announced three meetings to get public suggestions on what should go into a new proposal.

Competitive foods are any foods sold in competition with the type A lunch required in the national school lunch program.

Last April, the agriculture department proposed to restrict — until after the last school lunch period — the sale of candy, soda water, frozen desserts and chewing gum sold in vending machines, on a la carte lines or at snack stands.

More than 2,100 comments were received on the April proposal and they "raised some significant issues which deserve additional public scrutiny," Foreman said. "Therefore, we are withdrawing the April

proposal and will use the public meetings and written comments to help form the basis for a new one."

The meetings will be held Jan. 30 in Nashville, Tenn., Feb. 6 in Detroit, Mich., and Feb. 13 in Seattle, Wash. They will focus on developing competitive food standards that consider nutrition education, health, eating habits and the local administration of and impact on the school food programs.

Last year, Congress authorized the secretary of agriculture to regulate the sale of foods of limited nutritional value that are offered in competition with the national school lunch and breakfast programs.

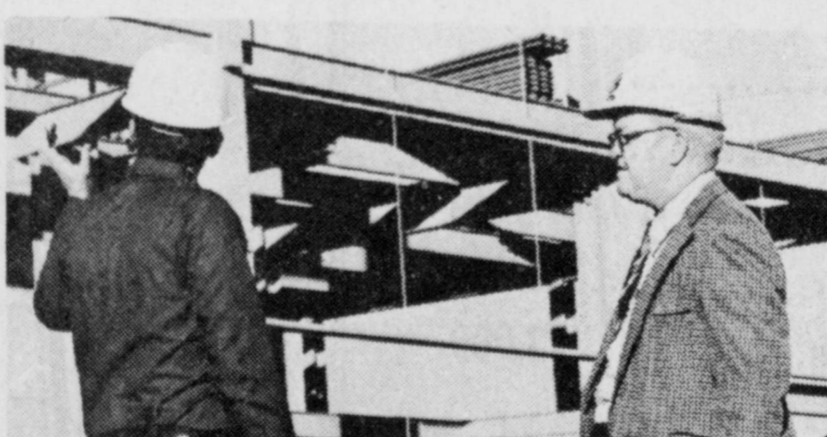
In the comments received on the April proposal, 82 percent favored the regulation or some variation of it; 18 percent opposed it. Foreman said the three public meetings were scheduled "in line with the agriculture department's policy

of seeking broader public participation in the decision making process of government."

Requests to speak at the meeting should be sent to local contact persons. They are: Nashville—Edward Hightower, on (404) 881-4259; Detroit—Frank Johnson, on (312) 353-1044; and Seattle—Benedicto Montoya, on (415) 556-4951.

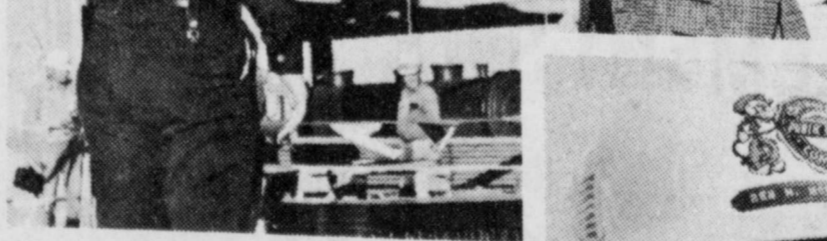
Those who cannot attend but wish to comment may do so by writing Margaret O.K. Galvin, school programs division, Food and Nutrition Service, U.S. Department of Agriculture, Washington, D.C. 20250, by Feb. 15, 1979.

The meetings will begin at 9 a.m. and will be held in Nashville at the University of Tennessee Center, Room 358, 10th and Charlotte Ave.; in Detroit at Henry Ford Hospital, Robin C. Buerkel Auditorium, 2799 West Grand Blvd.; and in Seattle at Seattle Public School



A pleasure . . . and a challenge!

That's the way Ben McMullin, PRINCIPAL STRUCTURAL ENGINEER for Southwestern Public Service, sees his job . . . his role in the boy scouts . . . and life!




"You know, I've got some 30 years in scouting. I do it all . . . workin' with the boys and the adult staff. Lookin' back, I think the highlight in scouting for me was taking 11 boys to the National Jamboree in Leadville that was an experience! It's been a pleasure . . . challenge. Same as my job at SPS. I'm the Principal Structural Engineer in charge of the power plant . . . that's the steel and concrete that holds up the building you might say. It's very exacting work. We combine our experiences with research on new and better materials and products . . . trying to make the next power plant build more efficient than the last one. It's a real challenge but that's what it's all about . . . keeping it going down for everybody. I've been at it 25 years now and I'm glad to be part of that team. We're doing the job and trying to do it better."

SPS has encouraged me in my job and in all my civic activities. You bet I'm proud to work for SPS . . . and for my community. It's hard to imagine one without the other."



REVIVAL

Expect A Miracle Rally With Evangelist Dale E. Sexton



Jesus is The Way and the Way to Jesus is the Word

TO BEGIN SUNDAY, JANUARY 14 FIRST ASSEMBLY OF GOD

701 W. Missouri Street Floydada, Texas

A Ministry of Healing And Deliverance

SPIRIT SOUL BODY

Floyd Commissioners Court Has Two-Day Session

agenda faced the county Commissioners when they met Monday. The county body returned to complete its session.

Milton Jr. moved a sum of \$80,000 for sharing money between the county and the state. The board of Floydada. The county reserves the right to accept or reject all bids.

Aaron Carthel made the motion that county employees cannot be paid for working for the county during the vacation period.

OFFICIALS BONDED
Official bonds covering the following elected county officials was approved: Glenna Mae Orman, county treasurer;

Mary L. McPherson, district clerk; C.E. Jarrett, commissioner, Precinct Two; James C. Lackey, commissioner, Precinct Four; Choise Smith, county judge; Margaret Collier, county clerk; and H.E. Porter, justice of the peace, Precinct One.

These bonds are to be filed in the county clerk's office and recorded in the official bond record.

The Martina Carisales and Linda Blue child welfare cases were tabled until the February court meeting.

Liouso Cisneros was officially employed as custodian of the Floyd County Courthouse. The employment was made retroactive to Dec. 1, 1978.

The trapping situation in Floyd County was discussed by Mike Acklin, county trapper.

Following the motion Carthel, the county governing body decided to cancel the Orkin pest control contract for the agriculture building.

SPAG MEMBERSHIP
Members of the commissioners court discussed paying dues to the South Plains Association of Governments. After consideration, the court voted to renew the Floyd County membership in SPAG for 1979.

Bills were approved for payment as presented. All the above mentioned business was on the Monday agenda.

MILEAGE INCREASED
Major matters Tuesday dealt with travel expense for county officials. Jarrett made the motion that mileage paid to the sheriff and deputies be increased from 15 cents to 17 cents per mile. This increase was adopted, retroactive to Jan. 1.

Jarrett also moved that money travel pay for the commissioners court be increased \$50 per month, effective Jan. 1. This was also unanimously offered.

Jack Lackey then offered a motion that the home demonstration agent's travel be increased \$50 per month, effective Jan. 1, and that travel expense for the county agent and assistant agent be raised \$50 per month, effective March 1. These matters passed on unanimous vote.

Carthel offered the motion that extra road employees' salary be increased, which also was adopted.

Attending the two-day session were the entire court: County Judge Choise Smith and Commissioners Aaron Carthel, Bob Jarrett, Grigsby Milton, and Jack Lackey.

Food Savings are In The Bag at Piggly Wiggly



PIGGLY WIGGLY

Barney's Butcher Shop Sale

USDA GRADE A

BOX O' CHICKEN OR SPLIT FRYERS

55¢

WITH BACKS LB.

OLD FASHIONED MARKET STYLE

SLICED BACON

\$1.29

LB.

PIGGLY WIGGLY LARGE, GRADE A

EGGS

DOZEN

72¢

FARMER JONES ALL MEAT OR BEEF

FRANKS

12-OZ. PKG.

89¢

USDA HEAVY WESTERN BEEF BLADE CUT

CHUCK STEAK

LB.

\$1.29

LEAN, FLAVORFUL BOSTON BUTT

PORK ROAST

LB.

\$1.39

PIGGLY WIGGLY

OLEO

1-LB. QTRS.

3 \$1

PIGGLY WIGGLY

FLOUR

5 LB. BAG

58¢

PAMPERS

EXTRA ABSORBENT DAYTIME DIAPERS

24-CT. BOXES

\$4.99

Stan's Produce Sale

SWEET, JUICY CALIFORNIA NAVEL

ORANGES

10 FOR **98¢**

GENUINE RUSSET

BAKING POTATOES

10 LB. BAG **88¢**

SOLID, FIRM

YELLOW ONIONS

LB. **15¢**

DOWNY

FABRIC SOFTENER

64-OZ. BTL.

\$1.68

DOUBLE STAMPS EVERY WEDNESDAY

We give Double Gold Bond Stamps every Wednesday with any purchase of \$2.50 or more excluding cigarettes.

...the adult le...
...counting for...
...more in Idaho...
...pleasure...
...I'm the...
...power plant...
...holds up the...
...We combin...
...and better...
...next power...
...e. It's a rea...
...keeping the...
...years now...
...ing the job...

Schwertner Off For Washington

CONTINUED FROM PAGE ONE

ed, the economy made seven. We did not have to borrow money — as other countries did — in fighting the war (World War II).

"During that time we had a healthy, viable economy. Then, we got back to a cheap food policy."

Schwertner explains that Americans then "had to borrow the money into circulation and we have kept borrowing until we now have nearly an eight trillion dollar debt. We are depending more and more on foreigners for our needs. I am against being so dependent on foreigners."

SPEAKS IN WASHINGTON

The Floyd County farmers spoke before the House Agriculture Committee. Although he had no prepared text, Schwertner drove home three points:

"(1) When you destroy your incentive to produce, you destroy America.

"(2) When energy costs increase, our costs are compounded. This happens because the prices jump on not only fuel, but also on chemicals, fertilizers, synthetic and other items.

"(3) If you have a product and the value continues to drop, you tend to put it in a corner and disregard it. If the value increases, you take care of it; when the value is high enough, you might lock it up."

GRAIN SALES PROTESTED

The Tractorcade participant enthusiastically disagrees with recent U.S. grain sales to other nations. "When our government makes sales to other countries — like those to Russia and China — you never hear the price. Our government made a contract with other countries without our (farmers) representation."

He explains that these unpopular grain contracts leave the farmer operating "at about 61 per cent of parity." This is, in his opinion, "one of the things which is keeping our prices suppressed. We (farmers) are now controlling our own destiny we are having to fulfill those contracts which we didn't make."

Schwertner predicts that "you'll see some fireworks" during the Washington Tractorcade. The grain contracts with Russia and China were engineered by two under-secretaries in the U.S. Department of Agriculture, he notes.

A short time later, the two men became vice presidents of Continental and Bunge Grain Co., Schwertner contends. Continental handled 80 per cent of the Russia and China grain transaction and Bunge handled 20 per cent.

"Milo was \$6 a hundred at that time (1974). Our prices since have dropped drastically, but these two companies are still receiving close to parity."

"We demand to know why we are not receiving near the contract price."

The Floyd Tractorcade participant says that AAM hopes to maintain lobby status. "It shows that farmers had better take care of their business if they want to stay farmers."

Water District Rep Measuring County Wells

Don McReynolds, chief of the Technical Division of the High Plains Underground Water Conservation District No. 1 will be in Floyd County measuring depth-to-water levels in certain wells during the week of January 15-19, weather permitting, so don't be surprised if you see one of the District's blue-and-white vehicles on some of your property. There are approximately 90 such wells in Floyd County.

Staff members from the Water District began the annual program of measuring the depth-to-water levels in the more than 800 observation wells scattered throughout the fifteen county District area shortly after the first of the year. The number of wells in each county varies from as few as four (4) in Potter County to over one hundred in Lubbock County.

Since most of the wells to be measured are operational irrigation wells the month of January was chosen to allow for a reading in wells that have not been utilized for

quite some time. This dormant period allows for recovery from the cone of depression developed during the pumping season.

The wells will be measured to find the depth to the "static" water level. After measuring, a yellow identification tag will be attached to the well equipment for the

owner's information.

Information gained from this program is used for decline rate projections, determining the amount of water left in storage and very importantly, as a basis for the income-tax depletion allowance claims on landowner's tax returns.

FAST BUSINESS CARD PRINTING!
AND THE PRINTING CHARGE IS COMPETITIVE

OFFICE AND ART SUPPLY CENTER

North Side Square Floydada

Got Heating Or Plumbing Problems?
Call **HOLMES PLUMBING**
AUSTIN OR STEVE
983-2251
6:30 - 9:30 a.m. and 5:30 p.m. Until!

OBITUARY

Mrs. Felix Riojas

Funeral services for Petra G. Riojas, 70, of Anton were

at 11 a.m. Friday at Our Lady of Grace Catholic Church and burial followed in Peaceful Gardens Cemetery under the direction of Rix Funeral

Directors. Mrs. Riojas died at 6:35 a.m. Wednesday in Health Sciences Center Hospital after a long illness.

She was a Catholic. Survivors include her husband, Felix; two sons, Carlos of Floydada and Felipe of Lubbock; three daughters, Juanita R. Garcia and Elicia

M Naranjo, both of Lubbock, and Julia R. DeLuna of Anton; eight sisters; three brothers; 43 grandchildren; and 22 great-grandchildren.

of Bois D'Arc, Missouri. John W. Buchanan of Missouri; two granddaughters, Nancy Hagood of Lubbock and Karen Bede of Paso; seven great grandchildren and two great grandchildren.

Myrtle Buchanan

Myrtle (Mom) Buchanan, 102, died Friday January 12 at 9 a.m. at the Floydada Nursing Home. Services will be Saturday January 13 at 10 a.m. in the First Christian Church with Reverend Dennis Swearingin officiating. Burial will be in the Humansville Cemetery, Humansville, Missouri.

Mrs. Buchanan was born April 9, 1876 in Schott, Missouri. She and Mr. James Hale Buchanan were married in 1900 in Missouri. He preceded her in death in 1939.

Mrs. Buchanan moved to Floyd County at the time of his death to make her home with her daughter, Mrs. Harry Morckel, where she made her home until she became resident of the Floydada Nursing Home about nine years ago. She was a homemaker and a member of the Methodist Church.

She is survived by two daughters, Mrs. Harry Morckel of Lubbock and Ruth Fields of Carthage, Missouri; two sons, Paul Buchanan

L. L. Lynn

Services for L.L. Lynn of Matador were at 10 a.m. Friday in the First Church in Matador.

The Rev. Luther pastor of the First Methodist Church in Matador officiated and the Rev. Kirk, pastor of the United Methodist Church here assisted.

Burial followed in Mount Cemetery of Matador under direction of the First Church Funeral Home.

Lynn died at 5:30 p.m. Wednesday at M.D. Hospital in Houston after a lengthy illness.

He came to Matador from Oklahoma in 1918 and had lived in Whitesboro, Missouri for 23 years. He was a Matador for 18 years.

The retired farmer was a Methodist.

Survivors include his wife, Elsie; two sons, Larry and Alvin; six daughters, Barney (Carlene) Guthrie, Mrs. Bob Morton of Cleveland, Gene (Daphne) Dalhart, Mrs. Don Burditt of Dumas, Mrs. (Ruth) McCallie of Colorado, and Mrs. Larry Noland of Floydada.

brothers, Alvin of San Antonio, Marvin of Oklahoma, Oscar of Oregon, Z.B. of Enid, Oklahoma, Lester of Tracy, California and 11 grandchildren.



ARNOLD Schwertner and his father, August, hold an American Agriculture

Movement banner beside the tractor the son is driving to Washington.

Groundwater Depletion Allowable Tax Allowance

Like all segments of our society the irrigated landowner on the Southern High Plains must also pay his taxes; but thanks to Marvin and Mildred Shurbet of Petersburg, and a 1965 decision from the United States Court of Appeals for the Fifth Circuit, the irrigated landowner has a tax break allowance for the depletion of his groundwater.

In November of 1965 the Internal Revenue Service published its Ruling 65-296 which stated that the IRS would not appeal the decision in the case of the United States vs. Marvan Shurbet et

al. The ruling further said "in that case, the court held that the taxpayers are entitled to a cost depletion deduction for the exhaustion of their capital investment in the groundwater extracted and disposed of by them in their business of irrigation farming. The court specifically stated, however, that its decision was not meant to furnish a precedent for allowance of cost depletion except under the peculiar conditions of the Southern High Plains."

The ruling stated that the deduction would be allowed to any taxpayer who could

prove the following three things: first, a decline of his groundwater during the taxable year; second, the thickness of the water formation under his farm at the time of purchase; and third, the actual cost basis in his water.

These data can easily be obtained by a taxpayer for filing a cost-in-water income tax depletion claim if his land is located within the geographical area covered by the High Plains Underground Water District No. 1. The District not only has the information available but has established an extensive sys-

tem of record keeping and data retrieval to provide the needed information to taxpayers, of their tax agents, in time for the irrigated landowner to file his tax returns.

"We expect to process between six and seven thousand requests this year before now and the tax filing deadline," said Water District Manager A. Wayne Wyatt. "Though there are not exact figures available on how much money is saved by this allowance, we estimate that at least \$3 to \$5 million is retained in the area served by the Water District each year."

Remember your ones and friends memorial to Lockwood General Hospital Fund. These memoranda toward equipment to serve our community best way possible.

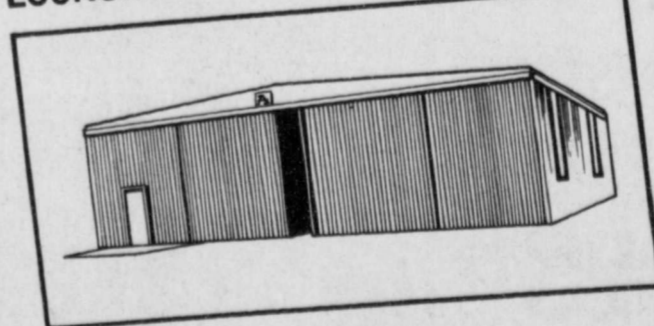
To get a total water depletion allowance for the year, multiply the acre depletion allowance figure by the number of acres in the tract. In this case, a 320 acre tract is used and the form completed as follows: \$5.32 x 320 = \$1,674.40. The year for this tract would be \$1,674.40.

AGRA STEEL BUILDINGS

Thousands of farmers and ranchers across the country have chosen Agra Steel

- Exceeds quality control standards
- Computer designed
- Pre-engineered
- Huge sliding double doors — smooth-rolling, self-cleaning
- Painted inside and out with double-baked enamel over galvanizing
- Weathertight — bird and rodent proof
- Pre-cut and pre-drilled
- Easy-to-read plans — numbered parts
- Fast and easy to erect
- Wide range of shapes and dimensions
- Modular fabrication

ECONOMICALLY MASS PRODUCED FOR LOWEST POSSIBLE PRICE



What are your needs? Shelter for big farm machinery, livestock or product? Remember, for quality, service, price... count on us! HUGE INVENTORY... IMMEDIATE DELIVERY

LESLIE NIXON

806 983-2644

FLOYDADA, TEXAS

RT. 4



Registered Dealer

If It's Results You Want-It's CLASSIFIED ADS You Need

FARMS AND ACREAGE

WANTED TO BUY irrigated or dryland farm, in Floyd or surrounding area. Write Box XRO, c/o Hesperian, Box 700, Floydada. tfc

FLOYD COUNTY LAND 70 acres cultivation, northeast of Floydada. Can be bought GI if you have your number 320 acres cultivation, part irrigated. \$50,000 down. If interested call Phil Kirkendall night 675-2584; day Chapman Realtors, Lubbock 1-18c

FARM MACHINERY

NORRELL TRACTOR PARTS for tractor and accessories. tfc

FOR SALE: Burr. Trailer, John Deere chassis, new tires. Call area 806-374-2369 Matador 1-14p

Truckload sale on tandem disk blades. 22 inch, 7 gauge for most popular makes, only \$15.16 each. Many other sizes and gauges available. Give us center hole and disk size for price quotation. Brown-McMurtry Impl., Silverton, Texas. Phone 806-823-2441 L-2-1c

LEGAL NOTICES

NOTICE TO BIDDERS FOR SALE

The City of Floydada, Texas will receive sealed bids at the office of the City Secretary, City Hall, 114 W. Virginia, Floydada, Texas until 5:00 p.m., February 13, 1979 and then publicly opened and read at its regular meeting at 7:30 p.m. at the above address for the following equipment.

1. 1963 Ford 1/2 ton pickup
2. 1962 Chevrolet 1/2 ton pickup without engine
3. 1960 Ford 4 door Station Wagon
4. 1964 Chevrolet 4 door sedan
5. 1971 Ford 4 door sedan
6. John Deere riding lawn mower, Six (6) H.P.

INSTRUCTIONS:

1. The above equipment may be inspected at 114 W. Virginia, Floydada, Texas.
2. The above equipment bids will be sealed and addresses to Mayor and City Council and state what equipment by name.
3. The City Council of the City of Floydada, Texas reserves the right to accept or reject any or all bids submitted.

s/Parnell Powell Mayor

s/Jimmie Lou Stewart City Secretary

CONTRACTORS' NOTICE OF TEXAS HIGHWAY CONSTRUCTION

Sealed proposals for mowing and litter removal on State Department of Highways and Public Transportation Right-of-Way in the following Counties: BAILEY, LAMB, LUBBOCK, FLOYD, and CROSBY.

Bids will be received at the District Office of the State Department of Highways and Public Transportation, P.O. Box 771, Lubbock, Texas, 79408, until 9:00 a.m., January 25, 1979, and then publicly opened and read.

The State Department of Highways and Public Transportation, in accordance with the provisions of Title VI of the Civil Rights Act of 1964 (78 C.F.R., Part 8), issued pursuant to such Act, hereby notifies all bidders that it will affirmatively insure that the contract entered into pursuant to this advertisement will be awarded to the lowest responsible bidder without discrimination on the ground of race, color, or national origin, and further that it will affirmatively insure that in any contract entered into pursuant to this advertisement, minority business enterprises will be afforded full opportunity to submit bids in response to this invitation and will not be discriminated against on the grounds of race, color, or national origin in consideration for an award. Plans and specifications are available at the Maintenance Office for the above mentioned county and at the office of William M. Pope, Supervising Maintenance Engineer, 601 Slaton Road, Lubbock, Texas.

Usual rights reserved.

NOTICE TO BIDDERS

The City of Lockney has a 1962 Red V-8 Chevrolet Station Wagon which has been used by the Lockney Fire Department as a back-up ambulance. It has 19,647 miles on it and can be seen at City Hall. The City Council will accept sealed bids until 5:00 p.m. February 7, 1979. The Council reserves the right to refuse all bids and to negotiate with the bidder of its choice.

/s/ Claude Brown, Mayor City of Lockney

ATTEST: Erma Lee Duckworth City Secretary.

HELP WANTED

WANTED EXPERIENCED FARM HAND, Permanent Position, with excellent opportunity for right person. Excellent farm house with central heat and air on pavement. Must be reliable. References required. 983-3570 nights. tfc

Male or Female - 2 full or part-time RN's, 1 bookkeeper - Business Manager for a 40-bed hospital. Above average salaries and excellent fringe benefits. Call person-to-person for administrator or director of nurses. Caprock Hospital, Floydada, Texas 806-983-2875. 1-14c

NEED RESPONSIBLE LADY to babysit new born. Prefer my home, references required. 983-2037 tfc

TREFLAN
5 Gal. \$109.50
CASH PRICE
\$108.00 - 30 Gal. Drums
OTHER CHEMICALS
COMPARATIVELY PRICED
Lone Star
Chemical, Inc.
Office: 652-2761
Deanie Henderson:
652-3434 LTFc

COW POKES

By Ace Reid



"Wul, we may never cure poverty, but it looks like we're fixin to cure wealth!"

THIS FEATURE SPONSORED BY
Floydada Real Estate & Insurance Agency
AUTO, FIRE & FARM INSURANCE
Jim Word - - - Phone 983-2360

Diamond Industrial Supply Co., inc.
Phone Days 296-7418 Nights 296-1200
or 296-7828
1014 Broadway
Plainview, Texas

Chain Sprockets	U-joints
V belts	Oil Seals
Sheaves	O-rings
	Wisconsin

SKF BCA Timken Bower
Cotton Stripper Brushes & Bats
"We Appreciate Your Business More" L-tfc

TREFLAN
5 Gallon \$108.00
(No Dealers Please)
PRODUCERS COOPERATIVE ELEVATOR
Floydada

ATTENTION HUNTERS & TRAPPERS
Fur buyer will be in Floydada at Leonard's Cafe each Friday from 12:45 until 1:15 beginning Dec. 1

We buy green and dry furs of all kinds. Skin case all furs, (like opossums), not open up the middle. We also buy deer hides. Well handled furs bring TOP PRICES!
Northwestern Fur Co.
Colorado City, Texas

TURNER REAL ESTATE
983-2635 Farms-Ranches Floydada, Texas

T. T. Enterprises
New Location
FORMERLY WHITES AUTO STORE
OFFERING CUSTOM CABINETS
AND ALL TYPES OF REMODELING.
After 5 Call Ike Tickle
652-3549 L-tfc

FARMS-RANCHES-CITY PROPERTIES-BUSINESS LEASES-LOANS
B. B. WILKES BROKER
REAL ESTATE
100 S Main, Lockney Barry Barker, Solicitor
Barker Insurance Agency-652-2642

IF IT IS INSURANCE -SEE-
BARKER INSURANCE AGENCY
LIFE-FIRE-CASUALTY-HOSPITAL

STORAGE SPACE
BOATS, FURNITURE, ANYTHING, ETC. BY THE MONTH OR SIX MONTH 10% DISCOUNT.
WEST TEXAS MINI STORAGE
983-3573 OR 983-2151

FOR SALE

FOR SALE: Country Club membership. 983-5256 tfc

FOR SALE: Windmill, steel tower, pipe, rod cylinder, overhead tank, several hundred fence posts, and sheep wire. Dorsey Baker, Lockney Ltfc

FOR SALE: Frigidaire, frost free refrigerator, good condition. C.M. Perry 983-2998. 1-18p

BUSINESS SERVICES

C-D-J 66 7-day service, car wash, oil change. Gas service, U-haul rentals. Located on Matador hwy. 983-2601.

INSULATION
Fire-Resistant. Installed and Guaranteed. MARR Insulation Co. Lockney 652-3593. Ltfc

C-D-J INSULATION can help save your dollars. For information call 983-2601.

NOTICE

NOW OPEN A-1 Pet and Grooming professional grooming, all breeds-no tranquilizers 821 Broadway, Plainview, Texas 293-3557 tfc

CHRIS BRADY, D.D.S. and **MARK HASSINGER, D.D.S.** Announce the Opening of Their Practice of **FAMILY DENTISTRY** at 405 Saye, Silverton, Texas 823-2417 As of January 17, 1979 TI-25c

WOULD THE PERSON OR PERSONS who took the gray ceramic donkey from the LeRoy Burn's nativity scene at 610 W. Georgia please return it. No questions asked. It was a gift and has special meaning for Mrs. Burns. 1-14c

Can You Use Some Extra Money Let Us Help!!!!
WE BUY SCRAP IRON, OLD JUNKERS, AND FREE PICKUP
Call 983-5277

AM I LATE?
Sunflower seeds will sprout in 36 hours.

For Sale

FOR SALE: 4 in. Green pump complete. 240 ft. setting. Same as new Dorsey Baker Ltfc

FOR SALE: Bale Cain stubble. 983-5166 tfc

Firewood for Sale - Oak, Pinon and Mesquite. Green or dry. Call 652-3810, before 8 or after 5 o'clock. L2-4c

FEET TIRED? Try Mason Shoes with "Velvet-ez" air-cushioned innersoles. Keith Emert, 652-3116. LStfc

FOR SALE: Good old upright piano. \$150.00. See at Floyd County Hesperian. tfp

FOR SALE: Floyd Co. Country Club membership. 983-2741 2-4c

FOR SALE: 104" Clyde Pearson Couch. Goose Down, Very Good Condition. See at Mize Pharmacy & T.V., Lockney. Phone 652-2345, Home 652-2412. L-1-18c

FOR SALE: 3 door freezer-refrigerator combination upright. Good and Harvest Gold call 983-3243 after six. 1-14c

FLOYD COUNTY ABSTRACT CO.
Abstracts Of Title
Title Insurance
Verna L. Stewart
Owner, Manager
217 W. California
983-3728
Floydada, Texas

DAN'S AUTO SERVICE
DAN TEUTON, Owner
Specializing in Automatic Transmission, Motor Tune-Ups, Auto Air Conditioning.
General Repair
We Have A BRAKE LATHE to handle all passenger car brake drums. Sec us for complete brake service.
Phone 652-2462

WE WANT YOU TO KNOW-
We sell all kinds of Good-year tires...tractor, auto, truck, a good tire, good service. Best deals in West Texas. Truck winch and hauling service. BABE'S SERVICE CENTER, floydada. tfc

CLASSIFIED RATES

CLASSIFIED ADVERTISING RATE: 10 CENTS PER WORD FIRST INSERTION: 7 CENTS PER WORD EACH SUBSEQUENT INSERTION. MINIMUM CHARGE \$1.50. CLASSIFIED DISPLAY RATE: \$1.30 PER COLUMN INCH-CARD OF THANKS: \$1.50.

AUTOMOTIVE

FOR SALE: 1973 Ford Station Wagon. Both priced to sell. Call Bob Copeland. 983-3479 tfc

FOR SALE: 1972 98 Olds, 4 door, tilt, cruise, tape deck. Ed Wester, 983-3430 tfc

FOR SALE: One 1975 Ford Thunderbird, low mileage, like new, loaded, Michelin tires. 846-2262 1-21c

1974 Ford Pickup, 390 Engine, very clean. 983-3570. tfc

FOR SALE: 1975 Continental Mark IV automobile, very clean. Louis Pyle 983-5358 1-21c

WANTED

WANTED Wheat Pasture 983-3445 1-21p

Need garage to store car by the month. Call 652-3413 after 5:30 L1-14c

SMALL JOBS WANTED Carpenter, painting, odd jobs Call 983-2294 after 6 p.m. tfc

SHOP FLOYD COUNTY FIRST!



Auto Accidents DO Happen... If one happens to you, be protected. Our car insurance offers coverage to meet your special needs - repairs to personal liability.

BAKER
Insurance Agency
127 W. Calif.
Ph. 983-3270

MOBILE HOMES

FOR SALE: 1976 Lancer 14 x mobile home on lot. Two bathrooms. Call after 5 p.m. 2-4p

FOR SALE: Three bedroom mobile home, playroom, fenced yard, and storage building. Call 983-3425 after tfc

FOR SALE: Three bedroom mobile home, double lot, air-conditioning. 983-3129, or 2-8p

FOR SALE: 3 bedroom mobile home with living and dining room. Call 983-3469 tfc

FOR SALE: 2 bedroom mobile home, King Real Estate. Call 983-2881 tfc

FOR SALE: 211 sq. ft. mobile home, appointment room, Memorial Hospital. Call 983-3469 tfc

FOR SALE: 3 bedroom mobile home, double lot, air-conditioning. 983-3129, or 2-8p

FOR SALE: 3 bedroom mobile home, playroom, fenced yard, and storage building. Call 983-3425 after tfc

FOR SALE: 3 bedroom mobile home, double lot, air-conditioning. 983-3129, or 2-8p

FOR SALE: 3 bedroom mobile home, double lot, air-conditioning. 983-3129, or 2-8p

FOR SALE: 3 bedroom mobile home, double lot, air-conditioning. 983-3129, or 2-8p

FOR SALE: 3 bedroom mobile home, double lot, air-conditioning. 983-3129, or 2-8p

FOR SALE: 3 bedroom mobile home, double lot, air-conditioning. 983-3129, or 2-8p

FOR SALE: 3 bedroom mobile home, double lot, air-conditioning. 983-3129, or 2-8p

MORTON BUILDINGS
Jerry Smith
Gene Straw
Plainview, Texas
Phone 806-293-4386

FOR BETTER CONCRETE CALL CALLOWAY READY-MIX 652-2224 LOCKNEY PLAINVIEW HWAY ALSO WHITE CALICHE ROCK FOR SALE

Kirby
Vacuum cleaners, new and rebuilt. 1 yr. guarantee. Parts, sales and service. Prices begin at \$124.50. Parker Home Furnishings in Lockney. 652-3315. Ltfc

Elanco Promotes John W. Cagle

John W. Cagle has recently been promoted and transferred within Elanco Products Company, the agricultural marketing division of Eli Lilly and Company.

Cagle, an agricultural chemicals sales trainee in the Dallas area for the past six months, has been promoted to a sales representative. He will be residing in the

Hewitt, Texas, area according to J.L. Forrest, manager of the company's Dallas sales district.

A native of Floydada, Cagle was graduated from Floydada High School in 1974. He received a bachelor's degree in general studies from Texas Tech University in 1978. He is the son of Mr. and Mrs. William Cagle of Floydada.

Have a nice week end.

Youth Confesses To School Fire

Charges Pending

Charges were pending at press time after a 14-year-old Floydada lad confessed to setting a Tuesday, Jan. 2, fire in the science wing of the Floydada Junior High.

The boy was taken to Lubbock Wednesday afternoon for a polygraph examination, but confessed before the test was administered. FJHS Principal Bob Aldredge says the call on the fire was received about 5:45 p.m. Jan. 2.



Cruz Tijerina

TIJERINA GRADUATES

guns, missiles does. He joined the Navy Fire Control Technician Third Class Cruz G. Tijerina, son of Mary G. Santana and step-son of Albert G. Santana of Route 1, Petersburg, was graduated from Fire Control Technician School.

During the 23-week course at the Naval Training Center, Great Lakes, Ill., he received instruction on the electronic weapons systems installed aboard current U.S. warships. He studied operating principles and procedures of radar, digital computers and related shipboard equipment used to control the firing of

DANCE SATS IN LOCK

Everybody is in for a dance on 8 p.m. night Saturday at the American building in Lockport. The dance will be provided by the Crow ("Big Bird") rillo. Admission charge per person.

COURTHOUSE NEWS

MARRIAGE LICENSE

Luis F. Saucedo and Margarita S. Luna. Thomas Bunton Hawkins and Tammy Lyn Tyler.

PROBATE

W.C. Mooney, will & appl. to probate. Lillie Handley, will & appl. to probate.

WARRANTY DEEDS

Cecil L. and Charlotte Carthel to Isaac and Carol Tickle, 1.0 acre N.W. D-Survey. John Key West and Madge West to John M. West, et al, 238 acres, Floyd. Wilfred Stoerner to Martin Stoerner and Cynthia Bybee, 5 acres, E-1/2-NW1/4, S-119, B-D-2, Floyd.

Wayne Bramlett et ux to Larry W. Bramlett, NW-1/4, S-38, B-D-2.

Thurman B. Thomas to Cora Jean Buchanan, -3/64 int. all E/2, S-23, B-N, Floyd.

Thurman B. Thomas to Marsha A. Thomas, 3/64 int. all E/2, S-23, B-N, Floyd.

Floyd L. Lawson et ux to Raymond E. Lawson et ux, all Lawson int., L-7, 8, 12, 13, 14, 15, 16, B-76, Floydada.

Clarence Guffee et ux to Henry M. McPherson et ux, L-2, B-66, Floydada.

John D. Mitchell to R.C. Mitchell, all M-int., 1/24 int. 4 acre, SE, S-56, Block G, Floyd.

Alice N. Mitchell to R.C. Mitchell, all 1/2 int. 4 acre, SE S-56, Block G, Floyd.

Larry G. Mitchell et al to R.C. Mitchell, 1/24 int. SE, S-56, Floyd.

Wesley Rhea Mitchell to R.C. Mitchell, 1/24 int. 4 ac., S-56, Floyd.

Sandra Kay Griffith to R.C. Mitchell, 1/24 int. S-56, Floyd.

Lennie Velma Willis to Dave F. Willis, L-6, B-24, Floydada.

Enrique V. Gonzales versus Service Life & Casualty Insurance Co. Judgement for defendant.

State of Texas vs. Joe L. Coleman charged with rape. Six years probation.

State of Texas versus Joy Dell Jordan, poss. of marijuana. 4 years probation.

State of Texas vs. Rex Armon Breed, poss. of marijuana. 4 years probation.

CASED FILED
Employers Mutual Cas. Co. vs. Maria E. Rodriguez, appeal from award of Industrial Accident Board.

CASES DISPOSED OF
Westmor Manuf. Co. versus Boothill Western Wear. Judgement for Plaintiff.

Levi Strauss & Co. versus Boothill Western Wear. Judgement for plaintiff.

LOCKNEY GENERAL

Hospital Report

Jan. 4 — to Jan. 11

Eula Thornton, Lockney, adm. 12-14, continues care.

Georgia Allen, Lockney, adm. 1-3, dis. 1-8.

Willie Jones, Lockney, adm. 12-29, dis. 1-6.

J.T. Strickland, Floydada, adm. 1-4, continues care.

Grady Cunningham, Quitaque, adm. 1-2, dis. 1-9.

Simplicio Leal, Quitaque, adm. 12-27, dis. 1-9.

Velma Carrillo, Plainview, adm. 1-4, baby boy, Tobe, born, 1-4, dis. 1-6.

Allen Jewell Francis, Silvertown, adm. 1-5, continues care.

Manuel Rivera Jr., Plainview, adm. 1-9, continues care.

Steven Alaniz, Lockney, adm. 1-9, continues care.

Juan Sustaita Vasquez, Lockney, adm. 1-10, continues care.

Richard P. Phillip, Lockney, adm. 1-10, continues care.

Cora Bankston, Plainview, adm. 1-11, continues care.

Irma Lopez, Amarillo, adm. 1-11, continues care.

Alice Willie Gordon, Lockney, adm. 1-7, continues care.

Christina Leal, Quitaque, adm. 1-2, dis. 1-6.

6-32 OZ

COKE OR DR PEPPER

\$1.89

\$2.29 VALUE PLUS DEPOSIT

89¢ SIZE

DORITOS

2/\$1.19



Mrs. Stinson Stringer \$100 Gift Certificate

PLAY BUDDYS LUCKY STARS

- | | |
|----------------------|----------------|
| Beatrice DeLaFuenta | Family Pride |
| Eli Enriquez | 1200 S&H Green |
| Joy Guest | 1200 S&H Green |
| Lidia Solsaido | 1200 S&H Green |
| Marlene Corbett | 1200 S&H Green |
| Mac Fowler | 1200 S&H Green |
| Kay Wilson | 1200 S&H Green |
| Mrs. Rosie Lee Jones | 600 S&H Green |
| Veral Bennett | 600 S&H Green |
| Anne Wilson | 600 S&H Green |

BUDDY'S

STORE HOURS
Mon.-Sat., 8 a.m. to 8 p.m. Sun., 9 a.m. to 8 p.m.
VALUES EFFECTIVE THRU SATURDAY, JANUARY 20, 1979
We Reserve The Right To Limit Quantities

<p>FLORIDA TANGERINES 4 LBS \$1.00</p> <p>FIRM GREEN CABBAGE 15¢ LB</p> <p>RUBY RED GRAPEFRUIT 6 FOR \$1.00</p> <p>NATIVE "IN THE SHELL" PECANS 99¢ LB</p> <p>38 OZ WESSON OIL \$1.69 \$2.13 VALUE</p> <p>12 OZ BRACHS CHOCOLATE COVERED CHERRIES \$1.39 \$1.79 VALUE</p> <p>16 OZ LIBBY'S CHUNKY PEARS 57¢ 75¢ VALUE</p> <p>12 OZ NABISCO VANILLA WAFERS 69¢ 89¢ VALUE</p> <p>1 LB MARYLAND COFFEE \$2.29 \$2.89 VALUE</p> <p>11 OZ HOT SHOT ROACH & ANT SPRAY 99¢ \$1.49 VALUE</p> <p>10 OZ. FRITOS BEAN DIP 2/99¢ 63¢ VALUE</p> <p>50 COUNT KLEENEX DINNER NAPKINS 2/99¢ 73¢ VALUE</p>	<p>U.S.D.A. BONELESS STEW MEAT \$1.69 LB</p> <p>USDA BONELESS ROUND STEAK \$2.39 LB</p> <p>USDA CHOICE CHUCK ROAST \$1.39 LB</p> <p>FAMILY PACK USDA CHOICE PORK CHOPS \$1.69 LB</p> <p>USDA CHOICE CLUB STEAK \$2.39 LB</p> <p>USDA CHOICE T-BONE STEAK \$2.49 LB</p> <p>USDA CHOICE BEEF RIBS \$1.19 LB</p> <p>USDA CHOICE RANCH STEAK \$1.59 LB</p> <p>CENTER CUT HAM SLICES \$1.99 LB</p> <p>1 LB NABISCO CRACKERS 65¢ 91¢ VALUE</p> <p>5 LB GLADIOLA FLOUR 77¢ 99¢ VALUE</p> <p>25 SQ. FT. REYNOLDS WRAP 3/\$1.00 53¢ VALUE</p> <p>12 OZ CAMELS RAW PEANUTS 59¢ 79¢ VALUE</p> <p>KRAFT CHEESE & CRACKERS 12/\$1.00</p>	<p>GIANT 49 OZ FAB SOAP \$1.89 VALUE</p> <p>4 BAR CASHMERE BOUQUET SOAP 79¢ 99¢ VALUE</p> <p>22 OZ LIQUID "PINE FOREST" AJAX \$1.59 VALUE</p> <p>8 COUNT HANDI-WIFE TOWELS 69¢ 91¢ VALUE</p> <p>28 OZ LIQUID AJAX \$1.59 VALUE</p> <p>14 OZ AIR WICK CARPET FRESH \$1.17 VALUE</p> <p>GALLON BUDDY'S MILK \$2.17 VALUE</p> <p>GIANT BAR BABY RUTH OR BUTTERFINGER 39¢</p> <p>1/2 GAL BELL BUTTERMILK \$1.17 VALUE</p> <p>15 OZ NABISCO OREO COOKIES \$1.15 VALUE</p>
---	---	--

Tracy Tyer...
...Saturday...
...a dream...
...being crow...
...the 1978 WI...
...As approx...
...their...
...wives, sel...
...find fans lo...
...ivity Center...
...for the h...
...Greg J...
...captains...
...heart, w...
...leader. T...
...Whirlwi...
...NEEDED: R...
...CORRESP...
...This newspa...
...respondents...
...rious commu...
...tersted pers...
...office for i...
...IDEAS EXC...
...A Reader...
...the Editor...
...s entry d...
...esperian poli...
...signed lette...
...The letter st...
...article on l...
...ough retiree...
...See J...
...Joe H. Cluc...
...elected