

The Floyd County Hesperian



Volume 83

Floydada, Floyd County, Texas 79235

Sunday February 18, 1979

28 Pages In Two Sections

Number 14

15¢ Per Copy

Floyd Livestock Show Next Week



Norman Allen, left, and brother Mike check out one of the lambs before the county livestock show this week.

Mike, a Floydada High Junior, and Norman, a freshman, are both FFA and a 4-H members.

From the four corners of this county, groomed and sleek steers, lambs, and swine will be loaded onto pickups and trailers Sunday and Monday enroute to Floydada.

The goal of their proud owners — 4-H and FFA members — will be grand champion banners at the 25th annual Floyd County Junior Livestock Show.

The five-day event begins Sunday with weighing of barrows and continues through next Thursday when exhibitors and their parents are honored with a banquet in Duncan Elementary Cafeteria in Floydada.

Monday and Tuesday — of judging plus one day — next Wednesday — devoted to judging by FFA and 4-H members and the auction of animals.

James McNeill will serve as general superintendent of the '79 Floyd County Junior Livestock Show. Assistant superintendents are to be Orville Harris and James Cleveland of the Floydada High vocational agriculture department; Elvin Lyon and Mike Glenn, vo-ag instructors at Lockney High School; Steve Herber and Birch Lobban, county Extension agents.

ACTIVITIES OUTLINED
Weighing of barrows will begin when the barn opens at 2 p.m. this Sunday. All swine are to be in place by 6 o'clock that day.

Monday activities begin with the

weighing of steers at 7 a.m. One hour later, at 8 o'clock, weighing, classifying and tooting of lambs starts. All steers must be in place by 9 a.m. and steer classifying is slated for 10 o'clock.

Judges for this year's show include: Jerry Adams, steers; Scotty Windham, swine; and Buddy Logsdon, lambs.

Ed Garnett will classify steers and lambs. Windham will be the first to judge as he begins to examine barrows at 2 o'clock Monday afternoon.

Selection of lamb winners leads off the Tuesday agenda at 9 a.m. Steer judging is scheduled for 2 p.m. that day.

Notification to sell non-placing floor bid animals must be made to officials one hour after completion of the judging schedule. Swine exhibitors are reminded that barrows may not be returned home after the show, due to a new federal regulation.

Youth livestock judging is scheduled for 7:45 a.m. Wednesday.

AUCTION WEDNESDAY
Exhibitors begin to reap the benefits of their efforts during the Wednesday afternoon auction. Raymond Akin will begin the auction by selling champion stock to high bidders at 1 p.m.

Floyd County Junior Livestock will offer for sale 32 steers, 70 barrows, 70 lambs or 50 cent of the total lambs and barrows with the total not to exceed 140. The 7 p.m. banquet is the only Thursday activity.

JUDGING DIVISION
Steers are to show in three classes — light, medium, and heavy — per breed. Prizes will include: first place, \$5; second, \$4; third, \$3; fourth, \$2; fifth \$1; and sixth through tenth, ribbon. Breed champions and reserve champions are to receive rosettes.

A banner and \$5 will be received by the grand champion steer's owner. A banner and \$3 goes to the reserve champion steer.

Swine are to be exhibited in light, medium, and heavy classes for the following breeds: Berkshire, Chester, White, Duroc, Hampshire, Poland Chinas and Spotted Poland China crossbreeds, and other breeds. Any of these which have fewer than 10 barrows entered will be shown with "other breeds" rather than as a separate breed.

In the event of 20 or fewer entries, a

breed is to be divided into two rather than three classes.

CHAMPION LAMBS
There will be no grand and reserve champion lambs, but the following class champions and reserve champions are to be declared:

Finewool — Rambouillet, Merino or cross between these two finewool breeds.

Finewool crossbred — typical first cross of a Suffolk, Hampshire, Corriedals, Dorset or Columbia.

Shropshire — purebred Shropshire lambs only.

Southdown — purebred Southdown lambs only.

Medium wool — Hampshire, Suffolk and all other medium wool are not eligible for the above mentioned classes.

OFFICIALS LISTED
Edwin Nutt is president of the Floyd County Junior Livestock Show for 1979. McNeill is vice president, and Larry Barbee serves as secretary-treasurer. Jack Johnson is to be the announcer. Following are the superintendents

and assistant superintendents in the three divisions:

Swine — Roger Dawdy, superintendent, Keith Phillips, Clinton Ware, Mark Noland, Harold Bennett, E.D. Morgan.

Lamb — Kenneth Broseh, superintendent, Harvey Allen, Austin Beedy, Eddie Teeter, Choise Smith.

Steer — Larry Golden, superintendent, Vernie Moore, Bob Ross, Warren Mitchell, and Ray Gene Carthel.

Harold Bennett is grounds superintendent, and Travis Jones will be loading superintendent. Dozens of other persons are assisting in various jobs.

Dr. Paul Glasson and Dr. Charles Overstreet will be show veterinarians.

BUYERS LUNCH
Individuals and managers of businesses who purchased animals during the '78 auction and prospective buyers this year are invited to a buyers lunch. Serving is scheduled to begin at 11:30 a.m. Wednesday at the show barn. The lunch precedes the auction.

Historical Commission Appointed By County Commissioners Court

County Judge Choise Smith has announced the official appointment of members to the Floyd County Historical Commission.

The County Commission is the agency charged with the responsibility of surveying, marking and preserving the county's heritage, and is to be engaged in numerous activities and projects recommended by the Commissioners Court and the Texas Historical Commission.

James H. Word of Floydada will be chairman of the group. Other members are Mrs. Don Marble, Tommy Assiter, Wilson Bond, Mrs. Joe Taylor, Mrs. Melvin Henry, Mrs. Henry Hinton, and

Mrs. Clay Henry.

Judge Smith pointed out that the 64th Legislature amended the statute which authorized the appointment of county historical commissions and in so doing, broadened the scope of activities and responsibilities of the group.

Judge Smith stated that in addition to the activities outlined in the statute, the county commission is to develop local history as a scholarly resource as well as a tourist attraction. He further stated that "Floyd County has a unique heritage of which every citizen should be justly proud and called on all citizens to support the goals and objectives of the county historical commission."

No Candidates Thursday For School Board And City Council Positions

No candidates had filed Thursday afternoon for places on the school trustee or city council ballots. Both elections are scheduled for Saturday, April 7.

Terms of Mayor Parnell Powell and Councilmen Wayne Russell and Jerry Thompson expire this year.

Two seats become vacant on the Floydada Independent School District board of education. Terms of Travis Jones, president of the board, and Lawrence Stovall are to be completed.

Candidates for school posts should sign with Darlynn Hambricht at the central office, 208 South Main. Aspirants for city offices may register at city hall.

Deadline for filing is 30 days prior to the election date.

Jack Stansell is to serve as judge for the trustee election, to be held from 7 a.m. until 7 p.m. in the courthouse. Gene Ehler has been appointed judge for the city balloting.

SOUTH PLAINS ELECTION

South Plains School will be the site April 7 for an election to name several school trustees. Board secretary Kendis Julian said Thursday that candidates are: Dwight Teeple, Nathan Mulder, Julian, Fred Marble, Ira Henderson, Oliver Clark, and Howard W. Staples.

Since South Plains has been declared as an independent school district, all seven board positions must be filled at this election.

Present trustee are Teeple, Mulder, Julian, Ronald Kitchens, Marble, Henderson, and Oliver Clark. The latter man is filling the unexpired term of Tommy Scaff.

DOUGHERTY TRUSTEES

Dougherty also has been declared an independent school district and all seven trustee positions must be filled in an April 7 election.

The present Dougherty board consists of Richard Ward, Lance Poole, Rickey Pennell, Kenneth Robertson, Billy Don Colston, James Ray Cage, and Larry Bostick.

Candidates are to file with Colston, the board secretary.

The Hesperian was unable to learn who has filed as trustees.

175 Apply For School Homestead Exemptions Here

Approximately 175 property owners in the Floydada Independent School District have applied for the \$5,000 homestead exemption.

Tommy Cathey, business manager for the school district, encourages all eligible taxpayers to sign a residential homestead exemption affidavit by April 30. This will enable him to determine the assessed valuation for next year's school budget.

Anyone who would like to sign an affidavit may contact Cathey at the central school office, 208 South Main.

Floydada Airport Fund Still Growing

Fifty-eight hundreds dollars....and counting!

Tommy Farris, chairman of a citizens committee to secure funds with which to assist with improvements at Floydada Airport, said early this week that \$5,800 presently is on deposit at First National Bank of Floydada for the project.

"I can see at least \$6,500 (in contributions)," Farris stated.

Schools Dismiss Early Friday

Due to adverse weather and hazardous traveling conditions, Floydada schools were dismissed at 1 p.m. Friday, according to Supt. Jerry Cannon.

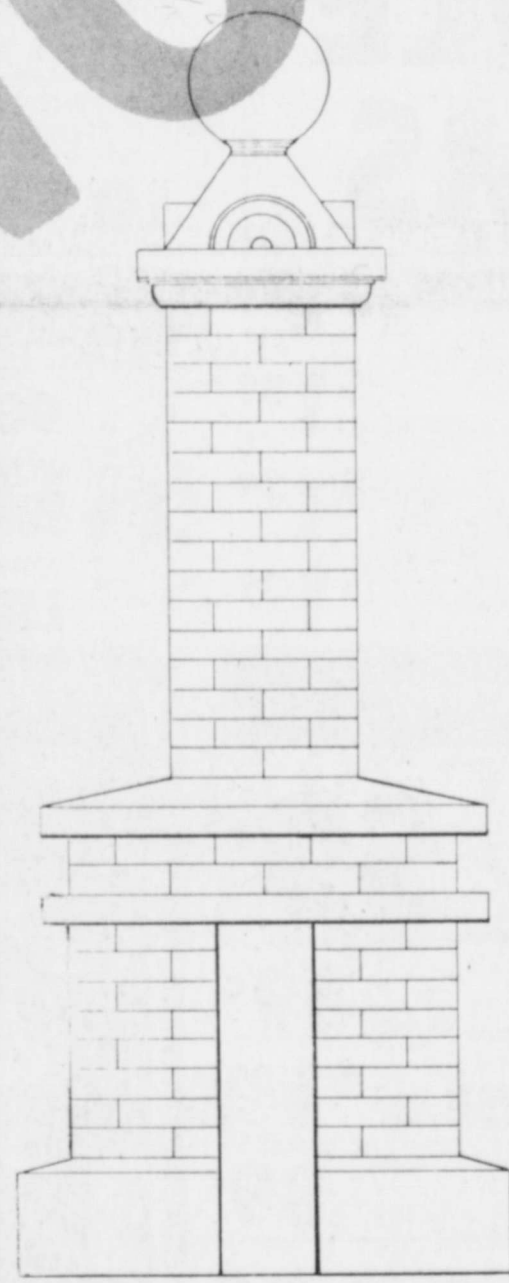
Lunch was served early that day.

Weather

DATE	HIGH	LOW
Feb. 8	43	34
Feb. 9	50	18
Feb. 10	64	27
Feb. 11	72	34
Feb. 12	63	36
Feb. 13	78	33
Feb. 14	87	42
Feb. 15	64	48
Total For Month —	.1	

Remember?

Street Light Turning Posts In Downtown



Can you remember these street light turning posts in downtown Floydada?

If so, you are no newcomer!

The "attractive but monstrous (in size)" street lights were removed "in the late '20s or early '30s." Concrete slabs remain at the four corners around the square as a reminder of the lights' existence.

This sketch was found in the county surveyor's office by Louis Newell. His father, W.D. Newell, is the Floyd County surveyor.

The 1918 "spec sheet" (specifications) called for the lights to be of grey brick with black cement mortar, white cut stone, steel angle bars, and the concrete bases. A 400-watt light was required.

The four "street light turning posts" were to have been built by the "Lyceum Committee."

Newell showed the sheet from yesteryear to David Kirk, who in turn allowed the Hesperian to make a copy. Kirk remembers that a number of car fenders were bent on the lights poles, which he termed "most attractive."

Who was on the "Lyceum Committee" which was in charge of the 1918 project? What do you remember about the lights? The Hesperian would like to learn more about these unique lights and share the information with our readers.



HISTORY does repeat itself! A "blizzard" raked the South Plains last February 16, dumping eight to 10

inches of snow across Floyd County and over a foot at some area points. This

Friday — February 16 — snow started about 8 o'clock in the morning and was continuing at press time.

COLA 9¢... GIVE... GREEN CAMPS... DOUBLE... WEDNESDAY... SOFTNER... NCE... \$1.69... 69... 59... 87... \$1.19 VALUE... 2/89... 63¢ VALUE... 79... \$1.19 VALUE... HEAVY WEIGHT... \$1... \$1.41 VALUE... 69... 99¢... 49 VALUE

TOTAL SAVER

TOP QUALITY!

WE RESERVE THE RIGHT TO LIMIT

HONEST VALUES!

STOREWIDE SAVINGS!



THRIFTWAY IS YOUR HONEST VALUE STORE!
BE SURE TO CHECK THIS ADD FOR A SPECIAL REFUND OFFER!

YOUR THRIFTWAY STORES SELL & FEATURE ONLY FINE QUALITY AMERICAN GROWN GRAIN FED BEEF, FRESH PORK & QUALITY POULTRY!

4-7 LBS. AVG. PORTIONS OR **HALF HAMS \$2.09** LB.



KAHN'S HICKORY GROVE BONELESS FULLY COOKED

WHOLE HAMS

WINTER WARMER PLAIN **WOLF CHILI**

15 OZ. CAN **99¢**

ADDS LIFE TO... REFRESHING **COCA-COLA**

6-32 Oz. Btl Ct. **\$1.29** Plus Deposit

TOTAL GROCERY SAVERS

SUPER CLEANING **FORMULA 409** 22 OZ. BTL. \$1.29

MAXWELL HOUSE INSTANT **COFFEE** 10 OZ. JAR \$1.29

SKINNER SHORT CUT ELBO **MACARONI** 12 OZ. PKG. \$1.29

SCHILLING PURE **VANILLA** 2 OZ. BTL. \$1.29

JELL-O INSTANT PUDDINGS & **PIE FILLINGS** 3 1/2 OZ. BOX \$1.29

Bell Quality Checked

ICE CREAM 1/2 Gal. \$1.29

FRESH GUARANTEED 73% LEAN **GROUND BEEF**

LB. **\$1.29**

WRIGHT'S HICKORY SMOKED SLICED **SLAB BACON**

LB. **\$1.39**

\$1.99 LB. WATER ADDED 12-14 LBS. AVG.

REGULAR & WATER PAK CHUNK LIGHT **STARKIST TUNA**

6 1/2 OZ. CAN **69¢**

SHELF SPECIALS

KRAFT MINIATURE **MARSHMALLOWS** 10 1/2 OZ. BAGS **\$1.29**

CARNATION RICH HOT **COCOA MIX** 12-1 OZ. ENV. **\$1.29**

ALL GRINDS MARYLAND CLUB **COFFEE** 1 LB. CAN **\$1.29**

PURINA DRY **DOG CHOW** 50 LB. BAG **\$9.99**

- KAHN'S HICKORY GROVE BONELESS CENTER CUT **HAM SLICES** LB. **\$2.49**
- OSCAR MAYER FRANKS BEEF/MEAT JUMBO **WEINERS** LB. **\$1.59**
- CLAUSSEN SWEET 'N SOUR SLICES **PICKLES** 24 OZ. JAR **\$1.29**
- GOOCH'S GERMAN BRAND SMOKED **SAUSAGE** 12 OZ. PKG. **\$1.39**

- OSCAR MAYER MEAT/BEEF THICK SLICED **BOLOGNA** 8 OZ. PKG. **99¢**
- OSCAR MAYER SLICED MEAT/BEEF THICK THIN **BOLOGNA** 12 OZ. PKG. **\$1.39**
- OSCAR MAYER SLICED **BACON** LB. **\$1.99**
- OSCAR MAYER PORK LINK SAUSAGE **LIL' FRIERS** LB. **\$1.99**

10¢ OFF LABEL **PURINA CHEER DETERGENT** GIANT BOX **\$1.29**

6¢ OFF LABEL SUPER SIZE **COAST SOAP** 7 OZ. BAR **49¢**

- DAIRY VALUES**
- SHURFRESH MARGARINE **SOFT OLEO** 1 LB. BOWL **59¢**
- PILLSBURY'S DELICIOUS **CINNAMON ROLLS** 9 1/2 OZ. CAN **69¢**
- KRAFT MIDGET HORNS **CHEDDAR CHEESE** 16 OZ. PKG. **\$1.89**
- Bell Quality Checked **BUTTERMILK** 1/2 Gal. **89¢**
- VICK'S FORMULA 44 **COUGH SYRUP** 6 OZ. BTL. **\$2.39**

PURE TEA REFRESHING **INSTANT NESTEA**

3 OZ. JAR **\$1.89**

U.S. NO. 1 RUBY RED **GRAPEFRUIT** LB. **19¢**

CALIFORNIA SUNKIST **LEMONS** LB. **39¢**

WASHINGTON D'ANJOU **PEARS** LB. **39¢**

CALIFORNIA CELLO PKG. **CARROTS** LB. **29¢**

CALIFORNIA LARGE SIZE **AVOCADOS** EA. **25¢**

LONG GREEN SLICERS **CUCUMBERS** LB. **29¢**

CENTRAL AMERICA **BANANAS** LB. **29¢**

\$2.00 CASH REFUND ON THESE ITEMS

FROM YOUR **PARTNERS IN SAVINGS**

BUY 3 OF THESE 5 BRANDS FOR YOUR REFUND.

Vaseline Intensive Care Bath Beads

Q-TIPS

Kotex Tampons

Vaseline Intensive Care Lotion

Shurfine Shampoo

Mail this certificate, the required proof, your name, address and zip, to: Thriftway, P.O. Box 2789, Memphis, TN 38101. Offer expires April 30, 1979. Offer limited to one per household. Refund rights may not be mechanically reproduced. Allow 4-6 weeks to receive your refund. Cash value 1/20 of 1¢.

NAME _____ ADDRESS _____ CITY _____ STATE _____ ZIP _____ STORE NAME _____

REGULAR OR SUPER KOTEX TUBE TYPE **TAMPONS** 16 CT. BOX **\$1.09**

FROZEN FOODS

MINUTE MAID **ORANGE JUICE** 6 OZ. CAN **43¢**

S & H GREEN STAMPS EVERYDAY DOUBLE ON WED.

ORE-IDA SOUTHERN STYLE **HASH BROWNS** 2 LB. PKG. **69¢**

BEEF ENCHILADA/CHEESE ENCHILADA/MEX./FIESTA/COMB **PATIO DINNERS** EA. **69¢**

CLASSIC/COMB./SAUSAGE-MUSHROOM/PEP. & MUSHROOM **TOTINO'S PIZZA** 20 OZ. BOX **\$2.99**

LAST CHANCE TO COMPLETE YOUR SET! **STONEWARE DISHES** FINAL WEEK!

PAGES THRIFTWAY

LOCKNEY

PRICES EFFECTIVE FEB. 18-24, 1979

Woman's Page

NEWS 'N' NOTES

(by Sharon Hillis)

Floydada Rebekah Has Valentine Party

Floydada Rebekah No. 77 met for a regular meeting on Tuesday night, February 13th. Betty Medford, Assembly Warden of the Grand Lodge of Texas and Bonnie Stogsdill of Levelland Rebekah Lodge #5 were visitors.

decorated in the Valentine motif.

Artie Webb read a Valentine quiz, and other games also were played. A guessing game was played and Ethel Sawyer won a box of chocolates.

Amanda Hart, Grace Grundy and Lona Sparks sang a special song entitled, "Because I Love You" and dedicated it to Artie Webb, Noble Grand and her husband, Floyd Webb.

Cake, coffee and spiced apple juice was served to the guests and members. All reported a lovely time.

Several members were reported ill. They were Foy Gooch, Laules Parkey, Estelle Warren and Fay Hart. Also the death of Artie Webb's uncle, Claud Brandon, was reported. A Valentine party was held after the lodge closed. The hall was

Hester Moore Presents

Program On China

Mrs. Ella Reue was hostess to the Wesley Ann Circle Monday night February 12.

Mrs. Hester Moore presented a program on "China", during which she showed the little shoes that Chinese women wore to make their feet very small. She stated that they were "down" in their clothing for

warmth. Refreshments with a Valentine motif were served to members Elizabeth Armstrong, Julia Baker, Dianna Glover, Ethel Hinson, Billie Jordan, Bennie Leibfried, Jewell Martin, Lorena McKinney, Helen Solomon, Margaret Springer and hostess Ella Reue.

COFFEE-ICE CREAM FINALE

1/4 cup Irish style instant coffee beverage
2 cups boiling water
Vanilla or chocolate chip ice cream

Place instant coffee beverage in coffeepot or carafe. Add boiling water and stir well. Pour over scoops of ice cream in coffee or demitasse cups and serve at once. Makes 2 cups or 3 regular servings or 6 demitasse servings.

REVIVAL

MARCH 5-9 7:30 p.m.

BIBLE BAPTIST CHURCH

810 S. 3rd FLOYDADA

PASTOR
DALE
KEENER

EVANGELIST
JIMMY
GILMORE

Take Precautions With Space Heaters

Take Precautions With Space Heaters

Take precautions when buying and using space heaters.

ELECTRIC SPACE HEATERS

An unvented or improperly vented gas, oil or kerosene space heater, especially a poorly adjusted and dirty one, can produce deadly quantities of carbon monoxide.

Older, unvented heaters may lack safety devices required by recent voluntary standards such as gas shut-off valves that stop the flow of gas and prevent carbon

monoxide poisoning and gas build-up in case the flame goes out.

Have gas, kerosene and oil space heaters inspected annually to ensure that they are properly adjusted and clean.

ELECTRIC SPACE HEATERS

Look for an electrical space heater with an automatic switch that cuts off electric power if the heater is tipped over.

To prevent electrical shock, avoid using a portable electrical heater in the bathroom, if at all possible.

Never place a portable electrical heater near a bath-

tub, shower or sink, and never touch an electric heater when wet.

In addition, keep all electrical wiring in good working condition.

FLAME, HEATING COIL GUARD

Buy a space heater with a guard around the flames or heating coil to keep children, pets and clothing away from the heat source—clothing can catch fire and cause severe burns.

Falling against or touching the exterior surface also can cause severe burns.

Replace loose or missing guards on older heaters.

READ LABELS

Read the labels and instructions before installing and using a new heater.

Check local codes and make sure all installation requirements are met.

Do not put a space heater near drapes, furniture or other flammable materials or near traffic lanes.

Keep a window partially open and the room well-ventilated when using an unvented, fuel-burning space heater.

Even vented heaters require ventilation for proper combustion.

Credit Rating Check Up

Investigate Credit Rating

CREDIT RATING CHECK-UP

Schedule a credit rating check-up—and keep up the practice just like an annual medical or dental check-up.

Checking credit is an easy and beneficial process.

HOW TO BEGIN

Begin with a visit, telephone call or written request to the local credit bureau.

Look under "Credit Rating" or "Reporting Agency" in the telephone directory Yellow Pages.

If they are not listed, check with a bank, department store or Better Business Bureau office.

it does not fairly represent their side of a credit or billing dispute.

COSTS

Consumers denied credit, insurance or employment may check their credit file free of charge.

However, consumers not denied credit in the past 30 days may expect to pay—usually five dollars or less—for checking credit.

It may also cost to add information to a credit file and have the credit reporting agency verify this new information.

HOW CREDIT BUREAU WORKS

Credit bureaus gather and sell data on consumers to credit grantors, insurers, employers and other business.

The bureaus are not permitted to interview third parties or collect personal information on a consumer without the consumer's prior knowledge.

ADVANCES

Many advances are derived from a credit file check.

A consumer can question erroneous, vague or misleading items, plus they can have missing favorable credit references added to the file.

Also, the consumer can add information to the file if

HOSPITAL NEWS

CAPROCK

Della G. Younger, adm. 1-4, dis. 2-13.

Alice M. Gonzales, adm. 2-1, dis. 2-7.

Julio V. Ibarra, adm. 2-5, dis. 2-10.

Annie Alenda Carr, adm. 2-8, dis. 2-9.

Lola F. Cavanaugh, adm. 2-9, dis. 2-12.

Eva E. Knierim, adm. 2-9 dis. 2-12.

William A. "Bill" Dodson, adm. 2-10, dis. 2-11.

Annie L. Neff, adm. 2-11.

Marselino V. Carbajal, adm. 2-12.

Jose Rodriguez, adm. 2-12.

Billie Jordan, adm. 2-15.

Bennetts Honored On

Golden Wedding Anniversary

Mr. and Mrs. Wayne Bennett were honored with a 50th wedding anniversary celebration Sunday February 11 at Fellowship Hall in the First United Methodist Church in Floydada. Hosting the event were Mr. and Mrs. Luis Moore of Dumas and

Mr. and Mrs. Harold Bennett of Floydada.

Special out of town guests were Mr. Bennett's two sisters and families from Burkburnett, Pauline Marris and Fay Martin; his mother, Mrs.

Vivie Bennett, also of Burkburnett; and Mrs. Bennett's two sisters, Mrs. Edith Stringer of Lubbock and Fleet Halland of Brownwood.

The couple received special congratulations from President and Mrs. Jimmy Carter of Washington, D.C.

Flowers

SPEAK THE LANGUAGE OF LOVE!

Flowers For All Occasion

Potted Blooming & Green Plants Wedding & Funeral Flowers Large Line Of Cut Glassware, Dinnerware, Silverware. Complete Assortment Of Jewelry Gifts For Everyone On Every Occasion.


"Our Pleasure Is To Serve You"

Schacht's

Flowers, Jewelry & Gifts

112 W. Poplar Lockney 652-2385


SHURFRESH MILK



KIRTLEY'S MARKET

316 N 2ND 983-3105

WE ACCEPT FOOD STAMPS



WE RESERVE THE RIGHT TO LIMIT


WE GIVE DOUBLE S AND H GREEN STAMPS ON WED. THESE SPECIALS GOOD FEB. 19 THRU FEB. 24, 1979

<p>BANANAS 4 Lbs. \$1⁰⁰</p>	<p>Country Pride FRYERS Lb. 61¢</p>
<p>ORANGES Lb. 39¢</p>	<p>Flavor Wright BACON Lb. \$1²⁹</p>
<p>AVOCADOS 4/\$1⁰⁰</p>	<p>Shurfresh Canned HAM 3 Lb. Reg. \$7.52 \$6⁸⁶</p>
<p>POTATOES 10 Lb. 99¢</p>	<p>GROUND MEAT Lb. \$1³⁹</p>

<p>SUPER SUDS</p> <p>Giant Size 89¢</p>	<p>Shurfine PORK & BEANS</p> <p>16 Oz. 29¢</p>	<p>Old El Paso REFRIED BEANS</p> <p>16 Oz. 2/79¢</p>
<p>Keeblers CLUB CRACKERS</p> <p>1 Lb. 89¢</p>	<p>Wolf CHILI</p> <p>15 Oz. 89¢</p>	<p>PINESOL</p> <p>15 Oz. 79¢</p>

Shurfine **COFFEE**

2 Lb. **\$2⁴⁹**



6 32 Oz. Bottles **COKE, 7UP, DIET 7UP OR TAB**

Plus Deposit: **\$1⁵⁹**

Mrs. Garrett Speaks To Dorcas Sunday School

Dorcas Sunday school First Baptist Church met February 13 Mrs. C.M. Meredith. Prayer was voiced by Aline Bradley. May Garrett, teacher of the class, gave the devotion and read "Friends" by Graham. Mrs. Cleo read a historical Valentine of different countries. Mrs. Mary Wilson then read "Are you reading 'Are you of the Aged.'" For Mrs. E.P. Nelson (Lula) the poem to the

Bridge For Heart Scheduled

Floydada County Association Bridge for Heart will be February 20 from 10 a.m. to 3:30 p.m. at the Community Center at Georgia in Floydada. The event is for the benefit of the Heart Fund. A spaghetti lunch will be served. The days events include bingo prizes, prizes (including a afghan) and two

Homebuilders E. H. Club Meets

Homebuilders E.H. Club met at the home of Mrs. Bill on Feb. 13. Mrs. Norrell led the group in a Valentine game and Smith read the devotion Ex. 25:1-5. Carolyn (Williams) was introduced into the club. Children have returned home after years in Iran. She will be the speaker at the county club day in March. The hostess served a lovely Valentine cake to Mmes. Elmer Norrell, Raymond Evans, Raymond Williams, Ruth Trapp, J.W. McClure, Gordon Mayfield, Ernie Widener and Sharon Hillis. The next meeting will be with Mrs. Elmer Norrell February 27.

RY A NEW HAIRDO...

Audrey's Hair Styles

All New Price List

Shampoo & Set	\$6 ⁰⁰
Hair Cut For Men Or Women	\$5 ⁰⁰
Permanents For Men Or Women	\$18 ⁵⁰
Blow Dry	\$6 ⁰⁰
Color	\$8 ⁵⁰
Conditioners	\$2 ⁰⁰ & \$3 ⁰⁰
Shampoo Only	\$1 ⁰⁰
Tints	\$8 ⁵⁰
Bleach	\$18 ⁵⁰
Frost	\$16 ⁵⁰

Sale Items

All Wigs \$7⁵⁰ To \$25⁰⁰

Wig Styling \$8⁰⁰ To \$10⁰⁰

Full Service For Men And Women

Call Now For An Appointment

983-3649

Audrey Thomas

ALL ON PAVEMENT 4 MILES SOUTH, 1/2 MILE WEST AND 1/2 MILE SOUTH OF FLOYDADA

Clip And Save This Advertisement

TOTAL SAVERS
 22 OZ. BTL. 89¢
 10 OZ. JAR 39¢
 12 OZ. PKG. 45¢
 2 OZ. BTL. 79¢
 3 1/2 OZ. BOX 29¢
 \$1.39
 \$1.09
 \$1.39
 \$9.99
 \$1.39
 \$4.99
 \$2.99
 \$4.39
 \$6.99
 \$6.99
 \$2.29
 \$2.49
 \$1.59
 \$1.59
 \$1.59

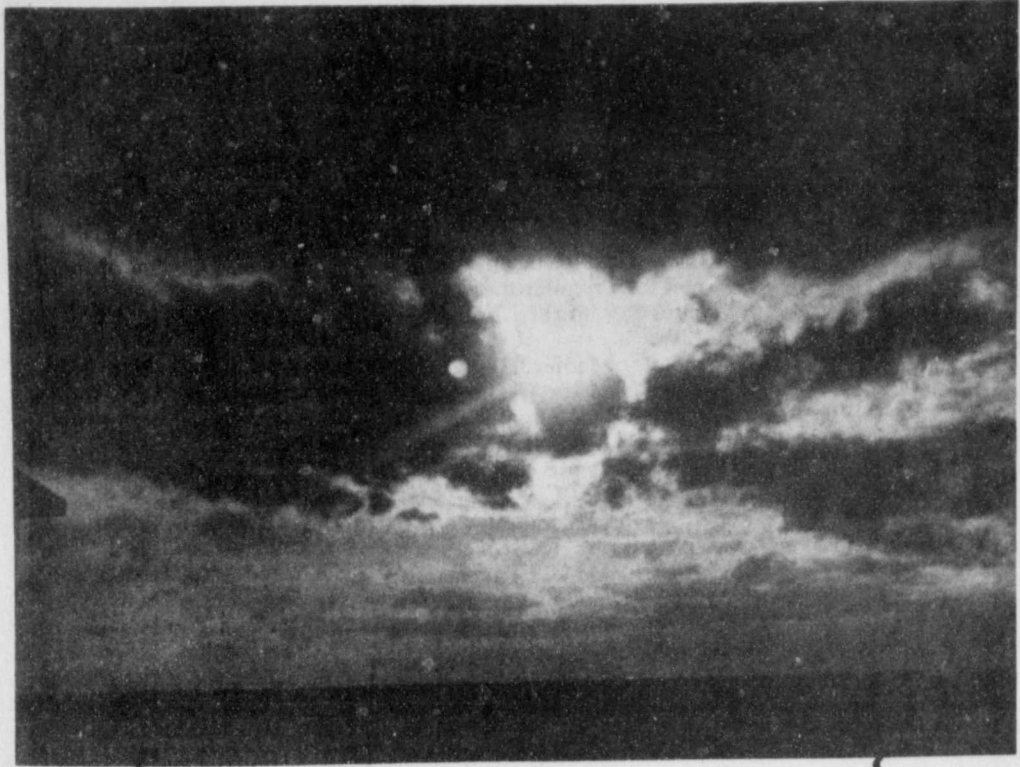
Nominations For Awards Sought

The woman volunteer will be the emphasis of West Texas State University's fourth annual Texas Panhandle Distinguished Service Awards to be presented April 21 in the WTSU campus in Amarillo.

Nominations of the outstanding women volunteers in the top 32 counties of the Texas Panhandle are now being sought by the WTSU office of Programs for Women, which hosts the event.

Nominations must be in March 30. The nominee must be 18 years of age or above, a resident of the top 32 Panhandle counties and have devoted her time to volunteer work. Forms can be obtained by writing the Office of Programs for Women, Box 495, WT Station, Canyon.

Twenty-eight women have received the Texas Panhandle Distinguished Service Award. Annie Taylor of Floydada was a 1977 awardee and Hester Moore of Floydada was among last year's distinguished women.



SUMMER SUNSET — This picture was taken last Summer in the Fairview Community by Jack N. Moore of 521 1/2 West Mississippi in Floydada. Moore receives \$2 for submitting the outstanding photo for this issue.

Courthouse NEWS

PROBATE
Paul B. Murff, will and app. to probate.
L.F. Duvall, will and app. to probate.
Vera Duvall, will and app. to probate.

WARRANTY DEEDS
J.T. Terrell, Jr. Farms, Inc., to John T. and Linda L. Terrell, All SE/4, S-12, B-N; All SE/4, S-14, B-N; Floyd.
Lucille M. Hart to J.R. and Wanda Turner, 27 acres, S-136, B-1, Floyd.
Ona Ruth Neff and Verlon Wright to Charlie Wright, 3/4 int., L-S, W 14, 6'-L-6, B-1, Bartley, Floydada.
Billye T. Loudermilk to Jerry Cypert, 640 acres, Floyd, S-106, B-4.
Glad Lyn Norman and Don Lewis Norman to James Freeman, All L-7, B-92, Floydada.
I.W.A. Massie to Lucy

Goins Cates, W/2 - L-13, All L-14, 15, B-6, Texas Add., Floydada.

L.B. and Theresa L. Elam to Oliver Ray Gant and Lynda Kay Gant, 2.064 acre tract, S-47, B-D6, Floyd.

Evelyn Lee Stalcup Worral to Gerald A. Ulmer, All L-1, 2, 3, 4, 5, B-33, Lockney.

Jacinto B. and Maria Lopez to Janie Flores, L-N.70, Ft. L-2, B-3, Lockney.

Janie Flores to Angel and Emma Araujo, N70, Ft. L-2, B-3, Lockney.

S.L. and Irene West to Mary Bell Neff, All L-9, N 1/2, L-10, B-1, Baker, Floydada.

CASES FILED
Emogene Lackey Stansell vs. Polk and Patton Inc., suit for damages.
In the matter of Ramon Hernandez petition for occupational drivers license.

Floyd Animals Entered In Houston Show

A number of Floyd County exhibitors are planning to show animals in the annual Houston Livestock Show and Rodeo, according to a release from the association. The event is scheduled February 21 through March 4.

Information from Houston Livestock Show indicates that the following county youngsters — representing Floyd County 4-H, Floydada FFA and Lockney FFA — plan to exhibit stock:

Market lambs — Susan Hendrix, Hunter Smith, Jodie Smith, Greg Jones, Darlene Brosch, Earl Brosch, Amy Jones, Tracey Womack (two), and Danny Tinney.

Market steers — Dara Carthel, Carria Burleson, Beverly Burleson, Dusty Burleson, Jimmy Covington, Marty Covington, Chad Edwards, Shannon Edwards,

Chris Fulton, Mark Beedy, Byron Brock, Danny Nutt, and

These figures are for Floyd County and for the Houston area. More than 27,000 entries have been

Information from Houston Livestock Show indicates that the following county youngsters — representing Floyd County 4-H, Floydada FFA and Lockney FFA — plan to exhibit stock:

Market lambs — Susan Hendrix, Hunter Smith, Jodie Smith, Greg Jones, Darlene Brosch, Earl Brosch, Amy Jones, Tracey Womack (two), and Danny Tinney.

Market steers — Dara Carthel, Carria Burleson, Beverly Burleson, Dusty Burleson, Jimmy Covington, Marty Covington, Chad Edwards, Shannon Edwards,

PRICES EFFECTIVE FEBRUARY 19-24, 1979

WE RESERVE THE RIGHT TO LIMIT QUANTITIES



FRESH - SOFT - SMOOTH
TENDERCRUST
BREAD IS BETTER

THOMASON
VENTURE GROCERY & MARKET
PHONE 652-3346 LOCKNEY, TEXAS



Meat Specials
USDA GRADE "A" COUNTRY PRIDE

PAN READY
Cut-Up Fryers LB. **65¢**
FRESH
Fryer Drumsticks LB. **99¢**
SPIT
Fryer Breasts LB. **1.09**
FRESH
Fryer Thighs LB. **99¢**



55¢

Meat Specials
SWIFT'S BREAKFAST STRIPS 12 OZ. PKG. **\$1.39**
GLOVER'S MEXICAN STYLE **Hot Links** LB. **99¢**
TASTY HORMEL **Ham Patties** 12 OZ. CAN **\$1.39**

RAMIREZ CORN **Tortillas** 32 OZ. PKG. **59¢**
WISCONSIN LONGHORN **Colby Cheese** LB. **\$1.89**

FOOD SPECIALS



All 89¢ Lays
Potato Chips **69¢**

Gladiola
Flour 5 Lb. Bag **69¢**



Frozen Morton
Honey Buns 2/98¢
9 oz. pkg.

PLAIN
Wolf Chili 19 OZ. CAN **99¢**

ASSORTED FROZEN
Morton Dinners 2 11 OZ. PKGS. **\$1.09**

JIF SMOOTH/CRUNCHY
Peanut Butter 18 OZ. JAR **\$1.09**



Hills Brothers Coffee LB. CAN **\$2.39**



10¢ OFF LABEL
Giant Cheer 49 OZ. BOX **\$1.39**



MACARONI & CHEESE
Kraft Dinners Deluxe 14 OZ. BOXES **89¢**

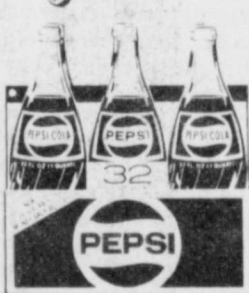
DOUBLE STAMPS ON WEDNESDAY



ALL PURPOSE RUSSET
Potatoes 5 LB. BAG **49¢**

WASHINGTON D'ANJOU **Pears** LB. **39¢**
CALIFORNIA SUNKIST **Lemons** LB. **39¢**

CALIF. GREEN PASCAL **Celery** LARGE STALK **39¢**
WASHINGTON GOLDEN DELIC. **Apples** LB. **39¢**



6-32 OZ.
Pepsi, Bubble Up or Diet Pepsi



\$1.49
PLUS DEPOSIT

DETERGENT
Liquid Joy 12 OZ. BTL. **89¢**

VALUABLE COUPON
DETERGENT
Liquid Joy 12 OZ. BTL. **89¢**
COUPON EXPIRES FEBRUARY 24, 1979

LAST CHANCE!
COMPLETE YOUR SET NOW!
SPRING COLLECTION STONWARE
ALL ITEMS ON SALE!

Dairy And Frozen Food
ALL VARIETIES HUNGRY JACK
Biscuits 10 CT. CAN **39¢**
AMER./PIM./SWISS
Kraft Singles 12 OZ. PKG. **\$1.29**

Shell Specials
KRAFT **French Dressing** 8 OZ. BTL. **53¢**

HUNT'S WHOLE PEELED **Tomatoes** 28 OZ. CAN **69¢**
DEL MONTE CRU./CHK./SLU **Pineapple** 2 15 1/2 OZ. CANS **\$1.09**
GLAD WRAP **Glad Wrap** 100 FT. ROLL **49¢**

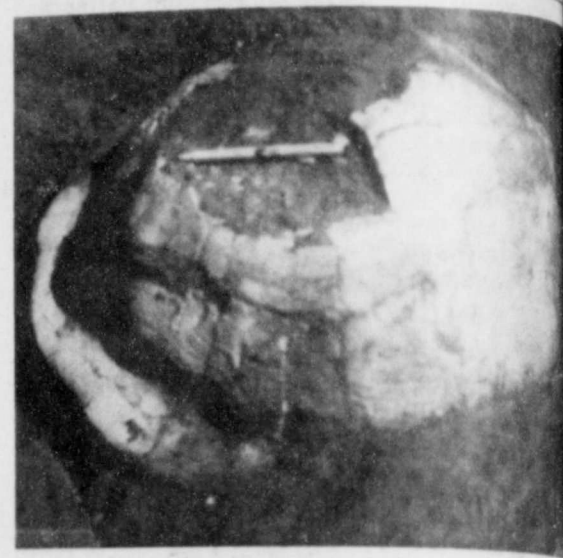
Health And Beauty Aids
FOR COLDS
Vicks Vaporub 3 OZ. JAR **\$1.59**

DAYTIME COLD MEDICINE
Vicks Daycare 6 OZ. BTL. **\$1.79**

VICKS
Cough Syrup 3 OZ. BTL. **\$1.19**

Gracery Specials
MR. COFFEE **Filters** 50 CT. PKG. **49¢**

NIGHTTIME COLD MEDICINE
Vick's Nyquil 10 OZ. BTL. **\$2.39**



SEEN any million-year-old turtles lately? Bill and Rick Day recently discovered these prehistoric turtles in the area of Mackenzie Lake. With the help of Jim Word of Floydada, they began excavating the turtles last week. They are about two feet in diameter. Brad Feuerbacher and Rick Day are pictured with one of the turtles.

Wed. February 22
9.99
KING SIZE WALLET CREATIVE COLOR PORTRAITS FOR ONLY

Kodak paper. For a Good Look at the Time of Your Life.



SHUGART COLOR PHOTOS
THOMPSON PHARMACY
200 SO. MAIN FLOYDADA, TEXAS

In the Univers...
Marble leg inju...
The product game t...
from th the char...
The her effe early it...
scored the first!

In the Marble team hij...
Christia lied 19 j...
in the th against...
sixth ga But th...
ment to nagging...
scorer i

WELC Count Steve H...
this wee Steve ar...
show! With Sharon l...
Extensio

THA! A sp Harris i...
utmost dada FF...
appears James r...
get a st Thanks,

A LO! A los turns on...
lights a

Published...
E. Mo. i Texas 7923...
Jim Reynol Local \$10.50...
a year. Secor...
dada, Texas

TE! MEMBEP

stalli con w is quire...
lea...
One you'll e nu...
bou

Call

Donette Marble Leading Raider Basketball Scorer

In her first year as a Texas Tech University Red Raider woman basketball junior college transfer Donette Marble has been impressive despite a leg injury that forced her to miss eight games.

The South Plains Junior College product is averaging 12.9 points per game to lead the Raider squad. In 16 games, Marble has shot 36.2 per cent from the floor and 62.2 per cent from the charity line for a total of 206 points.

The Floydada High product began her effective assault against opponents early in the Raider schedule as she scored 23 points against Angelo State in the first game of the season.

In her second game as a Raider, Marble scored her season high (and team high) of 27 points against Abilene Christian University. The forward tallied 19 points against Wayland Baptist in the third game and poured in 25 more against the University of Houston in the sixth game of the season.

But the new year brought disappointment to the Raiders and Marble. A nagging leg injury kept the leading scorer and rebounder sidelined until



DONETTE MARBLE

Feb. 3. She has seen only limited action in the two games since her return.

SCHOOL RECORDS

For her outstanding play at SPJC, Marble was voted all-conference and all-region in 1976-77 and 1977-78. She still holds nine school records at the school.

While a student at Floydada High School, Marble lettered in basketball, tennis, and track. She was the state doubles tennis champ in 1975 and was selected all-district forward in 1974 and 1976. Marble holds the school record of 52 points in one game.

When not playing basketball for the Raiders or pursuing her studies in accounting at Texas Tech, Donette enjoys skiing and horseback riding.

Her parents, Mr. and Mrs. Don Marble, reside at South Plains.

The Raider women basketballers played their final home game Feb. 10 against Oral Roberts University. They have two more road games before the TIAAW large-college championship, Feb. 22-24 at Stephen F. Austin State University in Nacogdoches.



MARIE TARDY was chosen Valentine Sweetheart at Caprock Hospital.

4-Hers Get Head Start On Wheels

By Birch L. Lobban
County Extension Agent

Getting a driver's license is a big step in the life of any teenager. And 4-H Wheels can help make that step a lot easier to take, points out Birch L. Lobban, county agent with the Texas Agricultural Extension Service.

The Wheels pre-driver education course is part of the national 4-H automotive program conducted by the Extension Service and supported by the Firestone Tire and Rubber Co.

Wheels participants learn about their responsibilities as drivers, how using the

family car will affect their parents' insurance rates, and what makes an automobile run. Their instructors are sinnessmen, safety officials and mechanics. "Classrooms" may be garages, auto dealerships, tire centers, police stations or anywhere the automotive action is, explains Lobban.

Practical and technical know-how are stressed in all 4-H automotive projects and activities. 4-H members learn-by-doing about highway safety, traffic and motor vehicle laws, basic auto maintenance and the economics of buying and operating a car. 4-Hers also explore

vocational opportunities in automotive engineering, design, assembly and sales.

Automotive program members can earn annual awards donated by Firestone and arranged by the National 4-H Congress in Chicago for one member per state, and four medals of honor in each county.

Up to 10 certificates per state are awarded to clubs or counties that report outstanding over-all 4-H automotive programs.

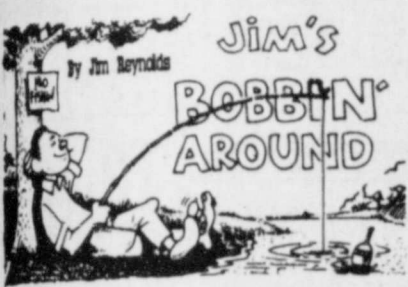
As many as two clubs or counties that report outstanding overall 4-H automotive programs. As many as two clubs or counties per state can win plaques of honor for outstanding automotive driving events, adds

Lobban.

Firestone also sponsors automotive safety and care events at the Western U.S. 4-H Engineering Event in Omaha, Nebraska, and the Eastern Event in Richmond, Virginia. Top individuals in the automotive events will receive shares of stock in the company.

For more information about the 4-H automotive program and the practical experience it can provide, contact the county Extension office.

Educational programs conducted by the Texas Agricultural Extension Service serve people of all ages regardless of socio-economic level, race, color, sex, religion, or origin.



Continued from Page One

WELCOME, STEVE

County Agricultural Extension Agent Steve Herber officially assumed duties this week in Floyd County. It seems that Steve arrived just in time for the stock show!

With Steve, Birch Lobban, and Sharon Hillis, this county has a strong Extension staff.

THANKS

A special thanks goes to Orville Harris and James Cleveland for their utmost cooperation compiling the Floydada FFA Chapter special section which appears in this issue of The Hesperian. James made a special effort to help us get a stock photo Thursday afternoon. Thanks, fellows!

A LOSER

A loser is a would-be suicide who turns on the gas, changes his mind and lights a cigarette.

THE FLOYD COUNTY HESPERIAN

Published each Sunday and Thursday at 11 E. Mo. St., P.O. Box 700, Floydada, Texas 79235. Publication No. 202680. Jim Reynolds, editor. Subscription rates: local \$10.50 a year, out-of-trade area \$11.50 a year. Second class postage paid at Floydada, Texas 79235.

TEXAS PRESS ASSOCIATION

MEMBER 1979

Recognize Rock Formation

Site of the rock formation which projects an image of an Indian chief was correctly identified by Jake Watson and Mrs. Clinton Denning as being visible from the road leading to Floydada Country Club.

The photo, suggested by Clinton Denning, was published in Thursday's issue of The Hesperian.

Mrs. Floyd Webb said the "Indian" is "around the corner going to the golf grounds, down the road a piece."

Parnell Powell said that the rock formation is visible looking west from the Plains Baptist Camp.

Fur Trappers To Hold Monthly Sale Saturday

Caprock Trapper's Association will hold its third fur sale next Saturday, Feb. 24,

at the Civic Center in Dickens. The site is one block south of Highway 82, going toward Spur.

Headquarters for CTA is now at Dickens. New officers include: president, Larry Pate of Idalou; vice president, Larry Burke of Afton; secretary, Danny Roberts of Afton; treasurer, Dean Shaw of Dickens; and public relations, Preston Mynatt of Dickens. Jim Perryman and Jerry Slaton, both of Afton, are board members.

CTA is now associated with Fur Takers of America. The group has an active membership of over 100 members.

"We not only represent the rights of the trappers but of gun owners and all outdoorsmen," says Mynatt, who adds, "If we are to maintain our rights we need to work together to unite."

Anyone interested in starting a CTA chapter in his community or in becoming a member should contact Dean Shaw, Dickens, Tex. 79229. One-year membership is \$5 and each member receives a copy of "The Fur Taker" at each meeting.

Caprock Trappers Association held its second fur sale in January. Approximate price of furs was \$65 for well-handled coyote pelts, \$30 for green coyotes, \$35 for well-handled coons, and up to \$200 for bobcats.



Make A Note Of It.

This handy wall phone is as functional as it is attractive. Available with Touch-Tone® service or rotary dial, the Noteworthy® has a place for everything. Including the phone book. And it comes in four fashion colors.

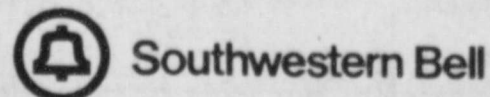
You'll never have to worry about repairs, because the working components are owned by the Bell System. We'll fix them anytime there's a problem, without additional charge.

You'll find the Noteworthy® at your nearest PhoneCenter Store, where you can also choose from a variety of other colorful and attractive styles. Or call your local Southwestern Bell business office. Choose a phone that's genuinely you and genuine Bell.

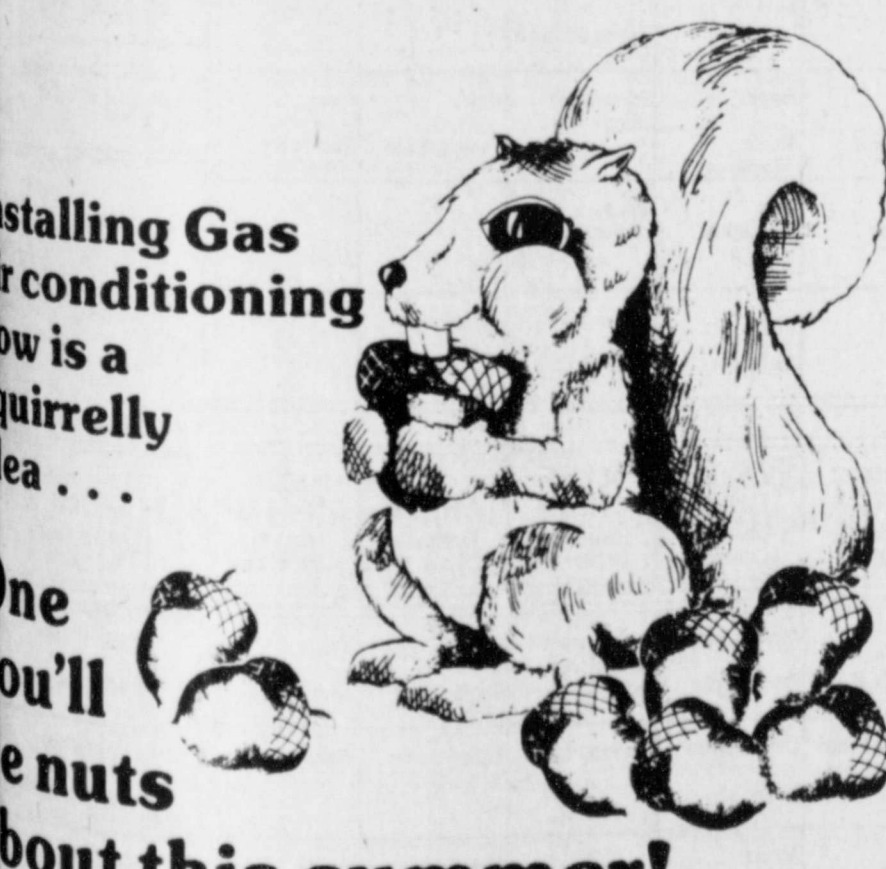
The Noteworthy \$15 a month for five months or a one-time charge of \$75.

Prices do not include taxes or, if applicable, installation and recurring charges. If necessary, hearing aid adapters are available from your telephone company.

®Registered trademark of American Telecommunications Corporation



THE CHOICE IS YOURS. BE CHOOSEY.



Installing Gas
Air conditioning

How is a
squirrelly
idea...

One
you'll
e nuts
about this summer!

PIONEER NATURAL GAS COMPANY
(A Division of PIONEER CORPORATION)

Call Pioneer Natural Gas for a free survey and cost estimate. There's no obligation.

Have a good
week!

RCA For The Best Price & Service On RCA T.V.'s See MIZE PHARMACY & T.V. 1102 S. MAIN LOCKNEY 652-2435

PRESTON GALLON \$1.90 USDA Inspected Plant Custom Processing, Wholesale and Retail Meats, Cut, Wrapped, Frozen, and Fully Guaranteed. Financing Available On Freezer Beef Lockney Meat Co. Lockney, Tx. 652-3305 Hwy. 70

The Cable & Regular Television Programs Schedule Will Appear In This Newspaper Each Sunday Sponsored By The Merchants On These Pages!!!

SUNDAY 02/18/79 Table with columns for AM, WTCG CH. 17, KTXT CH. 5, PTL CH. 6, KMCC CH. 28, WGN CH. 9, KTV CH. 10, KCBD CH. 11, KLBK CH. 13. Rows show program schedules from 7:00 to 5:30.

SUNDAY 02/18/79 Table with columns for PM, WTCG CH. 17, KTXT CH. 5, PTL CH. 6, KMCC CH. 28, WGN CH. 9, KTV CH. 10, KCBD CH. 11, KLBK CH. 13. Rows show program schedules from 6:00 to 12:30.

MONDAY - FRIDAY Table with columns for AM, WTCG CH. 17, KTXT CH. 5, PTL CH. 6, KMCC CH. 28, WGN CH. 9, KTV CH. 10, KCBD CH. 11, KLBK CH. 13. Rows show program schedules from 7:00 to 5:30.

MONDAY 02/19/79 Table with columns for PM, WTCG CH. 17, KTXT CH. 5, PTL CH. 6, KMCC CH. 28, WGN CH. 9, KTV CH. 10, KCBD CH. 11, KLBK CH. 13. Rows show program schedules from 6:00 to 12:30.

TUESDAY 02/20/79 Table with columns for PM, WTCG CH. 17, KTXT CH. 5, PTL CH. 6, KMCC CH. 28, WGN CH. 9, KTV CH. 10, KCBD CH. 11, KLBK CH. 13. Rows show program schedules from 6:00 to 12:30.

WEDNESDAY 02/21/79 Table with columns for PM, WTCG CH. 17, KTXT CH. 5, PTL CH. 6, KMCC CH. 28, WGN CH. 9, KTV CH. 10, KCBD CH. 11, KLBK CH. 13. Rows show program schedules from 6:00 to 12:30.

THURSDAY 02/22/79 Table with columns for PM, WTCG CH. 17, KTXT CH. 5, PTL CH. 6, KMCC CH. 28, WGN CH. 9, KTV CH. 10, KCBD CH. 11, KLBK CH. 13. Rows show program schedules from 6:00 to 12:30.

FRIDAY Table with columns for PM, WTCG CH. 17, KTXT CH. 5, PTL CH. 6, KMCC CH. 28, WGN CH. 9, KTV CH. 10, KCBD CH. 11, KLBK CH. 13. Rows show program schedules from 6:00 to 12:30.

FRIDAY Table with columns for PM, WTCG CH. 17, KTXT CH. 5, PTL CH. 6, KMCC CH. 28, WGN CH. 9, KTV CH. 10, KCBD CH. 11, KLBK CH. 13. Rows show program schedules from 6:00 to 12:30.

FRIDAY Table with columns for PM, WTCG CH. 17, KTXT CH. 5, PTL CH. 6, KMCC CH. 28, WGN CH. 9, KTV CH. 10, KCBD CH. 11, KLBK CH. 13. Rows show program schedules from 6:00 to 12:30.

FRIDAY Table with columns for PM, WTCG CH. 17, KTXT CH. 5, PTL CH. 6, KMCC CH. 28, WGN CH. 9, KTV CH. 10, KCBD CH. 11, KLBK CH. 13. Rows show program schedules from 6:00 to 12:30.

SHOP OF ASS OF CLK GI Roye's N Cosmeti

rams
aper

SHOP OUR BEAUTIFUL
ASSORTMENT
OF CLOTHING AND
GIFT ITEMS
Boye's Merle Norman
Cosmetics & Apparel

BUDDY'S
STORE HOURS
MON.-SAT. 8a.m. - 9p.m.
SUN. 9p.m. - 8p.m.
WE RESERVE THE RIGHT
TO LIMIT QUANTITIES

DOUBLE ON WEDNESDAY

WTCC CH. 17 Atlanta Cable 4	WGN CH. 9 Chicago Cable 8	KTV CH. 10 Floydada Cable 10	KCBD CH. 11 Lubbock Cable 11	KLBK CH. 13 Lubbock Cable 13
Carol Burnett and Friends Sanford and Son	Dick Van Dyke Odd Couple	T.V. Power with Tom and Jerry	News Sanford and Son	News Joker's Wild
Night Gallery	Carol Burnett	No Programs	Diffrent Strokes Hello, Larry	Incredible Hulk
Movie: 'Godzilla'	Chicago at New Orleans		Brothers and Sisters Sweepstakes	Dukes of Hazzard
		Odd Couple		Dallas
		Dating Game		
Hogan's Heroes	News	Movie: 'Monster Zero'	News	News
Movie: 'Caldron of Blood'	Movie: 'Play Misty for Me'		Tonight Show	Movie: 'The Super Fight'
		News	Midnight Special	Movie: 'One of My Wives is Missing'
		Nightbeat		

WTCC CH. 17 Atlanta Cable 4	WGN CH. 9 Chicago Cable 8	KTV CH. 10 Floydada Cable 10	KCBD CH. 11 Lubbock Cable 11	KLBK CH. 13 Lubbock Cable 13
Cliffwood Avenue Kids Partridge Family	U. S. Farm Report Daniel Boone	No Programs	Yogi's Space Race Fantastic Four	All-New Popeye Hour
Star Trek			Godzilla Super 90	Bugs Bunny/Road Runner Show
Movie: 'Fall of the Roman Empire'	Wings	700 Club	Daffy Duck	Tarzan and the Super
	Movie: 'Tom Sawyer, Detective'	Voice of Agriculture Black Forum	New Fred and Barney Show Jetsons	Seven
	Income Tax Charlando	Asians Now Revisita de la Semana	Burford & Galloping Ghost Fabulous Funnies	Space Academy Fat Albert & Cosby Kids
Movie: 'Experiment in Terror'	Movie: 'San Antonio'	Our Men in the Capital World Tomorrow	U.S. Farm Report NCAA Basketball	Festival of the Lively Arts
		Outdoors	SWC Tournament, First Round	Capitol Eye Learning & Living
		Soul Train		
	Movie: 'Abbott and Costello Go to Mars'	Movie: 'War of the Monsters'	NCAA Basketball	National AAU Indoor Track and Field Championship
Mission Impossible			Wild Card	CBS Sports Spectacular
Fishin' Hole	Soul Train	Movie: 'Clambake'		Glen Campbell Los Angeles Open
Rat Patrol			Gerald Meyers	
Championship Wrestling	Judy Griffith My Three Sons		Wild Kingdom	Ruff House Hee Haw Honeys

WTCC CH. 17 Atlanta Cable 4	WGN CH. 9 Chicago Cable 8	KTV CH. 10 Floydada Cable 10	KCBD CH. 11 Lubbock Cable 11	KLBK CH. 13 Lubbock Cable 13
	Dick Van Dyke	Hee Haw	Lawrence Welk	Hee Haw
	Odd Couple			
Hee Haw Honeys Marty Robbins	NCAA Basketball: Illinois at Michigan	Movie: 'Breakfast at Tiffany's'	CHiPs	White Shadow
Dolly! Nashville Music	State		BJ and the Bear	Movie: 'Silent Victory: The Kitty O'Neil'
Pop! Goes the Country Nashville on the Road	Avon Tennis	Dance Fever	Rockford Files	Story
Porter Wagoner Rock Concert	News	Movie: 'Gilda'	News	News
	Movie: 'The Secret of Santa Victoria'		Saturday Night Live	WCT Tennis
				Movie: 'A Dandy in Paris'
		News	Sha-Na-Na	Aspic
	Nightbeat	Celestial Horses	Sign Off	



SORRY, GEORGE, but there is a better way! This photo attempts to remind folks who like to chop down cherry trees that there is an easier and better method for obtaining cherries today. But none of us, including Trinneer Achker in the picture, really have an axe

to grind with our nation's first birthday, and we hope that Washington's birthday is a good day. Happy birthday, George.....Monday, or whenever it is! [Photo and story line by Floydada attorney Bill Kincaid.]



FLOYDADA WHOZITS — How many readers can identify this well-known Floydada couple? One clue: there could be more than one Floydada High student who bears a resemblance. If you would like to guess at the couple's identity, please contact our office Monday through Wednesday.

LOCKNEY WHOZIT — This young lady was about 10 years old when this picture was taken, in 1920 or thereabouts. We think she looks kinda like her granddaughter does now. Anybody know who she is? Call The Beacon if you think you do.

Sam Spence As None Recognize Floydada Whozit

Several persons guessed at last week's Floydada Whozit but no one was correct. The mystery man in the picture was Sam Spence.

This newspaper would like to have photos from yesterday to be published as Whozits. The pictures will be used in the order in which they arrive. Photos of present Floyd County residents are desired, but those of former residents also will be used.

Thomas Kids In Whozit Picture

The brother-sister pair in last week's Lockney Whozit were W.L. Thomas and Meda Ruth Thomas Watts, as everybody who called in correctly stated.

Marjorie Holcomb was the first to correctly identify the mystery picture subjects. Also guessing correctly were Agnes Frizzell, Nancy Carthel, Ida Rose, Mary Lou Bollman, Delbur Rose and Mrs. Alvin Nichols.

Agnes Frizzell thought the Floydada Whozit in last Sunday's paper was Janice Loyd.

WASHINGTON'S BIRTHDAY SALE

RCA's new electronic Keyboard Control
Direct push-button tuning of all 82 channels. L.E.D. channel number display.



RCA The Seville Model GCT38

COST PLUS 10% WITH TRADE

RCA 25" diagonal ColorTrak featuring ChannelLock electronic tuning with Keyboard Control

ColorTrak is RCA's most advanced, most automatic TV. And now RCA's new ChannelLock electronic tuning—the most accurate, most automatic tuning system in RCA history—makes it even better.

- New ChannelLock electronic tuning with keyboard control lets you tune all 82 channels directly. Large L.E.D. channel number read-out.
- 100% solid state XtendedLife chassis is designed for low power consumption, high efficiency and long life.
- Automatic Color Control and Fleshtone Correction.
- Automatic Contrast/Color Tracking lets you adjust contrast, color and brightness with one control instead of three.
- Automatic Light Sensor adjusts picture for changes in room light.
- RCA Super AccuFilter picture tube has tinted phosphors to help keep colors vivid, even in bright room light.
- Mediterranean cabinet with pecan finish on select hardwood solids and veneers. Simulated wood trim. Concealed casters.



"WE SERVICE WHAT WE SELL"



JERRY'S T.V. & APPLIANCE

215 S. Main

Phone 983-3481

Floydada

your electric investment

Chances are, you never thought about the value of the electric distribution system that serves you. How much do you suppose is invested in the electric meter, service connection, poles and wires just to serve you? And how about the miles of line that bring electricity to your property — what's your share of that? And the transformers? And the trucks and the line equipment, and the electric utility property and building? What's your guess? Nationally, America's public power systems have an average investment of more than \$1,000

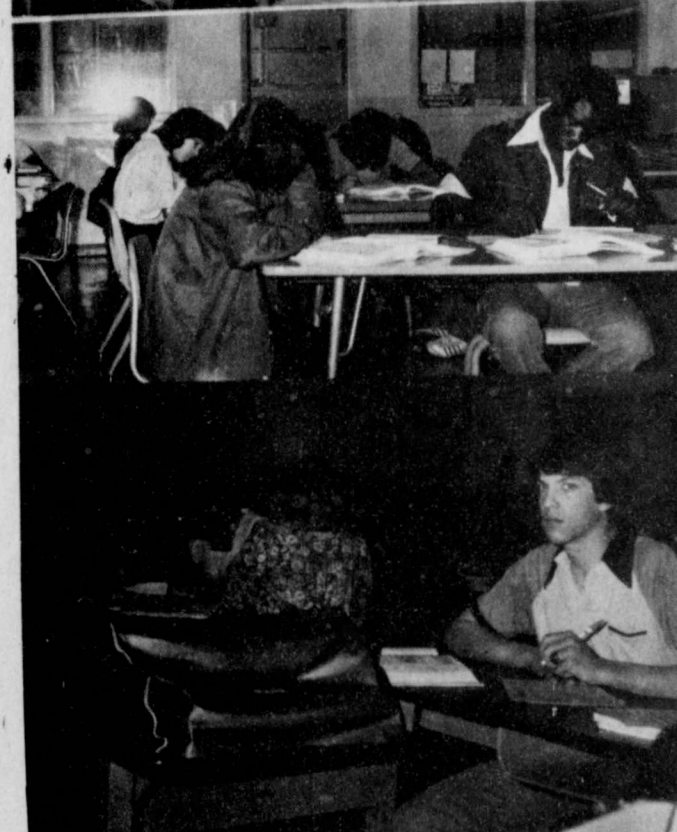
for each customer served — \$1,034 to be exact. And this figure is growing rapidly. Ten years ago the investment for each customer was \$596 — about half that of today.

We estimate that an average of nearly \$150 will be spent in electric system additions or improvements for each customer served.

Your electric utility investment is a sizeable and growing amount. As your local publicly owned electric utility, it is our responsibility to use and maintain this investment wisely. As a citizen-owner, you should know that we value your electric utility investment.



Whirlwind World



BUSINESS DEPARTMENT classes shown in session are Typing, Rosemary Gonzalez (left) and Jimmy Jones; Record Keeping — Elva Martinez (left) and Tim Collins (right); and Bookkeeping — Trava Gentry, Beverly Vickers, Tracy Tyler and Calvin Dick.

Business Department Curriculum

The following is a synopsis of the curriculum of the business department plus the extra-curricular opportunities sponsored by the two business teachers.

TYPING I. Typing I is an elective course which may be taken by sophomores, juniors, and seniors. Basic touch typing skill is mastered during the first quarter, then students use the skill in problem applications. Emphasis is given to typing letters, tables, and manuscripts with footnotes.

The course is designed for both personal use and clerical/office application. In the second quarter a unit on career choice is covered which allows students to type manuscripts on careers of their choice. The last quarter includes typing business forms and also has a job-application unit covering the typing of letters of applications and resumes.

Typing I students are eligible to compete in UIL typing competition each spring. After local competition, four outstanding typists are selected to type at the district literary meet. Winners advance to regional and then to state competition. It takes many hours of extra practice for the UIL typists, all of which is done after school.

Since 1970 Floydada has had five typists who advanced to state competition in Austin. In 1970 Larry Jones placed 4th, in 1972 Darla Milton won 1st and also had the best paper statewide Class B. through AAAA, in 1973, Teresa Love ranked 2nd, in 1974 Duffy Williams placed 5th, and in 1975 Brenda Turner was 4th.

Other typists who have won in district and competed at regional include: 1971—Beth Guests—6th, 1975—Tracy Puckett, 1976—Susan Pierce—5th, 1977—Jill Poage—4th and Patricia Anderson, 1978—Kara Copeland.

ACCOUNTING. Since only one class of Accounting is

offered, enrollment is usually limited to seniors and a few juniors. Using the double-entry method of accounting, students learn to analyze business transactions, record the transactions in journals, and post to ledger accounts. Several types of journals and ledger forms are used.

Practice in check writing and bank statement reconciliation is provided. Financial papers such as the Income Statement, Capital Statement, and Balance Sheet are prepared and analyzed.

Accounting methods used for payroll, payroll taxes, and sales tax as well as those used for bad debts, depreciation, notes and interest, and accrued income and expenses are covered in the latter stages of the course.

Students spend approximately five weeks on an accounting simulation in which they keep all the books for a merchandising business.

The 10-key adding machine and calculators are used extensively and students are introduced briefly to the use of automated and electronic data processing in accounting.

SHORTHAND. An intense effort must be given by students to learn the fundamental alphabet of shorthand. They begin by reading and progress to writing. After the letters are mastered, students work at increasing speed, which is the main purpose of shorthand. A student must be capable at the end of the year of taking material at 60 wpm for 6 minutes and then transcribing (typing) that material with a 95% accuracy. This is the minimum requirement for passing the course.

These people also have an opportunity to represent their school by participating in the UIL competition in the spring. Many extra hours of after-school practice at speeds ranging from 80-120 wpm are required.

Floydada has been well represented in UIL shorthand during the past 10 years. During that time, two girls have qualified to compete at the state level in Austin. In 1974 Teresa Love placed 8th and in 1978 Lisa Noland ranked 10th.

Students who have placed at district and advanced to regional are Teresa Hinsley—4th in 1968, Lori Chappel—1970, Kathy Chappel—1971, Sarah Puckett—4th in 1972, Darla Milton—4th in 1973, Teresa Love—5th in 1974, Lisa Noland—3rd and Trava Gentry—6th in 1978.

RECORD KEEPING. Students learn a combination of keeping records for personal and for business use. More emphasis is placed on the study of forms such as sales slips, checks, receipts, and office memorandums.

Some coverage is given to the books of a business such as journals, ledgers, and financial statements. The financial statements are fairly simple with a great amount of repetition provided to help the students master the material.

VOCATIONAL OFFICE EDUCATION. VOE is a federally funded program enabling senior and some junior students to work two periods a day in an office job in addition to one period of classwork. (This program will be covered more fully at a later date.)

VOE is the co-curricular organization which automatically goes with the VOE classroom work. This club has money-raising projects and a limited number of social activities.

Public Notices

NOTICE OF DISSOLUTION
Notice is hereby given that the partnership under the firm name of Perry Implement Company, whose principal business is at Lockney, Floyd County, Texas, intends, as of January 1, 1979, to become incorporated without the change of firm name, except the addition of "Inc." to the name.

Further notice is hereby given that the partnership under the name of Perry Implement Company, located at Lockney, Floyd County, Texas, upon the incorporation as aforesaid, dissolved by mutual consent of the partners and that the business will continue under the same name as a Texas Corporation. Payment of debts owing to the partnership and presentation of demands for payments of debts due by the partnership should be made to the corporation at the same address as the partnership in Lockney, Floyd County, Texas. DATED January 31, 1979.

s/s Jerry Perry
Jerry Perry, a partner
s/s John E. Perry
John E. Perry, a partner
L2-4, 2-11, 2-18, 2-25c

LEGAL NOTICE
Proposals for an Update to the South Plains Association of Governments' Comprehensive Water and Sewer Plan: Proposals addressed to the South Plains Association of Governments will be received at the Office of the Community Development Planner until 12:00 Noon March 12, 1979, for research and technical services in providing an update to the Regional Comprehensive Water and Sewer Plan. Proposals will be considered on March 13, 1979. The SPAG Board of Directors reserves the right to reject any or all proposals. Affirmative action plans under Section 3 of the HUD Act of 1968, as amended, will be required.

Proposal guidelines are available in the Office of the Community Development Planner, South Plains Association of Governments, 1709 - 26th Street, Lubbock, Texas, Phone (806) 762-8721. L-218, 2-25c

NOTICE OF INTENTION TO ISSUE CERTIFICATES OF OBLIGATION

TAKE NOTICE that the City Council of the City of Floydada, Texas, shall convene at 7:30 o'clock p.m. on the 13th day of March, 1979, at its regular meeting place in the City Hall of said City, to consider the passage of an ordinance authorizing the issuance of certificates of obligation of said City in an amount not to exceed \$500,000 for the purpose of paying all or a portion of certain contractual obligations to be incurred for improvements to the City's Electric Light and Power System, to wit: (i) the purchase of materials, supplies and equipment for an electric substation tie facility, (ii) the erection of the electric substation tie facility, including the installation of electric transmissions and distribution lines and (iii) professional services of engineers. The certificates proposed to be issued are to be payable from ad valorem taxes and net revenues derived from the operation of the City's Electric Light and Power System. The lien on the pledge of the net revenues of the City's Electric Light and Power System securing the payment of such certificates will be junior and subordinate to the lien and pledge securing the payment of the City's outstanding Electric Light and Power System Revenue Bonds and additional revenue bonds which may be issued on a parity with such outstanding revenue bonds.

s/s Wm. A. Feuerbacher
City Manager, City of
Floydada, Texas
2-18, 2-25c

Cotton Milo Corn Make The Most Of Nitrogen Fertilizer With ... N-SERVE nitrogen stabilizers.

Get the most from the nitrogen you apply. Add N-SERVE® nitrogen stabilizers to your nitrogen fertilizer. N-SERVE cuts nitrogen loss by slowing the nitrification of the N in the soil. This helps the nitrogen you apply become available to the crop at a slower, more manageable rate. That means more efficient, effective use of the nitrogen you apply. Come see us for more information about N-SERVE nitrogen stabilizers. Just look for the sign with the N-SERVE policeman.

You'll grow bigger with a little help from Dow.

SUN-VUE FERTILIZER INC.
Your Smith-Douglass Dealer
Lockney

YOU CAN GROW

These farmers, until they saw five fields on four farms show similar differences, also believed that hot weather prevents corn pollination. Call me, Colonel Taylor, person to person at (505) 345-8441.

FARM GUARD PRODUCTS

6130 Second Street N.W. (505) 345-8441 Albuquerque, New Mexico



FEBRUARY BIRTHDAYS — Maudie Gray, left, and Anis Franks were honored at a Tuesday afternoon birthday party for the residents of Floydada Nursing Home who have February birthdays.

LEGAL NOTICE
TO WHOM IT MAY CONCERN: Notice is hereby given that Delton Jack, heretofore conducting business as a proprietorship, has ceased to continue such business and has transferred to a corporation on January 17, 1979, the name of Delton Jack Farms, Inc.

DELTON JACK FARMS, INC.
By Delton Jack
Lockney, Texas
L1-28, 2-4, 2-11, 2-18, 2-25c

LEGAL NOTICE
TO WHOM IT MAY CONCERN: Notice is hereby given that Eugene Beedy, heretofore conducting business as a proprietorship, has ceased to continue such business and has transferred to a corporation on January 15, 1979, the name of Eugene Beedy Farms, Inc.

EUGENE BEEDY FARMS, INC.
By Eugene Beedy
907 West
Floydada, Texas
L-28, 2-4, 2-11, 2-18, 2-25c

LEGAL NOTICE
TO WHOM IT MAY CONCERN: Notice is hereby given that Vernie Moore, heretofore conducting business as a proprietorship, has ceased to continue such business and has transferred to a corporation on January 15, 1979, the name of Vernie Moore Farms, Inc.

VERNIE MOORE FARMS, INC.
By Vernie Moore
909 West
Floydada, Texas
L-28, 2-4, 2-11, 2-18, 2-25c

LEGAL NOTICE
TO WHOM IT MAY CONCERN: Notice is hereby given that Randy Bertrand, heretofore conducting business as a proprietorship, has ceased to continue such business and has transferred to a corporation on January 22, 1979, the name of Randy Bertrand Farms, Inc.

RANDY BERTRAND FARMS, INC.
By Randy Bertrand
Floydada, Texas
L-28, 2-4, 2-11, 2-18, 2-25c

LEGAL NOTICE
TO WHOM IT MAY CONCERN: Notice is hereby given that Delmas McCormick, heretofore conducting business as a sole proprietorship, has ceased to continue such business and has transferred to a corporation on January 15, 1979, the name of Delmas McCormick Farms, Inc.

DELMAS MCCORMICK FARMS, INC.
By Delmas McCormick
901 West
Floydada, Texas
L-28, 2-4, 2-11, 2-18, 2-25c

LEGAL NOTICE
TO WHOM IT MAY CONCERN: Notice is hereby given that Laron Fulton, heretofore conducting business as a proprietorship, has ceased to continue such business and has transferred to a corporation on January 15, 1979, the name of Laron Fulton Farms, Inc.

LARON FULTON FARMS, INC.
By Laron Fulton
838 West
Floydada, Texas
L-28, 2-4, 2-11, 2-18, 2-25c

Notice is hereby given by the Parks and Department that a public hearing will be held at 2:00 p.m. on March 14, 1979 at the County Courthouse at Floydada, Texas for the purpose of gathering information concerning hunting, fishing and trapping regulations for Floyd County. As the result of action by the Texas Legislature, the Parks and Wildlife Commission is responsible for the setting of seasons, bag limits, and means and methods of wildlife resources in Floyd County. All interested persons are urged to attend the comment upon the proposed regulations.

MORTON BUILDINGS INC.
Plainview Lockney Floydada Gentry
For information call or write ...
MORTON BUILDINGS INC.
Box 1928 Phone 806-293-4386

OBITUARY



DR. BILL NORTON

Dr. Norton Psychologist At Family Service Office

Dr. Bill Norton has been named psychologist for the Central Plains Family Service office in Floydada. He is to be in the Floyd County office each Monday and Wednesday from 8:30 a.m. until 12 noon and from 1 until 5 p.m.

Central Plains Family Service office is located in Room 200B, which is on the second floor of the Floyd County Courthouse.

Dr. Norton was the first psychologist associated with the office in Floydada when it opened in the Spring of

1975. He served this office approximately two years before being assigned fulltime to the central office in Plainview.

A Plainview resident, Dr. Norton received his doctorate from Florida State University.

He encourages anyone in need of his services to phone 983-2584 or "drop by the office" in Floydada. Fee is based on a sliding scale depending upon a family's income and ability to pay.

Central Plains Family Service office in Floydada offers

a wide variety of counseling and education services.

KTXT-TV Reveals

Power Increase

KTXT-TV, the non-profit, public television station licensed to Texas Tech University in Lubbock, announces that it is increasing power to include Floyd County.

A spokesperson said KTXT is "the only station in our area that specializes in cultural and public affairs programs

three stepsons, Dr. Richard White of Tahoka, Randy L. White of Taos, N.M., and Gary C. White of Lubbock; a sister, Celia of Abilene; two brothers, Horace of Tuscola and Allen of Abilene; two grandchildren and two step-grandchildren.

Palbearers will be Borden Davis, Monte Dodson, Ronald Sherrill, Buel Draper, Alfred Moody and J.W. Inkiebarger.



SAVINGS ROUNDUP



PIGGLY WIGGLY

"Each of these advertised items is required to be readily available for sale at or below the advertised price in each store, except as specifically noted in this ad. We reserve the right to limit quantities. None sold to dealers." Prices good February 18 thru February 24, 1979.

DAILY
8 a.m. - 8 p.m.
SUNDAY 9 a.m. - 8 p.m.



CRISCO
\$1.78
3-LB. CAN
Limit one (1) per customer with \$10.00 additional purchase excluding cigarettes. Thereafter at regular price of 00c.

Barney's Butcher Shop Sale

"BE SATISFIED WITH PIGGLY WIGGLY MEAT OR DOUBLE YOUR MONEY BACK!"

SWIFT ROYAL ROCK ALL SIZES
YOUNG TURKEYS
78¢
LB.



USDA HEAVY WESTERN BEEF BONELESS BOTTOM
ROUND ROAST
\$1.88
LB.



COMBINATION PACK 10 CHOPS: 6 CENTER, 4 END CUT
PORK CHOPS
\$1.48
LB.



GLOVER
SLICED BACON
\$1.28
12-OZ. PKG.



SPAM
\$1.09
12-OZ. CAN
Limit two (2) per customer with \$10.00 additional purchase excluding cigarettes. Thereafter at regular price of 1.43



STAR-KIST LIGHT CHUNK TUNA
69¢
6 1/2-OZ. CAN
SAVE 24¢



PIGGLY WIGGLY LOW FAT MILK
\$1.59
GAL.
SAVE 66¢



HEINZ KETCHUP
79¢
32 OZ. BTL.
SAVE 34¢



SAVE 42¢ ON 5 CANS
PIILLSBURY BUTTERMILK OR REGULAR BISCUITS
7 \$1
8-OZ. CANS



DOUBLE STAMPS EVERY WEDNESDAY

We give Double Gold Bond Stamps every Wednesday with any purchase of \$2.50 or more excluding cigarettes.

Stan's Produce Sale!

"BE SATISFIED WITH PIGGLY WIGGLY PRODUCE OR DOUBLE YOUR MONEY BACK!"

- NEW CROP RED JUICY RIPE CUT OR WHOLE WATERMELONS LB. **18¢**
- LOADED WITH VITAMIN C RED GRAPEFRUIT 5 LB. BAG **98¢**
- CRISP & TENDER PASCAL CELERY EA. **28¢**
- GENUINE RUSSET BAKING POTATOES LB. **18¢**
- EXCELLENT FOR FRYING OR BAKING EGGPLANT LB. **38¢**



Infant

are pending at the Funeral Home for David Delafuen... infant son of Mrs. Joe Manuel of Floydada. The baby was born Thursday at 9:45 p.m. in General Hospital. Includes his parents and Jose Luis; Maria, Dolores and all of the home; grandparents, Mr. Manuel Delafuen... and Mr. and Mrs. Mercedes.

Embree

for Warren Embree were held Friday at the Taboka Church of the Nazarene. Burial was in the Jim Pyburn offi...

in Tuscola Cemetery under the direction of the Home of Ta... Funeral Home with graveside service by Jody...

died Tuesday in County Hospital of a brief illness. He was of Tuscola, he was married to Billie Marie Stephenson in 1927. She died in 1975. He was married to Billie Marie Stephenson in 1927. She died in 1975. He was married to Billie Marie Stephenson in 1927. She died in 1975.

Lockney, Texas. He was born in 1912. He was married to Billie Marie Stephenson in 1927. She died in 1975. He was married to Billie Marie Stephenson in 1927. She died in 1975.

Lockney, Texas. He was born in 1912. He was married to Billie Marie Stephenson in 1927. She died in 1975. He was married to Billie Marie Stephenson in 1927. She died in 1975.

Lockney, Texas. He was born in 1912. He was married to Billie Marie Stephenson in 1927. She died in 1975. He was married to Billie Marie Stephenson in 1927. She died in 1975.

Lockney, Texas. He was born in 1912. He was married to Billie Marie Stephenson in 1927. She died in 1975. He was married to Billie Marie Stephenson in 1927. She died in 1975.

Lockney, Texas. He was born in 1912. He was married to Billie Marie Stephenson in 1927. She died in 1975. He was married to Billie Marie Stephenson in 1927. She died in 1975.

Lockney, Texas. He was born in 1912. He was married to Billie Marie Stephenson in 1927. She died in 1975. He was married to Billie Marie Stephenson in 1927. She died in 1975.

Lockney, Texas. He was born in 1912. He was married to Billie Marie Stephenson in 1927. She died in 1975. He was married to Billie Marie Stephenson in 1927. She died in 1975.

Lockney, Texas. He was born in 1912. He was married to Billie Marie Stephenson in 1927. She died in 1975. He was married to Billie Marie Stephenson in 1927. She died in 1975.

Lockney, Texas. He was born in 1912. He was married to Billie Marie Stephenson in 1927. She died in 1975. He was married to Billie Marie Stephenson in 1927. She died in 1975.

Lockney, Texas. He was born in 1912. He was married to Billie Marie Stephenson in 1927. She died in 1975. He was married to Billie Marie Stephenson in 1927. She died in 1975.

Lockney, Texas. He was born in 1912. He was married to Billie Marie Stephenson in 1927. She died in 1975. He was married to Billie Marie Stephenson in 1927. She died in 1975.

Lockney, Texas. He was born in 1912. He was married to Billie Marie Stephenson in 1927. She died in 1975. He was married to Billie Marie Stephenson in 1927. She died in 1975.

Lockney, Texas. He was born in 1912. He was married to Billie Marie Stephenson in 1927. She died in 1975. He was married to Billie Marie Stephenson in 1927. She died in 1975.

Lockney, Texas. He was born in 1912. He was married to Billie Marie Stephenson in 1927. She died in 1975. He was married to Billie Marie Stephenson in 1927. She died in 1975.

Lockney, Texas. He was born in 1912. He was married to Billie Marie Stephenson in 1927. She died in 1975. He was married to Billie Marie Stephenson in 1927. She died in 1975.

Lockney, Texas. He was born in 1912. He was married to Billie Marie Stephenson in 1927. She died in 1975. He was married to Billie Marie Stephenson in 1927. She died in 1975.

Lockney, Texas. He was born in 1912. He was married to Billie Marie Stephenson in 1927. She died in 1975. He was married to Billie Marie Stephenson in 1927. She died in 1975.

Lockney, Texas. He was born in 1912. He was married to Billie Marie Stephenson in 1927. She died in 1975. He was married to Billie Marie Stephenson in 1927. She died in 1975.

Lockney, Texas. He was born in 1912. He was married to Billie Marie Stephenson in 1927. She died in 1975. He was married to Billie Marie Stephenson in 1927. She died in 1975.

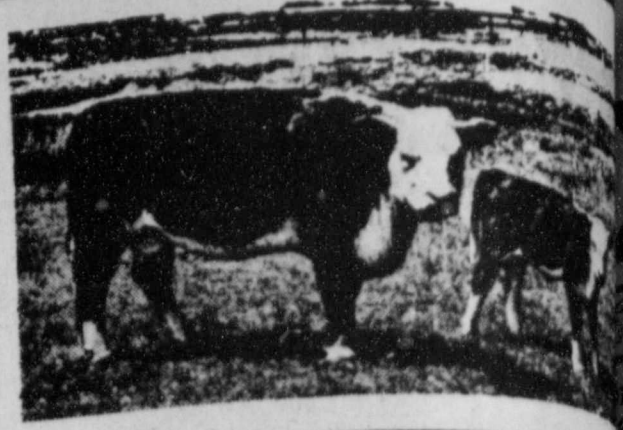
Lockney, Texas. He was born in 1912. He was married to Billie Marie Stephenson in 1927. She died in 1975. He was married to Billie Marie Stephenson in 1927. She died in 1975.

Lockney, Texas. He was born in 1912. He was married to Billie Marie Stephenson in 1927. She died in 1975. He was married to Billie Marie Stephenson in 1927. She died in 1975.

Lockney, Texas. He was born in 1912. He was married to Billie Marie Stephenson in 1927. She died in 1975. He was married to Billie Marie Stephenson in 1927. She died in 1975.



FARM & RANCH NEWS



Business Incorporation Discussed By Texas Tech Professor

Farmers, ranchers or others who are incorporating small businesses should beware of a "knee jerk" recommendation to take advantage of Subchapter S of the Internal Revenue Code, according to a Texas Tech University professor who teaches tax law.

Dr. David C. Cummins, of the Texas Tech Law School faculty, said that incorporation under Subchapter S often is recommended in the belief that shareholders can avoid double taxation, a belief he calls "more myth than reality."

It is possible, he said, to manage a regular corporation's relationship to its stockholders so that the burden of double taxation does not apply.

"There are no blanket answers to the manner of incorporation," Cummins said, "but too many people automatically choose Subchapter S thinking there is a tax advantage, and they should look closely at the disadvantages."

Among the disadvantages, Cummins said, is that a very restrictive buy-sell plan for stock transfers is required by Subchapter S.

"Probably the best first step for the individual wanting to incorporate a closely held business," he admonished, "is to find a tax expert—accountant, lawyer or other specialist—to study the past performance of the business and the future plans of the individual who will be the principal stockholder. Then follow that expert's advice."

"The earlier advice is sought, the cheaper the fee and the fewer the pitfalls," Cummins said.

Unless paperwork is carefully drawn, he said, it is possible for the corporation

to have to pay taxes on profits while shareholders pay taxes also on their dividends, but there can be a pitfall if shareholders are required to pay taxes on dividends that have not been distributed, "in effect paying taxes on income they haven't received."

In Subchapter S, he explained, there is only one class of stock and none of it can be put in a trust. In a regular corporation, however, there can be more than one class of preferred and more than one class of common stock. This protects the will of the patriarch or matriarch of a corporation in keeping the controlling interest in the hands of capable stockholders, whether relatives or key employees, and at the same time caring for bonafide stockholders who should have no share in controlling the corporation, whether for lack of interest or competence.

Another significant incorporation pitfall to avoid is Section 341 of the Internal Revenue Code, he said. This applies to a business incorporated for one reason only—for instance, to continue a line of credit—that is, a company incorporated only to be collapsed when its reason for existence disappears. "The penalty section in 341 is designed to be a shoe two sizes too small, and it will pinch," he warned. "The point is to not sell shares and liquidate the corporation but continue to operate until the business loses its status as a collapsible corporation."

"A tax expert will discuss Section 341 before the incorporation papers are drawn," Cummins said, "and plans can be made to avoid the penalties this section calls for."

Cummins said that the advantages and disadvantages of incorporating are particularly important now to farmers and ranchers who are faced with a cutoff in their lines of credit. Texas law limits to 10 percent the amount of interest that can be charged an individual borrowing money while the prime rate is 11.75 percent and the Federal

Reserve discount rate so high that banks don't lend money at 10 percent. A corporation, unlike an individual, can borrow at a higher interest rate.

The Texas usury law does not apply to all kinds of credit but does apply to the production loans required by farmers and ranchers to operate their businesses.

Gasohol: What Are the Facts?

AUSTIN—One of the products recently in the spotlight as an alternate energy source is "gasohol," a blend of unleaded gasoline and alcohol which can be produced from agricultural crops and by-products, advises Agriculture Commissioner Reagan V. Brown.

Here are some of the answers to questions often asked about gasohol, compiled by the Texas Department of Agriculture:

1. What is gasohol?
Gasohol is a type of fuel utilizing a blend of unleaded gasoline and ethyl alcohol—generally 10 per cent alcohol.

2. Can any automobile use gasohol?

Yes. In fact, cars with carburetor adjustments can be operated with 100 per cent alcohol. Researchers at Texas A & M University report that three test cars driven for three years with 100 per cent methal alcohol have shown no adverse effects. Economically, however, the 90 per cent gasoline, 10 per cent alcohol mix is the most feasible at present.

3. In those areas where gasohol is commercially available, does it cost more?
Yes. Present technology can produce one gallon of pure fuel ethyl alcohol for between 80 cents to \$1.25 per gallon. The blended gasohol would cost around four to eight cents per gallon more than unleaded gasoline after tax exemptions, but there are definite advantages—improved mileage, less engine wear, and higher octane, therefore no ping.

4. How is this "fuel alcohol" produced?
Scientists can distill alcohol from any agricultural material which contains sugar or starch—corn, grain sorghum, below-grade fruits and vegetables, citrus peels, sugar cane, sweet sorghum, wood wastes, and on and on.

5. Isn't there a lot of waste, using corn for instance, just for alcohol production?
No. Residues produced make excellent livestock feed, since the protein in the corn is not destroyed or used in the distillation process. In fact, some operations could be almost "perpetual motion"

operations. Corn is used to make the alcohol. The residue is used to feed cattle. Cattle wastes can then be used to produce methane gas to power the alcohol-distillation plant.

6. Will fuel alcohol eventually completely replace gasoline in American cars?

That's highly doubtful. The alcohol is, most practically, used as an additive to gasoline, but any volume marketed would certainly help alleviate the fuel shortage.

7. Would using agricultural materials for alcohol production cause less food to be grown in Texas?

Again, probably not. Due to vast carryover stocks of grain, millions of acres of Texas farmland are currently not in production. This "set-aside" land can, under the Federal farm program, be used to grow energy-producing crops. Some experts estimate that Texas could double its production of grain, supplying plenty of material for alcohol production, as well as for food use and for exports, if there was a profitable market for their product.

And don't forget the use of other agricultural by-products, an important source of material for alcohol production. The tops of harvested vegetables, or sub-standard fruits and vegetables that cannot be marketed for food use—these, too, can be used for alcohol.

8. Are there any commercial fuel alcohol plants in operation in Texas at present?

No. Actually, there are no fully-established, commercial plants producing volume amounts of fuel alcohol in the U. S. at all.



CATTLE ON FEED UP—The total number of Texas cattle on feed increased by eight per cent as of the first of the year, the Texas Department of Agriculture reports, even though general beef supplies declined due to a smaller number of grass-fed beef available.

Beef Supply Down Despite Increased Feedlot Output

A sharp decline in the number of grass-fed cattle available has tilted the beef-supply balance, even though an eight per cent increase in cattle on feed has been reported, Agriculture Commissioner Reagan V. Brown said.

"It may be hard for many consumers to understand, but beef supplies are down in spite of the larger number of cattle in feedlots," Brown said. "The increased output on fed beef has simply not been able to offset the decline in grass-fed numbers."

As of January 1, there were 2 million head of cattle in Texas feedlots, according to the Texas Crop and Livestock Reporting Service. This is eight per cent above the 1.85 million on

feed at that time last year.

Overall beef production is declined by four per cent while veal production dropped 10 per cent. In Texas, the December slaughter was down by 27 per cent from a year ago, while the decline are expected in 1979.

The reduced supply of cattle in feedlots, however, has resulted in higher prices, but cattlemen endured four years of bottom cattle prices brought on by overstocked herds. Brown said beef prices have risen partially of the higher prices for both and grain-fed beef, but also steadily increasing transportation

Texas Cotton Crop Could Hit 20-Year

Texas' farmers are expected to plant the largest cotton crop in over two decades, while acreage for other 1979 crops is predicted to drop, the Texas Department of Agriculture has reported.

Commissioner Reagan V. Brown said cotton plantings were expected to reach 7.2 million acres, up four per cent from last year. This would make 1979 acreage the largest since 1958.

Commenting on the latest Texas Crop and Livestock Reporting Service data on 1979 prospective plantings, Agriculture

Commissioner Reagan V. Brown said, "down in sorghum and a nine per cent decline



Washington sources have informed Plains Cotton Growers Inc. that the organization's continuing efforts toward voluntary acreage diversion program for 1979 may have a chance to succeed.

PCG has been working to secure a 10 percent voluntary set-aside and 15 percent voluntary diversion program since its Board of Directors adopted that position at a meeting on October 11 last year. USDA agreed a set-aside was needed and recommended to the Administration a 10 percent mandatory and 10 percent voluntary set-aside. The Administration however refused to accept the Department's advice and a no set-aside, no diversion program was announced at the end of December.

At this late date, almost planting time for producers in some areas of the Cotton Belt, USDA's legal counsel ruled the Department cannot announce a set-aside, but the option to offer a voluntary paid diversion program. And a high USDA official advised PCG February 8 that such a program "is still under consideration and is still a possibility." The official was not, however, overly optimistic.

The prospects for almost 14 million planted acres in 1979 generally given much of the blame for a decline of almost seven cents per pound in the market price of cotton in late November.

As PCG President Lloyd Cline pointed out at a press conference in Lubbock February 7, the current price of 49 cents per pound for average High Plains qualities is below the cost of production. Using per-acre production costs from Marvin Sartin, area farm economist for the Texas A & M Extension Service, and assuming 10-year average yields, Cline cited a 1978 per-pound cost to produce irrigated and non-irrigated cotton, respectively, of 66.6 and 55.7 cents. He called attention to Sartin's projected nine percent or more increase in production costs for 1979.

"Which simply means," Cline said after the conference "that unless something is done to alter the prospects for a huge cotton acreage and production this year, cotton production may well be in serious trouble this Fall."

The conference was called to rebut the much publicized remark by Secretary of Agriculture Bob Bergland that "the farmer demands for better prices are motivated by unfashioned greed."

Other principals of the conference were Carl King of District President of the Texas Corn Growers Association, and Ed Harp of Lubbock, Executive Vice President of the Texas Sorghum Producers Association. All three of the producers' representatives quoted production cost figures well above current prices for the respective commodities. King was especially critical of Bergland and called for the Secretary's resignation.

Asked for PCG's feelings on the Secretary's remaining in office, again after the conference, Cline said the PCG Board has never considered the issue.

By **Stephen H. Herber**
Around the County
County Agent's Column

Winter and early spring are good times for collecting soil samples, says Stephen H. Herber, county agent with the Texas Agricultural Extension Service.

At present, Extension Service laboratories are processing samples as soon as they arrive, and reports are mailed within one week.

Prompt service is an important requirement for an effective soil testing service, says Herber. However, waiting until the planting season can cause delays and results may not get back to producers in time.

Sampling well in advance of planting offers the advantage of allowing time to obtain needed fertilizers. Early sampling also is advised to avoid wet soil later in the season. If soils are muddy and sticky, it is difficult to obtain a good sample. And, excess moisture adds to

shipping costs. To reduce shipping weight, samples can be air-dried for a day or two. Heating should be avoided, however, since it fixes potassium in some soils so it cannot be removed by laboratory procedures for testing.

One of the keys to a good soil test is collecting a representative soil sample of a field. From 10 to 15 samples should be collected from an area as large as 40 acres. These should then be mixed together for a composite sample. Also, the area tested should be divided according to soil type as well as past and future cropping practices.

Take time to collect representative soil samples and carefully complete the information sheet that must accompany each sample, advises Herber.

Collection and mailing instructions, mailing cartons and information sheets are available at the county Extension office.

Sponsored by the Following Interested Firms

First National Bank Floydada	Collins Implement Co. Floydada	Floyd County Farm Bureau
Case Power & Equipment Floydada	Russell's Equipment & Supply Floydada	Perry Implement Lockney
Floydada Cooperative Gins	Wilson Electric Floydada	Ansley & Son Lockney
McDonald Implement Co. Floydada	Hi-Plains Gin Lockney	Floydada Implement Co.
Martin & Co. Floydada	Consumers Fuel Association Lockney	

Sponsor Needed **Sponsor Needed** **Sponsor Needed**

HOME FOR SALE: 2 bed room, good sha... 983-2518.

SALE: 2 bed room, fully carpeted, ready to live... Forster Finley, 983-2433.

SALE: Three bed room, bath brick home, room, built-in appointments. 983-2433.

SALE: 3 bedroom home for sale, double lot. 983-2433.

SALE: 2 bath, 1 or 2 bedroom, heat and air, fire carpet through out and fenced back. Payne, 983-5379.

SALE: 2 and 3 bedrooms for sale. King, 983-2881.

ERAL nice two and room homes for sale can be arranged. Hale Insurance Estate at 983-326.

SALE: 2 bed room, partly carpeted, lot. 1102 S. Jada, James Lee 833-2646 or 983-317.

SALE: ELECTRIC brick home or garage. New c/s layout, fenced, fruit trees, st decreased over 50 per cent. Call for appointment. 983-2033.

SALE: Brick home, 3 bed room, fully carpeted, central heat and air conditioning with cellar and pavement. 8 of Lockney. Call L.

SALE: Three bedroom, central heat, fully carpeted, bathroom and new applis. Call for appointment. G. 150 x 140. 983-3189 after five.

SALE: Three bedroom, one bath, garage, quite nice. Call after 6 p.m. 983-3961.

SALE: Three bedroom, two bath. 61 983-3469.

SALE: Nice two bedroom house in Lockney, central air and 347 or 652-3432.

SALE: 2 bedroom, Good condition, nice rent. \$9,700. Call after on weekends.

SALE: Two bedroom, 226 E. Mar 5120 after 5:30.

Need

SEE YOUR F

FOR CRED

He

Accident

Auto

Liabi

Equip

Floyd Co

OFFICE: 983-3

Floyd

Paul Koonsn

652-3655

David Cates

983-3273

If It's Results You Want-It's CLASSIFIED ADS You Need

HOME FOR SALE
 SALE: 2 bedrooms, good shape. 515 sq. ft. 983-2518. 2-25p
 SALE: 2 bedroom fully carpeted, wall to wall, ready to live in. Call Peter Finley. 983-3871. 2-18c
 SALE: Three bedroom, brick home. Den, room, built-ins. Call appointments. 983-3451. 2-18c
 SALE: 3 bedroom ranch home for sale. Gated lot. 983-3129. 2-25p
 SALE: 2 bath, 3 bedroom and den; carpet through out; gated fenced back yard. 983-5379. tfc
 SALE: 2 and 3 bedroom homes for sale. King Realty. 983-2881. tfc
 SALE: nice two and three bedroom homes for sale. Call 983-3261. tfc
 SALE: 2 bedroom partly carpeted on lot 1102 S. Main, James Lee Nichols. 983-3144. tfc
ELECTRIC Three brick home on J.B. New carpet, fenced back yard, trees, storage. Call for appointment. tfc
 SALE: Brick house, 3 bedrooms, 2 full carpeted and air conditioning with central heat and air. Two car garage. 8 miles from Lockney. Call 293-1222. tfc
 SALE: Three bedroom, central heat and air, carpeted. Redone bathroom and kitchen. New appliances, storage building. 150 x 140. 983-3498. Call after five. tfc
 SALE: Three bedroom, one bath, single garage, quite neighborhood. Call after 6 p.m. for appointment. 983-3961. 2-18p
 SALE: Three bedroom, two bath. 615 W. 983-3469. 2-25c
 SALE: Nice two bedroom house in Lockney. New central air and heat. Call 652-3432. tfc
 SALE: 2 bedroom Good condition. Make nice rent property. \$700. Call after 6 on weekends. 983-1218. 2-18c
 SALE: Two bedroom 226 E. Marivena. Call after 5:30. 3-11c

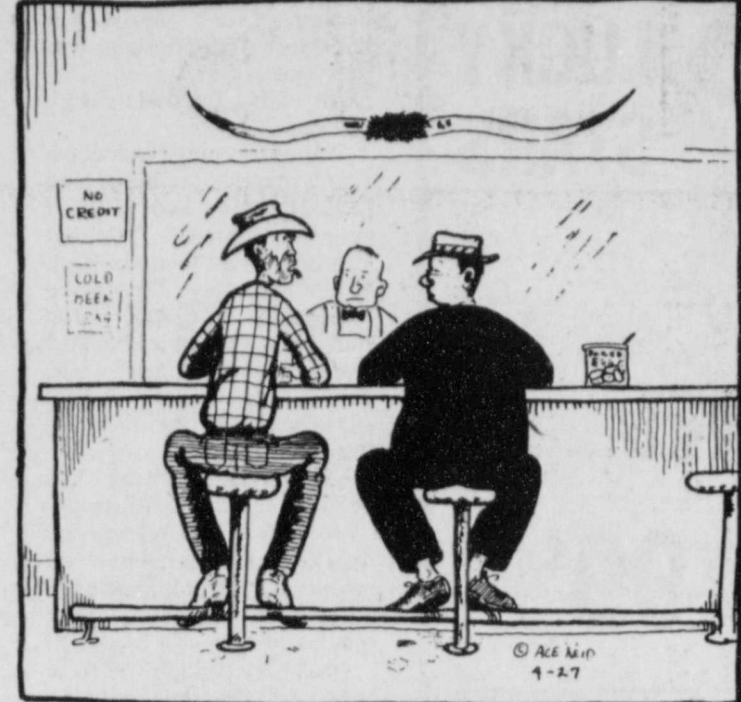
Real Estate

FOR SALE: Several good two and three bedroom houses. Bond Real Estate. Contact Wilson Bond, 983-2151 or 983-3573. tfc
 FOR SALE: Three bedroom and two bath house. Allison Realty 652-2134. tfc

FARM MACHINERY

FOR SALE: 30 brush stripper, triangle basket, good shape. Call Verlon Wright 983-3047 nights. 2-18c
NORRELL TRACTOR PARTS for tractor and irrigation supplies and accessories. tfc

COW POKES By Ace Reid



"Why do cowboys drink so much? Wul, you would too if yore rear end wuz always sore, or you wuz too hot or too cold and yore pants wuz always too tight!"

THIS FEATURE SPONSORED BY
Floydada Real Estate & Insurance Agency
AUTO, FIRE & FARM INSURANCE
 Jim Word — — Phone 983-2360

Public Notices

LEGAL NOTICE
 Proposals for an Update to the South Plains Association of Governments' Comprehensive Water and Sewer Plan: Proposals addressed to the South Plains Association of Governments will be received at the Office of the Community Development Planner until 12:00 Noon March 12, 1979, for research and technical services in providing an update to the Regional Comprehensive Water and Sewer Plan. Proposals will be considered on March 13, 1979. The SPAG Board of Directors reserves the right to reject any or all proposals. Affirmative action plans under Section 3 of the HUD Act of 1968, as amended, will be required. Proposal guidelines are available in the Office of the Community Development Planner, South Plains Association of Governments, 1709 - 26th Street, Lubbock, Texas, Phone (806) 762-8721. 2-18, 2-22c

NOTICE TO CONTRACTORS
 Sealed bids addressed to the City of Floydada, Texas, will be received at the City Hall until 7:30 p.m., March 13, 1979, and then publicly opened and read for furnishing all plant, labor, material, and equipment, and performing all work required for seal coating runway, aprons, parking areas, turnarounds, and access road at the Floydada Municipal Airport located north of the City. Bids shall be submitted in sealed envelopes upon the blank form of the proposal attached hereto and marked in the upper left hand corner. All proposals shall be accompanied by a cashier's check of certified check upon a national or state bank in the amount of five (5%) percent of the total maximum bid price payable without recourse to the City or a bid bond in the same amount from a reliable surety company, as a guarantee that bidder will enter into a contract and execute performance bond within ten days after notice of award of contract to him. The bid security must be enclosed in the same envelope with the bid. Bids without check or bid bond will not be considered. The successful bidder must furnish performance and payment bonds upon the forms which are attached hereto in the amount of 100% of the contract price from an approved surety company holding a permit from the State of Texas to act as surety or other surety or sureties acceptable to the Owner. (If contract is less than \$25,000, no performance or payment bond is required.) The right is reserved to reject any and all bids and to waive any informality in bids received. Plans, specifications and bidding documents may be secured from the office of the City Manager, or at the office of Bill R. McMorries & Associates, Inc., 6300 Canyon Dr., Amarillo, Texas 79109, on deposit of Fifty (\$50.00) Dollars per set which sum so deposited will be refunded, provided: (1) All documents are returned in good condition to Bill R. McMorries & Associates, Inc. not later than 48 hours prior to the time for receiving bids; or (2) The Contractor submits a bid and all documents are returned in good condition to Bill R. McMorries & Associates, Inc. at the time that bids are opened. CITY OF FLOYDADA, TEXAS By: Parnell Powell, Mayor 2-18c

DAN'S AUTO SERVICE
 DAN TEUTON, Owner
 Specializing in Automatic Transmission, Motor Tune-Ups, Auto Air Conditioning.
 General Repair We Have A BRAKE LATHE to handle all passenger car brake drums. Sec us for complete brake service.
 Phone 652-2462

SILVER
 Top prices paid for U.S. coins and silver.
EARL COX
 Tulla, Texas
 995-4417

STORAGE SPACE
 BOATS, FURNITURE, ANYTHING, ETC. BY THE MONTH OR SIX MONTH 10% DISCOUNT.
WEST TEXAS MINI STORAGE
 983-3573 OR 983-2151

Underground PLASTIC Irrigation Water and Gas Pipe Installed
SILVERTON METAL WORKS
 806-823-2431 or 823-2173

FOR BETTER CONCRETE CALL CALLOWAY READY-MIX
 652-2224 LOCKNEY PLAINVIEW HWY ALSO WHITE CALICHE ROCK FOR SALE

JOHN DEERE
 6" Hard Surface Chisel Sweeps
\$5.95
Collins Implement Co.
 Floydada 983-3732

BE A WINNER!
 Call Producers on all your chemical needs.
 30 Gal. Treflan \$651.00
 5 Gal Treflan \$111.00
 5 Gal. Tolban \$109.00
 5 Gal. Prowl \$108.00
PRODUCERS COOPERATIVE ELEVATOR
 Floydada 983-2821

Diamond Industrial Supply Co., inc.
 Phone Days 296-7418 Nights 296-1200 or 296-7828
 1014 Broadway Plainview, Texas
 Chain Sprockets V belts Sheaves U-joints Oil Seals O-rings Wisconsin SKF RCA Timken Bower Cetlon Stripper Brushes & Bats
 "We Appreciate Your Business More" Ltfc

FARMS-RANCHES-CITY PROPERTIES-BUSINESS LEASES-LOANS
B. B. WILKES BROKER REAL ESTATE
 100 S Main, Lockney Barry Barker, Solicitor Barker Insurance Agency-652-2642

IF IT IS INSURANCE -SEE- BARKER INSURANCE AGENCY
 LIFE-FIRE-CASUALTY-HOSPITAL

Treflan Application \$3.50 Acre
Custom Plowing Reasonable
 Victor Smith 983-2048 Billie Jo Smith 983-2604

FOR SALE

FOR SALE: Country Club membership. 983-3451 tfc
 FOR SALE: Late model Whirlpool washer and dryer. \$190.00. 652-3468. L2-18c
 260 feet of 2 inch pipe and sucker rod, cylinder, Dempster pump jack, one horse motor. 983-2377.
 FOR SALE OR TRADE FOR GUNS. Chain saw, and trolling motor. 983-3695. 2-22c

BUSINESS SERVICES

C-D-J INSULATION can help save your dollars. For information call 983-2601.
 C-D-J 66 7-day service, car wash, oil change. Gas service, U-haul rentals. Located on Matador hwy. 983-2601.
INSULATION Fire-Resistant. Installed and Guaranteed. MARR Insulation Co. Lockney 652-3593. Ltfc

WE DO Painting, floor leveling, house blocking, roofing and remodeling. We are now working Floydada Area. Contact Childress Bro. Collect 352-9563 tfc

"CARPET NEED CLEANING?" Let me do the work for you. Dry Foam, 10 cents sq. foot. Call Jack Moore 983-3033 at 5 p.m. 2-25c

FARMERS - A good marketing plan is a must in any business. Farmers Grain and Livestock Corporation can guarantee you up to 20% more profit for your 1979 production. It doesn't cost anything to listen. Call David Turbeyville for appointment. 652-3348 day's - 652-2334 nights. Ltfc

TREFLAN APPLICATION AND PLOWING
 Call Darrell Dudley at 983-5320 or A.C. Carthel at 983-3200. S-tfc

INVESTMENTS

FOR SALE: BANK STOCK - First National Bank, Floydada. Call Lubbock 797-1957 after 6 p.m. or Saturdays and Sundays. 2-18c

Kirby
 Vacuum cleaners, new and rebuilt. 1 yr. guarantee. Parts, sales and service. Prices begin at \$124.50. Parker Home Furnishings in Lockney. 652-3315. Ltfc

FLOYD COUNTY ABSTRACT CO.
 Abstracts Of Title Title Insurance Verna L. Stewart Owner, Manager
 217 W. California 983-3728 Floydada, Texas



Auto Accidents DO Happen... If one happens to you, be protected. Our car insurance offers coverage to meet your special needs - repairs to personal liability.
BAKER Insurance Agency
 127 W. Calif. Ph. 983-3270

For Sale

FOR SALE: Diningroom Suite, extra leaf and 6 chairs. 983-2603. 2-22p
 FOR SALE: Caloric gas range, two oven-double decker, auto, oven ignition, time cook and keep-warm system, auto, meat probe ultra-ray broiler. 1978 Chevrolet Silverado - four wheel drive. Loaded. Call Kay Tinney, 983-3726. 2-18c

For Sale or Trade, Portable G.E. pot scrubber dishwasher, will trade for old desk. Call 652-3179 Ltfc

FEET TIRED? Try Mason Shoes with "Velvet-eez" air-cushioned innersoles. Keith Emert, 652-3116. LStfc

FOR SALE: Dempster pump jack, Model G-3, 2 H.P. motor. 230 ft. of 2 1/2 inch pipe and rod. one 30 H.P. switch box 320 ft. No. 6 Cable. 652-3182 Ltfc

FOR SALE: Country Club share, \$125.00, dues paid until March 31. O.R. McIntosh. 983-3460. tfc

TREFLAN
 Check on our Chemical prices, also we now have available Liquid fertilizer
Lone Star Chemical, Inc.
 Office: 652-2761
 Deanie Henderson: 652-3434

Can You Use Some Extra Money Let Us Help!!!!
 WE BUY SCRAP IRON, OLD JUNKERS, AND FREE PICKUP
 Call 983-5277

Big Savings -Up to 25% discount- Big Protection Farmers Texas Homeowners Policy
SAM A. SPENCE
 112 W. MISSOURI
 PHONE 983-2881

TURNER REAL ESTATE
 983-2635 Farms Ranches Floydada, Texas



WE WANT YOU TO KNOW-
 We sell all kinds of Good-year tires...tractor, auto, truck, a good tire, good service. Best deals in West Texas. Truck winch and hauling service. BABE'S SERVICE CENTER. Call floydada. tfc

NEED RESPONSIBLE LADY TO BABYSIT INFANT. References required. 983-2037. tfc

WANTED: Lady to live in with patient in Floydada, or might consider day time only. Reasonable salary. Call 652-2339 Ltfc

HELP WANTED OFFICE
 Must be Experienced, Must be able to type and use office machines. Bookkeeping experience preferred. Permanent position with good opportunities Will train to use computer. Previous Computer experience useful but not required.
CONTACT Darrell Miller-Marble Bros. South Plains 983-3744 TFC

CLASSIFIED RATES

CLASSIFIED ADVERTISING RATE: 10 CENTS PER WORD FIRST INSERTION: 7 CENTS PER WORD EACH SUBSEQUENT INSERTION. MINIMUM CHARGE \$2.00. CLASSIFIED DISPLAY RATE: \$1.30 PER COLUMN INCH CARD OF THANKS: \$2.00.

AUTOMOTIVE

FOR SALE: 1976 Chevrolet Luv pick-up AM-FM cassette radio, carpet, heater, air conditioner. Custom wheels. 14,000 actual miles. 812 S. Wall. Floydada 983-2142. Jimmy Nichols. tfc

FOR SALE: 1967 Ford Econoline Club Wagon. 6 cy. auto, air. Average condition. 983-5278. 810 S. 3rd. 2-22c

NOTICE

NOW OPEN A-1 Pet and Grooming professional, grooming, all breeds, no tranquilizers 821 Broadway, Plainview, Texas 298-3557 tfc

PETS

FREE Black labrador pups. Will deliver. 652-3580. L2-18c

FOR SALE - Saint Bernard puppies. Call 652-2354 L3-1c

FARMS AND ACREAGE

WANTED TO BUY irrigated or dryland farm in gated or surrounding area. Write Box XRO, c/o Hesperian, Box 700, Floydada. tfc

BUSINESS OPPORTUNITIES

Very Nice variety store for sale. Good location, ideal for retired couple. Call 806-839-2081. 2-18c

CARDS OF THANKS

The many acts of kindness shown to us in the loss of our father has made that loss easier to bear. We appreciated the food, flowers, card and visits. We are truly blessed by having our friends and relatives to show our sorrow. God Bless each of you. Sincerely, The Family of D.D. Tate Percy, Kenneth Virginia and Mavis L2-18p

Jonna West Wins First In SWCD Essay Contest

Jonna West was revealed Tuesday as first place winner in the 1979 conservation contest. She is to receive \$20. Monte Lyons was the second place winner, and third place went to Kelly Higginbotham. Lyons earned \$10 and Miss Higginbotham was recipient of \$5.



WINNERS in the Floyd County Soil and Water Conservation District essay contest were revealed in a Thursday afternoon assembly program. They are, from left, Kelly Higginbotham, second; and Jonna West, first.

Wayland Singers To Appear At First Baptist

The "Spirit of America Singers" from Wayland Baptist College in Plainview will perform at the First Baptist Church here at 7 p.m. today. The public is invited, according to Dr. Floyd C. Bradley, pastor. Christy Stringer Newberry, daughter of Mr. and Mrs. Bill Stringer of Floydada, is a member of the group. She will be making her last appearance with the group here in Floydada. "Spirit of America" won a nationwide university talent test that was sponsored by the entertainer Bob Hope.

Rotary Club To Attend Buyers Lunch Wednesday

Floydada Rotary Club will not meet next Wednesday, Feb. 21, at Massie Activity Center. President Jimmy Willson says Rotarians are to attend the buyers' luncheon at 11:30 a.m. at the Floyd County Junior Livestock show barn Wednesday. Barbecue will be served.

"If we make an error, we pay the penalty. And the interest."



Henry W. Block
H&R Block preparers are carefully trained. But if we should ever make an error that costs you additional tax, you pay only the tax. Block pays any penalty and interest. We stand behind our work. That's another reason why we should do your taxes... whichever form you use, short or long.

106 W. Missouri
Floydada, Texas

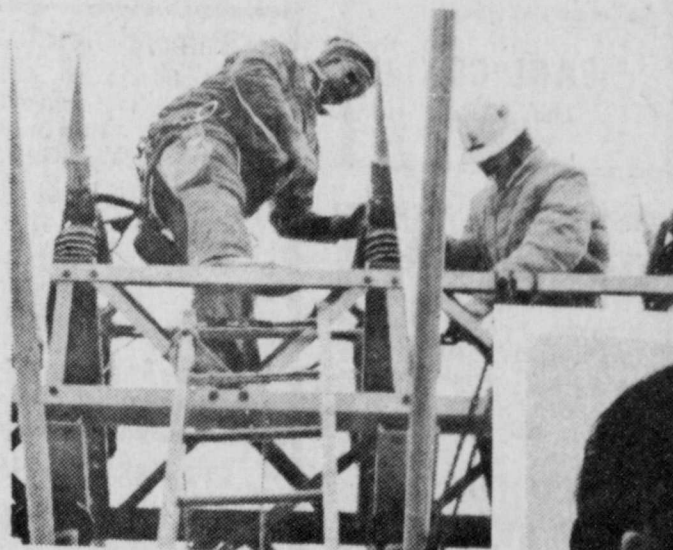
983-5233

H&R BLOCK
THE INCOME TAX PEOPLE



"OF COURSE I KNOW THE VALUE OF A DOLLAR. THAT'S WHY I'M ASKING FOR TWO."

"They're Just Like Family . . ."



That's what James Stovall, Southwestern Public Service Company High Voltage Substation Electrician, says about the people he works with at SPS and the boys of the Maverick Club.



JAMES STOVALL

money, drive the bus... put 11,000 miles on van in 'bout 6 months driving Maverick Club tournaments. I'm even a substitute dad for their folks can't be at a tournament. I'll be and cheer 'em on. And the big boys watch the little ones, too. Those Maverick Club boys they're just something special to me and my family. And you know, I feel the same about western Public Service Company. They take care of my family too, everybody pitches in to get the job done. And they take good care of you. Take the Training program. Eleven years ago, I didn't have a trade, no job security. Now, thanks to SPS, I'm a journeyman electrician... that's a trade for a family... my trade... that special feeling working with the Maverick Club boys... things nobody can take away from me."

BUDDY'S

220 S. 2ND

STORE HOURS
Mon.-Sat., 8 a.m. to 8 p.m. Sun., 9 a.m. to 8 p.m.

VALUES IN THIS AD THRU WEDNESDAY, FEBRUARY 21, 1979

We Reserve The Right To Limit Quantities

WE GIVE S&H GREEN STAMPS

PLAY LUCKY STARS

<p>15 OZ. DEL MONTE</p> <p>SPINACH</p> <p>3/\$1⁰⁰</p> <p>45¢ VALUE</p>	<p>15 OZ. EATWELL</p> <p>JACK MACKEREL</p> <p>69¢ VALUE 2/99¢</p>
<p>15 OZ. HONEY BOY</p> <p>PINK SALMON</p> <p>\$1⁴⁹</p> <p>\$1.89 VALUE</p>	<p>14 OZ. CONTADINA WHOLE</p> <p>TOMATOES</p> <p>2/89¢</p> <p>55¢ VALUE</p>
<p>VALUES IN THIS AD IN ADDITION TO OUR THURSDAY AD</p>	
<p>16 OZ. LARSEN</p> <p>VEG-ALL</p> <p>3/\$1⁰⁰</p> <p>45¢ VALUE</p>	<p>16 OZ. ATKINS HAMBURGER</p> <p>DILL SLICES</p> <p>59¢</p> <p>81¢ VALUE</p>
<p>LEAN</p> <p>GROUND BEEF LB. \$1²⁹</p> <p>CENTER CUT</p> <p>PORK CHOPS LB. \$1⁹⁹</p> <p>RUBY RED</p> <p>GRAPEFRUIT</p> <p>6 FOR \$1⁰⁰</p> <p>12 OZ. KEEBLER</p> <p>VANILLA WAFERS 2 FOR \$1²⁹</p> <p>15 OZ. GEBHARDT</p> <p>CHILI 2/99¢</p> <p>40 COUNT BOUNCE</p> <p>FABRIC SOFTNER \$1⁶⁹</p> <p>30 OZ. GEBHARDT</p> <p>TAMALES 79¢</p> <p>12 OZ. TENDER VITTLES</p> <p>CAT FOOD 59¢</p> <p>5 LB. GLADIOLA</p> <p>FLOUR 79¢</p>	<p>BONELESS</p> <p>CHUCK ROAST LB. \$1⁹⁹</p> <p>WILSON</p> <p>HAM LB. \$2¹⁹</p> <p>RED DELICIOUS</p> <p>APPLES 39¢ LB.</p> <p>2 LITER "NO DEPOSIT"</p> <p>PEPSI-COLA 69¢</p> <p>171 OZ. FAMILY SIZE</p> <p>TIDE \$4³⁹</p> <p>KEEBLER CLUB OR TOWN HOUSE</p> <p>CRACKERS 87¢</p> <p>50 OZ.</p> <p>CASCADE \$1⁴⁹</p> <p>QT.</p> <p>MIRACLE WHIP 69¢</p> <p>WITH PURCHASE OF 1 LB. WILSON BOLOGNA \$1.19 WITHOUT PURCHASE</p> <p>22 OZ.</p> <p>LIQUID IVORY 79¢</p>





Standing, left to right:
 Tim Radloff, reporter
 Kelly Marble, secretary
 Beverly Burleson, FFA sweetheart
 Kelly Higginbotham, plow girl

Seated, left to right:
 Carria Burleson, treasurer
 Blake Kitchens, president
 Jay Waller, vice president
 Gerry Norrell, sentinel

Youth With A Purpose. Their Goals Are Set!

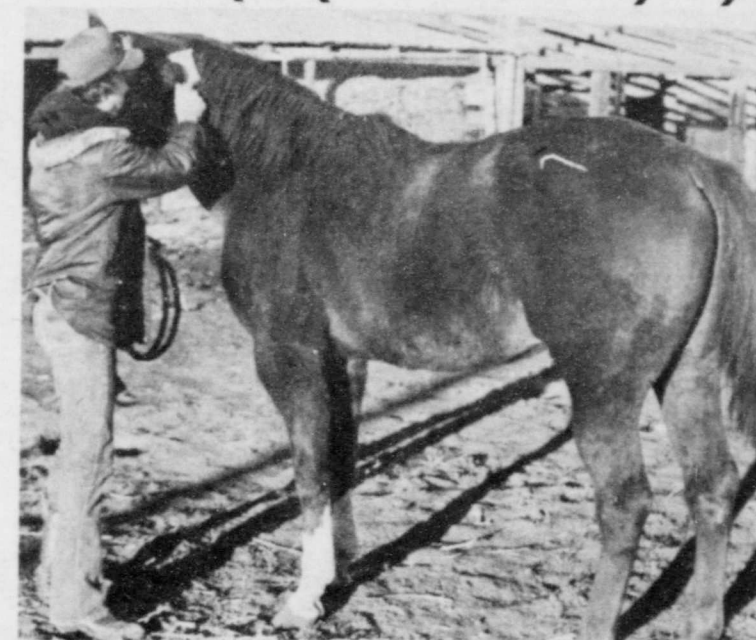
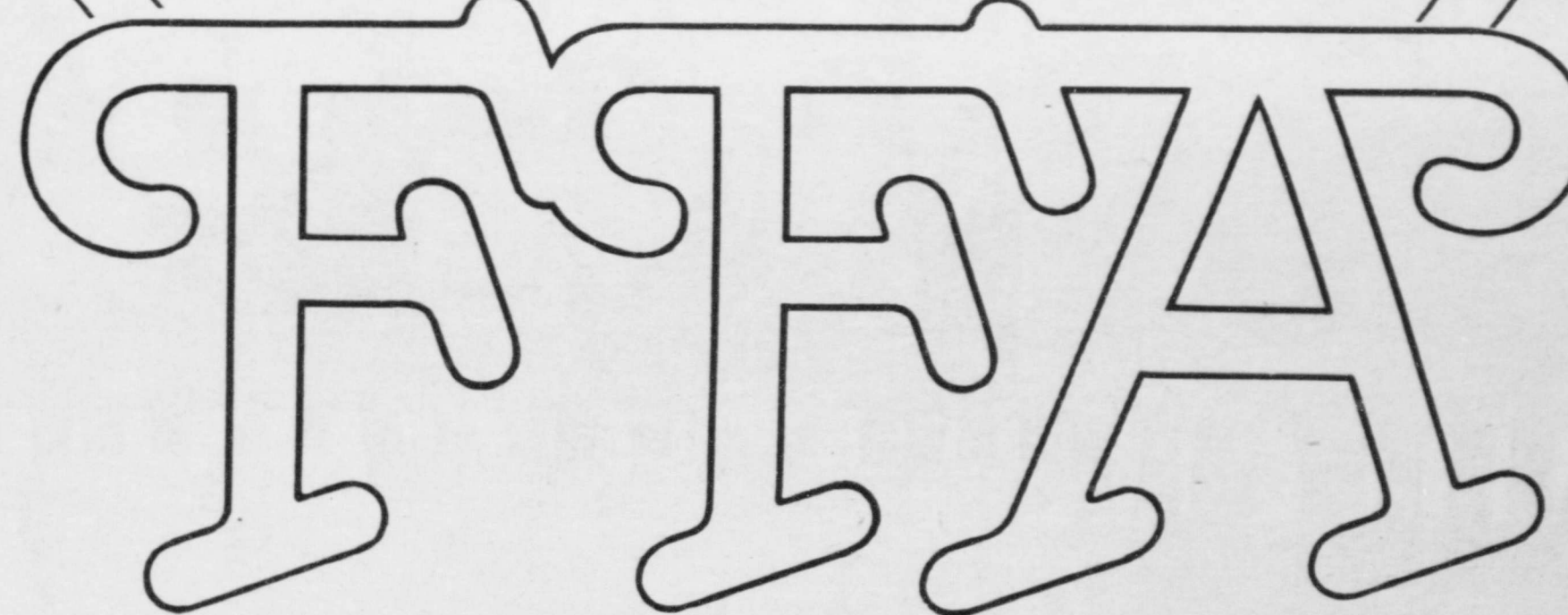
WE JOIN OTHER FLOYDADA BUSINESS FIRMS IN CONGRATULATIONS TO THE FLOYDADA FFA BOYS FOR THEIR OUTSTANDING ACHIEVEMENTS. THIS GROUP OF YOUTH ONCE AGAIN HAS DEMONSTRATED THAT SUCCESSFUL FARMING BEGINS WITH VOCATIONAL PREPARATION.

"Helping You Change Things For The Better"

THE FIRST NATIONAL BANK OF FLOYDADA
 FLOYDADA, TEXAS 79235 MEMBER F.D.I.C.



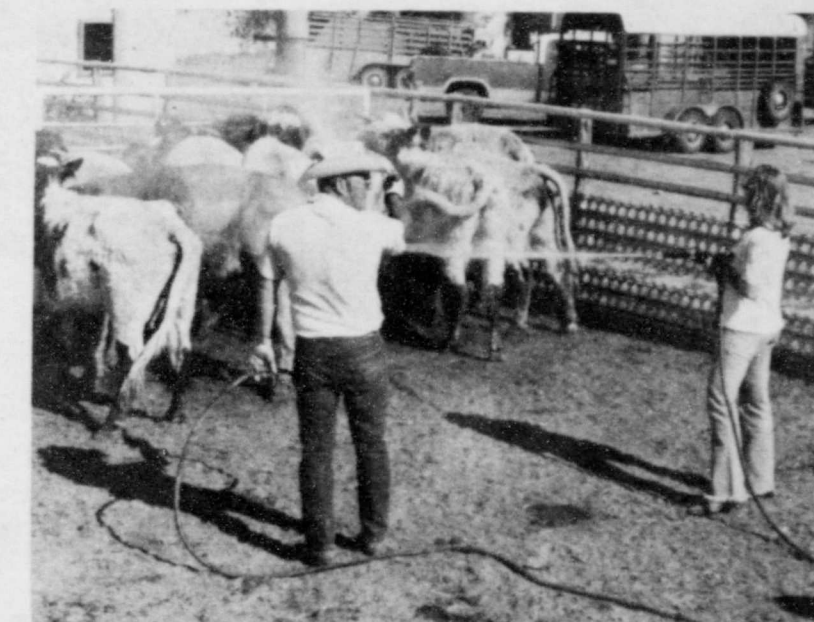
Floydada FFA Chapter



JAY WALLER . . .
 training horses



KELLY MARBLE . . .
 in his greenhouse



CARRIA BURLESON . . .
 Beef Cattle Proficiency

Education
 At Work

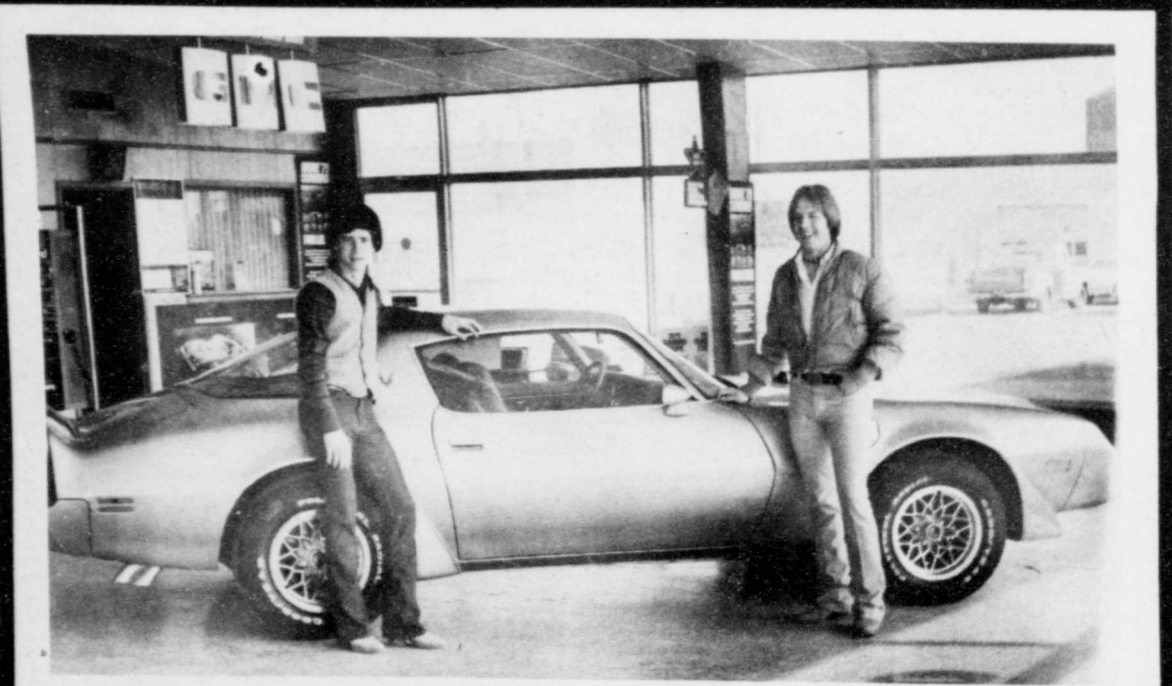


Education
 At Work



Senior and Junior Members of Floydada High

FFA Chapter



City Auto.....Jay Waller and Blake Kitchens.

**The Future Of Farming
Lies In Your Hands**

We Salute the Floydada Future Farmers

CITY AUTO INC.

BUICK PONTIAC GMC

Popular Projects

Swine and lambs are the most popular livestock projects among members of the Floydada FFA Chapter.

Twenty FFAers plan to exhibit lambs in the Floyd County Junior Livestock Show, the same number who will show swine.

Eight FFA members are preparing steers for the county livestock show.

A few FFAers anticipate showing more than one type animal.

Following are members of Floydada FFA Chapter who plan to exhibit stock in the county show this week:

Steers — Jimmy Covington, Carla Bureson, Chris Fulton, Todd Beedy, Ricky Heflin, Tommy Ross, Danny Nutt, and Mark Nutt.

Lambs — John Fortenberry, Jay Waller, Jim Waller, Tracy Womack, Greg Jones, Lisa Bice, Kyle Stapleton, DeLee Marble, Dwayne Marble, Kelly Marble.

Monty Williams, Todd Williams, Bryan Higginbotham, Kelly Higginbotham, Mike Allen, Norman Allen, Danny Tinney, Barbara Schwertner, and Gilbert Schwertner.

Swine — David Cochran, Bryan Emert, Dwayne Hightower, Terry Jones, Tim Radloff, Monty Seymour, Neal Becker, Sammy Bradley, Garry Norrell, Danny Nutt, Mark Nutt, Gregg Pruitt, Ken Warren, Robert Nixon, Keith Nixon, Brent Duke, Van Lowrance, Todd Williams, Monty Williams, and Mike Campbell.



LIVESTOCK JUDGING TEAM — (left to right) Greg Pruitt, Jay Waller, Greg Jones, and Gary Norrell.

The FFA Salute . . .

Our organization "fosters patriotism" and we give the salute to our country's flag as a part of our official closing ceremony:

"I PLEDGE ALLEGIANCE TO THE FLAG OF THE UNITED STATES OF AMERICA AND TO THE REPUBLIC FOR WHICH IT STANDS, ONE NATION UNDER GOD, INDIVISIBLE, WITH LIBERTY AND JUSTICE FOR ALL."

LEARNING...

Learning By Doing Is A Basic Principle Behind The Vocational Agricultural Education Program.

FFA Encourages That Principle, And Gives The Student-Member A Chance For Growth.

Adams Well Service

Boone Adams

We Feature A COMPLETE LINE OF FARMING EQUIPMENT

for Future Farmers and Today's Farmers

RUSSELLS EQUIPMENT & SUPPLY

608 E. HOUSTON

OUR FUTURE FARMERS OF AMERICA

IS PATRIOTISM ON PARADE...

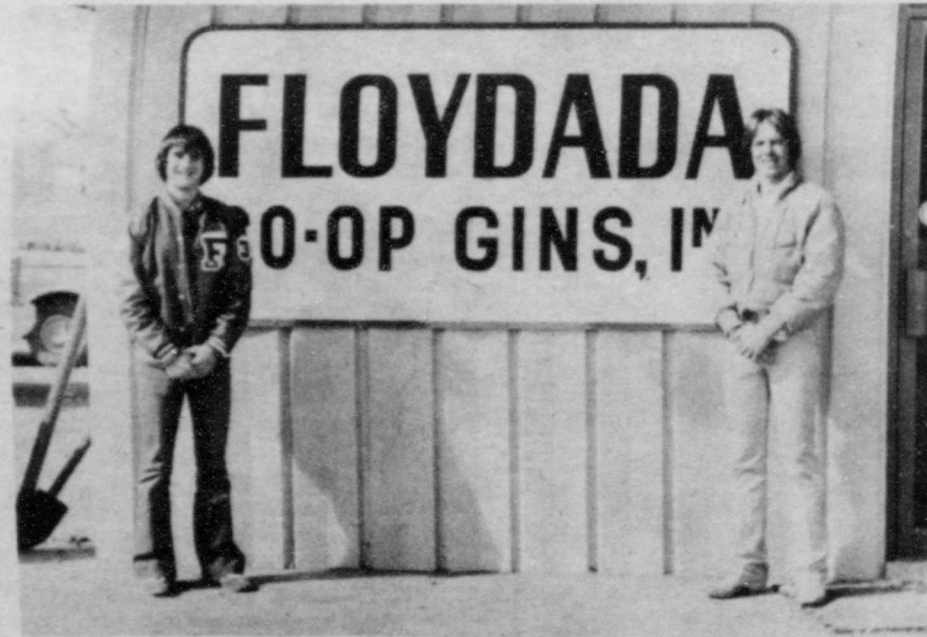
WITH A DEEP AND CONCERNING INTEREST FOR A BETTER AMERICA.



CONSUMER'S FUEL ASSOCIATION

404 E. Missouri Floydada 983-3394

It's National FFA Week!



Floydada Co-op Gins.....Danny Nutt and Blake Kitchens.

Young
Farmers
And Cotton
Are Important
In Our
Future!



This week we congratulate
Our FUTURE FARMERS OF AMERICA

AGRICULTURE IS THE NATION'S LARGEST AND MOST BASIC INDUSTRY. FORTY PER CENT OF OUR WORKING PEOPLE ARE ENGAGED IN THE PRODUCTION, PROCESSING, AND DISTRIBUTION OF AGRICULTURAL PRODUCTS OR IN PRODUCING SUPPLIES AND SERVICES FOR FARMERS. FLOYD COUNTY CO-OP GIN SALUTES THE FUTURE FARMERS OF AMERICA.

**Floydada
Co-op Gins Inc.**

RAY GENE FERGUSON, MANAGER



CHAPTER SWEETHEART . .
Beverly Burleson at district sweetheart contest.

**Sweetheart
In Contest**

Beverly Burleson, chapter of the Floydada FFA Chapter, participated in the district sweetheart contest at the district FFA meeting and banquet in Tulia, Nov. 20. She is the daughter of Mr. and Mrs. S.C. Burleson.

**Proficiency
Awards Won**

Three members of Floydada FFA Chapter received proficiency awards at the state level last year. Clinton Ware placed third in outdoor recreation, Bill Starkey was third in crop efficiency, and Kelly Marble earned a third in horticulture.

SCHOLARSHIP

Bill Starkey earned a \$6,000 scholarship from the Houston Fat Stock Show. He is attending West Texas State University.

SCHOLARSHIP

John Jones, a former Floydada FFA member, is attending West Texas State University on a scholarship earned through the university.

SCHOLARSHIP

Jimmy Finley of Floydada has been awarded a scholarship through Texas Tech University.

National FFA Week is scheduled in February to honor George Washington who was an outstanding farmer as well as a great leader.

Members of the FFA are students of high school vocational agriculture.

87 Members

**Floydada FFA Large
Chapter**

Eighty-seven Floydada High School students are studying vocational agriculture under instructors O.L. Harris and James H. Cleveland.

They study at six different levels: VA I, Ag Co-op I, Ag Co-op II, VA II, VA III, and VA IV.

Following are the vo-ag students:

VA I — Norman Allen, Lisa Bice, Johnny Bridges, Chris Fulton, Kelly Higginbotham, Dink King, Ronnie Minner, Robert Nixon, Mark Nutt, Billy Parker, Lee Parker, Kevin Bailey, Randy Strange, Cruz Martin, Todd Beedy, Brent Duke, Martin Eastham, Brad Fulton, Darrell Gooch, Ricky Heflin, Aaron Hendricks, Bryant Higginbotham, Van Low-

rance, Mark McCormick, Jay Miller, David Main, Troy Moore, Carlos Rainwater, Tommy Ross, Kyle Stapleton, Jim Waller, Terry Westbrook, and Monty Williams.

Ag Co-op I (employer in parenthesis) — Mike Bagwell (E.A. Williams), Mike Campbell (Lynn Campbell), Kelly Marble (Elton Goen), Ray Mercado (Eddie Joe Foster), Tracy Womack (Mark Martin), Kenneth Young (John Dunlap).

Ag Co-op II (employer in parenthesis) — Bryan Fortenberry (Ina McDowell), Andy Langley (Willie Bradshaw), Bret Marble (Marble Brothers), Leroy Martinez (Henry Hinton), Danny Tinney (O.D. Moore), Rodolfo Trevino (Johnney West), Gary Vick (Ralph C. Johnston), Clinton Ware (W.R. Ware), Rodney Ra-

thel (Arnold Ratheal).

VA II — Keith Brawley, Robert Cevera, David Cochran, Arthuro Delgado, Bryan Emert, Rob Evert, John Fortenberry, Dwayne Hightower, Joe Hinkle, Simon Herrera, Terry Jones, Jimmy Martinez, Jimmy Nichols, Tom Potts, Tim Radloff, Monty Seymour.

VA III — Mac Collins, Ray Fuller, Dwayne Marble, Keith Nixon, Rex Reves, Todd Williams, Duncan Woody.

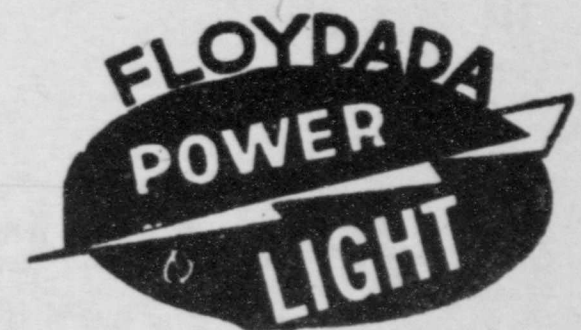
VA IV — Mike Allen, Junior Arredondo, Neal Becker, Sammy Bradley, Jim Covington, Jimmy Jackson, Greg Jones, Blake Kitchens, Ricky Luna, Monty Lyons, Gerry Norrell, Danny Nutt, Greg Pruitt, Todd Vickers, Jay Waller, and Kenny Willis.



BRAD FULTON and JAY MILLER make proper adjustments on band saw before operation.

**WE SALUTE
THE FFA
ELECTRIC
POWER**

....plays a big part
in the progress of the
FUTURE FARMER



**THE FOLKS AT MARTIN & CO.
SALUTE
FUTURE FARMERS
OF AMERICA**



FARMING EQUIPMENT AND GOOD FARMERS GO
HAND IN HAND FOR BETTER FARMING.

THE FUTURE OF FLOYD COUNTY DEPENDS
UPON OUR FARMERS OF TOMORROW.

MARTIN & COMPANY

Discovery—that's what it's all about—young men and women seeking insights into their future in agriculture, looking down the road today for a glance at tomorrow.

The key to success in their search is a sound vocational education program. When combined with an active FFA chapter in which members learn by doing, the program unites youth with career opportunities in agriculture.

In the classroom and in practical experience activities FFA members learn about opportunities in the American Free Enterprise system. They learn too, how to take advantage of their opportunities and select a career.

The vocational agriculture-FFA program of career education strives to match the individual's skills and potentials with likely opportunities which the student may find interesting and relevant.

The expansion of career opportunities in the American agri-complex is not new. Many people are needed to do the millions of "jobs" necessary to keep the agri-complex moving. What is new is the emphasis being placed on the broad spectrum of careers in the total field of agribusiness. Frequently members have the opportunity to put their classroom knowledge to use in an occupational experience program with an agribusiness firm, thus expanding the opportunities available to FFA members beyond the traditional production agriculture.

FFA provides its members an opportunity to develop their personal and career potentials, such as assuming responsibility, taking the lead, speaking out for what they believe, working with others and making decision.

These and many other ways FFA unites youth with their opportunities.

The primary aim of the FFA is the "development of agricultural leadership, cooperation, and citizenship." Every community and organization needs leaders.

They also need individuals who are good workers and cooperate in getting a job done. Good citizens are those who carry their share of the load.

Through your FFA participation you learn how to make a valuable contribution to your home and community. The 12 purposes of the FFA that follow are the basis for what you do in the FFA.

The purposes of the FFA are:

I. To develop competent, aggressive, rural, and agricultural leadership.

We lead best by demonstrating our own skills and showing a willingness to do a good job. FFA activities and awards are planned to help members grow in their knowledge and skill so they can

be effective leaders in their community and their chosen career. We must be ready to stand up for our beliefs.

II. To create and nurture a love of country life.

Country life is more than living on a farm or ranch. It involves the love of the great outdoors. Your choice of an agricultural career offers many outdoor jobs for you . . . forestry, park service, game and fish specialists, to name a few.

III. To strengthen the confidence of students of vocational agriculture in themselves and their work.

The demand for people with agricultural skills and know-how grows every day. Your background in vocational agriculture - agribusiness and the FFA helps you prepare for an important and satisfying career.

V. To encourage members in the development of individual farming programs and establishment in agricultural careers.

We learn best by doing, just as our motto suggests. You will be developing a Supervised Occupational Experience Program which will be the foundation for advancement in the FFA. It is your personal springboard into your chosen career.

VI. To encourage members to improve their home and its surroundings.

Some of the skills that you learn in vocational agriculture - agribusiness can help make your home a better place in which to live and work. An improvement project in your home such as landscaping or painting the house can help you toward an advanced degree or make it possible for you to win a proficiency award.

VII. To participate in worthy undertaking for the improvement of agriculture.

Ever since the days of the old community "barn raisings," people have worked together for the common good. FFA members learn how to be part of a team and to work together for the good of all.

VIII. To develop character, train for useful citizenship, and foster patriotism.

Effective leaders are those who set a good example through hard work and sound moral principles. As an FFA member you learn the real importance of becoming a useful citizen in your community by participating in activities that benefit the community.

IX. To participate in cooperative effort.

Through the FFA you can discover the thrill of doing your part in cooperative ventures. This may be in a cooperative business or you might be a part of a chapter project to improve the community in which you live.

X. To encourage and practice thrift.

The ability to provide financially for yourself and for those who will one day depend upon you is a major part of being a useful citizen. FFA members earn through their Supervised Agricultural Occupational Experience Program. George Washington was better able to serve his country because of his sound financial practices. Remember those three words in our motto, "Earning to Live."

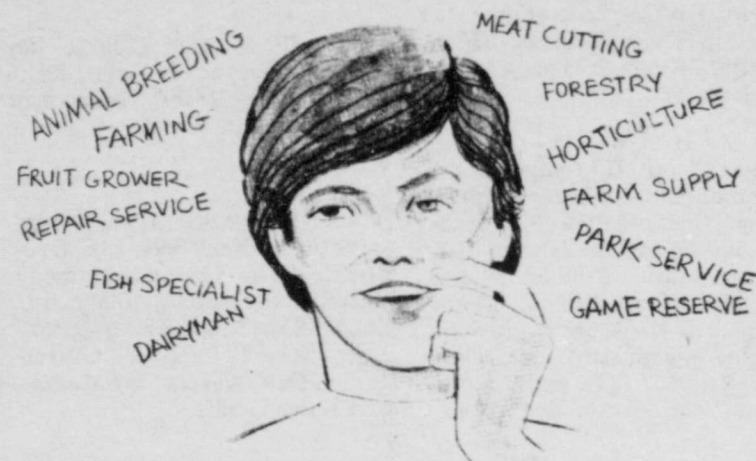
XI. To encourage improvement in scholarship.

The FFA is the doing part of your vocational agriculture - agribusiness training. FFA activities make what you learn in the classroom more meaningful and improves the scholarship of FFA members.

XII. To provide and encourage the development of organized rural recreational activities.

We have all heard the saying: "All work and no play . . ." FFA members work hard, but they play just as hard. There are so many wonderful opportunities for fun in America. The best part is on the doing level. It is so much better to play the game than it is to sit in the stands.

Willson & Son- Builders Mart



NATIONAL FFA WEEK

WE TAKE THIS MEANS

OF SALUTING THE FLOYDADA FFA BOYS . . .

AND ENCOURAGE THEM TO BECOME GOOD

GRAIN AND COTTON FARMERS.

WE WANT TO SERVE

THEM

IN THE FUTURE

McCOY GIN & GRAIN STORAGE INC.



ADVISORS O.L. Harris and James Cleveland.

Harris And Cleveland:

34 Years Teaching

Thirty-four years of teaching experience are represented by the two instructors in the Floydada High vocational agriculture department.

O.L. Harris has 30 years teaching experience, the past 10 in the Floydada system, and James H. Cleveland has spent all of his four year teaching career in Floydada.

Vo-ag teachers also are Future Farmers of America advisor. Harris, head of the vo-ag department, has seen his chapter receive numerous coveted awards during his tenure in Floydada.

Two of his students have become American Farmers, the highest award available, and 51 young men under his guidance have received their Lone Star Farmer Degrees. Under Harris, the Floydada FFA Chapter has earned two gold emblem, two silver, and three bronze awards in nine years.

The Floydada High FFA Chapter earned silver national safety awards in 1973 and again in 1976.

The chapter also received a gold VOAC award in 1976, a bronze VOAC award in '77 and silver award last year.

In addition, there have been a number of state and area awards presented to Floydada FFA Chapter. A group must win area and

state competition to be considered for national honors.

Harris instructs two classes of vo-ag I, and one class each of vo-ag II, and vo-ag IV.

He received a bachelor's degree from Sam Houston State College and a master's from Texas Tech University.

JAMES H. CLEVELAND
During the past four years, Cleveland has helped 26 Floydada vo-ag students qualify for their Lone Star Farmer (state) Degrees.

In addition, he has assisted various students who have received proficiency awards in agriculture, helped work on chapter awards that include BOAC, chapter rating awards, and chapter safety awards.

Cleveland began his teaching career at Floydada in 1975, teaching agriculture co-op and production agriculture.

He earned a bachelor's degree in Agriculture Education at East Texas State University in 1974 and a Master's of Science Degree in Animal Science from ETSU in 1975. He has attended Texas Tech University for the past three years working toward an administrative certificate.

Cleveland's hobbies include hunting, fishing and ham radio.

FFA ... More Than Agriculture ...

Yessir!

WE'RE
FOR
THE



FFA BOYS

...AND WE INVITE THEM AND THEIR FAMILIES TO VISIT US ANY TIME THEY'RE IN FLOYDADA

CAPROCK MOTOR PARTS & HARDWARE

We've Always Enjoyed Working With Our FFA Youth, We Support Their Aims & Goals.

DAVIS FARM SUPPLY INC. AND LOFT WESTERN WEAR

517 East Houston, Floydada, Texas

FFA at 50





DAIRY JUDGING TEAM — (left to right) Dwayne Hightower, Jimmy Nichols, and John Fortenberry.

Advisors: Experienced Leadership FFA Chapter 'Balanced'

The Floydada High Agriculture Department has "one of the most balanced programs in the state."

Vo-ag students are taught a good deal of technical agriculture and participate in all phases of leadership, judging contests, livestock shows and fairs.

The department has had 59 Lone Star (state) Farmers in FFA the past nine years and two American Farmers. In the past seven years, the Floydada High FFA Chapter has received two gold emblem chapter ratings, two silver ratings, and three bronze ratings on the national level.

Floydada FFA Chapter has been the recipient of two silver ratings at the national level on chapter safety and one gold, one silver, and one bronze on the "Building Our American Community" program.

Several local FFA members have assisted in state FFA conventions by serving on various committees and in individual roles including: courtesy care, state organist, voting delegates, and ballot counting. One member has played in the National FFA Band and six others have applied as band members.

Various Floydada FFA Chapter members have served as district and area FFA officers and have taken part in public speaking and talent contests. Members take part each year in leadership

contests and judging contests. They have attended various shop contests in this area.

During the past 10 years, a number of Floydada vo-ag students have applied for and received proficiency awards.

One member received a \$4,000 scholarship from the Houston Stock Show and also a \$6,000 scholarship.

Several students exhibit animals at major stock shows across the state and have won top honors.

The income of students taking vocational agriculture in production as well as the co-op program has been as much as \$40,000 to \$60,000 each year for the past ten years.

Floydada FFA is one of the state's oldest chapters. Founded in 1930, it was the third chapter in the Lone Star State.

Schwertner Last American Farmer

David Joseph Schwertner of Floydada was recipient of the American Farmer Degree at the 50th National FFA Convention, held Nov. 8-11, 1977.

He is the latest member of Floydada FFA Chapter to receive highest degree of membership in the FFA.

Instructor O.L. Harris was one of the nation's outstanding FFA teachers who received the Honorary American Farmer Degree during the same convention.

Four Types Of Membership

The FFA has four kinds of membership identified in Article V of the National FFA Constitution found in the Official FFA Manual.

"Active" membership begins when you become a Greenhand.

"Collegiate" membership is available to students enrolled in agriculture at post-secondary institutions.

"Honorary" membership can be bestowed on those people who have been outstanding supporters of the FFA.

"Alumni" membership is available to all former members: collegiate members, honorary members, and others who wish to support the FFA.

It is estimated that there are over four million former FFA members. Nearly 15,000 are members of the National FFA Alumni Association.

FFA members are high school boys and girls studying vocational agriculture. They are discovering tomorrow.

FFA membership reached an all-time high of 510,000 last year.

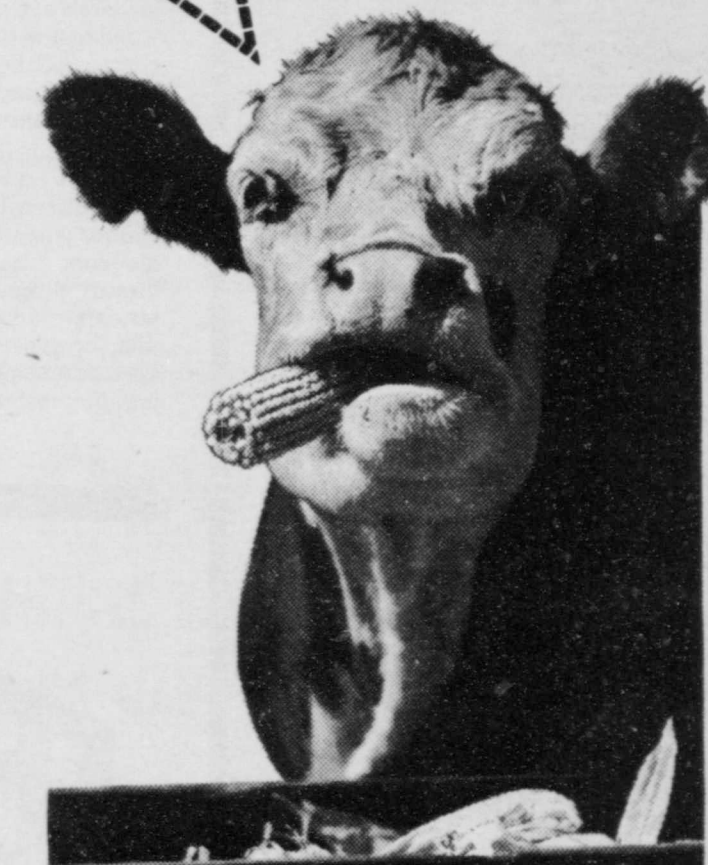


Sophomore and Freshmen Members of

Floydada High FFA Chapter

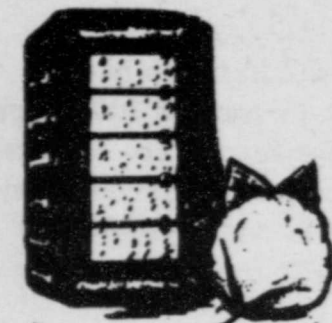


Don't Miss The 25th Annual
Floydada Stock Show



Floydada Livestock
Sales Co.

**BAKER
INSURANCE
AGENCY**
SALUTES THE
FLOYDADA FFA
CHAPTER



FFA WEEK



THEY GO TOGETHER

COTTON & FUTURE FARMERS

WE'RE INTERESTED IN COTTON
AND FARMERS... and we're happy
to be a part of the FFA observance.

DARTY GIN

IN DOUGHERTY

National Recognition

Kath Nixon was revealed as Star Chapter Farmer and John Fortenberry was recognized as Star Greenhand to highlight the annual FFA banquet, held April 17 in Duncan Cafetorium.

Receiving Honorary Chapter Farmer Degrees were eight men:

Johnny West, J.E. Waller, Vernie Moore, Travis Jones, August Schwertner, R.H. Lutrick, Ed Nutt, and James McNeill. Special appreciation awards went to Doris Nixon and Carolyn Marble.

Dr. Charles Overstreet received recognition with an Honorary

State Farmer Award. It was the second award for Dr. Overstreet, who first received the award as a Floydada High student.

Highlight of the program was a talk by George Toone of Lubbock. A blind student, Toone gave an inspiring talk in "ambition, dream, goals and accomplishments."

Another blind student, Pam Washburn, presented dinner music. A music major, she was accompanied by her seeing-eye dog, Nellie.

FFA President Jay Waller served as master of ceremonies, Danny Nutt gave the invocation, Carria Burleson extended the

welcome, Jimmy Covington introduced special guests, Adeana Morris gave chapter accomplishments for the year, Greg Jones introduced Plowgirl DeeAnn Fry and sweetheart Melody Powell. Awards to chapter members were presented by instructors O.L. Harris, James Cleveland, and Don Stegall.



GREENHAND chapter conducting team [left to right, front row] Mark McCormick, Terry Westbrook, Van Lowrance, Bryant Higginbotham, Brent Duke, Brad Fulton [back row from left] Tommy Ross, Carlos Rainwater, Mark Nutt, and Lee Parker.

tham, Brent Duke, Brad Fulton [back row from left] Tommy Ross, Carlos Rainwater, Mark Nutt, and Lee Parker.



LISA BICE, left and Kelly Higginbotham nailing on a turtle stool, a workshop project.



RADIO TEAM — [left to right] Dwayne Marble, Rex Reves, Mac Collins, and Duncan Woody.

There Is A Reason For Everything

A good vocational agricultural education program combined with active FFA participation insures that student-members DISCOVER the career that's right for them.

The young men and women in FFA today will be the leaders of tomorrow's American agri-complex.

DANIEL Automotive Supply

SALUTING FFA DURING NATIONAL FFA WEEK

A Chance For Growth!

Members of the Floydada Chapter join with over 450,000 other FFA members in the United States in celebrating National FFA Week.

Throughout the week the Texas chapters are planning activities to support the theme.

National FFA Week always includes George Washington's birthday in observance of his leadership in promoting scientific farming practices. Washington is considered the patron saint of the FFA and has come to symbolize the FFA treasurer.

Organized in 1928, the FFA promotes leadership, cooperation and citizenship among high school vocational agriculture students. The FFA Foundation awards program provides chapter, state and national recognition for supervised programs of agricultural production, marketing, processing and service.



Collins Implement.....Greg Pruitt and Gerry Norrell.

John Deere Is Popular With Today's Farmers....

And FUTURE FARMERS! COME SEE US....

COLLINS IMPLEMENT CO.

SALUTING THOSE WHO WILL BE THE FARMING & COMMUNITY LEADERS OF TOMORROW FUTURE FARMERS OF AMERICA



FARMERS... AND FUTURE FARMERS WE STOCK A COMPLETE DISPLAY OF VETERINARY EQUIPMENT AND SUPPLIES.

THOMPSON PH 983 5111
Rexall PHARMACY
200 SO MAIN FLOYDADA, TEXAS

"You Bet! We're For The.... FUTURE FARMERS!"



Farm Bureau.....Carria Burleson, Beverly Burleson, Farm Bureau Manager David Cates, Kelly Higginbotham, and Lisa Bice.

FLOYD COUNTY FARM BUREAU

"Voice of Agriculture"
101 South Wall Phone 983-3777
Floydada



THE KEY TO SUCCESS

For FFA members the key to their success in life is vocational agricultural education. This sound program is headed by the local vo-ag instructor — chapter advisor. The program prepares the student-member for tomorrow's agriculture.

PRODUCERS CO-OP ELEVATORS

SALUTING FFA IT'S NATIONAL FFA WEEK



Farming in the United States has steadily progressed over the 200 years of American independence. The Future Farmers of America have contributed much to the success and development of American agriculture.

Willie Wiredhand has been working with Future Farmers for many years - buying their livestock - encouraging skill development through Farm Mechanics contests and supplying low cost power for all types of livestock and crop projects.

Willie is proud to be a part of the farming progress of the 7 county areas served by Lighthouse Electric Cooperative.

Lighthouse Electric Cooperative

A SALUTE TO THE FLOYDADA F.F.A. FOR A JOB WELL DONE



FFA QUIZ TEAM — [left to right] Kelly Higginbotham, Norman Allen, and Lisa Bice.



VAN LOWRANCE works on a show box as Troy Moore looks on.



AT THE CONVENTION

FFA Goals In Life

Floydada FFA Advisor Orville L. Harris and two members — Jay Waller and Jimmy Covington — attended the National FFA Convention in Kansas City, Mo., last February. The local chapter received national recognition for achievement in community development.

Gordan Cavanaugh, administrator, Farmers Home Administration, and Sen. Richard A. Lugar from Indiana made presentations.

Floydada FFA Chapter was one of 142 "Building Our American Community" winners recognized at the special awards banquet.

The FFA provides an opportunity for youth in agriculture to learn, to do, to earn, and to serve.

There are over 8,000 FFA chapters in 50 states as well as Puerto Rico and the Virgin Islands.

"Learning to Do, Doing to Learn, Earning to Live, Living to Serve" is the motto of the FFA.

Parker Studio
SALUTES
THE FLOYDADA
FUTURE FARMERS
OF AMERICA



Learning From The Past

America's agriculture has a rich heritage that is the backbone of our Nation's history. The desire for an adequate amount of good food has always been paramount among the people.

Thus came the program of vocational agricultural education. Agricultural education was brought into the classrooms of America's high schools. A way to educate, motivate, present new techniques to the young men in farming.

But no one was willing to completely relinquish the time-proven method of "let a kid do it — under the watchful eye of an adult — and he'll learn from his experience." So shortly came an organization — The Future Farmers of America — providing educational opportunity beyond the classroom.

For the 500,000 future farmers, future ranchers, future agribusinessmen currently enrolled in the vo-ag FFA program, the Learning By Doing principle is still used.

There have been some drastic changes though in agriculture's

classrooms. More than text books and a little room in the back of the school, vo-ag goes out into the local agricultural community, onto the farms, into the laboratory or greenhouse, in the dirt and among the animals, on the machines.

Like the basic industry of agriculture, vo-ag also has a rich heritage. The program has trained millions of young men and women for careers in agriculture. That heritage will continue in the 8,500 vocational agricultural classrooms in Ameri-

All of us are aiming at something in life. You have a goal, an objective, a purpose. The vocational agriculture and FFA program of career education strives to match the individual's skills and potentials with likely opportunities which the student may find interesting and relevant.

The public is invited to "join us this week in saluting more than 485,000 thousand FFA members during National FFA Week.

For America's youth, choosing a career is a tough decision. But for members of the Future Farmers of America that decision is made easier. This year over 110,000 FFA members will graduate from agricultural education courses.

Instruction in areas like forestry, agricultural mechanics, and ornamental horticulture will provide skills that may help a Future Farmer land one of the half-million jobs that must be filled in agriculture each year.

Education is the key to agricultural efficiency. The FFA helps provide that education.



FFA MEMBERS
More than a half million students of vocational agriculture are members of FFA.

FFA unites its members with their career opportunities in the industry of agriculture.



Floydada Implement.....Neal Becker and Sammy Bradley.

THE FOLKS AT MASSEY FERGUSON
SALUTE
THE FLOYDADA
FUTURE FARMERS

WE WANT TO BE OF SERVICE
TO THE FUTURE FARMERS
AND TODAY'S FARMERS
IN THIS TRADE AREA.

FLOYDADA IMPLEMENT CO

LOCKNEY HIGHWAY



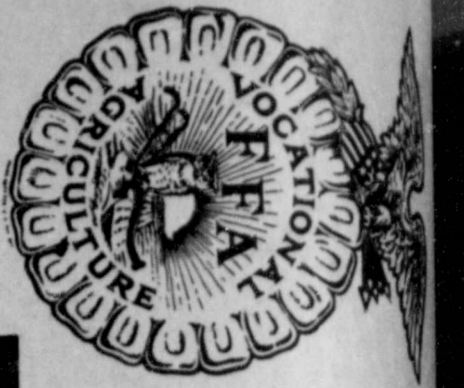
Oden Chevrolet.....Mac Collins, Rex Reves, and Dwayne Marble.

WE AT
Oden Chevrolet-Olds.
AND THE FUTURE FARMERS OF AMERICA
ARE WORKING HAND IN HAND TO BRING
THE BEST LEADERS AND FARM PRODUCTS
TO THE AMERICAN PUBLIC

212 S. MAIN

OUR 42nd YEAR
IN FLOYDADA

PHONE 983-3787



THE STAFF OF THE FLOYD COUNTY HESPERIAN



SAYS "HATS OFF" TO THE FUTURE FARMERS OF AMERICA

WHO HAVE WORKED SO DILIGENTLY

TO MAKE THIS 25th SHOW

A BIG SUCCESS

Be



TRAVIS

Jones Can
For Scho

Travis Jones, president of the Independent School District, filed on as a candidate for two seats on the trustee election. Lawrence Stovall, ex-A Floydada native, is in his sixth year of school at the site of Floydada Jones, a farmer, rents of three sections.



20 INCHES
Official measurement was 10 inches and should be agricultural land.

20 CENT PAPER!
The price of news has been traditionally higher in recent years, but this newspaper is being done in its newsrack which is being done in the state — who pay 25 cents or more in other areas. We have raised their rate to 20 or 25 cents.

FLOYDADA SENIORS LARGELY LOCAL RESIDENTS
That the Floydada is the largest in the South Plains. One hundred and membership in the seniors.

We were invited to the meeting last Thursday. Many different types of members good!

THANKS FOR HELP
A big "Thank you" to the persons who were gathered for the Floydada. Show this to the president of the stockholders. Brose, Smith, steers; J. Scher, Clerk; J. Orville H. and Elvin L. Herber and B. and many others. Their help allows better job for the