

# The Terry County Herald

Not Neutral—Not On The Fence—A Paper With An Opinion And A Purpose

VOLUME 43

BROWNFIELD, TERRY COUNTY, TEXAS,

FRIDAY, MAY 7, 1948

NUMBER 41

## Terry County Herald Becomes Member Of The Associated Press

The "something new" advertised on the front page of The Herald a few weeks ago has come to pass—

The Herald is proud to announce that it has become a member of the Associated Press, world-wide, non-profit news gathering association. In becoming a member of this association, the Herald secures the services of thousands of reporters the world over. State news photos and many other news features are now available to the Herald.

The publishers consider it securing membership in the Associated Press one of the most important steps ever taken in the Herald's entire career.

A complete story of the history of the Associated Press will appear in next week's issue of the Herald.

### Honor Assembly To Be Held Monday In H S Auditorium

Special awards are to be made to classes winning "Goal Post Decoration" contest and to the class and club having the best "Judged" assembly program for the year. These are cash awards of \$5.00 each, given by the student council.

The American Legion has offered six prizes given as follows: Best individual assembly performance; Essay; Music; Scholarship; Outstanding Girl and Outstanding Boy.

Mr. E. G. Akers is the donor of a yearly award for the best Fire Essay of the year.

The Junior Chamber of Commerce is awarding prizes totaling \$100 to the Home Economics Girls making the greatest progress during the year.

Awards will also be made in Spanish, Typing, D. E. and Girls' P. E. Divisions.

The public is cordially invited to attend this yearly recognition of all clubs and school activities.

### 6 Gigantic Billboards To Advertise City

The directors of the Chamber of Commerce Monday night endorsed a program for the erection of six gigantic billboards to be located at the dual approaches of the Levelland-Lubbock highways into the city from the north, one at the approach from the east, one from the west, and one covering both the Lamesa and Seagraves approaches, welcoming visitors and tourists to Brownfield. There will be two more boards located at points just outside of Lubbock and just this side of Carlsbad pointing out the mileage from those points to Brownfield, inviting tourists to pause, fill your tanks and tummy at Brownfield.

These boards will be 54 feet long, 13 feet deep standing 16 to eighteen feet in the air giving the center one-third of the board and three feet by 54 foot skirts to the Chamber of Commerce and to the City of Brownfield. This will carry a picture illustrating the natural resources of the area and the lettering giving the Chamber of Commerce and the City of Brownfield will be outlined in brilliant colorful scotchlite which will reflect by car lights as far as you can see at night.

Individual panels size 3 and one-third feet by five and one-half feet will be sold to the merchants on a four year contract with a two year option giving them an opportunity to have their own individual roadside ads on each side of the boards in sponsorship of the program.

Arrangements were made by the Western Sign Co. operating out of Hot Springs, N. M. who are opening a bulletin plant in Lubbock this month, to handle all details of selling the sponsorship, securing the lease locations, constructing and handling the art work on these boards. L. D. Neal of that Company completed arrangements and began work Tuesday.

### Midland Co. Getting Ad Results

The Midland Livestock Auction company wrote us recently to make a change in their ad, and stated that they were really extending their business, and more and more business was coming to them from this area.

The auction companies in other nearby cities take for granted that they have this area grabbed, and do little advertising outside their own papers and radio stations.

Well, they may have reason in the future to quit ignoring the other advertising media of the area.

### Maj. Walker Located At Georgia Air Base



TURNER AIR FORCE BASE, ALBANY, May 6—Major Willie G. Walker, son of Mrs. Lee Walker of 219 North 4th St., Brownfield, has reported for duty here at Turner Air Force Base with the 31st Fighter Wing where P-51 fighter pilots are trained.

Major Walker entered service in December, 1941 and was commissioned a second lieutenant and pilot in June 1942. A regular Air Force officer with a permanent commission of first lieutenant, the Major has served two tours overseas, the first from September, 1942 to January, 1944 and the second from March, 1946 to March 1948. During World War II, the Brownfield officer was commanding officer of the 25th Fighter Squadron of the 51st Fighter Group with the Eighth and Twelfth Air Forces. Prior to his assignment here at Turner, Major Walker served on Okinawa.

### Barbecue At U. D. Sawyer Ranch

On Tuesday evening, the elaborate home of Mr. and Mrs. U. D. Sawyer of Crossroads, N. M., was the scene of a barbecue given for friends and relatives.

A program of music and speeches was presented. Lt. Gov. Montoya of Santa Fe, N. M.; Sec. of State, Mrs. Romero; and Mrs. Sawyer were speakers. Music was furnished by records and by a string band. A telegram from a group of Congressmen in Washington stated that they were unable to attend because of important business.

From 2,500 to 3,000 people were served 1400 pounds of barbecue, 100 large loaves of bread, cold drinks, coffee, and cake.

Among those attending from Brownfield were Messrs. and Mesdames Sawyer, Graham, Orb Stice, Ches Gore, Mon Telford, J. O. Gillham, Clyde Lewis, Clarence Lewis, E. A. Graham, Mrs. Eldora White, Mrs. Bit Copeland, Blue Graham, Twilla Graham, Geraldine White and Gertrude Johnson.

### Demos Elect Delegates To State Convention

Local Democrats in a meeting at the Court House, Tuesday afternoon, presided over by J. O. Gillham, county chairman, elected R. M. Kendrick, Dan Davis, Lee O. Allen, O. L. Peterman, Tom May and Charles Didway as delegates, and H. M. Pyeat, Glen Akers, W. B. Tudor, J. O. Gillham, B. G. Hackney and H. R. Winston as alternates.

The delegation goes uninstruced, except to also try to send an uninstruced delegation to the National Convention.

Mrs. W. B. Toone of Dallas is a guest in the home of her niece Mrs. W. A. Bell.

### Seagraves Takes Bears In Third Game of Season

After the Brownfield Bears won the first two of their contests in the Oil Belt League, Seagraves went on a batting spree last Sunday to take the locals 26-11.

With Courtney pitching, Seagraves jumped into an early lead on a three run first inning and a six-run third inning. They added three more counters in the fifth and made eight runs in the sixth.

Brownfield fought back with three runs in the fifth and five in the eighth, but the game was out of reach.

The Sunday scores we have do not include the Post-Sundown game, and are as follows:

Levelland	19
Denver City	5
Littlefield	8
Slaton	7

### Taking Off To Where It Rains Sometimes

Well, folks, and friend readers, if any, we are "Remingtoning" this little epistle Tuesday afternoon, with the intention of bidding good old Terry and vicinity a farewell for a couple of weeks.

By the time the sun is well over the caprock, we aim to be headed in that general direction, with the ultimate windup back in the red hills of the old Volunteer State, to chew the fat with relatives and friends of days gone by, as well as newer comers in the family tree.

To begin with, almost to a man, woman and child in the old New Hope community, is related to us either by blood or marriage. And there are many others scattered a bit further off, especially places like Memphis, Jackson, etc. We believe we could spend six weeks back there in west Tennessee, never spend a night at the same place and then not get outside a second cousin. And believe it or not, we'd be welcome with any of them or with just old friends.

None of the merchants are big merchants. Their stocks are modest but meet the needs of the community. None of the farmers work the "all outdoors area," and they have time to pass the time of day and chew a bit of fat with their visitors. We have been from coast to coast, in most of the old South and a great portion of Texas, but we have never met people in all our travels that rather entertain company than those old Tennesseans.

We have found in our time that the richer the people the less they have to do with others. Way back in 1900 when we first came to Texas, it was a noted fact in some of the blackland sections of Texas that you might live neighbor to a man on the next farm for a year and never know his name. If you met him at all, it was just "howdado," and on he went.

We are glad the people of this area have never gotten into that kind of selfish habit. We can't live alone any more than we can die alone. We hope selfishness will ever be banished from good old Terry as it always has from the people of old Hardeman county, Tennessee.

### WARD SCHOOL BONDS BEING ASKED

Petitions were circulated this week, asking the School Board to order an election to vote on \$125,000 bond issue to build three ward schools for primary grades. One to be in the Santa Fe Addition, one west side of town and one south of the draw, here in town.

The Petitions were to be presented to the Board today.

### Band Members Win Honors In Musical Festival

The Brownfield high school band directed by Richard Young, attended the Annual Interscholastic League Music Competition Festival held in Canyon, Friday, April 30.

The band gained second division honors in concert playing and sight reading.

Eleven soloists and ensembles placed in the first division. There were numerous second and third division ratings given to local band members. These soloists receiving first division ratings were: Mike McCord, cornet solo; Crawford Burrow, cornet solo; Doug Tankersley, cornet solo; Gene Willingham, bass; Lyle Shelton, trombone; Chuck Wilson, trombone; Yvonne Fobis, twirling; Clive Jones, French horn; Chuck Wilson, baritone; cornet trio composed of Doug Tankersley, Crawford Burrow and Don Andrews.

Judges for the competition were Melborn Carey of Phillips University, Col. Earl D. Irons of N. T. A. C. in Arlington, and Max Mitchell of Oklahoma University.

The judges commended the local band on its fine performance. With additional instrumentation the band should reach an excellent rating. Due to the late organization of the band this year, the marching contest was not entered.

Brownfield competed against ten other class A bands. There were 30 bands on the West Texas State College campus Friday.

### Johnson Implement Doing Much Improving

Our next door neighbor, the Johnson Implement Co., is really doing about in its establishment for the past week or two, and when the redo is over, you are going to see a radical change for the better in their place of business.

Aside from the general appearance, there will be new counters and show cases galore, and last but not least, Mr. Johnson will be domiciled in a new cutoff office up front, with new desk and other up-to-now fixtures.

So, you fellows are hereby warned not to walk into that store now with "hiya guy." Better tip your hat and ask if "Mister" Johnson is in?

### New Date For Post's Stampede and Rodeo

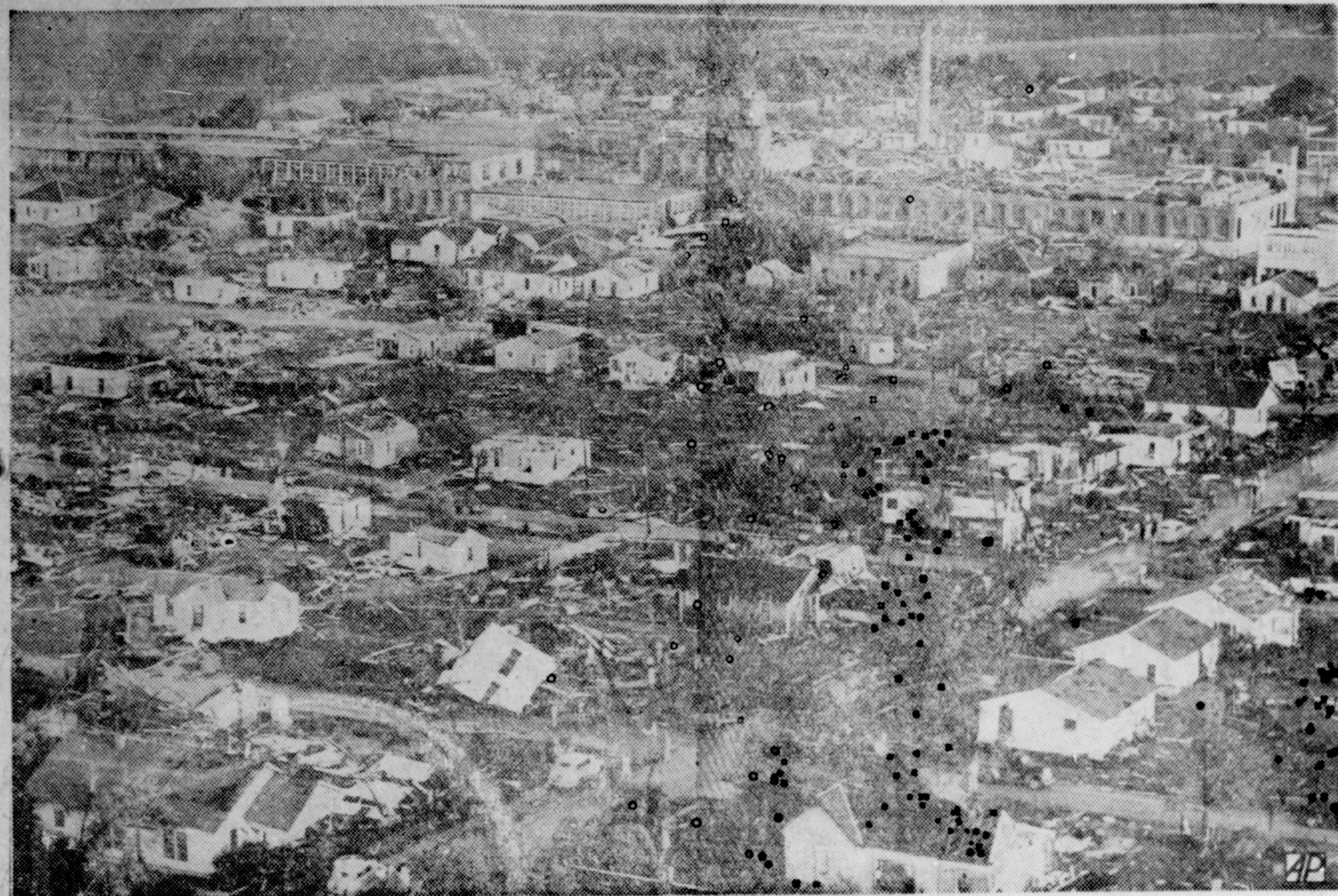
The dates of the 1948 Post Stampede and Rodeo have been set up to May 20-23 inclusive to avoid a second annual conflict with the professional rodeo sponsored by the American Business Club in Lubbock.

The sudden enforced change of dates found the Post Citizenry ready to pitch in and make the 1948 show "the biggest and best in history and truly 'The Fastest Show in the West'."

Merchants started putting welcome banners on their building fronts on Thursday and by this week the town was fully decorated in rodeo regalia. Booster trips by chartered bus are being scheduled to begin in the near future.

Two bus loads of Post Stampede boosters are scheduled to arrive in Brownfield at 9:45 Friday morning, May 14 and will present a brief program.

Juanell Jones spent the week end with Vela Mae Dumas of Lubbock.



DAMAGED BY TORNADO—This air view shows the Texas Textile Mill at McKinney, Texas, which was heavily damaged by a tornado which hit the north Texas city May 2. (A. P. Photo)



FIREMEN FIGHT FIRE IN LONGVIEW BUSINESS DISTRICT—Firemen fight a fire in the business district of Longview, Texas, which destroyed two buildings and damaged three others. The loss was estimated at \$350,000 (AP Photo)

### Building Permits Gain This Week

Building permits issued by the City of Brownfield from April 28 to May 5 total \$27,000. The following permits were issued:

Ed E. Harden, build 54 by 30 residence, located at 304 Lubbock Road, \$5,000.

J. B. Worsham, move in 16x40 barrack and remodel, located 608 Tahoka Road, \$2,200.

J. L. Melsap, move 40x24 frame residence and 48x16 garage, located Tahoka Road, \$9,000.

A. H. Pierce, build 28x85 warehouse, located 125 Seagraves Road \$2,500.

Jack Henderson, 24x28 side room located South 5th, \$3,000.

E. B. Burnett, 40x28 Duplex, located 315 W. Leke St. \$6,000.

Robert Whitney, 8x12 Accessory Building, located 320 South 4th, \$100.

Mrs. J. D. Pharr and Mrs. Ruth Lowe visited Mrs. Chris Hindman in Hobbs, N. M. Sunday.

### Closing Program Announced by Supt. Cowan

Supt. S. P. Cowan announced the closing program for this school year early this week.

The following is a calendar of events:

May 6 Band Concert at high school.

May 10 Student grand assembly.

May 11 FFA annual banquet.

May 13-14 Senior examinations.

May 16 Baccalaureate, 8:00 p. m. Church of Christ, set non by Bro. Jimmie Wood.

May 17-18 other student examinations.

May 20 11:00 a. m. West Ward graduation, elementary certificates for graduates of 8th grade will be awarded.

May 21 closing of school; commencement at 8:00 p. m. address by Dr. Dick O'Brien of Big Spring.

Miss La Verne Watson visited in Dallas over the week end.

### Seminole Awarded National Safety Honor

CHICAGO, May 1 (AP)—Seminole, Texas, was given recognition Saturday by the National Safety Council for a shining lack of traffic fatalities.

When the council issued its 1947 honor roll recently, Seminole, Okla., was listed as one of the cities having no auto deaths.

The Texas town's chamber of commerce immediately pointed out that it hasn't had a person killed in traffic for 26 years.

Saturday, the safety council said it had verified through the State Department of Public Safety that there hasn't been a fatality in Seminole, Texas, during the 10 years when the records have been compiled.

T. A. Wartes and family attended a family reunion held in Lubbock Sunday.

### ALL OUT DRIVE STARTS NEXT WEEK

## Chamber of Commerce Budget Totals \$14,500

The first regular meeting of the Chamber of Commerce Board of Directors was held Monday night, with interested members and guests attending.

Hiram Parks, the president of the Chamber of Commerce, in his opening address laid out the agenda for this year and appointed nine Committee Chairmen as follows:

Finance and Business Committee Chairman, C. K. Kendrick; Membership Committee Chairman, Bill McKinney; Program of Work Committee Chairman, Glen Akers; Agriculture Soil Conservation and Rural Relations Committee Chairman, Homer Winston; New Industries and Industrial Relations Committee Chairman, J. O. Gillham; Education Committee Chairman, C. G. Griffith; Civic Improvement Committee Chairman, E. Latham; Recreation Committee Chairman, D. Jones; and Transportation Committee Chair-

man, O. L. Peterman. Mr. Peterman appointed the following as members of his committee: Herman Chesshir, Paul Campbell, J. McWhorter and La Copeland who were present at the meeting.

A \$14,500 budget for 1948 was proposed, voted on, and carried unanimously as part of the agenda for the forth coming year. This represents the largest budget ever set for the City of Brownfield but in order to get a job done which other cities are getting done it will require this amount to carry out the years program and make a comparative showing with other cities of this size in West Texas. Heretofore Brownfield has not had as much activity in Chamber of Commerce work as it could have as was outlined and pointed out by the directors, Monday night, who pledged themselves to work on the definite assignments given them.

From all indications the buck

passing has come to a climax and the members of 1948 may reasonably expect adequate dividends from their investment in the Chamber of Commerce.

Bill McKinney heading the membership drive will kick off next Monday morning with this committee consisting of the chairman of the other named committees and committeemen they select to help them. Their grim determination to accomplish their goals was illustrated by a motion to have continuous meetings every two weeks, each Monday at 7:30 p. m. at the Esquire Restaurant from last Monday night until such time that the Chamber of Commerce is thoroughly organized and functioning to the satisfaction of all the members.

All local business men whether members of the Chamber of Commerce or not are invited to participate in these meetings and will be allowed to voice their opinion and make suggestions.

# The Herald

Entered as second-class matter at the postoffice at Brownfield, Texas, under the act of March 3, 1879.

**A. J. Stricklin & Son**  
Brownfield, Texas

**Owners and Publishers**  
A. J. Stricklin, Sr.  
Editor and Publisher  
A. J. Stricklin, Jr.  
Manager and Ass't. Editor  
Published Every Friday At  
209 South Sixth  
Brownfield, Texas

**Subscription Rate**  
In the Trade Area ..... \$2.00  
Out of Trade Area ..... \$3.00  
Advertising Rates on Application

MEMBER 1946  
TEXAS PRESS ASSOCIATION  
PANHANDE PRESS ASSOCIATION

## ANNOUNCEMENTS

The following named candidates have announced their candidacy for office subject to the action of the Democratic Primaries Saturday July 24 and August 28, 1948:

**CONGRESS 19th DISTRICT**  
GEORGE MAHON

**FOR STATE SENATOR**  
RALPH BROCK  
Lubbock County  
KILMER B. CORBIN  
Dawson County  
DUDLEY K. BRUMMETT  
(Lubbock County)

**FOR DISTRICT ATTORNEY**  
H. B. VIRGIL CRAWFORD,  
Brownfield  
R. STANSELL CLEMENT  
Lamesa

**FOR COUNTY JUDGE**  
H. R. WINSTON

**FOR SHERIFF**  
OCIE H. MURRY

**FOR ASSESSOR-COLLECTOR**  
HERBERT CRESSHIRE

**FOR COUNTY ATTORNEY**  
GEORGE W. NEILL  
R. J. GRAVES  
L. C. HEATH

**FOR COUNTY CLERK**  
H. M. (Dube) PYEATT

**FOR DISTRICT CLERK**  
ELDORA A. WHITE

**FOR COUNTY TREASURER**  
MRS. O. L. (Oscar) JONES

**FOR COMMISSIONER, Pct. 1**  
W. BRUCE WHITE

**FOR COMMISSIONER, Pct. 2**  
MARION B. STONE

**FOR COMMISSIONER, Pct. 3**  
S. H. (Sam) GOSSETT

**FOR COMMISSIONER, Pct. 4**  
LEE BARTLETT

**FOR JUSTICE OF PEACE, Pct. 1**  
H. R. (Horace) Fox  
J. W. HOGUE

set the newcomer, or just throw in the wet towel and call it quits. Instead our scientists went to work here in the "Cotton South," and came up with some very beautiful fabrics that even the fashionable beach resorters would not be ashamed to wear. They are getting real results and old King Cotton is a long way from abdication.

It is refreshing to read such articles as a short story in a recent issue of *Colliers*. It seems that a Maine couple had a child that developed a tumor, and they took him to Boston for an operation. It leaked out that the couple were about stranded, and the big-hearted people of the Hub City made up a sizable purse. The mother stated that she did not want to seem ungrateful, but they could not "beholden to the offer of money." The man with a broad New England twang stated that they still had \$15 after expenses, and would either walk or hitch hike back to their Maine farm, and that as they worked it themselves, would make out somehow. Just to think there are still a few people that do not think society owes them a living.

Editor Joiner of the *Rails Banner* tells us that he has sorter been let down by his favorite GOP candidate, Harold Stassen, since Stassen came out for the retention of a tax on margarine. Well, it seems that we faintly remember that a fellow known as Harry S. Truman vetoed a measure some time back to take off the tax, and it failed to carry over his veto. All those boys up there, who have to seek votes in the middle north, dread the Butter Boy's Trust, but housewives all over the country are making it hot for them, and many of these housewives live right up there in the big butter country, but are on the consumer end of the hot poker. For fifty years the Butter Trust has had the country by the tails with a downhill pull, but it seems they are about to reach the end of their rope.

Around a year ago, Newburyport, Mass., made headlines, when the merchants of that city undertook to set a precedent for price reductions by a cut across the board reductions. Now, the merchants of that little city as well as those all over the land, are just as far from an exit from their perplexities as ever. And with inventories rising and customers still protesting high prices, the poor retail merchants seem to be between the devil and the deep blue sea.

About one third of the farmers' income is said to be from the sale of meat products from the farm, representing some \$10 billion dollars annually. As we understand it, this amount represents only that part paid them by packers and local butchers, and does not take into consideration millions of pounds used on the farms. Truly we are a great meat eating nation. The drift to vegetarianism has hardly made a ruffle on the ocean of meat eaters in America.

It does not take an expert to figure out the fact that one reason things you buy are so high, is that there is entirely too much "featherbedding." Now let us suppose that the farmer had to hire three men to milk two cows. If that were a fact, you'd be paying just \$1.75 a quart for your milk instead of around 20c.

Again before that time arrives, we want to stress the importance of backing up Mayor May in his proclamation of a cleaner town. So far this year, we have not seen a single house fly. We saw just a few of the old bottle green ones back in March. And we have been around a number of places where food is sold either by grocery men or cafes, not a fly has been seen. This is the result of rigid cleanups and a crack street cleaning crew

over the past few years. But we must not sit down on our laurels. Constant battle with flies and their breeding places is the price of a clean, healthy community. Take your guard down just a few days or weeks, and the town is full of this nauseating, disease spreading pest. Personally the ter will be out of town at the beginning of the cleanup drive, but we are going to make arrangement for our premises to be spick and span by hiring some one. In the meantime, polio has become epidemic in the lower Rio Grande valley and as hot weather comes on, will likely spread to this area. Let's keep in mind the fact that while doctors know of no cure as yet for that disease, cleanliness is one of their first recommendations. Also, a clean town is the bet against a typhoid or dysentery epidemic.

**CITATION BY PUBLICATION**  
THE STATE OF TEXAS

TO: Gus Umphress and wife, Della Umphress, their heirs and legal representatives; Tom A. Nowell and wife, M. E. Nowell, their heirs and legal representatives; B. J. Wallace and wife, Pearl Wallace, their heirs and legal representatives

GREETING:

You are commanded to appear and answer the plaintiff's petition at or before 10 o'clock A. M. of the first Monday after the expiration of 42 days from the date of issuance of this Citation, the same being Monday the 7th day of June, A. D. 1948, at or before 10 o'clock A. M., before the Honorable District Court of Terry County, at the Court House in Brownfield, Terry County, Texas.

Said Plaintiff's petition was filed on the 20th day of April, 1948.

The file number of said suit being No. 3454.

The names of the parties in said suit are:

E. C. Davis as Plaintiff, and Gus Umphress and wife, Della Umphress, their heirs and legal representatives; Tom A. Nowell and wife, M. E. Nowell, their heirs and legal representatives; and B. J. Wallace and wife, Pearl Wallace, their heirs and legal representatives, as Defendants.

The nature of said suit being substantially as follows, to-wit: Suit in trespass to try title, damages and rents as to 160 acres of land in the NE part of Section 27 in Block T, D & W Ry Co. survey in Terry County, Texas, described by metes and bounds as follows:

Beginning at NE Cor. of said sec. 27 for NE Cor. this tract;

Thence West 712.8 vrs; Thence South 1267.2 vrs; Thence East 712.8 vrs; Thence North 1267.2 vrs. to place of beginning; plaintiff pleads his title, as well as 10 years Statute of Limitation; prays for title to and possession of said land and premises, for rents, damages, costs of suit and writ of restitution.

Issued this the 20th day of April, 1948.

Given under my hand and seal of said Court, at office in Brownfield, Texas, this the 20th day of April, A. D. 1948.

ELDORA A. WHITE, Clerk, District Court, Terry County, Texas.

When Skin Torture Drives You Mad!

Try clean, powerful, penetrating Monie's Emerald Oil. The very first application should give you comforting relief and a few short treatments convince you that you have at last found the way to overcome the intense itching and distress. Monie's Emerald Oil is easy and simple to use—promotes healing. Ask any good druggist for Monie's Emerald Oil. Satisfaction or money back.

**Notice of Cleanup Week in Brownfield**

STATE OF TEXAS,  
COUNTY OF TERRY:  
CITY OF BROWNFIELD:

WHEREAS, Cleanliness is a prime factor in the good health of each person, is conducive of well being, and promotes a good spirit in the heart of each of us; and

WHEREAS, in order to have a clean healthy city, it is necessary for all of us to work together, to that end; and

WHEREAS, it is deemed expedient to set aside several days to be devoted by each individual of our city, to the cleaning up of our city, during such time:

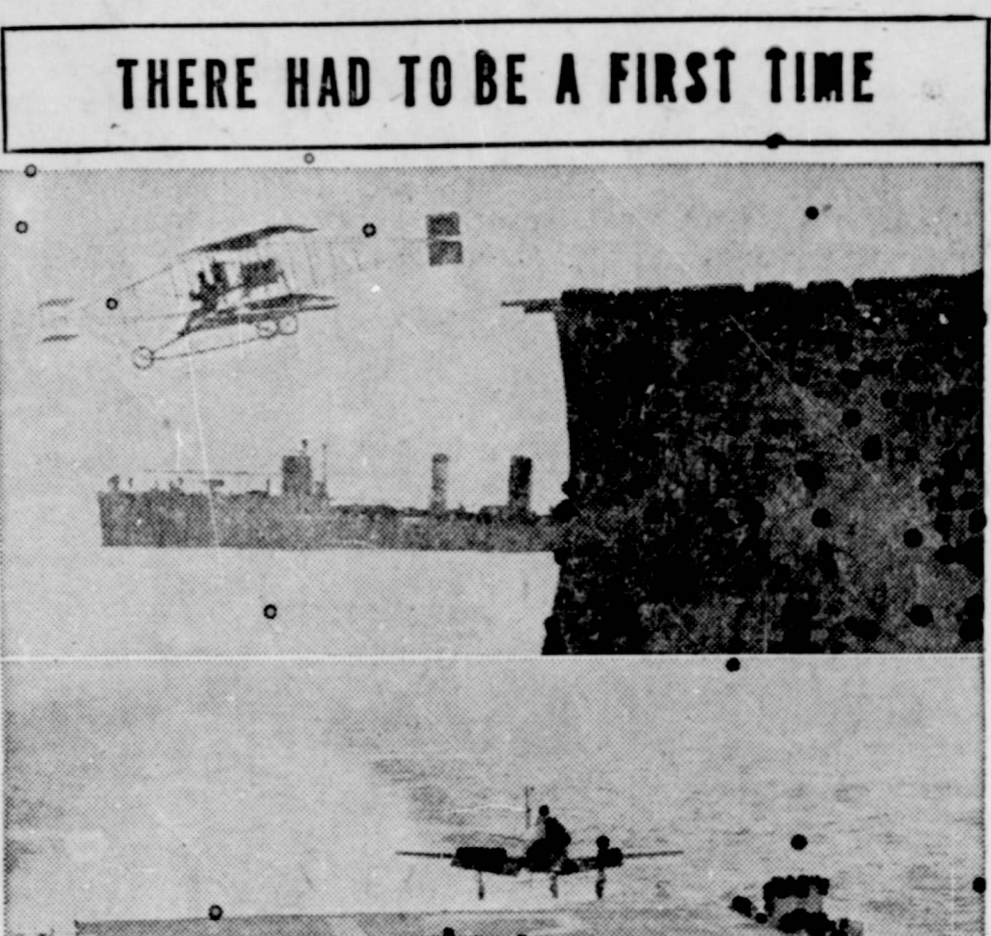
NOW THEREFORE I, TOM MAY, Mayor of the City of

**Your Friend in Need**  
**McKINNEY'S Insurance Agency**

This agency offers you more than a fire or casualty insurance policy. When misfortune strikes... the facilities of this agency go into action to relieve you of worry, responsibility and a multitude of demanding details... to represent your interest in the settling of claims. That's another reason why it pays to buy insurance from...

**McKINNEY'S INSURANCE AGENCY**  
1st door east 1st. Natl. Bank Phone 161-J

**THERE HAD TO BE A FIRST TIME**



Advances in American naval ships and equipment have been marked throughout the century and a half of the Navy Department's history by important milestones of progress. One of these was the first flight from the deck of a ship, made in 1910 by Lt. Eugene Ely, when he took off from a miniature flight deck on the foredeck of the USS Birmingham (upper). Three years later naval aviation had its actual start when Admiral George Dewey signed the report of the General Board, which recommended the establishment of a Naval air arm. Today aviation is one of the elements in the three-pronged American Navy. Flowering of "Navy Air" can be symbolized in such terms as the lower photo in which an F7A "Fury," a jet-propelled Navy fighter, makes a landing aboard the USS Bogue while the ship cruises off the California coast. (Official Navy Photograph)

**ARE YOU NEXT?**  
YOUR home may be next for destruction by fire. Protect yourself from the possibility of financial loss by adequately insuring it.  
**A. W. TURNER, Insurance Agency**  
407 W. Main Main Brownfield

**Tom Crawford ELECTRIC**  
Licensed and Bonded Electrician. Repairing - Contracting - Neon Sign Maintaining. Located at Terry County Lumber Co., Phone 182.

**McGOWAN & MCGOWAN LAWYERS**  
West Side Square Brownfield, Texas

**EVERETT ZANT SIGNS**  
Phone 265-W

**Dr. H. H. Hughes DENTAL SURGEON**  
Alexander Bldg. Phone 261

**Money To Loan**  
On West Texas Farms and Ranches Cheap Interest. Long Term Loans.

**Robert L. Noble**  
West Side Square

**BURTON G. HACKNEY**  
Attorney-at-Law  
Practice in All Courts  
Suite No. 3  
Brownfield Building

**Dr. James E. Finley DENTIST**  
Office at 308 West Main  
PHONE 610-W

**NELSON CLINIC**  
229 South Third  
Eyes Examined - Glasses Fitted  
Dr. E. O. NELSON  
Physician and Surgeon  
GENERAL PRACTICE  
Phone 322-R

**Dr. W. A. ROBERSON**  
DENTIST  
In Neill Building Next To Hospital  
Brownfield, Texas

**Santa Fe Awards To 4-H Clubbers**

Sixty-five educational awards to outstanding 4-H Club members in Colorado, New Mexico, Texas and other states served by its lines, will be offered in 1948 by the Santa Fe Railway, in continuance of its policy of annually encouraging American boys and girls to train themselves in agricultural pursuits, President Fred G. Gurley has announced.

The awards are cash sums sufficient to defray all traveling and other expenses for the winners to attend the National 4-H Club Congress held in Chicago. Certificates of merit from the Santa Fe president are presented to the individuals as a keep-sake record of their achievement and participation in the awards.

Winners are certified by the state 4-H Club leaders to the National Committee on Boys and Girls club work headquarters at Chicago, and the railroad takes no part in the selection of winners except in establishing the original basis for the awards.

In announcing the 1948 awards, President Gurley stated that their purpose is to help 4-H Club members to help themselves and that the Santa Fe takes pride in the fine records its past winners have made in their home communities.

Mrs. Jack Broder, Jack L. and Margaret Goza spent the week end in Lubbock with Mr. and Mrs. Kenneth Threft.

Mr. and Mrs. W. O. Helms and Mrs. Clyde Coleman attended Parents Day at Texas Tech Sunday.

**Dr. and Mrs. Paul Henley and Dr. and Mrs. J. T. May of Little Rock, Ark. are visitors this week in the Tom May and W. B. Downing homes.**

**Dr. Royal E. Kiofanda, Jr. VETERINARIAN**  
3 blocks West Copeland St.  
Phone 900F2

**Dr. A. F. Schofield DENTIST**  
Alexander Bldg North Side Square  
Brownfield, Texas

**BURTON G. HACKNEY**  
Attorney-at-Law  
Practice in All Courts  
Suite No. 3  
Brownfield Building

**Dr. James E. Finley DENTIST**  
Office at 308 West Main  
PHONE 610-W

**NELSON CLINIC**  
229 South Third  
Eyes Examined - Glasses Fitted  
Dr. E. O. NELSON  
Physician and Surgeon  
GENERAL PRACTICE  
Phone 322-R

**Dr. W. A. ROBERSON**  
DENTIST  
In Neill Building Next To Hospital  
Brownfield, Texas

**BROWNFIELD FUNERAL HOME**  
Modern Ambulance Service  
25 Years Service In Brownfield, Texas  
PHONE 185

**Tech Students To Visit Indian Ruins**

A tour of Indian villages and Indian ruins in western New Mexico and Arizona will be included in the summer school anthropology field course to be offered by Texas Technological College, Dean W. C. Holden, head professor of history and anthropology, revealed.

The advanced anthropology course which is being resumed this summer during the second semester of summer school, is designed to fill the full six weeks with five weeks excavation work at Arrowhead ruins, near Golieta, N. M., and the other week to include the planned inspection tour.

Dr. Holden said some 70 rooms of the 180 separate compartments have been restored through the excavation work of the college classes that started the excavation project in 1933.

W. M. Pearce Jr., anthropology professor on leave of absence, will return to Texas Tech this summer to supervise the field work in New Mexico.

Mr. and Mrs. W. H. Hight of Breckenridge were weekend guests of their daughter, Mrs. Robert Smith.

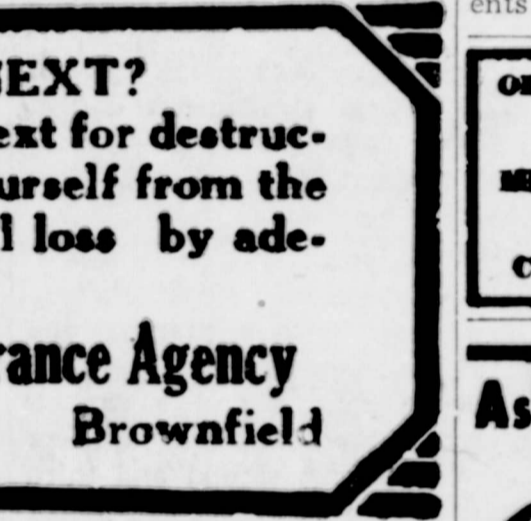
Mr. and Mrs. Dick Falls spent the weekend in Amarillo.

**Why you should use FLATLUX**  
The wall paint made with OIL!

Because  
One coat covers most any surface  
Goes on smoothly... no laps or brushmarks  
Dries fast to a flat, glareless finish  
No offensive odor... Use room the same day  
Washable with soap and water  
Beautiful lime-proof and fade-proof colors  
A real Oil paint... not thinned with water

Apply with the BPS FLATLUX BRUSH.

ONE GALLON PAINTS THE AVERAGE ROOM



**CICERO SMITH LUMBER CO.**

**SWART OPTOMETRIC CLINIC**  
516 West Broadway  
BROWNFIELD, TEXAS  
**Dr. Gordon E. Richardson**  
OPTOMETRIST  
Phone 414

**HOUSES FOR SALE**  
Built at yard, ready to move. Sold F. O. B.  
Yard. 2 Rooms to 4 Rooms.  
**REPAIR LOANS**  
We furnish labor and material. Nothing down - 36 Months To Pay!  
**TERRY COUNTY LUMBER COMPANY**  
Phone 182  
C. L. Aven, jr., Mgr. Martin Asst. Mgr.

**Dr. A. F. Schofield DENTIST**  
Alexander Bldg North Side Square  
Brownfield, Texas

**BURTON G. HACKNEY**  
Attorney-at-Law  
Practice in All Courts  
Suite No. 3  
Brownfield Building

**Dr. James E. Finley DENTIST**  
Office at 308 West Main  
PHONE 610-W

**HIGGINBOTHAM - BARTLETT CO.**  
FOR  
**L-U-M-B-E-R**  
and building materials of all kinds.

**Grapette**  
SODA  
A GRAPETTE, please

**Dr. Royal E. Kiofanda, Jr. VETERINARIAN**  
3 blocks West Copeland St.  
Phone 900F2

**Dr. A. F. Schofield DENTIST**  
Alexander Bldg North Side Square  
Brownfield, Texas

**BURTON G. HACKNEY**  
Attorney-at-Law  
Practice in All Courts  
Suite No. 3  
Brownfield Building

**Dr. James E. Finley DENTIST**  
Office at 308 West Main  
PHONE 610-W

**NELSON CLINIC**  
229 South Third  
Eyes Examined - Glasses Fitted  
Dr. E. O. NELSON  
Physician and Surgeon  
GENERAL PRACTICE  
Phone 322-R

**Dr. W. A. ROBERSON**  
DENTIST  
In Neill Building Next To Hospital  
Brownfield, Texas

**BROWNFIELD FUNERAL HOME**  
Modern Ambulance Service  
25 Years Service In Brownfield, Texas  
PHONE 185

**Don't Let "Gums" Become "Repulsive"**  
Are your "GUMS" unsightly? Do they itch? Do they burn?—Druggists return money if first bottle of "LETO'S" fails to satisfy.  
Primms Drug Brownfield

**GEO. W. NEILL**  
ATTORNEY AT LAW  
Specializing in contracts, conveyances, probate and land titles  
OFFICE: 1st Floor Neill Tower

**Krueger, Hutchinson and Overton Clinic**  
LUBBOCK, TEXAS

**GENERAL SURGERY**  
J. T. Krueger, M. D., F. A. C. S.  
J. H. Stiles, M. D., FACS (ortho)  
H. E. Mast, M. D., FACS (Urology)

**EYE, EAR, NOSE & THROAT**  
J. T. Hutchinson, M. D.  
Ben. B. Hutchinson, M. D.  
E. M. Blake, M. D.

**OBSTETRICS**  
O. R. Hand, M. D.  
Frank W. Hudgins, M. D. (Gynecology)

**INTERNAL MEDICINE**  
W. H. Gordon, M. D., F. A. C. P.  
R. H. McCarty, M. D.

**GENERAL MEDICINE**  
G. S. Smith, M. D. (allergy)  
R. K. O'Loughlin, M. D.

**X-RAY AND LABORATORY**  
A. G. Barsh, M. D.  
J. H. Felton, Business Manager

**WATCH**  
for our opening sale date at our new yards.  
Our market is growing and we continue to get better prices and more satisfied customers every week.  
—Sale Every Thursday—  
**MIDLAND LIVESTOCK AUCTION CO.**  
Listen to KCRS every Thursday at 12:30  
**DON ESTES, Owner and Manager**

**1c Sale!**  
**TREND**  
2 pkgs.  
**38c**

PINEAPPLE JUICE

All Gold no. 2 ..... 19c

To **MOM** *Our First Lady Today and Every Day*

**PIGGLY WIGGLY**

Mother's Day May 9



Mayflower  
**MARGARINE**  
1 lb. carton  
**37c**

PRESERVES, World Over

Peach or Apricot 2 lbs. 43c

Resco  
**TOILET PAPER**  
roll ..... **12c**

PICKLES, Betty sour or dill quart ..... 25c

**GRAPEFRUIT** TEXAS SEEDLESS POUND ..... **5c**

**CUCUMBERS**  
FRESH POUND ..... **12½c**



**CAULIFLOWER**  
Snow White lb. .... **10c**

**SQUASH** Yellow  
Pound ..... **10c**

**LETTUCE** Firm Heads  
Pound ..... **12c**

**CELERY** Calif. green  
lb. .... **12c**

**LEMONS** Sunkist  
Pound ..... **12c**

Texas Grapefruit  
**JUICE**  
46 oz. can  
**15c**

CRACKERS, Crispy  
1 lb. box ..... 25c

Adams Orange  
**JUICE** sweetened  
46 oz. can ..... **25c**

SALMON, pink tall can ..... 49c

**Green ONIONS** FRESH BUNCH ..... **7½c**

**Shortening** CRUSTENE 3 lbs. .... **92c**

GRAPE NUTS Post, box ..... 20c

RINSO, large box ..... 37c

SUPER SUDS, large box ..... 37c

EAGLE BRAND MILK large can ..... 27c

TOMATOES No. 2 can ..... 12½c

SCHILLINGS TEA ¼ lb. box ..... 23c

VIENN ASAUSAGE Snack Time ½ ..... 15c

DOG FOOD, Dash no. 1 tall ..... 15c

Serve **REAL**  
**ITALIAN SPAGHETTI**  
WITH MEAT BALLS!  
(RECIPE ON PACKAGE)  
**SKINNER'S**  
LONG SPAGHETTI, 7-OZ. PKG. 11c

English

**PEAS**

Good Taste

No. 2 ..... 12½c

PAPER TOWELS Scott, roll ..... 15c

SLICED APPLES Comstock no. 2 ..... 23c

Santa Clara APRICOTS in syrup 2½ ..... 25c

Good Taste PEACHES in syrup 2½ ..... 25c

All Gold PRUNES in syrup 303 glass ..... 15c

PINEAPPLE, sliced no. 2½ ..... 35c

CAMAY Toilet Soap bar ..... 10c

LAVA SOAP medium bar ..... 10c

MARVENE  
**SUDS**  
Large Box  
**15c**

BEANS & FRANKS, Phillips  
12 oz. can ..... 15c

Shasta  
**PEACHES**  
2½ can ..... **19c**

RAISINS  
2 lb. bag ..... 32c

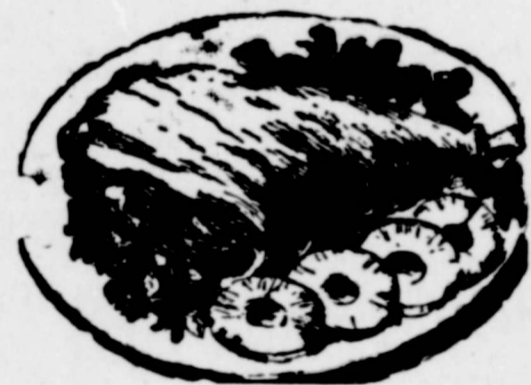
**GREEN BEANS** GOLD TIP No. 2 can ..... **10c**

**SLABBA CON** SUGAR CURED Pound ..... **49c**

Royal  
**DESSERT**  
box  
**8c**

COCOMALT  
1 lb. can ..... 47c

**SLICED BACON**  
Armour's white label ..... **59c**



**PICNICS HAMS**  
Morrels ½ or whole lb. .... **49c**

PORK SAUSAGE, rolled  
lb. .... 49c

BACON dry salt  
lb. .... 39c

HENS, full dress, drawn  
2½ to 3 lb. average, lb. 49

STEAK Club ..... 69c

TURNIP  
**GREENS**  
No. 2½ can  
**10c**

NEW POTATOES, Deer,  
whole no. 2 can ..... 14c

PLENTY DRESSED FRYERS AND COTTAGE CHEESE

Libby's  
**SPINACH**  
No. 2 can  
**18c**

**PIGGLY WIGGLY**  
*referred by wise shoppers*



Heinz  
**KETCHUP**  
Large bottle  
**29c**

SOCIETIES \* CHURCHES \* ENTERTAINMENTS \* CLUBS

Social Events of the Week

Mrs. L. W. Bownds, Editor

Phone No. 1

Girl Scout Leaders' Elect Officers

The Girl Scout Leaders' Club met at the home of Mrs. E. H. Crump Thursday afternoon, April 29, at which time new officers were elected as follows: President, Mrs. Dennis Lilly; vice-president, Mrs. John Criswell; Secretary-Treasurer, Mrs. K. B. Sadler.

One of the important things discussed at the meeting was intermediate camping at established camps. Mrs. Gene Gunn is in charge of this program and any girl who is interested in going to camp this summer should have her parents see Mrs. Gunn immediately, as Brownfield is limited on the number of vacancies it can obtain at established camps. The first girls to see Mrs. Gunn will be the first ones allowed to go.

Local Brownie day camp was also discussed but the scope of the program was not decided upon. Cakes were served by the hostess and the meeting was adjourned.

NEW ARRIVALS

Thomas Stephen, son of Mr. and Mrs. J. T. Barnes of Brownfield, arrived May 1, weighing 6 pounds 8 and one-half ounces. The father is employed by Stanolind Pipe Line.

La Vern, daughter of Mr. and Mrs. Cliff Hopper of Lorenzo, arrived April 30, weighing 7 pounds and 13 ozs. The father is a farmer. Bobby Dale, son of Mr. and Mrs. H. C. Corbitt of Brownfield, arrived May 2, weighing 5 pounds and 14 ozs. The father is a farmer.

JACKIE LITTLE HAS PARTY

Jackie Little entertained a group of friends with a party Friday night at Coleman Park. After games, refreshments of cakes and cookies were served to about 50 guests.

Chinese Student, Joe Ma, Speaks Here

Joe Ma, Chinese student at Texas Tech, spoke to a large audience Tuesday night at the Presbyterian Church. The lecture was sponsored by the Maids and Matrons Club.

Mr. Ma spoke of "Conditions in China." He is in Texas Tech as a result of his friendship with Ernest Winter, a Lubbock boy who is now studying to be a dentist missionary to China. During the war, Winter, a navy flier, was shot down in a China jungle. He was led to safety by Joe Ma and other Chinese. After returning to Lubbock Winter persuaded several business men to sponsor Ma's education at Texas Tech.

Mrs. Ma is attending Tech also and accompanied her husband Tuesday night.

INTERNATIONAL MUSIC TOPIC OF CEN-TEX HARMONY MEETING

A program of "International Music" was given at the last meeting of the Cen-Tex harmony club when members met at the La Mecca Cafe Tuesday evening at 8:00 o'clock.

Miss Delia Wall was program leader for the evening. Others assisting with the program were Mrs. Grace Moore, Mrs. Ruth Huckabee, Homer Newman, Mrs. Jimmy Moore, Mrs. Tony Lucky, and Mrs. Jim Harrison.

Nineteen members and one guest, Mrs. Lee Brownfield, were present.

APPROACHING MARRIAGE ANNOUNCED

Mrs. Estelle Brown is announcing the approaching marriage of her daughter, Miss Juanita Jo Brown, to Raymond Smith.

The wedding place will take place Sunday, June 6, at the Crescent Hill Church of Christ.

Miss Brown is a 1946 graduate of Abilene Christian College.

Shower Is Courtesy To Joyce Dungan

As a courtesy to Miss Joyce Dungan, bride elect of Sammy Jones, a shower was given Tuesday afternoon at 4:00 o'clock in the home of Mrs. A. W. Turner.

In the receiving line were Mrs. R. L. Harriss, Mrs. Turner, Miss Dungan, Mrs. Archie Dungan, mother of the bride-elect, Mrs. W. T. Howze, mother of Mr. Jones and Mrs. Ned Self, aunt of Mr. Jones.

Mrs. Bobby Jones and Miss Caroline Harriss registered guests. At the register was a basket of sweet peas covered with a net heart.

The table was laid with a white maderia cloth. The centerpiece consisted of a miniature bridal party, made of pastel yarn, leaving an altar of white and rose snapdragons.

Lime sherbert punch and pink cookies were served to about 75 guests.

Assisting in the dining room were Mrs. M. J. Craig, jr., Mrs. G. G. Rambo of Lubbock, Miss Frances Rambo and Mrs. J. E. Smith.

Mrs. Eulee McPherson and Mrs. Ruth Huckabee gave musical selections throughout the afternoon.

Hostesses were Mesdames Hiram Parks, R. L. Harriss, Earvin Rambo, Dave Finney, J. B. Knight, A. W. Turner, J. R. Watson, A. A. Sawyer and C. E. Lackey.

LIONS ENTERTAIN THEIR LADIES WEDNESDAY

The local Lions Club entertained their ladies at a banquet Wednesday evening at the Veterans Hall.

Music was furnished by Chuck Wilson, trombone soloist and Mr. and Mrs. Young, band instructors.

Mrs. M. Singletary of Union left Monday for Mineral Wells where she will enter a hospital for treatment.



UNHAPPY MODEL—

Little Deborah Short, one and a half years old, of Phillips, Texas voices her displeasure at modeling her ensemble before mothers at a

MRS. W. A. ROBERSON HOST TO DELPHIAN CLUB

Mrs. W. A. Roberson was hostess to members of the Delphian Study club when they met at her home Monday afternoon at 4:00.

Mrs. K. D. Snedeker was chairman of the program, "First and Last Frontiers." Mrs. Wayne Brown and Geo. Steele assisted with the program.

In a short business meeting, plans were discussed for the dance revue to be held Monday, May 17.

A dessert course was served to: Mesdames Brown, Steele, Snedeker, Crawford Burrow, Ted Hardy, L. D. Spradling, Sawyer Graham, Joe Hardin, Louie Simmons, Leonard Chesshir, Les Short, Johnny Brooks, Tom Harris and W. N. Lewis.

Mrs. M. Singletary of Union left Monday for Mineral Wells where she will enter a hospital for treatment.

HOSPITAL PATIENTS

Surgical: Mrs. John Smith, Seagraves; Mrs. Don Carson, Seminole; Mr. Roy Fitzgerald, Plains; Mr. Balenten Caurizalez, Lubbock.

Medical: Mrs. S. I. Freeman, Levelland; Jimmy Sherrian, Tokio Nathan Brown, Brownfield; John Winston Ashe, Tatum.

Mr. and Mrs. Herbert L. King are in San Antonio this week. Mr. King's brother will return with them for a visit.

tea and children's fashion show in Borger, Texas. "Debbie" is getting little consolation from her "big" brother, Douglas, 4, who is not perturbed in the least by the proceedings. (AP Photo)

MEADOW HD CLUB

The Meadow Home Demonstration Club met in the home of Mrs. J. C. Finley, Tuesday, May 4.

Lillian Doak gave a report on the Home Economics open house at Tech and a report on the district two meeting.

Mrs. W. J. Moss and Mrs. J. C. Finley gave programs on making neufchatel cheese and milk drinks, Refreshments of milk drinks, sandwiches, ice cream, and cookies were served.

The next meeting will be in the home of Mrs. Sam Gossett on May 18. Miss Dunlap will present the program.

MOTHER'S DAY PROGRAM AT TOKIO

The Tokio and Turner communities are planning a Mother's Day program to be held at the Tokio Community Center Sunday.

There will be dinner on the ground and an all day program. Rev. Sharp will speak at 2:30. Everybody is invited to attend.

Grady Goodpasture and seven boys from the Sunday School class at the First Baptist Church spent the weekend at Mr. Goodpasture's wheat farm near Pampa.

MRS. IKE BAILEY HOSTESS TO LAS AMIGAS

Mrs. Ike Bailey was hostess to members of the Las Amigas bridge club Wednesday evening at the Esquire.

High score was won by Mrs. Hiram Parks, second high by Mrs. Jerry Kirschner and bingo by Mrs. Chad Tarpley.

A fried chicken dinner was served to Mesdames Parks, Tarpley, Kirschner, Burton Hackney, Jack Hamilton, Lal Copeland, Orb Stice, Jack Stricklin, jr., Al Muldrow, Prentice Walker, Lee Brownfield and Clovis Kendrick.

FRIDAY NIGHT, MAY 7 LAST MEETING OF GOMEZ PTA

Friday night, May 7, is the date of the last meeting of the Gomez PTA for this term.

Mrs. A. M. Muldrow of Brownfield will be the guest speaker. There will be a social hour. Parents of children starting to school for the first time next term have a special invitation to attend and meet the teachers.

Everyone is urged to attend this meeting.

MRS. RUDY WRIGHT PARTY HONOREE

Mrs. Rudy Wright was named honoree at a party given from three to five Tuesday afternoon in the home of Mrs. Grady Goodpasture. Mrs. Wright is moving to Beaumont, Texas.

The refreshment table was laid with yellow net over yellow satin and centered with an arrangement of yellow and purple iris. Mrs. Lula Singletary poured punch.

Hostesses were Mesdames John Portwood, Lee Brownfield, Wayland Parker, Jimmie Rodgers and Grady Goodpasture.

BETA THETA ENTERTAINS RUSHEES MONDAY NIGHT

Members of the Beta Theta Chapter of Epsilon Sigma Alpha entertained three rushees Monday night with a bowling party in Lamesa.

Rushees were Bennie Wartes, Melba Roberson and Betty Tyler. Members attending included: Shirley Ellis, Bernadine Grabber, Evalyn Evans, Patricia Steen, Minnie Hazel Bowman and Kanna Stephens.

MARJORIE AND PATSY SCALES TO BE PRESENTED IN RECITAL

Mrs. W. H. Dallas will present Marjorie Scales, pianist and alto, and Patsy Scales, Soprano in a recital to be given Sunday, May 9, at 4:00 o'clock in the Methodist Church.

The following numbers will be given:

- Moonlight Sonata (op. 27 no. 2) Beethoven; Sunrise Serenade; Overture to William Tell, Rossini.
- "The Rosary," Nevin, a vocal duet.
- Rustle of Spring, Ludwig; Concerto, Greig. "Home," vocal duet.
- The Man I Love, Gershwin; Warsaw Concerto, Addinsell.
- "Now is the Hour," vocal duet.

\$750,000 NEEDED FOR SCHOOL BUILDING PROGRAM

At the last meeting of the school board, it was determined that \$750,000 will be needed for the building program.

It is necessary for the school board to be petitioned to order the bond election.

BOB FERGUSON OBSERVES 14th BIRTHDAY

Bob Ferguson celebrated his fourteenth birthday with a picnic Saturday evening in Coleman Park.

Gifts were presented at the Ferguson home, after which supper was served and games were played in the park.

Attending were Leah Dale Portwood, Kay Francis Szydloski, Roxie Anne Miller, Carlton Brady, Freda Anthony, Jo Ann Shelton, Jone Anderson, Bobby Eatham, Donnie Boyd, Herby Kendrick, Joe Don AuBerg, Carl Billings, Tommy Hord, Bobby Peterman, Willis McNeill, Jerry Anderson, Bob and his parents, Mr. and Mrs. Ralph Ferguson.

Mr. and Mrs. C. McWilliams have recently returned from a two weeks vacation in California.

Visitors this week in the home of Mr. and Mrs. T. A. Wartes were Mr. and Mrs. A. J. Wartes of Seattle, Washington, Mr. and Mrs. Jud Wartes of Petersburg, and Mr. and Mrs. C. M. Wartes of Morton.

**Mother Loves Flowers**  
Beautiful fresh cut flowers artistically arranged in bouquets and corsages make a lovely gift for Mother on her special day.  
**WE WIRE FLOWERS ANYWHERE**  
**HOY'S FLOWERS**  
310 W. Main Phone 410-J

starring you...

Smart Girl GINGHAMS

by



Hurry for dresses that put the spotlight on junior figures... make the most of tiny junior waistslines, long junior legs. Doris Dodson uses crisp, unquenchable gingham... newest, most flattering lines. And will wonder never cease? Prices them for smart girls' budgets.



\$10.95 to \$17.95

as seen in LIFE "Gingham Girl" gives you basque cut and peplum shirring, cut crystal buttons for sparkle. Doris Dodson uses Dan River gingham in brown or black combinations. 7 to 15. \$14.95



as shown in JUNIOR BAZAAR SEVENTEEN "Cheques" fashion-drawn by Doris Dodson, is just one of the dividends paid to you by a whole gay collection of Smart Girl Gingham. Bank on green, fuschia, or blue to credit your sun-gold skin... be perfect wherever you go. 7 to 15. \$16.95

Collins



a floral tribute....

to the most wonderful Mom in all the world —your Mom. Gift her with flowers—OUR fresh, lovely flowers so artistically arranged to please Mother. Order from us today.

BROWNFIELD FLORAL

1101 Lubbock Road

Phone 193-J

WITH MODESTY WE WANT TO SAY WE'VE CAPTURED SOME RENOWN BECAUSE WE TRY TO MAKE OUR STORE A CREDIT TO THE TOWN  
**NELSON'S**

"BROWNFIELD'S OLDEST AND BEST" Phone 19W  
**NELSON'S JEWELRY**  
DIAMONDS • WATCHES • JEWELRY  
BROWNFIELD, TEXAS

Gifts For The Girls In Your Life



Your MOTHER and



THE SWEET GIRL GRADS



- GOWNS, satin, crepe, and jersey 3.50 - 12.98
- SLIPS, satin, crepe, and jersey 2.98 - 7.98
- HOSE 1.39 - 2.50
- BLOUSE 4.98 - 12.95
- PANTIES, blue, black, white, and rose 1.00 - 1.50
- HALFSLIPS 3.98 - 4.98
- Alexander de Markoff Cosmetic Sets 3.50 - 6.50 plus tax
- BRASSIERS 2.00 - 4.50
- EVENING BAGS 4.98 - 9.95 plus tax
- PAJAMAS and pajamas sets 5.95 - 14.98
- NAUGHTY NIGHTIES 4.98 - 5.95
- Alexander de Markoff Perfume And Cologne 3.00 - 15.00 plus tax
- Alexander de Markoff Bath Soap set 1.00 plus tax
- GLOVES 1.79 - 8.95
- HEADSCARFS 2.50 - 5.00

The Go're Fashion Shoppe

403 W. Main

Brownfield, Texas

**BE SURE YOU BUY  
PHILLIPS PRODUCTS  
BUTANE - PROPANE -- GASOLINE - OILS  
PLAINS LIQUEFIED GAS INC**

OFFICE Phone 202      WHOLE SALE Phone 126      STATION Phone 115-R

**NEW ENGINE  
OR CYLINDER BLOCK ASSEMBLY  
INSTALLED IN YOUR CHEVROLET  
CAR OR TRUCK**

**EASY BUDGET TERMS      WRECKER SERVICE**

**TEAGUE-BAILEY CHEVROLET CO.**

Brownfield, Texas      For Better Service      Phone 100

**IT PAYS FARMERS**

**...TO MAKE EVERY BIT OF WORK COUNT**

**AND TO GET FULL SERVICE FROM OIL**

Farmers are learning to arrange things so chores can be done without unnecessary work. It's sheer waste to take 150 minutes for a job that could be done in 60 or 70 minutes with better planning. Just as it's wasteful to accept only 60 or 70 hours of use from tractor oil when Veedol Tractor Oil stands up for 150 hours in gasoline-burning tractors. 150-Hour Veedol is made by advanced methods and equipment from 100% Pennsylvania, the world's toughest crude.

**150-HOUR VEEDOL**

**SAVES FUEL** by reducing power blow-by.  
**SAVES TIME** by avoiding breakdown delays.  
**SAVES REPAIRS** through greater heat and wear resistance.  
**SAVES OIL** — stands up 150 hours in gasoline-burning tractors; cuts oil consumption in all tractors.  
**SAVES TRACTORS** — assures long, economical service.

**WARREN & RICKETS**

SEE US FOR ALL YOUR OIL AND GREASE NEEDS

**Planting Seed**

**IMPROVED PAYMASTER  
NORTHERN STAR  
LOCKET 140  
QUALLA  
SHARPS HALF & HALF**

All State Registered, State Certified — Gin run, re-cleaned and Ceresan treated Macha Storm proof.

**SEE US FOR YOUR COTTON SEED**

Highest Prices Paid for Gin Run Seed

**HERMAN'S GIN**

Week-end visitors in Dallas were Mrs. Buster Jenkins and son. Herbert Chesshir attended the Tax Collectors Convention in Fort Worth this week.

**DE-WAXED and DE-JELLIED**

**EXTRA PROTECTION FOR YOUR CAR**

**E. C. ROBERTS, Seagraves, Tex.**

**Baby Chix**

Also 2 and 3 Week old chicks for immediate delivery. We have hatches each Monday and Thursday.

We are custom hatching this season.

EVERLAY FEEDS  
**CHISHOLM HATCHERY**

**For PROMPT REPAIR SERVICE in a Busy Season**

**FAST SERVICE**      BREAKDOWNS WELDING OVERHAULING ADJUSTING RECONDITIONING ALIGNING PAINTING GENERAL MACHINERY REPAIR WORK

**FACTORY-TRAINED MECHANICS**

**LATEST SHOP EQUIPMENT**

All Allis-Chalmers replacement parts made in the same factory and to the same specifications as the original parts. Phone or bring in your equipment.

**ALLIS-CHALMERS SALES AND SERVICE**

**J. B. KNIGHT IMPLEMENT CO.**



**Spring Brings Confusion**

SPRING has turned Washington into a riot of color. The crowded capital goes about its business as usual; the annual cherry blossom festival drew its usual thousands along the tidal basin, and the social and diplomatic set stage their usual teas and receptions. But the tension and the gravity are written on the faces of the people on the crowded streets. The city, from Capitol Hill to the Potomac, is engulfed in eddies and swirling cross-currents of conflicting opinions and emotions.

On any subject you can get a different answer from a different viewpoint. The confusion in an election year ordinarily is enough to baffle the layman seeking the solid substance of truth from the maze of political talk-talk from a dozen candidates. But add to it the world crisis and the bewildering mass of world economics and international diplomacy, of reversed foreign policies, and the situation seems almost chaotic and hopeless.

As a matter of fact, the calmest, most serene oasis in the welter of confusion, where there is an atmosphere of detachment by comparison, is at 1600 Pennsylvania avenue. It's a restful place, anyway, the White House. And there President Truman, his grey hair greying, his lined face more deeply etched, but tanned and alert, is seemingly tranquil amid the domestic and foreign buffeting.

"No, I'm not happy about it. But it was something that had to be said." That was his observation to reporters on his mobilization speech and it explains his philosophy. He has done about everything that could be done to bring about his defeat at the elections and he is not happy about it.

Palestine, Trieste, the Marshall plan, the Truman doctrine, selective service, universal military training, civil rights and the southern revolt, tax reduction votes and perhaps inevitable war—all have brought glare and censure down upon his head. He is not happy about it—but "it had to be said."

Whether he was right or wrong, that took courage in an election year.

Consensus among observers here is that congress eventually will go all-out to make this country militarily strong—that selective service will be passed (there is some doubt about universal military training)—and more and more millions will go for national defense—that foreign policy has jelled into military as well as economic defense of western Europe to stem the tide of communism—that the Marshall plan is well on the way to reality—that the world crisis is real and serious and that while war is not inevitable it is "not remote."

**Wellman Supt. Goes To Olton**



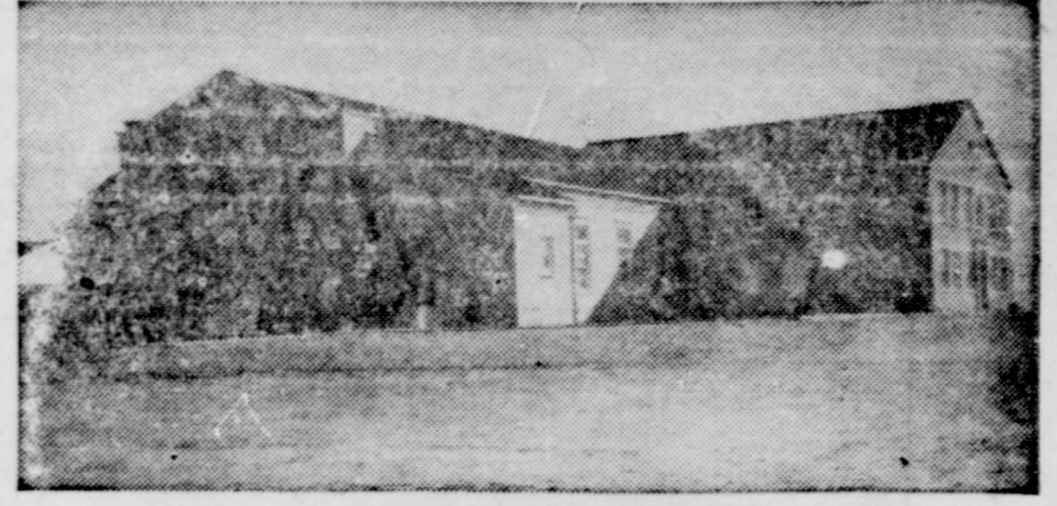
The people of the Wellman vicinity, as well as the people all over Terry county will sincerely regret that Superintendent J. T. Jones of the Wellman schools has decided to move to Olton next term, where he will have charge of the schools. Jones has been a great aid to the people, not alone of Wellman, but to the entire area, coming as he did just at the beginning of the war, he has been valuable in all kinds of drives, as was also his wife, who is also a teacher. They have three children, aged 8, 9 and 12.

Supt. Jones was born in Parker county, Texas in 1907, and taught in the schools of that and Jack county, ending with the superintendency of the Springtown school followed by work in the Quartermaster's depot in Fort Worth, coming from there to Wellman in 1942.

As back in central Texas, so also in Terry county, Jones proved himself not only as a builder of better school plants, but improvements as well in raising the standards of the school in which he taught or headed. He has been a power in the consolidation movement in Terry county, in which the county has reduced the number from more than a dozen struggling two and three teacher schools, to just four large consolidated districts, Wellman, Union, Meadow and Brownfield.

Even with enlarged facilities, new buildings, etc., the tax rate in the Wellman district has been lowered, believe it or not. For instance, the per acre tax rate on farm land has dropped from \$8 to \$7 per acre. It has grown from 12 to 16 teachers, and added credits in music, bookkeeping, home-making, speech, typing, algebra II, and commercial law. Some new teacherages and improvement on others. Work is to start in the immediate future on a \$81,000 elementary school building.

Mr. Jones stated to the Herald recently that he had enjoyed to the fullest, the fine co-operation of the students, graduates, the school board and the community in general, but felt he was getting a promotion in the larger Olton schools with 780 scolastics, 26



**CRESCENT HILL CHURCH OF CHRIST**

Lubbock Rd. At Oak St. Jimmy Wood Minister

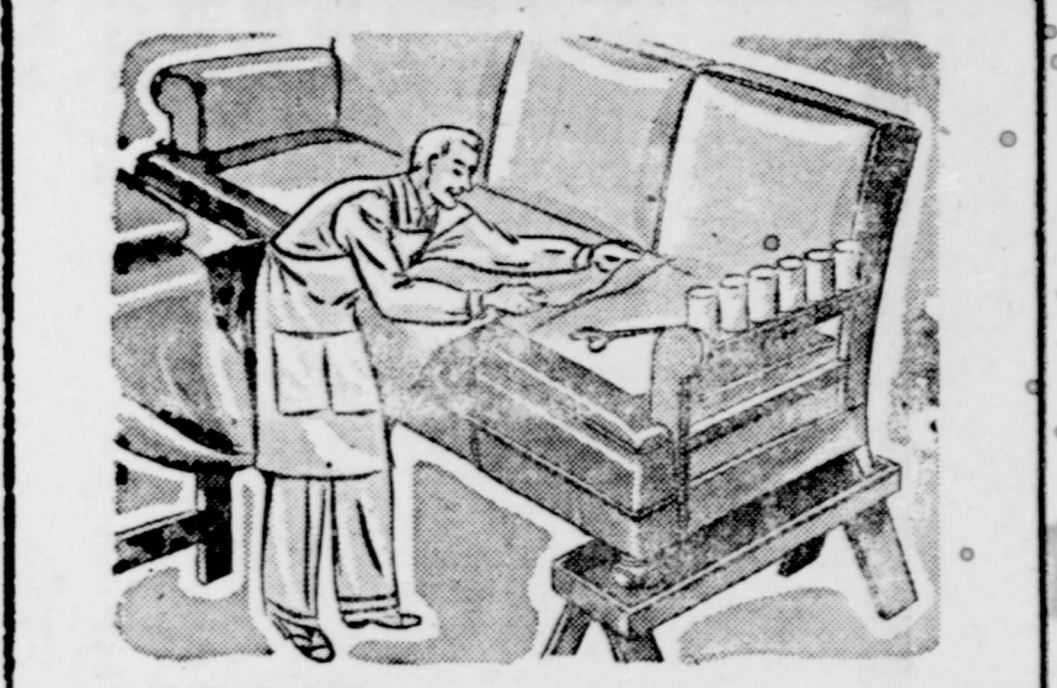
Bible Study Sunday 9:45 A. M.  
Preaching Sun. 10:45 A. M.  
Communion, Sun. 11:45 A. M.  
Young People Sun. 6:30 P. M.  
Even. Worship Sun. 7:30 P. M.

Communion, night, Sun. 8:15 P. M.  
Ladies Bible Class Tues. 3:00 P. M.  
Teacher's Class, Tues. 8:00 P. M.  
Mid-week Bible, Wed. 8:00 P. M.

teachers and a better salary. But that he was leaving with the kindest feelings to all.

Not only does he leave ties of friendship with Wellman, but he stated, that he has enjoyed very much working with the civic and charitable organizations at Brownfield, such as the Lions, Jaycees, Red Cross, USO, when they were staging drives for funds. He promises that he and family will return not seldom, but frequently to say hello to the fine people of this area. He will move to Olton as soon as housing for his family can be had.

Supt. Jones even stated that he like the oft encouragement of the Old Herald had given him (we wonder when?) He even likes our slogan: "not on the fence—a paper with an opinion and a purpose." Terry county friends of the Jones family will wish them much success and happiness in their new and larger undertaking at Olton.



**LET US RE-UPHOLSTER Your Old Living Room Suite In Our Workroom**

There are years of service remaining in your old living room suite. Wide choice of nice fabrics at these low prices.

- HERE'S WHAT WE DO:**
- Suite called for and delivered.
  - Old covering removed.
  - Frames repaired, braced and polished.
  - Webbing reset and replaced.
  - Springs replaced, reset, retied with special twine.
  - Platform completely rebuilt.
  - New seat cushions. Covered in fine fabric.

**FOWLERS**

FURNITURE AND UPHOLSTERY

709 Lubbock Road

**Loyalty Files Made Inviolable**

President Truman's abrupt halting of the surrender of loyalty files to publicity-seeking congressmen will have a beneficial effect on irresponsible smearing by some congressional committees. The President in effect told these committees, "hereafter if you want information about government employees, see me and I'll be the sole judge of whether it's in the national interest to make this information public." No doubt such men as the Rankins, Thomases and Hoffmans on Capitol Hill will sputter and bluster but Mr. Truman has ample precedent and constitutional authority to back up his unceremonious, and straightforward directive.

Secretary Marshall told a congressional committee that policy on Palestine was reversed upon his recommendation, that it was his conception that the government's highest duty was to prevent war if possible by every means—military preparedness, economic and political means. Palestine was becoming a Far East powder keg ready to explode. Partition had failed. He was thinking of America as a determining factor rather than of pleasing Jews or Arabs. So he suggested temporarily suspending partition in favor of a United Nations trusteeship in an effort to ease tension.

Under the theory that if we're going to prepare, let's do it right, some here are urging congress to go ahead and pass laws re-creating all war agencies, including rationing, price and wage controls, all to go into effect when and if there is a crisis. These laws also would include high income and excess profits taxes to be effective at the word of congress.

**Agriculture Funds Down**

The house has passed an agricultural appropriation bill amounting to \$545,533,453. This is about 90 million dollars less than the President's budget and \$36,933,198 less than the department got in fiscal 1948. But 65 million of the 99 million cut is another "bookkeeping" cut. Actual reduction is a little less than 35 million or about 4 per cent. The 65 million is for school lunches, which the house proposes to finance out of customs taxes.

Our inquiries last week of more or less lost and found nature about one Dr. McIlary, who promised a said editor a mess of fish, really went to town with results. No more than two hours after the Herald hit the streets than in walked the Doc. No fish, says he. But he made everything quiet satisfactory with us yes, entirely satisfactory: Thanks a lot.

**DODGE**

**Hundreds of Thousands of Times**

Hundreds of thousands of post-war Dodges are now in the hands of owners. They have advanced the average man's or woman's conception of a motor car. They have invaded all car markets regardless of price. They have delivered riding and driving qualities not known before. They continue to offer a new world of automobile experience. You can act with confidence on these facts today.

*Smoothest Car "Altogether"*

The Lowest Priced Car with Fluid-Drive

Sell your scrap metal now.

**BROWNFIELD MOTOR CO.**

7TH & BROADWAY STS. BROWNFIELD, TEXAS

# FURR'S

# SAVE OVER 40% WITH OUR CARD PLAN

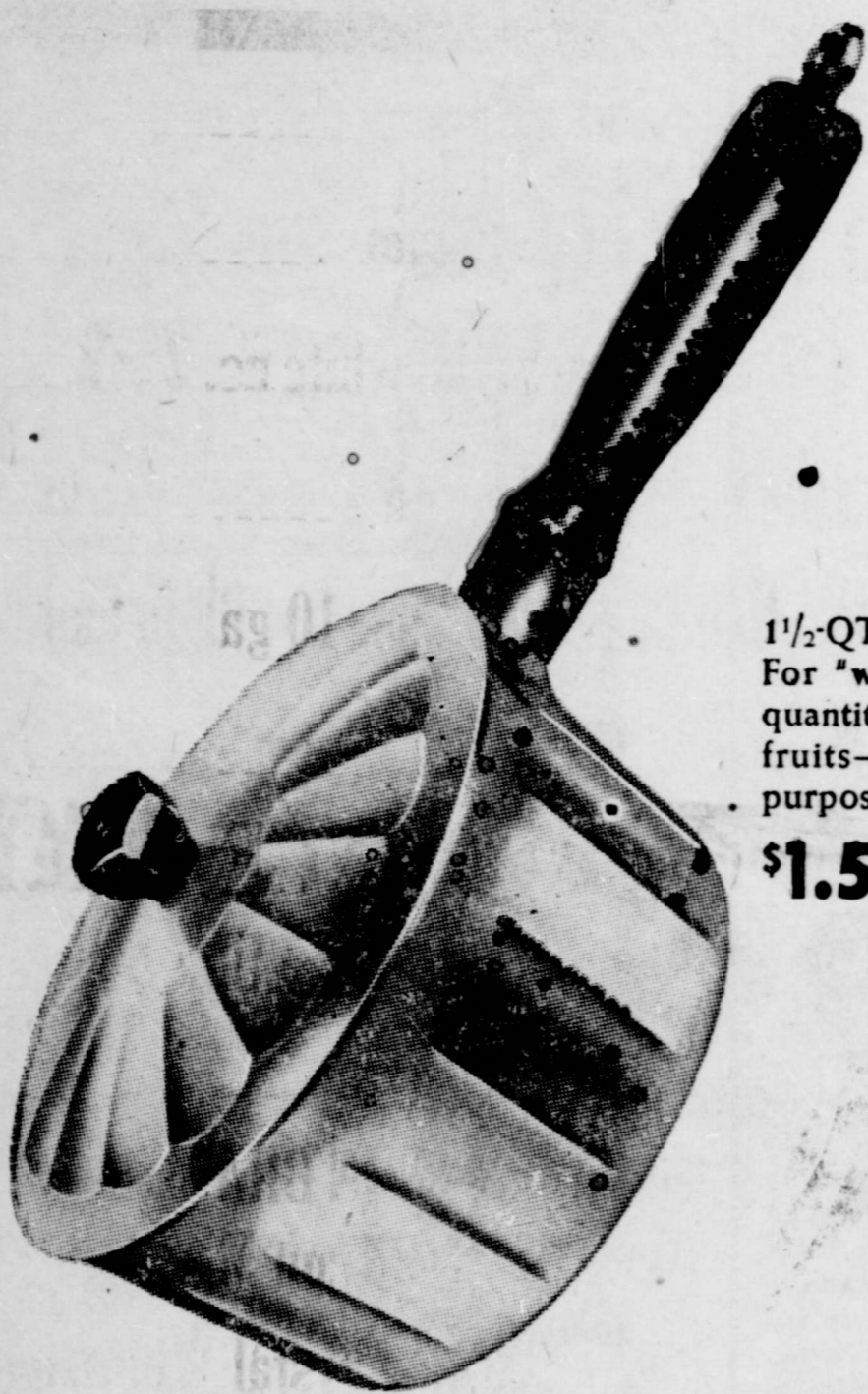
## ON HOUSEHOLD INSTITUTE *Waterless Cookware*

HERE'S HOW: Have the amount of every grocery, meat, and produce purchase you make in one of our stores, punched on your card. When you have \$5.00 in "punches," buy a Household Institute utensil at our money-saving card price.

HERE'S WHAT YOU GET: Top quality, thick, cast aluminum, with broad, flat bottoms that pick up heat quickly and distribute it evenly all over the pan and its contents; covers that keep steam and moisture within the pan, and baste the juices back into the food; and insulated handles that stay cool when used top-of-stove, and are easily removed for use in oven or replacement. A lifetime investment at a bargain price.

**1 1/2-QT. COVERED SAUCE PAN:** For "waterless" cooking smaller quantities of fresh vegetables and fruits—and all usual sauce pan purposes.

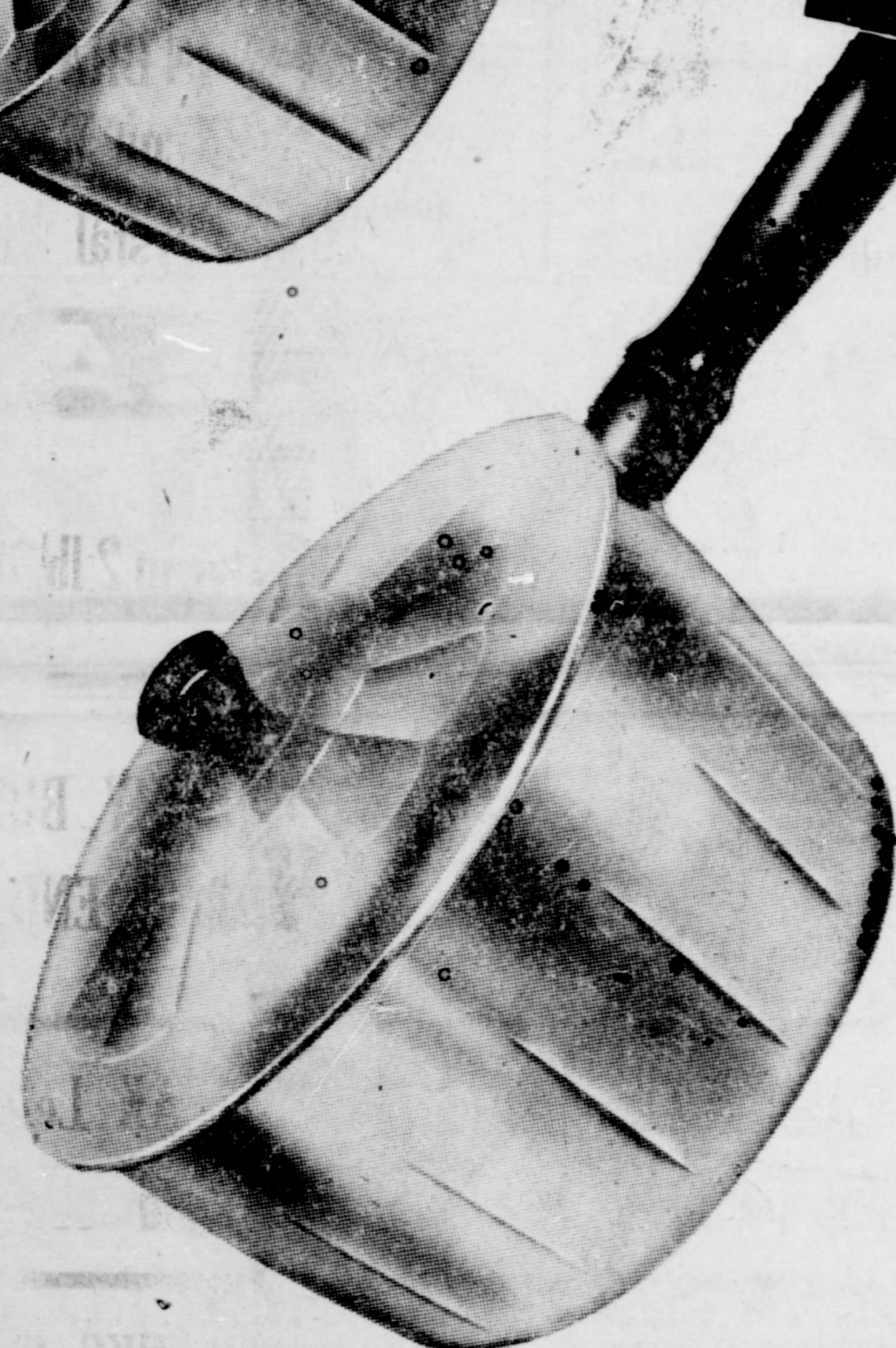
**\$1.59 WITH CARD    \$3.18 WITHOUT CARD**



**IDEAL FOR GIFTS**

**3-QT. COVERED SAUCE PAN:** For larger quantities—or larger sizes—of fresh vegetables and fruits cooked the "waterless" way. Ideal for deep-fat frying.

**\$1.99 WITH CARD    \$3.98 WITHOUT CARD**



**4 1/4-QT. DUTCH OVEN—SAUCE PAN:** For top-of-stove roasting and general purpose cooking, including "waterless" cooking of bulky foods.

**\$3.29 WITH CARD    \$5.98 WITHOUT CARD**



**9 1/2-INCH FRYING PAN:** Large, flat surface browns food quickly, uniformly, requires very little heat and frying fat.

**\$1.39 WITH CARD    \$2.76 WITHOUT CARD**



**9 1/2-INCH CHICKEN FRYER:** Ideal for Swiss steak, breaded chops, inexpensive meats and poultry; makes foods tender, tasty; juices stay in.

**\$2.39 WITH CARD    \$4.78 WITHOUT CARD**



USE THIS CARD 10c

**SAVE OVER 40% WITH THIS CARD**

HOUSEHOLD INSTITUTE®  
*waterless*  
COOKWARE

- SUPERB QUALITY 2.00
- COOL INSULATED HANDLES 2.40
- THICK ALUMINUM 2.60

EXAMPLE OF HOW YOU SAVE

10c
20c
40c
60c
80c
1.00
1.20
1.40
1.60
1.80
2.00
2.20
2.40
2.60
2.80
3.00
3.20
3.40
3.60
3.80
4.00
4.20
4.40
4.60
4.80
5.00

**9 1/2-IN. FRY PAN**  
Only \$1.39 WITH CARD  
WITHOUT CARD \$2.76

See Other Side for the savings on all the beautiful pieces.  
This card is good for are subject to change, date and any price

me only. Prices shown 's notice of expiration be posted in our stores.

**THIS IS THE CARD THAT SAVES YOU MONEY**

**SEE THE OTHER PIECES NOW ON DISPLAY**

**30 DAYS TRIAL**

*Satisfaction Guaranteed*

**BE SURE TO GET YOUR CARD TODAY**

*Low prices every day*

# FURR'S

# SUPER MARKETS

# ANOTHER FURR'S "SCOOP"!

## Get Your Aluminum Card Now!

HERE ARE THE ITEMS AT 40% SAVINGS BUY THE PURCHASE OF \$5 in merchandise

- 9 1/2 QUART FRYING PAN, \$1.39 with card \$2.78 without card
- 1 1/2 QUART COVERED SAUCE PAN \$1.59 with card \$3.18 without card
- 3 QUART COVERED SAUCE PAN \$1.99 with card \$3.98 without card
- 9 1/2 inch CHICKEN FRYER \$2.39 with card \$4.78 without card
- 4 3/4 quart DUTCH OVEN SAUCE \$3.29 with card, \$5.98 without card
- 8 CUP SIZE COFFEE MAKER \$1.99 with card, \$3.45 without card
- 9 CUP SIZE PERCOLATOR \$2.39 with card, \$4.00 without card.



"HOUSEHOLD INSTITUTE"  
Super Quality Thick Aluminum  
**WATERLESS COOKWARE**

Save Over **40%**

WITH OUR CARD PLAN, HERE'S HOW!  
Have the amount of every purchase you make in any department of any Furr's Super Markets punched on your card. When you have \$5 in "punches", buy any one household institute utensil at our money-saving card price.

USE THIS CARD TO SAVE OVER 40% WITH THIS CARD HOUSEHOLD INSTITUTE WATERLESS COOKWARE

EXAMPLE OF HOW YOU SAVE  
9 1/2-IN. FRY PAN \$3.80 with card \$2.28

TOP QUALITY THICK CAST ALUMINUM  
This Offer For A Limited Time ONLY!

## Snowdrift 3LB. CAN \$1.07 | Miracle whip PINT 33c

- TOMATOES No. 2 can 12 1/2c
- PEACHES Spiced, Del Monte No. 2 1/2 39c
- BLACKEYE PEAS Rio Star no. 2 can 15c
- BEANS & POTATOES Aywon, No. 2 can 15c
- APPLE BUTTER, Pallas, 29 9oz. jar 29c
- PEANUT BUTTER 12 oz. jar, Food Club 33c
- CAKE FLOUR Swansdown lg. 41c
- CORN Bridgford frez. lb. 19c
- TUNA Pirate no 1/2 can 41c

## SALMON Alaska Pink tall can 49c

**10 CENT FOOD SALE!**

Spinach, Sequoia no. 2 can 10c; Kraut, no 2 can 10c  
Hominy Staffo life no. 2 10c; Soup Camp. tom. 10c  
PORK & BEANS Whitson 12 oz. can 10c  
GREEN BEANS Rose Cut No. 2 can 10c  
TOMATO JUICE Libby's tall can 10c

- TREET 12 oz. can 49c
- OLEO TOP SPRED Pound 35c
- CORN Iowa Cream Style, white no. 2 can 15c
- GRAPE JUICE, Red Wing Pint 25c
- CHERRIES Red Sour pitted no. 10 gallon can \$1.43
- PICKLES sour or dill, quart 23c

## Peaches NILE No. 2 1/2 can 19c

- GEBHARDT'S CHILI plain can 36c
- HOLSUM OLIVES 1 3/4 oz. jar 17c
- AJAX cleaner can 12c
- HEINZ Baby Food 2 cans 15c
- LACHOY Chinese Dinner pkg. 53c
- SOAP, Palmolive bath bar 15c
- HEINZ Cream of Tomato soup can 12c
- JUNKET Rennet Tablets pkg. 11c
- SOAP Palmolive reg bar 10c
- SOAP Cashmere Bouquet 12 1/2c
- SOAP Crystal White giant bar 9c
- ORANGE JUICE FOOD CLUB 46 oz. can 25c
- SKINNERS RAISIN BRAN pkg. 15c
- GLDETYME Biscuit Mix pkg. 15c

## Fresh Fruits and Vegetables

- CAULIFLOWER Snowwhite lb. 12 1/2c
- SQUASH** South Texas White OR YELLOW lb. 5c
- AVOCADOES for salad's that's different lb. size 2 for 35
- CUCUMBERS Pound 15c
- CELERY California 15c
- LEMONS California Sunkist 10c
- SPINACH Texas Broadleaf pound 10c

## DRUG NEEDS

- Rubber Gloves Designed for dishwashing pr. 29c
- DEXTRI MALTOSE full pound 59c
- Modart Shampoo 75c size 39c
- GILLETTE BLUE BLADES 10's for 49c
- Wildroot Crain Oil Tonic, \$1 size 69c
- Pepsodent Tooth Pwdr. giant 39c
- FRESH Deodorant 50c size 43c

## Quality MEATS

- CHESE Food Club, American 2 lb. box \$1.05
- Ham** CUDAHY, BUTT END 55c SHANK END, Pound 49c
- BACON Sugar Cured Market Sliced, lb. 59c
- STEAK Loin or T-Bone Pound 69c
- PORK CHOPS Pound 63c
- FRANKS Skinless Pound 39c
- FRYERS Full Dressed And Drawn, lb. 69c

Low prices every day **FURR'S SUPER MARKETS**

### Sterling Parrish Seeks Re-Election In 30th Senatorial District

To The Voters of the 30th Senatorial District:

With deep appreciation for past support and for the privilege of serving the people of the 30th Senatorial District, I announce for reelection for a second term as your state senator. In my first term, I worked full time at the job of representing the people of my district and their best interests. In doing so I had but one measuring rod. That was the Golden Rule. I tried to represent my friends and neighbors in the district, where I was born and raised just as I would like for any one of them to represent me.

I shall continue working along that same course if I am reelected to serve a second term.

I was born and raised in Crosby County. I live at Lubbock, do a little farming and am associated with a partner in the insurance business. Most of my time, however, is devoted to the business of representing the people of this district in the Texas Senate. My record, of which I am extremely proud, is an open book. On the basis of that record, I solicit your support and will greatly appreciate your vote.

STERLING J. PARRISH

Mr. and Mrs. E. J. Cooper of Tahoka, Mr. and Mrs. N. E. Wood and children of Tahoka and Mr. and Mrs. Claude Nowlin of Lamesa visited in the Andrew Cooper and P. A. Nowlin homes Sunday.

### G I Question And Answer Department

Q How many persons in the United States are eligible for Veterans Administration benefits?

A It is estimated that more than 48,000,000 persons (living veterans and their dependents) may become eligible for VA benefits under present laws. By 1962, the figure is expected to rise to 62,300,000.

Q What is vocational advisement and why is it required under the Vocational Rehabilitation Act?

A The main purpose of Vocational advisement is to determine whether a disabled veteran should train for a profession or for a particular trade or occupation based on his previous education, experience, personal desires and ability. He is required to take a series of aptitude tests at a VA guidance center where he is interviewed and counseled by a group of highly trained specialists. This advisement is required under the program to insure the disabled veteran's proper rehabilitation.

Q I am the beneficiary of a \$10,000 National Service Life Insurance policy. Are the payments I am receiving subject to taxation?

A No. National Life Insurance as such, is exempted from taxation, except for Federal Estate Tax purposes.

Q I am going to school under the educational provisions of the G-I Bill and would like to know whether I have to get prior approval from VA if I wish to change my course?

A If you are studying in a public high school or college, you no longer will need prior approval from

### VETERANS NEWS

Seriously disabled World War II veterans, eligible for automotive vehicles at government expense, have until June 30, 1948, to submit their applications, the Veterans Administration reports.

VA advised these veterans to apply for their cars as soon as possible to allow ample time to process their applications.

The law provides an automobile or other conveyance at a cost not to exceed \$1,600, for any World War II veteran who lost or lost the use of, one or both legs at or above the ankle as the result of service-incurred injuries.

Veterans who lose subsistence, compensation or pension checks should notify immediately the appropriate Veterans Administration regional office.

VA said a veteran losing such a check should write a letter giving his full name and address, his claim number and the date and amount of the check. He should also state what the check was for and the circumstances surrounding its loss.

On being notified of the check's loss, VA determines first if it may have been found and returned to the U. S. Treasury. If so, the check will be re-mailed to the veteran. If not, VA will request the Treasury to stop payment and take necessary steps to reimburse the veterans.

A veterans who finds his check after reporting its loss should notify VA and hold the check until he has been advised by the Treasury that action to stop payment has been withdrawn.

VA before changing your course. The change now may be approved by your school.

# City Ordinance No. 1213

## LEGAL NOTICES

ORDINANCE NUMBER 1213  
NOTICE  
TO ALL PERSONS, FIRMS OR CORPORATIONS OWNING OR CLAIMING PROPERTY OR ANY INTEREST THEREIN ABUTTING THE PORTIONS OF STREETS HEREINAFTER NAMED:

You are hereby notified that the City of Brownfield has contracted for the improvement of the hereinafter described portions of streets or avenues, by excavating, grading, filling and paving the same with eight (8) inch compacted caliche base and Triple Asphalt Surface Treatment, and necessary work in connection therewith, in accordance with the plans and specifications approved by the City Council, on the hereinafter named portions of streets or avenues. The estimated amount per front foot proposed to be assessed against the owner or owners of abutting property, and the estimated total cost of such improvement on each said street or avenue or portion thereof, is as follows:

**Unit No. 1:** Eleventh Street from the south line of Powell Street to the north line of Hill Street; width, 39 feet face to face of curbs; total rate to be assessed against owners of abutting property, \$2.65 per front foot; total cost of improvements on such portion of street, \$1864.24.

**Unit No. 2:** Eleventh Street from the north line of Hill Street to the north edge of the pavement on Main Street; width face to face of curbs, 39 feet; total rate to be assessed against owners of abutting property, \$2.65 per front foot; total cost of improvements on such portion of street, \$2783.32.

**Unit No. 3:** Railroad Avenue from the north line of Ross Street to the south line of Lot 17, Block B, Santa Fe Addition; width face to face of curbs, 39 feet; total rate to be assessed against owners of abutting property, \$2.65 per front foot; total cost of improvement on such portion of avenue, \$3292.84.

**Unit No. 4:** Railroad Avenue from the south line of Lot 17, Block B, Santa Fe Addition to the south line of Lot 3, Block B, Santa Fe Addition; width face to face of curbs, 39 feet; total rate to be assessed against owners of abutting property, \$2.65 per front foot; total cost of improvement on such portion of avenue, \$4794.16.

**Unit No. 5:** Fifth Street from the southeasterly line of Railroad Avenue to the north line of Storey Street; width face to face of curbs, 49 feet; total rate to be assessed against owners of abutting property, \$3.15 per front foot; total cost of improvement on such portion of street, \$1577.85.

**Unit No. 6:** Fifth Street from the north line of Storey Street to the north edge of the pavement at Ripley Street; width, 49 feet face to face of curbs; total rate to be assessed against owners of abutting property, \$3.15 per front foot; total cost of improvement on such portion of street, \$3181.42.

**Unit No. 7:** Third Street from the south edge of the pavement on Lake Street to the north line of Powell Street; width face to face of curbs, 39 feet; total rate to be assessed against owners of abutting property, \$2.65 per front foot; total cost of improvements on such portion of street, \$1912.03.

**Unit No. 8:** Third Street from the north line of Powell Street to the north line of Hill Street; width face to face of curbs, 39 feet; total rate to be assessed against owners of abutting property, \$2.65 per front foot; total cost of improvements on such portion of street, \$2145.16.

**Unit No. 9:** Third Street from the south edge of the pavement on Tate Street to the north edge of the pavement on Cardwell Street; width face to face of curbs, 39 feet; total rate to be assessed against owners of abutting property, \$2.65 per front foot; total cost of improvements on such portion of street, \$1977.96.

**Unit No. 10:** Third Street from the south edge of the pavement on Cardwell Street to the north edge of the pavement on Buckley Street; width face to face of curbs, 39 feet; total rate to be assessed against owners of abutting property, \$2.65 per front foot; total cost of improvements on such portion of street, \$1977.96.

**Unit No. 11:** Third Street from the south edge of the pavement on Buckley Street to the north line of Reppito Street; width face to face of curbs, 39 feet; total rate to be assessed against owners of abutting property, \$2.65 per front foot; total cost of improvements on such portion of street, \$2008.97.

**Unit No. 12:** Second Street from the south line of Ross Street to the north line of Stewart Street; width face to face of curbs, 39 feet; total rate to be assessed against owners of abutting property, \$2.65 per front foot; total cost of improvements on such portion of street, \$1977.96.

**Unit No. 13:** Second Street from the north line of Stewart Street to the north line of Felt Street; width face to face of curbs, 39 feet; total rate to be assessed against owners of abutting property, \$2.65 per front foot; total cost of improvements on such portion of street, \$2671.77.

**Unit No. 14:** Second Street from the north line of Felt Street to the north edge of the pavement at Storey Street; width face to face of curbs, 39 feet; total rate to be assessed against owners of abutting property, \$2.65 per front foot; total cost of improvement on such portion of street, \$2671.77.

**Unit No. 15:** Second Street from the south edge of the pavement on Broadway to the north edge of the pavement on Tate Street; width face to face of curbs, 39 feet; total rate to be assessed against owners of abutting property, \$2.65 per front foot; total cost of improvements on such portion of street, \$1977.96.

**Unit No. 16:** Second Street from the south edge of the pavement on Tate Street to the north edge of the pavement on Cardwell Street; width face to face of curbs, 39 feet; total rate to be assessed against owners of abutting property, \$2.65 per front foot; total cost of improvements on such portion of street, \$1977.96.

**Unit No. 17:** Second Street from the south edge of the pavement on Cardwell Street to the north edge of the pavement on Buckley Street; width face to face of curbs, 39 feet; total rate to be assessed against owners of abutting property, \$2.65 per front foot; total cost of improvements on such portion of street, \$1977.96.

**Unit No. 18:** Second Street from the south edge of the pavement on Buckley Street to the north line of Reppito Street; width face to face of curbs, 39 feet; total rate to be assessed against owners of abutting property, \$2.65 per front foot; total cost of improvements on such portion of street, \$2008.97.

**Unit No. 19:** "A" Street from the south edge of the pavement on the Tahoka Road to the north line of Hill Street; width face to face of curbs, 39 feet; total rate to be assessed against owners of abutting property, \$2.65 per front foot; total cost of improvements on such portion of street, \$1900.84.

**Unit No. 20:** "A" Street from the north edge of the pavement on Main Street; width face to face of curbs, 39 feet; total rate to be assessed against owners of abutting property, \$2.65 per front foot; total cost of improvements on such portion of street, \$2043.89.

**Unit No. 21:** "A" Street from the south edge of the pavement on Tate Street to the north edge of the pavement on Cardwell Street; width face to face of curbs, 39 feet; total rate to be assessed against owners of abutting property, \$2.65 per front foot; total cost of improvements on such portion of street, \$1977.96.

**Unit No. 22:** "A" Street from the south edge of the pavement at the Cardwell-Buckley Alley to the north line of Buckley Street; width face to face of curbs, 39 feet; total rate to be assessed against owners of abutting property, \$2.65 per front foot; total cost of improvements on such portion of street, \$923.05.

**Unit No. 23:** "A" Street from the south line of Buckley Street to the south line of Reppito Street; width face to face of curbs, 39 feet; total rate to be assessed against owners of abutting property, \$2.65 per front foot; total cost of improvements on such portion of street, \$2522.65.

**Unit No. 24:** "B" Street from the south edge of the pavement on Broadway to the north edge of the pavement on Tate Street; width face to face of curbs, 39 feet; total rate to be assessed against owners of abutting property, \$2.65 per front foot; total cost of improvements on such portion of street, \$1977.96.

**Unit No. 25:** "B" Street from the south edge of the pavement on Cardwell Street; width face to face of curbs, 39 feet; total rate to be assessed against owners of abutting property, \$2.65 per front foot; total cost of improvements on such portion of street, \$1977.96.

**Unit No. 26:** "B" Street from the south edge of the pavement on Cardwell Street to the north line of Buckley Street; width face to face of curbs, 39 feet; total rate to be assessed against owners of abutting property, \$2.65 per front foot; total cost of improvements on such portion of street, \$1583.64.

**Unit No. 27:** "B" Street from the east return of the pavement on Second Street to the west return of the pavement on First Street; width face to face of curbs (including existing center strip of pavement) 45 feet; total rate to be assessed against owners of abutting property, \$2.05 per front foot; total cost of improvements on such portion of street, \$1700.89.

**Unit No. 28:** "B" Street from the east return of the pavement on Second Street to the west return of the pavement on First Street; width face to face of curbs (including existing center strip of pavement) 45 feet; total rate to be assessed against owners of abutting property, \$2.05 per front foot; total cost of improvements on such portion of street, \$1700.89.

**Unit No. 29:** "D" Street from the south edge of the pavement on Tahoka Road to the south line of Hill Street; width face to face of curbs, 39 feet; total rate to be assessed against owners of abutting property, \$2.65 per front foot; total cost of improvements on such portion of street, \$2215.68.

**Unit No. 30:** "D" Street from the south line of Hill Street to the south line of Main Street; width face to face of curbs, 39 feet; total rate to be assessed against owners of abutting property, \$2.65 per front foot; total cost of improvements on such portion of street, \$2215.68.

**Unit No. 31:** "D" Street from the south line of Main Street to the south line of Broadway; width face to face of curbs, 39 feet; total rate to be assessed against owners of abutting property, \$2.65 per front foot; total cost of improvements on such portion of street, \$2215.68.

**Unit No. 32:** "D" Street from the south line of Broadway to the south line of Tate Street; width face to face of curbs, 39 feet; total rate to be assessed against owners of abutting property, \$2.65 per front foot; total cost of improvements on such portion of street, \$2215.68.

**Unit No. 33:** "D" Street from the south line of Tate Street to the north line of Cardwell Street; width face to face of curbs, 39 feet; total rate to be assessed against owners of abutting property, \$2.65 per front foot; total cost of improvements on such portion of street, \$2541.87.

**Unit No. 34:** Ross Street from the east line of Fourth Street to the east line of Third Street; width face to face of curbs, 39 feet; total rate to be assessed against owners of abutting property, \$2.65 per front foot; total cost of improvements on such portion of street, \$1977.96.

**Unit No. 35:** Ross Street from the east line of Second Street; width face to face of curbs, 39 feet; total rate to be assessed against owners of abutting property, \$2.65 per front foot; total cost of improvements on such portion of street, \$2640.77.

**Unit No. 36:** Ross Street from the east line of First Street to the east line of Second Street; width face to face of curbs, 39 feet; total rate to be assessed against owners of abutting property, \$2.65 per front foot; total cost of improvements on such portion of street, \$2640.77.

**Unit No. 37:** Ross Street from the east line of Second Street to the east line of First Street; width face to face of curbs, 39 feet; total rate to be assessed against owners of abutting property, \$2.65 per front foot; total cost of improvements on such portion of street, \$2640.77.

**Unit No. 38:** Lake Street from the west edge of the pavement at Fourth-Fifth Alley to the east edge of the pavement on Fifth Street; width face to face of curbs, 39 feet; total rate to be assessed against owners of abutting property, \$2.65 per front foot; total cost of improvements on such portion of street, \$1124.80.

**Unit No. 39:** Hill Street from the east return of the pavement on Fourth Street to the centerline of Third Street; width face to face of curbs (including existing center strip of pavement) 45 feet; total rate to be assessed against owners of abutting property, \$2.05 per front foot; total cost of improvements on such portion of street, \$1700.89.

**Unit No. 40:** Hill Street from the east return of the pavement on Second Street to the west return of the pavement on First Street; width face to face of curbs (including existing center strip of pavement) 45 feet; total rate to be assessed against owners of abutting property, \$2.05 per front foot; total cost of improvements on such portion of street, \$1700.89.

**Unit No. 41:** Hill Street from the east return of the pavement on Second Street to the west return of the pavement on First Street; width face to face of curbs (including existing center strip of pavement) 45 feet; total rate to be assessed against owners of abutting property, \$2.05 per front foot; total cost of improvements on such portion of street, \$1700.89.

**Unit No. 42:** Hill Street from the east return of the pavement on Highway 51 to a line 165 feet east of the east line of "A" Street; width face to face of curbs (including existing center strip of pavement) 39 feet; total rate to be assessed against owners of abutting property, \$1.75 per front foot; total cost of improvements on such portion of street, \$5127.50.

**Unit No. 43:** Hill Street from a line 165 feet east of the east line of "A" Street to the west edge of the pavement on "B" Street; width face to face of curbs, 39 feet; total rate to be assessed against owners of abutting property, \$2.65 per front foot; total cost of improvements on such portion of street, \$2671.77.

**Unit No. 44:** Hill Street from the east edge of the pavement on "B" Street to the west line of "C" Street; width face to face of curbs, 39 feet; total rate to be assessed against owners of abutting property, \$2.65 per front foot; total cost of improvements on such portion of street, \$2671.77.

**Unit No. 45:** Hill Street from the west line of "C" Street to the west line of "D" Street; width face to face of curbs, 39 feet; total rate to be assessed against owners of abutting property, \$2.65 per front foot; total cost of improvements on such portion of street, \$2671.77.

**Unit No. 46:** Hill Street from the west line of "D" Street to the west line of "E" Street; width face to face of curbs, 39 feet; total rate to be assessed against owners of abutting property, \$2.65 per front foot; total cost of improvements on such portion of street, \$2671.77.

**Unit No. 47:** Cardwell Street from the east edge of the pavement on Fifth Street to the west edge of the pavement on Fourth Street; width face to face of curbs, 39 feet; total rate to be assessed against owners of abutting property, \$2.65 per front foot; total cost of improvements on such portion of street, \$1977.96.

**Unit No. 48:** Cardwell Street from the east edge of the pavement on Club Street to the east line of "C" Street; width face to face of curbs, 39 feet; total rate to be assessed against owners of abutting property, \$2.65 per front foot; total cost of improvements on such portion of street, \$2572.87.

**Unit No. 49:** Cardwell Street from the east line of "C" Street to the east line of Ballard Street; width face to face of curbs, 39 feet; total rate to be assessed against owners of abutting property, \$2.65 per front foot; total cost of improvements on such portion of street, \$2572.87.

**Unit No. 50:** Cardwell Street from the east line of Ballard Street to the east line of "D" Street; width face to face of curbs, 39 feet; total rate to be assessed against owners of abutting property, \$2.65 per front foot; total cost of improvements on such portion of street, \$2572.87.

**Unit No. 51:** Buckley Street from the east edge of the pavement on First Street to the center line of Block 4, East Addition; width face to face of curbs, 39 feet; total rate to be assessed against owners of abutting property, \$2.65 per front foot; total cost of improvements on such portion of street, \$3628.10.

**Unit No. 52:** Buckley Street from the center line of Block 4, East Addition to the east line of "A" Street; width face to face of curbs, 39 feet; total rate to be assessed against owners of abutting property, \$2.65 per front foot; total cost of improvements on such portion of street, \$2708.66.

**Unit No. 53:** Buckley Street from the east line of "A" Street to the east line of Bell Street; width face to face of curbs, 39 feet; total rate to be assessed against owners of abutting property, \$2.65 per front foot; total cost of improvements on such portion of street, \$2572.87.

**Unit No. 54:** Buckley Street from the east line of Bell Street to the east line of "B" Street; width face to face of curbs, 39 feet; total rate to be assessed against owners of abutting property, \$2.65 per front foot; total cost of improvements on such portion of street, \$2572.87.

**Unit No. 55:** Buckley Street from the east line of "B" Street to the east line of Club Street; width face to face of curbs, 39 feet; total rate to be assessed against owners of abutting property, \$2.65 per front foot; total cost of improvements on such portion of street, \$2572.87.

**Unit No. 56:** Buckley Street from the east line of Club Street to the east line of "C" Street; width face to face of curbs, 39 feet; total rate to be assessed against owners of abutting property, \$2.65 per front foot; total cost of improvements on such portion of street, \$2572.87.

**Unit No. 57:** Buckley Street from the east line of "C" Street to the west line of Ballard Street; width face to face of curbs, 39 feet; total rate to be assessed against owners of abutting property, \$2.65 per front foot; total cost of improvements on such portion of street, \$2572.87.

**Unit No. 58:** Buckley Street from the west line of Ballard Street to the west line of "B" Street; width face to face of curbs, 39 feet; total rate to be assessed against owners of abutting property, \$2.65 per front foot; total cost of improvements on such portion of street, \$2603.88.

**Unit No. 59:** Reppito Street from the east line of "B" Street to the east line of "C" Street; width face to face of curbs, 39 feet; total rate to be assessed against owners of abutting property, \$2.65 per front foot; total cost of improvements on such portion of street, \$2572.87.

**Unit No. 60:** Reppito Street from the east line of "C" Street to the east line of Club Street; width face to face of curbs, 39 feet; total rate to be assessed against owners of abutting property, \$2.65 per front foot; total cost of improvements on such portion of street, \$2572.87.

**Unit No. 61:** Reppito Street from the east line of Club Street to the east line of "C" Street; width face to face of curbs, 39 feet; total rate to be assessed against owners of abutting property, \$2.65 per front foot; total cost of improvements on such portion of street, \$2572.87.

**Unit No. 62:** Reppito Street from the east line of "C" Street to the east line of Club Street; width face to face of curbs, 39 feet; total rate to be assessed against owners of abutting property, \$2.65 per front foot; total cost of improvements on such portion of street, \$2572.87.

**Unit No. 63:** Lons Street from the west line of "B" Street to the west line of Club Street; width face to face of curbs, 39 feet; total rate to be assessed against owners of abutting property, \$2.65 per front foot; total cost of improvements on such portion of street, \$2572.87.

**Unit No. 64:** Lons Street from the west line of Club Street to the west line of Ballard Street; width face to face of curbs, 39 feet; total rate to be assessed against owners of abutting property, \$2.65 per front foot; total cost of improvements on such portion of street, \$2572.87.

**Unit No. 65:** Lons Street from the west line of Ballard Street to the west line of "B" Street; width face to face of curbs, 39 feet; total rate to be assessed against owners of abutting property, \$2.65 per front foot; total cost of improvements on such portion of street, \$2572.87.

### The Low Down From Hickory Grove

I been reading where a fellow painted a picture in San Diego it took the prize, also it touched off a debate. One uncouth person says the picture looks to him to be an impacted tooth with a cavity but his wife says, No, it is a scorched soup bone, she says. Others say it is a typographical error, but the Art Society says, tui! tui! it is "Hope Deferred," anybody should see that, just like the artist labeled it. But one stubborn fellow there still clings to the typographical error theory that "hope" should have read "dope."

Trying to look high-brow, statistically speaking and not knowing just how also being cflor blind our Art patrons and critics are crowding all others as America's greatest suckers group.

But enough on art and on to Congress. Folks down there, brought up in the city, are talking learned like and profound on the farm questions how to teach the farmer about rotating crops how much fertilizer, etc. etc. And to get the help to do these and 100 other profound things planned from A to Z the Civil Service is scouring the country for stenographers, Ph.D.'s, all kinds of help. Do you mean to intimate, says Henry, that Congress ranks up there in second place, alongside the art crowd? No, I says, us voters are in second place Congress is only third.

Yours with the low down,  
JO SERRA

### Local Man Buys Bull From Tech

Three yearling registered Aberdeen Angus bulls bred and raised under the supervision of the Texas Technological College animal husbandry department, were sold recently at top prices. W. L. Stangel, dean of agriculture, reported.

The young bulls which weighed just under a 1,000 pounds at the time of sale were purchased by Money Price, Brownfield; Carden Green of Lubbock, and J. B. Jeffus of Plainview.

abutting property, \$2.65 per front foot; total cost of improvements on such portion of street, \$2572.87.

**Unit No. 62:** Reppito Street from the east line of "C" Street to the west line of Ballard Street; width face to face of curbs, 39 feet; total rate to be assessed against owners of abutting property, \$2.65 per front foot; total cost of improvements on such portion of street, \$2008.97.

**Unit No. 63:** Lons Street from the west line of "B" Street to the west line of Club Street; width face to face of curbs, 39 feet; total rate to be assessed against owners of abutting property, \$2.65 per front foot; total cost of improvements on such portion of street, \$2572.87.

**Unit No. 64:** Lons Street from the west line of Club Street to the west line of Ballard Street; width face to face of curbs, 39 feet; total rate to be assessed against owners of abutting property, \$2.65 per front foot; total cost of improvements on such portion of street, \$2572.87.

A hearing will be given and held by and before the Governing Body of the City of Brownfield, Texas on the 11th day of May, 1948, at Brownfield in the City Hall in the City of Brownfield, Texas, to own or claiming any property abutting upon said portions of streets and to all owning or claiming any interest in any such property. At said time and place all owning or claiming any such abutting property or any interest therein shall be and appear and will be fully heard concerning said improvements, the cost thereof, the benefits to be assessed therefor, the benefits to the respective parcels of abutting property by means of the improvements on said streets; and concerning the regularity, validity and sufficiency of the contract for, and all proceedings relating to such improvements and proposed assessments therefor; and concerning any matter as to which they are entitled hearing under the law in force in the City and under the proceedings of the City with reference to said matters. Following said hearings, assessments will be levied against abutting property and owner or owners thereof, and such assessments, when levied, shall be a personal liability of the owners of such property and a first and prior lien upon the property as provided by the law in force in the City and under which the proceedings are taken, being the Act passed at the First called Session of the 40th Legislature of the State of Texas and known as Senate Bill 68.

In all said matters and things, all owning or claiming any such property or interest therein, as well as all others in anywise interested, will take NOTICE.

Done by order of the City Council of the City of Brownfield, Texas, this 12th day of April, 1948.

ATTEST:  
E. D. Jones, City Secretary, City of Brownfield Texas.  
TOM MAY, Mayor, City of Brownfield, Texas.

(seal) 41c

**The Most Amazing FM TABLE MODEL Ever Offered!**

**Genuine PHILCO**

**EASY TERMS**



**PHILCO 472**  
Sensational new Philco F. M. Band Circuit—compares with high priced P. M. receivers in performance. Amazing fidelity of tone usually attained only in cabinets of greater size.  
EXTRA VALUE AT NO EXTRA COST  
Only Was \$83.75 Now \$59.95

**PHILCO Extra Value Sale!**  
It's here—extra value at no extra cost to you. Don't miss our Philco Extra Value sale—32 new 1948 models to choose from—\$19.95 up. Come in now!



**PHILCO 1259**  
Thrilling Philco Automatic Table Model Radio-Phonograph. Streamlined Walnut Cabinet of stunning simplicity. New Velvet-Smooth Philco Record Changer that plays up to 12 records at one loading!  
Was \$159.95 Now \$119.95



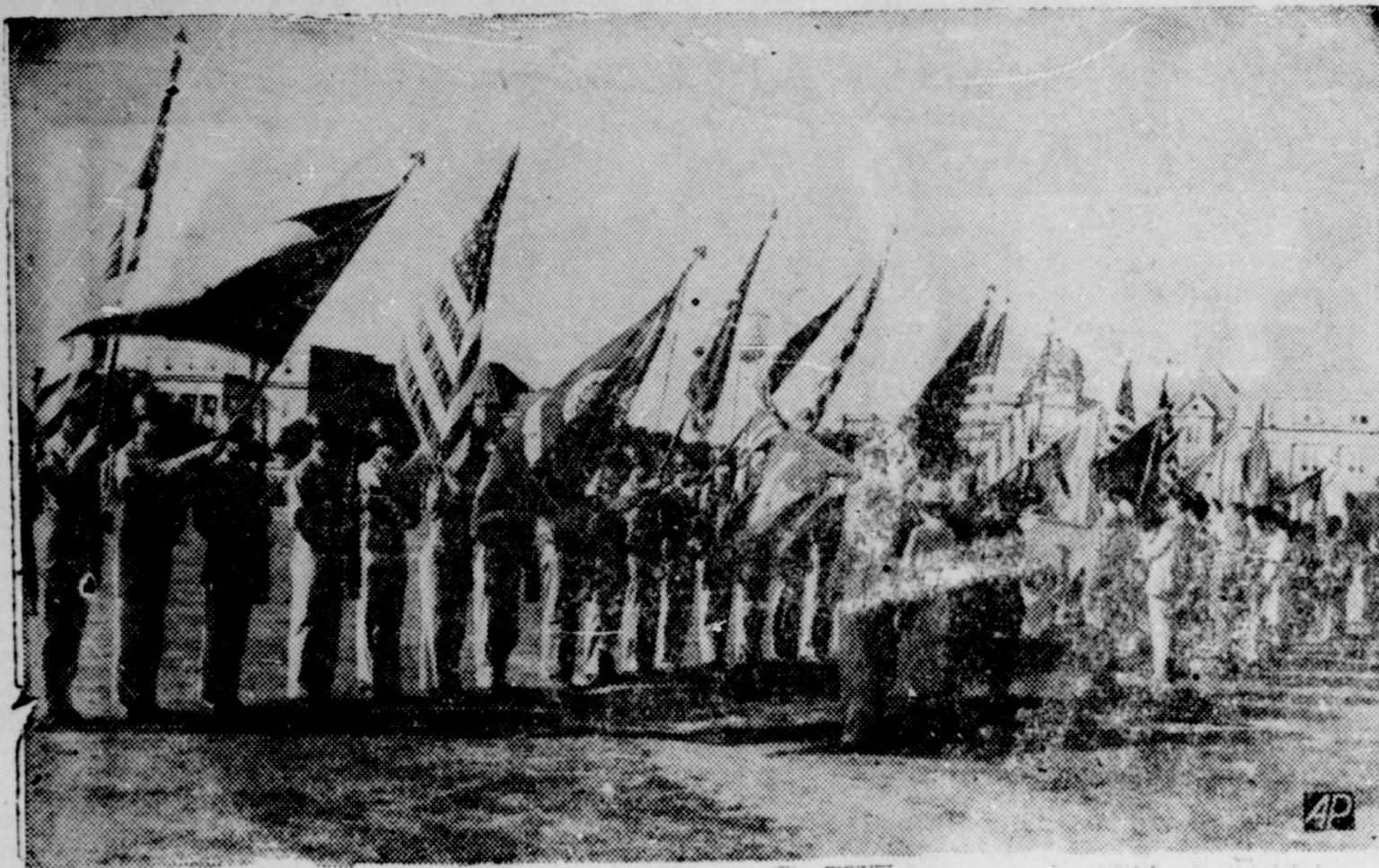
**PHILCO 1262**  
Amazing Philco Automatic Radio Phonograph Console value. Priced for modest budgets—full-size with all the quality features that have made Philco famous!  
Was \$159.95 Now \$119.95

**EXTRA VALUE AT NO EXTRA COST**

**Special Clearance!**  
Original Bourgain Floor Samples  
Don't miss this chance to save!

**COPELAND HARDWARE**





**THE OLD FLAGS PASS**

The Cadet Corps of the Texas A & M College, College Station, Texas, is presented with ten new flags, representing every branch of service, at ceremonies during San Jacinto Day, April 21,

at the cadets' main drill field. The flags were the gifts of former student and the State Federation of Texas A & M Mothers Club. In the group presenting the flags are Taylor Wilkins of the college faculty; Mrs. Gibb Gilchrist, wife

of the college president; A. E. Hinman, Corpus Christi, president of the Former Students Association, and Mrs. H. C. Huddleston, Fort Worth, president of the State Federation of Texas A & M Mothers' Clubs. (AP Photo)

**Strange Isms Invade Texas**

Strange "isms" are invading the South and are finding some support.

Henry Wallace persistent critic of his own country and friend of Soviet Russia, got his new party organized in Texas Sunday.

Some 500 delegates met in Houston and, following the bidding of their leaders, set up the party machinery.

And in the course of their proceedings, they adopted a platform or program of action. What do they propose to do? Well, here are some of their proposals:

1. To abolish segregation of races in education. In other words, they would prohibit white schools and Negro schools. They would throw Negroes and whites together in every school room in Texas where both races exist, and they would have white teachers and Negro teachers in every school. School boards would not be allowed to consider the matter of race or color in employing teachers. If any board could be shown to have done so, its members would be thrown into jail.

2. The pool tax would get abolished as a prerequisite to voting. The State's right to prescribe the

qualification for voting would be denied and outlawed. The federal government would attend to that.

3. The voting age would be reduced from 21 to 18 years. Mere school children would be given the privilege of voting--and not only the school children 18 years of age or older, but every Brazos Bottom Negro, every illiterate Mexican youth, over 18 years of age, whether they had ever seen inside a schoolhouse or not, could vote not only on candidates but on proposed constitutional amendments and grave questions of state. The Wallace proposal would open the polls to great masses of illiterate and irresponsible voters who would know nothing whatever about the candidates or the issues involved. They would become the pawns of scheming and corrupt politicians and would make real democratic government a farce.

4. The Wallace program declare "steadfast opposition to universal military training and national draft." It would fight every move to prepare for war and would render this country helpless in case of attack by a powerful foreign foe.

5. The party affirms its "affiliation with the principles of the C. I. O., the A. F. L. and others labor organization." It says nothing about "affiliation" with the group of unorganized labor, with farmers' organizations, the little business man, or the common people of America the honest red-blooded, liberty loving people who have made America what she is. And so this is Wallacism, as enunciated and proclaimed over its own signature.

Do we want it down here in Texas? Not as long as we are sane. Lynn County News

A barbecue held on the U. D. Sawyer ranch Tuesday evening was attended by Mr. and Mrs. J. M. Telford, Mrs. M. L. Copeland and Mrs. Eldora White of Brownfield.

Weekend visitors in Amarillo were Mr. and Mrs. Doug Jones and daughters.



One of the top-tight jesters of Gainesville Community Circus is Paul Nieball, Jr. He is one of the more than two score funny fellows who take part in the two hour program which also features aerial, acrobatic and clown acts and highly trained animals.

His show will be at Lubbock Fair grounds next Friday and Saturday, May 7-8.

**PLAINS NEWS**

Mrs. Stanlee Bowers spent a few days the first of the week in Lubbock visiting her children.

Mr. and Mrs. John McKee visited in Midland Saturday night and Sunday.

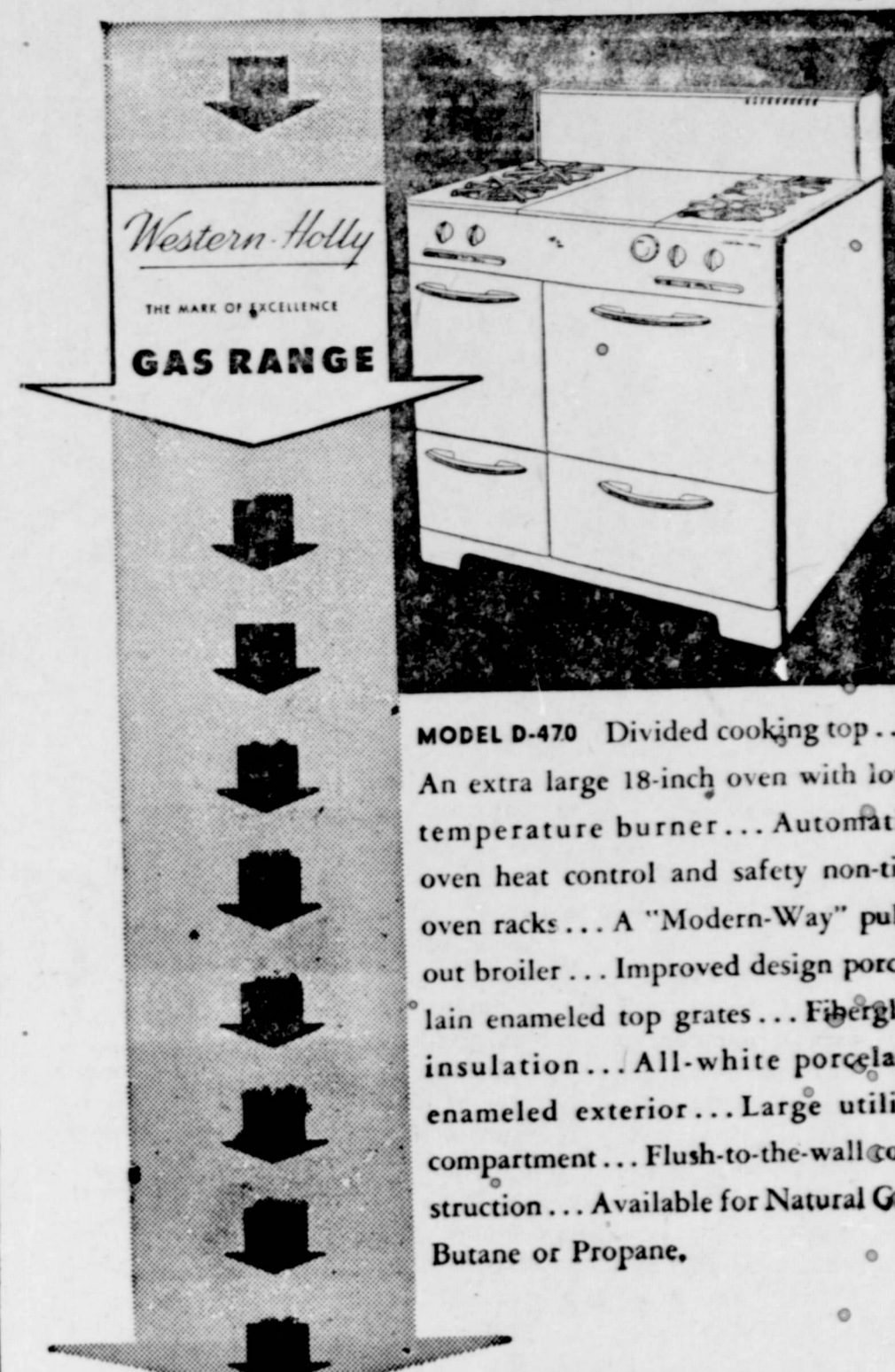
Mr. and Mrs. Jim Story were fishing near Abilene over the week end.

Mrs. J. H. Morris and Mrs. John Camp and son visited in Odessa over the weekend.

Plains chapter No. 882, Order of the Eastern Star met in regular session Monday night with 14 members and three visitors present. Refreshments were served by Mr. and Mrs. S. A. Bowers and Mrs. Norelle Sloan.

Mr. and Mrs. Joe McLaren and daughter were weekend guests in Lubbock.

Mr. and Mrs. Darton are vacationing in Hot Springs, N. M.



**GENE GUNN TIRE STORE**

Wellman Whisperings GOMEZ GOSSIP

Dr. and Mrs. Muri Brown, who are establishing a home in Denver City were guests of his aunt, Mrs. E. O. Pentecost and family Sunday. Also visiting in the Pentecost home were a sister, Mrs. I. T. Holden, of Coleman and brother, B. H. Jones of Tahoka.

L. C. Bennett and family visited in the Carl Watkins and Bob Watkins home Sunday.

Bro. Sloan of Houston who has recently closed a revival service at the Baptist Church has returned to his home. Several conversions and additions to the church were made during the revival services.

Mrs. J. W. Cotten of Seagraves and daughter of Roswell, N. M. visited the Loyde Fosters Saturday. Vilda Loyde returned home with her grandmother for a week and visit in Seagraves.

Mrs. Geneva Emerson is recovering from a serious illness resulting from an attack of the measles.

The Wellman Elementary school presents a number of plays on Friday night, May 7 in the Wellman high school auditorium. The choral club will present a program and the Wellman Boy Scouts plan a "Shindig" on the same program.

Mrs. Ione Cruz of Amarillo visited her parents, Mr. and Mrs. J. W. Bishop Sunday.

The Wellman high school juniors and seniors held their annual banquet at the Esquire April 30. A hilarious program was given and a small get together was given in the Harmon Scales home after the banquet, by Marjorie and Patsy Scales.

Mr. and Mrs. Joe Howton entertained the Younger set with a lawn party on Saturday night May 1. Games of 42 were played by parents attending.

Mrs. J. T. Jones and Peggy were hostess to the small fry and parents Saturday night, May 1. A large crowd attended, some staying the night with Mr. and Mrs. Jones and children.

Mrs. J. A. Roberts and Miss Letha Nell Roberts of Coahoma spent the weekend in the home of her daughter, Mrs. E. R. Lay and family. They all visited Elnor Roberts in Seagraves Sunday.

Mr. and Mrs. Jack Mason entertained with a "42" party last Thursday night. Mrs. Jim Nelson of Brownfield demonstrated Stanley products. Those attending were Messrs. and Mesdames T. O. Oliver, R. J. Rowden, Alfred Tittle, Walter Paden, Ray Hughlett, Earl Brown, H. H. Covert, Raymond Wiggins.

Rev. and Mrs. Louie Dendy of Brownwood are the proud parents of a daughter, Donna Ann, born April 30. Mrs. Dendy is the former Wanetah McLeroy.

Gordon Newsom has sold his farm near Gomez to Clay Garner and moved to Brownfield.

The teachers and children of Gomez School went to McKenzie State Park at Lubbock last Friday for a picnic.

Rev. Tom Burns of Shamrock is the new pastor of the Gomez Baptist Church, and will move here as soon as school is out. Rev. and Mrs. Burns have two daughters, age 14 and 16.

The WMU Missionary Society of Brownfield association met at the Gomez church last Thursday for an all day meeting. The book, "In Royal Service," was reviewed by Mrs. J. H. McClain of Waco, the State Field representative. A paper sack lunch was served at noon. Sixty persons attended the meeting which was presided over by Mrs. W. H. Kenley. Nine societies were represented.

**Remember Mother May 9**



WITH **Permanized MENGEL Furniture**

this lovely durable furniture is taking the nation by storm—Can be had in beautiful dark mahogany as well as the new bleached woods.

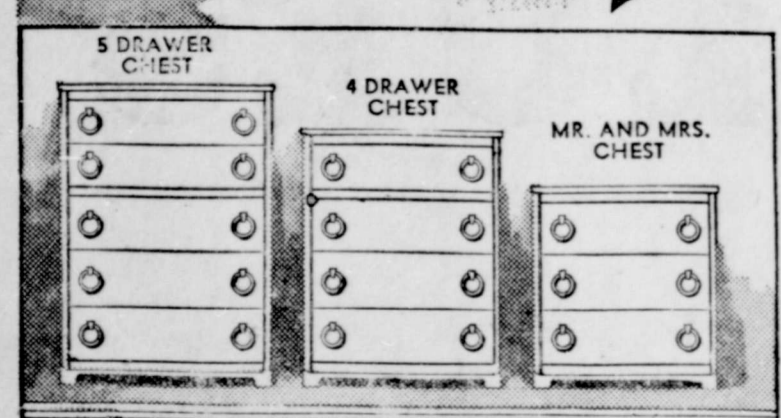
Comes in open stock: Order any pieces you want. Equally smart for bedrooms, living rooms and dining room.



*Newer than New* Exactly as illustrated

**Blond Oak Modern**

Choose the smart new Mr. and Mrs. CHESTS grouped with other pieces—or, choose the pieces that fit your bedroom and make it as beautiful as you have dreamed it might be. Smart new Mr. and Mrs. CHESTS... a stunning Dressing Table... large Plate Glass Mirrors and a new style Brass Drawer Pull that will not mar the front of the pieces.



**HERE IN BROWNFIELD!**  
**HEART OF TEXAS SHOWS CARNIVAL**  
 ALL SCHOOL CHILDREN, CITY AND RURAL ADMITTED FREE AT GATE Fri.  
 TWO MORE DAYS, FRI. & SAT.  
 Modern Shows!—Thrilling Rides!  
 Located at the Y North of town  
 COME ONE! COME ALL!

**"SPEEDY" PORTWOOD MOTOR CO.**

IF I LIKE MY SPEEDOMETER SET BACK 16 MILES PLEASE  
 LOOK, MA'AM— I'D BE GLAD TO DO IT, BUT— WHY?  
 YOU SAID YOURSELF I SHOULD HAVE MY CAR LUBRICATED EVERY THOUSAND MILES— WELL, I'M SIXTEEN MILES OVER MY THOUSAND AND—  
 YOU DON'T HAVE TO BE SO EXACT, MA'AM, BUT LETTING YOUR FRIENDLY FORD DEALER LUBRICATE YOUR CAR REGULARLY IS THE RIGHT IDEA AS IT WILL GIVE IT LONGER LIFE AND BETTER PERFORMANCE.

1947— FORD TUDOR  
 1946— FORD CLUB COUPE  
 1946— FORD CLUB COUPE  
 1946— FORD FORDOR  
 1942— FORD TUDOR  
 1942— FORD TUDOR  
 1942— FORD TUDOR  
 1942— FORD TUDOR  
 1941— FORD TUDOR  
 1941— FORD TUDOR  
 1940— FORD TUDOR  
 1937— PLYMOUTH TUDOR  
 1946— Chevrolet Truck LWB  
 1946— Chevrolet truck LWB with grain bed  
 1937 FORD 1/2 ton PICKUP

**Approved PURINA CUSTOM MIXING SERVICE**

**LET US MAKE YOUR GRAIN WORTH MORE**

We are equipped to grind your grain and balance it with a Purina Concentrate for more meat, milk or eggs. We use approved Purina formulas. See us today.

**Sonny's Feed Store**  
 1001 West Main

---

**Cesspool & Septic Tanks Cleaned And Repaired All Inspection Free**  
**A. A. POWERS**  
 1211 W. Lake St. Brownfield

**J. B. KNIGHT**  
 HARDWARE • FURNITURE • IMPLEMENTS  
 Liberal Terms on all Household Appliances  
 BROWNFIELD PHONE 90 - SEMINOLE PHONE 333

**Ford PORTWOOD MOTOR CO.**  
 Telephone 306 • 4th AND HILL

It's Lots Of Fun  
 When You Know  
 the



# RIGHT ANSWERS

... And it's worth \$50.00 to you if you know the right answer when we phone and ask you who's your "NEIGHBOR FOR THE MONTH." BUT — you MUST answer your phone when we call you! Last month we made several calls before finding the winner. So, be sure you answer your phone when we start calling for right answers to your NEIGHBOR FOR THE MONTH.

Results of last month's contest:

369-M ----- No Answer	214-M ----- No Answer	103-R -----
235-W -----	362-M -----	57-J ----- No Answer
111-W -----	186-R -----	177-M ----- No Answer
106-W ----- No Answer	156-J ----- No Answer	356-J ----- No Answer
	905-F12 -----	
	338-W ----- Miss Dorothy Short ----- The Winner !	

MRS. EVA BAGGETT WAS YOUR NEIGHBOR FOR APRIL..... WHO WILL IT BE FOR MAY????

## WATCH FOR THE CLUES

SPONSORED BY

# HAYNE'S BAKERY

Sunday guests of Mr. and Mrs. Harvey Gage were Mr. and Mrs. Earl Chester and son, Mr. and Mrs. Dick West and Mrs. S. J. Billings of Sudan.

Mr. and Mrs. William Thurman and Mr. and Mrs. Kenneth Hodges visited Mrs. Thurman and Mrs. Hodges parents in Hale Centings over the weekend.

Weekend guests of Mr. and Mrs. A. M. Muldrow were Mrs. Muldrow's parents, Mr. and Mrs. R. C. Kennedy of Pauls Valley, Oklahoma.

Mrs. Zuma Burk, of Phoenix, Arizona, visited last week with her niece, Mrs. Roy Harris and Mrs. W. O. Helms and Mrs. J. M. Bennett.



# Look who gets squeezed!

Union leaders representing less than one-tenth of railroad employees reject recommendations of President's Emergency board—refuse to negotiate except on their own terms—threaten to paralyze nation by strike!

THE LEADERS of three railroad unions, representing less than one-tenth of all railroad employees, have called a railroad strike that would paralyze the nation. These leaders refuse to accept a 15 1/2 cent hour wage increase retroactive to November 1, 1947. This increase was recommended by an impartial Emergency Board appointed by President Truman.

Unions refuse rules discussion. Certain rules changes demanded by these union leaders—which would increase wages still further—were recommended by the Board. But the union leaders want more—they demand that the railroads put into effect ALL the changes they asked for, including those the Board felt should be denied.

On top of this, they insist that certain rules changes proposed by the railroads be withdrawn in spite of the fact that the Board recommended them! These union leaders have refused to negotiate except upon these arbitrary terms.

Greater wage increase not justified. Engineers and firemen are among the highest paid of all employees in America, as figures in the box show. This strike threat doesn't justify giving a greater increase than other railroad workers received.

Emergency Boards are a means provided by the Railway Labor Act in the public interest to avoid strikes. The President's Board

after hearing evidence for 33 days, made recommendations based on all the facts in the case. The railroads have accepted these recommendations.

Who's to blame? Although they deplored so large an extra cost burden, the railroads accepted the report of the Board because they felt it was in the public interest to uphold the spirit and intent of the Railway Labor Act.

In contrast, this small group of railroad union leaders are attempting to flout the intent and spirit of the Railway Labor Act, and dictate their own terms. They have dictated a paralyzing railroad strike.

You will be the victim! How long will the American public stand for the undemocratic, arbitrary, and abusive use of the right to strike and the disregard of the obligation to provide transportation? How long can the American people permit a few dictatorial union leaders to defy the processes provided for peaceful settlement of disputes?

Force seldom produces settlements that are either fair or lasting. Moreover, a point is often reached when personal interests must be held subordinate to the greater public welfare. That is why the railroads have accepted the Emergency Board recommendations. That is also why the leaders of these three unions should reconsider their decision to call a paralyzing strike.

### Compare these wages with what you make!

Type of Employee	1939 Average Annual Earnings	1947 Average Annual Earnings	1947 Average Annual Earnings with Wage Increase Recommended by President's Board
<b>ENGINEERS</b>			
Road Freight (Local and Way)	\$3,066	\$6,152	\$6,785
Road Passenger	3,632	5,391	6,025
Road Freight (Through)	3,147	4,682	5,167
Yard	2,749	4,078	4,740
<b>FIREMEN</b>			
Road Freight (Local and Way)	\$2,738	\$4,721	\$5,310
Road Passenger	2,732	4,544	5,176
Road Freight	2,069	3,450	3,914
Yard	1,962	3,156	3,605

Railroad wages computed from Interstate Commerce Commission Statement M-390



105 WEST ADAMS STREET • CHICAGO 3, ILLINOIS

We are publishing this and other advertisements to talk with you at first hand about matters which are important to everybody.

**B. T. RUCKER**  
Licensed State Land Surveyor  
And Irrigation Specialist  
PHONE 2-5331  
2421 - 25th St. — Lubbock, Tex.

### MAKES MONEY IN PIG IRON—

Miss Alice Hansen signs a document in her office in New York during an interview. In a Lone Star Steel Corporation's stockholders meeting in Dallas, Texas, President Eugene B. Germany revealed that Miss Hansen President of the Pittsburgh Mill Steel Com-

### Chickenpox Incidence Reported High

With the incidence of chickenpox one hundred per cent higher than records indicate for a seven year median, Dr. Geo. W. Cox, State Health Officer, issued a statement declaring, "It is a great mistake to treat even light cases of childhood diseases such as chickenpox, measles, mumps scarlet fever or whooping cough as though they did not amount to much. That sort of treatment makes it possible for these diseases to spread and cause serious outbreaks among children and their resulting impaired resistance makes them easy victims to other forms of infection."

"Some of the most serious outbreaks of chickenpox have been traced to mild cases—that is, cases so light that the doctor was not called. In some instances the children have continued to go to school and to associate and play

### CARD OF THANKS

We wish to express our sincere thanks to each and every one who helped or expressed a desire to do so in the illness and death of our dear husband and father. May God richly bless each one.

Mrs. Callie Smith, Andrew Smith and family, Frank Smith and family, Mrs. W. M. Goode and family, Mrs. G. C. Bristow and family, Mrs. B. L. Caldwell and family, Mrs. Tom Cogburn and family, Mrs. John E. Fitzgerald and family, Mrs. J. J. Jowers and family.

Refusing to be ignored when the President of the United States failed to declare a national holiday for Cowboys, Bandera Texas stomped from the Union and set up the Free State of Bandera. May 21-22, 1948 has been set aside for a huge celebration to be known as the Bandera Stompede.

Miss La Verne Watson visited in Dallas over the week end.

### WHAT'S IN A NAME

Its not spring but good christian names that are responsible for rhymes in several Texas Technological College professor's gradebooks this year.

For instances, two lasses, the first from Roby and the other from Hamilton, Texas, answers to Dene Beene and Kitty Witty. The rhymed names in the young men's ranks are from Clovis, N. M., Big Spring and Phillips, and respectively are Rene Jacquet, Sander-son Anderson and K. G. Agee.

Mrs. Henry Bates was out of the local hospital bright and early Monday, and ready to leave with friends husband for their home in Abilene. She stated she stood the operation fine, and the people in general, as well as the doctors and nurses were swell to her.

Sunday visitors in Amarillo were Mr. and Mrs. J. B. Worsham, Mr. and Mrs. Clarence Lewis and Patsy.



### Follow this Phillips 66 Check List NOW FOR TROUBLE-FREE SUMMER DRIVING!

- ✓ Drain and Refill Crankcase with Phillips 66 Premium
- ✓ Transmission and Differential lubes
- ✓ Front wheel bearing packs
- ✓ Chassis lubrication — (no squeaks!)
- ✓ Radiator Drain and Flush — (keep your engine cool)
- ✓ Radiator hose — worn?
- ✓ Spark plugs — O.K.?
- ✓ Fan Belt — worn?
- ✓ Air and oil filters — clogged?
- ✓ Windshield wiper — working?
- ✓ Wax and polish body — (the new look!)
- ✓ Lamp bulbs — (always carry spares!)
- ✓ Seat covers — (interior decoration)
- ✓ Battery and battery cable — (don't go dead!)
- ✓ Tires and tubes — (Lee's a mighty fine tire!)

Cut Out and Call on your Phillips 66 Dealer!



**JESTER PITCHING—**  
Governor Beauford H. Jester throws the first ball to open the Big State League season in Austin, Texas, in a game between Austin and Waco. Jester played baseball in college. (AP Photo)



# Looked at and looked up to

This is the one, of course, that you spot at a glance.

This is the one that sends a string of facts racing through your mind — if you know automobiles — the instant you see the name ROADMASTER spelled out on its fender.

Up to one hundred and fifty Fireball horsepower. Eighteen feet big — and spring-coil lively.

Gorgeously finished. Coil-spring cradled on all four wheels. Shod with oversize tires that take extra low pressures for added comfort.

Convenient too — with push-button controls not only for the top, but for door windows and the front-seat adjustment as well.

This, too, is the only passenger car in this country where the power plant does what gears used to do.

Here's the one place you'll find Dynaflo Drive,\* in which liquid replaces not only the clutch and manually operated low, second and high, but mechanical gear-changers as well.

In short — here's liquid ease and smoothness in delightful new degree, through a sort of "magic muscle" that lets you forget about gear-changing practically entirely.

No wonder, then, this car is looked up to.

Looked up to for impressive appearance — looked up to for superlative ability.

Looked up to for what's newest in engineering advances.

If your standards call for a real performer — and for quality a cut above the ordinarily good — specify ROADMASTER when you see your dealer (with or without a car to trade) about getting an order in.

- BUICK alone has all these features**
- \* DYNAFLOW DRIVE (Optional, Roadmaster Series)
  - \* TAPER-THRU STYLING (Sloper and Roadmaster)
  - \* VIBRA-SHIELDED RIDE \* SAFETY-RIDE RIMS
  - \* HI-POISED FIREBALL POWER
  - \* ROAD-RITE BALANCE \* RIGID TORQUE-TUBE
  - \* QUADRIFLEX COIL SPRING
  - \* SOUND-SORBER TOP LINING (Sloper and Roadmaster)
  - \* DUMMATIC SPARK ADVANCE \* FLEX-FIT OIL RINGS
  - \* TEN SMART MODELS \* BODY BY FISHER

**WHAT'S DIFFERENT ABOUT DYNAFLOW DRIVE?\***

To an efficient new pump (left above), Buick engineers have added a true turbine (right) and an ingenious new supercharging oscillating action (right) which produce a torque-boosting result in starting and accelerating. The result is the first device on any American passenger car which employs liquid to fill the function of both the clutch and the usual low, second and high gears. The clutch pedal is eliminated and a simple control gives you direction.

\*Optional at extra cost on Roadmaster models only.

When better automobiles are built **BUICK** will build them

**The COPY CUP**

BE SURE TO GIVE US YOUR SPORTS STORIES — SO EVERYONE CAN ENJOY THEM!

**Come in! See the New Frigidaire Electric Range**

It's beautiful in design, far advanced in improvements and new conveniences. See how Frigidaire really makes all cooking Carefree Cooking.

- Extra-large porcelain oven.
- Radiant-tube 5-speed cooking units.
- Cook-Master oven clock control.
- Double-Duty Thermizer cooker.
- Waist-high, smokeless type broiler.
- All-porcelain inside and out.

and many, many others

**FARM & HOME APPLIANCE**  
Phone 255-J 611 W. Main St.

The Preacher



**Be Beautiful For Graduation**  
With one of our  
**Good Permanents**  
Call 351-J  
For Appointment  
**THE DUCHESS BEAUTY SHOP**  
VIOLA SMITH 114-A North 6th



**SPECIAL !!**  
MONTH 10th  
TUESDAY 11th  
**2 DAYS ONLY**  
**FREE FACIAL**  
with each \$1.75 oil shampoo set  
**CLOMA CUMMINGS**

**WANT ADS**

**CLASSIFIED RATES**  
Per word 1st insertion 3c  
Per word each subsequent insertion 2c  
No ads taken over phone unless you have a regular charge account.  
Customer may give phone number or street number if ad is paid in advance.

**FOR SALE**

**FOR SALE:** early, type improved Macha Storm Proof cotton seed \$2.50 per bushel. Ginned several bales at one time. Johnson Implementation Company. 41c

**FOR SALE or trade:** 36 Chevy Coupe, new battery, universal joint, gears, fair tires, motor overhauled, trade on later model, pay difference. See at "Little" Super Market. 41p

**FOR SALE,** battery fryers, \$1.00 each on foot. 221 W. Ross St. City. 41p

**FOR SALE,** gas range, excellent condition, 4 burner, oven control. 901 E. Broadway, call 362-J. 40tfc

**For Sale Cotton Seed**  
Northern Star, Half and Half, Maca Storm Proof, Hi bred, D. P. and L. No better seed found; one year out; cleaned, sacked and treated; ready to go anywhere; several bales ginned at a time. Located 3 blocks north of the court house. See R. O. Hamill phone 187-J Hamill Apartments, Levelland, Texas. 45c

**FOR SALE,** bundled feed, \$15.00 per ton. See R. O. Hamill, phone 187-J Hamill Apartments, Levelland, Texas. 41c

**FOR SALE** 1938 AC-WC tractor, in good shape, good rubber; new type cultivator and all other planting equipment, \$1,000. Also 250 gallon propane tank 62 per cent full, almost new, \$200. Reason for sale, already supplied. Homer Sudderth, 2 miles west and 7 north Tokio. 41p

**FURNITURE** and household appliances sold on easy terms at Brownfield Furniture Company. 29tfc

**FOR SALE** 7,000 lbs. of second year half and half, J. R. Oliver strain, Whitewright, W. T. Hollifield, one mile west of Brownfield. 42p

**RECORDS** made anytime. Recording machine in home, piano to use. 502 N. "A." 41c

**FURNITURE** and household appliances sold on easy terms at Brownfield Furniture Company. 29tfc

USED Electrolux, good condition, 5 foot. G. H. Kirkland, 927 South Sixth. 39tfc

**RENTALS REAL ESTATE,**

**FOR SALE** 2 houses on one lot \$3100.00, \$1100 down, rest on terms. 713 E. Hill, Brownfield. John Wright Star Route 4, Lamesa, Texas. 42p

**WANTED** to rent: 2 bedroom house, occupy now or by June 15, best references. R. E. Williams, call Lubbock, 9003 collect. 42p

**BEDROOM** for rent, 501 East Lake. Mrs. W. C. Knox 41p

**320 ACRES** Yoakum County land located 7 miles south-east Plains on Bennett road. Has been in cultivation, \$12.50 per acre, no minerals. See M. E. Patterson, T. P. Camp, Bennett, Texas. 41p

**CHOICE LOTS FOR SALE** on East Broadway, East Tate and East Cardwell. This is part of the Brownfield Nursery. We have been unable to give possession until now. Streets have been graded through this property, so drive out and select a nice restricted lot. See John B. King at the Brownfield Nursery. 34tfc

**WANTED** 4-room unfurnished house, W. M. Hudnall, Gen. Del or call Craig Motor Co. 33tfc

**FARMERS!** Mr. Meredith is now ready to do your grubbing and bulldozing work. Has front end & back end grubber and brush rake. See or write L. E. Meredith, Box 229, 320 E. Stewart St. Brownfield. 34tfc

**IRRIGATION LAND IMPROVED AND IN UNIMPROVED** In Deaf Smith, Castro and Swisher counties. Also other lands in which you may be interested. Make an appointment with me to see these lands. Homes in Brownfield for sale and possession.  
**D. P. CARTER**  
Brownfield Hotel

**LOST:** \$15.00 roll of three cent stamps. Return to Ojal Fitzgerald or call 304-M Reward. 41p

**LOST:** glasses, pink plastic rims. Lost in town, case from Broome Optical Co. Mrs. Bob Campbell, phone 11. 41tfc

**HELP WANTED—Female**

**WANTED:** Stenographer Clerk, 18 - 35. Must be competent stenographer. 5-day, 40-hour work week. Salary governed by qualifications and ability. Group Hos-

**Preston E. Smith Asks for Re-Election**



Preston E. Smith, Lubbock theatre man and state representative from the 119th district, made formal announcement of his candidacy for re-election to the post. "In announcing for re-election to the Legislature, I feel that I can render the people of this district much greater service than during the past," Smith's statement said.

"The state government is the largest business operated in Texas with annual expenditures in excess of \$300,000,000 and I believe we ought to have qualified men in Austin to make decisions on the spending of this huge sum.

Smith listed redistricting, reapportionment of the permanent university fund income to the state's 16 state-controlled colleges, farm-to-market road improvement and improvement of the plight of Texas school and school teachers as foremost problems confronting the Legislature.

"One of the most important functions of our state government is the education of our school children," Smith's statement pointed out. "To accomplish this we must have well qualified teachers. To get these teachers we must realize that they are important to our future citizens and should be paid accordingly to their important contributions they are making to our society. I will continue

pitalization, Insurance, Annuity, and Sick Benefit Plans. Inquire Standard Pipe Line Company, Second Floor Brownfield State Bank Building or P. O. Box 1029, Brownfield, Texas. 41c

**TWO persons** desire ride to Calif. Mrs. R. L. Hamm 507 E. Main 42p

to support those measures that will benefit our school teachers; also those measures strengthening safety for our school children."

"The farm-to-market roads in this state, in many areas, are in a deplorable condition. There is much legislation that the legislature could pass to help get the farmers on good roads with their farm products. At the same time this would be beneficial to those rural schools which carry their students to and from school daily. I have always supported measures that would improve farm-to-market roads and will continue to do so if re-elected."

Regarding redistricting, Smith said: "Our present governor, if he would carry out his Constitutional oath of office, would immediately call the legislature into session and redistrict this state. "Year after year, the Constitutional mandate that this state shall be redistricted after each federal census has been ignored, but there is nothing in the Constitution to prevent the governor from calling a special session on redistricting. Every time the state has been redistricted, it has been at a special session and this was accomplished the last time by Gov. Pot Neff back in 1921.

"Without representation, which is the only defense we have in the legislature, West Texas is at the mercy of the majority members who have repeatedly violated their oaths of office and thwarted every move to redistrict the state. Actually the plight of West Texas, by the state not having been redistricted in the past 27 years, has been 'taxation without representation,' as we are always taxed and since 1930 this section has not had the proper representation at Austin.

Smith, who was one of the leaders the past two sessions in a movement to apportion income from the permanent university

**To The Voters Of Terry County**

I wish to take this means of announcing my candidacy for the office of County Commissioner of Precinct 4.

If elected to the office, I promise to serve everyone in a fair and impartial manner and to the best interests of the precinct.

I will try to see all the voters between now and the date of the elections. In the meantime, I earnestly solicit your vote and influence.

Respectfully,  
J. B. (Mutt) Oliver.

The Girls Chorus from the Church of Christ composed of Peggy Bradley, Wynona Bradley, Josie Chisholm, Joy Chisholm, Patsy Black, Mary Chisholm, and Mary Murry sang at Loop Sunday afternoon.

fund among the state's 16 state colleges, said he would continue to work for a redistribution of this income to all state colleges on a per capita basis for building purposes only.

**MRS. HARRIS CONDUCTS LESSON AT WSCS**

Mrs. Glen Harris conducted the study lesson from Chapter 4 of "Committed Unto Us," at the Monday meeting of the Women's Society for Christian Service which was held in Fellowship Hall.

Mrs. A. E. Proctor opened the study with a devotional. Others

taking part in the program were Mesdames Charles Wilson, C. F. Mote and Tobe Power.

Attending were Mesdames Thurston, Hogue, Carpenter, Tharp, Hill Thompson and Downing.

Mr. and Mrs. Dick Falls spent the weekend in Amarillo.

**RIO**

<b>FRI.—SAT.</b>	<b>SUN.—MON.</b>
<b>THE LAST ROUNDUP</b>	<b>SWAMP WATER</b>
Gene Autry	Walter Brennan Virginia Gilmore John Carradine

**RIALTO THEATRE**

<b>FRI.—SAT.</b>	<b>SUN.—MON.</b>	<b>Tues. - Wed. - Thurs.</b>
<b>RED STALLION</b>	<b>THE BIG CLOCK</b>	<b>THE DARING DAUGHTERS</b>
with Robert Paige Noreen Nash	Ray Milland Charles Laughton	Jeanette McDonald Jose Iturbi

**RITZ THEATRE**

<b>SAT. ONLY</b>	<b>SUN.—MON.</b>	<b>TUES.—WED.</b>	<b>Thursday - Friday</b>
Allan Lane and his Stallion	William Halop Ann E. Todd	<b>GOLDEN BOY</b>	Stewart Granger Jean Kent
<b>BANDITS OF DARK CANYON</b>	<b>DANGEROUS YEARS</b>	Barbara Stanwyck William Holden	<b>CARAVAN</b>

Mrs. J. A. Roberts and daughter, Miss Letha Nell, were up over the weekend visiting relatives here and Seagraves. They left Monday for Hot Springs, N. M., where they will take the hot baths for several weeks.

**Milk-Minded**

KEEPING THE LAWN CUT IS MY JOB— I DO IT WITH A SMILE—

The man whose trade—or hobby—is gardening, knows how much energy it takes to do a job. That's why a tall glass of milk mid-morning or mid-afternoon's the rule! It refreshes... energizes!

**FOR FREE DELIVERY**  
**PHONE 184**  
**Orr Dairy**  
BROWNFIELD, TEXAS

**WE HAVE THE THINGS YOU WANT TO EAT WHEN SUMMERTIME TURNS ON THE HEAT!**

We have recently installed a Refrigerator type vegetable and fruit case.

Come in and see this most modern way of displaying fruit and vegetables. No more water to vex you and you will receive your merchandise so cool and fresh.

Yes we have **SPECIALS**. Watch our windows for specially priced merchandise.

Buy your meat from **STELL'S** where quality and service is always a first consideration.

We unconditionally guarantee every item purchased in our store. Adjustments cheerfully made.

**GROCERY STELL'S MARKET**  
SUSIE B. STELL, Owner • A. STELL, Manager  
420 W. MAIN

**PALACE DRUG**

offers these **Mothers Day Gift SUGGESTIONS**

**JEWELRY**

such as:

BULOVA WATCHES  
PEARLS, PINS  
RINGS, also costume jewelry.

**MOTHER LOVES CHOCOLATES**

We have the largest stock of candy in the Southwest!

**Mothers Day TOILETRIES**

PERFUMES IN HER FAVORITE BRAND & ODORS  
COLOGNES — BODY POWDERS — FACIAL CREAMS — COSMETIC GIFT SETS.

LUGGAGE — POTTERY — FOUNTAIN PENS  
PENCILS, ETC.

**REVIEWAL**

Brownfield Christian  
**CHURCH**  
Hill Street at Ballard

April 23  
To  
June 6