



2,245 NEW TELEPHONE DIRECTORIES were sent through the mail this week to Brownfield, Meadow, Ropesville, and Wolfforth businesses and residents, from the local branch of the General Telephone Company of the Southwest. Paul Farrar, district manager, and Mildred Flowers, office employee, are shown above as they put the directories in individual brown envelopes and stamped them for mailing. Over 3,100 directories will be distributed in all, as the company will deliver books to pay stations and private branch exchanges, and a few directories will be distributed for extension phones. (Staff Photo.)

## TECHNIQUES FOR GETTING FARM BUREAU RECOMMENDATIONS ENACTED

Important issues now before Congress and techniques for getting Farm Bureau recommendations enacted into law will be discussed at a District 2 Farm Bureau meeting Saturday, Feb. 27, at the Lubbock Hotel, according to Kelton Miller, publicity chairman of the Terry County Farm Bureau. Officers, members of the legislative committee and the publicity chairman of the Terry County Farm Bureau have received invitations from Texas Farm Bureau President J. Walter Hammond. In urging them to attend, the state farm leader stressed the importance of the meeting as it relates to national legislation affecting agriculture. All Farm Bureau members are invited to attend. The meeting for counties in this district will begin at 10 a.m. Dist. Director H. L. (Hub) King, of Brownfield, will preside.

"Farm Bureau members have spent a good deal of time and effort in developing the policies of the organization," Hammond stated. "These policies, to be worthwhile, must be executed. For that reason, and because of the nature of the meeting agenda, it is vital that we have Farm Bureau leaders from each county in attendance." The meeting is one of a series of 12 policy execution sessions being held over the State in February and March. Subjects include agricultural price supports, natural resources, labor-management and foreign trade. Speakers include C. H. DeVaney of Coahoma, vice president of the Texas Farm Bureau; Loys D. Barbour of Iowa Park, District 3 director; R. G. Arnold of Auburn, Ala., assistant organization director for the Farm Bureau Southern Region; and M. C. Jaynes of College Station, organization specialist for the Texas A&M College Extension Service.

Farm Bureau policies relating to agricultural price support programs, foreign trade, natural resources and labor-management relations will be analyzed at the meeting. Loys D. Barbour of Iowa Park, District 3 director, will speak on the fundamental principles of the farm organization and ways to be effective on legislative matters. Vice President C. H. DeVaney will review the Farm Bureau's policies on national issues.

Information Director Bill Hoover will discuss local publicity and public relations. R. G. Arnold, of Auburn, Ala., assistant organization director for the American Farm Bureau's Southern Region, will have for a topic, "Is Farm Bureau the Answer?" M. C. Jaynes, of College Station, organization specialist for the Texas A&M Extension Service, will also appear on the program for the meetings.



LIONS TALENT REVUE WINNERS are shown above after they performed at the high school auditorium, Friday night, at which more than 700 persons attended. Winners in three divisions were announced after the contest by Master of Ceremonies Virgil Crawford. Sonny Curtis, of Meadow, a guest soloist, presented western numbers, and a starlight exhibition square dance group from Lubbock, also performed. Jerry Gannaway, of Brownfield, was pianist during the show. Marca Holland, of Post, who performed vocal and dance numbers was awarded the grand prize of a \$50 watch, from Bayless Jewelry or Nelson Jewelry. Pictured above, left to right, are Doris Toler, vocalist, first place; Mercy Lee Smith and W. L. Smith, a dance team, third place, all from Wheatley colored school; John Hansard, Publicity Chairman and Director; Marca Dean Holland, Post, song and dance, first place; Charles Lindsey, western song, second place, all in Junior High division; Glenn Harden, of Meadow, piano solo, second place; Bobbie Quigg, vocal, first place; Verna King vocal, third place, all in the High School division. (Staff Photo.)

## FB TO MEET AT LUBBOCK HOTEL TOMORROW, 22D

Techniques for getting Farm Bureau recommendations enacted into law will be discussed at a series of 12 district meetings over the State in late February and early March, according to J. Walter Hammond, president of the Texas Farm Bureau. The first session will be held Feb. 22 at Lufkin, and the last meeting will be held March 6 at Alice. Other meetings are scheduled for Canton, Dallas, Wichita Falls, Amarillo, Lubbock, Big Spring, Brownwood, Waco, Bellville and Beeville. District directors will preside at the meetings which begin at 10 a.m. and last until 3 p.m.

The state farm organization has issued special invitations to county Farm Bureau officers and board members, publicity chairmen and members of legislative committees. The public is also invited.

Farm Bureau policies relating to agricultural price support programs, foreign trade, natural resources and labor-management relations will be analyzed at the meetings. Loys D. Barbour of Iowa Park, District 3 director, will speak on the fundamental principles of the farm organization and ways to be effective on legislative matters. Vice-President C. H. DeVaney will review the Farm Bureau's policies on national issues.

Information Director Bill Hoover will discuss local publicity and public relations. R. G. Arnold, of Auburn, Ala., assistant organization director for the American Farm Bureau's Southern Region, will have for a topic, "Is Farm Bureau the Answer?" M. C. Jaynes, of College Station, organization specialist for the Texas A&M Extension Service, will also appear on the program for the meetings. Meeting for this area at Hotel Lubbock tomorrow, (Saturday) February 27.

## SOME REAL BARGAINS HERE FOR DOLLAR DAY!

Among those who will have some real bargains next Monday, which is the monthly Dollar Day here in Brownfield, is the J. C. Jones Co. That good old reliable firm sells stuff reasonable all the time, and when they put on bargain prices, they really go to town. We want you to carefully go over their ad this week. We feel sure they have listed many things you need.

Then there are others with some bargains that you will want to pick up while the picking is good. So close up at the farm and ranch, Monday, and come to Brownfield for your bargain buys. Be seeing you.

## Southwestern Life's Financial Statement Shows New Highs

Several new high marks in its business operations were recorded by Southwestern Life Insurance Company in 1953. It has been announced by President James Ralph Wood in his report on the company's financial statement of the year.

A new record in annual life insurance sales was established by the company's agency force as it produced \$153,680,329 of new paid-for business, up \$3,657,411 from the 1952 total. As a result, the company's total insurance in force at the end of the year was \$1,065,059,933, a gain of \$85,338,012 during the 12-month period.

Policy benefits paid to policyholders and beneficiaries totaled \$14,910,827, a new record for one year and nearly \$2,500,000 above the payments in 1952. Since 1903, when it was organized, the company's policy benefit payments amount to more than \$180,000,000.

Year-end assets totaled \$296,192,307, an increase of \$25,799,461 for the year. The major part of the company's new investments in 1953 went into loans on real estate. A total investment of \$142,395,587 in this category account for 48 per cent of the company's total assets, and reflects the continuation of the strong demand for capital to be used in the construction or improvement of Texas homes, farms and business properties.

Total liabilities appear in the statement as \$268,086,923. Funds for safeguarding the savings of policy holders, including capital, surplus and contingency reserves, amount to \$28,105,383. Policies purchased from Southwestern Life by individuals in 1953 averaged \$5,905 in face amount. Southwestern Life is represented here by W. Graham Smith.

Mr. and Mrs. Jerrell Price, of Odessa, and Mr. and Mrs. Will Orndorf, of Bingham, N. M., visited this week with the two women's parents, Mr. and Mrs. A. T. Stafford, 803 East Main.

Mr. Richard Kennedy, of California, is visiting this week in the home of her parents, Mr. and Mrs. Howard Swan, 317 East Hill.

## 'Doc' Benton In Race For Commissioner, Precinct Number 1

Many of my friends have approached me to make the race for Commissioner in Precinct No. 1, and after giving the matter serious thought, I have decided to offer for the office.

I am 38 years of age and lived in the Union Community since I was six months old. I am married and have three children.

The major duties of a Commissioner are handling the finances of the county, while at the same time he must build and maintain the roads of his precinct. I feel that I am capable of handling those and all other duties of the office.

I invite you to investigate my background, my abilities and fitness for this office. If, after you have done this, and are satisfied that I am capable of performing the duties of this office, I will appreciate your vote and support.

I think the time has come for a tightening of our tax purse strings, and if elected I will run the office as economically as possible.

W. L. (Doc) BENTON.

## PROGRAM FOR WORLD DAY OF PRAYER, MAR. 5

World Day of Prayer, sponsored by the Federated Women's Clubs of the local churches, and the ministerial alliance, will be held from 10-11 a.m., Friday, March 5, at the First Baptist Church. The following program has been announced.

Proclamation: Homer Nelson. Call to Worship. Hymn, "Sweet Hour of Prayer." Devotional.

Hymn, "The Beautiful Garden of Prayer." Offering, and explanation of purpose of offering.

Prayer. Address. Prayer.

Persons of all denominations are invited and a special invitation is extended to the working people of Brownfield to attend, dressed in their work clothes.

Officers of the FWC include Mrs. Johnny Criswell, Methodist Church, president; Mrs. Ben Monnett, Presbyterian, vice president; Mrs. R. L. Lewis, First Christian Church, secretary; and Mrs. J. B. Ray, First Baptist, treasurer.

Subscribe for the Herald now.

Read the Herald Ads and save.

## C OF C BANQUET IS HOWLING SUCCESS WITH SURPRISE FOR GUESTS

A surprise was in store for the 275 persons who attended the annual Chamber of Commerce banquet, Tuesday night, at the Jesse G. Randal cafeteria. Dr. Charles Karsakoff, of Washington, D. C., the scheduled speaker, turned out to be Stuttering Sam, of Tulsa, Okla.

Rev. Tom Keenan, master of ceremonies for the program, looked around the auditorium and called upon an acquaintance of his to make a talk.

Keenan said that a friend of his from Sweetwater was attending and he called upon him to say a few words, while the audience anxiously awaited the speaker of the evening.

A man, half way back at a far table, stood, said thanks, but he didn't care to talk, but the Rev. Keenan insisted. The man came forward, very embarrassed and stuttered for a few minutes, then got into his hilarious speech.

After the stranger had returned to his table, the Reverend asked if Dr. Karsakoff had arrived, and if so to stand. The man who had just spoken stood, and Rev. Keenan introduced Cecil Hunter, better known as Stuttering Sam, widely known after dinner speaker.

The whole affair was kept secret and only a few of the Chamber of Commerce members were wise to the joke, before the evening.

Hunter, or Karsakoff, or the stranger, or Stuttering Sam said, "I don't think the country is going to the dogs, and it's a great age, we're living in." He predicted great peace time use of the atom, saying, one atom could "suck all the water out of the Gulf, shake out all of the salt, and irrigate all of Texas." He said that when all that happens, there will be no more drought and sandstorms that are known today.

Hunter's talk followed an example of the Texas style of hospitality. The night before the banquet, two couples from New York State registered at a Brownfield motel, the owner noted their address, promptly gave them four tickets to the banquet and telephoned the CoC officials.

At the banquet, two men were called forward and presented "Ten Gallon" hats. They were A. S. Burhill and A. L. Turner.

Chamber directors also had a gift for their organization's man. (Continued on back page.)

## 120 LIFETIME CERTIFICATES WILL BE PRESENTED SCHOOL BOARD MEMBERS

Approximately 120 life-time certificates for all school activities, will be presented to former board members of the Brownfield School District as a special feature in a series of activities celebrating Public School Week, March 1 through March 6. Clarence G. Griffith, current president of the school board will make the presentations at a general assembly to be held in the Brownfield High School auditorium, Monday, at 7:30 p.m.

Receiving certificates will be: R. M. Banowsky, P. B. Brothers, O. T. Halley, A. M. Brownfield, R. M. Kendrick, Earl Alexander, Fred Smith, A. R. Brownfield, D. P. Lewis, A. J. Stricklin, A. A. Sawyer, W. W. Price, G. W. Chisholm, Clyde Lewis, A. W. Ender-son, J. E. Michie, C. L. Hudgins, W. A. Bynum, R. A. Simms, F. W. Proctor, A. C. Green, Walter Gracey, J. M. Telford, G. M. Green, R. E. Self, W. B. White, W. R. McDuffie, C. E. Ross, A. E. Cary.

(Continued on Back Page)

Your shallow cultivation, sandstorm, irrigation, or washing rains will not move this chemical. It is right down there for plant food. Or if you do not wish to invest, you may employ an experienced man to put this crop building chemical on your land for you. But it is best to do this before you start planting your crop.

(Continued on Back Page)

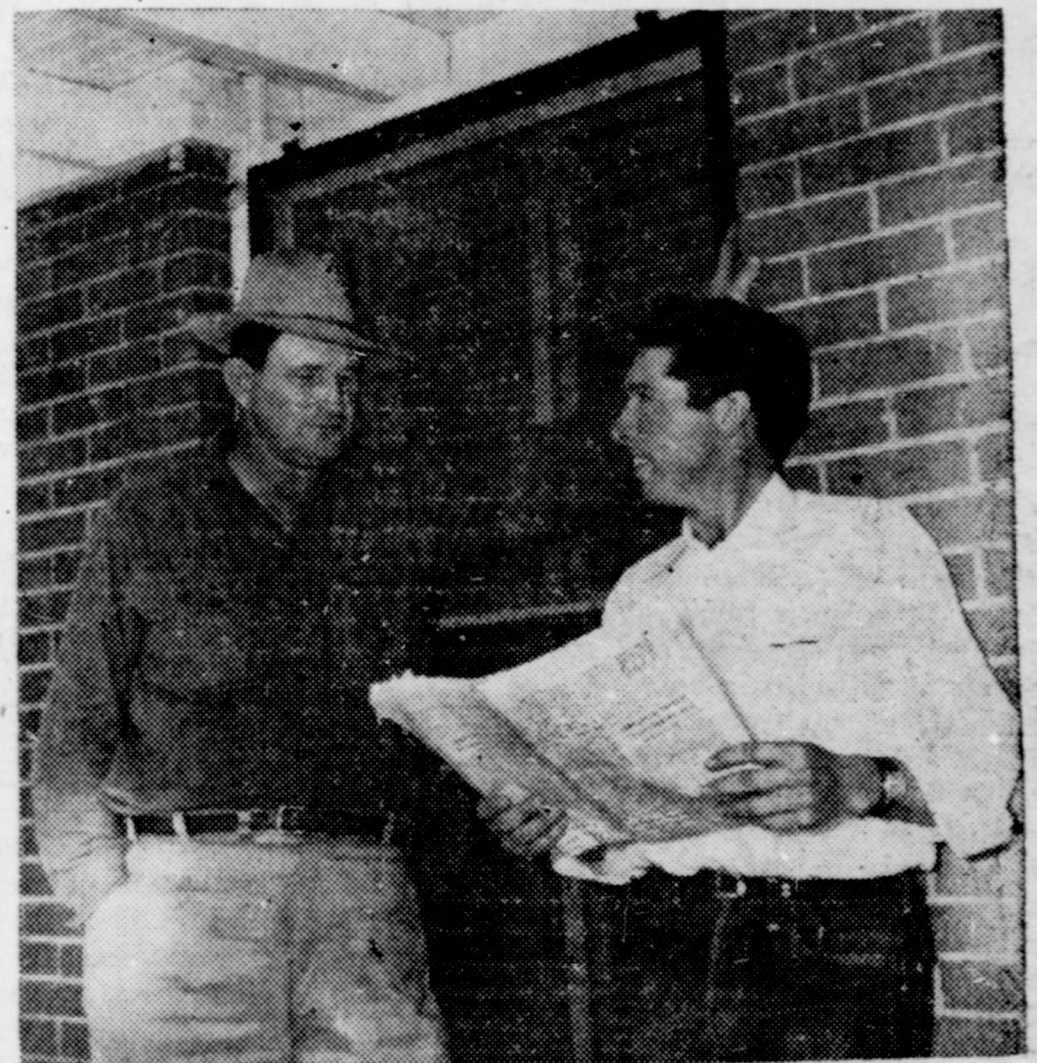
## NEW DAIRY PRODUCTS BEING DISTRIBUTED

A number of Lamesa business men have recently set up an organization to produce a new dairy product in this area, with Paul Kiser as President and John Kilgore as vice president. The name of the organization is Gold Star Dairies, Inc. The new milk can now be had from your grocer in Brownfield.

The new firm grew out of the efforts and work of Mr. Kilgore and Bert Powell, of Lamesa, to (Continued on Back Page)



PLANNING PUBLIC SCHOOL WEEK, principals, teachers, and presidents of the PTAs of Brownfield met recently to map plans for the forthcoming March 1-6 Public School Week and to set days for the various schools to hold open house and Parents Back to School Night. Chairmen and Committees were appointed by Supt. O. R. Douglas, and plans were discussed for a daily radio program to be broadcast every day during the celebration, which will mark the 50th year of the Brownfield Schools. Shown above, looking over a window placard advertising the week, left to right, back row, are Supt. Douglas, S. W. Miller, 7th grade; and Dalwin Webb, principal Jr. High. Sitting, Mrs. Leonard Ches-shir, East Ward Jr. High PTA president; J. B. Curtis, Curriculum Coordinator; Mrs. Harry Goble, Jesse G. Randal-West Ward PTA president; Vernon Brewer, principal Randal School. (Staff Photo.)



FARMERS TALK IT OVER—Two Terry farmers, James Adams, who farms seven miles northeast of Meadow, pictured at left, and L. D. Hamm, Jr., seven and a half miles east on the Tahoka Highway, were discussing the merits of dry land and irrigation farming, when the Herald camera caught them this week in front of the Farm Bureau. Adams, who has lived in Terry County 14 years, and who has as his main crops, cotton and maize, doesn't believe that dry land farming will ever go out of style, and Hamm, who has been in Terry County since 1928, and whose crops are also cotton and maize, feels that the situation is rather rough right now, but he still isn't convinced that over a five or seven year period, that a farmer will be better off using irrigation. Neither farmer has found any real damage done to his land by the recent sandstorms and Hamm, who along with his three brothers has approximately 6,000 acres in cultivation, believes that this year's crop prospect is good, due to the good underground season, as a result of the rains in October. Adams, who deep plowed 325 acres this year, says that his outlook for this year's crop will depend entirely upon when and if it rains, but he is very optimistic. He sets the best time for planting cotton as May 20, and June 20 for maize, having compared and tried other dates. He has 400 acres in irrigator, and 370 acres in dry land. Hamm has 900 acres in irrigation and prefers May 15 to June 10 for planting cotton; for planting Plainsman maize, June 10; combine Hegira and 7078 Milo on July 10. He broke 1,000 acres this year. Both farmers are optimistic about the drought breaking any time now. (Staff Photo.)



# J. C. JONES CO. Brownfield, Tex.

# SALE THAT IS A SALE!

Sale Starts Friday February 26th

*Announcing*

WE HAVE PURCHASED THE ENTIRE STOCK OF THE

## C & H VARIETY STORE

IN ABERNATHY, TEXAS  
—AND ARE

### Closing Out This Entire Variety Stock In Our Brownfield Store

We have purchased this VARIETY STORE STOCK at less than 30c on the dollar! We find that we know exactly NOTHING about variety business . . . so we are passing the savings on to you, and we do mean SAVINGS!

WHEN YOU SEE THESE CLOSE-OUT PRICES you will agree with us that we know exactly nothing about it. We are pricing the goods for quick disposal . . . we want you to attend! We are staking our reputation on the fact that we think you will be pleased!

DOORS OPEN  
9 A. M.

●

We Want **YOU** To Attend This Sale!

●

IT'S SOMETHING SPECIAL AND DIFFERENT!

●

We're Expecting **YOU** . . . BUT YOU MAY HAVE TO SERVE YOURSELF!

Factory Surplus Yard Goods—

# 1 1/2

1000 YARDS Remnants

SILKS — COTTONS — RAYONS

Reg. Price!

FACTORY CLOSE OUT! EACH

## Turkish Wash Cloth 5c

Dozens To Sell. Reg. 10c and 15c Values—Limit 10

FACTORY CLOSE OUT!

### MEN'S FINE BELTS

VALUES TO \$2.50, NOW **\$1.00**

### SUSPENDERS

VALUES TO \$1.00, NOW **50c**

FACTORY CLOSE OUT!

### Women's Lingerie, Gowns, Pajamas, Slips, Half Slips

Some Nylons Values to \$5.95

# 1.98

CHOICE

FACTORY CLOSE OUT! ALL SIZES

### Women's Sample Wash Dresses

Values To \$5.95 HURRY CHOICE **\$2.98**

FACTORY CLOSE OUT! REG. PRICE LESS

### Bates Bed Spreads

LIMITED QUANTITY DROP PATTERNS

# 21%

FACTORY CLOSE OUT! 45-INCH

### Unbleached Muslin 5 yds.

# \$1

ONE BIG ASSORTMENT

### Men's and Boys Jackets

Values to \$12.90 Close Out Choice **\$5**

ONE BIG RACK

### Women's Better Dresses

MAKING ROOM FOR NEW SPRING DRESSES

Values to \$9.90 Close Out Choice **\$3**

ONE BIG RACK FINAL CLEARANCE!

### Woman's Children's COATS 1-2

reg. price

FINAL CLEARANCE

### Mens Dress Pants

Reg. Price LESS **21%**

LOOK! SAVE ON SHOES! SPECIAL GROUP

### Men's Oxfords

Choice **\$4.95**

LOOK! SAVE ON SHOES! SPECIAL GROUP

### Women's Shoes

BROKEN SIZES CHOICE **\$1.98**

—WORTH COMING MILES FOR!

## A HUGE ASSORTMENT ODDS & ENDS IN VARIETY STORE GOODS AND FACTORY CLOSE-OUTS!

YOU'LL REALLY SAVE BY SHOPPING AROUND!

Save More Than **1/2**

1000 CARDS

### BUTTONS

Values to 10c Close-Out Price

# 1c

Card

NO LIMIT!

See What 25c Will Do At Our **25c TABLE!**

BETTER HURRY—CHOICE—25c

See What \$1.00 Will Buy—VARIETY

### VARIETY VALUES TO \$3

Your Choice **\$1**

HUGE ASSORTMENT

### VARIETY ITEMS 2 FOR 5c

Regular 5c Bias Tape And Other Items—Values to 15c

AND HERE, WE BELIEVE, WILL BE A **MOST POPULAR TABLE!**

MORE VARIETY STOCK AND FACTORY CLOSE-OUTS—VALUES TO \$6.00

# \$2

This Table Will Get A Terrific Mauling—So Hurry!

### VARIETY VALUES TO \$2

CHOICE OF TABLE **50c**

**PLEASE!**

- NO EXCHANGES
- NO REFUNDS
- NO ALTERATIONS

ALL SALES FINAL!

# J. C. JONES CO.

**BROWNFIELD**  
HAS NEVER SEEN A SALE LIKE THIS!  
**BE HERE EARLY!**











**THE HEN OR THE EGG?**  
 The Eisenhower Administration's economic planning is based on the theory that in the American way of life production is the basis of all newly created wealth. Thus, the Administration contends, the way to improve the welfare of all citizens is to expand the production of goods and services. And in its effort to expand production it proposes to increase the incentive for expansion in the business and industrial life of the country.  
 Abnormally high taxes reaching as high as 87 per cent on business and industrial incomes would, under the long-range Eisenhower plan, be gradually lowered. Hobbiling government restrictions would be relaxed. A friendlier attitude toward business and industry would be established. The economic policy makers in the Administration feel that these measures would stimulate the healthy growth of the American enterprise system, bring vast expansion in many fields, make millions of new jobs, and otherwise create new purchasing power to be spent in all channels of American commerce.

**Purchasing Power**  
 There is another theory in economics which contends that the welfare of all citizens is simply to put more dollars into the hands of more people—anyway you can get them there. Thus, it is reasoned, more goods will be produced to satisfy the added purchasing power. In a sense, this is the Keynesian theory developed by Lord Maynard Keynes, the Englishman.

Keynes was the originator of the "pump priming" theory. Purchasing power is so important, this theory holds, that it is all right, at times, for government to pay 1,000 people to dig holes, and another 1,000 to cover up the holes. This puts purchasing power into 2,000 hands, although no new wealth is created. This school of thought today opposes any long-range plan for stimulating expanded production to make more jobs, and more income, and more purchasing power through newly created wealth.

**Which Came First**  
 The problem is something like the hen and the egg question—**which came first?** Does purchasing power or production come first? It's a good question. Let's go back to the beginning. God created the Heavens and the Earth. Then Adam and Eve were created. They were placed in a world with natural resources on every side, but no wealth. They couldn't buy a thing. To survive they had to devise ways of getting food, clothing and shelter from the fields, the forests, the animals and the streams. Thus they had to produce. They had to take a natural resource and make it into a usable commodity. Then it was worth something. Then it was wealth.

Production came first—before wealth and before welfare. It was the sole basis for the improving material welfare of Adam and Eve. Nobody gave Adam and Eve any wealth; they had only opportunity to work and to produce. As their children came and grew up, one by one, production on earth had to be stepped up if all were to live as well as the parents did. Had they merely divided what Adam and Eve produced, the expanding human race could not have survived.

**Production, The Key**  
 The "industrial revolution" that began about 1850 was merely a swift expansion of production. Mass production finally evolved, and the American standard of living soared. In fact, the improving living standard can be traced directly—and solely—to the expanding industrial production up through the last 100 years.

There is no foreseeable end to the rising economic welfare of the American people—if business and industry are given the incentives that a dynamic enterprise system needs it is to fulfill its destined service to mankind. On the contrary, no scheme of taking dollars from one and giving them to another—without increasing production—has any lasting value to anybody. On production, depends the future prosperity and security of every American.

Your Heart Association, now sponsoring the 1954 Heart Fund Campaign, points out that doctors can help almost all cases of heart diseases, especially with early diagnosis.

Advertise It in The Herald.

Charlie Price's Western Auto  
 Associate Store

M. J. Craig Motor Co.

Bailey Chevrolet Co.

Imperial Battery Co.

J. B. Knight Co.

Goodpasture Grain &  
 Milling Co.

Smith Machinery Co.

Farmers Co-Op Society No. 1

Jack's Garage

Higginbotham-Bartlett  
 Lumber Co.

Tudor Sales Co.

Brown & Dean Nash Co.

Fair Department Store

Terry County Herald

Kersh Implement Co.

South Plains Readymix  
 Concrete

Rock, Sand and Cement  
 We Deliver

Dial 4401 Res. Dial 4803

Let's all go  
 Church Sunday  
 where we are all one with the Lord



HESTER MEMORIAL METHODIST CHURCH, located on Seventh Street, in the Colored Addition, was named for Rev. J. N. Hester, 702 South Seventh, superannuated Methodist minister, who was instrumental in the church's building program three years ago. Mrs. C. S. Smith is pastor of the congregation, which has fifteen members and twelve children in Sunday School. Mrs. Smith, who moved here four years ago from Monahans, has been preaching and doing evangelistic work for the past fifty years. First pastor of the church which was organized ten years ago, was Rev. W. D. Adkins, who now lives in Hobbs, and who was succeeded by Mrs. O. V. Harris, of Brownfield. The Stewards of the church include I. H. Harris, Roberta Harmon, and Katie Aimar. The congregation is making tentative plans for the remodeling of the church building this year. (Staff Photo).

**CHURCH OF GOD**  
 Rev. O. Stegall, pastor  
 Sunday:  
 10:00 a. m.—Sunday School  
 11:00 a. m.—Morning Worship  
 8:00 p. m.—Evangelistic Services  
 Wednesday:  
 8:00 p. m.—Mid-Week Services  
 Saturday:  
 8:00 p. m.—Young People's Services

**FIRST PRESBYTERIAN CHURCH**  
 Rev. Tom Keenan, pastor  
 Sunday:  
 9:45 a. m.—Sunday School  
 11:00 a. m.—Morning Worship  
 8:00 p. m.—Evening Worship

**SOUTHSIDE CHURCH OF CHRIST**  
 Bill Andrews, Minister  
 Sunday:  
 9:45 a. m.—Sunday School  
 10:45 a. m.—Morning Worship  
 6 p. m.—Young People's Meeting.  
 7 p. m.—Church Service.  
 7:30 p. m. Wednesday Night—  
 Thursday:  
 10:00 a. m.—Women's Bible Class

**CHURCH OF CHRIST**  
 at Wellman  
 Minister. S. A. Ribble  
 Sunday Morning:  
 10:00 a. m.—Study Period  
 10:45 a. m.—Preaching Services  
 Sunday Evening:  
 7:30 p. m.—Study Period  
 8:00 p. m.—Preaching Services  
 Wednesday Evening:  
 7:30 p. m.—Bible Study

**FIRST METHODIST CHURCH**  
 Uel D. Crosby, pastor  
 Sunday:  
 9:45 a. m.—Sunday School  
 10:50 a. m.—Morning Worship  
 6:30 p. m.—Intermediate Fellowship  
 7:00 p. m. Children's Choir  
 7:30 p. m.—Evening Worship

**WEST SIDE BAPTIST CHURCH**  
 Rev. S. R. Respass, Pastor  
 Sunday—  
 10:00 A. M.—Sunday School.  
 11:00 A. M.—Morning Worship.  
 6:30 P. M.—Training Union.  
 7:30 P. M.—Evening Worship.  
 Wednesday—  
 7:30 P. M.—Prayer Meeting.

**FIRST BAPTIST CHURCH**  
 Rev. Jones W. Weathers, pastor  
 Sunday:  
 9:45 a. m.—Sunday School  
 \* 11:00 Morning Worship  
 8:45 p. m.—Training Union  
 3:00 p. m.—Evening Worship

**CALVARY BAPTIST CHURCH**  
 Rev. Bill Austin, pastor  
 Sunday:  
 10:00 a. m.—Sunday School  
 11:00 a. m.—Morning Worship  
 7:30 p. m.— Training Union  
 8:30 p. m.—Evening Worship

**NORTH SECOND STREET CHURCH OF CHRIST**  
 219 North Second  
 J. L. Pritchard, evangelist  
 Sunday Morning Services, 10:30.  
 Evening Services, 7:30.  
 Wednesday Evening, 8:00

**CHURCH OF THE NAZARENE**  
 Rev. Howard Smith, pastor  
 Sunday:  
 10:00 a. m.—Sunday School  
 11:00 a. m.—Morning Worship  
 8:00 p. m.—Church Service

**FOURSQUARE GOSPEL**  
 Rev. R. J. Walls, Pastor.  
 10:00 a. m.—Sunday School  
 11:00 a. m.—Morning Worship  
 7:00 p. m. Young People's Services  
 8:00 p. m.—Evening Worship  
 Wednesday:  
 8:00 p. m. Prayer Meeting

**ASSEMBLY OF GOD**  
 Rev. Elmer Tyler  
 Sunday:  
 10:00 a. m.—Sunday School  
 11:00 a. m.—Morning Worship  
 8:00 p. m.—Evening Worship  
 Friday:  
 8:00 p. m. Bible Study

**ST. ANTHONY'S CATHOLIC CHURCH**  
 Lovelland Highway  
 Rev. Thomas O'Reilly, S. A. C., Pastor  
 Rectory located at 1008 E. Hester.  
 First, 3rd and 5th Sundays—Mass, 6 p. m.  
 Second and 4th Sundays—Mass 8:30 a. m.  
 and 10:30 a. m.  
 First Friday—7:30 p. m.

**EPISCOPAL CHURCH**  
 Of the Good Shepherd  
 Scout Hut, Seagraves Highway  
 Rev. Rex C. Simms, vicar  
 Sunday:  
 8:45 a. m.—Morning Prayer and Sermon  
 9:45 a. m.—Sunday School  
 Holy Communion, second and fourth Sundays

**CRESCENT HILL CHURCH OF CHRIST**  
 Sunday:  
 9:45 a. m.—Sunday School  
 10:45 a. m.—Morning Worship  
 6:30 p. m.—Young People's Service  
 7:30 p. m.—Evening Worship

**IMMANUEL BAPTIST CHURCH**  
 506 East Stewart  
 Rev. E. Denton, pastor  
 Sunday:  
 10:00 a. m.—Sunday School  
 11:00 a. m.—Morning Worship  
 7:30 p. m.—Training Union  
 8:30 p. m.—Evening Worship

**FIRST CHRISTIAN CHURCH**  
 Paul Farrell—Minister  
 Sunday:  
 9:45 a. m.—Sunday School  
 11:00 a. m.—Morning Worship  
 7:00 p. m.—Young People's Fellowship  
 7:30 p. m.—Evening Worship  
 Wednesday:  
 7:30 p. m.—General Night Service

**NORTHSIDE BAPTIST CHURCH**  
 (Fundamentalist)  
 Rev. A. J. Franks, pastor  
 Sunday:  
 10:00 a. m.—Sunday School  
 11:00 a. m.—Morning Worship  
 7:30 p. m.—Bible Study and Young People's Meeting  
 8:00 p. m.—Evening Worship  
 Wednesday:  
 8:00 p. m.—Prayer Meeting

- Portwood Motor Co.
- Ed Hill's "66" Service
- Ross Motor Co.
- Star Tire Store
- Wilgus Pharmacy
- First National Bank
- Jones Theatres
- A. A. A. Lumber Co.
- Robert L. Noble  
 Insurance and Real Estate
- Modern Steam Laundry
- Shorty Collier's Gulf Service
- Brownfield State Bank  
 and Trust Co.
- Primm Drug
- Martin's Radio & TV Service
- Frank Daniel  
 Furniture and Electric
- Ray's Cleaners
- Terry County Lumber Co.
- Collin's
- City Drug
- J. C. Jones Co.
- Newton Webb Implement Co.
- Brownfield Tractor Co.
- Green Hut Grill



## Townes Speaks At Joint Circle Meeting

A joint meeting of the Presbyterian Circles Mary King and Mae Dallas was held at 2 p.m., Monday, at the church's parlor, with Mrs. Claude Buchanan, president of the Mary King Circle, presiding.

Mrs. J. M. Teague offered the devotional. Mrs. A. T. Pickett, program chairman, introduced County Attorney Vernon Townes, who spoke concerning "Christian Social Actions in the Community," stressing that our youth should be guided by Christian homes in order to lower the delinquency rate.

A social hour was held and Mrs. L. L. Bechtel, hostess, served cupcakes and coffee to approximately 25 members.

## WEST WARD STUDENT KNOCKED DOWN BY AUTOMOBILE, TUES.

Kenneth Key, West Ward student, and son of Mr. and Mrs. Doug Key, was knocked down by an automobile at 12:05 noon Tuesday, when a local student's automobile brakes failed to hold, in the drive behind the Zesto Stand. The small boy was rushed to the hospital where X-rays were made. Attendants found no broken bones, only a badly frightened lad.

Kenneth returned to school Wednesday.

## LOYAL WOMEN'S CIRCLE MEETS WITH MRS. W. C. BURROW, TUESDAY

Loyal Women's Circle of the First Christian Church met at 9:30 a.m., Tuesday, at the home of Mrs. W. C. Burrow, 913 East Cardwell. Devotional was given by Mrs. David M. Cowgill and the lesson, on the Women of the Bible, was

## Guest Day Features Ranch Life Talk By Tech History Prof.

"Ranch Life in the Southwest," was discussed by Dr. William M. Pearce, Jr., Department of History, Texas Tech College, at the Feb. 23 Guest Day meeting of the Alpha Omega Study Club, held at the Seleta Jane Brownfield Clubhouse.

Dr. Pearce recalled early types of ranch entertainment in the Southwest, which were usually in the form of dances once a year, at Christmas time. He described ranches such as the ones near Spur and Matador.

Hostesses were Mesdames Sam Teague, P. R. Cates, and George O'Neal. Director for the afternoon was Mrs. Joe Christian.

Guests attending included Mesdames Joe Henderson, Harold Meador, A. A. Sawyer, Harold McCabe, Robert Randles, L. J. Richardson, all of Brownfield, and Mrs. E. R. Anderson, of Plains.

Members attending were Mesdames Lee Brownfield, P. R. Cates, William Cope, M. J. Craig, Jr., Truett Flache, Grady Goodpasture, Jack Hamilton, W. T. McKinney, George O'Neal, M. R. Paddock, V. L. Patterson, D. L. Pemberton, John Portwood, Sam Teague, K. L. Turner, J. C. Powell, Morgan Copeland, and Charles Hamilton.

Place that want-ad in the Herald.

presented by Mrs. Jerry Stoltz, with special emphasis on Rebekah. Sweet rolls and coffee were served to Mesdames Truett Flache, Paul Farrett, Joe Christian, R. L. Lewis, Johnny Venable, Alvin Hallbauer, Stokes, Cowgill, and the hostess.

## MRS. BROWN TALKS ON 'TRUE RELIGION WITHIN INDIVIDUAL' AT WSCS

Women's Society of Christian Service of the Methodist Church met Monday at 3 p.m., with Mrs. Ernest Latham presiding and Mrs. Glenn Harris leading the opening prayer.

Announcement was made that a sub-district meeting will be held at Seagraves, March 17, at 10 a.m.

Mrs. Jess Smith brought the devotional. The song, "Praise Him! Praise Him!" was sung. Scripture reading was 90 Psalm, verses one and two; Jeremiah 31:31-33. Mrs. Smith closed the devotional period with a prayer.

Mrs. G. N. Brown was leader of the discussion of the last session of the study, "True Religion Is Within the Individual."

As a result of the study, the society plans to hold a class on "Teach Us to Pray," at 2:30 p.m. on Mondays.

Those present were Mesdames W. B. Downing, Fred C. Smith, R. J. Purcell, A. W. Butler, D. S. Sampson, Vernon Henderson, Joe Johnson, Ida Belle Walker, B. L. Thompson, J. B. Knight, Leo Holmes, J. H. Carpenter, Fred Miller, Hobert Lewis, Jim Griffith, Latham, Harris, Smith, and Brown, and Miss Maudie Bailey.

## PINK & BLUE SHOWER HONORS MRS. ROACH

A pink and blue shower in honor of Mrs. Jarvis Roach was given by Mrs. L. G. Moore, 707 East Lake, at 10 a.m., Feb. 17.

Out of town guests included the honoree's aunt, Mrs. Ethel Harris, of El Paso, and Mrs. Lillian Blake, of Dallas.

Others attending were Mesdames T. L. Bruton, Buddy Rambo, Harley Starnes, Mack Ross, Pete Curtis, Billy Blankenship, and Billy Gorby.

## Terry County Cancer Crusade Organized For Year, 1954

Miss Kathryn Daniels, of Lubbock, field representative for the American Cancer Society, aided in organizing the Terry County American Cancer Crusade, Wednesday, Feb. 17, in the home of Mrs. Wayland Parker.

James Harley Dallas was again named Terry County Cancer Crusade chairman. Mrs. Wayland Parker, chairman, Mrs. Ben Monnett, educational chairman; Mrs. Jimmy Shook, secretary and publicity chairman; and Dr. T. L. Treadaway, Dr. Mullican, Mrs. Viola Simmonds as medical advisors.

Watch for the date of the Cancer Crusade drive in April.

## LIFE MEMBERS ARE HONORED AT E. WARD-JR. HIGH PTA TEA

East Ward-Junior High Parent Teachers Association observed Founders' Day with a tea, honoring Life Members, when the regular meeting was held at 4 p.m., Feb. 18, at the Junior High Library.

Mrs. W. P. Norris was program chairman and introduced Mrs. L. M. Wingerd, who made a talk on progress in our schools. Mrs. George Steele, life membership chairman, presented Mrs. Leonard Chesshir, president, with a life membership card.

Others holding life membership cards in the PTA in this area, are Mesdames Frank Wier, Pat Patterson, Jim Griffith, Ernest Latham, Hattie Holgate, L. M. Wingerd, Lee Fulton, Jesse G. Randal, Gaster Spencer, and W. A. Bell.

A candle light service was held in commemoration of the three councils of PTA. Mrs. Norris pre-

## TEXAS HAS A NEW HEALTH OFFICIAL

Dr. Henry A. Holle, internationally-known public health administrator of New York City, with a strong Texas background, today



Dr. Henry A. Holle was named State Health Officer for Texas. He will succeed Dr. Geo. W. Cox, whose resignation is effective March 1.

Dr. J. B. Copeland of San Antonio, chairman of the State Board of Health, announced the selection and described Dr. Holle as "one of the foremost public health administrators in North America."

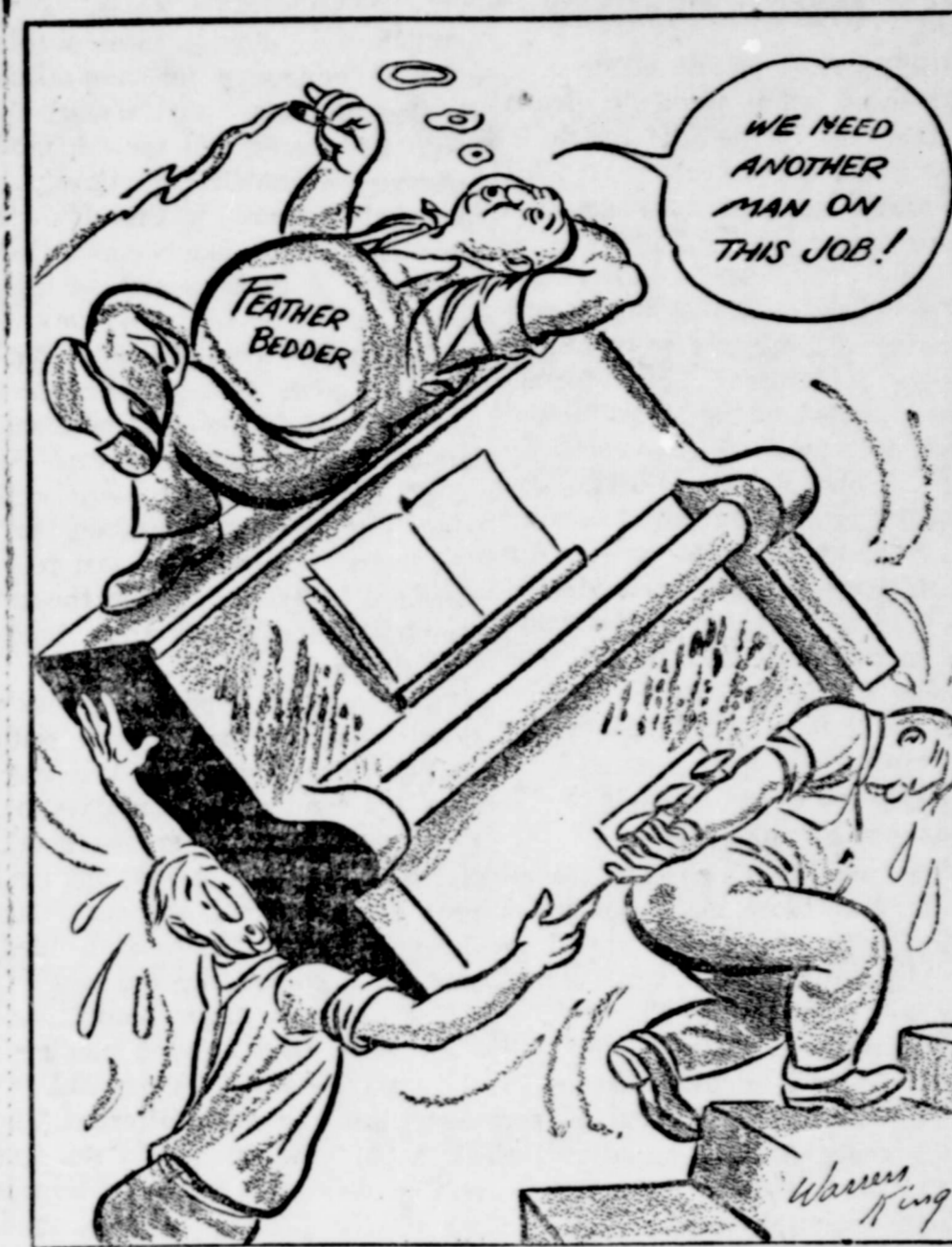
"Dr. Holle has distinguished himself in a number of assignments in North America and Central Europe," Dr. Copeland said. "He gained the pinnacle of the public health administrative phase of the medical profession in government duty posts in the United States, in the Panama Canal Zone during the early years of World War II, and later as Chief Medical Officer of a mission sent to war-torn Poland."

Dr. Copeland said that Dr. Holle's "outstanding qualifications in

sented the National PTA; Mrs. Steele, the Texas PTA; and Mrs. Chesshir, the local PTA.

The tea hour closed the meeting with Mrs. Wingerd pouring punch. Hostesses were Mesdames Crede Gore, Bill McKinnney, Norris, and Steele.

## THREE FOR THE MONEY!



the field of public health, coupled with his splendid Texas background qualifies him as foremost among the many outstanding physicians considered by the board of health to fill the State Health Department's top post."

Dr. Holle will assume his duties as new state health officer when he is replaced in his present assignment as Regional Medical Director of US Public Health Service regions I and II, a ten-state area with headquarters in New York City.

The 49-year-old Dr. Holle (pronounced Holly) was born in Brenham. He received his early education in Brenham public schools and graduated from Blinn Memorial College in Brenham. He took pre-medical work at Texas A&M College, and later the University of Texas medical school, where he later received his medical degree in 1927. He took internship in Hermann Hospital at Houston.

Mr. and Mrs. Clarence Lewis, Seagraves Road, left last week end for Florida, where they will visit with her sister, Mrs. Tillman Stitt, husband and children.

Dr. and Mrs. D. M. Cowgill and Mr. and Mrs. John Happ, of Brownfield, returned this week from Galveston, where they attended the Texas Public Health Convention. Enroute home the Happs picked up their two sons in Austin, where they had visited with their grandmother.

Mr. and Mrs. J. E. (Buddy) Gillham, 8001 East Lake, returned on Thursday from a week's stay in Philadelphia and New York. Mrs. Gillham met with her publisher in Philadelphia to discuss final details on publication of her first novel, "With God's Help."

Place that want-ad in the Herald.

## AGRICULTURE STABILIZATION NEWS AND PLANS

By Looe Miller

### 1954 SUPPORT PROGRAMS ARE HERE SUMMARIZED

Price supports have already been announced for most 1954-crop grains. For wheat, the support level directed by law is 90 per cent of parity—the same as for 1953-crop wheat. The announced minimum is a national average of \$2.20 per bushel. If parity is higher on July 1, 1954, the dollars-and-cents support will be raised. Support in 1953 was \$2.21 per bushel.

Supports on the other grains, for which 1954 rates have been announced are set at 85 per cent of parity, the same as for 1953. In dollars-and-cents, the national average support levels are: Oats, 75c per bushel; barley, \$1.15 per bushel; rye, \$1.43 per bushel; and grain sorghums, \$2.28 per hundred-weight. Under the "transitional parity" features of the modernized parity formula provided by law, parity prices are lower this year than last for all other grains except rye, which has already completed its "transition." Therefore the dollars-and-cents support rates for 1954 are somewhat lower than in 1953 for the three crops other than rye. The 1953 rates were 80c for oats; \$1.24 for barley; \$1.43 for rye; and \$2.43 for grain sorghums. The 1953 Terry County loan rate for grain sorghums, \$2.38, and 1954 Terry County loan rate will probably be about \$2.23.

For all these crops, the Department of Agriculture has urged producers against over-expanding their acreages. Wheat, cotton, tobacco, and peanuts this year will be grown and marketed under acreage-allotment, marketing-quota programs. Corn in the commercial area will be grown under acreage allotments.

Of the major crops for which 1954 price supports have not yet been announced, legislation directs supports at 90 per cent of parity for the "basic" crops—corn, cotton, tobacco, peanuts, and rice.

Subscribe for the Herald now.

# STILL GOING STRONG

The people of the area seem to appreciate our cutting the price of the Herald on account of the drought to—

## \$1.50 per year

Until further notice we shall continue the rate in our TRADE AREA ONLY. You'll have to hurry.

We appreciate those who have responded with their renewals as well as the many new readers we have obtained.

As soon as conditions change, we aim to go back to the old rate of \$3.00 per year in the trade area, as we really lose money at \$1.50 per year.

## Terry County Herald



## QUALITY FOOD

makes Better Cooks!

FRIDAY & SATURDAY,

February 26 - 27

## OLEO

GRAYSON  
1 lb. in quarters

## 20c

PEERLESS FLOUR 25-lb. sack 1.49

BEANS RED KIDNEY No. 303 can 10c

MILK WHITE SWAN 25c  
2 Large Cans for

HOMINY YELLOW No. 2 can 10c

NORTHERN TISSUE 2 Rolls for 19c

Meal AUNT JEMIMA 43c  
5-lb. sack

POTATOES 10-lb. Mesh Bags 43c

## -Market-

Choice Club  
STEAK lb. 59c

Pure Pork  
SAUSAGE lb. 43c

ALL MEAT  
FRANKS lb. 59c

NICE  
FRYERS  
55c

—FREE DELIVERY DIAL 3161—

## HENRY CHISHOLM

## GROCERY

SOUTH SIDE OF SQUARE

WE DELIVER

BROWNFIELD, TEXAS

## HOW FAR YOUR FOOD DOLLAR GOES HERE!





