

# The Spearman Reporter

MEMBER  
NATIONAL NEWSPAPER  
Association - Founded 1884

VOLUME 60, NO. 38

THE SPEARMAN REPORTER, Hansford County, Texas 79081

THURSDAY, AUGUST 14, 1969

## SCHOOL BOARD PETITIONED TO CALL

## BOND ELECTION

### Sorghum Farmer To Vote

John C. White, Commissioner of Agriculture, today certified the Grain Sorghum Producers Association to conduct a referendum in 29 Texas high plains counties. The grain sorghum farmers will vote on a program of research and market development, designed to strengthen the farmers profit position by financing research to find methods of lowering production costs and promoting markets.

Representing the Grain Sorghum Producers Association in Austin today were Pat Northcutt of Silverton, Texas, GSPA secretary-treasurer; K. B. Parish of Springlake, Texas, GSPA vice-president; and GSPA executive director, Elbert Harp. Harp stated, "We are pleased to have the opportunity of holding this referendum. It is the first opportunity the farmers have had to vote on this program which is so essential to their future." Recent passage of HB 764 by the Texas 1969 Legislature made it possible to hold such a referendum among the producers of grain sorghum.

Harp said, "We are looking for a vast majority of the farmers to approve this referendum. The investment will only be five cents per ton, to be collected at the point of first sale, or an average of eight cents per acre throughout the area. If we do not find some way to cut the high cost of production and strengthen the prices of the grain we sell, the grain farmers will not be able to stay in business. If nothing more could possibly come from this program than a possible reduction of one spraying for insects, this would yield a 2500% return annually for a farmers' investment. This is only one possibility of the value in this program."

A mail ballot will be held in early October, and a 12 man board will be elected at the same time. This board will have the responsibility of developing the programs of research, promotion, and education which they believe most vital to the grain farmers and use the funds for this purpose. Any grain producer may have his name on the ballot by submitting it in writing, with the signatures of ten other grain farmers, to the Grain Sorghum Producers Association, 1212 14th Street, Lubbock, Texas 79401 by the first of September.

"It is a farmer's program, a board made up of producers, a voluntary program in that anyone may get his money back if he so desires, and it is the farmers future GSPA was concerned about when we asked for this opportunity. We believe it will pass by an overwhelming majority," Harp added.

A list of the counties involved are: Armstrong, Briscoe, Carson, Castro, Dallam, Deaf Smith, Floyd, Hale, Hansford, Hartley, Hutchinson, Moore, Oldham, Paret, Potter, Randall, Sherman, Swisher, Bailey, Cokran, Crosby, Dawson, Gaines, Hockley, Lamb, Lubbock, Lynn, Terry, and Yoakum.

Bobby Hall is vacationing and visiting in Denver, Colorado for a week.

### SCRABBLE GOLF TOURNAMENT SET FOR FRIDAY, 6:30

Members of the Hansford Golf Club are invited to participate in a Scrabble tournament Friday, August 15. Tee off time is set for 6:30 P.M. Entrance fee is \$1.00 each.

The Spearman School Board met in regular session Monday night and looked over a petition which had been left in the office of the Superintendent early Monday.

The petition, signed by 68 persons, read as follows: PETITION FOR BOND ELECTION

We, the undersigned registered voters and taxpayers of the Spearman Independent School District do hereby petition the Board of Trustees of the Spearman Independent School District to call a bond election for the purpose of deciding whether bonds should be issued for construction of a new athletic stadium, track and field house for the Spearman Independent School District. The bonds should be in the amount of \$185,000.00, bearing interest at a rate not to exceed the maximum legal

rate for such bonds, and maturing in such installments as shall be fixed by the Board of Trustees.

No spokesmen for the petition was present at the meeting but Tuesday morning Sonny Windom, Irvin Davis and Ray Martin met with school officials to receive instructions as to the board's procedure and plans for calling the election.

At least 20 qualified voters with property on the tax roll is all that is required to call such an election according to legal rules, so the board of trustees employed Columbia Securities to proceed with necessary legal documents concerning the election. These financial advisors are preparing the election order, which will be acted upon at a meeting of the school board next Monday night, August 18th.

Tentative date for such

an election is projected for September 6. If voters favor the building of a new football stadium, track and field house, the next step would be to employ architects to draw up plans and give estimates as to the cost of such a plant.

In 1965 voters turned down a bond election calling for a \$120,000.00 stadium and field house.

In other business before the board Monday night, trustees approved the Ice cream and bread bids for the school cafeteria. Ice cream will be purchased from Swift and Company, American Bakeries received the bid for bread.

Changes were made in the Junior High and adult lunch prices. Junior High students will pay 40 cents instead of 35 cents and adults who eat at the cafeteria will pay 60¢ instead of 50¢. Elementary students will be able to eat

for 35¢ and high school students for 45 cents.

The board employed three new school teachers. Mrs. Donald Parker, a 1969 graduate of West Texas State University will be the new High School English teacher. Mrs. Parker's home is Stinnett.

Robert Masters, a Tech graduate, was employed as Backfield coach and will also teach social studies in High School. Masters has taught the past two years in Odessa. He is married and has two children.

Tommy Fanbrough, a 1969 WTSU graduate, was employed as Elementary and Junior High PE instructor and 7th grade boy's coach.

Trustees awarded gasoline bids to Alton's Gulf Station at 13.9¢ per gallon. Pearson-Snyder Conoco received the oil bid at \$1.12 per gallon.



### Cluckland

Travel approximately ten miles southwest of Gruver, and you'll find yourself entering the realm of Cluckland.

As you'll see a large, inactive home that might be any structure along the asphalt lined drive of plantations row in New Orleans. The only difference you'll see will be the absence of flowers framing the big scene, there are lots of flowers framing the big scene of the Dean Clucks. Looking away from the house, the Cluck feed-lot loom before you. As we drove into the lot, noticed what appeared to be a small village. There are a neat bungalow and number of mobile homes spaced along a large grassy area. Three youngsters are busily engaged in a game of croquet. These are the children of some of the employees working for the Cluck operation. "Someone might say," see the feed lot and you've seen them all" however our recent visits to numerous

lots has left the impression that each operation has an individuality, and operational procedure of its own.

There's cattle aplenty on the Cluck yard but these cattle are different from most in that they are big, hefty, fat cattle.

There's no lack of equipment on the scene. We watched a feed truck loading up on the scales in the feed mill and then followed it down a lane of feed troughs. The driver skillfully manipulated the controls to deliver the feed into the troughs as the truck rolled alone.

In another area, we drove down in to an ensilage pit to inspect a modern ensilage loader manufactured by Oswalt Industries of Garden City, Kansas. On our way out of the pit, we passed a truck slowly backing in. As we sped by, the driver jammed on his brakes, and

I suppose even now that truck driver is wondering what that Buick was doing down in that hole.

Elsewhere in the area a loader was cleaning off the surface of the ground and loading the refuse in to trucks for removal from the yards.

Many things are different on the Cluck feed lot. For instance, there's a large metal building that serves as a bunk house and cook house. It's as modern as next Monday. Then there's the big garage where mechanics work on various equipment including ensilage cutters and other heavy farm equipment.

If you happen to be visiting the lot and see a plane suddenly take off across the way, don't be alarmed, it's probably Dean heading for Kansas or Colorado or some place to look at some cattle or inspect another operation.

On the other hand, you might even pay a visit when Dean's right on the lot. If you do, you'll enjoy talking to him because he's nice people.

### First Deficit In 30 Yrs.

## School Board Faced

## With Million \$ Loss

The Board of Trustees of the Spearman Independent School District will meet August 25 to consider the adoption of the official 1969-70 operating budget for the school, and for the first time in 30-years will meet with a deficiency in the amount of funds needed to carry out the current type school program.

The estimated receipts for the school term under consideration is \$956,635.00. Estimated expenditures total \$1,045,194.00 which leaves a \$88,559.00 deficit which must be made up out of carry-over funds.

The total assessed value for the tax roll for 1968 amounted to \$45,735,416.00, but for 1969 totaled only \$44,302,643 which is a loss in assessed value of \$1,432,773.00.

The loss comes about due to a 25% decrease in gas production in the Spearman Independent School District and the total loss would have been substantially more

had not producing Gas Companies agreed to a 20% increase in their ratio of assessment for ONE YEAR ONLY. The sad fact is that after applying a 20% tax increase to all gas wells, the school still came up with over one million dollars loss in assessed value, and had not these Gas Producers agreed to the 20% increase in their assessment, tax payers within the SISD would be footing this bill.

With the increase applied to producing Gas Companies and royalty owners, plus using \$88,559.00 fund balances from previous years, the school was able to meet its budget for THIS school year.

However, this situation definitely means changes in the tax structure, and soon. The Board of Directors is faced with one of two things - either cut down on the entire school program, or raise taxes.

Coupled with the gas loss is the Teacher Pay Raise

which was voted by the last session of the Texas Legislature. This year the Spearman Independent School District has had to come up with an additional \$45,000 to meet this salary increase. NEXT year, 1970-71, the projected cost for this salary increase is set at \$55,000.00. This additional revenue must be met and the only alternative now in sight is a tax increase.

Many tax payers in the Spearman School district labor under the misconception that the "State pays most of this teacher pay-raise" when actually, 85% of all expenditures is financed by property tax payers!

The Gas Companies have saved the tax payers' neck this year, but this type of an agreement cannot be expected to last for another school term. An increase in school taxes is necessary if Spearman School District continues to meet its budget.

Mr. and Mrs. Daniel Hall recently visited in Perryton with the James E. Gray family.

Mrs. Lora Vernon has returned home from a visit to Springville, California with her son Dick Vernon and family. They all went to Las Vegas, Nevada for a few days.

### Claims Victory

Troy Sloan, new manager for the First Methodist Softball team, carried his crew to an upset 16-11 victory at the local diamond Tuesday night.

Thursday night, the Baptist will meet the First Christians.

### Council Hears Reports

The City Council met in regular session Monday night to hear departmental reports for the month of July.

Chief Leland Wood reported the lightest month in many years for the City Police department. Only 15 traffic tickets were issued, 5 motor vehicle accidents investigated, 4 drunks arrested, one theft and 3 vandalism cases.

The animal control department, on the other hand, reported an active month. Three animals were held over from June; picked up 21 in July; destroyed 12. Five animals were paid out of the City Pound, one escaped and six were held over.

City Court had 19 cases filed with a total of \$29,950 in fines assessed. Of this total, \$20 was paid in Jail time; \$16,50 remains unpaid, \$1.00 was suspended making a total of \$182.00 collected.

The volunteer Fire Department made three calls in July. One was at the Cattlemen Steak House, one at A and W Drive-In and the other a grass fire at the football field.

Charles Gilliam, Community Public Service Manager, was named Fire Chief for next year.

The council discussed the construction now underway at the new Sewage Plant and announced that the final delivery date for new equipment was September 15. The new complex is approximately 40% complete.

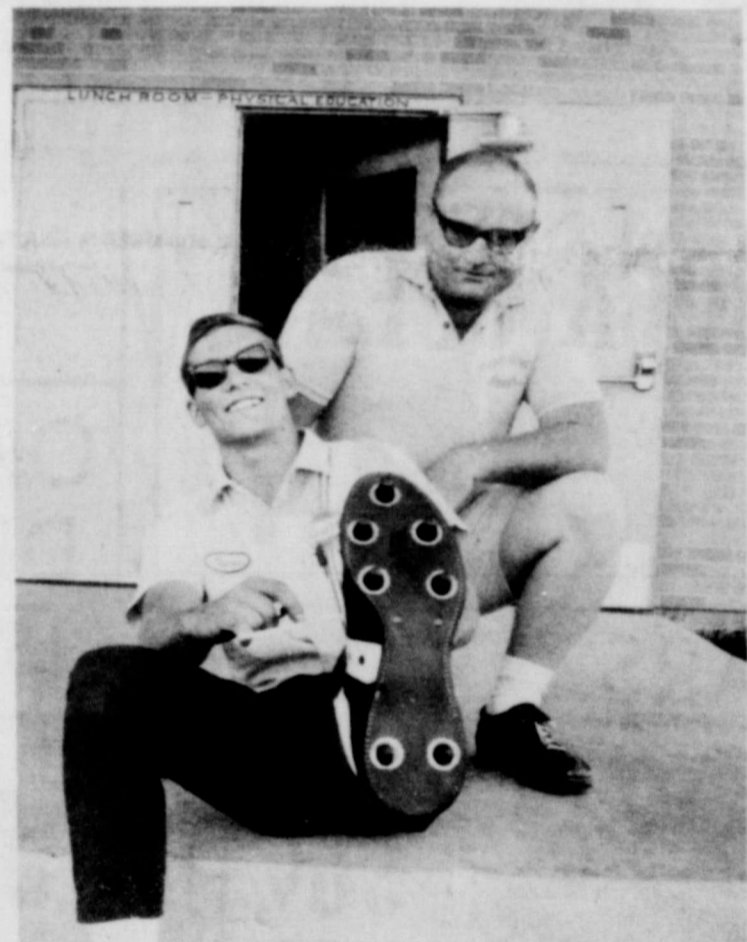
Recently the City Council voted to change the Zoning Board from a 5-man to a 7-man committee. Mrs. Peyton Gbner accepted a position on the Board. Mrs. Joel Lackey is a tentative appointment.

Mr. and Mrs. Bill Archer and 2 children were in Spearman recently to attend the wedding of his sister Nelda.

### Lay Minister Frank Buzzard To Fill Pulpit

In the absence of pastor Koerselman, who is vacationing, Frank Buzzard will fill the pulpit at the First Presbyterian Church Sunday August 17 at the 11 a. m. worship service.

The public is invited to attend and hear Mr. Buzzard give an inspiring Christian message for Christ. Mr. Buzzard, a Lay Minister, brought the message for the August 3 service which the congregation and visiting guests enjoyed very much.



Spearman's fine center, Thomas Collard, tries on his new football shoes. The shoes were issued the team Wednesday. All prospective Lynx football players, who have not checked with coach Anthony, are urged to do so today. The first day for practice, will be Monday, August 18th.



Mr. L. C. Kelly, Quinton Jenkins, and Quinton the second, will conduct the big M. W. Lackey farm sale Saturday August 16, at 1:30, 14 miles South of Spearman. Quinton and his fine crew will be on hand for this big sale, and the public is invited to attend.

Weekend visitors in the L. W. Walker home here included his brother Mr. and Mrs. Milford Walker of Lawton; his sister, Mrs. June Epperson of Tulsa and the Walker's daughter Mr. and Mrs. Robert Cole and guests Mr. and Mrs. Bill Wirtz all of Renfro.



**Let Me See**  
... by Sybil

We have reached the "I don't know where the summer went" season. Fall lies just around the corner. The unofficial demarcation line that most of us live by is Labor Day and the opening of school. The two come so closely together that Labor Day, which this year is on September 1, has become the traditional occasion for

end-of-summer family outings.

Billy and I spent the week-end motoring along highway 66 and I never saw the like of people - either going or coming - pulling campers, boats and U-haul trailers. They were taking advantage of the quickly-ending vacation season. You could point out the ones who were "going" - they were happy, laughing, excited, and their camping equipment was neatly stowed away or tied down. It was no trouble telling the ones who were just returning. Hot, tired, bedraggled. Luggage piled askew, fishing poles sticking in this way and that. Goes to prove what I've always said: vacations just spoil you. I never took one in my life that really put me in the mood to go back to work. I hate to come home, hate to unpack, wash all the dirty clothes, put up all the camping equipment in readiness for next year, start something to eat, clean all the sand out of everything, etc. If the truth were known I doubt if ANYONE comes home from vacation relaxed.

renewed, full of vim and vigor and ready to settle down once more to another year of routine work.

A short weekend is not so bad. That's the vacations we take anymore. This weekly outing is for the birds. But we sure did locate an ideal place for one if you are interested. Roman Nose National Park just north of Watonga, Okla. Of course the day we were there it was 110 in the shade (no shade) but it surely is a lovely place for camping, fishing, golfing, etc. Good fishing lake, lovely cabins, lodge and all sorts of family recreation.

If you haven't visited the Oklahoma City Zoo in some time, make it a point to go soon. We spent about 6 hours there Sunday and never did see everything. About 3 hours of the six I spent in front of the cages housing the monkeys and apes. I could watch these stupid animals all day long. The 860-lb. Gorilla is quite a specimen. I wished for a tape recorder to take note of conversations I overheard while standing before the

ape's cages. One lady explained to her family that "this is the way WE used to look hundreds of years ago." I could not help to say "speak for yourself lady, but I refuse to believe I ever resembled something that looks like that... smells like that... or acts like that!" If there is any one thing I firmly believe it's that God made man in His image and he CREATED the beasts of the field....

It would be nice if Spearman was located on highway 66! Man can you spend money along that road---especially if you are having car trouble and have to stop every 20 miles. Every service station along that highway knows by heart our old red Buick's license number and just how much water its radiator holds. Of course we did pick the hottest day in the year to go to Oklahoma City. We started to abandon the car completely and take to the air... but all the chartered planes charged 2¢ per pound for each passenger and we simply didn't have this kind of money! Stopped by all my favorite

Antique shops plus a few new ones, and discovered that the two glazed stone-ware pitchers I found several months ago turned out to be real finds. I discovered these in an out-of-the-way type of place and bought them for a song. Now I find they are listed in the Antique trader's book for around \$50 bucks each. In fact several dealers wanted to BUY them from me! This is what makes going "junking" so much fun. The price of antiques is certainly going up--daily... along with everything else. Remember back when the scientists used to tell us that the chemicals in the average human body were worth just 98 cents? Inflation seems to have hit that figure too. A Northwestern University biochemist says those chemicals are now worth \$3,500--so hold on to yourself!

The only thing I did not find on my junk spree over the weekend was the old salt-glazed butter crock I've been looking for so long. BUT, early Monday morning my phone rang and it was Betty Porter telling

me she had brought one back for me from her trip to Arkansas. What a grand surprise. Was I thrilled.

Oh me! What a week end. Makes me relaxed, renewed, full of vim and vigor and ready to get back to work.

**BOB PRICE COMMENTS**

Here are the comments of Congressman Bob Price on the questionnaire which he sent to all residents of the 18th Congressional District several weeks ago. The questionnaire sought, through a series of multiple choice questions, to obtain an indication of the sentiment of Panhandle residents on a variety of domestic and international issues.

"The response we have had to the questionnaire my office sent out last month has been gratifying. I have received a great many replies from interested constituents and we will shortly begin tabulating the results.

"That is why it is extremely important that those who have not returned their completed questionnaires and



P.O. Box 458 213 Main Street Spearman, Texas 79081

**WILLIAM M. MILLER**  
Editor and Publisher

THE SPEARMAN REPORTER  
Published every Thursday at Spearman, Texas, Second class postage paid at Spearman Post Office, 79081

Any erroneous reflection upon the character of any person or firm appearing in these columns will be gladly and promptly corrected upon being brought to the attention of the management.

SUBSCRIPTION RATE--Hansford, adjoining counties, \$7.00 yr. Other points, \$5.00 or in combination with The Hansford Plainsman, \$9.00 yr.

Advertising rates on request.

who wish to be included in this informal poll, complete the forms and return them within the next two weeks. We expect to begin tabulating the returns shortly after Congress recesses about the middle of this month.

"The results will be announced as soon as tabulations are completed."

"Those who did not receive forms may contact my Washington Office, 507 Cannon House Office Building, Washington, D. C. 20515, and a form will be sent."

'Week-End Values for Thursday-Friday & Saturday

LAST WEEK'S WINNER

Mrs. J.D. Lycon \$100.00

**\$10000** WIN Free Cash JACKPOT DAY

Nothing to Buy... You do not have to be present to WIN

GET YOUR CARD PUNCHED THIS WEEK

Register Just Once You're then in the "POT" for the weekly Award

Wonderful Cash Dollars

**COCA COLAS**  
Carton of 6 Plus Deposit  
Regular or King Size **44¢**

**ICE MILK**  
Lanes 'Big Dish' Flavors  
Half Gallon **44¢**

**GROUND BEEF**  
Shurfresh All Meat  
lb. **59¢**

**BACON**  
Shurfresh Hickory Smoked  
2 lb. Pkg. **\$1.29**

**FRANKS**  
Shurfresh All Meat  
lb. **59¢**

**PEARS**  
Food King Bartlett Large  
2 1/2 Size Can **34¢**

**Peas**  
Shurfresh Early Harvest  
303 Size Can **2 for 39¢**

**HEN TURKEYS**  
Norbest 10 to 12 lb.  
lb. **39¢**

**Ground Beef** Fresh Extra Lean  
**Patties** lb. **79¢**

**VELVEETA**  
Krafts Cheese Spread  
2 lb. Loaf **96¢**

**JELLO**  
Gelatin 3 oz.  
All Flavors **10¢**

**Barbecue BEEF**  
Boneless lb. **98¢**

**Bologna**  
Shurfresh All Meat  
lb. **69¢**

**BARBECUE Fryers**  
each **\$1.29**

**POTATO CHIPS**  
Shurfresh 'Snappy-Crisp'  
Large Size Twin Pak **38¢**

**Lemonade**  
Minute Maid Frozen  
6 oz. Can **10¢**

**BOLD**  
Detergent Large Family Size  
**\$2.18**

**GLADIOLA** 5 lb. Bag **44¢**

**BAKERITE** Shortening 3 lb. Can **53¢**

**Peaches**  
California Large Hale  
lb. **24¢**

**PLUMS**  
Large Red Meated 'Elephant Heart'  
lb. **28¢**

**HAMBURGER BUNS**  
Hunts Tomato Tendercrust Large Size Pkg. of 6 Buns **18¢**

**MUSTARD** French 9 oz. Bottle **18¢**

**CATSUP** Family Size 20 oz. Bottle **28¢**

**PINEAPPLE** Libbys Sliced or Crushed 15 oz. C **28¢**

**TOMATO SAUSE** Hunts Buffet Size **9¢**

**SIMILAC** Baby Formula  
**4 for 94¢**  
13 oz. Cans

**POTATOES**  
Red McClure  
lb. Bag **20¢**  
**68¢**

**ONIONS** Spanish Yellow **7¢**

**TOMATOES**  
Fresh Large Beef-Steak Type  
lb. **25¢**

**COFFEE** Maryland Club  
lb. Can **69¢**

**Cut Rate GROCERY**



I'll tell it like it is: He thinks a yard just ain't a yard without a St. Bernard. By the way, my name is "Butch".

**IMPORTANT PUBLIC NOTICE**  
All the corn on land owned or farmed by Carl Archer has been sprayed with Dyston, Sevin, Parathion and 24D and is not fit for human consumption.

It could prove very dangerous to the health of persons eating corn from any of these fields.

**DEATH CLAIMS "PAT" MCGHEE**  
George Lee (Pat) McGhee died at 7:00 a. m. Tuesday, August 12 at his residence, 900 S. Bernice Street in Spearman after a lengthy illness.  
A farmer by occupation, Mr. and Mrs. McGhee had lived in Spearman about a year.  
The body will be taken to Mercedes, Texas for burial in the Teria Cemetery. He was 55 years of age.  
Survivors include his wife Ethel, of the home; two sons, George McGhee of Amarillo; sisters: Mrs. Gertrude Allen, Mercedes; Elizabeth Berry of Port Isabelle, Tex., Mrs. Mary Wilder of Japan; brothers: Carl of San Antonio, Robert of Williamsville, N. Y. and Wesley of Ft. Pierce, Florida.



Gruver Banker Ralph Bort and his fishing buddies display a few of the fish they caught on a recent fishing expedition on the Brazos River!

### Traffic Law Revisions Are Effective September 1

AUSTIN--Slow-moving drivers who drive on the inside lanes of divided highways may find themselves in trouble after September 1. On that date, Department of Public Safety patrolmen will begin enforcement of a new state law which requires that vehicles traveling at less than the normal speed of traffic be driven in the right-hand lane, or as close as practicable to the right-hand curb or edge of the roadway, except when passing.  
Another section of the law requires moving traffic to stay to the right of the center line on roadways having four or more lanes of traffic, except when authorized to go to the left of such center line by traffic control devices or when making left turns into or from alleys, private roads or driveways, regardless of whether there is a double yellow stripe or not.  
Colonel Wilson E. Speir, director of the Texas Department of Public Safety, said still another new law

provides for the adoption of a "slow-moving vehicle emblem" for display on certain types of vehicles.  
Speir said the measure requires that all machinery, tractors, or other vehicles which operate at a maximum speed of 25 miles per hour or less must display a triangular emblem approved by the DPS on the rear of the vehicle.  
Operators of such vehicles will have until January 1, 1970 to obtain emblems approved by the DPS and mount them as prescribed by law. Use of the emblem on other types of vehicles, or on fixed objects, is prohibited by law.

Mr. and Mrs. John Pipkin visited over the weekend in Amarillo with their daughter and family Mr. and Mrs. Larry Stokes and brought their grandson Chris home with them for a visit.

### Youth To Give Play Sunday

The Oslo Lutheran Church Youth group will present a Summer Play entitled "The Gingerbread House in the Forest" adapted from the Grimm story of "Hansel and Gretel" on Sunday Evening August 17, 1969 at 7:30 on the lawn at Oslo Lutheran Church.

The director, Mrs. Lynn Stedje of Goodwell, has cast the following characters: John Mark, Amy, and Alice Stavlo, Barbara, Steve and Linda Stedje, Julie and Karen Knutson, Brian McMillan, Jon and Wayne Olsen, Paula Carroll and Kathy TeBeest.

The cast and director have prepared the stage equipment and the parents have been faithful to bring the youth to the practices. We wish to thank all who have contributed their time and help, also Wirtz Lumber and Panhandle Furniture of Guymon and Gruver Lumber of Gruver.

The public is cordially invited this Sunday evening for this Summer Play. Refreshments following the play.

### NEED DONATIONS FOR BOOK SALE TO AID LIBRARY

The Twentieth Century Club is planning a Book Sale in the month of October to benefit the Hansford County Library.

Already some very interesting books have been donated to the cause but more are needed to make the project worthwhile.

Anyone having any books which he no longer wants or has room for on his shelves at home is urged to take them to the Hansford County Library where they will be kept until the date of the sale.

### HOSPITAL NOTES

Patients in the Hansford Hospital this week are Lillie Sloan, Joe Reaves, Birtie McNabb, Linda Bartz, Walter Tyler, Marie Nunez, and Hazel Morton.  
Dismissed were Carl Tucker, Tammy Kendrick, Rosa Gilliland, Danny Hand, Cora Dillow, Victor Miller, Victor Estrada and James Sanders.

### YOUTH INVITED TO VACATION BIBLE SCHOOL

All children ages 3-15 are invited to attend Vacation Bible School at the Fellowship Baptist Church, 11th and Archer Street, Spearman.  
The School begins August 18 and concludes Aug. 22. Classes will be held daily between the hours of 9:30 a. m. and 11:30 a. m. All area youth are welcome.



### On July 20, 1969, electric heat was installed on the moon

It sat right smack in a spot called the Sea of Tranquility.

Although the information is classified, we assume electric heat was chosen to ride 240,000 miles into outer space aboard the Apollo 11 because it's compact and unbelievably efficient.

After all, only electricity delivers heat that's flameless, odorless and practically silent.

And, since the temperature on the moon can drop to -250° at night, you know they needed the most reliable system our best brains could devise.

Actually, the electric heat system used to keep our men warm on the moon is very much like the ones you'll find in millions of homes here on earth—clean, modern, space-saving, economical.

For more information about electric home heating, call our office... today!

**COMMUNITY PUBLIC SERVICE**  
Your Electric Light & Power Company

### HELP WANTED

#### Job Openings

Now available for men familiar with handling, fertilizer, petroleum products and general labor.

Above Minimum wages plus overtime. Group hospitalization.

CONTACT DALE OLTMAN OR J.D. HERRING  
**Hitch Grain Co.**  
806-733-2610



Left to Right : Mrs. D.G. Cluck, Dean Cluck, Mrs. Donnie Thoreson, Donnie Thoreson, and Bob Cluck.

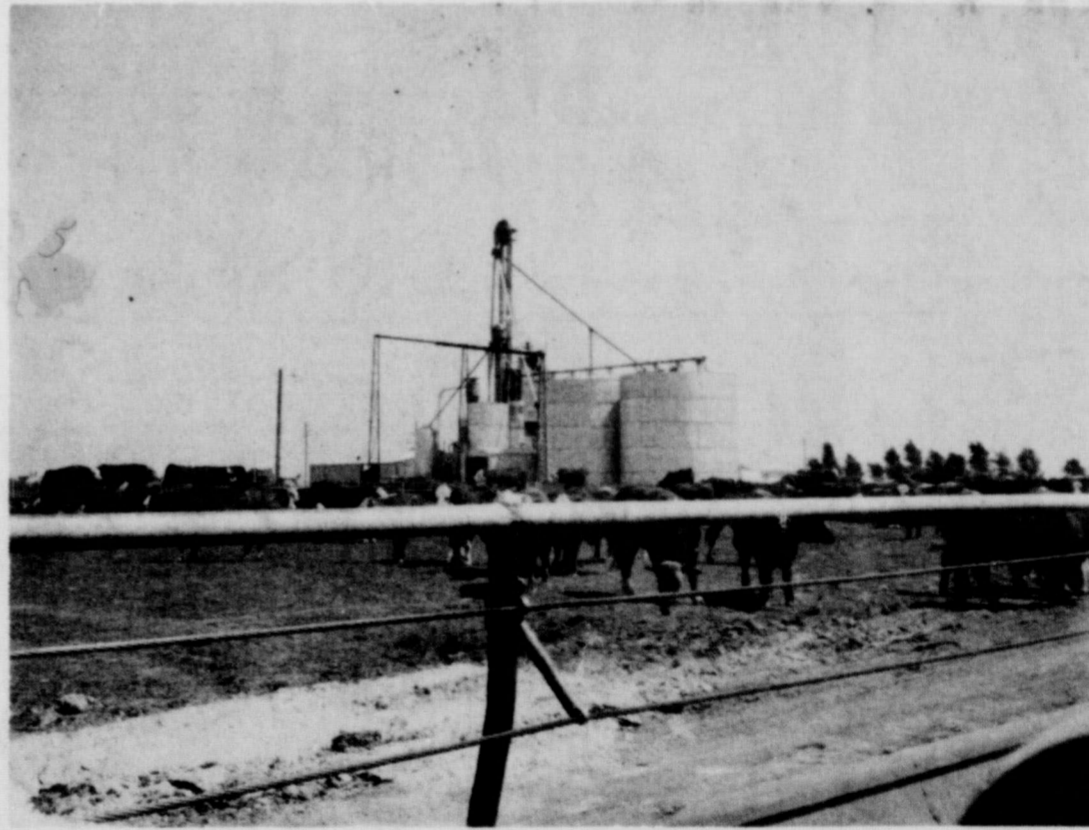
WE TAKE THIS MEANS TO CONGRATULATE THE CLUCK FEEDYARDS. THE GROWTH OF HANSFORD COUNTY DEPENDS ON PEOPLE LIKE YOU

WE ENJOY DOING BUSINESS WITH PEOPLE LIKE THE STAFF OF CLUCK FEEDYARDS.

### BLOCK DRILLING CO.

SUNRAY, TEXAS

BOX 460



THANKS TO ALL OF YOU --- AT CLUCK FEEDYARDS WE ARE PROUD OF YOUR FEEDLOTS AND THE PROGRESS YOU HAVE MADE IN THE CATTLE FEEDING INDUSTRY--

### GRUVER LUMBER CO.

GRUVER, TEXAS



DISTRICT GOVERNOR AT ROTARY... The Spearman Rotary Club was honored at their regular Monday luncheon by a visit by their District Governor, Judge Charles L. Reynolds of Childress, Texas.

McWhirter... A number of visitors and out of town Rotarians attended the luncheon and local guests included Billy Miller and Clay Gibner.

was indeed a Rotarian... The man then asked if he planned to attend the noon luncheon.

Don't expose yourself to the heat when you don't have to... Don't go out in the hot sunshine without a hat... Don't wear heavy or tight clothing.

mile or so of shallow flats... When the tide falls the flats are left dry, and the fish are trapped in the depression.

800,000 Pounds Of Fish Die In Lower Laguna

ROCKPORT--Low tides and lack of rainfall coupled with high temperatures and high salinity have killed an estimated 800,000 pounds of redfish, trout and drum in Lower Laguna Madre.

Biologists said the area is seldom used by fishermen due to its inaccessibility, and said the kill had been going on for about a month now.

'TEXAS' Passes Halfway Mark In 1969 Season

The bugle will blow for the 200 time in the Palo Duro Canyon on Monday August 4 to announce the opening of a performance of "Texas" the musical romance of Texas history by Paul Green.

THE FAMILY LAWYER

Wife Versus Parents

If a bridegroom is lucky, his bride and his parents will work out their new relationship in sweet peace and harmony.



taking care of his wife. The judge said she had first claim on his earnings.

his mother, who had full charge of managing the household.

A public service feature of American Bar Association and State Bar of Texas. Written by Will Bernard.



The dictionary says punch is "a beverage composed of fruit juices."



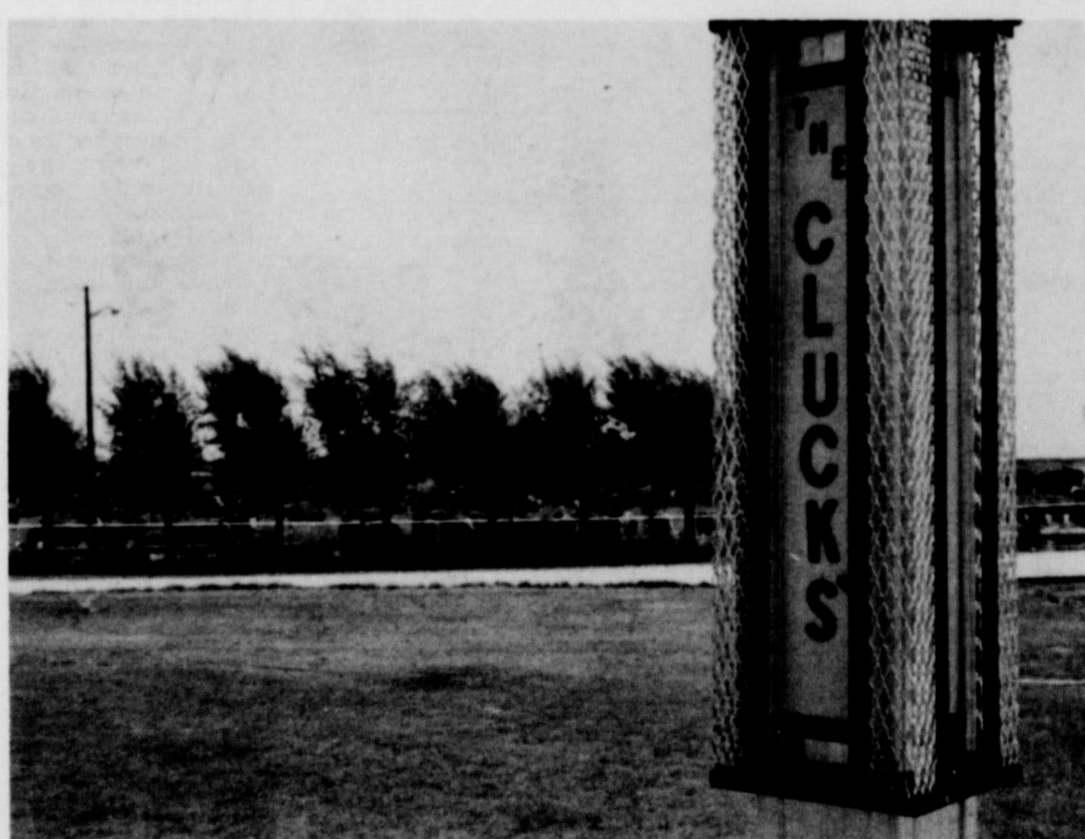
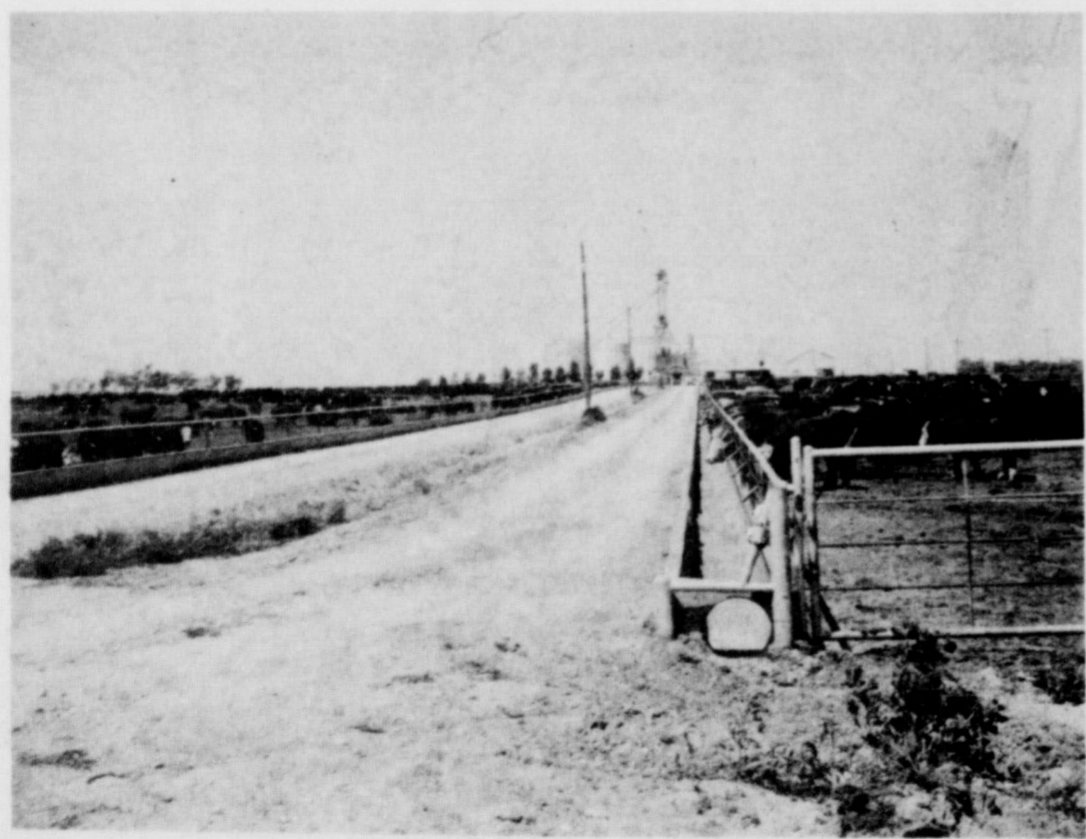
Ideas With Punch

Undiluted frozen punch concentrate makes a delicious cream sauce.

Accent on Health... A weekly public service feature from the Texas State Department of Health. J.E. PEAVY, M.D., Commissioner of Health.

With a summer heat wave scorching Texas, there is the possibility you could become a victim of sunstroke or heat exhaustion during the blast-furnace weather ahead.

headache and everything looks red to him. Often the victim becomes unconscious.



TWO VIEWS OF THE CLUCK FEEDYARDS

WE SALUTE ONE OF THE LEADING INDUSTRIES IN HANSFORD COUNTY, — CATTLE... AND ALSO ONE OF THE LEADERS IN THIS INDUSTRY—THE CLUCK FEEDYARDS

WE ENJOY DOING BUSINESS WITH SUCH FINE FOLKS.

SPEARMAN REDI MIX

SPEARMAN, TEXAS

PHONE 659-2323

WHERE OUR BUSINESS IS CONCRETE

Fiddle-Free Color TV by RCA



Cummings Refrigeration And Air Conditioning

Boxwell Bros. Funeral Home AND Flower Shop

WHITE HOUSE LUMBER CO.

Hansford Lodge

A.F. & A.M.

SERVICES

FOR SALE

YOUR KNAPP SHOE DEALER

FOR RENT

FOR RENT

Master Commodities Inc. Cattle-Cattle Futures Pork belly Futures

WANTED

CATTLE WANTED--For immediate and future delivery...

Wanted to Buy--baby furniture...

HELP WANTED

WAITRESS WANTED--Must be neat and clean & experienced...

WORKING MOTHER would like responsible adult lady to pick up one small girl after school...

WANTED: Babysitter in my home all day Monday through Friday...

LEGAL NOTICE

The Board of Trustees of the Spearman Independent School District will meet at 8 P.M. Monday, August 25 to consider the adoption of the official 1969-70 operating budget.

THE STATE OF TEXAS COUNTY OF HANSFORD TO THOSE INDEBTED TO, OR HOLDING CLAIMS AGAINST THE ESTATE OF A. R. HENDERSON, DECEASED:

The undersigned having been duly appointed executrix of the Estate of A. R. Henderson, deceased, in Cause No. 1253 in the County Court of Hansford County, Texas, on the 12 day of August, 1969, hereby notifies all persons indebted to said estate to come forward and make settlement...

LEGAL NOTICE NOTICE TO BIDDERS Sealed bids will be received at the office of the City of Spearman, Texas until 8:00 P.M. August 25, 1969 for furnishing the gasoline requirements of the City of Spearman for a period of 12 months, October 1969 through September 1970...

CITATION BY PUBLICATION STATE OF TEXAS TO: Annie Wallace, Martha Norem, Gyrnd Thale, Kristian Time, Margrethe Time, Isak Time, Bjarne Time, Grodem, Einor Time, Stein Time, Halger Time, Harold Time, Tora Time, Anna Nelson, Ola Lunde, Margrethe Heigard, Erik Lunde, Elizabeth Paulsen, Sigud Augland, Karen Tunheim

NOTICE OF PUBLIC HEARING The Zoning Board of Adjustment of the City of Spearman, Texas will hold a public hearing on August 18, 1969, 6:30 P.M. at the City Hall, Spearman, Texas for the purpose of considering the application of Mr. W. D. Davidson to locate a mobile home at 909 S. Dressen...

LEGAL NOTICE Being certified by the Commissioner of Agriculture of the State of Texas for this purpose, the Grain Sorghum Producers Association of Texas 79401 proposes a referendum election on grain sorghum under provisions of House Bill 764, 61st Legislature on the proposition of whether or not grain sorghum producers in the counties of Armstrong, Briscoe, Carson, Castro, Dallam, Deaf Smith, Floyd, Hale, Hansford, Hartley, Hutchinson, Moore, Oldham, Parmer, Potter, Randall, Sherman, Swisher, Bailey, Cochran, Crosby, Dawson, Gaines, Hockley, Lamb, Lubbock, Lynn, Terry, and Yoakum shall assess themselves a maximum amount of 5 cents per ton to be collected at the point of first processing or sale and to elect members for a 12 man commodity producers board to administer proceeds of such assessment to be used for research, disease and insect control, education and promotion designed to encourage the production, marketing, and use of grain sorghum.

hand and the seal of said court at office in Spearman, Texas, this 28 day of July, 1969.

Card of Thanks

I wish to thank my friends and relatives for the beautiful flowers, cards, letters, prayers and gifts I received while I was ill. They will always be remembered.

Too Late To Classify

HOUSE FOR SALE to be moved located 18 miles north Gruver, 28' x 40', 2 baths, air, heat, excellent condition. Phone 659-2636.

Gigantic backyard sale. Dishes of all kinds - pots and pans - clothing - bed clothes - some tools - everything you can imagine. Open on Thursday and Friday at 9 a.m. 428 S. Bernice.

HELP WANTED Part time fountain help. LYNX DEN Spearman, Tex.

Aransus Hunt Drawing Reaches Deadline--3 Wks.

AUSTIN -- Deer hunters have three weeks to get their name in the pot for the September gun hunt on Aransus National Wildlife Refuge on the Texas Gulf Coast, according to Gordon Hansen,

refuge manager. Requests for application blanks should be mailed to the Bureau of Sport Fisheries and Wildlife, c/o Texas Parks and Wildlife Department, John H. Reagan Building, Austin, Texas 78701. Completed applications must be in Austin before the 5 p.m. deadline August 15. Applications received after the deadline cannot be used and will be returned to sender.

The gun hunts were scheduled first this year in hopes more deer would be taken from the Refuge. With gun hunts first, the archery season was extended to Oct. 5 and will give archers 14 days of hunting this year. Last year, archers hunted the first eight days of September.

Hansen reported a fair crop on the Refuge this year even though there were a good many fawns lost in May due to high water. Since then, he said, the Refuge has dried up considerably and like other areas of the State is "awfully dry."

"It is still a little too early for an estimated deer population," Hansen said, "but it is excessive for the range when you consider our other objectives on the Refuge."

Because of the heavy population, both gun and bow hunters can take three deer, one of which must be an antlerless deer during the September season. Archers who hunt Oct. 1-5 will be able to take only two buck deer.

Detection Lab Established To Control Nematode

COLLEGE STATION--Nematodes, small hair-like roundworms which live in soil, will soon be getting a lot of special attention. Because of the increasing importance of plant parasitic nematodes control, and the need for agricultural producers and homeowners to have information needed for control, a detection laboratory has been established at Texas A&M University.

Dr. Wendell Horne, plant pathologist for the Texas Agricultural Extension Service, said the lab would operate on much the same basis as the soil testing lab, also an Extension Service operated facility. A fee of \$2.00 per sample will be charged for the detection service which will include the identification of nematodes present, infestation level, whether or not chemical or cultural control methods are justified and a listing of resistant varieties of plants.

Horne will be in charge of the laboratory. Treatment or control recommendations will be made either by Horne or another Extension plant pathologist. Recommendations, Horne said, will be based on facts other than nematode counts, including consideration for the crop to be grown, cultural practices available, variety differences, soil type and other factors. Test results should be back to the sample sender within 10 days from the receipt of the sample in the lab, Horne said.

The plant pathologist noted that nematodes are found in every section of Texas. All, however, he noted, are not destructive to plant life. The major Texas commercial crops affected by the parasitic pests are cotton, peanuts, vegetables and ornamentals.

Horne advised farmers and homeowners to keep in touch with the local county agricultural agent for information on the official opening of the lab and especially on how to take the needed soil samples. Special plastic lined containers must be used in submitting the samples.

The new facility should be able to handle up to 50 samples per day. Mrs. Pete Fisher and Tim were in Okmulgee, Oklahoma last week, where Tim, pre-enrolled in Oklahoma State Tech. Classes will start Sept. 29.



- 1965 CHEV. PICKUP 1/2 ton. R and H. 4-speed A real good pickup.....\$1095.00
1965 CHEV. 1/2 ton pickup 4 wheel drive \$1295.00
1966 CHEV. 1/2 ton pickup.....\$1095.00
1966 CHEV. 1/2 ton pickup.....\$1095.00
1967 GMC Pickup.....\$1395.00
1967 Chev. 1/2 ton pickup.....\$1695.00
1968 Chev. Pickup.....\$1995.00

Excel Chevrolet-Olds. HIGHWAY 207, SPEARMAN, TEXAS Jeer



For your feedlot needs... See us today, we can haul everything from cattle to hay in our Chevys.

FOR THE BEST IN AERIAL WEED & INSECT CONTROL

CONTACT Tom Penn Inc.

Spearman - Phone 659-3539 Perryton - Phone 435-3727 Nite Phone - 435-2798

SPEARMAN OFFICE OPEN 8 TO 5 6 Days

ALL NEW EQUIPMENT RADIO DISPATCH

REAL ESTATE FOR SALE

Will sell you 3-bedroom house and lot, 60' x 140' for \$4,150.00 if you will do balance of work such as putting in rest of foundation and utility lines.

255-rtnc

### A DOLLAR'S WORTH OF SODA POP

Children often pay more taxes on a dollar's worth of soda pop than drinkers do on a dollar's worth of beer.

A drinker who has two beers over the bar at 50 cents each, pays only 2.6 cents state tax. Kids buying a dollar's worth of soft drinks will pay 3 cents to the state, and in most places, another 1 cent to the city.

The Texas House of Representatives has voted to increase even further that tax on soft drinks and other items, and at the same time to continue exemption of beer and liquor. Alcoholic drinks are given a satin-pillow treatment. (Even beer is exempt from the so-called Sunday Blue Law; under it, you can legally buy beer but not a bucket). Why this preferential treatment of alcoholic beverages? This is a question the people of Texas ought to ask their representatives in Austin, and they ought to demand an answer.

Alcoholic beverages cause more crime, more welfare, more admissions to mental hospitals, more automobile accidents---more public tax burdens than any other single item. Yet they are given preferential tax treatment.

Beer taxes have not been increased in 14 years. Liquor taxes have not been increased in 10 years. The House has voted to increase the Sales Tax from 3 to 3.5 per cent, and to include other services, such as haircuts. This tends to discourage haircuts and encourage drinking, quite the opposite to what we ought to be doing.

### State Parks Get New Facilities

AUSTIN--The Texas Parks and Wildlife Department has recently completed several development projects in State parks in all parts of the State.

The following new facilities are now open to public use.

Atlanta State Recreation Park, located approximately 12 miles northwest of Atlanta in Cass County--one restroom with showers, eight trailer sites, eight campsites with electricity, and seven campsites without electricity.

Big Spring State Recreation Park, approximately one mile southwest of Big Spring in Howard County -- 12 shaded picnic units.

Blanco State Recreation Park, located one mile south of Blanco in Blanco County -- 10 trailer sites.

Caddo Lake State Scenic Park, located approximately 14 miles northeast of Marshall in Harrison County -- nine cabins renovated.

Dangerfield State Recreation Park, located five miles southeast of Dangerfield in Morris County -- one restroom with showers, 10 trailer sites, and 18 campsites without electricity.

Goliad State Historic Park, located one mile south of Goliad in Goliad County -- one restroom with showers, five screened shelters, 20 combination tent/trailer sites, and 25 picnic sites.

Goose Island State Recreation Park, located 12 miles northeast of Rockport in Aransas County, two restrooms with showers, one restroom without showers, and 25 open camping shelters with electricity.

Huntsville State Recreation Park, located 10 miles southeast of Huntsville in Walker County -- one restroom with showers, and 25 campsites with electricity.

Lockhart State Recreation Park, located approximately two miles southwest of Lockhart in Caldwell County -- one restroom with showers and 10 trailer sites.

Lyndon B. Johnson State Historic Park, located approximately 14 miles west of Johnson City -- one headquarters visitor center, one restroom without showers,

and 20 picnic units. Mission San Francisco de los Tejas State Historic Park, located 22 miles northeast of Crockett in Houston County, one restroom with showers, five trailer sites, five campsites, five campsites with electricity, five campsites without electricity, and 10 picnic sites.

San Jacinto Battleground State Historic Park, located approximately six miles southeast of Houston in Harris County -- one restroom without showers, and 50 picnic sites.

Tyler State Recreation Park, located eight miles north of Tyler in Smith County -- one park headquarters building, three restrooms with showers, one restroom without showers, 35 screened shelters, one group shelter, 40 campsites without electricity, 36 campsites with electricity, 39 trailer campsites, 40 picnic sites, and four miles of nature trails.

### GI Rollcall At Highest Peak

The GI roll call has passed the 27,000,000 mark.

In announcing the new total of enrollees, Jack Coker, Manager of the Veterans Administration Regional Office in Waco, said that Vietnam veterans discharged to August 4, raised the ledger count to the highest peak in history.

In reviewing the veteran population, the VA Manager noted that the average age of all 27 million veterans has increased to 44.3 years.

Broken down by wars, the average age of veterans on the active rolls are:

Spanish-American War (6,000 veterans) 90.3 years; World War I (1,647,000) 74.7 years; World War II (14,592,000 veterans) 49.7 years; Korean Conflict (6,847,000 veterans) 40 years; and Vietnam era (3,169,000 veterans) 26.2 years.

Also on the VA rolls are 3,134,000 who served in the Armed Forces between the Korean Conflict and Vietnam. Their average age is 30.7 years.

The totals above tops 27 million since some veterans served in more than one period.

While most of the nation's veterans have taken advan-

tage of some rights during the 25-year history of the GI Bill, Coker pointed out, major participation was four million in education and another 7.5 million for on-the-job training.

Millions including many of those who received education and training benefits, also have received other benefits such as loan guarantees for purchases of homes, businesses and farms, and compensation or pensions.

The VA Manager pointed out that Vietnam veterans who did not complete high school have an opportunity veterans of other wars did not, in that the VA will pay them monthly subsistence while they earn their high school diploma. This does not reduce their entitlement for other educational or training benefits.

Complete information on GI Bill benefits is available at any VA office, locations of which are in the white pages of telephone directories.

### Supervisor Tells About Stocking Farm Ponds

WACO--New farm ponds are not places for dumping just any kind of fish, according to Fred G. Lowman, fisheries supervisor of freshwater fisheries in Waco for the Texas Parks and Wildlife Department.

Special attention should be given not only to the species of fish to be released in new waters but the numbers are of equal importance as well. New impoundments should be stocked with the kind of fish which the owner or operator desires to catch or use.

It is very important to restrict the number of fish placed in a farm pond to only those which the water will be able to support. It would be futile to place black bass in a farm pond if no one connected with the area fished for them. The same is true of other species.

When a stock tank is to receive bass and channel catfish, Lowman recommends that the best results may be expected when the channel catfish are introduced in the fall before releasing the black bass the following spring. Bass stocked in farm ponds in the spring often grow large enough by fall to consume most catfish or other fish stocked at the same time.

Lowman says people hurt their chances for good fishing when they release fish of varying sizes and species.

Fish of different sizes placed in stock tanks may not be expected to produce good results.

The one or two fish which were caught in a neighbor's pond could possibly be larger than those received from the hatchery and therefore eat them. This could lead to a farm pond stocked with only a few large but not hungry fish which are difficult to catch.

### TWO SOUTH TEXANS GET AACI AWARDS

AUSTIN--Two South Texans were given Awards of Merit from the American Association of Conservation Information (AACI) for their activities in the conservation of the State's wildlife resources.

Receiving awards were George T. Jambers, Jr., a prominent rancher of Whitsett, McMullen County, and Haywood McDaniel, of San Antonio, who is in the investment business specializing in Mutual Funds.

The awards were presented by Robert G. Mauermann, deputy director of the Texas Parks and Wildlife Department, in the Department offices here. The awards were given to the two men for both their general conservation activities as well as their assistance to the Parks and Wildlife Department in acquiring the 15,200-acre Light Ranch to be used by the Department as a wildlife management area.

The ranch is now known as the Chapparral Wildlife Management Area and is located in Dimmit and La Salle Counties.

The American Association of Conservation Information is an international organization interested in the conservation of all natural resources. Its membership is made up of representatives of State, Federal, and Canadian Provinces.

Three such Awards of Merit are made in each State each year. The recipient of the third award will be announced soon.

### 'TEXAS' Cast

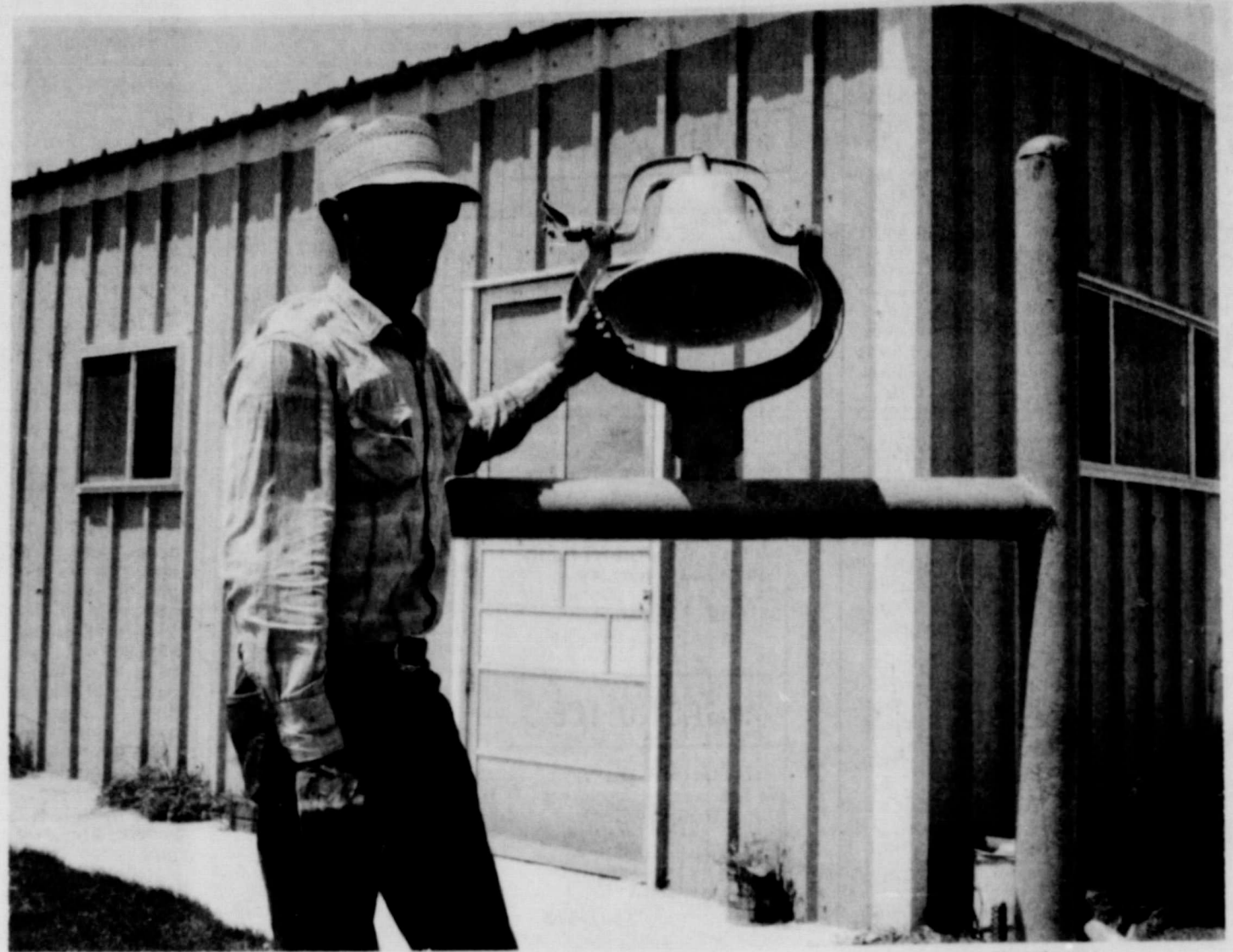
The cast members of "Texas," Palo Duro Canyon's outdoor drama, will stage a production of their own August 10, called "Texas

Originals." The show will include original choreography in ballet and jazz, songs from popular Broadway musicals and from operas, and piano selections of Gershwin's Rhapsody in Blue as

well as original piano compositions. There will even be an excerpt from a Shakespearean play, and a display of art work, all presented by those selected for the "Texas" cast of 1969.

"Texas Originals" is being produced to raise a scholarship fund for a well-deserving college student in the cast to be named by the directors and other selected members of Paul Green's

"Texas." The scholarship is not limited to a WTSU student, but to any college student who is in the "Texas" cast regardless of his or her major.



Bartons Salt Products ring the bell every time.

Phone 633-2141  
Box 989

## BARTON SALT COMPANY

HUTCHINSON, KANSAS

Full Line Of Salt Blocks  
Bartons Economy Stock Salt  
Sulfurized Salt

Bartons All Purpose Granulated Salt  
Bartons Trace Minerals  
Bartons-Hip Boot Salt



Producing Pelletized Alfalfa for successful feed lots in the Golden Spread Area.

## WESTERN ALFALFA CORPORATION

BOX 38

PHONE 316-276-7649

HOLCOMB, KANSAS



THURSDAY, AU...  
Director  
Care Wit...  
AUSTIN -- S...  
high temp...  
most of...  
into t...  
according...  
Director fo...  
Texas Parks...  
equipment...  
Godin says...  
ported in...  
at l...  
parks, and...  
are keepi...  
on camp...  
fires...  
According...  
ing rains...  
and weedi...  
been well...  
weather...  
a highly...  
he says...  
We are usi...  
by all cam...  
with camp...  
anything...  
a spark...  
Conser...  
Award...  
Fort Ho...  
EMPLE -- T...  
the Army...  
Hood Mill...  
located ne...  
Texas...  
winner fo...  
of Defense...  
award, acco...  
Wildlife D...  
Biologist...  
Temple...  
The award...  
to the...  
of the...  
or Air For...  
to have...  
most out...  
resource...  
during...  
calendar...  
Marine...  
Nort...  
the fir...  
beat...  
Hood, he...  
First and...  
Divisio...  
Corps, sp...  
0,000 ac...  
lands in B...

**Director Urges  
Care With Fires**

SPARSE rainfall and high temperatures have caused most of Texas' State parks to be tinder boxes, according to Mark Gosdin, director of park services for Texas Parks and Wildlife Department.  
Gosdin says fires have been reported in at least four of the parks, and park supervisors are keeping a close watch on campers and their campfires.  
According to Gosdin, good fire rains encouraged a profuse growth of underbrush and weeds which have been well cured by the weather. "This makes a highly combustible fuel," he says.  
"We are using extreme care by all campers, not only with campfires, but with anything which could be a spark," says Gosdin.

**Conservation  
Award To  
Fort Hood**

THE DEPARTMENT of the Army recently named Fort Hood Military Reservation located near Killeen in central Texas, the second place winner for the Secretary of Defense Conservation Award, according to Parks and Wildlife Department biologist Larry Holland Temple.  
The award is presented annually to the military installation of the Army, Navy, or Air Force that is judged to have conducted the most outstanding natural resource conservation program during the preceding calendar year. Camp Home Marine Base near Beaufort, North Carolina placed the first place award, narrowly beating out Fort Hood, home of the Army's First and Second Signal Divisions and the Third Corps, sprawls over 8,000 acres of former fields in Bell and

**Coryell Counties and is the site of the greatest concentration of mechanized armor in the Free World.**

In addition to the massive military operation at the huge installation, Fort Hood has long been a leader in game and fish management activities among Fourth Army military installations.  
Good game management practices there are a result of excellent support of installation commanders to the leadership and planning provided through the Conservation Section of the Fort Hood Rod and Gun Club.  
During the last decade technical assistance for Fort Hood game management programs has been provided by game biologists of the Trinity-Brazos Game Management Survey of the Parks and Wildlife Department.

**ELEMENTARY,  
JUNIOR HIGH  
TO REGISTER**

Registration for Grades One Thru Four will be as follows:  
First Grade- 9:00 til 12:00 Friday Aug. 22, 1969---  
Second Grade thru Fourth Grade Monday Aug. 25 from 9:00 til 12:00 A. M.---  
New Students that have moved into the Spearman School District and are attending Spearman Schools for the first time will pre-register from 1:00 til 3:00 Thursday Aug. 21, 1969.  
If at all possible, we encourage each student to register at the time scheduled instead of waiting until the day school starts.  
Registration for grades Five thru Eight will be as follows:  
Monday Aug. 25, 1969-- All Jr. High students report to Auditorium at 9:00 A. M. for registration.  
All New Students that have moved to the Spearman School District and are going to attend Spearman Schools for the first time should pre-register Thursday Aug. 21, 1969 between the hours of 1:00 P. M. to 3:00 P. M.

**School  
Schedule**

High School students who have moved to Spearman this summer and who plan to attend school here next term should go by the High School Principal's office either August 18, 19 or 20 between the hours of 10 a. m. and 2 p. m. to prepare their class schedules for the upcoming school term.  
Also, any student who needs to make a schedule change should do so on these dates.  
All Spearman High School Students shall report to the High School Auditorium Monday, August 25, 1969 for the purpose of receiving textbooks, handbooks, locker assignments and election of class officers. Each class member shall report according to the following schedule:  
Seniors, 8:15 a. m.  
Juniors, 9:35 a. m.  
Sophomores, 12:45 p. m.  
Freshmen, 2:05 p. m.  
Classes begin on Tuesday August 26, 1969.

**Motor Vehicles  
Large Part Of  
Texas Economy**

Enough jobs to support a city nearly the size of the combined metropolitan areas of Houston, Fort Worth and Corpus Christi.



Pvt. Roland B. George is home on a 21-day leave following which he will be shipped to Vietnam as a Water Supply Specialist with the U. S. Army.  
Pvt. George is visiting in Spearman with his sisters Mrs. Joe Fickling and Mrs. Clinton Word and in Gruver with his friend Billy Hunt. He has also visited in Higgins with his parents Mr. and Mrs. L. E. George and family.  
George completed his basic training A. I. T. at Fort Leonardwood, Missouri. He will report back to Oakland, Calif. at the end of his leave where he will await orders for overseas duty in Vietnam.

Special studies conducted by AMA show that manufacturers of motor vehicles, not including independent suppliers, operate 145 plants or offices in Texas. These employ 10,300 workers with an annual payroll of \$82 million. Annual taxes paid by these firms to state and local governments exceed \$4 million.  
Texas' importance as an automotive state is highlighted by its production of 233,000 passenger cars in the 1968 model year. In addition, motor vehicle makers spent more than \$50 million for goods and services from some 950 different firms in the state.  
The state's 1,989 new car and truck dealers represent an investment of \$242 million, employ 45,700 workers and pay out \$268 million annually in wages and salaries.



STACKS AND PILES OF NEWSPAPERS AND BOYS --- Paper boys shown above inserting Hansford Plainsman copies in the Newspaper office included Ernie Sandoval, Leroy Pacheco, Joey Avila, Mike Slater, Danny, Wendell and Shawn Kelly; John Pearson, Billy Snider; Jimmy Fickling; Richard and Steve Southern; Raymond and Michael Barnes and Shawn Rojas. These boys sell around 300 newspapers each week end.

**Kindergarten  
Students Will  
Enroll Sept. 2**

Kindergarten teachers Mrs. F. J. Hoskins and Mrs. J. E. Womble, announced this week that students will enroll for school at 8:30 a. m. Tuesday, September 2nd.  
Both teachers said classes will start September 3 and for the first two weeks students will be dismissed after two hours of school.  
Mrs. Hoskins' school is located at her home, 724 S. Townsend. Mrs. Womble's classroom is at her home, 822 S. Bernice Street.

Man showing doctor his wife's hand; "She did it preparing dinner," he said. "It's frostbite."

She: "You deceived me before our marriage. You said you were well off."  
He: "I was, but didn't know it."

**FINANCIAL STATEMENT  
Hansford County**

**SUMMARY OF RECEIPTS AND DISBURSEMENTS**

Funds	May 1 Balance	Receipts	Disbursements	Aug. 1 Balance
Jury General	\$ 1,519.30	\$ 34.42	\$ 723.25	\$ 830.47
Courthouse & Jail	13,291.19	134,300.60	116,917.11	30,674.68
Cemetery	9,581.38	31,144.21	24,722.92	16,002.67
Hospital	582.10	68.84		650.94
Road & Bridge, General:	13,910.72	52,381.94	63,847.81	2,444.85
Precinct No. 1	39,714.86	3,060.04	31,445.26	11,329.64
Precinct No. 2	36,683.48	3,500.97	30,712.13	9,472.32
Precinct No. 3	29,971.93	3,072.91	22,294.89	10,749.95
Precinct No. 4	36,137.36	9,162.57	22,046.86	23,253.07
Road & Bridge, Sinking:	2,074.86	137.82		2,212.68
Precinct No. 1	2,229.49	88.09		2,317.58
Precinct No. 2	10,691.80	63.81	5,426.19	5,329.42
Precinct No. 3	6,352.16	7,404.49	12,426.19	1,330.46
Precinct No. 4	1,046.93	108.96		1,155.89
Road District No. 2	251.40	81,900.00	80,978.50	1,172.90
Road District 4	20.16	8,028.40	8,028.25	20.31
Social Security	4,884.45	14,866.33	18,083.19	1,667.59
Perm. Imp. Sinking				

**RECONCILIATION WITH DEPOSITORY BANK  
AS OF AUGUST 1, 1969**

Funds	Book Balance	Outstanding Checks	Outstanding Receipts	Bank Balance
Jury General	\$ 830.47	\$ 393.35		\$ 1,223.82
Courthouse & Jail	30,674.68	2,838.15		33,512.83
Cemetery	16,002.67	403.12		16,405.79
Hospital	650.94			650.94
Road & Bridge, General:	2,444.85	5,633.93	\$3,584.55	4,494.23
Precinct No. 1	11,329.64	456.02		11,785.66
Precinct No. 2	9,472.32	1,458.83		10,931.15
Precinct No. 3	10,749.95	299.50		11,049.45
Precinct No. 4	23,253.07	75.00		23,328.07
Road & Bridge, Sinking:				
Precinct No. 1	2,212.68			2,212.68
Precinct No. 2	2,317.58			2,317.58
Precinct No. 3	5,329.42			5,329.42
Precinct No. 4	1,330.46			1,330.46
Road District No. 2	1,155.89			1,155.89
Road District 4	1,172.90			1,172.90
Social Security	20.31			20.31
Perm. Imp. Sinking	1,667.59	2,781.94		4,449.53

**OUTSTANDING BONDED INDEBTEDNESS**

Hansford County Courthouse & Jail Bonds, Series 1957	\$ 61,000.00
Hansford County Hospital Bonds, Series 1959	148,000.00
Hansford County Road & Bridge Precinct No. 1, Fund 8	5,000.00
Hansford County Road District 2, Road Bonds, Series 1965	15,000.00
Hansford County Road District 4, Road Bonds, Series 1948	44,000.00
<b>Total</b>	<b>\$273,000.00</b>

**INVESTMENTS**

Hansford County General Fund 2	\$ 75,000.00
Hansford County Courthouse & Jail Fund 3	20,000.00
Hansford County Road & Bridge Precinct 4 Sinking, Fund 15	7,000.00
Hansford County Road District 4, Fund 19	69,000.00
Hansford County Perm. Imp. Sinking Fund 24	14,000.00
<b>Total</b>	<b>\$185,000.00</b>

**Yes. We have  
NEW High-Yielding  
DEKALB  
BRAND  
PALO DURO  
Wheat Variety!**



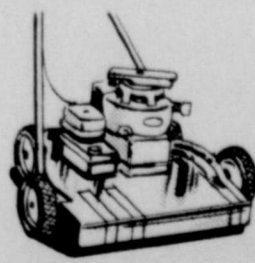
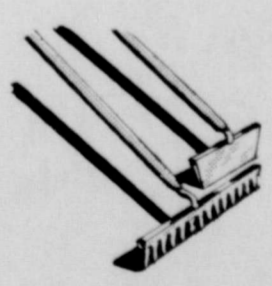
Especially bred for this area. Delivers big yields of high test weight grain with excellent milling, baking qualities. Short, stiff-strawed, takes higher fertility and irrigation. Medium-early maturity, excellent tillering. And it's breeder seed. Plant a portion of your acreage this year - seed your entire acreage next year. Discover this better wheat now - yours from nine years of DeKalb research.

**ORDER YOUR SEED NOW!**

TROY SLOAN 659-2954

**SUMMER CLEAN UP  
SALE**

- GARDEN HOSE
- INSECTECIDES
- FERTILIZERS
- HAND TOOLS
- LAWN MOWERS
- TOOL BOXES
- LIQUID EDGER



MANY OTHER ITEMS

WAKA FARM STORE AUG. 18-23

**BILL SHELBY**

NEWS FROM AUSTIN

By Rep. Abraham....

THE SPECIAL SESSION - Representative Malouf Abraham--

As we go into our third week, things are getting hot and heavy down here in Austin and the sparks are flying.

The Budget and the Tax Bill are over in the Senate and the arguments are under way.

They passed a Budget of about \$5.8 BILLION for the next two years. This is an increase of \$2 BILLION over the bill only four years ago-- over 50 percent. There were 17 of us who voted against it.

Then they passed the Tax Bill which raises around 325 MILLION DOLLARS, but I am happy to tell you that there were 59 of us who voted against it. Frankly, I thought we would be lucky to get 35 votes.

I have taken the position of not voting for ANY new taxes unless they will reduce the proposed budget. I think all of us realize that it does cost more money to operate our state government. We have increased the teachers salaries, established new colleges, medical schools, dental schools, additional facilities for mental health, etc. and many other things that I feel we need.

However, I think that there are a number of other places where we could cut our spending. Even Washington has tightened their belt in several areas. I need to know if you feel the same way as I do or not. Just one item gives 200 people raises of \$2,000 per year which comes to nearly \$800,000 for the two years. So, let me know what you think as it is a pretty lonesome feeling to be bucking the pressure if you don't know whether your people are backing you or not.

I am hopeful that the people all over Texas will be upset enough so they will write their Representatives about holding the costs down, so that we can cut down on the amount of new taxes. That's probably wishful thinking on my part.

I am proud of the fact that I have the smallest

expense account of the 150 members. I have a credit of over \$7,000 which is more than half the salary I have EARNED down here. Been thinking that I would go down and get \$7,000 worth of stamps and trade them for a Cadillac. However, on second thought maybe you would rather I deprive myself and keep on trying to save your money.

Water Inc. Plans To Double Efforts For 'Texas Water'

Officials of Water, Inc. have pledged a continuing of efforts aimed at bringing the Texas Water Plan from the drawing board to reality. The plan, the basis for Constitutional Amendment No. 2, was defeated by a narrow margin August 5.

K. B. "Tex" Watson, Amartillo, Water, Inc. President, said the regional organization would "redouble its efforts" toward ultimate adoption of the plan. "West Texas must have supplemental water if we are to grow and prosper," Watson said.

Bill Clayton, Executive Director of Water, Inc., emphasized that "West Texans, particularly, should not take a defeatist attitude. We know the job can be done and we are dedicated to doing it," he said.

Water, Inc., one of the major organizations dedicated to seeking and finding a solution to the long range water problems of West Texas and Eastern New Mexico, was in the forefront of the campaign for passage of Constitutional Amendment No. 2. In the areas served by Water, Inc., voters gave the Texas Water Plan overwhelming support. The amendment was defeated in Houston where a plurality of more than 50,000 votes was recorded opposing it.

Clayton said that in spite of the defeat, much progress has been made in Texas in a shorter period of time than in most states. He cited the California water plan which required six years from inception to approval by the California legislature, then five more years for public approval. Clayton said that in Texas, another proposed constitutional amendment could be submitted to the voters in November, 1971, and

predicted that it will be accepted, even in areas such as Harris County where opposition was the heaviest.

Clayton said he felt the water plan would be passed by voters in 1971 for several reasons. He said that by mid-1971, studies now underway to determine the extent of surplus water in the Mississippi River would be far enough along to indicate determination of availability. Also he said, the Louisiana and Mississippi Delta study would have progressed to the point that "we can go to the people in that area and sell them on this idea."

Both Clayton and Watson expressed their appreciation to those who worked in promoting the Texas Water Plan, and they called on all who helped, financially and otherwise, to continue in the "uphill battle for water."

Garden Club Met With Mrs. Riley

The Dahlia Flower Club met for a 9:30 a. m. meeting in the home of Holly Riley, July 11. Refreshments of a variety of cookies, punch and coffee were served as members arrived.

The meeting was called to order by the president, Susan Delk, and the minutes were read and approved. Holly Riley reported on the progress of the installation of a hydrant at the Girl Scout House.

The program, a most interesting one, "How To Grow a Lawn", was presented by Frankie Walker.

Roll call, "A Family Tradition" was answered by Mmes. Garrett Allen, Erwin Delk, J. W. Walker, Ervin Hester, Harry Shedeck, Olin Sheets, Guy Remy and the hostess.

One floral specimen, crepe myrtle, was displayed by Mrs. Erwin Delk. The meeting was closed with the reading of the club collect.

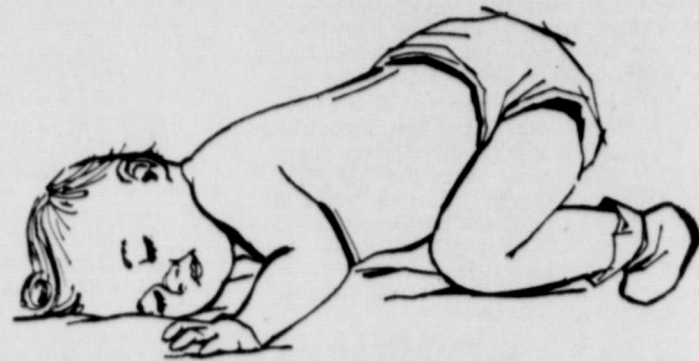
The Dahlia Flower Club will meet next in the home of Mrs. Earl Taylor August 25 at 3:00 p. m.

Mr. and Mrs. Don Shockley of Perryton and Mr. and Mrs. Jeff Hawkins, Vickie and Jim David Crawford visited in the home of Mrs. Edd Wilbanks Sunday.

Beat This Years HEAT And next years High Prices !!!

You can be sure he will stay cool and asleep with an

Amana

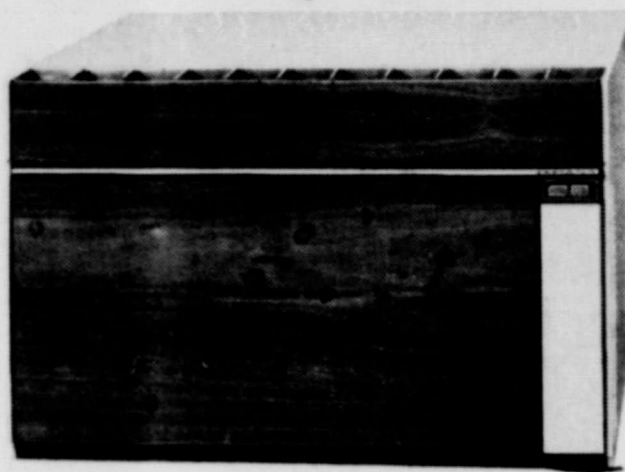


ALL SIZES

room air conditioner

It is up to 56% Quieter than 8 major brands tested... regardless of size!

FEEL COOL BE COOL with a big capacity Amana



We still have a good supply on hand

Full 5 year warranty

ANTHONY ELECTRIC

PLAINS SHOPPING CENTER



Pictured above sitting is Ralph Bort standing is Richard Fletcher.



Pictured above left to right, Lupe Puente, Aimee Lamberson and Debby Irwin.

THE STAFF HERE AT THE GRUVER STATE BANK TAKE THIS MEANS TO CONGRATULATE THE STAFF AT CLUCK FEEDYARDS.

WE ENJOY DOING BUSINESS WITH YOU

GRUVER STATE BANK

GRUVER, TEXAS



### PLAINS TO GET WORLD'S FIRST DESALTING PLANT

At 2:00 p. m. August 19, the city of Plains, Texas and the DuPont Company will formally dedicate and place into operation the world's first municipal water desalting plant based on reverse osmosis. "Permasep" permeators, a Du Pont invention which has caused much interest in the water treatment field, will then bring Plains its first good quality water. Many officials from cities, counties and the State of Texas have been invited to attend the ceremony. Representatives of several Federal agencies, realizing the value of good quality water in west Texas, will also be present.

### Final Inspection For Panhandle State Buildings

Final inspection of new buildings and remodeling at Panhandle State College were made Friday, August 8th.

The inspection included a new girls dormitory, Industrial Arts Building, addition to McKee library that doubled its size, remodeling the second floor of Hester Hall, (old cafeteria) and minor remodeling of the second floor of Sewell-Loofburrow and will be in operation this fall.

Following the final inspection of the building equipment and supplies can be moved in. Beds and equipment for the girls dorm has arrived and will be set up this month.

The remodeling of Hesper

Hall made available additional classrooms and offices. The building will house the office of Financial Aids and Placement, classrooms for geology and geology labs and offices for the geology staff.

### Arts & Crafts Guild Meeting

Ladies of the Arts and Crafts Guild of Spearman, met Friday, August 8 in the home of Mrs. P. A. Lyon, Sr. Those attending enjoyed an afternoon of painting and visiting. Mrs. Lyon served refreshments to Mmes. Clay Gibner, Ned Turner, Pope Gibner, Joe Trayler, Bruce Sheets, Bill Gandy, Fred Daily, Garrett Allen and Freeman Barkley.

Mrs. Garrett Allen will be hostess for the Guild in her country home August 15.



Mr. and Mrs. Frank Shields announce the arrival of a baby daughter born in Perryton Hospital at 7:45 a. m. July 11. Tammy Joan Shields weighed 7 pounds 3 1/2 ounces and measured 20 inches in length at birth.

Maternal grandparents are Mr. and Mrs. Billy Weant and paternal grandparents are Mr. and Mrs. Louie Karns of Spearman. Maternal great grandparents are Mrs. Mabel Edwards and Mr. and Mrs. A. N. Weant all of Spearman.

Mr. and Mrs. Dick Doyle of Gruver are parents of a new daughter. Born July 31 in Ochiltree County Hospital, her name is Peggy Shannon. Maternal grandparents are Mr. and Mrs. Ray Moore of Spearman.

Mr. and Mrs. Larry Stokes announce the arrival of their third child, a daughter born August 10 in St. Anthony Hospital, Amarillo. She weighed 7 lbs. 9 ozs. and is the grandchild of Mr. and Mrs. John Pipkin of Spearman.

Pvt. and Mrs. David Boyer of Arnett, Okla. announce the arrival of a baby daughter born in Newman Memorial Hospital in Shattuck. Teri Renee weighed 8 lbs. 4 oz. and measured 21 inches at birth. Maternal grandparents are Mr. and Mrs. Ed Roberts of Arnett and paternal grandparents are D. O. Boyer of Shawnee, Okla. Mr. and Mrs. L. E. George are great-grandparents of Higgins, Texas. Mrs. Joe Fickling and Mrs. Clinton Ward of Spearman are proud great aunts.

Weekend visitors in the Aaron Love home were Mr. and Mrs. Bill Powell and children of Pecos, and Mr. and Mrs. John Miller from Rolla, Kansas.

### THDA Dallas Convention

DALLAS--Almost a thousand Texas Home Demonstration Association (THDA) members will gather here September 16-18 for their annual convention.

Dr. Bardin Nelson, sociology professor at Texas A&M University; Dr. Earle Williams, Baylor Dental College; and Helen Poe, world traveler, author and lecturer from Dallas, will head the speaker line-up.

A unique part of the convention, according to THDA President Mrs. Sam Spier, Manchaca, is workshops on citizenship, safety, cultural arts and recreation, family life, 4-H and health. Each will feature experts in the area to help members carry out programs in their counties.

Artists Roberta and Wesley Speir from Austin will present the arts section. They operate Hill Country Art Gallery on Lake Travis. Women's defense expert Paul Boesch, Houston, will speak at the safety workshop. He has authored two books on the art of self protection for women.

A fashion show from Penny's Linda Gaylor, Dallas, will begin the convention. Program participants include Mrs. James Yates, Dallas County THDA chairman; Mrs. James Cave, Roby; Mrs. Maynard Gaines, Coleman; Mrs. Tom Joyce Cunningham, Denton; Mrs. Lloyd Kirkpatrick, Uvalde; Mrs. Florence Low, assistant Extension director for home economics, Texas A&M University; Mrs. A. E. Hodges, Hereford; Mrs. Howard Kolb, Post; Mrs. Bill Hardy Rotan; and Mrs. J. K. Johnson, Weatherford.

Visitors in the W. R. Shaull home this weekend were his son Mr. and Mrs. Jess Shaull and children from Miller, South Dakota. Jess owns a Sale Barn in Highmore, So. Dakota.

Jim David Crawford of Amarillo spent last weekend in Spearman with his mother and visited other relatives.

### MAYONNAISE HAZARDOUS TO SNAKES

TYLER--Caution: Mayonnaise may be hazardous to your health--if you're a snake.

Three East Texas men recently demonstrated their technique for killing with mayonnaise when they encountered an especially belligerent cottonmouth maccasin while hauling hay.

After a cursory and unsuccessful search for a stick or rock with which to dispatch the snake, one of them remembered a jar of mayonnaise in his lunch bag. A well aimed toss by the man incapacitated the snake long enough for the other two to administer the coup de grace with quart cans of motor oil.

Joe Womble and son Johnny of Abilene, Texas spent the weekend here with his mother Mrs. Jesse Womble.

### Enrollment Dates For P - S College

The fall enrollment at Panhandle State College is scheduled for September 2 and 3 with classwork starting on Thursday, Sept. 4. All freshmen who have not taken the ACT test will report on September 1 at 1:00 p. m. The test will be given in room 127, Hamilton Hall.

Entrance requirements for students enrolling for the first time are as follows: an application for admission; a medical form; a copy of high school transcript; a copy of the ACT scores (freshmen); official transcript of all college credits and deposits for dorm or apartment rent. Dormitory reservations \$15.00; college apartments \$25.00.

Mr. and Mrs. Paul Hazelwood and boys vacationed at Tres Ritos, Trinidad, Red River and Taos, New Mexico last week. They reported a fine catch of fish.



The Summer-Long Suit is a fashion swinger now! Jackets long or short, belted or not--with sleeves long or short or "no-sleeve". Jackets with the look of a shirt, a blazer, a pea-jacket. Skirts that move with soft pleats, swingy width. 3-piece suits with matching pants. Best of all, the fabrics: polyester knits and Fortrel-cotton blends--machine washable, and absolutely no-iron PERMA-PREST!

ATTENTION ALL KIDS AGES 3-15

YOU ARE INVITED TO ATTEND

## Vacation Bible School

AUGUST 18th-22nd.

9:30 to 11:30 A.M.

AT

## Fellowship Baptist Church

11th & ARCHER ST.

## HELP WANTED

### Typist Clerk

Northern Natural gas Co. Located

15 miles South East of Spearman, Texas.

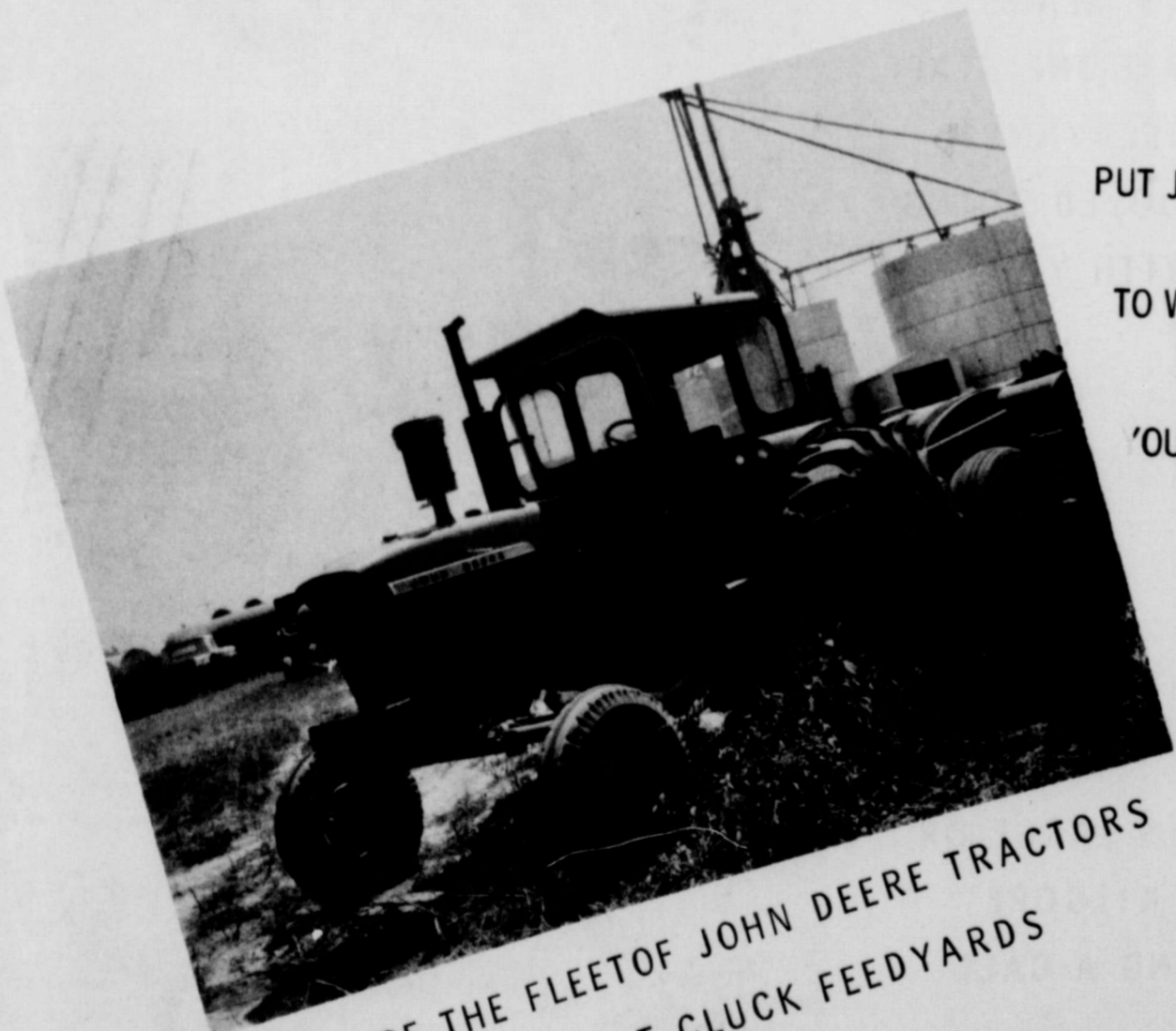
GOOD PAY

with extra benefits.

Opportunity for advancement.

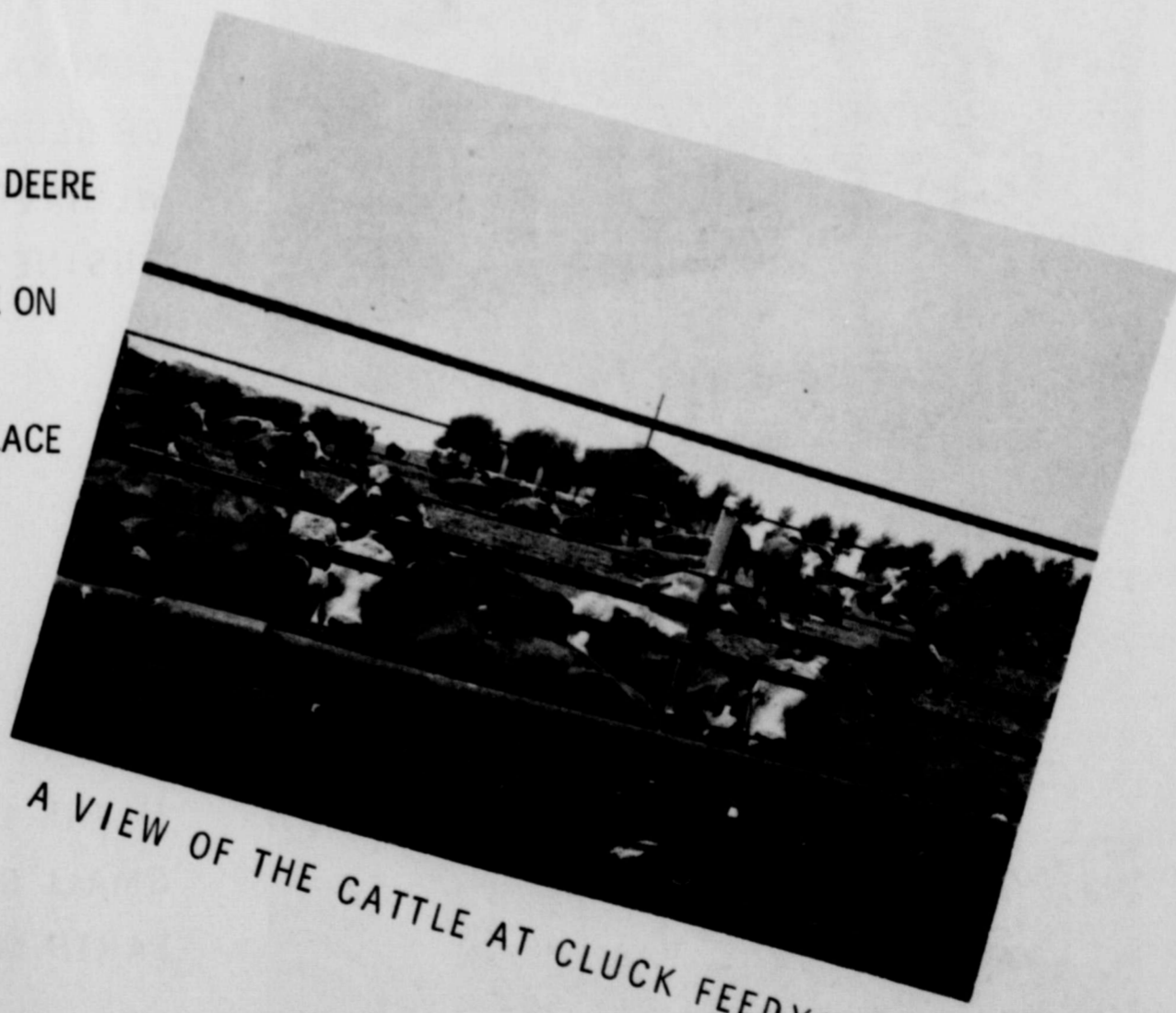
Application taken from Thursday, August 14th, through Thursday, August 21st.

CONTACT L. D. Mead - at 659-2561, during the day call 659-3657 evenings.



ONE OF THE FLEET OF JOHN DEERE TRACTORS IN USE AT CLUCK FEEDYARDS

PUT JOHN DEERE TO WORK ON YOUR PLACE



A VIEW OF THE CATTLE AT CLUCK FEEDYARDS

CONGRATULATIONS TO CLUCK FEEDYARDS

JUST ONE IN A LONG LIST OF OUR HAPPY CUSTOMERS WHY NOT JOIN THIS LIST



# HANSFORD IMPLEMENT INC

YOUR JOHN DEERE DEALER

# holt news

Mr. and Mrs. Eldon Beck and family of Fairfield, California visited last week his sister Mr. and Mrs. Richard Gaines and Peggy, also Mr. and Mrs. Fred Mayfield of Snettett and Mr. and Mrs. Owen Pendergraft.

Vernie Rosson of Spearman and Maude Rosson spent Saturday night in Erick, Oklahoma visiting Mr. and Mrs. Le Roy Rosson, Cecil Rosson and other relatives.

Mr. and Mrs. Medlin Patterson weekend guests were, Mr. and Mrs. O. L. Patterson of Benjamin, Texas, Mr. and Mrs. Truett Hester and girls of Knox City, Texas, Mr. and Mrs. B. C. Morgan and children, and Mrs. Ida Gipson of Shamrock.

Kathy Jenkins caught a flight from Amarillo Friday August 8 to visit cousins Mr. and Mrs. Jimmy Cook and family at Andrews Air Force Base, Maryland. It is about ten miles from Washington, D. C.

Mr. and Mrs. Owen Pendergraft attended Sunday night August 10 at 7:30 o'clock in The First Methodist Church of Ulysses, Kansas the wedding of Mr. and Mrs. Ronald Sears. Then the Pendergrafts spent the night with Mr. and Mrs. Gerald Gray of Ulysses and returned home, Monday.

Messrs. and Mmes. Ira Harbour and Ted, Curtis Harbour, Doyle Jackson and boys, and Dan Jackson attended the wedding Saturday night August 9 at the First Baptist Church of Snettett of Mr. and Mrs. Danny Chisum of Snettett. Danny is a grandson of Mr. and Mrs. Dan Jackson.

Mr. and Mrs. Travis Reger, Debra and Dale returned home Monday from a weeks vacation. They did a lot of sight seeing at Pa Cosa Springs, rode the little train from Durango to Silverton, traveled over the Million Dollar Highway and spent several nights in Denver visiting Mr. and Mrs. Bruce Medler. They also visited the Rocky National Park. They enjoyed their vacation very much, but happy to be back home, again.

## Helpful Hints From Me To Thee

by Vivian C. Warminski  
County Home Demonstration Agent

Self-adhesive wall coverings brings new life to worn-out interiors attractively and fast. This easy-to-use product (just pick a pattern, peel off the protective backing and press) offers many decorating ideas.

Bonny Lay Extension home furnishings specialist, suggest the home decorator cover a plywood screen with a woodgrained pattern or even a different pattern on both sides for a new room divider. Or enliven old bookcases by lining the shelves with a bright floral shade.

One new variation is a design of nylon flocking over printed vinyl. Since these coverings are plastic and the flocked pattern is nylon, dirt and other stains can be washed off without damaging the color or material.

If you plan to buy lace for fall, Graham Hard, Extension clothing specialist, gives some tips.

1. Ask if lace is stabilized for shrinkage control. Lace fabrics are under tension in manufacture. Dry-cleaning and the steaming in finishing release the fabric causing shrinkage if it hasn't been stabilized. Unstabilized laces may shrink as much as 10%.

2. Note underarm and side seams in lace clothing. Are they ample in width and well finished? Shallow seams pull out

with strain in wear.

3. Observe buttonholes. Unfinished or machine-stitched buttonholes fray readily.

The Summer fruit jubilee is on... choices include blueberries, peaches, plums, grapes and cantaloupe. When selecting them, consider family likes and the cost per serving -- considering waste and size and how it will be served. When taking them home, treat them gently -- and refrigerate. Peaches may be ripened somewhat at room temperature first... or if berries are the choice spread them in a larger dish.

The supply of high grade beef is up... and the demand for the quick-cooking cuts is also increasing. So what will be the items to watch and use? Mrs. Gwendolyn Clyatt, Extension consumer marketing specialist, suggests longer cooking cuts like the chuck, rib and rump roasts of beef.

A real tasty dessert is a minted fruit and berry bowl. Use a combination of fresh fruits and berries: melon balls, orange sections, sliced bananas, pitted sweet cherries, strawberries and cut-up pineapple. Combine fruits in a large bowl; sweeten to taste. Sprinkle with chopped fresh mint. It looks so cool and it is so refreshing!

Saltwater trotliners will also be prohibited from using metal stakes in counties in which the Texas Parks and Wildlife Department has regulatory authority. Trotlines in these regulatory counties are limited to 600 each.

Phillips says metal stakes rust and break off at water level, presenting a hazard to boating.

Violations of these laws are misdemeanors and punishable by fines from \$25 to \$200.

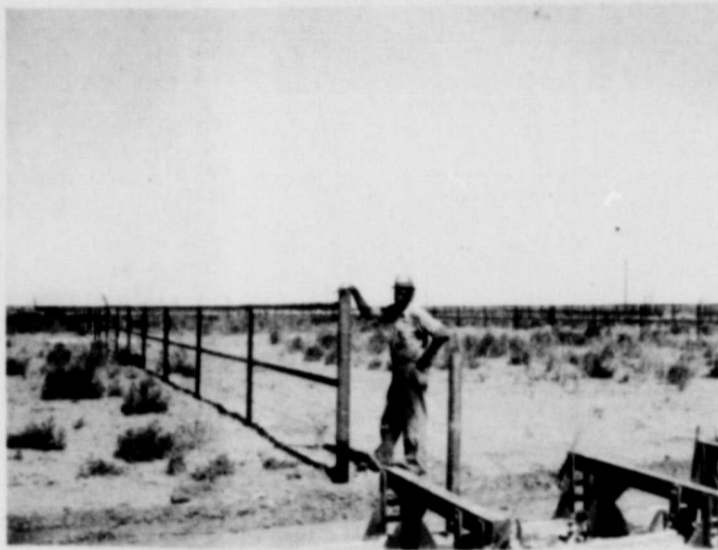
### Saltwater Lines Must Be Tagged

AUSTIN -- Saltwater trotline fishermen will be required to mark their lines with numbered tags to be issued by the Texas Parks and Wildlife Department beginning Sept. 1. Cost of the tags will be \$1.

After this date any trotlines found without a tag will be subject to seizure, according to J. B. Phillips, law enforcement coordinator for the Department.

One numbered tag must be attached to each 300 feet of trotline.

WE TAKE THIS MEANS TO CONGRATULATE THE STAFF OF CLUCK FEEDYARDS. YOU HAVE ADDED TO THE FUTURE OF HANSFORD COUNTY.



WHEN WE DO WORK FOR PEOPLE LIKE THE STAFF AT CLUCK FEEDYARDS IT IS A PLEASURE.

## CORRAL CONSTRUCTION CO.

5202 E. WASHINGTON PHOENIX, ARIZ. 275-8597

GARY BUNGER

GRUVER

733-2406



WE TAKE THIS MEANS TO CONGRATULATE THE STAFF OF CLUCK FEEDYARDS WE HAVE ENJOYED DOING BUSINESS WITH YOU.



IF THE JOB IS LARGE OR SMALL GIVE KILGORE EARTH MOVING A CALL



## KILGORE EARTH MOVING INC.

BOX 714

GRUVER, TEXAS



**MRS. KENNETH WAYNE FARIES**  
nee Sylvia Mae Parks

Sylvia Mae Parks and Kenneth Wayne Faries were joined in marriage in a formal ceremony held at 8 P. M. in the Morse Community Church at 8 P. M. The couple are Mrs. H. B. Parks and Mr. and Mrs. Kenneth Faries of Spearman, Texas. Mr. Faries is a former pastor of Morse Community Church, read the double ceremony before an arrangement of white gladioli and daisies. Two branched candelabra entwined with a silver arrangement of white flowers marked the aisle which was draped with the aisle carpet.

Miss Cynthia Thompson of Mexico, Missouri, and a cousin of the bride was the organist. She accompanied Mrs. Robert Adamson of Spearman who presented vocal selections, "Hawaiian Wedding Song" and "The Wedding Prayer." Given in marriage by her father, the bride wore a formal wedding gown of ivory silk organza with a matching lace trimmed cathedral veil of ivory illusion. The floor length gown featured brief sleeves and yoke effect of chantilly lace which was repeated on the hemline of the gown in motifs ending in a scalloped design. The scalloped neckline, hemline and motifs of lace scattered over the gown were encrusted with tiny pearl

beading. The mantilla veil of illusion was bordered with beaded chantilly lace. The bridal bouquet was a cascade of stephanotis and daisies surrounding a white orchid. Maid of honor was Miss Patricia Henderson of Morse, cousin of the bride. Bridesmaids were Miss Carla Hanshu of Darrouzett and Mrs. Suzanne Howell of San Antonio. All were attired in floor length gowns of avocado antique satin designed with empire waistlines. The front V-neckline was enclosed by a ruffle extending to the V-neckline in the back and down the wrap around skirt to the hemline. The matching headpieces were velvet bows designed with pinpoint streamers holding small pink daisies. They carried white baskets filled with arrangements of pink and white daisies. Best man was Gary Faries, brother of the groom. Groomsman were Johnny Graves of Sunray and D. Allen Miller of Dallas. Keith Parker of Perryton, cousin of the groom, and Wade and Lynn Parks, brothers of the bride, served as ushers.

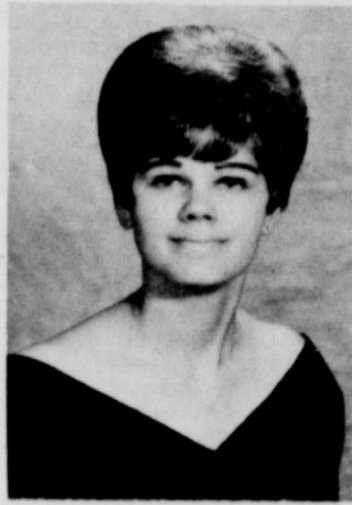
Mrs. Parks, mother of the bride, wore a beige lace ensemble with matching accessories. Mrs. Faries, mother of the groom, chose a mint green two piece knit dress with white accessories. Both wore orchid corsages.

Following the ceremony a reception was held at the Community Center. Mrs. Walter Graves of Lubbock, sister of the bride, registered the guests.

The bride's chosen colors of olive green and pink were featured in the decorations on the bride's table. The table was laid with a lace cloth over green and was centered with an arrangement of pink and white daisies, stock and olive green candles. The four-tiered wedding cake and appointments of silver and crystal completed the table arrangement. Miss Janet Parker of Perryton, cousin of the groom, and Mrs. Mike Stedje of Gruver presided at the serving table.

The bride's traveling costume was a two piece ensemble consisting of a white linen dress and pimento coat. Her accessories were white and her corsage was the orchid from her bridal bouquet.

Following a wedding trip to Colorado Springs, the couple will be at home in Lubbock where both are students at Texas Tech University.



**Vicki Shedeck**  
Attends VICA Conference

Miss Vicki Shedeck Vocational Industrial Clubs of America, District VI Reporter will leave for Austin, Sunday, August 17th through August 22nd for the Ninth Leadership Development Conference. This is held for VICA District and State Officers, and Delegates each year. Vicki will learn more about Leadership in the world of work and why it is so important today. There will be other students from all over Texas in Austin for the Leadership Conference representing the Texas Association.

Vicki is a Senior in Spearman High School.

After the Leadership Conference she will be officially District VI Reporter for VICA.

Vicki is the daughter of Mr. and Mrs. Richard Shedeck. The coordinator of VICA is Mr. Wilbur Hull who teaches ICT and DE in High School.

### Bride-Elect Is Honored

A pre-nuptial shower honoring Miss Donna Ownbey, bride-elect of Roy Reese, Jr., was held in the Hospitality Room of the First State Bank, Saturday afternoon, August 2. Guests who called between the hours of 2:30 and 4:00 were registered by Dorothy Groves.

The refreshment table, attended by Nancy Reese, sister of the prospective groom and Jane Ownbey, sister of the bride-elect was laid with a white linen cloth. Centering the table was a four branched silver candelabra entwined with smilax and blue pompom mums. Punch, cake, nuts and mints were served from crystal and silver table appointments.

Mrs. Roy Reese, Sr., assisted the honoree in the opening of her lovely gifts.

Miss Ownbey was presented with a corsage of white roses, tied with blue ribbon and tufts of nylon tulle, carrying out her chosen colors.

Hostesses for the occasion were Mmes. Willis Sheets, Herbert Butt, Bill Jackson, J. P. Vernon, Max Baggerly, B. J. Grayson, E. D. Clement, J. L. Brock and P. A. Lyon, Jr.

Out of town guests were Mrs. Roy Reese, Sr., Miss Nancy Reese of Borger, and Mrs. Jim Archer of El Paso.

The table was covered with a white linen handworked cloth, decorated with pink tulle bows at each corner. Centered on the table was a floral arrangement of pink asters. Misses Linda Smith and Frances Whitson served from the crystal punch bowl and cake server.

Miss Toni Griffin, sister of the prospective groom, assisted the honoree in opening her gifts.

White carnation corsages were presented to the honoree, her mother Mrs. Dub Hanners and the prospective groom's mother, Mrs. R. O. Griffin of Borger.

Out of town guests attending were Mrs. R. O. Griffin and Toni Griffin of Borger and Mrs. Ola Sparks and Mrs. Belva Bettis, Shara and Barbara of Perryton.

Hostesses for the affair were Mmes. Jimmy Kirkland, Bill Jackson, Wesley Garnett, Sr., Don Smith, Orvil Brummett, H. P. Cates, Sam Patterson, Dick Kilgore, L. S. McLain, Jack Whitson, Frank Massad, W. B. Barnes, and Sam Watson.

### Pre-nuptial Gift Shower Honors Melinda Pearson

Miss Melinda Pearson, bride-elect of Mr. Ronnie Newton Hopper, was honored with a pre-nuptial shower held in the Hospitality Room of the First State Bank, Saturday evening, August 9.

Guests called between the hours of 8:00 and 9:30 and were registered by Linda Tillery of Amarillo.

Hostesses for the affair were Mmes. J. P. Vernon, Wesley Garnett, Sr., A. F. Loftin, Earl Riley, D. E. Spoonemore, Bill Brown, Nolan Holt, Hall Jones, Floyd Close, Don McCammond, P. A. Lyon, Jr., and Altha Groves.

The serving table was beautifully decorated with a white embossed linen cloth, centered with an arrangement of yellow roses in a cut glass bowl. A silver candelabra holding yellow tapers was placed directly behind the arrangement.

Miss Sharon Mauldin and Mrs. Don McCammond attended the refreshment table,

servicing punch, cakes, nuts and mints from the silver appointments. The color scheme carried out the bride-elect's chosen colors of yellow and white.

Melinda was presented with a corsage of yellow roses by the hostesses. Her mother, Mrs. A. S. Megert and the prospective groom's mother, Mrs. Bob Hopper were given corsages of white mums tied with yellow ribbon and tulle.

Out of town guests included Mrs. Megert of Borger, Mrs. Bob Hopper of Petersburg, Texas, Mrs. Garrett of Borger and Melinda's sister, Mary Smith of Miama, Texas.

### METHODIST YOUTH AT CHURCH CAMP

Youth of the United Methodist Church of Spearman left early Monday morning for a "retreat" at Antonito, Colorado. They will camp at Aspen Glades Camp Ground until Friday, August 15.

Activities for the young people of the United Methodist Church will include swimming, hiking, fishing, group singing, they will hike to the sand dunes one day and cook each day over open camp fires. Each evening will find them all around camp fires taking part in worship services.

Those attending the retreat were UMY members, Patricia Schnell, Vickie Rosenbaum, Kay Reed, Becky McClellan, Denise Sparks, Debbie Daniel, Jody Healer, Toni Hudson, Randy Collard, Robert Archer, Kelly Rosenbaum, Ronnie Head, Pat Sloan, Bill Ownbey, Steve Reed and Stan Hudson, Mr. and Mrs. Dennis Nelson and Reverend and Mrs. Wesley Daniel accompanied the group as sponsors.

W. C. Davis and daughter Nancy of Tucson, Arizona visited in Spearman with his parents, Mr. and Mrs. Jimmy Davis, his brother Irvin Davis and family and his sister Mrs. Don Smith and family Sunday through Thursday.

### TEL Sunday School Class Has Meeting

Mrs. Alma Kizziar was hostess for the monthly social and business meeting of the TEL Sunday School Class of the First Baptist Church.

Mrs. Fred Fewin opened the meeting with a prayer, followed by the business session presided over by Mrs. Kizziar.

The devotional, taken from the 8th chapter of Psalms, was given by Mrs. Wilbanks. Mrs. Bob Baley closed the meeting with prayer.

Mrs. Jenna V. Ownbey was a guest at the party, bringing some of her paintings for the viewing of members of the class.

Present were Mmes. Fred Fewin, Bob Baley, Lillie Hacker, Edd Wilbanks, Lena Stephenson and the hostess.

### COUPLE TO BE WED SATURDAY

Miss Debbie Mae Robbins, daughter of Mr. and Mrs. J. A. Robbins Jr. of Stratford, Texas and Murphy Allen, son of Mr. and Mrs. Delbert Allen of Gruver, Texas have chosen August 16 as the date for their wedding in the Robbins home in Stratford.

The bride-elect will be a senior at Spearman High School. Allen is a graduate of Stratford High School and at present is employed at Spearman.

Mr. and Mrs. James Maxwell of Broken Arrow, Oklahoma were in Spearman over the weekend. They returned their niece and nephew, Peggy and Andy James to their home after a visit with the Maxwells while their mother Mrs. Red James was in the hospital.

Mr. and Mrs. Don Archer and baby of El Paso were in Spearman for the wedding of his sister Nelda.



A PICTURE OF THE FUEL TANKS AT CLUCK FEEDYARDS.

WE TAKE THIS MEANS TO CONGRATULATE THE STAFF OF CLUCK FEEDYARDS.

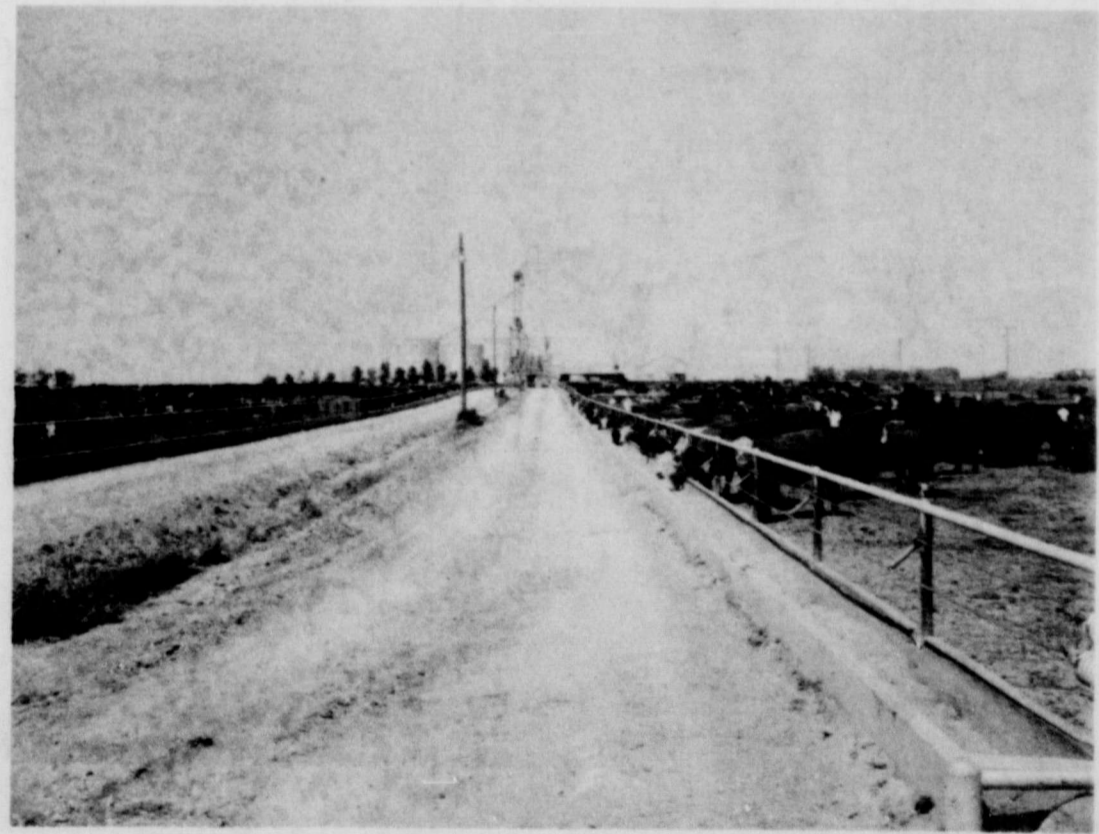
WHEN THINKING OF FUEL GO TEXACO

# Eddleman & Eddleman

TEXACO PETROLEUM PRODUCTS  
GRUVER, TEXAS 733-2511



## CONGRATULATIONS TO THE STAFF OF CLUCK FEEDYARDS



A VIEW OF THE FEEDYARDS

WE ENJOY DOING BUSINESS WITH YOU



SERVING YOUR FEEDING NEEDS

207 N. MCCREE

GRUVER, TEXAS

### Parks To Get New Facilities

AUSTIN--State parks in all parts of Texas are slated for new facilities, and bid dates for the projects have been established by the Texas Parks and Wildlife Department.

The following is a guide to the types of facilities to be built and the final date on which the construction bids will be accepted.

Atlanta State Park, located approximately 12 miles northwest of Atlanta in Cass County, will get a new headquarters building, a superintendent's residence, a maintenance building, and related utilities. Bids are due 2 p.m., Aug. 20.

Baltimore State Recreation Park, located five miles southwest of Baltimore in Reeves County, is scheduled to get a new headquarters building, a restroom with showers, 15 trailer sites with shade shelters, renovation of the swimming pool, a bath house, a concession building, a residence, a new service building, related utilities, landscaping, roads and parking areas. Bids are due 2 p.m., Aug. 24.

Cleburne State Recreation Park, located approximately 14 miles southwest of Cleburne in Johnson County, will get a new headquarters building, six screened shelters, three restrooms with showers, a service building, 15 campsites, 20 trailer sites, 15 picnic sites, utilities, repair to concession building, a bathroom, a residence, landscaping, roads, and parking. Bids are due at 10 a.m., Aug. 22.

Fort Griffin State Historic Site, located 13 miles north of Albany in Shackelford County, will get a new visitor's center and restoration work. Bids are due at 10 a.m., Aug. 21.

Fort Richardson State Historic Park, adjacent to Jacksboro in Jack County, will receive restoration work on the hospital and officers' quarters plus miscellaneous site work. Bids are due at 10 a.m., Aug. 21.

General Zaragoza State Historic Site, located two miles south of Goliad in Goliad County, is to get a replica of the birthplace of General Zaragoza. Plans should be complete and under

contract by Aug. 31. Repairs to the existing compound will be made at Goliad State Historic Park, located one mile south of Goliad in Goliad County. Plans should be completed by Aug. 31.

Goose Island State Recreation Park, located 12 miles northeast of Rockport in Aransas County, will receive a new headquarters building, a restroom with showers, a residence, 15 campsites, utilities, land reclamation and drainage, roads, and parking areas. Bids are due 10 a.m., Aug. 20.

Lake Brownwood State Recreation Park, located approximately 16 miles north of Brownwood in Brown County, is to get a new headquarters building, a residence, two restrooms with showers, one restroom without showers, a service building, 15 campsites, 20 trailer sites, 15 picnic sites, utilities, renovation of the concession building, roads, and parking areas. Bids are due 3 p.m., Aug. 22.

Lake Corpus Christi State Recreation Park, located approximately three miles southwest of Mathis in San Patricio, Jim Well, and Live Oak Counties, will build a residence, 14 trailer sites, roads, and parking areas. Bids are due 10 a.m., Aug. 20.

Lockhart State Recreation Park, located approximately one mile southwest of Lockhart in Caldwell County, is due to get repairs on the existing residence, a pro shop, a bathroom, 10 camp sites, utilities, roads, and parking areas. Bids are due 10 a.m., Aug. 22.

Monahans Sandhills State Scenic Park, located five miles northeast of Monahans in Ward and Winkler Counties, is to get a restroom with showers, sewage dump station, 25 combination campsites, utilities, roads, and parking areas. Bids are due 10 a.m., Aug. 26.

Palmetto State Scenic Park, located 13 miles northeast of Gonzales in Gonzales County, will get one restroom with showers, one restroom without showers, five campsites, seven trailer sites, 15 picnic sites, renovation of the concession building, water storage building, landscaping, parking areas, and a utilities system. Bids are due 10 a.m., Aug. 22.

Palo Duro Canyon State Scenic Park, located 20

miles southeast of Amarillo, is to get a renovation of interpretive building, one restroom with showers, one restroom without showers, 20 campsites, 20 trailer sites, roads, parking areas, and utilities. Bids are due 2 p.m., Aug. 22.

San Jacinto Battleground State Historic Park, located 10 miles southeast of Houston in Harris County, will get bulkhead repairs, an extension of the water system, repairs to the terrace, roads, and parking areas. Bids are due 3 p.m., Aug. 22.

Caddo Lake State Scenic Park, located 14 miles northeast of Marshall in Harrison County, will get a new visitor center, residence, one restroom with showers, one restroom without showers, a service building, five screened shelters, 15 campsites, 20 picnic sites, and 15 trailer sites. Bids are due 2 p.m., Aug. 15.

Daingerfield State Recreation Park, located five miles southeast of Daingerfield in Morris County, will get one restroom with showers, 10 campsites, renovation and repair of the combination building, extension of utilities, roads, and parking areas. Bids are due 2 p.m., Aug. 15.

Fort Griffin State Historic Park, located 15 miles north of Albany, is to get a new restroom with showers. Bids are due 2 p.m., Aug. 15.

### The Cost Of The Sound Of Music

Dallas -- If you have a stereo tape recorder and a stack of tapes in your car and don't take some basic theft precautions there's a good chance they won't be there in the morning.

And unless you take the time to mark your equipment and record the serial numbers the chances of ever recovering the stolen goods are practically nil.

The stealing of stereo tape recorders and tapes from automobiles is becoming a major headache to law enforcement officials in the Southwest, as well as insurance companies. Because of the failure of car owners to protect their tape decks from theft, they are easy prey for the professional car thief and are being stolen at a fantastic pace.

For instance, in Austin,

Texas, in 1965 there were approximately 20 stereo players and 200 tapes stolen from automobiles, according to that city's police department. Thefts skyrocketed to around 900 players and almost 6,000 tapes in 1968. This same rate of increase applies to practically every major city in the Southwest, or the whole nation for that matter.

G. C. Benson, manager of the southwestern division of the National Automobile Theft Bureau, says that the key to preventing the theft of tape players is for car owners to always lock their cars when leaving them unattended and mark their stereo equipment.

"Leaving cars unattended on dark, residential streets or apartment parking lots should be avoided as much as possible," said the NATB official.

"Also, don't advertise the fact that you have a stereo player in your car by leaving tapes in plain sight in the seats or in a box in the middle of the floor. These are things the thief first looks for."

The recovery rate of stolen players and tapes is only 10 to 20 per cent, says Mr. Benson.

"Auto stereo player owners must mark both their players and tapes permanently and record these serial numbers and markings in order to have any real chance of recovery. Permanent, but inconspicuous markings greatly aid law enforcement officials in their recovery efforts."

Mr. Benson also pointed out that many car owners fail to take the trouble to protect their players and tapes properly because they aren't really worried about having them stolen. They expect their insurance company will pay for the loss.

"However," he said, "these people forget that the cost of insurance varies in proportion to the amount paid out in claims. This can ultimately only lead to the owner losing out. Also, there is always the possibility that if insurance companies continue to suffer huge losses due to these thefts that they will limit insurance coverage for stereo players and tapes."

These 900 stereo players and 6,000 tapes stolen in Austin in 1968 were valued at about \$50,000 or more in replacement value, according to Mr. Benson. He added that there may have

been more stolen that were not reported to police. "Anyway you consider it, it's a lot of money to pay for music, especially music to entertain a thief," Mr. Benson concluded.

### TANE Asks For Increased Tax On Beer and Liquor

Beer and liquor taxes would have to be more than doubled just to pay for the cost of alcohol-related crime, according to a report by Texas Alcohol Narcotics Education (TANE).

The report on "Alcohol-caused costs, compared with taxes paid in by beer and liquor," says that 76 per cent of crime in Texas is alcohol-related. Crime costs, police, courts, prisons, etc., cost the State \$150 million a year. The industry pays in approximately \$51 million in taxes, less than half that figure, according to the TANE report.

The report further states that alcoholic drinks cause 62 per cent of admissions to State mental institutions; 38 per cent of financial loss due to auto accidents; 93 per cent of the cost of picking up throw-away drink containers littering Texas highways; and that on-the-job alcoholism costs Texas industry \$350 million a year.

Using the figures furnished by TANE, some 150 "Committees for Fair Taxation," located across Texas, are asking that beer and liquor taxes be increased, and that they be put under the Sales Tax. Texas beer taxes of \$4.30 a barrel have not been increased in 14 years. Liquor taxes of \$1.68 a gallon, have not been increased in 10 years. Both are exempt from the Sales Tax.

TANE is a non-profit organization, supported financially by Texas churches and by individual contributions. Results of its research into alcohol and drug problems are made available to the public. The organization's programs include publishing books for students and teachers, production of film strips, a free motion picture lending library, public school lectures and demonstrations, a 100-man speakers bureau, legislative information, research, and an annual seminar on alco-

hol and narcotics for teachers and church leaders held at Baylor University in Waco. Although it is a Texas organization, TANE's books and audio visual aids are in use nationally and throughout the English-speaking world. Some have been translated into Japanese, Korean, and Spanish.

### Bush Bill Aims At Smut Peddlers

Congressman George Bush today introduced a bill aimed at limiting purveyors of pornography in their use of the mails to transmit sex-oriented smut materials into private homes and businesses.

"The flood of mail to my office within recent weeks regarding pornography has been staggering," Bush said. "It quite clearly points up the fact that it is time to dry up the flow of unwanted smut and obscenity now pouring into millions of American homes."

Bush noted that in defense of the recent increase in mailing of obscene materials, many mailers have cited Supreme Court rulings based on the first amendment guarantees of freedom of speech and press.

The Bush bill would require mailers of obscene materials to first purchase from the Post Office Department a list of all families who have submitted their names to the Postmaster General indicating they do not want to receive such mail. The list would be made available only upon request and payment of a service charge, a fee covering all costs of compiling and maintaining the list.

"My bill offers a refinement of present law," Bush said, "in that it permits families to request that no obscene materials be sent them before, not after, they receive it."

Under the bill, a family would simply inform the local post office that its mailbox is off-limits for smut mailings. Any mailer who violated this request and sent obscene materials to a family on the list would be subject to fine or imprisonment. The bill also contains penalties for sales, rentals or lending of this list.

Further, the bill gives the Postmaster General the power to request the Attorney General to commence civil action against those

who violate any provisions of the bill. During preparation of the civil suit, the Attorney General may enter a temporary restraining order containing such terms as the court deems just, including provisions enjoining the defendant from mailing any sexually oriented advertisement of any person or class of persons.

In introducing the legislation, Bush pointed out that President Nixon has stated that "there is no simple solution to this problem."

"However," Bush said, "this bill represents a start. Such measures are needed now so that we may stop the abuse of the postal service for this depraved purpose and reinforce a man's right to privacy in his own home."

### Talk Explains Drunk Driver Law

AUSTIN - A free illustrated talk explaining the new Texas law which makes chemical breath tests mandatory for drunk driving suspects is now available from the Texas Safety Association.

Entitled "So, What Do We Do Now?", the talk points out that for the past ten years, 68 percent of persons killed in one-car accidents were drunk when they died, as were 43 percent of those killed in two-car accidents. It goes on to estimate that enforcement of the new law can lower those percentages considerably, saving as many as 500 lives a year.

Starting September 1, Texas drivers suspected of driving while intoxicated must take a test to determine the alcohol content of their blood. If they refuse the test, they can lose their driver's license.

"So, What Do We Do Now?" describes each step in the administering of the test to a suspect. The talk is designed to give Texans a better understanding of the "breath test" law and the procedures which will be followed in enforcing it.

Illustrated with 33 color slides, the talk is available at no charge to adult groups throughout the state. Civic and service organizations wishing to see the presentation are urged to contact the Texas Safety Association, 1623 South Lamar Boulevard, Austin, Texas 78704. Telephone Area Code 512, 444-6551.

### Drownings Still Take Many Lives

AUSTIN--Drownings in Texas have soared well over the 350 mark, and as the outdoor recreation season grinds on, there is no indication that the rate of drownings will fall, according to Robert G. Mauermann, deputy director of the Texas Parks and Wildlife Department.

Department files show there have been at least 369 drownings this year. A major portion of these drownings are connected with recreational activities such as swimming and boating.

"In other words," says Mauermann, "what starts out as a pleasant outing here or on the water turns into a tragedy."

"The case histories of the drownings we receive here are alarmingly repetitive," he says. "People keep making the same mistakes over and over again."

According to Mauermann, water safety rules are few, simple, and easy to follow. And the rules could have saved the lives of a major portion of those drowned, had they been observed.

"Take boating, for example," he says. "If everyone would wear the life jackets which are required to be aboard the boat for each passenger, drownings due to boating accidents would virtually be eliminated."

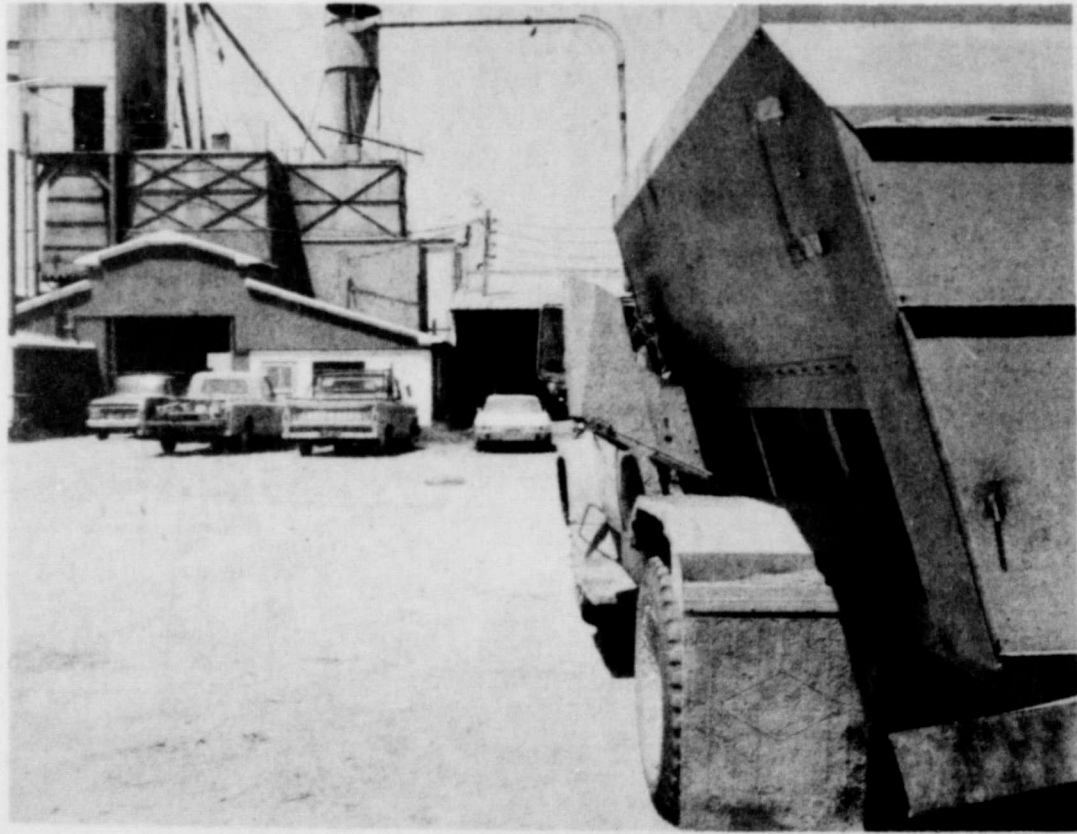
Mauermann says that while boating accidents account for a good portion of the drownings, swimming and wading accidents cause the majority of deaths.

"It is always amazing to me the number of non-swimmers who will wade in unknown waters where they can't see their feet," says Mauermann. "They then step into deep holes and can't swim the three or four feet back to shallow water to save their lives."

Swimmers are constantly overestimating their abilities and dying for it, according to Mauermann.

"The most heart-breaking tragedies are the children, the toddlers, two, three, and four years old, who somehow find their way to an apartment swimming pool or drainage ditch the moment their mother's back is turned," says Mauermann.

CONGRATULATIONS TO THE STAFF OF CLUCK FEEDYARDS.



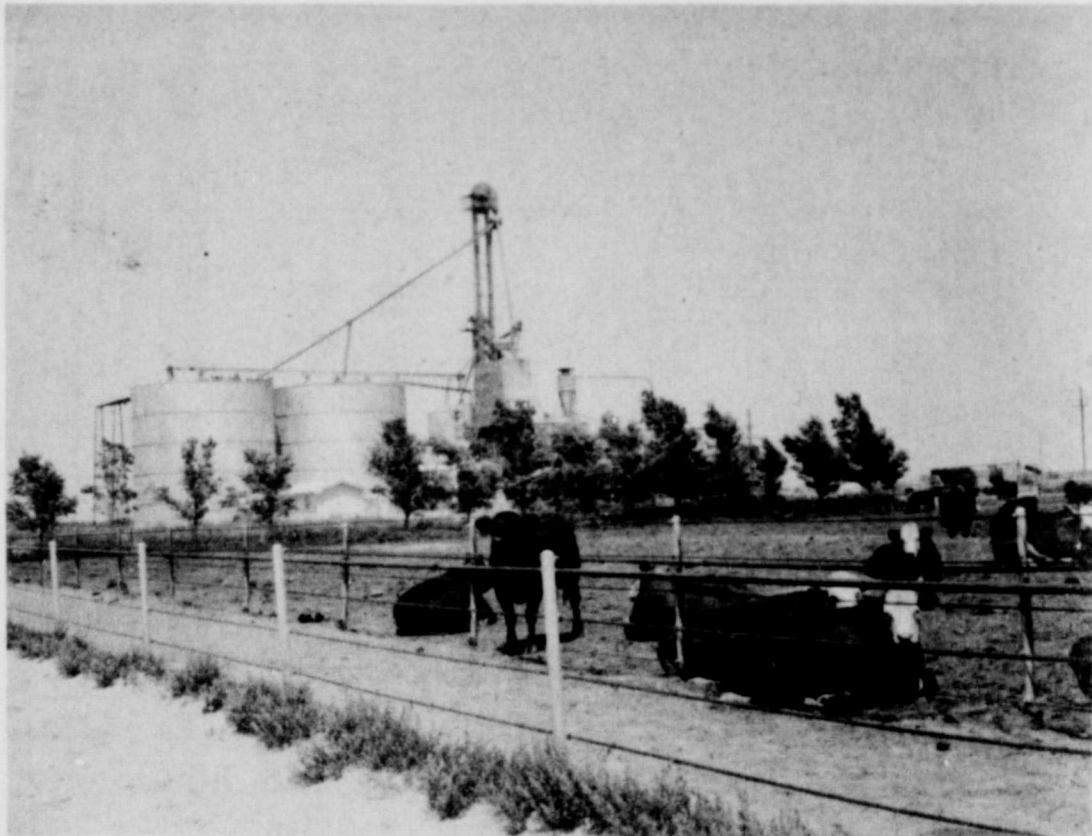
WE ARE THE SUPPLIERS OF ALL YOUR FARMING & FEEDLOT NEEDS

# GRUVER FARM SUPPLY

515 MAIN

PHONE 733-2882

CONGRATULATIONS TO THE STAFF OF CLUCK FEEDYARDS. DOING BUSINESS WITH YOU HAS ALWAYS BEEN A PLEASURE.



# HITCH GRAIN CO.

HITCHLAND

BERNSTEIN

### Rules For Bicyclists

Although summer is about over—as far as carefree young bicyclists are concerned—bicycle safety is still a must for our Texas streets and highways.

And with school time approaching, many students will be pedaling their way to class—and in many cases, home.

The Texas State Department of Health suggests that parents and regulations for bicyclists.

It's important that parents instruct their children in the "right" manner in the neighborhood.

Some 600 bicyclists annually lose their lives when in collision with motor vehicles.

There are more bikes being ridden now than ever. Children learn to ride at an earlier age and more adults are taken to bicycling for exercise and recreation.

Failure to observe traffic laws contribute heavily to accidents involving bicycles, and more than half of the accidents occur at intersections.

For safety while riding, here are some tips for bicyclists:

A skillful bicyclist always has his bike under control, has both hands free to steer and never rides too fast for the road.

The cyclist must develop an eye for balancing and pedaling to avoid swerving, slipping a fixed object or missing off the roadway.

Parents should make certain their children are skilled before sending them off into traffic.

Hand signals should be used by bicyclists as well as motorists.

Bicyclists should avoid riding between cars or even an automobile and a curb at stop signs.

Double up on one bicycle, dangerous and illegal. Never hold onto a moving vehicle and don't attach a bike to a vehicle.

Always ride single file.

Trick riding or strutting is always dangerous. Riders of hi-risers are especially cautioned against making the bike rear up and riding on back wheels only, or jumping the bike over obstacles.

### Flea Beetle Field Day

LA PORTE--Your chance to get a bucket of flea beetles is coming August 12 at the Murphree Wildlife Management Area near Port Arthur.

Who would want a whole bucket of flea beetles? Anyone with a lake or stream choked with alligator weed would, according to Texas Parks and Wildlife Department biologist.

Alligator weed is a rapidly spreading waterplant which was accidentally introduced into the United States from South America in the late 1880's.

It now clogs thousands of acres of ponds, streams, and waterways in the southern states and California.

Flea beetles, little insects resembling ladybugs, are natural parasites of alligator weed in South America.

Unfortunately, they didn't get to U. S. waters when the alligator weed did. They finally made it to Florida a few years ago when the U. S. Department of Agriculture brought them in in an effort to find a biological control for the alligator weed.

In May 1967, flea beetles were released on the Murphree Area, and were later released on the Sheldon Wildlife Management Area northeast of Houston.

The release was so successful, and the flea beetles have reproduced so well, that biologists are planning a "flea beetle field day" for the August date.

Entomologists from the Department of Agriculture and biologists from the Parks and Wildlife Department will be on hand to show visitors flea beetle damage to alligator weed and to discuss the biology of the beetle.

And for those who want to start their own projects, free flea beetles will be available.

Biologists say that the beautiful thing about flea beetles is that their whole existence depends upon the alligator weed. They use it both for food and their reproductive cycle.

Therefore, when the alligator weed is gone, so will be the flea beetles, thereby eliminating the chance that they will be another biological disaster such as nutria, English sparrow, or walking catfish.

### HUTCHINSON PIONEERS TO MEET AUG. 17

The 28th annual Hutchinson County Pioneer's all-day meeting is scheduled for August 17 at the Skinnett High School Cafeteria beginning at 10 a.m.

Bring a basket dinner and enjoy a program and a day of visiting.

To be a pioneer you must have lived in Hutchinson County before 1920, but everyone who wishes to attend is welcome.

Lex Board is chairman of the Pioneer Association. Mrs. J. C. Matney is secretary-treasurer.

### Parks, Wildlife Department Gets Research Station

AUSTIN--Construction bids for a Fresh Water Fisheries Experimental Station near Mountain Home are now being accepted by the Texas Parks and Wildlife Department.

The deadline for bids for the renovation of ponds at the site, used for years as a fish hatchery by the Department, is Aug. 13.

Bids for a 75'4" by 40' laboratory and office building are due Aug. 20.

Marion Toole, inland fisheries coordinator for the Department, said the hatchery will still be used for the distribution of fish, but many of the ponds will be converted for research.

Toole says the research station will be the first one in Texas devoted to fresh water fisheries studies. The Department operates a salt water fisheries research station near Palacios.

Biologists already have several projects in mind for the station such as research on the mortality rate of hooked bass when they are returned to water, and the marking of fish by means of fluorescent dyes and other materials.

The effects of toxicants and other chemicals on aquatic life can also be studied under controlled conditions.

Other projects could include research on how many catfish could successfully be reared in a pond, correct stocking methods, and studies of the walking catfish.

The laboratory could be used to find out more about fish parasites and other problems encountered by fresh water fisheries personnel.

### Deadline Set For Refund Claims

AUSTIN--Attorney General Crawford C. Martin reminded Texans today that August 16, 1969, is the deadline for mailing refund claims on broad spectrum antibiotics for which they were overcharged during the years 1954 through 1966.

That is the deadline set by the federal court for individuals to file claims for a share of the \$100 million settlement offered by five drug manufacturers after multiple civil anti-trust actions were filed against them by Texas and other states.

Martin said the procedure for filing consumer claims was the result of an order issued by the U. S. District Court in New York. The forms for the refund claims may be picked up at the County Clerk's office in each county courthouse.

A number of newspapers have also printed copies of the form.

If a person fails to file a claim, it will constitute authorization to use the money recovered in his behalf for the benefit of all consumers in a manner directed by the federal court.

The notarized claims must be mailed to the Clerk, United States District Court, P. O. Box 745, Bronx, New York 10451.

Drugs involved in the settlement are Aureomycin, Terramycin, Achromycin, Mystecilin, Panalba, Panmycin, Polycycline, Steclin, Tetracycline and Tetrex.

### GMO'S CLEAR 2,016 CASES

AUSTIN -- Game management officers of the Texas Parks and Wildlife Department cleared 2,016 violations in June compared with 1,215 violations for the same period last year.

Leading the list in June this year were fishing violations with 901. Of these, 846 of the citations were given for fishing without a license.

Water safety violations were the second most violated class of laws with 687. Failure to have a Coast Guard approved life saving device for each person in the boat accounted for 363 of these.

There were also 100 hunting violations and 44 commercial fishing violations.

Disposition of cases are as follows: convicted, 1,732; dismissed, 139; served time in jail, five; appealed to higher court, one; fine suspended, five; money retained by county, 69; not guilty, two; juvenile, six; and void, 57.

Fines assessed amounted to \$34,275.16 with the State's portion being \$27,652.98, and the arrest fee being \$1,362.90. The total revenue to the State treasury was \$29,015.88.

Mr. and Mrs. L. J. George and children of Vinson, Oklahoma visited this past weekend in the home of her parents, Mr. and Mrs. Bill Martin.

### Desk Gives Purpose To A Room

COLLEGE STATION -- When shopping for a desk, look for one that will be a good mixer with other furnishings in living room, bedroom or study--wherever it will be used.

And keep a weather-eye out for practical features as well as good looks, reminds Bonny Lay, Extension housing and home furnishings specialist.

She says the National Association of Furniture Manufacturers reports it is a vintage year for interesting, practical desk designs.

From the swinging modern in wood and metal, trestle styles, pedestals, kneeholes, drop fronts, fall fronts, to table desks--authentic reproductions of Early American and traditional from Queen Anne, Louis XV to Georgian--they give purpose to a setting.

Table desks possess most of the necessary attributes without looking businesslike. Some give the campaign look; some are highly practical with vinyl tops rimmed with wood; some have drawers brightly lined in red velvet; and some have writing surfaces.

Other choices available, says the Texas A&M University specialist, are drop front styles, one with small drawers and compartments in the desk section and storage drawers in the base, ones with many pigeon holes and small storage drawers in the base, ones with many pigeon holes and small storage drawers in the base, ones with many pigeon holes and small storage drawers in the base.

storage drawers, ones with large drawers include file drawers or ones with back galleries to hold books, lamps, etc.

### Older Drivers Bad Reputation Is A Myth

COLLEGE STATION--The current reputation of the older driver is a myth. A national study shows that the older driver has less than his proportionate share of "all accidents" and "fatal accidents," and "injury accidents."

Even in highly populated areas, the older driver has low accident involvement.

Minnie Bell, Extension specialist for aging, reports these findings from a recent national study by Judge Sherman G. Finesilver, University of Denver College of Law.

Judge Finesilver is an authority on safety and the older driver.

The older driver refers to those persons 65 years and older, Miss Bell explains. The study is significant in regard to insurance licensing and general acceptance as competent drivers.

Fatal accidents are a real problem of the elderly. Judge Finesilver believes this is due to the inability to withstand injury than any driver from ages 35 to 64.

The two youngest groups of drivers, those under 24 and those from 25 to 34, have highest rate of fatal accidents.

### Atlanta Park Starts New Era

TEXARKANA--With the development of new facilities, Atlanta State Recreation Park, located 12 miles northwest of Atlanta in Cass County, starts a new era which could eventually make it one of the most popular recreation spots in Texas.

Until recently Atlanta was a relatively undeveloped park. The Texas Parks and Wildlife Department added one restroom with showers, eight trailer sites, eight camp sites with electricity, and seven campsites without electricity to the 1475 acre park to supplement the 20 picnic sites which were already there.

More development is planned. Bids are now being accepted for the construction of a headquarters building, a residence, a maintenance building, and related utilities.

Atlanta State Park is located on the south bank of 119,700-acre Lake Texarkana. The lake not only offers excellent fishing, but water skiing and other boating activities as well.

Tall pines mixed with hardwoods make a natural beauty setting for the park. Caddo Indians once tended their farms in the area.

Mr. and Mrs. S. W. Robertson, Mr. and Mrs. Lowell Robertson and Gina of Perroyon, and Mr. and Mrs. Litch Sparks, Jr., of Stinnett visited in the home of Mr. and Mrs. Ray Robertson Sunday.

### Industrial Tour Guide Published

AUSTIN -- Texas hospitality in the form of more than 630 plant tour invitations has been extended by the state's industries through a brochure just released by the Travel and Information Division of the Texas Highway Department.

Largest industrial tour guide of any state, the 1969 publication lists 132 Texas cities with industries offering plant tours. Houston, as expected, leads the list with 51 firms; Dallas has 47, and Austin is a surprising third with 32.

Other cities with a substantial number of tours are San Antonio, Wichita Falls, Fort Worth, Arlington, Amarillo, Garland, Corpus Christi, Beaumont, Freeport and Hearne.

The listings include industries in smaller communities in addition to giant industrial complexes. The plants offering tours are engaged in diverse processes ranging from aerospace equipment to sportswear and cowboy boot manufacture.

The brochure is available free upon request to the Texas Highway Department, Travel and Information Division, P. O. Box 5064, Austin 78703.

Mr. Silva Davis of Gruver visited in the home of his daughter and family, Mr. and Mrs. Paul Hazelwood last Sunday. Mr. and Mrs. Curtis Francis and children of Canadian also visited in the home Sunday.

# T.G.&Y.

5¢ TO 1¢ STORES

119 Main Spearman, Texas STORE HOURS: MON.-FRI. 8:30-6:00 SATURDAY 8:30-8:00

Prices good through Saturday while quantities last

**Sheaffer Cartridge PEN** With 7 Cartridges **58¢** COMPARE AT \$1.00

**8 Count PENCILS** No. 2 Lead **18¢** COMPARE AT 29¢

**Filled Loose Leaf BINDER** With Clip **77¢** Ea. Colored Canvas Binder With Inside Spring Clip 25 Sheets Filler 10-1/2" x 8" With 4 Subject Dividers. Compare At \$1.27

**BIC PENS** 3 Pens Per Package **28¢** Pkg. COMPARE AT 87¢

**CRAYOLA CRAYONS** 16 Count Package **18¢** Pkg. COMPARE AT 29¢ BUY NOW AND SAVE!

**BEST BUYS ON... SCHOOL SUPPLIES** **"Petite-Lite" Cosmetic MIRROR** Compare At \$9.95 **\$6.88**

**250 Count Package TYPEWRITER PAPER** 11 x 8-1/2" **48¢** Compare at 69¢

**Filled Loose Leaf BINDER** With Clip **\$1.67** Each Complete With Dictionary, 50 Sheets Filler Paper And 5 Piece Plastic Tab Divider. Compare At \$2.85

**COMPOSITION BOOK** 60 Sheets **Wide Rule With Margin** **27¢** Ea. Compare At 49¢ OUR LOW PRICE

**SPECIAL BACK-TO-SCHOOL STEREO RECORD** **\$1.00** Wings Glen Campbell - Linda Ronstadt - Danny McCulloch Quick-Kutter Messenger Service - Joe South The Bob Seger System - The Corporation Lather and the Hand People - The Stone Ponies **Get Yours Today! \$1.00** Ea. Compare At \$4.98 T.G.&Y.'s Own Recording Offered Exclusively To Our Customers For Their Back-To-School Listening Pleasure!

**300 COUNT FILLER PAPER** 5 Hole Paper Will Fit The Standard 2 or 3 Ring Notebooks. Wide Rule. Make Us Your One-Stop Headquarters For School. **Quality Plus Quantity! 38¢** Compare At 59¢ **500 Count FILLER PAPER 59¢** Compare At 88¢ **80 COUNT STENO NOTEBOOK 18¢** Ea. COMPARE AT 29¢

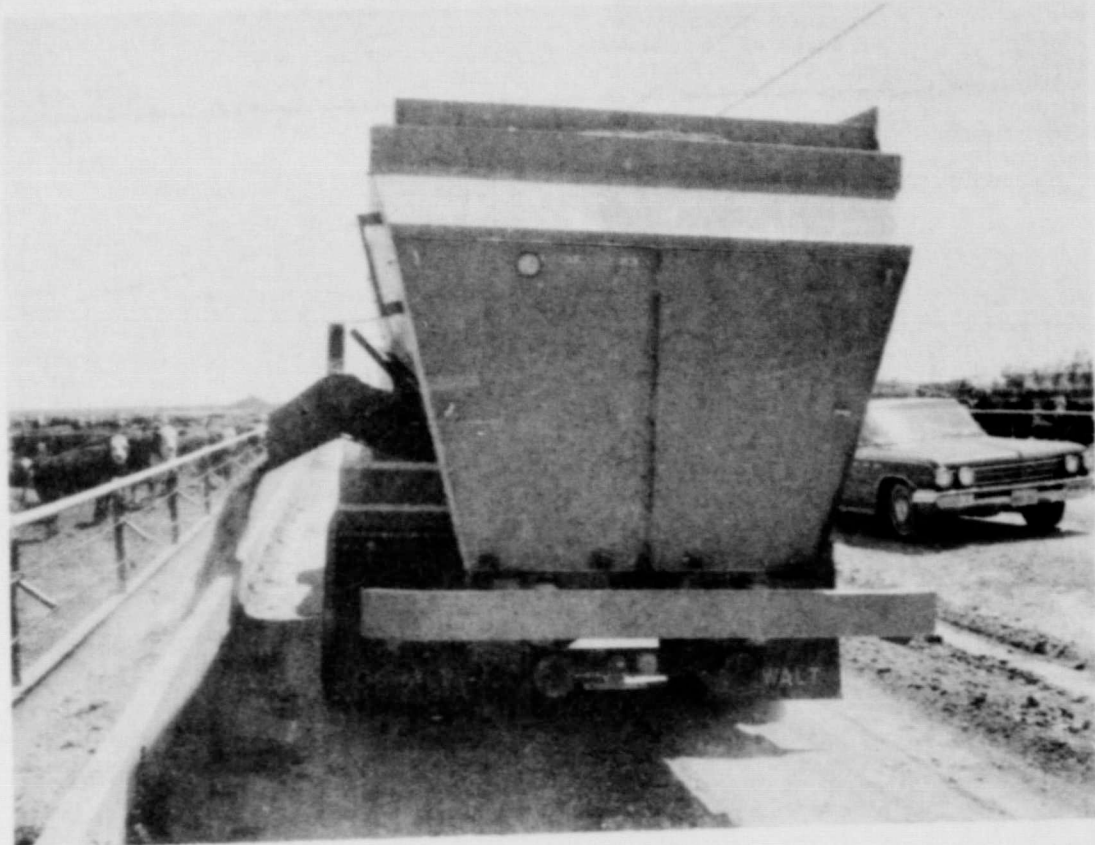
**STOP PATCHING... STOP PAINTING.**

**FINISHING IS PERMANENT!** **4X8 SHEET** \$4.25 pr. sheet **WHITE HOUSE LUMBER CO.**

**FIGHT BACK!** **NITROMITE** Fight the price, cost squeeze on your wheat with NITROMITE. Shamrock's fine brand of anhydrous ammonia. A preplant application of NITROMITE speeds early growth, producing lush, high-quality forage (and plenty of it!)—an important factor if you plan to graze cattle this winter. And the cash crop? NITROMITE delivers the most usable nitrogen per dollar to help increase yields without increasing cost appreciably. So come harvest, even if prices are low, you make out. If they're good, you'll be the big winner. Put down NITROMITE now. It'll give you a fighting chance in the marketplace. **DISTRIBUTED BY TAYLOR EVANS—AMARILLO** Subsidiary of Diamond Shamrock Corporation **SPEARMAN SUPER SERVICE** A product of Diamond Shamrock Oil and Gas Company A Unit of Diamond Shamrock Corporation

Shop T.G.&Y. For Your Back-To-School Needs

# COMING , or GOING, OSWALT Gets The Job Done



Breakfast Time At The Dean Cluck Feed Lots.



Supper Time---

These  
Are  
Just  
A  
Few  
Of

The

OSWALT

Implements

At

Work

On

The

Cluck

Feed

Lot

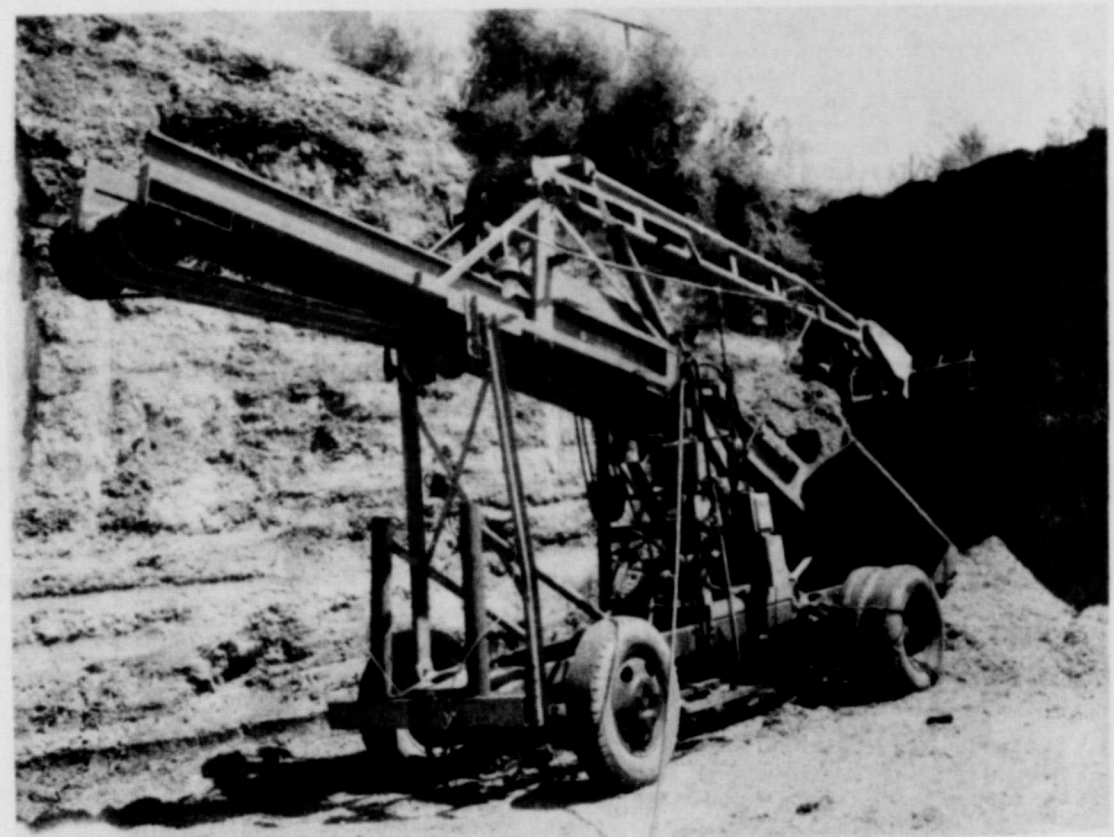
In

Gruver,

Texas.



The Cattle Like The New OSWALT Ensilage Truck, And So Does The Truck Driver.



A View Of The OSWALT Ensiloader At The Cluck Feedyard.



This OSWALT Manure-Spreader Is A Must For An Efficient Feed Lot Operation.



Another View Of The OSWALT Manure Spreader.



# OSWALT INDUSTRIES

North Hy. 83-- P.O. Box 1038 --Phone 276-7681 Area 316--- Garden City, Kansas 67846