



# The Spearman Reporter

|          |        |
|----------|--------|
| MARKET S |        |
| WHEAT    | \$1.29 |
| MILO     | 2.08   |
| SOYBEANS | 2.35   |
| BARLEY   | .85    |
| CORN     | 1.18   |
| OATS     | .70    |

TIME 60, NO. 41

THE SPEARMAN REPORTER, Hansford County, Texas 79081

THURSDAY, SEPTEMBER 4, 1969

## 85,000. BOND ELECTION IS SATURDAY

### For New Football Stadium, Field

Every registered voter with property on the tax roll of the Spearman Independent School District will be eligible to vote in an election Saturday, September 6 at the Junior High School. Polls will be open from 8 a. m. to 5 p. m.

At this time taxpayers will have an opportunity to say whether or not they approve a \$85,000 bond issue. The bond issue is favored, the football field, stadium, field house and track

will be built just south of the Spearman High School. It is hoped that the 8-year money can be paid off at a five and three-fourths percent interest rate.

The plan, as recommended by financial advisors from the bonding company (so as not to have an immediate large tax raise) is to pay the money back over an eight year period. \$5,000.00 payments will be paid each year for three years; \$10,000.00 payments each year for three

years, a \$25,000.00 payment the seventh year and the balance of \$115,000.00 the eighth year, plus interest payments each year of course.

A simple majority vote will carry in Saturday's election.

Each voter will be required to submit his voter registration certificate, and to sign an affidavit swearing that he is a taxpayer of the Spearman Independent School District.



OPENS LAW OFFICE IN SPEARMAN

Mr. Mark Nichols has opened Law Offices in the office building located on S. W. Court Street, Spearman. Nichols is a native of Happy, Texas where he graduated from High School. After graduating from West Texas State University, he entered St. Mary's School of Law in San Antonio.

For the past two years he has been associated with the Estate and Gift Tax Division

of the Internal Revenue Service in Amarillo.

With no house available in Spearman, the Nichols family found a residence in Gruver, where Mrs. Nichols teaches physics and math courses in Gruver High School. They have two children, June, age 6, and Kirk, age 3.

This newspaper joins other citizens of this area in welcoming this new family to our community.

### LIONS TO STAGE CHICKEN FRY TONIGHT, 7:00

Members of the Spearman Lions Club will hold the annual chicken fry tonight, Thursday, September 4, honoring doctors, hospital staff, school faculty members and their families.

Chief cooks Woodrow Gibner and Oscar Donnell will fry about 80 chickens in big steel pots over bonfires. They will serve the usual accompaniments.

Serving will begin promptly at 7 p. m. so the program can conclude before sundown.

This is one of the most enjoyable events of the year staged by the Lions Club and a large crowd is always in attendance.



Supt. James Cunningham appeared before services clubs this week to explain the upcoming bond issue to build a proposed football field, stadium and field house.

### LYNX TEAMS TO SCRIMMAGE SATURDAY NITE

Lynx football teams will scrimmage Saturday night. The varsity team goes to Guyton and the B team, or Freshman team will scrimmage Booker at Spearman.

At the Quarterback meeting Monday night coaches gave parents the names of boys going to Guyton and those who were staying in Spearman.

Also, at the meeting Monday night, it was learned that the team did real well in scrimmage against Memphis Saturday night. Coaches are stressing open field tackling this week as the Memphis team outscored the Lynx by only one touchdown when Lynx members missed some open field tackles.

A large group of spectators is expected at both scrimmage games.

Coaches stress that THIS year all of the boys would get to see some action. In fact, 44 of the 58 high school boys will start on either offense or defense. This will give a new incentive to football in Spearman, where many a boy has warmed the bench for years, only to give up in despair never getting to play. Our congratulations to the coaches for deciding to see that all the boys will get in on the action!

Mr. and Mrs. R. E. Bradford and Sue Bradford went to Richardson over the weekend to visit their son David and family, then on to Plainview where Sue enters Wayland College.

### Service Clubs Briefed On School Bond Issue

James Cunningham, Superintendent of Spearman Public School's followed up his speech at the last Rotary Club luncheon with a talk at the Lions Club regular meeting this past Tuesday.

Both speeches were on the forthcoming bond election to be held Saturday, September 6th.

In both instances Cunningham spoke neither for or against the bond issue but clearly pointed out what the money derived from the bond issue would be used for in the event of its passage.

He passed around charts at both gatherings showing the exact amount the increase in taxes would be if the issue passed. Many members of both clubs were greatly surprised and pleased when they saw the small increase the bond issue would add to present taxes.

Upon termination of each speech, the superintendent made himself available for questions and answers.

There were, as expected, many questions. Cunningham proceeded to answer each question methodically and clearly. On rare instances, when he could not answer a question, he made no hesitation in admitting that he could not supply the answer. One of the first questions

aimed at Cunningham was: "What are the conditions of the field house or dressing room?"

His prompt answer was short and to the point: "Deplorable."

It was brought out that conditions were such that players removed wet suits after practice or after a game to result for the next dressing in the same wet suits.

One club member remarked that wet hip pads and shoulder pads unless dried out between wearings would tend to rot away much more rapidly than properly cared for gear.

It was generally conceded that the proposed stadium would not be of the oval design however the speaker pointed out that some earth moving would need to be done regardless of the type stadium decided upon.

He furthermore revealed plans for a track course were incorporated in plans for the field.

One Rotarian made the remark "When our boys play away from home and see the modern conditions at other schools, it probably makes them feel ashamed of their own facilities."

A Lion remarked "Without the proposed facilities, it's like a million dollar mansion using an outhouse."

### MITES DAMAGING SOME OF LOCAL GRAIN SORGHUM

Some late grain sorghum on the High Plains has heavy infestations of mites in certain sectors.

This report comes from Dr. Bill Clymer of Lubbock, area entomologist with the Texas Agricultural Extension Service.

The mites, which built up during recent hot weather, feed on the plant leaves. Heavy populations can completely destroy all leaves in a short time, points out the entomologist. They are usually found on the lower side of leaves and appear in much the same place on the plant as greenbugs. There's much yet to be learned about this pest and the amount of damage isn't definite.

In addition to causing rapid drying of the plant, heavy mite infestations have been suspected as predisposing the lodging of sorghum stalks and webbing problems in some heads. This makes harvest difficult, explains Clymer.

Due to their position on the plant, the tiny pests are protected from insecticide contact and are difficult to control. If an insecticide is to be applied by airplane, use at least five gallons of total mix since good coverage is essential in a control program.

Parathion, Ethion and Trithion are chemicals that can be used for control.



### LUSBY HELPS CLEAR FREIGHT DERAILMENT

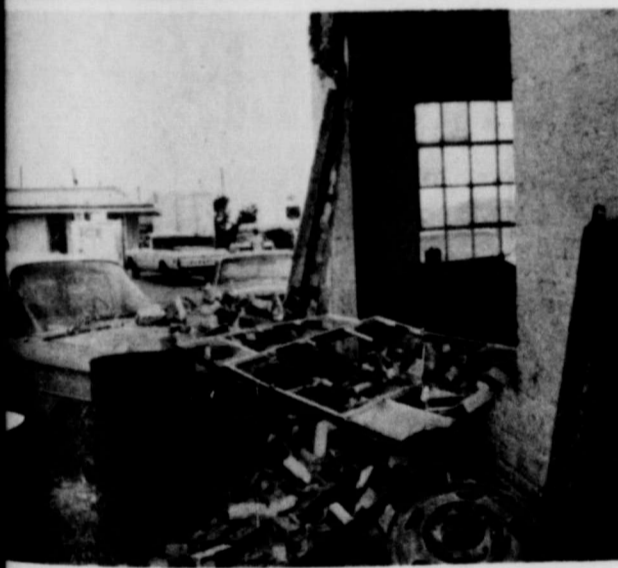
Workmen were at the scene of a Rock Island freight derailment early this week about 24 miles south of Spearman.

Thirteen freight cars and two diesel engines were derailed. There were no injuries, spokesman for the railroad said.

The site of the derailment is a few hundred yards south of the spot where exploding and burning railroad cars tied up traffic on the Rock Island line for several days earlier this year.

The cause of the derailment had not been determined.

Junior Lusby of Spearman, was called to the scene with his cat tractors and other heavy equipment to help clear the Rock Island line for traffic.



Bob Hall, Manager at Consumers Sales Company, says cost estimates have been made as to damages to this building in the accident which occurred Saturday about 8:30 p. m. Ronald Dunaway, a Spearman resident, said his brakes failed just as he drove up to the back entrance of Consumers. The car plowed through the closed doors, tearing out the door and window, knocking out much of the brick wall and damaging the roof. The driver was not injured.

### SD Taxes 2% Off In Sept. Only

Spearman Independent School District tax payers are advised that statements this year are due and payable in September. A 2% discount is allowed during this month. After September, the amount must be paid. The amount begins to accrue as of February 1.

This year's total assessed is \$4,302,643, a loss of \$42,773 from last year.

Included in the current year is \$15,657,853 of personal property; \$85,630 Minerals and \$59,160 Industrial, which includes pipelines, pipelines, utilities, etc.

The main purpose for the September tax billing, which is into effect last year, is to get the tax year to coincide with the school year.

### Frank B. Butcher Receives Masters

Frank B. Butcher of Spearman was among some 200 persons who received degrees at the College of William and Mary's Summer Commencement, held August 23 in Phi Beta Kappa Memorial Hall. He received his masters degree in Physics. He received his B.A. from University of Texas, 1965.

More than two-thirds of the degrees were at the graduate level, including three Ph.D.s in physics and one in marine science.

The Commencement ended a Summer Session which attracted some 2,000 students along with several hundreds of teachers and other professional people who were enrolled in special institutes and seminars.

Mr. and Mrs. Homer Martin and Eddie Gail and Mr. and Mrs. James Martin attended the rodeo at Trinidad, Colo. last weekend.

### MELVIN MINOR IS STATIONED IN THAILAND

U. S. AIR FORCES, Thailand-Airman First Class Melvin Miner, son of Mr. and Mrs. Burton Miner, Gruver, Tex., is on duty at Udorn Royal Thai AFB, Thailand.

Airman Miner, a photographer, is serving with a unit of the Pacific Air Force. Before his arrival in Thailand, he was assigned to Sheppard AFB, Tex.

The airman, a 1965 graduate of Pawnee (Okla.) High School, attended Oklahoma State University School of Technical Training at Okmulgee. His wife, Raetta, is the daughter of Mr. and Mrs. Ray Gibson, Ralston, Okla.

Mr. and Mrs. Dick Boxwell spent last week vacationing at Red River, N.M.

### WEATHER

Clouds covered the Panhandle the past week end and a slow, steady drizzle continued throughout the day Sunday and on into Monday.

Officially, the Spearman area measured 1.37 inches. Although this precipitation fell Sunday, the last day of August, the official weather man measures it on September 1 so it will be recorded for September rainfall.

August ended with a total of 1.91 inches of rain and with the 1.37 recorded here Monday, brings the year's total to 15.99 inches. The year's average rainfall is 21.53.

The hottest day in August was the whopping 106 recorded on Aug. 11. The lowest the mercury recorded was 60 degrees on August 27. At least 12 days in August the temperature stood at 100 degrees and over.

### COUNTY AGENT NEEDS PRODUCE FOR FAIR BOOTH

Hansford County Agent Robert Adamson is asking everyone who can to assist him in collecting a top-notch display of garden and field produce to place in the Hansford County booth at the Tri-State fair in Amarillo.

Adamson asks that county residents bring this produce to his office by September 11th, a week from today.

He is in need of pumpkins, melons, squash, large tomatoes, etc. specimens presentable for the fair.

Adamson will leave with the produce September 13 and hopes to have the outstanding booth at the fair.



### DR. G. BAYLESS TO FILL PULPIT

Dr. Gordon Bayless will fill the pulpit at the First Baptist Church for the next four Sundays in absence of the Pastor Rev. B. T. Shoemaker who is on a preaching mission in India.

Rev. Gordon Bayless is well known throughout this area, having pastored the First Church in Pampa for many years. He is a retired minister and now makes his home in Pampa. Dr. Bayless was an evangelist for 20 years and served various pastorates for some 30 years before retiring.

The public is invited to attend the First Baptist Church and hear this dynamic speaker.

### Football Tickets Go On Sale

Season football tickets go on sale Tuesday September 2nd at the school business office. Those persons holding reserved seats last year may purchase the same seats if they call for them before Friday, September 12. Those who would like their regular seats again this year are urged to purchase these tickets as soon as possible, Monday, September 15, all unclaimed tickets will go on sale, first come, first served.

Reserved seat season tickets will be \$7.50 for the six home games.

The first home game is Friday, September 19 with Canadian.

### Basketball Girls Washing Cars This Saturday

The Lynxette Basketball girls are having a car wash Saturday, September 6th at Alton's Gulf service station. Proceeds which will go to help pay expenses for their Duncanville trip.

### County To Develop Shelter In Case Of Nuclear Attack

County Judge Johnnie Lee announced today that Hansford County has undertaken the development of a Community Shelter Plan as the foundation of local emergency readiness. The plan will enable the local government to give its people information to answer the questions: "Where do I go?" and "What do I do?" in case of nuclear attack.

Judge Lee stated that the project will include the entire county and include

the cities of Gruver and Spearman. Technical assistance has been requested from the State Civil Defense Office and the Army Corps of Engineers in undertaking this project. Funds for printing and distribution of appropriate brochures will be provided by the Federal Office of Civil Defense.

The public fallout shelters located by the Corps of Engineer survey will be evaluated and the population, insofar as possible, will be matched to the shelter inventory. If it is determined that adequate public shelter is not available, the plan will prescribe other fallout protective measures to meet the need.

A brochure detailing the procedures to be followed in the event of a nuclear attack will be prepared and distributed to each family in the county. Judge Lee stated that the development of the plan will take several months to accomplish due to the complex nature of the information that must be collected, analyzed and prepared for distribution.

### BOY SCOUTS TO MEET MONDAY

Scout Master Harry Stumpf reminds all boy scouts of Troop 51 that their first meeting of the season is scheduled for Monday, September 8 at 7 p. m. Scouts will meet in the Spearman community building.

All boys interested in scouting are invited to attend.

Stumpf said the first camp-out has been set for Saturday and Sunday, September 13 and 14. Plans for the outing will be made at the Monday meeting.

### WOMEN BOWLERS ARE NEEDED

Women bowlers are NEEDED for Thursday night leagues. If interested, please call Jackie Mathews at 2808.

Those women who want to bowl and have already signed up for league play, are concerned that many more ladies sign or the popular sport will fail completely in Spearman.

Mrs. Bessie Selz of Pilot Point, Texas is visiting here in the home of her sister Mrs. Bill Miller Sr.

### MORSE STUDENTS COLLEGE BOUND

College Students leaving for college from Morse, include: Mike Johnson, Delbert McCloy, Monte McCloy, Sylvia and Kenneth Faries, Patricia Henderson, Alva Henderson, Glenda and David Johnson. All these are going to Texas Tech in Lubbock. J. D. Schick is going to Amarillo College, Amarillo. Bob Womble will be going to West Texas, Canyon, Larry Bontke to Electronic school in Dallas.



**Fiddle-Free Color TV by RCA**



106 E. Kenneth

**Cummings Refrigeration And Air Conditioning**

Phone 659-2721  
Phone 659-2441

GORDON CUMMINGS

**Boxwell Bros. Funeral Home AND Flower Shop**

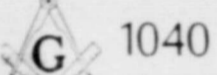
Day-Night Phone 659-2212  
Spearman, Texas

**WHITE HOUSE LUMBER CO.**

Building & Plumbing Supplies

PHONE 659-2818

**Hansford Lodge**



**A.F. & A.M.**

Regular Communication 2nd. and 4th Monday of each Month

Tommie Russell, W.M.  
Cecil Batton, Secy.

GRAND OPENING of Sharon's BEAUTY SHOP, 414 S. Endicott Phone 659-2710. Open Monday thru Saturday, 40T-8tp

YOUR KNAPP SHOE DEALER in this area is JUNIOR TAYLOR located at 405 S. Hazlewood, in Spearman, Texas. Call 659-3548 for information. 35T-rtn

Interior and exterior decorating. Special roof stain. Free estimate. Phone 659-2198. 40T-rtn



**PANELING IS PERMANENT!**



Real wood walls save you time and money on patching, painting, and re-painting. Patented baked-in the wood finish will not crack, chip, or peel. Your walls have permanent beauty.

**4X8 SHEET \$4.25 pr. sheet WHITE HOUSE LUMBER CO.**

**FOR SALE**

FOR SALE--Trombone, Excellent Condition. Call 3183 or 3122. 40T-3tc

FOR SALE: Piano, upright baby grand. Cable Nelson. Excellent condition. Phone 659-2150 or 659-2318. 38T-rtn

FOR SALE--Hungarian Vizsla Bird dog puppies. See at 403 S. Barkley or call 659-3519. 39S-4tp

FOR SALE-1960 Ford 4 door. Top notch condition. See Tommy J. Owens, 659-3275. 40S-2tp

FOR SALE: Lear Jet Stereo 8 portable eight track stereo tape player \$55. Call 659-3358 or come by and see at 119 S. Brandt. 40S-rtn

FOR SALE: Registered puppy. Call 3362. 37S-rtn-c

FOR SALE: 1966 Renault Dauphine, 24,000 actual miles. Excellent school or work car. Vernon Thompson, 30 S. Brandt. 659-3336. 40T-rtn

FOR SALE--Good structural 2" pipe. Approximately 200,000 feet. Also small amounts of 2", 3", 4" and 4 1/2". Phone A/C 915-366-1803 after 5 P.M. or write Ire R. Simons, 5493 N. Everglade, Odessa, Texas 79760. 40T-3tp

Sturdy wheat for sale-- Jimmy Greene, 659-3196. 40T-10tc

FOR SALE--One pair of band shoes, like new. Size 7 medium. Ray Robertson. 40T-rtn

For Sale--Baldwin Acrosonic Good condition. Call 3246. 33S-rtnc

FOR SALE--Saxophone, \$60. J.L. Pierce 659-3358. 37T-rtn

FOR SALE--Conn Trombone. Used one year. Call Gruver 733-2563. 41T-4tc

FOR SALE--Set of two old model Dempster drills in good running condition. Call 659-2082. 41T-2tc

**REAL ESTATE**

FOR SALE--Gruber Hotel and Coffee Shop. Contact Mildred Aitken, 733-2395. 41T-rtn

FOR SALE-3 bedroom brick house. Fenced backyard. 1101 S. Drensen, Ph. 659-2155. 29S-rtn

FOR SALE-3 bedroom brick house. Bath and three-quarters, carpeted, central heat, built-in appliances, large covered patio with fenced yard, 720 Cotter Drive. Call 659-3221 or 659-2226. 34T-rtn

FOR SALE--In Morse. One bedroom house (Lubbock built house) large kitchen, air conditioner, stove. Call 878-2711 or 878-2294 or 878-2707. 38T-8tc

**FOR RENT**

FOR RENT--Furnished, clean air conditioned. TV's available. Downtown Apts. Phone 2269. 10T-rtn

FOR RENT--Furnished apt. 606 S. Bernice Street, Tel phone 659-2652. 2-rtn

FOR RENT--Furnished bachelor quarters, kitchen privileges. Call Jim McLain, 3418. 40T-rtn

FOR RENT--One bedroom trailer house. \$50 month or \$15 week. Gas and water furnished. Call 659-3517. 40T-rtn

**WANTED**

CATTLE WANTED--For immediate and future delivery. Camco, Box 51, 435-4741-AC 806, Perryton, Texas. Roy L. Johnson, 435-4355, Vern G. Conner 435-5815. 34T-rtn

**HELP WANTED**

WAITRESS WANTED--Must be neat and clean & experienced. Apply in person to Georgia McLeod at Miller's Cafe or call 3656 after 1 p.m. 20T-rtn

**STRAYED**

STRAYED-325 lb. whiteface heifer branded 7 on left hip. Ph. 659-2454. 41T-rtn

**NOTICE...**

I am not responsible for any debts made in my name. Mrs. Abbye Ownbey, Box 414, Canyon, Texas. 41T-8tc

**LEGAL NOTICE**

**NOTICE OF PUBLIC HEARING**  
The Zoning Board of Adjustment of the City of Spearman, Texas, will hold a public hearing on September 8, 1969, at 6:30 p.m. at the City Hall, Spearman, Texas, for the purpose of considering the application of Mr. Sam Rhodes, Jr. to place an office building on the lot directly behind Lot 3, Block 15, Glover Terrace addition. The Zoning Board of Adjustment will determine if the request for a non-conforming use permit will be granted.  
s/ Donald Denham  
Chairman, Board of Adjustment, Zoning Board of the City of Spearman, Texas 40T-41T-c

**NOTICE**

The Zoning Board of Adjustment feels that the following suggestions would be beneficial to anyone planning to build a home, office, or building; to make improvements or additions to a building; or to move a trailer house or other type of portable building within the city limits of Spearman:  
1. Obtain a building permit from City Hall. Building permits apply to trailer houses and portable buildings as well as new construction, additions and improvements.  
2. Before purchasing a lot or starting construction, check to make sure the building will comply with the provisions of the zoning ordinance.  
3. When in doubt about the provisions of any zoning ordinance, call City Hall. s/ Donald Denham, Chairman, Zoning Board of Adjustment City of Spearman 40T-41T-2tc

**Card Of Thanks**

I want to thank everyone of my friends for their thoughtfulness while I was in Northwest Hospital in Amarillo. Your cards, letters, phone calls and flowers helped make my stay in the hospital a much more pleasant one. Your kind expressions of friendship will never be forgotten.  
Eck Lee

**Too late to classify**

Beauty College Special Discount! 20% discount for full time student enrollment during the month of September. For further information contact Loel D. Box, Pampa College of Hairdressing, 716 W. Foster. 41T-8tc

SOUP'S on, the rug that is, clean with Blue Lustre. Rent electric shampooer \$1. Spearman Hardware. 41T

Poodle Grooming. Carolyn Billingsley, 509 S. Endicott, Ph. 659-3401. 41T-4tc

**HELP WANTED**

**NURSES AIDES AT PIONEER MANOR PHONE 659-2114**

**Master Commodities Inc.**

**Cattie-Cattle Futures  
Pork belly Futures  
Phone 338-7403  
Guymon, Okla.**



**Let Me See ... by Sybil**

Grassroots opinion says "amid all the noise made on college campuses these days there is an awful lot of shouting about the necessity of more remedial courses for underprivileged students. What the academic world really needs is more remedial courses for administrators. A kind of boot camp for college presidents might fill the bill nicely. We heard a rumor just the other day that before next fall... college presidents will go on strike--for combat pay... Campuses today need a new breed of man. The experts claim he must be a man who can plumb the depths of human relations, withstand the stress of mass criticism and manage the pressures of group confrontation without the loss of academic serenity. What they really mean is that he should have a soft heart, a tough hide and know how to run a fort."  
Many of you here will remember Orvie Hamilton who lived in Spearman back in the early 1940s. I ran into Orvie last week at the lunch counter in Gordon's drug store. We really had a long visit and I filled him in on all the news. He asked about many, many people even I had forgotten. The last time I had seen Orvie was in 1944. I was in an Amarillo hospital and he was all dressed up in a Sailor uniform. It was the second day after my appendectomy and I guess it must have been the ether for this big, brave sailor boy said just one word before he slithered to the floor in a dead faint. It is always good to see old friends. Orvie works for General Motors and lives in Amarillo.  
Labor Day has never meant much to us. We labor as usual. We celebrated Saturday and took Eddie Faye, Bessie and Elizabeth to Palo Duro State Park to see TEXAS. We stopped by Six Gun City for the first time and wandered through this picturesque old town. Got to see the big "gun fight" staged at 5 p.m. by some tough looking college boy play-actors. Ran into the Lawton Guthries here. The actors didn't show me much, but they could fall right well. We went on down into the beautiful canyon in time to take the two mile ride on the Sad Monkey Train. This little train takes you on a trip through part of the Canyon you will never see and the conductor points out to you rock carvings done by the Indians hundreds of years ago. We liked it.  
The TEXAS production is much improved from 2 years ago. Several scenes have been added, some changed, and the thunder and lightning storm is more realistic than ever. We had kept our fingers crossed all day long for fear it would rain on us. The skies were dark and cloudy all day, but never did it rain a drop! When the storm scene came along Eddie Faye leaned over and asked me if it was really coming a storm or was it the show. This particular scene is so very realistic that many in the audience

put up their umbrellas and dig for their rain coats. The lighting this year was simply fantastic, much improved and the 1,450 persons in attendance Saturday night showed much enthusiasm for the cast. A man from Okinawa won the triangle for the longest distance traveled to see the show. If you didn't see it this year, or if it has been a few years since you have attended, by all means plan to next summer, which will be its fifth season.  
Billy has decided we will go on a diet. He would do this at a time when aunt Bessie is visiting. She makes the best bread you ever tasted...big, fat brown loaves. If you are one of those people who wonder what "soul food" is all about you should put your feet under her table for one meal. Steve's friend Billy Giles learned she was coming and said, "Oh boy, I'm hungry for some good cooking." She has a special way with corn bread and butter beans, sow belly and turnip greens. Apricot fried pies thrown in for GOOD measure.  
Oh, well when you need to diet just as well get started. Before long you will see us both just dwindling away to nothing which means we'll be able to wear our "reserve" wardrobe for the first time in many a moon. If you have priced new clothes recently you will know why we MUST drop down several sizes. Who knows, when I dig out those clothes which have been too-little-too-long, they might just be the latest style.

**NOTICE**

Spearman Rebekah Lodge 290 will have a Rummage Sale, September 8 beginning at 9:00 a.m. The sale will be held in the old Western Auto Store building on Main St.

The first meeting of the year for the Twentieth Century Club will be held September 11 at 9:30 a.m. in the home of Mrs. P.A. Lyon, Sr.

Mrs. Johnny Waggoner and daughters visited Sunday with Mrs. Waggoner's mother, Mrs. May Conner in Syracuse, Kansas.

Mr. and Mrs. Narrel Wilson and family of Lubbock spent the weekend in Spearman visiting her parents the Sam Graves'.

Darla Neal, second grader, slipped in P.E. and broke her arm Friday. She is in Mrs. Vaughn's class. She is the daughter of Mr. and Mrs. Billy Neal.

Eck Lee is now home from the hospital in Amarillo where he had surgery and is recuperating nicely.

Mr. and Mrs. Olo Crum are in Spearman visiting with her parents, Dr. and Mrs. Hackley and with Olo's family, during the break between semesters at St. Mary's Law School, in San Antonio.

Lt. Glen Keim reported in August to Fort Sill for a 12 week training period before being sent to Okinawa for a 2 year period. He will return to Spearman this coming weekend and take his wife and baby back to Fort Sill with him. Glen is supposed to serve for 2 years in Okinawa, his wife will be allowed to follow him and live there.

Mr. and Mrs. Sammy Kemp and son Joey went to Dodge City and Garden City, Kansas for the Labor Day weekend. They visited Boot Hill Cemetery in Dodge City and the Fennings Park and Zoo in Garden City.

Eddie Riley of Lakewood, Colo. is visiting in Spearman with his parents, Mr. and Mrs. James Riley and family.

Harley Reeves, a 1967 graduate of Spearman High School, is home on leave from the army after serving his tour of duty in Vietnam. He will serve six more months before his release from the army.

Mr. and Mrs. Z.O. Bingham and family returned this week from a vacation visiting relatives in Pleasanton, Calif.



P.O. Box 458 213 Main Street Spearman, Texas 79081

**WILLIAM M. MILLER Editor and Publisher**

THE SPEARMAN REPORTER  
Published every Thursday at Spearman, Texas. Second class postage paid at Spearman Post Office, 79081

Any erroneous reflection upon the character of any person or firm appearing in these columns will be gladly and promptly corrected upon being brought to the attention of the management.

SUBSCRIPTION RATE--Hansford, adjoining counties, \$7.00 yr. Other points, \$5.00 or in combination with The Hansford Plainsman, \$9.00 yr.

Advertising rates on request.

Guests in the home of Mr. and Mrs. Sam Nitschke over the weekend were their daughter, Mr. and Mrs. Norbert Kauffeldt and children of Baton Rouge, La., and their son, Mr. and Mrs. Luther Nitschke and family of Wichita, Kans.



E.J. CALLAWAY displaying a couple of nice channel cat caught at Lake Meredith. One weighed 4 lb., the other 3 3/4 lbs. He and his brother caught a total of 28 lbs. of nice channel cat and pike. (Photo courtesy Vic's Marine & Tackle Supply)

**Everything Goes**

**LIQUIDATION SALE**

All items will be sold at cost or below

**309 Main Spearman, Texas**

Open 9 a.m. to 3 p.m

Office

**Furniture & Accessories  
Store Fixtures  
Bedroom, Living Room & Dining Room Furniture**

Must be sold to the bare walls by Sept. 15th

**Charlene Bulls' Interiors**  
309 MAIN SPEARMAN TEXAS  
BOX 885 PHONE 659-3202



**SUNDAY RECEPTION TO HONOR MR AND MRS ELMO McCLELLAN 1919 - 1969**

*The Children of Mr. and Mrs. Elmo McClellan Sr. request the pleasure of your presence at a reception honoring their parents at a celebration of the Fiftieth Anniversary of their marriage Sunday, the Seventh of September, Nineteen hundred and sixty-nine at the Fellowship Hall of the First Christian Church from 3:00 to 5:00 p. m. Grover, Texas*

**holt news**

Mrs. Medlin Patterson hostess to a Mary Kay cosmetics party, Tuesday August 26. A prize was given to Mrs. Campbell. The beauty salient was Mrs. Ruth Crowell, Texas. Mrs. Mmes. Raymond, Owen Pendergraft, Campbell and Maude Chamberlain and Groves of Spearman long Labor Day week-end guests of Mr. and Mrs. Crawford of Tullia, Ariz. Mr. and Mrs. George and Mrs. Floy Cotnam of Hereford recently visited Mrs. Gertrude Neill of Spearman. Mr. and Mrs. Robert Tevebaugh of Lubbock, and

Mrs. Bertha Jenkins were Labor Day week-end guests of Mr. and Mrs. Bob Tevebaugh of Claude. Mrs. Phil Jenkins was given a Birthday Party Tuesday afternoon August 26. Gifts were given to the honoree and refreshments were served to Mmes. Myrtle Stephen of Borger, Raymond Kirk, Wesley Jenkins, Bertha Jenkins, Martha Barton, Owen Pendergraft, Berda Holt, Medlin Patterson, Phil Jenkins and Maude Roson. Mr. and Mrs. Rickey Tevebaugh have been living four months in Springville, Arizona, so they were Saturday morning callers of his uncle and aunt, Mr. and Mrs. C. W. Kirk. They were enroute to Edmond, Okla. Mr. and Mrs. Chuck Martin and boys of Wichita, Kansas were week-end guests of her brother, Mr. and Mrs. Richard Gaines and Peggy. Mr. and Mrs. Bruce Fiedler of Denver were Labor Day week-end guests of her

parents, Mr. and Mrs. C. W. Kirk and other relatives. Mmes. Bud Jackson and Robin, Bill Jackson of Spearman and Fronye Close recently spent several days in Dallas, fall shopping for the Gift Box of Spearman. Those enjoying a Fish Fry dinner Sunday night with Mr. and Mrs. Owen Pendergraft were Mr. and Mrs. Bruce Fiedler of Denver, Mr. and Mrs. C. W. Kirk, Mr. and Mrs. Travis Reger, Debbie and Dale, and Maude Roson. Jeff Webster of Dayton, Ohio is visiting relatives, Mr. and Mrs. Ira Harbour, and Mr. and Mrs. Curtis Harbour. Soon he will be leaving for college. Steve Smith of Dimmitt was Labor Day week-end guest of Mr. and Mrs. Monty Harbour and family. Mr. and Mrs. Robert Janson, Randy and Scott of Amarillo were week-end guests of her father, Bud Jackson. Mrs. Bill Campbell of Stinnett visited Labor Day Mr. and Mrs. John Campbell.

**HD Council Votes To Aid Foreign Student**

The Hansford County Home Demonstration Council met Tuesday August 25 in the HD Clubroom with president, Mrs. Bernard Barnes presiding. Mrs. Barnes opened the meeting with a devotional on "My Yoke Is Easy And My Burden Is Light", from Matthew 11:30. Regular business was attended to and a report was given from Judge Johnnie Lee on the exchange student who is living in the Max Baggerly home. The Council voted to help with the student's needs while she is in Spearman. Council officers and club officers are to be elected in September. Mrs. B. J. Garnett, Mrs. Larry Hays and Mrs. Herb Howe were appointed to the nominating committee for council officers. Plans were initiated to sell pecans again this year. Prices have not been set as yet, as a price list was not available. 4-H Council reported 30 girls entered in the Dress Review. Three 4-H girls attended the

District Electric Camp, one was unsponsored. It was voted by members to repay the 4-H Council for the expenses. Attending were Mmes. Bernard Barnes, L. W. Rosenbaum, Daniel Sheets, Larry Hays, Elizey Vanderburg, Herb Howe, B. J. Garnett, M. W. McCloy, Claude Jackson, Jim Nicholson, Gordon Cummings, Earl Goodheart, Frank Davis, Mack Dortch, Ted Evans and guests Mrs. Glenda Muir and Miss Vivian Warminski.

**Needlework Is Displayed For club Members**

Mrs. Gordon Parrish was hostess for the Thursday, August 28 meeting of the Hansford Home Demonstration Club. Club president, Mrs. L. W. Rosenbaum, presided over the business session. A display of needlework, old and new styles, was on display for the viewing of club members. The program was presented by Mrs. Elizey Vanderburg, who showed slides on her trip to the eastern part of the United States. Those present were Mmes. Elizey Vanderburg, L. W. Rosenbaum, Daniel Sheets, Flavil Ayers, Herb Howe, Virgil Floyd, Dude Brown, the hostess Mrs. Parrish and one guest Mrs. A. W. Mobley.

**Peggy West Is Rho Rho Hostess**

The Rho Rho Chapter of Beta Sigma Phi Sorority met in the home of Peggy West, Thursday, August 28, to begin the new year. Marti Garnett, president, presided over the meeting. Members discussed plans for a style show and salad supper to be held the evening of September 27 in the H D Club room. Ticket sales will be in progress in the next few weeks by members, with posters being placed in the downtown stores announcing the time and ticket prices. A notice was read to members of the death of the sorority founder, Mr. Walter W. Ross. Toni Archer, assisted by Karen Countiss, presented the program entitled, "Oratory". Three oratories were given, "The Gettysburg Address", by Abraham Lincoln, "The Sermon on the Mount" from the Bible, and "Advice to Players", from Hamlet by Shakespeare. Those attending were Toni Archer, Karen Countiss, Marti Garnett, Scarlet Jackson, Leanna Kenney, Joan Stewart, Peggy West, Carolyn Gressett, Charlotte Jackson, Sandra Lindsey, Kay McFarlin, Cheryl Meek, Linda Umphress, and Nelva White.

**Arts & Crafts Guild Meeting**

Mrs. Bruce Sheets was hostess Friday, August 29 to members of the Arts and Crafts Guild. Those attending the afternoon china painting session were Mmes. Fred Hoskins, Pope Gibner, P. A. Lyon, Sr., Joe Traylor, Ned Turner, Bill Gandy, C. A. Gibner, Fred Daily, Garrett Allen and the hostess. Mrs. Nolan Holt will hostess the Guild, Friday, September 5.

**Rebekahs' Planning Activities**

Spearman Rebekah Lodge 290 met in regular session in the IOOF Hall at 8:00 p. m. Aug. 28, with Ina Mae Hughes Noble Grand and Ann Shelton Vice Grand as presiding officers. Plans were made to have a Bake Sale in November, a Rummage Sale in September and a dance in October. The site of the Bake Sale will be announced later as will the building for the Rummage Sale. The Rummage Sale will be held September 8, 9, and 10. The dance will be in the Community Building with the band announced at a later date. A discussion was held on the plans of Oddfellows and Rebekahs to build a new building for the IOOF and Rebekahs Old Folks home in Ennis, Texas. Refreshments were served by 12 members by Gladys Richardson and Mildred Chamberlain.

Recent visitors in the home of Mr. and Mrs. Eck Lee were Bob Lee and Robert McCune of Colorado. Also visiting in the home were Mr. and Mrs. Max Carmichael of Dallas.

**Mrs Jarvis Is W M U Hostess**

The WMS Study Group of the Baptist Church met Wednesday morning August 27 in the home of Mrs. Woodville Jarvis. Mrs. Don Jones opened the meeting with the prayer calendar, noting the Baptist Missionaries birthdays. A very interesting talk was given by Mrs. Eddie Gates on the life and work of her missionary brother, Wayne White and his wife Winnie. The Whites are missionaries in Mexico. Attending were Mmes. Ray Devers, Bob Bailey, Lena Stephenson, Don Jones, A. F. Loftin, Fred Holt, Woodville Jarvis and the guest, Mrs. Eddie Gates.

**Future Farmers Elect Officers**

Tuesday, September 2 was the first Future Farmers of America meeting for the new school year. At this meeting new officers were elected, President is Kenneth Donahue, Jim Kunselman is Vice President, Phil Sanders was named secretary and Frank Wilment Treasurer. Steve Hicks was elected reporter, Pat Sloan was named Sentenil and Gary Evans parliamentarian, which is a new office for FFA. The chapter also voted on the delegates for the district meeting which will be held in Spearman, Kenneth Donahue and Jim Kunselman were the two selected.

**School Lunch Menus**

Monday, Sept. 8-Barbecue on Bun, Buttered Corn, Potato Salad, Peach Halves, Chocolate Chip Bars, Milk, High School Meat Choice-Ham Salad Sandwich. Tuesday, Sept. 9-Chicken Pot Pie, Mashed Potatoes, Buttered Spinach, Dill Pickle Spears, Mixed Fruit Cup, Hot Rolls - Butter - Milk, High School Meat Choice-Beef Cubes in Gravy. Wednesday, Sept. 10-Hot Dogs - Chili Sauce, Seasoned Pinto Beans, Potato Chips, Cantaloupe Wedge, Chocolate Cake - Milk, High School Meat Choice-Pimento Cheese Sandwich. Thursday, Sept. 11-Baked Ham Slice, Scalloped Potatoes, Green Beans with Bacon, Orange-Pineapple Salad, Banana Pudding, Bread - Milk, High School Meat Choice-Swiss Steaks. Friday, Sept. 12-Hamburger - Mustard or Tuna Salad Sandwich, Seasoned Beans, Potato Gems - Catsup, Dill Pickle Slices, Lettuce - Tomato Salad, Butter Cookies - Milk, Ice Cream Cup.

**HOSPITAL NOTES**

Patients in the Hansford Hospital this week are Max Lackey, Birtie McNabb, Sidney Baker, Ray Converse, Delbert Woods, Doris Kreger, Deta Blodgett, Annabelle Parrish, Lou Howk and baby boy. Dismissed were Marilyn Wood, Hettie Davis, Rosa Messer, Luella Rook, Wilbur Hull, Harry Lash, Patty Sheppard, James Bulls, Modesta Romeriz.

**New Arrivals**

Mr. and Mrs. Alfred Love of Amarillo are proud parents of a new son, their first child. Troy Sutton was born August 30 and weighed 8 lbs, 6 ozs. Maternal grandparents are Mr. and Mrs. Sutton Gable of Spearman. Paternal grandparents are Mr. and Mrs. Earl Love of Follett. The youngster also has two sets of great grandparents.

Jenna V. Ownbey was honored last Monday with an autograph session at the Gift Box in Pampa. During the prior week she was at Herd and Jones Drug in Borger for an autograph session. She was also invited to show her paintings at the Burger Arts Festival and will have two oil paintings at the Tri State Fair in Amarillo.

**Helpful hints from Me to Thee...**

by Vivian C. Warminski County Home Demonstration Agent

Juicy sweet peaches! Just makes your mouth water to think about them. These fruits top the U. S. Department of Agriculture's Plentiful Foods List this month so you won't have to look far for this queen of fruits to satisfy you hunger for something delicious. Here's a peach of an idea for a breakfast of dessert delight---

PEACHALADE  
1 medium orange  
2 pounds peaches  
1 lemon  
1 cup water  
7-1/2 cups sugar  
1/2 bottle liquid pectin  
Squeeze juice from orange and lemon. Grind rinds or chop in electric blender. Put peeled, pitted peaches into bowl. Crush fine with mesh-type potato masher or small can with both ends cut out. Add fruit juices to peaches. Let stand.

Put ground orange and lemon rinds in to 5 or 6 quart kettle. Add water. Cover. Simmer over medium heat for 10 minutes. Blend peach mixture and sugar into cooking rinds. Bring to full rolling boil. Boil 10 minutes. Stir often. Remove from heat. Stir in pectin. Alternately stir and skim to remove foam for 5 minutes. Pour into clean, hot, dry jelly jars. Seal at once with self-sealing lids. Or cover at once with a 1/4 inch layer of melted paraffin. Store in a cool, dark place.

Use PEACHALADE on toast, French toast, on top of ice cream for dessert, or on bread for a snack for the kids. Think up your own uses for it!

Why not buy a bushel of fresh peaches and freeze them so that the whole family can enjoy their delightful goodness the year around? Nowadays, freezing is one of the simplest and least time-consuming ways to preserve fruits at home. The choice, golden hue, juicy fresh flavor and vitamin A-rich nutritive value of peaches are well kept through freezing.

Here are some general considerations in freezing any peaches:

1. Select firm, but ripe, fruits without bruises. Slice or chop as desired.
2. Pack with sugar, cold sirup or unsweetened, depending on use planned. (A 40 percent sirup, three cups sugar to four cups water, is generally best for peaches.)
3. Add ascorbic acid to prevent darkening (1/2 teaspoon to 1 quart sirup.)
4. Pack in moisture-proof containers, with all fruit covered by the sirup and 1/2 to 3/4 inch of head space.

A bushel of peaches will fill 16 to 25 quarts. Plan about 15 pints for each person in the family.

**Texas Show Ends Season**

The 1969 season for "Texas" closed Labor Day. More than 70,000 people have seen the show this year. Comparative figures in the past are: 1966 - 61,338; 1967 - 64,925; 1968 - 65,012. In a recent survey taken here as well as in outdoor shows all over the United States, the question was asked, "Have you seen this drama before?" At "Texas" 33% of the people interviewed

said, "Yes". It has been the privilege of the "Texas" cast to entertain the members of the Agricultural committee of the U. S. House of Representatives, who were brought to the Canyon by Rep. Bob Price. They also played to the Speaker of the Texas House the Hon. Gus Mutscher, and to a group of Texas senators led by Senator Grady Hazelwood. Directors and business managers of several other outdoor shows have been in the audience and several, including the director of UNTO THESE HILLS have written warm congratulations to the cast. The first meeting of the Texas Tourist Council ever held in West Texas was set so that its members could attend the show.

The audience has included visitors from 79 different countries and the triangle which goes to the visitor who has come the greatest distance has not been given to anyone from the United States. One evening the winner came from Vietnam and as he left the theatre he was delighted to be confronted by a very small boy who stuck out his hand and said "Welcome to Texas!" All fifty of the United States have been noted in the parking lot or in the guest book. A man from New Hampshire completed the list. He was the last person to sign the guest book on Saturday night. At this close of the 1969 season, the staff and the cast wish to express their thanks to everyone who has made this success possible.

**Sta-Dri WATER REPELLENT**

We can now treat your garments with Sta-Dri, the world's finest water repellent. Sta-Dri restores the water repellency of your garments and gives them the look and feel of new. This is just another service we are able to perform for you so your fine rainwear will remain water repellent.

**WARDROBE CLEANERS**  
302 Main Ph. 659-2511



**Put a bright outlook on homework with proper study light**

By providing the best possible light for your child, you can help prevent eyestrain . . . and put a bright outlook on homework which can lead to better grades. His study lamp should be tall enough to spread light evenly over the entire work area. It should have a 150-watt bulb . . . a diffusing bowl to prevent glare . . . and a shade that conceals the light source from the eyes. See your dealer soon, or call us for more information.

**COMMUNITY PUBLIC SERVICE**  
Your Electric Light & Power Company



**T.G. & Y.**  
5¢ TO 10¢ STORES

Prices Good Thru Saturday While Quantities Last.

**WEEK-END BARGAINS**

**COOKIES** 4<sup>PKGS.</sup> \$1  
Creme Filled Duplex Peanut Butter Vanilla Lemon

**EVERYDAY GREETING CARDS** 53<sup>BOX</sup>¢  
Value to \$1.25

**7 PIECE PLASTIC SALAD SET** 88<sup>SET</sup>¢  
Compare At \$1.29

**METAL SPONGE MOP** 88<sup>EA.</sup>¢  
Compare At \$1.69

**Straw BROOM** 88<sup>EA.</sup>¢  
Limit 2 Compare At \$1.29

**SPECIAL! Asst. 1969 Model CAR KITS** 88<sup>EA.</sup>¢  
Compare At \$2.00

**DUST MOP** 88<sup>EA.</sup>¢  
Compare At \$1.69



# V O T E

# S A T U R D A Y



### SPEARMAN SORELY NEEDS A NEW ATHLETIC PLANT

Mr. James Cunningham, Superintendent of schools says: "Our present facilities are not adequate---- we have an unsafe situation in getting boys to and from dressing rooms and to and from the field to play. The field house needs to be adjacent to the day to day practice area."

We do not own the land our present football field is located on. Building permanent structures on property not owned by the school is not sensible.

We have no dressing rooms for our boys at the field.

There is no place for the coaches to meet with the boys at halftime.

Rest rooms are inadequate for fans.

Our Football Field is our image---- our image to visitors should be improved.

Voting hours...8: 00 a. m. to 7: 00 p. m.

Vote (YES) for your school bond.....  
....At the Junior High School

THIS ADVERTISEMENT SPONSORED BY SPEARMAN CITIZENS INTERESTED IN BETTER ATHLETIC

First... about  
bond... ss. The  
min... our bon  
debt... n lower  
the... in our  
class... have c  
to vis... g schoc  
find... a very  
vious... ar as ou  
debt... structure  
tax... rned.

We... to the  
board... to have  
ly gu... nding o  
mon... e years.

At th... have ni  
of bo... ness pa  
to ma... athletic  
bond... e year t  
sche... total of  
years... on bonc

HOW... ECT YOU

Your... al tax:

YOUR... ALLY W  
SHOU... ISSUE



# YES! SEPTEMBER 6



### WHERE WILL THE NEW PLANT BE?

The new plant will be built on the school property (already owned) just south of the high school building. The administration says there is ample room for any future required expansion for the building facilities, and for the new plant, including plenty of parking space, practice field, field house, etc.

This would give Spearman a first class athletic plant in every respect and put it where it was planned to be built by the foresightedness of school board members when they planned our new high school building.

### COST BREAKDOWN

Stadium, including: \$30,000.00  
 press box, moving old stands  
 Lighting System . . . . 15,000.00  
 (on wooden poles)  
 Fencing . . . . . 9,000.00  
 (6 foot outside, 4 foot inside)  
 Dirtwork . . . . . 10,000.00  
 All Weather Track . . . 33,000.00  
 (including curbing)  
 Field House (50 x 70 feet) 45,000.00  
 with adequate dressing rooms etc  
 Concession Stands,  
 Rest Rooms, Ticket Offices,  
 Goal Posts, Flag Pole,  
 Score Board (move), P.A.  
 System, Automatic Water  
 Sprinkling System, Asphalt  
 Walks, Etc. . . . . 31,200.00  
 Architect Fees . . . . . 11,000.00  
 TOTAL . . . . . \$184,200.00

|           |    |             |       |            |
|-----------|----|-------------|-------|------------|
| SEPTEMBER | 12 | SUNRAY      | There | 8:00 p. m. |
|           | 19 | CANADIAN    | Here  | 8:00 p. m. |
|           | 26 | CANYON      | Here  | 8:00 p. m. |
| OCTOBER   | 3  | STRATFORD   | Here  | 8:00 p. m. |
|           | 10 | GRUVER      | There | 8:00 p. m. |
|           | 17 | *BOYS RANCH | There | 8:00 p. m. |
|           | 24 | *STINNETT   | Here  | 8:00 p. m. |
|           | 31 | *DALHART    | There | 8:00 p. m. |
| NOVEMBER  | 7  | *PHILLIPS   | Here  | 8:00 p. m. |
|           | 14 | *PANHANDLE  | Here  | 8:00 p. m. |

\*designates district games

### BUILDERS OR WRECKERS

I watched them tearing a building down,  
 A gang of men in a busy town;  
 With a ho-heave-ho and the side wall fell  
 I asked the foreman, "Are these men skilled?"  
 He gave a laugh and said, "No, indeed!  
 Just unskilled labor is all I need!  
 I can easily wreck in a day or two  
 What builders have taken a year to do!"  
 And I thought to myself as I went my way,  
 Which of these roles have I tried to play?  
 Am I a builder who works with care,  
 Measuring life by rule and square?  
 Am I shaping my deeds to a well made plan,  
 Patiently doing the best I can?  
 Or am I a wrecker who walks the town  
 Content with the labor of tearing down?  
 Author Unknown

ATHLETIC FACILITIES (Chairman, Sonny Windom)



# College Student Exodus

A large exodus of college students bound for institutions of higher learning across the land, will begin about September 12.

Many have already left for college, but the majority will exit Sunday September 15.

The following list includes freshmen, sophomores, juniors and seniors and some who are at work on their masters degrees. Several married couples and some with families are also among the college-bound.

All the names (which were available to this newspaper) are printed below.

Texas Tech falls behind West Texas State University in the number of Spearman students attending. Forty-three is the number attending WTSU, with 37 attending Texas Tech.

The below list includes 172 students enrolled in some 45 college, trade schools, etc.:

WEST TEXAS STATE UNIVERSITY--CANYON--Lynda Hall, Jerry Holton, Randy Moore, Archie Smith, Daniel Smith, Connie Trindle, Janice Trindle, Glenn Baker, Cheryl Bollinger, Donald Burkhardt, Mike Shedeck, Debbie Hazelwood, Bonnie Vernon, Joe Hutchison, Jonny and Bob Phillips, Wesley Jenkins, Kate Kilgore, Patry Kingsley, Janie Kirkland, Janie Beck, Gary Ellsworth, Susan Uptergrove, Darlene Waggoner, Bobbie

Neil Grayson, Mike Larsen, Jimmy Kinkle, Vernon Pipkin, Marsha Schumann, Frances Whitson, Tom Hoobler, David Knox, Bill Blackburn, Larry Butt, Larry Holt, Susan and Jack Kidder, Richard Pipkin, Barry Lynn Goff, Rickie Howterter, Eddie Gail Martin, Wesley Jarvis, Hal Shufeldt.

TEXAS TECH--LUBBOCK--Cathy Mackie, Wesley Brinkley, Diane Thomas, Danny Knox, Hal Hoover, Jennifer Patton, Myrna Crum, Debra Langent, Steve Crooks, Leslie Crooks, Miles Cline, Karen Pink, Lisa Curry, Steve Baggerly, Carrol Day, Gary Faries, Mr. and Mrs. Kenneth Faries, Monte Lusby, Catherine Lyon, Leroy Callaway, Jill Grange, Lynne Garnett, Gary Gates, Johnny Crawford, Carla and Tommy Gurnfory, Rebecca Hutchison, John Hutchison (Law School), Danny Womble, Tony Hester, Steve Holton, Sharon Mauldin, Willie Reneau, Gary Woolley, Penny and Dan Ralston.

UNIVERSITY OF TEXAS AT AUSTIN--James Ownbey, Donna and Roy Reese, Jr., Doug Lackey, David McClellan, Debra Brock, Mike McLain, Mike and Linnie Riley, Steve Sheets, Mike Sanders (Law School).

TEXAS A&M AT BRYAN--Jack Lee, Mart Brillhart (Veterinary School), Bill McClellan, James Schnell, Susan and Jim Steve Ownbey.

SOUTHERN METHODIST UNIVERSITY AT DALLAS--Charles Shieldknight, Mike Davis, Clay Schnell.

OKLAHOMA STATE UNIVERSITY AT STILLWATER--Terry and Ralph Ridenhour, Glenn and Karen Blodgett, Marilyn Blodgett, Linda Smith.

HARDIN-SIMMONS UNIVERSITY AT ABILENE--Harrel Adkison, Susie Adkison.

WAYLAND BAPTIST COLLEGE AT PLAINVIEW--Debbie Thomas, Marcia Shieldknight, Melinda Pearson Hopper.

NORTH TEXAS STATE COLLEGE AT DENTON--Roy Woodson.

EASTERN NEW MEXICO UNIVERSITY AT PORTALES--Mike Stewart.

TARLETON STATE COLLEGE AT ALVA--Mansel Bryan.

NORTHWESTERN STATE COLLEGE AT ALVA--Bobby Smith.

TEXAS A&M AT KINGSVILLE--Gary Haner.

OKLAHOMA UNIVERSITY AT NORMAN--Mike Skinner.

COOK COUNTY COLLEGE AT GAINESVILLE--Bill Skinner.

MEMMURY COLLEGE AT ABILENE--Lloyd McWhirter, Toni Hudson, Thel Daniel.

PHILLIPS UNIVERSITY AT ENID--Brenton Haworth, Kathy Pattison.

UNIVERSITY OF HOUSTON--Marty Jones, Terry Jones.

AMARILLO JUNIOR COLLEGE AT AMARILLO--Ken Schneider, Terry Delozier, Jene Welch, Kurt Shedeck, Ernie Vanderburg, Jerry Hawkins.

CLARENDON JUNIOR COLLEGE AT CLARENDON--Orville Boese, Lynn Kemper, Guy Dell White.

ODESSA JUNIOR COLLEGE AT ODESSA--P. A. Lyon, III.

PARIS JUNIOR COLLEGE AT PARIS--Glenda Upchurch, M. D. ANDERSON TUMOR INSTITUTE AT HOUSTON--Gweneth Hammers Griffin.

AIR FORCE ACADEMY AT COLORADO SPRINGS--James Lemons.

JESSIE LEE'S BEAUTY SCHOOL AT LUBBOCK--Marilyn Jones.

SOUTH PLAINS COLLEGE AT LEVELLAND--Ronald Howterter.

MISS WADE'S FASHION MERCHANDISING COLLEGE AT DALLAS--Gail Hopper.

SAN MARCOS ACADEMY AT SAN MARCOS--Nanette McIntyre.

LIBERAL JR. COLLEGE AT LIBERAL--Chris Babbs.

EL PASO COMMUNITY COLLEGE AT COLORADO SPRINGS--Dallas Haner, CONNALLY TECH AT WACO--Robby Woodson.

NAVARRO JUNIOR COLLEGE AT CORSIANA--Anthony and Linda Wilkerson, Richard Booth.

UNITED ELECTRONICS SCHOOL AT OKLAHOMA CITY--Ronnie Burch.

UNIVERSITY OF TEXAS DENTAL HYGIENIST SCHOOL AT HOUSTON--Kay Jackson.

FRANK PHILLIPS JUNIOR COLLEGE AT BORGER--Sue and Mike Hendrick, Lee Shaver, Ben Shoemaker, Larry Williams.

AMARILLO JUNIOR COLLEGE AT AMARILLO--Ken Schneider, Terry Delozier, Jene Welch, Kurt Shedeck, Ernie Vanderburg, Jerry Hawkins.

CLARENDON JUNIOR COLLEGE AT CLARENDON--Orville Boese, Lynn Kemper, Guy Dell White.

ODESSA JUNIOR COLLEGE AT ODESSA--P. A. Lyon, III.

PARIS JUNIOR COLLEGE AT PARIS--Glenda Upchurch, M. D. ANDERSON TUMOR INSTITUTE AT HOUSTON--Gweneth Hammers Griffin.

AIR FORCE ACADEMY AT COLORADO SPRINGS--James Lemons.

JESSIE LEE'S BEAUTY SCHOOL AT LUBBOCK--Marilyn Jones.

SOUTH PLAINS COLLEGE AT LEVELLAND--Ronald Howterter.

MISS WADE'S FASHION MERCHANDISING COLLEGE AT DALLAS--Gail Hopper.

SAN MARCOS ACADEMY AT SAN MARCOS--Nanette McIntyre.

LIBERAL JR. COLLEGE AT LIBERAL--Chris Babbs.

EL PASO COMMUNITY COLLEGE AT COLORADO SPRINGS--Dallas Haner, CONNALLY TECH AT WACO--Robby Woodson.

NAVARRO JUNIOR COLLEGE AT CORSIANA--Anthony and Linda Wilkerson, Richard Booth.

UNITED ELECTRONICS SCHOOL AT OKLAHOMA CITY--Ronnie Burch.

UNIVERSITY OF TEXAS DENTAL HYGIENIST SCHOOL AT HOUSTON--Kay Jackson.

FRANK PHILLIPS JUNIOR COLLEGE AT BORGER--Sue and Mike Hendrick, Lee Shaver, Ben Shoemaker, Larry Williams.

AMARILLO JUNIOR COLLEGE AT AMARILLO--Ken Schneider, Terry Delozier, Jene Welch, Kurt Shedeck, Ernie Vanderburg, Jerry Hawkins.

CLARENDON JUNIOR COLLEGE AT CLARENDON--Orville Boese, Lynn Kemper, Guy Dell White.

ODESSA JUNIOR COLLEGE AT ODESSA--P. A. Lyon, III.

PARIS JUNIOR COLLEGE AT PARIS--Glenda Upchurch, M. D. ANDERSON TUMOR INSTITUTE AT HOUSTON--Gweneth Hammers Griffin.

AIR FORCE ACADEMY AT COLORADO SPRINGS--James Lemons.

JESSIE LEE'S BEAUTY SCHOOL AT LUBBOCK--Marilyn Jones.

SOUTH PLAINS COLLEGE AT LEVELLAND--Ronald Howterter.

MISS WADE'S FASHION MERCHANDISING COLLEGE AT DALLAS--Gail Hopper.

SAN MARCOS ACADEMY AT SAN MARCOS--Nanette McIntyre.

LIBERAL JR. COLLEGE AT LIBERAL--Chris Babbs.

EL PASO COMMUNITY COLLEGE AT COLORADO SPRINGS--Dallas Haner, CONNALLY TECH AT WACO--Robby Woodson.

NAVARRO JUNIOR COLLEGE AT CORSIANA--Anthony and Linda Wilkerson, Richard Booth.

UNITED ELECTRONICS SCHOOL AT OKLAHOMA CITY--Ronnie Burch.

UNIVERSITY OF TEXAS DENTAL HYGIENIST SCHOOL AT HOUSTON--Kay Jackson.

FRANK PHILLIPS JUNIOR COLLEGE AT BORGER--Sue and Mike Hendrick, Lee Shaver, Ben Shoemaker, Larry Williams.

reaus, Inc., leading trade association in the credit bureau industry.

The Credit Bureau of Hansford County, Inc. is affiliated with ACB and has adopted the Policies for Protection of Privacy.

The credit bureau policies were formulated by an Advisory Committee on Protection of Privacy, consisting of 10 representatives of nine consumer trade associations, and are official operating policies for the more than 2100 independent ACB credit bureaus.

"Although these policies represent only minor departures from procedures already being followed in many far-sighted credit bureaus, said Mrs. Hand, "their adoption will serve to standardize procedures for all bureaus."

Mrs. Hand said that strong support by credit granters who use credit bureau services would enable the industry to implement the guides in a uniform, self-regulatory posture. "We believe that the relatively few credit bureaus outside ACB will freely adopt our code for the good of the consumer and of free enterprise," Mrs. Hand said.

The new code provides the following consumer protections:

1. Bureaus have pledged to provide trained personnel to explain the credit report and to advise the consumer of his credit difficulties.
2. Credit bureaus will provide non-credit granting government agencies with identifying information only. Any other information, with the exception of security investigations, will be supplied only in response to legal process.
3. Contracts with credit granters will require that a

bona fide business transaction be involved for each credit report requested.

4. Specialized information developed for a personnel report will be kept separate from and not incorporated into a credit report.

5. Credit bureaus will record public record information and note whether the disposition or adjudication is shown in the bureau file. Credit granters will be urged by credit bureaus to inquire further as to the details and disposition of public record information which might be of significance to the credit decision.

6. Credit bureaus will assign a definite file-life to each kind of information placed in file. Bankruptcies, for example, will be deleted 14 years from date of discharge. With some exceptions, other items will be kept only seven years.

The consumer credit industry trade associations which participated in formulating the guidelines included the American Bankers Association; American Industrial Bankers Association; American Petroleum Credit Association; American Retail Federation; International Consumer Credit Association; National Consumer Finance Association; National Foundation for Consumer Credit; National Retail Merchants Association; and ACB.

Development of the guidelines started two years ago when ACB began an intensive study of the policies, procedures and operations of member credit bureaus.

"The purpose of this study was to make certain that credit bureau members of ACB protected the privacy of consumers and permitted bona fide credit granters to

intelligently evaluate a prospective applicant for credit," Mrs. Hand explained.

"These guidelines are the result of intensive research and study," Mrs. Hand added. "They were developed by granters representing all segments of consumer credit; by credit bureau managers; through discussions with state and federal legislators; and through consultation with educators and attorneys."

Mr. and Mrs. Gene Sparks, and family, will move to Casper, Wyoming, this week. Gene has been promoted to production superintendent for Diamond Shamrock Corporation. Gene has been with the Shamrock Corporation in Spearman for the past 10 years. This is Gene's third promotion since employment.

All of his Spearman friends hate to see Gene leave, but are glad that he has this fine opportunity with the Diamond Shamrock Corporation.

Sunday dinner guests in the home of Mrs. Harry Shedeck were Mr. and Mrs. Noble Sikes of Portales, Mrs. Shedeck's daughter, and Mr. and Mrs. Lloyd McWhirter of Abilene, Mr. and Mrs. Richard Shedeck and children and Mr. and Mrs. Jack McWhirter and Maria. Ronnie Burch was a guest in the afternoon.

Mr. and Mrs. Caylor Hoobler visited in Odessa over the Labor Day weekend with their son Max Hoobler.

intelligently evaluate a prospective applicant for credit," Mrs. Hand explained.

"These guidelines are the result of intensive research and study," Mrs. Hand added. "They were developed by granters representing all segments of consumer credit; by credit bureau managers; through discussions with state and federal legislators; and through consultation with educators and attorneys."

Mr. and Mrs. Gene Sparks, and family, will move to Casper, Wyoming, this week. Gene has been promoted to production superintendent for Diamond Shamrock Corporation. Gene has been with the Shamrock Corporation in Spearman for the past 10 years. This is Gene's third promotion since employment.

All of his Spearman friends hate to see Gene leave, but are glad that he has this fine opportunity with the Diamond Shamrock Corporation.

Sunday dinner guests in the home of Mrs. Harry Shedeck were Mr. and Mrs. Noble Sikes of Portales, Mrs. Shedeck's daughter, and Mr. and Mrs. Lloyd McWhirter of Abilene, Mr. and Mrs. Richard Shedeck and children and Mr. and Mrs. Jack McWhirter and Maria. Ronnie Burch was a guest in the afternoon.

Mr. and Mrs. Caylor Hoobler visited in Odessa over the Labor Day weekend with their son Max Hoobler.

## Sparks Family Is Moving

Mr. and Mrs. Gene Sparks, and family, will move to Casper, Wyoming, this week. Gene has been promoted to production superintendent for Diamond Shamrock Corporation. Gene has been with the Shamrock Corporation in Spearman for the past 10 years. This is Gene's third promotion since employment.

All of his Spearman friends hate to see Gene leave, but are glad that he has this fine opportunity with the Diamond Shamrock Corporation.

Sunday dinner guests in the home of Mrs. Harry Shedeck were Mr. and Mrs. Noble Sikes of Portales, Mrs. Shedeck's daughter, and Mr. and Mrs. Lloyd McWhirter of Abilene, Mr. and Mrs. Richard Shedeck and children and Mr. and Mrs. Jack McWhirter and Maria. Ronnie Burch was a guest in the afternoon.

Mr. and Mrs. Caylor Hoobler visited in Odessa over the Labor Day weekend with their son Max Hoobler.

### INSTRUCTIONS FOR GIVING DESCRIPTION OF SPECIFIC ITEM ON PROPERTY

Article 5.04 of the Texas Election Code, which requires that you give a description of one specific item of property which has been rendered for taxation or placed on the unrendered rolls as stated in the affidavit, makes the following provision:

PROPERTY OTHER THAN REAL ESTATE "The description of a specific item of property which is required on the affidavit shall be sufficient as to personal property if it identifies the property by a general statement of its nature, as, for example, household furniture, automobile, livestock, jewelry, stock of merchandise, corporate securities, etc.

REAL ESTATE "If real property is located in an incorporated city, town, or village, a statement of the location of the property by street and number shall be sufficient; and if it is located in an unincorporated town or village, it shall be sufficient to identify the property by general description as so located, as, for

example, 'house and lot in the town of \_\_\_\_\_.' It shall be sufficient to describe a farm, ranch, or other rural property by a statement of its location with reference to a town, community, or other well-known landmark, as, for example, 'farm near \_\_\_\_\_.'

"Upon request of the voter, the election officer attending him shall inform him as to what will be a sufficient description on the affidavit for the specific item of property which he wishes to list."

If you need assistance in filling out this affidavit, ask the election officer to help you.

ABSENTEE VOTING BY MAIL. If you are voting an absentee ballot by mail, you must swear to the affidavit before a notary public or other officer authorized to administer oaths, and he must fill out and sign the certificate at the bottom of the affidavit. Place the completed affidavit in the carrier envelope with your ballot stub and the ballot envelope containing your marked ballot.

TO THE VOTER: Read this affidavit, fill in the blanks indicated by an X, and then return the form to the election officer. If you are unable to write, ask the election officer for instructions on what to do.

TO BE FILLED IN BY ELECTION OFFICER

Poll List No. \_\_\_\_\_

Registration Certif. No. \_\_\_\_\_

### AFFIDAVIT OF OWNERSHIP OF PROPERTY DULY RENDERED FOR TAXATION

For Voting at Election Held by

SPEARMAN INDEPENDENT SCHOOL DISTRICT

on September 6, 1969

I solemnly swear that I own property which was rendered to the Spearman Independent School District for taxation for the year 1969 within the time fixed by law for such rendition, or was placed on the tax rolls of the Spearman Independent School District for the year 1969 by the Tax Assessor prior to August 18, 1969, the date on which this election was ordered; and that the following is a description of one item of property so rendered or placed on the tax rolls (SEE REVERSE SIDE OF THIS FORM FOR INSTRUCTIONS):

X \_\_\_\_\_ (Description of Property)

I understand that the giving of false information in this affidavit is a felony punishable by a fine not to exceed \$5000.00 or by imprisonment in the penitentiary not to exceed 5 years, or by both such fine and imprisonment.

X \_\_\_\_\_ (Signature of Voter)

Sworn to before me by the above-signed voter on this the \_\_\_\_\_ day of \_\_\_\_\_, 1969

\_\_\_\_\_  
(Signature of Officer Administering Oath)

\_\_\_\_\_  
(Title of Officer Administering Oath)

# VOTE AS YOU PLEASE BUT, Please Vote SATURDAY SEPT. 6th

Nº

Spearman ISD Bond Election September 6, 1969

(NOTE: Voter's signature to be affixed on the reverse side)

SAMPLE BALLOT

(Place an "X" in the square beside the statement indicating the way you wish to vote)

FOR

AGAINST

PROPOSITION

THE ISSUANCE OF BONDS AND THE LEVYING OF THE TAX IN PAYMENT THEREOF

THESE IMPORTANT VOTING INSTRUCTIONS, AND SAMPLE BALLOT. COMPLIMENTS OF

# Spearman Reporter



Re-print from the Hansford Plainsman

"You Name It" by BILLY MILLER

We received a letter to the editor this week, and have made an attempt to answer it to the best of our abilities. The letter is from Helen Curtis and others, who are interested in the coming bond issue.

Here's the letter: Dear Editor: Being genuinely concerned for better education, we would appreciate your publishing answers to the following questions in order that we may vote more intelligently in the coming school bond election: Question No. 1. We note that in the same issue that the board was petitioned to have the bond election, notice was given that taxes must be raised next year, since the school is currently operating at a deficit. The state is scrounging desperately to find something to tax that isn't already over-taxed and the Federal government is now taxing taxes, EXACTLY how much would

the school taxes be raised if the bond issue passes? ANSWER: About 5¢ per \$100.00 valuation-and we might add our opinion, this is very, very small considering what the results to our young people and our school program might be! QUESTION No. 2: What is the seating capacity of the stadium now? ANSWER: Approximately 1200, counting both sides (home and visitors bleachers.) QUESTION No. 3: From the records of attendance, how many times last year did the admissions exceed the capacity. ANSWER: We have no accurate records of this, but at

every game, many people line the rails. And, we know that there are no press box facilities for your local paper, but we don't like to even mention this, because we are going to the games if we have to stand out in the rain as we have done for the past several years. The local press-box facilities can't even handle the radio, and visiting press. But, like we say, we are going to the games if we have to stand out in the rain. QUESTION No. 4: If the above answer indicates that the admissions never exceeded the capacity, does that indicate that there is not sufficient public interest in the games to justify enlarging the stadium? ANSWER: We sure think that enlarging the stadium will increase attendance, and will certainly be justified. QUESTION No. 5: If the admissions repeatedly exceeded the seating capacity, does that indicate there should be sufficient income from the admissions to pay for the new facilities as do other sports, such as bowling alleys, skating rinks, rodeos, etc.? ANSWER: This is a tax bond, not a revenue bond. And, I don't know about bowling alleys, skating rinks, and rodeos, revenue but I do know that every one of these have real good seating arrangements. QUESTION No. 6: Since there is approximately 1150 students enrolled and with a possible maximum of 100 boys involved in football and track, how will the remaining 1000 students who are interested primarily in an academic education be benefited by the passing of the bond issue? ANSWER: The band, and P. E. programs are a part of our over-all education system, and adequate facilities must be provided for these needs. Also, since Spearman school enrollment has jumped to an all-time high, if all of the kids (approximately 1200) of them show up for the ball games, the other 4,000 people in town will have to stay at home. And, heaven help us if some of the AA and AAA schools that we are going to host this year bring fans with them. With the population increase, and the people who will be moving here with the feedlots in the area, we all know that our stadium is inadequate. QUESTION No. 7: What percentage of the present budget is allocated to athletic expense-which includes the payment for and maintenance of four gyms, stadium, salaries of numerous coaches, uniforms, meals, and transportation of the players?

ANSWER: This question will be hard to answer. But, we will try, and bear in mind that we don't know all of the answers to this one: In the first place, the four gyms are not used for football, but are used everyday for the Physical Education program for our kids. I remember how I yelled and hollered because they didn't put the new gym out in the edge of the city, landscape it real pretty and make it look like a college set up. But, here is what the school board told me; they said "Billy, we didn't build that gym to please the few people who attend a ball game once a week during basketball season. We put that gym there for the seven or eight hundred kids who use it every day, 5 days each week. And, if we had moved it out in the country, there would be many days that the gym couldn't be used by the 800 kids. And, the other three gyms are used exactly the same way!" Now, I assume that none of the budget is being used for payment on the old stadium, other than maintenance. As for the salaries of the 7 coaches who work with the 7th, 8th, Freshmen, and A squad boys, you will have to decide whether these men have any value to the school system other than coaching football. And, the most radical person in town will have to admit that these men do things other than coach football, but if you figure all 7 of their salaries, and figure how much time they actually spend with football, and figure how much time they spend the rest of the year teaching, and in P. E. programs, you surely would vote for the new stadium. It is impossible for us to arrive at an exact percentage, so we won't say what percentage their salaries are, because we don't know how to figure it fairly. We can say that the entire athletic budget in the Spearman school system is only \$28,000.00. And, you can knock off \$11,000.00 of that because that is what the athletes brought in from tickets to athletic events, leaving only \$17,000.00 total expenses for the athletic budget. Now, we haven't figured spark plugs for the buses, wear and tear on the tires, electricity, water, and several other things. But, basically, our football program just doesn't cost nearly as much as we

had been led to believe, and we hope that this answers your question pretty well. QUESTION No. 8: Since the generally accepted reason for any athletic program is the physical fitness benefits to the players, how would the building of a field house accomplish this? ANSWER: I am glad you asked this particular question: Of course Helen, you have never had to dress for a football game at the gymnasium, get in a bus, drive to the field, and then finally jump off the bus on the playing field. And, if you think this isn't an irritating situation, you should try it. And, our school officials say that if we had a field house next to the school, we SURE WOULD USE IT EVERY DAY" LET ME REPEAT THIS IN CAPITAL LETTERS, OUR SCHOOL OFFICIALS SAY THAT IF WE HAD A FIELD HOUSE NEXT TO THE HIGH SCHOOL, WE WOULD USE IT EVERY DAY. And, these officials that I talked with were not coaches. I did not talk with any coach concerning any of this article. I talked with school officials, who I thought were answering my questions as fair, and neutral as they could. Although, I think the coaches would have done likewise. Now Helen, if we don't put the new field house next to the high school, it will be used only 5 times each year, but if we build it where it can be used (as we did our high school gym), it will be used every day of the school year by the high school students. Helen, I must admit that I don't see how our football program has done as well as it has; and, I enjoyed doing the research on these questions. I would like to add one more little thought on our football field house; if we don't get those kids out of those buses, we are going to kill about half of them from carbon-monoxide gas. Really, the visiting teams from Gruver, Sunray, and other smaller class A schools don't appreciate having to go to their school bus and use it for a locker room, and I am a little bit ashamed for them to have to.



Schools Only 60 Short Of AAA

Voters are reminded, that the school in Spearman is only 60 students away from AAA. The requirements for AAA are 440 students in high school, and we now have 380 in high school in Spearman. Spearman is the only school in the area to show an increase in enrollment this year, and if we had some houses, we would be in AAA sooner than you can imagine. Back the stadium project, and help your town grow...

Billy Miller

you to print. But Helen, thank goodness 90% of the people see this issue like you and I do. They just want to be informed, and we have tried to print the truth, I honestly am for the bond issue, but I am much more interested in informing the public. I think we have printed the truth, and the truth will set you free to vote as you please. And, we are not tax experts; it we have made some mistakes, we will be quick to correct them. I personally, was for the bond issue, still am, and even more so, after I read the recent tax article in the Reporter. I feel that I have a clear picture of both sides, and can now vote 100% for a growing school, and a prosperous community.

Helene Curtis Nature Blend Wigs (They'll make your hair jealous)



Beautiful as the most beautiful hair. Permanently curled. Just tease and style yourself. Wash & wear. Never frizzy. Never limp. (The secret's in our special fiber, Modac 53™.) Mix & match 24 fabulous shades. Replacement guarantee for one full year with every wig, wiglette and fall. They're great. Try them and see.

STRETCH WIG \$29.95 / FALL \$17.95 / WIGLETTE \$9.95

Gordon's DRUG SPEARMAN, TEXAS

14 MAIN PHONE 659-2141

IT IS YOUR MONEY You have a right to know these facts

You spend a lot of money for auto insurance. You have read wild statements about insurance costs and companies. If you would like some plain talk, here it is.

They say... Auto insurance companies are guaranteed a profit.

FACT: Before insurance companies can make a profit they have to first pay to have wrecked cars repaired or replaced, pay hospital and doctor bills for folks injured in auto accidents, pay for stolen or stripped cars, pay for cars damaged by hail, fire, wind or flood waters, pay wages or commissions to 95,400 Texans who give service to policy holders in every county in the state, pay taxes and operate their companies. If there is anything left after all these payments have been made, it is profit.

They say... Texas auto insurance rates need to go up 14 percent.

FACT: The evidence is very clear. Accidents are up. Medical costs are up. Repair costs are up. Auto thefts and vandalism are both up. All this forces rates upward. Facts and figures prove that a 17 percent increase is needed now.

They say... There is nothing you can do to lower your auto insurance costs.

FACT: You can't lower labor and medical costs. You can't lower automobile and parts costs. You can help reduce the number of traffic accidents and crimes against automobiles. The accident that doesn't happen does not boost the cost of auto insurance. The car that isn't stripped or stolen does not increase the cost of your auto insurance.

Let Governor Smith, your Mayor and your County Officials know that you want a stop put to Texas' growing traffic accident and crime tolls... that you want the law enforced. Good law enforcement can reduce accidents and crimes against cars.

Lower accidents and crime rates can mean lower auto insurance rates for you. Isn't this worth a little effort on your part?

Association of Texas Fire & Casualty Companies 110 Vaughn Bldg. Austin, Texas 78701

They say... Labor costs are a small part of auto insurance costs.

FACT: Labor costs make up the major part of auto repair bills and in some parts of Texas labor costs for auto repairs have increased in recent time by an amazing 40 percent.

They say... Auto insurance companies make too much money.

FACT: Look at this listing of the earnings by major industries in the United States as published by the First National City Bank of New York and as republished in the study developed by the Arthur D. Little Co., an independent research organization then judge for yourself:

Table with 2 columns: Industry, Profit in Relation to Net Worth. Includes Common Carrier Trucking (22.9%), Air Transport (27.5%), Miscellaneous Transportation (16.5%), Electric Power (11.4%), Iron & Steel Mfg. (9.5%), Telephone & Telegraph (10.0%), Auto & Truck Mfg. (22.8%), Automotive Parts Mfg. (13.4%), Fire & Casualty Insurance (2.8%).

DEKALB PROOF OF PERFORMANCE

PALO DURO WHEAT

Table with 5 columns: Location, Variety, Yield, Increase in Yield With Palo Duro, % Increase in Yield With Palo Duro. Lists various locations like Charles Olomon, R.D. McDuff, J. R. Belt, W. M. Rakes, Jack Sturgeon, Russell Graves, Leonard Batenhorst, Jimmy Harris and their respective wheat yields and performance increases.

Save Your Own Seed

Plus 25 % Increase In Grazing Potential See Your Dekalb Dealer

TROY SLOAN - Dealer PHONE 659-2954



VALUES GOOD THROUGH THURSDAY, FRIDAY & SATURDAY

LAST WEEK'S WINNER

Duke Roberts  
100.00

# \$10000

## WIN Free Cash JACKPOT DAY

THIS WEEK

Nothing to Buy... You do not have to be present to Win

GET YOUR CARD PUNCHED THIS WEEK

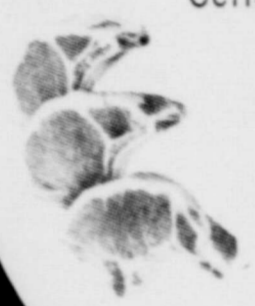
Register Just Once

You're then in the "POT" for the weekly Award

Wonderful Cash Dollars



**PORK CHOPS**  
Center Cut



Lb. **98¢**

*Tender Tasty* **MEATS**

**PORK CHOPS** Family Pac Loincuts  
Lb. **79¢**

**BACON**  
Shurfresh Hickory Smoked  
2 lb. PKG **1.49**

**FRANKS**  
A. F. Brand All Meat



Lb. **65¢**

**Barbecue SPECIALS**  
Fresh Tasty

Barbecue Fryers Each **1.29**

Barbecue Beef Boneless Lb. **98¢**

**YOU'LL ENJOY SHOPPING HERE!**

Shurfresh Heavy Rich 8 oz. Carton **Whipping Cream 28¢**

Gaines Meal 5 lb. Bag **69¢** Maryland Club Lb. Can **Coffee 69¢**

**DELSEY** Bathroom Tissue 4 Pak Roll **49¢**

Shurfresh RSP 303 size can **Cherries 25¢** Zesta Supreme Saltines Lb. Box **Crackers 34¢**

**CRISCO** All Vegetable Shortening 3 lb. Can **69¢**

**CAKE MIX**  
Betty Crocker Box **28¢**

**JELLO**  
Gelatin All Flavors 3 oz. **3 for 28¢**

Shurfresh Snappy Crisp Large Bag **POTATO CHIPS** Reg. 59¢ **38¢**

Cheese Spread 69¢ Pillsbury 5 Lb. Bag **Flour 46¢**

Prices Pimiento 14 oz. Carton

**TANG** Instant Orange Drink FREE Apothecary Jar 18 oz Size **88¢**

Zee Tropic Tone Paper 60 Count **Napkins 12¢** Chiffon Soft Lb. **Margarine 38¢**

**COKES** Regular or King Size Carton of 6 Plus Deposit **44¢**

Del Monte Crushed **Pineapple 32¢** Krafts 8 oz. Bottle **French Dressing 26¢**

**FAB** Lemon Freshened Detergent Giant Size **68¢**

Del Monte Whole Blue Lake **Green Beans** 303 size can **25¢**

WHERE THE SAVINGS ARE BIG

Shurfresh 12 oz. Can Spiced **Luncheon Meat 46¢**

Del Monte 46 oz. Can **Tomato Juice 28¢**

**TREAT THEM TO FROZEN FOOD**

Birdseye Orange (9 oz. Can) **Awake 4 or \$1**

Johnstons Pkg of 2 **Pie Crusts 35¢**

Sara Lee **Pound Cake 68¢**

Patio **Mexican Dinners 39¢**

Mix or Match **Peas 5 for 88¢**

Shurfresh 10 oz. **Spinach 5 for 88¢**

or Chopped **Squash 5 for 88¢**

**Broccoli**

*for Good Eating* **FRESH VEGETABLES & POTATOES**

Red McClure **20 Lb. Bag 79¢**

**PICK O'THE CROP Fresh Fruit**

Solid Crisp Iceberg Large Head **Lettuce Each 18¢**

**CUCUMBERS** Colorado Long Green Slice Lb **12¢**

**APPLES**  
Washington NewCrop Extra Fancy Red Delicious LB. **26¢**



**GRAPES**  
Fresh Flame Tokay Lb. **29¢**




**Cut Rate GROCERY**