

# The Spearman Reporter

VOLUME 61, NO. 1

THE SPEARMAN REPORTER, Hansford County, Texas 79081

THURSDAY, NOVEMBER 27, 1969

## Thanksgiving Day

- 8:00 a. m. - 4-THANKSGIVING PARADE- 43rd annual Macy's Parade telecast from New York City.
- 10-THANKSGIVING PARADES-Special coverage of four parades. Macy's in New York; Gimbel's in Philadelphia; J.L. Hudson's in Detroit; Toronto-Eaton's Santa Claus Parade (3 hrs.)
- 11:00 a. m. 10-NFL FOOTBALL-The Minnesota Vikings vs. Lions at Detroit.
- 12:30 p. m. 4-AFL FOOTBALL-The Denver Broncos vs. Chiefs at Kansas City
- 1:30 p. m. 7-COLLEGE FOOTBALL-Special: Texas Tech vs. Arkansas at Little Rock.
- 3:00 p. m. 4-AFL FOOTBALL-San Diego Chargers vs. the Oilers at Houston.

5:00 PM NFL  
49ERS  
COWBOYS  
Chanel 10 - 5 p. m.



Late in March of 1621 concluded a peace treaty with the Indians which was to last for fifty years.

## FIRST THANKSGIVING AT PLIMOTH PLANTATION

THE FIRST THANKSGIVING celebrated at Plymouth in 1621 was a harvest festival, a gathering of family, friends and neighbors, and a time of games and feasting.

Almost half of the original 102 Pilgrims had survived the first winter. They had labored long and hard to build a village and plant crops. When their harvest was gathered, they celebrated.

In writing to a friend in England describing the First Thanksgiving, one of the Pilgrims said: "Our harvest being gotten in, our Governor William Bradford sent four men on fowling; so that we might after a more special manner, rejoice together, after we had gathered the fruit of our labours. They four, on one day, killed as much fowl as, with a little help besides served the company almost a week."

"And among the rest, their (the Indians) greatest king, Massasoit, with some ninety men, whom for three days, we entertained and feasted, and they went out and killed five deer; which they brought to the Plantation and bestowed on our Governor, and upon the Captain (Myles Standish) and others."

In describing this Thanksgiving, which set the pattern for the traditional American celebration, other writers tell of foot racing, wrestling, exercising arms (infantry drill) and pitching the bar.

These scenes were acted out by citizens of Plymouth, Massachusetts, many of whom are descendants of those who celebrated the First Thanksgiving. Appropriately enough, the setting was at Plimoth Plantation, an outdoor museum where the first Pilgrim settlement is being re-created.

## CALLAWAY AND HOHERTZ STAR IN 44-30 WIN OVER STRATFORD

A couple of Spearman guards starred for the Lynxettes at Stratford Saturday night; they were Callaway and Hohertz, who stopped the Elkettes, as Spearman's all-state forwards scored 44 points, to defeat the defending state A champions rather easily.

Miss Patterson led the Lynxettes in the thrilling match up of the state A and AA champion teams with a total of 21 points.

The guards for the Saturday night game were: Callaway, Lynn Hohertz, Kirkland, Rosenbaum, Liz Hohertz and Schnell.

The Lynxettes will meet the Gruver team in Spearman, next Friday night, Nov. 28 in a big Thanksgiving double-header game.

BOX SCORE	FG	FT	F	PTS
Shufeldt	5	3	1	13
Patterson	8	5	1	21
Schnell	2	1	2	5
Shieldknight	1	1	0	3
Brummett	0	0	0	0
Schell	1	0	0	2
Daniel	0	0	0	0

## PIONEER RESIDENT BURIED TUESDAY

Funeral services for Mrs. Bertie S. McNabb, 91, a longtime Spearman resident, were held at 3 p.m. Tuesday in the First United Methodist Church, The Rev. Wesley Daniel, pastor, and Frank Buzzard, layman officiated. Burial was in Hansford Cemetery under the direction of Boxwell Brothers Funeral Directors.

Mrs. McNabb died Sunday morning in Hansford Hospital. She was born in Palo Pinto County in 1878 and had lived here since 1903. She was a member of the Baptist Church and had been a member of the Order of Eastern Star for 61 years and was a former Grand Matron of the local chapter. Survivors include a son, Warren of Albuquerque, N.M., and a daughter, Mrs. Viola Whitson of Spearman.

## LYNX DOWN ELKS 50-37 TO REMAIN UNDEFEATED

### BOYS B TEAM OUTSTANDING

Pacing the boys to their 24-17 win over Stratford was Jr. Salinas with 7 points. The boys played a fine defensive ball game. The entire B-team played in this ball game with the points scattered among seven of the players. The B-team consists of Salinas, Lemons, Torres, Staggs, Discoll, Schroeder, Wilmeth, Evans, Upchurch, Hicks, Vandenburg, Locke and Sloan, Head and Shieldknight of the A-team played with the B-team Saturday night. The coach is Larry Wilson. The boys played ball control the entire game with no turnovers in the third period.

	FG	FT	PTS
Salinas	2	3	7
Head	0	5	5
Shieldknight	0	4	4
Lemons	1	0	2
Torres	1	0	2
Staggs	1	0	2
Schroder	1	0	2
TOTAL	6	12	24

Spearman's fine Lynx Team put the jinx to Stratford Saturday night. Big Lusby's sharpshooting, combined with fine guarding by Schell and Lyon was too much for the over-matched Elk team. The defending district and bi-district champion Lynx team had 8 boys in the scoring column for a total of 50 points. Fans are already talking about this Lynx team; but Coach Simpson is warning fans to beware of such outstanding team as the Gruver Greyhounds, the Sanford-Pitch team, not to speak of old foe Phillips.

The Lynx looked extremely sharp at Stratford Saturday night and fans are eager to see someone who can give the boys, or the girls team a test. So far no one can even come close to these teams. Spearman boys defeated Stratford 50-37.

	FG	FT	F	PTS
Schell	3	4	4	10
Holland	1	1	3	3
Mosier	2	3	1	7
Weston	1	2	0	4
Womble	3	0	1	6
Lusby	5	4	3	14
Lyon	1	0	1	2
Butt	1	2	4	4

Spearman 50-Stratford 37. Guards: Harper, Head, Grayson and Shieldknight.

## Speech Group Winners

Competing with 24 participating schools, the Spearman High School Speech Department won the runner-up sweepstakes trophy at the West Texas State University Speech tournament held last Friday and Saturday.

Tascosa High School of Amarillo won first.

Twelve Spearman students advanced to the semi-finals in individual events; six went to the finals. In the finals Lynn Brack placed in boys' prose and Larry Fryer placed first in boys' informative speaking.

Rosemary Burkhart was named as runner-up for the best actress trophy.

The two debate teams placed second. The girls

team of Glynna Sanders and Jean Porter lost on a 2-1 decision to Muleshoe. The boys team of Richard Tracy and Buddy Dossett lost on a 2-1 decision to Tascosa. There were 43 debate teams in the tournament.

Reaching semi-finals or finals were: Jean Porter, informative; Lynn Pierce, informative; Danny Carroll, persuasive; Glynna Sanders, persuasive; Bobby DeArmond, persuasive; Mary Hazelwood, prose; Gary Miller, prose; Rosemary Burkhart, poetry; Wade Parks, poetry; Scott Vernon, poetry; Kay Johnson and Wade Parks, Duet acting; Rosemary Burkhart and Mary Hazelwood, duet acting.

## Flying Queens Play Here Saturday Night

The Hutcherson Flying Queens of Wayland Baptist College in Plainview, play their second game of the season here Saturday night against the Mexico National team.

The Queens opened the season Friday night in Silverton against the Mexico team and they meet them again December 1 in Plainview.

Marcia Shieldknight, outstanding basketball player who graduated from Spearman High School last year, is a freshman member on the Queen squad. She is the daughter of Mr. and Mrs. Jimmy Shieldknight.

Game time is 7:30 in the Spearman High School gym. Harley Redin, who is beginning his 15th year as coach of the Queens, has only five lettermen back from last year's 26-4 squad, including two full-time starters. The team's other five players are freshman.

For the first time in the history of the Queens, there is not a senior on the team. Not only will the Queens be inexperienced as a whole, but also must adjust to the international rule, which goes into effect this year in the college ranks. Under the new rule, only five players will take the floor in contrast to the six-player rule of the past.

"This should make for a faster and more interesting game," Redin commented.

Returning lettermen are 6-0 center Wanda Roe, 5-8 guard Susan Britton, 5-11 forward Cherri Rapp, 5-7 forward Carolyn Dornak and 5-6 guard Debra Martin. Roe, a junior, voted the most valuable player in the National Girl's Basketball League last year and was honorable mention for All-American at the National Tournament in Gallup, N.M.

Britton, a sharpshooting former All-Stater from Springlake, was third in scoring last year with 304 points and is expected to spearhead the offensive attack.

Rapp, a sophomore from Estelline, came on strong as a freshman last season and on the strength of her aggressive defense and rebounding, was honorable mention for Rookie of the Year in the National Tourney.

Back for her third year on the Queens are the team's only other junior, Dornak is a solid performer and the chance to play regularly may be the chance she has needed to develop into a top college player.

Martin missed most of last season with a broken leg but figures as a starter. She is quick and a team leader.

Among the freshmen is one of the top all-time scorers in Oklahoma school girl history, Mayme Patterson. The 5-7 forward averaged more than 30 points per game for tiny Burns Flat last year and was the leading scorer in the East-West game with 27 points.

Marcia Shieldknight, a 5-6 guard, led Spearman in scoring and directed her team to a state playoff berth last winter. Sherry Stark, also a 5-6 guard, was top scorer for Quitaque and played in the Coaches' All-Star Game.

Former Crosbyton standout, Bobbie Winn who made the All-District team and holds two school records, and Susan Baldwin of Pearland give the Queens added strength under the boards. Both are 6-0 freshman centers.

Judy Gover of Springlake is manager and freshman coach.

The Queens have 30 games on their schedule and will defend their Iowa Invitational Tournament titles in addition to playing in the National AAU Tournament in Gallup, N.M.

"We plan to put a good, young team on the floor," said Redin. "The deciding factor in our season will be how well our opponents adapt to the new style of play. We feel our girls will be able to adjust adequately to the new rules."

## ALL DISTRICT FOOTBALL TEAM

Several of the Spearman football players were named to the all-district teams this year. Two players, Lusby and Lyon, were named to the all-district first team. Lusby was named both on offense and defense. Lyon was named on the defensive team.

The Spearman players were: SPEARMAN OFFENSE-1st Lusby Tackle, Jr.; 2nd Archer End, Jr.; 2nd Jackson Guard Sr.; 2nd Womble QB, Jr.; 2nd Pool RB Jr.; Hon mention Brown Guard Sr.; Honorable mention Schroder End, Jr.; Honorable Mention, Lyon RB, Jr.

SPEARMAN DEFENSE-1st Lusby Tackle, Jr.; 1st Lyon, End, Jr.; 2nd Cummings, Guard Sr.; Honorable mention Loveday Guard, Jr.; Honorable mention, Archer, End, Jr.; Honorable mention, Jackson, Linebacker, Sr.; Honorable mention, Pool Def. Back, Jr.

All of these boys will be back next year but Jackson, Brown and Cummings.



WINS MINK CAPELET --Mrs. C.L. Patton, 708 Lee Drive, wears the mink capelet presented her Saturday by Ideal Store manager Bob English. Mrs. Patton said "this is the first thing I ever won in my life." The local grocery firm is sponsoring a "win a Mink contest" and Mrs. Patton is the first local winner.



Meet the No. 1 Queen-Spearman's Marcia Shieldknight-To play with the Flying Queens in Spearman.



# Open House

## PIONEER MANOR NURSING HOME

511 W. 11th ST.

SPEARMAN TEXAS

NEW OWNERSHIP - NEW MANAGEMENT

### SUNDAY NOV 30 TH

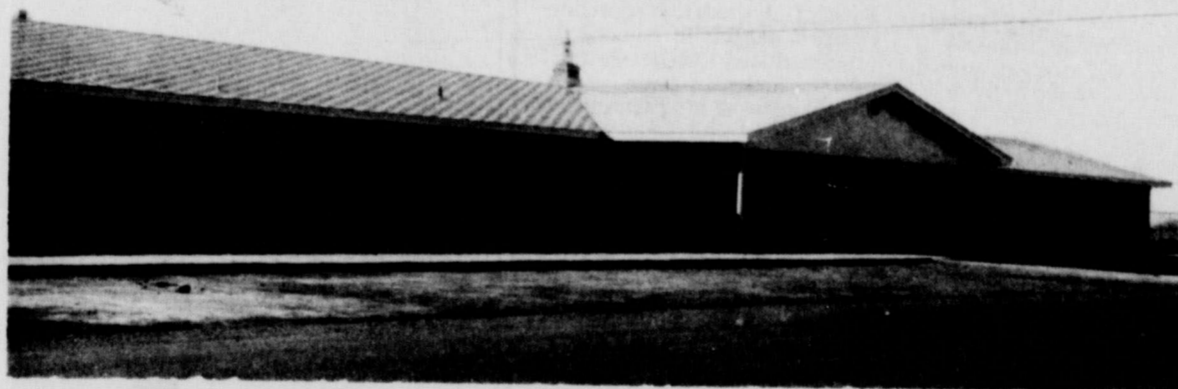
### 2:00 to 4:00 P. M.

Refreshments Will Be Served

PUBLIC CORDIALLY INVITED  
TO ATTEND THIS OPEN HOUSE



MR. JESS TAYLOR, OWNER



Pioneer Manor- 36 Bed Nursing Home



CATHERINE DAVIS, MANAGER

MEMBER

TEXAS NURSING HOME ASSOCIATION  
AMERICAN NURSING HOME ASSOCIATION

## PIONEER MANOR NURSING HOME

511 W. 11th ST.

SPEARMAN, TEXAS

PHONE 659-2114

# T.G.&Y.

5¢ TO 15¢ STORES

STORE HOURS: MON.-FRI. 8:30-6:00 SATURDAY 8:30-8:00 119 Main Spearman, Texas

## CLOSED TODAY

For Thanksgiving Shop & Save Tomorrow

### 45 PC. DINNERWARE

Hi-impact plastic resists damage and breakage. Dishwasher safe. Choose from 3 lovely patterns: Leaves & Wheat, Acapulco, and Charlotte.

COMPARE AT \$15.99

# \$9.99

SET



#421CP

Compare at \$1.29

### JUMBO ROLL

## GIFT WRAP

PAPER: 8 lovely designs to choose from 80 Square Feet.

FOIL: Printed & Embossed designs 30 Square Feet.

# 99¢

PKG.

## GIFT WRAP

PAPER: Luxurious paper wrap in charming holiday designs 80 Sq. Ft.

FOIL: Beautiful shimmering foil wrap in lovely colors and designs 30 Sq. Ft.

# 77¢

PKG.

Silver Foil & Silver Lightweight

## ICICLES

Decorate your tree this year with shimmering icicles. Add a touch of wonderland to your Christmas tree. Compare at 49¢

Silver Foil - 800 Strands. Silver Lightweight - 875 Strands.

# 37¢

ONLY... BOX

## STICK-ON BOWS

Compare at 89¢

25 bows in bag 3-1/4" dia. Traditional and high style colors.

# 67¢

PKG.

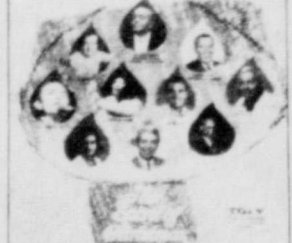
## STEREO RECORD

"SPIRIT OF CHRISTMAS"

10 lovely Christmas Songs by 10 Great Artists. A Record to enjoy year after year. Such songs as Silver Bells, Little Drummer Boy, Jingle Bells, and many more! Buy Now And Save On This Great Record Buy.

# \$1.00

Compare at \$4.98



## CHRISTMAS CARDS

50 COUNT

Attractive Designs with Appropriate Greetings Buy Yours Today!

Compare at 88¢

# 77¢

NOW ONLY BOX

7 PIECE

## COOKWARE SET

This set includes: 1 Qt. Saucepan with Cover, 2 Qt. Saucepan with Cover, 10" Fry Pan, 5 Qt. Dutch Oven (cover fits both). Easy to clean. Assorted colors.

# \$9.99

COMPARE AT \$15.95 SET

Charge it at TG&Y

Use Your Bank Americard



Gale Miller



Mrs. Gale Miller

### SUNDAY SCHOOL DIRECTORS ATTEND LEADERSHIP SCHOOL

Mr. and Mrs. Gale Miller, 1106 So. Barkley, Spearman who are Sunday School directors for the Full Gospel Evangelistic Association gathered with some 500 other Christian Education leaders in Cincinnati, Ohio, in late October for the first Christian Education Leadership Seminar sponsored by the National Sunday School Association. "Implications for Church Education in the 70's" was the theme as delegates from 38 states, Canada, and one from South Africa discussed the challenges of the next decade. The Seminar attracted 515, including 65 denominational leaders; 131 Directors of Christian Education; 62 writers, editors and their curriculum personnel; 61 pastors; 39 youth leaders and 48 professors from Christian colleges.

For the first time in the 24-year history of NSSA, the emphasis of the annual meeting was for professional leadership in the Christian Education field. Last year more than 10,000 lay leaders and teachers registered for the national convention in Anaheim, California. "Another first" is that of bringing in as speakers, men who are not directly associated with NATIONAL SUNDAY SCHOOL ASSOCIATION to serve as "Resource Stimulators." Listening teams then quizzed the speaker. In the afternoons those in attendance divided into 50 groups to discuss the implications of the speaker's statements and then report back. A prominent Christian Educator then summed up the implications for Christian Education in the coming decade.

Dr. Howard G. Hendricks, an "insider" who has led research teams for the NSSA and is a Christian Education professor at the Dallas Theological Seminary was chosen as speaker for the keynote dinner. He told the evangelical church leaders that a number of points in their existing programs

worry him. Our churches are "indestructible", and criticism might "drive us back to find out why we're in business." He asked for more attention to the people of the congregations and educational media. Many new techniques have been passed up because too many educators are afflicted by an "acute case of the blahs," he said. He told his audience they were too resistant to change, too afraid to experiment and learn by failure, and too afraid of ridicule.

Dr. Howard G. Hendricks summed up the seminar as he had keynoted it with a pointed challenge. "One way to begin positive changes," he said, "is to change yourself." Hendricks told the educators, "Now you must go home and recreate the atmosphere and the technique of the Seminar for your laymen."

The last step is to have someone distill the implications of the seminar for action. "Not all of this is aimed at youth," the Rev. Sherman Williams, NSSA president from Castro Valley, California said, "Equal weight must be given to youth and continuing adult education and church involvement."

"In this way we will be continually rethinking the total thrust of the church and reproducing the processes that have changed our own thinking here."

### TULIA ARTIST AMONG 'GREATS'

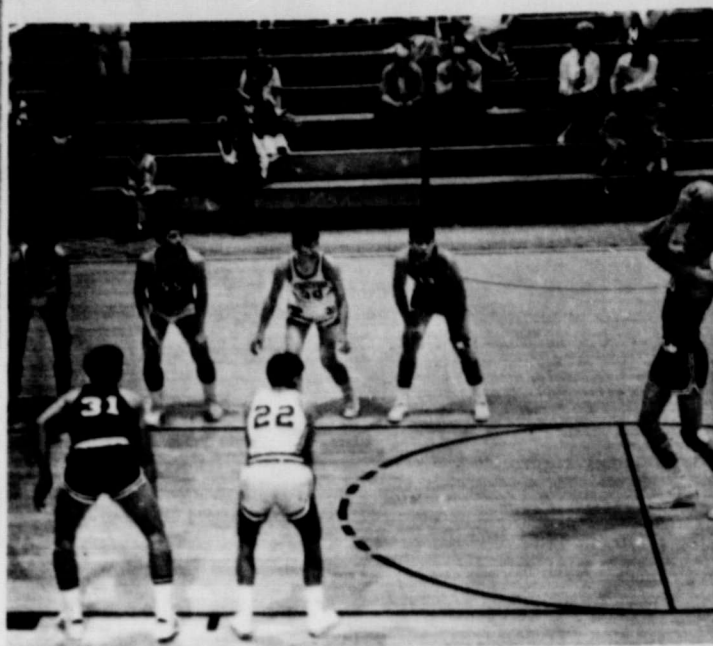
AMARILLO--The work of the most discussed new artist of the West, Kenneth Wyatt, Tulia, will be presented in a major exhibit at the High Plains Galleries, 4535 Canyon Expressway, Amarillo, November 30-December 15. The show will climax a record year of activities and honors for Wyatt which include ten shows in three states, guest artist of the Tri-State Fair, magazine covers, Christmas cards and critical acceptance.

Wyatt has mixed his painting and many appearances as an inspiring and humorous speaker with his regular work as Evangelist of the Amarillo District Methodist conference. His first exhibit in January attracted Ken Curtis--Festus of TV Gunsmoke fame--who bought nine of his paintings of horses, cowboys and cattle. Festus was quoted in The Vernon Daily Record by Orin Brewer: "He's the best I've seen since Russell and Remington." Mr. Curtis (Festus) confides in a compliment that places the 38 year old minister in company with artists who are recognized as among the greatest in their field in American history.

During 1969 Wyatt has been featured in Western group or one-man shows at San Angelo, Vernon, Plainview, Dumas, Dalhart in Texas; Elk City and Woodward in Oklahoma and at Pittsburgh, Pa. The big city East liked and bought his work. His September appearance at the Tri-State Fair was outstandingly successful. He has had two covers on The American Quarter Horse Journal and one on Southwestern Heritage. One of his three Christmas paintings has been a best seller for Sherwood Framables.

Wyatt's work is featured by action and authentic detail. He is a privileged guest on Panhandle ranches and spends days working with camera and sketch pad for details and background. This has resulted in wide praise by cowboys and cattlemen. They are among his enthusiastic buyers.

Many Southwestern banks, large corporations and beef producing companies point to their Wyatt paintings as do an increasingly large number of art collectors. When the show opens at 2:30 Sunday afternoon it is a safe bet that High Plains Galleries will be host to a lot of his former parishioners in this region in addition to his other fans.



Junior Salinas puts up this free shot to add to his total score for seven points Saturday night in the Stratford game. Spearman's good defense was the factor that accounted for this win for the B-team.



Ronnie Lusby (No. 45) was the leading scorer for the Lynx in their 50-37 win over Stratford Saturday night. Terry Butt (No. 33) looks on.

# TEXAS PRESS ASSOCIATION

Member 1968

P. O. Box 458 213 Main Street Spearman, Texas 79081

## WILLIAM M. MILLER

EDITOR & PUBLISHER

THE SPEARMAN REPORTER  
Published every Thursday at Spearman, Texas. Second class postage paid at Spearman Post Office, 79081

Any erroneous reflection upon the character of any person or firm appearing in these columns will be gladly and promptly corrected upon being brought to the attention of the management.

SUBSCRIPTION RATE--Hansford, adjoining counties, \$7.00 yr. Other points, \$5.00 or in combination with The Hansford Plainsman, \$9.00 yr.

Advertising rates on request.



Sheila Patterson, No. 14, puts up this shot to add to her total of 21 for the night to lead the Lynxettes in their victory over Stratford Saturday night. Also pictured is Leann Shieldknight, No. 54 and Sandra Shufeldt.

# ANNOUNCING...

WERE HERE TO SERVE YOU WITH OUR NEW MOBILE UNIT, THERE'S ONLY ONE OTHER UNIT IN THE STATE OF TEXAS. OUR UNIT PROVIDES FULL SERVICE FACILITIES ON THE SPOT WITH



LOAN PAYMENTS



NEW PURCHASE LOANS



NEW CONSTRUCTION LOANS



NEW SAVINGS ACCOUNTS



Withdrawals from savings accounts

## 9:30 To 3 pm

WE'RE ON THE LOT OF THE PLAINS SHOPPING CENTER IN SPEARMAN ON MONDAY, WEDNESDAY & FRIDAY FOR YOUR CONVENIENCE.

WE WILL BE IN CANADIAN ON TUESDAYS AND IN GRUVER ON THURSDAYS.

# Perryton Savings

## & LOAN ASSOCIATION

Be sure and visit our mobile unit at the plains shopping center

JANUARY W  
Stinnett and  
Ann Creacy  
son of Mrs.  
Creacy is e  
Buna Vista  
ing Service.  
B&P W-  
BOSSSES  
The Busine  
at Womens  
man held th  
night buffet  
gam Monday  
per 10 in th  
The Home  
Spearman H  
the meal. Se  
bars Ring, E  
Gates, Vick  
Kellen Wor  
Smith, Sharr  
Nedra Black.  
The Invc  
by Mrs. Mat  
Hazel Jacks  
guests and r  
Night, Clu  
Gordon Cur  
a group of h  
who present  
ment, They  
Kay Reed,



Mr. and Mrs. S. M. Anderson, Mrs. Bud King, Mrs. Rhoda Overton, Mrs. Albert Mackie, Dorothy Roden, the Home Ec girls and the entertainers.

**Holiday Dinner Enjoyed By Club**

The Gladiola Flower Club met Saturday evening November 22 in the HD Club room for the annual Thanksgiving dinner for their special guests, the husbands of members.

The menu included turkey, dressing, giblet gravy, green bean casserole, candied sweet potatoes, salads, hot rolls and a selection of pie served buffet style from a table centered with an arrangement of fall colored flowers in a gold footed vase. Tables where guests were seated were decorated with bronze and yellow mums and candle arrangements in amber cut glass containers. Further enhancing the decor of the room was a cornucopia arrangement on the buffet.

Following dinner, table games were enjoyed by Mmes. and Messrs. Max Baggerly, John Brown, Lloyd Buzzard, Irvin Davis, Dan Desimone, Ed Haner, Bill Jackson, Marcus Larson, Kenneth McKay, Bill Partridge, Ray Robertson, Don Smith, Bill Turner, Billy Weant, Leland Wood, new members, Mr. and Mrs. Ronnie Schaefer and honorary members Mr. and Mrs. Craig Hutchison.

**Heads' Host Dinner Bridge**

Mr. and Mrs. Garland Head were hosts for the Friday evening Bridge Club in the home of Mr. and Mrs. Kiff White November 21. A Thanksgiving dinner of turkey and dressing and all the trimmings was served to those attending, at 6:30 p.m.

High scorers for the evening were Billy Miller and Virginia Cates. Those present for the evening were guests, Mr. and Mrs. Pat Cates, and members, Mr. and Mrs. Billy Miller, Mr. and Mrs. Bill Douglas, Mr. and Mrs. Don Knox, Mr. and Mrs. Ray Robertson and the hosts.



**ENGAGEMENT ANNOUNCED**-Mr. and Mrs. G. R. Kilgore announce the approaching marriage of their daughter, Margot Elizabeth to Mr. Dickey V. Sims, son of Mr. and Mrs. Hubert V. Sims of Lefors. Miss Kilgore was graduated from West Texas State University and is now teaching in Hereford. Mr. Sims is a senior accounting student at West Texas State University. A Christmas wedding is being planned.



**Girl Scout News**

Girl Scout Brownie Troop 155 met Friday November 21 in the Little House with leaders, Mrs. R. L. McClellan, Mrs. Irene Baker and Mrs. Wayne Ellsworth.

The girls worked on Christmas gifts for their parents and played games. Lisa Douglas served refreshments to Deanne Baker, Brenda Boyd, Bridgett Canon, D'Anda Close, Barbara Ellsworth, Dethene English, Joanne Hays, Jean Ann McClellan, Margie Schubert, Delinda Scroggs, Kelly Shaver, Dana Smith and Tammi White.

**MUSIC CLUB MEMBERS PRESENT PROGRAM FOR CENTURY CLUBS**

The Twentieth Century Club of Spearman met for the November general meeting last Thursday in the country home of Mrs. J. D. Wilbanks. Co-hostesses were Mrs. Tom Sutton and Mrs. J. R. Keim.

Mrs. Johnnie Lee, Twentieth Century Club president, presided over the meeting.

The Spearman Music Club, a member of the State and National Federated Music Clubs, gave a most interesting and enjoyable program. Musical numbers presented were: a piona duet "Exodus" by Mrs. Tom Sutton and Mrs. Rue Sanders; vocal solo, "Stormy Weather" by Mrs. Don Knox; piano solo "Bumble Boogie" by Mrs. Rafor Clark; pump organ duets "Trust and Obey" and "Come Ye Thankful People Come" by Mrs. J. D. Wilbanks and Mrs. Tom Sutton; pump organ solo "The Bells of St. Mary" by Mrs. Wilbanks who also demonstrated their player piano by playing piano rolls "Missouri Waltz" and "Stars and Stripes Forever". The final selection was "America the Beautiful" sung by the entire Music Club group accompan-

ied on the piano by Mrs. Kenneth McKay, club pianist. Delicious refreshments were served to those attending, followed by a tour of the Wilbanks' home.

Present were guests Mrs. Zora Hartman of Denton, Mrs. Arch Marshall of Houston, Mrs. Leroy McCalman, Mrs. W. A. Schubert; Music Club guests, Mmes. Russell Townsend, Ronnie Schaefer, Don Knox, Rafor Clark, Kenneth McKay, Rue Sanders, Bernard Barnes, J. D. Wilbanks, Tom Sutton, members Mmes. Olin Sheets, C. U. Pope, George Buzzard, Nolan Holt, J. T. McWhirter, Woodville Jarvis, O. C. Holt, C. A. Kleeberger, L. L. Anthony, Fred Holt, Michael Holt, Johnnie Lee, Dick Kilgore, Wayne Hutchison, P. A. Lyon Sr., W. J. Massie, Joe Traylor, Joe Novak, Tom Sutton, John Trindle, Guy Fuller, Wesley Garnett, Sr., Ed Garner, V. N. King and John Allen.

Mrs. Zora Hartman of Denton visited Wednesday through Saturday of last week in Spearman, staying in the home of Mr. and Mrs. P. A. Lyon Sr., and visiting with her friends in the city.



Mr. and Mrs. Lloyd Gilley of Kermit (formerly of Spearman) announce the arrival of a new son, Bobby James was born November 12. He weighed 9 lbs. 15 oz. and measured 23 inches long. The youngster has two sisters Carrie Lynn, age 7, and Toni, age 4 and a brother Timmy, age 21 months.

Mr. and Mrs. Margarito Marquez of Gruver announce the arrival of a baby boy, Jose Patrocino Marquez, born November 18 at 11:05 a.m. in Hansford Hospital. He weighed 7 lbs. 13 oz. and measured 20 inches.

A four year old boy got a severe sun burn, and his skin began to peel. One day, as he washed his face, his mother heard him mutter to himself: "Only four and wearing out already."

**B&PW HAS BOSSES NIGHT**

The Business and Professional Women Club of Spearman held their annual Bosses Night buffet dinner and program Monday evening November 10 in the HD Clubroom.

The Home Ec girls from Spearman High School served the meal. Servers were Barbara Ring, Becky Beck, Susan Gates, Vicky Cummings, Shellen Womble, LeAnn Smith, Sharon Lambert and Nedra Black.

The invocation was given by Mrs. Mabel Edwards. Mrs. Hazel Jackson welcomed guests and members to Bosses Night. Club president Mrs. Gordon Cummings introduced a group of high school students who presented the entertainment. They were Lynn Brack, Kay Reed, Becky McClellan,

and Randy Foshee. The group sang several patriotic numbers and also gave the closing ceremony, a patriotic reading with the singing of patriotic songs as a background.

Lee Phillips, deputy sheriff, was to be the guest speaker for the evening but due to a death in his family, he was called out of town. Miss Dorothy Roden presented a skit on "Shoplifting" assisted by Nell Cummings, Belle Crawford, Susie Hand, Leona King and Emma Collins, to take the place of the guest speaker.

Attending were Mr. and Mrs. Gordon Cummings, Mrs. Lura Belle Crawford, Mr. and Mrs. L. F. Hand, Mrs. Hazel Jackson, Mrs. R. F. Kingsley, Mr. and Mrs. John Bishop, Rev. and Mrs. Gail Ott, Mr. and Mrs. James Cummings, Mr. and Mrs. Nelson Bell, Mr. and Mrs. E. L. Collins.

**GIRLS B TEAM WINS 43-32**

The four Spearman High School basketball teams traveled to Stratford Saturday night. Each team returned home with a victory.

**GIRLS B-TEAM**

Teresa Beck led the B-team girls in their 43-32 win over Stratford with a total of 21 points. Coach Masters said that after only three practices together that an all around team effort was the reason for their win.

	FG	FT	PTS
Floyd	2	9	13
Hays	1	2	4
Ooley	2	1	5
Beck	5	11	21

Beauty contests didn't start in Hollywood or Atlantic City or Miami. They began when the second woman arrived on earth.



COME TO OUR CHRISTMAS SHOWING MONDAY, DEC. 1st. 7:00 - 9:00 P.M. FEATURING A COMPLETE SELECTION OF ORIGINALLY STYLED DESIGNS

**Spearman FLORAL GIFTS**  
PLAINS SHOPPING CENTER  
SPEARMAN, TEXAS 79081



HUTCHERSON FLYING QUEENS--PLAYERS FOR THE HUTCHERSON FLYING QUEENS ARE, FRONT ROW LEFT TO RIGHT: MARCIA SHIELDKNIGHT, DEBRA MARTIN, SHERRY STARK, AND CAROLYN DORNAK. STANDING LEFT TO RIGHT, ARE BOBBIE WENN, SUSAN BALDWIN, WANDA ROE, CHERRI RAPP, SUSAN BRITTON, MAYME PATTERSON AND JUDY GOVER, MANAGER.



**The Boys At Excel Say Don't Miss The Big Game**  
**Saturday, Nov. 29th 7:30 P.M.**  
**Spearman High School Gym**  
**Wayland Flying Queen VS The Mexican Nationals**  
**See You in Spearman Saturday Nite, Nov. 29th**  
**JEEP - OLDS - EXCEL CHEVROLET**  
**'SERVING HANSFORD COUNTY**



Local city police destroyed 307 containers of beer, wine, whiskey recently. The liquid refreshments were contained in everything from 11 oz. cans to 1/2 gallon jugs. The confiscated liquor was destroyed November 19.

### \$47 Million Gas Project Is Launched

Peoples Gas Company of Chicago has announced that a subsidiary, Natural Gas Pipeline Company of America, plans construction which will increase its peak-day delivery capacity 10 per cent for the 1970-71 winter heating season.

Included is the installation of a 9,300-horsepower gas turbine at the company's Pringle compressor station. O.C. Davis, president of Natural, said the program will make available in excess of 5 billion cubic feet of gas for peak-day delivery. The total includes the first purchase of Canadian gas to help meet the energy needs of Chicago and other Midwest markets served by the Peoples Gas system. Estimated cost of the program is \$47 million.

The transmission company outlined its plans in two applications filed recently with the Federal Power Commission. The first application calls for construction of about 58 miles of loop pipeline and additional wells and gathering lines at company storage facilities in Iowa and Illinois. Withdrawal capacity from underground storage reservoirs will be increased by 125 million cubic feet of gas per day.

Also proposed is the purchase from other pipeline companies of Canadian gas supplies and additional gas storage service.

The second segment calls for construction of about 150 miles of 36 inch loop pipeline in Oklahoma, Kansas, Nebraska, Iowa and Illinois and additional compressor horsepower at stations in Texas and Oklahoma.

Natural has conditioned the latter segment on Federal Power Commission approval of a substantial increase in the company's return on equity as sought in another proceeding.

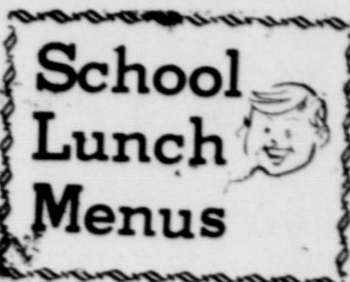
#### PIN BENDERS LEAGUE

TEAM	WON	LOST
Brock Ins.	28	13
McClellan Gr. (Inc.)	27	13
Thomas Cl.	26	18
Bowl Mor	26	18
Harvey Feedlot	21	23
Farm Bureau	19	24
Floyd's Lockers	18	26
Vernons (Inc.)	6	34
HIGH TEAM SERIES		
McClellan Grain	1290	
Thomas Cleaners	1264	
Bowl Mor	1238	
HIGH TEAM GAME		
Bowl Mor	466	
McClellan Grain	438	
Bowl Mor	436	
HIGH INDIVIDUAL SERIES		
Patty Spoonemore	543	
Anne Sanders	465	
Jewel McCalman	446	
HIGH INDIVIDUAL GAME		
Patty Spoonemore	191	
Patty Spoonemore	181	
Patty Spoonemore	171	

## Perryton Schedules Livestock Conference

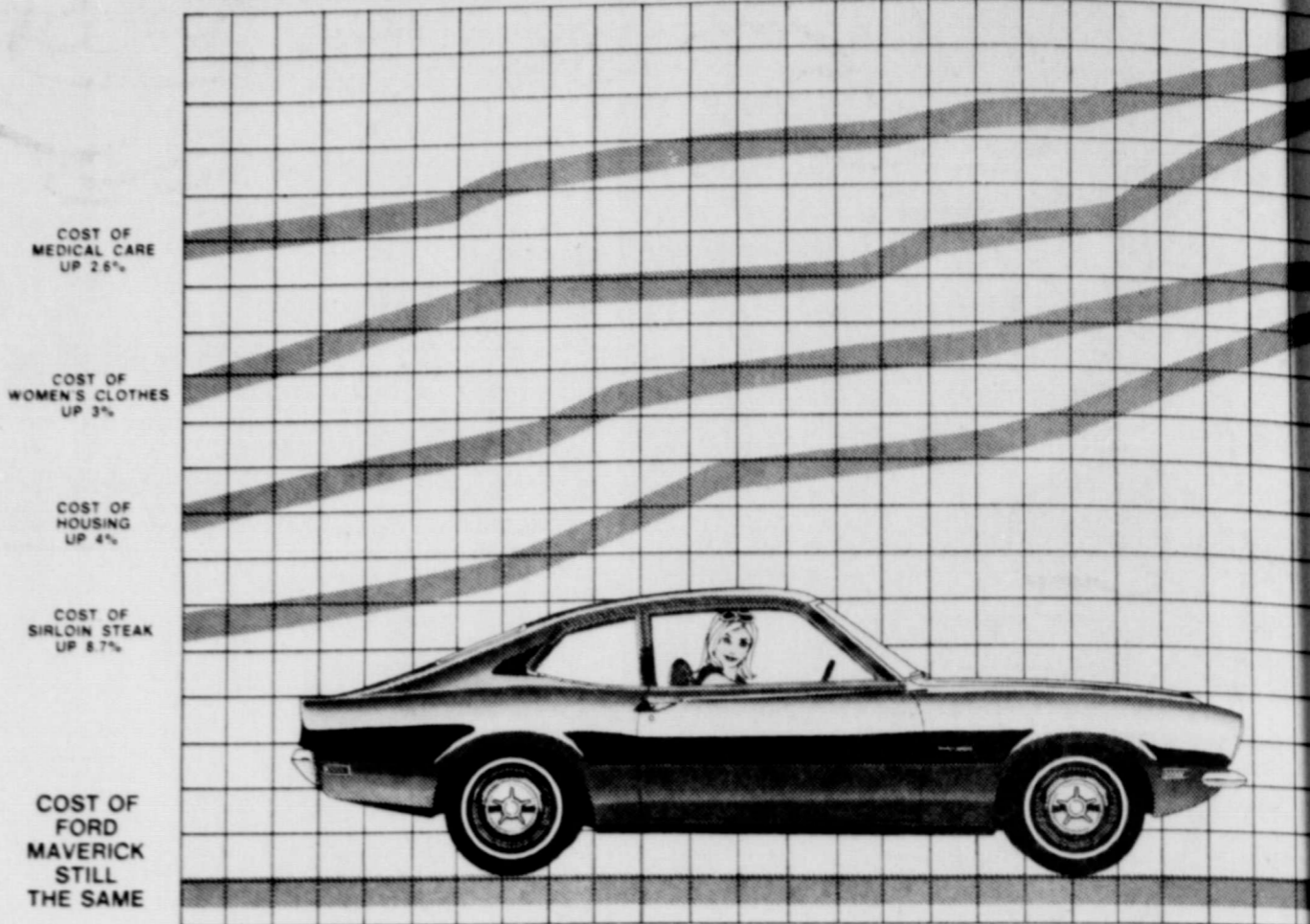
Perryton schedules Second Annual Livestock Conference with the theme "Perspectives of the Beef Cattle Industry". Such speakers as W.H. "Bill" Calkins, First Vice President, Intermediate Credit Bank, Houston, Texas, will speak on "Financial Perspective". Lewis G. Jacobs, Vice President, Customer Development Iowa-Beef Packers, Inc. Dakota City, Nebraska, will speak on "Modern Trends in Beef Processing". The Honorable Bob Price, Representative 18th Congressional District, will deal with the subject "Viewpoint of Government". Lloyd Bergsma, Executive Secretary, Texas Cattle Feeders, Ass'n. of Amarillo, Texas will speak on "Recent Developments in Cattle Feeding". "The World Picture and Research Developments" will be the topic of Dean Gerald Thomas, Dean of Agriculture, Texas Tech, Lubbock, Texas.

"Questions and Answers in the Beef Industry" will be the subject for a panel discussion moderated by Dean Gerald Thomas. Members of the panel will include Lewis G. Jacobs, Lloyd Bergsma, W.H. "Bill" Calkins, and W.K. "Bud" Burgess, General Manager, Cactus Feeders, Inc. of Dumas, Texas. Also on the panel are George R. Enloe, General Manager, Caprock Industries, Gruver, Texas and Ed Garnett, Area Farm Management Specialist, Texas Agricultural Extension Service, Amarillo, Texas.



MONDAY, DEC. 1  
Stewed Chicken/Egg Noodles  
Seasoned Green Beans  
Buttered Corn  
Dill Pickle Spears  
Citrus Fruit Cup  
Honey-Peanut Butter Blend  
Hot Rolls-Milk  
HIGH SCHOOL MEAT CHOICE  
Beef Pot Pie  
TUESDAY, DEC. 2  
Ground Beef and Spanish Rice  
Seasoned Green Peas  
Combination Salad  
Cherry Gelatin/Whipped Top.  
Cornbread-Butter-Milk  
High School Meat Choice  
Juicy Burger  
WEDNESDAY, DEC. 3  
Hot Dogs-Chili Sauce  
Potato Gems-Catsup  
Blackeyed Peas/Bacon  
Chopped Onions  
Cherry Cobbler-Milk  
High School Meat Choice  
Pimiento Cheese Sandwiches  
THURSDAY, DEC. 4  
Tamales  
Seasoned Pinto Beans  
Potato Salad  
Carrot Sticks  
Peach Halves  
Hot Rolls-Butter-Milk  
High School Meat Choice  
Corn Dogs-Mustard  
FRIDAY, DEC. 5  
Hamburger-Mustard or  
Chicken Salad Sandwich  
French Fries-Catsup  
Lettuce-Tomato Salad  
Dill Pickle Slices  
Spiced Applesauce  
Gingerbread-Milk

## Look what's happened since Maverick was introduced in April.



### Your Ford Dealer's holding the price line. Maverick. Still \$1995\*

When it comes to prices, you know what's going on. And what's going up. But there's one thing still going straight. Maverick. It holds the line. And its small price makes it America's biggest car value. Here are the facts about our Simple Machine.

It's simple to drive. You get the passing power of a 105-hp Six. Great gas mileage too.

It's simple to park. Maverick can turn in a tighter circle than the leading import.

It's simple to service. Maverick is easier and less expensive to maintain than an economy import. It needs fewer oil changes, fewer chassis lubrications.

It's simple to repair. You can do many routine maintenance jobs yourself.

It's simple to own. Maverick saves you money when you buy it. And when you drive it. That's the reason our small car is going over big.

Maverick lets you stop worrying about rising costs. Come see the Simple Machine at your Ford Dealer's now.

For more information about Maverick see your Ford Dealer or write: Maverick Catalog, Dept. N-4, P.O. Box 1503, Dearborn, Michigan 48121.

\*Ford's suggested retail price for the car. White sidewall tires are not included; they are \$30.00 extra. Since dealer preparation charges vary, they are not included, nor is extra equipment that is specially required by state laws.



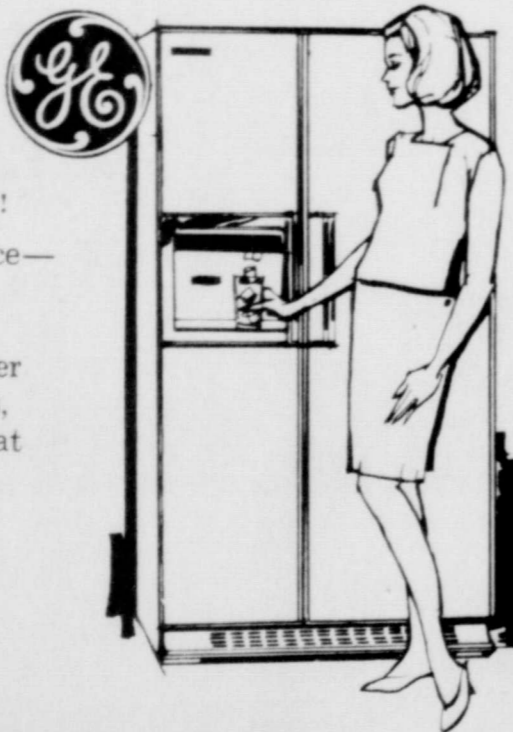
### Your Ford Dealer fights the price rise

## SPECIAL SALE

Monday through Saturday

Automatically fills your glass with ice or chilled water at a touch.

23.5 cu. ft. No Frost Refrigerator with new Custom Dispenser



Instant ice, instant water —without opening the doors!

- Side-by-side convenience—less than 36" wide
- Freezer holds 295 lbs., has Automatic Icemaker
- Tempered glass shelves, Convertible 7-Day Meat Keeper, Adjustable door shelves
- Rolls out on wheels for easy cleaning!
- GE colors or white

REG 869.00

Model TFF-24RE

**\$690.00**

DURING SALE

other refrigerators as low as

**\$169.00**

Automatically replaces ice as you use it!



17.6 cu. ft. No Frost Refrigerator

- Automatic Icemaker stores up to 340 cubes!
- Freezer holds up to 165 lbs. Model TBF-18AE
- Rolls out on wheels for easy cleaning
- Only 30 1/2" wide, 66" high

REG. 429.00

DURING SALE **\$369.00**

**ANTHONY ELECTRIC**

PLAINS SHOPPING CENTER

# BIG BUYS

AT BIG SAVINGS

Christmas Decorations Discounted

Christmas Candy New Shipment

Christmas Cards New Shipment

Mark T Automatic Electric Toothbrush Cordless & rechargeable reg 18.00 Spec. **9.98**

LILT PERMANENT Special Price **77¢**



**Vitamins** Chewable with iron

reg \$4.19 Spec. **\$2.99**



"KENNER"

SUPER SPIROGRAPH

Artistically challenging. SUPER SPIROGRAPH contains new curved and straight sections that snap together to form squares, ovals, trapezoids, clovers and many other shapes.

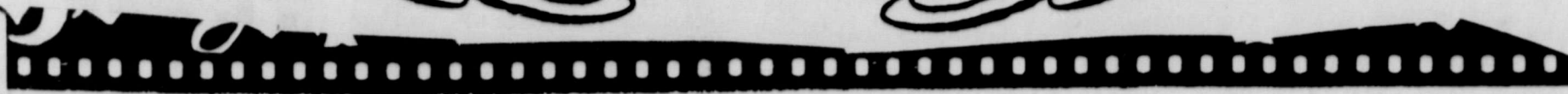
Super it's new

DISCOUNT PRICE Spec. **\$4.94** Reg. \$6.95

PHONE 659-2141.

**Gordon's DRUG**

Spearman, Texas 314 Main



THE SPEARMAN REPORTER, Hansford County, Texas 79081



### Outstanding Farmer Banquet Set Tonight

The annual Bankers award dinner honoring the outstanding farmer in the Hansford Soil & Water Conservation district, is scheduled to begin tonight (Thursday December 4) at 7:30 p.m. in the Spearman High School Cafeteria. This banquet is sponsored each year by the First State Bank of Spearman and the Gruver State Bank of Gruver. Farmers and their wives throughout the county will enjoy a meal catered by Sutphen's Barbecue and will

hear the Rev. Leon Hill give the main address. Color slides of the district will also be shown by District Conservationist Bob Crawford. Willard McCloy of Morse was named the outstanding conservation farmer at the awards banquet last year. McCloy, a director of Hansford Soil & Water Conservation District, owns about 5 sections of land in that part of the county and carries out a diversified program on his ranges and irrigation land.

### Freshmen 'Socks' Freshmen Monday



Coach Perry Coursey discusses with AAAA freshmen at the tournament Friday and Saturday.

### Miss Merry Christmas Contest Is Scheduled

ENTRY BLANK FOR THE "MISS MERRY CHRISTMAS" of Hansford County, 1969.

NAME: \_\_\_\_\_  
AGE: \_\_\_\_\_  
ADDRESS: \_\_\_\_\_  
MAILING ADDRESS: \_\_\_\_\_  
PARENT'S NAME: \_\_\_\_\_  
TELEPHONE: \_\_\_\_\_  
\*Signature of legal parent or guardian: \_\_\_\_\_  
Today's Date: \_\_\_\_\_

\*NOTE: To be valid, entry blank must be signed by legal parent or guardian.

### SATURDAY

Spearman this Saturday, the youngsters. Santa Claus will arrive at 2:00 p.m. on his sleigh where he will set up his workshop. He will return to the downtown area until 5:00. Santa Claus will arrive at the post office Tuesday to make an advance shipment of candy to all the good boys and girls.

### On Coyote Problem

Hansford County ranchers are invited to attend a meeting concerning the coyote problem in this area. The meeting will begin at 7:00 a.m. on Monday, December 15, in the county courtroom in Spearman. Agent Robert Adam will be in charge of the meeting. He has checked the possibility of security for a trapper. There is no charge for the meeting. Admittance is free. Other information will be given.

### Mrs Townsend's Brother Died

Mrs. Russell Townsend was notified early Thanksgiving morning of the death of her brother, Oscar L. Smith, 55, of Tucson, Arizona. Smith, a retired Army man, passed away in the AF Base Hospital at San Antonio where he had been for the past six months. He had made his home in Tucson since his retirement from the army five years ago. Funeral services were held Monday morning.

### 7th Grade Games

The 7th grade boys will play Phillips here Thursday, Dec. 4, 4 p.m. The 8th grade boys will also play here Thursday following the 7th grade game.

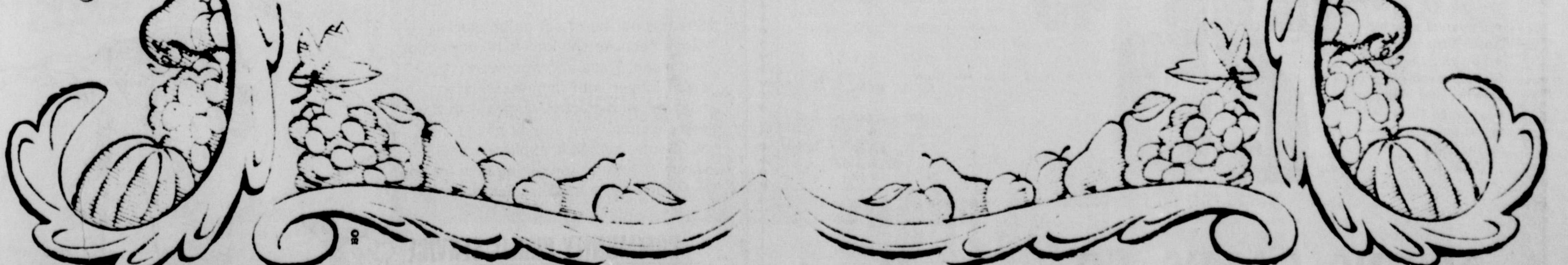
### Busbys Have Holiday Guests

Thanksgiving Day guests of Mr. and Mrs. R.D. Busby and children, Anita Carol, Newanna Jo and Robert John, of 900 S. Bernice were his brother and two sisters and their families. For the traditional Thanksgiving dinner served at noon guests were Mr. and Mrs. Johnny Bob and Kelly Sue of Lubbock; Mr. and Mrs. Blackie Lammert of Lipscomb, and

The team, and Ray...  
The Ly...  
The Fish...  
This is one group of athletes had in the... and they are one of the best teams in the... are expected all of the... in the... BOX SCO... Name Beedy Schell Floyd

- SPEARTEX GRAIN
- NORTH PLAINS TRUCK AND IMPLEMENT, INC.
- PEOPLES NATURAL GAS
- PIERCE WATER WELL SERVICE
- THE HANSFORD PLAINSMAN - PRINTERS
- NORTH PLAINS ELECTRIC - CO - OP Perryton

- CUMMINGS HEATING-REFRIGERATION
- CANTRELL'S FLYING SERVICE
- EQUITY
- EXCEL BODY SHOP
- FIRST NATIONAL BANK - Perryton, Tx
- BOXWELL BROTHERS
- THE SPEARMAN REPORTER





HOME FROM THE KILL---Jackie week hunting up around Broadus, bucks, two of them 6-pointers. man hunters said the deer were pie-

Concentrate on positive thoughts to share with your family. "I love you" and "I'm proud of you" should be common in family conversations. Or say it with a smile, a pat or a kiss. It's easy to speak out with criticisms, demands and complaints, reminds Jennie Kitching, Extension family life education specialist.

ainers of beer, wine, eshments were contain- to 1/2 gallon jugs, ed November 19.

also proposed is the pur- from other pipeline anies of Canadian gas es and additional gas service. The second segment calls instruction of about 150 of 36 inch loop pipeline ahoma, Kansas, Nebras- owa and Illinois and ad- al compressor horsepow- tations in Texas and ma. Ina Griffi ment on Federal Po- born at Patr 31, 1876. Texas August 26 18 D. T. and Inaot the first years 184 24+ riage in Hall vs 18 26 Greer Counties) 6 34 moved to McGERIES County, Indian in 1290 in 1895, 1264 On February 13, 1238 moved to their HOME in Union County, 466 Mexico, five miles 438 west of Texline, 436 they were active anSERIES thustastic workers as 443 helped develop what 446 GAME 191 181 171

**WT CHORALE TO SING HERE DECEMBER 3**

CANYON, Texas--Members of West Texas State's University Chorale will begin their annual concert tour to area high schools with a performance at 10:20 a.m. Dec. 3 at Spearman High School. The 66-voice choral group, directed by Dr. Houston Bright of the WTSU music department, will include in their program both



- MONDAY, DEC. 1  
Stewed Chicken/Egg Noodles  
Seasoned Green Beans  
Buttered Corn  
Dill Pickle Spears  
Citrus Fruit Cup  
Honey-Peanut Butter Blend  
Hot Rolls-Milk  
HIGH SCHOOL MEAT CHOICE  
Beef Pot Pie
- TUESDAY, DEC. 2  
Ground Beef and Spanish Rice  
Seasoned Green Peas  
Combination Salad  
Cherry Gelatin/Whipped Top.  
High School Meat Choice  
Juicy Burger
- WEDNESDAY, DEC. 3  
Hot Dogs-Chili Sauce  
Potato Gems-Catsup  
Blackeyed Peas/Bacon  
Chopped Onions  
Cherry Cobbler-Milk  
High School Meat Choice  
Pimiento Cheese Sandwiches
- THURSDAY, DEC. 4  
Tamales  
Seasoned Pinto Beans  
Potato Salad  
Carrot Sticks  
Peach Halves  
Hot Rolls-Butter-Milk  
High School Meat Choice  
Corn dogs-Mustard
- FRIDAY, DEC. 5  
Hamburger-Mustard or  
Chicken Salad Sandwich  
French Fries-Catsup  
Lettuce-Tomato Salad  
Dill Pickle Slices  
Spiced Applesauce  
Gingerbread-Milk

**holt news**

Kathy Jenkins of Amarillo was a weekend guest of her parents, Mr. and Mrs. Phil Jenkins. Mr. and Mrs. Arch Marshall of Houston visited last week her mother, Mrs. Berda Holt and other relatives. While in the Panhandle, Arch Marshall and Nolan Holt, enjoyed pheasant hunting in Ne-

**TURKEY PRICES SLIGHTLY HIGHER**

COLLEGE STATION--Apples, cranberries, oranges and grapefruit are economically priced this week, just in time for the Thanksgiving cornucopia. Bananas, Tokay grapes, russet potatoes, cabbage, carrots, cauliflower, sweet potatoes, broccoli, collards, turn-

ips and mustard greens also are plentiful, adds Mrs. Gwendolyn Clyatt, Extension consumer marketing specialist at Texas A&M University. In the meat department, frozen turkeys are priced slightly higher than a year ago, says the specialist. Fryers are priced attractively and Grade A large eggs offer the best quality and economy in eggs. Look for best beef values this week on round steaks and roasts, short ribs, stew meat,

ground beef, blade pot roasts and steaks. Pork values include picnics, shoulder roasts and steaks, canned ham, fresh sausage and end cut loin roasts and chops. Mr. and Mrs. Verlin Beck were hosts for a pre-Thanksgiving dinner Sunday in their home. Present were Thelma Beck, Mr. and Mrs. Allen Ricketts and Linda, Mr. and Mrs. Mearl Beck. Marie Beck visited in the afternoon.

**The "Maverick" Plows**

**ugged - quality the big Jobs time around.**

**Cost Breakdown:**  
COST OF MEDICAL CARE UP 28%  
COST OF WOMEN'S CLOTHES UP 3%  
COST OF HOUSING UP 4%  
COST OF SIRLOIN STEAK UP 87%  
COST OF FORD MAVERICK STILL THE SAME

**Your Ford Dealer's Deep Sweep with Maverick**

When it comes to prices, you know what's going on. And what's going up. But there's one still going straight. Maverick. It holds the line. And its small price makes it America's biggest value. Here are the facts about our Simple Machine. It's simple to drive. You get the passing power of a 105-hp Six. Great gas mileage too. It's simple to park. Maverick can turn in a tight circle than the leading import. It's simple to service. Maverick is easier and less expensive to maintain than an economy import. Needs fewer oil changes, fewer chassis lubrications. It's simple to repair. You can do many routine maintenance jobs yourself.

**Your Ford Dealer figures versatility with extra trash lamps and swedge-point**

**HELP! The F. F. A. Buy Texas Oranges or Grapefruit. 40 LB. BOX. \$5.00 Guaranteed Give as a Christmas Gift Order before Dec. 1st. Arrives Dec. 15th. Call 659-2035.**

	WON	LOST
Ina Griffi	28	19
born at Patr	27	13
31, 1876.	26	18
ed at her hocr,	26	18
(inc.)	21	23
Texas August	18	26
D. T. and Inaot	6	34
the first years		
riage in Hall vs		
1890 to D.		
Sone lived		
of their		
ERS LEAGUE		
Ina Griffi		
born at Patr		
31, 1876.		
ed at her hocr,		
(inc.)		
Texas August		
D. T. and Inaot		
the first years		
riage in Hall vs		
1890 to D.		
Sone lived		
of their		
ERS LEAGUE		
Ina Griffi		
born at Patr		
31, 1876.		
ed at her hocr,		
(inc.)		
Texas August		
D. T. and Inaot		
the first years		
riage in Hall vs		
1890 to D.		
Sone lived		
of their		
ERS LEAGUE		

**SPECIAL SALE**

Monday through Saturday

fills your glass  
ed water at a touch.

**WIDE!  
LOW!  
STYLISH!**

**GOOD YEAR**

**4 PLY NYLON CORD "Safety All-Weather Z"**

**\$25.45**

Compared to the "Safety All-Weather G" we've:  
• Designed a new Angle Grip tread  
• Lowered the profile for improved stability and handling  
• Widened the tread to put more rubber on the road

Check your size... Whitewalls or Blackwalls

SIZE	Whitewall Tubeless	Blackwall Tubeless	Plus Fed. Ex. Tax and old tire
F78-14 (replaces 775 x 14)	\$30.25	\$26.95	\$2.54
G78-14 (replaces 825 x 14)	\$32.80	\$29.50	\$2.66
H78-14 (replaces 855 x 14)	\$35.70	\$32.40	\$2.89
E78-15 (replaces 735 x 15)	\$28.75	\$25.45	\$2.48
F78-15 (replaces 775 x 15)	\$30.25	\$26.95	\$2.45
G78-15 (replaces 825 x 15)	\$32.80	\$29.50	\$2.62
H78-15 (replaces 855 x 15)	\$35.70	\$32.40	\$2.85
J78-15 (replaces 885 x 15)	\$39.90	\$36.60	\$3.02

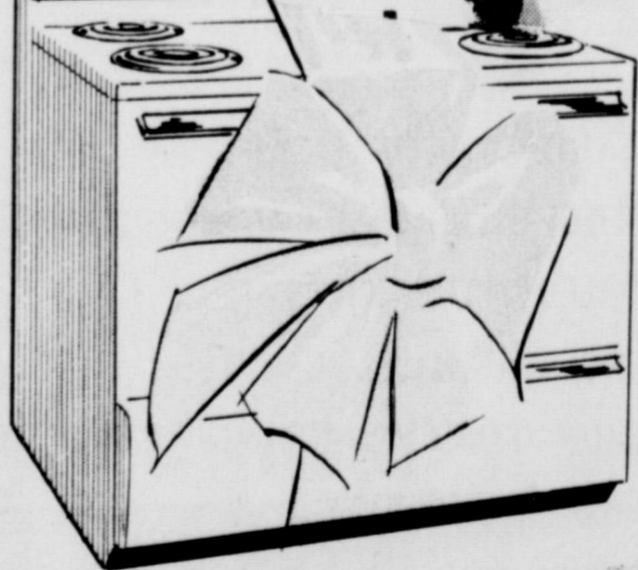
**OWENS SALES CO** 659-2506 Spearman, Texas

**BIG B**

Truck & Imp., Inc. Spearman, Texas 659-2421

**AT BIG SAVINGS**

Christmas Decorations



help Christmas dreams come true...

give her a modern **ELECTRIC RANGE**

She has her heart set on an electric range because she knows it cooks cool and clean. Walls and woodwork stay clean longer with flameless electric cooking. And electric ranges with the self-cleaning oven stay bright as new. So, Santa, see your appliance dealer soon... and do something nice for your lady. Give her a modern electric range.

**COMMUNITY PUBLIC SERVICE** Your Electric Light & Power Company

