

# the SPEARMAN Reporter

VOLUME 62, NO. 9 THE SPEARMAN REPORTER, Hansford County, Texas 79081 THURSDAY, JANUARY 21, 1971

## Lions To Meet With Rotarians

The Spearman Lions Club will be guests of the Spearman Rotarian Club Monday noon. There will not be a meeting Tuesday for the Lions. The special meeting, will feature two young men who will give the program on "Dope." Both of the men are former addicts and have appeared on area TV stations. All Lions and Rotarians are urged to attend this joint meeting Monday.

## Indictments Returned 7 Tried

Eight indictments were returned against six defendants by the Hansford County 84th judicial district grand jury which was in session here Friday, January 15. Seven defendants, all jail cases, pled guilty and all were tried before the court the same day. District Judge Max Boyer presided. Probation was granted six of the seven defendants who were tried. Only one defendant received a penitentiary sentence in the court session. She was Layleen Lanham; 3 years for forgery at Massad's; three years for forgery at Cut Rate Grocery and three years for forgery at G&Y. Sentences are to run concurrent.

Another woman, Wilma Can Wait, who had been previously indicted, received three years probation for forgery at Cates Mens Store. Two men were given three-year probation having been charged with thefts of saddles and riding gear from Hansford feedyards. This sentence was noted to Ronald Jeter and Glen Smart. Charged with forgery at G&Y, Ideal Grocery and Cates Grocery, James Thompson and Timothy Pearson also received three-year probation terms. Vernon O. Lester, charged with theft of pipe from Humble Oil and Refining Company, has given a three-year probation.

## OPEN YOUR HOME TO A FOREIGN EXCHANGE STUDENT

The High School Student Council and the local American Field Service Committee is seeking a family with a heart big enough to accept a foreign exchange student during the 1971-72 school year. Couples with children, even if there is no senior student in the home; couples without children; and in some circumstances homes with only one parent may apply for a student. If you are interested call 659-2584 or 659-2585.

## BIG GAMES ON TAP FOR LYNX LYNXETTES

Spearman's four varsity teams, A and B boys and girls, will have their hands full this Friday night as they tangle with one of the best basketball teams in the state. The Spearman Lynx will meet the Phillips Blackhawks at Lynx gymnasium Friday night with the B boys game beginning at 7:30. The A boys game will follow. The Lynxettes, who have pretty well won their act this year however and Canyon game will not be a contest. But, for the Lynx, it is a different story. Lynx almost have to win game against Phillips Friday night to win the district title. The Lynx face two tough games, one at Dalhart and a return game at Phillips. They must win Friday night to win in the district race. And Lynx fans think that

## FUNERAL RITES TUESDAY FOR JACK DOUGLAS

Mrs. Jess Womble learned late Saturday of the death of her nephew, Jack G. Douglas. Douglas, 42, was a soil conservationist with the U. S. Dept. of Agriculture in Washington, D.C. He was a veteran of the Korean conflict and the son of the late Mr. and Mrs. Johnnie Douglas, Shamrock pioneers. For several months in 1957, Douglas lived in Spearman and was with the Soil Conservation Service. From here he moved to Amarillo, then to Albuquerque, N.M. He died suddenly at his home in Falls Church, Va. Saturday January 16. Death was attributed to a heart attack. Funeral services were held Tuesday afternoon in the First Baptist Church in Shamrock with the Rev. James Coffman officiating. Mr. Douglas was born and reared in Shamrock. Survivors include his wife of the home; a son Don; a daughter, Donna, one brother, and his grandmother Mrs. A.P. Bumpers of Shamrock.



Arlon L. Dedmon Incoming President

## Zip Translators Are Installed

Letter sorting machines at Houston and Dallas are now equipped with Zip Mail Translators. Nine other large offices are scheduled to have these ZMT units by the end of 1971. These ZMT units are being installed in post offices throughout the nation. Since they require readable ZIP coded lettersize mail, public use of ZIP Code is increasingly important. Un-zipped mail going to these units causes operational inefficiency and delay of mail. It is especially important that window envelopes reveal a clear, concise, readable address with the five-digit ZIP Code in full view.

## OPEN YOUR HOME TO A FOREIGN EXCHANGE STUDENT

The High School Student Council and the local American Field Service Committee is seeking a family with a heart big enough to accept a foreign exchange student during the 1971-72 school year. Couples with children, even if there is no senior student in the home; couples without children; and in some circumstances homes with only one parent may apply for a student. If you are interested call 659-2584 or 659-2585.

## BIG GAMES ON TAP FOR LYNX LYNXETTES

Spearman's four varsity teams, A and B boys and girls, will have their hands full this Friday night as they tangle with one of the best basketball teams in the state. The Spearman Lynx will meet the Phillips Blackhawks at Lynx gymnasium Friday night with the B boys game beginning at 7:30. The A boys game will follow. The Lynxettes, who have pretty well won their act this year however and Canyon game will not be a contest. But, for the Lynx, it is a different story. Lynx almost have to win game against Phillips Friday night to win the district title. The Lynx face two tough games, one at Dalhart and a return game at Phillips. They must win Friday night to win in the district race. And Lynx fans think that

Coach Simpson, with his slow deliberate style of ball playing, will give the Hawks all they want Friday night. And, the Hawks know this and are not taking Spearman lightly. They will come prepared to play another tough game and will show no mercy on the Lynx. The big game at Spearman Friday night night should be a real barn-burner for local fans to see. It is a shame that we can't see the Lynxettes play Canyon too. Phillips does not have a girls basketball program, so this necessitated scheduling Canyon on this same night. Fans are urged to come out early Friday and get a good seat. Last year when the Hawks came to Spearman, there just weren't any good seats left, so come out and watch the fine Spearman B boys play the Hawks. Both of these games will be crowd pleasers Friday night. See you at the 6:15 game.

## Annual C-C Banquet Monday Nite

## 50th Anniversary

"Coach" Berl Huffman, Director of Public Relations for the Texas Tech Ex-Students association, will be the speaker at the annual Spearman Chamber of Commerce banquet to be served Monday night January 25 in the High School Cafeteria.

Often described as a living legend, the popular Huffman's main duties now include speaking engagements and working closely with the class reunion programs at Texas Tech University.

Chamber directors who have been in charge of ticket sales for the banquet, said today they expect a crowd of 300 persons.

The Spearman Chamber will observe its 50th Anniversary at the Monday evening repast and twenty-one of the past 29 presidents have notified authorities that they will be present. Beginning at 6:30 p. m., everyone will have the opportunity to meet and visit with past presidents and renew old acquaintances at a reception to be held in the language lab next to the cafeteria. The banquet meal will be served at 7:30.

Past presidents who will be present include Gene Cline, Dumas; Bob Heard, representing his late father Hobb Heard; T.R. Shirley, Perryton; and James P. Linn of Oklahoma City.

Local past presidents in attendance will include J.L. Brock, Ralph Blodgett, Pete Fisher, George Collard, Dick Countiss, Mrs. John R. Collard Sr. will represent her late husband; Jimmy Hicks, Jimmy Hester, E.J. Copeland, Orvil Brummett, D.E. Hackley, Charles Gilliam, Kenneth Evans, C.A. Gibner, Peyton Gibner, Oscar Donnell, Joe Trayler and Roy L. McClellan.

The highlight of the banquet will be the presentation of the awards to the "Man of the Year" and the "Woman of the Year." Citizen cast ballots for these decisions and the revelation will be kept secret until banquet night. Presenting these awards will be last year's Man of the Year, Jesse Davis, Elzey Vanderburg will present the "Employee of the Year" award. Spearman High School English teacher, Mr. Worley Smith, will act as Master of Ceremonies.

Recently installed officers who will officially take over their duties at the banquet are as follows: President, Arlon L. Dedmon; vice president Dan Desimone; treasurer, Elzey Vanderburg. Mr. Dedmon, who will head the Chamber of Commerce in 1971, is the manager of Gifford-Hill Woster, Spearman plant. Dan Desimone owns and operates Berry's Dry Cleaners, Elzey Vanderburg, a farmer, is the manager of the ASCS government offices for Hansford County.

Dinner music will be furnished by the Spearman high school swing band directed by Mickey Owens.

This banquet, commemorating the 50th anniversary and honoring past Chamber presidents, promises to be one of the best programs ever staged by the Spearman Chamber of Commerce.



Berl Huffman Banquet Speaker

## Court Calls Bond Election In Prec.

On January 7 members of the County Commissioners Court met in special session to set dates for a \$50,000 Bond Election for the purpose of building a bridge crossing the Palo Duro creek some 10 miles north of Spearman. Fifty-five residents who live within county precinct No. 2 had previously petitioned the court to build a new bridge structure after the steel span-bridge collapsed December 12. The bridge spanning the Palo Duro at this particular point was erected in 1947.

A legal notice of the election appears in this newspaper. The taxpayers in precinct 2 will vote on the road bond election February 9 at the Gus Renner residence, approximately 17 miles Northwest of Spearman. The polls will open at 8 a.m. and close at 7:00 p.m.

Judge Johnnie C. Lee said that if the bond election carries so that the new bridge and road work can be done, there will be no wooden or steel bridges in Hansford County. All will be concrete.

Man talking to himself: "I wish I had a dental appointment to cancel--that always brightens my day."

## J. D. HELMS' BROTHER KILLED

Funeral services for Clifford Dale Helms, 47, who was killed after midnight Sunday in a one-vehicle accident near Anson, were held Wednesday in the First Baptist Church at Floydada.

Officers said the accident occurred when the truck Mr. Helms was driving struck some cattle in the center of the road. Born in Arkadelphia, Ark., Mr. Helms moved to Floydada in October, 1938.

Survivors include his wife, a son, two daughters, his parents Mr. and Mrs. P.D. Helms of Floydada, two brothers and two sisters. One of the brothers is J.D. Helms, a former Spearman attorney, now residing in Oklahoma City.

## M&M GROCERY ADDS EQUIPMENT

A new, twenty foot produce case has just been installed at the M&M Grocery here in Spearman. The two tiered case is equipped with slanted mirrors making an attractive display of the produce.

The new case features such things as eggplants, green onions, corn on the cob, pineapples, avocados, parsley, limes, okra, radishes and pears in addition to produce carried in the past.

Another new addition to M & M products is a line of home made fruit pies.

## LIONS CAMP

Applications for a summer vacation full of fun for handicapped children in the Spearman area are now being accepted by Members of the Spearman Lions Club.

This unique Texas Lions Camp for Grippled Children at Kerrville will open its first two weeks session Sunday, June 6, 1971. Five Sessions will be held this summer for youngsters from seven through sixteen years of age.

The Camp is free to eligible blind, deaf, mute or crippled children. Transportation to and from the Camp is supplied by the local Lions. All requests for summer camp are handled locally by Lions.

For more detailed information about the Camp, you are urged to contact James Cunningham of the Spearman Lions Club Business Phone 659-3233, Residence Phone 659-3547.

In the past years, Lions have sent over 12,000 youngsters to Camp.

## SEMI-ANNUAL SALE AT REED'S SHOES

Reed's Family Shoe Store starts their regular Semi Annual sale today.

This year's sale offers the largest stock of sale priced shoes in the history of the business. The sale is starting earlier than usual because of the early arrival of the new Spring lines. This early arrival has caused a space problem in the store.

This sale will include values for the entire family, including mens boots and shoes. There's also a special one cent sale on a large selection of ladies shoes. Shoppers will find a good choice in all types and styles of footwear.

## Fire Scare At Rook Home

An early morning fire alarm Monday summoned volunteer firemen to the home of Mr. and Mrs. George Rook, 1005 S. Archer street.

Firemen said there was no combustion but the house was filled with smoke from electric wiring. A spokesman said there was evidently a short in the wiring but they could never find where the smoke was coming from.

The electricity was turned off and an electrician called to locate the faulty wires or overloaded condition.

## Men's Day At Baptist Church

Men's Day will be observed Sunday, January 24 at the First Baptist Church. Men will be in charge at both morning and evening services.

Musicians will be Mr. Buddy Benton, pianist and Mr. Max Murrow, organist.

At the 11 o'clock worship hour, Glenn Day will welcome guests and Ray Moore will give the prayer. Wesley Garnett Jr. will be in charge of preliminaries and introduce speakers Marcus Connelly and Ronnie Wood.

Mr. R.E. Bradford will be the speaker at the evening service. Jim Davis will assist. Special music will be provided.

## Agriculture Income Here Should Increase



County Agent Robert Adamson, left, looks on as Judge Johnnie C. Lee signed a proclamation designating January 25-29 "3, 76 in '76 Week" in Hansford County.

A program to increase Texas agricultural income by more than a billion dollars by 1976 was announced recently by Dr. John E. Hutchison, director of Texas Agricultural Extension Service.

This goal calls for \$3.76 billion in total cash receipts by the end of the 1976 crop year, not including government payments. Texas presently accounts for about five percent of the total national agricultural cash receipts. But to achieve the goal of \$3.76 in '76 the state must claim almost ten percent of the projected national increase in the coming years.

A committee of agricultural economists with the Extension Service studied past production records and made projections for 1976 based on current trends and expected improvements in technology and marketing.

According to County Agent Robert Adamson, cash income to farmers and ranchers in Hansford County should be more than fifty million dollars by the end of 1976. This will be an increase of more than thirty million dollars from 1968-69 figures, with feedlot cattle contributing a large part of the gain. The projections are based on studies of the Texas Agricultural Extension Service and are part of the "3, 76 in '76" program, a state-wide project to increase

Texas agricultural cash receipts by more than one billion dollars.

All over Texas the week of January 25-29 has officially been set aside as "3, 76 in '76" week. In conjunction with this program, Johnnie C. Lee, County Judge of Hansford County, signed a proclamation calling upon all citizens to join in this observance and to dedicate their efforts to the achievement of its stated objectives.

The proclamation reads as follows: WHEREAS, the Texas agricultural industry, in all of its phases, continues to be our most important industry, and WHEREAS, agriculture continues to have great growth potential in our county with the rewards from such growth accruing to the benefit of all citizens, and

WHEREAS, there is an urgent need for an active crusade to increase the public's knowledge, acceptance, and appreciation for the highly significant contribution which agriculture makes to the economy of our county and to the level of living enjoyed by its citizens, and

WHEREAS, it is recognized that all citizens of this county have a vital stake and a legitimate self-interest in the general well-being of the farmers and ranchers who provide the great abundance and variety of food and fiber of highest quality which we all enjoy, and

WHEREAS, "3, 76 in '76" is a well-conceived program designed by the Texas Agricultural Extension Service, with the endorsement and active support of agricultural agencies, organizations, and individual leaders, to help the agricultural industry achieve its full potential through an intensification of efforts by producers, agribusinesses, and professional agriculturists to bring about an increase in income to Texas farmers and ranchers of \$1 billion by the end of crop year 1976, and

WHEREAS, "3, 76 in '76" will narrow the gap between knowledge and practice through the coordinated application of improved production and marketing practices that have been proven to be sound and profitable, and

WHEREAS, the achievement of an increase of fifty-million dollars in agricultural income by the end of crop year 1976 will improve the net profit and competitive position of Hansford County farmers and ranchers and make highly significant contributions to the future economy of the county, NOW THEREFORE, I, Johnnie C. Lee, County Judge of Hansford County, Texas do proclaim the week of January 25-29, 1971 as "3, 76 in '76 Week" in Hansford County and call upon all citizens to join in this observance and to dedicate their efforts to the achievement of its stated objectives.

# Teletype Terminal To Be Installed In Sheriff's Office

AUSTIN--Governor Preston Smith today approved six action grants totaling \$136,268 to five state planning regions and the Department of Public Safety to upgrade communication and information systems as a means of speeding up apprehension of criminals.

The grants were among 31 awards approved by the Governor on recommendation of the Texas Criminal Justice Council at its regular monthly meeting. Judge Joe Frazier Brown, executive director of the Council, called the six grants "a giant step" in enhancing law enforcement ca-

capabilities for coping with the state's burgeoning crime rate. By means of the grants four regional law enforcement teletype networks will be expanded or upgraded with faster equipment.

The award to the Department of Public Safety will clear a road block to updating criminal histories for conversion to computer accessibility. The grant, for \$13,700, will be used to employ inmate typists of the Texas Department of Corrections to expedite processing of fingerprint data, eliminating a 70-day backlog which has caused delay in up-

dating criminal histories. To continue one year, the project is subject to an in-kind match of \$11,123 by DPS.

Other grants designed to produce faster and more effective information and communication services are as follows:

Permian Basin Teletype Network, Odessa, \$36,060, to expand to 28 terminals the law enforcement teletype network serving the Permian Basin and Upper Rio Grande State Planning regions. The loop will extend to Seminole and Lamesa, on the north, Big Spring on the east, Sanderson and Marfa on the South and El Paso on the

west. The network presently serving the area consists of only 13 stations, with no teletype coverage south of Midland. Cash match will be \$24,040.

Central Texas Council of Governments, Belton, \$15,027, for upgrading of the Central Texas regional teletype network by replacing manual equipment with automatic. Covering six counties, the network has terminals in the sheriff's offices of Bell, Coryell, Hamilton, Lampasas, Milan and Mills counties, and in police departments of Temple, Killeen, Copperas Cove and Rockdale. Cash match will be \$4,200 with in-kind match of \$6,684.

East Texas Council of Governments, Tyler, \$30,874 for upgrading existing teletype network with faster equipment and adding new terminals. Terminals to be upgraded are

the police and sheriff's departments at Longview and Texarkana; sheriff's offices at Linden, Gilmer, Canton, Rusk and New Boston; and police departments at Henderson, Marshall, Kilgore, Nacogdoches, Lufkin, Palestine, Athens, Gladewater, Mineola, Carthage, Dainierfield and Mount Pleasant. Cash match will be \$20,676.

Panhandle Regional Planning Commission, Amarillo, \$25,607 for improving and expanding the present teletype network in the Panhandle State Planning Region, to serve 19 of the 25 counties of the region. New teletype terminals will be installed or old ones upgraded in the police departments of Amarillo, Dalhart, Friona, Borger, Pampa, Shamrock, Tulla, and Hereford, and in sheriff's offices of Potter, Randall, Deaf Smith, Castro, Collingsworth, Swisher, Moore and Hansford counties. Cash match will be \$18,809.

El Paso Council of Governments, El Paso, \$15,000 for a regional law enforcement communications and information study to determine the need for a computerized inter-governmental system. In-kind match of \$10,000 will be provided.

Equipment for upgrading and expanding each of the teletype networks will be installed as soon as it is available, probably in three to six months. The new equipment will be compatible for connecting the entire loop with the automatic teletype switching system which has been installed at Austin by the Department of Public Safety. With these new facilities, messages can be transmitted to any part of the state instantaneously, and eventually information can be obtained from state computer-stored crime files in a matter of minutes through the projected Texas Crime Information Center.

The Criminal Justice Council, responsible for statewide planning, administers grants to units of state and local government in 12 broad categories to assist them in carrying out projects for improving the criminal justice system.



## Miss Burkhardt In All-State Choir Again

At area try-outs for the TMEA All-State Choir held in Lubbock recently, Miss Rosemary Burkhardt, daughter of Mr. and Mrs. O.L. Burkhardt, was placed in the choir for the third time in four years. It is the first time any student in Region I has made the organization three years of their high school career. Miss Burkhardt placed first among sixteen students trying out on her part. This is notable in that her competition came from Amarillo, Lubbock, Midland, Odessa, El Paso and other smaller towns and cities in the area.

She and her director Edward Howk will journey to Houston in February to the Texas Music Educators Association Annual Convention where the All-State Choir will perform as well as the two All-State Bands and All-State Orchestra.

A senior student at Spearman High School, Rosemary plans to enter West Texas State University next fall and continue studying music.



## P. A. Lyon III Honor Student

P. A. Lyon III, sophomore student at Odessa Junior College, was placed on the Dean's Honor roll for the fall semester.

For a student to make the dean's roll, he cannot make a grade below a B.

Lyon is the son of Mr. and Mrs. P. A. Lyon Jr. of Spearman.

## "GET INVOLVED" Accident Report

Three minor vehicle accidents have been reported to City police the past week.

January 13- at Barkley & Kenneth, a 1965 Buick driven by Jean Rubano, 1008 Blodgett Drive, and a 1964 Chrysler driven by Jettie Davis, 1002 Townsend. No injuries, minor damage.

January 14- in the 400 block on Davis street, a parked 1967 Olds owned by Jerry Floyd, 1102 S. Townsend, and a 1969 Rambler driven by Frances Nichols, 714 Steele Drive. Minor damage.

January 16, at Collard and Carson, a 1966 Buick driven by Viola Campbell, 706 Steele Drive, and a 1970 Dodge Charger driven by Gerald Mark Sanders of Perryton. Minor damages.

## "GET INVOLVED"

# PUBLIC AUCTION

## OCHILTREE COUNTY, TEXAS REAL ESTATE

### MONDAY, FEBRUARY 1, 1971 at 10:00 a.m.

Located 6 miles East of Perryton on Highway 15 then 1/4 mile North.

**Legal Description:** Section 126, Block 10 S.P. & RR Survey Co. 477 acres more or less.

Farm has 387 acres in cultivation and 90 acres in grass with one producing oil well. One-third mineral rights goes with farm. All growing crops go with purchase of farm. At present time there are 166 acres sown to wheat.

Wheat allotment: 177.1 acres; feed grain: 72 acres.

Farm has one good 6 inch well 3 years old, good liveable house, storm cellar and water for domestic use.

**FARM MACHINERY**

1967 1206 Int. diesel tractor has cab, 3 pt, row crop, A-1 condition, 1400 hours  
 1965 5010 JD diesel tractor with 9 yard carry all has No. 760 heavy duty chain loader all A-1 condition  
 1967 Int. 4 bottom 16 inch roll over moldboard plow  
 1968 Lilliston 4 row cultivator  
 2-1964 15 ft. Krause oneways  
 2-1962 M & M 16x10 grain drills  
 JD double tool bar guage wheels 16 ft.  
 4 row Junior planters  
 16 ft. King off set disc  
 4 row marker  
 10 ft. Eversman land leveler  
 12 ft. Electric motor and grain auger  
 Aeromotor wind mill head  
 4 cycle B & S motor and sprayer  
 1000 gal. propane tank  
 550 diesel tank

**Pilson cattle chute**  
 Juzzi pump and pressure tank  
 5-wire and metal gates  
 Cattle oiler  
 Lot of new and used lumber  
 Lot of wire and posts  
 1 Lot of seed  
 Stock of bales sedan  
 Metal hay rack  
 5-Metal water tubes  
 Lot of barrels and pumps

**IRRIGATION EQUIPMENT**  
 Worthington 8 inch pump 420 ft. setting  
 1967 Model 900 M & M irrigation motor  
 Amarillo gear head  
 3600 ft. 30 ft. joint 8" gated 40" row irrigation pipe  
 1 Lot of elbows, tees, connecting joints, etc.  
 Pipe trailer

**TERMS on Farm Equipment: Cash Date Of Sale**

John Cluck, Trustee First National Bank, Perryton, Texas

# Q

## QUINTON JENKINS The Auctioneer

616 Ramada • Amarillo, Texas 79108  
 Phone 806/383-7733

All our sales are advertised over Radio KGNC 710 each Friday at noon and over TV Channels 8, 10 and 12 each Tuesday at 7:25 a.m.  
 Any announcement made on day of sale supercedes all other announcements.

## Music Club Had Program On Sibelius

Spearman Music Club met Tuesday, January 12 in the Home Demonstration Clubroom. President Betty Clark opened the meeting with members reciting the "Collect". Ann Sanders read the hymn story and the members sang "Praise to the Lord" by Joachim Neander.

The study course was presented by Kathleen Sutton from the book "Great Pianist" on Jean Sibelius. A piano solo was presented by Dorothy McKay "Valse Triste" by Sibelius; a piano duet by Ann Sanders and Kathleen Sutton "Finlandia" by Sibelius; vocal trio including Ann Sanders, Pit Oakes and Colleen Schaefer accompanied by Dorothy McKay sang "Be Still My Soul" by Sibelius; and a piano solo by Mrs. Dean Leighnor "Romance in D Flat, Op 24 #9".

The Closing Collect was recited by the members and the hostesses Mmes. Nelson Bell and Dan Desimone served refreshments to Mmes. Clark, Dean Leighnor, Beth McKay, Jack Oakes, Sanders, Ronnie Schaefer, Tom Sutton and J. D. ...

The January 26 meeting will be in the Jack Kemper room and the exchange students on the program for the evening.

## Come Where The Herefords Are

### 55th Annual Auction

# PANHANDLE HEREFORD BREEDERS ASSOCIATION

## 1 P. M., WEDNESDAY, JAN. 21

### AMARILLO, TEXAS

AT

## Amarillo Stock Show & RCA Rodeo

7 Rodeo Performances - Jan. 22-27

## FAIR PARK COLISEUM

Produced By Beuter & Son, Elk City, Okla.

### Selected Herefords For Auction

\*All Bulls Have Attained Minimum Required Weights Per Day Of Age  
 \*All Bulls Will Be Examined By A Veterinarian For Soundness

**Single Bulls - Single Females**  
**Pens 3 Bulls - Pens 5 Bulls**

PLACING FOR SALE ORDER 2 P.M., TUES., JAN. 20

# PANHANDLE HEREFORD BREEDERS ASSOCIATION

A.E. PRONGER, Pres.  
 Stratford, Texas  
 GAINES FRANKS, SEC. - MGR., AMARILLO, TEXAS

## GIFFORD-HILL'S 360 SPRINKLER SYSTEM

GIFFORD-HILL

Beautiful days oft times come at the wrong time. You might just as soon see a gentle, soaking, half-inch rain. But because Mother Nature isn't always as dependable as she might be, Gifford-Hill has stolen some of her thunder.

The electrically powered 360 sprinkler system lets you schedule your own rain. The exclusive sprinkler spacing concept applies the same amount of water at one end of the system as it does at the other. No puddling. No runoff.

The 360 goes in either direction, uphill or down. It will water a quarter-circle, a half-circle, any portion of your field with the exact amount needed. And the positive gear drive motor lets it move only when you want it to.

You should have a 360. On those beautiful sunny days, you'll have everything going for you, including the rain.

Gifford-Hill & Company, Inc.

# rounds out a beautiful sunny day.

# ON TV

## JOHN DEERE FARMING FRONTIERS SHOW

Watch the year's best agricultural one-hour special right in your own living room! You'll see several "Furrow-on-Film" educational subjects, and get a preview of "What's New for '71 from John Deere."

**57**

## Sunday 24 Jan

KVII TV CHANNEL 7  
 4 P.M.

# Hansford Implement



THRIF-T PRICES ON NORTHERN GRAIN-FED

# Ideal Meat-Master Pork!



## PORK ROAST

FRESH PICNIC STYLE

LB. **29¢**



### Center Cut Pork Roast

FRESH & LEAN LB. **35¢**

RIB CENTER CUT  
Pork Chops.....LB. **79¢**  
FIRST CUT  
Pork Chops.....LB. **59¢**

FRESH HOME STYLE  
Pork Sausage.....LB. **45¢**  
FRESH, TENDER  
Pork Cutlets.....LB. **79¢**

MEADOWDALE  
**Boneless Ham** 7 TO 9 -LB. AVERAGE ..... **99¢**

**EVERYDAY LOW PRICE!**

**Pork Steak**  
FRESH, LEAN & TENDER  
LB. **49¢**

**EVERYDAY LOW PRICE!**

**Pork Loins**  
QUARTER SLICED  
9-11 CHOPS  
LB. **59¢**

**EVERYDAY LOW PRICE!**

**Spare Ribs**  
COUNTRY STYLE OR REG.  
LB. **59¢**

MEADOWDALE  
**SLICED BACON**  
1-LB. PKG. **49¢** 2-LB. PKG. **89¢**

Fresh Dairy AT LOW THRIF-T PRICES

IMITATION CREAM CHEESE 8-OZ. PKG. **18¢**  
KRAFT COLBY 16-OZ. PKG. **87¢**  
IDEAL GRADE A 1/2-GAL. CTN. **Butter-milk 43¢**

Beverages AT LOW THRIF-T PRICES

WELCH'S GRAPE 46-OZ. CAN **Welchade Drink 29¢**  
WELCH'S CRANBERRY 22-OZ. BTL. **Cocktail Juice 49¢**

Cookies AT LOW THRIF-T PRICES

PREMIUM CRACKERS 1-LB. BOX **Nabisco Saltines 39¢**  
15-OZ. OREOS, 14-OZ. CHIPS AHOY  
**Nabisco Cookies 49¢**

ADD TO YOUR SET TODAY!  
SHEFFIELD PORCELAIN CHINA  
**Cake Plate or Mug 99¢** WITH EACH \$3 PURCH.

REGULAR \$12.50  
**Cosco Folding Game Table 99¢**  
ONLY WITH PURCHASE OF 4 FOLDING CHAIRS AT ONLY \$5.99 EA.

THRIF-T SAVINGS!

SOFT TUB OLEO 1-LB. CTN. **Blue Bonnet 39¢**  
FAMOUS 1-LB. BOX **Kraft Velveeta 57¢**

Camelot Items AT LOW THRIF-T PRICES

CAMELOT SLICED 3 16-OZ. CANS **White Potatoes 43¢**  
CAMELOT 15-OZ. CANS **Tomato Sauce 53¢**  
CAMELOT 16-OZ. CANS **Apricot Halves 98¢**  
FINE, WIDE, EXTRA WIDE 16-OZ. PKG. **Camelot Noodles 27¢**  
PLAIN DILL, KOSHER DILL OR DILL CHIPS 32-OZ. JAR **Camelot Pickles 47¢**

Soaps & Cleaners AT LOW THRIF-T PRICES

THRIF-T PRICED **Tide Detergent 69¢**  
FOR DISHES 22-OZ. BTL.  
GIANT SIZE **Ivory Liquid 47¢**

CANE OR BEET **SUGAR 48¢** WITH \$5.00 OR MORE PURCHASE  
5-LB. BAG

THRIF-T SAVINGS!  
MEADOWDALE WHOLE PEELLED **Tomatoes 5 \$1** 16-OZ. CANS

THRIF-T SAVINGS!  
FAIRMONT DOUBLE DOZEN **Popsicle Bars 63¢** PKG. OF 24  
KLEENEX JUMBO ROLL **Botique Towels 34¢**  
KEN-L-RATION 72-OZ. PKG. **Dog Burgers \$1.69**

THRIF-T SAVINGS!

MORTON'S SPECIAL 10-OZ. BAG **Morton's Donuts 39¢**  
MORTON'S PKG. OF 2 **Pie Shells 39¢**  
MORTON'S 9-OZ. PKG. **Honey Buns 33¢**  
BANQUET SELECTED VARIETIES 4 3-OZ. PKGS. **Cook 'n Bags \$1.00**

THRIF-T SAVINGS!

REG. \$1.09 LIQUID 8-OZ. BTL. **Pepto-Bismol 77¢**  
REG. \$1.19 JERGEN'S 9 1/2-OZ. BTL. **Hand Lotion 78¢**

THRIF-T SAVINGS!

NORTHERN ASSORTED SINGLE ROLL **Bath Tissue 9¢**  
EASY-OFF SPRAY 8-OZ. CAN **Oven Cleaner 69¢**  
BLUE CRYSTALS 46-OZ. CAN **Sani-Flush 59¢**  
VAN CAMP'S 8-OZ. CAN **Beenie Weenies 25¢**

THRIF-T SAVINGS!

AUNT JEMIMA ORIGINAL 2-LB. BOX **Pancake Mix 47¢**  
AUNT JEMIMA 24-OZ. BTL. **Pancake Syrup 63¢**  
SUNSHINE 22-OZ. PKG. **Oatmeal Cookies 59¢**

ISLAND GOLD 15-OZ. CANS **Crushed Pineapple 3 53¢** FOR  
CAMELOT ASSORTED PINT CTN. **Gelatin Salads 39¢**

Frozen Foods AT LOW THRIF-T PRICES

THRIF-T SPECIAL **El Chico Dinners 39¢**  
MEXICAN OR ENCHILADA 14-OZ. PKG.

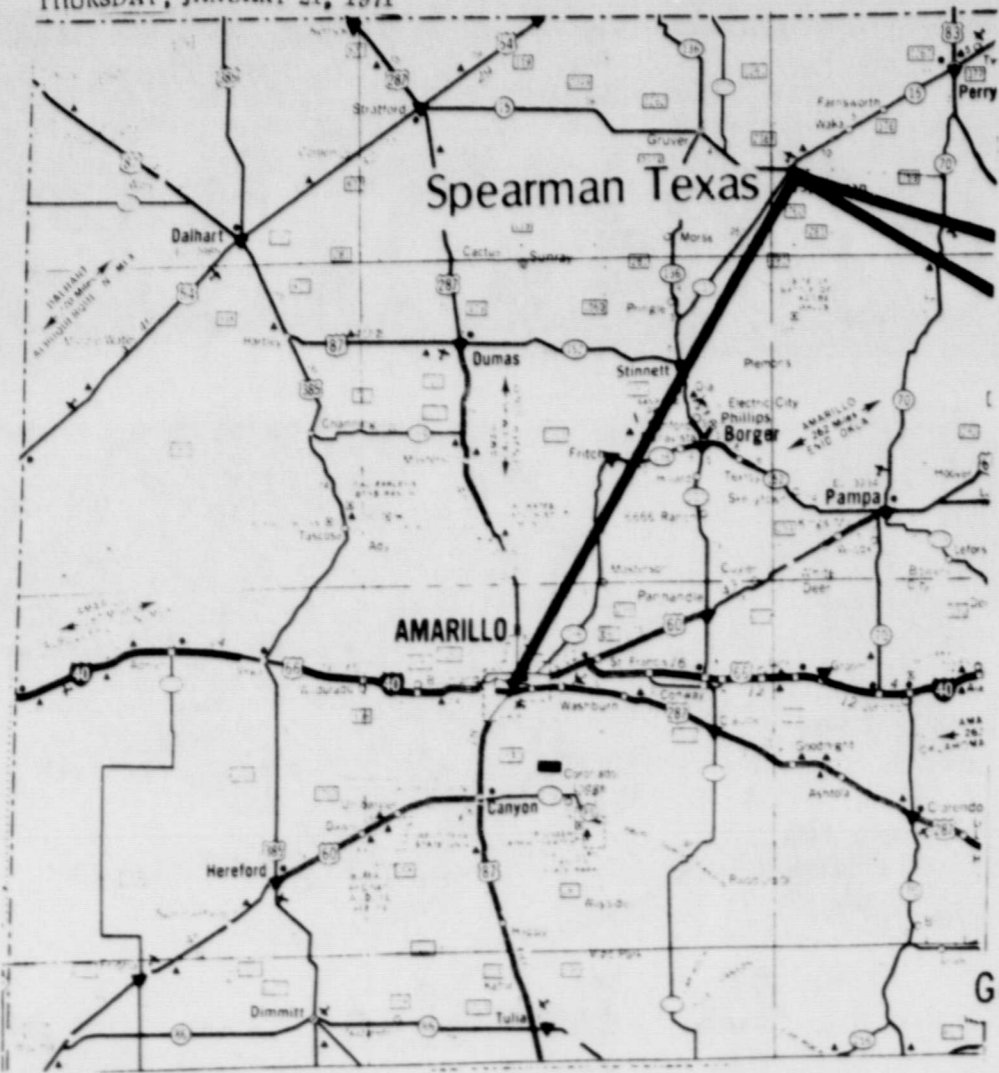
Health & Beauty Aids AT LOW THRIF-T PRICES

THRIF-T SAVINGS!  
CLOSE-UP REG. 61¢ 3-OZ. TUBE **Toothpaste 36¢**

Quality Products AT LOW THRIF-T PRICES

THRIF-T SAVINGS!  
MUSSELMAN'S GOLDEN 35-OZ. JAR **Apple Sauce 49¢**

U.S. NO. 1 COLORADO **Russet Potatoes 49¢** 10-lb. BAG  
CRISP, TENDER **CELERY 25¢** LARGE STALK  
FLORIDA RED ROSY CALIF. **Radishes 2 17¢** 6-OZ. BAGS  
HARDIN **Parsnips 1-lb. BAG 23¢**  
**Apple Cider 1/2-gal. btl. 69¢**

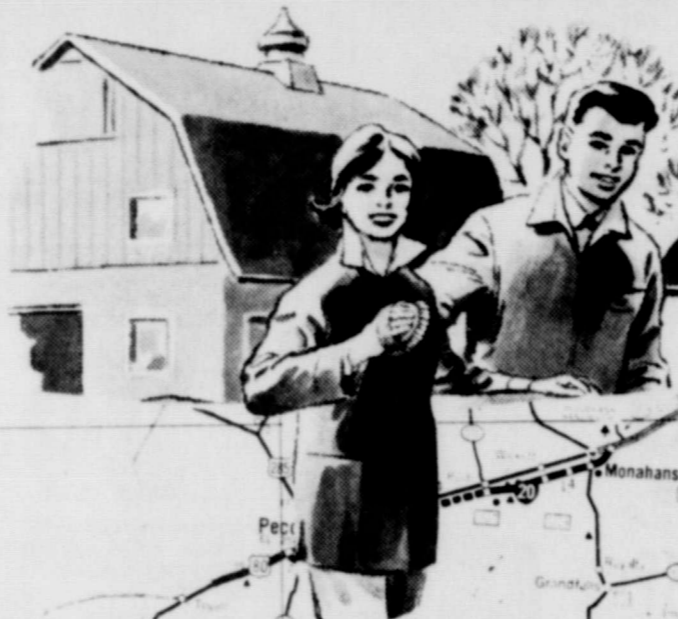


WE HOPE EACH OF YOU BRING HOME FIRST PLACE

Good luck at the Amarillo Livestock show this week.



# We Proudly Salute Our Farm Youth...



- B. AND B. FARM INDUSTRIES, INC.
- FRONTIER FEEDERS
- GIFFORD HILL WESTERN
- JR LUSBY CATS
- R L MCCLELLAN GRAIN CO., INC.
- PERRYTON FEEDERS
- CHALMERS PORTER
- WHITE HOUSE LUMBER CO.
- CATES MEN AND BOYS STORE
- A. AND W. ROOT BEER
- NORTH PLAINS TRUCK & IMP. INC.
- NORTH PLAINS ELECTRIC

FIRST NATIONAL BANK Perryton

HOFFERBER TRUCK LINES

SPEARTEX GRAIN

HANSFORD FEEDYARDS

WHEATHEART FEEDERS, Perryton

EXCEL BODY SHOP  
EQUITY

T. C. HARVEY FEED LOT

PIERCE WATER WELL SERVICE

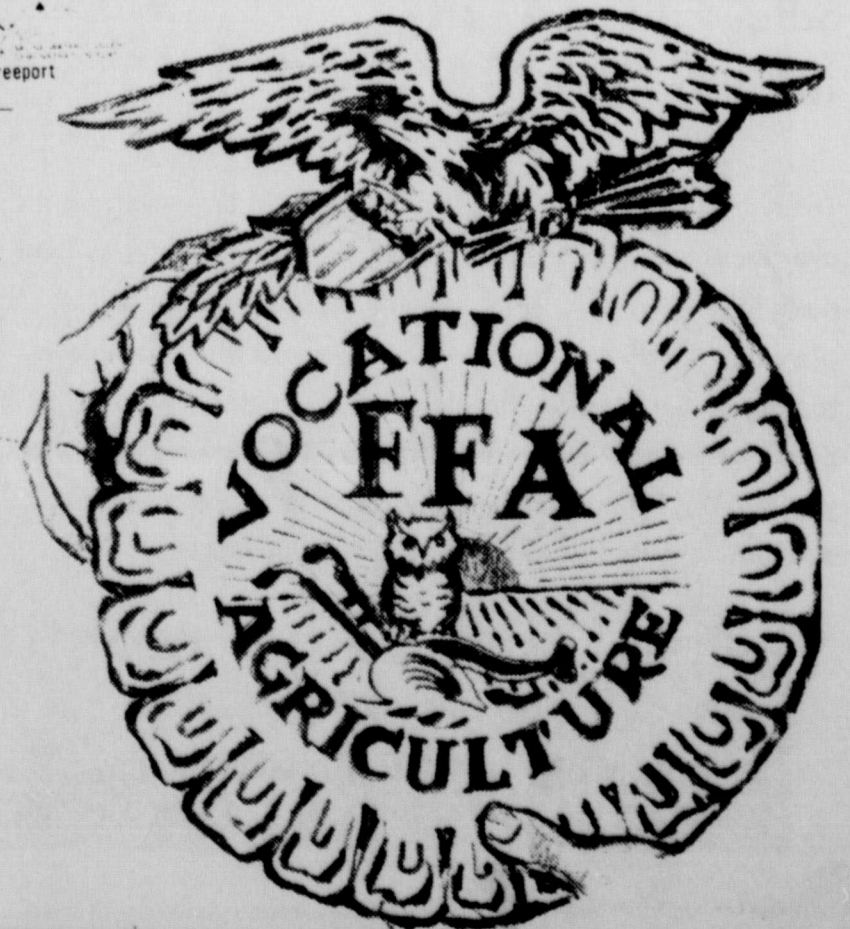
CUMMINGS REFRIGERATION

THIS ADVERTISEMENT SPONSORED BY THE ABOVE LISTED

# Future Farmers of America



GOOD LUCK AT THE FORT WORTH LIVESTOCK SHOW NEXT WEEK.



**Our Heritage of Faith...**

Food for thought . . .

**THE LAST CHANCE**

Read Luke 13:6-9

"If it bears fruit next year, well and good; but if not, you can cut it down." Luke 13:9

Produce or lose your job—that too is life. There is a kind of ruthlessness in human society. There is no room for those who do not produce. It is simply not fair to others when unproductive persons remain on the payrolls. And personnel managers must make the harsh decisions.

Greater flexibility exists in the kingdom of God. The harsh rule of produce or be dismissed is tempered by love and concern. God's kingdom is ruled by love. There is concern for the individual. God does not accept human failure, not at first anyway. He meets it with renewed love and concern.

This parable was spoken first to the Jews. God had lavished love and gifts upon Israel but to no avail. Prophet after prophet had been sent, but Israel produced no fruit. Unless she changed, the time for judgment would come.

God looks for fruit from all who are in His kingdom, but He never leaves us to produce it alone. God cares for us through His Son. He sends us His Spirit. We are constantly exposed to His love and grace by which we may grow and produce. God expects to see in us the fruits of the Spirit: love, joy, peace, patience, kindness, self-control. (Galatians 5:22, 23.)

How are we doing? Are our lives as barren as the fig tree? If so, there is still a last chance to change. Until judgment comes there is always the possibility for a new beginning. We are never too old or too hardened. In Christ we can become new creatures. But Christ is our last chance.

**Prayer**

We thank Thee, Father, for last chances, for Thy acceptance of our failures. Fill the emptiness of our lives with the richness of Thy presence. Cleanse us from sin and renew our barren lives so that we may renew others. Send us Thy Spirit that we may be fruitful indeed. For Jesus' sake, Amen.

**1970 Recorded 20 Accidents**

The Texas Highway Patrol investigated no accidents on rural highways in Hansford County during the month of December, according to Sergeant C. E. Henderson, Highway Patrol supervisor of this area.

The rural accident summary for this county during the calendar year of 1970 shows a total of 20 accidents resulting in one person killed, 16 persons injured, and an estimated property damage of \$27,650.00.

"Operation Motorcide" which was in effect during the Christmas and New Year's holidays recorded 101 traffic deaths as compared to the estimated 87. Ten of these traffic fatalities occurred in the Lubbock Region in the following counties: Cochran, Crosby, Parmer, Swisher, Wichita and Wise which had one fatality each with Dallam and Potter Counties having two fatalities each.

The Patrol Supervisor reminded all motorists to think about the more than 30,000 people that have been killed in Texas traffic accidents during the last 10 years, and to join the drive to reverse this alarming trend of traffic deaths by strict observance of traffic laws and rules of defensive driving.


**Ideal Eye Catchers**

If you stroll along the aisles of Ideal food market in Spearman, you'll begin to notice a lot of handy gadgets displayed at eye level and spaced a few feet apart.

These gadgets include such items as kitchen aids and other small household items.

It's pretty difficult to examine these numerous items with-

**Faith Lutheran Church**  
11th & Bernice



Worship 9 a.m., S.S. 10:15  
Victor Andersen Pastor

out finding one or more to take along home.

These displays tend to make shopping just a little more interesting.

**CATES GROCERY BACK IN ACTION**

Don Cates, owner and operator of Cates Grocery has been busy replenishing his grocery stock and is now ready to serve the past customers of the store.

In reality, the store has never really been closed but the grocery stock was depleted when J. C. Cates decided to retire.

According to Don, the new owner, he will carry a complete line of groceries and other products carried in the past with the exception of fresh meats.

Cold cuts, dairy products and produce will still be offered for sale.



DAVE LLEWELLYN

**The Lost One Comes Back**

A rebellious young son, who knew his older brother was in line to inherit his father's business, grabbed up all the "bread" his Dad had set aside for his future and took off for freedom, some place where he could "do his own thing" with his own kind of people.

Before long he was broke and alone. When he finally came to his senses he went back home to try to get an ordinary job in his father's company. His father was glad to see him come back, but his brother was angry.

You probably have read this story before, not only in a newspaper, but in the Bible. Jesus told a story like this, in Luke 15, that has come to be called the parable of "The Prodigal Son."

**Three Similar Stories**

As a parent or close observer of teen-agers, you may sense satisfaction at the outcome of this story. A free-thinking son who ran away from his father's good advice and careful upbringing has had to admit that Dad was right, after all, and to settle down to a responsible sort of life. You may even indulge a slight tendency to gloat. After all, if Jesus agrees with you, perhaps a little "I told you so" to your kid is justified.

Before you slip this article into your son's school books or put the "Prodigal Son's" parable on the wall of his room, however, we had better study this story more closely.

Two similar short stories preceded this one in Jesus' teach-

ing. He told about a man who lost one of his 100 sheep and searched tirelessly until he found the missing sheep. Then He told about a woman who lost one of 10 pieces of silver and cleaned every inch of her

house to recover it. Then he told this story about the man who lost one of his two sons.

When the son in this story wanted to leave, the father not only made no objection but obligingly provided the money necessary for the escape. Why?

When circumstances forced the son to return home, his father made him immediately welcome, made no comment to the son's apologies, made him feel "at home" again. No sermons. No scolding. No gloating. Why?

**Voluntary Decision**

Because the way to find God is to discover yourself. The son did not run away from home because he was rejecting his father's values, but because he needed to find his own values.

When allowed to face the reality of himself, he returned and adopted his father's values as his own. His stay-at-home brother hid his rebellion, the story says.

Any set of values, especially those created by a relationship with God, must be held by an honest decision in the light of reality. They cannot be forced upon anyone, not even on a child by his parents. A rebel may be on his search for himself, and ultimately for God. So Jesus associated with sinners.

God, represented by the father in this story, made His home and fellowship available to His wayward son, helped him take the final steps to return, expressed genuine joy at his homecoming. But God did not try to reform His son's ways against his will.

These parables teach that God is seeking a relationship with us. The so-called "Prodigal Son" parable teaches more than that, doesn't it?

Copyright Dave Llewellyn 1971

Sunday School Lesson for January 24, 1971

**PUBLIC AUCTION**  
**Of Custer County, Oklahoma**  
**Real Estate & Farm Machinery**

LOCATED 9 1/2 MILES WEST OF CLINTON ON HIGHWAY 73 (MODELLE) AND 2 1/2 MILES NORTH. OR FROM FOSS 4 MILES NORTH TO HIGHWAY 73, 1 1/2 MILES EAST AND 2 1/2 MILES NORTH.

*Wed., January 27, 1971 - 10 a.m.*

**400 ACRES REAL ESTATE**

LEGAL DESCRIPTION: W 1/2, W 1/2 Section 6, Township 12, Range 18 and E 1/2 NW 1/4 and NE 1/4 Section 6, Township 12 Range 18.

ONE HALF OF ALL MINERAL RIGHTS

331 ACRES IN CULTIVATION: 47.6 acres wheat; 81 acres grain sorghum; 81.8 acres cotton; 44 acres barley; 9 acres corn.

PROJECTED YIELD: Cotton 595 lbs.; Grain Sorghum 49 bu.; Wheat 29 bu.; Barley 39 bu.; Corn 34 bu.

PLANTED: Wheat 70 acres; Barley 100 acres; Alfalfa 18 acres. All land lays on or adjacent to Washita River. Most all land can be flood irrigated or sprinkled.

**WASHITA RIVER WATER RIGHTS OF RECORD**

Farm has Vested Water Rights No. 39-10: 70 acres ground water or 120 acre feet of water. No. 69-41: 145 acres surface. 290 acre feet of water. No. 69-41: 90 acres surface. 180 acre feet of water; No. 56-913: 68 acres surface. 136 acre feet of water.

This farm has some of the best land that is on the Washita River. Two sets of improvements.

Farm has one 6-inch irrigation well and the best water rights on the Washita River.

Farm will be offered in two tracts, then as a unit.

TERMS ON REAL ESTATE: 10 percent down on date of sale. Balance at close of escrow. 21 days given to have title examined. Merchantable title and warranty deed furnished.

**IRRIGATION EQUIPMENT**

- ◆ A & M 1320 Ft. Roll Over Wheel System Irrigation Unit
- ◆ 6" x 6" Dempster River Pump. Has Ford 6-Cylinder engine. 1500 GPM
- ◆ 5" x 1" Berkley Pressure Pump, mounted. Has 6-cylinder International motor. 1200 GPM
- ◆ 50 Joints of 6" Flowline 30-Ft. Long Pipe
- ◆ 40 Joints of 5" Pressure Joints 30 Ft. Long Pipe
- ◆ 80 Joints of 3" Flowline 30 Ft. Pipe
- ◆ 10 Joints of 1" Flowline 40 Ft. Pipe
- ◆ 10 Joints of 6" Gated Pipe for 10" Rows, 30 Ft. Long
- ◆ 1 Joints of 5" Gated Pipe for 10" Rows, 30 Ft. Long
- ◆ One Lot of Sprinklers, Elbows & other Irrigation Equip.
- ◆ One Lot of Irrigation Tube ◆ Two Pipe Trailers



**FARM MACHINERY**

- ◆ 1966 931 Case diesel Row Crop Tractor, dual rear wheels
- ◆ 1962 Model 65 MF 3-Pt. Low Clearance
- ◆ Krause Penetrator Tandem Disc 13' 9"
- ◆ Sunflower Stubble Mulcher with two 6' blades
- ◆ New No. 38 JD Ensilage Chopper. Has 2-row corn head for 38 and 40 inch rows
- ◆ No. 216 JD Tandem Ensilage Wagon, like new
- ◆ Side Winder Roto Tiller 160" 3-Pt. with assist wheel, guage wheels, 540 PTO, like new
- ◆ JD 4-Row Cultivator, like new
- ◆ AC 3-Pt. 4-Row Disc Opener Planter
- ◆ New Holland Side Delivery Rake
- ◆ JD 3-Pt. Mower, like new
- ◆ Case 3-Pt. 4-14 inch Moldboard Plow
- ◆ 26-Ft. Parker Crust Buster
- ◆ Hydraulic 4 or 6 Row Front Mounted Marker
- ◆ M & M 16 x 8 Grain Drill ◆ One Lot of Posts and Wire
- ◆ Two 500-Gallon Propane Tanks
- ◆ 200 Gallon Propane Tank on Trailer
- ◆ Metal Hay Feeder ◆ Tandem Stock Trailer
- ◆ One Lot of Hand Tools ◆ Old Scratch Cattle Oiler

**HAY**

800 BALES OF ALFALFA

TERMS ON PERSONAL PROPERTY — CASH. ALL ACCOUNTS TO BE SETTLED FOR ON DAY OF SALE!

**MR. & MRS. WADE MYERS**

FOSS, OKLAHOMA

OWNERS

PHONE (405) 592-3322

**Quinton Jenkins and Associates, the Auctioneers**

616 RAMADA TRAIL

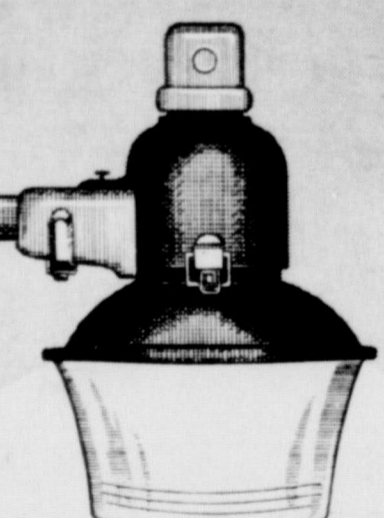
AMARILLO, TEXAS 79108

PHONE (806) 383-7733

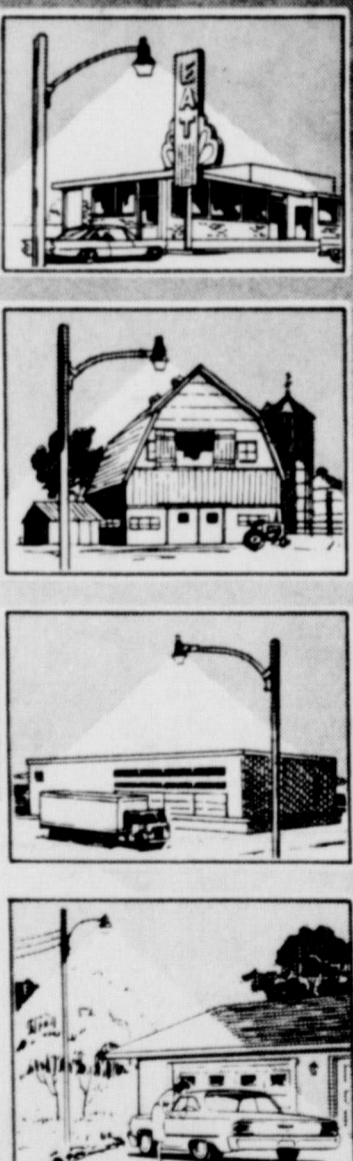
All our sales are advertised over Radio KGNC 710 each Friday noon & over TV Ch. 8, 10 and 12 Tuesdays at 7:25 a.m.

— ANY ANNOUNCEMENT MADE ON DAY OF SALE SUPERCEDES ALL OTHER ANNOUNCEMENTS —

**The Automatic NITE-LITER**



... night-long convenience, safety and security for less than 2¢ an hour!



The economical Nite-Liter spreads useful, convenient light over an area up to 100 yards in diameter automatically from dusk to dawn. The bright mercury vapor Nite-Liter will be placed on a tall wooden pole wherever you wish, completely maintained and even the electricity furnished . . . all for only \$4 a month. No investment is required . . . the total cost to you is just \$4 a month. Call our office soon and have the economical Nite-Liter installed on your property.

**Total cost \$4 per month**

**COMMUNITY PUBLIC SERVICE**

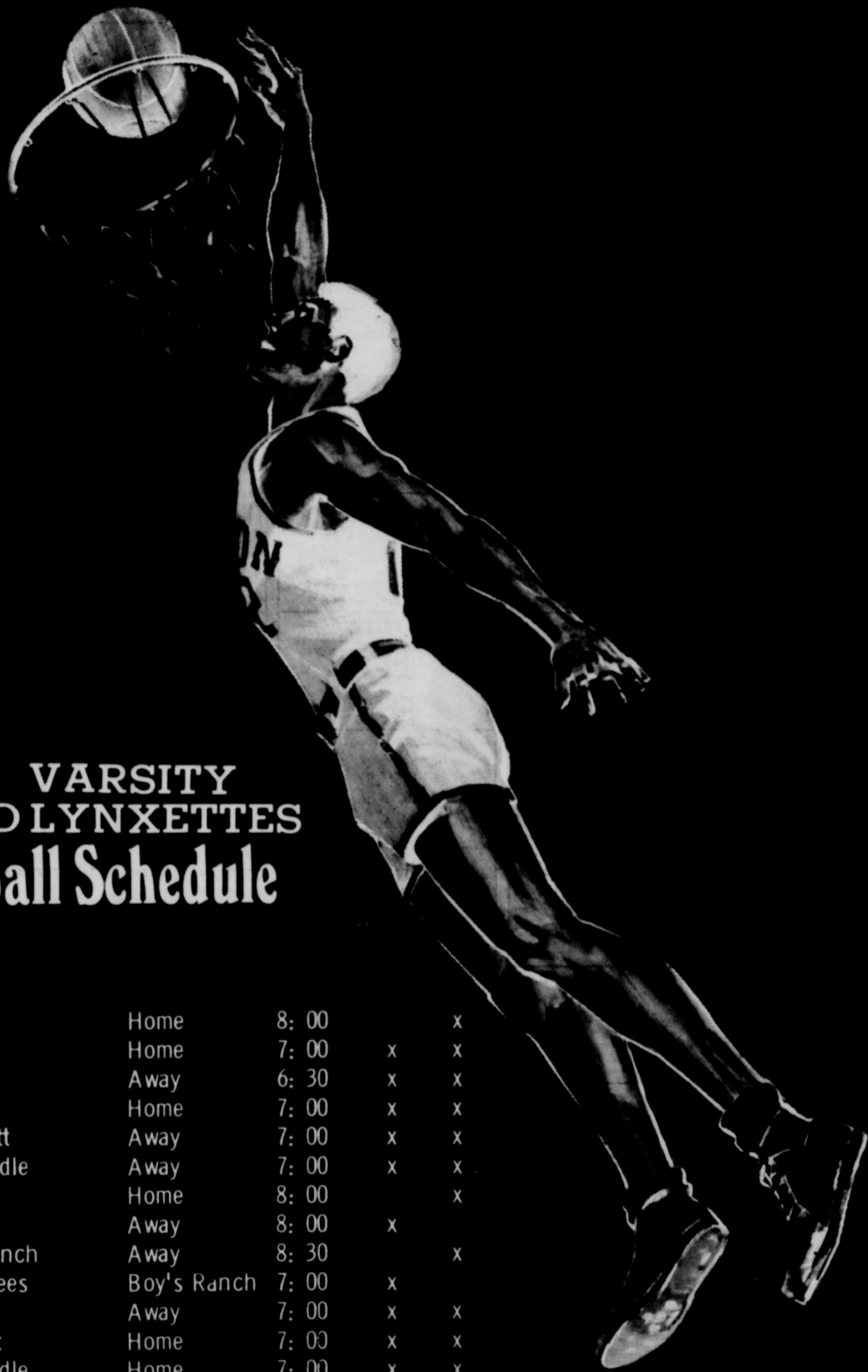
Your Electric Light & Power Company

An Equal Opportunity Employer



# BASKETBALL

## FOLLOW THE LYNX AND LYNXETTES



### 1971 VARSITY LYNX AND LYNXETTES Basketball Schedule

Jan. 2	Dumas	Home	8: 00		x
Jan. 5	Canyon	Home	7: 00	x	x
Jan. 8	Tulia	Away	6: 30	x	x
Jan. 12	*Dalhart	Home	7: 00	x	x
Jan. 15	* Stinnett	Away	7: 00	x	x
Jan. 19	*Panhandle	Away	7: 00	x	x
Jan. 22	*Phillips	Home	8: 00		x
Jan. 22	Canyon	Away	8: 00	x	
Jan. 26	*Boys Ranch	Away	8: 30		x
Jan. 26	Queen Bees	Boy's Ranch	7: 00	x	
Jan. 29	*Dalhart	Away	7: 00	x	x
Feb. 2	*Stinnett	Home	7: 00	x	x
Feb. 5	*Panhandle	Home	7: 00	x	x
Feb. 9	*Phillips	Away	8: 00		x
Feb. 12	*Boys Ranch	Home	8: 00		x
Feb. 12	Boise City	Away	7: 00	x	

# 28 Team Tourney Begins Thursday

Spearman's annual Jr. High Tournament, will begin today (Thursday) at the Spearman high school gymnasium. There will be a total of 28 teams in the tournament, with 8 of the teams coming from Spearman. The 7th and 8th grade boys and girls will each have 8 teams in the tournaments giving the local fans an opportunity to view the finest group of basketball players in the school's history.

Games will be played in both the old and new gymnasiums, as a total of 60 games will be played during the tournament.

Games will start Thursday (today), at 12:15 p. m. with Gruver and Spearman 8 girls in the old gym and (7th grade), and Canadian and Stinnett 7th grade boys in the new gym. Other Spearman games are: Stinnett 7th grade girls at 4 p. m., Spearman and Gruver 7th grade at 12:15 p. m., Spearman and Phillips 7th grade boys at 3:15, Spearman and Gruver boys (7th) at 1:30 p. m., Spearman and Stinnett 8th grade girls at 6:30 p. m., Gruver and Spearman girls 8th grade team at 2:45, Spearman 8 and Gruver 8th grade boys at 5:15—all of these are Thursday games for the Spearman teams.

## SCHOOL LUNCH MENU

- MONDAY, JANUARY 25  
Sliced Franks  
Sauerkraut  
Mashed Potatoes  
Carrot Sticks  
Mixed Fruit Cup  
Honey-Peanut Butter  
Hot Rolls-Milk  
High School Meat Choice  
Beef Casserole
- TUESDAY, JANUARY 26  
Scalloped Chicken and Potatoes  
Buttered Leaf Spinach  
Seasoned Peas and Carrots  
Tossed Salad  
Peanut Butter Cake  
Bread-milk  
High School Meat Choice  
Golden Fried Fish-Tartar Sau.
- WEDNESDAY, JANUARY 27  
Chili-Crackers  
Seasoned Pinto Beans  
Cabbage-Pickle Relish Slaw  
Peach Slices  
Raisin Bread-milk  
High School Meat Choice  
Pimiento Cheese Sandwich
- THURSDAY, JANUARY 28  
Baked Turkey with Gravy  
Cornbread Dressing  
Green Beans with Bacon  
Buttered Corn  
Cranberry Salad  
Butter Cookies  
Bread-milk  
High School Meat Choice  
Steak Fingers
- FRIDAY, JANUARY 29  
Hamburger-mustard or Tuna Salad Sandwich  
Potato Omelet-Catsup  
Lettuce-Tomato Salad  
Dill Pickle Slices  
Cherry Cobbler-milk

## Sports Scene

The Spearman teams (all four of them) had quite a night at Panhandle Tuesday. The Spearman 8 girls lost a heart-breaker 40-40 in overtime to the Panhandle 8 girls. The Spearman 8 boys lost a 1 pointer 27-26, in a defensive duel. The Spearman Lynxettes, won their game about as predicted 75-39, with Sheila Patterson hitting 33 points, about her average for a nights outing. The Spearman boys won their game, rather easily, 49-39. Edgar Womble put on a floor show with his long - 1 handed shots, to lead the Lynx scoring with 18 points.

A large crowd of Lynx and Lynxette fans (both A and B teams) are following the teams this year. Basketball is, and should be, big business in AA schools. At the Panhandle game Tuesday night there just wasn't room for all of the fans to get in the gym, hardly. And, we do want to mention how important the fans are to the teams. The town just takes for granted, that the Lynxettes will be in Austin come February 25th. This isn't so, Coach Weese has worked harder with this team, than any team he has ever worked with. He has had to, He has a real fine group of girls, but as he said earlier in the season, he has to develop these guards, as well as improve these forwards before he can think about winning state. But, fans think he will make it, and lets all get behind this great team and let them know we are saving our money for the regional tourney which will be held Feb. 19-20 in Lubbock we think we aren't even sure of this.

As far as the Lynx are concerned, they have the gigantic task of facing one of the toughest districts in their history. And, if they win Friday night they just might make their way on down to the Regional tournament. The Lynx continue to improve and we

**"GET INVOLVED"**

Monday Meeting Enjoyed By All

The Spearman Rotarians enjoyed a fine program at their regular Monday meeting. Scoutmaster Harry Stumpf discussed the history of scouting in Spearman along with the progress of scouting. Scoutmaster Stumpf is one of the finest and most dedicated Scoutmasters in the area. He was named as the outstanding Scoutmaster for this region at a recent Scout round table meeting in Guyton.

The Rotarian Student-Of-The-Week is Steve Benton, Steve is a Senior at SHS, and the Rotarians enjoyed his presence at the Monday meeting. Rotarians were sorry to hear about Rotarian Mack Mauldin. However it was learned that he is recovering very well after a recent heart attack. President Elizey Vanderburg reminds all Rotarians to be on hand for the next Monday meeting. Officers in the Rotar Club include President Elizey Vanderburg, Vice President Don Hengert, Secretary Dr. Wesley Garnett, Jr., Treasurer Peyton Gibner, Directors Carl Reed, Max Baggerly, Junior Lusby and Gene Barkowsky, Sgt. at Arms, E. J. Copeland. Contact any of these Rotarians if you are interested in joining the club.

President Elizey Vanderburg reminds members that opportunities for make-up are as follows:

Monday-Hereford, Leveland, S.W. Lubbock, Sweetwater; Tuesday-Andrews, Big Spring, Borger, Canyon, Memphis, Midland W., Muleshoe, O'Donnell, Plainview, Post Seagraves, Slaton, Wellington, Texhoma; Wednesday-Childress, Denver City, Dumas, Floydada, Lubbock, Odessa, Pampa, Stanton, Sudan, Tullia; Thursday-Amarillo, Littlefield, Midland, Perryton, Seminole, Snyder, Spur, Tahoka; Friday-Brownfield, Dalhart, Dimmitt, Lamesa, Lockney Odessa, Panhandle, Ralls, Shamrock, S & 2, Amarillo.

## Holt New

Mr. and Mrs. Lex Board of Morse visited Friday nite, Mr. and Mrs. C.W. Kirk.

Mrs. Bertha Jenkins was week-end guest of her daughter, Mr. and Mrs. Bob Tevabough of Claude.

Mrs. Blanch Lamb of Spearman spent the week-end visiting her son Mr. and Mrs. Bob Lamb and family of Pringle.

Jan Jones of Wayland College and Marty Jones of Houston spent the week-end visiting their parents Mr. and Mrs. Marvin Jones.

Mr. and Mrs. Elmer Griffin of Spearman visited Sunday their daughter, Mr. and Mrs. Kenneth Allen and family of Perryton.

Mr. and Mrs. Butch Baker and family of Spearman were Sunday afternoon callers of Mr. and Mrs. Travis Reger and family.

Mr. and Mrs. Doyle Jackson, Tim and Terry visited Friday her parents Mr. and Mrs. J.C. Galloway of Kress, Texas. Friday was Mr. Galloway's birthday.

Raymond Kirk was Thursday nite dinner guest of Mr. and Mrs. Owen Pendergraft.

Mr. and Mrs. Medlin Patterson were host to a Jackson

family Re-Union dinner Sunday January 17. Mrs. Carter Crawford made a beautiful birthday cake honoring four birthdays in January, Dan Jackson, Doyle Jackson, Mrs. John Campbell, and a brother in-law Henry Francis of Mangum, Okla. Present for the occasion were Mrs. Viola Fite, Mr. and Mrs. Carter Crawford and Mr. and Mrs. Dee Jackson and Larry Scoggs of Spearman, Mr. and Mrs. Henry Francis of Mangum, Okla. Mr. and Mrs. Dan Jackson, Mr. and Mrs. John Campbell, Mr. and Mrs. Claude Jackson, Mrs. Nolan Holt, Mr. and Mrs. Doyle Jackson Tim and Terry, Mr. and Mrs. Ira Harbour and Ted. All were present but two brothers Charlie Jackson of Blair, Okla. and Bud Jackson, Scott and Randy Janson were afternoon callers.

Mr. and Mrs. Henry Francis of Mangum were Sunday nite guests of her sister, Mrs. Viola Fite of Spearman.

Raymond Kirk was Friday luncheon guest of the Phil Jenkins.

Mr. and Mrs. Carroll J. Richards and family of Ft. Riley, Kansas, have moved recently to Wichita. Carroll J. is a son of Mr. and Mrs. Wesley Jenkins.



One Day Only  
Sun. Jan. 24  
LYRIC THEATRE

COUGAR COUNTRY, an outstanding wild-animal movie, will show at the Lyric Theatre, Spearman, Sunday, January 24. Four showings have been scheduled: 2:30, 5:30, 7:30 and 9:30. Admission will be adults \$1.75 and children 75¢.

In the still, rugged high country of Colorado there is nothing more real than a young cougar as he stalks his prey. And there is nothing funnier than the actions of a curious

cat as he awaits a cold and hungry night...wondering how it got away!

"Cougar Country" is the real story of the first two years in the life of a mountain lion in the beautiful mountains of the West. It is the latest release by American National Enterprises, Inc., an outdoor and adventure film company located in Salt Lake City, Utah.

A huge cast of wild animals provides the actions as "Whiskers," the cougar, grows up under the careful tutoring of his mother. Background is the natural splendor of the Rocky Mountains. Nature provides the special effects; American National Enterprises, Inc. provides the film and cameras.

Life for the young cougar among the peaks of Colorado mountains is exciting and funny as he learns to catch fish from an icy stream and sometimes ends up getting wet.

"Cougar Country" provides "fun" entertainment for the entire family as "Whiskers" moves farther and farther from his mother's lair and meets more of his neighbors, including a somewhat offensive skunk, a mean marmot, a not-too-friendly American Eagle, giant moose and elk, beaver, badgers and coyotes--and all the other animals with whom he share his territory--"Cougar Country."

Here is an outdoor film that shows nature as it really is--sometimes deadly serious,

sometimes unbelievably comical--but always colorfully beautiful! "Cougar Country" is a film which adults and children alike will enthusiastically enjoy.

**"GET INVOLVED"**

HOSPITALS

Patients dismissed since 1-11-71 B.W. Renner, Larry Lackey, PATIENTS IN HOSPITAL--Lou Miller, Elizabeth Flores, Ham Wilbanks, Irvin Hester, Thelma Davis, Ina Martin, Jeff Melton, Don Horn, Perpe Burns, Charley Langston, Ruby Wilbanks,

HOW TO BUY BEEF---To get the most from beef purchase W.W. Bailey, Extension livestock and meats specialist, suggests that buyers use both the U.S.D.A. quality grades, which have been in use for many years, and the newer yield grades. The quality grades indicate the palatability of the meat while the yield grades indicate the yield of meat that can be used for cooking.



M & M Grocery & Market No. 1  
202 North Bernice St. - Phone: 659-3234  
Spearman, Texas Open 7 Days A Week  
Buccaneer Stamps - Shurfess Milk - TenderCrust Bread - Finest Steaks in the Panhandle

# Savings

HAIR SPRAY 98¢  
H (2 Cans-17-6 oz. Cans)

NOODLES 3 for \$1  
College Inn Chicken And Beef

SALMON 98¢  
Shurfine 16oz. Cans

MEAT BALLS 37¢  
Franco-American Spagetti and 15 oz.

APPLE BUTTER 35¢  
Shurfine 28 oz. Jars

Fresh Slab BACON 59¢  
Lb.

Fresh BEEF LIVER 39¢  
Lb.

Always Fresh POTATOES 10 lbs. 67¢  
No 1

Dog Food 13 for \$1  
Twin Pet

Comstock Apples 3 for \$1  
20 oz.

Instant Potatoes 49¢  
American Beauty four oz. Pkgs

Tomatoes 29¢  
Cello-pac

Oranges 2 lbs. 29¢  
Sunkist

Brach's Bulk Orange Slices 59¢  
lb.

New Fresh HOME-Baked PIES 69¢  
Cherry, Pineapple, Pecan Pineapple Cheese and Apple

House Shoes 69¢  
Reg. 99¢ all sizes  
Jergen's Bath Soap 12 Bars \$1.99

TENDERCRUST BREAD 1 1/2 lb. or giant loaf 5 for \$1.00

## "GET INVOLVED"

REMOVING STAINS---To remove combinations of greasy and nongreasy stains such as salad dressing, ice cream, gravy, or meat juices from washable material, first sponge the stain with cool water. If the spot remains, soak in cool water for 30 minutes. If the spot still doesn't come out, rub liquid soap or detergent into it. Rinse well and let the material dry. If a greasy stain remains, sponge with a spot remover.





et Me See by Sybil...

Cowboys lost Billy pulled half her hair out. I got home from Church to find the doors locked, shades all pulled and the phone off the hook. He had his favorite chair pulled up in front of the TV and within hands reach was the familiar "bible" (the Pro-Football manual); a box of fresh cigars, package of Day's Work and a spit can. (Thank goodness.) Later I noticed the tobacco was all gone, cigars all chewed and all that was left of the "bible" was a charred heap of ashes in the fireplace. I fixed him a tray full of dill pickles, melba toast and a pitcher of water and quietly placed it on his chair-side table. We didn't speak a word. To this day he doesn't know what he ate for Sunday dinner. Then I left home. For some reason I anticipated a dangerous afternoon at my house. It must have been terrible! But at least he suffered all by himself. If you are wondering what that big black thing is on our front door, it's a funeral wreath. In a way I'm sorry these weekend football games via boob-tube are over. Sunday cooking has been no problem at all and it has given me quite a lot of free time to just do my own thing. On top of all that, Billy has received much beneficial exercise from it. You would be surprised at the amount of physical activity he puts out during one of these games. It provides a healthy release for his frustrations, provides an excellent outlet for his aggressive energy, reinforces his masculinity and fulfills his dreams of glory. TV football also provides a period of escape for men like Billy who suffer unbearably from pressures of modern life, the world crises in the Middle East, and the fact that school taxes are so high. It also provides great solace and satisfaction for a man like him who works so hard during the week and is so thwarted and frustrated by depressing local and world events that are beyond his control.

I realize all this you see. But some women consider football on TV as a bad marital influence. Some even consider it grounds for divorce-TV style. Some wives lash out at their husbands for weekend desertion of his own family, abandoning them for his own fantasy world of football on TV. Wives who feel so "left out" because their husbands watch all the TV football games belong to one of the four types of persons described by the famous psychiatrist Dr. Frank Brice-land: First, there's the ulceroidal type who worries about the problem. Second, there is the thyroidal type who runs around the problem about it, and the fourth, there's the hemorrhoidal type who sits on it and waits for it to clear up. It has all cleared up, gals. After last Sunday, you now have your husband back and if you can keep him awake Sunday afternoons maybe you and the family can get back to enjoying "togetherness."

Glenda Guthrie Sorority Host

Xi Zeta sorority met Thursday Jan. 14 in the home of Glenda Guthrie, President Altha Townsend presided over the business meeting. Regular reports were given. A report was given on the success of the Chili Supper the sorority had and a "Thank You" to all who came to enjoy the food and helped in the turnout. Plans were discussed for the Valentine dinner dance but nothing definite has been decided as of now. Refreshments were served by the hostess Glenda Guthrie to Anne Archer, Dottie Beedy, Karen Countiss, Linda Davis, Pat Dear, Pat Donnell, Helen Etter, Elaine Floyd, Marti Garnett, Mary Lee, Lucille Lewis, Judy Martin, Elsie Matthews, Altha Townsend, Peggy West, Gwen McLain and Mona Beth Windom.

Mrs. Robinson Bridge Hostess

The evening of Thursday, January 14 was bridge night for some of the school teachers at the First State Bank hospitality room. Fern Robinson was hostess for the evening and served refreshments to Martha Latham, Faye Cunningham, Louise Hull, Betty Hazelwood, Sonja Ragsdale, Felma Evans and Frankie Sloan. Fern Robinson had high score and Louise Hull second high.

Mrs. Robinson Bridge Hostess

The evening of Thursday, January 14 was bridge night for some of the school teachers at the First State Bank hospitality room. Fern Robinson was hostess for the evening and served refreshments to Martha Latham, Faye Cunningham, Louise Hull, Betty Hazelwood, Sonja Ragsdale, Felma Evans and Frankie Sloan. Fern Robinson had high score and Louise Hull second high.

Rebekah Lodge Plans Installation

The Spearman Rebekah Lodge 290 met in the IOOF Hall in regular session Thursday evening January 14. Ann Shelton, noble grand and Mona Slater-vice grand were presiding officers. Thelma Kenny and Inex Holland will be going to Perryton on the 18th to help with their installation of officers. Other Spearman Rebekah members are invited to attend also. There will be a practice for the installation of Spearman officers on the 21st and all are asked to be present for this meeting. A salad supper and the installation of officers will be held January 28. Mona Slater served refreshments to the attending members.

Pheleo Circle Met Wednesday

Wednesday, January 13 was the meeting day for the Pheleo, which met in the Fellowship Hall of the Christian Church. Chairman Nan Nicholson led the opening prayer and presided over the meeting. Jean West delivered the devotional. The group had the entrance hall of the church paneled, and the bill was accepted. St. Patrick Day dinner plans were started. Time was spent sorting and boxing clothes donated for the Church World Service truck. Hostess for the meeting was Betty Jean Davis. Attending were Nan Nicholson, Jean West, Faye Wirsdorfer, Rose Cummings and Margaret Evans.

Candlelight Ceremony Installation

Women of Faith Lutheran Church met Wednesday, Jan. 13 at 7:30 in the Parish Hall. Delphine Kopke led devotions following with the lesson "Whose Are You?" from I Cor. 1-9. A candlelight ceremony was held for installation of officers: Janice Ward, president; Betsy Ward, vice president; Delphine Kopke, secretary; Nora Meyer, treasurer; Josephine Schneider, secretary of education, and Jan Rinker, secretary of stewardship. After the ceremony they all sang "Tall Candles."

Apple cake, coffee and tea were served to the following members: Dorothea Tackitt, Josephine Schneider, Elma Ward, Betsy Ward, Delphine Kopke, Ruth Knudson, Delma Barnum, Nancy Meyer, Selma Rencau, Evi Meyer, Fern Welch, Nora Meyer and Janice Ward.

Mrs. Trayler Is Guild Hostess

Mrs. Joe Trayler was hostess for the Arts and Craft Guild Friday 15 in her home. The ladies enjoyed the afternoon visiting and painting on their china. Refreshments were served to Mmes. Guy Fuller, Sada Hoskins, Pope Gibner, P. A. Lyon, Sr., Ned Turner and Deta Blodgett. Next Friday's meeting will be held at Mrs. W. L. Russells.

Ruth SS Class Met Tuesday

Ruth Sunday School Class met Tuesday January 12 in the home of Mrs. Major Lackey. Mrs. Lackey presided over the business meeting. Addie Novak gave the devotional. Attending were Mmes. Major Lackey, Sada Hoskins, Mable Edwards, Joe Novak and Altha Groves.

Drug Program

The Methodist Church WSCS wishes to thank all who came to the drug program Wednesday, January 13. Dr. Gregg spoke on "Misuse of Drugs" and there was a question and answer period after. Refreshments were served by the WSCS group after the program to a very large crowd.

"GET INVOLVED" Sign in a Pentagon office: "Look alive. Remember, you can be replaced by a button." "GET INVOLVED"



Brownie Scout Troop 3 met Monday Jan. 18 in the scout house with leaders Mmes. Ralph Bynum and Melvin Swenn.

The girls were told about the Father of the Year contest and time was devoted to working on these. Some time was given to learning some new games. The meeting from now on will be let out 15 minutes early, so the parents may pick up their girls at 4:15.

Jane Nichols served refreshments to Cassie Baker, Dana Bruce, Kenda Burke, Terrie Bynum, Edie Clemmons, D'Ann Cummings, Cammye Gee, Michelle Graham, Melanie Kenney, Jinny Morris, April Percy, Penny Perkins, Kimberly Reed, Tamera Scroggs, Laurie Swenn and Lesa Thomas.

Brownie Troop 149 met Thursday January 14 at the Scout House with Doris Perkins and Ann Flowers. Sue Owens was a guest for a short time.

Terry Owens served refreshments to the girls then Mrs. Jack Moran gave the girls a few pointers on the proper way to present the flag in a flag ceremony. Time was spent practicing on this.

Brownies at this meeting were Shannon Bowling, Pamela Dry, Debbie Eller, Connie Etheredge, Jan Flowers, Jane Flowers, Tammy Ford, Tammy Freeman, Terry Owens, Debbie Perkins, JoAnn Reed, Melissa Robertson, Karen Southern and Yvonne Sullivan.

"GET INVOLVED" Wive to husband: "I'll be glad when you get up high enough at the office to be cranky there!" Economy: A way of spending money without getting any fun out of it.

Cub Scout News

Cub Scout Den #5 met with Mrs. Jack Owens. The scouts visited the courthouse and jail and were shown around by Lee Phillips. Returning to the Owens home they planned the skit their den will present at the pack meeting next week. It was decided to have an extra meeting to work on this skit which will be Thursday, Jan. 21. Refreshments were served by Lynn Ray Vernon to Michael Smith, Richard Montgomery, Mike Owens, Kerry Mullen, Cole Umphress and Rex Freeman.

Cub Scout Den #6 met

Mrs. Charles Hall home Monday, Jan. 18. The meeting was opened with the Flag Ceremony & Promise. Roll call and dues were taken. Brent Biles-Den Chief, continued helping the boys work toward their "Boh-cat" pin. Games were enjoyed. Refreshments were brought by Kevin Russell. The meeting closed with the "Living Circle."

Scouts present were Brent Biles, Kevin Russell, Ronnie Bentley, Johnny Scates, Kelley Scates, Shawn Swenn, Dennis White, Roger Kennard and David Hall.

Junior Book Club Met

The Junior Book Club met Monday evening with Mrs. Oscar Donnell as hostess. Mrs. Donnell also gave a review on the book "The Builder". Refreshments were served to Mmes. C. J. Renner, Nita Henry, Pat Cates and Oscar Donnell. The February meeting will be hosted by Mrs. Renner.

"GET INVOLVED" Mrs. Graves Is Bridge Hostess

Blue Monday Bridge Club met with Mrs. Sam Graves Monday January 18 of an afternoon of bridge. Margaret Gibner held high score. Attending were Margaret Gibner, Mildred Daily, Norman Gandy, Ruth Hill, Deta Blodgett, Gwenfred Lackey and the hostess. The next meeting will be in the home of Mrs. Lackey on February 1.

Wanda Archer Reviews Book

The Aletha Fuller Circle met in the Baptist Church Monday January 18 with Virginia Fowler hosting a salad supper. Wanda Archer delivered the book review on "Tiwan". Enjoying the evening were Doris Wilde, Eva Adkison, Dorothy Woolley, Lillie Hacker, Velma Shoemaker, Leona King, Altha Groves, Sada Hoskins, Mary Boyd, Alma Bradford, Virginia Fowler and guests Dorothy Chevalier and Joan Cantwell.

"GET INVOLVED" Mrs. Inez Holland visited

Mrs. Inez Holland visited Mr. and Mrs. Terry Holland in Amarillo last Sunday.

Veterans who served between Feb. 1, 1955, and March 3, 1966, (as well as Vietnam Era veterans) are eligible for GI Bill educational benefits. Contact the VA.

"GET INVOLVED"

WE ARE OPEN DAILY TO SERVE YOU DURING OUR REGULAR STORE HOURS. A full line of Groceries, Produce, Dairy Products, Cold Cuts & Tobacco Products. Fresh Bread and other Bakery Products. DON CATES Cates Grocery & Market PHONE 659-2224 119 N. BERNICE

COUGAR COUNTRY IN COLOR Starts Sunday One Day Only LYRIC THEATRE Showtimes 2: 30-4: 30 6: 30-8: 30 Adults 1. 50 Child Under 12-75c A PRODUCT OF AMERICAN NATIONAL ENTERPRISES, INC.

We Wish You Luck ALL OF US AT GOLDEN SPREAD, WISH EACH OF OUR EXHIBITORS IN HANSFORD COUNTY THE BEST OF LUCK, AT THE BIG AMARILLO SHOW THIS WEEK-END, AND THE FORT WORTH STOCK SHOW NEXT WEEK-END. IT HAS BEEN OUR PLEASURE TO BE ASSOCIATED WITH YOU, AND YOUR PARENTS IN LIVESTOCK RAISING, THIS YEAR, AND EVERY YEAR. OUR FUTURE FARMERS AND FOUR-STOCK RAISERS ARE THE FINEST BOYS AND GIRLS IN THE WORLD... ONCE AGAIN, WE WISH ALL OF YOU THE BEST OF LUCK... Golden Spread Sales Co.

Semi-Annual CLEARANCE Men's Boots \$12.95 to \$15.95 Men's SHOES Rand & Fortune \$6.95 to \$7.95 Children's Shoes Selected Styles 40% Off HAND BAGS \$1.99 \$2.99 \$3.99 Large Group SHOES Assorted Styles 2 pair \$5 Ladies Shoes Dress Shoes Boots Casuals Loafers First Pair Regular Price 2nd Pair 1c Reed's Family Shoes

# CLASSIFIED ADS WORK WONDERS

Advertise where people LOOK to buy in the



**Fiddle-Free Color TV by RCA**



**Boxwell Bros. Funeral Home and Flower Shop**

**Cummings Refrigeration and Air Conditioning**

**WHITE HOUSE LUMBER CO.**

**Hansford Lodge 1040 A.F. & A.M.**

**SERVICES**

Bultaco-Hondako Motorcycles, Sales & Service, The Cycle Shop, Stinnett, Texas.

Nursery attendant need for Sunday morning services at First Christian Church, Apply-ph 659-2416 or 2497, no 3T-rtn

BOOTS MADE at Woody's, Two boot makers, Woody's Boot Shop, Higgins, Texas, 495-rtn

**PAINT SALE**

Latex Wall Paint \$3.95  
Latex House Paint \$4.95

**PANELING SALE**  
\$1.50-Up

**FOXWORTH GALBRAITH LUMBER CO**

**LOCK SERVICE-1** will be out of town most of the time Monday through Friday for a time. If you have a lock which needs servicing or new keys, leave lock at the White House Lumber Co., and I will repair it on Saturdays, Business Residence Phone 2942, E. D. Mund,, 485-4tc-1T

**FOR SALE**

**FOR SALE**-One lake pump, 1200 ft. pipe, Phone 882-4439, Andy Fuqua, Hardesty, Okla., 9T-rtn

**GARAGE SALE**-1014 S. Bernice, Saturday Jan. 23 9 a. m. to 6 p. m. Sunday afternoon, 2 to 5, 8S-2tp

Authorized Singer Sales & Service, 659-3132, 8S-8tp

A good buy...give it a try. Blue Lustre America's favorite carpet shampoo, GORDON'S DRUG.

**FOR SALE**-2 bedroom home. Fenced backyard. Fully carpeted. Equity and take over payments. Call 659-2492 Spearman. Also have good dune buggy for sale. 4T-rtn

**REAL ESTATE**

**LAND FOR SALE**-1920 acres (Sections 101, 104 and 116, Block 45, H&TC Ry. Co., Hansford County, Texas.) 177 acres in cultivation, balance in grass. A set of improvements. No minerals. Located four miles Northwest of Spearman, Texas. Federal Land Bank loan on land, \$62,500.00 at 7% interest with semi-annual payments of \$2,420.00. For additional information call Porter R. Underwood, Jr. 204 Amarillo Building, Amarillo, Texas Phone 372-3262. After 6:00 p. m. call 352-5516, 4T-rtn

**LAND FOR SALE**-1280 acres (Sections 70 and 71, Block 2, GH&H Ry. Co., Hansford County, Texas.) 924 acres in cultivation, balance in grass. Three irrigation wells. No minerals. Located 17 miles Southwest of Gruver. Wheat allotment 462 acres. Feed-Grain allotment 190 acres. Loans on land \$133,000.00 at 5 3/4% and 7% interest. For additional information call Porter R. Underwood, Jr. 304 Amarillo Building, Amarillo, Texas. Phone 372-3262. After 6 p. m. 352-5516, 43T-rtn

**FOR SALE**-1300 acres wheat land twelve miles South East Pueblo, Colorado. See Robert E. Portenier Leach Co. Main and First Street, Pueblo, Colorado, 816-2, 6S-6tp

**FOR SALE 522 ACRES**

Minnie Peterson estate-12 miles south of Guymon. Most of it irrigated. Producing gas well. Write G.H. Tittsworth, 505 N. West Street, Wichita Kansas, 67203, 51S-24T

**FOR SALE**  
3 BR Home Dessen St. Luxury home, Blodgett Dr.  
2 BR, near school, nice  
2 BR, corner lot  
Greenhouse & Dwelling  
Trailer park & small house  
3 BR, 2 bath home, SW Spearman  
4 Unit Apt. Zoned Retail  
Choice residential lots  
4} acres E. Kenneth  
Airport Lot on Pavement  
EMMETT R. SANDERS  
BROKER  
659-2516  
8T-rtn

**FOR SALE**-Section northeast of Spearman, near large feed-lot, good water area. Emmett Sanders, 659-2516, 9T-3tc-T only

**WANTED**

**HELP WANTED**-Person to work 2 to 3 hours afternoons cleaning high school building. Apply to school business office, 403 East 11th, Spearman, \$1.60 per hour. Phone 659-2116, 8S-2tc

**FOR RENT**

**FOR RENT**-Small two bedroom home. Unfurnished, COLLARD REAL ESTATE Ph. 659-2501 3T-rtn

**FOR RENT**-One bedroom home. Unfurnished, COLLARD REAL ESTATE Ph. 659-2501 3T-rtn

**HOUSE FOR RENT**-2 large bedroom in Spearman. Call 733-2135 in Gruver for appointment. 9T-3tc

**For Rent**-2 bedroom house. Unfurnished Inquire at 327 N. Hazelwood. 51T-rtn

**FOR RENT**-Furnished, clean, air conditioned TV's available. Downtown Apts, Phone 2269. 10T-rtn

**FOR RENT**-3 bedroom carpeted unfurnished house. 659-2566 or 2719, 51S-rtn

**FOR RENT**-One Bedroom Furnished apartment. Call 659-2274. 4T-rtn

**FOR RENT**-Furnished Bachelor Apt. Contact Jim McLain. 659-3418. 12T-rtn

**FOR RENT**-One Bedroom, newly furnished apartments. Carpeted. Phone 659-2566, 41T-rtn

**FOR RENT**-furnished Apt. 606 S. Bernice Street, Phone 659-2652. 28S-rtn

**LEGAL NOTICES**

**NOTICE TO CREDITORS**  
I, Myrtle Bernstein, whose Post Office Address is Gruver, Texas, having on the 18th day of January, 1971, been duly granted Letters Testamentary of the Estate of Mary Brandvik, deceased, and having qualified according to law as Independent Executrix, NOW GIVE NOTICE TO ALL PERSONS HAVING CLAIMS AGAINST SAID ESTATE, requiring them to present the same properly authenticated, to the undersigned within TWELVE MONTHS from the date of said appointment, for allowance.  
Myrtle Bernstein  
Post Office Address:  
Gruver, Texas  
9T-ltc

**NOTICE**  
Notice is hereby given, that the Commissioners' Court, in and for Hansford County, Texas, will receive proposals at its regular meeting in February, 1971 being the 8th day of February, 1971 at 10:00 o'clock A.M. in the office of the County Judge, in the town of Spearman, Texas, from any Bank, Corporation, Association or Individual Banker of said County, for the depositing of Public Funds of said County, in such Bank, according to and as provided in Articles 2544 and 2545 of the Revised Civil Statutes of Texas.  
Norma Jean Covell  
County Clerk, Hansford County, Texas  
9T-2tc

**NOTICE OF ROAD BOND ELECTION**  
THE STATE OF TEXAS COUNTY OF HANSFORD TO THE RESIDENT QUALIFIED ELECTORS OF COMMISSIONERS' PRECINCT NUMBER 2 OF HANSFORD COUNTY, TEXAS, INCLUDING THOSE WHO OWN TAXABLE PROPERTY IN SAID PRECINCT AND WHO HAVE DULY RENDERED THE SAME FOR TAXATION:

TAKE NOTICE of an election to be held on the 8th day of February, 1971, within COMMISSIONERS' PRECINCT NUMBER 2 OF HANSFORD COUNTY, TEXAS, for the purpose of submitting the following proposition:  
"WHETHER OR NOT the bonds of COMMISSIONERS' PRECINCT NUMBER 2, a political subdivision of HANSFORD COUNTY, Texas, shall be issued in the total principal sum of FIFTY THOUSAND DOLLARS (\$50,000), to mature serially over a period of years not to exceed TEN (10) years from their date, to be issued and sold at any price or prices and to bear interest at any rate or rates as shall be determined within the discretion of the Commissioners' Court of Hansford County, Texas, at the time of issuance, for the purpose of constructing, maintaining and operating macadamized, graveled or paved roads and turnpikes, or in aid thereof; and shall ad valorem taxes be levied on all taxable property within the said COMMISSIONERS' PRECINCT NUMBER 2, sufficient to pay the interest on said bonds and to provide a sinking fund for their redemption at maturity."  
AND FURTHER TAKE NOTICE that the manner of holding said election and canvassing and making returns thereof shall be governed by the General Laws of this State, when not in conflict with the provisions of Chapter 16 of the General Laws passed by the Thirty-Ninth Legislature at its First Called Session in 1926; that the ballots for said election shall be prepared in sufficient number and in conformity with Chapter 6, V.A.T.S., Election Code, and the aforesaid proposition shall be set forth in substantially the following form:

"THE ISSUANCE OF BONDS AND THE LEVY OF AD VALOREM TAXES IN PAYMENT THEREOF"  
The word "FOR" and beneath it the word "AGAINST" shall be made to appear on the left of the proposition. A square shall be printed on the left of each of the words "FOR" and "AGAINST", and each elector shall place an "X" in the square beside the statement indicating the way he wishes to vote.  
AND FURTHER TAKE NOTICE that said election shall be held at the GUS RENNER RESIDENCE, approximately 17 miles Northwest of Spearman, Texas, and in COMMISSIONERS' PRECINCT NUMBER 2 OF HANSFORD COUNTY, TEXAS, and the officers of said election shall be as follows:  
Mrs. Harold Saltzman, Presiding Judge  
Mrs. Etta L. Beck, Alternate Presiding Judge  
The Presiding Judge shall appoint not less than two (2) nor more than three (3) qualified clerks to serve and assist in holding said election; provided that if the Presiding Judge herein appointed actually serves, the Alternate Presiding Judge shall be one of the clerks.  
On election day the polls

shall be open from 8:00 A.M. to 7:00 P.M.

Absentee voting shall be conducted at the County Clerk's Office in the Court-house, in accordance with the provisions of V. A. T. S., Election Code, Chapter 5.

All resident qualified electors of Commissioners' Precinct Number 2 of Hansford County, Texas, including those who own taxable property in said Commissioners' Precinct Number 2 and who have duly rendered the same for taxation, shall be permitted to vote at said election. That at said election two separate ballot boxes shall be provided at the polling place. In one box only resident qualified electors who own taxable property and who have duly rendered the same for taxation shall be allowed to vote. In another box all resident qualified electors (who are otherwise qualified but do not own taxable property which has been fully rendered for taxation) shall be allowed to vote. The votes cast in each of said boxes shall be recorded, returned and canvassed in such manner as will reflect separately the votes cast by the qualified electors who own taxable property and who have duly rendered the same for taxation (including those who own taxable property and who have duly rendered the same for taxation).

The above and foregoing NOTICE OF ROAD BOND ELECTION is issued and given by me, pursuant to authority conferred by order of the Commissioners' Court ordering said bond election, duly passed and adopted on the 7th day of January, 1971.

WITNESS MY HAND AND THE SEAL OF THE COMMISSIONERS' COURT OF HANSFORD COUNTY, TEXAS, this 7th day of January, 1971.

Norma Jean Covell  
County Clerk and Ex-Officio Clerk of the Commissioners' Court of Hansford County, Texas  
(Com. Crt. Seal)

8T-9T-10T-c

**Mesa's Gas Volumn Up 90%**

MESA PETROLEUM CO. (NYSE) announced today that Kansas Power & Light Company has commenced operation of additional compression facilities in the Hugoton Field of Kansas, and that the rate of delivery of gas from Mesa's properties to Kansas Power & Light Company is now over 200 million cubic feet per day, which is in line with the projected 1971 sales of 70.6 billion cubic feet. This intrastate sale is at an average price of 21.3¢ per thousand cubic feet. The contract quantity for 1970 was 50 billion cubic feet; however, due to delays in construction of compression facilities, sales to KP&L in 1970 amounted to only 44 billion cubic feet. Mesa will, however, receive payment for the full contract quantity and KP&L will be able to make up the deficiency during the next three years. Under generally accepted accounting principles, such income will be deferred for financial reporting purposes by Mesa and taken into income as the gas is produced.

Expansion of Mesa's Processing Plant near Ulysses, Kansas is on schedule and should be completed in early February. Such additions will insure efficient processing of the increased volume of gas and should result in an average recovery of natural gas liquids of 170,000 gallons per day, an increase of some 30% over the 1970 level. A long-term contract for the fractionation and sales of the natural gas liquids has been made with Cities Service Oil Company and deliveries under this contract began January 1, 1971.

A stork is a bird with many things charred against it which should have been blamed on the lark.

TEXAS PRESS ASSOCIATION  
Member Since 1970

**THE SPEARMAN REPORTER**  
Spearman, Texas 79081  
213 Main Box 458 659-3434

Published Weekly at 213 Main Street, Spearman, Texas 79081

Owner-Publisher ..... William M. Miller

Any erroneous reflection upon the character of any person or firm appearing in these columns will be gladly and promptly corrected upon being brought to the attention of the management.

SUBSCRIPTION RATE--Hansford, adjoining counties, \$7.00 yr. Other points in combination with The Hansford Plainsman, \$9.00 yr.

Let us Precondition Your Calves or Grow Your Cattle

On cheap Rations- Complete Cattle Services  
Barnes & McCammond  
BARNES FEEDLOT  
Spearman, Texas 659-3638  
659-3393

Ford's answer to imports...the new Pinto.

1971 Pinto

Ford's answer to dull...the bold Mustang.

1971 Mustang Hardtop

Ford's special value...Galaxie 500. Free Power Steering! Free Power Disc Brakes!

White Sale Special  
1971 Ford Galaxie 500  
2-Door Hardtop

FORD Better idea for safety...buckle up

**NOW! SPECIAL WHITE SALE SAVINGS ON BIG, LUXURIOUS GALAXIE 500's!**

Free Power Steering... When you buy this quiet Galaxie 500 2 Door Hardtop White Sale Special equipped with vinyl roof, wheel covers, white sidewall tires, bumper guards, accent stripe, special paint and special luxury seat trim.

Free Power Disc Brakes and Free Power Steering... If the Galaxie 500 White Sale Special you choose is also equipped with air conditioning, tinted glass, automatic seat back release, and visibility group which includes a parking brake light, remote-control sideview mirror and extra courtesy lighting.

Import-sized car. Pinto. Ford's Pinto is import-sized, import-priced, but with these advantages over the popular imports: more usable room inside, a lower silhouette and wider tread for good stability on the highway, a 75-hp engine so you don't have to worry about moving into expressway traffic. And remember Pinto is a carefree little car. It saves you on gas. It's designed to need less routine maintenance. Most maintenance you can do yourself.

Bold, new personal car. Mustang. Mustang is at it again this year with a lineup of personal, sporty cars that could bring out the new you. There's a new look in Mustang '71. Its spirit is bolder. And there's a new wider stance for better handling. New standard features include side door Steel Guard Rails, concealed windshield wipers and recessed door handles. And there's a long list of options to let you design any of six new models to your own specifications. Mustang...it's a personal thing.

**INSTRUMENT FLYING GROUND SCHOOL**  
Saturday, January 23rd

HOME DEMONSTRATION CLUB BUILDING

To be held three consecutive weekends, Saturdays and Sundays. Qualifies to pass the FAA Instrument written exams. Contact Flying, Inc., in Amarillo, or J.L. Brock in Spearman for details. Enrollment limited.

Instructors:  
Bill Puttock, Advance and Instrument Ground Instructor, Member American Meteorological Society.  
Ken Kohler, Advanced and Instrument Ground Instructor, ATR

**Flying INC.**  
KENNETH KOHLER  
(806) 376-4509  
TRADEWIND AIRPORT  
ROUTE 2 BOX 2A  
AMARILLO TEXAS

The S boys and their liv illo Sho the For weekend the fine! lvestoc! The h man for January January weighed Sunday, will sho County i to make this wee Barrow Sloan, R halston, Cook, J Kingmar Billy Gil crossbre will sho Ronnie S

B

8T-9T-10T-c

FORD  
P

# LIVESTOCK READY TO SHOW

The Spearman FFA and 4H boys and girls are preparing their livestock for the Amarillo Show this weekend and the Fort Worth Show next weekend. This will be one of the finest groups to ever show livestock in the two big shows. The hogs will leave Spearman for Amarillo this Friday, January 22nd. On Saturday, January 23 all hogs will be weighed and sifted at 8 a. m. Sunday, January 24 all hogs will show. Many Hansford County residents are planning to make the big Amarillo show this weekend.

Barrows are entered by Pat Sloan, Ronnie Head, Seth Ralston, Ronnie Sasser, Allen Cook, Joe Bob Jones, Carl Kingman, Roy Hawkins and Billy Giles. Pat will show a crossbred chester white; Seth will show crossbred Duroc; Ronnie Sasser will show a

Hampshire; Allen Cook will show a Duroc; Joe Bob Jones will show Hampshire, Poland China; Carl Kingman will show a Poland China; Roy Hawkins will show crossbred Hampshire; Billy Giles will show a crossbred.

Beef animals to Amarillo will leave here Saturday, January 23. The cattle will be weighed and sifted Sunday, January 24 and will show next Monday, January 25.

Roy Jackson will show an Angus steer, Karen Kunselman will show a crossbred steer; Jerry Etheredge will show a Hereford steer. Two 40H steers will be shown by Sam and Kim Boone. Both of the Boone steers are Herefords and these two 4-H exhibitors are expected to make a good showing along with the FFA boys.

Following the Amarillo

show, the Spearman FFA and 4-H boys and girls will head for the big Fort Worth Stock Show.

Exhibitors there include Karen Kunselman, one short-horn cross steer; Bailey Patterson, one polled Hereford steer; Bailey Patterson, one Hereford heifer; Roy Jackson, two Angus steers; Richard Sasser, one Angus steer.

4-H exhibitors at Fort Worth include Cindy Patterson, one Hereford heifer; Kim Boone, one Charolais steer; Kim Boone, one Hereford heifer; Sam Boone, one Hereford steer.

The Fort Worth trip is scheduled as follows: Leave Spearman, Tuesday January 26 with cattle, January 27th, ready steers for show, January 28th, steers weighed and toothed, January 29th, all steers will be sifted, January 30th, all

steers will show, January 31st, Monday, all beef heifers will show.

Swine entered in the Fort Worth Show, include Pat Sloan, one Berkshire and one crossbred, Karl Kingham, 1 Poland China; S. Ralston, 1 Duroc, 2 Hampshire, 1 crossbred and 1 spotted; Ronnie Head, 1 Poland and 1 cross; R. Hawkins, 1 Hampshire and 1 crossbred; D. Hext, 1 Hampshire; Roy Sasser, 1 Berkshire and 1 Hampshire; Billy Giles, 1 cross; J. D. Davis, 1 cross; A. Cook, 1 Duroc; J. B. Jones, 2 Hampshires, 1 Poland, 1 cross; K. Kelp, 1 Chester, 1 Poland. A total of 2 Berkshires, 1 Chester, 3 Durocs, 7 Hampshires, 4 Poland, 7 cross, and 1 spotted swine will be taken to the Fort Worth show.

The Department of Agriculture has advised Congressman Bob Price that they have modified their ruling which would have required that land diverted under the new set-aside program must have been harvested in at least one of the past three years.

Congressman Price told Secretary Clifford Hardin last week that this would mean the plowing up of thousands of acres of land that have been planted in grass to prevent soil erosion. As a result, the Department of Agriculture has agreed that this soil bank or ACP land can be used for set-aside in 1971.

"I am pleased that the Department has made this decision and am hopeful that during the next year we can convince them to allow this practice to continue after 1971," Price said.

The Agriculture Department advised the Panhandle Congressman last week that they will allow county ASCS committees to determine dates for grazing diverted acres as long as they are uniform within a specific area.

Department officials have refused, however, to designate barley as a feed grain for 1971; but will offer a price support loan of 8 1/2¢ per bushel on barley produced on allotted acres.

## Ruling Modified On ACP Land

The Grain Sorghum Producers Association has done it again," reported Troy Sloan of Spearman, a local representative of the organization. The legislative action of relation grain sorghum to corn on a nutritional value has given millions of dollars of farm income protection to the grain sorghum producers of the United States. While many areas of farm income were being lowered by the provisions of the new farm bill, the total loan and price support payments were raised from \$2.14 per hundred weight in 1970 to \$2.25 per hundred weight for 1971. This is an increase of 11¢ per hundred weight income protection on all grain grown. Grain sorghum is now related at 92% of the nutritional value of corn, and tests are being conducted to substantiate that the nutritional value is at least 95% or greater than that of corn. This would mean an additional 8¢ per hundred weight income protection for all grain sorghum grown.

The production year of 1969 saw 16.8% of all grain sorghum grown go into export markets as cash sales. This means that 16.8% of the producer's income is derived directly from export markets, which removes this much grain from the local market condition. This additional grain could have a depressing factor upon local prices. Export markets pay well to our local producers, and milo producers must see that these markets are maintained and enlarged. The Grain Sorghum Producers Association, since its organization in 1956, has been the recognized spokesman for grain producers. It has seen national production go from 22 bushels per acre to a high of 66 bushels per acre, which demanded new markets, and these markets were found in the local feed-

ing and export industry. Grain sorghum sales exceeded \$200,000 in this area each year and is now the largest acreage and cash crop in the area. Producers in each county are elected and serve on the board in making policy decisions and giving directions. Their efforts have paid big dividends for the producers of this area. Administrative decisions are being made each day that affects the income of each grain sorghum producer. GSPA must meet with leaders on all levels to get the best possible deal for the producer. Many producers have overlooked the opportunity with their membership dues. Incidentally, as a landowner, or land operator, have you given your support?

## COUNTY AGENT'S REPORT

— By Robert Adamson

Cash income to farmers and ranchers in Hansford County should be more than fifty million dollars by the end of 1976, according to Robert Adamson, county agricultural agent.

This will be an increase of more than thirty million dollars from 1968-69 figures, with feedlot cattle contributing a large part of the gain. The projections are based on studies of the Texas Agricultural Extension Service and are part of the "3, 76 in '76 program," a state-wide project to increase Texas agricultural cash receipts by more than one billion dollars.

Total cash receipts from all agricultural enterprises in Hansford County are presently about twenty-eight million dollars. The most important ones are grain sorghum, wheat, stocker cattle and feedlot cattle.

The county will be aided in its production efforts by the Panhandle Economic Program. Extension specialists will hold conferences in Hansford County on February 25, 1971 to discuss improved production of grain sorghum.

The projections are based on estimates from the County Program Building Committee; after separate predictions were made by Extension economists. The figures were published for each county, Extension district and economic area in Texas.

"Hansford County producers will have access to production information and techniques that can help speed success for the Texas goal of \$3.76 billion in 1976," says Mr. Adamson.

Most of the livestock and swine went to Mexico and South American countries which have found Texas cattle and hogs more than adequate for upgrading their herds, Commissioner White said. Texas Department of Agriculture personnel are active throughout the year in helping foreign visitors locate and buy good Texas swine and livestock.

The figures on exports are based on the U. S. Department of Agriculture's health certificate records. Such certificates are required when exporting livestock and swine.

## FARM BUREAU LEADEKS WILL TALK 'TAXES'

AUSTIN--State Legislators will be tuned in on legislative goals of the state's largest general farm organization at a meeting scheduled to be held at the Villa Capri Motor Hotel here Wednesday, Jan. 20.

State Senators, Representatives and elected State officials will be guests of the Texas Farm Bureau at a banquet that evening in conjunction with a statewide Legislative Conference of county Farm Bureau leaders that will be held Jan. 20 and 21.

County Farm Bureau presidents from over the state and chairmen and members of their PX (policy execution) committees will attend the conference where legislative goals of the state farm organization and issues expected to confront the 82nd session of the Legislature will be discussed.

At the banquet, TFB President J. T. Woodson will discuss current agricultural problems, TFB policies in regard to those problems, and the things the organization will be trying to accomplish during this year's legislative session. The TFB has 121,158 member families in 204 organized counties.

The conference will begin at 2 p. m., Jan. 20 and will adjourn at noon the following day. Speakers will include O. R. Long, Waco, TFB executive director; Tommy Klemcke of Austin, TFB director of state affairs; Ed McKay of Waco, TFB legislative director; and several legislators. Long will speak on "Let's Accept the Challenge." Klemcke will discuss key state legislative issues. McKay will speak on "PX Power."

Topics to be discussed by legislators will include How A Bill Becomes Law, Water for Texas, Agricultural Pollution Problems, Where's the Money Coming From, and the Effect of Redistricting on Rural Political Power.

The county Farm Bureau leaders will tour the capitol

and meet with their respective Senators and Representatives on the afternoon of Jan. 20.

Woodson said taxes and redistricting are "two big items" with which this session of the Legislature will be dealing. "We are looking at the biggest tax bite in many years--as much as \$700 million," he said. TFB policy favors use of the present selective sales tax as the method for raising the necessary funds for operation of the state government.

The TFB president said rural areas will lose representation to urban areas in the realignment of legislators' districts required following the 1970 census.

## WOKK WEEK REDUCED FOR HIWAY WOKKERS

AUSTIN--The Texas Highway Commission today reduced the normal work week of hourly-paid maintenance employees of the Texas Highway Department from 45 to 40 hours a week.

The change is effective March 1. The action was taken to bring the work week of hourly-paid maintenance employees into line with those of salaried employees of the Department who have been on a regular 40-hour work week for several years.

The Commission has had under study for a considerable time a proposal to place all employees on a uniform work week without a reduction in gross pay. The action today implements this proposal.

## MARKET REPORT

Wheat	\$1.42
Milo	2.02
Corn	1.33
Soybeans	2.38
Oats	.70
Barley	1.05

## "GET INVOLVED"

# BUTCHER BOY MARKET

412 DAVIS

Phone 659-2425

We sell only Choice Grade Beef

Special Thursday, Friday, & Saturday

If you don't see it in the meat case, ask for it. We like to custom cut your meat.

**CHICKEN FRIED STEAK**

Lb. \$1.19

Meat Cut The Way You Want It.

Eggs - Bread - Milk



## LOVE THY NEIGHBORHOOD

Money you save with us goes back into the community to provide homes and jobs.

# Perryton Savings

## & LOAN ASSOCIATION

MEMBER FEDERAL SAVINGS AND LOAN INSURANCE CORPORATION WHERE YOU SAVE DOES MAKE A DIFFERENCE\*

Full Service Mobile Office Spearman Plains Shopping Center Mon., Wed., & Friday Phone 659-2344 GRUVER-THURSDAY CANADIAN-TUESDAY

MEMBER FEDERAL SAVINGS AND LOAN INSURANCE CORPORATION WHERE YOU SAVE DOES MAKE A DIFFERENCE\*

We could make a "believer" out of you

...FAST!

What do you want most in that new tractor for '71?



Bigger power to help you move faster? More total comfort and protection? We'll show you Case power and comfort the likes of which you've never seen before. Come in and we'll prove it!



CASE WILL GIVE YOU A \$300.00 CREDIT

To introduce you to the COMFORT AND PROTECTION OF A CASE CAB

Purchase your new '70 Case Agri King Tractor this month and Case will apply \$300 toward the purchase of a Case cab.\*

\*The \$300 may be applied to other eligible options if you prefer. See us for information. Limited time offer.

**R.L. McClellan & Sons, Inc.**

# JANUARY JUBILEE OF OLD FASHIONED

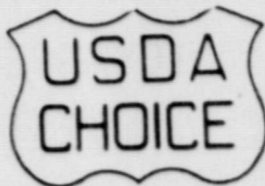
The Friendliest Store In The Panhandle

**Cut Rate**  
**GROCERY**  
PLAINS SHOPPING CENTER  
SPEARMAN, TEXAS



# FOOD BARGAINS

## BEEF



### Fryers

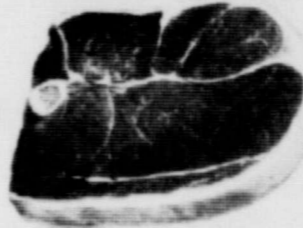


27¢  
lb.

Fryer Breast 59¢  
lb.

GROUND BEEF 48¢  
lb.

### STEAK



89¢  
lb.

### STEAK



98¢  
lb.

### ROAST



79¢  
lb.

### ROAST



89¢  
lb.

### LISTERINE

88¢

### OLEO

29¢  
1 lb.

### APPLES

25¢  
No. 2 can

### APRICOTS

25¢

### TOMATOES

19¢

### Vegetable Oil

46¢



At Least \$100.00 Or More  
**JACKPOT DAY**  
WIN Free Cash



Shurfresh Medium  
**Eggs**  
38¢  
doz.

Tender Crust  
**Bread**  
25¢

Folger 1 lb. can  
**Coffee**  
87¢



SHURFINE 10 lb. bag  
**Flour**  
89¢

Chocolate Drop  
**Candy**  
29¢  
bag

Shurfresh Flat Can  
**Tuna**  
29¢

## FOOD SAVINGS

Green Beans 19¢  
Shurfresh 303 can

Apple Butter 29¢  
Shurfresh 28 oz.

French Dressing 25¢  
Kraft 8 oz.

Honey Buns 24¢  
Morton

Orange Juice 3 for 88¢  
Shurfresh Frozen 12 oz. Can

Toastem Pop Ups 38¢  
All Flavors

### HAIR SPRAY

3 for 1¢

### CAKE MIXES

4 for 88¢

### PEACHES

28¢

### CHEER

68¢

## ORANGES

17¢  
lb.

## APPLES

19¢  
lb.

Carrots 2 for 19¢

Turnips 11¢  
lb.

