

the SPEARMAN Reporter

VOLUME 62, NO. 11

THE SPEARMAN REPORTER, Hansford County, Texas 79081

THURSDAY, FEBRUARY 4, 1971



TAG TIME AGAIN--Vicki Warren displays one of the new 1971 license tags which went on sale at the County tax office Feb. 1. This office reported a brisk sale of 100 tags Monday. Purchasers are asked to present their renewal notices when buying tags. These notices were mailed from the State office several weeks ago. Over five thousand passenger, commercial and farm tags were received by the county tax office. Deadline for having tags on vehicles is April 1.

Meetings Slated On Wheat Referendum

Two meetings are slated in the Panhandle for the week of February 15 to explain a wheat referendum to producers in 17 counties. These meetings are held prior to a certification by the state commissioner of agriculture for the Texas Wheat Producers Association to conduct such a referendum. The purpose of the referendum is to raise funds with which to conduct programs of education, research, disease and insect control and marketing of wheat, explains County Agricultural Agent Robert Adamson.

The first meeting will be held on February 15 at 2 p. m. in the County Community Building in Dumas. Producers Moore, Ochiltree, Hansford, Garman, Carson, Hartley, Lam, Lipscomb, Gray and Dickinson counties are engaged to attend.

Another meeting is slated for February 16 at 7 p. m. in the Community Center in Safford. This meeting will be for producers in Deaf Smith, Farmer, Castro, Rankin, Potter, Oldham and Strong counties.

The program at each location is designed to explain the provisions of the referendum and to give a brief report on the overall wheat industry.

Ed Garnett of Amarillo, area farm management specialist with the Texas Agricultural Extension Service, will be the principal speaker at each meeting. Representatives of the Texas Wheat Producers Association will also be on hand to answer questions concerning the referendum.

Mr. Adamson urges all wheat producers in Hansford County to attend the upcoming referendum meeting so that they will be able to make a knowledgeable choice when election time for the referendum rolls around. A two-thirds majority vote will be required.

Today's modern housewife has only to push a button to get her dishes washed. Her mother had to push a husband.

Children are those people who complain all year that there's nothing new-and sit reading comic books as you drive through Yellowstone.

CREDIT BUREAU MANAGER CITED FOR 'HIGH STANDARDS OF ACHIEVEMENT'



Certificate of Merit has been awarded to Susie J. Hand, manager of the Credit Bureau of Hansford County, Inc. by the National Credit Bureaus, Inc. for service to the individual consumer, the community and the credit industry.

Announcement of the award was made by John L. Spafford, Houston, president of ACB, which is an international trade association serving more than 600 credit bureau and collection service members in the U.S., Canada, and several foreign countries.

The high standards of achievement established for award recognize the excellent service provided by the Credit Bureau of Hansford County, Inc." Spafford said. It also reflects an impressive

performance in meeting community civic obligations."

Credit reporting and collection service executives who earn the Certificate of Merit Award are eligible to compete for 32 Regional Leadership Awards which will be presented by ACB. Eight awards, four each in credit reporting and collection service, will be made in each of the four ACB regions.

Regional award winners will be announced at the four ACB regional conferences scheduled this spring. Regional winners will be eligible to compete for eight International Leadership Awards which will be presented at the ACB annual International Conference scheduled June 14-16 at the Fairmont Roosevelt in New Orleans.

Prec. 2 Residents To Vote On New Bridge

MRS. J.L. BROCK TO HEAD LOCAL A F S CHAPTER

The American Field Service Committee met Sunday, January 11 with Faye Palmer, President presiding.

Present were Frank Lemons, Jack McWhirter, Eugene Barkowsky, Joyce Lackey, Mary Brock, Dorcas Collard, JoAnn Lee, Mrs. Olin Sheets and Faye Palmer.

Officers for the new A. F. S. year were elected as follows: President-Mary Brock; Vice-President-Mr. and Mrs. Max Baggerly (Co-officer); Secretary-Betty Uptergrove; Treasurer-Dorcas Collard; Finance Chairman-Jack McWhirter; Student-Family Liaison-Faye Palmer; Home Selection-Faye Palmer; Americans Abroad-Altha Townsend; School Liaison-Eugene Barkowsky; Publicity-Joyce Lackey; Special Project-JoAnn Lee; Student Representative-Kerry Evans.

The American's Abroad committee was added to the list of officers this year. The purpose of this committee is to encourage and work with students interested in going abroad to study for a year in much the same manner that we have a student come to Spearman. The local chapter plans to devote its interest giving some attention to this area.

The committee and interested persons were given an evaluation sheet by the president to be filled out and mailed back to her to evaluate our local A. F. S. program in Spearman.

The American Field Service Chapter in Spearman is responsible for securing foreign exchange students in Spearman High School.

"A husband like yours must have been hard to find," one local wife said to her friend one day.

Even a kick in the pants can be a boost if you're headed in the right direction.

Qualified voters in Commissioner's Precinct two of Hansford County will go to the polls Monday, February 8 to vote on a \$50,000 road bond election.

Elector in precinct two petitioned for the election to replace the bridge crossing the Palo Duro creek about 10 miles north of Spearman. The steel span bridge collapsed Dec. 12.

Only voters in precinct two are qualified to vote as this precinct, and only this precinct, will assume the indebtedness of the bond. Judge Lee said, however, that passage of the road bond election will not raise taxes in that precinct.

The election will be conducted at the Gus Renner farm residence approximately 17 miles northwest of Spearman. Polls will be open from 8 a. m. to 7 p. m. Presiding judge for the election will be Mrs. Harold Saltzman with Mrs. Etta L. Beck alternate presiding judge.

If the bond election carries, County Judge Johnnie C. Lee said the contract will be let immediately calling for a new concrete bridge to be built. The 240-foot structure will be located 500 feet southeast of the present bridge. Quite a lot of road work will be done also. Curves on either side of the crossing will be straightened, a new approach will be made and a new road built on north from the bridge to straighten out some of the curves. The new roads will include the cutting down of several hills.

At present, residents in precinct two are crossing the dry creek bed via a graded roadway.

Judge Lee said some of the materials from the old steel bridge (such as the pilings) can be used in the new structure, thus making for cheaper bids from contractors.

If the bond election carries, the building of the new concrete bridge does away with the last steel or wooden bridge crossing in the whole of Hansford County.



Patients in Hansford Hospital are Phyllis Breeden, Otis Kizzlar, Dianne Butler and son, Thelma Davis, Leroy Thompson, Ruby Wilbanks, Bernice Weant, Loren Simmons, Irvin Hester and Gee Wills.

Dismissed were Coy Winders, Adelia Lopez, Lynn Brack, Jeff Melton, Pepper Burns, Donald Burke, Aladeo Delos Sanchez, Kathy Beck and daughter, Scott Tout.

GET INVOLVED "GET INVOLVED" Gun Club Organized

Bill Abar of Spearman has been named President of the recently organized Hansford Rod and Gun Club.

Interested men met recently at the home of Bill Porter to draw up the necessary organizational plans and to name officers for the local club.

Vice President is Jerry Cantwell, 1114 S. Haney. Chief Instructor is Ray Christenson, 21 So. Endicot. Secretary-Treasurer is Bill Porter, 213 So. Archer.

Serving on the general activity committee will be Verlin Behne, Buddy Benton and Joe Archer.

The next meeting date has been set for February 14 in the upstairs conference room at the Hansford Library. Those interested in attending are asked to use the back stairs.

Everyone is welcome.

Flight From Police Results In Accident

A city police officer on routine patrol duty the night of January 28, observed a car going through Spearman at a high rate of speed.

The officer switched on his red flashing light and proceeded after the 70-model chevrolet which was clocked at 70 mph in a 45 mile speed zone. The car picked up speed and fled from the Police unit.

This resulted in a high speed chase south down highway 207. The fleeing vehicle made a right turn on highway 520 some four miles, then turned back south on a caliche road. After traveling nearly 2 more miles, the car hit a dip in the road causing the driver to lose control of his vehicle. The car

flipped over several times and when it finally came to rest the car was totally demolished and the driver was pinned inside the wreckage.

The driver of the car, 21-year old Larry Coleman Jones of Morse, was released from the wrecked vehicle and taken by H&S Ambulance to the Hansford Hospital. He was treated and released.

Officers of the Texas Highway Department of Public Safety investigated the accident. Jones was filed on in City Corporate Court on two charges: for traveling 70 mph in a 45 mile speed zone, and for failing to stop for flashing red lights on Police unit. Jones paid a \$70.00 fine.

Scouts To Name "Father of The Year"

The Spearman Girl Scouts are having their annual Father-Daughter Banquet February 12 at the Junior High Cafeteria. In past years the supper was held during Girl Scout Week and the girls fixed themselves and their fathers a box supper. This year the supper will be a Valentine banquet with sustaining members of several years as invited guests. A sustaining member is a person who has contributed yearly to the Spearman Council to help pay for camping and other supply needs.

The Junior troops will help

host the dinner. The highlight of the evening will come when the Brownie "Father of the Year" and the Junior "Father of the Year" awards will be presented. The girls have submitted unsigned themes on why they feel their father should be "Father of the Year." These themes are being judged by local citizens not connected with scouting.

All the troops have been working hard on table decorations, invitations, and skits for the evening and a good time for all has been planned.

Spearman Teams Win Tuesday Nite

Spearman won an important double-header game against Stinnett Tuesday night at Lynx gym, with the girls winning 82-40 and the boys winning 35-28. Sheila Patterson netted 27 points to pace the Lynxettes, while Edgar Womble made 13 to lead the Lynx.

The Lynx and Lynxettes will crown their Basketball King and Queen at the high school gym Friday night when they meet the Panhandle Panthers here.

The Spearman B team girls defeated the Stinnett B team, 32-20, and the Spearman B boys lost a thriller in an overtime, 34-33.

The Spearman girls will become district champions if they defeat Panhandle Friday night. The bi-district foe apparently will be Shamrock. The Shamrock-Spearman bi-district game, will be played one week from Monday or Tuesday night at a neutral site, probably. The regional tournament will be played in Coronado gym, Lubbock, February 20 (Saturday). The game will not be played in the coliseum, because of the Aggie-Tech game on the 20th.

DEATH CLAIMS JACK WESTON

Jack Weston, a 60-year old Duncan, Oklahoma resident, died at his home Saturday, January 30. Mr. Weston had recently undergone surgery at the Scott & White Hospital and Clinic in Temple where doctors discovered he had extensive cancer.

Funeral services were conducted at 2:30 p. m. Monday in Duncan.

Mr. Weston, a former Spearman resident, was the brother of Mrs. J. H. Martin of Spearman. Other survivors include his wife Marguerete, of the home; two sons: Bill Weston of Washington State, and Wesley Weston of Jonesboro, Ark.; and 4 grandchildren.

Pork Producers To Meet Monday

Morse resident, Lynn Davis, secretary-treasurer for the North Plains Pork Producers, announced today a very important meeting for this association.

The meeting is set for 7:30 p. m. Monday, February 8 at the Phillips Manor Restaurant in Dumas, Texas.

Dr. Gualwood of WTSD is the speaker who will present the program.

Winter Sale

Brad Beedy, at Beedy Furniture in Spearman, is having his final Winter Sale now, and you are invited to drop by and look at the many, many bargains in beautiful new furniture.

Of course, you are invited to come by, and just visit and look.

HOMECOMING DANCE AFTER GAME FRIDAY

The Student Council of Spearman High School is sponsoring a Basketball Homecoming Dance immediately following the game here Friday night, February 5. The proceeds will go to further the foreign exchange student program here for next year.

The "Roadside Convention" is the Amarillo band which will furnish the music. The dance will be held in the community building and admission charge will be \$2.00 each. The dance will conclude at 12-midnight.

Phil Jenkins won the door prize at the Big John Deere show, in Spearman Sat.

Irrigation Motor Thefts Reported

Sheriff J. B. Cooke is soliciting the aid of Hansford county farmers in reporting to him any suspicious person prowling around irrigation motor sites.

Sheriff Cooke said two reports of stolen irrigation motors were reported to him the past weekend.

Thieves took a Ford motor off the irrigation well on the Robert Novak farm south of Spearman and a Chevrolet motor from the well on the Price Miller farm near Bernstein. This motor belonged to Elbert Wright.

Cooke said the motors are the size which can be used in trucks. With the proper equipment the motors could be easily lifted into a pickup truck.

The Sheriff urges everyone to be on the lookout for any suspicious activity in the rural community and to report to him immediately.

One other theft was reported over the weekend. Some \$200 worth of twenty foot metal fence panels were taken from the Dutch Clawson farm near Hitchland.

"YOU NAME IT" by Billy Miller

There seems to be a slight foul-up on the site of the girls regional basketball tournament this year. The tournament will probably be held on one day, Saturday February 20th in Lubbock at the Coronado high school gym. This is a great disappointment to most of us girls basketball fans, as we feel like the girls are entitled to play in the Lubbock Coliseum, the same as the boys, but the Texas Aggies and Tech teams also tangle on Feb. 20 and of course that means that the girls have to play at another location on that day. But, we understand that the Coronado gym will seat about 3,000 fans, and this should be about half-enough for the games. We are printing this story for all girls basketball fans, who plan to attend the regional. We are not implying that the Lynxettes will be there, as they have not yet won the district. But, we did want to pass this information on as many people in the Spearman area are wanting to get the dope on the tournament day and location, as they plan to attend. Of course, we hope that the Lynxettes will make it to the Lubbock tournament, but as we said before we are simply printing this information, because the site had not been determined for the tournament until Monday of this week.

Another 70 or 75 persons were in attendance at Dr. Younce's bible class at the HD clubroom Monday evening. It is so refreshing to hear a man who simply teaches about Christ, and doesn't care what denomination you belong to, or any of the other minor details. He simply (and the 70 present) wants to help people who are interested in learning more about Jesus Christ. He is a real fine teacher and I do so enjoy his class.

By the way, my no. 1 sports fan James Cunningham, assures me that the Shamrock girls will be the bi-district foe for the Lynxettes. Wellington and Shamrock girls are having a pretty close contest. I still haven't given up on the Lynx, beating Phillips at Phillips, and throwing the district into a tie, forcing a play-off between the two teams. Watch those Lynx boys-they are ready for Phillips.

Have you heard the definition of an expert. That is someone who lives at least 30 miles from your home town! How true this statement is.

Shop SPEARMAN, for all of your GROCERY NEEDS.

January Weather "Cold"

Although the last few days of January could be termed Spring-like days, the month as a whole was just plain cold. In fact many of the old-timers say it broke records as to the "longest cold spell".

0.46 moisture was recorded from the four-inch snow which fell January 3rd and 4th and beginning January 5th the next five days were listed as "ice days"--during this time the temperature hovered below the freezing mark continually. The snow and ice refused to melt and at this writing there are still snow piles in shaded places throughout the county.

Temperatures during that cold week went as low as seven degrees below zero. This mark was reached on January 5. The highest night-time reading for the month of January was 36 degrees.

The high for the month was 75 degrees on January 29th, but that night the mercury plunged once again to a chilly 28 degrees.

On January 30 residents enjoyed another spring like day in 74-degree sunshine but by the first day of February another cold front invaded the area and the mercury never reached above the 39-degree mark Monday, Feb. 1. Monday night's low was 15 degrees.



George Rook, left above, and Jim Beeson, right, smile happily after the first days business. Rook and Beeson are the owners of the new Spearman Auto Parts Company. They are currently open for business, however, they will have their grand opening upon the arrival of more merchandise now on the way.

Heart Fund Dollars Develop New Life Saving Method—'ECPR'

(This is the third and final article in a three-part series presented by your Heart Association to inform readers of this newspaper about the urgent need for prompt medical help in the event of heart attack.)

Following heart attack, one's chances of survival are infinitely greater in a hospital than in your home, even though

the hospital may not be presently able to render heart monitoring service.

Almost all hospitals have equipment to electrically control a faulty heart rhythm. Further, they are equipped to administer medications designed to correct complications, as well as to utilize a new technique known as external cardiopulmonary resuscitation—ECPR.

Just a few years ago an imaginative Baltimore doctor developed a method of restoring normal rhythm to a heart in ventricular fibrillation, a serious arrhythmia that is usually fatal.

Later, he became the co-developer of external cardiac compression, a procedure that

has already restored to normal function thousands of stopped hearts.

This maker of medical history is Dr. William R. Kouwenhoven. It is all the more remarkable that he is not a physician, but rather a doctor of engineering. His medical collaborator in both projects was Dr. James R. Jude, now of Miami. Together, they have opened a doorway of hope of many heart attack victims, who, in other circumstances, might perish.

External cardiopulmonary resuscitation, used in combination with the more familiar

mouth-to-mouth breathing, is a procedure to be used following "cardiac arrest"—a term describing sudden cessation of circulatory function. The idea is to keep oxygenated blood flowing to the brain until appropriate medical treatment can be applied to restore normal heart action. Many times the heart restarts spontaneously.

ECPR is done by depressing and then releasing the sternum, or breast bone, in such a manner as to squeeze the heart against the vertebral column, then permitting the heart to relax. As a result, an

artificial but adequate circulation is maintained. The procedure is most effective when used in conjunction with mouth-to-mouth breathing. Many times the heart starts spontaneously during this procedure.

External cardiopulmonary resuscitation is for application only by a trained person, and, in many instances, can save the victim of cardiac arrest—especially if resuscitation maneuvers are started promptly, never later than four minutes after the arrest occurs.

To meet the training need,

Heart Associations throughout the country are conducting educational programs which enable physicians and nurses, police, firemen, utility workers and ambulance attendants to apply emergency measures when signs of sudden death are evident. Many thousands have been already trained.

February is American

Heart Month

Annual Store Manager's



PRICES EFFECTIVE THRU SATURDAY, FEB. 6, 1971. LIMIT RIGHTS RESERVED. NONE SOLD TO DEALERS.

LOYE RANDALL
Spearman, Texas

Once again our store manager has personally selected an outstanding assortment of special values in celebration of "Their Special Week." Come share the savings and get acquainted with Ideal friendliness. You'll have an Extra Thrif-T Shopping Spree at Ideal!

KRAFT Festival of Food Favorites!



KRAFT'S SALAD DRESSING
Miracle Whip.....
Quart Jar **48¢**

SPAGHETTI DINNER.....
KRAFT TANGY **3** 8-OZ. BOXES

SHEFFIELD PORCELAIN CHINA EACH
Cake Plate or Mug WITH EACH \$3.00 PURCHASE **99¢**
COSCO REG. \$12.50 ONLY

WITH PURCHASE OF 4 FOLDING CHAIRS AT \$5.99
Folding Table **99¢**

BIG BOTTLE 1000 ISLAND 16-OZ. SIZE **61c**
Kraft Dressing.....

THRIF-T SAVINGS!

Kraft Jellies
GRAPE, APPLE - GRAPE, PLUM OR BLACKBERRY JELLY, OR GRAPE JAM 18-OZ. JARS **3 FOR \$1**

BIG BOTTLE FRENCH 16-OZ. SIZE **53c**
Kraft Dressing.....

THRIF-T SAVINGS!

Salad Dressing
1000 ISLAND, FRENCH ITALIAN, CREAMY RUSSIAN OR 1000 ISLAND LOW CALORIE 8-OZ. BTLs. **3 FOR \$1**

WITH CHEESE Kraft Noodles..... **4** 6 1/4-OZ. PKGS. \$1

THRIF-T SAVINGS!

Marshmallows
KRAFT MINIATURE 10 1/2-OZ. PKG. **19¢**

THRIF-T SPECIAL . . . PURE VEGETABLE

Crisco..... 3-LB. CAN **77¢**

WITH \$5.00 OR MORE PURCHASE

THRIF-T SAVINGS!

Golden Corn
GREEN GIANT WHOLE OR CREAM 16-OZ. CANS **5 FOR \$1**

THRIF-T SAVINGS!

Jell-o Gelatin
3-OZ. PKGS. **6 59¢** FOR

Soaps & Cleaners AT LOW THRIF-T PRICES

FOR DISHES	22-OZ. BTL.	69c
Ivory Liquid		
NEW LEMONY	32-OZ. BTL.	95c
Joy Liquid		
SUPER SPECIAL	32-OZ. BTL.	99c
Thrill Liquid		
GIANT SIZE	BOX	93c
Duz Detergent		
GIANT SIZE	BOX	93c
Bonus Detergent		
GIANT SIZE	BOX	93c
Oxydol Detergent		
FAMILY SIZE	BOX	3 ³⁹
Tide Detergent		
GIANT SIZE	BOX	83c
Cheer Detergent		
FAMILY SIZE	10-LB. BOX	2 ⁰⁹
Dash Detergent		
FOR AUTOMATIC DISHWASHERS	GIANT	83c
Cascade Detergent		
KING SIZE	BOX	1 ⁶³
Gain Detergent		
KING SIZE	BOX	1 ⁶³
Bold Detergent		
GIANT SIZE	BOX	93c
Ivory Snow		

Quality Products AT LOW THRIF-T PRICES

SKINNER'S CUT	24-OZ. PKG.	49c
Macaroni		
DAWN FRESH	3 5-OZ. CANS	27c
Mushroom Sauce		
KELLOGG'S REG. OR FROSTED	11-OZ. PKG.	45c
Pop Tarts		
CAMELOT WHOLE	16-OZ. CAN	27c
Tomatoes		
GREEN GIANT KITCHEN SLICED		
Green Beans	16-OZ. Cans	4 \$1
ENRICHED FLOOR	10-LB. BAG	
Gold Medal		98¢
COCOA PUFFS, FROSTY-O'S, TOTAL		
Big "G" Cereals	Boxes	2 83¢
DINTY MOORE	24-OZ. CAN	
Beef Stew		69¢
CAMELOT	32-OZ. BTL.	
Cranberry Cocktail		48¢

Fresh Dairy AT LOW THRIF-T PRICES

KRAFT	1-LB. CTN.	
Parkay Oleo		28¢
REG. OR BUTTERMILK	8-OZ. CANS	
Pillsbury Biscuits	3 FOR	25¢
GRADE A	DOZEN	
Medium Eggs		39¢
GRADE A	DOZ	46c
Large Eggs		
KRAFT	10-OZ. PKG	59c
Longhorn Cheese		
IDEAL	PINT CTN	29c
Half and Half		
FAIRMONT, ALL FLAVORS	8-OZ. CTN	33c
Dip & Snacks		
IDEAL GRADE A	QT. CTN	23c
Buttermilk		
THRIF-T SAVINGS!		
Kraft Velveeta	2-LB. LOAF	98¢

Everyday Favorites AT LOW THRIF-T PRICES

BETTY CROCKER UPSIDE-DOWN, 3 VARIETIES
Cake Mixes 21-OZ. BOX **63¢**

THRIF-T SAVINGS!

Cake Mixes
BETTY CROCKER LAYER 18-OZ. BOXES **3 FOR \$1**

CAMELOT CROWN QUALITY
Ice Cream
ALL FLAVORS 1/2 GAL. CTN.
59¢

THRIF-T SPECIAL
Lysol Cleaner.....CAN 59

Great American Soups

5 FOR \$1.00 with this coupon

Select your favorite Varieties

***** Valuable Heinz Great American Soup Offer *****

Great American Soups

5 14 1/2-OZ. CANS **\$1.00**

WITH THIS COUPON

OFFER GOOD ONLY AT IDEAL FOOD STORES THRU FEB. 21, 1971.

Good only with this coupon. Void where prohibited, taxed or restricted by law. (Limit of one coupon per family)

H. J. HEINZ CO. WILL REDEEM
H. J. HEINZ CO. 1970

CRICKET GILES IN HOSPITAL FOR FOOT SURGERY

Mrs. Cricket Giles entered Amarillo's High Plains Hospital Tuesday of this week. Mrs. Giles has suffered the past several years from arthritis which has left her feet in very bad shape. Wednesday afternoon she underwent surgery on both feet to correct this condition. She will be hospitalized there for several days.

Exchange Student Gives Program At Music Club

The Spearman Music Club, member of the State and National Federation, met in the Jack Kemper home Tuesday, January 26. Betty Clark, president presided at the meeting. The meeting was opened with the members reciting the "Collect". Kandy Vaughn narrated "I Am The Nation". Audrey Leighnor introduced the exchange student, Dung Trinh. Dung spoke on "Native

Folk Music". Hostesses for the evening were Mmes. Kenneth McKay and Jack Kemper. They served refreshments to the guests Mmes. Hal Rinker and R. L. Uptergrove, Kandy Vaughn, Dung Trinh and members Mmes. Don Knox, Pat Cates, Rue Sanders, Dean Leighnor, Raford Clark, Carroll Scroggs, J.D. Wilbanks, Nelson Bell and Ronnie Schaeffer.

Mr. and Mrs. Jackie Gray and family of Wichita Falls visited here last week with her grandmother, Mrs. J.E. Fickling.

CUB SCOUTS RECEIVE BOB CAT PINS

The Spearman Cub Scouts met in a Pack Meeting at the Methodist Fellowship Hall Monday, February 1. Den 6 opened the meeting with the flag ceremony and Den Chief Brent Biles read "our Flag". Den 4 sang America. Lawton Guthrie presented Bobcat pins to Roger Kennard, Rodney Hull and Dennis White. First year pins were presented to Lynn Ray Vernon, Calvin

Barkowsky, Kirby Hargis, Timmy Spoonmore, Ken Pracker and Johnny Kenney. Den 1 showed their plane-teriums and Kevin Townsend told "How Stars Help Us". The parent count of those present per den gave the Den Cub Bear to Den 5. Den 5 presented a skit called "Visit to the Doctor". Den 3 presented a story skit. The Blue and Gold Banquet will be held February 22 for all Cubs and their parents. Den 2 gave the Cub Yell for the Pack closing.

If you want to see an heirloom, start probating a will!

Mrs. McIntyre Is Guild Speaker

Sacred Heart Women's Guild met in regular session February 1 in the Parish Social Hall. Meeting was called to order by President Joan Farr. Reports were given. Discussion was held on the Italian spaghetti dinner which is being planned for March. A bedspread brought from Old Mexico will be raffled at the supper. The ladies were informed of a bake sale to be held in April. The meeting was adjourned and guest speaker Mrs. Ben Mc-

Intyre spoke on "Family Life-Year 2000". Refreshments were served to Mrs. McIntyre and 19 Guild members.

Arts & Crafts Guild Meeting

Mrs. Ned Turner hosted the Spearman Arts and Craft Guild Friday, Jan. 29 in her home. Attending were Mmes. Joe Traylor, P. A. Lyon, Sr., Pope Gibner, Deta Blodgett, Lula Womble, Sada Hoskins and the hostess. Mrs. Womble will be hostess Feb. 5.

The Millers Are Bridge Club Hosts

Mr. and Mrs. Billy Miller entertained members of the couple's bridge club Saturday evening. Those present included Mr. and Mrs. Ray Robertson, Mr. and Mrs. Pat Cates, Mr. and Mrs. Rue Sanders, Mr. and Mrs. Garland Head, and Mr. and Mrs. Bill Douglas. High scores for the evening were Mrs. Douglas and Ray Robertson.

Thrif-T Sell-a-Thon!



Smoked Ham

TENDER SHANK PORTION

39¢

Lb.

BUTT PORTION **49¢**

HICKORY SMOKED HAM

IDEAL'S THRIF-T LOW PRICE!

GRADE A—WHOLE

Fresh Fryers **29¢**

LB.

IDEAL'S THRIF-T LOW PRICE!

FRESH—GRADE A

Hen Turkeys **39¢**

10—14 LB. AVG.

BONELESS, BITE SIZE

Beef Stew..... **79¢**

12-OZ. PKG.

Skinless Franks..... **59¢**



MEADOWDALE HICKORY SMOKED

Sliced Bacon

2 LB. PKG. **89¢**

1-LB. PKG. **49¢**

OHSE, BY THE PIECE

Chunk Bologna... **39¢**

12-OZ. PKG.

Sliced Bologna..... **59¢**

SMOKED CENTER CUTS

Ham Slices

99¢

LB.

FAMILY PAK SIRLOIN CUT

Pork Chops

69¢

LB.

MIX OR MATCH SALE!

TEXAS RUBY RED **GRAPEFRUIT**

EXTRA FANCY RED **ROME APPLES**

CALIFORNIA **NAVEL ORANGES**

7 \$1.00

LBS.

YOUR CHOICE

LITTLE FRISKIES CHICKEN OR FISH

Cat Food..... **49¢**

2-LB. BOX

FRISKIES, ALL FLAVORS

Dog Food..... **7 \$1**

15-OZ. CANS

HEINZ POLISH

Dill Pickles..... **59¢**

32-OZ. JAR

WELCH'S

Grape Juice..... **3 \$1**

6-OZ. CANS

THRIF-T SAVINGS!

Cling Peaches

MEADOWDALE HALVES OR SLICED **28¢**

30-OZ. CAN

THRIF-T SAVINGS!

Orange Juice

MEADOWDALE FROZEN **6 \$1**

6-OZ. CANS

CALIF. RED **Emperor Grapes**..... **39¢**

1-LB.

JUMBO **Celery Hearts**..... **39¢**

PKG.

IMPORTED **Cocounuts**..... **29¢**

EACH

CAMELOT **Orange Juice**..... **69¢**

HALF GAL.

FRESH **STRAWBERRIES**

3 \$1

BOXES

SERVE A DELICIOUS STRAWBERRY TREAT THIS WEEK!

Classroom Teachers Oppose Code

The executive committee of the 45,000 member Texas Classroom Teachers Association, reaffirming the unanimous decision of the TCTA Board of Directors, today called on all Texas educators to reject the entire proposed Code of Ethics and Standard Practices prepared by the fifteen-member Teachers Professional Practices Commission and urged the substitution of the Code of Ethics of the Education Profession already adopted by the delegate assemblies of TSTA and TCTA.

In a letter to local TSTA and TCTA presidents, Oather E. Raynes, president of TCTA, asks all certified public school employees to vote "no" on every item on the ballot, then write across the ballot, "I support the Code of Ethics of the Education Profession."

According to Raynes, oppositions to the proposed code center around the feeling that the code is imprecisely written and in some instances even infringes on educators' rights.

It is the opinion of the TCTA board that standards are included in the code, the violation of which should not warrant de-certification, Raynes said, "We are skeptical of any instrument which might allow teachers to be coerced or fired for engaging in legitimate actions.

If this code is adopted, Texas teachers will be bound professionally and ethically by one code (the Code of Ethics of the Education Profession) and bound legally by another code (the code prepared by the Commission).

Raynes pointed out that the proposed code includes stand-

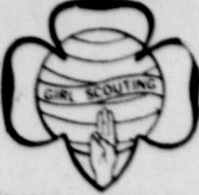
ards of behavior of a nature that does not warrant de-certification for violation. He emphasized, "We must make every effort to insure that the teaching profession in Texas is governed by an instrument which clearly states the ethics of the profession and sets down only standards of behavior, the violation of which justifies the loss of the teaching certificate."

PTA Council To Meet Friday

Hansford County P.T.A. Council will hold their meeting Friday, February 5 in Gruber at the school at 9:30 a. m. The program will be presented by Bob Crawford of the Soil Conservation Service on Pollution. All interested persons are cordially invited to attend.

How many of us are like wheelbarrows-useful only when pushed and too easily upset.

Values to Hold



Worlds to Explore

Brownie Troop 155 met Friday 29 with leaders Irene Baker and Sea Elkworth at the Scout House.

The troop elected new officers who are: President-Brenda Boyd; Secretary-Tammi White; Treasurer-Donna Bruce. The troop worked on their decorations for the Father-Daughter banquet and worked on the flag ceremony for P. T. A.

Refreshments were served to: Deanne Baker; Brenda Boyd; Donna Bruce; D'Ann Close; Lisa Douglas; Barbara Ellsworth; Dethene English; Joanne Hays; Sabra McCoy; Margie Schubert; Kelly Shaver; and Tammi White.

Meeting time has been ex-

tended to 5:00 so time can be used to do more!

Junior Troop 78 met Monday Feb. 1 at the scout house with leaders Mmes. Donald Bowen and Hal Rinker. Troop helper Mary Kibler was also present. The troop worked on the table decorations for the Father-Daughter supper. The Betty Crocker coupon contest for the week was won by Leslie Groves and Sheila Scates with 394 coupons. Information on the cookie sales was given and order forms passed out. Mary Kibler served refreshments to Terrie Bowen, Brenda Bowling, Donna Goff, Leslie Groves, Gerri Lynn Maize, Kim Rinker, Tammy Robertson, Sheila Scates and Donna Schmeier.

Brownie Troop 3 met with Mrs. Ralph Bynum Monday Feb. 1 at the scout house. The girls spent time learning the new songs they will present at the Father-Daughter supper. Cassie Baker served refreshments to Dana Bruce, Kenda Burke, Terri Bynum, D'Ann Cummings, Cammy Gee,

Michelle Graham, Melane Kenney, Ginny Morris, Jana McCoy, June Nichols, April Pearcy, Penny Perkins, Kimberly Reed, Tamera Scroggs, Laurie Swenn and Lesa Thomas.

Volleyball League To Be Organized

The Ministerial Association is calling a meeting on Tuesday, February 9 at 7 p. m. at Faith Lutheran Church to see if there is interest in a Churchmen's Volleyball League for this Spring.

One representative from each interested church is asked to be present. This league would be for those out of high school. If your church would not have enough men for a full team, but you are interested, please attend. We can combine groups in order to have enough to make up a team.

Suit Filed By Grape Growers Important

The president of the Texas Farm Bureau said today a \$3 million suit filed by Arizona grape growers against Cesar Chavez's union could have far-reaching repercussions.

"We hope that the outcome will help guarantee that food markets are open to both the housewife and the producer," J. T. (Red) Woodson of Gober, Texas, said. "No one, not even the producer, should have the monopoly power to shut off food supplies to the American consumer," he said.

The \$3 million suit was filed Jan. 11 in the federal district court in Phoenix by 12 Arizona table grape growers against the United Farm Workers Organizing Committee, an AFL-CIO affiliate, and its officers and agents, including Cesar Chavez, for losses suffered by the growers on their 1969 and 1970 crops.

The suit seeks damages from UFWOC for violation of the Sherman Anti-Trust Act, Arizona anti-trust, and anti-boycott laws and interferences with common law rights. It also seeks relief from any further boycotting.

According to the complaint, punitive damages are also asked against UFWOC of \$100,000 for each grower.

Woodson said Farm Bureau supports the rights of labor to organize and bargain collectively.

"However, boycotts of farm and ranch products by labor unions shut off markets for entire commodities whether or not individual growers may be involved in a labor dispute and whether or not workers want to join a union," Woodson said.

The Texas farm leader said it is obvious to most people that there is a need for state and national legislation providing fair and equitable rules to guide farmer-worker relationships. He said that the National Labor Relations Act is intended to provide guidelines for industry-labor relations, and that farmers and ranchers need national legislation designed to fit the unique conditions of agriculture.

The complaint filed in Arizona points out that prior to 1969, UFWOC confined its boycott of table grapes to California, but during 1969 the boycott was extended to Arizona grapes with great damage to growers of that state in the 1969 and 1970 marketing seasons.

According to the complaint, the UFWOC enlisted the support of the Amalgamated Meat Cutters and Butcher Workmen of North America and the Retail Clerks International Association and various

locals of the two unions, in pressuring wholesalers, jobbers and retail grocery stores into refusing to handle or sell table grapes from the Arizona growers involved in the suit.

As a result of the boycott, the complaint states, the Arizona growers not only were shut out of the market, but the consumers were deprived of the opportunity to buy fresh table grapes and to buy such grapes of suitable condition and quality.

The Texas Farm Bureau leader said that the American Farm Bureau Federation as well as state Farm Bureaus have voiced support for the principles involved in the suit.

Protecting Your Reputation

COLLEGE STATION—A consumer will have the legal right, beginning January 23, to receive information concerning himself on file in credit-reporting agencies, announces Mrs. Doris Myers, Extension specialist in home management at Texas A&M University.

The new legislation passed by Congress states that anyone refused employment, credit or insurance because of a bad credit report must automatically receive the names and address of the reporting agencies.

The law also gives the consumer the right to require correction of any false information in his credit files. If the consumer disputes the information, the agency must re-investigate. The consumer also has the right to sue for damages resulting from negligence on the part of the credit-reporting agency.

Anyone who deliberately obtains information from a consumer-reporting agency under false pretenses will be violating federal criminal law.

The best safeguard a consumer can make is to be sure he has a good credit rating by making payments on time. A few late payments won't be considered a poor credit risk, but chronic late payments sometimes are reported against a consumer.

"Get Involved"

MEN NEEDED
in this area to train as
LIVESTOCK BUYERS
LEARN TO BUY CATTLE, HOGS AND SHEEP
at sale barns, feed lots and ranches. We prefer to train men 21 to 35 with livestock experience. For local interview, write age, phone, address and background to:
NATIONAL MEAT PACKERS TRAINING
3435 Broadway, Dept. B-163
Kansas City, Mo. 64111

Who needs serious money?

Working for an education?
You need serious money.

Serious money is a savings account at Security Federal -- a fund set aside for emergencies...necessities...future plans...and especially peace of mind. At Security Federal, serious money is insured safe...instantly available...and growing, with highest interest. Savings in by the tenth of the month earn from the first. Save by mail free, park free at both offices, use the drive up window in Amarillo. People who need serious money save it, every payday, at Security Federal, the oldest and largest association in the High Plains.

SECURITY FEDERAL SAVINGS & LOAN ASSOCIATION



WEST FRANCIS AND GRAY STREETS

PAMPA, TEXAS

MEMBER, FEDERAL SAVINGS & LOAN INSURANCE CORPORATION
FEDERAL HOME LOAN BANK SYSTEM



TG & Y

- 5 WAYS TO PAY
- 1 CASH
- 2 LAYAWAY
- 3 BANKAMERICARD
- 4 MASTERCARD
- 5 TG & Y REVOLVEACCOUNT

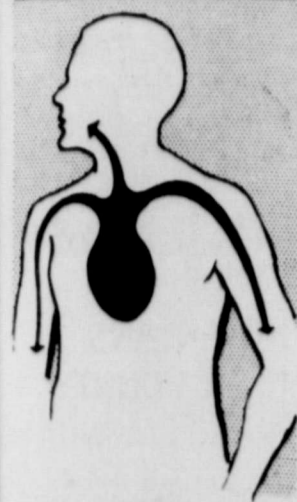


Store Hours:
Mon.-Fri. 8:30 to 6:00
Sat. 8:00-8:00

Prices Good Thru Sat While Quantities Last
119 Main Spearman, Texas

1 lb. Bag CONVERSATION HEARTS	Compare at 39¢	33¢
WHITMANS SAMPLER	1 3/4 oz. Size	25¢
Brach's 1 lb. CHOCOLATE HEARTS	Compare at \$1.49	99¢
25 count For Boys and Girls VALENTINE'S	Compare at 39¢	23¢
65 count VALENTINE'S	Compare at \$1.00	77¢
Compare at \$1.77 PANTY HOSE		\$1.47
Brach's Chocolate Covered 12 oz. CHERRIES	Compare at 69¢	2 for \$1
Valentine GREETING CARDS	each	15¢ to \$1

HEART ATTACK?



1 KNOW THE USUAL SYMPTOMS:

- Prolonged, oppressive pain or unusual discomfort in the center of chest, behind the breastbone.
- Pain may radiate to the shoulder, arm, neck or jaw.
- The pain or discomfort is often accompanied by sweating, nausea, vomiting and shortness of breath may also occur.
- Sometimes these symptoms subside and then return.

Minutes count when heart attack strikes. Act promptly.

2 PHONE YOUR DOCTOR IMMEDIATELY.



3 IF YOU CAN'T REACH DOCTOR, GET TO EMERGENCY ROOM OF HOSPITAL AS SOON AS POSSIBLE.

THIS NEWSPAPER joins your Heart Association in presenting the life-saving educational message shown above, and in asking your support of the Heart Fund Campaign.

WHEN DELAY IN GETTING MEDICAL HELP CAN COST YOU YOUR LIFE



IN ACTION AND INDECISION AFTER ONSET OF HEART ATTACK CAN BE FATAL. FIRST 4 HOURS ARE MOST PERILOUS.



EVEN SO, AVERAGE HEART ATTACK VICTIM DELAYS 3 HOURS BEFORE SEEKING MEDICAL HELP.



WHEN HEART ATTACK STRIKES, PHONE DOCTOR IMMEDIATELY.



IF YOU CAN'T REACH DOCTOR, GET TO EMERGENCY ROOM OF HOSPITAL AS SOON AS POSSIBLE.

THIS NEWSPAPER joins your Heart Association in presenting the life-saving educational message shown above, and in asking your support of the Heart Fund Campaign.

Your Heart Fund Dollars Helped Save Lives of 'Valentine Girls'



TWO YOUNG BENEFICIARIES OF HEART SURGERY express their thanks that Heart Fund dollars spurred developments in heart surgery that corrected their inborn heart defects. They are Monica Barnes, 8½, and Theresa Barnes, 7, sisters, living at Stratford, Conn.

HEART PRINCESS JOINS DR. WHITE IN ASKING SUPPORT OF HEART FUND



DR. PAUL DUDLEY WHITE, a founder and former President of the American Heart Association, pays court to 7-year-old Tammy Tuttle of Hyde Park, Mass., the 1971 Heart Fund Princess. She's a beneficiary of open heart surgery, who now has a normal life expectancy.

Heart-fund drive Chairman
MRS. JAMES LAIR

Canvass. will be Feb. 21st

February is American Heart Month!



New Rays of Hope for All Hearts

School Menu

- Spice Cake
- Milk
- High School Meat Choice
- Chicken Fried Beef Patties

Even the mosquito doesn't get a slap on the back until it starts working.

- MONDAY, FEBRUARY 8
- Beef cubes with Barbecue Sc.
- Green Beans with Bacon
- Buttered Corn
- Dill Pickles Spears
- Sliced Peaches
- Yeast Batter Bread
- Milk
- High School Meat Choice
- Chicken and Egg Noodles
- TUESDAY, FEBRUARY 9
- Tomato Meat Loaf
- Mashed Potatoes
- Buttered Leaf Spinach
- Carrot Sticks
- Chocolate Chip Cookie Bars
- Batter bread
- Milk
- High School Meat Choice
- Fried Fish-Tartar Sauce
- WEDNESDAY FEBRUARY 10
- Grilled Cheese Sandwich
- Beef and Vegetable Stew
- Tri-Taters-Catsup
- Celery Sticks
- Congealed Fruit Salad
- Gingerbread
- Milk
- High School Meat Choice
- Corndogs-Bread
- THURSDAY, FEBRUARY 11
- Hamburger-Mustard
- Seasoned Beans
- Potatoe Gems-Catsup
- Lettuce-Tomatoe Salad
- Dill Pickle Slices
- Pineapple-Coconut Pudding
- Milk
- High School Meat Choice
- Ham Salad Sandwich
- FRIDAY, FEBRUARY 12
- Abe Lincoln's Day
- Oven Fried Sausage
- Fried Potatoes-Catsup
- Blackeyed Peas with Bacon
- Cranberry Salad

LEADING CAUSES OF DEATH IN U.S.

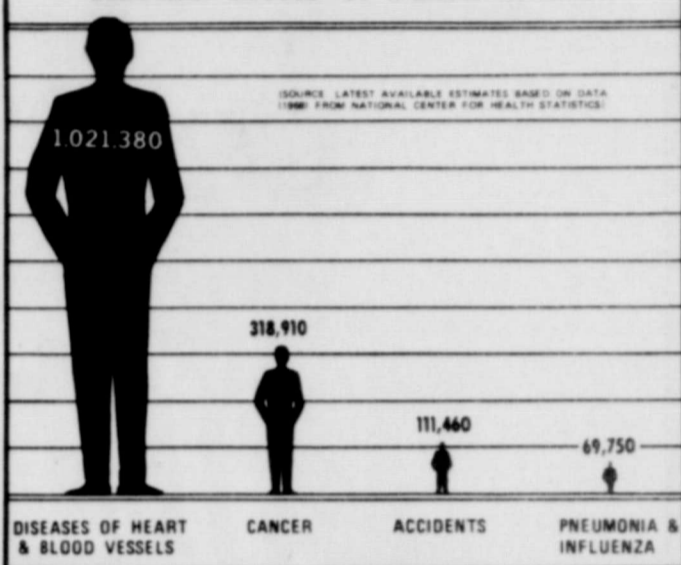


CHART DRAMATIZES MAGNITUDE of the problem of heart and blood vessel diseases in the United States. They now kill more than a million adults and children yearly, accounting for about 53 per cent of all deaths in this country and afflicting more than 27,000,000 living Americans. The Heart Fund Campaign is being conducted in February to fight this foremost health enemy.

LIONS HEAR SCOUTING EXECUTIVE

The Spearman Lions Club enjoyed a program on Scouting, brought by Bill McElroy, at the regular Tuesday noon meeting. Bill is the Adobe Walls Council Director. Also present was local scoutmaster Harry Stumpf. Harry has done a fine job, with the Lions Club sponsored troop. The scouts started out in 1968 with 7 members, and they now have 44 active members.

Mr. McElroy discussed the beautiful scout camp at Mobeetie, Texas. The camp is in need of some hot water shower facilities and the club voted to give some \$330.00 to the camp for this project. Also it was learned that out of the 2,017 boys in this council, only about 500 attend the scout camp in the summer. The beautiful camp, called Camp M.K. Brown, is one of the most beautiful scout facilities in the world, and with the addition of hot water showers, the camp will be even more attractive to scouts in the future.

Lion Woodrow Gibner won the regular drawing which was a Lions Club tie clasp.

The club voted to join with the Heart Fund March in helping the Heart Fund drive this month.

Best Wishes To

Spearman Auto Supply



GEORGE ROCK JIMMY BEESON

WE TAKE THIS OPPORTUNITY TO WELCOME OUR NEW NEIGHBORS

North Plains Truck & Imp. Inc.
First to serve the farmer



SPEARMAN, TEXAS

BUTCHER BOY MARKET

412 DAVIS Phone 659-2425

We sell only Choice Grade Beef
Special Thursday, Friday, & Saturday

If you don't see it in the meat case, ask for it.
We like to custom cut your meat.

Brick Chili

Meat Cut The Way You Want It.

Eggs - Bread - Milk



7th Anniversary Stocker & Feeder Sale

12:30 P.M. February 10, 1971

Consign your Livestock Early As We Will Have Plenty of Buyers

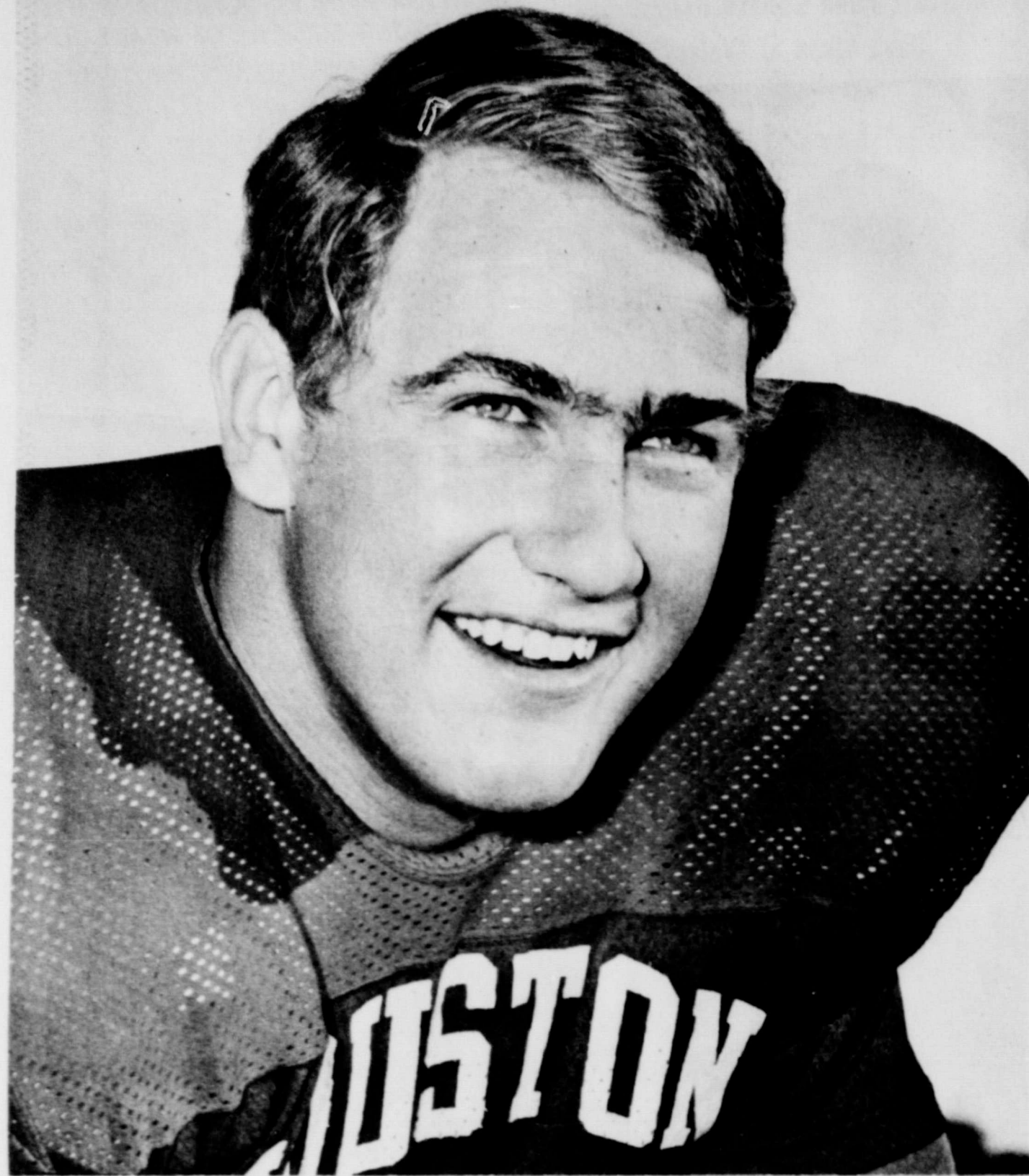
For Further Information Contact:

Bob, John, Chuck Mayer or Vince Masters

Panhandle Livestock Auction

405-338-3378 Guymon, Oklahoma

Faith Lutheran Church
11th & 
Worship 9 a.m. S.S. 10:15
Victor Andersen Pastor



L.D. Rowden, son of Mr. and Mrs. R.C. Rowden, Pampa, Texas, was drafted in the 10th round of the Pro-football draft, by the Chicago Bears. L.D. played his college ball at the University of Houston where he started in his freshman year as a running back, and switched to defensive safety his second year. L.D.'s brother, Gary, lives in Spearman. L.D. was invited to play in both the North-South Shrine game and Blue-Gray. He played in the Blue-Gray game. He is 6 ft. 2 inches tall and weighs 220. Although he was drafted as a linebacker, he probably will be used at tight end, according to scouts.



Let Me See
by Sybil...

I truly believe Methodist men (and women) are the best cooks in the world! I've decided this after eating "ground hog" meals with the Methodist women every year for the past many. I hope they continue the tradition. It gives everyone the opportunity to enjoy a good food, and good fellowship. The meal Saturday evening was the best ever. They served more people than ever before too. Of course there are those like Allen Pierce who are never satisfied with anything. Allen said he personally thought they really did serve Groundhog, except in this case it was Ground squirrel and the women caught them all out at Merle Beck's farm. All I can say is, if this is true, those squirrels had the biggest pork chops I ever saw.

Billy & I enjoyed another Methodist-prepared meal last Tuesday night at the Chamber banquet in Perryton. The Methodist men prepared the huge charcoaled filet mignon steaks for a crowd of some 350 people. A Methodist farmer from Ochiltree county grew some top-grade wheat, another Methodist farmer had the grain ground and a Methodist woman personally baked 58 loaves of the best whole wheat bread you ever tasted. Lawrence Ellzey, the Methodist choir director, entertained at the informal western-attire banquet, by strumming his guitar and singing real old-time cowboy ballads. A great time was had by all!

I could tell you some more things about Methodists... but I think it's enough to say "they are great cooks."

IF THERE HAPPENS to be any one around who collects old magazines, I know where you can pick up several old, old copies of the now defunct Colliers and Saturday Evening Post. Launa Pearson has moved from her farm home east of Spearman, to home in Perryton. Launa found stacks of these magazines in her basement and hates to throw them away. If you are interested, go by 714 S. Baylor in Perryton and talk her out of them.

I WAS SO GLAD to see my dear friend Mrs. E. A. Greever in town Monday. As many of you know Mrs. Greever endured a long siege of illness a while back but she is now up and around and going strong again. She brought me the latest book of poems she has just had published. She is offering a copy of the book to anyone who would want one. Just give her a ring. The title of this book is "Peace Quietness and Assurance." This alone should make you want one. They are free of charge. Mrs. Greever said she was feeling fine now, but having a difficult time at being "lazy." Her niece is staying with her and refuses to let her do a thing. For most people this would be a joy---but for Mrs. Greever, it is a task. She is 82 years of age.

ACCORDING TO THE fashion designers, if you have enough self confidence you can wear anything anywhere anytime! The ready-to-wear industry has been hurting this

past year. Add the dropping of women's hemlines to the economic recession and you come up with a decided absence of purchasers.

The fashion slogan for 1971 is "Anything Goes." Looking through the new spring clothes you can believe this, so far as hemlines go. But there's more to fashion today than hem lengths. It's called "looks". The American Indian look, the Spanish gaucho look, the Roman gypsy look and others, some mentionable some not. Many of these "looks" are separating the women from the girls. And this is the whole purpose.

A woman with a good figure (skinny, that is) could wear a short dress like her daughter's and feel young. But she can't wear her daughter's fringed vest and jeans and look anything but ridiculous. Maybe that's why young people are adopting some of these kooky clothing styles---they've finally found things which are their very own, which mother and dad won't dare emulate.

The history of fashion reveals that when money is good, fashion is bright. When times are hard fashions are drab. If this is so, many of the designers surely misread the barometer for dozens of the major industries have gone broke and closed their doors.

Anyway, perhaps we are in for a good year in 1971 for I've noticed that fashions are anything but drab. New fashions for spring are in bright, vivid colors... especially men's clothing. Designers have drawn heavily on the 1930's and 1940's for their

inspiration. This means they will probably bring back the broomstick skirts. Remember those? Full, gathered tiers. Wash the skirt, starch it stiff and wrap it around a broomstick. No ironing. I had 3 and finally threw them away just last year.

There's one wardrobe I know of which will never go out of style so far as I'm concerned. A pair of old jeans and a big sloppy sweat shirt. Self confidence? Just pure comfort.

ROTARIANS HEAR COUNTY AGENT, MONDAY

The Spearman Rotary Club enjoyed a talk on "Ecology" by county Agent Robert Adamson at their regular Monday meeting. Adamson did not paint a very rosy picture of the destruction of our plants and animals by chemicals and waste products. The topic of the day, of course, is how to preserve and save our natural resources.

Rotarian Chunky Blackburn recently talked with Scoutmaster Harry Stumpf and asked how the Rotarians could help the Scouts. Scoutmaster Harry Stumpf suggested that the club buy some air conditioners for the camp near Mobeetie. The club is taking this under consideration and is expected to help air condition some of the buildings. Scoutmasters state that the heat was unbearable at camp last year. The Rotarians voted to assist with the Heart Fund program this month.

RANCHERS - FARMERS - FEEDLOT OPERATORS

A fine offering of cattle and calves passed thru our Auction Arena last Friday, Jan. 29th. The Auction started at 12:30 p. m. and was completed at 6:15 p. m. selling 3875 total head.

Our next regular sale will be Friday, Feb. 5th. Our next CONSIGNMENT SALE will be Friday, Feb. 12th.

Ship your next cattle to an "ACTION AUCTION" where your satisfaction is our concern.

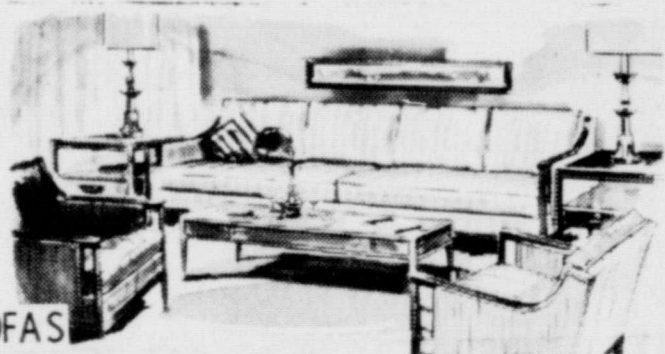
Sales Start at 12:30 P. M.

C. F. Augustine-----Euline Smith-----Raymond Choate
- cattle - - office - - cattle -

TEXHOMA LIVESTOCK COMM. CO., INC.

TEXHOMA, OKLAHOMA 73949

FINAL CLOSE OUT ON WINTER CLEARANCE



SOFAS

Blue / Green Modern Sofa	\$349.95	\$249.95
Brown & Gold Mediterranean Sofa	369.95	259.95
Blue & Green Quilted Traditional Sofa	289.95	198.50
Orange & Green Early American Pine Frame Sofa	398.50	319.95
Orange Tweed Early American Sofa	319.95	259.50
Green Tweed Early American Sofa	299.95	239.95
Brown Vinyl Sofa	269.95	198.50
Orange & Brown Print Early American Sofa	398.50	329.50
Green Velvet Traditional Sofa w/Striped Cush.	449.50	369.95
Beige & Gold Sculptured Velvet Traditional Sofa	549.50	449.50
Gold & Orange Print Lounge Sofa	439.50	359.50
Gold & Beige Tweed Modern Sofa	349.50	289.50
Green/Gold Velvet Spanish Sofa w/matching chair	895.00	729.50
Green/Gold Velvet Spanish Loveseat	429.50	349.50
Green & Gold Striped Velvet Sofa	498.50	398.50

CHAIRS

Pair Green Traditional Chairs	\$ 119.50ea	\$79.95ea
Pair Turquoise Tufted Back Chairs	169.50ea	98.50ea
Green Velvet Channel Back Chair	129.50	79.95
Orange Traditional Chair	149.95	98.50
Pair Black & Gold Tweed Spanish Chairs	99.95ea	69.95ea
Pair Green Tweed Spanish Chairs	179.95ea	119.95ea
Turquoise French Provincial Chair	149.50	75.00
Beige Italian Provincial Chair	149.50	75.00
Brown & Blue Italian Provincial Chair	149.95	75.00
Blue & Green Traditional Chair	119.95	79.95
White Traditional Chair	136.50	69.95
Modern Aqua Chair	109.50	49.95
Modern Chair & Ottoman	139.95	74.50
Modern Print Chair	129.95	59.95
Orange Mediterranean Chair	159.50	79.95
Early American Print Chair	139.95	89.95
Early American High Back Gold Chair	149.50	98.50
Pair High Back Provincial Chairs	179.95ea	98.50ea

MISCELLANEOUS

6 Rack Maple Gun Cabinet	\$198.50	\$149.95
Organ Desk	259.95	198.50
Valets	14.95	9.95
Maple Bookcase	69.95	49.95
Magazine Racks	37.50	29.95
World Globe	129.50	99.95
Mushroom Ottomans	94.50	76.50
Hall Console w/Mirror	45.00	34.50
Bookcase Console	209.50	198.50
Bar Stools	21.50	16.95
Hall Trees	29.95	24.50
Vanity Stools	32.00	19.95



BEDROOM

White & Gold French Provincial Double Dresser, Mirror, Chest, Double Bed & Nite Stand	\$439.50	\$298.50
White & Gold Powder Table	129.95	89.95
Spanish Oak Double Dresser, Mirror, Double Bed & 2 Nite Stands	468.50	329.50
Spanish Oak Bachelor Chest	91.50	69.95
Modern Walnut Trundle Beds	169.50	139.50
Spanish Pecan Triple Dresser, Mirror, Chest, Nite Stand & Queen or Regular Headboard	569.50	429.50
Spanish Pecan Triple Dresser, Mirror & Queen or Regular Headboard	349.50	259.50
Provincial Triple Dresser, Mirror, Chest 2 Nite Stands & King Size Bed	729.95	498.50
Spanish Oak Triple Dresser, Mirror, Chest & Double or Queen Size Bed	498.95	339.50
Spanish Oak Double Dresser, Mirror, Chest & Double or Queen Size Bed	469.50	319.50
Spanish Pecan Triple Dresser s/Twin Mirrors, Chest, Nite Stand & Queen or Double Bed	629.50	499.95
Spanish Oak Triple Dresser, Mirror, 2 Nite Stands & King Size Bed	678.00	549.50
Spanish Pecan Triple Dresser, Mirror, Chest Nite Stand & Queen or Double Bed	776.50	579.50
Spanish Pecan Triple Dresser w/Twin Mirrors, Chest, 2 Nite Stand & King Size Bed	974.50	729.50
Modern Walnut Double Dresser, Mirror & Double Bed	239.95	192.50
Early American Pine Double Dresser, Mirror, Chest, Nite Stand & Queen or Regular Bed	729.35	589.50
Early American Double Dresser, Mirror, Chest, Bed & Nite Stand	572.50	459.50

DINING ROOM

Early American Maple Round Table & 4 Chairs	\$418.50	\$329.50
Early American Maple Rectangular Table & 6 Chairs	438.50	359.50
7 Pc Dinette	179.95	129.95
7 Pc Dinette	240.00	189.50
7 Pc Dinette	189.95	139.95
5 Pc Modern Dinette	199.95	149.95
5 Pc Modern Dinette	164.50	129.95
5 Pc Modern Dinette	240.00	189.50
7 Pc Spanish Dinette	240.00	198.50
5 Pc Spanish Dinette	169.50	129.50

All bedding in twin, regular, queen, & King sizes reduced for this sale.

Final Close Out on bin of sofa pillows values to 7.95 now only 99¢

All table, floor & hanging lamps reduced, some as much as 50%

CLOSE OUT ON ALL BEDSPREADS 1/3 OFF

Close out on 9 x 12 /braided rugs, Reg. 79.95 Close Out Price 49.95

Final Close Out on 4x6 area rugs. Reg. 39.95 Close Out Price 24.50

LA-Z-BOYS

Early American Orange Tweed	\$249.50	\$198.50
Early American Green Tweed	215.95	169.95
Traditional Orange Tweed	239.95	189.95
Early American Wood Arm	259.95	209.50
Early American Green Plaid	239.95	189.95
Spanish Red Print	264.50	209.50
Traditional Green Vinyl	214.50	169.95
Spanish Red Vinyl	279.50	224.50
Modern Orange Vinyl	204.50	159.95
Traditional Gold Vinyl	204.50	159.95
Traditional Gold Velvet	245.00	198.50
Traditional Green Velvet	279.50	224.50
Traditional Green/Gold Velvet	265.00	209.50

Boody's FURNITURE CO.
PLAINS SHOPPING CENTER
659-3044

Jock Lee Named Distinguished Student At A&M



Wednesday, January 27 was meeting time for Boy Scout Troop 51 in the scouting room in the back of the Community Building, with Harry Stumpf; Bob Farr; and Ronnie Burke. Bob Crawford continued working with the scouts on their Soil and Water Conservation project. There were 33 scouts present at this meeting.

Saturday, January 20 the Boy Scout Troop 51 Patrol leaders and their assistants met from 9-12 a.m.; to plan for the troops exhibit to be taken to Guymon for the Scout-O-Rama.

Cub Scouts Den 6 met Monday Feb. 1 with their leader Mrs. Charles Hall. Sandra Stewart helped Mrs. Hall at this meeting which was opened with the Pledge to the Flag. Den Chief Brent Biles served refreshments before the boys went to the Methodist Church to practice on their part for the Pack meeting. While the boys were there, they helped set up the chairs for the evening meeting. Scouts attending were Den Chief Brent Biles, Kevin Russell, Ronnie Bentley, Kelley Scates, Shaun Swann,

Girl Scouts Taking Orders For Cookies

Cookie sales are in progress for the Spearman Girl Scouts. This year's selection is very good and the girls of the Junior troops are out taking advance orders. The cookies will be delivered to those who order around the 12 of March. The girls only have a week to take these orders and some are trying to earn camperships for this summer. A campership pays the girl's way to established camp in Woodward, Okla. If you would like to order some delicious cookies and a girl does not contact you, PLEASE call one of the leaders and a girl will be right out. Numbers to call: 659-3193; 659-3880; or 659-3511.

Paula Higgins Enrolled at LCC

Paula Higgins, daughter of Mr. and Mrs. J. B. Higgins of 1005 Drensen, has enrolled for the spring semester at Lubbock Christian College. Paula is a 1970 graduate of Spearman High School where she was a member of the National Honor Society, the Band, won the psychology award and the shorthand award. She is a freshman majoring in English. Lubbock Christian College is a small, private, senior college offering BA and BS degrees in 16 majors.

Boy Scout NEWS

BOWLING NEWS

PIN BENDERS-1-29-71	WON	LOST
TEAM		
Golden Thimble	44 1/2	21 1/2
Bowl Mor	42	22
McClellan Grain	36 1/2	27 1/2
Wallis	32	32
Farm Bureau	30	34
Burtors TV	26	28
Vernons	24	40
J.L. Brock Ins.	24	40
HIGH TEAM SERIES		
McClellan Grain	1366	
Golden Thimble	1350	
Bowl Mor	1240	
HIGH INDIVIDUAL SERIES		
Sheryl Meek (Sub)	562	
Jewel McCalmon	512	
Jo Larson	479	
HIGH TEAM GAME		
McClellan Grain	497	
Golden Thimble	497	
Bowl Mor	459	
HIGH INDIVIDUAL GAME		
Sheryl Meek (sub)	209	
Jo Larson	199	
Sheryl Meek	193	

BIRTHS

Mr. and Mrs. Harold Fickling of Amarillo announce the birth of a new son. Evan Lee was born Jan. 27. He weighed 8 lbs. 12 oz. and was 22 inches long. Maternal grandparents are Mr. and Mrs. G. E. George of Higgins. Mrs. J. E. Fickling of Spearman is a paternal grandparent.

Air Force Changes W A F Requirement

The United States Air Force recently changed the education requirements for women applying for the USAF WAF Program. It was announced today by

SSGT Tim Harmon, Local USAF Recruiting Representative from Amarillo, Texas. Young women who have completed requirements to be a high school graduate by completion of the General Educational Development (GED) Test may now apply for the USAF WAF program. Further information may be obtained on the program by contacting SSGT Tim Harmon, USAF Recruiting Office, PO Building, Amarillo, Texas, or by calling 376-0147 or 376-0148.

Computers For Grocery Stores

COLLEGE STATION--A computer for checkouts at the grocery store, which would mean speedier checkouts and savings for the consumer, has been demonstrated for the U.S. Department of Agriculture, announces Gwendolyn Ciyatt, Extension specialist in consumer marketing. The computerized checkout system was demonstrated by Virginia Knauer, Presidential Assistant for Consumer Affairs, at the Agricultural Research Service Office of the USDA. It is the first working trial model. The system consists of an electronic scanner, held over the product that reads the code label and records the price.

name, amount and other identifying data about the item. The customer receives a detailed list of items purchased, prices, tax and number of stamps due. The computer records this information and maintains an inventory by name and automatic ordering information for shelf replacement. It does not, however, handle fresh produce--items such as lettuce or unpackaged carrots. Both time in the checkout lines and consumer money can be saved by installing the computers. Also, the system will save clerks considerable time and may encourage lower food prices. Few problems remain to be worked out, but the computerized checkout system offers possibilities, Mrs. Ciyatt says.

Garden Mulches Leaflet Available

Garden mulches and how to use them is the subject of a new leaflet available from the USDA Soil Conservation Service. Bob Crawford, SCS district conservationist at Spearman said the leaflet "Mulches for Your Garden" has the best and most concise explanation of how to use mulches and compost in a garden that he has ever seen. The leaflet explains how mulches cushion falling raindrops which reduce soil loss and soil compaction. Crawford said. "Mulches keep soil cool in the summer, conserving moisture; they also furnish food for earthworms which are valuable for aerating the soil. Organic matter added by mulches helps keep soil crumbly and easy to work." Crawford said some mulches are more valuable if composted before using. The new publication shows how to build a simple compost bin out of wire or boards and is complete with drawings and pictures. The leaflet lists the number of cupful of various kinds of fertilizer, wood ashes, or epsom salts to add to a bushel of compost to speed decomposition and to increase the compost's plant nutrient value. Details are also given on how to make acid compost for use with azoecae and rhododendrons. "Proper handling of mulches is one of the most important and least understood soil and water conservation measures used in Texas," Crawford said. "All good conservation farmers leave the stalks and stems from their crops on the land to reduce erosion and conserve moisture. Few conservation measures do more to reduce pollution from blowing dust or from sediment." The district conservationist said gardens could use the same principles in flower and vegetable gardens by utilizing mulches from grass clippings, tree leaves, straw, stems and stalks from harvested vegetables, and other material.

One Of Nation's Outstanding Young Men

CANYON, Tex.--A West Texas State University instructor in government was named one of America's Outstanding Young Men of 1970. Leon W. Blevins, 33, was selected for the honor by an independent board of advisors, comprised of prominent educational and business leaders. The award is presented annually to young men who have distinguished themselves as outstanding young men in America. A Brownfield native, Blevins was educated at Levelland High School, Texas Tech University, Wayland Baptist College, Southwestern Baptist Theological Seminary, and the University of Texas at El Paso. Receiving a bachelor's degree in 1961 from Wayland Baptist, Blevins enrolled at Southwestern Theological Seminary to study church history and church-state problems. Blevins completed his Master's degree in political science in 1967 at Texas at El Paso. Blevins taught in high schools at Deming, N.M., and Holtville, Calif., and at the University of Texas at El Paso, Texas Tech and West Texas State. He has pastored Southern Baptist Churches in Texas, New Mexico and California. A frequent speaker at churches, schools and patriotic meetings, Blevins also writes religious articles. Working with young people has been more than a part time for Blevins. He and his wife Shannah, directed a girls home in 1961 near Fort Worth. While he was teaching at Texas Tech, Blevins served as assistant chairman of the Mission Committee of the First Baptist Church in Lubbock. Blevins and his wife have three children, Tab, 9, Michael, 6, and Shaleah Zan, 3.

The population of the United States--now roughly 205 million--may total 280 million to 300 million persons by the end of this century. All these developments put pressure on our resources. Consider the fact that the average American in a life span of 70 years uses 26 million tons of water, 21,000 gallons of gasoline, 10,000 pounds of meat, 14 tons of milk and cream, 9,000 pounds of wheat, and great quantities of other products from the earth.

Hamburger

4 lb. Pkts. **53¢**
lb. **59¢**
Otherwise **59¢**

Slab Bacon

Sliced
Lb. **59¢**

CHUCK ROAST

Lb. **59¢**

Prices Good Thru Fri. and Sat.

BARBECUED CHICKENS

FRESH DAILY

ARM ROAST

Lb. **69¢**

BREAD

1 1/2 lb loaves
2 for 45¢

<h3>Egg Plant</h3> <p>1 lb. 19¢</p>	<h3>Tomatoes</h3> <p>3 lb. lug 79¢</p>	<h3>GREEN ONIONS</h3> <p>Fresh 2 bunches 19¢</p>	<h3>Potatoes</h3> <p>White 20 lb. 79¢</p>
<h3>Potatoes</h3> <p>303 Can 2 for 25¢</p>	<h3>Soup</h3> <p>College Inn Chicken & Noodles or Beef & Noodles 3 for \$1</p>	<h3>Pies</h3> <p>Try our Home Baked Pie-Apple, Cherry, Pineapple, Pecan and Blueberry. 39¢</p>	<h3>Spaghetti Dinners</h3> <p>American Beauty Macaroni & Cheese or 7 oz. 2 Pkgs. 39¢</p>
<h3>Peaches</h3> <p>Shurffine #2 1/2 Cans 4 for \$1¢</p>	<h3>Vegetable Oil</h3> <p>38 oz. Shurffine Pure 89¢</p>	<h3>Mashed Potatoes</h3> <p>24 oz. American Beauty Instant 49¢</p>	<h3>Pork & Beans</h3> <p>Van Camps #2 1/2 Can 2 for 89¢</p>
<h3>Dog Food</h3> <p>Twin Pet 11 cans \$1</p>			

LEWIS LLEWELLYN Is Breaking Law Way to Do Good?



"We must break every law to save three million Soviet Jews," said Rabbi Meir Kahane, leader of the Jewish Defense League, recently. "The time has come for us to bury our respectability before it buries us." The rabbi was referring to plans by his organization to take action -- legal or illegal -- to direct attention to the plight of Jews in the Soviet Union. There is no doubt that the Jews in Russia need help. What we can do to help them is another question, since they are under the control of a government that apparently pays little attention to humanitarian considerations. But the way to help them is definitely not to violate the laws of this country. That only succeeds in making criminals out of people with supposedly good intentions. Larry Fine, executive director of the JDL, said on January 11, "We feel that, by creating a crisis, we will force the Russians to let the Jews go." However, the board of governors of B'nai B'rith, Jewish service organization, declared that the deeds of the JDL were the "lunatic-fringe action of an unrepresentative, notoriety-seeking group."

"Let reverence for the law... be taught," he continued, "in the schools, seminaries, and colleges. Let it be written in primers... Let it be preached from the pulpit and proclaimed in the legislative halls, and enforced in the courts of justice... In short, let it become the political religion of the nation." Is this advice from Lincoln out of date? Have times changed? Is it now all right to break laws that we personally do not approve of? Or is it permissible to "do evil that good may come?" Vice President Spiro Agnew, speaking to the American Legion convention in Portland, Ore., last September, said, "Ours is a system rooted in law. It's based on respect for law, and on laws that deserve respect... We have a First Amendment that guarantees the right of free speech and free assembly. But smashing windows, burning offices, and assaulting people in the streets are not acts of speech or assembly. Those are trespasses upon the equally sacred right of others to be safe in their property and in the free enjoyment of their liberty." **Obedience Required** Although some religious leaders have declared that it is all right to break the law when "the end justifies the means," they did not get this teaching from the Bible. Here's what the Bible says on this matter: "Put them in mind to be subject to principalities and powers, to obey magistrates, to be ready for every good work." It is not a "good work" for any minister, priest, or rabbi to advocate disobedience to law -- for any purpose or at any time.



Miss. Vicki Shedeck

Engagement Is Announced

The Spearman United Methodist Church will be the setting for the May 16th wedding at 2:30 of Miss Vicki Ann Shedeck and Mr. Billy Wilson. Miss Shedeck is the daughter of Mr. and Mrs. Richard H. Shedeck of Spearman and the parents of the prospective bridegroom are Mr. and Mrs. Bill Wilson of Gruver.

Miss Shedeck is a 1970 graduate of Spearman High School and a freshman student at Panhandle State College. Mr. Wilson is a 1968 Gruver High School graduate and a Junior Industrial Arts Major at Panhandle State College.

SORORITY PLANS VALENTINE DANCE

The Rho Rho Chapter of Beta Sigma Phi met Thursday, January 28, in the home of Deanne Kenney. President Scarlet Jackson presided over the business meeting. After the opening the Valentine dance was discussed. The dance will be held at the Perryton Country Club, February 12. Other service projects were discussed.

Charlotte Jackson read from the book of Beta Sigma Phi. The program was presented by Sheryl Meek with Charlotte Jackson assisting on "Literature". Group discussions were held after the program. After the closing refreshments were served to: Madelin Fuqua; Charlotte Jackson; Scarlet Jackson; Linda Latta; Sandra Lindsey; Sheryl Meek; Nan Nicholson; Linda Umphress; Virginia Martin; Joan Vernon; Loretta Cook; Coda Zschlesche; Delma Barnum; Mary Lovett; Linda Venneman by the hostess Deanna Kenney.

Spearman Study Club Met Feb. 1

Spearman Study Club met in the home of Sandra Ladd, February 1 with Mrs. Ladd and Mrs. David Wilson as hostesses. The meeting was opened with the reading of the Junior Pledge. Roll call was answered with "Do you have a generation gap?" Margaret Evans conducted the business meeting. The Top of Texas PFWC District Spring Convention which will be held in Pampa on April 1 and 2 was discussed. Nominations for Junior Director will be presented at the convention. All Junior clubs are to present skits at the convention. Patty Sheppard and Sandra Ladd were appointed to prepare the Spearman skit. Anyone wishing to enter the Fashions for Fun Contest held at this convention must have their entries in by March 1. A nominating committee composed of Margaret Adamson, Marilyn Wilson and Margaret Evans was appointed. The club still has ladies long gloves for sale in black and brown at the cost of \$2 a pair.

Guest Speaker Mrs. Orvil Brummett presented the program "Do you hear me God--the times are changing!" Those present were the guest, Mrs. Brummett; members Margaret Adamson, Margaret Evans, Sonja Ragsdale and Patty Sheppard.

B-SCOUTS ENJOY SKATING PARTY

The boys of Scout Troop 51 had a afternoon of fun Saturday, 30. The boys gathered at the Community Building to distribute some circulars then they were taken to Perryton for several hours of skating. Parents taking car loads of boys were: Mr. and Mrs. Leroy McCalmon; Mr. and Mrs. Harry Stumpf; Mr. and Mrs. Bob Farr; Mrs. Kopke; Mrs. Orville Latham; Mrs. Coy Kelley; Mr. Don Schmeht; and Ronnie Burke. 41 persons enjoyed the skating before returning to Spearman where Al Tucker and Bill Innis had been preparing 135 hamburgers for the boys. Even with a few bruises-a good time was had.

Holt New

Mmes. Vivian Green and Charmin Lyles of Gruver were Tuesday afternoon callers of Mr. and Mrs. A.C. Green of Spearman.

Mr. and Mrs. C. W. Kirk and Maude Rosson were Tuesday night dinner guests of Mr. and Mrs. Travis Reger and family.

Mrs. Berda Holt was hostess to a birthday party Wednesday afternoon January 27 honoring Mrs. Herbert Kirk, Mrs. John Campbell and Mrs. Odie Crawford. Mrs. Kirk was unable to be present for the party. Gifts were given to the honorees and refreshments were served to Mmes. Bertha Jenkins, John Campbell, Medlin Patterson, Dan Terry, Phil Jenkins, Odie Crawford, Owen Pendergraft, C. W. Kirk, Berda Holt and Maude Rosson.

Mr. and Mrs. Tom Waugh of Perryton were Saturday afternoon callers of Mr. and Mrs. W. E. Bratton and Mrs. Mildred Chamberlain of Spearman. Mr. Waugh, Mr. Bratton and Mrs. Chamberlain are retirees of the Community Public Service.

Mrs. Owen Pendergraft was Thursday luncheon guest of Mr. and Mrs. Phil Jenkins.

Mr. and Mrs. Bob Tevebaugh and Mr. and Mrs. Robert Tevebaugh of Claude, Mr. and Mrs. Phil Jenkins were Sunday dinner guests of Mrs. Bertha Jenkins. The Tevebaughs also visited the Travis Regers and C. W. Kirk.

Mrs. W. E. Bratton and Mrs. Mildred Chamberlain of Spearman visited Sunday afternoon Mrs. Pearl Teeter in Perryton.

Altha Groves of Spearman is staying with Mrs. Garrett Allen of Spearman who has a foot injury.

Mrs. Jesse Thompkins of Spearman spent last week visiting Mrs. Sam Morman and family of Amarillo.

Mr. and Mrs. Owen Pendergraft were Friday night callers of Mr. and Mrs. Phil Jenkins.

Mildred Chamberlain of Spearman and Maude Rosson were Sunday night guests of Mrs. Bertha Jenkins.

Bill Campbell of Stinnett, Mr. and Mrs. John Campbell visited Saturday night a week ago with Mrs. Maggie Mayes and Mr. and Mrs. Luther Mayes of Oklahoma City.

UPCOMING MOVIES RATED

C--Children (8 to 12)
 Y--Young People (13 to 17)
 A--Adults (18 and over)
 Cannon For Cordoba--No information available
 On A Clear Day You Can See Forever--Entertaining musical about a young girl with extraordinary mystical powers.
 A & Y & C--Excellent
 WUSA--Contrived melodrama of an unprincipled alcoholic who works for a right-wing radio station, WUSA. Paul Newman and his mistress (Joanne Woodward) are approached several times by a left-wing welfare worker (Anthony Perkins) who tries unsuccessfully to make Newman aware of his political responsibility. Their conflict is culminated in an unnecessary and bloody riot, sparked off by Perkins' insane attempt to assassinate the president of WUSA. This shallow and over-long film contains every cliché about contemporary America. Although issues are presented, no sides are taken and no committed or responsible statements are made. Hollywood's blatant exploitation of serious problems is despicable. Cursing and one sex scene. A--Mediocre, Y & C--No.

The Executioner--Numerous corpses mark the circuitous twists and turns of this familiar spy tale. A few semi-nude scene. A--Good, Y--Mature, C--No.

It's A Mad, Mad, Mad, Mad World--Comedy, great fun.

Hello Dolly--Delightful family fare is the pass phrase for this adaptation of Jerry Herman's Broadway hit. Barbara Streisand stars as a conniving matchmaker, circa 1900, who has her eyes on the wealthy and crusty Walter Matthau.

A & Y & C--Very Good
 How To Commit Marriage--No information available.

NEW OFFICERS NAMED FOR REBEKAH LODGE

The Spearman Rebekah Lodge 290 met in regular session in the 100F Hall January 28, at 7:30 p.m. Ann Shelton-Noble

Grand and Mona Slater-Vice Grand were presiding officers. New officers for the 1971 term were installed. Installing team were: District Deputy President -Lee Henry; Pro tem.; Deputy Marshal-Winnie Edler; Deputy Warden-Cel Cudd; Deputy Secretary-Roberta Moulton; Deputy Treasurer-Hazel Allen; Deputy Musician-Mildred Stone; Deputy Inside Guardian-Florance Taylor; Deputy Outside Guardian-Alice Moore; Deputy Chaplin-Clara Stubblefield; all of Perryton. New officers installed were: Noble Grand-Mona Slater; Vice Grand-JoAnn Weaver; Recording Secretary-Jackie Hall; Treasurer-Dorothy Longley; Warden-DeAnna Kenney; Right supporter to Noble Grand-Franke Durrye; Left supporter to Noble Grand-Rose Cummings; Right Supporter to Vice Grand-Inez Holland; right supporter to Chaplin-Gaunita Boxford; left supporter to chaplin-Marie Sparks; Musician-Thelma Kenney; Inside Guardian-Ruth Caro; and Color Bearer-Martha Boyd.

Refreshments of sandwiches, punch, and cake were served to 19 Perryton guests and 16 Spearman members.

Sacred Heart Women Planning Italian Dinner

The ladies of the Sacred Heart Parish are planning an Italian Spaghetti Dinner for Sunday, March 7, 1971 from 4:00 to 8:00 in the church parish hall. The public is invited to come eat spaghetti before going to evening church services of other activities. The menu is: Spaghetti and Meat Balls, Tossed Green Salad, Garlic Bread, Relish, Cake, Ice Tea and Coffee. Tickets are Adult \$1.75; Children \$.075, 6 and under Free.

Information on purchase of advance tickets can be obtained by calling 659-3193 or contacting any lady of the parish.

Working Bees 4-H Club Met

Five Little Magic Cooks of the Working Bees 4-H Club met with their leader, Mrs. Dwight Hutchison and assist-

ant leader, Gina Hutchison, Friday January 29 for their first foods lesson.

The nine year old girls helped prepare a simple supper meal. Each girl made a grilled cheese f ankfurter sandwich. Gina Hutchison demonstrated cleaning, peeling and preparing carrot strips and celery to the group. The table was properly set and each girl evaluated her product after eating the prepared meal. Nutrition and the daily requirements found in the menu were discussed.

These girls who all live in town enjoyed touring the farm after their lesson.

Members present were: Pam Collins, Jamie Morley, Jamie Thomas, Tamie Baker and Leslie Platt.

Mrs Archer Is Xi Zeta Hostess

The Xi Zeta Sorority met Thursday 28 in the Ann Archer home. President Altha Townsend presided over the meeting. Committee reports were heard Area convention of the Beta Sigma Phi will be held in Perryton, October 9 and 10. The Valentine dinner and dance will be held in Perryton at the Country Club February 12. A valentine gift for the sponsored girl at Borgers Girls Town was discussed. Ruby Lair reported on Heart Sundays February 21 and February 28. The program was given by Matt Lair on the recent Farm Bureau Seminar. Members present were: Ann Archer; Linda Davis; Pat Dear; Marti Gamett; Ruby Lair; Elsie Mathews; Joan Stewart; and Altha Townsend.

Blue Monday Club Meeting

Gwenfred Lackey was hostess for the Blue Monday Bridge Club Monday in her home.

Attending were Mildred Daily, Margaret Gibner, Norman Gandy, Viola Graves who was low score, Ruth Hill, Lula Womble, Deta Blodgett and Emma Seitz, who had high score. Ruth Hill will be Feb. 15 hostess.

MRS E.A. GREEVER PUBLISHES 2nd BOOK OF POETRY

Mrs. E. A. Greever, a known Spearman resident, a publisher of religious and poetry, has just published her second volume of poetry, "Peace, Quietness & Grace", a book of poetry just off the press and Mrs. Greever is offering the book to anyone who might want a copy. The book of poems was obtained from Mrs. Greever herself, from her daughter Mrs. Tom Sutton, or from her son's wife, Mrs. W. J. Greever. It is free for the taking.

Freeman Barkley Easter Seal Campaign

Mr. Freeman Barkley will head the 1971 Easter Seal Appeal in Hansford County, announced by P. O. Settle of Fort Worth, President of Easter Seal Society for Children and Adults of Texas. Residents of Hansford County will receive the annual Easter Seal Appeal letters in the beginning March 1. The Seal Appeal, conducted to provide disabled persons their families treatment services, will continue the Easter Sunday, April 11.

Mr. Barkley is one of the men and women throughout Texas who are serving in capacity. The cost of the wide Easter Seal program one million dollars, financed mainly by the Easter Seal Appeal. Almost 90 percent funds raised by the Easter Appeal remain in Texas to support the growing needs of disabled in the state.

Special emphasis is being given in the 1971 Easter Seal Appeal to the disabled child or his family in Hansford County who may need assistance now know where to obtain. Any disabled person can claim him at the First State Bank Spearman, Texas, who will refer the request for services to the Easter Seal Society. A determination of the extent of assistance needed, the most efficient means of obtaining that assistance will be made. Arrangements for medical treatment or service will be made by the Easter Seal Society.

RACK SALE

SALE STARTS TODAY

Fashion CLEARANCE

\$10, \$15, \$20

DRESSES AND SPORTS WEAR

BARGAINS BY THE ARMFUL at

LADY FAIR

Plains Shopping Center Spearman

Surprise Rack \$5 AND UNDER

Thank You

WE SEND THIS SPECIAL NOTE OF THANKS TO EACH PERSON WHO ATTENDED OUR FARMING FRONTIERS OPEN HOUSE. YOUR ATTENDANCE ADDED TO ITS SUCCESS

Congratulations

ALSO WE WISH TO CONGRATULATE PHIL JENKINS-WINNER OF OUR DOOR PRIZE.

Hansford Implement

S. HIGHWAY 207 SPEARMAN

REAL ESTATE

FOR SALE-10 x 55 Mobilhome 100 x 190 ft. lot with garage. During day phone 2559, after 4, 2967.

LAND FOR SALE-1920 acres (Sections 101, 104 and 116, Block 45, H&TC Ry. Co., Hansford County, Texas, 177 acres in cultivation, balance in grass. A set of improvements, No minerals. Located four miles Northwest of Spearman, Texas, Federal Land Bank loan on land, \$82,500.00 at 7% interest with semi-annual payments of \$2,420.00. For additional information call Porter R. Underwood, Jr., 304 Amarillo Building, Amarillo, Texas, Phone 372-3262. After 6:00 p.m. call 352-5516.

LAND FOR SALE-1280 acres (Sections 70 and 71, Block 2, GH & H Ry. Co., Hansford County, Texas.) 924 acres in cultivation, balance in grass. Three irrigation wells. No minerals. Located 17 miles Southwest of Gruver, Wheat allotment 462 acres. Feed-Grain allotment 190 acres. Loans on land \$133,000 at 5 3/4% and 7% interest. For additional information call Porter R. Underwood, Jr., 304 Amarillo Building, Amarillo, Texas, Phone 372-3262. After 5 p.m., 352-5516.

FOR SALE-2 bedroom home. Fenced backyard. Fully carpeted. Equity and take over payments. Call 659-2492 Spearman. Also have good duné buggy for sale.

FOR SALE-Section northeast of Spearman, near large feedlot, good water area. Emmett Sanders, 659-2516.

FOR SALE 522 ACRES

Minnie Peterson estate-12 miles south of Guyton. Most of it irrigated. Producing gas well. Write G.H. Titsworth, 505 N. West Street, Wichita Kansas, 67203.

FOR SALE 3 BR Home Dessen St. Luxury home, Blodgett Dr. 2 BR, near school, nice 2 BR, corner lot Greenhouse & Dwelling Trailer park & small house 3 BR, 2 bath home, SW Spearman 4 Unit Apt. Zoned Retail Choice residential lots 4 1/2 acres E. Kenneth Airport Lot on Pavement EMMETT R. SANDERS BROKER 659-2516

FOR SALE: In Sanford at Lake Meredith. Five lots, level, no restrictions. 125 ft. street frontage by 120 ft. depth. Improved with utilities. Ideal for summer home, boat storage, or house trailers. For more information Phone Sanford 86-3787. Curtis Woodring 10S-4tp

New Listing: For Sale, 3 bedroom brick home; central heat & air; nice location near junior high; buy equity and assume loan. Emmett R. Sanders, 659-2516.

FOR SALE

FOR SALE-One Lake Pump, 1200 ft. pipe, Phone 882-4430, Andy Fuque, Hardesty, Okla. 9T-rtn

FOR SALE-12 x 56 Trailer house. \$200 equity and take up payments furnished. Call 659-3601 after 6 p.m. 11T-rtn

FOR SALE-5 bedroom suits, washer & dryer, Singer sewing machine, 7 cook stoves, 7 refrigerators, 7 heaters, 2 dinettes. Call 659-2271 after 6 p.m. 10T-4tp

FOR SALE-1963 Ford Galaxie 500, 2 wheel trailer. Phone 659-2791. 10S-rtn

FOR SALE-Oak Firewood. By the rick or cord. Ph 659-2736. 10S-4tc

FOR SALE-Several good, exceptionally clean, used Color TV sets. Earl Goodheart, 659-2871. 10T-rtn

FOR SALE-1960 Chevrolet pickup. Good shape. Jack McMullan. 1010 Haney. 11T-rtn

FOR SALE in Spearman. Nearly new spinet piano. Concert approved. Tremendous Bargain. This is your chance to win a fine piano by assuming small payments. Write at once-McFarland Music Co., 1410 W. 3rd, Elk City, Okla. 73644 11T-1tp

CLEAN rugs, like new, so easy to do with Blue Lustre. Rent electric shampooer and buffer \$2. GORDON'S DRUG

FOR RENT

FOR RENT-3 bedroom unfurnished house. 201 N. Hazelwood. Call 2764. 11T-rtn

FOR RENT-3 bedroom carpeted unfurnished house. 659-2566 or 2719. 51S-rtn

FOR RENT--Furnished Bachelor Apt. Contact Jim McLain, 659-3418. 12T-rtn

FOR RENT-One Bedroom, newly furnished apartments. Carpeted. Phone 659-2566. 41T-rtn

FOR RENT-furnished Apt, 606 S. Bernice Street, Phone 659-2652. 28S-rtn

For Rent-2 bedroom house. Unfurnished Inquire at 327 N. Hazelwood 51T-rtn

FOR RENT-4 room unfurnished house. 659-2661. 11T-rtn

HELP WANTED

TEXAS OIL COMPANY needs good man over 40 for short trips surrounding Spearman. Contact customers. We train. Air Mail R.B. Dickerson, Pres. Southwestern Petroleum Corp., Ft. Worth, Tex. 11T-1tc

Card of Thanks

Our heartfelt thanks to all who extended comforting sympathy and help in our recent sorrow. For the floral offerings, food and other kindnesses, we are deeply grateful. The family of Shirley Moyer

Heart Surgery Girl Now "in the Swim" For '71 Heart Fund



TWO HEART OPERATIONS speeded by Heart Association research saved the life of 2-year-old Amy Huntley of Middletown, R.I. Now, at 13, she swims 50 meters in 31.5 seconds, and hopes to represent U.S. in 1974 olympics. Meanwhile, she invites your all-out support of the 1971 Heart Fund Campaign. HF-O-6

PAINT SALE

Latex Wall Paint \$3.95 Latex House Paint \$4.95

PANELING SALE

FOXWORTH GALBRAITH LUMBER CO

FRANK PHILLIPS COLLEGE

Borger, Texas



Fall Registration Aug. 26th & 27th DORMITORIES MAXINE GOINS HALL W.G. STEPHENS HALL



DAVE LLEWELLYN

Right Reading of Jesus' Parables

"My love is like a red, red rose." The Scottish poet, Robert Burns, spoke in this verse feelings known to the heart of every man, didn't he? You've heard these words; perhaps you have even recited their thought. But just what is it that this line says?

The Problem

Does it mean that the one whom you love, like the rose, prefers to live out-doors, close to nature? Does it mean that she is deeply passionate, as the reddest red? Or is she tender, because she is badly unburned? Or might the "red, red rose" be the color of her lips?

Does it mean that she has the fragrance of the rose? Or might her charm be like the rose-bud that blooms beautifully, but then is quickly withered? Is she like a rose because she is pretty—or prickly?

In fact, is this line even talking about a woman at all? Perhaps it is not about the person he loves, but rather about his feeling of love.

Robert Burns used an analogy, a comparison, to express an attitude and a concept about love. This use of images, or pictures from life, is invaluable for conveying some kinds of information—especially feelings or attitudes. But such images must be interpreted with great care.

A Principle

One rule must be obeyed: any interpretation of an image, or picture from life, must make sense in the whole picture—and not just a part. To know what Burns meant by "My love is like a red, red rose" you must study the entire poem.

Here is another example.

Jesus told a story about a widow whose case was ignored by an unjust judge. This woman finally got justice from him because she pestered him until he judged her case, just to get rid of her. Jesus then said, "Shall not God avenge His own elect, which cry day and night unto Him, though He bear long with them?"

Many people have interpreted this parable, which is recorded in Luke 18, to mean that people ought to pray and beg God, day in and day out, to answer their prayers. This interpretation, however, does not fit the entire story.

The very next thing Jesus says is, "I tell you that He shall avenge them speedily." God gives to our prayers immediate action.

The fact that you may not see how anything is being done is explained in the phrase "though He bear long with them." God gives you faith and patience to accept His action in the proper course and in the proper time. This does not mean you should not speak repeatedly to the Lord about a matter, but you should realize that He heard you the first time.

This parable was to teach "that men ought always to pray, and not to faint." Jesus concluded, saying, "When the Son of Man comes, shall He find faith on the earth?"

Faint not; have faith. Jesus is not warning us not to faint with exhaustion from ceaseless praying. He is warning us not to faint or lose heart from frustration because we don't have faith that our prayers are heard and God is acting on them.

Copyright Dave Llewellyn 1971

Sunday School Lesson for February 7, 1971

February is American Heart Month!

LIFE-SAVING SUGGESTIONS

Instant recognition of heart attack symptoms and immediate medical care can save tens of thousands of American lives each year. With this in mind, the American Heart Association—supported through your Heart Fund gifts—offers some advice that all of us should take to heart: Know the warning signs of heart attack and act immediately to obtain medical help when they occur.

The new concept is given validity by the greatest life-saving development to emerge from the 1960s, namely, hospital coronary care service which reduces in-hospital deaths following heart attack by about 30 per cent. With optimum utilization of this service it might be possible to save an additional 50,000 lives yearly.

But the most skilled professional staff and the finest equipment are all but useless unless the patient acts quickly to obtain the service. Most of the reversible crises following heart attack occur during the first 72 hours. And the first four hours are the ones of greatest peril.

In other words, minutes count. The decision to obtain medical assistance immediately can represent the difference between life and death. Such a decision should not be left to the heart attack victim alone, but rather is one for the wife, husband, relative or friend. Heart attack symptoms vary, but these are the usual warning signs:

- * Prolonged oppressive pain or unusual discomfort in the center of chest, behind the breastbone.
* Pain may radiate to the shoulder, arm, neck or jaw.
* The pain or discomfort is often accompanied by sweating, nausea, vomiting and shortness of breath may also occur.
* Sometimes these symptoms subside and then return.

If these symptoms occur, the person with suspected heart attack should avoid physical exertion as much as possible. Someone should phone your doctor immediately. If the physician can't be reached, the patient should be moved immediately—to the emergency room of a hospital.

Incidentally, the recommendations offered are wholly in line with the Heart Fund slogan: "Give—so more will live."

THE FAMILY LAWYER

Lost at the Laundry

Katherine went to the neighborhood laundry to pick up her week's wash. But the proprietor greeted her with bad news.

"We had a burglary last night," he said, "and your bundles were stolen. I'm afraid you are just out of luck."

But Katherine decided that he, not she, ought to bear the loss. Filing suit for damages, she pointed out that the back door of the laundry had only the flimsiest kind of a lock, even though the building had been burglarized before. The court found the proprietor guilty of negligence, and ordered him to pay Katherine's claim.



When you leave clothing at either a laundry or a dry cleaner, you are creating what the law calls a "bailment." The company, as the bailee, must take reasonable care of your belongings. Although not to blame for an unavoidable loss, it is liable for a loss it could fairly have prevented.

Suppose the company tries to protect itself by a notice saying it is not responsible for losses of any kind. Does that make a difference? Most courts will recognize some limitation, but not a total denial, of the company's liability. Furthermore, a notice has no legal effect unless it is properly brought to public attention.

In one case a laundry inserted into each finished bundle a small printed notice, placing a dollar limit on its liability for losses. But when a customer demanded payment for some missing items, the company was held liable in full. The judge said the dollar limit could not be part of the bailment contract, because it was not even mentioned when the clothing was first brought in.

On the other hand, the com-

TEXAS PRESS ASSOCIATION Member Since 1970 THE SPEARMAN REPORTER 213 Main Spearman, Texas 79081 Box 458 659-8434 Published Weekly at 213 Main Street, Spearman, Texas 79081 Owner-Publisher William M. Miller Any erroneous reflection upon the character of any person or firm appearing in these columns will be gladly and promptly corrected upon being brought to the attention of the management. SUBSCRIPTION RATE--Hansford, adjoining counties, \$7.00 yr. Other points in combination with The Hansford Plainsman, \$9.00 yr.

pany too is entitled to "notice" of what it is accepting responsibility for. In another case, a man negligently left a ring in the pocket of a suit he sent to the cleaner. The ring vanished, and he put in a claim against the company for compensation.

But after a court hearing, his claim was turned down. The court said he could not blame the company for losing what it did not even know it had.

A public service feature of the American Bar Association and the State Bar of Texas. Written by Will Bernard.

© 1971 American Bar Association

TEXAS VEGETABLES--The value of commercial vegetables (fresh marketing and processing) produced in Texas during 1970 totaled \$141,422,000 reports the Texas Crop and Livestock Reporting Service, up 16 percent from 1969. Leading crops in value of production were onions, carrots, potatoes, cabbage and watermelons. Nationally, Texas ranked third in harvested acreage, production and value of fresh market vegetables behind California and Florida.

VA has eliminated its .5 per cent funding fee on guaranteed and direct loans to post-Korean vets.

Small Watershed projects help prevent floods and reduce sediment pollution in streams, lakes, harbors and estuaries. Upstream watershed projects can also provide water for homes, cities, industry and recreation.

If you'd like further information about watershed protection projects for your community, contact your local Soil Conservation Service Office.

Without man's stewardship, Nature itself has rarely been productive enough to meet men's needs--certainly not in the numbers in which we exist today and will exist in the future. Yet our resources must serve every economic and social need of mankind. The challenge is to assure that beauty and bounty as well as conservation, development and use are maximized simultaneously into the very long future. SCS 1/71

BODY WEIGHT CAN AFFECT HEN'S PERFORMANCE--Texas A&M University research shows that body weight can have more effect on laying hen performance than ration. The findings came out of Poultry Science Department's 500-day second genotype environment performance test. Bill Doran was in charge of the test.



End cold weather hang-ups with an electric dryer.

Why risk frostbite hanging clothes on the line when you can dry your clothes indoors in comfort . . . electrically? An electric dryer not only saves you clothesline work and weather worries, it saves ironing time, too. Thanks to gentle tumble drying and controlled electric heat, permanent press clothes come out of your dryer ready for wear without ironing. See your electric appliance dealer soon. Dry clothes the work-free way . . . electrically.

COMMUNITY PUBLIC SERVICE Your Electric Light & Power Company An Equal Opportunity Employer



Let us Precondition Your Calves or Grow Your Cattle On cheap Rations-Complete Cattle Services Barnes & McCammond Spearman, Texas 659-3638 659-3393

WANT ADS

Fiddle-Free Color TV by RCA

Burton's TV

Boxwell Bros. General Home and Flower Shop

Jummings Refrigeration and Air Conditioning

WHITE HOUSE LUMBER CO.

Sanford Lodge 1040 A.F. & A.M.

SERVICES

Hodako Motorcycles, Service, The Cycle Shop, Stinnett, Texas 806-878-2298. 9S-rtn

SHOES MADE at Woody's, boot makers, Woody's Shoe Shop, Higgins, Texas, 49S-rtn

LOCK SERVICE-I will be out most of the time Monday through Friday for a lock. If you have a lock which needs servicing or keys, leave lock at the White House Lumber Co. and will repair in on Saturday. Home or Residence Phone 2, E.D. Mundy. 48S-4tc-1T

Authorized Singer Sales & Service, 659-3132. 8S-8tp

FREE SURGEON-Pruning, electrical or removal. Evergreen Trimming also, dormant spraying, Spading and rototilling. Call Bob Welch, 435-3438. 48, Farnsworth, Texas. 10S-9tc

Printing Service-All your printing needs. Ph. 659-2452. N. Hazelwood Hill Newing. 11T-4tc

COME TAX SERVICE-316 Bernice, Phone 659-3175. 5 days and weekends. 11T-rtn


Check these food buys and Check out with savings!

U.S.D.A. Choice
SIRLOIN STEAK




98¢ lb.

Fresh Dressed Tender and Plump
FRYERS



27¢ lb.

Fresh and Lean
GROUND BEEF



48¢ lb.

U.S.D.A. Choice T-Bone
Steak

\$1.29 lb.

Extra Lean Ground
Chuck

79¢ lb.

Kornland Sliced
Bacon

49¢ lb.

Lean and Tasty Chopped
Sirloin

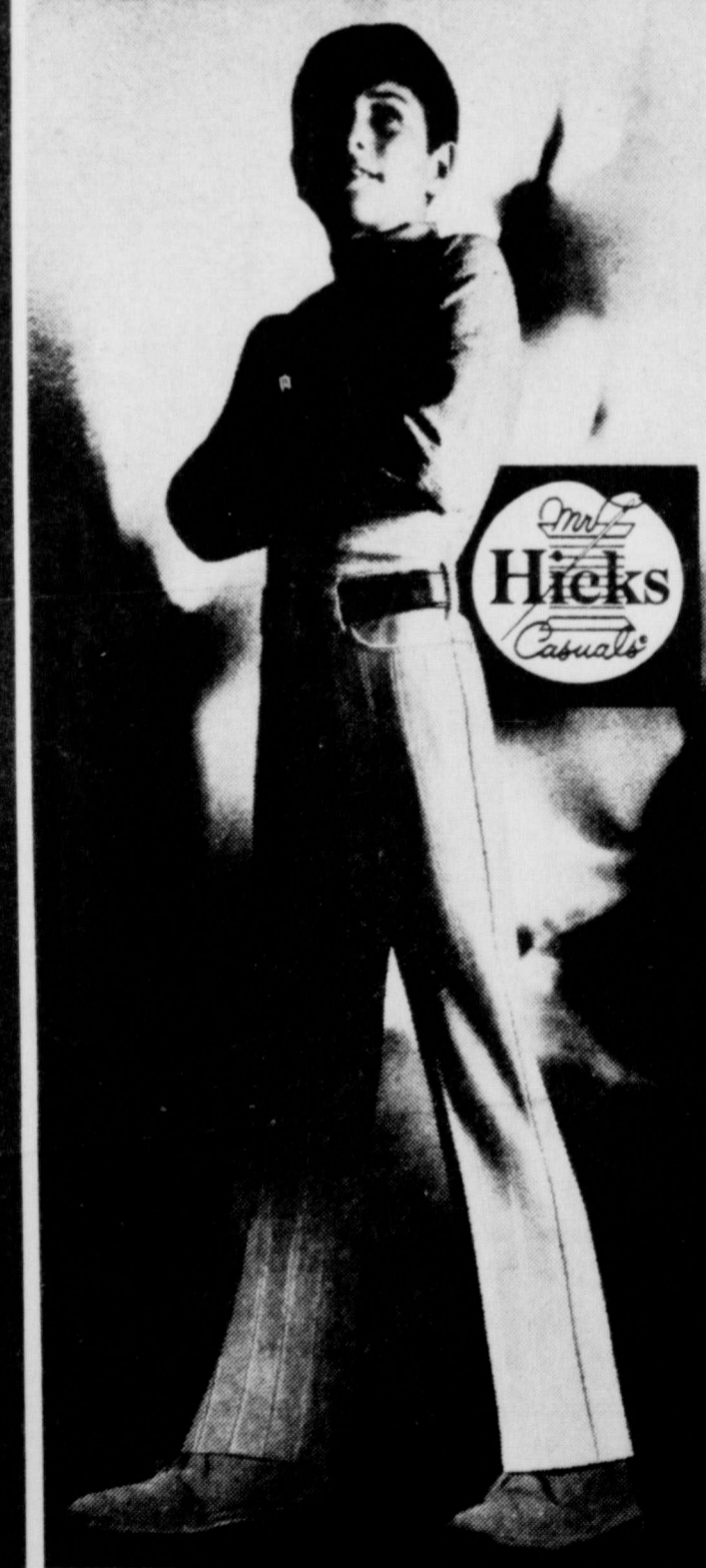
89¢ lb.

Fresh and Tender Baby Beef
Liver

49¢ lb.

BONUS BUCCANEER COUPON
100 FREE BUCCANEER STAMPS
With this coupon and Purchase of \$7.50 & over
1 Coupon per customer Good only at Cut Rate Grocery Expires Saturday Feb. 6th

Cut Rate Grocery
THIS COUPON IS WORTH 20¢
When You Buy a 1 Lb. Can of Maryland Club Coffee 3¢
77¢ with coupon
Cash value 1/20¢. Limit one per customer.
expires March 6th



Hicks Casuals

Sizes Through 18
\$5.99 2831R

FIESTA DEL MONTE
Del Monte Cling no 2 1/2 Can
PEACHES Sliced or Halves **3 for 88¢**
Del Monte 1 1/2 size can Sliced Chunks or Tidbit
PINEAPPLE **4 for 99¢**
Del Monte 303 size can
COCKTAIL **4 for 99¢**
Del Monte 46 oz. Can **TOMATO JUICE 34¢** Del Monte- 46 oz. Can **PINEAPPLE JUICE 29¢**
Del Monte Whole-303 Can **Tomatoes 4 98¢** Del Monte Early - 303 Can **Peas 4 88¢**
Del Monte-303 size can
SPINACH 5 for 88¢
Del Monte Cream or W.K. Golden 303 can **Corn 4 for 88¢** Del Monte Tomato 14 oz. bottle **Catsup 5 for 98¢**
Del Monte Cut Bluelake-303size can
Green Beans 4 for 88¢

Solid Heads Iceberg
LETTUCE



16¢ lb.

Washington Extra Fancy Winesap
APPLES 19¢ lb.

Fancy Maryland Sweets
YAMS 13¢ lb.

Crystal Wax White Sweet
ONIONS 15¢ lb.

Sunkist Navel
ORANGES 15¢ lb.



Gold Medal 5 lb. **FLOUR 49¢** Shurfresh U.S.D.A. Grade A Medium Size Dozen **EGGS 38¢**
Shurfresh Rich in Quality Half gallon **Ice Cream 64¢** Clifton Floral Bathroom Twin Pak **Tissue 24¢**
Shurfresh Frozen **TV Dinners 38¢** Shurfresh Pure Vegetable 3 lb. **Shortening 58¢**
Strawberries 26¢ Shurfresh Frozen 10 oz.
Family Size **SCOPE MOUTHWASH \$1.28** Family Size **LIQUID PRELL \$1.38**

Family Favorites



Regular **43¢**
Giant Size **69¢**
King Size **\$1.59**
Giant Size **89¢**
Giant Size **69¢**
Giant Size **71¢**

The Friendliest Store In The Panhandle
Cut Rate GROCERY
PLAINS SHOPPING CENTER
SPEARMAN, TEXAS