

obscured
irrel's care
e gait made
: tiptoeing

Pheasant
ologists

neck pheas
handle pro
harvest of
10 birds and
n-hours of
ologists of
Wildlife De
logist

birds were
improving
ing birds in
oadside not
otors made
and often
is a new m
ised.

with hunt
rds, 15 in
nel are set
ts, a syste
actual he
n.

be run dur
is of July
August to
pleasant re
again dur
ks of Octob
k of Novem
the distrib
rior to h
will enable
advise h
trations of
found.

More
Roads

7.2 miles
distered for
H. C. Pitt
ident of the
Dealen

of California
in motor
passed the
Texas take
e months
the same
r. As an
rated, "in
gistrations
hs of 1971
ations dur
ast year by

increase
population
of the im
ing job
partment
construct
e finest re
world to
as-owned

continua
e means
he impor
ishment
ehicle Co
the Legis
emben of
e expected
few week
ncrease,
within a
e vehicle
as will
rns will
ew motor
of 10-

skley and
e been
er parents
. They
& Sunday
is attend
ech.

ic

on Windsor
brought the
am at Lions
Club Tues
He is coach
ing a swim
team here, and this is
first for Spearman. He
swimming enthusiast
about 15 swimmers. I
get a picture of him
team for the paper
today if I can. All of
enjoyed Don's pro
and this promises to be
important program for
of Spearman.

YOU NAME IT

Billy Miller

Everything has been kind of
around here this week. I
don't come out with any
editorials, trying to
everyone to quit drinking,
chewing bubble gum
wearing "them nylons." So,
something is sure enough sim-
ing down. Some of the
fans" are once again
ing to me. Incidentally,
to Bobby Grayson's
editor, and there
with him a lot of good solid truth
baseball program in
Spearman, and this is the first
I have really been
directly with the
to really see how
means to our commu-
I must tell you this story
Abon Ellsworth when he
coaching his Little League
and won the champion-
k. We had to be put to bed,
Doctor's orders to not
up. The strain and pressure
completely shattered his
I sure do want to sa-
"Old Abon" for telling
this story, and I will re-
to my readers so you
kinda sympathize with us
And, above all,
get mad at any coach,
Little League official for
participation in the pro-
gram. All of us are just try-
ing to make it a good program
with these fine boys of ours. I
with one business man
he actually thought that
his business so bad to be
in Spearman he was
going to quit. Coaching
Spearman is probably no
different from any other town,
I wouldn't be a bit sur-
prised to see Dan Owen take
Spearman-ynx "all the
this year.

More Roads

7.2 miles
distered for
H. C. Pitt
ident of the
Dealen

of California
in motor
passed the
Texas take
e months
the same
r. As an
rated, "in
gistrations
hs of 1971
ations dur
ast year by

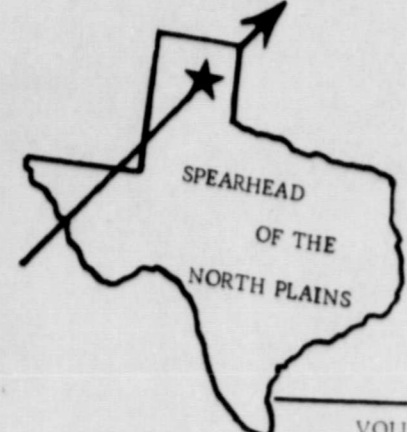
increase
population
of the im
ing job
partment
construct
e finest re
world to
as-owned

continua
e means
he impor
ishment
ehicle Co
the Legis
emben of
e expected
few week
ncrease,
within a
e vehicle
as will
rns will
ew motor
of 10-

skley and
e been
er parents
. They
& Sunday
is attend
ech.

ic

on Windsor
brought the
am at Lions
Club Tues
He is coach
ing a swim
team here, and this is
first for Spearman. He
swimming enthusiast
about 15 swimmers. I
get a picture of him
team for the paper
today if I can. All of
enjoyed Don's pro
and this promises to be
important program for
of Spearman.



the Spearman

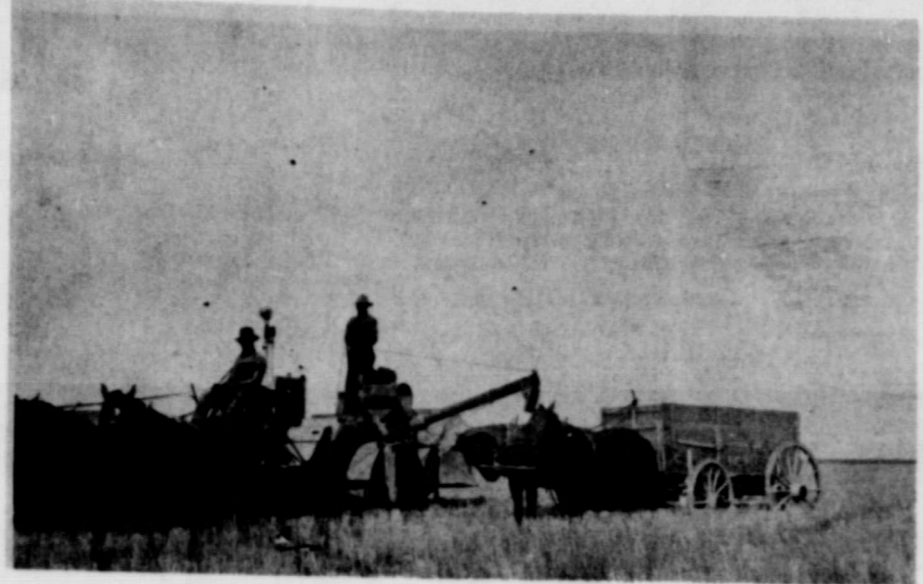
Member 1971
TEXAS PRESS ASSOCIATION

VOLUME 62, NO. 31

THE SPEARMAN REPORTER, Hansford County, Texas 79081

THURSDAY, JUNE 24, 1971

Harvest, 52 Years Ago



HARVEST--51 YEARS AGO This picture, made in the field of Walter Wilmeth, shows the combined harvester and thresher belonging to Paul Higgs. This "new machinery" was able to cut 20 acres per day. The wheat yielded 25 bu. per acre, and was hauled to market by horse-drawn wagons. (July 4, 1919).

Harvest was in full swing (51 years ago) at old Hansford and some of the farmers were lucky enough to have "new machines" assisting them with grain harvest.

THE HANSFORD HEADLIGHT carried the following noteworthy events concerning harvest:

Joe Cloe was in the city Wednesday night from his fine farm southeast of Hansford, for binder repairs and supplies. Joe says they are running two binders at his place; pulling one with a Fordson and the other with teams, and that the Fordson is cutting rings around the teams of horses. J.H. Buchanan is driving the Fordson and Mr. Cloe is manipulating the binder, and they cut from 20 to 30 acres of grain per day. George Hays and Leo Dacus are knocking down about 30 acres per day with a Fordson and an 8-foot McCormick binder. The Fordson tractor is proving to be a great success.

Walter Wilmeth is in operation on his farm in the Grand Plains community one of the monster combined harvesting and threshing machines, which cuts and threshes the grain at one operation, thereby eliminating much labor.

Jim and Wayman Edwards will start a similar machine on their farms south of Hansford in a day or so. They are said to be the last word in farm machinery.

Miss Hestie Hazelwood came from the farm southeast of town Tuesday in search of binder repairs.

P.A. Lyon, R.L. McClellan, J.G.B. Sparks and others went into Amarillo this week (51 years ago) in search for harvest hands.

Attorney C.D. Works, Drug-gist Hillhouse and Rev. Sanford hired out this week to work in the county's wheat crop harvest.

Everybody is busy in the harvest and the town of Hansford has been an almost deserted village all week. The weather is ideal. The hot sultry days are ripening the grain at a rapid rate and binders and headers are shaping it for the threshing machines soon to follow. It is by far the largest grain crop ever produced in the county and the beauty of it is that it is being saved in good shape and a big percent of it can be shipped out over the Santa Fe from Spearman thereby saving a haul of from 40 to 60 miles and greatly increasing the profits of the farmer. Securing the additional help needed in the harvesting of this great crop has been a serious problem, but Hansford County farmers, always equal to any emergency, have about worked out the solution, and, while a few more men could be used, yet reports from all directions indicate that harvesting is progressing at a satisfactory gait. A majority of the harvest hands come from Amarillo and points on the Santa Fe. Owing to the great demand for men in Kansas, the Guymon office of the department of labor has been unable to secure men fast enough to supply the demand. In another day or so many crops will be finished and this will release men for other fields. Ten days more pretty weather and the story will be told. Hansford county's great wheat crop will be up to the threshermen and freighters.

The harvest issue of the HANSFORD HEADLIGHT newspaper carried an advertisement from the John L. Hays Mercantile Co. listing groceries for harvest--flour, bacon, hams, potatoes, syrup, honey & apple butter. Canned goods in gallons. Also Weber Wagons and Fordson Tractors, and plenty of twine for binding the grain bundles.

The Guaranty State Bank of Hansford, Texas boasted capital and surplus \$28,000. The Hale Drug Company, trying to get citizens to patronize their fountain advertised that the ice cream served at their fountain was made from pure Jersey Cream. The ice cream was very pure and wholesome and contained no glucose, gelatin, starch or other adulterations usually found in factory ice cream.

The Haney Drug Co. preferred to advertise Tanlac--a splendid tonic and system purifier--for the health's sake.

Fifty-one years ago, at harvest time, there was not yet a city of Spearman, but the town was in the making for the railroad was building lines in this direction. Rails were laid for the railroad seven miles this side of Booker and the force of 100 men were laying three-fourths of a mile of rails per day. When harvest was completed, help would be more plentiful and the work can be pushed to a speedy completion. Later that year, the railroad was laid, and the town of Hansford moved lock, stock, business houses and homes, up from the valley to the present town site of Spearman.

Set-Aside Payment Due July 1

Farm program participants who certify performance of program provisions now or within the near future can expect to receive set-aside program payments shortly after the first of July, according to John Trindle, Chairman of the Hansford County Agricultural Stabilization and Conservation (ASC) Committee.

"We have been receiving some inquiries about when the set-aside program payments will be made," he said. "The Agricultural Act of 1970 provides for payments to be made as soon as practicable after July 1."

He pointed out that a producer cannot receive payment until after he has come in to the County ASCS Office, officially designated his set-aside acreage and certified compliance with other farm program provisions.

Final date for certification is Aug. 15. As this deadline date indicates, early certification is optional. A producer who is sure that his operations meet the farm program regulations can assure himself early payment by certifying early.

"Don't certify until you are sure," advised Trindle. "Litter to be safe than sorry, and I want to remind all farm program participants that no changes can be made after certification and that their farm may be spot-checked to determine that performance is up to standard. If you have any questions, be sure to call the County ASCS Office."

HANSFORD COUNTY REACHES GOAL IN SAVINGS BONDS

Mr. C. A. Gibner, County Bond Chairman, announced today that sales of Series E and H United States Savings Bonds in Hansford County during May were \$4,949. Sales for the first five months totaled \$74,868 for 107 percent of the 1971 goal of \$70,000.

During the month Texans purchased \$16,476,145 in Savings Bonds compared to \$14,528,581 (includes Freedom Shares) during May 1970. Year-to-date sales totaled \$86,134,682--47 percent of the 1971 goal of \$181.9 million.

Nationwide, new purchases of Series E and H Savings Bonds during May amounted to \$462 million, 25.9 percent above 1970. Sales the first five months of 1971 were \$2,229 million--19.6 percent above a year earlier. Exchanges of Series E for new Series H bonds amounting to \$105 million were reported for the five-month period of 1971, compared to \$101 million exchanged during 1970.

The Spearman Post Office will be closed Monday July 5 in observance of Independence Day. No deliveries will be made on city or rural

Reputation is character minus what you've been caught doing.



Hospital News

Patients in Hansford Hospital are Bernice Weant, Myrtle Robinson, Cecil Ham, Ottis Mason, Rita Schoening, Esteransa Puentes and son, Emma Lopez, Thelma Jackson, Jamie Thomas, Anita Anthony, Lee Phillips, Cora Knutson, Pete Lieb, Butch Hale, Jesse Lira, Robert Powers, Gertrude Nelson, Lilly Pool, Otto Holland and Hugh Deere.

Dismissed were Cecil Wright, Joe Gomez, Sharon Sheets, Frances Scroggs, Ina Mae Ferrell, Ophelia Vela, Cathy Leatherman, Nettie Phelps, Bill Swan, Hazel Morton, Kathy Brown, Myrtle Latimer, Roscoe Parks, Betty Romero and son, Kenneth Sullivan, Bess Selz and Emma Tucker.



New Rotary Club president Don Hergert, left, accepts the gavel from former president Ellzey Vanderburg. The new president was installed in a joint meeting with the Perryton Rotary Club last Thursday night at the Perryton Country Club.

Harvest Report From Hitchland

Dale Oatman, manager of Hitch Grain Co., reports that all of the dryland wheat has been cut in the Hitchland area. The dry land made from 5-15 bushels, and this has been about the county average. The semi-irrigated wheat, which was watered only 1 time is making around 30. The true irrigated and fertilized wheat is making from 40-75 bushels. Mr. Oatman reports, and this is also true for the county average.

Fire Damages Home

A fire, which apparently started in a hot water heater on the back porch of the John Sell residence north of Spearman, did extensive damage to the farm home Sunday night.

City Fire Chief, Robert Ragsdale, said the fire department received the call about 11:45 p.m. Sunday night. Ragsdale said evidently some passer-by saw the fire and turned in the alarm.

City policeman Bingham was the first to reach the scene, but was unable to rouse anyone by knocking on the door. He turned on the siren in his police car and woke up Miss Debbie Sell, who was asleep in the basement.

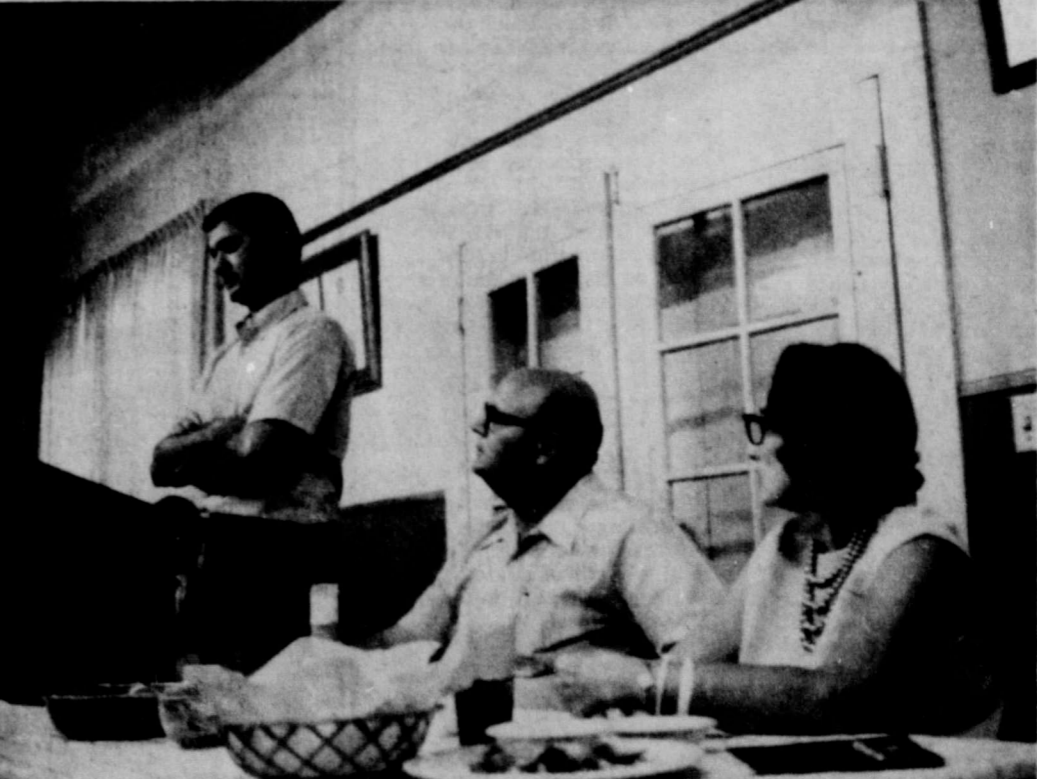
Mr. and Mrs. Ronnie Sell are living in the home, but they were not home at the time. Chief Ragsdale said the porch roof burned off and fire spread into the roof over the kitchen. Extensive fire damage was done to the kitchen and back porch area and the rest of the house received extensive smoke damage.

The farm home belongs to Mr. and Mrs. John Sell who have just recently moved to Ill.

Spearman firemen extinguished the fire in one hour's time.



Rotary Club song director Goy Palmer and pianist Carrie Marie Berry add the real spice to the regular Rotary Club meetings--held every Monday in Spearman.



Dean Weese gave the program at the regular Monday noon Rotary Club meeting. Dean is head of the Youth Summer Program in Spearman and also will be a coach of the girls Pan American basketball team this year. He will assist Coach Reddin of Wayland College. Dean discussed both the summer program for the youth of Spearman, and answered programs concerning the Pan American basketball trip this summer. New president Don Hergert conducted his first official meeting as President Monday. Rotary Ann Berry is pictured on the right.

Perryton Churches To Host Youth Encounter

A sub-district combination youth revival and lay witness mission is scheduled this weekend in Perryton.

The Youth Encounter, June 25-26, gets underway at 6 p.m. Friday with registration at the Methodist Church in Perryton. Registration fee will be \$1 and includes four meals. The week-end will be filled with group witnessing, testimonials by Texas Tech's star fullback Larry Hargraves and

a former Black Panther Benny Wayfield. Of special interest will be a concert by the Continental Singers set for 9 p.m. Saturday night at the High School auditorium. A free-will offering will be collected for this group of Christian entertainers.

Youth from all churches are urged to attend, including juniors, high school and college age young people. Churches from all over the Panhan-

dle will be sending youth to the conference. All denominations are expected to attend. Interspersed with spiritual activities will be various entertainment hours such as swimming, coke crowds, picnics, etc. Youth will sleep overnight in the various churches in Perryton Friday evening. All will take their sleeping bags for the "lock-in" sleep.

Following registration at 6 p.m. Friday, host churches will

have a hamburger supper for all guests.

For further information on the weekend retreat, call Miss Debbie Daniel in Spearman.

Mrs. Jim Steve Ownbey and children spent last week here with her parents, the Craig Hutchisons. Lisa Hutchison returned home to College Station with her sister for a month's visit.

Philmont Scout Ranch Prepares For 30th Season

Cimarron, N.M.--More than 500 college and high school students, as well as many of their teachers, have flocked to tiny Cimarron to spend the summer. Coming from all parts of America, they have many things in common. Not long hair, beards and a drug habit, but a background in Scouting, a love for the great outdoors and a desire to serve others.

These young men will serve as staff members at Philmont Scout Ranch and Explorer Base, the national camping area of the Boy Scouts of America, during its 30th year of service to Scouts and Scouters.

A great deal remains to be done at the Ranch, located in the heart of New Mexico's Sangre de Cristo mountains, prior to arrival of campers on June 15, according to Joe Davis, Director of Camping.

New staff members are being trained and old Philmont hands are busy cleaning offices and clearing mountain trails closed since last September. Trucks and equipment are also being overhauled and made serviceable," he added.

Although staff training officially ends on June 13 with "Operation Scatter" when tons of equipment and food and scores of men are trucked into the 22 remote mountain camps located high in the mountains, staff members never stop learning. "From the day they arrive until the day they leave, Philmont staff members continue to learn and improve their operations," Davis noted. "This is the only way to give the campers the Philmont experience they seek."

More than 15,000 Scouts and Scouters are expected to spend 12 days camping and hiking in Philmont's rugged back country this summer taking advantage of programs as diverse as orienteering, survival training, mountaineering, gold panning and archaeology.

Fossil Donated To Canyon Museum

CANYON, Tex.--The lower jaw of a prehistoric phytosaur, recently acquired by the Panhandle Palms Historical Museum, suggests that the creature might not have been an ideal house pet.

Judging from the length of the jaw, Bill Harrison, curator of anthropology at the museum, estimates the size of the creature to have been in excess of 20 feet. The jaw alone is about three feet in length, he says.

The fossil was donated by a former Lubbock resident and amateur archeologist William H. Skelton.

Skelton, a former student at West Texas State University, excavated the jaw himself in nearby Palo Duro Canyon during the late 1930's. He kept it in a cement cast until recently, when he moved to Austin to take a position with the Board of Pardons and Paroles.

Harrison describes the creature as being a crocodile-like alligator type amphibian. He says the jaw dates back 180 million years to the Triassic period, when the Panhandle was mostly marshes and swampland.

"This particular jaw is unusually large with many fine

teeth," Harrison says. He adds it was also unique in that the six large front teeth, each about three inches long and as big around as a nickle, were found intact.

Harrison says the large teeth were probably used to catch prey. It is believed the creature fed on fish and other marine life.

With the six large front teeth and the more than 30 smaller teeth, it is evident the phytosaur's diet was not restricted to small prey, he says.

Harrison says that during the Triassic period phytosaurs were quite prevalent throughout the Texas Panhandle.

For several years, an entire phytosaur skull has been on display in the museum. However, it is smaller than the jaw donated by Skelton and bears few teeth.

Also donated by Skelton were a camel jaw and a lower jaw of a mammoth. Both were discovered near Clarendon.

The phytosaur jaw is broken in a few places and will need to be repaired before it goes on display in the museum, located on the West Texas State University campus.

teeth," Harrison says.

He adds it was also unique in that the six large front teeth, each about three inches long and as big around as a nickle, were found intact.

Harrison says the large teeth were probably used to catch prey. It is believed the creature fed on fish and other marine life.

With the six large front teeth and the more than 30 smaller teeth, it is evident the phytosaur's diet was not restricted to small prey, he says.

Harrison says that during the Triassic period phytosaurs were quite prevalent throughout the Texas Panhandle.

For several years, an entire phytosaur skull has been on display in the museum. However, it is smaller than the jaw donated by Skelton and bears few teeth.

Also donated by Skelton were a camel jaw and a lower jaw of a mammoth. Both were discovered near Clarendon.

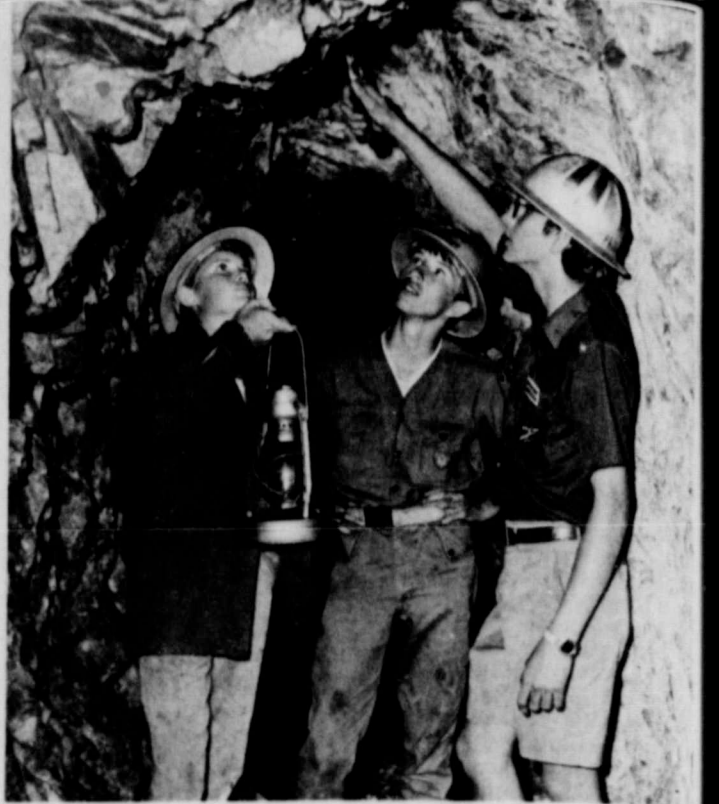
The phytosaur jaw is broken in a few places and will need to be repaired before it goes on display in the museum, located on the West Texas State University campus.



1. High adventure camping is a byword at Philmont Scout Ranch--and that generally means a lot of work and walking, as this young Scout is discovering. While on the Philmont mountain trails, the average Scout will hike nearly 90 miles with a 30 pound pack on his back. Photo by Ian Bentley.



5. Dehydrated trail food can be good, as well as easy to carry on long mountain hikes. Not all Scouts at Philmont believe it, though, and a little testing before dinner is usually in order. Photo by Skip Boyer.



6. The mountains of Philmont are honeycombed with old gold mines, long since closed. Two, however, have been reopened and are a high point in the Philmont program. Pointing out marks of an old quartz vein, a Philmont staffer, right, explains early mining techniques to two Scouts. Photo by Ian Bentley.

SAVINGS

SUMMER

Cube STEAK

\$1.19

lb.

Ground CHUCK

69¢

Blade Cut CHUCK

55¢

lb.

End Cut

PORK CHOPS

55¢

lb.

Short Lean Ribs

29¢

lb.

10¢ off Giant

DOWNEY 69¢

Swifts, round half gal.

ICE CREAM

Assorted Flavors

79¢

15 oz. Del Monte Crushed

PINEAPPLE

3 for 1

14 oz

CATSUP

4 for 1

College Inn

Chicken and Noodles or Beef and Noodles

3 for \$1

Bordens

YOGURT

Assorted Flavors

3 for 98¢

M & M Grocery & Market No. 1

202 North Bernice St. - Phone: 659-3234

Spearman, Texas Open 7 Days A Week

Buccaneer Stamps - Shurfresh Milk -
Finest Steaks in the Panhandle

summertime

TASTE TEMPTERS

Hunts Whole #300 size

Tomatoes

4 for \$1

Cello

Radishes

each **10¢**

Green Onions

Bunch **9¢**

Working Students & Withholding Tax

If you are a student who is working during the summer and you will not earn enough to owe any income tax (\$1700), it's not too late to go back and talk to your payroll office about completing a Form W-4E. The "E" stands for exemption. A recent change in the tax law allows your employer to let you take home all your pay under these circumstances. The new law allows your employer to stop withholding on students who will not earn enough to owe any income tax. It also saves the government the trouble of sending you an income tax refund next January or February.

Tax Note To New Brides

Most of the sweet young brides that are taking the fatal step this June won't take this piece of advice. However, we'll tell them anyway.

If you are getting married during this year you have to get your name changed on your Social Security card. If you don't get your name changed, come tax refund time next January or February, the IRS computer won't know who Mrs. John Doe is. It will question why Jane Smith's Social Security Number got on a Tax return for John and Jane Doe.

Yes, girls, we understand that you have lots of things to do, but you will be glad if you go ahead and change your Social Security number now.

FOOD ENERGY FOR SUMMER

Summer activities may increase energy needs, or calories. Remember your child spends more energy swimming or swinging a baseball bat than cracking a book. The best way to make sure your family is well nourished for these extra activities is to include in your daily diet the four basic food groups. These groups include milk, meat, vegetable-fruit and bread-cereal.

WEINERS--Hot dogs are an all-time American favorite; more than 14 billion were eaten last year. But many consumers don't know that two kinds of weiners are sold in the market. "All meat" weiners mean the meat consists of a combination of skeletal muscle meats; "all beef" means only beef.



COUPON BONANZA!

CLIP & SAVE UP TO **\$6.35** WITH COUPONS AT RIGHT

HERE'S ANOTHER OF THOSE POPULAR, MONEY SAVING EVENTS!



DECORATOR SHELVING Style-A-Shelf

This Week: 8"x24" Shelf (Reg. \$3.99 Value) ONLY **\$1.99**

PLUS... THE FAMILY HANDYMAN
Do-It-Yourself Encyclopaedia..... ONE **49¢** VOL. 2-16 \$1.69

BOTH OFFERS ARE WITH \$3 OR MORE PURCHASE

Frozen Foods AT LOW THRIF-T PRICES

PEAS, CUT CORN OR SPINACH
Meadowdale Vegetables
6 10-OZ. PKGS. **\$1.00**

MEADOWDALE
Crinkle Potatoes..... **89¢** 5-LB. BAG

CHIPS AHOY 14 1/2-OZ. PKG. **Nabisco Cookies**..... **53¢**

CRYSTAL CLEAR 10-LB. BAG **Ice Cubes**..... **39¢**

PRICES EFFECTIVE THRU SATURDAY, JUNE 26, 1971. LIMIT RIGHTS RESERVED. NONE SOLD TO DEALERS.

Fresh Dairy AT LOW THRIF-T PRICES

LOW FAT MILK..... **\$1.17** GALLON

BUTTERMILK..... **27¢** QT.

CHEESE COTTAGE..... **47¢** 24-OZ. CTN.

QUEEZ-A-SNACK..... **43¢** 6-OZ. TUBE

CHEEZ WHIZ..... **55¢** 8-OZ. JAR

DIET PARKAY..... **45¢** 1-LB. CTN.

BAR-B-Q SAUCE..... **47¢** 18-OZ. BTL.

WASHING MACHINE CLEANER..... **81¢** 28-OZ. BTL.

WASHING MACHINE SPRAY..... **\$1.39** 14-OZ. CAN

STOKELY'S Tomato Catsup 20-OZ. BTL. **24¢** LIMIT 3

SUPER STAR SPECIAL

Only One \$5.00 Purchase, excluding Beer and Cigarettes, entitles you to all Super Star Specials at Prices advertised.

MEADOWDALE HALVES OR SLICES Cling Peaches..... NO. 2 1/2 CAN **28¢**

RANCH STYLE Beans..... 2 300 CANS **35¢**

CAMELOT, ALL FLAVORS Ice Cream..... 1/2-GAL. CTN. **69¢**

MILE HI CUT Green Beans..... 3 303 CANS **43¢**

VALUABLE COUPON
GOOD FOR **30¢ Off** ON TWO PKGS. JOHNSON GRAHAM
Pie Crusts
WITH \$5.00 OR MORE PURCHASE
LIMIT 1. EXPIRES 6-26-71.

VALUABLE COUPON
GOOD FOR **40¢ Off** ON FIVE 18-OZ. JARS IDEAL
Preserves
WITH \$5.00 OR MORE PURCHASE
LIMIT 1. EXPIRES 6-26-71.

VALUABLE COUPON
GOOD FOR **30¢ Off** ON 2-LB. CAN MARYLAND CLUB
Coffee
WITH \$5.00 OR MORE PURCHASE
LIMIT 1. EXPIRES 6-26-71.

VALUABLE COUPON
GOOD FOR **25¢ Off** ON PURCHASE OF 1-LB. BOX
Lipton Tea
WITH \$5.00 OR MORE PURCHASE
LIMIT 1. EXPIRES 6-26-71.

VALUABLE COUPON
GOOD FOR **20¢ Off** ON 5-LB. BAG GOLD MEDAL
Flour
WITH \$5.00 OR MORE PURCHASE
LIMIT 1. EXPIRES 6-26-71.

VALUABLE COUPON
GOOD FOR **15¢ Off** ON 10-CT. PKG. POST CEREALS
Post-Tens
WITH \$5.00 OR MORE PURCHASE
LIMIT 1. EXPIRES 6-26-71.

VALUABLE COUPON
GOOD FOR **30¢ Off** ON PURCHASE OF BOX OF 40
Kotex Tampons
WITH \$5.00 OR MORE PURCHASE
LIMIT 1. EXPIRES 6-26-71.

VALUABLE COUPON
GOOD FOR **30¢ Off** ON 3-PK. CTN. WESTINGHOUSE
Flash Cubes
WITH \$5.00 OR MORE PURCHASE
LIMIT 1. EXPIRES 6-26-71.

VALUABLE COUPON
GOOD FOR **35¢ Off** ON PKG. OF 4 WESTINGHOUSE
Light Bulbs
40-75-100 WATT
WITH \$5.00 OR MORE PURCHASE
LIMIT 1. EXPIRES 6-26-71.

VALUABLE COUPON
GOOD FOR **30¢ Off** ON PURCHASE OF ONE
Economy Broom
WITH \$5.00 OR MORE PURCHASE
LIMIT 1. EXPIRES 6-26-71.

VALUABLE COUPON
GOOD FOR **50¢ Off** ON 25-LB. BAG BOW WOW BRAND
Dry Dog Food
WITH \$5.00 OR MORE PURCHASE
LIMIT 1. EXPIRES 6-26-71.

VALUABLE COUPON
GOOD FOR **30¢ Off** ON 25-LB. BAG CAT'S PRIDE
Cat Litter
WITH \$5.00 OR MORE PURCHASE
LIMIT 1. EXPIRES 6-26-71.

VALUABLE COUPON
GOOD FOR **25¢ Off** ON 13-OZ. CAN TOM SCOTT
Mixed Nuts
WITH \$5.00 OR MORE PURCHASE
LIMIT 1. EXPIRES 6-26-71.

VALUABLE COUPON
GOOD FOR **30¢ Off** ON 16-OZ. PKG. SWANSON'S
Fried Chicken
WITH \$5.00 OR MORE PURCHASE
LIMIT 1. EXPIRES 6-26-71.

VALUABLE COUPON
GOOD FOR **25¢ Off** ON 12 PKGS. FUNNY FACE
Drink Mix
WITH \$5.00 OR MORE PURCHASE
LIMIT 1. EXPIRES 6-26-71.

VALUABLE COUPON
FREE 26-OZ. BOX PLAIN OR IODIZED
Camelot Salt
WITH \$5.00 OR MORE PURCHASE
LIMIT 1. EXPIRES 6-26-71.

VALUABLE COUPON
GOOD FOR **25¢ Off** ON FOUR 15-OZ. GREAT AMERICAN
Heinz Soups
WITH \$5.00 OR MORE PURCHASE
LIMIT 1. EXPIRES 6-26-71.

VALUABLE COUPON
GOOD FOR **35¢ Off** ON THREE 15-OZ. EL CHICO TORTILLAS
Enchiladas
WITH \$5.00 OR MORE PURCHASE
LIMIT 1. EXPIRES 6-26-71.

VALUABLE COUPON
GOOD FOR **\$1.00 Off** ON 5-LB. CAN BAR-S BRAND
Canned Ham
WITH \$5.00 OR MORE PURCHASE
LIMIT 1. EXPIRES 6-26-71.

VALUABLE COUPON
GOOD FOR **40¢ Off** ON 14-OZ. PKG. CARNATION
Instant Milk
WITH \$5.00 OR MORE PURCHASE
LIMIT 1. EXPIRES 6-26-71.

TENDER, ECONOMICAL MEAT - MASTER MEATS!

U.S.D.A. CHOICE BEEF

ROUND STEAK

WHOLE SLICES

99¢

LB.

U.S.D.A. CHOICE BONELESS Round Steak..... **\$1.19** LB.

U.S.D.A. CHOICE BONELESS Top Round Steak..... **\$1.29** LB.

20-LB. BEEF STEAK BUNDLE

- 4 Lbs. Round Steak
- 4 Lbs. Sirloin Steak
- 2 Lbs. Chopped Sirloin
- 3 Lbs. T-Bone Steak
- 2 Lbs. Cube Steak
- 3 Lbs. Chuck Steak
- 2 Lbs. Swiss Steak

Tender Meat-Master Beef

ALL 20 LBS. FOR ONLY **\$20.99**

U.S.D.A. CHOICE BONELESS Dinner Steaks..... **\$1.39** LB.

U.S.D.A. CHOICE BONELESS Rump Roast ROLLED & TIED..... **\$1.19** LB.

QUARTER SLICED

Pork Loins

9 TO 11 CHOPS

59¢

LB.

MEADOWDALE Sliced Bologna..... 12-OZ. PKG. **59¢**

BAR-S FULLY COOKED, WHOLE Boneless Hams..... **\$1.09** LB.

BAR-S BRAND Sliced Bacon..... 1-LB. PKG. **69¢**

MEADOWDALE

Sliced Bacon

HICKORY SMOKED

97¢

2-LB. PKG.

THRIF-T PRICED GARDEN-FRESH Fruits and Vegetables!

GOLDEN RIPE

BANANAS

U.S. NO. 1 CALIF. LONG

White Potatoes **10.59¢** LB.

Slender Cucumbers **2.25¢** FOR

Onions..... **2.29¢** 2 LBS.

Orange Juice **89¢** 1/2-GAL. BTL.

THRIF-T SAVINGS!

GERBER'S STRAINED

Baby Food

9 4 1/2-OZ. JARS **\$1**

THRIF-T SAVINGS!

STAR KIST LIGHT

Chunk Tuna

43¢ 6-OZ. CAN

THRIF-T SAVINGS!

CAMELOT

Pineapple Juice

37¢ 46-OZ. CAN

THRIF-T SAVINGS!

KITTY CLOVER BAR-B-Q OR CHEESE

Potato Chips

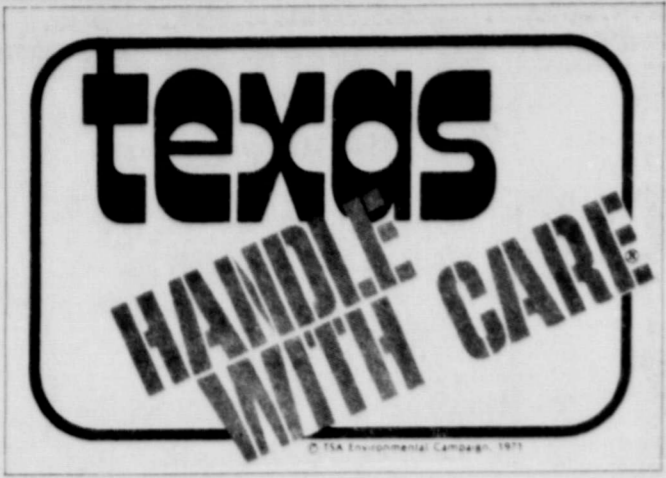
39¢ REG. 49¢ 8-OZ. BAG

THRIF-T SAVINGS!

GARLIC, FRENCH OR RUSSIAN

Wishbone Dressings

\$1 8-OZ. BTL.



ARCHITECTS' DRIVE—This symbol is the identifying mark supporting the statewide public education campaign on environmental opportunities announced by the Texas Society of Architects. TSA President Tom Bullock, Houston, said his group intends to encourage the participation of all Texans in a campaign to motivate active concern for the environment. This symbol will remind Texans to make it a habit to ask this question: "Am I handling Texas with care?"

AUSTIN—Recognizing the delicacy of the many advantages of Texas, the Texas Society of Architects (TSA) has announced a massive statewide public education campaign to motivate active citizen participation in protecting the environment.

TSA President Tom Bullock, Houston, said Texas architects will, during the next 12 months, use all the resources available to "unite Texans and encourage them to adopt a positive protective attitude toward our state's many environmental opportunities."

He explained that the thrust of the campaign will be unlike other environmental drives in several ways. "First, this campaign will be completely positive. It will extol the beauties and advantages of Texas, and urge their protection and magnification."

"Second, it will be broader than other environmental campaigns of which I am aware," he said. He explained that architects feel that attitudes toward minority groups and senior citizens are also environmental concerns. "As another example, education is not usually thought of as an environmental matter, but it certainly can and must contribute to solutions to our environmental problems," he said.

He said the campaign will be waged under the theme, "Texas: Handle With Care." "Architects feel an obligation to speak out loud and clear about what is happening to the environment," Bullock said during an Austin news conference (6/17/71). "We will do this through a positive, far-reaching public education campaign."

"We intend the theme, 'Texas: Handle With Care,' to become a constant reminder to every Texan to be environmentally aware every day," he said.

"As another example, education is not usually thought of as an environmental matter, but it certainly can and must contribute to solutions to our environmental problems," he said.

He explained that the campaign would cover seven areas which the architects see as major environmental concerns—conservation, historic resources, transportation, health, education, housing and human resources.

The TSA plans to use the media of mass communications to help get its message across to the public. Bullock said businesses and other organizations who join the campaign will become associates and will be encouraged to use the distinctive "Texas: Handle With Care" symbol in their routine mailings and even on their products.

He was quick to point out that the purpose of the campaign is not to provide a final solution to all the environmental problems of our state. "But, we do hope to create an atmosphere in which solutions will be possible—even demanded," the leading architect said.

While the architects initiated the drive, they do not intend to wage it alone, Bullock explained. He said the TSA is enlisting other groups, businesses and individuals to unite behind the campaign, thereby involving the maximum number of people.

"There are no easy answers to preserving our environmental opportunities," Bullock said. "But there is an easy question: 'Am I handling Texas with care?'" He said his group hopes to convince all Texans, from the business and government executive to the housewife and teenager, to apply this question to all daily decisions.

He explained that the campaign would cover seven areas which the architects see as major environmental concerns—conservation, historic resources, transportation, health, education, housing and human resources.

The TSA plans to use the media of mass communications to help get its message across to the public. Bullock said businesses and other organizations who join the campaign will become associates and will be encouraged to use the distinctive "Texas: Handle With Care" symbol in their routine mailings and even on their products.

The Houston architect said the campaign is an outgrowth of the Governor's Conference on Urban and Community Affairs, sponsored by the TSA in 1969, during which national environmental spokesmen joined architects in expressing concern for the future of our surroundings.

He said the failure of many environmental bills in the past session of the legislature further points up the need for this campaign. He said TSA hopes to build support through public participation for protective legislation in the next session of the legislature. "We hope Texans will demand meaningful environmental

legislation from their representatives and local government leaders," Bullock said.

At the same time the campaign is designed to encourage concern at the individual level. "Even the housewife, by her choice of a household cleanser or by teaching her children about the environment, makes critical decisions involving the future of the world," Bullock said.

An audio-visual presentation has been produced to be used by local chapters of the American Institute of Architects to explain the Texas campaign to people throughout the state. Bullock said he would urge citizens to contact any local architect to schedule the showing of the show at civic clubs or other group meetings.

Dr. and Mrs. Bill Barnum and Mr. and Mrs. Joe T. Venneman spent the weekend in Raton, N.M.

Mrs. Mike Hendricks and Connie Sue are visiting with her parents, Mr. and Mrs. Troy Sloan, while Mike is at National Guard Camp.

Mr. and Mrs. Jamie Creamer spent the weekend in Paducah attending Jamie's class reunion, and visiting with his parents. Danny stayed for a longer visit. They also picked up Billy Dave from camp at Edgington, Okla.



Proper tools for school authorities to use to prevent organized disruption on Texas campuses become a reality as Governor Preston Smith (center) signs Representative Dean Cobb's (left) House Bill 314. Senator William T. Moore (right) of Bryan was Senate sponsor of the bill.

The Dumas legislator is the Representative for District 77. District boundaries will be changed in order to meet population figures of the 1970 census for the next session of the legislature, at which time, Rep. Cobb's present district will include the top ten counties of the Texas panhandle. Cobb expressed his regret in his loss of the representation for Oldham County, but looks forward to serving new constituents in Hansford, Hemphill, Lipscomb, Ochiltree and Roberts Counties.

NEW LAW TO PREVENT SCHOOL DISRUPT

AUSTIN—SP—Campus administrators will be given more effective tools to prevent or organize disruption and disturbance of our state schools through Representative Dean Cobb's House Bill 314, which was signed into law today by Governor Smith.

"The purpose of this bill is not to deprive anyone of his rights or his freedom," Cobb said. "However, there are factions on our campuses, dedicated revolutionists, whose aim it is to rob students of their right to acquire an education. Our institutions of higher learning will now have the laws to curb these campus disruptions."

House Bill 314 defines the period of disruption and authorizes state supported institutions to require identification of persons on campus at such times. The bill further authorizes a maximum 14-day withdrawal of consent to remain on campus, whenever there is reasonable cause to believe that such person has willfully disrupted the orderly operation of such campus and that his presence on the campus will constitute a substantial and material threat to its orderly operation. Any student or employee who is suspended or expelled on grounds of disruption may be barred from the campus during suspension or disruption for a period not to exceed one year. Violators will be fined to a misdemeanor.

It is also a misdemeanor knowingly refuse to leave a building during those hours when it is closed, when to do so by an authorized person. Rep. Cobb's bill sets a fine of not more than \$500 imprisonment in the County Jail for not more than six months, or both.

Rep. Cobb said that the bill requires hearing procedures for accused persons as well as setting forth the right of a person from whom consent is drawn to be represented by counsel, the right of cross-examination, disclosure provisions on the basis upon which detention shall be made.

The two-term lawmaking County Attorney for Moore County prior to his election to the Legislature, where he had recognition for enforcing the law fairly and with conviction. His effort in the curbing campus disorder will benefit all Texas institutions of higher learning with House Bill 314 becoming law.

Mr. and Mrs. Claude Phillips of Higgins visited in the home of the Elden Ferrell's over the weekend.

Mr. and Mrs. Ray Francis Nevela White and Miss Nevela spent Sunday in Raton attending the horse races.

CLEARANCE SUMMER

	REGULAR	SALE
Italian Provincial triple dresser, mirror, king size headboard w/frames, 2 nite stands & 5 drawer chest by Thomasville	\$723.95	\$459.50
Spanish triple dresser, mirror, regular or queen size headboard w/frame	349.50	269.50
Spanish triple dresser, mirror, 5 drawer chest, one nite stand & regular or queen size headboard w/frame	569.50	398.50
Antique white French Provincial powder table w/matching chair & regular or queen size bed w/footboard	268.50	179.50
Antique white French Provincial powder table (slightly damaged)	129.95	59.95
Spanish Oak double dresser, mirror, regular or queen size bed w/footboard and two nite stands	468.95	319.95
Spanish Oak 75" triple dresser, mirror, two nite stands & king size headboard w/frames	678.00	539.50
Mediterranean pecan triple dresser w/twin mirrors, chest, 2 nite stands & regular or queen size headboard w/frame	678.00	539.50
Mediterranean pecan triple dresser w/twin mirrors, chest, one nite stand & regular or queen size bed w/frame	629.50	498.50
Solid pine double dresser, mirror, chest on chest and queen size cannon ball headboard w/footboard	658.50	519.50
Early American heavy maple bund beds complete w/ladder & guard rails (will convert to twin beds)	249.50	198.50
Early American lingerie chest	139.50	109.50
Early American maple nite stands	59.50	39.95
Early American triple dresser w/twin mirrors, full size bed & 2 nite stands	598.00	449.50
Early American maple chest of drawers	169.95	129.50
Modern walnut trundle beds	169.50	129.50
Modern walnut double dresser (formica top), mirror & regular or queen size headboard w/frame	239.95	179.95
Modern walnut lingerie chest	119.95	89.95

	REGULAR	SALE
One 7 pc rectangular table & 6 chairs	\$179.50	\$119.50
One 7 pc round table & 6 chairs	189.95	129.50
One 7 pc octagonal Spanish table & 6 chairs	240.00	179.50
One 7 pc round traditional table & 6 chairs	240.00	179.50
One 5 pc round table & 4 swivel chairs	164.50	129.50
One 5 pc oval table & 4 swivel chairs	240.00	179.50
One 5 pc oval Spanish table & 4 chairs	169.95	119.95
One 5 pc modern octagonal table & 4 swivel chair (will serve as game table also)	199.95	139.95
One Early American 48" round table (slightly damaged)	189.50	129.95
One 8 pc Mediterranean octagonal table, glass front china & 6 chairs	969.50	779.50
One 6 pc Mediterranean buffet, round pedestal base table & 4 chair	1007.50	679.50

	REGULAR	SALE
One blue & green print modern sofa	\$349.95	\$198.50
One blue & green quilted traditional sofa	289.95	189.95
One 2 pc set-sofa & matching chair in gold vinyl	399.95	259.95
One beige & gold velvet traditional sofa	549.50	439.50
One gold & green quilted velvet Spanish sofa	559.50	459.50
One 2 pc set-gold tweed modern sofa & chair	509.00	389.95
One green/gold velvet striped sofa	498.50	398.50
One blue & green striped velvet Mediterranean sofa	549.50	469.50
One orange & gold print traditional sofa	439.50	329.50
One green & beige sculptured velvet sofa	559.50	469.50
One green/gold quilted traditional sofa	449.50	359.95
One lemon velvet tufted back sofa	598.50	479.95
One green & blue sculptured velvet traditional sofa	498.50	419.95
One three cushion orange & green velvet Spanish sofa	498.50	419.95
One crescent shaped tufted back beige & gold sofa	539.50	449.50
One Early American beige print sofa	398.50	298.50
One orange tweed Early American sofa	319.95	219.95
One early American green & orange quilted print sofa	398.50	319.95
One Early American green tweed wing back sofa	299.95	198.50
One pine frame loose cushion (seat & back) sofa	398.50	289.95
One brown & gold tweed modern sofa	369.95	219.95

	REGULAR	SALE
Twin Size Posture Rest mattress & box spring	\$159.50 set	\$109.50 set
Regular Size Posture Rest mattress & box springs	159.50 set	109.50 set
Queen Size Posture Rest mattress & box spring	198.50 set	149.50 set
King Size Posture Rest mattress & box springs	289.95 set	219.50 set
Bunkies (will fit any standard size bunk or trundle bed)	49.95	39.95
Duplex bed (for sleeping or sitting)	198.50	159.95
Twin size rollaway bed complete	59.95	47.50
48" rollaway bed complete	69.95	57.50

	REGULAR	SALE
One pr green velvet traditional chairs	\$139.95 ea	\$112.50 ea
One pr beige & green print wing back traditional chairs	179.95 ea	98.50 ea
One pr blue velvet w/white welt chairs	219.50 ea	179.50 ea
One pr lemon velvet Mediterranean chairs	239.50 ea	198.50 ea
One pr green velvet w/lemon welt chairs	179.95 ea	139.95 ea
One pr lemon velvet w/green welt chairs	179.95 ea	139.95 ea
One pr citrus velvet w/beige welt Mediterranean chairs	239.50 ea	198.50 ea
One pr light blue velvet high back chairs	219.50 ea	179.50 ea
One pr green tweed Spanish chairs	179.95 ea	98.50 ea
One pr lemon velvet tufted back chairs	198.50 ea	159.95 ea
One pr blue & green quilted print chairs	179.50 ea	139.50 ea
One pr swivel rockers (gold or green)	129.95 ea	89.95 ea
One pr gold velvet low back chairs	198.50 ea	149.95 ea
One pr Early American tweed rockers	129.95 ea	98.50 ea
One Early American orange & green print chair	139.95	98.50
One Early American orange tweed rocker	159.95	119.95
One Early American orange tweed rocking loveseat	198.50	139.95
One Early American pine frame chair & ottoman	259.95	198.50
One Early American pine frame rocker	179.95	139.95
One Early American gold tweed swivel rocker	129.95	89.95
One Early American gold wing chair	149.50	98.50

	REGULAR	SALE
One gold plaid, three cushion	\$398.50	\$319.95
One modern black vinyl tufted	450.00	359.95
One gold velvet loose cushion	549.50	439.95
One orange & green gold print loose cushion	529.50	398.50
One brown & green stripe loose cushion	498.50	398.50
One Early American gold & red plaid wing back	465.00	329.50
One modern black & white plaid pillow back	485.00	398.50

	REGULAR	SALE
One rust nylon hi-back traditional	\$239.95	\$189.95
One avocado herculon Early American	239.95	189.95
One gold traditional	229.50	179.95
One Naugahyde Mediterranean	279.50	229.95
One Naugahyde Mediterranean	269.95	219.95
One red & green damask Mediterranean	264.50	189.95
Two Naugahyde Modern-one gold, one coral	204.50	169.95
One gold Naugahyde traditional	229.50	189.50
One avocado Naugahyde traditional	214.50	179.50
One gold velvet Mediterranean	279.95	229.95

	REGULAR	SALE
Two regular size Naugahyde-one black, one green	\$ 98.50	\$ 79.95
Two Large Naugahyde-one black, one green	129.95	98.50
One king size gold Naugahyde on casters	179.50	139.95

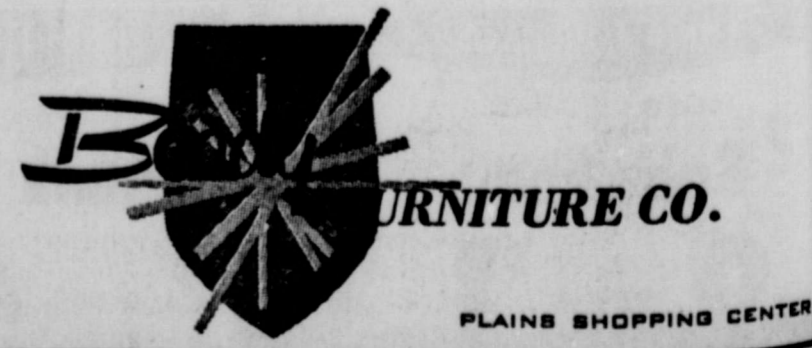
Large Selection of Discontinued Carpet Samples 18" x 27" \$1.00 ea 13" x 18" .50 ea

Area Rugs 1/2 Price

ALL TABLE, FLOOR & HANGING LAMPS, TABLE & WALL ACCESSORIES SALE PRICES, SOME UP TO 50% OFF

ALL BEDSPREADS, REGULAR & KING SIZE, SALE PRICED

TERMS: Nothing down 36 months to pay



FABRIC MART SALE

\$4.98.....KNITS.....\$3.49

\$6.98.....KNITS.....\$4.98

\$8.98.....KNITS.....\$5.98

\$11.98 & \$12.98 KNITS.....\$8.98

LINEN PLAIDS 1/2 OFF

ALL OTHER TYPES MATERIALS EXCEPT STAPLES 1/4 OFF

ONE TABLE 1/2 OR MORE OFF

FABRIC MART

109 MAIN PERRYTON, TEXAS

One Lot of 12 Chairs--Values to \$169.50--Your Choice \$49.95 Each.

PLAINS SHOPPING CENTER



Me See by Sybil...

food--including hot bread. Every few miles we were reminded to "stop and eat at Dutch's Inn."

Take old Colonel Sanders of Kentucky fried chicken fame. He was penniless at the age of 65 when he got the idea of promoting his recipe for fried chicken.

He took his first social security check for \$105 and embarked upon this big advertising campaign.

Now, before you get to thinking recycling is riding a bicycle backwards, I'll set you straight by letting you know this is the phase the ecology buffs are concerned about.

They want to come up with a way to recycle everything... cloth, metal, paper, glass. They say that in 20 years we will be taking everything to a recycling plant of discarding it.

Mr. and Mrs. Charles Hutchison of South Haven, Kansas, and Mr. and Mrs. Bernal Hutchison of Caldwell, Kansas, spent the weekend here in the Craig Hutchison home.

do away with cotton crops the lumber industry and various manufacturing plants throughout the world.

I've always pretty much believed in and tried to practice the old axiom "use it up, wear it out, make it do--or do without"

Noticed a cartoon in the Rangely, Colo. TIMES this week showing a male and female "hippy-type" couple strolling along and the caption beneath read: "I'll run over and pick up my unemployment check and then go over to the U. to see what's holding up my check on my Federal Education Grant, and then pick up my food stamps."

It's a tough life. Times have changed. In the 1700's it was "Give me liberty or give me death." In the 1800's it was "Give me Liberty." In the 1900's it is just "Give me."

Mr. and Mrs. Phil Jenkins Sunday night cook out dinner guests were Mrs. Mabel Edwards, and Mr. and Mrs. Pate Grigsby of Spearman, Mr. and Mrs. Wesley Jenkins, Mrs. Bertha Jenkins and Wally Berner, Mr. and Mrs. Dub Morton, and Mr. and Mrs. James Davenport of Stinnett were Sunday evening callers of the Phil Jenkins.

holt news

Kayla Allison of Stinnett was Monday and Tuesday night guest of the Travis Regers.

Dale Reger spent Wednesday and Thursday night with his friend Jamie Allison of Stinnett. They attended the Methodist Sunday School swimming class Wednesday night in Stinnett.

Kenneth Slyter of Augusta, Kansas is visiting his grandparents Mr. and Mrs. Fred Holt.

Mrs. Bob Stewart of Spearman spent a couple of nights last week with her daughter, Mr. and Mrs. C. A. Dancer of Borger.

Mrs. Lance Walker of Estelline, Texas was a weekend guest of friends, Mr. and Mrs. Herbert Kirk.

Kandy Martin was Thursday night guest of Debbie Reger. Mr. and Mrs. Robert Janzen and boys and Mrs. Blanch Lamb of Spearman, Mr. and Mrs. Howell Sampson and family of Mooreland, Okla. and Mr. and Mrs. Dean L. Rogers of Weatherford, were Sunday dinner guests of Mr. and Mrs. Bud Jackson on their farm at Kelton.

Mr. and Mrs. Phil Jenkins Sunday night cook out dinner guests were Mrs. Mabel Edwards, and Mr. and Mrs. Pate Grigsby of Spearman, Mr. and Mrs. Wesley Jenkins, Mrs. Bertha Jenkins and Wally Berner, Mr. and Mrs. Dub Morton, and Mr. and Mrs. James Davenport of Stinnett were Sunday evening callers of the Phil Jenkins.

Bob Gaines of Oklahoma City helped his brother, Richard Gaines harvest last week. Mr. and Mrs. Dan Jackson were Thursday night guests of their daughter, Mr. and Mrs. Bob Phelps of Derrick of Forgan, Okla. Then Friday the Phelps and Jacksons motored to Medicine Lodge, Kansas and spent the night with Mr. and Mrs. Jim Packard. Mr. and Mrs. David Reid of Morse Sunday Father's Day dinner guests were Mr. and Mrs. Robin Giblin of Morse, Mr. and Mrs. Monty Harbour and boys, Mr. and Mrs. Ira Harbour and Ted and Mr. and Mrs. T. I. Harbour and other relatives.

CHEERLEADER'S CLINIC WILL BE LARGEST EVER

The 3rd annual National Cheerleaders Clinic, to be held at Panhandle State College July 5-9, is reaching a capacity number.

Forty-seven high schools from Oklahoma, Texas, Colorado, Kansas, and New Mexico will register Monday, July 5, between 3-5 p. m. Registration will be held in the lobby of the girls dorm.

The clinic is sponsored by the National Cheerleaders Association, under the direction of Lawrence Herkimer. Mr. Jim Reece will be the head instructor at the Panhandle State College clinic. He will be assisted by 3 other male and 3 female instructors.

High schools planning to attend are:

TEXAS--Follett, Spearman, Straford, Gruver, Texline, Hartley, Channing, Panhandle, McLean, Darrouzett, Stinnett, Higgins, Phillips, Lefors and Claude. Other schools from Oklahoma and Colorado, Kansas and New Mexico will be present.

Spearman high school cheerleaders include Amy Renner, Donita Floyd, Sue Ellen Womble, Sharon Lambert, Kathy Brown and Debra Gregg.

To find out what a poor loser you are, just start dieting.

Visitors Last Week In Parrish Home

Last week's visitors in the Gordon Parrish home were their son Mr. and Mrs. Jerry Parrish and children, who are moving to Shreveport, Louisiana for the summer where he will be working with the Creswell Street Church of Christ. Their daughter Mr. and Mrs. James Maxwell and children of Roswell, New Mexico, Miss Silvia Laoo and Miss Susana Rocha of Salvador, Brazil were also visitors in the Parrish home. These girls have been attending the Adams State College in Alamosa, Colorado where Jerry has been living, and were on their way back to Brazil.

REMY FAMILY REUNION HELD

Mr. and Mrs. Guy Remy and Mr. and Mrs. Don Maize and daughters Jerrilyn and Tammi Jo attended the Remy family reunion at Duncan, Okla. June 19th and 20th. The reunion was held in the home of Mr. and Mrs. Don Addins in Duncan. Mrs. Georgia Reed of Woodward, Okla., Mrs. Addins, grandmother was a guest.

The family consists of six sisters and our Mr. Guy Remy of Spearman. All of them and their families were present except two grandchildren. They came from Wyoming, Colorado, Arkansas, Oklahoma and Texas. Mrs. J. K. Morris and daughter Suzanne of Grand Junction, Colo. spent Thursday night in the home of her brother Guy Remy on the way down to the reunion.

Sisters present were Mrs. Leola Coffey, Duncan, Okla.; Mrs. Don Roberts, Fritch; Mrs. Albert Truitt, Miami, Okla.; Mrs. Dick Haines, Velma, Okla.; Mrs. Raymond Addins, Duncan, Okla.; Mrs. J. K. Morris, Grand Junction, Colo.

Children other than the Don Maizes of Spearman were Mr. and Mrs. Donald Addins, Helen, Fred, Cathy, Bama Jane and Loren of Duncan, Okla.; Mr. and Mrs. Darrell Davis and Angie of Tonkawah, Okla.; Mr. and Mrs. Ken Daniel of Mountainburg, Ark.; Mr. and Mrs. Mike Roberts and Roger of Gillette, Wyoming; Mr. and Mrs. Raleigh Williams of Amarillo; Mr. and Mrs. Randy Floyd, Shannon and Andrea of Arlington, Texas; Mr. and Mrs. Jim Talley of Duncan, Okla.

Mrs. Groves Hosts Presbyterian Women

The Presbyterian Women's Association met Wednesday June 9 with Dorothy Mae Groves.

Alice Turnbull gave the lesson on the study "In Search of Christian Community."

The group planned an ice cream social at the church the evening of June 30. They will take up a donation for a film strip machine.

Attending were Mmes. Spoonemore, Baggerly, Turnbull, Batton and Groves.



THE SPEARMAN REPORTER

Spearman, Texas 79081 213 Main Box 458 659-3434

Published Weekly at 213 Main Street, Spearman, Texas 79081

Owner-Publisher William M. Miller

Second Class Postage Paid at Spearman, Texas

Any erroneous reflection upon the character of any person or firm appearing in these columns will be gladly and promptly corrected upon being brought to the attention of the management.

SUBSCRIPTION RATE--Hansford, adjoining counties, \$7.00 yr. Other points in combination with The Hansford Plainman, \$9.00 yr.

GIRLS ATTEND SCOUT CAMP

Mrs. Jack Moran and Jonell returned home Saturday June 19 from a week at the Girl Scout Camp in Boiling Springs State Park outside of Woodward, Okla.

Mrs. Moran was employed as a camp nurse for the June 13 to 19 session.

Spearman Senior Scouts attending came as Program Aids for the same session were Becky Beck, Lillian Ralston, Mary Kibler, and Donna Reed.

Junior Scouts from Spearman Troop 190 were: Jonell Moran, Joyce Cummings, Jennifer Umphress, Sue Close, Phillis Crawford, Terri White, and Jamie Thomas.

Parents taking the girls to camp were Messrs. and Mmes. Billy Close, James Umphress, Mrs. Jim Thomas and Mrs. Jack Moran. Parents helping with the return trip were Mrs. Nelva White, Mrs. Moran and Mr. and Mrs. Billy Close.

The girls and Mrs. Moran all enjoyed a week of hiking, boating, swimming, nature studies, and camping which will help them in the future.

Judy Trimble of Hereford is visiting with her grandparents, Mr. and Mrs. Kiff White and other relatives.

SPECIAL MOVIES TO BE SHOWN FRI. AT LIBRARY

Children enrolled in the Summer Reading program at Hansford County Library will have an opportunity to see some very entertaining films Friday afternoon June 25.

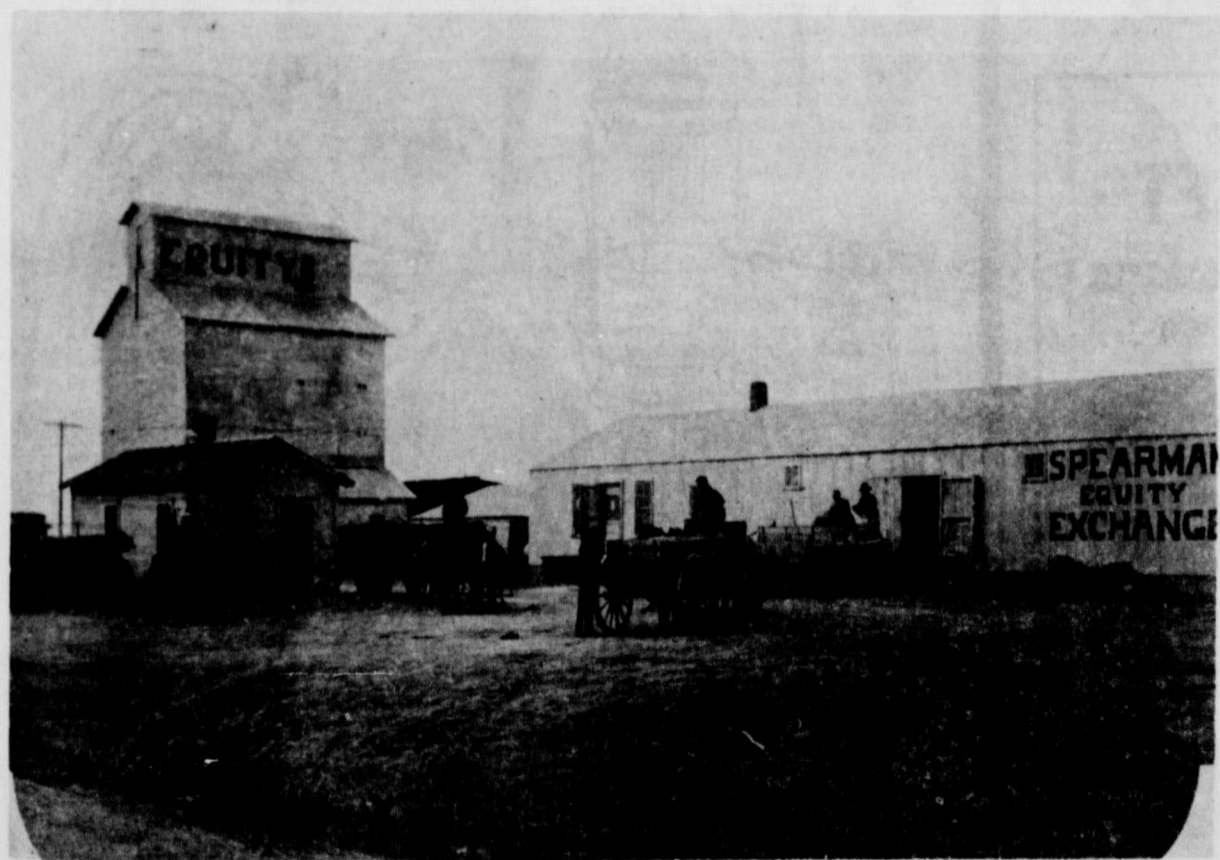
At the regular Friday film hour, 2:15 p. m., two Abbot & Costello films, plus "Paddle To The Sea" will be shown. All children are invited to attend the Library film hour.

Mr. and Mrs. Andy Rhodes returned recently from a very successful fishing trip to Chama, N. M. The Rhodes' son, Andy Gene, and his son Mike from Irving, Texas visited them last week. Mike stayed for an extended visit with his grandparents.

Faith Lutheran Church

Worship 9 a. m. S. S. 10:15

Victor Andersen Pastor



HARVEST 1971

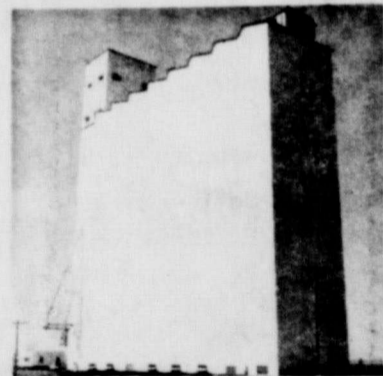
The 14 elevator facilities of the Perryton Exchange serve some 5,000 members from Knowles, Oklahoma to Pringle, Texas and from Hardesty, Oklahoma to Sam's Corner, Texas. The Equity was the first in this area to build inland elevators. Since then, several have been built.



Serving This Area Since 1919



HUNTOON



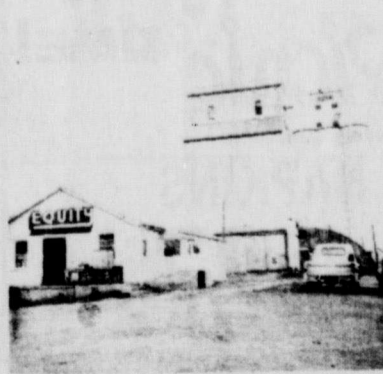
TWICHELL



WAKA



SPEARMAN



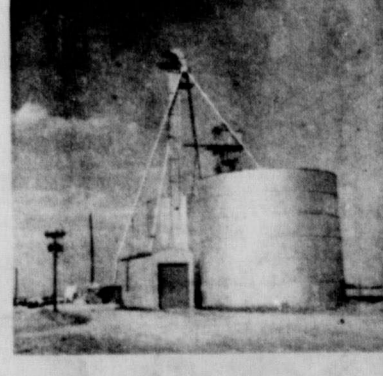
HARDESTY



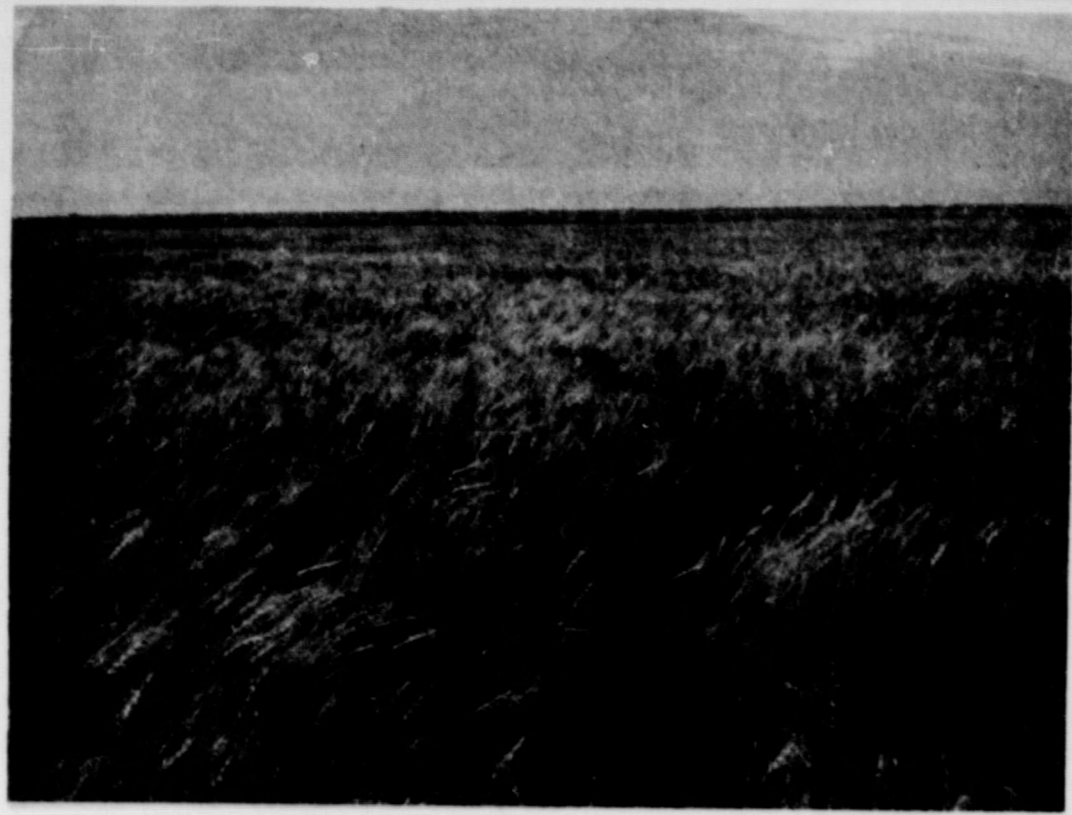
BEAVER



SAM'S CORNER



PRINGLE



GOLDEN wheatfields such as this one are producing grain in various amounts for Hansford County farmers this harvest. Yields per acre are being reported all the way from 77 bushels to as low as 15.

Majority Of Hansfordites Listed As "Home Owners"

Compared with some sections of the country, home ownership in Hansford County is at a high level.

According to the latest official figures, the proportion of local families that own the houses in which they live is relatively large.

The findings are based upon an analysis of reports released by the Department of Commerce, based upon data gathered during the recent Census of Housing.

It shows that no less than 59.1 percent of all dwelling units in Hansford County are now owned by their occupants. It compares with 58.9 percent in the United States and 55.4 percent in the State of Texas.

Most of the upward trend in home ownership took place in the eight years or so prior to 1968, when there was little

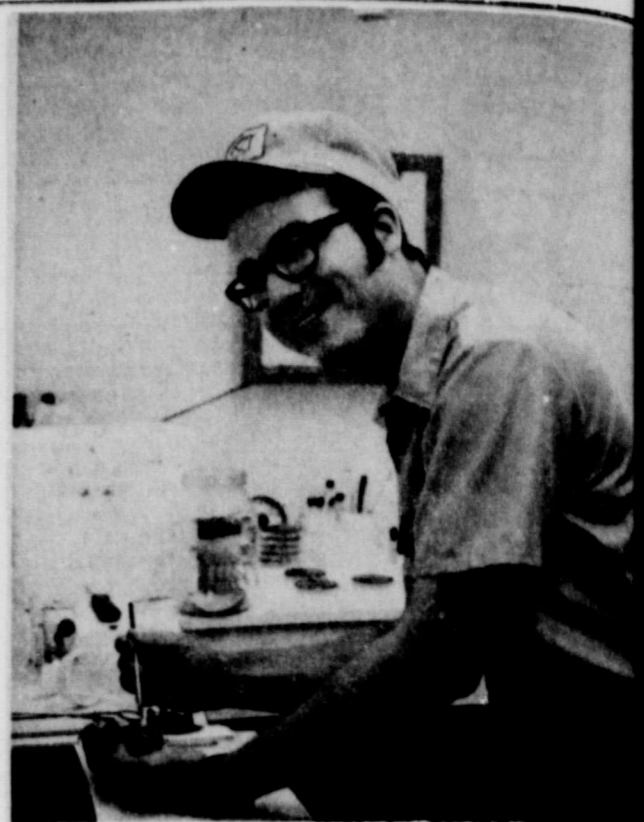
unemployment, when incomes were moving higher and when the availability of mortgage money at favorable rates made it possible for many families to attain their goal—a home of their own.

The figures for the local area show a total of 2,173 year-round dwelling units, of which 1,286 are owner-occupied.

Nationally, the number of home owners rose 7.1 million in the 10-year period, going from 32,8 million to 39.9 million, the Department of Commerce reports.

However, because of the increase in population during those years, the percentage of families in the United States who were living in their own homes was only slightly higher in 1970 than it was in 1960.

Although there has been much trading up in recent



Research Technician Studying Here

An Oklahoma State University College of Veterinary Medicine senior is spending an eight week period in Spearman as a research technician, under the direction of Dr. H. B. Rinker, et al.

From Waynoka, Oklahoma, Lonnie Moore is field man working with a grant from Oklahoma Experiment Station, Texas Cattle Feeders Association and private funds, in an effort to solve many of the causes of respiratory disease in stocker and feeder cattle. A study is also being conducted

into causes of acute death in feedlots.

The grant is available utilization by Oklahoma University, College of Veterinary Medicine in cooperation with the staff of the Panhandle Veterinary Clinic. Research was initiated in fall of 1969, and is presently at a point where a breakthrough of the respiratory disease complex appears to be in the near future.

When Lonnie returns to studies, another student will replace him.

HARVEST 2/3 Complete

Spearman grain dealers this week dubbed the wheat harvest "about 2/3 complete" in Hansford County.

Harvest, having been delayed by consistent rains, began in earnest here last week. It didn't take farmers long to cut what dryland wheat was left in the county after several damaging hail storms had done away with much of it. Most of the hail was sustained to wheat fields in the Morse community. Much of the dryland fields surrounding Spearman had been grazed out earlier.

Grain elevator men say the quality of irrigated wheat is good, much of it 64 pound test. A few isolated instances in irrigated fields the grain due to late freezes, but all-in-all the grain is very good so far as test is concerned.

Most surprising to dryland farmers was the yield for this year's crop which was pegged to be very poor due to the drought. Much of the dryland wheat yielded from 10 to 15 bushels per acre, testing all the way from 54 to 60 lbs. Irrigated grain yields have been running from 40-45 bushels per acre to as low as

15 bushels. One farmer reported his irrigated grain was making 77 bu. Very few farmers have finished out their totals as yet so a complete average is not available.

Although combines are rolling in most fields, some of the irrigated wheat still stands in various stages of "greenness" but if the weather continues ideal, Hansford County's wheat harvest will soon be history.

Most farmers, expecting this to be a relatively low-yield crop, are being pleasantly surprised.

Mr. and Mrs. Nelson Atchley of Seattle, Wash., visited her recently in the home of their daughter, Mr. and Mrs. Jim Thomas and family.

Mr. and Mrs. Jim Fowler visited Saturday in Dimmitt with her brother and family Mr. and Mrs. M.J. Reed.

Rev. Ray Christenson spent a few days in Denver, Colo. last week where he visited a brother who is very ill.

Emergency Equipment Installed

Meeting in regular session Monday night, City Aldermen had a very short business agenda.

Don Wirsdorfer, swimming instructor, and Allen Simpson, pool manager, met with the council and requested the city purchase several safety items needed at the Spearman Swimming Pool.

The council agreed to purchase items requested: a ring buoy with a rope, a first aid kit, one 12-foot long reaching pole, 2 blankets and some resuscitation tubes.

The council discussed the new law recently passed by the legislature going away with open-pit burning at city

dump grounds. There is no time limit on the change-over to either land fill dumping or incinerator disposal, but the council is looking into the matter and will make a decision later on.

Anthony Electric last week installed a new emergency electric generator at the City Hall and this was demonstrated Monday night by council members.

This new equipment assures plenty of power at the city hall in case electricity goes off for one reason or another. In case of a storm and electricity failure, the storm-alert siren, fire alarm and police radio systems will continue to be operable through the emergency generator.

Meeting dates for next month were set for July 12 and 26.

Mr. and Mrs. Troy Smith and Cindy, Kansas residents, spent the weekend here with his aunt, Mr. and Mrs. C.E. Blackburn.

Weather

Weather here the past seven days has been ideal for harvesting. Six days out of the last seven has seen daytime temperatures in the 90's with the hottest day for the month charted on June 19.

June rainfall totals stand at 1.53 inches.

The week's weather, recorded by Official U.S. Weather observer Bill Haden is as follows:

date	hi	low
15	92	59
16	95	61
17	95	65
18	96	67
19	98	69
20	90	61
21	89	57

A sign at a railroad crossing near Colorado Springs: "The average time it takes a train to pass this crossing is 14 seconds—whether your car is on it or not."

Rev. and Mrs. B.T. Shoemaker spent last week in Leonard, Texas visiting her parents, and in Commerce visiting his mother and sister. They returned home Saturday.

Never hit a man when he is down. He may get up again.

Mr. and Mrs. L.F. Har have their two grandchildren this week while their mother, Mrs. Bill Hand (Paulette) in the Oklahoma City hospital tests. This week the Hands expect their daughter Mrs. Jim Bengston and son from Hutchinson, Kansas. Mrs. Bengston will stay with her parents about 10 days while her husband is taking his summer camp training in New Jersey.

Sign on a church: Come in and have your faith lifted.

T.G. & Y. EVERYBODY'S HAPPY... OUTDOORS!

PRICES GOOD IN ALL 5c to \$1.00 STORES & FAMILY CENTERS THRU SATURDAY - WHILE QUANTITIES LAST!

REGISTER NOW

Enter T.G. & Y.'s Exciting Sweepstakes... Win 1 Of 12 Exciting VACATIONS for 2!

Cool Off with Cool Savings... Golden "T"

Rattan PLATE HOLDER SET

Colorful, attractive way to give your paper plates the added support they need. Assorted colors to brighten your picnic table!

Fantastic Buy!

4 IN. PKG. **99c**

Inflatable PLAY SET

Includes 55 X 12" three ring pool with bright designs, A 20" colorful beach ball, Raft and 20" Ring

Provides exciting backyard fun for any child all summer!

All 4 items At One Low Price!

T.G. & Y. Top Value! **\$3.99** SET

Salt Water TAFFY

1-lb. Bag ONLY... **37c** BAG

ELECTRIC FANS

Multi-Switch, powerful motor, U.L. approved, handy carrying handle. Come in today and save at this low price!

Big T.G. & Y. Buy! **\$12.88**

PAPER PLATES

100 Count

White, 9" diameter paper plates with fluted edges to prevent spills. Great indoors and out!

LOW PRICE **47c** PKG.

IT'S Picnic TIME!

Gayety Luncheon NAPKINS

White 150 Count Limit 4 **27c** PKG.

30 Quart Styrofoam ICE CHEST

Durable and sturdy one-piece molded construction. Side handles are molded into the body to prevent accidents. Self-insulating Pik-Pak® Styro.

Model #404 **77c** EA.

Coconut MARSHMALLOWS

9-Oz. Bag Deliciously Toasted **33c** PKG.

Great Buy!

T.G. & Y.

119 Main Spearman, Texas

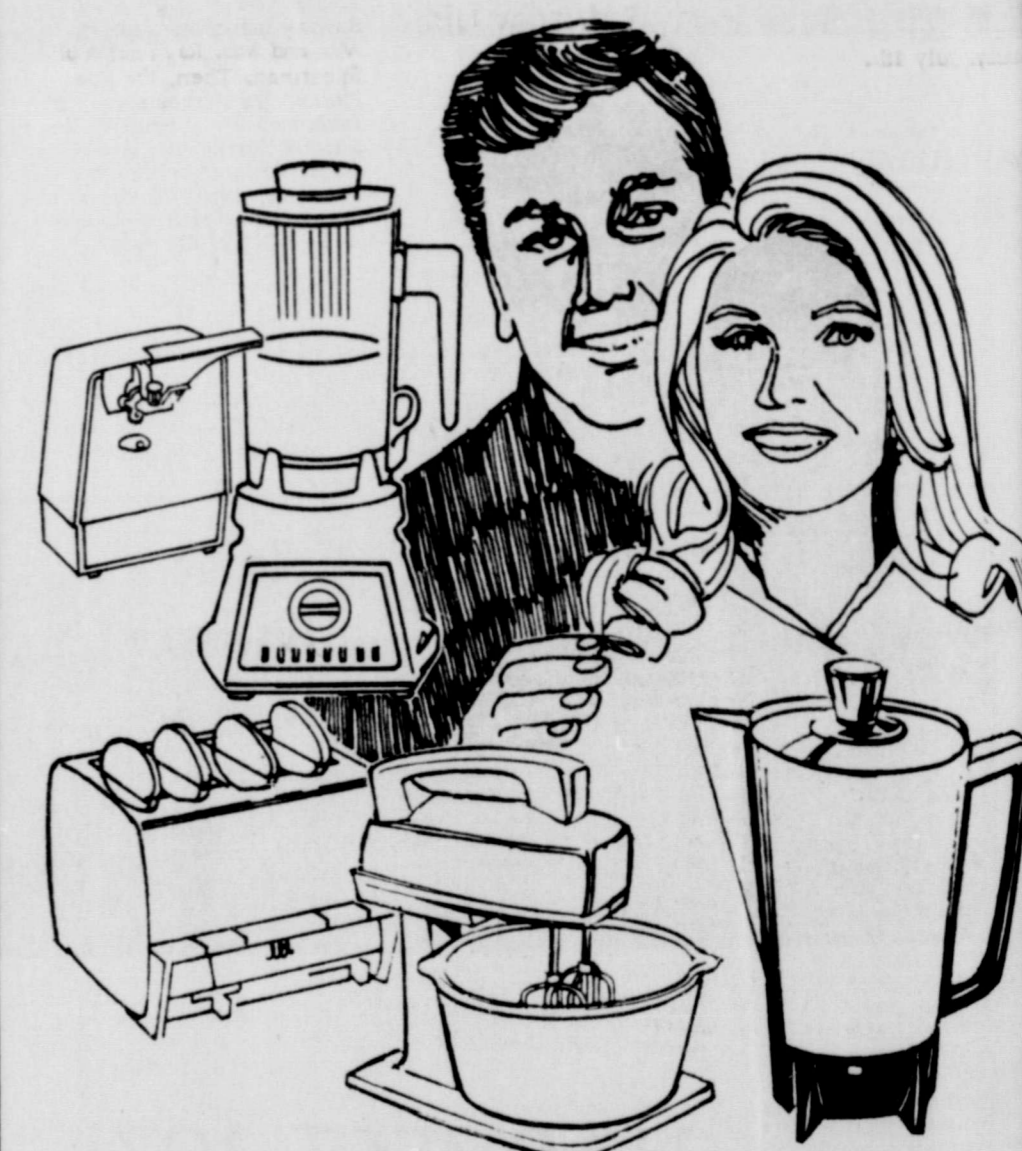
Store Hours: Mon.-Fri. 8:30 to 6:00 Sat. 8:30-8:00

5 WAYS TO PAY

- CASH
- LAYAWAY
- BANK AMERICARD
- MASTERCARD
- T.G. & Y. REVOLVE ACCOUNT

BANK AMERICARD

WE HONOR master charge



Useful, work-saving electric appliances can make homemaking easier for newlyweds

When you choose an electric appliance as a wedding present, you're sure to be remembered warmly for a long time to come. An electric gift will be useful, practical and can save time and work. And for the new bride just starting homemaking, she usually needs all the work-saving and time-saving help that she can get. There are so many great electrical gift ideas, too... blenders, toasters, coffee makers, can openers, mixers... and many, many more. Visit your electric appliance dealer soon and choose the electric gift that will delight the June bride.

COMMUNITY PUBLIC SERVICE
Your Electric Light & Power Company
An Equal Opportunity Employer

Local Students On Tech Honor Roll

ROCK, Texas--Names of students who qualified for the semester lists for the semester at Texas University were released.

Qualify for the dean's list must have a point average of 3.0 and must be taking 12 semester hours.

Students of honor were made by the dean's list and schools at Texas University. They are: Agnes of Agricultural, Arts and Sciences, Economics, Engineering, Education, and Business Administration, and the Graduate School and the School of Education.

Students from Spearman included: ... OF ENGINEERING; ... Henderson, Junior- ...

41 Class Reunion July 4

Spearman High School class of 1941 will ... Spearman July 4th ...

Mr. and Mrs. Pat Cates were hosts to their bridge club Saturday night.

Cates' Host Bridge Party Saturday Nite

Mr. and Mrs. Pat Cates were hosts to their bridge club Saturday night.

Arts & Crafts Guild Meeting

Arts and Crafts met June 18 in the home of Mrs. Deta Blodgett.

Graves Have Visitors

Mrs. Albert Graves, and Becky of Faleigh, have spent the greater part of the past three weeks at the home of Mrs. Albert Graves.

BIRTHS

Mr. and Mrs. Larry Sager of Balko, Okla. are the proud parents of a baby boy born June 20.

Participation Gift

Henry Flores was honored with an anticipation gift on Friday, June 18.

Refreshment Table

A refreshment table was set in a pink cloth and with a bouquet of flowers.

Weekend Visitors

Weekend visitors in the Joe Graham home here were his parents Mr. and Mrs. Tom Graham.

Vern Sanford Announces Retirement --To End Long Journalistic Career



VERN SANFORD

AUSTIN, Tex. June 18 -- Vernon T. Sanford, general manager of the Texas Press Association for almost 24 years, will retire on July 1.

Already presented with a half-dozen plaques and honors by various regional press groups with whom he has worked, as well as a resolution from the Texas Senate, he accepted the plaudits of the profession and announced he would go to Montana in early July "to do a little fishing."

He and his wife, Allyne, plan to continue to make their home in Austin, but hope to do quite a lot of traveling in Texas.

Sanford has been general manager of TPA since December 1, 1947, when he moved to Texas from his native Oklahoma. Since that date he has been a guiding force for the 634 daily and weekly newspapers of Texas, working quietly "behind the scene" to upgrade the journalism profession and help charter the course of newspapers in the state.

Today the organization is recognized as one of the leading press groups in the nation. Sanford came to Texas from a 13-year career as secretary-manager of the Oklahoma Press Association. He set up the first TPA headquarters in one room, with one employee, in the Baker Hotel in Dallas. Next year the office was moved to Austin to be near the Capitol.

Recently he saw a major goal accomplished when the 91-year-old association moved into elegant new headquarters at 718 West Fifth Street in Austin -- its first wholly owned, permanent home.

A native of Chickasha, Oklahoma, Sanford is a graduate of the University of Oklahoma and earned a masters of journalism degree from the University of Missouri.

Before joining the Oklahoma Press Association, he worked briefly in the same capacity for the Nebraska Press Association.

He began his newspaper career at age 10 as a carrier boy and printer's devil for the Chickasha Daily Express.

He was employed by the Express for 10 years in circulation, reportorial and advertising departments. He left the Chickasha daily to enroll in the University of Oklahoma and join the staff of the Norman Daily Transcript. He also worked for and had an interest in the Democrat-News, a morning semi-weekly newspaper in Norman. At one time he operated his own advertising agency in Norman. Following graduation from MU, he became advertising manager of the Anadarko Daily News.

Honors have been bestowed upon Sanford in numerous realms. At age 19 he was awarded the first Legion of Honor Degree by the Chickasha Chapter of the Order of De Molay.

He also is a member of two outstanding honorary groups at the University of Texas in Austin: Alpha Delta Sigma, advertising fraternity, and Kappa Tau Alpha, national journalistic honor society.

He has an honorary lifetime membership in the National Press Photographers Association and is a lifetime member of Sigma Delta Chi, national journalistic fraternity.

In 1959 he was commissioned an Admiral in the Texas Navy by Gov. Price Daniel.

On the national level, Sanford has been president of Newspaper Association Managers and three-time chairman of National Newspaper Week, an annual promotional event sponsored by NAM.

In addition to membership in the Outdoor Writers Association of America, he belongs to the Texas Outdoor Writers Association and served as secretary-treasurer and bulletin editor for many years.

He is a director of the Texas Public Relations Association and is affiliated with the Texas Society of Association Executives, the Austin Ad Club, the Dallas Press Club, the Austin Society of Industrial Editors, is a member of the Headliners Club, the Texas Press Club, Bass Anglers Sportsman Society and is an honorary member of the Capital Bass Club of Austin.

Sanford's hobbies have had a place in his professional life with the Texas Press Association. Currently he edits the Texas Press Messenger, a monthly magazine for Texas newspapers; a weekly Members' Service Bulletin; and produces four weekly columns: Outdoors in Texas, Tips for Outdoorsmen, News for Outdoorsmen and a State Capital News Column entitled Highlights and Sidelights from Your State Capital. His columns are some of the most widely published and widely read in the state.

Since coming to Texas, Sanford has added numerous activities to the association's service program, which has among its functions 21 separate projects including an ad placement service, a press clipping service, special columns and features, an employment service, a monthly Texas Press Reporter, and six statewide conventions a year.

TPA's staff now numbers 21 persons. Many of them have been with Sanford 10 years or longer.

Then there was the lawyer who instructed his son in the alleged facts of life.

PRPC Awarded Criminal Justice Planning Grant

AUSTIN--Panhandle Regional Planning Commission, Amarillo, was one of 21 regional councils awarded criminal justice planning grants for Fiscal Year 1972 by Governor Preston Smith Friday. The amount is \$20,000.

The awards, totaling more than \$545,000, were approved on recommendation of the Texas Criminal Justice Council, which oversees state law enforcement planning and administers funds from the U.S. Department of Justice under the Omnibus Crime Control Act.

The Panhandle grant will be used in implementing action projects outlined in previous plans and in updating the comprehensive five-year criminal justice plan for the 25 counties of the Panhandle State Planning Region.

The Panhandle Regional Planning Commission employed a full-time criminal justice coordinator last Jan. 1. The old Public Protection Committee has been replaced by the Criminal Justice Advisory Board, with equal representation from each of the five planning and service areas into which the Panhandle region is divided.

Professional criminal justice planning services will be furnished to each unit of local government in all 25 counties, with the commission serving as a regional clearing house.

These counties are Dallam, Sherman, Hansford, Ochiltree, Lipscomb, Hartley, Moore, Hutchinson, Roberts, Hemphill, Oldham, Potter, Carson, Gray, Wheeler, Deaf Smith, Randall, Armstrong, Donley, Collingsworth, Parmer, Castro, Swisher, Briscoe and Hall.

To supplement the \$20,000 grant, the commission will contribute \$2,222 to the criminal justice planning budget.

Mower Is Most Dangerous Piece Of Machinery

MOST DANGEROUS--A three-year study by the University of Iowa shows the rotary power lawn mower to be the most dangerous of farm equipment. Out of 180 cases of amputations studied, 34 were credited to rotary powered lawn mowers; 20 to corn pickers with grain elevators and combines ranking third and fourth. Might be well to keep this information in mind when grass mowing time rolls around.

Mrs. Mitchell Clements and Christine of Dumas spent Father's Day with her parents, Mr. and Mrs. H.P. Cates and Charles.

Mr. and Mrs. Jimmie Hall and Sherri of Fritch are visiting this week in the home of her parents, Mr. and Mrs. Aaron Love.

Weekend visitors in the home of Mr. and Mrs. A.C. Greene were her sister, Mrs. Nellie Allinger and her daughter Mrs. Howard Daly of Flint, Michigan. They left Monday morning for Missouri where they will visit other relatives before going on to their homes in Michigan.

POTATO SALAD--Here's a tip for making potato salad--add the dressing while the potatoes are slightly warm so they can absorb the flavor.

STORING SUMMER FOODS--During the summer months, pay particular attention to food storage. For all dairy foods, follow the rule of the 3 C's--keep them cold, clean and covered.

Western Auto

...the family store

and CATALOG ORDER CENTER

Bob English

313 Main Spearman

659-2259

SAVE 31c

Chic Nylon Panty Hose

REG. \$1 VALUE AT W.A.

69c

2 sizes fit all K1336.37

SAVE 20c!

Bright 20" Inflatable Vinyl Beach Ball

29c

Regular 49c! 2E1008

STP Oil Treatment

1.60 VALUE, NOW ONLY

97c

During Sale! A1310

STP Gas Treatment

75c VALUE, NOW ONLY

47c

During Sale! A1312

STP products slightly higher in Arizona and California where fair traded.

W.A. Has Everything to Keep Your Car Looking and Running Its Best! Shop Our Store and Our Big Catalog and Save!

LADY FAIR

DISCOUNT SALE

STARTS JUNE 28

<h3>SUMMER BAGS</h3> <h1>40% OFF</h1>	<h3>SLACK SUIT</h3> <p>ONE RACK</p> <h1>40% OFF</h1>
<h3>★ SHORTS</h3> <h3>★ SLACKS</h3> <h3>★ BLOUSES</h3> <h1>30% OFF</h1>	<h2>SLACK SUITS</h2> <h1>30% OFF</h1>
<h2>ALL SUMMER DRESSES</h2> <h1>30% OFF</h1>	<h2>SUMMER ROBES</h2> <h1>50% OFF</h1>

SPECIAL ---Rain Coats \$2.00

Vanity Fair Robes, Gowns & Pajamas 20% off

LADY FAIR

"PLAINS SHOPPING CENTER"

PHONE 659-3215 SPEARMAN

June Dairy Month Features

**T
H
R
I
F
T
W
A
Y**

shurfresh  **EGGS**  **36¢**  **DOZ.**

KRAFT  **SLICED CHEESE** 12-oz PKG **59¢**

KRAFT  **PHILADELPHIA CREAM CHEESE** 8-oz PKG **35¢**

KRAFT  **SQUEEZE-A-SNACK** 8-oz. JAR **45¢**


CHEEZ WHIZ Plain, Pimento, or Jalapeno 8-oz. JAR **49¢**

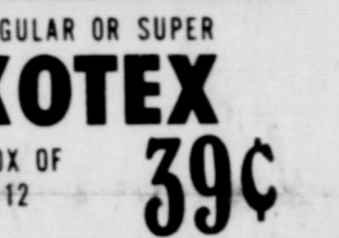
Cottage Cheese Shurfresh 1lb. Carton **24¢**

Coffee Cream Shurfresh Pint **29¢**

SOUR CREAM Borden's 8 oz. Carton **39¢**

Peaches Hunts Cling no. 2 1/2 Can **27¢**

KLEENEX  **WHITE OR ASS'T. COLORS 125-CT. 2-PLY FACIAL TISSUE** **5 \$1.00** **BOXES**

KOTEX  **REGULAR OR SUPER BOX OF 12** **39¢**

HEN TURKEYS  **NORBEST FROZEN** **10 to 14 LB. AVG.** **43¢** **lb.**

BACON Hickory Smoked Shurfresh 2 lb. pkg. **99¢**

CHUCK ROAST USDA Choice Beef lb. **69¢**

CHUCK ROAST USDA Choice Beef Blade Cut lb. **53¢**

ARM ROAST USDA Choice Beef Round Bone lb. **73¢**

Frozen Foods Specials

Orange Juice Texsun- 6 oz. 6 for 99¢	FRUIT PIES Morton's Each 25¢	COOL WHIP Birdseye 4 1/2 oz. 29¢	Broccoli Spears Shurfresh 10 oz. 29¢
--	--	--	--

FRUITS VEGETABLES

Avocados  **Large California "GREAT FOR SALADS"** Each **10¢**

GRAPES Thompson Seedling lb. **34¢**

CANTALOUPE Arizona Deep Meated lb. **12¢**

CARROTS California Long Golden Denver-Cello Bag **19¢**

HEALTH & BEAUTY AIDS

TOOTHPASTE **CLOSE-UP** RED OR NEW MINT 6.2-oz. FAMILY SIZE **69¢**

PRELL 7 oz. Super Size Concentrate Shampoo **99¢**

JERGENS Dispenser Lotion-14 1/2 oz. Plastic **99¢**

DRISTAN Decongestant 50 Count-Reg. \$2.39 Size **\$1.48**

POTTED MEAT ARMOUR'S 2 3 1/2-oz. CANS **29¢**

Vienna Sausage ARMOUR'S 3 5-oz. CANS **69¢**

ARMOUR'S TREET 12-oz. CAN **49¢**

SALAD DRESSING Bama Quart **38¢**

PORK & BEANS Van Camp's 15 oz. Can **14¢**

WE RESERVE THE RIGHT TO LIMIT QUANTITIES

COFFEE Maryland 1lb. Can 79¢	FLOUR Shurfresh 5 lb. 39¢	ICE MILK Shurfresh 1/2 Gal 46¢
COKES King or Regular-Carton 43¢	CHEER Detergent-King Size \$1.19	SALAD OIL Shurfresh-35 oz. 79¢



CUT RATE GROCERY
 PLAINS SHOPPING CENTER-SPEARMAN, TEXAS
HOME OF BUCCANEER STAMPS
 'BUCCANEER STAMPS CAN BE REDEEMED IN SPEARMAN

JACKPOT THIS WEEK
 \$100.00
 Last Week's Winner
 Mrs. Max Taylor \$200.00





MRS. GARY DANIEL FARIES nee Dara Dyann Bybee

was maid of honor. Bridesmaids were her sister, Becky Bybee of Lockney, Virginia Lakey of Lubbock and Vickie Jacobs of Bovina. They were dressed alike in gowns of orchid, yellow and green sheer printed with white flowers. Their pillbox headpieces, fashioned from the same material, held shoulder length veils. Each carried a nosegay of colorful summer flowers.

Susie Probasco of Floydada was her cousin's flower girl. Candlelighters were Cam and Pam Probasco, twin cousins of the bride. Ring bearer and carpet roller were Matt and Maury Probasco.

Kenneth Faries served his brother as best man. Groomsmen were Louie Bybee, brother of the bride, Lynn Kemper of Canyon and Tom Brown of Paducah.

Larry Williamson of New Castle, Jack Harle of Mineola and Keith Parker from Perryton served as ushers.

Reception guests were received following the ceremony in the American Legion Home at Lockney, Wanda Lane, Viola Moody, Gayle Fortenberry, Merwean Carthel, More Bybee, Betty Woodall and Laverne McCarty hosted the reception.

The bride's table was covered with a white brocade cloth. The centerpiece was a tall candelabra surrounded by bouquets of the bridal attendants. The three-tiered wedding confection was decorated with pink, orchid, green & yellow rosettes.

Following a wedding trip to New Mexico, the couple will be at home June 13 at the Auburn Trailer Courts at Lubbock, Texas where they are students at Texas Tech University.

Pre-nuptial courtesies honoring the couple included a bridesmaid luncheon held at Hemphill Wells and the rehearsal dinner hosted by the groom's parents Mr. and Mrs. Daniel Faries.

The bride is a 1968 graduate of Lockney high school. The groom graduated the same year from Spearman High School.

Supernstitions are opinions of others.

The First United Methodist church at Lockney, Texas was the scene of a double wedding ceremony June 20. The bride and groom were Dara Dyann Bybee and Gary Daniel Faries. She is the daughter of Mr. and Mrs. Bybee of Lockney. His parents are Mr. and Mrs. Daniel Faries of Spearman. The pastor, Reverend Frank J. J. was officiant. The couple were exchanged before a background of 21-branched chandeliers and baskets of red summer cut flowers. Wedding music was furnished by Mrs. Bybee McCormick of Lockney. The organist accompanied the bride's cousin, Debbie Bybee, who sang several nuptial selections. The bride, who walked the aisle on the arm of her father, wore a formal gown of silk organza fashioned with a high collar, empire bodice and short full sleeves of Chantilly lace. Her cathedral length veil of illusion, trimmed with Chantilly lace, fell from a camelot headpiece of lace and seed pearls. She carried a white Bible topped with a bouquet of white orchids and roses. Marcia Gibbs of Dalhart

FOR SALE-3 bedroom 2 bath home, completely carpeted. Fenced yard, corner lot. Equity. Present loan 5 3/4%. 659-2171. 30S-2tp

FOR SALE-14 ft. Starcraft boat 40 hp Evinrude motor, \$850 ph. 2929. 319 Archer. 30S-rrn

FOR SALE-One 3 bedroom house. Collard Real Estate. 659-2501. 30S-3rc

FROM wall to wall, no soil at all, on carpets cleaned with Blue Lustre. Rent electric shampooer and buffer \$2. GORDON'S DRUG

FOR RENT

FOR RENT-furnished Apt. 606 S. Bernice Street. Phone 659-2652. 28S-rrn

Combinations Changed Locks keyed alike. Location, only block building west on Gruver Hi-way. E. D. Mundy, phone 2942. 28T-Tonly

Mr. and Mrs. R. E. Lee were recent visitors in Colorado Springs, Colo. The object of their trip was to see two granddaughters before they left on trips. Robin Lee was going to Malibu Vancouver Canada to camp. Debbie Robertson left for six weeks trip People to People tour in Europe.

Mr. and Mrs. Russell Townsend has at weekend guests for Father's Day their sons Capt. and Mrs. Kenneth Townsend and children Terri and Jeff of Offur Air Force Base, Omaha, Nebraska and Mr. and Mrs. Charles R. Townsend and children Shannon and Christy of Tulsa, Okla. Charles is City Manager of Cinema Theatre, Tulsa.

YAMAHA
Sales & Service
EAGLE CYCLE SHOP
10 SW 4th
435-3594
Perryton, Texas

420-million bushels is the estimated harvest now getting under way in the southwest and midwest wheat belt. This harvest has to be moved from growing areas to elevators and mills, also to ports for export. Here's how Santa Fe has been getting ready for this big job. At the start of the year we ordered 800 giant 100-ton covered hopper cars which are ideal for moving wheat, potash and bulk commodities as they can be loaded in twelve minutes and unloaded in about three minutes. During April we added 500 more to increase the order to 1300 cars, so we could have almost 10,000 giant hoppers ready by harvest. We also use box cars and other types of equipment to keep the wheat rolling. And there are other ways we are ready for this big job. Last year we expanded and automated our Argentine Yard at Kansas City, which is a busy wheat terminal. Our data center at Topeka is prepared to keep constant check on cars to gain the best possible utilization of equipment. Diesel units have been added to our locomotive fleet and older units updated to move the wheat trains. Now the harvest is starting and Santa Fe people, with their experience and dedication, are ready to handle this big transportation job. All together we are making our strongest effort to move this year's wheat harvest while at the same time keeping all other freight moving across our railway.

Santa Fe
"To efficiently move huge volumes of wheat at harvest time must depend on fast loading and unloading of cars by shippers, elevator operators and at port terminals. We must also rely on prompt inspection by government agencies. Through cooperation with everyone in the grain industry, Santa Fe is making an all out effort to move this year's wheat harvest without a serious car shortage."

John S. Reed
President - Santa Fe Railway

Santa Fe
Santa Fe—the railway that is always on the move toward a better way

Support ASTRO a sound transportation plan to meet tomorrow's needs

Mr. and Mrs. Desmond Homer Kelly
The Reverend and Mrs. Charles Arthur Hufstetter
request the honour of your presence
at the marriage of their children
Virginia Elaine
and
James Arthur
to be united in Christ Jesus
on Friday, the second of July
Nineteen hundred and seventy-one
at seven o'clock in the evening
Morse Community Chapel
Morse, Texas

Reception following ceremony
Community Building

Mrs. R. T. Farris and Rebecca returned Tuesday from Purcell, Okla. where they had been to see her father Mr. J. W. Cotten who is in the hospital there. They are still running tests.

Mr. and Mrs. Joe Traylor visited over the weekend with their son and family Mr. and Mrs. Charles Traylor and children at Abilene. Charles is band director at Abilene Christian College.

Mrs. Daniel Sheets drove to Abilene Saturday to meet her son Jerry and family. She brought the children home with her for a while. Jerry works for Union Carbide at Texas City.

Mr. and Mrs. R. E. Lee had as their weekend guest Mrs. Lyall Murdock of Stratford.

Mrs. Clinton Wilson of Dumas, Mr. and Mrs. George Parker from California, Mr. and Mrs. Max Corbett of Florida visited with Mrs. Grace Archer Wednesday. Mrs. Parker is the sister of the late Mrs. Lee McClellan.

Mr. and Mrs. Harold Howetter have as their guest this week Miss Sheila Gurnet of Aspen, Colo.

Mr. and Mrs. E. G. Archer, spent the weekend in Lubbock with their son and family Mr. and Mrs. Glenn Archer. Glenn is attending law school there.

Mrs. Tommie Lovett, Mike and Carlee, Mrs. Carl Archer, Mrs. Tommy Gumfory and Kathryn, Mrs. R. B. Archer, Mrs. D. E. Hackley, Travis Patterson and Andrea Archer went to Amarillo Friday to the circus.

Sheets' Attend Taylor Wedding

Mr. and Mrs. Jeff C. Noel and Chris of Dallas came up Friday and accompanied her parents Mr. and Mrs. Bruce Sheets to Lakin, Kansas for the wedding of Miss Peggy Taylor, Peggy is the daughter of Mr. and Mrs. Delmar Taylor, former Spearman residents, and Mrs. Taylor is Mrs. Sheets sister. Mr. and Mrs. Sheets brought Chris home with them after the wedding while the Noel's went on vacation in Colorado. Mr. and Mrs. Noel came back to Spearman and spent Father's Day with her parents.

Archers Have Houseguests

Dr. and Mrs. Ed Lauvstad, his and Kurt of Osceola, Iowa visited in the home of Mr. and Mrs. E. G. Archer over the weekend. Other visitors were their son Mr. and Mrs. Jim Archer, Ron, Jay and Jami of El Paso. Kim Archer returned with the Jim Archers for a three week visit with Bill, Jim and Don, his three brothers. The boys are all planning a fishing trip to old Mexico this week.

Granddaughter Visits In Tension Home

Miss Simone Drum of Fullerton, Calif. 8 year old granddaughter of the Calvin Tensions, was met at Amarillo Airport June 20 by her grandmother, Mrs. Calvin Tension and her uncle, Jack McKee. Simone will be spending two weeks here with her grandparents and uncle.

Abstons Enjoy Colorado Trip

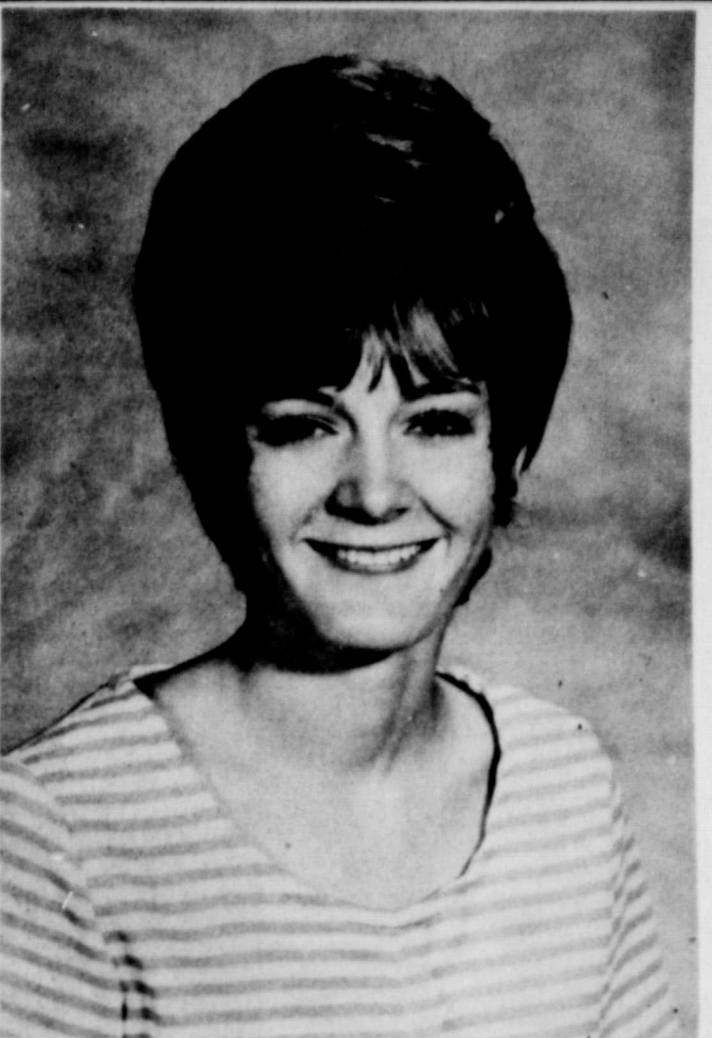
Mr. and Mrs. E. C. Abston returned last week from a vacation trip to Colorado. They were accompanied by Mrs. Abston's sister and husband Mr. and Mrs. Wm. T. Ritchey of Oklahoma City, Okla. and were joined at Vallecito Lake by Mrs. Abston's brother and wife, Mr. and Mrs. M. W. Ford of Gallup, N.M. Points of interest at Durango, Silverton, Ouray and Mesa Verde were visited and much time was spent trout fishing.

Donna Freeland, Danny Robertson To Wed July 31

Mr. and Mrs. Harvey C. Freeland of Austin, Texas are announcing the engagement and approaching marriage of their daughter, Donna Marie, to Mr. Danny Ray Robertson, the son of Mr. and Mrs. T. Ray Robertson of Spearman.

Mr. Robertson, a graduate of Spearman High School, attended West Texas State University. Currently, he is employed with Western Electric Company in Austin and is a junior at the University of Texas.

Miss Freeland attended Patricia Stevens Fashion Merchandising College in Dallas. She is now attending the University of Texas where she is a sophomore majoring in Elementary Education. A July 31st wedding is being planned.



Betrothal Announced

Mr. and Mrs. Marvin Jones of rural Spearman announce the engagement of their daughter, Jan, to Mr. Terry Neal of Plainview. The prospective groom's parents are Mrs. Jeri Neal of Clovis, New Mexico, and the Reverend Carl Neal of Cone, Texas.

Miss Jones, a 1970 graduate of Spearman High School, and Mr. Neal, a 1967 graduate of Tucumcarr High School, are both students at Wayland Baptist College. An August 21 wedding is being planned.

NEWS FROM YOUR Home Demonstration Agent

By Nelle Albrecht

Having been in Spearman for a little over a week now its already home to me. Its been a pleasure to meet many of you who have come by the office. Hope more of you will do so though I must confess it will be a while before I'll get the right name and face together! Am looking forward to working with all of you.

Since its summer and many people are barbecuing lets explore the history of this word. To us barbecue suggests good eating outdoors with family and friends, but it is actually an ages-old Indian practise.

Barbecue developed from an ancient practise of the Tupinamba Indians of Eastern Brazil. This tribe slept on a wooden frame covered with palm fronds. The frame was put on long poles to keep it above the ground and was called barbracat.

The Tupinambas also used a similar frame over an open fire to smoke and dry meat. About 1550, Hans Stader, a shipwrecked German, lived with these Indians and first reported the practise of barbecuing.

The first American to use the word barbecue was Washington Irving who used the term to describe a social event in 1809.

Today, barbecue means a simple meal with meat cooked over an open fire. The meat may be poultry, beef, pork, wild game or even fish. A lettuce or cabbage salad, pickles, beans, potatoes and dessert are usually served with barbecue.

Barbecuing can be a big social event or simply backyard fun-time for the whole family. Its up to you and your family.

Something many of you mothers are concerned with these warm days is the children with their plea, "I'm thirsty".

June's dairy month so why not quench their thirst with healthy nutritious milk drinks, some ideas even for non milk lovers are:

Milk with Maple: Combine 1/8 teaspoon maple flavoring and 1 teaspoon sugar with a cup of chilled milk. Garnish with fruit chunks stuck on a straw.

Milk with Bananas: Add 1 tablespoon sugar, 1 egg, 1/2 teaspoon vanilla and 1/3 cup mashed bananas to 1 cup of chilled milk. Sprinkle with a dash of nutmeg.

Milk with Peppermint: Add crushed peppermint stick candy to milk. Chill in refrigerator until candy is dissolved. Top with a dab of whipped cream and a peppermint candy stirrer.

Milk with Cherries: Mix 2 tablespoons of canned cherry pie filling with a tall glass of icy cold milk. Garnish with maraschino cherries.

Milk with Orange Juice: Stir 2 tablespoons fresh frozen orange juice concentrate into a cup of milk. Add a

FRIENDS INVITED TO BRIDAL SHOWER

You are cordially invited to attend a wedding shower Monday, June 28 from 7-9 p. m. honoring Mrs. Mike (Vick) Stewart.

The gift shower will be held in the country home of Mrs. Deacon Clement. Assisting her with hostess duties will be Mrs. A. D. Reed, Jr.

Mrs. E. N. Wilbanks Sunday Visitors

Guests in the home of Mrs. E. N. Wilbanks Sunday were Mr. and Mrs. Joe Don Shockley and children from Plano; Mr. and Mrs. Troy Davis and children from Denton; Mr. and Mrs. Ron Hoyt Boyd and children, Loretta Boyd, Carl Lucas, Jim David Crawford from Amarillo; Mrs. Don Shockley and Chuckie of Perryton; Mrs. Visa Compton of Odem; Melba Dale Floyd and Steffi and Mr. and Mrs. Jeff Hawkins, Vicki and Jo Edd Crawford, all of Spearman.

Father's Day Dinner Honors Kiff White

The family of Mr. and Mrs. Kiff White gathered in their home Sunday to celebrate Father's Day and Mr. White's birthday. Those enjoying a barbecue cookout were Mr. and Mrs. Cy Carr and Gary from Miami, Mr. and Mrs. James White, Mr. and Mrs. Jim Ivey and family from Chandler, Arizona, Sue Hendricks and Connie Sue from Amarillo, Mr. and Mrs. Troy Sloan and Pat, Mr. and Mrs. Garland Head, Delinda and Ronnie, Mr. and Mrs. Tommie White, Terri, Tammi, and Tracy, Mrs. Kiff E. White and Chris and Mary Sparks.

GIRL SCOUTS DAY CAMP SET

The annual Girl Scout Day Camp is set for June 28 to July 2 for 1971. Any girl scout who has not yet turned in her application slip to her leader is urged to contact Mrs. Jack Moran by calling 659-3193 so the scout can be counted.

The camp this year is to be held on the Gibner Ranch and one day is set aside for swimming at the Venneman ranch. Each day the girls will meet at the scout house at 8:30 a. m. to leave for the camp and will return to the scout house at 1:30 p. m. Camp setting, nature hikes, swimming, crafts, evening meal preparations, program for parents and a watermelon feed, and all but Brownies will spend the last night; are some of the activities set for camp. Fun and learning will be enjoyed by all.



Beverly Bohanan has pre-entrolled for the fall term at Panhandle State College. Beverly is a graduate of Spearman High School and the daughter of Mr. and Mrs. Glen Bohanan of Spearman, Texas. Beverly plans to major in 2 year Business Course.

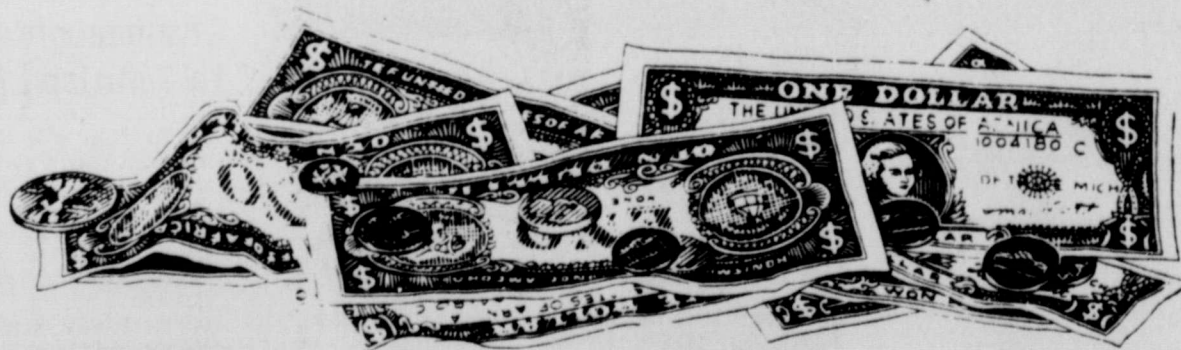
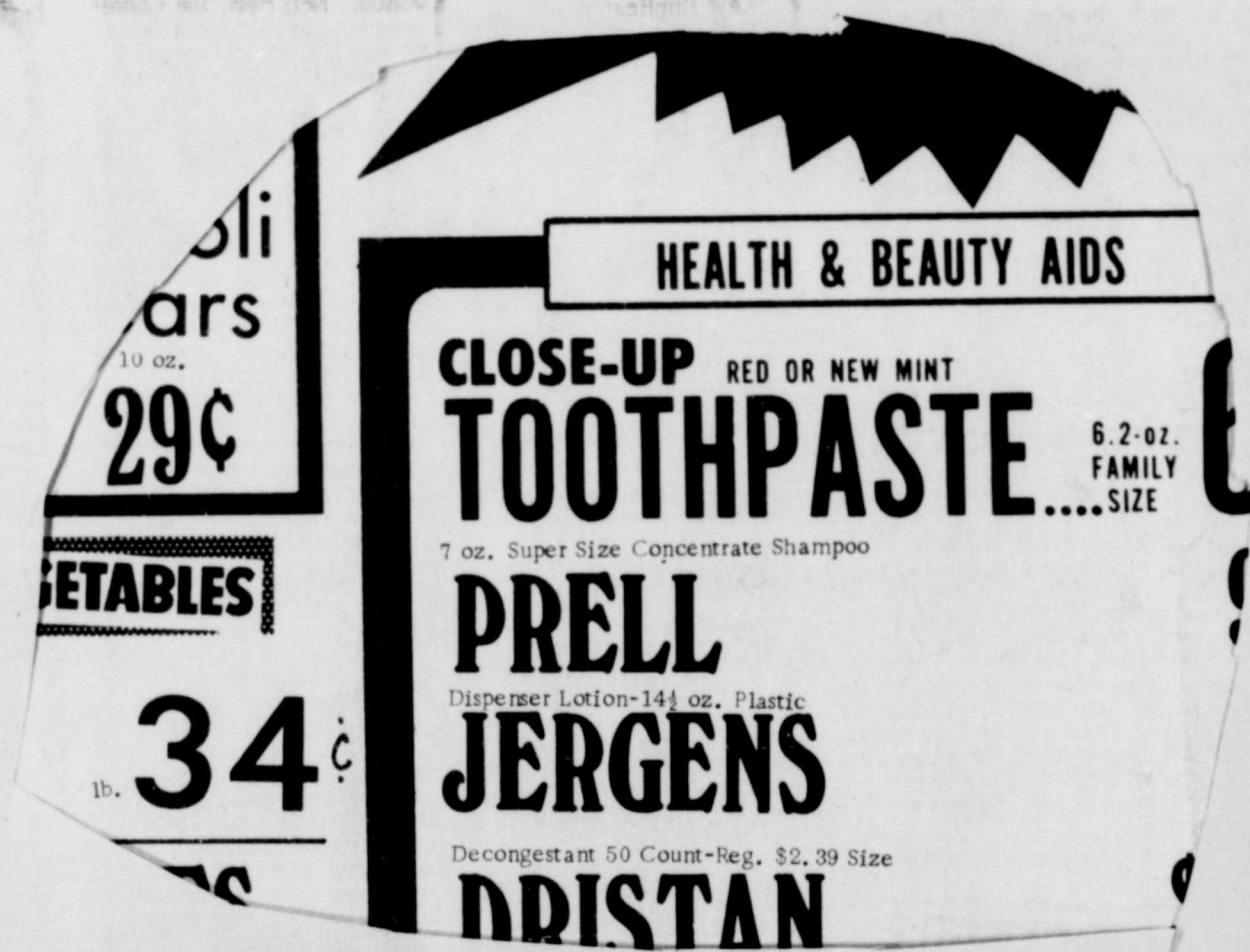
In high school, Beverly was active in Band and FHA.

Guest in the J. B. Buchanan home is her sister, Mrs. Fay Schweitzer of Redondo Beach, Calif.

Helen Fisher spent the weekend on her ranch near Memphis.



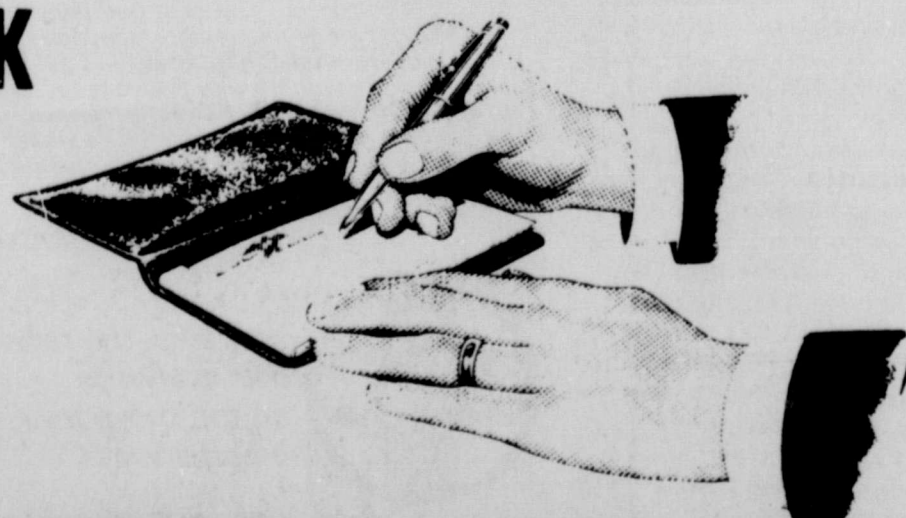
Medcalf



FIRST NATIONAL BANK

Member Of FDIC And Federal Reserve System

PERRYTON TEXAS



WANT ADS

Advertise where people look to buy in the

Fiddle-Free Color TV by RCA

Burton's TV

659-2121

106 E. Kenneth

Boxwell Bros. Funeral Home and Flower Shop

Night Phone 659-2212 Spearman, Texas

Cummings Refrigeration and Conditioning

Phone 659-2721 Phone 659-2441

WHITE HOUSE LUMBER CO.

Hanstford Lodge

1040

A.F. & A.M.

Regular Communication 2nd and 4th Monday of each month

Daniel Faries, W. M. Cecil Batton, Secy.

SERVICES

What Beauty by Mary Kay do for you. For a complimentary Facial Call Malolal tonight, Ph. 659-2119.

FOR RENT

FOR RENT-furnished Apt. 606 S. Bernice Street. Phone 659-2652. 28S-rtm

FOR RENT-Furnished apartments. See Lee Phillips or call 2788 after 6 p.m. 30T-rtm

FOR RENT-One bedroom house. Collard Real Estate. 659-2501. 30S-3rc

FOR RENT-Furnished bachelor Apt. Contact Jim Mc-Lain, 659-3418. 12T-rtm

FOR RENT-Furnished garage apartment. Bill paid. 303 S. Barkley. Call 659-3022. 31T-rtm

WANTED

Light Housekeeping or Baby Sitting-Call 3623. 31T-2rc

Kindergarten Enrollment Deadline

KINDERGARTEN ENROLLMENT DEADLINE: July 1. Mrs. Cherry Garnett, Phone 3588 or Mrs. Zetha Blackburn 2719. 30S-rtm

EMMETT SANDERS, broker 659-2516 26T-rtm

Non-Polluting-Phosphate free laundry detergent 20 lb. box or bucket, \$5.29 on sale at Sears, Plains Shopping Center. 659-2573. 26S-8tc

FOR SALE-3 bedroom home, close to school and town. Call 2497. 28S-rtm

FOR SALE-1280 acres, sections 70 and 71, Block 2, GH&H Railway Co., Hansford County, Texas. 924 acres in cultivation, balance in grass. 3 irrigation wells, no minerals, located 17 miles southwest of Gruver. Wheat allotment 462 acres, feed grain allotment 190 acres. Loans on land \$130,000 at 5 3/4 and 7% interest. For additional information call Porter R. Underwood, Jr., phone 372-3262, after 6 p.m. 352-5516, 304 Amarillo Building, Amarillo, Texas. These sections will be sold either separately or together. 26S-rtm

FOR SALE: 3 BR home, single garage, carpeted, central refrigerated air, low payments, Emmett Sanders, Broker, 659-2516 nights 659-2601. 31T-T only

GARAGE SALE-514 S. Hazelwood, across from swimming pool, 1/2 price on everything until June 26th. Lots of Clothing and What Not. 31T-1tc

GARAGE SALE-Small appliances, clothing and Miscellaneous, Friday and Saturday, June 25 and 26, 309 W. 12th Ave. 31T-3rc

RUMMAGE SALE-Fri. & Sat. 10 N. Snider Street. 31T-1tc

FOR SALE: 40 x 60 ft. steel building and 140 x 200 ft. lot, Crawford Addition, on paving. Includes trailer space. Emmett Sanders, 659-2516 nights 659-2601. 30T-3tc-Tonly

FOR SALE: 3 BR stucco house, detached double garage and workshop, on large lot. Priced to sell. Emmett Sanders, 659-2516 nights 659-2601. 30T-3tc-Tonly

FOR SALE-Clean 10 x 55 Van Dyke mobile home, fully furnished, including air conditioner, sell wholesale. Call Gruver 733-2916 after 5 p.m. 27T-rtm

FOR SALE-2 1969 John Deere Diesel 105 combines. Cab 20 ft. header. 2 20 ft. pickup reels. Dale Davis, Spearman, Texas 659-2489. 30T-rtm

FOR SALE-3 bedroom 2 bath home, completely carpeted. Fence yard. Corner lot. Equity. Present loan 5 3/4%. 659-2171. 30S-2tp

FOR SALE-14 ft. Starcraft boat 40 hp Evinrude motor, \$850 ph. 2929. 319 Archer. 30S-rtm

FOR SALE-One 3 bedroom house. Collard Real Estate. 659-2501. 30S-3rc

FROM wall to wall, no soil at all, on carpets cleaned with Blue Lustre. Rent electric shampooer and buffer \$2. GORDON'S DRUG

FOR RENT-furnished Apt. 606 S. Bernice Street. Phone 659-2652. 28S-rtm

FOR RENT-Furnished apartments. See Lee Phillips or call 2788 after 6 p.m. 30T-rtm

FOR RENT-One bedroom house. Collard Real Estate. 659-2501. 30S-3rc

FOR RENT-Furnished bachelor Apt. Contact Jim Mc-Lain, 659-3418. 12T-rtm

FOR RENT-Furnished garage apartment. Bill paid. 303 S. Barkley. Call 659-3022. 31T-rtm

WANTED

Light Housekeeping or Baby Sitting-Call 3623. 31T-2rc

Kindergarten Enrollment Deadline

KINDERGARTEN ENROLLMENT DEADLINE: July 1. Mrs. Cherry Garnett, Phone 3588 or Mrs. Zetha Blackburn 2719. 30S-rtm

EMMETT SANDERS, broker 659-2516 26T-rtm

Classified ads work for you!

Card of Thanks

Words fail to express our sincere appreciation for all the kindnesses to our family during the long illness & death of our loved one. A special thank you to Dr. Gregg and the hospital staff, and to all our friends for their offerings of food, flowers, memorial gifts and prayers. May God bless each and every one of you. The families of L.D. Pierce

I wish to thank everyone for the nice cards, flowers, and other expressions of kindness and thoughtfulness I received while I was a patient in Hansford Hospital. Ina Mae Ferrell

To Late To Classify

GARAGE SALE-Adults & infant thru age 5 girl's clothing, toys, trike, waders, some old fruit jars & bottles, package unit auto air conditioner, miscellaneous. Saturday, June 26, 9 to 6. 1111 S. Driessen. 31T-1tp

GARAGE SALE-1114 S. Haney, Friday, 25th, Saturday, 26th. Lots of children's clothes. 31T-1tc

FRANK PHILLIPS COLLEGE

Borger, Texas



Fall Registration

Aug. 26th & 27th

DORMITORIES

MAXINE GOINS HALL

W.G. STEPHENS HALL

Locksmith Service

Keys Duplicated
Locks Serviced
Combinations Changed
Locks keyed alike
Location, only block building west on Gruver Hi-way.
E.D. Mundy, phone 2942 28T-Tonly

Mr. and Mrs. R.E. Lee were recent visitors in Colorado Springs, Colo. The object of their trip was to see two granddaughters before they left on trips. Robin Lee was going to Malibu Vancouver Canada to camp. Debbie Robertson left for six weeks trip People to People tour in Europe.

Mr. and Mrs. Russell Townsend has as weekend guests for Father's Day their sons Capt. and Mrs. Kenneth Townsend and children Terri and Jeff of Offut Air Force Base, Omaha, Nebraska and Mr. and Mrs. Charles R. Townsend and children Shannon and Christy of Tulsa, Okla. Charles is City Manager of Cinema Theatre, Tulsa.

HESTER (BECK)

CRAWFORD

is now at

CINDERELLA

BEAUTY

SALON

Tues. - Sat. 10:00 - 3:30

Helen Whitaker Noreen (Sutton) Stokes
Vyneta States Tina York

give us a call

8:30 until 5:30

Plains Shopping Center

659-3413

Eddie Martin In "Texas" Cast



Eddie Martin

Eddie Martin, son of Mr. and Mrs. J.H. Martin of Spearman, will perform the role of Archie Dyer during the sixth season of the musical drama "TEXAS". He has performed in such productions as "Our Town" and "Child Buyer". At West Texas State University he plays the organ in the Faith Student Choir. While at Spearman High School, 1960-64, he was president of his high school choir, president of the FFA chapter and senior class favor ite. Martin is one of the 130 persons selected for the 1971 "TEXAS" company.

"TEXAS" Cast Rehearsing

The 92 people in the 1971 cast of "Texas" are rehearsing for eight hours a day. Margaret Moore, the Associate Director, is working intensively with the actors to help them to perfect their speaking parts. Royal Brantley, the Musical Director, has taught the music, and is now drilling and polishing-listening for precision and balance-so that the choirs will be ready to make the recordings for the dream sections of the show. He has already presented the delightful contrapuntal exercises which the cast uses for warm ups through the season. Neil Hess, the Choreographer, has led the dancers through the figures-fresh new routines-which he has devised for this year's production. Before practicing these the entire cast warms up with simple steps-building their endurance to the point where each one can run a quarter of a mile for an entrance and appear on the stage singing and dancing and not out of breath. Sometimes these warm ups are directed by Jim Holston, assistant to Neil Hess. Under Charlotte Brantley, the costumes are shaping the clothes for the scenes. Under Jim Kemmerling the technical crew is getting the stage and sets ready-handicapped a little by a sudden wind which rolled the train a short distance on two wheels and sent chairs sailing through the air. Under Pat Jarrett the sound and light crew is checking wiring and testing speakers, and experimenting with lighting effects. These preparations are leading to the opening of the sixth season of the Musical Drama by Paul Green-the "Texas" show-which played to more than 350,000 people

The Production, written by Pulitzer Prize winner Paul Green, opens Thursday (June 24) and runs nightly, except Sunday, through August 28 in the Pioneer Amphitheatre in Palo Duro Canyon. A special performance will be given Sunday, July 4.

Opening night will be a gala honoring the mayors of the Panhandle who broke ground for the amphitheatre ten years ago. Both the mayors of ten years ago and the current mayors of the Panhandle towns will be guests of the Heritage Foundation for the evening.

A feast of barbecue prepared by Scott Surphen of Amarillo will be served preceding the production.

Mrs. Ples Harper, public relations director, recalled the ceremonies 10 years ago. "Each mayor stood behind his city's sign with a spade and they broke ground at the same time," she explained. "This symbolized the groundbreaking and the unified effort of the Panhandle."

The mayor of Spearman has been invited to join the other honorees.

For tickets or additional information write "TEXAS", Box 268, Canyon, Texas, 79015.

Beachcombers Comb Parked Cars For Treasure

DALLAS, June 15--As Texans once again start their yearly exodus to the beaches and lakes to escape summer's heat, so do thieves whose business it is to go where the action is. C.C. Benson, manager of the Southwest region, National Automobile Theft Bureau (NATB) said here today.

"A beach parking lot during the Texas summer is the closest thing we have to the Sahara desert and vacationers who dread returning to an ovenlike car will leave windows open, unwittingly inviting thieves to help themselves not only to valuables in the car-but to the car itself," Mr. Benson said.

Most bathers want as little with them as possible on the sandy shores, Mr. Benson noted, so cameras, handbags, clothing, binoculars and even billfolds and car keys are left in the car while the owners soak up the sun.

NATB advises families to take as few valuables to the beach as may be necessary. Keep personal property in the trunk of the car out of sight. The professional thief is deterred only momentarily by a locked glove



AFTER THE REHEARSAL OF "TEXAS" on Friday, June 18th Eddie Martin was host to the company of singers for a watermelon feast. The company has been rehearsing 8 hours a day preparing for the summer show.

during its first five seasons in the beautiful amphitheatre in the magnificent Palo Duro Canyon State Park. Show opens 8:45 PM nightly except Sundays June 24th thru August 28th. A special performance July 4th. For tickets write Box 268, Canyon, Texas or phone.806-655-2182.

Beachcombers Comb Parked Cars For Treasure

DALLAS, June 15--As Texans once again start their yearly exodus to the beaches and lakes to escape summer's heat, so do thieves whose business it is to go where the action is. C.C. Benson, manager of the Southwest region, National Automobile Theft Bureau (NATB) said here today.

"A beach parking lot during the Texas summer is the closest thing we have to the Sahara desert and vacationers who dread returning to an ovenlike car will leave windows open, unwittingly inviting thieves to help themselves not only to valuables in the car-but to the car itself," Mr. Benson said.

Most bathers want as little with them as possible on the sandy shores, Mr. Benson noted, so cameras, handbags, clothing, binoculars and even billfolds and car keys are left in the car while the owners soak up the sun.

NATB advises families to take as few valuables to the beach as may be necessary. Keep personal property in the trunk of the car out of sight. The professional thief is deterred only momentarily by a locked glove

said here today. "A beach parking lot during the Texas summer is the closest thing we have to the Sahara desert and vacationers who dread returning to an ovenlike car will leave windows open, unwittingly inviting thieves to help themselves not only to valuables in the car-but to the car itself," Mr. Benson said.

Most bathers want as little with them as possible on the sandy shores, Mr. Benson noted, so cameras, handbags, clothing, binoculars and even billfolds and car keys are left in the car while the owners soak up the sun.

NATB advises families to take as few valuables to the beach as may be necessary. Keep personal property in the trunk of the car out of sight. The professional thief is deterred only momentarily by a locked glove

compartment, so cash, watches and jewelry should either be left at home or kept with you on your beach blanket. Mr. Benson also stressed that although the old "hide-the-car-keys-under-the-seat" trick might seem safe, it is one of the first places a professional thief will look and the unsuspecting sun-worshiper might return to find more than his valuables missing.

"The vacation vehicle... pickups with cameras or motorized mobile homes is also a prime target of the professional thief in the Southwest," Mr. Benson added. "These should be locked when they are left, even for a short time."

"Don't let your vacation be spoiled by the pilferer or professional thief who thrives on the carelessness of honest people," Mr. Benson said. "Hot or not, lock your car or camper at all times and take the keys."

Mr. and Mrs. Charles Gilliam, Mrs. Dorothy Chevalier, Mrs. Mildred Chamberlain and Mr. and Mrs. W.E. Bratton attended the wedding of Miss Sara White in Perryton Saturday. Miss White is the daughter of Community Public Service Division Manager Mr. and Mrs. L.S. White, Perryton.

Mrs. Dorothy Chevalier has as her guest this week Misses Terry King and Pat Williamson of Memphis, Tennessee. Miss King is a niece of Dorothy's and Miss Williamson is a friend of Miss King.

Mr. and Mrs. Jerrold Thomas spent the weekend in Dallas.

STOCKMEN--FARMERS--RANCHERS--FEEDLOT OPERATORS

Next Friday, June 25th will be our last sale in June and is a Consignment Sale. FOR JULY: We will hold a cattle auction every Friday. We do not plan to close for any reason thru the summer. It is almost impossible to predict the size of our runs for July, but we expect them to be some smaller than they have been. We will advise from week to week what we expect.

Last Friday, June 18th we sold 3539 cattle and calves. Our auction started at 12:30 P. M. sharp and the selling was completed at 7:40 P. M.

Ship your next cattle to a Dependable Cattle Auction with "Action".
CONTACT: Cliff Augustine-----Sam Elliott-----Raymond Choate
Texhoma, Okla. Amarillo, Texas Texhoma, Okla.

TEXHOMA LIVESTOCK COMM. CO., INC.

Ph. (405) 423-3251 Texhoma, Oklahoma P.O. Box 70

SUNDAY, OCTOBER 20, 1968

Hail Damage Reported

The harvesting of a bumper maize crop which was beginning to pour into local elevators earlier in the week, was brought to a stand-still Wednesday when heavy thunderstorms invaded the area. Wednesday night's storm, accompanied by high winds and hail, brought reports of varied amounts of crop damage from farmers south and east of Spearman. Garland Head estimated 20-30 bushels of grain on the ground, shattered and blown down by "at least six different hail storms during the night." Major damage to the sorghum crop was reported by Major Lackey, Everett Vanderburg, Doyle Jackson and other landowners in the part of the county known as "hail alley." Soggy roads and water-logged fields will prevent a complete estimate of crop loss until a drying out period prevails. Hail was reported heaviest in the Kiff E. White farm area where their home had extensive roof damage. Window lights were knocked out and their car was heavily damaged. These same reports came from the Doyle Jackson home place.

PROTECT YOUR MAIZE

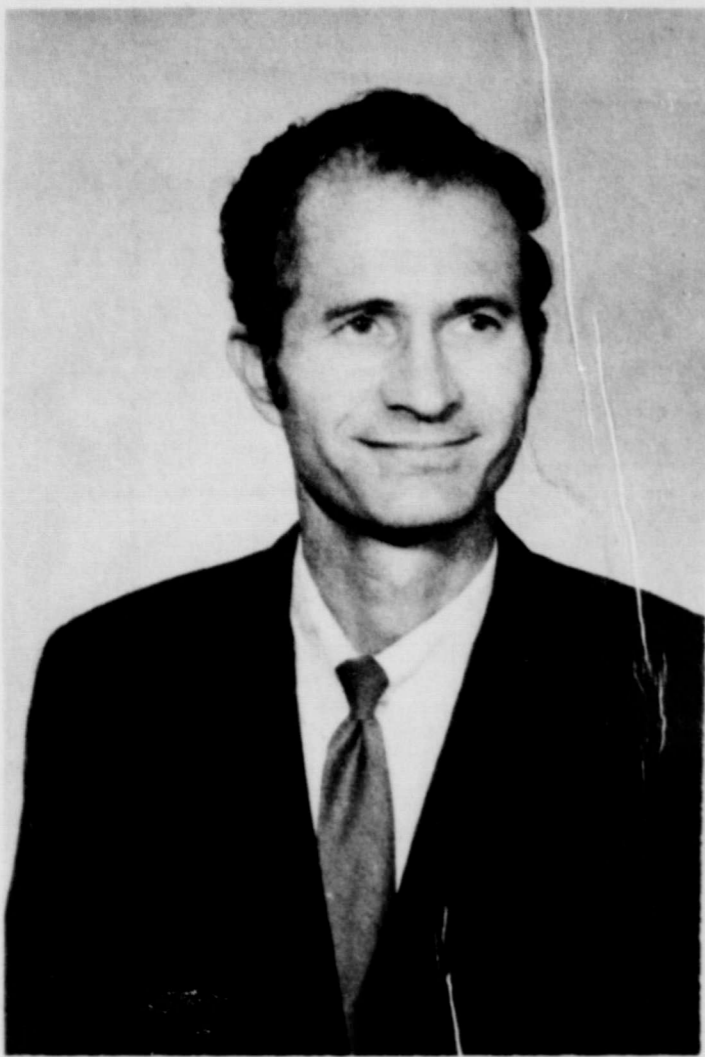
Buy INSURANCE Today

48 HOUR WAITING PERIOD

Now is the time to get HAIL INSURANCE on your growing maize crop... Protect those valuable crops NOW.

B J. L. Brack Agency Insurance
206 MAIN STREET - SPEARMAN, TEXAS

Missionary To Speak Here Sunday Morning



Wayne White

Rev. and Mrs. Wayne White, Southern Baptist Missionaries stationed in Guadalajara, Mexico, will be speaking at the First Baptist Church in Spearman Sunday morning.

The pastor, Rev. S. T. Shoemaker, announced that Wayne White will be speaking at the regular 11 a. m. worship hour. Mrs. White will be speaking in an adult department at 10 a. m.

Since 1968 Missionary Wayne White has been stationed in Guadalajara, Mexico, where he engages in religious education promotion on a national scale. He also

continues to serve as field missionary for the state of Sinaloa, a position which he previously filled full-time. He is also religious education director for the Cethsemane Baptist Church in Guadalajara. In this capacity he is setting up a training and teaching program, including a special worship service for young people.

White was previously stationed in Mazatlan. The move to Guadalajara was necessitated by his health. After being ill with hepatitis for about 18 months, his colleagues suggested that the climate, food and medical facilities

in Guadalajara would be more beneficial.

Appointed by the Foreign Mission Board in 1963, the Whites went to Mazatlan after a year of Spanish language study in San Jose, Costa Rica.

White grew up in Pampa, Texas. He is the brother of Mrs. Eddie Gates of Spearman. Mr. and Mrs. White have four children, Laurie 18, Robin 16, Travis 14 and Cynthia, 13.

Mr. White says it was while he was serving with the Navy during WWII that he first began to study the Bible and have regular prayer times. He began to feel God had a place of service for him and was very impressed with the need for missionaries in Japan, after the war, a shop clerk asked him "what means Jesus Christ?"

The public is cordially invited to attend Sunday morning church services and hear this missionary tell of his life's work.

SEEDS

Yesterday my niece said, "Uncle Michael, I know there is a God. But who made Him?" "Nobody," I answered. "When did He begin to live?" she asked. "He always was," I replied. "Will He ever stop living?" she wondered. "No," I answered. "He always will be." "But," she admitted, "I don't understand." "Neither do I," came my confession. The finite cannot comprehend the infinite.

Every one, if he is endowed with a normal mind, finds questions about God arising in his mind very early in life. This is convincing proof that there is a compassionate Creator, a living Lord, whom men endeavor to know.

One who came to know Him said in Psalm 93:1 and 2, "The Lord reigns, Thy throne is established of old: Thou art from everlasting."

In this day of crime, immorality, rebellion and trouble, it is comforting to the soul to look up and say with assurance and admiration, "The Lord reigns!"

Survey On Drug Abuse by TANE

A two-to-one majority of teachers, students, and boys on probation believe laws on drug abuse should be more strict according to a statewide survey made by Texas Alcohol Narcotics Education (TANE).

The question: "Do you believe laws on drug abuse should be more strict?" was answered, "Yes" by 85% of teachers, 65% of high school students, and 54% of boys on probation. Total response was 67% for more strict laws.

The survey was taken in both rural and metropolitan areas of the state, from Farwell, near the New Mexico line, to Houston. In large city schools, the administration was asked to determine a representative cross section of teachers and students.

"Are you personally acquainted with a drug abuser?" was answered "Yes" by 18% of teachers, 53% of high school students, and 50% of boys on probation.

"Do you know someone who could get illegal drugs for you today if you wished to make a purchase?" was answered "Yes" by 12% of teachers, 52% of students, and 39% of boys on probation.

"Do you know someone who would sell illegal drugs directly to you if you wished to make a purchase?" was answered "Yes" by 10% of the teachers, 40% of students, and 39% of boys on probation.

In your opinion, what are the two main factors leading to drug abuse in teenagers? was answered "Peer Group Pressure," and "Curiosity," in that order, by teachers. Students, however, rated "Curiosity" first. Boys on probation rated "escape" first, and "Sex Substitute" second.

In your opinion, what are the two most important pre-

ventative measures that can be taken to combat drug abuse? was answered "Education" and "Elimination of Supply of Illegal Drugs," by teachers and students. Boys on probation rated "Education" slightly ahead of "Law Enforcement," "Stronger Laws," and "Legalization of Marijuana."

The question: "Is it possible to learn about the effects of a drug without personally experimenting with it?" was answered "Yes" by 98% of teachers, 90% of students, and 84% of boys on probation.

"Have you come to a decision about whether or not marijuana should be legalized?" was answered "Yes" by 80% of teachers, 78% of students, and 44% of boys on probation. (They were not asked what their decision was.)

Areas involved in the survey were Farwell, Cotulla, Sulphur Springs, Richardson, Garland, Childress, Grapevine, McAllen, Fort Worth, and Houston. (The survey was also taken in Dallas, but results were not returned in time for tabulation.)

TANE is a non-profit, educational organization, dedicated to preventing alcohol and drug problems. In existence since 1935, it is supported financially by Texas churches, individual contributions, businesses, industry, and proceeds of sale of educational aids.

Programs include public school assembly programs, in-service teacher training workshops, drug education seminars for schools and churches, publishing books, production of audio visual aids, a 150-man speakers bureau, legislative information service, research, and an annual drug education workshop co-sponsored with Baylor University. The next workshop is scheduled for August 5-7 at Waco.

Mr. and Mrs. James W. Walker had as weekend guests their son Mr. and Mrs. J. G. Walker and son Kent of Odessa. Also two great granddaughters, Amanda and Tracy Foust of Odessa.

LAST RITES JUNE 22 FOR FLORA RANDALL

Mrs. Flora O'etta Randall, 74, a longtime resident of Spearman, died at 3:45 a. m. June 20 in St. Anthony's Hospital in Amarillo where she had been a patient the past 12 weeks.

Funeral services were held at 2:30 p. m. Tuesday, June 22 in the Union Church at Spearman. The pastor,

Rev. Ray Christenson officiated, assisted by Rev. Don Windsorer, pastor of the First Christian Church.

Burial was in Hansford Cemetery by Boxwell Brothers Funeral Home of Spearman.

Mrs. Randall was a native of Cedar Creek, Mo. She was a member of the Union Church.

Survivors include five sons: Ed of Oklahoma City, Willis,

Dale and Loye all of Spearman, and George Jr. of Perryton; three daughters, Mrs. Doris Bradshaw of Pampa, Mrs. Naomi Fryrear and Mrs. Faye Davis of Spearman; two brothers, Dee Hinkle of Willow, Calif., and Clarence Hinkle of Oklahoma City; one sister Mrs. Vera Van Hook of McLeod, Okla., 39 grandchildren and 27 great-grandchildren.

Sale Thurs, Fri, & Sat.

Pre-finished PANELING

We stock and install chain link fence

MASONITE VINYL COATED 4 x 8 x 1/4
Walnut Reg. \$5.95 Sale \$4.79
Cherry Reg. \$5.95 Sale \$4.79
Oak Reg. \$5.95 Sale \$4.79

MASONITE VINYL COATED 4 x 8 x 1/4
Pecan Reg. \$7.95 Sale \$6.29
Walnut Reg. \$7.95 Sale \$6.29

4 x 8 x 3/16
Light Pace Setter Reg. \$3.98 Sale \$3.19
Medium Pace Setter Reg. \$3.98 Sale \$3.19
Dark Pace Setter Reg. \$3.98 Sale \$3.19

Inlaid linoleum now in stock

Natural Hickory
\$5.29
REGULARLY \$6.95

Cherry Flank
\$3.85
REGULARLY \$4.75

Walnutone
\$2.89
REGULARLY \$4.25

Bleached Pecan
\$5.29
REGULARLY \$6.95

Newport Chestnut
\$3.65
REGULARLY \$4.25

Oil Crown Walnut
\$4.95
REGULARLY \$5.95

Olive Pecan
\$5.29
REGULARLY \$6.95

Honey Birch Vinyl
\$5.29
REGULARLY \$6.95

Foxworth Galbraith Lumber Co.



READY TO SERVE YOU
IN THE PRESENT
HARVEST.



YOUR FRIENDLY Gruver State Bank... stands ready to serve you this harvest, as in the past... we welcome your business, and count it an honor and privilege to serve each and every one of you... drop in to see us this harvest...



Take Time To Stop In -
"For A Higher Degree of Friendly Service"

GRUVER STATE BANK

COMPLETE BANKING SERVICE
SAFE DEPOSIT BOXES

