

Spearman Will Vote On New Pool April 7th

SAMPLE
OFFICIAL
BALLOT

April 7, 1973
SCHOOL TRUSTEE
ELECTION

Note: Voter's Signature To Be
Affixed on the Reverse Side.

Member
the
Spearman
TEXAS PRESS ASSOCIATION

REPORTER

Volume 65 No. 18

SPEARMAN REPORTER, Hansford County, Texas 79081

Thursday, March 22, 1973

Spearman Independent School District

- Wilson McClellan
- Ray J. Martin
- Roy L. Bulls
- Joel Lee Lackey
- Ralph E. Bynum

JOEL LACKEY ASKS FOR SUPPORT IN SCHOOL B. RACE

The previous times that I have run for the school board I have stated that in my opinion we have a fine school system. I still maintain that we have a school system that compares favorably with any Class AA school in the state.

The many changes coming from Austin in regard to our school will be a big issue in the next three years. During the previous terms that I have served I have seen more and more control and interference from Austin. The important factor in education as I see it is self-control. It is my hope that the recent Supreme Court decision will help keep our schools in local hands. The local people know their needs much better than someone in Austin.

Once again I want to say that we have one of the finest faculties there is anywhere and we must always strive to keep a strong faculty. I feel the quality of students that Spearman schools turns out is a credit to the faculty and the school system.

By nature I am a conservative, however, my record will show that I am interested in and have supported all areas of our program. It is imperative that we must not lose sight of the fact that we must spend our tax dollar as wisely as possible. I am sincere and willing in my efforts to continue to serve the community through the board of education and I pledge my time and efforts to see that we keep a fine educational program in Spearman.

At this time I would like to ask for the support of the voters of the Spearman Independent School District in order to be re-elected to the board of education.

Thank you.....
Joel Lee Lackey

Wilson McClellan Is Candidate for School Board of Trustees

In making my decision to seek this position on the school board there were many persons of various interests who suggested that I throw my hat in the ring.

During these discussions it seemed to be the main thought that these persons were concerned with only fair and reasonable representation.

As to my qualifications, I am a taxpayer and father of two school age boys, one in the 7th grade and one in the 11th grade. I received my education in the Spearman School System and Texas Tech University.

We have a good school system; however, I believe that our school system should be continually improved as I believe everything in this community should be improved, while at the same time maintaining a reasonable tax rate out of an equitable evaluation which will give a fair value in taxes.

Our community deserves a well balanced school system with adequate planning in each area. To do this I feel we must keep our salary schedule at the top and provide a pleasant working atmosphere to assure our children the best possible education.

It is my feeling that we should strive to have the best possible school system in the state or at least among the best school systems of the state.

In summary, if elected, I will try to do my best in consideration of students, parents and taxpayers. I will also work to keep local control of our school system and I will listen to both sides of any issue.

Thank you,
Wilson McClellan

Fashion Show

A spring Fashion show, sponsored by the DECA students of Spearman High School, April 6 at 7:30 p.m. in the HS auditorium.

The latest spring clothing fashions from Spearman's ladies and mens clothing stores will be modeled by boys and girls who are distributive education students.

Along with the show will be varied entertaining acts.

Tickets for the show are now on sale from any DECA student or from the Chamber of Commerce office. Tickets are \$1.00 for adults and 75¢ for students.

Choral Concert

The "Faith Chapel Singers" a choral group from West Texas State University, will be in concert at the Apostolic Faith Church in Spearman Saturday, April 7 at 7:30 p.m.

The church's pastor Rev. Winston J. Barker gives everyone a special invitation to attend this inspirational musical concert.

The Barker's son, Jerry and his wife Lavanda are a part of this choir. Also, Mrs. Myrtle Fullbright has three of her grandsons in the choral group. They are sons of Dr. and Mrs. Wilbur D. Fullbright of Boston, Mass.

CORRECTION

In the article concerning the organizational meeting of the Hospital Auxiliary, Mrs. Emmett Sanders, treasurer, was left off the list of officers.



VOTE YES-A-THON instigators Tammy Rook, Tammy Farr, Kevin Rook and Julie Farr got the ball rolling for the rally to be held Friday, April 6 beginning at 4:30 in front of the city hall. The group will march down Main Street to the 'old swimming pool park' where they will stage a rally in support of the upcoming bond election for the swimming pool.

Youth want new swimming pool

The four young people pictured above met Sunday night in the homes of Mr. and Mrs. George Rook and Mr. and Mrs. Bob Farr planning activities to show their support for the upcoming bond election April 7 for a new heated swimming pool.

As a result, all students, young people as well as adult supporters of this issue are invited to attend a VOTE-YES-A-THON to begin at 4:30 p.m. Friday, April 6. The group will meet in front of the City Hall to begin their YES-A-THON, going down the post office street onto main and continue to the 'old'

swimming pool park. Escorts will be the Spearman School Band and a Spearman fire truck.

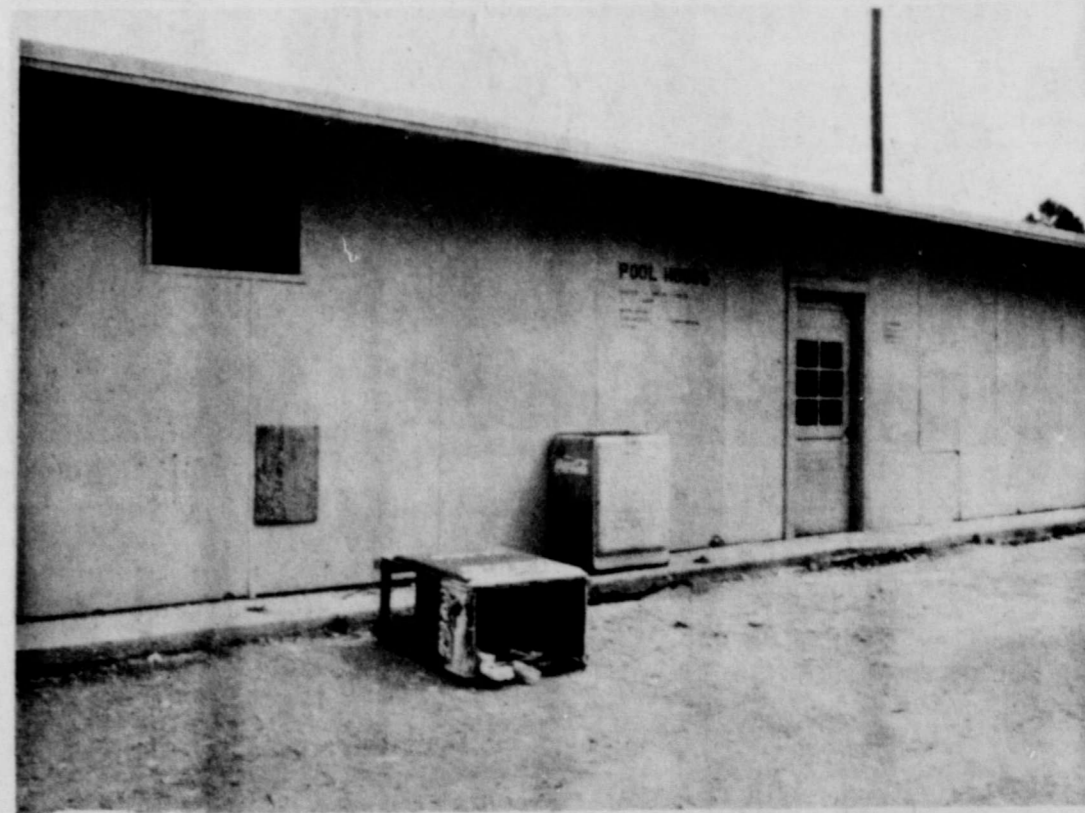
Guest speakers for the Rally to be held at 5 p.m. in the Park will be: City Manager Mike Struve and the swimming coach Rev. Don Wirsdorfer. An alternate meeting place will be announced if weather conditions will not permit using the Park.

Many businesses and individuals have donated supplies for posters and decorations for the Rally at the Park. All participants are encouraged to make signs to carry on the YES-A-THON.

After the Rally, refreshments will be furnished by the Spearman Chamber of Commerce. The Rally will dismiss around 6 p.m. so everyone may listen to the 'Open Forum' to be broadcast on KBMF-FM at 7 p.m.

Although, these young people are firm supporters of the YES vote, they stated that "as much as anything, everyone needs to vote." Backing the young people in their effort are the Spearman Chamber of Commerce; Women's Division of Chamber of Commerce; Dr. Hackley, Mayor; Mr. James Cunningham, superintendent of Spearman schools; all school principals, the City Park Board and many individuals.

BE SURE AND VOTE APRIL 7th



SPEARMAN WANTS A NEW SWIMMING POOL

Dear Citizens of Spearman, The new swimming pool proposed for our community is really needed. It will encourage not only our young people to swim, but adults will feel like it is suited for them.

I support this project for several reasons. First, the safety factor. The diving boards and swimming areas will be apart from each other. Second, those little children too small to swim will have a pool outside the main pool area. Third, the teaching area at the shallow end will enable the teachers to do a better job of teaching. Fourth, a heated pool makes it a great deal more pleasant to swim. It is easier to teach children, as they will not complain of the cold water. Adults will also not complain and will feel more like swimming.

I believe the cost per family is very cheap. For each water meter it costs 50¢ a month of \$6.00 a year. If we wait any longer the cost will go up. Surely we can go now and it will only cost you extra for three years. Support this project for it will benefit our community and help Spearman move ahead.

Sincerely,
Don Wirsdorfer

Mrs. Sam Wysong, Secretary-Manager of Spearman Chamber of Commerce, attended the 1973 Annual Leaders Workshop of the West Texas Chamber of Commerce.

Mary Lou was among the more than 200 business and civic leaders from 61 West Texas cities who received certificates for the completion of the workshop.

The one-day workshop, conducted by the regional Chamber of Commerce, was held for the purpose "to better orient Chamber leaders as to their responsibilities and to inform them on the latest proven operational techniques," according to C. W. Brown, president.

CITY OF SPEARMAN

No.

City of Spearman
City Officers Election
April 7, 1973

Regular City Officers Election

Notice: Signature to be affixed on reverse side of stub.

Saturday, April 7, 1973

OFFICIAL BALLOT

(Place an "X" in the square beside the name of the candidate for whom you wish to vote)

FOR ALDERMAN, (Vote for three)

- Dan Desimone
- E. J. Callaway, Jr.
- J. K. Hicks
- Alton Ellsworth
- James B. Lair
- Clarence Pettitt

Voters will select two school board members this Saturday, and 3 city councilmen; plus, vote on a \$135,000 swimming pool bond.

Candidates who have filed for the school board include: Wilson McClellan, Ray J. Martin, Roy L. Bulls, Joel Lee Lackey, and Ralph E. Bynum. Two will be elected for the school board position, with incumbents being Ray J. Martin and Joel Lee Lackey.

Three men are running for the Aldermen's positions. They are Dan Desimone, E. J. Callaway, Jr., J. K. Hicks, Alton Ellsworth, James B. Lair and Clarence Pettitt. Incumbents are Dan Desimone, E. J. Callaway, Jr., and J. K. Hicks.

The entire community is working hard for the new swimming pool. The children plan a march this week, if the weather permits, and already several posters etc. have been put up reminding people to vote.

Remember, it is your civic duty to vote in the elections this Saturday. According to information from City Hall and High School, a record absentee vote may be made by Tuesday of this week, when absentee voting ended.

Bulletin Board

The Women's Aglow Fellowship will meet April 9 in the library meeting room at 9:30 a.m.

The Joy Dancers will dance Thursday night, April 5 at Community Building at 8 p.m. Gene Mack of Borger will be the caller.

The Ladies Auxiliary of Little League will hold a meeting April 12 at 7:30 in the HD Clubroom.

The Auxiliary is open to any woman who has a son playing in Little League.

If you are interested in joining the auxiliary and cannot attend the meeting contact Carole Hall 659-3356.

Letter To The Editor

As a concerned citizen of our community, I feel that it is necessary that we have a new swimming pool. In the past several years I have worked in organizations for the betterment of the community but as a rural resident it is impossible for me to vote in city elections.

I urge everyone to vote for this bond issue, and in backing it, I personally will pay the \$18 that city residents will pay if the bond issue passes. I feel that this is very little to pay to have a safe and sanitary place for our children to enjoy.

Maybe the citizens of Spearman think we have a swimming pool, but they should drive by and have a look at it before deciding.

Mrs. Kenneth Evans



District 1-AA tournament chairman James Cunningham, Superintendent of Spearman schools, stands, as the Stratford golf team waits to tee off in the annual 4-wheel drive golf tournament, held at beautiful Hansford Golf Course during the flood of Monday. The brave lads from every town in the district played in rain, slush etc.

Attending the Charles and Frances Hunter Christmas meeting at the Gruver high school auditorium Friday evening were Mmes. Sara Belle Crawford, Rhoda Burton, Floydcan Gatlin and Mac Floyd.

We, the members of the Spearman Study Club are donating \$100 toward the construction of the new swimming pool.

We feel that a new pool is a much needed improvement for our community.

We urge you to vote "YES".
The Spearman Study Club



Coach Lewis and his tennis team get out the "erying towel" and wait their turn in the district tennis tournament, played in Spearman's gym. The tennis players were supposed to play in Borger, but had to move to Spearman to play inside.



Spearman's fine golf team poses, just before the tee off of the big "4-wheel drive" tourney, played at Hansford Golf Course Monday, during the rain.

the **Spearman** REPORTER

213 Main Spearman, Texas 79081 Box 458 659-3434

Published Weekly at 213 Main Street Spearman, Texas 79081

Owner-Publisher William M.

Second Class Postage Paid at Spearman, Texas

Any erroneous reflection upon the character of any person or firm appearing in these columns will be gladly and promptly corrected upon being brought to the attention of the management.

SUBSCRIPTION RATE--Hansford, adjoining counties, in combination with The Hansford Plainsman, \$7.00 yr. Other points in combination with The Hansford Plainsman, \$9.00 yr.

Set-aside Acres Lowered

No change has been made in feed grain program payments or regulations as a result of the lowering of feed grain set-aside from an acreage equal to 25 percent of a farm's base to 10 percent, reports John Harry Rudd, State Farm Program Official.

The set-aside acreage reduction is automatic, he said, and producers have no added paperwork and no required visits to the Agricultural Stabilization and Conservation Service (ASCS) County Office.

"The only change is that the set-aside requirement for producers who enrolled under the 25 percent set-aside plan has been reduced to 10 percent," said ASCS State Committee Chairman Rudd.

"Those producers will be notified by the ASCS County Offices of the change for their farm. If they already had their set-aside land inspected and measured, it can be re-measured at their request at no additional cost.

"I want to emphasize that

payments for all participants in the feed grain program are unchanged--whether they signed under what was the 25 percent set-aside plan or under the zero set-aside plan," Rudd said.

He pointed out that payments are calculated on half the feed grain base times farm yield payment rate.

However, those feed grain producers who signed up to set aside acreage are required to set aside a percentage of their feed grain base in order to qualify for payment. On their remaining cropland acreage they are free to plant any crop they choose, except quota crops which are peanuts, rice, extra long staple cotton and tobacco.

Those producers who signed up for the zero set-aside plan agreed to accept a reduced payment in order to have all of their cropland free for planting. They also agreed to limit their feed grain plantings to no more than their

1972 production.

"None of this is change," the ASC Committee Chairman said, adding that producers cannot switch from the set-aside they signed up for.

He also said there is no change in the provision which allows haying and grazing on set-aside acreage, with a reduction in payment. The per-acre payment deductions for haying and grazing set-aside land and for alternate crops remain as previously announced.

"The lowering of required set-aside acreage probably was the least disruptive action that could be made in the 1973 Feed Grain Program. And action was required to free up more acreage for planting and livestock use.

"Study of the March 1 planting intentions report showed that not enough corn would be planted--and barely enough soybeans--to provide for anticipated demand and adequate

carryover.

"Action was necessary in order to prevent or alleviate a shortage in the supply of agricultural commodities. Set-aside acreage was the only land which could be readily released for crops," Rudd said.

Reduction of the feed grain set-aside is expected to return from 3.8 to 6 million acres back to major crops, such as corn, grain sorghum, barley and soybeans. The added corn acreage is expected to total between 2 1/2 to 3 1/2 million acres. Other acres of released set-aside land may be used for livestock forage.

Based on the latest enrollment report, the action taken will release approximately 930,000 acres from set-aside designation in Texas.

Mrs. Hany Douglass of Rogers, Ark, is visiting in Spearman for a while. She is a welcome house guest of her daughter, Mrs. Chalmers Porter who is recuperating from major surgery.

news from your HOME DEMONSTRATION AGENT

by Nellie Evans

Hansford County was represented by 24 ladies from Spearman, Gruver and Morse at the District 1 THDA meeting held at Boys Ranch last week. Despite the fog and rain there was a record attendance. . . . 489! As part of the days program the superintendent of Boys Ranch told us about the programs offered by the ranch. After a barbecue lunch at which the Boys Ranch band entertained, we all enjoyed a tour of the facilities. We can truly be proud that this fine institution is in our area. It is doing a great service a for a lot of boys.

Saturday Hansford County will be represented by three

4-H girls at the District 4-H Show. These include Gina Hutchison entering a Candy Cane Coffee Cake, Diane VanZandt will make a Plum Cake and Sally Bradford will enter Super Barbecue Beef. We wish these girls the best as they each compete against 20 other girls in their divisions.

April 27 and 28 are being promoted as "bake and take" days by the Texas wheat Producers Board. It simply consists of baking a food and taking it to a shut in, friend, nursing home etc. If you would like more details please come by our office for a brochure on

Special On Permanents \$8.50
Regular Price \$12.50

Miss Texas Beauty Shoppe

- *SHIRLY McCOY
- *FRANCES SCROGGS
- *CAROLYN BABITZKE

2nd & Snider Spearman
659-2861

Your Baker-Taylor Employee of the Week

Howdy Neighbor



KENITH AND FRANCES LOFTIN

Your Baker and Taylor employee of the week, is Kenith Loftin. Kenney and Frances Loftin, are well known in the Spearman area. Kenney has been employed with Baker and Taylor for 11 years. He is welding supervisor for Baker and Taylor. Frances Loftin loves to hunt, fish, work in her yard and enjoys many hobbies. She has worked with the Spearman Lions Club for several years with the Beauty Pageant. Needless to say, she will be called on again this year to help sponsor the big Lions Club program. The Loftin's have one daughter, Diane, who lives in Amarillo. She is Mrs. John Zachary. Diane and John have 2 children.

Kenney Loftin is probably one of the finest welders, if not the finest in the area. Kenney loves to hunt and fish, and above all, he loves to work for Baker and Taylor. It is "great" to fine men who like their jobs. Kenith Loftin says that there is no doubt, about his company being the finest drilling company in the world. And, we must admit that both Kenney and Frances "love" Spearman. They have just recently purchased the Willis Sheets home in Spearman, and they are proud to be a part of our community, and a part of the fine Baker and Taylor organization. We salute these two fine citizens, and remind everyone that Frances Loftin will be helping with the big Lions Club Beauty Pageant this May 10th.

SINCE 1947 BAKER & TAYLOR DRILLING COMPANY HAS CONSISTENTLY REIGNED #1 AS THE BUSIEST OIL WELL DRILLING CONTRACTOR IN THE TEXAS PANHANDLE. WE HAVE DRILLED MORE THAN 2000 OIL & GAS WELLS IN THE PAST 25 YEARS AND HAVE WORKED FOR EVERY MAJOR OIL COMPANY IN THE U.S. WE'VE WORKED HARD TO GIVE OUR CUSTOMERS THE KIND OF SERVICE THEY EXPECT AND DESERVE. BUT THE KIND OF SERVICE WE GIVE DEPENDS PRIMARILY ON THE KIND OF EMPLOYEES WE HAVE WORKING FOR US.

BAKER & TAYLOR DRILLING COMPANY

Rates its employees No. 1

THE 1973 "MISS HANSFORD CONTEST" will be held Thursday, May 10th ---Plan now to attend.....



G&Y Has New Asst. Manager

Douglas McDonald is the new assistant manager of the T.G. & Y. store in Spearman. McDonald is truly a well rounded young man. He was born in American parents in Cambridge, England. In his early years he lived in such places as Japan, Hawaii and other foreign lands. He has been in every State of the United States with the exception of Wyoming. Douglas attended high school in Amarillo and spent two years at Texas Tech. He started working during his college days at the T.G. & Y. store in Lubbock. At the age of 18, McDonald was given a choice to become a British or an American citizen. He chose America. His interests include singing. He was a member of the state choir during his high school days. He likes bowling and is an avid football fan. He looks forward to a long future with the T.G. & Y. organization but admits to having a hard time at one time for a bottling plant. The new assistant manager comes from a large family of 10 brothers and one sister. His father is manager of Cattle Co., a feedlot in Hereford. McDonald comes to Spearman after recuperating from an operation in Amarillo. He is a member of the Baptist Church and expects to be married in the near future. He is presently living at 410 Terrace.

District I THDA Met At Boys Ranch

The District I Texas Home Demonstration Association met at Cal Farleys Boys Ranch. The total count of the Home Demonstration Women, Extension Home Economics and guests from 20 counties attending the day long session. Leading the general assembly Thursday, March 29, was Charles Waminski of the Deer, Mrs. Sue Farris of Amarillo, District Extension for Home Economics, reduced the Extension Home Economics from the 20 counties represented. Mrs. Billie of Rotan, THDA State President, also was a program participant. Walter Nagle, District Staff President at the Boys Ranch, gave the welcome to the history of the institution was presented by R. E. Nelson, ranch superintendent. The workshop was introduced and carried out the state

the marked improvement in the number of record setting performances by these young athletes, can only point out the fact that the AAU Junior Olympics track and field program is improving year after year." Hallstrom echoed Giambelluca's sentiments, saying that "with the kind of performances achieved by AAU Junior Olympic athletes in 1972, there is no doubt in my mind that many of these youngsters will be our country's Olympic hopefuls in the years ahead."

Past Junior Olympic track and field competitors include Bill Toomey, winner of the Decathlon gold medal at the 1968 Olympic Games in Mexico City; John Penne, first man to pole vault over 17 feet; Wilma Rudolph, winner of three gold medals in the Rome Olympics in 1960; and Rafer Johnson, gold medalist in the Decathlon in the 1960 Rome Olympiad. These competitors were all also recipients of the AAU's Sullivan Award, as the Nation's outstanding amateur athlete (in 1969, 1963, 1961 and 1960 respectively).

In addition to the national publicity given to 1972's top Junior Olympic athletes as a result of their performances, each has been awarded a National AAU Junior Olympic Certificate, by AAU President David Riveness, commending them on their achievements. Twane is the 12 year old son of Coach and Mrs. Kenneth Friemel, both teachers in Spearman public schools. Twane won national recognition for the track event when he participated in the Borger Regional AAU meet last summer.

DISTRICT PTA CONFERENCE SET FOR APRIL 9 & 10

All Parent-Teacher members in District 19 are reminded that the 18th annual spring Conference of District 19 PTA will be held April 9 and 10 at Panhandle Texas high school. Registration begins at 2:30 p.m. April 9 with a banquet scheduled that evening at 7 honoring life members, administrators, teachers and boards of education. April 10 is an all-day meeting with the president calling the convention to order at 9:30 a.m. and the important election of new officers set for 11 a.m. Workshops will be conducted in the afternoon with the session to be concluded with a board meeting at 3 p.m.

Twane Friemel Is 4th Nationally

INDIANAPOLIS--Twane Friemel of Spearman, Texas recorded the fourth best performance nationally in the 75 yard dash event for 10-11 years while competing in the National AAU Junior Olympic track and field program. An effort of 9.7 in the event gave him national recognition as a top competitor from a field of millions across the country.

Under the National sponsorship of the Chevrolet Motor Division, the AAU Junior Olympics is a nationwide youth development program that involves millions of youngsters each year in 14 sports. "The high level of these performances emphasizes to us the crucial role that the AAU Junior Olympics plays in this nation's sports development," said Robert D. O'Connor, General Sales Manager, Chevrolet Motor Division. "Chevrolet is indeed proud to be associated with the AAU in developing these programs."

National tabulations were announced today by Sam Giambelluca, Chairman of the AAU Junior Olympic Girls' Track and Field Committee, and Tom Hallstrom, Boys' Track and Field Chairman. Giambelluca commented, "Our increase in the number of participants and



FIRST PLACE WINNERS-Tammy Rook in Ready Writing and Alan Uptergrove in Number Sense were first place winners in the UIL Literary Events Competition held in Dalhart March 31. Spearman placed second in team competition with 55 points; Panhandle was first with 67; and Dalhart third with 36.

APRIL MOVIES

The following movie ratings are from the Parents Magazine. Symbols are A-Adults (18 and over), Y-Young people (13 to 17), C-Children (8-12). PETER N TILLIE-PG-Although this comedy has its tragic moment it is for the most part a diverting piece of magic. The courts ip and marriage of Pete, a market researcher, and Tillie, a secretary is both hilarious and touching. A social dynamo introduces them and a homosexual confidant adds just the right amount of zaniness to everyone's affairs. Some of the best scenes involve family life with his son. Sexual jokes, A-Very good. Y-For over 16, C-No.

DIRTY LITTLE BILLY-R. Purporting to be a true story of how Billy the Kid began a life of crime, film shows squalor, lawlessness, and venality of life in mid 19th century mid-American town. Point of film seems to be that poor dumb Billy was victim of times and circumstances, and another demythologizing of Old West tries to make up for its hollow center with a lot of gritty, peripheral sex and violence to no effect. A-Not recommended; Y-Very Mature; C-No.

A SEPARATE PEACE-Nov 1 about prep-school life in the 1940's has been made into an intriguing, albeit uneven film. The story focuses on Finny, a sweet natured athlete, and Gene, an intellectual-roommates whose deep friendship ends in tragedy in their senior year. A-Good; Y-Mature; C-No.

YOUNG WINSTON-PG-Most Americans are familiar with the visage and gravel voice of the elder British Prime Minister Winston Churchill. This movie has as its subject the dashing boy-man, Churchill's beginnings were by no means humble-His father was a respected Tory leader and his mother an American heiress. Churchill's adventures as an officer/war correspondent in Asia and Africa and his speeches before Parliament are equally enjoyable because of the tremendous excitement. Violence. A & Y-Excellent. C-Very Mature.

THE VALACHI PAPERS-R-Based on Joe Valachi's testimony before a U.S. Senate Investigating Committee in 1963, this film provides plenty of action and blood but very little depth in its characterizations. Violence: Nudity; Cursing. A-Fair-Y-Mature because of violence. Co-No.

THE GETAWAY-PG-Fun and games, crime escape about a \$500,000 bank robbery contains every choot-out cliché since "Bonnie and Clyde." All

actors are poorly cast in their roles. Violence; Sex; Cursing. A-Fair, Y-For over 15, C-No.



Miss Schnell On Honor Roll At Pharmacy College

The University of Texas has named 182 students to the College of Pharmacy honor roll for the 1972 fall semester and Miss Patricia Schnell has been cited for "high honors." Students qualifying for the honor roll accumulated at least 36 grade points (B average) for the semester. Total grade points are calculated by multiplying the number of semester hours undertaken by the value of each grade. (A equals 4 points). Miss Schnell, 1972 graduate of Spearman High School, is the daughter of Mr. and Mrs. Louis Schnell.



HOSPITAL AUXILIARY OFFICERS met at the hospital Friday to discuss what services would be most beneficial to the hospital. Pictured are 1 to 8 Mrs. Tom Latta, president, Mrs. Clark Mires, vice president, Mrs. Eloise Renner, Director of Nurses, S.M. Anderson, hospital administrator and Mrs. Emmett R. Sanders, treasurer. Mrs. Bob Collier, secretary, not pictured.

Auxiliary To Begin Services On May 1

The Hansford Hospital Auxiliary officers, Mrs. Tom Latta, President; Mrs. Clark Mires, Vice President; Mrs. Bob Collier, Secretary and Mrs. Emmett R. Sanders, Treasurer, met at the Hansford Hospital, Friday, March 27th, at 2 with Mrs. Eloise Renner, Director of Nurses; and S.M. Anderson, Hospital Administrator, to discuss and decide what duties and services would best be beneficial to our hospital. After knowing and agreeing on these duties and services the by-laws were drafted by the

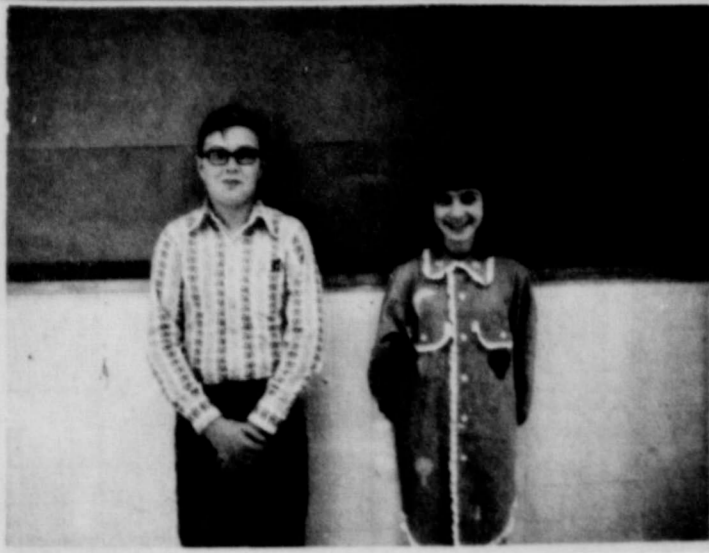
officers to be accepted by the auxiliary members at their next meeting. Also, an official smock-type uniform was selected for the auxiliary members to wear while performing their duties. Future plans for expansion and revising the hospital itself were shown to the officers and a copy of these plans will be available for auxiliary members to view at their next meeting. The auxiliary plans to begin performing their services around May 1st after all active members have a chance to meet later this month for full briefing on all matters pertaining to the auxiliary duties.

Advertisement for Rexall 70th Anniversary Special. Features various products like Redi-Spray, Cotton Balls, Aspirin, Home Permanent, Toothpaste, Mouthwashes, and Vitamin capsules. Includes a large '70th ANNIVERSARY SPECIAL' logo and 'Rexall 2 for Sale' promotion. Price points are listed for many items, such as \$1.24 for Redi-Spray and \$1.99 for Home Permanent.

I AM RUNNING FOR A SEAT ON THE SPEARMAN SCHOOL BOARD AND I SOLICIT YOUR VOTE IN THE LOCAL ELECTION ON SATURDAY APRIL THE 7TH ROY BULLS

Pol. Adv. Paid For By Roy Bulls

Spearman Rexall Drug Phone 659-2226 Phone 733-2021 Spearman Gruver Two Registered Pharmacist On Duty



MARK SHEETS AND LANE VAN ZANDT both won 1st in their divisions of Oral Reading in the Elementary District UIL Literary Competition held at Dalhart, March 31.



CHAD WILSON, a second grader won second in storytelling in the University Interscholastic League contest. The IAA District Contest was held in Dalhart, Texas Saturday March 31, 1973. Chad is the son of Mr. and Mrs. Leon Wilson.

Our Heritage of Faith...

Comments by Pastor of Faith Lutheran Church

Plans for the Vacation Bible School to be held with the Presbyterians have been completed. The dates are June 4 - 8 from 9 to 11 a.m. Teachers from both congregations will be used. We invite you to plan to send your child to the school. The Pre-school children will be at the Presbyterian Church with the older classes at the Lutheran Church.

The fifth in our Lenten Series will be held this evening, April 5th at 7:30. We have been studying personalities connected with the Passion History of our Lord. Those we have considered so far are Peter, the thief, Pilate, and our Lord. This evening we will look at the Apostle John.

Our Luther Leaguers are planning a garage sale to be held shortly. The exact time and place has not been set as of yet. Watch for further information on this and be sure to stop and see the items which they have for sale.

Life is a very precious gift which God has entrusted to your care. How are you fulfilling the responsibility for that life. Do not put off being concerned with how your life is lived. It may slip by and be gone before you realize. If you have no church home, we invite you to visit us at Faith and to become a part of our Christ centered program. Morning worship is at 9:30 with Sunday School for all ages at 10:30.

Donita Floyd Is Shower Honoree

Mrs. McLain Is Bridge Hostess

Donita Floyd, bride-elect of Ronnie Lushy, was honored with a miscellaneous shower Saturday, March 31 in the home of Amy Renner. Other hostesses for the event were Karl Lou Schumann, Sueleen Womble, Sharalyn Grayson and Patricia Schnell.

Miss Floyd received many lovely and useful gifts. Punch and cake were served to Mandy Hart, Diana Donahue, Liz Davis, Sarah Ehrig, Kathy Brown, Becky McCallan, Peggy Floyd and Sheila Patterson.

The Blue Monday Bridge Club met April 2 in the home of Mrs. L.S. McLain. Ruth Lackey had high score for members and Mattie Ruth Grigsby had high for guests. Members were Mmes. Deta Hodgett, F.J. Daily, Bill Gandy, Pope Gilmer, Sam Graves, Vester Hill, Lester McLain, Major Lackey and Bill Seitz. Guests were Mmes. J.L. Brock, Pate Grigsby and Delon Kirk.

Tickets Now On Sale For Athletic Banquet

Tickets are now on sale for the Spearman Athletic Banquet. The banquet will be April 14 at 7:30 p.m.

Guest speaker will be Earl Huffman, who is a retired coach from Texas Tech.

Tickets are \$3.00 and may be purchased from any high school cheerleader or call Cathy Dear, 659-3073; or Sueleen Womble at 659-2386.

Cates Presents Club Program

The Home Science Dept. of the Twentieth Century Club met March 15 in the home of Mrs. Claude Newell.

Mrs. C.A. Kleeberger, vice chairman presided.

The program was presented by Mr. Don Cates, ICT and DI Coordinator of this program in our local school. He introduced the president of VICA, Billy Giles and a student in the ICT class. Billy told what this program means to him at the

present time and his plans for the future. Mr. Cates then answered questions of club members.

Roll call was answered by each member present on "A Teacher I Remember".

The hostess served refreshments to Mmes. G.R. Kilgore, Frank Davis, Wayne Hutcheson, J.R. Keim, Tommy Russell, J.R. Stump, Frank Carmody, O.C. Holt, C.A. Kleeberger, Michael Holt and Guy Fuller.

Korean Native Is Program Speaker

The Twentieth Century Club met in regular session Thursday March 22 at 2:30 p.m. in the Home Demonstration Clubroom. Hostesses for the meeting were Mmes. G.R. Kilgore, Fred Holt, Olin Sheets and C.U. Pope.

Mrs. Tom Sutton called the meeting to order, followed by the reading of the minutes by Mrs. J.R. Stump. Two corrections were made, which added Mrs. C.A. Kleeberger as a hostess of the previous meeting and Mrs. P.A. Lyon as a guest.

The members voted to sup-

port the Spearman Chamber of Commerce with their July 4th celebration in Spearman by a donation. After discussion the members voted not to enter a float in the parade this year. Points were turned in for the CCA program. At the close of the business session it was announced that the Fine Arts group would meet with Mrs. John Brown and the Home Science group would meet with Mrs. Michael Holt on April 12.

Mrs. John Bishop was welcomed as a new member.

In keeping with the program subject "Where East Meets West", a most interesting program was given by Mrs. James Nobles, a Korean native who now lives in Spearman. She has been a resident of the U.S. for twelve years and is now a citizen of the U.S. She told of her home life, customs, food and social life in Korea. She prepared a display of hand-made garments, art work and novelties from Korea for members to view.

Those enjoying an orange-ello fruit whip and crackers were Mmes. Joel Watson, L.L. Anthony, John Allen, Guy Fuller, Tom Sutton, J.R. Stump, John Bishop, Frank Davis, J.R. Keim, Woodville

Study Group Met March 28

The Baptist Women's Study Group of the Women's Missionary Union met March 28 in the church parlor at 9:30 a.m. The meeting was opened with Mrs. L.L. Anthony giving the Prayer Calendar and reading Acts 2: 14-21. Altha Groves led in special prayer for the missionaries.

The program was presented with Mrs. Woodville Jarvis in charge. "Missions and National Issues" was the title for the skit presented by Mmes. R.H. Gray, Woodville Jarvis, Arthur Adkison, Sammy Don Jones and Ray Devers. The scene was in the den of a ladies home, where two women were having coffee. While they were sitting discussing Chaplains and their part in the armed services they were greeted by three visitors. Each visitor told of their problems and how a Chaplain had helped each of them in their time of trouble. The group dis-

cussed the problems of an Air Force Academy Cadet, a wife of a service man with marriage problems and how God came into the life of a crusty Army sergeant who died in Viet Nam.

Refreshments were served in fellowship hall by the hostesses Mrs. R.H. Gray to the following: Mmes. L.L. Anthony, Woodville Jarvis, Arthur Adkison, Sammy Don Jones, Ray Devers, A.F. Loffin, Fred Holt and Altha Groves.

The next meeting will be April 7 in the First Baptist Church at 9:30 a.m. for the general meeting.

McLains Return From Extended Trip

Mr. and Mrs. L.S. McLain returned last week from an extended trip. They load their trailer and are at home anywhere. They left Spearman before Christmas and enjoyed Christmas dinner with their youngest daughter and her husband, Mr. and Mrs. Les Harlan (Polly) and Cheri at Cooper, Texas. They visited another daughter (Mona) and her husband, Mr. and Mrs. Don May in Austin. During their

stay in Austin they attended the Governor's Inauguration. Lester and grandson, Tom Don May attended the Inauguration of President Lyndon B. Johnson. They drove out to Harlingen where they stayed about two weeks, moving on to Lake Con where they fished with Mr. and Mrs. Kiff White and Mr. and Mrs. Daniel Stone and caught up on the news from Spearman.

Wallace Berner To Be Speaker At FGMF Meet

Wallace Berner of Spearman, Texas, will be the speaker at our FGMF April 9, 1973 meeting will be at 8:00 p.m. in the Home Demonstration Building.

Wally, as a youth, was brought in the ways of the Lord but later in life he strayed from the teachings. By the Grace of God he was once again drawn into a close walk with the Lord. His testimony will be how he had to make restitution.

SAVE EXTRA CASH ON OUR PRIVATE LABEL ITEMS THIS WEEK!

PRICES FROZEN!

PROVE IT TO YOURSELF... OUR PRIVATE LABEL BRANDS ARE PRICED LOWER... SOME EVEN LOWER THAN THE MARCH 8 FREEZE ON HUNDREDS OF ITEMS. CHECK YOUR MAILER OR NEWSPAPER INSERT DISTRIBUTED EARLIER THIS WEEK FOR ADDITIONAL SAVINGS ON MANY OTHER ITEMS. PRICES EFFECTIVE THRU 4-7-73. LIMIT RIGHTS RESERVED.



BONELESS HAM

MEADOWDALE FULLY COOKED

WHOLE HAMS... \$1.09 lb.

7 TO 9-LB. AVERAGE

Half Hams... \$1.19

3 TO 4-LB. AVERAGE



CAMELOT COFFEE

All Popular Grinds at this low, low price! 1-LB. CAN 68¢

LIMIT 1 CAN WITH \$5 OR MORE PURCHASE

BELTSVILLE TURKEYS

EMPIRE BRAND

QUARTER SLICED

Pork Loins... \$1.09 lb.

LEAN, COUNTRY STYLE

Spare Ribs... 99¢ lb.

GORTON'S VALUE PACK

Fish Sticks... \$1.49 lb.

Fish Fillets... \$1.59 2-LB. PKG.

GORTON'S VALUE PACK

Fish Cakes... \$1.09 24-OZ. PKG.

GORTON'S VALUE PACK

Fish 'n Fries... \$1.49 2-LB. PKG.

GORTON'S

Pollock Fillets... 69¢ lb.

GORTON'S BREADED

Fantail Shrimp... 99¢ 8-OZ. PKG.

SLAB CUT... 2-3 LB. PKGS.

Sliced Bacon... 89¢ lb.

HICKORY SMOKED

MEAT-MASTER BEEF

Rib Steaks... \$1.29 lb.

TABLE TRIMMED

BONELESS CHUCK CUT

Family Steaks... \$1.29 lb.

ROUND BONE CUT

Swiss Steaks... \$1.29 lb.

BONELESS

Chuck Roasts... \$1.29 lb.

MEADOWDALE ALL MEAT

Sliced Bologna... 69¢ 12-OZ. PKG.

WISCONSIN RANDOM WEIGHT

Cheddar Cheese... 99¢ lb.

CAMELOT BAKED BEANS, COLE SLAW OR

Potato Salad... 43¢ 14-OZ. CTN.



CAMELOT SOUPS

CHICKEN NOODLE OR CHICKEN RICE

THRIFT-PRICED

CAMELOT CATSUP

7 \$1 10-OZ. CANS

34¢ 26-OZ. BTL.



ICE CREAM

MEADOWDALE, ALL FLAVORS

LIMIT 2 WITH \$5 PURCHASE

ICE CREAM HALF GALLON 46¢

CAMELOT VEGETABLE

SHORTENING 64¢ 3-LB. CAN

Saltine Crackers

CAMELOT... LIMIT 1 BOX, PLEASE

Saltine Crackers... 24¢ 1-LB. BOX

Green Beans

MEADOWDALE CUT

Green Beans... 6 \$1 303 CANS

Fruit Cocktail

CAMELOT... LIMIT 4, PLEASE

Fruit Cocktail... 4 \$1 303 CANS

Mandarin Oranges

MEADOWDALE

Mandarin Oranges... 23¢ 11-OZ. CAN

Liquid Bleach

SQUIRE... LIMIT 1, PLEASE

Liquid Bleach... 44¢ 1-GAL. JUG

Bath Tissue

LADY CAMELOT... LIMIT 1 PACKAGE

Bath Tissue... 66¢ 10-ROLL PKG.

Black Pepper

MEADOWDALE

Black Pepper... 56¢ 2.4-OZ. CANS

Laundry Detergent

SQUIRE BLUE GIANT BOX

Laundry Detergent... 68¢

Facial Tissue

LADY CAMELOT... LIMIT 3, PLEASE

Facial Tissue... 5 \$1 BOXES OF 200

Camelot Pineapple

MEADOWDALE

Camelot Pineapple... 62¢ 3 NO. 2 CANS

Golden Corn

MEADOWDALE WHOLE

Golden Corn... 6 \$1 303 CANS

Tomato Juice

CAMELOT

Tomato Juice... 3 \$1 46-OZ. CANS

Camelot Pickles

WHOLE DILLS

Camelot Pickles... 42¢ 31-OZ. JAR

Camelot Spinach

THRIFT-PRICED

Camelot Spinach... 6 \$1 303 CANS

Tomato Sauce

CAMELOT

Tomato Sauce... 10 \$1 84-OZ. CANS

California Asparagus

THRIFT-PRICED

California Asparagus... 49¢ 1-LB.

Tomatoes

WED WIFE

Tomatoes... 39¢

Oranges

CALIFORNIA VALENCIA

Oranges... 5 \$1 RAG 69¢

Radishes

FLORIDA CRISP

Radishes... 25¢ 2 4-OZ. BAGS

Orange Juice

FLORIDA FRESH

Orange Juice... 49¢ QUART CTN.

FREE GIFT!

Get a \$1.95 box of Scotts Shrub and Tree Fertilizer FREE when you buy a 5,000 or 7,500 sq ft bag of Scotts Super Turf Builder!



IT'S SUPER TURF BUILDER. Scotts lawn food with plant-available iron. It gives your grass the high nitrogen feeding that southern grasses require. (1.8 lbs nitrogen per 1,000 sq ft—compare it with other brands.) Makes your lawn really sparkle.

5,000 sq ft (35 lbs) 9.95
7,500 sq ft (52 1/2 lbs) 13.95

authorized Scott's retailer
B & B Sales Co.

IMPORTED PORCELAIN CHINA | HOUSEHOLD PLASTICWARE SALE

FEATURING THIS WEEK

CUP 44¢

YOUR CHOICE 44¢



STRAWBERRIES

FRESH FROM CALIFORNIA

California Strawberries... 49¢

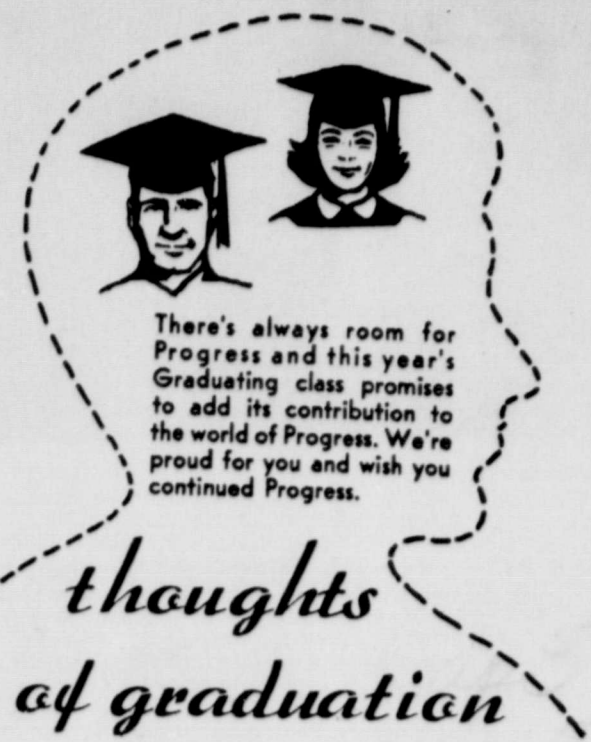
3 BOXES \$1

California Asparagus... 49¢

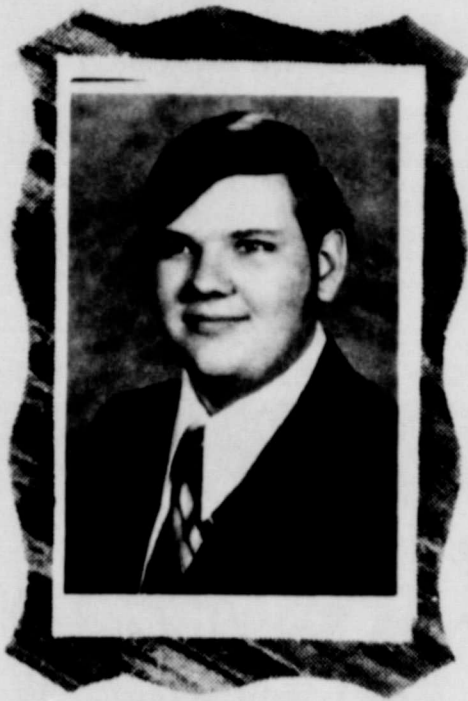
Oranges... 5 \$1 RAG 69¢



Congratulations grads!



Valorie Uptergrove



Kurt Hergurt

MEET THE SENIORS OF 73



Mike Floyd



Kendra Brack



Darlene Innis

Hansford Implement

Golden Spread Sales Co.

Hansford Feed Yard

Speartex Grain Co.

Location No. 1 - Gruver Highway
659-2549
Location No. 2 - 514 Collard St.
659-2521

Baker & Taylor Drilling Co.

THE SPEARMAN REPORTER

P. A. Lyon Insurance

Junior Lusby Cats

Consumers Sales Co.

Martin Trucks

Equity

THE HANSFORD PLAINSMAN

n they atten
's Inaugura
andson, Tim
ended the
Lyndon B.
n to Harlan
tayed about
ng on to Lak
ey fished w
. Kiff Whit
. Daniel Ste
p on the la
an.

a Berner
Speaker
IF Meet

ner of Spea
e the speak
pril 9, 1973
be at 8:00
Demonstrat

youth, was
ays of the la
fe he trav
hings. By
he was onc
a close wa
His testam
e had to ma

!

UR

E

6c

4c

\$1

CKAGE

6c

EASE

\$1

\$1

\$1

SALE

4c

9c

9c



JONELL MORAN AND PHYLLIS CRAWFORD, winners of the local fire prevention poster contest, had their posters screened in regional competition at Amarillo, and they have now been sent to Austin for screening. If they are selected at Austin they will hang in the Capitol.



POSTER CONTEST WINNERS

A poster contest the past week revealed that all school students are certain hoping for a new swimming pool. Art work on the posters urged voters to vote "yes" in the bond election.

Members of the Spearman Park Board, to promote enthusiasm for the upcoming bond election for a new swimming pool, sponsored the poster contest for students in grades 5 thru 8.

The results of the poster contest are now complete and the top two winners were Debbie Perkins, a 5th grader, and Kelly Stewart, in the 8th grade.

These winners were presented with season passes to the swimming pool.

Honorable mention artists in the poster contest were Page Mitchell, Bruce Ammons, Karen Tope and Lonnie Clemmons. They were presented with 10 free swim passes.

The bond election, calling for \$135,000 with which to build a new swimming pool facility, is set for Saturday, April 7 at the junior high school building. Polls close at 7 p.m.

Renner Joins Wheat Producers On Mexico Trip

The research work of Wheat Breeder and Nobel Peace Prize Winner, Dr. Norman E. Borlaug at the International Maize and Wheat Improvement Center (CIMMYT) at Obregon, Mexico, will be visited and studied this week by four Texas agricultural leaders. The research oriented study and conference is under the auspices of the Texas Wheat Producers Board with emphasis on potential wheat improvement of Texas varieties.

Participating in the April 3rd-6th session are: Mr. N.F. Renner, Spearman wheat producer and member of the 9 man Texas Wheat Producers Board. Dr. Kenneth Porter, Bushland, professor in charge of wheat breeding, Texas A & M Agricultural Experiment Station; Dr. Tom Longnecker, Director, High Plains Research Foundation, Halfway; and Bedford Forrest, Farm & Ranch Director, KVII-TV, Amarillo.

A similar group of wheat producers and agricultural scientists from Colorado will join the Texans in Phoenix for the Mexico trip as a cooperative venture between the Colorado Wheat Producers Committee and the Texas Wheat Producers Board, according to Bill Nelson, Amarillo, administrator of the Texas Research and Market Development Program.

Wheat varieties released from CIMMYT have been credited with increasing wheat yields in developing countries such as Mexico and India. The Center is supported principally by the Rockefeller and Ford Foundation and to a lesser extent by the World Bank, U.S. Agency for International Development, and the Canadian and West German governments.

Recent announcements by CIMMYT indicate that it is changing its emphasis which has been high yields from irrigation to improved quality, and improved varieties and farming practices under dryland conditions.

Mr. Ken Kendrick, Chairman of TWPB from Stratford, said that the Board in approving the project wanted to study the work at the Intern-

ational Center to learn if there might be materials or techniques that could be utilized to improve the wheat varieties and production practices in Texas which might raise producer income from wheat production.

Other producer-members of the 9-man TWPB are: Dwight Hamilton, Olmer; Leo Witkowski, Hereford; W.R. Moore, Munday; John Cogdell, Crowell; Otis Hamman, Tulia; C.L. Edwards, Panhandle; Delbert Timmons, Perryton.



Pat Sloan Named To 'Who's Who' College List

CLARENDON—Each year, a national organization known as who's who Among Students in American Junior Colleges with headquarters in Tuscaloosa, Alabama, requests every junior college in the United States to choose a number of outstanding students who will be listed in a national publication known as Who's Who in American Junior Colleges.

To qualify for the Who's who Column, students attending a junior college must be a sophomore. This year the following students have been chosen from Clarendon College: Billy Ed Dixon, Miss Carol Jean Godfrey, Miss Cindy Jane Maddox all of Memphis; Pat Sloan of Spearman; Tim J. Saye of Clarendon; James J. Thompson of Claude; Leslie T Teaff of Sunray; and Miss Mary Wade of Panhandle.

Pat is the son of Mr. and Mrs. Troy Sloan of Spearman.

HOSPITAL Notes

Patients in Hansford Hospital are Virgil Wilbanks, Delpha Chambers, Laura Lowell, Addie Novak, Ruth Caldwell, Joe Turner, Gordon Parrish, Inez Kirk, Ethel Hester, Elwanna Eaton, Willard Russell, Jarrett Hendrick, Linda Brown. Dismissed were Carole Hendrick, Doris Brogdon, Wesley Vines, Carolyn Close, Joe Evans, Inez Kirk, Tom Powers, Sue Antalek, Linda Wilkerson, Myong Nobles, Dora Olivaréz, Chester Heath and Shirley Snow.

CANCER CRUSADE NOW UNDERWAY IN THIS COUNTY

Mrs. James Stedje of Gruver has been named Chairman of the Hansford Co. Unit of the American Cancer Society's 1973 educational and fund raising Crusade which begins April 1.

The 1973 Crusade is under the national chairmanship of Lawrence Welk, the famous bandleader and musician known to millions of television viewers.

"The emphasis in the 1973 Crusade is on action and we shall be marshalling the efforts of volunteers in Spearman and Gruver to bring home the message that the annual checkup can be a lifesaver," said Mrs. Stedje.

The great advance of recent years in fighting cancer with drugs, and by new methods of surgery and radiation has added new meaning to the theme "We want to wipe out cancer in your lifetime," Mrs. Stedje said. "So we want to encourage every member of the community to

get a regular health check including cancer tests. The test for early detection of cancer of the cervix or neck, womb, and the proct, examination for cancer of the colon. Either of these types of cancer discovered in time can be cured."

"To bring this message to the widest section of the community and to support the ASC programs of research, education and service to cancer patients we are urging everyone to fight cancer with a check and a check," said Mrs. Stedje.

A house to house campaign Spearman will be conducted April 15 from 2 to 5 p.m. Cancer crusade chairman Spearman is Mrs. Bert Stedje.

Mrs. Gates Is Guest Reviewer

A salad supper was enjoyed by members and a guest of the Spearman Book Club, March 27 in the home of Mrs. Mary Berry. During the evening meeting, Mrs. Eddie Gates, guest, reviewed the book "Hiding Place" by Corrie ten Boom. This book dealt with Dutch families under the Nazi reign. The author told how she worked with the Dutch underground and also that the place referred to in the title of the book was a three story house in Holland which had a secret room they hid in during the war.

Attending were Mrs. Sheets, R.E. Lee, Clay Clifton, Fred Hoskins, Joe Trayler, Holt, Thomas Etter, Miss Campbell, the guest Mrs. Eddie Gates and the hostess.

HALTER TOPS FLARE OUTS SMOCK TOPS

TODDLER AND GIRLS PAJAMAS

BOYS NOVELTY PAJAMAS

BOYS RAIN COATS WITH HOODS

Douglas Duds
216 MAIN STREET
SPEARMAN, TEXAS

Local Group Attends FGFB Meeting

A group from Spearman joined a charter from Perryton for the Full Gospel Businessmen's Fellowship Association in Houston last week. Those from Spearman attending were Rev. and Mrs. Ray Christenson, Mr. and Mrs. Jerry Bowling, Mr. and Mrs. Sam Janzen, Mrs. Myrtle Fullbright, Adalyn Barnes, J.H. Martin, Lura Belle Crawford, Dorothy Groves and Margie Crockett of Spearman, Jean Scroggs of Waka, Mr. and Mrs. Paul Allison of Ulysses, Kans., Mr. and Mrs. Gary George and boys, Mrs. Wilma Wooster and Debra, and Lela Logan all of Perryton. Others attending from Spearman were Mr. and Mrs. Jack McWhirter, Mr. and Mrs. L.W. Rosenbaum and Frank Buzzard.

Tickets On Sale For DE Activities

Tickets are on sale now for the D. E. Talent-Fashion Show, Teen Dance, and Rodeo Dance. The Fashion Show will be on Friday, April 6th. Admission will be \$1.00 for adults, and 75¢ for students. Mrs. Charlene Bulls will be the announcer for fashions furnished by Spearman merchants. The Fashion Show will begin at 7:30 P.M. The Teen-Dance will start at 9:00 P.M. and end at 12:00 P.M. on April 7. Admission is \$2.00 per person. The Rodeo Dance will be on April 14th. It will last from 11:00 P.M. until 2:00 A.M. The Band will be "The Justin". You can buy tickets from any D.E.C.A. member of The Spearman Chamber of Commerce.

Allsup's 7-11

Shurline **SLICED CHEESE** 69¢
American

Shurline **GREEN BEANS** 25¢
Whole 15 1/2 Oz.

Shurline **PEACHES** 29¢
29 oz.

chocolate **CHERRIES** 89¢
Brachi's 18 oz.

TIDE 79¢
Giant Box

GIVE YOUR MENU A LIFE
...and your food budget too!

BARBECUE RIBS
BARBECUE BEEF
BARBECUE CHICKEN
HOT LINKS
Burritos

Raths Ra-Corn **BACON** 65¢
1 lb.

Shurline **TUNA** 49¢
6 1/2 oz.

Shurline **Vienna Sausage** 29¢
4 oz.

Instant **Oat Meal** 39¢
1 Minute Brand 18 oz.

Soflin **TISSUE** 79¢
10 rolls

Pop Rite **POP CORN** 15¢
1 lb. package

Shurline **HAIR SPRAY** 49¢
11 oz.

Shurline **CARAMELS** 29¢
14 oz.

Shurline **Pop Corn** 19¢
in a pan

Shurline **PORK AND BEANS** 25¢
31 oz.

Shurline **MARGARINE** 5 For \$1
1 Lb.

Dere Vanse:
Mag sez she wants git over to yore plase and git her tars balaxed but she don't aim to cum over until after the elixion. She wuz over there yesterday and sed ever time she stuck out her hand to signal a tern she wuz shakdn hands with sumbody that wuz runnin for the school bored or the city counsel or sumthin. She sez she bleaves in safe driven and won hand driven ain't safe.

She sed she stuck out her hand to make a yew turn on mane strete and shuck hands with fore people before she got turned around.

She never found out who wuz runnin fer whut but she sed they shore liked to shake hands. She had got so used to it that when she cum home, she even shuck hands with me.

Yores trewly,
Chester L. Feabody the third-Shuck Spert

SEE US FOR FRONT-END ALIGNMENT AND BALANCING

SNIDER PEARSON CONOCO SERVICE STATION
659-3555

COW POKES By Ace Reid

"Oh, I'm shore glad it's you sheriff! You can help us return my neighbor's cattle that some thier put in our pickup!"

Afraid of theft? Put your valuables in a safety deposit box and your money in a checking account at the First State Bank.

FIRST STATE BANK
SPEARMAN, TEXAS
FDIC

WANT BETTER CITY GOVERNMENT...
THE WAY TO GET IT...
VOTE FOR PETTITT

Clarence Pettitt Solicits Your Votes To Elect Him To Your City Council In The Election On Saturday April 7th

Pol. Adv. Paid for By Clarence Pettitt

Gruver Lodge To Host Examinations

Saturday, April 14, 1973, the Gruver Lodge #1326, Gruver, Texas, will host Master Certificate examinations. B. Noland, member of the committee on Work, Grand Lodge of Texas, A. F. & A. M., Gruver Lodge #849, Summerfield, Texas, will be in charge of the meeting. All Master Masons are invited to be present for the occasion. The meeting will be held in the Gruver Lodge Building, located above the United States Office in Gruver.

Nelle Evans Gives Demonstration

The Town and Country Home Demonstration Club met April 2 in the home of Betty Van Zandt, Joye Watson gave the devotional. Roll call

was answered with "What I See In The Mirror" by Linda Close, Phyllis Collins, Anita Faulkner, Nedra Hays, Cindy Holton, Lynna Renner, Betty VanZandt, and Joye Watson. Minutes were read and approved.

Communications consisted of an invitation to join the hospital auxiliary, a request to build a float for the Hansford County Roundup, and a Civic Beautification meeting for April 10 announcement.

The nominee for THDA chairman for this year is Linda Close. Nominee for State Delegate is Gwen Younger. Betty Van Zandt gave a report on the district meeting.

Linda Close gave a council report. The HD Council annual meeting is a Salad Luncheon April 10th and HD Council Bake Sale April 11th.

Nelle Evans gave a very interesting program on cooking with wine. She made onion dip which everyone got to sample.

Recreation was a game to help each person learn more

about the other members. The surprise package was won by Linda Close and Phyllis Collins won the white elephant package.



Welcome new members: Charles Martin, Joe Day, Speartex Grain. The next regular board meeting will be Thursday, April 5, in the Home Demonstration Clubroom. The 4th of July fireworks display is just around the corner. The Chamber is

asking for contributions from clubs and organizations to help with the cost. Our thanks to the Dahlia Flower Club for their generous donation. REMEMBER TO VOTE SATURDAY, APRIL 7, 1973. Total Business Members 77 Total Individual Members 45 GROW 'N GO WITH HANSFORD COUNTY.

It is nearly time again for the Hansford Roundup. The date for the big day is May 12. The carnival will move in on Monday, May 7, and will probably be in operation on Tuesday. The Bar-B-Q, parade and Old Fiddlers Contest will be on Saturday plus the rodeo and the dance. The Jaycees have booked Eloy and the Troubadours for the Saturday night dance. Chairmen have not been appointed as yet, but they will be announced soon. More on the Hansford Roundup later. Rho Rho and the Women's Division have already entered floats in the parade.

The 1973 Spearman Mailing Lists are now on sale. They are only \$1.00 and something every home and business should have. Stop by the Chamber office today for your Mailing List.

The Texas Tourist Council has prepared a brochure on available films about our beautiful state. These films are available free of cost for information contact the Chamber office.

This office has just received the 1973-74 names and addresses of the Texas Senate and House of Representatives and the district they serve. Call 659-3333 if you are in need of this information.

Our Welcome Lady--Mildred Chamberlain--called on 14 newcomers during the month of March and only found 4 at home. Mildred doesn't stop at just one call, she keeps going back until she finds someone at home or that they have moved.

The Borger Chamber Banquet is Thursday, April 5, and tickets are \$5.00 each. If you would like to attend this banquet call the Chamber office and we will have tickets reserved for you. We would like to have a good attendance in Borger. When it comes to tourist travel The Panhandle of Texas has always been forgotten, so several cities in the Panhandle have gotten together and have formed the Panhandle Play Ground Association. Your Chamber has joined this association. Brochures have been printed and taken to the Houston

Travel Show, Los Angeles Show and to the Des Moines Show. Billboards across the Panhandle will have the same design as the cover of the brochure. The Chamber will receive their brochures next week. We will have two members on the board of directors of the Panhandle Play Ground Association. They will be announced at the next Board Meeting. Grow and Go With Spearman in '73.

The Women's Division of the Spearman Chamber of Commerce will be in charge of renting welcome banners to the merchants for the Hansford Roundup. This is a fine service these ladies are doing and they will be contacting you or you can call the Chamber office for information.

There will be a Civic Beautification Meeting in the Chamber office Tuesday, April 10, 1973 at 10:30 a.m. All Clubs and organizations and interested individuals are encouraged to be there. The Chairman,

J. L. Brock is asking for co-operating from everyone on this worthwhile project.

Kim Boone Herefords To Sell April 7th

One hundred (100) head of registered Hereford and Polled Hereford bulls and females will sell at public auction on Saturday, April 7, 1973 at Guyton, Okla. in the Great Plains Hereford Association 29th Annual consignment sale.

The offering consists of 70 service age bulls and 30 females, some with calves by side as well as bred heifers and yearling open heifers.

The Great Plains Hereford Association sponsors a sale each year in early April and emphasizes sound useful breeding stock with bulls ready for heavy service. The current consignment of 70 bulls are primarily 2 year olds with a few younger and older bulls. Membership in the organization, numbering approx. 80, is composed of breeders from

5 states with consigners in this sale as follows:

Oklahoma: Fred and Paul Barby-Knowles, Ted Berry-Texhoma, Leslie Campbell & Sons-Elmwood, M. W. England-Goodwell, Claude and Jerry Harland-Texhoma, Messner Herefords-Laverne, Benton Thomason and Sons-Stillwater, VR Hereford Ranch-Balko, Joe Al Warner-Sons-Wheelless, Gene-Ial House Herefords-Leedy, and R. B. Graft-Leedy.

Texas: Max Blau-Follett, Roy Bradshaw-Dalhart, Wayne Maddox-Miami, Willard and Delbert McCloy-Sunray, Pronger Bros.-Stratford, Summerour Ranch-Dalhart, Kim Marie Boone-Spearman, and Bob Newton-Lark.

The sale will be held at the Panhandle Livestock Comm. Co. Sale Yards beginning at 1 p.m. CST. Bulls will be sold individually with females sold as singles, pairs, and small groups as the consigners and buyers wish. No show is scheduled and animals will not be groomed nor fitted, but will, however, be in good useful condition. They may be in-

spected in the yards during the morning preceding the sale at 1 p.m. Gene Watson, of Hutchinson, Kan. will be the auctioneer.

Mrs. Jessie Tompkins returned Monday morning from Stratford where she had been visiting her daughter and husband, Mr. and Mrs. M. L. Mitts and her granddaughter and husband Mr. and Mrs. B. A. Donaldson and children.

Attending the Blanche Marie Britain funeral in Stinnett Sunday were Mr. L. S. McLain, Messrs. and Mmes. Carl Archer, J. L. Brock, Don McLain, Woodville Jarvis, Dr. and Mrs. D. E. Hackley and Mmes. Natalia Greene and Mildred Chamberlain of Spearman and Maude Rosson, Messrs. and Mmes. O. C. Holt, Raymond Kirk, and Buster Kirk of the Holt Community.

Rev. and Mrs. Winston Barker, Mr. and Mrs. Wallace Berner and Mr. and Mrs. Bill Watson and Jill drove to Guyton Thursday evening where they enjoyed a Mexican dinner.

Maybe your air conditioning system will last through another hot summer.

But maybe it...


Call your air conditioning specialist now and have your air conditioning equipment checked and put into first rate operating condition. A cooling system which operates efficiently can reduce operating costs and save electricity. And it could save you costly repairs and shut-downs later on during hot summer days.



COMMUNITY PUBLIC SERVICE
Your Electric Light & Power Company
An Equal Opportunity Employer

Get the center pivot you need from the company that builds them all

water drive oil drive electric drive



■ Valmont backs you up with trained service and parts right in your community. ■ Have galvanized protection without paying extra. ■ You can count on Valmont to be around in the years ahead.

<p>New Valley WATER DRIVES</p> <ul style="list-style-type: none"> Reverse 24-hour circle Simple, proven water hydraulic drive Big 7 - 6 pipe combinations Steel wheels or rubber tires Galvanized protection doubles the life 2 1/2 hour field-to-field portability Extreme rough ground Repairs extremely low 	<p>New Valley OIL DRIVES</p> <ul style="list-style-type: none"> Run dry Oil hydraulic power Galvanized Drive independent of water supply Low maintenance cost Steel wheels 2 1/2 hour field-to-field portability Extreme rough ground Big 7 - 6 pipe combinations 	<p>New Valley ELECTRIC DRIVES</p> <ul style="list-style-type: none"> Chain or gear box drive 60 steel wheels or 44 tires Easy portability As fast as 10 hrs. per quarter section New rough ground coupling 9 crop clearance Galvanized inside and out All U.L. approved circuitry Reverse or run dry Automatic collector ring
--	---	--

MANUFACTURED BY VALMONT INDUSTRIES
World's largest manufacturer of center pivot systems - electric • oil • water drives

DELTA IRRIGATION CORP.

Bill Hughes Box 840 Pampa, Texas 806-665-1131

Jerry Hughes Follett, Texas 806-653-3711

TG&Y

Store Hours - Monday Thru Friday
8:30 to 6:00 Saturday 8:30 to 8:00
119 Main Spearman, Texas

Prices Good Thru Sat.

Dress Shirt

Asst. Colors Permanent Press

\$ 2⁹⁹

Alberto Balsam

Hair Conditioner

super or regular

8 oz.

66

PAMPERS

Newborn

\$ 1¹⁷

30 count box

Kodak **Film**

for color slides

\$ 1⁹⁹

20 exposures

126-20

Shredded Foam

1-lb. bag

37^c

RIDEUM TOYS

Racer, Moped, ATV Scrambler, tractor, horse

\$ 1⁹⁹

Playballs

assorted colors

88^c

Punch-o-Balls

Assorted Colors

37^c

Golden T **Shave Cream**

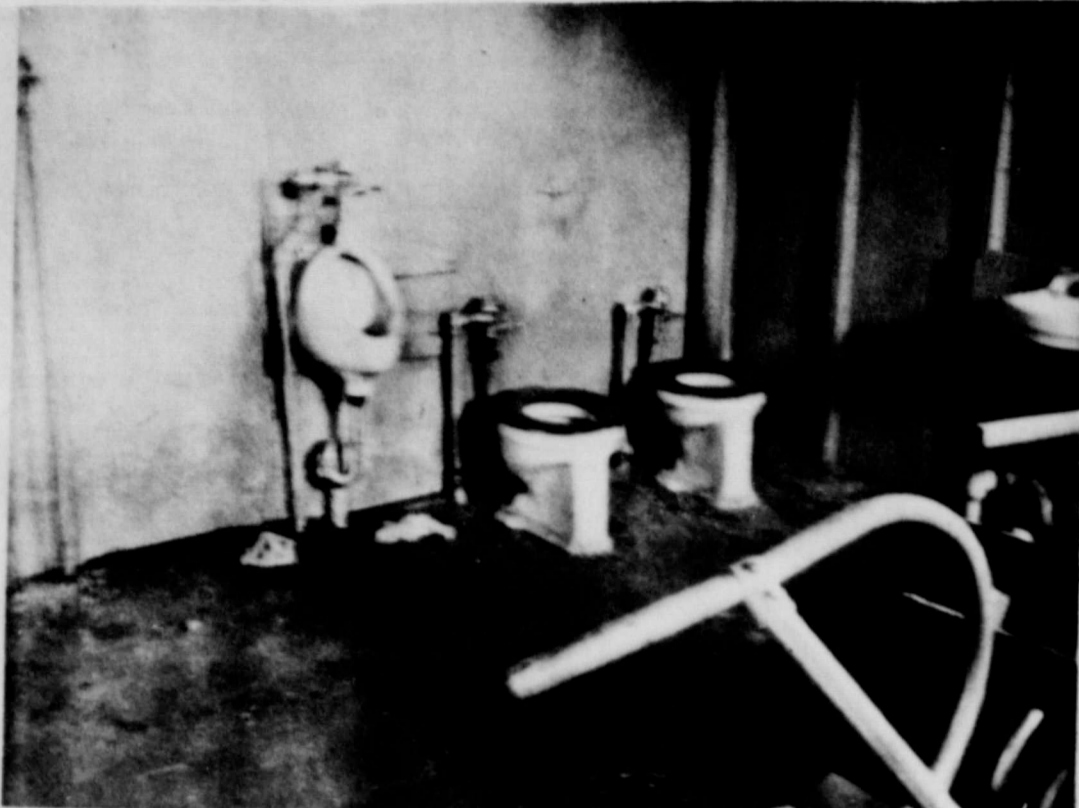
Menthol or regular

2 for 77^c

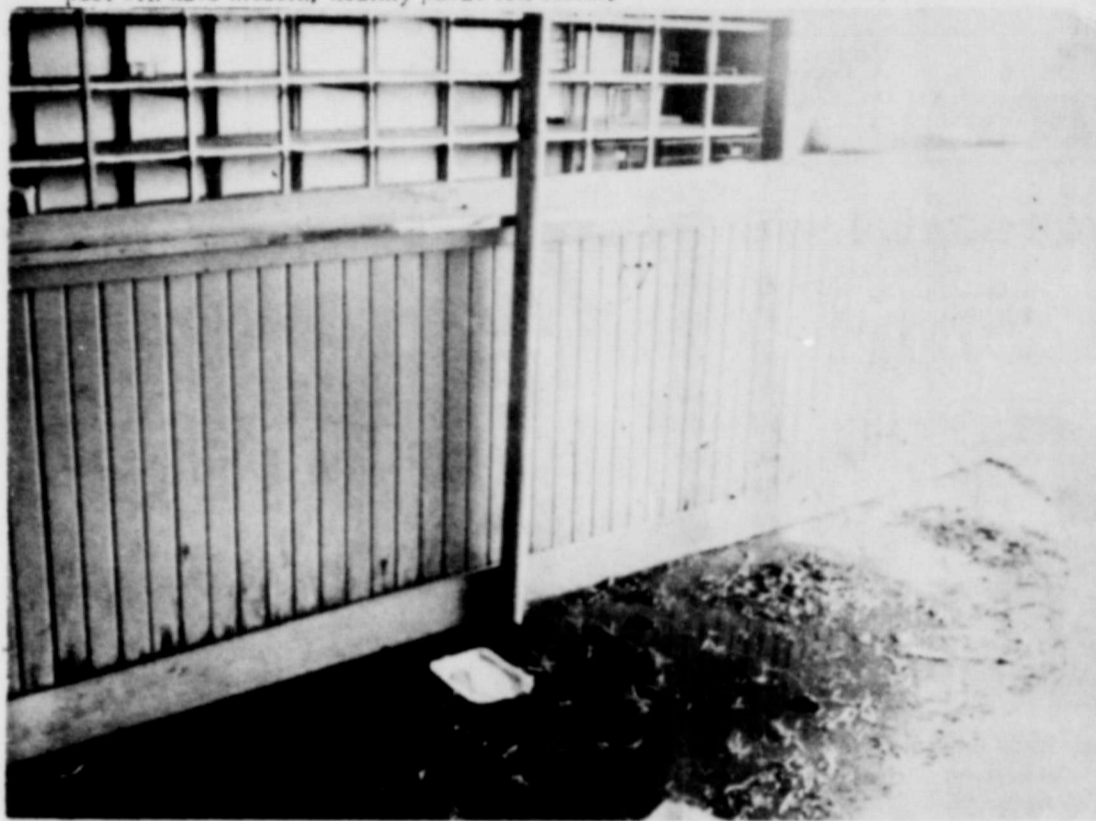
Laundry Basket

Bamboo

67^c



This is the boys rest room at the old Spearman swimming pool. The new swimming pool will have modern, healthy public rest rooms.



This is the main entrance to Spearman's present swimming pool. Can you imagine your children bringing their friends, and kindfolks to this mess any more?



The old swimming pool just doesn't meet the needs of the 5th largest producer of agricultural products in the great state of Texas. Vote for a new swimming pool this Saturday!!!



Let Me See
by Sybil

Here is your chance to be a good Samaritan---if you know a Mary A. Moen De-long, who used to live in Spearman, and know her whereabouts, the National Life Insurance Co. would appreciate your letting them know. So would Mrs. De-long. The Insurance Co. is trying to locate her because she has a life insurance policy which has matured for a substantial amount of money! She would be about 53 years of age. She has a son and a daughter. When the family lived in Spearman she was Mary Moen. If you could be of help, contact the Librarian at Hansford Library and give her this information. The insurance company wrote the letter of inquiry to the Librarian. Mary Moen De-long ---where are you??

RECON THE HIGH cost of living is going to make thieves of us all! I read in my Antique trader where thieves are stealing barnes---big barnes, right out from under the farmer's nose. One man was gone from home for 2 days and when he returned to his farm, his huge old barn was gone. Thieves had literally torn it down and carted it off. Old barn siding is becoming very popular to home builders now, especially to people who wish to create a rustic old country look and this old lumber (weathered by the elements) is high as a kite! On the other hand, lumber is high enough now to make people yearning for a new home want to steal... rather than buy such an inflated market.

Along with food, lumber is the basic bulge in the economy, and like food--it effects one of the basic needs of man---shelter. In the last 6 months lumber prices added at least \$1,200 dollars to the cost of building an average new home. This simply means that the home buyer must have \$40 per month salary increase in order to meet the monthly mortgage payment which is higher in ration, according to the increased price of lumber. Price tags on all wood products have been changed so often lately you get writers cramps trying to keep up. We've had an 18% hike in envelope prices just lately.

Newsprint is getting higher, as is all wood-pulp products. Have you priced a 2 X 4 lately? Between January & March the price of 2 X 4 lumber increased 25%. During the same period 3/8ths inch plywood increased 98%. Renters suffer, home improvements are almost a thing of the past. Building a fence in the back yard costs more than twice what it did six months ago.

SO THE President sets a ceiling on meat prices. Why pick on meat--or lumber for that matter--when everything mentionable has increased in price accordingly. Proposition these people who want the meat price rolled back to December, with a roll back of their salaries, proportionally and they would throw down their picket signs immediately! With no more will power than I have, it would benefit me greatly if they would ration food. Did you know that overweight is now epidemic and that calorie counting has become a NATIONAL obsession? Eating habits do not change--the amount of physical activity does. Consequently we have a nation of sit-around people who are still eating a thresherman's diet. Most people over 30 are perhaps doomed to a perpetual cycle of eating it off. Dieters now range from people who are naturally round to young men--muscular and wiry only a few year ago--who suddenly notice expansion at their waist lines. Old and young alike--in America and Europe--eat too much and exercise too little.

This is not the first time that eating habits have gotten out of time with physical activity. Even the Spartans of ancient Greece, among history's most disciplined peoples, once faced a crises of obesity. After years of military successes, there were slaves in abundance, leaving little work for citizens to do. The Spartan elders noticed (as we can easily observe today) that men were "spending their lives at splendid tables, delivering themselves to the hands of their cooks to fatten them in corners like greedy brutes, and to ruin their bodies which, enfeebled by indulgence and excess, stand in need of as much care as if they were continually sick." The solution, a characteris-

tically Spartan one, proved quickly effective. It was legislated that all males between the ages of 30 and 60 must eat their main meal daily in a public dining hall where the food was lean in energy and skimpy in amount. Nobody loved a fat Spartan. What Sparta did for the Spartans, America might try. On the fat people. As well as I love to eat, I hope it never comes to food ration-

ing. I'll pray for gasoline rationing. Then we'll all walk to work and be forced to get that exercise we refuse to partake of voluntarily. They say over-weight is getting to be a labor problem. Recently the personnel director of a large factory received another one of those

30-page government questionnaires which asked, among other items: "How many employees do you have, broken down by sex?" The director replied, "Over weight is a problem with us."

Mrs. Mary Lou Wyszog and daughter Jan were in Amarillo Friday for Jan's checkup with her doctor. Jan's broken arm mending rapidly.

Please Go To The Polls And Vote

Vote For

Alton Ellsworth

FOR CITY COUNCIL
ON APRIL 7TH

I WILL SINCERELY SERVE THE PEOPLE
OF SPEARMAN WHEN ELECTED.

Pol. Adv. Paid By Alton Ellsworth

ELECT THESE THREE MEN---HICKS,
CALLAWAY AND LAIR TO YOUR
CITY COUNCIL, SATURDAY APRIL 7,
1973.

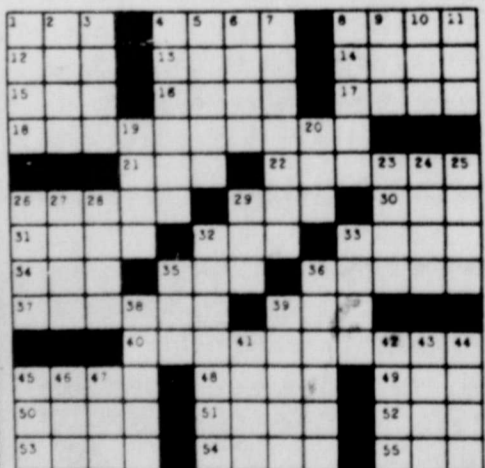
MATURE AND WELL QUALIFIED, HAVE
THE DESIRE AND TIME TO SERVE AND
ARE NOT AFRAID TO STAND UP AND
BE COUNTED FOR YOUR INTERESTS.
IF YOU REALLY WANT HONEST, MA-
TURE AND PERSONAL REPRESENTA-
TION IN YOUR CITY GOVERNMENT
AND MEN THAT HAVE NO AXES TO
GRIND AND BELIEVE IN COOPERA-
TION AND UNITY BUT WILL NEVER BE
A (CHARLIE MCCARTHY) CANDIDATE
FOR ANYONE, ELECT HICKS, CALLA-
WAY AND LAIR TO REPRESENT YOU.
VOTE APRIL 7, 1973

Pol. Ad Paid For By Friends Of The Candidates

INSURANCE IS NO PUZZLE FOR US

- | | | |
|------------------------------|------------------------------------|---|
| ACROSS | 31. Guided trip | 54. Scotland -- |
| 1. Word in a question | 32. Relatives | 55. Owned |
| 4. Two together | 33. Military camp | |
| 8. Sudden fancy | 34. Vase | DOWN |
| 12. Massage | 35. Mr. van Winkle | 1. Shawl, scarf, or mantle |
| 13. Sympathetic response | 36. Panama seaport | 2. Hawaiian |
| 14. Wedding "shower" | 37. In --, item by item | 3. Comply with the wishes of "worse" |
| 15. Pub drink | 39. Coquettish | 4. Antonym of "worse" |
| 16. Salty drop | 40. Do as others have done: 2 wds. | 5. Tuna's habitat |
| 17. Unobstructed | 46. Narrow cut | 6. In --, because |
| 18. Public telephone: 2 wds. | 48. Island or Sea | 7. Sky-earth meeting line |
| 21. Years in a decade | 49. Homonym of "2" | 8. Incorrect |
| 22. Move in short angles | 50. What children love to do | 9. Knowledgeable: slang |
| 26. Step | 51. Done! | 10. Winter hazard |
| 29. The sun | 52. Piercing tool | 11. "The worst -- give off the best advice" |
| 30. Building wing | 53. May to May | 19. Recipe word |
| | | 20. Petriolium |
| | | 23. Ardor |
| | | 24. In addition |
| | | 25. A Campbell |
| | | 26. Shirt-front ornament |
| | | 27. Ripped |
| | | 28. Uncle's wife |
| | | 29. Slight taste |
| | | 32. Party-spoiler: hyp. wd. |
| | | 33. Youths |
| | | 35. River |
| | | 36. Spanish |
| | | 38. Craven |
| | | 38. Later than |
| | | 39. Lid |
| | | 41. Molten rock |
| | | 42. Beehive State |
| | | 43. Where Council Bluffs is |
| | | 44. Related |
| | | 45. Bashful |
| | | 46. Be situated |
| | | 47. Miss Lupino |

CROSSWORDS



Ask About Our Home Owners Policy

B J. L. Brock Agency
Insurance

206 MAIN STREET - SPEARMAN, TEXAS

"Democracy is a very bad form of government, but it is the best yet devised by man"

Winston Churchill

**YOUR VOTE IS
YOUR LICENSE
TO GRIPE!**

**VOTE
APRIL 7TH**

CLASSIFIED AD 659-3434

Burton's TV
Phone 659-2121

SCHOOL VOTE CITY
April 7th

SERVICES

Boxwell Bros.
Funeral Home and Flower Shop
Day-Night Phone 659-2212
Spearman, Texas

Cummings
Refrigeration And Conditioning
Phone 659-2721
Phone 659-2441
GORDON CUMMINGS

Listen to HARVEST TIME
9:00 A.M. SUNDAY
KBMF
United Pentecostal Church
Sponsor

UNITED PENTECOSTAL CHURCH
106 S. Bernice
Services 10:00 a.m.
and 7:00 p.m.
Each Sunday
Spearman, Texas

HANSFORD LODGE 1040 F. & A. M.
Regular Communication
2nd & 4th Monday of each month.
Howk, W.M.
1st Barton, Secy.

FOR SALE
ALE-8mm-Gym exercise new. Reasonable price.
559-2621.
17T-rtm

FOR SALE
1 Honda Trail Yamaha SL 100, cycles, Foremost like. 659-3644.
19S-3tp

FOR SALE
3 bedroom house wall to wall carpet, corner lot, large back yard, carport with 2 bedrooms, large kitchen. S. Bernice 659-3465
18S-RTN

LAND
622 acres, 375 cultivated, 3 extra good 8" wells, Near Stinnett, Texas. \$90,000 down, good terms on balance or will consider trade on smaller farm.
Nice 200 acres, all cultivated 1 good 8" well, 3400 ft. of tile near Spearman. 29% down, good terms on balance. Have buyer for land on North Plains. Will appreciate your listing.
J. M. Handy Real Estate
Off. 364-3566 Res. 364-4 Hereford, Texas.

FOR SALE: White German puppies, A K C Registered, whelped January 30, 1973, Call 659-2309 after 5:00 week days: 12:00 noon Saturdays, Spearman. 18S-rtm

FOR SALE: Small furnished house plus trailer hook-up on 50 foot lot, priced to sell. Emmett Sanders, Broker, 659-2516, nights 659-2601, 46T-rtm

Grayco Furniture has 100 Fancy lamps, 100 elegant tables, mix or match. Occasional chairs too, Grayco Mobile Homes, Hwy 3, Southeast Guymon. 18S-4tc

FOR SALE: Well located half section, excellent cultivated land, S.E. of Spearman. Collard Real Estate. 659-2501.405 Davis. 19T-rtm

FOR SALE-1951 Chevy Pickup. Automatic Trans, Olds Rocket 88-V8 engine. Real sharp, clean. Call 435-3636 between 9 a.m., 6 p.m. or 435-3251 after 6 p.m. 20T-3tc

FOR SALE-House at 121 Townsend. 4 rooms and bath, carpeted, refrigerated air, floor furnace, dishwasher, disposal. Call 659-3069. 20-2tp

FOR RENT
For Rent: 2 room furnished Apartment. Call 659-2639. 20-rtm

FOR RENT-Furnished apt. 606 S. Bernice Street. Phone 659-2652 or 2452. 28S-rtm

DISC ROLLING-Phone 659-2800 in daytime-659-2815 evenings. 6T-20tp

INCOME TAX SERVICE-Call 659-3175 after five or weekends. 316 S. Bernice. 9S-rtm

To have your garden or yard retotilled call Jimmy Vanlandingham. 659-2835 15S-9tp

Professional Dog Grooming and boarding. Carmon Laird. 118 N. James. 659-2106. 46T-rtm 8p

HERB'S SEWING CENTER, 213 S. W. 3rd, Perryton, Texas has several good used machines from \$14.95 up. Service all makes. Phone 435-2993. 13S-rtm

RUTH'S CRAFT SHOP. Everything for the artist. Tole, China, Decoupage, Blank China, Wooden products, Patterns. Open 9-5, Mon.-Fri. 1107 Barkley, Spearman. 20T-rtm

SAVE Big! Clean rugs and upholstery with Blue Lustre. Rent electric shampooer and buffer \$2. GORDON'S DRUG.

Tree Surgeon-FREE ESTIMATES. Bob Welsh, Farnsworth, Texas 15S-12tp

Tennis Lessons To Be Given
Contact: Teresa Beck, 659-2618

all the cards, visits, gifts, and flowers while I was in the hospital. May God Bless you all.
Carrie Russell.

We would like to express our thanks and appreciation for all the phone calls, prayers, food, flowers and deeds of kindness shown to us during the death of our beloved sister, Mrs. Jeanette Brown. May you always be blessed for the many deeds of kindness.
Billy Boatwright and family

I wish to thank all my dear friends for the visits, the lovely flowers, cards and gifts I received during my recent illness. Thank you also for your continued prayers. May God bless each of you.
Colleen Jeffries 20-2tp

County Agent Report
by Joe Van Zandt

Pasture weeds are expensive as they reduce grazing and lower forage quality. Weeds rob pasture grasses of valuable moisture and nutrients. They also are irritating to livestock grazing the pastures. Weeds have a better ability than grasses to obtain nutrients and moisture. Consequently, weeds get first choice of nutrients and moisture. Numerous result demonstrations throughout Texas have shown that two to three times more grass can be grown on the same pasture acre when weeds were controlled as when they were not controlled. Chemicals usually offer the most effective weed control and several are available and safe to use in pastures. Chemicals should be applied when weeds are young and actively growing. Adequate amounts of water should be mixed with herbicides and applied according to directions on the label. Specific recommendations for controlling weeds common to pastures in Hansford County are available at the County Extension office. **PLANT NUTRIENTS-Many**

Had Heart Surgery

Raymond Sparks, owner of Sparks Laundries in Spearman, underwent heart surgery in Amarillo's St. Anthony Hospital Tuesday morning. Mr. Sparks, who has a history of heart trouble, suffered another attack last week and was hospitalized in Hansford Hospital for several days. Saturday he was transferred to Amarillo for tests and observation which resulted in heart surgery Tuesday of this week. The Sparks Laundries remain open to the many customers in this community, but the personal service has been closed until Mrs. Sparks is able to be back in Spearman with these businesses.

Chlorophyll is the green coloring material in plant leaves which plays a vital role in photosynthesis, the process in which the sun's energy converts carbon dioxide from air and hydrogen from water into carbohydrates. The production of carbohydrates by photosynthesis is probably the most important of all chemical reactions. This process provides the energy and substance for plant growth. And, since humans and animals secure their nourishment by eating plants, they likewise are dependent on photosynthesis for their livelihood. So, to keep plants green and growing vigorously, we must supply them with the necessary plant nutrients at least once a year. To find out how much fertilizer to apply I recommend having the soil in your fields, lawn, garden and flower bed tested. Information on soil testing is available at the county Extension office. Damp and rainy weather brings with it the problem of mildew.

Mildew is a fungus that will grow and reproduce on wood, paper, plaster, concrete, paints, leather and fabrics. It causes discoloration and may eventually destroy the value of the material on which it is feeding. The fungi are always present in the air. Mildew may flourish in any damp, warm, poorly ventilated and poorly lighted locations such as basements, crawl spaces, closets, bathrooms and unventilated storage areas. A musty odor frequently indicates the presence of mildew which may occur on the ceiling around attic fans or vents. Heat leaking from the attic into a cool room causes moisture to form on the ceiling, providing a favorable climate for mildew. Some mildew can be removed from painted surfaces with a stiff brush. If it comes off easily and leaves no stain, repaint with a mildew-resistant paint. For severe cases on cement floors, wall tiles and all types of floor tiles, scrub the infested area thoroughly with a solution of chlorine bleach (1/2 to 1 cup of bleach per gallon of water). Rinse with clear water and wipe the surface as dry as possible. The bleach not only kills the fungus but removes dead particles as well. Work quickly and carefully on plastic and asphalt tile to avoid spotting the surface. For wood surfaces with mildew, first try a solution of 4 to 6 tablespoons of washing soda to a gallon of water. Scrub well and then rinse with water.

If this doesn't remove the mildew, use 4 to 6 tablespoons of trisodium phosphate cleaner and 2 tablespoons of household ammonia or 4 to 6 tablespoons of trisodium phosphate cleaner and 1 cup of liquid chlorine bleach per gallon water. If a plastered wall has mildew, scrub it with a mixture of 2 tablespoons of formaldehyde in a gallon of water. Let dry before painting or papering. 1. Get rid of any damp soil or heavy vegetation outside which keeps walls damp and encourages mildew. Have the ground drainage improved if necessary. 2. Keep all vents in the foundation open during the summer and leave one on each side open in the winter. A vapor-resistant cover can also be placed over the ground in the crawl space to cut down on moisture. 3. A small electric light burned continuously in a closet will often provide enough heat to prevent mildew. Chemical moisture absorbers such as silica gel, activated alumina or calcium chloride also are available. Moth crystals are usually effective in removing mildew odors in closets. Leave closet doors open if the house is to be unoccupied for a few days. 4. Keep excess moisture out of the house. Remove steam from cooking, bathing and drying clothes with an exhaust fan. 5. Use a mildew-resistant paint when repainting an area infested with mildew or use a manufactured mildew retardant. Do not use mildew-resistant paints in areas such as play pens or window sills where babies might chew the finish.

is sponsored by the Fort Worth Chamber of Commerce in cooperation with the Texas Agricultural Extension Service, Texas A&M University, and Soil and Water Conservation Districts. Operating a 1,944-acre farm 12 miles southeast of Perryton, the Greens' major enterprises include dryland and irrigated wheat, corn, milo and grassland for their cattle. Farming operations follow a basic soil and water conservation plan developed in cooperation with the local Soil and Water Conservation District. "Mrs. Green was chosen for her outstanding achievements in conservation at home and on the farm," according to W.A. King, conservation director, resources information, Fort Worth Chamber of Commerce, who made the announcement. The mother of one son and two daughters is homemaker, partner in farm management, gardener and seamstress for the Green family enterprise. Her most recent role is that of grandmother. Conservation projects in the home include sewing, a project Mrs. Green cites as her major one, gardening and food preservation. Mrs. Green is as active in farm conservation practices as she is in the home. During harvest, she is truck driver, and throughout the year she helps with field crop work, road-building, planting, cattle branding and "doctoring." Her latest project is raising pigs. Farm conservation projects include irrigation water management, crop rotation, stubble mulching, terracing, pond construction and emergency tillage when necessary for erosion control. "Of conservation, she noted, "Basic principles learned from Home Demonstration Club work, 4-H, and soil and water conservation programs have enabled me to develop methods to conserve my time and energy as well as soil and water."

Mrs. Green is a friendly Circle Home Demonstration Club member, serving as council finance chairman, and a member of the First United Methodist Church. State winner in the conservation homemaker competition is Mrs. Edward Weil of Hale Center. Other regional winners include Mrs. Ewell D. Lord of San Saba, Mrs. R.H. Ellermann of Needville, Mrs. M.E. Corley of Richards and Mrs. Elmer Kinkerman of Burkburnett.

The Test Is The Thing
Uterine cancer deaths were cut in half in 30 years after the Pap test helped doctors detect the disease early and treat it promptly. To develop more life-saving tests and treatments, support your American Cancer Society.



Mrs Green Winner Of 1973, Region 1 Homemaker Award

Spread It Around
Spread the word that early detection of cancer can save lives. Give generously to the American Cancer Society whose programs of education, research, and service will help reduce the cancer toll.

UNDER NEW MANAGEMENT
Avenue A Garage
Jim and Joe's Auto Repair
204 Avenue A Open Sundays

APPLICATIONS WANTED
The City of Spearman is now accepting applications to fill two full-time positions.

The City of Spearman is now accepting applications for summer employment.

WHY PAY RENT?
969 acres on paving near Gruver. All in cultivation. 5 irrigation wells. 300 acres of growing wheat goes with sale. \$35,000.00 down, good terms on balance.
J.M. HAMBY REAL ESTATE
Hereford, Texas
Phone 364-3566 a/c 806
Res. 364-2553 a/c 806

PTA To Sponsor School Operetta

The P.T.A. sponsored school operetta will be presented April 13, 1973 at 7 p.m. in the High School Auditorium. Third grade students, under the guidance of Mrs. Clark, school music instructor, will present "Cowboy On The Moon." The operetta is being presented as a fund-raising project, proceeds of which will be placed in the P.T.A. Scholarship Fund. Admission to the operetta will be free of charge, however, donations will be accepted at the half-time of the operetta. The Spearman P.T.A. gives a \$300.00 scholarship each year. At the present time the P.T.A. has not had a money making project and hopes to raise the amount on April 13, 1973. If there is someone who would like to donate to this cause, please make your check out to the Spearman P.T.A. and mail to Allen Alford, Finance Chairman, 511 S. Townsend, Spearman, Texas 79081.

SIX FAMILY GARAGE SALE
Begins Friday April 6 at 3 p.m. until Saturday, April 7 8 until 7 Bargains that are unbelievable. Furniture, TV set, 2 exercisers, good clothing, miscellaneous items. 713 Steele Drive. 20-ltc

MPH winds had blown snow into deep drifts. Snow ended here about 11 a.m. Sunday but the high winds continued most of the day. Most east-west roads were closed to traffic for a while until road machinery could clear the drifts, some measuring 4 to 5 feet in depth. Sunday's high temperature for the day was a cold 33 degrees, according to the official weather gauge at the Billy Haden residence. Sunday night's low was 18 degrees. After 6.21 inches of moisture for the month of March, and the 0.91 of an inch thus far in April, the area has turned into a swamp--with dirt roads impassable and fields virtually "bottomless." Last month was the wettest March since 1957 when 6.28 inches of rain was recorded almost exactly the amount received here last month. Area residents are comparing the weekend blizzard with the one which occurred on the same date in 1938. That storm raged without letup for 36 hours and when it ended "you could walk over all the fences

Van Zandt Monday of this week said he did not think the past weekend blizzard damaged the wheat "much--if any." Van Zandt said the wheat is "only just beginning to joint, and the tiny head now forming was kept beneath the snow and protected from the very cold temperatures." No reports of livestock losses due to the blizzard have been heard. The worst livestock damage would come from shrinkage and weight loss. Livestock in Hansford County have been dying like flies the past few weeks from wheat poisoning, so livestock men could not be hurt much worse than they already have been. At least they were thankful not to have experienced the giant cattle loss as ranchers in Colorado and New Mexico have due to blizzards. Texas Panhandle residents have lost count of how many snows have been recorded here since October 30, and only know that nearly 60 inches of the white stuff has been measured since that date.

Bob Ferguson on the Crawford, of the H.A. Mr. Ferguson farms in Club for buying his bitwister for the Spearman

Your Vote Appreciated In Saturday's Election

DAN DESIMONE

CANDIDATE FOR ALDERMAN

Pol. Adv. Paid for by Dan Desimone