

THE PLAINVIEW EVENING HERALD

TWICE-A-WEEK

VOLUME 28, NUMBER 2.

PLAINVIEW, TEXAS, TUESDAY, JANUARY 9, 1917

LIVESTOCK PRODUCERS MORE PROSPEROUS THAN AT ANY OTHER TIME SINCE SIXTIES

HIGH PRICES FOR BEEF EXPECTED TO CONTINUE THROUGH COMING YEAR—PEACE OVERTURES WOULD MAKE LITTLE DIFFERENCE IN THE MARKET.

(From Annual Review by Livestock Journals.)
Not since the days of the Civil War have livestock producers enjoyed such sky-high prices as were paid on the American market during 1916. Unparalleled prosperity in every branch of commercial industry throughout the United States, together with the world-wide demand for beef, occasioned by the strife in Europe, made 1916 the greatest year in history for livestock production and selling. Packers also enjoyed their greatest twelve months of profit-making, although the percentage of profit on the business turn-over was held to a small figure, as in past years.

Never before have the low-priced classes of cattle sold to better advantage. An unlimited demand prevailed for anything carrying a hide, due to the needs of Europe, and canner material soared to very lofty figures. In keeping with the high prices paid for cattle, hogs also shot skyward. Part of the increase in values was due to the foreign demand, most countries purchasing more than ever before, but it is generally held that the local demand was the chief factor that supported the market. The American public consumed more hog products than in any other previous year, and packers willingly granted prices demanded in order to supply their trade.

The export of bacon for the first ten months totaled 469,899,970 pounds, against 422,190,691 pounds the same period in 1915, and had an increased value of \$11,548,395. Hams and shoulders bought on foreign account totaled 237,285,763 pounds, against 229,286,441 pounds a year ago, the values of which were \$36,515,642 and \$31,901,387, respectively.

There were 349,027,164 pounds of lard sent abroad in the first ten months, against 374,106,435 pounds a year ago, yet the value of the former shipments was \$3,344,862 greater than the previous year. Canned pork and pickled pork exports were slightly smaller in amount than a year ago, but the value was larger. Although foreign buyers took only 8,603,676 pounds of fresh pork the first ten months of 1915, at a valuation of \$1,076,791, there were 45,377,601 pounds, having a value of \$5,507,725, exported during the corresponding period of 1916.

Sheep and lambs also brought record-breaking prices and the demand throughout the United States was very broad throughout the year. Not only did the live animals sell at unusual prices, but the pelts values soared likewise, while wool buyers paid out more money for clips than ever before. These side lines increased the profits of the producer. Pelts often sold around \$3.00, while wool of a good grade cleared more frequently about 30 cents. The big value of the by-products actually reduced the cost of the meat 3 to 5 cents per pound, or the retail figures would have been greater than they were. The exports of mutton and lamb from Argentina to the United States were small, and most of these shipments were made the first three months, the uncertainty of sea traffic from South America to New York being largely responsible for the increase in direct shipments to Europe. The export demand for live stuff was limited to a few hundred head, which had no bearing on the trade in general. The entire New Zealand wool clip was purchased by the British Government at 24 cents per pound for the inferior cross-bred to 45 cents for the superior Merino combings.

Regarding the future outlook for a continuation of present high prices, a market authority has this to say:

"While it is undoubtedly the case that the Government livestock census will, when issued, indicate a very material increase in bovine stocks, and that the future beef supply is not in any particular jeopardy, there would, nevertheless, appear to be some cause for concern as regards the immediate outlook. The irresistible combination of high market prices and high cost of production have caused widespread liquidation of beef cattle, and this liquidation shows no indication of decreasing. The year closed with an increase at Chicago of a half million cattle, a million and a half hogs, and about three-fourths of a million sheep. Taking the seven principal market centers into account, an increase is found in cattle marketings of 1915 of 16 per cent, of hog marketings 22 per cent and just a slight increase in sheep.

"It is persistently liberal marketing of cattle with which is felt the greater concern, for it would surely seem to indicate a comparative shortage in beef supplies before grass. A shortage, of course, is only a shortage when the demands exceed the supply. Present demands are based in large measure upon the tremendous export orders and the universal employment of labor at home. Should peace be declared in Europe and the use for the output of home munition factories obviated, it would be natural to see labor decidedly less well employed and industrial depression develop. However, there would appear to be mighty little indication of peace. In any event, reports from London, Paris and Petrograd would hardly seem to indicate that the Kaiser's proposals are going to be seriously considered, and that the war will go on to a point where exhaustion will compel cessation.

"All may expect, therefore, to see in this country a continuance of high prices for all grades of livestock, and the more liberal the marketing of beef cattle now, the more keenly will be felt any shortage in the spring. The doptist can see ahead for the livestock producer only a continuance of high prices. Latterly the outgoing movement of feeders has shown a little more life, but there is not being re-

TENANT LAW IS INVOLVED IN DISTRICT COURT CASE

CRIMINAL DOCKET IS SET FOR THE FIFTH WEEK BY JUDGE R. C. JOINER.

RAILROAD BONUS CASE REVIVED

Judge Is Disqualified in Four Cases, and Will Ask for Exchange With Another Judge.

Judge R. C. Joiner, of the Sixty-fourth Judicial District, will probably be the first judge to pass on the tenant law, passed by the Thirty-fourth Texas Legislature. A case involving this law, R. W. Sanders vs. E. C. Casey and J. G. Doby, is now before the court. The plaintiff is seeking a writ of garnishment. Judge Joiner has overruled the demurrer of the defendant and will hear the facts in the case. Casey and Doby are tenants of Sanders, having raised cotton on one of his farms. The tenant law, which was passed shortly after the inauguration of Governor Jas. E. Ferguson, the principle being the main plank in his platform, provides that a landlord cannot charge more than one-fourth of the crop as cotton rent and not more than one-third of the crop as grain rent. Money rent was agreed upon. The suit arose over difference in settlement of claims. A companion suit has been filed by a cotton-buying firm in an effort to determine to whom money for the cotton sold should be paid. Local attorneys are of the opinion that this case brings to the test for the first time the new law, no case having been reported from the higher courts.

In four cases docketed in the District Court Judge Joiner is disqualified, three of the number having been on the docket when he became judge and the fourth involving a kinsman. Another judge will probably exchange benches with Judge Joiner to try these cases: First National Bank vs. C. H. White, Jno. Taylor vs. Jno. Claridge, L. M. Blakemore vs. J. V. Gayton and Ed. Kennedy vs. Jno. Burson, et al.

A number of cases in which the Panhandle and Santa Fe Railway is defendant are on the court docket, and all except the cases of J. J. Simpson and J. L. Francis have been set for Monday of the third week of court.

One of the oldest cases on the docket is to come up at this term. It was at one time ordered off the docket, but later allowed to remain. This is a suit brought against A. E. Harp by C. L. Talmadge, and is for a bonus alleged to have been subscribed to bring the Panhandle and Santa Fe Railway to Plainview, years ago.

The criminal docket has been set for the fourth week. The main cases to be tried are those of the State of Texas vs. Wagoner, charging robbery by firearms; the State of Texas vs. Jas. McPeak, transferred from Floyd County by change of venue, murder, and the State of Texas vs. Jake Garrison, transferred from Floyd County to Briscoe, tried there with no verdict, and then transferred to Hale County on change of venue. The last-named suit arose over the bank which closed at Lockney a few years ago. It will be tried on the fifth week.

The court has disposed of cases since opening yesterday as follows: C. C. Slaughter vs. W. H. Allen, et al., trespass to try title; dismissed for want of prosecution. J. M. Graham vs. Prudential Life Insurance Co., suit to cancel note; set for Monday of the third week of court. M. J. Wright vs. A. J. Frain, et al.; dismissed. Carter-Houston Dry Goods Co. vs.

(Continued on Page Four.)

Chautauqua Association to Meet Thursday Afternoon

"Business of importance to every man who signed last year's Chautauqua guarantee will be transacted Thursday by the association," said J. F. Garrison, president of the Plainview Chautauqua Association, this afternoon. "There will be plans made for the coming Chautauqua, and it is thought that the matter of disposition of funds accruing from last year's contract will be brought up.

The meeting will be held in the third-floor parlor of the Hotel Ware, at 3 o'clock p. m."

LIGHTING RATES ARE REDUCED TO 12 CENTS

TEXAS UTILITIES COMPANY MANAGER ANNOUNCES CHANGES EFFECTIVE IMMEDIATELY.

WILL IMPROVE SERVICE, TOO

Reduced Power Rates Will Be Announced Soon, Probably by February 1.

An open letter to Mayor W. E. Risser from R. A. Drum, manager of the Texas Utilities Co., states that the rate for current for electric lighting in Plainview has been reduced, effective at once. The letter in full follows:

"Plainview, Texas,
"January 1st, 1917."
"Hon. W. E. Risser,
"Mayor of Plainview,
"Plainview, Texas.
"Dear Sir:

"It has been our intention to make a reduction in the electric-lighting rate now in effect in Plainview as soon as we could complete the construction of our new plant and equipment. However, we have been delayed in getting material, and we have decided to put in effect, at once, the following reduced rates in Plainview:

"Net Residence Rate, per month—First twenty kilowatt hours, 12 cents per kilowatt hour; next ten kilowatt hours, ten cents per kilowatt hour; all in excess, five cents per kilowatt hour.

"Net Commercial Rate, per month—First fifty kilowatt hours, 12 cents per kilowatt hour; next fifty kilowatt hours, ten cents per kilowatt hour; all in excess, eight cents per kilowatt hour.

"The above rates are subject to a minimum charge of \$1.00 per month.

"By R. A. DRUM, Manager."

This afternoon Mr. Drum stated to a representative of The Herald that the company has had in mind for several months a reduction, and have been making investigation as to the basis for making same. He further stated that there has been ordered additional equipment to improve the service given by the Texas Utilities Co. A new 520-horsepower Diesel engine has been ordered for delivery on May 1. An order has also been placed for equipment that will equalize the current and maintain more even lights.

Manager Drum also states that there will be a reduction in power rates soon, probably by the first of February.

ELKS INITIATE LARGE CLASS.

Friday the B. P. O. Elks Lodge initiated a class of eight candidates. Among those here out of the city were E. B. Penny, B. O. McWhorter, M. E. Sidebottom, Newton A. Wilson, Joe Powell, E. Wolforth and Arthur Howard, of Lubbock, and Messrs. Orr and Perkins, of Matador.

DR. R. F. HARE TO CLOVIS.

Dr. R. F. Hare, until recently county farm demonstrator of Hale County, with his family left this afternoon for Clovis, N. M. The family will probably make their home at Las Cruces.

LOSES VENDOR'S LIEN NOTES VALUED AT TWO THOUSAND.

L. M. White, of Petersburg, was here yesterday on business. Having closed a cattle deal, he had in his possession vendor's lien notes of the face value of \$2,000. These were lost by him somewhere in Plainview. They are signed by M. G. Gregory, who purchased the cattle.

First Y. M. B. L. Meeting for New Year to be Held Thursday

The first meeting of the Y. M. B. L. for the new year, and, incidentally, the first under the new administration, will be held Thursday evening at seven o'clock, at the Barker-Winn Building.

C. J. HUBBARD OPENS OFFICES.

C. J. Hubbard, of Boston, Mass., president of the Texas Land and Development Co., has opened offices in the Grant Building, adjoining the general offices of the Texas Land and Development Co. He will probably be here several weeks on business.

HALF OF NEEDED \$30,000 FOR WAYLAND BAPTIST COLLEGE IS ALREADY SUBSCRIBED

CASH MUST BE READY BY MARCH FIRST IF STATE BOARD MAKES GIFT OF \$30,000—CAMPAIGN WILL BE CARRIED ON IN PLAINVIEW AND IN HALE COUNTY.

More than half the funds needed for Wayland Baptist College have been raised! Sunday at the Baptist Church was devoted to placing before that congregation the claims of the college, with excellent results. The money subscribed will be paid before the first of March. Five thousand five hundred dollars were raised Sunday morning.

In addition to the subscription mentioned, there have been other donations since the campaign was launched, on Wednesday. The students and faculty of Wayland College have pledged \$3,200. This came as a surprise, those hearing Rev. R. E. L. Farmer's statement Wednesday night that the college would raise \$2,000 from faculty and students believing that he had set his mark too high. However, President Farmer insists that more will be forthcoming from the faculty and students, the collection having been taken before several had returned from the holiday vacation visits.

An organized campaign plan includes the co-operation of the Plainview Chamber of Commerce and the Young Men's Business League. President Farmer met last night with the board of directors of the latter organization, and will be at the regular meeting Thursday evening to present the claims of the school. In Plainview, Rev. J. E. Gates, pastor of the First Baptist Church and for many years president of Wayland College, and President R. E. L. Farmer will have charge of the campaign. In the other towns and rural district, Rev. J. T. Burnett, financial agent of the college, will have charge of the campaign. Rev. Burnett is an able financier, being one of the directors of the First National Bank of Canyon, Texas, and in every way a business man of merit. He will aggressively push the claims of the college.

The plan to put the school on a firm financial basis includes the sale of 550 lots owned by the college. It is expected that these will net between \$30,000 and \$50,000 cash.

SAYS WILL BE BIG DEMAND FOR SORGHUM GRAIN IN MARCH

Santa Fe Industrial Agent Suggests Means of Selling Kaffir and Maize at Good Price.

"There will be a big demand for kaffir, milo and sorghum seed in March and April," states L. L. Johnson, agricultural and industrial agent for the Panhandle and Santa Fe Railway Co., in a letter to The Herald. Mr. Johnson refers to a letter, received by him from John Fields, editor of the Oklahoma Farmer, relative to demand in Oklahoma and Kansas for seed kaffir and milo maize, from which we quote:

"If your Texas Panhandle friends will hold their kaffir and milo until a little bit later and will get in touch with buyers here through the papers, they will be astonished at the demand and at the business that will come to them.

"Oklahoma and Kansas are practically bare of good kaffir seed, and there is but very little milo. There will be an immense demand for it, but it will not come until March and April.

"I have just returned from the Farmers' Short Course, at Stillwater, Okla., and find all of the county agents scouting for seed.

"If you will have men interested in selling their kaffir and milo, write Dr. M. A. Beeson, Stillwater, Okla., and send him a sample of seed. I am sure that he can help them dispose of it at good prices. Ect."

"JOHN FIELDS."

ARE SEEKING THROUGH TRAIN SERVICE ON THE SANTA FE.

The Snyder Commercial Club, through its secretary, J. P. Chambless, editor of the Snyder Signal, is making a fight before the Texas Railway Commission for double daily train service through Snyder from Amarillo to Sweetwater. The trains now serving this territory are operated one way each day, with the local freight trains carrying a passenger coach. Other towns on the route affected are joining in the movement. A January hearing had been promised by the commission, but late dispatches state that this hearing has been postponed until February 13.

BEEF PULP IS IN GREAT DEMAND FOR STOCK FEED.

Col. R. P. Smyth, of the Chamber of Commerce, is in receipt of a letter from F. A. Gillespie, treasurer of the Garden City Sugar and Land Co., stating that no quotations can be made on dried beef pulp. "There is an enormous demand for this material," states Mr. Gillespie, "and we sold out our entire product this fall thirty days before we had turned a wheel."

Judge and Mrs. C. H. Curl, of Littlefield, were visitors in Plainview yesterday.

With the \$30,000 to be raised in Hale County, the proceeds of lot sales and the \$30,000 promised by the State Executive Board of the Baptist Church, it is hoped that sufficient money will be available to liquidate the school's indebtedness, which is now about \$136,000.

The books of the institution from its foundation will be audited by a competent accountant, and a registrar employed to care for the books of the school and other routine duties which have been devolving on the president and administrative officers heretofore. The library room in the administration building will be finished and will be a memorial to Dr. J. E. Nunn, of Amarillo, member of the board of trustees, who has given \$500 to the completion of this room and who has stated that he will give an additional thousand dollars next year.

To Transfer Student Body.

Although there has been no official action and there will be none until Thursday, it is expected that the faculty and student body of Goodnight Baptist College will come to Plainview to be with Wayland College. That school will be closed, and the entire Panhandle, Plains and New Mexico field left open to Wayland College. Assurance has been given that this action will be taken, Drs. Scarborough and Brooks having conferred with the officials of the school before coming to Plainview. There will be as many as fifteen and probably twenty-five students from Goodnight to enter Wayland.

FULLER WILL BE SPEAKER HOUSE OF REPRESENTATIVES.

Four Opponents of Cold Springs Man Announce Their Withdrawal From the Race.

Special to The Herald. AUSTIN, Texas, Jan. 8.—All candidates opposing F. O. Fuller, of Cold Springs, have withdrawn from the race today, and his election as speaker of the House without opposition is assured.

George Mendell, anti candidate, was the first to withdraw, and he was followed in succession by W. M. Fly, James A. Florer and French Spencer, all rival pro candidates.

Mr. Fuller is a strong advocate of the West Texas A. & M. College promotion, having appeared in Wichita Falls at the last general meeting of the campaign association, and there openly avowed himself in favor of the movement.

BOY KILLED AT SILVERTON.

Automobile Runs Over Son of County Clerk Anderson, of Briscoe County.

A son of County Clerk Anderson, of Briscoe County, was killed Sunday, according to reports from visitors from that town this afternoon. A car driven by a son of Minor Crawford, it is stated, ran over young Anderson. The death was accidental, according to statements of the narrators.

225 POLL TAXES ARE PAID.

Up to and including January 1, receipts have been issued by Sheriff J. C. Terry to 225 persons for poll taxes. This is far behind the number issued on the same date last year.

Jacobs Brothers Company's Big

JANUARY CLEARANCE SALE

NOW ON IN FULL FORCE

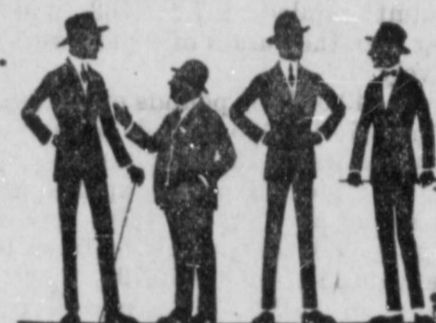
Hundreds of customers who have attended our Big Clearance Sale are saying: "IT'S THE BIGGEST AND BEST SALE EVER HELD IN PLAINVIEW."

WHY NOT? Every item represented in this sale is new and seasonable and fully up to the Jacobs standard. It is only in our eager determination to sell all this years goods and keep "The New Store New" that it is possible to offer such wonderful values. ALL This Years Goods MUST BE SOLD—We Need the Room.



Come and let us prove to you that this is the ONE BIG SALE of the year. Don't Delay—Come Today—It's a Jacobs sale and it will be well worth your while.

Jacobs Bros. Co
THE ONE PRICE CASH STORE



Community Correspondence

CHASING COYOTE ON MOTOR-CYCLES IS EXCITING SPORT.

RAMSEY, Texas, Jan. 3.—Work started on our new school building Monday. It will be finished probably this month.

There were three new pupils in our school this week. This makes a total

of fifteen scholars. We have quite a small school now, but there are good prospects for a larger one.

Our Sunday School is growing all the time. Our old building will hardly hold every one.

Bro. J. A. Sweeney, of Lockney, filled his regular appointment Sunday, but did not preach, on account of

his cold.

There is nothing definite about our proposed rabbit drive. It seems our farmers are slow to realize the necessity of this move.

E. E. Russell came in last week from Oklahoma, where he spent the last year.

Floyd Landrum is now driving a Ford.

Clarence Goins and Alfred Russell attended the home-talent show at Lockney Monday night. A good show was reported.

F. H. Ford, of Lockney, is improving a section close to Ramsey.

Judson Miller is improving a half-section one mile west of Ramsey.

Jim Beall has just improved and sold an eighty-acre block one mile east of Ramsey.

Claud Thornton, of Lockney, has moved into our vicinity.

Mr. Cliff, formerly of Hale County, has moved into our community.

A singing was given at Mr. Hatchers' in which our young people sang the old year out and the new year in.

An R. F. D. mail route is coming through our community, it being changed from the Mickey star route. This will be a great benefit to the people of Ramsey, as all of us have to go to Lockney for our mail. This is very unhandy, and we are glad to see this route.

Carl Russell made a trip to Floydada last week.

We are sorry to learn of our neighbor, Mr. Jones, moving from our community.

Floyd Landrum made a trip to Lorenzo Monday.

Miss Jewell Gordon, of Lorenzo, who has been up visiting her relatives, Mr. Fulkerson's, returned home last week.

Mr. Miller is moving into his new house, which he has just completed.

Ralph Fulkerson spent Saturday night with Verner Jones.

John Mesmer was seen hunting coyotes in our locality Sunday.

Clarence Goins was a Fairview visitor Sunday.

Allen Jones came in from Childress last week, where he spent the holidays.

A party at Mrs. Landrum's Tuesday night was well attended.

T. H. Tedford is moving down to Lakeview.

J. A. Wiley is moving over west of Lockney.

SPRING LAKE.

SPRING LAKE, Texas, Jan. 6.—Mauk Brothers have moved to Littlefield.

Miss Myrtle Vore returned to her

school work, at Dawn, Saturday, after spending the holidays with home folks. Mr. and Mrs. M. E. Cleavenger entertained New Year's day with a 12-o'clock dinner. A large crowd was in attendance.

Wallace Phipps was in Hereford Wednesday and Thursday.

Miss Ona Yelton was hostess at a 6-o'clock dinner Wednesday. A large number of her young friends were in attendance, and report a jolly good time.

Vane Bentley, who spent the holidays visiting friends at Spring Lake, returned to Canyon Saturday.

T. F. Brown, a former resident of Spring Lake, was shaking hands with old friends and neighbors here the first of the week. Mr. Brown moved his family to Oregon three years ago. He says he is glad to get back to old Texas.

A good number of men met at the church to work on the unfinished room Tuesday. It is the intention of

the members to finish the work on the building this winter.

School began Tuesday morning, after a week's vacation.

Professor Hinsen and Miss Beatrice Vore motored to Hereford and other points Saturday and Sunday.

Messrs. H. M. Packard, W. S. Hall, L. F. Harris, M. E. Cleavenger, P. D. Vore, C. Axtell, J. M. Reddington, A. C. Bales and J. L. Gehres attended court at Olton the first of the week.

STRUVE NEWS.

STRUVE, Jan. 1.—Quite a number attended the exercises at school last Friday. The pupils are having a two weeks' vacation. Miss May Walker, our teacher, left last Saturday for her home, near Gainesville, to spend the holidays.

A quiet wedding was celebrated at the home of Mr. and Mrs. John Henderson Christmas evening, when their daughter, Angle, was married to Ira

McLain. Rev. Fred Pilley, of Olton, officiated. Mr. and Mrs. McLain were both raised on the Plains, and have many friends in this and surrounding communities, who wish them much joy in their wedded life. They will make their home on the Anderson farm.

Miss Gladys Norfleet, of Wayland College, is at home for the holidays.

Messrs. Lee Hooper, Richard Henderson and Hal and Walter Swopes delivered a car of alfalfa hay in Plainview this week.

Jim Light and sister, Mrs. Whitacre, of Hale Center, were visitors in the Light home one day this week.

We have several cases of la grippe in our community.

Whenever You Need a General Tonic Take Grove's

The Old Standard Grove's Tasteless Chill Tonic is equally valuable as a General Tonic because it contains the well known tonic properties of QUININE and IRON. It acts on the Liver, Drives out Malaria, Enriches the Blood and Builds up the Whole System. 50 cents.

Hamner's January CLEARANCE SALE

We Are Offering Our Entire Stock of Ladies High Grade Shoes at Greatly Reduced Prices

No Old Stock—All This Winter Styles

\$6.50 values now	- - - - -	\$4.95
6.00 values now	- - - - -	\$4.75
5.00 values now	- - - - -	\$3.85
4.50 values now	- - - - -	\$3.68

Clearance Sale Rain Coats

\$2.75 Rain Coats	- - - - -	\$2.20
3.50 Rain Coats with book satchel and cap,	- - - - -	\$2.88
5.00 Rain Coats only	- - - - -	\$3.95
9.00 Rain Coats only	- - - - -	\$7.20

Clearance Sale Corsets

\$1.50 Madam Grace Corsets	- - - - -	\$1.20
2.00 Madam Grace Corsets	- - - - -	\$1.45
2.50 Madam Grace Corsets	- - - - -	\$1.85

One lot odd sizes, mostly small sizes, to close out, sale price ONE-HALF PRICE.

Hamner's Dry Goods Store

"Sells it For Less"

Phone 210

Plainview

Appeal to Reason

☞ Ask any of the great army of Postum users what influenced them to try this beverage, and the reply nine times out of ten will be that they were convinced that caffeine and tannin in tea and coffee were harmful to health.

☞ Some imagine it is hard to give up coffee and tea. But it isn't, with the delightful aroma and flavor of Postum at hand. This flavor somewhat resembles that of high-grade Java coffee, but there is no coffee in Postum—only the nourishing goodness of wheat, skilfully processed with a small per cent of wholesome molasses.

☞ Postum comes in two forms: Postum Cereal, which has to be boiled; Instant Postum—soluble—made in the cup, instantly. Some prefer one, some the other. Made right, they are alike delicious, and the cost per cup is about the same. There's better health, comfort and efficiency in

POSTUM

"There's a Reason"

WE take this opportunity to express our gratitude and extend our thanks to those who have been so loyal in their support of this store. Our army of customers have our sincere good wishes throughout the holiday season. We will have for them a splendid line of practical gifts.

DONOHOO-WARE HARDWARE CO.

Phone 80

NO. 5475.

REPORT OF THE CONDITION OF

The First National Bank

AT PLAINVIEW, IN THE STATE OF TEXAS, AT THE CLOSE OF BUSINESS ON DECEMBER 27, 1916.

RESOURCES.

1. (a) Loans and discounts (except those shown on (b) and (c))	\$596,341.41
Total loans	\$ 596,341.41
U. S. bonds:	
(a) U. S. bonds deposited to secure circulation (par value)	\$ 25,000.00
Total U. S. bonds	25,000.00
Bonds, securities, etc.:	
(e) Securities other than U. S. bonds (not including stocks) owned unpledged	\$ 538.10
Total bonds, securities, etc.	538.10
3. Stock of Federal Reserve Bank (50 per cent of subscription)	3,600.00
4. Value of banking house (if unincumbered)	50,000.00
(b) Equity in banking house	50,000.00
10. Furniture and fixtures	38,927.69
11. Real estate owned other than banking house	
(a) Net amount due from approved reserve agents in New York, Chicago, and St. Louis	\$ 24,261.33
(b) Net amount due from approved reserve agents in other reserve cities	168,420.44
13. Net amount due from banks and bankers (other than included in 12 or 20)	201,360.28
15. Other checks on banks in the same city or town as reporting bank	15,539.82
16. (a) Outside checks and other cash items	\$ 18,300.78
(b) Fractional currency, nickels, and cents	176.60
17. Notes of other national banks	3,640.00
19. Federal Reserve notes	5,500.00
20. Lawful money in vault and net amount due from Federal Reserve Bank	79,062.00
21. Redemption fund with U. S. Treasurer and due from U. S. Treasurer	1,250.00
TOTAL	\$1,237,888.45

LIABILITIES.

23. Capital stock paid in	\$ 100,000.00
24. Surplus fund	20,000.00
25. (a) Undivided profits	\$132,557.08
(b) Less current expenses, interest and taxes paid	21,302.63
28. Circulating notes outstanding	25,000.00
31. Net amount due to banks and bankers (other than included in 29 or 30)	216.10
Demand deposits:	
33. Individual deposits subject to check	614,496.90
34. Certificates of deposit due in less than 30 days	64,041.33
36. Cashier's checks outstanding	10,294.60
Total demand deposits, Items 33, 34, 35, 36, 37, 38, 39, and 40	\$688,832.83
Time deposits (payable after 30 days, or subject to 30 days' or more notice):	
41. Certificates of deposit	292,586.07
Total of time deposits, Items 41, 42, and 43	\$292,586.07
TOTAL	\$1,237,888.45

STATE OF TEXAS, COUNTY OF HALE, ss:
I, Guy Jacob, Cashier of the above-named bank, do solemnly swear that the above statement is true to the best of my knowledge and belief.
GUY JACOB, Cashier.

Subscribed and sworn to before me this 6th day of January, 1917.
(SEAL) C. S. WILLIAMS, Notary Public.

CORRECT—Attest:
J. H. SLATON,
LEVI SCHICK,
W. C. MATHES,
Directors.

Community Correspondence

HALFWAY GRAIN FARMERS APPRECIATE GOOD RAIN.

HALFWAY, Texas, Jan. 3.—The fine rain of Saturday and Saturday night and the warm weather that is prevailing is greatly appreciated by our wheat farmers, as the wheat was needing both rain and warm weather.

School reopened on January 2nd, with an enrollment of eight new pupils, namely, Hubert, Beulah, Ruby and Clyde Henderson; Clifford, Hazel and Clarence Taylor, and J. W. Dye, Jr.

Willie Cornelius is absent from school on account of illness.

Mrs. I. J. Helm is quite sick at present.

Mrs. G. W. Lewellen and children, who spent Christmas week on their farm, returned to Plainview Monday.

Clayton Lewellen is in care of his father's farm until the return of his brother, Djalma, from Lockhart and other points.

Mr. and Mrs. Chas. Smith visited Mr. Smith's parents, in Floyd County, on Sunday, returning Monday afternoon.

Miss Almira McComas, who is attending the State Normal, at Canyon, spent the holidays with home folks, returning to Canyon on Tuesday.

Mrs. Ruth Brown and children, of Lamesa, who have been visiting Mrs. Brown's brother, J. W. Dye, for some time, returned home last Friday.

Mrs. Charley Dye and children are here, the guests of their relatives, the Dye family and Mr. and Mrs. F. C. Clark.

Blackleg still prevails in this community, Henry Allen having lost very heavily the past week.

J. H. Wilson returned from Hill County last week, accompanied by his wife, daughter and daughter-in-law and baby.

The annual election of officers in our Sunday School took place on Sunday, December 31st. R. L. was re-elected superintendent; W. W. Pinkerton, assistant superintendent; Miss Mavis Smith, secretary-treasurer; Miss Allie Hooper, organist. Mrs. J. H. Helm was elected teacher of class No. 2; Mrs. Pinkerton re-elected teacher of class No. 3; Mrs. Hooper re-elected teacher of the junior class, and Mrs. N. K. Smith re-elected teacher of the primary class. Only a few members of the Bible class being present, the choosing of a teacher for this class was deferred until a later time.

The temperance drama, "Dot, the Miner's Daughter," was given here on last Friday night, by the Mothers' Club, assisted by a number of the gentlemen of the community. The play was a great success, and was repeated again on Monday night, by request. The Mothers' Club wishes to thank the following named gentlemen for their faithful assistance in getting up the play: Messrs. Chas. Smith, W. W. Pinkerton, Albert Kayser, Riley Gilbert, Tom Holland, Clyde Huguley and Nelson Smith.

MANY NEW HOUSES BEING BUILT IN HALE CENTER.

HALE CENTER, Texas, Jan. 8.—The general health of the community is much better.

Miller Harrington, who has been on the sick list for several months, is reported as being much better.

Mr. Porter, of Tulla, is laying the foundation for a new house in the south part of town.

Porter & Sons are to build a grain elevator here soon.

Mrs. Willie Harrington was in Hale Center Saturday and stayed over Sunday with Less Harrington.

Silas Maggard is rejoicing over the arrival of a new girl at his house.

Several new residences are in process of construction in the Hale Center community.

The Hale Center High School basketball teams went to Olton Friday afternoon and played ball. The girls played the Olton High School girls 23 to 13, in favor of Hale Center. The game between the boys stood 3 to 18 in favor of Hale Center.

Mr. Rodgers, of Plainview, was in Hale Center Saturday trying to buy horses and mules.

Mr. Hoosier and son, of the Stoneback community, were in Hale Center Saturday afternoon attending to business.

Mrs. W. B. Smith and children are visiting relatives in Central Texas since the holidays.

Robert Alley had thirty-three prospectors here last Friday.

Mr. Masterson has moved one of Hale Center's old landmarks, the old Smith Hotel it used to be. It was moved out to Mr. Masterson's farm southwest of town.

Mr. Reeves, of the Hooper community, was in Hale Center Saturday attending to business.

Kay Yates was up from the farm Saturday marketing butter and cream. Kay is the kind of man who believes in living at home.

Howard Lemond and Robert Claxton did not return to Roswell Military Institute. Howard went to Canyon Normal for the remainder of the year. The Mothers' Club met at the High School Building Friday afternoon and had a very pleasant and profitable meeting. The club voted to have their meetings twice a month for the remainder of the school year.

Mrs. Whitacre went to Plainview Saturday.

H. E. McCabe was in from the farm for several days the past week.

W. L. Harrington and wife were down from Plainview and spent the night with Mr. and Mrs. D. H. Stovall.

G. H. Stovall and wife came in Monday, from Brownwood, and will make their home near Hale Center. Mr. Stovall is a brother of D. H. Stovall, the principal of the Hale Center Schools.

NO. 9802.

REPORT OF THE CONDITION OF THE

Third National Bank

AT PLAINVIEW, IN THE STATE OF TEXAS, AT THE CLOSE OF BUSINESS ON DECEMBER 27, 1916.

RESOURCES.

1. (a) Loans and discounts (except those shown on (b) and (c))	\$474,376.93
(c) Acceptances of this bank purchased or discounted	11,600.00
Total loans	\$474,376.93
U. S. bonds:	
(a) U. S. bonds deposited to secure circulation (par value)	\$100,000.00
Total U. S. bonds	100,000.00
Bonds, securities, etc.:	
(e) Securities other than U. S. bonds (not including stocks) owned unpledged	\$ 205.00
Total bonds, securities, etc.	205.00
3. Stock of Federal Reserve Bank (50 per cent of subscription)	3,600.00
10. Furniture and fixtures	7,127.23
11. Real estate owned other than banking house	8,726.81
12. (a) Net amount due from approved reserve agents in New York, Chicago, and St. Louis	\$ 2,576.59
(b) Net amount due from approved reserve agents in other reserve cities	53,958.80
13. Net amount due from banks and bankers (other than included in 12 or 20)	16,590.27
15. Other checks on banks in the same city or town as reporting bank	1,345.74
16. (a) Outside checks and other cash items	\$ 23,078.02
(b) Fractional currency, nickels, and cents	382.50
17. Notes of other national banks	4,890.00
20. Lawful reserve in vault and net amount due from Federal Reserve Bank	38,385.99
21. Redemption fund with U. S. Treasurer and due from U. S. Treasurer	5,900.00
22. Other assets, if any	146.87
TOTAL	\$740,340.38

LIABILITIES.

23. Capital stock paid in	\$100,000.00
24. Surplus fund	20,000.00
25. (a) Undivided profits	\$ 37,213.13
(b) Less current expenses, interest, and taxes paid	10,499.57
28. Circulating notes outstanding	100,000.00
31. Net amount due to banks and bankers (other than included in 29 or 30)	45,625.96
Demand deposits:	
33. Individual deposits subject to check	373,911.45
34. Certificates of deposit due in less than 30 days	12,314.83
36. Cashier's checks outstanding	2,746.20
Total demand deposits, Items 33, 34, 35, 36, 37, 38, 39, and 40	\$388,972.48
Time deposits (payable after 30 days, or subject to 30 days' or more notice):	
41. Certificates of deposit	56,532.38
Total of time deposits, Items 41, 42, and 43	\$ 56,532.38
52. Liabilities other than those above stated	2,496.00
TOTAL	\$740,340.38

STATE OF TEXAS, COUNTY OF HALE, ss:
I, T. Stockton, Cashier of the above-named bank, do solemnly swear that the above statement is true to the best of my knowledge and belief.
T. STOCKTON, Cashier.

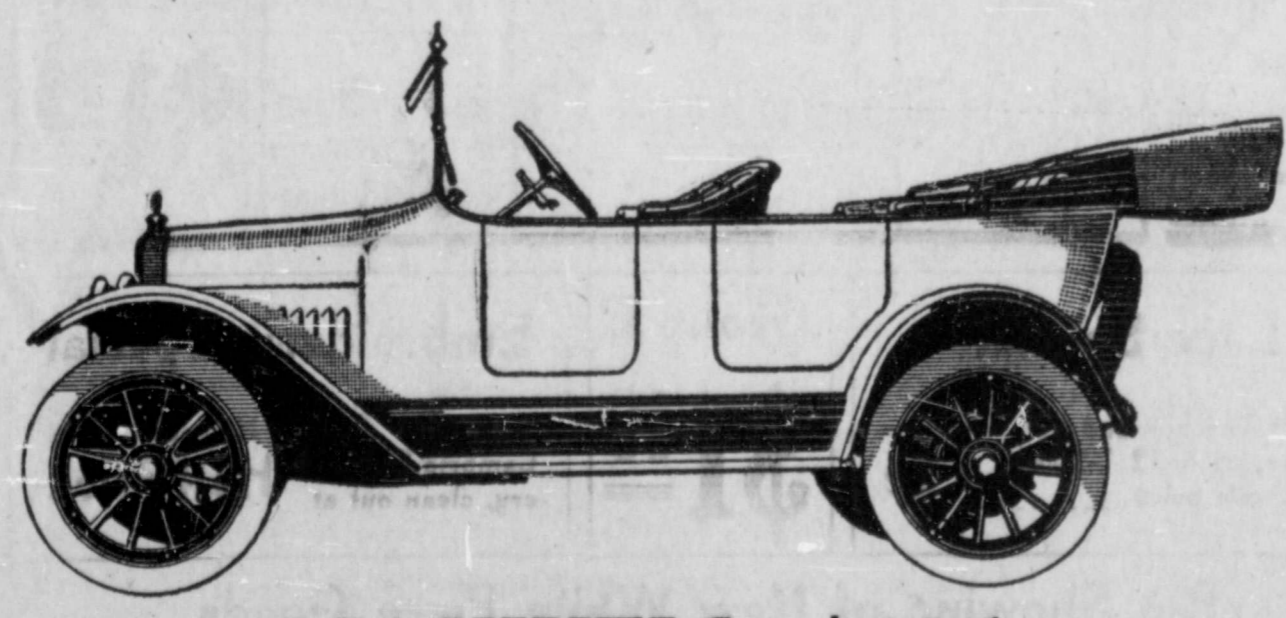
Subscribed and sworn to before me this 8th day of January, 1917.
(SEAL) Y. W. HOLMES, Notary Public.

CORRECT—Attest:
L. A. KNIGHT,
L. G. WILSON,
W. A. DONALDSON,
Directors.

Pay As You Ride

With only a small payment down you can secure the big, complete, economical Maxwell.

You've wanted a car—this plan of ours makes it possible to get the car you have in mind. We also have a splendid savings plan. See us about it.



MAXWELL \$635
F. O. B. DETROIT

SOUTH PLAINS MOTOR CO.

J. M. Lipscomb Phone 677 T. D. Lipscomb

Statement of the Condition of The Citizens National Bank PLAINVIEW, TEXAS At the Close of Business, December 27th, 1916

Resources

Overdrafts	NONE
Loans and Discounts	\$335,320.35
U. S. Bonds and Stocks	100,000.00
Federal Reserve Bank Stock	3,600.00
Real Estate, Furniture and Fixtures	25,692.95
CASH	93,888.44
	\$558,501.74

Liabilities

Capital	\$100,000.00
Surplus and Undivided Profits	40,568.36
Circulation	100,000.00
DEPOSITS	317,933.38
Borrowed Money	NONE
	\$558,501.74

I hereby certify that the above is correct.
R. A. UNDERWOOD, Cashier.

E. B. HUGHES, President W. W. UNDERWOOD, Active Vice-President
R. C. WARE, Vice-Pres. R. A. UNDERWOOD, Cashier H. Y. HUGHES, Asst.-Cashier

DIRECTORS

J. N. DONOHOO, Chairman E. B. HUGHES W. W. UNDERWOOD
WAYNE PAXTON R. A. UNDERWOOD R. C. WARE J. H. BUNTIN

The Plainview Evening Herald

—Published Every Tuesday and Friday Evening by—
THE HERALD PUBLISHING COMPANY,
Corner Broadway and Second Sts.

HERBERT S. HILBURN, Editor E. B. MILLER, Business Manager

Entered as second class mail matter July 1, 1914, at the Post Office at Plainview, Texas, under the act of March 3, 1879.

\$2.00 a Year; \$1.00, 6 Months. Advertising Rates on Application.

DO A GOOD TURN DAILY.

Jacob Riis called the good turn "the core of the Boy Scout Movement." It is this feature, itself based upon the ideal of service to one's fellow man that has helped to give the movement force and virility, and each individual Scout a strength of character which carries him through hard places.

It is not doing a thing for credit, not doing it for praise, not always because it is necessary; but because it is the attention a gentleman pays to another. Some good turns are noticed, some talked about, others spectacular; these are very valuable, but the backbone of Scouting is the many thousands of little good turns done each day by Boy Scouts in every corner of the country.

Boy Scout anniversary week begins February 4. The Plainview Scouts are to observe the week.

Plainview is proud of her Boy Scouts. During the Hale County Fair, a few months past, and through the Chautauqua and at other times they have made themselves useful and have done their good turns, serving others. They are learning that great lesson of association with fellow being, to be able to serve without humility, to aid others in a straightforward manner. And their service is appreciated.

FOR A GREATER WAYLAND COLLEGE.

It isn't a life and death case. Wayland Baptist College will continue whether or not the campaign to raise \$30,000 in Plainview and Hale County succeeds. But the campaign will succeed! It's half completed now.

At no other time in the history of the school has it meant as much to Plainview as it now does. And what Wayland College means to the town in cultural advantages, in increased business and in prestige depends largely upon what is done for the school this year.

The strong Baptist denomination proposes to get behind the school and give it its financial and moral support. One-fourth of the money to be raised this year by the denomination, \$250,000 total, which will be \$60,000, is to go to Wayland College. Thirty thousand dollars of this amount is to be raised in Plainview and Hale County, and an equal amount will be contributed by the State board.

It is expected that the Goodnight College faculty and student body will be transferred to Plainview, Wayland College having taken over their field and guaranteed their contracts, which, incidentally, entails no obligation on them greater than they now have; for the general board of the Baptist Church has guaranteed Goodnight College's accounts. Then, all of the territory from Abilene and Decatur, west to the Texas line, and a great portion of New Mexico is given to Wayland College. This division of territory has the sanction of the board of education of the denomination, under whose auspices Wayland College is conducted.

There is now offered an opportunity to put Wayland College on a firmer basis in every respect than ever before. Its support from the Baptists of all Texas will be assured.

That Plainview will not be called upon again to help Wayland College is by no means promised. Plainview must help in many ways if the school is to be all that it should. But in return Plainview receives many benefits too ostensible to require review. Education cannot be given to the student with the expectation that he pay what it costs. It would be exclusive and prohibitive under those conditions. Only the extremely rich would have the advantages of culture and learning. If society is to be benefited by intelligent citizenship, by efficient workers, by all-round men, she must pay the cost. And who will say that, dollar for dollar, the expenditure for education does not return to society in increased production of the individuals receiving its attention in its schools?

Property values in Plainview are higher than they would be if Wayland College did not exist. Then, is the property owner of Plainview under any obligation to support the college?

OUR AGRICULTURAL AGENCIES.

What may be considered a typical black-lander's view of the West Texas A. & M. College movement is that expressed in the editorial from the Waco Times-Herald published below. It seems hard, indeed, for some Central and East Texas folks to realize that the 98th meridian is not the western boundary of Texas. Says the Times-Herald:

"What shall it be?
"The inquiry has reference to the 'branch' A. and M. College to be established west of the ninety-eighth meridian.

"Is it to be a 'branch,' and, if so, will it take directions from the parent school or be its own boss?

"What is to be the scope of its teaching?

"Should it be restricted to work in agriculture and animal industry to meet the specific needs of the section that it is called on to serve?

"Or shall it undertake to teach engineering and industrial arts and possibly normal methods of teaching?

"All of this last is being urged.

"In other words, the 'branch' is to be a great oak, or, if 'branch' means a stream, then a mighty river.

"President Bizzell of the A. and M. College ventures to express the opinion that the 'branch' be made a junior college, under the control of the parent school, and he thinks that ultimately there should be four of these institutions, located in the four characteristic sections of the State.

"President Bizzell has got the right idea.

"But the Legislature may conclude that President Bizzell is jealous for his own institution in a way to impair his vision.

"And we can't help believing that the money spent by the State's Agricultural Department could be put to better use increasing the efficiency of the Agricultural and Mechanical College."—Wichita Times.

The Times has raised a question which has been of interest to many of the far-seeing men of Texas; namely, the expediency of continuing the State Department of Agriculture.

Agricultural agencies in Texas are the State Department of Agriculture, the Extension Service and the Texas Agricultural and Mechanical College. Wherein the work of these is duplicated and wherein there is waste of money and energy is a question of efficiency. Thereby also hangs a question of expediency.

Strawberries in Brownsville, Texas, jack rabbit and pork sausage in the Plains and Panhandle country, and Texas a farm-loan-bank district in itself. Shuffle along to Texas.

GRAND JURY DID NOT FIND BILL AGAINST ELMER RHODES.

Elmer Rhodes, who has been held in jail to await the action of the grand jury, following an examining trial held several days ago in the court of Justice of the Peace Earle C. Keck as to alleged theft by larceny of horses, was released this afternoon, when the grand jury failed to find a bill against him. The report of the jury was made to Justice Trilmer about four-thirty o'clock.

W. A. Miller is in Granger, Texas.

IOWAN BUYS RESIDENCE.

Yesterday a deal was closed between H. L. King and Claude A. Beck whereby Mr. Beck becomes owner of a seven-room cottage on Restriction Street. The consideration was \$2,200. Mr. Beck will move his family to Plainview soon.

REINKEN
saves you money. Buy winter clothes now.

TENANT LAW IS INVOLVED IN DISTRICT COURT CASE.

(Continued from Page One.)

T. A. Morrison, suit on note; judgment by default for the plaintiff.

J. L. Craig vs. T. A. Morrison, suit on debt; dismissed and costs paid.

J. S. Cassidy vs. S. P. Davidson, suit for debt; judgment by default.

Robt. McQuillen vs. C. C. Slaughter, suit for land; set for the sixth week of court.

Ex parte vs. Jack S. Barton; judgment removing disabilities.

J. V. Freeman et ux. vs. Otho S. Houston, et al.; dismissed for want of prosecution.

E. P. Norwood vs. W. A. Marshall, et al., trespass to try title.

W. R. Simmons vs. A. A. Tucket, et al.; judgment for defendant.

R. M. Ellerd vs. W. T. Mize; plaintiff demanded jury, and case set for Monday of third week.

W. C. Watson vs. Maggie Finnie, et al., damage; set for Friday of the second week; plaintiff demands jury.

E. L. Lovorn vs. Jno. W. Willis, et al., damage; set for Thursday.

S. G. Levings vs. R. E. Huston; pe-

tion for injunction; dismissed at cost of plaintiff.

A. W. Wallace, et al., vs. R. D. Benson, trespass to try title; set for Wednesday of the third week.

Bessemer Gas Engine Co. vs. Robt. Alley; continued by agreement.

on note and foreclosure; set for Friday on note and foreclosure; set for Friday.

R. E. Burch vs. W. H. Kamerer, suit on note and damage; dismissed.

Ella McWhorter, et al. vs. J. O. Rountree, suit on injunction; set for third week of court.

C. A. Ritter vs. J. W. Cauger, et al.; judgment by default for debt and foreclosure.

C. A. Knupp vs. T. A. Culpepper, trespass to try title; continued to perfect service.

J. N. Morrison vs. J. W. Willis Drug Co., suit for debt; A. M. McMillan permitted to intervene, a receiver being asked for. The case is set for Thursday.

R. W. Sanders vs. E. C. Casey and J. G. Doby, writ for garnishment; defendant's demurrer overruled. Defendant excepts.

A. B. Roberts vs. O. P. Kikor, foreclosure; set for second week.

TEXAS SWINE BREEDERS TO MEET AT CHILDRESS JAN. 17-18.

The Texas Swine Breeders' Association will hold their mid-winter meeting in Childress, Texas, January 17-18.

W. H. Haynes and family returned Saturday night from Decatur, where they have been visiting with Mr. Haynes' mother, who has been ill. She is much improved.

Mrs. Elmer Smith, of Runningwater, has returned from Eddy, Texas, where she has been visiting with relatives.

WANTED—Second-hand trailer. Give price. Address C. C. COVERT, Runningwater. 2t-pd.

SEE H. L. KING, phone 516, for tiling for Trees and Garden. 3t.

FOR SALE—Full-blood White Face bull. Price \$65. F. M. DAUGHERTY. 2e-pd.

FOR RENT—Furnished room with fireplace. Can give board. Married couple preferred. MRS. L. W. DALTON. 1t.

WANTED—Four men for room and board. Nice front rooms. 405 West Main Street. 1t.

FURNISHED ROOM for rent; see-and house south of Baptist Church. Phone 470. 4t.

AUTOMOBILE CURTAIN found in street north of Methodist Church. Owner may have same by calling at Herald office and paying for this ad. 1t.

FOR SALE: Choice half-section six and one-half miles from Court House. Attractive price and terms. R. E. COCHRANE. 1t.

Clothes and shoes will be higher next fall, buy now at the cut prices prevailing at
REINKEN'S

Carter-Houston's January Sale of White

This is Particularly a Sale of Exquisite Dove Undermuslins

Picture to yourself the daintiest, prettiest and sheerest garments you have ever seen—then come here and find just what you have pictured and more. It will be a real treat to visit this special department sale this week and Monday of next week.

Low prices, high quality, and a wonderful display of goods commend this sale to the careful shopper.

Here, this week, we offer you Lingerie, the materials of which are of superior quality, in dainty designs, some with fine edgings and embroideries, others plain. These garments are all made of fresh, crisp and substantial qualities of Nainsooks, Cambrics, Muslins, Washable Silks and every wanted material.

We have included in this special event every kind of undergarment wanted by women, misses and children. There are beautiful and serviceable Corset Covers, Teddies, Gowns, Petticoats, Drawers, Chemises, Princess Slips, and Envelope Chemise. Every garment is cut on the newest lines and is perfect in workmanship.

This is a real hurry up sale—hurry up for you for the choice selections won't last long the way we have specially priced them for this big January offering.

All articles are grouped A, B, C, D, and E. The prices of the groups are invariably as shown in this ad.



<p>Group A</p> <p>49c</p>	<p>DOVE Combinations</p>	<p>See the newest styles in</p> <p>DOVE</p> <p>TRADE MARK</p> <p>Under-muslins</p> <p>"You will Love the Dove"</p> <p>We have the very latest ideas in all under-muslin garments.</p>	<p>Group C</p> <p>98c</p>
<p>Group B</p> <p>75c</p>			<p>Group D</p> <p>\$1.25</p>
<p>Lace Special</p> <p>One lot Torchon and Val Lace Insertions, up to 12 1-2 cent values, sale price 2c</p>	<p>Group E</p> <p>\$1.48</p>	<p>Embroidery Special</p> <p>One lot Swiss, Nainsook and Cambric Embroidery, clean out at Half Price</p>	

Big Showing of New White Piece Goods

During this special January sale of Dove Spring and Summer Lingerie we are showing our new arrivals in Sheer Dimities, Nainsooks, Organdies, Mercerized Flaxons, etc.—goods necessary to your spring sewing plans.

Carter-Houston's

"GOODS THAT SPEAK FOR THEMSELVES"



SOCIETY

Telephone Number 72

ANNOUNCEMENTS.

The Junior Missionary Society will meet Wednesday evening at four o'clock, at the Methodist Church.

The Methodist Church membership will hold the second "get-acquainted" meeting during the prayer meeting hour, in the church auditorium, Wednesday evening.

Mrs. E. Dowden will entertain the members of the Bridge Club at her apartments, at the Ware Hotel, next Tuesday afternoon.

Mrs. R. E. Meyers is entertaining the Five Hundred Club, at her home, this afternoon.

The Benevolent League executive committee will meet in the Central School Building Friday afternoon at three o'clock.

The Working Women's Club will meet Friday afternoon at four o'clock, in the Central School Building. A lesson on cooking will be a feature of the program.

HONORING MRS. EYMAN.

Complimentary to Mrs. A. H. Eyma, of Columbus, Ohio, Mr. and Mrs. E. Dowden entertained Judge and Mrs. L. S. Kinder at dinner at the Hotel Ware last night. Mrs. Eyma left this morning for Missouri, where she will visit her mother before returning to her home.

PRISCILLA EMBROIDERY CLUB.

Thursday afternoon the Priscilla Embroidery Club met with Mrs. C. Fuller. The hostess served a dainty two-course luncheon.

The next meeting will be January 18, with Mrs. K. Hartley.

MRS. MARSHALL PHELPS IS NEW PRESIDENT MYSTIC CLUB.

Officers for New Year Are Elected; Mrs. L. A. Knight Is Leader of Interesting Study.

The Mystic Club met in regular session Saturday afternoon, in the club room, with only a fair attendance. In the absence of the president, Mrs. E. Lee Dye, Mrs. D. F. Sansom presided.

It was time for annual election of officers. The following were unanimously elected:

President—Mrs. Marshall Phelps.
First Vice President—Mrs. D. F. Sansom.
Second Vice President—Mrs. R. W. Brahan.
Secretary—Mrs. R. B. Tudor.
Treasurer—Mrs. W. A. Todd.
Corresponding Secretary—Mrs. J. O. Rountree.
Parliamentarian—Mrs. T. P. Whittis.
Critic—Mrs. H. W. Harrel.
Press Reporter—Mrs. J. J. Bromley.
A very interesting lesson on Egypt followed, Mrs. L. A. Knight being the efficient leader.

PRESS REPORTER.

QUESTIONS FOR THE "AS YOU LIKE IT" CLUB, JANUARY 11.

1. Of what descent was Augustine Inturbide?
2. What army did he organize and for what did it stand?
3. Who led the revolution that ended Inturbide's reign?
4. After banishment from Mexico, why did Inturbide return?
5. Tell something of the "Fiesta" season in Mexico.
6. To whom is Mexico indebted for the advancement in its educational system?
7. What proportion of the inhabitants of Mexico is Indian, and how has it distinguished itself?
8. How is Mexican society divided?

PROGRAM FOR LAMAR MOTHERS' CLUB, JANUARY 12.

Music—Victrola.
Reading—Miss Patti Thraash.
Music—Victrola.
"How the Parents' Co-operation Can Help the Child's Progress in School"—
(1) "Proper Food and Clothing"—Mrs. L. D. Rucker.
(2) "Regular Attendance"—Miss Beulah Posten.
The subject of "Home Co-operation" will be continued next month.

Wallie Boone, of Whiteflat, was in Plainview yesterday on business.

Mr. and Mrs. Tony Chism, of Amarillo, were here Saturday.

E. D. McMurtry, of Silverton, was here Saturday on business.

Tom Sterne and Guy Wade, of Childress, and C. R. Barrett, of Altus, Okla., were visitors in Plainview Saturday.

E. M. McKinney, of Happy, was here Saturday.

Mr. and Mrs. R. A. Haley, of Matarador, were here Saturday.

Mr. and Mrs. O. P. Bush, of Boston, are here for a short visit.

Miss Lacy Dalton, who is teaching at Hale Center, visited in Plainview Saturday and Sunday.

Byron Gist has returned from Memphis, Texas, where he has been visiting for a few days. His home is near Littlefield.

Miss Adoline Irick spent Sunday with her sister, Miss Anna Irick, of Floydada.

Mr. Overton and mother, from Abernathy, were in town shopping Monday.

Miss Riley, from East Texas, has been visiting on the Plains.

J. J. Barton, of Bartonsite, was here yesterday on business.

John Wilkin, of Bartonsite, was here yesterday on business.

Col. W. F. Cody ("Buffalo Bill") is not expected to live, according to news dispatches from Glenwood Springs, Colorado.

B. B. Huguley, of Halfway, was a visitor in Plainview yesterday.

Mrs. T. B. Carter, Mrs. A. G. Hinn and C. E. Carter went to Spur yesterday by motor, returning late last night.

Mrs. F. B. Wentworth was called to her home, in Paulding, Ohio, on account of the illness of her mother.

Mrs. T. P. Whittis returned Sunday from Austin, where she spent the holidays with her father and mother.

MUNICIPAL TREE COST PLAINVIEW ONLY \$87.87.

The finance committee of the Federated Clubs' municipal Christmas tree has made its final report, which shows the cost of the municipal tree to be \$87.87. The surplus has been turned into the fund for the public library.

Frank's Necessity Store, candy	\$ 4.00
Mrs. Wing, typewriting	5.00
J. H. Lockhart, work	1.00
Pierson & Smith Grocery, candy	4.50
L. J. Warren Grocery, candy	3.30
E. G. Bennett Grocery, apples	6.13
Boyd Grocery Co., candy	3.00
Sewell Grocery Co., candy	1.05
East Side Grocery Co., candy	4.50
Cash Grocery Co., sacks and candy	10.20
Richards Bros. & Collier, rope and trimming for tree	3.05
Mr. Dalmont, Christmas tree	15.00
Miss Nell Sansom, incidentals	.50
Labor and material for fixing star	12.00
Express on star here and return	14.64
Total expense	\$87.87

The amount left over, which is \$50.13, has been voted by the City Federation to be used for the Public Library fund.

MRS. MOLLY V. DYE.

MISS WILLIE MAY MILLER SUCCEUMS TO TUBERCULOSIS.

Miss Willie May Miller, daughter of Mr. and Mrs. W. A. Miller, died Sunday morning at 6:30 o'clock, at the family residence, of tuberculosis. Miss Miller had been suffering with the malady for two years. Some six months ago, in company with her father, she went to Colorado, thinking that the change in climate would prove beneficial to her health, returning to Plainview some two months ago.

The funeral services were conducted yesterday afternoon by Rev. J. W. Story, pastor of the Methodist Church, and Rev. A. L. Moore, presiding elder of the Plainview District of that church, and interment was made in Plainview Cemetery, under the direction of A. A. Hatchell.

The many beautiful flower wreaths bespoke the high esteem Miss Miller's many friends held. Pall bearers were Misses Lizzie May Rook, Mildred Thompson, Milly Goode, Gileert Moore, Iva Cole and Rose Nottingham, friends of the deceased.

The Miller family moved to Plainview some four years ago, from Williamson County, Texas. Until a few months ago Mr. Miller was engaged in the wagon and implement business, under the name of the Plainview Buggy Company.

J. Walter Day will leave Wednesday for Chicago, where he will be identified with the Industrial Department of the New Orleans & Great Northern Railroad. Walter S. Ayres, for a number of years Vice President and General Sales Manager of the Texas Land & Development Company, is the recently appointed Industrial Commissioner of this railroad. Mr. Day has for ten years been located in Hale County, pursuing both agricultural activities and the colonization business. While Mr. Day has not disposed of his interests in Hale county and does not intend to do same, still his new work will be of a permanent nature, and his family will shortly join him, in Chicago.

FURNISHED ROOMS for rent. PALACE HOTEL. 6t-pd.

LOST—Cameo pin, in business district, Saturday, January 6. Return to Herald for reward. 2t-pd.

MRS. I. J. HELM IS DEAD.

Funeral Services Will Be Held Thursday Afternoon, at the Plainview Cemetery.

Mrs. I. J. Helm, for a quarter of a century a resident of this section, died late Friday night, at the family residence, in the Halfway community, of pneumonia, after an illness of only a few days. Mrs. Helm was seventy-six years old. Only two months ago her husband, who was en route to Mineral Wells in the hope of improving his health, died at Slaton, and was buried in the Plainview Cemetery.

Mrs. Helm's remains will be interred at Plainview Cemetery Thursday afternoon at 2:30 o'clock, under direction of A. A. Hatchell, the services being conducted by Rev. J. E. Black, of Abernathy.

P. J. Woodridge went to Gainesville Saturday on business.

Judge J. E. Lancaster left Sunday morning for Battle Creek, Mich., where he will be in a sanitarium for several weeks.

J. W. Peace went to Tulla yesterday on business.

BARGAIN.

Quarter-section patented land 7 miles north of Olton for sale cheap. Easy terms. OWNER, Box 325, Plainview, Texas.

Goods will be higher next fall. Buy now for next fall's wear at the low prices now in effect.

REINKEN'S

SPECIAL PRICES

AT



All Ladies' and Children's Shoes

Substantial reductions on all styles. Many styles offered at \$1.00 and \$1.50.

Children's and Misses Cloaks All Reduced

Several dozen styles to select from.

All Ladies Suits and Waists Reduced

All Men's and Boys' Overcoats and Mackinaws at Reduced Prices



Compelling Prices

at Cash Grocery Company's Two Stores

Below we quote you prices from our large assortment of Groceries, both staple and fancy, effective at either of our two stores. Remember, prices named below are far below the market today. If you are in the market for a ny quantity, your every want will be cared for. 14 POUNDS SUGAR FOR \$1.00.

BACON AND HAMS.		BAKING POWDER.	
S. & S. Majestic Breakfast Bacon, pound	30c	All 25c sizes for	20c
Laurel or Banquet, pound	23c	All other sizes same proportion.	
Dry Salt, good quality, pound	20c	Red Star Health Bran, sold exclusively by Cash Grocery Co., sterilized package	25c
S. & S. Sugar-Cured Hams, pound	23c		
Country-Cured Hams, extra quality, lb.	23c		
BEANS AND PEAS.		COMPOUNDS.	
Limas, Pinks or Blackeyed Peas, pound	10c	10-pound Cottolene	\$1.90
CANNED GOODS—FISH.		10 pounds Compound	\$1.50
American Sardines, each 5c; dozen	50c	50-pound cans Compound	\$7.50
American Sardines, Underwood's, each	10c	100-pound cans Compound	\$16.00
Norwegian Sardines, in olive oil	15c	FLOUR.	
Fish Flakes, White, extra quality, 2 for	25c	Guaranteed Quality.	
Pink Salmon, 2 for	25c	Red Star or Pride of Texas, sack	\$2.25
Pink Salmon, dozen	\$1.40	Red Star (hard) at, per 100 pounds	\$4.50
CANNED FRUITS.		Pride of Texas (soft), per 100 pounds	\$4.50
Hurrah! Our car of California Canned Fruits is here at last! Note our prices:		Light Crust, sack	\$2.55
No. 1 size, extra quality, Apricots, Peaches, Plums, Pears, etc., at 2 cans for	25c	Fleischman's Yeast twice a week.	
Any of above, or assorted, per dozen	\$1.40	Olives, individual, 5 ounce, each	10c
Stewed Prunes—something fine—per can	15c	Olives, Sylmar Ripe, each	15c
Pineapple, No. 1 size Del Monte	10c	Popeorn, extra quality, 3 pounds for	25c
Pineapple, No. 2 size Del Monte	17c	2 1/2-gallon keg Pickles, our price	\$1.50
Pineapple, No. 3 size Del Monte	23c	RICE.	
Pineapple, No. 10 size Del Monte	75c	10,000 pounds Fancy Head Rice at, per 100-pound sacks	\$5.50
Extra—12 cans No. 3 Peaches	\$1.50	14 pounds for	\$1.00
Remember we have most everything that is packed—in all sizes.		Broken Head, 100 pounds	\$4.50
CANNED VEGETABLES.		20 pounds for	\$1.00
Corn, extra standard quality, 2 for	25c	POTATOES.	
Per case, 2 dozen	\$2.75	Our price, pound	3 1/2c
Hominy, large size	10c	Per 100 pounds	\$3.40
Hominy, per case	\$2.25	SOAP.	
Hominy, Dairy Maid, packed in pure milk, extra quality, 2 for	25c	13 bars any kind White Laundry Soap	50c
Dairy Maid, case, 2 dozen	\$2.50	Case of 100 bars	\$3.75
Del Monte, extra fancy Tomatoes, 2 large cans	25c	Lenox (yellow), 7 for	25c
Del Monte Tomatoes, case, 2 dozen	\$2.65	Case of 100 bars	\$3.40
Pork and Beans, White Swan, 2 for	25c	SUGAR.	
CATSUP.		14 pounds Sugar for	\$1.00
Griffon, pints, 25c value	19c	100-pound sacks for	\$7.50
Snyder's, pints, 35c value	30c	This is below the market. If you are in the market, buy today. (Subject to change.)	
Catsup in gallons	75c	COFFEE.	
Cocoon in bulk, long shredded, extra quality, pound	25c	Arbuckles', 10-pound quantity	\$2.25
COFFEE.		Folgers', full line now	List
Peaberry in bulk, Our Leader; ground while you wait; guaranteed; pound	25c		

Winter Is Not Over by Any Means

Look Out for a Coming Cold Spell

Perhaps you have put off buying that OVERCOAT, or MACKINAW, or a HEAVY SUIT OF CLOTHES, but the reduced prices now in effect ought to bring you to the conclusion that now is the time to buy and save yourself a nice piece of money.

Then there are BOOTEES, CAPS, SWEATERS, FLANNEL SHIRTS, WOOL UNDERWEAR and scores of useful articles for cold weather wear going at CUT PRICES.

CLOTHES AND SHOES WILL SURELY BE HIGHER PRICED NEXT FALL so why not anticipate your wants and buy now at the prevailing low prices.

Think it over and come to

REINKEN'S Clothing and Shoe Store

Look for the Big Electric Sign

CASH GROCERY COMPANY

PURE-FOOD PRODUCTS.

STORE NO. 1—622 Broadway, Phone 101.

STORE NO. 2—East Side Square, Phone 337.

Our deliveries leave on schedule time—9:00 and 11:00 a. m.; 3:00 and 5:30 p. m. Stores open promptly at 7:00 a. m. and close at 6:30 p. m.

COMING! COMING!

THE SEASON'S SENSATION

ADMISSION FREE

WEDNESDAY, JAN. 17, 1917

X I T RANCH IS BOUGHT
BY PAT AND JOHN LANDERGIN.

John and Pat Landergin, of Amarillo, Texas, are reported to have just closed a deal for 100,000 acres, known as the old X I T Ranch, for \$5.75 an acre, or a total of \$575,000. The ranch covers a part of Oldham and Deaf Smith counties, in the western part of the Panhandle country of Texas. For

several years Landergin Brothers have owned and operated a large cattle ranch located at Vega, Texas, 20 miles from the ranch they have just purchased. For several years, too, they have been operating under a lease most of the X I T ranch, which they now own under the new deal. They have on this ranch at present 7,000 cattle.

"We are becoming convinced," John

Landergin said, in discussing this deal, "that in order to continue in the cattle industry we must own more land, and not depend upon leasing any longer. This was simply a case where if we did not step in and buy, some one else would. The days of free range and lands available for leasing have passed. The ranch we have bought is fenced, but we will at once begin making many other improvements in fence building and the boring of wells. It is well watered in places by springs, and where such water is not available we will put down wells and erect water tanks. As heretofore, this will remain our steer ranch, and it will continue to be stocked with what is known as the Bell cattle. We have bought the calves from this ranch, located in New Mexico, for many years, and we expect to continue handling them. On the other ranch we will do considerable breeding."

According to the custom of allowing 30 acres to the steer, which was the rule in the early ranching days, when the country was open, the X I T Ranch will carry about 3,300 aged steers, remarks the Drovers' Telegram. But under the modern methods in force in Panhandle ranching, where a large amount of feed is used through the winter and in dry periods, this ranch will carry 10,000 or more cattle. This land is in one body, and borders on the New Mexico line. The ranch has long been noted for its cattle.—Oklahoma City Livestock News.

TEXAS U. FOOTBALL SCHEDULE.

AUSTIN, Texas, Jan. 6.—The 1917 football schedule for the University of Texas has been completed, and consist of eight games. The game with A. & M. College will be played at College Station, just a week before Thanksgiving, while the Thanksgiving attraction will be the game with the University of Arkansas, at Austin. The complete schedule is as follows:
Saturday, October 6—Trinity University, at Austin.
Saturday, October 13—Southwestern University, at Austin.
Saturday, October 20—University of Oklahoma, at Dallas.
Saturday, October 27—Rice Institute, at Austin.
Saturday, November 3—Baylor University, at Waco.
Saturday, November 10—University of Missouri, at Austin.
Wednesday, November 21—Texas A. & M. College, at College Station.
Thanksgiving, November 28—University of Arkansas, at Austin.

Another Note from President Wilson

This is not another note from President Wilson but it is a message of economy for shrewd buyers who try to obtain the necessities of life in good quality as cheaply as possible. It conveys to you as much as any note ever written, information which will help reduce your high cost of living.

Our Big Food Specials for the Week:

Coffee—4-pound pail Best Rio, this week only	95c	Luxury Brand Bartlett Pears, in 2 1/2-pound cans, each	25c
Coffee—3 1/2-pound pail the very best Santos Peaberry for	95c	2 cans for	45c
Coffee—3-pound pail Maxwell House	90c	Del Monte Tomatoes, large size, 2 cans	25c
Coffee—No. 1 Peaberry, in bulk, per pound	22 1/2c	Per dozen	\$1.40
Coffee—No. 2 Peaberry, in bulk, per pound	20c	Luxury Blackberries—	
Gallon California Fruit, Capitol Brand, per gallon—		Two 2 1/2-pound cans for	45c
Yellow Free Peaches	40c	Per dozen	\$2.35
Apricots	45c	Luxury Strawberries—	
Blackberries	45c	Two 2 1/2-pound cans for	45c
Loganberries	50c	Per dozen	\$2.35
Del Monte Catsup, per gallon	70c	Dixie Jelly, 10-pound pail	65c
Luxury Brand Sliced Pineapple, in gallons	65c	Whole Head Rice, 16 1/2 pounds for	\$1.00
Ideal Brand Sliced Peaches, in heavy syrup, in 2 1/2-pound cans, each	20c	Per 100 pounds	\$5.50
Justice Corp., 2 cans for	25c	Best Breakfast Bacon, pound	27c
Or, per dozen	\$1.40	Sugar-Cured Bacon, per pound	23c
		Best Oil, 5 gallons for	55c
		Flour is advancing every day. Better buy your Flour now. Best soft-wheat flour, guaranteed to be as good as there is, per 100, \$5.25	
		Royal One, best blend	\$4.50

We make two deliveries a day so phone us your orders

Farmers Exchange

"The Store With a Hart"

Phone 674

A Few Extra Specials While They Last

We have left a very few sets and individual pieces in high class FURS which we are closing out at ONE-HALF PRICE. This means a genuine saving on a necessity which has advanced in price and will advance more.

One lot of children's and misses' hose, the pair 10c

One lot of Torchon and Val Lace Insertions which formerly sold up to 12 1-2c a yard, extra special while they last, your choice, the yard 2c

New Arrivals at Your Store

New spring Gingham and Percales are now being shown in our Wash Goods Section.

We have just received and have ready for your inspection a new assortment of \$4 and \$5 creps de chine blouses.

CARTER-HOUSTON'S

"Goods That Speak for Themselves"