

# THE PLAINVIEW EVENING HERALD

Official Paper of the City of Plainview.

TWICE-A-WEEK

Official Paper of the County of Hale

FRIDAY, SEPTEMBER 21, 1917

PLAINVIEW, TEXAS, VOLUME 28, NUMBER 70

## GOVERNOR FERGUSON IMPEACHED ON FIRST CHARGE--27 TO 4

—Star Telegram.

### 16 MEN LEAVE OCT. 3 TO FILL HALE CO. QUOTA

SIX HAVE APPLIED TO DISTRICT BOARDS AND AWAIT DECISIONS.

### 23 DEPARTED WEDNESDAY

Stores Closed While 1,500 Paid Respect to Departing Future Soldiers.

The Kid has gone to the Colors, And we don't know what to say; The Kid we had loved and cuddled Stepped out for the Flag today. We thought him a child, a baby With never a care at all; But his Country called him man-size, And the Kid has heard the call.

His Dad, when he told him, shuddered; His Mother—God bless her!—cried, Yet, blest with a mother-nature, She wept with a mother-pride; But he whose old shoulders straightened Was Granddad—for memory ran To years when he, too, a youngster, Was changed by the Flag to a man. —W. M. Herschell.

The going of the twenty-three young men of Hale County to Camp Travis Wednesday morning stirred the Americanism of a crowd of perhaps fifteen hundred citizens who gathered at the Santa Fe station to bid them God speed. And yet many were the hearts saddened at that strange scene.

Many of the stores had closed in honor of those departing. They had been laden with gifts by thoughtful ones during the afternoon of Tuesday, and at the parting little pocket "housewives" were presented them by the members of the Girls' National Honor Guard.

But seventeen had expected to go until the night before departure, when telegraphic information ordered all available sent.

Fred C. Pearce, chairman of the exemption board, explained this was because the designated quotas of the east and south Texas counties were so large that many negro registrants would have to be sent. Instead, the counties having mostly white registrants were called upon to furnish additional white men to fill the assignments to Camp Travis, and the negroes drafted will be sent elsewhere.

Those who left Wednesday were: Patrick Connelly, Oliver Linwood Shelton, Richard C. Martin, Wm. Marlon Moore, Frank Joe Paekte, Willie Dick Hinds, John Thomas Mathis, Stephen P. Jones, Carl Laney, John Hatmaker Empe, William Henry Cornett, Charles Cox Brown, James Whitacre Fort, August William Otto, Edward Smith, John Henry Wayland, James Wm. Harrell, Barber Eubanks, James Kelley Hooper, Herman Lee Gnammer, Dont Dent Wallen, John McVickers, and George Antony Fessler.

The remainder of the Hale County quota, sixteen in number, will leave here a week from next Wednesday, October third.

The local exemption board was ordered to have in readiness ten per cent in excess of the required quota to allow for possible exemptions granted by appeal boards.

There are several appeals now before the higher board. These have not yet been reported back. Unless approved and exemptions are granted, these men who have appealed will leave October third: Raymond Dwight Gibbs, Plainview; Leonidas Leslie Gibson; Plainview; Claude Harrison Bray, Plainview; Coy Onos Durham, Plainview; and Harry W. Pierson, Plainview.

Those who have not been granted exemption or made appeal and are subject to call of October third are: William Henry Casey, Hale Center; Jasper Lee Gipson, Plainview; Byron Fyffe Yancey, Plainview; Burgin Bird, Plainview; Travis Edward Lutrick, Hale Center; Manan Columbus Johnson, Pampa; Roy Andrew Upton, Plainview; Harvey B. McGuire, Hale Center; Kirby Lee Smith, Lubbock; Ross White, Abernathy; William Olive Hunt, Plainview; Dan Miers, Plainview; and Forrest Cleveland Hoffman, Plainview.

A few others are available for emergencies which might arise before the time of departure.

### Three Civil Cases In Three Days Is County Court Record

County Court is grinding at the rate of a case a day.

Wednesday judgment was rendered the plaintiff in the case of T. P. Buswell vs. L. T. Maybough, garnishee.

Tuesday the case of Oxweld Acetylene Co. vs. L. H. Russell, suit on contract, resulted in a hung jury.

Today the damage suit case of Joe Lee Ferguson vs. B. M. Johnson was heard. At five o'clock the jury had not returned a verdict.

### ODES INFANT BURIED.

The infant daughter of Mr. and Mrs. Henry H. Odes, of Kress, was buried in the Plainview Cemetery Thursday, under the direction of A. A. Hatchell.

### "BAT" NELSON HERE WITH YANKEE ROBINSON CIRCUS

Always Kept Himself Physically and Morally Straight During Fighting Career.

"What was the hardest fight you ever had?" asked a Herald reporter yesterday of Battling Nelson, who was here with the Yankee Robinson Shows.

"A negro fighter by the name of Williams, at Hot Springs, Ark., gave me the toughest two rounds of my fighting career," answered the world's lightweight champion. "He knocked me down four times in the first round, and I think six times in the second. He had me about done for when it was whispered from his corner of the ring that he was slipping. I waded in in the third and had him going down hill from then until the finish."

"Who do you consider the most consistently hard fighter you ever tackled?" was then asked of Champion "Bat."

"Without a doubt, Gans was the best man I ever had to make a reputation on," said Nelson.

Battling Nelson is a very human sort of a fellow, although the human qualities of his face ordinarily contained in the ears and nose have been battered into "cauliflowers" on the "map" of the famous fighter. His ring injuries have been responsible for twenty-seven operations on his nose and six or seven on his ears.

Nelson has always been acclaimed the squarest fighter the game has ever known. He has always kept himself physically and morally fit, and attributes much of his success to the fact that he never smoked a cigar, took a chew of tobacco, or a drink of liquor in his life.

"Who do you consider the best fighter of today?" was the next question.

"There are none," came the answer. "The modern fighter is too much of a degenerate to get very far. The best of them today would have been poor second raters in the olden days."

Nelson appeared with his sparring partner in the aftershow of the circus performance yesterday.

Among the better acts of the big show yesterday were those with the runt pigs and Col. El Sauer, the seals with Captain Wesley, the pumas with Ruth Irwin, the lions with Capt. Gerald Irwin, the polar bears with La Pencho, and the high school horses ridden by Chas. Barry, Virgil Barneit, and Bessie Harvey. The contortionists, Daisy Bachmann and Rue Enos, were good.

### NEARLY ONE-HALF INCH OF RAIN REPORTED THIS WEEK.

Eight hundredths of an inch of rain was recorded by the local weather station on Wednesday. With the rains of Monday and Tuesday, the total for the week has been brought up to .43, nearly one-half inch.

The total for the year to date has been nine and three-quarters of an inch. Most of this moisture has fallen at times to do the most good for feed crops, and unless an early frost injures the late crops, the Plainview country will have a splendid feed crop yield.

Unusually heavy rains have been reported west and south of Plainview for several days this week. The eastern part of Lamb County and the western and southern parts of Hale County are well soaked.

John T. Holland was in Canyon Saturday.

### ABE NYE GIVEN TWO YEARS ON THEFT CHARGE

Four Important Criminal Suit Motions for Rehearings Will Be Reviewed Tomorrow.

Abe Nye was given two years' sentence in the state penitentiary last night when the jury found him guilty on the charge of theft of wire. His attorney will ask for a rehearing of the case. Judge Joiner will consider the motion tomorrow.

In the case of W. R. Matsler vs. the P. & S. F. Railway Co., damage on live-stock shipment, each side made a motion for judgment. Judgment was rendered for the plaintiff.

Motion for new trials for Tom Duke, convicted on a charge of arson; Bob Payne, convicted on charge of theft, and C. E. Gibson, convicted on charge of burglary, will be heard by Judge Joiner tomorrow.

Bess Thompson has withdrawn his motion for a rehearing and will accept the penalty imposed by the jury, which found him guilty of aggravated assault and fixed a fine of \$25 and thirty days' jail sentence.

Judge Joiner will consider judgments in the county delinquent tax suits tomorrow. There are more than fifty of these cases.

This afternoon the court granted a divorce to Mrs. Charlie A. Harp, of Abernathy, from her husband, Dr. E. M. Harp. The custody of two minor children was given to Mrs. Harp.

### 400 POUNDS OF GOODS ARRIVE FOR RED CROSS

Many More Volunteers Wanted to Help Make Up Hospital Garments.

Four hundred pounds of cut-out garments arrived yesterday for the local chapter of Red Cross. These articles are for pajamas and other bed clothes for hospital use, and cost approximately \$350.

Mrs. E. E. Roos, chairman of the committee on publicity, stated today that the chief need of the chapter now is workers. There are very few women who are sewing regularly, and with these new garments it will be necessary to interest many more women in the work.

In the knitting work there is a sufficient number of prospective workers as soon as the yarn arrives.

Mrs. T. B. Carter, general chairman of the chapter, is fitting an office at headquarters, according to instructions. Yesterday a desk for the office was given by L. R. Pearson.

On Tuesday the chairmen of the several committees of the local chapter will go to Halfway to organize an auxiliary, and two days later will organize another at Petersburg.

### MISS MAYHUGH REMEMBERED.

A host of admiring and appreciative friends were at the Santa Fe station this afternoon when Miss Edna Mayhugh left for her new home, at Kansas City. Practically the entire congregation of St. Mark's Episcopal Church was there, and many friends brought gift boxes.

Miss Mayhugh has been active in club, charity, and civic work, and will be missed by her associates.

### HOUSTON HANDLES TWO CARS.

C. R. Houston has taken the distribution of the Paige automobile. Mr. Houston will also have the Harroun car as soon as this light car is placed on the market. At present he has headquarters at Carters' Garage, on Austin Street.

### BIRTHS.

Born, to Mr. and Mrs. Fred Weyl, three miles east of Plainview, September 19, a son.

Born, to Mr. and Mrs. Robert V. King, 13 miles southeast of Hale Center, September 17, a son.

Born, to Mr. and Mrs. Evarder Moon, ten miles west of Plainview, September 18, a son.

Born, to Mr. and Mrs. Raymond Young, Plainview, September 13, a daughter.

Born, to Mr. and Mrs. W. W. Connell, Plainview, September 21, a son.

### GRAND JURY WANTS NO MORE SHORT WEIGHTS

Recommend New Jail and Greater Allowance for Board of Prisoners.

The report of the Grand Jury which adjourned Tuesday afternoon found more than felonies and misdemeanors to complain of.

A new jail, an investigation of short weights and measures and prohibition of the sale of intoxicating liquors and patent medicines were recommendations of that body.

They report that, in company with Dr. J. C. Anderson, county health officer, they inspected the jail in the basement of the court house and found it unsanitary and inadequate; that it is an unsafe place to keep prisoners. They found that prisoners are being fed but two meals a day and those of food not good or wholesome. They found that the county is allowing the jailer but forty-five cents a day for the board of each prisoner, and recommend to the County Commissioners that steps be taken to erect a new jail, and because of the high cost of foodstuff, to make an allowance of seventy-five cents a day for the meals of each prisoner.

In connection with the unsanitation and board of prisoners, they do not lay blame upon the officers in charge, but rather upon conditions which could not be improved except for authorized changes.

Numerous reports were brought to the attention of the Grand Jury, according to its report, of the practice of merchants, meat markets, and dealers in other commodities practicing the giving of short weights and measures. Many complaints were also filed stating short weights on ice deliveries.

The Grand Jury recommended that the county attorney take steps to stop such practices and protect the buying public from such short weights.

They also state that their attention was called to the fact that various kinds of bitters and patent medicines are being sold by druggists of the county and that these liquids are intoxicating. They recommend that steps be taken by the officials to stop such sale.

During its session the Grand Jury examined over two hundred witnesses and returned eighty-four indictments, fifty-one of them for felonies and thirty-three for misdemeanors.

### MISS DOLLY RICHARDSON FIRST WOMAN TO GIVE TOBACCO DOLLAR.

Miss Dolly Richardson was the first American fighting man to enjoy a week's smoke at her expense. She is the first lady to add one dollar to the Soldiers' and Sailors' Tobacco Fund. Her contribution brings the total contribution from Plainview to \$38.50, enough to supply one hundred and fifty-four Sammys with smokes for a week.

Nearly every newspaper which one reads tells of the difficulty the Americans in France are having in securing tobacco, and, if it can be obtained, of the high prices charged.

Contributions to this fund make possible the purchase of forty-five cents' worth of tobacco in this country which is sent to France for twenty-five cents.

Contributions will be received at The Herald for this cause.

### WAYLAND COLLEGE ENROLLMENT REACHES OVER 175.

Dr. R. E. L. Farmer stated to a Herald reporter this afternoon that complete classification of the students at Wayland College has not yet been made, but the enrollment will run from 175 to 190.

It is expected that some will come in Monday to matriculate.

### GERARD CITIZENS OFFER \$10,000 REWARD FOR GERMAN GENERAL.

FORT WORTH, Texas, Sept. 20.—Citizens of Gerard, Kent County, have raised a \$10,000 fund to be offered as a reward for the taking dead or alive of the German commander of the Eleventh Division. It was this commander who recently was reported in Associated Press dispatches to have offered a reward of 400 marks or approximately one hundred dollars for the first American soldier dead or alive brought behind the German lines.

### Plainview Methodist Sunday School Lead State in Attendance

The Plainview Methodist Church was first in attendance of its Sunday School for the State of Texas on September sixteenth, with 652, according to the Texas Christian Advocate of September twentieth.

Dr. E. E. Robinson, the local pastor, is very proud of the record, since there are now five annual conferences in the state. His Sunday School not only lead the state in attendance on that day, but there were only two other Sunday Schools in the state which ran over 600 in point of numbers, Wichita Falls and the First Methodist Church of Fort Worth.

While at Amarillo, Doctor Robinson had the pleasure of leading the state in Sunday School attendance on several occasions.

### GOVERNOR REFUSES TO TELL SENATE SOURCE OF LOANS

"If I Have to Pay the Price of My Office I Will Keep Names Secret," Says Executive.

AUSTIN, Texas, Sept. 20.—Despite a large affirmative vote that he disclose to the Senate high court of impeachment all the circumstances surrounding his borrowing of \$156,500 in currency this year, Governor James E. Ferguson this afternoon refused to do so.

The governor said he intended no disrespect to the court, which had voted 23 to 7 that he should answer a long series of questions propounded by M. M. Crane, counsel for the House board of managers.

"But," he added, "I believe honestly and candidly that I have the constitutional right to decline to furnish this information. I don't believe any court in the land will hold me guilty of contempt."

Following the governor's statement, Mr. Crane turned him over to W. A. Hanger for re-direct examination. After a few questions concerning the State University matter and the Temple State Bank, recess was taken until morning, with the prospect that all evidence will be in sometime tomorrow. If a recess is not taken over Saturday and Sunday, the week-end will probably see the conclusion of the case.

When Attorney M. M. Crane asked him to tell who loaned him the money, the governor said:

"When I obtained that money I promised the friends who helped me I would keep their identity secret. However, if the price of my office must be paid by refusing to open up to the public my private affairs, I must pay that price."

He said the transaction had no reference to any official act.

### G. C. ELECTRIC CO. TO HAVE NEW HOME IN ELK BUILDING.

The G. C. Electric Co. is planning a fine new home in the Elk Building, in the store room now occupied by Miller Dry Goods Co. They will open there November first.

Special fixtures of mahogany, plate glass and French mirrors have been ordered, at a cost of approximately \$2,500. The large front show window will have a plate glass backing to admit the light. The rows of showcases and wall fixtures on the north and south walls will be fitted with marble base. The floor will be covered with a heavy cork linoleum.

About sixty feet from the front will be two Victor recital rooms with a record room against the north wall serving both recital rooms. Back of these will be a demonstrating room for heavier electrical apparatus, such as ranges, washing machines, etc.

The new store room has been leased for three years. J. F. Garrison, president of the company, stated this morning that a complete line of sporting and electrical goods and Victrolas will be carried in the Elk Building store, while the present location, on Fifth Street, will be retained for the battery station, and for the sale of tires and other auto supplies.

### MARRIAGE LICENSES.

County Clerk Jo. W. Wayland issued marriage license to George Richards and Miss Verna Harrison on September 16, and to Gustav Robert Akerston and Amelia Lorene Wicker on September 20.

### TERRIFIC ALLIED DRIVE ON WESTERN FRONT

FIGHTING AT YPRES MOST DESPERATE, AND PERHAPS MOST IMPORTANT.

### ADVANCES MOST IMPORTANT

Active Campaign All Along West Front Being Met With Stubborn German Resistance.

BRITISH HEADQUARTERS IN FRANCE AND BELGIUM, Sept. 20.—Field Marshal Haig's offensive which was begun at dawn this morning on the Belgian battle front, is proceeding with marked success, especially in the crucial sector between the Ypres-Roulers Railway and Hollebeke.

If the attacking forces maintain the positions to which they have advanced in this section, they will have accomplished one of the most remarkable and most important achievements in recent months. The German infantry made the most determined resistance in their attempt to regain this vital ground, and their artillery retaliated heavily against the British big guns.

LONDON, Sept. 20.—The British forces on the Belgian front attacked the German positions at 5:45 o'clock this morning east of Ypres. Field Marshal Haig reports that satisfactory progress was made and that the British already have captured some valuable positions.

The British official statement announcing that Field Marshal Haig had taken the offensive this morning says:

"We attacked at 5:40 this morning on a wide front east of Ypres. Satisfactory progress is reported. Our troops already have captured some valuable positions."

Field Marshal Haig's selection of the battle front to the east of Ypres in Belgium as the scene of his latest offensive against the Germans indicates that it is a continuance of the expressed purpose of the British commander-in-chief to force the armies of Crown Prince Rupprecht of Bavaria from the western coast of Belgium and to cut off the German submarine and airplane bases on the North Sea from Zebrunne to Nieuport, including Ostend.

The British drive apparently is being made in the direction of Roulers and Courtrai, from which Belgian towns, according to recent dispatches from the Dutch front, the German military authorities have been evacuating the civilian population.

That the British offensive has been in progress for several days was made known in recent statements of the German general headquarters staff. The Germans reported that the British were maintaining a violent and destructive fire against the Teuton positions, the bombardment frequently reaching the intensity of drum fire.

A bitter fight is in progress in the neighborhood of Iverness Copse/Nunwood and Glencorse Wood. If the attackers maintain the positions to which they have advanced in this section they have accomplished one of the most remarkable and most important achievements in recent months.

The German infantry is making a most determined resistance to retain this vital ground, and the Teuton artillery is retaliating heavily against the British big guns.

Today's offensive will be known as the battle of the Menin road. Fair weather had improved the ground, but the mud still was deep and the whole territory covered with water-filled shell holes, tangled barbed wire and shattered trees. The German defenses were composed largely of concrete redoubts.

The Germans poured a wicked stream of bullets into the ranks of the advancing troops from concrete redoubts. Every little elevation and all the woods were choked with rapid fire guns.

The British encountered hard fighting at many places, but their magnificent artillery work had done much to make the first stage of their drive easier.

John Lucas and family returned yesterday morning from a vacation trip to several of the prominent cities of the South. They did not get to visit Havana, Cuba, as they expected.



**Community Correspondence**

**WHITFIELD NEWS.**

WHITFIELD, Sept. 18.—Mrs. J. Crosthwait and children returned last Wednesday, after a two weeks' visit to Jones County.

W. Ganancy, from Wingate, Texas, visited his brother Bob and family a few days last week.

Mr. and Mrs. Saunders and family left Wednesday morning for their home, in Oklahoma, after a brief visit with relatives here.

Mr. Street and Mr. Ooley were Floydada callers Tuesday morning. Will and Henry Ratjen left for the training camp the first of the week.

Mrs. E. C. Dodson has gone to Canyon to keep house for her daughters, who are attending school there.

Brother Edwards, of Kress, preached to a full house here Sunday evening.

Gene Bass, of Kress, was in our community Sunday evening, and took charge of the young people's class in Sunday School.

School will soon commence here, with Mrs. Mattie Walling and brother as teachers.

Mr. and Mrs. Morris Kemble, of Dimmitt, were in our community last Sunday evening.

A fine shower fell here recently.

**BARTONSITE ITEMS.**

BARTONSITE, Sept. 18.—School opened September 10, and has been progressing nicely. Arrangements are being made to put in a new heating system and other improvements.

Joe Barton was transacting business in Abernathy Friday.

Joe Oatis, of Tucson, Ariz., has been visiting his sister, Corrah Lee Oatis, the past week.

Mr. and Mrs. J. P. Carr visited the Lubbock County Fair Saturday.

A nice rain fell in our community Monday afternoon.

Sunday School is increasing in number and interest. Every one come and bring some one else.

Joe Oatis left for Canyon Saturday, where he will visit with his mother.

Mr. and Mrs. J. P. Wilkins, Mr. and Mrs. H. R. Carr, Mr. and Mrs. John Waddell, Miss Josephine Waddell and Messrs. Joe and Jack Barton were Lubbock Fair visitors Saturday.

Miss Corrah Lee Oatis was an Abernathy visitor Friday evening.

Many of the farmers are busy sowing wheat.

There was a large crowd in attendance at the singing at J. L. Brandt's Sunday night.

**SECOND LIBERTY LOAN ON MARKET FROM OCTOBER 1 TO 27.**

WASHINGTON, Sept. 20.—The second liberty loan campaign will last four weeks, opening October 1 and closing October 27. Wednesday October 24, will be celebrated as Liberty day throughout the country and arrangements will be made to hold patriotic meetings in every city, town and village.

Details of the second liberty loan, it was officially announced tonight, will be made public as soon as possible after Congress disposes of the \$11,000,000,000 bond bill.

Diseases are not the only things that are contagious. Kindness is contagious. Manly integrity is contagious. All positive virtues are contagious.—Henry van Dyke.

Every duty we omit obscures some truth we should have known.—Ruskin.

Charter No. 9081. Reserve District No. 11.  
**REPORT OF CONDITION OF**  
**The Citizens National Bank**  
AT PLAINVIEW, IN THE STATE OF TEXAS, AT THE CLOSE OF BUSINESS  
ON SEPTEMBER 11TH, 1917.

RESOURCES.	
1. (a) Loans and discounts (except those shown on (b) and (c))	\$364,181.01
Total loans	\$364,181.01
2. Overdrafts	6,446.57
<b>5. U. S. bonds (other than Liberty Bonds of 1917):</b>	
(a) U. S. bonds deposited to secure circulation (par value)	\$100,000.00
Total U. S. bonds (other than Liberty Bonds) and certificates of indebtedness	100,000.00
6. Liberty Loan Bonds, unpledged	\$ 6,500.00
7. Stock of Federal Reserve Bank (50 per cent of subscription)	3,600.00
11. Furniture and fixtures	9,255.00
12. Real estate owned other than banking house	10,212.35
13. Lawful reserve with Federal Reserve Bank	26,147.13
15. Cash in vault and net amounts due from national banks	88,877.06
18. Checks on other banks in the same city or town as reporting bank (other than Item 17)	654.21
Total of Items 14, 15, 16, 17, and 18	\$ 89,531.27
20. Redemption fund with U. S. Treasurer and due from U. S. Treasurer	5,000.00
<b>TOTAL</b>	<b>\$629,873.33</b>
LIABILITIES.	
22. Capital stock paid in	\$100,000.00
23. Surplus fund	20,000.00
24. (a) Undivided profits	\$ 20,827.94
(b) Less current expenses, interest, and taxes paid	4,540.58
27. Circulating notes outstanding	100,000.00
29. Net amounts due to National banks	97.48
30. Net amounts due to banks and bankers (other than included in 28 or 29)	26,093.93
Total of Items 28, 29, and 30	\$ 26,191.41
Demand deposits subject to Reserve (deposits payable within 30 days):	
31. Individual deposits subject to check	260,467.84
32. Certificates of deposit due in less than 30 days (other than for money borrowed)	6,200.64
34. Cashier's checks outstanding	726.13
Total demand deposits subject to Reserve, Items 31, 32, 33, 34, 35, 36, 37, and 38	\$267,494.61
Time deposits subject to Reserve (payable after 30 days, or subject to 30 days or more notice):	
39. Certificates of deposit (other than for money borrowed)	90,899.95
Total of time deposits subject to Reserve, Items 39, 40, 41, and 42	90,899.95
<b>TOTAL</b>	<b>\$629,873.33</b>

STATE OF TEXAS, COUNTY OF HALE, ss:  
I, R. A. Underwood, Cashier of the above-named bank, do solemnly swear that the above statement is true to the best of my knowledge and belief.  
R. A. UNDERWOOD, Cashier.  
Subscribed and sworn to before me this 20th day of September, 1917.  
FLOY PIPPIN, Notary Public.  
CORRECT—Attest:  
J. N. DONOHOO,  
WAYNE PAXTON,  
R. C. WARE,  
Directors.

**Wayland Baptist College**—This institution offers excellent advantages in the Departments of Music, Art, Expression, Business, Education etc. Students who finish in our Academy will be admitted to schools or colleges of university rank. Students who complete our two years of regular College work will be admitted to the Junior year in the best Colleges or Universities.  
Best Educators are now agreed that it is better to take Academy or Junior College work in a regular Junior College. Young and immature students can not have the personal attention and individual attention in larger Colleges or Universities which they would have in a school like Wayland or other Junior Colleges.  
The Department of Education which has been recently added will be in charge of Dr. W. A. Wilson, an educator of long and successful experience, who has made special study of educational problems in America and Europe. Special attention will be given to those who wish to prepare themselves for the work of teaching. Write for catalogue or confer with us personally.  
R. E. L. FARMER, President

On Account of Holiday We Will Be Closed All Day Wednesday, Sept. 26

**THE NEW FALL SUITS AND COATS**



We direct special attention to our extensive showing of Beautiful Coats and Suits. Our styles are so different and numerous we can't begin to describe them here.

Accept this invitation to call and see our individual and distinctive garments which we are offering at prices that will surprise you.

Coats ranging in prices at \$11.50 to \$59.50.

Suits ranging in prices from \$13.45 to \$69.50

**Misses' and Girl's School Dresses**



An extraordinary purchase of Misses all wool serge dresses which we are offering at extra special values.

\$12.95 and \$14.50

Over 25 different styles in this lot elaborately trimmed and made of French serge, sizes from 14 to 38.

**Our Girls' Serge Dresses**

6 to 14 years at \$3.95 to \$5.85.

**The Very Newest in Fall Boots**

We have just received another shipment of Misses' medium military heel in Havana brown only \$5.85. Others as low as \$3.85 and up to \$12.50.



**Jacobs Bros. Co**  
THE ONE PRICE CASH STORE

"Plainview's Fastest Growing Store"

**Lum Terry and John Vaughn Say**

That September the 24th is the limit of endurance for violating the law by using bright headlights on your auto.

LET US EQUIP YOUR CAR TODAY WITH  
**"MORE-LITE" LENS**

Small Sizes \$2.00 set. Large Sizes \$2.50 set



**"Safterlite" Lens**

Make your auto safe under the new automobile regulation law which becomes effective, by local enforcement of Monday September 24th.

Don't take a chance on getting by a day or two without these special lenses on your car. You may escape but you had better not try it.

Let us put a pair on your car now and be prepared to wave a greeting to the officers on Monday.

\$2.50 a Set for all makes of cars \$2.50

**Alfalpa Lumber Co.**

Phone 163 Plainview, Texas



**WHAT RIBBONS SIGNIFY.**

**America Rewards Its Soldiers With Emblems of Service.**

The War Department is receiving many inquiries from a pardonably curious public as to the meaning of the various insignia worn on the uniforms of officers and enlisted men of the army, and as a result has authorized the following:

The little strips of parti-colored ribbon worn on the left breast, each of a prescribed length of one and three-eighths inches are army service ribbons, each ribbon having its own peculiar significance. The stripes are symbols standing for medals and campaign badges which the bearer is entitled to wear. There are ten of these honors recognized by the army. Two are medals of honor, one a certificate of merit and the others are badges of historic campaigns. Obviously it would be impractical for the possessor to wear his medals and badges on his service uniform, and so he wears the little ribbon symbol instead. The ribbons are as follows:

**Congressional Medal of Honor:** White stars on a field of light blue silk. This medal is awarded only by Congress for some particular deed of gallantry in action. It is the most coveted of all army honors.

**Philippine Congressional Medal:** Blue band in center flanked by stripes of white, red, white and blue, the blue on the outermost edges of the ribbon. This ribbon is worn by those men who stayed in the service after the conclusion of the Spanish-American war to put down the Philippine insurrection.

**Certificate of Merit Badge:** Two red, white and blue bands, separated by a thin band of white, the blue being uppermost in each instance. This honor is conferred by the President.

**Civil War:** Campaign ribbon of equal-sized bands of blue and gray.

**Indian Wars:** Bright red, with narrow edges of deeper red.

**Spanish Campaign:** Alternating stripes of yellow and blue. This is the most familiar of all campaign ribbons.

**Philippine Campaign:** Blue band in center, flanked by narrower bands of red, blue edges.

**Cuban Occupation (time of Spanish War and several years thereafter):** Blue in center, flanked by narrow yellow stripes, then broader red stripes, and finally blue borders.

**Cuban Pacification (indicating service in Cuba during the period 1906-1909, when the United States straightened out governmental affairs for the new republic):** Broad olive drab center, flanked by three narrow stripes of red, white and blue, the red on the outermost edges.

**China Campaign (indicating service in the march to Peking):** Broad band of yellow with narrow borders of blue.

Ribbons for gallantry in action are worn farthest to the left, followed by campaign ribbons in chronological order.—Army and Navy Journal.

SAVE YOUR MONEY to buy a bond of the second Liberty Loan of 1917.

**MORE RED CROSS AMBULANCES TO BE SENT TO RUSSIA.**

As a part of its program for rendering effective assistance to Russia, the American Red Cross is to ship at once to the Red Cross Commission in Russia, headed by Dr. Frank Billings, 125 motor ambulances and automobiles.

This is the third Red Cross shipment to be dispatched to Russia since the arrival of the Commission there, less than two months ago. Drugs, medical supplies and surgical apparatus with a total value of nearly \$400,000 have already been sent.

Ambulances are needed with the Russian armies almost more than any other form of relief. On the eastern front there are now only 6,000 vehicles for the transportation of the wounded, while on the French front, only a third in length, there are 75,000 ambulances. The automobiles now being shipped by the Red Cross will equip one Russian Army corps with five complete ambulance sections.

Each section will include fifteen motor ambulances, one auto-bus for transporting slightly wounded, one kitchen trailer, and one dressing station car. In addition, each section will have two touring cars for the use of officers; three light delivery trucks, and one repair car, carrying necessary tools and extra parts, and one extra car for gasoline fuel.

For the present, personnel for ambulance sections will not be sent to Russia, but the machines will be operated by Russian drivers under the direction of the Red Cross. Should it be necessary later to send American drivers, they will be recruited from volunteers in the United States.

**DISCREET.**

In a Kentucky town on the edge of the mountains the crowd at the post office was discussing the latest homicide. Uncle Luther Williams, ripe in years and experience, approached the group, and some one turned to him.

"Uncle Luther," he inquired, "how do you stand in regard to this killing yesterday? Don't you think something ought to be done about it?"

"My son," said Uncle Luther, "I'm plum hostile to all killings whatsoever; but if 'Bad Bud' Menfee had to kill somebody, it seems like to me he was powerful discreet in the choice he made yistiddy."—Saturday Evening Post.

**LATEST REPORT.**

Paderewski was giving a private concert at the home of a young matron who had recently acquired great wealth, but whose knowledge of music was not equal to her money.

"Beethoven, madam," was the reply. "Oh, yes," she exclaimed. "And is he composing now?" "No, madam," was the grave response, "he is decomposing."

**PEARS \$1.25 PER BUSHEL**

**BEST TEXAS YAMS PRICED RIGHT**

As the season has advanced Pears have become cheaper This is our third car and we are offering them for \$1.25 a bushel at the car.

This car will be here Monday and Tuesday and we already have many orders so you had better get yours in promptly.

The car will be located near the Flour Mill

In addition to this car of pears there will be a car of East Texas Yams, fine ones, and the price is absolutely right.

Better plan your preserving for next week and let us know what you will want.

Phone 621 **D. C. AYLESWORTH** Phone 621

**"A SHINE IN EVERY DROP"**

Black Silk Stove Polish is different. It does not dry out; can be used to the last drop. Liquid and paste one quality; absolutely no water; no dirt or grit. You get your money's worth.

**Black Silk Stove Polish**

is not only most economical, but it gives a brilliant, silky lustre that cannot be obtained with any other polish. Black Silk Stove Polish does not rub off; it lasts four times as long as ordinary polish—so it saves you time, work and money.

Don't forget—when you want stove polish, buy Black Silk. It is the best stove polish you ever used—your dealer will refund your money.

Black Silk Stove Polish Works, Sterling, Illinois. Use Black Silk Air Drying Iron Enamel on grates, firebricks, stove-pipes, and automobile tire rims. Prevents rusting. Try it.

Use Black Silk Metal Polish for silverware, nickel, or ware of brass. It works quietly, easily and leaves a brilliant surface. It has no equal for use on cutlery.

**Get a Can TODAY**

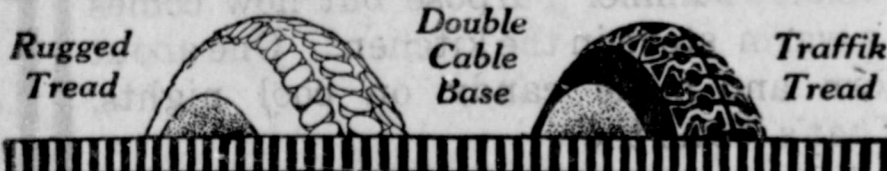
**J. B. NANCE THE LAND MAN.**

"The man who sells more land than any man in Texas."

Has moved his office from the Finnie to the Hull Building. His new office is in the new building over Burns Dry Goods Store and is well fitted up to handle some mighty good bargains in any kind of farm or ranch property or city real estate.

SEE HIM AT HIS NEW OFFICE.

**FEDERAL TIRES**



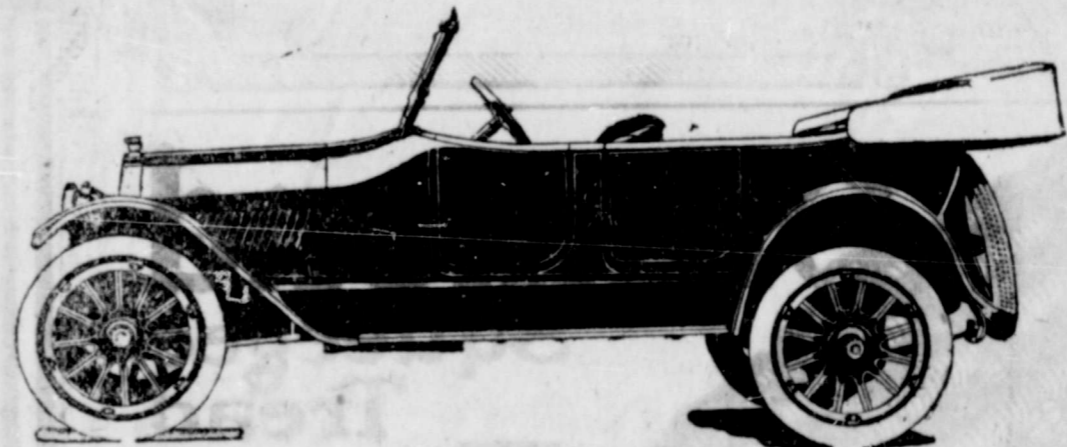
On slippery or soft road surfaces the remarkable efficiency of Federal non-skid treads is very evident.

Both Rugged (white) and Traffik (black) treads give a sureness of traction that ordinary "fancy" treads lack. They scientifically combat skidding and wheel-spinning.

This tread efficiency, though important, is incidental to the rugged durability that has made Federals known as the "Extra Service" Tires. You owe your car a set of them.

DISTRIBUTED BY **McGLASSON-ARMSTRONG RUBBER CO.**

The Federal Rubber Co. of Illinois. Factories: Cudahy, Wis.



*Oldsmobile*

THE comfort, power, body design and coachwork of this Oldsmobile Model 45 meet every desire of the experienced motorist—at a price several hundred dollars below any comparable value in a motor car.

Its comfort is a revelation; the underslung long rear springs combined with the deep, double-tiered springs of the upholstery, give riding unexpected smoothness and ease. Exceptional roominess and carrying capacity of the body come from the economy of space in the use of the compact V-type motor.

The 8-cylinder motor delivers one horse-power to every 51 pounds of car weight—a ratio so high as to assure more than ample reserve power for every emergency of the road.

Remarkable flexibility, fascinating smoothness of over-lapping power impulses and freedom from vibration—all characteristic of 8-

cylinder construction are perfected to the highest degree. Its quick "get-away" and spirited "pick up" at any speed, together with elimination of frequent gear shifting, gives Oldsmobile driving a real zest that is devoid of drive strain. Yet the gasoline consumption is unusually low—even as compared with less powerful cars.

Oldsmobile country-wide system of service stations and the generous full year guarantee are added insurance of complete owner satisfaction.

And the price of this car is only \$1467.00, i. o. b. Lansing.

**OLDS MOTOR WORKS, Lansing, Mich.**

**BURTON-FRYE SALES CO.**

PHONE 656



**BETTER GARDENS FOR 1918.**

By G. D. EVERETT,  
Vegetable Specialist.

Next year's garden should be thought of now and plans made out to have the best garden that can be made. Everyone should be able to go into their garden during the spring, summer and fall and gather enough vegetables to supply the table, or into the cellar and pantry and bring out enough canned vegetables to furnish the family with food. There are many people in the country who are supplying all of their wants from home gardens. This is done by planning the work in advance and by getting the soil into shape.

The weeds, grasses and other vegetation furnish a good home for the insects and diseases. These should be plowed, spaded under or removed from the field and not left to harbor these pests. Many gardens are deserted because these little insects and diseases obtain the lead on the grower in the garden. If this lead is never obtained these pests can be easily controlled. The plowing or spading under of this rubbish adds humus to the soil, which is very beneficial.

Sandy soils should not be left fallow during the winter if they can be planted with a cover crop of some kind. Some of the best cover crops to use are rye, winter barley, wheat, oats, winter vetch and burr clover. These crops prevent the land from washing, the plant food from leaching out, the moisture from escaping, and when turned under, these green crops add plant food to the soil and make the soil better physically.

All of the stable manure should be saved if possible. There is not enough manure for the whole farm, but there is enough on every farm to fertilize the garden. This manure should be spread on the soil every day, or it can be piled in some place where the rain and weather will not damage it. It is best to dampen the pile before placing any more manure on it. The water tends to prevent the pile from becoming too hot. Ashes should be sowed on the farm. They contain a large per cent of potash, especially the wood ashes, and also contain a large per cent of lime. The potash is one of the commercial fertilizers which are very high now, and everything that can be used to add potash to the soil should be saved. Place them in a pile where the rain will not leach them.

The plan of the garden should be studied this winter, so that there will not be any last motion in the planting and raising of the vegetables next spring. Study the variety, the distances apart each should be planted, the depth of planting the seed and the growing in the garden of every vegetable that will be planted in the home

garden this coming spring. The grouping of the vegetables in the garden is placing together the quick maturing vegetables in one group and the vegetables that produce through the whole season in another group.

Germany is not contemplating peace. She is contemplating a truce. That is the terrible logic of the situation.—New Haven Journal.

**SPEAKING OF VEGETABLES.**

A young married lady was explaining the difference between silver and electro to a small domestic, and said: "Mary, you will always find a lion on anything that is real silver." "Yes, mum," said Mary. "I'll remember; and I've heard say as there is always carrots on gold, though I ain't seen them."—Chicago Herald.

## MAXWELL

Most Miles per Gallon      Most Miles on Tires

We have not deviated from our fixed one-chassis-model policy.

But we have refined and developed the Maxwell.

The new compensating under-slung rear springs mean comfort for you and preservation of your car.

This is the type of spring used in the newest models of many of the highest priced cars.

The wheel base is six inches longer—the frame has been strengthened—the windshield sloped, the body lines made more graceful, and the body made roomier.

But the Maxwell price stands at a figure which still makes it "the world's greatest motor car value."



Touring Car \$745  
Roadster \$745; Coupé \$1095;  
Berline \$1095; Sedan \$1095  
All prices f. o. b. Detroit

South Plains Motor Co.  
Telephone 677  
Edge Garage

# New Store News

*Just received by express, New Coats for Children, Misses and Women. New Dresses, New Coats and Coat Suits. New Shoes for Men, Women and Children. New Black Cat Stockings for Men, Women and Children. Gordon Fancy Silk Stockings for Women. Come see the new things.*

**CHILDREN'S AND MISSES**  
Plush and Velvet Coats, in Fancy and Staple Colors  
Prices \$5., \$6.50, \$7., \$9., \$10.

**SPECIAL PICK-UP VALUES**  
in Ladies' Heavy Utility Coats in the New Colors, New Trims, and New Models for this the New Season.  
Prices, \$9., \$10., \$12.50, and \$15.

**THE BRADLEY KNIT**  
Sweater Coats, styles for Men and Women, dark red, dark gray, green mixed and card.  
Prices \$4., \$5., \$6., and \$7.

**MEN'S HEAVY COTTON and**  
Cotton and Wool mixed Sweaters, colors oxford and navy.  
Price \$1.25, \$1.50, and \$2.

**SPECIAL OFFER TO CLOSE**  
out, for reason of no room to handle. We have seven 9 x 12 Art Squares to close out at less than regular prices, prices run \$12.50 to \$37.50.  
Close out prices \$10. to \$32.50.

**BOYS' SCHOOL SHOES**  
Box Calf Blucher Bals, size 12 to 2. Price \$2.00  
Vici Button, heavy sole, size 12 to 2  
Price \$2.00  
Same in sizes 2 1-2 to 5 1-2  
Price \$2.50  
Heavy Smoked Scout or Outing shoes, rawhide soles, sizes 2 1-2 to 5 1-2.  
Price \$2.75  
Boys' Gun Metal Dress Shoes, button or lace, sizes 2 1-2 to 5 1-2.  
Prices \$3., \$3.50, and \$4.

## J. M. BURNS & CO.

Plainview's Daylight Store

East Side Square



# Diamond Squeegee Tread Tires

**Diamonds are not offered to car builders. Experienced motorists demand them in far greater volume than any other non-equipment tire.**

**Why?**

**They know the mileage in these tires of live rubber, tough fabric and doubly durable tread.**

**The Diamond Rubber Co. Inc. Factories Akron, Ohio.**

LOCAL DEALER  
**G. C. ELECTRIC CO.**  
PLAINVIEW, TEX.

**Square-deal service**

## The Heating Stove Season Will Be Here Before You Are Expecting It.

Be among the wise ones who will get their heaters early and be prepared when the first northr hits. You know it will come soon for it always does, year after year.

Year after year many of you have waited until the blizzard came and while the little folks and the housewife sat about wrapped up and shivering you rushed down to buy a stove. Everybody rushes the orders about the same time and it taxes us to get them all up promptly so some have to wait and keep on shivering until the stove gets there. Don't be one of those who will shiver this year.. Be wise, buy now and defy the coming cold.

*Cole's Hot-Blast Heaters, and Garland Base Burners and Heaters will fill the bill in every particular.*

The oil stove has served it's summer purpose but now comes the time when you want a warm stove in the kitchen. One about which you can pop corn and make candy on cool nights. That's it and the

**Garland and Arcadian Ranges**  
are just the thing that will serve the purpose.

# R. C. WARE HARDWARE CO.

Phone 178

Phone 178



**BRITISH TEACHERS FIND "THE PERFECT WOMAN."**

"The Perfect Woman" has just been defined by a conference here of teachers from the girls' schools throughout England. Here is the result of their united efforts:

"The perfect woman is forty, is married, and is the mother of five children. She is in happy circumstances, living in a beautiful part of the country, a few miles from a big town. She is the center of a good home, in which there is a high standard of cleanliness and comfort, and where good taste is everywhere visible in furniture, carpets, curtains, wall paper, ornaments, clothes.

"The ideal woman is sensible and businesslike, and her home is a place of peace. She is patriotic and interested in politics, and does all she can to remove the causes of suffering among the poor. She is a delightful companion, and has a gift for friendship. She is a religious woman, and tries to fulfill her duty toward God and toward other people.

"She takes walks, rides bicycle, climbs, swims, dances, skates, rows and plays games. She can ride a horse and drive a motor car. She is proficient in many branches of practical learning. She can do anything and

everything about the house. She has some knowledge of law, knows how to invest money, can use a typewriter. She is a great reader; every day she reads some serious book, as well as a newspaper and a novel. She speaks three languages besides her own, and reads foreign books. She is fond of gardening and has learned several crafts — wood-carving, metalwork, bookbinding and embroidery."

**HOPELESS FOR THE KAISER.**

Mr. Hoover is engaged in feeding a Nation from which the Kaiser can't take the gruel away.—Boston Transcript.

**J. J. Lash's Real Estate Corner**  
712 BROADWAY. PHONE 652. PLAINVIEW, TEXAS.

We have 4,000 acres grass land 800 acres deeded balance under absolute lease for 5 years. Deeded land well improved and only \$17.50 per acre, easy terms on half, all good plains land.

Have 160 acres on Eastern Colorado, good level land, owner will trade for good resident property in Plainview.

Have 640 acres to lease for five years, cash rent, payable annually without interest.

Have a section of land in Castro County to trade for an improved half section closer in.

We have well improved ranch of 5,000 acres, all good plains land will sell, worth the money and give good terms.

Have 640 acres of land improved, and an acreage tract well improved near Plainview, will trade for land in Central or North Texas.

Have several nice town properties we can sell on small payment down, balance by the month.

Have 7 room house on Restriction Street, \$700. will handle it, balance terms.

Have a party wanting 150 head of cattle to pasture for three months, good grass not far from Plainview.

**J. J. LASH REAL ESTATE CO.**

**Better Be Safe Than Sorry**

Monday the new law on automobile headlights will be enforced in Plainview. That means that you are due to get in trouble unless you are ready with the required kind of lights on that date.

We can keep you out of trouble if you will let us install a pair of

**WARNER LENSES**

This lens is one of the oldest and most approved on the market.

They are reasonable in price, effective in results, and meet the requirements of the law.

*Let Us Keep You Out of Trouble*

**PLAINVIEW MACHINE & AUTO CO.**

D. BROWN Prop.

Phone 16

**Special Purchase Sale!**

We bought something and now we are having trouble finding room for what we bought. We bought the furniture stock of the Phelps Furniture Store and our stock was already so full that we are having trouble now finding room for this added stock.

We have decided therefore to move out this stock into the homes of the Plainview country. We bought this goods right and we are going to let you have it right. Understand us, this is a stock of many new and second hand articles which could not be duplicated at the original purchase prices, much less the sacrifice prices at which we bought them.

Well then, this becomes your golden opportunity to buy what you are needing for fall below cost and we want you to see how far your dollars will go.

Come in—let's figure it out.

**W. E. WINFIELD**

*"If It Isn't Good We Make It Good."*

Phone 95

**Great Boxes and Bales Filled With Glowing Autumn Merchandise**

Arriving Every Day by Freight and Express.

Here are the New Autumn Dresses and Coats that so many women seem to be wanting

For almost as soon as they arrive, they are finding new owners. They seem to be just the kind of dresses and coats women have set their hearts on—possibly its because we've been so particular in selecting them—No two alike. Possibly its because of their smart lines and their interesting trimming features. At any rate they are going out almost as fast as they come in. Of particular mention are the

Stylish and Practical Dresses and Coats at Moderate Prices, \$15., \$16.50, \$18.50, \$25., and \$30.



**New Suits and Waists**

Expressing refinement, distinction and individuality. A cordial welcome is extended you to inspect the new fashions and we are confident that you will see much that is interesting and informative.

**CARTER-HOUSTON'S**

*"Home of Goods That Speak for Themselves"*



**THE PLAINVIEW EVENING HERALD**  
TWICE-A WEEK

—Published Every Tuesday and Friday Evening by—  
**THE HERALD PUBLISHING COMPANY,**  
Corner Broadway and Second Sts.  
H. S. HILBURN & E. B. MILLER, Owners.

W. M. RICHARDS, Editor E. B. MILLER, Business Manager  
Entered as second class mail matter July 1, 1914, at the Post Office at Plainview, Texas, under the act of March 3, 1879.  
\$5.00 a Year; \$1.00 6 Months. Advertising Rates on Application.

**COMPLY WITH THE LAW.**

City and county officials have announced that on Monday, September 24th, they will enforce the new automobile law to the letter.

That statement makes it incumbent upon every car owner to read the law and follow out its provisions.

Most laws have some minor flaws, for legislators, like others, are human, and therefore err, but the main provisions of this law are designed for the comfort and protection of the general public, not excepting the car owners themselves.

Dimmers on cars, or painted headlights, will not comply with the law; only approved lenses, which diffuse the light and avoid the troublesome blinding effect, will meet the requirements. There are other provisions besides this with which the car owner should become conversant.

Ignorance of the law does not excuse. It would be unfortunate for any to come under the penalty through ignorance; it would be unpardonable for those who deliberately try to override the law.

**THE NATION AT WAR.**

The fighting is so far away and so few of our boys are over there yet that the American people hardly realize what it means to be at war with the world's greatest military power. We are becoming used to conscription, for it has been under way for some time and has been brought home to many families, but the unlimited powers in other directions of a government at war are little appreciated as we lay our plans for the future. If it should develop into a struggle for national preservation, the individual and his interests will be as nothing. If it comes to pass where such a course is considered necessary by those in charge of our government, not only may every available boy and man between the ages of 18 and 50, say, be taken for military service, but every available privately owned dollar may be conscripted as well. The Nation's food supply may be seized and doled out in sparing quantities. The mines, the shipyards, the railroads, the industrial plants, the automobiles may all be taken over by the Government without regard to the interest of those who own them. In time of peril to the Nation what we consider individual property rights amount to little or nothing. The Nation must be saved at any cost.—Ohio State Journal (Columbus).

**PUGET SOUND-TO-GULF ROAD BEGINS MARKING.**

The Puget Sound-to-Gulf Highway has begun the marking of its line from Corpus Christi to Amarillo, it was announced Tuesday. Work has progressed rapidly from Corpus Christi to San Angelo. Bright wagon colors are being used in the color scheme.

The red and blue bands on the numerous posts and bridges found along this national highway will indicate to

the traveler that he is following the right road. Every county between Amarillo and Corpus Christi will have completed the markings in the next two months.

NEW YORK, Sept. 20.—Mayor John Purroy Mitchel won the Republican mayoralty nomination in yesterday's primary by a plurality of approximately 1,100 votes over Wm. Bennett. With only two districts missing out of 2,060, Mayor Mitchel's vote was 36,646 and Bennett's 35,527.

**RINGLING BROS. SHOWS**

Have carried a Palmer graduate Chiropractor with them four years at a good salary to adjust their employees. Bessie Love and Valeska Surratt, of movie fame; many high officials, and professional and business men have learned that Chiropractic is the surest road to health. Every afflicted person should investigate and learn how the Chiropractor adjusts the cause and disease disappears. No cause, no effect. Call Phone 630, ask for B. J. Zaekary, D. C., for d.e. information, etc., free. It.

**Get Your Child Ready For School**

An examination of the eyes is an important part of getting the child ready for school. If the youngster has eye strain he can't master the work readily.

Give your child a fair chance by having the eyes examined at Peterson's. That will determine whether or not the eyes need any help.

If they do the right help will be given to improve and preserve the vision.

**WILBERT PETERSON**  
Jeweler and Optician

The HALLMARK Store



**More than a Rental Battery**

It's more than a rental battery that you get when you bring your battery to us for repairs.

It's more even than a fully charged Willard Battery to fit your car.

What we actually give you is the use of your car while a vital, necessary part is being repaired.

That is what Willard Service does for you. That is one of the things that makes Willard Battery service complete.

Next time you're in, ask us about the Still Better Willard with Threaded Rubber Insulation. It is of interest to every car owner who wants the most economical battery he can buy.

**O. T. RUSHING**

*Willard Service Man*

With McGlasson-Armstrong Rubber Co. Phone 73



- We wish to thank our customers who so patiently waited for the arrival of Buick cars. We have been making every effort to get your cars for you.
- From now on we expect to be able to get prompt deliveries.
- We most certainly donot want you to pay a deposit on your car. It has come to our attention that some of our prospective purchasers have sold their deposits at a profit to themselves. We do not want this traffic in paper.
- If you have a deposit and cannot or do not care to use it for your own legitimate purchase we will gladly refund the deposit you made.
- If you want a Buick car, you don't have to buy a deposit and pay a scalper's profit. We will sell you the Buick for the price of the Buick
- If your needs are immediate we can supply them and if you are going to want a Buick at any definite time in the future and will let us know we will make every effort to have that car the day you want it.
- There are several cars of Buicks here and on the road.



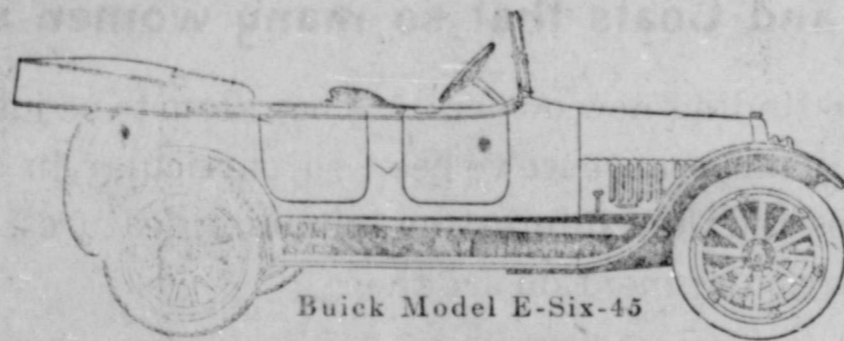
**The Car Everybody Admires**

Buick owner appreciate the fact that they never have to apologize for lack of harmony of appearance or consistency of performance in their car.

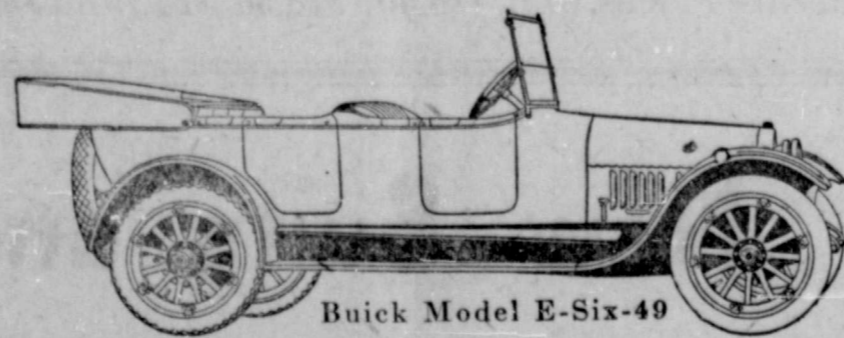
Symmetrical body lines, excellence of genuine leather upholstery completeness of detail and finish, with a general air of refined elegance, command favorable comment and admiration.

The quiet simply controlled Buick Valve-in-Head motor commands respect for its never failing ability to furnish power for every emergency. To know that they have at all times a surplus of power under their control for mountainous country or hard going, gives the driver of a Buick Valve-in-head complete satisfaction and affords genuine pleasure.

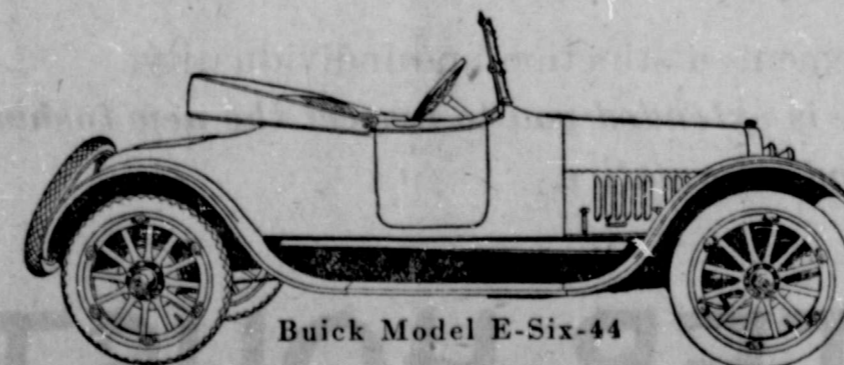
**Everybody Knows Valve-in-Head Means Buick**



Buick Model E-Six-45



Buick Model E-Six-49



Buick Model E-Six-44

**The Choice of All Motorists**

In no matter what company you find yourself with a Buick Valve-in-head, you are impressed with the fact that all have dignified respect for your choice of a motor car, for the reason that it is generally accepted as the car of first choice by nearly every owner regardless of the car he drives.

Their inability to get a Buick when they bought their car is the excuse of many. The world known truth that the Buick is a car of unusual beauty and refinement and that the valve-in-head is the correct principle of gasoline engine construction is responsible for the complete approval of the general public enjoyed by the Buick valve-in-head.

**Everybody Knows Valve-in-Head Means Buick**

**E. E. ROOS, Buick Distributor**  
Phone 17 "In the Heart of Auto Row"



# SOCIETY

Telephone Number 72

## MRS. E. E. ROOS HOSTESS.

## BENEVOLENT LEAGUE.

Wednesday evening Mr. and Mrs. E. E. Roos entertained a number with bridge. Dr. J. W. Grant won high score for the evening.

Those present were Mr. and Mrs. P. J. Woodridge, Mr. and Mrs. Hugh Burch, Mr. and Mrs. F. W. Clinkscapes, Dr. and Mrs. J. W. Grant and Mr. and Mrs. E. E. Roos.

A cream course was served.

## FAREWELL PICNIC FOR MISS MAYHUGH AND CLASS.

Thursday evening Mrs. Albert Hinn and Mrs. Tom Carter entertained Miss Edna Mayhugh and her Sunday School class with a picnic, which was held on the Seth Ward grounds.

The picnic was given as a farewell to Miss Mayhugh, who leaves this afternoon for Kansas City. Ice cream and cake were served.

Those present were: Catherine and Elizabeth Woodridge, Betsy and Jane Miller, Mildred Cochran, Rebecca Burch, Daisy, Robert and Rufe Hunsaker, Betty B. Bledsoe, Harold, Virginia and Robert Hinn, Mrs. J. T. Mayhugh, Miss Edna Mayhugh, Mrs. E. B. Miller, Mrs. Bledsoe, Mrs. Albert Hinn and Mrs. Tom Carter.

Fred Moore made a business trip early in the week to Slaton and Tahoka.

The Benevolent League met in regular session, at the home of Mrs. C. W. Tandy. The meeting was called to order by the president, Miss Edna Mayhugh, and devotional exercises, conducted by Mrs. F. L. Brown, followed.

The report of the treasurer, Mrs. A. C. Hatchell, was heard and some large expense items allowed, due to the fact that for almost seven weeks two worthy families in the west part of town have had several cases of typhoid fever, which required the services of trained nurses, besides other expense required for the betterment of sanitary conditions. Also \$27.50 was spent alleviating the sufferings of a tubercular patient.

The League has received some splendid donations in the way of food specially prepared for the sick; also bed linen and other needed articles necessary for the comfort of the sick during the fever season by a number of generous helpers who are not members of the League. An ice box with coupons for a thousand pounds of ice was donated by the Texas Utilities Co.

Financial items being disposed of, the next matter considered was the development of a civic conscience in the matter of procuring the aid of the state and county in getting help for worthy widows with children dependent on them for support; also school

books and other needed articles for scholastic children whose parents are unable to provide them.

Some suggestions as to the duty of officials in regard to these matters were given by one of the local attorneys, setting forth the facts that in some cases official aid must be given and in some others it is optional, and can be either given or withheld by the county officers.

A strenuous effort is being made on the part of some of the members to procure some of this kind of assistance for those we've aided in the past and known to be worthy of help, before the usual needs incident to cold weather bring more pressing calls to our attention.

The annual election of officers was held the following being elected: President, Miss Mayhugh; vice president, Mrs. Chas. Saigling; secretary, Miss Pack; treasurer, Mrs. A. C. Hatchell. After some further instruction as to the official duties of the new staff, the meeting was adjourned.

REPORTER.

J. C. Joiner, of Taylor County, will leave tomorrow for his home, after a visit with his son Judge R. C. Joiner. Mr. Joiner has also visited with the family of L. M. Blakemore while here.

Mr. and Mrs. M. E. Merrill, of Lubbock, arrived Wednesday for a visit with the family of Mr. and Mrs. G. C. Keck.

Mrs. J. R. Kerley returned Wednesday from a visit at Amarillo.

C. A. Bowron and family will leave soon for an extended visit with relatives in central and east Texas.

Mrs. Knox, who has been the guest of Mrs. J. C. Ross, left Tuesday for her home, in Post City.

Mr. and Mrs. J. J. Lash are expected to arrive today or tomorrow from an extended vacation trip in Southern California. They are returning in their car.

Mrs. Cora Pritchett and daughter, Mary, returned to Stamford Sunday, after spending the summer here. Mrs. Pritchett will again teach in Stamford College this winter.

Miss Velma Bonner, of Lubbock, who has been visiting Mr. and Mrs. M. M. Bonner, returned to her home early in the week.

Rev. J. S. Wicks, of Amarillo, was here Sunday to hold services at St. Mark's Episcopal Church.

Chas. Reinken went to Amarillo Wednesday to meet his wife and children, who have been visiting in Wisconsin and Illinois during the summer. They returned here yesterday.

Mrs. A. Van Howeling and her mother, Mrs. Mary E. Bucy, returned Wednesday from an extended visit at Long Beach, California.

C. W. Sewell has been on the sick list all of this week.

Mrs. L. Marsh, who has been the guest of her brother, G. W. Graves, left Sunday for her home, at Los Angeles.

Miss Odell, of Cleburne, is the guest of Mrs. Dan Morgan, near Halfway.

Miss Lucile Bryan, accompanied by her father, Dick Bryan, left Sunday for Fort Worth. Miss Bryan will attend school there this winter.

Mrs. J. B. Martin has returned to her home, after a visit with Mrs. Alex Anderson.

Mrs. E. W. Suggs, of Crosbyton, left for her home Tuesday, following a visit with her daughter, Mrs. Earnest Jones.

Rev. T. B. Haynie is in Waxahachie, where he went to participate in the opening of Trinity University.

Miss Lula Lindsay, of Fort Worth, who has been visiting her sister, Mrs. B. H. Towery, left last Saturday for her home.

J. C. Rawlings and his father, who have been touring in Colorado for about a week, returned Wednesday morning.

R. S. Pipkin, of Canyon, was here on business the end of last week.

A. B. Martin went to Motley County this morning on business. He will return tonight.

Mrs. Cora E. Pritchett returned from Stamford yesterday morning, where she had gone to teach in Stamford College. She found the attendance so poor there, because of the drought in that section, that she decided to return and spend the winter here.

R. F. Christy, of Quitman, will join The Herald force the end of this week.

B. F. Landers has returned from a long visit at Cuervo, New Mexico.

L. L. Johnson, agricultural demonstrator for the Santa Fe, has been here several times during the past few weeks looking for seed wheat.

Miss Mary Wayland returned Saturday from a visit with Miss Pauline Burnett, at Lockney.

Mrs. I. B. Shelton left Saturday for a visit with her son at Sayre, Okla.

Miss Edna Mayhugh left today for Kansas City, where she will be employed with her brother, John Mayhugh, who has gone into business, under the firm style of the Modern Letter Writing Co.

V. A. Munger has returned from an extended visit in Michigan and the Great Lakes country.

C. W. Sewell and family returned Saturday from a visit at Dalhart.

## GOOD TASTE IN WOMEN'S FINE SHOES FOR FALL



The final touch to a woman's appearance lies in the selection of her Fall Footwear.

The new modes are a trifle less fanciful than heretofore, invariably displaying a new nicety of line and construction that will please you.

The popular seven and eight inch boots with plain or fancy tips are certain to meet your approval. We have many models for your send black uppers seem tolection. Gray, brown, a

hold first attention.

Make your purchases now and remember "good taste" will tell. We have found it so after years of service in selecting shoe styles to meet your satisfaction.

**Fine Kid Boots \$6.50 to \$12.50**

## NEW COATS AND DRESSES FOR CHILDREN

This is an appropriate time to start outfitting the children in their new coats and dresses for fall.

Coats are cut in two sections using different panel and pleating effects; while the large and medium sized collars, novelty cuffs, odd cut sleeves, belts, and high waisted effects are the popular features.

The simple one piece dress will be favored for school wear. For the young girls there are some charming creations.

May we expect you to come and see these.

**Richards Bros. & Collier**



## \$20,000 IN PRIZES

Will be given away this year at the

## PANHANDLE STATE FAIR

AMARILLO, OCT. 8, 9, 10, 11, 12 AND 13

THE BIGGEST CATTLE SHOW IN THE SOUTHWEST.

\$10,000. in Premiums in this division

AGRICULTURAL EXHIBITS SECOND TO NONE

\$4,000 in Premiums in this division.

SPLENDID RACING PROGRAM

\$4,000 in purses hung up for this

VARIED AMUSEMENT ATTRACTIONS

Something Doing Every Minute.

Mlle. La Belle and Dare Devil Hurley in their great Automobile Cloud Swing. Bell and Eva, acrobatic and clown performers. Grace Ayer, the premier roller skater of the world, and others to be announced later.

REMEMBER this is the Panhandle State Fair—Your fair help make it a bigger success than ever this year, by exhibiting the best you have and having every member of your family attend at least one day. With proper co-operation this fair can be made as big as the Dallas Fair in a few years.

COME TO THE FAIR—TELL YOUR FRIENDS

Write for Catalogue.

J. L. Van Natta, Sec'y and Mgr., Amarillo, Texas

## Expert Service

When Buying Shoes

Reinken's Salesmen

Will not sell you a shoe unless they are sure you are satisfied.

--They don't only sell you a shoe, but--

Sell you Shoes That Fit



Most all foot trouble can be traced back to the careless selling of shoes.

Here you will find a last and size that will fit—

**YOUR FOOT**

WHY NOT BUY YOUR NEXT PAIR AT—

## REINKEN'S

Walk-Overs and Florsheims shown in many and varied lasts.

MONDAY AND TUESDAY. SEPTEMBER 24th and 25th.

GEORGE M. COHAN

in

"SEVEN KEYS TO BALDPATE."

also a

NEW PATHE NEWS. A Sure Enough Picture.

at

OLYMPIC

Every day

Regular Prices.

# HALT!

Better not have that said to you, Mr. Motorist, next week when the new law goes into enforcement on the kind of lights you have. It might cost you more than a little attention and a pair of approved lenses.

Osgood Lenses and Warner Lenses

Are the best on today's market. Either of them will stand the tests of any state or national law. They are the approved lenses for you to have fitted on your car.

Hurry over and let us put them on for you.

**Knight Auto Co.**

PHONE 237

## The Churches

First Methodist Church. Sunday School at 9:45 a. m. Get ready for a great Sunday School. Let teachers and pupils feel the responsibility. "Promotion Day" will soon be here.

Preaching at 11 a. m., by Rev. W. M. P. Rippey. Brother Rippey will leave for California on the 25th of this month. Do not fail to hear him Sunday.

Preaching at 8 p. m., by the pastor, Rev. Ernest E. Robinson.

League at 7 p. m.

A cordial welcome to all.

CHURCH REPORTER.

## AMERICAN OFFICERS GET FRENCH WAR CROSSES FOR WORK.

AMERICAN HEADQUARTERS IN FRANCE, Wednesday, Sept. 19.—Brigadier General George B. Duncan and Major Campbell King are the first American officers to receive the war cross in the French awards growing out of American participation in the recent Verdun offensive, when they acted as observation officers in forward artillery posts. Whether the officers will be permitted to accept the decoration is not known.



**THE KANSAS CITY LIVE STOCK MARKET IN DETAIL.**

**KANSAS CITY STOCK YARDS.**  
Sept. 17, 1917.—Cattle receipts were moderate, at 25,000 head, and there was a good market, strong to 25 cents higher, top steers \$16.25. Hogs received were 5,000 head, market 5 to 10 cents higher, top \$18.75. Sheep and lambs 6,000 head, market strong, no good killing lambs offered, feeding lambs at \$18.35.

**Beef Cattle.**

There was a keen market on everything, but no extra high class fed steers were offered, the right kind being worth \$17.00. Grass steers sold higher, straight grassers up to \$13.00, some 1,100-pound steers to feeder buyers at \$12.75, bought away from the packers. The presence of a large number of country buyers helped out on killing cattle. Oklahomas sold at \$8.75 to \$11.85, some common light steers down to \$7.00. Ditcher grades were 15 to 25 cents higher, some heavy cows up to \$10.00. Threatened trouble with switchmen yesterday caused many Kansas cattle to be turned back to pastures, but the demand today could have taken good care of many more cattle than arrived.

**Stockers and Feeders.**

More than 35,000 cattle were bought for the country last week, with prices strong at the close, and this week is opening up with a large number of buyers here. Prices are 10 to 25 cents higher today, stock steers \$7.00 to \$9.00, a few fancy light-weights up to \$10.55, feeding steers at \$9.00 to \$11.00, fleshy steers at \$11.50 to \$13.25, stock cows and heifers \$5.50 to \$9.00.

**Hogs.**

There was some decline the last days of last week, but it had disappeared largely in the sales made today, choice heavy hogs selling at \$18.75, medium weights at \$18.60, lights \$18.20, bulk of sales \$17.50 to \$18.60. Light receipts continue, and there is a wide variety in quality, very few choice hogs included. Average weight for last week was 189 pounds, two pounds lighter than corrected average weight for previous week. Receipts are so far below requirements here that local prices are out of line with other markets, running above St. Louis and Chicago a good part of the time.

**Sheep and Lambs.**

Country buyers get the largest share of the receipts, taking the Westerns today at \$18.00 mostly, with some eye lambs at \$18.35. Choice fat lambs to killers are worth \$18.00 to \$18.25, plain natives around \$17.50. Breeding ewes are selling at \$13.00 to \$17.25, feeding wethers and yearlings \$12.50 to \$14.00. A fair amount of breeding and feeding stock is available, especially since country buyers take such a large share of the receipts.

J. A. RICKART,  
Market Correspondent.

**THE ANSWER.**

A quack doctor was holding forth his medicine to a rural audience.  
"Yes, gentlemen," he said, "I have sold these pills for twenty-five years and never heard a word of complaint. Now, what does that prove?"  
Voice in the Crowd—"The dead men tell no tales."

Charter No. 9802. Reserve District No. 11.

**REPORT OF CONDITION OF THE  
Third National Bank**

AT PLAINVIEW, IN THE STATE OF TEXAS, AT THE CLOSE OF BUSINESS  
ON SEPTEMBER 11, 1917.

**RESOURCES.**

1. (a) Loans and discounts (except those shown on (b) and (c) )	\$553,500.37
Total loans	\$553,500.37
2. Overdrafts	11,472.59
3. U. S. bonds (other than Liberty Bonds of 1917):	
(a) U. S. bonds deposited to secure circulation (par value)	\$100,000.00
Total U. S. bonds (other than Liberty Bonds) and certificates of indebtedness	100,000.00
4. Bonds, securities, etc.:	
(c) Securities other than U. S. bonds (not including stocks) owned unpledged	\$ 340.02
Total bonds, securities, etc.	340.02
5. Stock of Federal Reserve Bank (50 per cent of subscription)	3,600.00
6. Furniture and fixtures	7,972.36
7. Real estate owned other than banking house	1,510.66
8. Lawful reserve with Federal Reserve Bank	44,704.92
9. Cash in vault and net amounts due from national banks	109,570.30
10. Net amounts due from banks and bankers, and trust companies other than included in Items 13, 14, and 15	16,937.70
11. Checks on other banks in the same city or town as reporting bank (other than Item 17)	1,934.68
Total of Items 14, 15, 16, 17, and 18	\$128,442.68
12. Checks on banks located outside of city or town of reporting bank and other cash items	4,081.86
13. Redemption fund with U. S. Treasurer and due from U. S. Treasurer	5,000.00
14. Other assets—Bills of Exchange	64,011.39
<b>TOTAL</b>	<b>\$924,636.85</b>
<b>LIABILITIES.</b>	
15. Capital stock paid in	\$100,000.00
16. Surplus fund	20,000.00
17. (a) Undivided profits	\$ 32,916.53
(b) Less current expenses, interest, and taxes paid	7,189.12
Total undivided profits	25,727.41
18. Circulating notes outstanding	99,700.00
19. Net amounts due to National banks	6,220.45
20. Net amounts due to banks and bankers (other than included in 28 or 29)	15,503.23
Total of Items 28, 29, and 30	\$ 21,723.68
21. Demand deposits subject to Reserve (deposits payable within 30 days):	
Individual deposits subject to check	449,529.87
Certificates of deposit due in less than 30 days (other than for money borrowed)	21,241.35
Cashier's checks outstanding	5,516.14
Total demand deposits subject to Reserve, Items 31, 32, 33, 34, 35, 36, 37, and 38	\$476,287.36
22. Time deposits subject to Reserve (payable after 30 days, or subject to 30 days or more notice):	
Certificates of deposit (other than for money borrowed)	105,198.40
Total of time deposits subject to Reserve, Items 39, 40, 41, and 42	\$105,198.40
23. Bills payable, other than with Federal Reserve Bank, including all obligations representing money borrowed, other than rediscounts	76,000.00
<b>TOTAL</b>	<b>\$924,636.85</b>

STATE OF TEXAS, COUNTY OF HALE, ss:

I, T. Stockton, Cashier of the above-named bank, do solemnly swear that the above statement is true to the best of my knowledge and belief.

T. STOCKTON, Cashier.

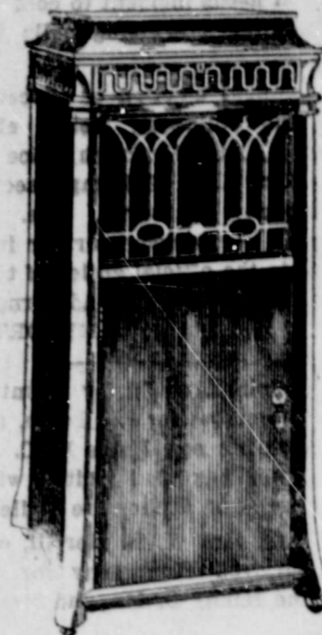
Subscribed and sworn to before me this 21st day of September, 1917.

MRS. CLYE V. OBERSTE, Notary Public.

CORRECT—Attest:

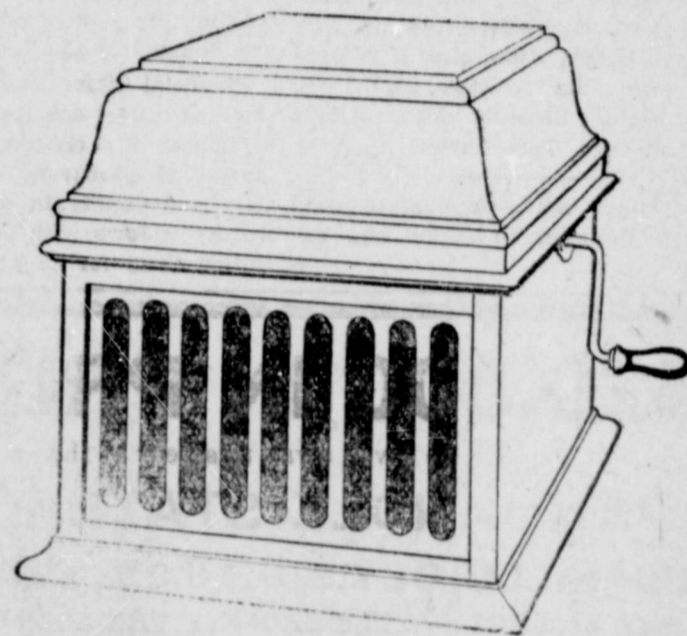
L. A. KNIGHT,  
W. A. DONALDSON,  
L. G. WILSON,  
Directors.

# Removal Sale!



In preparation for our removal to the Ruby Theatre Building on October first we have decided to offer marked reductions on all of the **HIGH GRADE PIANOS** in our present stock. Pianos are heavy and hard to move, and it costs money to move them. . . We make these big reductions so that you will let us move them to your homes instead of moving them to our new store.

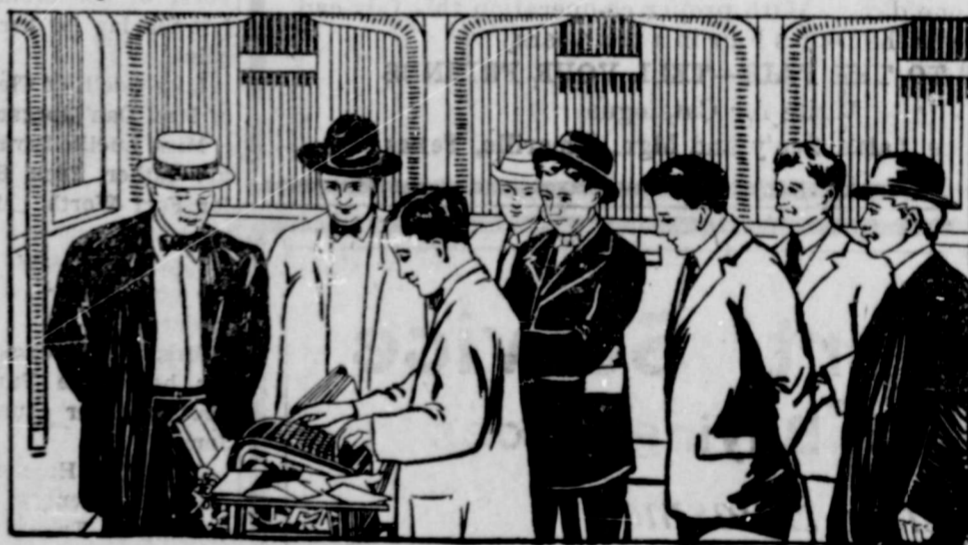
There will be no reductions in our stock of Edison Phonographs. However, we have a nice stock of these excellent machines and want to demonstrate their worth to you. We have both the Diamond Disc and the Amberol machines and a complete stock of both kinds of records. We also have a complete stock of new Sheet Music. . .



## Ryden & Son

621 Ash Street.

Phone 67



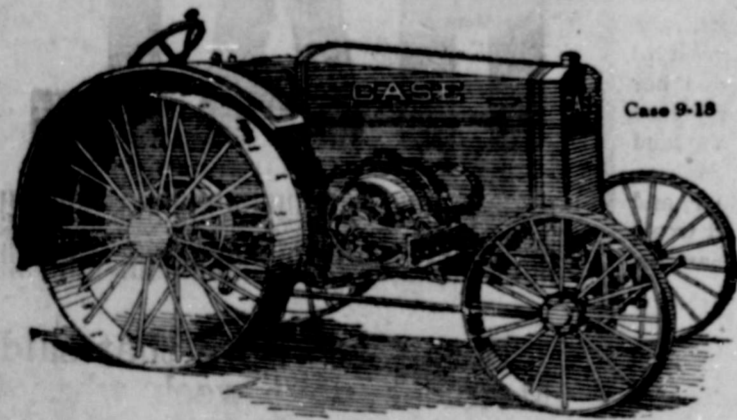
### A Special Exhibition of the New Mechanical Bookkeeper at THE THIRD NATIONAL BANK

A cordial invitation is extended to you to come into this bank and inspect the wonderful Burroughs Bookkeeping Machine which we have just installed. This "bookkeeper with brains of steel" that cannot make a mistake is on exhibition in our banking room.

We want you to see just how this machine operates—how it adds, subtracts and figures balances without an error. Our bookkeepers will show you exactly how our books are posted by machinery. The demonstration will be both interesting and instructive. Samples of the work will be distributed to everyone present.

This machine has been installed for the purpose of giving added protection to our depositors. We urge you to call and become acquainted with this improved method of handling your account.

## Third National Bank



### THIS SMALL TRACTOR FITS ANY FARM

This small Case Tractor is conservatively rated at 9 horsepower draw bar pull and 18 horsepower on the belt. It is more easily handled than a team. It is only 10 ft. 3 in long, 4 ft. 10 in wide and 5 ft. 1 in high. Weighs about 3600 lbs. It does the work of six horses in the field and a boy can handle it. You can drive it day and night, never gets tired. Every farmer can afford one. It will do your work economically—faster and better, so why wait? Order now. We will teach you how to hitch it to any job.

Let us explain fully and quote prices.

E. N. EGGE AUTO COMPANY

# CASE



EFFICIENCY OF RAILROADS BEING SEVERELY TESTED.

"The efficiency of the American railroads is being severely tested at the present time," said R. J. Parker, General Manager of the Western Lines of the Santa Fe Railway System, today in discussing the transportation situation and the problem of moving a million soldiers and their equipment and supplies to the various training camps.

"And efficiency," Mr. Parker continued, "depends very largely on the condition of track and equipment. The up-keep of track, locomotives, and rolling stock generally is, therefore, a first consideration and is an important item in the expense account of railroads every year. Worn steel and ties must be promptly replaced and bridges, culverts, and roadbed kept in good repair. This requires constant attention by an army of men, distributed along the entire line. Another army of men keep close watch of locomotives and other rolling stock, and extensive and well equipped shops are maintained for the repair and overhauling of all equipment. In short, it takes eternal vigilance night and day to keep track and equipment in condition for safe and speedy movement of traffic.

"The cost of this runs into large figures every year. On the 3,869 miles of Western Lines of the Santa Fe the maintenance of way and structures for the fiscal year ending June 30, 1917, cost \$4,790,049.43 or about \$1,238 a mile. The maintenance of equipment cost \$7,147,617.62, or around \$1,847 a mile; a total per mile of line of over \$3,000 for these two items alone. This is nearly one-half of the entire cost of moving traffic for the year, including Western Lines' proportion of System expense.

"And the cost of maintenance is increasing seriously, and apparently the end is not yet. The increase is due to two factors—the heavy government business of moving troops and supplies, and the constantly rising prices of everything needed in railway operation, from material and supplies to labor.

"The denser the traffic, the shorter the life of track and equipment, requiring more frequent renewal of steel and ties, and replacing ties is a big item in up-keep of track. Locomotives go sooner to the shops for complete overhauling. All this is now being done at a higher cost. Yet this increase in cost is not offset by a corresponding increase in revenue. And government business is even handled at reduced rates.

"Still the Santa Fe continues its policy of giving efficient service through careful maintenance of track and equipment, cost what it may. The Santa Fe looks to the future and the upbuilding of the territory it serves. The Santa Fe is an integral part of the industrial and business life of every community along its lines and endeavors, therefore, to perform its duties efficiently by moving the traffic of the community promptly and safely. And good track and equipment are the keys to efficiency in railway service.

"The Santa Fe, being part and parcel of the communities it serves, appreciates more than ever the co-operation of the people in every way. Under the present abnormal and often trying traffic conditions, efficiency is all important in moving the heavy government business without inconvenience to the public."

A. M. HOVE.

CULLING THE FLOCK.

By F. W. KAZMEIER, Poultry Husbandry.

The high price of all poultry feeds makes it necessary to cull the poultry flock very closely. The average farm poultry flock has never been culled

close enough. Too many old, weak and poorly bred individuals are allowed to remain in the flock.

The flock should not only be culled to remove unprofitable individuals, but also to eliminate the weak and ailing ones, because they jeopardize the entire flock. The weak individuals, as a rule, are the first ones to contract a disease.

Cull out all those that are too old. Cull out all those that are too old. A hen that is more than two years old, as a rule, is not a very profitable bird from the standpoint of egg production.

In selecting for egg production, bear in mind that the late and quick molters are the best layers in the flock. Those that molt in September, October and November are better layers than those that molt in July and August.

The individuals that have a worn and soiled plumage in September are better layers than those that have a new and clean plumage at that time.

Among yellow-shank varieties, those with pale-colored shanks at this time of the year are better layers than those with bright yellow shanks and beak.

The early-maturing pullet is the one to select to keep. They are better layers than the late-maturing pullets.

The strong, vigorous, active, callan and fighting male bird, young or old,

is the one to save to head your breeding pen.

It is not too early to begin fall hatching. The high price of farm poultry feeds has caused many farmers and poultry raisers to dispose of almost their entire flock of chickens. A conservative estimate shows that the number of poultry in Texas has been decreased at least 35 per cent. Our only hope of replenishing this decrease is by fall hatching.

Now and then someone sympathizes with King George because he is only a "figurehead," but it's just possible George is willing to have his activities so restricted that there's no danger of his being one of the world's prime mischief makers.—Milwaukee Journal.

**MONEY TO LOAN**  
**8 PER CENT SIMPLE INTEREST**  
 I have the cheapest and best loan proposition on South Plains lands.  
 See me and I will explain to your satisfaction.

**J. F. GARRISON**  
 PLAINVIEW TEXAS

"HOGINE"

"A SPECIALLY PREPARED COOKED HOG FEED"

This feed is higher in food value than the usual feeds and therefore it takes less feed and reduces the feed bills. Ask us about this new feed—you will be interested.

**ALLEN & BONNER**  
 Phone 162 Phone 162

**BIG AUTO RACES**

**Thrilling Automobile Races**  
 by America's greatest drivers will attract thousands of visitors this year.

Thousands spent on what is already regarded as the greatest dirt track in the country, to make the contests all the more sensational.

Don't overlook the Automobile Show presentation of the latest in all standard makes of cars.

A brilliant football schedule—including the Texas-Oklahoma event—will afford lovers of this sport a chance to see stars of the game in action.

**STATE FAIR OF TEXAS**  
 "THE FAIR WITHOUT AN EQUAL"  
**DALLAS OCT. 13-28, 1917**

**SCHOOLDAYS ARE HERE**

That means to hurry along and not be tardy. Don't come up missing when you are called upon to start your work promptly, but have the little things necessary to make your school work successful and pleasant.

We do not handle school books but we do have many supplies that you will be needing and we believe that we will be able to sell them to you at full value for your school money.

- |                               |                  |
|-------------------------------|------------------|
| Drawing Books.                | Pencil Holders.  |
| Tinted Paper.                 | Drawing Tablets. |
| Pencil Tablets.               | Pencils.         |
| Crayolas.                     | Ink Tablets.     |
| Book Satchels.                | Compasses.       |
| Pens and Holders.             | Book Straps.     |
| Water Colors.                 | Inks.            |
| Fountain Pens from \$1.00 up. | Erasers.         |

Learn To Look For The Things You Need Here

**Long-Harp Drug Company**

"Progressive and Progressing"

Phone 161

Plainview, Texas

**Chesterfield CIGARETTES**  
 of IMPORTED and DOMESTIC tobaccos—blended



**A new combination—Mild, yet they "Satisfy"!**

Yes, this new cigarette is more than just good tasting, it delivers a new and important thing to smokers—

Chesterfields "reach home," they let you know you are smoking—they "Satisfy"!

Yet, they're Mild!

Don't be surprised—the new blend of Imported and Domestic tobaccos does it. And the blend can't be copied.

Let Chesterfields give you new cigarette enjoyment.

*Ligarettes*

They "Satisfy"—and yet they're Mild!

20 for 10¢

Wrapped in glassine paper—keeps them fresh.



**FALL GARDENS.**

By G. D. EVERETT,  
Vegetable Specialist.

The people of Texas should by all means have fall gardens this year. There have not been in the past so very many gardens planted in the fall in this state, due to the facts that the weather is usually dry and vegetables have been so cheap that the fall gardens did not pay. Vegetables are going to be in demand this fall and winter, because other foods are so high. The drought, which all the South has experienced this summer, has been one of the longest in many years. Many crops have been reduced nearly 50 per cent, and some are a total failure.

Meats will be high, because the army has to have them and will pay a large price for them. Many men now in the army who seldom ate meat in their home will have to eat meat now in their rations, or they cannot withstand the work they have to do. There are many who did not eat very much white bread, but are now having it in their regular rations in the army.

**Preparation of Land.**

The fall garden should be started now, and some thought should be given to the spring garden. If the land can be plowed or stirred for the fall garden it should be done now, but not too deep. Four or five inches is deep enough. This stirring of the land will prepare it so that all of the rain will be caught and the vegetation, such as weeds and grasses, which harbor insects and diseases, will be destroyed. Where the land is too hard to break this vegetation should be destroyed with a hoe.

The soil should be plowed or stirred as soon after a rain as possible. Be sure not to plow or spade up more in one day than can be raked or harrowed during the same day. The clods of earth are easily broken when they are first turned up, but if left to become hard they make a poor seed bed, especially for the small gardens.

Where irrigation can be practiced, so that when a ball of it is compressed in the hand the particles will stick to-

gether. It matters not how dry the top soil or surface if the soil where the roots are, is in the right condition.

**Time for Planting.**

There are many vegetables which can be grown in Texas during the fall and a few in the winter. The cool weather in the late fall and early winter is more favorable to most vegetables than the hot weather in late spring and early summer. In most parts of Texas gardens should not be started until in the middle or last of September, due to the hot, dry weather we usually have during this month.

**Varieties of Vegetables.**

Group 1.—Such vegetables as tomatoes, peppers, cabbage, cauliflower, brussel sprouts, egg plants, celery, lettuce, and onions give better results when they are transplanted. These should be planted about the middle of August in the cold frame or some place where they might be shaded during the hot noon and evenings and kept watered.

**Planting.**

Group 2.—Prepare the soil thoroughly, so that the seed bed may be in the best physical condition. A five- or ten-cent package of each of the seed will be enough for the family's use. Plant the seeds from 1/2 to 1 inch deep in the drill, and in the rows about 4 to 5 inches apart. If the plants come up too thick in the drill, thin them out. Transplant the plants in the garden as of course, it is not necessary to wait for a rain. Most people irrigate too much and some not quite enough. Be sure that the soil (three or four inches

under the surface) is kept damp enough, soon as they are 4 to 6 inches high. It is best to pull the lower leaves of the tomatoes, pepper, and egg plants, and cut about 1/2 of the larger leaves off of the cabbage, cauliflower, brussel sprouts, celery and lettuce. About 1/2 or 2/3 of the onion tops should be cut off; also the same amount of the roots. Place all of the plants deeper than they originally were in the cold frame. It is best to plant in the cool of the evening and water if possible. Be sure the soil in the cold frame is damp, so the plants can be pulled easily without breaking the roots. Cucumbers should be started in small boxes, 6 to 10 seeds in the box, and plant each box to the hill, pieces of sacks sewed together so as to contain soil can be used. Place the sacked plant in the hill when plants are large enough. The sack will decay. Tomatoes should be planted 2 1/2 to 3 feet in the drill and drills 3 feet apart. Cabbage, cauliflower, and brussel sprouts 2 feet in the drill and in drills 3 feet apart. Pepper 18 inches in the drill and drills 2 to 2 1/2 feet apart. Cucumbers 4 to 5 feet apart each way. Egg plants 3 feet in the drill and drills 3 feet apart each way. Celery can be planted either 6 to 9 inches apart in the drills and drills 3 to 4 feet apart, or 7 inches in the drill and drills 7 inches apart. Lettuce 1 foot in the drill and drills 1 1/2 to 2 feet apart. Onions in drills 3 to 6 inches and in drills 14 to 20 inches apart.

The following vegetables should be planted in the open garden in the middle or the last part of September:

Carrots, parsnips, salsify, Swiss chard, spinach, beets, Petai or Chinese cabbage, endive, radishes, mustard, rutabaga, Kohi-rabi, okra, onion sets, and onion plants.

Swiss chard, Petai or Chinese cabbage, and endive, should be thinned 12 to 15 inches in the drill and drills should be 2 feet apart. Carrots, parsnips, salsify, beets, and rutabagas, 4 to 8 inches in the drill and drills 2 to 2 1/2 feet apart. Radishes 2 to 4 inches in the drill and drills 18 inches apart. Kohi-rabi 4 to 6 inches apart in the drill and drills 18 to 24 inches apart. Beans, dwarf or bush, 8 inches apart in drills and drills 2 feet apart, pole 3 to 4 feet each way. English peas 2 to 4 inches in the drill and drills 2 to 3 feet apart. Field peas, such as the black-eyed peas, and lady peas, 4 to 6 inches in the drill and drills 2 to 3 feet apart. Squash in drills 6 to 8 feet each way and 6 to 10 seeds in the hill. Onion sets or onion plants, 3 to 6 inches in the drill and drills 18 to 20 inches apart. It is best to sow plenty of seed and then thin to the desired distances, than it is to have to resow the seed in the skips.

The leaves of Swiss chard are cooked like spinach and the thick leaf stalk prepared like asparagus or used as celery. Petai or Chinese cabbage,

is excellent for greens. Endive is a salad plant, also used for garnishing. Carrots, parsnips, salsify, turnips, beets, and rutabaga have thick roots which are eaten when cooked or pickled. Mustard, kale, rape, and spinach are plants used for their leaves, which, when cooked, make an excellent dish. Kohi-rabi is similar to the turnips. Cook the bulb with the skin on and then peel and fix like cabbage with cream. English peas need a moist, cool climate and will do well in fall. Squash may do better if started in little boxes or sacks in a cold-frame like cucumbers, but will make if planted in the open field.

The fall season is so short that it would not be advisable to try and grow most vegetables in succession, but there are some vegetables, such as radishes, mustard, spinach, kohi-rabi, kale and rape that may be planted in succession. Plant a small row of each every four or five days.

**Cultivation.**

The soil of the garden should be cultivated every week or ten days after the seed are planted. The fall season is much drier than the spring season, so as much water as possible should be prevented from escaping by evaporation, and cultivation is one of the best methods to use. This stirring of the

soil changes the position of the particles causing capillary movement of the water upward, but keeps the moisture from evaporating as fast as if it were not stirred so often. This frequent cultivation keeps down all weeds and grasses, which tend to rob the plant of its food and water. If the garden is small the yard rake or hoe may be used to do the cultivating.

Germany thus far has stood strongly for annexation and indemnities without peace.—Chicago News.

The lid of every soap box that is a pedestal for treason should be lifted.—Philadelphia Ledger.

Eat  
**Butter Crust Bread**  
Full 16 oz. Loaves  
Two for 25c  
Phone  
**Watson's Market**  
No. 635  
Free Delivery

**ONE BARGAIN**  
West Half of Survey No. 3, Block C-2, Hale County. Nine miles from Abernathy on main road to Petersburg. About as near perfect as any half section in the County.  
**Two Room House—Small Barn—Fenced—Well and Windmill.**  
240 acres under cultivation.  
**LISTEN!** The Price is only \$25.00 per acre if you will write to the owner, Mrs. O. B. Irione, Worthington, Ohio.  
**TERMS:** \$1500 Cash, \$1500 in two years, balance five years, deferred payments at 6 per cent.  
**KNOWN AS MILLIKEN FARM**

**\$1,250** f. o. b. Racine  
120-inch Wheelbase  
40 h. p. motor.

**MITCHELL**

**\$1,525** f. o. b. Racine  
127-inch Wheelbase  
48 h. p. motor.

**SIXES**

**FIFTY SURPRISES**  
In the Latest Mitchells—See Them

No matter how well you know fine cars, scores of features will surprise you in the Mitchells, we believe.

These are examples of the extra values which efficiency methods can give. And they are fine examples. All are produced complete—chassis and body—under John W. Bate, the efficiency expert. And in a model plant, where up-to-date methods have cut labor cost in two.

**Wanted Extras.**

We have taken pains to learn what men and women want. And they are all in the latest Mitchells.

There are 31 features rarely found in cars. These include a power tire pump cars. These include a power tire pump, dashboard engine primer, reversible headlights, etc.

There are shock-absorbing springs, found on no other car. They make the Mitchell the easiest-riding car. In two years—since we adopted this feature—not a single spring has broken.

**Double Strength.**

But the greatest Mitchell feature is the 100 per cent over-strength. In the past three years we have doubled our margins of safety.

Safety parts are vastly over-size. Castings are almost eliminated. Over 440 parts are built of toughened steel. We spend \$100,000 yearly on radical tests and inspections.

The result is a lifetime car. Two Mitchells that we know of have already been run over 200,000 miles each.

There are surprising luxuries and beauties. In the past year we have added 25 per cent to the cost of finish, upholstery and trimming.

There is heat fixed finish which stays new. There is extra grade leather that lasts. There is a light in the tonneau, a locked compartment, handles for entering, and countless dainty touches.

There are all the attractions our experts found in 257 show models—all in a single car.

**MITCHELL SIXES**  
Two Sizes

\$1,525. Mitchell—a roomy 7-passenger Six, with 127 inch wheelbase and a highly developed 48-horsepower motor.

Three Passenger Roadster, \$1490.

Club Roadster, \$1,560

Sedan, \$2,275 — Cabriolet, \$1,960.

Coupe, \$2,135. — Club Sedan, \$2,185.

Also Town Car and Limousine.

\$1250 Mitchell Junior—a 5-passenger Six on similar lines, with 120 inch wheelbase and a 40-horsepower motor. 1-4-inch smaller bore.

Sedan, \$1,950—Coupe, \$1,850. Club Roadster, \$1,280.

**8 Smart Styles.**

The Mitchell line now includes eight exclusive styles.

All are designed by our experts and built in our own body plant.

They include open cars and closed cars, convertible cars and sport cars. All of them distinctive. They come in two sizes at two basic prices. No other cars in the Mitchell class offer so many appeals.

**Plainview Machine & Auto Company**  
D. Brown, Prop. Phone 16  
*Mitchell Distributors*



**Farmer Friends,**

How about building that implement house to protect your machinery? They have cost you too much good money to allow them to remain out of doors this winter. Don't say lumber is too high, the little additional cost in advance of lumber, you will not notice it. We have a heavy stock of lumber on hands, and will be glad to help you plan and estimate cost of your buildings. Come, we will talk it over.

**A. G. McAdams Lumber Co.**

**Good Things Come To Those Who Wait**

The brick paving has been finished around the Wayland Building and our many friends can now drive up to our doors. We will put on a great number of special prices both in the grocery and the racket store.

If you want to save money come and see us for the next ten days.

**G. E. LEWIS**

Phone 116

Wayland Building



RATES
ONE CENT PER WORD
EACH INSERTION

THE EVENING HERALD'S
LIVE WANT AD PAGE
TELEPHONE NO. 72

THE MARKET PLACE
OF THE
SOUTH PLAINS

OUR FLOURS cost you just a little less and are just a little better than other brands. HARVEST QUEEN MILLS.

OH YOU BARGAIN!

Seven thousand acres, sixty per cent smooth land, water 30 to 50 feet, 5 sections to good shipping point, \$3.00 per acre. Good terms. Some trade at right price. W. B. KNIGHT, Plainview, Texas. P. O. Box 44.

MONEY TO LOAN. SCOTT & BLACKMER.

Farm and Ranch Loans. The inspector lives in Plainview. Prompt service. Room 22, First National Bank Building. Office phone 544. Residence phone 665.

FOR SALE—A good modern house, with two large lots, near High School Building. See owner, A. VAN HOWELING, or phone 516 or 518.

We are in the market for Dry and Green Hides. Highest prices. ALLEN & BONNER, Coal and Grain Dealers. Adv. 11.

"SAVE MONEY"

And call RYDEN & SON MUSIC STORE when your piano needs tuning. Work guaranteed.

\$17.50 PER ACRE buys 1,735-acre improved ranch 20 miles from Hereford. Land is all smooth, well watered and fenced, two houses, all necessary sheds, corrals, etc. 250 acres fine crop goes with place; also 4 sections leased land adjoining, all fenced and well watered, with lease paid to June 1, 1918. 300 good Hereford cows at \$70.00 each must go with sale. 15c per acre for leased land. \$12,000.00 can run easy, 6 per cent interest; balance cash. Immediate possession. Phone or write L. BASKIN, Hereford, Texas. 2t-pd.

CUT THE COST OF living by feeding the milk cow Meal and Hulls, properly mixed; only \$1.70 per sack. E. T. COLEMAN, Coal and Grain Dealer. 4t.

FOR SALE—Thoroughbred rat terrier pups. For information, write R. V. STEARNS, Brady, Tex. 4t-pd.

The chains of habit are generally too small to be felt, until they are too strong to be broken.—Samuel Johnson.

Nothing is truly good to a man which does not make him just, temperate, courageous, and free.—Marcus Aurelius.

We are in the market for Dry and Green Hides in any quantity. RUCKER PRODUCE COMPANY.

FOR SALE—Two 2-year-old mules; also one good mule 15 hands high, and some good horses. SOUTH PLAINS MOTOR CO., Maxwell Dealers, Plainview. Phone 677.

FOR SALE—Jack, 1,000 pounds, 7 years old, and German Coach Stallion, 1,425 pounds, 8 years old. Will sell both for \$1,000.00. See W. B. LEWIS, Plainview, Texas. Oct. 10.

FOR QUICK SALE—One-half section of good public land near Petersburg. See R. E. ECHOLS, Petersburg, Texas. 6t.

FOR SALE: Four-room house and lot with garage. One-third down, balance \$17.50 per month. See M. P. GARNER.

FOR SALE OR TRADE—Chalmers Roadster. See S. T. COOPER, at G-C Electric Co. 2t.

ROOMS FOR RENT—Call JOHN JOHNSON at business phone 398 or residence phone 437.

FOR RENT—A five-room house and bath. Will rent to party wishing to buy the household furnishings now in the house. Five acres of land, with good stand of millet, goes with this place. Will also sell chickens and two cows. Phone 108. 2t-pd.

I have one NEW PIANO PLAYER, 88 note, will trade on good car and pay cash difference. Must trade at once. C. A. BOWRON, Jeweler. 2t.

SIMON PURE Nigger Head Lamp for the heater and Nut for the cook stove, is the economical way to buy your winter's supply. E. T. COLEMAN, Coal and Grain Dealer. 4t.

CAR OF PEARS.

HULEN'S Fancy Keiffer Pears will be in Monday. See HULEN, at the car. Bring sacks and fill them up. A car of Fancy Peaches will arrive about the 27th. 1t.

FOR SALE—Light Six Buick. F. W. CLINKSCALES. Phone 49. 1t.

FOR RENT—Two upstairs bedrooms. Phone 317. 3t.

FOR RENT—Two furnished light-housekeeping rooms. Phone 148. 1t.

Remember this—that there is a proper dignity and proportion to be observed in the performance of every act of life.—Marcus Aurelius.

It is excellent to have a giant's strength, but it is tyrannous to use it like a giant.—Shakespeare.

FOR SALE—Two 2-year-old mules; also one good mule 15 hands high, and some good horses. SOUTH PLAINS MOTOR CO., Maxwell Dealers, Plainview. Phone 677.

OREGON & CALIFORNIA RAILROAD CO. GRANT LANDS. Legal right over land at last ended. Title reverted in United States. Land, by Act of Congress, ordered to be opened under homestead laws for settlement and sale. Two million three hundred thousand acres. Containing some of the best Timber and Agricultural Lands left in United States. Large Copyrighted Map showing land by townships and sections, laws covering same and description of soil, climate, rainfall, elevations, temperature, etc. Postpaid One Dollar. GRANT LANDS LOCATING CO., Portland, Ore. Oct. 17

FOR SALE—Two 2-year-old mules; also one good mule 15 hands high, and some good horses. SOUTH PLAINS MOTOR CO., Maxwell Dealers, Plainview. Phone 677.

WANTED—Two unfurnished rooms, connected, close in. Phone 27. 3t.

FOR SALE—220 acres of land 8 miles from Lockney. One hundred acres can be sown in wheat. Some improvements. See R. W. VANDERSLICE or phone TOM THOMPSON, at phone 190.

LOST—A leather halter in Plainview Wednesday. Finder please return to Herald office. 1t-pd.

FOR SALE—At \$40.00 per acre, 400 acres five miles of Lockney, in shallow water belt near some of the "Syndicate" big irrigation wells. Greater part of this land is in good state of cultivation. J. B. DOWNS LAND, CATTLE & LOAN CO., Lockney, Texas. 1t.

BASE BURNER COAL, the best the world knows—Lykens Valley, Pennsylvania, Coal, the most heat known to the money. E. T. COLEMAN, Coal and Grain Dealer. 4t.

FOR SALE—Waterloo Boy tractor and gang plow. Have contract for plowing 260 acres of land. Can be seen in operation on Calahan place 12 miles east and 6 miles south of Plainview. Will sell cheap. 2t.

FOR RENT—Three-room apartment; furnished or unfurnished. MRS. M. F. GARDNER, Seth Ward Addition. 1t.

FOR SALE—Four mare mules. See E. E. MORAN, at Cash Grocery No. 1. 1t.

FOUND—Bunch of keys. Owner may obtain same at The Herald office by payment for this ad. 1t.

TO TRADE—Two houses to trade for land. E. W. WILDER. 1t.

FOR SALE OR TRADE—One Chevrolet touring car. E. W. WILDER. 1t.

FOR SALE—Good horse. See W. N. McDONALD. 1t.

FOUND—In Gilbert's taxicab, September 8, one lady's umbrella. Owner can have same by proper identification and payment for this ad. 3t.

FOR RENT—One furnished upstairs bedroom. Phone 533. 3t-pd.

FOR SALE—Quarter section land 8 1/2 miles northeast of Plainview; shallow water belt; all tillable; \$30 per acre, half cash, balance four years, 8 per cent interest. On market short time only. Address P. O. BOX 46, Crosbyton, Texas. 3t.

VICTROLAS—Play any record—\$50.00; now on sale at \$30.00. BOWRON, the Jeweler. 2t.

FOR SALE—Choice Cockerels, single comb, White Leghorns; Tom Barren 200-egg strain; Oak Grove Farm, Single-Comb Rhode Island Reds; Ear-Heart strain; choice pen. Price, \$1 and \$2. MRS. GRACE PILLEY, Olton, Texas. 2t.

SAFETY FIRST! Don't listen to the fellow who advises you to put off buying Coal for Cheaper Prices. What is 50 cents to \$1.00 when the question is Good Coal and making the winter on Sorry Coal? E. T. COLEMAN, Coal and Grain Dealer. 4t.

WANTED—To rent or buy five or six-room house in west part of town; not too far out. Phone 665. 2t.

FOR SALE—Four sections of land in Reeves County, 95 per cent tillable. Will make an ideal ranch. Will sell or trade for good land near Olton, in Lamb County. J. B. DOWNS LAND, CATTLE & LOAN CO., Lockney, Texas. 1t.

We are in the market for Dry and Green Hides. Highest prices. ALLEN & BONNER, Coal and Grain Dealers. Adv. 11.

FOR RENT—Two nicely furnished rooms, close in. Phone 218. 1t.

J. B. DOWNS LAND & CATTLE CO. Sell, Exchange, or Lease any size tracts for grazing or farming purposes through Northwest Texas, especially Floyd and adjoining counties. We render and pay taxes on non-resident lands. Phone 86, Lockney, Texas. Office: First National Bank Building. 1t.

WANTED—Nurse girl or middle-aged woman at WARE HOTEL to care for two-year-old child. 1t.

FOR SALE CHEAP—One J. R. Lewis well machine and six-horse White gas engine; just run about 12 months; good as new. Will take some good trade or a second-hand Ford car on it. For further information, see or write J. J. GARRETT, Route A, on T. L. & D. Co. farm three miles southeast of Plainview, Texas. 3t-pd.

One second-hand Chevrolet for sale or trade. E. N. EGGE AUTO CO. 1t.

FOR SALE—Three-room residence not far out. Nice fruit trees and grape vines; one-half acre of ground. Fronts two streets. 1t.

TEN-ACRE irrigated truck patch half mile from Court House. Price low; easy terms. 1t.

Four blocks from square: Five-room residence. Windmill; water in house; good barn. W. E. ARMSTRONG, 705 Ash Street. Phone 209. 1t.

FOR SALE—At \$35.00 per acre, 250 acres in the "Runningwater" Draw Valley near Lockney; 20 feet to water. The very best proposition for an irrigation farm we know of. J. B. DOWNS LAND, CATTLE & LOAN CO., Lockney, Texas. 1t.

FOR SALE—Good mower, wagon, lister, row binder, harness, good young work mule and mares. Third street east of Missouri Hotel. MRS. CORA STEVENS. Tues.-1t.

A COST SALE FOR 5 DAYS Of Watches, Clocks, Jewelry, Diamonds, Piano, Victrolas, Sheet Music, Fixtures. Everything at and below Cost. Must be sold at once, as must move building by the first. \$6 come at once. C. A. BOWRON, the Pioneer Jeweler. Next to Elk Building. 2t.

FOR SALE—My home place. Six-room house and garage. Can make terms. Owner, W. FLAKE GARNER. 1t.

FOR SALE—Two 2-year-old mules; also one good mule 15 hands high, and some good horses. SOUTH PLAINS MOTOR CO., Maxwell Dealers, Plainview. Phone 677. 1t.

FOR SALE OR TRADE—A pick-up 20-acres, Orchard Park Addition. See J. F. McDONOUGH after six o'clock. 6t-pd.

SEED WHEAT.

Acclimatized dry land seed wheat for sale. One thousand bushels De Marquis Spring Wheat and Turkey Red Winter Wheat. This wheat has been carefully grown on deep-tilled land with 1 1/2 inch rainfall, thoroughly cleaned and guaranteed free from smut and all foreign matter. Price, \$1.00 per bushel, f. o. b. Bovina. Samples sent free on application. COL. A. J. BESTER, Bovina, Texas. 9-18

FOR SALE AND RENT—Singer Sewing Machines; new or second-hand. Phone 636. 716 Broadway St. 1t.

FOR RENT—Two large rooms, with bath. Nicely furnished. On Wayland Boulevard. Phone 375. 1t.

WANTED—A housekeeper for small family. Apply MRS. F. J. SHELL, Ralls, Texas. Phone 57. Oct. 16-pd.

COAL AND FEEDSTUFF—that's what we are both thinking about. Phone 176 and tell me what you want. Prices always within the market. E. T. COLEMAN, Coal and Grain Dealer. 4t.

WANTED—A young single woman for general housework. Permanent place for right party. BOX 177, Plainview. 1t.

FOR SALE—Ford Car. E. H. PERRY. 2t.

BUY COAL NOW, or you might get cold feet later on. E. T. COLEMAN, Coal and Grain Dealer. 4t.

LOST—Lady's gold watch, Elgin, seven jewel. Reward if returned to Herald. 2t.

LOST—Wagon sheet Saturday afternoon on Wayland Boulevard. \$1.00 reward for return to Herald office. 2t-pd.

HARRY L. KNIGHT, OF MARSHALL, TEXAS, GAINS 26 POUNDS.

Popular Young Railroad Man Says He Has Found Out From Experience What Tanlac Will Do.

"When I had finished taking my third bottle of Tanlac, nearly three years ago, I had entire relief from my rheumatism and found that I had actually gained twenty-six pounds in weight besides. I threw my crutches away and went to work, and I have held my weight and have been well ever since."

The above remarkable statement was made to the Tanlac representative in Marvin's Pharmacy a few days ago by Harry L. Knight, of Marshall, Texas. Mr. Knight has for a number of years been connected with the bridge-building department of the Texas Pacific Railroad, and was always at his post of duty until he became so disabled by the rheumatism that he was forced to stop work and seek relief. Mr. Knight is a nephew of former Adjutant General A. J. Scott, who was formerly of Atlanta, Ga., but now of Tioza, Texas, and he has many friends, especially among railroad people, in this section of the "Lone Star State."

Continuing his statement, Mr. Knight said: "Yes, sir, I have found out the value of Tanlac by taking it myself. I certainly appreciate what it did for me, and I'm glad to make this statement and give others the benefit of my experience with what I consider the best and most useful medicine yet discovered."

"Three years ago, I was taken with what is called articular rheumatism in a very severe form. I was laid up with it and remained in a hospital at Marshall for three weeks. I got no relief and had about given up. I just suffered as much as a mortal could, it seemed to me, and no treatment or medicine gave me any relief. I had intense pain in the joints of my lower limbs and my feet were so swollen I couldn't wear my shoes. I had to use crutches, and even then it was agony for me to navigate. I lost twenty pounds in weight and was badly run down. I was extremely nervous, and this made my suffering worse, as my pain was principally in my swollen joints and it was torture for me to move about at all.

Dallas News and decided to give it a trial. I just began to improve on my first bottle and, as I have already said, when I finished my third bottle I was entirely relieved, threw away my crutches and went back to my old job with the railroad. I picked up twenty-six pounds, which was six pounds more than I had lost. I have enjoyed good health and the free use of my limbs, without any pain, ever since, and Tanlac did it all. My work keeps me exposed to the weather a great deal, and I decided to come here and get me another bottle of Tanlac to keep my system in good shape and fortify myself against the dangers of the winter season, and I know Tanlac will do it. I am very grateful for what it did for me nearly three years ago and for the good health I have enjoyed ever since then, and I don't hesitate to tell anybody about it."

Tanlac is sold in Plainview by Long-Harp Drug Co., and in Hale Center by Hale Center Drug Co.—Adv.

LEMONS WRITEN AND BEAUTIFY THE SKIN.

Make Your Beauty Lotion Cheaply for Your Face, Neck, Arms and Hands.

At the cost of a small jar of ordinary cold cream one can prepare a full quart of the most wonderful lemon skin softener and complexion beautifier, by squeezing the juice of two fresh lemons into a bottle containing three ounces of orchard white. Care should be taken to strain the juice through a fine cloth so no lemon pulp gets in; then this lotion will keep fresh for months. Every woman knows that lemon juice is used to bleach and remove such blemishes as freckles, sallowness and tan and is the ideal skin softener, whitener and beautifier. Just try it! Get three ounces of orchard white at any drug store and two lemons from the grocer and make up a quart of this sweetly fragrant lemon lotion and massage it daily into the face, neck, arms and hands. It is marvelous to smooth rough, red hands.—Adv.

Miss Rebecca Ansley SPIRELLA CORSETIER Telephone Number 304

UGH! CALOMEL MAKES YOU DEATHLY SICK

Stop Using Dangerous Drug Before It Salfivates You! It's Horrible!

and straighten you right up better than calomel and without griping or making you sick I want you to go back to the store and get your money. Take calomel today, and tomorrow and believe you need vile, dangerous calomel to start your liver and clean your bowels.

Here's my guarantee! Ask your druggist for a 50-cent bottle of Dodson's Liver Tone, and take a spoonful tonight. If it doesn't start your liver you will feel weak and sick and nauseated. Don't lose a day's work. Take a spoonful of harmless, vegetable Dodson's Liver Tone tonight and wake up feeling great. It's perfectly harmless, so give it to your children any time it can't salivate, so let them eat any-

Watson's Market Dealers In Fresh and Cured Meats We have our own Motorcycle Delivery Phone 635

L. A. KERR, Architect. Office at Fulton Lumber Co. Phone 107. Home Phone, 423.

DR. PENNOCK, OSTEOPATH. Gr't Building, Room 22. Wednesdays and Saturdays.

ILLUSTRATORS-DESIGNERS AND ENGRAVERS EXCLUSIVELY THE COCKS-CLARK ENGRAVING CO. ENGRAVE AND BLAST

MISS PATTI THRASH, Teacher in EXPRESSION. Studio, Wayland Building. Room 12. Phone 584.

Call Telephone No. 73 for FREE Quick Tire Service

HARRISON & KERR CO., General Contractors. Office at Fulton Lumber Co. Phone 107. Home Phones, 325 and 423.

RUPERT M. CRABB, Teacher of PIANO AND VIOLIN. Studio, Wayland Building, Room 10.

W. A. TODD, Agent All Kinds of Insurance Office No. 14, First National Bank Building. Phone 129.



R. E. COCHRANE Specialist in High Grade PHOTOGRAPHY



—ROUND TRIP SUMMER TOURIST.— Los Angeles, California \$61.85 San Francisco, California \$85.80 Kansas City, Missouri \$31.00 St. Louis, Missouri \$37.40 Chicago, Illinois \$49.00 Dawson Springs, Kentucky \$46.20 Washington, D. C. \$65.40 All good until October 31st.





# YOUR BIG CHANCE



Perhaps you didn't act on our announcement of last week telling you of your big opportunity to buy from a special assignment of

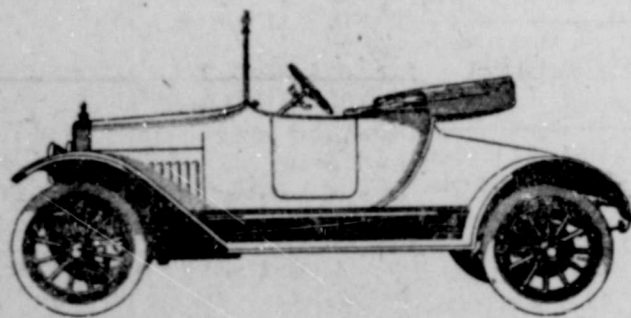
## Maxwell Touring Cars

### For \$715 Delivered

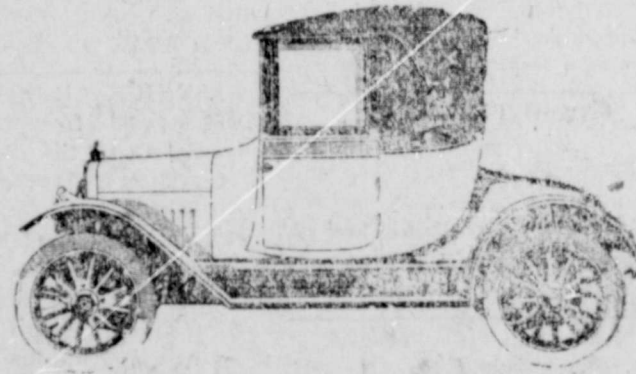
*This price which was in force before the recent increase applies now only on two car-loads of Touring Cars which we had not expected on our contract allotment. While the few of them last you can save just \$80.—after that the price will again be \$795. delivered.*

**Write Us, Phone Us, Wire Us To Save You a—**

Maxwell  
Roadster  
\$795  
Delivered



Maxwell  
Touring Car  
For \$715  
Delivered



Maxwell  
Coupe  
\$1,160  
Delivered

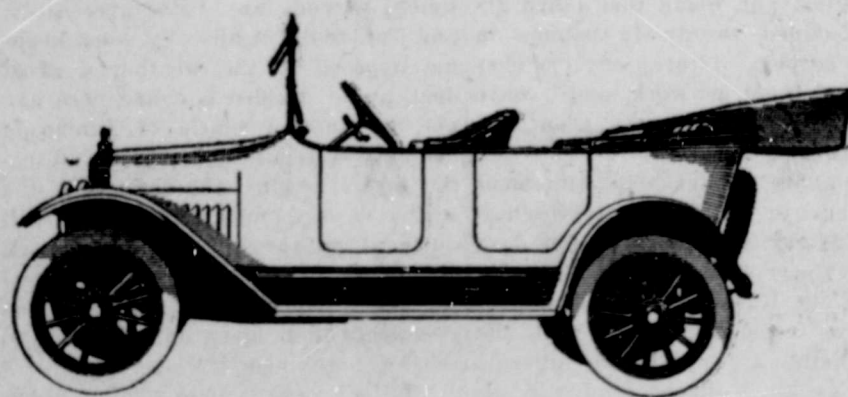
## Don't Overlook That One-Ton Truck Value

The biggest \$1,035 you ever paid for a money making, money saving automobile. We will carry \$600 of the cost in twelve monthly payments at 6 per cent interest.

### Maxwell Trucks for Transfer Men.

### Maxwell Trucks for The Farmers.

Ask any Maxwell Truck owner what income he is getting on his investment. Then come to us and be fitted out right.



Save your teams—keep them in the fields and do your hauling with one of these little wonder workers.

There is not a car in the Maxwell line that we are not prepared to back up with expert service. We carry a complete line of all Maxwell parts and only expert Maxwell mechanics work on your Maxwell car.

# SOUTH PLAINS MOTOR COMPANY

J. M. LIPSCOMB, Manager

Phone 677