

# THE PLAINVIEW NEWS

Tuesday---TWICE A WEEK---Friday

Volume No. 14

Plainview, Hale County, Texas, Tuesday, April 13, 1920

Number 96

## MANY WINDMILLS WRECKED BY WIND STORM SATURDAY

### OUTHOUSES AND PLATE GLASS WINDOWS BLOWN OUT ON SATURDAY NIGHT

Saturday night about nine o'clock a sudden windstorm came up accompanied by hail and a quarter-inch of rain. The windstorm was very strong, especially across the western part of Plainview, from the Buchheimer place to Wayland college, possibly fifty windmills being wrecked, a number of out houses blown down and a small residence blown off its foundations. Down in town several plate glass show windows were blown out of stores.

East of town, so we are told, across a narrow strip of territory many windmills were wrecked, and at Petersburg there was a windstorm and considerable hail.

Saturday was another windy day, just as the past four Saturdays have been, which turned to the north and all day Sunday and yesterday a cold norther blew. Yesterday morning there was ice, with the thermometer at 25 degrees above zero.

### Cement and Plate Glass Scarce

J. B. Maxey, the contractor and builder, says building operations are tied up on account of the scarcity of cement and plate glass. He was in Dallas last week to see about getting cement to finish the Guaranty State Bank and Barker Co. buildings. Mr. Maxey believes the cement mills have been clogged down or slowed up in order to boost the price of cement, which is already sky-high and going higher.

General Motors Co. has bought the largest plate glass factories in the United States and will manufacture windshields and automobile windows. New glass factories can be erected and equip glass for building purposes will be scarce.

### First Presbyterian Church

Sunday school every Sunday at 9:45 a. m. Preaching at 11 by Rev. J. H. Abney. Senior Christian Endeavor at 6 p. m.

A cordial invitation is extended to attend all of these services. Strangers in the city are especially welcome.

### Prominent Methodist to Talk on Centenary

Dr. J. J. Stowe of Nashville, Tenn., a prominent Methodist, will deliver an address at the Methodist church tonight on the Centenary Movement of the Methodist church.

### Willard Harp Building Home

Willard Harp has let the contract to W. J. Mitchell for the erection of a five room residence on Restriction street to cost about \$5,000.

E. B. Thomas came in yesterday from Noble, Okla., to look after business interests in this county. He lived in Hale county until he moved to Oklahoma several years ago.

L. A. White and family are moving to Plainview from Ranger, and he has associated himself with Tom Carter in the sale of Hart-Parr tractors. He is a brother of W. F. White of the Carter-White Motor Co.

Arthur Nafzger of Olton returned last week from a stay of nearly three months at his old home in Wisconsin. He declares "the Plains are good enough for me."

## Two Solid Cars Eggs Shipped Out Each Week

The Panhandle Produce Co. and The Rucker Produce Co. are each shipping a carload of eggs by freight each week. The eggs go to Havana, Cuba, New York and other large cities.

The poultry growing industry in Hale county is becoming almost as important an item of revenue as the field crops and ranks close to wheat and the row crops.

Bailey May Speak in Amarillo The Amarillo News of this morning announces that J. W. Bailey may speak in that city next Tuesday.

## DELEGATES SENT TO BIG ROAD CONVENTION

W. N. Claxton Represents County, G. M. Phelps and E. H. Perry Plainview

G. M. Phelps, E. H. Perry and W. N. Claxton will represent this county at the Bankhead Highway convention and the National Good Roads convention to be held in Hot Springs, Ark., this week. Mr. Claxton will represent the county, and Messrs. Phelps and Perry will represent Plainview. Mr. Phelps has already gone, and the other two gentlemen will leave this afternoon.

They will be joined at Tulsa by John Burson, who represents Briscoe county.

Fred Schreier and Mr. Lineville, representing Lamb county, have already gone.

## To Hold County Fair in Plainview Next Fall is Plan

The Board of City Development at a meeting held Friday afternoon appointed a committee, composed of H. S. Hilburn, W. Holbrook, and W. E. Risser, to take up the matter of holding a county fair in Plainview next fall, and to report back to another meeting of the Board.

In years before the war each fall a very creditable county fair was held. The News trusts that these annual fairs can be resumed.

### Strike Causes Embargoes

The strike of the railroad men in the north and east seems to be passing to the east, and plainview out in the west. Many are going to work in the western cities, and many are striking in the eastern and middle cities. It is thought it will be over in a few days.

Embargoes on freight and express prevail, and the live stock and produce markets are closed for the time.

On account of the express embargo, Postmaster Will Stockton informs us that the parcel post business has become enormous and the postal service is swamped.

### Local Oil Company Liquidates

The Plainview Oil & Gas Co., organized in Plainview more than two years ago, and which drilled two wells on its lease at Burk Burnett, last week liquidated, having sold its holding to another company. The stockholders have been paid \$14.31 on the \$100 worth of stock held, thus losing \$85.69 per share on their investment. Just before the first well came in the stock was sold as high as \$150.

### Ex-Soldiers Enderse Wilson

Friday night, pursuant to a call made for all ex-service men in Dallas to meet and form the "Ex-Soldiers' Democratic Party," (to promote the Bailey organizations), the anti-Bailey supporters were in the majority, took charge of the organization, elected officers, and adopted resolutions heartily endorsing the Wilson Administration.

### Leonard May Buys Home

Mr. Williams, who runs the blue auto bus, has sold his residence near Wayland college to J. L. Howard, who recently moved here from Leonard, Texas. Mr. Howard and family have occupied the place.

### Realize \$23.25 from Pie Supper

One night recently there was a pie supper at Center Plains school, west of Hale Center, and \$23.25 was realized, which will be used toward improving the school building. Miss Nora Horton is teacher.

### Dr. Wofford Installs X-Ray

Dr. C. D. Woodard has installed a modern x-ray machine in his dental office. R. E. Cochrane will have charge of the machine.

### Five Hundred and Fifty Accounts

City Secretary George Saigling is sending out water and sewer accounts for the quarter. There are now about 550 users of the water and sewer systems.

### Checking Up Vaughn's Books

J. O. Rountree and Tom Shelton are auditing the books of John Vaughn, the retiring city marshal, and he expects to turn over the office to Chas. Wilson tonight.

## TRADE EXCURSION OVER PLAINVIEW COUNTRY TWO DAYS THIRD WEEK MAY

### Every Business Firm to be Represented Fund \$2,500 to be Raised for Band Joint Commercial Secretary

The most enthusiastic meeting yet held by the Junior Chamber of Commerce was that held at the city hall last night. The attendance was large and several new members were present.

The most important business was that of the trade excursion, and May 17 and 18 were set as the dates when it will take place, just before the annual chautauqua. It is proposed that the trade excursion include at least one representative from each business house in the town, and as many others as can go, and a tour in cars taken over the Plains, visiting each town in the Plainview trade territory. It is hoped that more than fifty cars will take part in the excursion. The excursionists will advertise and boost for Plainview, get acquainted with our neighbors, invite them to attend the chautauqua, and give them the glad hand generally. The Junior Chamber of Commerce Band will go along and furnish music.

A special meeting of all the merchants and other business men of the town is called for next Tuesday night at the city hall, and all who are interested in the welfare of the business interests and the development of Plainview are expected to be present.

### Will Meet at City Hall

The Junior Chamber of Commerce will meet at the city hall the second and fourth Tuesday nights in each month, and all members are urged to remember the dates and place and be present.

### SPECIAL FIFTEEN-CENT ROAD TAX CARRIES

Very little interest was taken in the election held in Plainview precinct Saturday to vote a special road tax of 15c. The proposition carried by 99 majority, the total vote being 160 to 61. At the court house box the vote was 64 for, 15 against; at the city hall 96 for, 46 against.

The special tax will raise about \$7,500 a year and will be used to buy and maintain a road grading outfit on the roads in this commissioners' precinct.

### Light Vote Was 160 to 61 Will be Used for Precinct Roads

While nothing sensational has transpired relative to the building of a railroad from Plainview to Silverton, the committee has been at work some extent.

A joint conference of the Plainview and Silverton committees will be held here in several days, to hear reports of the sub-committees and make further plans.

### Will Attack the Validity of New City Charter

We are informed by persons living in the outskirts of the city that a fund is being raised to employ lawyers and attack the constitutionality of the new city charter, which was adopted at the election last week. The attack will be made on the point that Plainview does not have a population of five thousand people, hence cannot incorporate under the "five thousand or more" law.

They protest that they were voted into the city incorporation against their will.

The parties to the suit will be people who live outside the old city limits of the present city.

### Presidential Party Conventions

The state presidential democratic convention to elect delegates to the national convention will be held in Dallas May 25. The county convention will be held at the court house May 4, and the precinct conventions at each voting box in the county Saturday, May 1.

### Public Weigher at Hale Center

The commissioners court this morning appointed W. L. Townsen to be public weigher of the Hale Center precinct, to fill the vacancy caused by the resignation of G. H. James.

### Potter Will Build Roads

Potter county commissioners have decided to go on with the big concrete road-building program, no matter if the cost is skyhigh.

### Take Agency for Paige Cars

Messrs. Peace & Lewis have taken the sales agency for the Paige cars for Hale, Swisher, Floyd and Briscoe counties.

### Marvin Garner and Peyton Randolph spent the week end in Santa Anna oil fields where they looked after the oil well owned in Plainview. They have every season to think the well will become a good producer.

## BAILEY MAN WILL SPEAK HERE FRIDAY AFTERNOON

A. T. Cole, a Clarendon Lawyer, Will Speak at Court House at 2:30 O'Clock

Announcement has been made that A. T. Cole, a Clarendon lawyer, will speak at the court house or the band stand Friday afternoon at 2:30 o'clock in behalf of the Bailey faction.

The public is invited to hear him, and the ladies are also urged to attend.

### Buys the True Rosser Place

E. R. Shanks from Eastland county has bought the True Rosser residence, on West Tenth, and will occupy it with his family. He owns lands near Eastland on which there are several producing wells, so he has informed us.

## Post Office Joins Overall Club to Fight H. C. of C.

Friday Postmaster Will Stockton, Assistant Postmaster Ernest Spence, Charles Oliver Anderson, C. A. Chambers and V. L. Lornaway and Postal Carriers Elmer Anderson and John Bier joined the "overall club" movement that is spreading over the United States to combat the high cost of clothing, and demand the use of white striped duck overall trousers and coats, and they are wearing these costumes while at work.

### What's the Use?

Birmingham, Ala., April 10.—With Birmingham's "overall club" organized to combat the high cost of clothing, was working overtime to get the new members of the club to wear the white striped duck overall trousers and coats, and they are wearing these costumes while at work.

### Children Play With Matches

Yesterday morning the five-year-old twins of Mr. and Mrs. Chas. Reinken, while playing with matches at the family home, on Restriction street set on fire some boxes next to the barn. The fire alarm was turned in but before the truck got there Mrs. Reinken and neighbor women had turned on the yard hose and put out the fire.

When the twins found the fire getting away from them they ran away and Mrs. Reinken not seeing them thought they might be behind the boxes, took them away and burned one of her hands in doing so.

### Dr. Eanks Here Tomorrow Night

Dr. Louis Albert Banks, the prominent lecturer, author and preacher, will deliver an address on worldwide prohibition at the Methodist church Wednesday night. The public is invited to hear him. No charge for admission. Dr. E. E. Robinson says all who hear him will be well repaid for their time.

### Depot Cafe Changes Hands

J. E. Cooper has bought the Depot Cafe from N. N. Bailey, who has conducted it for several years, and will take charge this week. Mr. Cooper has been railroad pump man for some time. Mr. Bailey and will likely move back to Paducah.

### Band Receives New Music

The Jr. C. of C. band received a big lot of new music by express yesterday. It will now begin to practice in earnest; and it is hoped that the entire personnel of the band, which is thirty-five, will come regularly to the rehearsals.

### Tilson Spoke in Canyon

Capt. T. J. Tilson spoke in Canyon yesterday on political matters, and especially against Baileyism. He was given a good hearing by a goodly number of auditors, so he informs us. He says Bailey won't get many votes in Randall county.

### Mrs. Thompsons' Brother Dies

Sherman Gillespie, age 36 years, died recently in the sanitarium of his brother in La Jolla, Calif. The deceased was a druggist in Shamrock, Okla., and was a brother of Mrs. W. W. Thompson of Plainview.

### Universal Army Training Defeated

In the senate yesterday the bill providing for universal military training was defeated, or rather was withdrawn because it faced an adverse vote.

## CITY CLEAN-UP CAMPAIGN THURSDAY--EVERYBODY HELP

### EVERYBODY URGED TO ASSIST IN MAKING THE TOWN SPOTLESS

Plainview will have a general clean-up Thursday, which has been set for that purpose, and it is urged that everybody co-operate in the work, so that the town may get into the "spotless town" class. Each person is urged to clean up his or her premises, burn the trash and pile up the incombustible stuff so it can be hauled off.

The campaign will be in charge of Fred Cousineau, city fire marshal, and he has selected captains for each district, as follows: South of Fifth street to the city limits and east of Broadway to the city limits, Mrs. R. B. Tabor; south of Fifth street to the city limits and west of Broadway to the city limits, R. E. Cochrane; north of Fifth street to the city limits and east of Ash street to the city limits, W. E. Boyd; west of Ash street to Columbia street and north of Fifth street to Thirteenth street, Mrs. W. R. Blocksom; west of Columbia street to Galveston street and north of Fifth street to Thirteenth street, Mrs. R. W. O'Keefe; west of Galveston street to city limits and north of Fifth street to Thirteenth street, Mrs. P. W. Vanderpool; north of Thirteenth street to city limits and west of Ash street to city limits, J. W. Ray.

The school principals will have the children clean up their respective school grounds.

### Winners in Essay Contests

Hazel Mayo of Petersburg won for class B schools and Walcott Kirk of Central school for the ward schools in the county interscholastic essay contest recently held in Plainview. The contest was made here, following the grading of the papers.

The essays of these two will be sent to the director for the district, who lives in Snyder, to contest for the district championship.

### Lubbock's Population 3,958

Washington, April 7.—The 1920 census of Lubbock, Texas, as announced by the Census Bureau, is 3,958, an increase of 2,020, or 104.2 per cent. Lubbock was incorporated in 1909 and its first census was in the year following, when it contained 1,938 people.

### Fire Truck Being Overhauled

E. L. Frutner, of Dallas, expert repair man from the LaFrance factory, is here overhauling the auto fire truck and making such repairs as it may need. While the truck is being repaired an Oldsmobile truck is being used temporarily, being equipped with hose and ladders.

### Plainview Defeats Amarillo

In the games of base ball between Amarillo and Plainview high school teams, played here Friday and Saturday afternoons, Plainview won.

In Friday's game the score was 12 to 4, and in Saturday's 9 to 3.

### Will Speak at Happy Union

Capt. T. J. Tilson will speak at Happy Union Saturday night on the political issues of the day. The people of that community are urged to be present.

### Bloomer Base Ball Girls

A base ball team of Bloomer girls want to play in Plainview the first week in May, and has written a challenge to one of the local teams.

## To Attend District Interscholastic Meet at Lubbock

A large number of Plainview and Hale county school boys and girls will attend the district meet to be held in Lubbock Friday and Saturday, and take part in or witness the contests.

The district is composed of Bailey, Borden, Cochran, Crosby, Dawson, Dickens, Floyd, Gaines, Garza, Hale, Hockley, Lamb, Lubbock Lynn, Motley, Scurry, Terry and Yoakum counties.

### Delivered Commencement Address

Dr. E. B. Atwood, president of Wayland college, delivered the commencement address to the Dimmitt high school Friday night.





## TIRE BARGAINS!

A good many motorists think of a tire bargain always as a tire bought cheap—for little money. They are always trying to save money by buying seconds and cut-price tires of one kind or another.

Only an expert tire man can pick out that kind of a bargain—and he often gets stuck.

The automobile owner, the average man who never worked on tires or handled them in a business way, can tell nothing about a new tire's wearing value from looking at it.

### DON'T GAMBLE ON TIRES

So leave the tire gambling to people whose time is worth less than yours when on the road are in the garage, and whose necks are not very valuable anywhere.

The real tire bargain is a standard make of tire of good quality.

It has a reputation it must live up to.

Its manufacturers must make good tires if they are to stay in business.

Buy standard tires like

### FEDERAL TIRES

These tires are all bargains. We stand behind that statement with our guarantee and the manufacturers back it up with the guarantee.

## McGlasson-Armstrong Rubber Co.

Our Tire Wagon is just as close to you as your Telephone

## Lindsay Oil Co.

"The Old Reliable"

Is well equipped to handle your gasoline and oil needs. Satisfactory service and courteous treatment given every customer.

**Carter Lindsay, Mgr.**  
Near Coal Chute

### Genuine Mebane Cotton Seed

Carload just received. Better come before it is all sold.

**Bonner-Price Coal Co.**

A. E. Howerton of Slaton is heretoday on business.

## The Plainview News

Published Tuesday and Friday at Plainview, Hale County, Texas.

J. M. ADAMS, Editor and Owner

Entered as second-class matter, May 23, 1906 at the Postoffice at Plainview, Texas, under the Act of Congress of March 3, 1879.

Subscription Rates  
One Year ..... \$2.00  
Six Months ..... \$1.10  
Three Months ..... .60

### KRESS

April 7.—Runningwater and Kress played baseball Wednesday on our home grounds 4 to 3 in favor of Runningwater.

Gardens are looking fine, especially turnips and spuds.

Messrs. T. K. Boren and G. Davenport, while on their way to Tulla last Thursday afternoon, happened to quite an accident. Something went wrong with the car and, as they were going too fast to stop, they tried to slow it up some, but the car turned over in spite of their efforts. Mr. Boren's arm was broken, and Mr. Davenport was hurt on the face and his knee and leg were also badly bruised. Both men were considerably "bummed up," not to mention the car.

The Methodist Ladies Missionary society met Tuesday afternoon at the Methodist church and the Baptist Ladies' Aid society met Tuesday afternoon at the home of Mrs. Vinson.

Rev. Vinson is in Sweetwater on business.

The Methodist meeting closed Sunday night.

The people of Kress had an Easter hunt out at Mrs. S. E. Groff's. After the hunt they spent a few happy moments cooking and eating. A large crowd was present and all seemed to enjoy it very much, most especially the children.

The young people's missionary society met Sunday afternoon at the Methodist church.

Mr. and Mrs. Hasting of O'Donnell are in Kress this week visiting their daughter, Mrs. W. G. Adkisson.

Mr. and Mrs. F. T. Skipworth left Thursday for Tularosa, N. M., where they will spend some time for the benefit of Mrs. Skipworth's health.

A. J. Harris, manager for Rockwell Brothers & Company, is on a business trip to cities in South Texas.

### TULLA

April 9.—Miss Eula B. Ward and Mr. W. L. Stafford, of Rockwood, were married Wednesday, April 7th, at the home of the bride's parents, Mr. and Mrs. J. H. Ward, thirteen miles northeast of Tulla.

Pastor T. C. Willett began a series of revival services last Sunday at the Methodist church.

Dr. E. N. Pennock, of Amarillo, was a visitor in Tulla this week.

Mrs. Meade F. Griffin and little son, Meade F. Jr., of Plainview, spent Thursday in Tulla, the guests of Mrs. Ira L. Tucker.

Friday evening, April 2nd, Mr. and Mrs. D. H. Thompson, in honor of their daughter, Miss Avis, spread a most delightful turkey dinner for some of the jolly friends of the Thompson home.

Mrs. E. G. Barks delightfully entertained the L. T. D. club, at her home Friday afternoon, April 2.—Herald.

A House of David street preacher was in the city the first of the week and held forth on the streets several times. This sect forbids the men shaving or cutting their hair.—Memphis Herald.

### DEMOCRATIC CLUB ORGANIZED

Pursuant to a call issued by C. R. Scott, precinct chairman of pro-administration Democrats, a large number of representative citizens of the Hale Center precinct met at the school auditorium, Saturday night and organized the Hale Center Democratic Club for the purpose of seeing that this precinct sent a solid pro-administration delegation to the County Democratic convention on Tuesday, May 4.

After the purpose of the meeting being stated by the chairman, the organization of the club was perfected, with the following officers:

G. R. Scott, president; Mrs. Sallie L. Maid, vice president; W. L. Townsend, secretary-treasurer.

Executive committee—Robert F. Alley, Mrs. J. M. Cox, A. M. Griffin, W. S. Kisor and Mrs. B. M. Johnson.

Many short talks were made by those present declaring their undivided support to the Democratic party and praising President Wilson, for his great leadership as head of the Democratic party.

The following resolution was unanimously adopted:

Whereas, The Democratic party under the leadership of that incomparable statesman and patriot, Woodrow Wilson, has given to the Nation two of the wisest, most progressive and most beneficial administrations in fifty years, and has caused to be placed upon the statute of the Nation more constructive laws, in favor of the masses, instead of classes, than any other administration. Among them is; currency reform and the establishment of the Federal Reserve banking system. Tariff reform and tariff commission, Federal farm loan bank and rural credit system, the election of United

## Two Good Books for Women

We have them both—we can supply you with both on your request—and each one of them will help the other. The first is a bank book—every woman should have her own, for the butter-and-egg dollars grow quickly into big sums when they're put away carefully. And the second is THE COUNTRY GENTLEMAN—the weekly book of farming. It's a farm paper for the women and men, the girls and the boys—full of how-to-make-money ideas for the whole family. This bank wants the women as well as the men to read

## The COUNTRY GENTLEMAN

From all parts of the United States comes the testimony of more than 600,000 farmers who regularly read THE COUNTRY GENTLEMAN, that this Great National Farm Weekly is helping them constantly to make more money. It will do the same for you—for every farmer hereabouts. It will help both farmers and their wives to build

bigger bank accounts each year. We are making it easy for our neighbors to subscribe for THE COUNTRY GENTLEMAN because we believe in it. We want you to know it as we do. If you have an account with us, we'll charge it only \$1.00, on your instruction, for 52 big weekly issues. And if not, we'd like you to get both those books.

5c

the copy everywhere

### Guaranty State Bank

R. S. Beard, Pres.; L. P. Barker, Vice-Pres.; C. D. Hensley, Cashier

Gentlemen:

(1) Because you know me, enter my name for THE COUNTRY GENTLEMAN for one year and charge the cost, \$1.00, to me; or

(2) Here's my dollar. I want THE COUNTRY GENTLEMAN, send it to me. (Cross out one of above paragraphs)

(My Name) .....

(My Address) .....

(City) ..... (State) .....

States senators by the people; conducted the Nation triumphantly and gloriously through the greatest war ever recorded in history and brought about an epoch of prosperity unparalleled in the annals of the world. These being only a very few of the great and glorious achievements of the Wilson administration.

Therefore, Resolved: That we the Democrats of Hale Center precinct, in mass meeting assembled, do heartily and enthusiastically endorse the Democratic administration under Woodrow Wilson, and solemnly pledge ourselves to attend the primary conventions May 1, and use our vote and influence to the support of a delegation to our county and state conventions that will send a delegation to the National Democratic convention at San Francisco, that will vote and do all in their power to se-

ecure the unqualified endorsement of the Democratic administration under the leadership of our great and good president, Woodrow Wilson.

After the adoption of the above resolution, the following were appointed as a committee to secure the name and pledge of every Democrat in this voting precinct who is in favor of upholding the great principles of Democracy, against all assaults upon it from those within and without: Mrs. Geo. Yates, W. S. Kisor, Mrs. R. C. Cox, W. L. Porter, Mrs. Nick Alley, T. F. Mounts and Rev. G. H. Bryant.

The club then adjourned to meet Friday night, April 16, at the school auditorium, at which time we will have some good speakers present.

Friends, the enemy has thrown down the challenge, let's meet it, and route their great (?) leader from

the confines of our great state.  
G. R. SCOTT, President.

### Hagemiers Have New Baby

A daughter was born March 24 to Rev. and Mrs. Henry Hagemier, at Commerce, where he is pastor of the Christian church. They have named her Virginia Frances.

Rev Hagemier was pastor of the First Christian church of Plainview four years ago.

W. T. Blackwell, well known farmer living near Idalou, died in the sanitarium at Lubbock April 7, of pneumonia. He was buried in Lubbock. He leaves a widow and one child.

## Great Damage Done By Saturday's Storm

Especially to Automobile Tops

If you were one of the unfortunates who suffered damage it would be wise to have your repairs made at once as a stitch in time saves nine, more especially in windy weather.

Bring us your top at once for proper repairs.

## Richards Auto Top & Painting Company

We Can't Do All the Work, So We Do the Best



# WANT COLUMN

Try a want-adv. in the News. Only a word, minimum charge 16c a time.

**WATSON'S BUSINESS COLLEGE** is the best.

**PIANO TUNING**—See Paul Ryden. Phone 417.

**WANTED**—Carpenters at the Har-vest Queen Mills.

**FOR BARGAINS** in new and second-hand windmills see or phone S. S. Sloneker. 42-tf.

Marchal Neil Flour at Cash Gro-cery Co. Phone 101.

**320 ACRES FOR SALE**—West half section 37. Write J. E. Harrell, Throckmorton, Texas, Box 27. 95-4tf

**WANTED**—To buy baby calves. M. E. Franklin, Olton, Texas. 95-6t

J. R. Shackelford, "The Rawleigh Man" of Hale county. See him for anything in the Rawleigh line.

**FOUND**—Pair of gold-rimmed spec-tacles in case. Owner call at News office.

**FOR SALE**—Mabene Cotton Seed for planting, early picked, before rains, \$2.60 per bushel at Overall's Barn.

**WHITE WYANDOTTE** Eggs for hatching, \$3.00 per 15 eggs, fertility guaranteed. Write J. K. Kinney, Box 93, Plainview, Texas.

**LOST**—Between Hale Center and Plainview, heavy log chain, hook on both ends. Finder notify Roy Irick, and receive reward. 93-4t-p

**FOR SALE**—Gasoline hay press, good as new; or would trade for team or milch cows.—Albert Veazey, four miles southwest Plainview.

**EGGS FOR SALE**—White Holland turkeys.—Mrs. W. H. Crowley, two miles northeast of town.

**FOR SALE**—One 1917 five-passenger Buick four; one 1918 Ford roadster. Good condition.—Phone 119.

**FOR SALE**—One small Superior drill, Ensilage cutter, go-devil, one table, two single units Empire milk-machines.—Mrs. J. C. Goodwin.

I AM in a position to handle vendor's lien notes payable on or before.—C. K. Shelton.

**ESTRAYED**—Sorrel blaze-face horse, about March 25, between Plainview and Post City. Notify E. Dowden, Phone 511. 93-4t-p

**LOST**—Elgin 15 jewel, open face gold watch, no chain in Plainview Saturday. Reward. Leave at News. Albert Veazey.

**SAVE MONEY**  
By feeding your milch cow cotton seed hulls—the most economical roughage available.

**PLAINVIEW GRAIN COMPANY**  
Phone 435

**FOR SALE**—One Ford, with form-a-truck body. A good farm truck, price \$275.00.—Texas Land & Development Co.

**FOR SALE**—Ford car in good shape, for cash or trade for milch cows.—Phone 478, C. B. Rees. 96-tf.

**HAIR CUTS 35c** at Ben's Shop. Home of "5-in-1" best hair tonic on earth. 94

The Band Box, successors to R. & H. Millinery, will sell you a hat at reduced prices this week. 1-3 off on all spring stock. 1t

**WANTED**—Good energetic man to work in coal and feed business. Time killers need not apply. E. T. Coleman. 2t

**FOR SALE**—We are anxious to show some nice homes. Also some cheap places.—Peace Bros., Plainview, Texas, Phone 60 93-2t

**PLAINVIEW GRAIN COMPANY—SELLS**  
Wheat Bran,  
Wheat Gray Shorts,  
Wheat White Shorts,  
Wheat Screenings,  
Schumacher Cow Feed,  
Mo-Milk Cow Feed,  
Oats,  
Corn,  
Threshed Maize,  
Maize Heads,  
Maize Chops,  
Mixed Chicken Feed,  
Cotton Seed Meal,  
Cotton Seed Hulls,  
Planting Cotton Seed,  
Alfalfa Hay,  
Millet Hay.  
Delivery all parts Plainview. Get our prices.—D. F. Sansom & Son, Props. 87-tf.

**NOTICE**—I am now with the Ford Repair Shop, next to the News office, and will appreciate your patronage when you need your car repaired.—Johnny Pearson, the "Ford Doctor." 96-6t

**FOR SALE**—Six-room house and 3 lots, east front. Good orchard, lots of trees, at right price; terms.—See A. L. Lanford, at Mile Barn. 95-tf

**HAIR CUTS 35c** at Ben's Shop. Home of "5-in-1" best hair tonic on earth. 94

**WANTED**—Hides, poultry and eggs.—Panhandle Produce Co.

**ANYONE WANTING** to borrow money on land, take up due paper or sell vendor's lien notes would do well to see C. K. Shelton.

In order to make room for our mid-summer hats you can now buy your spring hat at 1-3 off former price. Call and see.—The Band Box, suc-cessors to R. & H. Millinery Co. 1t

If you have good mules see A. L. Lanford, the mule buyer. In the mar-ket all the year around. I buy and sell every day, one or carload.—A. L. Lanford, day phone 550, night phone 217.

**FOR SALE**—Four room California bungalow, modern, with lights, bath and sewerage, hot and cold water, sink in kitchen, one lot, new house.—See H. B. Adams or phone 97.

5lb. bucket of Shortening for \$2.25 at Cash Grocery, Phone 101.

**POULTRY** is getting higher. The Panhandle Produce Co., west of Nobles Bros. wholesale house, is pay-ing the highest prices. See them.

**IF YOU WANT** to buy a farm, buy a horse, mule or cow, or have an auction sale, see T. J. Allen, Peters-burg, Phone 3.

**WANTED** A second-hand Buckeye incubator. Address Box 212, Plain-view.

**FOR SALE**—Two registered Duroc-Jersey boars, Cherry strain, extra good bone.—C. D. Webb, Kress, Tex-as. 95-4t-p

**COPIES WANTED**—The News needs copies of its issues of Aug. 5th and Oct. 31, to complete its 1919 files, and will pay 25c for copy of either of these dates. If you have a copy send it to us at once.

### MASONIC BODIES

Plainview Chapter R. A. M., meets the Third Thursday night in each month.  
Plainview Commandery, K. T., meets the second Monday night in each month.

Chase & Sanborn Coffee at Cash Grocery Co., Phone 101.

**FOR SALE**—Pure-bred White Leg-horns eggs, \$1.50 per setting.—Jack Leslie, third door north of Baptist church. 88-tf.

**SINGLE COMB WHITE** Leghorn eggs \$1.25 for 15, \$5 per 100.—Mrs. R. P. Frazier, Phone 179-3 rings. 89-16t

**FOR SALE**—160 acre well improved farm, good buildings, four miles east of Plainview, 2 miles of East Mound school house, 126 acres in wheat, 10 acres oats. Purchaser gets half of crops delivered in Plainview. See H. B. Adams at News office for price and terms.

**FOR SALE**—Few settings of Blue Andalusian eggs, \$1.50 per setting.—E. W. Byars. 92-tf.

If you want syrup see Cash Grocery Grocery Co. Phone 101.

**FOR SALE**—Eighty acres best land in Hale county, adjoining Seth Ward, fenced rabbit-proof. Nice ornament-al, evergreen and shade trees on it, and fine building site. Direct from owner.—D. C. Aylesworth.

A span of young mules to let. Phone 294, or see Thos. J. Hart at Oakland Sales Co. 95

**EGGS FOR SALE**—White Leghorn, from fancy stock, 100 per cent fer-tility guaranteed. \$3 per setting of 15, \$15 per hundred.—V. L. Form-way, Plainview. 84-tf

**WANTED**—Green and dry hides at L. D. Rucker Produce Co.

**REGISTERED DUROC - JERSEY** Hog and Full blood Jersey bull, sub-ject to registry, will make the sea-son the Plainview Nursery.

**FOR SALE**—On account of disability I want to sell my interest in the Pat-ton House. This is an opportunity to get in the rooming and hotel busi-ness at a small cost. Can be leased for two years if desired.—Address Box 506, Plainview Texas or call at Hotel.

**WANTED**—A girl to work in the office. See Claude B. Hurlbut & Co., Room 14 First National Bank Bldg. Phone 658.

We can be depended upon to pay the highest market prices for poultry, eggs and hides.—Panhandle Produce Co., west of Nobles Bros.

**FOR SALE**—Complete pump outfit consisting of 80 ft. 5 inch standard pipe, 80 ft. heavy sucker rod, 8 ft. 4 inch lead pipe and 4 3-4 inch brass cylinder, 40 inch barrel. \$125 buys the outfit. Clyde Phillips, 1 1-2 miles southwest Hale Center, Phone 67F11. 93-8t.

### SAVE MONEY

By feeding your milch cow cotton seed hulls—the most economical roughage available.

**PLAINVIEW GRAIN COMPANY**  
Phone 435

**FOR SALE**—5 acre block, 12 blocks west of square, 5 room modern house, sheds and poultry houses on same, fenced and cross fenced with hog wire. Price \$6,000.00. Can give immediate possession.—J. A. Williamson at Mc-Adams Lumber Co. Phone 25.

**FOR SALE**—My threshing outfit, in good running shape. Terms to right party. See or call—C. L. Barrett, at Perry Motor Co.

**FOR SALE**—320 acres, east half sur-vey 11, Block N, Floyd county, 16 miles southeast of Plainview, 7 miles south-west Lockney, shallow water belt, close to Irick school house, 2 room house, other improvements; \$47.50 per acre, including owner's third of 1920 crops. Half cash. Owner, 1805 Timmonds Ave, Portsmouth, O.

**FOR SALE**—Good five-passenger car, or would trade for real estate, prefer city property. What have you got?—John Ryden. 93-tf.

**LAND! LAND! LAND.**  
320 acres in eight miles of Happy, 8 room house, good barn sheds, and outbuildings, 260 acres in cultivation, all in fall wheat, and looking fine. Has two sections of lease. Price \$45 per acre, and throw in the wheat and the lease, grass and farming tools of all kinds. If you are in the mar-ket for a home, don't fail to see me.—Geo. W. Lash, Happy, Texas. 95-4t

**FOR QUICK SALE**—List your city property, farms and ranches with H. B. Adams, office in News office, phone 97.

**STRAYED** from Seth Ward about 10 days ago a small-dark sorrel mare and a light brown horse mule, both branded E on right shoulder.—R. E. Huston.

**D. F. SANSOM & SON WANT** PARTY TO BREAK and plant 200 acres sod, or to rent same.

**TO SELL OR TRADE**, close in, well improved residence property in on land, paying or assuming balance.

**TO BUY** a good second hand saddle.

**TO SELL OR TRADE** a six cylinder seven passenger 1915 model Studeba-ker, run very little, in good condition, in on land or moderate priced Plain-view residence, or for livestock.

**TO SELL** you any kind of feed stuff, delivered anywhere in Plainview. Lo-cated public scales old stand. Phone 435 for our prices.

**TO SELL** 1050 high grade Rambouil-lett ewes, three to five and six years old, due to begin lambing April 1st.

**TO SELL**—320 acres exceptionally good land, 200 acres in cultivation, im-provements moderate, located about twelve miles northwest Hale Center,

**TO SELL** 640 acres improved land, about ten miles northwest Hale Center Hale county, one-half in cultivation, 70 acres wheat.

**CAN MAKE** attractive terms upon any of this land. 88-tf

### F. DAVENPORT

Located sixteen miles east and three miles north of Plainview, wants to sell:

ONE TEAM good small work horses, \$100.  
ONE YOUNG TEAM, \$150.

ALSO SEVERAL fine arge young workhorses.

FIFTY COWS and Springing Hol-stein Heifers.

60 FISCHER WHITE ROCK Hens.  
ONE FORD TRUCK.  
TWO FORD Touring cars.  
ONE RUMLEY Tractor, 18-35, used one year, price \$1,000. Terms.  
SEVERAL NEW two-row John Deere Listers.

ABOUT \$5,000 worth of other farm machinery, none of which has been used over two years.  
ADDRESS Lockney, Texas, or in-quire at Wayland Hotel, Plainview.

**FOR SALE**—1918 Model Ford Sedan in good condition, would trade for notes.—J. L. Dorsett. 93-tf

See Cash Grocery for Garden seed.

**FOR TRADE**—Span of young mares for good milch cows.—Phone 478, C. B. Rees. 96-tf.

**FOR SALE**—Duroc sows with pigs. \$40.00 to \$50.00 each with litter.—Texas Land & Development Co. 95

**WE HAVE A VACANCY** in our op-erating force that we would like to have some young lady whose home is in Plainview apply for The work is permanent, interesting and clean and the surroundings are congenial. No previous employment or business ex-perience is necessary and to any young lady between the ages of 17 and 25 years of age, unmarried, and who can give good reference as to character, we extend the invitation to investigate employment in our organization.—Apply Manager, S. W. Tel. & Tel. Company.

**WANTED**—Second-hand Ford cars see Amos Magness, south of Egge's Garage. 95-2t-c

**FOR SALE**—A handsome three piece ivory bed-room suite.—Mrs. E. E. Roos.

**FOR SALE**—265 acres, 2 room house, 200 acres in cultivation, 100 acres in wheat. \$3000 cash down, balance 1 to 5 years at 6 per cent interest.

480 acres unimproved, level land, price \$19.00 per acre, 1-2 cash, bal-ance 1 to 3 years at 6 per cent.  
640 acres, all fenced, 150 acres in cultivation, 2 room house, well, price \$24 per acre. \$6000 down, balanc 1 to 8 years at 7 per cent. 1 mile to school.

2000 acres, all fenced, 270 acres in cultivation, 170 sowed to wheat, 100 head of stock cattle, team and farm-ing implements goes in at \$40 per acre. \$20,000 cash down, balance 1 to 5 years at 6 per cent. If sold pos-session will be given at once.  
E. BROOKS, Phone 152, Tullia Tex. 90-4t-1w

**GENERAL X-RAY WORK**  
Rooms 4 and 5  
First National Bank Building  
R. E. COCHRANE

### ANNOUNCEMENTS

Subject to Democratic primary.

For District Attorney:  
CHARLES CLEMENTS, Plainview.  
AUSTIN C. HATCHELL

For County Tax Assessor:  
GEO. J. BOSWELL  
W. H. MURPHY.

For County Judge:  
L. D. GRIFFIN  
L. W. SLONEKER.  
R. P. SMYTH

For County and District Clerk:  
J. P. HOWARD.  
JO. W. WAYLAND

For Sheriff and Tax Collector:  
JOHN VAUGHN  
E. E. MONZINGO  
BEN E. MITCHELL  
J. C. TERRY.

For County Treasurer:  
J. M. JOHNSON.

For Commissioner Precinct No. 1:  
G. MARSHAL PHELPS.

For Commissioner, Precinct No. 2:  
E. B. SHANKLES

For Commissioner, Precinct No. 4:  
R. T. BARBEE.  
H. R. TARWATER.  
R. L. HOOPER

### EASTSIDE CAFE

L. R. CREWS, Proprietor  
MEALS AT ALL HOURS  
A Most Complete Line of Short Orders  
CHICKEN DINNER EVERY SUNDAY

### DR. L. STAAR O TOMETRIST

Expert Glass-fitter. Repairing done. Upstairs over Shillett Grocery Store

Family Has Six Operations  
Mrs. Dee Alexander, daughter of Mr. and Mrs. D. M. Alexander of north of Plainview, last week under-went a surgical operation at the sanitarium for appendicitis.

This is the sixth member of the Alexander family to undergo a surgi-cal operation the past year or so. A son was operated upon a couple of weeks before. All of them recovered.

There are twelve children in the family.

J. H. Garner and daughter will leave in a few days for Chattanooga, Tenn., where the girl will undergo a surgical operation. They will also visit relatives at Kensington, Ga.

Vaughn & Augspurger, local sales agents for the J. I. Case line of heavy farm machinery, have moved their office to the building next door north of Lash Realty Co.

# LOOK! MR. FARMER!

Insure Your Growing Crops of Grain Against

## HAIL

In One of the Following Old Line Companies

THE HARTFORD	THE HOME
THE AETNA	THE SAINT PAUL
THE FRANKLIN	THE SPRINGFIELD
THE NATIONAL UNION	THE GREAT AMERICAN
THE NORTHWESTERN	THE INSURANCE CO. OF N. A.

This Agency Has Stood the Test for 14 Years.  
Why Take a Chance—Be Safe Rather than Sorry  
We write all kinds of insurance, we make all kinds of bonds, money to loan on farms and city property.

**MALONE & WARE**  
Successors to Malone & Jackson  
Grant Building Plainview, Texas

# Lands Wanted

We are anxious to get in touch with those who have land for sale, as we have numer-ous customers ready to buy.

We will be glad to see or hear from any one wanting to sell with best prices and terms—Don't delay, our customers are coming.

## Otus Reeves Realty Co.

Plainview, Texas

### In Addition to Our Complete Line of JORDAN AUTOMOBILES

We Can Now Supply You With  
**Texan Trucks, Texan Automob-iles and Southland Tires**

Made in Fort Worth. Guaranteed positively 7,500 miles.

Come in to see us.

**Jordan Motor Car Sales Co.**  
Phone 345  
Plainview, Texas

## LIGHT CRUST FLOUR

"The Flour of Quality"  
For Sale By

## LINN & BOTTS

Kress, Texas

J. P. Linn W. G. Botts

# MONEY

To loan or take up Vendor's Lien notes on Plains land. Best interest rate and terms. No red tape, money ready.

**Shallow Water Land & Loan Co.**  
D. Hefflefinger, Mgr. Office Ware Hotel

## LET ME SELL YOUR LAND FOR YOU

I am in position to furnish some ready buyers for farm and ranch lands in Hale county, and would like to have those who have property for sale to list same with me.

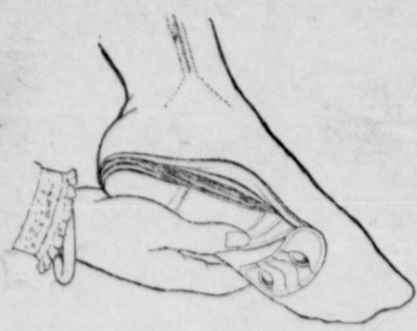
Come in and see me, and tell me what you have to sell, and I will find you a buyer.

H. B. ADAMS, office at News office, Phone 97.

We are long on syrup. See us be-fore you buy.—Cash Grocery Co. town today.



## A Graduate of Orthopraxy at Your Service



Why suffer with corns, bunions, callouses, fallen arches, burning or sweaty feet?

Most all foot troubles are caused by improperly fitted shoes.

We are in position to give you a service seldom found in a city the size of Plainview.

See our window for display of Wizards foot appliances and charts; then come in and have our Mr. Rice, who is a graduate of orthopraxy, give you an opinion on your particular trouble.

Buy a



Have your shoes properly fitted and your foot trouble will vanish.

## Jacobs Bros. Co.

Krippendorff, Dittman fine footwear for Ladies, Bostonian and Packard shoes for Men, Landis and Red Goose slippers for Children at prices that are lower in comparison.

## Land Bargains

Five section ranch, 120 acres in cultivation, house, 2 wells and mills, shallow water. \$18.00 per acre. Terms.

480 acres between Plainview and Hale Center, improved, 100 acres wheat and 50 head of sheep go with place. This is a real snap. Price \$65.00 per acre. Terms.

Fine piece of land 10 miles southeast of town, can sell this week only at \$35.00 per acre.

Can sell you 177 acres or as such as you want, 10 miles south of Muleshoe, good hard land, shallow water, now being opened up to farmers, at \$22.50 per acre. Easy terms.

A few nice pieces around Oiton at \$25.00 per acre.

Fine farm close in to Plainview, well improved, within 2 miles of Lamar school. Price \$175.00 per acre.

Modern home in Plainview, 3 lots, good orchard, furnace heated. Easy terms. Price on application.

**C. H. CURL**

ROOM 21, GRANT BLDG.

PLAINVIEW, TEXAS

**White Bermuda onion plants.**  
**Frost Proof cabbage plants.**  
**Everbearing Strawberry plants.**  
**Giant Rhubarb roots.**  
**Horse Radish roots.**  
**Asparagus roots.**  
**Onion sets.**  
**Seed potatoes.**

**Every day shipments.**  
**The best that grows.**

**White Seed Company**

### Civic League is Re-Organizing

The Civic League is re-organizing, and asks for the support of the people of the town. The first work it has set out to do is to clean up the town and to urge the people to plant shade trees, flowers and shrubs. A clean-up day will be announced soon.

Rev. Harlan J. Matthews, the pas-

tor of the Baptist church, was a pleasant visitor at the News office Saturday. He is a very genial man and we predict for him a successful pastorate here.

Walter Thatcher has gone to Vernon to work on the Vernon Record as a linotype operator. His family will remain here.

## SOCIETY

Mrs. Maggie Johnson and Mr. E. Thatcher marry. Isaac Edwin Thatcher and Mrs. Maggie Johnson were married in this city Saturday night, Rev. J. H. Abney performing the ceremony. They will live in Mr. Thatcher's home near the Nazarene church.

Mr. Thatcher is a well known painter and paper-hanger of the town, and the bride is also well known and is a prominent member of the Presbyterian church. They have the best wishes of their many friends.

### Eastern Star to Meet

There will be a call meeting of Plainview Chapter, Order Eastern Star, Friday evening, April 16th, for the purpose of initiation.

The "Blues" will entertain the "Reds" during social hour.

### Entertainment at High School

There will be an entertainment at the high school Thursday evening, April 16th, for the piano fund. A varied program of general appeal will be given by Prof. Crab and other musical and dramatic talent. The numbers will consist of music and readings of both classic and popular nature, embracing selections pleasing to all tastes and the efforts of the committee deserve a liberal patronage.

The Parent-Teachers' association will have their last regular monthly meeting on Friday, April 16th at 2:30 at the high school. All members are urged to be present.

### Delphian Club Discusses

"Roman Literature"

The Delphian club met with O. B. Jackson Saturday afternoon, and with Mrs. E. M. Carter as leader, discussed "Roman Literature."

The following delegates to the county federation meeting to be held in Hale Center April 24 were appointed by the president: Mrs. W. C. Mathes and Miss Alma Armstrong.

The next meeting of the club will be May 8th with Mrs. R. A. Underwood, and the subject will be "Survey of the Medieval Ages: Teutonic Nations; the Feudal System; the Early Church." Mrs. Hattie Deacon will be the leader, and her helpers will be Miss Ruby Barrow, Mrs. Will Stockton, Mrs. R. A. Underwood and Mrs. J. B. Scott.

### Arrivals at Hotel Wayland

Friday—E. F. Holly, Fort Worth; C. Gran Tall, Dallas; J. C. Willis, Howard, Federer, Russell Newbold, Alfred Griggs, R. M. Bisbee, Quint Taylor and Paul Anderson, Amarillo; H. Heinisuis, Chicago; W. B. Scrutcheins, Amarillo; T. J. Lee, New York; F. H. Leslie, Bartlett, Texas; M. B. Johnson, Amarillo; K. I. Wallingford, Amarillo; Mrs. Alma Kellar and children, Spring Lake; Miss Virginia Moorman, Spring Lake; H. C. Chapman.

Saturday—J. W. Finney, Dallas; Nat Smith, Dallas; Mr. and Mrs. C. A. Carleton, Estes Park, Colo.; E. A. Loessberg, L. W. Brown, S. R. Given, W. R. McQueen, Amarillo; Mrs. Alma Kellar and two children, Miss Virginia Moorman, Spring Lake; C. J. White and wife, Dawson Busby, Ethyle Givens, Lockney; Mable Dagley, Amarillo; Walter Hegi, Clint Gregory, Petersburg; L. G. Stagner, Denver; Dude Shankle, city; E. D. Hughes, Dallas; Roy Bailey, Petersburg; Ben Buchanan, G. C. Burt, city; C. Pogue, Floydada.

Sunday—W. F. Nolen, Dallas; W. L. Wallace, Silverton; Joe Schuler, Ralph Wiese, Petersburg; A. H. Bumguard, Geo. Wiskat, St. Louis; R. B. Hunter, Shspwks; T. P. Tipton, Dimmitt; Fred Thompson, Los Angeles.

Monday—A. J. Dusie, Houston; Grady L. Beard, Amarillo; W. J. Sadler, W. W. Campbell, Gustepson, Amarillo; F. C. Benham, M. R. Forcusion, Dallas; L. S. Whitcomb, Amarillo; G. M. Cox, Austin; R. C. Hunton; A. N. Haraway, Dallas; G. M. McKee, Amarillo; Dr. Borden, R. C. Brazel, D. L. McDonald, Hereford; C. R. McQueen, Amarillo; Hoyt Temple, Roswell; R. O. Field and wife, Floydada; J. W. Anderson, Lockney; Gray Wilson, Dallas; Julius Hill, New York; W. H. Baughn, city.

Mrs. E. E. Roos came in Saturday from Amarillo.

**CITATION BY PUBLICATION THE STATE OF TEXAS.** In the County Court, June Term, A. D. 1920.

To the Sheriff or any Constable of Hale County—Greeting:

YOU ARE HEREBY COMMANDED, that by making publication of this Citation in some newspaper published in the County of Hale for four weeks previous to the return day hereof, you summon The heirs of J. C. Curtis, deceased, and their heirs and legal representatives, whose residence is unknown, to be and appear before the County Court to be held in and for the County of Hale, at the court house thereof, in the city of Plainview, on the 1st Monday in June, 1920, same being June 7th, 1920, then and there to answer the petition filed in said Court on the

# CORRECT STYLES

That Are the Truest Economy In  
Selections of Garments  
for Graduation Wear

On  
Display



At  
Carter-Houston's

## Substantially Reduced In Price

Here are dresses so bewilderingly delightful that you will be in amaze to know not which one, but how many of them you prefer. Every dress is of an original styling, rich in design, but more beautiful still in the gayety of the pattering and coloring and when it comes to the trim effects, the clever use of knifetucks, the many opportunities offered for embroidere effects in the tunic drapes and the richness of the fuller draped types, you will find yourself face to face with the dresses you have dreamed of but never before saw so perfectly put into actuality.

And the Prices Are as Pleasing as the  
Styles Are Elaborate



Gage Millinery  
And  
Flanders Blouses  
At Unusual Savings

To complete your wardrobe at an unusual saving, we have placed for the approval of the Sweet Girl Graduate, our complete line of Gage spring and summer hats, combined with the beautiful Flanders blouses, with many others at reduced prices, and then too there are everything else that you will need to complete the wardrobe for such event, silk undergarments, silk hosiery, laces, ribbons, handbags, handkerchiefs, all these are now on display for your approval.

**Carter-Houston's**

The Store of Quality

12th day of April, 1920, wherein Mrs. Moreen May Turney, joined by her husband, G. C. Turney; Glenn Lee Curtis, Robert C. Curtis, and John Roy Curtis, by his next friend Mrs. Zula Lee Kinard, are Plaintiffs, and J. C. Curtis, the heirs of J. C. Curtis deceased, and their heirs and legal representatives, are Defendants, the File Number of said suit being No. 749, and the nature of Plaintiffs' demand being in substance, an action for adjudication of heirship, wherein plaintiffs allege that J. C. Curtis, grantee in a deed from Mrs. Parthenia M. Curtis, dated the 19th day of June, 1918, recorded in Vol. 43 pages 589-590 Hale County Deed Records to the following described land: Situated in Hale County, Texas, being a part of survey of 640 acres patented to W. J. Curtis, Assce of H. P. Speed, by patent No.

321, Vol. 55, dated the 26th day of April, 1918, and more particularly described as follows: BEGINNING at NW corner of Survey No. 3, block K, certificate No. 0-518 T. W. & N. G. Ry. Co., for the NE corner of this survey; thence W with the N line of said survey 1188.5 vrs. to a point 711.5 vrs. East of the NW corner of said survey; then S 1900 vrs. a point in the S line of said survey, 711.5 vrs. E of its SW corner; thence E with the S line of said survey, 1188.5 vrs. to its SE corner; thence N with the E line of said survey, 1900 vrs. to the place of beginning, containing 400 acres of land, is dead; that he had absented himself from the State of Texas for more than 7 years successively to this date; that no administration was had upon his estate in this State or elsewhere and none was necessary; that he left no will; that he left no

personal property in this State; that the property above described was all the property belonging to his estate; that plaintiffs, Moreen May Turney; Glenn Lee Curtis; Robert C. Curtis and John Roy Curtis are the children and all the children, and the heirs and all the heirs of the said J. C. Curtis so far as is known to plaintiffs.

HEREIN FAIL NOT. But have you then and there before said Court, this writ with your return thereon, showing how you have executed the same.

Witness: Clerk of the County Court of Hale County, Given under my hand and Seal of said Court at office in the City of Plainview, this the 12th day of April A. D. 1920.

JO. W. WAYLAND,  
Clerk County Court, Hale County, Texas.



# Remember the Coal Situation Last Winter

Buy your coal early, and put in Simon Pure Niggerhead, the best that money will buy. Operators have named prices to dealers, which advance monthly, why wait and pay higher prices for inferior coals?

## E. T. COLEMAN Coal & Grain Dealer

Phone 176

Between Depots

### BURNETT SATIN--BLACK MAMMOTH JACK REGISTERED

16 1-2 hands high, 17 inch front bone, 21 inch rib bone, 35 inches from tip to tip. Will make the season at my place four miles north of Hale Center on Plainview road. Call and see him. We will show you Niger, one of his gets 15 hands high, eleven months old. \$15 to insure live colt. Not responsible for accidents.

G. A. LOUPTAN, Hale Center

#### PERSONAL MENTION

W. E. Hall of Tulia is here today. Mrs. Ella Price of Lubbock was here Saturday.

D. L. McDonald of Hereford was here yesterday.

J. I. Collins of Tatum, N. M., is here on business.

H. C. Smith of Westerville, Ohio, is here on business.

J. V. Boston of Kress was in town Monday on business.

G. M. Stark of Howe, Hunt county, is here prospecting.

Mr. and Mrs. G. G. Thompson of Slaton were in town Sunday.

C. Dunham and F. E. Bayels of Quitaque were here yesterday.

J. R. Smelser of the Bartonside community was in town Saturday.

E. N. Egge returned Saturday from a business trip to Iowa Park.

Z. T. Northcutt went to Amarillo yesterday morning on a business trip.

Mrs. E. D. McMurtry of Vigo Park was here Wednesday, shopping.

A. T. Ogg came in Sunday from Ranger to spend several days with his family.

F. J. Brayme from Red Cloud, Neb., is here prospecting with a view

of locating.

F. J. Shell, W. E. McLaughlin and M. A. Moses of Ralls were here on Wednesday.

Homer Howard of Lockney was here this week en route to Amarillo, on business.

Mrs. Lilly Chandler of Chicago has arrived to visit her cousin, W. W. Thompson.

Mr. and Mrs. John M. Gist of Odessa came in yesterday to visit relatives and friends.

Mr. and Mrs. Gerald Robertson of

Lockney have gone to Mineral Wells to spend the summer.

E. Van Deventer came in Sunday from Wichita Falls, to spend a few days with his family.

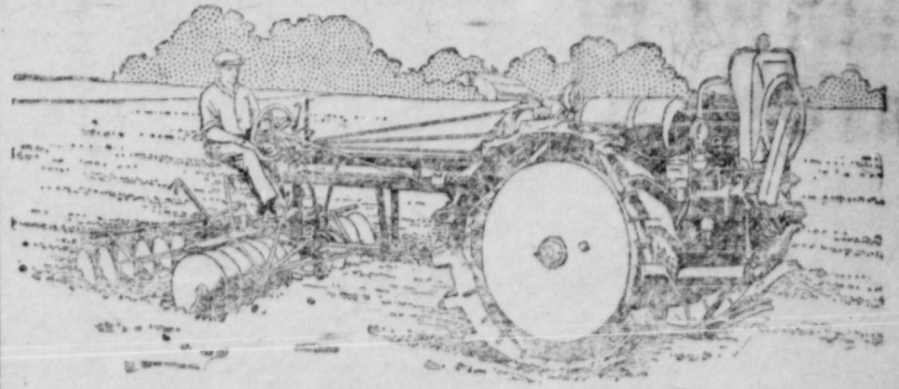
R. E. Burch left Saturday for Abilene to visit several days, and will then go to Wichita Falls.

Mrs. France Baker and Miss Irene Whitely of Lockney were here this morning, en route to Lubbock.

John A. Sneed returned the latter part of the week from a business trip of several days to Ranger.

## Attend Moline Tractor Demonstration Thursday, Friday and Saturday at Plainview

ONE MAN OPERATES BOTH TRACTOR AND IMPLEMENT



One Man Discs 27 Acres a Day with the New

**MOLINE**  
UNIVERSAL TRACTOR  
It Solves The Farm Help Problem

Discing is rapidly and economically done with the new Moline-Universal Tractor, Model D, one man with an 8-foot tandem disc harrow covering 27 acres in ten hours. With a 10-foot disc harrow he covers 38 acres, and with a 20-foot peg-tooth harrow 76 acres.

The light weight of the Moline-Universal Tractor, 2200 pounds, makes it especially adapted for discing and similar work, as it does not pack the soil and uses but little fuel, running on less than half throttle most of the time. It is light, but more than enough power to pull two 24-inch plows at high speed, all its weight being traction weight.

The Moline-Universal Tractor attaches directly to the implement and forms a single, compact unit with it. It is controlled by the operator from the seat of the implement, where he must sit to do good work. One man with the Moline-Universal does as good work as two men with the average tractor.

The Moline-Universal is adapted for all classes of farm work. Its high

clearance, 20 1/4 inches, makes it ideal for cultivating, and it is equally well fitted for planting and harvesting. In addition, it has ample power for belt work, pulling a 24-inch grain separator or 16-inch ensilage cutter with ease.

There is work on the farm every day in the year for the Moline-Universal. It does every kind of operation that can be done with horses and do it better, faster, and cheaper. This is why the Moline-Universal really replaces horses, and, at the same time, by enabling one man to do much more work than ever before possible, solves the farm help problem.

The detailed construction of the new Moline-Universal, Model D, is the best it is possible to manufacture. Perfected 4-cylinder overhead-valve engine, electric starting and lighting system, complete enclosure of all working parts, and fifteen Hyatt roller bearings, are a few of the main features.

We invite you to examine this machine at your earliest opportunity.

ONE MAN OPERATES BOTH TRACTOR AND IMPLEMENT

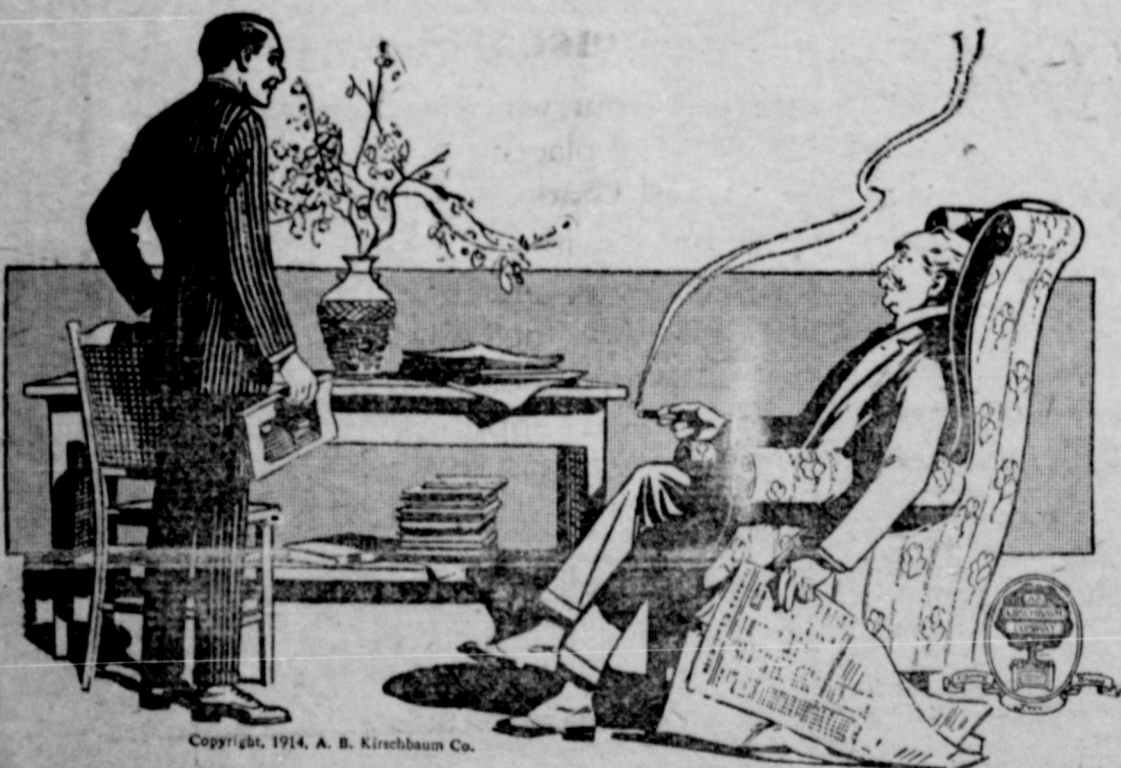
### Perry Motor Company

2nd Door East City Hall

Phone 437

Plainview, Texas

## Clothes Buyers "On the Inside" Are Buying Early



You remember last year—how the late buyers found stocks all broken up and prices soaring. Pretty much the same now; good woollens rare as hen's teeth; production way below normal. And prices are rising. Clothing folks know that it is so.

Right now we can sell you a good grade of new Spring suits and that will—unless all signs fail—be selling at ten and fifteen dollars higher in a few months.

All wool, newest patterns, dandy fabrics, late 1920 styles, true tailoring, long wear, satisfaction. Remember, though—we said we have them now. Pick yours today.

## REINKEN'S Clothing and Shoe Store

a good place to trade

### PLAY

#### "A SOLDIER'S SWEETHEART"

A pre-war story, given by the

Senior Class of Wayland College

Friday, April 16th at 7:30 o'Clock

In College Auditorium

Admission 35c and 50c

## TAXI, TRANSFER

### and Service Station

Blasengame's Confectionery. Phone 99.

## Flack & Nichols



# THE ABERNATHY WEEKLY NEWS

## Spring Time is Paint Time

Lumber and building materials are too high to not protect with a couple of coats of good paint. We have the B. P. S. line of paints, as good as any paint made. Come and let us figure with you on your paint bill and also on any thing in the building line that you may need.

Still have a few good post, get them while they last.

**McAdams Lumber Co.**

Phone 2 Abernathy Sam W. Smith, Mgr.

## Merril and Stambaugh Elevator

Coal, Grains and Feed  
We Solicit Your Patronage

## Stambaugh Bros.

Abernathy, Texas

The place to buy your Groceries. First-class goods at the right price.

Fresh Bread

## COMING

We now have in transit, a full, complete and up-to-date stock of Dry Goods, Notions, Gents' Furnishings, shoes, etc. In a few days we will be able to show the new things. Come to see us, you will find our merchandise and prices right.

**Hardesty & Fields**  
Successors to R. M. Hardesty

## CROW BARBER SHOP

AGENTS FOR TROY STEAM LAUNDRY  
Agents for Several Good Lines of  
MEN'S MADE TO MEASURE CLOTHES  
FIRST-CLASS CLEANING AND PRESSING  
FIRST-CLASS BARBER WORK AND  
HOT BATHS

E. E. CROW, Prop.  
ABERNATHY, TEXAS

## The Abernathy Hotel

C. F. BUS KE, Prop.  
Just across the street from the Depot  
GOOD MEALS CLEAN BEDS  
PRICES RIGHT  
Special rates to boarders by the week.

## T. B. Stone Gin

ABERNATHY, TEXAS

Mr. Stone is holding this space in the Abernathy News not because he needs to advertise, but because he is a good citizen of Abernathy and knows that to keep the paper in the town the merchants must do their share in the advertising matter.

We Have everything in the Fountain line, milk drinks, ice cream, bottle drinks, etc. Everything kept and served in a sanitary condition

**Pinson Drug Co.**

## Abernathy News

Miss Lottie Struve, Editor

The Abernathy Weekly News is published on Tuesday of each week in connection with the Plainview News.

### SUBSCRIPTION RATES

By mail in advance, per year .... \$2.00  
which includes bi-weekly issues of Plainview News.

### Wind Damages School Roof

The wind did considerable damage to our school house. A new roof has been put on.

### Would Build \$20,000 Gin

Tuesday representatives of the West Texas Gin Co. were here conferring with local people relative to building a gin here to cost \$20,000.

### Hinse Building New Home

Mr. Hinse, who recently moved here from Wisconsin, is building a new home.

### Crow Buys Thurmond Farm

Lee Crow has bought John Thurmond's farm and will move on the place.

### SOCIETY NEWS

Mr. and Mrs. Jack Parish

Entertain Young People

Friday night a crowd of young people, sixty in number, gathered at the home of Mr. and Mrs. Jack Parish.

The evening was spent playing 42 and card games.

Refreshments were served and everyone had a good time.

Mr. and Mrs. Sam Merrill

Entertain Young People

The young people spent a most enjoyable evening at the home of Mr. and Mrs. Sam Merrill's Thursday.

Mr. and Mrs. Slinger Entertain

Mr. and Mrs. Slinger entertained the young people of McWhorter community Friday evening.

### Organizing Abernathy Orchestra

Abernathy is getting up an orchestra so as to be prepared to furnish music any time and also for the pleasure of the work itself.

We would like to have the help of all who play instruments of any kind or sing.

Little Ima Lee Hembree has been confined to her bed with a light attack of diphtheria, but is now recovering.

List your farms with the Schulz Land Co., Abernathy.

The new residence of T. B. Stone is progressing nicely.

Emil Hinse has bought a fine pair of mares from Mark Gregory of Petersburg.

List your farms with the Schulz Land Co., Abernathy.

DR. J. B. McBRIDE, M. D.

General Practitioner

Calls answered day or night

ABERNATHY, TEXAS

## PERSONAL MENTION

Mr. and Mrs. Martin Caldwell were here Monday visiting Ed Caldwell and family.

Mr. and Mrs. Bill Evans have gone to San Angelo.

Mrs. J. W. Hembree and Orin went to Lubbock Tuesday.

Misses Janie and Bell Mitchell, who are staying in Plainview, came down Thursday to spend the week end with their folks.

Walter Overton left Friday for Tennessee.

Reyborn Darden who has been at Woodward, Okla., is at home visiting his parents, Mr. and Mrs. Henry Darden.

Miss Beulah Crow was taken to Lubbock sanitarium Friday to be operated on for appendicitis.

J. P. Hix of Canyon has taken the place of his brother, Lewis Hix, here in the bank.

Hugh Ragland went to Amarillo one day this week.

Lewis Hix left Tuesday for his home in Canyon.

Bill Pool from Brownfield was in town this week.

Little Nina Mae Drew who has been visiting at the home of Mr. Pearce Yoe the past two weeks, returned to her home in Plainview Tuesday.

Dr. J. B. McBride and Mrs. Pinson went to Lubbock Thursday.

Emell Hines has bought a new overland car.

J. E. Gordon of Lubbock was here this week writing insurance.

John Adams Lutrick, who has been in Dalhart, has come home.

A. J. Fuch, Herbert Garth and Rudolph Fuch left Friday in a car for Marble Falls, San Antonio and other Southern points.

Miss Grace Evans has quit work in Pipkin-Ragland grocery store, and Miss Mabel Pipkin has taken her place.

S. E. Jaroe, an ex-citizen of Abernathy, died the other day.

Mrs. George Ragland has returned from a visit to Marathon and Cisco. She was accompanied home by her sister, Mrs. Lowery.

DeWitt Oliver, teacher of Sunshine school, was in town Saturday visiting his parents, Mr. and Mrs. J. D. Oliver.

Mrs. H. Darden and family left Saturday to visit her daughter, Mrs. Willis Goodson in Lamesa.

Otto Stolley came in from Austin Monday morning.

Uncle George Caldwell is here visiting Ed Caldwell and family.

Miss Ruby Daniels, who has been attending school at Plainview, is at home.

List your farms with the Schulz Land Co., Abernathy.

## Want Column

List your farms with the Schulz Land Co., Abernathy.

CHOICE CUTS OF BEEF & PORK  
Home Cooked Meals  
SHORT ORDERS  
THE EUREKA CAFE  
Mrs. Watson, Prop.

## Ragland-Pipkin Grocery Co.

Bran .....	\$2.35
Shorts .....	\$3.95
Bewley's Best Flour, Every sack guaranteed, 500 lb. lots .....	\$6.70
Belle of Wichita, 100 lbs. for .....	\$7.20
Alpatross, 100 lbs. for .....	\$7.20
Meal, per sack .....	\$1.10

WE HAVE THE GOODS AND SELL CHEAP FOR CASH

## Lubbock sanitarium

A Modern Fireproof Building  
Equipped for Medical and Surgical Cases

DR. ARVEL PONTON

Office Phone 628 Residence Phone 628

DR. O. F. PEEBLER

Office Phone 209 Residence Phone 341

DR. J. T. HUTCHINSON

Office Phone 209 Residence Phone 216

DR. M. C. OVERTON

DR. J. T. KRUEGER

MARY F. FARWELL, R. N.

Superintendent

Phone 628

A chartered Training School is conducted by Miss Mary F. Farwell, R. N., Superintendent. Bright, healthy young women who desire to enter may address Miss Farwell.

## Struve Mercantile Co.

Will serve you with Hardware and Dry goods.

Call and make yourselves at home.

Your Money Will Grow Like  
a Crop When Deposited  
With the  
First State Bank  
Abernathy, Texas

## BUSINESS MAN

Your telephone is an extra salesman that will cut down expenses for you.

Housewives phone your orders to your grocer and have them delivered. Abernathy Telephone Company will install your telephone.

W. H. CROW, Manager

Our Lists of

## Farm Bargains

Will Interest You

Send for a Copy Today

Schulz Land company

## The Farmers Coal & Grain Co.

L. S. Heggan, Pres. C. F. Buske, Vice Pres.  
W. A. Harrell, Sec'y.

HIGHEST MARKET PRICES PAID FOR YOUR GRAIN

ABERNATHY, TEXAS

## Van's Shop

CLEANING AND PRESSING

AGENT FOR TAILOR-MADE CLOTHES

ABERNATHY, TEXAS

An Entire New Program  
Will Be Shown  
At  
The Best Theatre

Prices 15c and 25c Show begin 7:30 prompt

"Joe" Bailey is now salesman at Looper's grocery store.



# ANNOUNCEMENT

We have purchased the Post Office Garage across the street from the Post Office, and will continue the business under the same name and at the same stand.

We will continue to do Maxwell service repair work and will carry a full line of Maxwell parts and supplies. We will do work on any and all makes of cars.

We will also push the Portage Tires and tubes because we believe them to be as good as any thing offered on the market.

Mr. Tom Lipscomb will remain with us as one of our mechanics and with his assistance we will soon be acquainted with local Maxwell cars and their owners. We wish to be of real service to you and invite your visit and your patronage.

We appreciate the patronage given Mr. Roy Lipscomb, former owner, and will make every effort to serve you as well as he has, and in addition will try to always improve the service.

We guarantee our work and service.

## Post Office Garage

Asher & McKee, Props.

next Monday evening at 4 p. m., and in front of the tent Monday night at 7:00 p. m.

Watson's Business College  
Alvin Thomas enrolled this week. His home is at Abernathy.  
Zillah Rightmire graduated last week.

The following students will soon graduate from the bookkeeping department: Fritz Schachat, Hattie Hargrove, Annie Trammell and Bailey Hankins.

Erma Feltnagle has accepted a position with the Herald Pub. Co. Gertrude Bishop with M. J. Baird. Minnie Bell Woolverton with a real estate firm in Amarillo, Eppie Long has been offered a position in Clarendon, and she will probably accept same about May 1.

We are in receipt of a letter from Betty Merrell. She is holding a position with the railroad company at Springdale, Ark.

Earl King writes from Gordon, that he has a position with the First National Bank of that place.

Carvey Groves was a pleasant visitor last Saturday. He is employed by the Texas & Pacific railroad and is located at Big Springs.

Ruby Daniel was called to her home in Abernathy, on account of serious illness of her cousin.

It looks like now from the number of inquiries we are having that our spring and summer attendance is going to be greater than ever before.

**NOTICE OF TRUSTEE'S SALE**  
Of the Security provided by an Indenture of Trust Securing \$500,000 Prior Lien Notes of the Texas Prairie Lands Ltd.

Default having been made in the payment of the principal and of all interest accrued since the 1st July 1918 on the Prior Lien notes of the Texas Prairie Lands Limited issued under an indenture of trust dated 12th December 1914 to secure an authorized issue of \$500,000 face value of the said notes, the Old Colony Trust Company, trustee of the said indenture of trust hereby gives notice that, in the exercise of the power in that behalf contained in the said indenture of trust and subject to the terms and conditions of sale hereinafter set forth, it will offer for sale at the Old Colony Trust Company at Boston, Mass., on the seventh day of May 1920 at 12 o'clock noon all of the trust property held by it under the said indenture of trust, including:

1. A first mortgage upon certain farms in Hale County, Texas, known respectively as the Demonstration Farm and the Pioneer Farm containing 1267.53 acres more or less and valued for the purpose of the said indenture at \$165,000.

2. Certain vendor's lien notes, issued in respect of 4,906.46 acres more or less of land in Hale, Floyd and Swisher counties, Texas, and amounting on the 6th April 1920 to the aggregate face value of \$375,921.42.

3. Certain contracts for sale and mortgage relating to 1154.80 acres more or less of lands in Hale, Floyd and Swisher counties, Texas. The aggregate face value of the contracts on the 6th April 1920 was \$150,104.

4. Certain mortgage on 2995.65 acres more or less of lands in Hale, Floyd and Swisher counties, Texas. Contracts for sale previously made in respect of these lands and now cancelled amounted to the aggregate face value of \$290,269.88.

5. Cash held by the said trustee under the said indenture amounting on the 6th April 1920 to \$54,354.22.

The said Trust Property may be inspected in the office of the trustee at any time prior to the date of the sale.

**Terms and Conditions of the Sale.**  
No bid will be received from any bidder who shall not have deposited with the trustee the sum of \$1,000 in cash or a certified check on a national bank or trust company acceptable to the trustee as a pledge that he will make good his bid in case of acceptance. In case any bidder shall fail to make good his bid or shall fail to comply with the terms of sale, then, at the option of the trustee, the deposit made by such bidder shall be applied toward the payment of the expense of and resale and the making good of any deficiency or loss in case such property shall subsequently be sold at a price less than that bid at the prior sale, the trustee reserving all legal rights against such bidder. The deposits of unsuccessful bidders will be returned to them when the property has been struck down. Upon acceptance of any bid the deposit of the bidder shall be applied toward the purchase price.

The holders of the said notes or any of them or the trustee on behalf of all the noteholders shall have the right to purchase the said trust property upon equal terms with other persons and the purchaser shall be entitled to be allowed as paid in or towards satisfaction of the purchase money such sums as shall be payable to him or them out of the proceeds of sale in respect of any notes and coupons held by such purchaser paying the balance, if any, in cash.

It is provided in the indenture of trust that this sale of the trust property and good and sufficient transfers pursuant thereto shall be a perpetual bar both in law and equity against Texas Prairie Lands Limited, its successors and assigns, and all persons claiming by, through or under it of all its rights, title and claim in and to the trust property so sold.

The trustee, however, reserves the right to reject any and all bids and to adjourn the sale from time to time without further notice.

Further particulars with reference to the sale may be obtained from the trustee.

Dated the sixth day of April, 1920.  
**OLD COLONY TRUST COMPANY,**  
By C. B. Humphrey, Vice-President.

## U---MUST---C BRUNK'S COMEDIANS

Big Tent Theatre

Double Sidewalled Waterproof, Corner E. 7th and Beech Sts.—Nash Hotel Block



HARLEY SADLER  
(As Himself)

Non-Profit  
Prices

Children . . . 25c  
Adults . . . 35c

War Tax  
Included

Doors Open 7:00  
p. m.—Curtain  
8:00 p. m.

All Next Week  
Starting

MONDAY,  
APRIL 19

25 PEOPLE 25

Band and Orchestra  
NEW VODIL BETWEE  
ACTS  
PLAYS CHANGED EVERY  
NIGHT

Opening Play Monday Night  
a Rural Comedy in 4 Acts

'The Country Boy'



HARLEY SADLER  
(As a Country Boy)

## Back With You Again

My sale of my grocery store did not go through and I am back at the old stand doing business as formerly, and ask all my old friends and customers to remember me with their grocery business. I have a complete line of groceries, and I give the best of service.

L. J. Warren Grocery Co.



### BIG TENT THEATRE HERE NEXT WEEK

Brunk's Comedians will erect the most complete and comfortable tent theatre touring the Southwest, on the corner of East 7th and Beech streets on the Nash Hotel block, next Monday morning. This tent will be absolutely water proof, double sided and sand steam proof.

This company is composed of 25 actors, musicians and vaudeville artists, which are second to none in their respective lines of work. Harley Sadler, the comedian and manager of the company has surrounded himself with the best talent obtainable regardless of expense, to give the public the latest comedies and dramas of the day and will present here such plays as "The Girl He Couldn't Buy," "The Sweetest Girl in Arizona," "The Man from Arkansas," the great military play, "The Coward," etc., for your approval.

The opening play next Monday night will be a rural comedy drama in 4 acts, entitled "The Country Boy," with plenty of good clean rube comedy throughout, also up-to-the-minute high class vaudeville between acts, supported by Prof. Moore's Concert Orchestra, who will play other classical and jazz selections in concert before the curtain and between acts, which represents 3 distinct classes of entertainment for one price of admission, which is so low you can't afford to miss a night and bring the whole family.

The doors will open at 7:00 p. m. and the curtain will rise promptly at 8:00 p. m. and the show will be over at 10 p. m.

Watch for the band on the streets

## Planting Cotton Seed

We have arranged for a large quantity of acclimated Mabine and Barnett's planting seed—the best variety for this country—which will sell at reasonable price.

A most successful Floyd county cotton raiser says:

"Bed your land only once, plant shallow a bushel per acre, plow shallow and often.

There will be a big demand. Fill your requirements early. We will appreciate your orders.

## Plainview Grain Company

D. F. Sansom & Son, Props.

### CITATION BY PUBLICATION THE STATE OF TEXAS,

In the County Court, June Term, A. D. 1920.

To the Sheriff or any Constable of Hale County—Greeting:

**YOU ARE HEREBY COMMANDED,** that by making publication of this Citation in some newspaper published in the County of Hale for eight weeks previous to the return day hereof, you summon the heirs and legal representatives, whose residence is unknown, to be and appear before the County Court to be held in and for the County of Hale, at the court house thereof, in the city of Plainview, on the 1st Monday in June, 1920, same being June 7th, 1920, then and there to answer the petition filed in said Court on the 12th day of April, 1920, wherein Mrs. Moreen May Turney, joined by her husband, G. C. Turney; Glenn Lee Curtis, Robert C. Curtis, and John Roy Curtis, by his next friend Mrs. Zula Lee Kinard, are Plaintiffs, and J. C. Curtis; the heirs of J. C. Curtis deceased, and their heirs and legal representatives, are Defendants, the File Number of said suit being No. 749, and the nature of Plaintiffs' demand being in substance, an action for adjudication of heirship, wherein plaintiffs allege that J. C. Curtis, grantee in a deed from Mrs. Barthner M. Curtis, dated the 19th day of June, 1918, recorded in Vol. 43 pages 589-590 Hale County Deed Records to the following described land: Situated in Hale County, Texas, being a part of survey of 640 acres patented to W. J. Curtis, Asse of H. P. Speed, by patent No. 321, Vol. 55, dated the 26th day of April, 1918, and more particularly described as follows: BEGINNING

at NW corner of Survey No. 3, block K, certificate No. 0-518 T. W. & N. G. Ry. Co., for the NE corner of this survey; thence W with the N line of said survey 1188.5 vrs. to a point 711.5 vrs. East of the NW corner of said survey; then S 1900 vrs. a point in the S line of said survey, 711.5 vrs. E of its SW corner; thence E with the S line of said survey, 1188.5 vrs. to its SE corner; thence N with the E line of said survey, 1900 vrs. to the place of beginning, containing 400 acres of land, is dead; that he had absented himself from the State of Texas for more than 7 years successively to this date; that no administration was had upon his estate in this State or elsewhere and none was necessary; that he left no will; that he left no personal property in this State; that the property above described was all the property belonging to his estate; that plaintiffs, Moreen May Turney; Glenn Lee Curtis; Robert C. Curtis and John Roy Curtis are the children and all the children, and the heirs and all the heirs of the said J. C. Curtis so far as is known to plaintiffs.

HEREIN FAIL NOT. But have you then and there before said Court, this writ with your return thereon, showing how you have executed the same.

Witness: Clerk of the County Court of Hale County.

Given under my hand and Seal of said Court at office in the City of Plainview, this the 12th day of April A. D. 1920.

JO. W. WAYLAND,  
Clerk County Court, Hale County, Texas.

W. H. Cooke of Clarendon is here on business.

## Just Received

Twin City 12-20 tractors. Pulls six disc plows or combined.

See us for Farm Power Machinery.

Panhandle Sales Company  
Egge's Old Stand



# Jacobs Bros. Co.

THE ONE PRICE CASH STORE

## The Profit Sharing Store

### Features

#### Sale of All Silk and Fancy Shirts

\$16.50 values	\$12.95
12.50 values	9.85
9.85 values	7.95
7.95 values	6.35
6.85 values	5.45
5.95 values	4.85

Come today, they are going fast.

Sale of all Ladies' and Children's Ready-to-wear—embracing the newest in Suits, Coats, Dresses, Skirts, Petticoats, Blouses and Summer frocks, every garment radically reduced.

### EDITORIAL

During these unprecedented times when everything is unusually high—it behooves everyone to practice TRUE ECONOMY. Trade at the store where you are not only assured Quality but Economy As Well.

Thousands have voiced their appreciation for the modern methods we employ at our store.

We are the Premier Cash Store of the Plains. We have never cut a price nor loss a penny on accounts. We have no favorites, every one accorded the same consistent fair dealings.

Trade at the only One Price store in Plainview,

JACOBS BROS. CO.

Mrs. J. L. Perdue left Monday morning for El Paso to visit her son, George Perdue, and family.

Mrs. Thompson of Amarillo came in yesterday morning to visit her parents, Mr. and Mrs. F. B. Gouldy.

L. H. Graver and family of Lockney have gone to Kansas and Missouri to visit relatives for two months.

John Thompson left this morning for Dallas, where he will take employment with the Western Electrical Co.

B. R. Chapman and L. H. Blakemore, Jr., went to Amarillo this morning to attend the Cletrac school of instruction.

John Dalrymple, who has the contract for the street paving in Lubbock, spent Sunday here with his family.

Mr. and Mrs. Frank Bain, Mrs. J. A. Bain, Mrs. Longmoor and daughter of Silverton were in Plainview Wednesday.

Mrs. Caraway and son of Lubbock are here at the bedside of Rev. A. B. Roberts. They are related to Mrs. Roberts.

Mr. and Mrs. Sterling W. Reynolds left Sunday night for Desdemona, and Mrs. S. E. Reynolds left for Eastland.

J. R. Sharp, Frank Annon, Less and R. H. Wormack of Hereford and Harvey Cash of Dimmitt were in town yesterday.

N. E. McCune, druggist in Tulia, underwent a surgical operation for appendicitis at the Plainview sanitarium last week.

Mr. and Mrs. O. Nuzum, Mr. and Mrs. J. W. Holland, M. Cooper and Mrs. C. S. Cooper of Tulia were in Plainview Tuesday.

J. C. and Elroy left Sunday for a weeks' trip to Oklahoma City and Ft. Smith, Ark., to buy furniture for their store.

R. Holland returned last week from Dallas and San Angelo, where he spent the past three months with relatives. His health remains very poor.

Mrs. Gearman, who has been the guest of her parents, Mr. and Mrs. P. H. Connally, for four months, left yesterday for her home in South Dakota.

Miss Smith returned Saturday from a trip to Amarillo.

Mrs. Morey McGlasson will leave tomorrow morning for a visit with relatives in Houston and Galveston.

Miss Lois Duff returned last week from Austin, where she had been visiting the family of State Treasurer John W. Baker.

R. C. Ware left Thursday for a business trip to Fort Worth.

## New Wash Suits for Boys

The tragedy of little boydom is that the inhabitants insist on growing up and can't always wear these boyish wash suits in blue, pink, green, yellow and grey chambray, braid trimmed. Middy suits are shown in belted, norfork and regulation styles.

Oliver Twist, with white waists trimmed in color, and quaint little Dutch suits are popular models for thrt little boy from three to seven.

Come in and let us show you the Little Eddy suits for boys.

Barrier Bros. Dry Goods Co.  
Dependable Merchandise  
N. W. Corner Square Phone 26  
Plainview, Texas  
Stores also at Lubbock, Brownfield and Floydada

# The Plainview Mercantile Company

The Store for All the People. The Store the People Are Building

## Observing National Ginghams Week, April 12 to 19

A little late in our announcement but always ready to give space and offer at special offering this old reliable King of Wash Fabrics.

So we are for this special occasion and set time, pricing you every piece of ginghams and every garment made of ginghams at a real saving in price. Notice the offer following.

All 45c Gingham at	40c
All 40c Gingham at	35c
All 35c Gingham at	30c
All 30c Gingham at	25c

Gingham dresses in Childrens, Misses and Womens. Styles for street, for school and house wear, real values at such prices as are offered on this occasion. Remember the date, April 20. Remember the occasion, it's National Ginghams week and remember this store is observing this period.

### Children's Aprons

Ages 6 to 14, \$1.35 now 90c

### Children's Dresses

Amoskeag gingham, linen trimmed, ages 2 to 6, regular \$2.50 value now \$1.86  
White Nurses linen, colored trimmed \$3.50 now \$2.40

### Misses' Dresses

Fancy plaid gingham, Organdy trimmed, age 8 to 14 \$4.75 now \$3.60  
White linen special \$3.50 now \$2.70

### Ladies' Specials

Bungalow aprons \$2.75 now \$1.95  
Porch dresses \$5.00 now \$3.60  
\$7.50 now \$4.80

Other values too numerous too mention.

# PLAINVIEW MERCANTILE COMPANY

BURNS & PIERCE, Proprietors