

TENTH ANNUAL CONVENTION NUMBER

# The LIVESTOCK

Historical Society



# INSPECTOR

DEVOTED EXCLUSIVELY TO LIVE STOCK INTERESTS.

Tenth Year,  
No. 21.

Woodward, Oklahoma and Kansas City, Missouri; February 15, 1904.

\$1 Per Year



Oklahoma Pavilion at St. Louis World's Fair.



# BREEDER'S DIRECTORY



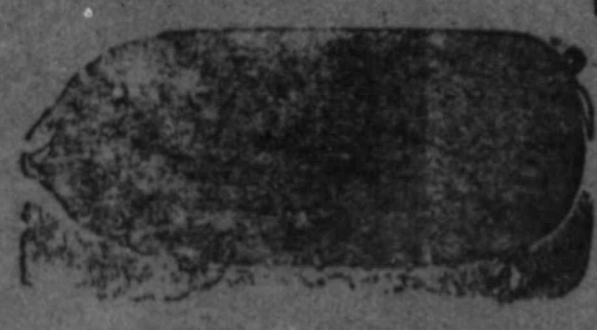
## Shorthorn Bulls

We breed Short-Horn Bulls from deepest strains of Bates cattle, using sires from such famous old and tried families as Wild Eyes, Kirk-Lovington, Barrington, Rose of Sharon, Hilpa, Liverpools and Crags.

No bulls on earth have greater power of transmitting the qualities that have made the Short Horn the leading beef breed of cattle. Our bulls are bred on Buffalo grass, and are not weakened for range purposes by being pampered.

Our ranch is on the Staked Plains, seventeen miles from Panhandle, Tex. Come and see us.

**H. T. GROOM, Manager,**  
Panhandle, Texas.



## BRIGHTSIDE POLAND CHINA SWINE.

Are better than ever, splendid young pigs of this size for sale. A few, only, of pairs for mating can be furnished at present. All orders filled promptly and pedigree furnished. Splendid new blood from some of the great prize winners in the west has been introduced into the Brightside herd. All orders answered promptly. Pigs by express to all parts of Kansas and Oklahoma. Address: U. H. SPULL, Brightside Stock Farm, Mulvane, Kansas.

# St. Joseph Stock Yards Company

**CAPACITY** 25,000 Cattle, 30,000 Hogs,  
15,000 Sheep, 10,000 Horses and Mules.

Best Live Stock Market on Missouri River. Stockers and Feeders strong demand at all times. Most modern yards in existence. A trial shipment will make you a regular patron

## WE WANT YOUR BUSINESS

G. F. Swift, President      J. P. Donovan, V. P. & Gen. Mgr.  
Horace Wood, Asst. Gen. Mgr.      M. B. Irwin, Traffic Mgr.

# SPRINGER & STUBBS

DENVER, COLO.



LANDESSOHN

THE LEADING IMPORTERS OF FRENCH DRAFT BELGIAN DRAFT AND OLDENBURG COACH HORSES



LOUIS LE BRUN

Have had twenty years' experience in the importing of horses in Iowa and Illinois. Now permanently located at the **Denver Union Stock Yards**, where we are always prepared to show the finest specimens of the breeds we import. Every animal selected by us personally, for his breeding and individual merit. Our Royal Belgian Stallions are the old Flemish Stock. Our French Draft Stallions are the best that can be found and our Oldenburg Stallions are genuine, all from that German Duchy, so long famous for its Coach horses. We buy Coachers in no other part of Germany. Correspondence solicited. Visitors always welcome.

**SPRINGER & STUBBS, Union Stock Yards, DENVER, COLO.**

## Stop and Think

before you purchase your tickets for points north, east, south or west.

### The Southern Kansas R. R. of Texas

is the only direct route to Kansas City, Chicago, St. Louis and points beyond and

### The Pecos Valley Lines.

penetrates the heart of the far famed Pecos Valley, justly re-puted to be the finest fruit growing district in the United States, connecting closely at Pecos, Texas, with the Texas & Pacific Rv. for El Paso and all points in old Mexico.

All of our trains make close connection at Amarillo with the Ft. Worth & Denver Ry. trains both north and south eliminating the necessity for stop-overs en-route for passengers traveling over that line.

Write your friends in the east to ask their local railway agents regarding home-seeker's rates to the Panhandle and Pecos Valley via the Santa Fe system.

A full line of descriptive literature of the Panhandle and Pecos Valley always on hand which may be obtained free by application to this office.

**DON A. SWEET,**

**TRAFFIC MANAGER.**

AMARILLO, TEXAS.

## A BOOM

does not ultimately bring about the best results to a community.

## THE PAN HANDLE

is NOT on a boom, but is enjoying the most rapid growth of any section of Texas.

## WHY?

Because only recently have the public at large realized the opportunities which this northwest section of Texas offers. The large ranches are being divided into

## SMALL STOCK FARMS

Wheat, Corn, Cotton, Melons and all kinds of feed stuffs are being raised in abundance, surpassing the expectations of the most sanguine. A country abounding in such resources (tried and proven), together with the

## LOW PRICE

of lands cannot help enjoying a most rapid growth, and that is what is happening in the Pan-Handle.

## "THE DENVER ROAD."

has on sale daily a low rate home-seekers' ticket which allows you stop-overs at nearly all points; thus giving you chance to investigate the various sections of the Pan-Handle.

Write **A. A. GLISSON**, Gen. Pass. Agent.

Fort Worth, Texas

For pamphlets and full information.

## Combination Sale of Registered Stock

The members of the Improved Stock Breeders Association of the Wheat Belt will sell at public auction at

**Caldwell, Kansas, March 3 and 4, 1904,**

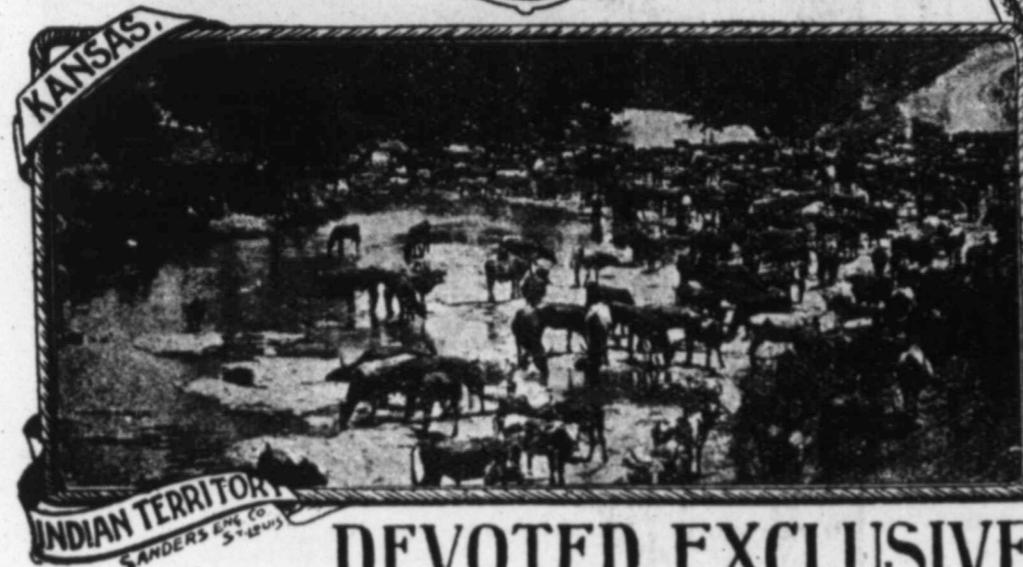
a choice lot of Registered Pure Bred Short Horn, Hereford and Galloway Cattle, Percheron Horses and Poland China and Duroc Jersey Hogs. Six months time will be given without interest on approved security. 5 per cent discount for cash. Do not fail to attend this sale as bargains will be plenty. Choice breeding animals of both sexes at your own price.

COL. LAPE BURGER, Auctioneers  
COL. J. W. SPARKS, Auctioneers

Address all inquiries to **CHAS. M. JOHNSON**, Sec.  
Caldwell, Kan.

TENTH ANNUAL CONVENTION NUMBER

# The LIVE STOCK



# INSPECTOR

DEVOTED EXCLUSIVELY TO LIVE STOCK INTERESTS.

Ninth Year,  
No. 21

Woodward, Oklahoma and Kansas City, Missouri, February 15, 1904.

\$1 Per Year



Hotel Lee, Oklahoma City

Headquarters of Oklahoma Live Stock Association during Convention week, February 23-25, 1904. Office of Secretary will be open daily, in first door to left of main entrance, in room occupied by M. K. & T. offices.

### UNEQUALED GROCERY BARGAINS.

Our large grocery department can supply you with the choicest fresh groceries at lower prices than you can buy the same quality of goods either in Kansas City or at your home grocery. Below we give a few of the rare bargains. Others will be found in our Special Grocery Circulars. Write for them today.

- 25 lbs. best granulated sugar, \$1.00.
- Arbucks or Lion Coffee, per lb., 9c.
- Our Drive blend bulk roasted coffee, per lb., 8c.
- 1 box good laundry soap, 100 bars, \$1.00.
- Fresh soda crackers, per lb., 4 1-2c.
- Fresh glass snaps, per lb., 4 1-2c.
- Chichest tea tannings or broken leaves, not dust, per lb., 10c.
- Fancy loose roll, imperial tea, per lb., 25c.
- 10 lb. Scotch rolled oats, 28c.
- Red Columbia River salmon, 12 1-2c.
- 8 oz. bottle lemon extract, 13c.
- 1 gal. can sugar syrup, 35c.
- 10 lb. ball pure white table lard for, 98c.
- Arm & Hammer soda, full lb. package, 6c.

Our large General Catalogue contains everything wanted for use on a farm or in the home and all at money saving prices. Don't buy supplies of any kind until you see it. We mail it free for the asking.

**UNITED MAIL ORDER CO.,**  
Retailers of Everything at Wholesale Prices.  
529 Delaware St., Kansas City, Mo.

### SILVER CREEK SHORT-HORN

Imported Aylesburg Duke and Cruickshank bull, Lord Thistle, in service. Have won more premiums at 1903 Western shows than any other Kansas herd.

J. F. STODDER,  
Burden, Cowley County, Kan.,

### FAST GRINDING of family meal or masses famo the Monarch French Burr and Attrition Mills.

Genuine Imported French burr. None to compare in speed or character of work in the guarantee. Sold on 15 days trial. All sizes and styles. Catalogue free. Sprout Waldron & Co. Box 248, Muncy, Pa.

### RANCHMEN:

Save cost of hand by buying one of our Scotch Collie Pups. They are from trained stock, best blood and are raised on ranch where they are used to handle cattle, hogs, sheep and poultry.

MORRIS & CO.  
R. F. D. 2. San Antonio, Tex.

When visiting Kansas City, stop at the **BLOSSOM HOUSE,** Opposite Union Depot.

### CORN HARVESTERS

It cut and throws it in pile. One man and one horse cut what two men and one horse could do. Price \$12. Circulars free.

NEW PROCESS MFG. CO., LINCOLN, KS

### TRY AN IDEAL.

J. W. Miller's Incubator—made by the man who knows. It is really self-regulating.

**30 DAYS FREE TRIAL**

We get no money until you are perfectly satisfied. Poultry Book Free.

J. W. MILLER CO.,  
Box 45, Freeport, Ill.  
(Poultry supplies and thoroughbred fowls.)

### BUILT TO LAST

Never outclassed. Sure Hatch Incubators. Built better than your house. No hot centers; no chilling draughts on sensitive eggs. Every cubic inch in egg chamber at uniform, blood temperature of fowl. It's a continual pleasure to hatch nearly every fertile egg with a Sure Hatch. Free catalogue with pictures tells lively story.

**SURE HATCH INCUBATOR CO.,**  
Clay Center, Neb. Indianapolis, Ind.

### NO GAS TO KILL

Very little lamp gas in an incubator egg chamber often kills every germ. No gas can possibly creep into the **SURE HATCH INCUBATOR** because it's heated by our rustless, heavy copper, hot water circulator. Don't waste money and lose good eggs experimenting with poor incubators. Send for free catalogue, D 28 and learn why the Sure Hatch hatches pure. Sure Hatch Incubator Co., Clay Center, Neb. and Indianapolis, Ind.

### Incubators.

30 Days Trial  
Johnson's Old Trusty.



California Red Wood Cases. New oil saving, perfect regulating heating system. A five year guarantee with every machine. Write to Johnson, the incubator man, and find out about the **Great \$10.00 Special Offer.** New catalogue with egg, poultry and incubation records. Keep books with the hens. Plenty of books. They're free. Quick shipments a specialty.

**M. M. JOHNSON, Clay Center, Neb.**

### OKLAHOMA AGRICULTURAL COLLEGE,

STILLWATER, OKLAHOMA

offers for sale

**One two-year-old Aberdeen Angus bull.**

—AND—

**One yearling Hereford bull.** Berkshire, Chester white, Duroc-Jersey, and Poland China boars and gilts. Write to Agricultural Department for description and prices.

### SKUNK Skins, HORSE HIDES and CATTLE HIDES

and all other kinds of Raw Furs

bought for spot cash, 10 to 50% more money to you to ship to us than to sell at home. Write for price list and market report. **HUNTERS' and TRAPPERS' GUIDE \$5.00.** book, 300 pages, cloth bound. Illustrating all fur animals. All about trapping, trappers' secrets, kind of traps, etc. Special price \$1. to Hides and Fur Shippers.

**ANDERSON BROS., Dept. 5 7, Minneapolis, Minn.**

### A PAYING BUSINESS.

Mining has made more multi-millionaires than all other lines of business. We own the following valuable mining claims, and want your assistance in securing the gold that only awaits machinery to extract it.

The "Assurance" group of six full claims, in the Argus Range of Mount ains, Inyo County, California, from which many assays have been made, some running as high as \$680.00 per ton.

One claim in the Panimint Range of Mountains, Inyo County, California, near producing mines now operating 5, 10 and 20 stamps each. Pay ore here begins almost at the grass roots.

One claim on the "Gold Hill," Kern County, California, where over 1,200 feet of tunnels and cross-cuts have blocked out thousands of dollars worth of ore, which can be mined and milled at an expense of \$5.00 per ton. A four-stamp mill is now operating on this ore and turning out bullion far ahead of our expectations.

A mill test of ten tons of this ore was made about ten days ago, giving a clean-up of over \$200.00, and a second test of ten tons gave \$350.00 in gold bullion.

WANTED—YOUNG MEN to prepare for Government Positions. Fine openings in all Departments. Good Salaries. Rapid Promotions. Examinations soon. Particulars Free. 49-3m

Inter-State Cor. Inst., Cedar Rapids, Ia.

### GRAND BOOK FREE

DR. McLELLAND, the celebrated specialist in **DISEASES OF MEN**, explains his methods, tells how seminal weakness, sexual debility, stricture and gleet, blood poison and loathsome skin diseases can be cured at home at small expense. **BEST MEDICAL BOOK FOR MEN** of this or any age. 96 pages, profusely illustrated, sent postpaid sealed, with symptom charts, to every man reader mentioning this paper. Address **C. A. McLELLAND, M. D., 318 E. Douglas, Wichita, Kansas**

### PER EGG CAPACITY

The Sure Hatch Incubator is a high grade machine through out, (over 30,000 in use) anyone can operate them, and when it is considered that we pay the freight and that the machines are all larger than rated capacity and are sent on 30 days trial, the egg capacity is the cheapest of any machine on the market.

Our Free 1903 Catalogue was made to order for the poultry raisers—poultry and egg record tables, etc. A big book full of good things. Address nearest office.

**SURE HATCH INCUBATOR COMPANY,**  
Columbus, Ohio. Clay Center, Nebr. Eugene, Ore.

### CUTTERS

# Black Leg Vaccine

Has stood the test of time and is today the most favorably known of any. We can refer to stockmen who have successfully re-vaccinated and stopped losses with our vaccine after unsatisfactory trial of foreign and other vaccines.

It is put up in **STRING and POWDER FORM**, and is the freshest easiest used, and lowest priced vaccine on the market.

WRITE FOR **BLACK LEG BOOKLET**; it is readable and interesting.

IF YOUR DEALER HAS NOT GOT OUR VACCINE, OR IF HE TRIES TO SELL YOU SOME OTHER, REFUSE TO TAKE IT AND ORDER DIRECT FROM US. WE PAY ALL CHARGES, INCLUDING CHARGE FOR RETURN OF MONEY BY EXPRESS.

For reference to successful users and for further particulars concerning these and our other products, address

## THE CUTTER ANALYTIC LABORATORY,

FRESNO, CALIFORNIA.

N. B.—The Live Stock Inspector carries fresh stock of our vaccines and can supply you at list price. Ask them for the names of successful users in your territory.

## FARMERS FRIEND WHEAT.

### Crowned King of the Wheatfield.

Positively the most wonderful wheat on earth. Excels in all points, and makes more money for the farmer than any other soat. Absolutely fly proof, very hardy, very hard red grain, testing 60 to 65 lbs per bushel. It has proved a great sensation everywhere tried. Don't miss trying it.

Our **FOSTERS IMPROVED LONGBERRY** has the longest heads and the biggest stiffest straw of any wheat grown.

Our catalogue No. 39 tells all about them, Its free with samples. Also tells of our Shropshire sheep, Shorthorn cattle, and Poland China swine.

**MAPLEWOOD STOCK FARM, Allegan, Mich.**

USED COLD OR HOT.

## CURES MANGE OR SPANISH ITCH.

# CAR-SUL CATTLE DIP

KILLS LICE, TICKS, AND SCREW WORMS. CAR-SUL DIP is prepared exclusively for cattle and horses, and is guaranteed to do the work WITHOUT INJURY TO THE EYES or other parts of the animal.

**Free Trial** State number of cattle you have and we will send you FREE OF COST enough Car-Sul to test its merits thoroughly. **A TRIAL CONVINCES.** CAR-SUL is for sale at dealers or by express, PREPAID, \$1.50 per gallon. Special price in quantities. Book of indorsements with illustrations of CATTLE DIPPING FREE. Address

**MOORE CHEM. & MFG. CO.** 1501-1503 GENESEE ST., KANSAS CITY, MO.

## Wichita Commercial College.

THIRD FLOOR SHEETS BLDG. E. H. ROBINS, Pres.

### THE STOCK HOTEL The Royal Hotel

Good Meals. Clean Beds. Prompt Service.

One block from Live Stock Exchange Building at Stock Yards.

Guthrie Okla. Headquarters for all western Oklahoma visitors to the Capital city and the best place for every body.

Kansas City, Missouri FRED VAN DUYN, Mgr.

# The Live Stock Inspector

DEVOTED EXCLUSIVELY TO  
LIVE STOCK INTERESTS

VOL. 10 No. 20

WOODWARD, OKLA., FEBRUARY 1, 1904.

Subscription, \$1.00

## The Tenth Annual Convention

Of the Oklahoma Live Stock  
Association

AT OKLAHOMA CITY, OKLA.

February 23, 24 and 25,  
1904.

The Cattlemen's Convention Committee of the Chamber of Commerce of Oklahoma City have made elaborate arrangements for the entertainment of the public in a grand and gorgeous way. The appearance in Oklahoma City of 500 United States cavalrymen in general field maneuvers and com

petition pack train drill, with the mounted cavalry band will be a feature of the entertainment. Prof. A. E. Ashbrook's school of twenty parlor performing horses, including Thistle-down, the World's Champion High Jumper. This feature alone is worth coming miles to see. The bronco busting and cattle roping will be a treat in itself and the Polo games each day, between the Kansas City and Mineo, I. T., teams will be worth any one's time to go and see, as they represent the best polo talent in the U. S.

The Cattle Show will be second to none ever held in the Southwest and will be attended by herds of the representative breeders of the country.

The prizes offered by the Exhibit Committee are sufficient to cause the attendance of all of the best herds in the country. The Combination sale will have fifty-two as good Herefords as was ever sold anywhere, fifty Short-horns, the equal of any on earth, twenty Aberdeen Angus, sired by imported Scotch bulls of show-ring

note bred by Anderson & Findley of Iola, Kan., and Galloways, the equal of any on earth, bred by S. M. Croft & Sons, Bluff City, Kan., All in all, the stock offered in this sale is the equal of any ever offered to the public if not the best ever.

Prof. F. C. Burtis of the Oklahoma A. & M. College of Stillwater, O. T., will judge the cattle and no better can be found, for Prof Burtis is an expert judge of thoroughbred stock. The Exhibit Committee has done everything to make the Stock Show a success and the advertising committee has done some of the best work ever known, all of their work having been turned out in Oklahoma City. The premium list of the Stock Show has especially been gotten up tastefully and is a standing advertisement for the Oklahoma people.

The Cattlemen's Convention button is especially neat and attractive. Every committee has the very best material in it and this alone is why the TENTH ANNUAL CONVEN-

TION of the OKLAHOMA LIVE STOCK ASSOCIATION will be the GREATEST EVER

### Railroad on Persimmon Flats.

On going to press we learn from Capt. J. C. Jones of Mutual that the new road to come through the Persimmon Flats has been settled as a sure thing. The local committees who have had charge of raising the required fund which to buy the right of way, received permission to choose their location.

The Helena Herald says this about our fine winter weather: Strike one, two, three and out! The warm weather the past ten days gave the base ball lover a chance to enjoy their sport. Such is winter in Oklahoma. While the boys in the eastern states are spending their time skating and nursing frost bitten ears, the Oklahoma lads are playing marbles and base ball.



GRAND CHAMPION CARLOAD OF FEEDERS AT THE INTERNATIONAL EXPOSITION.

Two-year-old Herefords bred and shown by the Matador Land and Cattle Co., Motley County, Texas.—(Courtesy Live Stock Report.

## Oklahoma.

## From the Governor's Report of Oklahoma.

Oklahoma with its 38,830 square miles and its \$400,000,000 valuation merely represents the beginning of a great state. The production of two of the greatest cereals on earth—wheat and corn, is represented by 36,000,000 bushels of wheat and 65,001,000 bushels of corn. The commodities shipped into the territory would make a train over 250 miles long, and the products shipped out would make a train over 335 miles long. This is not taking into consideration the amount of stuff raised and consumed in the territory.

By comparison Oklahoma is as large as the combined area, of Delaware, Maryland, Massachusetts, New Hampshire and New Jersey. According to the census of 1900, the population of Oklahoma was greater in proportion to area than that of 12 other states. Since that census was taken the population has doubled in numbers. Gov. Ferguson seems to be emphatic when he says, "Oklahoma is entitled to Statehood—entitled to it now."

Our Oklahoma with its \$400,000,000, the 650,000 American citizens, the seven Territorial Higher Institutions of learning, the various Sectarian colleges and schools, the 26,000,000 miles of rail road, the 232 territorial banks, the 79 National Banks, the 243 weekly news papers, the 304,713 horses, the 63,452 mules, the 1,036,662 cattle, the 35,231 sheep, the 234,218 swine, the 36,000,000 bushels of wheat, the 2,857 organized school districts, the 171,973 school children, the 2,915 school teachers, the thousands of bushels of potatoes, apples, peaches, pears and pums, the extensive dairying, poultry raising, truck gardening and the multitude of undeveloped resources, as a very conservative of Oklahoma's products at the close of her 14th year.

From the above statistics may be formed a basis upon which to reckon her great future.

Oklahoma was included in the Louisiana purchase consummated by Thomas Jefferson in 1803,—over 100 years ago.

While some of the states embraced in this great purchase have been growing all this century. Oklahoma has sprung up with such wonderful rapidity in so short space of time its record sounds very incredible to some of the people from the extreme eastern part of the continent. Oklahoma is divided into 26 counties, with a varying area of 333,000 square miles.

## THE EMPIRE COUNTY.

Woodward county is second to the territory. It has 2,124,000 acres with a population of 17,163 (1902 enumeration) which has more than doubled since this report was made. This county is one of the greatest stock raising and agriculture counties in the territory. The precipitation has been of sufficient extent to insure good crops of wheat, oats and other small grain. Corn has done well, alfalfa and other forage crops have made excellent yields.

In former years the "long horn"

cattle were permitted to run over the prairie, which at that time was considered to be unfit for anything else, but the large herds have been replaced by a better grade of cattle, though not so many in number.

Our winters are of a very short duration thereby rendering the feeding season very short. The grass after it has been frost bitten has been known to fatten stock. There are great evidences of better grades of cattle and other stock on every hand.

The Oklahoma Live Stock Association was founded in 1895 and primarily had for its object the protection of its members. It maintains a brand inspection and record, which proved of great value to stock raisers enabling them to identify their property when stolen. The influence of the organization is also brought to bear upon the maintenance of the Federal Quarantine Line both in and out of the territory and thus a large saving in values to stockmen result.

Woodward county occupies the north west corner of the territory except Beaver county which joins Woodward county on the west and extends to New Mexico.

## WOODWARD CITY.

This is the county seat. It is also the birth place of the LIVE STOCK INSPECTOR, the official organ of the Oklahoma Live Stock Association. Woodward is to have water works in the near future to be owned by the city. The empire city of the north west part of the territory has a great future before her, being centrally located on the valley of the north Canadian River.

## Wilson Blames the Retailer.

The Secretary of Agriculture is reported to have said: "Either the farmer is not getting enough for his beef or the consumer is paying too much. Fat cattle are not so dear as they were two years ago, and there are good reasons why they should not be. But there are no good reasons why the consumer should pay as much for his beefsteak as he paid about that time. Whether the packer or the retailer is to blame I cannot say, but my impression is that the retailer has absorbed most of the difference. The margin between those prices—what the farmer receives and what the retailer pays—is much greater than it should be.

When beef was at its highest, about two years ago, it was clearly apparent that there was a scarcity in the material of which beef is made; the corn crop had been very short, and consequently beef became very dear. The retailers put their prices up. Now their prices are about the same, although cattle on the hoof are perhaps \$1.50 per hundredweight less than at that time.

With regard to the world's prices of beef, I have taken steps to ascertain the extent to which we are meeting competition in the British market from South American countries. I am strongly convinced that the Argentine people are sending an increasing amount of refrigerated quarters of beef to Great Britain.

(Continued on page 5)



## SALZER'S FARM SEED NOVELTIES

**Salzer's National Oats.**  
Most prolific Oats on earth. The U. S. Dept. of Agriculture, Washington, says: "Salzer's Oats are the best out of over four hundred sorts tested by us." This grand Oat yielded in Wisconsin 156 bu., Ohio 187 bu., Michigan 231 bu., Missouri 255 bu., and North Dakota 310 bu. per acre, and will positively do as well by you. Try it, sir, and be convinced.

**A Few Sworn to Yields.**  
Salzer's Beardless Barley, 121 bu. per A.  
Salzer's Homebuilder Corn, 304 bu. per A.  
Salzer's Big Four Oats, 250 bu. per A.  
Salzer's New National Oats, 310 bu. per A.  
Salzer's Potatoes, 756 bu. per A.  
Salzer's Onions, 1,000 bu. per A.

All of our Farm and Vegetable Seeds are pedigree stock, bred right up to big yields.

**Salzer's Speltz (Emmer).**  
Greatest cereal wonder of the age. It is not corn nor wheat, nor rye, nor barley, nor oats, but a golden combination of them all, yielding 80 bu. of grain and 4 tons of rich straw hay per acre. Greatest stock food on earth. Does well everywhere.

**Salzer's Million Dollar Grass.**  
Most talked of grass on earth. Editors and College Professors and Agricultural Lecturers praise it without stint: yields 14 tons of rich hay and lots of pasture besides, per acre.

**Salzer's Teosinte.**  
Salzer's Teosinte produces 113 rich, juicy, sweet, leafy stalks from one kernel of seed, 14 feet high in 30 days; yielding fully 50 tons of green fodder per acre, doing well everywhere, East, West, South or North.

**Grasses and Clovers.**  
Only large growers of grasses and clovers for seed in America. Operate over 5,000 acres. Our seeds are warranted. We make a great specialty of Grasses and Clovers, Fodder Plants, Corn, Potatoes, Onions, Cabbages, and all sorts of Vegetable Seeds.

**For 10c in Stamps**  
and the name of this paper, we will send you a lot of farm seed samples, including some of above, together with our mammoth 140 page illustrated catalogue, for but 10c in postage stamps.

Send for same to-day.

**JOHN A. SALZER SEED CO.**  
**LA CROSSE, WIS.**



## GOOD SEEDS CHEAP

**BEST  
Ever Grown.**

None better and none so low in price, 1c per pkt. and up, postpaid. Finest illustrated catalogue ever printed sent FREE. Engravings of every variety. A great lot of extra pkgs. of seeds, new sorts, presented free with every order. Some sorts onions only 55c per lb. Other seed equally low. 40 years a seed grower and dealer and all customers satisfied. No old seeds. New, fresh and reliable every year. Write for big FREE catalogue.

**R. H. SHUMWAY, Rockford, Ill.**

### MEAL OR FEED

Fine meal for family use. For corn crusher and roller, new cracker, all round feed mixer for every farm need.



## Monarch Mills


Attention to grain! Improved French burr style. Thousands in use. Meet every home or farm purpose. No. 4 and 15 dies free trial. Get Monarch catalog before buying. Sprout Waldron & Co. Box 243, Muncy, Pa.

**D. P. NORTON'S SHORTHORNS.**  
DUNLAP, MORRIS CO. KANSAS.

Herd Bull, Imp. British Lion 133692  
In consequence of slump in cattle business prices of young bulls greatly reduced.

## Plainville Shorthorn Herd

Headed by Strawberry Baron 149498 and Price Lucifer 188685, a pure Cruickshank. Young stock for at all times. N. F. SHAW, Plainville, Ks.



## BALMOLINE

De Huys Balmoline

excels all other remedies for Collar Galls, Sore Shoulder, Scratches, Wire Cuts, Cracked Hee's, Siftasts, Chafes, Rope Burns, Sore Legs, Caked Udder, Old Standing Sores of all kinds, etc. Keeps away the flies preventing Maggots, Screw Worms, and Proud Flesh. Equally good for man or beast. Endorsed by horsemen everywhere. It brings the new hair every time. Sold by all druggists. Price 25c and 50c. Trial size 4c by mail. For circulars etc. write De Huy Balmoline Co. Box 15, Abilene, Kans.

## The MISSOURI PACIFIC Railway

The popular route, Kansas City to St. Louis and Kansas City and Omaha and the West.

Unsurpassed train service.

See that your tickets read via:

MISSOURI PACIFIC

The Sure Way

To reach your destination quickly and comfortably.

E. E. Blockly, T. P. A.

C. E. Styles, A. G. P. A.     Wichita, Kan.

Kansas City, Mo.

## AGENT WANTED

Good man is every county to sell

Osgood Standard Scales


For Store, Factory and Farm.

Most complete line made. 1903-4 Pat. erns Steel Lever Stock Scales are beauties. Prepared an experienced in selling machinery and implements. Fine catalogue. No samples. Can be handled nicely as a side line. Liberal contract. Exclusive agency. Have you that man in mind? Show him this ad—He can make money. We want him now. Act quick.

**OSGOOD SCALE CO.**  
338 Central St.     Binghamton, N. Y.  
Largest makers of Farm Scales

## Old Trusty Incubator


Guaranteed Five Years. 30 Days Trial.  
It is the result of a life given to the study of incubators and practical work as a manufacturer. None of the weaknesses of the old and many new improvements. A dependable hatcher. An oil saver. Write and get Johnson's new book. It's free and worth having if you ever owned or expect to own chickens. Write the incubator man, M. M. Johnson, Clay Center, Neb.



## YOU'RE LOOKING

for just such a machine as Miller's new Ideal Incubator, the perfect hatcher, sent on 30 days' trial. Absolutely automatic. Test it yourself. Big poultry and poultry supply book free.

**J. W. Miller Co., Box 65, Freeport, Ill.**



When writing to advertisers mention  
**LIVE STOCK INSPECTOR.**

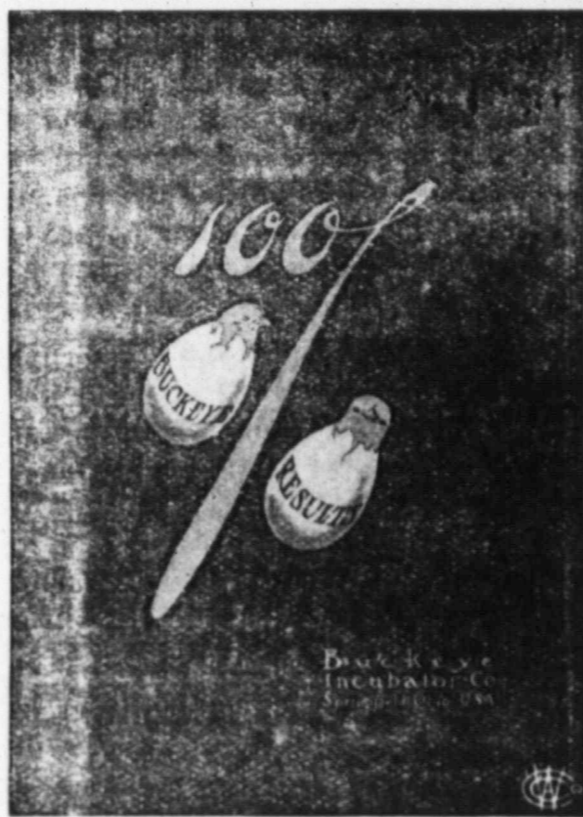
The Argentine people cannot ship their livestock because of the foot and mouth disease which they have there, so they are compelled to slaughter and ship their product in refrigerated quarters, and they must sell it for what they can get. From what I can learn the volume of this trade is increasing so fast as to account in some part for the cheaper prices of beef that are now prevailing abroad over those of a short time ago. This should give us lower prices here, because the price in London of our live animals and our refrigerated beef has much to do with our prices here. We sell abroad every year \$250,000,000 worth of animals and animal products."

The Secretary of Agriculture, if properly reported, has again laid himself open to criticism. It does not require great insight into the meat business at the present time to know that the slaughterer is making a smaller margin of profit than is current in any other business. The retailers are in open competition, have no agreement as to price, and assert that their profits in handling the most perishable product of food consumed by man is far less than that obtained by the confectioner, the dairy storemen or the druggist.

It would seem as if some of the ardor and energy of the Secretary of Agriculture were misplaced and mispent, and that if he wants to keep busy the suggestion of a correspondent of The National Provisioner, that there be some regulation and control of the production and sale of proprietary remedies, might receive his prior consideration.

It would seem like a hard proposition for an incubator to hatch more than 100 per cent, but in three authenticated cases people using Buckeye Incubators have taken out more live chicks than the number of eggs set. One egg hatched live twins in each case, and all the other eggs produced single chicks. The new Buckeye catalogue for 1904 gives a large number of reports from customers who have made high percentages in hatching—92 per

cent and over. Of course, one cannot always expect such high results, because as much depends upon the quality of the eggs and the faithfulness of the operator as upon the machine, but these reports give ample proof that the Buckeye and



Bantam machines, made by the Buckeye Incubator Company of Springfield O., are good machines, and will earn handsome dividends every year for poultry men and farmers who are fortunate in owning them and justify the manufacturer's faith that a very low priced incubator may be sold on its merits, and on 30 days trial. There are many features of Buckeye and Bantam Incubators and broods that give one something to think about. Their system of heating and ventilation is different, as well as their regulator. The Buckeye catalogue gives good reasons for these special features of the machines, and the reports of hundreds of customers give still better reasons, in the form of results, which is what every purchaser wants. There are things in the Buckeye catalogue in fact, which every poultryman ought to know.

"No cold corners; the Iowa is round" is the text of the new catalogue and



poultry book for 1904 from the Iowa Incubator Co., Des Moines, Ia. The walls of Iowa incubators are made of compressed fiber board, which is bent around in a circle so that there are no joints or cracks to open and let the warm air escape, or let in cold air to chill the eggs. The warm air comes in at the top from the heater, and it has the same distance to travel in every direction to reach the walls, so that there are no corners in the machine. Many leading fanciers have been using the Round Iowa successfully in hatching their prize birds, which shows what the experts think of the Iowa, and pages of reports are given in the book from "ordinary" poultry people who are just using the Iowa to make money. Iowa Brooders are also fully illustrated and described, and the practical poultry raiser will find many improvements in them which will appeal to his good judgment. Plans for poultry houses and practical information for all who keep hens occupy a large part of the book. It is announced that the company will give \$60 in prizes the coming year for the best pictures of hatches, poultry yards or pens of throughbred poultry. Every one interested in poultry ought to send for a copy of this book and get the proofs that Iowa machines are money makers.

PAGE

DON'T YOU WANT

to try a better fence this year than that you bought last year? You'll find it in The PAGE. PAGE WOVEN WIRE FENCE CO., Adrian, Michigan.

**FREE SEEDS**  
Vegetable and Flower  
We will send our 1904 catalogue and one packet each Lettuce, Radish and Onion; also 75 varieties of Flower Seed; Peas, Sweet Peas, Parsnips, etc., in a coupon envelope, which will be accepted as 25c. If returned with an order from our catalogue. All for 10c. to pay postage.  
ZIMMERMAN SEED CO., Dept. 23 Topeka, Kan.

PEACH TREES

Elberta, Champion and other best commercial sorts. 100 perfect little trees, 1-year from bud, express paid to your station for \$5.00. 500 by freight, charges paid, \$15. Varieties true—no disease. A full line of other high grade nursery stock. Send at once for list.

New Haven Nurseries, New Haven, Mo.

**Salzer's National Oats**  
Greatest oat of the century. Yielded in 1903 in Ohio 187, in Mich. 241, in Mo. 256, and in N. Dakota 310 bush. per acre. You can beat that record in 1904!  
**For 10c and this notice** we mail you free lots of farm seed samples and our big catalog, telling all about this oat wonder and thousands of other seeds.  
JOHN A. SALZER SEED CO.  
La Crosse, Wis.

WIRE FENCE

Before you buy WIRE FENCE write us for information that will save you from 50 to 80 per cent. We tell it FREE.  
KITSELMAN BROS. Box Muncie, Ind.

ESTAB. 1867  
**WELL DRILLING MACHINERY.**  
PORTABLE and drill any depth by steam or horse power. 42 DIFFERENT STYLES. We challenge competition.  
Send for Free Illustrated Catalogue to  
WELLS & FAYE HILL CO.  
2 Chestnut St., Waterloo, Iowa



Champion calves bred by the L. S. Ranch, Tascosa, Texas

OUT-HATCH—ONE TRIAL

Any one with common care can get a high per cent of chicks the first time when fertile eggs are put in a

**Sure Hatch**

**Incubator.** Sure regulator—even hen temperature—no guess at ventilation—clean, pure air for eggs and chicks. Send for free catalogue that tells of improvements and other conveniences.  
SURE HATCH INCUBATOR CO.  
Cly Center, Neb., or Indianapolis, Ind.



Counting Chicks Before Hatching is not safe unless you have an

**IOWA ROUND INCUBATOR**



R. C. Bauermeister, Norwood, Minn., got 490 chicks from 500 eggs. He followed directions, the machine did the work, because it was built on right principles and by good workmen. The IOWA has fiber-board case, does not shrink, swell, warp or crack. Regulation and ventilation perfect. Our free book gives more testimonials and full particulars. Everything about incubation free.  
IOWA INCUBATOR COMPANY, BOX 244, DES MOINES, IOWA

# Farm and Garden

Edited by an Oklahoma Farmer.

## A Digest of Current Farm Topics.

"Nothing of worth or weight can be achieved with half a mind; with a faint heart; with a lame endeavor."

### TO MAKE A SUCCESS OF FARMING.

Nine times out of ten, we may safely say, when a man, given a sufficient amount of tillable land, fails to make farming pay, or even a living from the soil; it is traceable to lack of attention or system. Energy is the prime requisite for success in any line of work. A man may not be lazy or dilatory, nor yet a poor manager, but what we need in every farming district are people who make more of a business of farming and conduct it on business principles.

When a person desires to embark in any kind of business venture he secures all the knowledge attainable relating thereto; posts himself as to details, and then keeps in touch with every part of the workings, giving it his attention from early until late, planning and studying every phase of the situation, striving his utmost to advance. Thus it should be with farming,—study your work, the best methods, and plan for the accomplishment of same. We are all familiar with the type of Missouri farmer who has been accustomed to making a living so easily just by "letting things grow" and not caring for aught else except a "living" works one day, and goes to town the next to sit around on dry goods boxes and whittle. Still Missouri is well represented by claim holders here in western Oklahoma, who prove themselves willing workers and good planners.

One thing which argues well for the future of western Oklahoma, is the cosmopolitan settlers. Everyday we meet the energetic Iowaian, who know how to farm, the Illinois farmer who knows the value of good land, the Nebraska farmer accustomed to the plains and the Kansas farmer who can tell you all about drouth hot winds and the vicissitudes of the pioneers not so many years ago,—all eager to try his methods on the Oklahoma soil. A little adaptation of your pet notions, no doubt will occur, but we will learn by experience. But to be successful farmers, allow me to urge,—make a business of farming, and give it as much attention and thought and study as you would any other line of business.

### AN EMPEROR A MODEL FARMER.

The independence of farm life is almost proverbial and it is an interesting pursuit as well. The last decade has witnessed people from nearly every walk of life, who elect through love of this independence, or the charm of out door work, to try their hand at farming.

Emperor William, of Germany has

been directing much attention lately to the matter of agriculture, believing that the German farmers could increase their crop and improve the condition of their land by more scientific methods. His 5000 acre farm in Caduieu, is half forest, and when the Emperor took possession four years ago it was very dilapidated with poor drainage, and only rice and potatoes would grow. Wheat oats and barley, and mangel wurtzel have been introduced, and there are 150 Dutch cows on the estate. He has just bought a place adjoining Caduieu, called Kinkelhof, where he expects to breed some of the best Westphalian swine. These estates will probably add \$20,000 a year to the Emperor's revenue.

### SEED SHOULD BE TESTED.

It is surprising how many farmers and gardeners fail to take the precaution of testing seed before planting, since it is such an easy thing. A piece of moist cotton in a shallow dish kept in a warm room. Some varieties of seed require a little longer to germinate than others. The virility of seed such as cabbage, radish and clover can be determined by dropping them on a hot stove; if alive the heat will form steam from their inside moisture, and they will explode and pop.

Fertilizers—In some manner our farm crops must get three elements to insure success:—nitrogen, phosphoric acid and potash. Part of this will come from the air, and this supply can be greatly increased by thorough cultivation. It has been estimated that to produce a good crop of corn we must have two hundred and fifty pounds nitrogen from every acre grown.

Among the legumes clover ranks first as a maker of plant food, as an acre in a good year yields, of nitrogen 200 pounds, potash 175 pounds, phosphorus 50 pounds, but the drawback to clover for Oklahoma farmers lies in the fact that it is next to impossible to get a stand. Barnyard manure cannot be produced in quantities sufficient to fertilize large areas of land. Many farmers are turning their attention to rye as a fertilizer.

The common problem, yours, mine, everyone's,

is not to fancy what were fair in life. Provided it could be—but finding first what may be, then how to make it fair up to our means.—Robert Browning.

Every farmer should have a regular time to begin work and to stop working.

Plan each days work ahead, and save time. Many farmers wait until noon before they can decide what to do that day.

Study the products of the soil, and raise that most adapted to your locality as your stock must get its living from the soil.

One thing which the western Oklahoma farmer would do well to take into consideration at planting time is the variety of soils and surface conditions. It frequently occurs that a sandy loam is only a few rods distant from a field of dark rich earth thus two adjoining farms in many instances require different treatment.

A small power cutter is a great convenience on the farm, and will pay for itself several times in a year by cutting fodder, millet and corn fine enough to be eaten up clean.

Mealy wheat is having a boom in the Mississippi valley; in several years test it stood first among 65 varieties in resisting the fly and winter damage.

Western Oklahoma should prove the mecca of the stock farmers. Many of our farmers who in other localities were content with tilling the soil alone, realize the many natural advantages for stock raising, such as long season for grass forage producing said, natural wind breaks, short and mild Winters, and have at least a small herd.

It does not require any more field for good stock than it does for poor. is an old maxim that stock farmers especially beginners would do well to consider. If you raise good feed it will make more money to feed it to pure blooded stock. A good animal is always in demand, and in stocking up your farm if you exercise care in selecting thoroughbred and registered stock, you are on the right track.

### GARDEN.

The Red Wethersfield onion is the standing variety throughout the west, as they are the most hardy and better adapted to this western country. Immense crops can be grown, on a small amount of space, and to the commercial gardeners we would suggest planting an acre or more for the winter market.

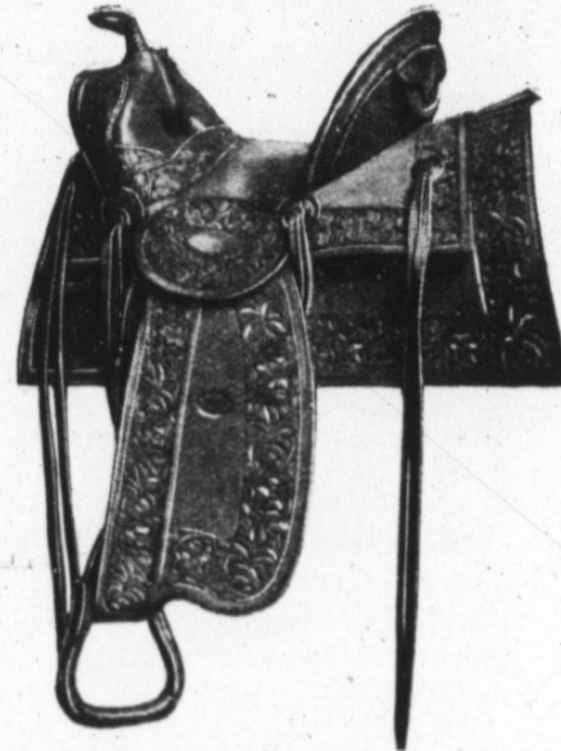
An excellent method to prevent maggots from destroying onions is to sprinkle along the rows sand scented with kerosene. Stir a half pint of oil into ten quarts of sand.

Every family garden should contain several plants of parsley or chervil. A piece too should be given to growing herbs such as Sweet Marjoram, rosemary, saffron, sage, sorrel and thyme.

A good plan in growing potatoes is to cover them up as soon as they come up out of the ground in order to destroy weeds and make subsequent cultivation easier and more effective, as this causes little if any set-back to the plant.

## GOOD SADDLES

AT REASONABLE PRICES.  
The Famous Pueblo Saddles



Made by R. T. FRAZIER, Pueblo, Co. O.

SEND FOR NEW CATALOGUE NO. 6.  
and HARNESS CATALOGUE NO. 5.

## California Excursions.

In Pullman tourist sleepers on fast trains, tri-weekly, PERSONALLY CONDUCTED.

New cars, courteous employees, satisfying meals. The cheap and comfortable way to go to LOS ANGELES AND SAN FRANCISCO.

Why stay at home?  
The California tour described in our books.  
Address: General Passenger Office, Atchison, Topeka & Santa Fe Railway, Top kv.

## Santa Fe.

The Most Direct Route

From either North or South to the Famous Health Resort and Springs of

## SULPHUR, I. T.

IS VIA THE



Descriptive literature concerning this delightful resort furnished upon application to  
Passenger Traffic Department,  
FRISCO SYSTEM,  
Saint Louis.

## FRUITFUL TREES

Healthy, hardy, vigorous trees; finest varieties; lowest values. Apples, 50¢ per 1000; Rambler Grapes, \$20 per 1000; Rambler Rose, 50¢; Black Locust and Russian Mulberry, \$1.00 per 1000. Freight prepaid. Catalogue free. Grove County Nurseries, Box 643, Beatrice, Neb.



**Oklahoma's Stability**

In the brief history of the development of Oklahoma, that country has labored against such retarding influences as have been placed upon it by ignorant public sentiment. It is there that you find a young government, new country and very uncertain conditions seem to be the opinion of the uninformed. It is quite natural for public to take the sensational view instead of the cold reality which, however, is much more beautiful than is supposed. The "wild and woolly west" has progressed in spite of its unmerited nickname. Oklahoma stands today the strongest commercial factor of the great United States.

According to statistics furnished by Dun's Review of the issue of January 9, Oklahoma has made the biggest per cent of decrease in number of business failures the past two years of any state or territory in the United States. The record is a matter of pride to her people.

In 1902 Oklahoma suffered 135 business failures in 1903 only 103. The percentage of decrease is 23.7, the greatest proportion of financial improvement reported by that great journal of finance and trade.

Under the head of Failures by Sections, Dun's Review says: "Geographically considered, there were no striking gains in number of failures, except in the West, where more than 100 per cent increase occurred in some cases, notably Michigan and South Dakota; while Ohio and Kansas also recorded a much larger number than in 1902. At the East the only important numerical increase was in Pennsylvania. New York showed little alternation and Massachusetts a material decrease. Texas and Missouri both reported more failures than the preceding year, but Arkansas made a favorable comparison. At the South there were fewer failures than in 1902, particularly in Florida, Georgia, Tennessee and Kentucky."

Among the states with an increase of failures in the past past year, the following are cited with the number of increase over the previous year: New York 26, Pennsylvania 84, North Carolina 39, Louisiana 8, Texas 45, Missouri 42, Ohio 70, Indiana 53, Michigan 136. (130 per cent increase of failures), Minnesota 55, Iowa 44, Kansas 84, North and South Dakota 33, Colorado 23, Washington 17, Oregon 22, California 16.

All might be given as none equal the record of Oklahoma but in selecting them, examples have been taken from all over the United States. In the aggregate the failures for the two years compare thus: (1902) 11,615; (1903) 12,069. It is readily seen that the United States come out in the hole with 35.7 per cent increase of failures in the past year. In comparison then with the whole United States, Oklahoma is in 60 per cent better condition as she comes out ahead 23.7 per cent and the United States loses by a failure of 35.7.

The conclusion scarcely need be drawn—you can see it plainly. Space can be saved as there needs be no argument to close this article. No one can doubt the figures of Dun's Review so the figures are backed by admitted honor. Then recognize this

proven fact: Oklahoma offers the greatest inducements to capital and industry and is in the best financial condition of any state or territory. Failure is not in the lexicon of Oklahoma's history. The true story of Oklahoma is a fairy tale, rich in phenomenal progress, and the future is still brighter.

**Importance of the World's Fair Live Stock Show.**

The February number of the "World's Fair Bulletin," a magazine devoted to the Louisiana Purchase Exposition, publishes an article reviewing the work of the World's Fair Department of Live Stock to the first of his year. Regarding the importance of the World's Fair Live Stock Show this article says:

The live stock interests of the world are certain to mark the universal exposition of 1904 as a distinct era in the history of improved stock breeding. The first cause for this is in the entirely new but fitting basis upon which the exposition management has placed its recognition of live stock. A result that cannot but follow will be the establishing standards heretofore unattainable which will be recognized for a period beyond the memories of many who will see them achieved in 1904.

"The live stock classification has been given subordinate consideration at former expositions designed to summarize the world's progress. This was true, at least in theory, at the World's Columbian Exposition, where the live stock awards were on a much greater scale than at any international fair that had preceded. The scope of the Louisiana Purchase Exposition of itself called for the placing of the Live Stock exhibits upon an independent basis, but this was urged forward by the present greatness and the possibilities of the industry in the Louisiana Purchase territory and in all the area of which St. Louis is the geographical center. The reciprocal importance that here prevails is especially significant. Independent nations occupying the territory which we now know as the United States might have built up manufacturing or mining or agriculture in general to prosperous proportions but improved stock breeding, the summit level of farming, could never have reached its present status in America under such conditions. The live stock interests have a peculiar concern in the commemoration of the Louisiana purchase."

**You Can't Afford**

To stay at home when you can attend the convention of the Oklahoma Live Stock Association at Oklahoma City, O. T., February 23rd to 25th, inclusive, for the remarkable low rate of one fare plus fifty cents for the round trip.

Tickets will be on sale at all stations, Carlsbad and north, February 21st, 22nd and 23rd, with final limit to return, February 27th.

There is going to be a great time and you will be sorry if you miss it. For further information call on our local agents or address me.

DON A. SWEET,  
Traffic Manager.  
Amarillo, Texas.

**National Live Stock Commission Co.**

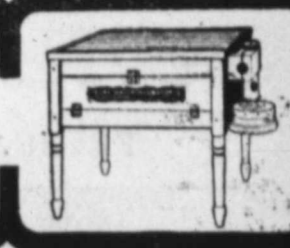
FORT WORTH, TEXA

**'OUR SERVICE THE BEST'**  
**Ship Us Your Hogs. It Will Pay You**

Market Advice  
Gladly Furnished.

Write Us  
Wire Us. Ship Us.

**PROFITABLE "PEEPERS"**  
Welcome sounds—the first faint "peeps" from cracking shells—heard coming from the evenly heated egg chamber of the  
**Sure Hatch Incubator**  
Those sounds mean money profit for the owner. A Sure Hatch starts chicks in life with strong lungs, solid bodies and good constitutions. Our free catalogue D 28 tells how. Write now.  
Sure Hatch Incubator Co., Clay Center, Neb., or Indianapolis, Ind.



**Winter Tourist Rates**  
TO THE  
**Sunny South**

Tickets on sale daily until April 30, 1904, to the principal Winter Resorts of Mississippi, Georgia, Alabama, Florida, Tennessee, South Carolina, Louisiana and Texas.

Return limit June 1, 1904.

Full details on application.

**FRISCO LINE**

C. W. Strain,  
Div. Pass. Agt.  
Wichita, Kan.

CHICAGO, ILL. DENVER, COLO.  
KANSAS CITY, MO. SIOUX CITY, IA.  
SO. OMAHA, NEB. SOUTH ST. JOSEPH, MO

Ship Your Cattle, Hogs and Sheep to  
**Hopkins-Kiely Com. Co.,**  
Kansas City Stock Yards,  
KANSAS CITY, MO.

**SPECIAL OFFER**

Having established a herd of Registered Short Horn and Hereford cattle at my place,  
**"VALLEY VIEW STOCK FARM,"**

4 miles north of Claude, Texas, on the F. W. & D. R. R. (Armstrong County,) and desiring to interest others in my section of Texas to breed a higher class of cattle, and to reach that end, I have decided to offer a limited number of young cows or cows with calf by side; some heifers and young bulls at Private sale. If you have any appreciation of thoroughbred cattle and would like to join me in the business, the prices will be within your reach. Will give 6 to 12 months time on satisfactory paper. Address  
SILAS EDMONDSON,  
Claude Texas.  
R. E. EDMONDSON,  
Kansas City, Mo.

## THE LIVE STOCK INSPECTOR

PUBLISHED SEMI-MONTHLY BY

W. E. BOLTON.

WOODWARD, OKLAHOMA. KANSAS CITY, MISSOURI.

Represented in Kansas City Stock Yards by H. B. Corvey, 289 Live Stock Exchange, Kansas City, Mo.  
 Represented in Denver, Colo., by C. O. Spencer, Times Building.  
 Represented in New Mexico by Geo. H. Hutchins, Carlsbad.

New York Office: 928 American Tract Society Building, W. B. Leffingwell, Manager.  
 Chicago Office: 35-37 Randolph Street, W. B. Leffingwell, Manager.

Mr. Leffingwell is authorized to accept advertisements for THE LIVE STOCK INSPECTOR at our contract rates. Orders filed with him will receive our prompt and careful attention.

The only journal published in Oklahoma and the Indian Territory, devoted exclusively to live stock interests and stock farming.

Entered at the post-office at Woodward, Oklahoma, as second-class mail matter.

FEBRUARY 15, 1904

## NOTICE TO SUBSCRIBERS.

**REMITTANCES.** In sending money to the LIVE STOCK INSPECTOR please observe that the Clearing House will not accept private checks at par. Remit by postal or express orders, eastern bank exchange, registered letter, or if by private check add twenty-five cents for collection. Amounts of less than \$1 can be paid in postage stamps.

**DISCONTINUANCES.** Subscribers wishing the LIVE STOCK INSPECTOR stopped at the expiration of their subscription must notify us in writing to that effect otherwise we shall consider it is their wish to have it continued and we will make collection for the same.

**CHANGES OF ADDRESS.** When a change of address is ordered, both the new and old address must be given and notice sent two weeks before the change is desired. We require this on account of our heavy mailing list.

Official Organ of the Oklahoma Live Stock Association

## At News Depots, and On Trains.



WICHITA—By C. A. Tanner & Co., 122 North Main St.

DENVER—By Hamilton & Kendrick News Co., 17th and Champ.

ENID, OKLA.—Parker Book Store.

AMARILLO, TEX.—M. Gan Bros. News Co.

For sale on all western Santa Fe trains, by Newsboys.

For sale on U. P., Denver & Gulf trains, by Denver Ry News Co.'s agents.

Sold on K. C. F. S. & M., Mo. Pacific and St. L. & S. F. trains by the agents of the Van Noy News Co.

## OFFICERS OKLA. LIVE STOCK ASSOCIATION

Pres. .... Abner T. Wilson  
 1st Vice-P. .... Geo. Crowell  
 2nd " .... Geo. W. Boyd  
 Sec. .... W. E. Bolton  
 Treas. .... John Gerlach

## EXECUTIVE COM.

COURT BROWN, Liberal, Kas.  
 J. P. CAMPBELL, Ashland, Kas.  
 GEO. CARR, Stone, Okla.  
 R. W. BRESNIE, Ponca City, Okla.

Pres. and Sec'y ex-officio

## LIVE STOCK SANITARY COMMISSION OF OKLAHOMA. MEMBERS BOARD.

W. E. Bolton, Pres.  
 Woodward.

Thos. Morris, Secretary, Guthrie.

P. A. Becker, J. H. Egan

T. B. Ferguson, Ex-officio

The office of the Board is in Guthrie.



A postal card, addressed to the Secretary of the Oklahoma Live Stock Association, Woodward, Okla., will bring by return mail a full set of blanks necessary for becoming a member of the Association, also full information pertaining to the same.

## Advertising Rates.

Display advertising 10 cents per line, agate (fourteen lines to the inch).

Special reading notices 10 cents per line.  
 Business cards or miscellaneous advertisements will be received from reliable advertisers at the rate of \$1.50 per agate line for one year.

Annual cards in the "Reader's Directory," consisting of four lines or less for \$6.00 per year, including a copy of the Live Stock Inspector free.

Electrics should have metal base.  
 Objectable advertisements or orders from unreliable advertisers, when such is known to be the case, will not be accepted at any price.

To insure prompt publication of an advertisement, send cash with the order; however, monthly or quarterly payments may be arranged by parties who are well known to the publishers, or when acceptable references are given.

All advertisements intended for the current issue should reach this office not later than the 10th or 25th of each month.

Every advertiser will receive a copy of the paper free during the publication of the advertisement.

Address all orders.

LIVE STOCK INSPECTOR, Woodward, Okla.

THE LIVE STOCK INSPECTOR exercises great care in admitting advertisements to its columns. If any of our readers wish information regarding any advertisement or advertiser we would be glad to give same. If you wish to buy anything that is not advertised in our columns, write us and we will refer you to the best place to buy.

## The Independent Packing House Movement.

The National Live Stock Convention at Portland, Oregon, last week was unanimously in favor of pushing the Independent Packing House proposition, started by the stockmen of the west. The idea of the stockmen is to have a corporation composed entirely of live stock raisers, who shall be share holders in the company and directors of its business affairs. The plan of this company is to compete with the combination plants giving the producer a better price for his stock and maintaining reasonable prices to the consumer.

The address of C. E. Adams of Nebraska was read by Col. Wilson of Texas in the absence of Mr. Adams, who was unable to attend the convention. The address, which was well received by the delegates, explained to the convention some of the injurious effects of a packers' combination upon the growers and feeders of live stock. He said in part:

"The great live stock interests of America must not be harnessed and delivered at the door of the meat trust. The profits must be equally distributed between the producer and the packer and the profits must be reasonable enough so that the great third party, the consumer, can enjoy the benefits.

"If the way is not open through the regular course of business it becomes necessary for the producer to take the means which seems to be the only remedy in his hand, and build independent packing houses, to be operated on an economical and constructive basis, such as will give to the producer a fair profit and to the consumer a product which he can afford to enjoy.

"The Independent institution would simply act as a governor upon the market, to which country would be fitted by it and the live stock industry would thrive again.

"The ruin already wrought by the

present system calls for independent action for your own protection, as it calls upon the law makers to place restrictive measures upon all combinations, management of which is inimical to the best interests of the country. Independence is the greatest privilege of the American people and while this right is not abused it can harm no one."

The address of Col. Adams was followed by the introduction of a resolution favoring the establishment in stock centers of independent packing plants by stock men. The resolution also pledged the support of the live stock association to these packing plants.

## Market Letter.

Kansas City, Mo., Monday, Feb. 8 1904

Diminished receipts of cattle were of benefit to the market last week, but not to the extent that might have been expected. Packers were not good buyers, but the demand, though not normal, was a little ahead of the supply, and fat steers gained 10 to 15 cents during the week, cows and butcher stuff, including bulls were 15 to 25 higher. Veal calves strong. Top steers \$5.00 for the week, medium grades sold at \$4.00 to \$4.60. Cows ranged from \$2.50 to \$3.75 for those above canners. Stockers and feeders improved in activity, but not in price except the light or thin, if good quality, kinds. Heavy feeders and common to fair fat steers bring practically same price, or \$3.65 to \$4.25. Run today 7,000 head, market 10 to 15 cents higher on best steers, top \$5.00. Others, including she stuff and stockers and feeders strong to 10 cents higher.

Hogs changed very little all of last week, and closed Saturday about like previous Saturday, with a top of \$5.00. War news strengthened market today prices are up 5 to 10 cents. Top today \$5.10, bulk of all sales \$4.85 to \$5.05. Heavy hogs sell best, and weights above 240 pounds bring today \$4.95 to \$5.10.

The Live Stock Exchange here took action last week, relative to service on live stock from Railroads, that should be of great benefit to shippers. An inspector was appointed to see that stock is delivered to the yards for unloading without unnecessary delays in railroad yards. Other commercial bodies here have joined hands with the Exchange, and an effort will be made to force railroads to arrange their schedules so as to deliver live stock at the yards here before the market opens each day, at 8:00 A. M.

JNO. M. HAZELTON,

Live Stock Correspondent.

Charlie Morrison, Junior relates a singular coincidence which he avers happened the other day. He had sold a horse to one of his neighbors and before he delivered him the animal to kick and died. Many horses have done this before, but the singularity comes in by the fact the animal died standing and its body had assumed such a perfect posture that it remained upright for several hours after its death. It is indeed a very curious case.—It is more a surprise.

G. W. Rourke, formerly agent at

this point but who for the past two years has been train master at Cleburn, Texas, has recently been appointed superintendent on the Ft. Worth and Denver road and will assume his new duties Feb. 8th. The "News" is glad to note Mr. Rourke's promotion and wishes him all possible success in his new position.

Mr. Babb and son were in from Beaver county Wednesday attending to business at the Land office. They reported quite a prairie fire in Beaver county last week which burned over an area of about ten by twenty miles and which destroyed a considerable amount of property. The stories are various as to how the fire originated but none are confirmed.

C. S. O'Bryan, formerly associated with the News but now of the Cleveland Enterprise is in the city arranging to move his family to Cleveland. Mr. O'Bryan is well pleased with his new location and has a splendid outlook for a first class newspaper. The News wishes him all possible success in his new undertaking.

On account of every night being taken up at the Lodge Rooms, the Order of Eastern Star which recently organized here were having trouble in finding a meeting place, until the Workman Lodge stepped forward and proffered two evenings out of the month to them.

Day County farmers will plant a great deal of cotton this year. There are several gins in the county and others are building. The returns from cotton and wheat crops furnish a large amount of the revenue of this section—Canadian Valley Echo.

I. B. Lawhon, of Alva, was in Woodward last week. The judge recently moved from his claim near Curtis to Alva, but does not like the Normal town as a place of residence near as well as he does Woodward.

S. O. Hingston, of Richmond, south east part of the county, was in town Tuesday. He reports plenty of feed and stock in fine condition. Mr. Hingston is quite a fine stock fancier as well as a progressive farmer.

Some may think we have had a taste of winter here in Oklahoma, but when one reads the reports of what kind of weather they're having in Iowa and Missouri, feel like it was "the good old summer time" here.

Groundhog day was one of Oklahoma typical sunspangled days. If Mr. Groundhog got out of his hole it's a question if he remained in the open long enough to enquire how the railroad is progressing.

It is reported that a deal has just been consummated whereby Chris Dovy received \$10,000 for his farm near Supply from the Railroad Co., who purpose using it for water storage.

Woodward county has 3,796 females and 4,171 males of school age. She is one of the few counties that has no colored children of school age.

### Where "Baby Beef" Started.

The handy or light-weight steer is in demand because he cuts a higher per cent. of beef to fat and bone than does the weightier animal. The lighter steer is also the younger, and, hence, the tender steer. He is popular with the butcher because the marketman's customer likes his meat. It is preferred because the muscles, tendons, nerves and tissues of the two-year-old beef are not hardened by age or use. They are like the sappy young tree, unfirm and un-set. The drift of the public taste in this direction has changed the whole beef industry and produced an unpopularity for the grasser that has wiped the Texas longhorn from the range and even threatens the common ranger as his breed now exists. The beef market demands a better breed of beef and the breeder must meet that demand by producing it in his herd.

The export trade has been developed by that careful selection which is known as "export beef." The foreigner has taken to our selection for his table. Our own people are more prosperous. In fact, the farmer always was a tickler for good beef. The farmers of the South are the originators of the "baby beef" idea. They have long had the habit of penning a two-year-old steer and fattening him to the last ounce from their corn cribs, hay lofts and kitchen. The cost of rounding up one of these steers has never been considered. The main idea was to produce a fat steer whose carcass would yield juicy meat and whose fats would yield tallow of a high order for months of quietude and the stable and the jam-

ming of the carcass with rich and abundant home food turned out a steer which would arouse the envy of the average blue ribbon Christmas beef producer now-a-days.

The strange part of it all is the fact that the farmer rounded up his runt breed into good beef. This was due, evidently to the fattening process when the animal was still young, vigorous, in a growing humor and fit for taking on by the forced process that which he would not take on by any process later on. The relative cost was doubtless against the profit side of the ledger, but the farmer wanted one good, toothsome carcass of beef and he fattened that at any cost.

It is said that the slaughter house killing of "baby beef" was due to hotel taste developed from the South, and that the young steer feeding had a Southern origin of which the young steer feeding there was the genesis. These Southern farmers experimented for years upon old cows and old steers—the latter produced by castrating old males—and found that neither of them could be properly fattened except after a year of rest, a summer of good grazing and then the greatest care in the fall. Their digestions bad and worn out. The proper ration could not be found to hold them through. The proper ration could be found. The adoption of the young steer method was the result—National Producer.

### Mr Stannard's Stock Food.

At this year's meeting of the Improved Stock Breeders' association—a meeting at which, by the way, nothing

but illegal practices were "condemned"—a hot nest was stirred up by the mention of the value to feeders in the so-called stock foods so extensively advertised today, one man "who used to be" an agent for one of the well-known stock food companies was present, and made several broad-gauged insinuations concerning the attitude of certain farm papers and agricultural colleges toward the use of these so-called stock foods. He even went so far as to say that a certain agricultural college "outside of Kansas" wanted \$300 to make a favorable report on the use of the food at their college.

Our friend, Colonel Robinson, a kid repeatedly for the name of that particular college, but the had-been-agent, though willing, it seemed, to accuse was not willing to disclose.

A statement that our friend, Mr. Stannard of Emporia, was a regular user of the so-called stock food and found it profitable, was quickly earned up by Mr. Stannard himself. Mr. S. said that he had tried with but two or three exceptions, all the stock foods manufactured, and he had as yet been unable, although feeding them as directed by the companies that manufactured them, to get the value out of them that he could out of a food of his own make. It is one recommended by one of his herdsmen, a Scotchman by birth. He takes 500 or 600 pounds of oil meal, adds 100 pounds of salt, then 5 pounds each of ginger and sulphur. This, Mr. Stannard said made him better gains in feeding his toughbred Herefords than any make of stock foods he had ever tried, and the cost is only 2 cents a pound or even less if in large quantities, while the price of stock food put out by the

extensive advertisers of today ranges from 7 to 14 cents a pound.

We rather think that fellow who made so many assertions before the stock breeders' meeting in Topeka a few weeks ago wished he hadn't spoken by the time the members got through giving their experience in feeding the various makes of stock food. At any rate, no stock food company was able to get "testimonials" at the meeting to make use of later in type a foot high and of brilliant colors.

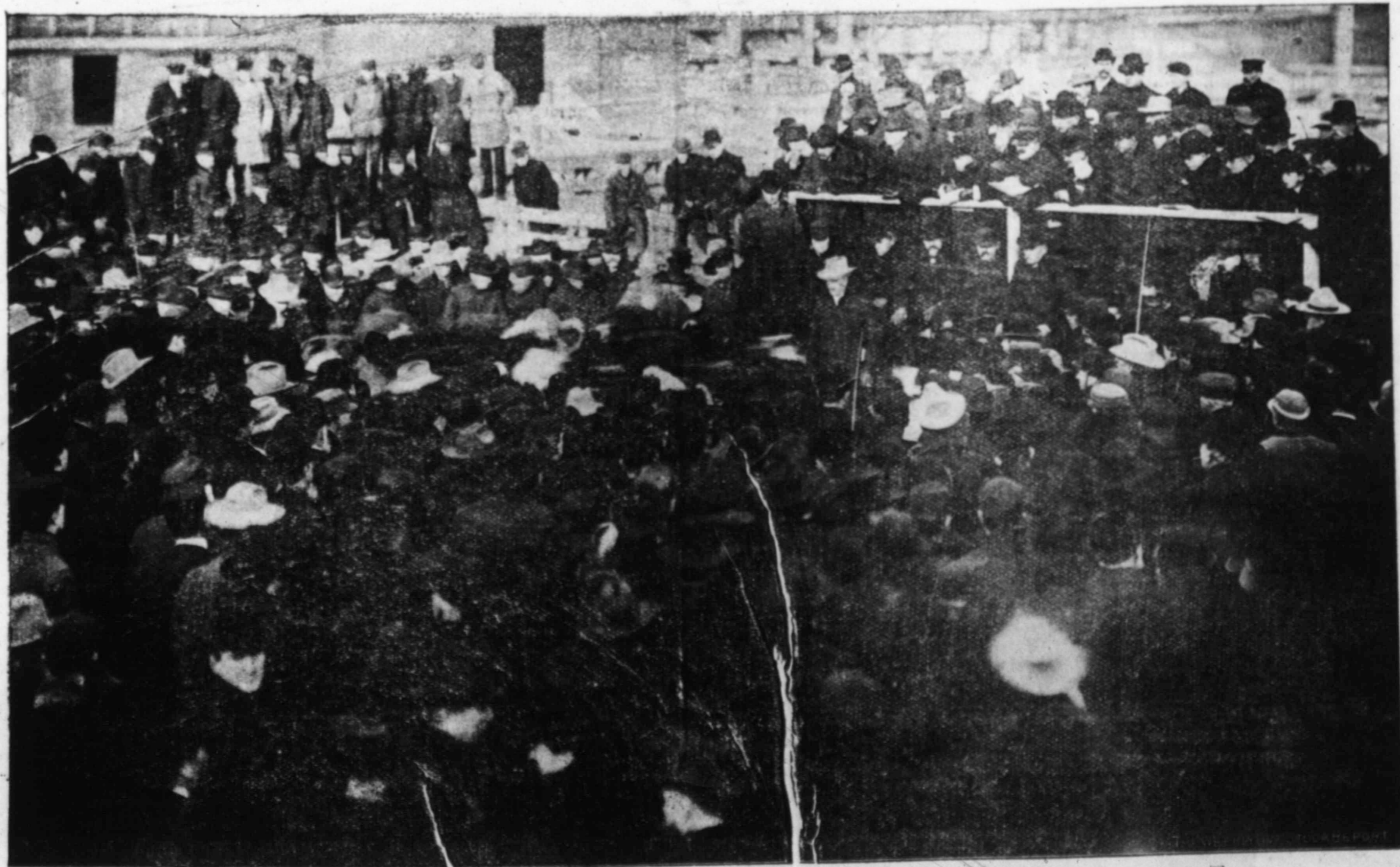
### To Open Pasture Land.

Lawton, Okla., Feb. 5.—The following letter has been received by Judge Cheryhomes of this city from Congressman John H. Stephens of Texas, under date of Jan. 27:

"Your letter to hand relative to my bill to open the pasture lands for settlement. This bill is now pending before a subcommittee and I am after them every day to get a report from them, and hope to succeed in a short while.

"Lucy has a bill pending for this same purpose. The only difference between the two bills is the time allowed settlers to pay for said land and the manner of opening. Lucy wants sealed bids and one-third paid in cash and balance to be paid in two years, while my bill calls for open auction to highest bidder and one-fifth cash and the balance to be paid in five annual payments. I shall and will do all that I can to get this land opened as soon as possible."

You will miss the best time of your life if you don't attend the Oklahoma City convention.



Selling the prize carlots of fat cattle in front of the Exchange Building on Friday Dec. 4, at Chicago.

**The Halsell Land Sale.**

For three weeks past we have heard rumors about the sale of the old reservation here—the Halsell pasture, and the news (?) got into a number of the daily papers; but all these reports lacked something, so we have waited for authentic news, and we got it this week.

Monday morning F. V. Bantom and J. A. Peterson called at our office. They are members of the company which bought the Halsell pasture and had been here three or four days looking it over with a view to revising, or adopting a price list.

Mr. Bantom told us the company was composed of eastern and Oklahoma City capitalist, and that they intend to sell it out to settlers for farms and stock ranches. They will have offices at Oklahoma City, Woodward and Supply. The parties interested will do business under the firm name of F. V. Bantom & Co., and Mr. Peterson will have charge of the Woodward and Supply offices, with headquarters at Supply. The Woodward office will be located in the Gerlach Bank, and the lands are on the market now.

The gentlemen composing the company are influential, and connected with other enterprises calculated to aid them in selling these lands to homeseekers. Mr. Peterson, the local agent in charge, is a very pleasant gentleman who will spare no effort to dispose of the company's holdings, and we are pleased to welcome him among us.—Supply Republican.

**Pointed Paragraphs.**

An ounce of practice is better than a ton of theory.

Of the many human buds few ever bloom successfully.

Beware of the individual who is lost to all sense of shame.

Be sure of your fattened calf before essaying the prodigal role.

Who ever heard of an actress seek-

ing a divorce without publicity?

Some people are like parrots—they talk too much and say too little.

The actor's fur-lined ulster doesn't always protect him against a frost.

Somebody is always getting in the way of the man who is in pursuit of happiness.

A man seldom poses as a confirmed bachelor until after some woman has confirmed him.

The man who is blind to his own interests usually has four eyes for his neighbor's affairs.

It is easy to distinguish cut glass from the other kind; is found on the bargain counters.

**Help for the Poor.**

A few days ago we received a most remarkable communication from an outfit in the city of Washington. It was a request for us to get up a petition to be signed by the people of our country generally, requesting the congress of the United States to raise the salary of the president from \$50,000 to \$75,000; cabinet officers, members of congress and all other officers at Washington in same proportion. It contemplates a general raise of about 50 per cent all along the line.

Now, the editor of this paper is a very charitably inclined person and is very ready to help the poor so far as his ability and opportunities may justify; but we prefer to choose our own way of dispensing our charity. We will not get up this petition, but we will make this very liberal offer: If any of these poor fellows find themselves at the point of starvation, we are willing to take their place for a season and relieve them of the burden.

It is really an awful thing to make a poor man like Roosevelt serve as president at the meager pittance of fifty thousand dollars a year, and we feel sorry for him—so sorry in fact that we expect to do all in our power to relieve the poor man of his burden at the next election. Then what a measly shame it is to force a poor man to go to the senate or to the

We are the depository of Woodward County.  
We are the depository of Dewey County.  
We are the depository of Woodward City.  
We are the depository of the people.

We pay interest  
on time deposits

**The First National Bank**

OF WOODWARD, OKLAHOMA;

You are invited to join our multitude of customers.

**WESTERN SEEDS For Western Planters 1904 Seed Catalog Ready**

We make a specialty of Field and Grass Seeds. Choice stock Alfalfa, Bromo Grass, English Brome Grass, Cane Seed, Millets, Macaroni Wheat, Dwarf Essex Rape, Russian Speltz, (Emmer). Full line Tree Seeds. Most seeds very scarce. Order Early. Write for Free Catalog to **Kansas Seed House** or Branches—Denver, Colo., and Oklahoma City, O. T.

house of representatives and pay him only five thousand dollars a year and clerk hire. It is a wonder they don't profit by the example of the labor unions and strike for high wages. Instead of that the poor cusses just stay and starve year after year in infirmary and let their children cry for bread.

As stated above, we will not circulate a petition, but if any of our readers want to contribute any money, old clothes, corn meal or bacon to the poor fellows we will take charge of it and see that it is properly used. The poor should not be allowed to suffer in a land of plenty.—Graham Leader.

**Time to Be Feared.**

The next sixty days are most to be feared by stockmen. Cattle go into the winter with warm blood in their veins and flesh on them to resist the cold. As the winter progresses their condition becomes poor and they are less able to withstand the storms. This year, up to now, they have had good grazing throughout Kansas and it is asserted that it would take severe and protracted storms to cause any losses. From reports in the discount rooms of banks, now is a good time to go into the stock raising business. A banker recently, speaking on this point, said that Kansas offered more

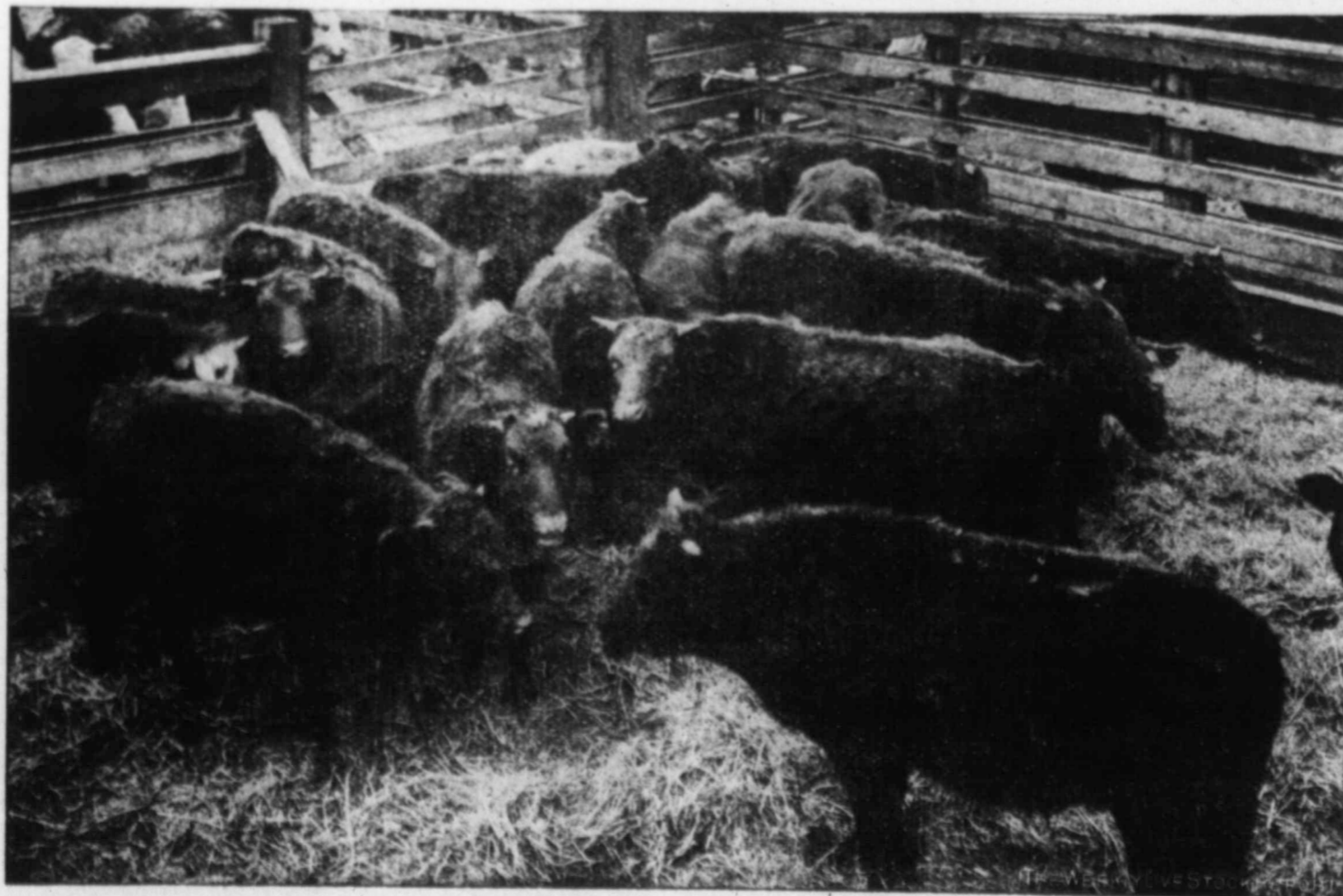
money now for cattlemen than it ever could be expected to again. "Stock is so low," said this banker, "that it can go no lower. On the hand, it must go higher. To show how low cattle are, mortgage holders are not calling in their loans. They want the cattlemen to keep on caring for their stock, waiting for a rise. A war would double the fortune of every cattleman in the country. A continuance of prosperity will make the market respond and prices will go up. Cowmen are selling their stock, which means that the breeding is being cut off. This exhausts a market in four years and compels an answer in two years. There is not the slightest possible means by which stock can go much lower, while there are a hundred by which it must go higher."—Kansas City Journal.

Some fellows are always taking exceptions at what the newspapers have to say of them. As a matter of fact the man who gets mad at what the newspapers say in the way of news and about him is generally just the man who should return thanks three times a day for the things the newspapers knew about him and don't print. There is not one man in ten that the newspaper man could not print something that he does not want the world to know. The idea is to be thankful for what the newspaper man knows and does not tell.—Ex.

"Francis," said the little girl's mamma, who was entertaining visitors, "you came down stairs so noisily that you could be heard all over the house. Now, go back and come down the stairs properly." Francis retired and in a few minutes re-entered the room. "Did you hear me come downstairs then, mamma?" "No, Dear, this time you came down like a lady." "Yes, this time I slid down the banisters," explained Francis.—X.

A Leavenworth girl who was visiting her uncle near Lausing expressed her anxiety at the savage way in which the cow regarded her. Her uncle allowed it must be on account of the red waist she had on. "Dear me," exclaimed the girl "Of course it's out of fashion but I had no idea a county cow would notice it."—Times.

The annual meeting of the Territorial Board of Agriculture was held in Guthrie, Tuesday, Wednesday and Thursday.



Owned by Howell Bros, Montrose, Col. Feeders Under one year old.

## THIS ELEGANT SKIRT



Is an advance model for spring 1904, which we have had specially designed for our mail order customers. It has the new postilion hip yoke and new back.

**We will make it to your measure**

Exactly as shown in the illustration, from a stylish melton cloth, in navy blue, blue gray, medium blue, medium brown, tan, medium green, Oxford gray, medium gray, or light gray, either in walking length or with a slight train

**\$4.98**

for .....  
When ordering send waist measure; measure around hips six inches below waist line; length in front at side and at back.

**Samples of cloth**

and self measurement form sent upon request.

**Peck's Spring Catalogue**

**Ready about March 1, mailed free.**

This catalogue will be the handsomest we have ever published. It will contain illustrations and descriptions of the newest fashions in tailor made suits, walking skirts and dress skirts, made to your measure, also handsome, ready-to-wear garments of all kinds in this spring's newest styles and a great deal of other information about general drygoods, carpets, curtains, furniture and shoes. Write for a copy; it will be mailed you free.

**Express Charges Paid**

On orders of \$5 00 and over to any express office in Missouri, Kansas, Nebraska, Iowa, Illinois, Indian Territory and Oklahoma Territory, and on larger amounts to other states.

Geo. B.  
**Peck**  
Dry Goods Co.  
Kansas City, Mo.

## THE NEW WAY OF SMOKING MEAT

Everybody can cure their own meats without the use of fire, smoke-house, or any of the clumsy and laborious methods of the old days, by using

**WRIGHT'S CONDENSED SMOKE**

This wonderful preparation is a liquid smoke, made from hickory wood. It imparts to meats cured with it the delicate flavor that is peculiar to meats smoked with hickory wood. Used by applying the Condensed Smoke with a brush. Send names of 8 who cure meat and we will mail you sample free. Sold only in square quart bottles with metal cap. Never in bulk. At druggists, 75c; sent prepaid, \$1.00, or 50c, if you pay express; price in Canada, \$1.00.

**WRITE FOR FREE BOOKLET**

on curing meats. Be sure to get "Wright's Condensed Smoke." Made by The E. H. Wright Co., Ltd., 111 W. 4th St., Kansas City, Mo.



## WHY IT'S ROUND

Who ever saw a square hen's nest? We imitate Nature's way in the "Iowa Round Incubator." As result, there are no half heated corners—no superheated centre draughts—no chilling or overheating eggs. Buy a Round Incubator, the Iowa, and get big per cent hatches. Directions simple. Ask now for free illustrated catalogue.

**IOWA INCUBATOR CO., Box 244, Des Moines, Ia.**

# C. C. C. C.

Lawrence, Kan.,

Jan., 20, 1904.

Please find enclosed 25 cents for one bottle of your Cactus Corn Callous Cure. It is the best I ever tried. Removed all I tried it on like magic.

A. R. NOTTINGHAM.

**The Genuine Cactus Corn Callous Cure**

Is guaranteed to cure any corn, wart or callous or money refunded. One large size trial bottle sent on receipt of 25 cents in coin or stamps. Don't wait but send today.

**Cactus Remedy Co.,**

**Kansas City, Mo.**

B 2211 E 9th St.

### Communication.

Caple, Okla., Feb. 1, 1904.

LIVESTOCK INSPECTOR:

This has so far been an exceptionally fine winter for stock. We have had fully the average amount of cold weather but have had no snow or rain here, except in a few isolated localities since August 10th, consequently grass is of good quantity and stock looks well, better in fact at this time than for five years past. Many settlers are coming in and homesteading the government to such an extent that many cattlemen who have depended on government land for range will have to greatly reduce their herds. We poor souls who live near the Texas line and secured some of the Texas land still have a prospect of staying in the business if the railroads do not take it all in freight and shrinkage. As to what will become of the settler I make no predictions, but when they have lived here for 17 years, as I have done, they will know a lot of things that they don't know now. I believe there are better prices in the near future for the cattleman who can make it through until after the next presidential election. But with 20 per cent loss last winter and only 20 per cent calf crop branded last summer a shrinkage of 25 per cent to 40 per cent in values within 12 months, the exorbitant freight charges made by the railroads, together with the poor service rendered by them, a wait of from one to four weeks for cars with cattle shrinking heavy, then 36 to 50 hours on the train, to make a run that has heretofore been made in 17 to 18 hours, it does not take a smart man to tell that unless conditions are improved not many can stay in the range cattle business. I notice that the annual meeting of the Association is coming on apace at Oklahoma City. I hope that while in session the membership will take some action towards having the next session of the legislature do something to control the railroads instead of the roads controlling us.

J. C. DENISON.

### Market Letter.

Kansas City, Mo., Feb. 1, 1904.

Special to LIVE STOCK INSPECTOR.

Live Stock receipts at Kansas City last week and the same week last year were as follows:

	Cattle	Calves	Hogs	Sheep	H&M
'04	39,984	1,435	42,797	10,461	1,132
'03	34,774	1,642	30,428	10,668	1,722

Whether conditions played a most important part in the cattle market last week, and were largely averse to sellers. Monday and Tuesday prices jumped up 10 to 20 cents, account of short supplies, incident to storms in the west. This advance drew good runs later in the week, and as packers were indifferent and wanted few cattle, the advance was more than wiped out before the close of the week. Packers claimed storms in the east had shut off their supply of refrigerator cars, leaving their coolers full, thereby forcing them to cut down operations. Fat steers and butcher stuff closed this week barely steady with close of previous week. Veal calves sold strong. Bad weather also shut off country demand for stockers and feeders, leaving speculators with many cattle on hands. Late in the week

this class of cattle were 30 to 50 cents below the good markets of two weeks ago. Run today is 8,000 head, and market barely steady. Buyers were cautious at the beginning today, and fat steers and killing kinds of cattle sold no better than steady. The best stockers and feeders, however, were strong, with others showing little life. Receipts were moderate at all markets today and should this continue during the week, prices may recover the loss of the last half of last week.

Hog prices changed for the worse after Monday of last week. Top was \$5.15 last Monday, highest day of the winter. Net loss was 15 to 20 cents for the week, with most loss on light weights. Run today is 7,000 head, and market 5 to 10 cents lower again. Top to buy \$90., bulk of all sales \$4.65 to \$4.85. Packers dread the \$5 mark, and resolutely fight any approach to that figure.

### Governor Ferguson Praises the Press.

As a neverfailing means of putting down or quelling minor disturbances, at least, the newspaper boys can be depended upon more frequently than the law or other forceful means." said Governor Tom Ferguson yesterday to a party of correspondents. "I am a full and firm believer in the power of the press and would not hesitate to submit to the boys propositions, which in my mind, should be settled for the public good and in the right way.

"It matters not in what part of a state or territory a disturbance may arise, if the newspaper can secure a true state of affairs they can settle it more quickly and in a better way than by any other means. The boys, of course, may be somewhat vitriolic in their attacks and in the words they use, but I have never known a time when they were not effective and the desired results were reached.

"In the present contention regarding the sale or retention by the state of the Oklahoma school lands, the newspapers are carrying on an educational work which is to be commended and which will beyond any doubt result in the proposition being submitted to the people, as a non partisan issue. Even in political questions and in matters of state importance I would in a majority of cases trust the editorial boys with securing the better judgment.

"A good, severe, rebuking jacking-up at times will do more good to a man, a community, a state, than can be reached in any other way. I have known public officials, to be criticised for turning loose to the press so-called important propositions, which should probably have been kept secret, but I have noticed that they have invariably been settled in the right way and ten times more quickly than had an attempt been made to settle them on the quiet. And I will admit too, that if you try to keep a thing quiet the boys will get it in some way—perhaps a garbled report which will do more harm than the publication of the truth."—Guthrie Leader.

You will miss the best time of your life if you don't attend the Oklahoma City convention.



AUNT MARY'S CHAT.

Dear Friends:—This is to be a little heart-to-heart talk to all of you.

Just two years have been added to the record of time since I came to you as "Aunt Mary." You gave me such a hearty welcome that the day has ever been one of the bright ones on memory's calendar.

Have you gained anything from your acquaintance with me? Have you gained a wider outlook upon life in any of its aspects? Have you received inspiration from contact with others' thoughts as expressed on this page? How many pleasant half-hours have we brought to you during the past two years?

Again, have you had a hand in the good work going on? You have had thousands of thoughts worthy of perpetuation during two years' time.—I'm certain of that! Did you write them down for the encouragement and inspiration of others? A few. Some started and faltered by the way. The few, bless them! "How they cheer and help us on our way!"

There must surely be many among our large family of readers whose names are unknown on this page. Why may we not hear from them all? Why not have a long string of letters every month? (You see there are but two today!) There are so many things to write about, in this beautiful working world of ours, and so many people who are waiting for our words.

Come one, come all! Let us know who you are and what you think. The days to come are to be brighter days, understand, than the days were that have gone. We must believe that, always, and then do our share loyally to make them so.

With an abiding love for all the "Household" and a cordial welcome ready for each member, I remain sincerely yours,  
Aunt Mary.

## AN OBJECTIVE POINT.

"Madam Hobby" set me to thinking. She said "Train your daughters to be proficient in some remunerative profession," or words to the same effect.

I have no daughters to train, but on looking round about me I see numerous daughters who need training, and the advice of "Madam Hobby" strikes me forcibly.

"Proficient." That's the word "Adept—well skilled," that's what Webster says it means. It means learn to do something well, thoroughly well. Be no slouch at it. Do it better than anybody else can. It will pay.

And that brings one to the latter part of Madam Hobby's advice. "A paying profession." There are professions and professions, and scores of them

pay. How can one be picked from the many in order that training for proficiency may begin early? Why, that's easy, as Madam Hobby intimates. Watch the bent of a child's mind, study his natural inclinations, and you'll soon see what he's good for.

Yes, "Madam Hobby," you're right, and no wonder, after the experience you've had. When one has suffered, one knows better how to alleviate suffering.

You spoke only of the need of training for girls, I add, the boys need it too, just about as much. Don't they just grow up, you might say, knowing no more than a monkey? How will they make their living when they are men? With concentration of thought and efforts toward an objective point early in life there will be more successful men and women.

So, enlarging upon "Madam Hobby's" suggestion, I say, "Boys, be master of some trade or profession, girls, be mistress of remunerative work you can perform with skill. To both, be proficient."

## AUNT BLANCH.

♦♦♦♦♦

WHEN FATHER'S TOO SICK TO WORK.

"There's all that varnishing to do, and the wardrobe hooks to fasten up in the clothes closet. While father's at home today, we might as well do a dozen or so of the little odd jobs that have had to be put off so long. Jonna, you just pile up some slats by that broken chicken coop, so father can nail it up good and strong when he happens to pass by it any time during the day. Minna, bring the last and those worn shoes of yours from the shoe closet. Father can mend them while he's here today! Oh, Father dear, do you think you'll feel like taking the pantry door down and nailing a piece at the back, so it will latch when it's closed? All right, I'll be so glad to have it done. And of course you'll be able to answer those letters of Arthur's and Mirandah's. That won't be tiresome. I never seem to have time for all those little things. I wonder whether you couldn't run up that account book for me,—I've tried and tried and it won't balance to save me! Nell, you run and hunt your father a pencil and some blank paper."

I listened and looked on at this household drama all day. Being only a visitor, I said no word and was cautious lest a look betray that I noticed. But inwardly put it down as a sin and a shame that this good man should be driven to death by his family on a day when he was ready ill with "grip." This most miserable and tedious enemy had been afflicting him a week or two and at last he gave up and admitted that he was not able to go to work, that he must lie around the house and doctor himself a day or two. "One would think," said I to myself, "that his family would give him every attention and not allow him to lift his hand eye to wait upon himself!" Instead of that, every member of the family seemed on the alert for work to put him to, and all day long he was at it. His weary attitude, his patient expression, his uncomplaining attitude appealed to my sense of justice no less than the actual physical discomfort he suffered. It was such a rare thing that those people had the pleasure of having among them for

one whole day the hard toiling head who made the living for them, and how they had abused the privilege. The following day he returned weary to his usual work.

I unburned my indignant soul to Aunt Jessica when I had returned to her. She evinced a pleased interest quite incompatible with the horrified look I expected to see.

"That's good. Served him right!" she cried delightedly. "You needn't think I'm crazy or hard-hearted. I know those Hoskinses well. Peculiarities are right in their line. Why, once when Mrs. Hoskins was just getting up from a long spell of fever and the doctor said she needed out of door exercise, old man Hoskins put her to driving the hay wagon. She pulled through it somehow and got stout again. That woman never lays off a day herself or gets a mite of coddling when she's sick, mind you! Why should he? Once when Minna was down with scarlatine, oughtn't to have opened her eyes or anything; her father brought in a heap of grain sacks and old horse blankets and said she could patch 'em and save the time from being teetotally wadded. And he made Mrs. Hoskins let her patch them, too. And Jonna—why, that boy doesn't know what it is to enjoy being sick, as most boys do. That spell of bilious fever he had last year didn't exempt him from duties, for Mr. Hoskins made him memorize "Sheridan's Ride," and "Hiawatha" and I don't know what else, and heard him recite them, too, almost every time he came in the room. Think of being drilled in elocution while you're flat of your back with bilious fever! Balancing a housekeeper's accounts with the grip is nothing in comparison. Consider your sympathy wasted, my dear, when it's poured out on the head of Hoskins!"

♦♦♦♦♦

## SLAUGHTER SICKLY INFANTS?

Dear Aunt Mary: Is there or is there not, a movement among reformers to have laws enacted legalizing the killing of babies that are puny or weakminded? If so, what society is at the head of it. Do you have any idea such laws will ever be passed? It doesn't seem so bad to hear humane Societies talk about killing crippled beasts to put them out of their misery but it does appal me to think of wholesale slaughter of helpless innocents of the human race. A friend of mine told me that an acquaintance of hers had seen something of the sort advocated in print. It is too horrible to believe. Please answer, and oblige.

MRS. I. G. H.

[A few detached, self-styled high-thinkers have advanced ideas favoring such a method for strengthening the race, but if any of the various reform societies are at the head of it, or even officially in it, I have failed to see the announcement. Such laws will never be passed. Those who would advocate the placing of such laws on our statute books might well thank their lucky stars for having been born in a land too civilized for such enactments. One of the experts of this repulsive suggestion to destroy all the diseased or deformed in infancy is the learned Chancellor of the State University of Nebraska. Yet, let us be charitable. While the learned Chancellor Elisabeth Benj. An-

draws may be right in saying it would strengthen future generations to slay weaklings of the present, there is ground for hope that he is too human to believe the end would justify such means.]

## Had Cattle to Sell.

Alya, O. T., Jan. 29.—A young fellow named Harvey VanGundy appeared here yesterday morning and went to Reed's butcher shop and said he had four fat cattle to sell. He acted as if he was in a hurry, and Mr. Reed went down to the stock pens, looked at the cattle and offered \$90 for them; VanGundy asked \$100. Reed, being a little suspicious, was in no hurry, and told him he would give \$95 for them, but couldn't pay him all the money until noon, and 'phoned Sheriff Oates, who went and took a look at VanGundy, who in the meantime had sold the cattle to Joe Schmitzer and got \$5 to hold the trade. Oates asked where he got the cattle, and he talked at random until Oates invited him to get into a buggy and go with him to where he bought the cattle. He finally admitted that he got the cattle out of Butcher Garland's stock pen at Kiowa. Oates put him in jail and the sheriff of Barber county came down today and took him to Medicine Lodge to hold for trial, and Garland came and got his cattle. VanGundy had been at work for Garland.

## School Land Figures.

In looking over the Superintendent's Report we find that there are 4,770 school children in Dewey county, and that each receives \$1.09 from the school fund of the territory derived from the rent of school land. The total received in Dewey county is \$5,119.30. This makes a neat sum for the children, and if the territory holds the land it will be a source of perpetual revenue, but if sold the leakage and shrinkage will set in and in thirty or forty years from now the Oklahoma school fund will dwindle down to a very small point. Let us be sure of what we have.—Cestos Report.

## Low Rate To Oklahoma City,

\$8.55 Oklahoma City and return going February 22 to 24 inclusive. Return until February 27th.

W. W. ARNOLD Agent.

Sheriff Grimes tells of an interesting case of animal sense of danger and self preservation. A few days ago, while moving a bunch of cattle, he noticed a large golden eagle attempting to capture a jackrabbit, but the jack was too much for the eagle. The jack was near a wire fence, and upon perceiving the eagle he sought the fence and located just on the opposite side from the eagle. The eagle being unable to make a successful dive thru the fence, would of course light on the side upon which the rabbit was, then swiftly diving for the rabbit, the latter would as quickly change to the other side of the fence. This continued until the herd of cattle came up, when the jack made his get-a-way by running amongst the cattle, where he was lost to view from the eagle.—Ashland Clipper.

# R. T. FRAZIER

Will Be At

**LEE HOTEL, OKLAHOMA CITY, OKLA.**  
February 23 to 25

With a Fine line of

# FAMOUS PUEBLO SADDLES



**These Saddles are Known the World over for for Quality.**

## ◆ Pleasant View Galloway Farm ◆ 150 Head in Herd.

One of the largest herds in Kansas. Paul Neiter 15876 at head of herd. We offer the following—

Twenty 6 to 20 month old bulls. Ten 1 year old bulls  
Twenty 6 to 20 month old bulls. One ear of bred cows

Write or come. **W. Guy McCandless Cottonwood Falls, Ks.**

### Up to Standard.

Kansas City, Mo., Feb. 1.

All indecision respecting the American Royal live stock show for 1904 was dissipated today when representatives of the four beef cattle breeds met in this city and voted to hold an exhibit up to the standard of previous events of this nature.

It was the consensus of opinion among those present that special attention should be devoted this year to the earload exhibit of feeding cattle, and the different associations will offer special premiums for this exhibit. A much larger sum in prizes will be hung up for the earload exhibit than was ever offered before. Each of the four cattle associations will hold an auction sale of feeding cattle dur-

ing the show, following the plan employed in auction sales of breeding stock.

The committees appointed by the Hereford, Shorthorn, Angus and Galloway breeders' associations met in parlor "U" of the Midland hotel this morning.

Eugene Rust of the stock yards company, was made chairman of the meeting and C. R. Thomas, secretary. The Shorthorn association was represented by F. H. Gentry of Sedalia; B. O. Cowan of Chicago, and T. J. Wornall of Liberty, Mo.; the Hereford breeders by Charles Gudgell of Independence, C. A. Stannard of Emporia and W. B. Waddell of Lexington, Mo.; the Angus breeder by Geo. Stevenson, jr., of Waterville, Kans., and H. W. Elliott, of Estill, Mo., the

Galloways by A. M. Thompson, of Nashua, Mo.

The proposition to hold a Royal this fall met with opposition only from the Shorthorn breeders; the Angus and Galloway breeders had held preliminary meetings and instructed their representatives to vote for the show. After these breeders had agreed to cooperate with the Hereford men and a show for the fall had been decided upon the Shorthorn men surrendered and agreed to join the movement.

It was decided to make this the greatest of all Royals, making feeders in earlots a special feature. For these animals some very attractive prizes will be offered.

Although striving in every way to make this the banner Royal, it was the sense of the meeting that it should in no way be made to hamper or impair the efficiency or attractiveness of the St. Louis show, but that on the other hand the members of all associations stood pledged to support it.

Were instructed to report to their various associations with directions to invite them to appoint two members from each, who will, with one representative from the stock yards interests, constitute an executive committee, which shall meet in the Midland parlors, March 1, at 10 a. m. to agree upon prizes and order of exhibits, etc.

A cordial invitation was ordered extended to the sheep, hog and goat men to participate in this great American Royal. JNO. M. HAZELTON.

Our readers are urged to bear in mind the annual February auction of registered Hereford cattle from the well known herds of Gudgell & Simpson, of Independence, Mo.; Frank Rockefeller, Belvidere, Kan., and Dr. James E. Logan, of Kansas City, Mo. This is the regular annual reduction sale from these establishments, and as has been the case in previous years in the February sales, this offering will comprise the best surplus stock each consigner has produced. The Independence Mo., breeders will sell 30 head, Mr. Rockefeller 25 and Dr. Logan 15. They will be joined by several prominent Kansas and Missouri breeders with a grand lot of good young cattle, including Jones Bros. of Comiskey, Kan., with 18 head; Steward & Hutcheon, Boicetow, Mo., 8; Walter B. Waddell, Lexington, Mo., 7; Robt. H. Hazlett, El Dorado, Kan., 2; J. W. Wampler & Son, Brazilton, Kan., 2; and Mrs. C. S. Cross, of Emporia, Kan., with 3 head. This makes a grand total of 110 head, and will comprise perhaps the very best offering of registered Herefords scheduled for any point this year. The national prominence of many of the contributing herds, won by demonstrated merit in the United States' best show rings, insures the buying public of a high class offering in both individuality and pedigree. The sale will be held in the steam heated sales pavilion at Kansas City, Mo., on Tuesday and Wednesday, February 23 and 24. Catalogues may be had free upon request to Gudgell & Simpson, Independence, Mo. Note the displayed announcement on the last page of this issue and kindly mention this paper when writing.

### 40 Years a Seed Grower.

R. H. Shumway, of Rockford, Ill., is an old time seedman, having been in the business for upwards of forty years. He is both seed seller and seed grower. The most striking thing about his advertisement elsewhere is the remarkably low prices at which he is selling. This can only be accounted for by the fact that he grows his own seeds. The purities and freshness of Shumway's seed are not to be trusted because his prices are much lower than others. In his forty years, he has built up a seed buying trade that would not think of patronizing anyone else. He is satisfied with the small profits from the people who are sure to become permanent customers. He can't afford to sell them anything but the best. He issues a large and beautifully illustrated catalog. Is most liberal with extra pockets of new varieties. Everything is fully illustrated and accurately described. His is a catalog you should not fail to get before placing seed orders. Mention this notice in writing and he will send it free.

### A Successful Veteran.

You might hardly feel like calling him a veteran if you should see him, because he stands straight, moves quickly and has a clear bright eye. But when a man has been hustling at the same business for more than forty years, if he isn't a veteran what is he? Then, too, he has succeeded, as you can readily see from the broad acres devoted to growing evergreens and other ornamental shade and forest trees, shrubbery, etc., for it is D. Hill of Dundee, Ill., whom we are talking about. Mr. Hill has grown and shipped many million trees in his lifetime and has millions more coming along. His name is a household word all over this country and in many foreign countries. Write for his catalogue "Millions of Trees" and mention this paper. Address as above.

### "The Sure Hatch in Alaska."

Minto, Yukon, Jan. 7, 1904.—Seattle Produce Co., Eugene, Oregon.

Gentlemen: Enclosed please find eighteen dollars (\$18) for another 150 egg incubator. Please send it send it as soon as possible as I want to set it in the forepart of March. The one you sent me last fall is all right and I want to set two in March, or sooner if the hens begin to lay. I will want some more later. I enclose 20 cents for exchange of Canadian greenbacks. On my first hatch I got 85 per cent and have not got less than 95 per cent since that time. Ship the machine to Mrs. John Fussell, Minto, Yukon, care of Mr. Wheeler, Royal Mail service, White Horse.

### Very Popular.

The "Osgood" Standard Scales, manufactured by Osgood Scale Co., Central Street, Binghamton, N. Y., are the subjects of an illustrated announcement to the trade, in this issue. They emphasize the fact that they want dealers and agents everywhere to handle the farm scale, the house adds a proposition to ship scales on a thirty-day trial. The wagon scales made by this firm are becoming very popular and the sales are larger than was expected. A catalogue will be sent on application.

**Oklahoma Hotel Rules.**

Gents going to bed with their boots on will be charged extra.

Three raps at the door means there is murder in the house and you must get up.

Please write your name on the wall-paper so we know you've been here.

The other leg of the chair is in the closet if you need it.

If the hole where that pane of glass is out is too much for you, you'll find a pair of pants behind the door to stuff in.

The shooting of a pistol is no cause for any alarm.

If you are too cold put the oil cloth over your head.

Kerosene lamps extra; candles free but they mustn't burn all night.

Don't tear the paper off the wall to light your pipe. Enough of that already.

Guests will not take out their bricks in the mattress.

If it rains through the hole overhead you'll find an umbrella under the bed.

The rats won't hurt you if they do chase each other across your face.

Two men in a room must put up with one chair.

Please don't empty the sawdust out of the pillars.

If there is no towel handy use a piece of the carpet.—Ingersol Review.

**Crops for Next Season.**

In talks with farmers we learn that a large acreage of old land will be sown to barley and oats in this locality next spring. This will be better than chancing too much to wheat, as it has been demonstrated that a one crop country is not generally prosperous. It has been demonstrated that this is a great wheat country, but to risk all to that crop would be dangerous, for in the best of countries it is found that failures will occur occasionally, which would bring on hard times, and a new country, especially, could not easily stand that kind of a treatment. But with barley, which last season demonstrated, could be grown here and harvested in prime condition, another crop has been added to the sure ones for this locality and one that there is much profit. Nearly every farmer in this locality will sow from five to twenty acres. Then there is oats, which is a good crop and very prolific. The acreage of the oat crop will also be very large, as the farmers realize that all small grain crops are almost sure, as they are harvested before the dry weather comes on. These small grains, with plenty of broom and kaffir corn will make farmers in this locality in prosperous circumstances if they hold on to their lands long enough.—Curtis Courier.

The Oklahoma wheat exhibit for the world's fair is about all collected and it is first-class. There are over a hundred samples of wheat testing from sixty-three to sixty-five pounds to the bushel. Only wheat testing sixty-three pounds or over will stand any show to claim a place in the exhibit.

**WANT COLUMN.**

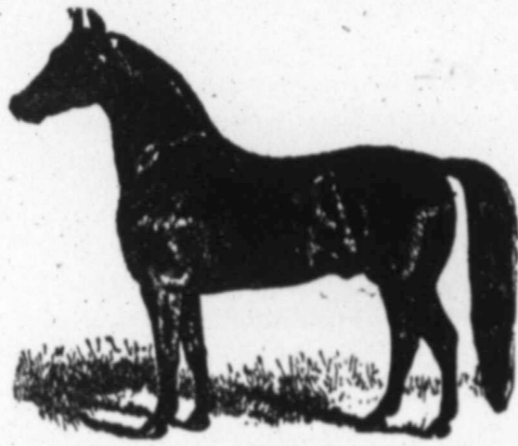
ONE CENT A WORD.

"For Sale," "Wanted," "For Exchange," and small advertisements for short time, will be charged one cent a word for each insertion. Cash must accompany order.

**FOR SALE CHEAP.** on Payments: A fine little Ranch of 400 acres, good springs and running water; 90 acres cultivated, small grove of big trees, orchard, house, corrals, etc. If taken at once, \$6,000. Address W. H. Coxe Live Stock Inspector, Woodward, O. F.

**FOR SALE.**—At a bargain a 960-acre ranch suitable for stock raising. 320 acres wooded land and one section of school land. Plenty of timber and an abundance of running water. 12 miles of fencing. Address F. Morris Box 50, Shattuck, Okla.

**FOR SALE!**



**PERCHERON STALLIONS:**  
All Registered and fully warranted.

From two to five years old; color, mostly black; good style and action, and from one of the very largest and best breeders and importers in the United States, Singmaster & Sons of Iowa.

These horses will be sold at reasonable prices, and on easy terms. Parties desiring horses will do well to call on or write us for terms and other particulars. We will help in opening companies.

**WALKER BROS. & CO.**  
Payne Co. Glencoe, Okla.

**Cheap Trip California.**

Go to California in a comfortable Pullman Sleeper on a fast train, with pleasant people, in charge of an experienced agent, and save many dollars, as compared with highest class service.

Personally-conducted excursions over the Santa Fe three times a week to Los Angeles and San Francisco. Also through cars from Boston and St. Paul. Ask for tourists car pamphlet.

**Santa Fe.**

**J. N. HARSHBERGER,**  
**Live Stock Auctioneer,**  
Lawrence, Kansas.  
Sales of all kinds of stock. Have made sales during last year for best breeders west of Mississippi river and am now booked for some of the best sales. Large acquaintance east and west. If you are making a sale write or wire me for date. Mention this paper.

**The Bantam**  
Incubator Co.  
Box 74, Springfield, O.

Chas. H. Watts, Cattle Salesman Levi Cox, Pres.  
Lon S. Mawhinney, Hog Salesman W. H. Jones, V. Pres. } So. Omaha  
Frank A. Watts, Office S. R. Cox, Sec-Treas. } Nebraska

**COX-JONES COM. CO**

CHAS. H. WATTS, MGR.

**LIVE STOCK COMMISSION MERCHANTS**

Rooms 315-316-308 Exchange Building Old Phone 312

SOUTH ST. JOSEPH M. SOURI

CALL UPON  
CORRESPOND WITH  
CONSIGN TO

**Clay, Robinson & Company,**

Live Stock Commission  
Stock Yards

**MARDI GRAS**

**NEW ORLEANS  
LOUISIANA**

FEBRUARY 16, 1904.

**Rock Island  
System**

VERY LOW ROUND TRIP RATES.

**GEO. H. LEE, G. P. A.**  
Little Rock, Ark.

**J. S. McNALLY, D. P. A.**  
Oklahoma City, Okla.

**LAFE BURGER,**  
Wellington, Kansas.  
Headquarters Wellington National Hat Co. have conducted the largest sales in America. Thorough acquaintance with pedigree and individual merit. Extensive acquaintance with breeders. Write me before claiming dates. Dates made at this office.

**JAMES W. SPARKS,**  
**Live Stock Auctioneer,**  
MARSHALL, MO.  
Sales made anywhere. Have been and am now booked for the best sales of high class stock held in America. Thoroughly posted on pedigrees and individual merit. Large acquaintance among the leading stock breeders of America. Terms reasonable. Write me before claiming your date.

**100 PER CENT HATCHES**  
Our new catalogue contains hundreds of them obtained by **BUCKEYE INCUBATOR** users in all parts of the U. S. send for a copy and read the proof. It is free.  
Buckeye Incubator Co., Box 78, Springfield, O.

**NO HUMBUG** Farmer Brighton's  
Swine, Stock, Market and Calf Dealers. Stop swine from rooting. Makes 40 different size marks. Extracts Horns. Price \$1.50. Send \$1 for trial. If results, send balance. Paid May 6, 1902. Hog and Calf Holder only 75c.  
**GEORGE BOOS, MFR., FAIRFIELD, IOWA.**



**WICHITA UNION STOCK YARDS CO.**

WICHITA, KANS.  
**CAPACITY 3,000 CATTLE,  
 5,000 HOGS.**  
 Private Yards for Texans  
 Perfect Sewerage and City Water  
 All Pens Covered.  
**W. R. DULANEY,**  
 Supt. of Stock Yards.



**The Kansas City Stock Yards**

Cover 160 acres of ground and are the most modern and convenient of any in the world. They are located near the wholesale district of the city, easily accessible to the business and residence portion by street railway and within eight blocks of the Union depot.

**Kansas City is the Largest Stocker and Feeder Market in the World**  
**While it is the Chief Packing Center of the Middle West**

INCLUDING HOUSES OF

Armour Packing Company, Swift and Company, Schwarzschild & Sulzberger Co., Jacob Dold Packing Company, George Fowler, Son & Company, Limited, Cudahy Packing Company, Ruddy Bros. Packing Company, Etc.

And a full line of buyers for both domestic and export trade. All railroads centering at Kansas City have direct rail connection with the Kansas City Stock Yards.

**The Kansas City Stock Yards Offers More Advantages as a Market Than Any Like Institution in the Country.**

**C. F. MORSE, E. E. RICHARDSON, EUGENE RUST, W. H. WEEK**  
 A. P. & G. Mgr. Sec. & Treas. Genl. Mgr. Genl. Agent.

**LIGHTNING HAY PRESSES**  
 HORSE AND STEAM POWER CATALOG FREE  
**KANSAS CITY HAY PRESS CO.**  
 THE OLD RELIABLE 153 MILL ST. KANSAS CITY MO

**L. S. NAFTZGER, W. R. TUCKER**  
 PRESIDENT VICE-PRESIDENT  
**J. M. MOORE, CASHIER.**

**Fourth National Bank**  
 WICHITA.

CAPITAL - \$200,000  
 SURPLUS - \$50,000

General Banking Business Transacted

**EVERGREENS**  
 Hardy sorts, Nursery grown, for wind-breaks, ornament and hedges. Prepaid \$1 to \$10 per 100-50 Great Bargains to select from. Write at once for free Catalogue and Bargain Sheet. Local Agents wanted.  
 Evergreen and Specialist, Dundee, Ill.

**FOR SALE CHEAP**  
 ON PAYMENTS.

A fine little Ranch of 400 acres, good springs and running water; 90 acres cultivated, small grove of his trees, orchard, house, corrals, etc. If taken at once, \$6000. Address W. B., Care of Live Stock Inspector, Woodward, Okla.

**FENCE! STRONGEST MADE.** Bull Strong, Chicken Tight. Sold to the Farmer at Wholesale Prices. Fully Warranted. Catalog Free. COILED SPRING FENCE CO. Box Winchester, Indiana, U. S. A.

**STOCK BRANDS.**

One cut, one year, \$10; each additional brand on cut, same owner, \$5 per year; each additional brand requiring engraved block, one year, \$2. These prices include copy of paper one year to any address. Strictly cash in advance.

**ISHMAEL & RUDOLPH.**



P. O. Kiowa, Kas.  
 Range on Buffalo, in Woodward county.

EARMARKS: crop and split left. Horses: branded heart on left shoulder.

**A. L. McPHERSON & SONS.**



P. O. Address, Woodward, Okla.  
 Range, Canadian river northward, including Cottonwood Springs.

On left side or shoulder. Horses branded same as above. Range same as above.

**WHITE & SWARINGEN.**

P. O. Address: Woodward, Okla.  
 Range: On Sand creek, 5 miles north of Fort Supply.



OTHER BRANDS.

**LS** On right side, seven under bit each ear.  
**2** On both sides.

HORSE BRANDS.

**V** On right shoulder.

**T. C. SHOEMAKER.**

P. O. Address, 1416 Linwood Ave., Kansas City, Mo.  
 Ranch address, Optima, Oklahoma.  
 Range, head of Beaver, in Beaver Co., Okla.



OTHER BRANDS:



10 on left side

**F. D. WEBSTER.**



P. O. Address, Gage Oklahoma.

Range, on Little Wolf east and south of Gage.

**F** On left jaw of all young stock.

**IB** on left hip.

**V** On left hip or shoulder.

**O** On left hip.

HORSE BRANDS:

**ED** On left shoulder.

**GEO. W. CARR.**

P. O. Address, Stone, O. T. Location of range on Turkey Creek, in Day county.



BRAND OF CATTLE.

**I** On Left Hip.

**7** On Left Hip.

All calves are branded same as cattle.

BRAND OF HORSES.

**I** On left thigh.

Location of range same as cattle.

**J. L. SIMPSON,**  
 Hammond, Okla.



**19** left shoulder and side.

**11** left shoulder and hip.

**C** left loin.

**111** left side.

Range, East Quartermaster Creek, Custer County Okla. (Nov. 1, '99)

**M. C. CAMPBELL.**

Owner and Manager, Wichita, Kansas. Range on Cimmaron, headquarters mouth of Snake creek, Clark county, Kansas.



Other brands, on left shoulder horses. Range same as cattle.

**MILLARD WORD.**



P. O. Address, Grand Day County, Oklahoma.

Range, on South Canadian, Red Bluff and Mosquito creeks, in Day county.

Ear mark: Crop the left and swallow-fork the right.

**7** on left thigh.

## OFFICIAL PROGRAM

THURSDAY, FEB. 25

**Tenth Annual Convention**  
OF THE  
**Oklahoma Live Stock Association**  
Oklahoma City  
February 23, 24, 25, 1904

## OFFICERS

PRESIDENT: GEO. W. CARR, STONE, OKLA.  
VICE-PRESIDENT: GEO. W. CROWELL, ALVA, OKLA.  
SECRETARY: W. E. BOLTON, WOODWARD, OKLA.  
TREASURER: JOHN J. GERLACH, WOODWARD, OKLA.

## EXECUTIVE COMMITTEE

A. L. MCPHERSON, B. W. MURPHY, CHAS. GARTEN,  
R. C. BRESNIE, SEMER MASON, L. STEWART,  
G. C. BROWN.

## LEGISLATIVE COMMITTEE

JNO. GEORGE, JACK PIGFORD, W. T. SMITH, ED T. DAVIS,  
C. P. JOHNSON, W. C. CAMPBELL.

## QUARANTINE COMMITTEE

JNO. GEORGE, JACK PIGFORD, W. T. SMITH, ED T. DAVIS,  
C. P. JOHNSON, W. C. CAMPBELL.

Official Premium List of Registered Cattle Show and Sales may be had at Show Barns where members and visitors will be welcomed every day Don't fail to see the cattle in show barns. FRANK L. KENYON, Supt.

## ...Official Program...

TUESDAY, FEB. 23

10:00 a. m. Call to order by the President  
Invocation  
Address of Welcome—Mayor of Oklahoma City  
Response—Vice-President, GEO. W. CROWELL  
President's Annual Address  
Report of Secretary; Report of Treasurer  
Election of Officers for coming year  
Appointment of Committees on Resolutions by the President  
Recitation—MISS E. G. BURKE  
Adjournment  
2:00 p. m. Members and Guests are invited to visit Cattle Barns and Sale Yards; and participate in entertainment given by Oklahoma City

WEDNESDAY, FEB. 24

9:00 a. m. Reports of of Standing Committees, followed by general discussion and introduction of resolutions  
10:00 a. m. Address—GOVERNOR T. B. FERGUSON  
Splenetic Fever—By COL. ALBERT DEAN, Agent Bureau Animal Industry, Kansas City  
Live Stock Conditions in Oklahoma—By THOMAS MORRIS, Secretary Oklahoma Live Stock Sanitary Commission  
How best can Oklahoma be protected from Splenetic Fever—COL. T. M. THACKER, Mangum  
Value of Oklahoma Live Stock Association to the Farmer.—By W. W. FARMER, Shattuck, Okla.  
Recitation—MISS E. G. BURKE  
Adjournment  
2:00 p. m. World's Championship Roping Contest—See last page, this program.

9:00 a. m. Scabies in Cattle—J. E. GEORGE, Liberal, Kan.; C. H. LOCKHART, May, Okla.—Discussion  
Live Stock Transportation—SUPT. H. A. TICE, Arkansas City.—Discussion.  
Use of Dipping Vats—G. M. MOORE, Kansas City  
Glanders in Oklahoma—DR. L. J. ALLEN, B. A. I.  
Winter Feeding and Marketing—M. F. WORD, Grand, Oklahoma.  
Oklahoma at World's Fair—Commissioner F. L. WENNER—Guthrie.  
Stock Yards Market Talks:  
St. Louis, L. W. Krake  
Kansas City, W. H. Weeks  
St. Joseph, M. B. Irwin  
Chicago, W. E. Skinner  
Wichita, W. R. Dulaney  
Ft. Worth, J. W. Hovenkamp  
Report of Committee on Resolutions  
Appointment and Confirmation of Executive Committee  
Appointment of Standing Committees on Legislation, Quarantine and Transportation  
Selection of place for next Annual Meeting  
Final Adjournment  
2:00 p. m. World's Championship Riding Contest.—See next page, this program.

All Stock Farmers and Cattle Owners are invited to join the Association; members admitted any time during convention at the office of the secretary at the Lee Hotel; or at the Convention Hall during sessions.

## Official Program for the Roping Contest, Wednesday, February 24, 1904, at 2 p. m.

1st Prize \$500 provided there are 20 entries; if less all the entrance money goes to the winner, provided, however, that \$250 is guaranteed.  
2nd Prize \$100  
3rd Prize \$50  
4th Prize Saddle valued at \$50

## Rules for Roping Contest

1st Limited to 30 entries.  
2d Steers will be numbered, contestants will draw. Steers will be roped as they come.  
3rd Contestants will be allowed to have rope in hand, but must not start until starter's flag drops.  
4th The rope must go over head or horns, no foot roping allowed, unless head or horns are caught first.  
5th Cattle must be securely tied by at least three feet with a tie rope or peal, and remain securely tied by three feet for five minutes.  
6th Each contestant is required to rope when number is called. No man allowed to rope more than one steer at this contest.  
7th Time will be taken by three timers from the time the starter's flag falls to the time the marshal's flag falls, which will fall when the steer is properly tied. Contestant will indicate to marshal when steer is tied by throwing up his hands.  
8th A committee of three competent judges will be appointed to decide any controversy, and their decision shall be final.  
9th The roper must stand at north end of wing and after the steer crosses the 50-foot line the flag will fall; and if the contestant starts before the falling of starter's flag, he will be counted out.  
10th If entries are made by letter, \$5 should accompany the letter. All entries must be made before 12 o'clock, Noon, on Feb. 24th, 1904.  
Entrance fee, roping contest, \$25

## Official Program for the Riding Contest, Thursday, February 25th, 1904, at 2 p. m.

1st Prize \$250. If more than 10 entries all of the entrance fee  
2nd Prize \$100  
3rd Prize One Saddle and bridle valued at \$75.

## Rules for Riding Contest.

1st Limited to 20 entries.  
2nd Horse must be saddled by rider. He will be allowed one helper, who can only hold horse for him.  
3rd Rider when mounted shall give the word "ready" when blind will be pulled. Then "It's up to you."  
4th Rider must use slick saddle and no leggins; spurs and all other equipments must be satisfactory to judges.  
5th The decision of the judges will be made from time rider begins to saddle, and will be based on his manner of saddling, mounting and riding.  
6th If the rider catches any portion of the saddle with hands or arms, he will be foul and counted out.  
7th The committee shall have the right at any time during the contest to cancel the entry, and if necessary, to remove from the arena any contestant, on account of disorderly or improper conduct, or who is guilty of cruelty to his horse.  
8th No horse shall be eligible who throws himself more than once. The committee reserves the right to remove any horse from the arena at any time.  
9th Any man who draws a horse which shall prove not to be a buckner, and that will not give him a fair chance to show his ability as a rider, may draw another horse.  
Entrance fee for riding contest, \$25

# Car-Sul Cattle Dip

Is prepared especially to

**Kill Lice and Ticks and cure Mange or Itch. on Cattle.**

**USED HOT OR COLD**, is guaranteed to do the work without injury to eyes, skin or hair.

**Trial Gallon \$1.50** At dealers or sent direct, express prepaid. 5 gallons \$6.75, by freight prepaid. Larger quantities at reduced prices. Illustrated book on "Skin Diseases of Cattle;" free-

---

## Moore's Hog Remedy, Dip and Feed.

Prepared for use on Outside and Inside of Hogs. Will Kill Lice and Scurvy, Remove Worms and Prevent Disease.

**Trial Gallon \$2.50.** At Dealers or direct, express prepaid. Larger quantity at reduced price. Book "Care of Hogs" free. Write for it.

---

## Car Sul Disinfectant Dip and Lice Killer.

Will kill Lice and other VERMIN and cure skin disease on all kinds of animals

### A Splendid Dip For Hogs

Unexcelled for use in poultry houses as a LICE and MITE Killer.

**Trial Gallon \$1.50** At dealers or direct, express paid, 5 gallons \$6.75 by freight prepaid.

For useful information about dipping all kinds of live stock

Call on or address

**Moore Chem. & Mfg. Co.**  
**1501 & 1503 Genesee St., KANSAS CITY, MO.**

EDWARD MORRIS, President.

C. G. KNOX, Vice-President.

# ST. LOUIS NATIONAL STOCK YARDS.

DAILY CAPACITY

15,000 Cattle, 17,000 Hogs, 12,000 Sheep 3,500 Horses

Located directly opposite the city of St. Louis at National Stock Yards, Ill. Street cars taken at Washington Ave., entrance to Eads bridge will convey you to Exchange building. Unexcelled facilities for marketing all kinds of live stock. Fastest growing market in the country. Being continually enlarged and improved to meet the requirements of the trade. Buyers for four large packing houses and an endless number of small packing houses and city butchers induce lively competition. Good demand for stockers and feeders from an expanding territory

Receipts for 5 years Ending	Cattle	Hogs	Sheep	H. and M.
1893	2,947,028	4,164,182	1,557,229	89,280
1898	3,660,882	7,208,679	2,378,288	330,197
1903	4,523,029	8,609,763	2,401,348	630,835

The above figures are an index of the growth and vastness of the St. Louis market. The geographical location of St. Louis, situated as it is in the central part of the United States, makes it the natural market for both shipper and buyer of live stock. All roads lead to St. Louis and no market has the superior advantages for concentrating and distributing live stock products which abound here.

L. W. KRAKE, Ass't Gen'l Mgr.  
O. H. BROWN, Traffic Mgr.

C. T. JONES, Gen'l Mgr.

## Hereford Breeders'

### Fifth Annual Combination Sale

At

### Fine Stock Sale Pavilion

### Kansas City, Mo.

### TUESDAY and WEDNESDAY, FEBRUARY 23 and 24, 1904.

# 110 Herefords 110

#### CONTRIBUTORS

Jones Bros, Comiskey, Kan., 18; Dr. J. E. Logan, Kansas, City; Mo., 15;  
Gudgell & Simpson, Independence, Mo., 30; Frank Rockteller, Belvidere, Kan. 15;  
Robt. H. Hazlett, El Dorado, Kan., 2; W. B. Waddell, Lexington, Mo. 7;  
Steward & Hutcheon, Bolckow, Mo. 8; J. W. Wampler & Son, Brazilton, Kan., 2;  
Mrs. C. S. Cross, Emporia, Kan., 3.

For catalogues apply to

**Gudgell & Simpson,**  
Independence, Mo.