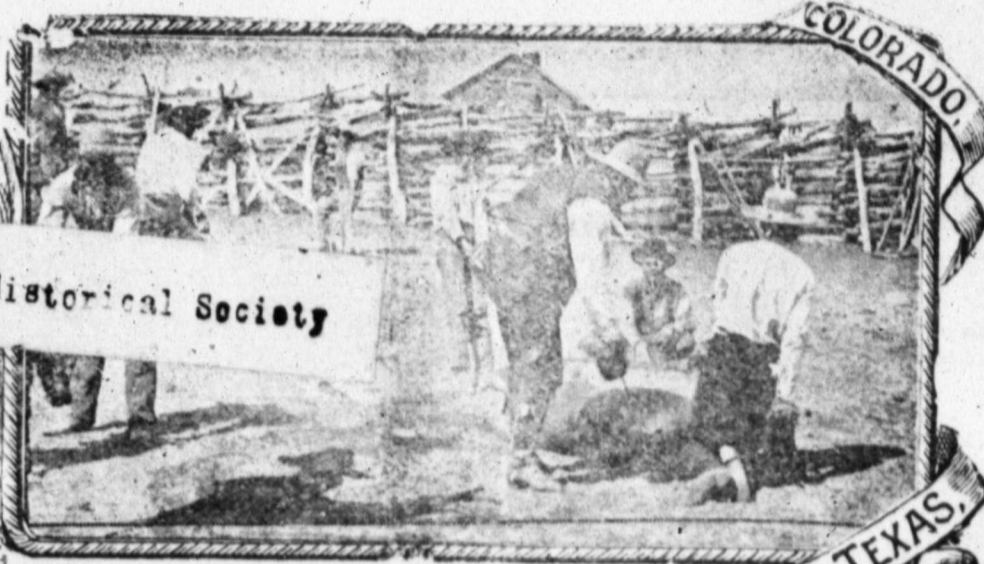


The LIVESTOCK



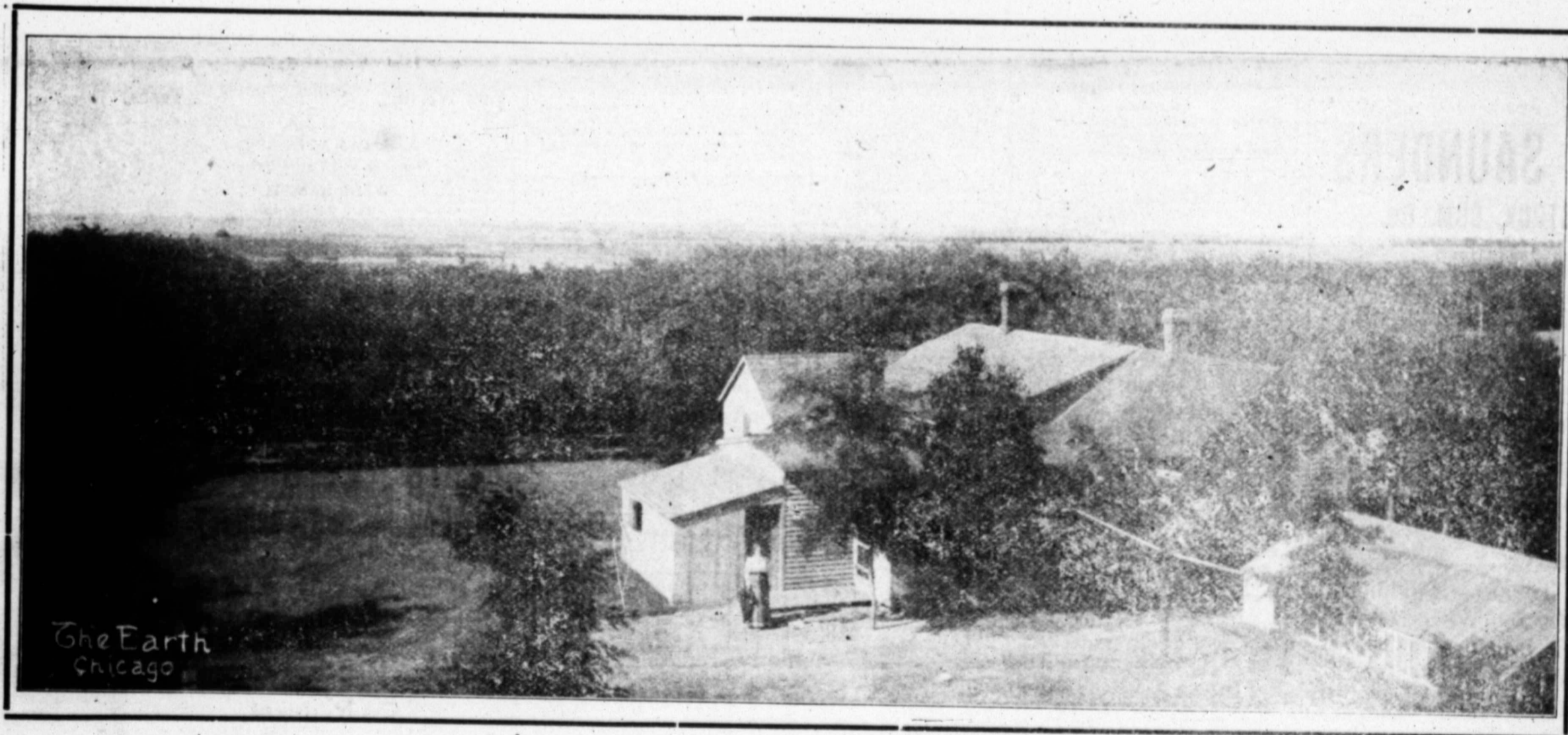
INSPECTOR

DEVOTED EXCLUSIVELY TO LIVE STOCK INTERESTS.

Eleventh Year.
No. 25:

Woodward, Oklahoma, and Kansas City, Missouri, April 1, 1906.

\$1 Per Year.



Ranch Home, Orchards and Fields on Englewood Branch of the "Santa Fe."

Courtesy Earth Publishing Company.

"No Shipment Too Large For Our Capacity Nor Too Small For Our Attention."

M. SANSON, President and Gen'l. Manager.

W. B. WORSHAM, } VICE-PRESIDENTS.
A. L. KEECHLER, }

DIRECTORS.

C. C. Slaughter, W. B. Worsham
R. J. Klebers, S. B. Burnett,
J. B. Wilson, A. L. Keechler,
Sam Davidson, D. T. Bomar,
W. T. Waggoner, M. Sansom,
J. W. Kokernot, W. E. Halsell,
J. F. Lyons.



S. B. BURNETT, TREASURER.
J. F. LYONS, SECRETARY.

SALESMEN.

CATTLE HOGS AND SHEEP.
C. L. Brown, J. B. Mitchell.
W. S. Vinson.
ORDER BUYER.
Geo. L. Deupree.

NORTH FORT WORTH, TEXAS.

Did it Ever Occur to You!

That it might be to your advantage to ship your stock to

Geo. R. Barse Live Stock Commission Company?

Why?

1. Because we have experienced and competent salesmen; therefore we make the best sales, assuring you the full market price for your stock. 2. Because we have the best yardmen, consequently you get the best fills and the best weights. 3. Because we have the best office work, assuring quick, accurate accounts of sale and prompt returns.

Try us with your next shipment. The packers at Ft. Worth look to us for their cattle and hogs.

Geo. R. Barse Live Stock Com. Co.

FORT WORTH, TEXAS.

KANSAS CITY, MO.

EAST ST. LOUIS, ILL.

G. W. SAUNDERS, President.
T. A. COLEMAN, Vice President.
J. JACOBS, Sec'y. and Treas.
FORT WORTH OFFICE.
W. E. JARY, Manager.
W. T. CHESSER, Cattle Salesman.
W. E. JARY, Hog Salesman.

G. W. SAUNDERS
LIVE STOCK COM. CO.

(INCORPORATED.)

OFFICES:—Fort Worth. San Antonio. Kansas City and St. Louis.

Stock Farmers, Attention.

Have you any cattle, hogs, or sheep to market? If so, bill them to "Geo. W. Saunders Live Stock Commission Co.," Stockyards, Ft. Worth, Texas. Established in Texas 1886. We guarantee full market values, best attention and prompt returns. Write for free Daily Market Paper.

ST. LOUIS

KANSAS CITY

NORTH TEXAS LIVE STOCK COMMISSION COMPANY

(INCORPORATED)

OFFICERS
J. P. DAGGETT, PRES. & GEN. MGR.
J. T. DAY, VICE-PRES.
B. SINGLETON, SEC'Y & TREAS.
SALESMEN
CATTLE: E. M. BUD DAGGETT
LEWIS G. BAREFOOT
HOGS & SHEEP: JNO. W. JOYCE



FREE AND INDEPENDENT OF THE REGULATIONS OF THE LIVE STOCK EXCHANGE. EXCHANGE RULES, COMMISSION: \$8.00 PER CAR ON HOGS AND SHEEP, \$12.00 TO \$18.00 PER CAR ON CATTLE AND REFUSE TO PAY TELEPHONE OR TELEGRAM MESSAGES. OUR CHARGES: \$8.00 PER CAR ON HOGS AND SHEEP, \$12.00 PER CAR ON ALL CATTLE.

CONSIGN US YOUR

CATTLE, SHEEP AND HOGS

REFERENCES:

FORT WORTH NAT'L BANK
STOCKYARDS NAT'L BANK

AND YOU WILL BE PLEASSED WITH RESULTS

WIRE OR PHONE

US AT OUR EX.

PENSE

ST. JOE

FORT WORTH STOCK YARDS

CHICAGO

FORT WORTH.

The packing houses of Ft. Worth were erected in 1902 and put in operation November 1st of the same year.

Comparison of the receipts of 1904 and 1905 at Ft. Worth:

	CATTLE.	HOGS.	SHEEP.
1905.....	726,573	399,394	115,146
1904.....	535,999	223,641	94,285
Increase....	190,574	175,753	20,861

FRITZ STRAUGHAN, President
JAS. A. BRANNAN, Sec. & Treas.

Inter-State Commission Co.

LIVE STOCK EXCHANGE BUILDING.

Fort Worth, Texas.

JAMES STEWART,
Manager and Cattle Salesman.
WADE HAMPTON,
Hog Salesman.

CHICAGO, ST. LOUIS, ST. JOSEPH,
KANSAS CITY.

Consign Your Cattle and Hogs to the

Ware Live Stock Commission Company.

FORT WORTH, TEXAS.

Market Reports Furnished On Request,

GodairCrowley Commission Co

LIVE STOCK COMMISSION AGENT.

(INCORPORATED.)

OFFICES:—

FORT WORTH,

ST. LOUIS,

KANSAS CITY.

Capital \$50,000.00.

Officers:— E. E. Baldrige, President. A. F. Crowley, Vice-President. E. G. Gibson, Vice-President. Geo. W. Hoover, Secretary and Assistant Treasurer. A. G. Godair, Treasurer and Assistant Secretary. A. Spears, Cashier.

DIRECTORS.—

G. T. REYNOLDS. W. D. REYNOLDS. A. F. CROWLEY. E. E. BALDRIDGE. GEO. E. COWDEN.
E. C. GIBSON. A. G. GODAIR. W. H. COWDEN. W. H. GODAIR.

FORT WORTH SALESMEN:

Cattle—A. F. Crowley, A. C. Thomas.

Hogs and Sheep—Jno. F. Grant, L. Runnels.

THE Live Stock Inspector

AND **FARM NEWS**
FOR STOCK FARMING AND THE HOME.

VOL II, No. 24.

WOODWARD, OKLA. APRIL 1, 1906.

Subscription \$1.00.

Oklahoma Live Stock Association.

Twelfth Annual Convention,

Oklahoma City, March 13-14 and 15
1906.

The 12th Annual Convention of the Oklahoma Live Stock Association at Oklahoma City was the most practical and interesting meeting in several years past.

The program was replete with many very able addresses, which will be printed hereafter from time to time in this paper, in order that every member of the organization may have the benefit of a complete report of the proceedings.

The resolutions adopted provide for some material changes for the better and the adoption of a plan providing for an Association Adjuster of Claims for members will doubtless result in great practical financial benefit to everyone.

The plan provides for an Adjuster of wide experience to be employed on a per cent by the Executive Committee and work on same is now progressing. Just as soon as the deal is closed each member will be notified by the Secretary and given instructions and forms for submission of all Claims to the Adjuster who will act as their direct agent in securing satisfactory settlement.

The officers elected for the the ensuing year are: President; Joe C. Miller of Bliss; Vice President, John H. Sams of ElReno; Secretary, W. E. Bolton Treasurer, Jno. J. Gerlach, Woodward.

In lieu of election of County vice Presidents, action was authorized for forming county associations in each county, composed of members of the Association, without fees or, dues, to hold semi-annual meetings, to elect officers and providing that the president of each county as-

sociation shall be constituted a Vice-President of the regular Territorial or state Association; Calls will be issued soon for this purpose, by the Executive Committee which is composed of the following:

R. M. Bressie Ponca City. E. B. Johnson, Norman. Ed. Davis, Erick. W. M. Hurst Woodward, E. Bridges, Enid. President and Secretary Ex-officio.

Enid was selected as next place of meeting. Date of meeting to be fixed by Executive Committee and published.

The resolutions adopted are as follows:

THE RESOLUTION.

Resolved, The members of this Association tender their thanks to Col. R. M. Bressie, president; Hon. John J. Gerlach, treasurer, and Col. W. E. Bolton, secretary; and their assistants for the very able manner in which they have managed and conducted the affairs of this association during the preceding year, and may their future lives be full of happiness and contentment.

RAIL ROAD SERVICE.

Whereas, Railroads for a long time have given very poor service to live stock shippers, in the way of not furnishing cars promptly and the slow running time of trains carrying live stock, therefore be it.

Resolved, That we the members of this association, demand that all railroad companies recognized live stock as perishable property, that they furnish cars promptly, when ordered, and after stock is loaded into cars that such trains carrying live stock be given orders to run an average of twenty miles per hour from originating point to destination.

Resolved, The members of this association heartily thank the railroad companies for their assistance in giving special passenger rates of fare to all those attending this convention hereby making this meeting one of the greatest in the history of the association.

Resolved That the thanks of this association be tendered to Mr. I. T. Pryor for the valuable assistance rendered our resolution committee and for other valuable service rendered our association, and further would fully appreciate any courtesy conferred on Mr. Pryor by the Cattle Raiser's Association of Texas.

OKLAHOMA EXPERIMENT STATION

Whereas, The work of experiment

stations throughout the country has been of great benefit to agriculture and

Whereas, The funds of experiment stations are insufficient to provide for the increased demands upon them, therefore be it

Resolved, That this association urge upon the senate of the United States the importance of the Adams bill which has passed the house of representatives increasing the federal appropriation for experiment stations and request its early consideration and passages, and

FEVER TICKS.

Whereas, The importance of the complete eradication of the cattle tick is vital to the future of the cattle industry of Oklahoma, therefore be it

Resolved, That the association endorse the request of the southern Live Stock Commissioners for a federal appropriation of \$500,000 to be expended under the direction of the secretary of agriculture in pushing the work of extermination of this tick; and

FARMER INSTITUTES

Whereas, The spread of correct information about scientific methods of stock raising and farming among all the people is requisite for the development of Oklahoma's agricultural possibilities, therefore be it.

Resolved, That the members of this association lead their aid in the development of farmers' institutes, the agricultures courses of the Agricultural College, and all movement looking toward the development of our unsurpassed agricultural resources,

HOSPITATELY GIVEN.

Resolved, That the officers and members of this association heartily thank the citizens of Oklahoma City for their kind and hospitable treatment during the meeting of this association in their great and growing commercial center of the southwest and to each speaker of the convention,

Resolved, That the officers and members of this association kindly thank the press and their representatives for the able manner in which they have reported and handled the proceedings of this convention, thereby aiding in its success and in making the world understand what our aims and purposes are.

MEAT INSPECTION.

Whereas, It has come to the attention of this association that the government is or has been appropriating insufficient funds to pay meat inspectors for all the packing houses of the country especially for the smaller houses that aid in the purchase of live stock on the markets, therefore be it

Resolved, By the members of this

association that congress be memorialized to appropriate sufficient funds for the employment of a sufficient number of inspectors for all packing and slaughter houses, thereby guaranteeing a square deal for all concerned in live stock industry, and

Resolved, That we sincerely endorse the action of President Roosevelt in the packers' investigation, and assure him of our continued support of his efforts to secure a "square deal" for the member of this organization.

Resolved, That the thanks of this association be tendered to the following named gentleman for the highly interesting, entertaining and instructive addresses given by him during the meetings. (Here follow the names of all who spoke, you know them and others who have aided in making this convention a grand success.

TIME IN TRANSIT.

Whereas, There is now pending in the 59th congress of the United States a bill amending section No. 4386 of the Revised Statutes of the United States extending the time in which live stock in transit may remain on board the cars without penalty from 28 to 36 hours, exclusive of the time required for loading and unloading, and

Whereas, The enforcement of said law as it now stands, is an unwarranted hardship and unnecessary punishment to live stock, works a serious loss to the shipper and an unnecessary expense to the transportation company handling same and

Whereas, This amendment in no wise lessens the liability of railroad companies under the law in the performance of an efficient service with due diligence and dispatch, and which requires them to respond to the shipper in damages upon failure to do so, nor does it enable them to consume any longer time than now required over the same distance and,

Whereas, from actual experience and observation in the transportation of live stock over the various lines of railroads, we know and assert it to be a fact that the frequent and unnecessary unloading and reloading of live stock, made necessary by the present 28-hour law, is positively inhuman in fact, such unloading and reloading must of necessity be done by force, which is attended always by unavoidable punishment, to which facts we urge careful investigation by all persons interested; therefore be it

Resolved, by the Oklahoma Live Stock Association, assembled, that the United States congress be and it is hereby urgently requested to give said bill favorable consideration, thus affording the live stock shippers of the country the relief asked for.

(Continued on page six.)

THE LIVE STOCK INSPECTOR.

Farm Notes.

As the sower's work is done,
seed is in its winter bed;
let the dark brown mould be
spread,
hide it from the sun,
leave it to the kindly earth
the still earth and brooding air
then pest now may smite, the sleek
light on the drowned furrow beat,
winds that, from the cloudy hold
inter, breathe the bitter cold,
then to stone the mellow mold,
safe shall be the wheat;
out of heaven's unmeasured blue
walk again the genial year,
wake with warmth and nurse with
dew
germs we lay to slumber here.

—Bryant.

the sharp wire and concentrated
fter peach borers this month
ybody can grow Irish potatoes,
here are few who can grow them

ose young apple trees don't need
ng. See that the rabbits don't

high-headed fruit tree, like a
headed man, gets too far from
ground to be of much service to
orld. Keep your heads low.

strawberry patch that shivers
e cold of February for lack of
or hay mules, need not be ex-
d to come up smiling with an
crop of berries in the spring
e are other reasons for mulching

isadvantage growing out of the
manure for winter applications
wis is found in the large num-
weeds which spring up from
top dressings. Cotton seed meal
ive the same life and force to
awn grasses without this un-
iness and trouble.

od time now to plan for next
crops. Don't wait till the last
of the morning and then rush out
xpect things to move like clock

Every farmer ought to have
rogram just as much as the
er on the railroad, and work to
ave you?

old orthodox method of shaping
g fruit trees was to cut back two
or two and one half above the
id to force the coming tree to
its head just below the place cut.
Southwest, where western suns
hurtful to the exposed bark of
headed trees we cut nursery
one foot or eighteen inches
r and study to shade the trunks.
re are a great many farms and
that can never be cultivated at a

These, if planted with forest
such as chestnuts, oaks,
and larches, will produce a
h of timber which will be a
of profit, and then the energies
farmer might be concentrated
the best land, and the manure
be applied where it would do
ost good.

ead of exposing the corn fodder
fields, it should be stored under
as soon as dry enough, and it
e an advantage to have it in a
arn where it will not get wet
ack. In the south, the stalks
ripped of their blades, which

are cured in bundles, and put in a
barn immediately, which renders the
fodder very nutritious and it largely
supplies the place of hay.

Perhaps left in the ground over
winter will produce early greens in
spring, and so with the stalks of cab-
bage if they are left with their roots
in the ground. The most popular for
offering early greens however is
spinach which is hardy and endures
severe winters. Another winter vege-
table which remains unharmed by
cold weather is salsify, which how-
ever, is seeded in May.

In setting young nursery stock in
orchards, time will be saved and the
lives of trees assured, in all ordinary
cases where the shipment has come a
long way, and the tops are somewhat
dry, by first covering each bunch of
trees with moist earth for three to six
days. This tends to "plump" the
stock and start afresh the flow of sap
toward the twigs. All wrapping
should be removed before thus bury-
ing the young trees. Tree watering
is advisable in this case. We think
such treatment more necessary for
vines than trees.

Planting the Trees.

The people of Oklahoma are show-
ing a greater interest each year in
tree planting. Farmers plant trees
for the purpose of growing wind-
breaks, posts and fuel. Such plant-
ing constitutes the greater part of the
areas now being set to trees. The
planting of trees for shade and adorn-
ment about the house and yard is of
equal importance in town and in the
country and most of the citizens seem
to be deeply interested in this work.
The results that have now been ac-
complished along this line are very
gratifying and the energy that is now
being exerted in the care and tending
of trees indicates that the people fully
appreciate the value of trees in this
climate.

The season of planting is of minor
importance. The condition of the
soil at the time of planting is of great-
est importance. In Oklahoma, trees
can be planted any time during the
late fall, winter and early spring
while the ground is not frozen and is
moist enough to work well.

The amount of land that can be de-
voted to this purpose should be the
principal point in deciding the forma-
tion of the planting. The hedge row
form of planting requires the trees
that develop a thick, bushy top like
the Russian mulberry and the Osage
orange. The plants should be set
about two feet apart in the row and
should be well cultivated to encourage
as great a growth as possible. These
trees make a very dense top when in
full leaf and are quite free from in-
jurious insects and diseases. The
Russian mulberry is the best free
commonly grown for such purposes.

Planting trees for the growing of
posts is being done quite extensively
in some sections of Oklahoma. For
this purpose trees that grow rapidly
and produce a durable wood are es-
pecially desired. The trunk of the
tree should be long, free from
branches and straight. Such trees
may be grown either by constantly
pruning off the branches, or by

planting the trees close together so
that after four or five years the trees
will prune themselves. The latter
method is usually the best plan to
follow. In close planting the growth
of the top is augmented and the
growth of the side branches is
checked, and after a few years no
pruning is necessary.

Trees that are transplanted and set
permanent positions in the wind-
break, in the wood lot, or about the
house and yard for shade should
have the soil about them well culti-
vated through the spring and sum-
mer. In the yard where the trees are
set separately and at some distance
from each other, the cultivation can
be done with a hoe, but in the large
planting the work should be done
with the one or two-horse cultivators.
The cultivation should be constant,
and shallow, and should leave the
soil level. Weeds and grass on the
same land with trees will hinder the
growth of the trees the same as they
will hinder the growth of corn or cot-
ton.

Black locust is the best tree for
planting, for growing post timber and
for fuel. It makes a good growth on
poor land and a very rapid growth on
bottom land. It sprouts from the roots
and for this season is not a very de-
sirable for lawn planting.

Catalpa is a very rapid growing
tree on good land but not on light or
poor soil. It makes an unsatisfactory
growth. The wood makes very good
post timber but not good fuel.

The white elm is the best tree for
planting in the wood for shade. It is
also very good for wind break plant-
ing but the wood is not as valuable
as that of the black locust and catalpa.

The soft maple is a good tree for
wind break and fuel but it is of se-
condary value for either
purpose. It makes a rapid growth and is
a beautiful tree but that is the best
that can be said for it.

The Russian mulberry is a tree of
rare vigor and hardiness and one of
the best trees for planting in wind-
breaks.

The white ash, box elder, hackberry,
honey locust, Osage orange, syc-
amore and black walnut are trees that
may be planted with some degree of
satisfaction but are not as capable of
growing well under all conditions as
the trees previously mentioned.

OUT WORMS ON WHEAT.

Reports from Canadian and King-
fisher counties, state that wheat is
being seriously damaged by cut
worms. The entomologist of the ex-
periment station has visited fields
where the worms are at work, and
recommends spraying a strip of the
wheat just ahead of the worms with
Paris-green at the rate of one pound
to 100 gallons of water. The spraying
should be done while the worms are
feeding on the wheat and of course,
no stock should be allowed to pasture
on the sprayed wheat.

THE STOCK HOTEL

Good Meals. Clean Beds.
Prompt Service.
One block from Live Stock
Exchange Building at Stock
Yards,
Kansas City, Missouri.

SALE DATES.

The following dates are claim-
ed for public sales:

By Dr. J. E. Logan, April 24,
1906, Kansas City, Mo., "Sunset
Herefords."

G. L. Rinehart of Hunnewell,
Kan., claims date of April 19, for
sale of Hereford cattle.

April 24, "Sunset Herefords",
at Kansas City, Mo., Dr. James
E. Logan, Proprietor.

April 25, Scott & March, Bel-
ton, Mo., Herefords, at Kansas
City, Mo.

PEACH TREES

Hardy, fruitful kinds. Honest
values, 5c each. Apple trees, 50c;
Concord grapes, \$20 per 1000. Rus-
sian Mulberry and Black Locust,
\$1.40 per 1000. Rambler roses, 25c.
210 orders prepaid. Catalog free.
Gage County Nurseries,
Box 643, Beatrice, Neb.



WE BUY FURS SKUNK MINK COON

and all other kinds. Top market prices
and quick cash returns. Trap-
pers Guide Free to those who
ship and mention this ad.
McMILLAN FUR & WOOL CO.
MINNEAPOLIS, MINN.
WRITE FOR CIRCULARS

NURSERY STOCK

Of All Kinds At
WHOLESALE.
Send us a list of your wants for
prices. We will save you MONEY
Agents Wanted Everywhere.
Hart Pioneer Nurseries
Fort Scott, Kans. Box 45.
(Please mention this paper.)

GINSENG IS A MONEY MAKING CROP.

Room in your garden to grow hundreds of dollars worth. Thrives throughout U. S. and Canada. We sell roots and seed during spring and fall planting seasons and buy the dried product. You can get started in this profitable business for a small outlay. Send 2c stamp today for illustrated literature telling all about it.

The St. Louis Ginseng Co., St. Louis, Mo.

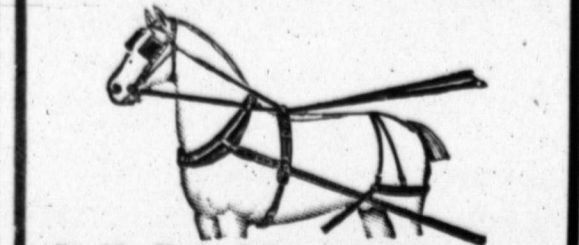


No. 331. Canopy Top Surrey. Price complete, \$65.00. As good as sells for \$25.00 more.

33 Years Selling Direct

Our vehicles and harness have been sold direct from our factory to user for a third of a century. We ship for examination and approval and guarantee safe delivery. You are out nothing if not satisfied as to style, quality and price. We are the largest manufacturers in the world selling to the consumer exclusively. We make 200 styles of Vehicles, 65 styles of Harness. Send for large free catalog.

ELKHART CARRIAGE & HARNESS MFG. CO., ELKHART, IND.



No. 10. Single Collar and Hame Harness. Price complete, \$14.00. As good as sells from \$5.00 to \$8.00 more.

HORSE NOTES.

"I can't keep my horses fat, no matter how much I feed them," says a farmer. Have you tried feeding more regularly? Irregularity in feeding makes thin horses no matter how much is fed. They should also have regular work hours if possible.

♦♦♦♦♦

For several reasons it is more desirable to have colts come in fall than in the spring. It is no little item that they are not so worried by flies and heat. They seem to stand the change better when weaned at the springtime on the grass than if taken from their mother in autumn.

♦♦♦♦♦

It takes longer and requires more to make up a pound of loss than it does to add five pounds of gain under favorable conditions. This largely explains why it is a poor policy to merely keep animals through the winter in a poor condition.

♦♦♦♦♦

It is far more profitable to own a brood mare worth \$500 than it is to keep five brood mares representing the same amount of investment, as the product of the one mare, when bred to the right horse, will sell for more than the product of five common mares, and it takes just one fifth the care and feed to keep.

♦♦♦♦♦

I stored some sheaf oats in the barn to feed during the winter to idle horses, etc. It is liked by the mice, as well as the stock, and that is a serious drawback. Some winters they make sad havoc, and some winters they do little damage. I mowed some and stored it away as oat hay, having been told that the mice cannot, or do not, work in loose oats so much as in sheaf oats. Have not yet reached the oat hay so as to be able to tell from experience.

♦♦♦♦♦

Boiled feed is useful for colts, brood mares and stallions if fed two or three times a week. Draft horses being prepared for sale may be given cooked food once a day. An excellent feed for horses is made by boiling barley and oats in a kettle with considerable water and pouring the mass over chopped alfalfa, allowing the whole to stand until the hay is well softened. Bran, roots and a small quantity of oil meal may be added also.

♦♦♦♦♦

FEEDING OATS TO COLTS!

Most horseman will agree that oats are the natural food of the horse whether colt or adult, and that there is no danger in feeding oats if they are properly given and the colt has proper exercise.

Just here is where most of the trouble is, particularly in winter. The grains given are so concentrated that if the colt does not have sufficient exercise he rapidly gains down and trouble is laid to the oats. The best mixture for a weaned colt is equal parts of bran and oats with a small handful of oil meal mixed in with each ration. For the first winter skim milk of good quality will help the colt along in good shape with the grain recommended and this with the exercise in plenty on warmish days and a comfortable roomy box stall at night will make a colt to be proud of.

♦♦♦♦♦

ABOUT THE HORSE BUSINESS.

Several readers have been asking the same question. "How long will the present good prices for horses remain?" Of course the writer of this cannot answer to a certainty. No other man can, either. However, one thing will come true; as soon as the country is filled up on horses, prices are bound to lower. When that will be, whether in a year or two or whether in twenty years, no man can say.

It is something that seems to come on gradually, yet always strikes the country all at once. We go to bed at night and dream of the big price we are going to get next day for a team we have to sell, and next morning find that prices have been lower a third because the supply is greater than the demand.

Orchard Hill Herd Duroc Jersey Swine
R. F. Norton, Prop., Clay Center, Kan.
Several spring males and twenty bred gilts for sale. The best brood sows. Send for private sale catalogue. (1714)

(Please mention this paper.)

AN INSTANT'S PAIN
and the dehorning job is smoothly done, no crushing or bruising of the skull.
KEYSTONE
Dehorning Knife
is used. Easy, sure and most speedy in operation. No evil results can follow. Cuts from four sides at once. Endorsed by veterinarians. Guaranteed.
T. PHILLIPS, POMEROY, PA.



DON'T MISS THIS CHANCE



You can make your year's success an assured certainty by sending at once for a free copy of Salzer's remarkable book of **SEED BARGAINS** and taking advantage of the astonishing offers made therein. They cover such varieties as Oats, Barley, Corn, Sorghum, Clover, Timothy, Wheat, also Cabbage, Cauliflower, Peas, Beans, Onions, Tomatoes, etc., all of the strongest, hardiest Northern grown, pure, pedigree stock.

5 Tons Grass Free!
Everybody loves a rich, prodigious growth of grass or fodder for cattle, sheep, horse or swine! If you will send this notice in to us today, you will receive our Bargain Seed Book free, together with sufficient grass seed to grow 5 tons of rich grass hay on your lot or farm this summer. All free for the asking.

Remit to and we will package Cosmos, the most fashionable, serviceable, beautiful annual flower.

JOHN A. SALZER SEED CO.,
Lock Box 38, La Crosse, Wis.



GEO. W. FOSTER, CATTLE SALESMAN, RES. PHONE 848 E. 357.
W. C. BROMWELL, HOG SALESMAN.
J. P. SMITH, CATTLE SALESMAN, RES. PHONE 231 E. 357.

FOSTER-SMITH COMMISSION COMPANY.

We give you personal service in the yards. Stockers add Feeder purchased on order.

If we please you tell others; if not tell us. Write us for special information.



Local and long distance telephones.
HOME 5293 MAIN.
BELL 506 HICKORY.

223-224 Live Stock Exchange, Kansas City, Mo.

STOP READ DECIDE

To Ship To **Tamblyn Commission Co.,**
LIVE STOCK COMMISSION MERCHANTS.

You are entitled to full market values. Others are profiting by shipping to us. No hired salesmen. Convenient yards. Prompt returns. Our patrons are our references.

Tamblyn Commission Company.

Geo. S. Tamblyn. R. L. Tamblyn.

We Guarantee Taylor's Dip

To Cure Mange and Scab, Kill Lice and Ticks and all Diseases of Hogs.

It is Cheap, Effective, and Non-injurious to the animals.

10 Gallons \$10.00
..... Larger Quantities at Less Price

Write us for Prices on Hog and Cattle Tanks.

"Taylor's Stock Tonic and Salt"

Is a compound for breeder and feeder of cattle, sheep, swine and horses that has no equal as a conditioner, health-maker and preserver. It is not mixed with the feed, thus forcing the animal to eat what it does not require, but is placed in boxes to take the place of ordinary salt. Free access to this Tonic will prevent Blackleg, Pink-Eye, Fevers, Hog Cholera, etc. It will positively expel worms from horses, hogs and sheep. It gives the animal vim, vigor and vitality, makes digestion perfect, coat and skin right; is no trouble to feed and is satisfactory to every stockman who uses it.

500 Pounds, \$18.75.

Write for Booklet.

F. J. TAYLOR CO.,
361 Live Stock Exchange, Kansas City, Mo.

TRADE RECIPROCIITY.

Whereas, There is an organization with headquarters in Chicago known as the American Reciprocity Tariff League, the object of which is to bring about reciprocal trade relations with foreign nations, and

Whereas, The accomplishment of this result would be of direct benefit to the producer of live stock, therefore be it

Resolved, By the Live Stock Association of Oklahoma, assembled, that we hereby express to Chairman Sanders and Secretary Skinner, of said league, our hearty approval and moral support of the good work they are doing.

EQUITABLE FREIGHT RATES.

It is further Resolved, That we heartily commend the action of President Roosevelt toward securing equitable freight rates to all classes of shippers throughout the country. We deplore the granting of rebates or other special privileges to favored patrons of our great railway systems and more particularly the modern method of shipping dressed meats in so called private cars owned by the great packers a custom which directly reduces the profits of cattle growers and adds materially to the retail price of meats everywhere.

Resolved, That we are in full sympathy with the active prosecution of the beef trust in the court and hereby pledge our moral support to the president and his assistants toward conviction of all who are violating the law for individual gain.

COUNTY ORGANIZATION.

The report of the committee on county organizations and constitutions and by-laws recommended that the county organizations be known as County Live Stock Associations, to be composed of such stockmen as are now members of the territorial organization and any person over eighteen years of age, who is the owner of not less than five head of cattle. The officers shall be a president, vice president and secretary. No membership fee shall be charged, but all members must be, or become, members of the Oklahoma Association, which thereby entitles each person so belonging, to membership in the County Association wherever he may reside. All officers to be elected on the first day of the first regular meeting, to hold office one year. The president of each County Association is thereby constituted a regularly elected president of the Oklahoma Association.

REPORT OF COMMITTEE ON LEGISLATION.

We your committee on legislation beg to report that we have had under consideration matters of pending legis-

lation, and respectfully recommended that a resolution be adopted by this convention endorsing and approving what is known as "the Hepburn bill," same being entitled: "An act to regulate interstate commerce," and which has passed the house and is now pending in the United States senate, and suggest the following resolution of endorsement:

INTERSTATE COMMERCE BILL.

"We the members of the Oklahoma Live Stock Association in convention assembled at Oklahoma City, O. T. believing that there should be legislation by congress to grant relief from the present unjust and unreasonable railroad rates, and believing that the Hepburn bill, which has passed the house and is now, pending in the United States senate, is a fair and just measure and that its enactment will in a great measure give relief from existing evils in connection with the transportation of live stock, therefore, be it,

"Resolved, That it is the unanimous desire of this association that said bill do pass and become a law, and we here by request that all senators having the interests of our people at heart (which we believe they all have) do work and vote for the passage of 'the Hepburn bill.'"

RAILWAY BOARD.

And we do further recommend; believing that our people will in all probability frame and adopt a constitution for the new state of Oklahoma between now and the next annual convention, and believing that it is of vital interest to the public welfare and especially to the live stock interests, that the organic law of the new state should provide for an elective board of railroad commissioners of not less than five in number, conferring on them full power to fix rates and tolls on all railroad and other public corporations within the state, the following resolution as expressing the sentiments of this convention:

"We, the members of the Oklahoma Live Stock Association in annual convention assembled at Oklahoma City O. T. this 14th day of March, 1906, believing that the public welfare will be better promoted and that the live stock interests will be better protected by a provision in the constitution of the new state which will provide for a board of railroad commissioners to be elected by the people, of not less than five in number, which board shall be given full power to fix rates and tolls on all railroad and other public corporations, engaged as common carriers, therefore be it,

"Resolved, That it is the sense of this convention that all its members

work to secure the adoption of a provision of this kind by the constitutional assembly."

And your committee further recommend that some suitable person be appointed to represent the association in all matters of general interest in connection with transportation, to act under the direction of the general executive committee in all general grievances, and this committee would suggest that Hon. Thomas Doyle, of Perry, O. T., be selected to act in the above capacity for the ensuing year.

CLAIM ADJUSTER.

And it is further resolved that a claim adjuster be employed to handle claims for members of this association against the railroads, said claim adjuster to receive as his compensation a certain per cent, to be agreed upon, of the claims so collected, and that said claim agent shall be the authorized agent of the members of this organization, and when delegated to act in said capacity by any member of this organization he shall do so without cost to the association, other than the percentage agreed upon in the contract between him and the said organization, and that five per cent. of all claims collected shall be paid to the treasurer of the association for general incidental purposes, and

Be it further resolved that the executive committee on the adoption of this resolution is hereby instructed to carry said resolution into effect.

W. W. HURST,
Chairman.

ANNUAL ELECTION OF OFFICERS.

The annual election of officers resulted as follows:

J. C. Miller, president of the famous 101 Ranch, who has served as vice president during the past year, as president succeeding R. M. Bressie; Vice president, John Sams, El Reno; secretary, W. E. Bolton, Woodward; treasurer, J. J. Gerlach, Woodward.

The contest for the presidency was spirited.—Thos. Doyle of Perry nominating J. C. Miller of Bliss, and W. E. Bolton, of Woodward, placing in nomination R. M. Bressie, of Bressie. The presidency was decided by a close vote. In retiring from the office, President Bressie thanked the convention for the courtesy of all the members during the past year in the hearty co-operation they have given in assisting him in the work of the association. Secretary Bolton has been secretary of the association for the past twelve years and his selection was unanimous. Treasurer Gerlach has been treasurer for the past ten years and the vote of the entire association, upon motion was cast by secretary Bolton, for Mr. Gerlach.

THE HOPIING CONTEST.

J. E. Carroll, for many years past and at this time, an active member of our Oklahoma Live Stock Association, successfully defended his title to the World's Championship, winning first prize and the purse of \$600 by tying his steer in 30 seconds. The two-day contest shared by 41 sturdy cow-punchers resulted as follows: 1st prize, J. E. Carroll, Mangum; 2nd prize, \$250, Jim Warren, Arkansas City, time 36 1/2 seconds; 3rd prize, \$100, John Ross, Erick, time 48 1/2 seconds; 4th prize, \$50, Will Noel, Ponca City, time 59 1/2 seconds.

DON'T MISS THIS CHANCE



You can make your year's success an assured certainty by sending at once for a free copy of Salzer's remarkable Book of **SEED BARGAINS** and taking advantage of the astonishing offers made therein. They cover such varieties as Oats, Barley, Corn, Speltz, Clover, Timothy, W heats; also cabbage, Radish, Beets, Peas, Beans, Onions, Tomatoes, etc., all of the strongest, hardiest Northern strains, pure, pedigree stock.

5 Tons Grass Free!

Everybody loves a rich, prodigal growth of grass or fodder for cattle, sheep, horse or swine! If you will send this notice in to us to-day, you will receive our Bargain Seed Book free, together with sufficient grass seed to grow 5 tons of rich grass hay on your lot or farm this summer. All free for the asking. Send us and we add package of Cosmos, the most fashionable, serviceable, beautiful annual flower.

JOHN A. SALZER SEED CO.,
Lock Box 38, La Crosse, Wis.

Cheap Rates to Denver.

The



will sell daily until May 31st round trip tickets to the above point at greatly reduced rates.

Tickets limited to May 31st, except tickets sold during month of May to be limited thirty days.

For full information see Frisco agent or address:

D. C. FARRINGTON, T. P. A.,
Oklahoma City, Okla.
F. E. CLARK, D. P. A.,
Wichita, Kansas

FARMERS' PROBLEMS

Co-Operation.

Brother farmers, I have been reading some articles lately, in regard to "farmers' problems," which were very interesting.

But I regret to notice that there is a disposition on the part of some to want to get into an argument and act as if they had a chip on their shoulder and were anxious for somebody to knock it off.

If we look into the history of Co-Operation, we will find that there hasn't been anything of importance accomplished without Co-Operation.

Only through Co-Operation of the thirteen colonies were we able to gain our independence and form the greatest nation on earth.

And only through the Co-Operation of a majority of the states during the civil war, was it possible to maintain this great nation.

If we look at the business side we will find the same to be true.

Nothing of importance has been accomplished without Co-Operation.

Some unscrupulous persons have used it as a means to oppress the unorganized.

But instead of sitting around and howling we should get to work, organize and work together to put our business on a paying basis.

Now, there are different organizations working for for this purpose. We should be zealous and work for the organization which we believe to come nearest accomplishing the desired results.

But brother farmers, don't lose sight of the fact that other organizations may suit some other persons ideas better.

The principles of the A. S. of E. appeal to me from a business stand point as being the best solution to the problem. Because we maintain that the other fellow has no right to price our products and its a poor rule that won't work both ways.

There is enough in all the organizations which strike along the same lines, that we can find plenty to co-operate in and not fight one another.

Fighting among ourselves is just what suits the combines that are working to keep us down. As long as we continue to do this they will continue to reap their reward and pocket the hard

earned dollars that belong to us.

We have the strength to accomplish our ends if we will only co-operate.

Let us practice, preach and talk it wherever we go and victory will be ours.

Respectfully,

C. R. BURRIS.

NEWS AND NOTES.

Our visit to "Prairie Dell" on Saturday 10th was most pleasant but Sunday was a shivering shouting time even to those not very pious. And our return home was a 25 mile drive facing the worst storm of the year.

We found the people at Gate and Kimble as affable as ever. The leading men of the community were at church in spite of the severe weather. Among them were Charley Smith Sarkin Haynes and Winnie Allen. Geo. Wolf from the irrigation ditch and Mr. Murray from Murray P. O. would have been out had the weather permitted. One is five miles north and the other eight miles south. Our next visit is on record as follows:

Third Saturday and Sunday of April Service Saturday night, Sunday morning at 11.30, and at night at 7.30 for song service; and 8.00 for preaching.

What's the matter with American Society of Epiuity? Has every watchman, except Jno. Leasure, laid down his horn? John's last blast indicates that he is laboring under a fearful nightmare because of the "mail order house." He would buy potatoes or other farm stuff of the farmer if he could get it cheaper of some one else?

EQUITY IS ALL RIGHT!

We've seen no better solution of the farmers' problems than from her pen. We never expect to repent or recant our warm expressions of love and loyalty. Nor fall short at any time of the fullest and gladdest service toward effecting its sublime and noble purpose.

Our neighborhood is called the "Evergreen Valley." We don't think it is meant to publish our verdancy by such a title, as we boast a cemetery, two farmers' unions, two churches and some general negatives to everything. But what stumps us is a Mormon church just organized in our evergreen valley. Three members so far. We are sorry any one should be caught by such stuff, but all who are posted,

know the real name of that church is "Polygamy."

E. R. WILLIAMS,
Stockholm, O. T.

Live Stock in Oklahoma.

Chicago Live Stock World:

Next to the Texas Cattle Raisers' Association probably the most enthusiastic live stock organization in the country is that of Oklahoma.

The Oklahoma meeting is now in session. It is worthy of passing note because Oklahoma has passed through the period of transition. Farming has succeeded ranching and the homestead displaced the ranch house.

What were a few years ago the great pastures of the southwest have practically disappeared. New conditions have been installed. Where one steer was raised under old conditions there will be ten under the new.

What has been done in Oklahoma will be repeated elsewhere in the trans-Missouri country. The small stockman is on the ground to stay.

Long's Speech

In his speech on the statehood bill in the United States senate, Senator Long said:

"Oklahoma and Indian Territory comprise an area somewhat smaller than either Kansas or Nebraska, but larger than Arkansas or Iowa and about the same size as Missouri. The governor of Oklahoma in his last report estimated the population of Oklahoma June 30 as not less than 800,000. The officials of the Department of the Interior on the same date estimated the population of Indian Territory at not less than 700,000. The estimates of the bureau of census for the year 1905 give the population of Indian Territory as 498,000 and Oklahoma 558,261, or a total for the proposed state of Oklahoma of 1,056,261. Using the same estimates on other states the population of the proposed state of Oklahoma is within 100,000 of the combined population of the following states: Delaware, Idaho, Montana, Nevada, Utah and Vermont.

These states are entitled to twelve senators in this chamber, and yet Oklahoma is denied the privilege of sending two. The population of the proposed state is nearly equal to the combined population of Montana, New Hampshire and Oregon. It is greater than North Dakota and South Dakota combined. It is nearly twice the population of the state of Washington. It is half again as large as Maine. It is nearly four times the population of Montana. It is greater than that of any New England state except Massachusetts.

THE TERRITORY'S VOTE.

Oklahoma cast for delegate to Congress at the 1905 election a total of 109,145 votes. This was greater than the total vote cast in any of the

following states: Alabama, Delaware, Florida, Louisiana, Maine, Mississippi, Montana, Nevada, New Hampshire, North Dakota, Oregon, Rhode Island, South Carolina, South Dakota, Utah, Vermont and Wyoming—eighteen in all.

"This was more than 30,000 votes in excess of the total vote combined in the state of Nevada, Vermont and Wyoming. It was 7,000 more votes than the state of Utah cast at the last election. There is no reliable way of estimating the vote in that part of the proposed state of Oklahoma known as Indian Territory, yet there is probably practically as many votes in Indian Territory as in Oklahoma.

GREAT LIVE STOCK VALUATION.

"The total live stock valuation of the proposed state of Oklahoma for the last year was \$91,620,723. This is greater than the live stock valuation of the states of Idaho, Nevada, Utah and Vermont combined. It is almost exactly that of North Carolina and South Carolina combined. It is 12 million dollars greater than South Dakota and almost twice that of North Dakota. It is equal to that of Wyoming and Montana combined, with 4 millions to spare.

"The total farm products last year of the proposed state were \$58,046,112, which is 17 millions greater than North Carolina and within 5 millions of North Carolina and South Carolina combined; it is almost equal to South Dakota and about 7 millions greater than Montana, South Carolina, Vermont and Wyoming.

MANUFACTURERS ARE INCREASING.

"According to the report of the census bureau of manufacturers for 1905, there was 807 manufacturing establishments in the proposed state, with a capital of \$13,661,079. The capital of the combined establishments is nine times greater than that of South Dakota, six times that of North Dakota, over twice the amount of the combined states of North Dakota and Nevada; very nearly the total for Montana, 1 million more than Utah, one-half of Kansas and one-fourth of Colorado.

"The total percentage of increase in establishments was 108 in Oklahoma and 160 in Indian Territory. The percentage of increase in value of products was, 200 in Oklahoma and 201 in Indian Territory. This was not equaled by, any state in the nation, although the entire West made great gains over the showing made by the twelfth census."

Livestock Auctioneer,

ELLIS H. HUGHES.

I have cried and am now booked for the largest and best sales in the southwest. Write me at

GAGE, OKA, R. R. N. 1.
(Please mention this paper.)

NO MORE BLIND HORSES.

For Specific Ophthalmia, Moon Blindness and other sore eyes, Barry Co., Iowa City, Ia., have a sure cure.

Save the calves—fresh Vaccine to prevent Blackleg, on sale at the NEWS office.

THE LIVE STOCK INSPECTOR

PUBLISHED SEMI-MONTHLY BY

W. E. BOLTON

WOODWARD, OKLAHOMA KANSAS CITY, MISSOURI

Kept Sent in Denver, Colo., by O. Sprenger, Times Building.

The only journal published in Oklahoma and the Indian Territory, devoted exclusively to live stock interests and stock breeding.

Entered at the post office at Woodward, Okla., on Feb. 1, 1906, as second-class mail matter.

APRIL 1, 1906.

NOTICE TO SUBSCRIBERS

REMITTANCES. In sending money to the LIVE STOCK INSPECTOR please direct that the money in full will not accept private checks at all. They will be paid by postal or express orders, or by registered letter if it is private. Send all twenty-five cents for collection. Amounts of less than \$1 can be paid in postage stamps.

DISCONTINUES. Subscribers wishing the LIVE STOCK INSPECTOR stopped at the expiration of their subscription must notify us in writing to that effect otherwise we shall consider it as their wish to have it continued and we will make no objection for the same.

CHANGES OF ADDRESS. When a change of address is ordered, both the new and old address must be given and notice sent two weeks before the change is desired. We require this on account of our heavy mailing list.

Official Organ of the Oklahoma Live Stock Association.

Advertising Rates.

Display advertising 10 cents per line, again fourteen lines to the inch.

Special reading notices 10 cents per line.

Business edits or miscellaneous advertisements will be received from reliable advertisers at the rate of \$1.00 per square foot for one year.

Annual cards in the "Breeder" directory consisting of four lines or less for \$6.00 per year, including a copy of the Live Stock Inspector free.

Electric should use metal base.

Objectionable advertisements or orders from unreliable advertisers, when such is known to be the case, will not be accepted at any price.

To insure prompt publication of an advertisement, send cash with the order; however, monthly or quarterly payments may be arranged by parties who are well known to the publishers, or when acceptable references are given.

All advertisements intended for the current issue should reach this office no later than the 14th or 25th of each month.

Every advertiser will receive a copy of the paper free during the publication of the advertisement.

Address all orders to LIVE STOCK INSPECTOR, Woodward, Okla.

THE LIVE STOCK INSPECTOR exercises great care in admitting advertisements to its columns. If any of our readers wish information regarding any advertisement or advertiser we would be glad to give same. If you wish to buy anything that is not advertised in our columns, write us and we will refer you to the best place to buy.

Fine Boar for Sale.

One of my very best boars from Starwater Herd, Poland China, aged 15 months, weight about 350. May be seen at Wallace farm, one mile south of town. This is an exceptionally good animal, finest blood, quick maturer, first class getter. Must sell to make room for others, and will let him go for only \$20, with 10 per cent off if taken before Feb. 1, 1906. Call at NEWS Office. W. E. BOLTON 3013

With modern conveniences such as Woodward will have by August 1st it will become the most desirable residence city in Oklahoma.

With the use of the Campbell system of cultivation, the Woodward county farmers need not fear the very driest of years.

The attendance at the 12th Annual convention of the Oklahoma Live Stock Association at Oklahoma City March 13-14-15 promises to be the best in its history to date.

A constant stream of Prairie schooners are passing westward daily, many having fine teams and some few having a nice little bunch of cattle. These are the people who will help make Woodward the greatest County in Oklahoma.

Nick Hudson, Jr., had bad luck in the roping contest, being unable to catch the long legged steer given him. He is a mighty good man with the riata and we picked him as a winner of one of the prizes but luck was dead against him this time.

The Oklahoma Live Stock Association is now in better condition than for several years past. Arrangements are being perfected for the organization of county Associations, to cooperate with the above named, in every county in Oklahoma, during the next six months if possible.

Mr. and Mrs. R. Talbert, of Corydon, Iowa, are here on an extended visit to their daughter, Miss Mary, who has been for the past four years a faithful employe of this office at such times when not residing on her homestead claim. Mr. Talbert owns a valuable farm near Chaney on which he made final proof some years ago. They will remain in Woodward during the summer.

"The New State" is a compilation of facts concerning Oklahoma and Indian Territory which should be in the home of every man in Woodward county. Keep posted. It is also just the thing to send to your friends and relatives in the benighted east as it has a splendid latest revised map with it of our New State to be. It is on sale at the P. O. News stand in Woodward for only twenty five cents; or it may be had in connection with a subscription to the WOODWARD NEWS, mailed post paid to any address. See our subscription offer No. 11 in this issue.

Col. F. H. Hughes was here from Gage as a witness in the Barnes contest case Tuesday.

A. J. Peters and Miss Muriel Dolphin of Garber, Okla., were here Monday looking after some valuable claim locations.

Calves are worth money this year. Don't let them die for lack of prevention. Blackleg Vaccine now on sale at the NEWS office.

Fred Brockstiegl while digging a well near Gage this week was buried by a cave-in and was dead when rescuers reached his body. Dr. Pearson as coroner has charge of the case but no sitting was held as cause of death was fully apparent.

Twenty-three covered wagons passed through Woodward last Saturday for Beaver county. They were certainly pleased with Woodward and the surrounding country and said if Beaver county was as good as Woodward county they would be satisfied.

You elect men to Congress or the bench and pay them five or ten thousand a year. The trust pays them fifty thousand. Which do you suppose they will serve? If you would pay them fifty thousand the trusts would pay fifty more and get their service just the same. The corporations do not pay unless the service be rendered. But you pay and trust to luck for the service. Corporations will use any man you elect. They know, and the men you elect know, that you are ignorant of what principles of law should be enacted, and those you elect can vote any they way please and you are none the wiser.—Wayland.

Chrysanthemum Fair.

The Earnest Workers of the Baptist church will conduct a flower show, the latter part of October or first of November. Premiums will be offered for the finest chrysanthemums and also for the best display of miscellaneous flowers. Any one in Woodward and surrounding towns can enter flowers, but none excepting those grown in Woodward county will be accepted in the contest. The chrysanthemum premiums 1st, 2nd and 3rd will be offered for the finest single collection, and for the finest specimen plants.

Now is the the time to order chrysanthemums, if you wish to

enter this contest.

Watch for further particulars.

MRS. J. W. STANDIFORD, Com. MRS. L. L. CHARVOZ, MRS. J. J. GERLACH.

"Trade Day"

A splendid custom obtains in some eastern Oklahoma towns of observing the first Monday of each month as "Trade Day."

Acting upon this suggestion, the NEWS will nominate

MONDAY, APRIL 2ND as "First Trade Day" in Woodward and invites every person having any live stock or personal property of any description for sale to come and offer it on that day.

Also, all persons wishing to buy any article or live stock are invited to come and bid or buy as they choose.

For the purpose of aiding in getting this started, the WOODWARD NEWS will furnish an auctioneer, free of charge on above named date in order to start the plan.

Afterward, Trade Day dates will be on every Monday of each month and in a short time, people from all parts of the county will time their trips to be here on these dates.

The idea is worth a trial, benefits all concerned and injures no one. All unions of F. E. and C. U. and of A. S. of E. are requested to consider and approve of this plan. Let us get together for trade among ourselves on the first Monday of every month. Let's try it!

Remember the date, Monday April 2nd at Woodward; Free auctioneer for this date may be had if desired, by notifying this office.

All in favor of this plan, stand up and be counted. It will help everybody. No politics in this plan!

Let's have a recognized "Trade Day" and work together for advancement of Woodward county.

Who is It.

When writing to change address, always give name, former address and future address. We have a card post marked at Arnett saying:

"Please send my paper to Arnett, Day county, Oklahoma, R. F. D."

The card has no name or other address. If the subscriber desires to receive the paper, we must know name and present P. O. address.

TO PROTECT & PROMOTE
FARMERS' PROBLEMS
 FARMERS' INTERESTS

To the WOODWARD NEWS:

Now is the time for farmers to hustle, get together and consolidate their forces. You will have it to do if you accomplish anything that will be of lasting benefit to the farmers of this county. It is useless to evade or try to get around this fact. House divided against itself will surely fall.

Our county is nearly covered with farmers unions of and under two different names, both trying to obtain the same result by different methods. Some one is wrong and as long as they continue to be wrong there will be wasted efforts and no permanent results.

Farmers of Woodward county let us look this question square in the face. What are we going to do to get the farmers of this county to join all their forces into one grand combination that can not be broken? It must be done and that quickly if we expect to handle our crops this coming season without the aid of the speculator.

Let us see what the difference is between a good Educational Union man and a true exponent of the A. S. of E.

The Union man says "we are going to work to raise the price of our crops they sell too low." The Equitor agrees with him on this proposition.

Next, the Union man says: "We are going to run opposition to the retail merchant, we will put him out of business, he sells goods too high." The Equitor says, "well low that is foolishness; our hardware men, our implement men and our grocers etc. are not speculators, they are legitimate business men. We have no quarrel with them. They are the men that have made it possible for me to stay here and now do you think I want to help try to ruin him, well I guess not. All I want is a fair price for my crop and I want to pay him a fair price for his goods."

Look here Mr. Union man, don't you know you can't buy cheap goods with high priced corn? Don't you know you can not buy cheap flour and pay for it in high priced wheat? If you don't young man, I guess you had better go and get educated some more. I guess we had better give you a little lesson now.

Young man what you want is dollar wheat and forty cent corn; you want a good price for hogs, kaffir corn, broom corn, and butter and eggs. And by the way, who is going to buy your butter and eat it, when you do up your home town? You'll ship it will you? Well you won't do that long till you go out of the butter business young man.

No sir you don't want any cheap goods; all you want is a profitable price for your stuff and you will be perfectly willing to pay a fair one for what you buy. I guess all that is the matter with you Mr. Union man is you didn't stop to think that it would not help you any if goods were cheap. You have got to get the money first, or you can't buy them. Young man, your business is to join hands with your brother farmers, combine your

efforts in one direction, that of getting a profitable price for farm products and not be so little as to try to pull your merchants prices to pieces because he was a little shrewder in the past than you have been.

When you do this and show other people that you have got just as smart as they are you won't have to set down and whine about everybody robbing the former. I care not by what name the farmers of this county organize under, be it Equity or Educational and Co-operative Union, we must recognize the right of all to live and let live, attend strictly to business that concerns us and keep out of mercantile entanglements of all kinds, before we will reach any great measure of success. Farmers let us get together and organize right, upon the right principle and not have a disorganized organization such as exists at this time.

If we continue this foolishness we will not only lose money but become a laughing stock and by word against the boasted intelligence of the farmers of Woodward county.

Yours truly,

JOHN LEASURE.

Doris Okla.

To the WOODWARD NEWS:

John Leasure; Dear Sir and Brother: It was with much amusement I read your article in the News last week relative to farmers' unions in Woodward county. Had it not have been for the wide circulation of that paper I would not have replied to your misleading letter; but fearing erroneous contents might cause strife and ill feeling between the members of the F. E. and C. U. of A. and the A. S. of E., I feel it my duty to call attention to some of the mistakes in your article.

You insinuate that the Union and the Equity are at variance, and that a contention exists between them; that they are trying to gain the same result by widely differing methods. Then you assert that the members of the Union are for waging war with their home merchants, and you give the impression that it is their chief object, to buy very cheap, or as you put it "buy cheap goods with high priced corn, cheap flour with high priced wheat;" and you affirm that the Union man wants to sell at so high a price and buy at so low a price that a home merchant cannot do business with profit. Then you picture the members of the Union as an ignorant, unreasonable young man, and proceed to severely lecture and censure him. This you please to call "giving him a lesson."

Now, brother, you have endeavored to teach without being taught; you have, in your ignorance, attempted to instruct those who are familiar with the subject you endeavor to write upon. I guess we had better give you a lesson.

The purpose of the Farmers' Union

is to discourage the mortgage and credit system; to assist members in buying and selling; to educate farmers in the science of agriculture; to crop no more than they can cultivate, and encourage diversification in crops; to strive constantly for harmony and good will among all mankind, and especially among farmers.

To accomplish this purpose we know of no better way than to be organized into a fraternal labor union composed principally of farmers, and that union in its workings to be like unto other labor unions that are such powerful factors in the world to-day. This union proposes to assist its members in selling by handling their produce at a minimum cost; by encouraging its members to hold their crops until they can realize a fair profit on them. This Union proposes to assist its members in buying by protecting them from unscrupulous merchants who yield to a temptation to raise the price of their goods much higher than they should, and to protect its members by a rigid enforcement of law for the suppression of vice and immorality. This Union is based upon the principles of equity, justice and the golden rule.

What we do not intend to do is to ruin our home merchant by injuring his legitimate interest, for we cannot well do without him. And it is not our intention to tear down legitimate enterprises; we do not wish to interfere with him or have anything to do with mercantile transactions so long as he gives us a square deal and is satisfied with a reasonable margin of profit; but when he fails to do this, the Union avails us a recourse; we then can, and will, ignore our home merchant and buy elsewhere. But we have reason to believe, by past experience, it will be seldom that we will be forced to buy in a distant market. When a merchant realizes that we will not pay an exorbitant premium upon his goods he will take the tip and govern the price of his goods accordingly. That is all we wish; we are not so little as you insinuate, that we do not wish our merchant a fair recompense for his time and money invested, nor are we so hopelessly ignorant that we do not know when we are getting fair treatment; we are not the fools you would have the public believe. We have among us old men of experience, men in middle life with good judgment; we have young men of ability, and men of every age who are educated, cultured and refined; therefore we are able to determine whether we are getting justice or not from the parties we deal with.

Our war is against the speculator, or middle man, who adds nothing to the common wealth, but levies heavy toll upon the producer for his unneeded and unasked-for service; he is the individual we wish to put out of business. We differ from the A. S. of E., principally, in that we sit behind closed doors, and we bar the merchant because he often casts his influence with our enemies. And then there may come a time when we will have the unpleasant task of compelling him to respect our rights.

As to your assertion that the Equity and the Union are much divided I can say I know of no enmity existing on the part of the Union toward the Equity. We have a view placed in

our hearts for all farmers' movement and are willing to join hands with any movement which has for its object the bettering of the farmers' condition. We have among us many Equity brethren who are good and loyal Union men. The Union extends a hearty welcome to all Equity brothers, no do we ask them to abandon the A. S. of E., but we wish to work in harmony with that association and help to maintain their schedule of prices on farm products. Our interests are the same; we have the same purpose in view, and our method to attain this purpose is practically the same, differing no more, accordingly, than the Methodists and United Brethren differ in their war against sin and satan.

I hope no Equity man will countenance any effort to drive a wedge of prejudice or ill will between the two bodies of united farmers. Now, my brother, you had better make yourself acquainted with the actual workings and learn its aims and purposes before you attack it. You make a straw enemy and attack it with fury, wasting time and energy, without accomplishing any good for anyone. No doubt you have been the personification of the boasted intelligence of the Woodward county farmer, but now suffering from senile decay. There is nothing the matter with the Union, man, the malady is with you.

Respectfully,
 A. COCHRAN.

Hackberry, Okla.

Don't Sell Your Eggs

When they are cheap; pack them. With my new method will keep two years. Will be as fresh as new laid eggs. No special place required to store them. Only cost 1/2 cent per dozen to pack them. Write me for circulars. MRS. B. F. WILCOXON, Ft. Des Moines, Ia.

LIFE BURGER,

Wellington, Kansas



Headquarters Wellington National Bank. Have conducted and am now booked for some of the largest sales in America. Thorough acquaintance with pedigree and individual merit extensive acquaintance with breeders. Write me before claiming dates.

FRUITFUL TREES



Healthy, hardy, vigorous trees; finest varieties; honest values. Apples, 50¢; Peaches, 60¢; Concord Grapes, \$20 per 1000; Rambler Roses, 20¢; Black Currant and Russian Mulberry, \$1.00 per 1000. Freight prepaid. Catalogue free. Gage County Nurseries, Box 643, Beatrice, Neb.

60 YEARS' EXPERIENCE

PATENTS

TRADE MARKS
 DESIGNS
 COPYRIGHTS & C.

Anyone sending a sketch and description may quickly ascertain our opinion free whether an invention is probably patentable. Communications strictly confidential. HANDBOOK on Patents sent free. Oldest agency for securing patents. Patents taken through Munn & Co. receive special notice, without charge, in the

Scientific American.

A handsomely illustrated weekly. Largest circulation of any scientific journal. Terms, \$3 a year; four months, \$1. Sold by all newsdealers. MUNN & Co. 361 Broadway, New York Branch Office, 625 F St., Washington, D. C.

Brooder Chicks.

One of the most important subjects of to-day, that confronts the poultryman, especially the beginner, is the caring for and feeding young chicks.

Chicks normally hatched and given almost any kind of care will live and seem to thrive for the first week, then the trouble begins. The critical period in the chicks life is the first two weeks. Starting the chicks right is half the battle. Where they have arrived at three or four weeks old they have nearly passed the dangers of chickendom. One great danger is over feeding. The young chicks require but little food for the first few days of their lives. Their digestive organs are not strong and by over-feeding, it over-taxes the digestive organs and bowel trouble results. Just before leaving the shell the chick draws into the body the whole of the absorbed yolk of the egg. This is its food before and after leaving the shell. It must be exactly right as nature never errs. It is the food nature provided to sustain life until the chick is strong enough to take other food. Chicks should not be fed until 48 hours old. If fed too soon or too much, the yolk of the egg which it took into the body before leaving the shell, will not be drawn upon. It will remain unabsorbed and in time decompose, causing bowel trouble and death. The greater number of chicks which die of bowel trouble, do so at about a week or ten days of age. If you will open one of the chicks, nine cases out of ten you will find the yolk in the yolk sac. This is due to over-feeding. The first two weeks of a chick's life is the most critical period. Failure in brooder chicks is due to the care given them. The more attention you give them the larger the returns. I believe that not one-half of the chickens hatched reach a marketable age. Their death is caused by poor management and a lack of knowledge of the business.

Brooding chicks by artificial means is an art, but with the best of appliances it is fully as successful as with hens. Cats, rats, weasles and heavy rains all help to cut down the size of the poultry raisers flock of chickens.

Whole flocks of chickens are kept at a loss, when a good profit might be realized if the owners only had more system about the caring for them. Take lessons from the hen; see how closely she broods her chicks. Do likewise; maintain a hover heat of 95 degrees the first week, then gradually reduce to 75 degrees about the fourth week and then gradually do away with heat entirely.

The floor of the brooder should be covered with chaff. Into this chaff scatter a small quantity of chick food. Make them work for every grain as exercise is an important item in the raising of brooder chicks. For the first two weeks, chicks do best fed often and little at a time; five meals a day, then four, then three. Regularity establishes best health and habits and as long as the chicks scrateb, they are safe and not over-fed. After the chicks begin to feather out, they can be fed cracked grain. Boiled wheat is one of the best growing

feeds. They should have dry bran, charcoal, grit and beef scraps before them all the time.

Clean quarters, fresh air, sunlight, shade, dirt to wallow in, clean water to drink, green stuff, good wholesome grains, green cut bone or beef scraps and plenty of grit and you will raise good strong chicks. Your success will depend largely on how much thought and study you give them.

MRS. B. F. WILCOX,
Ft. Des Moines, Iowa.

Abardeen-Angus Auction at Kansas City

The list of consignor to the Aberdeen Angus auction at Kansas City, April 3d, will be found in the advertisement in this issue and it shows that leading breeders of the west are contributing to it. Sixty head are cataloged, one-third of which are bulls and two-third of which are cows and heifers. The most fashionable families are represented including Blackbird, Prides, Fricas, Queen Mother, Drumin Lucys, Wastertown, Roses, Ballendaloch Nosegayn, and others that are held in the highest esteem. The get of such noted bulls as Black Monarch of Emerson, the champion sire of the day; Imp. Blackbird Baron of Advie Ballendaloch Blackbird; Invincible Blackbird a Blackbird by Heather, Led 4th and out of Blackcap 4th a full sister to Black Knight; Prime a highly bred Pride and highest priced bull sold at Kansas City last year of the breed; McHenry Blackbird 6th a celebrated sire of the Blackcap branch of the aristocratic Blackbirds; Corrector a Ballindaloch Coquette and splendid sire; 2d Meyers of Estill; a champion and champion sire are cataloged.

The blood lines are the best and the cattle have been selected with a view towards setting forth the best type and characteristics of the breed. The catalogue is now ready and will be mailed on application to W. C. McGavock, Sale Manager, Springfield Ill. Individually this offering is believed to be the best that has been made of the breed at Kansas City and the catalogue should prove interesting to all lovers of the breed.



THE SHORT LINE from the Great Southwest to St. Louis.

Six Trains Each Direction Between Kansas City and St. Louis.

EVERYTHING FIRST-CLASS.

Ask your agent to route you via the MISSOURI PACIFIC RAILWAY.

He will gladly do so and you will be more than glad that you did so.

C. E. STYLES, E. E. BLECKLEY
A. G. P. A., T. P. A.,
Kansas City, Mo. Wichita, Ka

The New State Constitution Should Prevent Overstudy in our Schools.

A word to those over-anxious to educate: Many of our greatest thinkers are crying out in regard to overloading our children in schools. Dr. Talmage preached a very strong sermon discouraging children in school. Let us get less, and be more thorough.

Taken from the ladies home Journal, January, 1902, from different parents:

"Marks and medals were the goal of our ambition with our boy; he died and we suffer."

"My wife and I often say we lovingly murdered our little girl. Promotion! Promotion! was our cry. Then our little girl was promoted, but not in the way we had hoped."

"Twelve children from over-study under my professional care as a physician have opened my eyes this year."

"It was either no boy or no school; we chose the latter and took our boy out."

"I gave my nerve force—yes my life blood—to pass. Now I am a sick young wife, weak, nervous and physically wrecked."

"I had a foolish ambition that my daughter should graduate early. She did, but now I have an invalid child."

"Our poor little boy, just previous to his passing-away, went into a delirium of fear that he would not get his 'Marks.' His dread was some pitiable."

"A beautiful niece in a private asylum is a sorrowful tribute to modern schooling."

"Foolishly I went ahead. Ambition spurred me on. Now my little girl is mine no longer. She graduated but she never recovered and in two years we had no daughter."

"Last year I laid my dear little daughter away wrecked in nerves and brain by overstudy. Too late I saw my error."

"At seventeen I broke down. Today at thirty I am still an invalid."

"At the age of twenty-one I see my daughter a nervous wreck from overstudy."

"A little mound in our family plot is all that we have."

Shorthorns for Sale.

Red Prince 169,657, calved in June 1900, got by Sir Arthur 143,138, by Scotland Prince 105,425, registered in Vol. 39, Page 789, out of Mt. Echo Bell 5th. Also 1 calf coming 2-year old. Call at place 6 miles south and 3 miles west of Woodward, or write me at this address.

N. L. CHENOWETH,
34 t 4 pd. Owner.

\$10.00 Sweep Feed Grinder. **\$14.00** Galvanized Steel Wind Mill.

We manufacture all sizes and styles. It will pay you to investigate. Write for catalog and price list.

CURRIE WIND MILL CO.,
Topeka, Kansas.

EVERGREENS AND FOREST TREES

That are Sure to Satisfy

I have been growing evergreen and forest trees for 31 years, always with one idea—trees that satisfy. When you buy Hill's trees you get honest value—highest quality. My catalogue is my salesman; it's free. Contains 48 pages illustrated with beautiful pictures; describes all kinds of nursery stock for all purposes—hedges, windbreaks and ornament. Also fruit trees, shrubs and vines. 50 Best Bargains ever offered—\$1.00 to \$10.00 per 100 Prepaid. Everything first-class, guaranteed exactly as represented. Write for catalog today.

D. HILL, Evergreen Specialist
Dundee, Ill.

The Royal Hotel

Guthrie Okla.

Headquarters for all western Oklahoma visitors to the Capital city and the best place for every body.

FRED VAN DUYN Mgr.

Cheap Twine for Oklahoma Farmers.

Word has reached Guthrie that the board of directors of the Kansas penitentiary which met yesterday fixed the price of binding twine to be sold both in Kansas and Oklahoma at nine and one-fourth cents per pound for all orders under 5,000 and eight and three fourths cents for orders of 5,000 pounds and over. This is to be the price free on board the cars ready for shipment at Lansing. The twine is pure Yucatan white sisal, running 500 feet to the ball. The trust price as announced is .10 cents a pound free on board of cars at Kansas City. Dealers and farmers' clubs ordering 5,000 pounds will be able to save one and one-fourth cents a pound by buying from the prison plant. The twine plant is in full operation and it is expected that about 5 million pounds will be manufactured ready for market by June 1. More than 2 million pounds is now in the twine ware house ready to ship at any time.

None was sold in Oklahoma last year, but all orders from the territory will be filled this year.

The Kansas penitentiary twine plant has been fortunate in collecting for twine sold. In the five years the plant operated, the total business amounted to about 3-4 million dollars and only \$41 worth remains on the books as unpaid for.

THOROUGHBRED HEREFORDS

At Public Sale, in Amarillo, April 17-18-19.

In our catalog of last year we made the following announcement.

Feeling that we know the needs of the ranchmen, and believing we can supply them in a way beneficial and satisfactory to all, we have decided to hold annual sales of thoroughbred cattle of the beef breeds during the meeting of the panhandle Stockmen's Association. Our offering this year is composed of as grand a lot of Herefords as were ever offered at public sale in Texas or elsewhere. It is our aim to bring these cattle to your doors and sell them to you on their merits strictly and at your own price, feeling assured of fair treatment at your hands. A "square deal" is all we ask. These cattle have been handled and wintered as they should be for range use. They show for themselves. The produce of these cattle will be such as the feeders of the Corn Belt will always buy.

In making our second annual sale, we can only affirm the above statement. This year during the annual meeting of the Panhandle Stockman's Association, we will offer 75 bulls and 25 cows, all registered Herefords and of suitable age for immediate service, from several of the best known herds in the central west, and many of them bred in the Panhandle of Texas. The majority of this offering have been either bred in Texas or have been held here for the past year and are therefore thoroughly acclimated, and consequently worth more to the buyer than those recently shipped in.

The sale will be held at the Stock Yards commencing promptly each day at one P. M., Tuesday, Wednesday and Thursday, April, 17-18 and 19th. Ample provisions will be made for the transportation of prospective buyers and all visitors, from the City to the Stock yards.

We are trying to do you good. Help us by your presence and bids. Col. R. E. Edmonson will officiate as and be ably assisted by C. R. Thomas Sect'y of the American Hereford Association.

O. H. NELSON.

The Cattlemen's Convention at Oklahoma City last week was a shining success. Next year, at Enid!

Farm and Stock is an illustrated monthly magazine in the interest of Corn Breeding, Cultivation and Live Stock. Price \$1 a year, but for a short time will be sent a year on trial for 10c and names of ten farmers who grow corn Farm & Stock, 216 Charles, St. Joseph, Mo.

Order your eggs for hatching from Mrs. B. F. Wilcox, the most successful poultry raiser in Iowa. E. B. Thompson Ringlets and Latham strains of B. P. Rocks. Write me for prices. Box 50, Ft. Des Moines, Ia.

Black Leg Vaccinē, Fresh, For Sale at this office. Strings, Pellet or Powder form as desired. The best, and is a sure preventive. 87 t 6

Kansas City Markets.

Special to LIVE STOCK INSPECTOR: Stock Yards, Kansas City, Mo., March 20th, 1906. Cattle receipts are 5000 less first two days this week than same days last week. The market improved after last Tuesday, recovering about all the loss of first two days last week, but trade is slow this week, without much change in price. Cows and heifers are an exception, and sell strong all the time, account of scarcity. Stockers and feeders are still suffering from adverse weather condition. The last two weeks have been the hardest of the winter, on stock cattle particularly, as besides the severe weather and naturally weakened condition of many cattle, the question of feed has suddenly assumed great importance. In western Kansas feed is scarce, and in many localities roughness is unusually high.

The supply of cattle to-day is 10,000 head, a reduction of 3,000 from last Tuesday. Heavy steers are barely steady, light weight steers are in demand, cows, heifers and bulls strong and active, veals shade higher, stockers and feeders dull. Anyone who contemplates purchasing thin cattle, and can handle them, would make a bit in buying now; when the weather settles, prices will jump up quickly. Two loads of 1570 lbs, steers sold at \$5.70 today, many sales at \$5.25 and upwards, bulk \$4.70 to \$5.40. One shipment sold at \$5.25 today out of same lot that sold at \$5.25 here last Tuesday; others from same lot sold at Chicago yesterday at \$5.40. Choice heifers bring up to \$5.25, bulk of good heifers \$4.40 to \$4.85, cows up to \$4.60, bulk \$3.25 to \$4.25, bulls \$3.25 to \$4.15, veals \$5.50 to \$7.00, stockers and feeders \$2.85 to \$4.50.

The hog market has been unusually slow for two weeks, as packers are using every effort and argument to secure lower prices. Market makes little net-change from week to week, and victories on either side are short lived. Supply is running moderate, mainly because of bad shipping weather, only 43,000 last week, 11,000 today. Market is up 2½ to 5 cents to-day, top \$6.27½, bulk of sales \$6.10 to \$6.25. Weights below 200 lbs. bring up to \$6.20, pigs around \$5.25.

Woodward Produce Market s.

[Reported weekly by J. W. Miller - Grocer near Post Office.]

Wheat	63 cts per bushel
Corn,	38
Oats	35
Potatoes	\$1.00
Peanuts	60
Kaffir corn	32
Millet	1.00
Alfalfa seed	\$7.00 per bushel.
Sweet Potatoes	80 cts
Cotton,	2 cents per pound,
Eggs	10 cts per dozen.
Butter	15 cts per lb.
Hens & springs	6 cents
Turkeys	11 cents
Hides	8 @ 9 cents
Hay, prairie	\$6.00 per ton.
Hay, alfalfa	\$10.00
Canē seed	75 cts per cwt.
Broom corn seed	85 @ 90 cts.
Corn chops	\$1.00 per cwt.
Bran	\$1.00

5000 Telegraphers NEEDED

Annually, to fill the new positions created by Railroad and Telegraph Companies. We want YOUNG MEN and LADIES of good habits, to

Learn Telegraphy AND R. R. ACCOUNTING.

We furnish 75 per cent of the Operators at Station Agents in America. Our six schools are the largest exclusive Telegraph Schools IN THE WORLD. Est. blished 20 years and endorsed by all leading Railway Officials.

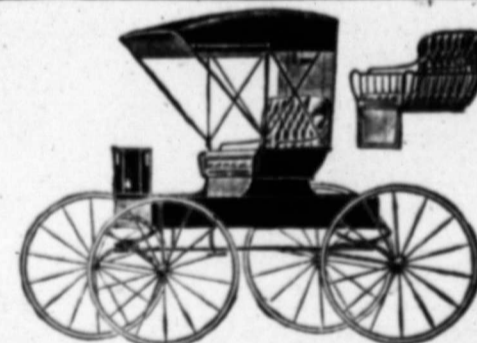
We execute a \$250 Bond to every student to furnish him or her a position paying from forty to sixty dollars a month in States east of the Rocky Mountains, or from seventy five to one hundred dollars a month in States west of the Rockies, in a mediately upon graduation.

Students can enter at any time. No vacations. For full particulars regarding any of our Schools write direct to our executive office at Cincinnati, C. Catalogue free.

THE

Morse School of Telegraphy.

Cincinnati, O. Buffalo, N. Y.
Atlanta, Ga. LaCrosse, Wis.
Texarkana, Tex. San Francisco, Cal.
314m



No. 629. Combination Top Buggy with Bike Gear and 4 in. rubber tires. Price complete with extra stick seat, \$69.50. As good as sells for \$25 more

33 Years Selling Direct

Our vehicles and harness have been sold direct from our factory to user for a third of a century. We ship for examination and approval and guarantee safe delivery. You are out nothing if not satisfied as to style, quality and price. We are the largest manufacturers in the world selling to the consumer exclusively. We make 200 styles of Vehicles, 65 styles of Harness. Send for large free catalog.

ELKHART CARRIAGE & HARNESS MFG. CO., Elkhart, Ind.



No. 330. Extension Top Surrey. Price complete, \$70.50. As good as sells for \$25.00 more.

Bring your job printing to the NEWS office. We will duplicate any price made by a print-shop in Oklahoma and do better work

Notes on Farmers' Strike.

Don't be alarmed about the exportable surplus. We claim just as much of our staple crops will be used at the fast prices made by the farmers as at lower prices made by the speculators. At present, Europe would take just as much wheat on the basis of \$1.00 as at 85 cents, because they've got to have our wheat. We will claim more. Put the price of all our grain at fair prices maintain them and export will increase all along the line. The A. S. of E. plan covers every possible condition that can possibly arise. Hence let us go ahead and organize and meet the conditions when come.

"Work and wait" With the farmers this means "Organize and control." The working question is: do you produce in the past therefore, with rapidly increasing population and consumption, what is to fear in the future? It is not a question of demand for your produce, but the questions, who will put the price on them? Don't depend on anybody else on earth or in heaven to work this matter out for you, or it will never be worked out. Depend on yourself and do your work in such a way as to compel the world.

The same fidelity to your business as has been displayed by manufacturers, merchants, bankers, mine owners, railroad corporations, and laborers, will place you in the head of all industries and make farmers the most honored and respected people in America. Are you an inferior class of people that you may conclude to do this? Who of you will discipline your market by intimating by strikes or boycotts that you cannot

or... trial...
 sa...
 if...
 ch...
 sh...
 we... which the farm... farmer... other people who want to see prosperity continue and be abundant in the country, are urged to help. But the people in Kansas, Nebraska, Minnesota, Iowa and Illinois are ready to complete the organization of the A. S. of E. in those states.

Farmers are waking up as they never did before, since they have such a simple and effective plan to build a business system of marketing afforded by the A. S. of E. They see now that they can do their own business instead of being merely laborers for others. Instead of their products that they worked so hard for, over to a middle class of people and saying "take them and allow me what you can," they can put the price on them themselves.

While farmers exert a force to organize the five states shown on the map organization will not be slackened in any state.

The states of Wisconsin, Michigan and New York are being organized to control the potato crop and market it. Read the official paper for interesting details.

When farmers are organized on the plan of the A. S. of E., production can also be controlled if it is become necessary.

Remember, the A. S. of E. is for all

crops. If your chief crop is corn, you will also get the full advantage on any minor crops as corn, flax, hay, hops, fruit poultry, etc.

The appeal we make is to reason in men. Are you a reasonable man? Will you invest \$1.00 in that which is bound to bring you from a few dollars to a thousand dollars or more, depending on the extent of your operation, the first year.

There is nothing visionary about the A. S. of E. program. It has been demonstrated, numerous times and never found wanting. The power of controlled marketing has compelled the prices in the cases of wheat of the 1903 and 1904 crops and it is not to late to demonstrate it on the 1905 crop. With cotton it won, and the tobacco growers have won the greatest and most notable victory of all against the tobacco trust. It will win for every farmer wants to win it.

Farmers should know that whatever of betterment of prices they are receiving now for crops is all on account of the work and education done by the American Society of Equity. We can present convincing proofs. Others have disputed our right to claim the credit, but they fail to show any other cause or reason for the increased prosperity among farmers.

It is all right to thank your crops over to the middle class to handle and distribute, but not until you have been paid good wages for all the labor represented in them; also interest on the investment, wear and tear of machinery, loss of plant food from the soil and a good profit beside.

There was a time when "going to Congress" meant, to the States man, a desire to be in a position to do something that would be an everlasting benefit to the county.

Developed into simply a "chance" to smear some of his glory and fame over the pages of History, and now it simply means, to the majority, an opportunity to gobble cold cash, that he may return to his native city, flood it with dignity, betray the interests of the friends who placed him in the said position and make a slob of himself in general. —Greensburg Republican.

VARICOCELE

A safe, Painless, Permanent cure GUARANTEED. 30 years' experience. No money accepted until patient is well. CONSULTATION and valuable BOOK FREE, by mail or at office. DR. C. M. COE, 915 Walnut St., Kansas City, Mo.

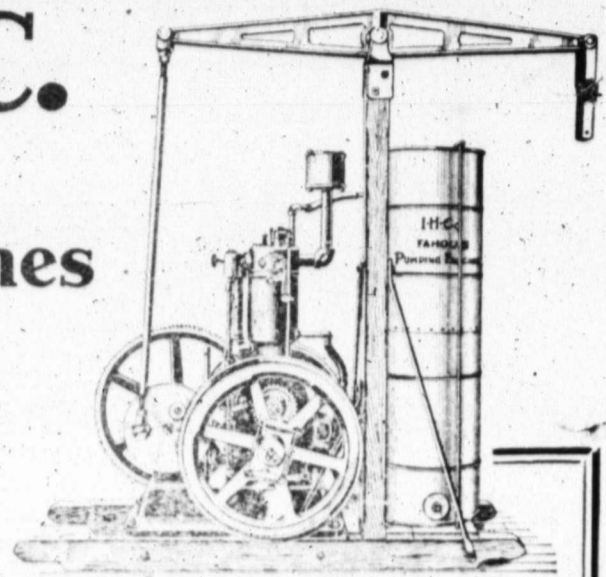
KANSAS ANTI-LIQUOR SOCIETY

We are mailing free a prescription for the cure of the liquor habit that can be given secretly in food, also one for the tobacco habit that can be given secretly. The only request we make is that you do not sell them, but give copies to friends. Add with stamp KANSAS ANTI-LIQUOR SOCIETY, Room 94 Gray Bldg. Kansas City, Mo.

WELL DRILLING MACHINERY

PORTABLE and drill any depth by steam or horse power. 43 DIFFERENT SIZES. We challenge competition. Send for Free Illustrated Catalogue No. 1 KELLY & TANEYHILL CO. 9 Chestnut St., Waterloo, Iowa or Oklahoma City, Oklahoma

THE I. H. C. Famous Pumping Engines For Wells.



This is the Famous Pumping Engine.

Its equal has never been produced for the purpose.

It works perfectly on shallow wells and is about the only thing known which will lift water regularly from the deepest wells.

The walking beam can readily be attached to any pump of standard make.

It's use insures a constant and abundant water supply for house use, for live stock and for fire protection.

Its capacity is sufficient to meet all demands.

Should you need light power for other purposes, you may secure it by detaching the walking beam and belt from engine fly wheel to other machinery.

In this way, the engine is available and efficient for sawing wood, churning, working butter, sawing wood, turning grindstone, grinding feed, etc.

The full line of I. H. C. engines embraces numerous sizes and sizes:

Vertical—2, 3, 5 Horse Power.

Horizontal Portable and Stationary—4, 6, 8, 10, 12, 15 Horse Power.

If in need of a Pumping Engine or engine for general purposes, call on International Local Agent, see the engine and secure catalogues or write for further information.

INTERNATIONAL HARVESTER COMPANY OF AMERICA,

Chicago, Illinois, U. S. A.

DELICIOUS RADISHES FREE
 with BARGAIN LIST FREE

A Big Package of Splendid Radish Seed, Enough to Grow Bushels of Luscious Radishes, Free

Everybody loves a tender, juicy radish. Send to-day and get free, our Great Bargain Seed Book and enough Radish seed to keep you in luscious radishes all summer long. Or, if you prefer, we will send you sufficient grass seed to grow 3 tons of high hay grass on your farm this summer and our Bargain Catalog, free for the asking.

Our Bargain Catalog is a wonderful book, brim full of rare bargains at bargain prices of all kinds of Onion, Sweet Corn, Cucumber, Radishes, Lettuce, Tomatoes, etc., etc. and also a wonderful array of pedigree farm seeds as Oats, Wheat, Corn, Barley, Potatoes, Timothy, Grasses, Clovers, Alfalfa, etc., etc.

Simply send us this notice, sign your name and address and the free package of Radish or Grass Seed as you select, together with this new interesting Bargain Catalog with all of its bargain offers, all of its bargain surprises in flowers, vegetables and farm seeds, all the valuable information showing our wonderfully low prices, all will be sent you by return mail postpaid.

If you enclose 1c, we add a package of Cosmos—the most beautiful fashionable annual flower.

JOHN A. SALZER SEED CO., Lock Box 38, La Crosse, Wis.

PIONEER GUARANTEED NURSERY STOCK AT WHOLESALE PRICES.

All stock guaranteed disease free and true to name. Hart Pioneer Stock is pure bred and produces heavy crops. Value received for every dollar sent us. No Agent's Commission. WRITE FOR COMPLETE PRICE LIST. WE WILL SAVE YOU MONEY.

HART PIONEER NURSERIES, Established 1863, Fort Scott, Kan.

M'INTOSH & STOCKTON,
 Live Stock Commission Merchants.

Rooms 219, 220, 221 and 222 Exchange Building.
KANSAS * CITY * STOCK * YARDS.

REFERENCES: Any Bank or Business House in Kansas City. Home 3501 Main; Bell 137 Hickory. Correspondence and Consignments Solicited.

At the...
 at Washingt...
 resolutions...
 ing a coup...
 marriage co...
 properly sig...
 by the contr...
 ually divorce...
 without gain...
 for relief...
 ly getting ea...

NEW STA...
 As Large as...
 Has 1,500...
 Population...
 Gaining al...
 Has 70,430...
 Large as C...
 Property...
 tories \$1,000...
 Indian Ter...
 000 undergr...
 State had...
 ways...
 Percentag...
 United State...
 Indian T...
 schools...
 Cities ran...
 000...
 Indians nu...
 Very few...
 Tribes are...
 Chickasaws...
 okees...
 State pro...
 cotton, all...
 fruit, potato...
 natural gas...
 gypsum, lea...
 woods...



Only safe...
 NEAT, SUBS...
 TOP CAN BE...
 want to...
 A few reason...
 is Superior...
 It is the only...
 to the makers...
 of the only...
 put your ong...
 it is the only...
 and it is a wh...
 It is th... Only Fro...
 gy the wh...
 It is the Only Fro...
 Apr to as well...
Columbus
 Gen A...
 OKLA...

At the "Divorce" convention at Washington, D. C. last week resolutions were adopted favoring a coupon attached to the marriage certificate which when properly signed and witnessed by the contracting parties effectually divorced them, quietly and without going through the courts for relief. The game is certainly getting easy!

NEW STATE OF OKLAHOMA.

As Large as Ohio and Indiana and Has 1,500,000 Population.
 Population about 1,500,000.
 Gaining about 1,000 a week.
 Has 70,430 square miles.
 Large as Ohio and Indiana.
 Property value in joint territories \$1,000,000,000.
 Indian Territory has \$500,000,000 underground.
 State had 5,000 miles of railroads.
 Percentage illiteracy 7. In United States 10 3-4.
 Indian Territory has 680 schools.
 Cities range from 5,000 to 35,000.
 Indians number 89,000.
 Very few blanket Indians.
 Tribes are Creeks, Choctaws, Chickasaws, Seminoles and Cherokeees.
 State produces cattle, corn, cotton, all cereals, fine small fruit, potatoes, coal, asphalt, oil, natural gas, granite, marble, gypsum, lead, zinc and valuable woods.

The Cheapest Lands

In the United States today, soil, climate, markets, transportation facilities and all considered,

Are Southern Lands

They are the best and most desirable in the country for the truck and fruit grower, the stock raiser, the dairyman and general farmer. Let us tell you more about them. The Southern Field and other publications upon request. Home-seekers Excursions on the first and third Tuesdays of each month.
 M. V. RICHARDS, Land and Industrial Agent, Southern Railway and Mobile & Ohio Railroad, Washington, D. C.
 CHAS. S. CHASE, 622 Chemical Bldg., St. Louis, Mo. M. A. HAYS, 225 Dearborn St., Chicago, Ill.
 Agents Land and Industrial Department.

Geology and Water Resources Oklahoma.

The geology and water resources of Oklahoma form the subject of a report by C. H. Gould that has just been issued by the United States Geological Survey as Water-Supply and Irrigation Paper No. 148. The principal geologic formation is a wide-spread deposit of red clay, shale, and sandstone, known as the "red beds." The flood plains or bottom land of the rivers of Oklahoma are made up largely of alluvium derived from the uplands by the disintegration of red beds and Tertiary sands and clays. The discussion of the geology is followed by a description of the water resources, which are dependent upon geologic conditions. A general characterization of the stream, springs and deep wells is followed by a detailed account of the water conditions by counties. Selected analyses of the stream, spring and their adaptability for domestic or manufacturing purposes. The paper also contains descriptive notes and data of 19 wells in each of the 26 counties of Oklahoma. These well records are representative of over 5,000 wells concerning which information has been collected. In the selection of the data special care was taken to include only those which are most typical for each locality and which represent ordinary conditions. It is believed that these records show the typical underground water conditions in the Territory, although in some cases there are local conditions which may differ more or less widely from those indicated.

The data regarding wells contain the following items: Diameter and depth of well, depth to principal water supply, distance from mouth of well to water, the manner in which the water is obtained at the surface, the quality of the water, the yield of the well, and the effect of pumping on the level of water.

The report may be obtained from the United States Geological Survey, Washington, D. C.

Live Stock in the United States

The following figures give a correct estimate of the number of live stock in the United States at the beginning of the year 1905:

Cattle (all ages and kinds)	61,242,107
Hogs	47,320,511
Sheep	45,170,423

Below we give a statement showing how this large volume of business was distributed among the eight western markets and the number of head received at each point:

	Cattle	Hogs	Sheep
Chicago	3,411,000	7,731,000	4,738,000
Kansas City	2,423,165	2,493,779	1,315,399
St. Louis	1,123,150	2,028,831	644,748
Omaha	1,016,312	2,235,390	1,096,965
Ft. Worth	726,573	399,394	115,146
St. Joseph	547,324	1,904,771	975,721
St. Paul	488,399	852,168	826,674
Sioux City	403,500	1,301,000	57,000

The Event of The Season AT KANSAS CITY.

Great Three Days Auction of Aberdeen-Angus and Herefords.

FROM THE HERDS OF LEADING BREEDERS AND EXHIBITORS
At Fine Stock Sale Pavilion, Stock Yards, Kansas City, Mo.

TUESDAY, WEDNESDAY & THURSDAY, APRIL 3, 4, 4, 1906.

Sixty Attractive Aberdeen-Angus Will be Sold on Tuesday, April 3d, Consigned by

- | | |
|------------------------------------|----------------------------------|
| Jos. H. Rea & Son, Carrollton, Mo. | C. J. Williams, Harris, Mo. |
| R. S. Williams, Liberty, Mo. | S. B. Dewey, Ft. Madison, Iowa. |
| T. J. McGeeary, Highland, Kas. | S. Melvin, Greenfield, Ill. |
| Berry Lucas, Hamilton, Mo. | Geo. H. Maize, Happy Valley, Mo. |

Fifty-eight High Class Herefords Will be Auctioned on Wednesday, April 4th, Consigned by

- | | |
|----------------------------------|-------------------------------------|
| Gudgell & Simpson, Independence, | J. S. Lancaster & Sons, Liberty, |
| Scott & March, Belton, | James Paul, Patch Grove, |
| Dr. James F. Logan, Kansas City, | T. P. Whittenburg, Pleasant Hill, |
| R. T. Thornton, Kansas City, | J. A. Wilkerson, Kearney, |
| James A. Gibson, Odessa, | J. C. Andras, Jr., Manchester, Ill. |
| T. W. Carmichael, Odessa, | B. H. Downing, Clerk. |

Fifty Herefords, beautifully conditioned and of grand substance, conformation and breeding, will be sold on Thursday, April 5th, by Dr. James E. Logan, Kansas City, Mo. They have been carefully selected from his noted Sunset Herd and constitute a very choice

The best type, character and blood lines are represented in these offerings by both sexes of these two breeds
 Auctioneers, For Catalogue address

- | | |
|-----------------------|-------------------|
| COL. R. E. EDWARDS, | W. C. McGavock, |
| COL. GEO. P. BELLOWS, | SPRINGFIELD, ILL. |
| COL. R. L. HERRIMAN, | |

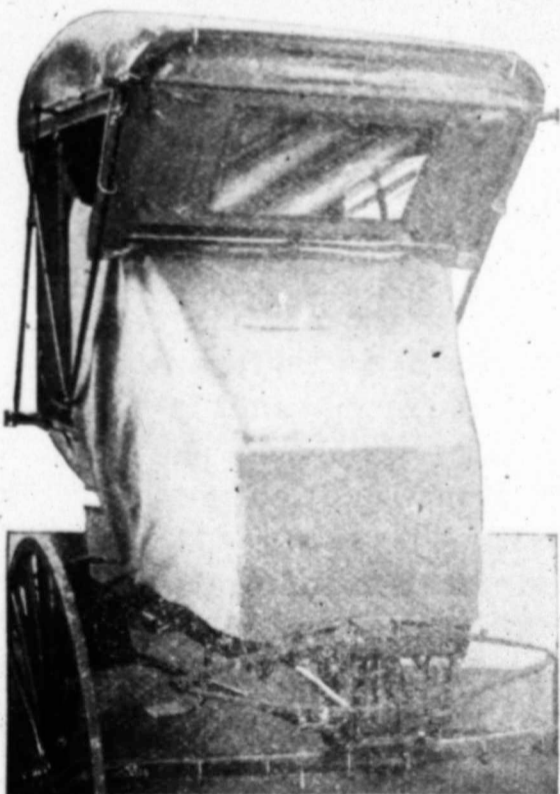
M. C. R. Thomas, Secretary of the American Breeders' Association, will also assist in the ring the days the Herefords are sold.

FAIRVIEW STOCK FARM
 FOUR MILES NORTH OF LEXINGTON, O., T.

SHORT HORN CATTLE
POLAND-CHINA HOGS

Head bulls Ravenwood Count 2nd 181,574, and Scotch Vincent 2nd 215,394; Scotch and Scotch Topped cows of elect breeding and individuality. The home of the Grand Champion Sweep Stakes bull and cow, also first in herd at Oklahoma City Royal Feby., 23, 24 & 25. Herd Bull Axlines Perfection 32,695.
 W. E. ALKIRE Proprietor
YOUNG STOCK FOR SALE

Western Seeds for Western Planters
 Seeds for Farm and Garden, Alfalfa, Acacia, Sorghum, Wheat, Russian Speltz, Millet, Kaffir Corn, English Blue Grass, Oklahoma Blue Grass, Hungarian Brome Grass and Full Line Garden, Flower and Field Seeds. Write NOW for our 1906 Catalog. Free by mail. Address **Kansas Seed House, Lawrence, Kansas,** or **Colorado Seed House, Denver, Colo.,** or **Oklahoma Seed House, Oklahoma City, Okla.**



Only Safe Storm Top in Market

NEAT, SUBSTANTIAL AND SAFE. TOP CAN BE DROPPED INSTANTLY. MADE TO FIT ANY SIZE TOP.

A few reasons why this Storm Top is Superior to any Front on Market. It is the only top that you can use in the heaviest rain and it will keep you dry. It is the only front that will permit you to put your engine top down at any time. It is the only front with which you can carry a load of hay. It is the only front that will keep your buggy dry when you are out in a storm. It is the only front that will fit on any make of buggy. It is the only front that will fit on any size of buggy. It is the only front that will fit on any make of buggy. It is the only front that will fit on any size of buggy.

Columbus Buggy Company.
 Gen. Agts for O., I. and T. OKLAHOMA CITY.

Write for
Market Reports.
KANSAS CITY STOCK YARDS.

FRANK WITHERSPOON,
Live Stock Commission Agent.

Ship to him and
Get Best Results.
KANSAS CITY, MISSOURI.

W. P. CHERRY,
PRES. AND GEN'L. MGR.
CHAS. P. TILDEN,
Vice-Pres. and Treas.
J. F. WAITE, Ass't Treas.
JOHN Q. CHORN, Secretary.

Twelve Experienced Men Look After The Business of This Company.
Correspondence Solicited. All Business Entrusted to Us Shall Have Our Personal Attention.

CHERRY-TILDEN

Live Stock Commission Company,

ROOMS 284 A and B.
LIVE STOCK EXCHANGE BLD'G.

KANSAS CITY.

LONG DISTANCE TELEPHONES.
Home 494 Main. Bell 197 Alckory.



Our business increased 25 per cent. last year. We want your business and influence. * * * *

Markets furnished by wire, letter or Market Reports. Eighteen years in active business in Kansas City.

We are well known to Bankers and Business Men in Kansas City, and many Stockmen and Bankers in Six States. Give us a trial and be convinced that for Good Sales, Prompt Returns and Courteous Treatment our Company can not be excelled.

SEEDS FIELD, GARDEN, FLOWER

EVERYTHING for the Farmer or Gardener
Planet Jr., Garden Tools, Seed Sowers, Bale Ties, Onion Sets, Large Stock Clover, Timothy, Alfalfa, Millet, Cane, Kaffir Corn, Potatoes, Blue Grass, Orchard Grass. Write for FREE catalogue.
MISSOURI SEED CO., 1426 ST. LOUIS AVE., KANSAS CITY, MO.

St Joseph Market Letter.

South St. Joseph, Mo., March 22nd 1906. The demand for cattle has been fairly good but there has been a tendency to bunch to large a supply of one kind of steers on the markets, that is a short fed half fed grade, that has been selling around \$4.90 @ \$5.25. These are showing a little decline now while the better and higher priced kinds are steady, and the light weights especially if attractive in quality are fairly strong. The general outlook for the market seems to favor around present or slightly stronger prices for the good, fat kinds of steers, but there is danger of too many of these short fed medium price cattle being thrown on the market within the next few weeks. Muddy feed lots and the coming on of spring work, inducing many holders to cash their cattle at this season of the year. The market for butcher stock has been lightly supplied, and for this reason prices have held close to steady, but there is a feeling pre-

valent that prices are top-heavy, and anything like liberal receipts will be apt to result in a turn to lower prices. There has been a good demand for feeding cattle right along, and prices have held fairly steady, with nice qualified yearlings and twos receiving the most favor, and showing a shade of strength in prices.

The market for hogs has been rather an up and down affair, although the fluctuations in prices have been narrow and the close today finds prices but a shade lower than the extreme close of last week, and a good big 5c higher than the low time of this week.

Hogs are still quite good in quality and there does not seem to be any reason to anticipate a severe shortage. Packers have shown a strong disposition of late to prevent prices from going any higher, and belief is becoming quite general in trade circles that the top has been seen.

Fresh Blackleg Vaccine for calves, at the NEWS office. *

The city election is next month. Now is the time to wake up and keep your eyes open. Put only good men in council. Select only such men as are true to the people. You know them! Wake up!

The Texas Association.

Application for admission to membership were received from 137 persons. It was stated that with the members received during the year, there are now 1,755 names on the roster. These represent an ownership of 3,000,000 cattle, and the cattle and land owned by them are worth about \$150,000,000. From Last Annual Report.

The Oklahoma Live Stock Association can never be as big as the Texas—not enough territory but it can and will cover the ground of its own state just as well, be far better in proportion and be an effective working organization.

Now for a Live Stock Association in every county in Oklahoma, co-operative with the State Association—Watch for the call for Woodward county!

At the present time there are 607 banks in Oklahoma and Indian Territory. Oklahoma has ninety-five national and 265 state banks; Indian Territory, 118 national and 138 private banks. With the two territories united in one state, Oklahoma would rank tenth in the number of national banks.

"BEST IN OKLAHOMA."

Hotel Lee.

The Best Hotel
in Oklahoma City.

Everything First Class.
Centrally Located.

OKLAHOMA CITY.

WANT COLUMN,

ONE CENT A WORD.

"For Sale," "Wanted," "For Exchange" and small advertisements for short time, will be charged one cent a word for each insertion. Cash must accompany order.

WANTED: Two hundred turkey eggs, for hatching. Write or call on C. M. L.—Care of NEWS office.

A postal card, addressed to the Secretary of the Oklahoma Live Stock Association, Woodward, Okla., will bring by return mail a full set of blanks necessary for becoming a member of the Association, also full information pertaining to the same.

HOW to become a member of a great Co-operative Company and make money in the mail order business. Send stamp H. Elliott 40, East 22nd St., Chicago, Ills.

When visiting Kansas City, stop at the **BLOSSOM HOUSE,** Opposite Union Depot.

Carey Hotel

Wichita, Kan.

\$2.00 and three \$3.00 per day

Headquarters for Commercial and Stockmen.

AUGUST DANIELSON, PRP

Farm Telephones a Necessity.

The utility of the telephone to the farmer is becoming more pronounced every year. The endless satisfaction of being in close touch with neighbors, the railroad station, creamery, and city, appeals not only to the farmer but his family as well. The Andrae & Sons Co., 885 W. Water St., Milwaukee, Wis., specialize in supplying farmers and independent lines with everything pertaining to telephone systems. The Andrae people who have been very successful in establishing telephone system throughout the entire country, make a special telephone for farmer's use. Their instruments are constructed in such a manner as to enable them to be subjected to extra hard usage. We would advise our subscribers to write for the large book that is being given away free by the Andrae Co. 19 t

The Commercial has received a letter from a fellow down in Oklahoma, stating that a company desires to form a company and build a railroad from Beaver City, Nebr., through Norton Hill City, Wakeena, Ness City, Jetmore, Dodge City, Ashland, down through Woodward, Grand, Cheyenne in Okla., and to Ft. Worth. The road would be a good thing, but we learned long ago not to get excited over the report of a new railroad—Ashland Clipper.

A Worker's War Club.

Dare you dare to lie inactive when a dozen men to-day
Make a dozen million dollars on your crops when'er they say?
Dare you let them price your produce, price the things which you must buy?
Make you pay them double tribute; what'er you sell, what'er you buy?
Dare you rest in dumb submission, let a wrong so flagrant cry?

Are you sleeping? Are you crazy? Do you work for pleasure now?
Are you on your seaside outing? Is your wife in Europe now?
Are your children off to college while the servants hoe and plow?
Nay, your life is naught but drudg'ry, naught but work from morn till night,
While your wife and children, also, need must enter in the fight.

Yes, you feed the world in plenty; keep ten million wheels in motion;
Run the steam cars and the steam boats on the land and on the ocean;
Fill the shop and mill and factory; locate marts of trade and business;
Build up cities, states and countries; form the backbone of the nation;
Pay its bills in noble fashion, even own the earth it's built on.

But alas, where is your portion? Who has got it? Can you find it
In the billion dollar steel trust or the oil trust or the meat trust
Or the multi headed food trust? In the dividends of railroads,
Telegraphs or telephones? Yes, in all of these you find it,
Find your wealth 'mid pomp and glory, 'mid the gorgeous rich and splendid.

It is theirs. They have got it. You produced it. How about it?
Are you willing to continue being robbed of your just profit?
Will you bolt and say the farmers will not hold for better prices;
Will not join in farmers' union; are too jealous of each other,
Rather let a stranger fleece them than to help their nearest brother?

If you bolt, go hide your "physog," narrow minded, jealous, weak,
Shut yourself in some dark closet, let the newsboys' union speak,
Even they in councils profit, so do bootblacks through their unions;
But the farmers are too foolish; are too jealous, weak and fitful,
Get you all such flagrant nonsense, Farmers shall in unions council!

We shall form a mighty union, large in numbers, strong in power;
Which will solve in perfect justice all the problems of the hour.
We shall price our own farm produce, price it at a profit too,
And command the world to pay it. Hold until our price does come,
Then you, farmer, have your portion; then your new life has begun.

You no longer are a farmer bound and shackled by a market
Made by brokers for their plunder, from your hard-earned, well-filled basket,
But a farmer, king in power, who commands a recompense
For his many weeks of labor; for his toil and his privation,
That he too may take an outing; take a well-earned, long vacation.

Spend a day off at the seaside; send his wife to Europe now;
Send his children off to college; let the servants hoe and plow,
Nay, the farmer is not sleeping; is not crazy working now
But a man of means and muscle, well developed at the plow,
Who in mental calculations, rules the world and markets now.

—By M. Wes. Tubbs, Portville, N. Y.



5 TONS OF GRASS FREE AND BARGAIN LIST FREE

The year of 1906 on our seed farms was one of prodigal plenty. The result is enormous stocks of Northern grown pedigree seed Oats, Wheat, Barley, Speltz, Potatoes, Grasses, Clovers, Timothy seed, etc., etc.

Salzer's Bargain Seed Book

is brim full of bargains in Seeds at bargain prices, way below any ever offered. This Bargain Catalog with sufficient grass seed to grow on your own lands this summer

5 TONS OF NUTRITIOUS GRASS

is sent free for the asking. Or, if you prefer Radishes, we will send you free, enough seed to keep you in Radishes all summer long, and our Bargain Catalog.

Simply send us this notice, sign your name and address and the free package of Grass seed or Radish, as you select, together with this new, interesting Bargain Catalog with all of its bargain offers, all of its bargain surprises in flowers, vegetables and farm seeds, all the valuable information showing our wonderfully low prices, all will be sent you by return mail postpaid.

If you send 4c. we add a big package of *Cosmos*—the most beautiful fashionable annual flower.

JOHN A. SALZER SEED CO., Lock Box 38, La Crosse, Wis.

Farm for Sale
160 acres, six miles north
Fargo, O. T. House 14x18
stable 14x28, two strong wells,
good water. 110 acres in good
state of cultivation, 93 acres in
wheat, 50 acres pasture. Fine
alfalfa land. Will sell stock and
implements with place if desired
and give possession as soon as
deal is closed.
35 tf np. R. D. WOOLLEY.

TREES THAT GROW
Ready varieties that yield big crops.
Grafted Apple 54c. Budded
Peach 5c. Concord Grapes
Black Locust Seed.

NURSERIES
Pay the Freight

ALLEN, ROBERTSON & CO.

Kansas City Stock Yards

Good People to Do Business With — 25 Years in the Trade.



H. THEIS & CO.,

KANSAS CITY STOCK YARDS.

Our patrons are our best reference. We have competent salesmen and get results. Markets furnished when desired. Consign your stock to

H. THEIS & CO.,

Kansas City.

J. M. SCAMMAN, President. GEORGE HUNTER, Vice President. J. W. BENNETT, Sec. and Treas.

Ship Your Stock to
MISSOURI LIVE STOCK COMMISSION CO.,
 St. Joseph, Mo.

Good Sales. Prompt Returns.

National Stock Yards, Ills. Kansas City, Kansas.
 PRES. C. M. KEYS, Manager. VICE PRES. W. H. KEYS, Manager.
 F. C. PINKERTON, Cashier.

C M KEYS COMMISSION CO.

Office Nos. 87-89 2nd Floor,
 New Building,
 National Stock Yards, Ills.

Office No. 105 Exchange Bldg.,
 Kansas City Stock Yards,
 Kansas City, Kans.

Fort Worth Stock Yards Co.

Horse and Mule Department.

Capacity
 4,000 Head Daily
 Facilities for handling
 Horses and Mules
 Unsurpassed.

Twelve Responsible
 Dealers and
 Commission Firms
 doing business
 in this department.

Auction Sales
 Every
 Monday in Each Month
 Commencing Second
 Monday in January

Carry 1000 to 1500 mules and 500 to 800 horses on hand at all times. Recent adjustment of freight rates makes this the most desirable market in the Southwest and Southeast. Correspondence with Fort Worth Horse and Mule Co., Cooke and Simmons, W. O. Reminger & Co., Edwards & Co., or any of the other dealers and commission firms will be promptly attended to. Mention this ad in your communications.

WICHITA UNION STOCK YARDS CO.

WICHITA, KANS.

CAPACITY 3,000 CATTLE.
 5,000 HOGS.

Private Yards for Texans
 Perfect Sewerage and City Water
 All Pens Covered.

W. R. DULANEY
 Supt. of Stock Yards.

LIVE STOCK DIP.

Eagle Brand.

CURES
 Mange and Scabies.



REMOVES
 Lice and Ticks.

The best and cheapest dip in the world, costs 2c per head to dip cattle and 1/2c per head for hogs and sheep. We sell it on a positive guarantee to do what our directions say. The best 10 foot long, hog and sheep tanks at \$10.00. Cattle tanks at proportionally low prices. Write us your wants.
 STOCK YARDS MANUFACTURING CO.
 Room 217, Live Stock Exchange. Kansas City, Mo.

BEN L. WELCH,
 Cattle Salesman

CHAS. A. WELCH
 Hog Salesman

WE OBTAIN MARKET PRICES FOR
 CATTLE HOGS AND
 SHEEP.



WE GUARANTEE
 SATISFACTION
 IN BUYING STOCK
 ON ORDER.

LIVE STOCK
 Commission Agents.

Rooms 58-59 A & B Live Stock Exchange
 KANSAS CITY

Phone 439 Main
 H. C. KERRY

St. Louis

National Stock Yards

Receipts for 1905:

Cattle, 1,124,003 Hogs, 2,026,403
 Sheep, 645,104 Horses-Mules, 178,257

Handle 60% of quarantine cattle receipts
 Show very large gains in native cattle.
 Demand for sheep much greater than supply.
 Largest horse and mule market in the world.

EDWARD MORRIS, President. C. G. KNOX, Vice President.
 C. T. JONES, Gen'l Manager. L. W. KRAK E, Gen. Traffic Mg