

# STOCK SHOWERS

COLORADO TEXAS

ARIZONA

MEXICO

NEW MEXICO

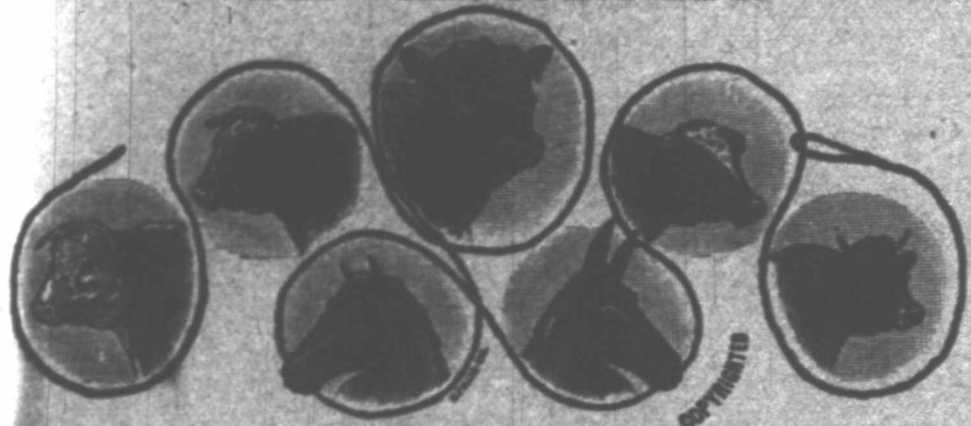
Live Stock, Feed Farming and Commerce.

Vol. III. No. 49.

LAS VEGAS, NEW MEXICO, FEBRUARY 19, 1887.

Weekly, \$3 a Year

**GEO. L. GOULDING & CO.**  
**LIVE STOCK COMMISSION MERCHANTS,**  
 DENVER, COLORADO.



PROPRIETORS NEW CITY STOCK YARDS.

We have on exhibition and for sale the largest and most complete assortment of live stock west of the Missouri river. During the meeting of the Range convention in February we will have on hand over eight hundred head of fine stock, from which our customers may select. Nearly every breed of cattle and horses will be represented by thoroughbreds and grades of both sexes.

Cleveland Bays, Galloways, Aberdeen-Angus,  
 Clydesdales, Jerseys, Holsteins,  
 Percheron-Normans, Herefords, Shorthorns.

Trotting Stock, Shetland Ponies, Jacks, Mules.

Breeds which there will be a great number of native mares and horses, cow ponies, native cattle, eastern mares, fresh milk cows, etc.

Our arrangements with the principal breeders all over the country are such, that we are enabled to fill orders for any kind of stock on short notice and at the lowest figures.

Correspondence solicited. Remember our auction sales of fine stock during week of Range convention.

**MEXICAN LANDS** In large or small tracts.  
 For information and circular write to  
**MEXICO AND TEXAS LAND AND CATTLE CO.**  
 EL PASO, TEXAS.

**WM. ROBERT**  
 Will have for sale for  
**SPRING DELIVERY**  
 A number of fine  
**GRADE SHORTHORN BULLS.**

Raised on the Pecos river from the well improved and celebrated former "Chisum Herd." This stock is known to be first-class. Address  
 WM. ROBERT, ROSWELL, N. M.

**HUNTER, EVANS & CO.**  
**Live Stock Commission Merchants**

NATIONAL STOCK YARDS, St. Clair Co., Ill.  
 KANSAS CITY STOCK YARDS, Kansas City, Mo.  
 UNION STOCK YARDS, Chicago, Ill.

Fifteen years active experience in live stock commission business. Markets reports regular and special, and all other information incident to the business, will be furnished free by each house. Parties having stock to market, in large or small numbers, will do well to confer with us before making arrangements.  
 Each office in charge of a member of the firm. Correspondence always has prompt attention.

**H. R. HARRIS,**  
**REAL ESTATE & LIVE STOCK BROKER,**  
 SOCORRO, NEW MEXICO.

I have on my books a large list of ranches, including land grants in New Mexico and Mexico. Many tracts of agricultural land and city property. Land scrip furnished. Loans negotiated. I handle Hereford, Shorthorn, Angus and Galloway grade and pure bred bulls. Native and improved sheep, pure bred rams and Angora goats. Saddle horses and stallions. New Mexico, Texas and Mexico-cattle and stock horses.

"OUR OWN RAISING."



**THE SHORTHORN CATTLE CO.**

OFFERS FOR SALE, SPRING DELIVERY.

**300 HEREFORD and SHORTHORN GRADE BULLS**

Address R. J. BISHOP, LUNA, SOCORRO COUNTY, N. M., or  
 H. R. GODLEY, DALLAS, TEXAS.

**W. W. CRAPO,**  
 FLINT, MICHIGAN.

**HEREFORD CATTLE,**

Of individual merit and excellent lineage; the oldest, largest and best herd in the state. The blood of Lord Whiton, Horace, The Grove 3d, Hartington, Marquis, and others of equal note.

FOR SALE just now, about sixty grand young bulls, from fifteen to twenty-four months old, also a few very choice imported heifers, and about thirty ones and twos of my own breeding, all at rock bottom prices—in fact no fancy prices asked. Special inducements on car lots to ranchmen. Also a number of farms on easy terms. Address, JOHN W. FOSTER, Manager, Flint, Michigan.

**LIGHTNING HAY PRESS**



Adapted to baling hay, wool, cotton, and other material. Full circle, most rapid, and easiest operated of any press in the market.

MANUFACTURED BY

**Kansas City Hay Press Co.**  
 6th and Mill Sts. Kansas City, Mo.

**HEREFORDS!**

REGISTERED BULLS AND HEIFERS

Pure Bred and Shorthorn Crosses.

Range Cow Horses.

From English Thoroughbreds, Kentucky Saddlers and Tennessee Pacers.

Road Horses.

AMERICAN STANDARD BRED TROTTERS.

All stock branded 5 T or



**CAMERON BROS., Managers,**

**San Rafael Cattle Company,**

LOCHIEL, PIMA CO., ARI.



**W. H. McBROOM,**

Offers an Unusually Fine Lot of

**HIGH GRADE**

**Shorthorn Bulls**

To be Delivered in Spring.

**Fine New Mexico Stock.**

**W. H. McBROOM,**

Port Sunner, N. M.

**BANKERS,**  
And those doing business with financial institutions, will find it to their advantage to consult this department in which all the leading banks of the southwest are represented.

FOR CARDS OF  
First National Bank, Las Vegas.  
First National Bank, Albuquerque.  
First National Bank, El Paso.  
See last page of cover.

## Maverick Nat'l Bank,

BOSTON, MASS.

CAPITAL. \$400,000  
SURPLUS. 400,000

Accounts of banks, bankers and corporations solicited.  
Our facilities for collections are excellent, and we re-discount for banks when balances warrant it.  
Boston is a reserve city, and balances with us from banks (not located in other reserve cities) count as a reserve.  
We draw our own exchange on London and the Continent, and make cable transfers and place money by telegraph throughout the United States and Canada.  
Government bonds bought and sold, and exchanges in Washington made for banks without extra charge.  
We have a market for prime first-class investment securities, and invite proposals from states, counties, and cities, when issuing bonds.  
We do a general banking business, and invite correspondence.  
ASA P. POTTER, President.  
JOS. W. WORK, Cashier.

## The City Bank

OF LAS VEGAS.

JOSHUA S. RAYNOLDS, President.  
ALPHEUS A. KEEN, Cashier.  
CAPITAL, \$30,000.

Transacts a General Banking Business.

## ALBUQUERQUE NATIONAL BANK!

Albuquerque, New Mexico.

CAPITAL STOCK PAID IN, \$100,000.

OFFICERS:  
JOHN A. LEE, President.  
S. M. FOLSOM, Vice President.  
W. S. STRICKLER, Cashier.

DIRECTORS:  
JOHN A. LEE, S. M. FOLSOM, E. D. BULLOCK,  
W. P. METCALF, HENRY N. JAFFA, C. H. DANE,  
M. S. OTERO.

Does a General Banking Business.  
Interest Paid on Time Deposits.  
Gold dust purchased and advances made on shipments of cattle, gold and silver bullion, ores, etc. Superior facilities for making collections on accessible points at par for customers. Exchange on the principal cities of Europe for sale. Stockmen's business a specialty.

## San Miguel Nat'l Bank

OF LAS VEGAS,  
LAS VEGAS, - - N. M.

Authorized Capital, \$200,000  
Paid-up Capital, 100,000  
Surplus Fund, 50,000

OFFICERS:  
W. M. EADS, Pres. J. GROSS, Vice Pres.  
D. T. HOSKINS, Cashier.

DIRECTORS:  
COLLEEN MOISE, JACOB GROSS, HENRY GORER,  
A. M. BLACKWELL, O. L. HOUGHTON,  
E. C. HENRIQUES, M. S. OTERO,  
T. H. LAWRENCE, W. M. EADS.

Does a General Banking Business. Drafts for sale on the principal cities of Great Britain and the continent of Europe.

United States Depository.

## First National Bank

OF SANTA FE.

W. W. GIFFIN, Pres. R. J. PALEN, Cashier.  
FRANK PERNA, Vice President.

## LA MONTAGNE, CLARKE & CO.

Bankers and Brokers,

42 New St., New York.

E. LA MONTAGNE, Jr., N. Y. Stock Exchange.  
HERMAN CLARKE.  
WALLACE R. SMITH.

Refer by courtesy to  
Messrs. E. LA MONTAGNE & Sons, New York.  
UNION BRIDGE CO., Buffalo and New York.  
THE STOCK GROWER, Las Vegas, N. M.  
Deposits received subject to sight draft. Interest allowed on balances. All securities dealt in at the New York Stock Exchange bought and sold for investment, or on margin.

## P. R. PAGE,

DEALER IN  
General Merchandise,

Wool, Hides, Pelts and Cattle.  
CARRA SPRINGS, NEW MEXICO.

Goods Sold at Reasonable Prices.  
Travelers will find good accommodations both for man and beast.  
Hay, Corn and Oats always on hand.

## Rheumatism.

All cases of chronic rheumatism of long standing can find a sure cure in the New Mexican Rheumatic Cure. After the use of one bottle the most skeptical will be convinced that the long dratted disease can be conquered, whether caused by exposure, syphilitic taint, or any other derangement of the blood. The New Mexican Rheumatic Cure will be sent to any address in the United States or Canada on receipt of postoffice order.  
One bottle \$2.00. Six bottles, \$15.00.  
Postoffice orders, J. A. MURRAY,  
Box 105, Druggist, Las Vegas, N. M.  
In ordering please note how and where the disease is located, and whether the joints swell or not.

## DICK DUTCH, WITH CLARK & CO. Hatters,

524 Main Street,  
KANSAS CITY, - - MISSOURI.

A complete line of *Stetson's Hats* for stockmen.  
Send statement of size worn, and hat will be sent by express, subject to approval.

## O. L. HOUGHTON,

—Dealer in—

## Hardware

Two Stores, East and West Side,  
LAS VEGAS, NEW MEXICO.

Fence Wire in Car Lots.

## COOLEY & HUNTER,

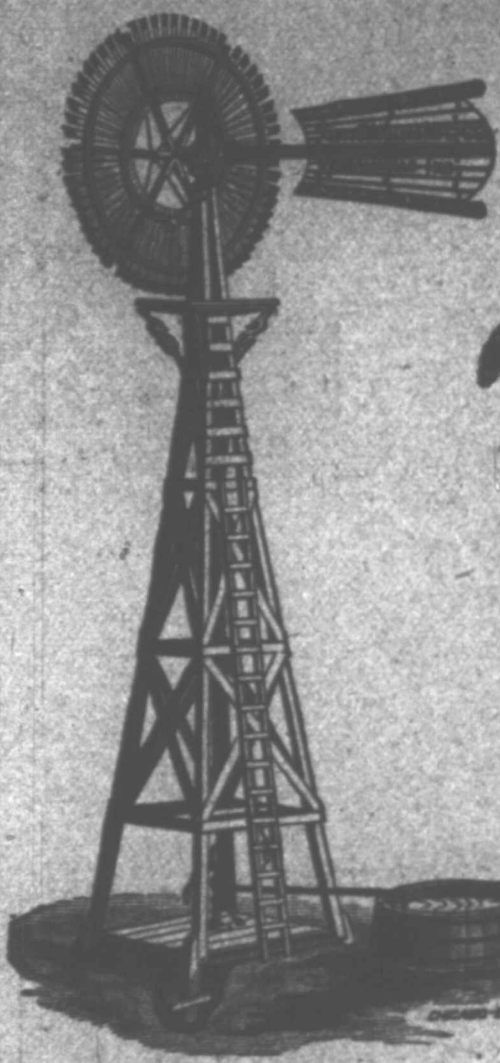
Proprietors Livery, Feed and Sale.

## Stables,

CLOSED CARRIAGES, MOUNTAIN WAGONS,  
OPEN CARRIAGES, AND SADDLE HORSES.

CHARGES REASONABLE.

Horses and wagons bought, sold or exchanged. All orders by telegraph promptly answered. We take great care to please owners who board their horses at our stables.  
Constantly on hand a number of well-broke cow ponies in good condition, and ready for use. They are offered for sale at reasonable prices.



## Star WIND MILLS

Water Works Supplies.

Wind Mills, Derricks, Tanks, Pumps, Hose, Pipe Fittings, Fountains, Feed Grinders, Etc.

## Tubular Well Tools,

And Supplies, a Specialty.

To the cattlemen we wish to say that we are now making a

## A Special Outfit for Ranches

to supply water to large herds, and having furnished many of the largest ranches in Texas with the water works, we know we have just what you need.

Address for prices, particulars, etc.,

## FLINT & WALLING MANFG. CO.

1404 WEST 11th ST., KANSAS CITY, MISSOURI, AND 1607 MAIN ST., FORT WORTH, TEXAS.

EDGAR B. BRONSON, President.

WM. S. HILLS, Vice-President.

WM. H. AUSTIN, Cashier.

## EL PASO NATIONAL BANK

OF TEXAS.

No 3608.

PAID IN CAPITAL, \$150,000.00

STOCKHOLDERS:  
CLARENCE KING, JAMES D. HAGUE, WM. S. HILLS,  
WM. H. AUSTIN, GEORGE B. ZIMPELMAN, MARK MARK,  
GEO. TEW, EDGAR B. BRONSON, W. COFFIN.

General business transacted; collections promptly made and remitted; foreign and domestic exchange bought and sold; special facilities offered on Mexican business. Customers are offered the convenience, free of cost, of our Herring's safety deposit boxes in fire-proof vault.

CORRESPONDENTS:

National Bank of the Republic, New York; Bank of California, San Francisco; Bank of Commerce, St. Louis; National Bank of Kansas City, Kansas City, Missouri.

WALTER C. WEEDON, ERSBONE S. McBRILL



## Walter C. Weedon & Co.

Breeding Stock Commission Agents

IMPORTERS, DEALERS IN AND BREEDERS OF

## GALLOWAY

AND

## ANGUS CATTLE,

41 Live Stock Exchange,

Kansas City, Missouri.

PURE-BRED STOCK, BOARDED, BOUGHT AND SOLD ON COMMISSION.

Catalogues compiled. Sales advertised and clerks.

Ranches and Farm Property Inspected.

GRADED BULLS FOR RANCHES IN CAR LOTS A SPECIALTY.

DEALERS IN  
Holsteins, Jerseys, Short Horns and Herefords.  
AGENTS FOR  
"THE GLYCERINE DIP,"  
Dana's Stock Label.

SOLE OWNERS OF  
Woodon's Sale Numbers and Barne's Patent Bull Ring.

BLUNT & FARR, ALBUQUERQUE, NEW MEXICO, WESTERN AGENTS.

# STOCK GROWER

COLORADO TEXAS  
ARIZONA MEXICO NEW MEXICO

Live Stock, Feed Farming and Commerce.

Vol. III. No. 49.

LAS VEGAS, NEW MEXICO, FEBRUARY 19, 1887.

Weekly, \$3 a Year

## Contents.

Editorial Notes.....	1
No Place for Boodlers.....	1
Good Work to be Done.....	1
It is Good.....	1
The Denver Meeting.....	2-3
San Miguel Stockmen.....	3
Great Loss of Cattle in Montana.....	3
A Bogus Cattle Company.....	3
From All Points.....	4
Wool Growers.....	4
The Angora Goat in New Mexico and Arizona.....	5
Southwest Stock Notes.....	6
The St. Paul Union Stock yards.....	6
Feed Farming.....	7
G. W. Littlefield.....	8
Correspondents.....	8
Personal.....	9
Business Pointers.....	9
Beating the Cowboys.....	9

THE only un-American Sparks felt the recent northwestern chill long before it left Manitoba.

THE New Mexico quarantine act has become a law by the approval of the governor. Texas men will now run their cattle into Colorado and seek an outlet for them in lands where quarantine laws are not known.

IF COLORADO will only keep the trail open for Texas all demands of the Texas men on the International Range association will have been granted in advance, and satisfaction reigns supreme with any and all operations of that association with the average Texas delegate.

It looks at this writing that the Montana journals which have filled their columns with the evils of overstocking the range for the past six months, can now throw off the nightmare during the ensuing year at least. The blizzard has settled the question for them.

ONE of the amusing features of the Denver meeting was the reckless manner in which the president of the Range association in his address invited the range journals to "tread on the tail of his coat." The range newspapers have a more intelligent and responsible work to do in helping to solve the great problems connected with the western beef industry than to waste time in climbing over the broadcloth of any individual who wants that kind of distinction.

WITHOUT extended comment it can be pretty safely predicated that the range cattle business of western and northern Montana is now a *nil* quantity. The most intense cold for a decade of years has nearly wiped out the herds and in many instances the cowboys attending them. The weather of the past few days has left the range country there open to

the incursions of the granger who will promptly occupy the land and as promptly be frozen to death in all probability when the next cold wave strikes that land.

THE Chicago journals have found another Jonah to explain away the present difference in prices between the beef producer and consumer. They call it the oleomargarine bill, and say that it has taken \$2 to \$2.50 from the value of every steer marketed. Granted. But where are the other Jonahs to make up the additional \$10 to \$12? The east as well as the west have refused to remove their finger from Chicago as the place where the men live who are hostile in word, look and deed to the beef industry of a nation.

THERE was a notable inclination on the part of a few of the speakers at the Denver meeting to say nothing that might offend Chicago. The silent influences which the rangeman has been convinced for some time were being thrown Chicagoward in deference to the request of Armour and his associates, were kept wholly in the background during the latter half of the convention. The friends of Chicago and quasi friends of the western cattle industry found that the men who had come to Denver to take part in the meeting meant business and were determined to put a stop to the trifling efforts of those men who must bend the knee to the Armour bank of Kansas City, and who thought they could serve both the Lord and the devil at the same time.

WE PUBLISH in another column a valuable article on the Angora goat industry as applied to New Mexico and Arizona, from the pen of G. L. Brooks, of Socorro, N. M. Mr. Brooks has treated the question in an interesting manner and from the standpoint of fact. His deductions as to the utility of and profit to be gained from the business are logical and open up an important field for a person of limited means to engage in the live stock business with every assurance of success. THE STOCK GROWER, looking into the future, sees that the great industry of stock raising, for which the southwest is especially adapted, will become more successful in its development through diversity of methods and the just adaptation of means to the most desirable ends. The intelligent presentation of the best way in the inauguration of one method is what Mr. Brooks has done in his treatment of the Angora question.

### GOOD WORK TO BE DONE.

The directory of the International Range association is composed of first-class men. The executive committee of

board by whom the working force is represented will give the cattlemen of the west sufficient evidence within a reasonable time of the utility of the International Range association for the purposes for which it was formed. Governor Hadley, of New Mexico, and Governor Routt, of Colorado, members of the executive committee, are men of marked ability, clear judgment and earnestness of purpose in whatever they undertake to do, which assures to the association good work and the accomplishment by them of something that will have the merit of general approval. These men are thoroughly convinced that fighting enough has been done with the mouth; they will now continue the contest with heart and brains, using the high trust committed to them for the general good and sinking beneath the waves any desires to make of the International association a means of personal aggrandizement. The country can safely trust Hadley and Routt, and it may be added will back them in their work in dollars and cents as well as moral support in what they have laid out to be done by their committee to bring relief to the western cattle industry.

### IT IS GOOD.

THE condition of the cattle business in the southwest may be expressed in these words: It is good. The superficial observer, comparing the season of high prices with the present, takes a pessimistic view of the situation. THE STOCK GROWER, looking at the industry in its every phase and predicating from the standpoint of facts, unhesitatingly pronounces that the range cattle business of New Mexico and Arizona in its individual and collective capacity was never in a more stable condition than it is today, and has never at this season of the year promised better legitimate returns for the year than it does at this writing. There have been no failures among the stockmen here and there are no indications of financial weakness in any direction. The industry of range cattle raising will undergo some changes in the territories named in common with it elsewhere. The men engaged in the business and those coming into it now are progressive, thinking men who will be the first to adapt themselves to the innovation upon the established order of things that is before them and in some instances partially begun. Cattle stocks and cattle investments will remain, where the men engaged in the practical details of range cattle raising on the ranch and range know their business, always among the best class of securities. As Governor Routt expressed it at the Denver meeting, "you can't bust the man in the cattle busi-

ness who is stealing his grass from Uncle Sam." THE STOCK GROWER will add to what the governor says that you can't down him anyway if he is a cattelman and conducts his business in a right, intelligent manner. It assumes by this also that he is not burdened by un-business like forces that would make the same amount of capital he employs unprofitable in any business under the sun. Every day brings the cattlemen who remain in the business nearer to exact methods and the proper handling of their investments, and consequent sure returns.

### NO PLACE FOR BOODLERS.

It is reported that Governor Ross has received already nearly twenty personal applications for appointment by him to the commissioner board required under the new act of quarantine. This is lamentable in the extreme as betraying a low order of intelligence on the part of the applicants and furthermore in their supposing that Governor Ross will be governed by any such appeals for personal preferment in selecting the three commissioners to constitute the board. THE STOCK GROWER, unless all signs fail, is glad to assure the cattlemen of New Mexico that in the question of who shall represent them in this important matter of regulating the operations of the New Mexico law of quarantine, Governor Ross will be guided wholly in his selection of the three commissioners by the eminent fitness of the men chosen for the work to be done. He has always stood by the cattle industry and has been as solicitous for its welfare as any man could be. The board of commissioners who shall have the keeping of the cattle interests of this territory in their hands to guard it against bovine diseases is one of the most responsible commissions that can be created by the people, and knowing Governor Ross' integrity of purpose in this matter of securing absolute protection for the live stock industry, it does not believe that he will take any action in the premises other than what will meet with the general approval of the stock interests.

THE STOCK GROWER would kindly say to aspirants for a position as cattle commissioner under the law of quarantine that Governor Ross has the means at his command to ascertain who among the practical stockmen of this territory are fitted in every respect for a position on the commission. New Mexico now has one of the best laws of quarantine in America. Let no one think that the Governor is going to destroy that law in its practical operation by the appointment of three of any of the fifteen or twenty boodlers who have made a personal application for the position of commissioner.

THE DENVER MEETING.

The First Annual Session of the International Range Association.

On the 8th instant, the first annual session of the International Range association convened in the Tabor Opera house, Denver. The following states and territories were represented in the convention: Colorado, New Mexico, Texas, Arizona, Montana, Utah, Mexico and the British Northwest Territory.

An impressive opening prayer was made by Bishop Warren, of Denver.

Governor Alva Adams was then introduced to the convention by the president and at once stepped to the front and in a terse, logical way combined with good rhetorical effort discussed for half an hour the present condition of the range cattle industry and the lessons of the hour, as well as expressed the hope that he might see those who had had the privations of pioneer life, the hardships of the wilderness and plains, the hazard of storms, winter and disease, gather the harvest, and not see all the profits go to those who live in ease in eastern cities, who revel in luxury and plenty, free from danger, exposure and risk.

Mayor Bates then followed with an address of welcome to the convention in behalf of the city of Denver, after which the business of the meeting was begun by the appointment by the chair of nine as a committee on credentials. The chair announced the following as the committee: J. L. Brush, Colorado; C. C. Slaughter, Texas; E. S. Newman, Old Mexico; J. D. Warner, New Mexico; J. F. Andrews, Utah; E. B. Bronson, Montana; W. F. Nedringhaus, Northwest Territory; Brewster Cameron, Arizona; T. H. Lawrence, New Mexico.

The association then adjourned until 2:30 p. m.

At 2:40 p. m. President Head called the association to order and announced the appointment of G. L. Brooks as assistant secretary, and George T. Haswell, sergeant-at-arms.

The committee on credentials submitted their report, which was read by Brewster Cameron, secretary of the committee, as follows:

Your committee on credentials beg to strongly urge on the convention the importance of making an amendment or supplementing the by-laws with a clause which shall distinctly declare that no individual or association of individuals, stockmen or others, shall have the privilege of voice or vote in any meeting, regular or special, of this International Range Association, except he be a regularly appointed agent from some local association which is a member in good standing of the International Range Association, and that no person shall be eligible as a delegate who is not himself a bona fide owner of live stock in the range country and a member in good standing of a local association as aforesaid.

This amendment or supplement to the by-laws seems to us essential on account of the lack of any advice or instruction in the by-laws to govern a committee on credentials and to properly guard the deliberations of our association against the intrusion of men and ideas which, from ignorance or adverse interests, may antagonize the interests of this association.

The committee on credentials reported the following associations entitled to membership in the convention, with the number of votes to be cast by each and the number of cattle and horses represented by the respective associations.

Tombstone, Arizona, Stock Growers' association of Cochise county: Brewster Cameron, delegate, one vote.

Las Animas County association, of Colorado: T. G. Blaine, J. G. Clark, two votes.

Grand River, Colorado, Stock Growers' association: Edward S. Robinson, delegate, one vote.

White River, Colorado, association: John J. Niblock, H. H. Eddy, delegates, two votes.

Colorado Stock Growers' association: J. L. Brush, E. M. McGillin, G. W. Thompson, R. M. Moore, C. S. Haver, W. J. Wilson, D. H. Moore, H. H. Metcalf, R. G. Head, C. M. Hampson, J. L. Routt, delegates, eleven votes.

Eighth District, Colorado Stock Growers' association: B. C. Killin, D. H. Wood, C. E. Kuhn, Sim Green, delegates, four votes.

Dawson County, M. T., Range association: R. D. Hunter, F. G. Nedringhaus, delegates, two votes.

Assiniboine, N. W. T., Live Stock association: T. H. Logan, (Nedringhaus proxy), delegate, one vote.

Utah Cattle and Horse Growers' association: William Burke, delegate-at-large,

H. J. Faust, A. J. Stuart, G. H. Snell, James Andrews, E. G. Wooly, N. W. Clayton, Jones, Robert Bullock, John Schaffer, W. N. Dusenbury, delegates, eleven votes, 230,000 head.

The Cattle and Horse Growers' association of New Mexico: Henry Milne, H. M. Taylor, J. C. Lee, W. E. Anderson, J. A. Alcock, J. D. Warner, Montague Stevens, W. H. H. Llewellyn, S. E. Booth, G. L. Brooks, W. E. Brunton, P. Mother-sil, Charles Kohn, E. S. Carlisle, delegates, thirteen votes, 300,000 head.

Northern New Mexico Live Stock association: O. A. Hadley, F. Clutton, A. Morton, D. C. Holcomb, T. H. Lawrence, delegates, five votes, 150,000 head.

International Live Stock association of El Paso, Texas: E. B. Bronson, delegate, three votes, 50,000 cattle.

Northwest Texas Cattle Raisers' association: John N. Simpson, C. C. Slaughter, L. H. Cathart, J. F. Evans, T. T. D. Andrews, John Snyder, S. P. Cunningham, W. F. Somerville, G. H. Connel, A. S. Lyon, delegates, ten votes, 225,000 head.

Texas Live Stock association: H. B. Stoddard, delegate, one vote.

Southern Texas Live Stock association: John T. Lytle, T. L. Colman, Jesse Prenal, H. C. Tardy, B. F. Buzzard, delegates, five votes, 100,000 cattle.

Republic of Mexico: E. S. Newman, delegate-at-large, one vote.

We further find the following delegates duly accredited from live stock associations not members of this association:

Wyoming Stock Growers' association: C. Ferris, H. B. Ijams, Dr. J. D. Hopkins and W. H. Stein.

Chaffee County, Colorado, Cattle Growers' association: J. M. Michael, Henry Newby, John G. Evans, J. L. Lallee, Frank Keys and Henry Van Kleeck.

South Pueblo, Colorado, Cattle Growers' association: Joshua Mulock and Ira Mulock.

Gunnison, Colorado, Stock Growers' association: A. K. Stevens and D. E. Bentley.

Sixth District, Colorado, Cattle Growers' association: J. O. Phillippi, B. Gilpin, jr., and Dr. William M. Stickler.

Your committee respectfully refer to the convention the matter of the standing of those delegates without any recommendation.

Governor Hadley, of New Mexico, moved the adoption of the report, which was done unanimously.

On recommendation of J. C. Leary, Preston G. Cutter, of California, was admitted as a representative in the association.

President Head then read his address to the convention, which on motion of Judge Faust was ordered placed on the records of the association.

A communication was received from Norman J. Colman, United States commissioner of agriculture, regretting his inability to be present and expressing his deep sympathy with the objects of the association.

A communication of about the same tenor was received from D. E. Salmon, chief of the bureau of animal industry.

The Kansas City Live Stock exchange sent a communication asking the association to endorse the Miller bill.

A communication from E. W. Crutcher, president of the Nevada Live Stock association, was read. He expressed great interest in the struggle of the cattlemen against monopolies and in the general interests and work of the association.

The report of the executive committee was then read by the secretary of the association, Mr. J. C. Leary.

On motion of Mr. H. M. Taylor the report was placed on file and the thanks of the association was tendered the executive committee.

Mr. H. H. Metcalf offered the following resolution and moved its adoption:

To the Congress of the United States:

Your memorialists, the International Range Cattle Growers' association, would respectfully represent that:

WHEREAS, Contagious pleuro-pneumonia is known to exist in several states of this Union, and the imminent danger of the spread of the same to the large and unprotected cattle herds of the west, is viewed with alarm by our citizens, and if this, as well as other contagious and infectious diseases among live stock, is not prevented by prompt legislation in congress, and protection given to this vast industry, it is liable to cause great destruction to the live stock interests of this and adjoining states and territories, and we further represent and state that, owing to the vast area of the plains, and our inability to fence and protect our ranges from daily incursions of cattle from one range to another, renders it impossible to successfully quarantine against the spread of said disease: therefore be it

Resolved, That the congress of the United States be and is hereby requested to pass such a law as will effectually extirpate all contagious diseases of the character mentioned, by placing in the hands of competent agents of the general government full and complete power to act in all matters relating thereto, and that a sufficient appropriation be made of not less than one million of dollars, to pay the necessary expenses of the same.

Mr. Brewster Cameron seconded the adoption of the resolution, and the motion prevailed without discussion or negative vote.

Governor Routt moved the appointment of a committee on resolutions, and that all resolutions be referred to it without debate. Carried.

Mr. Brewster Cameron moved the appointment of a committee of five on the revision of the constitution. Carried.

Judge Faust moved the adoption of the same rules which prevailed at St. Louis, making all the speeches not more than five minutes long. Carried.

Mr. Cameron moved to reconsider his motion to appoint a committee of five, which prevailed, and then he moved the appointment of a committee consisting of one member from each association, and the motion prevailed.

The committee on resolutions, consisting of the following gentlemen, was appointed: B. F. Buzzard, W. M. Dusenbury, Colonel Milne, Ike T. Pryor, H. H. Metcalf, S. C. Haver, E. S. Newman.

The committee on revision was appointed as follows: Brewster Cameron, Col. H. B. Stoddard, C. M. Hampson, R. D. Hunter, O. A. Hadley, H. L. Nedringhaus.

Upon motion of Brewster Cameron the secretary was directed to telegraph to the United States senate and house chairman of the committee on agriculture, the resolution adopted in relation to legislation.

On the opening of the second day's session Delegate Brush, of Colorado, offered a set of resolutions showing a discrimination of railroads of \$2.50 per car in favor of heavy eastern cattle as against light range cattle, and that a committee of three be appointed to secure, if possible, a uniform rate of twenty-five cents commission per head for selling cattle. Also commending the weather bureau, and that a committee of one from each state and territory be appointed to secure widely distributed and best results from the same. Referred to the committee on resolutions.

Mr. Brokate, secretary of the National Butchers' Protective association, upon invitation then read an able and exhaustive paper upon the relation of the butchers of the country to the producers of meat. He appealed to the convention to stand by the different markets of the country, to build them in all large cities wherever the location will admit and thus give the butchers the privilege of entering into competition with the different syndicates and again restore the good old times when the supply and demand shall control the markets and not the Big Four.

Mr. E. M. McGillin was then invited to the platform, and in a short address presented his plan of relief. The subject matter of Mr. McGillin's discourse seemed to find favor with the convention, but did not meet with an enthusiastic reception from the delegates and after some considerable discussion in which a great deal of rambling talk was indulged in it was referred to the board of directors for further consideration.

Mr. D. E. Bentley, of El Paso, Texas, then took the floor upon invitation of the convention and delivered one of the ablest addresses of the meeting: Mr. Bentley's remarks were received with applause and on motion his address was incorporated in the minutes of the meeting. The convention then adjourned till 2 p. m., at which time the convention was called to order and resumed work.

Messrs. J. C. Burney, D. B. Whitney, and — French, Nebraska, were admitted upon the floor of the convention, also F. E. Page, of the Pawnee Valley Live Stock association of Kansas.

Upon motion of Mr. H. B. Stoddard, of Texas, chairman of the committee on revision, the constitution was taken up for adoption. It was read and acted upon section by section. The first objection was upon section 4, which provided for the officers of the association.

It was moved by Mr. Buzzard, of Texas, that "the affairs of the association be conducted by the president, first vice-president, secretary and treasurer." This amendment was adopted.

Mr. Bronson, of Texas, suggested that the executive board be composed of associations rather than states. His suggestion was submitted in the order of a motion, and the matter was dismissed.

Brewster Cameron objected to the change, and based his objection upon the ground that no equitable representation could be made, inasmuch as a man representing an association of 10,000 head of cattle would have the same influence as one representing 100,000 head.

J. L. Brush wanted a general discussion of the point, as it was very important.

Governor Hadley, of New Mexico, spoke in favor of having the representation from the states and territories, though he admitted it was less democratic than the proposition to make the representation by associations. The motion was withdrawn, and the section was adopted as read.

In reference to article 2, section 8, Brewster Cameron moved that the word "first" be substituted for "senior" before vice-president, which was adopted.

Major Buzzard moved as an amendment to the same article that the secretary give a \$50,000 bond.

Colonel Simpson, of Texas, coincided with Mr. Buzzard, and said that the convention should not throw the responsibility of a bond upon the executive committee.

Mr. Cameron moved as an amendment a \$25,000 bond.

Vote was taken upon the \$50,000 bond, and it was passed.

Article 4 of the section being read, Brewster Cameron, of Arizona, moved that a \$50,000 bond be imposed upon the treasurer, which was adopted.

The remaining sections being read, the constitution and by-laws were adopted without material change.

As adopted they read as follows.

SECTION 1. This association shall be known as the International Range Association.

SEC. 2. The object of this association shall be the promotion and development of the cattle and horse growing interests of the range country of North America, the promotion of special wants of the different sections thereof not inconsistent with the general good, the prevention of the introduction of contagious and infectious diseases among neat cattle and horses, the prevention and punishment of crime against property, securing just, reasonable and certain rates for the transportation of live stock, protection of range possessions, and generally to bind together a common interest in that the same may be fostered, developed, systematized and guarded.

SEC. 3. Membership in the association shall be by associations and societies, which are now or may be hereafter organized for the objects above named, and that include range cattle and horses. Each of such bodies may become a member upon the consent of this association thereto, by application and payment of fees, shall hold one membership, and shall pay the entrance fee and such assessments as may be made from time to time.

The representation in the International Range Association in its annual meetings, and at all called meetings thereof, shall be by delegates duly appointed and accredited upon the basis following, that is to say: Each association or society, or combination of associations, controlling collectively not less than 10,000 head of neat cattle or horses, or both, may be admitted to the International Range Association, and shall be entitled to one delegate, and every 25,000 additional head thus controlled and reported shall be entitled to an additional delegate.

Provided, That no state or territory shall be entitled to more than one-fourth of the entire vote of the association at any regular or special meeting, and that in every case the taxation for the support of the association shall be in proportion to the vote to which each state or territory is entitled, and no individual or association of individuals, stockmen or others, shall have the privilege of voice or vote at any meeting, regular or special, of this association except he be a regularly appointed delegate from some local association which is a member in good standing of this association, and no person shall be eligible as a delegate who is not himself a bona fide owner of live stock in the range country and a member in good standing of a local association.

SEC. 4. The officers of this association shall be a president, vice-president, secretary, treasurer and board of directors, consisting of one member from each state and territory within the jurisdiction of the association, of which the president of the association shall be a member ex-officio and the presiding officer.

The board of directors shall appoint an executive committee, to consist of three members, inclusive of the president of the association, who is hereby constituted chairman of such committee, and to this committee shall be delegated all powers which are granted to the board of directors in article 5 of this constitution.

The time, place and frequency of meetings of the executive committee shall be such as may be deemed in their judgment advisable.

There shall also be a vice-president elected from each state and territory.

SEC. 5. All of said officers shall be elected by ballot at the annual meeting of the association, and shall hold their respective offices for one year and until their successors are duly elected and installed. But said board of directors and said vice-presidents shall be selected in the following manner, that is to say: The delegation from each state and territory shall name the vice-president and the member of the board of directors from their own jurisdiction.

SEC. 6. Each association or society on becoming a member shall pay an entrance fee of \$25.00. Such fee shall be due and payable in advance; and in addition thereto such assessments not exceed-

ing in any one year one-half cent per head on all the cattle and horses represented by the association, as the board of directors may assess and levy from time to time by virtue of and pursuant to the by-laws hereof. Any such association or society failing to pay assessments within six months after the time the same shall be due shall cease to be a member, but may again be admitted by payment of the amount it may thus be in default, within the discretion of the board of directors.

Sec. 7. In case any vacancies occur in the board of directors the same shall be filled by the state or territorial association where the vacancy occurs, and the person so appointed shall hold office until the next regular session.

The board of directors shall meet immediately after their election. The board shall have entire control of all business of the association during its adjournment. It shall audit all accounts and order vouchers before proper payments, to be drawn by the secretary or treasurer. It shall represent the association in all matters arising during the adjournment of the association. At each annual meeting this board shall make a report to the association in regard to all matters requiring its attention, and shall make such recommendations as they may deem advisable.

No changes were made in other sections of the constitution which stand as they were adopted last year.

The convention being called to order on the morning of the third day the Hon. Brewster Cameron moved the suspension of the rules, and the adoption of the following resolution:

WHEREAS, The Hon. Norman J. Coleman, commissioner of agriculture, under the limited powers granted by congress in the act creating the bureau of animal industry, has done everything possible to protect the cattle industry of the United States from the ravages of pleuro-pneumonia, therefore,

Resolved, That the thanks of this association are due and are hereby tendered to the honorable commissioner and his corps of assistants.

Secretary Leary moved to refer the resolution to the committee on resolutions, and on motion of Mr. Brush that motion was laid upon the table.

J. L. Brush—I trust that this resolution will carry as I have been in a position to know that Mr. Coleman has done all that he was empowered to do to carry out the duties of his office as commissioner.

Gov. Routt—I too, favor the resolution, as I believe that Mr. Coleman has done his duty in the matter of contagious diseases, and I always favor proper expression of appreciation of all men who faithfully and honestly discharge their duties as public officials.

The resolution was unanimously adopted.

Mr. T. R. Jones, of the Southern Colorado Cattle Growers' association was admitted as a delegate.

Mr. Ike Pryor, of Texas:

Resolved, That we as representatives of the range cattle industry, do hereby recommend and request that all parties driving cattle from any state or territory to another where quarantine regulations exist, do faithfully comply with such rules and regulations as their respective sanitary boards may agree upon, and we heartily disapprove of any attempt to violate said rules and regulations.

Governor Hadley, at the unanimous request of the convention, then read an admirable address on the benefits of organization to the range cattle industry.

The following resolution was then presented:

WHEREAS, Reports have been circulated by parties ill-advised or misinformed relative to the condition of the range cattle growing industry of the United States, representing the financial status of the business in a light which has no relation to the facts, magnifying a few individual failures by giving to them a general application as illustrating the instability of the industry, and otherwise seriously misrepresenting the people who have their capital invested and are employing their energies in this occupation; and

WHEREAS, Such false reports have appeared in several current journals in various parts of the country where the condition of our business is not understood, and have and may operate to the injury of an important and legitimate industry; and

WHEREAS, A careful investigation has demonstrated that no other branch of business presented in the United States can be credited with a less number of financial failures than the live stock growing industry, and that such failures as have occurred are directly attributable to land and other speculations foreign to the business; therefore,

Resolved, That this International Range association, composed of men from the various states and territories engaged in range stock growing, take this opportunity to deny the truth of the reports aforesaid, that, while we have shared in the general depression which has prevailed, and are subject to some unjust restrictions in marketing our product, we are yet able to declare our business in a reasonably healthy condition, with every indication of a marked improvement in the future.

Governor Routt moved that the rules be suspended and the resolution passed.

Governor Hadley spoke in favor of the resolution, saying, as far as New Mexico was concerned, it was not only not bankrupt nor was it on the verge of bankruptcy. It was true that the profits of last year were small, but the statement that cattlemen were bankrupt did not apply to New Mexico at least, for there was not a cattleman there whose check was not good. He therefore hoped the resolution would pass.

Various resolutions having reference to the weather bureau, the regulation of the commissions on cattle, etc., were then introduced, and on motion were referred, together with all other matters that had come before the convention wherein suggestions were contained for relief from the exacting conditions now surrounding the industry, to the board of directors who should take them under consideration.

The election of officers was then taken up and resulted as follows:

R. G. Head, President; J. L. Brush, First-Vice-President; J. C. Leary, Secretary; J. A. Cooper, Treasurer.

Vice-Presidents were chosen as follows, each delegation announcing its choice under the call of the state: Alfred Butters, Colorado; H. Milne, New Mexico; B. F. Buzzard, Texas; H. J. Faust, Utah; R. D. Hunter, Montana; T. H. Logan, N. W. Territory. Arizona was passed.

The executive committee were next chosen, as follows: Brewster Cameron, Arizona; J. L. Routt, Colorado; O. A. Hadley, New Mexico; C. C. Slaughter, Texas; E. S. Newman, old Mexico; H. M. Taylor, Montana; H. L. Niedringhaus, N. W. Territory; James Andrews, Utah.

The board, as chosen, was then declared the board of directors for the ensuing year, and a meeting was announced to be held at the Windsor hotel.

A resolution of thanks to the citizens of Denver for courtesies extended was passed, also a vote of thanks to the sergeant-at-arms, George T. Haswell.

In reply to a question of governor Hadley, of New Mexico, Mr. Brush stated that the expenses of the convention were very kindly paid by the citizens of Denver.

Notice of the ball was given, after which the convention adjourned *sine die*.

Bullard & Co. have now at both their houses at Liberty and Endee a full supply of what the stockman wants for his camp and the cowboy for his outfit.

San Miguel Stockmen.

At the Plaza hotel on Feb. 15, 1887, was held a meeting of the executive committee of the San Miguel association, called by W. B. Stapp, chairman.

Those present were R. Mings, G. W. Stoneroad, N. B. Stoneroad, F. N. Page, W. B. Stapp and C. A. Rathbun.

The minutes of the last meeting were read and adopted.

Collections reported by the secretary were: Montezuma Cattle company, \$66.45; Stapp, Ennis & Co., \$27.75; Las Vegas and Quincy Cattle company, \$24.85; W. B. Stapp, \$18.00; Barash & Block, \$11.15.

The total amount paid to the Northern New Mexico association is \$296.10, leaving a balance of one hundred dollars still due upon inspection expenses for 1886.

Mr. Page moved that the bills payable of \$185.10 due the First National bank be adopted as an obligation of the association and that the treasurer be instructed to pay the same from any funds received by him. Adopted.

Mr. Stoneroad moved that the secretary be instructed to request the presence of all members at the next annual meeting, and to invite their respective foremen to be present at the meeting.

Mr. Stapp, chairman, having employed Jno. W. Garrard as inspector at Las Vegas, commencing Jan. 9, 1887, at a salary of fifty dollars per month, to continue until April 1, or until arrangements for the year has been made, Mr. Stoneroad moved that this action be approved and that Inspector Garrard be continued as inspector for the association. Carried.

Mr. Mings moved that the chairman and secretary be instructed to confer with the Northern New Mexico association in regard to inspection for the coming year and be empowered to act for this association. Carried.

It was moved by Mr. Page that the notice of the call for the annual meeting be published in the *Weekly Optic* and *The Stock Grower*.

Mr. Stapp moved that the name of Robert Mings be recommended to the governor for appointment as one of the three commissioners to be appointed under the new quarantine law.

The meeting then adjourned.



BORDERER of Drumlanrig. (2028) Property of BUSH & MORSE.

BUSH & MORSE,

Windsor Farm, Denver, Colorado,

Breeders of Thoroughbred

Galloway Cattle

Cattlemen and others invited to visit our farm, and appointments can be made at the Windsor hotel.

Specimens of our herd can be seen at any time at

Geo. L. Goulding & Co.'s Corral,

Corner Wazee and Sixteenth streets, who are agents for the sale of our cattle.

Illustrated catalogue mailed on application.

HIGH GRADE HEREFORD BULLS.

RANGE RAISED AND ACCLIMATED.

We have for sale fifty well grown two year old and yearling high grade Hereford bulls raised on our Colorado ranches. Also 100 Colorado cows in calf to registered Hereford bulls. The registered bulls in use are the get of such sires as "Assurance," "Legrehan," "Anxiety," "Archibald," "Bredwardine," "Earl Horace," "Lord Wilton," "The Grove," "Rudolph," "Sunrise," "King of Hearts," "Winter de Cote," and other royal prize winners. Address,

THE DEL MONTE LIVE STOCK COMPANY,

Henry Van Kleeck, Manager.

PONCHA SPRINGS, COLORADO.

Great Loss of Cattle in Montana.

Butte, Mont., Feb. 9.—The thermometer has been ranging from 40° to 60° below for the past ten days. Specials from Fort Assinaboine, Fort Shaw and Benton say cattle are now dying from exposure by the thousands.

Bismarck, Dak., Feb. 10.—Reports are coming in daily from the ranges near Blunt of the loss of cattle, owing to the scarcity of feed and insufficient protection from the severe winter weather. There has been snow continuously since the middle of November and it has been necessary to feed them during that time.

Butte, Mont., Feb. 12.—Reports received from Fort Benton, Fort Assinaboine, and upper river towns, say the loss of life from the cold will be larger than anticipated. Ranchmen were unable to go after fuel. Those going from one town to another were lost in the blizzards. A great many cowboys, endeavoring to drive cattle, were frozen. Some have to get their lower limbs amputated.

Salt Lake City, Utah, Feb. 13.—The stock losses of our Montana friends must be something fearful to contemplate. With the thermometer showing forty-eight degrees below zero and the wind blowing a hurricane, there is nothing for a starving animal to do but to die. We expect to hear that whole herds have been swept away, and the loss must be almost beyond estimate. It seems clear that the storm and cold combined which struck our sister territory last week made the conditions more severe than there has been any record of for years.

Ft. Keogh, Mont., Feb. 14.—In round numbers there were January 1,200,000 head of cattle and 25,000 sheep on the ranges north and south of the Yellowstone river within a radius of one hundred miles of this point. Up to that date stock had not suffered much from the severity of the winter, but during January and half of February, just closing, storms have been of unprecedented frequency and the temperature averaged the lowest for fifteen years. It is not possible to accurately estimate the losses, but they have been enormous, in some place amounting to practical annihilation of whole herds.

A Bogus Cattle Company.

St. Louis, Mo., Feb. 8.—A telegram from New York announces the arrest of John W. Clark, charged with swindling J. F. Jackson, of Philadelphia, out of \$1,750 by giving him bogus collateral in the Clark Land and Cattle company. Clark operated extensively in this city. The company is not altogether a myth, as stated, although its status at present is somewhat vague. About three years ago Clark came to St. Louis and formed a stock company for the breeding of cattle in Texas. At that time the cattle fever was at its height, and a company was formed with a capital stock of \$500,000, of which Clark, who was elected president, claimed to own seven-eighths. Jacob S. Merrel, now dead, was elected vice-president, George T. Malone, treasurer and Silas F. Cathings, secretary. Considerable land in Dawson county, Texas, was purchased, which it was proposed to stock with cattle. Whether the land was ever stocked it is impossible to discover.

The only man connected with Mr. Clark or his company to be found in St. Louis is Capt. C. P. Walbridge, executor of the estate of Jacob S. Merrel. Mr. Walbridge says that all he knows of the concern is that the Merrel estate holds a note of the company for \$1,200 advanced by Mr. Merrel to Clark and a block of the Clark company's stock, the face value of which is in the neighborhood of that sum. Mr. Walbridge says that the consideration of this money was the undoubted cause of Mr. Merrel's election to the vice presidency. Shortly after his father-in-law's death Mr. Walbridge sent the note for collection to a bank in Lampasas, Texas, but it was returned. He then placed it in the hands of attorneys for collection, where it now is. "The name of Mr. Merrel being connected with the company," said Walbridge, "gave it a certain amount of stability, but beyond the loan to Clark he had nothing to do with the company at all. I saw Clark sometime after Mr. Merrel's death, when he said he was anticipating acquiring some money and would pay the note. At the time of Mr. Merrel's death Clark was in Europe."

It is believed here that the company was not what it appeared to be. Clark left for the east several weeks ago.

FROM ALL POINTS.

Live Stock Notes Carefully Collected From Every Source.

The stock cattle trade is "looking up" in Chicago.

It is reported by New York dailies that the National Consumers' Meat company about which so much has been written, has gone to pieces.

New York received more than five times as many live cattle as Boston, last year, although Boston received over twice as much dressed beef as New York.

Canned corned beef is advancing rapidly, being influenced by the large purchases made of late for European account. It is estimated that orders have been accepted for 20,000,000 pounds for shipment.—*Chicago Commercial.*

The foreign supply of cattle in Great Britain, in 1883 numbered 163,800; in 1884, 158,002; and in 1885, 144,380. Of sheep the foreign supply consisted of 803,341 in 1883, 692,422 in 1884, and 602,011 in 1885.

J. W. Buster, manager of the Continental Cattle company, returned after a two weeks visit to St. Paul and the Ice Palace, on Friday morning. He says that the Ice Palace is the biggest thing he has seen for years, and that he bought it, to be delivered in July.—*Miles City Journal.*

It is a matter of belief that old meat—that is, meat from aged animals—is uniformly tough, and that from young as uniformly tender. There is something fallacious in this view, but if old beasts are fattened rapidly and killed when in the flush of condition the meat will be tender, but if killed when in a shrink condition the meat will be tough.

Talking of range losses, the *Rocky Mountain Husbandman* says: "From the best information we can get we cannot hope at best to get off with a less loss than was experienced in the winter of 1879-'80, or rather the spring of 1880, while there are some localities where it will, in all probability, reach that of 1881, the spring following the hard winter." Montana seems to be faring worse than any other section in respect to losses.

Mining stocks had their wild boom, and bonanza kings, ditto railroads and other new innovations. So also have the cattle ranchmen, and those now in the business must feel the effects of a reaction, that, though it works hardship to many, is but the beginning of a sound, healthy and remunerative basis for one of the greatest industries that man can engage in, but it must be conducted on economical business principals.

Ranchmen holding cattle in the southwest are in the most cheerful mood. The winter, so far, has been most favorable, and cattle have done unusually well. Reports from Kansas, Colorado, New Mexico and Arizona ranges all agree that cattle have so far fared well. The grass cured well last fall and cattle went into winter in good condition, and while the weather has been cold there has been few storms and in consequence nothing to drive cattle about.—*Kansas City Record.*

A number of Texas cattlemen were in Kansas City last week en route to the Denver Range convention. They were Ike T. Pryor and Geo. W. Littlefield, of Austin, and A. H. (Shanghai) Pierce, of Galveston. They all agree that the outlook for the coming season is much more encouraging than in 1886. While no speculative advance is looked for in the market, it is thought enough improvement will be had in prices to put the ranchmen in a more healthy shape.—*Kansas City Record.*

W. W. Patterson, of Grayson, is making arrangements to pump water from the San Joaquin river California for the purpose of irrigating a large tract of the land on the Patterson grant for the purpose of growing alfalfa for stock raising. Irrigation by pumping water from rivers has been discussed for some time among people who have studied artificial irrigation, and the plan of Mr. Patterson will be watched with interest. The proposed pump will have a capacity of 10,000 gallons a minute.—*Breeder and Sportsman.*

The estate trade is strengthening, and contracts for spring delivery are being talked about very freely. The demand is as yet uncertain, but there are a very respectable list of buyers in the field. Prices are likely to be uncertain for several weeks, and the impression prevails

that delays are in the sellers' favor. To stockmen the situation appears encouraging. To this date (the 14th February) the winter has been uncommonly friendly, so that the range element believe more fully in a repetition of the winter of 1881-2.—*Texas Ex.*

It is reported upon good authority that the Stock Yard company has taken up the bonds of a new commission firm because the firm is alleged to have sold some cattle recently and held back 10c per cwt. of the proceeds in addition to the regular commissions. The head of the firm is one of the oldest Illinois cattle shippers. It is hoped the charge may not prove to be correct, but if it does the rascals should go. Mr. C. F. Pierce, of Camp Point, Ill., is said to be the man who was *unfairlanded* this time; the cattle selling at \$4.75 to Eastman and being returned at \$4.65.—*Chicago Drivers' Journal.*

Ranches in Montana are so detached that but little reliance can be placed upon rumors concerning the condition of stock. Fall feed was short, but strong and good, and sheep went into winter in excellent shape. The storm in November brought us sudden cold; a regular blizzard, causing more or less loss among sheep from scattering. The month ending Jan. 20, has been trying, owing to snow and high winds. Snow on a level of eighteen inches in many places was something unusual in Montana, and many sheepmen were obliged to feed hay, but recent light chinooks from the southwest Montana reports serious losses by those without hay.—*Stock Gazette.*

The Beaver Land and Stock company was organized this week by Fort Morgan and Greeley men, with a capital stock of \$30,000. The incorporators are A. S. Baker, J. W. and J. E. McCreery, et al. The company owns 4,800 acres of choice farming land situated south of Brush and under the Platte and Beaver canal. The object is the growing of live stock and the improvement of these lands, looking to their final sale as farms. The lands will be suitably fenced and on each quarter section forty acres will be seeded to alfalfa. For the present stock will be the principal care of the company, but from time to time farms will be sold off as wanted.—*Fort Morgan (Colo.) Times.*

Dishorning cattle is growing in favor. The best time for the operation is at one month old, when, according to Prof. Wallace, the embryo of the horn can be cut with a pen knife, close to the skull, taking a little skin with it, causing but little suffering. The *American Dairyman* says: "The head of a full grown animal must be confined so that the horns can be got at. Then a sharp butcher's saw makes quick work. A little blood flows; but it soon stops. After this there is a quite, well-behaved beast in the herd, with a saving in every way—less danger to man and beast, less feed consumed, more benefit from what is eaten, fewer abortions and greater comfort to the previously bullied and bruised animals. Let the good work go on.—*Texas Farm and Ranch.*

On the evening of election day, 1886, the bonfire corner Railroad avenue and Center Street, was not entirely to celebrate that occasion, but also to burn the garden seeds remaining from the stock of last year under D. Landreth & Sons' cremation system, which were entirely destroyed. The new stock advertised in our columns by Browne & Manzaneros Co. are all guaranteed fresh.

Wool Growers.

The representative wool growers of New Mexico perfected their permanent organization at a meeting held at the Palace hotel, Santa Fe, on February 10th, by electing the following named officers:

President, Tranquillino Luna, of Valencia.

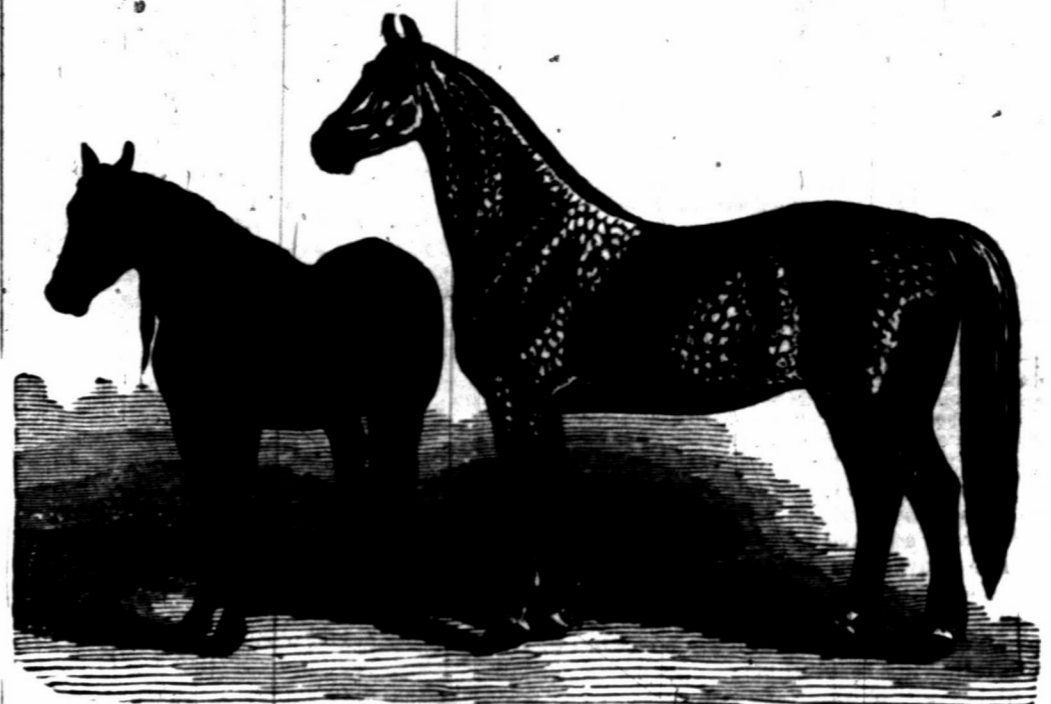
Vice-president, Pedro Y. Jaramillo, of Rio Arriba.

Secretary and treasurer, Amado Chavez, of Valencia.

The gentlemen present represented nearly 1,000,000 head of sheep.

An executive committee was appointed comprising one member from each county as follows:

Percheron Horses!



Pony mare and colt, by imported Success. Weight of mare, 750 lbs.; colt, 1,200 lbs.; sire, 1,700 lbs.

OVER ONE HUNDRED HEAD OF IMPORTED PERCHERON, FRENCH COACH AND GRADE STALLIONS AND MARES.

The largest collection of draft and coach stallions in the west. My imported Percherons were selected from M. W. Dunham's latest importation, which arrived in August, and are all recorded in the stud books of both France and America.

THE FRENCH COACH HORSES

Are fine styled, smooth formed and solid colored, combining size, action, beauty and endurance. Weight, 1,200 to 1,400 pounds. These horses are the get of some of the best coach stallions owned by the French government (some of the pedigrees tracing back more than one hundred years). The government certificate of breeding will be furnished with each horse.

In making this selection it has been my aim to combine individual merit with the finest breeding, using my best efforts to procure the choicest specimens of draft and coach horses that could be obtained.

I am prepared to make as low prices and as favorable terms as can be made on the same quality of stock from any other stud in America. Every horse guaranteed as represented, and a sure breeder. Special rates made on the shipment of horses for breeding purposes, to any point in Colorado or the south or west.

Persons who desire to compare and examine these two great breed of horses, will here find an opportunity seldom offered, and are invited to come and see them. Correspondence solicited.

JNO. A. WITTER,

DENVER, COLORADO.

Office, Room 5, Evans Block. Stable, 16th and Wazee Sts. 45-6m



MARRS, MIDDLETON & HUNTER,

THE

LEADING LIVE STOCK MERCHANTS

OF DENVER, COLORADO.

LARGEST BUSINESS OF ANY FIRM IN THE CITY!

A big stock of all classes of cattle and horses always on hand.

We defy competition in prices. Liberal advances made. Stable and yards: 1704 to 1728 Wazee street. Branch office, Union stock yards.

Santa Fe, Ambrosio Pino; San Miguel, J. G. Chavez; Rio Arriba, Reyes Gonzales; Taos, Pedro Sanchez; Mora, Wm. Pinkerton; Colfax, C. B. Ladd; Valencia, R. A. Baca; Dona Ana, Nestor Armijo; Sierra, J. M. Tafoya; Lincoln, Jose Montano; Grant, Sutherland; Socorro, Eutimio Montoya; Bernalillo, M. S. Otero.

Hon. M. S. Otero, of Bernalillo, was chosen chairman of the executive committee.

It was ordered by the executive committee to have 200 copies of the by laws and rules printed in Spanish and English, for the use of the members; also to get all the necessary books and stationery for the secretary.

A committee of five members was appointed for the purpose of conferring with the Territorial Cattle association whenever any question may arise between cattle owners and sheep owners, with a view to their settlement. This committee is composed of the following members: T. D. Durns, Pedro Perea, J. G. Clancy, Solomon Luna, William Pinkerton.

Adjourned subject to the call of the president.

The *Vernon Guard* makes this suggestion: Live stock is not worthless out here. Prices, it is true, are low, but they are sure to rise in a comparatively short time, at least. Farmers and stock raisers of Northwest Texas who live to witness this rise in the stock market will be divisible, of course, into several classes. One class will comprise those who have sold their stock for one-half, or less, of its true value. Another class will consist of those who might have had a hundred, or, for that matter, several hundred head of stock, but did not think them worth buying until after the price got too high. Then there will be the good old stable class of common sense, practical men, who will find themselves enriched in a hurry, because they acted all along on the principle that milk and beef production can sustain no more than a temporary shock while human tastes remain as they are. Which of these classes will you join, reader?

Notice.

LIBERTY, N. M., December 15, 1886.—No one is authorized to contract debts or make collections in my name without written order from me. JOHN DIXON.

The  
To TA  
Ang  
rapid  
quenc  
been p  
in the  
inform  
useful  
but sli  
of our  
It i  
month  
inter  
ico wi  
topogr  
pure a  
closer  
condit  
Minor  
nature  
prehaj  
It is a  
try is  
to met  
stock.  
gating  
and as  
and en  
has int  
of 3,00  
of pu  
thus f  
has all  
no wil  
thous  
ains o  
cade.  
We  
goat is  
in Ash  
in larg  
The fi  
(six fe  
Dr. J.  
Many  
when  
crease  
States  
where  
climat  
cessful  
as and  
are to  
by Bai  
Weyar  
4,000 t  
& Pari  
5,000 e  
in Nev  
1,500 h  
1,000  
head,  
head,  
comm  
Puebl  
which  
the Ar  
We  
this an  
merce,  
the va  
produc  
that t  
United  
of the  
be im  
Cape c  
The  
this bu  
the cor  
to thro  
color,  
graded  
are we  
head,  
first cr  
to five  
to the  
ten de  
Angor  
from \$  
in Nev  
mohai  
upon  
cross s  
quarte  
and ha  
second  
pound  
and fif  
pure-b  
sional  
shear  
The  
given

**The Angora Goat in New Mexico and Arizona.**

To The Stock Grower:

Socorro, N. M., Feb. 5, 1887.

Angora goat husbandry is developing so rapidly and promises to be of such consequence in the near future—having already been productive of such surprising results in the United States,—that a few words of information on the subject may be both useful and interesting to those who are but slightly acquainted with this branch of our animal industries.

It is only within the past eighteen months that it has been known to a few interested in the subject, that New Mexico with its high altitude, its mountainous topography, combined with its dry and pure atmosphere, bearing in every way a closer relation to the climate and natural conditions of its native country, (Asia Minor), is more especially adapted to the nature and wants of the Angora goat than perhaps any portion of the United States. It is a fact still less known that the industry is one of the most profitable—notably to men of small means—of any in live stock. The writer commenced investigating the subject early in the year 1885, and as a result, he has established a ranch and engaged in the business himself and has introduced into the territory upwards of 3,000 grade Angoras and over fifty head of pure-bred animals. The experience thus far had, though of short duration, has all been favorable and it is probably no wild prophesy to predict one hundred thousand Angoras for the hills and mountains of New Mexico within the next decade.

We will say briefly that the Angora goat is a native of the province of Angora in Asiatic Turkey, where it has been bred in large numbers for thousands of years. The first importation to the United States (six females and two bucks) was made by Dr. J. B. Davis, of South Carolina, in 1849. Many importations have followed, since when they have gradually spread and increased in different parts of the United States and the industry has been lucrative where mountains, brushy hills and a dry climate exist. At present the most successful results have been attained in Texas and California and the largest ranches are to be found in these states, being led by Bailey, of California, with 8,000 head, Weyand, of the same state, with from 4,000 to 5,000 head, Arnold Bros., Devine & Parish, of Texas, with from 3,000 to 5,000 each. The largest flocks, we believe, in New Mexico, are Brooks & McKee, 1,500 head; St. Clair, of Monica springs, 1,000 head; Garst, of Pecos river, 900 head, and Wickham, of Fort Wingate, 700 head. There are also a great number of common goats owned by Mexicans and Pueblo Indians throughout the territory which will all eventually be graded up by the Angora.

We presume it unnecessary to state that this animal produces the mohair of commerce, or to undertake to go into detail of the various uses to which this valuable product is applied. It is sufficient to say that there is an active demand in the United States, and that ninety per cent. of the mohair used in this country has to be imported from Asia Minor and the Cape of Good Hope.

There are two methods of engaging in this husbandry, either by commencing with the common goat, which costs from two to three dollars per head, according to color, or with does which have been graded up from common stock and which are worth from four to ten dollars per head, according to quality and grade. The first cross (half-blood) being, say from four to five dollars per head, and from that up to the fourth and fifth cross (15-16 or 31-32) ten dollars. In either case, pure-bred Angora bucks must be used which cost from \$50.00 to \$65.00 per head, delivered in New Mexico or Arizona. The clip of mohair to be expected depends, of course, upon the grade of the animals; the first cross shearing an average of about three-quarters of a pound, is known as "trash" and has but a slight market value. The second cross will usually average 1½ pounds; third cross 2½ pounds; fourth and fifth cross, from 3½ to 4½ pounds; pure-breds from 4½ to 6 pounds. Occasionally there are pure-bred bucks that shear ten or twelve pounds.

The quotations for domestic mohair as given January 1st, 1887, by William

McNaughtans' Sons, of New York, the largest and best known mohair commission house in the United States, are as follows:

Choice, pure-blood	40@45c.
Superior, full-blood	35@40
Fair, fifth cross	30@35
Ordinary, fourth cross	25@30
Inferior, third cross	15@20
Trash, hair, first and second cross	8@15

These prices are laid down at New York for the fleeces just as they are sheared from the animal. Five cents will cover freight, commission and all other charges and should be deducted from the above prices to arrive at the value at home.

Possibly no better method can be employed of giving a fair idea of the opportunities for profit and loss in this business than to illustrate by example, and in arriving at the results set forth below, care has been taken to obtain the actual and practical experience of breeders who have been engaged in the business several years, and the minute detail, given as to the cost of herders, salt, stake ropes, taxes, death losses, etc., can leave no doubt as to the approximate correctness and conservatism of the estimates that follow. We will say that the new beginner will commence with:

600 ¼ to ¾-bred Angora does at \$4.50	\$2,700 00
240 ¼ to ¾-bred wethers at \$3.50	840 00
To this must be added 6 pure-bred bucks at \$55	330 00
<b>Original investment</b>	<b>\$3,870 00</b>

An estimate of the expenses of the year will add to this:

Herder's wages at \$20 per month	\$240 00
"Grub" for herders at \$10 per month	120 00
Extra herder for three months during kidding season	60 00
"Grub" for extra herder at \$10 per month	30 00
Spring shearing expenses at 2½ cents per head	21 00
Fall shearing expenses at 2½ cents per head	21 00
Taxes 1¼ on two-thirds valuation	45 15
Stake ropes at 3 cents per kid	18 00
Salt at 3 cents per head	25 20
Incidental expenses, marketing mohair, etc., at 3 cents per head	25 20
<b>Total expenses</b>	<b>\$605 55</b>
Death loss 2½ per cent.	96 75
	<b>\$702 30</b>

No other expenses will be required and amounts to eighty-three and a half cents per head on a herd of from 800 to 1,000 head. For a herd of twice the size of the one in question, the additional expense would be just double the various items mentioned, except as to the herder and his board (as one herder can take care of 2,000 or 2,500 as well as a smaller number and the incidental expenses would be no more), making the expense for the larger number, 1,680 head, amount to \$1,019.40, or in round numbers sixty cents per head. In this climate no shelter is required, consequently no improvements in the way of sheds, fenced pastures, etc. will be needed.

Many breeders raise an average of one and one-fourth kids to every doe. From correspondence had upon the subject, while none have estimated less than 100 per cent., yet we would exclude the one year-old does from this estimate; that is we think it perfectly safe to calculate upon raising 100 per cent. of kids to maturity from all does two years old and upward. Some good breeders of long experience run one buck to every 100 or 125 does. Bailey says one buck to every fifty does, but he may be influenced in this statement by his desire to sell bucks. Another prominent California breeder has for the past three years run one buck to every thirty does and has raised 122 per cent., 130 per cent. and 127 per cent. of kids to maturity in each year respectively, counting all his does from two years old up.

To make a conservative estimate, one can safely calculate upon an income for the first year, ending December 31st, as follows:

600 kids from 2 to 8 months old at \$2.50	\$1,500 00
6 thoroughbred fleeces, 36 lbs., at 40 c.	14 40
1,000 lbs. of mohair, spring and fall shearing, at 7½ cents net	75 00
<b>Total receipts</b>	<b>\$1,589 40</b>
Deducting expense account and death loss as above	702 30
<b>Net profit</b>	<b>\$887 10</b>

Or a return of twenty-three per cent. upon the original investment. This percentage of profit would be increased to twenty-eight per cent. upon a herd of twice, and to thirty per cent. upon a herd of three times the number on which this estimate is based. This profit, as large as it is, will become greater, not only in proportion to the increase in numbers from

year to year, but will also be affected favorably by the superior quality of mohair produced and the enhanced value of the kids as they arrive at maturity. To arrive at the percentage of profit, which must be considered as interest returned upon the original investment, for the second year, we must add to the expense account for the running of the 600 additional yearlings, and to the receipts for the mohair clipped from them, and thus pursuing the same course for the third, fourth and fifth years and so on, the original investment not changing, we will find that the annual interest return upon the capital first employed would soon become something fabulous.

There are two methods of handling wether goats. The first and most profitable, after the third cross, is to keep them for shearing. The second is to slaughter them, selling the carcass to butchers and the pelts, when cured, to the hide dealers. The first course is the one adopted in the foregoing estimate. The second would be the best one to pursue until the wethers become what is known as "shearing" wethers.

The Angora goat as an article of food, is most excellent, and there can be no doubt that as it becomes better known and prejudice dies out, there will be a great demand for it. The meat is strong only when the kids have been allowed to run until from four to six months old before castrating. There is none of that sheepish taste so objectionable to many and to be found always in mutton. The writer, in connection with Mr. McKee, sold in the winter and spring of 1896, 200 Angora wethers to the butchers of Socorro, N. M., at \$2.25 per carcass, and the pelts to the Browne & Manzanares company at from seventy five cents to \$1.25 each, thus obtaining an average of a trifle over \$3.00 per head. It being an experiment with the butchers, and knowing the prejudice that existed against the meat, they offered it at first as mutton until the demand became so much greater than they had ever had for mutton that they met their customers' praise of the meat with the information that they had been eating Angora goat meat instead of mutton, but in every instance the customer continued to purchase it. A letter but recently received from Mr. McKee states that he has recently contracted 300 wethers at \$3.00 per carcass, reserving the pelts, which is equal to from \$3.75 to \$4.00 per head, and this at a time when mutton wethers are selling at from \$1.25 to \$2.00 per head, including the pelts.

That there is a sentiment existing in the mind of almost every one against the raising of Angora goats as a business, cannot be denied, and arises mainly from a want of knowledge upon the subject and from a narrow prejudice formed from "rank smelling" recollections of the old-time "billy" of the village livery stable. But the beautiful pure white Angora, with its long, silken fleece, is as different from the ordinary goat as are the finest bred horses from the Spanish bronchos of New Mexico or the mustangs of Texas.

There are but few who have the faintest conception of the extent to which the goat industry figures in the world's economy. A reliable statistician, in a recent article giving the number of live stock of the world, after referring to the number of sheep in the world says:

"Although this country has not quite one-twelfth of the sheep in the world, yet in goats (a large proportion of which are wool or mohair producing), we are very considerably behind as the following compiled table shows:"

India and Asia Minor	20,000,000
Africa and the Cape of Good Hope	11,000,000
Turkey, European	6,000,000
Mexico	8,000,000
Spain	5,000,000
Venezuela	4,000,000
Greece	4,000,000
Russia, Asiatic	4,000,000
Germany	4,000,000
Italy	2,000,000
Cape Verde Islands	2,000,000
Argentine Republic	2,000,000
United States	2,000,000
Arabia	2,000,000
China	2,000,000
Chili and Peru	2,000,000
France	2,000,000
Russia, European	2,000,000
Austria	2,000,000
Servia and Roumania	1,500,000
Portugal	1,500,000
Uruguay	1,000,000
Sweden and Norway	1,000,000
Switzerland	1,000,000
Brazil, Japan and other countries	3,000,000

Making in all 97,000,000 as the present goat stock of the world, of which the United States has but one-fiftieth part, while Mexico has one-twelfth. This is

but a pitiable showing for our own country when compared with the fact that we have one-fifth of the cattle and one-sixth of the sheep of the world.

As compared with sheep husbandry, the Angora goat has many advantages:

1. They live to an age of from sixteen to twenty years, while sheep die, we believe, in from eight to twelve years.
2. They are subject to no disease while many are common among sheep.
3. They will run and keep in good condition upon a much poorer range than sheep; in fact, upon ranges unfit for other stock.
4. They do not require half the care and attention that must be given to sheep. They are more easily herded as they remain in one flock, never separating into two or more bunches.
5. Mohair is worth net in New Mexico from eight cents to forty cents per pound while wool is worth only from seven cents to eighteen cents per pound.
6. In case of death or slaughter, goat pelts are worth from seventy-five cents to \$1.25 each, while sheep pelts are worth only from ten cents to forty cents each.
7. As the United States furnishes but one-tenth of its own consumption of mohair, there is not such danger of fluctuation in prices as there is in wool.
8. As a much greater percentage of does have twins and triplets than ewes, the increase is from twenty-five to thirty-three per cent. greater than with sheep.
9. As the Angora subsists very largely by browsing on brush and bushes, they are not destructive to the range for cattle and horses as are sheep.

It will be said that in arriving at our cost of the plant and the average profit or interest returned upon the investment, we have neglected to make any allowance for ranch or range. We will say in explanation, that we have not considered it necessary at the present time, nor will it be necessary, in our judgment, for the next three or four years to consider this feature as applied to New Mexico or Arizona. It is a well-known fact that through lack of water four-fifths of the mountains and mesas of these territories, while affording the finest pasturage, are part of the public domain and must so remain, thus affording free range to those who are so fortunate as to own the water supply of any particular section. And while it is also true that nearly all of the water available for cattle and horses has been occupied, yet it is equally true that several hundred "locations" can still be made upon what are known as box canyons; that is to say, where the banks of a stream are so high and precipitous that cattle and horses cannot get down to water. In such places the Angora goat will be at home as it can climb or descend anything that is not absolutely perpendicular. Again, these box canyons are almost invariably in the wooded sections of our country where the best range and forage advantages are offered for an Angora ranch; and then a small range—as compared with cattle ranches—with one, or possibly two, water locations, will be found to be sufficient for several thousand Angoras.

While no attempt has been made to say all on this subject that can be said, yet we have endeavored to give some reliable information, and a few plain and practical reasons why to the capitalist, the farmer, the ranchman, and more especially to the man with but small means, an investment in this industry would prove most remunerative.

G. L. BROOKS.

**Free Trade.**

The reduction of internal revenue and the taking off of revenue stamps from proprietary medicines, no doubt has largely benefitted the consumers, as well as relieving the burden of home manufacturers. Especially is this the case with *Green's August Flower* and *Boschee's German Syrup*, as the reduction of thirty-six cents per dozen has been added to increase the size of the bottles containing these remedies, thereby giving one-fifth more medicine in the seventy-five size. "The *August Flower* for dyspepsia and liver complaint, and the *German Syrup* for cough and lung troubles, have perhaps, the largest sale of any medicines in the world. The advantage of increased size of the bottles will be greatly appreciated by the sick and afflicted in every town and village in civilized countries. Sample bottles for ten cents remain the same size.\*

# THE STOCK GROWER.

ISSUED WEEKLY AT

LAS VEGAS, NEW MEXICO.

Office, Bridge Street, in Stock Grower Building.

THE STOCK GROWER COMPANY.

The Subscription Price of THE STOCK GROWER is \$3.00 a year, payment in advance. Single copies, ten cents. New subscriptions can commence at any time during the year.

The Stock Grower is sent to subscribers until an explicit order is received by the publishers for its discontinuance, and all payment of arrearages is made, as required by law.

Discontinuance.—Remember that the publishers must be notified by letter when a subscriber wishes his paper stopped. All arrearages must be paid. Returning your paper will not enable us to discontinue it, as we cannot find your name on our books unless your postoffice address is given.

Always give the name of the postoffice to which your paper is sent. Your name cannot be found on our books unless this is done.

The Courts have decided that all subscribers to newspapers are held responsible until arrearages are paid, and their papers are ordered to be discontinued.

ADVERTISING RATES ON APPLICATION.

Address all communications to THE STOCK GROWER, Las Vegas, New Mexico.

Only journal devoted exclusively to the stock growing, feed farming and commercial interests of the Southwest. We give the cattle news of the range country.

Endorsed by every cattle association and representative ranchman in the southwest.

Official Paper of the Pima County, Arizona, Ranchmen's Association.

Official Paper of the Lincoln County Stock Association.

Official Paper of the San Miguel County Stock Association.

Official Paper of the Dona Ana County Stock Association.

Official Paper of the Central New Mexico Stock Growers' Association.

Official Paper of the Canadian River Live Stock Association.

Copies of this paper for sale by

S. B. WRIGHT, Denver, Colorado.  
W. L. LONG, St. James Hotel, Kansas City.  
ASTOR HOUSE NEWS STAND, New York City.  
S. H. PARVIN & SON, Cincinnati, Ohio.  
OTIS TURNER, El Paso, Texas.

Copies of the STOCK GROWER are on file at the American Exchange 449 Strand, London, and American Exchange, 35 Boulevard des Capucines, Paris.

SATURDAY, FEBRUARY 19, 1887.

## SOUTHWEST STOCK NOTES.

Short Items Relative to Stock and Stockmen of the Southwest.

The great Tascosa bridge is approaching completion.

Fine rains are reported from southern and eastern New Mexico.

John T. Lytle, of Texas, is negotiating the sale of 10,000 head of steers to the Wendling Land and Cattle company.

J. T. Bates has brought 150 head of blooded cows and eighteen bulls from Missouri to his Organ ranch, near Las Cruces.

New Mexico shipped to market last year less than 2,000 cars of steers, scarcely one-half the product that went out in 1885.

The Mimbres River outlaws who have been preying on the horse stock of Grant county, have been captured and are now in jail.

The annual meeting of the Pecos Valley Stock association, to arrange the spring round-ups, will be held at Pecos City the first Monday in March, 1887.

Sam Doss, the past week, sold to Skinner Bros. & Taber, of Denver, 3,000 head of one, two and three-year-old steers from his Fort Sumner ranch. Terms private.

One of the finest bunches of pure bred Galloway cattle in America, consisting of one bull and fifteen heifers, will soon be placed on one of the large ranches of the southwest.

The New Mexico Land and Cattle company, of Valencia county, has sold 13,000 head of cattle, 800 bulls and the horses of the outfit to California parties. Consideration not stated.

J. J. Dolan has sold his mercantile interests in Lincoln county and also his interest in the Home-stake mine, and will in the future confine himself to the management of his ranch property.

James M. Harper, a Grant county stockman, was sand-bagged in Kansas City recently, where he had sold a bunch of steers, and robbed of the proceeds of the sale, amounting to about \$4,000.

It has just been discovered that the alleged bequests of one R. E. Moore, a reputed ranchman of New Mexico, of \$250,000, to the Catholic church of Ireland, are a myth. Moore died in sin and poverty.

Diamonds recently purchased by prominent cattlemen of New Mexico is an evidence that the cattle business is one of the best and that the checks of cattlemen in this neck of the woods are as good as government bonds.

John Harris, the well-known cattleman of Texas, will drive and ship north the coming season from Texas 25,000 head of ones and twos. Mr. Harris will take the eastern trail this year and give New Mexico a clear field.

"Zeke" Newman, of El Paso, who shipped into Montana last season a few hundred head of Texas and New Mexico steers, estimates that the recent extreme cold prevailing in that territory has refrigerated very nearly the entire bunch.

Sixteen pure-bred Herefords of the Blossom herd of Kansas City, comprising one old bull, two

heifers and thirteen cows, were sold at public sale in Denver last week at an average of \$174. The Aberdeen-Angus from the same herd, comprising four bulls, eight cows and three heifers went at an average of \$288.33.

Wm. Owens, a prominent ranchman near Nogales, Ari., accidentally shot himself in the right leg on the night of the 11th inst. His life is despaired of. He is a brother of the young Owens who was brutally murdered near that place last summer by the Apache Indians, at the time of the massacre of the Peak family.

With the wires telling us that the mercury stands sixty degrees below zero and the herds by the thousands dying from exposure and many human lives lost by the extreme cold weather in Montana, the people of the southwest can thank God that in this land of sunshine, plenty and prosperity are always assured to the stockman.

G. W. Williams, the Pecos river cattleman, while visiting in Paris, Texas, recently was robbed of a lady's solitaire diamond valued at \$700, belonging to his wife, and a gent's ring containing a cluster of diamonds worth \$200. The thief entered the residence where Mr. and Mrs. Williams were visiting and broke open a trunk containing the valuables.

A correspondent from Seven Rivers, N. M., writes: "Grass in this part of the country is very short, especially along the Pecos river. We fear heavy losses the coming spring unless we have snows or early rains. We have had no snow this winter as yet and it is almost too late to expect much now. Cattle are in much better fix now than they were last year at this time."

John Flood has sold his interest in the Short-horn Cattle company, of New Mexico, to J. M. Hall, of the same company, for \$75,000, and bought a like interest in the San Simon ranch, located partly in Cochise county, Arizona, and partly in Grant county, New Mexico. R. J. Bishop has sold a portion of his interest in the first named ranch to J. M. Hall for \$33,750.

The Arizona Central bank has been recently opened at Flagstaff. The parties principally interested are F. L. Kimball, president of the Colorado bank, of Durango; B. N. Freeman, cashier of the same, and J. S. Hoskins, jr., who will be the resident manager and cashier. The bank of Flagstaff has also been started up with W. G. Stewart, president, and E. S. Clark, cashier.

Governor Hadley sold in the Denver market on Wednesday last week through the well-known commission house of Geo. L. Goulding & Co., fifty-four head of grade Galloway yearling heifers at \$65.00 per head, to Messrs. Cowell, of Stockton, California. The same parties also purchased fourteen registered bulls and heifers at \$300 each, and thirteen head of thoroughbred Angus bulls and heifers at \$300 each.

From all points in the Texas Panhandle and eastern New Mexico comes the word that the warm rains of the past two days have been general and planters find their land in fine condition. Cattle continue to fatten and have not up to date been fed at all. With the large amount of railroad construction going on and the cattle and agricultural prospect eastern New Mexico and the Panhandle are taking a boom.

J. S. Reynolds, of Albany, Texas, has leased 480 acres of the Simms ranch, at Phoenix, Arizona, including the home place, for a term of two years. Mr. Reynolds is a raiser of fine horses and is now in Texas making arrangements to ship as soon as possible two hundred head of horses to put on his new ranch, and will continue stocking up until he has established a business consonant with the needs of the country there.

Some of the western stock papers are locating the Dolores Land and Cattle company, of Texas, that recently failed, in Grant county, New Mexico. For the information of all THE STOCK GROWER says that no cattle company in New Mexico has failed and none is likely to fail. The cattle business of this territory and Arizona is in a healthy, prosperous condition with the best outlook for years at the present time.

The class of men that have rushed to Santa Fe to secure an appointment to the cattle commission board and veterinary department of the board are not of the material that Governor Ross wants to choose from in forming the board. It may be said that one or two of the inspectors under the old law have no fitness for a position on the new board and that the law was changed, in order to rid the cattle industry of such timber.

Under the present conditions of the 72,000,000 acres of land in Arizona, there is available to the stock raiser not more than 30,000,000 of acres, and to the farmer and horticulturist not more than 1,000,000 of acres. The extended valley of the desert land stretching from Yuma to the mountain ranges of Pima and Pinal counties, 300 miles in length and more than 125 miles in width, containing about 15,000,000 acres of land, could, with irrigation, be made as productive as any part of southern California.

A southwestern paper states that the H. Witbeck Cattle company has purchased 300,000 acres of land in Sonora. This tract of land, together with the 30,000 acres in Arizona, purchased from the Rejoz Cattle company, will give them one of the best and most extensive ranges in the southwest. They have also just added 500 head of cattle to their herd, bought from B. A. Packard, and will continue to make purchases of cattle until their range is fully stocked. This company has already expended nearly \$300,000 in ranches and cattle.

Last week Mr. Geo. Baggs, the Chamberino stock raiser, lost his \$1,000 sorrel stallion. The animal died from congestion and inflammation of the bowels. Mr. Baggs has done more to improve the grade of horses in the valley than all our stock raisers put together. We regret to chronicle this loss to Mr. Baggs and also the loss of so valuable an animal to the horse raisers who cannot do too much in the line of bringing their horse flesh to better grade. The prosperity of a people can always be judged by the grades of horse flesh they raise and drive.—Las Cruces Republican.

Surveyor-General Julian will, on the 21st inst., let contracts for the subdivision survey of the Nolan land grant, in Colfax, Mora and San Miguel counties, N. M. This grant, containing 578,000 acres, is one of the richest in New Mexico in agricultural lands. The title was declared invalid eighteen months ago, and the grant opened for entry, but the interested parties obtained a new hearing before Secretary Lamar, and entries were suspended. The decision of the secretary was against the claimants, and the grant is restored to entry. Re-surveys of other grants are to be let on the 21st, and several of them that have been declared invalid in title will be opened to entry.



Thoroughbred and High-Grade

NEW MEXICO RAISED

## HEREFORD BULLS

FOR SALE BY

FRANCIS CLUTTON,

CIMARRON, - - - NEW MEXICO.

I am prepared now to make contracts for spring delivery, and invite correspondence, or personal inspection, by intending purchasers.



## Shorthorn Bulls

FOR SALE BY THE

LA CUEVA RANCH CO.

LA CUEVA, MORA CO., N. M.

These bulls have all been raised on the La Cueva ranch, and are out of high grade cows and by thoroughbred bulls. They are ready for immediate service.

The Walnut Grove Water Storage company, of Yavapai county, Arizona, has placed \$350,000 of its bonds on the St. Louis market. The object of the company is to reclaim a tract of land 100 miles long and thirty miles wide, which lies in Yavapai county, a few miles from the Hassa Yampa river. This tract, which is valued at \$1,000,000, is the security for the bonds. The object in selling the bonds is to raise money to construct an immense dam to stop the water in a canyon, catching the spring rains and thus holding in reserve enough water to irrigate the land throughout the entire year. The contract for building the dam has been let to a San Francisco company, which is under bond to have it ready to catch the April rains.

The Wendling Land and Cattle company, of Colorado and New Mexico, lately held their annual meeting in Denver and elected Colonel E. F. Lamb, president; Dr. S. S. Smythe, secretary and treasurer; Anthony Shinderholtz, general manager; Taylor F. Maulding and Henry Wendling, directors. The Wendling company has been quite prosperous in the past and has become one of the mammoth cattle concerns of the west. As an indication of their business we will state that last year they sent to market nine thousand head of beef cattle, and now have on hand and for sale nineteen thousand head of stockers. The extensive grazing grounds of this company are in Arapahoe, Elbert and El Paso counties, in Colorado, and in Mora county, New Mexico.

Trail herds strike for Liberty or Endec, Bullard & Co. will replenish your "chuck wagons" at low prices. They keep a full assortment of all camp supplies.

### The St. Paul Union Stock Yards.

The St. Paul Union Stock Yards company had a happy thought when they concluded to invite, last Friday, a number of members of the legislature now in session in St. Paul, and other distinguished gentlemen, to visit the west St. Paul stock yards and see for themselves something of the undertaking which must so greatly benefit all the farmers and stock raisers in the state of Minnesota, in Dakota, and indeed in all sections tributary to the great commercial centers of St. Paul and Minneapolis. The visit revealed a vast amount of work already accomplished, and that only a portion of what was contemplated. The live stock exchange is now well under way, while the vast feeding barns, illustrated and described in the same number, are almost ready for occupancy by the 1,880 head of cattle they have been designed to accommodate. Adjoining these barns is the combined elevator, corn crib, granary and hay mow, which when full will contain 25,000 bushels of corn, 25,000 bush-

els of other grain for feeding, and 450 tons of hay. The saving of labor in connection with this huge feeder has been carefully studied and a system of endless chains will unload the corn and the hay, depositing the former in the crib and the latter on any one of the three floors composing the hay barn. From the crib the corn will be conducted to the sheller, whence all the cobs are projected down a shoot into the engine room to feed the furnace, while the shelled corn is conducted into bins. Numerous feed mills and hay cutters are provided and by means of shoots and flexible feed pipes, the feed is conducted to the lower floor, being mixed on its way in just such proportions as are required. Thence a tramway will serve to convey the feed wagons into the barns. Suffice it to say that the immense ice houses, with an aggregate capacity for 40,000 tons of ice, are nearly completed; the artesian well supply continues undiminished at the rate of over 200 gallons a minute, and the enormous undertaking of raising the whole grade of the 180 acres devoted to the stock yards, an average of over six feet is well under way. Altogether the visit was a most interesting one, especially to those who, from familiarity with the history of the stockyards enterprises at Kansas City and Chicago, were able to form some conception of the magnitude of the enterprise of which they were visiting the cradle.—The Farmer.

Paris, Feb. 12.—Col. Thompson, commissioner from Illinois, Ohio, and other states, intrusted to represent the interests of the American trade in Percheron horses, had today a long and very satisfactory conversation with M. Develle, the French minister of agriculture, concerning the rumored intention of the French government to prohibit the exportation of horses. During the conversation M. Develle said: "I have consulted fully with M. Goblet, president of the council, and Gen. Boulanger, the minister of war, and am able to give you a positive, formal assurance that the government has no intention whatever at present of prohibiting the exportation of horses, as only the other day 456 French horses were sold to Germany and crossed the frontier."

A Profit

Our old who some interest a acres of b eastern Co put in dit the whole down to will buy c only in su feed thro question a prise, for winter se pounds ga (Mont.).

But a fe poring ove would lear name of th a long nor having for edge of Ne has been p deservin only can cr ing to the

Some prop Gibbon, Ne is largely i states that in this line outlets for the northw summer sto New York bought by value —me oil test is n factory to a breed of th ed from ye favorable to

In a lat Mr. W. H. rado, says: alone. I w I know of n saw with it

timothy to t sons—that i hay and the frequently i more for m with timoth; for pasture. mend alfalf have had to your cattle i sure, howev tured if ther in it. I no get in on th in preferenc other day to reason why clover there saw it with i trouble in pu any season makes heavy on alfalfa, i there is som the minds of not sure. T

MO

My first kr California in a field of ei bottom prod of feed. It Colorado on raised thro ture and see four times as I had some curing alfalf about two tor four to five w was three ye

Alfalfa req ture of the so first up, wher Grain will st seeded alone

It is very h when fairly s to start in the killed by fro last of May, about Septem from the root dry summer o

For a fine twenty five pe



FEED FARMING.

A Profitable Industry Now Coming to the Front.

Our old friend J. C. Shepard, of Denver, who sometime since sold out his cattle interest at top prices, is fencing 2,500 acres of bottom land on the Republica, in eastern Colorado, and in the spring will put in ditches and prepare for irrigating the whole tract with the view of seeding down to alfalfa. Mr. Shepard says he will buy cattle again next summer, but only in such numbers as he is prepared to feed through the winter. There is no question as to the success of his enterprise, for cattle kept growing through the winter season will be three hundred pounds gainer when they reach maturity.

But a few years ago the school boy in poring over the map of the United States would learn that his geograpy gave the name of the "Great American Desert" to a long north and south strip of country, having for its middle line the western edge of Nebraska. But of late years it has been proved that the strip was not deserving of the name of desert, for not only can crops be raised there, but, according to the *Chicago Live Stock and Produce Review* of Feb. 2, "within a few years the dairy interest has grown to hand-some proportions. Mr. S. C. Bassett, of Gibbon, Neb., who was at the yards to-day, is largely interested in this industry, and states that rapid strides are being made in this line. During most of the year the outlets for the creameries are Denver and the northwestern country, while in mid-summer stock are shipped to Chicago and New York. The cream is no longer bought by the uncertain guide to real value—measurement or "guage"—but the oil test is now used, which is more satisfactory to all concerned. The quality and breed of the dairy cows are being improved from year to year, and the outlook is favorable to a steadily growing success."

In a later communication on alfalfa, Mr. W. H. McCormick, of Berthoud, Colorado, says: "I never would sow alfalfa alone. I would mix other grass with it. I know of nothing better than timothy to sow with it. I sow four to six pounds of timothy to the acre. I do so for two reasons—that it improves the quality of the hay and the yield is much better. I have frequently gotten two dollars on the ton more for my alfalfa that is thus mixed with timothy, and besides it is much safer for pasture. Do not think that I recommend alfalfa as a pasture for cattle, as I have had too dear experience to say, 'turn your cattle in on your alfalfa.' I am not sure, however, but that it might be pastured if there is a good share of timothy in it. I notice when the cows chance to get in on the alfalfa they eat the timothy in preference to the alfalfa. I said the other day to a gentleman, 'if there is one reason why we should sow timothy with clover there are a hundred why we should sow it with alfalfa.' I had never had any trouble in pasturing horses on alfalfa at any season of the year. Some think it is heavy with foal ought not to run on alfalfa, but I am inclined to think there is something in what has been in the minds of some, though of this I am not sure. Time will tell."

MORE ABOUT ALFALFA.

My first knowledge of the plant was in California in the dry year of 1871, where a field of eight acres on Feather river bottom produced an astonishing amount of feed. It has proved a great success in Colorado on upland. It is extensively raised throughout the state, for hay, pasture and seed. The seed yields two to four times as much as red clover. I had some experience in raising and curing alfalfa hay in Oregon, where I got about two tons of cured hay per acre, at four to five weeks growth after the plant was three years old and roots well down. Alfalfa requires very deep and fine culture of the soil. It is very tender when first-up, when frost and weeds will kill it. Grain will smother it, hence it must be seeded alone after the last frost in spring.

It is very hardy and stands frost well when fairly started. It is the first plant to start in the spring and the last to be killed by frost in autumn. If sown the last of May, it will ripen a crop of seed about September 1st and then grow again from the roots, as it did here in the past dry summer on upland. For a fine quality of hay twenty to twenty-five pounds of seed per acre gives

the best results; for raising seed, twelve to fifteen pounds would be sufficient. A thick stand makes the most and choicest of hay, but a lighter stand fills better for seed, yet for hay the latter is liable to become woody in the stronger stalks, especially if allowed a growth of six to eight weeks between cuttings.

The seed should be sown evenly broadcast and covered (in dry, light soil) two to three inches deep. The best tool for doing it is the Acme harrow, set for the coulters to run about three inches deep when the bars ride the ground; after which rolling would be beneficial. The first crop should always be saved for seed, where seed is the object, as it takes 100 days or more for seed to ripen after the plant first starts. If cut for hay June 1st, it would probably ripen seed before frost in southern Minnesota. If the plants were three years old. Alfalfa makes excellent late fall pasture from September 15 until winter when cut the last time the last of August.—S. Pelton in *The Farmer*.

FIVE YEARS OF ALFALFA.

Reading a letter published in the *Farmer* of November 10, from the pen of Mr. S. Pelton, headed: "Can we Grow Alfalfa?" suggested to me that my experience with the plant might prove valuable to my brother farmers, and I will therefore proceed to tell what a five years experience in a climate very much similar to ours has taught me. It was in a high mountain valley, nearly 5,000 feet above the level of the sea, where I have seen frosts as late as May 31, severe enough to kill the leaves on trees and the same season heavy frosts, August 20, that I had my experience in cultivating alfalfa.

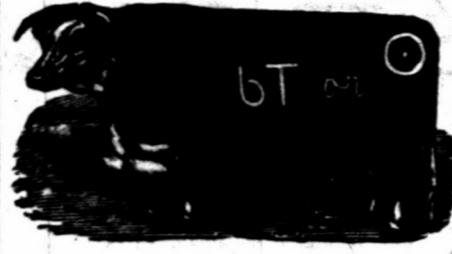
The above writer but states the simple truth as to both yield and quality. Alfalfa is especially valuable for the cows, causing them to give rich and abundant milk. Swine will leave corn to eat alfalfa hay and get fat thereon, but it will not do to let stock into a heavy field of alfalfa to start with, as it would be almost sure death by bloating, assistance usually coming too late. Start stock on it when it is quite short, so they will have to rustle to fill themselves. Sheep must not be allowed on it, as they will kill it, eating it down too close. Swine will do well, but must be ringed the first two years of its growth.

It was found to be best to plow and pulverize the ground deeply, and sow with barley as early as that can be safely sown; use fifteen pounds of alfalfa seed to the acre; cover lightly. Cut the barley early, so as to give the young plants as much sun as possible, it does not bear shade at any time. It would be profitable to mulch in the fall as soon as the ground freezes to the depth of ten inches to prevent the frost from going down any further, but not sooner, as when the plant is growing it is easily smothered in all stages of its growth. The second year remove mulch as soon as hard freezing is over. Cut it as it is about ten inches high the first year and also the first cutting the second year. Cut often that year, and do not try to raise seed; it injures the plant. The third year you may raise seed; let the second cutting grow for that purpose. It can be threshed out of the straw with a threshing machine, but the burrs not many of which will be crushed must have that done some other way. Seed yield is very variable. The price of seed varies from eight to eleven cents per pound in California. It is often adulterated with mustard seed; stirring it in water will show it. Alfalfa seed will sink.

Now as to the soil most adapted to it: All light warm soils, even alkali, when not so strong as to destroy the wild grasses, are good, provided there is no clay within at least five feet from the surface, for the moment the roots strike clay, they will decay at that point and soon die out. A thrifty field of alfalfa of two years' growth, died out within one year on striking clay within three feet. The reason alfalfa does so well in California, Colorado, Nevada and Utah, is that the detritus from the mountains is very deep and mostly without a clay bottom.

Care must be taken not to allow standing water on it when the weather is warm; even twelve hours will kill it; cold water does no harm. Alfalfa when cut for hay is best raked up as soon as fairly wilted and cured in the winnow. It pays best to cut it for hay for fall feeding and is safest. Cut in four to six weeks growth when well established, the oftener the better. Only Italian bees can get honey from the flowers.—*The Farmer*.

ARIZONA.



Cameron Bros.

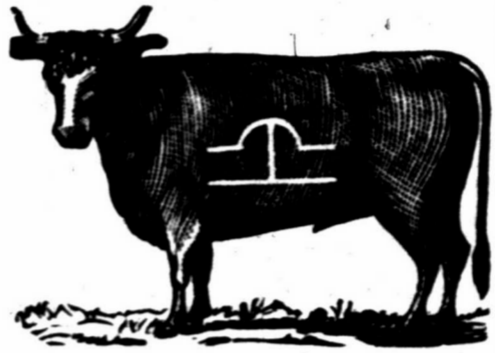
Postoffice, Lochiel, Pima county, Arizona. Range, on the San Rafael de la Zanja Grant. Ear marks, right cropped, left slit. All cattle in the quarter-circle U brand are marked underslope the right, swallowfork in left. Horse brand, like cut.

Also own the following brands, kept up:



Harry K. Hildebrand.

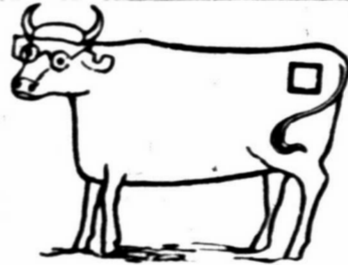
P. O.: Lochiel, Ariz. Range, valleys and slope of west Huachuca. Mark, swallowfork both ears. Horse brand, same as cut.



Aztec Land and Cattle Company. [Limited.]

HENRY WARREN, General Manager.

Post office address: Holbrook, Arizona. Range, Apache and Yavapai counties. All cattle branded same as cut on both sides. Horses: [mark] on right and some on left shoulder, also [mark] right flank.



William Curtis.

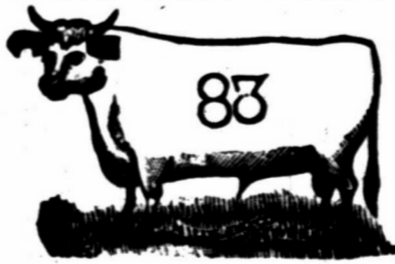
WOODS & POTTER, Managers.

Post Office, Woodruff, Apache County, A. T. Ear mark: crop right over bit left. Horse brands, [mark] on left thigh, [mark] on left hip, and [mark] and [mark].



Gardiner, Gillies & Wilmerding.

P. O.: Navajo Springs, Apache county, Arizona. Range, Deer and Cedro Springs, Apache county. Ear marks, right ear is grubbed. All cattle in addition to above brand, have an X on the left jaw. Horses are all branded [mark] on right shoulder.



Santa Rita Cattle Co.

ISAAC N. TOWN, Superintendent.

Postoffice, Calabasas, Pima county, Arizona. Range, Santa Cruz river, Pima county, Arizona. Calves of 1886 and imported bulls are branded same as cut on left hip.



A. L. Morrison & Sons.

P. O.: Springerville, Arizona. Home ranch, Mamie creek, near Escadilla Mts. Ear marks, underslope right, crop left. Horse brand, same as cattle, on right hip.

ARIZONA.

\$1,000

REWARD! I desire to call attention to my marks and brands for cattle, as shown in cut. I sell no stock cattle, and will pay \$1,000 reward for the arrest and conviction of any person or persons unlawfully handling cattle in the following brand and marks.



J. H. Hampson.

P. O.: El Paso, Texas. Ranch P. O.: Clifton, Arizona. Range, on Eagle creek, Graham county, Arizona. Ear marks, crop and split left, crop right. Horse brand, [mark] on the left shoulder.



Milo A. Smith.

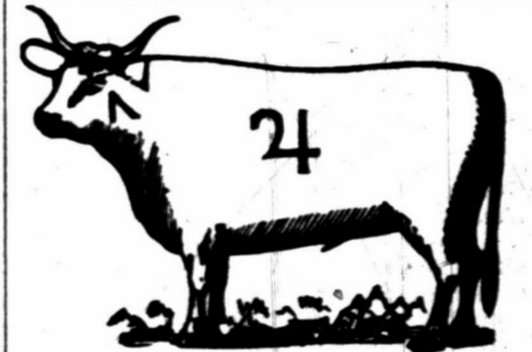
P. O.: Springerville, Apache county, Arizona. Range, Escadilla mountains, Apache county, Arizona; and Johnson's Basin, Socorro county, New Mexico.

Other Brands:

ELC side, on left side and S on left hip. ELC on left side and B on left hip.

Horse Brands:

ELC and also S in circle on the left hip.



Smith, Carson & Co.

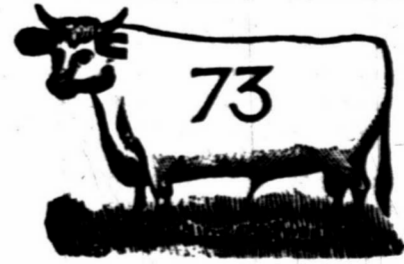
P. O.: Springerville, Apache county, Arizona. Telegraph and express office, Navajo Springs, Atlantic and Pacific railroad.

Ear marks: [mark] Crop off the left. Horses branded: [mark]



David Rope.

P. O.: Holbrook, Apache county, Arizona. Range, Rope's ranch, four miles west of Holbrook, south of the Little Colorado river. All cattle have two bars on left jaw, and are marked with a half under-crop in each ear. Horse brand, XV on the left hip.



Malsh & Driscoll.

Postoffice, Tucson, Arizona. Range, on Santa Cruz river, south of Tucson, Pima county. Horse brand [mark] on the left hip.



Hunings & Cooley.

Breeders and Importers of Thoroughbred and Graded Cattle.

P. O.: Show Low, Apache county, Arizona. Horse brand, same as on cattle, on left shoulder.

READERS will confer a favor if, when writing to advertisers, they will state they read advertisement in the Stock Grower.

JAMES H. CAMPBELL, Manager, Union Stock Yards, Chicago.

D. L. CAMPBELL, Manager, National Stock Yards, East St. Louis, Ill.

G. W. CAMPBELL, Manager, Kansas City Stock Yards, Kansas City, Mo.

# JAMES H. CAMPBELL & CO., Live Stock Commission Merchants,

SUCCESSORS TO ANDY J. SNIDER & CO. AND CAMPBELL, LANCASTER & CO.

Offices, Rooms 23 and 24, Exchange Building, - - - - - Kansas City Stock Yards, Kansas City, Missouri.

Consignments Solicited. Correspondence Promptly Attended to, and Markets Furnished by Mail or Wire, on Application.

**G. W. Littlefield.**  
Following is an interview with a reporter of the Austin Statesman had with Major George W. Littlefield, chairman of the executive committee of the Texas State Live Stock association, which met at Dallas last January:

Said he, "You ask me why there should be a gathering of cattlemen in Dallas on the occasion of our annual meeting? There are many reasons, sir, and they are all of force, and are important. In the first place, it is our annual meeting, and matters of vital interest are before us that must be considered. It is only by concert of action that we can hope to achieve success. To obtain this we should know no south, west or east Texas, nor any other sectional feature of the state, but we should work for one common purpose, and that, the good of the cattle business. By concerted action, backed by the means and the proper energy, we would again see the cattle industry prosper and become a pride to the state. In this day and time, when we have the Farmer's Alliance, Bankers' association, the Dressed Beef ring, the Butchers' association and others too numerous to mention—in fact, you can't find any business of any degree of magnitude but what it is held together by some kind of association. Why is it that the great cattle business of Texas can't agree and find soon within our state association a place for all the different interests of the cattlemen?"

It is to be hoped that every man who owns cattle within the state will go to Dallas, for their is some grand work to be done if we bring the cattle business back to its former prosperity.

Among the many points that will be discussed none are of more importance to the cattlemen than the present laws of our state. We have no quarantine law against cattle. The governor has power to quarantine diseased people, diseased horses, sheep or swine, but not a scintilla of authority to stop diseased cattle from coming into our state, and if they were here he has no law to quarantine them within any bounds.

Why should there be such negligence on the part of those who have entrusted to their care, and keeping the interests of this great state? The governor has done his duty, and had the cattle interests of the whole state stood together as one man, having but one object—that the greatest good to the business—we would have had such protective laws as we need. It is said that experience is a dear school. We have just had a little experience, for within the last two weeks the cattle people, from one side of Texas to the other, have read, with fear and trembling, the reports about the diseased cattle at Dallas. This shows one weakness, and we should see to it, that at our meeting at Dallas, on the 11th of January, a committee is appointed who will go before the next legislature and urge the passage of an act that will give us what we need in the way of a quarantine law. Next, our interests need good and wholesome laws governing the school land public lands, not forcing the cattlemen to pay alike per acre for every section of school land he leases. It's not all worth the same, and should be leased according to its value for the grass it grows. Next is that vexed and important question—railroad freight rates. The cotton men are very much interested in freight rates. You can't ship a lot of freight from any given point in Texas to another place 300 miles distant, within the state, as cheap as you can ship the same goods, at, say, from the city of St.

Lonis to the coast of Texas. Manufacturing and home industries can never prosper so long of the laws of the state don't control the railroads. Look to it and secure such laws as give equal protection to our home industries, as is given to those of other states.

Next, and by far the greatest burden that is on the cattle business, is the hold of the dressed beef ring of Chicago. Our cattle are not worth more than half what they were two years ago. Yet the people of the north and east are paying just as much for their steaks today as they did then. The concert of action within the ring at Chicago sets the price for all the steers shipped there, and if you don't like it you can help yourself. You have to walk up and take your medicine like a little man. For two years we have dumped our beef into the laps of this combination, and we have seen during that time our business sink and shrink day by day until barely life is left in the trade for the producer. Middlemen of one or another kind get off with the profits, and the poor ranchman is left to grumble over the situation. And the most of them set back and wait for something to turn up. Looking for some other fellow to bring about relief. Now take my word for it, if we ever get out of this troublesome fix, and rid business of this tax placed on it by the dressed beef ring, we must get together in concerted action, making one common interest, and fight this fight for the good of all. Don't let south Texas argue for its pet scheme, its favored place for a refrigerator and canning house, nor allow the same to north nor west Texas. But form into a company from all sections of the state and select a place where there can be a market made—a place where we can get to by different lines of road—and we can then ship away our dressed beef and canned stuff, having a sharp eye to a way out to water, where foreign vessels will take our meats to other countries. We don't want to ship our dressed meats to Chicago, to come in contact with the ring at their headquarters. It is better to ship it to eastern cities where to better compete with the ring, there should be a cooling house from which to retail the meat to the butchers. Without cooling houses we can do no trade; for we are in the clutches of Armour, Swift & Co.

There are many other points of interest that should be discussed, and I am sure the energetic, wide-awake cattleman will this time be on hand, take a look over the ground and be able to count noses from the great west as well as the familiar faces of those of the Panhandle and the far off Pecos. We want to let the country know that we have risen to the needs of the work before us, and we want to try to make our work redound to the good of the second heaviest industry in the state."

### TO NORTHERN STOCKMEN.

Outfits expecting to send wagons to work in the Canadian river country during the coming season will find a large and varied stock of all supplies at low prices at Bullard & Co., of Liberty and Ende, and by purchasing there will save a long haul with loaded wagons.

### Correspondents.

C. H., St. James, Minn: I have the material on the ground for a geared wind mill, and find I must use pine for anchor posts. What treatment ought they to have to prevent rot, and how long will they probably last?

Answer.—Char the posts an inch-deep and for six or eight inches higher than they are to be inserted in the ground. If you give them a coating of coal tar after charring they will last still longer.

### Notice-Aviso!

Section 2313. If any person shall wilfully set on fire any woods, marshes or prairies so as thereby to occasion damages to any other person, such person shall pay a sum not exceeding five hundred dollars nor less than fifty dollars, one-half thereof for the use of the person prosecuting the same, and the other half for the use of the county in which the offence is committed.

Section 2313. Si alguna persona maliciosamente incendiare cualesquier montes, campos o llanuras, de modo que ocasiona perjuicio a cualquiera otra persona, tal persona pagara una suma no excediendo quinientos pesos, ni menos que cincuenta pesos; una mitad de la cual, será para el uso del condado en el cual la ofensa fue cometida.

Section 2314. If and person shall set on fire any woods, marshes, prairies, whether his own or not, so as thereby to occasion any damage to any other person, such person shall make satisfaction in double damages to the party injured, to be recovered by civil action.

Section 2314. Si alguna persona incendiare cualesquier montes, campos o llanuras, ya sea suyo propio o no, de modo que por esto se ocasiona cualquier dano, a alguna otra persona, tal persona hara satisfaccion en dobles perjuicios a la parte injuriada recobrados en una accion civil.

The Lincoln County Stock association offers a reward of \$100 for the arrest and conviction of any one violating the above sections to the detriment of any member of said association.

La asociacion de criadores de vacas de condado de Lincoln, ofrecen un recompensa de \$100 para la arresta y convencion de cada una persona que hagan mal contra las miembros de esta asociacion y contra estos secciones de las leyes del territorio.

H. MILNE, President.  
JAS. J. DOLAN, Sec. and Treas.

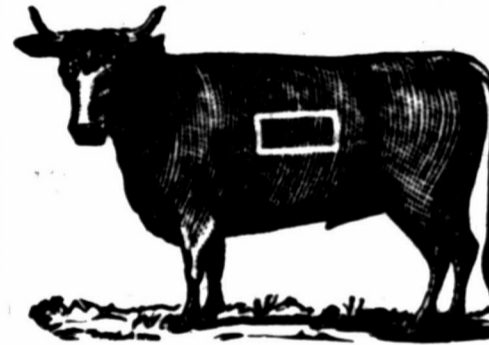
Subscriptions received for any American or Foreign

### NEWSPAPER OR MAGAZINE.

Send price with order, or write for terms.

R. F. HARDY, Las Vegas, N. M.

### SOUTHERN COLORADO.



George W. Thompson.

P. O. Address: Trinidad, Colorado. Ranges in western portion of Las Animas county, Colorado, and eastern portion of Colfax county, N. M.

Some branded same as above on right side. Some cattle in the following brands on either side or hip: WI HH TI Various ear marks.

#### Additional Brands:

N - N on right or left side. X on left side and hip. X on left jaw. N + N on right or left side with N on right or left hip. Various ear marks.  
Horse brands, N on left hip and N - on left hip.

Horses also branded same as on above cut, but smaller, on the left shoulder or left thigh.

### New Haven Cattle Company.

W. W. THOMPSON, Foreman.

F. T. Bradley and C. K. Dewell, Assistants.

Postoffice, Trinidad, Colorado.

Range, Lower Apishapa. Brand as here given.

Ear marks, under half crop to left.

Horse brand same as cattle brand.



Lane & Murray.

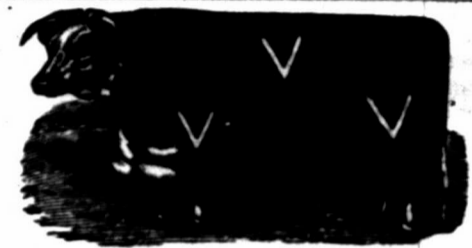
P. O.: West Las Animas, Colorado.

Range, Fort Lyon to Mud creek, Colorado.

Ear marks, underslope and underbit each ear.

Additional brands: Triangle on jaw. left loin. right side. left side. left side. left side. Horse brand, HL (connected) on left shoulder.

### SOUTHERN COLORADO.



A. D. HUDNALL.

Postoffice, West Las Animas, Colorado. Breeder of Hereford cattle, North side Arkansas river, Bent county, Colorado.

Ear marked, swallow fork left ear.

#### Additional Brands:

left side, left thigh; under back in each ear.

left shoulder, left side, left thigh.

left side. left hip.

### KANSAS.

#### Watson & Fullington.

P. O.: Greensburg, Edwards county, Kansas. Ranch headquarter camp Willow Bar, on Cimarron river, Neutral Strip.

All increase branded as in cut.

Ear marks, upper and lower bit left ear.

#### Additional brands:

on the left hip.

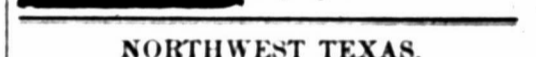
Horses branded on the left hip.



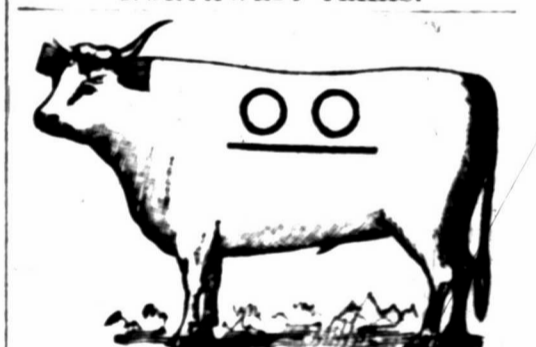
#### T. B. Porter.

P. O.: Lakin, Kansas. Range, on the Cimarron river, Seward county, Kansas.

Ear marks, split left crop right.



### NORTHWEST TEXAS.



O. J. Wren.

Cattle Raiser and Dealer. Postoffice, Colorado, Texas. Ranches in Fisher and Kent counties.

Horse brand, circle bar on left hip.

#### Lee-Scott Cattle Co.

P. O.: Tascosa, Texas. Range, Oldham and Hartley counties, Texas, and San Miguel county, N. M., on the Canadian river.

Horse brand on the left hip.

#### Additional Brands:

LS both sides; marked, crop and split both ears.

left side; over both sides; crop and half crop, under bit left.

split right and split left.

both sides; all on split each. Also, the left side.

GM left side; marked, underslope each ear, all steers.

In addition to the reward offered by the association, we will pay a reward of one thousand dollars for the conviction of any one stealing, butchering or illegally branding any of our stock, or marking any of our calves.

#### LEE-SCOTT CATTLE CO.

#### Presnell & Mussey.

P. O.: Fort Stockton, Tex. Range, Comanche creek and Pecos river, Texas.

Ear marks, sharpen left ear.

Horse brands on left hip.



N  
De  
All e  
est  
Lo  
He  
low  
STEEL  
THE  
SAT  
Items  
Ex-See  
Col.  
Washing  
J. G.  
has been  
and left  
C. C.  
pany, w  
headwat  
tion at t  
W. P.  
Lincoln  
during t  
New Yo  
Mexico  
Natha  
county,  
land an  
Yanke  
in a her  
Will  
Monday  
ing of t  
is large  
and the  
Hon.  
and far  
weeks  
1,300 m  
and be  
country  
Mr. J  
the gra  
interest  
Gnow;  
head of  
this cut  
Mr. J  
Co., of  
danger  
so far  
gone to  
health  
will be  
Ex G  
visited  
Grande  
largely  
like me  
the con  
in a tr  
coast.  
Hent  
brand i  
Nottle  
where i  
The l  
and G  
will be  
M  
brand i  
will re  
their r  
Thos  
southw  
fords  
acclim  
countr  
Bush  
celebr  
our co  
is head  
is said  
bull in  
choice  
The  
missio  
Denve  
of live  
conspi  
The r  
ter bu  
gentle  
ness

# NEW MEXICO LIVE STOCK COMPANY

G. L. BROOKS, MANAGER.

SOCORRO, NEW MEXICO.

## Dealer in Ranches

All classes of Land Scrip at Lowest Quotable Prices. Mortgage Loans Negotiated. Shorthorn, Hereford, Polled Angus and Galloway Stock Bought and Sold.

## STEERS FOR SPRING & SUMMER DELIVERY

To be Made at Any Point.



## All Classes of Cattle

Native and Improved Sheep, Angora Goats and Registered Bucks. Patented Ranch Property and Confirmed Grants. Stock Horses, Stallions and Saddle Horses.

## CONTRACTS MADE FOR RANGE CATTLE

From Texas, Mexico and New Mexico.

### THE STOCK GROWER.

LAS VEGAS, NEW MEXICO.

SATURDAY, FEBRUARY 19, 1887.

#### PERSONAL.

#### Items of Interest Relating to Stock Growing People.

Ex-Senator Dorsey is now in Paris.

Col. J. W. Dwyer will shortly return from Washington.

J. G. Morton, a southern Colorado cattleman, has been visiting in Las Vegas during the week and left for Texas on Monday night.

C. C. Swinburne, of the Valley Ranching company, who is building up a fine enterprise on the headwaters of the Pecos, is taking a little recreation at the hot springs at the present time.

W. P. Anderson, the progressive cattleman of Lincoln county, spent a few days in Las Vegas during the week accompanied by Mr. Condon, of New York, who is getting acquainted with New Mexico affairs.

Nathan Hall, a prosperous cattleman of Socorro county, is now enjoying a short visit in New England and will undoubtedly demonstrate to the Yankees that the cattlemen of New Mexico are in a healthy financial condition.

Wilson Waddingham will be in Las Vegas on Monday next in attendance upon a special meeting of the different cattle companies in which he is largely interested, and will leave for Mexico and the Pacific coast the day following.

Hon. Justus Clark, of Red Oak, Iowa, banker and farmer, left for home Tuesday after a four weeks' visit to his Socorro ranches. He came 1,300 miles for a stock pasture, but says it pays, and he thinks New Mexico the greatest stock country on earth.

Mr. Becker, of the Indian Territory, who finds the granger a pressing factor on the ranchman's interest there, was an agreeable caller at the Stock Grower's rooms on Friday. Mr. Becker has 30,000 head of cattle that he will bring into the southwest this summer, if he can find range for them.

Mr. Ernest Tee, of the firm of Smith, Carson & Co., of Apache county, Arizona, has recently been dangerously ill at St. Johns, Arizona, but is now so far recovered as to be able to travel, and has gone to California, where he will remain until his health is fully restored, which his friends hope will be in a short time.

Ex-Governor Alger, of Michigan has recently visited his ranch near Engle. The Detroit & Rio Grande Live Stock company, in which he is the largest stockholder, is making preparations to largely increase their holdings. Governor Alger, like most New Mexico cattlemen, rides through the country in a special car and finds recreation in a trip to the City of Mexico and the Pacific coast.

#### Business Pointers.

Henry K. T. Lyons, of Raton, publishes his brand in this issue.

Notice of a "Masters Sale" will be found elsewhere in this issue.

The brands of the Kansas and New Mexico Land and Cattle company, the Carlisle Bros., managers, will be found on this page.

M. Johnston, of Wagon Mound, places his brand also where the cattlemen of the southwest will recognize his cattle when they drift from their range.

Thomas Jones, of Sedalia, Colorado, tells the southwest stockmen where to look for grade Herefords. He is prepared to fill orders with animals acclimated and adapted to this section of the country.

Bush & Morse, of Denver, owners of the now celebrated Windsor farm, advertise elsewhere in our columns Galloway cattle for sale. Their herd is headed by Borderer of Drumlanrig (2025), which is said to be the finest three-year-old Galloway bull in America. The females of this herd are all choice carefully selected animals.

The display "ad" of the great live stock commission firm of Marra, Middleton & Hunter, of Denver, gentlemen whose aggregate yearly sales of live stock are enormous, will be noticed in a conspicuous place among the reading columns of THE STOCK GROWER. Marra, Middleton & Hunter buy and sell all kinds of live stock and are gentlemen with whom it is a pleasure to do business.

The columns of THE STOCK GROWER are filling so rapidly with advertising matter that a further enlargement of the paper is necessary. Next week two pages will be added, thus giving eight columns more than is usually run to our readers and patrons. Our plea for cutting down on the reading matter for some weeks is that good business in the way of new advertising has obliged us to greatly curtail this department of the paper.

Geo. L. Goulding & Co., of Denver, whose advertisement will be found on the cover of this issue, sold last week at their new City stock yards 251 head pure-bred and grade animals, horses, mules, &c., for the grand total of \$23,348. These animals were all sold at auction and private sale and the amount of business done speaks volumes for the energy and ability of Goulding & Co. in the handling live of stock to advantage.

The Del Norte Live Stock company, Henry Van Kleeck, manager, of Poncha Springs, Col., make a specialty of Herefords. The herd of this company is one of the finest in the west and their grade bulls are unsurpassed for the use of the western cattlemen in the United States. Mr. Van Kleeck purchased last week a bunch of Hereford youngsters in Denver, with which to increase his holdings of choice stock, that for individual merit stand at the head of this strain. The Del Norte company's herd is already one of the most notable herds of the west and ranchmen in buying their grade and pure-bred bulls from this company will in every instance get dandies. Write to the manager for prices and information.

#### Beating the Cowboys.

Some twenty-five or thirty cowboys bound for Texas boarded a Northern Pacific train in Dakota the other day and took possession of an emigrant sleeper. Every one of them sported a revolver and bottle of whisky. They refused to show the conductor their tickets and demanded that he should drink with them. A passenger suggested that the conductor should get some opium and slip it into their bottles. At Bismarck the brakeman was sent to a drug store for the opium. The brakemen went into the car and accepted their generous offer to imbibe, and, while pretending to drink, slipped a small quantity of the soothing drug into each bottle. Quiet soon reigned where all before had been pandemonium. These denizens of the wild rowdy west were soon sleeping sounder than the Cardiff giant. The exultant conductor rolled them over like logs, went through their pockets, punched their tickets, and rolled them back in their berths.

#### Master's Sale.

By virtue of a decree rendered in the district court of the territory of New Mexico, in and for the county of Mora, by Hon. Elisha V. Long, chief justice of the supreme court of the territory of New Mexico, and judge of the first judicial district court thereof in and for said county of Mora, on the tenth day of January, A. D., 1887, in a certain cause therein pending, wherein Charles H. Feld was complainant and Andres Serna, et al., were defendants, whereby it was ordered, adjudged and decreed, among other things, that the following described real estate and premises, lying and being in the counties of Mora and San Miguel, and more particularly described as follows, to-wit:

- The west one-half of the northwest quarter, and the west half of the southwest quarter, of section five, township nineteen north of range thirty-one east.
- The east half of the southeast quarter of section twenty-one, and the east half of the northeast quarter of section twenty-eight in township nineteen north of range twenty-nine east.
- The southwest quarter of the southeast quarter, the south half of the southwest quarter of section eleven, the northwest quarter of the northwest quarter of section fourteen in township twenty north of range thirty-one east.
- The west half of the northwest quarter, the southeast quarter of the northwest quarter, the southwest quarter of the northeast quarter of section twenty-five in township twenty-two north of range thirty-one east.
- The south half of the southwest quarter of section twenty-six, the north half of the northwest quarter of section thirty-five in township twenty-one north of range thirty-one east.
- The south half of the northeast quarter, the north half of the southeast quarter of section eleven in township twenty north of range thirty-one east.
- The east half of the northeast quarter of section two, the south half of the northwest quarter of section one in township twenty-one north of range thirty-three east.
- The northwest quarter of the northeast quarter, the northeast quarter of the northwest quarter of section twelve in township twenty north of range thirty-one east.
- The west half of the southwest quarter, the west half of the northwest quarter of section thirty-six in township twenty-two north of range thirty-three east.
- The northeast quarter of section twenty in township twenty-one north of range thirty-four east.
- The south half of the southwest quarter, the south half of the southeast quarter, of section thirty-five in township twenty-two north of range thirty-three east.
- The south half of the southwest quarter, the south half of the southeast quarter of section thirty-six in township twenty-two north of range thirty-one east.
- The southeast quarter of the northwest quarter, the southwest quarter of the northeast quarter, the west half of the southeast quarter of section thirty-three in township twenty-two north of range thirty-one east.
- The east half of the northwest quarter, the south half of the northeast quarter of section thirty-two in township twenty-two north of range thirty-two east.
- The southwest quarter of the southeast quarter, the south half of the southwest quarter of section twenty-nine east, or so much thereof as may be sufficient to realize the amount of sixteen thousand nine hundred and ninety-two dollars and eight cents (\$16,992.08), together with interest thereon at the rate of six per cent per annum from January 10, 1887, and also the costs of the suit, including the fees, disbursements and commissions on this sale, be sold at public vendue for cash in hand, to the highest and best bidder, at the court house door in the county of Mora, and that said real estate may be sold altogether or in separate parcels as may seem best, by John H. Koogler, a special master appointed for that purpose.

- Now, therefore, notice is hereby given that the above described land, real estate and premises, will be sold at public auction to the highest and best bidder for cash in hand, on Tuesday the fifth day of April, A. D., 1887, at ten o'clock in the morning of said day, at the court house door, in the town of Mora, in the county of Mora, and territory of New Mexico, in accordance with the aforesaid decree of court.
- JOHN H. KOOGLER, Special Master.  
February 17th, 1887. 47-54

#### Notice for Publication.

[Pre-emption No. 1,691.]  
LAND OFFICE AT SANTA FE,  
February 16, 1887.  
Notice is hereby given that the following named settler has filed notice of his intention to make final proof in support of his claim, and that said proof will be made before the register and receiver at Santa Fe, N. M., on March 28, 1887, viz.: John E. Roark, of San Miguel county, N. M., for the S. W. 1/4 S. E. 1/4, sec. 20, T. 1, N., R. 25 E.  
He names the following witnesses to prove his continuous residence upon, and cultivation of, said land, viz.: Wm. Phillips, Jack M. Potter, W. H. Fuqua, W. G. Urdin, all of Fort Sumner, N. M.  
CHARLES F. EASLEY, Register.

#### Notice for Publication.

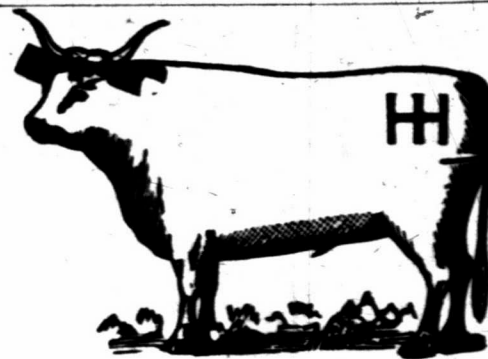
[Pre-emption No. 1,834.]  
LAND OFFICE AT SANTA FE,  
February 16, 1887.  
Notice is hereby given that the following named settler has filed notice of his intention to make final proof in support of his claim, and that said proof will be made before the register and receiver at Santa Fe, N. M., on March 28, 1887, viz.: William Phillips, of San Miguel county, N. M., for the S. W. 1/4 S. E. 1/4, S. E. 1/4 S. W. 1/4, sec. 27, W. 1/4, N. E. 1/4, sec. 34, T. 1, N. R. 26 E.  
He names the following witnesses to prove his continuous residence upon, and cultivation of, said land, viz.: John E. Roark, W. S. Chadderden, Jack M. Potter, Geo. S. Taylor, all of Fort Sumner, N. M.  
CHARLES F. EASLEY, Register.

#### Stolen.

From the ranch of C. F. Adlon, near Hay's ranch, in San Miguel county, N. M., on January 25th, two white horses, aged seven or eight years, one branded C L on shoulder, the other S on hip. Any information leading to recovery will be suitably rewarded at the premises, at Las Vegas Iron Works, Las Vegas, N. M.

C. F. ADLON.

#### NEW BRANDS.



JAMES D. REED, Prest. G. L. BROOKS, Sec'y. SAM N. DEDRICK, Manager.

#### J. D. Reed Cattle Company.

P. O.: Socorro, N. M. Range, western slope of the Magdalena mountains, Gallinas and Hierosiosa mountains, and the Bear Springs, all in Socorro county, New Mexico.

Bars across hips as in cut on both sides. Ear marks, 1 half under crop left and crop right, 2 sharpen the left and crop the right.

#### Other brands:



left side. right side.

Horse brand: left hip saddle horses. rt. sh'lder stock horses.

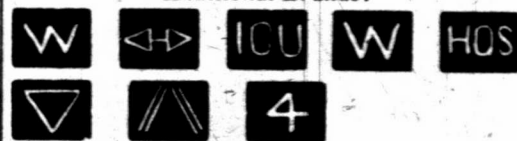
#### Kansas and New Mexico Land and Cattle Company.

[LIMITED.]  
EDMUND S. CARLISLE. HAROLD CARLISLE.  
Managers.  
Postoffice: Durango, La Plata county, Colo.  
SAN JUAN RANCH BRANDS.

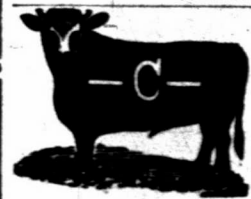


Range, Canon Gallego, Rio Arriba county, N. M. Ear mark, figure 7 underbit in each ear. Increase in this the principal brand.

#### Additional Brands:



Horse brand: on left thigh.



#### H. M. Coy.

P. O. Las Vegas, N. M. Range, Sandjulla creek, San Miguel county.

All increase branded as in cut.


#### Other Brands:





MORA COUNTY.

**W. H. Willcox**  
P. O.: Wagon Mound, Mora Co., N. M. Range, Mora county west of Red River and east of Turkey mountains.  
Horse brand same, on left hip. Some cattle on right side.



**The Wendling Cattle and Land Co.**  
OF COLORADO AND NEW MEXICO.  
New Mexico Division.—Breeding Ranch.  
TAYLOR MAULDING, Manager.  
Brand: "O. K." on all stock. Range in Mora County, New Mexico. No cattle vented.  
Office: 325 17TH ST., DENVER, COLO.  
S. S. SMYTHE, Secretary.



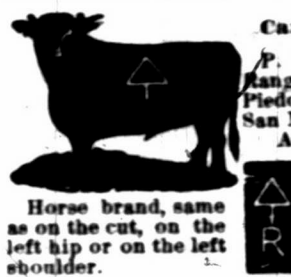
**W. T. Marshall.**  
P. O.: Wagon Mound Range, Escondido, south of Wagon Mound.  
Horse brand, same on left hip.  
Ear marks, under half crop left, over half crop right.  
Also have some cattle branded on right.  
All increase branded as in cut.



**Billings & Soule.**  
P. O.: Tramperos, Mora county, N. M. Range, head of Tramperos, Mora Co.  
Other brands: both on the left side.  
All increase branded as in cut with (bar) in addition on back of right leg.  
Horse brand, > or 3 on right shoulder.




**Carl W. Wildenstein.**  
P. O.: Watrous, N. M. Range, Pinos Altos and Piedoso Canon, Mora and San Miguel counties.  
Additional brands:  
Horse brand, same as on the cut, on the left hip or on the left shoulder.



**Price Lane.**  
P. O.: Wagon Mound Range, south of Wagon Mound.  
Horses branded on right shoulder.  
L on right shoulder.




**L. W. Leach.**  
P. O.: Wagon Mound Range, south of Wagon Mound.




**J. F. LaTourrette.**  
P. O.: Wagon Mound Range, near Fort Union.  
Extra brand, L left shoulder A left side.  
Ear marks, swallowfork right, crop and two splits in left.  
Horse brand, same as cattle, on left shoulder.



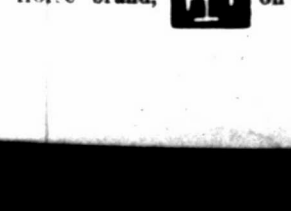
**S. H. Fairchild.**  
P. O.: Wagon Mound, N. M. Range, in Wagon Mound district.  
Ear marks, split and underbit left.  
Additional brand, Z on the left side.  
Horse brand, same as cattle, on left shoulder.



**La Cueva Ranch Co.**  
D. C. DEUEL, Manager.  
P. O.: La Cueva, N. M. Range, Coyote and La Jara, Mora county.  
Horse brand, on the right shoulder: L




**H. T. Sinclair.**  
P. O.: Wagon Mound, Range, Vermejo and Teta Vegue.  
All increase branded the same as old stock.  
Other brand, T on right shoulder, side and hip.  
Horse brand, HT on the left shoulder.

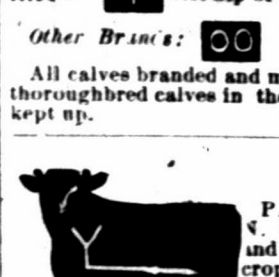


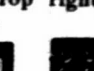
MORA COUNTY.


**T. H. LAWRENCE, Manager, East Las Vegas.**  
W. E. LAWRENCE, Range Supt., Tequisquite, Mora county, N. M.  
**Dubuque Cattle Co.**  
P. O., East Las Vegas.  
Range, Tequesquite, Ute creek and Tremperos, Colfax, Mora and San Miguel counties.  
Horse brands, Σ X or MX or T left hip or shoulder.




**F. J. Maidaner.**  
P. O.: Wagon Mound, N. M. Range, Vermejo and Teta Vega. Ear mark, crop left and split right.  
Other brand: .  
Horse brand, same as cut, on the shoulder.





**William McCartney.**  
P. O.: Los Angeles, Cal. Ranch P. O.: La Cinta, New Mexico.  
Range, Rincon and Arroyo de Los Alamocitas.  
Ear marks, crop right, under slope left.  
Other brands: .  
Horse brand, same as cattle, on left shoulder.

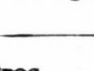
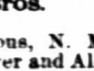
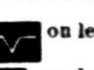



**Robison & Clark Cattle Company.**  
W. D. CLARK, Manager.  
P. O.: Wagon Mound, N. M. Range, south of Wagon Mound.  
Horse brand, T on the right shoulder.  
Other brands, H on right side and hip; also, J on right hip and I right side.  
16 on the left side and hip.  
All increase branded as in cut.


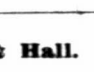
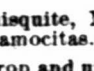



**H. S. Gratz.**  
P. O.: Capulin, N. M. Range, Dry Cimarron, Colfax county.  
Marks, slit in right ear.  
Horse brand, same as cut on the left shoulder.  
Other brands:  on the left side. Marked, with a slit in the right ear and tin tag in the left ear.



**Farr Bros.**  
P. O.: Watrous, N. M. Range, Red River and Alamocitas.  
Horse brand,  on left shoulder.  
Other cattle brand,  on left side.  
Also  left side.  
Some cattle are branded with a flying V on side without slash.

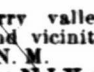


**Shepard & Hall.**  
P. O.: Tequisquite, N. M. Range, Alamocitas.  
Ear marks, crop and underhalf crop right; crop and underbit left.  
Other brands:  
this brand kept up.  right shoulder, side and hip.  
Horse brands  left hip; also  on right hip.



**The Riverside Cattle Company.**  
W. B. BRUNTON, Manager.  
P. O.: Shoemaker, Mora county, N. M. Range, Cherry valley, Pinos Altos and vicinity, Mora county, N. M.  
Other brands: NIX on right side, kept up.  
Horse brand, 2 on right shoulder.



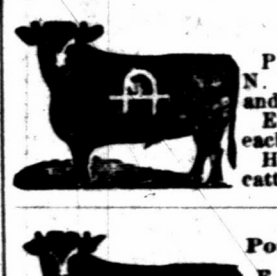
**Illinois Live Stock Co.**  
J. S. HOLLAND, Manager.  
P. O.: Tramperos, N. M. Range, Vermejo.  
Some cattle are branded thus  but all increase are branded as in cut.  
Ear marks—Crop and underbit left, and underbit right.  
Horse brand, same as cut, on left shoulder.




**THE STOCK GROWER** presents the best medium for advertising, because it is read by every stockman in the southwest.

MORA COUNTY.

**J. B. Brown.**  
P. O.: Wagon Mound, N. M. Range, Vermejo and Teta Vegue.  
Ear marks, underslope each ear.  
Horse brand, same as on cattle on left shoulder.



**Portsmouth Cattle Co.**  
E. E. HOLMES, Manager,  
P. O.: Kansas City, Mo.  
H. G. HOWARD, Supt.,  
P. O.: Springer.  
Range, Colfax and Mora counties, New Mexico.  
Horse brand: Same as on cattle, as in cut. Some horses branded B B.



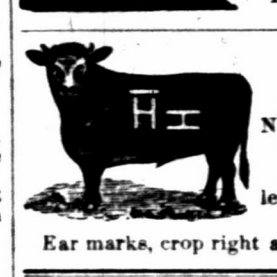
**S. B. Watrous & Son.**  
P. O.: Watrous, N. M. Range, east of Watrous, north and south of Mora river.  
Horse brand, W on the left shoulder.  
Ear marks 



**Wagon Mound Cattle Company.**  
GARTH & LEARY, Managers  
P. O.: Wagon Mound, Mora county, N. M. Range, Vermejo.  
Horse brand  on right shoulder.



**Charles Sumner.**  
P. O.: Watrous, Mora Co. Range, south of Wagon Mound.  
Ear mark, two slits in left ear.  
Horse brand K left thigh.



**M. Johnston.**  
P. O.: Wagon Mound, N. M. Range, Vermejo.  
Horse brand, same on left hip.  
Ear marks, crop right and swallowfork left.



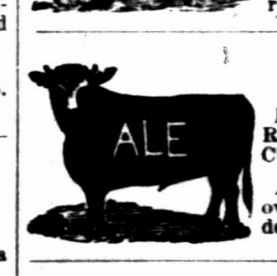
**The Akron Live Stock Company,**  
Akron, Ohio.  
AUGUSTUS CURTIS, Manager.  
I. H. KINGMAN, Range Foreman.  
Postoffice, Springer, N. M.  
Known as the "Stirrup" brand, formerly owned by Porter & Clouthier.  
Horse brand, same, on the left hip.  
Other brands:  and various other brands. Brand all calves with dart.  
Range, Ocate mesa and canon, Sweetwater and Cimarron river.



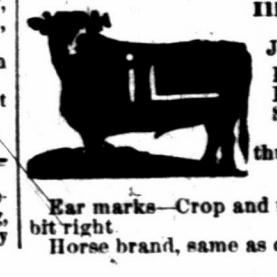
**Henry K. T. Lyons.**  
P. O.: Raton, N. M. Range, Sugarite and Red river.  
Ear mark, sharpen the left ear.  
Horse brand, same on right hip.



**Aaron Bales.**  
P. O.: Watrous, N. M. Range, Petrosan canon and Cherry valley, Mora Co.  
All calves marked with overbit in left and two underbits in right.



**J. Linn Smythe.**  
P. O.: Raton, N. M. Range, Gates Canon, Colfax county.  
Ear marks, split in the left and under hack right.



COLFAX COUNTY.

**Urraca Hereford Ranch.**  
FRANCIS CLUTTON.  
Postoffice, Cimarron, Colfax County, N. M.  
Thoroughbred herd,  left side. Ear mark, underbit right and left.  
Horse brand, 5 on the left shoulder.



**Palo Blanco Cattle Co.**  
O. A. HADLEY, Manager.  
P. O.: Springer, N. M. Range, Chico, Retaplen, Holkio, Palo Blanco, Don Carlos and Ute creek.  
Ear mark, swallow fork the left.  
Horse brand, same as cattle, on left thigh.  
Also  left side, slash  slash left hip.



**Miller & Harshman.**  
P. O.: Springer, N. M. Range, Ocate, Colfax Co. Ear mark, crop and underbit left.  
Other brands:  all on left side, shoulder and hip.  
Horse brand  on the right shoulder.




**S. W. Dorsey.**  
P. O.: Chico Springs, New Mexico.  
Range—Currumpo, San Rafael, Cinnegulla, Perico, Carrizo, Pinipitun, and Sierra Grande, Colfax county.  
Horse brand, same as above, on right shoulder.  
Additional Cattle Brands:  
 left side and hip.  
 on right side.  
 left or right side.  
 left hip or side.  on left side.



**S. A. Kail.**  
P. O.: Wagon Mound, Range, Vermejo and Teta Vegue.  
Cattle have various ear marks. All increase marked as in cut.  
Horse brands: Same as cattle on right hip.




**Eagle Tail Cattle Co.**  
O. A. HADLEY, Manager.  
P. O.: Raton, N. M. Range, Eagle Tail and Tenaja.  
Horse brand, same as the cut, on the left shoulder.

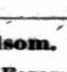
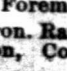
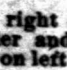


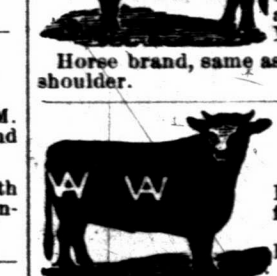
**Lake Ranch Cattle Co.**  
D. C. HOLCOMB, Manager.  
P. J. TOWNNER, Foreman.  
P. O.: Chico Springs, N. M. Range, Ute creek, Tremperos, Alamocitas, and Carrizo, Mora county, New Mexico.  
Horse brand, same as cut, on the left hip or shoulder.



**J. Linn Smythe.**  
P. O.: Raton, N. M. Range, Gates Canon, Colfax county.  
Ear marks, split in the left and under hack right.



**S. M. Folsom.**  
E. A. CAHOON, Foreman.  
P. O.: Cimarron Range, Cerososo Canon, Colfax county.  
Other brand:  on right shoulder and on left side, also  on left hip.  
Horse brand,  on the left hip.



**THE STOCK GROWER** presents the best medium for advertising, because it is read by every stockman in the southwest.

COLFAX COUNTY.

**J. A. Judd & Co.**  
P. O.: Raton, Colfax Co. Range, Sugarite.  
Horse brand, J left hip  
Also own all cattle branded thus:  
Increase branded and marked as in cut.

**Western Land and Cattle Company.**  
(Limited.)  
**JAS. A. FORDS,** Gen. Mgr.  
12 Delaware block, cor. of Seventh and Delaware Sts. Kansas City, Mo.  
Range, Cimarron river.  
P. O.: Madison, Colfax county, New Mexico.

**Other prominent brands:**

all on the right side, and right hip right or left on the left shoulder thigh. on the right hip. on the right thigh.

**Richard Steele.**  
P. O.: Tequisquite, N.M. Range, Tequesquite and Ute creek, Colfax county.  
Ear marks, under half crop right, underbit left.  
All young stock branded as in cut.

**Other brands, not kept up:**

on left side. left shoulder, left hip. left side. Horse brand, on left shoulder.

**Ernst Winter.**  
P. O.: Raton, Colfax Co. Range, Sugarite and Red river, Colfax county.  
Ear marks, split right, underbit left.

**Other brands:**

right side: swallowfork and left side, under hack each ear. left side and hip. left side and hip. Horse brands left, or right side.

VALENCIA COUNTY.

**W. P. METCALF,** Superintendent. **JAS. A. STINSON,** Ranch Manager.

New Mexico Land and Cattle Company.

P. O.: Chilili. Range, Estancia grant, Valencia county.  
Horse brand, circle on the left hip.

P. O.: Chillil. Range, Estancia grant, Valencia county. Horse brand, circle on the left hip.

**Kennedy & Co.**  
P. O.: Coolidge, N. M. Ranges in Valles de Las Tuces. Range, between Bluewater and Coolidge, along line of A. & P. R. R.  
Old stock are branded on left side; since 1883 all branded as in on the cut.  
Ear marks, crop right, under half crop left.  
Horses branded or left shoulder.

**L. P. BRADLEY, Pres.**  
**T. S. MUMFORD, Secy.**  
**Cebolla Cattle Co.**  
P. O.: Santa Fe, N. M.; box 218.  
Range, Valencia county, near Fort Wingate.  
Horse brand, the same.

**Davenport Live Stock Company.**  
**M. B. BOWMAN,** Mangager.  
P. O.: Chilili, N. M. Range, Buffalo Springs. Horse brand, same as cattle on left hip.

**J. A. Johnson & Co.**  
P. O.: Albuquerque, N. M. Range, San Jose ranch, on A. & P. railroad, forty-seven miles from Albuquerque.  
Horse brand, J left hip. Various earmarks

VALENCIA COUNTY.

**ALC**

**Acoma Land and Cattle Co.**  
P. D. RIDENOUR, President, Kansas City.  
E. D. BRACKETT, Sec. and Treas., Kansas City.  
J. E. SAINT, Vice-Prest. and Mgr., Grants, N. M.  
Range, the Acoma Grant, and territory adjoining west and north.  
Horse brand, U on the left hip.

**ROMAN A. BACA,** President, San Mateo, N. M. **MAX FROST,** Secretary, Santa Fe, N. M.

**San Mateo Cattle Co.**  
Range, The Miguel and Chaves Grants, Valencia county, New Mexico.

**Dr. E. C. Henriques.**  
P. O.: Belen and Las Vegas. Range, Estancia Springs, Valencia county.

**Other brands** All the increase of cattle and horses branded as in main cut.

SAN MIGUEL COUNTY.

**IXI**

**Calkins Cattle Company.**  
O. L. HOUGHTON, Manager, Las Vegas. E. J. WILCOX, Range Supt., Fort Sumner.  
Range, Pecos river, near Fort Sumner.  
Ear marks on increase, crop off left.

**Other brands:** on the left shoulder, side and hip. on the left side. on side, on hip.  
Horse brand, on the left hip.

**DAY BROS. & Co.**  
P. O.: Liberty, N. M. Range, Trujillo.  
All increase is not ear marked, but end of tail cut off.  
Horse brand, connects ND on left shoulder.

**D. A. IRWIN, & D. RUBIDGE.**  
**Irwin & Rubidge.**  
P. O.: Denver, Colorado. Range, Trujillo, N. M.  
**DAY BROTHERS,** Managers.  
P. O.: Liberty, New Mexico.

**Lon Horn.**  
P. O.: Trinidad, Colo., or 503 East Ninth St., Kansas City, Mo. Range, on Pecos river, old Fort Sumner reservation.  
Cattle also bear left side, not kept up.

**Stoneroad Brothers.**  
P. O.: Cabra Springs, N. M. Range, the Beck Grant.  
Horse brand on the left thigh.

**J. & E. Rosenwald.**  
P. O.: Las Vegas, N. M. Range, Charco, San Miguel county.  
Marked, crop the right.  
Also own cattle branded

**Clifton Davis.**  
P. O.: Puerto de Luna. Range, Juan de Dios.  
Ear marks, crop left, and crop and split right.  
Horse brand, on the left shoulder.

SAN MIGUEL COUNTY.

**Fond du Lac & Las Vegas Cattle Co.**  
**JAS. GAYNOR,** President and Manager.  
P. O.: Fon du Lac, Wis. Range, Liberty Ranch.

**Geo. W. Mayhan.**  
P. O.: Watrous, N. M. Range, Tualosa Canon, Los Conchos.  
Ear marks, crop and two dits in left ear.  
Horse brand, C on left shoulder.

Some cattle branded as above, on the ribs. Beef brand A-K on left side, and bar across the loin, under the tail. Brand all increase as in cut.

**P. C. Pixlee.**  
P. O.: Liberty, N. M. Range, Tierra Blanca and Pajarito creek, San Miguel county.  
Horse on the left shoulder. All horses brand are vented when sold.

**James Conant.**  
P. O.: Gallinas Springs Range, Gallinas Springs and Ojo de Los Conchos.  
Other brand, on left side.  
Horse brand, same as cut, on the left hip.

**Frank W Dale.**  
P. O.: Liberty, N. M. Range, on Red River, 12 miles above Fort Bascom.  
Ear mark, crop the right and sharpen the left ear.

**Simon Frankenthal.**  
P. O.: La Cinta. Range: La Cinta Creek.  
Horse brands: SF on left shoulder.

**Lewis Walker and Mary Walker.**  
P. O.: La Canon Largo. Range, Canon Bonito and Canon Largo.  
Horse brand, cross on the left hip.  
A few cattle branded in three crosses only.

**Canon Largo, N. M.**  
Range, Canon Bonito and Canon Largo.  
Horse brand on left hip. Both brands kept up.

**Tiffin Cattle Co.**  
H. F. HALL, Manager.  
P. O.: Liberty, N. M.  
Horse brands - Stock horses, on left shoulder; saddle horses, on left hip.

**Myers Bros. & Livezey.**  
Postoffice, Liberty, New Mexico.  
Horse brands, on the left hip.

**Nourse & Day Bros.**  
P. O.: Liberty, N. M. Range, Trujillo.  
Old stock branded on the right hip; young stock as in cut, and also cut off end of tail.  
No ear marks.

SAN MIGUEL COUNTY.

**QID**

**Hullard & Co.**  
P. O.: Liberty, N. M. Range: Tierra Blanca and Pajarito Creeks, San Miguel County.  
Other Brands: also on right side; also on right side.  
Ear mark: Underslope both ears.  
All increase branded right side.  
Horse Brand: on left hip or neck.

**ROBERT MINGUS,** Puerto de Luna. **C. A. RATHBUN,** Las Vegas.  
**R. Minguis & Co.**  
P. O.: Puerto de Luna. Range, head of Alamo Gordo.  
All increase is branded as in cut and ear marked crop and over hack left under back in right.  
**Other brands:** For cattle put on both sides For cattle (either side) and horses All horses tails bobbed.

**Circle Cattle Co.**  
A. MONROE, Manager.  
Post office, Tequesquite. Horse brand, left hip.  
**Other brands:** left side. left side.

**Governor C. H. Moore.**  
P. O.: Puerto de Luna. Range, Upper Yeso.  
Various ear marks. Horses branded same on shoulder.

**Las Carretas Cattle Co.**  
**WM. S. WASHBURN,** Mgr.  
P. O.: Fort Sumner, N. M. Range, Las Carretas and Pecos river.  
Also claim cattle branded thus left hip or flank, not kept up.  
Cattle branded on both sides. Horses branded with star on left hip.

**T. Romero, Bro. & Son.**  
P. O.: La Cinta. Range, Atarque Canon and Montoya Grant.  
Horse brand, same as cattle, on the left thigh.  
Other cattle brands All increase marked hole in left and split right.

**Silva & Dodge.**  
P. O.: Puerto de Luna. Range, Alamo Gordo.  
Horse brand, on either side, on the shoulder.  
Ear marks, jinglebob in left upper half crop right.  
All calves branded as above. Also own

**Mariano Hinojos.**  
P. O.: Puerto de Luna. Range, Carriso.  
Horses and steers are branded thus:

**Valley Ranching Co.**  
P. O.: Glorieta, N. M. Range, headwaters Pecos river.  
Short horns only. Young bulls for sale.

**Quincy & Las Vegas Cattle Co.**  
W. S. LYON, Manager.  
P. O.: Cabra Springs. Horse brand same on left shoulder. Ear marks, double jinglebob right; swallowfork left.

WHEN you write to an advertiser mention the Stock Grower.

SAN MIGUEL COUNTY.



All increases branded on both sides, marks, crop left and crop and hole in right  
Stonewall Cattle Company.  
Rick B. Winslow, Manager.

P. O.: Cabra Springs, San Miguel Co., N. M.  
Range, head of the Juan de Dios, head of the Pajarito Arroyo and Cuervo.

Additional brands:

X on right side and II on right hip. X on the right side. X on right side and X on right hip.



W. B. Stapp.

P. O.: Las Vegas.  
Range, Los Conchas.  
Additional brands:  
SH on left ribs.  
78 on left rump or hip.  
S jaw, S ribs, S thigh.



Montezuma Cattle Co.  
J. I. Moore, Manager.  
P. O.: Eden, N. M.  
Range, Los Tancos and on Pecos river.  
Horses branded same as cattle on the left shoulder or hip.  
Brand any place on animal.



Pajarito Cattle Co.  
A. H. Whitmore, Presid't, Las Vegas.  
E. D. Bullard, Sec. and Manager, Liberty.  
P. O.: Las Vegas, N. M.  
Range, Pajarito, near Liberty, N. M.  
Calves branded on both sides.  
Ear marks, crop and two splits in each ear.



Hyde Park Cattle Co.  
P. O.: Hyde park, Illa.  
Range, El Salitre, San Miguel county.  
Horse brand, same as cut, on right hip.  
All young stock branded same as cut.



Lorenzo Lopez.  
P. O.: Las Vegas. Range, El Cuervo, San Miguel Co., New Mexico.



Pete Maxwell.  
P. O.: Fort Sumner, N. M.  
Range, Pecos river, near Fort Sumner.  
Ear marks: Right ear cropped and split, and left ear cropped.  
Also claims



Geof. McCrohan.  
P. O. Liberty, San Miguel county.  
Range, Esccondido, near Wagon Mound.  
Ear marks, crop right; staple bit left.  
Horse brand, same as cut on left shoulder.



Stapp & Ennis.  
P. O. Las Vegas, N. M.  
Range, Los Conchas.  
Ear marks, crop and hole in right; swallow fork left.  
Horse brand, same as cut on left hip.



Chas. S. Cowan.  
P. O.: Pecos Town, N. M.  
Range, Rincon de las Trozas, Red River, and Cow Creek, Upper Pecos.  
Horse brand 7—on left shoulder.  
Ear mark, crop the left, and upper half crop right.  
Some cattle branded TA on left side.  
All increase branded as in cut.

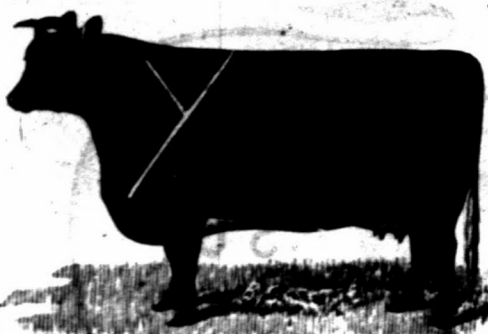


J. N. Degraftenreid & Sons.  
P. O.: Fort Sumner, N. M.  
Range, Alamo Gordo. Saddle Horses branded SIX Stock horses are branded O—O



Sam Goldsmith.  
P. O.: Liberty, N. M.  
Range, Plaza Largo.  
Ear mark, crop and underbit left.  
Horse brand, circle cross on the left shoulder.

SOCORRO COUNTY.



HURST, BLACK, KIEHNE & WILEY.

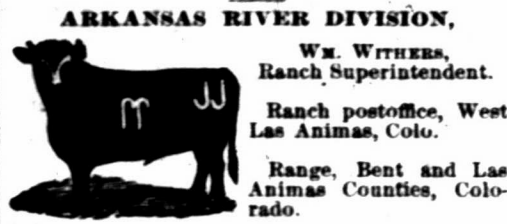
Postoffice, Patterson, Socorro county, New Mexico.  
Range, southwestern part of the San Augustine plains, and Nigrita river, Socorro county, N. M.  
Additional Brands, not kept up.



Ear marks, swallow fork the left, crop the right. Above brand and ear mark kept up.

THE PRAIRIE CATTLE CO.

[LIMITED.]  
W. J. TOD, General Manager.  
MURDO MACKENZIE, Sec. and Cashier.  
Trinidad, Colorado.



ARKANSAS RIVER DIVISION,  
Wm. Withers, Ranch Superintendent.  
Ranch postoffice, West Las Animas, Colo.  
Range, Bent and Las Animas Counties, Colorado.  
Other Prominent Brands:  
JJ PJ JN N A C  
P K K A JJ



CIMARRON RIVER DIVISION,  
W. J. Cartwright, Ranch Superintendent.  
Ranch postoffice, Catalpa, Colfax county, N. M.  
Range, Colfax, Mora and San Miguel counties, New Mexico.  
Other Prominent Brands:  
T 7 7 J J L T  
T X T I T F  
H H Horse Brand, on the left shoulder or hip



CANADIAN RIVER DIVISION,  
A. F. Mitchell, Ranch Superintendent.  
Ranch postoffice, Tascosa, Oldham Co., Texas.  
Range, Oldham county, Texas.  
Other Prominent Brands:  
7 A U L X A-L  
X III Horse brand, same as cattle.

Fruit and Ornamental Trees  
MAGNOLIAS, PALMS, ROSES, CLEMATIS, Etc.  
10 MEDALS AND 39 PREMIUMS  
Awarded at the World's Exposition in New Orleans.

New descriptive catalogues, containing many new and rare varieties, will be sent: No. I.—Fruits, Grapevines, Olives..... 4 cents. No. II.—Ornamental trees, Evergreens and Plants..... 4 cents.  
JOHN ROCK,  
San Jose, California

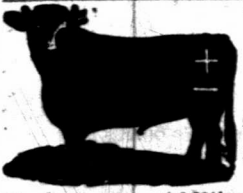
The BUYERS' GUIDE is issued Sept. and March, each year. 32-319 pages, 8 1/2 x 11 1/2 inches, with over 3,500 illustrations—a whole picture gallery. GIVES Wholesale Prices direct to consumers on all goods for personal or family use. Tells how to order, and gives exact cost of everything you use, eat, drink, wear, or have fun with. These INVALUABLE BOOKS contain information gleaned from the markets of the world. We will mail a copy FREE to any address upon receipt of 10 cts. to defray expense of mailing. Let us hear from you. Respectfully,  
MONTGOMERY WARD & CO.  
227 & 229 Wabash Avenue, Chicago, Ill

SAN MIGUEL COUNTY

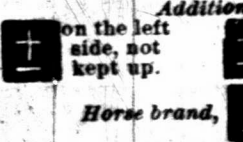


Fort Sumner Land and Cattle Co.  
DAN. J. TAYLOR, President and Manager, Fort Sumner, New Mexico.  
Range, Fort Sumner, N. M. P. O.: Fort Sumner.  
Ear marks, crop the left.

Additional brands—All kept up.  
NO right side, V7 right hip, K right hip or hip.  
VO on right side or hip.  
Some horses are branded VO



Robert L. M. Ross.  
P. O.: La Cinta.  
Range, Las Alamocitas Arroyo.  
All young stock branded as in cut.



Additional brands:  
+ on the left side, not kept up. + on the left side, not kept up.  
Horse brand, T on the left hip.



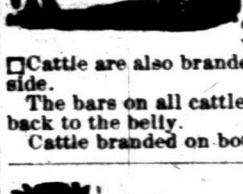
E. G. Austen.  
Postoffice, Watrous, N. M.  
Range, near Liberty, San Miguel county, N. M.



Barash & Bloch.  
P. O.: Las Vegas, N. M.  
Range, Los Conchas.  
Cattle branded either side.  
Horse brand, same as cut, on left shoulder.  
Ear marks, swallow fork each ear.  
Additional brand on left side. 2B  
All increase branded as in cut.



Isidor Fellheimer, Of New York.  
R. Hirsch, Of Las Vegas, N. M.  
Fellheimer & Hirsch.  
Ranch P. O.: Liberty, New Mexico.  
Range, Pajarito and Tierra Blanca, San Miguel Co.  
Cattle branded on either side.  
Horse brand, T left hip.  
Ear marks, on increase crop left; old stock have various earmarks.



Waddingham Bell Ranch.  
MICHAEL SLATTERY, Mgr  
P. O.: La Cinta, county of San Miguel, New Mexico.  
The range, Montoya Grant. All the horses on the ranch have the same bell brand on left shoulder.



Jas. E. Johnston.  
P. O. Liberty, N. M.  
Range, Liberty, N. M.  
Ear mark, crop and split each ear.  
Horse brand, same as cut on left hip or thigh.



Kemary Ritter.  
P. O.: Liberty, N. M.  
Range, Canadian and Trujillo rivers.  
Ear marks crop left—swallow fork, right.  
Also own all cattle in the C brand, formerly belonging to M. J. Coots.  
All horses branded X on the left shoulder.



Rudolph Erminger  
P. O.: Liberty, N. M.  
Range, Pajarito and Tierra Blanca, San Miguel Co.  
Ear marks, underbit in each ear.  
Horses 2 on the left branded 2 on the left shoulder.  
Also cattle branded on the left side.



Mrs. D. F. Allen.  
P. O.: La Cinta, San Miguel county, New Mexico.  
Range, Atarque Canon.  
Other brands: Some cattle branded same on left hip.  
Horse brands: Same on left shoulder.

The Stock Grower Job Office

Is Now The Most Complete in the Southwest  
And can turn out every class of printing Cheaply and Promptly

We have on hand a splendid line of live stock cuts of every description, and make a specialty of doing every class of work required by companies or individuals.

Stock Certificates, Letterheads, Prospectuses, Noteheads, Brand Books, Envelopes, Billheads, Statements, By-Laws, Cards, Vouchers, Checks, Receipts, Tally Books, Etc., Etc. Etc., Etc.

WRITE FOR SAMPLES AND ESTIMATES.

Address, THE STOCK GROWER, Las Vegas, New Mex.  
And at the same time

SUBSCRIBE FOR THE STOCK GROWER

Three Dollars Per Year.  
Acknowledged by all representative stock raisers to be the leading journal of the range country.

A. McDONALD, WHOLESALE

Liquor Dealer  
GIVENS' BLOCK, BRIDGE ST., LAS VEGAS, NEW MEXICO.  
Special attention given to ranch trade. Mail orders for all classes of liquors and cigars carefully attended to.

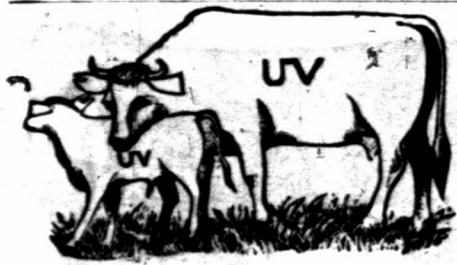
Notice of Contest.  
LAND OFFICE AT SANTA FE, N. M., January 12, 1887.

Complaint having been entered at this office by John Doid, against Neponuceno Bica, for abandoning his final homestead entry No. 1,156 dated March 19, 182, upon the E 1/2 NW 1/4, E 1/2 SW 1/4, section 15, township 7 N, range 23 E, in San Miguel county, N. M., with a view to the cancellation of said entry; the party is hereby summoned to appear at this office on the 18th day of February, 1887, at 10 o'clock a. m., to respond and furnish testimony concerning said alleged abandonment. CHARLES F. EASLEY, Register. LEIGH O. KNAPP, Receiver.

Notice.  
rail running from back bone to point of shoulder.  
Steers in the above brand are the property of the Chadbourne Bros., who drove this bunch of steers from Texas last year.  
Postoffice address, Endee, N. M.

Situation Wanted.  
Wanted, by a young man who can give good references as to honesty, industry and sobriety, a position with some cattle company as regular "puncher" and bookkeeper, with extra pay for the latter. Have had sufficient experience to run an outfit.  
Address, stating salary, to BOOKKEEPER, care STOCK GROWER office. 44-6t.

SAN MIGUEL COUNTY.



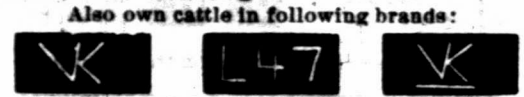
Trujillo Ranch Company. Of LAS VEGAS. Office of Browns & Manzanares. C. W. BROWN, Manager. P. O.: Red River Springs, New Mexico. Range on Trujillo creek, in Oldham county, Texas; and San Miguel county, New Mexico.



All increase branded as in above cut. Horse brand, same as cut on the left shoulder. Some horses have Star C on the left hip.



Y. Kohn & Co. P. O.: La Cinda. Range, Arroyo de los Alamosas. New ear mark, half under crop each ear. Also 'WK' on cattle either branded or marked double jinglebob in left ear.



Also own cattle in following brands: shoulder, side, hip. All increase to be branded and marked as in cut. Horses branded 'M' some on left shoulder and some on left leg.



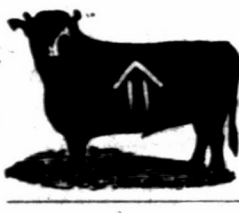
Fuller, Devine & Co. P. O.: Puerto de Luna. Range, Salado. Ear marks, crop and underbit in each ear. Horse brand, small T on left shoulder.



Waddingham Cattle Association. RAYMOND JENKINS, General Manager. P. O.: Fort Bascom, N. M. Range, Canadian river and Ute creek. Additional brands '4' on right and left hip, making '44' when seen from behind. Horse brand on shoulder.



W. H. McBroom. P. O.: Fort Sumner, N. M. Range, Canaditas. Ranch Foreman, Snow HARRIS. Additional brands 'X' on left hip, 'on left side' on left side.



L. S. Rogers. P. O.: Liberty, N. M. Range, Monte Ruelto. Other brands, 'XLY' on left shoulder, side and hip, respectively. Horse brand, same as cut, on the left hip.



Heckle & McDowell. P. O.: Las Vegas, N. M. Range, Sabinoso and Largitjos arroyo. Some branded only with a 'W' on either side and ear mark grub right or left. Horse brand, 'L' on the right shoulder.

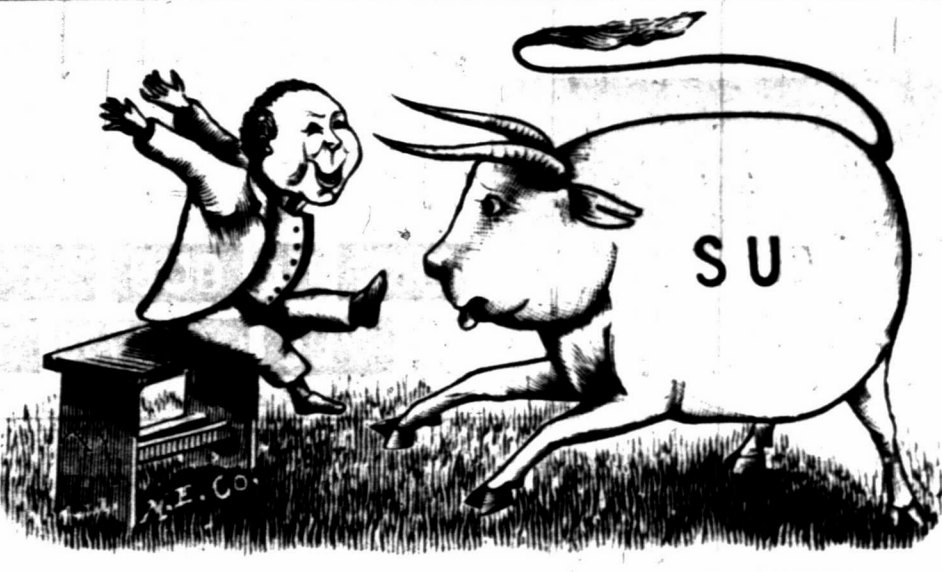


New England Live Stock Company. P. O.: Greeley, Colorado. Ranch P. O.: Fort Sumner, N. M. Range, the Pecos, at Fort Sumner. Additional brands, '102' and 'DOS'. Horses branded same as cattle on left side. Earmark, crop and two splits in right ear. Cattle in brand of above cut branded both sides.



W. A. Burnett, Trinidad, Colorado. J. D. WILLIAMS, Foreman. P. O.: Liberty, N. M. Range, Monte Ruelto, San Miguel county, New Mexico. Additional brands, 'T' on left jaw and 'H' on left side. Horse brand, 'H' on left hip.

SOCORRO COUNTY.



UPCHER & STEVENS.

R. A. JONES, Range Superintendent. Postoffice, Frisco, Socorro county, New Mexico. Range, Tulerosa and San Francisco Rivers, and Johnson Basin, Socorro county, New Mexico.

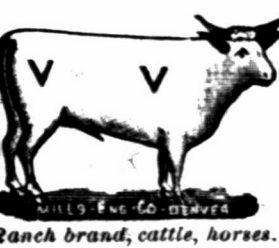
There was a young man who said, "How? Shall I soften the heart of this cow?" "I'll brand her S U And M-F too, Crop her right, split her left ear:—That's How."

We run two brands, SU and M-F. Ear mark, crop the right and split the left, for both brands. Horse brand, SU on left thigh or left shoulder.

All increase of the following brands is put in the above brand and mark



MAY on side, S on hip. BEL on side, S on hip. U on side. All brands on left side. ALA on side, O on hip. U O on side. Old cattle in various marks and brands. Horse brands, U S and J O N S on left hip.



FLOYD JARRETT,

Postoffice, Datil, New Mexico. Range, Alamocito Park and the Datil Mountains, Socorro County.

Ear marks for all cattle, underslope both ears. Slash brand is the road brand to the original herd, not having ranch brand.



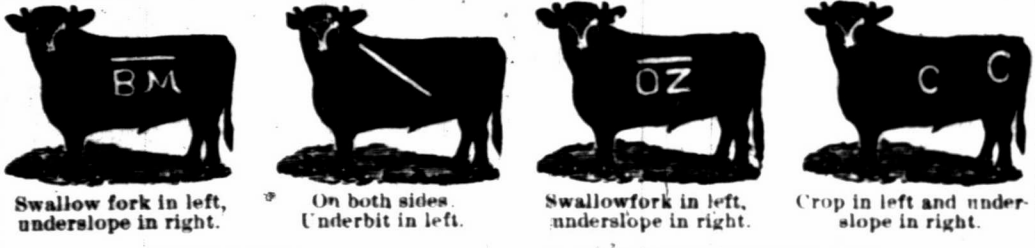
COLORADO AND NEW MEXICO.

THE HOLT LIVE STOCK COMPANY.

WILLIAM T. HOLT, President. MYRON W. JONES, Manager. Office, Opera House block, Denver, Colorado. P. O. box 2163.

A. TEMPLE THORN, Cashier and Accountant. L. WALLACE HOLT, 7 Rivers, N. M., Asst. Manager.

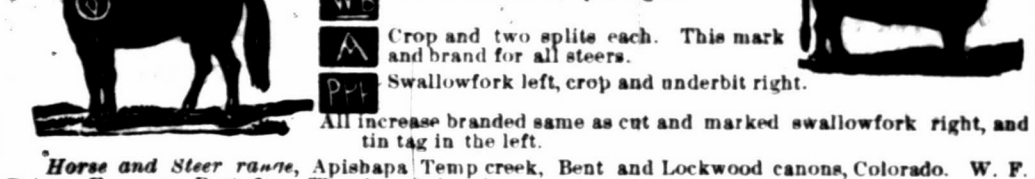
Breeding range, on the west side of Pecos river, Lincoln county, New Mexico. GEORGE WILCOX, foreman; P. O., Seven Rivers, N. M. Steer range, in Elbert and Bent counties, Colorado. W. A. WAGGONER, foreman; P. O., Hugo, Colorado.



Swallow fork in left, underslope in right. On both sides, Underbit in left. Swallowfork in left, underslope in right. Crop in left and underslope in right.

THE BLOOM CATTLE CO.

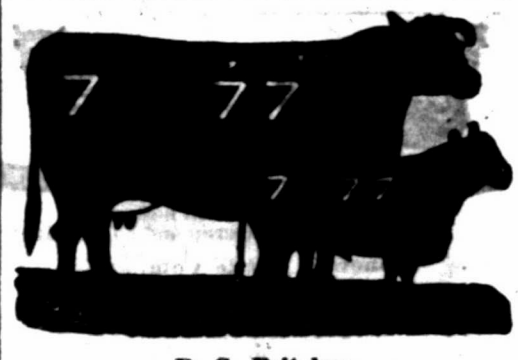
FRANK G. BLOOM, General Manager, Trinidad, Colorado. Also own the following brands:



Half undercrop left, crop right. Swallowfork left, split right. Crop and two splits each. This mark and brand for all steers. Swallowfork left, crop and underbit right. All increase branded same as cut and marked swallowfork right, and tin tag in the left.

Horse and Steer range, Apishapa Temp creek, Bent and Lockwood canons, Colorado. W. F. BLOOM, Foreman, Postoffice, Thatcher, Colorado. Breeding ranch, Rio Hondo, Lincoln county, New Mexico. JOHN BURNS, Foreman, Postoffice, Lincoln, New Mexico, care Circle Diamond ranch.

SAN MIGUEL COUNTY.



D. G. Fritalen. P. O.: Liberty, San Miguel Co., N. M. Range, Tierra Blanca. Ear marks, crop and slit twice the left ear. Horse brand, '77' on right hip.



Frank Carpenter. P. O.: Liberty, N. M. Range, Red River, twelve miles above Fort Bascom. Ear marks, crop the left and sharpen the right ear.



H. R. Trask. P. O.: Liberty, San Miguel county, N. M. Range with W. A. Burnett. Also own 'OL' on left side with slash on hip and 'X' on left side.

All increase branded as in cut. Horses branded with teepee and as in cut on left hip, and 'OL' on left shoulder. No stock cattle sold in these brands.



A. Straus, Manager. P. O.: Liberty, Range, Rincon del Charco. Horse brand, same as on cattle, on right shoulder or left hip. All young stock is branded thus: 'K' on left shoulder, side and hip. Other brands: 'TO'.



R. & L. Davidson. P. O.: Liberty, N. M. Range, Tierra Blanca, San Miguel county. Ear marks, overslope left. Horse brand, on the left shoulder, thus: 'M', 'C', 'V'.

None of these brands kept up. XV on left shoulder and V on left hip. All increase branded XV on both sides.



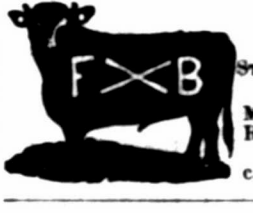
S. Fred. Reuther. P. O.: La Cinda, N. M. An over half crop in each ear. 'NX' increase branded as in cut.



Reuther & Nahm. P. O.: La Cinda, N. M. Crop two splits left; half undercrop right. 'RH' increase branded as in cut. Horse brand '7' on the left shoulder.



M. S. BRAZIL. MRS. LUE B. MAXWELL. Brazil & Maxwell. P. O.: Las Vegas, Ranch P. O.: Fort Sumner. Range, Taivan ranch, east of Fort Sumner. Horse brand, on left shoulder.



Fort Bascom Cattle Raising Co. STEPHEN E. BOOTH, Mgr. P. O.: Fort Bascom, San Miguel Co., New Mexico. Range, Baca Location, No. 2. Horses branded same as cattle on the left hip.



L. H. Pinnell. P. O.: Santa Rosa, N. M. Range, Los Tanos, Pecos river. Cattle branded on both sides. Ear marks, crop the left swallow fork the right.

ALWAYS mention the Stock Grower in writing to advertisers.



SAN MIGUEL COUNTY.



The Dutchess Catt's Co. of New Mexico. TAYLOR MAULHIG, Manager, Postoffice, Wagon Mound. Ranch P. O.: Liberty, N. M. Range, Pajarito, San Miguel county. Other brands, HUT and 202 both on the left side. Horses branded same as above cut, on left hip.



Sam Doss.

JOHN PAWLEY, Foreman. Ranch P. O.: Fort Sumner. Address, 508 East 9th st., Kansas City, and Trinidad, Colo. Range, Pecos river, at Fort Sumner.

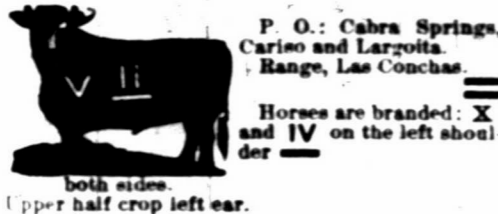
Additional Brands. Cattle in DQ brand have also following brands: Some D on left hip and left jaw; a few branded D on left hip, side and jaw. Cattle in VG brand have also following brands: Some U right loin; some N right side. Note of these brands are kept up. All increase in cut side branded and marked as in cut. All horses branded DQ on right thigh.

Las Conchas Cattle Company.

A. S. HALL, Manager.



Underslope right. Also both sides. Young stock, crop right, old stock, grub right.



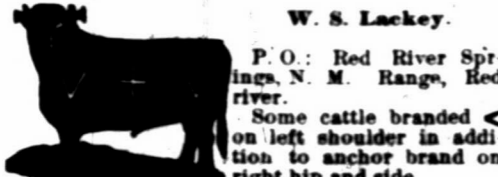
P. O.: Cabra Springs, Cariso and Largoita. Range, Las Conchas. Horses are branded: X and IV on the left shoulder. both sides. Upper half crop left ear.



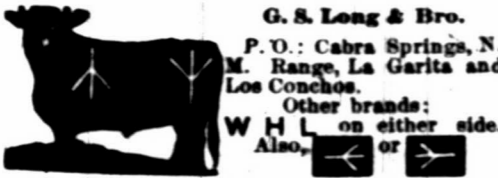
Miguel Romero. P. O.: Las Vegas, The range, San Rafael springs, San Miguel county. Horses, same as cattle. Additional brands: [AR] [ER]



Juan De Dios Cattle Company. P. O.: Las Vegas, N. M. Range, Juan de Dios, San Miguel county. Horse brand, same as on cattle, on the left shoulder.



W. S. Lackey. P. O.: Red River Springs, N. M. Range, Red river. Some cattle branded < on left shoulder in addition to anchor brand on right hip and side. Also owns one-half interest in the anchor brand, formerly owned by Lackey & McNamara. All increase branded as shown in the cut. Horse brand, V cross on the left hip.



G. S. Long & Bro. P. O.: Cabra Springs, N. M. Range, La Garita and Los Conchos. Other brands: W H L on either side. Also, [ ] or [ ] On either side. Increase branded as in cut. Horse brands, same as cut. Ear marks, slit right, overbit left.



Louis LeTestu. P. O.: Puerto de Luna, Range, Salado. Horse brand, on left shoulder. Ear marks, crop the right and jinglebob in the left.

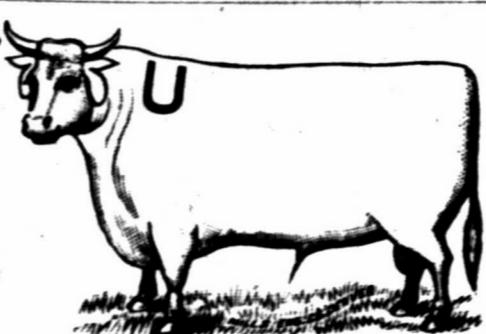
LINCOLN COUNTY.

WM. ROBERT,

Postoffice, Roswell, Lincoln county, New Mexico.

Ranges,

Breeding range, on the Pecos river, New Mexico. Steer range, on the San Pedro river, in Cochise county, Arizona.



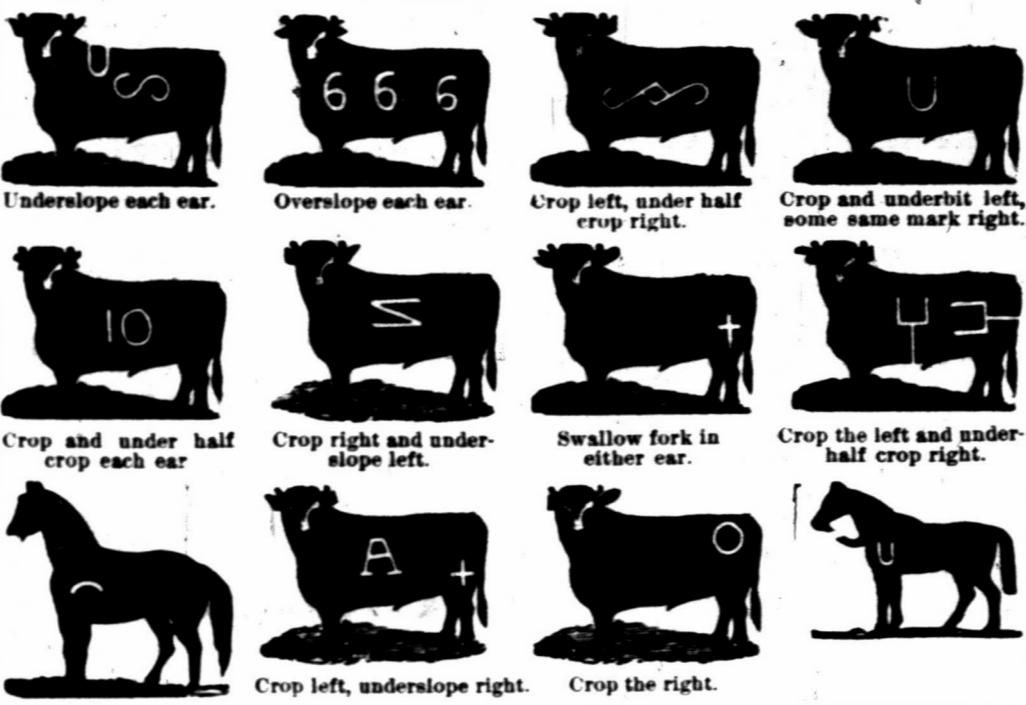
Horse Brand,

U on the left shoulder.

Ear Marks,

Jinglebob in both ears.

Same brand and marks kept up on both the steer and breeding ranges. All increase of following brands, which I own, marked and branded as in main cut.



Underslope each ear. Overslope each ear. Crop left, under half crop right. Crop and underbit left, some same mark right. Crop and under half crop each ear. Crop right and underslope left. Swallow fork in either ear. Crop the left and under half crop right. Crop left, underslope right. Crop the right.

THE ANGUS V V RANCH.

KIRBY & CREE.

Postoffice, Fort Stanton, Lincoln county, New Mexico.

Range, Rio Salado, Rio Bonito, Little creek, Eagle creek, and Rio Ruidosa.

Ear marks, underbit in each ear.

Horse brand, V on the left shoulder.

Additional Brands:

[E] on right side, underbit both ears. [S] on left side, or either side. [V] on either hip. [W] on the left side. [V] on left shoulder, side and hip. Marked, crop right and underslope left.

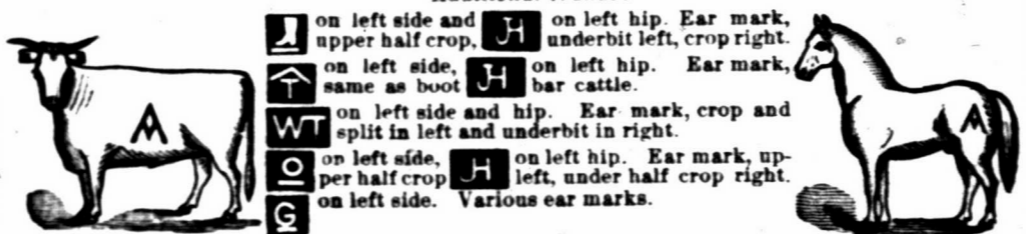


ANDERSON CATTLE COMPANY.

W. E. ANDERSON, Manager.

Postoffice, Roswell, Lincoln county, New Mexico. Range, On the Hondo river, Lincoln county, west of Roswell.

Additional brands:



[J] on left side and upper half crop. [H] on left hip, underbit left, crop right. [T] on left side, same as boot. [W] on left side and hip. Ear mark, crop and split in left and underbit in right. [O] on left side, upper half crop. [G] on left hip, ear mark, upper half crop right. [H] on left side. Various ear marks.

MILNE & BUSH LAND AND CATTLE CO.

Postoffice, Roswell, Lincoln county, N. M. Range, on the Pecos and Berrendo rivers.



Main brand. Grub Left. Grub left and underslope right. Grub left and crop right. Additional Brands: [O X O] on left shoulder, side and hip. Different ear marks. [I X] on left side. Ear marks, crop left under half right. Horse brand, V left thigh.

MEXICO, TEXAS AND WYOMING.



CLAY M. MANN,

Postoffice Address, Colorado City, Texas.

Ranges, Los Varas, State of Chihuahua, Mexico; Kent county, Texas, and Western Wyoming. Ear marks on all cattle, crop off left. All horse stock branded as in cut.

SAN MIGUEL COUNTY.



Frank Huntington.

Postoffice, La Cinta, N. M. Range, Rincón La Cinta. Also own cattle in ZH on on left side. Horse brand, same as cut, on left thigh.



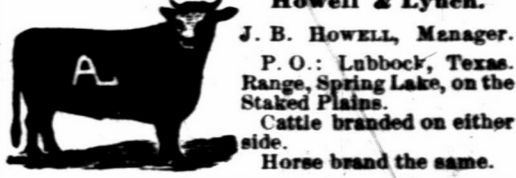
R. C. Temple.

P. O.: Fort Sumner. Range, at Fort Sumner. All increase branded on the right side. Horses branded same as cut on the right hip. Mark, over half crop.



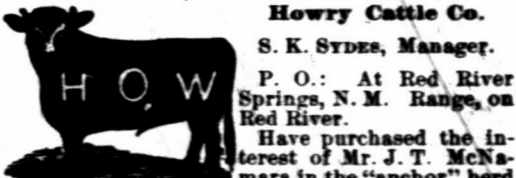
A. Goldsmith.

P. O.: Las Vegas, N. M. Range, Charco, San Miguel county, New Mexico. Horse brand, circle cross on the left shoulder. Underslope and underbit left, overslope and overbit right.



Howell & Lynch.

J. B. HOWELL, Manager. P. O.: Lubbock, Texas. Range, Spring Lake, on the Staked Plains. Cattle branded on either side. Horse brand the same.



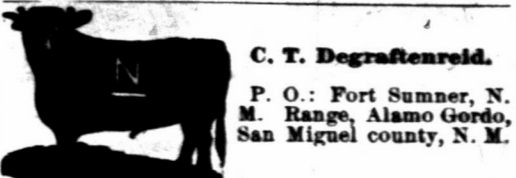
Howry Cattle Co.

S. K. SYDES, Manager. P. O.: At Red River Springs, N. M. Range, on Red River. Have purchased the interest of Mr. J. T. McNamara in the "anchor" herd and range. All "anchor" cattle belonging to this company are tally branded with the [ ] and all increase of 1884 is in the [ ] brand. All increase from [ ] and [ ] branded as in cut, and marked crop and under half crop the left ear. Horse brand, RY on the left hip. All increase marked crop and under half crop left.



E. K. Houghton.

P. O.: Liberty, N. M. Range, Monte Ruelto, San Miguel Co., N. M. Horse brand, same as cut, on the left hip.



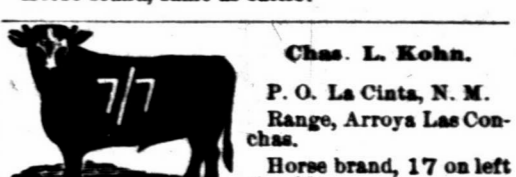
C. T. Degraftenreid.

P. O.: Fort Sumner, N. M. Range, Alamo Gordo, San Miguel county, N. M.



Ilfeld & Letcher.

Postoffice, Las Vegas, N. M. Range, Alamosa. Also Chas. Ilfeld, [FE] and [50]



Chas. L. Kohn.

P. O. La Cinta, N. M. Range, Arroya Las Conchas. Horse brand, 17 on left shoulder.

LINCOLN COUNTY.



L. M. Long.

P. O.: Roswell, N. M. Range, Rio Hondo. Other brands: [ ] [ ] Both on left side.



Also run cattle in this brand, which is kept up. Ear marks, upper jinglebob in the right and lower jinglebob in the left.

LINCOLN COUNTY.



El Capitan Land and Cattle Company. P. O.: Fort Stanton, Lincoln county, New Mexico. Range, north of El Capitan mountains, Lincoln county.

Other brands. MEL left shoulder, side and hip. Ear marks slit and underbit in right. COM left shoulder, side and hip. OWL on left side. Mark, ed crop right, underbit left.

left side and hip. Ear marks, split Horse brand on both ears. All increase marked as in cut and tails bobbed. When sold all horses are counterbranded with a small black on the left jaw.

S. S. Terrell.

P. O. Fort Stanton, N. M. Range, Rio Bonito. Ear marks, crop left, split and underbit right. All cattle branded with "riding bar" across top of and extending down on both shoulders. Also some cattle branded SS on right hip or thigh. Horse brand, SS on left thigh.

S. A. Hubbell.

Post Office: Bernalillo, New Mexico. Range: Guadalupe Mountains.

J. & J. S. Reynolds.

A. B. ALLEN, Foreman. P. O.: Fort Sumner, N. M. Range, 8 miles below Cedar Canon on the Pecos river. Horse brands, J on left shoulder.

Sutherland & Farrell

P. O.: Roswell, N. M. Range, Rio Hondo, above Roswell. Other brands: All cattle have two bars across the butt.



Carrizoso Cattle Ranch Co. (Limited).

JAMES A. ALCOCK, Manager. P. O.: White Oaks, N. M. Range, Carrizoso. Horse brand, C with dot in center placed on left shoulder.

W. H. Fuqua.

P. O. Fort Sumner, N. M. Range, Moro canon. Pecos river, 35 miles south of Fort Sumner. Ear marks, hole in left, finger left.

Old stock branded left side, increase both sides. Additional brands. Ear marks same as above. Ear marks, hole in left, quarter over and under crop right. Horse brand: A on left shoulder.

Eddy-Bissel Cattle Co.

EDDY BROS., Managers. P. O.: Seven Rivers, N. M. Range, on the Pecos near Seven Rivers. Horse brand on the left shoulder.

W. L. Rynerson & Co.

P. O.: Las Cruces, and Lincoln, N. M. Range, Rio Felix, Lincoln county. Horse brand, same as on cattle, but smaller, and on left shoulder.

John Shaw & Co.

Wm. MAILAND, Supt. P. O.: Fort Sumner, N. M. Range, Yeco and Pecos river. Horse brand, X on the left shoulder. Increase brand both sides.

Atlantic and Pacific Railroad

TIME SCHEDULE.

Table with columns: WEST BOUND, STATIONS, EAST BOUND. Lists train times for Mountain Time and Pacific Time between Albuquerque, Las Vegas, and Santa Fe.

\*Meal stations. Through tickets to all the important cities east and west on sale at the principal stations.

W. A. BISSELL, General Passenger Agt. D. B. ROBINSON, Gen. Manager, Albuquerque, N. M.

Notice for Publication

LAND OFFICE AT SANTA FE, N. M., February 10, 1887. Notice is hereby given that the following named settler has filed notice of his intention to make final proof in support of his claim...

Notice for Publication

LAND OFFICE AT SANTA FE, N. M., February 10, 1887. Notice is hereby given that the following named settler has filed notice of his intention to make final proof in support of his claim...

Resignation of Manager

Notice is hereby given that at a meeting of the board of directors of the Las Carretas Land and Live Stock company, held at the office of said company in Waverly, Mo., on the 17th day of November, 1886, Wm. S. Washburn resigned his position as manager for said company in New Mexico...

Saddles

WILLIAM MALBEUF'S. LAS VEGAS, NEW MEXICO.

Having found out the wants of the people I deemed it wise to prepare for it. Consequently I procured the services of the best California saddlers, who can make saddles to suit anybody, and give satisfaction, as I use the best CALIFORNIA MATERIAL and first-class workmanship.

TONY CAJAL,

The Palace Barber Shop, Bridge street, near the Postoffice, LAS VEGAS, NEW MEXICO.

ATTORNEY'S CARDS.

J. D. O'Bryan. W. L. Pierce.

O'BRYAN & PIERCE, ATTORNEYS AT LAW. LAS VEGAS, NEW MEXICO.

Special attention given to all matters pertaining to real estate.

A. C. VOORHEES, ATTORNEY AT LAW, RATON, NEW MEXICO.

Special attention given to the business of cattle-men and collecting.

JAMES H. PURDY, ATTORNEY AT LAW, SANTA FE, NEW MEXICO.

Specialty: Land Titles.

J.B. KLATTENHOFF & CO.

Undertaker

AND EMBALMER.

A COMPLETE ASSORTMENT OF

Furniture, Queensware and Glassware, BRIDGE ST., LAS VEGAS.

THE COLORADO

TELEPHONE AND TELEGRAPH CO.

Exclusive lessors of the Electric Telephone in New Mexico.

Special attention given to leasing and putting up Telephones for Private Lines at Stores, Ranches, Mines, etc.

Correspondence invited. Address H. T. VAILLE, Supt., Las Vegas, N. M.

A. H. MARTIN. P. J. MARTIN.

MARTIN BROTHERS,

AGENTS FOR THE BRUNSWICK AND BALKE COLLENDER CO.

Billiard Supplies, Etc. Dealers in Kentucky Bourbon and Rye Whiskies and Distillers' Agents.

CALIFORNIA WINES AND BRANDIES. Marwede Building, next to Postoffice, LAS VEGAS, NEW MEXICO.

Notice for Publication

[Pre-emption No. 2,009.] LAND OFFICE AT SANTA FE, N. M., January 7, 1887.

Notice is hereby given that the following named settler has filed notice of his intention to make final proof in support of his claim, and that said proof will be made before Probate Clerk of San Miguel county, at Las Vegas, N. M., on February 26, 1887, viz.: Tomas C. de Baca, of San Miguel county, N. M., for the S. E. 1/4 sec. 20, T. 10, N. R. 26 E.

He names the following witnesses to prove his continuous residence upon, and cultivation of, said land, viz.: Julian Padilla, Juan Troncoso, Espiridon Sanchez, Teodosio Salazar, all of San Miguel county, N. M.

CHARLES F. EASLEY, Register.

Notice for Publication

[Pre-emption No. 1,461.] LAND OFFICE AT SANTA FE, N. M., January 26, 1887.

Notice is hereby given that the following named settler has filed notice of his intention to make final proof in support of his claim, and that said proof will be made before the probate clerk of San Miguel county, at Las Vegas, N. M., on March 14, 1887, viz.: Frank N. Page, of San Miguel county, N. M., for the E. 1/4 S. W. 1/4 and lots 3 and 4, sec. 6, T. 7 N., R. 26 E.

He names the following witnesses to prove his continuous residence upon, and cultivation of, said land, viz.: A. Grzelachowski, Antonio Montoya, Pedro Ma. Gallegos, Francisco Ortega, of Puerto de Luna, N. M.

CHARLES F. EASLEY, Register.

LINCOLN COUNTY.



Three Rivers Land and Cattle Ranch Co.

GEORGE B. BARBER, Manager.

P. O.: Lincoln, N. M. Range, Three Rivers, Lincoln county, N. M. Horse brand, one cross, same as cattle, on the left hip.

A. M. Rogers & Son.

P. O. Independence, Mo. Range, Canaditas (with McBroom.) A few fine young bulls for sale. Parties in need of either high grade or thoroughbred bulls will please correspond with us.

L. L. Cattle Company.

M. R. Lewis, Range Mgr. and Secretary. Postoffice, Fort Sumner, N. M. Lewis Lutz, Treasurer. Las Vegas. Range, Pecos river, 40 miles south of Ft. Sumner. Ear marks, underslope right, overslope left. Horse brands, L on shoulder, O on jaw, both on the right side.

Frank Leaset.

P. O.: Ruidoso, Lincoln county, N. M. Range, Ruidoso river. Horse brand, on the left shoulder.

R. P. Segrest.

P. O.: Seven Rivers, N. M. Range, head of Seven Rivers, South Prong. Ear mark, underbit and overslope left ear, overbit right ear. Horse brand on left side. Some cattle are branded with the S straight up.

Additional brands.

RRS—Ear mark, overslope and underbit left; overbit right.

OL—Ear mark, overslope and underbit left; overslope right.

HUB—Ear mark, crop and under half-crop left; crop right.

On shoulder and hip. Ear mark, swallow fork and underbit left; swallow fork right.

J. A. LaRue.

P. O.: Las Vegas, N. M. Range, Rio Felix, Lincoln county, New Mexico.

George G. Gann.

P. O.: South Fork, Lincoln county, N. M. Range, Pleasant valley, 9 miles north of Upper Pecos. Marked, crop both ears. Horses branded same as cattle, on left shoulder. Also own all cattle branded G on both sides.

Pat Garrett.

P. O.: Roswell, Lincoln county, N. M. Range, White mountains. Also all cattle with a butt brand. Horses branded same as cattle.

William Slane.

P. O.: Ruidoso, Range, from Ruidoso river to Eagle creek. Horse brand same as cut on left thigh.

J. C. White.

P. O.: Fort Sumner, Range, ten miles below Fort Sumner. Mark, crop and swallow fork right, crop left. Horse brand on the left hip.

MENTION this paper when writing to advertisers.

LINCOLN COUNTY.



Littlefield Cattle Company. J. P. Whitz, Manager.

Postoffice, Roswell, N. M. Range, at Bosque Grande, Rio Pecos; and at Four Lakes, on the Staked Plains.

Also cattle in the following brands: on the side, on the right side, on the right side and on right hip.

W on the side, F on the hip, side and shoulder, 24 on the left hip, J O on shoulder, side and hip, S on the shoulder, side and hip.

For these brands various marks: Horse brands: W, F, S on top of the right thigh.

Also own all cattle in the following brands: L O D left side; ear mark, swallow fork right overslope and underbit left; S S S left side, and S on hip; J E W left side; O V U left hip, side and shoulder.

Lea Cattle Company. J. C. Lea, Manager. W. M. Atkinson, Range Foreman. P. O.: Roswell, Lincoln county, N. M. Range, on the Hondo, North Spring and Pecos rivers, and on the Aqua Azul, Blackwater and Baca Ranches, all in Lincoln Co.

Ear marks, crop and split left, split right. Brand as in cut on left side, but sometimes on right side. Ear marks sometimes reversed. Additional brands: E side, and also some on side and hip. W side, J B on hip or loin. L E A on side, or shoulder, side and hip. Cross on side and hip. And various other old brands and marks.

Horse brand: L on left shoulder and A on left hip or right thigh. Part branded only on left shoulder thus: L A

Emil Fritz. P. O.: Lincoln, N. M. Range, Rio Pecos, Lincoln county, N. M.

A. E. Powers. Postoffice, Fort Stanton, Lincoln county, N. M. Ranch P. O., Powers' ranch, Red Canon, Socorro county, N. M. Horse brand same as cat

Other Brands: B U K Crop and under half-crop left, crop right. E U K Crop and under half crop left, crop and underbit right. Both brands on both sides of animal.

Doak Good. P. O.: Paris, Texas. Range, Los Portales, Staked Plains. Ear marks, crop and underbit each ear. Cattle branded on left side.

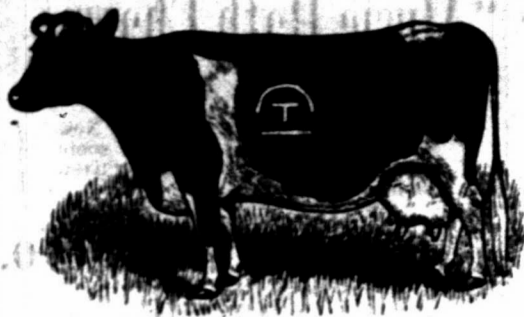
Cass Land and Cattle Company. W. G. Urrox, Manager. Geo. R. Urrox, Range Foreman. P. O.: Fort Sumner, N. M. Range, on the Pecos river, at Cedar Canon. Horse brand, same as in cut, only on right hip.

All young stock branded as in cut on the right side, and also with a 7 on the left hip.

Edwin Terrell. P. O. Ruidoso, N. M. Range, Ruidoso river. Horse brand E D on left thigh.

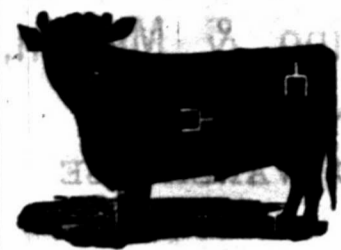
Hernandez Bros. P. O.: Fort Sumner, N. M. The range, California Ranch, on Pecos river, and the San Juan mesa. Horse brand on left hip. Ear marks: Swallow fork in the left ear.

SOCORRO COUNTY.



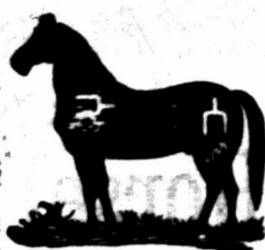
IRA E. LEONARD, President, Socorro, N. M. C. O. TIFFANY, Sec. & Treas., San Marcial. J. C. TIFFANY, Manager, San Marcial, N. M.

BOSQUE BONITA Land & Cattle Company SAN MARCIAL, SOCORRO COUNTY, NEW MEXICO.



Shorthorn Cattle Co.

J. M. HALL, President, Los Angeles, Cal. R. B. GODLEY, Sec'y and Treas., Cleburne, Texas. R. J. BISHOP, Ranch Manager, Socorro. Range, Luna Valley, Rita Blanca and San Francisco Rivers, western end of Socorro county. Ear marks, some underslope left, and crop and under half crop left, crop right.



THE LEONARD BROTHERS,

IMPORTERS AND BREEDERS OF

Galloways, Aberdeen-Angus and Shorthorns.

SPANISH JACKS AND JENNETS.

MOUNT LEONARD, MISSOURI.

Very Choice Lot of Black Polled and Shorthorn Grades For Sale.

Car load lots for ranchmen a specialty. We have some of the largest and choicest herds of pure-bred stock to select from. Prices reasonable.

Call on or Address, THE LEONARD BROS., Mount Leonard, Mo.

E. G. MURPHEY & CO.,

THE PLAZA PHARMACY

BRIDGE STREET, LAS VEGAS, NEW MEXICO.

Wholesale and Retail dealers in Drugs and Chemicals. Physicians' prescriptions a specialty. Country orders solicited and prompt attention given same.

TO THE STOCKMEN AND OTHERS, living at a distance: We will gladly fill any orders you may send for goods, whether in our line or not, and ship them as promptly as possible.

ST. NICHOLAS HOTEL,

Sixth St. and Douglas ave., Las Vegas.

CATTLEMEN AND ALL WILL FIND HERE A PLEASANT STOPPING PLACE

Centrally Located. Reading Room Connected. American and European Plans.

MRS. M. A. HORNBERGER, Proprietor.

Feed and Sale Stables

LAS VEGAS, N. M.

Good Rigs to let at reasonable rates. Horses boarded by the day or week.

Special Rates to Stockmen

GOOD SADDLE HORSES.

HORSES AND MULES FOR SALE

J. S. DUNCAN, Proprietor.

Over 6,000,000 PEOPLE USE

FERRY'S SEEDS

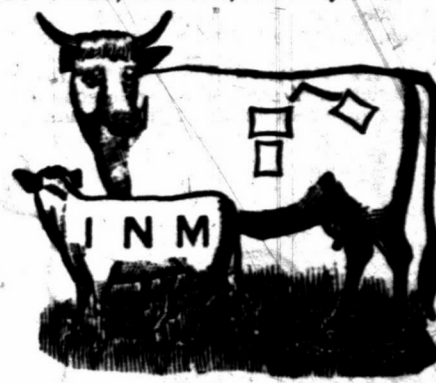
D. M. FERRY & CO. are admitted to be the LARGEST SEEDSMEN in the world. D. M. FERRY & CO'S Seed Annual For 1907 will be mailed FREE to all applicants, and to last season's customers without ordering it. Invaluable to all. Every person using Garden, Field or Flower SEEDS should send for it. Address D. M. FERRY & CO. Detroit, Mich.



SOCORRO COUNTY.

Iowa and New Mexico Ranch Company.

JUSTUS CLARK, President, Red Oak, Iowa. GEN. H. M. ATKINSON, Vice Pres., Santa Fe, N. M. BENJ. B. CLARK, Secretary, Red Oak, Iowa. PAUL P. CLARK, Treasurer, Red Oak, Iowa.



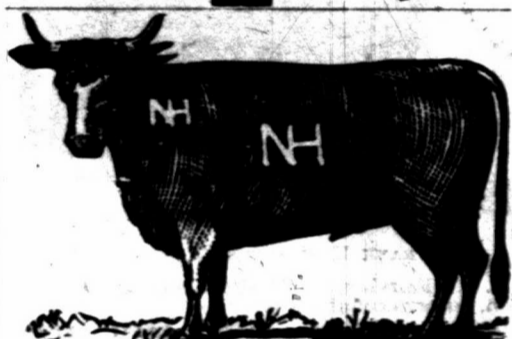
P. O. Magdalena, New Mexico. Range, Socorro and Valencia counties.

Horse brand on left calf, in cut, and marked crop right and underslope left.



J. W. Crawford, "CAPTAIN JACK." P. O.: Fort Craig, New Mexico. Range, Fort Craig Military Reservation.

All increase branded and marked same as cut. Horse brand on left shoulder.



Nathan Hall Cattle Company. NATHAN HALL, Manager.

P. O. Socorro, New Mexico. Range, Apachita creek, Tulerosa creek and Gallo Springs, Socorro county.

Horse brand, NH connected, same as on cut, on the left hip. Ear Mark as in cut, except it being on left ear. Also have cattle branded O on left side and hip with ear mark crop and under hack left and jingle-bob right.

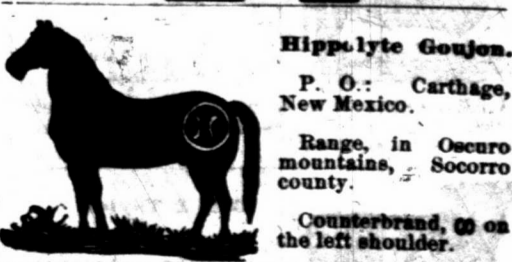
All increase branded as in cut.



Grant Bros. & Browne.

P. O.: Albuquerque, N. M. Range, Alamosa Park, Socorro county. Ear marks, swallow fork in each ear. Horse brand, same as cut, on left shoulder.

Other brands, on right jaw.



Hippolyte Goujon. P. O.: Carthage, New Mexico. Range, in Socorro mountains, Socorro county. Counterbrand, on the left shoulder.



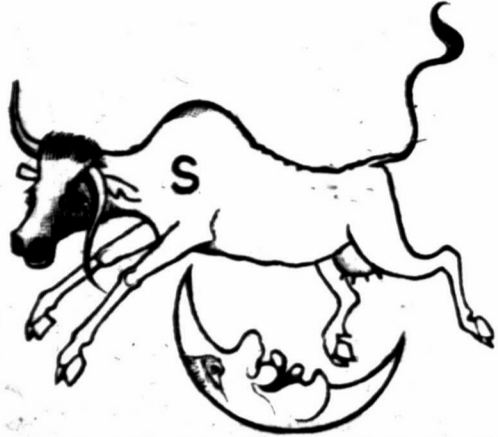
Curwen & Norris. P. O.: Magdalena, Socorro Co., N. M. Range, north slope of San Mateo mountains and adjoining San Augustine plains. In addition part of cattle branded N on right jaw, balance C on right jaw. Ear mark, crop and two slits in each ear. Horse brand, C-N on right thigh.

SOCORRO COUNTY.

AMERICAN VALLEY CO.

W. B. SLAUGHTER, President and Gen. Manager. Postoffice address, Socorro, New Mexico. Ranch, American Valley, Socorro county, N. M.

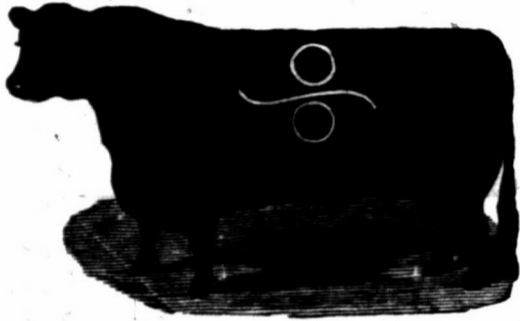
\$250 REWARD will be paid for the arrest and conviction of any person or persons illegally handling any stock in the following marks and brands:



Cattle brand kept up, S as in above cut, on both shoulders. On the left hip of horses.

Other Brands:

ANA side, @ hip. Underslope each ear. CC@ side, @ hip. Crop and underbit left ear. F on side and loin, or side and hip. Cross @ on bought steers; used as a road brand. V side, underslope each ear. M side, various marks and other brands. D side, various marks and other brands. @ on side, underslope left, swallowfork right.



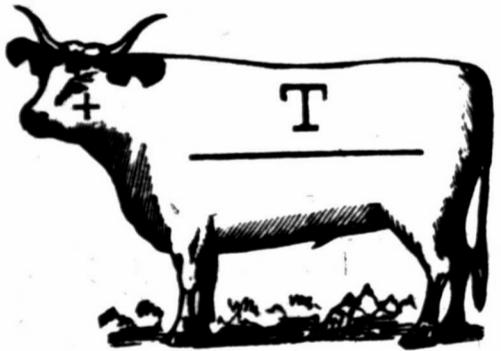
Deer Park Cattle Company.

FRANK H. WINSTON, Manager.

P. O.: Fairview, N. M. Ranches, at Elk mountain, Socorro county.

Also own the following brands:

Horse brand, @ on the left shoulder.



Trocke, Maunsell & Co.

P. O.: Patterson, Socorro Co. Range, eastern slope of the Mogollon mountains, between headwaters of the Nigrita and Gila rivers. Ear marks, underbit right and left ear.

Other brands:

Horse brand on the left shoulder. 7 on left hip of cows and left side of calves.



Seven Rivers Cattle Co.

JOHN HARRIS, Manager.

P. O.: Colorado City, Texas. Range, east side of Pecos river, 35 miles above Pecos Station, Tex. Horse brand, same as the cut on the left hip.

A REWARD of \$250 is offered for the arrest and conviction of all persons illegally handling any cattle in this brand.



Bell & Taylor.

P. O.: Socorro, N. M. Range, Oscuras mountains, Socorro county. Horse brand, XK on left shoulder.

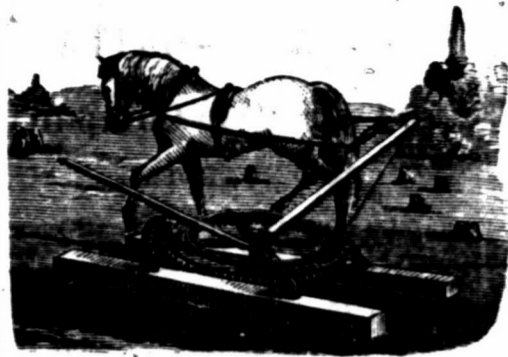


Nigrita Cattle Co.

JOHN BELL, Foreman. P. O.: Alma, Socorro Co., N. M. Range, South of Nigrita, Mogollons. Horses are branded the same as cattle but on the left hip.

Solon E. Rose & Bro.

MANUFACTURERS OF



RANGE Horse Powers

All sizes from one-half, or burro power, to six horse power.

Exclusive agents for Eclipse Windmills, Gould's Pumps, Deering Mowers and Reapers, St. Louis Artesian Well Tools, Knowles' Steam Pumps and Boilers. Write for catalogue and prices.

S. E. ROSE & BRO.

Albuquerque, N. M.

J. C. BERTRAM,

Breeder and Importer of

HEREFORD CATTLE

BRISTOL, ILLS.



Makes a speciality of importing representatives from best families and breeding only stock of superior excellence.

Am prepared also to furnish ranchmen first-class grades, which I will guarantee to be of superior breeding, well marked, and sired by bulls of acknowledged merit.

For quality of animals handled by me I refer all ranchmen to the Hereford bulls now on the ranch of Mr. William Robert, at Roswell.

CORRESPONDENCE SOLICITED.

Herefords! Herefords!



John W. Prowers Jr. Owner and Breeder

Of the well-known herd of pure-bred Hereford cattle, of the late Hon. John W. Prowers. Young bulls and heifers for sale; also, twenty-five pure-bred and imported cows, ages ranging from three to six years old. Address all inquiries to

J. J. LANE, Guardian for John W. Prowers, Jr., WEST LAS ANIMAS, COLO.

S. L. LEON & CO.,

THE LEADING

Grocers, Bakers

OF LAS VEGAS.

We have also the Finest Line of Fancy and Imported Groceries in New Mexico.

Dealers in Queensware and Glassware.

Ranch Trade Solicited and Prompt Attention given all Mail Orders.

NORTHWEST CORNER OF PLAZA.

"Music Hath Charms,"

And there is not a ranch in New Mexico which does not have some musical instrument to help to "liven the leisure hour."

A GUITAR, A BANJO,

Or even an accordeon will afford much pleasure. Write for list and prices to

Marcellino & Mernin,

Las Vegas, N. M.

MUSIC WAREHOUSE.

P. S.—A full line of strings, music and supplies.

W. H. SHUPP,

Manufacturer of

Wagons And Carriages,

Buckboards and Spring Wagons a Specialty.

Keeps on hand the Cooper steel skein wagon, and an assortment of Buggies and Carriages. Makes Mess Boxes and Branding Irons. Horse Shoes fitted ready to nail on, and portable forges, with tools, for ranch use, always on hand.

Agent for Osborne Mowers.

LAS VEGAS, — — NEW MEXICO.

C. A. RATHBUN,

—Dealer in—

Boots, Shoes,

LEATHER AND FINDINGS.

Boots and Shoes to Order.

SOLE AGENT FOR M. D. WELLS & CO.

Stock Grower's Trade Solicited.

Bridge Street, West Las Vegas.

Frank T. Robinson,

REPRESENTING

PETERS & TROUT,

Lancaster, Ohio,

Merchant Tailors

Has arrived in Las Vegas with the finest line of samples of men's wear ever seen in the west.

Headquarters at the Depot Hotel.

Refers to hundreds of stockmen customers as to prices, work and satisfaction.

Stock Exchange

Stables,

FEED AND SALE.

Finest Livery in the City.

DON R. OAKLEY, Prop.

Good teams and careful drivers. Nice rigs for commercial men. Horses and mules bought and sold. Branch stable at the Hot Springs. Telephone No. 53.

Stables in rear of the St. Nicholas Hotel,

LAS VEGAS, NEW MEXICO.

THOMAS JONES,

BREEDER OF

Grade Hereford Cattle,

SEDALIA, COLORADO.

Choice young bulls for sale. Farm, twenty-five miles from Denver on D. & R. G. R. R. Refer to J. A. Cooper, president Colorado cattle association, Denver.

SOCORRO COUNTY.



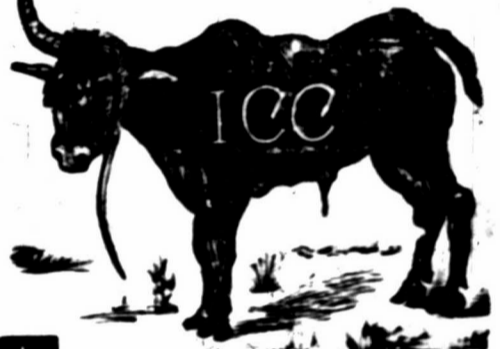
H. E. HOLBROW. D. H. SMITH. Postoffice, Magdalena, Socorro county, N. M. Range, west of San Mateo mountains and San Augustine Plains.

Also own HD and AD

Illinois Cattle Company.

S. P. JOHNS, Manager. JULIUS M. EAVIS, Foreman.

P. O.: San Marcial, Range, between Magdalena and San Mateo mountains, and on west side of Rio Grande river, between San Marcial and Cantaritas.



HORSE BRAND.

Other brand AQ on the left side and left hip. Ear marks, crop the right and underslope the left.

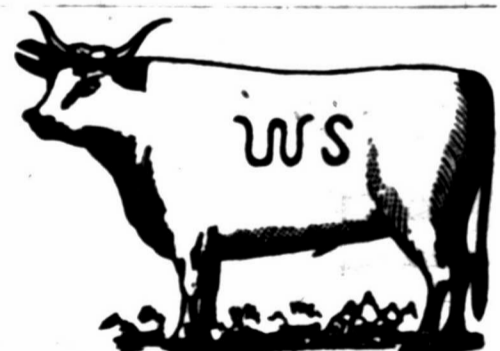


A. HARDCASTLE. C. MITFORD

Hardcastle & Mitford,

ADORE RANGE,

Range, on headwaters of the Upper Gila, Sierra county. P. O.: Grafton, N. M. Horse brand, HM (connected) on left hip or shoulder. Also 2 on the left hip.



WS Ranch.

J. H. COOK, General Manager.

P. O.: Alma, Socorro county, New Mexico. Range, San Francisco river, Socorro Co. Horse brand, same as cattle, on left shoulder or thigh.



C. S. Roberts.

P. O.: San Marcial, N. M. Ranges, Los Barros, 20 miles west of San Marcial, Socorro county. Ear marks, crop right and small crop and half circle above and below in left; also, skin cut on nose. Horse brand, same as cut on left hip. Cattle branded either side and hip.

# Browne & Manzanares Co.

LAS VEGAS AND SOCORRO, NEW MEXICO.



## WHOLESALE GROCERS,

DEALERS IN

AGRICULTURAL IMPLEMENTS, RANGH AND MINING SUPPLIES.

### LANDRETH'S GARDEN SEEDS

BEST IN THE WORLD.

Cremation System.

New Seeds Only For Sale.

THE BEST MARKET FOR

### WOOL, HIDES, PELTS, & C.

WILL AT ALL TIMES COMPETE WITH EASTERN PRICES.

### ECLIPSE WINDMILLS

The Best and the Cheapest.

UMPS, PIPES, AND FIXTURES.

Agents For

### Cooper's Sheep Dipping Powder

A Cold Water Dip.

Sure cure for Scab. Best and cheapest dip in the world. Send for pamphlet, with plans for dipping.

Browne & Manzanares Co.



## Mundy Bros

EL PASO, TEXAS.

Lands in Mexico

—And the—

Southwest.

—And—

## Live Stock

Commission Merchants.

Have unequal facilities for the purchase and sale of Lands in Mexico, and for supplying any class of stock in quantities to suit purchasers.

Correspondence Solicited.

GRAZING LANDS A SPECIALTY

## The Armijo House,

ALBUQUERQUE, N. M.

NEWLY FURNISHED THROUGHOUT.

Every modern convenience has been added, making it one of the best hotels in the southwest. Commercial travelers will find commodious sample rooms. The bar and billiard room are the finest in the territory. Its nearness to business, street car lines, opera house, depots, etc., make it desirable in every way. Requesting your patronage, respectfully,

W. E. TALBOTT, Proprietor.

CHAS. E. BONSALL, Manager.

## A. D. HUDNALL,

West Las Animas, Colorado,

IMPORTER AND BREEDER OF

## POLLED ANGUS

AND

## Hereford Cattle.

Has sold in New Mexico during the past season over 1,000 head of grade and thoroughbred bulls, and would refer intending purchasers to any of my customers for the quality and condition of the cattle furnished.

I am prepared to furnish, at any time, thoroughbred or grade bulls, guaranteed of the best strains, and, being Colorado raised, ready for immediate service. The cattle from my herds, at the Albuquerque fair, won all first prizes. Correspondence solicited and inspection of herds invited. Full particulars and pedigrees furnished.

I will Contract now for Spring Delivery.

Car-load Lots a Specialty.

J. C. LEARY & CO., Agents, Las Vegas.

## SIMON LEWIS' SONS,

## Golden Rule Clothing Store

WHOLESALE AND RETAIL DEALERS IN

Clothing, Hats, Boots and Shoes, and Gent's Furnishing Goods.

### WE'VE GOT THE STOCKMEN'S TRADE,

But want to hear from the few who have not yet bought from us. We can refer to any ranchman in Northern New Mexico as to our Low Prices and Fair Dealing.

## OUR TAILORING DEPT

IS THE MOST COMPLETE IN THE WEST.

Boots and Shoes Made to order at Lowest Prices and in the Best Style.

Mail Orders Promptly Attended to.

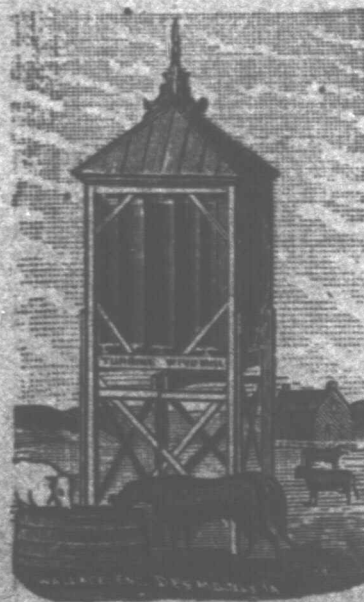
LAS VEGAS, NEW MEXICO.

## PLAZA HOTEL REOPENED

August 1st, 1886.

Thoroughly Renovated and under the Management of the Las Vegas Hotel and Improvement Company.

First-class in all its appointments. Clean, airy rooms. Elegantly furnished. A No. 1 table, and everything possible done for the comfort of guests. Headquarters for Stockmen and Commercial men. Rates \$2.50 per day. Special rates to parties remaining a week or more.



## Turbine Windmill!

For Western Ranches.

Runs with lightest breeze and through severest gales steadily and evenly, being a SELF REGULATOR.

Irons sold and plans furnished. Any man with a little knowledge of tools can build the woodwork any place at small cost, and save freights.

This is the only windmill adapted to the RAVEN COUNTRY. Its small cost, its great durability and power, and its strength to withstand any windstorm, makes the TURBINE WINDMILL the ranchman's favorite.

Satisfaction guaranteed. Send for circular and price list.

A. H. SOUTHWICK, Patentee.

604 East Locust Street, Des Moines, Iowa

**The First National Bank of Las Vegas N. M.**

**Capital Stock, \$100,000.**

**Surplus Fund, \$30,000.**

J. RAYNOLDS, President.

J. S. PISHON, Asst. Cashier.

JOSHUA S. RAYNOLDS, Cashier.

GEO. J. DINKEL, Vice-President.

**The First National Bank of Albuquerque, N. M.**

Capital Stock, \$100,000.00.

Surplus Fund, \$100,000.00.

J. RAYNOLDS, President.

M. W. FLOURNOY, Asst. Cashier.

JOSHUA S. RAYNOLDS, Vice-President.

**The First National Bank of El Paso, Texas.**

Capital Stock, \$100,000.00.

Surplus Fund, \$15,000.00.

J. RAYNOLDS, President.

JOHN W. ZOLLARS, Vice-President.

H. S. KAUFMAN, Cashier.

The above associated banks have the Largest Capital and most conservative management of any banking house west of the Missouri river, and largely control the banking business of New Mexico. A long residence in this territory familiarizes the management with the wants of customers. Business solicited.

**Gross, Blackwell & Co**

LAS VEGAS, NEW MEXICO.

**GROCERIES, DRY GOODS,**

**Boots, Shoes, Etc., Etc.**

At all times on hand a full line of the Racine and Schuttler manufacture of Farm, Freight and Spring

**WAGONS.**

A Full Line of Stetson Hats, suitable for Ranchmen, always on hand, ranging in price from \$4 to \$15.

SPECIAL ATTENTION GIVEN TO RANCH TRADE.

Prices quoted when desired and special attention given to mail orders.

R. B. GODLEY,  
Sec'y and Treas. Shorthorn Cattle Co.

JOHN FLOOD,  
Vice-Pres. Shorthorn Cattle Co.

**GODLEY & FLOOD,**

**Land and Cattle Commission Brokers,**

ST. GEORGE HOTEL, DALLAS, TEXAS.

Will examine and make detailed reports on ranches, and will render for taxation, pay taxes, and generally protect the interests of non-residents. Will negotiate the purchase, sale or lease of agricultural and ranch lands in Texas, New Mexico and Arizona. We make a specialty of contracting and delivering stock cattle and all kinds of steer cattle to purchasers in New Mexico, Arizona and the northwest. References given on demand. Mr. Flood will give the ranch and cattle interests his exclusive attention, being a practical cattle and ranch man of twenty-five years' experience.



**Percheron Horses!**

The oldest and most extensive breeding establishment west of the Mississippi river.

**OVER EIGHTY HEAD**

Of pure bred and high grade stallions and mares on hand. Also a few Recorded Imported French Coachers.

Twenty-five stallions on hand imported by M. W. DUNHAM. Our imported stock all registered in Percheron Stud Book of France and America.

We handle nothing but first-class stock, and guarantee all stock sold to be breeders.

AVERY & COLEMAN, Proprietors of Republican Valley Stock Farm, Wakefield, Clay County, Kansas.

HENRY ARMY.

C. R. COLEMAN, Formerly with M. W. Dunham

HENRY G. COORS

WILLIAM F. COORS

**COORS BROS.,**

Successors to Lockhart & Co., Wholesale and Retail Dealers in

**Furniture and Hardware**

Tinware, Sporting Goods, Shotguns, Rifles, Pistols, All Styles of Ranges, Cooking and Heating Stoves, House Furnishing Goods of Every Description.

Lumber, Sash, Doors, Lath, Shingles and Blinds,

PAINTS, OILS AND GLASS.

All Orders by Mail Promptly Filled. Ranch Trade Especially Solicited.

LAS VEGAS, NEW MEXICO.

**NOW**

Is the time to buy

**DRY GOODS CHEAP AT**

*Chandlerfeld*

LAS VEGAS, ALSO

**Carpets, Furniture and Ranch Supplies.**

Call when in town, or order by mail.

**SADDLES!**

**SADDLES!**

**For \$35.00**

I will ship to any address in New Mexico or Arizona one of my best, plain, double stack, No. 44, Colorado saddles.

In addition to saddles, I keep a full line of all styles of

**Harness, Bits, Spurs, Quirts, Chapareros, Etc., Etc.**

**JOHN H. HUGHES,**

ALBUQUERQUE, N. M.

**J. C. LEARY & CO.,**

**Commission Merchants for the Sale of Live Stock and Ranches**

OFFICE IN STOCK GROWER BUILDING, LAS VEGAS, N. M.

Will contract to deliver at any point thoroughbred or grade animals of any breed, at lowest prices. Contracts for surveying taken; maps, plans and estimates for railroad work, and surveys for irrigating schemes and water works carefully made.

We make a specialty of closing trades satisfactorily and promptly. We can find buyers for stock of all kinds, and give personal attention to all business which is entrusted to us. We have the largest acquaintance in this section.

Correspondence solicited, and all inquiries will receive prompt attention.