



LUCKY NUMBER — Little Tommy Nelson, son of Mr. and Mrs. Homer I. Nelson of 1203 East Buckley, is shown as he draws a winner for the Christmas tree the Brownfield Junior Women's Study Club gave away at a coffee given Friday morning in Seleta Jane Brownfield Club-house. His mother holds him as Mrs. Billie Blankenship, president, holds the box of tickets for his drawing. Mrs. Ben Christopher of Magnolia Camp was the winner. Christmas decorations were used throughout the room. (NEWSfoto)



The Farmer's Wife

By ROSE JEAN HENSON

"Be there a farmer who had not said this week as he shook his head

Oh where, oh where, can I get another trailer."

Mechanical cotton harvesting got under way this week and already the gins are full up. Farmers can expect an empty trailer 24 to 26 hours from the time it is weighed over the scales — that is if the gin does not break down.

This week's favorable weather has made it possible to machine 8 to 12 bales of cotton per day, so one readily can see why the farmer would need at least six three-bale trailers. And just in case some of you city folks don't know how much money it takes to buy a three-bale trailer, I can tell you — \$300 to \$350. You know now why most farmers don't have all the trailers they need.

It also has not been unusual to see trailers along side the roads and highways with blow-out tires. And speaking of highways, farm-to-market roads are a God-send to the farmer. Whether the city dweller derives much benefit from them or

not, they may be sure that their tax dollar has been well spent in constructing them. You also might like to know that a lot of farmers' wives are hauling cotton from dawn to dusk. Mes. Homer Barron, Jake Benson, Bob Smith, Bill Copeland, Jack McCrary and Murial Williams are just a few that I have seen this week.

The Meadow gins also employ several women as book-keepers. This may or not be a "woman's world," but I hope the men realize that there are times when the little woman is pretty handy to have around — especially at this time of year.

I am already weary of hearing about satellites and all that goes with them. Are you? Every radio broadcast and newspaper is loaded with scientific data, which I know very little about. We ought to learn more about satellites and what the scientists are attempting to accomplish. No subject is interesting when one understands absolutely nothing about it.

I believe we are about to see one of the greatest American about-faces that history has ever known — intellectually, economically and, I hope spiritually. It seems to me that there is too much emphasis being placed on "getting a head" of Russia, instead of the actual necessity of these scientific projects.

American people are "pigs" about everything. We want to out-do the rest of the world. There is such a thing as cutting the nose off to spite the face, and it is not always wholesome to keep up with the Joneses, especially if they are playing with dynamite. Somehow, I can't feel as embarrassed about Russia getting into space first as are some of our government officials.

The average person understands common sense, and if I were "director of propaganda" in the United States, I would attempt to sell the public or benefits and necessity rather than competition and supremacy.

Our lawmakers better be

concerned more about enlightening the voters as to necessity. My predictions are that the average person who does not understand anything about satellites will understand very well that his income tax has been increased.

Then Mr. Lawmaker will find the average citizen about as hard to handle as Russia — unless he has been cushioned for the blow beforehand. Unless I miss my predictions, competition alone is not going to fill the cushion sufficiently to soften the blow.

The idea of shooting a star of peace into the stratosphere on Christmas Eve and having it glow happily around this old world strikes me as good. How to make it shine across Afghanistan and Arabia and everywhere else on its orbit so the people can see it would be a problem.

The more serious question seems to be the lack of interest so far expressed by our Sputnik specialists. They are more concerned about a new name for our Sputnik. They say it is bad enough to be trailing Russians with hardware in the skies (and that's what these satellites are) but it would be even worse to adopt their name. Pride again. No wonder the rest of the world raises an eyebrow when we hand out billions for their needs. They have a right to question our sincerity—are we humble and really want to help or are we trying to impress the world? I wonder, sometimes.

Somebody will come up soon with an official name for our man-made moons. How about peace planets, or friendly stars or brotherly moons?

They tell us that by next summer, if all goes well, we should have two dozen moons

Dollar Day Winners Determined by Lot

Mrs. L. V. Alexander of Route 2 was winner of the \$50 gift certificate for last Monday's Dollar Day activities in Brownfield.

She has \$10 in merchandise awaiting her at Bayless Jewelry, Canipe's Fashion Fabrics, Dunlap's, Collins and the Fair.

Other winners, of \$10 certificates, were Mrs. Luther Malcolm of 705 East Lake (Cobb's), Mrs. J. A. Bench of 1308 East Repetto (Franklin's), Ruby Whitaker of 109 South Second (Furr's) and Mrs. C. W. Pate of Route 2

of varying sizes and shapes racing in space. The Russians won't be sitting on their handkerchiefs. They'll have 20 or more moons up there too. If each one of these circles the globe every 90 minutes—well that's a lot of whirling and beep-beeps.

What if one of ours for instance whirls into a Russian moon—what then. And supposing it did and parts of it fell on farmer Brown's head. Who would he sue? Some smart lawyers better be making some scientific laws to protect the innocent — just in case. Maybe they are, already, and it is being held as classified information.

My dear readers, I suggest we all tighten our belts and hold our hats and expect anything. I am not an alarmist but a sound imagination might be helpful.

While the scientists toil making man-made stars, the unlearned would do well to keep his eyes on the Star of Bethlehem — that he can understand.

(Brownfield Bargain Center). SOCIETY? CALL 2188 CLASSIFIED? CALL 2188

Lowe's Studio Picture of the Week



Christmas Greetings

FOR PICTURES OF YOUR CHILDREN. COMMERCIAL, PORTRAIT, OR KODAKS—PHONE 4211 — 604 WEST MAIN

Mrs. Wilson Rites Held Here Saturday

Funeral services for Mrs. Lena Wilson, 72, of Mangum, Okla., were held in Brownfield Funeral Home Chapel Saturday with the Rev. Jones Weathers, pastor of First Baptist Church, officiating.

Mrs. Wilson, who lived here about 30 years before moving to Mangum three years ago, died Thursday in Mangum. She was born in Hood County Feb. 13, 1885 and moved here

in 1936. Survivors include two daughters, Mrs. Arthur F. Stark of Mangum and Mrs. Margie Talley of 416 West Powell; five grandchildren and two great-grandchildren.

Burial was in Brownfield Cemetery under direction of Brownfield Funeral Home.

SOCIETY? CALL 2188 CLASSIFIED? CALL 2188

Why do so many success-minded people take the Dale Carnegie Course?



DR. GEORGE S. BENSON, President, HARDING COLLEGE, SEARCY, ARKANSAS, Prominent U. S. educator, author, lecturer and commentator, SAYS:

"The Dale Carnegie Course has developed members of our faculty in an astonishing way. It has given them a new clarity of expression, new poise and confidence. It is the best type of training I have ever experienced to help men and women develop their abilities in speaking and human relations."

FREE DEMONSTRATION

Brownfield High School Cafeteria Thursday, December 12 — 6:30 P.M.



Many prominent people agree that the Dale Carnegie Course is the surest step toward leadership and higher income. This famous self-improvement course quickly instills poise and self-confidence. You learn to speak effectively and deal successfully with people. Come and see for yourself how men and women in this community are preparing themselves for career-advancement. We invite you to attend the Free Demonstration. There is no obligation—and we promise you one of the most exciting evenings of your life!

—Presented By— JAMES E. "Red" NORMAN

2702—21st Lubbock, Texas PO-5-7959



Give Yourself The Finest Gift Your Family Ever Received FOR LOCAL INFORMATION CALL LEONARD ELLINGTON

Business 4121

Residence 3852

BENEFIT KIWANIS CLUB

SHOP FARM and HOME APPLIANCES PRE-CHRISTMAS SALE

20% TO 40% OFF

We Are Overstocked Prices Are Slashed

Cash or Credit - 24 Months To Pay Complete Home Furnishings

This Is All New Merchandise

PHONE 2050

ACROSS STREET FROM POST OFFICE

Stu Safe

Terry she Brownfield began distr lets concern driving to the county

The book Our High Safe," are p Advertising erson and every young reports Chief

The book tributed in a However, St ford said c tained by c or the polic

Lack

In an ec drivers, the e says "Most have in ha hicles can l of effort. T of willing: selves or a

self or a

self or a

self or a

self or a

self or a

self or a

self or a

self or a

self or a

self or a

self or a

self or a

self or a

self or a

self or a

self or a

self or a

self or a

self or a

self or a

self or a

self or a

self or a

self or a

Students Urged To Be Safety-Conscious Here

Terry sheriff's officers and Brownfield police this week began distributing two booklets concerning safety and safe driving to school children in the county.

The booklets, "Tragedy on Our Highways" and "Play Safe," are published by Safety Advertising Company of Henderson and are available to every youngster in the county, reports Chief James Tippit.

The booklets are being distributed in all county schools. However, Sheriff James Fulford said copies may be obtained by contacting his office or the police department.

Lack of Effort

In an editorial to young drivers, the editor, C. B. Pruitt says "Most of the trouble we have in handling motor vehicles can be traced to lack of effort. This may be lack of willingness to control ourselves or a lack of willingness

to learn. "I have assembled here what I believe to be a new and effective way to teach safety education to our young drivers. I believe this type of teaching will command the attention of everyone who picks up this magazine and that it will impress not only the youth but the adults as well."

"Tragedy on Our Highways" contains pictures of members of sheriff's and police departments, in addition to numerous photographs of the results of accidents caused by poor driving habits.

Editorial By Officers

The booklet also contains a message by Chief Tippit and Sheriff Fulford. "Every available means should be taken to teach our children and grown-ups, too, the importance of safety. As your law enforcement officers, we are only too glad to assist in this program in any way possible," they

Cason Goes On Scoring Binge As The Cubs Lose To Lamesa and Levelland

Despite a scoring binge by Kenneth Cason, the Cubs fell to Lamesa and Levelland by narrow margins Thursday and Friday.

Cason dropped 27 points through the hoop Thursday when Lamesa slipped past the Cubs, 57-51. The rest of Brownfield's scoring was scattered six players, Ken Cary being No. 2 man with eight points.

Gary Vice and John Ward hit for 18 and 17 points, respectively, to lead the Tigers.

In the B game, Joe Oswald dropped 13 points through the nets to lead Brownfield to a 38-33 victory. John Eldon Jones was close behind with 10 points and Bob Cloe registered eight.

In Friday night's tilt, Coach Farris Nowell said the Cubs were cold at their shooting game, hitting only about 23 per

cent from the field, as they went down before Levelland's Loboes, 47-41.

Cason tallied for 23 points in the tilt to lead scoring. However, Brownfield's second high scorer hit only four points on four free-throws.

The Cubs entertain Snyder here Tuesday night.

Immanuel Baptist to End Youth's Revival

A weekend youth revival at Immanuel Baptist Church will close today with services at 11 a.m. and 7:30 p.m.

Dale Pruett of Lubbock will be bringing the sermons with Harold Brantley leading the singing. Both are ministerial students from Wayland Baptist College at Plainview.

Six other students from the college will be assisting them and will stage a drama, "Challenge of the Cross," at the night service. A period of fellowship will follow the night program.

Broncos of Meadow To Attend Banquet

The Meadow Bronco football squad will be honored at a banquet at 7 p.m. Tuesday in the high school cafeteria.

The affair, sponsored by mothers of the football team and pep squad, will feature Joe Kelly, Lubbock Avalanche-Journal sports editor, as the main speaker.

Others attending the banquet will be the pep squad, high school faculty and ministers of Meadow churches.

Originally scheduled for Dec. 16, the annual banquet was moved to this week because of a conflict.

Roy Priests Will Give PTA Program Monday

Mr. and Mrs. Roy Priest will present the program, "Elementary Youth, Health and History," when Jessie G. Randal PTA meets at 7:30 p.m., Monday in the school cafeteria.

All parents and patrons are urged to attend.

CLASSIFIED? CALL 2188

Carolyn Jones And Linda Leech Feted On Their Birthdays

Linda Leech and Carolyn Jones were entertained on their 12th birthdays with a party Tuesday afternoon in The Party House. Hostesses were their mothers, Mrs. Ruben Leech of 1201 East Hester and Mrs. Carroll Jones of 1302 East Hill.

Centerpiece arrangement was a Christmas scene of reindeer and sleigh. Surprise packages were given as favors.

Guests attending the party were Linda Bailey, Nancy Noel, Sue Lowe, Sandra Bevers, Jeanie Kendrick, Judy McNeal, Carole Cates, Paulett Murry, Cheryl Powell, Janie

Rodgers, Rena Landers, Judy Ackers, Donna Douglas, Tenna Gillham, Margaret Blackstock, Donnie Reece, Glenda Keeler, Kathy and Arlene Bryant, Sandra Sealey and Carolyn Hall.

The USS Swordfish sank a Japanese merchant ship Dec. 15, 1941, to become the first U.S. submarine to sink an enemy warship.

SOCIETY? CALL 2188

Youth Panel To Tell Its Story at PTA Meeting

"Youth Tells Its Story" will be topic for discussion when Colonial Heights PTA meets at 7:30 p.m. Thursday in the school cafeteria.

Curtis Sterling will be the moderator for a panel of four high school students giving their views on youth of today and how they, as youth, think parents can cope better with certain problems.

"The only store on the Plains that sells infants furniture only . . . from Bassinette to youth bed."

INFANTS and CHILDRENS FURNITURE

BABY'S WORLD inc.

1007 13th St. LUBBOCK, TEXAS

1007 13th Street PO3-2383
TWO DOORS WEST OF THE MATERNITY SHOP

DON'T WORRY... JUST HURRY!

Shop this Gift Guide

From Kyle's Redemption Center

These Specials Good Today thur Saturday, Dec. 14

BRANDT'S POTTERY
Covered Centerpiece
Reg. 7.50 Value
4.95

COVERED Candy Dishes
Regular 7.50 For Christmas
NOW **4.95**

LARGE SANDWICH PLATES
REG. 7.50
4.95

COLORED PERCALE SHEET
Regular 3.98
NOW **3.49**

LIMED OAK Record Cabinet
Regular 19.95 Value
CHRISTMAS GIFT PRICE **14.95**

IMPORTED ITALIAN COPPER PLAQUES
GOING NOW... **30% OFF**

CAL PACIFIC Lava Bowls
REG. 3.75
BUY NOW FOR CHRISTMAS **2.50**

LAMP SHADES
3.69 VALUE
2.98

BEAUTIFUL GIFT TOWEL SETS
Fancy boxed for Christmas
A gift any woman would appreciate.
Reg. 2.98 Box For CHRISTMAS NOW ONLY **1.98** Box

BRANDT'S POTTERY Centerpiece
Reg. 4.98 Value—NOW **3.75**

ONE GROUP Wrought Iron Floor Lamps
Regular 14.95 ONLY **9.95**

ONE GROUP WROUGHT IRON Floor Lamps
Regular 12.95 ONLY **7.95**

EXTRA LARGE Leatherette Scrapbooks
Reg. 1.98 Value **1.25**

CUFF LINKS and TIE BAR SETS
A Real Buy and Just in time for Christmas... Reg. 2.49 Value **1.25**

BRASS FRAMED What-Not Shelf and Planters
Regular 6.25 Value
Ideal Christmas Gifting... **4.95**

Large Doll Trunks
Every little girl will want Santa to bring her a doll trunk... Here is your opportunity to really save!
Regular 10.95... but look—NOW ONLY **5.49**

Dollie SHOPPERS
Reg. 4.95 Value
NOW **2.98**

LARGE ASSORTMENT Ladies' Houseshoes
20% OFF

HALL'S CHINA COFFEEMAKER
Reg. 19.95 Value
NOW **14.95**

SETS CROQUET
Reg. 29.95 Value
19.95

Do Your Christmas Shopping and Save .. At
Kyle Grocery... Redemption Center
"The Home of K and S Blue Stamps"



THE GOOD AND THE BAD — The photo at left shows the destructive force wind erosion can accomplish when soil conservation practices are not instituted throughout an area. Though the Terry farmer left sorghum stubble on his land to keep it from blowing, a neighbor's wheat field did not have such protection. The neighbor's topsoil submerged the field



of the farmer trying to save his topsoil. In the right photo, a Terry farmer uses a new type of drill to plant sorghum into old sorghum stubble. By using the right equipment, Soil Conservation Service officials say conservation practices can be continued while planting crops. (SCSphotos)

No. 1—

Northwest Home Demonstration Club Yule party scheduled next Friday in Terrell Bell home.

Familiar timepiece on west face of First National Bank overhauled this week.

Seen the Jaycee rosebed and plaque at Terry County Park entrance?

Second Dale Carnegie class getting under way soon here, by reason of demand.

Total of 1,296 square miles in Terry County. So... we have an estimated 13 persons per square mile living around us as neighbors.

New offices for Dr. Robert Burns, immediately south of Lowe's Studio, about ready for occupancy.

Texas Tech will meet the following Southwest Conference basketball teams in 1957-58 play: A&M, TCU, Baylor, Arkansas, Texas and SMU.

Mrs. Anna Bell Lay Harrison will carry her oyster-case right to the appeals court in Amarillo.

From city limit to city limit on Lubbock Hwy., we've counted 21 service stations.

Coincidence: At intersection of Seagraves and Lamesa roads, highway signs read, 41 miles to Lamesa, 41 miles to Seminole.

Immanuel Baptist concludes weekend youth revival with 11 a.m. and 7:30 p.m. services today, Wayland College group to present drama tonight.

National VFW magazine has recognized Hand Bros. Post 6794 for issuing Americanism pamphlets to Brownfield, Wellman, Union and Meadow school students.

Annual banquet for Meadow's Broncos will be held at 7 p.m., Tuesday in the school cafeteria.

First Methodist Church choir to appear in concert at 7 p.m., next Sunday. Special Christmas music on program.

The Rev. Don Murray of First Baptist Church at Meadow named last week to important position with advisory committee of Baptist General Convention of Texas.

Among dinner guests honoring Mrs. George Mahon — the congressman's wife — Thursday in Lubbock: Mrs. Al Muldrow, Mrs. J. O. Gillham, Mrs. Burton Hackney.

Voice class of Mrs. John Luckie in concert at 3 p.m., today at First Presbyterian.

Coleman Collier celebrated third birthday Wednesday. Son of Mr. and Mrs. Pate Collier of 901 East Oak.

Beta Thetas will have Christmas party Dec. 16 in Seleta Jane Brownfield clubhouse.

Betrothed: Margaret Ingram, Robert Earl Faught. Marriage: Dec. 22 at Wellman.

Linda Leech, Carolyn Jones had birthdays Tuesday. Parents are the Ruben Leeches of 1201 East Hester and Carroll Joneses of 1302 East Hill.

Leo Tolstoy's fabulous "War and Peace" at Rustic come Tuesday, Wednesday, Thursday.

Need the sheriff? Telephone 3033.

Lack of snow no problem at 313 East Cardwell, where Mrs. Vern Bridge used tumbleweeds, cleverly arranged and sprayed white, to make a snowman for her children and front-yard display.

Historic sights: seas of Goodpasture grain stored on ground mile down Tahoka Hwy., on hillside north of rodeo arena and couple acres southwest of city.

Candidates for political offices on county, district, state level will be filing notices after first of year.

Five new directors currently are being elected by Brownfield Chamber of Commerce members. Deadline for voting, Dec. 20.

CLASSIFIED? CALL 2188

No. 2

num, Earvin Rambo, Tiery Wood, Kirby Wood, O. R. Stice, Clovis Kendrick, Sam Murphy, Dewey Murphy, Sawyer Graham, Cecil Smith, Dr. E. O. Nelson, Frank Willis and Guy T. Nelson.

Mrs. Burnett was born July 12, 1879, in Bosque County, and moved to Terry in 1902, where her husband farmed and ranched until his retirement several years ago. She was a pioneer member of First Baptist Church.

No. 3

steer calves brought \$21 to \$25, some weighing 497 pounds at the latter price with heifers weighing 470 pounds at \$22.50. Most stocker heifer calves ranged downward from \$22.

Some Reach \$23
A few bull calves sold as high as \$23. Yearlings stocker steers sold from \$16 to \$22.50.

No. 4

from "home," often piling up on fence rows and in fields.

Lack of application of sound conservation principles in the past has allowed soils in this area to erode rapidly to only coarse sandy land, said Whitmire.

"This reduces the land's production capability because it cannot hold sufficient water and because it remains susceptible to further wind erosion," he added.

However, Whitmire pointed out much has been accomplished in Terry County and on the South Plains in recent years. "Approved conservation practices rapidly are being adopted here," he said.

"But, in a situation like we some weighing 728 pounds at \$22.25 and 552 pounds at \$22.50. Stocker cows sold from \$13 to \$16.50.

Shortfed steers and heifers brought \$20 to \$22, a few choice yearlings \$23 to \$24, plain butcher offerings \$13 to \$19. Beef cows sold mostly from \$14.50 to \$16, canners and cutters \$10 to \$14, shelly lightweight cows \$8 to \$10. Bulls brought \$13 to \$16.50.

Good and choice slaughter calves drew \$21 to \$23.50, outstanding odd head to \$24, low grade butcher calves \$15 to \$19, cull sorts \$12 to \$14.50.

Butcher hogs sold fully as high as last week with most 195 to 260 pounds at \$17.75 to \$18, a few at \$18.25, some 286 pounders at \$17.65. Weights from 160 to 190 pounds ranged from \$16.50 to \$17.50. Sows brought \$16 to \$17 or strong to 50 cents higher. A few stags sold at \$10 to \$12.

LAMB PRICES FIRM
Sheep and lambs sold fully as high as during the previous week. Good and choice \$5 to 95 pound woolled and No. 1 pelt slaughter lambs brought \$21.50 and \$22, plainer kinds \$21 down.

Good shorn yearling wethers sold at \$19, two-year-olds \$17 and aged wethers \$14 to \$15. Ewes were quoted around \$2 down, feeder lambs \$17 to \$21.50 and slaughter goats \$7 to \$7.75, including some heavy wether goats at \$7.50.

No. 5

from the date of the permanent injunction judgment to file their appeal. "We feel they will file as early as possible, however," he said.

Returns By Jury
The injunction verdict was returned Nov. 18 by a jury of 11 men and one woman after three and one-half days of tense testimony. After Judge Louis B. Reed delivered the charge, the panel took three and one-half hours to reach its decision.

Action on the appeal is not expected to be taken until after the first of the year, surmised Copeland.

"It's doubtful the case will come up for hearing before February," said the attorney. "It could be earlier or later, depending upon the number of cases already on the calendar."

SOCIETY? CALL 2188

No. 6

and to administer the Sacramental Rite of Confirmation today at Church of the Good Shepherd.

The services will begin at 4 p.m., and the public is invited to attend. The church is located at 204 Lanny Ave., and a reception will be held following the confirmation.

No. 7

widen base and resurface Texas 137 from Texas 51 south to U.S. 62.

Seminole Courthouse Is Site of Ag Sessions

The new courthouse at Seminole will be site for the Tuesday meeting of the Four-County Agricultural Workers Council.

Some 25 Terry men are to take part in the event, which will begin with breakfast at 7 a.m., in the courthouse dining room.

Speaker will be the director of the Lamesa Cotton Cladding Office. Several Brownfield cars will leave Green Hut Grill at 6 p.m.

On the Spot! by NIBLACK

No need for her torture Firm and trim now is the Spot Reducing by NIBLACK Lost those inches easily!

WORLD'S GREATEST METHOD OF SCIENTIFIC SPOT REDUCING

NIBLACK SYSTEM

Introductory Offer Through December 7 Treatments \$10.00

Beauty Aid Clinic

509 Seagraves Hwy. Ph. 4605

HOLIDAY SPECIAL

10% Off On All Mattress Work

Terry County Mattress Co.

Phone 4422 or Write Box 872

For Free Pickup & Del.

Also New Mattresses and Box Springs

CANIPE'S FASHION FABRICS

NEXT TO THE FIRST NATIONAL BANK

SEE ADVANCE PATTERNS FOR NOVELTY GIFT IDEAS!

SEW FOR CHRISTMAS SPECIALS!

SPECIAL PURCHASE! NOVELTY GIFT CERAMICS

YOU MUST SEE OUR LARGE SELECTION OF NOVELTY GIFT ITEMS \$1 EACH

Shop Early... Don't Wait

NOVELTY APRONS

DO - IT - YOURSELF... WASHABLE NYLON 2 FOR 1.29

DO - IT - YOURSELF! MAKE YOUR OWN PILLOW CASES AND SAVE... WONDERFUL GIFTS... **49c**

FABRIC SAVINGS... BY THE YARD...

OUR ENTIRE STOCK! **WOOLENS REDUCED!**

All Wools... Reg. 4.98 NOW ONLY **1.99** YARD

Wool-Dacron... Reg. 3.98
Wool-Rayon... Reg. 2.98

72 INCH WIDE FELT

FOR CHRISTMAS TABLECLOTHS... APPLIQUES... SKIRTS HOLIDAY COLORS **2.29** YD.

CORDUROY PRINTS AND SOLIDS

REGULAR 1.69 AND 1.29... NOW ONLY **59c**

FIRST QUALITY

MOM! IF YOU LIKE TO SEW DROP THE HINT FOR A GIFT CERTIFICATE FROM CANIPE'S FASHION FABRICS

heavenly CHRISTMAS GIFTS

WALLACE Pacific Cloth **DRAWER LINER**

FREE... Plus FREE... 4 WALLACE Sterling Spreaders

Gifts Worth Up To \$33.50!

When You Buy a **"Smart Set"**

16 PIECE STARTER SET OF WALLACE STERLING

Prices Start as Low as **\$83***

Buy a complete 16 Piece Starter Set of Wallace Sterling — GET FREE 4 Matching Sterling Spreaders PLUS a smart new Wallace Pacific Cloth Drawer Liner to store your sterling as you add to it! Buy Smart, Buy NOW — our EASY PAYMENT PLAN enables you to take your Starter Set home today, start using it right away!

* Prices vary slightly with patterns. Available in all nationally-known, nationally-advertised Wallace Sterling patterns, Luncheon and Dinner Size. Starter Set consists of 4 teaspoons, 4 salad forks, 4 knives, 4 forks.

LIMITED TIME OFFER NOW AT

J. B. KNIGHT HARDWARE

COURTESY A manager of F the left as he day to Mary I 2, store emplo gensen, anothe to, who recei

IN COLLIS

Gin

A 45-year-old injured critical day when his c an earth-movir about 3½ mile man.

J. D. Pender of McNabb G is in Lubbock pital, paralyzed down, accordin tendants.

Pendergrass en neck, fractu fractured ribs "bad" facial lac ed Treadaway attendants, wh



COURTESY AWARDS GIVEN — Joe Jackson, manager of Furr's local store, is pictured on the left as he presented a courtesy award Friday to Mary Nell Rosamond Young, of Route 2, store employees. Looking on is Jerry Morgensen, another employee, of 1008 East Repp, who received a like award. Each also received a special check. The presentation was the climax of a courtesy contest sponsored by the store. Employees of the store made the selections. They are standing in front of a special Christmas display that proved fitting for the day. All employees received Christmas bonus checks Friday. (NEWSfoto)

IN COLLISION THURSDAY

Gin Manager Injured

A 45-year-old Terry man was injured critically early Thursday when his car collided with an earth-moving machine about 3 1/2 miles south of Wellman.

J. D. Pendergrass, manager of McNabb Gin in Wellman, is in Lubbock Methodist Hospital, paralyzed from the neck down, according to hospital attendants.

Pendergrass suffered a broken neck, fractured left arm, fractured ribs and "extremely bad" facial lacerations, reported Treadaway-Daniell Hospital attendants, who gave initial

treatment. He was taken to Lubbock by Brownfield Funeral Home ambulance after preliminary examination and treatment here.

Investigating officers said the mishap occurred about 7:30 a.m., Thursday when Pendergrass attempted to pass road machinery on a section of unpaved road, south of Wellman.

Officers identified Stanley R. Holley Jr., 21, of Brownfield as driver of the machine. He was not injured in the collision, which ripped the left side from the Pendergrass auto-

Union Cagers Take Victories in Ackerly Tourney Thursday

Union's boys and girls cage teams advanced to the second round of the Ackerly Tournament with Thursday wins over Sterling City and Dawson, respectively.

Second round play was slated to be held Saturday afternoon.

David Cabe edged Alton Foster for high-scoring honors in the 60-23 slaughter of Sterling City. Cabe tallied 15 points while Foster garnered 14 and Wylie Kay had 12.

Sterling City never got into the game as seven of Union's eight players connected for points, hitting for 21 field goals while holding their opponents to eight.

Barbara Gruben and Doris Howell hit the nets for 44 past Dawson, 45-38, in the initial round of play.

Miss Gruben led scoring with 25 points on seven field goals and 11 free-throws. Miss Howell tallied five field goals and nine free tosses for 19 points. Frances Dyer scored the other Union point.

Though outscored from the field, 32-24, Union's lasses gained the winning margin at the free-throw line, garnering 21 points to only six by Dawson.

A. Blair and P. Fortenberry led Dawson scorers with 12 points.

mobile and crushed the top. Holley is employed by Henry L. Stafford Construction Co. of Lubbock.

Methodist Hospital spokesmen said Pendergrass is resting, but suffers from the neck injury.

SOCIETY? CALL 2188
CLASSIFIED? CALL 2188

'WOULD UP ALLOTMENTS'

(EDITOR'S NOTE: Plains Cotton Growers, Inc., has published details of a proposed legislative program for cotton. Following is the second of a three-part report which the NEWS will print for its readers concerning the PCG proposals.)

To accomplish the broad objectives of the program, PCG advocates the following five points:

1. One price at a competitive level to domestic and foreign cotton mills.
2. Increased acreage through dual allotment plan based on acreage which would be: a. domestic allotment, and b. total allotment (domestic plus export).
3. Equalization payments to the farmer on his domestic allotment, with no limitations on payments.
4. A loan program at a price level slightly below the world competitive price.
5. Provisions concerning the Soil Bank as long as the acreage reserve section is in effect.

ONE PRICE . . .
Cotton to be sold at a world competitive price to both domestic and foreign mills. This would discourage the expansion of synthetics and of cotton production in foreign countries, and enable the American mills to compete better with foreign cotton textiles—the export program already has proved both these points a broad.

INCREASED ACREAGE . . .
With the increase in cotton consumption expected to result from the competitive price, together with retirement of Soil Bank acreage, a substantial increase in total acreage allot-

ments will be necessary to provide an adequate supply of cotton. This can be accomplished as follows:

a. USDA to make estimates of domestic and export needs, such as 9,000,000 bales domestic and 5,000,000 bales export, for a total consumption of 14,000,000 bales.

In order to reduce present surpluses, one million bales of the excess of total supply over normal supply, which ever is smaller, will be deducted from estimated total consumption to establish the national marketing quota. For example, 14,000,000 minus one million would give a marketing quota of 13,000,000 bales.

b. Using an estimated five-year national average yield of .55 pounds per acre, the total acres required to produce 13 million bales would be 500/355 x 13 to equal 18,300,000 acres.

Adding an estimated 2 million acres for Soil Bank withdrawals, the national allotment would be 20,300,000 acres. Since the present allotment is 17,500,000 acres, this is an increase of 16 per cent.

The domestic portion would be computed by the formula: Estimated domestic consumption divided by the national marketing quota equals nine-tenths equals 69 per cent.

c. Each farmer then would receive his share of the increased national allotment. For example, a farmer who now has 100 acres in allotment would receive 116 acres, of which 80 would be domestic and 36 export.

Since he does not have to plant all his allotment, the

fraction on which he will receive payments is computed by the formula:

Domestic allotment (acres) divided by total planted acres equals his equalization factor. For example, if this farmer plants all 116 acres his factor will be 80/116 equals .69.

If this farmer plants only the domestic, his factor will be 80/80 equals 1.00. His equalization factor will be typed on his compliance card, and will

Tuesday Suggested Deadline for Mailing Some Yule Parcels

With the rush of Yule mailing fast approaching, Postmaster Joe Shelton this week urged postal patrons to take special care in preparing parcels.

Shelton also issued a plea that patrons make Tuesday their deadline for mailing out-of-town parcels and Christmas cards. "Also, it will be a tremendous aid to our staff if patrons will have local mail in the post office by Sunday," he added.

The postmaster urged residents to take special care in packing fragile items. "Even then it is a good idea to insure or register such items," he said. "Pamphlets are available at the post office to aid patrons in proper packing procedures."

"Combination-mailing is another service I'm sure many patrons will want to use this Christmas," said Shelton. "Under present regulations, a letter may be enclosed in a package if the sender places the postage on the outside and marks 'First Class' with the address."

Box Supper Monday Is Set By Wellman PTA

Wellman PTA will sponsor a box supper at 7:30 p.m. Monday in the school cafeteria.

Money raised will be used for the advancement of boy scout and girl scout work at Wellman and also for the construction of outdoor tennis courts.

All girls are asked to bring box suppers.

Brownfield Cubs To Be QBC Barbecue Guests

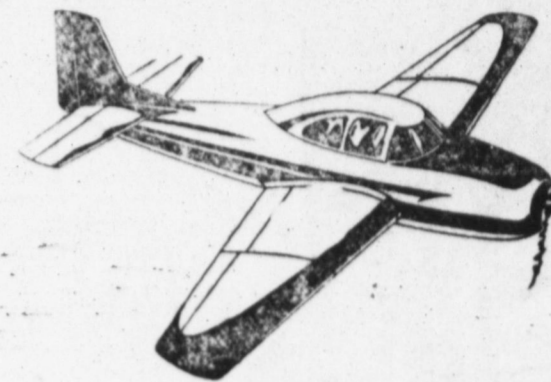
Approximately 85 Brownfield junior and high school football players will be feted with a barbecue dinner at 8 p.m. Monday in the junior high school cafeteria, according to C. G. Griffith, Quarterback Club president, sponsoring organization.

Griffith said barbecued chicken and "all the trimmings" will be fare for the gridiron

Water Authority Meet

Director Lee Brownfield will attend a board meeting at 10 a.m., Monday in Plainview of the Canadian River Municipal Water Authority.

Agenda will include approval of Oct. 14 minutes, payment of bills, receiving fiscal report of treasurer, hearing nominating committee's report, and other business as submitted.



This takes skill and practice

IT TAKES SKILL TO FILL A PRESCRIPTION
To be sure.....see us!!

NELSON'S R PHARMACY
211 S. 6th St. Phone 3144
"Where Most Prescriptions Are Filled"

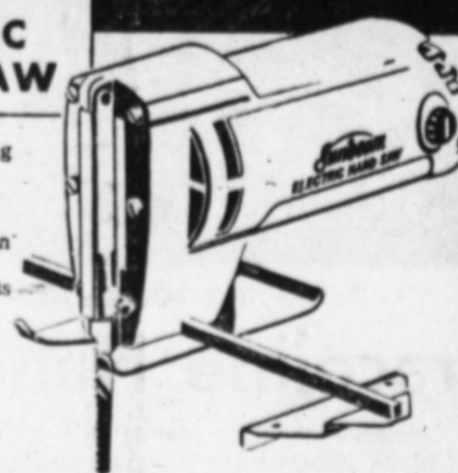
Fox Paint & Paper The Place to Get

Gifts for the Handyman

Complete line of HOME WORKSHOP TOOLS

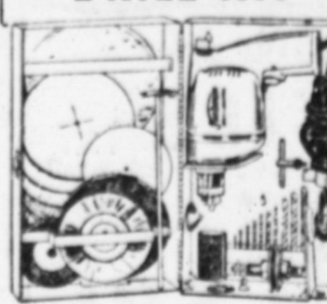
Sunbeam

ELECTRIC HAND SAW



- Ends arm and back-aching sawing
- Goes through 2 x 4's in seconds
- Makes tough cuts in iron and steel
- Perfect for accurate cuts in Formica, Masonite
- Rips, cross-cuts, jigsaws, copes, hacks, scrolls, keyhole saws. Precision built. Rugged. Lightweight. With Rip Guide and Blade, only \$42.50

DRILLMASTER DRILL KIT



Top quality, deluxe drill kit in roomy metal case. Buff, polish, sand, wire brush clean, mix paint, etc. Kit with Drillmaster Jacobs Geared Chuck, Same with Jacobs Hex-Key Chuck, \$37.50

SANDER



The sander that stood up over 1,000 hours in continuous use. Lightweight. Professional results. Easy-to-change abrasives. \$39.50

10% OFF ON ALL POWER TOOLS PURCHASED BEFORE CHRISTMAS



Hobby Supplies

- NUMBER PAINTING KITS
- COPPER HOBBY KITS
- PICTURE FRAMING SUPPLIES

COMPLETE LINE Spray Paint and Glitter For Your Christmas Decorating

FOX PAINT & PAPER SUPPLY
415 West Main Phone 3646



As seen in Vogue....

for the young-in-heart.....

Lace steps out Holi-dating

In a figure molding sheath of sheer elegance. Lovely re-embroidered Chantilly lace over matching taffeta, with enchanting tucked midriff.

Black—Size 13 \$29.95

Shelton's

Save up to 7.00 a pair in our

SAMPLE SALE



SIZES 4B and 4 1/2 B only VALUES to 12.95

NEW SPRING SHOES only 5.95

Aren't you the lucky one... if you wear size 4B or 4 1/2 B... just look at the savings we're offering on nationally advertised shoes... come early and see these terrific values... we're dozens of the season's newest, smartest styles. Colors and materials galore. High and medium heels.

Fenton's Shoe Store

503 W. Main "Quality Shoes" Phone 3016

National Magazine Carries Article Of VFW Activity Here

Hand Bros. Post 6794, Veteran of Foreign Wars, has received state recognition in the November issue of the Texas VFW News.

Earlier in the year 1,700 pamphlets on Americanism and miniature flags of our Country and pencils were passed out to children in the first three grades in Brownfield Wellman, Union and Meadow schools.

A picture of Jack Aaldrup post commander, and Lejeune Lincoln, chairman of the post's Americanism committee distributing the kits to Claudine Peters, daughter of Mr. and Mrs. Carl Peters of Levelland Highway, and Bob by Payne, son of Mr. and Mrs. Bob Payne of 703 Park Lane was carried in the state paper.

This past week the post received recognition from first and second grade students of Mrs. James W. Stone of the Meadow school. Each pupil sent a letter of appreciation for the material. On the letters were drawings of the flags received.

According to Aaldrup there is the possibility the post will receive national recognition.

This Week's School Menu

(EDITOR'S NOTE: Following is the menu for all Brownfield school cafeterias the week of Dec. 9-13.)

MONDAY

Baked ham, rice, green beans, tossed salad, peaches and cookies, biscuits and milk.

TUESDAY

Meat loaf, creamed potatoes, buttered carrots, cucumber pickles, butterscotch pudding, hot bread and milk.

WEDNESDAY

Macaroni and cheese, weiners, bean salad, spinach, corn bread and butter, cherry cobbler and milk.

THURSDAY

Roast beef, mashed potatoes, gravy, English peas, celery stick, fruit cup, hot rolls and butter and milk.

FRIDAY

Tuna loaf, buttered corn, baked potatoes, cabbage and apple salad, ice cream, bread and milk.

THE BIG BUY is DEKALB HYBRID SORGHUM



YIELDS

make DEKALB Hybrid Sorghum a "Profit Crop."

STIFF STALKS

to hold those heavy grain heads wet, as they should be.

OPEN HEADS

to assure faster drying and a good defense against insects and disease

Irrigated
Glen Lucas of Rt. 2 Levelland reports;
Martin Yielded 2912 pounds per acre at 16.4 moisture in 40 inch rows.
DeKalb E-56a Yielded 4890 pounds per acre at 14.4 percent moisture.
This is a 978 pounds of grain additional for Glen to harvest.

WESTERN GRAIN & FARM STORE

Dunlap's

ONLY
14 SHOPPING
DAYS TIL
CHRISTMAS

SHOPPERS SPECIALS!



Harem
Bells

Aladdin Lounging Slippers

Mercury
Mercury lounging slippers . . . look like they stepped out of Aladdin's palace . . . many styles . . . several fabrics . . . cushioned insoles . . . many colors, hand washable. Come in their own carrying bag.

3.98



Boys' Long Sleeve

SPORT SHIRTS

These are a blend of fine cotton and pure silk . . . colored in checks, stripes and plaids. Shirts that reflect the Holiday season. Sizes 6-18 . . . wonderful, inexpensive Christmas gifts.

1.99



Men's Wash and Wear

White Dress Shirts

Regular 5.95 value that we have reduced in price for our Christmas Shoppers Special. This shirt will drip dry to sparkling smoothness. Soft, medium spread, perma-stay collar . . . barrel cuff . . . lustrous buttons.

3.99



A. — BEWITCHING "BABY DOLL" with a round neck emphasized by sparkling rhinestones on filmy net, caught with a lovely bow. Sizes S-M-L in Frost White, Pink Glow or Heaven Blue.
B. — SAUCY KNEE-LENGTH GOWN with a scoop neck identical to our Baby Dolls. Bedecked with a flowing ribbon bow. Sizes 32-38 in Frost White, Pink Glow or Heaven Blue. Wonderful for Christmas.

3.99

3.99

LADIES' NYLON
TRICOT SLIPS
From our fabulous collection of lingerie for Christmas we have chosen a group of slips that sold for as much as 5.95 . . . and reduced the price to 3.98.

3.98

MEN'S WHITE
DRESS SHIRTS
A gift every man wants . . . dress shirts. At Dunlap's low price you can give him several. See this value now . . . Shop Dunlap's for quality Christmas gifts for less money.

2.98

MEN'S WESTERN STYLE
HATS
Made for us by one of America's biggest names in hats. We cannot tell you the name . . . but you will know it instantly. These hats sell regularly for 10.00 to 15.00.

7.00

LARGE COLLECTION OF
Costume Jewelry
For Christmas we have gathered a terrific collection of costume jewelry that is sure to please every woman on your list. Stones . . . metals . . . enamels . . . all colors and shapes

1⁰⁰ and 2⁰⁰ Plus Tax



OUTSTANDING COLLECTION OF

Graceline Handbags

From famous Graceline comes this collection of black patent bags in many beautiful shapes . . . this is the perfect gift . . . and the price is so very low.

5⁰⁰ Plus Tax

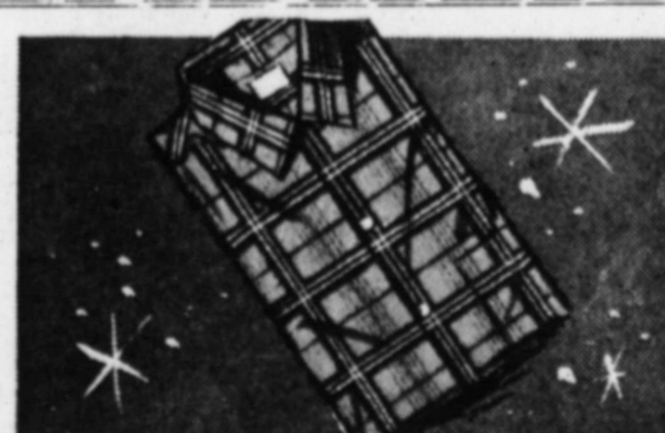


75 GAUGE . . . 10 DENIER

SHEER HOSIERY

75 Gauge — 10 denier Nylon Hosiery . . . sheerest hosiery made for her Christmas Gift. Usually sells for 1.95 pair . . . Dunlap's price is only 1.00. Save and buy her a box of three pairs in new fashion colors.

1.00
3 Pr. 2.39



MEN'S FAMOUS GALEY & LORD

Combed Cotton, Sport Shirts

Made of new fabrics; Washable cotton and cupinoy. Washable gabardine, Pima cotton and silk. Lustrous Cotton and silk. Sizes S-M-L-XL. A smart gift for any man on your Christmas list.

2.99



MEN'S ALL NYLON

STRETCH SOX

Finest quality stretch sox for men . . . new patterns designed to our own specifications. Fits sizes 10-13 . . . new colors for now and into spring. Should sell for 79c pair.

57^c pr
3 Pairs for 1.69

LADIES' NYLON BRIEF STYLE
PANTIES
Hollywood brief style panties made of washable nylon tricot . . . dries in a jiffy. White or pink in sizes 5-6-7. Smart gift for every woman on your list. Regular 1.00 pair.

89^c and 58^c pr

IMPORTED DELUXE 6 PC.
Steak Knife Set
Six piece Solingen, Germany Steak set with hollow ground Stainless Steel Blades . . . hardened and tempered, heavy gauge, mounted with Chrome-plated pistol bolster

A Set of 6 Pieces **2.98**

MEN'S FINE LEATHER
BILLFOLDS
Special buy on men's fine leather billfolds. Pigskins, seals, Morocco, cape, ostrich grain, alligator, buffalo, saddle leathers and polished calf. This is definitely a special price

2.99 Plus Tax

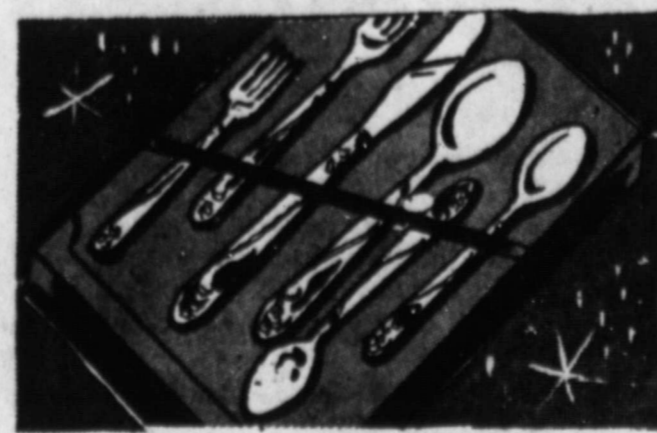
BOYS' BROADCLOTH
PAJAMAS
Boys' high count broadcloth pajamas that are exceptionally well made. Coat style with elastic waist, gripper front, and cuffs. Stripes and fancy patterns. Sizes 6-16.

2.98



RAYON AND COTTON DAMASK TABLE CLOTH AND NAPKINS . . . white, pink, gold, green, aqua . . . size 52 x 52 cloth with four napkins. Smart gift for any woman.

3⁹⁸ Set



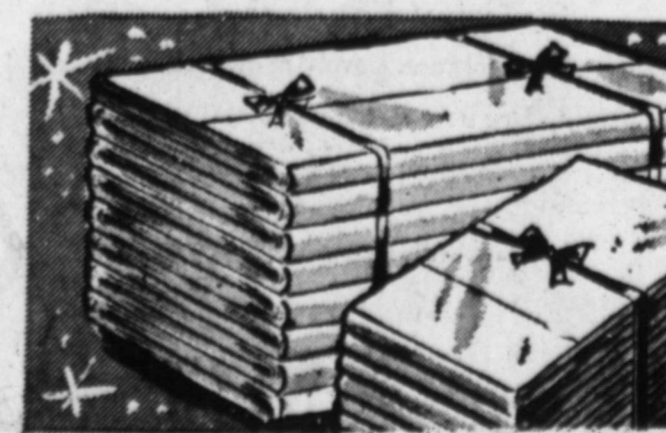
6 PC. SET ARDSLEIGH STAINLESS STEEL . . . Highest workmanship, guaranteed . . . individual gift box. 1—knife, 1—fork, 1—salad fork, 1—soup-spoon, 2—teaspoons.

1⁰⁰ Setting



HOSTESS GIFT SETS . . . Gorgeous appliqued Towel Set in a beautiful gift box . . . ideal for a Gift.

3.99
2.99
and 1.99



Cannon Striped Woven Percale Sheets

Size 81 x 108 Christmas Special **4.49** Pillow Cases To Match **98^c**

Mrs. Luckie's Voice Class Sets Concert

Mrs. John F. Luckie of 1006 Tahoka Road will be presenting her voice pupils in a special Christmas program today at 3 p.m. in First Presbyterian Church.

Twenty local students, three from Ropesville and one from Plains will be taking part in the program. Also appearing on the program will be guest

Brownfield Trio Helps Entertain Mrs. Mahon

Mrs. George Mahon of Washington, D.C., wife of Cong. Mahon, was honored Thursday with a luncheon given by Mrs. Waggoner Carr of Lubbock in Plainsman Hotel.

Three Brownfield women were guests, Mrs. J. O. Gillham of 804 East Tate, Mrs. Burton Hackney of 803 East

Radio Group Finals Plans for Its Yule Party in Clubhouse

Plans for a Christmas party were completed when Terry County Amateur Radio Club met in Clubhouse Tuesday.

Date for the event was set for 7:30 p.m., Dec. 17 in the clubhouse, David Nicholson, president, appointed Lewis

Simmonds, E. C. Pool and Speck Plummer to make arrangements for the yule tree and program.

Those making general preparations for the party will be Don McCandless and Clyde Lewis. Mmes. Pool, Simmonds, and Lewis will be in charge of refreshments.

Simmonds gave a report concerning FCC rules and regulations governing the proper way

to keep an accurate and current log of all periods of transmitting on their radio sets.

ON THE SPOT
Office Boy (nervously). Please sir, I think you're wanted on the phone.
Employer — You think! What's the good of thinking?
"Well, sir, the voice at the other end said: 'Hello, is that you, you old idiot?'"

at Knight Furniture You Are Sure to Find ...

The gift that thrills everyone in the family is a fine piece of furniture or a smart home accessory that will be used with delight for years to come! Let your gift reflect the love you bear — give beautiful, practical furniture! See us today.



Lounge Chairs
With
Matching Ottoman

For a man's comfort! Lounge chairs that adjust to any position has matching ottoman. Easy to care for. A great Christmas buy. Your choice of leather-like or cloth fabrics in the latest styles and colors to match any surrounding.

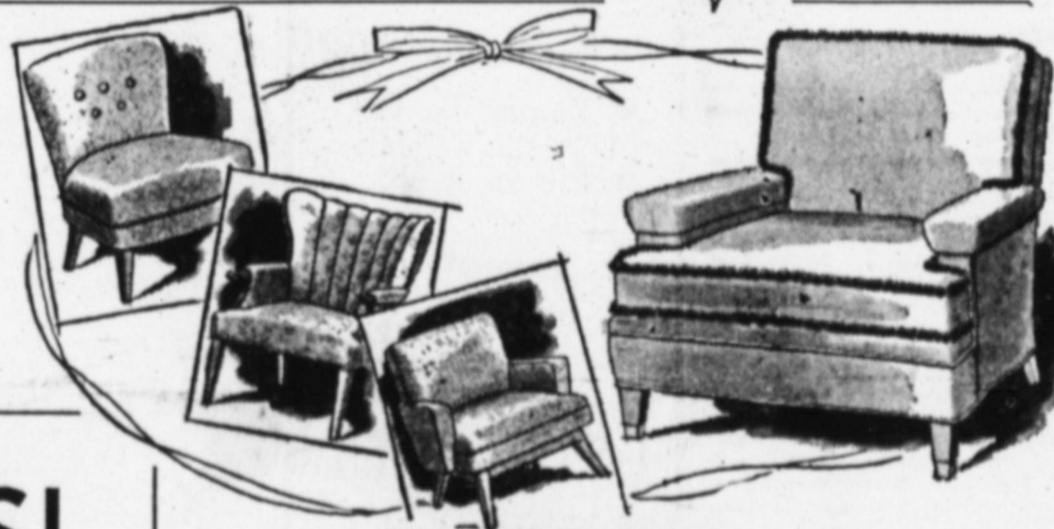


GIFTS

FOR THE HOME

FOR MOM Occasional Chairs

Here is the gift that will surely please any mother... beautiful, practical occasional chairs for every room in the home. Upholstered to match the decor of every room.



LAMPS!

We have the lamp or lamps to "light" any home at Christmas time... Beautiful floor lamps... elegant table lamps... or you may choose from a wide array of practical wall lamps... buy several to "light" the home on Christmas Eve.



LEATHER TOPPED TABLES

Exciting gift values in glowing mahogany tables with rich-looking leather tops. Wide selection... coffee tables, end tables, step-tables

Your Credit Is Good At KNIGHT'S

Framed Pictures

You must see these beautiful framed pictures... landscapes, still-life... and many others. All will make wonderful presents.



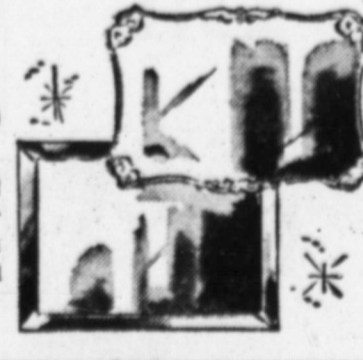
Smoking Stands

Get him a smoking stand to set beside his lounge chair. You will find a large selection from which to choose.



MIRRORS

This is a gift every lady will love... beautiful mirrors for the living room, dining room and bedroom... both framed and plain.



Samsonite Card Tables and Chairs

We carry a complete line of Samsonite Card Tables and Chairs... all sizes and colors... buy now for extra-table use during the holidays.

ALL SIZES AND SHAPES Hassocks

Come in and look over our smartly styled Hassocks... you will find many different shapes, sizes and colors from which to select.



J. B. Knight Co.—furniture

"HOME OF QUALITY FURNITURE"

612 West Main

"Free Delivery"

Phone 2091



PREPARING FOR BAZAAR — Mrs. Ernest Latham, president of Brownfield Garden Club, is shown on left as she discusses display arrangements with Mmes. Val Garner, James King and Lee Fulton in preparing for the club's Christmas Bazaar, held Thursday afternoon in Seleta Jane Brownfield Clubhouse. Mrs. Fulton was general manager and hostesses were Mmes. Garner and King. Not shown are hostesses Mmes. A. J. Bell and Fred Turner.

Buddhism Studied by Maids and Matrons

Maids and Matrons Club met Tuesday afternoon in Seleta Jane Brownfield Clubhouse for a study of Buddhism.

Mrs. J. M. Teague, chairman of adult education council of Brownfield, was principal speaker. She explained some of the beliefs and practices of Buddhism. The effect communism might have on Buddhism also was discussed. She followed with her idea of the effect we, as a Christian nation, could have on the Asian religion.

Christmas decorations were used with an oriental table arrangement to lend atmosphere to the program. Hostesses were Mmes. J. L. Crow and J. A. Jackson.

Fruit cake and coffee were served to Mmes. Teague, E. O. Nelson, Frank Wier, Crow, E. C. Davis, Joe Satterwhite, M. G. Tarpley, E. F. Latham, A. W. Butler, W. R. Tilson, Paul Blackstock, Looe Miller, W. M. Adams, John B. King, Jackson and John Cadenhead.

Mrs. Layman Hosts Ideal Bridge Club

Mrs. Earl Layman of 905 Tahoka Road entertained Ideal Bridge Club Wednesday afternoon.

Mrs. Edson Wilder took high score prize and Mrs. Bob Land second high. Consolation went to Mrs. R. L. Bowers.

Refreshments were served to Mmes. Jerry Bailes, Grady Goodpasture and Joe Christian, guests, and to Mmes. Wilder, Bowers, Bill Anderson, Coy Barnett, Chris Hafer, Roy Herod, Land, Joe McGowan and Al Muldrow.

Christmas Party Is Set By Beta Thetas

Beta Theta Chapter of Epsilon Sigma Alpha met with Greta Hipp of 1404 East Tate Tuesday evening.

Reports from standing committees were given. Ann Johnson will be in charge of a special Christmas party to be given Dec. 16 in Seleta Jane Brownfield Clubhouse. The chapter voted to make a contribution to the Goodfellow fund.

Pie and coffee were served to Bobbie Bayless, Patsy Hamilton, Betty Hillis, Cleo Newsum, Jo Jennings, Dorothy Gore, Olla Mae Hamilton, Margaret Ratliff, Rita Wilson, Kay Billings, Johnson, Whitie Howell and Trucene George.

Meadow Lists Nine Honor Roll Students

A total of nine students were listed on Meadow Schools' second six-weeks honor roll, according to J. L. Carroll, superintendent.

The list includes: Second grade—Karen Dunn and Linda Watson.

Fifth grade—Charlotte Watson.

Sixth grade—Richard Copeland, Ronnie Dunn and Betty Kirk.

Seventh grade—Robbie Beasley and Sandra Caswell.

Eleventh grade—Shirley Watson.

Running a church is a demanding job and those who do it have no easy days.

Mrs. Layman Hosts Ideal Bridge Club

Mrs. Earl Layman of 905 Tahoka Road entertained Ideal Bridge Club Wednesday afternoon.

Mrs. Edson Wilder took high score prize and Mrs. Bob Land second high. Consolation went to Mrs. R. L. Bowers.

Refreshments were served to Mmes. Jerry Bailes, Grady Goodpasture and Joe Christian, guests, and to Mmes. Wilder, Bowers, Bill Anderson, Coy Barnett, Chris Hafer, Roy Herod, Land, Joe McGowan and Al Muldrow.

Christmas Party Is Set By Beta Thetas

Beta Theta Chapter of Epsilon Sigma Alpha met with Greta Hipp of 1404 East Tate Tuesday evening.

Reports from standing committees were given. Ann Johnson will be in charge of a special Christmas party to be given Dec. 16 in Seleta Jane Brownfield Clubhouse. The chapter voted to make a contribution to the Goodfellow fund.

Meadow Lists Nine Honor Roll Students

A total of nine students were listed on Meadow Schools' second six-weeks honor roll, according to J. L. Carroll, superintendent.

The list includes: Second grade—Karen Dunn and Linda Watson.

Fifth grade—Charlotte Watson.

Sixth grade—Richard Copeland, Ronnie Dunn and Betty Kirk.

Seventh grade—Robbie Beasley and Sandra Caswell.

Eleventh grade—Shirley Watson.

Week of Prayer Is Observed at Calvary

Women's Missionary Society of Calvary Baptist Church met each afternoon last week at the church in observance of Week of Prayer.

Theme for the programs has been "For God So Loved." Mmes. Billy Stephens, Glen Brown and Billy Suggs have been conducting the discussions.

A special program, "Prayer Around the World," Friday afternoon climaxed the series. All circles will meet in regular sessions at 1:30 p.m. Tuesday.

Smiths Are Hosts For Tuesday Bridge Group

Tuesday Night Bridge Club met with Mrs. E. J. Smith of 609 East Lons this week.

High score prize went to Mrs. C. L. McLendon and consolation to Mrs. Billy Hamilton.

Those playing were Mmes. Ray Tippit, McLendon, B. M. Coppock, George Burt, J. W. Fitzgerald, Earl Carroll, Hamilton, Johnnie Harrison and Mr. and Mrs. Bobby Jones, and Mr. and Mrs. Smith.

The unemployed are not all eager to find what they're looking for.

Margaret Ingram's Betrothal Revealed

Mr. and Mrs. George Ingram of Star Route, Welch, have announced the engagement and approaching marriage of their daughter, Margaret, to Robert Earl Faught, son of Mr. and Mrs. R. E. Faught of Route 3.

The Rev. P. C. Goza will perform the ceremony at 4 p.m. Dec. 22 in Wellman Baptist Church.

Miss Ingram will be graduating from Wellman High School in May. He is a graduate of Union High School and attended Eastern New Mexico University. He is now engaged in farming.

take a look at your future...



Call your SwL representative
W. Graham Smith

Southwestern Life Insurance Company

Buying

Selling

Renting

Services

Employment

For Best Results

READ AND USE THE

WANT

ADS

PAGE TWO Brownfield News-Herald, Sunday, Dec. 8, 1957

FARMS FOR SALE

160 acres good irrigation well, 56 acre cotton allotment, good four room house with bath. The price \$28,000. \$10,000 down, bal. on terms.

320 acres, two irrigation wells, fair improvements, 112 acre cotton allotment, the price \$175.00 per acre. \$14,000 down, bal. on terms.

460 acres, good improvements, two irrigation wells, pumps, motors, sprinkler pipe, 165 acre cotton allotment, the price \$125.00 per acre.

SEE BOB COLSON

Robert L. Noble Agency

406 West Bdwy. Phone 4181 Brownfield, Texas

PACKAGE POLICIES—

LOW COST WAY TO COVER YOUR HOME



- Personal Liability
- Pets Liability
- Residence Liability
- Sports Liability

Save on your home insurance through modern policies that combine your home coverages into one low cost package. Fire, theft, and personal liability coverages are available to you, as a homeowner or tenant, in a choice of several plans.

Ask us about them.

LONES COPELAND Agency

EAST HILL STREET

CHURCH OF CHRIST

GOSPEL MEETING

ENDS TODAY

Daily Services 7:30 P.M., Sun. Morning 10:30, Sun. Eve. 7:00

Evangelist Dell Young From Spur, Texas will be the speaker.

Everyone Is Invited

EAST HILL STREET CHURCH OF CHRIST

1204 E. Hill

Brownfield, Texas

HELP WANTED

NURSING POSITION now available. Seagraves Clinic Hospital. Apply in person at hospital. 80-2tc

WANTED: Resourceful efficient men to sell well known product. Opportunities unlimited, with good income. Phone 2379 after 6:00 p.m. for appointment. 81-1tc

WANTED

MAKE THE TEST you'll like it best. Get Glaxo asphalt tile coating at Copeland Hardware.

WANTED: Would like to buy about 100 shoats, Ft. Worth market price. Martin Packing Co. Phone 2528 or 3980. 81-1tc

FOR RENT

FOR RENT: Furnished apartment — \$50.00 per month. Bills paid — Call 3018 or 2745 after 6 p.m. 81-1tc

RENT A HOME — in the Brownfield Manor, beautiful brick apartment house, 900 East Reppito, with ice box and stove furnished, 1 or 2 bedrooms, all bills paid. See David Nicholson Agency, 418 West Main or call 3603 or 3740. 12-1tc

FOR RENT: 1 Bedroom unfurnished home, 108 Cedar, Phone 4412 or 2347. 81-1tc

FOR RENT: Furnished apartment—401 N. A. Call 2745 after 6 P.M. or 2018 days. 79-1tc

Dub Halford—Charles Cloe

Painting, Taping, Textoning, Floor Covering, Cabinet Tops and Carpenter Work. All work will be satisfactory. Phone 4876.

LEGAL NOTICE

A public hearing will be held in the County Court Room of the Terry County Courthouse, in Brownfield, Texas, at 10:00 A.M. on December 11, 1957, for discussing the improvements of the following Highway projects:

1. U.S. Highway 350 from Youakum-Terry County Line East approximately 6.0 Miles.

2. U.S. Highway 42 from the end of the present divided highway south of Brownfield, southwest to F.M. Highway 396 in Wellman.

Highway Engineers will explain the location and proposed improvements and answer any questions concerning these projects.

All persons interested in these projects are invited to attend the meeting. 80-2tp

TO SELL OR BUY

CLASSIFY

Phone

2188

MISCELLANEOUS

LOST: 8 week old part cocker-spaniel puppy strayed from 704 E. Buckley between 4:00 and 5:00 p.m. Thursday, Call 2561. 81-1tc

FOR SALE

FOR SALE: 2 row AC Combine \$200.00, 10 ft. Broadcast Binder, \$100.00. Contact Claude Addison 6 miles east and one mile north of Plains or Phone GL 6-2426. 65-1tc

FOR SALE: David Bradley garden tractor, with implements \$200.00 14 Ft. Egin boat, trailer and 7 1/2 Egin Motor \$375.00 Call 3883 after 6:00 p.m. 81-4tp

FOR SALE OR TRADE: Grocery store & filling station — 1/2 acre, living quarters & garage repair shop, 6 room house with garage — 1/2 acre. Seagraves Road — S. H. Depoyster Phone 2338. 81-1tc

FOR SALE: Good used 46,000 BTU Payne Floor Furnace, excellent condition — buy at your price. Call 3313. 80-1tc

FOR SALE: 1956 Trailer house at 3 Point Trafter Court, Call 3388—D. R. Mitchell. 77-1tc

FOR SALE: TOYS! TOYS! TOYS! Save now during Gene Gunn's Toy Clearance. All toys will be sold between now and Christmas... here is your opportunity to really save. 80-1tc

Several

Used No. 15

Cotton Harvesters

- Reconditioned
- Ready To Go
- Priced Right

Phone 4633

KERSH IMPLEMENT CO. Seagraves Road

REAL ESTATE

10 acres near Brownfield, Improved, \$6,000 One third down.

460 acres Terry County, 2 wells, 165 acres cotton, fair improvements. Wells on nat. gas, \$125 per A. Terms.

Ray Christopher Real Estate

410 W. Bdwy. Ph. 2268

- See Us For Your—
- REAL ESTATE
- FARM & RANCH LOANS
- IRRIGATION LOANS
- OIL PROPERTIES

JOE W. JOHNSON

406 West Broadway Phone 4443

FOR SALE

FOR SALE: Ford sedan, in excellent condition. To be sold at an equally excellent bargain. Please telephone 2709. 81-2tc

FOR SALE: Case "70" breaking plow, in good condition. See A. W. Hiltbrunner, 3 miles south of Gomez for demonstration. 81-3tp

FOR SALE: Red cedar furniture and cedar chest. Driftwood floor lamps for den or living. Also picture frames made to order. Furniture repair, 812 1/2 Tahoka Road, Homer Starnes Fix-It-Shop. 78-8tp

FOR SALE: TOYS! TOYS! TOYS! Save now during Gene Gunn's Toy Clearance. All toys will be sold between now and Christmas... here is your opportunity to really save. 80-1tc

FOR SALE: Highest Quality Fences at Lowest Prices. All Types Materials for all Purposes. No Down Payment and 36 Months For Free Estimates Call 4204. R. T. Wilson, Agent; Curtis Fence Co. 75-1tc

To Sell Or To Buy

Telephone 2188

FOR SALE: Truck float with fifth wheel — See at first house east of Marson trailer Court. 80-3tc

FOR SALE: Maternity dresses, sizes 10 to 12. Telephone 3726. 80-2tc

FOR SALE: 24 inch Goodyear girls bicycle — white wall tires and basket. Call 2239. 80-1tc

PIANO FOR SALE: \$75.00 Cash or will trade for guns. H. L. McKay 221 W. Cardwell Phone 2585 after 6 o'clock p.m. 80-1f

REAL ESTATE FOR SALE

FOR SALE: 160 Acres in Gaines County, Good Cotton Allotment. One 6" well with sprinkler system & Motor. Will Carry \$8,000.00 or \$10,000.00 loan. \$125.00 Acre. The Pemberton Agency, 210 S. 5th, Phone 4119. 71-1tc

FOR SALE: 308 Acres 7 miles from Brownfield. One 8" well and One 4" well, Sprinkler system etc. 101 Acres Cotton. Has \$15,000.00 Loan. \$160.00 Acre. The Pemberton Agency, 210 S. 5th, Phone 4119. 71-1tc

FOR SALE: House by owner, 1 year old, 3 bedroom, living room and dining room carpeted, \$8,750. Phone 4756. 77-1tc

FOR SALE—320 A. farm, 300 A. in cultivation in water belt, 100 A. cotton allotment. Known as the old Reed farm 6 mi. east 1 mi. south of Blvd. 61-1tc

FOR SALE: Ready - Built Homes, 2-Bedroom — 936 Sq. Ft. \$2995.00. Can be seen at 1400 E. Reppito. Glenwood Homes, Inc. 66-1tc

FOR SALE — have two 2 bedroom homes low equity; also have nice 3 bedroom and den well located. DAVID NICHOLSON AGENCY phone 3603-3740. 56-1tc

FOR SALE: 5 room house 416 S. 3rd—\$3750.00, Phone 3830. 76-1tc

Have some good buys in irrigated and dry land in Terry and Gaines County.

Plenty of good lots in Brownfield.

Leonard Lang Real Estate

112 S. 5th Ph. 3351



EXCLUSIVE DEALER FOR

- ... Western Pumps
- ... A-M Couplers
- ... Rain Bird And Buckner Sprinklers

FREE ESTIMATES GIVEN WITHOUT OBLIGATION Ask One Of Our Many Satisfied Customers!

Call 2156

Meel Ross — Shorty Forbus

Western Pump & Supply Co.

Classified Advertising Rates: 5 cents per word first insertion; 4 cents per word each time thereafter—minimum charge of \$1.00 per insertion. Classified Ad deadline for Thursday issue is noon Tuesday and for the Sunday paper 5:00 p.m. Thursday.

REAL ESTATE FOR SALE

FOR SALE: How much would you give for \$4664.73 equity in FHA home at 1203 North Atkins St.? Loan balance \$5375.26. Contact James W. Bradley 2204 South Monticello St. Big Spring, Texas. 78-4tp

FOR SALE: Small tract of land in Ozarks on U.S. Highway 51. Good hunting and fishing near Norfolk lake. Sell or trade for car or pickup or what have you. Call 4590 or write Box 224. 78-8tp

LOT FOR SALE: 90 ft. front, near Colonial Heights, Call Jerry Gannaway, Phone 3809. 70-1tc

SEE US FOR . . .

- INSURANCE
- BONDS
- REAL ESTATE

Phone 2272

A. W. TURNER Agency

407 W. Main

FOR SALE — 2 bedroom house, 713 Magnolia, Phone 2278. 42-1tc

REAL ESTATE LOANS

- Repair & Improvement
- House Loans
- Irrigation Loans

(No Minerals Required) The Pemberton Agency

210 S. 5th Ph. 4119

FARM HOME FOR YOU, 160 acre farm Terry County, old improvement. Good irrigation water available. Price for early sale \$100 acre.

320 acre well improved farm Lynn County, \$150 acre. \$20,000 cash, balance \$2,000 yearly.

Two sections grass land Youakum County ready for the plow. Offered now \$15,000 cash, balance terms, price \$25 acre.

320 acres grass land Youakum County on pavement \$39 acre. See me if you will buy or sell. D. F. CARTER, Brownfield Hotel.

FOR SALE

1957 D-8 Caterpillar & Breaking Plow

1953 10 ft. McCormick-Deering Broadcast Binder

1955 UB Moline 1951 G John Deere 1948 M Farmall

All with 4-row equipment & on LP Gas

8 row Stalk Cutter 9 row sand fighter 4 section drag harrow 4 row Rotary Hoe pull type 2 two-row knife slides 1 four-row pick-up slide

If interested contact: Claudie Addison

6 miles East 1 mile North of Plains, Texas

or Phone GL 6-2426

MISCELLANEOUS

TRADE: Will trade Frontier stamps for S&H Green stamps. Call 4344 or 226 after 5 p.m. 81-1tc

YOU CAN Have "unwanted hair" removed permanently from any part of your body. Beauty Aid Clinic, phone 4606. 78-1tc

FINISH HIGH SCHOOL or grade school at home in spare time. Books furnished. Diploma awarded. Start where you left school. Write Columbia School, Box 5061, Lubbock, or Phone SW9-0651. 60-52ta

WE BUY COTTON

COCHRAN BROS.

810 W. Main Night 3634 Phone 2277

WANTED — All type of interior or exterior painting, papering and decorating. For free estimate call 3707 or 2659. Terms if desired Pete Merritt, 210 N. D. 39-4

MUSTACHES LOOK GREAT on men, but very un feminine on ladies. Let us remove that superfluous hair. Beauty Aid Clinic, 4606. 78-1tc

DOG OWNERS, let us help solve your pet problem. We sell and install 6' Stockade Fences. Barbed Cedar or Oak — Installed 12.00 Run Ft. Phone 2608. 66-1tc

FOR ALL YOUR WINDMILL and Pump repair see James Estell 604 North A St. or phone 4401. 71-1tc

COME IN Or CALL Terry County Mattress Co. for your bedding needs. Free Pickup & Delivery. 101 Seagraves Rd., Ph. 4422. 72-1tc

LOST: 1 ladies brown Lizzard shoe — Call 2124 or 4791 after 5 p.m. 81-2tc

WILL MAKE Doll Clothes in my home. Bring doll or pattern and material. \$3.00 for 1 pattern wardrobe. Also will make gift aprons. 1104 E. Caldwell. 81-1tc

WILL KEEP Pre-School Children in my home, 1504 East Caldwell. Telephone 3373 Mrs. E. L. Lofton. 81-4tc

YOU said it Cy! It's really a buy. Blue Lustre rug and upholstery cleaner. Copeland Hardware

CARD OF THANKS

May we take this means to express our thanks and sincere appreciation to our friends and neighbors for the many kindnesses and expressions of sympathy in the loss of our daughter and sister Gladys Hill. We are grateful for the flowers and for the food that was furnished and served, for anything you may have done. Mrs. W. H. Hill Mrs. T. C. Fowler Howard Hill Joe Hill Mrs. Kenneth Copeland John Hill

CARPET CLEANING—Shampooing done right on the floor in your home. Carpets ready for use the same day. Call City Carpet Cleaners. Ph. 2024.

FARM LOANS

- No Inspection Fee
- No Closing Fee

See— W. GRAHAM SMITH

Representing SOUTHWESTERN LIFE INSURANCE CO.

Phone 2056 1202 East Cardwell

Give A Glenwood Home For Christmas

Hurry — Hurry

GLENWOOD HOMES Inc. HAS UNDER CONSTRUCTION A Beautiful 3-Bedroom - 1 1/2 Bath Brick

GI HOME

(Probably The Last In Brownfield)

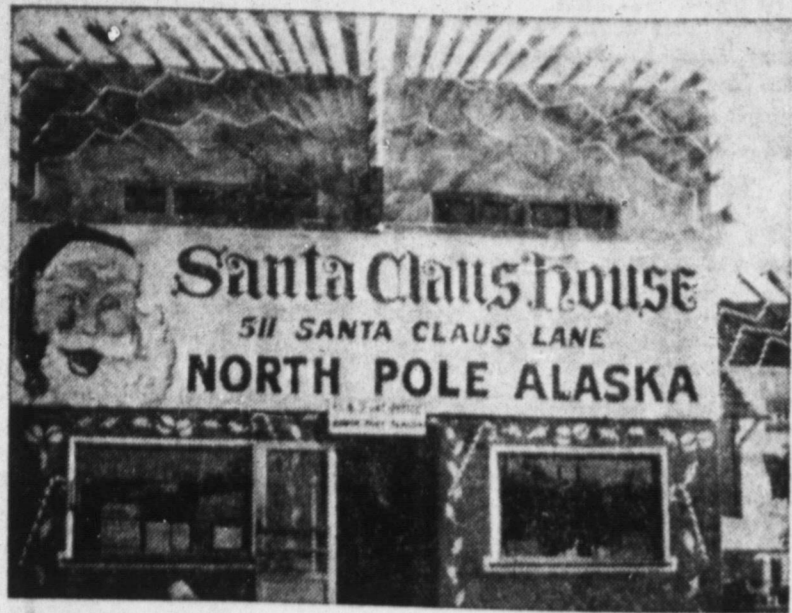
Total Price \$12,200

Only \$250.00 Down

Only 1 FHA Home Left LOCATED ON EAST REPPITO

Call 2608

Joe Ramsdell T. K. McMillin



SANTA CLAUS HOUSE — Shown is Santa Claus House at North Pole, Alaska. PFC Joe Wayne Stroble sent the picture to the children of Mr. and Mrs. C. A. Bullard of 1021 South Seventh to let them know he was really at the home of Santa Claus. Stroble is a former resident of Brownfield.

Challis News

By MAE HENDERSON
NEWS Correspondent

The Rev. Edd Russell did the preaching Sunday in the absence of the pastor. He and Mrs. Russell and son and Sae Rainey visited in the C. S. Carroll home.

Mrs. Loyal Henson and Kathy and the Rev. and Mrs. Oscar Kinsey took Thanksgiving dinner with their son, Mr. and Mrs. Jerry Henson of Lubbock.

Mr. and Mrs. E. L. Hogg of Lamesa visited their daughter and family, Mr. and Mrs. Wayne Bagwell, Sunday.

Mr. and Mrs. Bill Henderson and family of Odessa and Mrs. Jean Henderson and boys of

Hobbs, N.M. visited in the W. J. Henderson home and with other relatives Thanksgiving day.

Mr. and Mrs. Holder are the proud parents of a baby girl, Garla Denise.

As the pastor was leaving Wednesday for New Mexico to help in a revival, prayer meeting was held Tuesday night. A large crowd attended.

A special fellowship hour for Thanksgiving was held and refreshments of cookies, coffee and hot chocolate were served.

Mrs. E. N. Corley honored her daughter Carolyn Ann with a birthday party Tuesday afternoon.

The birthday cake and other refreshments were served to Linda Kay Carroll, Ruthie and Josephine Holcombe, Mami

Herrington, Suzana Armstrong and Trudy Gracey.

Mr. and Mrs. E. R. Slater visited their daughter and family, Mr. and Mrs. James Potts of Amarillo, Sunday.

Mr. and Mrs. Clarence Clark and Lue Net spent the holidays with her parents, Mr. and Mrs. Jack Andrews, of Plainview.

Those visiting in the J. L. Langford home Thursday were Mr. and Mrs. L. V. Langford and girls, Mr. and Mrs. Harold Parish and Jerry, Mr. and Mrs. Gray and Frank Gray and boys.

Our sympathy goes out to the Huckelberry family on the loss of their loved one, Miss Fay Huckelberry, who had been in ill health for some time.

Those visiting in the E. N.

Pre-School PTA To Have Meet Jan. 6

The high school library was the site Monday evening for the first session of the first Pre-School PTA-unit to be organized, not only in Brownfield but also in District 14.

Mrs. Ross Campbell was elected president, and working with her will be Mrs. Darrell Knight as vice president and Mrs. Ves Hicks as secretary and treasurer.

Kenneth Browning, principal of Colonial Heights Elementary School, will handle the publicity. Good and bad influences adults have on the lives of children were shown in a film to the 25 attending. The next meeting of the unit has been set for 7:30 p.m., Jan. 6 in the high school library.

Coleman Collier Is Feted On Birthday

Coleman Collier was honored with a party on his third birthday, Wednesday, by his mother, Mrs. Pate Collier of 901 East Oak.

Christmas theme was used in room decorations, table arrangements and refreshments.

Refreshments were served to Johnnie McCoy, Robbie and David Bowers, Carla Miller, Mark, Win and Tricia Moore, Berrie and Claudette Collier and Mmes. John McCoy, Carl Hecker, Marion Bowers, Wyn-dal Miller, Erwin Moore, S. B. Collier and John Dick Moor-head of Sundown sent a gift.

Every individual owes society more than can be repaid in one lifetime.

TODAY, MONDAY AT RIALTO

'20 Million Miles To Earth' Provides Spectacular, Huge, Entertaining Tale

"20 Million Miles to Earth," the science-fiction thriller starring William Hooper and Joan Taylor is showing today and Monday at the Rialto Theatre.

Probably nothing like "20 Million Miles to Earth" ever has been shown on the screen. It is a spectacular, fearsome and entertaining tale.

Hooper plays the officer and sole surviving member of the interplanetary expedition whose rocketship crashes into the sea off Sicily. Taken ashore by fishermen, he recovers under the tender ministrations

of lovely Miss Taylor. Also recovered from the sea is a miniature specimen of the Venus-beast brought back to earth for study. The creature grows in size, smashes its chains and proceeds to run amok.

There ensues one of the grimmest hunts in screen history as science and soldiers unite to smash the creature from outer space before it annihilates the earth.

Why is it the ignorant talk and the intelligent so often remain silent.

USED OK CARS CHEVROLET

Jack Bailey

1956 Chevrolet 2-door
Radio, heater & new seat covers **\$1095**

1955 Chevrolet 2-door BelAir
Radio, heater, standard transmission with overdrive, white sidewall tires & tinted glass **\$1195**

WHOLESALE COST

1953 GMC 1/2 Ton Pickup
Heater & Good tires **\$595**

1953 Ford 1/2 Ton Pickup
Radio, heater, new seat covers & good rubber—Only **\$495**

Jack Bailey Chevrolet

TORNADO PROTECTION

Tornado and Bomb Shelter

Tornado alert — puts fear in the hearts of all — act NOW before the tornado season hits, and it's too late to act.

Shelter Poured All At One Time
All Reinforced Concrete
Painted Inside and Outside
Complete With Seats
Can Be Purchased On Easy Terms

For Information — Write Box 1186-T
BROWNFIELD NEWS
c/o Jack Fiske or Bob Morton

TORNADO SHELTER CO.

1902 Ave. Q Lubbock, Texas



"I Came By Early to Tell You About the Wonderful Gift Waiting for You at the Brownfield Savings and Loan Association"

LOOK!
You Get This
Eastman Brownie
Kodak . . . FREE



When You Open a Savings Account of \$10 or More . . .

Why Not Open an Account for Yourself . . . Then Give the Camera as a Christmas Gift — Or, Give a Savings Account and Camera for Christmas.

TO OUR PRESENT SAVERS . . .

Any of our present savers Personally Bringing in anyone who opens A Regular Savings Account of \$10.00 or More, while this offer is in effect will also receive a FREE CAMERA!



Brownfield Savings & Loan Association
BROWNFIELD, TEXAS



Tau Phi Chapter Seeks Used Household Items for Needy; Set Party for Dec. 17

"Helping Needy Persons" was the theme when Tau Phi Sorority met with Mrs. Ruthette Swift of 1502 East Buckley Monday evening.

Miss John Lou Callison, president, was in charge of opening ritual. Mrs. Leatha Feagins, social chairman, presented final plans for a Christmas dinner dance to be held at the Palm Room in Lubbock on Dec. 17. Husbands and dates will be guests.

An 18-inch bride doll and her

wardrobe being displayed in the window of Brownfield Chamber of Commerce is to be first prize for a Christmas raffle the sorority is having at 9 p.m. Dec. 16, according to Mrs. Mayme Terrill, ways and means committee chairman. Second prize will be a dressed turkey. Tickets are 75 cents and winners will be notified.

Mrs. Nancy Price, service committee chairman, reported having sent wash cloth scuffs made by members to State

Project Office for distribution to mental patients in Texas for Christmas.

Need Used Items

The chapter is in need of used clothing, household linens, quilts, blankets, toys and other items. These items are to be distributed to needy families of Terry County under the direction of Mrs. James Burnett of the local State Welfare Department.

Used magazines and books also are being sought for distribution at Big Spring State Hospital. Anyone desiring to donate may leave contribution with Mrs. Nancy Price at 1004 East Cardwell.

Following the business session Mrs. Price gave the program on "How is Your Con-

People, Spots In The News

EDWARD HOFFER'S "California Hills" won top honors and \$2,000 prize in Hallmark Art Award in which 50 artists from 16 countries competed. Hallmark Cards will send paintings on U.S. tour.



OBEYING old "when in Rome—" advice, Abbe Lane, there making a movie, tries to look as sultry as possible ... which is quite, eh?



MINNESOTA native (5 1/2 months old) is held up to window by mother to get first idea of how snowy it can get in Minneapolis, even in November. It was a 10-inch fall.

Soviets Add Robot To Construction Workers

London — Soviet scientists have developed a "building robot" which can apply plaster, lay bricks and build houses,

it is said by Tass, the Soviet news agency.

The automatic house building machine can construct a five story brick house in from 50 to 90 days. The robot, controlled from a revolving working cabin, cuts labor costs to a tenth.

A high velocity gun that uses steam-heated helium instead of gun powder to propel bullets, is being fired at the Naval Ordnance Laboratory, Silver Springs, Md., to test the flight characteristics of projectiles.

Traffic Snarls When Mason Moves Switch

Rochester, N.Y. — When a mason, helping to remodel the office of a traffic-control di-

rector, moved a switch to make his work easier, he unwittingly set 46 traffic signals haywire.

The signals flashed crazily for more than fifteen minutes, giving motorists stops and go's almost simultaneously.

WEEKLY TV LOG

Channel	Day	Time	Program	
KCBD-TV Channel 11	SUNDAY, DEC. 8	12:00	Wizard	
		12:30	Frontiers of Faith	
		1:00	To be announced	
		1:30	Wisdom	
		2:00	Lawrence Welk Show	
		3:00	Wide Wide World	
		4:30	Dee Weaver Show	
		5:00	Meet the Press	
		5:30	Zorro	
		6:00	Ted Mack's Show	
		6:30	Sally	
		7:00	Steve Allen—color	
8:00	Dinah Shore—color			
9:00	Loretta Young			
9:30	Highway Patrol			
10:00	Broken Arrow			
10:30	News			
10:40	Weather			
10:45	Sports			
11:00	Channel 11 Theater			
MONDAY, DEC. 9	7:00	Today		
	9:00	Arlene Francis Show		
	9:30	Treasure Hunt		
	10:00	The Price is Right		
	10:30	Truth or Consequences		
	11:00	Tic Tac Dough		
	11:30	It Could Be You		
	12:00	Tex and Jinx		
	12:30	Club 60—color		
	1:30	Bride and Groom		
	2:00	Matinee—color		
	3:00	Queen for a Day		
3:45	Channel 11 Matinee			
5:15	Hospitality Time			
5:30	Superman			
6:00	News			
6:10	Weather			
6:15	Here's Howell			
6:30	The Price is Right, color			
7:00	Restless Gun			
7:30	Wells Fargo			
8:00	Twenty One			
8:30	Sheriff of Cochise			
9:00	Suspicion			
10:00	Walter Winchell's File			
10:30	News			
10:40	Weather			
10:45	Sports			
10:50	MGM Show			
TUESDAY, DEC. 10	7:00	Today		
	9:00	Arlene Francis Show		
	9:30	Treasure Hunt		
	10:00	The Price is Right		
	10:30	Truth or Consequences		
	11:00	Tic Tac Dough		
	11:30	It Could Be You		
	12:00	Tex and Jinx		
	12:30	Club 60—color		
	1:30	Bride and Groom		
	Channel 13 KDUB-TV	SUNDAY, DEC. 8	10:40	First Christian Church
			12:00	Face The Nation
12:45			Pro-Football Kickoff	
1:00			Professional Football	
3:45			CBS World News	
4:00			As We See It	
4:30			This Is The Life	
5:00			Fashion	
5:30			20th Century	
6:00			Lassie	
6:30			Becheor Father	
7:00			Ed Sullivan	
8:00	G. E. Theatre			
8:30	Alfred Hitchcock			
9:00	\$64,000 Challenge			
9:30	Reader's Digest			
10:00	What's My Line			
10:30	Final Edition			
10:45	20th Century Fox Show			
MONDAY, DEC. 9	7:00	Jimmy Dean Show		
	7:45	CBS Morning News		
	7:55	Texas News		
	8:00	Captain Kangaroo		
	8:45	Network News		
	8:55	Local News		
	9:00	Garry Moore Show		
	9:30	Arthur Godfrey Time		
	10:30	Strike It Rich		
	11:00	Hotel Cosmopolitan		
	11:15	Love of Life		
	11:30	Search for Tomorrow		
11:45	Noon News			
12:00	Liberace			
12:25	Walter Cronkite News			
12:30	As The World Turns			
1:00	Beat The Clock			
1:30	P.T.A.			
2:00	The Big Payoff			
2:30	The Verdict Is Yours			
3:00	The Brighter Day			
3:15	The Secret Storm			
3:30	The Edge of Night			
4:00	Home Fair			
4:30	Topper			
5:00	Looney Tunes & Bugs B.			
6:00	News, Weather, Feature Section			
6:15	Doug Edwards			
6:30	Robin Hood			
7:00	Burns and Allen			
7:30	Official Detective			
8:00	Danny Thomas Show			
8:30	Beyond This Place			
9:00	Studio One			
10:00	Doug Fairbanks			
10:30	News, Weather, Feature Section			
11:00	Columbia Showcase			
TUESDAY, DEC. 10	7:00	Jimmy Dean Show		
	7:45	CBS Morning News		
	7:55	Texas News		
	8:00	Captain Kangaroo		
	8:45	Network News		
	8:55	Local News		
	9:00	Garry Moore Show		
	9:30	Arthur Godfrey Time		
	10:30	Strike It Rich		
	11:00	Hotel Cosmopolitan		
	11:15	Love of Life		
	11:30	Search for Tomorrow		
11:45	Noon News			
12:00	Liberace			
12:25	Walter Cronkite News			
12:30	As The World Turns			
1:00	Beat The Clock			
1:30	Houseparty			
2:00	The Big Payoff			
2:30	The Verdict Is Yours			
3:00	The Brighter Day			
3:15	The Secret Storm			
3:30	The Edge of Night			
4:00	Home Fair			
4:15	Beauty School			
WEDNESDAY, DEC. 11	7:00	Jimmy Dean Show		
	7:45	CBS Morning News		
	7:55	Texas News		
	8:00	Captain Kangaroo		
	8:45	Network News		
	8:55	Local News		
	9:00	Garry Moore Show		
	9:30	Arthur Godfrey Time		
	10:30	Strike It Rich		
	11:00	Hotel Cosmopolitan		
	11:15	Love of Life		
	11:30	Search for Tomorrow		
11:45	Noon News			
12:00	Liberace			
12:25	Walter Cronkite News			
12:30	As The World Turns			
1:00	Beat The Clock			
1:45	Houseparty			
2:00	The Big Payoff			
2:30	The Verdict Is Yours			
3:00	The Brighter Day			
3:15	The Secret Storm			
3:30	The Edge of Night			
4:00	Home Fair			
4:30	Topper			
5:00	Looney Tunes & Bugs B.			
5:45	Looney Tunes			
6:00	News, Weather, Feature Section			
6:15	Doug Edwards			
6:30	I Love Lucy			
7:00	The Big Record			
8:00	The Millionaire			
9:00	Armstrong Theatre			
9:30	Armstrong Theatre			
10:00	Touchdown			
10:30	News, Weather, Feature Section			
11:00	Warner Brothers Show			
THURSDAY, DEC. 12	7:00	Jimmy Dean Show		
	7:45	CBS Morning News		
	7:55	Texas News		
	8:00	Captain Kangaroo		
	8:45	Network News		
	8:55	Local News		
	9:00	Garry Moore Show		
	9:30	Arthur Godfrey Time		
	10:30	Strike It Rich		
	11:00	Professional Football		
	1:30	Houseparty		
	2:00	The Big Payoff		
2:30	The Verdict Is Yours			
3:00	The Brighter Day			
3:15	The Secret Storm			
3:30	The Edge of Night			
4:00	Home Fair			
4:15	Beauty School			
FRIDAY, DEC. 13	7:00	Jimmy Dean Show		
	7:45	CBS Morning News		
	7:55	Texas News		
	8:00	Captain Kangaroo		
	8:45	Network News		
	8:55	Local News		
	9:00	Garry Moore Show		
	9:30	Strike It Rich		
	11:00	Hotel Cosmopolitan		
	11:15	Love of Life		
	11:30	Search for Tomorrow		
	11:45	Noon News		
12:00	Liberace			
12:25	Walter Cronkite News			
12:30	As The World Turns			
1:00	Beat The Clock			
1:30	Home Demonstration Day			
1:45	Houseparty			
2:00	The Big Payoff			
2:30	The Verdict Is Yours			
3:00	The Brighter Day			
3:15	The Secret Storm			
3:30	The Edge of Night			
4:00	Home Fair			
4:30	Topper			
5:00	Looney Tunes & Bugs B.			
5:45	Looney Tunes			
6:00	Net-4, Weather, Feature Section			
6:15	Doug Edwards			
6:30	Leave It To Beaver			
7:00	Trackdown			
7:30	Zane Grey Theatre			
8:00	Mr. Adams and Eve			
8:30	Silent Service			
9:00	The Line Up			
9:30	Person to Person			
10:00	Telephone Time			
10:30	News, Weather, Feature Section			
11:00	Warner Brothers Show			
SATURDAY, DEC. 14	8:30	Captain Kangaroo		
	9:30	Mighty Mouse		
	10:00	Susan's Show		
	10:30	Saturday Playhouse		
	11:00	Jimmy Dean Show		
	12:00	Let's Take A Trip		
	12:30	Professional Football		
	3:30	Championship Bowling		
	4:00	Frontier Theatre		
	5:00	Big Picture		
	5:30	Kingdom of the Sea		
	5:45	Kingdom of the Sea		
6:00	Sgt. Preston			
6:30	Perry Mason Show			
7:30	26 Men			
8:00	Gh. Susanna			
8:30	Have Gun, Will Travel			
9:00	Gunsnske			
9:30	Colt 45			
10:00	Columbia Showcase			
11:00	Premiere Performance			

GIFT SUGGESTIONS

FROM BOB'S

LADIES' AND CHILDREN'S HOUSE SLIPPERS

\$1

LIMITED SELECTION IN DISCONTINUED PATTERNS

LADIES' HOSE

REG. \$1.00

\$1.50

2 Pr. 2 Pr.

FULL FASHION 15 DENIER 51 GA.

GIFTS FOR CHRISTMAS GIVING

\$1

2 Pr. 2 Pr.

SPECIAL MEN'S SOCKS

REG. 55c - 79c

\$1

3 Pr. 3 Pr.

SIZES 10 THROUGH 12 FROM OUR REGULAR

GIRLS' BOBBY SOCKS

\$1

2 Pr. 2 Pr.

BOB'S SHOE STORE

Looked at your wife's stove, lately?

If you're hunting for THE gift... the "piece de resistance" that'll put you in solid clear thru 'til next Christmas... a new GAS range is your best bet. She'll thank her lucky stars for a Santa such as you, with each meal she prepares.

GO GAS FOR GIVING

A glamorous GAS range is so completely automatic it guarantees cooking success. And it looks just as good as it cooks... streamlined beauty that gives any kitchen a "lift." As for economy, you'll reap much more than you sow — money wise — because GAS costs 5 to 8 times less than other fuels (a nice bonus for your wife's piggy bank!) Need we say more, than... see your gas appliance dealer tomorrow!

BURNER WITH A BRAIN... the last word in automatic cooking.

fuel for a growing empire Pioneer Natural Gas Company

MAKE IT A WHITE CHRISTMAS GIVE HER A MAJOR APPLIANCE



THANKS A MILLION SALE

It's General Electric's 30th Anniversary and we say thanks a million for over 30 million GE Appliances sold. Here is your chance to buy New GE Appliances and Televisions at Special Low 30th Anniversary Prices.



Your Trade-In Will Make
The Down Payment ...
**NO PAYMENT DUE
TIL MARCH 1st**

MAKE IT A WHITE CHRISTMAS GIVE HER A MAJOR APPLIANCE

ONLY 14 SHOPPING DAYS TIL CHRISTMAS SHOP EARLY



New General Electric Refrigerator ... 11 Cubic Foot ... Magnetic Safety Door ... Butter Keeper ... Celebration Special ...

\$239⁹⁵
WITH TRADE

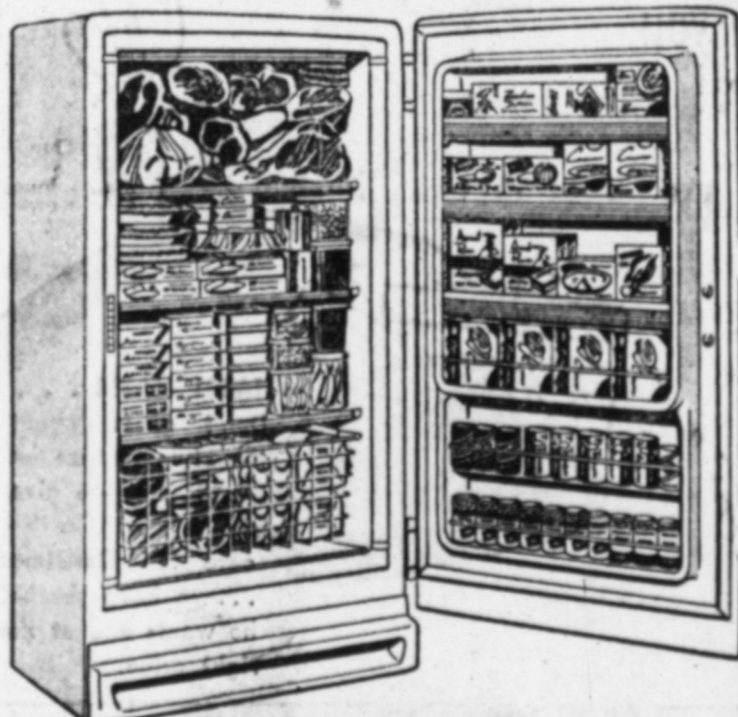


Here It Is —
1958 GE
Thinline TV

Big 21-Inch Screen ... Full year's guarantee!

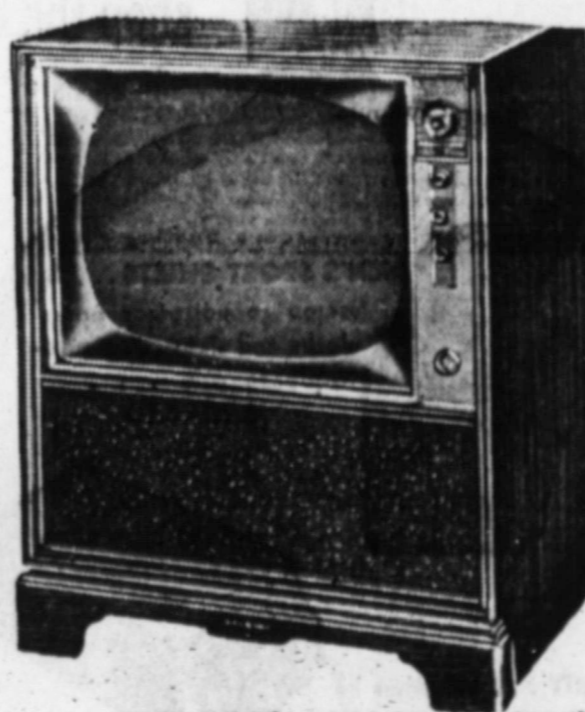
A GE Celebration SPECIAL ...

\$239⁹⁵ BASE EXTRA
BUY NOW — NO PAYMENT DUE TIL MARCH 1st.



GE Upright Freezer ... 11 Cubic Foot ... Magnetic Safety Door ... Book Shelf Design ... 360 Pound Capacity ... Celebration Special ...

\$259⁹⁵



21" GE Console ...

Power Tuning ... Ultra-Vision!
This Will Make the Perfect Gift for the Whole Family And it's priced so very low ...

\$289⁹⁵

BUY NOW — NO PAYMENT DUE TIL MARCH 1st.



General Electric Range ... 40 Inch ... Completely Automatic Cooking ... Celebration Special ...

\$219⁹⁵
WITH TRADE

cooks an oven meal for 30 all at one time. One shelf holds 4 cake layers or 8 loaf pans. Biggest roasts slide in sideways. 23" wide, 16" high, 18" deep.



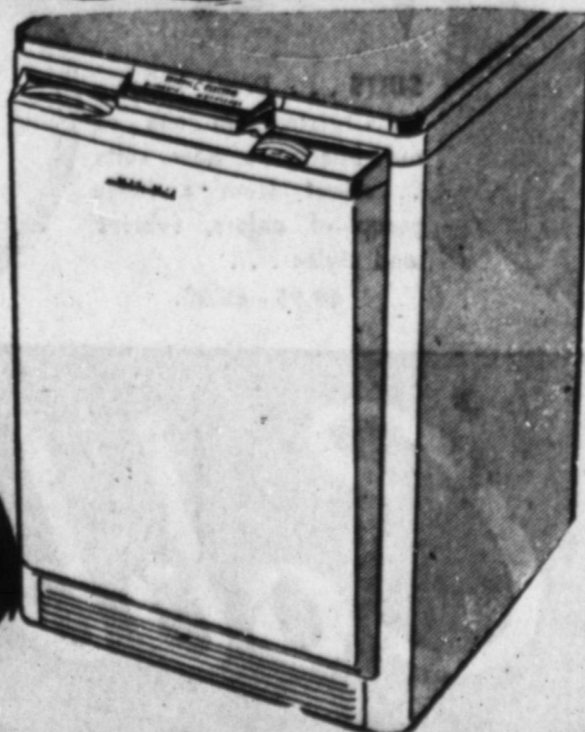
GE Filter-Flo Washer ... Top Loading ... Big Capacity ... Completely Automatic ... Celebration Special ...

\$249⁹⁵
MATCHING DRYER
\$199⁹⁵

WITH TRADE

GE Dishwasher ... Mobile Maid ... Keeps Dishes Hygienically Clean and Sparkling ... Celebration Special ...

\$199⁹⁵



GENE GUNN TIRE STORE

"YOUR GE SALES AND SERVICE HEADQUARTERS"

409 West Main

Phone 3313



SOFTBALL CHAMPS — This group of lasses topped six other teams to claim the BHS girls' softball championship completed this week. Members are, from left front row: Freda Price (captain), Juanita Dawbre and Clarice Cor-

ABOUT YOUR HEALTH

State Health Commissioner Cites Danger of Using Certain Liquids To Dry Clean Clothing Or Other Items In The Home

The curtains looked dingy, so she decided to clean them in a pan of gasoline in the bathtub. She forgot about the pilot light on the floor furnace just outside the bathroom door. She was buried just a couple of weeks ago, this usually alert woman who was "accustomed" to doing her own dry cleaning. It happens to someone somewhere practically every day, says Dr. Henry Holle, state health commissioner.

Many victims of home dry cleaning accidents like the woman above, routinely used flammable liquids to clean curtains or clothes. Others were beginners, motivated by economy or convenience.

Most of them were ordinarily sensible, with full awareness of the peril of gasoline or naphtha or other dry cleaning preparations. One moment of carelessness to which we are all prone turned them from happy homemakers into sad statistics.

Explosions are only one of several risks run by the thoughtless do-it-yourself operators. Some cleaning agents are flammable; others give off injurious vapors; still others are harmful to human skin.

All could be lethal if taken internally.

So inflammable is gasoline that to keep it stored at home is to openly court disaster. Gasoline emits vapors to form explosive mixtures in the air. A transient spark from a light switch or cigarette and the mixture may be ignited.

Vapors may flow in an invisible stream for 200 feet from the point of use, flashing back and exploding the main container when touched off by flame or spark. Static electricity generated by synthetic or silk fabric being cleaned is fully capable of igniting the fumes of gasoline or naphtha.

Care must be taken to avoid inhaling concentrated vapors, since the common ones — excluding turpentine — are anesthetics. Some, after prolonged exposure, are injurious to internal organs.

If gasoline or naphtha can dissolve dirt and grime on fabrics, obviously these same fluids are able to cut through the natural oils of human skin.

You still insist on doing your own dry cleaning? Then do it right.

Uses only non-flammable cleaning agents, keeping in mind that "non-explosive" markings on a label do not necessarily mean "non-flammable." Never, under any circumstances, use gasoline or naphtha.

Do your cleaning outside, toxic vapors will be quickly and safely dissipated. Use a dip stick in the liquid instead of your bare hands.

Keep children and pets away from your cleaning operations. Children are often the innocent victims of home cleaning accidents.

DIAMONDS
The Christmas Gift
FOR THE MODERN MISS
\$1 DOWN

MAKE THIS A DIAMOND CHRISTMAS
Diamond rings and diamond watches on easy credit terms. Buy now! Pay next year!

BULOVA
DIAMOND PRISCILLA
2 sparkling diamonds in an enchanting setting. 17 jewels. Lifetime unbreakable mounting. **\$3975**

STAUDT'S JEWELRY

118 S. 5th St. Phone 2046
Brownfield, Tex. East Side of Square

AUTHORIZED KEEPSAKE DEALER

Horticultural Fax By Norvell Gillespie

GIANT CACTUS

CONCRETE BLOCKS FILLED WITH LIGHT SOIL ARE GOOD CONTAINERS FOR SUCCULENTS.

THE LARGEST OF ALL CACTI IS THE SAGUARO. IT GROWS IN SOME INSTANCES TO 70 FEET AND WEIGHS UP TO 12 TONS! IT IS THE STATE FLOWER OF ARIZONA.

CACTI AND SUCCULENTS ARE SO INDIVIDUAL THAT THEY ARE BEST KEPT TO THEMSELVES. KEEP WEEDS OUT OF YOUR GARDEN BY PAINTING UNDILUTED WEED-B-GON ON LARGE UNWANTED WEEDS FOR FAST RESULTS.

On Dec. 5, 1929, a Marine aviator, Capt. A. N. Parker, became the first pilot to fly over the Antarctic Continent.

SOCIETY? CALL 2188

Your Invitation:
Southside Church of Christ

701 Old Lamesa Road
Ira A. Wolfe, Minister
Sunday Services: Bible Study 9:45 a.m.
Worship 10:45 a.m.
Evening WORSHIP 7:00 p.m.
Wednesday Bible Study 7:30 p.m.

The U.S. Navy is building a modern air-sea base at Rota, Spain, only 40 miles from Pal-



Authentic Milk Glass with Fashion Flair...

Do you like "traditional"? Then use Fosteris Milk Glass. It's made by hand, just like the antique originals. That's why it has the porcelain-like, authentic look collectors prize.

Do you prefer "modern"? Designers use Fosteris Milk Glass as a light, decorative accent against today's plain wall tones. It's quite the fashion. (Quite functional, too!)

You'll find Fosteris Milk Glass is appreciated in almost any setting... which makes it a wise gift choice or treat for yourself. See our wide selection.

Copeland Hardware

WANTED Gifts for a man's world

from COBB'S... that's right, you will find just the right gift for the one-and-only when you shop the complete selection available here!

GLOVES... Pigskin, Suedes, smooth Leathers; leather-lined... he'll love these... 3.98 - 5.98.

MEN'S DRESS SHIRTS... Here is something no man has too many of... whites and colors... gift wrapped... 2.98 - 3.98

MEN'S SPORT SHIRTS... Wide selection of colors, cloths and sizes... a sure-to-please gift... 3.98 - 6.98

HATS! HATS!... Don't guess about the style or size he would like — give him a Gift Certificate for Christmas... we have the hat he wants and at the right price.

SHAVING KIT... Whether he travels a lot or is just a stay-at-home, he'll really like this beautiful shaving kit... 6.98

CUFF LINKS - TIE BAR SET... Plain and fancy... gold or silver, and priced so very reasonable for Christmas gifting... 2.50-5.00.

BELTS... Whether it be a stretchy, plain leather, western style, or ivy league... you will find it at Cobb's... 1.00-2.00.

BILFOLDS... Famous - name brands leather billfolds... beautifully gift wrapped, sure to please... 5.00.

TIE... What man doesn't appreciate a new tie... here you will find many styles and colors from which to select... 1.50-2.00.

SUITS... Dress him up for Christmas in one of our handsome new suits... select from a large group of colors, fabrics and styles... 49.95 - 65.00.

NAIL CLIPPER SET... Complete set — clippers, file, scissors... a gift he'll use for years to come... 3.98.

HANDKERCHIEFS... Every Christmas the good old standby... handkerchiefs. We have many different kinds... boxed for easy gifting... Manhattan 4 in a box... 1.00.

SOCKS... This he will always need and appreciate... socks are the one item he always needs... select from argyles or stretchy... a size and color for every man on your list... 55c - 1.00.

SHOP Early!

Cobb's

Vol. 20

Grid

Twent football graduat mend fo conunci head co or.

Senior Hartstie from L Moore, guard halfback Kingsvil ie Dixo

Ano man w William player have b letter c year. l ence ru as Tec play fr Other ters are

IN DI

A

To

By : Andrew ANDR turning good pre team, C hopes hi improve ord. The M

Brownfield News SPORTS

Grid Letters To Be Given To 28 Raiders

Twenty-eight Texas Tech footballers, of whom only five graduate, have been recommended for letters to the athletic council by DeWitt Weaver, head coach and athletic director.

Seniors include end Pat Hartsfield, alternate captain from Lubbock; guard Charlie Moore, captain from Lubbock; guard Tim Stone of Kilgore, halfback Carlos Lerma of Kingsville, and fullback Charlie Dixon of McCamey.

Another third-year letterman was junior tackle Phil Williams of Lubbock, only player besides Hartsfield to have been awarded a varsity letter during his freshman year. Under Border Conference rules through 1955, Texas Tech was permitted to play freshmen on the varsity. Other juniors awarded letters are quarterbacks Floyd

Dellinger of La Vega, Jerry Bell of Ballinger, John Riddle of Artesia, N.M., halfbacks Milton Vaughn of Littlefield, Jimmy Knox of Graham, and John Roberts of Stillwater, Okla., fullbacks Gene Bentley of Panhandle and Floyd Cole of McCamey, center Jack Henry of Floydada, guard Roger Nesbitt of Compton, Calif., tackle Jim Henderson of Lubbock, ends Gerald Seaman of Fort Worth and Bobby Stafford of Roaring Springs.

Sophomores earning letters are halfbacks Mickie Barron of Childress and Ronnie Rice of Lefors, center Bill Turnbow of Burk Burnett, guards Homer Rosenbaum of Abilene, Ed Strickland of Pampa, tackles Bobby Cline of Belton and Jerry Don Stockton of Tuscola, ends Jimmy Allison of Amarillo and Jerry Selfridge of Borger.

Cubs Rated Dark-Horses In 2-AAA Roundball Race

An inexperienced Cub cage squad broke the ice on the 1957 campaign with a double victory over the Seagraves Eagles here Tuesday night. They were scheduled to travel to Snyder, Levelland Thursday and Friday.

A terrific re-building job faces Coach Farris Nowell who begins his 10th season here this year. Only two starters are returning from last year's team which compiled a 17-11 record for the season and 2-6 in district play.

A third letterman is expected to bolster the ledger to a degree. Starters returning include Ken Cary and Kenneth Cason. Ellis Cox is the only other returning letterman.

Additional aid is expected from David Ivey, 6 foot, 1 inch senior; Larry Meeks, 5 foot, 11 inch senior; Gene Mason, 6 foot, 11 1/2 inch, senior and Johnny Mack Jones, a senior who stands 6 foot, 6 inches tall. The squad averages only 5 feet, 11 inches in height despite having seven players over 6 feet tall. Cason and Jones are expected to provide

the rebounding power for the team.

Coach Nowell definitely gives his charges only a dark-horse rating in District 2-AAA play again this year. "We just don't have enough experienced boys," he said. "While Kermit and Monahans have their 1957 teams returning almost intact."

Nowell and assistant coach Elroy Payne said they hope to improve on last year's fourth place district finish. "However, this will depend upon how fast our kids come along," noted Nowell.

Counting this week's schedule—Seagraves and Snyder—the Cubs face an 18-game schedule plus the Borger and Brownfield tournaments this season.

The district slate opens at Pecos on Jan. 10. The 10-game district race will close here against Odessa Ector on Feb. 14.

Tournament competition will open at Borger Dec. 13-14 when the Cubs meet Borger, Phillips and Dumas in a two-night stand. In the Brownfield tourney, the Cubs will host Monterey of Lubbock, Levelland and Colorado City. The meet is scheduled to run Jan. 3 and 4.

Members of the Cub cage team are David Ivey, Ellis Cox, Ken Cary, John Eldon Jones, Larry Meeks, Gary White, Joe Oswald, Gene Mason, Bob Cloe, Johnnie Mack Jones, Kenneth Cason, Leon Hinson, Ken Willis, Deryl King, Charles Lee and Leon Clark. Duane Petty is manager of the team.

The Schedule:
Dec. 3 Seagraves (53-37)
5 Snyder T
6 Levelland T
10 Snyder H
13-14 Borger Tournament

- 17 Levelland H
- 19 Seagraves T
- 20 Lovington, N.M. T
- 31 Lovington H
- Jan. 3-4 Brownfield Tournament
- 10 Pecos T*
- 17 Kermit H*
- 21 Andrews T*
- 21 Monahans H*
- 28 Ector T*
- 31 Pecos H*
- Feb. 4 Kermit T*
- 7 Andrews H*
- 11 Monahans T*
- 14 Ector H*

T Denotes game on opponents court; H Denotes home game; * Denotes District game.

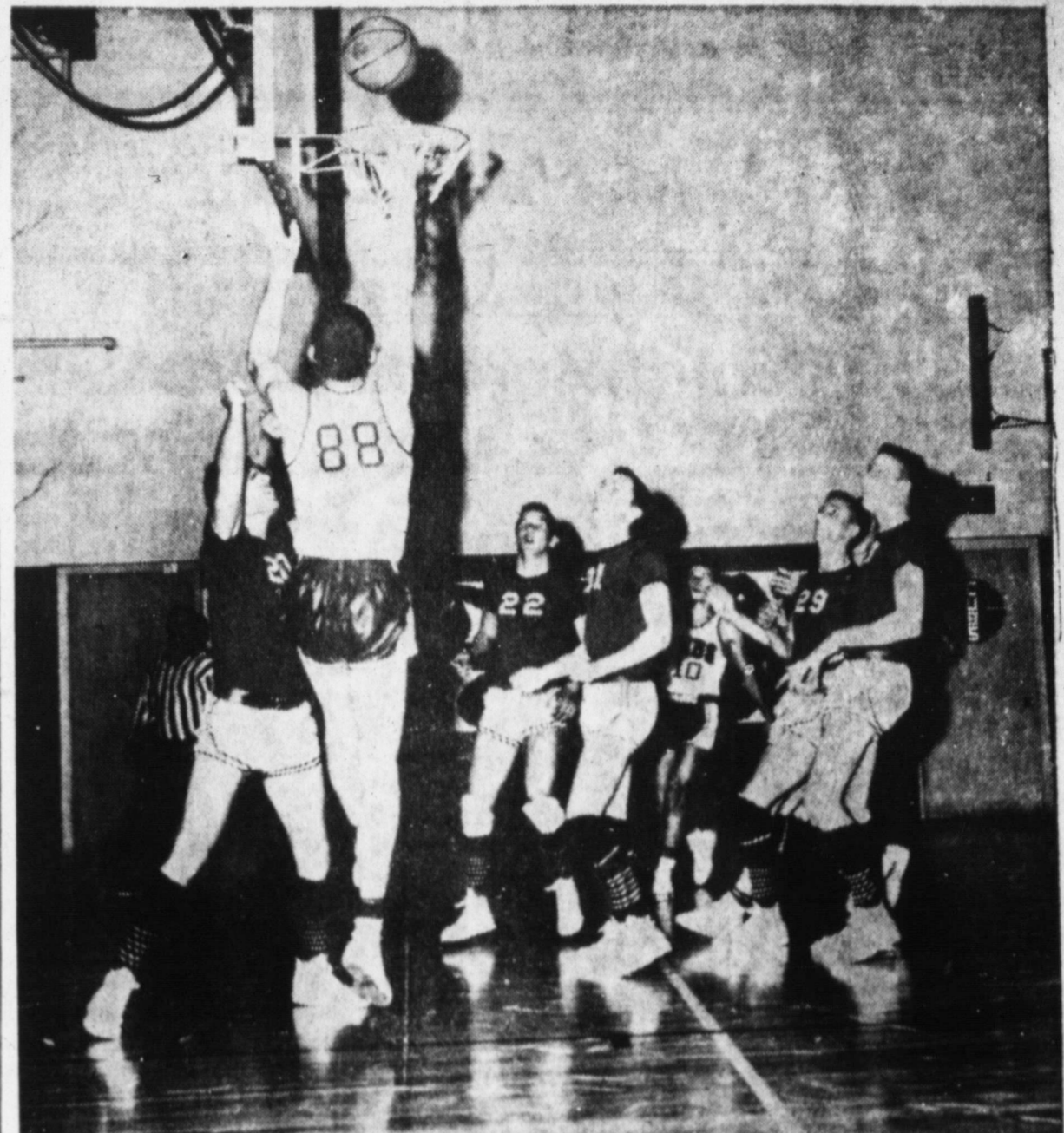
5 SWC TEAMS

Tech Grid Slate Set

Five games with Southwest Conference schools are on the 10-game 1958 Texas Tech football schedule announced by Coach DeWitt Weaver.

SWC teams meeting the Red Raiders next fall include Texas A&M, University of Texas, Texas Christian University, Baylor University, and University of Arkansas. Tech also will meet five conferences teams in 1959 before engaging in full title play in 1960.

To make room for the extra SWC teams—three were played this fall—two long-time Border Conference opponents were dropped. These were Hardin-Simmons, on Tech's schedule for 24 games since 1926, and Texas Western, whose Miners have played the Raiders 16 times since beginning the



AWAY SHE GOES — Deryl King (88) lofts the ball goalward in Tuesday night's opening battle with the Seagraves Eagles. Watching in the background, (NEWSfoto) in apparent amazement are, from left Barber

IN DISTRICT 2-AAA

Andrews Cage Prospects Expected To Look Up After Poor '57 Record

By SPEEDY NEIMAN
Andrews News Sports Editor
ANDREWS — With five returning lettermen and some good prospects up from the B team, Coach Vernon Johnson hopes his Mustang cagers can improve over last season's record. The Mustangs had a 7-19 sea-

son mark and were last in the 2-AAA standings with a 1-7 won-lost record. However, Coach Johnson welcomes back his two top scorers in senior Jay Sherrard and junior Ronnie Brice.

Sherrard hit the basket for 299 points last season and a game average of 12 points.

Brice added 255 points for runner-up honors and a game average of about 11 per tilt.

Sherrard, a 6-2 forward, hit 36 per cent of his field goal attempts last season and 69 per cent of his free shots. Brice, 6-1, hit 35 and 52 per cent, respectively.

See No. 1 Page 3

University of Houston, Texas, and TCU are the only teams not on the 1957 schedule being played in 1958.

The schedule:
Sept. 20 — Texas A&M at Dallas
Sept. 27 — West Texas State at Lubbock
Oct. 4 — Texas at Austin
Oct. 11 — TCU at Fort

Worth
Oct. 18 — Baylor at Lubbock
Nov. 1 — Oklahoma State at Lubbock
Nov. 8 — Arizona at Lubbock
Nov. 15 — Tulsa at Tulsa
Nov. 22 — Arkansas at Lubbock
Nov. 29 — Houston at Houston

RECKON SO!
Mary Lou — Mother, do missionaries go to heaven?
Mother — Certainly.
Mary Lou — Do cannibals?
Mother — I should think not.
Mary Lou — Well, if a cannibal eats a missionary he'll have to go, won't he?

CLASSIFIED? CALL 2188



'sound' investment: a Triple-Test suit by HART SCHAFFNER & MARX

Makes you look Like a million for less than you'd believe...

That's a fact . . . you don't have to be a millionaire to look like one. Not if you happen to be wearing the most in demand among flannel suits—Eton Flannel. You'll seldom see a richer-looking flannel . . . its sleek, supple texture tailors handsomely in the new Trend styles—tall, trim and tapered. And unlike most flannels, it has an extra bonus of wear woven in.

An HS&M exclusive in traditional plain tones or new shadow stripe effects, Eton Flannel conveys just the right impression of ease and distinction. You'll find it a business and social asset to own at least one. Want proof? That's easy . . . just see yourself in one—here and real soon!



Collins
Dress Right—you can't afford not to!

Brownfield News Editorials

QUESTION OF ATOMIC ARMS REDUCING MANPOWER FORCES

U.S. Relying More on Her Allies

The United States has decided to place increasing reliance on the armed forces of its allies in the defense of Western Europe and to streamline its forces into atomic units.

Although this has been the general plan for some time, a recent announcement from Washington made it clear that the United States will continue to station troops at foreign bases but will be represented by smaller manpower totals, organized in atomic support commands.

At the time of this announcement it was revealed that some 20,000 civilians would be cut from the Air Force payroll and more than 100,000 workers would be released in the aircraft construction industry. The Army and Navy also are in for cuts.

There is no reason why the United States should not rely on small manpower units, with atomic weapons at their disposal, rather than conventional military forces, which require both a large manpower complement and expensive logistical problems.

Take the example of Germany, the country where the largest U. S. military force on foreign soil is now stationed. In Germany, the United States has been maintaining the equivalent of about six combat divisions for a number of years. The Russians, it is estimated, have about 175 available to them.

Since our allies in Europe have little ground strength in Germany and since the German Army has not yet become an effective force, the six United States divi-

sions would amount to no more of a deterrent than would a much smaller atomic-weapon force.

An attack on either would mean all-out war for the United States, for this country would not allow an aggressor to attack its military forces, no matter how small, and get away with it.

The only hope of maintaining the freedom of the world and preventing aggression has been for a number of years the hope that this country's nuclear power would dissuade a potential enemy from launching an attack on our forces. If we maintain impressive atomic power in Germany, its capabilities might be impressive although the manpower total of our forces is not.

The same yardstick applies to both the Air Force and the Navy, in that fewer bombs can do more damage today than a greater number of bombs did in World War II. Likewise, relatively few planes or ships are able to deliver more devastating blows today than a larger number of planes or ships delivered in World War II.

In the final analysis, any new war will be decided by the reserve strength and atomic and nuclear capabilities, if they are employed, and the greatest blows would probably not originate in Germany, or in the fringe areas, but nearer home.

Therefore, a considerable saving can be sensibly achieved by the reduction of military forces abroad, and national security should not be impaired thereby.

of laws based on Hoover Commission proposals which the 84th and 85th Congresses have enacted since the Commission completed in 1955 its two-year study of the government. Its 26-volume, 3 1/2 million-word report to the Congress contained 314 specifications for reducing duplication and waste in Federal Government operations.

According to the Citizens' Committee, 39 per cent of the Commission's total recommendations were "on the books," and the score at the end of 1957, could well be substantially better than 50 per cent.

In commenting on what has so far been accomplished Clarence Francis, chairman of the Citizens' Committee, has this to say: "In viewing these results, we can feel some satisfaction but we find absolute no ground for complacency. Speaking realistically, 1957 has been a year of hard going in terms of legislative action. Let citizens have never worked harder or better to convey their official Washington their whole-hearted support of the Commission's program."

This "hard going," referred to by Mr. Francis, was occasioned by the logjam caused by the prolonged debate over Civil Rights, Foreign Aid and other issues in the latter part of the first session of the 85th Congress.

A considerable portion of action taken at the first session carries over into the second session of 1958. Congress, therefore, faces the new year in a position to move quickly on the bills on which partial action has already been taken. And that's where all of us can be helpful by constantly importuning our two U. S. Senators and our Congressman to implement these partially enacted bills, and get the remainder into the legislative hopper as quickly as possible.

You can fortify your demands by writing to the Citizens' Committee for the Hoover Report, 441 Lexington Ave. New York 17, N. Y. That organization will be happy to send you "for free," ammunition to strengthen your appeal to your Washington representatives.

Hope this article comes somewhere near answering the question posed by my California friend. Next question please!

The USS Princeton, the first Navy warship to have propelling machinery below the waterline out of reach of enemy shot, was launched at Philadelphia Dec. 10, 1843.

Business and Professional DIRECTORY

Dr. J. U. Borum Jr.
OPTOMETRIST

207 S. Fifth St.
Phone 3172

Dr. James E. Finley
—DENTIST—
Office 308 West Main
PHONE 4884

Hackney & Crawford
—Attorneys—
Brownfield, Texas

FUNERAL HOME BROWNFIELD
Modern Ambulance Service
Roy B. Collier, Owner
Dial 2525

McGOWAN & McGOWAN
—Attorneys—
Brownfield, Texas

Morgan L. Copeland
Attorney at Law
Civil Practice
Courthouse
Dial 3121

DIXIE DUGAN by J. H. Striebel

YES, LI'L GIRL YOU'RE GOING TO BE A BIG GIRL SOMEDAY

DIXIE DUGAN SAYS

HELP MAKE KENNY TREATMENT AND REHABILITATION AVAILABLE TO MORE VICTIMS OF POLIO AND ALLIED DISEASES. GIVE TO THE KENNY FOUNDATION FUND APPEAL!!

Specialty prepared for the Elizabeth Kenny Foundation, National Headquarters, 2400 Fehay Tower, Minneapolis 2, Minn.

Brownfield News
409 West 2nd, Brownfield, Texas

JURTS J. STERLING Editor
JOHN BYNUM Editor
WELDON CALLAWAY Advertising Manager
A. D. FAIRBAIN Mechanical Superintendent

Published Every Thursday And Sunday
Entered as second class matter at Post Office in Brownfield, Texas under the Act of March 3 1879.

Subscription rates: Terry, Yoakum, and Gaines County — \$5.00 per year. Carrier boy delivery in City — \$6.00 per year, Elsewhere — \$7.00 per year.

TO ADVERTISE THEIR PROGRAMS

Even Television Using the Newspapers

By WELDON CALLAWAY

"All business is local . . ." This short slogan sums up the case for newspapers as an essential advertising medium. The slogan contains truths which no business can afford to ignore — not even the television industry.

A television program, like bread and shoes, is a product which must be consumed by individuals on the local level. In the competition for an audience the networks have to sell their programs to the public.

Consequently, the network television companies have become big newspaper advertisers. It has been estimated that the television industry will spend \$15,000,000 on newspaper advertising during the present season.

But why should television stations and networks use newspaper advertising? For the same reason that any retail business buys newspaper space: It pays.

An advertising executive who has been directing the promotion of television said, "What has happened is that stations are learning the value of newspaper space to improve their ratings."

Through the newspaper a television station or network is able to do three things which can not be done with air advertising.

In newspapers they may reach that part of the public which is not tuned to a particular station at a certain time. Newspapers provide a permanent record of program information which may be used for reference. Newspaper advertising gives the public an opportunity to "shop" for programs.

A television program, like a list of grocery items, can not be remembered from a broadcast. Only the printed word presents information in a form which can be studied by the consumer at his leisure.

The 1st Marine Division brought to a successful end the Battle for Guadalcanal, the first offensive of the U. S. against the Japanese, Dec. 9, 1942.

THE AMERICAN WAY

By GEORGE PECK

"Just how far has the Congress gone in acting upon the recommendations made in the report of the Hoover Commission?" That was asked of me this week by a California taxpayer. Feeling that many other readers of this column also may be wondering about what progress has been made, I'm attempting to answer my questioner by means of this column.

For the exact status of the recommendations, I'm indebted to "The Citizens' Committee for the Hoover Report," a non-profit national organization, with headquarters in New York City. This committee has done a prodigious job of stirring up the American citizenry to put "burrs under the saddles" of Washington legislators to act upon the Hoover Report recommendations as speedily as possible.

In this campaign it has enlisted the cooperation of many national civic, professional, women's, farm, trade, and business groups. Among these are: Kiwanis International, U. S. Chamber of Commerce, National Association of Life Underwriters, American Institute of Certified Public Accountants, General Federation of Women's Clubs, U. S. Junior Chamber of Commerce (Jaycees), National Council of Negro Women, and the National Retail Dry Goods Association. All the foregoing, along with a host of others, are working with the Citizens'

Committee headquarters to keep their State and local affiliates informed on developments in the drive for "better government at a better price."

Now that my information comes from an authoritative source, let's get around to answering my reader friend's question, which in the slang usage of the day was, "Wha' cools with the Hoover Report recommendations?"

The drive for adoption of the Commission's recommendation has just about reached the halfway mark. The first session of the 85th Congress (just recently recessed) held Committee hearings on 22 Hoover Report bills. Of these, 11 were passed by one House or the other, and four were enacted into law. (In addition, a Presidential Reorganization Plan completing liquidation of the Reconstruction Finance Commission, as recommended by the first Hoover Commission was approved.)

This brings to 33 the number



OFFICERS
J. D. DILLHAM, President
LEO D'NEHE, Vice President
BRUCE ZORNS, Vice President
NEWELL A. REED, Secretary
SID A. LOWERY, Jr., Secretary

DIRECTORS
J. D. DILLHAM
BRADY GODDASTURE
LEO HOLMES
J. E. KNIGHT
J. D. MCGOWAN
W. J. MCGOWAN
A. M. MULDRON
D. C. BRIMM
NEWELL A. REED
J. M. TEAGUE, Jr.
BRUCE ZORNS

COUNSEL
MCGOWAN & MCGOWAN

SAVE WITH A PLAN IN MIND!

Save for the things you want . . . for the things you need . . . and, most important, for your future security. Start saving this week.

Open an Account at BROWNFIELD SAVINGS & LOAN.

LATEST DIVIDEND RATE . . . 3% A YEAR

Brownfield Savings & Loan Association
BROWNFIELD, TEXAS

By Mort Walker

C'MON BEETLE! WE STILL HAVE WORK TO DO!

HERE! CATCH!

Y'GOTTA WATCH HIM EVERY SECOND! LOOK! LYING DOWN AGAIN!

By Beetle Bailey

THAT WAS A FRIGHTENING FILM

DO YOU THINK THE US WILL EVER BE GADDDY INVADED LIKE THAT, SIR?

IT DOESN'T HURT TO BE PREPARED! IF I WERE YOU I'D KEEP SOMETHING 'Y HANDY BY YOUR BED IN CASE THERE IS SUCH AN EMERGENCY!

By Frank Robbins

WHAT'S WRONG COOKEY? YOU LOOK MAD.

OH, WASHINGTON TOLD ME TO STOP PUSHING HOT IRONS OUT TO THE GENERAL IN THE FIELD. IT'S TOO COSTLY.

COSTLY? WHAT'S COSTLY ABOUT IT?

BEATS ME

BUT I'LL SURE MISS THE RIDE OUT THERE.

By Johnny Hazard

IN A WAY, MR. AMORY, I HATE TO DO THIS TO MISS JAMISON! SHE'S ABOUT TO GET HER BIG BREAK—AND THEN WE HIT HER WITH THIS!

STARTING TODAY! "INSIDE INFO!"

HER LOCAL INTERVIEW PROGRAM HAD A FANTASTIC RATING, MR. KENDALL! SHE WAS DUE TO GO NETWORK, BUT NOW—?

IT'S ALL PART OF THE HAZARDS OF THE PROFESSION! PERHAPS HER TROUBLE WAS . . . SHE WAS TOO SUCCESSFUL!

NOT AT ALL, MR. AMORY!

HER TROUBLE WAS GETTING FRIENDLY WITH A CERTAIN YOUNG MAN WHILE ATTENDING U.C.L.A.!

ARE YOU SURE YOU'VE GOT THE RIGHT GIRL, MR. KENDALL? EVEN THE STATE DEPARTMENT CAN BE WRONG!

NOT THIS TIME, MR. AMORY! WE'VE CHECKED HER OUT THOROUGHLY. FBI, REPORTS, COLLEGE ENROLLMENT LISTS, FRIENDS, NEIGHBORS—THE WORKS!

GINGER JAMISON WAS A MIGHTY POPULAR GIRL IN COLLEGE—DATED HALF THE MALE UNDERGRADUATES! THIS WE PUG UP IN A LOCAL PHOTO-DEVELOPING HOUSE . . .

IT SEEMS THAT U.C.L.A. HAD JUST SCORED AGAINST SOUTHERN CALIFORNIA . . .

I SEE WHAT YOU MEAN . . .

I GUESS YOU'VE GOT THE RIGHT GIRL, MR. KENDALL! WELL, NOW THE REST IS UP TO HER!

EXCUSE ME, MR. AMORY—MISS JAMISON IS HERE!

MORNING, MR. AMORY! COULD THIS GENTLEMAN BE THE SPONSOR OF MY NEW NETWORK TV SHOW?

YOU MIGHT ALMOST SAY THAT, GINGER! MEET MR. RON KENDALL OF THE STATE DEPARTMENT!

PLEASED TO MEET YOU, MISS JAMISON! AND NOW LET ME ASK YOU A QUESTION—HOW WOULD YOU LIKE TO GO AFTER THE MOST IMPORTANT INTERVIEW OF YOUR LIFE?

YEAR TAX NUM

This taxes, Ameri Texas

If you being c save m planning Before 1958 pl remember ceive a able con ise dedu can't tal deductio for dona take onl your year coringl

Planning

If you stand year, you to defer ing pledi pyramidi you may tions. He better-th are tryin tions on should n have mad you woul 1958? Here i keep in m end pledi contribu —and the year whe the char actualy c

Property

A gift of to entitle tion. It s since you the full a gift, it g give away more than

For exa own a few you \$100 the stock ently fully are going church, ch for a size next few sider cont before the

By givis organizati benefit by

No.

The ot saw limit. They are senior; J. and Robert

YEAR END TAX TIPS NUMBER 3 More Tax-Saving Deductions And How To Time Them

This is one of a series of four articles on federal income taxes. The articles are based on information provided by the American Institute of Certified Public Accountants and the Texas Society of Certified Public Accountants.

If you are one of those individual taxpayers who is constantly being collared and dollored for charitable contributions, you may save money by paying particular attention to the timing and planning of your year-end donations.

Before paying off on any more 1957 pledges you might have made, remember that you will not receive a tax credit for your charitable contributions unless you itemize deductions on your return. You can't take the standard 10-per cent deduction and a special deduction for donations to charity. You may take only one or the other, so plan your year-end pledge payments accordingly.

Planning Charitable Gifts

If you will be forced to take the standard 10-per cent deduction this year, your best tax move would be to defer payment on your outstanding pledges until after January 1, pyramiding them into 1958 when you may be able to itemize deductions. However, if you have had a better-than-average income year and are trying to bunch itemized deductions on this year's return, you should pay not only the pledges you have made but possibly the pledges you would ordinarily make in early 1958.

Here is an important point to keep in mind as you plan your year-end pledge payments: a charitable contribution will be considered paid—and therefore deductible—in the year when the check is delivered to the charity and not when it is actually cashed.

Property Donations

A gift does not have to be in cash to entitle you to a charitable deduction. It can be in property, and since you can claim a deduction for the full market value of a property gift, it may actually pay you to give away items that are now worth more than they cost.

For example, suppose that you own a few shares of stock that cost you \$100 a few years ago. Today the stock is worth \$150, and apparently fully priced. If you know you are going to be approached by a church, charity, college or the like for a sizeable donation within the next few months, you might consider contributing these securities before the end of the year.

By giving this property away, the organization you care to favor will benefit by receiving property which

Preparing State Taxes

The state and local taxes which you pay are also deductible items that often can be pyramided to give a tax advantage. Some taxes that fall due early in 1958 can be paid to give you an additional deduction on this year's federal tax return. On the other hand, it may be to your advantage to delay payments until 1958. Be careful when you do this, however. You may incur a late payment penalty.

Farmer Tax Tactics

While businessmen and farmers can do everything that a salaried worker can do to cut their tax bills, they also have special opportunities to time year-end deductions.

A farmer, for example, who reports for tax purposes on a cash basis, can deduct his expenditures in the year paid. By purchasing his 1958 grain requirements in December, he can increase deductions on his 1957 return. If he borrows money to make this purchase, the interest paid on the loan during the year is also deductible.

A businessman, whose year-end tax plan calls for bunching deductions on this year's return, can time the sale of used equipment to establish loss deductions. For example, by selling a truck that has a depreciated value of \$500 and a real market value of \$500, a businessman may claim a tax credit for his \$200 "loss." If he sells the truck before December 31, he can take this deduction on his 1957 return.

Last Article: Steps That Could Save A Dependency Exemption.

This Week's Sports Slate

Basketball
 Tuesday . . . Snyder vs. Cubs
 Wednesday . . . WTSC vs. Tech
 Thursday . . . Borger Tourney (Cubs)
 Meadow Tourney (Meadow Union)
 Friday . . . Borger Tourney Meadow Tourney
 Saturday . . . Meadow Tourney Saturday

Munn, 5-10 senior; Jerry Shepard, 6-6 senior.
 Rounding out the squad of 15 are Earl Hays, 6-6½ senior; Larry Sheppard, 6-4 junior; Terry Betenbough, 5-10 junior; Larry Shoemaker, 5-9 sophomore; and Paul Harrison, 6-1½ junior.

After football players had quit the gridiron and joined the team Monday, Coach Johnson was impressed with the workouts. "They looked better than I had anticipated," said Johnson Tuesday.

Sherrard and Brice are sure to claim starting berths on the team with Whitworth and Perrin appearing capable of moving into the standing lineup for the first game.

There may be an interesting battle for the fifth spot among the first five. McClure, Adudell, Criner and Jerry Shepard are the most probable candidates at this time.

Early reports from around District 2-AAA indicate Kermit and Brownfield as the teams to beat this season. Both teams have good height and several lettermen back from last year.

The Mustangs will have a little more height than last season, with a starting lineup that will average around 6-1. Whitworth and Perrin can join Sherrard and Brice to give Andrews four cagers with "an eye for the bakset."

A MAJOR DEFECT

Jeweler — Why do you want me to refund your money on this engagement ring? Didn't it suit?
 Young Man — The ring suited all right — but I didn't.

Soil Tests Advised To Prepare Lawns, Gardens For Spring

A soil test is the first step in getting your garden or lawn off to a good start next spring.

Fertility — of the right kind and amount — is necessary to keep lawns growing good and to keep gardens producing plenty of good vegetables. This can be determined in a laboratory test.

Taking a soil sample for testing to determine its fertility needs is easy, said William F. Bennett, supervisor of the Soil Testing Laboratory at Texas A. and M. College.

If it is from a lawn, dig about the first three inches of soil from about 10 different

places, mix them together and then take about a pint to be used for testing.

If it is from a garden use the same procedure, but dig about the first six inches of soil, Bennett said. One sample normally is enough for most lawns or gardens, but if the type soil differs from one part of the lawn to another a sample from each of the various types should be taken.

A soil test cannot be used to determine whether a plant has died from root rot or some other disease, he said. Neither can the test be used to deter-

mine presence of soil insects or other effects not due to a lack of soil fertility.

However, if samples are taken to help determine plant growth difficulties, complete information on how the plants have grown and symptoms of the disease should be included with the soil sample.

After a soil sample is collected an information sheet should be obtained at the county agents' office and completed to accompany the sample to the Soil Testing Laboratory at Texas A. and M. College. The length of time required to test the soil sample is usually one to two weeks.

Texas Beef Raisers Note Big Increase In '56 Consumption

Beef producers in Texas and the nation have seen consumer demand for their products steadily increase for the past several years.

Roy W. Snyder, extension meats specialist, says beef consumption on a per capita basis in the United States reached a peak of 83.5 pounds in 1956.

He says the figure is expected to be only slightly smaller in 1957 with the decrease due to reduced beef slaughterings. The 1957 per capita consumption, however, still will be well above average figures.

He credits the rise in beef consumption to a number of factors but chief among them is the favorable competitive position beef has been holding in comparison with other red meats.

To emphasize further this point, Snyder says consumers ate more beef in 1956 than all other red meats combined, about 31 per cent

of the 163.3 pounds consumed per capita was beef. This total figure was also a record.

Promotion and advertising also are cited by the specialist as factors in the increase. Special attention has been called to the nutritive and economical

values of the lower priced cuts with beef organizations playing a big part in this promotion.

To focus further public attention upon the Texas beef industry, Governor Price Daniel has proclaimed the week of December 1-7 as "Beef Week in Texas."

SWART OPTOMETRIC CLINIC

—Offices In—
 Brownfield and Lubbock
 Brownfield . . . 516 W. Bdwy Phone 2070
 Lubbock . . . 1630—13th POster 3-4771

No. 1—

The other three lettermen saw limited action last season. They are Leon McClure, 6-2½ senior; J. B. Criner, 5-8 senior; and Robert Burke, 6-1½ junior.

Burke will miss action for about a month because of a football injury.

Top prospects from last year's B-team are Gordon Whitworth, 6-1 senior; Ray Max Perrin, 5-11 junior; Jimmy Adudell, 6-1 junior;

PHILCO-BENDIX

'58 DUOMATIC Washer-Dryer COMBINATION

WASHES AND DRIES FASTER! LINT-FREE! WRINKLE-FREE!



BIG FILTER DRUM

Washes cleaner . . . Lint-free . . . UP TO 45 MINUTES FASTER

Plunges clothes into penetrating suds . . . flushes lint, sand and dirt out through 2,880 perforated filter holes. Washes and dries faster!



PERFECT DRYING!

Dries clothes so Wrinkle-free you use hangers instead of an iron!

Big Filter Drum gets clothes so fluff-dry and wrinkle-free many need no ironing. It's perfect for new "Wash and Wear" garments.



SAVE MONEY!
 SAVE TIME!
 SAVE WATER!
 SAVE SUDS!
 SAVE YOUR HANDS!



SIMPLEST, SAFEST CONTROLS. Lighted and easy to use. Out of reach of children.



COSTS ONLY PENNIES PER LOAD. Thriftiest washer-dryer on the market.



SAFELY WASHES AND DRIES ALL FABRICS. Recommended by makers of miracle fabrics.

Washes and dries a full load up to 45 minutes faster.

Patented Suspension System.

Available in Gas or Electric Models.

Handy Porthole Door.

Exclusive Pump Protector Screen.

More Philco-Bendix Duomatics have been sold than all other combination washer-dryers together!

Philco-Bendix Home Laundry Appliances are brought to you by Philco Corporation

Frank Daniel Furniture Electric

"Better Values at Lowest Prices"

Chevrolet works wonders in every weight class!

NEW HUSTLE! NEW MUSCLE! NEW STYLE!

New light-duty Apaches . . . new medium-duty Vikings . . . new heavy-duty Spartans . . . all bring you the latest in dollar-saving truck advancements for 1958.



A REVOLUTION IN V8 DESIGN!

It's the all-new 230-h.p. Workmaster V8 with revolutionary Wedge-Head design for extra pulling power at lowest cost! Series 90 and 100.



BIG NEWS IN EVERY ENGINE!

New power and economy in the Task-Force 58 engine line, from the new 145-h.p. Thriftmaster 6 to the big new short-stroke V8's.



NEW TASK-FORCE STYLING!

You see new broad-shouldered appearance — new style in the bright new grille, new hood and fenders — new colors and interiors!



SAFER SEEING WITH 4 LIGHTS!

Handsome new dual headlamps put more light where it's most needed for safer seeing at night. They add to styling, too!



NEW STEP-VAN BODIES!

Three all-new Step-Van models to cut costs and save work in door-to-door delivery service! Big walk-in bodies are 8, 10 and 12 feet long.



NEW MIDDLEWEIGHT TRACTORS!

With a 6-foot cab-to-axle dimension, Series 50 and 60 cab-and-chassis models are ideal for 9-foot dump bodies or long 35-foot trailers!



AN IMPROVED POWERMATIC!

Powermatic (optional, extra cost) with additional drive range, 3-5, means even better performance and economy in traffic.



SURE-FOOTED 4-WHEEL DRIVE!

New Chevrolet 4-wheel drive models will go anywhere on or off the road! They give twice the traction of a 2-wheel drive truck.



NEW DRIVER CONVENIENCE!

Controls are convenient to reach, the accelerator pedal is newly positioned, and a new 20" wheel cuts steering effort in heavyweights!



Above: Series 60 medium-duty tractor model.
 Center: Series 100 heavy-duty cab-and-chassis.
 Right: Series 31 pickup model.

CHEVROLET TASK-FORCE 58

Latest editions of the "Big Wheel" in trucks!

Only franchised Chevrolet dealers display this famous trademark. See Your Local Authorized Chevrolet Dealer

A Family That Prays Together, Stays Together

- Harris Flying Service**
Aero Crop Dusting & Spraying
- Tim's Service & Safety Lane**
Bear Wheel Alignment—Brake Repair
— Safety Inspection —
- Brownfield Ditching Service**
Dick Chisholm
- Terry County Lumber Co.**
Square Deal For a Round Dollar
- Merritt Grocery**
Your Best Food Buy
- Farmer's Cooperative Society**
No. 1 Gin
Leonard White, Mgr.
- Merman's Gin**
Plains Highway
- Frank Daniel Electric & Furniture**
If It's Westinghouse It's The Best
- H. C. Denson**
Oil and Water Hauling
406 S. 14th—Ph. 4646
- Cobb's Department Store**
- Al's Motor Company**
For Good Used Cars — See Us
318 E. 1st
- Brownfield Glass & Mirror Co.**
Glass For Every Purpose
Store Fronts & Remodeling
- First National Bank**
Complete Banking Service
- Furr's Super Market**
Brownfield, Texas
- Jones Theaters**
Regal-Rialto-Rio—Rustic & Rig Drive-Ins
- Modern Steam Laundry**
905 Lubbock Road
- Gaasch Construction Co.**
Of Brownfield
- Higginbotham-Bartlett Lbr. Co.**
Complete Line For Building
- Kyle Grocery**
Home of K & S Blue Stamps
- Cicero Smith Lumber Co.**
Quality Building Materials
- Newton & Webb Implement Co.**
Your Case Implement Dealer
- Fair Department Store**
Quality Merchandise
- Portwood Motor Co.**
Your Authorized Dealer
4th and Hill Streets

WHICH CAME FIRST?

The old question about the chicken and the egg is one that will haunt the minds of men forever. It will never be answered and fortunately need not be, but we do know from whence came life itself and that is of vastly more importance. Life was given by Creator God who made Himself known to men and about whom we read in the Bible. We are also told in the Bible that our destiny as persons is to receive light and life from God and reflect His splendor into the world; this and this alone will give us the true joy of life.

Let your light so shine that seeing your good deeds men will turn and glorify your Father who is in Heaven.

Is something wrong with your life—
an inner restless dissatisfaction? The
answer to every human problem comes
only from God our Maker. He alone
can forgive and restore.
Through the church God has com-
mitted the provision and proclama-
tion of His forgiveness and redem-
ing love. Without a church relation
no one is securely related to God.
Everyone should be in the Church and
the Church in everyone!

© 1927, Coleman Adv. Serv. P. O. Box 4887, Dallas, Texas

- Goodpasture Grain And Milling Co., Inc.**
902 West Broadway
- Ross Drilling Company**
Mac Ross
- J. B. Knight Company**
Hardware-Furniture-Implements
- Jack Bailey Chevrolet Co.**
401 West Broadway
- Glenwood Homes, Inc.**
Opality Homes
- South Plains Ready Mix, Inc.**
- Robert L. Noble**
Insurance & Real Estate
- P. R. Cates**
Residential Building
- Lloyd Moore**
Building Contractor
- Brownfield Motor's Inc**
Mercury Sales & Service
- Terry County Farm Bureau**
Why Settle For Less
Buy The Best
- Pemberton Insurance Agency**
210 S. 5th Phone 4119
- S. B. (Shorty) Collier Gulf Service**
501 S. 1st Phone 4303
- Brownfield Magneto & Electric Co.**
Complete Automotive & Industrial,
Electrical Service Phone 4588
- Newsom Gin at Gomez**
J. L. Newsom Owner
- South Gin Inc.**
With Our Compliments
Phone 2601
- McIntyre Electric Service**
Radio and TV Repair
Phone 4320
- Brownfield News-Herald**
Working For A Better Brownfield
- Davis Super Service**
Our Compliments
- Lee Crabtree Machine Shop**
With My Compliments
- Tom Harben Conoco Service Sta**
We Give Frontier Stamps
1st and Main—Phone 2008

These religious messages are made possible by the above individuals and business firms with the hope of creating a more sincere interest in our churches and a more church-minded community.

Your Church Calendar

<p>FIRST METHODIST CHURCH Meadow, Texas 9:45 a.m.—Sunday School 10:00 a.m.—Morning Worship 7:30 p.m.—Evening Worship</p>	<p>CHURCH OF CHRIST Wellman, Texas 9:00 a.m.—Study Period 10:00 a.m.—Preaching Service 8:00 p.m.—Preaching Service</p>	<p>BROWNFIELD PRIMITIVE BAPTIST CHURCH J. W. Garforth, Pastor Meets each second Sunday at 10:30 a.m. Also Elmo Edward, each fourth Sunday at 10:30 a.m.</p>	<p>FRIENDSHIP BAPTIST CHURCH Elder C. A. Seay, Pastor Meet 1st and 3rd Sundays 11:00 a.m.—Morning Worship 7:30 p.m.—Evening Worship</p>	<p>SOUTH SIDE CHURCH OF CHRIST Ira A. Wolfe, Minister 9:45 a.m.—Sunday Bible Study 10:45 a.m.—Morning Worship 7:00 p.m.—Evening Worship</p>	<p>CRESCENT HILL CHURCH OF CHRIST John McCoy, Minister 9:45 a.m.—Sunday School 10:45 a.m.—Morning Worship 6:30 p.m.—Evening Worship</p>
<p>NORTHSIDE BAPTIST CHURCH (Fundamentalists) Rev. A. J. Franks, Pastor 10:00 a.m.—Sunday School 11:00 a.m.—Morning Worship 8:30 p.m.—Evening Worship</p>	<p>FIRST BAPTIST CHURCH Rev. Jones W. Weathers, Pastor 9:45 a.m.—Sunday School 10:50 a.m.—Morning Worship 7:30 p.m.—Evening Service</p>	<p>WESTSIDE BAPTIST CHURCH Rev. S. B. Respass, Pastor 10:00 a.m.—Sunday School 1:00 a.m.—Morning Worship</p>	<p>CHURCH OF GOD Rev. W. E. Mitchell, Pastor 10:00 a.m.—Sunday School 8:00 p.m.—Evangelistic Service 11:00 a.m.—Morning Worship</p>	<p>FIRST PRESBYTERIAN CHURCH 9:45 a.m.—Sunday School 11:00 a.m.—Morning Worship 6:00 p.m.—Westminster P-worship 7:30 p.m., Wed.—Prayer Meeting</p>	<p>EMMANUEL BAPTIST CHURCH 10:00 a.m.—Sunday School 11:00 a.m.—Morning Worship 8:00 p.m.—Evening Worship</p>
<p>EPISCOPAL CHURCH of The Good Shepherd Rev. Rev. C. Simons, Vicar 8:45 a.m.—Morning Prayer and Sermon 9:45 a.m. Sunday School Holy Communion 2nd and 4th Sundays</p>	<p>EVANGELICAL METHODIST CHURCH William Mayo, Pastor 10:00 a.m.—Sunday School 11:00 a.m.—Morning Worship 7:00 p.m.—Evening Worship</p>	<p>UNITED PENTECOSTAL CHURCH Rev. J. M. Allen, Pastor 9:45 a.m.—Sunday School 11:00 a.m.—Morning Worship 7:30 p.m.—Evening Worship 8:00 p.m. Friday—Young People's Meeting</p>	<p>GRACE LUTHERN CHURCH R. L. Young, Pastor 1:00 p.m.—Sunday School 8:00 p.m.—Divine Worship</p>	<p>PARKVIEW METHODIST CHURCH Rev. Ray Elmore, Pastor 10:00 a.m.—Church School 11:00 a.m.—Worship 8:00 p.m.—Evening Worship</p>	<p>FIRST CHRISTIAN CHURCH Marion Nilson, Pastor 9:45 a.m.—Sunday School 11:00 a.m.—Morning Worship 6:30 p.m. Youth Program</p>
<p>BETHEL TEMPLE ASSEMBLY OF GOD CHURCH Rev. B. & Curtis, Pastor 10:00 a.m.—Sunday School 8:00 p.m.—Evangelistic Service 8:00 p.m.—Wednesday Prayer Meeting People's Service 8:00 Friday Young</p>	<p>FIRST BAPTIST CHURCH Meadow, Texas 9:45 a.m.—Sunday School 11:00 a.m.—Morning Worship 7:30 p.m.—Evening Services</p>	<p>CHALLIS BAPTIST CHURCH Frankie Rainey, Pastor 10:00 a.m.—Sunday School 11:00 a.m.—Worship Service 7:00 p.m.—Evening Service</p>	<p>NORTH SECOND STREET CHURCH OF CHRIST Services 7:30 p.m.—Evening Services</p>	<p>CHURCH OF THE NAZARENE Rev. Howard Smith, Pastor 10:00 a.m.—Morning Worship 7:30 p.m.—Church Service</p>	<p>FIRST ASSEMBLY OF GOD CHURCH Rev. J. R. Brashear, Pastor 10:00 a.m.—Sunday School 11:00 a.m.—Morning Worship 7:30 p.m.—Evangelistic Service 7:30 p.m.—Wednesday Worship Service</p>
<p>CALVARY BAPTIST CHURCH Rev. Warren Stowe, Pastor 9:45 a.m.—Sunday School 11:00 a.m.—Morning Worship 7:30 p.m.—Evening Service</p>	<p>FIRST ASSEMBLY OF GOD CHURCH Rev. J. R. Brashear, Pastor 10:00 a.m.—Sunday School 11:00 a.m.—Morning Worship 7:30 p.m.—Evangelistic Service 7:30 p.m.—Wednesday Worship Service</p>	<p>JOHNSON BAPTIST CHURCH Rev. H. H. Gray, Pastor 10:00 a.m.—Sunday School 11:00 a.m.—Morning Worship 7:30 p.m.—Evening Worship 8:00 p.m.—Evening Worship</p>	<p>FIRST METHODIST CHURCH Rev. James Tidwell, Pastor 9:45 a.m.—Sunday School 10:00 a.m.—Morning Worship 7:00 p.m.—Evening Worship</p>	<p>ST. ANTHONY'S CATHOLIC CHURCH Leveland Highway Rev. Paul H. Land, Pastor 8:30 a.m. & 10:30 a.m. Masses —Sundays 7:30 p.m. First Fridays Confessions: Before all Masses</p>	<p>SEVENTH-DAY ADVENTIST E. E. Cash, Pastor Meeting in Primitive Baptist Church Each Saturday 2:30 p.m.—Sabbath School 3:30 p.m.—Praching</p>

Ou

Thanks large acre as will al sorghum bushels in 213,249,000 the Unive eau of Bu Product crease fr acre in 1 1957.

Rain A

Our Places of Worship Here..



★ ★ ★
IMMANUEL BAPTIST CHURCH—Pictured are Immanuel Baptist Church and its pastor, the Rev. Boyd Pearce. The church is located at the corner of East Stewart and North B, and the parsonage at 1202 North Atkins. Sunday schedule: 10 a.m., Sunday school; 11 a.m., worship; 6:30 p.m., training union; 7:30 p.m., worship. Prayer meeting each Wednesday at 8 p.m. One woman's missionary society meets at 2:30 p.m. Monday and the other at 7:30 p.m. Tuesday. Brotherhood meets at 7:30 p.m. Tuesday. GAs meet at 4 p.m. and Sunbeams at 3:30 p.m. Thursday. Immanuel Baptist Church has 175 members with an average attendance of 85 at Sunday school.
 ★ ★ ★

SMALLEST TOTAL SINCE 1953

U. S. Carryover Cotton Set At 9 Million Bales by Aug. '58

Carryover of cotton in the United States on Aug. 1, 1958 is expected to be around 9 million bales. This would be the smallest since 1953 and about 5.5 million bales below the record high of 14.5 million bales in 1956, according to figures released recently in the 1958 outlook issue of The Cotton Situation, a U. S. Department of Agricultural publication.

The carryover on Aug. 1, 1957 was 11.2 million bales and the decline is being caused by relatively large disappearance and smaller crops in the last two successive marketing years.

Disappearance of cotton was 16.2 million bales in 1956-57 and is estimated at about 14.1 million in 1957-58. Although below last season, it would be the largest for any other season since 1951-52. The cause of the relatively large disappearance in both seasons is large exports.

Domestic mill consumption for the current season is expected to be about the same as in 1956-57—some 8.6 million bales.

Cotton consumption per person in 1957 is estimated at slightly more than 24 pounds, almost 2 pounds smaller than in 1956.

U. S. exports of cotton during the 1957-58 season are expected to be about 2 million bales smaller than those of 1956-57. Exports are expected to total about 5.5 million bales for 1957-58, and while this is smaller than 1956-57, it may be higher than any other season since 1940-50.

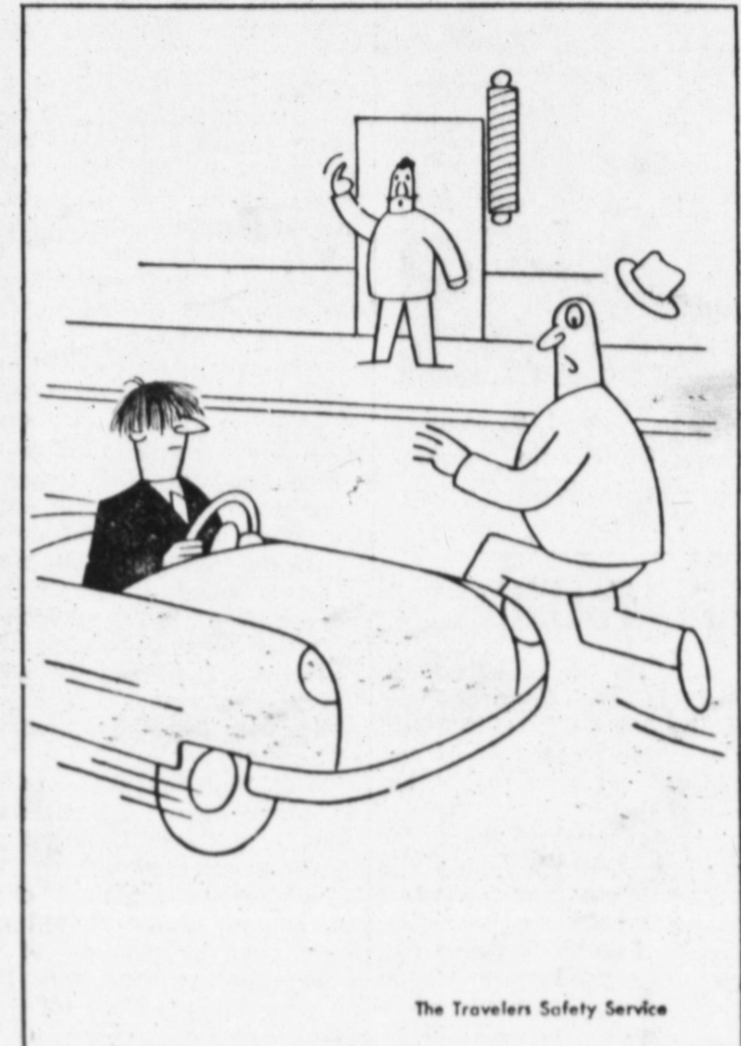
Sales of cotton for export by CCC under the 1957-58 export sales program were 3.7 million bales as of October 29. Recent sales have been small because of the existence of satisfactory stocks abroad and the limited selection available in cataloged CCC stocks.

The supply of cotton in the U. S. is estimated at about 23 million bales. This is approximately 4.6 million bales smaller than the record supply of 1956-57. The 1957-58 supply includes a starting carryover of about 11.2 million running bales, production of about 11.7 million and estimated imports of around 100,000 bales.

The 1957 cotton crop was estimated at about 11.7 million running bales as of Nov. 1. This compares with 13.2 million bales for the 1956 crop and a 1955 crop of 14.5 million bales. As of Nov. 1 about 48 per cent of this crop had been ginned compared with 73.9 per cent to the same date a year ago. Ginnings through Nov. 1 1957 were the smallest proportion of the crop ginned to this date on record.

The 1957 crop is being produced from the smallest har-

Heedless Horsepower by O. Soglow



The Travelers Safety Service
 233,000 pedestrians were killed and injured in 1956.

compared with 409 a year ago has reduced the quantity of cotton and a record high of 417 ton harvested and certainly will cause a deterioration in the quality of the 1957 crop. Part of the high yield was caused by a shift in acreage to the very high yielding areas of the West. The weather in a large part of the Cotton Belt has been unfavorable. This has reduced the quantity of cotton harvested and certainly will cause a deterioration in the quality of the 1957 crop. The total of state acreage allotment for all types of cotton in 1958 of 17,636,814 acres is only 37,006 acres smaller than such allotments for 1957.

3 BIG BARGAINS

1957 Ford Tractors
 Close Out 3 Only

- 1-640 Gasoline
- 1-640 L Butane
- 1-840 L Butane

High Trades On These New Ford Tractors

Finance If Desired
 6 Month Factory Warranty
 For More Farming At Less Expense
 Go Ford ALL The Way

2 and 4 Row Implements
 We Carry A Complete Line of Ford Parts
 Large Stock For Ferguson Tractors

BROWNFIELD TRACTOR CO.

304 Tahoka Rd. Phone 2636

Rain And Acreage Boost Expected To Double Sorghums

Thanks to timely rains and large acreage expansion, Texas will almost double its grain sorghum yield from 124,202,000 bushels in 1956 to an estimated 213,249,000 in 1957, points out the University of Texas Bureau of Business Research.

Production is expected to increase from 26 bushels per acre in 1956 to 31 bushels in 1957.

Texas, the most important grain sorghum state in the nation, will produce approximately 40 per cent of a record U.S. crop estimated at 514 million bushels and 2 1/2 times the 1956 output. Record increases are expected throughout the major sorghum-growing states of Kansas, Nebraska, Missouri and Oklahoma.

Sorghum in the past was

thought of strictly as a crop for cattle forage, but today approximately 80 per cent of Texas production is raised for its grain, a large portion of which is used in domestic industry or exported, George E. Neel, Jr., Bureau editorial assistant, notes.

Products obtained from sorghum include starch, sugar, oil and animal feeds. Starch is used in confections, bakery products, cosmetics, brewing paper, textiles, pharmaceutical preparations and many other products.

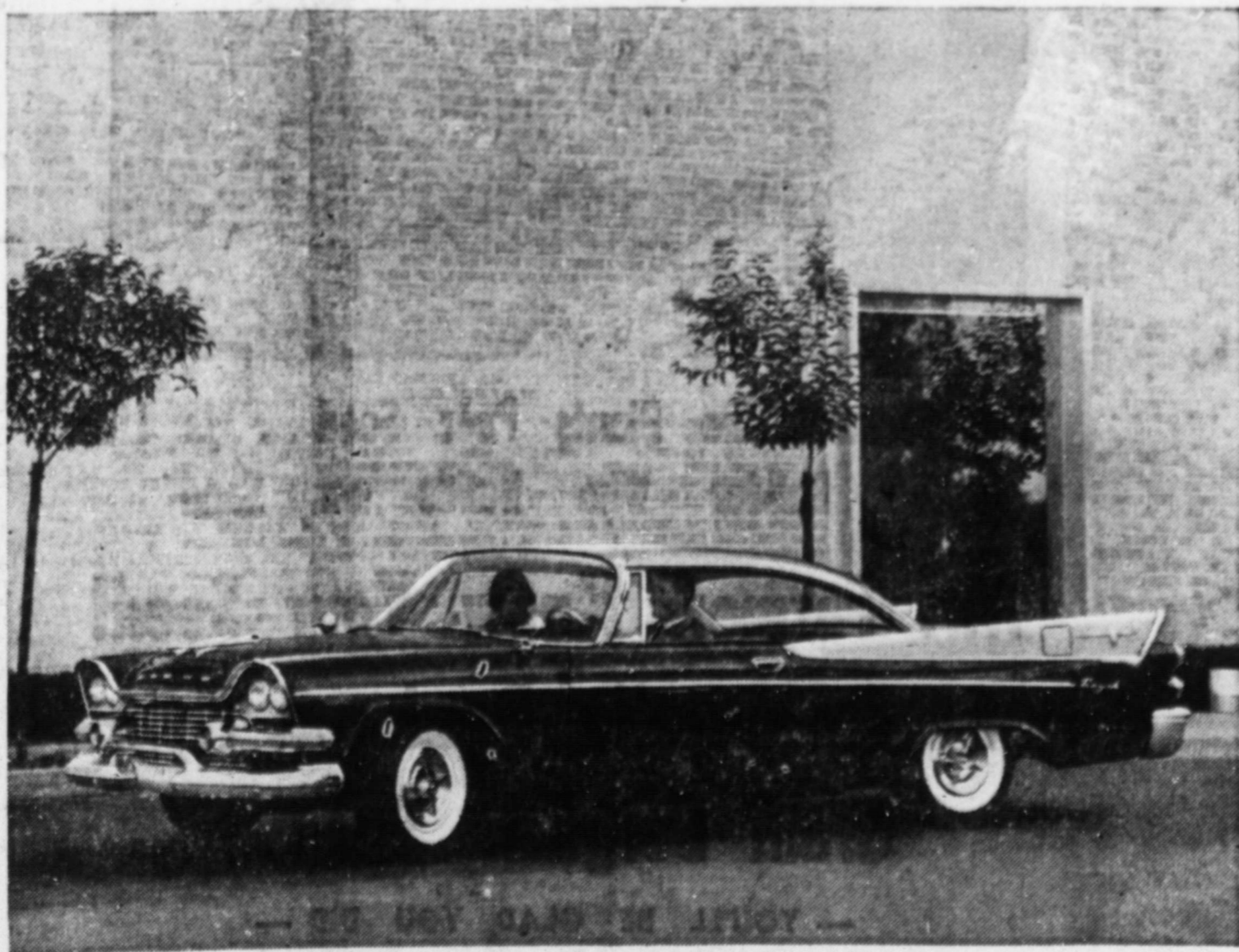
Sugar is used in confections, carbonated beverages, canned and processed foods, and synthetic rubber. Oil is used in soaps, glycerine, margarine, mayonnaise and pharmaceutical preparations.

About one-third of recent U. S. sorghum crops have been sold as exports. Europe and the Near East have been using the grain primarily for feed, but India and other Far Eastern countries use it largely in a home-ground meal for human consumption.

EVERY PRESCRIPTION GETS PROMPT ATTENTION HERE!

This store gets busy very often. But our Registered Pharmacist, fully aware of the importance of his specialty, sees to it that each prescription is compounded and ready exactly when it is promised! Your Doctor is quite familiar with our efficiency and eagerness to please — so he recommends us wholeheartedly and knows that his orders will be carried out with precise accuracy. When you have a prescription to be filled, place it in our capable hands. You'll like our dependable service!

COATS PHARMACY
 PHONE 2622 210 South 6th



"ALMOST, BUT NOT ENOUGH" is our verdict on how close competitive cars have come to matching the Sweep-Wing 58. Take style. Other new cars are "almost" as low in inches, but still seem high and boxy in looks. Some of them are "almost" going to find, but not enough to really make a difference. Then take performance. None of the

other 1958 cars have anything to match the sway-free, dip-free, vibration-free ride of Torsion-Aire. (It's standard equipment.) Most of them still don't even have push-button driving! So after you've seen the "almost" cars, come in and drive a Sweep-Wing 58. You'll see why we say: They're catching on, but they can't catch up.

Craig Motor Co. — 719 West Broadway



FOR THE TOP OF YOUR LIST

... a profitable Saving Account from the BROWNFIELD STATE BANK & TRUST COMPANY. It's the ideal gift for it keeps giving as it earns our profitable Interest, currently 2% a year.

Come in this week for your Gift that Grows. You'll find it convenient to do your 'Christmas shopping' at our handy office.

SAFETY DEPOSIT BOXES FOR RENT

Serving Brownfield Since 1905





SAFETY PATROL — These six youngsters represent the law in directing traffic around the junior high school during the noon hour on school days. The group, all sixth graders, are, from left, Conrad Vernon, Bubert Burroughs, James Nickols, Richard Constancio, Mickey Beck and John Travis. (BHSfoto)

Specialist Says Now Is Time To Prepare Poultry Facilities

Now is the time for poultrymen to recheck their management to make sure they are ready for the winter weather that lies ahead, advises Ben Wormell, extension poultry husbandman.

Ventilation is one of the main things to check, says Wormell. Poor ventilation can cause trouble in laying houses. Careful attention to weather reports will enable poultrymen to adjust the poultry house ventilators before severe weather hits during sudden winter weather changes.

Draft-free circulation of fresh air is necessary to

keep the litter, and dry litter is necessary to keep down the number of dirty eggs. The cleaning of dirty eggs requires a lot of extra labor and may damage seriously the interior quality.

Provide at least two and one-half square feet of floor space per adult bird, says the husbandman. Be sure each bird has at least four inches of feeder space and one inch of watering space. Each 100 birds will consume about six gallons of water per day.

Operators should provide 25 individual nests or three community nests, two by six feet,

for each 100 birds. Fill them with a three-inch layer of clean straw or other available litter. Replace any portion of the nest litter as soon as it becomes soiled.

A careful weekly check for lice of mites will enable the poultryman to apply control treatments before a heavy infestation of these parasites can reduce egg production of the flock.

Incidentally shooting crows at the end of the season is a good way to get rid of old shells and at the same time do your bit in killing off those black rascals.

Many towns will have crow shoots. If you have a few crows around, get busy and organize an eradication campaign. It will pay off.

Boat Care Now

Have you checked your boat lately? Most of us have been so busy with our hunting in recent weeks, that we've neglected our boats.

A visit to any boat dock area will reveal many boats with six inches of water in the bottoms. The recent rains have almost filled others.

If boats are to last a long time and give good service, they need care. Mark it on



By L. A. WILKE

There was turkey on the Thanksgiving table of many lucky Texans this year!

Turkey season opened Nov. 16, along with the white tail deer season, in many areas of the state.

Most of the birds were killed in the Edwards Plateau, better known as the Hill country of Texas. But other spots of the state also provided a few gobblers.

With the beginning of the deer and turkey season, only one more open season is awaited by the hunters . . . quail season. It will be legal to hunt quail in most of the counties of Texas after December ends.

As new seasons come on, others pass out. It no longer is legal to kill doves in either the North or South zone.

It will be legal to kill mule deer west of the Pecos between Dec. 26-27, inclusive. The white tail season will end Dec. 31, as will the goose season. Then it will be legal to kill only ducks and quail until Jan. 16.

After that the shotguns can be wiped clean and put away until next Sept. 1 unless you like to shoot crows.

Incidentally shooting crows at the end of the season is a good way to get rid of old shells and at the same time do your bit in killing off those black rascals.

Many towns will have crow shoots. If you have a few crows around, get busy and organize an eradication campaign. It will pay off.

Boat Care Now

Have you checked your boat lately? Most of us have been so busy with our hunting in recent weeks, that we've neglected our boats.

A visit to any boat dock area will reveal many boats with six inches of water in the bottoms. The recent rains have almost filled others.

If boats are to last a long time and give good service, they need care. Mark it on

your calendar to dedicate the next pretty week-end, or at least a portion of it, to checking your boat. Perhaps it might need to be hauled out of the water for a good scrub job, inside and out, or a coat of paint.

Paint is helpful to the life of a boat, as well as to its appearance.

You may want to dry-dock your boat for the winter, but this isn't necessary in Texas. There'll be plenty of week-ends during the winter months when you can get in some good fishing or boating.

While you're at it, check your trailer.

See that the bearings have plenty of grease and that the tires are in good condition.

Most of the fish being caught now are crappie and sand bass. Every lake and stream in Texas is producing plenty of crappie. Most of them are on the small size, but they are big enough to make a good meal.

During the past year there have been many fishing barges and doughnut shaped barges built on the major lakes. They are baited down and furnish ideal spots for crappie fishing. Some of them are steam heated. There is one on Whitney that even provides TV.

Other fishermen just tie their boats up to dead trees sticking out of the water, or anchor at well-marked spots and catch

their crappie with minnows.

For sandies most of the fishermen right now are following the gulls and jiggling. With a limit of 25 sandies you can have plenty of fun during the day.

One of the favorite lures is the Dixie Jet, which, by-the-way, is made at Houston. It is a spoon of exactly the right weight to get these sandies.

There is one good trick to remember, if you've never fished this way before. A light rig is very important. Say a 6 1/2 foot light action rod with a 6 to 9 pound test line. Let your lure go to the bottom, take two or three turns on the reel, quiver the rod very slightly by moving the tip slowly up and down.

The sandies hit almost invariably on the down motion. For that reason they usually are on the hook when you start the upward movement. If you are not careful you can yank the hook out of its mouth before it has been set.

A couple of good fishermen with a little practice and a few of these Dixie Jets can fill the bottom of the boat in a few minutes of hot fishing. Try it.

Are You Ready?

If you haven't made arrangements yet for a place to hunt quail, you'd better hurry. Every indication points to the very best season in years. There was a tremendous hatch and survival this year, of the native birds. In addition thousands of birds from hatcheries were released throughout the state.

If you haven't made arrangements yet for a place to hunt quail, you'd better hurry. Every indication points to the very best season in years. There was a tremendous hatch and survival this year, of the native birds. In addition thousands of birds from hatcheries were released throughout the state.

If you haven't made arrangements yet for a place to hunt quail, you'd better hurry. Every indication points to the very best season in years. There was a tremendous hatch and survival this year, of the native birds. In addition thousands of birds from hatcheries were released throughout the state.

were hatched at the Game & Fish Commission farm at Tyler.

The Coturnix is a most interesting looking bird, slightly smaller than the bob, but looking somewhat like it.

It is a fine bird for training dogs, but a hard bird to get up. You can almost walk on one before it will take flight.

The Coturnix is a migratory bird, however, and is expected to move about the state quite a bit. Because of this it usually can survive a drouth better than the bob.

These birds all have been banded. If you get one, be sure and turn the band over to your local game warden, or send it to the commission in Austin.

GREAT!

He — Miss Onthego, if you wish to see nature at its best you should take a trip through the great pine woods of the Adirondack mountains.

Miss Onthego — Oh, that would be great! I dote on pine-apples!

GRAZED OFF

Dad—Sonny, they can't tell me anything about the horrors of war. In the Battle of Verdun my head was grazed by a German bullet.

Sonny—There ain't much to graze on there now, is there, Dad?

LETS US BE RESOURCEFUL

Authority on Etiquette — "It is an indication of ill breeding to rattle or jingle your money."

Listener — "Well, a lot of us will have to think up some other method of displaying our lack of culture."

RUSTIC DRIVE IN

Sunday & Monday
December 8 & 9

"TEENAGE DOLL"

June Kenney
Fay Spain
John Brinkley

ALSO
"UNDERSEA GIRL"

Mara Corday
Pat Conway

Tues. - Wed. & Thurs.
December 10-11 & 12

Leo Tolstoy's
"WAR AND PEACE"

Audrey Hepburn
Henry Fonda
Mel Ferrer
Anita Ekberg

Farmers' Tax Guide For 1958 Available

Farm and ranch families needing information on income and social security taxes are reminded by Extension Farm Management Specialist C. H. Bates that the 1958 Farmer's Tax Guide is now available. Copies may be obtained from county extension agents.

Bates says the 64-page reference publication is not changing materially from last year's popular edition. The booklet is provided by the Internal Revenue Service and is written in easy-to-understand language with many income and social security tax items covered in detail. A number of sample tax forms also are shown for the guidance of those seeking first-hand information or "know-how".

Accurate Tax Reporting

Farm records are emphasized as a need for accurate tax reporting, points out Bates. Families desiring assistance with business or living records are advised to contact their local county extension agents for information on record training sessions planned for some counties.

Farmers and ranchmen who keep a close watch on their business operations often find that they can do a much better tax management job when records are kept, says the specialist. The new tax guide also will assist by pointing out helpful tax rights and options.

Because the supply of the Tax Guide may not be sufficient to enable every family to have a copy, Bates suggests that the copy be shared with a neighbor.

ing sessions planned for some counties.

Farmers and ranchmen who keep a close watch on their business operations often find that they can do a much better tax management job when records are kept, says the specialist. The new tax guide also will assist by pointing out helpful tax rights and options.

Because the supply of the Tax Guide may not be sufficient to enable every family to have a copy, Bates suggests that the copy be shared with a neighbor.

"Best meal I've eaten in over a year," said Ellis Foust, banker and rancher from Littlefield, Texas, after he finished eating the below meal at Bill Holder's

HITCH-N-POST

201 S. 1st

Hickory Smoked Barbecue
Beef served with Beans,
Chili, Potato Salad, Pickles,
Relish, Onions, Butter, Hot
Rolls, Cherry Cobbler
and Coffee

\$1.05

Delicious Hickory Smoked
Barbecue Chicken with above \$1.20

Treat The Family Sunday
To A Delightfully Different Meal

HITCH-N-POST

Corner of Broadway & Lubbock Rd.

How Was Your Turn—Out This Year?



"The Farmer Who Plants Poor Seed . . . Is Like
The Builder Who Builds on Sand"

Mr. Farmer: Know Your Seed!
Insist On Locally Produced Hybrid
Grain Sorghum Seed!

— YOU'LL BE GLAD YOU DID —

Plains Liquefied Gas

JONES THEATRES

"MOVIES ARE YOUR BEST ENTERTAINMENT"

REGAL

DIAL 2616

Sun. & Mon., Dec. 8 & 9

Tues. - Wed. — Dec. 10-11



Thurs. - Fri. - & Sat. — Dec. 12 - 13 & 14

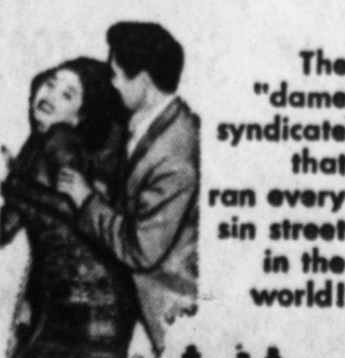


RIALTO

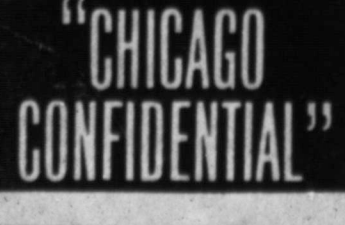
DIAL 2220

Sun. & Mon. Dec. 8 & 9

Tues. & Wed. - Dec. 10 & 11



Thurs. - Fri. & Sat.
December 12 - 13 & 14



LE

And
VOLUME 1

Teri
In A

By CI
NEW

Terry's receiving arm with the Adair miles south of Tulsa, process 11 of butane, gas a day operation. Construction began poor weather, workly, reports plant engi

To
C. D. Pe has been n of the nev tion. The intendent three or f in the pl tion.

"Howevr the install matically," nathy.

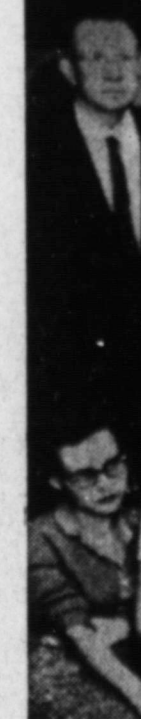
The eng persons a plant cons Through comparati field Char officials p other step trial growt Adair m. oline plant being the Wellman, lulu Oil Co stallation, the Terry-northwest

Christm
Sold He

Wax st take yo Christmas sold by Scouts.

The tree the North adjacent Prices Delivery day. The opened fr p.m., dai officials.

The t here from Royal Gc



THEIRS E the only per cent the way, employee ter Brinsc James M. Jones. F