

THE MULESHOE JOURNAL

Vol. 2

Muleshoe, Bailey County, Texas, Friday, March 20, 1925.

Number 5

Cold Check Law Signed by Governor

The recent passing by the Legislature and its signature by the Governor of the "cold check" law will set at rest the pulses of many business men of this section who have recently been terribly bothered and suffered undue loss from this cause.

Section four, of this law, which is herewith quoted, is the one that gives the desired protection and is as follows:

The obtaining by any person of any money or other thing of value with intent to defraud by the giving or drawing of any check, draft or order upon any bank, person, firm or corporation with which or with whom such person giving or drawing said check, draft or order, or at the time when in the ordinary course of business such check, draft or order would be presented to the drawee for payment, sufficient funds to pay same, and no good reason to believe that such check draft or order will be paid, provided that if said check, draft or order is not paid on presentation the return of same shall be prima facie evidence of the fraudulent intent of said person drawing or giving said check and provided further, that if such check, draft or order is not paid within 15 days after the same is returned unpaid, it shall be prima facie evidence that no good reason existed for believing that said check, draft or order would be paid and it shall also be prima facie evidence of intent to defraud and knowledge of insufficient funds of the drawee."

What A Nebraska Man Says About the Journal

Dorchester, Neb.,
3-12-25.

R. B. Boyle,
Muleshoe, Texas.

Dr. Editor:

I certainly appreciate the wonderful little paper you are putting out. As a Bailey County land owner I hope it is an index to the way things are developing down there.

R. C. Panter, M. D.

WANTED—To do your printing, calling cards, wedding invitations, programs and office forms. Journal office at Muleshoe, across street from court house.

WORD PUZZLERS

Workers have the best opportunity to win success when equipped with

Webster's New International Dictionary

"The Supreme Authority"

It contains over 407,000 words, including thousands of new terms, 32,000 geographical subjects, 12,000 biographical entries. Answers all kinds of questions of *What, Why, When, How, Where and Who*. Constantly improved and kept up to date. Cross-Word Puzzle Editors use it as their authority.

Why not be in the winning class? WRITE for specimen pages and prices. Free pocket maps if you name this paper.

G. & C. MERRIAM CO.
Springfield, Massachusetts

NATIONAL WEBSTER

Former Bailey County Man Passes Away

Rev. O. T. Wattenbarger, son of Mr. and Mrs. Solomon Wattenbarger was born near Milan, Mo., May 25, 1867 and died at his home 426 S. Vine, St., Wichita, Kans., on March 11, 1925, age 57 years 9 months 16 days.

He was married to Ida May Baker on May 25, 1894. To this union were born five children, May Lucile, who died at the age of four years, Zena Lorene Kennedy, Hurley, Texas, Loran Wattenbarger, Colorado Springs, Colo., Marie Larue who died in infancy and Sadie Alice Wattenbarger, Wichita, Kansas.

This union was broken on May 25, 1915 by the death of Mrs. Wattenbarger. In March 1917, Rev. Wattenbarger was married to Mrs. Ida May Hart, who survives him.

At an early age he joined the M. E. Church and a little later he gave evidence of a call to the ministry.

He spent three years in South Western College at Winfield, Kansas, in preparation for the work. Later having received a call from the Congregational Church at Haven, Kansas. He united with the Congregational body and held pastorates at Haven, Kans., Argentine, Kans., GreenRidge, Mo., Almeno, Kans., Wakefield, Kans., Doby Springs, Okla., Hurley, Tex., Kingfisher, Okla., and Hennessy, Okla. Rev. Wattenbarger was profoundly religious and was characterized as a minister by a religious fever which made him zealous in the work of the Kingdom.

The greatest revival the Pleasant Grove U. B. Church near Haven and Burrton, Kans., ever had was held by Rev. Wattenbarger and Rev. G. W. Morgan. This meeting lasted eight weeks.

He is survived by his wife and companion, three children as mentioned above, four sisters, Mrs. Mary A. Morrow, Kansas City, Mo., Mrs. Maretha M. Ripers, Alameda, Calif., Mrs. Sachel L. Moody, Nowata, Okla., Mrs. Sarah M. Taylor, Carthage, Mo., other relatives and many friends here and elsewhere. Relatives and friends mourn his death. But cherish the memory of a good life.

"Servant of God, well done thy glorious welfare passed the battle fought the victory won and thou art crowned at last." And I heard a voice from heaven saying unto me, write, Blessed are the dead which die in the Lord from henceforth: yea, saith the Spirit that they may rest from their labours and their works do follow them. Rev. 14: 13.

Funeral services were conducted in the Presbyterian Church, Burrton, Kansas. By Rev. C. U. Priddle, West-side United Brethren church, Wichita, Kans. on the afternoon of March 13 and interment was made in Burrton cemetery.

Notice To Land Owners of Bailey County

Having your corners established, by your County engineer, may later save you time, trouble and money. See or write F. H. Matthews county engineer. 5-6-7.

Blacksmith Announcement

I have opened a Blacksmith shop at Progress, wood work and blacksmithing. All work guaranteed, satisfaction or money back. O. S. Petrie.

The Home Paper As a Reader Sees It

It is hard to estimate the value of a good local paper to the community. It boosts early and late. It radiates joy and sunshine. It preaches in season and out of season, the gospel of progress. It heralds to the world good things, real and imaginary of the community. It magnifies the virtues of its townspeople and community folks, and minimizes their faults. It is the community's elixir its panacea, and its antidote against the community's obnoxious toxicants that tend to undermine and destroy the community.

Instinctively, people judge the town and community, largely by its local paper. If the paper is well edited and well patronized, by the local business concerns, those into whose hands it falls are impressed with the wide-awakeness and up-to-dateness of the town and community.

If you want your local paper well edited you and you and you, which is the community, must get solidly back of your local editor. You must subscribe for the paper. You must advertise in its columns. You must patronize its job department. You must assist your local editor to get all the community news. And you must overlook the little errors the editor occasionally makes.

Remember: Your local editor is neither infallible omnipotent, omnipresent, nor omniscient. Don't expect him to never make a mistake. Don't expect him to have the power to put across every big worthwhile thing for your town and community all by himself. Don't expect him to know all things, and get sore because he failed to tell about your Aunt Susan Snoops getting her corns extracted by Doc. Peelum. Don't expect him to be everywhere at one and the same time.

Just remember that your local editor is human like yourself, and is just as subject to the same human limitations. Therefore, HELP HIM. Help him with your hearty criticism, your hearty-handshakes and encouraging words. Help Him. Give him the school news, the church news, the club news, the lodge news; give him the "doings" of your town and community. Help him! Subscribe liberally for his paper, and patronize liberally his advertisers.

The dear old home paper! I love it more than I can tell. Sometimes it cuts a funny caper, But it tells of Mary, Sal and Nel And all the folks who come and go, And everything that's fine and dandy, And all the things we want to know, From politics to home-made candy, And it's a booster all the time! In fair weather, foul or bad It swears: "This is the finest climate In all the world by-gad."

I wouldn't be without it. No-Siree! It's like a letter from the folks. That's what the home paper is to me. I love its personals and homely jokes. It's editorials always rings true. I love everything about the sheet. That's exactly what I do. Blamed if any other paper has it beat!

I love the old home paper. Not to take it is a crime. Sometimes it cuts a funny taper, But to boost it is sublime! --J. H. S.

Waco Couple Buy Tithing Land Near Here

1919, S. 10th., Street,
Waco, Texas,
3-10-1925.

Mr. R. B. Boyle,
Muleshoe, Texas,
Dear Sir:
Please find enclosed check for one dollar and fifty cents (\$1.50) to pay my subscription to the Journal.

We have bought 320 acres of land some seven miles North of Muleshoe and we want to keep up with the news of that section. It looks like to read the Journal is a good way to keep up with the news. We shall call the farm that we have bought the "Tithing Farm" for every tenth dollar made on that farm will be given to the Muleshoe Baptist church, and the spread of the Gospel to the ends of the earth.

I am a ministerial student in Baylor University, Waco, Texas. I have two good half time churches and have been preaching some thirteen years, Mrs. Gary and I are both for making that country one of the greatest countries on the Plains. We are for every good work to make Muleshoe one of the best places to live.

I am sincerely,
M. A. Gary.

Texas Clean Up Week April 5th to the 11th

The entire state of Texas will set aside the week of April 5th to 11th, as State Clean up campaign. Dr. Matthews our city health officer wants to impress on the public of this city to cooperate on this movement. Let's clean up our town, and go a little stronger, paint up also.

Mrs. D. W. Winn Entertains W. M. U.

The W. M. U. met with Mrs. D. W. Winn, Wednesday in regular meeting. The 8th chapter in Manual of W. M. U. methods was discussed with Rev. Stuart as teacher. Nine members and one visitor were present. The society meets with Mrs. D. A. Dodson next Wednesday March 25 in business and social meeting and we urge that every member be present to draw your capsul. The capsul social is the beginning of something new. Come and get in with us. All new members will be gladly welcomed.

Epworth League Program

Fanny Crosby Memorial Services
Leader Miss Lottie Huke.
Subject: Soul Winning Service in Song.
Scripture Reading 149 Psalm.
Song.
The Life of Fanny Crosby By Mrs. E. R. Hart.
Special Song.
The Power of Sacred Song--- Good Harden.
An Incident that Reveals the Spirit of Fanny Crosby---Beth Mardis.
Reading---By Irene Carles--- "Saved by Grace."
Piano Solo---"Saved by Grace."
Mrs. Carl Elrod.
Song.
Reading: by Bill Elrod, "Blessed Assurance."
Song.
Special Music: Duet By---Iris Harden and Opal Morris.
Reading: "Pass Me Not O Gentle Savior" By Miss McCarty.
Song.
Poem: By Virginia Mae De Bord
Talk: "Eyes in Her Heart," by Ethel Kistler.
Song.
Benediction.

School Trustee Election Notice

Notice is hereby given that on the 4th day of April A. D. 1925 there will be held an election in the several Common and Independent School District of Bailey County for the purpose of electing trustees of the various districts.

There will be held, also, a county wide election for the purpose of selecting a member of the County Board of Education known as "County Trustee At-Large," also, to select members of County Board of Education in Commissioners Precincts 1 and 4. Only voters living in Commissioners Precincts Nos. 1 and 4, will be permitted to vote in the selection of these last two members, but every qualified voter in Bailey County is permitted to vote for the member of the County Board of Education At-Large.

Notice is hereby given that the election boards of the various Common and Independent School Districts shall act in the same capacity in the elections for members of the county board of education.

INSTRUCTION OF SCHOOL BOARDS

Trustees in Common School Districts will select three qualified voters of their respective districts to hold and conduct said election. Trustees in Independent School Districts will appoint three persons who shall be qualified voters in the district to hold and conduct such elections.

TERM OF OFFICE OF TRUSTEES

In Common School Districts vacancies are filled by appointment by the County Board of Education and appointees shall serve only till the next trustee election.

TO WHOM RETURN ARE MADE In Common and Independent School Districts the returns are to be made WITHOUT DELAY to the board of trustees where such elections are held.

ISSUING COMMIONS In Common and Independent districts the local board of trustees will issue to the persons so elected their commissions as trustees and report their actions to the county superintendent, The County Clerk, on behalf of the Commissioner's Court shall issue to the county school trustees their commissions.

SCHOOL CENSUS NOTICE

Notice is hereby given to the census trustees of all Common and Independent School Districts that the scholastic census shall be taken not later than March 31st. Census supplies have been mailed out by the County Superintendent to the various boards and should you fail to receive same come in and get another supply.

Wm. G. Kennedy,
County Superintendent.

Mrs. Bryon Griffith Gives Dinner Party

Mr. and Mrs. Byron Griffith entertained a few of their friends Tuesday evening with a dinner party. The following were present: Misses Lizzie Harden, Verbie Griffith and Reta Lea Dodson and Good Harden, Bernie Griffith and Howard Carlyle, 42 and other games were played.

New lumber yard on tracks above grain elevator. Bennett Mfg. Co.

M. P. Smith Store Has Clearance Sale

The firm of M. P. Smith begins a big clearance sale today, and will continue it until after March 28. The prices of the entire stock is being slashed in order to reduce their large stock. Mr. Smith said: "We offer you the product of America's best manufacturers at low prices you never dreamed or expected to see.

We invite you to pay us a visit for when you see the merchandise and the low price you will be sure to buy and once you have bought you will return again."

On the last day of the sale a Ford Touring car will be given to some one, absolutely free. See his big page ad in this issue and come in at once.

Iowa Newspaper Man Pleased With Journal

Keosauqua, Iowa,
March, 12, 1925.

Mr. R. B. Boyle,
Muleshoe, Texas,
Dear Sir:

I received your bill for the Journal a few days ago and am enclosing herewith check for another year. Somehow I missed the first number under your management and did not know of the sale of the paper until a couple of weeks later. You are making the Journal a mighty newsy paper and think you are doing a fine work in advertising the country.

The writer spent the best 20 years of his life in the newspaper business in this state and so I am much interested in all parts of the paper, any paper, as one has a more critical appreciation of a paper than one who has never been in the game.

I may get down there some time this year and will make it a point to come in for a visit.

Very sincerely yours,
Edwin G. Erler.

Johnson Specialty Shop Stages A Big Sale

Mrs. Johnson said, "Since opening the Specialty Shop, in the Hotel James building, we have enjoyed a fine business. We now have a complete stock of Ladies Ready-to-wear, Millinery, hose, men's clothing, furnishings and shoes for men, women and children, and in order to get acquainted with the people of this trade territory we are staging a 10 day sale. In this issue you will find a quarter page ad giving her announcement. Look it up, read it and come to town today.

Service

"I keep six honest, serving men;
(They taught me All I Know).
Their names are WHAT and WHY
and WHEN,
and HOW and WHERE and WHO"
KIPPLING

WHAT was the Declaration of London?
WHY does the date for Easter vary?
WHEN was the great pyramid of
Cheops built?
HOW can you distinguish a malarial
mosquito?
WHERE is Canberra? Zeebrugge?
WHO was the Millboy of the Slashes?
Are these "ele men" serving you too?
Give them an opportunity by placing

WEBSTER'S NEW INTERNATIONAL DICTIONARY

in your home, school, office, club, library. This "Supreme Authority" in all knowledge offers service, immediate, constant, lasting, trustworthy. Answers all kinds of questions. A century of developing, enlarging, and perfecting under exacting care and highest scholarship insures accuracy, completeness, compactness, authority.

Write for a sample page of the New Words, Lists of Regular and Irregular Verbs, Also "You are the Jury" prices, etc. In signing this publication we will send you a

G. & C. MERRIAM CO.
Springfield, Mass., U.S.A. Est. 1837

Wide Vogue in Print Materials

The sweeping vogue of printed materials, of printed silks most conspicuously, suggested much of the romance that surrounds their making. Long ago, writes a fashion correspondent in the New York Times, as far away in the dim past as silk weaving was first known, its lustrous surface was printed with patterns of various sorts, primitive in the earliest creating, but growing in artistic importance as the handicraft was perfected.

In those early days of hand looms, of wonderful dyes, of long hours and of infinite industry, the designs conceived by artists were blocked by hand, and there was none other than hand-printed silk. It was worn by the nobility and by the peasants, there being between the two the difference of quality only. Later, through the years when other styles have engaged the attention of a fashionable public, printed silk has come and gone in waves. Brocades and embroidered stuffs have had each a vogue from time to time as high lights in luxury.

Prints have seemed somehow to belong especially to the Indian and the Portuguese cottons that are so much used in modern schemes of interior decoration. Occasionally a wandering gypsy wearing a printed square about her shoulders has flashed a hint of its picturesque beauty, and from Paris have been received now and then odd frocks and blouses made of silk of the old-time sarah, or "China silk" type, printed with a Persian pattern.

Last year printed dress silks, crepes and chiffons were introduced as a standard of style, though they were accepted with some caution by the leading couturieres of Paris, and found but a timid audience on this side. This season they have carried over and are to be absolutely the accepted mode.

Replace the Bold Patterns.

With printed silk assured of an established vogue, both the designs and the colors are new and artistically significant. The sensation of the first presentation of the fabrics was, of course, the Prints Ferroniere, inspired by "The Ironmaster," Brandt, designer of the famous doors of the Verdun Memorial monument, reflecting the modern art spirit as it is translated into silk. To speak in the language of silk merchants, these prints, the importance of which grows in appreciation, emphasize, in their composition, motifs in the graceful "tendrill" and "coquette" in the delicate tracery of large patterns.

Brilliant and warm as the original design, they have an added beauty of warmth and color and are developed in the "Camalon" color principle of the season and in the dominant color schemes. A startling bit of this type, in illustration, is a Jacquard tinsel brocade reproducing a Brandt balustrade.

Apart from this sensation in design, fineness and exquisiteness are the characteristics of the latest prints, replacing the bold patterns, motifs and color schemes of last season's styles, which were distinctly Oriental. With this radical difference from past styles, these ideas in design are

is shown in delicately proportioned affairs, echoing the sophistication of the period and the delicate note in the newest prints.

"Another innovation is the border and the scheme in which half the width of the silk is printed in a design wholly different from the other half. This difference is effected quite subtly by a variation in the background, one-half being done on a dark ground, the other half, in the exact design, being printed on a lighter ground. Occasionally an eccentric is shown, such as a geometric print, having vertical lines in one half of the goods and slanting lines in the



Coat in White Kasha Cloth, Plaid in Greens, Browns, Reds.

other. These are especially clever in their adaptable possibilities, for they may be used in a variety of ways in dress designing and in trimmings."

An Array of Designs.

Variants in design are almost without limit. The time-honored and well-beloved polka dot is presented in entirely new arrangement. It is never, in the new silks, printed in regular spaces as heretofore, but is done with unusual flexibility and originality of pattern. There are prints having three tiers of dots in successively increasing size, and those in which open and solid dots are combined. There are octagonal dots, regular plaids formed of very large dots and dots so placed as to form a border.

Another style of printed silk has a name traceable to the Grand Prix ball in the other side, very showily illustrated by the picturesque name of "El Garoon." This is a flashy pattern in which the Spanish influence is apparent, in yellow, red and the copper tones. Much is due to the inspiration had from Spain in both design and color in these most decorative prints. Some of the most swagger have an ivory ground in which is drawn a sort of cubist floral conception in yellow, brown and maroon.

Patterns showing all-over tiny figures are in reality produced from a design originally bold and swinging. All of these printed in one color on half the width of the fabric, in another color on the other half, offer the most intriguing possibilities to an ingenious couturiere, for the architecture of a gown may thus be varied in many ways. Almost all of these patterns in color are printed on a "blond" or "rose" ground.

Many Colors Are Used.

In contrast to the reds and browns and yellows, with a perfect craze for red in all of its possible shades, some exceptionally beautiful silks are shown in pervenche blue, the design usually traced on a lighter ground, which presents it sharply. This blue is especially successful in the wash silks, and in the printed patterns shares the popularity of copper red, tomato red and the cyclamen pink.

Modistes and smart shops predict a "red" season, introducing many shades and sorts of red and endless combinations on a "blond" background. "Toile de Sote Cinderella" is the name of a different weave that is printed in many artistic designs, generally of floral type, a charming fabric for elaborate afternoon and evening gowns, suitable for late spring or summer.

A ribbed silk shown both plain and printed bears the original names "Cote Dolphin" and "Cote Triton." The novelty, beauty and artistic significance of these printed silks are absorbing, for the moment, the attention of the Paris creators and among the best style designers in this country. And it has become known that while they are of French authorship, originally, they have been adopted by American skill as now presented to the world of fashion and are an altogether American product which the Parisians are themselves taking over.

LACE FLOUNCED DANCE FROCKS; FLOWERS AND MORE TRIMMING

WHEN sweet sixteen is clad in a lace flounced frock, she is ready for dance, party—and conquests. Of course the gown itself must be of silk in lovely pastel color. For the dress shown in the picture, shimmering taffeta was selected, two-toning from delicate periwinkle blue to soft rose. Youth's lithe figure yields so gracefully to slightly fitted bodice and bouf-

lery shops in your vicinity or study the "latest news from Paris" and be convinced. Even the erstwhile prim tailored felt hat has succumbed to the lure of flowers. Early showings partake largely of exquisite pastel colored felts with a gorgeous rose or two positioned at just the most effective angle, or, maybe, clusters of violets. The model shown at the top of the



A Pretty Dance Frock.

fant skirt, no wonder Dame Fashion insists on this naive mode when it comes to evening gowns for young girls.

As to lace, who would be without a lace-trimmed frock this season? At present lace is about the most important word in the modern style vocabulary. Of course there are ways and ways of using lace, a whole book could be written on the subject. For party dresses it ruffles and flounces into airy-fairy effects, just like this picture shows.

In regard to the cunning bouquet of flowers posed so perkily on the shoulder of this silken frock, shoulder bouquets are the popular idea just now. Adorable dance frocks of chiffon are numerous in the spring and summer collections. They are lovely in

group features a milan crown with faille silk brim. Padded morning glories in nature colorings are supplied to the side crown.

Just below to the left is a cunning bonnet whose flower bride under the chin spells youth in all its coquettish loveliness. The shape itself is smothered in multi-colored rose petals.

The ruche of blues forming a semi-brim is something new and interesting, as shown on the lovable little chapeau to the right. Blues in all the effectiveness of their brilliant blue coloring entirely cover the tall cap-like crown.

The prevailing color of the flowers spread so flatly over the crown-surface of the hat below to the left is purple, for purple and its allied mauves, heliotropes and lavenders, is one of the featured colors for this season. The



Group of New Hats.

their flower colorings or in flesh pink or biscuit shade, these delicate tints being great favorites. Of course these transparent gowns are beautified with billows upon billows of lace. Sometimes myriads of tiny ruffles flutter gayly around and around the skirt. Again, in harmony with fashion's latest whim, deep circular flares veil the chiffon, producing in this way a pronounced fullness.

The flower-trimmed hat is coming into its own, in fact, it has "arrived." Make a tour of leading mil-

linery shops in your vicinity or study the "latest news from Paris" and be convinced. Even the erstwhile prim tailored felt hat has succumbed to the lure of flowers. Early showings partake largely of exquisite pastel colored felts with a gorgeous rose or two positioned at just the most effective angle, or, maybe, clusters of violets. The model shown at the top of the

group features a milan crown with faille silk brim. Padded morning glories in nature colorings are supplied to the side crown. Just below to the left is a cunning bonnet whose flower bride under the chin spells youth in all its coquettish loveliness. The shape itself is smothered in multi-colored rose petals. The ruche of blues forming a semi-brim is something new and interesting, as shown on the lovable little chapeau to the right. Blues in all the effectiveness of their brilliant blue coloring entirely cover the tall cap-like crown. The prevailing color of the flowers spread so flatly over the crown-surface of the hat below to the left is purple, for purple and its allied mauves, heliotropes and lavenders, is one of the featured colors for this season. The

transparent wing-like effect carries out the new idea of surmounting the very summit of the crown with trimming.

Coquetry is written in every line of the saucy little Ninche shape shown last in this collection of advance models. Covered with flowers in this cunning model, with the exception of a border of plaided silk, which is formed of the same ribbon as the huge moure bow which fills in the space at the back of the upturned brim.

JULIA BOTTOMLEY.

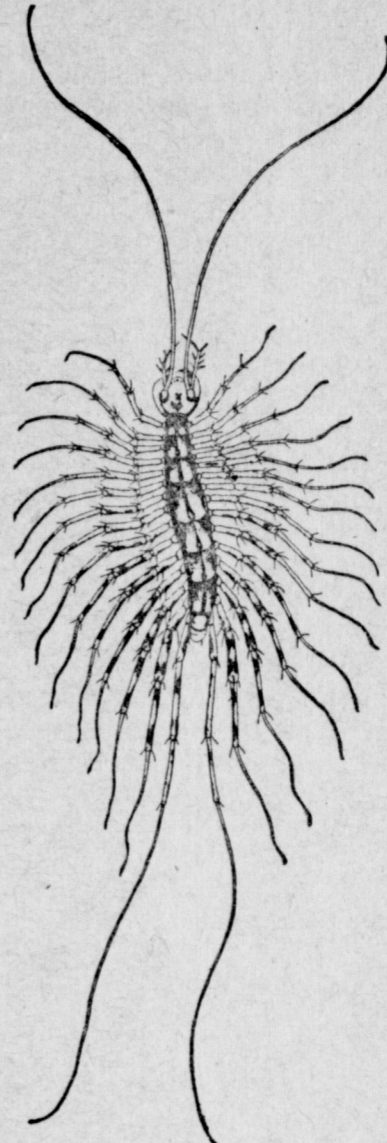
(© 1925 Western Newspaper Union.)

INSECTS DESTROYED BY HOUSE CENTIPEDE

Looked Upon as Aid in Keeping Pests in Check.

(Prepared by the United States Department of Agriculture.)

The house centipede, which is not a true insect, but a species of Myriapoda, or "thousand legs," is a creature of the damp, and sometimes becomes amazingly abundant in bathrooms, moist closets, cellars, conservatories, and near heating pipes. While its appearance and rapid, darting movements make it quite alarming to many people, it is really very cleanly in its habits, and aids in keeping down the number of such pests as house flies, roaches, moths, and other insects. Very few cases are recorded of these centipedes having bitten any human being. If pressed with the bare foot



A House Centipede.

or hand, or if caught between sheets in beds, they might bite in self-defense, as would almost any other insect. The few cases on record where this has happened indicate that severe swelling and pain may result from the poison injected. Prompt dressing of the wound with ammonia is recommended.

Were it not for its unpleasant appearance and the rather poisonous nature of its bite, the house centipede might be looked on as an aid in keeping other pests in check. To control it, all individuals that are seen should be destroyed. All moist places where centipedes would naturally hide should be frequently inspected and dusted freely with fresh pyrethrum powder.

CHOOSING BEDDING QUITE IMPORTANT

Pride of Careful Housekeeper and Is Essential.

(Prepared by the United States Department of Agriculture.)

Good bedding is not only the pride of all careful housekeepers, but an essential part of a comfortable bed. It should include, says the United States Department of Agriculture, a light-weight mattress pad, sheets, pillowcases, blankets, a comfortable and a simple, washable spread.

A washable mattress pad, which may be bought ready-made, or made at home of muslin and cotton batting, not only protects the mattress, but improves the smoothness of the bed under the lower sheet. An old light-colored quilt or cotton blanket may be used for the purpose.

The quality of the sheets and pillowcases depends on the amount one wishes to invest in them. Considering only the materials and time used, ready-made sheets and pillowcases are often more economical than those made at home, but the latter have the great advantage of being made to fit a particular bed. Both sheeting and pillowcases come in various widths, and the latter is also woven in tubular form so that no side seam is needed. Sheets should be from 24 to 36 inches wider and longer than the mattress, so that the ends and sides can be generously tucked in and the top of the upper sheet turned down to keep the blankets clean. The hem at the top of the sheet should be at least 2 1/2 inches, and at the bottom from 3/4 to 1 inch. Machine hemstitching makes a pretty finish for the pillowcases and the wider hem of a sheet, and in many communities is done for a small charge per yard.

Blankets containing a large proportion of good quality wool which has been heavily napped are generally considered more comfortable and also most satisfactory if given the proper care. Many reliable manufacturers state the percentage of wool on the card attached to the blanket. Cotton blankets are now made so that when new they are as warm as wool, and they are much less expensive. They tend, however, to become matted with wear and washing, which renders them less warm. Many power laundries can make them fluffy again, but this wears out the foundation fabric. Blankets without colored borders generally keep their shape better than those with them, and also there is no risk of color fading or running, but if one likes the touch of color, it is best to make sure that the border is of the same quality of wool as the rest of the blanket.

Comfortables are frequently needed during very cold weather. Both cotton and wool batting are used as the filling in comfortables, and though more expensive than cotton, wool is warmer in proportion to the weight, and easier to clean. Either kind of comfortable may be bought covered with cheesecloth ready for the outer cover of any pretty lightweight material. Comfortables may also be bought ready-made.

Striped dimity bedspreads with pillow shams to match are dainty, easy to launder, durable, and not expensive. Marseilles, crochet, and other specialty woven materials are also used for counterpanes or spreads. If possible, it is well to have two spreads for each bed, so that they may be changed frequently.

DAILY CLEANING FOR PLUMBING FIXTURES



Farm Woman at Work in Improved Kitchen.

(Prepared by the United States Department of Agriculture.)

All bathroom and sink fixtures should be cleaned daily, the United States Department of Agriculture reminds the housekeeper in a new Farmers' Bulletin, 1426, Farm Plumbing, in which directions are given not only for the care of plumbing but for its installation on a simple scale in rural homes.

No sharp or pointed utensil, sandpaper, coarse, gritty powder, scouring soap, oil, acid, or acid preparation should be used because they tend to injure the thin shiny glaze, literally the skin of enamel and vitreous wares. The treatment should be much the same as with table crockery, relying mainly on soap and hot water. As needed a very fine specially prepared cleaning powder costing 25 cents for one-pound cans may be used to remove grime and stains. A small quantity of the powder should be sifted on a damp cloth and the fixture be wiped out or lightly scoured, and rinsed with clean, warm water. A little kerosene on a cloth is sometimes used to remove paint and grease. Soap, water, and a brush are sufficient ordinarily for cleaning water closets. If a vitreous bowl has become badly incrustated, discolored, and foul smelling, a small quantity of chemical closet cleaner may be sifted into the water in the trap, be allowed to stand several hours and then be flushed away.



Black Felt Crepe With Printed Design in Red and White.

presented in models from the best authorities in Paris. They are from those creators who knew well the origin, the ideal and the adaptation of the frock built of printed silk.

To quote from an authority: "Plaids supplant the travers. Geometric designs with dotted effects take the place of large Oriental motifs. An interesting new technique, the 'Gravure,' influences several groups of prints. Three-tiered effects, borders and stripes are very popular. Bold plaids with squares of large octagonals and dots and those in cross-stitch patterns are among the striking novelties. The trend toward the Directoire, illustrated in striped silks—'rayures,' as the importers call them—

Modern Shoe Shop

G. E. ODELL, Prop.
Next Door to Gupton Grocery Store
Shoe Repairing,
Light Harness Work
Auto Curtains Repaired

O. N. Robinson

General Farm Auctioneer
Muleshoe, Texas

American Cafe

J. W. HIGGINBOTHAM Proprietor

Regular Dinners

—AND—

Suppers

Short Orders

Located First Door North of City Bakery

Mick & Reeves Auctioneers

We Sell Everything Make a Specialty of Farm Sales
Phone to Dimmitt, Texas Write Us at Muleshoe, Texas

The City Dray Line

GOOD HARDEN, Owner
We do all kinds of hauling
No job to large or small for us
Get Me at PANHANDLE LUMBER CO.

Quality Lumber

All Kinds of Building Material

Good Lumber at Economy Prices

Whaley Lumber Company

TOM BRYSON, Mgr.
Paints Windmills Hardware

The Muleshoe Journal
R. B. Boyle Editor.
\$1.50 a Year in Advance

NOTICE

Notice is hereby given that on the 3rd and 4th of April there will be held examinations for teachers certificate.

Wm. G. Kennedy,
County Superintendent.

International Bible Students League

Mr. H. H. Dingus, of Brooklyn New York, will deliver a free lecture at Hurley, Texas on March the 23rd at eight thirty p. m. Subject Millions Now Living Will Never Die. The public is cordially invited to attend, there will be no collections everything is free.
Mrs. A. J. Scott.

New Subscribers

The following readers have renewed or subscribed to the Journal this week: Olif Ostguler of Donnybrook, N. Dak., Wm Robson of Westmoreland, Kan., Chas. Pooch, Livermore, Iowa., M. J. Bashara, Wichita Falls, R. C. Panter, Dorchester, Neb., E. C. Pribolte, G. Knrz of Hurley Jesse Hetrick, Attica, Ind., J. La Boyteaux, W. S. Wisheart, E. S. Wisheart all of Millville, Ind.

Rev. J. D. Farmer moved into the new Methodist parsonage Wednesday. Brother Farmer comes to the Plains from Mason county.

Johnson Barber SHOP

W. D. JOHNSON, Prop.

LAUNDRY AGENCY

The Basket Leaves Monday and Returns on Wednesday

Strictly Union

A. R. Matthews M. D.

Physician and Surgeon
Muleshoe, Texas

John V. Guyton M. D.

Physician and Surgeon
Surgery a Specialty

STATE OF TEXAS, Bailey County.

We, the undersigned Jury of Freeholders, citizens of said Bailey County, Texas, duly appointed by the Commissioners' Court of Bailey County, Texas, at its February 28th term, 1925, to view and establish a First class Road from and to the points hereinafter described and having been duly sworn as the law directs, hereby give notice that we will, on the 13th day of April 1925, assemble at beginning point of said road and thence proceed to survey, locate, view, mark out and establish said road beginning at the common corner of Sections Nos. 142 and 143 in Block "A," and Sections Nos. 9 and 10 in Block "B" all in the Melvin, Blum & Blum Surveys; Thence South on the Section line between Sections Nos. 9 and 10; 22 and 23; 35 and 36; 48 and 49; 61 and 62; 74 and 75; 87 and 88 all in Block B to the Block line between Block "B" and Block "C" at a point where it intersects the Section line between Sections Nos. 9 and 10 in Block "C"; Thence West 1 mile to the Section line between Sections Nos. 8 and 9 in Block "C"; Thence South on the Section line between Sections Nos. 8 and 9; 34 and 35; 47 and 48, all in Block "C," Melvin, Blum & Blum, and ending at a point where said Section line ends at a point on the North line of League No. 161, Presidio County School Lands.

And we do hereby notify C. P. Mettel, A. A. Lumpkin, Henry Bradley, Fred A. Coplin, Dora Fernald, J. G. Morrison, J. K. Schreiber, Charles Pooch, G. E. McCelvey, A. X. Erickson, C. O. Munson, Lizzie Bannitt and any and all persons owning lands through which said road may run, that we will at the same time proceed to assess the damages incidental to the opening and establishing of said road when they may either in person or by agent or attorney, present to us a written statement of the amount of damages, if any claimed by them.

Witness our hands, this 16th day of March A. D. 1925,
T. G. Gaddy, P. B. Grissom, K. H. Green, P. A. Bayless, Jurors of view. 5-6-7-8

See F. H. Matthews about wiring, plumbing and concrete work. 5-6-7-c

Direct from mill to user lumber at a big saving. Bennett Mfg., Co.

Church Directory BAPTIST

Worship and preaching 1st and 3rd Sundays in each month 11 a. m. and 8 p. m.
Business meeting Wednesday 8 p. m. after first Sunday.
Sabbath School every Sunday at 10 a. m. Ray Griffiths Supt., B. Y. P. U. 7 p. m. Miss Lane Pres.
Prayer Meeting every Wednesday 8 p. m.
W. M. U. every Wednesday 3:30 p. m. Mrs. Ray Griffith Pres.
C. D. Gupton, Treasurer.
Taylor White, Clerk.
A place of worship for every member of the family.
W. L. Stewart, Pastor.

You are invited to attend the Epworth League Sunday at the Methodist church.

Send Your

Abstract Work

—To The—

Muleshoe Abstract Company

A. P. STONE, Prop.
Muleshoe, Texas
Agent for Warren Addition

Mrs. L. B. Baird, of Amarillo, is here this week, the guest of her brother, L. S. Barron.

R. J. Klump is building an addition to his home in our city.

Let us have your country produce, top prices at all times. G. W. Sollock.

Mesdames L. S. Barron and Ray Griffiths were in Clovis, Saturday.

FOR SALE—Fruit trees, roses, Evergreens, shade trees, Ever-bearing straw berries, budded paper shell pecans trees. Parker Bros. Narsery Co., Fayetteville, Ark. H. C. Garland, Agt., Gupton Hotel, Muleshoe, Texas, Phone No. 5.

We have an expert mechanic at your service. White Front Garage

See F. H. Matthews about wiring, plumbing and concrete work. 5-6-7-c

Mrs. W. T. Stewart is on the sick list this week, but was reported improving.

Mr. J. O. Morgan, of Tolbert, Texas, has been over this week making some improvements on a place he owns near Muleshoe.

Buy from us and save middle mans profit. Bennett Mfg., Co.

Save money on your lumber. Bennett Mfg., Co.

Hotel James

GOOD BEDS

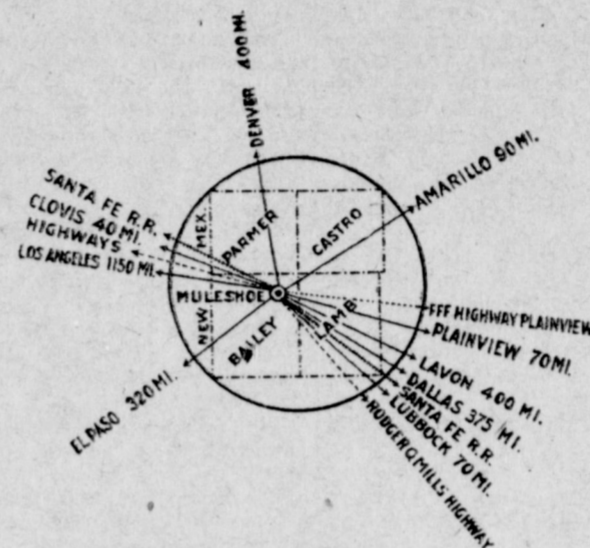
MECCA CAFE
in
Connection

JAMES JOHNSON, Prop.

Did you know that 90 percent of the CROSS EYES Can be straightened by the scientific fitting of Glasses and that no operation is necessary?

See C. E. WORRELL, Eyesight Specialist
Lyceum Theatre Bldg. Clovis

This is The First Opportunity That You Have Had to Purchase a Home on a 10 or 20 acre Tract of Land



We offer these small tracts just four miles from town on the main highway, excellent shallow water irrigation land. Priced exceptionally low. Terms if desired. We invite your inspection.

Phone, Come or Write

R. L. Brown, Muleshoe, Texas

Nothing Makes a Better Showing Than A Building Well Painted

It not only makes your buildings look better, but it gives them much longer wear. We have all colors for all purposes,—buildings, fences, vehicles and implements. Let us help you with all your improvements. We might have an idea that would be of value to you.

Panhandle Lumber Co.

Our Aim: Courtesy, Quality, Service
Visit Our Hardware and Furniture Departments

BEST Farms Prices Terms

Bargains in city property

Faulkner & Vance

Dr. A. E. Ricker, of Dallas, Supt., of the Congregational churches of the Southwest was in Muleshoe Thursday the guest of Mr. and Mrs. C. C. Mardis.

Last Thursday afternoon Misses Reta Lea Dodson, Verbie Griffith and Good Harden and Bennie Griffith enjoyed a theatre party at Clovis.

on the other hand, it may be when the count of Monte Cristo cried "The world is mine!" he had merely mastered a cross-word puzzle.

With the radio bringing the continents within earshot of one another, the golden age of Volapuk, Ido and Esperanto dawns now if ever.

They took the crookedest letter in the alphabet, says a cynic, to make the dollar sign. That's nothing—the straightest letter is the pronoun "I."

Chicago is to have the largest and tallest hotel in the world, but there is no assurance thus far that its chefs will know how to make potato soup.

Anyone who has been able to figure out what the futurist painter is driving at should experience no difficulty to speak of with a cross-word puzzle.

If as much time were given to public affairs as is now devoted to cross-word puzzles there would no longer be any need of worrying about the future.

Well, if a doctor is right in his warning to housewives that dusting is a menace to health, that seems to be the handwriting on the top of the piano.

It would be just like the builders of this new pullman car designed especially for transportation of federal prisoners to name it Utopia or Honey-suckle.

Methodist Missionary Society Met at Parsonage

The Womans Missionary Society of the Methodist Church met at the new parsonage Wednesday to welcome the coming of the pastor and family and to complete the furnishing of the parsonage. Lunch was served at the noon hour by the ladies of the church.

The next meeting will be with Mrs. Roy Elrod, March 25. Everyone is invited to be present as the end of the month is time for the quarterly report.

TOWN VISITORS TUESDAY

Mrs. Fred Harre, Miss Julia Harre, Hon. Curtis Taylor, Mr. Ray "Speeder" Roubinek, Major Edward Lane.

L. R. Poindexter the "Chili King," moved his place of business one lot this side of his old stand.

Fords for rent with or without driver, ballon tires. Call Valley Motor Co.

WANTED—To buy second-hand pair of trousers. Must be cleaned and pressed. Curtis Taylor.

R. B. Hinkle, of Plainview, was a visitor of Miss Reta Lea Dodson, last Friday.

Mr. and Mrs. Chester Layne, and Mr. and Mrs. Crees, motored to Clovis, to enjoy the movie Saturday evening.

For Old Line Insurance

Whether LIFE
SICK and ACCIDENT
FIRE
TORNADO
HAIL
OR RAIN

See **J. E. ALDRIDGE,**
Muleshoe, Texas.

Or write in care of The Blackwater State Bank.

Dodge Brother's Cars



D. O. SMITH
Muleshoe, Texas

Bailey County Abstract Company

Established in 1900

L. S. Barron, Mgr. Muleshoe, Texas

Abstracts, Loans, Conveyancing and Insurance.
All matters pertaining to land titles given prompt attention

When Requested, Land Rendered for Taxation for Non-Residents.

[Member Texas Abstracters Association; also Member Association of Title Men]

C. C. Mardis, President W. G. Kennedy, Vice-Pres
L. S. Barron, Secretary-Treasurer
—NO. 3943—

Muleshoe National Farm Loan Association

The Best Thing Ever Organized for the Farmer

DIRECTORS LOAN COMMITTEE
C. C. Mardis I. W. Harden
W. G. Kennedy S. E. Morris
S. E. Morris Hiram Bearden
Hiram Bearden Muleshoe, Texas

TREES! TREES!

Fruit, shade, ornamental, flowering shrubs, vines, roses, etc.

Fruit bearing Trees for the Panhandle-Plains

Peaches, plums, pears, apples, cherries, grapes and all kinds of berries. Many of which have borne 16 years out of the 21 we have been here. Let us select your orchard, out of our sure bearing varieties, that will have ripe fruit from June till frost. Have had 35 years experience, tested over 300 varieties. Now is the time to plant.

Write for Catalogue, or come to the

HEREFORD NURSERY

L. P. Landrum, Mgr. Tel. No. 99 Hereford, Tex.

For ALL KINDS GARDEN and FIELD SEED

ROSWELL SEED COMPANY

Roswell, N. M.

Catalog Mailed on Request
Denia Onion Seed

Mrs. L. D. Griffith, of Plainview, spent the week-end with Mrs. J. H. Johnson.

Mr. Collins is in town today looking over land. He is connected with the Federal Loan Co.

Remember you can get the best of lace and harness leather at G. E. Odell Shoe Shop. 5-6-p

Pressly & Thomas Attorneys-at-Law

General Practice and Probate Law
Interests of Non-resident Clients given Careful Attention

Practice in all Courts
Muleshoe, Texas

Mrs. J. H. Johnson was visiting in Plainview the first of the week.

W. D. Johnson and S. E. Morris returned from Wichita Falls, Tuesday.

R. C. Odell who lives on the Dempester farm East of here bought half interest in G. E. Odell's Shoe Shop.

Dr. W. Guyton was here a few days last week visiting his son Dr. J. B. Guyton also looking at some land.

J. L. Taylor Barber Shop

First Class Work

LAUNDRY AGENCY

The Basket Goes Out on Tuesday and Returns Thursday

Let Us Serve You
Special Attention to Everyone

T. B. Fry Blacksmith Shop

General Blacksmithing

Acetylene Welding

Disc Rolling

Machine Work Done

In Appreciation

Every Bodys Store has grown steadily since it was started and is still advancing in every line. Increased sales have necessitated a large stock of goods and we have just moved to our new location next door to the Rodes Dry Goods Co.; which has been recently overhauled to suit our business.

Our Customers Have Made Our Business

The good people of Bailey and Parmer counties have made a success of Every Bodys Store. Credit is due to these good people for our being able to carry a larger stock, move it to a better and more central location and to a larger store room and in appreciation of the many favors extended we are going to stick to our original policy of giving our customers as much value for every dollar spent with us as it is possible to give. We are now located in the building formerly occupied by A. Wiedmann and we cordially invite all our friends and customers to call on us at our new store, whether they buy or not—we are always glad to see you.

Every Bodys Store

SAM ISENBERG, Proprietor
Clovis, N. M.

Miss Ethel Cunningham is writing insurance for the Peoples Mutual Aid Insurance Company of this city.

M. A. Scott and S. J. Pfrimmer of O'Donnell who are real estate men and have the intention of buying some land here.

EASTER

is
APRIL 12TH

Be sure you
Look Your Best

on that day
When all good dressers meet

ORDER

a suit of

Master Tailored Clothes

NOW!

and be ready to go out on
EASTER—Dressed in the Best



Bill's Tailor Shop

Exclusive Sales Representative

Plant Trees NOW!

And Until Last of March. Liberal Premiums with cash orders.

No Communities and few homes have enough home-grown fruit. Peaches, Plums, Pears, Figs, Nectarines, Pecans, Jujubes, Berries, and other Fruits.

We have new sure-bearing varieties and the old standards.

We will trade trees for land.

In future people will drive twenty or thirty miles to pick their own fruit and pay more than if you took it to them.

Evergreens, Flowering Shrubs, Roses, Hardy Climate-Proof Native Shrubs, and other ornaments.

We Pay Express. Satisfaction Guaranteed. Information given.

The Austin Nursery

F. T. Ramsey & Son

Austin, Texas

Since 1875

Half and Half Cotton Seed Have Arrived

and are going fast

Those that have spoken for seed may call for them at the Bailey County Elevator Co., at Muleshoe any time. To others that wish some of the seed we would suggest that you see either of the parties mentioned below and have your order booked as the supply of this class of seed will be exhausted long before planting time.

Call or write

RAY GRIFFITH or J. E. ALDRIDGE
Muleshoe, Texas

NOTICE

J. E. Rae of Waple Platter Grocery Company of Clovis, will demonstrate **White Swan Coffee** all day

Saturday, March 21st

Paul C. Avery with Iten Biscuit Company of Plainview, will serve **Iten Products** in connection with **White Swan Coffee**.

The public and our customers are invited to be with us on this day.

Saturday, March 21st

C. D. Gupton & Son

For Better Motor Lubrication We Recommend



The highest grade oil in the world

OFFICIAL INSIGNIA OF THE
PENNSYLVANIA GRADE CRUDE OIL ASSOCIATION
Permit No. 151

We have the right grade for your motor or engine

When TIRES
in TUBES
Need of ACCESSORIES
GASOLINE
OIL

Consult Us

We Carry a Complete Stock of Sizes, Balloons,
Cords and Fabrics

Valley Motor Co. Inc.

Home of "Checker Service" Muleshoe, Texas

Mr. Gaede received 500 Rhode Island Red baby chicks one day this week. Herman Haber also received 250. Many people are going to get into the chicken business this spring.

Mr. and Mrs. Mark Ering visited some folks at Plainview last Sunday.

Miss Zula and Bernie Harding, of Farwell, visited friends here the first of the week.

J. D. Thomas, E. H. Hart and wife and Miss Leona Brown were in Plainview, Monday.

Miss Elizabeth McCorkle, of Temple, left Monday for her home after a few days visit with Mr. and Mrs. R. J. Klump.

Misses Jewel Stevens and Jessie O. Carpenter visited in Hereford over Sunday.

H. W. Kistler purchased a Dodge Sedan from D. O. Smith last week.

Mrs. E. J. Vance left Thursday for Bakersfield, California, to bring her sister Mrs. Joe Henderson, here. Her sister is quite ill and will go to a hospital in Lubbock.

We note the tree planting campaign is still taking on interest. If you can't plant now, make sure you do it this fall. Not only in town but all over the territory

Pacos valley.

J. C. Whaley, of Gainsville, and his son-in-law B. C. Beasley are in town this week.

J. W. Sneath, of Amarillo, and G. W. Mills, of Spur, are in our town this week. These men are prospective land buyers near Muleshoe.

McCarty Insurance Agency

Better to have Insurance and not need it---
Than to need Insurance and not have it---

Young People Organize Class Sunday

The Young People of the First Methodist Church, of Muleshoe, Texas, organized their class last Sunday.

Miss Lottie Huke was elected President with Miss Beryle McCarty as Secretary-Treasurer.

We have a new membership committee and also a social committee.

This is a very active crowd of young people and are planning on having many good times together.

We extend an invitation for new members.

Dr. F. W. Dodson DENTIST

Suite 12 Nunn Bldg. Amarillo
Office in Amarillo 24 years
Regular trips to
Muleshoe
Next Visit

April 13 to 18
Inclusive

Cyril I, emperor of Russia, has called a council meeting of grand dukes, but it is doubtful if any of them have sufficient car fare to Paris.

It takes five collars per man per annum to girdle the necks of our males of the species, not counting the brass collars which several millions wear in politics.

Another beautiful thing about patronizing home industry is when your neighbor is making things you buy, he is also getting himself into a condition to buy things you sell.

When a politician uses the term "common people," you know that he alludes to a state of society in which one man is not only as good as another, but a blamed sight better.

Look to The

Bailey County Elevator

--For--

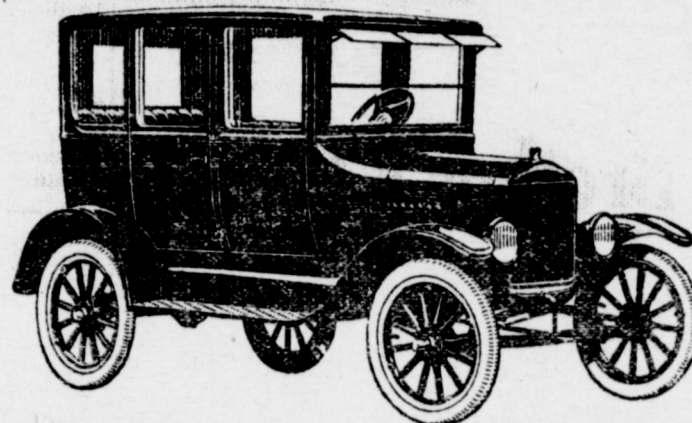
Efficient Service Always

We buy all kinds of grain. Bring it to us.
Pay Market Price at all Times

Ray Griffiths, Mgr.

Muleshoe, Texas

LINCOLN *Ford* FORDSON
CARS · TRUCKS · TRACTORS



Just Received a Car Load

of Fords consisting of Touring Cars, Coupes, and Sedans. If interested come in today

Ask Us For a Demonstration at Once

See us for used cars, or get a new one from us

Green-Hicks Motor Co.

Ten Big Selling Days Opening Saturday March 21st

Ten days of tremendous slashing of prices on the very newest merchandise. Our Complete stock.

LISTEN, GOOD PEOPLE

We feel like there is no use to quote prices as our entire stock of new goods will be sold at cost plus 10 per cent. We have never put on a sale since we have opened for business and we have decided the best way to have a Sale, is to have one right and if you will come visit us, we will prove our statement.



Spring Dresses and Coats

Will have for your approval, 50 New Dresses in prints, solid colors and the New Ensemble Suits.

Many New Hats

We will have scores of New Hats for the Ladies' and Children. Latest Styles and shapes in select colors.



250 PAIR OF FINE SHOES

NOTICE---A representative and expert shoe man from the factory will be here Saturday, March 21st, ONLY, to assist in the showing of 250 pair of brand new style shoes, for Men, Ladies and Children.

Johnson's Specialty Shop
In Hotel James Building

Let your home man print your 1926 Calenders and wall pockets. We have the swellest line now on display ever shown by any house. See them at Journal office.

If you fail to receive your Muleshoe Journal or if your neighbors fail to get theirs, better come in and subscribe again, as we have cut off all readers who are behind with their paper.

Bennett Mfg. Company

Sells lumber and building material direct from their Mills in East Texas to the builders. Save money, buy from us on tracks just above grain elevator

MULESHOE - - TEXAS

NOTICE TO LAND OWNERS

If you want to sell your land I am in a position to help you and will appreciate very much your listings.

I have some good prospective buyers at this time and it may be you have just what they want. So please give me your listings at once.

R. B. Canfield Lands and Loans

Muleshoe, - - - - Texas

See Me For
Best Prices and Terms
on Land

Muleshoe Land Co.

W. G. Panter, Manager

The Numetal Weather Strips

Keep Dust Out



---will stop the cracks around your windows and doors--save one third your fuel--keep out rain and dust and prevent rattle. Installed easy, without removing the window from the frame.

For Old Or New Homes

Call For Demonstration

E. R. Hart Lumber Co.

Means Real Service

Lumber Hardware Tractors

Trees Acclimated

To our customers and friends in the Muleshoe territory come to our Nursery 2 1-2 miles north of Plainview or send your order direct, our Plums, Peaches, Grapes, Apple, cross cherries, etc are varieties that bear, we know the best after 15 yrs of propegating differnt varieties we specialize in. The late blooming kind also our shade and ornamental are hardy and acclimated. You will save money by coming or writing. Catalogue on request.

Plainview Nursery
Plainview Texas.

EXECUTION SALE

State of Texas, County of Bailey, in County Court of Bailey County Texas.

A. L. Harris, Plaintiff

vs:

W. M. Hill, Defendant.

Whereas, by virtue of a writ of attachment issued out of the county court of Bailey county Texas, in a suit filed therein on the 8 day of December A. D. 1924, in which A. L. Harris is plaintiff and W. M. Hill is defendant, I did, on the 20 day of December A. D. 1924, at 3 o'clock, p. m., attach the following described tracts and parcels of land, situated in the county of Bailey, and State of Texas, and belonging to the said W. M. Hill, to wit, being Labors numbered, 1-2-3-4 and 5 in League numbered 188; and Labors numbered, 22-23-24 and 25 in League numbered 189; and Labors numbered, 3-4-5-6-7-8-11-12-13-14-15-16-17-18-19-20-21-22-23-24 and 25, in League numbered 190; and Labors numbered, 1-2-3-4 and 5 in League 191, all of said land being a part of the Ector County school lands situated in said county, and containing 6198.5 acres, and whereas the said plaintiff in said cause did upon the 3rd day of February A. D. 1925 obtain a judgement foreclosing said attachment lien, and execution has been issued thereon, now by virtue of said execution I will offer for sale on the 7th day of April A. D. 1925, the same being the first Tuesday in said month, between the hours of ten o'clock a. m., and four o'clock p. m., and will sell at public auction, for cash, all the right title and interest of the said W. M. Hill in and to said propey.

Dated at Muleshoe, Texas, this the 7th day of March A. D. 1925.
H. A. Douglass, Sheriff of Bailey County Texas. M-4-5-6

SHERIFF SALE

THE STATE OF TEXAS, County of Bailey. BY VIRTUE of a certain execution issued out of the Honorable County Court of Bailey County, on the 12th day of February 1925 by C. C. Mardis clerk of said Court against A. J. Tays for the sum of two hundred-forty-two and 50-100 (\$242.50) dollars and cost of suit, in cause No. 28 in said Court, styled M. F. Loyd versus A. J. Tays and placed in my hands for service, I, H. A. Douglass as Sheriff of Bailey County Texas, did, on the 23rd day of February 1925 levy on certain Real Estate, situated in Bailey County, described as follows, to-wit North one-half of Section 4 Block Z., of the W. D. & F. W. Johnson's Subdivision as shown by the plat of such Block Z., of record in the deeds records of Bailey County, Texas, and levied upon as the property of said A. J. Tays. And on Tuesday, the 7th day of April 1925 at the Court House door of Bailey County, in the Town of Muleshoe Texas, between the hours of ten a. m. and four p. m. I will sell said land at public vendue, for cash, to the highest bidder, as the property of said A. J. Tays by virtue of said levy and said execution and levy.

And in compliance with law, I give this notice by publication, in the English language, once a week for three consecutive weeks immediately preceeding said day of sale, in the Muleshoe Journal a newspaper published in Bailey

County.

WITNESS my hand, this 23rd day of February 1925. H. A. Douglass, Sheriff Bailey County, Texas. M-4-5-6.

For Sale--Fine yellow dent seed corn, bred from the Experiment Station at Lubbock. Plenty on hand. Taylor White 2-3-c

Get your gasoline, oil, Ford parts and accessories at White Front Garage.

Cars of lumber arriving daily. Bennett Mfg., Co.

The Moeller Cafe is now open to serve you. Come early or late.

We want your produce and will pay top prices. G. W. Sollock.

Call 54 if you have a visitor or know of any news.

Get your carbon paper at the Journal office, good grade and a little cheaper.

Parties sending in articles for the paper must sign their names. We do not use the name with the articles but have it for our file.

Our telephone number is 54 use it often. Muleshoe Journal.

City Bakery

KITTY LAYNE, Prop.

Bread, Cakes and
Pies

Baked Every Day

Phone 18 Muleshoe, Texas

There's Big Money In Fruit!

But You Must Have Good Stock!
PLANT PARKER TREES! They'll Grow!

FRUIT is bringing high prices--and we know of farms which were saved because of single fruit crops. There is big money to be made in fruit, YOU can make it with little effort. But you must have good stock, just as you have good stock of cattle.

PLANT PARKER TREES! These trees are grown by us in the famous Ozark Fruit Belt and this mountain-grown stock is most hardy and productive. The word "PARKER" is like "Sterling" on silver--guaranteed true to name and we stand back of everything we sell. Our representative will gladly plan your orchard, suggesting fruits, and giving valuable advice without charge. Truly it will pay you to have an orchard and we'll help you make good money with it. By all means, see our representative, who will give you more information as to our trees, prices, etc., and take your order. SEE--

GARLANG & JOHNSON

At Gupton Hotel, Phone No. 5

REPRESENTING THE

PARKER BROS. NURSERY CO.

THE FAYETTEVILLE NURSERIES

Established 1887

Member American Ass'n. of Nurseries

FAYETTEVILLE, ARK.



SERVICE

Is Our MOTTO

We keep our force large enough to give you real service at all times in every department of our store.

Candies, Drinks, Cigars, Cigarettes, Toilet Goods and Drugs

McCarty Drug Store

Prescriptions, Properly, Prepared

Johnson Brothers Furniture and Undertaking Company

Prompt Service Day or Night
Courteous Treatment and Reasonable Prices

Motor Equipment also
Exclusive Ambulance

Embalmers

Licensed in Texas and New Mexico

Clovis and Portales, N. M.

See Or Write R. F. MOORE

For pure Half and Half Cotton seed, climated to the Plains, makes more per acre, more lint and matures three weeks earlier than any other cotton. Improved by

Summers & Son of Vernon, Texas

R F Moore, Muleshoe, Texas, box 93

MICKIE, THE PRINTER'S DEVIL

By Charles Sughrue
© Western Newspaper Union

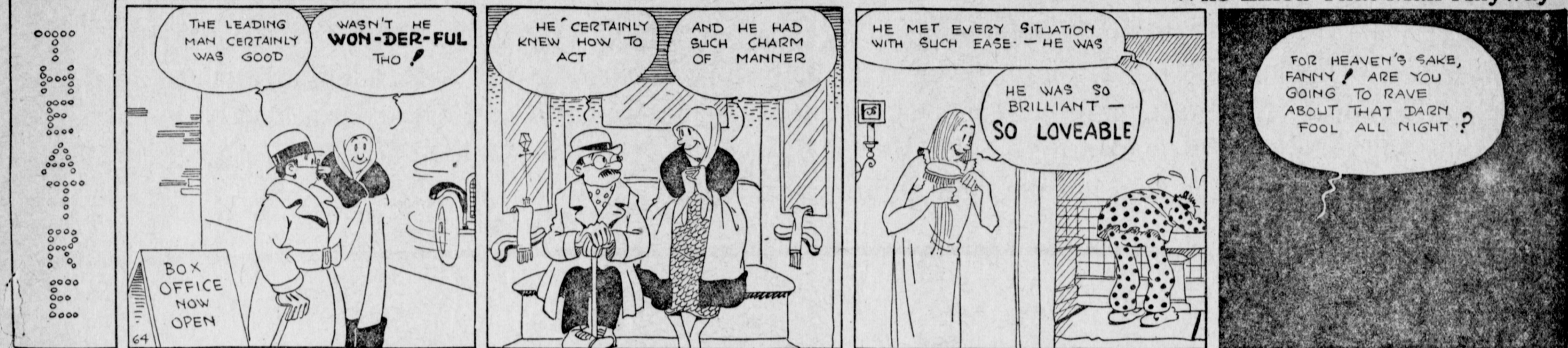
An Obliging Cuss



WHAT'S THE USE

By L. F. Van Zelm
© Western Newspaper Union

Who Liked That Man Anyway

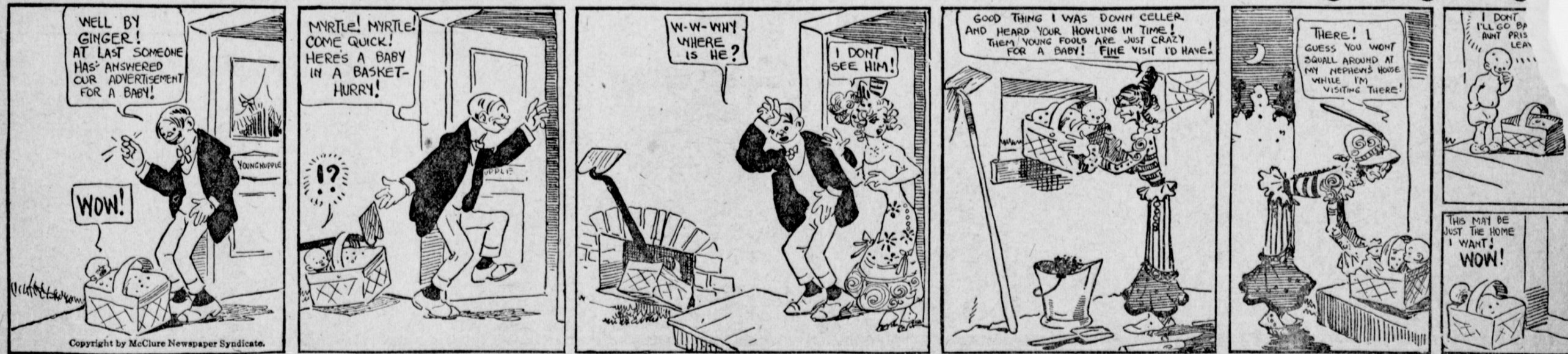


Ether Waves

Our Pet Peeve



HOME WANTED FOR A BABY



The Clancy Kids

Over Timmie's Head



By PERCY L. CROSBY
© by the McClure Newspaper Syndicate



Smith's Gigantic Clearance Sale

Begins Friday, March 20th, and Closes
Saturday March 28th

Our entire stock of Dry Goods and Groceries must be greatly reduced. And our winter Dry Good are placed at your mercy. Our loss will be your gain. Never in the history of our city was such radical reductions placed on new merchandise. We must move the greatest portion of our present stock. New goods are arriving everyday and they will go in this great Clearance Sale. It will pay you to drive many miles and buy liberally at this sale. You not only make a big saving but may get a Ford car FREE.

Ginghams

- One lot of 27 inch gingham, regular price 12 1-2 cents, sale price per yard . . . 8 1-3c
- One lot of 30 inch gingham, regular price 15 cents, sale price per yard . . . 11c
- One lot of 30 inch gingham, regular price 17 1-2 cents, sale price per yard . . . 12 1-2c
- One lot 32 inch gingham, regular price 35 cents, sale price per yard . . . 26c
- 32 inch Toile De Nord Gingham, regular price 35 cents, sale price per yard . . . 31c
- 32 inch Gilbral fine gingham, regular price 60 cents, sale price per yard . . . 53c
- All 25 cent ginghams on sale, per yard . . . 21c

Shirting Goods

- 32 inch Madris, regular price 70 cents sale price per yard . . . 49c
- 36 inch striped shirting, regular price 35 cents, sale price per yard . . . 27c

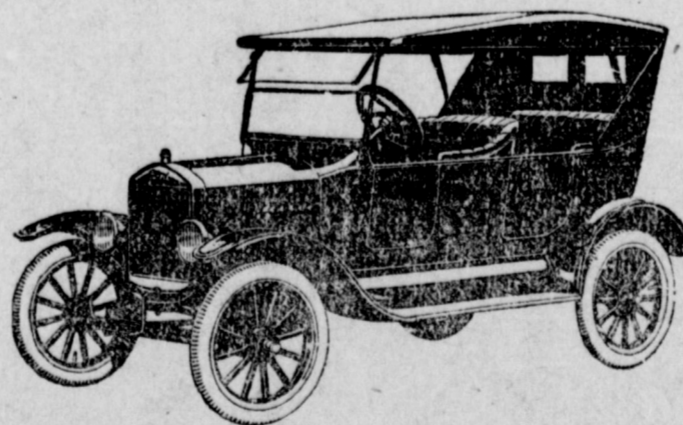
Dress Goods

- ess Linen, assorted colors, specially priced per yard . . . \$1.00
- ndian Head, 36 inch, fast colors, all shades, regular price 60 cents, sale price per yard 51c
- Windsor Crepe, 27 inch, assorted colors, regular price 35 cents, sale price per yard 29c
- Silk checked and figured Voiles, 40 inch width, regular price \$1.40, sale price per yard \$1.15
- Dotted Voiles, 40 inch, assorted colors, regular price 75 cents, sale price per yard 59c



Absolutely FREE
Ford Touring Car
March 28th

Now is the time to get a Ford that will not cost you a cent. With every purchase of merchandise or payment on your account you will get a ticket entitling you to a chance to win the Ford Automobile for every dollar purchased or payment on account or notes.



Staples

- Silk mixed crepe, 40 inch, assorted colors, regular price \$1.75, sale price per yard . . . \$1.35
- Unbleached muslin, regular price 17 1-2 cents, sale price per yard . . . 15c
- Bleached muslin, regular price 25 cents, sale price per yard . . . 19c
- Truth Cambrice regular price 25 cents, sale price per yard . . . 19c
- Chee Foo Pongee, 36 inch, regular price \$1.25, sale price per yard . . . 98c

Ladies' Coats

Our entire stock of Ladies coats, in various sizes and colors, ranging in price from \$72.00 to \$5.00. Choice at \$20 each. Cheaper ones in proportion.

MEN'S OVERCOATS

\$25.00 Coats going at . . . \$16.00

MEN'S HOSE

Mens 20 cent hose for 15 cents Reduced prices on all hose.

WORK CLOTHING

- Regular \$2.00 overalls on sale at . . . \$1.50
- Big Yank, blue work shirts regular price \$1.15 sale price . . . 90c
- Big Yank khaki shirts regular price \$1.25 sale price . . . \$1.00

OUTING FLANEL

36 inch outing flanel, heavy grade, regular price 30 cents, sale price 23c all colors. This price is less than wholesale price today..

LADIES' HOSE

Ladies fiber silk hose, regular price 75 cents, sale price 49c. Reduced prices on all hosiery in stock.

Remember the Sale Starts Friday, March 20th and Closes
Saturday March 28th

20 % Discount
On Shoes

M. P. SMITH
MULESHOE, TEXAS

Everything
Cash