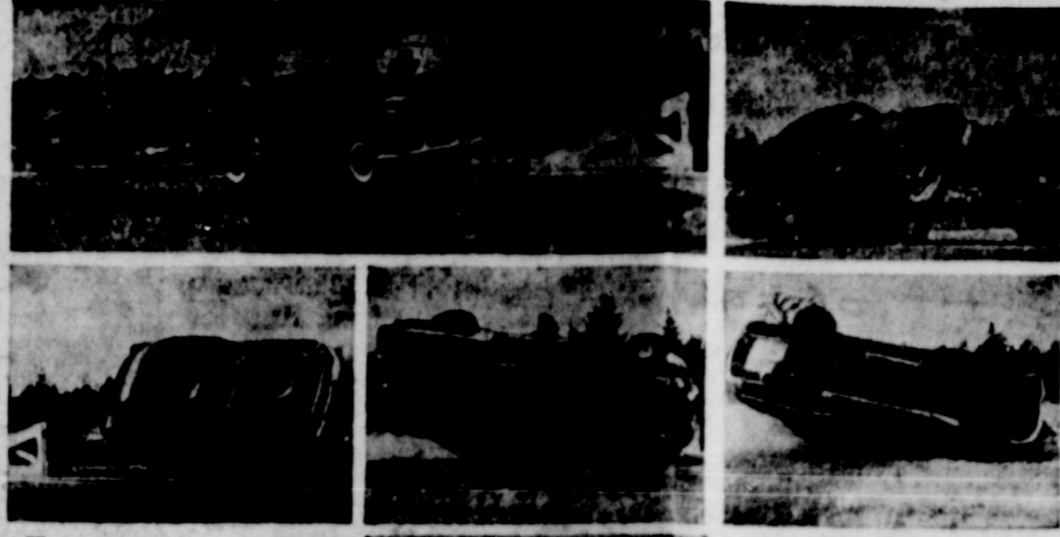


Plant Trees-Shrubs Now Says Expert

Don't wait too long. That's the advice from Sadie Hatfield, extension landscape gardening specialist of Texas A. and M. College...

When you put trees out, it's best to ball and burlap them to keep the roots from drying out.

High Speed Roll-Over Tests Car Body



The accompanying photographs show the culmination of a gruelling series of tests conducted by Fisher Body engineers on a new car body before it is placed in production.

The car was rolled over at 50 miles an hour on a special course at the General Motors Proving Ground. Towed by another car, the test model automatically unlatched itself as it went up and over a ramp, hurtling through the air 40 feet before hitting the ground.

In this test, the car rolled completely over and was driven off under its own power. Not a single pane of the safety plate glass was cracked. The test was made purely as an experiment to see how the new body by Fisher withstood the shock of being turned over at high speed.

Fisher Body engineers made high speed movies of the entire sequence to study in detail how the body resisted the shock.

Cooperatives In Texas Have Good Business In '48

Farm business in Texas chalked up a good year as far as cooperatives were concerned. Texas farmers took advantage of favorable business conditions during 1948 to put a little more money in their cooperative pockets...

COST OF 'HIGH' LIVING BLAMED FOR SHORTAGE

Dallas.—"A man with a wife and two children can't live on the salary of \$4,200 a year," was the excuse offered by a former Dallas county treasurer...

mitted taking the money during 1948 in amounts of \$35 to \$100 at a time. He admitted he spent part of it for "stag parties and liquor."

Wet shoes should never be dried close to a stove. Fast drying of leather makes it shrink, harden or crack open.

WOODY . . . The Builder's Friend SO I'M OLD-FASHIONED! CORRECT LADY! FOLKS WHO LOOK AT YOUR HOUSE SAY YOU ARE! MODERNIZE NOW! WITH THE BEST BUILDING MATERIALS. WILSON & YOUNG LUMBER CO. J. M. WILSON O. W. YOUNG WILLSON & YOUNG LUMBER COMPANY PHONE 12 - SPUR, TEXAS

Farm Record Book Big Aid to Farmers

Keeping farm records isn't a big job. That is, it isn't if you have the Texas Farm Record Book. Did you ever wonder how to avoid the large amount of trouble and work it takes to fill out your income tax return?

how much land, machinery, and farm products you have on hand? The farm record book is the answer to all these questions.

of the assets—in inventory form—located on the farm. The Texas Farm Record Book was designed so it can be adapted to any farm conditions in the state.

YES, THIS MEANS YOU - YOU - AND YOU

Everyone Is Invited to Come to See Our New Location 120 West Harris Street Across From Ramsey's Garage Announcing the New Ferguson Tractor and Farm Implements We have been appointed Sales Representative in Dickens and Kent Counties by the Dealer, C. H. Elliott Company of Paducah, Texas. Reduced Prices on New 1949 Model Cars for Quick Sales 1949 Kaiser Special, only \$2195.00 1949 Ford Custom Station Wagon Below List 1949 Frazer Manhattan, Going at \$2695 Another Bargain in a Used Chev. 2 dr. 1939 \$575.00 Visit Our New Shop For Your Needs Guaranteed Service on all makes of Cars and Tractors. Gene Roberts' work will Stand-up with the best. GREGORY MOTOR CO. 120 West Harris Spur, Texas Phone 465 Gene Roberts, Mechanic Bill Gregory, Owner

Dunlap's SPUR, TEXAS

Pre-Inventory SALE!

Thursday, Friday and Saturday, Jan. 27, 28 and 29

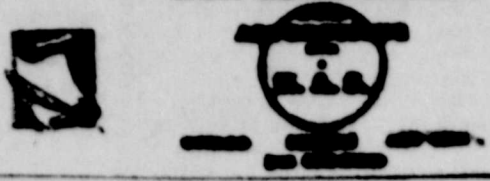
BLANKETS 5% wool, 95% Cotton Blankets in plaids of blue or rose, satin bound. 3.98 (Reg. \$4.49 value) ALL-WOOL BLANKET 100% wool blankets, rayon, satin bound and boxed, colors maize, peach, rose and white, size 72x84. 6.95 (Reg. \$9.95 value) 50% WOOL, 50% COTTON BLANKETS Satin bound and boxed, in colors of green, aqua, rose, blue and wine. 5.95 (Reg. \$7.95 value) DOUBLE BLANKETS Fine quality all cotton blankets in plaids of blue, pink. Size 60x80. 1.98 (Reg. \$2.98 value) COTTON SHEET BLANKETS Heavy napped, white sheet blankets, size 70x90. 1.49 (Reg. \$1.98) OUTING Good quality, fast colors, blue or white. 19C (Reg. 50c. yd.) YARN All wool yarn and cotton yarn, special 1-2 PRICE BED SPREADS Sorry we cannot advertise the name of this spread. They are slightly irregular spreads, by well-known manufacturer, normally sell from \$8.95 to \$10.95. Comes in colors of rose, tan, blue, green and slate. All one price, during our Pre-Inventory sale 5.95 COTTON PRINTS 36 inch prints in a wide variety of patterns. 29C (35c value, yd.) NYLON HOSE 51-gauge, 15 denier hose in beautiful colors of cinnamon, autumn dusk, smoke cloud, brown toast. These are slightly irregulars which were made to sell for \$1.95 98C LADIES BLOUSES Ladies cotton blouses with short sleeves. Printed, solids and plaid patterns. 1.69 (Size 32 to 40) LADIES DRESSES 85 ladies dresses in crepes, gabardines, wools and failles. 1-2 PRICE (Value is \$34.95) COSTUME JEWELRY Large assortment, ear screws, necklaces, compacts, scatter pins, etc. 59C PLUS TAX (Regular to \$2.98) FOUNDATION GARMENTS One group of ladies brassieres, garter belts and corsets. 1.00 (Regular to \$2.98, your choice) LADIES PANTIES Tuck-stitch panties in tearose. Sizes small, medium and large. 19C (Regular 50c value) LADIES UNIONS Ladies slip unions in white. Sizes small, medium and large. 69C (Regular \$1.29 value) LADIES SHOES Two tables of ladies shoes in suede, calf and kid. High, low and medium heels. 2.00 (Regular to \$12.95, special) LADIES SLIPPERS One table ladies house shoes. Broken sizes 1.00 (Value to \$3.95) MEN'S SHORTS Broadcloth shorts, gripper fasteners, sizes 30 to 44. 49C (Reg. 60c value) MEN'S DRESS HATS Men's fur felt dress hats, large selection of size and color. 2.98 (Reg. \$5.00 and \$6.95 values) MEN'S KHAKI PANTS SHIRTS Type 1 army twill shirts and pants, good size selection. 3.98 (Pants 3.69, Shirts) LEE RIDERS AND LEVIS 26 - 36 sizes 3.45 BLUE OVERALLS 8-oz. denim mastercut blue overalls. 2.69 (Girth 25 to 30)

OFFICIAL PUBLICATION FOR COUNTY OF DICKENS AND CITY OF SPUR

TEXAS THE SPUR

Dickens News and Dickens County Times Absorbed by Purchase Published Weekly on Thursdays at Spur, Dickens County, Texas. Offices and Printing Plant Located at 424 North Burlington Avenue, Opposite the U. S. Post Office. TELEPHONE 128

Willard Jones, Publisher; Joe B. Foster, Editor-Manager; H. Emily Lacey, Bookkeeper



NOTICE: Any erroneous reflection upon the contents...

SUBSCRIPTION RATES: For Year in Advance... in Dickens, Crosby, Mayag, King, Stinsonville, Cottle, Kent, Garza, Floyd, Comanche, \$3.00

VETERANS NEWS

Department of Labor: The study is being used by VA... The next few years will see an increased demand for college graduates...

school official before going on leave. Advance leave is provided only in case of emergency.

Car-Tunes By SPUR MOTOR CO.



"Harry—you simply must take the car in SPUR MOTOR CO. and have the brakes adjusted."

Treasure Hunts Uncover Prized American Silverplate

WHERE'S a new type of treasure hunt sweeping the nation... It all began when The International Silver Company...



Illustrated a century of American silverplate are the new 1937 Rogers Silver patterns above.

Vic Vet says



VETERAN STUDENTS AND TRAINEES NEED NOT REPORT NATIONAL GUARD DRAFT DUTY IN THEIR EARNING STATEMENTS

Legal Notices

NOTICE TO CREDITORS FOR COUNTY REPOSITORY: Notice is hereby given that Dickens County will enter into contract with any banking institution...

Robert (Nig) Emert and G. H. Watson, defendants. A brief statement of the nature of this suit is as follows, to wit: This is a suit to re-establish a debt against Mrs. G. H. Watson...

Dr. W. F. Patrick, OPTOMETRIST, SPUR BANK BUILDING, Phone 499

SPUR MARONIC LODGE No. 1000 Regular Meeting THURSDAY, FEBRUARY 10

William - Puckett Post No. 101 AMERICAN LEGION Meets 2nd and 6th Thurs. Each Month

Ratliff & Conner Lawyers Spur :: Texas

Dr. O. R. Claude, O.D., Optometrist, 100 West 2nd Street, Spur :: Texas

Dr. M. H. Brannon, DENTIST, Office Spur County Bank Building, Phone 50 Spur, Texas

Dr. W. C. Gruben, OPTOMETRIST, Phone 177 Spur, Texas

CAMPBELL'S, AMBULANCE SERVICE, Air Conditioned Coach

With each discovery, other members of the family family reached... A resident of Hill Valley, California, for example, recently reached...

As early as 1847 Rogers was the discoverer of a 13th Century, 6-cup resident, almost was lost by the grandfather to an Indian who...

With Our Churches

CHURCH OF CHRIST: Sunday Services: Bible school, 10:30 a. m. Sermon at 11:00 a. m. Communion at 11:45 a. m. Young People, 6:30 p. m.

Monday

1:00 Ladies Class; 1:00 ictory Bible Class; 1:00 The Hour of Power; 1:00 The Hour of Power; 1:00 The Hour of Power...

THE STATE OF TEXAS

To Robert (Nig) Emert and G. H. Watson, Defendants, Greeting: You are hereby commanded to appear before the Honorable District Court 110th Judicial District of Dickens County...

FOR RENT

Office Floor Sander; Office Edge; Floor Polisher; New Concrete Mixer; Willson - Young Lumber Co. Phone 12

FARM OR RANCH LOANS

We would like to figure with you on farm or ranch loans in Dickens County. We would appreciate any real estate listings you may have.

OSCAR KILLIAN

REAL ESTATE, 212 Conley Bldg., Lubbock

BUSINESS & PROFESSIONAL DIRECTORY SPUR, TEXAS

H. S. Holly Agency: GENERAL INSURANCE, AUTO LOANS, "Cash in 10 Minutes"

SPUR CAFE: Mr. and Mrs. Geo. Lisenby, Owners, PLATE LUNCHES - SHORT ORDERS, SANDWICHES

Chandler Funeral Home: Burial Insurance Plan That Anyone Can Afford, Ambulance Service, Phone 248 Spur, Texas

Spur Trim & Body Shop: SOUTH BURLINGTON, Expert Body & Upholstery Works

Gibson INSURANCE AGENCY: GENERAL INSURANCE, Day Phone 40 - Night Phone 182

66 Service Station: Spur, Texas, WHOLESALE & RETAIL, Open 24 Hours

HILL TOP CAFE: OPEN ALL NIGHTS, Serving the Best in Food, Good Coffee - Tobacco, Cold Drinks

South Panhandle Land Title Company: Abstracts of Titles, Established 1927, Phone 51 or 55, Dickens, Texas

STAR FEED STORE and HATCHERY: ALL KINDS FEED, GRINDING SERVICE, We Buy Produce, PHONE 20

B. & H. STUDIO: Spur, Texas, QUALITY PORTRAITS, COMMERCIAL PRINTING, BODIES FINISHED, All Modern Finishing Equipment

Who gets him off to work? Wakes him up, Tells him the news, Makes his coffee, Shaves his face, Washes his shirt, Presses his pants, and does everything but kiss him good-bye?

West Texas Utilities Company: His wife? ... Sure, she helped a lot—and she kissed him, too! But a co-star in this morning drama is Reddy Kilowatt, your electric servant.

Beware Coughs from Common Colds That HANG ON

Cromulsion relieves promptly because it goes right to the seat of the trouble to help loosen and expel germ laden phlegm and aid nature to soothe and heal raw, tender, inflamed bronchial mucous membranes.

Bethel Baptist Church Program: Rev. Lee Vaughn, Pastor, 10:30 a. m. Sunday School, 11:00 a. m. Preaching, 2:30 p. m. Singing, 3:30 p. m. Training Union, 7:30 p. m. Preaching

Christian Church Schedule: Sunday, 10:00 Bible School, 11:00 The Lord's Supper, 11:25 Bible Message, 7:00 Young People's Meeting, 8:00 Bible Message



HAND-PROOF

YOUR own hand is the first to touch the pouring-cin of the bottle of milk we have on your doorstep. That completely protective Sealright hood, made of specially treated, sterilized paper is sealed on in the dairy at 200° F. and guards your milk against contamination.

FLAINS COOPERATIVE INC. PLAINS GOLD PASTEURIZED MILK, Plainview, Texas

Always Boosting Spur

