



### Infestation Of Grass Hoppers Is Expected In 1949

Grasshopper infestations tend to run in 10-year cycles — and 1949 is the tenth year of the present cycle. There may be as many or more hoppers this year than last — and 1948 was pretty bad. This prediction is made by H. G. Johnston, state grasshopper control leader and head of the Texas A. & M. College department of entomology, on the basis of egg counts made by USDA grasshopper control division workers. Hoppers will begin to hatch in South Texas within the next two weeks, he said. The worst centers of infestation of the differential grasshopper — the big yellow one with chevrons on his legs — will be along the Brazos between Waco and Richmond and along the Trinity as far south as Polk and San Jacinto counties. Scattered infestations are expected along creek bottoms in North Texas as far east as Titus county and west to the West Cross Timbers. A lesser — but still above normal — outbreak of the migratory grasshopper is expected in West Texas, the South Plains and the Panhandle. The differential grasshopper can be controlled by dusting along fence rows and ditches, when

### MISS AMERICA LIKES PICNICS



HOPKINS, MINN. — Beautiful 18-year-old BeBe Shopp has that healthy look that comes from spending lots of time in the fresh air and sunshine. When the weather is nice, Miss America likes to go on picnics and her favorite sandwich is peanut butter and jelly or mayonnaise, an enriched white bread. She makes the sandwich "extra special" by sprinkling finely chopped celery on the peanut butter to get more crispness. "If you like lettuce, too, wrap it separately and add to the sandwich at the picnic," BeBe explains.

the hoppers first hatch, with either 15 pounds of 10 percent chlorthane or 15 pounds of 10 percent chlordane per acre. After the insects move into the fields, control is more difficult. Toxaphene or chlorthane can be used against the migratory grasshopper where there is enough

toxaphene or 15 pounds of 10 percent chlorthane per acre. After foliage to hold the insecticide. In areas of little foliage where the hoppers work on the ground poison bait is necessary. County agents west of the Cross Timbers will again set up poison bran mash mixing plants if the outbreak warrants, Dr. Johnston said.

### Farm Income In State Below '48

Texas farm cash income for February 1949 fell 15 per cent from a year earlier, the University of Texas Bureau of Business Research reported. February marks the sixth consecutive month that farm income has fallen below its year-earlier level. Totalling \$43,594,000, farm income was at the lowest point in February 1949 since March 1942. Marketing of rice, wool, cattle, hogs, poultry, and milk products rose during the 12-month period, but income from other types of farm products was substantially below February a year ago.

Coastal Prairies and Trans-Pecos districts showed increases of 14 and 2 per cent over February 1948, while decreases ranged from 1 per cent in Southern Texas Prairies to 67 per cent in the Lower Rio Grande Valley. Texas farmers received \$9,537,000 from sales of milk products, which was the greatest source of income in February 1949. Sales of cattle amounted to \$8,996,000, and

### GIVE THEM MORE THAN SYMPATHY



### Buy Easter Seals

Easter Seal dollars last year provided more than 20,000 of Texas crippled children with medical care, equipment, rehabilitation, special education and transportation. As Easter day draws near, Texans are asked to buy and use the Easter Seals which they have received through the mail from the Texas Society for Crippled Children or their local Societies.

last half of 1945, represented the period of reconversion from the expanded war production, there has been only cyclical recession in business activity since 1935. It is generally considered that the upswing in business after the large decline of the early thirties began in March 1933, which means that for 16 years the level of business activity has been expanding almost all of the time. All but one of the components of the composite index of Texas business declined in February. Miscellaneous freight carloadings dropped 12 per cent; department and apparel store sales and pay rolls, 4 per cent; crude oil runs to stills, 2 per cent; and employment, a fractional dip. The only component to rise was electric power consumption, which was up 5 per cent. Dr. Stockton said the decline that has been under way since last August has carried three of the components to levels below that of February 1948. Miscellaneous freight carloadings were down 17 per cent from a year ago, and crude runs to stills and department and apparel store sales were down fractionally from February 1948. Electric power consumption and pay rolls were up 11 per cent from a year earlier; and employment, 5 per cent. Retail trade in February showed a substantial rise from the January level, with the Bureau's index rising 4 per cent after adjustment for seasonal variation. It is significant that all of the increase in the index of retail sales was in the sales of durable goods stores increased 12 per cent.

### Easter Toys Set New High



### Pre-Madison Rodeo Slated for Aug. 1

The Pre-Madison Square Garden Dublin Rodeo dates were set for August 31, September 1, 2, and 3 at a meeting of the directors last week. These dates were selected as this again is just before the Worlds Championship Rodeo Corp. departs in their special train for New York for their show in Madison Square Garden. The 1949 show will be four night performances, these being on Wednesday, Thursday, Friday and Saturday nights. Special emphasis will be given to the fact that this is the tenth anniversary of the Dublin Rodeo. Because of this anniversary the directors plan to make the show bigger and better as a celebration of their ten years of existence.

### Texas Business Shows 2% Drop

Continuing the downward trend in February, the index of business activity in Texas dropped 2 per cent from January, after adjustment for seasonal variation, the University of Texas Bureau of Business Research reported. With the exception of a 6-per cent gain in Coastal Prairies, all crop-reporting districts registered sharp declines from January to February. After adjustment for seasonal variation, the Bureau's index of farm cash income fell to 192 per cent of the 1935-39 level in February 1949, the lowest index since July 1942. The index was 211 in January and 234 in February 1948.

### Traffic Deaths Drop 1% In 1949

Traffic deaths dropped one percent in 1948, reaching a total of 32,200 in 1947, but injuries increased eight percent, according to figures released today by The Travelers Insurance Companies. The personal injury total, 1,471,000, was an all-time high. The 1947 figure was 1,365,000. These data are contained in a booklet entitled "The Human Race," fifteenth in an annual series of traffic safety publications issued by the companies.

### Symphony Concert Dates Changed

The Lubbock Symphony Orchestra announces a change of dates for the final concert of the 1948-49 season. Amparo Iturbi, internationally famous pianist and sister of Jose Iturbi with whom she has appeared in many movies, will appear with the Symphony on May 6 and May 7 instead of April 29 and April 30 as was announced last fall. Due to a conflict in booking in England, the Symphony relinquished the earlier dates so Miss Iturbi would be able to finish her dates in that country before flying to Lubbock for her concerts. The change was necessary because Miss Iturbi had

**Easter VALUES**

SHOP GABRIEL'S THIS WEEK-END!

Men's Dress OXFORDS Easter Special 5.00	New Arrivals! Franklin Salyna EYELET DRESSES 25.00
Men's Dress SHIRTS All-Sizes-Solids and Fancies. Reg. 2.98 1.98	<i>Something New! Something Smart!</i>
Boy's T-Shirts Assorted Colors Easter Special 49c	
Men's Work PANTS Reg. 2.98 value 1.98	NATURAL color CASUALS of Genuine WATER BUFFALO ONLY 3.95
Ladies Easter BAGS Leathers, plastic choice colors Value to 4.95 2.98 (plus tax)	
Field Crest Wear Well SHEETS Size 81x99. Reg. 3.29 Easter Special 2.00 (2 to a customer)	Percale Colored SHEETS Size 81x99, Type 140 2.98 Pillow Case to Match 75c

See Our Norge Appliances Before You Buy!

**Gabriel's**

**Look Out!**

DON'T WAIT FOR TROUBLE — TRADE TIRES NOW!

Our big trade-in allowance pays you full price for the unused mileage.

BE SAFE — RIDE WORRY-FREE on new  
**GOODYEAR TIRES**

Motorists who want extra safety, extra wear appreciate the plus-value of new Goodyear. Stronger cord body, more resistant to bruises and blowouts — wider, flatter treads that give longer wear, quicker stops.

Buy the Easy Pay Way — mail down payment and terms as low as **1.25** a week

New tires deserve new tubes — LifeGuards make blowouts harmless.

ALLEN AUTO SUPPLY  
PHONE 14 SPUR, TEXAS

**REAGAN MOTOR CO.**  
PONTIAC SALES AND SERVICE  
Spur, Texas

**LOOK**

- 1 — 1948 Chevrolet Aero, Radiator and Heater \$1795
- 1 — 1940 Dodge 4-door \$495
- 1 — 1938 Ford 2-door \$395
- 1 — 1936 Ford 2-door \$295

All Used Cars Guaranteed!

For Complete Auto Repairs Bring Your Car to Our Shop . . . All Work Guaranteed.

The New '49 **PONTIAC**

**The Most Beautiful Thing on Wheels!**

We are, of course, very proud and happy that people everywhere are calling the new Pontiac "the most beautiful thing on wheels." Pontiac is a brilliantly beautiful automobile — as handsome a car as ever rolled over America's streets and highways.

But Pontiac's real beauty cannot be fully appreciated until you drive the car yourself. For the new Pontiac is beautifully engineered, too — to give you a completely different kind of automobile performance that simply must be experienced in order to be believed.

Pontiac for 1949 offers a totally new kind of ride — a ride as smooth and effortless and comfortable as a car can be. And either of Pontiac's famous engines, six- or eight-cylinder, is a sweetheart for power. Remember, too, Pontiac is the lowest-priced car in the world offering the ease of Hydra-Matic Drive. Available on all models at extra cost.

Take a long look at the next new Pontiac you see — then come in and give the car a really thorough examination. That's the way really to appreciate why people are calling Pontiac "the most beautiful thing on wheels."

**REAGAN MOTOR COMPANY**  
409 N. Burlington Spur, Texas

# No Reason To Wait Until After Easter

BUY NOW DURING THIS

Exciting Before Easter

# CLEAR-A-WAY!

BEGINNING FRIDAY, APRIL 15 - 9 A. M.

You'll Be The Grandest Family In The Easter Parade!



### Ladies Spring Suits and Coats

#### SUITS

Sizes	Color	Reg. Price	Sale Price
14 & 16	1 Blue & 1 Black Sport Suit	39.95	19.95
16	Black Faille	39.95	26.95
14	Navy Wool Crepe	44.95	19.95
11	Beige Gabardine	49.95	29.95
18 & 16	Red Gabardine	49.95	29.95
16	Navy Wool Crepe	59.95	39.95
11	Light Blue Wool	59.95	39.95
9 15 & 16	Aqua Gabardine	69.95	39.95
18	Grey Sharkskin	69.95	39.95
44	Black Gabardine	69.95	39.95
14	Grey Gabardine	79.95	49.95
14	Grey Sharkskin	79.95	59.95
15	Grey Sharkskin	89.95	59.95
16	Navy Gabardine	89.95	59.95
14	Brown Gabardine	98.95	59.95

#### COATS

Sizes	Color	Reg. Price	Sale Price
16	Beige Gabardine	29.95	17.95
16	Grey Gabardine	29.95	17.95
16	Navy Blue Gabardine	29.95	17.95
14, 12 & 10	Light Green Gabardine	29.95	17.95
12	Light Green Suedecloth (shortie)	34.95	19.95
16	Cocoa Crepe	39.95	26.95
10	Grey Gabardine	39.95	26.95
16 12	Blue Gabardine	39.95	26.95
14	Light Green Gabardine	39.95	26.95
18	Light Green Suedecloth (Short Coat)	39.95	26.95
12	Brown & Beige Tweed	49.95	29.95
16	Beige Gabardine	49.95	29.95
16	Tan Gabardine Short Coat	49.95	29.95
16	Grey Wool Crepe	59.95	39.95
14	Beige Tweed	59.95	29.95
13	Red Gabardine	79.95	49.95
16	Navy Gabardine	89.95	49.95

#### MEN'S DRESS HATS

Close-out on a special group of men's dress hats, values to 7.95.

2.99



All Alterations FREE Use our convenient Lay-away plan. A small deposit holds your selection.

50 Ladies Spring and Summer

#### DRESSES

Crepes, Failles and Gabardines. Values up to 44.95

Reduced to one-half price

#### LADIES SLIPS

Ladies Multifilament Rayon Crepe Slips. Lace trimmed. Sizes 32 to 46

Reduced from 3.95 and 5.95

2.99

#### ORGANDY CURTAINS

Ruffled Organdy Priscilla Curtains. 95-inches long, permanent finish.

Reduced from 4.95 to

2.99

#### Boy's Dress SUITS

Suits for the young man at a great savings!

Reduced from 14.95 to 8.90

Reduced from 17.95 to 9.90

Reduced from 19.50 to 11.90

Reduced from 24.00 to 14.90



75 Ladies Spring and Summer

#### DRESSES

Values up to 39.95

Reduced to

6.00

#### IRISH LINEN

Blue, Grey, Aqua, Rose, Orchid, White, Brown, Navy, Black and Red.

Reduced from 2.98 to

1.98

#### MEN'S DRESS SHIRTS

One large table of men's dress shirts, famous nationally advertised brands. Fancies and solids. Sizes 14 to 17, values 3.98, your choice

1.98

Ladies and Children's

#### SHOES

500 pairs of ladies and children's shoes. Ladies black patent and calf, open and closed styles. Children's Roman Sandals, black and white, dress sandals and oxfords and high top shoes. Values to 9.95, only

2.00

#### MEN'S KHAKI SUITS

Men's 8.2 army twill pants and shirts to match. Full cut, sanforized, boatsail drill pockets, seven belt loops. Shirts 6-oz. sanforized with 2 large flap pockets.

Pants, size 28 to 44

2.49

Shirts, size 14 to 17

2.19

Ladies Spring and Summer

#### GLOVES

in Pastels and Black by Kayser and Towne.

values to 1.49

69c

#### PRINTS CHAMBRAYS

One Table Cotton Prints and Woven Chambray. Fancy, solid and striped patterns.

Reduced from 49c to

29c yd.

#### MEN'S DRESS SOCKS

Rayon banner wrap anklets, choice patterns, reduced from 58c pair to

29c

#### Men's DRESS SHOES

Dress and sport oxfords, loafers and light top shoes. Blacks and browns. Value to 7.95, only

4.90

#### MEN'S SUITS

Save on these wool worsted suits. All year weight. Large selection of patterns.

Reg. 55.00 Suits 39.50

Reg. 45.00 Suits 29.50

#### MEN'S DRESS PANTS

Amazing before Easter offering of Men's Dress Pants.

Reduced from 17.50 to 12.90

Reduced from 15.50 to 10.90

Reduced from 12.95 to 8.90

Reduced from 10.95 to 7.90

Reduced from 7.95 and 6.95 to 4.90



#### Ladies Nylon Hose

A Surprise in Fine Easter Nylons. Slight irregulars of regular \$1.65. 51 gauge, 15 Denier in new spring colors.

69c

6 pairs 4.00

Limit 6 pairs to a customer

#### Children's Spring COATS

Only seven of these Little Coats Left.

Reduced from 14.95 to 7.98

Reduced from 17.95 to 8.98

Reduced from 19.95 to 9.98



# Dunlap's

SPUR, TEXAS

### FIVE POLIO PRECAUTIONS ARE LISTED FOR PARENTS

Warning that the 1949 polio season is "just around the corner," the National Foundation for Infantile Paralysis today issued a list of precautionary measures to be observed by those in charge of children during the epidemic danger period which usually runs from May through October, reaching its peak during the hot, mid-summer months. The five easy-to-follow health rules for children are:



1. Avoid crowds and places where close contact with other persons is likely.
2. Avoid over-fatigue caused by too active play or exercise, or irregular hours.
3. Avoid swimming in polluted water. Use only beaches or public pools declared safe by local health authorities.
4. Avoid sudden chilling. Remove wet shoes and clothing at once and keep extra blankets and heavier clothing handy for sudden weather changes.
5. Observe the golden rule of personal cleanliness. Keep food

tightly covered and safe from flies or other insects. Garbage should be tightly covered and, if other disposal facilities are lacking, it should be buried or burned.

The National Foundation also listed the following symptoms of infantile paralysis: headache, nausea or upset stomach, muscle soreness or stiffness, and unexplained fever. Should polio strike in your family, call a doctor immediately. Early diagnosis and prompt treatment by qualified medical personnel often prevent serious crippling, the National Foundation pointed out.

The organization emphasized that fear and anxiety should be held to a minimum. A calm, confident attitude is conducive to health and recovery. Parents, it said, should remember that of all those stricken, 50 per cent or more recover completely, while another 25 per cent are left with only slight after effects.

If polio is actually diagnosed, contact the chapter of the National Foundation for Infantile Paralysis serving your community. The chapter will pay that part of the cost of care and treatment which patient or family cannot meet.

OUT OUT AND KEEP FOR REFERENCE

### Former Enlisted Men Urged to Join Active Reserves

A survey just completed by the Instructor's Office, Organized Reserve Corps, of Spur and the surrounding vicinity, has shown that there are many former army enlisted men and enlisted Reservists who are passing up a good opportunity by not belonging to or being active in the Reserve. The reserves will be called upon to carry a large share of the responsibility of keeping the United States in the proper state of military preparedness in the future, and in so doing offer some very good benefits to enlisted reservists.

Major Samsel, Instructor for the Reserves of Lubbock District, said today that many former service men believe that they would be subject at any time to

a call to active duty if they were members of a Reserve Unit. This is an entirely erroneous opinion, since no Reservist may be called to Active Duty without his consent except in case of war or grave national emergency. An enlisted man may join the reserve and remain inactive except in a time of national emergency, or he may participate in inactive duty drill where he merits points for retirement, promotion and drill pay. Also, by being in the Reserve, he builds up his longevity, attend schools of the services with full pay and allowances, or if he so desires, he may take periods of active duty that are available. He may retain his grade held at time of discharge, and in the event he is called during a national emergency, he will be called to duty with the rank of his grade held in the Reserves. After twenty years of

### Better Seeds for Better Crops



To ensure bigger crops for a hungry world, the United Nations Food and Agriculture Organization (FAO) is now sending hybrid seed corn to 19 countries in Europe and the Near East. In Italy, for example, hybrid corn gives up to 50 percent better yields than older types. Here members of FAO's agricultural division push hybrid seed for other countries suffering from food shortages.

satisfactory service in the regular and Reserve forces, an enlisted man, upon reaching the age of 60 years may draw retired pay, the bare minimum which a Reservist could expect amounting to more than forty dollars a month.

In the near future an officer from the Instructor's Office, Lubbock, Texas, ORC will be in the vicinity on an announced date and place to explain in person the Reserve program and enlist or reenlist men into the service of the Reserve.

### Trading In Spot Cotton Slows Down

Trading in spot cotton slowed down last week in Texas markets, reports the Production and Marketing Administration, U. S. Department of Agriculture. Domestic mill interests continued quiet with purchases limited to small lots for nearby needs. However, export demand remained good. Merchants found some of the desired qualities in rather scarce supply.

Local merchants and shippers offered rather freely at prevailing prices which climbed to the highest point since February 23 early last week but declined later. Net losses on quotations at Dallas and Houston ranged between 75 cents to a dollar per bale from

Monday through Friday, but Galveston prices held steady all week at \$2.60 cents per pound. Middling 15-16 inch cotton.

At this time last year, cotton quotations at these markets had reached a peak of 36.65 cents per pound, about \$20 to \$21 per bale higher than they were last Friday.

Farmers sold some equalities in government loan cotton between \$3 and \$7 per bale last week.

### Crosby Sets Beer Vote For May 7

CROSBYTON, (Special)—The Crosby County Commissioners court Monday ordered an election to be held May 7 to determine whether or not the sale of beer of not more than four per cent alcoholic content be permitted in Crosby county.

The move had long been rumored and widespread interest has been shown over, the South Plains in the circulation of a petition in Crosby county calling for the election.

The petition was presented to the court Monday, containing 400 signatures. Of the total, 266 names were certified. Only 200 were necessary for the court to take action calling the election. Earnest Joiner, editor and publisher of The Halls Banner, and an outspoken foe of what he has

termed "open bootlegging" in Crosby county, sponsored the petition "in an effort to settle the issue legally," he explained some time ago when first announcing plans to circulate the petition.

### Bill to Curb Investigators Gets Approval

AUSTIN, Texas.—The public would be protected against imposters under the guise of private detectives by the provisions of a bill approved by the House state affairs committee.

Rep. W. O. Reed of Dallas said Tuesday he hopes to bring the new bill to the House floor for a vote soon.

The bill defines investigator, private detective, watchman, patrol man, guard and agencies employing such persons. All are brought under terms of the bill. Those coming under the bill's

provisions would be required to obtain licenses from a 3-member board appointed by the Governor. An administrator would be employed at an annual salary of \$8,000 and make bond of \$10,000. He would be the board's enforcement officer.

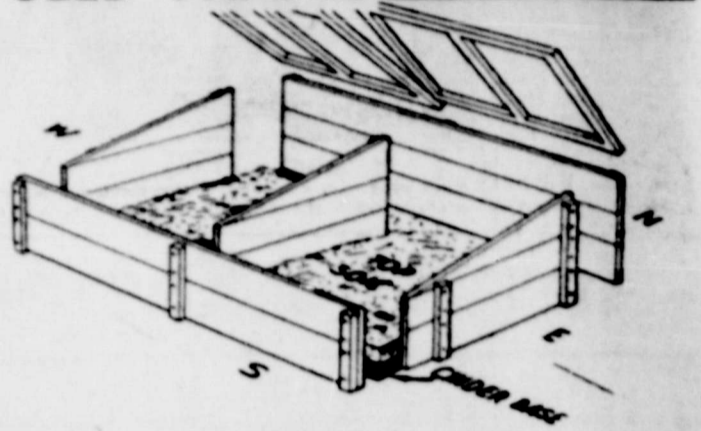
After satisfying the administrator as to good character, competency and integrity an applicant would pay \$150 for a license and make bond of \$10,000 as a guarantee of faithful and honest conduct of his business.

For repairs on electrical appliances and motors call C & W Electric. 25-tfc

Make plans now to take advantage of the many values offered during our BIG REXALL 1c SALE, April 20, 21, 22 and 23. City Drug Co. 25-t

FOLLOW the crowds to PROCTORS. 25-11c

### Easy to Make SEED FRAME



Anyone handy with a hammer and saw can construct this sturdy seed frame. It is made up of four sides, and a hinged top glazed with Vimlite. Flexible plastic glazing Vimlite is used because it is shatterproof, lightweight, has good insulation qualities and is easy to install. No growing of the frame, or putting in necessary. Vimlite is merely tacked in place like fly screen.

The standard size for seed frames is 3 feet x 4 feet. To protect it against rot and decay, the lumber used should be treated with Dow's pentachlorophenol. This chemical and Vimlite can be obtained at hardware, lumber and building supply stores.

Assemble the four sides, center partition, and top frames according to the sketch. For permanent construction it is advisable to use gal-

vanized screws instead of nails. The seed frame is set in place on the ground with the high side to the north, and the top sash slanted toward the sun. The inside should be filled with 3 inches of cinders or gravel and then a layer of top soil. This insulates against cold, and improves drainage. When the seed frame has served its purpose each season, it should be removed and stored until it is time to use it again.

#### Lumber List

- Sides: 3 pcs. 1" x 6" x 6 ft.  
15 lineal ft. 1" x 2"
- Sash: 30 lineal ft. 1" x 2"  
4 hinges, 1 1/4" x 1 1/4"  
2 yds. VIMLITE, 36" wide

\*Reg. U.S. Pat. Off.



We extend our Best Wishes to our many Friends on this EASTER SUNDAY

HOME DEPT. STORE  
Mr. and Mrs. C. A. Fagan

## Been Fishing?

## Visit Uncle Jim Over Week-end?

## Daughter Getting Married?

## Been Sick?

If So, Your Friends Are Interested!  
Turn In Your NEWS ITEM To The SPUR Office

YOUR FRIENDS ARE OUR READERS. Keep Them Informed!

We Need Correspondents and Subscription Agents In Surrounding Communities. Inquire At Office

# The Texas Spur

# Society-Club News

## Audrey Williams Walter G. Johnson To Wed April 15

Mr. and Mrs. R. F. Williams of Borwinwood have announced the engagement and approaching marriage of their daughter, Audrey, to Walter G. Johnson, Jr., of Spur.

The couple will be married at Brownwood during the Easter holidays.

Miss Williams attended Mullin High School and Howard Payne

College and is teaching in the Dickens School System.

Her fiancé, son of Mr. and Mrs. Walter G. Johnson of Spur, attended Spur High School and Texas Technological College before entering the service. He served in the Army four years including two and a half years spent in the European Theater. He is now attending the Veteran and Vocational School in Spur.

You will SAVE money at the REXALL 1c SALE April 20, 21, 22 and 23. City Drug Co.



FAIREST OF ALL TSKC—Miss Joan Moore, of Redtown, senior at Texas State College for Women, was crowned Saturday, March 26 as Queen of the Redbud Court, in the final program of a week-long festival at the college.

## Officers Elected For East Ward P-TA

The East Ward P-TA met April 12th in the East Ward auditorium. Mrs. Joe Long gave the devotional and Robert Keith Beason gave a piano selection. Mrs. Durham's fourth grade room sang several songs led by Miss Middlebrook.

Mrs. Lynn Buzbee talked on the subject "Live and Learn with your Children."

New officers for the coming year elected were: Mrs. V. C. Smart, Jr., president; Mrs. Cecil Godfrey, vice president; Mrs. Eric Swenson, secretary; and Mrs. Trudy Dickson, treasurer.

Plans for the Summer round-up for all children entering their first year of school were also discussed.

Mrs. Marcy's first grade room won the room count.

See C & W Electric for house wiring supplies. Phone 71. 25-tfc

## Birthday Dinner Honors Mrs. Stubbs

Mrs. Harriet Stubbs was honored with a birthday dinner Sunday, March 27th at the home of Mr. and Mrs. Bill Chambliss.

Friends and relatives present were Mr. and Mrs. Dewey Stubbs and Mr. and Mrs. Dewey Stubbs, Jr. of Stamford; Mr. and Mrs. Carl Stubbs and daughter of San Antonio; Mr. and Mrs. Fred Fisher, Mr. and Mrs. Doyle Ward and children; Mr. and Mrs. O. G. Powell, Mr. and Mrs. Bill Fricke and son; Mr. and Mrs. E. L. Anderson, all of Pampa; Mr. and Mrs. Aubrey Johnston of Abilene; Mr. and Mrs. Wayne Hardin of McAdoo.

Mr. and Mrs. Pat Qualls, Mrs. Jonnie Bell Gibson and children, Mr. and Mrs. R. T. Gibson, Gayle Reese, Ada Lou, Wanda Jean Chambliss of Spur, and Mr. and Mrs. Bruce Gibson of Sagerton, Texas.

## Training Union To Close Friday Night With Social

The Training Union of the First Baptist Church Spur, is working toward the enlistment of its members in active service, and that end is in a "Round-Up" Campaign this week. Seeking to enlist all ages in actual work learning the entire program of the Training Union and better Christian living. Over 150 have been enrolled, and the attendance has averaged over 100. The "Round-Up" will close with a social for all ages in the last period Friday night. Mrs. Edna Lang of Houston and the State Baptist Training Union Department of Texas is giving direction to the work. Featured tonight (Thursday) will be the 2-1-2 through 4 year-olds in the Rhythm Band in the closing assembly. The pastor's topics for Sunday are: "The Folded Napkin" in the Morning, "Youth Takes Over" in the Evening. At the Evening service, the pastor will present the youth pastors for the next week, Tommie Alldredge and John E. Berry. These two young men will direct the entire work of the church for the week. With Tommie Alldredge conducting the midweek prayer service, and speaking Sunday night, the 24th of April, John E. Berry will speak in the Sunday Morning service. Also, Joe Simpson will direct the Sunday School, William North the Training Union, Melvin Lindsey the Brotherhood, Wayne Smith will be Chorister, and Virginia Ruth Shugart will act as W. M. U. president.

You are always welcome to help worship the Lord, and to help train the fine young people, states the pastor, C. Melvin Ratheal.

## Bargains Mark Want Ad Week



Jean McKeudrick hunts used car bargains on the hood of a Chevrolet truck especially decorated to commemorate National Want Ad Week. The event is being observed this month for the first time since the war.

orary members, who were Mrs. Horace Gibson, Mrs. Norton Barzetti, and Mrs. Evalene Holly. Frances Holloway was elected as a life-time member of the Chapter.

Since the girls serve several teas and banquets each year, the club bought a silver tea service. This was unanimously voted on by the members at the meeting.

Three candidates for the Dinner Bell Award were nominated. They were Joyce Johnson, Carolyn Henshaw, and Annette Lee. The nominees were voted on by secret ballot. The votes are to be counted by your sponsor, Mrs. Holly and Mrs. Gramland. No one will know, however, who received this award until it is presented at the annual style show on May 3rd.

The Chapter discussed the trip to Dallas for the FHA State Rally that some of the girls are to attend in May.

After the business session, Frances Holloway, Area II president, conducted a quiz on Parliamentary Procedure.

The committee, Margaret Wood and Ginger Walker served delicious refreshments.

Reporter—Annette Lee.

Mr. and Mrs. L. J. Phillips of Fort Worth recently visited Mrs. Phillip's parents, Mr. and Mrs. L. C. Ponder, and her sister, Mrs. Carl Peninger.

The E. S. Lee family and Carolyn and Kathleen Kelley spent the week end in Hale Center with Mr. and Mrs. M. F. Knight.

## NEED A STEEL FILING CABINET?

We Have

Legal Size, all Steel  
(4 Drawer) only

60.00

Letter Size, All Steel  
(4 drawer, with lock) only

65.00

SAFE—(Fire proof, small) only

75.00

ALL REAL BARGAINS!

# The Texas Spur

## DID U KNOW?

CANNED FOOD IS SUCH A VALUABLE COMMODITY ON THE AFRICAN GOLD COAST THAT A HANDSOME WIFE MAY BE BOUGHT WITH A CAN OF TOMATOES!

## ENGLISH FOOD MKT.

CLOVER FARM STORES

Shop These Everyday Prices!

## ENGLISH SEZ!

A MAN CAN'T HAVE HIS HEAD FULL OF ODDS AND ENDS AND END UP WITH THE ODDS ON HIS SIDE!

## BANANAS

Central American Pound 11c

GLADIOLA 25 lbs. 1.89  
FLOUR 10 lbs. 85c  
5 lbs. 49c

SOUTH TEXAS CARROTS BUNCH 4c

HEART'S DELIGHT, No. 2 1-2 size  
FRUIT COCKTAIL In Heavy Syrup 35c

PASCALS GREEN CRISP CELERY LB. 9c

HEART'S DELIGHT, No. 2 1-2 size  
PEACHES SLICED OR HALVES 29c

FRESH FIRM TOMATOES LB. 19c

HYDROGENATED SHORTENING CRUSTENE 3 LB. CAN 83c

## SAVORY OLEOMARGARINE

POUND 21c

## 5¢ SALE

HARD WATER SUDS SENSATION  
1 pkg. 37c  
Reg. price  
1 pkg. 5c  
BOTH 37c

## HAPYDA PICKLES

Sour or Dill—Full Quart 25c

## SLICED BACON

Armour's Star Pound 55c

PLAIN GOLD, 12-OZ. PKG. COTTAGE CHEESE, 2 for 25c

FROZEN, SWEETENED STRAWBERRIES, 16-oz. pkg. 49c

For EASTER 1-2 or whole Pound 59c

CHICKEN OR CHILI ENCHILADAS 59c

ARMOUR'S STAR BEEF CHUCK ROAST, lb. 53c

12-OZ. PKG. GREEN OKRA 31c

ARMOUR'S STAR ROLL SAUSAGE, lb. 39c

PARKER HOUSE ROLLS, pkg. 25c

ARMOUR'S STAR BEEF RIBS, lb. 27c

SWIFT'S PECAN ROLLS 75c

BIRDSEYE APRICOTS, pkg. 25c

## PLENTY FRESH WATER CATFISH THIS WEEKEND

## Mason's New Book Reviewed at 1917 Study Club Meet

The 1917 Study club was entertained at one o'clock luncheon in the lovely country home of Mrs. Clark Forbes on Tuesday, April 12.

As leader for the afternoon, Mrs. W. H. Marshall presided over a lively discussion on hopes and plans for civic improvement project.

Rollcall was answered by members with "New Books I Have Read." Mrs. William Ligon, in her inimitable manner, reviewed the book "Eagle in the Sky" by E. Van Wyck Mason.

Members present were: Mrs. J. E. Berry, S. L. Benefield, J. H. Byeman, R. E. Dickson, Nell Davis, Fred C. Hailo, E. C. McGee, Tom Johnston, Wm. Ligon, W. H. Marshall, and the hostess, Mrs. Clark Forbes.

The next meeting will be April 19 in the home of Mrs. S. L. Benefield.

## Mother-Daughter Banquet Friday

The G. A.'s of the Bethel Baptist Church entertained with a Mother and Daughter banquet on Friday, April 8th at 8 p. m.

Mrs. Milton Mansfield, G. A. leader, was master of ceremonies for the occasion. Barbara Sharp gave the welcome address and Mrs. A. L. Marry gave the response.

Each girl introduced her mother and expressed her reason for enjoying attending the G. A. meetings.

Rev. Lee Vaughn spoke on the subject "What the G. A.'s Mean to our Church." Rev. H. L. Burnham gave "Arise and Shine for Thy Light is Come."

Mrs. Manie Lewis led a prayer preceding the dinner.

Those present were: Barbara Sharp, Ruth Ann McAtee, Marion Louis, Marcy, Carol June Marcy, Betty Lou Crafton, Constance Garcia, Bertha Jo Gibson, Mary Ester Gatlin, Francis Wilson, Shirley Rogers, Jo Alice Kimmel, and Wilma Jean Kimmel.

Misses A. C. Sharp, D. C. McAtee, A. L. Marry, Oscar Crafton, Minnie Lewis, Gatlin, J. B. Kimmel, John T. Kimmel, Milton Mansfield, Ray Caplinger, W. B. Steele, Raymond Futch, Miss Jennie Williams, Miss Vera Lynn Crafton, Rev. and Mrs. Lee Vaughn and Rev. and Mrs. H. L. Burnham.

## Artaban Chapter Names Honorary Members Monday

The Artaban Chapter met in the Home Economics laboratory on Monday, April 11 at 7 o'clock. The meeting was called to order.

## ATTENDS BARBECUE

Among those from Spur attending the big Swenson barbecue at Throckmorton Saturday were Mr. and Mrs. W. T. Andrews, Eric Swenson, Mr. and Mrs. Jim Barron and Mr. and Mrs. Albin Swenson.

## Mr. and Mrs. Jeff Puckett returned Monday from a visit to Corpus Christi.

**FOOD FACTS**

IN THE FUTURE BREAD WILL BE UNIFORMLY BAKED IN JUST 30 SECONDS WITH HIGH FREQUENCY EQUIPMENT!

**CELEOPATRA ATE PICKLES FOR HER BEAUTY!**

WHITE BREAD BAKED 5000 YEARS AGO HAS BEEN FOUND IN EGYPT

Today MOST BAKERY FOODS ARE ENRICHED WITH ADDED MINERALS and VITAMINS

# SALE!

# GOODBYE TIRES

NOW 9.95 WITH YOUR OLD TIRE ONLY PLUS TAX 6.00x16 Size

IT'S MARATHON—Goodyear's Economy Tire That Runs and Runs and Runs!

BIG SAVINGS ON OTHER SIZES! COME IN—YOU DON'T NEED TO PAY CASH

ALLEN AUTO SUPPLY  
Phone 14 Spur, Texas





**NT WAR DEAD HONORED**—Veterans of World Wars I and II examine a plaque listing names of North Texas State College ex-students honored Thursday as a new memorial student union building was dedicated. Dr. Harold Brenholts, left, an ex-student, veteran of both wars, and member of the education faculty, finds many familiar names in the list. Palmer Lawrence, right, a Junior from Arlington, was a World War II infantryman and was wounded in the Battle of the Bulge.

**NTSC Memorial Pays Tribute To Former Students**

DENTON—Tribute was paid to 147 former students of

North Texas State College who gave their lives in World War I and II as the new NTSC memorial student union building was dedicated Thursday March 31.

Included on the list of ex-student union building was dedicated Thursday, March 31. Included on the list of ex-students honored was Gilbert McKaskiel Winston, son of Mrs. T. L. Winston, Spur. Names of the Gold Star ex-students are listed on a bronze memorial plaque located in the foyer of the new union building. A lamp lighted during the ceremony will burn continuously over the plaque.

**State Building Permits Gain**

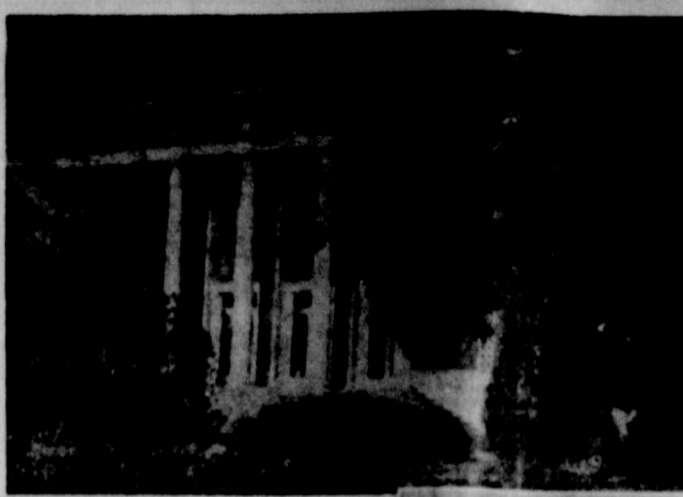
AUSTIN, April 14.—Building permits in Texas rose 18 per cent from January to February, a level 22 per cent under the like month in 1948, the University of Texas Bureau of Business Research reports.

Following the seasonal trend, a number of cities tallied sizeable increases over the previous month. February permits were more than three times as high as the January level in Cleburne, Kenedy, Sweetwater, Kerrville, Amarillo, Lamesa, Midland, Borger, Denison, Temple, Lubbock, and Wichita Falls.

On the other hand, permits in February declined from 2 per cent in Corpus Christi to 80 per cent in Bryan below January.

After adjustment for seasonal variation, the Bureau's index of building permits gained 12 per cent over January to 474 per cent period in February. A year earlier, the index stood at 601.

Decreases from February 1948 ranged from 2 per cent in Gainesville to 93 per cent in Marshall.



Symbols of the "Growth through service" of John Tarleton Agricultural College at Stephensville is the Auditorium Building. It stands on the site of the original college building where fifty years ago, on Sept. 3, 1899, a group of 114 students were the first to enroll. Now with an annual enrollment of over 1,000, Tarleton will combine on April 30-May 1 the Annual Parents Day and Ex-Students Homecoming Reunion with a Semi-Centennial Celebration in a gala two-day festival. President E. J. Howell is the first president of Tarleton since it became a state school in 1917.



PRESIDENT HOWELL

During the same period, building permits more than doubled from a year earlier in Brownsville, Cleburne, Amarillo, Galveston, and Beaumont.

Leading the State in February, Houston's permits totaled \$5,901,790; Dallas slipped into second place with \$4,224,135, and San Antonio, Austin, Amarillo, and Fort Worth followed in that order.

**WTex Utilities To Add 20,000 HP Turbo Generator**

West Texas Utilities Company yesterday completed preparations for installing a new 20,000 horsepower turbo-generator at the Abilene power plant.

Construction work has been going on for more than two years getting ready for this 170 ton precision machine whose output of electric energy will more than double the plant's generating capacity . . . a capacity which only last July was doubled by the installation of a 10,000 horse-power unit.

The first of five freight cars needed to transport the monster machine from the factory has already arrived. Two more cars loaded with component parts are now in transit. The generator itself will arrive in the next few days.

This generating unit was ordered April 1, 1947 and company plans and work for the expansion predated that order by many months. When the unit goes into operation this summer it will have taken more than four years over-all to complete the project.

"This generator will provide additional electric power for the industrial and agricultural development of West Texas," said Price Campbell, WTCU president. "The Abilene plant expansion is a basic part of the Company's \$20,000,000 construction program to provide more and better electric service for the area we serve."

**WED 2 HOURS AFTER MEETING.**

Shreveport, La. — Katherine Adams, 19, and Pete Johnson, 21, of Boston, were recently married although they had never met each other before the ceremony. Their parents, both gypsy, are old friends and, following gypsy custom, made the marriage contract. The pair to be married have no say in the matter.

In another test at the Temple Substation, treated seed gave 25 to 30 percent better stands than untreated seed. At the same time, the plants made greater yields between treated and untreated seed varied from year to year, depending on the amount of disease germs on the seed and the condition of the soil at planting time, Miller says.

Chemicals which have proved effective are ceresan M, common ceresan (2 percent), new improved ceresan (5 percent), Dow 9B and spergon.

Directions on the containers should be followed very closely, and the delinted as well as the fuzzy seeds should be treated. It is very important that the seeds are thoroughly and evenly covered with the dust in a container, such as a can on an axle that can be rotated, he concludes.

Louis officially resigns his world heavyweight championship.

**Arabs Trained In Methods Used In 4-H Club Programs**

King Ibn Saud of Arabia has hired American county agents to show his people how to grow more and better crops. Gradually the Arabs are replacing 4,000 year-old farming methods with modern American ways. Their goal is to raise all the food they can eat instead of importing 75 percent. Toward this end, these county agents hope to organize Arab-style 4-H Clubs which may one day conduct a field crops program just as Texas is doing now.

Good farm practices and expert use of farm machinery are part of the 1949 National 4-H Field Crops program, declared Guy L. Noble, director, National Committee on Boys and Girls Club Work. The project, which stresses increased production of certified seed, food, feed and fibre crops—is off to a good start in

the Lone Star state. With the help of county extension agents and local club leaders, 4-H boys and girls learn to use scientific farming methods. Included are seed bed preparation, plant parasite and disease control, soil analysis and contour farming.

**2 BOYS FALL TO DEATH**

Yosemite, Calif.—Two Stanford University students, Peter B. Yezell, 18, and Kenneth Alden Haines 19, both of Fresno, fell down a 620-foot ledge to their death, while attempting to climb the ledge, linked by 100 feet of rope, a length considered by veteran climbers as too great for such a risky ascent up wet, snow-whitened crags. Their bodies were found badly battered, at the foot of the ledge.

British ask credit basis in U. S. trade to end dollar shortage.

**Now see why Kelvinator gives you far more food space!**

**COLD CLEAR TO THE FLOOR!**

Model 399.50

• Roomier by far with shelf space gain, plus the bonus refrigerated Fruit Freshener!

• Frozen Food Chest holds 50 pounds of packed frozen foods and ice cubes. Plenty of ice cubes ever handy!

• Gold-Mist Freshener keeps salad greens and leftovers fresh for days in supermoist cold Fruit Freshener keeps a big supply of fruit . . . a case of soft drinks deliciously cold!

• Powered by Kelvinator's famous, economical Polarsphere . . . sealed-in-steel, permanently lubricated!

GET MORE... GET COLD CLEAR TO THE FLOOR

**GET Kelvinator**

**DID YOU KNOW?**

1. Kelvinator is leading the field in sales in the U. S. in 1949 . . .
  2. The CM Model Kelvinator gives you more CU-FT per dollar spent than any refrigerator sold?
  3. That Kelvinator is the leading seller in the Spur territory?
- Ask these Customers who have bought since March 3, 1949

- |                      |                  |
|----------------------|------------------|
| Mrs. Nell Davis      | T. D. McKinney   |
| Luther Harris        | Pete Nix         |
| Clayton Willis       | O. L. Rigsby     |
| J. T. Anderson       | Charlie Gage     |
| Robert C. Bateman    | E. O. Turbyfill  |
| Mrs. Jessie Morris   | R. F. Jackson    |
| Girard Home Ec. Room | Rube Stewart     |
| Dick Hindman         | O. E. Byrd       |
| J. C. Stubblefield   | R. J. Cornelious |
| R. J. McAteer        | Jess Wyatt       |
| J. L. Brown          | T. W. Walker     |
| W. A. Hollaway       | Coy Guthrie      |
| E. J. Nichols        | G. L. Godfrey    |
| S. M. Murray         | Roger Pingham    |
| John A. Scott        | E. M. Locke      |
| Raymond Powell       | Preston Baker    |
| Mrs. Lenora Luckett  | George Nally     |
| Alvis Wilson         | Jack Taylor      |
| McAdoo Home Ec. Room |                  |

**CROP HAIL INSURANCE**

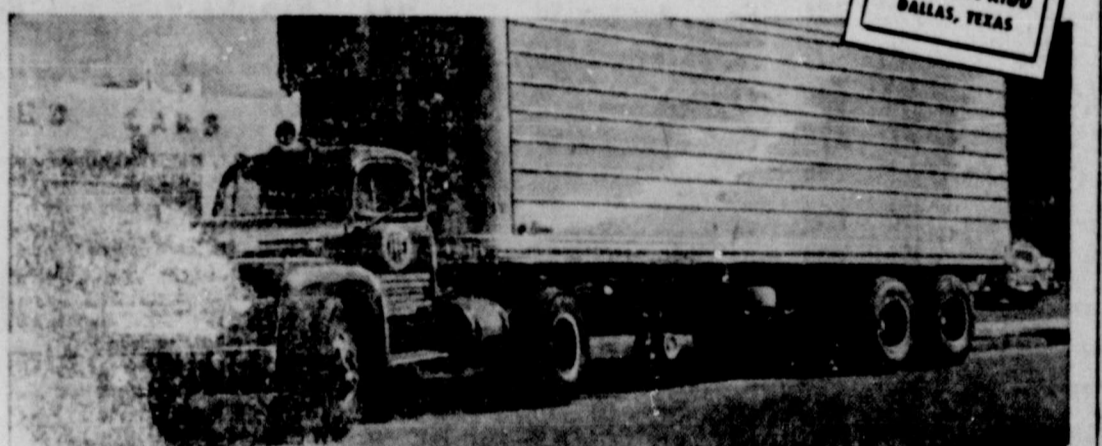
We are ready to write your wheat Hail Insurance and will be ready to write your Hail Insurance on cotton.

Please see us before the Hail Storm.

**H S HOLLY AGENCY**

Office Phone 201 Residence Phone 158

**"PERFORMANCE of my new 145-H.P. Ford F-7 BIG JOB equals trucks of twice the G.V.W. rating"**



OVER ALL TYPES of roads, the performance of my new 145-horsepower Ford F-7 BIG JOB equals that of trucks with double the G.V.W. rating of the F-7," reports George F. Kidd who hauls for the Frozen Food Express of Dallas, Texas. "The economy of operation is more outstanding with an average of 7 miles to the gallon of gas. My Ford Truck has proven that it is really 'Bonus Built'."

Mr. Kidd is but one of many Ford BIG JOB enthusiasts. Thousands of others are profiting from gas economy unusual in the big truck field . . . from an ability to carry gross loads of 50,000 lbs. and more on tandem-axle semi's . . . from power that makes the BIG JOB the king of the hills. Come in and get the facts on any one of our 139 Ford Bonus Built Truck models for '49. It's extra strong to last longer.

- ★ Brand New 145-Horsepower Ford V-8 Truck Engine
  - ★ New Super Quadrax Single-Speed Axles; Two-Speed optional on F-8.
  - ★ Big Tires; up to 10.00-20 on F-8, up to 9.00-20 on F-7
  - ★ New Heavy Duty Five-Speed Transmissions
  - ★ Big Rear Brakes, Power Actuated, 16-in. by 5-in. on F-8
  - ★ Built and Warranted for the following ratings:
- |              |                      |                    |
|--------------|----------------------|--------------------|
|              | Gross Vehicle Weight | Gross Truck Weight |
| '49 FORD F-7 | 19,000 lbs.          | 35,000 lbs.        |
| '49 FORD F-8 | 21,500 lbs.          | 39,000 lbs.        |
- ★ Nationwide Service From Over 6,400 Ford Dealers

**Nothing Goes IN... FORD Trucks BUILT STRONGER TO LAST LONGER**

**Godfrey & Smart**

SPUR, TEXAS

**The Laundry Is BETTER ...**

It's just like magic! Without lifting a finger . . . your wash day results are better than ever! Sparkling clean! Almost like new! That's how your laundry looks when we return it to you! Linens are snowy white! His shirts and other accessories are flawless! Your own and the rest of the family's personal wear is as perfectly done as you could ever want it! All of this at a minimum of cost. And—with complete servicing. We call for and deliver at your convenience!

**SPUR LAUNDRY AND DRY CLEANERS**

Phone 62 Spur, Texas

**THACKER - GODFREY CO.**

Spur, Texas

FOR QUICK RESULTS USE THE CLASSIFIED

CLASSIFIED AD RATES—3 cents per word for first insertion; 1 cent per word for each insertion hereafter; minimum for each insertion, 30 words.—Brief Cards of Texas 75 cents.

FOR SALE: Cotton seed for planting. Also have second hand lumber. A. W. Jordan. 24-3tp.
FOR SALE: Fryers for sale. \$1 each. T. L. Conaway, 1 mile west of Spur high school. 24-2tp.
FOR SALE: General Electric Washing machine. Mrs. Billy Hilly. Phone 163. 25-2tc.
FOR SALE: Near Spur, 160 Acres Good Farm Land. Also 2400 acres leased, 600 acres state lease at 3c per acre located near Clayton, N. M. good 8-room rock headquarters, living water and protection. Priced only \$17.50 per acre for deeded land. EXTRA good terms. For complete detailed information on the above property, see, call, or write S. H. HAILE & CO., 213 E. 9th, Amarillo, Texas. Phones 2-4337-2-5833. 25-1tc.
FOR SALE: Corrugated iron upright tank 25 barrel capacity. See A. Q. Smetzer. 25-1tp.
FOR SALE: 1948 KB5 International Truck. Grainyards and cattle frames. Like new. See Theodor Fry, call 296-W. 25-3tp.
FOR SALE: Mortgage lifter case used, hand-headed, and reconditioned. Can be seen at Hairgroves Feed Store, or see L. D. Cravey, Spur, 25-3tp.
FOR SALE: Electric Sewing Machine. Call Mrs. Al Bingham, 9005-F-2. 25-1tc.
FOR SALE: New Perfection Kerosene hot-water heater. 23-gallon capacity, good condition. See J. J. Albin, Spur. 25-3tc.
FOR SALE: John Deere 6 foot combine. Cheap. Roy Arrington. Phone 148-W. 25-3tp.
FOR SALE: 3-room house, 3 extra lots located on N. Burlington of Sp. Franks Adams or phone 153-W. 25-3tp.
FOR SALE: Mortgage lifter case used, hand-headed, and reconditioned. Can be seen at Hairgroves Feed Store, or see L. D. Cravey, Spur, 25-3tp.
FOR SALE: Electric Sewing Machine. Call Mrs. Al Bingham, 9005-F-2. 25-1tc.
FOR SALE: New Perfection Kerosene hot-water heater. 23-gallon capacity, good condition. See J. J. Albin, Spur. 25-3tc.
FOR SALE: John Deere 6 foot combine. Cheap. Roy Arrington. Phone 148-W. 25-3tp.
FOR SALE: 3-room house, 3 extra lots located on N. Burlington of Sp. Franks Adams or phone 153-W. 25-3tp.
FOR SALE: Mortgage lifter case used, hand-headed, and reconditioned. Can be seen at Hairgroves Feed Store, or see L. D. Cravey, Spur, 25-3tp.
FOR SALE: Electric Sewing Machine. Call Mrs. Al Bingham, 9005-F-2. 25-1tc.
FOR SALE: New Perfection Kerosene hot-water heater. 23-gallon capacity, good condition. See J. J. Albin, Spur. 25-3tc.
FOR SALE: John Deere 6 foot combine. Cheap. Roy Arrington. Phone 148-W. 25-3tp.
FOR SALE: 3-room house, 3 extra lots located on N. Burlington of Sp. Franks Adams or phone 153-W. 25-3tp.

SPUR
Box Office Opens 11:45 Sat-
urday, 1:15 Sunday, 1:45
other days.
Thurs. Fri. & Sat.
THE CREEPER
Also—
JOHNNY MACK
BROWN in
"Loose Star Trail"
Sat. & Mon.
Filling the screen with all the
Spectacle, Romance and thrills
that made the novel a tremen-
dous best-seller.
CAPTAIN from
CASTILE"
Starring
TYRONNE POWER
Tues. — Wed.
DISASTER
Sky High
Hollywood's
Tasty Thriller

PAILACIE
Box Office Opens 11:45 SAT.—1:15 SUN.
1:45 Other Days
Call 185 for Schedule
Friday and Saturday
A GUNSMOKE
BARRICADE
CANT STOP
TOM HOLT
Chapter 3 SUPERMAN
and CARTOON
PREVIEW SAT. NITE, SUN. & MON.
There's Nothing Like A Woman to
Come Between Men
THEY'RE HEADING
FOR A SHOWDOWN AT
ALSO—
BUGS BUNNY—CARTOON
AND—NEWS REEL
TUESDAY
GIFT - NITE
650
Less 20 per cent state tax
Also THIS IS AMERICA
Short
WEDNESDAY-THURSDAY
THERE IS SOME DON
JUAN IN EVERY MAN.
BUT THERE WAS MORE
IN HIM
—HE MADE HISTORY
WHEN HE MADE LOVE
Also FIVE MEN Short
and NEWS REEL.



Future Farmers Visit Detroit

DETROIT—National Officers of the Future Farmers of America, an organization of 270,000 young farmers studying vocational agriculture, met top flight industrial and business leaders and toured Detroit manufacturing plants during a two-day visit to the Motor City. Above, Doyle Conner, of Starke, Florida, president of the Future Farmers, and Frank R. Pierce, president, Dearborn Motors Corp., look over a model of the Ford tractor manufactured in Detroit.

Shirley Hairgrove
District Winner
in Essay Contest
Miss Shirley Hairgrove, senior in Spur High School, was announced winner last week in a district essay contest on the subject "The Kind of Teacher I Would Like to Be." This announcement was made by the director of Teacher Recruitment, Texas Federation of Women's Clubs, Mrs. Walter Travis of Hummer, Texas.

Mrs. J. E. Morris and Mrs. J. C. Keen spent last week end in Midland as guest of their children, Mr. and Mrs. Bill Walton and Mr. and Mrs. Jack Keen. Mrs. L. C. Ponder visited her son, Levi Ponder in Fort Worth over the week end. Mrs. Ann Miller of Dallas spent the week end here with her daughter, Mrs. C. H. McCully and family.

Mrs. Martin Hosts
HD Club Thursday
The meeting place for the Solder Mound Home Demonstration club was in the attractive home of Mrs. Cal Martin Thursday, April 14th with Mrs. Jewel Robinson, H. D. agent, in charge of the program. Children's clothes and helpful health hints were discussed. Comfort rather than durability in clothing was stressed. Mrs. Ollie Hindman was club prize winner at this meeting. Delicious refreshments of tuna sandwiches, pear salad, lemon cream pie and iced tea were served to ten members and two visitors. They were Meses. Floyd Barnett, Ollie Hindman, Joe McDaniel, T. W. Williams, John Astor, T. B. Watson, W. H. Condon, Dee McArthur, Jewel Robinson, the hostess, Mrs. Martin, and the visitors, Mrs. Arnold Long and Mrs. R. Long.

Legal Notices
NOTICE TO CREDITORS OF
ESTATE OF W. A. JOHNSON,
DECEASED
A notice is hereby given that letters testamentary upon the estate of W. A. Johnson, deceased, were issued on the 22nd day of March 1949 by the County Court of Dickens County, Texas. All persons having claims against said estate are hereby required to present the same to us within the time prescribed by law. Our residence and postoffice address are, respectively: James B. Reed, Spur, Texas; H. A. C. Brummett, Dickens, Texas.

House Extends
European Aid
WASHINGTON—By a vote of 354 to 48, the House Tuesday passed a \$3,380,000,000 bill to continue the Marshall Plan of European recovery for another 15 months. The vote came after 13 hours of debate. It took the Senate 12 days to pass a similar measure setting a \$3,380,000,000 limit on the spending. The Senate vote was 70 to 7.

USDA Sets Deadline
For Claiming Cotton
WASHINGTON—The Agriculture department today gave farmers until Aug. 1 to reclaim 1948-cotton stored under government price supporting loans. Growers can regain clear title to the cotton by paying off their loans and carrying charges. On March 17, about 4,400,000 bales of 1948-cotton were tied up under the price support loan program. Cotton not reclaimed by Aug. 1 will be taken over by the department, placed in a pool and held for later disposition. If there should be anything left above the government loan investment and accrued charges—including storage, insurance and handling costs—it would be distributed among producers whose cotton was placed in the pool. The distribution would be made in proportion to the amount of cotton each had in the pool.

Texas Claimed
Facing Decline
DALLAS — Lt. Gov. Allan Shivers, warned Wednesday that Texas is "facing a definite economic decline." In a speech prepared for delivery before the Oak Cliff Lions club, the lieutenant governor suggested it was high time Texas change its practice of holding legislative sessions every two years. No one, he said, can predict two years in advance. "What I propose," he said, "is that our Texas government operate under the good business practice of appropriating funds only one year in advance instead of two years." "I think," he added, "the legislature should appropriate funds now only for the fiscal year 1949-1950. Then next January, I think we should meet again in Austin and decide what funds will be needed for 1950-1951." The state, he said, "is facing a definite economic decline, and I feel that we can better judge both the demands for appropriations and the need for additional taxes a year from now when we have learned the full import of this economic decline."

Price Supports For
Soybeans Announced
WASHINGTON — The Agriculture department announced it 1949 crop soybeans at 90 percent of parity as of Sept. 1. The base support rate will be for U. S. No. 1 soybeans containing not more than 14 percent moisture. A premium of one cent a bushel will be allowed for green and yellow varieties, and a discount of 19 cents will be taken for black and mixed varieties. Soybeans will be supported by means of loans and purchase agreements available to producers from time of harvest through Jan. 31, 1950. However, the parity price may change between now and Sept. 1. The House of Representatives has approved an extra \$595,800,000 in G. I. benefits for the next three months, partly because of increased joblessness among veterans. Part of the money would be used for unemployment payments under the G. I. Bill of Rights. Most would be for educational benefits under the same law. President Truman asked the extra money. The House Appropriations committee quickly approved the fund, which would supplement money already voted for the fiscal year ending June 30. The bill will come before the House tomorrow for expected prompt passage. It has not been considered by the Senate.

Another Lean Year
Voted For Britons
LONDON — Another lean year stretched ahead for Britons today — a year of higher food prices and skimpier tax relief. The House of Commons gave overwhelming approval yesterday to the Labor government's \$15-billion budget. The vote was 302-3, with all Conservatives and a handful of Laborites abstaining. The three negative votes were cast by Independents. The budget, drawn up by Sir Stafford Cripps, chancellor of the exchequer, was defended by him as the only way out to avert "betraying the trust of the people." Cripps said the Labor government is "on the right road" toward recovery. The budget calls for higher prices for railroad meat, cheese, butter and oleomargarine. Speck Lunsford of Olney conducted business in Spur last week end. Mr. and Mrs. F. R. Blair are attending to business in Lubbock today. Mrs. Eric Foster left Wednesday to spend a few days in Lubbock with her daughter, Mrs. L. J. Hurst. Mr. and Mrs. Jack Patton and son, Kenneth spent the past week end in Edinburg. Betty Weaver of Dallas arrived Tuesday for a visit with her parents, Mr. and Mrs. Bob Weaver. She will return to Dallas Sunday.

EASTER VALUE PARADE
NOW AT SAFEWAY
SAFEWAY HAS YOUR EASTER HAMS
Get ready for this happy feast. Ask your Safeway market man to select a fine, lean ham, just the right size for your family's needs. Guaranteed tender, good eating or your money back.
Grocery Values
Pineapple Libby's Sliced No. 1 Can 1 17¢
Pineapple Libby's Crushed No. 1 Can 1 17¢
Tomato Juice Telle 40-Oz. Can 2 21¢
Corn Tuttle, Golden Whole Kernel 2 12-Oz. Cans No. 303 17¢
Peas Super Bells Sweet, Fancy Quality No. 1 Can 1 19¢
Sardines Star Brand Natural No. 1 Can 3 25¢
Baby Foods Heinz Sterilized 3 25¢
Catsup Bol Monte Tomato 14-Oz. Jar 19¢
Cherub Milk 3 33¢
Airway Coffee 40¢
Nob Hill Coffee 14-Oz. Pkg. 44¢
Nob Hill Coffee 24-Oz. Pkg. 87¢
Edwards Coffee Top Quality 14-Oz. Can 52¢
Root Beer Cragwood (Soft Drink) 22-Oz. Can 10¢
Bon Bons 1811-Oz. Pkg. 39¢
Candy Corn 14-Oz. Pkg. 29¢
Jelly Beans 14-Oz. Pkg. 29¢
Gum Drops Size 14-Oz. Pkg. 29¢
Cane Sugar 10 89¢
Margarine Dolewood Plate 14-Oz. Pkg. 19¢
Margarine Sunnybrook Colored Quarters 14-Oz. Pkg. 37¢
Shortening Swift Jewel 24-Oz. Can 59¢
Cheese Food Brown 24-Oz. Pkg. 69¢
Bread Mrs. Wright's Extra Tender 16-Oz. Pkg. 19¢
Crackers Sunshine Crisp 14-Oz. Pkg. 25¢
Flour Elixton Craft Top Quality 10 87¢
Flour Pillsbury's Best 10 87¢
Meal Mummy Low White Corn 5 33¢
Values in Soaps
Oxydol 14-Oz. Pkg. 29¢
Ivory Flakes 14-Oz. Pkg. 29¢
Lux Flakes 14-Oz. Pkg. 29¢
Vel Washing Powder 14-Oz. Pkg. 27¢
P & G Soap 14-Oz. Pkg. 29¢
HAMS Swift Premium or Armour Star 10- to 12-Lb. Avg., Half or Whole Lb. 63¢
HAMS Grey Family Star 10- to 12-Lb. Avg., Half or Whole Lb. 59¢
HAMS Cured Shank Cuts, Approx. 1/3 14- to 20-Lb. Hams Lb. 55¢
HAMS Cured Butt Cuts, Approx. 1/3 14- to 20-Lb. Hams Lb. 49¢
Fryers Fresh Dressed and Dressed Lb. 63¢
Fryers Mince Ham, Cut up, in Corbans Lb. 71¢
Oysters, fresh, pt. 69¢
Oysters Frome 11-Oz. Pkg. 55¢
Oysters Frome 11-Oz. Pkg. 55¢
Sausage Intermountain Pure Pork, 5 Lb. Pkg. Lb. 49¢
Franks, Swift's Cello Lb. 55¢
Sliced Bacon 14-Oz. Pkg. Lb. 45¢
Roast Government Graded Lb. 53¢
Steaks Heavy Beef Sirloin Gov't Graded Lb. 75¢
EGGS FRESH COUNTRY SELECT LARGE WHITE EGGS IDEAL FOR THE CHILDREN'S EASTER PARTY. DOZ. 41¢
Eggs Mornings Star—Large & Med., Mixed Colors Doz. 57¢
SAFEWAY GUARANTEED PRODUCE
Fresh Corn Golden Cross Wolf Hybrid Ear 3 for 25¢
RADISHES 2 bunches 5¢
Green Onions 5¢
Oranges Florida, Sweet, Jersey 7¢
Lemons California Lb. 15¢ Carrots, 2 lb. 13¢
Rhubarb 14-Oz. Pkg. Lb. 15¢ Pascal Celery Lb. 10¢
Fresh Tomatoes On. 23¢ Potatoes Idaho Lb. 59¢
English Peas 14-Oz. Pkg. Lb. 17¢ New Potatoes Lb. 7¢
Prices in This Ad are Effective Friday and Saturday in
G. I. more for your money SAFEWAY



SERVING A RICH FARM CROP, STOCK AND POULTRY RAISING TERRITORY OF WEST TEXAS.

THE TEXAS SPUR THURSDAY, APRIL 14, 1949

## Senator Corbin Termed 'Lone-Wolf'

AUSTIN, April 7.—A New Dealer who thinks he's pretty much of a lone wolf in the Texas Senate is the new spokesman for the big South Plains and West Texas district of cotton, cattle, wheat and oil.

He's Sen. Kilmer B. Corbin of Lamesa. This fall, this honoree is only 29. This is his first term in the Legislature. During the four years he'll represent the vast 24-county district that cuts a swath through the state in the South Panhandle, just below it and into West Texas.

This is the land of big ranches, irrigated and dry land farms, Lubbock is the city in this district, Texas Tech the big state school and the state hospital at Big Spring the chief eleemosynary institution.

Senator Corbin counts himself

a New Dealer. And he adds, "I'd be more at home in the House with my political ideas than I am in the Senate." He doubts that there's anyone else in the Senate who shares his theories all the way.

"I'm for more taxes to give more services," Senator Corbin said. "The taxes would be on natural resources."

By the time Corbin was in the second grade in a country school in Dawson County, he knew he liked to make speeches. So he reasoned that he should become a lawyer. But probably the thing that turned him up the road to the Capitol was a state declamation contest in which he won the second prize. Then he was in Lamesa High School.

"In those days I thought all lawyers did was talk," Corbin said.

When he graduated from Lamesa High School, he went to Texas Tech to study pre-law. Then later at the University of Texas he entered Law School in

## New Machine Eases Farm Gardening Chores; Provides Mobile Power Unit

The kitchen garden, for the chore of housewives and youngsters, will be tended a lot easier as well as more economically on many a farm this year thanks to a new, low-priced, all-purpose rotary tillage power gardener now on the market.

Plowing with tractor or horses? A thing of the past for these farm gardens. With this new machine a housewife or youngster can prepare a full acre of good fallow ground ready for seed in eight hours.

And the whole household is saved hours of back-breaking



hand cultivating, too. In fact, a full two acres of ground can be cultivated without fatigue in an eight hour day.

For planting potatoes or bulbs, or for hilling or making irrigation ditches an attachment for turning the machine into a furrower is another time and money saver.

For any of these operations the handle bars adjust up or down or side to side so that practically anyone can enjoy the fun of power gardening.

The new machine, the Model T Moto-ette (a name reminiscent of the earliest gasoline power on many farms) is manufactured by Rototiller, Inc., which introduced rotary tillage in this country some 19 years ago.

But gardening isn't the limit of the Model T's usefulness. With an

inexpensive hitch an ordinary hand lawn mower can be turned into a power mower in a few minutes' time. It can also be converted quickly into a field mower with a sickle bar cutter on the side like on large tractor mowers. Or it can be converted to a power log saw for cutting logs up to 14 inches. And when winter comes there is a snow plow attachment for clearing drives and sidewalks.

The new machine is also an economical and mobile power unit for spraying, dusting, pumping water and other uses.

Best of all, the Model T is not high priced. It can be bought for about the same price and on the same terms as a farm-sized mechanical refrigerator or electric stove. Operating costs are said to be about the same too.

## Postal Rates In Texas Increase

Postal receipts for 60 Texas cities rose 15 per cent over February 1948 to total \$3,394,580 in February 1949, dropping 5 per cent from January, the University of Texas Bureau of Business Research reported.

Dallas, up 20 per cent in February, though not showing the highest per cent advance over a year earlier, exceeded other Texas cities in dollar value, its postal receipts amounting to \$860,360.

Houston's postal receipts, reaching \$570,227, climbed 17 per cent in the February-to-February comparison, while Fort Worth's total of \$366,450 provided a 21-per-cent advance over the same period.

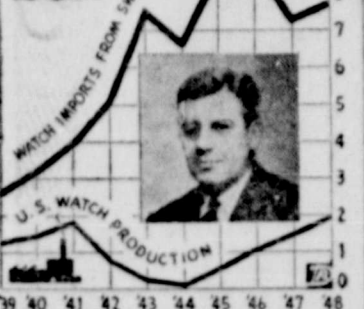
San Antonio registered a 13-per-cent gain in February over a year ago with \$314,469 in postal receipts, which topped Austin's total \$160,934, a 23-per-cent jump over February 1948.

Cities having the greatest percentage increases over the February-to-February period were McAllen, up 131 per cent; Tyler, 52 per cent; Sweetwater, 49 per cent; and Jacksonville, 39 per cent.

Gains over the previous month were recorded by McAllen, 81 per cent; Austin, 31 per cent; New Braunfels, 21 per cent; and Sweetwater, 12 per cent. Smaller increases were turned in by Borger, Lamesa, Jacksonville, Fort Worth, and Longview, while decreases were registered by other Texas cities.

After adjustment for seasonal variation, the Bureau's index of postal receipts rose 1 per cent to 177 per cent of the prewar (1925-39) base period in February 1949.

## SEES THREAT TO U.S.



War-essential American jeweled watch industry is threatened by heavy imports from Switzerland which discourage healthy growth of domestic manufacture and thus endanger national security in case of another conflict, James G. Shennan (inset), president of Elgin National Watch Co., tells U.S. Senate committee at hearing on extension of trade agreements act. Asking "realistic duties" to equalize difference in movement costs resulting from Swiss labor rates which are 60 per cent lower than U.S. rates, Shennan cites figures for past 10 years (above). They show that importers captured bulk of U.S. market while the three exclusively American manufacturers of jeweled movements were engaged in vital war production.

## Car-Tunes By SPUR MOTOR CO



### BALANCED DIET for safe driving

Want your car to purr along this Spring? Let us give it a complete change of oil and grease, flush-out the water system. Then feed her a steady diet of our top quality gasoline and cheerful service whenever you drive in!

## MCNUTT'S TEXACO SERVICE STA.

PHONE 38

WE CALL FOR AND DELIVER YOUR CAR

cern of Senator Corbin. For water is the big economic need of the people he represents.

"The Legislature can't make it rain," the new Senator said. "But we can't help protect the water that the people do have."

Corbin's idea of the best way to do that is to leave things alone as they are. He's leary of proposals now before the Legislature to regulate water. One such measure would completely revise present surface water rights, cancel unused rights and reissue new rights through an enlarged state board.

Another water issue which Senator Corbin looks at favorably is a bill to set up water districts for underground water rights. Now there's no law controlling underground water except the principle that it belongs to the person who owns the land, he said.

If the surface water rights bill gets out of the committee where it now is, Senator Corbin is ready to put an amendment on it that would protect the water rights of West Texas cities. The West Texas Chamber of Commerce asked his help on it.

Corbin is cosponsor with Sen. Walter Tynan of San Antonio on the controversial basic science bill in the Senate.

The self-styled liberal Senator also believes in lifting the ceiling on old-age assistance. He wants a bigger appropriation for eleemosynary institutions.

Personally he's sponsoring a bill to set up a state distribution system for the school lunch program in co-operation with the federal plan. It carries a \$412,400 appropriation and so far hasn't gotten out of the finance committee. The Department of Public Welfare would administer the program.

The Senator also introduced a bill to let private persons take over the country hospitals in counties which can not support them.

"I'm for the people because I'm one of them," Corbin said. "I've lived on a farm most of my life like most of the people I represent."

Senator and Mrs. Corbin have three children, Barry, 8; Blaine, 5; and Jane, 4. They are living in Austin during the session.

## Cottonseed Plan Studied By Profs

Attentive farmers and cottonseed crushers: University of Texas research scientists have devised a plan to increase the value of Texas' second largest money crop, cottonseed.

Dr. A. B. Cox, cotton marketing professor, has directed research into the ratio of the price of a unit of feed of cottonseed

meal and hulls to the farm price of milk which he says will give feeders and cottonseed crushers a formula for more profitable utilization of those products.

Dr. Cox explains that cottonseed meal or hulls are raw materials and their values to the producers and the feeders depend on their most effective use.

This economic research in regard to cottonseed and cottonseed products is designed to create greater values in cottonseed and cottonseed products by developing their most valuable uses through better marketing. The feed-milk ratio is an example of one phase of the study.

Dr. Cox has directed the economic portion of what is a broad cotton research program (financed by the legislature, sponsored by the Texas State-wide Cotton committee and administered by the Texas Cotton Research Committee composed of the presidents of the Texas A. & M. College.

DR. B. J. WELCH, Optometrist

Will Be At

## THE SPUR INN

Spur, Texas

SATURDAY, APRIL 16, 1949

To Examine Eyes, Fit Glasses, Duplicate Lenses

HOURS 9 A. M. to 5 P. M.

DRS. CAULEY & WELCH

1114 Ave. L, Lubbock

# SEE THE NEW Westinghouse Electric RANGES

**BEST LOOKING! BEST COOKING!**

Here's new capacity, new convenience for your kitchen! The big, new Westinghouse—with its sparkling beauty—will be your first choice forever!

**\$329.95**

YOU CAN BE SURE...IF IT'S Westinghouse

- NEW! SUPER-SIZE MIRACLE OVEN**  
Cooks food in any rack position! New spaciousness! New speed! New perfect heat circulation!
- NEW! SURFACE COOKING CAPACITY**  
Boons working space between units! 4 full-size Corox Units! New room for large utensils!
- NEW! SIMPLIFIED COOKING CONTROLS**  
Out of the Steam Zone! Best Cooking Tel-A-Glance Switches and Single Dial Oven Control!

SEE THIS STARTLING, NEW, SIMPLIFIED RANGE BY Westinghouse

**C & W ELECTRIC**  
Phone 71 Spur, Texas 415 N. Burlington

### LOST GOLD EXPEDITION

Los Angeles.—An expedition—the 44th of its kind, has set out to search for the fabulous "lost loot of Lima," hopeful of finding the \$500,000,000 in pirate booty which is said to be hidden on tiny Cocos Island. Ellis Patterson former lieutenant governor of California, heads the expedition, which sailed from California, on January 21. The British merchantman, Mary Dear, is supposed to have carried the "loot of Lima" to Cocos when Simon Bolivar, liberator, staged his march on Lima, Peru, and is said to consist of solid gold statues and other art objects.

Mark these dates on your bargain calendar, Wednesday, Thursday, Friday and Saturday, April 20, 21, 22, 23. It's REXALL 10 SALE DAYS at the City Drug Co.

## Your first thrill is seeing it... Your greatest thrill is driving it!

The most Beautiful BUY of all now made even more attractive by new lower prices!

The most Beautiful BUY for Talk about thrills! Performance with Economy You'll get the biggest "triple-thrill" in motoring out of seeing, driving, and saving money with this new Chevrolet—the most beautiful buy of all—now available at new lower prices!

And, while you'll naturally be happy to know it's the beauty-leader, we believe you'll get your greatest thrill out of driving it. You'll experience amazing new handling ease and riding ease, thrilling acceleration, and outstanding hill-climbing ability—plus typical Chevrolet economy. For here's the only low-priced car with a world's champion Valve-In-Head engine—of the type now being used on more and more higher-priced automobiles.

Give yourself and your family the biggest "triple-thrill" in motoring—see, drive and save with Chevrolet—the most beautiful buy of all!

The most Beautiful BUY for Styling. Yes, it has smoother, smarter lines—front, top, side and rear! Add to this the glowing color harmonies, the luxurious fittings and fabrics of its bodies by Fisher, and you'll understand why people call Chevrolet the most beautiful of cars.

The most Beautiful BUY for Driving and Riding Ease—with new Center-Point Design. This great 4-way engineering advance—including Center-Point Steering, Center-Point Seating, Lower Center of Gravity without loss of road clearance, and Center-Point Rear Suspension—brings you a brand new kind of driving and riding ease exclusive to Chevrolet and higher-priced cars.

The most Beautiful BUY for Comfort. Enjoy the lounging restfulness of a Super Size Interior with extra-wide "Five-Foo Seats," extra-generous head, leg and elbowroom, and the advanced heating and ventilating system of a "car that breathes." \* (Heater and defroster optional at extra cost.)

The most Beautiful BUY for All-Round Safety. Featuring: (1) Certi-Safe Brakes with "Dubi-Life" rivetless brake linings (2) Extra-Strong Fisher Unisteel Body (3) Panoramic Visibility (4) Safety Plate Glass in all windows, and (5) the super-safe Unitized Knee-Action Ride.

FIRST-CLASS QUALITY AT LOWEST COST!

# CHEVROLET

AMERICA'S CHOICE FOR 16 YEARS

**SPUR MOTOR COMPANY**  
E. L. CARAWAY, OWNER  
SPUR, TEXAS TELEPHONE 37

# COME TO EASTER CHURCH SERVICES



**ATTEND THE CHURCH OF  
YOUR CHOICE  
SUNDAY, APRIL 17, 1949**

Glorious hymns of Easter . . . and inspiring words of prayer await you and your family at the Church of your choice. The clear beauty of the song and the reverent words promise a sincere reaffirmation of All things good.

The doors of Spur Churches stand always open to welcome you. So whether you attend church regularly or not . . . plan to observe this day of reverence in sacred worship with us. Your attendance at the Easter Sunday services will strengthen your faith and devotion . . . be a firmer bond to Him.



This Page Sponsored by the Following Firms and  
Individuals of Spur

Spur Auto Company  
Palace and Spur Theatres  
West Texas Utilities  
Brazelton Lumber Company  
B and H Studio  
Dorothy's Salon  
Riter Hardware  
The Texas Spur  
Palace Drug

Wacker's  
Holly Insurance Agency  
The City of Spur  
O. L. Kelley  
Quality Cleaners  
Joe Terrell's Shoe Shop  
Brashear Supply  
Dunlap's

City Drug Co.  
Gibson Insurance Agency  
Spur Laundry  
Bryant-Link Company  
Spur Security Bank  
Dickens County REA  
Thacker-Godfrey  
Leon Ice Company

Hill Top Cafe  
Spur Implement Company  
"66" Service Station  
Proctor's  
O. K. Rubber Welders  
Godfrey and Smart  
Red Front Drug  
Humphrey Equipment Company  
Alderson's

# 'ROAD HOUSE,' GRIPPING DRAMA, BOASTS SUPERB PORTRAYALS BY LUPINO, WILDE, HOLM, WIDMARK

Out of tense drama, suspense and dynamic action, Twentieth Century-Fox has fashioned one of the most gripping motion pictures of the year. The film is "Road House" starring Ida Lupino, Cornel Wilde, Celeste Holm and Richard Widmark which opens Sunday at the Palace Theatre.

This reviewer has never seen actors as perfectly integrated with their roles as they are in this motion picture. As Lily, the sultry torch singer, Ida Lupino not only turns in an expert, perfectly, perfectly drawn characterization but reveals a singing voice of unusual calibre doing full justice to a batch of tunes which should be haunting the air waves during the coming months. Cornel Wilde is cast in a two-fisted virile role as the night club manager who succumbs to Lily's charms, while Celeste Holm, fresh from her Academy Award winning triumphs offers a grand performance as Susie, the road house cashier. Those of you who have acclaimed Richard Widmark will cheer again

as this new and vital screen personality wins further honors as Jeffy, the sinister road house owner.

In brief, "Road House" is the story of a night club singer whose looks and magnetism involve Wilde and Widmark in a struggle for her love. Out of this antagonism grows the dissolution of the men's friendship, and the transformation of Widmark from an easy-going playboy into a vindictive enemy. A climax in which the men are pitted against each other as they track through the northern wasteland will most assuredly have you glued to your seats with excitement.

Further asset of this dynamic drama is a unique setting with the drama, loves and conflicts played out against the tavern and bowling alley background of the road house.

High praise should go to director Jean Negulesco, who has done a superb job in welding the elements of this striking motion picture together. Producer Edward Chodorov, who also wrote the



IDA LUPINO and CORNEL WILDE in a romantic scene from 20th Century-Fox's dramatic triumph, "ROAD HOUSE," with Richard Widmark.

screenplay, gets a heavy vote of thanks along with Twentieth Century-Fox for giving us one of the most suspenseful and dynamic pictures of the year.

### BRAVE DOG!

Bloomfield Hills. — While attempting to catch one of two large dogs, Patrolman Joseph Pinter was badly bitten by the other dog and was taken to a hospital with cuts on his arms and wrists.

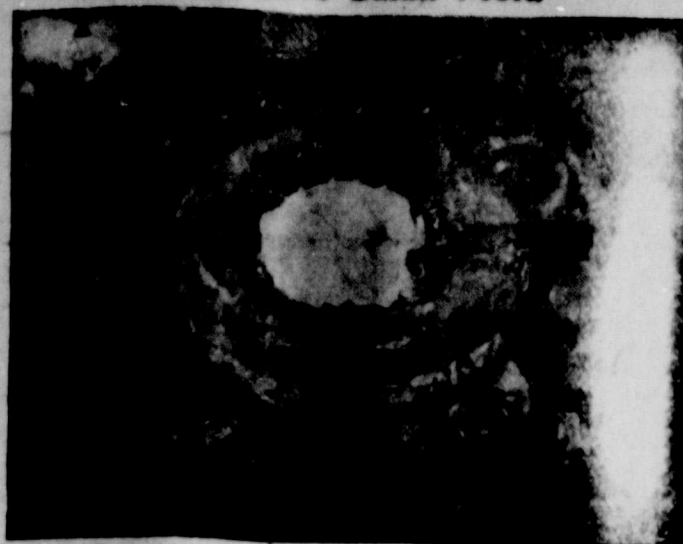
### 18 CHILDREN AT 42

Maestag, Wales.—Although only 42 years of age, Mrs. Sarah Elizabeth Beecham has borne her eighteenth child—an eight pound, thirteen ounce girl.

### TAKE 20,000 PENS, PENCILS.

Janesville, Pa.—Burglars crashed the door of a Parker Pen Company plant building, bound and blindfolded a watchman and then made off with an estimated 20,000 pens and pencils.

### Attractive Salad Mold



Molded salads have a crisp, cool look that makes you eager to taste. And when you make the mold with flavorful cream cheese and salad dressing, fruit nectar, crushed pineapple and celery, you have a salad supreme in flavor, color and good eating.

Serve with dainty bread and butter sandwiches and a beverage.

### Apricot Ring Mold

- 2 tablespoons gelatin
- 1/2 cup cold water
- 1 egg apricot nectar
- Dash of salt
- 2 tablespoons lemon juice
- 1 cup crushed pineapple
- 1/2 cup salad dressing
- 2 3-ounce packages cream cheese
- 1 cup chopped celery
- 1/2 cup chopped pecans
- 2 teaspoons gelatin
- 1/4 cup cold water
- Apricot halves
- Pineapple Slice halves

Soften the 2 tablespoons of gelatin in the 1/2 cup cold water. Dissolve over hot water, and add to the apricot nectar blended with the salt and lemon juice. Chill. When the apricot begins to thicken add the crushed pineapple. Pour half of this mixture into an 8 1/2-inch ring mold which has been brushed with salad oil. Chill until firm.

Now blend the salad dressing into the cream cheese. Add celery and pecans. Soften 2 teaspoons of gelatin in the 1/4 cup water. Dissolve over hot water and add to the cream mixture. Spread this mixture over the firm apricot aspic. Chill.

Pour the remaining apricot aspic over the cream cheese layer and chill again.

When firm, unmold on crisp lettuce. Fill the center with small lettuce leaves and salad dressing. Surround the mold with the apricot and pineapple halves.

### Weekly Swing SOUTHWEST FARM MARKETS

Many farm products sold at lower prices than a week ago, despite strength in some quarters, the U. S. Department of Agriculture's Production and Marketing Administration reports.

Wheat and oats closed unchanged Monday compared to a week earlier, but corn declined a cent or more, and barley and sorghums lost 2 to 3 cents. No. 2 white corn sold around \$1.75 a bushel in bulk carlots at Texas common points with yellow corn around \$1.65, and barley \$1.33. Milo brought \$2.67 to \$2.72 per 100 pounds.

Green beans and new potatoes headed the list of spring vegetables now coming from south Texas fields. Squash and onions also started moving, and a few cucumbers were ready for market. Good carrots were becoming scarce, and beans and spinach were about gone. Increased straw-

berry sales at Hammond, Louisiana brought lower prices than a week ago. New Orleans paid lower prices for green vegetables. Cabbage and green onions sold lower at Denver, and potatoes and sweet potatoes higher.

Southwest egg and poultry markets eased a little since a week ago, as spring weather brought larger supplies to market. Current egg receipts sold from 40 to 41 cents a dozen at Dallas and Fort Worth Monday, 37 to 40 at Denver, and 39 to 43 at New Orleans. Fryers brought 32 to 33 cents in North Texas and 33 to 36 at Denver.

Butcher hogs recorded net losses of mostly 50 cents at San Antonio, 75 cents at Fort Worth, \$1 at Oklahoma City, and \$1.50 at Denver. Sows held about unchanged at San Antonio and Oklahoma City, but lost 50 cents to \$1 at Fort Worth and Denver. Prices on stocker and feeder pigs dropped \$1.50 to \$3 for the week.

Cattle prices showed little change for the week on most classes, although scattered gains of 25 cents to \$1 appeared. Common

to good cows ranged from \$18 to \$21 at Houston, \$17 to \$19 at Fort Worth, San Antonio and Oklahoma City, and \$17.50 to \$19.26 at Denver.

Spring lambs advanced \$2 a hundred pounds at Fort Worth to reach a new high price of \$33 on good and choice. Other sheep and lamb markets showed only scattered changes up or down. Denver bought the first spring lambs of the season at \$29.

Little wool changed hands. One clip sold in Texas at 70 cents a grease pound.

Livestock receipts last week were mostly a little lighter than the week before in the southwest but somewhat heavier in the midwest. All dressed meat except veal sold in New York Monday unchanged to \$1 or more higher than a week earlier.

Short grained milled rice strengthened after substantial sales to the Philippines. Most feedstuffs sold higher as chick and pig feeding increased. Spring pastures reduced demand for all but top quality hay. Cool damp weather delayed peanut planting, and prices of seed peanuts eased. Shelled peanuts remained dull.

Southwest cotton markets closed Monday from 25 cents a bale lower than a week ago to \$1.25 higher. Prices ranged from 32.55 at Houston to 32.90 at New Orleans.

The money-saving event of the year, City Drug's big REXALL 1c SALE April 20, 21, 22 and 23.

### Abernathy Wins District 3-A Meet

In the District 3-A Track and Field meet in Floydada Saturday, Abernathy won first place with a team total of 35 points over Spur, Rails, Lockney, Crosbyton, Matador, Paducah and Floydada.

Spur won the Junior division with 21 1-2 points ahead of Floydada with 17 1-2, and Lockney took first in the grade school

events with 22 points. High man in the senior events was Smith, Abernathy, with 16 3-4 points. He won the 100-yard dash in 11.1, threw the discus 194 feet, 7 inches, and placed in several events. A teammate, Hughes, had 12 1-4 points for second high individual and Herschell Nelson was third with 9 1-2 points.

Hughes won the 120-yard high hurdles in 18.2 and the 200-yard low hurdles in 26.3. Nelson took the 220-yard dash in 24.0, and was on the first place Floydada 440-yard relay team.

The mile run was won by McCullough, Lockney, in 5:19.1; Simpson of Spur pole vaulted 9 feet, 6 inches; Miller of Abernathy won the shot-put with a heave of 36 feet, 7 1-2 inches; Rawlings of Spur broad jumped 19 feet, 5 3-4 inches.

The high jump was won by Blair of Spur with a jump of 5 feet, 7 inches; Stephens ran the 880-yard run in 2:19.6 for Abernathy; and Turner of Floydada won the 440-yard dash in 56.0.

Watch next week's issue of this paper for Drug values Galore in our big REXALL 1c SALE. City Drug Co.

### AVES DOGS, DIES PENNILESS

Ipswich, England. — The Rev. Henry Mayne-Young, 79, died almost penniless because, with his meager savings, he had bought 200 dogs of the breed for two dogs. The dogs, Bruce and Monty, Alsatian and Dalmation, are seeing-eyes for the rector's 76-year-old widow, who is almost blind.

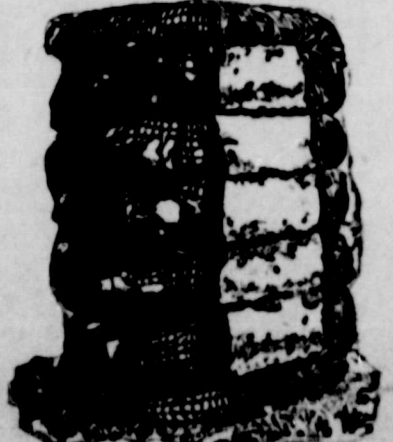
A court, which had condemned the dogs to death for chicken-killing, were bought by the rector upon the payment of a day-to-day reprieve—at the rate of about \$4 a day, and court costs of more than \$1,600 wiped out the man's savings.

AAA officials say overloaded trucks damage highways.

# Farmers' Co-op Gin

Spur, Texas

## ANNUAL MEETING



SATURDAY, APRIL 16, 1949  
GIN OFFICE 2:00 P. M.

- Dividend Checks will be Distributed
- Three Directors To Be Elected

The Following Names Have Been Submitted By The Nominating Committee

W. J. Driggers, Duck Creek — Clyde Horn, Red Hill  
Clayton Willis, Antelope — M. M. Copeland, Red Hill  
W. T. Williams, Spur — T. B. Watson, Spur

Directors Retiring Are

W. J. Driggers, Duck Creek — C. C. Kimmel, Dickens  
W. T. Williams, Spur

Nominations Will Be Open From the Floor

EVERYONE IS WELCOME!

## FARMERS CO-OP GIN

Lloyd Hindman, Manager

### Officers

C. C. Kimmel, President  
W. J. Driggers, Vice-pres.  
Bob Hahn, Secretary

### Directors

W. J. Driggers  
C. C. Kimmel  
W. T. Williams  
Bob Hahn  
J. L. Karr  
G. L. DeLisle  
Jeff Smith

# Easter Values In Parade

AT WACKERS... Featuring New Merchandise For Spring and Summer!

Large EASTER EGGS  
Pound 39c  
1-2 Pound 20c

EASTER BASKETS  
Cellulose wrapped with Toys and Candy  
45c to 98c

Large Assortment of Easter Toys and Greeting Cards

LADIES NYLON HOSE  
By DuPont  
Three new, beautiful shades to select from.  
51-gauge, 15-denier  
1.35  
54-gauge, 15 denier  
1.49

LADIES RAYON PANTIES  
18-dozen ladies rayon panties, white, tearose, blue and maize. Band, or elastic leg.  
Regular 69c values, Saturday only, pair  
55c

LADIES HALF SLIP  
Lace and ribbon-trimmed, straight cut, colors, white, Tearose and blue, only  
2.19

LADIES PANTIES  
A very popular number in white, tearose, blue and maize, with embroidered decoration. Regular 69c value, for only  
79c

BRASSIERES  
By Best-form, nationally advertised, nylon taffetas in white, tearose and blue.  
1.59  
Satin with nylon net inset, in white, tearose and blue  
1.59

GARZA SHEETS  
Reg. 81x108 bed size, Saturday only,  
2.69

# G. F. Wacker Stores

# Sunday School Lesson

## THE FUTURE LIFE (Easter)

International Sunday School Lesson for April 17, 1949

**MEMORY SELECTION:** "Christ has been raised from the dead, the first fruits of them who have fallen asleep."—I Corinthians 15:20

**Lesson Text:** John 5:25; I Cor. 15:20-25; II Cor. 4:16-18, 31

The Christian faith in the divinity of Jesus Christ and the confident belief in individual immortality rests largely upon the reality of his victory over the power of death and the grave. If Jesus did not live again after his death at the hands of the Jewish authorities, the whole truth and dependence of the gospel stories be-

comes worthless.

Therefore, it is very reassuring to realize that the resurrection of Jesus is probably better attested than any other historical fact which is nearly two thousand years old. Aside from the many occasions upon which he appeared to his disciples, all recorded in the ancient manuscripts, the sudden transformation which took place among his apostles, changing them from frightened and discouraged men into flaming evangelists of a new doctrine, is evidence of some miraculous event which had transformed them.

The average man or woman takes life and death as the expected, scarcely bothering himself with mental searchings and strivings, which led to a firm con-

viction in life beyond the grave. Scientific proof of immortality is lacking, if we require laboratory demonstrations under physical limitations, for no man can convince the doubter as definitely as he can show that water, heated, dissipates itself as steam. But, neither can the doubter irrevocably prove that death is the end, for all nature seems to reveal the indestructibility of matter. Form and habit may be changed but matter cannot be destroyed—so with the human soul.

We know that hydrogen and oxygen, in certain proportions, unite to form what we know of as water. The running brook is hydrogen and oxygen, the frozen ice or vaporous steam is the same. Melt it or condense it, as we have water again in its customary form. This is no mystery and we accept it without question.

Then, why does not life—our conscious, individual identity or soul—have capabilities of existing in our human bodies during one period and, under certain conditions, and of surviving in spirit under a different environment and at another time? The same creating power which perpetuates hydrogen and oxygen in their various stages would hardly equip the acme of his creation—the hu-

man soul—with less resourcefulness. Man, in his mind, distinguishes himself from the physical body, which is his. During all the years of life, he is alert to the unity of one soul throughout all the changing forms of his mortal frame. He knows that he controls that body, that he directs its activities as a being separate and superior to it. He is cognizant of a natural world around him, all of which apparently exists for his use and benefit, but, of all things, he himself ranks first.

A common unity underlines all of nature. There is apparently a definite correlation and purpose through it all, culminating in man. For what, then, does he exist? This points to a future life for the human soul, which begins with the death of the physical body and forced from the body by the latter's physical death, but why not think that we die humbly when our eternal spirit descends its earthly frame?

The caterpillar crawling in the dust is far removed from the beautiful butterfly flitting about in the springtime sunshine, yet it has changed through death. Faith enables man to project his vision into that spiritual existence into which death is the only gateway. Reason justifies this expectation. Nature round about us furnishes analogies and faith assures mortal men and is "evidence of things not seen."

Jesus gives the answer to the

most profound question of all ages: "How shall I find eternal life?" He says: "I am the resurrection and the life; he that believeth in me, though he were dead, yet shall he live; and whosoever liveth and believeth in me, shall never die." (John 11:25-26).

## With Our Churches

### CHURCH OF CHRIST

Willis G. Jernigan, Minister  
Bible Study ..... 10 a. m.  
Sunday Morning Worship 11:00 o'clock  
Young Peoples' Assembly 6:15  
Sunday evening sermon 7:00  
adies Bible Study Monday 2:00 p. m.  
Midweek evangelistic Wednesday 7:30 p. m.  
7:30 o'clock  
"A Welcome Awaits You!"

### FIRST BAPTIST CHURCH

C. Melvin Rathel, Pastor  
9:45 A. M.—Sunday School for all ages.  
11:00 A. M.—Sermon  
7:00 P. M.—Training Union — all ages.  
8:30 P. M.—Sermon.  
Tuesday, 7 A. M.—Brotherhood Breakfast.  
Wednesday, 7:15 P. M.— Superintendent's Meeting.

## ASSOCIATIONAL BROTHERHOOD MEETING

BETHEL BAPTIST CHURCH  
APRIL 18, 1949

### THEME MEN AND BOYS

8:00 P. M.—Song Service—O. L. Dewees  
8:15 —Devotional—Tommy Aildredge  
8:25 —Witnessing To Boys—Grady Lackey  
8:40—Message—Rev. C. C. Beaty

EVERY MAN BRING A BOY

## Amateur Rodeo

FLOYDADA, TEXAS  
April 23-24

\$900 in prize money

Three performances  
Afternoon and night, of 23rd and afternoon of the 24th. Two go rounds, five events, Bull Riding, saddle bronc riding, bareback riding, calf roping, and jackpot cowgirl sponsor contest.

Admission: Adults \$1.00 plus tax

Children: 50c plus tax

Mail all entries to Calvin Seien by April 22.

Stock furnished by Jay Wise.

## FACE YOUR FINANCIAL STORMS WITH A SMILE

It doesn't take as much income as you might think to start you on the way to security through a savings account. A little put aside each week will mean a happier future for you and your family. You can enjoy living without the burden of continual financial worries. Bank what money you can, and let a savings account be your umbrella when financial storms come!



## SPUR SECURITY BANK

Member: Federal Reserve System  
Federal Deposit Insurance Corporation

## Have beauty secrets... by you



Since the days of the Egyptian wars women have loved this type of coiffure, and the modified modern version is soft and natural-looking when based on a home permanent. The hair is not more than two inches in length and just the ends are set in large pin curls—the crown is smooth. Jan Lamer, (above) starring on CBS' "Crime Photographer" likes the charming halo effect of this hair-do because it perfectly frames her heart-shaped face.

Evening Service, 8:00 p. m.  
Tuesday evening: Prayer meeting, 8:30 p. m.  
Friday evening, C. A. Service, 7:30 p. m.

**DICKENS BAPTIST CHURCH**  
B. C. Stonecipher, pastor  
0:00 A. M. — Sunday School  
1:00 A. M. — Preaching  
7:30 P. M. — Training Union  
8:30 P. M. — Evening Service  
Mid-week Prayer Service  
..... 7:30 P. M.

Wait for the HEXALL SALE, coming to the City Drug on April 20, 21, 22 and 23rd.



## Trade-In Wheel Bumps... for

SOFTER RIDING... EASIER STEERING  
**U.S. ROYAL Air Ride**



Trade-In Your Old Tires  
**O. K. RUBBER WELDERS**  
Spur, Texas

## WHEELS SHAKEY?

Let us balance them with our Stewart Warner Electric wheel balancer. We Have Seat Covers for all makes and models

The Skirt Takes a Blouse Of Matching Fabric



SMART team-mates are these two Celanese Jersanese "separates" designed by Toni Owen. The sport cardigan-blouse features flaring long sleeves, a plunger neckline, and the tiny roll collar so popular this season. The skirt, with its wide center-mermaid and myriad of soft pleats hangs in fluid, youthful lines, having none of the bulky appearance associated with heavier fabrics. An unbeatable combination for summer, this Jersanese outfit comes with packs easily, and wears like 1950.

# Proctor's Overstocked Unloading SALE!

COME to our TREMENDOUS



stock reducing store-wide

# SALE

We are sorry we were unable to wait on all of our Customers, Friday, Saturday of last week. We cordially invite you to come back. Extra help has been added. Sale Ends Saturday, 16th, 9 p. m.

SALE PRICES STRICTLY CASH

No Refunds.

bargains galore all over the store

# PRICES GET THE AXE!

bargains galore all over the store

# PROCTOR'S

"Spur's Finest Dept. Store"