

Partners...



You and the Santa Fe

Santa Fe, through your local agent, is your every day partner—your partner in business and pleasure, in progress and growth.

Our part is providing you with regular, safe freight and passenger service . . . service you need to keep local business humming and give you needed passenger transportation.

You do your part when you ship and travel Santa Fe. It is only through your continued patronage that we can provide you with this dependable rail service, so . . .

Whenever you ship or travel, make it Santa Fe *all the way*. It pays big dividends for our partnership.

Let your Santa Fe Agent help you with all your transportation problems.



Mrs. Addie Sprayberry visited in the home of her son, Mr. and Mrs. Oran Sprayberry and family of Lubbock this week.

Mr. and Mrs. C. P. Scudder and family spent last week end in Mineral Wells visiting relatives.

LEGAL NOTICE

ADVERTISEMENT FOR BIDS (LEGAL)

SEALED PROPOSALS will be received by the Commissioners at City Hall, Spur, Dickens County, Texas, until 2:00 P. M., Central Standard Time, on April 22, 1952, for the construction of a hospital building in Spur, Texas.

SEPARATE PROPOSALS accompanied by bid check or adequate bid bond of 5% of bids, are requested for the erection and completion of the following for the above buildings:

GENERAL CONSTRUCTION
 Proposal No. 1—General Construction only (Base Bid) Separate Bids with Alternates.

MECHANICAL WORK
 Proposal No. 2—Heating, Ventilating, and Air Conditioning.
 Proposal No. 3—Plumbing.
 Proposal No. 4—Combination-Heating, Ventilating, Air Conditioning and Plumbing.
 Proposal No. 5—Electrical Work.

EQUIPMENT
 Proposal No. 6—Kitchen Equipment.
 Proposal No. 7—Sterilizing Equipment.
 Proposal No. 8—Casework.
 Proposal No. 9—X-Ray Equipment.

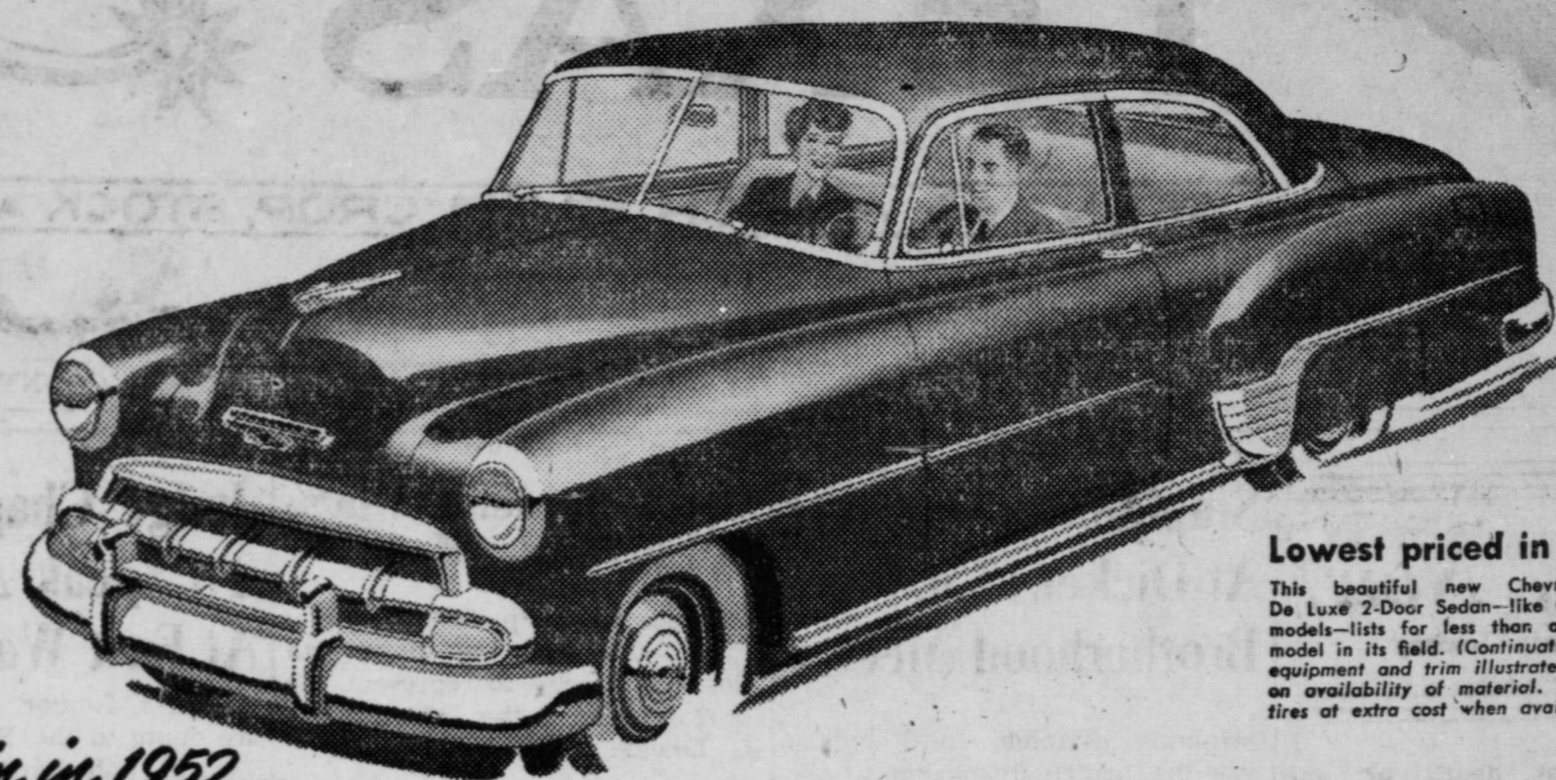
WAGE SCALE: Attention is called to the fact that there must be paid on this Project not less than the general prevailing rates

PLANS, SPECIFICATIONS, AND CONTRACT DOCUMENTS are on file and in the office of DAVID S. CASTLE COMPANY, Architects and Engineers, 1082 1/2 North First Street, Abilene, Texas, and may be secured by making a deposit of \$25.00 which will be returned to each bidder immediately upon the return of the Plans, Specifications and Contract of wages which have been established and are found in the specifications.

Documents in good condition. No refund on Plans, Specifications, and Contract Documents returned later than 10 (ten) days after the award of the contract will be obligatory.

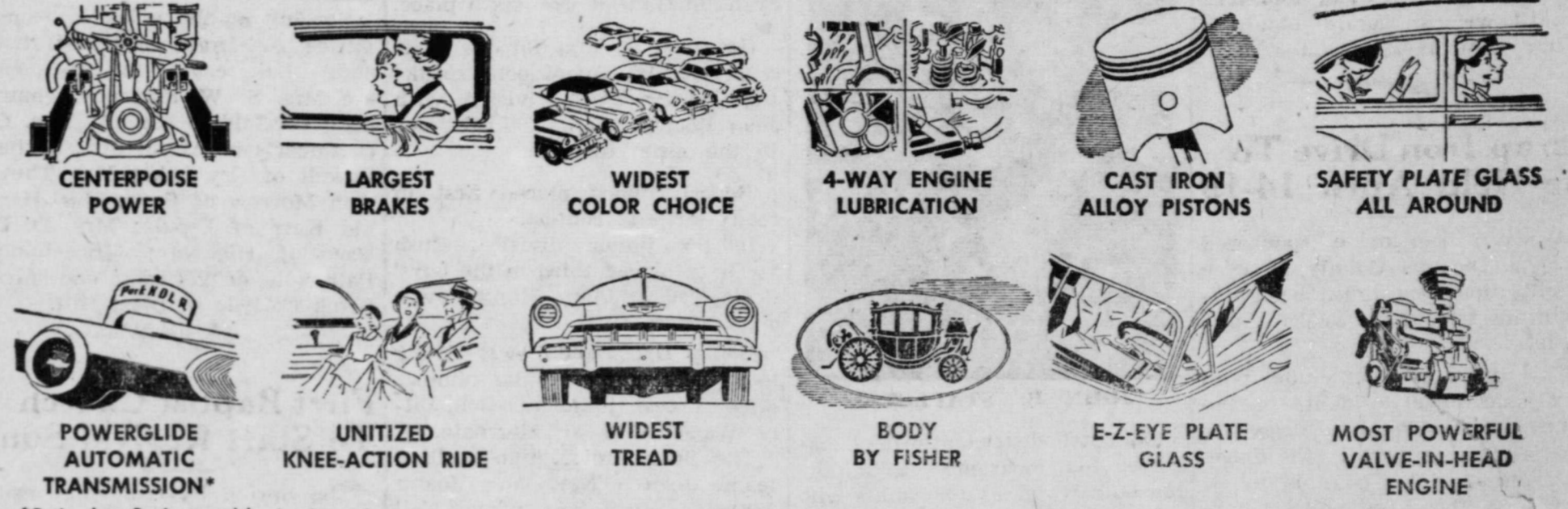
The City Commissioners of Spur reserve the right to reject any or all bids and to waive informalities.

NED HOGAN, Mayor, City of Spur, Dickens County, Texas.



Again in 1952... **lowest-priced line in its field!**

Yes, Chevrolet brings you lowest prices on model after model . . . as well as all these fine features found in no other low-priced car!



MORE PEOPLE BUY CHEVROLETS THAN ANY OTHER CAR! **CHEVROLET** The Only Fine Cars PRICED SO LOW!

SPUR MOTOR COMPANY
 E. L. CARAWAY, OWNER
 SPUR, TEXAS ~ ~ TELEPHONE 37



Ahead—the Nicest Miles in the World!

Well, the day has come! You have your beautiful Golden Anniversary Cadillac—and are off on that cross-country journey you've so eagerly awaited.

You're full of hope and anticipation—but almost afraid it's too good to be true. Can *any* car perform and handle the way people say *this* one does?

You come to the end of the street that opens into the crosstown thoroughfare—and the big, easy-acting brakes settle you down to the softest, smoothest stop you ever experienced in all your life.

You touch the throttle, and the great engine starts you out like the flight of an arrow—smoothly and swiftly and quietly.

Almost before you know it, a light turns red—and, once again, that easy, velvety stop. And then the green—and again that swift, eager move into action.

Stop and go—red and green . . . and pretty soon it dawns upon you that you never dreamed of driving a car that handled and performed like this.

Wonderful in city traffic—no doubt about it!

And then the cars thin out about you—the traffic lights stretch farther and farther apart—and you find yourself on the open road.

Instinctively, your foot goes down on the throttle; but, quickly, it eases up again. For you find yourself really rolling in a couple of hundred feet! So you do a little experimenting until you find the spot where the accelerator belongs for sane and sensible driving—and then you settle back and relax.

You scarcely seem to be moving at all. You handle the wheel with the weight of your hand. You're comfortable—resting—at peace with the highway! The sun rises higher and the road beckons on.

"Where did we plan on stopping tonight?"

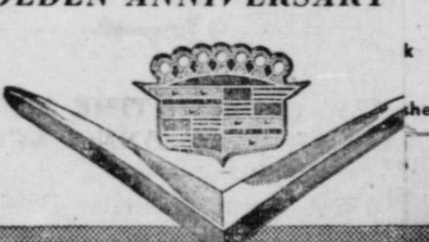
"Better take a look at the map and see what's on down the line. We're going to get a lot farther than I ever dreamed we could!"

Yes, it's true what they say about Cadillac. Better come in and see it—and drive it—while

8-lb. 49¢
 5-lb. 14¢
 1-lb. 29¢
 10-oz. 15¢
 5-oz. 5¢

Flav NuMac
 8-oz. Jar 2¢

THE GOLDEN ANNIVERSARY



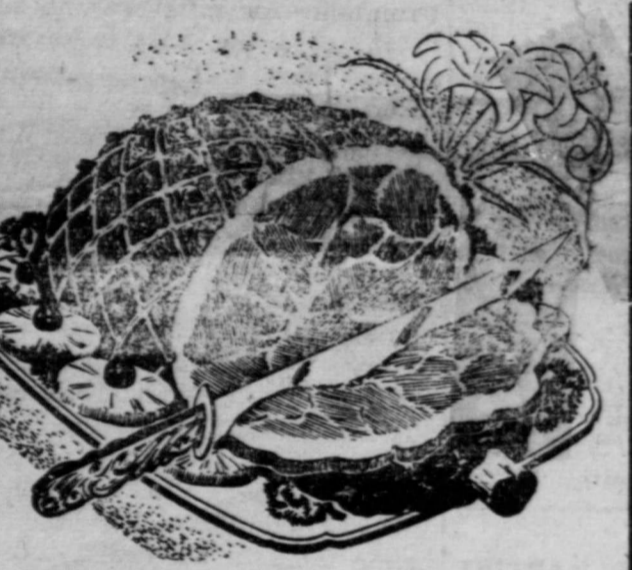
Prices effective

REAGAN MOTOR COMPANY

Easter Values

in Fine Food... at Thrifty Prices

CRISCO 3 lb. can **83c**



WILSON'S CERTIFIED
Easter Hams
 Half or Whole lb. **49c**

All Meat lb. **FRANKS 49c**
 Wilson's Cert. Ready to eat or uncooked
PICNICS lb. **35c**

Korn King 1 lb. Trapak **BACON 35c**
 Fresh Fancy Select Pt. **OYSTERS 85c**

Oleo Blue Bonnet First Quality Col. qtrs. lb. **17c**

SNIDER'S PURE 2 lb. JAR **STRAWBERRY PRESERVES 59c**

Lima Beans Argo Green and White **2 FOR 25c**

Miracle Whip Pint **Salad Dressing 35c**
 Trusty 1 lb. can **Dog Food 3 for 25c**

White Swan Fancy 14 oz. jar **KETCHUP 19c**
 Nanette Facial Quality **Toilet Tissue 2 for 23c**

Adams 46 oz. can **ORANGE JUICE 27c**
 200 size **KLEENEX 2 for 29c**

Heart's Delight 46 oz. can **Pineapple Juice 31c**
 Modart 75c size **SHAMPOO 49c**

FARM-FRESH FRUITS AND VEGETABLES

Full of juice lb. **LEMONS 13c**
 Fresh Crisp bunch **RADISHES 5c**

Fresh bunch **Green Onions 5c**
 Large Green stalk **CELERY 15c**

Pineapple Sliced or Crushed. No. 1 flat **15c**

DOUBLE GREEN STAMPS EVERY WED.

WE GIVE S. W. GREEN STAMPS

MAC'S FOOD MARKET





EASTER Value Event

Special Purchase!
2,000 Yards
FABRICS
77c yd.

ONE OF THE GREATEST SELECTIONS OF FABRICS EVER TO BE SOLD AT SUCH A DRASTICALLY LOW PRICE!

TISSUE CHAMBRAY, CIRCULAR AND REGULAR SKIRT FABRICS, SHEER RAYON CORD, BEMBERG AND FANCY CHAMBRAYS. COLORS AND PATTERNS GALORE! WIDTHS OF 36 INCH TO 45 INCH.

THESE GOODS WERE MADE TO SELL FOR 98c TO 1.49 YD.



Mrs. G. W. Justice and Mrs. J. T. Powell spent the week end in Lubbock, doing a bit of shopping and sight seeing. They also visited in the home of Mrs. Frances Roberts and Mrs. Ola Young.

GLENN JONES GENERAL PLUMBING

All work done in a workmanlike manner and guaranteed to give satisfaction.

Headquarters
 WILLSON & YOUNG LUMBER CO.
 PHONE 12

OWN YOUR OWN!



F. H. A. LOANS NOW AVAILABLE!

We are ready to submit your application for an F. H. A. Loan on a New Home!

- PROMPT COMMITMENTS -

REPAIR LOANS

FOR RURAL OR CITY BUILDINGS
 Remodel, add to, and repair your city or country home, fences, barns, etc.
 3 YEARS TO PAY! - NO RED TAPE!

SPUR LUMBER COMPANY, LTD.

Spur, Texas

18th ANNUAL STOCKHOLDER'S MEETING

STAMFORD PRODUCTION CREDIT ASSOCIATION

Texas Cowboy Reunion Grounds
 Stamford, Texas

THURSDAY, APRIL 17, 1952, 9 A. M.

ALL PRODUCTION CREDIT MEMBERS AND THEIR FAMILIES ARE INVITED TO THE ANNUAL MEETING AT THE TIME AND PLACE SHOWN ABOVE. A MAJORITY ARE EXPECTED TO BE PRESENT.

IN ADDITION TO THE BUSINESS MATTERS THERE WILL BE SOME WORTHWHILE ENTERTAINMENT, ALSO A NUMBER OF PRIZES FOR MEMBERS AND THEIR WIVES, AND A CHUCK WAGON DINNER FOR THE FAMILY.

IF YOU ARE A MEMBER OF THE PRODUCTION CREDIT ASSOCIATION YOU ARE EXPECTED TO FILL YOUR PLACE AT THIS MEETING. IT WILL BE INSTRUCTIVE, ENTERTAINING AND PROFITABLE.

J. L. HILL, JR.,
 Secretary-Treasurer

1/2 PRICE SALE! Carole King Junior Fashions



- Style 6054, Window Pane plaid chambray... Tan, Green, Grey, Sizes 9-15. Small jewel buttons trimmed in pique... Reg. 6.95 Sale . . . 4.47
- Style 8144, Small check rayon tafeta. Horseshair braid trim on pockets and sleeve. Brown, Green, Black, Navy. Regular 10.95 Sale . . . 5.47
- Style 8152, Salyna cloth trimmed with eyellet. Aqua, Rose and Beige. Double Belt. Regular 12.95. Sale . . . 5.47
- Style 8154, Two-toned for Easter beauty... Salyna cloth. Beige and Brown, Plum and Lavender. Regular 10.95 Sale . . . 5.47
- Style 9347, Rayon Gabardine with multi-colored belt and pocket trim. Beige, Pink, Perrywinkle and Aqua. Regular 8.95. Sale . . . 6.47
- Style 8143, Print as pretty as only Carole King can make it. Jewels on tie at neck. Regular 10.95 Sale . . . 5.47
- Style 8163, All pique for beauty. Blue, Pink and Yellow. Scrolls of braid on the bodice. Regular 10.95. Sale . . . 5.47
- Style 6051, Cool chambray for spring and summer. Trimmed with eyellet embroidery. Rose, Aqua, Green. Regular 8.95. Sale . . . 4.47
- Style 8053, Rayon Shantung, that ties at throat. Cat-crow design on bodice. Tomato, Blue, Kelly, trimmed with white. Regular 12.95. Sale . . . 6.47
- Style 8155, Salyna Sun Dress. Jewel trimmed belt. Beige, Tomato, Aqua, Avocado. Regular 10.95. Sale . . . 5.47

Only Dunlap's could bring you a value like this!

Dunlap's

No Alterations At This Low Price!



LADIES WASHABLE CASUAL SHOES

Wellco "Foam tread". Wedge heels and flats. SIZES 4 to 10. REGULARLY 3.49 and 3.98

2.99

SPECIAL GROUP MEN'S LONG SLEEVE SPORT SHIRTS

Handsome Rayon and Acetate fabrics. VALUES TO 4.98

1.99

MEN'S NYLON SHORTS

BOXER STYLE. Fancy and solid colors. PLAIN . . . 1.50 FANCY . . . 1.89

MEN'S SPORT SOCKS

A wonderful selection of sport weaves and colors. All ticketed 75c

36c pr.

ONE SPECIAL GROUP! BOYS' Gabardine SLACKS

A genuine "Bur Mill" Rayon Gabardine. SIZES 6 to 16. REGULARLY 3.98

only 2.99

HIS FAVORITE FADED BLUE DENIM SLACKS

FOR BOYS. ● Just like dad's ● Elastic boxer waist ● Three deep pockets ● Sanforized ● Guaranteed washable ● Sizes S, M, L

2.79

LADIES' NYLON HOSE

51 GAUGE 15 DENIER. First quality Dupont Nylon. All new colors. Sizes 8 1/2 to 11

68c pr.

3 pr. for 2.00

JUST IN TIME FOR EASTER! LADIES SUITS

These suits are a branded line of one of the finest makers. Beautiful Rayon faille in coffee, rose, beige, maize and navy. SIZES 10 to 20. REGULARLY 24.95

18.99

LADIES' SKIRTS SKIRTS Skirts

Almost any style, fabric, color, pattern and size to choose from.

only 2.98

LADIES' BLOUSES

Blouses Blouses. Of fabrics in Nylon, Rayon and Fine Cotton. Colors of the rainbow to choose from.

only 2.98

ONE SPECIAL GROUP LADIES DRESSES

Gingham, Nylon, Rayon and Broadcloth fabrics to choose from.

VALUES TO 12.95

only 6.00

CHILDREN'S Nylonized PANTIES

Finished with type 8 Nylon — for fabric strength, wear and beauty. Colors of pink, white, blue and maize. Sizes 2 to 14. PRE-EASTER SPECIAL!

38c

36 IN. PURE IRISH LINEN

In beautiful colors of white, pink, blue, beige and navy. REGULARLY 2.49

only 1.98 yd.

PRE-EASTER SPECIAL! BELCRAFT CHENILLE BED SPREADS

Full bed size. A close woven baby chenille in white, rose, green, blue, chartreuse and pink. REGULARLY 6.95.

5.19

IN CHARGE:
R. B. Dickett,
Sooner Sales System
Okla. City, Okla.

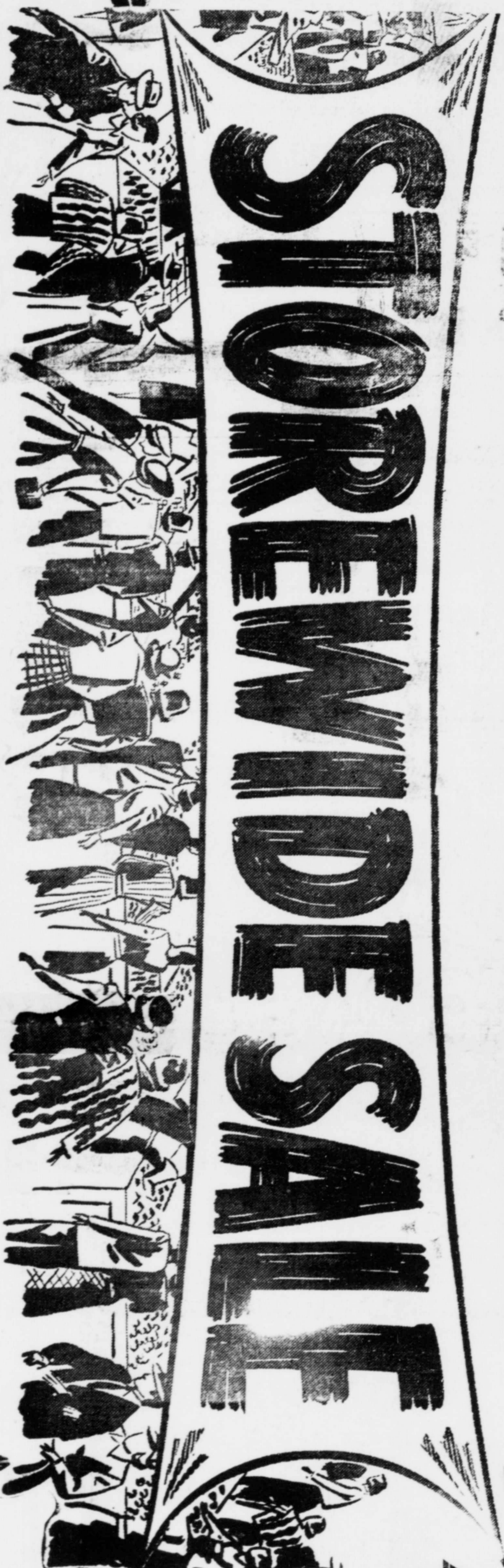
Good News
Extra!

PROCTOR'S
SPUR, TEXAS

Cuts loose with a RIP-ROARING, PRICE SLASHING,
MONEY SAVING SALE with the Power of Dynamite!
TRULY A GIGANTIC BOMB BLAST OF BARGAINS!

DURING SALE!
All sales cash - all
sales final - no ex-
changes - no re-
funds - no altera-
tions!

STORE CLOSED
TUES. & WED.
To re-price re-ar-
range, re-group &
reduce the entire
stock.



IT'S WAR AND MURDER WITH ATOMIC POWER-FORCED --

TO SELL THE BULK OF THIS ENTIRE STOCK (IN 9 DAYS) AT PRICES NO ORDINARY STORE COULD STAND! EVERY ITEM
MUST GO! NOTHING RESERVED! CONSISTING OF MENS, WOMENS AND CHILDRENS NATIONALLY ADVERTISED BRANDS!

SALE Starts Thurs. 9 a.m. Sharp! April 10th.

VALUES TO \$2.98 LADIES COTTON
PETTICOATS & SLIPS
• First Quality
• Exceed Value
• With They Last...
98c

REGULAR \$1.98 MENS ARMY CLOTH
SHIRTS or PANTS
• Genuine Gingham
• First Quality
• Exceed Value
• With They Last...
3.99

REGULAR \$3.49 VALUE NANOTIZED
MENS OVERPAITS

HOUR SPECIAL!
THURS. 9 A.M.
VALUES to \$1.59 YD.

YARD GOODS
• Gingham • Chambray
• Pique • Voile • Fancy
Muslins - White 1 gr. laste

25c

HOUR SPECIAL!
THURS. 2 P.M.
Reg. 39c and 49c value

BOYS SOCKS
• Argyles and Blazer
stripes. Sizes 6 to 10 1/2 pr.

10c

39c val Girls' ANKLETS, pair **10c**

HOUR SPECIAL!
FRI. 10 A.M.
Values to \$1.98 yard

MATERIALS
• Gabardines • Rayons
• Faille • Satins • Fan-
cy Gingham • Taffetas
• One large group. Yd.

50c

HOUR SPECIAL!
FRI. 2 P.M.
Reg. 75c and \$1.00 value
MEN'S NYLON

DRESS SOCKS
• Pastels • Solids • Fan-
cies • Elastic tops • sizes
10 to 12. Pair

25c

\$2.98 yard value. Imported
SWISS GINGHAMS
• Made from Irish cotton
• Bright, summer colors
• Sale price, YARD
1.99

Reg. \$10.00 to \$12.50 values in
MENS FELT HATS
• New Spring styles
• Various finishes
• Sale price, EACH
6.99

NEW ARRIVALS. PINK COTTON
Balloon BROADCLOTH
• All new summer colors
• Finest quality
6.00

Blue, Striped, Denim
 • Full length, well tailored
 • 8 Ounce Weight
 • Sale Price, Pair **2.98**

VALUES TO \$6.00 CANNON AND HAYNES
BATH TOWELS
 • Full 20 x 40 size
 • 2 Thread Count
 • Fancy Patterns
 • Sale Price, each **44c**

VALUES TO \$4.95 FIRST QUALITY
MENS PAJAMAS
 • Broadcloth, Rayon
 • Well Tailored, full cut
 • Size A, B, C, D
 • Sale Price, Pair **2.99**

REGULAR \$3.79 VALUE—FIRST QUALITY
COLORS SHEETS
 • Cottons, Popperels
 • Fine Thread Count
 • Wide, Full Size Hem
 • Sale Price, Each **2.49**

Reg. 80c value. 38 inch width
80 Sq. BROWN MUSLIN
 • 40 square count
 • Fine quality
 • Nationally Advertised
 • Sale Price, Yard **23c**

Reg. 60c value. White Cotton
Mens TEE SHIRTS
 • Well Tailored Full cut
 • Combed-Cotton Yarn
 • All Regular Sizes
 • Sale Price Each **39c**

Reg. \$1.50 value. New Summer Crepes
RAYON & NYLON
 • New Summer Patterns
 • Famous Brands
 • Ideal For Many Uses
 • Sale Price, Yard **1.09**

Reg. \$3.98 value. GREYSTONE
MENS DRESS SHIRTS
 • Two Flat Pockets
 • Fine quality Chambray
 • Well tailored fitting
 • Sanitized. EACH **2.99**

Reg. 98c yard value. 36 inch.
SUMMER TAFFETAS
 • All new summer colors
 • Famous brands
 • Sale price, Yard **69c**

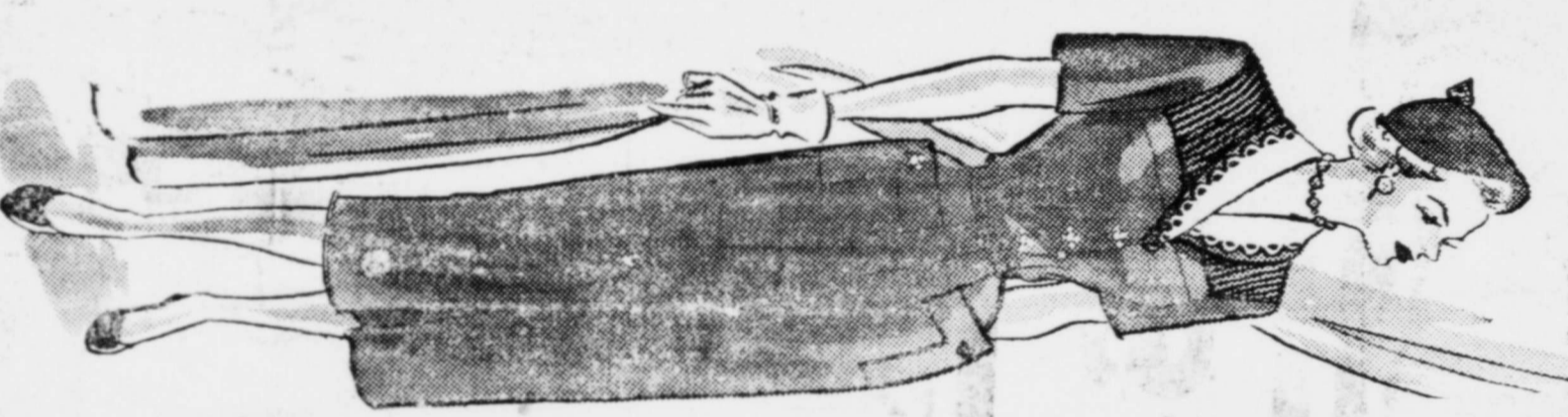
Values to \$2.98. First Quality
BOYS DENIM JEANS
 • Double and single knee
 • Sizes 1 to 14
 • Sanitized Strunk
 • Sale price, PAIR **1.98**

Values to 2.49 yard
DRESS LINES
 • Crease resistant 50% max. Gas
 • Treated for fading & pre-shrink
 • New colors.
1.49
 YARD

Choice of the House!
 4.95 to 22.95 values
LADIES ROBES
 • Serenaders • Rayons • Chas.
 • All sizes • OUT THEY GO

Choice of the House!
 14.95 to 34.95 values
LADIES TOPPERS
 • Pastels • Darts • New Styles
 • Arrivals • Be here early
 • YOUR CHOICE

ONE GROUP VAL. TO 2.98
LADIES BRASSIERES
 • WHITE • PINK
 • New Styles • Broken, Glass
 • Ideal for Morning Day



TO CLOSE OUT
 ENTIRE PRESENT STOCK
SPRING AND SUMMER DRESSES
 NOTHING RESERVED
 OUT THEY GO AT
 NEAR GIVE-AWAY PRICES

All 5.95
DRESSES \$3.99
 All 9.95
DRESSES \$5.99
 All 10.95
DRESSES \$6.99
 All 14.95
DRESSES \$8.99
 All 17.95
DRESSES \$10.99
 All 22.95
DRESSES \$12.99
 All 29.95
DRESSES \$19.99

Reg. 39c yd. 80 sq.
BLEACHED DOMESTIC
 • Full 36 in. wide
 • Snow White Cotton
 • Cut from full bolts
27c
 YARD

72x90 in. 7 1/2 ft. len.
PURREY BLANKETS
 • Whites • Pastels • Wool and
 • Rayon • Satin Binding • Moh
 • Proofed. SALE PRICE
7.95

OUT THEY GO!
 ALL LADIES
SKIRTS
 • New Spring & Summer Styles
 • Many Patterns — All Sizes
 • All 5.95
SKIRTS 3.99
 All 7.95
SKIRTS 5.99
 All 8.95
SKIRTS 6.99
 All 10.95
SKIRTS 7.99

OUT THEY GO!
 ALL LADIES
BLOUSES
 • New summer styles • Light,
 • dark and fancy fancy patterns.
 • All 2.98
BLOUSES 2.29
 All 3.98
BLOUSES 2.99
 All 4.95
BLOUSES 3.99
 All 7.95
BLOUSES 5.99
 All 10.95
BLOUSES 6.99

SHOE SALE FOR LADIES
 • White stock on sale
 • All widths
 • All styles
 • Summer

VALUES TO \$7.95
SUMMER STYLES SANDALS
 • White • Navy
 • Black • Beige
 • Hi and low
 • heels. Pair
 REGULAR \$3.98 SUMMER
SANDALS \$2.99
 • Colors
 • Summer styles
 • All sizes, pr.

VALUES TO \$5.98 NEW
SANDALS
 • Red Goose
 • All colors
 • Sizes up to 5
 • Sale Price
\$2.98
 REG. \$3.98 SUMMER
SANDALS \$2.49
 • New styles
 • Sizes to 5
 • Sale price, pr.

VALUES TO \$2.95 NEW
NUNN BUSH OXFORDS
 • Mic toe
 • Pinch caps
 • Brogue style
 • Sale, pr.
\$14.99
 VALUES TO \$9.95 SPRING
WORK SHOES
 • All leather
 • \$8.98 WOOLYERNE
 • Nat. sedi. pr.
\$5.99

Reg. 2.49, Type 128
81x99 SIZE SHEETS
 • First Quality • Wide Hems
 • Full size • Fine count
1.89
 56c 42x36 inch
Pillow Cases 44c

3.98, 130 thd. count.
PEQUOT SHEETS
 • First Quality
 • Snow White Cotton
 • Full Wide Hems
2.48
 42x36 PEQUOT
Pillow Cases 59c

Men's Athletic Rib
UNDERSHIRT 29c
 • Full cut
 • First quality
 • Cotton rib, ea.
 69c Broadcloth, sanf.
Mens SHORTS 39c
 • Gripper Front
 • Elastic sides
 • Plain • Fancy
 • Men's, Kith cotton
SHORTS, 29c

Val. to \$75. Nat. Adv.
MENS SUITS 39.99
 • Year round weights • All wools
 • Mixtures • Single or double
 • breasted • Light or dark patterns
 • New Patterns, models
 • Values to 75.00
 • Choice of
 • the House!
 VALUES TO \$5.00 MENS
SUITS OUT THEY GO! 29.99

VALUES TO \$7.95. MENS FAMOUS
WESTERN Style SHIRTS 4.79
 • Pearl buttons, zippers
 • New summer patterns
 • Sanitized Strunk
 • Sale price, EACH

VALUES TO \$3.98 YARD. NEW
SILK SHANTUNGS 2.49
 • New summer patterns
 • Pleasing colors
 • First quality
 • Sale price, YARD

VALUES TO \$14.95. NEW ALL WOOL.
MENS DRESS PANTS 9.95
 • Year round weight
 • All summer colors
 • Easy on, slip on
 • Sale price, PAIR

\$24.95 VALUE. NEW SPRING
MENS SPORT COATS 14.95
 • Plain or fancy patterns
 • First quality material
 • Sizes to 3
 • Sale price, EACH

VALUES TO \$12.99 YARD. 36 INCH
Summer GINGHAMS 69c
 • New summer patterns
 • Many patterns & col.
 • First qual. contract
 • Sale price, YARD

VALUES TO \$10.95. SPRING and SUMMER
MENS DRESS PANTS 6.99
 • Well tailored
 • Plain or fancy patterns
 • Year round weight
 • Sale price, PAIR

\$7.98 VALUE. 27x27 INCH GENUINE
BIRDSEYE DIAPERS 1.89
 • Very absorbent
 • Fine soft cotton
 • Full 27x27 size
 • Sale price, DOZEN

VALUES TO \$4.95. LADIES
NYLON SLIPS 1.89
 • Tailored or lace
 • All regular sizes
 • Full length, each
 • Sale price, EACH

VALUES TO 69c THE PAIR. LADIES
RAYON PANTIES 39c
 • Two bar tread
 • All sizes
 • Tailored neatly
 • Sale price, PAIR

PROCTORS

HUNDREDS OF OTHER UNAD-
 VERSED ITEMS ON SALE AT
 NEAR GIVE-AWAY PRICES!



EASTER Value Event

Special Purchase!
2,000 Yards
FABRICS
77c yd.



ONE OF THE GREATEST SELECTIONS OF FABRICS EVER TO BE SOLD AT SUCH A DRASTICALLY LOW PRICE!

TISSUE CHAMBRAY, CIRCULAR AND REGULAR SKIRT FABRICS, SHEER RAYON CORD, BEMBERG AND FANCY CHAMBRAYS. COLORS AND PATTERNS GALORE! WIDTHS OF 36 INCH TO 45 INCH.

THESE GOODS WERE MADE TO SELL FOR 98c TO 1.49 YD.

Mrs. G. W. Justice and Mrs. J. T. Powell spent the week end in Lubbock, doing a bit of shopping and sight seeing. They also visited in the home of Mrs. Frances Roberts and Mrs. Ola Young.

GLENN JONES GENERAL PLUMBING

All work done in a workmanlike manner and guaranteed to give satisfaction.

Headquarters
WILLSON & YOUNG LUMBER CO.
 PHONE 12

OWN YOUR OWN!



F. H. A. LOANS NOW AVAILABLE!

We are ready to submit your application for an F. H. A. Loan on a New Home!

- PROMPT COMMITMENTS -

REPAIR LOANS

FOR RURAL OR CITY BUILDINGS Remodel, add to, and repair your city or country home, fences, barns, etc.

3 YEARS TO PAY! - NO RED TAPE!

SPUR LUMBER COMPANY, LTD.

Spur, Texas

18th ANNUAL STOCKHOLDER'S MEETING

STAMFORD PRODUCTION CREDIT ASSOCIATION

Texas Cowboy Reunion Grounds
 Stamford, Texas

THURSDAY, APRIL 17, 1952, 9 A. M.

ALL PRODUCTION CREDIT MEMBERS AND THEIR FAMILIES ARE INVITED TO THE ANNUAL MEETING AT THE TIME AND PLACE SHOWN ABOVE. A MAJORITY ARE EXPECTED TO BE PRESENT.

IN ADDITION TO THE BUSINESS MATTERS THERE WILL BE SOME WORTHWHILE ENTERTAINMENT, ALSO A NUMBER OF PRIZES FOR MEMBERS AND THEIR WIVES, AND A CHUCK WAGON DINNER FOR THE FAMILY.

IF YOU ARE A MEMBER OF THE PRODUCTION CREDIT ASSOCIATION YOU ARE EXPECTED TO FILL YOUR PLACE AT THIS MEETING. IT WILL BE INSTRUCTIVE, ENTERTAINING AND PROFITABLE.

J. L. HILL, JR.,
 Secretary-Treasurer

1/2 PRICE SALE! Carole King Junior Fashions



1. Style 6054, Window Pane plaid chambray... Tan, Green, Grey, Sizes 9-15. Small jewel buttons trimmed in pique... Reg. 8.95 Sale . . . 4.47
2. Style 8144, Small check rayon taffeta. Horseshoe braid trim on pockets and sleeve. Brown, Green, Black, Navy. Regular 10.95 Sale . . . 5.47
3. Style 8152, Salyna cloth trimmed with eyelet. Aqua, Rose and Beige. Double Belt. Regular 10.95. Sale . . . 5.47
4. Style 8154, Two-toned for Easter beauty... Salyna cloth. Beige and Brown, Plum and Lavender. Regular 10.95 Sale . . . 5.47
5. Style 9547, Rayon Gabardine with multi-colored belt and pocket trim. Beige, Pink, Perrywinkle and Aqua. Regular 12.95. Sale . . . 6.47
6. Style 8143, Print as perky as only Carole King can make it. Jewels on tie at neck. Regular 10.95 Sale . . . 5.47
7. Style 8183, All pique for beauty. Blue, Pink and Yellow. Scrolls of braid on the bodice. Regular 10.95. Sale . . . 5.47
8. Style 6651, Cool chambray for spring and summer. Trimmed with eyelet embroidery. Rose, Aqua, Green. Regular 8.95. Sale . . . 4.47
9. Style 8253, Rayon Shamrock, that ties at throat. Chain-stitch design on bodice. Tomato, Blue, Kelly, trimmed with white. Regular 12.95. Sale . . . 6.47
10. Style 8155, Salyna Sun Dress. Jewel trimmed belt. Beige, Tomato, Aqua, Avocado. Regular 10.95. Sale . . . 5.47

Only Dunlap's could bring you a value like this!

Dunlap's

No Alterations At This Low Price!



LADIES WASHABLE CASUAL SHOES

Wellco "Foamtrend". Wedge heels and flats. SIZES 4 to 10. REGULARLY 3.49 and 3.98

2.99

SPECIAL GROUP MEN'S LONG SLEEVE SPORT SHIRTS

Handsome Rayon and Acetate fabrics. VALUES TO 4.98

1.99

MEN'S NYLON SHORTS

BOXER STYLE. Fancy and solid colors.

PLAIN **1.50**

FANCY **1.89**

MEN'S SPORT SOCKS

A wonderful selection of sport weaves and colors. All ticketed 75c

36c pr.

ONE SPECIAL GROUP! BOYS' GABARDINE SLACKS

A genuine "Bur Mill" Rayon Gabardine. SIZES 6 to 16. REGULARLY 3.98

only 2.99

HIS FAVORITE FADED BLUE DENIM SLACKS

FOR BOYS. • Just like dad's • Elastic boxer waist • Three deep pockets • Sanitized • Guaranteed washable • Sizes S, M, L

2.79

LADIES' NYLON HOSE

51 GAUGE 15 DENIER. First quality Dupont Nylon. All new colors. Sizes 8 1/2 to 11

68c pr.

3 pr. for 2.00

JUST IN TIME FOR EASTER! LADIES SUITS

These suits are a branded line of one of the finest makers. Beautiful Rayon faille in coffee, rose, beige, maize and navy. SIZES 10 to 20. REGULARLY 24.95

18.99

LADIES' SKIRTS SKIRTS SKIRTS

Almost any style, fabric, color, pattern and size to choose from.

only 2.98

LADIES' BLOUSES

Blouses Blouses

Of fabrics in Nylon, Rayon and Fine Cotton. Colors of the rainbow to choose from.

only 2.98

ONE SPECIAL GROUP! LADIES DRESSES

Gingham, Nylon, Rayon and Broadcloth fabrics to choose from.

VALUES TO 12.95
only 6.00

CHILDREN'S NYLONIZED PANTIES

Finished with type 8 Nylon — for fabric strength, wear and beauty. Colors of pink, white, blue and maize. Sizes 2 to 14. PRE-EASTER SPECIAL!

38c

36 IN. PURE IRISH LINEN

In beautiful colors of white, pink, blue, beige and navy. REGULARLY 2.49

only 1.98 yd.

PRE-EASTER SPECIAL! BELCRAFT CHENILLE BED SPREADS

Full bed size. A close woven baby chenille in white, rose, green, blue, chartreuse and pink. REGULARLY 6.95.

5.19

Partners...



You and the Santa Fe

Santa Fe, through your local agent, is your every day partner—your partner in business and pleasure, in progress and growth.

Our part is providing you with regular, safe freight and passenger service . . . service you need to keep local business humming and give you needed passenger transportation.

You do your part when you ship and travel Santa Fe. It is only through your continued patronage that we can provide you with this dependable rail service, so . . .

Whenever you ship or travel, make it Santa Fe *all the way*. It pays big dividends for our partnership.

Let your Santa Fe Agent help you with all your transportation problems.



Mrs. Addie Sprayberry visited in the home of her son, Mr. and Mrs. Oran Sprayberry and family of Lubbock this week.

Mr. and Mrs. C. F. Scudder and family spent last week end in Mineral Wells visiting relatives.

LEGAL NOTICE

ADVERTISEMENT FOR BIDS (LEGAL)

SEALED PROPOSALS will be received by the Commissioners at City Hall, Spur, Dickens County, Texas, until 2:00 P. M., Central Standard Time, on April 27, 1952, for the construction of a hospital building in Spur, Texas.

SEPARATE PROPOSALS accompanied by bid check or adequate bid bond of 5% of bids, are requested for the erection and completion of the following for the above buildings:

GENERAL CONSTRUCTION
 Proposal No. 1—General Construction only (Base Bid) Separate Bids with Alternates.

MECHANICAL WORK
 Proposal No. 2—Heating, Ventilating, and Air Conditioning.
 Proposal No. 3—Plumbing.
 Proposal No. 4—Combination-Heating, Ventilating, Air Conditioning and Plumbing.
 Proposal No. 5—Electrical Work. EQUIPMENT
 Proposal No. 6—Kitchen Equipment.
 Proposal No. 7—Sterilizing Equipment.
 Proposal No. 8—Casework.
 Proposal No. 9—X-Ray Equipment.

WAGE SCALE: Attention is called to the fact that there must be paid on this Project not less than the general prevailing rates

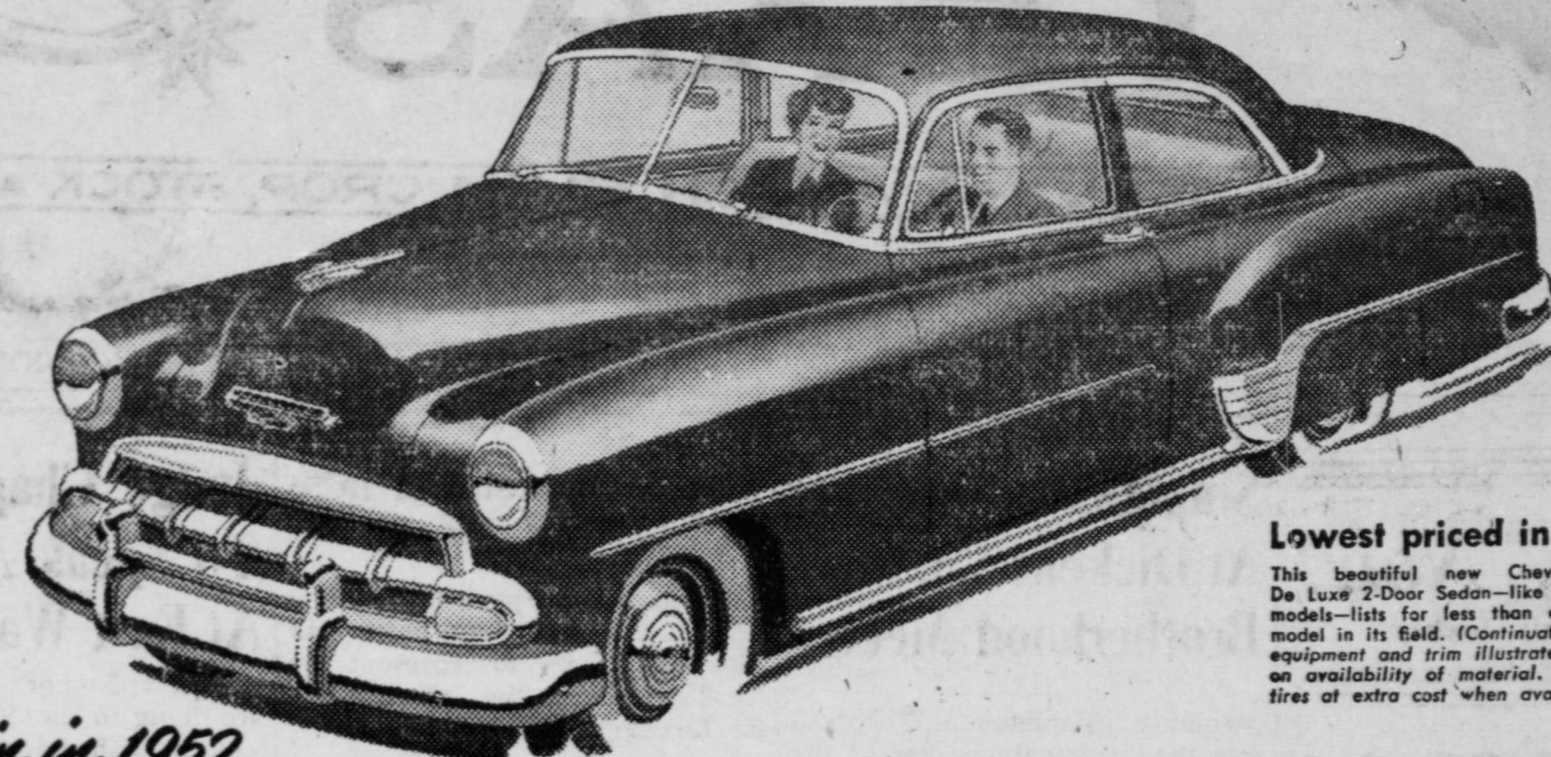
PLANS, SPECIFICATIONS, AND CONTRACT DOCUMENTS are on file in the office of DAVID S. CASTLE COMPANY, Architects and Engineers, 1082 1/2 North First Street, Abilene, Texas, and may be secured by making a deposit of \$25.00 which will be returned to each bidder immediately upon the return of the Plans, Specifications and Contract of wages which have been established and are found in the specifications

Documents in good condition. No refund on Plans, Specifications, and Contract Documents returned later than 10 (ten) days after the award of the contract will be obligatory.

The City Commissioners of Spur reserve the right to reject any or all bids and to waive informalities.

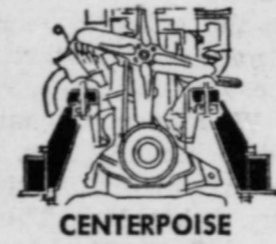


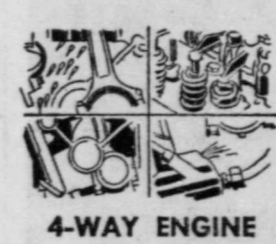


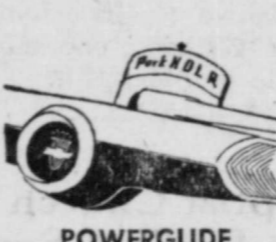

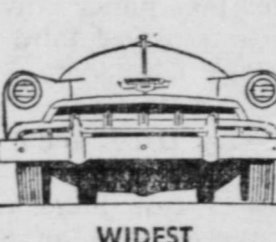



NED HOGAN, Mayor, City of Spur, Dickens County, Texas.

2tc



Again in 1952... **lowest-priced line in its field!**

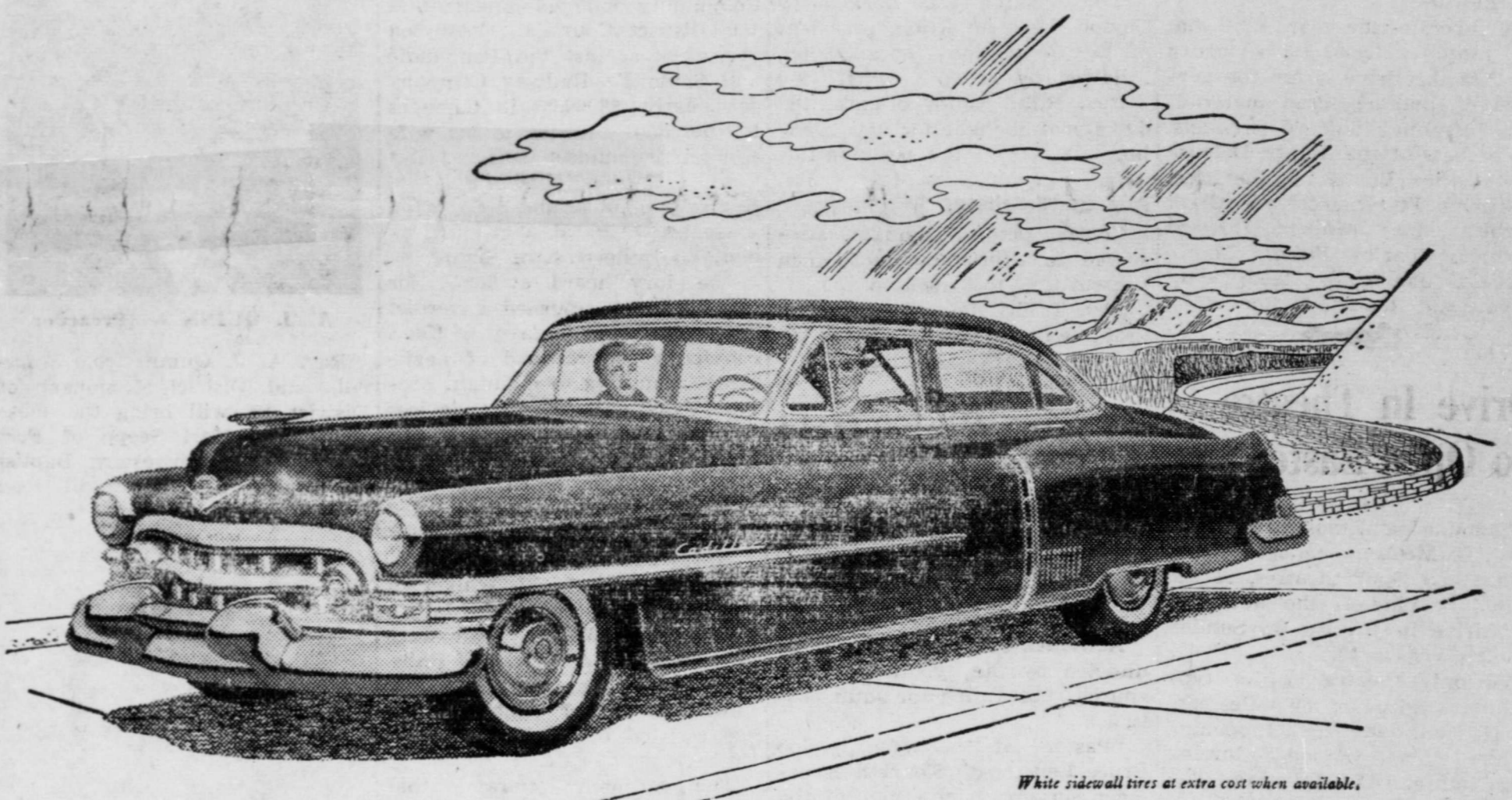
Yes, Chevrolet brings you lowest prices on model after model . . . as well as all these fine features found in no other low-priced car!

 CENTERPOISE POWER	 LARGEST BRAKES	 WIDEST COLOR CHOICE	 4-WAY ENGINE LUBRICATION	 CAST IRON ALLOY PISTONS	 SAFETY PLATE GLASS ALL AROUND
 POWERGLIDE AUTOMATIC TRANSMISSION*	 UNITIZED KNEE-ACTION RIDE	 WIDEST TREAD	 BODY BY FISHER	 E-Z EYE PLATE GLASS	 MOST POWERFUL VALVE-IN-HEAD ENGINE

*Optional on De Luxe models at extra cost.

MORE PEOPLE BUY CHEVROLETS THAN ANY OTHER CAR! **CHEVROLET** The Only Fine Cars PRICED SO LOW!

SPUR MOTOR COMPANY
 E. L. CARAWAY, OWNER
 SPUR, TEXAS ~ TELEPHONE 37



Ahead—the Nicest Miles in the World!

Well, the day has come! You have your beautiful Golden Anniversary Cadillac—and are off on that cross-country journey you've so eagerly awaited.

You're full of hope and anticipation—but almost afraid it's too good to be true. Can *any* car perform and handle the way people say *this* one does?

You come to the end of the street that opens into the crosstown thoroughfare—and the big, easy-acting brakes settle you down to the softest, smoothest stop you ever experienced in all your life.

You touch the throttle, and the great engine starts you out like the flight of an arrow—smoothly and swiftly and quietly.

Almost before you know it, a light turns red—and, once again, that easy, velvety stop. And then the green—and again that swift, eager move into action.

Stop and go—red and green . . . and pretty soon it dawns upon you that you never dreamed of driving a car that handled and performed like this.

Wonderful in city traffic—no doubt about it!

And then the cars thin out about you—the traffic lights stretch farther and farther apart—and you find yourself on the open road.

Instinctively, your foot goes down on the throttle; but, quickly, it eases up again. For you find yourself really rolling in a couple of hundred feet! So you do a little experimenting until you find the spot where the accelerator belongs for sane and sensible driving—and then you settle back and relax.

You scarcely seem to be moving at all. You handle the wheel with the weight of your hand. You're comfortable—resting—at peace with the highway! The sun rises higher and the road beckons on.

"Where did we plan on stopping tonight?"

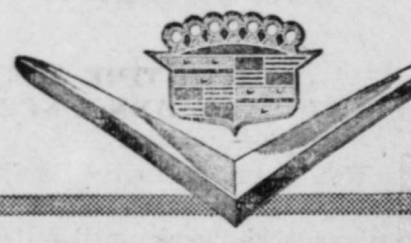
"Better take a look at the map and see what's on down the line. We're going to get a lot farther than I ever dreamed we could!"

Yes, it's true what they say about Cadillac. Better come in and see it—and drive it—while

8-lb. Box 49¢
 1-lb. 14¢
 10-oz. Jar 29¢
 10-oz. Jar 15¢
 5-lb. 5¢

Flav Numa
 8-oz. Jar 29¢

THE GOLDEN ANNIVERSARY



Mac's Food Market

REAGAN MOTOR COMPANY

Easter Values

in Fine Food... at Thrifty Prices

CRISCO 3 lb. can **83c**



WILSON'S CERTIFIED
Easter Hams
 Half or Whole. lb. **49c**

All Meat lb. **FRANKS 49c**

Wilson's Cert. Ready to eat or uncooked lb. **PICNICS 35c**

Korn King 1 lb. Trapak **BACON 35c**

Fresh Fancy Select Pt. **OYSTERS 85c**

Oleo Blue Bonnet First Quality Col. qtrs. lb. **17c**

SNIDER'S PURE 2 lb. JAR **STRAWBERRY PRESERVES 59c**

Lima Beans Argo Green and White 2 FOR **25c**

Miracle Whip Pint **Salad Dressing 35c** Trusty Dog Food 1 lb. can 3 for **25c**

White Swan Fancy 14 oz. jar **KETCHUP 19c** Nanette Facial Quality Toilet Tissue 2 for **23c**

Adams 46 oz. can **ORANGE JUICE 27c** 200 size **KLEENEX 2 for 29c**

Hearth's Delight 46 oz. can **Pineapple Juice 31c** Modart 75c size **SHAMPOO 49c**

-FARM-FRESH FRUITS AND VEGETABLES-

Full of juice lb. **LEMONS 13c** Fresh Crisp bunch **RADISHES 5c**

Fresh bunch **Green Onions 5c** Large Green stalk **CELERY 15c**

Pineapple Sliced or Crushed. No. 1 flat **15c**

DOUBLE GREEN STAMPS EVERY WED.

WE GIVE 2 X GREEN STAMPS

MAC'S FOOD MARKET

* * * * *

ABSTRACTS

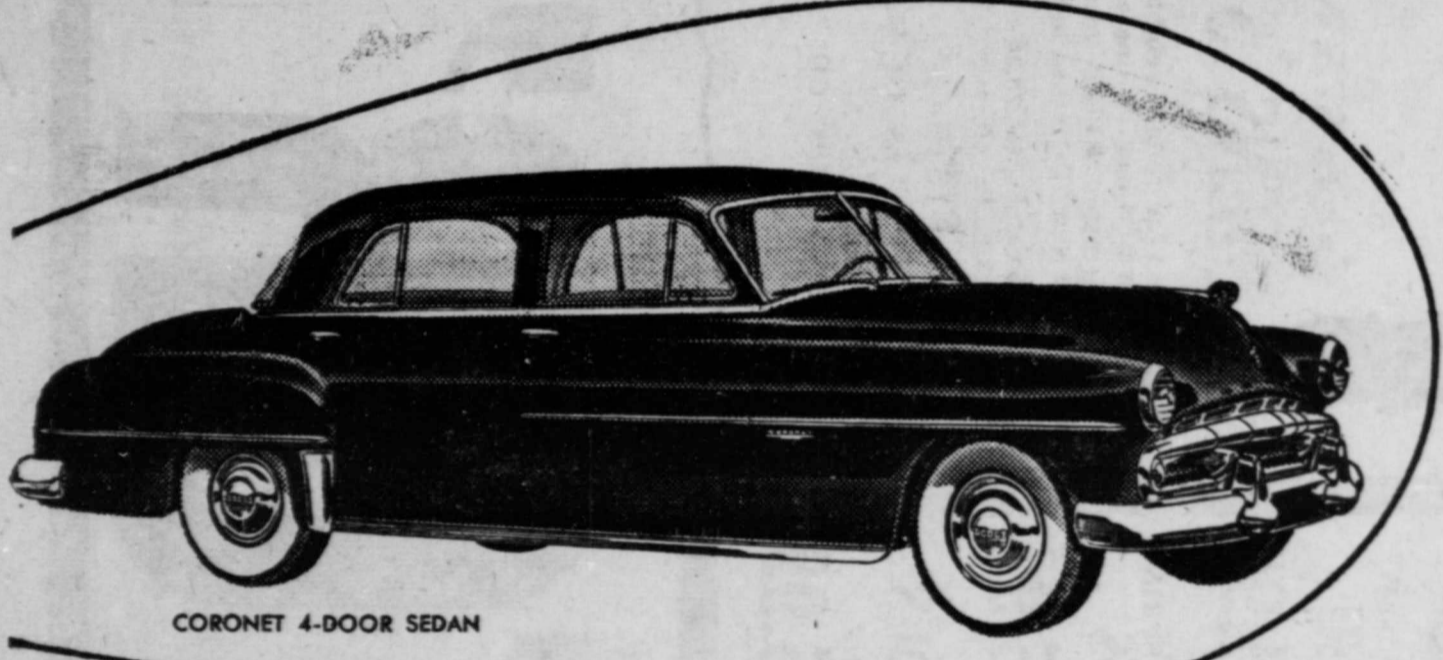
* * * * *

PROMPT SERVICE
REASONABLE PRICES

* * * * *

WARREN TITLE COMPANY
Phone 2641 Dickens, Texas

See
HOW COMFORTABLE
You are in the '52 Dodge!

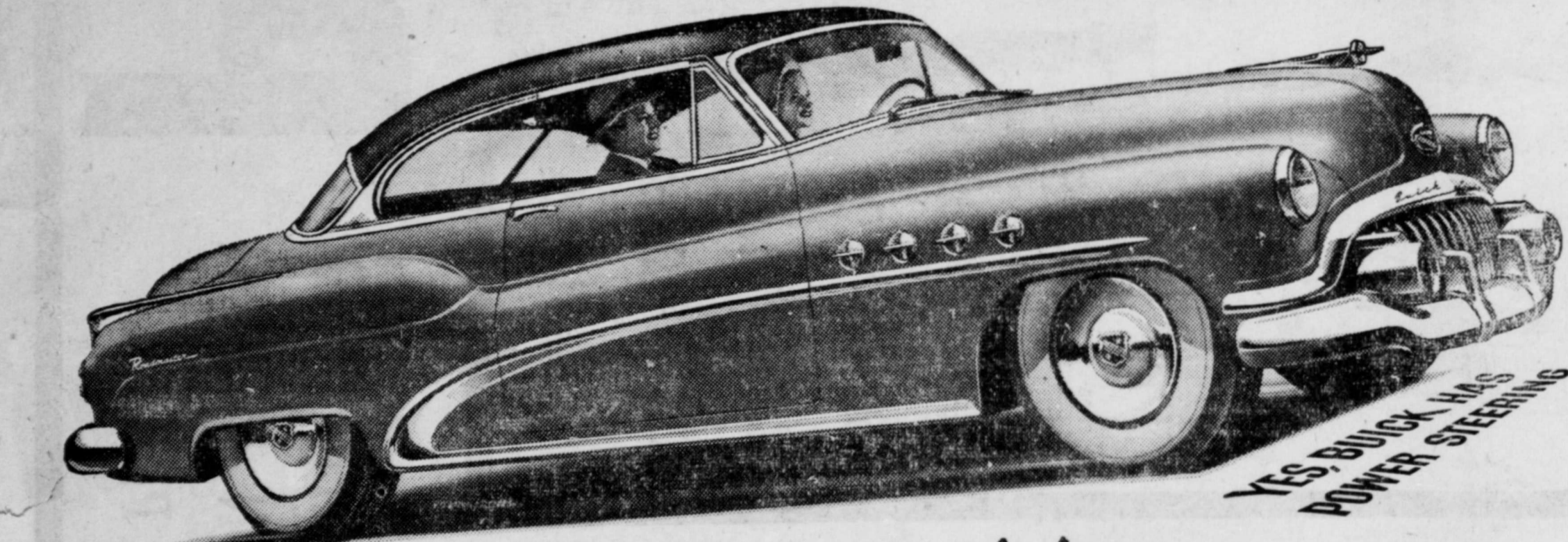


Let the "SHOW DOWN" way show you exactly how much extra leg room, head-room, hip room Dodge gives you!

Where others give you "sell" WE GIVE YOU PROOF!
You'll enjoy using the free "Show Down" booklet. It's a real eye-opener. It gives you the straight facts you need to know to judge car value and get the most for your money. Stop by for your copy. You'll be glad that you did.

When a car is big enough inside to let you sit relaxed and at ease... that's when restful riding comfort begins. The new '52 Dodge is extra big inside... gives you more all-around roominess than many cars costing hundreds of dollars more. Step by for your free "Show Down" booklet. You can prove Dodge comfort features... safety features... engineering advancements that mean dependability, economy and top performance. Get behind the wheel and try Dodge yourself! When you do... we're sure you'll play it wisely and get a dependable '52 Dodge. Specifications and equipment subject to change without notice.

New, dependable '52 DODGE
NOW ON DISPLAY
JONES MOTOR COMPANY



helping
Give the little lady a hand

THIS ad is addressed to husbands—husbands who've yearned for the thrill of sitting behind a broad hood packed with horsepower—and the pride of rolling down the street in a car that tells the world, "Here's a man who knows the finest thing on wheels."

But husbands have wives. And wives have been known to say, "No big cars for me. They're too hard to handle."

Well, we have an answer for that one. It's a ROADMASTER with Buick's new Power Steering.† And Power Steering takes over any time the steering gets tough—works like a helping hand—reduces the effort of turning the wheel of a car at a standstill to about the same effort it takes to pick up a mink coat.

BUT out on the open highway—with a clear straight stretch before you—your hands still have command of the wheel—you can feel that sure, firm, easy and eager responsiveness that's a part of the fun of driving.

The rest of the fun is in something else that's new this year—the highest horsepower that a Buick Fireball Engine has ever delivered—and an Airpower carburetor that lets loose an extra reserve of power when needed, and still adds extra miles to your cruising range on each tankful of gas.

So we suggest a family demonstration. You'll both like the hushed and restful silence of this superbly able traveler. You'll like the harmonious beauty of its

interior, and the deep and luxurious softness of its seats.

You'll like the velvet-gloved grip of its Wide-Band brakes, and the most capacious trunk in Buick history.

You'll like the smooth surge of Dynaflo Drive, and you'll like—but why waste time talking, when you could be finding out more than we can ever tell you? How about making a date to do that right now?

Equipment, accessories, trim and models are subject to change without notice. White sidewalls optional at extra cost when available. †Optional at extra cost on Roadmaster only.



WHEN BETTER AUTO MOTORISTS...
SPUR AUTO COMPANY
PHONE 8 SPUR, TEXAS

Miss Faye Middlebrooks, Spur public school music teacher, and Mrs. Al C. Williams, local private piano teacher, spent two days of the past week end in Canyon where they attended the Interscholastic chorus contest. They also visited the R. E. Smith family.

Cpl. David McAteer is visiting his parents, Mr. and Mrs. D. C. McAteer of Spur. He is to report to Travis Air Base, Fairfield, Calif., April 18.

Knights of Pythias
Meet each Mon.
Visitors Welcome

A. M. Le Croix
Attorney At Law
Spur, Texas

Mr. and Mrs. Seger Jenkins of Lubbock were guests at the home of her mother, Mrs. Cecil Addy, for the week end.

Mr. and Mrs. W. L. Richey of Haskell visited with their daughter and family, Mr. and Mrs. Walker and Cynthia Jane, Sunday afternoon.

Miss Patricia Anne Batchler, high school physical education teacher of Bryan is expected in Spur this week end, during which time she will visit in the home of her parents, Mr. and Mrs. J. E. Batchler.

Dr. M. H. Brannen
Dentist
111 E. Harris Phone 97
SPUR, TEXAS



AMBULANCE SERVICE
Air Conditioned Coach
CAMPBELL'S

Dr. O. R. Cloude
Chiropractor
100 West Hill Street
Spur, Texas

Dr. W. C. Gruben
OPTOMETRIST
Phone 177 Spur, Texas

Ratliff, Conner and Wilke
Attorneys at Law
Spur, Texas

MASONIC LODGE
No. 1922
Regular Meeting
SPUR
Thursday, April 10, 1952

Dr. W. F. Patrick
OPTOMETRIST
112 E. Harris Phone 499

Dr. W. K. Callan
DENTIST
401 N. WILLARD Phone 97

CARD OF THANKS
The Foreman Chapel Church wishes to thank each one who helped or contributed to the reconstruction of our Church. May God bless you, is our prayer. The membership of Foreman Chapel Church

NOW you can BUY your complete HOME REPAIRS
on a Easy-Pay Budget Plan New "Home-Fix-Up" Dept.

You can buy both the Labor and Lumber and Pay by the Month.

10% DOWN
UP TO 36 MONTHS TO PAY!
NO JOB TOO SMALL OR TOO LARGE!
ANY WORK FROM THE ROOF DOWN!



FROM THE CELLAR UP!
FIX UP!

You can pay as little as \$5.00 per month for complete installations or If you want to do the job yourself, you can buy the materials and pay as you can on our EASY-PAY Budget plan. Either way you save time, worry and money by getting top quality materials and skilled workmanship.

Let Us Give You A

FREE ESTIMATE
No obligation to buy anything
WHAT WORK DO YOU WANT DONE?

Check these necessary improvements
Attics Kitchens
Additions Picket Fences
Bathrooms Porches
Club Cellars Remodeling
Doors & Windows Roofing
Floors Shelving
Garages Siding
Insulation Storm Sash, Etc.

Willson-Young Lumber Co.
Ph. 12 Spur, Texas

FARMERS and RANLHERS-

YOU'LL FIND EVERYTHING YOU NEED TO BUILD NEW FENCES AND REPAIR OLD ONES AT SPUR LUMBER COMPANY

•CEDAR POSTS •BARB WIRE
•STAPLES •FENCING TOOLS

Compare Our Prices Before you Buy!

FENCING MATERIALS AVAILABLE THROUGH OUR FARM IMPROVEMENT LOAN SERVICE

SPECIAL!

WE HAVE JUST RECEIVED 1,000 SIX FOOT Cedar Posts 20c ea.

Spur Lumber Co., Ltd.

"WE DON'T MEET PRICES — WE MAKE THEM!"
Clarence Alexander, Mgr. & Co-Owner

BUSINESS & PROFESSIONAL DIRECTORY SPUR, TEXAS

B. J. WHITENER
Cement & Stucco Contrator
Phone 266-W Spur, Texas

H. S. Holly Agency
GENERAL INSURANCE
AUTO LOANS
"Cash in 10 Minutes"
Office Phone 201 Res. Phone 158
Spur, Texas

NICKELS BUTANE
Call us any time for courteous service and Quality Products.
Phone 95
McAdoo Phone 6

Chandler Funeral Home
Burial Insurance Plan That Anyone Can Afford
Ambulance Service
Phone 248 Spur, Texas

Gibson
INSURANCE AGENCY
• GENERAL INSURANCE •
Day Phone 40 — Night Phone 152

DE LUXE BEAUTY SHOP
Open from 8 a. m. to 6 p. m.
HAIR SHAPING \$1.00
ALL TYPES OF BEAUTY SERVICE
PHONE 17 SPUR, TEXAS

WATTS ELECTRIC
Commercial & Domestic Wiring
Appliances and Air Conditioner Repair Service
Phone 686 Spur, Tex.

BLAIR PHOTO SERVICE
All Kinds of Photography Work
One Day Service on Roll film Developing

BURT DRUG, AGENCY
Call 76-W For Special Photography Work

This Space For Sale
By The Month
Phone 128

66 Service Station
WHOLESALE & RETAIL
Open 24 Hours
Phone 20 Spur

South Panhandle Land Title Company
Abstracts of Titles
Dickens, Texas
Office Phone 2931 — Residence Phone 2867
Established 1917
Complete Set of Abstract Records to all Land Titles in Dickens County, Texas.
HOME OWNED AND OPERATED

Jack Rector Insurance Agency
Insurance of all types
Fire—Automobile—Casualty
Public Liability, Etc.
Phones Office 43, Res. 42-W Box 1455 Spur, Texas

"Always Boosting Spur"

REVIVAL

First Baptist Church

Spur, Texas



A. J. QUINN

A. J. QUINN

Amarillo - Preaching



KARL SEEPE

KARL SEEPE

Ft. Worth - Singing

APRIL 13-20

Services Daily

7:00 A. M. -- 8:00 P. M.

Come try the
NEW "ROCKET"!



Johnny and Lucille, Oldsmobile's Singing Sweethearts... invite you to enjoy a ride in a special "Rocket" Show Car. The keys are waiting for you!



Above, New Oldsmobile Super "88" 4-Door Sedan. A General Motors Value.

Take the keys... take the wheel... take off on the most thrilling drive of your life! Oldsmobile's sensational new Super "88" will far surpass every expectation! New 160-horsepower "Rocket" for sweeping, surging action! New Hydra-Matic Super Drive* for record-breaking getaway and

hill-topping power! GM Hydraulic Steering* for new ease, safety, command of the car! Plus a Body by Fisher that's big, rugged, beautiful! Only Oldsmobile offers this great combination of headline features! Try them in action! Drive our special "Rocket" Show Car—soon!

*Hydra-Matic Super Drive, GM Hydraulic Steering, Automatic Eye—and white sidewall tires (when available) optional at extra cost. Equipment, accessories and trim, subject to change without notice

OLDSMOBILE

SEE YOUR NEAREST OLDSMOBILE DEALER
EDWARDS-KELLEY IMPLEMENT COMPANY

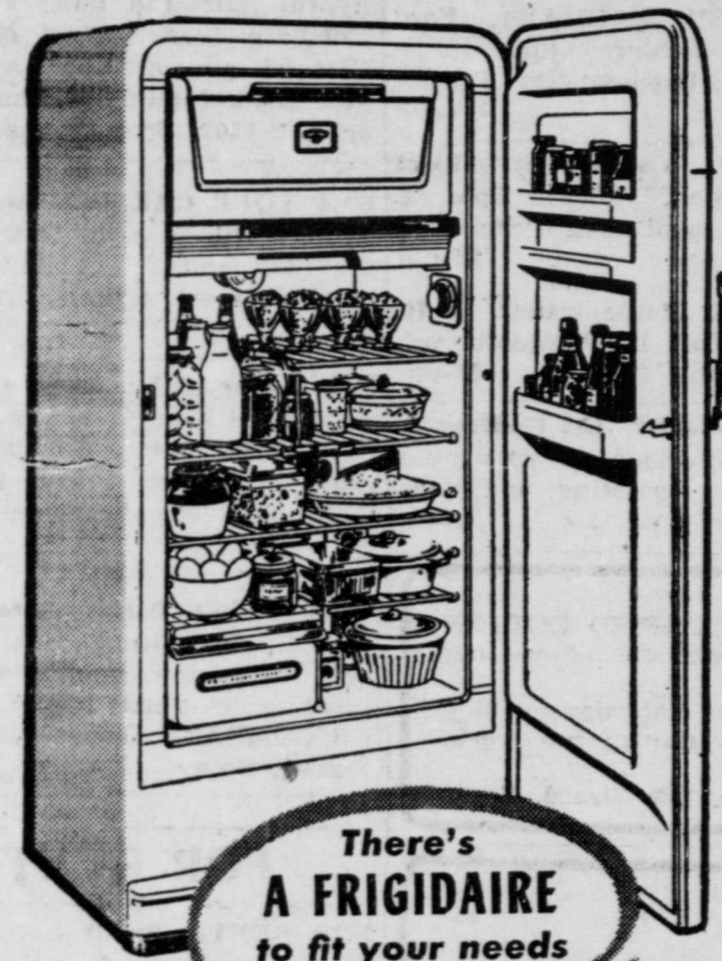
SPUR, TEXAS

THE KEYS ARE WAITING! DRIVE OUR SPECIAL "ROCKET" SHOW CAR TODAY!



LOOK! For big needs—
Small budgets!

New FRIGIDAIRE



Master Models



with
FULL-WIDTH SUPER FREEZER
AND ALL THESE FEATURES!

- Freezes and keeps 41 lbs. frozen food
- 3 full-width shelves
- 1 adjustable shelf
- Sliding Chill Drawer
- 2 large, all-porcelain Hydrators
- Super-powered Meter-Mixer Mechanism
- Exclusive Quickcube Ice Trays
- 1-piece, all porcelain interior

There's
A FRIGIDAIRE
to fit your needs
and budget

Come in! See the new Cyclo-matic Frigidaires and all the Deluxe and Standard models, too.

NOW IS THE TIME
to prepare for summer Refrigeration needs!

West Texas Utilities
Company

NOW IS THE TIME...

REPAIR and MODERNIZE

for better living, added value!

New fencing for your farm is an investment in better farming...

BARBED WIRE

12 1/2 ga. 2 pt. perfect	\$7.50	36" 1" mesh poul. net.	7.50
26" 12 1/2 ga. field fence	12.50	1 7/8 in. well cylinder with	
32" 12 1/2 ga. field fence	14.00	check valves	10.00

8 penny common nails. 100 lb. keg	\$9.00
16 penny common nails. 100 lb. keg.	9.00

Portland Cement	per sack	\$1.00
Masonry Cement	per sack	.95
Concrete mixer furnished free		

BATH ROOM FIXTURES - 3 PIECE SET

Heavy Duty Cast Iron - Nationally Advertised Brands - Complete to Floor

\$124.75

LUMBER

2 x 4's	-\$9.50	2 x 6's	-\$9.50
---------	---------	---------	---------

1 x 12	-\$12.50
--------	----------

OAK FLOORING, NO. 2	-\$10.50
---------------------	----------

GALVANIZED STOCK TANKS

4 Ft.	\$19.20	6 Ft.	\$31.14
4 1/2 Ft.	\$21.96	6 1/2 Ft.	\$35.06
5 Ft.	\$24.93	7 Ft.	\$38.30
5 1/2 Ft.	\$28.08		

"The Greatest Name in Paint"
SHERWIN-WILLIAMS

Outside White First Grade \$4.50 Gallon

KEMTONE - \$2.98 Gallon

SHEET ROCK

1/4 In.	\$3.25	3/8 In.	\$3.75	1/2 In.	\$4.50
---------	--------	---------	--------	---------	--------

No. 1 Composition Shingles 210

Assorted Colors. Per Sq. \$5.50

FELT, 15 - lb. \$2.50

COMPLETE STOCK OF WALL PAPER 1/2 PRICE!

WE CUT AND THREAD PIPE

WILLSON - YOUNG

Lumber Company

Phone 12

Spur, Texas

CLASSIFIED AD SECTION

FOR SALE
 FOR SALE: New Hampshire setting eggs, 50c per doz. J. P. Simons. 25-2tp
 FOR SALE: Five room frame house, new shingled roof. To be moved. T. A. Bailey, Girard, Tex. 25-3tp
 FOR SALE: '48 Chevrolet, 150; '38 V8 pickup, \$50; international truck, new motor overhaul, good tires; 1950 GMC 1/2 ton truck; '48 Chevrolet 1/2 ton pickup, four speed, \$650; '48 V8 Tudor; '49 Chevrolet deluxe Fordor. Spur Motor Company, E. L. Caraway. 25-cftn
 FOR SALE: Field Seeds and mixed feeds. Rand's Feed Store. 24-4tc
 FOR SALE: Used Windmill. See Thomas Bingham, Espula community. 24-2tp
 FOR SALE: Field Seeds and mixed feeds. Rand's Feed Store. 24-4tc
 FOR SALE or TRADE: 1948 1/2-ton Chevrolet pickup; 1948 2-ton Chevrolet truck. 2 speed, new motor; Telephone 699-W or see Rip Garner. 24-2tp

APRIL SHOWERS Used Car Specials. From \$65 to \$275. 37 Chevrolet Fordor, 39 Chevrolet Fordor, 39 Dodge Fordor, 39 Ford Coupe, 40 Chevrolet Tudor, 40 Ford Fordor, 41 Ford Tudor, 40 Chevrolet 2-ton truck with bed and 2-speed rear axle. GODFREY & SMART, Ford Dealers, Spur. Low Down Payment-Easy Terms 24-4tc
FOR SALE: 1 two horse trailer. Good condition. Olney Walker, R. E. A. Office 3. 25-2tp
FOR SALE OR TRADE: A few cows, ready to milk. Phone 579-J. E. S. or Everett McArthur 19-12tp
FOR SALE: Cotton seed, 1000 bu. Macha Stormproof; 1500 bu. hybrid half and half; 1700 bu. Northern Star. Sacked or bulk. Cleaned and treated. All first year seed. Inquire at phone 464, or Box 1302, Spur, Texas. 16-cftn
GET YOUR CAR Inspected Now, while it will pass the test. Avoid the rush and delay later. Godfrey & Smart official inspection station. 24-4tc
Gravel for Sale: Lots of rock, sharp sand base, \$1.00 per yard at pit, \$3.00 delivered. Six miles south of Jayton, Phone 906F555 night only. Claude Senn. 12-20tp
FOR SALE: Large variety late model, clean used cars. Priced very reasonable. Small down payment, easy terms. JONES MOTOR COMPANY, Dodge-Plymouth dealer, Spur. 28-ttc

Miscellaneous
LOST: Black cocker spaniel. Female. Is wearing a collar and tags. Contact Elmore Britton. 25-cftn
LOST: Child's coat, brown gabardine, size 10. Taken by mistake from East Ward playground. Contact Mrs. L. P. Hamilton at school. 25-1tp
FOR SALE: A good used cook stove for \$48.00. See Robert Williams. 25-cftn
LEARN AT HOME: Turn spare hours into better pay, a more secure future, through mastering bookkeeping and accounting under our easy-to-learn plan by mail. Thousands of grateful students. "Careers That Pay" explains all. Write for Free copy today. Draughon's Business College, P. O. Box 508, Tel. 5-5544, Lubbock, Texas. 25-4tc
NOTICE TO CONTRACTORS OF PROPOSED CONSTRUCTION FOR THE TEXAS AGRICULTURAL EXPERIMENT STATION A PART OF THE TEXAS A & M COLLEGE SYSTEM
 Sealed proposals addressed to the Board of Directors, A & M College System for the construction of a Shop and Implement Shed Building on Substation No. 7, Spur, Texas until 2:00 P. M. April 19, 1952 and then publicly opened and read.
 Detailed plans and specifications for the work may be seen for examination and information and proposal forms may be obtained from C. E. Fisher, Superintendent, Substation No. 7, Spur, Texas, or from Arch C. Baker, College Architect, 331 Administration Building, A & M College of Texas, College Station, Texas. 25-2tc

NOTICE!
 the Annual Meeting
 of the
FARMERS CO-OPERATIVE SOCIETY
 of Spur, Texas
 will be held April 19, 1952
 East Ward Aud. 1:00 P. M.
\$23,426.50 in Dividends will be Paid to Patrons at this meeting.
YOU ARE WELCOME!
COME!
 W. T. WILLIAMS Pres. MARION JORDAN Sec.
 LLOYD HINDMAN Mgr.

FOR SALE
 200 bu. of NORTHERN STAR STATE CERTIFIED COTTON SEED; also three refrigerators, one deep freeze and many other things.
 I will be in Spur at the Silver Moon Cafe, Saturday evening and Monday, or contact me at Girard any day of the week. Will trade cafe fixtures for cattle.
 M. A. DARDEN P.O. Box 125, Girard, Texas

FOR RENT
FOR RENT: Small unfurnished house. Separate furnished bedroom for rent. Mrs. Maude Seale, Phone 587-J, 813 W. Harris. 24-12tp
FOR RENT: Five room house at 522 Trumble Avenue. Unfurnished. Price \$40 per month. Water bill paid. Mrs. John K. Johnson, Route 1, Spur, Texas. 24-13p
FOR RENT: Small three room unfurnished house for rent. Close in. Call 249-J, Mrs. W. L. Hyatt. 24-4tc
HAD A WRECK? Let Godfrey & Smart Body Shop do your auto body repairs, painting, and glass work. 24-4tc
RESURFACE floors the easy, fast and thrifty way - rent our smooth-working Hitec Sander & Edger. Wilson-Young Lbr. Co. 25-1tc

Rev. Lee Ervin, preaching of Chickasha, Okla.
Joe Kidd, Music Director
A. B. Stuckey, Jr., Pastor
"YOU ARE INVITED TO ATTEND"

JUST ARRIVED
 Beautiful New Spring Formals In Just Your Color!
 (PERFECT FOR THE JUNIOR-SENIOR BANQUET)
 See New Spring Fashions In New Exotic Colors
ELNORA'S DRESS SHOP
 1013 W. HARRIS PHONE 122

FOR RENT: Small unfurnished house. Separate furnished bedroom for rent. Mrs. Maude Seale, Phone 587-J, 813 W. Harris. 24-12tp
FOR RENT: Five room house at 522 Trumble Avenue. Unfurnished. Price \$40 per month. Water bill paid. Mrs. John K. Johnson, Route 1, Spur, Texas. 24-13p
FOR RENT: Small three room unfurnished house for rent. Close in. Call 249-J, Mrs. W. L. Hyatt. 24-4tc
HAD A WRECK? Let Godfrey & Smart Body Shop do your auto body repairs, painting, and glass work. 24-4tc
RESURFACE floors the easy, fast and thrifty way - rent our smooth-working Hitec Sander & Edger. Wilson-Young Lbr. Co. 25-1tc

SAFeway EASTER VALUE DAYS!

Big handsome HAMS
 for Your Easter feasting!

HI HO
 WE PROUDLY ANNOUNCE THE OPENING OF YOUR NEW DRIVE IN THEATRE SUNDAY, APRIL 13.
 Box Office opens 6:30 p. m.
 Picture on Screen 7:30 p. m.
 Admission - Adults 44c, Children 12c
OPENING PICTURE
SUN., APRIL 13 - MON., APRIL 14

WANTED
OFFICE GIRL WANTED: Assistant clerk, City of Spur office; salary to start at \$100.00 per month; 44 hour week; see C. O. Fox or James Cowan at City Hall. 25-cftn
WANTED: Farm Loans. 4% interest payable on or before maturity, Spur National Farm Loan Assn. Spur, Texas. 27-cftn

EGGS
 Breakfast Gems Grade A Quality Large, White 59¢
 Morning Star Grade 2 Quality Large, White 47¢
 LOCAL CURRENT RECEIPT DOZ. EGGS 33¢
Baking needs
 Kitchen Craft Flour 10-lb. Bag 99¢
 Fleet Mix 40-oz. Pkg. 47¢
 Corn Meal Many Lbs Yellow 5-lb. Bag 35¢
 Shortening Sunbowl 2-lb. Can 55¢
 Margarine Sunbowl "Made in Texas" 1-lb. Pkg. 25¢
 Margarine Dolewood "Made in Texas" 1-lb. Pkg. 19¢
Really fresh coffee
 Airway Mild, Mellow 1-lb. Pkg. 75¢
 Nob Hill Rich, Robust 1-lb. Pkg. 77¢
 Edwards Top Quality 1-lb. Can 85¢

HAMS Swift's Premium Cured 10 to 14-lb. Average Sold Half or Whole Lb. 59¢
 Chuck Roast 69¢
 Short Ribs 45¢
 Sliced Bacon 39¢
 Dry Salt Jowls 15¢
 Frankfurters 45¢
 Lamb Roast 63¢
 Leg O' Lamb 73¢
 Lamb Chops 95¢
 Pork Sausage 55¢
 Pork Roast 39¢
Fresh Fryers Whole Ready-to-Cook Lb. 49¢
Turkeys Beltsville White, 4 to 6-lb. Avg., U. S. Grade A Ready-to-Cook Lb. 73¢
Pork Sausage Wingate Pure Pork 1-lb. Pkg. 29¢
LUNCHEON MEAT lb. 49¢
FRESH HAMS Half or whole lb. 59¢

ablaze with fury and terror!
FORT OSAGE
SOON!
 Starring Rod Cameron Jane Nigh
 Tom and Jerry Cartoon & The Three Stooges

PALACE
BOOK OFFICE OPENS 11:45 Saturday; 1:15 Sundays, 1:45 other days Call 185 For Schedule
FRI. & SAT.
 Tim Holt in "OVERLAND TELEGRAPH" - 2nd Feature
 "SUNNY SIDE OF THE STREET" Starring Frankie Laine Also Cartoon
Preview Sat. Nite 11:00 Sun. - Mon.
 "Ma and Pa Kettle At the Fair"
 Marjorie Main Percy Kilbride
 You'll enjoy their latest and newest picture!
 Also Cartoon and news

Safeway "Easter-value" buy.....
Tooth Paste Colgate Cream Regular 45c Value Giant Size 29¢
Cling Peaches Highway Y. C. Slices or Halves No. 2 1/2 Can 25¢
Golden Corn Pine Grove Cream Style 2 No. 2 Cans 25¢
SUGAR Pure Cane 10 lb. bag 89¢
JELLO Ass't flavors 2 pkgs. 15¢
NAPKINS 80 Count White or colored pkg. 14¢
 Mrs. Wright's Bread 24-oz. Loaf 20¢
 Easter Cake 20-oz. Pkg. 59¢
 Plain Cookies 1-lb. Pkg. 28¢

"Black Raspberry" Ice Cream Party Pride's special Easter flavor Also Vanilla, Chocolate, Peaches and Strawberry Pkg. 30¢
Penny savers
 Strawberries Frozen 12-oz. Pkg. 29¢
 Orange Juice 2 6-oz. Cans 25¢
 Jell-well Desserts Ass't'd Flavors 3-oz. Pkg. 7¢
 Salad Dressing Duchess "Made in Texas" 32-oz. Jar 59¢
 Cream Cheese Kraft Philadelphia 3-oz. Pkg. 17¢
Fine canned foods
 Fruit Cocktail Del Monte No. 303 Can 25¢
 Tomato Juice Taste Telli 46-oz. Can 25¢
 Sweet Peas Sugar Belle Fancy Quality No. 303 Can 17¢
 Tomatoes Gardnerside No. 2 can 18¢
 Luncheon Meat 12-oz. Can 48¢

TUESDAY - WEDNESDAY
BUD ABBOTT & LOU COSTELLO
"THE FOREIGN LEGION"
 OH, THOSE BOYS!
THURSDAY - FRIDAY
SIERRA
 WANDA BURL DEAN AUDIE MURPHY HENDRIX WES JAGGER SPORT SHORT
DO NOT FAIL TO GO BY THE NEW SNACK BAR!
 POP CORN PEANUTS CANDY SNOG-GONES DRINKS CIGARETTES HOT DOGS!
 To the mothers with small babies we have a bottle warmer for your convenience.

TUESDAY GIFT NITE 425
 Less 30% State Tax - SHOWING -
"CROSSWINDS" in Technicolor John Payne - Rhonda Fleming
Wed - Thurs.
 Fred McMurray Dorothy McGuire Howard Keel
"Callaway Went Thataway" Also, Short Subjects
POLITICAL ANNOUNCEMENTS
DICKENS COUNTY
 The following persons have announced their candidacy for the respective political offices subject to the Democratic primary of 1952.
 Sheriff, Tax Assessor & Collector H. R. (HORACE) CAGE
 A. J. HARVEY
 CLEO E. ROGERS
 RAYMOND BEADLE
 County Judge W. H. HINDMAN (Re-election)
 County Treasurer MRS. AVA JOHNSON (Re-election)
 Commissioner, Precinct 1 ROY WARD (re-election)
 L. H. RICHARDS
 JACK GIPSON
 Commissioner, Precinct 2 E. J. OFFIELD
 J. B. GREENWOOD, JR.
 Commissioner, Precinct 3 J. B. (BAILEY) KIMMEL
 ARNER WATSON (re-election)
 Commissioner, Precinct 4 GEORGE PIERCE (re-election)
 HENRY EDWARDS
 Constable, Precinct 2 R. D. (BILL) GREER
 Justice of the Peace, Pre. 3 A. M. LECROIX
 County Clerk HORACE HYATT
 FRED ARRINGTON
110TH JUDICIAL DISTRICT
 District Attorney JOHN B. STAPLETON
 ENOS T. JONES
85th DISTRICT
 Representative DAVID RATLIFF (re-election)
 24th District Senator STERLING WILLIAMS
 BARLEY SAIDER

Easter produce values
Oranges Florida Sweet, Juicy 8-lb. Bag 45¢
Calavos California 30-Size 2 for 25¢
Fresh Corn Sweet Yellow Lb. 19¢
 Grapefruit Florida 8-lb. Bag 49¢
 Sunkist Lemons 300 Size Lb. 14¢
 Fresh Dates California 1-lb. Pkg. 29¢
 Fresh Spinach California Cello Pack 10-oz. Pkg. 15¢
 Green Onions or Radishes 5¢
 White Onions Texas Crystal Wax Lb. 15¢
 Pascal Celery Crisp Tender Lb. 10¢
 Clip-Top Carrots Ohio Lb. 9¢
 Asparagus California 1-lb. Pkg. 29¢

Special Price! Flavor-Whipped NuMande Mayonnaise
 9-oz. Jar 21¢ 16-oz. Jar 37¢
 We reserve the right to limit quantities and to refuse sales to dealers.
 Prices effective Fri. and Sat.
STORE HOURS
 Monday thru Friday 8:00 a. m. - 6:30 p. m.
 Saturday 8:00 a. m. - 8:00 p. m.
 301 N. Burlington Spur, Texas