

# TEXAS THE SPUR

SERVING A RICH FARM CROP, STOCK AND POULTRY RAISING TERRITORY OF WEST TEXAS.

The Dickens Item and Dickens County Times Absorbed by Purchase

VOLUME 47

SPUR, DICKENS COUNTY, TEXAS

THURSDAY, SEPTEMBER 20, 1956

NUMBER 48

## Whoa, Now!

By Grady Lackey

We've been told that some famous prognosticator has predicted that in 1957 a bomb will greatly reduce the world's population. If he is right, he can wag his finger at the few folks left and chant "I told you so!" If he's wrong, he will join the ranks of his countless forerunners who down through the ages have ventured guesses at when the world will end, who will win the World Series, and where your Coke bottle was made.

We used to have a Bible prof at H-SU who explained that when this old world does come to an end, there will be someone somewhere who foretold it—simply because every day of every generation has already been picked by someone.

But why not take a chance on being here at least through Sept. of 1957 and take advantage of our "Good Neighbor" subscription rates. Renew your subscription and get one for your neighbor—both for only four little dollars.

Coaches Henry and Eddins are doing a fine job molding the 1956 Bulldog grid machine into a working unit.

Take a young coach, new in a head-coaching position, give him a sprinkling of juniors and seniors and a whole flock of soph and fresh, and you've got a pretty big job cut out for both coach and the boys.

We'll go along with the other guessers who through their mystic powers of prophecy see a victory in the offing for Spur to-morrow.

The area's first batch of commercial broilers under the Purina plan are growing out at Charlie Witt's place now.

We still feel that this is a major step in the right direction toward a balanced, diversified economy for our cotton-cattle country.

The Spur Memorial Goat (that's what a lot of folks want to call our hospital) is now being blamed for all the financial woes of the city.

Undoubtedly, the hospital is a responsibility to the city coffers. But, may we point out that it is not now or has it ever lost as much money annually as the experts told us it would before it was ever built.

We've all heard it said that way back when it was first opened some arrangements should have been made to take care of the annual deficit. It's easy enough to go way back and jump on the administration that has been out of office some five years. But we have had three administrations since then, and still no working plan has been worked out to meet the hospital's deficit.

And of course, there are those that right now are shouting to close 'er up.

Can we keep a clean conscience as a city and listen to attempts to destroy one of Spur's finest assets, while at the same time we struggle along in other municipal ventures requiring hundreds of thousands of dollars investment for only a drizzle of a book profit?

There are several municipal enterprises we would prefer seeing dumped or otherwise disposed of before we would even consider closing or in any way reducing our hospital operation.

## Bulldog Boosters See Hamlin Film

The Spur Bulldog Boosters met Tuesday night at the East Ward auditorium to see the film of the Spur - Hamlin game and to receive their membership buttons.

Chief Booster Jerry Ensey urged all Boosters to wear their buttons to all football games to show both fans and athletes that the organization is behind the team.

A good crowd was present to see the film Tuesday.

## SB Wheat Date Is Now Oct. 5

The final date for Dickens County wheat growers to sign up in the 1957 wheat acreage reserve program has been extended from Sept. 21 to Oct. 5, states Dickens County ASC office manager W. W. Gunn.

Through Tuesday evening, 58 county wheat growers had signed agreements to participate in the wheat portion of the Soil Bank. Gunn states that approximately \$29,000 in money for this particular program has been accounted for.

Through Tuesday evening, 58 county wheat growers had signed agreements to participate in the wheat portion of the Soil Bank. Gunn states that approximately \$29,000 in money for this particular program has been accounted for.

Through Tuesday evening, 58 county wheat growers had signed agreements to participate in the wheat portion of the Soil Bank. Gunn states that approximately \$29,000 in money for this particular program has been accounted for.

Through Tuesday evening, 58 county wheat growers had signed agreements to participate in the wheat portion of the Soil Bank. Gunn states that approximately \$29,000 in money for this particular program has been accounted for.

Through Tuesday evening, 58 county wheat growers had signed agreements to participate in the wheat portion of the Soil Bank. Gunn states that approximately \$29,000 in money for this particular program has been accounted for.

Through Tuesday evening, 58 county wheat growers had signed agreements to participate in the wheat portion of the Soil Bank. Gunn states that approximately \$29,000 in money for this particular program has been accounted for.

Through Tuesday evening, 58 county wheat growers had signed agreements to participate in the wheat portion of the Soil Bank. Gunn states that approximately \$29,000 in money for this particular program has been accounted for.

Through Tuesday evening, 58 county wheat growers had signed agreements to participate in the wheat portion of the Soil Bank. Gunn states that approximately \$29,000 in money for this particular program has been accounted for.

Through Tuesday evening, 58 county wheat growers had signed agreements to participate in the wheat portion of the Soil Bank. Gunn states that approximately \$29,000 in money for this particular program has been accounted for.

Through Tuesday evening, 58 county wheat growers had signed agreements to participate in the wheat portion of the Soil Bank. Gunn states that approximately \$29,000 in money for this particular program has been accounted for.

Through Tuesday evening, 58 county wheat growers had signed agreements to participate in the wheat portion of the Soil Bank. Gunn states that approximately \$29,000 in money for this particular program has been accounted for.

Through Tuesday evening, 58 county wheat growers had signed agreements to participate in the wheat portion of the Soil Bank. Gunn states that approximately \$29,000 in money for this particular program has been accounted for.

Through Tuesday evening, 58 county wheat growers had signed agreements to participate in the wheat portion of the Soil Bank. Gunn states that approximately \$29,000 in money for this particular program has been accounted for.

Through Tuesday evening, 58 county wheat growers had signed agreements to participate in the wheat portion of the Soil Bank. Gunn states that approximately \$29,000 in money for this particular program has been accounted for.

## Witts Put Down 4,000 Chicks To Initiate New Area Program



Pictured above are Mr. and Mrs. C. P. Witt of Calgary as they look over their batch of 4,000 baby chicks. The new broiler house is the first of its type in the area to start raising broilers according to a plan being sponsored by the Purina feed company and, Clary Poultry and Egg of Lubbock. The chicks were delivered by special truck last Friday morning from the Western Hatchery in Dallas. At the time the above picture was taken, the chicks were less than a day old. They were placed in eight enclosures like the one shown above, and vaccinated the next day before being turned loose in the 160x24 ft. house. The chicks are straight run Ventress Cross. Only one was lost in transit.

## Hamlin Ekes Out 18-12 Victory Over Bulldogs

### BULLDOGS TO SEEK FIRST VICTORY ON TRIP TO ANSON TOMORROW

By Bob Johnson  
A game laced with penalties and fumbles by both teams unfolded here last Friday night, with the Spur Bulldogs coming out on the short end of an 18-12 score.

Seems as though the breaks went both ways as the Bulldogs led off with an inside kick. Hamlin bogged down and punted from their own 44 yd. line. Spur then punted after a penalty set back.

A few plays later Eddie Hagins came out of chute number one for the touchdown. He didn't break stride as he raced 65 yards for the tally.

Hamlin took the kick-off and drove to Spur's 15, passed to the four, and Adair went across tying the score. The extra point try was blocked.

Spur got a break in the second quarter when Ford made a TD that was called back on a clipping penalty.

After see-sawing back and forth, the Pied Pipers managed to punch across another TD in the second quarter.

A magnificently blocked punt by Max Gabriel as he shot the gap gave Spur a much-needed break at this point. A few plays later Gabriel went over for the score. Halftime score: 12-12.

The tie-breaking tally came in the final quarter. A 1-yard plunge sent John Richey across for the TD.

There was a conspicuous absence of conversions on both sides. A fumble caused a fourth-quarter rally by the Bulldogs to fade away.

The stand-outs on defense in our opinion were Allen Kinsner, James Gordon and Randall Gilcrease. Gabriel played his usual fine game at the linebacker position. Kidd's blocking up the middle on offense must have had something to do with Hagin's 65 yard run. Ray Don Powell has been handling the ball like a veteran.

The way the Bulldogs are improving from game to game, we have every right to be proud of them. If we can hold the penalty to a minimum and hang on to that ball, it is this reporter's opinion that we will show up fine in conference play.

To Anson Friday  
Looking to Friday night's game

## Dr. Maddox Will Fill Dickens Pulpit

Dr. Broughner P. Maddox, associate professor of Bible at Wayland College, Plainview, Texas,



Dr. B. P. Maddox will be supply pastor at Dickens, Texas Baptist Church at 11:00 and 7:30 p. m. on Sunday, September 23, according to Robert Reynolds of Dickens.

## Rev. Bill Sharp To Preach Here Sunday

Rev. Bill Sharp will preach at the First Methodist Church in Spur next Sunday, Sept. 23 at 11 a. m. He is here visiting his parents, Mr. and Mrs. John Sharp of Dickens and his sister, Mrs. Bob Crockett of Spur.

## Former Spur Veteran Passes Away Sept. 2

Edward G. Mobley, formerly of Spur, passed away Sunday, Sept. 2 at the Veterans Hospital in Amarillo where he has been living for some time.

Mobley had been in the hospital most of the past year, suffering with a heart ailment which was responsible for his death. His wife, formerly Daisy Franklin, visited here last week but has returned to her home in Amarillo.

## Lake Plans Advance; Early Election Sought

### BOARD AWAITING LEGAL PAPERS PRIOR TO CALLING FIRST ELECTION

The four-city committee of the White River Water Control and Improvement District met in Post Saturday to discuss further steps toward the construction of the lake on White River.

Plans are now being made to have the first of three elections the latter part of October instead of Dec. 1 as previously announced. Bonding procedures for the five members of the temporary board of directors were begun Saturday and the election will be called as soon as official word of the creation of the district is received from the state board of water engineers and the district board can be organized. This is expected to be done within the next week.

Ransom Galloway, representing the district's fiscal agent, was present at Saturday's meeting and assisted in outlining a question-and-answer brochure for distribution in the four cities of Spur, Ralls, Crosbyton and Post prior to the holding of the confirmation election.

He stated that even though the first election could probably be called before the originally estimated date, of Dec. 1, he felt that the estimated completion date of August 15, 1957 should remain.

The August 15, 1957 date is the estimated completion date of all preliminary and legal action. Construction will begin immediately thereafter and will require an estimated six months.

Present at the Saturday meeting from Spur were Committeemen Lynn Burbee and E. B. Blumberg, and Grady Lackey.

## Posse 6-5 Victor Over Jacksboro

The riders of the Dickens County Sheriff's Posse sealed up the bi-district title in the Western States Palmetto Polo league in Jacksboro last Sunday by slipping past the host team 6-5.

The win gave the local team a 20-11 total score victory. They defeated Jacksboro 14-6 in the first game of the series here Sept. 1.

Their next opponent is still unknown, depending on the outcome of the Fisher County and El Dorado match.

## Rummage Sale Sat. To Boost Spur Band

The Spur Band Boosters met Tuesday night, Sept. 18, with approximately 50 members present.

Plans were laid to again sell chocolate candy this year, beginning about Dec. 1.

A rummage sale will be held Saturday of this week to raise band funds. William Starcher, president of the organization, reports that anyone wishing to donate items for the sale may take them to Godfrey's Furniture. The sale will include anything of value, such as clothes, shoes, hats, etc.

## Rotarians to Host Anns, Faculty

Gerre Hancock, Rotary Foundation Fellow from Lubbock, will address the Spur Rotary Club at



the Ladies Night meeting tonight, Sept. 20.

Ladies, Teachers, Tonight  
The Spur Rotary Club will honor their Anns and members of the Spur schools faculty at tonight's meeting.

Hancock was selected from the 163rd District of Rotary International in 1954 and has just returned from a year of study at the University of Paris, Paris, France. Already 25 Rotary Clubs in this district have been scheduled to hear Gerre report on his experiences.

Born in 1934 at Lubbock, he lived in Petersburg, Ralls, Brownfield and Tahoka before moving back to Lubbock where he graduated with honors from high school in 1951. He is the son of Mr. and Mrs. E. E. Hancock of Lubbock.

ARNOLD FEEDS FANS  
Hester Arnold furnished the watermelon last Friday night for approximately 200 Spur and Hamlin students.

The watermelon feast was held at the First Baptist Church following the football game. The group was made up mostly of pup squad and band members of the two schools.

ROBERTS APPOINTED  
Gene Roberts, past chancellor of the Spur Knights of Pythias lodge, was recently appointed District Deputy Grand Chancellor.

Roberts' area will include the lodge in the South Plains area.

## Baptist Assn. To Meet Here Today

The annual meeting of the Dickens County Baptist Association will be held tonight and tomorrow, Sept. 20 and 21, at the First Baptist Church in Spur.

Tonight's program starts at 7:30 with the song service. The Brotherhood report and WMU report will precede the evening message by Dr. Hope Owen of Wayland College.

Friday morning the song service starts at 10:00. Various reports and announcements precede the annual message by Rev. Lloyd Pendley at 11:30.

Friday afternoon program opens at 1:30, and will include the remaining reports and announcements. The missionary message will be delivered by Rev. J. E. Lee at 2:50.

## Labor Shortage Slows Area Crops

A shortage of cotton pullers over the county is holding up the cotton harvest. The East Afton area is the only ginning area reporting plenty of help.

Ginning hit 2,222 bales in the county yesterday afternoon. The Spur gins total 1521 bales.

The Dickens and Afton areas report serious shortages of hands, while indications around Spur are that more are coming in and are available for work. The McAdoe area reports that they could use more hands up there.

The Girard gin reported 825 bales through yesterday afternoon with more pullers needed.

## Application of Gin Trash To Soil Boosts Conservation, Crop Yield

THE EFFECT OF MULCHES ON WATER CONSERVATION ON THE HARDLANDS OF THE ROLLING PLAINS

By Dr. Earl Burnett, Agronomist, Tex. Ag. Exper. Stat., Spur, Tex.

Experiments have been conducted for several years by the Texas Agricultural Experiment Station at Spur, Texas to determine the effects of various types of organic materials on runoff, water infiltration, and crop yields.

Born in 1934 at Lubbock, he lived in Petersburg, Ralls, Brownfield and Tahoka before moving back to Lubbock where he graduated with honors from high school in 1951. He is the son of Mr. and Mrs. E. E. Hancock of Lubbock.

STOCKHOLDERS OF SNFLA TO MEET SATURDAY  
The stockholders of the Spur National Farm Loan Association of Spur are holding their annual meeting Saturday, Sept. 22 in the Dress Tea Room in the Windell building, announces James B. Reed, secretary-treasurer.

Door prizes will be given to both men and women. Refreshments will be served, reports given and directors elected.

A good program is planned and a large crowd is expected, reports Reed.

When used as mulches. These studies have shown that runoff can be reduced by using litter materials as surface mulches.

During 1953 and 1954, 34 percent of the rain causing runoff was lost from Abilene clay loam soil of 2 percent slope where no litter had been applied. On similar adjacent plots the runoff losses amounted to 14 percent where two tons per acre of gin trash was plowed under and to seven percent where two tons per acre of gin trash was left on the soil surface. In other words runoff was approximately five times greater on bare soil than where two tons per acre of gin trash was used as a surface mulch.

In August, 1953, depth of moisture penetration was measured on mulch plots following a rain of 2.8 inches. An average moisture penetration of 15 inches was found on plots where no litter had been applied, compared to an average penetration of 39 inches, 34 inches, and 30 inches where on plots that had had application of gin trash.

When used as mulches. These studies have shown that runoff can be reduced by using litter materials as surface mulches.

During 1953 and 1954, 34 percent of the rain causing runoff was lost from Abilene clay loam soil of 2 percent slope where no litter had been applied. On similar adjacent plots the runoff losses amounted to 14 percent where two tons per acre of gin trash was plowed under and to seven percent where two tons per acre of gin trash was left on the soil surface. In other words runoff was approximately five times greater on bare soil than where two tons per acre of gin trash was used as a surface mulch.

In August, 1953, depth of moisture penetration was measured on mulch plots following a rain of 2.8 inches. An average moisture penetration of 15 inches was found on plots where no litter had been applied, compared to an average penetration of 39 inches, 34 inches, and 30 inches where on plots that had had application of gin trash.

When used as mulches. These studies have shown that runoff can be reduced by using litter materials as surface mulches.

# "NEVER REST 'TILL SPUR SCHOOLS ARE BEST"

By Marie Kelley-Pres. P.T.A.

"Mighty Oaks From Little Acorns Grow"

We are in the business of growing children with integrity of character and healthy personalities. They may be compared to seeds of trees. A mighty oak tree can grow from a tiny little acorn seed.

A great storehouse of honesty, spirituality, wisdom, truthfulness, happiness, usefulness—all these intangible qualities grow into our child's thinking to make him what he is and they grow from a tiny word they hear, a look they see on our face, a atmosphere we create, or a smell, or a feel or a taste (the seed) we expose them to.

It's so important for us to have the proper seed to plant. One seed that is well for us to plant in our child's thinking early in life is that of being able to look at all sides of a question, and after seeing all points of view, decide what course he must take, in the light of the authority that has been presented.

The first time our child decides that he does not want to wear the clothes we have put out for him is a good place to start him to "weighing" ideas and letting his point of view stand beside yours in equal importance.

When you hear his side of the question, then he will hear yours. When points have been set on both sides, let him decide what he will do and let him tell you why he makes this choice.

We, parents and teachers, citizens and friends in Spur, are going to need to begin studying all sides of many important questions that come before us in this age we live in. Why not evaluate all the points of view and then resolve our differences into a working view for us and our children.

It seems to me that this would be a sane and democratic approach to the segregation question.

If we spent the next two years studying the question as Christian Americans, then when the things break for us in Spur, we

will have a foundation on which to make our decisions!

If we have not decided ahead of time what pattern we shall follow if a certain thing happens, then we have to rely only on the impulse of the moment, and when we are emotionally involved, our judgement becomes bad!

I was so pleased to hear some of the Junior High school parents say, "We want to learn to be friends with our teachers. We want to learn to talk to them as friends. We want to open up a line of communication with them and our principal!"

"We'd like to meet our teachers and our children on a friendly social basis—We'd just like to talk together, once a month."

"We'd like to study questions that apply and may arise in our school! We'd like to get authoritative information so that we could rely upon certain decisions."

When parents take this attitude, then all we need to do is to get together, choose a moderator from the group and just talk.

What a fine gesture this would be for parents, teachers, and students in the high school.

The same would work for the East Ward School too.

I should like to recognize the chairmen of the following basic committees for the East Ward P.T.A. Each chairman and her committee will be asked to function as an important part of the business activities for the coming year.

The Executive Board of the East Ward P.T.A. will be made up of the officers which are: Mrs. Everett Martin, vice-president; Mrs. James Jay, secretary; Mrs. Loyd Hindman, treasurer; Mrs. Everett McArthur, parliamentarian; Mrs. Billy Bigham, historian; Mr. Allison, president and the following committee chairmen:

Membership, Mrs. Robert Williams; Goals and Projects, Mrs. Jessie Morrison; Hospitality, Mrs. Pat Winkler; Social, Mrs. Raymond Powell; Music, Mrs. Bob Nunley; Budget and Finance, Mrs. Loyd Hindman; Attendance, Mrs. James Jay; Publicity, Mrs. Grady Lackey; Pre-School, Mrs. William Starcher.

This Executive Committee will meet at 1:30 p. m. in the Teacher's Lounge on the regular meeting day for the P.T.A.

The first meeting will be at 1:30 p. m. October 9 in the Lounge. Please, be present!

Mrs. Carl Peninger attended a convention and review for Reflexology at the Marchman Hotel in Wichita Falls two days last week. Mr. and Mrs. Fred Stofel that held the convention are from New York.

REDDY SAYS



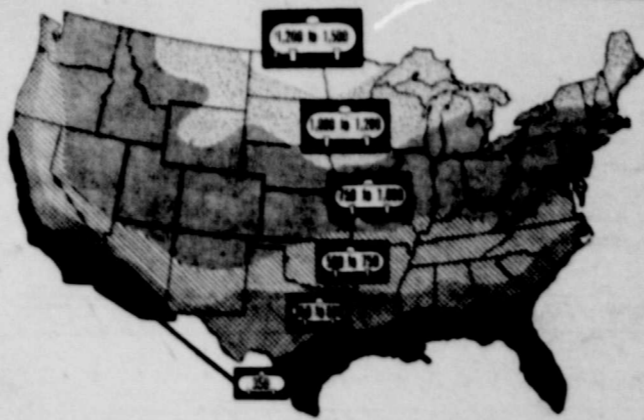
They make better grades when there's good lighting, too!

Young eyes need good light to study by — Fill empty sockets with the right sized bulbs!

EYESIGHT IS PRICELESS GOOD LIGHT IS CHEAP

West Texas Utilities Company

## LP-Gas Tank Size Guide



CHICAGO—To prevent any possible shortages of LP-Gas this winter, the National LP-Gas Council urges rural, small town, and suburban users of the fuel to fill their storage tanks as soon as possible—certainly before the end of the month. By doing so they will assure themselves of a source of dependable fuel—regardless of weather conditions—throughout the winter.

The council also urges consumers to be sure their storage tanks are adequate for their individual LP-Gas needs.

As a guide to users, the above map shows the average tank size needed for home heating in six weather zones. These sizes will also assure an adequate supply of LP-Gas for other uses including cooking, automatic water heating, refrigeration, incineration, and clothes drying.

To determine the approximate tank size you need, check the gallonage figures on the map in your weather zone. If your present tank size does not correspond, ask your LP-Gas dealer to analyze your specific needs to determine the correct tank size for your home.

Kenneth E. D. Wolfe, president of the council, pointed out that spot shortages occurred in some sections of the country last winter as the result of prolonged cold weather. He said that many of these shortages would not have occurred if consumers had made full use of their home tanks by filling them early. Bulk LP-Gas dealers would then have been able to empty and refill their bulk plant storage facilities before the winter peak.

Because of the steel strike it is even more important for consumers to fill their tanks early this year, Wolfe said. The strike curtailed production of tanks, tank cars, and trucks vitally needed to handle increased LP-Gas production and demand. Sales of LP-Gas were up 17 per cent in 1953 and are expected to be even higher in 1954.

## DICKENS NEWS...

### MARRIAGE PLANS TOLD FOR NANCY FLOOD, R. E. MOHLER

Mr. and Mrs. John Flood announce the forthcoming marriage of their daughter, Nancy, to Spec. 3rd Class Robert E. Mohler, son of Mr. and Mrs. Ernest Mohler. The wedding will be in the home of the groom's sister, Mrs. Ernest Smith, at 10 a. m. on Oct. 5.

Nancy is a 1956 graduate of Patton Springs. Robert is a graduate of Dickens High School and has served in the Medical Corps for the past two years. The couple will make their home in Ft. Orde, Calif., where he is stationed.

### S. H. HAWLEY'S OBSERVE 50th WEDDING ANNIVERSARY

Mr. and Mrs. S. H. Hawley of Dickens observed their 50th wedding anniversary in their home Sunday, Sept. 9.

Mr. and Mrs. Hawley have been residents of Dickens since 1917. She is the former Dora Yarobrough. The couple were honored with a dinner in their home served by their children.

They have 54 grand children, 79 great grandchildren and three great-great grandchildren.

### BAPTIST Y. P. FELLOWSHIP

The young people of the Baptist Church met in the home of Mr. and Mrs. J. C. Reagan for fellowship on Wednesday night.

Punch and cookies were served to 22 persons. All had a good time.

The next meeting will be in the Wallace Conway home.

Airman 3rd Class Warren Simmons of Sheppard Air Force Base at Wichita Falls visited this week end with his wife and her parents, Mr. and Mrs. John Flood, Martha and Nancy.

Mr. and Mrs. Byron Brown and family of Pampa visited with Mrs. Christine Hunt and family over the week end.

Mrs. Spencer McBride and Robert Dale and Mrs. Dale Sedwick and daughter of Lubbock visited with Mrs. Ernest Mohler on Monday night.

Mr. and Mrs. Dale Sedwick and daughter of Lubbock spent the week end with Mr. and Mrs. Spencer McBride and Robert Dale. Mrs. Emma Winkler visited with her son and family in Spur this week.

Mrs. Billy Roy McBride of Pampa visited with Mr. and Mrs. Spencer McBride last week.

Mrs. Dale Sedwick and daughter of Lubbock are visiting with

Mr. and Mrs. Spencer McBride this week.

Mr. and Mrs. Pat Winkler and sons of Spur visited with Mrs. Emma Winkler Sunday.

Mr. and Mrs. Warren Simmons visited his father, Henry Simmons, in Crosbyton Sunday.

Mrs. Warren Simmons' grandmother, Mrs. H. A. Finley, and daughter, Grace, visited her in the home of her parents, Mr. and Mrs. John Flood.

### APPLICATIONS FOR TEXAS HIGHWAY PATROLMEN WILL BE ACCEPTED NOW

Examinations for men qualified will be given state-wide during the later part of October and those scoring the highest will enter the Patrol Training School at Austin next January.

Salary of Patrolmen is \$315 monthly, plus longevity. They are also paid during training. Other benefits include annual leave and benefits of the State Retirement System and Federal Social Security.

General requirements for appointment to the Texas Highway Patrol includes: 21 to 35 years of age, inclusive; medium height of five feet, eight inches; weight in proportion to height; good physical condition; and high school education or equivalent; must be citizen of the United States and resident of Texas for at least one year immediately prior to making application. They are also required a rigid character investigation.

Young men who wish to make application or for further information regarding the Patrol may be obtained by writing to W. J. Elliott, chief, Texas Highway Patrol, Austin, or by contacting E. L. Posey, captain, Texas Highway Patrol, at District Headquarters, Lubbock.

### EAST WARD MENU MONDAY, SEPTEMBER 24

Sliced cheese, scalloped potatoes, green beans, carrots, white cake, bread, milk.

TUESDAY, 25th  
Barbecued ham, sweet potato and apple casserole, cole slaw, peanut butter cookies, milk, bread.

WEDNESDAY, 26th  
Pinto beans, potato salad, baked corn.

THURSDAY, 27th  
English peas, chicken fried steak and gravy, celery sticks, banana pudding, bread, milk.

FRIDAY, 28th  
Sandwiches, cheese, ham, lettuce salad, potato chips, sliced peaches, bread, milk.

### A NEW MARKET FOR CATTLE

## Keeton Livestock Commission Co.

Complete Facilities to Feed — Shape — Sell Your Cattle

SALES ON FRIDAY'S — Saturday if Necessary

"40 Years in the Cattle Business"

Prompt — Efficient — Dependable

Located 5 miles South East of City Limits on

U. S. Highway 94 — Lubbock, Texas

Santa Fe Railway mainline

Phone Sherwood 4-8441 or SH 41473

Claude Keeton PO 3-5835 Ralph Keeton SH 4-7487 Reginald Zachary SH 48147

10,000 CATTLE CAPACITY

## Plains Cotton Growers To Study Problems of Short Staple Growers

An event which will have far reaching consequences and benefit to the Dickens County and South Plains area is in the planning stage by the Plains Cotton Growers, Inc. This is a Short Staple Cotton Research Conference to be held in Lubbock on Oct. 18 and 19. Joe Rose and Joe Long, Dickens County committeemen, announced this week.

Dickens County and the South Plains area produces approximately one-tenth of the entire U. S. cotton crop and nearly one-half of the Texas crop. Production has expanded rapidly during the past decade or so and many problems have arisen in connection with this rapid expansion. Many different varieties of seed have been tried with more or less success and satisfaction, but there has been little effort at standardization or organized seed distribution.

The short growing season on the Plains gives rise to problems existing only in this area. Storm resistance and early maturing in combination are only two of the important factors which must be developed. Modern concepts of cotton marketing are bringing up a new factor in the marketing picture which is of tremendous importance to the Plains area. This is the rapidly expanding use of the micronaire in cotton merchandising, and the real possibility that the micronaire value may soon be included on the Smith-Doxey classing card. Such a move would undoubtedly inject the micronaire into the loan picture, and would carry tremendous implications for the Plains. These are only a few of the many problems which must be faced and solved in the near future.

The purpose of this conference is to study and explore the entire short staple cotton situation. It is expected to develop a Master Plan for action through both immediate and long range research programs to improve the quality of Plains cotton, to reduce costs, and strengthen the competitive position of short staple cotton on the market.

To initiate a sound program of research and marketing it is necessary to collect and thoroughly analyze all the facts and work out an integrated plan which will take into account every segment of the cotton industry.

To accomplish this the Plains Cotton Growers are inviting the top cotton leaders in the United States to this conference. Outstanding men in research, production and marketing will be included. These will include scientists from the USDA, the Texas Agricultural Experiment Stations, the Texas Extension Service, private breeding firms, technical experts from the National Cotton Council, and outstanding leaders from all segments of the cotton and allied industries.

Advanced experimenters in the

development of a complete cotton Research Center for the Plains.

6. To give proper and adequate publicity to the program of improvement launched by the Plains Cotton Growers.

## BETTY SUE by CECIL



You can well afford to own the KELVINATOR WASHER-DRYER TEAM from GODFREY'S because first of all they can be purchased on easy terms... and second, they allow you to save on laundry costs as well as free you from the weather. See them today... you'll be glad you did.

GODFREY'S  
CBS TV - KELVINATOR  
MAKING HOME FURNISHINGS  
PHONE 145 SPUR TEXAS

## Announcing Our New TASTE TEMPTING Steak Sandwiches

A GENEROUS SIZE TENDERIZED BEEF STEAK ON A LARGE TOASTED BUN... COMPLETE WITH LETTUCE, TOMATO **50c**

... Just Another of the Many Happy Reasons the Whole Gang Meets to Eat at the DIXIE DOG DRIVE IN

- Dixie Dogs
- Dixie Burgers
- Sandwiches
- Steak Sandwiches
- Malts, Shakes, etc.
- Complete Fountain
- Fried Chicken
- Friendly Service

## JUST ARRIVED! NEW FALL LINE OF DOTTY DAN CLOTHES FOR LITTLE MEN

Sizes 1 to 8, Small to Extra - Large  
• Shirts • Jackets • Overalls  
• Short Pants • Long Dress Pants



All-Cotton Washable No - Iron Overalls **3.98**

Corduroy OVERALLS **4.95**

## Special Purchase Specials For Friday, Saturday, Monday

### NYLON NET

- SPECIAL PURCHASE
- LOVELY COLORS
- SAVE!

2 yds. **1.00**

### DOMESTIC

- HEAVY UNBLEACHED
- A REAL SAVING!
- 3 DAYS ONLY!

5 yds. **1.00**

### ONE BIG RACK BLOUSES

- Ladies & Children's
- Save, Save, Save
- Your Choice Only

**1.00**

### ONE GROUP LADIES DRESSES

- Final Reduction
- Many Way Below Cost!
- Choose Yours Now!

**5.00 & 7.00**

# PROCTOR'S

Spur, Texas

# Roaring Springs...

Rev. and Mrs. Arnold Bickel visited and shopped in Plainview Monday.

Mr. and Mrs. Melvin Thacker and children of Lockney and Mrs. Turner Hunter and children of McCoy spent Friday night here with their parents, Mr. and Mrs. S. D. Hunter. The group with John Hunter drove to Electra Saturday to visit with Mr. and Mrs. Sam Hunter.

Mr. and Mrs. A. L. Bland and son of Plainview visited here Saturday with friends.

Mr. and Mrs. Howard Osborn and children and Mr. and Mrs. Talma Osborn of Dimmitt and Miss Marilyn Stanton of Hart spent the week end here as guests of Mrs. Hazel Bridges and Mrs. and Mrs. Earl Osborn.

Mrs. Charles Jones of Elton visited recently with Mrs. C. D. Wilson.

Mr. and Mrs. W. D. Wilson of Strathmore, Cal. are here visiting with his mother, Mrs. C. D. Wilson and his sisters, Miss Benno Wilson and Mrs. Bertie Faulkner.

Mr. and Mrs. Leonard Ward of Kalgary were recent guests of Mr. and Mrs. W. A. Valentine and Mr. and Mrs. Bill Bailey.

Mr. and Mrs. John A. Scott looked after business in Lubbock Monday and did some shopping.

Bob Sullivan of the East Afton community is a patient in the Methodist Hospital in Lubbock recovering from surgery.

Rev. E. Norman of Childress visited Sunday with Mr. and Mrs. W. H. Rigby.

Don Forbis and Red Dunlap of Muleshoe spent the week end with Don's parents, Mr. and Mrs. Frank Forbis before going to Lubbock Monday where they enrolled at Texas Tech.

S. N. Davis Jr. and Don Warren who are in the U. S. Army are here on furlough visiting with their parents, Mr. and Mrs. S. N. Davis and Mr. and Mrs. Ray Warren. They took their basic training at Ft. Bliss. They will report to Camp Gordon, Ga. on September 28.

Cecil Scott is a patient in Spur Memorial Hospital.

Mrs. D. W. Hughes is in Lubbock visiting with her children. Recent guests of Mr. and Mrs. Horace Simpson were Rev. Tommy Shannon of Okla. and Mr. and Mrs. John Props and children of Memphis.

Mr. and Mrs. Jimmie Johnston visited in Lubbock during the week end with her daughter and family, Mr. and Mrs. H. K. Young.

Week end guests of Mr. and Mrs. Ray Martin were her mother, Mrs. Leslie Kimball of Artesia, N. M. and a sister, Mrs. Tom Egerton of Ft. Worth.

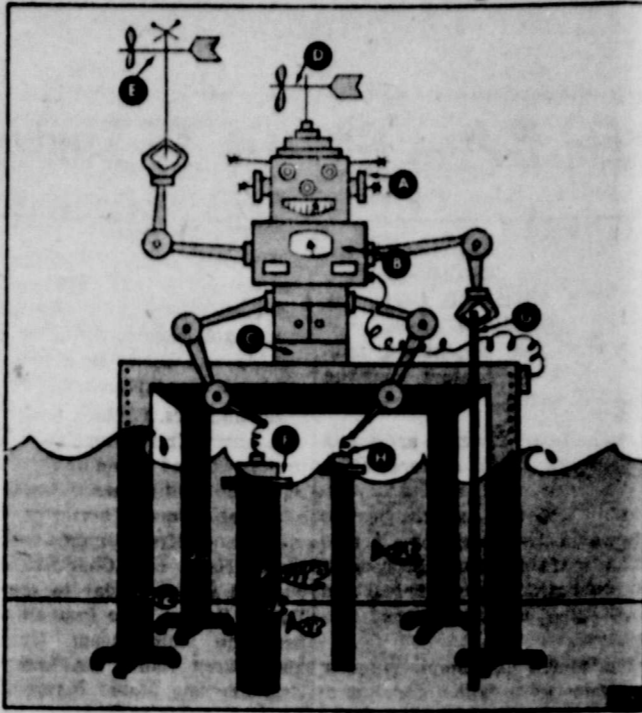
Mr. and Mrs. Loyd Beardson of Jacksonville visited here recently with her mother, Mrs. Mae Fletcher.

Mr. and Mrs. D. J. Brandon of Lubbock spent the week end here with his brother and wife, Mr. and Mrs. Claud Brandon.

Mrs. Omie Masey and sons visited in Amarillo Sunday with Mr. and Mrs. Henry Casey.

J. W. Edwards, Ted Alsop, Lester Mullins and Don Baxter, who are in the U. S. Navy, are here visiting with their parents. They are in training in California.

## Meet The "Hurricane Inspector!"



This pioneer electronic device (sketched with apologies to Rube Goldberg) is designed to learn the real facts about storms at sea. Built by Gulf Oil Corp. to secure data for protecting crews employed in offshore drilling, the "Inspector" can record for the first time the forces of winds, waves, tides and currents in open water as far as 100 miles from land. It comprises: (A) instrument and (B) recording cabinets; (C) 22-volt operating battery and (D) wind generator to charge it; (E) wind velocity and direction detector; (F) wave force detector and (G) step resistance gauge for wave height; and (H) mean water level detector.

## CONSERVATION RESERVE... is for ALL FARMS



All farm land regularly used to produce crops including some hay, is eligible for the Conservation Reserve of the Soil Bank, the U. S. Department of Agriculture announces. Farmers participating in the Conservation Reserve will sign contracts through County Agricultural Stabilization and Conservation Committees to shift land from production to conservation uses. Contracts will be for 3 or 5 years if the land already is in an approved cover crop; for 5 or 10 years if approved cover must be established; and for 10 to 15 years if trees will be planted. Up to 80 percent of the costs of conservation practices may be paid by the government. In addition, annual payments on the land will be made during the life of the contract. Farmers also may participate in the Soil Bank's Acroage Reserve if they have allotments for wheat, corn, cotton, peanuts, rice, or tobacco.



### RUGGED WESTERN VISTAS PROMISE FILM THRILLS

No matter how good a script, or cast, a film would be a pretty dull thing if the scenery didn't fit. Director John Ford, who has won six Academy Awards, has an artist's eye for Monument Valley, the ruggedly picturesque area in northeast Arizona abutting into Utah.

He is fascinated by its red-colored spires, buttes and mesas resembling statues of ancient people and objects, majestic in their dignified natural beauty. Monument Valley was first discovered by Ford as a wonderful locale for picture making in 1938 when he made the first really great western, "Stagecoach." Since then Ford has returned to the site and its spectacular background on several other occasions.

Ford has used Monument Valley in filming Warner Bros.' production in Technicolor and Vista-Vision, "The Searchers." He spent five weeks there, with John Wayne, the star of the film, and some 250 technicians and artisans, plus a large cast, picturing the exciting development of Alan L.

May's best-selling novel.

There is an interesting story behind Ford's discovery of Monument Valley as a motion picture location. It is a nice story of faith, kindness and American enterprise, all of which brought a period of prosperity to the region's Navajo Indians at a time when they needed help most desperately.

To begin with, the so-called King of Monument Valley, Harry Goulding, who runs its only trading post, where the more than 500 Navajo Indian families buy their supplies, trading their rugs or silver ornaments for food, clothing and other needs, was unable to dispose of the articles because the tourist trade had dropped off so drastically, during the depression. The Navajos were starving, and Goulding himself was down to his last \$60. Then he heard that Hollywood was going to make a big western movie, on location. Against the advice of friends he decided to go to Hollywood and make a pitch for the film to be produced in his valley.

He managed to get an appointment with Ford, who was set to direct the film. Goulding had brought a number of photographs of Monument Valley with him and as soon as Ford had seen them, he was sold on the valley. He was sold doubly by Goulding's appeal for his people, the Navajos.

Soon a large Hollywood contingent was working in Monument Valley. Good salaries were paid to the Indians who worked either as actors or laborers on the film. "Stagecoach" not only won two Academy Awards, it also won the gratitude of the Navajos who had been saved from hunger.

Three more Ford pictures that were filmed in Monument Valley were "My Darling Clementine," "Fort Apache" and "She Wore a Yellow Ribbon," but the first time the Valley has ever been shown both in Technicolor and in Vista Vision is in "The Searchers," which will make its initial appearance Sunday at the Palace Theatre.

## Farmers Must Request Refunds Of US Gas Tax

Millions of dollars of farmer's money is literally going begging because farmers entitled to federal gasoline tax refund have failed to file claims. Internal Revenue service reports that only 400,000 claims have been filed by farmers of August 15 and that an estimated 2,600,000 farmers have yet to file.

Farmers have until October 1, 1956 to claim refunds for federal excise tax paid on gasoline purchased between January 1 and June 30, 1956.

It should be emphasized that unless eligible farmers apply for refund before October 1 deadline will lose all claim to this money.

A farmer may obtain refund of the tax he paid on gasoline which was used on his farm by a custom operator or neighbor in connection with cultivating soil, or raising or harvesting any agricultural

or horticultural commodity. The refund tax rate increased from two cents to three cents a gallon as of July 1. Between then and June 30, 1957, farmers will be entitled to an estimated gas tax refund of 90 million dollars, or

an average of 30 dollars to each eligible farmer. The next filing deadline after October 1 will be October 1, 1957 when farmers may file for refund due for fiscal 1957, began last July 1.

The local county Farm Bureau secretary, LauWanna Harris reports filing out many refund applications for members, however, some farmers seem to be overlooking the deadline date and have not yet applied for refund.

# 10 Miles are Worth 10,000 Words!

Test Drive Phillips 66 FLITE-FUEL and discover why we say: **IT'S PERFORMANCE THAT COUNTS!**



Even though we tell you that no other gasoline gives you the combination of high performance components you get in FLITE-FUEL, you can't appreciate what this really means until you drive with FLITE-FUEL in the gas tank of your own car.

The proof of FLITE-FUEL's superiority is in the driving! So we propose that you demonstrate to yourself the remarkable performance qualities of this different and better gasoline.

One of the things you'll like about FLITE-FUEL is its wonderful ease of starting. Then try it for its breathtaking acceleration. You'll be delighted with the smoothness made possible by advanced high octane. Discover the advantages of controlled volatility and positive anti-stalling.

In a gasoline it's performance that counts! Today, fill up with FLITE-FUEL at any station where you see the orange and black Phillips 66 Shield.

PHILLIPS PETROLEUM COMPANY



- Check off these Performance Advantages of **Flite-Fuel**
- Higher anti-knock
  - Easy starting
  - Fast acceleration
  - Clean-burning
  - More mileage

## "66" Service Station

# IT'S Smart to Shop

AT SPUR SUPER MARKET!

Kimbell's Best FLOUR 25 lbs. 1.79

Kountry Kist Vacuum Packed CORN 2 - 12 oz. cans 25c

300 Size Can RANCH STYLE BEANS 2 for 25c

300 Size Can White Swan PORK & BEANS can 10c

Fruits & Vegetables... Golden Yellow Bananas lb. 10c

Firm Green Heads Lettuce lb. 9c

Yellow Squash lb. 7 1/2c

Cello Package Carrots lb. 10c

10 LBS. Potatoes 39c

### MARKET SPECIALS...

Armour's Star or Wilson Certified BACON lb. 49c

All Brands (ALL MEAT) FRANKS lb. 39c

Ready to Eat PICNICS lb. 39c

Delite (PURE PORK) SAUSAGE 2 lbs. 43c

Sliced (Pimento or American) CHEESE 1/2 lb. 29c

303 CAN MISSION Peas 2 for 29c

12 OZ. CAN ARMOUR'S Treet 3 for \$1. IMPERIAL Sugar 10 lbs. 93c



**SALE**  
LARGE SIZE GIANT ECON.  
73c 1.25

Canon face cloth worth up to 15¢ inside  
Canon dish towel worth up to 25¢ inside

# SPUR SUPER MARKET

DOUBLE SCOTTIE STAMPS ON TUESDAY

## REDDY SAYS



Homework is easier when there's good light to study by, and your child will learn faster.

Fill empty sockets with the right sized bulbs to help your child's eyes while doing homework!

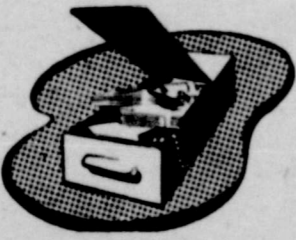
EYESIGHT IS PRICELESS GOOD LIGHT IS CHEAP

West Texas Utilities Company



Makes good reading, especially if you are leaving town and the house will be vacant. Best place for your valuables is a Safe Deposit Box in our vault where they are safe from loss of any kind.

GET ONE!



**SPUR SECURITY BANK**  
Member FDIC—Federal Reserve System

## TEXAS THE SPUR

SERVING A RICH FARM CROP, STOCK AND EQUESTRIAN RAISING TERRITORY OF WEST TEXAS

OFFICIAL PUBLICATION FOR COUNTY OF DICKENS AND CITY OF SPUR DICKENS ITEM and DICKENS COUNTY TIMES Absorbed by Purchase Published weekly on Thursday at Spur, Dickens County, Texas. Office and Printing Plant located at 424 North Burlington Avenue. Office Telephone 128.

H. G. LACKEY, JR., Publisher-Editor

NOTICE—Any erroneous reflection upon the character, standing or reputation of any individual, firm or corporation, which may appear in the columns of The Texas Spur will be gladly corrected upon its being brought to the attention of the publisher.

Entered as second class matter on the 15th day of November, 1909, at the Post Office at Spur, Texas, under the Act of Congress of March 3, 1879, and published continuously without removal.

### SUBSCRIPTION RATES

Per Year in Advance  
In Dickens, Crosby, Motley, King, Stonevill, Cottle, Kent, Garza, Floyd counties, \$2.50  
In Mail Zone Two, \$3.00  
In All Other Zones, \$3.50  
All subscriptions are removed from our mailing lists upon expiration. Renewals should reach us two weeks in advance of expiration date to avoid missing an issue. In giving address change, both old and new address should be given.

**Mrs. Andrews Is Installation Officer For Harmony Club**

Mrs. W. T. Andrews, who is a Honorary Life Member of the Spur Harmony Club, presided Tuesday evening, September 11, at the installation of club officers for the ensuing year. Her theme likened the officers to a tree and the works of the club to the fruits of that tree.

Mrs. Gabriel sang "Trees" by Joyce Kilmer as arranged by Oscar Rashback. Mrs. Andrews then introduced the following officers for the coming year: Mrs. Bob Nunley, president; Mrs. Earnest Johnson, vice-president; Mrs. Grady Lackey, recording secretary; Mrs. Ruth Ensey, corresponding secretary; Mrs. Joe Bell, treasurer; Mrs. Nell Davis, parliamentarian; Mrs. Ben Abercrombie, pianist; Mrs. Madge Carlisle, chorister; and Mrs. W. W. Gunn, assistant chorister.

Mrs. Jack Moore presented the yearbook, explaining the different programs and introduced the various committees acting within the club. She also outlined the projects for the year which will include the Christmas and Easter Cantatas. Mrs. Nunley made a very interesting talk in acceptance of the responsibilities of her place as president.

Dinner was served to the following members: Mmes. Ben Abercrombie, Joe Bell, C. L. Berry, J. E. Berry, Mickey Blackwell, Bob Copeland, Nell Davis, John Floyd, John Green, W. W. Gunn, Betty Henley, Grady Lackey, Jack Moore, Van North, Bob Nunley, L. R. Pondley, Chap Reese, Judon Rickels and Mac Steele. Associate members present were Mmes. Alfred Walker, James Willett, J. E. Swenson and the hostess, Mrs. George Gabriel, and honor guest, Mrs. Andrews.

**Spur, Patton Springs Bands To Compete At Lubbock Fair**

Spur High School Band and the Patton Springs High School Band along with other high school bands from throughout West Texas and Eastern New Mexico, will compete for \$600.00 in cash prizes which will be offered in conjunction with the "Parade of Bands" marking the opening day of the Panhandle South Plains Fair, September 24.

Judging will be according to regular Interscholastic Classifications—Class AAA, AA, A, and B. First place in each class will receive \$100.00 and second place in each class will win 50.00.

Band Director C. B. Abercrombia notified Parade Officials that Spur High School Band (68 pieces) will enter Class AA. Patton Springs Director Mrs. Ralph Marshall states that the Patton Springs 40-piece band will enter class B.

This year's parade, opening the 30th Annual Panhandle South Plains Fair, will begin at 10 a. m. September 24 and move through downtown Lubbock to the fair grounds. Awards will be presented immediately following the parade, rear the Fair Park Coliseum.

Opening day will also be "Area School Day" for thousands of school children throughout the South Plains. Every area student will be admitted to the grounds free of charge. "Holiday on Ice of 1936", the featured attraction this year, will hold a matinee performance at 2:30 p. m. Monday to which children under 14 will be admitted at half price.

Prof. D. O. Wiley, Texas Tech Band Director; Paul Branom, Tom S. Lubbock High School Band Director; and Ted Crager, McTerrey High School Band Director, all of Lubbock, are co-chairmen of the parade.

**"God's Power" Is Bagby Circle Topic**

The Bagby Circle of the W. M. U. of the First Baptist Church met Monday, September 17 in the home of Mrs. Hattie Turvin with 16 members present. Mrs. Adams, the chairman, presided. Mrs. Maude Seale brought the opening prayer. The program was under the direction of Mrs. Pretia Brooks Missionary Chairman. The topic for study was "God's Power Manifested in His People". The following parts were given: "Small Seeds Plus 50 Years" by Mrs. A. M. Walker; "Glances at the Philippines" by Mrs. Myrtle Whitwell; "Billie Graham's Boost to Missions" by Mrs. L. W. Langston; "At Last, Long a Missionary," by Mrs. Maude Seale; "Redeemed," by Mrs. Neaves. The closing prayer was brought by Mrs. John Adams.

**COUPLE RETURNS TO SPUR AFTER NEW MEX. WEDDING**

On Saturday, Sept. 15, Ernest Sullivan and Buelah Owens were united in marriage at Clovis, N. M.

After the ceremony, the couple returned to Spur where they will reside at 207 West 10th.

**20th Century Club Opens Season At Breakfast Saturday**

Mrs. Jack Rector was hostess to the Twentieth Century Study Club Saturday morning when they met for a reassembly breakfast after summer vacation. The meeting was held in the back yard where two attractive tables covered with green cloths were laid for the twenty-one club members.

The tables were decorated with centerpieces made of drift wood and autumn fruits. Colorful pottery in autumn shades added to the decor. Shoes, out dated and modern were used on the tables to carry out the club theme for the year "Footsteps of Progress". Mrs. Rector was assisted by her daughter, Katie, in serving a most delicious breakfast menu.

Mrs. E. S. Lee was director of the program. After giving a glance at the new year book, she introduced the president, Mrs. L. D. Ratliff, who gave a clever and interesting talk on "Progress is a Must".

Mrs. Rector closed the program by giving a unique talk on "Are

**Sister Of Spurite Is Wed In New Mexico**

Miss June Shreve of Hereford and Morris Fielder, also of Hereford, were united in marriage last Friday, Sept. 14, in New Mexico.

The bride is the daughter of Mrs. Willie Shreve and the sister of Mrs. J. D. McCain of Spur. The groom is the son of Mr. and Mrs. John Fielder of Hereford and formerly of Spur. Mr. Fielder was employed by the Dickens County Electric Co-op prior to the family's move to Hereford.

The couple will make their home in California.

**Past Presidents Passed**

Mrs. Basil Cairnes was welcomed as a new member. Others present besides those on program were:

Mmes. O. C. Arthur, Clyde Bearden, Cliff Bird, Bob Blackshear, T. H. Blackwell, E. D. Engleman, Eric Foster, Henry Gruben, J. A. Koon, George Stanford, George S. Link, F. C. Nichols, Dick Sampson, A. M. Walker, and Miss Margaret Elliot.

**Former Dickens HD Agent Honored**

Mrs. Agnes Marrs, former Dickens County home demonstration agent, and Smith county HD agent since 1946, is one of four



Mrs. Agnes Marrs  
Texans selected to receive the 1936 Distinguished Service Award of the National Home Demonstration Agent's Association. Presentation of the awards will climax

**Highway Community News**

Mrs. Richard Nance went to Lubbock Tuesday to see her daughter, Mrs. Taft Mitchell, who is ill. Mrs. Nance brought Kenneth Mitchell back home with her to

keep while his mother is ill. Mrs. Ray George and Mr. and Mrs. John Gregson went to Perrin to attend a funeral for three boys who were killed in a car wreck there.

Mrs. Ray George went to Idalou Monday to visit her son, Alton Estep and family. Her grandson, Gayle, came home after getting his arm broke in a foot ball game at Hardin-Simmons.

Mr. and Mrs. Clifford Kyser and son, Larry Craig, were here over the week end attending to business and visiting her parents, Mr. and Mrs. Elmer Thomason. Mr. and Mrs. Jimmie Hahn, Nelda Hahn and Charlotte Karr went to Idalou Friday to see Bill Hahn's Spring Lake football team beat the Idalou team. Mr. and Mrs. Larry Hahn, Mr. and Mrs. Earl Fry and Mabel Patterson of Lubbock met them in Idalou where they enjoyed a family Mr. and Mrs. Elmer Thomason went to Matador Saturday to see her mother, Mrs. Hoover and to

bring her home with them for a visit.

Mrs. Raymond Powell and children went to Hamlin Saturday to see the B team play the Hamlin B team.

Mr. and Mrs. Harry Martin of Hamlin visited his parents, Mr. and Mrs. Forrest Martin through the week end.

Mr. and Mrs. Bob Green and children went to Hamlin to see their boy play football.

Forrest Martin sold his calves to John Brantner Thursday.

Mrs. David Clay and daughter, Patsy, Mrs. Dick Stubble field and baby and Mrs. Tommy Hemphill of Dickens visited Mrs. Clay's mother, Mrs. Edna Hemphill and J. E. Sunday.

Tommy Hemphill, who is in the army, has been sent to Germany.

Douglas McArthur and his wife, Rosa, were at the Church of Christ Sunday morning where Douglas talked about "The Home and the Church". He will preach again next Sunday.

Mr. and Mrs. Art Wells and children, Mrs. Nelson Handley and children of Carlisbad, N. M., Mrs.

**'33 Club Has Supper To Start Season**

The home of Mrs. Everett McArthur was the scene of the first regular fall meeting of the 1933 Study Club on Tuesday, Sept. 18.

A salad buffet supper was enjoyed by the following members: Mmes. Horace Wood, C. H. McCully, Cal Wright, R. D. Ryan, D. L. Knight, W. G. Womack, H. G. Lackey, McArthur, O. R. Cloude, and the visitors, Mmes. Myrtle Whitwell, Lonnie Lewis and Emma Russell. Misses Everetta McArthur and Marilyn Hagins assisted as hostesses.

During the business meeting which followed, the new members were introduced and plans made for the coming year.

Lela Morgan and Jesse Wilke and daughter were dinner guests of Mr. and Mrs. Clarke Morgan Sunday Mr. and Mrs. Wells spent the week end with the Morgans.

Keley Putman has accepted a job at the Spur Gin.

**SUBSCRIPTION  
GOOD NEIGHBOR  
RATES**

For A Limited Time - Renew Your Current Subscription and Subscribe for Your Friend or Neighbor . . . Both for Only

**4.00**

**There are still a few folks in Dickens and adjoining Counties who don't get the TEXAS SPUR --**

**Here's your opportunity to save a dollar and do a neighborly deed. Find a neighbor who is not a subscriber - bring his name in with your renewal and pay only 4.00 for a year's subscription for both of you! Limit one year, to be eligible for Good Neighbor Rates, each renewal must be accompanied by a new subscription. Each new subscription must be accompanied by a renewal.**

**The Texas Spur**

## IT'S IN THE WANT ADS

Want to buy, sell, rent or trade something? Want to hire somebody? Looking for a job — a special service? You'll find the happy solution to your problem in the Want Ads!

When you want to BUY, look where people advertise what they have to sell. When you want to SELL, advertise where people look for what they want to buy. The classified columns of this paper will serve you well BOTH ways.

Read the Want Ads for the best buys at the lowest prices. Use the Want Ads to get the fastest sales results at the lowest advertising cost. You can get rates and place ads by telephone.

**THE TEXAS SPUR**  
JUST CALL 128

### CONSERVATION RESERVE FOR ALL FARMS

All farm land regularly used to produce crops, including tame hay, is eligible for the Conservation Reserve of the Soil Bank, the U. S. Department of Agriculture announces. Farmers participating in the Conservation Reserve will sign contracts through County Agricultural Stabilization and Conservation Committees to shift land from production to conservation uses. Contracts will be for 3 or 5 years. If the land already is in an approved cover crop, for 5 or 10 years if approved cover must be established, and for 10 to 15 years if trees will be planted. Up to 80 percent of the costs of conservation practices may be paid by the government. In addition, annual payments on the land will be made during the life of the contract. Farmers also may participate in the Soil Bank's Average Reserve if they have allotments for wheat, corn, cotton, peanuts, rice, or tobacco.

#### GIN TRASH, From Pg. 1

additions of 4, 8, and 16 tons of litter per acre. This is an indication of definite improvement in the rate of water infiltration into these heavy soils from the application of mulches.

Various types of materials have been used for mulching purposes since 1948, including manure, sorghum residue, and cotton gin trash. Very little difference has been noted in the effect of these materials on water conservation or crop yields when similar quantities have been used. An average yield increase in cotton production of approximately 60 percent

has been realized from the addition of mulching materials. The yield increases are attributed to the reduction in runoff and attendant deeper moisture penetration rather than fertility benefits since the applications of fertilizer during the same years have not increased yields.

The quantity of materials necessary to accomplish the water conservation job has not been definitely established. It is felt that four tons per acre of a bulky material such as cotton gin trash is adequate. Denser materials (greater weight per unit volume) must be applied in greater quan-

#### First Meeting Held By Dickens P.T.A.

The Dickens P.T.A. met for its first meeting on Monday, Sept. 10, with 17 members present. The group decided to give a cup towel shower for the lunch room. Everyone is urged to take or send something in this line for the lunch room.

The music program will be continued this year the same as last year. Austin Williams will begin a "Singing School" for the young and the old as soon as he returns from Nebraska. There will be one or two lessons a week at night. No charge will be made but donations will be welcome. This is sponsored by the P.T.A. and Civic Club.

It was also decided to have Coke, candy and chewing gum machines taken from the school. The next meeting will be Oct. Refreshments will be served to the entire school and all others who are present.

Mrs. Kenneth Atkinson, reporter

Mrs. J. E. Proctor of Kaufman, Texas, is in Spur visiting her two sons, Carl and Proctor and their families. She plans to stay about two weeks.

Mrs. J. D. Guyer of Spur and her brother-in-law, Dick Edinburg of McAdoo are in Comanche at the bedside of her mother who was taken seriously ill Tuesday.

titles to achieve the same results because of the difference in surface cover.

BAND BOOSTERS

RUMMAGE SALE

SATURDAY, SEPTEMBER 22

FOLLOW  
the  
BULLDOGS  
to  
ANSON  
Friday, September 21  
Game Time 8 p. m.

STOP & SHOP HERE FOR

# Best Buys

ARMOUR'S STAR

## Fryers lb. 39c

LEAN, TENDER  
Calf Ribs lb. 19c

Ranch Style Sliced  
BACON 2 lbs. 83c

Bologna lb. 23c

Fresh Produce . . .

RUSSETT  
Potatoes 10 lbs. 39c

Yellow  
ONIONS lb. 4c

SQUASH lb. 5c

Tokay  
GRAPES lb. 10c

WHITE SWAN  
COFFEE lb. 97c

KIMBELL'S  
FLOUR 25 lbs. 1.75

COLORADO PINTO  
BEANS 10 lbs. 89c

SUPREME COOKIES  
• FUDGE SALAD  
• PECAN SANDIES  
• CHOCOLATE DROP  
1 lb. bag 43c

BALLARD, PUFFIN CANNED  
BISCUITS 5 for 49c

KIMBELL'S  
OLEO 5 lbs. 1.00

12 oz. Kounty Kist Whole Grain  
CORN 2 cans 25c

300 CAN CHUCK WAGON  
BEANS 10c

KIMBELL'S 303 CAN

Spaghetti 3 for 35c

PEAS 303 CAN MISSION 15c

PLENTY FREE PARKING - USE REAR ENTRANCE  
DOUBLE FRONTIER STAMPS TUESDAY!

## Stop & Shop Mkt.

# McAdoo News..

Grady Jones of Big Springs spent Wednesday and Thursday with his parents, Mr. and Mrs. J. W. Jones. Sunday dinner guests were Mr. and Mrs. Ewell Buckner and Rex from Lubbock. Mr. and Mrs. E. B. Buckner and Mr. and Mrs. Guinn Hickman, Dwight and Lane.

Mr. and Mrs. Paul Stumpf and her father, Floyd Lason of Grandfield, Oklahoma were Friday and Saturday visitors in the home of her grandparents, Mr. and Mrs.

**Dr. M. H. Brannen**  
Dentist  
111 E. Harris Phone 88  
SPUR, TEXAS

**Dr. O. R. Cloude**  
CHIROPRACTOR  
109 West Hill Street  
Spur, Texas

**Dr. W. K. Callan**  
DENTIST  
501 N. WILLARD Phone 2

**Knights of Pythias**  
Meek Eve  
Monday Night  
VALLEY  
Welcome

**Dr. W. C. Gruben**  
OPTOMETRIST  
Phone 177 Spur, Texas

Will Eldredge. Mr. and Mrs. Tex Dickinson accompanied by Mr. and Mrs. Lee Allen Dickinson and children, left Sunday for a visit with their daughter, Mr. and Mrs. Bobby Pread and son and to see their new granddaughter.

The Elbert Jacksons who have been living at Abilene for several months have moved back home. Also the Ray Dickinsons who have been living at Anton have moved back home.

Mr. and Mrs. M. O. Burrow and Mr. and Mrs. Travis Bird and baby were visitors during the week-end in the home of their parents and grandparents, Mr. and Mrs. L. E. Bass.

Mr. and Mrs. Orvin Callihan and children who have been making their home in Iran, spent the week end at home.

H. L. Dennis has started harvesting cotton, to date he has ginned 4 bales.

Mr. and Mrs. O. E. Lumsden and Tommie Slaton spent Friday night in the home of their daughter, Mr. and Mrs. Dale Neff.

Mrs. Tom Harvey returned Wednesday from Odessa, where she had been at the bedside of her daughter, Mrs. Susie McCandless, who has had pneumonia and also suffered a heart attack. At present she is much improved.

Mr. and Mrs. Sonny Gage of Ft. Worth spent last week end in the home of her parents, the T. A. Harveys.

Mr. and Mrs. M. C. Baum were Tuesday and Wednesday visitors in Levelland. They visited Mrs. Annie Dean and Mary Katherine and Mr. and Mrs. J. E. Johnson. T. Sgt. Marion P. Baum has gone to Hawaii for a 6 months

tour of duty. His wife and children, James and Vera, are here for an indefinite visit with the M. C. Baums, and at Levelland with her parents.

G. B. Morris left Sunday for Dallas where he is attending the State Democratic Convention.

Waid Griffin of Spearman spent Friday night in the home of the J. J. Griffins.

Mr. and Mrs. Roy Ward of Dickens, Peny and Waid Griffin Jr., of Spearman were Sunday afternoon visitors in the G. G. Allen home.

Mr. and Mrs. B. O. Byrd, of Vernon were Saturday night guests in the home of Mr. and Mrs. John Formby. While Della Stovall and Mrs. John Freeman also of Vernon were guests in the M. C. Formby home.

Clayton Baum of Ralls spent the week end with his parents, Mr. and Mrs. M. C. Baum.

Mrs. George Potts honored her mother, Mrs. Maggie Nickels with a birthday dinner Sunday. Present were: Mr. and Mrs. R. E. Nickels, Mr. and Mrs. Roy Nickels and the hostess and Mr. Potts. Mr. and Mrs. Denzil McMillan of Lubbock were Sunday afternoon callers. Ronnie Millan accompanied his parents home after spending the week with his grandparents.

Mrs. Potts Formby and Frances Ann of Plainview spent Monday night with the M. C. Formbys.

Mr. and Mrs. John Formby were Spur shoppers Monday afternoon.

Mrs. Myrtle Hawley and Mrs. Tommy Hemphill of Dickens visited Thursday with their daughter and sister, Mrs. Walter McCormick and family.

Mr. and Mrs. Bill Tooke and Mr. and Mrs. Billy Wesley and baby of Lubbock visited last Sunday in the home of his father, the W. H. Tookes.

Billy Brownlow and Lucile Kirkendall of Lubbock were Thurs-



**the SOIL BANK**  
is a direct attack on surpluses

RESERVED FOR FUTURE USE TO REDUCE SURPLUS NOW

- Will reduce surpluses by reduced production
- Will increase farm income
- Will protect land for future use

The National Soil Bank program will help reduce price-depressing surpluses of wheat, corn, cotton, peanuts, rice and tobacco without placing all of the burden on the farmer, the U. S. Department of Agriculture says in announcing the 1957 Soil Bank program. Surpluses of these six "basic" crops have continued to pile up despite production controls and intensive marketing programs here and abroad. The 1957 Acreage Reserve encourages farmers to cut production below their average allotments and earn bonus payments for acreage reduction to help maintain or improve net farm income. Under the Conservation Reserve, farmers receive payments for land taken out of production and conserved for future use. Participation in the Soil Bank will not affect future establishment of State, county, or farm allotments. The Soil Bank supplements other farm programs. The County Agricultural Stabilization and Conservation Committee will assist farmers in planning their participation in the Soil Bank.



Something New - Ice On Skaters! - Lovely Glamour - "Ice" has her own thoughts on "Totin' Ice Around the World", one of the eight big production numbers featured with Holiday On Ice of 1956. The big revue will hold nine performances at Fair Coliseum, Sept. 23 - 28 at the Panhandle South Plains Fair in Lubbock.

day afternoon visitors with the G. G. Allens.

S/Sgt. and Mrs. W. D. Worcester stopped for a short visit last Saturday in the Ellis Power home, they were enroute to George A. F. B. in California, where he will be stationed. Key Neeley of Lubbock was also a visitor the same day, he was enroute to Oklahoma City to visit Nuge Rose who is hospitalized there.

Bobby House of Dallas and Mr. and Mrs. Leon House of Hobbs, New Mexico, visited recently with their parents, Mr. and Mrs. T. M. House.

Mr. and Mrs. Raymond Eldredge and Johnnye Raye and Mrs. T. J. Brantley attended the wedding of Peggy Buckner and Buddy Wynn in Lockney, August 21.

Flora Lee Parker of Jayton spent last week end with Mr. and Mrs. Ellis Power and children.

Mrs. L. B. Bass of Plainview, Mrs. G. F. Smith and Mrs. Oscar Holmes of Amarillo were Tuesday visitors in the L. E. Bass home.

Mr. and Mrs. Billy Gene Cyfert of Plainview, former McAdoo residents are parents of a daughter, Vickie Ann, she was born September 6th and weighed 6 lbs. 14 oz.

Mr. and Mrs. Willie Phifer visited Sunday in the home of Mr. and Mrs. Bill Tooke.

Carol Ann Allen has returned from a recent visit in Phoenix, Arizona, with her sister, Mr. and Mrs. Clarence Williams.

T. J. and Curby spent Monday night in Portales with Mr. and Mrs. Laverne Brantley.

Mrs. L. E. Bass and Mrs. T. J. Brantley were Tuesday shoppers in Spur.

Mrs. Laverne Brantley and Leamon Brantley of Portales visited here Tuesday and Wednesday.

The McAdoo Chapter of the F. H. A. met in the homemaking building on Friday, September 7th. The meeting was called to order by Wilma Harris, president. Eleven members were present.

The program, finance and recreation committees made reports. The reports were approved and accepted.

The meeting was adjourned. The next meeting will be September 14.

## LOSE UGLY FAT IN TEN DAYS OR MONEY BACK

If you are overweight, here is the first really thrilling news to come along in years. A new & convenient way to get rid of extra pounds easier than ever, so you can be slim and trim as you want. This new product called DIATRON curbs both hunger & appetite. No drugs, no diet, no exercise. Absolutely harmless. When you take DIATRON, you still enjoy your meals, still eat the foods you like but you simply don't have the urge for extra portions and automatically your weight must come down, because, as your own doctor will tell you, when you eat less, you weigh less. Excess weight endangers your heart, kidneys. So no matter what you have tried before get DIATRON and prove to yourself what it can do. DIATRON is sold on this GUARANTEE: You must lose weight with the first package you use or the package costs you nothing. Just return the bottle to your druggist and get your money back. DIATRON costs \$3.00 and is sold with this strict money back guarantee by:

THE CITY DRUG STORE - Spur  
Mail orders filled

Mrs. Claud Brandon and Mrs. Ed James and children shopped and visited in Plainview Thurs.

Recent guests of Mr. and Mrs. Lee Marshall were Mrs. Doris Webb, Miss Billie Ruth Webb and Mrs. Frances Patterson and daughter of Big Spring.

Mrs. Tom Hastings, Mr. and Mrs. Dean Hastings and daughter La Juana of Bovina visited here recently with Mr. and Mrs. J. T. Swim Jr.

## REDDY SAYS



Poor light increases eyestrain and fatigue which may result in defective vision.

Fill empty sockets with big bright bulbs for easier studying and faster learning!

EYESIGHT IS PRICELESS  
GOOD LIGHT IS CHEAP

West Texas Utilities Company

# BUSINESS & PROFESSIONAL DIRECTORY

SPUR, TEXAS

## FLOY WATSON AGENCY

FARM BUREAU INSURANCE FOR MEMBERS ONLY  
Fire, Casualty, Automobile, Life etc.  
IT PAYS TO BELONG TO FARM BUREAU  
108 E. Harris St. Spur, Texas  
Telephone Office 129 - Res. Dry Laid 5101  
P. O. Box 64

## FLOWERS

For all occasions. Complete Wedding Service. Corsage and Hospital Arrangements. Nice Funeral Pieces.  
"FLOWERS WIRED ANYWHERE"  
**DOROTHY'S**  
Day Phone 48-Night Phone 711  
Spur Texas

## MARKET POULTRY & EGG CO.

BUY OR STORE GOVERNMENT STORAGE FOR MILO AND OTHER GRAINS  
Feed (Grain, pellets, corn, oats, milo, barley)  
SPUR, PHONE 33 (1 block West of Co-Op Gin). DICKENS, PHONE 2487

## BELL'S CAFE

Open 5 a. m. Close 10 p. m.  
Phone 13  
Mr. and Mrs. R. J. BELL

## Chandler Funeral Home

Burial Insurance Plan That Anyone Can Afford  
Ambulance Service  
Phone 248 Spur, Texas

## 66 Service Station

WHOLESALE and RETAIL  
Open 24 Hours  
Phone 20 Spur

## THOMASON LAUNDRY

Washing 60c Hour  
Free Pick-up and Delivery Service  
Phone 66 Spur, Texas

## Jack Rector Insurance Agency

Insurance of all types  
Fire-Automobile-Casualty  
Public Liability, Etc.  
Phone Office 43, Res. 42-W Box 1488 Spur, Texas

## MRS. J. E. BERRY

Announcing  
FALL CLASSES IN PIANO, HAMMOND ORGAN AND THEORY  
314 EAST HARRIS TELEPHONE 216

## Randy Clifton

GRUBEN RADIO & TV CENTER  
Electrical Contracting. Wiring Supplies  
Zenith TV. Westinghouse Appliances  
Phone 491 - Spur

## COOPER'S CAFE

TASTY MEALS IN A FRIENDLY ATMOSPHERE  
-NOW OPEN SUNDAYS-  
OPEN DAILY 5 A. M. to 8 P. M.  
Mr. and Mrs. TOM COOPER, Owners



## GARNER IMPL. CO.

## SPUR CONVALESCENT HOME

Call 9517  
Mr. and Mrs. Clyde Tilley  
Located in former Nickels Hospital Building  
• DAY and NIGHT NURSE SERVICE  
• COMFORTS OF HOME FOR HANDICAPPED  
• FOR YOUNG and OLD ALIKE

## Ratliff, Conner and Walker

Attorneys at Law  
Spur Texas

## H. S. Holly Agency

GENERAL INSURANCE  
AUTO LOANS  
"Cash in 10 Minutes"  
Spur, Texas  
Office Phone 201 Residence Phone 150

## KEYSTONE FLEMING OF SPUR, INC.

BUTANE CARBURETION A SPECIALITY  
Phone 290 P. O. Box 1216  
SPUR, TEXAS  
ALWAYS PROMPT AND COURTEOUS SERVICE

## JERRY'S CAFE

BEST HOME COOKING IN TOWN  
OPEN FROM 5 A. M. TIL 8 P. M.  
Mr. and Mrs. Jerry Willard, Owners

## Gibson

INSURANCE AGENCY  
• GENERAL INSURANCE •  
Day Phone 46 - Night Phone 128

## CAMPAIGN SPECIAL!

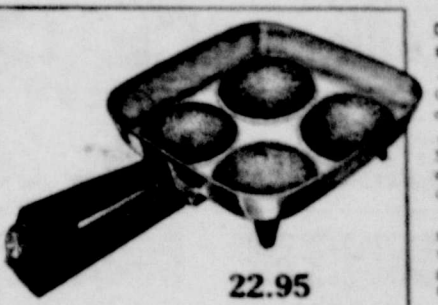
## THE ALL-NEW, BRAND NEW WESTINGHOUSE ROTISSERIE ROASTER

- Complete Outfit Includes:
- Fully Automatic Rotisserie
  - Full-dinner Size Roaster
  - Complete Set of Roasting Dishes
  - Attractive Functional Roaster Stand

Regular Price of Complete Outfit is 98.80

NOW ONLY! **83.85**

## Westinghouse Automatic FRY PAN



REG. 3.00  
Coppertone Lid only 99c (with Fry Pan)

## BOWL and STAND

WITH A NEW WESTINGHOUSE 2-TONE PORTABLE MIXER  
The extra-powered hand mixer with Stop-n-Go switch—makes complete 1-hand operation possible! Speed selector... heater ejector... rests on heel... hangs on wall. Choice of: Pink-and-white • Turquoise-and-white • Yellow-and-white • All-white.



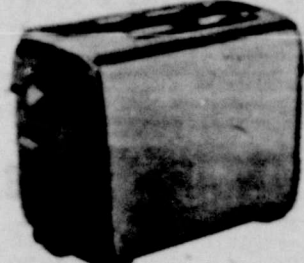
## WESTINGHOUSE WASHER - DRYER SPECIAL!

Reg. 559.90 - Now with Old Washer Both for

BIG, EXTRA LONG TRADE-INS ON WESTINGHOUSE FREEZERS, REFRIGERATORS, COOK STOVES

## RANDY CLIFTON

Gruben Radio & TV Center



## Smart New Toaster by Westinghouse

Replace your old toaster with this modern Westinghouse. Precision mechanism perfect toast every time. Hinged crumb tray, too, for easy cleaning!

## SEE OUR COMPLETE LINE OF WESTINGHOUSE SMALL APPLIANCES!

- STEAM IRONS
- COFFEE MAKERS
- WAFFLE IRONS
- VACUUM CLEANERS
- FLOOR POLISHERS

WE SERVICE EVERYTHING WE SELL!

Our Customers Come First

**388<sup>88</sup>**

## ALWAYS BOOSTING SPUR

## Wayland Prexy To Speak Here



Dr. A. Hope Owen, president of Wayland College, Plainview, Texas, will be guest speaker at the Dickens Asso. meeting at 8:40 p. m., on September 20, 1956, convening at the First Baptist Church in Spur.

Under Dr. Owen's leadership since July, 1953, great strides have been made at Wayland College, including the addition of more than half a million dollars in buildings and equipment. In 1953, the plant valuation was \$1,509,606 and a conservative estimate of today's assets comes to \$2,104,826. Besides this, capital endowment has risen from \$253,657 to \$415,000.

These forward steps are part of a Five-Year-Program of pro-

gress adopted by Wayland's Board of Trustees in 1954. Membership in the Association of Texas Colleges was another step forward and was accomplished in the spring of 1956.

On October 8, Wayland College will dedicate Bessie Fleming Hall, a residence hall for 34 young women which has been completed this summer. The dedication will be held in connection with Wayland's first Parents' Day, when parents will have a spend-the-day party on the campus, attending classes, chapel and meals as guest of their children. This feature is being added to the College Calendar at Dr. Owen's request.

Brotherhood Hall, residence for 50 young men, will not be completed in time to be used this fall. This building is being erected by the Baptist men of Districts 8, 9, and 10. During the summer, a College Bookstore has been constructed in what once was unused basement area in Administration Building, thereby releasing for much needed classrooms and offices space formerly occupied by the College Bookstore. Bids for the Van Howling Memorial Library will be called for within the next two months, with the hope that this modern library building will be ready for use in the fall of 1957. This will add another quarter million dollars to the plant valuation since Dr. Owen became president.

Dr. Owen is much in demand as a speaker before youth and church groups over a wide area. He is a graduate of Oklahoma Baptist University and Southern Baptist Seminary and has attended Southwestern Seminary. Dr. Owen has served on Southern Baptist Foreign Mission Board and Sunday School Board and executive committees of Southern and Texas Baptist groups.

## Tex. Banks Lead In Loans To Tex. Farms, Ranches

Texas farmers and ranchers met their credit needs during 1955 chiefly through loans from their local banks, according to Hobert Lewis, president of the Spur Security Bank, who represents the Texas Bankers Association as Dickens and Kent counties Key Banker. During the year, the state's banks provided more financial aid to farmers and stockmen than any other lending agency, he pointed out.

Using figures from the 15th annual farm lending survey of the Agricultural Commission of the American Bankers Association, Lewis noted that on Jan. 1, 1956, Texas banks had loans outstanding to farmers and ranchers totaling \$288,590,000 including both production and mortgage credit. This compares with \$285,374,000 held by insurance companies, second largest lender to Texas agriculture; \$164,810,000 held by Federal Land Banks; \$62,263,000 by Production Credit Associations; and \$90,408,000 by the Farmers Home Administration.

The total of farm credit outstanding in banks was made up of \$249,211,000 in production loans and \$39,379,000 in farm and ranch mortgages. In addition, banks in Texas held \$244,539,000 in C.C.C. paper not included in the above total.

"The efforts of the state's banks to meet the increased needs for intermediate-term (one to five or more years) loans are reflected in the figures for both real estate and production loans outstanding," Lewis said. "It is estimated that about three-fourths of the farm real estate loans are for purposes normally associated with intermediate-length loans. This would include such projects as the purchase of new machinery, improvement of livestock herds, etc. Beyond that, a substantial portion of the production loans in banks at the beginning of 1956 carried a repayment period of longer than one year."

Lewis gave several reasons for the increasing importance of in-

termediate-term credit in financing Texas agriculture. "First," he said, "farmers haven't had as much income to repay their obligations during recent years as they had during the war and early postwar years. Second, farm and ranch capital requirements have increased to a very high level. Finally, changing habits of farmers' customers have caused a notable shift to different cropping programs. Each farmer who has made such adjustments employed new capital to do it."

"These investments made through the use of intermediate-term credit have greatly contributed to more efficient farm businesses in Texas and to a higher standard of living for all Americans," Lewis stated.

Lewis reported that 856 of the 899 insured commercial banks in Texas served agriculture by making farm loans during 1955.

## Patrolmen Plea For Observance Of Bus Laws

The local State Highway Patrolmen are making an urgent appeal to Dickens County residents to familiarize themselves with our state laws regulating the passing of school busses and comply with such laws to the last letter.

The portion of the law they want to emphasize is Sec. 104 of Art. XIII, which says,

"Overtaking and Passing School Bus. The driver of a vehicle upon a highway outside of the limits of any incorporated city or town upon meeting or overtaking from either direction any school bus

which has stopped on the highway for the purpose of receiving or discharging any school children shall stop the vehicle immediately before passing the bus, but may then proceed past such school bus at a speed which is prudent, not exceeding ten (10) miles per hour, and with due caution for the safety of such children." It is very clear that this law requires a driver to stop for a school bus when it is taking on or discharging pupils regardless of which direction he is going.

Many of the school children riding the busses are youngsters who have not come to a realization of what danger is. They can dart out from the front or the rear of a bus in front of a passing car and be killed or seriously injured for life. It has happened too many times in Texas and we don't want it to happen to one of our own children. It will take on-

ly a moment to come to a full stop and it may be that moment will save some child's life.

The Highway Patrolmen also ask that all persons using any type trailer, and especially cotton trailers, be sure to have them equipped with tail lights or the proper type of reflectors when going on the highways at night. The law likewise requires these safety devices for your safety and that of others on the highway.

Our Highway Patrolmen have promised to keep a close look-out for violators of the two mentioned laws. They are anxious to make Dickens County a safe place for us all. Let's all cooperate with them.

Read The Want Ads

## Girl Scouts

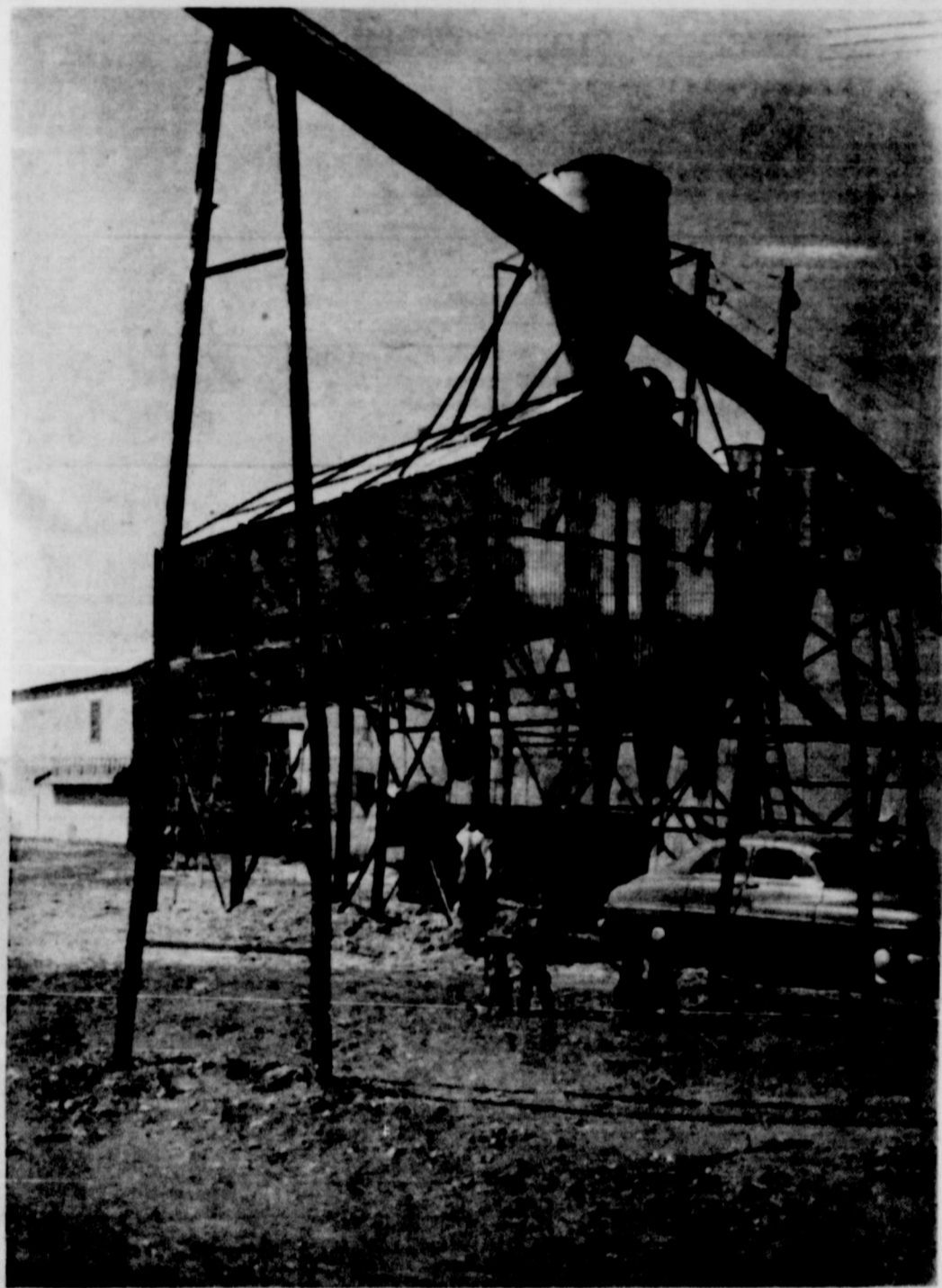
Troop XI Girl Scouts met on Sept. 18 in the Little House at the regular time.

Work was begun on projects in arts and crafts. They met with their new leader, Mrs. Bernice Hurst.

Mr. and Mrs. Richard Westfall and boys visited Mr. and Mrs. Clarke Morgan Sunday evening and took their cows that had been grazing the Johnson grass on the Morgan place, home.

Mrs. J. C. Keen and Mrs. J. C. Payne visited last week end in Odessa and Andrews with relatives and friends. They also attended open house of a new telephone company building in Andrews. Jack Ken is manager of the company.

# FOR LAND'S SAKE!



**YES, FOR THE LAND'S SAKE.** we have Now Installed A Modern, USDA Approved Cotton Burr Catcher, Shown Above.

The Benefits of Returning the Cotton Burrs to Crop Land are Many and Considerable. We Invite your Attention to the Relative Article on page 1 by Dr. Earl Burnett of the Spur Experiment Station.

**The Burrs Are Free-  
The Extra Profit Is Yours**

Just back your Trailer Under the Chute, Pull the Valve Rope, and Take Back to your Farm the Means of Better Crops Through Better Soil ...

# Farmers Co-Op Gin

SPUR, TEXAS

## EL-HQ

SAT. - ONLY

CLUB PALACE presents  
GLENDA FAYNE presents  
GLENDA FAYNE presents  
FORD - BORGNE - STERGER  
**JUBAL**

SUN. - MON.

KIERON MOORE  
LOIS MAXWELL

-In-  
**SATELLITE IN THE SKY**

In Cinemascope & Color

-Also-

In CINEMASCOPE and COLOR

**"THE WEDDING IN MONACO"**

PRINCE RAINIER III

and MISS GRACE KELLY

EXCLUSIVE! Only Official Film!

TUES. - WED.

BUCK NITE

One Passenger for 50c -

Rest of Car Load for 50c -

Load'er Down - Come on Out -

See the Greatest Motion Picture of Them All!

**20,000 Leagues Under the Sea**

With DONALD CRISP and other stars

See the FIRST DONALD CRISP Color in Cinemascope

GRAND CANYONSCOPE

in Cinemascope

THURS. - FRI.

JAMES DEAN

-In-

JOHN STEINBECK'S

EAST OF EDEN

## PALACE

FRI. - SAT.

CELL 2455

**DEATH ROW**

ACTUALLY WRITTEN IN THE DEATH CELL AT SAN PIENTINI!

-2nd Feature-

CHARLES STARRETT

-In-

**OVERLAND TO DEADWOOD**

Sun., Mon., Tues.

**JOHN WAYNE**

**"THE SEARCHERS"**

VISTAVISION and TECHNICOLOR

JEFFREY HUNTER - VERA MILES

WARD BOND - NATALIE WOOD

Wed., Thurs., Fri.

**JUMBO JACKPOT**

Attend Wed. or Thurs.

-Showing-

**A FUN HIT YOU'LL LOVE**

**HOPE SAINT**

BOB SANDERS

**THAT CERTAIN FEELING**

## HOSPITAL NOTES ...

Tuesday, Sept. 11-

Mrs. J. L. Sechrist, Spur, surgery.

Wednesday, Sept. 12-

W. D. Duboise, Jayton, for medical care. Dismissed Sept. 15.

Mrs. F. G. Shaw, Dickens, for medical care. Dismissed Sept. 15.

Gloria Cabrd, Spur, for medical care. Dismissed Sept. 15.

Friday, Sept. 14-

Clara E. Love, Spur, medical care.

Mrs. Minnie E. Walker, Jayton, medical care. Dismissed Sept. 16.

Saturday, Sept. 15-

Cecil Scott, Roaring Springs, for medical care.

Mrs. Olan Arthur, Spur, medical care.

Sunday, Sept. 16-

Mrs. Obie O. Lee, Lubbock, for surgery.

Mrs. John Adams made and sent to the hospital a delicious fruit cobbler for the patients and nurses. Thanks so much. It was very good.

Mrs. Arner Watson made the nurses a yellow cake this week. They all say thanks. It was certainly good.

Let's

**GET ACQUAINTED!**

This get-acquainted price now in effect  
**Texaco Fire Chief Gasoline**

**26<sup>9</sup>**

... and another get-acquainted price!  
**WASH & GREASE**

**2.75**

**FREE LOLLIPOPS FOR THE KIDDOS  
ALL DAY SATURDAY!**

**BARBERS' TEXACO  
(FORMERLY BIGHAM'S STATION)**

# CLASSIFIED ADS

## FOR SALE

**FOR SALE:** House and lot, 4 rooms and bath, located within 1 block of East Ward School, a bargain. Also gas cook stove and Philco Electric Refrigerator, both in excellent condition. Call 3225 or see Olney Walker 48-ctfn

**FOR SALE OR TRADE:** 4-rooms and bath, 301 E. 5th St Good Storm Cellar Trade for house to be moved or take car as down payment. M. S. Moody, Box 892, Phone 3256, Idalou, Texas 48-2tc

**FOR SALE:** Two Jersey Milk Cows and calves. J. W. Pickens, phone Dry Lake 2148 48-1tp

**FOR SALE:** Used TV's. Big 21" RCA Console Excellent condition \$150.00. 17" Admiral table model. Both with new picture tubes. Also two vacuum cleaners with all attachments. Priced to sell. Randy Clifton - Gruben Radio & TV center. 47-4tc

**FOR SALE:** 3 bed-room house with extra lot. Mrs. Iley Grantham. 423 N. Williams. 47-4tp

**FOR SALE:** My equity in 2 bed-room house GI Loan at 4%. 517 W. 1st. Harold Blair, box 214 Meadow, Texas. Call 3351 Meadow. 46-4tp

**FOR SALE:** Real Nice Fat Suckling Calves. Grade from Good to Choice. The kind that will please. For extra good Beef, half or whole, see R. L. Benson. Phone 108. 45-4tc

**FOR SALE:** 22 x 30 Farm House - 3 miles South and 1 mile West from Dickens. See G. L. Delisle at Spur or B. W. Suel, phone Lubbock SW 9-2674 45-4tp

**SQUAW DRESSES** Made to order, also pleated. Ric-Rac and braid. 623 N. Carroll, phone 130. 44-ctfn

**FOR SALE or RENT:** Piano. Mrs. J. E. Berry, phone 216. 45-ctfn

**BEEF FOR YOUR LOCKER** or home freezer. We have all size beefs available at all times. Half, whole or quarter. Wholesale price. Leon Ice Co., Spur. 36-ctfn

**FOR SALE:** "X" irrigation Lifetime aluminum tubes. \$1.15 each. Garner Imp. 17-ctfn

## WANTED

**WANTED:** Farm-Ranch hand until January 1st. E. H. Williams, phone 2290 Dry Lake. 48-2tp

**WANTED:** Good Farm Hand 30 years of age or older, married. Will furnish house and milk cow. Good salary. Year around job. Phone 108. R. L. Benson 47-2tc

**GOOD NEWS:** Real opportunity for older man to secure profitable business in Dickens County. For full particulars see R. L. Terrell 623 E. Main. St. Floydada or write Raleigh Dept. TX1-410-BLKI, Memphis, Tenn. Tell a friend about this ad. 47-3tp

**MESQUITE CHANING, DOZIER** Scraper Work and Deep Plowing. See or call W. R. Gholson, Box 14, Jayton. Call 2158. 39-13tp

**LET US SLAUGHTER** your beef or hog. Modern clean, sanitary facilities. Experienced staff. Leon Ice Co., Spur. 34-ctfn

**FOR Reliable Plumbing** see W. E. Day at Wilson & Young Lumber Co. Also Licensed Butane Plumber. Day Phone 12 - Nite Phone 412. 22-ctfn

**WANTED:** Farm Loans 4% interest payable on or before maturity. Spur National Farm Loan Assn. Spur, Texas 27-ctfn

## FOR RENT

**FOR RENT:** 4 room house with bath. Maggie Thacker, phone 920K3, Guthrie, Texas. 48-1tp

**FOR RENT:** 3 bedroom house, large cement basement, 714 N. Miller. See Cleo Rogers. 47-ctfn

**FOR RENT:** 3-room house, 601 W. Harris. 29-ctfn

## Miscellaneous

**FINISH HIGH SCHOOL** or Grade School at home. Spare time. Books furnished. Diploma awarded. Start where you left school. Write Columbia School, Box 5081 Lubbock. 47-52tc

**LOST:** Person who borrowed linoleum roller from Campbell's Furniture Co. Please Return. 48-ctfn

**LOST:** 1 Rambouillet Sheep. Last seen North West of Spur. Notify Ernest Kearney, Hill Top Service Station. 48-2tc

**STOP THAT ITCH!** IN JUST 15 MINUTES. If not pleased, your 48c bath at any drug store. Try Instant-drying ITCH-NE-NOT for bath or eczema, ringworm, insect bites, foot itch or other surface itches. Easy to use day or night. Now at CITY DRUG COMPANY Spur - Texas

## CARD OF THANKS

The kindness and sympathy of neighbors and friends in our recent sorrow will always remain with us as a precious memory. Our sincere thanks and gratitude for all those comforting acts. We also want to thank Bro. Leonard Dennis of McAadoo, Rev. Arnold Bickell of Roaring Springs and Bill Seale.

## CARD OF THANKS

We wish to thank our many friends for the kindness shown us during the long illness and death of our mother. May God bless each of you.

Anna Rucker, Grace McLaren, John Cannon, Robert Cannon, Ross Cannon, Weldon Cannon.

The Ollie Scott Family

Mr. and Mrs. Junior Martin and daughter of Littlefield spent the week end visiting his parents, Mr. and Mrs. Forrest Martin, and her parents, Mr. and Mrs. Jeff Smith.



## IT'S THE LAW in Texas

A Public Service Bureau of the State Bar of Texas

Suppose the mailman delivers to you a package containing a necktie—or a book, key-ring tags or a phonograph record—that you didn't order. Either with it, or by later mail, is a bill or request to remit the price.

What are your obligations, assuming you don't want the mer-

chandise? Must you return it? Can you use it and not pay for it? Must you keep it, or can you throw it away?

Generally speaking, recipients of unordered merchandise are under no obligation (a) to return it; (b) to acknowledge its receipt; (c) to pay for it unless used; (d) to give it particular care, or (e) to keep it beyond a reasonable time.

You are obligated to surrender the merchandise if called for in person by the shipper or his agent within a reasonable time. But you can demand storage charges before surrendering the item. If you mail it back at your own expense, you very likely will stay on the

sender's mailing list and will receive other shipments in the future.

There are no postal regulations governing unordered merchandise, except where fraud is involved.

Congress is trying to draft some legislation that will cover the situation. However, if you know what is in the envelope or package, you can write "Refused" across the face of the piece of mail and hand it back unopened to the mailman. No further explanation is required. You don't have to accept any class of mail. Further, your refusal probably will result in the sender having to pay return postage.

A ruling by the Federal Trade Commission holds it a violation of the Federal Trade Act for a sender of unordered merchandise to claim that "the receiver is under obligation to pay for or return the merchandise." Hence, if you don't use the merchandise, you are within your rights in refusing to pay for it.

In summary, unless you want to use the item, in which case you should pay for it, you should keep it for awhile and then may throw it away.

If another person's mail is improperly delivered to you, do not open it, as such action might make you liable to severe legal penalties. Such mail should promptly

be re-deposited in a postal box with an appropriate notation thereon, such as the proper address or "not 14 South Brown Street", showing the address to which the mail had been delivered.

(This column, based on Texas law, is written to inform—not to advise. No person should ever apply or interpret any law without the aid of an attorney who is fully advised concerning the facts involved, because a slight variance in facts may change the application of the law.)

Read The Want Ads

# Week - End Budget Balancers

## IN OUR MARKET...

WRIGHT'S COUNTRY STYLE

**Bacon** 2 Pound Package 98c

CORN KING

**Bacon** One Lb. 49c

**Pork Chops** Lb. 59c

ARMOUR'S "ALL MEAT"

**Bologna** Lb. 29c

ROUND, LOIN or T-BONE

**Steak** Lb. 59c

**DASH DOG FOOD** 2 cans 25c

**MARYLAND CLUB COFFEE** lb. 99c

**WHITE SWAN MILK** 3 tall cans 33c

**PINTO BEANS** 4 lb. bag 39c

**SIMONIZE (Liquid Wax)** quart 98c

ZESTEE or KIMBELL'S

**Preserves** PEACH APRICOT PLUM 3 20 Oz. Glasses 98c

GOLD MEDAL

**FLOUR** 10 Lbs. 89c 25 Lbs. 175

ARMOUR'S

**Treet** 3 12 Oz. Cans 100

KOUNTY KIST WHOLE KERNEL

**CORN** 12 Oz. Can 12 1/2c

KRAFT'S ORANGE

**ORANGE DRINK** 4 46 Oz. Can 89c

CHUCK WAGON

**BEANS** 303 can 10c

**CAMPBELL'S TOMATO SOUP** can 10c

**KRISPY CRACKERS** Lb. 25c

**BAKERITE** OR 3 Lb. Can 79c

**TEX STAR OLEO** lb. 19c

Face Cloth in Each Box **BREEZE** only 29c

FRESH FRUITS & VEGETABLES

CELLO **CARROTS** pkg. 7c **LETTUCE** lb. 10c

WHITE

**Potatoes** 10 Lb. Bag 35c

**CABBAGE** Pound 2c

TOKAY **GRAPES** 3 lbs. 25c

**SQUASH** lb. 7 1/2c

**LEMONS** lb. 11c

# Mac's Super Market

Double S & H Green Stamps on Tuesday

Frigidaire Air Condition For Your Shopping Comfort

Free Parking

S.M. S.M. S.M. S.M. S.M. S.M. S.M. S.M.