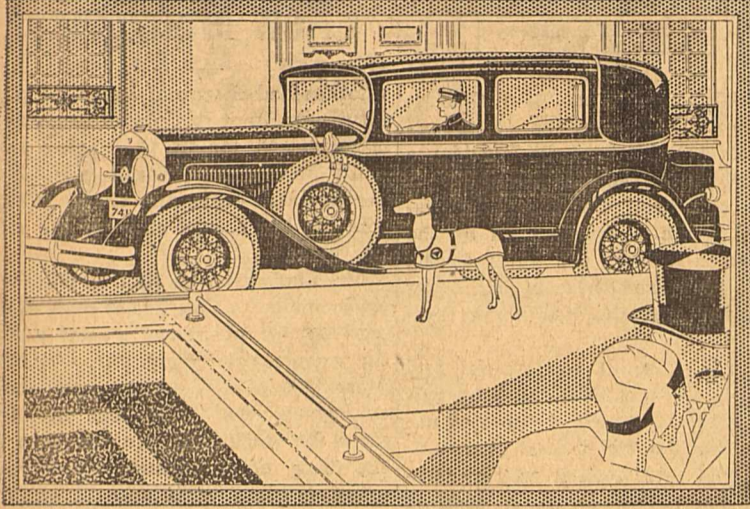


A Commander 8 by Studebaker

-Builder of Champions

\$1495
at the factory



NEW COMMANDER EIGHT BROUGHAM FOR FIVE, \$1675. Six wire wheels and trunk standard equipment. Bumpers and spare tires extra. COMMANDER EIGHT COUPE, \$1495. Prices at the factory.

A NEW and finer Commander Straight Eight now shares with the new Commander Six the laurels of their renowned predecessor. Youthful, keen-lined style brilliantly interprets The Commander's fleet and stout-hearted performance.

And, at Studebaker's low, One-Profit price, the new Commander Eight is a dollar value unmatched in motoring history. But measure its worth by a ride and a drive—TODAY!

Tune in on "Studebaker Champions"—Sunday Evening—9:15 to 9:45 Central Time. Station WFAA, KPRC, WOAI and all of NBC Red Network.

FOLEY MOTOR COMPANY
Spur, Texas

corner grocery store and mixed by hand. It consists of 25 pounds of wheat gray shorts; 25 pounds of wheat bran; 30 pounds of corn meal or whole ground corn; one and one-half pound of salt. The hens in this contest this year averaged 213 eggs per bird. Last year they averaged 211 eggs and the year before 197 eggs. All of these records are made on the same ration and show a wonderful egg production. And so remember that as long as it is a balanced ration they can lay if all other things are right. I personally know a good many men who are using the above ration with good results.

New applications of refrigeration, perfected by Frigidaire engineers, make cold more conducive than ever before to human comfort and happiness, according to West Texas Utilities Company local dealer, who has returned from a convention at Fort Worth where he saw an electric room cooler and a device for the regulation of freezing temperatures exhibited an explained.

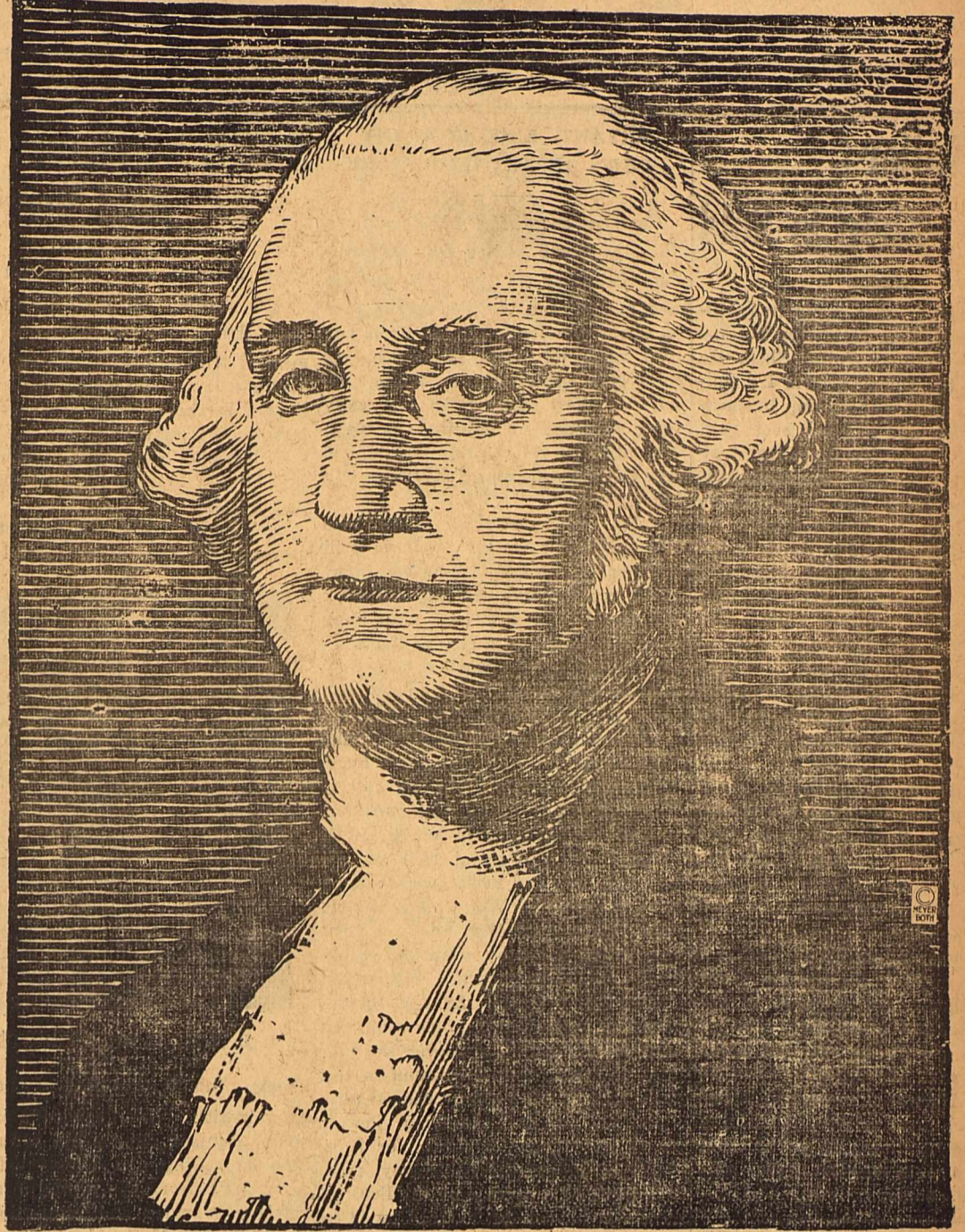
"The room cooler, designed to banish summertime discomforts is something for which scientists and engineers have sought for years," he said. "In tests it has been found to lower the temperature of an average sized room ten degrees in thirty minutes and to bring about a ten percent decrease in humidity.

"Just as important is the new cold control. With her Frigidaire equipped with this device, a house wife with no more trouble than turning a radio dial, may select any one of six different freezing speeds for the preparation of elaborate frozen deserts and other dainties in the freezing trays. In perfecting this device, engineers have kept in mind the hundreds of thousands of housewives who already own Frigidaires and have made the control so that it can be easily attached to previous models.

"Another development introduced at the meeting was a household model selling at the lowest price in the history of the company. This model, the result of long production study and analysis, is equipped with the cold control and embodies all the advantages of manufacture and efficiency which have contributed to Frigidaires leadership.

"The convention attended by the local dealer was one of a series of ten, which Frigidaire Corporation is holding to reach 8,000 members of its

THE MAN BEHIND THE HOLIDAY



Washington was the richest man that has ever served as President of our Country. He inherited a small portion of his estate, but it was through close business insight and judicious savings that he acquired the most of his holdings.

It would be well for us to accept his successful business principles as our rule and guide in a financial way, and try to save something of our earnings each month. Soon, you will be surprised and thrilled at your savings.

Add to your savings ability by investing in a few good Jersey cows and some chickens.

THE SPUR NATIONAL BANK

Two Kinds of Interest — Personal and 4%

FARM NOTES

By
E. L. TANNER, COUNTY AGENT
DICKENS COUNTY

The Missouri National Egg laying Contest at Mountain Grove, Mo. completed another wonderful year last

December. They are boys who have proved to us that an egg laying mash does not have to be mixed 999 times in a high powered machine to make a hen lay 300 eggs or better. They have been right up to the top in all the contests for the last seven years and they use a simple home mash of only six ingredients including salt. It is bought in retail lots from the

Special Selling of SPRING HATS

THIS WEEK END

\$3.95

and up



Models That
Have Already
Won Favor In Paris

These Hats have just arrived, and we are making a special offering to you. Don't fail to see these creations. The Bride or Miss will find the hats she will prefer to take with her on her honeymoon. Positively, we have the most beautiful assortment of hats ever shown in Spur.

BANGKOK FELT VISCA
HORSEHAIR BALLIBUNTIL
MILAN PANAMA SILKS

C. R. Edwards & Co.

Home of Honest Values in the Heart of Spur

CH. W. M.
KING, Secy.

field organization in the United States and Canada.

T. C. U. BAND WILL PLAY

FORT WORTH, Texas, Feb. 18—The Horned Frog Band of Texas

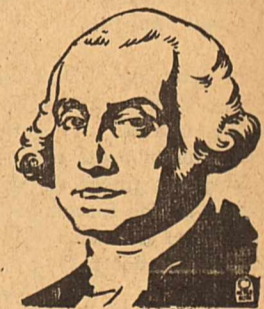
Christian University has been awarded the contract for the Fat Stock Show here again this year. The band will play two concerts daily, under the direction of Prof. Claude Sammis. Fifty student musicians compose the

O. E. Mixin of Dickens, was looking after business matters in our city Saturday.

C. L. White of Croton was attending to business matters here Saturday.

It Dominates

All The World



AMERICAN BUSINESS ENTERPRISE

IT IS THE drive and energy of the American business man which have brought our nation supremacy in the marts of the world. That spirit which impels a man irresistibly onward once he has faith in his idea. And it is the American bank, ever ready to back a good proposition with American dollars that provides the motive force. A typically American bank—

THE CITY NATIONAL BANK



We have some wonderful values in used cars. Will let you have them either for cash or credit.

See Us For Your Used Cars

FOLEY MOTOR CO.

Home Of Studebaker Cars

WILLYS OVERLAND OPENS NEW PLANT IN WEST

Los Angeles Branch Will Produce 150 Cars Daily and Employ 1,000 Men

LOS ANGELES, Feb. 6—Dedicated to the industrial and commercial development of the Pacific Coast and representing a major expansion of its manufacturing and service facilities

in one of the most important automobile markets of the United States, the Willys-Overland Company today officially opened its new Los Angeles manufacturing plant in the presence of civic and business leaders from all parts of California and high officials of the company.

Formal recognition of this progressive step by the Toledo manufacturer and speeches of congratulations were delivered by officers of the Los Angeles Chamber of Commerce at a luncheon given to President John N. Willys and his official party, while Mr. Willys responded by eulogizing the progress and possibilities of the entire Pacific Coast region and the spirit and enterprise of its leaders.

Mr. Willys pointed to national recognition of the premier position of California Highways and the outstanding growth of automobile ownership per capita of population in California as compared to other states, for further proof of the tremendous growth and splendid future of this territory.

The Los Angeles plant, which consists of four buildings, occupies a site of 20 acres and aggregates approximately 300,000 square feet of floor space. It will employ 800 to 1,000 operators on the day shift and will have a manufacturing capacity of 150 cars a day, although this can be increased by operating the plant at night.

Everything has been provided to make the plant strictly modern to the last detail. The plant contains complete cafeteria equipment, a kitchen and other accessories necessary to feed all the employees. There is also a hospital and first aid stations are located throughout the plant. The Los Angeles Terminal Railroad facilities are available as they are adjacent to the plant.

The main factory building, which is one story high with adequate natural light and mechanical ventilation, includes docks, railroad tracks, and floor space all under one roof with a total of 227,000 square feet. A two story building of brick construction with a tile roof will give 12,200 more square feet of floor space for housing the company's offices. An oil house of brick and steel construction, one story high, is provided besides a boiler house and engine room which, together, give the plant an additional 7,400 square feet of space.

In pointing out the advantages and additional facilities this plant gives to Willys-Overland in the Pacific Coast territory, Mr. Willys emphasized the fact that it will make it possible for the company to extend an increased efficiency and improved service to both the motoring public and Willys-Overland dealers organization in the states served by the new plant.

The plant itself is located about eight miles from the center of the city in a sub-division known as a manufacturing district. Following the formal ceremonies the plant immediately resumed capacity operations.

Prof. H. P. Bell, principal of the school of Prairie Chapel was greeting friends and looking after business interests here Saturday.

FRIGIDAIRE SHOWS "AMAZING" PROGRESS

"Amazing" is the only word to describe adequately the engineering progress reflected in new Frigidaire products, shown at the organizations convention in Fort Worth, according to West Texas Utilities Company, local dealer, who has returned from the meeting.

"The electric room cooler exhibited at the convention, indicates that refrigeration will ultimately rank with heat in its importance to the welfare and comfort of the human race," he declared. "This cooler in tests has lowered the temperature of an average size room ten degrees in thirty minutes and at the same time reduced the humidity ten per cent.

"Personally I was most interested in the new cold control for household models, which was displayed. This is a small dial, with six notches. Simply by turning this dial, the house-

wife is able to get any one of six freezing points in the deserts and ice tray. The freezing time of ice cubes is cut nearly in half. Ice cream now keeps perfectly, with this device attached.

"The convention went wild with enthusiasm when informed that the cold control has been made so that it can easily be attached to models now in use."

A new household model, selling at the lowest price in Frigidaire history also was announced by the local dealer.

W. A. Valentine, of Catfish community, was greeting friends on our streets Saturday.

Rev. J. V. Bilberry, of Dickens, was attending to business matters in our city Saturday.

B. A. Goss of Chandler Country was doing some trading with our merchants Saturday.

Jim Oldfield of Prairie Chapel community was attending to business af-

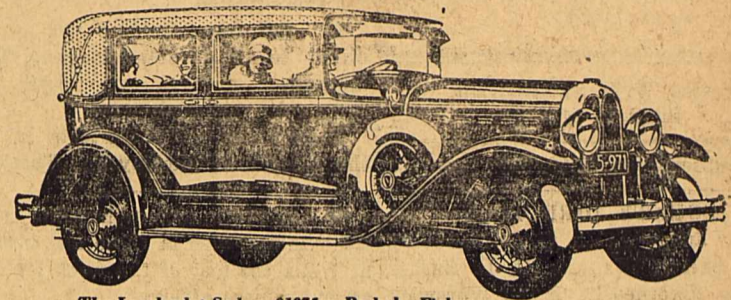
fairs here Saturday.

W. J. Collier, of Afton, was transacting business with our merchants Saturday.

J. Mat Dawson of Afton Community was attending to business affairs here Saturday.

F. E. Henze, of Gilpin was doing some trading in our city Saturday. He stated he was getting his land in shape for another crop.

J. H. Hooper of Twin Wells Community was attending to business interests here Saturday.



The Landulet Sedan, \$1375. Body by Fisher Bumpers and Wire Wheel Equipment Extra

PRODUCT OF GENERAL MOTORS

Its Pulse-Stirring Performance matches Its New and Original Style

There's no argument anywhere. Everybody agrees. All unite in praising the appearance of the New All-American . . . Its colors and contours and distinguished style . . . And there are many who go even further. The many who have driven this great new car. They enthuse over its pulse-stirring performance. Over its glorious power, acceleration and speed . . . unmatched in any other car offered at such moderate price!

Prices \$1145 to \$1375, f. o. b. factory, plus delivery charges. Lovejoy Hydraulic Shock Absorbers and spring covers included in list prices. Bumpers and rear fender guards extra. Check Oakland delivered prices—they include lowest handling charges. General Motors Time Payment Plan available at minimum rate.

J. D. POWELL MOTOR CO.
Spur, Texas

A NEW ALL-AMERICAN SIX BY OAKLAND

MAKE OLD JERSEY YOUR PARTNER

Your cows will help you feed and clothe the family and to conduct your farm in an economical way. They will be your source of income during the summer months if you will give them an opportunity.

We are here to furnish you the best market for your cream. Bring it to us and get the highest market price. Don't forget your sweet cream brings the best price. Treat the cow right and be prosperous, then give us a chance to treat you right by selling us your cream.

THE SPUR CREAMERY
Home of "Espuela Brand" Butter

PRETTY THINGS IN THE DRESS GOODS SECTION

Beautiful silk prints, heavy crepes and georgettes in all the adorable Spring Shades.

SHEER WASH MATERIALS

in the lovely Spring colors:—Imported sport linens and broadcloth—American Beauty Batiste—Crisp Organdy—Bright May Bell Prints—Don't fail to see our dainty Hope Pongee.



Your Best Face

Foremost

How silly it is to appear anywhere, any time, with out looking your very best! Complexions can look their best only when the yare intelligently cared for all year round. Our Elmo Line will assist in this attainment.

LOVELY IMPORTED LINENS

BEAUTIFUL MADEIRA LINENS

Just arrived, in vanity sets, napkins, Luncheon sets. Italian Embroidery Lunch Sets; Also, Sets in hand Blocked Embroidery, Hand Embroidered Pillow Cases. In fact everything for the Spring Bride's wish Chest.

New Spring

Footwear



The very preparations that will help with this intelligent care are here for you, including—

Just arrived in new pumps, also straps, lace and buckle effect. Plenty of snappy foot wear for sport, parchment kid and mocha beige trimming are especially attractive this Spring.

DRYGOODS DEPARTMENT

BRYANT—LINK COMPANY

SPUR'S DEPARTMENT STORE

LODGES

SPUR LODGE
No. 771 I. O. O. F.
Meets every Monday night. Visitors welcome.
A. R. HOWE, N. G.
C. F. APPEGATE, Sec.

SPUR COUNCIL
No. 277
Royal and Select Masters Meeting when called.
A. L. McCLELLAND, T. I. M.
J. RECTOR, Recorder

Stated Meeting of **SPUR CHAPTER**
No. 340 R. A. M.
Monday night on or after each full moon. Visitors welcome.
M. E. TREE, H. P.
J. RECTOR, Sec.

Stated Conclave of **Spur**
Commandery No. 76 K. T.
Second Tuesday in each month. Visiting Sir Knights welcome.
T. C. ENSEY, Com.
J. RECTOR, Recorder

SPUR REBEKAH LODGE
No. 178
Meets each Friday night. Members be present. Visitors welcome.
MRS. A. C. BURGESSON, N. G.
MRS. T. A. ROGERS, Sec.

ROTARY CLUB OF SPUR
Meets every Thursday at 12 o'clock at Spur Inn. Visiting Rotarians welcome.
GEORGE LINK, Pres.
DODGE STARCHER, Sec.

Stated Meeting of **SPUR LODGE**
No. 1023 A. F. & A. M.
Thursday night on or before each full moon. Visitors welcome.
C. J. CROUCH, W. M.
W. R. KING, Secy.

Dickens County Times

W. D. STARCHER, Editor
Entered as second class matter at the Post Office in Spur, Texas, October 30, 1924, under act of Congress March 3rd, 1879.

Advertising rates uniform to everybody in Spur country.

MRS. W. D. STARCHER,
Business Manager

Subscription \$1.50 Per Year

COUNTY DIRECTORY

County Judge ----- O. C. Newberry
High Sheriff ----- G. L. Barber
County Attorney -- B. G. Worswick
Clerk, County and
District Courts ---- Rob't Reynolds
County Treasurer --- Mrs. C. C. Cobb
County Surveyor ---- D. J. Harkey

County Commissioners

Precinct 1, A. C. Rose
Precinct 2, E. N. Johnson.
Precinct 3, H. O. Albin.
Precinct 4, Charlie Perrin.

HAULING—We want to haul the dirt and fill your yard, plow and do your garden work. Phone 9011-F1. M. V. Hutto. 3-7chg

IN HOUSTON THIS WEEK

Mr. and Mrs. M. C. Golding left Friday for Houston where they will visit relatives and attend the wedding of their niece, Miss Rosemary Hoffman. The wedding program was carried out yesterday, using a beautiful ring ceremony, Little Ida Lee Golding of Spur was the ring bearer for the occasion.

Mr. and Mrs. Golding will return either today or sometime early tomorrow.

Clara Bow in "The Fleets In" at the Lyric next Monday and Tuesday.

W. W. Flournoy, our hustling theatre manager was in Cisco and Mineral Wells the last of the week looking after business affairs.

Cecil McClung city, underwent an operation for ear trouble Wednesday morning. Dr. Blackwell did the work and he is getting along fine.

Mrs. Henry Runyon of Dallas has accepted a position with Love Dry Goods Company here and will have charge of the Ladies-Ready-To-Wear Department.

Mrs. Luther Garner, postmaster at Dougherty was here this week visiting her husband who is with the Spur Hardware and Furniture Co., Butterfly Jewelry, latest Novelties —Red Front Drug Store.

GIRL'S 4-H CLUB

Say, did anyone know that there is a 4-H club in Spur Hi? Well, there is and it is going to be heard from Friday. A peppy group of Club members met in Mr. William's Agriculture room and watch the 4-H girls now. They learned what colors are most becoming to them.

Just watch us. We are going to develop the "Peppiest Club in this Peppy High School." We are going to meet again Friday March 1, at Mrs. Booth's. Miss Osborne is going to give us a demonstration on bran muffins, salads, and salad dressings. We are learning to be cooks, too. Boys, if you are looking for a cook, here is a fine place to get one because some very dainty and appetizing dishes are prepared when we have a demonstration on cooking.

—Reporter Protempore.

PROGRAM

Junior Christian Endeavor Feb. 24.

Leader—Ernestine Hale.
Topic—Mission Study, Africa.
Song Service.
Business Period.
Prayer.
Scripture—Isaiah 2:2-5
Talk—Superintendent.
Story—Morton Bondonko Friends
—June Lisenby.
Story—Tembani's Chance—Bill Caraway.
Story—Bololo's Wich Come True—Opal McGlathery.
Review of Mission Station in Africa
Sentence Prayers.
Grading of Cards.
Benediction.

JOI DE VOI CLUB

Mrs. Cecil Fox entertained the Joi-de-Voi and guests in her home Wednesday afternoon.

The Valentine motif was carried out Hearts and arrows were artistically arranged thruout the house. The six tables represented cards, with red hearts numerically arranged on the white background of the covers. Valentines which were used for tallies, were presented the guests in an unusual manner.

At the conclusion of the games high score for club members went to Mrs. James O. Smith, high cut to Mrs. Horace Hyatt. Mrs. James Reed held high score for guests.

Cream and cake decorated with hearts and arrows were served to the following: Mmes. Riley Wooten, David Burns, James Smith, William Manning, Cecil Hicks, Charlie Powell, W. E. Flint, Horace Hyatt, Weldon McClure, Floyd Barnett, Dan H. Zachry, H. P. Schrimsher, Willie King, W. D. Wilson, James B. Reed, M. C. Golding, Hill Perry, C. L. Love, M. H. Brannen, Mac Watson, Clifford Jones Frank Laverty, Misses Glendol Elliott, and Julia Mae Hickman.

SILVER TEA

The Belle Bennett Missionary Society entertained with a Silver Tea on St. Valentines Day in the basement of the Methodist church. Decorations of red and white were used giving the large room a festive appearance. Red hearts placed over the windows and about the room bespoke the Valentine season. Mrs. G. H. Stack, Pres of the society, greeted the guests and escorted them to the tea table where Mmes. Jimmie Smith and W. E. Flint presided. The table was most attractive with red tapers in silver holders at each side, around which red hearts were artistically placed.

MRS. M. A. LEA ENTERTAINS

Mrs. M. A. Lea was hostess to members of the Cradle Roll and their mothers on Monday afternoon. During the afternoon Myra Moore gave a very pretty reading, "Beautiful Gift". Interesting talks were made by Mrs. W. B. Vaughn and Mrs. J. R. Lane. Mrs. Lea, who is superintendent of the Cradle Roll Department of the Missionary society, made a talk explaining the work of this department. She presented certificates to all the little members, and also a mite box in which she had placed a new penny. Refreshments of chicken salad, cake and chocolate were served. About fifteen members were enrolled in the department.

Ford Dealers for Ford Service — Godfrey & Smart.

Beginning at once the constable and sheriff will arrest all drivers of automobiles who are driving with only one light on the front of their car was the notice handed to the Times today. We were asked to notify the public that this was strictly against the law and the officers were preparing to arrest all who did not comply with this. This law is for the benefit of both the driver and the other fellow, an act on the part of the state trying to avoid as many accidents as possible.

HAD YOU THOUGHT OF THIS

Some flours may change in quality and composition, and the housewife constantly must change her recipes to meet that condition. But the housewife that uses the famous



PILLSBURY'S BEST XXXX FLOUR

has the same composition and highest quality all the time. It is secured by the laboratory test at the mill every hour in the day. Also the mill dietitian tests this famous flour to prove its standard before the housewife uses it.

After this standard has been established the housewife can always depend on her recipe producing the best in the art of baking Pillsbury is the most economical flour since it is the most dependable and is absolutely guaranteed by us for all baking purposes.

Try a sack of the famous Pillsbury Flour and be convinced you are using the best. Get it at the—

GROCERY DEPARTMENT

BRYANT—LINK COMPANY

Don't miss it...Clara Bow in "The Fleets In" at the Lyric next Monday and Tuesday.

FOR SALE—Good work teams and some good milk cows. Phone 9011-F1 M. V. Hutto. 3-7-chg
Don't miss it...Clara Bow in "The Fleets In" at the Lyric next Monday and Tuesday.

A letter was received from Mr. and Mrs. Jim Edd Hall this week stating that they are in Dover, Okla., enjoying a much needed rest. They asked for the Times to be sent to them.

SPRING HATS

This week brings us many newer effects in ladies hats; priced from—

\$2.95 up to \$6.00

With several lines between at—

\$4.50 and \$5.00

Nifty dresses in the lines for the younger set from

\$5.95 and up

in a vast price range to

\$37.50

Coats in clever styles covering a price range from—

\$12.95 to \$27.50

and others to arrive

New footwear, hosiery, underthings, new belts and other items covering the desired items for woman and miss.

On Sale five dozen wash dresses, extra value and good looking for the price of—

\$1.19

YOUNG MAN OR FATHER

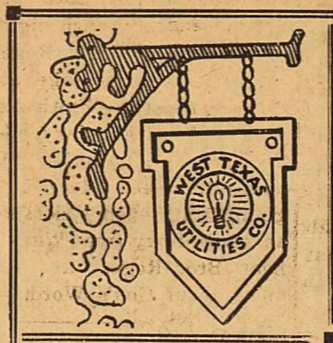
come to us for a look for that suit; priced from —

\$25.00 to \$37.50

in the better lines for men and cheaper kinds for the youth. Big assortment in hats, caps, shirts, underwear, work clothes, ties, hosiery, or any desired item for youth or father. Give us the once over we will appreciate showing you at your earliest opportunity.

LOVE DRYGOODS CO.

Spur, Texas



ALWAYS
READY TO
SERVE YOU

One of the paramount duties of a Public Utility is to keep electric energy in readiness for the customer's call—to be always ready to serve. To be prepared to supply every demand—often sudden and unheralded—is no small task. It entails an investment of millions of dollars in equipment which must often remain idle until the demand for power comes.

The West Texas Utilities Company is fulfilling this duty to its customers. It is contributing to the progress of West Texas, among other ways by being ALWAYS READY TO SERVE.

Eight years ago this company built at Abilene a central generating station—a station much larger than was needed to supply the electric demands of its territory. But the builders were looking into the future; they knew that with the rapid development of its territory and expansion of the company it would be needed.

Quickly, continuously, impressively came the customers' call for electric energy, just as the builders anticipated. Today, three central generating stations and smaller auxiliary and stand-by stations in 16 of the 108 Communities served by the West Texas Utilities Company are ready to hurl electricity over the Company's 2,000 miles of transmission lines.

In 1927 at San Angelo this Company built the first 8,500 horsepower unit of a central station. On May 1, 1928 a second unit, identical in design, went into service. At Lake Pauline, five miles southeast of Quanah the first 20,000 horsepower unit of a 60,000 horsepower station went into operation on September 10, 1928.

These plants together with the transmission lines, represent tremendous investment—investments necessary that the 108 communities may have the perfect electric service of metropolitan centers. Necessary too, that this company may always be in readiness to serve a rapidly growing West Texas.

West Texas Utilities
Company

MARSHALL COUNTY, TENNESSEE MADE RAPID DAIRY DEVELOPMENT AFTER BOLL WEEVIL HIT

By M. B. Oates.

Marshall County, Tennessee, located in the Southern part of Middle Tennessee had been engaged in stock farming to some extent before the advent of the boll weevil but had not gone in for dairying. However when the boll weevil hit in 1921, the people immediately turned to dairying.

After one year's experience with the boll weevil a cooperative creamery was built at Lewisburg. There was another creamery at Chapel Hill in the same county and these two creameries (both cooperatives) now have 750 patrons. Then early in 1927 the Borden Company completed a condensary at Lewisburg which is valued at \$1,000,000. This plant has 80 employees and 1000 milk patrons from which it receives 85,000 pounds of milk daily. The plant also has receiving stations which bring up the total daily milk receipts to 140,000 pounds. Lewisburg also ships a car load of milk daily to Chicago. Dairy products from Marshall county total \$1,000,000 a year. Sales of dairy cattle bring 250,000 more to dairy farmers of the county. There are now 25,000 cows and heifers above one year of age in the county. There are 2700 farms in the county and 65 percent of the farmers have dairy cows. It is said that there are a thousand owners of registered cows in the county which probably explains why there is a quarter of a million a year from sales of dairy cattle. There is not a scrub bull in the county. The county has a Jersey Breeders Association which has 150 members. All of this development has attracted the interest of the U. S. Department of Agriculture and as a result, Lewisburg is to get a Federal Dairy Experiment Station.

Such a record of accomplishments in the short space of six or seven years is almost spectacular; certainly it is remarkable. However if you had been at the banquet reception given us by the Chamber of Commerce you could have realized that such a representative group of citizens could by united effort do almost anything. Present at the banquet was J. M. McCord, Jersey Cattle Auctioneer and present Mayor of Lewisburg, also editor of one of the local papers. He was toastmaster and a good one too. Then another local editor was present and the County Agent, the Chamber of Commerce Secretary and Mr. Buchanan, Manager, of the Borden Southern Company. Mr. Marshall President, of the Marshall County Jersey Cattle Association was present and told of his faith in the Jersey cow. A. B. Harmon, District Agent, Extension Service, University of Tennessee, was present and also accompanied us for two days. Then there were eleven bankers present, almost every bank in the county having a representative there. Also several other business men of Lewisburg were there. That was a wonderful reception to give to a little party of only eight men and all of us total strangers. We were not only grateful for the wonderful reception given us but we were profoundly impressed with the fact that almost every business interest in the county was represented and eager to meet a group of visitors who were studying the dairy development in their county. In this particular respect, Lewisburg gave us the best reception on our tour. With these men all present and boosting dairying it was no wonder to us that they had done big things.

After the banquet, we asked for a conference with some of the bankers and two or three others. We then learned that the county was forced into dairy business by the boll weevil. The bankers confessed that they were skeptical at first about the dairy business, however, they took a chance and began to make loans for purchasing cows. They were still doubtful about the success of dairying but so far as the loans were concerned consoled themselves with the fact that they had the farmers notes and they

had their mortgages and they also had patrons with a common interest. Their doubt was finally dispelled by the success of their new venture and the bankers dismissed this part of the story by saying "everything worked out O. K."

Although the bankers were at first skeptical, their deposits have increased 50 per cent in six years. The number of depositors has increased 25 per cent and savings deposits now equal individual deposits. Six years ago there were very few savings accounts. Credit business has been reduced 50 percent. One banker stated that "in a one crop cotton section bankers lie awake at night worrying over their business but they can sleep at night because they have twelve pay days a year."

The farmers are doing well too because they have twelve pay days a year and for the further reason that their crop yields have already increased 25 percent due to the use of barn yard manure. All of them save manure and 20 percent of them use manure spreaders. Although this is an old cotton county very little commercial fertilizer is used. Farmers are also improving their pastures. There is now an average of 25 acres of tame grass per farm. Again someone made the statement that "the foundation of the dairy business is good pastures." The University of Tennessee recognizes the need for pasture improvement in order to make dairying more profitable with the result that many of the County Agents are conducting pasture demonstrations as a part of their regular program of work. Also Tennessee has the most extensive pas-

ture experiments in the United States at their Sub-Experiment Station at Columbia, Tenn., which we visited in company with Mr. Harmon, District Agent. At this station there are many grasses grown, both separately and in combinations. We were told that, up to the present sudan grass has produced the most milk per acre. My, what a lesson for us! We from northwest Texas where sudan is grown so easily and so well, it should be recalled that Chillicothe was the first place in the United States that sudan grass was grown. And every farmer in northwest Texas can successfully grow this wonderful grass which has now become a common grass yet one of the best summer grasses known for milk production.

Lets start a program that will give

LUMBER

Quality and Quantity

All Kinds of Building Material
Window Glass, Car Glass,
Plate Glass

LET US FIGURE WITH YOU

**MUSSER
LUMBER CO.**

PHONE 16

Service Appreciation

us more grass and "milk and money." R. L. Stewart, Of Roaring Springs, was transacting business in our city Saturday. Mr. Stewart often comes to our city on business affairs.

Ford Dealers for Ford Service—Godfrey & Smart.

Our Quality and Price are Right On

Electrical Work

Let Us Figure With You

**Admire
Electric Shop**

Phone 158

Claud Brammen of Roaring Springs was looking after business matters in our city Saturday.

Prof. I. N. Lee, principal of the school at Duck Creek was looking after business matters here Saturday.

Just Write Me Your Needs

COL. E. D. HUTSON

* Auctioneer, 11 Years Experience *

* Satisfaction is my aim *

* Box 122, Roaring Springs, Tex. *

* SPUR REALTY and LIVE STOCK CO. *

* If you want to Buy, Trade or Sell, anything anywhere, See— *

J. L. HUTTO

* Office Spur National Bank Bldg. *

T. J. SANDERS

Attorney-at-Law

General Practice

Office Campbell Bldg.

Phone 299 Spur, Texas

W. P. NUGENT & SON

Contractors and Builders

Phones: Office 32; Res. 72

Estimates furnished and work guaranteed.

SPUR, TEXAS

RAWLINGS & HAILE

Real Estate

Spur Mutual Office, over Spur National Bank

We sell land and lots and lots of land. See us before you buy or sell.

DR. T. H. BLACKWELL

Specialist Eye, Ear, Nose and Throat

Also Office Practice

Office over Spur Nat'l Bank

Phone 35 Res. 25

LAVINA B. CONKLIN

and

JAMES E. RIDEOUT

CHIROPRACTORS

Office over Spur Nat'l Bank

—SEE—

JOHN HAZELWOOD

FOR

ALL KINDS OF HAULING

WE DO YOUR MOVING

"Prompt Service Our Motto"

Phone 263

If You Want Service Call

J. T. Billberry's Transfer

Phone 169 Res. 279M

D. L. PARDUE

Piano Tuning

WITH N. T. COCHRAN

Phone 30, Spur, for appointments.

P. C. NICHOLS, M. D.

Office at Nichols Sanitarium

Phone 39 Res. 167

SPUR, TEXAS

DR. M. H. BRANNEN

DENTIST

Office over Spur Nat'l Bank

SPUR, TEXAS

J. H. GRACE, M. D.

General Practice Medicine

Minor Surgery and Obstetrics

Office at the Spur Drug Store

Phone 94 Res. 171

South Panhandle Land & Title Company

D. J. HARKEY, Mgr

Lands, Loans, Abstracts and Titles

Dickens, Texas

DR. A. J. COOPER

General Practice and Surgery

Especially equipped to treat chronic diseases of women

Residence Phone 24 Office 30

GIRARD, TEXAS

Cotton School!

Spur, Texas Mar. 11-April 5

Designed Especially to Serve:

- (1) Men desiring to enter Cotton Business as a profession, such as Cotton Classifier, Job Merchant, Shipper, etc.
- (2) Ginners, Merchants and Bankers or their employees who desire to handle Cotton for their concerns.
- (3) Farmers who desire to grade and staple, their own crops, know its value, and be able to serve their community.

Course Offered

The Course is designed to cover all important parts of the Cotton business—CLASSING, STAPLING, MARKETING, BUYING and SELLING, COTTON OFFICE PRACTICES, BUSINESS LAW effecting Cotton Business. To those who desire it—Typewriting and Penmanship will be given with out additional cost in THE AMERICAN BUSINESS COLLEGE at Spur.

Faculty and Officers

Practical Cotton Men of outstanding firms of Dallas, Lubbock and Spur have been engaged to teach and lecture the students in Classing and Stapling. All phases of the Cotton business will be covered by these lectures. The officers of the school are well known Cotton and Business men of Spur. Reference: Any Spur Bank, or Secretary Chamber of Commerce.

<p style="text-align: center;">Cotton is King</p> <p>In the South the man who links his future with Cotton—either as Planter, Grader or Buyer has a Real future—if he makes it a point to KNOW THE BUSINESS. Salaries and earnings of competent Cotton Men are usually far above that of other professions—the field is not crowded.</p>	<p>REASONABLE</p> <p>TUITION</p> <p>RATES</p>	<p style="text-align: center;">Only Limited Number</p> <p>We are prepared to take care of only a limited number in this school because of limited room and our desire to give individual instruction. The class is limited to 30. Act at once if interested.</p>
---	--	---

The time is short and number of students are limited. Write today for full information. Decide you are going to prepare for the Biggest Field of Business known to the South.

WEST TEXAS COTTON SCHOOL

Box 727 C. H. Busby and H. G. Harcrow Spur, Texas

LUBBOCK SESSION: This course will be repeated at Lubbock, Texas, April 8 to May 3.

Week's Shoe Shop

Will mend the old shoes and make them look like new, and save you the expense of buying new ones. We specialize on women's and children's shoes. Will appreciate your business.

Located at Ramsey's Garage.

**FATHER OF OUR COUNTRY,
DIGNIFIED YET HUMAN**

One hundred ninety seven years ago tomorrow on a little homestead near the banks of the historic Potomac, in Westmoreland County, Virginia, our first President was born. He was the eldest child of Augustine and Mary (Ball) Washington, his father having been married before he gained the hand of Mary Ball.

When George Washington was eleven years of age his father died, and the responsibility of caring for his other brothers and sisters fell upon him. He and his mother became partners in the rearing of the family which necessitated George to be away from home a great deal. His advancement for an education were very limited. He never attended school after he was sixteen years of age. However, he was very studious and while books were not numerous in those days he read practically everything found in libraries of the elite homes of aristocratic Virginia.

Young Washington grew up under practically the same environment that other boys of the community enjoyed. He was very fond of sports and games and fox-hunting was the zenith of his pleasure. We wish to bring it before our readers that Washington was not born great. He was born under only ordinary circumstances and shared the life of a widow's son. He had his likes and dislikes similar to those of other boys of his day, he richly indulged in all the social features of the times, and no one enjoyed more the entertainment of friends than he enjoyed it. He never missed a game, a dance or any other social feature. Yet in all his actions he was manly and sedate, being sure that all of his actions and conversation whether it be of the nature of a joke or other past time should be of the highest classical nature. He was never known to use an absurd statement, his thoughts always preceding what ever he had to say. His words contained the cultural characteristics of the superlative degree.

Washington had his love affairs much as other young men of that time. He was particularly fond of company of the ladies and no one could be more manly, more polite or more entertaining with members of the fair sex than could our beloved hero. He made many proposals and had received many refusals before he sought and won the hand of beautiful Martha Custis. While Washington had descended from an old and honored English family and was the living example of gentlemanly character and manners, yet his low financial standing kept him from being the idol of the Virginia society. Ladies say they marry for love, but in the days of Washington, they were very careful to know the man they loved at least possessed a reasonable assurance of being able to give them the material things they needed and wanted.

It was for this reason that Washington was not so successful in love affairs but whatever he may have missed by way of pleasure, whatever he may have suffered from a sense of disappointment in former refusals, he was adequately repaid for biding his time. While enroute to Williamsburg to attend a certain urgent business he was invited by a friend to halt and take dinner with him, the friend stating that he had a fair widow under his roof. Washington accepted the invitation and before leaving had left his proposal with the charming widow asking her to give him her answer as he returned from Williamsburg. He was accepted and was filled with all the joy that an accepted suitor was capable of.

As we stated before, Washington was fully repaid for all refusals he had received. The young widow, Mrs. Martha Custis was not only beautiful and of a fine family, but she was immensely rich. She had 30,000 acres of fine land and thousands of slaves, besides cattle, horses and other property. Although Washington had inherited the Mount Vernon Estate yet it was not considered a valuable holding. Washington made it so after he took it over, but Mrs. Custis needed a husband to manage her estate and was fascinated by the tall, stately young army officer who placed himself at the foot of her shrine.

We have already made the statement that Washington was not born under the shadow of greatness. Then, some one may ask, "what made him great?" First, we want to say that the ancestry of Washington was an English family who believed more in noble principles than they did to the accumulation of finances. Honor was more to them than bank stock. The Manor, England was noted for noble principles exhibited by its inhabitants. The idea of using a word was the lowest depths of misrepresentation and to acquire goods was a disgrace never was eradicated from the family was a blackball to entrance. These were the inheritable traits that the "Father of our Country" acquired through a poster-

ial origin. Then, there was a mother who devoted her every energy to the welfare of her children. She made George her companion, her helper, her partner. She both advised and confided in him. George did many things that displeased his mother, just as other boys do today. He was truthful, open and frank in telling her. And while she never failed to point out to him the sadness, and heartaches he caused her, yet she never failed to praise him for his manhood. If he killed a fine horse its loss was naught compared with the honesty manifested in telling her about it. What boy is there with a good genetical foundation, that would not promote manly principles when he knew that his mother of all society adored those great principles in him. Honesty is cultivatable but it must have an ancestral foundation to become a part of oneself.

As to the public life of Washington, most everybody is familiar. The places of responsibility that he assumed were not thrust upon him accidentally were known to be of a class that Washington and his entire family would stand true. Those in authority knew that when Washington was given a trust, a duty to perform, that there was no wire-working that everything would be done and done right. They knew Washington was not

seeking public honor. It will be observed that he held no political offices until after he had led the United Colonies to independence. His work was military. He had no need of a mahogany desk or an office boy in performing his public duties. He took the roughs in the military camps. He was tried and found true which established him in the minds of the people and when the time came for the government of the new nation to begin, they knew that Washington would start it right. What we have said relative to Washington could be said in regard to any other person in a career in life. There must be some outstanding characteristic in the life of everyone which in the minds of the people qualifies them for their work. If it is known you are worthy of being trusted and you do not care to emulate your personal interests you will have an opportunity to serve humanity, probably not as President of our country but in a manner that will be an honor to you and a pleasure to your fellowman. We cannot all be presidents, but we can all be honorable, trustworthy citizens of a country that any sovereign would be pleased to reign over.

GETTING TOGETHER

FORT WORTH Feb. 18—A joint meeting of the theological students of Texas Christian University Trinity

University and Southern Methodist University will be held at T. C. U. in the near future the exact date to be announced soon.

Program plans are already completed and call for a meeting starting at 5 p. m. a dinner and an evening session with three papers to be presented. One from each school.

Each paper is to discuss: 1. Origin of the denomination represented setting forth especially the causes that brought the denomination into existence; 2. The particular contribution the denomination has made to the cause of Christianity; 3. Do the original causes that brought the denomination in to existence still obtain.

Theological students from other near-by institutions are invited to participate in the T. C. U. meeting;

For Sale

Bedroom Suits, Rugs, Dining Room Suits, Electric Range, Hoosier Cabinet, Davenport, other household furniture just like new, best of quality.

Mrs. C. A. Love.

Opposite Church of Christ Spur, Texas.

List Completed

Our list of good and bad accounts and also checks, is now complete and open for inspection by members of the Association.

We trust you will use this list in your business dealings.

ELLA GARNER, Secretary

**RETAIL MERCHANTS
ASSOCIATION**

McCALL QUARTERLY
In planning your sewing you will find the New McCall Quarterly a great help to you. On sale at the pattern counter **25^C**

KELLAM DRY GOODS CO.

DOWN BY THE POSTOFFICE
SPUR, TEXAS

WE ARE ANXIOUS TO HELP YOU
We are always glad to show you the new things and help you make the selections that will be most satisfactory.

WALK A BLOCK AND SAVE



MARCH
McCall
Fashion
Sheets
FREE!
McCalls
Magazine
10c

FABRIC WEEK

A Week that will be devoted to the presentation of Fashionable Silks and Cotton Fabrics for Spring and Summer 1929. A week that will introduce this Department as the Best Place to buy piece goods at Saving Prices

New Printed Crepe

An extra quality in all-over Floral Patterns in many colors, suitable for children and grownups. 40 inches wide **\$1.95**

Washable Crepe

Genuine Beldings washable crepe full 40 inches wide in a number of good spring shades **\$1.98** special

Aberfoyle Prints

A new this Springs Fabric in a printed rayon in a very attractive floral and check designs bright Spring shades **\$1.25**

Gilbrae Gingham

New Spring Gilbraes in a number of new shadow plaids, also the popular checks and solid colors guaranteed fast **45^C** colors

New Spring Prints

Beautiful bright Spring patterns in this fine 36 in. Print absolutely fast colors in patterns for children and grown-ups **35^C**

32 in Red Seal Gingham

Genuine 32 inch Red Seal Gingham in pretty plaids, checks and solid colors. No better gingham can be bought at this price **25^C**

36 INCH PERCALE PRINTS
A full yard wide Percale in Pretty Spring Print Patterns a special **19^C** Value

32 INCH GINGHAM
Full 32 inch French Gingham in pretty plaid and check patterns a very special value **15^C**

Wright Bias Tape 10c

Warrens Nainsook Bias Tape 15c

Buttons "Galore"

36 In Florentine Prints

Full yard wide Florentine Prints in attractive small designs for children's frocks as well as patterns for mother **29^C**

Imperial Chambray

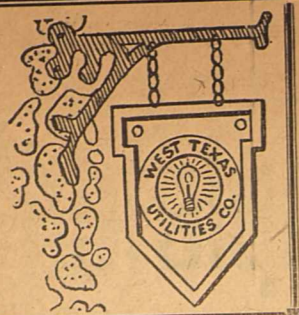
Genuine Imperial Chambray sure fast colors in new Spring Patterns linen finish no better cloth for childrens clothes **35^C**

Rayon

Full yard wide Rayon Alpaca, the cloth of many uses in Black Tan, Nile Pink, Blue, Grey Brown and Yellow **50^C**

Kellam Dry Goods Co.

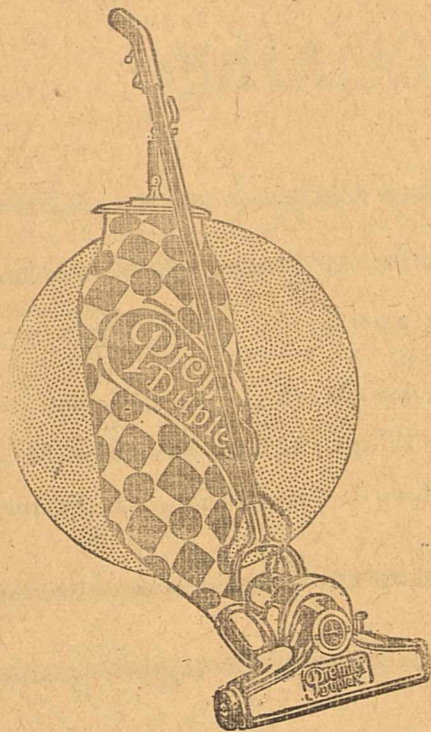
THE HOME OF McCALL PRINTED PATTERNS
A COMPLETE STOCK CARRIED ON HAND AT ALL TIMES



The "Premier Duplex" Will Clean Your Home As If By...

MAGIC!!

Yes, "Ma'am," All You Have To Do Is—



TOUCH the button, on goes your Premier Duplex Vacuum Cleaner! . . . Smoothly it moves over your rugs, under tables, into dark corners where dust easily collects. . . The Premier Duplex picks up every particle of dust, ravelings—yes, everything, leaving your home absolutely clean.

This Electric Vacuum Cleaner carries our endorsement as well as that of the manufacturer. . . It is durable, reliable and accomplishes better cleaning by its double action, a combination of powerful suction plus a motor-driven brush. . . You'll realize the true value of the PREMIER DUPLEX the very minute we install one in your home!

West Texas Utilities Company

PROGRAM WORKERS MEETING DICKENS COUNTY ASSOCIATION

FIRST BAPTIST CHURCH Spur, Texas Thursday and Friday, February 21-22 (BUDGET PROGRAM) THURSDAY, FEB. 21.

7:00 p. m. Devotional, by Rev. Wayne Grizzle, Watson.
7:15 p. m. Greatest Need of Our Association, by Rev. J. B. Bilberry, Dickens.
7:40 p. m. What Does God's Word Demand of the Pastor, by Rev. W. B. Bennett, Spur.
8:00 p. m. Special Music by J. D. Riddle, Amarillo.
8:05 p. m. Sermon by Dr. T. L. Holcomb, Dallas. (Our State Secretary).
FRIDAY, FEB. 22, Forenoon
10:00 a. m. Devotional, by M. D. Ivey, Spur.
10:15 a. m. The B. Y. P. U. and the Budget, by J. D. Riddle, Amarillo.
10:35 a. m. The Call of Today for Stewardship, by Miss Carrie Coffey, Watson.
Evening
10:45 The Sunday School and the Budget, by H. G. Harcrow, Spur.
11:05 The Budget and the W. M. S. by Mrs. Stevenson.
11:25 Special Music by J. D. Riddle, Amarillo.
11:30 Sermon by Dr. T. L. Holcomb, Dallas.
12:00 Noon Lunch.
1:00 Devotional by Rev. J. C. Scott, Crosbytown.
1:10 How may We Sell the Budget to Every Church in Our Association, by Rev. A. P. Stokes, Afton.
1:35 How to Put on the Budget in a Local Church. A Demonstration by Rev. E. T. Miller, Memphis, and J. D. Riddle, Amarillo.
2:30 W. M. U. Meeting. Mrs. Capp Ellis and Mrs. Godfrey in Charge.
2:30 Board Meeting in Basement. One Item, Raise Balance on Missionary Note Now past Due at Bank. Let Us Clear the Slate.
EVENING
7:00 Devotional by Rev. L. S. Bilberry, Dickens.
7:15 Lesson on Doctrines of Our Faith.
7:40 Doctrinal Sermon.

Birl Hight, manager of the Tri-County Lumber Company, left Saturday for College Station where he will attend the Lumberman's Short Course.

Austin C. Rose, of McAadoo, was transacting business in our city Tuesday for College Station where he stated everything on the Plains is all right but rather cold at this time.

"M" SYSTEM GROCERY FOR SATURDAY ONLY

- Karo Syrup 1 gal. 60c
- Corn. No. 2. 2 for 25c
- Raisens, 4 lb. 35c
- Prunes, 10 lb. 98c
- Corn Flakes, White Swan . . . 11c
- Blackberries, No. 2 16c
- Onion Sets, per gal. 40c
- Fresh Vegetables of All Kinds

ied and is prepared to meet any emergency that might arise.

It is freely admitted on all sides that Mr. Willys, through the incorporation of high priced car beauty and exclusive features in addition to the admitted mechanical superiority of the Whippet, is in the strategic position in the light car field. This with the increased facilities for greater car production and an increase of 50 per cent in his dealer organization, would indicate that the new year will find Willys-Overland surpassing even its record of 1928.

Butterfly Jewelry, latest Novelties—Red Front Drug Store.

WILSON DRAW SCHOOL

The Wilson Draw School is in session again having lost only about two weeks as a result of their building being destroyed by fire. A building to Mr. M. D. Hunter was remodeled and equipped and the school is in progress again.

We understand the contract for a new brick and tile school building will be awarded soon. The trustees had kept the old building insured and now have a fund of \$2,500.00 with which to start the new building.

Ford Dealers for Ford Service—Godfrey & Smart.

THE CHURCH OF CHRIST

Are you satisfied with life and its surrounding conditions? Are you happy and feel as free as the winds that blow? Is there no regret or ambition confronting you?

If you are satisfied then you are a failure already and have ceased to be an ideal human being.

There is nothing so sweet or nothing so good but that there is some feeling of dissatisfaction in the human heart that counts the beats with the clock of time.

The life of the Christian is a life of this kind but it is a true life.

It takes tears, sunshine, clouds and sunsets with rainbows of love to make the world go round. So let the world start appreciating life and life will appreciate you!!!

Next Sunday at eleven o'clock Bro. Berry will preach on the "Christian's Character" and everybody in Spur has a cordial invitation to attend this service and not only this one but every one held at the Church of Christ.

Preaching each Sunday at 11 A. M. Sunday evening at 7:30.

Ladies Bible Class at 3:30 P. M. Monday.

Player meeting 7:30 Wednesday evening.

Young People's Meeting each Sunday Evening at 6:30.

YOUNG PEOPLE'S PROGRAM Feb. 24, 1929

1. Service in Song—led by Gladys Johnson.
 2. Service in Prayer—Bro. Berry
 3. "What Is a Christian"—Gladys Johnson.
 4. Christian Influence—Pauline Oliver.
 5. The Church Was Made to Save You—Ione Biggs.
 6. "The World's Bible"—Howard Stubblefield.
- Leader—Dot Read.

NEW WHIPPET BEAUTY IS CHALLENGE TO LIGHT CAR BUILDERS

No Place in Industry for Manufacturer Who Fails to Meet the Demand of the Public Willis Says.

Striking as was the advancement in design and outstanding mechanical features of the original Whippet Four when it was introduced in June 1926, persons closely identified with the automobile industry declare that the new redesigned 1929 Whippet being introduced by the Willys-Overland

Company establishes an even more remarkable advancement in the world's light car field today.

In the statement of John N. Willys, president of Willys-Overland, in presenting the 1929 Superior Whippet Fours and Sixes that "there can be no place in the automobile industry for the car manufacturer in the low price field who fails to incorporate outstanding beauty of design, in his products in addition to proved mechanical excellence", is seen a virtual challenge to the builders of cars in the Whippet class to bring their cars to the new high standard of beauty set by the Whippet or be relegated to the obsolete class.

Since the successful creation of the original Whippet, buyers in the lower price ranges have come to accept the principles advanced by the Toledo manufacturer as representing the most modern engineering practices.

The presentation of the new Whippet Fours and Sixes is admittedly the master stroke of Mr. Willys who, just one year ago hurled a challenge at the light car manufacturers with the statement that "there can be no monopoly in the light car field," and followed it with a drastic price cut that met all competition on an even basis.

Mr. Willys then threw all his energies into the business and the company immediately was launched into the greatest sales year in its history. Month after month new sales and production records were established and before the year had half ended the sales volume surpassed the entire sales made in the twelve months of the previous year.

Even when the so-called seasonal lull in the year, the sales of the Whippet Fours and Sixes maintained a percentage gain far above that done by the automobile industry as a whole. The end of the year found the Toledo gain of more than 85 per cent over last year, whereas the industry as a whole showed an increase of but 12 per cent. This placed the Toledo manufacturer in first place for the year in percentage of gain over the previous year.

Plans for 1929 call for the largest production of motor cars in the entire history of Willys-Overland. For the past twelve months facilities have been added at the various plants of the company throughout this country and Canada to almost double the capacity. This would indicate that the Toledo car builder is going into the highly competitive low price field in the finest position he has ever occupied

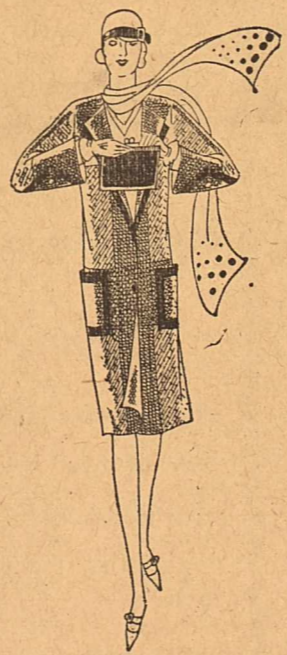
ASSEMBLE YOUR OWN ENSEMBLES

Ensembles The Life of the Mode

Every coat will have its harmonizing dress—every dress its coat! Thus speaks Dame Fashion—and thus it is accepted.

Here you will find a beautiful display of printed crepes—solid crepes—and printed georgettes—

to combine with a coat of Spring Broadcloth, flannel or a novelty tweed.



Hats Affect New Guises

Marvels—every one of these creations by Patricia, Clarice, Baroness and others.

Close fitting shapes—or others cut straight across the brow—while others may lift in a point over the brow.

Showing hats and scarfs that match, also. Materials are Ballibuntl, Paris Meme, Viska, Baku, Trico, and Sisal.

READY-TO-WEAR DEPT Bryant-Link Co.

SPUR'S DEPARTMENT STORE



COUNTY HOME DEMONSTRATION CLUB

Foods That Are Appetising And Different For Every Menu

No matter what kind of menu that you want to prepare, you can get the wanted items in groceries here. We have a most complete stock to aid the housewife with her daily cooking problems and if you haven't any new ideas, then come to our store and look around. You will get numerous suggestions from the many things here.

We strive to keep our stock up to date always in every respect. The quality is always the best and prices consistently low.

GIBSON GROCERY

"Ask For Your Gold Bond Stamps"



BREAD IN COLOR SCHEME

When you have your party remember we can furnish you bread in any color scheme for your sandwiches. The best flavors and in many colors.

Spark's Butter Kist Bread is the personality of good eats. Also, try our cakes, pies, and other lines in high class bakery products. You will be delighted with them and at the same time avoid the task of preparing them.

THE SPUR BAKERY

SPUR FARM LANDS AGAIN OFFERED FOR SALE

We are glad to announce that we are again offering for sale (at no increase in price) farm and small ranch tracts in Dickens, Kent, Crosby and Garza Counties.

Terms one-fifth cash. Balance on easy terms.

S. M. SWENSON & SONS

SPUR, TEXAS

Clifford B. Jones, Manager

We Are Not Stuk-up

But we have the East Side Market now and take a great pleasure in furnishing you the best meats you have ever eaten. We don't ask you to take our word for it—just let us show you. Try your next order of steak, roasts, etc. with us and you will agree with us.

Phone - - - - 12 EAST SIDE MARKET

JNO. A. BELL, Prop.

REFRESHMENTS FOR FEBRUARY PARTIES

County Home Demonstration Agent, Jennie Osborne

St. Valentine's Day, offering as it does an excellent decorative background for a party, provides at the same time a good opportunity for the preparation of special dishes that are the pride of every home maker. Valentine Salad, Strawberry Trifle and Valentine Kisses are a few of the suggestions given below. All of the recipes are suitable to the day both in appearance and taste.

VALENTINE SALAD
 1/4 cup cold water.
 1/2 cup boiling water
 1 cup canned fruit juice
 1 level tablespoonful gelatine.
 2 tablespoonsful lemon juice.
 Sugar.
 Few grains of salt.

Soak gelatine in cold water about five minutes, dissolve in boiling water and add lemon and fruit juice (cherry or raspberry, if pineapple juice is used color with re coloring) add salt and necessary sugar. Turn in shallow pan, and when firm cut out hearts with tin cutter. Arrange hearts on slices of pineapple, garnishing with lettuce.

STRAWBERRY TRIFLE
 1/4 cup cold water
 1/2 cup boiling water.
 1/2 cup sugar
 1 tablespoon lemon juice.
 1 level tablespoon gelatine.
 1 cup canned strawberry juice and pulp.
 2 egg whites
 few grains salt.

Soak gelatine in cold water about five minutes and dissolve in boiling water. Add sugar and fruit juice when it begins to thicken beat and fold in whipped cream and lastly the stiffly beaten egg whites. Serve on sponge cake. Or, pile in glasses and serve with pink frosted cakes.

VALENTINE KISSES
 1/4 teaspoonful gelatine
 4 teaspoonfuls cold water
 2 tablespoonfuls butter
 1 cup molasses
 1 cup corn syrup
 1 cup sugar.
 1/2 cup cream.
 Vanilla or Peppermint flavoring.

Cook corn syrup, sugar, molasses and cream until soft ball stage, add butter and cook until mixture will form a hard ball in cold water. Add dissolved gelatine to the mixture, stir well and pour out on well greased pan. Cool enough to handle, pull and flavor while pulling. Cut off small pieces with scissors and wrap.

TOMATO CUSTARDS
 4 eggs.
 1/2 teaspoon salt.
 1 cup tomato, strained pulp and juice.
 1/2 teaspoon pepper.

Beat the eggs, mix and bake as custards at 325 degrees for 35-40 minutes. Serve with cheese sauce. (1 cup milk sauce with 1/4 cup grated cheese.)

CHERRY PIE
 1/2 cup butter
 2 cups sugar.
 3 cups flour.
 3 teaspoons baking powder.
 4 yolks.
 1 cup milk
 1 teaspoon lemon extract
 4 whites of eggs.

Mix in order given. Bake in layers at moderate temperature. Fill with cherry jam. Garnish with whipped cream and cherries.

JUDICIAL DISTRICT COMPLETED

Last week Governor Moody signed the bill which created the new 110th Judicial District. It comprises Dickens, Motley, Floyd and Briscoe Counties. Attorney Kenneth Bain of Floydada was appointed Judge of the new district and Attorney A. J. Folley, of Floydada will act as District Attorney. It will be remembered that Mr. Folley at one time was a citizen of Spur and for that reason the people of this community have a personal interest in his success.

There will be three terms of District Court per year for Dickens County instead of the two terms as has been the custom in former years. Dates for District Court have not been announced yet but will be published later.

MASONS TO HAVE MEETING TONIGHT

The members of Spur Lodge, No. 1023, A. F. & A. M., will hold their stated meeting in the Masonic Hall tonight. Also, the officers announce that the Washington Memorial Services will be held at this meeting.

All members are requested to be present: Some will be asked to take part in the program of the evening.

Ford Dealers for Ford Service — Godfrey & Smart.

T. H. Tallant, one of our bustling real estate dealers living at Gilpin was attending to business affairs in our city Saturday.

Jno. Youngblood, one of Croton's farmers, was transacting business in our city Saturday.

S. W. Vernon of Highway Community was looking after business affairs in our city Monday.

G. A. Sloan of Highway was transacting business in our city Saturday.

Mr. and Mrs. J. A. Legg of Croton B. J. Howell of Espuela, was looking after business interests here Saturday.

—Insurance— —Bonds— —Loans—
CLEMMON'S INSURANCE AGENCY
 Spur Nat'l Bank Bldg — Spur, Texas — Phones 84 - 122
 See Us for the Best Loans on Brick Buildings and Residence Property
 Let us insure your cotton.

5% FEDERAL FARM LOANS

Amortization Plan

INTEREST PAYABLE ANNUALLY OR SEMI-ANNUALLY
 LOANS CAN BE RETIRED AT ANY TIME, OR AUTOMATICALLY PAYS ITSELF OUT IN 35 YEARS.

S. L. DAVIS
 SECT.-TREAS.

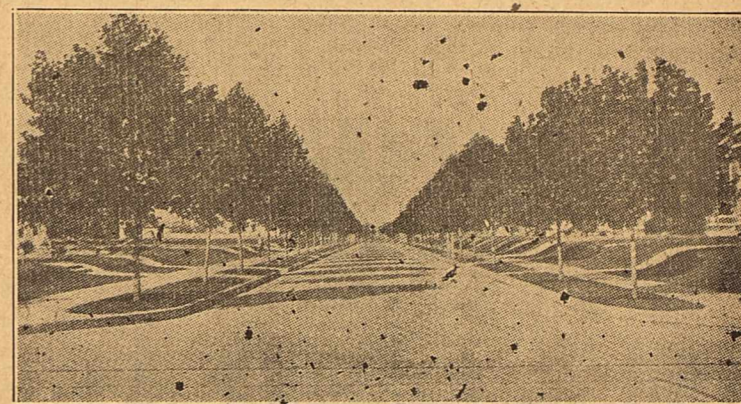
INSURANCE FIRE, TORNADO and AUTO LIABILITY

Better Have it and Not Need It. Than Need it and Not Have it.

M. E. MANNING
 Agency

Brazelton Lumber Company

A GOOD YARD IN A GOOD TOWN



Help the Home Beautiful Program

By Beautifying Your Home, Your Block, Your Street by Planting Tree, a Flower, a Sidewalk, Curb, or Flower Bed. See Me for Suggestions in either.

CHAS. WHITNER

Phone 204

for Economical Transportation

National Demonstration Week!

Drive the Chevrolet Six

No matter how closely you inspect The Outstanding Chevrolet of Chevrolet History—you will never appreciate what a wonderful achievement it is until you sit at the wheel and drive. So this week has been set aside as National Demonstration Week, and you are cordially invited to come in and drive this sensational automobile.

Not only is the new six-cylinder valve-in-head motor 32% more powerful, with correspondingly higher speed and faster acceleration . . . not only does it provide a fuel-economy of better than twenty miles to the gallon—but it operates with such marvelous six-cylinder smoothness that you almost forget there is a motor under the hood!

Regardless of the car you may now be driving—come drive this new Chevrolet Six. Come in today!

-a Six in the price range of the four!

The Roadster . . . \$525	The Convertible Landau . . . \$725
The Coupe . . . \$525	The Sedan Delivery . . . \$595
The Phaeton . . . \$595	The Light Delivery . . . \$400
The Sedan . . . \$675	The Sport Cabriolet . . . \$650
The Sport Cabriolet . . . \$695	

All prices f. o. b. factory, Flint, Mich.

CARAWAY CHEVROLET CO.

SPUR, TEXAS

QUALITY AT LOW COST

GIRARD NEWS

The School Carnival which was held last Tuesday night was a great success. A free program was given at six thirty. Then at seven all the booths opened up. At ten o'clock the negro minstrel began and there were several good piano solos and readings given. Miss Hawkins, the music teacher gave one of each which every one was delighted with and enjoyed.

The proceeds of the carnival went to help defray part of the athletic expenses. A large crowd was present and each one did his part to put it over and make it a success.

The Seventh Grade entertained the Sixth grade Thursday night with a costume Valentine party at the home of Mr. and Mrs. Pearsons. Most all of the little folks were present and each one came dressed in a costume.

After many minutes of fun and excitement, they were served with refreshments in which the Valentine played a great part.

Mr. John Langford and his ranch hands left last week for the Matador ranch where they will construct a

large tank which will take them three weeks to finish.

Mrs. Curley who recently underwent an operation is able to be up again.

Mr. W. A. Prewitt who has been ill for something like three months on account of a bale of cotton falling on him one night this past fall when the cotton yard was on fire, is now able to be up and walk about on crutches.

Almost every bone in Mr. Prewitt's body was fractured but we are hoping he will soon be able to walk without the aid of his crutches.

Little Betty Le Simpson has a bad case of the measles.

Miss Aretta Beavers was able to be back in school after a week's illness.

Mr. and Mrs. C. A. Dickern's family have the measles.

Mrs. Mary Lu Wright has a bad case of the flu.

Mr. and Mrs. Clyde Darden are down from near Lubbock visiting with relatives.

Mr. Clyde Darden has taken charge of the theatre until Mr. and Mrs. Yan

del get back and will continue to show pictures. So Girard is still doing well.

The Eastern Star met last Tuesday night.

Sunday at the Baptist Church a few of the Senior Class of the Sunday school opened up the services by giving a Sunday School program. It was arranged as follows:

Reading—Miss Dottie Simmons.
Song—By the Class.
Piano Solo—Miss Idell Cooper.
Reading—Mr. Fred Boland.
Song—Arranged by Mr. Womack.

We hear that a lady and man from Dallas have been down to look over the drygoods store business and they are thinking of putting a forty thousand dollar drygoods store here in which a ready-to-wear department will be established. We are hoping that Girard can run on to some kind of good luck like this.

Mr. George Spradling of Flomont was down last week visiting with relatives and friends.

Mr. Chrfrey Fincher and Jinks Cooper made a business trip to Plainview last week end.

Friday afternoon of last Girard and Jayton played the first game of the basketball tournament for the county basketball championship at Girard. Jayton defeated Girard by about four scores.

Mrs. Tom Cooper of Lockney, formerly of Girard spent a few days at Girard last week while on her way to Abilene.

Mr. Vernon Darden left Sunday for Abilene where he will stay with his sick mother.

Mr. Henry Simmons formerly of Girard was down from Plainview, where he is attending college, last week.

Mr. Hemphill and Marion Jordon of Spur have and will referee the senior boys basketball tournament.

Mr. Clay Beavers has purchased a new Chevrolet.

Mr. Jack Hindman and friends from Spur were down Sunday.

Mr. Jack Hunter was over Sunday from Clairemont.

Mr. J. W. Waggoner, Hugh Turner and friends motored to Spur Sunday.

Saturday night Miss Inize Venline entertained a group of young folks with a party.

Surday the Methodist preacher preached at the Baptist Church. He will preach every third Sunday.

Mr. Alph Parks and family went to Aspermont Monday.

GRAIN AND FEED

RATE RE-ESTABLISHED

LUBBOCK, Texas, Feb. 19—The Lubbock Chamber of Commerce has been advised by the Railroad Commission of Texas that rates on less than carload shipments of grain and hay seeds produced in the Plains—Panhandle section cancelled of Nov. 8, 1928 has been re-established effective February 15, 1929.

This action will mean the saving in freight charges thousands of dollars monthly to farmers and seed dealers of the Plains—Panhandle section an amount as a result of a petition filed Feb. 4, by the Lubbock Chamber of Commerce.

The old rate that was cancelled provided for a carrying charge of from 50c to 58c per hundred pounds on seed from the Plains—Panhandle points to other points in Texas, while the cancellation of the rate boosted the carrying charges to a range of from 81c to \$1.40.

With many requests from farmers and seed dealers who were affected the Lubbock Chamber of Commerce began working on the rate case soon after it was cancelled. Late in the year 1928, advice was secured from a number of outstanding traffic men about the case. Several expert traffic men advised that the ruling was final with no hope of getting the old rate re-established.

Not satisfied with this advice the Lubbock Chamber of Commerce continued searching for some way to get the rate re-established. Early in Feb. Albert L. Reed of Dallas was consulted and later employed to represent Lubbock in the matter. A petition was filed February 9, with the Railroad Commission of Texas praying for a re-consideration of the order.

On February 8, the railroad Commission wired that the old rate would be re-established, effective February 15. The entire expense of filing the petition was paid by Lubbock, which totaled well over \$1,000.

While Lubbock was vitally effected and benefited by the case, the entire Plains—Panhandle section will receive the same benefit.

The Plains section ships a large percentage of all cane sorghum, and sudan seed used over the entire nation. Particularly do other sections of Texas look to the Plains for their planting seed. While these other sections grow these crops, the seed from their crops do not have the stamina, vitality and fertility of the seeds grown in this section.

Farmers all over Texas and other states order their planting seed direct from local dealers over the plains

for the reason that they want to be sure they are getting Plains planting seed and oat seed grown elsewhere. This necessitates small less than car load shipments of the grain.

The increased rates would have made a big cut into the profits of the farmers growing grain for seed purposes.

The saving in freight rates will be enormous. For instance one Lubbock dealer shipped over 1,000,000 pounds of seed in less than car load shipments last year. The re-establishing of the old rate will save from \$5,000 to \$8,000 in freight rates to this dealer alone. Other dealers and farmers will be benefitted accordingly.

SPUR GIRL MARRIED TO RANGER BUSINESS MAN

A very quiet wedding occurred at the home of Mr. and Mrs. S. R. Bowman at eight thirty o'clock Monday morning when their daughter, Miss Ila, was married to Mr. Granville B Whittle of Ranger, Texas. The court ship and love affair of these two young people had extended over a period of months, when feeling their adaptability to each other, they decided to become life partners.

Members of the family and just a few friends were present for the ceremony. Promptly at eight thirty, Mrs. of R. E. Dickson touched the keyboard of the piano, playing a beautiful wedding march. Rev. F. G. Rogers, pastor of the First Baptist Church, soon entered the large and beautifully decorated living room of the home followed by Mr. and Mrs. Elmo Townsend and the bride and groom to be. Before the ceremony began, prayer was invoked upon the occasion. Then in a beautiful manner, Rev. Rogers pronounced the ceremony which was to unite them, husband and wife throughout the remainder of their lives. The ring ceremony was used.

The bride was dressed in a beautiful tan ensemble and carried a wreath of beautiful sweetheart roses. The groom was dressed in a grey suit, appropriate for the occasion.

The groom is the son of Mr. and Mrs. J. D. Whittle of Point, Texas. Formerly he was engaged in business at Madill, Okla., but at this time is located at Ranger, Texas where he has a large tailoring establishment.

The bride is the youngest child of Mr. and Mrs. S. R. Bowman, and has

spent the past seventeen years in Spur community. She was educated in Spur schools and in Wayland College. She has been associated with business firms in Spur for some time and for the past eighteen months has held a position with Kellam Drygoods Co., where she proved her ability in salesmanship.

Mr. and Mrs. Whittle left immediately for Ranger where they will stop for a short time, and then proceed on to Greenville to visit friends. They will go to Oklahoma for a few

days where they will visit other friends. Then with a visit with Mr. Whittle's parents at Point, they will return to Ranger where he will again take charge of his business. They expect to be at home at 108 South Rusk Street, Ranger, after February 26th.

Guests present to witness the ceremony were Mr. and Mrs. Joe Kellam Mr. and Mrs. Elmo Townsend, Mr. and Mrs. S. H. Twaddell, Mr. and Mrs. W. D. Starcher, Mrs. Otto Mott, Mrs. R. E. Dickson, Mrs. Ray Sanders, and Jacob Paul Twaddell.

HERE



IS A SHOWING OF LADIES READY-TO-WEAR, MILLINERY, HOSE and ACCESSORIES THAT IS COMPLETE FOR SPRING and WITHIN THE PRICE RANGE OF ALL

FAY FROCKS

ENSEMBLES that range from \$30 to \$45

SPRING COATS to suit any dress \$10 to \$45

DRESSES of georgettes and the most attractive prints \$20 \$25 \$30

FAY HATS

TAILORED \$6

SPORT

SEMI-DRESS

STRAWS

CROCHETED

RUBY BELL HATS

STRAWS, BRAIDED COMBINATIONS, ALL THE LIGHTER SHADES FOR SPRING \$5

HOSE

IN COLORS OF Pearl Blush, Rose Morn, French Nude, Beach Tan, Grain, Cuban Sand, Revery, Light Gunmetal, Parchment, and Champagne.

Service weight All silk Full Fashioned

98c \$1.49 \$1.95

PURSES THAT HAVE JUST ARRIVED TO COMPLETE YOUR NEW OUTFIT 98c to \$8.95

NOVELTY JEWELRY THAT INCLUDES BEADS, BRACELETS, EARRINGS BROACHES and RINGS to add color to your suit or dress 49c up

C. E. STONE CO.

Store No. 25 CHAIN STORES Spur, Texas

A Booster For Spur and Dickens County

NEW Management

Although our business is under new management it shall be our aim to keep the efficiency up to standard and make it even better if possible.

In coming among the good people of Spur country we want to be a citizen with you, to help you in all your progressive movements, to assist in the success of your schools and all other civic enterprises and lend our aid in making this a better town.

We want you to feel free to visit our Drug Store and make it your headquarters. Feel free to make your drug store needs known to us and thereby help us to be of service to you.

We are new among you. We want to get acquainted, want to know you, want to be able to call you by name soon. So, when you come into our store be free to shake hands with us and tell us who you are. Don't hesitate to ask us to help you in selecting your drug store needs. That is our business. It is only through your cooperation and patronage that we will succeed in your town. We want to merit your patronage by giving you service.

Don't Forget, But Come To See Us

City Drug Store

B. G. Lindley, Manager

Phone 115 Money Talks *****

HOKUS POKUS GROCERIES

SPECIALS FOR SATURDAY

Our prices are always right and Quality the Best

SUGAR, limit one, 17 lbs., \$1.00

Flour 48 lb Hackers Best \$1.50

LEMONS, per doz., 20c

COMPOUND, White Cloud 8 lbs. \$1.20

CORN, no. 2 Standard 3 for 29c

BANANAS, ripe and firm, per doz., 23c

LETTUCE 08c

CORN, Best Grade 2 for 26c

Hokus-Pokus Store

We Want Your Trade