

# THE MULESHOE JOURNAL

Dedicated to the Progress and Development of Bailey County and the South Plains of Texas

VOLUME 8.

MULESHOE, BAILEY COUNTY, TEXAS, FRIDAY, AUGUST 8TH, 1930.

## METHODIST REVIVAL MEETING WILL BEGIN HERE NEXT SUNDAY

### Lubbock Man Will Be In Charge of Two Weeks Services At Local Church.

Rev. J. W. Watson of Lubbock will do the preaching in the revival meeting that will start next Sunday, August 10, at the local Methodist church, and Mr. Bob Watkins of Hedley, Texas, will have charge of the singing, according to Rev. W. B. Hicks, pastor.

Preparations are now practically completed for the meeting and everything possible is being done to make this revival the most successful the church has ever held.

Rev. Watson is a man who preaches the word of God in a straightforward manner, and his sermons will be extremely interesting. All denominations are invited and urged to attend and take an active part in this great work.

Mr. Bob Watkins, who will have charge of the singing, will also have charge of the young people's work, and this part of the services will be well worth attending.

The local pastor in a recent statement asks the cooperation of all the people of Muleshoe, and urges that everyone attend these services, both morning and evening. He feels that much good will result from the meeting and earnestly asks the prayers of all Christian people in Muleshoe and surrounding country for the success of the meeting.

## Methodist Meeting At Lazbuddie Will Begin August 21

Beginning Thursday night, August 21, the Methodist people of the Lazbuddie community will start their revival meeting. Rev. E. H. Coburn, Methodist pastor at Petrolia, Texas, has been secured to do the preaching and to assist the local pastor in these services. We are looking forward to having the presence and cooperation of the Christian people of the Lazbuddie community. It is our desire to enlist your sincere prayers for the success of this campaign. PASTOR.

## Large Group Of Prospectors Here

Prospectors continued to come in to this section looking for farms and business locations, among those here Monday and Tuesday of this week from Oklahoma were:

R. H. Chambers, J. R. Horn, W. L. Hines, H. L. Strickland, R. E. Jeffries, E. R. Jeffries, Charles Jeffries.

Colorado visitors: G. P. Smith and wife.

Texas prospectors: John Withrow, T. E. Eppler, F. L. Vollrath, John Withrow, Luther Ham, F. E. Eppler. Each of these bought farms.

C. W. Coffey, E. V. Seales, E. D. Willford of Electra were in Muleshoe on business.

REV. J. W. WATSON



Rev. J. W. Watson of Lubbock who will do the preaching in the coming evangelistic campaign. He is an eloquent and inspiring speaker.

**A CORRECTION**  
In the announcement of the revival meeting of the Church of Christ at Lazbuddie in The Journal last week an error was made in the heading concerning the date. The revival meeting of the Church of Christ at Lazbuddie will start on Sunday, August 17th, as stated in the main article, and not on the 8th as indicated in the heading.

## Grain Prices Are On Upward Trend; Wheat Now 75c

Local grain prices are showing a healthy turn the past few days with wheat quoted here Thursday morning at 75 cents. This is 12 cents above the market of last week. Corn made the most sensational gain, being quoted here at 80 cents for shelled, a gain of 15 cents over last Thursday. Fifty cents for ear corn is offered, with maize at \$1.20 and kafir \$1.10. Continued dry weather over a large area of the United States is driving all feed stuffs to higher prices. Contract prices on sudan here Thursday were \$2.25 with little of the crop offered. Scattered showers over parts of the Plains promised some relief, but many sections report feed crops past aid.

Showers here today, (Thursday) with cooler weather will be of great benefit to crops. Prospects at this time were good for additional moisture, which was predicted by the weather bureau for this vicinity.

### Local Markets

This report is received each Thursday morning between the hours of 9 a. m. and 11:30 a. m. and is subject to change without notice. Markets are furnished by local dealers for the benefit of their patrons.

Wheat (Thursday noon)	75c
Corn, ear	50c
Corn, shelled	80c
Kafir	11.10
Sudan	12.25
Cottonseed cake	22.75
Cottonseed meal	22.75
Shorts	11.80
Brass	11.80
Tankage	15.00
Meat Scraps	15.25
Hogs	18.25

**Produce Market**  
The following quotations are given by Winningham Produce Co. and are subject to change without notice:

Cream	32c
Colored Hens, 4 lbs. and over	14c
Leghorn Hens, under 4 lbs.	10c
Colored Springs, 1 1/2 to 3 lbs.	16c
Leghorn Springs, 1 1/2 to 2 1/2 lbs.	13c
Corn	5c
Ducks	8c
Geese	8c
Eggs, candled, loss off	14c doz.

## Guilt of Bomb Slaying of Amarillo Woman Is Laid at the Door of Husband; Ready to Confess, He Says

The mystery of the most atrocious crime in the history of the Panhandle was solved Tuesday afternoon when Mrs. Verona Thompson, a pretty stenographer confessed that her employer, A. D. Payne, a prominent Amarillo at-

The Amarillo News stated Thursday that Payne's spirit had been broken and that he was ready to confess to his wife's murder. He is withholding his confession until the arrival of his brother, Sid Payne, of Tulsa, Texas. He has admitted that he planted the bomb which killed his wife and maimed his son, and that he wrote the letters found on his person when arrested.

torpey, had been making violent love to her for months before his wife had been blown up and killed while riding with her little son in her motor car, according to the Amarillo News Wednesday. The crime occurred about five weeks ago, and its solution had baffled enforcement officers to the extent that little headway had been made in finding the murderer until Tuesday.

## There's No Holding Him When He Gets Started

By Albert T. Reid



## BOARD OF EDUCATION ORDERS INSTITUTE; TO BE IN LUBBOCK SEPT. 1-2

Will Also Meet Two Days, Prior To December 25, In Bailey County.

According to an order recently passed by the County Board of Education of Bailey County, the teachers of said county will have four days institute during the 1930-31 school term. The teachers are to attend a joint Institute at Lubbock, September 1st and 2nd. The other two days will be held in Bailey County, the exact place and time to be determined by the teachers. The county board directed that one of the two days of County Institute must be held some time between the opening of the majority of the schools of the county, and December 25, 1930. The remaining day of the institute to be held some time between January 1, 1931, and the County Interscholastic League Meet.

The trustees of the various schools of the county are invited to attend. They are especially urged to attend the first meeting of county institute. School will open August 18, in several of the districts. Practically all of the schools of the county will begin by September 8th.

### EXECUTIVE COMMITTEE MEETS

The County Democratic Executive committee met Saturday of last week to check over the returns of the first primary election. As far as can be learned, no changes were made in the final count.

Candidates for county offices who will go into the run-off, or second primary are J. M. Bell and H. Sterling, for sheriff and tax collector, and Mrs. R. L. Tivis and Mrs. W. C. Cucey for Tax Assessor.

In the precincts, all will have candidates in the race to make a final decision as to who will hold office as commissioner with the exception of precinct No. 2. In this precinct D. W. Danielson won over his one opponent, H. M. Thompson, in the first primary.

The second primary will be on August 23rd, and candidates have only a short time to call on the voters in their appeal for support.

### TRAIN SCHEDULE CHANGED

Information received at The Journal office Wednesday was to the effect that beginning Sunday, August 10th, there would be a change in the time of one of the Santa Fe passenger trains. The train which has been arriving at 6:30 p. m. will be changed to 8:45 a. m.

## Two Gala Days For Amherst Big Celebration

Amherst, Texas—Amherst's annual celebration will be held Friday and Saturday, August 8th and 9th, with a line of entertainment that has not been equaled heretofore.

The three nights dancing starts on Thursday night of this week and continues through Saturday night, with Lubbock's six-piece negro orchestra furnishing the dance music. A large open air platform with seats will provide ample space for dancers and on-lookers.

F. V. Brown and H. Lindsey of Lubbock, assisted by Bud Johnson, also of Lubbock, will have charge of the rodeo. Bronc riding, calf roping, bull dogging, etc., will be features of the rodeo, with horse races each day.

Sudan, Muleshoe, Earth and Amherst will play double headers each day, beginning Thursday. The winner will receive a \$100 purse, finals to be played Saturday.

Speakers for Miriam A. Ferguson and R. S. Sterling, candidates for governor, will speak at 10:00 o'clock Friday morning.

The Greater London shows will have a complete mid-week with many entertaining shows and rides.

Mmes. B. W. Carles, D. K. Smith; Misses Opal Morris and Ellen Abbott left Sunday for Colorado for a few days vacation.

## Ross Sterling Speak At Lubbock Thursday, A

Opening with an address, boro next Friday night, Ro candidate for Democratic will visit the western section within the next week, anno received at Lubbock Wednesday. Mr. Sterling will address a ga in Lubbock on Thursday night, August 14, coming to this city from Amarillo where he is to speak Wednesday. Mr. Sterling will probably be accompanied on his western tour by W. C. Woodward, state senator from Coleman.

His incomplete schedule includes addresses at Wichita Falls Monday, Amarillo Wednesday, Lubbock Thursday and Sweetwater Friday. Arrangements for stops in intervening towns will be made.

Preparations for his reception in the Panhandle and South Plains will be made by Senator Pink L. Parrish, of this city, and J. O. Guleke, of Amarillo. The two have charge of organization of 32 Panhandle counties for Sterling.—Lubbock Journal.

## New \$40,000 G Plant Now Being Built At Ear

One of the most modern gin plants in this section of the country is now in the course of construction at Earth, 18 miles east of Muleshoe. The structure is to be all steel, fire proof throughout, with five eighty - saw stands. All the very latest cleaning machinery will be used, the cost totaling \$40,000.

In conversation with one of the business men of that place Tuesday of this week a Journal representative was told that three or four more business enterprises were to be started there within a short time, announcement of which would be made in a week or so. The little town of Earth is in the heart of one of the richest farming sections on the Plains and is attracting many new settlers, which is the cause of the rapid growth of the city.

## McCarty Drug Store To Change Hands Sept. 15

A deal was consummated last week whereby J. L. Collins of Coahoma, Texas, purchased the drug stock and fixtures of the McCarty Drug store, the sale to become effective on September 15th. The cafe was not included in the sale, and Mr. McCarty will continue to operate it on the rear of the McCarty building, although it is to be cut off from the drug store, with the cafe entrance on the north. Work of building an addition to the building has already been started, the addition to house the kitchen, leaving the dining room where it is now located. The lunch counter will be moved to the west side of the present dining room.

### EDDIE MOORE BURNS HANDS

Eddie Moore was seriously burned on his hands Monday with gasoline while he was testing out the motor of an automobile after repairing the gas line. In repairing the pipe his hands became covered with gasoline, and a backfire from the motor ignited it.

MR. BOB WATKINS



Bob Watkins of Hedley, Texas, who will have charge of the singing and young people's work at the Methodist revival meeting to be held here.

(Continued on page five)

**CARD FOR '31 IS NOW COMPLETE**  
 With the recent comb-all schedule for 1931, Texas football coaches a two-year campaign schedule includes games

with Harvard at Cambridge and Missouri at Austin. It is: Sept. 26, Simmons university at Austin; Oct. 3, University of Missouri at Austin; Oct. 10, Rice Institute at Austin; Oct. 17, University of Oklahoma at Dallas; Oct. 24, Harvard at Cambridge; Oct. 31, Southern Methodist at



**SITTING**  
 Mr. Charles M. Sheldon wrote "In His Steps," the book that sold a hundred million copies.

I asked him once to tell me about the greatest sermon he had ever heard. "I don't know that I can name the greatest sermon," he answered, "but I can tell you about one of the most interesting."

"It was in London, the preacher had won a great following by the unusual character of his mind and the directness of his speech."

"On this particular morning he startled the congregation with a text which most of them did not know is in the Bible."

"In the year that king Uzziah died, I saw also the Lord sitting upon a throne high and lifted up, and his train filled the temple."

"I wondered what in the world anybody could find in that text to hang a sermon on. I did not have long to wait."

"The preacher proceeded in vigorous tones: 'I direct your particular attention to the one word sitting. The great king Uzziah, had just passed away. You would expect that there would be excitement and confusion in heaven. Angels would be rushing around asking, "What is going to happen?" and "What shall we do?"

"Was that the case? Not at all. Behold the utterly unflustered Lord sitting upon a throne, high and lifted up—

I want to preach to you about the eternal patience and tranquility of God."

That story has always stuck in my mind. I like to think of the picture—the little kingdoms of the earth in turmoil, while the Lord sits quietly upon the throne, knowing that time will quiet the turmoil and the crisis will pass.

If you ever have occasion to write down the attributes that make men successful, do not fail to include staying power.

I know a man who has grown rich beyond any of his associates, though he is in many respects the least brilliant of the lot. But he had great patience and stick-to-it-iveness. When the others became excited and pessimistic, and sold their stock, he just sat tight. And time and the growth of the country have carried him high.

I read about all the men who thought they were smarter than Lincoln—Seward and Stanton and Chase—and maybe some of them were. But Lincoln had a great philosophy. When things were at their worst he would say, "This too will pass."

Every tough thing passes. Almost every problem becomes less hard under the softening influence of time. And when the turmoil is thickest the wise man climbs up on his great high throne and calmly and quietly sits.

**CONSTABLE PULLS BALL ACT: CATCHES EVIDENCE**

Lancaster, Pa.—Constable Bauer may have seen his best days as a ball player, but he's still able to catch with the best of them. On a liquor raid recently, the constable and three other officers cornered Harry Weit with 30 containers of whiskey. Weit, in an effort to destroy the evidence, hurled the bottles into the air. The constable leaped and caught two of them in his hands, thus saving enough evidence to arrest Weit.

Dallas: Nov. 7, Baylor at Austin; Nov. 14, Texas Christian University at Austin; Thanksgiving day, Texas A. & M. at College Station.

J. T. McConklin of Paducah was a business visitor here Monday.

**WINNINGHAM TRUCK LINE**

**BONDED AND INSURED**

Three trips each week from Muleshoe to Amarillo via., Earth, Dimmitt, Hereford and Canyon.

Leave Amarillo Monday, Wednesday and Friday.

Certificate No. 2508  
 Muleshoe Phone 74  
 Amarillo Phone 8968

**BUSINESS AND PROFESSIONAL COLUMN**

**Bailey County Abstract Company**

L. S. BARRON, Manager.

Abstracts, Loans, Conveyancing and Insurance

Agent for Mulshoe Townsite

**Call On Us**

For General Auto Repairing, Gasoline, Oils and Accessories.

**WHITE FRONT GARAGE**

And

**SNAPPY SERVICE STATION**

Distributor

**BIG STATE MOTOR OILS**

Bailey, Lamb, Farmer, Castro and Deaf Smith counties

**WHEN IN MULESHOE STOP AT The Elite Hotel**

Cozy—Comfortable—Good Service

C. D. GUPTON, Proprietor

MULESHOE TEXAS

**Dr. A. E. Lewis**

DENTIST

Offices Hours: 9 a. m. to 12:30 p. m.; 1:30 p. m. to 5:30 p. m.

Office over McCarty Drug Store Phone 86 Muleshoe, Texas

**PAT R. BOBO**

ATTORNEY-AT-LAW

PHONE 43 OFFICE IN COURT HOUSE MULESHOE, TEXAS

**A. R. Matthews, M. D.**

Physician

and Surgeon

MULESHOE, TEXAS

**Cecil H. Tate**

Attorney-at-Law Office in McCarty Building Phone 86 MULESHOE, TEXAS

**Dr. T. A. Moore**  
 Physician and Surgeon

Special Attention to Obstetrics and Children Muleshoe, Texas

**Lubbock Sanitarium and Clinic**

Dr. J. T. Krueger Surgery and Consultations  
 Dr. J. T. Hutchison Eye, Ear, Nose and Throat  
 Dr. M. C. Overton Diseases of Children  
 Dr. J. P. Lattimore General Medicine  
 Dr. F. B. Malone Eye, Ear, Nose and Throat  
 Dr. J. H. Sillis Surgery and Physiotherapy  
 Dr. H. C. Maxwell General Medicine  
 Dr. R. L. Powers Obstetrics and General Medicine  
 Dr. B. J. Roberts Urology and General Medicine  
 Dr. A. A. Rayle X-Ray and Laboratory  
 Dr. Y. W. Rogers Dentist  
 Dr. John Dupree Resident Physician  
 C. E. Hunt Business Manager  
 A chartered training school for nurses is conducted in connection with the sanitarium.

**Texas Utilities Co.**

Appreciates the Business Received From Muleshoe

**MICK The Auctioneer**

Will cry your sales anywhere. References. Come and hear me. Phone thru Dimmitt. P. O. Muleshoe or Flag.

**Matthews Sanitary Camp Cabins**

Muleshoe, Texas

**O. N. ROBISON**

General Auctioneer 20 YEARS EXPERIENCE

Will Give My Services Free to Schools or Societies Giving Box Supporters. Muleshoe, Texas. Route No. 1

**Dr. H. W. Duke**

PHYSICIAN AND SURGEON Specializing on Diseases of the Chest Phone 86 Muleshoe, Texas

STATED MEETING of Muleshoe Masonic Lodge, 2nd Tuesday night in each month. VISITORS WELCOME EVERETT HINKSON, W. M. CONNIE D. GUPTON, JR., Sec.

**BUILDING**

IF YOU ARE THINKING OF BUILDING—SEE ME. SAVE THAT RENT MONEY—OWN YOUR OWN HOME.

W. C. GORDON At Franklin Lumber Company

**We have joined with Firestone to not only meet but BEAT Mail Order and other Special Brand tires on Price-Quality-Service**

Come in and see the facts for yourself

YOU no longer need to send for tires by mail, nor do you have to buy tires made by some unknown manufacturer. Firestone prices are now the lowest in tire history, but more important than that, Firestone quality has never been higher.

We've taken the mystery out of tire buying

Visit our store and we will show you the "inside facts" about tires. We have actually cut up new tires and have the cross sections for you to examine—you will easily see why Firestone quality is so outstanding.

Don't worry about punctures and blowouts

Punctures and blowouts are bothersome and most people fear them—but NOW, because of the patented Double Cord Breaker, Firestone has practically eliminated them. Come in and let us show you this feature that puts two extra plies of cord right under the tread where most road wear comes and where punctures and blowouts start.

Compare Prices and Specifications

Because Firestone Tires hold all world records on road and track for speed, safety and endurance, many people think they are high priced—but just check these low prices—then compare quality—you will be dollars and miles ahead.

Our Size	4.50-21	Our Tire	.598 in.	Mail Order Tire	.558 in.
Width of Tire	4.75 in.				4.72 in.
Weight of Tire	16.80 lbs.				15.60 lbs.
Thickness of Tire					

Volume of Rubber in Tread and Sides	165 cu. in.	150 cu. in.
Number of Piles at Tread	6	5

Establish the Facts by Asking to See Cross Sections of Both Tires

**Firestone OLDFIELD**

Our Tire (Cash Price)	Mail Order Tire
4.40-21 \$5.55	\$5.55
4.50-21 6.35	6.35
4.75-19 7.55	7.55
5.00-20 8.15	8.15
5.00-21 8.45	8.45
5.25-18 8.98	8.98
5.25-20 9.40	9.40
5.25-21 9.75	9.75

6.00-20 12.55 12.90  
 4-Ply  
 Other Sizes Proportionately Low

**H. D. TRUCK TIRES**  
 30x5 19.45 19.45  
 32x6 34.10 34.10



**Firestone ANCHOR Super Heavy Duty**

Our Tire (Cash Price)	Mail Order Super Tire
4.50-21 \$9.20	9.75
4.75-19 10.20	10.25
5.00-19 10.95	11.75
5.25-20 12.35	13.65
5.50-20 13.90	15.15
6.00-20 14.70	17.10
6.50-19 17.40	18.95
7.00-20 19.05	23.45

Other Sizes Proportionately Low

**Firestone Batteries**  
 13-Plate Sentinel \$7.95

**Grateful Lady Pays Tribute To Konjola**

Now Giving This New and Different Medicine to Her Children—Read Her Statement



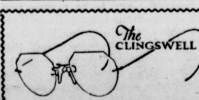
MRS. J. D. RHYNE

There is a reason why Konjola is America's best known medicine, and that reason can be summed up in just three words—Konjola makes good, even when all else tried has failed. Consider, as a typical example of Konjola's 32 ingredients at work, the case of Mrs. J. D. Rhyne, 616 East Eleventh street, Amarillo, who says:

"I was in a terrible condition for many years, with constipation, nervousness, indigestion and kidney and liver ills. It seemed no use to try medicines and treatments further, for I kept growing worse right along. I lost weight and had headaches and dizzy spells and bilious attacks. Food caused indigestion, and many a night I lay awake until two or three o'clock. But words can not express my surprise over what Konjola did for me. All of my ills have vanished and now I am giving Konjola to my children, and my husband is about to start the treatment."

Konjola is a medicine for all the family; old and young. That is why Konjola is a household word in tens of thousands of American homes.

Konjola is sold in Muleshoe at McCarty's drug store and by all the best druggists in all towns throughout this entire section.—Adv.



**J. R. Denhof**

OPTOMETRIST

"Better Vision With Comfort" Cor. 4th & Main Clovis, N.M.

**Send Your Abstract Work**

—To The—

**Muleshoe Abstract Company**

A. P. STONE, Prop. MULESHOE, TEXAS

Agent for Warren Addition

**Advantages of Our Tire**  
 Wider Tread, of Long-Wear Non-Oxidizing Rubber.  
 Thicker Tread, of Long-Wear Non-Oxidizing Rubber.  
 Heavier and Bigger All Around.  
 10% More Rubber in Tread and Sidewall.  
 7.2% Thicker Tire Section.  
 Double Gum-Dipped Cord Breaker, 6 Piles at Tread.

**We Mount Your Tires FREE—Drive in TODAY!**

**Muleshoe Motor Company**

Muleshoe, Texas

**NOTE:** Just passing on to you the savings of the one tire manufacturer who controls own sources of raw materials and who uses the most modern manufacturing methods in the industry—Leadership, gained in actual performance on race track and other endurance runs. The Inventor of the Balloon Tire. "Most Miles Per Dollar."

**DOUBLE GUARANTEE**

All Tires Guaranteed Without Limitations by Us and Firestone.

**Travel Tales**

Copyright 1930 By  
Federal Publishers Bureau  
All Rights Reserved

Full information regarding sailing dates, railway schedules, rates, passport requirements, hotel arrangements, etc., for all points in Europe, North, South and Central America may be obtained by consulting the TRAVEL DEPARTMENT of this newspaper.

**"ALICE" IN YELLOWSTONE**

By Marion Watson

"Alice in Wonderland" is what I've called myself since coming to Yellowstone. For, during the past few days in this fairland, I've lived the romance and thrills that accompanied my childhood reading of that fascinating tale.

Yellowstone is a wonderland, if there ever was one. There is nothing like it anywhere. You can't compare it with anything, for it's so uniquely different from everything else in the world that comparisons are impossible.

A great national reserve in the heart of the Rockies, 7,500 feet above the sea, that holds primeval beauty, intact for you and me—and for our children in years to come. There are other national parks, yes; but Yellowstone is the most universal and fascinating of them all.

It's a place wild, weird and colorful—where 4,000 hot springs play, and over 100 geysers frolic in the sunlight, while Old Faithful, their king, flings his hourly, 150-foot column of steam and boiling water high into the air; where pools are exquisitely colored and crystal rivers rush through painted canyons, one of them seemingly pure gold; where trout-filled lakes laugh in the pockets of white shouldered mountains, down whose sides innumerable cascades sparkle and cataracts roar; where petrified forests stand with stone trunks on carpets of brilliant flowers, and live forests tower heavenward with cathedral spires of green; and where fantastic natural formations silhouette themselves as Punch and Judy, a St. Bernard dog, or Thor's anvil, against a sky of turquoise blue.

Here a great national forest is the sanctuary of over two hundred types of feathered songsters, where wild game still roam at large; the famous Yellowstone bear—the graceful elk—the busy beaver—the noble bison—the shadowy antelope, and the picturesque bighorn sheep.

All my life I've wanted to see Yellowstone. And now that I've seen it, I want to come again. Already I'm planning a return trip. And you will, too. For it's fun to be "Alice in Wonderland;" and there's nothing quite like Yellowstone in all the world.

**FIND RARE DISEASE**

Goldthwaite, Texas, Aug. 5. (UP)—It is believed that Malta fever has developed in four cases in Brown and Comanche counties, the result of the bite of bugs in a cave occupied by goats. This is a very rare disease and but few physicians have had experience with it. Two representatives of the state health department, one from the state livestock sanitary commission and three physicians from Brownwood came to Goldthwaite Tuesday and accompanied the Mills County health officer, Dr. J. M. Campbell, to the home of the patients in the adjoining counties, where specimens of the blood from the patients and goats together with a number of the bugs, were taken to the state laboratory for analysis and examination.

**THE NEW**

for Economical Transportation



"6"

**Delivered Prices Fully Equipped**  
MULESHOE

Roadster, disc wheels	\$640.00
Coupe	710.00
Club Sedan	770.00
Coach	710.00
Sport Coupe, 5 wire wheels	800.00
Sport Roadster, 5 wire wheels	700.00
Sport Sedan, 6 wire wheels	885.00
Phaeton, disc wheels	640.00
Sedan	835.00
Sedan Delivery	740.00
Roadster Delivery with bed spare tire and front bumpers	815.00
Closed Cab Delivery with bed, spare tire, and front bumper	645.00
1½ Ton Truck with Cab	730.00

Check These Prices As Well As The Equipment  
A six in the price range of the four.  
**Valley Motor Co.**  
IT'S WISE TO CHOOSE A SIX



**THE FAMILY DOCTOR**  
By JOHN JOSEPH GAINES, M.D.

**WARNING**

No—your backache is not an indication of kidney disease, or, it's the poorest, to say the most for it as a symptom. Let me enumerate several points however, that should send you to the doctor post-haste, if you have been uneasy about this particular set of eliminative organs:

First, a progressively increasing shortness of breath, that you just can't account for; this with increasing weakness and rapid heart that interferes with your ability to do your ordinary work.

Second, you notice a puffiness under the eyes and maybe you have noticed black specks when looking at white surfaces; just tiny dots they are; and might escape your notice. With the puffiness of the lower eyelids, you may observe a decided swelling of the hands—not painful—just a bloat.

Third, and getting more alert, you

may notice a getting up from bed to relieve the kidneys—so many times that it really interferes with sleep; the amount may not be considerable, but it is the frequency of voiding that counts as a symptom. Even if you abstain from drinking water evenings you get up just as often. The appearance of the fluid voided is of the innocent-looking—or dark-red and scalding. It is your physician's business to determine the real condition.

Fourth,—look with suspicion on headaches that occur mainly at night—along toward morning worst. Those that are a frequent thing—persistent—and do not yield to your taking liver medicine.

These symptoms are usually concurrent, that is all work together—if your kidneys are out of order; the more severe they are, the worse neglected your kidneys have been. Go to the doctor at once!

The largest single oil refinery in the world is located at Port Arthur, Texas. (Authority: Manufacturers' Record.)

mounting to \$5,973.00 in favor of W. B. Arnold and cost of suit. Given under my hand, this 24th day of July, 1930.

**SHERIFF'S SALE**  
STATE OF TEXAS,  
County of Bailey.

By virtue of an order of sale issued out of the Honorable District Court of Deaf Smith County on the 23rd day of July, 1930, by the clerk thereof, in the case of W. B. Arnold versus Frank L. Stegall No. 1760, and to me, as Sheriff, directed and delivered, I will proceed to sell, within the hours prescribed by law for Sheriff's Sales, on the First Tuesday in September, A. D. 1930, it being the second day of said month, before the Court House door of said Bailey County in the town of Muleshoe, the following described property, to-wit: Situated in Bailey County, Texas, and being all of Section No. 52, Block 'B', Melvin, Blum & Blum Survey, containing 640 acres.

Levied on as the property of Frank L. Stegall to satisfy a Judgment a-

STATED MEETING of Muleshoe Chapter, No. 792, Order of Eastern Star, first Tuesday in each month. Visitors cordially invited.  
SYBIL MARCH, W. M.  
IRENE EDMONDS, Sec'y.

**Real Estate**

We make a specialty of farms and suburban property and will guarantee you fair treatment, the best of consideration, and all information you may desire in the purchase of a future home.

We have farms of all sizes, for all purposes and at all prices.

**R. L. BROWN**  
The Land Man  
Muleshoe, Texas

**BUSINESS IS GOOD**  
when you use as superior a product as this

Tires and roads are steadily growing better.

Mileages average much greater now than a few years ago.

As a result, fewer tires were sold in 1929 for renewal purposes by the rubber industry than in 1927.

But Goodyear sales for renewals in 1929 set a new all-time record.

In other words, public preference for Goodyear Tires reached a new peak.

There must be a powerful reason to cause tire-users to single out one tire so conspicuously as against all others.

There is: you'll find it in Goodyear Tires themselves.

Goodyear Tires *do* give greater value, and millions of people know it.

That is why Goodyear steadily forges ahead.

That is why Goodyear holds and year after year increases its leadership.

That is why Goodyear now builds *millions more tires* annually than any other manufacturer in the world.

Perhaps you would like to see concretely where Goodyear Tires are superior.

They are superior in both carcass and tread, the two main parts of a tire.

Any Goodyear Dealer will be glad to demonstrate the facts.

We promise you, the facts will sell you Goodyear Tires. Crude rubber is cheap this year; tire prices are 'way down; anyone can afford Goodyears.

Buyers are taking advantage of this situation, and Goodyear sales are going ahead as never before.

Strictly for reasons of value it will be more than ever true this season, as it has been true for fifteen years, that *more people ride on Goodyear Tires than on any other kind.*

A word to the wise: *now is the time to get yours!*

**Now is the time to Get YOURS**



**VALLEY MOTOR CO.**

CHEVROLET SALES AND SERVICE

MULESHOE, TEXAS

**Journal**

... matter at ... under the ... March 3, 1878.

... Cards of Thanks, etc., ... at for at the rate of 10 ... line.

... Rates on application.

**SUBSCRIPTION RATES**  
 ... County, 1 Year .....\$1.50  
 ... of County.....\$2.00

Texas Press Association  
 National Editorial Association

**ARE STILL RURAL**

... ding to the United States Cen-  
 ... the majority of the people of the  
 ... States live in "urban" rather  
 ... "rural" communities. The cen-  
 ... of 1920 showed 51.4 percent of ur-  
 ... population as against 48.6 percent  
 ... l. The census of 1930 will un-  
 ... doubtedly show a much larger propor-  
 ... living in communities of a size  
 ... than the Federal government calls  
 ... an.

... he catch in this is the definition of  
 ... "urban" and "rural". The government's  
 ... position is the arbitrary one that any  
 ... community with more than 2,500 in-  
 ... habitants is urban and anything less  
 ... than that is rural. We agree  
 ... the line has to be drawn some-  
 ... but we submit that this is  
 ... ing it too far down the line.  
 ... tainly there are thousands of  
 ... unities of more than 2,500 popu-  
 ... whose interests are still rural.  
 ... habitants have not got the  
 ... of view on any of the  
 ... ers of manners, morals  
 ... life generally. We can  
 ... tities of 50,000 and more whose  
 ... ts are still almost entirely agri-  
 ... cal, or in lines which depend  
 ... ly upon agriculture; and a city  
 ... that, no matter what its size, is  
 ... definitely rural.

**GREAT BOOM AHEAD**

... We are on the threshold of the  
 ... greatest boom that the country has  
 ... ever known, according to McNeel's Fi-  
 ... nancial Service which has the assur-  
 ... ance to venture this prediction almost  
 ... unqualified in a current statement

... which cites an interesting number of  
 ... reasons for its conclusion.  
 ... The McNeel's comment is in part as  
 ... follows:

... The country faces today a program  
 ... of expansion, invention, scientific de-  
 ... velopment and the arising of new in-  
 ... dustries and new modes which prom-  
 ... ise to make the next ten years in  
 ... American industry and finance far  
 ... greater than the last ten years; and  
 ... greater than anything that has ever  
 ... been accomplished in any similar pe-  
 ... riod in the life of the nation.

... At the present time, the financial  
 ... and industrial worlds are steeped in a  
 ... sea of pessimism—pessimism based on  
 ... what has occurred rather than upon  
 ... what is likely to occur. This is the  
 ... time to sound our bearings. It has  
 ... never been possible in the past at the  
 ... climax of a business or financial de-  
 ... pression to see the daylight, and the  
 ... basis and reason for the retreat from  
 ... the slough of despond—and the next  
 ... boom. Always however, has it been  
 ... wise and profitable when the picture  
 ... was clouded, and when business and  
 ... industrial leaders could see nothing  
 ... but gloom ahead, to lay the foundation  
 ... for the next boom which in every in-  
 ... stance in 100 years of economic pro-  
 ... gress in the country has been greater  
 ... than the preceding boom.

... In these occasional depressions  
 ... which the country has experienced  
 ... with regularity throughout its history,  
 ... and which have apply been termed  
 ... "growing pains," fortunes have been  
 ... made by those who possessed faith and  
 ... vision—faith in the future of the  
 ... United States, faith in the theory that  
 ... what are termed depressions are mere-  
 ... ly resting spells prior to a greater  
 ... boom; vision to foresee the great pos-  
 ... sibilities that are ahead.

**CATTLE SHIPMENTS**

... An additional fifteen cars of cattle  
 ... have arrived for the V. V. N. ranch,  
 ... southwest of here, according to local  
 ... Santa Fe employes. Thirty-five cars  
 ... were received last week, making the  
 ... total for the month of July 49 cars.  
 ... The cattle were shipped from Gentry,  
 ... Texas, and are being brought to the  
 ... local ranch for summer pasturage.—  
 ... State Line Tribune.

**YL MISSIONARY SOCIETY**

... The YL Missionary Society met at  
 ... the home of Mrs. S. D. Beller, with  
 ... 20 members and 4 visitors present. The  
 ... meeting came to order and songs and  
 ... prayer were offered. During the busi-  
 ... ness period the ladies planned to make  
 ... a basket quilt and other ways to in-  
 ... crease the budget.

... Mrs. Harrel had charge of the Bible  
 ... lesson. Mrs. Lloyd Jones and Mrs.  
 ... Shofner gave interesting accounts of


... the early missionary societies of the  
 ... South. The next meeting will be with  
 ... Mrs. O. N. Robison, August 19.—Re-  
 ... porter.

**BIG SPRING WILL BE  
 HOST TO DENTAL BODY**  
 Big Spring, Texas, Aug. 5. (UP)—  
 Big Spring will be host to the West  
 Texas Dental Association September  
 19-20. A program is being arranged  
 by which instructors in dentistry of  
 national reputation will be brought  
 here for two-day session.

... The entertainment committee is lay-  
 ... ing plans to provide the visiting den-  
 ... tists with two days of real entertain-  
 ... ment, according to E. A. Kelley, chair-  
 ... man of the public relations committee  
 ... of the chamber of commerce. The  
 ... Settles Hotel, the new 16-story hostelry,  
 ... will be officially dedicated with a ban-  
 ... quet and dance on the night of Sept.  
 ... 20, with dentists as hosts.

**NOTICE**  
 I have cut the price for Miniature  
 Golf to 10 cents, day and night. Every-  
 one can now afford to enjoy this  
 game. Excellent course. Bring your  
 friends and spend an hour or so each  
 evening.

MRS. R. L. FAULKNER.  
 For sandwiches and lunches, Polly's  
 Kitchennette.



**Schedule of New  
 Low Prices**

**FULLY EQUIPPED  
 DELIVERED**

Tudor Sedan	\$633.30
Fordor Deluxe	774.30
Fordor Three Window	734.30
Town Sedan	798.30
Standard Coupe	833.30
Sport Coupe	663.30
Deluxe Coupe	683.30
Cabriolet	853.30
Roadster	566.50
Phaeton	571.50
Truck, 1½ ton, 5 speeds	
Truck and Cab	690.30

**MULESHOE MOTOR CO.  
 MULESHOE, TEXAS**

Mrs. L. S. Barron and children, Chas.  
 Alsop and Hattie Ray Griffiths are at  
 Ceta Canyon this week attending the  
 Baptist Association.

Hamburgers you will enjoy eating,  
 Polly's Kitchennette.

Erwin Sollock and sons, John and  
 Robert and Harmon Sweeney of Rule,  
 are visiting Judge and Mrs. J. E.  
 Adams this week.

Let us make those sandwiches for the  
 next picnic. Polly's Kitchennette.

Luther Ham and wife and daugh-  
 ters, Zella Jo and Eddie Sone, of Tex-  
 on, Texas spent a few days visiting  
 friends here the first of the week.

Hamburgers you will enjoy eating,  
 Polly's Kitchennette.

# To the Voters of Bailey County

As it is impossible for me to see each of the voters personally at this time, I am taking this means to express my thanks for the support extended me in the First Primary, and to ask for your continued support on August 23rd. Any of you who voted for the candidates in the first Primary who are not in the run-off, and can see your way clear to give me your vote in the deciding contest, it will be appreciated.

**NOTICE**

I understand that it has been told that if I was elected to the Sheriff and Tax Collector's office that I was going to use Jim Dyer as a deputy. Well, that is not true. I do not intend to use Jim Dyer as a deputy, and any other parties mentioned is merely "politics."

**J. M. BELL**  
 Candidate for Sheriff and Tax  
 Collector of Bailey County



## JUST LISTEN TO THE BALLYHOO!



THEY'RE shouting at us and we know it! Trying to drown out the values we're offering in tires! But "tall talk" can't phase us... we're going right ahead, keeping our values up and our prices down.

Goodrich has a tire in Cavalier that can't be beat no matter where you buy. So we say let 'em shout! We're selling tires, not ballyhoo... and a look at these prices on Cavaliers proves it. Look 'em over... then come in.

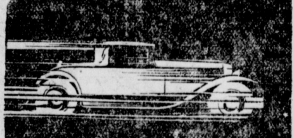
4.40 x 21	\$ 5.60
4.50 x 21	6.40
4.50 x 20	6.25
4.75 x 19	7.65
5.00 x 19	8.10
30 x 5 H. D.	18.75
32 x 6 H. D.	32.50

**Goodrich Cavalier**  
**McCoys Service Station**  
 Muleshoe, Texas



Why pay for  
**"MILEAGE"**  
 if you have to  
 walk part of it

Does your gas tank go dry before you've gone the miles you thought a filling would carry you? Is mileage just a promise in the gasoline you use? Switch to Phillips 66 and watch your gasoline gauge linger at the top of the scale while your mileage gauge reels off mile after mile. Phillips 66 combines mileage with flashy getaway, snappy pickup and smooth, lusty power because it's the gasoline of controlled volatility. Each gallon is scientifically fitted to the season and the climate. Drive up, with confidence, to the pump marked "Phillips 66". Ask for a tankful of motoring satisfaction. And get it!



PHILL-UP WITH  
**Phillips**  
 REGULAR 66 ETHYL  
**CONTROLLED VOLATILITY**  
 —the sensational principle that's back of the big swing to Phillips 66. Gives you a summer gas in summer—a fall gas in fall—a winter gas in winter—a spring gas in spring.

**CLAY BEAVERS, Local Agent**  
 Muleshoe, Texas

POLITICAL COLUMN

The following Political announcements are made subject to the action of the Second Democratic Primaries in August, 1930.

Fees for all announcements must be paid before name is placed in this column. All cards, advertising, etc. are charged for at the usual rates and must be cash in advance.

For Sheriff and Tax Collector

H. STERLING  
J. M. BELL

For Tax Assessor

MRS. W. C. BUCY  
MRS. R. L. TIVIS

For Commissioner, Precinct No. 1

Wm S. F. MATTHIENEN

A. J. HICKS

For Commissioner, Precinct No. 2

For Commissioner, Precinct No. 3

F. N. HOOD

A. E. ROBINSON

For Commissioner, Precinct No. 4

A. L. CARPENTER  
W. R. CARTER

Want Ads

HAVE PARTY who wants improved farm of 320 acres near Muleshoe. See R. L. Brown.

Have plenty of grass and water for your stock. K. K. Runnels, Texico, N. M.

FOR RENT—Two nice rooms. Can also give meals to limited number. Mrs. Beulah Motheral.

HAVE PARTY who wants improved farm of 160 acres near Muleshoe. See R. L. Brown.

Soapy Moody ran his race. All around his laundry place. And left me here fixing shoes. So few I have the rambling blues. All work and material guaranteed. J. M. McAdams, The shoe man.

WAGES WAR ON RATS

El Paso.—The Pied Piper is here. Instead of a mere horn, he is using a scientific method of rodent destruction acknowledged by many cities of the United States.

J. L. Nicholes of Atlanta has mapped out a campaign for ridding El Paso of rats and mice, against which many complaints have been registered with the health department.

NEW STADIUM UNDER WAY

Electra, Texas, Aug. 5. (UP)—A \$3,000 steel stadium built on a substantial concrete foundation is being erected on the Electra high school football field. When completed it will be one of the best structures of its kind on a high school athletic field in Texas. It is expected to be ready for the opening of the football season in September. The structure will seat 2,000 people.

Town Talk

Thomas E. Dugan, Jr., of Lubbock was a business visitor here Tuesday.

Rev. and Mrs. C. A. Joiner are attending the Baptist Association at Ceta Canyon this week.

Buford Butt was in Amarillo last Sunday.

S. E. Morris and J. C. Birdsong have returned from a trip to Wichita Falls.

Mrs. E. S. McNairy is visiting her daughter in Vernon this week.

B. J. Edwards of Lubbock was in town Monday.

Dr. Moore and daughter, Lovaca, motored to Clovis Sunday to see Mr. Enix, who has been ill the past few days.

Madames Nina F. and Faye Eldred spent a few days in Amarillo this week, the guests of Mrs. Cooper Woodburn.

Miss Imogene Burson of Silverton is spending a few days with her friend, Nelma Moore, formerly of Silverton.

Ray Griffiths and family have returned from their vacation in Colorado.

C. J. Roach and Owen Head made a business trip to Plainview last Friday evening.

J. M. Gray of McKinney was in Muleshoe Monday of this week.

Joshua Blocker was in Lubbock last Monday.

Mrs. Clifton E. High of Wellington spent the week-end with her brother, Pat R. Eboe.

Mr. and Mrs. L. S. Oneal were in Abernathy last Friday.

Jane Bucy and Bubby Kistler are in Farwell this week, the guests of Mrs. J. D. Thomas.

Mr. and Mrs. J. J. Lawler returned Thursday from an extended trip to East Texas.

Henry Montgomery and family left last week for Canyon, where they will make their home.

Mrs. C. J. Roach spent Monday evening with Mrs. Gillispie and Mrs. Penall.

W. L. Hester of Lubbock was a business visitor in Muleshoe Tuesday of this week.

Madaline and Buster Oneal returned to their home in Abernathy, Friday after a visit with their brother, L. S. Oneal.

Miss Doris Smith, who has been visiting Misses Jane Bucy and Bubby Kistler returned to Abilene last Friday.

Miss Mary Goodson returned last Thursday from a visit to Louisville, Ky.

Judge J. D. Thomas of Farwell was here Friday.

Messrs C. D. and Connie Gupton and Miss Avenelle Motheral returned last Thursday from a trip to Kentucky.

Miss Aline Evans of YL was a weekend guest of Lillian Roach.

Mr. and Mrs. A. C. Gaede are in Ceta Canyon attending the Methodist meeting.

Mrs. V. B. Rogers and daughters, Bettie Jane and Dale, have returned from a weeks vacation spent in the Little Colorado Canyon. Miss Virginia Keeler of Portales, accompanied Mrs. Rogers on the trip.

H. G. Gaither of Lubbock was the guest of Mr. and Mrs. V. B. Rogers last Monday.

Mr. and Mrs. Albers of El Reno, Oklahoma, are visiting Mrs. Albers' father, E. A. Garrett, and brother, Bill Garrett, this week.

Miss Lillian Adair returned Saturday from a visit with relatives and friends at Crosbyton and Floydada.

Mmes. H. C. Edmonds and H. A. Towery are visiting in Oklahoma this week.

BIRTHDAY PARTY

A party was given Friday afternoon, August 1st, on the Court House lawn in honor of little Nora Jean Roach, she being one year old on that day.

Cookies and lemonade were served to the following little guests: Anna Burns, Louana Walker, Maddaline Gillispie, Beverly Jean Acock, Richard Clyde Edmonds, Billie Jim St. Clair, Bobbie Mitchell, Arch Murphy March, and little Nora Jean. Those that entertained were Dora Nell McCarty, Bernice Arnold, Bettie Ruth Moeller, Anna Laura Mitchell, Kathryn Evans, Marie Lambert, Lillian and Christine Roach.

Let us make those sandwiches for the next picnic. Polly's Kitchentette.

PAYNE MURDER

(Continued from page one)

for some time, for a few weeks previous to the tragedy he had insured the life of his wife and two children pretty heavily, making himself the beneficiary. The policies carried double indemnity clauses, which would pay him double for their accidental death.

It is reported, too, that Payne had a ready explanation of everything incident to the murder, volunteering information that he had seen his son playing with dynamite he had procured to use in the Fourth of July celebration. He remained affable throughout the past five weeks, willing in every way to assist police in uncovering the crime, and had offered a reward of \$5,000 for the conviction of the murderer.

It seems that it remained for Gene Howe ('Tack') and A. B. McDonald, newspapermen, to solve the mystery. Clues led them to discover that Payne and Mrs. Thompson had a love affair, and upon interviewing her discovered that this was true. Mrs. Thompson broke down and confessed to the love affair, thinking that the newspapermen had more information than they really did, and related that she, too, had become suspicious of Payne since she had thought the matter over. In a signed confession made to police she told of

their love affair, and how Payne had made violent love to her, telling her that he was unhappily married, and that he and his wife had mutually agreed to separate. She said that he had told her repeatedly that he was going to get rid of his wife and children, but she thought it would be in a legal way. She said she felt as if she were doing wrong in going with the married man, but his advances were so persistent that she finally yielded. She admits that a great load has been removed from her mind since she has confessed to the love affair. She found him obnoxious at first but his ardent expressions of love for her had broken down her resistance, and she finally had consented to marry him. She confessed that passionate love scenes had taken place, but that they had not become intimate.

Although Payne was brought face to face with Mrs. Thompson at the city hall, they were unable to write a confession from him. His facial expressions, it is said, betrayed his guilt.

Charges of murder in the first degree have been filed against him. He is being held in the jail at Pampa under a heavy guard.

For sandwiches and lunches, Polly's Kitchentette.

THE ST

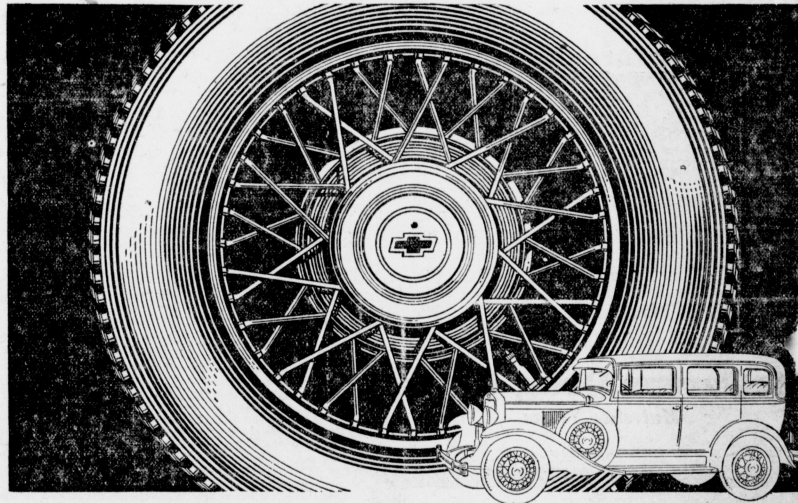
To 19

Balby Mrs. of the est. ceased, having. Court her final ac. tion of the estate of said deceased, together with a to be discharged from a said estate, to file the thereto, if any they h- the September Term, County Court, commehc holden at the courthouse o. ty, in the city of Muleshoe day of September, A. D. 1 said account and applicati considered by said court.

Witness, J. L. Alsip, Clerk County Court of Bailey County.

Given under my hand and said court, at my office in the Muleshoe this 5 day of August 1930. J. L. ALSIP Clerk County Court, Bailey County, Texas. By LOLA LIPSCOMB, Deputy.

CHEVROLET ANNOUNC  
DE LUXE  
WIRE WHEELS  
at no extra cost



Chevrolet again adds extra value to the Chevrolet Six! Those who prefer may now have any passenger model equipped with beautiful de luxe wire wheels—at no additional cost!

Designed especially for Chevrolet, these wheels incorporate many important features that have won favor on cars much higher in price. The ornamental hub caps are unusually large, and are finished in sparkling chromium plate. The bolts that hold the wheel in place are located inside the hub—thus assuring a smarter, more clean-cut appearance. The spokes are short and sturdy—the wheel construction is extremely rugged. Moreover,

there is an unusually large number of spokes —for extra strength and durability!

A variety of attractive new colors

In addition to this de luxe wire wheel equipment, Chevrolet now makes available a wide choice of new color combinations on all models —colors that are rich and distinctive.

You are invited to come in—NOW—and attend the first showing of six-cylinder Chevrolet models with these striking new colors and wire wheels.

Table with 4 columns: Model, Price, Model, Price. Includes Sport Roadster (\$455), Club Sedan (\$465), ROADSTER or PHAETON (\$495), Sedan Delivery (\$595), 1 1/2 Ton Chassis (\$510), Coach (\$456), Sedan (\$475), Light Delivery Chassis (\$365), With Cab (\$425), Coupe (\$456), Special Sedan (\$725), Roadster Delivery (\$440), Prices f. o. b., Sport Coupe (\$455), (6 wire wheels standard on Special Sedan), Filter, Mich. Special equipment extra.

Valley Motor Company  
CHEVROLET SALES AND SERVICE  
Muleshoe, Texas

SIX-CYLINDER SMOOTHNESS AT LOW CO

Here They Are

NEW SAMPLES OF FALL AND WINTER SUITS

Come in at your convenience and look these new suit samples over, then let us take your measure for one or more. Plain and fancy weaves that dress you up the moment you slip into one. Here you may obtain style and value that is hard to beat at prices ranging from \$22.50 to \$50.00.

That old suit or dress may look hopeless to you, but it can be cleaned so that it will look like a new one. Sent it in today.

We call for and deliver.

Muleshoe Tailor Shop  
See Mrs. T. E. Arnold or Phone 44

possibly of Representatives when the 1930 census is accepted by Congress.

**WILLIAMS SERVICE STATION**  
Gasoline, Oils, Tires, Tubes and Accessories  
**ALL NIGHT SERVICE**  
Your Business Appreciated  
**C. H. WILLIAMS, Mgr.**

Prof: What did Paul Revere say at the end of his ride?

Student: Whoa!

**COMPLETE Insurance Service**  
th up-to-date records and old line connections

**J. E. Aldridge Insurance Agency**  
Office at the Bank  
Muleshoe Texas

**SPECIALS**

for Saturday Only

- Loveland Talcum 19c
- Mavis Talcum 19c
- Coty's Face Powder with Perfume 79c
- Corn Huskers Lotion 19c
- Delight Kiss Toilet Water 69c
- Ploughs Toilet Articles, 25c for 19c

**McCarty's Drug Store**  
Muleshoe, Texas

**WANTED!**

Every farmer who has wheat to sell to bring it to our Elevator. Also maize, kaffir, corn, etc.

Purina Feeds bring you more profits. We carry a full line.

**BAILEY COUNTY ELEVATOR CO.**  
Muleshoe, Texas

**STATE TAX MEN AND BANKERS IN ACCORD**

Months of Negotiation Lead to Agreement on Changes Broadening Method of State or Local Taxation of National Banks.

NEW YORK.—Months of conference and negotiation between an American Bankers Association special committee and the Committee of the Association of States on Bank Taxation have resulted in an agreement on a form of amendment to the Federal statute dealing with state or local taxation of national banks that "maintains the integrity of the protective principles of the section and is satisfactory to the commissioners' committee," says the American Bankers Association Journal.

Thomas B. Paton, the organization's General Counsel, in making the announcement says that previously proposed amendments to the statute, which is known as Section 5219, have been opposed when it was felt their terms would enable any state to place banks in a tax class by themselves.

"The law as it stands today," Mr. Paton says, "permits state or local taxation of national banks or their shareholders in one or the other of the four following forms: the shareholders upon their shares—a property tax; the shareholders upon their dividends—a personal income tax; the bank upon its net income; the bank according to or measured by its net income. Only one form of tax can be imposed, except that the dividend tax may be combined with the third or fourth form if other corporations and shareholders are likewise taxed."

"The conditions permitted are: the tax on shares must be at no greater rate than on other competing moneyed capital; the income tax on shareholders must be at no greater rate than on net income from other moneyed capital; the tax on bank net income must be at no higher rate than on other financial corporations nor the highest rate assessed upon manufacturing corporations doing business within the state; the tax measured by net bank income is subject to the same limitations as the tax on net income of the bank but may include entire net income from all sources."

**States Seek Broader Law**  
National banks and their shareholders are taxed in different states under a diversity of systems, he says. "The U. S. Supreme Court has held that the low millage rate on intangible personal property is in violation of the present law where it results in national bank shares being taxed at a rate greater than that assessed upon competing moneyed capital. A number of states, unwilling to use the income methods permitted, had the alternative of either repealing the intangible tax laws or limiting taxation of national bank shares at the intangible rate. Therefore they sought a broadening of the permissive provisions."

Also, Mr. Paton points out, a Supreme Court decision held a state's excise tax on corporations invalid where it included income from Federal and local government bonds in the excise measure. This created doubt as to some state bank excise taxes.

"Conferences have been held to reach some agreement which would protect the banks, satisfy the tax commissioners and avoid a contest in Congress," Mr. Paton says. "From the standpoint of the tax authorities, the main objectives have been an amendment which would permit certain states to raise their low rate tax upon intangibles and at the same time derive an adequate, but not excessive, revenue from national bank shares, and an amendment which would permit certain states to tax corporations on their net income, excluding income from tax-exempts, and at the same time derive the same revenue from the banks as heretofore. From the standpoint of the banks, it has been deemed imperative to maintain the protective principles of Section 5219."

**The Changes Agreed On**  
"In the proposed amendment the existing provision permitting taxation of bank shares no higher than the rate upon competing moneyed capital has been modified with respect to certain intangible tax states only by a provision under which, instead of the moneyed capital limitation, the rate shall not be greater than the rate upon the shares of other financial corporations, nor upon the net assets of individuals, partnerships or associations employed in the banking, loan or investment business, nor higher than the rate assessed upon mercantile, manufacturing and business corporations with bank office in the state.

"Also an added fifth alternative permissive method, designated as a specific tax, permits a state, in place of an ad valorem tax on bank shares, to add together the total dividends paid the preceding year and the increase in capital, surplus and undivided profits, less additions to capital or surplus paid in by stockholders, and to divide this total by the number of shares. The state may tax the shares based upon this amount, but not to exceed the rate on other corporations in proportion to their net profits.

"This method is designed for states which have heretofore taxed national banks upon their entire net income from all sources at a proportionate rate to that assessed upon business corporations. The amount which is the basis of the tax is the equivalent of the entire net income from all sources, but being assessed against the shareholder upon his property in the shares and not a tax upon the bank, it is not open to the objection as an indirect tax on exempt income."

**California Town Bars Noisy Barnyard Colony**

Burlingame, Calif.—The blaring crow of the rooster, the gabbling of geese and the coo of the pigeon have been officially muted by Burlingame's city fathers.

In solemn convocation, the city council enacted an ordinance muting the vocal utterances of fowls and other barnyard residents, curtailing their number and restricting their wanderings. Owners who permit their charges to moo, bleat, crow, cackle, wrattle or snort where such noise disturbs neighbors in their sleep or otherwise, are punishable by a fine of \$500 and six months in jail.

**Flowers of 100 Sorts in Northernmost Alaska**

Point Barrow, Alaska.—More than 100 varieties of wild flowers are in bloom in the tundra within a radius of 200 miles from here. Of these, iris and wild forget-me-nots are the most abundant. Of the many colors, yellow predominates.

Scientists are interested in the fact that white snow blooms against dark backgrounds, dark reds and blues show blooms in the open spaces, while yellows are most numerous near water.

**Umbrella Sentences**

New York.—Joseph Latzo, husky iron worker, had to answer an intoxication charge twice. Magistrate Rudich suspended sentence. Latzo's wife, however, decided to do her own sentencing. As he left court she attacked him vigorously with an umbrella.

**Hair Cut by Lightning, He Feels "Pretty Good"**

Excelsior Springs, Mo.—Fred Skelton, farmer, believes in plenty of fresh air and sleeps with his head near an open window. One night lightning shot through the screen and struck his pillow, tore it to fragments and took off all of his hair. After being unconscious for about an hour, the farmer came to and said he felt "pretty good."

**Quebec Dog Carts to Go**

Quebec.—One of this province's most picturesque sights, the presence of small dog carts along the highways, has been condemned in the interests of the machine age.

**ROAD NOTICE TO NON RESIDENT LAND OWNERS**

THE STATE OF TEXAS, County of Bailey.

We the undersigned jury of freeholders, citizens of said Bailey County, Texas, duly appointed by the Commissioners' Court of Bailey County, Texas, at its first July Term, 1930, to view and establish a first class 60 foot road and having been duly sworn as the law directs, hereby give notice that we will on the 22nd day of August 1930, assemble at a place convenient to all and thence proceed to survey, locate view, mark out and establish said road, beginning at the Meador Grocery Store at the league line at the northeast corner of Labor No. 20, league No. 186, Swisher County School Land; thence south on the league line between league 186, Swisher County School Land and 193, Foard County School Land, 185 Swisher County School Land, 194 Foard County School Land, 184 Swisher County School Land, and 195 Foard County School Land; to the southwest corner of Labor 6, league 185, Foard County School Land; thence east on the labor line between Labors 6 and 15, league 195, Foard County School Land, to the northeast corner of labor 15, league 195, Foard County School Land; thence south on the labor line between labors No. 13 and 14, league 195, Foard County School Land, 16, 17, league 195, Foard County School Land, to the southeast corner of labor 16, league 195, Foard County School Land, the same being the southwest corner of labor 17, league 195, Foard County School Land, thence west on the labor line between labors No. 16 and 25, league 195, Foard County School Land, to the league line at the southwest corner of labor No. 16, league 195, Foard County School Land; thence south on the league line between leagues No. 195, Foard County School Land, 184 Swisher County School Land, League 196, Lubbock County School Land, 193, Floyd County School Land, 197, Lubbock County School Land, and 182 Floyd County School Land, to the Ozark Trail at the southwest corner of labor No. 25, league 197, Lubbock County School Land, the same being the southeast corner of labor No. 110, Floyd County School Land.

And we do hereby notify all parties and any and all persons owning lands through which said road may run, that we will at the same time proceed to assess the damages incidental to the opening and establishment of said road, when they may, either in person or by agent or attorney, present to us a written statement of the amount of damages, if any, claimed by them.

Witness our hands this 29th day of July, 1930.

W. E. COX  
C. D. FRENCH  
JOHN BLACKSHEAR  
LEE APPLIN  
W. R. YOUNG

Texas produced 62 per cent of carbon black in 1929—226,183,000 pounds of it.

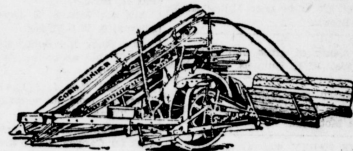


**DR. C. E. WORRELL**  
EYESIGHT SPECIALIST

Clovis, N. M. 112 E. 4th St.  
We Devote Ourselves Exclusively to the Care of the Eyes

Gathers, Cuts and Binds

**FASTER and CHEAPER**



**L**IGHT DRAFT, steady running—better work, more easily done—you get these desirable features with the Case-Osborne Corn Binder. Faster work, too—both wheels are of equal diameter giving steadier running over rough ground. A tongue truck is not needed with this well balanced machine although one can be used if desired.

Main drive chain outside or to the left of bull wheel readily accessible. This reduces side draft to a minimum. Binding mechanism has a ample range and ties tight bundles. Simple, durable knottor thoroughly tested and adjusted at the factory. Wheels are suspension type. The Case-Osborne Binder is noted for its dependability, light draft, and sturdy construction. A cost-saver and profit maker.

Come in and let us go over this binder's many advantages with you. We're always at your service. Give us a trial.

**BAILEY COUNTY ELEVATOR CO.**  
Muleshoe, Texas

**CASE**

FULL LINE OF QUALITY IMPLEMENTS

**If Company Pops In**

Company has a way of dropping in unexpectedly. You don't want to have to cook up a lot of stuff—it's too warm to stay a minute longer in the kitchen than is necessary.

Right here is where we come in—why not have a few cans of delightfully good pork and beans, salmon, sardines, deviled ham, potted ham, peanut butter?

Lay in a supply now and later on you'll thank us for the tip

"Fresh and Cured Meats"

**Gupton Grocery Co.**

Phone No. 4 Free Delivery  
Muleshoe, Texas

IF YOU WANT YOUR TIRE AND TUBE WORK DONE RIGHT, SEE WEAVER

# Start Now

—to get those hens in condition for fall laying. You so often wonder why it is that your neighbor gets plenty of eggs when prices are high. Maybe your flock is of the very best breed, but in the fall and winter they do not produce the eggs that they should.

The secret of the full egg basket is PROPER FEED. If hens are not fed a balanced ration they will not pay the dividends that they should. Merit Brand Feeds are mixed with just the proper ingredients. Start now to give your flock the care they should have.

We are always in the market for your wheat, corn, maize, kaffir and sudan. Get our prices before selling.

**Muleshoe Elevator Co.**  
MULESHOE, TEXAS

**Col. Bob Sammons**  
AUCTIONEER

"Services Guaranteed"

Phone 71 or 54 collect Muleshoe, Texas

# Save Worry

Make the most of your time by saving cooking and worrying about meals at your home. This store will supply you quickly with any article needed in the Grocery Line.

**Moeller's Grocery**  
Muleshoe, Texas

# As Strong As It's Weakest Link

We realize, that in this age of competition, the store that has one weak link in its chain of merchandising, will not last. So it will always be our aim in the future, as in the past, of offering only the highest grade of groceries, of giving courteous and pleasant service, of keeping our store and stocks clean and neat, and of always selling at the lowest possible prices.

**Henington Cash Grocery**

"Not How Cheap, But How Good."



International Sunday School Lesson for August 10.

**HANNAH, A GODLY MOTHER**

I Samuel 1:9-18, 24-26; 2:19

Rev. Samuel D. Price, D. D.

While throngs may go into the churches only some are real worshippers. One of very devout soul was found in the tabernacle at Shiloh at the close of the period of the judges. While harsh events are taking place in war and state there is always a cottage by the side of the road from which a great leader will come forth. Thus a setting is made for the sight that greeted the eyes of aged Eli, the priest, who ministered in the portable tabernacle which had been carried during the journey from Mount Sinai to the promised Land. There had been replacement of parts but it was still the place where God met with His children.

Hannah was bowed in prayer as could be noted by her moving lips, though no sound was heard by the observer. Eli came forward in rebuke and foolishly said she was intoxicated. Bold in her assertion of innocence this woman told in part what she had just been telling the Lord. She was one of the two wives in the home of Elkanah. Peninah had borne him sons and daughters while she was still childless, and like every Hebrew wife eager to have a son. Because she had not been a mother she was taunted by Peninah. Elkanah loved Hannah and was glad to give her a double portion of tasty food to indicate his favor, but this did not take away her heart hunger to become a mother. With directness she makes the matter the subject of prayer and it is discovered while in devotion by Eli.

This priest can speak for God and at once declares that her ardent petition will be granted. Samuel is the answer to her prayer and the babe is cared for in the utmost loving devotion. Added affection must be lavished in the earliest years for she had vowed to give him as a son of the tabernacle as

soon as he was weaned, which may have between the ages of three and five. To keep her promise Hannah returns to the tabernacle at Shiloh and reminds Eli of her specific prayer and its glorious answer. Though this is a lesson about Hannah it is natural to at least glance through the life of the son. Note first how the little fellow responded to the thrice repeated call of God during the night season as he said "Speak Lord; for that servant heareth." - I Samuel 3:9. Then observe how prayer is his great life work, in chapter 12:23. He was forced to lay down his judgeship but he would never cease his prayers for Israel.

Great songs come out of mighty triumphs. Hannah gave expression to her joy and thanksgiving in the Song that is recorded in chapter two. Note how repeatedly she gives all the glory to Jehovah. Turn also to the Magnificat, the song of Mary, Luke 1:46-55 and observe how the Mother of Jesus rejoices in often similar words.

While Hannah cannot have her boy, in keeping her vow, she can make love garments for him. Each year she visits Samuel at Shiloh and brings a little coat in her joy and for his comfort. One practical application of this lesson study is to observe another Mother's Day though we have passed the second Sunday in May. The scope of our prayer life is also suggested. We are to take everything to the Lord in prayer and ask for anything that is right for us to have. Often we are uncertain what would be best for us, and at such times we are taught to safeguard our petitions with the prayer that Jesus used in the Garden of Gethsemane when he said so devotedly, "Not my will, but thine be done." Samuel had every reason to always be proud of his mother. He evidenced his fidelity by the way in which he did his part to live out the prayers of Hannah. The Golden Text is an exhortation to every child: "My son, hear the instruction of thy father, and forsake not the law of thy mother," Proverbs 1:8.

# VERY LATESTS BY MARY MARSHALL

For a practical addition to your summer wardrobe we suggest black and white dotted silk made into a dress with short puffed sleeves, long rather full skirt and a collar with scalloped



edges made of white organdie, georgette or mull.

Collars of this sort appear on a number of the new summer dresses and are not at all difficult to make. To cut a pattern lay any simple flat collar that fits you on a paper, and trace the outline. It should be about five inches deep at back and sides and the front shown in the little sketch. Draw two-inch-wide scalloped round the edges of the collar and front tab. The material may be finished by machine pique or by a fine rolled hem.

To finish the collar at the front buy a small pearl buckle ornament and draw the ends through this so that they be held securely in position at the front of the collar.

# CAPPER PRIZE TO GO TO DR. BABCOCK

Is Honored for Distinguished Service to Agriculture.

Chicago—The first annual Capper prize of \$5,000 and a gold medal recognizing distinguished service to American agriculture has been awarded to Stephen Moulton Babcock, professor emeritus of agricultural chemistry at the University of Wisconsin. His invention in 1890 of the test bearing his name for butterfat in milk made possible the growth of today's important industry of dairying, so eminently a part of American agriculture. The test was not patented so that it might more fully benefit the dairy industry. In creating the annual award, Arthur Capper, senior Kansas senator, said



Doctor Babcock and Original Tester.

he desired to provide a concrete expression of gratitude to some of the persons who make contributions of national importance to agriculture.

Doctor Babcock is an agricultural chemist. He was awarded a bronze medal by the Wisconsin legislature in 1880, the grand prize at the Paris exposition in 1900 and the grand prize at the St. Louis exposition in 1904.

Heretofore the outstanding men in science, literature, and in various other creative arts have been awarded valuable prizes for their achievements. This is the first time that the men who devote their lives to working for agriculture and those engaged in the basic industry have been eligible for a prize of any kind, nationally speaking. The award will be formally made to Doctor Babcock this October at the National Country Life association convention in Madison, Wis., where the recipient lives.

Five Texas cities are listed among the ninety-three "largest American cities" in the 1930 census.

# ROAD NOTICE TO NON RESIDENT LAND OWNERS

THE STATE OF TEXAS, County of Bailey.

We the undersigned jury of freeholders, citizens of said Bailey County, Texas, duly appointed by the Commissioners' Court of Bailey County, Texas, at its first July Term, 1930, to view and establish a first class 80 foot road and having been duly sworn as the law directs, hereby give notice that we will on the 22nd day of August, 1930, assemble at the most convenient place to all and thence proceed to survey, locate view, mark out and establish said road, beginning at the northeast corner of Section No. 22, the same being the southeast corner of section No. 21, Block X; thence south on the section line between sections No. 22 and 23 Block X, to the southeast corner of section No. 22, the same being the southwest corner of Section No. 23, thence west on the south line of section No. 22, 11, and 6, all in Block X to the southwest corner of section No. 6, the same being the northwest corner of section No. 7, Block X, being

a distance of 4 miles. And we do hereby notify and any and all persons through which said road we will at the same time assess the damages incident, opening and establishment road, when they may, either in or by agent or attorney, present a written statement of the amount damages, if any, claimed by them. Witness our hands this 29th July, A. D. 1930.

ROY GOOD  
HOMER MARDIS  
W. D. McDORMAN  
C. A. MYERS  
J. A. WHITE  
Jurors of View. 25-4

# MAY FLY PARSON

Lamesa, Texas, Aug. 5. (UP)—Miss F. A. Smith of Plainview, 97, made her initial airplane ride here this week with Carl Bentzen of Lamesa, Texas. Bentzen is planning on taking a Boycan, Dawson County's preacher, for a ride in his plane this month.

# The Most Important Part of Your Dollar



—is the part you save. You can live with the part you spend, while you have to spend, but you can't get far ahead. Make your life show you a profit. Take out that most important part of your dollar first, every week or month, and save it. Start a thrift account today with us and make it grow each week. We will be glad to explain our Thrift Club Plan to you.

# Blackwater Valley State Bank

Established 1914

"Safety and Service through the Years"

Muleshoe, Texas



# Re-Shingle in spare time

THE NEW WAY

RIGHT OVER YOUR OLD ROOF

Our Aim - To Help Improve the Panhandle  
**PANHANDLE LUMBER CO.**

Courtesy - Quality - Service



ed Constitutional Amendments

S. J. R. No. 7. A CONSTITUTIONAL AMENDMENT TO BE VOTED ON NOVEMBER 4, 1930.

Be it resolved by the Legislature of the State of Texas: That Section 11 of Article VI of the Constitution of the State of Texas be amended so as to read as follows: Section 11. In order to enable the State to perform the duties imposed upon it by the Constitution of the State of Texas, hereafter made or hereafter to be made, and all grants, donations and appropriations that may hereafter be made by the State of Texas, or from any other source, shall constitute and become a permanent university fund. And the same shall be known as the University of the State of Texas, and shall be managed by the University of the State of Texas, which shall be managed by the University of the State of Texas, which shall be managed by the University of the State of Texas...

H. J. R. No. 11. PROPOSING A CONSTITUTIONAL AMENDMENT TO BE VOTED ON NOVEMBER 4, 1930.

Be it resolved by the Legislature of the State of Texas: That Article VII of the Constitution of the State of Texas be amended by adding thereto Section 16, which shall read as follows: "Section 16. All land mentioned in Sections 11, 12 and 15 of Article VII of the Constitution of the State of Texas, now belonging to the University of Texas shall be subject to taxation upon values fixed by the State Tax Board; and providing that the State shall remit annually to each of the counties in which said lands are located an amount equal to the tax imposed upon said land for county purposes at any time during the year at the seat of government for the transaction of business and each term thereof shall begin and end with each calendar year."

Sec. 2. The foregoing Constitutional amendment shall be submitted to the qualified electors of the State at the next general election to be held throughout the State on the first Tuesday after the first Monday in November, 1930. (A correct copy.) JANE Y. McCALLUM, Secretary of State.

S. J. R. No. 2. PROPOSING A CONSTITUTIONAL AMENDMENT TO BE VOTED ON NOVEMBER 4, 1930.

Be it resolved by the Legislature of the State of Texas, that Art. V of the Constitution of Texas shall be amended by adding a new section to be known as Section 3a, to read as follows: "Section 3a. The Supreme Court may sit at any time during the year at the seat of government for the transaction of business and each term thereof shall begin and end with each calendar year." Section 2. That Section 3 of Art. V of the Constitution of Texas shall be amended by repeating the sentence of said section which reads: "The Supreme Court shall sit for the transaction of business from the first Monday of October in each year until the last Saturday in June of the next year, inclusive, at the Capitol of the State." Section 3. If the Constitution shall not have been previously amended so as to provide that the Supreme Court shall be open at all times, then in that event the foregoing Constitutional amendment shall be submitted to a vote of the qualified electors of this State, at an election to be held on the first Tuesday after the first Monday in November, A. D. 1930. (A correct copy.) JANE Y. McCALLUM, Secretary of State.

S. J. R. No. 19. PROPOSING A CONSTITUTIONAL AMENDMENT TO BE VOTED ON NOVEMBER 4, 1930.

Be it resolved by the Legislature of the State of Texas: That Section 5 of Article 3 of the Constitution of the State of Texas be amended so as to hereafter read as follows: "The Legislature shall meet every two years at such time as may be provided by law and at other times when convened by the Governor. When convened in regular Session, the first thirty days thereof shall be devoted to the introduction of bills and resolutions, acting upon emergency appropriations, passing upon the confirmation of the recess appointees of the Governor and such emergency matters as may be submitted by the Governor in special messages to the Legislature; provided that during the succeeding thirty days of the regular session of the Legislature the various committees of each House shall hold hearings to consider all bills and resolutions and other matters then pending; and such emergency matters as may be submitted by the Governor; provided further that during the following sixty days the Legislature shall act upon such bills and resolutions as may be then pending and upon such emergency matters as may be submitted by the Governor in special messages to the Legislature; provided however, either House may otherwise determine its order of business by an affirmative vote of four-fifths of its membership." Sec. 2. That Section 24 of Article 3 of the Constitution of the State of Texas be amended so as to hereafter read as follows: "Members of the Legislature shall receive from the public Treasury a per diem of not exceeding \$10.00 per day for the first 120 days of each session and after that not exceeding \$5.00 per day for the remainder of the session. In addition to the per diem the members of each House shall be entitled to mileage in going to and returning from the seat of government, which mileage shall not exceed \$2.50 for every 25 miles, the distance to be computed by the nearest and most direct route of travel, from a table of distances prepared by the Comptroller to each county seat nor hereafter to be established; no member to be entitled to mileage for any extra session that may be called within one day after the adjournment of a regular or called session." Sec. 3. The foregoing constitutional amendment shall be submitted to the electors of this state qualified to vote on constitutional amendments at an election to be held throughout the State on the first Tuesday after the first Monday in November, A. D. 1930. (A correct copy.) JANE Y. McCALLUM, Secretary of State.

Progress News Notes

The Union Missionary Society met Monday at the school house with ten members and 20 children. We meet again next Monday at the school house with a lesson taken from the Voice. Sunday school had an attendance of 73 last Sunday. The Methodist revival will begin on Friday before the third Sunday in this month. Everyone is cordially invited to attend. Mr. and Mrs. M. L. Fenton of Clovis visited in the A. R. Fenton home Saturday evening. Mr. and Mrs. R. A. Stanley and family of Pampa visited Mrs. Stanley's uncle, Mr. T. L. Snyder and family Wednesday and Thursday of last week. A. R. Fenton and L. L. Welland were business callers in Portales and Parwell Monday. Mr. and Mrs. R. A. Stanley and family, Mr. and Mrs. Clarence Stanley and son, of Pampa, Mr. and Mrs. T. L. Snyder and Mary, Mr. and Mrs. W. H. Snyder, Mr. and Mrs. Raymond Chittwood, Mr. and Mrs. H. V. Snyder and daughter, Mr. and Mrs. T. L. Snyder and son and Miss Lucy Chittwood visited in the T. B. Morse home Thursday evening. Mr. and Mrs. W. B. Harlan returned Tuesday from Segraves where they have been visiting Mr. Harlan's parents. Mr. and Mrs. Clarence Elmore and boys spent Sunday with Mr. and Mrs. Alton Fenton. The ladies of the Missionary society are hard at work on their play, "The Southern Cinderella," which is to be given in the near future.—Reporter.

West Camp News

Mr. and Mrs. T. P. Bradberry and son, Clifford, visited in the B. Waller home Thursday night. Misses Maxine and Adalind McGuire of Texico, spent Friday night in the Roy Sheriff home. Grandma Knowles spent Sunday with Mrs. T. H. Adair. Misses Bula May and Eula Fay Waller visited in the Roy Sheriff home Friday night. Mrs. M. L. Brannon and son, Roy, from Vernon, Texas, are visiting her daughters, Mrs. Floyd Brock and Mrs. Elmer Smith. Little Jacquelyn Waller is spending a few days with her sister, Mrs. Bill Elrod. Dwight Sheriff spent Friday night Mr. Earl McGuire of Texico. Mrs. I. B. Robinson is spending a few days with her parents, Mr. and Mrs. E. Waller. Vernon Adair spent Sunday with Conrad Williams. Misses Eula Teague, Addie Lee Lindsey, Eula Fay and Bula May Waller spent Sunday evening with Vera, Vergie and Ruby Adair. Clara May Copeland and Mrs. Albert Knowles spent Monday with Mrs. Bob House and Sevoia. Mr. Raymond Waller spent a few days last week with Ira Robinson of Muleshoe. Misses Lillian, Vera, Virgie Adair; Messrs. Harold and Vernon Adair returned Saturday morning from Crosby county where they had been visiting the past week. Mrs. Harold Hudson and daughters, Nina and Jewell, of Oklahoma spent a few days with Edd Hudson last week. Mr. and Mrs. Brock took dinner with Mr. and Mrs. Elmer Smith last Tuesday. Mr. and Mrs. A. H. Davis visited

Mr. and Mrs. Albert Ramm and family Lubbock a week ago Monday, to have his right eye removed. He is getting along nicely. The Baptist revival which is being held at West Camp, is progressing nicely. Rev. Abe Sprull is conducting the services and Bro. C. A. Smith of Mangum, Oklahoma will assist him with the services later. Large crowds have been attending. Everyone is cordially invited to come.—Reporter.

I-C-E. This is to let you know WHY, WHERE and WHEN to buy ice. First—WHY: Because we weigh your ice and charge you for just what you get. Second—WHERE: At WINNINGHAM PRODUCE. Third—When: Call 74 any time between seven and nine o'clock A. M. and I deliver. We do not sell ice books, but for your convenience we will collect once a week, which will be Monday of each week. WE HAVE AN EASTMAN KODAK FOR EACH OF OUR CUSTOMERS. ASK FOR PARTICULARS. Winningham Produce. First door north of Postoffice.



SERVING MANY BUSINESSES. Experience of large fleet owners reveals the unusual reliability and economy of the new Ford.

the fish we could eat and more. At this place I got a ducking out of a canoe, which looked like a fixed up job. B. B. Pryor, a brother-in-law that weighs 300 pounds climbed in the boat and of course it sank. I got good and wet but sure had a nice time. On Tuesday, 29, we started for home, coming to Conway, Arkansas, and spent the night with my wife's sister, Mrs. Lizzie Clark. From there we went to Tulsa, spending the night with a niece. From Tulsa we came through Oklahoma City, Amarillo, and home to Muleshoe. Glad to be back, and Muleshoe was the best place we saw—including crops and all. On last Friday night Miss Nelma Moore entertained a few of her friends with a slumber party honoring Imogene Burson of Silverton. Those present were: Bessie Arnold, Marie Bucy and Katherine Evans. W. E. Snow of Amarillo was in Muleshoe Wednesday.

Bald Heads. No more falling hair nor bald heads if you will use the Five Point Hair Tonic. A new remedy that will stop itching scalp, remove dandruff, stop falling hair, produce healthy growth, and will keep hair in place. This remedy has been on the market for more than two years and not a single complaint. Sold at \$1.00 per bottle postpaid on a money back guarantee. Address: A. L. Duncan, Bessemer, Alabama.

A New Method of RE-ROOFING. Saves You Money — Adds to Comfort. No need to remove your old roof—lay Red Cedar Shingles right over the old roof. A thoroughly practical method has been worked out—saves removing old roof, avoids dirt, improves appearance of house, adds amazingly to warmth and comfort. We'll be glad to supply details, illustrated folder, estimate—also the shingles. We provide a complete shingling and re-shingling service. Don't re-roof until you investigate. Call or Phone for Fuller Particulars. E.R. HART LUMBER COMPANY. MULESHOE, TEXAS. TELEPHONE NO. 33.

A SIGNIFICANT TRIBUTE to the value of the new Ford is found in its increasing use by Federal, state and city governments and by large industrial companies which keep careful day-by-day cost records. In most instances, the Ford has been chosen only after exhaustive tests of every factor that contributes to good performance—speed, power, safety, comfort, low cost of operation and up-keep, reliability and long life. Prominent among the companies using the Ford are the Associated Companies of the Bell System, Armour and Company, The Borden Company, Continental Baking Corporation, Firestone Tire and Rubber Company, General Electric Company, Goodyear Tire and Rubber Company, Kellogg Company, Knickerbocker Ice Company, Morton Salt Company, Pillsbury Flour Mills Company, The Procter and Gamble Company, and Swift & Company. Each of these companies uses a large number of Ford cars and trucks. The Associated Companies of the Bell System use more than eight thousand. Modern business moves at a fast pace and it needs the Ford. Daily, in countless ways and places, it helps to speed the production and delivery of the world's goods and extend the useful service of men and companies. Constant, steady operation over many thousands of miles emphasizes the advantages of the sound design of the Ford car, its high quality of materials, and

unusual accuracy in manufacturing. Beneath its graceful lines and beautiful colors there is a high degree of mechanical excellence. An example of the value built into the Ford is the use of more than twenty ball and roller bearings. They are hidden within the car and you may never see them. Yet they play an important part in satisfactory, economical performance. Their function is similar to the jewels of a fine watch. Throughout the Ford chassis, a ball or roller bearing is used at every place where it is needed to reduce friction and wear and give smooth, reliable mechanical operation. At many points, as on the transmission counter-shaft, clutch release, fan and pump shaft, and front drive shaft, these ball and roller bearings are used where less costly types of bearings might be considered adequate. Additional instances of the high quality built into the Ford are the extensive use of steel forgings, fully enclosed four-wheel brakes, Rustless Steel, four Houdaille double-acting hydraulic shock absorbers, aluminum pistons, chrome silicon alloy valves, torque-tube drive, three-quarter floating rear axle, and the Triplex shatter-proof glass windshield. The Ford policy has always been to use the best possible material for each part and then, through large production, give it to the public at low cost.

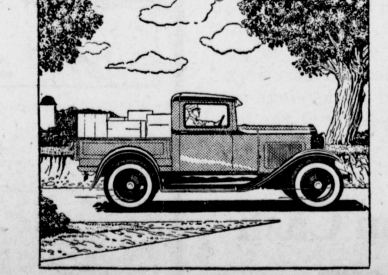


Table with 2 columns: Model and Price. Standard Coupe \$495, Sport Coupe \$525, De Luxe Coupe \$545, Tudor Sedan \$495, Three-window Fordor Sedan \$600, De Luxe Sedan \$660, Town Sedan \$660, Cabriolet \$625, Roadster \$635, Phaeton \$440, Pick-up Closed Cab \$445, Model AA Truck Chassis, 131 1/2-inch wheel base \$510, Model AA Truck Chassis, 157-inch wheel base \$535, Model AA Panel Delivery \$780. All prices f. o. b. Detroit, plus freight and delivery. Bumpers and spare tire extra at low cost. Universal Credit Company plan of time payments offers another Ford economy.

Muleshoe Motor Co. MULESHOE, TEXAS