

THE MULESHOE JOURNAL

Dedicated to the Progress and Development of Bailey County and the South Plains of

TERA SCRIPTA MANET—THE WRITTEN WORD ENDURES

MULESHOE, County Seat of Bailey County, TEXAS, THURSDAY, JANUARY 26, 1939

VOLUME

Many Plan Attending The President's Birthday Banquet At The High School Auditorium Jan. 30

In keeping with the nation-wide spirit of humanitarianism to be manifested at the close of this month, citizens Muleshoe and surrounding area will celebrate President Roosevelt's birthday at the High school auditorium on the night of January 30 with a "birthday quiet," the proceeds of which will go toward assistance of victims of infant-paralysis.

The banquet will be held under the direction of Dr. A. E. Lewis, recently appointed chairman of Bailey County for celebration purposes. Ladies of the Muleshoe church will be esters for occasion and a good feed is assured, program of entertainment is being arranged by an appointed committee, a pleasant evening is assured all operators, as well as the good they do humanity in their financial tribulations.

Dr. Lewis states that only 50 per cent of the money will go to the Wm. W. Georgia Foundation for paralytic in which President Roosevelt is annually interested, while the other 50 per cent remains in Bailey county a special fund for benefit of any one who may fall a victim to the disease.

There are hundreds of little children, victims of infantile paralysis, now lying on hospital beds, awaiting treatment. Recent count of the unfortunate reveals a total of 20 afflicted in this state, nearly 100 in the entire country, showing that the disease is spreading in many parts of the country.

Early Two Million Loans Made By The Loan Ass'n.

Two years of cooperative production has led to a total of \$2,000,000 in loans made by the Loan Association. The loans are being made to farmers and stockmen, and are being made on a basis of security.

The association now has 277 local stockholders, and a capital investment of \$1,629,470.00, protected by sound reserves of \$167,570.00.

Judge Witterding Realizes \$1,818 From 12 Cows

Anyone who thinks good milk cows of the South Plains area don't pay should talk with Judge W. E. Witterding who during the past year kept careful records of 12 milk cows, and during those 12 months they returned to him a total of \$778.34 in cream sold besides all the cream, milk and butter used by two families composed of eight people.

OLUMBUS WILLIAMS IS RIED IN FARMER CO.

Columbus Williams, who is charged with the slaying of Virgil Eaves over and dispute in February of last year, and Lazbuddy community, is being tried in Farmer County District court week.

BAILEY COUNTY SING MEET

The Bailey County Singing convention will be held at Bolina, Sunday, February 5, according to an announcement of Clinton Holmes, president.

League Events In Bailey County March 18-25

The athletic and scholarship schedules of the Bailey County Interscholastic League were arranged at a meeting of the executive committee of that organization held in Muleshoe at the court house Saturday afternoon of last week.

It was decided by the committee that Saturday, March 18, will be the date for literary contests and Saturday March 25, the date for track and field events, excepting playground ball and tennis, the two latter events to be scheduled and place arranged by Martin Shuttlesworth of Circlebeak, director of athletics and all coaches of this county interested.

Muleshoe was the place decided upon by the committee for events to be held March 18 and 25. The Executive committee is composed of Supt. W. C. Cox, director general; Martin Shuttlesworth, director of athletics; Miss Stella B. Jackson, director of debate; Mrs. Mary F. Neutzler of Watson, director of declamation; Roger Harvey, of Watson, director of extemporaneous speaking; Claudie Gallman, Muleshoe, director of spelling; Miss Muriel Barnett of Bula, director of music; and J. W. Miller, director of rural schools.

It was decided the Music committee of the Interscholastic League be asked to include the third grade in the events previously only the first and second grades have been participating.

The Director General appointed Mrs. Lula Needham, of Progress, H. C. Robertson of West Camp and Mrs. Katherine Sanders teachers in Bailey county, to write a letter to Interscholastic League asking for information on classification of rural schools.

The Executive committee recommended that members of the Musical committee meet in the near future to decide upon various divisions for the music contest.

Miss Ruth Wright, teacher in the Fairview school, was elected secretary for the County Interscholastic League to replace Miss Robie Foster formerly of Bula, but who is no longer in this county.

A committee composed of the directors of the athletic and tennis, and the county judge to be responsible for selection of judges for various contests.

BAILEY COUNTY TENANT FARMERS PAY OVER \$12,000 IN MOVING EXPENSE YEARLY FROM FARM TO FARM

Year-end moves will cost Bailey county tenant farmers more than \$12,000, and that is only the beginning of the cost to them and to the general public, it was stated by J. W. McDermott, county supervisor of the farm Service administration.

The Supervisor estimated that 212 farm tenants of this county move every year. The actual cash cost is around \$57.00 per family, he said, but the final cost to the tenant and to the public is much greater.

Most of the tenants who move could be stabilized through leasing methods which would encourage them to remain upon the same farm and to improve it, the supervisor stated. He said that the PSA flexible lease form, now being distributed by his office is winning favor with both landlords and tenants and that a considerable number of farms in this county will be operated under it during the coming year.

"A tenant who stays upon a given piece of land for only a year has no opportunity to build up that land and no incentive to do it," J. W. McDermott continued. "Instead, he is inclined to take out of it all he can. The land owner may be struggling along like the tenant on an inadequate income. He has his money invested in the land and taxes to pay, so he also is interested in having the tenant get the most possible out of this year's crop, letting the future take care of itself. In many cases, the landlord does not live in the county or the state, and fails to realize what is happening to his soil."

The supervisor said that tenant families move during the winter after the crops are harvested, which means that the movement is made at a time when the children must be taken

O'Daniel Urges Texans Join Infantile Paralysis Crusade



When Texas' new chief executive took office Tuesday, Jan. 17, his first official act as governor of Texas, was to issue a proclamation calling upon the citizens of the state to support the president's birthday celebrations Jan. 30, for the fight on infantile paralysis. Witnessing the signing of the proclamation by Gov. O'Daniel, standing left to right, is W. L. Clayton, state chairman for the celebration, Houston; Mayor Tom Miller, Austin; Hon. Coke Stevenson, lieutenant governor, and George Waverley Briggs, state vice chairman, Dallas. The new governor is heart and soul in accord with the fight for crippled children.

Littlefield Girls, Lazbuddy Boys Place First In Sudan BB Tourney; The Muleshoe Girls Won Second

The Muleshoe High school girls' and boys' basketball teams participated in Sudan's ninth annual basketball tournament played at the Sudan High school gymnasium last weekend.

Littlefield girls' team won first place, Muleshoe girls' second, Lazbuddy boys first and Leveland boys' second place of the entire tournament. Spade boys won first place consolation honors and Muleshoe boys second.

The local boys played their first game Thursday night with Sudan boys and were defeated with scores of 29 and 19, while the Muleshoe girls defeated Sudan girls 35 to 28 in their first game played in the tournament Thursday night.

Friday afternoon, winner of the Sudan-Muleshoe girls game played the winner of Amherst-Leveland girls game and the local girls won 31 to Amherst 25, placing them in the finals with Littlefield.

Muleshoe boys played loser of Amherst-Leveland boys game and defeated Amherst with scores of 39 and 17, making them eligible to enter the final game for consolation honors, playing with Spade boys, the latter being victorious and placing first.

Muleshoe girls final game was played Friday night with Littlefield girls, scores being 39 and 25 in favor of Littlefield.

Leona Lee, forward on the local team and Wanda Farrell guard placed on the all tournament team and received medals. The Muleshoe High school girls team as a whole won the second place trophy of the tournament it being an attractive piece of workmanship, a girl basketball player mounted on a medium height stand made of gold plated bronze.

Raymond Davis guard on the Muleshoe boys team was selected on the all tournament team.

Each player on the girls team was awarded individual second place gold medals and Leona Lee was presented with an extra award for being chosen leader of the local team. All trophies were presented to the winners by Supt. Biggers of the Sudan school.

Muleshoe girls team now has three attractive second place trophies they have won this season one from Bula tournament one from Muleshoe and the one received last weekend at Sudan.

A large crowd of basketball fans attended numerous games of the tournament.

Tuesday night of this week the Muleshoe High school girls and boys teams went to Bula to play match games and Friday night both local teams will go to Whiteface.

30 Awards To Be Made Vis Saturday, Trades Day; C From Many Miles Away Expecte

Dr. Lewis Heads President's Fete Here Jan. 30

At the regular meeting of the Chamber of Commerce last Friday noon Ed Lane was employed to handle details of the Trades Day events being held here each Saturday.

Rev. Jim Sharp reported there were some needy people in the community who were not eligible to receive WPA assistance and that they were being employed by the Red Cross committee to improve on the local school grounds, payment for such work coming from the Red Cross fund.

There was considerable discussion regarding the "disreputable" condition of the local school grounds, and a committee composed of Jim Sharp, C. D. Gupton and A. E. Lewis was appointed to confer with officers of the Parent-Teachers association looking toward improvement and general beautification of the school grounds.

Dr. Lewis, who has been appointed chairman of the Roosevelt Birthday Party function in Bailey County, recommended a banquet to be held here the night of January 30, and a committee was named by him to assist in making such arrangements.

CHURCH OF CHRIST REVIVAL ON

A large attendance of people manifesting much interest in religious matters is greeting Guy M. Woods, conducting the revival meeting at the Church of Christ in Muleshoe, according to reports.

Mr. Woods has proven himself an engaging speaker, fluent in his utterances methodical in his line of homiletics and very convincing in his denominational logic.

Last Sunday afternoon he spoke to a full house of people at the Methodist church on Religion and Science, delivering an inspirational and convincing message. This week the Church of Christ people are co-operating with the Baptists and Methodists in revival services.

COLLINS IS CHAIRMAN STATE HIGHWAY COM.

Carr P. Collins, Dallas insurance man, was last Monday appointed by Gov. O'Daniel as chairman of the State Highway Commission, effective Feb. 15, and succeeding member John Wood. The salary is \$4,000 a year.

Other members are Robert Lee Bobbitt, formerly chairman, and Harry Hines. The appointment term is for six years.

WEST CAMP BAPTIST CHURCH SERVICES

Services are held at the West Camp Baptist church every second and fourth Sundays. Preaching at 11:00 a. m. and at 8:00 p. m. Sunday school at 10:30 a. m. H. B. Y. P. U. at 7:30 p. m. —REV. H. H. COFFLAND, Pastor.

All Auto Drivers License May Be Renewed April

There will be approximately 2,500,000 auto driver's license expire in Texas April 1, according to information from Austin, of this total number about 2,500 residing in Bailey county, as this is the approximate number that have been issued since such license came in vogue, according to W. E. Renfrow, tax collector.

A proposed law has been introduced in the Legislature by Senator Rogers Kelly of Edinburg stipulating a two year license plan which law, if passed, may govern the Public Safety department in such renewals. At any rate, it is thought by officials they are going to have real cases of headaches when the renewing time arrives.

WTCC CONVENTION WILL BE AT ABILENE

Dates for the 21st annual convention of West Texas Chamber of Commerce have been set as May 16 and 17 to be held this year at Abilene.

Last Saturday was another in Muleshoe when "Trades Day" again inaugurated and people from miles around Muleshoe to celebrate, with advantage of special merchandise and enjoy the awards they made.

Next Saturday the number of both merchandise and cash, will be increased, and a still larger attendance is anticipated being present. Rotation of names may be made at 1:00 o'clock p. m. Making of awards will begin at 3:00 p. m.

Among those whose names were called last Saturday, but were absent Mrs. I. C. Ireton, S. L. Rollins, Mrs. J. Harris, James N. Hendrix, M. Green, Leonard Lee, H. M. Gal P. Barnett, H. B. King, Edgar B. Mrs. J. W. McDermott, B. B. Stedham, B. B. Stedham, Jr., from \$1 to \$4 in value each whose names are called, are rules of the committee, must be present to answer or forfeit it.

Those receiving awards Saturday were Francis Holladay, inson, J. E. Veazey, Mrs. J. W. McDermott, B. B. Stedham, Jr., E. O. B. COUNTY

QUARANTINED NOW

Nineteen counties in this now quarantined against hog according to available info they include Farmer, Castro, Briscoe, Motley, Dickens, Garfield, Terry, Yoakum, Cochran, and all counties in between.

Several hog growers have animals from cholera said to be shipped into the affected hogs. Animals must go direct to slaughter.

Co. Officials Ask More WPA Funds Of Government

There were 150 delegates from different parts of counties attending the meeting held in hubbuck Tuesday of last week, looking toward increased appropriations to care for WPA. Miller, who took a leading part in the investigation.

Miller was chairman of the committee and reported his findings of need to the effect of about 300 per cent increase over last year, or from 4,000 to 14,000 clients.

The cause of increased clients is not definitely known, Miller saying some thought it was due to increased number of tractors in use, others attributing it to short crops incurred by adverse weather conditions, by governmental acreage reduction, or both.

Many letters were received from county and city officials all over this western portion of the state, declaring the need of more funds to carry on WPA work, and telegrams were sent Texas U. S. Senators Morris Sheppard and Tom Connally urging an equitable appropriation by Congress to care for Texas needs.

UNION REVIVAL IS DRAWING CROWDS

The union revival meeting in progress here this week under auspices of the Church of Christ, Methodist and Baptist denominations is being characterized by good attendance and much interest manifest in the sermons delivered.

The ministers of these churches are taking their turn in preaching at the union morning service held at the local theatre, while separate services are held at each church in the evening. More than 300 people attended the three services Monday night and since the crowds have been increasing.

Services are also being held at Baptist church at 2:15 a. m. Grade school children, for the High

SENATORS CLASSIFIED

Mem. High school, and individuals in a few of the group of 38-39, are placed in the place in the of the block

MULTI-MEDIA AND FEATURE PAGE

MULESHOE JOURNAL

Class matter at the Muleshoe Postoffice under the Act of October 3, 1917.
 L. F. MITCHELL, Bus. Mgr.
 SUBSCRIPTION RATES
 Year, \$1.50; Outside of County one year, \$2.00.
 Published every Thursday at Muleshoe, Texas.
 Rates given upon application. Telephone No. 54.

Subscribers who change their addresses, or fail to get their paper, should notify this office giving both new and old addresses. All notices should be briefly and to the point. They should be on one side of the paper, and must reach this office not later than the morning of each week. The right of revision or rejection is published. Copying that does not show in its text or typography that it is paid for is an advertisement. All local advertisements remain in this issue unless otherwise specified. All notices, if not for what purpose, if the object to raise money by admission fee or otherwise, is an advertisement and when sent in for publication must be paid the regular advertising rate per line for each issue printed. Resolutions, cards of thanks, and resolutions of respect will also be charged the same rate.

Editorial

Every Great Attempt is Glorious Even if It Fails

FOUGHT FOR THE WEEK

It came to thy grave in a sack of corn season—Job 5:26.
 He grave of a friend said, "ad," but angels saying, "A man is Boecher."

AT FIRE SIREN ! ! !

Probably appropriate for the s to have the siren blown before the morning service for folks to keep out of "romantic" uses that fire "ore or less" confusion, "are a o b of "snaar-aring hell out spoke of it

IF YOU ARE ONE OF THE

There are plenty of folks in Muleshoe knowing the general meaning of "sneer shrek, whose nerves get tearing when it is sounded off out real reason. The Journal sly doubts the propriety of warning folks of the fiery hereafter with instrument that may send some hers to heaven or cause them nervous prostration. It doesn't take a psychologist to know how the shrieking that sliding whistle effects folks who ve once lost homes and other property in the devouring tongues of the fire team.

Likewise, there is no logical reason for letting loose the piercing shriek to call the local fire department members to practice. The effect upon many citizens, nor fire ladders nor lasses, is just the same. Since Muleshoe now has the contraption, why not blow it for the City Commissioners' wives to call em to dinner or supper, to announce when prizes are to be given away on Trades Day, when the County Judge goes to Austin on a highway benefit trip, or a hundred other subjects might be suggested just as potent and reasonable for such promiscuous blasts.

At least municipal tax payers would come nearer getting benefit from their money which was spent to buy the devilish-sounding thing!

KEEP ME WELL

The widely discussed system of keeping well through the means of socialized medicine is spreading into more states and cities throughout the country. This is medical insurance where prospective patients will pay in advance for future services of physician, nurse and hospital. In New York State the dental society will begin a year of furnishing dental care on this basis of prepayment.

The question of health insurance has been a topic hashed over and quarreled about for these last three years. The idea started out with a group of 430 physicians who became interested in providing health insurance for low-income families who are unable to meet medical costs when the emergency arises. The government also became interested in the growing movement and much has developed since "ators first" voted their appeal for this insurance, this past plan for a monthly "e will be income

In one of our southern cities there has been presented an ordinance which would prohibit the manufacture and sale of ice cream or other milk products containing intoxicating beverages. The city director of health wishes to protect the industry itself and also to protect the children of the city from acquiring a taste of alcoholic beverages through the "a of ice cream cones and sodas

persive for a poor man to be sick. With the growing favor for socialized medicine, there will be fewer emergency operations where the patient has put off, until the last minute, a necessary attention that should have been taken care of months before. "Keep Me Well" is a fine and wise slogan.

O'DANIEL'S TAX SHOT

"State Seethes Over O'Daniel Tax Proposals," was the heading of a newspaper story a few days ago. The Journal does not claim to be in the "seth-ing" class of Texas citizens; but it does admit having its wonderment aroused over probable results of such taxes as proposed by Gov. O'Daniel to the legislature.

While details of the proposed measure have not yet been made public, at first blush, the Transactions tax idea seems to be merely a kind of pyramid-sal tax that will hit the common people harder than would a mere retail sales tax.

Furthermore it may appear the governor has wined his old age pension program because he did not propose to give every old person a \$30 per month pension; but merely to boost the income of each to \$20 a month, and again Texas already has homestead tax exemptions up to \$3,000.

Plenty of citizens who think the proposed tax would work a hardship on manufacturing interests to compete with out of states who would not have to pay the first tax or two and that such proposal would come nearer yielding \$15,000,000 returns. We are frank to say from college to home, the Journal holds no brief for this kind of taxation; but we do give the new Governor credit for speaking his mind to the public, and it may be with this basic suggestion, he and the legislature can work out something equitable and meritorious.

UP AND COMING

There has been added shipping this past Christmas by means of the airmail. The air express and air mail volume has increased mightily, as well as the heaviest pre-Christmas air travel in its history. This is attributed to the fact that many young folks away at college have been able to afford the holiday journey from college to home by this route. This is the modern way for sons and daughters to be on tap to shout their greetings and it is a far call from the way our grandparents shouted the same greeting when the trip was made by rail and before that not so many made the jaunt at all.

There is a Muleshoe fellow who got a good laugh over the cartoon of the youngster with school book in hand, gazing up at his mother busy in a kitchen where she is surrounded by electric toaster, iron, percolator, stove, mixer, waffle iron, dish washer, etc. The child inquires, "Mother, what's a match?" And isn't it the truth?

WHAT WILL BE NEXT?

In one of our southern cities there has been presented an ordinance which would prohibit the manufacture and sale of ice cream or other milk products containing intoxicating beverages. The city director of health wishes to protect the industry itself and also to protect the children of the city from acquiring a taste of alcoholic beverages through the "a of ice cream cones and sodas



In ice cream and milk products seems almost unbelievable. Being sold to children recalls the baleful influence and despised character, offering her poisoned apple as an enticement to Snow White. This is an instance when a part of a fairy story comes to life.

Last week the Journal urged Bailey county citizens to pay their poll taxes before the deadline date at the end of January. There was no particular reason at that time for folks being anxious to vote; but since then Gov. O'Daniel has turned loose his Transaction tax scheme for raising money by an additional tax route, and plenty of property owners, commercial buyers and otherwise interested citizens will now pay their poll taxes so they may have a voice in deciding that matter. It may turn out this will not be "an off year" in poll tax paying, as is generally the case between candidating and electing periods.

Muleshoe citizens are to be commended in their taking part in the President's birthday celebration with a banquet to be given Jan. 30. While there are plenty of people who don't give a continental damn when the President has a birthday or if he ever has another, yet they do have a great deal of humanitarian sympathy for the unfortunate victims of infantile paralysis, and will gladly contribute their money toward such alleviation.

The Sudan News last week reported its Chamber of Commerce, during the past year, had met all its current expenses, paid off \$250 old accounts and closed the year with \$300 in the treasury. It might be advisable for Muleshoe to get Joe Salem, its past president, and Herb Teal, its secretary to journey hither and tell us just how they did it.

Since Japan is distilling alcohol from sweet potatoes, it looks like the Portales, N. M., and the Blackwater valley area surrounding Muleshoe may come into its own if it will get into the sweet potato alcohol production business and providing Roosevelt don't ban its exportation as being war munitions.

Gov. O'Daniel has been given a picture of former Gov. Steven Hogg, and a goat (sex unknown). Evidently the donor is allowing considerable latitude for the new, untried official. He may turn out to be a staunch statesman as was his venerable example, or the Legislature may make him a goat.

Plenty of Texans around Muleshoe, who voted for Gov. O'Daniel because of his pleasant radio crooning and back-slapping ways are now deeply concerned because of his pocketbook-tapping suggested to the Legislature.

Jaunty Journalettes

Most Muleshoe girls can be very sweet when they want.

Sympathy is what one Muleshoe woman often offers another woman in exchange for a little bit of gossip.

Economy is a thing that makes \$3.98 sound to the average Muleshoe woman a whole lot cheaper than \$4.00.

If you think a 13 year old mind is too childish for you, try working the 7th grade problems of a Muleshoe lad.

Today's Muleshoe youth doesn't differ very much from yesterday's child, except that yesterday they only asked for a nickel.

One nice thing

just purchased a nice new hat. He replied: "Yes my dear; but if she was as attractive as you are she wouldn't have to depend so much on millinery."

DISTRICT CRUSADE MEETING HERE

Thursday evening of last week the District Crusade Meeting was held at the Methodist church in Muleshoe. The meeting was well attended and the program was most interesting.

SNAP SHOTS

Plenty of men looking for an ideal draw a misdeal.

One sign of age is when you have a yen to smoke just as the hero clutches the heroine in his arms.

After a recent scandal it seems as if a good many families are now finding their way into the daily papers instead of remaining in the closet.

Sometimes we hear folks wondering just why it is that middle age, a period in life, seems to last longer than youth. Do you know?

A gentleman farmer is one who doesn't expect to make a profit. A farmer who expects to make a profit is a word we avoid in printing.

They may wear skirts long enough to cover up the knock-knees and h-legs; but the more we look around we figure they will not get them to do much good for the pigeon-toed girl.

We've observed frequently that it doesn't make any difference how good a meal may be cooked when one goes visiting, if you don't understand how to use all the implements put down by your plate, you can't really enjoy it.

Snapping turtle ferocious. That snapping turtle snaps so hard that it sometimes loses its balance.

YOU'LL SING TOO WHEN YOU USE MENNEN BRUSHLESS IT'S A CREAM NOT A GREASE

NO GREASE - NO MESS - NO RAZOR CLOG
 Wilts the whiskers—Soothes the skin

NAGGING BACKACHE

Modern life with its hurry and worry, irregular habits, improper eating and drinking, exposure, contagion, and loss of strength and energy, effects are disturbing to the kidneys and sometimes people suffer without knowing that disturbed kidney action may cause the trouble.

After colds, fever and similar ills there is an increase of body impurities the kidneys must filter from the blood. If the kidneys are overworked and fail to remove excess acid and other harmful waste, there is poisoning of the whole system.

DOAN'S PILLS

Make Every Farm a Factory Every Day of the Year

WE LIKE VISITORS

We like them not only from a social standpoint but from a sound business standpoint as well. We have found that a personal visit by a customer frequently enables us to serve him better, more completely, and more satisfactorily.

Have you a financial problem on your mind? Pay us a visit this week and see if we can't help!

Deputy Tax Collector M. G. Bass will soon start on his annual peregrination of tax assessing, and he says while it may make some folks see red and feel blue, yet everybody will have to sign in black and eventually pay off to again feel white.

A colored woman walked into Judge Miller's office a few days ago and said "Is you the Reverable Judge?" Smiling rather blankly the Judge replied, "I'm the Probate Judge, if that's what you mean." "Yas, dat's it," she said. "You see my old man died detested and left several little infidels and Ie wants to be made their executioner."

That J. W. McDermott is not only an economist but also a skilled was demonstrated a few when his wife was telling neighbor woman who b-

Muleshoe State Bank
 MEMBER FEDERAL DEPOSIT INSURANCE COF
 MULESHOE, TEXAS

LOCALS

- Mr. and Mrs. Odis Snow are parents of an eight pound girl, born Monday.
- Mr. and Mrs. Edd Milligan of Amarillo, attended to business and visited in Muleshoe Friday of last week.
- S. M. Bassell and George D. Craft of Plainview, were in Muleshoe on business Friday of last week.
- Mr. and Mrs. Gilbert Wollard visited with relatives in Portales, N. M., last Sunday.
- Dr. R. G. Panter of Dorchester, Nebraska, was here last week looking after property interests.
- Mr. and Mrs. G. O. Jennings of Lubbock, attended to business and visited in Muleshoe Saturday of last week.
- Edd Hall of Plainview, attended to

business and visited various acquaintances at the court house in Muleshoe, Monday morning.

- Hon. George Berry, assistant state attorney from Austin, was here last Monday on legal business.
- Roland Bigham made a business trip to Lubbock Friday afternoon of last week.
- Born to Mr. and Mrs. Dewey Mann of Muleshoe a daughter, Thursday evening of last week.
- D. C. Kloss of Olton, was here last week interested in buying a chunk of virgin Bailey county soil.
- FOR SALE: 10,000 bundles good cane. See Henry Randolph, 2 mi. N. Muleshoe.
- Ross McDonald of Altus, Okla., was here last week looking after land interests.
- Mr. and Mrs. Fred Whitson of Silvertown, attended to business and look-

ed after their land interests in the southern part of Bailey county, Friday of last week.

- Mrs. Dora McCarty and son, Leon, of Lubbock, were here last Sunday visiting friends.
- Mr. and Mrs. S. R. Little visited friends in the Fairview community Sunday.
- Mrs. L. W. Jordan of Littlefield, visited in Muleshoe Sunday with her husband and friends.
- J. E. Aldridge of Amarillo, was in Muleshoe the latter part of last week attending to business.
- Mr. and Mrs. Russell Craft, teachers in the Baileyboro school in south Bailey county, were in Muleshoe Saturday of last week on business.
- Attorney Cecil H. Tate attended to business and visited various acquaintances in Lubbock Friday afternoon of last week.
- WANTED: A man to take Rawleigh route in Bailey and Cochran counties; have to retire on account of health.—A. H. Howell, Bula. 52-21p
- George Shadd, former resident and business man of Muleshoe but now in the Dry Goods business at Spur was a visitor here Sunday afternoon.
- Mrs. A. C. Hayes of Clovis, N. M., visited in Muleshoe Friday afternoon of last week with her sister, Miss Helen Jones
- The total number of bales ginned in Bailey county to Jan. 16 was 14,700, there being 37,410 ginned to the same date last year.
- Mrs. C. D. Gupton, son and daughter, Mrs. Beulah Carles and Mrs. Beulah Motherall were Clovis, N. M., visitors Friday afternoon of last week.
- Irvin St. Clair, Bill Stell of Brownfield and James St. Clair of Morton, left Saturday evening of last week for Dallas to attend to business.
- Andy Hicks registered a new 1939 4-door Chevrolet sedan purchased from the Valley Motor Co., the latter part of last week.
- Judge M. G. Miller, D. Warner, H. E. Schuster and Johnnie Williams left Saturday of last week for Austin to attend to county business
- T. L. Kent has registered a 1939 Chevrolet sedan, purchased of the Valley Motor Co., the latter part of last week.
- SPECIAL: Star Telegram for 10 months, Daily and Sunday \$2.20, with Muleshoe Journal 1 year, \$6.70. Daily without Sunday, 10 months, \$5.20, with Muleshoe Journal, 1 year, \$5.70.
- Miss Lucy Robison, formerly of Muleshoe but now residing at Littlefield, spent the weekend here visiting her brother, Mr. and Mrs. Bill Robison, and other relatives and friends.
- Judge M. G. Miller and other members of the Bailey County Commissioners court made a business trip to Lubbock last week regarding the relief situation in this county.
- FOR SALE: Two farms, one well improved. One 141 acres at \$20 per acre; one 148 acres at \$27.50 per acre, 7 mi. west of Sudan. J. T. Gean, Star Mt. 1, Sudan. 52-21p
- Finley White, new county agent for Bailey county, succeeding W. C. Taylor, moved his family to Muleshoe, the latter part of last week. They are residing at one of Dr. A. E. Lewis' apartments
- Mid-term examinations were completed in the Muleshoe schools the latter part of last week and schedules of subjects for pupils have been reconstructed to begin the second semester of work. New half credit subjects have been added in the high school.
- Misses Sibyl Mae and Jaunita Coker, students at West Texas State college, Canyon, spent the weekend in Muleshoe visiting their sister, Miss Frances Coker and their parents, Mr. and Mrs. A. W. Coker. They returned to Canyon Sunday evening to resume their studies
- The next regular meeting of the Muleshoe Parent-Teachers association will be held at the high school auditorium, Monday night, February 6. An interesting program is being arranged and all parents, teachers and interested persons are cordially invited to attend.
- Rev and Mrs. F. B. Hamilton, Mrs. Ray Griffiths, Miss Dorris Hamilton, Miss Oneta Fern Hollis and Mrs. W. B. Harlan returned to Muleshoe Saturday afternoon of last week from Dallas where they spent a few days attending a District Sunday school Workers Convention.
- Mr. and Mrs. J. R. Moore, Mr. and Mrs. Seaborn Moore and J. R. Moore, Jr., returned the latter part of last week from Albuquerque, N. M., where they spent several days with their son and brother, respectively, who has been seriously ill in a hospital there.
- Mr. and Mrs. A. L. Davis returned home Sunday from Wichita Falls where they visited for a few days with her mother and sister. They were accompanied on their return by Mrs. Sallie Harden who had been visiting in Electra with her sister, Mrs. Tollie Wilburn.
- V. E. "Bunny" Garland of Muleshoe was rushed to a Lubbock hospital Sunday where he underwent a major operation. His wife and little daughter

Emergency Crop And Feed Loans Now Being Taken

Applications for emergency crop and feed loans for 1939 are now being received at Muleshoe, by L. S. Keen, field supervisor of the Emergency Crop and Feed Loan Section, Farm Credit administration, Wednesday of each week.

The loans will be made, as in the past, only to farmers whose cash requirements are small and who can not obtain credit from any other source. The money loaned will be limited to the farmer's immediate and actual cash needs for growing his 1939 crops or for the purchase of feed for livestock.

Farmers who can obtain the funds they need from an individual, production credit association, bank, or other concern are not eligible for crop and feed loans from the Emergency Crop and Feed Loan section of the Farm Credit administration. The loans will not be made to standard rehabilitation clients whose current needs are provided for by the Farm Security administration, formerly known as the Resettlement administration.

As in the past, farmers who obtain emergency crop and feed loans will give as security a first lien on the crop financed or the livestock to be fed if the money borrowed is to be used to produce or purchase feed for livestock.

Where loans are made to tenants, the landlords, or others having an interest in the crops financed or the livestock to be fed, are required to waive their claims in favor of a lien to the Governor of the Farm Credit Administration until the loan is repaid.

are staying with him and his condition is considered very serious according to report. He has been employed for the past several months at a local service station. Will Harper took him to the hospital.

● Among those from Muleshoe who attended the District Missionary conference at Earth, was in Muleshoe Tuesday guest of Rev. Jim Sharp and attended the morning revival service at the Palace theatre. He also filled the pulpit at the evening hour at the Methodist church.

● Mr. and Mrs. Jack Price are the proud parents of a six pound son, named "Booby Cleat," born Thursday of last week at Clovis, N. M. She and the new son are now at the home of her parents, Mr. and Mrs. R. G. Spence in Muleshoe.

● You can secure the AMERICAN MAGAZINE, COLLIER'S WEEKLY, and the WOMAN'S HOME COMPANION as well as many other publications with our newspaper. See our Great Money Saving Magazine offers. Here is your opportunity to get really great value at small cost.

● Among those from Muleshoe who attended the basketball tournament at Sudan last weekend were: Mr. and Mrs. Ferrel Little, Mr. and Mrs. Clarence Goins, Mr. and Mrs. Claudie Gallman, Mrs. Lela Barron, O'Neil Rockey, Miss Joe V. Goins, Miss Lela Mae Barron, Walter Moeller, Bert Redfrow, S. L. Rollins, Miss Bessie Lee Rollins, Miss Irene Askew, Pete and Red Harris, Alwyn Chitwood, Clayton Hill, "Pinky" Barbour, J. B. Sharp, Betty Joe Jordan, Geraldine Taylor, and Carter Taylor.

● Alvin Farrell, Mrs. C. R. Farrell and daughters Jaunita and Gayetta made a business trip to Pampa Saturday of last week. They returned via Panhandle to visit Rev. and Mrs. S. S. Watkins, he being a former pastor of the Methodist church in Muleshoe. He had been seriously ill for several days in an Amarillo hospital but was able to be moved to his home at Panhandle Saturday morning where he is pastor of the Methodist church. He had suffered a slight stroke of paralysis and was alling from other complications; but is now on the road to recovery according to report.

● James Knight Hicks, son of Rev. and Mrs. W. B. Hicks who formerly resided in Muleshoe a few years ago where he was pastor of the Methodist church, but now living at Balls, is still in a sanitarium at Wichita Falls where he was taken for treatment following a car accident which occurred about a month ago. The boy was attending Texas Tech college at Lubbock and was enroute to Seagraves to see his sister when he was injured. Several bones were broken and he was badly mangled and crushed. His condition is still considered critical, according to information received here by friends.

● Mr. and Mrs. A. L. Davis returned home Sunday from Wichita Falls where they visited for a few days with her mother and sister. They were accompanied on their return by Mrs. Sallie Harden who had been visiting in Electra with her sister, Mrs. Tollie Wilburn.

● V. E. "Bunny" Garland of Muleshoe was rushed to a Lubbock hospital Sunday where he underwent a major operation. His wife and little daughter

Joyland Jottings

Miss Hazel Simmons of Sudan, spent the weekend with her parents, Mr. and Mrs. A. Simmons.

Mr. and Mrs. J. D. Chester visited their son at Withlarrar, Sunday.

Mrs. L. L. Daniell and Regna Daniell of Lubbock visited Acie Daniell and family Monday and Tuesday.

Jack Bates has returned home from a Lubbock hospital where he was operated on for appendicitis.

Mrs. Hazel Besley and daughters of Wichita Falls, spent the weekend with Mrs. Claude Gage.

Horace Blanchard of Sudan, visited Paul Simmons last weekend.

Luther Hawk and family have moved back in our community.

H. D. Club Meeting

The Joyland home demonstration club met with Mrs. Albert Simmons Jan. 20, the house being called to order by the president.

Since we have lost our home demonstration agent it was decided to reorganize and rename our club.

Mrs. Dorman Chester was elected president, Mrs. Acie Daniell, secy., and Mrs. Claude Gage, reporter. We named our club, "The Willing Workers."

Those joining were Mrs. J. D. Chester, Beatrice Ansley, J. Nettles, Inez Bellar, Albert Simmons, Dorman Chester, Acie Daniell and Claude Gage.

It was decided each member should pay 30 cents to the club on their birthdays, also to have a contest, the losing side to entertain the winners, we named the sides, "Moon," and "Stars."

Being present or members, 35 and we urge all come and join us make it a better than ever. We quitted a q and intend to quilt time if she wants. The club adjourns. Mrs. Inez Bellar Feb please be present a member or visitor.—R

CONGRESSIONAL COPY IS AVAILAP

Through the co-man/George Mal Journal it is re bound copy of rectory for this th

The volume con dresses of all n, the various national administrations together w personnel, and a great w information.

This book will be avail citizen of the county desira formation as it contains, a found indispensable in peru subjects. When in need, of this office and the courtes, will be gladly given.

● FOUND: Sacking at hammermill feed grinder. C have same by identifying an for this ad.—Journal office

● FOR SALE: 6-weeks old Pigs, exceptionally good ones. MITCHELL.

HATCHERY IS NOW

OUR BIG INCUBATOR IS SET FOR THE SEASON'S

PLACE YOUR ORDERS EARLY FOR BABY CHICKS OF ALL POPULAR BREEDS AND FLOOD-TESTED FLOCKS

MULESHOE HATCHERY

TYE YOUNG, Prop. MULESHOE

PLENTY OF MONEY TO LOAN

at PER INT

ALSO, FHA LOANS

I have 16 10-acre Tracts Ask Me About them!

R. L. BROWN

"The Land Man"

MULESHOE, TEXAS

McCORMICK-DEERING TRACTOR SERVICE!!

I've just had my FARMALL overhauled, Bill, and it's workin' like a top!

YOUR tractor, too, will work like a top after we've serviced it. We've got the men, the tools, the methods, and the WILLINGNESS to do good work. Estimates and recommendations given without charge. Call, write or phone—or bring your tractor in.

If you do your own repairing, remember we carry a large stock of Genuine IHC Repairs for your convenience.

Our mechanics are well trained and experienced in servicing and repairing all McCormick-Deering Tractors and Engines. Having attended all Service Schools sponsored by the Harvester company and directed by trained service men, they obtain direct the required information first-hand. We specialize in the servicing of McCormick-Deering Tractors.

OUR WORK IS GUARANTEED

—And we meet all competitive prices labor and parts. Give us a try range today for us to come out tractor!

E. R. HART CO

INSIST ON GENUINE Muleshoe,

9c SALE 9c

—BEGINS—

SATURDAY

Morning, Jan. 28; ends a week from Saturday night. It will be a regular carnival of high values at low cost you can't afford to miss!

BLUE Enamelware, seamless steel base, various items, each only .09

SMART Glassware, 8-inch Berry Bowl, other dishes, each .09

MOP Holder, cadmium plated head, 4-ply yarn, 48-in., handle .09

BATHROOM Fixtures, Tumbler, Tooth Brush, or Soap Holder, .09

Solid Color Kitchen Ware

Here is an opportunity to brighten up your kitchen ware. Jug, custard Cups and Bowls of earthenware, green or yellow; the Jardine is semi-porcelain in turquoise, yellow or white. Small pieces 2 for 9c; larger ones each .09

FELT Base Mats, 18x36-in. an exceptional bargain .09

SHOE Polish, brown or black. THINK OF IT! 3 cans for .09

RUBBER Soles, Men's sizes. Buy several now! .09

OIL CLOTH, 46-in wide, variety of patterns, 1/2 yard for .09

Turkish Towels, 17x32, famous Cannon 9c

Novelty Checks, numerous colors, each .09

Women's Rayon Panties 9c

Attractive Novelty waives in tailored styles, each .09

RUBBER APRONS, 22x19 inches, ruffled edges, choice of colors .09

CLOTHES Pins, strong 7-coil spring type, 24 for .09

NUMEROUS OTHER ITEMS WE CAN'T LIST

WATCH FOR OUR BIG SALE CIRCULAR

St. Clair Variety Store

Muleshoe, Texas

You can't kill a lion with a B-B Gun



Wrong Size Lamp Bulbs Are MISFITS Too!

If you don't mind eyestrain, you can "see to read" with one lone 25-watt lamp... and save on your bill too! But that's foolish as any one can reason... because for the price of one pair of glasses, you can buy 125 100-watt bulbs.

So, for real eye comfort, it pays to use the right size bulb. And that means: Be sure you have at least a total wattage of 100 watts for your reading lamp.

For your eye-protection, we offer a carton of six 100-watt lamps, or any standard size smaller, for only 95c. Ask about our special assortment of lamps for 95c. And if you so desire, don't forget to tell us to put it on your next month's service bill.

Texas-New Mexico Utilities Company

DON'T RELY ON 4-LEAF CLOVERS



OUR WANT ADS ARE LUCKY TOO



FILL UP WITH Phillips '66'

—AT—
PHILLIPS SERVICE STATION
On Main Street

HERSTINE BELLER, Prop.
Muleshoe, Texas

... no
... cold motors
... do mean faster
... use Phillips 66 Poly
... the high test champion,
... nothing extra, since Phil-
... the WORLD'S LARG-
... PRODUCER of natural
... est gasoline.

General News Over Texas And Adjoining States For The Week

Two thousand trees and shrubs of 30 varieties will be planted on the Tech college campus, Arbor day, Feb. 22. There were 12,000 planted last year.

Gov. O'Daniel has suggested Texas' 300 highway patrolmen might be incorporated in the Texas Ranger organization.

Following a campaign under direction of Brownwood Chamber of Commerce, Brown county will plant 10,000 peach trees within the coming month.

The \$817,000 State hospital for insane authorized by the last Legislature to be erected at Big Spring is now practically completed and is awaiting a financial appropriation for furnishings.

Harry Knox Jr., Brownwood, first lieutenant in the Service Co., 132nd Infantry, Texas National Guard, has been named Adjutant General by Gov. O'Daniel, succeeding Carl Nesbit.

A bill allowing Tech college, Lubbock to erect new dormitories and other buildings by pledging the revenues from such buildings has been introduced in the Legislature by Senator G. H. Nelson, this district.

While industrial employment in Texas increased 3.3 per cent in December over November, payrolls increased only 2.1 per cent. Compared with Dec. of 1937 employment decreased 4.2 per cent while payrolls were down 3.4.

U. S. Senator Tom Connally, Texas has asked Congress to provide \$9,000,000 for a giant auditorium in Washington, that may be used once every four years for presidential inauguration purposes. The bill was occasioned by the soaking rain in which such ceremonies were held at Roosevelt's second inauguration.

WHY LET AN OLD CAR DRIVE YOU CRAZY?
BUY A GOOD USED CAR FROM THE ADS IN THIS NEWSPAPER

GRAIN!

BUY — SELL
STORAGE

SCALES GOVERNMENT
TESTED—ALL WEIGHTS
GUARANTEED CORRECT

Your Business
Is Solicited

S. E. CONE
GRAIN CO.
MULESHOE, TEXAS

FULL LINE OF
PHILLIPS

"66" PRODUCTS

Will be found at our
Station on State
Highway No. 7

"66" SERVICE
STATION
DAN WINN, Prop.
Muleshoe

WTCC Joins Protest Cotton Warehouse Difficulties

Estimating loss to West Texas farmers at approximately \$1,000,000, the West Texas Chamber of Commerce has become aligned with a protest of federal government efforts to collect 1937-38 cotton loan deficits.

Telegrams asserting the deficits resulted from erroneous grading of cotton have been dispatched to Reps. Clyde L. Garrett, Charles L. South and Marvin Jones and Sen. Tom Connally.

The movement was launched by W. C. Russell, Hamlin banker, who conferred last week with D. A. Bandeen, WTCC manager.

Bandeen said efforts also were being made to enlist the Texas Cotton association and the Texas Agricultural association in the protest. Burriss C. Jackson of Hillsboro is president of the Cotton association, and Cliff Day of Plainview heads the state agricultural association.

Russell, who estimated the million-dollar loss, said more than 150,000,000 bales of cotton are in storage over West Texas and 62,000 are stored at Hamlin, largest inland cotton storage point in the world.

While it is not now definitely known, yet it is assumed by many interested people that this protest may also include the Jordan cotton office, which is estimated to have, or will cost Bailey county farmers about \$55,000.00.

What's Happening In Washington And Other Cities Of Importance

During 1938 there were 18,553 aliens deported from the U. S., according to the Immigration commissioner.

During the 17 months Japan has waged war in China they have made 3,548 air raids on 417 towns and cities in 20 provinces to Nov. 30. The Commission says there have been 35,175 Chinese killed and 44,650 wounded. Casualties in rural districts were not tabulated.

Representative G. C. Crider of Tennessee has introduced a bill in that legislature asking that alimony rights be extended to husbands in divorces where they are the innocent parties. He would also outlaw alienation of affection and breach of promise suits.

The Securities Commission, Washington, announced last Friday it had stopped the sale in Hawaii of a Japanese bond issue to raise funds for hostilities in China. About \$56,000 had been collected from subscribers; but will have to be returned, it said.

BETTER HOMEMAKERS CLUB IS ACTIVE BUNCH

The Better Homemakers club met with Mrs. M. A. Springstube Tuesday, January 16, "Better Homemakers" being the new name chosen for the club. The yearbooks were filled out and Mrs. James Gregory is in charge of the program for next meeting.

Committees were appointed: Finance Mrs. W. G. Kennedy, Mrs. Jewell Pruitt, Miss Bessie Vinson; Exhibit, Mrs. Jim Cook, Mrs. M. A. Springstube, and Miss Elzada McMahan; Recreation, Mrs. James Gregory, Miss Ada Hogan, Mrs. Charles Baker; Expansion, Mrs. T. A. McLaren, Mrs. J. J. Gross, Mrs. Jeff White; Educational, Mrs. Jeff White, Eunice Humphrey, Mrs. Addie Hallford, Mrs. Russell Bearden.

An award will be given every three months to the women bringing the most people to club during this time.

Ten minutes of recreation was enjoyed by all. Mrs. L. R. Hogan received a recipe file for scoring the most points in the game.

A handkerchief shower was given for Mrs. Amos Williams who is leaving soon.

The next meeting will be with Mrs. Jim Cook, February 7. Everyone is invited. Program for the day will be "Cereals With Style."

Members present were Misses Ada Hogan, Bessie Vinson, Eunice Humphrey, Elzada McMahan, Mesdames Amos Williams, L. R. Hogan, J. J. Gross, Jeff White, James Gregory, Addie Hallford, T. A. McLaren, Carrie Wilhite, Charles Baker and the hostess, Mrs. M. A. Springstube. Mrs. Oscar Wilhite was a visitor.—Reporter.

REV. HAMILTON PREACHES AT AMHERST CONFERENCE

Rev. F. B. Hamilton and daughter Miss Dorris Hamilton, attended the West Plains Workers conference held at the Amherst Baptist church Tuesday. It was an all day meeting and an interesting program was rendered.

Rev. Hamilton delivering a sermon at the morning session. The West Plains Workers conference is composed of Bailey, Lamb and portions of neighboring counties, and 24 churches were represented at this meeting.

Rev. L. S. Jenkins, former pastor of the Baptist church in Muleshoe but now pastor of the Amherst Baptist church had charge of the program.

Describes 'Finest Waterfalls' Edward C. Rashleigh's "Waterfalls of the World" says: "Among the finest waterfalls in all this part of Europe (Austrian Alps), are the falls on the Krimmler Ache, near the village of Krimml. This stream, which is the discharge of three Krimml glaciers, descends in three leaps to a total depth of about 1,400 feet, the highest fall, which is divided into two separate plunges, being about 400 feet."

Doctor Cancels Debts; Future Burn Treatment Will Be Cash

A Gatesville doctor whose name has not been made public to the Press last week canceled out several thousand dollars worth of debts due him and which had been accumulating over several years past. That he was hopeless of ever getting a penny from these accounts was apparently evident in the jocular vein he assumed in notifying his clients, though he insisted that treatment of burns in the hereafter would be "cash in advance." Here is what he said:

"To those of you who owe me and are unable to pay, I pray that when you die the good Lord will be as lenient with you as I have been," a Gatesville physician publicly declared in an open letter, in which he indicated he never expected to get a "cockeyed cent." from the accounts and notes he had in connection with his practice as a doctor, and marked all of these "paid in full" as a recent holiday gift to his patients.

"You can meet me, look me square in the face and say, Doc, old boy, I don't owe you a red cent." Try it. It will make both of us feel better.

"To those of you who could pay and have not, I fear when we die we will meet in another world, where I am sure I'll be forced to practice again. I will try to get a nice red-hot underground office, centrally located near the famous 'half-acre' and convenient to the main furnace. Office hours from 9 p. m. to 5 a. m. Hunt me up the next night after you arrive. You will need treatment. I will specialize in burns. Terms—Cash in advance."

Government Land In Counties May Be Up For Taxes

The proposal made in Washington last week to tax all federally owned property in Texas, as well as other states, is favorably accepted in Bailey county, according to official comment, because this county is losing considerable revenue occasioned by the National Bird refuge located in its central portion.

OPPORTUNITY STILL OPEN

Notwithstanding the rapid sale of our drastically reduced priced Used Cars, we will continue the offer for only a few days more. We had a bunch of these "slaughter priced" cars at the opening of this sale, and still have a few extra good bargains left.

MAKE YOUR SELECTION NOW

We can't guarantee these prices much longer—and there is no telling when they can possibly be duplicated. **ACT NOW!**

PROVED BY THE PAST—IMPROVED FOR THE FUTURE

The Federal government owns 725,266 acres of land in Texas which, if equitably taxed would produce a revenue of \$1,619,000 per annum. Of this total there are 5,519 acres contained in the Bird refuge located in this county, such acreage having a tax value of \$22,464, and on which it is estimated there is being lost approximately \$300 in state, county and school taxes yearly.

So great is the school tax loss, that in the Bailey county school district, where the refuge is located it was found necessary last year to increase the tax rate 25 per cent to compensate for the loss of that once revenue producing land. It has been frequently stated that while Bailey county is proud to have such a refuge located within her confines, yet it has been paid for quite dearly and with only slight publicity returns in compensation.

A special board has been appointed to make a survey of all government properties held in various states, and probably upon their report some future action will be based.

TEXAS COUNTY TAX RATES HAVE WIDE VARIATION

The county tax rate in Bailey county for the coming year is 95 cents of the \$100 valuation, and while there are 15 other counties in Texas which have the same tax rate, there is a wide divergence in rates among the 254 counties of this state, according to the January issue of the Texas Tax Journal, published at Austin.

Trinity county, with a county tax rate of \$1.80 is the highest, while Kennedy county with 35 cents has the lowest county rate in the state. There are 61 counties having a higher rate than has Bailey, and 175 counties whose current rate is lower.

Cultivation of Rice in India The cultivation of rice in India was subsequent to that of China. In the Twenty-eighth century B. C., Emperor Shen Nung had the exclusive right of planting one special kind of rice, and four other kinds were planted by princes of his family.

INSURANCE OF ALL KINDS

PROMPT ATTENTION GIVEN TO ALL YOUR INSURANCE NEEDS

BAILEY COUNTY INSURANCE AGENCY

PAT R. BOBO, MANAGER MULESHOE, TEXAS

NOTICE

To Taxpayers!

●●●

Your 1938 TAXES are now due and must be paid before the first day of February, 1939, to avoid penalty.

Both men and women are required to pay their poll tax. Unpaid poll taxes are a lien upon any real or personal property you may own or come into possession of.

Those who are 60 years of age or more are not required to have an exemption to vote; those who have moved into the county since January 1, 1938, are required to have an exemption; those who have become 21 years of age since January 1, 1938, or will become of age during 1939 are required to secure an exemption certificate during January, 1939, before they may vote in any elections during the year. No charge is made for these exemptions.

1939 automobile license fees cannot be paid before February 1st, but must be paid between February 1st and April 1st, 1939.

●●●

W. E. RENFROW

Sheriff, Tax Assessor and Collector, Bailey County

READ THESE

WEEKLY LAY SERMON THE CHAIN OF INFLUENCES

By JESS MITCHELL

While in high school or college many of us studied physics and learned that the lever, the pulley, the inclined plane, the axle, the screw and the wheel were all sources of force and power.

Scientists and philosophers tell us there is probably a mental and spiritual law for every physical law; but while we are constantly making new discoveries in these more mystical realms, we have not yet discovered nearly so many of these mental and spiritual laws as we have of the physical ones.

I long ago came to learn that the soul is far more important than the body. An all-important eternity beats vivaciously and frequently viciously upon the two sides of a cradle; but the grave is simply a little only one step across in their endless journey.

So there are today multiplied thousands of humans, not all of them now infants who are being swept down the

great channels of worldly influences toward a mighty destiny, the most of which is unknown and little realized. Each and every one of them need to be surrounded by mighty chains of influences which will guide their life bargues safely in the proper direction.

With the world all a-jangle today, economic conditions all a-ry, spiritual entities apparently becoming atrophied, the ties of social life becoming more or less disrupted, national conjungality becoming paralysed, it has become all-important that the proper chains of influence be forged for holding and directing humanity in right channels of thought and life for their personal good and world-wide welfare.

Not only do these chains of good influence need to be wrapped around the young; but these cordons also need to be thrown about the middle-aged and the octogenarians as well. All over this great land of ours are prisons, some over-flowing with people who have had little or no restraining influences for their moral betterment.

Racial influence, tribal tendencies

REA WILL SOON GIVE TO COUNTRYMEN SOME OF THE CITY CONVENIENCES AT LESS COST THAN YEARS AGO

No one would think anything of it if his next door neighbor borrowed a cigarette; but he would probably regard the act as presumptuous if he were asked permission to run a cord to one of his electric light outlets so the neighbor could operate his radio for the evening.

This is by way of introduction to the fact that numerous country families living in Bailey and parts of adjoining counties will, in the near future, not only be able to enjoy radio programs, but numerous other benefits.

Incidentally, it is worthy of note that electric power is the only item in the government's standard cost-of-living index which costs less today than it did before the war, and with the completion of this rural electric system, hundreds of farmer homes in this area will be able to use such power for lighting, cooking, turning, cream separators and corn grinders, pumping water, operating office percolators, bread toasters, vacuum cleaners and a number of other purposes—and at a much less cost than they could have done so a few years ago.

And here there is an excellent illustration of the hyper-city of the politically-inspired unbecome which underlies the "high-cost-of-electricity" talk. The

all have their potent effect upon our individual actions. Environment is a mighty factor in character building. Hereditary gifts our lives with tenacious fingers of steel. Sometimes there appear to be actual reversions of the species and here and there individuals have a double or quadruple task of overcoming pre-natal tendencies that may date back to their great-grandparents and calls for a desperate fight to overcome them.

When the world's first chain bridge was thrown across the River Seine many years ago it was considered a monumental triumph, and indeed it was; but when it was thrown open for public traffic, it gave way in the center precipitating the multitude into the waters below. The center bolt holding the two great spans together was later found to be faulty. All the rest of that great bridge showed perfection of construction; but this king-bolt was imperfect. So often the bridge of human character is strong enough to hold up the weight of mighty mountains of temptation; but if one bolt is faulty it means failure and destruction for the entire being.

Occasionally individuals discover some of the weak links in their character chains and are able to re-weild them, making the entire chain of life stronger. It's a good idea for each of us to seek better company than ourselves. If our tongues are tempted to violence, let us associate with those of speech purity. If we are stingy, the association with charitable natures is advisable; if morose, consort with the good-natured; if inclined to gossip, seek companionship of those who never speak ill of others; if despondent, seek those of happy nature; if ignorant, seek association of the wise; if intolerant, mingle with the opposite. We all know that evil is contagious; but we should realize that good also is infectious.

Folks should get up out of the lowlands of kindred associations for their mental and spiritual betterment, just as they go to the mountains for improvement of their physical health. There is a mental miasma and a spiritual character as the physical swamp-life of this world is disastrous to their earthly lives. For our parents we are not responsible, nor for the place of our birth. We are not responsible for our features, stature, race nor complexion; but we are responsible for the associates we choose and for the moral influences under which we place ourselves.

The master painters of old refused to look at daubs of painting, lest it damage their own taste and style. No musician would care to live in the midst of discord. No writer would care to peruse books void of rhetoric. No public speaker wants to consort with folks who speak in the ungrammatical vernacular. So, no man or woman who has a high sense of self-respect, who is possessed of high ideals and a desire to acquire the greatest perfection in life can afford to choose evil associates. Some one has said: "Sow a thought, reap an action; sow an action, reap a habit; sow a habit, reap a character; sow a character, reap a destiny." So it is that in forging the individual links of character the chain eventually becomes weak or strong.

government has spent untold hundreds of millions for unnecessary publicly owned, tax-free power plants which duplicate and gradually eliminate existing heavily-taxed, private plants, to the detriment of all taxpayers. Yet power is one of the smallest items in any family's budget. With very few exceptions, it is one of the smallest items in the cost of operating a business or a manufacturing concern.

It's time we awakened to the facts. Socialism will find hardly siding in the United States. They have built power into a national issue, with exaggeration and misrepresentation as their tools. And all that is needed to explode this fake issue is a calm examination of the truth.

Research Bureau Says Can't Spend Way Into Prosperity

Those who subscribe to the doctrine that a government can "spend its way into prosperity," are due for a rude awakening, as a study recently published by the National Bureau of Economic Research indicates.

According to this study, tremendous drops have taken place in the production of durable goods and in privately financed construction. Between 1919 and 1929, the money spent for these purposes averaged about \$19,000,000,000 annually. In recent years, the average has dropped to \$6,500,000,000.

In those years, government spending has been at record levels—levels so high that the bulk of disinterested economists freely forecast ruin for the country if they are long maintained. Yet, in spite of that, pump-priming by the federal government—which means money going into construction and durable goods industries—has averaged government spending is in itself a tremendous barrier to a resumption of private spending on any substantial scale.

No one argues that this so-called "emergency" spending by the government can now be terminated at once. But all the valid economic evidence at hand indicates that the salvation of the country depends on a program to gradually reduce this terrific spending—and to encourage, through sound tax policies, a resumption of private spending in the durable goods field.

Aggi Agent White Urges Planting Trees Early

"We don't usually think of it during winter; but now is the time to remember how much shade trees were needed here and there about the home last summer," said Finley White, Bailey county farm agent. "Also, it is time to think about some needed trees for windbreaks. Sand storms may not come to this section this spring; but there is always more or less wind in the spring time, and it's always more desirable to have some tree and shrubbery protection about the place, whether in town or country during the "windy months," he continued.

"Trees transplanted from nurseries now will have a chance to settle in the soil and be ready to grow by the time spring arrives," White pointed out. He also recommended that trees be pruned back heavily and properly shaped at the time of transplanting.

"If trees are planted where they are needed and with consideration for their size, if given some extra water other than natural rainfall and little personal care, they will soon fit nicely into the landscape picture. Unless used for windbreaks about a place, trees generally should not be planted in rows, but rather in groups," White said. "For the past few years the Lubbock Experiment station has been furnishing several varieties of trees and hedges adaptable to this section, and it is understood they will do so again this year," White concluded.

MRS. ROCKEY IS CLUB HOSTESS

Mrs. Nell Rockey was hostess to members of the Half Century club at their regular meeting at her home Thursday afternoon of last week. An enjoyable afternoon was spent in the usual routine manner, and exciting games of Chinese checkers were played. Among those attending were: Mesdames J. F. Wallace, T. L. Eason, Mary S. Davis, Cora Givens, Alex Paul and Mrs. Rockey. Members will meet at the home of Mrs. Alex Paul Thursday.

YONAKA—BURNETTE

Last Saturday afternoon Mrs. Jerry Burnette and Mr. Glen D. Yonaka were united in marriage at Parwell, County Judge Lee Thompson speaking the words which made the young couple happy in their legal union.

The bride is the daughter of Mr. and Mrs. Carl Evans, of Texico, N. M., the family formerly residing in Liberty and Progress communities of Bailey county, where Mrs. Yonaka is well known and highly esteemed.

The groom is also a Bailey county citizen, for several months past being connected with the Kennedy-Yonaka washeteria, and has many friends in the Muleshoe area. They will make their home here where Mr. Yonaka will continue his laundry business interests.

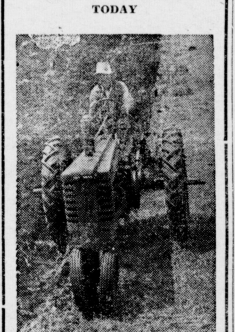
Size of Columbus' Ships

Of the ships in which Columbus discovered the Americas, the Santa Maria was the largest. The length on deck was 99 feet 3 inches, the tonnage 252; the Pinta had a length on deck of 82 feet 8 inches, the tonnage 161, while the Nina had a length on deck of 79 feet and tonnage 171. Tonnage figures are in terms of modern weight.

HELP STOMACH DIGEST FOOD

Without Laxatives—and You'll Eat Everything from Soup to Nuts. The stomach should digest two pounds of food daily. When you eat heavy, greasy, coarse or rich foods or when you are nervous, hurried or have indigestion, you may not get your full share of nourishment. Your food doesn't digest and you have gas, heartburn, bloating, pain, etc. Doctors may never take a laxative for the stomach but the expert stomach builder, Rub-My-Tim, relieves distress in no time and puts you back on your feet. Rub-My-Tim is so quick it is amazing and one size package proves it. Ask for Rub-My-Tim for indigestion.

DRIVE A NEW JOHN DEERE TRACTOR—THE NIFTIEST THING ON THE MARKET TODAY



Model A and B John Deere Tractors are meeting with popular demand because of their supremacy in mechanical efficiency, their modern styling and design and their easy, positive handling. They do more work and longer. Let us demonstrate their superior merits. Come in and see them!

W. H. PARSONS DEALER Muleshoe, Texas

Will Abstract (In Muleshoe)

Bailey county is to have abstract office to be located on building in Muleshoe, operated by James A. Gowdy Porter, and will be ready for about February 15. Mr. Gowdy is an attorney, resided for several years past in county seat of Lamb county, ter, comes here from Albu M., where he has been in business, and for several years ing to New Mexico was abstract office at Otto making index and records from official county Clerk's office a house.

Both men will move their here about the first of next mo. Gowdy occupying the building of I. W. Henry and formerly occup. W. C. Taylor, while Mr. Porter has yet secured a residence location.

666 relieves COLDS first day Headach and FEVER due to Colds in 30 minutes Try "Rub-My-Tim" a Woman's Liniment

QUICK RELIEF STOMACH DUE TO EXCESS AC Free Book Tells of Many Home Treatment that Mus or it Will Cost You N Over one million bottles of the W TREATMENT have been sold of Stomach and Duodenal Ulcers, Acid-Peps Digestion, Sour or U selts, Gas, Heartburn, St- etc., due to Excess Acid, Rub-My-Tim Ask for "Rub-My-Tim" it fully explains this marvelous a free. JAMISON'S DRUG S

Clean • Quick • Flexible • Dependable • HOT WATER REFRIGERATION COOKING • HEATING West Texas Gas Company

GRIFFITHS' ELEVATOR! DEALER IN GENERAL FEEDS AND VARIOUS GRAINS FERTILIZERS FOR ALL NEEDS Field and Garden Seeds in Season YOUR PATRONAGE APPRECIATED RAY GRIFFITHS ELEVATOR Muleshoe, Texas

MANSFIELD EXTRA MILEAGE Tires are 3 ways safer 1 CORD-LOCK SIDEWALL 2 DURO-MIX TREAD 3 100% SAFETY FACTOR BEAD These features insure the safety you need. We will gladly show these tires to you today. MORE MILEAGE, TOO! You'll Get More Than You Pay For in MANSFIELD TIRES! ARNOLD MORRIS AUTO CO. Muleshoe, Texas Telephone 111

THERE IS NO Transaction TAX CHARGED AT HENINGTON'S AND THERE NEVER HAS BEEN This so-called Transaction Tax is not something exactly new. For one time past there has been a growing practice among many business firms if a customer don't happen to pay his bill at the time of purchase, to add "interest charges" or "carrying charges" or some other hidden "extra" to the advertised price at the time such purchases were made. This store endeavors to engage in a "spot cash" business, though living occasional accommodation to responsible customers for short periods when needed; but in no case ever charging them or anyone else the courtesy. It Always Pays To Do Your Trading At This Grocery Store! HENINGTON GROCERY & MARKET MULESHOE, THE RED AND WHITE STORE TEXAS

BIG TRADES DAY AT MULESHOE Saturday, January 28 30 AWARDS 30 ABSOLUTELY FREE TO EVERYONE! Be sure to register your name with some business concern in Muleshoe. Ask for name tickets. Registrations close at 1:00 P. M. The awards will begin at three o'clock. Everyone for miles around is cordially invited to come, enjoy the day as guests of Muleshoe business concerns, and take advantage of the numerous fine offerings to be given FREE A BIG DAY ASSURED THOSE RECEIVING AWARDS MUST BE PRESENT WHEN THEIR NAMES ARE CALLED, ELSE THEY LOOSE THEIR GIFT. SEVERAL WHOSE NAMES WERE CALLED LAST SATURDAY WERE AND LOST AWARDS RANGING IN VALUE FROM \$5.00 to \$50.00 BETTER FIVE



TRUCK WEEK CELEBRATION

This is the Fifth Anniversary Celebration of National Truck Week—and a wonderful line Chevrolet is offering you...

If you are in the market for any type of Truck it will you to come in and let us show and demonstrate to you some of these new models.

VALLEY MOTOR COMPANY CHEVROLET SALES AND SERVICE

Muleshoe, Texas

DR. L. P. GIBBS PHYSICIAN and SURGEON Office in Danron's Drug Store

R. BOBO DENTIST OFFICE OVER WESTERN DRUG STORE MULESHOE, TEXAS

J. E. WILLIAMS OBITUARIAN and SURGEON Office 905, Res. 91, Muleshoe

V. STEED GENERAL DIRECTOR

DR. J. T. KRUGER DENTIST

Cecil H. Tate ATTORNEY-AT-LAW

Dr. A. E. Lewis DENTIST

Muleshoe Abstract Company

A. P. STONE, Prop. MULESHOE, TEXAS

Lubbock Sanitarium & Clinic Medical, Surgical and Diagnostic

J. H. Felton Business Mgr. RADIUM LABORATORY

Opportunity Knocks READ the ADS

JAMES A. GOWDY ATTORNEY-AT-LAW

Plainview Sanitarium & Clinic PLAINVIEW, TEXAS

STAFF E. O. NICHOLS, M. D. Surgery and Consultation

START THE ... NEW YEAR ...

PROPERLY Resolve— NOW TO USE ONLY PANHANDLE PRODUCTS DURING 1939

PALACE THEATRE Muleshoe, Texas

Thursday, January 26 Don Ameche and Arleen Wheelan in "GATEWAY"

Circleback News

Circleback P-T. A. The P-T. A. met in regular session Wednesday night, Jan. 18, at the school auditorium with a large crowd present.

Garner's Reminiscence The Garner's had a family reunion at V. E. Garner's Sunday, January 22

Progress News

Mr. and Mrs. Homer Mardis moved to Clovis, New Mexico, last week.

Mr. and Mrs. Oscar Whitte of Midway visited in the home of his mother, Mrs. F. K. Whitte last week.

Mr. and Mrs. Dave Stovall visited her brother at Circleback Sunday.

Rev. H. H. Copeland filled his regular appointment Sunday morning.

Charlie and Margaret Tutson left Saturday morning for Tucson, Ariz., to take their sister, Mrs. Ray Adair and three daughters to their new home.

West Camp News

Rev. H. H. Copeland filled his regular appointment Sunday morning.

Trumpet an Old Instrument One of the oldest of instruments, the trumpet was first used in the orchestra by Monteverdi.

THE WALLING WALL WHY WALL ABOUT BUSINESS? WHEN CONSISTENT ADVERTISING WILL REMOVE YOUR WORRIES

O'Daniel Recommends Transaction Tax While Roosevelt Wants To Tax All Salaries and Securities

Texas lawmakers assembled in legislative action at Austin last week were apparently greatly amazed when the recently inaugurated Governor O'Daniel precipitated what may turn out to be a bitter fight when he submitted his proposed "transactions" tax levy as a means of raising more money with which to pay old age pensions.

The constitutional amendment and the bill would pay pensions to persons in need but "need" would be defined as not having an income of \$30 a month.

The Bill O'Daniel offered defined the "transaction" as any dealing of every kind whatsoever between two or more persons.

Transactions involving charitable institutions. Salaries, wages and professional fees.

First sale of producer of all agricultural and live stock products.

Street car passenger fares up to ten cents and street sales of newspapers.

The tax would levy on manufacturer and jobber as well as on retail sales. It would tax such payments as those for house rent, purchase of newspaper advertising space and theatre admissions.

Estimating the tax would yield in good business years approximately \$45,000,000 annually. O'Daniel said he had chosen it especially because it presented a broad base of taxation.

Commenting on their reaction to the Governor's proposal, some of the lawmakers said: Senator Clint C. Small: "Well, we've got the issue."

Former Gov. Jim Ferguson said he was for it.

Representative Ross Hardin: "My honest opinion is if Gov O'Daniel had made the same speech (referring to his address in the legislature) in Waco the night he opened his campaign there, he would still be trying to sell flour."

PROGRESS SUNDAY SCHOOL IS GROWING NICELY

Progress Sunday school was well attended last Sunday. All officers and teachers were present and the roll was increased by 10 new members making 90 on roll. Classes had very good reports.

REGISTER WITH US FOR TRADES DAY! Your Lease On Life Depends—

May your lease on life be long And your days all happy be; May you always shun the wrong And the good in others see.

SPECIALS For Saturday Buying!

BEAVER'S GROCERY & MARKET Muleshoe, Texas

1939 CHEVROLET



The Public Has Compared All Prices AND AGAIN THE PUBLIC IS BUYING MORE CHEVROLETS THAN ANY OTHER CAR!

You can safely look to public opinion for a fair, honest and reliable verdict on car values. . . The public prefers Chevrolet for 1939 . . . and public preference is the public's proof that Chevrolet prices are lower . . . that Chevrolet quality is higher . . . that Chevrolet value is greater . . . that Chevrolet is the car for you.

"CHEVROLET'S THE CHOICE!" A General Motors Value

SEE YOUR LOCAL CHEVROLET DEALER VALLEY MOTOR COMPANY Chevrolet Sales and Service MULESHOE, TEXAS