

Historical Society 1
PO Box 885
Sonora TX 76950-0885
48435

The Devil's River News

Serving Sutton County Since 1890

Volume 127 • Issue 34

SONORA, TEXAS

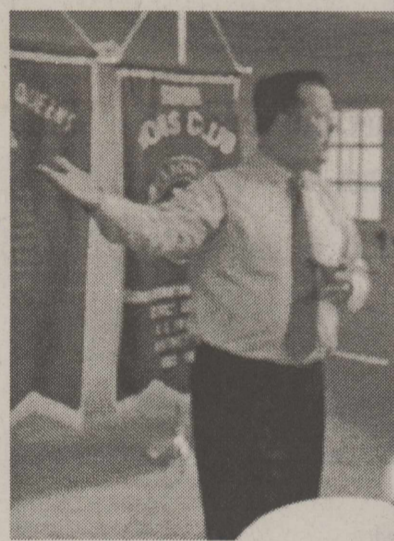
Thursday, August 20, 2015

Wellness
Ministry

Page 2

Study
Examines
Decline
Of Texas
Livestock

Page 3

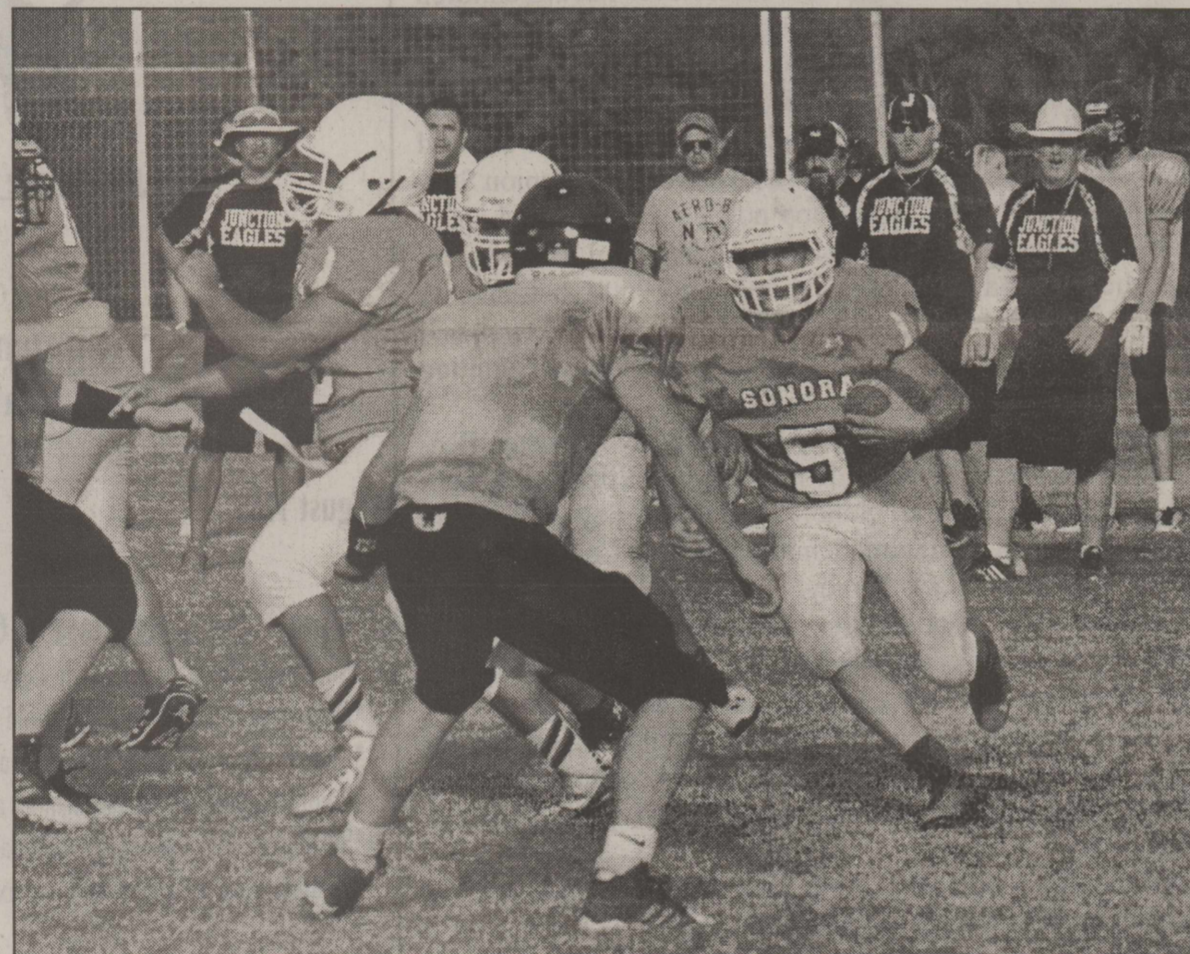


LIONS ROAR

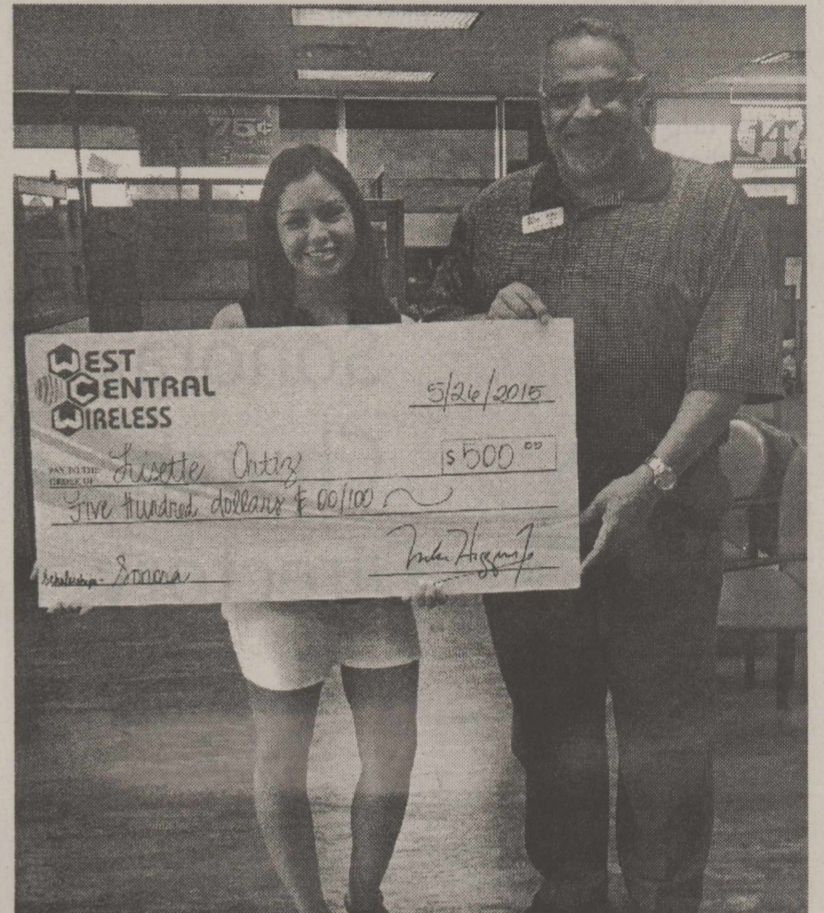
Page 4



The Varsity and the JV scrimmaged Junction and Eldorado on Friday, August 14th at Bronco Stadium. The next scrimmage is in Llano against the YellowJackets this Thursday starting at 6:30 pm. Photos by Ray Glasscock.



West Central Wireless Gives Scholarships To High School Students.



Lisette Ortiz from Sonora High School accepts a \$500 scholarship presented by Kebo Ligon from West Central Wireless.

The Mohair Council of America Announces its 2015 Annual Directors Meeting

The Mohair Council of America will hold its Summer Meeting on Wednesday, September 9, 2015 at the Sutton County Steakhouse, 1306 N Service Rd. Sonora TX. This will be a one day event. The Summer Meeting of the Mohair Producers Board will begin at 10:00 a.m. with the Mohair Council Directors/Membership meeting to follow at 10:30 a.m. There will be a noon break for lunch with the remainder of the meeting to follow lunch. Mohair Council members will hear about all the Council activities to date.

The membership meeting will also include discussion of many issues of concern to mohair producers. Reports will be given by related industry organizations.

All planning to attend are asked to RSVP to the Mohair Council office at 1-800-583-3161 or you may email Darlene Speck at darlene@mohairusa.com. We look forward to seeing you there. Information on this meeting and other events can be found on our website at www.mohairusa.com.

Back to School Safety for Drivers, Bicyclists and Pedestrians

By Jessica Stapper

The following article is provided by the Texas A&M AgriLife Extension Passenger Safety grant in College Station, TX provided by Bev Kellner Program Manager and TXDOT. It is being published in Sonora, TX to remind parents and children about being cautious in school zones with the new year school approaching.

Just when summer is really starting to heat up in Texas, it is almost time for children to go back to school. Soon motorists will be sharing the roads with school buses, pedestrians, bicycle riders, and lots of new teen drivers taking their first car to school. According to the National Safety Council, teen car crashes spike in September when they are driving to and from school. Drivers young and old need to be vigilant because child pedestrians can be very unpredictable. They're easily distracted and can often run into traffic or out from behind parked cars. Looking out for children rather than expecting

them to look out for us is our best defense as drivers.

Distracted driving is always dangerous, but it is especially dangerous in and around school zones. According to the Texas Department of Transportation, crashes in school zones are most commonly due to driver inattention, failure to control speed, and failure to yield the right-of-way at stop signs. As responsible drivers, we need to put down the phone and pay attention in school zones. In fact, it is illegal to use a cell phone in a school zone.

Whether your oldest is just starting kindergarten or taking that first trip to school in his or her own car, parents can play an important role in keeping their children safe. For young children, make sure they know the rules about school bus safety when it comes to boarding and getting off the bus. If you are transporting children to school, remember that children under 13 should always ride in the back seat in a car seat (including a boost-

er) or seat belt depending on whether they fit properly in the seat belt. Teen drivers and their parents should be aware of the Texas Graduated Driver License Law and the restrictions it puts in place, including no cell phone use at all and no more than one passenger under 21 in the vehicle unless the passenger is related to the driver. And, most importantly, always stress buckling up on every trip – even on those short trips to and from school! Jessica Stapper, Texas A&M AgriLife Extension Service agent in Sutton County, reminds drivers, bicyclists and pedestrians to follow these safety tips from the Texas Department of Transportation to prevent needless tragedies.

Tips for Driving in School Zones

Put away your cell phone. Cell phone use is banned in active school zones, and violators face fines from \$200 to \$500.

Always obey school zone speed limit signs. Remember, traffic fines usually double in

school zones.

Drop off and pick up your children in your school's designated areas, not the middle of the street.

Keep an eye on children gathered at bus stops.

Be alert for children who might dart across the street or between vehicles on their way to school.

Tips for Bicyclists

As a bicyclist, you should wear a helmet and obey all traffic laws, including the following:

Stop at red lights and stop signs.

Pay attention to lane markers.

Ride near the curb, traveling in the same direction as traffic.

Use a light on the front and a red reflector or red light on the back of your bike while riding at night.

Tips for Pedestrians

When there is a sidewalk, use it! Most pedestrians involved in traffic crashes due to walking in the roadway.

Remember, texting or listen-

ing to mobile devices can distract you from your surroundings.

Always cross at intersections and pay attention to the control signal. Look left, then right, then left again before proceeding and try to make eye contact with drivers before you cross the street. If a crossing guard is available, wait for the guard to lead you across.

Look for traffic when stepping off a bus or from behind parked cars.

As a passenger, get in or out of a car on the curb side of the street.

Motorists can make a big difference by remembering to drive with extra caution when driving in and around school zones. Your slower speed and extra attention may very well save a life!

Visit <http://www.txdot.gov/driver/kids-teens/school.html> more information on back to school driving safety.



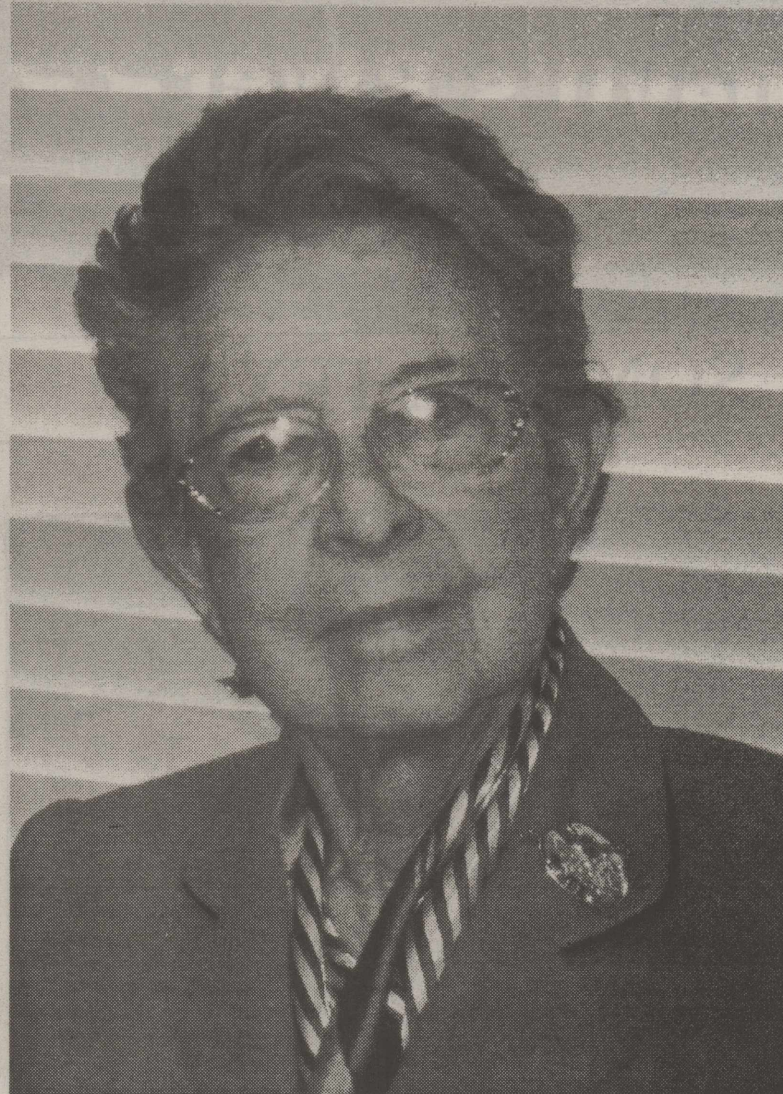
Wellness Ministry

Back to school! It's that time of year when parents are out full force in the stores or online buying clothes, shoes, lunchboxes, supplies and every other thing our kids could possibly need for a successful year. But it's important to remember that more than they need that perfect monogrammed shirt for the first day of school, they really need their bodies and brains prepared with lots of health-giving, brain-boosting, and focus stabilizing foods. Preparing healthy meals should be as much a part of the back-to-school regimen as picking out the perfect Pottery Barn kids backpack. What you put inside of your child has everything to do with how they focus, how they behave, and whether or not they catch every cold that rolls through the school. Sometimes we try harder to get a bow in our daughter's hair than we do to get her to eat a vegetable. But it's a new school year and we can make our kids prepared on the outside and on the inside. Set those young minds up for success and make real food part of your back-to-school regimen.

For anyone who eats and drinks without discerning the body eats and drinks judgment on him self. 1 Corinthians 11:29

Chelsea Blackbird is a Certified Nutritional Therapist. For more info contact chelsea@thechristiannutritionist.com or www.thechristiannutritionist.com

Obituaries



Elvie Davis Turney was born on September 7, 1919 in Del Rio, Texas to Florie and Emery Davis. She passed away peacefully in Eldorado August 13. Elvie was raised on a ranch in the rocky hills around Loma Alta. After graduating from Del Rio High School she attended the University of Texas and then an exclusive ladies school in the Washington DC area. After a whirlwind courtship of three months she married Jack Turney on October 24, 1938. Jack passed away January 3, 1984 after a little over 45 years of marriage. Elvie and Jack moved to Quemado valley during the drought of the 1950's. It was there that she was a Cub Scout leader before ever having children of her own. Later she served on the Eagle Pass Independent School Board.

Besides her love of the Lord & her family, Elvie had many interests in her lifetime. She and Jack traveled and showed quarter horses and had the 1946 AQHA World Champion Stallion, Chubby T. Elvie was a top notch seamstress and could sew a western suit and could also tool beautiful leather pieces. She obtained her pilots license in the 1950's, but gave up flying to raise her family. She was also a wonderful cook and famous for her pies. Her last & greatest passion was painting portraits in oil.

Elvie was preceded in death by her parents & her sister, Beatrice Lowry. Survivors include her daughter Elizabeth Schenkel & husband Terry of Sonora & Paul Turney & his wife Stacy of Capitan, NM. Grandchildren include Cody Schenkel, Thomas Schenkel, Jack Turney, Kyla Bannon & her husband Josh. Two great grandchildren, Bronson Schenkel & Scarlet Bannon. She is also survived by her brother, E.A. Davis of Smiley and many cousins, nephews and nieces.


Elvie always loved bright colors & would be honored for those who are able to attend her services to celebrate her long life by wearing bright colors, especially red, pink, purple & blue.

Graveside services will be held Saturday, August 15, 2015 at 10:00a.m. in Sonora Cemetery.

The family is very appreciative of all the love and care that she has received the past two years in the Schleicher County Nursing Facility. In lieu of flowers donations may be made to Hospice of San Angelo, 35 E Twohig, San Angelo, the Sonora Church of Christ at Box 333, Schleicher County Nursing Home Auxiliary, P.O. Box 454, Eldorado, Tx. 76936 or a charity of your choice.

Rosey Bud
Hodgepodges

Wedding Selections

Chelsey Lou Campbell
and True BursonEmily Newton and
Aaron PearlSavannah Leonard and
Brett Chambers


Sonora Church Directory

<p>Primera Iglesia Bautista 504 Santa Clara 387-2035</p> <p>The Church of the Good Shepherd Presbyterian 319 E. Mulberry 387-2616</p> <p>Lighthouse Community Church 1705 N. Crockett 387-9100</p> <p>St. Ann's Catholic Church 311 W. Plum 387-2278</p> <p>Jehovah's Witness 310 St. Ann's St 387-5658/387-5518</p> <p>Faith Apostolic Church 120 N. Concho Ave. 206-0277</p>	<p>Church of Christ 304 N. Water 387-3190</p> <p>First Baptist Church 11 E. Oak 387-2951</p> <p>St. John's Episcopal Church 404 E. Poplar 387-2955</p> <p>First United Methodist Church 201 N. Water 387-2466</p> <p>Casa Del Altarero Asamblea De Dios 306 W. 4th St 325-226-1789</p>
--	---

Brought to you by:
Kerbow Funeral Home
387-2266



Dog Obedience Training Classes

Sutton County Park
Active Canines, LLC
Julia Jones

August 11th

6:00 pm **Beginner Class** 6-week course \$60

- *Sit, Down, Come, Stay, Take It, Leave It, Leash Walking and behavior issues
- *Dogs five (5) months to 12 years old
- *Current vaccinations and Rabies required
- *Proof of paperwork for vaccinations and Rabies due first day of class
- *Small class size; Limited spots available
- *50-minute classes once a week for six weeks

Dog must be on leash at all times.

Reserve your spot today
Call 325.387.3344 or 325.206.1672Email jsjones37@gmail.comwww.activek-9s.net

The Devil's River News

Established 1890

228 E. Main Street, Sonora, Texas 76950
Phone: (325)387-2507 • Fax (325)387-5691Published every Thursday
USPS (155-920)

Publishing Owners: Ben D. Taylor, Sam C. Taylor

Editor: Ben D. Taylor

Billing: Lizzie Chavez

Advertising/Classified s: Lizzie Chavez

Reporting/Photography/Typesetting: Staff

Guest Columnists: Ray & Nancy Glasscock

Delyse Jaeger, Pascual Hernandez, Susan Hall

Email: General Information: editor@sonoratlx.netAdvertising: sales@sonoratlx.net

Copy and Ad Deadline: Monday 4:00 p.m.

Subscriptions

\$25 per year in county • \$32 per year out of Sutton County

\$22 per year Senior Citizens (in and out of Sutton County)

Second class postage paid at Sonora, Texas

Attn. Postmaster: Send address change to the Devil's River News,

228 East Main Street, Sonora, TX 76950

Any erroneous reflection upon the character, standing or reputation of any person, firm, or corporation which appears in the columns of this paper will be corrected upon due notice given to the Editor of this publication. The views expressed in submitted articles are not necessarily the views of The Devil's River Newspaper.

MEMBER
2015

TEXAS PRESS ASSOCIATION

Bronco Nutrition
Delicious Smoothies

30g Protein

250cal

10g sugar

+ Energy Drinks

110 N. Crockett

325-387-3100

Study Examines Decline Of Texas Livestock Auction Markets

COLLEGE STATION – graduate student Trent Hester and assistant professor Ariun Ishdorj – all based in College Station. Data was collected using sources such as the Texas Animal Health Commission, Texas Agricultural Statistics Service and other U.S. Department of Agriculture data. Anderson noted during the mid-1970s Texas beef cow numbers peaked at about 7 million head. Currently, Texas has approximately 4.2 million cows. Anderson said before starting the study, there was an expectation that there were fewer auction markets than when data first began being compiled in 1969.

“Things change over time, but we were interested in the changes in the beef industry’s infrastructure, particularly livestock auction markets,” Anderson said. “Obviously we’ve experienced changes in cattle cycles, inventory numbers and how we trade. We have the Internet, video auctions and direct sales. All of that has played a part in how we trade and market cattle.”

Other authors on the study were Dr. Andy Herring, associate professor in the department of animal science at Texas A&M University, and

to sell fewer cattle.” “That’s exactly what we saw,” Anderson said. “Then we wanted to know if these fewer auction markets are handling more volume. Overall, the markets haven’t declined as fast as the number of animals. Drought will do that as producers sell cattle at an incredibly fast rate. Over time, the auction markets adjust to that at a much slower pace.”

“The implied animal revenue keeps going up as drought occurs,” Anderson said. “The more animals are sold, the higher that revenue is. But that doesn’t account for inflation. Overall, we found there are fewer markets and declining real implied value when you factor inflation into the equation.”

Anderson noted the study did not account for video or Internet auctions or other marketing services. Also, sheep, goats and hogs were not part of the study.

The study proved their hypothesis correct, he said. Texas had 167 auction markets in 1969 and only 92 auction markets were left in the state by 2013. The study indicated that the decline could be attributed to a number of factors, such as producers using other means to market their cattle, “or overall, there being fewer cattle to market in the state, requiring fewer markets

Steve Whitson
 whitsoncom@gmail.com
 325-396-2609

Whitson Communications is currently looking for a contractor/installer in the Sonora area. Whitson Communications currently provides Dish Network, Internet Services, Telephone systems, Cell phone Boosters, Data Cabling and many other services as needed. Whitson Communications, Inc. serves a large number of diverse customers in an area from Del Rio to Llano and San Angelo. We also contract for several other national companies. Training will be provided - but a computer background would be a good asset. Resumes can be emailed to our location. The position will require a self motivated person with a detailed background.

\$14 / mo.*

SAMSUNG Galaxy S6



This incredible offer of \$14 per month is less than 50¢ per day!

Celebrate our 14th national ranking with a new SAMSUNG S6 for only \$14/month! We'll even pay off your contract when you switch from another carrier.



1-800-695-9016
 www.westcentral.com

- Lightning fast processor
- SAMSUNG's best camera, yet
- Wireless charging capabilities

San Angelo: 3389 Knickerbocker Road • 2609 N. Bryant Blvd. • Sunset Mall • HEB • Lowe's Grocery • Evans Communications • iPhone Repair Store
Ballinger: Shopping Basket **Brady:** 1200 S. Bridge **Brownwood:** 300 W. Commerce **Coleman:** Coleman Communications **Comanche:** 217 N. Houston **Comfort:** 616 B. Front Street
Deleon: Totecom Communications **Eldorado:** 17 S. Divide **Fredericksburg:** 1425 E. Main St. #800A **Goldthwaite:** Central Texas Communications **Junction:** 801 Main St. **Kerrville:** 1448 Junction Hwy. •
 317 Sidney Baker S. #300 • 231 Junction Hwy. • Advantage Communications **Mason:** Mason Gas **Menard:** B&N Artwear **Ozona:** 1002 Ave. E **Robert Lee:** 803 Austin
San Saba: Central Texas Communications **Sonora:** 205 a Hwy 277 N. **Stephenville:** 2187 W. South Loop **Stonewall:** Fred Burg Communications

#14 national ranking (For national post-pay customers exclusively switched by carrier's facilities based wireless mobile network.)
 *Tax and \$20 processing fee due up front. Based on 36 payments. See store for details.

Local Connections... Nationwide Reach

Summer Pneumonia In Sheep & Goats

Pneumonia can be a major health problem among all ages of sheep and goats. Afflicted animals generally weaken, refuse feed, appear gaunt, may cough, and breathe rapidly. Depending on the time it occurs, the condition often is referred to as shipping fever or acute summer pneumonia.

Pneumonia is usually caused by bacteria or viruses. Animals are probably infected early in life, but they may resist the infection until some stress occurs. This can be extreme changes in temperature, exposure to dust, shipping, or extended periods without feed.

Most of these infectious organisms are spread by direct contact with body fluids (saliva, nasal discharge, etc.) and fecal material. These

problems can also be transmitted from one animal to another by contaminated hands, buckets, feeders, troughs, and equipment.

Consult your veterinarian. Treatment must be based on early recognition of affected individuals. Treatment depends on whether the cause is bacterial, viral, or parasitic.

For bacterial cases, treatment with antibiotics is recommended. In viral cases, treatment for all viruses involves treating the symptoms, not killing the virus. With this in mind, fluids, anti-inflammatory agents, and antibiotics for secondary bacterial infections are usually prescribed by veterinarians.

In the case of parasitic-induced pneumonia, parasites can be treated with anthelmintics. Routine de-worming will

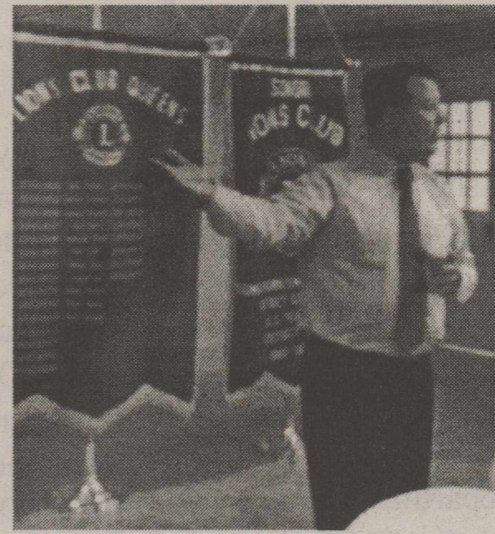
also help prevent the parasitic causes of pneumonia.

Fluid therapy, if practical, often aids recovery. In serious outbreaks, it is often advisable to treat all exposed animals with a therapeutic dose of antibiotics for several days.

If an animal has an infectious cause of pneumonia, it should be isolated from the rest of the herd. No matter the cause of the pneumonia, caution should be used to prevent additional spread of the disease by contaminated clothing, hands, buckets, troughs, etc.

As always, it is advisable to involve your veterinarian. Coughing, sluggishness and fever in sheep and goats may have several causes. A careful physical examination is required.

LIONS ROAR



lege and/or a career. He stated that students will be given the opportunity to take classes that will teach a trade, for those who are unable to, or just don't want to attend college.

Lion Lewis Allen reported that the hamburger supper for the teachers on Monday evening was a big success, and thanked all the Lions who helped. The Lions Club is very proud to serve the teachers each year and we appreciate all who joined us!

The Lions Club is gearing up for their annual auction, which will be held on October 20, 15. This is the largest fundraiser for the Lions Club each year and we are so very grateful to everyone who donates and makes it all possible. All proceeds are donated back to the community in one form or another. So, please plan to attend the auction; we will have a great meal and a lot of fun.

The Sonora Downtown Lions Club met on August 18, 15 at noon at the First United Methodist Church for their weekly meeting. Guest Speaker was new member, Mr. Ross Aschenbeck, who is our new Superintendent for the Sonora ISD. Mr. Aschenbeck spoke about his plans and goals for the new school year and beyond. He states that there will be a large emphasis on academics and preparing the students for col-

STATEMENT OF INCREASE/DECREASE

If SUTTON COUNTY adopts a 2015 tax rate equal to the effective tax rate of \$0.554269 per \$100 of value, taxes would increase compared to 2014 taxes by \$28,258.

If SUTTON COUNTY HOSPITAL DISTRICT adopts a 2015 tax rate equal to the effective tax rate of \$0.171808 per \$100 of value, taxes would increase compared to 2014 taxes by 8,298.

If CITY OF SONORA adopts a 2015 tax rate equal to the effective tax rate of \$0.565951 per \$100 of value, taxes would increase compared to 2014 taxes by \$648.

UNENCUMBERED FUND BALANCES

The following estimated balances will be left in the unit's property tax accounts at the end of the fiscal year. These balances are not encumbered by a corresponding debt obligation.

	TYPE OF PROPERTY	BALANCE
Sutton County	General Fund	\$ 3,974,033
	FM&FC	\$545,758
Hospital District	General Maintenance	\$ 350,000
City of Sonora	Restricted Fund	\$ 1,766,926
	Unrestricted Fund	\$ 540,798

2015 DEBT SERVICE for CITY of SONORA

The unit plans to pay the following amounts for long-term debts that are secured by property taxes. These amounts will be paid from property tax revenues (or additional sales tax revenues, if applicable).

Description of Debt	Principal or Contract Payment to be Paid From Property Taxes	Interest to be Paid from Property Taxes	Other Amounts to be Paid	Total Payment
Infrastructure	\$470,000	\$416,948	\$ 0	\$866,948
Total required for 2015 debt service				\$866,948
- Amount (if any) paid from funds listed in Schedule A				\$0
- Amount (if any) paid from other resources				\$282,000
- Excess collections last year				\$0
= Total to be paid from taxes in 2015				\$604,948
+ Amount added in anticipation that the unit will collect only 95.000000% of its taxes in 2015				\$31,839
= Total Debt Levy				\$636,787

EXPECTED REVENUE FROM ADDITIONAL SALES TAX for CITY OF SONORA

(For hospital districts, cities and counties with additional sales tax to reduce property taxes) In calculating its effective and rollback tax rates, the unit estimated that it will receive \$505,279 in additional sales and use tax revenues. For County: The county has excluded any amount that is or will be distributed for economic development grants from this amount of expected sales tax revenue.

2015 PROPERTY TAX RATES IN SUTTON COUNTY, SUTTON COUNTY HOSPITAL DISTRICT AND CITY OF SONORA

This notice concerns 2015 property tax rates for Sutton County. It presents information about three tax rates. Last year's tax rate is the actual rate the taxing unit used to determine property taxes last year. This year's effective tax rate would impose the same total taxes as last year if you compare properties taxed in both years. This year's rollback tax rate is the highest tax rate the taxing unit can set before taxpayers can start tax rollback procedures. In each case these rates are found by dividing the total amount of taxes by the tax base (the total value of taxable property) with adjustments as required by state law. The rates are given per \$100 of property value.

	County General	County FM&FC	County Hospital	City of Sonora
Last year's tax rate:				
Last year's operating taxes	\$ 2,783,696	\$ 597,421	\$ 1,080,259	\$ 810,371
Last year's debt taxes	\$ 0	\$ 0	\$ 0	\$ 0
Last year's total taxes	\$ 2,783,696	\$ 597,421	\$ 1,080,259	\$ 810,371
Last year's tax base	\$ 625,906,623	\$ 624,013,244	\$ 655,294,454	\$ 136,116,367
Last year's total tax rate	\$.435891/\$100	\$.093913/\$100	\$.164851/\$100	\$.551806/\$100

This year's effective tax rate:				
Last year's adjusted taxes (after Subtracting taxes on lost property)	\$ 2,728,844	\$ 586,151	\$ 1,080,332	\$ 751,264
=This year's adjusted tax base (After subtracting value of new Property)	\$ 598,394,690	\$ 596,635,946	\$ 628,799,663	\$ 132,743,610
=This year's effective tax rate	\$.456027/\$100	\$.098242/\$100	\$.171808/\$100	\$.565951/\$100
Total effective tax rate	\$.554269/\$100			

(Maximum rate unless unit publishes notices and holds hearings.)

This year's rollback tax rate:				
Last year's adjusted operating taxes (after Subtracting taxes on lost property and Adjusting for any transferred function, Tax increment financing, state criminal Justice mandate, and /or enhanced indigent Health care expenditures)	\$ 2,728,844	\$ 586,151	\$ 1,107,954	\$ 1,237,965
=This year's adjusted tax base	\$ 598,394,690	\$ 596,635,946	\$ 628,799,663	\$ 132,743,610
=This year's effective operating Rate	\$.456027/\$100	\$.098242/\$100	\$.176201/\$100	\$.932598/\$100
X 1.08 = this year's maximum Operating rate	\$.492509/\$100	\$.106101/\$100	\$.190297/\$100	\$ 1.007205/\$100
+This year's debt rate	\$.000000/\$100	\$.000000/\$100	\$.000000/\$100	\$.478271/\$100
=This year's rollback rate for each fund	\$.492509/\$100	\$.106101/\$100	\$.190297/\$100	\$ 1.485476/\$100
This year's total rollback rate	\$.598610/\$100			
- Sales tax adjustment rate			..000000/\$10	\$.379499/\$100
=Rollback tax rate				\$ 1.105977/\$100

STATE CRIMINAL JUSTICE MANDATE for SUTTON COUNTY

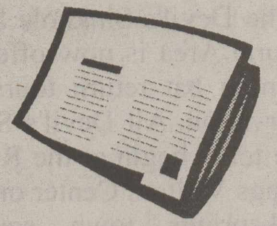
The Sutton County Auditor certifies that Sutton County has spent \$5,915 in the previous 12 months beginning 8/01/2014 for the maintenance and operations cost of keeping inmates sentenced to the Texas Department of Criminal Justice. Sutton County Sheriff has provided information on these costs, minus the state revenues received for reimbursement of such costs.

This notice contains a summary of actual effective and rollback tax rates' calculations. You can inspect a copy of the full calculation at Sutton County Appraisal District.

Mary Bustamante
Chief Appraiser

All real estate advertising in this newspaper is subject to the Fair Housing Act which makes it illegal to advertise "any preference, limitation or discrimination based on race, color, religion, sex, handicap, familial status or national origin, or an intention, to make any such preference, limitation or discrimination." Familial status includes children under the age of 18 living with parents or legal custodians, pregnant women and people securing custody of children under 18. This newspaper will not knowingly accept any advertising for real estate which is in violation of the law. Our readers are hereby informed that all dwellings advertised in this newspaper are available on an equal opportunity basis. To complain of discrimination call HUD toll-free 1-800-669-9777. The toll-free telephone number for the hearing impaired is 1-800-927-9275.

The Devil's River News Classified



(325) 387-2507

228 E. Main St.

sales@sonoratlx.net

Public Notice

NOTICE OF PUBLIC HEARING

NOTICE IS HEREBY GIVEN TO ALL INTERESTED PERSONS, THAT:

The City of Sonora, Texas proposes to institute annexation proceedings to enlarge and extend the boundary limits of said city to include the following described territory, to-wit:

Tract 1

A tract of land containing 3.720 acres situated in the County of Sutton, Texas, being a part of portion of Abstract 834, Sec. 66, HE & WT Ry. Co., Official Public Records of Sutton County, Texas.

Tract 2

A tract of land containing 0.431 acres (0.24 and 1.91 acres) situated in the County of Sutton, Texas, being a part of portion of Abstract 315, Sec. 85, HE & WT Ry. Co., Official Public Records of Sutton County, Texas

Tract 3

A tract of land containing 0.250 acres situated in the County of Sutton, Texas, being a part of portion of Lomax, Sec.85, HE & WT Ry. Co., Official Public Records of Sutton County, Texas.

Tract 4

A tract of land containing 0.420 acres situated in the County of Sutton, Texas, being a part of portion of Abstract 1186, Sec. 84, Steve J Murphy, Official Public Records of Sutton County, Texas.

Tract 5

A tract of land containing 25.305 acres situated in the County of Sutton, Texas, being a part of portion of Abstract 1186, Sec. 84, Steve J Murphy, Official Public Records of Sutton County, Texas.

Tract 6

A tract of land containing 0.757 acres situated in the County of Sutton, Texas, being a part of portion of Abstract 809, Sec. 54, HE & WT Ry. Co., Official Public Records of Sutton County, Texas

Tract 7

A tract of land containing 0.800 acres (0.56 and 0.24 acres) situated in the County of Sutton, Texas, being a part of portion of Southwest Subdivision, Lot1 and Lot 10, Official Public Records of Sutton County, Texas.

Tract 8

A tract of land containing 5.328 acres situated in the County of Sutton, Texas, being a part of portion of Abstract 809, Sec. 54, C F Adams & Southwest Division, Official Public Records of Sutton County, Texas.

Tract 9

A tract of land containing 16.898 acres situated in the County of Sutton, Texas, being a part of portion of Sinaloa Subdivision, Slide 9d, Plat Records of Sutton County, Texas.

Tract 10

A tract of land containing 29.050 acres situated in the County of Sutton, Texas, being a part of portion of Loma Alta Subdivision, Slide 27a, Plat Records of Sutton County, Texas.

A public hearing will be held by and before the City Commission of the City of Sonora, Texas on the 15 day of June, 2015 at 6:00 p.m. in the Council Chambers in the City Hall of the City of Sonora, Texas, located at 201 E. Main, for all persons interested in the above proposed annexation. At said time and place all such persons shall have the right to appear and be heard; of all said matters and things, all persons interested in the things and matters herein mentioned, will take notice.

By order of the City Council of the City of Sonora, Texas this the 18 day of May, 2015.

Belia

Public Notice

Notice
Public Hearing
Sutton County UWCD
Amended Rules
August 20, 2015
6:30 p.m.
Lillian Hudspeth Wellness Center
conference room
308 Hudspeth
Sonora, TX 76950

Employment

NOTICE is hereby given that Sutton County is now accepting applications for a full time Secretary for the Sutton County Extension Office. Applicants must have a strong work ethic and desire to work with all audiences, regardless of socioeconomic level, race, color, sex, religion, disability or national origin. Applicants must be able to communicate effectively, both verbally and in writing and must have a minimum education of High School Diploma or GED. Computer skills required. For additional information on duties; call Extension Agent Pascual Hernandez at 325-387-3101.

Sutton County offers health, dental, vision, life insurance, vacation and sick leave benefits.

Applications can be obtained at the Sutton County Auditors' office and must be returned at the Auditors' office by August 20, 2015. Sutton County is an equal opportunity employer.

Employment

For Sale By Owner
House with Acreage West of Sonora, \$ 296,000. Go To www.zillow.com (type in the Sonora Zip code 76950) FOR DETAILS. Or call 325-450-4807

Employment

Registered Nurse in Sonora and Surrounding Areas
Hospice of San Angelo, Inc.- San Angelo, TX.
Registered Nurse needed in Sonora and surrounding area including Ozona and Big lake. Work with Dynamic and supportive team and learn how rewarding hospice care can be. Some weekend/ night work required.
Benefits for FULL TIME:
Medical and Dental insurance
401K, Excellent Paid Time Off, Paid Holidays.
Looking for someone who is compassionate, self-motivated and flexible.

Reliable transportation is a must.

Want Ad

Will buy old or unwanted horses. FMI call George at (325) 446-6081.

For Sale

Want to buy a 1979 Sutton County History Book? Please Call 325-387-2826 FMI.

FOR SALE

2005 14x60 Mobile Home
3bedroom 1bath
ready for living

Public Notice

PUBLIC NOTICE BUDGET HEARING

The Sutton County Underground Water District will hold a public budget hearing on Tuesday, August 11, 2015 at 9:30 a.m. at the District Office, 301 S. Crockett Ave, Sonora, Texas. All citizens are invited to attend and may inspect the proposed 2014-2015 budget at the District office, Monday through Friday from 8:00 a.m. until 5:00 p.m.

Public Notice

The City of Sonora Municipal Court reminds violators that they have until September 15, 2015 to take care of outstanding citations to avoid having their names shared with the news media and published in the local newspaper. Sonora Municipal Court is located at 201 E. Main St. Sonora, Texas 76950. You can come in person to address your citation or call our office at (325) 387-5237.

SONORA SENIORS APARTMENTS

Located at 1901 Taylor Road
Sonora, Texas

1 & 2 Bedrooms

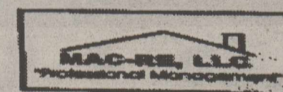
Rental Assistance Available for Qualified Applicants
HUD Vouchers Welcome
Rent Based on Income

Designed for the Elderly, 62 years of age or older.
Handicapped/Disabled, regardless of age.

- Energy Efficient
- Central Air & Heat
- Electric Range & Refrigerator
- Carpet/Tile
- Mini Blinds
- Pest Control
- Maintenance Service
- Washer & Dryer Hook-Ups

Please Call or Come By
(325) 387-5628

"Come Live With Us"



This institution is an equal opportunity provider and employer.



WTG
West Texas Gas, INC

Randy Dunaway
District Manager

1001 Main Street
Junction, Texas 76849
325-446-2555

We Are Replacing the Gas Line
Throughout Sutton County.



Know what's below.
Call before you dig.

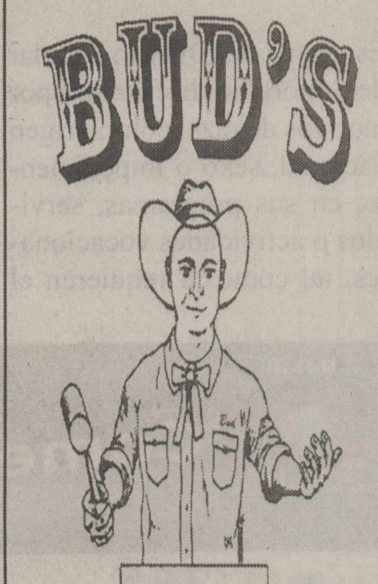
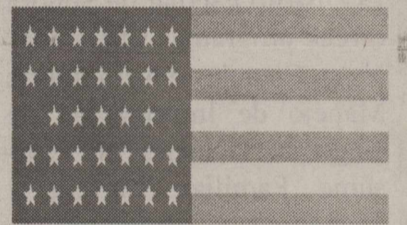
Mittel Dozing

Owned and Operated by
Robert Mittel
325-277-6883

Foreman · Todd Emery 325-277-0979

Brush Work · Fire Guards
Ranch Work
General Conservation Work

A Rancher, Working for Ranchers
16 years experience



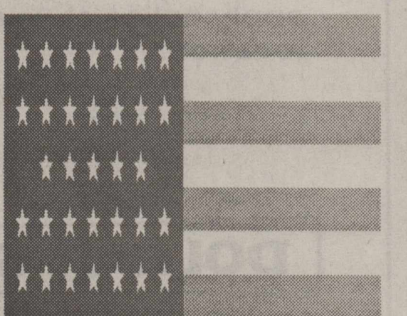
AUCTION SERVICE

325-895-0134

LONNIE (BUD) FIELD

Consignments,
Farm Sales, Estate, etc.

TDLR 10376



MORNING BAT RETURN TOURS START AT THE DEVIL'S SINKHOLE STATE NATURAL AREA

The Devil's Sinkhole State Natural Area is now offering morning bat return tours by reservation. All Devil's Sinkhole tours begin at the Rocksprings Visitors Center on the Rocksprings town square. The phone number for reservations and other inquiries is 830-683-2287 and the e-mail is devilssinkhole@swtexas.net.

The morning bat tour meets at the Rocksprings Visitors Center thirty minutes before dawn. Please be sure to reserve your tour, because the volunteers will otherwise

not know to meet you. The tour is available Wednesdays through Sundays now through October 31.

As bat season at the National Natural Landmark enters its last two and a half months, the bat roost gets bigger and bigger. The famous evening bat tour is seeing gigantic swarms now and the nightly bat emergence will continue growing into late September.

One bat tour guide calls this part of the bat season at the Devil's Sinkhole State Natural Area "Giga-bat time." The Devil's Sinkhole State

Natural Area is a Texas Parks and Wildlife Department facility. It shares its park staff with nearby Kickapoo Cavern State Park.

The bat population at the Devil's Sinkhole is estimated at 3.8 million bats. That number qualifies as the fourth biggest bat colony in Texas.

Some guests may want to do both the evening bat departure tour and the morning bat return tour. The attendants at the Rocksprings Visitors Center will be happy to help you connect with any of the six Rocksprings lodging options when you call.

Public Notice

Public Notification of Non-discrimination in Career and Technical Education (CTE) Programs

Sonora ISD offers career and technical education programs in Agriculture Science, Business Information Management, Family and Consumer Science, Career and Technology, and Industrial Technology. Admission to these programs is based on special needs and/or desire to participate.

It is the policy of Sonora ISD not to discriminate on the basis of race, color, national origin, sex or handicap in its vo-

ational programs, services or activities as required by Title VI of the Civil Rights Act of 1964, as amended; Title IX of the Education Amendments of 1972; and Section 504 of the Rehabilitation Act of 1973, as amended.

It is the policy of Sonora ISD not to discriminate on the basis of race, color, national origin, sex, handicap, or age in its employment practices as required by Title VI of the Civil Rights Act of 1964, as amended; Title IX of the Education Amendments of 1972; the Age Discrimination Act of 1975, as amended; and Sec-

tion 504 of the Rehabilitation Act of 1973, as amended.

Sonora ISD will take steps to assure that lack of English language skills will not be a barrier to admission and participation in all educational and vocational programs.

For information about your rights or grievance procedures, contact the Title IX Coordinator, Ross Aschenbeck, at 807 S. Concho, 325-387-6940 ext. 3001, and/or the Section 504 Coordinator, Stefanie Taylor, at 807 S Concho, 325-387-6940 ext. 3401.

Notificación Pública de No Discriminación en Programas Vocacionales y de Educación Técnica (CTE)

El Distrito Escolar de Sonora ofrece programas vocacionales en Ciencia de Agricultura, Manejo de Información de Negocio, Ciencias de Consumo Familiar, Carrera y Tecnología y Tecnología Industrial. La admisión a estos programas se basa en necesidades y deseo de participar.

Es norma del Distrito Escolar de Sonora no discriminar por motivos de raza, color, origen nacional, sexo o impedimento, en sus programas, servicios o actividades vocacionales, tal como lo requieren el

Título VI de la Ley de Derechos Civiles de 1964, según enmienda; el Título IX de las Enmiendas en la Educación, de 1972, y la Sección 504 de la Ley de Rehabilitación de 1973, según enmienda.

Es norma de del Distrito Escolar de Sonora no discriminar por motivos de raza, color, origen nacional, sexo, impedimento o edad, en sus procedimientos de empleo, tal como lo requieren el Título VI de la Ley de Derechos Civiles de 1964, según enmienda; el Título IX de las Enmiendas en la Educación, de 1972, la ley de Discriminación por Edad, de 1975, según enmienda, y la Sección 504 de la Ley de Rehabilitación de 1973, según

enmienda.

El Distrito Escolar de Sonora tomará las medidas necesarias para asegurar que la falta de habilidad en el uso del inglés no sea un obstáculo para la admisión y participación en todos los programas educativos y vocacionales.

Para información sobre sus derechos o procedimientos para quejas, comuníquese con el Coordinador del Título IX, Ross Aschenbeck, en 807 S. Concho, 325-387-6940 extensión 3001, y/o la Coordinadora de la Sección 504, Stefanie Taylor, en 807 S. Concho, 325-387-6940 extensión 3401.

City of Sonora Notice

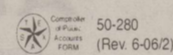
Notice is hereby given to all citizens of the City of Sonora that City ordinances are in effect for you and your real property. The City will grant a 90-day grace period from the date of this publication for the citizens to come in to compliance; during this time warning will be issued.

Under state law, on June 29, 2015 the City has annexed new areas to the City pursuant to Chapter 43 of the Texas Local Government Code. Prior to that date the City accepted several voluntary annexations in to the City. These newly annexed areas are governed by the same ordinances that govern the entire City. The areas annexed voluntarily and non-voluntarily are as follows:

2015	Legal Descriptions	General Description	Area (AC)	Area (AC)	Percent of Existing City Limits	Cumulative Area (AC)
		Current City Limits	59,285,786.960	1,361.014		1,361.014
Tract 1	A-834,3.72 Ac, Sec 66, HE & WT Ry Co		162,043.848	3.720	0.27%	1,364.734
Tract 2	A-315, 0.24 Ac, Sec 85, HE & WT Ry Co. & 1.91 Ac		18,774.435	0.431	0.03%	1,365.165
Tract 3	Lomax, Sec 85, HE & WT Ry Co. 0.25 Ac		10,890.044	0.250	0.02%	1,365.415
Tract 4	A-1186, 0.42 Ac, Sec. 84, Steve J Murphy		18,295.273	0.420	0.03%	1,365.835
Tract 5	A-1186, 25.305 Ac, Sec 84, Steve J Murphy		1,102,290.209	23.305	1.86%	1,391.140
Tract 6	A-809, 0.757 Ac, Sec 54, HE & WT Ry Co.		32,975.052	0.757	0.06%	1,391.897
Tract 7	Southwest Subdivision, Lot 1, 10, 0.56 Ac & 0.24 Ac		34,848.139	0.800	0.06%	1,392.697
Tract 8	A-809, 5.2382 Ac., Sec 54, CF Adams & Southwest Div.		232,088.608	5.328	0.39%	1,398.026
Tract 9	Slide 9b, Plat Records, Sutton Co.	Sinaloa	736,079.824	16.898	1.24%	1,414.924
Tract 10	Slide 27a, Plat Records, Sutton County, Texas	Loma Alta	1,265,423.062	29.050	2.13%	1,443.974
Tract 11		Hospital	2,657,170.629	61.000	4.48%	1,504.974
Tract 12		Love's	653,402.614	15.000	1.10%	1,519.974
Tract 13		467 Strip from Hospital to Love's	217,800.871	5.000	0.37%	1,524.974

You may read the City ordinances on the City's website: www.sonora-texas.com or read them at City Hall, 201 E. Main, during normal business hours.

/s/ Wanda Shurley, Mayor



NOTICE OF PUBLIC MEETING TO DISCUSS BUDGET AND PROPOSED TAX RATE

The Sonora Independent School District will hold a public meeting at 5:30 PM, Monday, August 31, 2015 in Vocational Building, 805 Prospect Sonora, Texas. The purpose of this meeting is to discuss the school district's budget that will determine the tax rate that will be adopted. Public participation in the discussion is invited.

The tax rate that is ultimately adopted at this meeting or at a separate meeting at a later date may not exceed the proposed rate shown below unless the district publishes a revised notice containing the same information and comparisons set out below and holds another public meeting to discuss the revised notice.

Maintenance Tax	\$ 1.04 /\$100 (Proposed rate for maintenance and operations)
School Debt Service Tax	\$.04837 /\$100 (proposed rate to pay bonded indebtedness)
Approved by Local Voters	

Comparison of Proposed Budget with Last Year's Budget

The applicable percentage increase or decrease (or difference) in the amount budgeted in the preceding fiscal year and the amount budgeted for the fiscal year that begins during the current tax year is indicated for each of the following expenditure categories:

Maintenance and operations	% increase	or	(.51) % (decrease)
Debt service	% increase	or	(6.5) % (decrease)
Total expenditures	% increase	or	(.66) % (decrease)

Total Appraised Value and Total Taxable Value (as calculated under Section 26.04, Tax Code)

	Preceding Tax Year	Current Tax Year
Total appraised value* of all property	\$ 669,631,013	\$ 648,258,709
Total appraised value* of new property**	\$ 6,770,920	\$ 5,174,600
Total taxable value*** of all property	\$ 601,080,351	\$ 576,043,173
Total taxable value*** of new property**	\$ 6,638,128	\$ 4,793,417

* "Appraised value" is the amount shown on the appraisal roll and defined by Section 1.04(8), Tax Code.
 ** "New property" is defined by Section 26.012(17), Tax Code.
 *** "Taxable value" is defined by Section 1.04(10), Tax Code.

Bonded Indebtedness

Total amount of outstanding and unpaid bonded indebtedness* \$ 522,193

* Outstanding principal.

Retail

Come Grow With Us!

Dollar General is a national discount retailer with over 12,000 stores employing more than 94,000 people. We offer the challenge and growth opportunities you desire. We are seeking energetic & hands-on team players for the following positions at our store in **Eldorado, TX**.

STORE MANAGER
SALES ASSOCIATES

If you are looking for a fulfilling career with competitive pay and benefits, along with excellent advancement potential, apply online at www.dollargeneral.com/careers and search by location.

EOE M/F/D/V

DOLLAR GENERAL

DG careers
 SERVE • EXCEL • SUCCEED

Serving others is our mission. **Make it yours.**