



## Stalled talks to resume

By ARTHUR MAX  
Associated Press Writer  
JERUSALEM (AP) — U.S. mediator Alfred Atherton takes a proposed blueprint for Arab-Israeli peace to Cairo today as Israel and Egypt prepare to resume the military half of their stalled negotiations.

that would provide guidelines for future negotiations. Atherton is to return to Washington in the middle of the week, to report to President Carter and Secretary of State Cyrus Vance before President Anwar Sadat arrives for his weekend meeting with Carter. Agreement on the declaration of principles would be the first breakthrough since Sadat's trip to Jerusalem in November

opened the door to direct peace negotiations. Israeli cabinet secretary Aryeh Naor said Sunday "agreement is coming closer." But Egyptian Foreign Minister Minister Mohamed Ibrahim Kamel said agreement should not be expected even during Sadat's visit to Carter. Israeli Defense Minister Ezer Weizman was expected to follow Atherton to Cairo in a day or two following the decision of

the Israeli cabinet Sunday to resume his negotiations with Egyptian Defense Minister Mohamed Abdel Ghany Ghamasy. Those talks recessed Jan. 13 in deadlock over the future of the 20 Jewish settlements established by Israel in the Sinai Desert. When Sadat broke off the parallel foreign ministers' negotiations in Jerusalem on Jan. 18, President Carter prevailed on him not to suspend the defense ministers' parley. But Israel delayed the resumption.

There was still no indication when the foreign ministers would resume negotiations. "That is up to Egypt," said Naor. "It wasn't Israel that broke off the talks." Israeli Prime Minister Menachem Begin, in a copyrighted interview with U.S. News & World Report, charged the Egyptians reneged on a promise made by Sadat during his visit to Jerusalem to demilitarize most of the Sinai Peninsula.

## Our buying power rises slightly

By R. GREGORY NOKES  
Associated Press Writer  
WASHINGTON (AP) — Americans generally will be better off in 1978, benefiting from a 5 percent increase in purchasing power, but the nation's economic future remains clouded by sluggish investment activity, Carter administration economists say.

Unemployment should decline to between 6 percent and 6.25 percent by the end of the year, down from the 6.4 percent rate in December, and inflation is likely to remain stuck at about the same 6 percent rate as last year. The administration's latest projections for this year are contained in the president's annual economic report to Congress, which was prepared by his Council of Economic Advisors, headed by Charles L.

Schultze, and released today. Some highlights of the report were disclosed by the president in his economic message to Congress two weeks ago. The president's advisers gave this overall short-term assessment of the economy: Prospects for continued expansion were favorable as 1977 came to a close. The sectors of the economy were in good balance, inventories were relatively lean and the balance sheets of businesses and financial institutions were strong.

They said the projected growth in the nation's gross national product of between 4.5 percent and 5 percent depends on enactment of Carter's proposed \$25 billion in tax cuts. The GNP, which measures the total output of goods and services in the economy, expanded 4.9 percent in 1977. Without the tax cuts, they said, the economy might start to slow down beginning about mid-year and extending into 1979.

But they made clear the economy isn't by any means out of the woods, even with the tax cut. Inflation and unemployment are serious problems, "and great resources of the U.S. economy are still incompletely utilized," it said.

## Inmates hold 10

By JIM KLAHN  
Associated Press Writer  
NEW WESTMINSTER, British Columbia (AP) — Inmates holding seven women and three men hostage today at the British Columbia Penitentiary met face-to-face with Royal Canadian Mounted Police negotiators and demanded transfers to another prison.

Initial talks conducted by telephone with a RCMP officer at radio station CKNW were taped, and the inmates ordered the tape played over the air. "There won't be any danger as long as both sides keep their words," said the taped voice of an unidentified inmate. A prison guard, Roy Yasuda, 32, was stabbed in the throat when the hostages were taken about 10 a.m. Saturday and was reported in serious but stable condition.

One of the five prisoners, Andrew Bruce, 28, was apparently slightly wounded in the leg by a ricocheting bullet.

No reason was given for the transfer demand, but one observer said continual unrest at the 100-year-old prison stems from inmate anger at conditions there. This was the 13th such incident at the prison since 1963, giving the "B.C. Pen" the reputation of being the worst in North America, said Jim Spears, a reporter for the Vancouver Province who has been involved in negotiations in previous confrontations.

Participants in the Sunday negotiations were Marguerite Jackson, a Vancouver lawyer representing the inmates, RCMP Sgt. Chuck Hutchinson and inmate Ralph Summers. RCMP Superintendent Bruce Northrup said the Canadian Penitentiary Service turned down a request by two of the five inmates to be transferred to Archambault Penitentiary in Quebec.

But Northrup said the inmates had tentatively agreed to a counter offer which would involve a transfer to Millhaven Prison near Kingston, Ontario. Northrup said final approval on any inmate transfer would have to come from Ottawa. He declined comment on other demands made at the meeting. Thirteen hostages were taken originally — two inmates, a male visitor and 10 women visitors. Three women have been released in exchange for food, cigarettes, coffee and drugs. The prisoners claimed to be armed with a pistol and two grenades, but officials could not confirm this.

Rep. Jim Mattox, D-Texas, told President Carter and House Speaker Thomas P. O'Neill Jr. he was planning to offer an amendment to the budget to delete all "major funds destined for South Korea," including more than \$800 million in military equipment scheduled to be left in South Korea after the 2nd Infantry Division is withdrawn. "Given the level of United States aid to South Korea in its aggregate this year," Mattox wrote O'Neill in a letter dated Jan. 27, "such action may not be enough inducement to gain cooperation from South Korea and insure that the (investigative) committee and its counsel, Leon Jaworski, have access to Tongson Park and (former ambassador) Kim Don Jo for interrogation.

The committee is investigating alleged efforts by Park and others to buy influence in Congress with money, gifts and favors. Mattox' letter-writing campaign came a week after Jaworski met with members of the freshman Democratic caucus. Jaworski reported on

the roadblocks to the congressional investigation put up by the Korean government, Mattox said. "In light of this contingency, I am proposing that the next armed services authorization bill contain provisions stipulating that the 2nd Infantry Division of the U.S. Army will not leave any equipment or supplies to the South Korean government when it makes its scheduled withdrawal unless that government complies with our request for full cooperation." Mattox noted the equipment includes "helicopters, tanks, field artillery, troop transports and other valuable, modern military hardware." The freshman congressman from Dallas is a member of the budget committee and serves on the committee's task force on national security, which monitors foreign aid budgeting. Early last week, Mattox co-sponsored a bill by another freshman congressman, Rep. Allen Ertel, D-Pa., calling on the South Korean government to cooperate by allowing congressional investigators access to Park and Kim. In his letter to Carter, also dated Jan. 27, Mattox asked the president to "direct the secretary of the army to include a contingency plan for the removal of that equipment as part of the formal plans for the Army withdrawal which will be pre-

sented to the joint chiefs of staff in the near future and inform the Korean government of this contingency." Mattox also told the president, "It is my belief that South Korea may be willing to sacrifice good relations with the Congress and upcoming appropriations benefiting them if they are still able to obtain the \$800 million in sophisticated military equipment the 2nd Infantry Division intends to leave behind." Rig employee found dead. CANADIAN — Officials of Hemphill County are still awaiting the ruling in the case of a 24-year-old rig employee of H&T Drilling, who was found dead and lying face down in a slush pit on noon Friday. John L. Groves of Sayre, Okla., was pronounced dead at the scene by Justice of the Peace Bob Gober. Groves was dispatched to check the slush pit on rig No. 42 near the Hemphill-Wheeler County line. He had gone to check the electric pump and was discovered by a fellow worker. It has been speculated that Groves could have drowned, but close friends say he was an excellent swimmer. The case is being investigated. Groves is survived by his wife and one son, both of Sayre. Funeral arrangements are pending.



'Of the frost that daily grows more keen' It's cold. It's been cold. It looks like it'll be cold for awhile longer. Sunday night the temperature dipped to 20 degrees F. The same is predicted for tonight. There was 17 days reported in January when the temperature did not rise above the freezing point. The old Farmer's Almanac prediction calls for "very cold, then seasonal," for Jan. 27-31. Picture was taken this morning about a mile east of the city on Highway 60. (Pampa News photo by Ron Ennis)

## Torres declines

BROWNSVILLE, Texas (AP) — For State Rep. Ruben Torres it was a case of thanks, but no thanks. The Brownsville Democrat Sunday said he opted to turn down the directorship of the Governor's Office of Migrant Affairs (GOMA) because it might prove "embarrassing" to Gov. Dolph Briscoe, who appointed him.

Torres, in effect, had to burn a rather large bridge behind him when he initially accepted the \$32,000 post, which he was to formally assume Wednesday. He had to resign his political office. Three people have already filed for the seat. The special election is scheduled for March 4. Torres has vowed to avoid the race.

Asphyxiation claims family. LAYTON, Utah (AP) — Autopsies were to be performed today on seven members of a family found dead in a home where police said temperatures measured at least 112 degrees. Authorities said the seven apparently died of asphyxiation from a faulty furnace. "It's about as tragic a thing as I've seen," said Davis County Sheriff William Lawrence. He estimated the victims had been dead about 12 hours when they were discovered by relatives about 4 p.m. Sunday. Police identified the dead as Ruben Martinez, 22; his wife Ernestina, 26; his daughter, Jessica, 2; his son, Zakery, 9 months; his twin brothers, Rowdy and Randy, both 9; and his sister, Bernadine, 16. The state medical examiner, Dr. Serge Moore, said all apparently died of asphyxiation in their sleep Saturday night. He said there was no evidence of foul play. Police Chief Lamar Chard said the victims were discovered by Mary and Janice Martinez, the mother and sister of Ruben. He said they broke a window to get in after their knocks went unanswered. Chard said the furnace thermostat was broken and only the "on-off" switch was functioning. He said the switch was in the on position and the furnace was running.

## Texas smash-up kills 8

ROCKPORT, Texas (AP) — The Department of Public Safety is calling Sunday's head-on collision that killed eight people "one of the worst traffic accidents in Texas in several years."

Authorities said five of the victims may have been children. All of the bodies were charred beyond recognition when the two cars exploded. Only one of the victims had been identified late Sunday night. All were taken to funeral homes in Corpus Christi and Rockport.

Police said 62-year-old Joe Rodriguez of Richmond, near Houston, was the lone occupant of a southbound Cadillac that collided with a northbound Chevrolet Nova carrying the other seven victims. Robinson said investigators believe the others may be from Victoria. "We've been talking to a family in Victoria but we're getting different descriptions of who should have been in the car and who shouldn't," said Robinson. "Right now, we have to keep them unidentified."

The accident occurred about 2 p.m. on a two-lane creek bridge on Texas 35 about 17 miles north of this coastal community. "Our troopers at the scene said Rodriguez was apparently on his way to see relatives in Corpus Christi at the time of the accident," said DPS spokesman Jim Robinson. "The Nova was torn in half and the back half was knocked 55 feet back-

wards. It burst into flames immediately. Robinson said passersby attempted to pull Rodriguez from the wreckage but the Cadillac exploded. Police said one of the witnesses managed to get his wallet out before the blast, which enabled authorities to identify him. State Trooper Terry Lankford said the cause of the crash is still under investigation. However, light drizzle was reported in the area at the time.

## Ohio still digging out

Scattered cars and trucks litter snowy highways. Runaway barges clog rivers, hitting dams and endangering other water traffic. And many towns remain unwilling fortresses against the outside world behind enormous snowbanks. Still, Ohio is digging out of the blizzard that paralyzed the state for four days and killed at least 31 people. "Things are getting better every day," Dennis Kwaitkowski, head of the Federal Disaster Assistance Administration's snow removal project in Ohio, said Sunday. Ohio expected 1 to 4 inches of fresh snow today, with temperatures no higher than the 20s, and officials expressed hope that it would not create new cleanup problems. Other states also struggled to recover from the devastating storm: — In Michigan, where 19 died and 15,000 travelers were stranded, many roads are still under 12-foot drifts. In the Lansing area, some sheriff's deputies made their rounds on snow-

shoes. The roofs on at least five buildings have collapsed. Michigan State University planned to reopen today after two days of canceled classes last week. — Illinois offices, schools and roads were opened today. O'Hare Airport was open but running behind schedule. — Northwestern Indiana received 2 to 4 inches of new snow Sunday. Scattered power outages were reported.

— In Kentucky, 208 National Guardsmen who had helped with rescue operations were deactivated. Schools were to remain closed, and the forecast was for more snow today. The biggest problem was on the Ohio River, where 100 wayward coal and grain barges had broken free from moorings between Pittsburgh and Louisville — some had slammed into dams.

Inside today's news

	Pages
Abby	5
Classified	9
Comics	8
Crossword	2
Editorial	2
Horoscope	2
On the Record	4
Sports	10
Sylvia Porter	4

the tax PAYERS suffer a pay CUT. —John Allen

Today's forecast was expected to be partly cloudy with a slight chance of drizzle and a high in the low 40's. (7 degrees C.) The low tonight will be in the low 20's. (-5 degrees C.) The high Tuesday will be near 40. (4 degrees C.) Winds will be from the south at 5 to 10 m.p.h., becoming northeasterly tonight.

Every time a tax CONSUMER gets a pay RAISE

10-Part Series Starts Today

## Slash Your '77 Tax Bill

Financial expert Sylvia Porter steers you through the maze of laws and regulations to help you get big savings on your taxes. See "Taxes ...," Page 4











# Balanced growth 'misguided'

By JONATHAN WOLMAN  
AP Urban Affairs Writer  
WASHINGTON (AP) — Henry Ford II, saying "too much government inevitably leads to economic decay," told a White House conference on the nation's economic future today that efforts to develop a balanced growth policy are misguided.

The Ford Motor Co. chairman said federal regulation is hurting industrial expansion and argued that economic growth must be given priority in any confrontation with efforts to improve environmental quality.

But Rep. Morris Udall, chairman of the House Interior Committee, told the White House Conference on Balanced Growth and Economic Development that it is a mistake to believe the nation's economy can grow at the rate of past years without some coordinated planning.

Some 500 delegates are meeting this week under White House sponsorship to consider the nation's economic future. "I welcome this chance to

take a stand in favor of vigorous, sustained national growth," Ford said in prepared remarks. "You will note that I did not say balanced national growth, but I am strongly opposed to many of the measures that have been adopted in any effort to achieve that goal."

Ford said the term balanced growth is often used "by those who argue that economic growth must be sacrificed to environmental quality...."

"We want clean, sparkling rivers and streams wherever we go. But must we close down

all the industrial plants along their borders in order to achieve that goal?" he asked. "We want clean air. But is 90 percent clean much less than 99.9 percent clean?"

Ford asked the conference delegates to wrestle with this question: "How much more regulation can we afford, either directly in product costs or indirectly through lost opportunities for economic growth?"

Udall, D-Ariz., said the period of unbridled economic growth is doubtlessly over. "Our great leap forward was

not the normal course of events, but rather an exception to them," he said. "It was based on cheap and inexhaustible energy and a never ending supply of water, minerals, lumber and other resources."

Udall said "the human race will be essentially out of oil and gas in 30 years. We can't ignore it, and it won't go away." He added:

"I am not talking about a national no-growth policy. All I am saying is that an insistence on growth in the pattern that we have known it in the past can only take it on a collision course."

The White House conference is featuring a series of verbal confrontations on issues such as growth vs. conservation, the Sunbelt vs. the Frostbelt, environmental protection vs. development.

"The key phrase is 'scarce resources.' How do you do more with less — less land, less energy, less water and less pollution," said one delegate, a Colorado businessman.

The 500 delegates hail from every state and territory and from all walks of life. Most are prominent in politics, business, labor or academia, representing the traditional viewpoints of economic diversity.

The conference opened Sunday night with a review of the nation's economic history from the 1700s, when growth was unlimited for a sparse population with abundant resources.

through the 1800s "manifest destiny" principle, the belief in some divine sanction for territorial expansion; to the present-day's dwindling resources, high unemployment, abandoned farms and aging cities.

"As we begin the second 200 years of our history, we know that the future will not resemble our past world of abundance: abundance of land, water, energy, mineral resources, forests and food," said Commerce Secretary Juanita Kreps.

"We know that things once thought free now bear a price tag. We know that new resource constraints bring new dimensions to our thinking."

She asked that the delegates consider questions about the federal government's role in economic planning:

- Should Washington keep hands off?
- Should the government guide the pace and location of economic growth through incentives built into the federal tax system?
- Should Washington flex its muscles and take on the role of planning national and regional growth?
- As older areas lose jobs and people, should the government subsidize those who have been left behind?
- Our nation needs a vision of what it expects of itself in the coming decade," Secretary Kreps said. "Only from such a vision can the outlines of national policy emerge."

## Your money's worth

### Save on taxes

Sylvia Porter

#### The Changed '77 Returns (First of ten columns)

Filing out your '77 federal income tax returns will be easier for millions of you because of these four major changes:

(1) The familiar 16 per cent standard deduction with minimums and maximums has been eliminated and replaced by a "zero bracket amount" (ZBA) which breaks down as follows:

A flat \$3,200 deduction if you are married filing a joint return.

A flat \$2,200 deduction if you are single or unmarried head of household;

\$1,600 if you are married filing separately.

Unlike the old standard deduction which you had to compute yourself, most of you don't have to compute or subtract your "zero bracket amount" on your '77 return. This has been done for you automatically in the '77 IRS Tax Tables and Tax Rate Schedules from which you will find your tax.

(2) You don't compute the amount of deduction to which you are entitled on your '77 return because of your personal exemptions, exemptions for dependents and for being 65 or over, or blind. This amount has been incorporated into the '77 IRS Tax Tables millions of you will use.

(3) The '77 IRS Tax Tables also take into account the general credit to which you are entitled. This credit comes to \$35 per exemption or 2 per cent of your taxable income up to \$9,000, whichever is larger, but not more than \$180. You don't do any of this arithmetic. The IRS Tax Tables "invisibly" do it for you.

(4) Filing out your Form 1040A will be a virtual cinch this year if your income is \$40,000 or less and you are married filing a joint return, or \$20,000 or less for any other filing status, and your income is solely from wages, salaries, tips plus not more than \$400 of interest or \$400 of dividends and you do not itemize your deductions. All you need do is enter the usual information on your marital status, the number of exemptions to which you are entitled, and your wages, interest and dividends. After you total up your income (called your adjusted gross income), you merely turn to the IRS Tax Table A, B, C, or D that corresponds to your marital status, run down the column to

find the bracket into which your adjusted gross income fits, move across to the column which shows the number of exemptions you claimed — and there is your tax.

The only additional computation you'll need is to subtract the amount withheld from your wages during '77. The IRS expects most of you to wind up with refunds for '77, so the form asks first for the amount of income tax withheld and then on the line under that asks for your tax. This makes it easy for you to subtract to get your refund. Try this simpler Form 1040A for '77. And don't pay any fee unnecessarily to have it done for you.

But there also are new complications for you who itemize your deductions and file long form 1040.

If, for instance, you took your itemized deductions and then picked your tax automatically from the Tax Tables, you would be taking both the itemized deductions and the ZBA. To eliminate this duplication, Form 1040 Schedule A, Itemized Deductions requires you to REDUCE your total itemized deductions — thus increasing your income — by the amount of the flat standard deduction (ZBA) built into your Tax Table or Tax Rate Schedule.

If, for instance, your itemized deductions total \$5,800 on line 39 of Schedule A, and you are married filing jointly, you must subtract \$3,200 (your "zero bracket amount" or flat standard deduction) from \$5,800, leaving you with what is now called "excess itemized deductions" of \$2,600 to subtract from your income. Then, the Tax Table or Tax Rate Schedules will give you the other \$3,200 automatically.

Filing your '77 return will be much more complicated for you if you can't use the Tax Tables because (1) your income runs over the \$20,000 or \$40,000 limits; or (2) your exemptions are greater than the Tax Tables provide for; or (3) you are married filing separately and your spouse itemizes deductions; or (4) you can be claimed as a dependent on your parents' return and have \$750 or more of unearned income and less than \$2,200 of earned income if you are single (\$1,600 if married filing separately). All of you must complete part or all of a newly added Schedule TC, Tax computation Schedule.

Tomorrow: Money - saving tips on sales tax tables.

find the bracket into which your adjusted gross income fits, move across to the column which shows the number of exemptions you claimed — and there is your tax.

The only additional computation you'll need is to subtract the amount withheld from your wages during '77. The IRS expects most of you to wind up with refunds for '77, so the form asks first for the amount of income tax withheld and then on the line under that asks for your tax. This makes it easy for you to subtract to get your refund. Try this simpler Form 1040A for '77. And don't pay any fee unnecessarily to have it done for you.

But there also are new complications for you who itemize your deductions and file long form 1040.

If, for instance, you took your itemized deductions and then picked your tax automatically from the Tax Tables, you would be taking both the itemized deductions and the ZBA. To eliminate this duplication, Form 1040 Schedule A, Itemized Deductions requires you to REDUCE your total itemized deductions — thus increasing your income — by the amount of the flat standard deduction (ZBA) built into your Tax Table or Tax Rate Schedule.

If, for instance, your itemized deductions total \$5,800 on line 39 of Schedule A, and you are married filing jointly, you must subtract \$3,200 (your "zero bracket amount" or flat standard deduction) from \$5,800, leaving you with what is now called "excess itemized deductions" of \$2,600 to subtract from your income. Then, the Tax Table or Tax Rate Schedules will give you the other \$3,200 automatically.

Filing your '77 return will be much more complicated for you if you can't use the Tax Tables because (1) your income runs over the \$20,000 or \$40,000 limits; or (2) your exemptions are greater than the Tax Tables provide for; or (3) you are married filing separately and your spouse itemizes deductions; or (4) you can be claimed as a dependent on your parents' return and have \$750 or more of unearned income and less than \$2,200 of earned income if you are single (\$1,600 if married filing separately). All of you must complete part or all of a newly added Schedule TC, Tax computation Schedule.

Tomorrow: Money - saving tips on sales tax tables.

find the bracket into which your adjusted gross income fits, move across to the column which shows the number of exemptions you claimed — and there is your tax.

The only additional computation you'll need is to subtract the amount withheld from your wages during '77. The IRS expects most of you to wind up with refunds for '77, so the form asks first for the amount of income tax withheld and then on the line under that asks for your tax. This makes it easy for you to subtract to get your refund. Try this simpler Form 1040A for '77. And don't pay any fee unnecessarily to have it done for you.

But there also are new complications for you who itemize your deductions and file long form 1040.

If, for instance, you took your itemized deductions and then picked your tax automatically from the Tax Tables, you would be taking both the itemized deductions and the ZBA. To eliminate this duplication, Form 1040 Schedule A, Itemized Deductions requires you to REDUCE your total itemized deductions — thus increasing your income — by the amount of the flat standard deduction (ZBA) built into your Tax Table or Tax Rate Schedule.

If, for instance, your itemized deductions total \$5,800 on line 39 of Schedule A, and you are married filing jointly, you must subtract \$3,200 (your "zero bracket amount" or flat standard deduction) from \$5,800, leaving you with what is now called "excess itemized deductions" of \$2,600 to subtract from your income. Then, the Tax Table or Tax Rate Schedules will give you the other \$3,200 automatically.

Filing your '77 return will be much more complicated for you if you can't use the Tax Tables because (1) your income runs over the \$20,000 or \$40,000 limits; or (2) your exemptions are greater than the Tax Tables provide for; or (3) you are married filing separately and your spouse itemizes deductions; or (4) you can be claimed as a dependent on your parents' return and have \$750 or more of unearned income and less than \$2,200 of earned income if you are single (\$1,600 if married filing separately). All of you must complete part or all of a newly added Schedule TC, Tax computation Schedule.

Tomorrow: Money - saving tips on sales tax tables.

find the bracket into which your adjusted gross income fits, move across to the column which shows the number of exemptions you claimed — and there is your tax.

The only additional computation you'll need is to subtract the amount withheld from your wages during '77. The IRS expects most of you to wind up with refunds for '77, so the form asks first for the amount of income tax withheld and then on the line under that asks for your tax. This makes it easy for you to subtract to get your refund. Try this simpler Form 1040A for '77. And don't pay any fee unnecessarily to have it done for you.

But there also are new complications for you who itemize your deductions and file long form 1040.

If, for instance, you took your itemized deductions and then picked your tax automatically from the Tax Tables, you would be taking both the itemized deductions and the ZBA. To eliminate this duplication, Form 1040 Schedule A, Itemized Deductions requires you to REDUCE your total itemized deductions — thus increasing your income — by the amount of the flat standard deduction (ZBA) built into your Tax Table or Tax Rate Schedule.

If, for instance, your itemized deductions total \$5,800 on line 39 of Schedule A, and you are married filing jointly, you must subtract \$3,200 (your "zero bracket amount" or flat standard deduction) from \$5,800, leaving you with what is now called "excess itemized deductions" of \$2,600 to subtract from your income. Then, the Tax Table or Tax Rate Schedules will give you the other \$3,200 automatically.

Filing your '77 return will be much more complicated for you if you can't use the Tax Tables because (1) your income runs over the \$20,000 or \$40,000 limits; or (2) your exemptions are greater than the Tax Tables provide for; or (3) you are married filing separately and your spouse itemizes deductions; or (4) you can be claimed as a dependent on your parents' return and have \$750 or more of unearned income and less than \$2,200 of earned income if you are single (\$1,600 if married filing separately). All of you must complete part or all of a newly added Schedule TC, Tax computation Schedule.

Tomorrow: Money - saving tips on sales tax tables.

find the bracket into which your adjusted gross income fits, move across to the column which shows the number of exemptions you claimed — and there is your tax.

The only additional computation you'll need is to subtract the amount withheld from your wages during '77. The IRS expects most of you to wind up with refunds for '77, so the form asks first for the amount of income tax withheld and then on the line under that asks for your tax. This makes it easy for you to subtract to get your refund. Try this simpler Form 1040A for '77. And don't pay any fee unnecessarily to have it done for you.

But there also are new complications for you who itemize your deductions and file long form 1040.

If, for instance, you took your itemized deductions and then picked your tax automatically from the Tax Tables, you would be taking both the itemized deductions and the ZBA. To eliminate this duplication, Form 1040 Schedule A, Itemized Deductions requires you to REDUCE your total itemized deductions — thus increasing your income — by the amount of the flat standard deduction (ZBA) built into your Tax Table or Tax Rate Schedule.

If, for instance, your itemized deductions total \$5,800 on line 39 of Schedule A, and you are married filing jointly, you must subtract \$3,200 (your "zero bracket amount" or flat standard deduction) from \$5,800, leaving you with what is now called "excess itemized deductions" of \$2,600 to subtract from your income. Then, the Tax Table or Tax Rate Schedules will give you the other \$3,200 automatically.

Filing your '77 return will be much more complicated for you if you can't use the Tax Tables because (1) your income runs over the \$20,000 or \$40,000 limits; or (2) your exemptions are greater than the Tax Tables provide for; or (3) you are married filing separately and your spouse itemizes deductions; or (4) you can be claimed as a dependent on your parents' return and have \$750 or more of unearned income and less than \$2,200 of earned income if you are single (\$1,600 if married filing separately). All of you must complete part or all of a newly added Schedule TC, Tax computation Schedule.

Tomorrow: Money - saving tips on sales tax tables.

find the bracket into which your adjusted gross income fits, move across to the column which shows the number of exemptions you claimed — and there is your tax.

The only additional computation you'll need is to subtract the amount withheld from your wages during '77. The IRS expects most of you to wind up with refunds for '77, so the form asks first for the amount of income tax withheld and then on the line under that asks for your tax. This makes it easy for you to subtract to get your refund. Try this simpler Form 1040A for '77. And don't pay any fee unnecessarily to have it done for you.

But there also are new complications for you who itemize your deductions and file long form 1040.

If, for instance, you took your itemized deductions and then picked your tax automatically from the Tax Tables, you would be taking both the itemized deductions and the ZBA. To eliminate this duplication, Form 1040 Schedule A, Itemized Deductions requires you to REDUCE your total itemized deductions — thus increasing your income — by the amount of the flat standard deduction (ZBA) built into your Tax Table or Tax Rate Schedule.

If, for instance, your itemized deductions total \$5,800 on line 39 of Schedule A, and you are married filing jointly, you must subtract \$3,200 (your "zero bracket amount" or flat standard deduction) from \$5,800, leaving you with what is now called "excess itemized deductions" of \$2,600 to subtract from your income. Then, the Tax Table or Tax Rate Schedules will give you the other \$3,200 automatically.

Filing your '77 return will be much more complicated for you if you can't use the Tax Tables because (1) your income runs over the \$20,000 or \$40,000 limits; or (2) your exemptions are greater than the Tax Tables provide for; or (3) you are married filing separately and your spouse itemizes deductions; or (4) you can be claimed as a dependent on your parents' return and have \$750 or more of unearned income and less than \$2,200 of earned income if you are single (\$1,600 if married filing separately). All of you must complete part or all of a newly added Schedule TC, Tax computation Schedule.

Tomorrow: Money - saving tips on sales tax tables.

find the bracket into which your adjusted gross income fits, move across to the column which shows the number of exemptions you claimed — and there is your tax.

The only additional computation you'll need is to subtract the amount withheld from your wages during '77. The IRS expects most of you to wind up with refunds for '77, so the form asks first for the amount of income tax withheld and then on the line under that asks for your tax. This makes it easy for you to subtract to get your refund. Try this simpler Form 1040A for '77. And don't pay any fee unnecessarily to have it done for you.

But there also are new complications for you who itemize your deductions and file long form 1040.

If, for instance, you took your itemized deductions and then picked your tax automatically from the Tax Tables, you would be taking both the itemized deductions and the ZBA. To eliminate this duplication, Form 1040 Schedule A, Itemized Deductions requires you to REDUCE your total itemized deductions — thus increasing your income — by the amount of the flat standard deduction (ZBA) built into your Tax Table or Tax Rate Schedule.

If, for instance, your itemized deductions total \$5,800 on line 39 of Schedule A, and you are married filing jointly, you must subtract \$3,200 (your "zero bracket amount" or flat standard deduction) from \$5,800, leaving you with what is now called "excess itemized deductions" of \$2,600 to subtract from your income. Then, the Tax Table or Tax Rate Schedules will give you the other \$3,200 automatically.

Filing your '77 return will be much more complicated for you if you can't use the Tax Tables because (1) your income runs over the \$20,000 or \$40,000 limits; or (2) your exemptions are greater than the Tax Tables provide for; or (3) you are married filing separately and your spouse itemizes deductions; or (4) you can be claimed as a dependent on your parents' return and have \$750 or more of unearned income and less than \$2,200 of earned income if you are single (\$1,600 if married filing separately). All of you must complete part or all of a newly added Schedule TC, Tax computation Schedule.

Tomorrow: Money - saving tips on sales tax tables.

find the bracket into which your adjusted gross income fits, move across to the column which shows the number of exemptions you claimed — and there is your tax.

The only additional computation you'll need is to subtract the amount withheld from your wages during '77. The IRS expects most of you to wind up with refunds for '77, so the form asks first for the amount of income tax withheld and then on the line under that asks for your tax. This makes it easy for you to subtract to get your refund. Try this simpler Form 1040A for '77. And don't pay any fee unnecessarily to have it done for you.

But there also are new complications for you who itemize your deductions and file long form 1040.

If, for instance, you took your itemized deductions and then picked your tax automatically from the Tax Tables, you would be taking both the itemized deductions and the ZBA. To eliminate this duplication, Form 1040 Schedule A, Itemized Deductions requires you to REDUCE your total itemized deductions — thus increasing your income — by the amount of the flat standard deduction (ZBA) built into your Tax Table or Tax Rate Schedule.

If, for instance, your itemized deductions total \$5,800 on line 39 of Schedule A, and you are married filing jointly, you must subtract \$3,200 (your "zero bracket amount" or flat standard deduction) from \$5,800, leaving you with what is now called "excess itemized deductions" of \$2,600 to subtract from your income. Then, the Tax Table or Tax Rate Schedules will give you the other \$3,200 automatically.

Filing your '77 return will be much more complicated for you if you can't use the Tax Tables because (1) your income runs over the \$20,000 or \$40,000 limits; or (2) your exemptions are greater than the Tax Tables provide for; or (3) you are married filing separately and your spouse itemizes deductions; or (4) you can be claimed as a dependent on your parents' return and have \$750 or more of unearned income and less than \$2,200 of earned income if you are single (\$1,600 if married filing separately). All of you must complete part or all of a newly added Schedule TC, Tax computation Schedule.

Tomorrow: Money - saving tips on sales tax tables.

find the bracket into which your adjusted gross income fits, move across to the column which shows the number of exemptions you claimed — and there is your tax.

The only additional computation you'll need is to subtract the amount withheld from your wages during '77. The IRS expects most of you to wind up with refunds for '77, so the form asks first for the amount of income tax withheld and then on the line under that asks for your tax. This makes it easy for you to subtract to get your refund. Try this simpler Form 1040A for '77. And don't pay any fee unnecessarily to have it done for you.

But there also are new complications for you who itemize your deductions and file long form 1040.

If, for instance, you took your itemized deductions and then picked your tax automatically from the Tax Tables, you would be taking both the itemized deductions and the ZBA. To eliminate this duplication, Form 1040 Schedule A, Itemized Deductions requires you to REDUCE your total itemized deductions — thus increasing your income — by the amount of the flat standard deduction (ZBA) built into your Tax Table or Tax Rate Schedule.

If, for instance, your itemized deductions total \$5,800 on line 39 of Schedule A, and you are married filing jointly, you must subtract \$3,200 (your "zero bracket amount" or flat standard deduction) from \$5,800, leaving you with what is now called "excess itemized deductions" of \$2,600 to subtract from your income. Then, the Tax Table or Tax Rate Schedules will give you the other \$3,200 automatically.

Filing your '77 return will be much more complicated for you if you can't use the Tax Tables because (1) your income runs over the \$20,000 or \$40,000 limits; or (2) your exemptions are greater than the Tax Tables provide for; or (3) you are married filing separately and your spouse itemizes deductions; or (4) you can be claimed as a dependent on your parents' return and have \$750 or more of unearned income and less than \$2,200 of earned income if you are single (\$1,600 if married filing separately). All of you must complete part or all of a newly added Schedule TC, Tax computation Schedule.

Tomorrow: Money - saving tips on sales tax tables.

find the bracket into which your adjusted gross income fits, move across to the column which shows the number of exemptions you claimed — and there is your tax.

The only additional computation you'll need is to subtract the amount withheld from your wages during '77. The IRS expects most of you to wind up with refunds for '77, so the form asks first for the amount of income tax withheld and then on the line under that asks for your tax. This makes it easy for you to subtract to get your refund. Try this simpler Form 1040A for '77. And don't pay any fee unnecessarily to have it done for you.

But there also are new complications for you who itemize your deductions and file long form 1040.

If, for instance, you took your itemized deductions and then picked your tax automatically from the Tax Tables, you would be taking both the itemized deductions and the ZBA. To eliminate this duplication, Form 1040 Schedule A, Itemized Deductions requires you to REDUCE your total itemized deductions — thus increasing your income — by the amount of the flat standard deduction (ZBA) built into your Tax Table or Tax Rate Schedule.

If, for instance, your itemized deductions total \$5,800 on line 39 of Schedule A, and you are married filing jointly, you must subtract \$3,200 (your "zero bracket amount" or flat standard deduction) from \$5,800, leaving you with what is now called "excess itemized deductions" of \$2,600 to subtract from your income. Then, the Tax Table or Tax Rate Schedules will give you the other \$3,200 automatically.

Filing your '77 return will be much more complicated for you if you can't use the Tax Tables because (1) your income runs over the \$20,000 or \$40,000 limits; or (2) your exemptions are greater than the Tax Tables provide for; or (3) you are married filing separately and your spouse itemizes deductions; or (4) you can be claimed as a dependent on your parents' return and have \$750 or more of unearned income and less than \$2,200 of earned income if you are single (\$1,600 if married filing separately). All of you must complete part or all of a newly added Schedule TC, Tax computation Schedule.

Tomorrow: Money - saving tips on sales tax tables.

find the bracket into which your adjusted gross income fits, move across to the column which shows the number of exemptions you claimed — and there is your tax.

The only additional computation you'll need is to subtract the amount withheld from your wages during '77. The IRS expects most of you to wind up with refunds for '77, so the form asks first for the amount of income tax withheld and then on the line under that asks for your tax. This makes it easy for you to subtract to get your refund. Try this simpler Form 1040A for '77. And don't pay any fee unnecessarily to have it done for you.

But there also are new complications for you who itemize your deductions and file long form 1040.

If, for instance, you took your itemized deductions and then picked your tax automatically from the Tax Tables, you would be taking both the itemized deductions and the ZBA. To eliminate this duplication, Form 1040 Schedule A, Itemized Deductions requires you to REDUCE your total itemized deductions — thus increasing your income — by the amount of the flat standard deduction (ZBA) built into your Tax Table or Tax Rate Schedule.

If, for instance, your itemized deductions total \$5,800 on line 39 of Schedule A, and you are married filing jointly, you must subtract \$3,200 (your "zero bracket amount" or flat standard deduction) from \$5,800, leaving you with what is now called "excess itemized deductions" of \$2,600 to subtract from your income. Then, the Tax Table or Tax Rate Schedules will give you the other \$3,200 automatically.

Filing your '77 return will be much more complicated for you if you can't use the Tax Tables because (1) your income runs over the \$20,000 or \$40,000 limits; or (2) your exemptions are greater than the Tax Tables provide for; or (3) you are married filing separately and your spouse itemizes deductions; or (4) you can be claimed as a dependent on your parents' return and have \$750 or more of unearned income and less than \$2,200 of earned income if you are single (\$1,600 if married filing separately). All of you must complete part or all of a newly added Schedule TC, Tax computation Schedule.

Tomorrow: Money - saving tips on sales tax tables.

find the bracket into which your adjusted gross income fits, move across to the column which shows the number of exemptions you claimed — and there is your tax.

The only additional computation you'll need is to subtract the amount withheld from your wages during '77. The IRS expects most of you to wind up with refunds for '77, so the form asks first for the amount of income tax withheld and then on the line under that asks for your tax. This makes it easy for you to subtract to get your refund. Try this simpler Form 1040A for '77. And don't pay any fee unnecessarily to have it done for you.

But there also are new complications for you who itemize your deductions and file long form 1040.

If, for instance, you took your itemized deductions and then picked your tax automatically from the Tax Tables, you would be taking both the itemized deductions and the ZBA. To eliminate this duplication, Form 1040 Schedule A, Itemized Deductions requires you to REDUCE your total itemized deductions — thus increasing your income — by the amount of the flat standard deduction (ZBA) built into your Tax Table or Tax Rate Schedule.

If, for instance, your itemized deductions total \$5,800 on line 39 of Schedule A, and you are married filing jointly, you must subtract \$3,200 (your "zero bracket amount" or flat standard deduction) from \$5,800, leaving you with what is now called "excess itemized deductions" of \$2,600 to subtract from your income. Then, the Tax Table or Tax Rate Schedules will give you the other \$3,200 automatically.

Filing your '77 return will be much more complicated for you if you can't use the Tax Tables because (1) your income runs over the \$20,000 or \$40,000 limits; or (2) your exemptions are greater than the Tax Tables provide for; or (3) you are married filing separately and your spouse itemizes deductions; or (4) you can be claimed as a dependent on your parents' return and have \$750 or more of unearned income and less than \$2,200 of earned income if you are single (\$1,600 if married filing separately). All of you must complete part or all of a newly added Schedule TC, Tax computation Schedule.

Tomorrow: Money - saving tips on sales tax tables.

find the bracket into which your adjusted gross income fits, move across to the column which shows the number of exemptions you claimed — and there is your tax.

The only additional computation you'll need is to subtract the amount withheld from your wages during '77. The IRS expects most of you to wind up with refunds for '77, so the form asks first for the amount of income tax withheld and then on the line under that asks for your tax. This makes it easy for you to subtract to get your refund. Try this simpler Form 1040A for '77. And don't pay any fee unnecessarily to have it done for you.

But there also are new complications for you who itemize your deductions and file long form 1040.

If, for instance, you took your itemized deductions and then picked your tax automatically from the Tax Tables, you would be taking both the itemized deductions and the ZBA. To eliminate this duplication, Form 1040 Schedule A, Itemized Deductions requires you to REDUCE your total itemized deductions — thus increasing your income — by the amount of the flat standard deduction (ZBA) built into your Tax Table or Tax Rate Schedule.

If, for instance, your itemized deductions total \$5,800 on line 39 of Schedule A, and you are married filing jointly, you must subtract \$3,200 (your "zero bracket amount" or flat standard deduction) from \$5,800, leaving you with what is now called "excess itemized deductions" of \$2,600 to subtract from your income. Then, the Tax Table or Tax Rate Schedules will give you the other \$3,200 automatically.

Filing your '77 return will be much more complicated for you if you can't use the Tax Tables because (1) your income runs over the \$20,000 or \$40,000 limits; or (2) your exemptions are greater than the Tax Tables provide for; or (3) you are married filing separately and your spouse itemizes deductions; or (4) you can be claimed as a dependent on your parents' return and have \$750 or more of unearned income and less than \$2,200 of earned income if you are single (\$1,600 if married filing separately). All of you must complete part or all of a newly added Schedule TC, Tax computation Schedule.

Tomorrow: Money - saving tips on sales tax tables.

find the bracket into which your adjusted gross income fits, move across to the column which shows the number of exemptions you claimed — and there is your tax.

The only additional computation you'll need is to subtract the amount withheld from your wages during '77. The IRS expects most of you to wind up with refunds for '77, so the form asks first for the amount of income tax withheld and then on the line under that asks for your tax. This makes it easy for you to subtract to get your refund. Try this simpler Form 1040A for '77. And don't pay any fee unnecessarily to have it done for you.

But there also are new complications for you who itemize your deductions and file long form 1040.

If, for instance, you took your itemized deductions and then picked your tax automatically from the Tax Tables, you would be taking both the itemized deductions and the ZBA. To eliminate this duplication, Form 1040 Schedule A, Itemized Deductions requires you to REDUCE your total itemized deductions — thus increasing your income — by the amount of the flat standard deduction (ZBA) built into your Tax Table or Tax Rate Schedule.

If, for instance, your itemized deductions total \$5,800 on line 39 of Schedule A, and you are married filing jointly, you must subtract \$3,200 (your "zero bracket amount" or flat standard deduction) from \$5,800, leaving you with what is now called "excess itemized deductions" of \$2,600 to subtract from your income. Then, the Tax Table or Tax Rate Schedules will give you the other \$3,200 automatically.

Filing your '77 return will be much more complicated for you if you can't use the Tax Tables because (1) your income runs over the \$20,000 or \$40,000 limits; or (2) your exemptions are greater than the Tax Tables provide for; or (3) you are married filing separately and your spouse itemizes deductions; or (4) you can be claimed as a dependent on your parents' return and have \$750 or more of unearned income and less than \$2,200 of earned income if you are single (\$1,600 if married filing separately). All of you must complete part or all of a newly added Schedule TC, Tax computation Schedule.

Tomorrow: Money - saving tips on sales tax tables.

find the bracket into which your adjusted gross income fits, move across to the column which shows the number of exemptions you claimed — and there is your tax.

The only additional computation you'll need is to subtract the amount withheld from your wages during '77. The IRS expects most of you to wind up with refunds for '77, so the form asks first for the amount of income tax withheld and then on the line under that asks for your tax. This makes it easy for you to subtract to get your refund. Try this simpler Form 1040A for '77. And don't pay any fee unnecessarily to have it done for you.

But there also are new complications for you who itemize your deductions and file long form 1040.

If, for instance, you took your itemized deductions and then picked your tax automatically from the Tax Tables, you would be taking both the itemized deductions and the ZBA. To eliminate this duplication, Form 1040 Schedule A, Itemized Deductions requires you to REDUCE your total itemized deductions — thus increasing your income — by the amount of the flat standard deduction (ZBA) built into your Tax Table or Tax Rate Schedule.

If, for instance, your itemized deductions total \$5,800 on line 39 of Schedule A, and you are married filing jointly, you must subtract \$3,200 (your "zero bracket amount" or flat standard deduction) from \$5,800, leaving you with what is now called "excess itemized deductions" of \$2,600 to subtract from your income. Then, the Tax Table or Tax Rate Schedules will give you the other \$3,200 automatically.

Filing your '77 return will be much more complicated for you if you can't use the Tax Tables because (1) your income runs over the \$20,000 or \$40,000 limits; or (2) your exemptions are greater than the Tax Tables provide for; or (3) you are married filing separately and your spouse itemizes deductions; or (4) you can be claimed as a dependent on your parents' return and have \$750 or more of unearned income and less than \$2,200 of earned income if you are single (\$1,600 if married filing separately). All of you must complete part or all of a newly added Schedule TC, Tax computation Schedule.

Tomorrow: Money - saving tips on sales tax tables.

## Hog cholera 'eradicated'

By DON KENDALL  
AP Farm Writer  
WASHINGTON (AP) — Nearly 150 years after it first appeared in Ohio and Indiana, hog cholera has been eradicated from the United States after less than two decades of federal and state efforts costing \$140 million.

Agriculture Secretary Bob Bergland will officially announce Tuesday that the disease, which affects only swine, has been eliminated.

The campaign against hog cholera, described by the Agriculture Department as "the most destructive and costly swine disease ever to exist in this country," really began in September 1961 with an authorization by Congress enabling USDA to cooperate with states in a nationwide campaign to stamp it out.

Hog cholera, unknown in the world before then, was first detected in 1833 in southern Ohio and along the Wabash River in Indiana. It soon spread to other states and to other countries in all parts of the world and still exists in many of them.

"The eradication of this 'native' American disease took just about 15 years — a relatively short time for disease elimination," Bergland said in a statement issued in advance of his official announcement.

"But even more important, the job was done for less than the original estimate," he said. "At the outset, eradication was expected to cost between \$160 million and \$200 million in state and federal funds. The actual cost from 1962 through 1977 was about \$140 million."

The federal and state campaign included the destruction of infected and exposed swine, with indemnity payments to owners of the animals. All told, some 5,700 swine herds containing about 800,000 hogs were destroyed from 1965 through 1976 at a cost of \$25 million.

Other efforts included the elimination of hog cholera vaccines in 1969 which helped in protecting vaccinated animals still enabled those to pass on the disease virus to others. States also cracked down on feeding of raw garbage, a common source of hog cholera when it contained pork trimmings from infected hogs.

The last case of hog cholera occurred Aug. 1, 1976, in a swine herd near Cape May, N.J.

WACO, Texas (AP) — Action by the president of Baylor University has stopped an on-campus presentation by the Dallas Gay Political Caucus.

D. Floyd Baker, a spokesman for the gay group, said the group was notified of the cancellation by Robert Hopkins, a member of the Minority Affairs and Student Rights and Responsibility Commission at Baylor.

A news release by the caucus quoted school president Dr. Abner McCall as saying that a Christian university cannot provide a forum for a "way of life not sanctioned by the scriptures."

Contacted at his home Sunday night, Dr. McCall said the release was "substantially correct."

He said the presentation was cancelled after the dean of students vetoed the idea and it was appealed to him.

"I told them (gay leaders) that it goes contrary to the standards at Baylor," he said.

McCall said it was the first such confrontation between school administrators and a gay rights group he could recall.

Gay spokesman D. Floyd Baker said plans are already underway for an off-campus presentation on the issue of gay rights in early March.

WACO, Texas (AP) — Action by the president of Baylor University has stopped an on-campus presentation by the Dallas Gay Political Caucus.

D. Floyd Baker, a spokesman for the gay group, said the group was notified of the cancellation by Robert Hopkins, a member of the Minority Affairs and Student Rights and Responsibility Commission at Baylor.

A news release by the caucus quoted school president Dr. Abner McCall as saying that a Christian university cannot provide a forum for a "way of life not sanctioned by the scriptures."

Contacted at his home Sunday night, Dr. McCall said the release was "substantially correct."

He said the presentation was cancelled after the dean of students vetoed the idea and it was appealed to him.

"I told them (gay leaders) that it goes contrary to the standards at Baylor," he said.

McCall said it was the first such confrontation between school administrators and a gay rights group he could recall.

Gay spokesman D. Floyd Baker said plans are already underway for an off-campus presentation on the issue of gay rights in early March.

WACO, Texas (AP) — Action by the president of Baylor University has stopped an on-campus presentation by the Dallas Gay Political Caucus.

D. Floyd Baker, a spokesman for the gay group, said the group was notified of the cancellation by Robert Hopkins, a member of the Minority Affairs and Student Rights and Responsibility Commission at Baylor.

A news release by the caucus quoted school president Dr. Abner McCall as saying that a Christian university cannot provide a forum for a "way of life not sanctioned by the scriptures."

Contacted at his home Sunday night, Dr. McCall said the release was "substantially correct."



**Advice**

Dear Abby  
By Abigail Van Buren

DEAR ABBY: The following is from a letter I recently received from an out-of-state relative:  
"Let's make a deal. Next year instead of sending each other Christmas presents, send me a check, and I will do the same for you. It will save us both a lot of trouble."  
Abby, I never considered shopping for Christmas presents "a lot of trouble." Besides, what's the sense of my sending her a check for \$30, and her sending me the same? How do you feel about it? I should add, this relative needs more money like I need another belly button.

**BULLETIN READER IN PHILLY**

DEAR READER: I agree with you. Tell her to just blow you a kiss next Christmas, and you'll do the same for her.

DEAR ABBY: My wife's older brother, who is retired, telephoned us long distance to give us some very bad news. He said his wife had cancer, then he asked me if I would put her on my Blue Cross at work.

I was startled to learn that his wife had cancer, and shocked at his suggestion that I put her on my Blue Cross. I told him that I didn't think General Motors, for whom I work, would approve.

He told me that he had once put his neighbor on HIS medical plan at work so he knew it could be done, but if that's the way I felt about it, he was sorry he called. Then he hung up.

Abby, my wife and I are bewildered. Could I put his wife on my Blue Cross? Legitimately, I mean?

**BEWILDERED IN OHIO**

DEAR BEWILDERED: You are correct in assuming that you may not put your brother-in-law's wife on your Blue Cross. In order for her to qualify for your Blue Cross coverage, she would have to be totally dependent on you financially, which is not the case. Your brother-in-law may have been able to legitimately include a neighbor on HIS medical plan, but it was not Blue Cross.

DEAR ABBY: Re the secretary whose boss asked her to return (on her lunch hour) a girdle his wife had purchased. The secretary was humiliated because, after standing in line for a long time, she was informed that undergarments were not returnable.

You should have told that secretary that if her boss ever asked her to return anything again, she should tell him that her lunch hours were already taken up with her own errands, but she would be glad to accommodate his wife ON COMPANY TIME.

If the boss allowed her to do so (which is extremely doubtful), the secretary should then take her sweet time to perform the errand. I assure you, that would be the last time the boss would ask his secretary to return anything.

**ALOHA IN HANAIEI, HAWAII**

DEAR ALOHA: Thanks, friend. Your answer was better than mine.

**CONFIDENTIAL TO "HATE QUEERS IN PASADENA, CALIF.":** Yes, some homosexuals are capable of committing crimes, but they are also capable of heroism. How soon we forget. Not long ago in San Francisco an acknowledged homosexual prevented the murder of President Gerald Ford at the hand of a heterosexual assassin.

Problems? Tell them to Abby. For a personal, unpublished reply, write Abby: Box 69700, Los Angeles, Calif. 90069. Enclose a stamped, self-addressed envelope.

**Ask Dr. Lamb**

Lawrence E. Lamb, M.D.

DEAR LAMB — In reply to a reader who requested some advice on weight control I would like to pass on two words — be careful!

The reader spoke of losing 35 pounds in four months after having a weight problem all her life. I too found myself confronting the same situation after losing a great deal of weight in a short period of time. After reaching a weight I thought was adequate I tried to find a plan to maintain my weight. I counted calories and weighed portions of food. I exercised vigorously. I drank coffee constantly to avoid the hunger pangs.

I found myself getting very upset, bewildered and confused. I continued to lose weight, all the while becoming more depressed and frustrated about what I could or could not eat.

The saga lasted for nearly nine months. At this point I weighed 80 pounds. I'm 5-foot-3. I was so confused that I tried to commit suicide. Luckily someone cared enough to send for professional help. It was then that I learned of an illness called anorexia nervosa.

A few comments from you could help to clarify the disease and its symptoms for your readers, but I would like to comment to everyone who diets strictly. If you find that controlling your weight becomes the prime motivating force in your life, if you feel lost, frightened and confused, please be careful. Get some help from your doctor. Anorexia nervosa is dangerous. It's a killer.

DEAR READER — Thank you for sharing your experience with others. And you are right, anorexia nervosa is dangerous.

It usually occurs in young girls in their teens. It can occur in males as well, but it is rare. The girl becomes obsessed with being thin as you have described. Such

**Polly's pointers**

Polly Cramer

DEAR POLLY — Our Pet Peeve is with those people we see carelessly throwing lit cigarettes out of their cars when there are people walking right by the car. I cannot imagine why anyone would do such a thing — clothing, etc. could catch on fire. — LILLY

DEAR POLLY — If you're handing fluffy coats or even fluffy toys down from one child to another use a wig brush to fluff them up after cleaning. Even the scruffiest things will look almost like new. Fluffy knit hats can also be improved 100 percent by brushing with a wig brush. — MRS. P.F.

**Canadian group makes history**

**WCTU members discard the axe**

By CHRIS EDWARDS  
Pampa News Staff  
If thoughts of Carry Nation wielding her axe against the evils of alcohol make you giggle, relax: It gives the president of the Women's Christian Temperance Union (WCTU) in Canadian giggles too.

The Canadian WCTU has grown from the original vehemently anti-alcohol organization it once was to a club that "provides community service more than anything else," said Mrs. Arthur Webb, president of the Canadian

WCTU. Canadian boasts the only WCTU building built, owned and operated by WCTU women in the United States.

The building, completed in 1911, houses the Hemphill County Library, which the WCTU hopes to add a wing to some time this year.

"A band of women had a vision grand. ... We saw a building large and stately arise from out the land. ... reads the beginning of a poem written by a WCTU woman and read when a mortgage was burned in 1917.

The building is indeed stately and grand, a southern mansion complete with marble pillars, stained glass windows, and a sliding wooden room divider that Mrs. Webb called "priceless".

The Canadian WCTU, organized with 24 members in 1902, grew to 150 members in 1937 and has since dropped to about 25, Mrs. Webb said. WCTU members raised funds for the building and land the same way they do now — by asking for donations and conducting yearly bazaars.

Members are prohibitionists, but Mrs. Webb said she was not "rabid" about it. Hemphill County, though, is dry except for one club.

Early WCTU members, in fact, might have financed the building by donations from drinkers.

"The ladies would march right into the saloons and solicit," Mrs. Webb said. "The husbands of the ladies would keep right on drinking, but gave donations."

A meeting room in the basement was used by clubs and organizations 288 times last year, Mrs. Webb said.

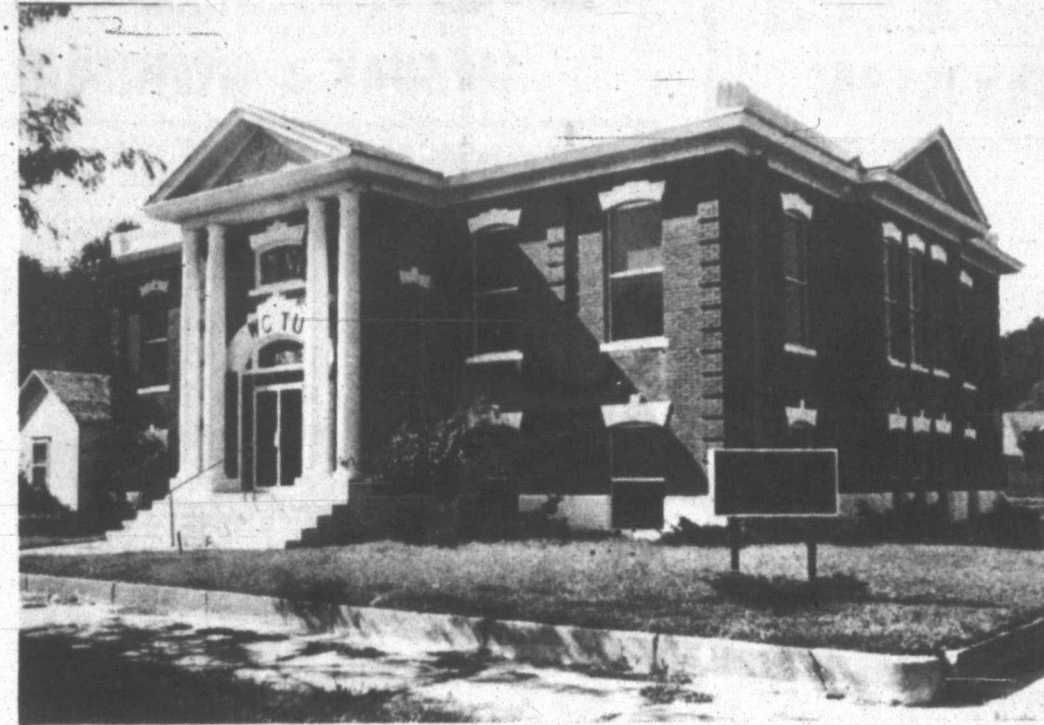
The WCTU has raised about \$70,000 of the estimated \$250,000 needed for an addition that will be almost as large as the original building.

The library, started in 1923, needs more room for books, meetings and a microfilm reader. The addition will also add needed parking space.

Rumors have it that Carry Nation did once visit Canadian, leaving behind a hatchet. The WCTU ladies have community support for their fund-raising efforts. They won't need hatchets to get the library addition built.

"But when we get that done something else will come up that we need to do," Mrs. Webb said.

**Parmichael Whiskey**  
Pampa's Leading  
FUNERAL DIRECTORS  
**665-2323**



WCTU building now Canadian library (Canadian Record photo)

**At Wit's End**

By ERMA BOMBECK  
I've got a great idea for a new game show.  
It's sort of a cross between "The Gong Show" and "Family Feud."

The way it works, a mother picks up the phone and as soon as it's determined it is for her, other members of the family swing into action like mimes Shield and Yarnell.

They dance in front of the phone, make gestures, pantomime words, and make pictures with their hands. The first one to get Mom to say, "Would you hold on a minute?" to the caller, gets a rap in the mouth.

I swear I've sat around in a chair all night without one person so much as saying a word to me. The minute I'm on the phone they come out of the woodwork.

One night one of the kids stood in front of me and while I was carrying on a conversation, unrolled his tongue down to his knees, crossed his eyes and pointed to the car hysterically.

I could only assume (1) his zipper was on fire; (2) he needed the phone to call the governor; (3) he wanted to know where my nail clip was. It was the latter.

I detest people who talk with me on the phone in absentia. You know the ones I mean. You're telling them an incredible story about how a strange man knocked on your door, asked to use your phone, and as he stepped inside locked the door behind him and snipped the phone cord and as you're relating all this, you hear your listener's muffled voice say, "Leroy, you put that brownie right back where you got it. You wanta have terminal zits?"

I used to have a friend who didn't bother to cover the receiver. She'd whisper in a loud voice, "Gloria! I'm gonna give you one!" Minutes later she'd admonish, "Gloria! I'm gonna give you two!" I never knew what the magic number was that meant the roof was going to cave in on Gloria, but somehow I understood what she was going

through. The other night as I was sitting by the phone looking up a number, my daughter yelled, "Hey Mom! Did you see my science notes? Did Ann call? Can I have the leftover pizza in the refrigerator? Do you have any clean pantyhose?" I yelled back, "No. No. Yes and No." She peeked in the room, "Sorry. I thought you were on the phone."

**Cobra** punches through loud and clear  
**LAST CHANCE--**  
To Move Up To A Top Quality 40 Channel Cobra C.B. At This Low Price!--  
Limited Quantity -- When present stock is sold this model will not be available  
Reg. \$149.95  
**\$69.95**  
COBRA 77X  
● Dynamic Gain Control  
● External Speaker Jacks  
● ANI Noise Blanker  
● PA Capability  
● Large RF-Signal Strength Meter  
**HALL TIRE COMPANY**  
700 W. Foster Your Mobile Sound Center 665-4241

**Bands slate concert**

Four Pampa bands will perform a mid-winter band concert from 7:30 to 9 p.m. Feb. 16 at the M.K. Brown Auditorium.

Performing will be the sixth grade band, directed by Sam Watson; the middle school band, directed by Jim Duggan; the junior high band, directed by Joe DiCosimo, and the Pride of Pampa Band, directed by Jeff Doughen.

Selections will include "Elvis Presley in Concert."

Dashing dab  
Perfume shouldn't be restricted to earlobes and wrists. A dab behind the knee and at the temple works well, too.

Tickets, purchased at the door, are \$1 for adults and 50 cents for children.

**Expert Cleaning Service**  
Knitwear & Sweaters  
**VOGUE**  
Drive-In Cleaners  
1542 N. Hobart  
PHONE 669-7500

**TUESDAY NIGHT IS FAMILY STEAK NIGHT**  
5 p.m. to CLOSE AT  
**SIRLOIN STOCKADE Family Steak House**  
Open 11 a.m. to 9 p.m. Mon and Sat. 1616 S. 18th N. Hobart 665-8251  
**STOCKADE CLUB STEAK DINNER**  
Complete dinner. Served with Your choice of Baked Potatoes or French Fries, plus salad and hot Streusel Topping.  
**\$1.89**

**Fite Food**  
1333 N. Hobart 665-1092 or 665-8842  
Open Daily 8 a.m. to 6:30 p.m.--Closed Sunday

Prices Good Through Saturday, Feb. 4, 1978

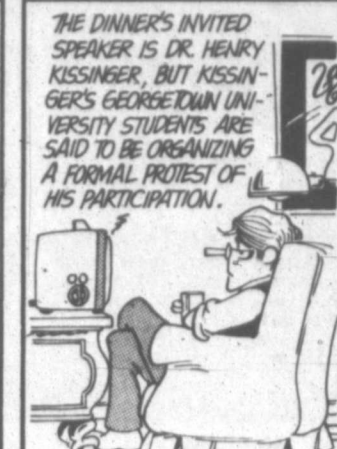
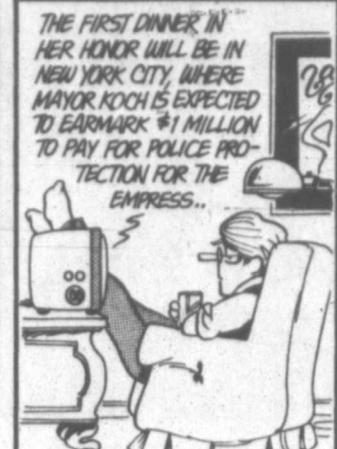
<b>FITE'S FAMOUS FEED LOT BEEF--U.S. INSPECTED</b>		
Half Beef 74¢ Plus 15 Lb. Processing	Hind Quarter 94¢ Plus 15 Lb. Processing	Front Quarter 64¢ Plus 15 Lb. Processing
Fresh, Frozen <b>BEEF PATTIES</b> 5 lb. Roll \$3.45	Fresh Dressed <b>BAKING HENS</b> 59¢	
Fite's Home Style <b>CHILI</b> 1 Lb. Ctn. 89¢	Feed Lot Beef <b>RIB STEAK</b> 1 lb. 1.29	
White and Dark Meat <b>TURKEY ROAST</b> 2 lb. Pkg. \$2.59	Nice, Lean <b>BEEF SHORT RIBS</b> 59¢	
<b>RUSSET POTATOES</b> U.S. No. 1 10 lb. Bag 79¢		
<b>SHURFINE COFFEE</b> Reg. or Drip Lb. can \$2.59		
<b>MUSHROOM SOUP</b> Campbell's 2 10 3/4 Oz. Cans 39¢		
<b>HONEY BUNS</b> Morton, Frozen, 9 Oz. Pkg. 39¢		
<b>BUTTERMILK</b> Plains, 1/2 Gallon 73¢		
Van Camp's 303 Cans <b>PORK &amp; BEANS</b> 2 for 59¢	Fresh--Thin sliced--White--Whole Wheat <b>Earth Grain Weight Watchers' Bread</b>	
Casserol Dry <b>PINTO BEANS</b> 2 lb. Bag 69¢	Northern White <b>TISSUE</b> 4 Roll Pkg. 69¢	
Del Monte Whole, 16 Oz. Cans <b>Green Beans</b> 3 for \$1	<b>CRISCO</b> 3 lb. Can \$1.67	
Grade A, Nest Fresh <b>LARGE EGGS</b> Doz. 69¢	Ken-L-Ration <b>DOG FOOD</b> 2 16 Oz. Cans 49¢	
Gala White, Large Roll <b>Jumbo Towels</b> 59¢	1/2 Gallon Jug <b>CLOROX BLEACH</b> 59¢	
Sara Lee Frozen <b>POUND CAKE</b> 12 Oz. Pkg. 89¢	Ragu Plain, Meat or Mushroom 15 Oz. Jar <b>SPAGHETTI SAUCE</b> 59¢	
Borden's Assorted Flavors <b>ICE CREAM</b> 1/2 Gal. \$1.29	Hi-C <b>PEACH DRINK</b> 46 Oz. Can 69¢	
Fresh <b>CARROTS</b> 1 lb. Bag 25¢	Ocean Spray Whole <b>CRANBERRIES</b> 16 Oz. Pkg. 29¢	



FUNNY BUSINESS By Roger Bollen



DOONESBURY



STEVE CANYON



by Garry Trudeau



by Milton Caniff

SIDE GLANCES

by Gill Fox



"No, we're not married, but at our age we're not exactly living in sin, either!"

B.C.



by Johnny Hart



THE BORN LOSER

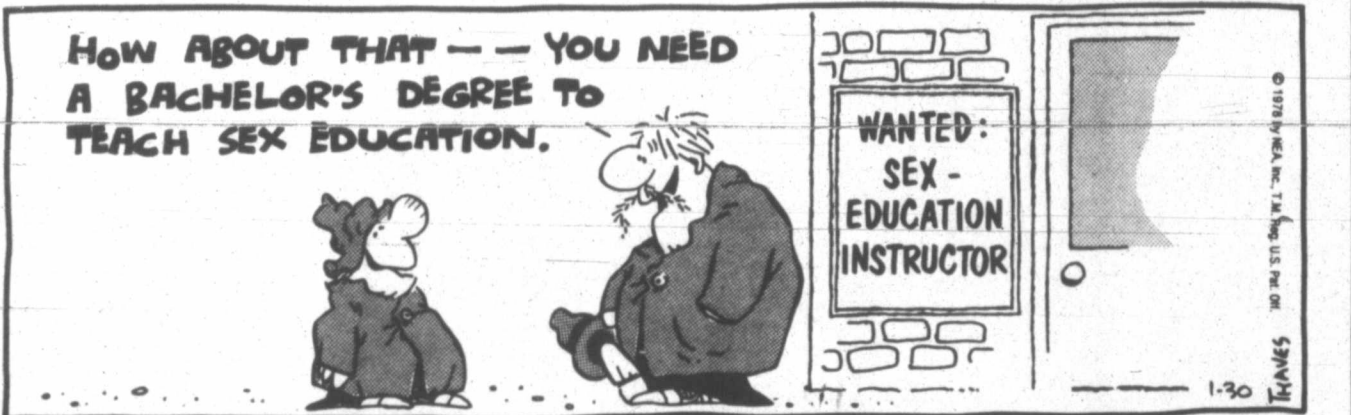


by Art Sansom



FRANK AND ERNEST

by Bob Thaves



PRISCILLA'S POP

by Al Vermorel



CAPTAIN EASY

by Crooks & Lawrence



ALLEY OOP

by Dave Graue



EK & MEK

by Howie Schneider



THE WIZARD OF ID

by Brant Parker and Johnny Hart



WINTHROP

Dick Cavalli



BUGS BUNNY

by Stoffel & Heimdel



OUR BOARDING HOUSE with Major Hoople



MARMADUKE

by Brad Anderson





GRIDIRON CURSIVE

AMHERST, Mass. (AP) — John Gladchuk, a wide receiver and co-captain of the Massachusetts football team, is majoring in hotel and restaurant management. He studied the art of cooking under a European chef at Newport, R.I., last summer.

As part of a course assignment, Gladchuk cooked a complete meal for 150 people at a Quarterback Club luncheon this fall. He served chicken cacciatore, rice, cauliflower, tossed salad and, for dessert, something called "Minuteman Cake," a maroon and white creation to match the colors of his school.

13 Business Opportunities

NEED DEALER for well established major oil company service station. Call 669-2611 or 669-2186.

14 Business Services

ACCOUNTING AND Tax service—individual and business. 669-3035.

BATH REMODELING

We are experienced in changing dull bathrooms into bright cheery ones. Call us for free ideas. Financing available. First payment in spring. BUYERS SERVICE 669-3231

14D Carpentry

RALPH BAXTER CONTRACTOR AND BUILDER ADDITION-REMODELING PHONE 669-8248

FOR ROOMS, Additions, repairs, Call H.R. Jeter Construction Company, 669-2961, if no answer 669-2764.

ADDITIONS, REMODELING, J & K contractors, Jerry Reagan, 669-9747 or Karl Parks, 669-2648.

BUILDING OR Remodeling of all types. Ardell Lance, 669-3946.

PAINTING AND REMODELING All Kinds 669-7145

ADDITIONS, REMODELING, roofing, custom cabinets, counter tops, acoustic ceiling spraying. Free estimates. Gene Breese, 669-3377.

KARLIN MUNS KARLIN Construction, building and remodeling. Call 669-3456 or 669-2882.

REMODELING AND additions, all kinds. Acoustical ceiling and trim work. Tape and bidding. Experience. Call J.D. or Chester at 669-4048 or 669-1754.

BLACKIE'S CONSTRUCTION, framing and remodeling anywhere in the Panhandle. 374-5963.

14F Decorators, Interior

KITCHEN REMODELING

New properly planned kitchen cabinets will delight the cook and add value to your home. Buyers service will help you expertly plan for the best use of your available space. Financing available. First payment in spring. BUYERS SERVICE 669-3231

REMODELING AND additions, all kinds. Acoustical ceiling and trim work. Tape and bidding. Experience. Call J.D. or Chester at 669-4048 or 669-1754.

BLACKIE'S CONSTRUCTION, framing and remodeling anywhere in the Panhandle. 374-5963.

14H General Service

SEWER AND Drain Line Cleaning. Call Maurice Cross, 665-4329.

ELECTRIC SHAVER REPAIR Shaver Service Under Warranty 2132 N. Christy 669-6618

HOUSE LEVELING, Taylor Spraying Service. Call 669-9992.

PATIO COVERS CARPORTS

The first patio cover designed for fine homes! Engineered for our local weather conditions. Beat the spring rush and save during our annual "Early Bird" sale. Financing available. First payment in spring. Free gifts with purchase. BUYERS SERVICE 669-3231

HOUSELY ELECTRIC Commercial and Residential Dryer, stoves and repairs. Call 669-7953.

14I General Repair

ELECTRIC RAZOR REPAIR Parts. New & Used razors for sale. Specialty Sales & Service 1008 Alcock Berger Hi-Way 665-0002

DRAFTY WINDOWS?

Why sit in a draft, or heat the great outdoors. The window people at Buyers Service have a reputation for solving even the most complex window problems. Call us for more information. BUYERS SERVICE 669-3231

FOR CERAMIC tile point up and repair work call. Shane Towles, 665-5075.

CLARK'S WASHER SERVICE 1121 Need Road 665-4882

14L Insulation

THERMACON INSULATION THERMACON meets all Federal specifications including HI-1515-C, FHA, VA, and HUD requirements.

Also THERMACON carries full Underwriters Laboratories classifications and follows up services. With U.L. reference No. R-4764 for loosefill and No. 500 for wall spray. 301 W. Foster 669-0991

CEL-O-THERM INSULATION Call for free home inspection J&K Contractors, 669-2648 or 669-9747.

FRONTIER INSULATION 100 percent natural wood based fiber. Guaranteed flame retardant. Non irritating, non toxic moisture resistant. H.H. PHA, VA and HUD approved. Sound deadening. Kenney Ray & Donald Maul, 665-5254, 665-3332.

MATNEY'S ENGINE SERVICE

Irrigation & Industrial We also work on Cars

• Tune-Up • Brakes • Mufflers • Valve Jobs

1107 S. Hobart 669-9554

FOR SERVICE BEYOND A CONTRACT CALL

BARRETT REALTORS Lee Garrett, Inc.

Janina Reagan 669-9774

Martene Kyle 665-4960

Fay Baum 669-3809

Mike Hoenigman 665-4292

Norma Shuckelford GRI 3-4345

Al Shuckelford GRI 4-4345

Mary Lee Garrett, GRI 669-9837

309 N. Frost 665-1819

FOR SERVICE BEYOND A CONTRACT CALL

BARRETT REALTORS Lee Garrett, Inc.

Janina Reagan 669-9774

Martene Kyle 665-4960

Fay Baum 669-3809

Mike Hoenigman 665-4292

Norma Shuckelford GRI 3-4345

Al Shuckelford GRI 4-4345

Mary Lee Garrett, GRI 669-9837

309 N. Frost 665-1819

FOR SERVICE BEYOND A CONTRACT CALL

BARRETT REALTORS Lee Garrett, Inc.

Janina Reagan 669-9774

Martene Kyle 665-4960

Fay Baum 669-3809

Mike Hoenigman 665-4292

Norma Shuckelford GRI 3-4345

Al Shuckelford GRI 4-4345

Mary Lee Garrett, GRI 669-9837

309 N. Frost 665-1819

FOR SERVICE BEYOND A CONTRACT CALL

BARRETT REALTORS Lee Garrett, Inc.

Janina Reagan 669-9774

Martene Kyle 665-4960

Fay Baum 669-3809

Mike Hoenigman 665-4292

Norma Shuckelford GRI 3-4345

Al Shuckelford GRI 4-4345

Mary Lee Garrett, GRI 669-9837

309 N. Frost 665-1819

FOR SERVICE BEYOND A CONTRACT CALL

BARRETT REALTORS Lee Garrett, Inc.

Janina Reagan 669-9774

Martene Kyle 665-4960

Fay Baum 669-3809

Mike Hoenigman 665-4292

Norma Shuckelford GRI 3-4345

Al Shuckelford GRI 4-4345

Mary Lee Garrett, GRI 669-9837

309 N. Frost 665-1819

FOR SERVICE BEYOND A CONTRACT CALL

BARRETT REALTORS Lee Garrett, Inc.

Janina Reagan 669-9774

Martene Kyle 665-4960

Fay Baum 669-3809

Mike Hoenigman 665-4292

Norma Shuckelford GRI 3-4345

Al Shuckelford GRI 4-4345

Mary Lee Garrett, GRI 669-9837

309 N. Frost 665-1819

FOR SERVICE BEYOND A CONTRACT CALL

BARRETT REALTORS Lee Garrett, Inc.

Janina Reagan 669-9774

Martene Kyle 665-4960

Fay Baum 669-3809

Mike Hoenigman 665-4292

Norma Shuckelford GRI 3-4345

Al Shuckelford GRI 4-4345

Mary Lee Garrett, GRI 669-9837

309 N. Frost 665-1819

FOR SERVICE BEYOND A CONTRACT CALL

BARRETT REALTORS Lee Garrett, Inc.

Janina Reagan 669-9774

Martene Kyle 665-4960

Fay Baum 669-3809

Mike Hoenigman 665-4292

Norma Shuckelford GRI 3-4345

Al Shuckelford GRI 4-4345

Mary Lee Garrett, GRI 669-9837

309 N. Frost 665-1819

FOR SERVICE BEYOND A CONTRACT CALL

BARRETT REALTORS Lee Garrett, Inc.

Janina Reagan 669-9774

Martene Kyle 665-4960

Fay Baum 669-3809

Mike Hoenigman 665-4292

Norma Shuckelford GRI 3-4345

Al Shuckelford GRI 4-4345

Mary Lee Garrett, GRI 669-9837

309 N. Frost 665-1819

FOR SERVICE BEYOND A CONTRACT CALL

BARRETT REALTORS Lee Garrett, Inc.

Janina Reagan 669-9774

Martene Kyle 665-4960

Fay Baum 669-3809

Mike Hoenigman 665-4292

Norma Shuckelford GRI 3-4345

Al Shuckelford GRI 4-4345

Mary Lee Garrett, GRI 669-9837

309 N. Frost 665-1819

FOR SERVICE BEYOND A CONTRACT CALL

BARRETT REALTORS Lee Garrett, Inc.

Janina Reagan 669-9774

Martene Kyle 665-4960

Fay Baum 669-3809

Mike Hoenigman 665-4292

Norma Shuckelford GRI 3-4345

Al Shuckelford GRI 4-4345

Mary Lee Garrett, GRI 669-9837

309 N. Frost 665-1819

FOR SERVICE BEYOND A CONTRACT CALL

BARRETT REALTORS Lee Garrett, Inc.

Janina Reagan 669-9774

Martene Kyle 665-4960

Fay Baum 669-3809

Mike Hoenigman 665-4292

Norma Shuckelford GRI 3-4345

Al Shuckelford GRI 4-4345

Mary Lee Garrett, GRI 669-9837

309 N. Frost 665-1819

FOR SERVICE BEYOND A CONTRACT CALL

BARRETT REALTORS Lee Garrett, Inc.

Janina Reagan 669-9774

Martene Kyle 665-4960

Fay Baum 669-3809

Mike Hoenigman 665-4292

Norma Shuckelford GRI 3-4345

Al Shuckelford GRI 4-4345

Mary Lee Garrett, GRI 669-9837

309 N. Frost 665-1819

FOR SERVICE BEYOND A CONTRACT CALL

BARRETT REALTORS Lee Garrett, Inc.

Janina Reagan 669-9774

Martene Kyle 665-4960

Fay Baum 669-3809

Mike Hoenigman 665-4292

Norma Shuckelford GRI 3-4345

Al Shuckelford GRI 4-4345

Mary Lee Garrett, GRI 669-9837

309 N. Frost 665-1819

FOR SERVICE BEYOND A CONTRACT CALL

BARRETT REALTORS Lee Garrett, Inc.

Janina Reagan 669-9774

Martene Kyle 665-4960

Fay Baum 669-3809

Mike Hoenigman 665-4292

Norma Shuckelford GRI 3-4345

Al Shuckelford GRI 4-4345

Mary Lee Garrett, GRI 669-9837

309 N. Frost 665-1819

FOR SERVICE BEYOND A CONTRACT CALL

BARRETT REALTORS Lee Garrett, Inc.

Janina Reagan 669-9774

Martene Kyle 665-4960

Fay Baum 669-3809

Mike Hoenigman 665-4292

Norma Shuckelford GRI 3-4345

Al Shuckelford GRI 4-4345

Mary Lee Garrett, GRI 669-9837

309 N. Frost 665-1819

FOR SERVICE BEYOND A CONTRACT CALL

BARRETT REALTORS Lee Garrett, Inc.

Janina Reagan 669-9774

Martene Kyle 665-4960

Fay Baum 669-3809

Mike Hoenigman 665-4292

Norma Shuckelford GRI 3-4345

Al Shuckelford GRI 4-4345

Mary Lee Garrett, GRI 669-9837

309 N. Frost 665-1819

FOR SERVICE BEYOND A CONTRACT CALL

BARRETT REALTORS Lee Garrett, Inc.

Janina Reagan 669-9774

Martene Kyle 665-4960

Fay Baum 669-3809

Mike Hoenigman 665-4292

Norma Shuckelford GRI 3-4345

Al Shuckelford GRI 4-4345

Mary Lee Garrett, GRI 669-9837

309 N. Frost 665-1819

FOR SERVICE BEYOND A CONTRACT CALL

BARRETT REALTORS Lee Garrett, Inc.

Janina Reagan 669-9774

Martene Kyle 665-4960

Fay Baum 669-3809

Mike Hoenigman 665-4292

Norma Shuckelford GRI 3-4345

Al Shuckelford GRI 4-4345

Mary Lee Garrett, GRI 669-9837

309 N. Frost 665-1819

FOR SERVICE BEYOND A CONTRACT CALL

BARRETT REALTORS Lee Garrett, Inc.

Janina Reagan 669-9774

Martene Kyle 665-4960

Fay Baum 669-3809

Mike Hoenigman 665-4292

Norma Shuckelford GRI 3-4345

Al Shuckelford GRI 4-4345



# Sports

10 Monday, January 30, 1978 PAMPA NEWS

## Stevens captures bowling title

Roy Don Stevens successfully defending his all-event scratch title with 1727 pins as the Pampa Bowling Association Men's City Tournament came to a close Sunday.

T.W.B. Oil won the team title with a score of 3089, 12 pins ahead of Lee Tex Valve No. 2. Others finishing in the money were Tri State Data (3025), Post Office Service Station (3019) and Miller Jewelry (3017).

Thirty-five teams entered the tourney.

The duo of Danny Degnar - Cliff Westbrook beat 56 other pairs to win the doubles title with a 1315 score. Finishing behind the champs were C. Gerald - S. Potter (1282), R. Hale - A. Acord (1276), Jeff Nash - Bill Morehead (1262), Lonnie Loker - Roy Stevens (1257), and Harold Dideon - Johnny Reynolds (1254).

## Girl Harvies face Borger

The flu-riddled girl Harvester basketball squad will host unpredictable Borger tonight and Pampa Coach Bob Young feels the key will be how well the Harvesters can suppress Bulldog stars Mary Ann Line and Nancy Wilson.

Line, the outside shooter, and 5-11 Wilson scored 32 of Borger's 37 points in the Dec. 8 victory over Pampa, 37-27.

"We don't have anybody who can match up with Wilson since (Pat) Coats is out," Young said. "Teresa Adair will have to do her best to keep Wilson from getting inside."

Joining Adair in the starting lineup will be Melissa Polson and Becky Davis on the outside, and Kelly Richardson and D'Conway on the inside flanks.

Richardson scored 20 points in the Harvesters' 55-43 loss to Plainview Thursday.

The girl Bulldogs beat Plainview twice in tournaments, and won the Amarillo Tournament in December. But Borger is below Pampa in the standings, having suffered numerous upsets.

Young and his troops would like to knock them down even farther.

Game times for the Fieldhouse contests are 6 p.m. for the junior varsity and 7:45 for the main event.

## Martina wins

LOS ANGELES (AP) - Martina Navratilova played excellent tennis on her way to a victory Sunday in a \$100,000 women's tennis tournament, but she said things might have been different if Chris Evert or Evonne Goolagong had been around.

"Maybe I wouldn't have a streak if Chris or Evonne were here," said the 21-year-old Navratilova Sunday after whipping Rosemary Casals 6-3, 6-2 to win the tournament championship and the \$20,000 first prize here.

# Haas breezes to Williams title

SAN DIEGO (AP) - Married life will be a little simpler for Jay Haas.

It's never really easy for the touring golf pro, who follow a gypsy existence in an endless series of hotels.

But it is easier when you can plan your schedule. And bright, 24-year-old Jay Haas, who plans to be married next winter, solved a lot of problems and potential problems with his front-running victory in the Andy Williams-San Diego Open.

The victory, the first in his brief, two-year tour career, was worth \$40,000 from the total purse of \$200,000 and carried some other very important dividends. It lifts him out of the ranks of qualifiers for 12 months. And, with assured appearances in the Masters and Tournament of Champions, virtually assures him of a spot in

this year's top 60 money winners and an exemption for all of 1979.

"You really can't appreciate how much that means," said Haas, a former national collegiate champion from Wake Forest. "You can plan your schedule. You can take some time off without losing your exemption for the next tournament. You don't have to worry

about being somewhere on Monday to qualify.

"I can't begin to tell you how important this is to me.

"Almost anybody out here (on the tour) will tell you that the exemption is the most important thing you can have."

He nailed it down with a front-running final round of 2-under-par 70 that made him a 3-stroke winner at 278, 10 shots under par on the 7,047-yard

South course at Torrey Pines.

Veteran Gene Littler and big Andy Bean, both of whom made challenges then fell victim to their own mistakes, and John Schroeder tied for second at 281. Littler, who left one in a bunker on the 15th, had a final 72. Bean, whose drive for the top died when he 3-putted the 16th, and Schroeder had final 68s.

Tom Watson, twice a winner

this year and the 1977 San Diego champion, made eagle 3 on the final hole for a 71 and a 285 total. Johnny Miller finished at the same figure after a closing 69.

Haas, nephew and golf student of former Masters champ Bob Goolby, started the warm,

sunny final round with a 1-shot lead and pulled away with three consecutive birdies beginning on the 4th.

He clinched it with three scrambling pars on the back, including a 12-foot saving putt on the 14th and good recoveries on the next two.

## Connors downs Tanner for Pro Indoor crown

PHILADELPHIA (AP) - So much for running and jumping, bicycling and practicing six hours a day. You need more than that to beat Jimmy Connors for a tennis championship.

Showing how vastly their approaches to the game differ, the irrepressible Connors downed Roscoe Tanner 6-2, 6-4, 6-3 Sunday in the \$225,000 U.S. Pro Indoor tennis tournament.

The 26-year-old Tanner talked all week about his austere six-week training grind under the direction of former U.S. Davis Cup captain Dennis Ralston. Tanner had felt that it made

him stronger, more disciplined, ready for the likes of Connors. He played well all week - even knocking out Sweden's Bjorn Borg - until Sunday.

The 25-year-old champion simply stroked his fellow Californian into submission in straight sets of the best-of-five final for the \$25,000 first prize. Not even Tanner's big serve - he had 16 aces against Connors - could save him.

Tanner, of course, had nothing to be ashamed of for his week's work. He eliminated Syd Ball, Zeljko Franulovic, Ilic Nastase, Eddie Dibbs and

Borg enroute to a confrontation with Connors. He left with a \$17,500 runner-up check.

The 28-year-old Tanner felt, however, that his earlier opposition set him up for Connors. Nastase, Dibbs and Borg hit with a lot of topspin, a slower ball that gave Tanner time to make adjustments.

"Jimmy hits the ball hard and straight at you," Tanner explained. "As a result I was late on a lot of shots. I have to get quicker. He (Connors) played well. But that's what makes him the toughest guy in the world to beat."

Connors beat Brian Gottfried in a 3 hour 32 minute semifinal Saturday night, after losing the first two sets of the best of five match.

The doubles title went to the top seeded pair of Bob Hewitt and Frew McMillan, who split \$11,500 for defeating Vitas Gerulaitis and Sandy Mayer 6-4, 6-4.

The doubles title went to the top seeded pair of Bob Hewitt and Frew McMillan, who split \$11,500 for defeating Vitas Gerulaitis and Sandy Mayer 6-4, 6-4.

Placing second in the girls events were Donna Stafford (50 freestyle) and Robin Hill (100 backstroke).

The Harvester swimmers will compete in the prestigious Amarillo Invitational beginning Friday.

## Tankers set marks

School records by Cary Smith and Kim Campbell highlighted an otherwise disappointing performance by the Harvester swim team in a triangular meet at Lubbock Saturday.

Smith's runnerup time of 1:03.2 in the 100 backstroke broke his own school record by three tenths of a second.

Campbell won the 200 individual medley with a time of 2:38.5, shattering her own mark of 2:40.5.

The Harvester boys lost to Coronado, 90-39, and Monterey, 108-42, while the girls dropped a 90-31 decision to the Monterey Plainsmen girls.

In the 1977 National Football League season, Ray Wersching of San Francisco twice kicked a field goal in the closing seconds of a game to defeat the New Orleans Saints.

## SWC glance

By The Associated Press

Team	W	L	T	Pct.
Texas	8	1	0	.889
Arkansas	7	1	0	.875
Texas Tech	5	3	0	.625
Houston	5	3	0	.625
Baylor	5	3	0	.625
SMU	5	3	0	.625
Rice	5	3	0	.625
Texas A&M	5	3	0	.625
TCU	5	3	0	.625

Monday-Arkansas 56, Baylor 55 (OT); Texas 76, Texas A&M 77 (OT); SMU 76, Houston 75; Rice 66, TCU 66.

Wednesday-Texas 79, Baylor 76; Texas A&M 50, Houston 54; Texas Tech 71.

Thursday-Arkansas 72, SMU 65.

Saturday-Texas A&M 74, Rice 78; Texas A&M at SMU, 7:30 p.m.; TCU at Houston, 8 p.m.

Sunday-TCU at Texas, 3 p.m. (TV); Rice at Arkansas, 7:30 p.m.; Baylor at Texas Tech, 7:30 p.m.; Texas A&M at Houston 4 p.m.

Monday-Baylor at Texas A&M, 7:30 p.m.; Houston at Texas, 7:30 p.m.; SMU at Rice, 7:30 p.m.; Texas Tech at TCU, 7:30 p.m.

Wednesday-Texas at Arkansas, 7:30 p.m.; Rice at Texas Tech, 7:30 p.m.; Texas A&M at SMU, 7:30 p.m.; TCU at Houston, 8 p.m.

Saturday-TCU at Texas, 3 p.m. (TV); Rice at Arkansas, 7:30 p.m.; Baylor at Texas Tech, 7:30 p.m.; Texas A&M at Houston 4 p.m.

Friday-Texas Tech at SMU, 7:30 p.m.; Baylor at Texas Tech, 7:30 p.m.; Texas A&M at Houston 4 p.m.

Friday-Texas Tech at SMU, 7:30 p.m.; Baylor at Texas Tech, 7:30 p.m.; Texas A&M at Houston 4 p.m.

Friday-Texas Tech at SMU, 7:30 p.m.; Baylor at Texas Tech, 7:30 p.m.; Texas A&M at Houston 4 p.m.

Friday-Texas Tech at SMU, 7:30 p.m.; Baylor at Texas Tech, 7:30 p.m.; Texas A&M at Houston 4 p.m.

Friday-Texas Tech at SMU, 7:30 p.m.; Baylor at Texas Tech, 7:30 p.m.; Texas A&M at Houston 4 p.m.

Friday-Texas Tech at SMU, 7:30 p.m.; Baylor at Texas Tech, 7:30 p.m.; Texas A&M at Houston 4 p.m.

Friday-Texas Tech at SMU, 7:30 p.m.; Baylor at Texas Tech, 7:30 p.m.; Texas A&M at Houston 4 p.m.

Friday-Texas Tech at SMU, 7:30 p.m.; Baylor at Texas Tech, 7:30 p.m.; Texas A&M at Houston 4 p.m.

Friday-Texas Tech at SMU, 7:30 p.m.; Baylor at Texas Tech, 7:30 p.m.; Texas A&M at Houston 4 p.m.

Friday-Texas Tech at SMU, 7:30 p.m.; Baylor at Texas Tech, 7:30 p.m.; Texas A&M at Houston 4 p.m.

Friday-Texas Tech at SMU, 7:30 p.m.; Baylor at Texas Tech, 7:30 p.m.; Texas A&M at Houston 4 p.m.

Friday-Texas Tech at SMU, 7:30 p.m.; Baylor at Texas Tech, 7:30 p.m.; Texas A&M at Houston 4 p.m.

Friday-Texas Tech at SMU, 7:30 p.m.; Baylor at Texas Tech, 7:30 p.m.; Texas A&M at Houston 4 p.m.

Friday-Texas Tech at SMU, 7:30 p.m.; Baylor at Texas Tech, 7:30 p.m.; Texas A&M at Houston 4 p.m.

Friday-Texas Tech at SMU, 7:30 p.m.; Baylor at Texas Tech, 7:30 p.m.; Texas A&M at Houston 4 p.m.

Friday-Texas Tech at SMU, 7:30 p.m.; Baylor at Texas Tech, 7:30 p.m.; Texas A&M at Houston 4 p.m.

Friday-Texas Tech at SMU, 7:30 p.m.; Baylor at Texas Tech, 7:30 p.m.; Texas A&M at Houston 4 p.m.

Friday-Texas Tech at SMU, 7:30 p.m.; Baylor at Texas Tech, 7:30 p.m.; Texas A&M at Houston 4 p.m.

Friday-Texas Tech at SMU, 7:30 p.m.; Baylor at Texas Tech, 7:30 p.m.; Texas A&M at Houston 4 p.m.

Friday-Texas Tech at SMU, 7:30 p.m.; Baylor at Texas Tech, 7:30 p.m.; Texas A&M at Houston 4 p.m.

## Soviet boxers win

MOSCOW (AP) - For the 10th straight year, the Soviet Union beat the United States in its boxing series - but the Yanks managed the only knockout and a pair of TKOs in the 11 bouts.

The Soviet Union wound up on top 7-4, with all of its victories coming on points in the three-round bouts. Three of the American victories were more like routs, capped by a powerful second-round TKO by 19-year-old heavyweight Greg Page of Louisville, Ky.

Page, a 1977 AAU national champion, danced like Muhammad Ali through the first round against Khoren Inzhyan, then exploded in the second round with right and left combinations that sent Inzhyan reeling. The bout was halted at 1:52 of the round as Inzhyan grasped at the ropes to keep from toppling over.

Andre Curry, a 17-year-old Golden Gloves regional champion from Washington, D.C., turned in one of the day's best performances. He flattened Viktor Kotovshchikov, a finalist in the 1976 Soviet championships, with a thunderous right to the jaw just 15 seconds into the second round of their light welterweight bout.

Flyweight Richard Sandoval, 17, of Pomona, Calif., outpointed Anatoly Klyuev and 22-year-old welterweight Edward Green of Houston stopped Ser-

# 1¢ SALE

We want to introduce you to our hungries stopping food.

So if you'll  
**BUY ONE GUADALAJARA FOR 69¢**  
you'll  
**GET ONE BEAN BURRITO FOR ONLY 1¢**

BRING THIS AD TO



OFFER Good with This ad ONLY. One Per Customer. Please OFFER EXPIRES Feb. 5, 1978

"THE HUNGER STOP"

HOURS  
MON.-THURS. 11 A.M.-10 P.M.  
FRI. & SAT. 11 A.M.-12 P.M.  
SUN. 11 A.M.-10 P.M.

508 N. Hobart

## RAY and BILL'S GROCERY & MARKET

OPEN 7 A.M. to 7 P.M.  
Ray Williams-Bill Colloway  
915 W. Wilks (Amarillo Hiway) 665-2125

### MATURE BEEF FOR YOUR FREEZER

HALF BEEF Lb. 74¢ Plus 15¢ Lb. Processing	HIND QUARTER Lb. 94¢ Plus 15¢ Lb. Processing	FRONT QUARTER Lb. 64¢ Plus 15¢ Lb. Processing
---	--	---

Talk to Bill About A HALF BEEF For Your Freezer

Fresh LUNCH MEAT Sliced to Order

ARM ROAST 93¢

COCA COLA 6 32 Oz. Bottles \$1.39 Plus Dep.

Borden 1/2 Gal. ICE CREAM \$1.29

4 Reg. Rolls NORTHERN TISSUE 69¢

Russett 10 Lb. Bag POTATOES 79¢

Prices Good through Saturday Feb. 4

BACON \$1.29  
Hickory Smoked, Slob, Sliced, Lb.

Weiners 65¢  
Shurfresh, Pkg.

RIBS 59¢  
Lean Beef, Lb.

CHILI 89¢  
Bill's Market Made Lb.

HAMBURGER PATTIES \$3.45  
5 Lb. Roll

CHUCK ROAST 89¢  
Mature Beef, Lb.

LARGE EGGS 69¢  
Nest Fresh Grade A, Doz.

Sunshine 12 Oz. VANILLA WAFERS 45¢

Shurfine Tall Can PINK SALMON \$1.49

Sunkist Navel ORANGES Lb. 25¢

## GOOD YEAR NEW ALLTRACTION RADIAL

### Tiempo Double Steel Belted Radial

A tire that's fun to drive because it gives you the right traction for any road, any weather. In the rain, Tiempo helps you avoid hydroplaning - that dangerous loss of control that can occur on rain slick pavement. Yet Tiempo steel belted radials also have the stamina to endure turnpike speeds, even under a scorching sun. Thanks to gas-saving radial construction, Tiempo gives you responsive handling, good mileage, as well as economy. Tiempo... a lot of radial for the money!

Priced Considerably Below Original Equipment Steel Belted Radial Tires

GRIPS IN RAIN...GRIPS ON CURVES...GRIPS TO STOP...NO GROOVE-TRACKING...QUIET TOO!

Whitewall Metric Size	Fits	OUR PRICE	Plus F.E.T. and old tire
P195/75R14	ER78-14	\$53.00	\$2.35
P205/75R14	FR78-14	\$57.00	\$2.56
P215/75R14	GR78-14	\$59.00	\$2.61
P225/75R14	HR78-14	\$64.00	\$2.67
P205/75R15	FR78-15	\$59.00	\$2.68
P215/75R15	GR78-15	\$61.00	\$2.74
P225/75R15	HR78-15	\$66.00	\$2.90
P235/75R15	LR78-15	\$71.00	\$3.00

P185/75R13 Whitewall fits BR78-13, plus \$1.93 F.E.T. and old tire

## 'POLYGLAS' WHITES

DOUBLE BELTED VALUES ON CUSHION BELT POLYGLAS... ACT NOW...

\$28

B78-13 whitewall plus \$1.82 F.E.T. and old tire

Size	OUR PRICE	Plus F.E.T. and old tire
E78-14	\$33.00	\$2.19
F78-14	\$34.00	\$2.34
G78-14	\$36.00	\$2.47
H78-14	\$38.00	\$2.70
G78-15	\$37.00	\$2.55
H78-15	\$39.00	\$2.77
L78-15	\$42.00	\$3.05

RAIN CHECK - If we sell out of your size we will issue you a rain check, assuring future delivery at the advertised price.

### No Hassle Auto Service...For More Good Years In Your Car!

#### LUBE & OIL CHANGE

Up To 5 Quarts Major Brand 10/30 Grade Oil

\$5.88

- Complete chassis lubrication and oil change
- Helps protect parts - ensures smooth, quiet performance
- Includes light trucks
- Please phone for appointment

#### ALIGNMENT SPECIAL

\$13.88 Parts extra if needed

Most U.S. and some foreign cars (depending on make)

IMPROVES TIRE MILEAGE, HANDLING, AND CONTROL

- Inspect and rotate all 4 tires
- Adjust caster, camber, & toe-in to manufacturers specifications
- Inspect steering and suspension components
- Road test car
- Excludes front-wheel drive cars.

#### ENGINE TUNE-UP

\$36.88 \$30.88 4 cyl. \$40.88 6 cyl.

Price includes parts and labor. \$4 less for electronic ignition. SAVES GAS, GIVES FAST STARTS IN ANY WEATHER

- Electronic engine, starting and charging system analysis
- Install new points, plugs, condenser
- Set dwell and time engine to specifications
- Adjust carburetor for fuel economy
- Cars with air conditioning \$2 more
- Includes Datsun, VW, Toyota, and light trucks.

#### BRAKE OVERHAUL

\$59.88 Additional parts extra if needed

YOUR CHOICE

2-Wheel Front Disc: Install new front disc pads • Resurface and true rotors • Repack front wheel bearings and install new grease seals • Inspect calipers and hydraulic system • Add fluid and road test car.

OR

4-Wheel Drum: Install new linings all 4 wheels • Replace brake drums • Repack front wheel bearings and install new grease seals • Check hydraulic system • Add fluid and road test car.

#### FREE V-BELT AND HOSE CHECK

IT COSTS YOU FIVE MINUTES & NO CASH

- We inspect all cooling system hoses and engine fan belts
- We recommend replacement parts (if needed) and their costs

#### GOODYEAR MUFFLER

\$28.88 installed

Most U.S. made cars - parts extra if needed

- Meets or exceeds every U.S. auto makers specifications
- Lifetime limited warranty: Free replacement if muffler fails due to rust, blowout, faulty workmanship, materials, or wear for as long as you own your car.

#### AUTO RUSTPROOFING

\$89.95

Limited warranty 5 years new cars 2 years used cars

- 20 major areas thoroughly coated with Goodyear's sealant
- Insulates and dampens sound
- Helps protect metal from salt, moisture and road chemicals
- Helps prevent rust on new cars - helps keep rust from spreading on older cars
- Applied by trained technicians.

Just Say Charge It!

Use any of these 7 other ways to buy: Our Own Customer Credit Plan • Master Charge • BankAmericard • American Express Money Card • Carte Blanche • Diners Club • Cash

Goodyear Revolving Charge Account

125 N. Somerville 665-2349