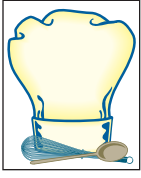


Lady Mules take to the court...  
Page 7



Local folks share Thanksgiving recipes...  
Begin Page 9



Agriculture news:  
Discussing ethanol, farm bill  
Page 13



# Muleshoe Journal



Striving to be your source for local news

Volume 88, No. 47

www.muleshoejournal.com

Muleshoe, Texas

50¢

November 22, 2007

## Mules ground S-F Eagles; take bi-district title



Photo by Stacy Conner

What's up Doc? Not this Sanford-Fritch player after Doc Fullmer zoned in on the tackle.

By Delton Wilhite  
Sportswriter

Wow maybe the best way to describe the Mule's performance Friday night in Dick Bivins Stadium. The Sanford-Fritch Eagles came into the contest as the number three team out of District 1-1A.

The Eagles were not expected to reach the playoffs but an exceptional night against the Panhandle Panthers vaulted them into the post season for the eighth time in school history.

This was the 15th post season appearance for the Mules since 1932. Nine of

those have come under Coach David Wood since he arrived in Muleshoe for the 1996 season. That year the Mules went 1-9 and they defeated Sanford-Fritch in the final game of the season.

The Mules have been out of the playoffs only three times since Wood took the reins for the Mules.

The Mules bounced backed after an early turn over that resulted in an Eagle touchdown. The Eagles briefly led the Mules 7-0. Briefly was the key word as the Mules only needed 31 seconds to respond with a 44-yard scoring pass

from Garrett Riley to Dusty Clayton to tie the game.

The Mules scored 42 unanswered points in the first half with Riley throwing five TD passes to three different receivers. The Mules scored once in each of the final two periods and the Eagles reached pay dirt for the second time in the final period. The 56-14 win by the Mules advances them to the Area round against the Littlefield Wildcats.

"In the past when a team got up on us early I would really get concerned," said Mule coach David Wood

Continued on page 6

## Lamplight By Larry Thornton

### It's Friday night, but Sunday's a coming

To say this past week has been discouraging would be an understatement. I won't burden you with my recent medical problems, but will say that much of it has been spent closer to a 10 on the hospital's pain scale than a one.

All too often I found myself visiting the land of "I don't care," as I described it to one of the doctors. What I meant was that while I was still experiencing pain, the medicine had convinced me that "I didn't care..." if I was experiencing pain."

Saturday night, however, I was able to make it through without calling in the big guns. Unfortunately, this also meant trying to sleep through the pain.

It was my second almost sleepless night in a row, but I finally drifted off during the early morning hours... only to sit up in the bed sometime later with the thought, "But Sunday's a coming."

What a truly glorious thought for a Christian.

Many years ago, I had the opportunity to listen to a sermon by the Rev. Dr. E.V. Hill.

Dr. Hill talked about the pain and discouragement the early Christians felt on the Friday of Christ's crucifixion.

He spoke about how dark and discouraging it must have been for Christ's followers as Jesus was slain... how frightful and confusing it 04st have been when he was laid in the grave.

But, thankfully, Hill reminded us in his sermon, it didn't end there.

"It's Friday night, but Sunday's a coming," Hill said, and his words ring true today.

As we move into this week of Thanksgiving, I must say that among the many things for which I am grateful to God are Sunday mornings.

Is it any wonder that early Christians would begin the practice of worshiping on Sunday, when they could celebrate the resurrection of their Lord and Savior, rather than on Saturday when he was still in the ground?

After the pains of the previous week I was reminded how the continuing promise of the resurrection marked by each Sunday morning throughout the year renews my hopes in the promises ahead.

Continued on page 2

## From slots to sermons to singing

Arlington Baptist College Ensemble will be performing at Calvary Baptist Church in Muleshoe, at 1733 W. Ave. C on Nov. 25, 2007 at 10 a.m. and 11 a.m. services. Muleshoe class of 2007 graduate James Coffman is part of this group who travel all over the United Sates presenting its program and the college's unique history.

Decorative wrought iron gates flanked by native sandstone guarded towers lend an aura of mystery and intrigue to the location of what was in the 1930's and 40's, the most opulent casino in the North American hemisphere, a gambling playground for the rich, adventurous, mischievous, famous and infamous.

In order to enter the property, guests had to pass through two rustic sandstone towers with turrets. Welcome patrons were allowed to enter by identifying themselves to the guards.

A 900 foot drive led to the rear of the house and a large parking area. The casino itself, hidden in a huge

underground room, when in full swing, had dice tables, roulette wheels, blackjack tables and slot machines. Top O' Hill Terrace was the most lavish gambling establishment in the United States when Vegas was just barren land.

Dr. J. Frank Norris, co-founder of Bible Baptist

in the 1930's in Arlington, he proclaimed, "Top O' Hill Terrace is a blight on Tarrant County. One of these days we are going to own the place!"

The prediction came true in 1956 when Bible Baptist Seminary purchased the property and converted it from a casino to a seminary.



ARLINGTON BAPTIST COLLEGE ENSEMBLE

Seminary, now Arlington Baptist College, was an ardent proponent of prohibition and gambling reform. At a tent meeting held

Sermons and hymns now ring across the terraced hills which once hummed with the playing of slot machines and roulette wheels.

### Local Weather

Thursday  
Rain/Snow..... 41/18

Friday  
Rain/Snow..... 37/15

Saturday  
Rain/Snow..... 44/19

Sunday  
Pt. Cloudy..... 44/26

Monday  
Cloudy..... 47/25

Tuesday  
Scat. Snow..... 48/25

Wednesday  
Mo. Sunny..... 52/27

Give It  
A Thought

Thank you for taking the time to read my musings each week! God bless you.

Words to ponder from Beverly

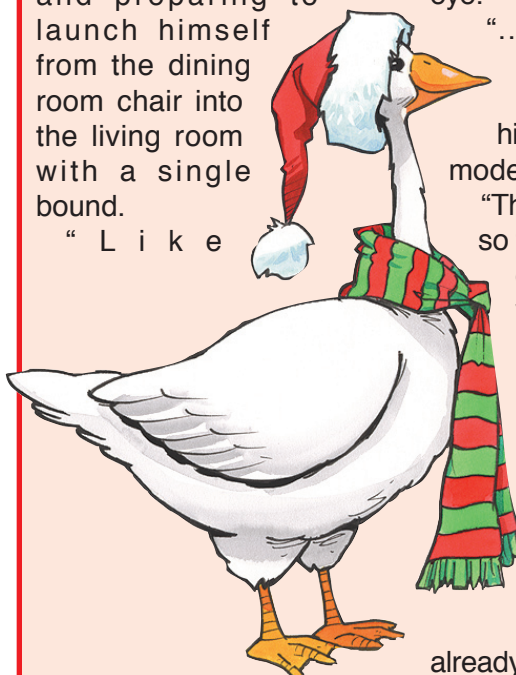
Missed your paper?  
Call the carrier Bobby Flores at 806-891-3950 (leave a message) or call the Journal at 272-4536, between 8:00 a.m. and 5 p.m.

## Santa's Christmas Gift

By Larry Thornton  
Part 2

"Good supper, Mom," Robbie said, setting his now-empty glass down and preparing to launch himself from the dining room chair into the living room with a single bound.

"Like



Ssssuperman!" he shouted silently within his own mind until he caught the look of disapproval on his mothers face out of the corner of his eye.

"...Uh ... not like superman," he said softly, taking himself out of launch mode.

"That's better. If you're so full of energy, why don't you help your sister with her homework.

"Mommm!"

The expression on her face, as she lifter her chin slightly and arched an eyebrow, told Robbie that he'd already lost this particular

battle.

As he walked past her, Robbie's hair was briefly mussed.

Marge followed him into the living room, grinning at the back of Robbie's head, aware of her triumph in a battle she didn't even have. But her smile quickly disappeared as her brother turned to face her.

"Okay, what have you got?" he asked.

"I need somebody to read to me."

Giving a playful half-skip over to her backpack, Marge pulled a brightly-colored book from her school bag and turning presented it to him with a smile.

of what it was... a Christmas storybook. "Mommm?" he yelled.

"Read it," came his mother's stern reply from the dining room.

Shaking his head, Robbie took the book and plopped down in the couch. "I wish you'd find something to believe in that's real..."

"Mom, he's doing it again!" Marge cried out.

"Please, Robbie, is this necessary?" said Mrs. Jeffers as she entered the room. "Just because you don't believe in something doesn't mean you have to destroy the dreams of others."

"But, Mom?"

"No, Robbie, you're wrong. Now, go to your room while I read to Marge,"

she continued. "I'll be in to talk to you in a few minutes.

\* \* \* \* \*

Sandy was still considering his travel options as he arrived back at the village. Since he didn't own any of the magical contrivances for which many of the elves were known, the accuracy of his intent to "borrow" transportation was in itself "inaccurate."

Sandy knew that it wouldn't be long before someone carried word to Santa Claus of his travel plans if he actually "borrowed" something

Continued on page 3



1125 West American Blvd.  
Muleshoe  
272-4251  
800-432-7617

HAPPY THANKSGIVING  
FROM EVERYONE AT MULESHOE FORD-MERCURY!



**Mule send-off Friday**

Mule fans are encouraged to come to the Bailey County Courthouse lawn on Friday, Nov. 23, at 3:15 p.m. to help send the Mules off to their regional title game against the Littlefield Wildcats. Fans should gather on the east (First Street) side of the courthouse.

The Mules take on the Wildcats Friday at 7 p.m. in Plainview. No advance tickets are being sold so coaches encourage you to get to the game early.

"Walk The Talk Mules" spirit signs are available free of charge at the Journal office, 201 W. Ave. C. Stop by and pick yours up before the game. Show some spirit Mule fans! Take these signs to the game and hang them in your businesses, vehicles and homes. Go Mules!

**Christmas donations sought**

"Christmas in Muleshoe," a project of the Bailey County Ministerial Alliance, helps loving hearts and able hands provide Christmas gifts for children of families with limited resources. Contributions for this project may be made at Muleshoe State Bank. Ask your teller to deposit your gift to the "BCMA Christmas in Muleshoe" account.

The BCMA is also accepting applications for the program. The applications are available at South Plains Community Action or at Muleshoe City Hall.

**Christmas Card Project**

The Christmas Card Project is now underway. This year's monies will go toward refurbishing an unused area into a chapel.

Your checks may be mailed to: Christmas Card Project, 1100 W. Avenue J, Muleshoe, Texas 79347, or dropped off at Park View Nursing Care Center at the same address. You may also drop off donations at Muleshoe State Bank and First Bank.

Dec. 17 is the cutoff date to make donations.

**Angel Food Ministries**

Trinity Christian Church of Muleshoe is going to be taking part in Angel Food Ministries, providing good

quality food at a reduced price. The food boxes are \$25 each per month.

For additional information call Berna Bradley at 272-3702 or or 946-7358.

**AA/Al-Anon meetings**

Those looking for help with problem drinking and needing extra support during the holidays can do so at open AA and Al-Anon meetings being held at 7 p.m. each Friday at the First United Methodist Church, at 507 W. Second. Please use the west side entrance. For information about these meetings call 806-965-2870.

**Prairie Winds Christmas show**

The Prairie Winds Chorus will present their annual Christmas dessert show Friday, Nov. 30, at 7 p.m. at Terra Vista Middle School, 12th and Upland in Lubbock. The show, entitled *Norma, the Ornament*, costs \$15, which includes the performance and dessert. Tickets must be purchased in advance by calling 806-799-7464.

**Xcel Energy Talk Station blood drive**

United Blood Services offers a way to kick back for an hour this hectic holiday season — while you are donating lifesaving blood you can review your shopping list, plan a holiday meal, or just plain relax. Donate blood on Thursday, Dec. 6, at Xcel Energy Talk Station, from 8:00 am to 12:00 pm, in the donor bus. Call 806 965-2194 to make an appointment today.

Blood donors must be in good health, weigh at least 110 pounds and be at least 17 years old. Bring a photo ID and donor card if you have one.

**Lamplight...**

**Continued from page 1**

Thank you, God. Thank you for the exuberance I felt that raised me from my hospital bed Sunday to worship you.

As you move through this week, be sure to look for all of the wonders, both

great and small, that God has placed in your life.

Thank him, praise him, and always remember that after you've experienced the darkest Friday night you could ever experience... Sunday's a coming.

**Complete Auto Repair**

- Tune Ups
- Brake Service
- Computer Diagnostic Repair
- We Build Engines and Have Rebuilt Engines For Sale
- We Do On-The-Site Irrigation Motor Repairs

*All Work Guaranteed We Pick Up and Deliver!*

**Burton Service Center**  
803 W. American Blvd. • 272-5330  
After hours: 946-8274 or 946-7996

**Muleshoe Journal** USPS 367820  
*Established Feb. 23, 1924 Published by Panhandle Weeklies, LLC.*  
Every Thursday at 201 W. Ave. C, P.O. Box 449, Muleshoe, TX 79347.  
Periodicals paid at Muleshoe, TX.  
Postmaster: Send address changes to the Muleshoe Journal, P.O. Box 449, Muleshoe, TX 79347.  
We are qualified members of:  
Panhandle Press Association, West Texas Press Association and Texas Press Association © 2007

**Sandra Aven, Publisher**  
saven@hearstnp.com  
**Leah Bell, General Manager/Ads**  
advertising@muleshoejournal.com  
**Larry Thornton, Managing Editor**  
editor@muleshoejournal.com  
**Bookkeeping/ Classified Advertising**  
classifieds@muleshoejournal.com

**Subscriptions:**  
By Carrier Yearly — \$22  
Bailey County, by mail — \$24  
Elsewhere — \$35  
By E-mail — \$22  
Advertising rate cards on request

\*Advertisers should check their ad the first day of insertion. The Journal will not be liable for failure to publish an ad or for a typographical error or errors in publications except to the extent of the cost of the ad for the first day of insertion. Adjustment for errors will be limited to the cost of that portion of the ad where the error occurred.\*

**Donate and Receive these Great Offers from Rapid**

Donate **10 Cans of Non-Perishable Food** **or** Donate a **New Toy worth \$10 or more**

and Receive **Free Professional Installation!** **\$49.95 value!**

**Expanded Basic & High-Speed Internet**

**\$34.95** per month for 6 months

**\$25.95** per month for 6 months

- Great Family Programming
- Something for Everyone
- Make your Holiday shopping even easier this season with Rapid's High-Speed Internet 512 Kbps service!

**Bundle and Save**  
Get both for one low price of **\$59.95** per month for 6 months

**Limited Time - Call Now!**  
**1.800.963.4984**

**Rapid Communications**  
your local link to the world

**COUNTRY CHRISTMAS**

**JUBILEE**

**Arts & Crafts Show**

**Friday, Nov. 30th & Saturday, Dec. 1st**  
**Farwell Community Center**  
**207 9th St. • Farwell, Texas**

**Show hours:**  
**Fri. 11 a.m. to 8 p.m. • Sat. 9 a.m. to 5 p.m.**

*Unique gift ideas for everyone on your list plus that 'special something' for yourself!*

*Baked goods • One of a Kind Handmade Crafts • Decor & More!*

**Door prizes given away every hour both days!**

**Full concession stand - breakfast, lunch and dinner items, snacks, drinks, and coffee.**

**It's A Wonderful Way To Start The Christmas Holiday!**

# Santa's Christmas Gift... continued from page 1

swift and powerful enough to reach the cities far to the south.

But he also knew it would be wrong to take something without permission, even though his intent would be to return it to its owner at a later date.

This basically left some of the magical critters that had become associated with the village over the centuries and offered their services on a personal whim.

Naturally, there were the reindeer, most of which worked almost exclusively for Santa. But requesting a ride from one of them was almost the same as mentioning it in the ear of Santa himself. Most people don't know it, but reindeer are notorious gossips.

Then, there was one of the arctic wolf packs.

When Sandy was younger he'd imagined it must be exciting to travel all of the time with a pack, howling at the moon and doing his part to protect the borders from incursion... only to have one of the elder elves point out that Sandy had probably been spending too much time playing with one of the war games that seemed to thrill so many of the human children.

It was pointed out that the fog bank was ample protection against most of Santa and the village's enemies, and those it couldn't offer protection against were too powerful for a pack of arctic wolves to fend off.

And there were the snow geese.

Many years earlier, a large flock of beautiful snow geese, most of which were

noticeably larger than the birds that took part in the annual migration to the south, took up permanent residency on the far side of the village, offering their services in exchange for the food and security they received.

Obviously, with the time constraints he faced, Sandy needed to get in a little air time.

\* \* \* \* \*

Sailing over the northern tundra on the back of an enormous snow goose would have been a little frightening, even for an adventuresome elf like Sandy, but being the major little inventors they were it wasn't long before a handy elf had constructed saddles for the geese.

And since then, part of the Winter Festival included an ariel race matching teams of elves and geese that brought the entire village to a cheering conclusion.

But while the swiftest geese and lightest elves normally competed in the event, Sandy's needs required something a little different.

Sandy needed a train... or rather the "snow geese" equivalent to a train. He needed a little bit of speed — after all his time was already beginning to run short; he needed a lot of strength, because he was going to have to get his gift back to the North Pole; and he needed a special trait... he needed Elwood.

"Elwood" an amazing name for an amazing goose. Just ask him: Are you Elwood? And the reply

would always be "Yethh, Thhir, I'm Elwood, an amathing name for an amathing goothhe."

Like all snow geese, if you haven't carried on a conversation with a snow goose, Elwood had a little trouble with the letter "S". It wasn't a speech impediment, the snow geese were quick to point out, it was a word construction problem. If humans, elves and others would have constructed their words without this particular letter, they wouldn't have a problem saying the word. Thhimple athh that.

As you've probably figured out, that special trait of Elwood's that Sandy was going to rely on was that... well, Elwood was a bit of a birdbrain, which isn't necessarily a bad thing considering Elwood was... well, a bird.

But when you took into consideration the fact that there were a lot of intelligent birds out there, including geese, you have to be truthful and recognize that Elwood would need an entire team of tutors to pass a Texas TAKS test.

He could do it, after all, he never got a question wrong more than three or four... or maybe five times, but he had all the heart of a lion, and would try as hard on the last attempt as he would on the first.

Everybody loved Elwood. They had no choice because Elwood didn't recognize such a thing as an enemy.

Early on in the flock, when other "brainier and often cruel" birds tried to embarrass him, their attempts at humor at his expense would oft as not

end in a hearty laugh by Elwood himself.

Then he'd slap them across the back in his good-natured way, sending them to their knees with a wing that was twice as large as their own, followed by a quick hug that was never quick enough squeezing out their life's breath as Elwood told them how much he liked them.

\* \* \* \* \*

"Are you thure we have to go tonight, Marvin.?" Elwood asked Sandy for the third time as they prepared for their trip south.

"Elwood, you know my name's Sandy. Why don't you call me Sandy," the elf whined as he helped the goose adjust the strap on the largest saddle they could find in the geese shed.

"It'd would be a lot eathhier if you let call you Marvin, Thhandy ithh thhpelled with Thhthhthh...thhthh," said Elwood, getting lost in the consonant as he tried to answer the question.

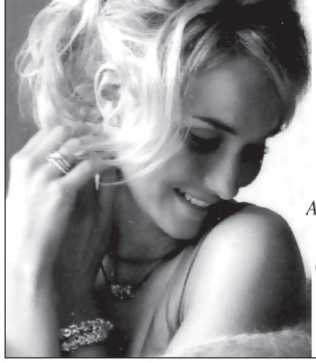
"No," the elf replied, "my mother named me Sandy."

"Well, my name's Elwood, an amathing name for an amathing goothhe."

Climbing into the saddle, next to his travel pack, Sandy signaled Elwood that he was ready.

With a short running start, and a flap of his great white wings, the adventure began.

*Continued next week*



One for every charmed moment  
**PANDORA**  
Jewelry  
As seen in Glamour, Oprah & Lucky magazines  
*Antiques & Fine Things*  
2104 W. American Blvd., Muleshoe • 272-4217  
Bridal Shower Selections

**www.drippi.com**



Let Us Give Thanks  
**Decorator's Floral & Gifts**  
wishes everyone a Happy Thanksgiving!  
To celebrate the season, we're giving everyone **50% Off All Fall Items Purchased!**  
Sale ends Nov. 22.  
**616 S. First Street Muleshoe • 272-4340**

## Give a Toy. Get FREE ACTIVATION!

Donate a toy (\$10 or greater) and get **FREE ACTIVATION** on a new calling plan.

Help a child in your community.

**OUR BEST PLAN ONLY \$39.95**

- > 1000 Anytime Minutes with **FREE** Nationwide Long Distance
- > **FREE** Unlimited Night and Weekend Minutes with **FREE** Nationwide Long Distance
- > **FREE** Unlimited Mobile-to-Mobile
- > **FREE** Carryover Minutes
- > **FREE** Loyalty Minutes

**NETWORK EXPANSION**

**NEW CELL SITES ARE LOCATED AT:**

- WIPP — Located 16 miles east of Loving, NM on Hwy 128. Provides coverage to Hwy 128 in the area and to the Waste Isolation Pilot Plant.
- Angel Fire East — Located east of Angel Fire on the Angel Fire Resort Ski Area. Provides additional coverage and capacity to downtown Angel Fire.
- Carrizozo — Located 3 miles east of Carrizozo, NM on Hwy 380. Provides coverage to downtown Carrizozo and to Hwy 380 in the area.

MOTOROLA KRZR Only \$59.95 with two-year commitment while supplies last. Reg. \$319.95. Camera Phones Starting at \$29.95!

TEXT MESSAGING ■■■ WEB BROWSING ■■■ PICTURE MESSAGING ■■■ WIRELESS ■■■

**PLATEAU Wireless**

www.plateauwireless.com 877-PLATEAU (752-8328)

**Hurry to Plateau and sign up to text and talk! Way To Go, Plateau!**

<b>Muleshoe</b> Five Area Telephone Coop. 302 Uvalde (806) 272-7700	<b>Muleshoe</b> Connection Warehouse 117 Main St. (806) 272-5532	<b>Frona</b> WT Services 1010 Columbia (806) 250-5555
--	---	--

Contract Term: 2 years. Early termination fees: \$200 per year, maximum of \$400. Night and Weekend hours are Monday through Thursday 7:00 PM through 6:59 AM and Friday 7:00 PM through Monday 6:59 AM. When outside the designated home area. Roaming: \$5.00 per minute with Free Long Distance. Additional taxes, fees, and surcharges may apply. Carryover Minutes: unused plan minutes are carried over month to month. Loyalty Minutes: 30 minutes after one year of service, 60 minutes after three years of service and 100 minutes after five years of service. Carryover and Loyalty Minutes are removed on the date of disconnect and/or forfeited in the event of suspension/termination for nonpayment. Plan only available on GSM phones. Offer not available in all markets. New toy must be valued at \$10 or greater or \$10 check donation and new wireless activation required. See store for details. Offer ends 12/31/07. Give a Toy. Get FREE ACTIVATION!

# CALVERT

## HOME HEALTH CARE, LTD.

Calvert is proud to recognize November as National Home Health and Hospice Awareness Month. With seven locations to serve you, Calvert is the choice for quality home health care!

**Littlefield Office:**  
913 Phelps Avenue, Littlefield, TX 79339  
Phone: (806) 385-1904  
Fax: (806) 385-5905

**Main Office:**  
Calvert Home Health Care, Ltd.  
10207 Indiana Avenue, Lubbock, Texas 79423  
Phone: (806) 747-8972  
Fax: (806) 747-8965

**Grand Court Office:**  
4601 71<sup>st</sup> Street, Suite 231  
Phone: (806) 785-4006  
Fax: (806) 785-4211

**Ventura Place Office:**  
3026 54<sup>th</sup> Street, Suite 315  
Phone: (806) 793-2662  
Fax: (806) 793-2636

**Carillon Office:**  
1717 Norfolk, Suite 2105  
Phone: (806) 281-6192  
Fax: (806) 791-3415

**Elmbrook Estates Office:**  
5301 66<sup>th</sup> Street, Room 1000, Lubbock, TX 79424  
Phone: (806) 783-8878  
Fax: (806) 783-8986

**Petersburg Office:**  
1520 Main Street, Petersburg, TX 79250  
Phone: (806) 667-1500  
Fax: (806) 667-9401

# Senior Citizen News

By Laverne Winn

The time to stop and give thanks for all our blessings is upon us. My heartfelt thanks are for our senior center and all the seniors who enjoy and give their support. We are so blessed to have a place like the center to visit every day.

Just a reminder the center will be closed on Thursday, Nov. 22, but will be open on Friday, Nov. 23.

Our sympathy goes out to Lidia, our helper, with the loss of her sister-in-law.

Our birthday party for the November birthdays will be on Thursday, Nov. 29. Mark your calendars to come to the center for lunch on that day.

Friday, Nov. 30, a domino tournament will be hosted by Beyond Faith Home Health. If you would like to enter the tournament come by the center and let us know. The tournament will begin at 10:00 A.M. Prizes will be awarded to the winners.

We will be taking our

fall decorations down and putting the Christmas decorations up. If you would like to help, please visit with us in the office. We need and appreciate your help.

We are selling tickets on a quilt donated by Marie Goforth. The tickets are \$2 a piece or three for \$5. The quilt is displayed in the center. Come by and look. The winning ticket will be drawn at the Christmas Party.

We will also have a silent auction on a quilt donation

by Crystal Walton, and four afghans donated by the Carpenter sisters.

Our Christmas party has been scheduled for Saturday, Dec. 8. The center will open at 1:00 P.M. for all who want to come in and play dominoes or games. Bring your favorite dish for snacks. Instead of a gift, please bring a can of food for the food bank.

The center will be closed on Christmas Eve and Christmas day, Dec. 24 and 25. Please mark your

calendars.

**Menu for Monday, Nov. 26—Friday, Nov. 30**

**Monday** – Nov. 26 – Chili con carne, rice, mixed vegetables, cornbread, chocolate pudding.

**Tuesday** – Nov. 27 – Cheeseburger on Bun, lettuce, tomato, onion pickles, pinto beans, chips, cake.

**Wednesday** – Nov. 28 – Steak, gravy, mashed potatoes, green beans, salad, wheat roll, cobbler.

**Thursday** – Nov. 29

– Beef tips, rice, oriental vegetables, salad, wheat rolls, cookies and fruit.

**Friday** – Nov. 30 – Fish or chicken strips, gravy, coleslaw, beans, cornbread, fruit salad.

**AA meeting**  
Open AA and Al-Anon meetings are being held at 7 p.m. each Friday at the First United Methodist Church, at 507 W. Second. Please use the west side entrance. Call 806-965-2870 for info.

# BAILEY COUNTY DEVOTIONAL PAGE

**WESTERN DRUG**  
& Something Special Gifts  
1411 W. American Blvd. 272-3106 Muleshoe

**"THE FIVE AREA TELEPHONE COOPERATIVE, INC."**  
West Plains Telecommunications, Inc.  
Five Area Systems, Inc., Plateau Wireless  
Five Area Long Distance - Five Area Internet  
302 Uvalde Muleshoe, USA (806) 272-5533

**MCCORMICK SEEDS, INC.**  
400 East Ash • 272-3156  
Muleshoe, Texas  
A COMPLETE LINE OF FIELD SEEDS  
Tim McCormick

**United Supermarkets**

**Farmers Coop Ass'n of Sudan**  
P.O. Box 120 • Sudan, Texas  
227-2461  
Mobile: (806) 638-7692 FAX (806) 227-2102  
Dennis Flowers, Gen. Manager Email: dflowers@fivearea.com

**IRRIGATION PUMPS & POWER**  
**Zimmatic** W. Hwy. 84  
CENTER-PIVOTS 272-5597

**minsa CORPORATION**  
US Hwy. 84 East  
Muleshoe • 272-5545

**BCEC** BAILEY COUNTY ELECTRIC COOPERATIVE ASSOCIATION  
Muleshoe — 272-4504 Morton — 266-8600

**MULESHOE PEA & BEAN, INC.**  
1680 CR 1044, Muleshoe • 272-5589  
Ed, Nicky & Chad Nickels

**MAPLE COOP GIN**  
927-5501  
Maple, Texas

**Deaf Smith County Grain, Inc.**  
Cliff A. Skiles, Jr.  
Jeb S. Skiles

**SPARKLE Cleaners**  
"WE CARE ABOUT YOU"  
114 East Ave. C, Muleshoe  
272-3570

**MULESHOE TIRE**  
107 Main St., Muleshoe • 272-4594  
After Hour Service: 946-7668

**BOEHNING DAIRY**  
690 CR 45, Earth  
"MILK - A PART OF EVERYTHING THAT IS GOOD!"

**WAYNE COPLEY TRUCKING**  
CALICHE, SAND & ROCK PRODUCTS  
P.O. Box 63 Muleshoe, Texas 79347 (806) 272-3697  
Mobile: (806) 946-8072

**Prayerful Waiting**  
by Max Lucado

"They all met together continually for prayer." Mark uses the same Greek word here translated "continually" to describe a boat floating in the water, waiting on Jesus. The Master, speaking on the beach of Galilee, told the disciples to have a boat ready and waiting (Mark 3:9). The boat was "continually" in the presence of Christ. So are the Upper Room disciples. One day passes. Then two. Then a week. For all they know a hundred more will come and go. But they aren't leaving. They persist in the presence of Christ.

The followers were willing to do one thing: wait in the right place for power.

We're so reluctant to do what they did. Who has time to wait? We groan at such a thought. But waiting doesn't mean inactivity—rather inHIMactivity. Waiting means watching for him. If you are waiting on a bus, you are watching for the bus. If you are waiting on God, you are watching for God, searching for God, hoping in God. Great promises come to those who do. "But those who wait on the LORD will find new strength. They will fly high on wings like eagles. They will run and not grow weary. They will walk and not faint" (Isa. 40:31).

To those who still struggle, God says, "Wait on me." And wait in the right place. Jesus doesn't tell us to stay in Jerusalem, but he does tell us to stay honest, stay faithful, stay true.

Desire power for your life?

It will come as you pray. For ten days the disciples prayed. Ten days of prayer plus a few minutes of preaching led to three thousand saved souls. Perhaps we invert the numbers. We're prone to pray for a few minutes and preach for ten days. Not the apostles. Like the boat waiting for Christ, they lingered in his presence. They never left the place of prayer.

From Come Thirsty  
Copyright (W Publishing Group, 2004) Max Lucado

This devotional & directory is made possible by these businesses who encourage all of us to attend worship services.

<p><b>ASSEMBLY OF GOD</b> FIRST ASSEMBLY OF GOD 521 South First Street 272-3017 S.S. 9:45 am, W.S. 10:30 am &amp; 6:00 pm, Wed. 7:00 pm</p> <p><b>EL BUEN PASTOR</b> 415 E. Ave. F - 272-5455 Pastor Domingo Luna - 272-4542 S.S. 9:45 am, W.S. 11 am &amp; 6 pm; Wed. 7 pm</p> <p><b>BAPTIST</b> CALVARY BAPTIST 1733 W. Ave. C. Rev. Jeff Coffman</p> <p><b>CIRCLE BACK BAPTIST</b> Intersection FM 3397 &amp; FM 298</p> <p><b>FIRST BAPTIST</b> 220 West Ave. E Dr. Stacy Conner</p> <p><b>FIRST BAPTIST</b> Lazbuddie • 965-2126</p> <p><b>PRIMERA IGLESIA BAUTISTA</b> 223 E. Ave. E Interim Rev. Troy Smith</p> <p><b>PRIMITIVE BAPTIST</b> 621 South First Elder Bernard Gowens, Min.</p> <p><b>PROGRESS BAPTIST</b> Progress, TX</p> <p><b>PROGRESS SECOND BAPTIST</b> Arthur Hays, Min. - 1st &amp; 3rd Sundays</p> <p><b>RICHLAND HILLS BAPTIST</b> Bro. Larry Thornton 17th &amp; West Ave. D S.S. 10 am; W.S. 11 am &amp; 6 pm; Wed. 7 pm</p> <p><b>TRINITY BAPTIST</b> 314 E. Ave. B - Bennie Wright, Min.</p>	<p><b>CATHOLIC</b> IMMACULATE CONCEPTION CATHOLIC CHURCH 805 E. Hickory Leonardo Pahamtang, Min.</p> <p><b>EPISCOPAL - CHARISMATIC</b> ST. CLEMENTS CHURCH COMMUNION OF CHRIST THE REDEEMER Hwy. 214 South • 272-5954 Father Sergio Leal Sun. W.S. 10:30 am</p> <p><b>CHRISTIAN</b> TRINITY CHRISTIAN CENTER 1723 W. American Blvd. • 272-3877 Reydon Stanford, Pastor Sun. W.S. 10:30 am</p> <p><b>CENTRO CRISTIANO</b> 117 E. Birch St. Hermanos Barron S.S. 10 a.m.; W.S. 11 a.m. &amp; 6 p.m. Wed. 7 p.m.</p> <p><b>CHURCH OF CHRIST</b> LARIAT CHURCH OF CHRIST Sam Billingsley, Min. S.S. 10 a.m.; W.S. 11 a.m. &amp; 6 p.m., Wed. 7 p.m.</p> <p><b>LAZBUDDIE CHURCH OF CHRIST</b> Nathan Crawford, Min. S.S. 9:30 am; W.S. 10:20 am &amp; 5 pm; Wed. 7 pm</p> <p><b>MULESHOE CHURCH OF CHRIST</b> 22nd &amp; W. American Blvd. S.S. 9:30 am; W.S. 10:20 am &amp; 6 pm; Wed. 7:30 pm</p> <p><b>16th &amp; AVE. D</b> CHURCH OF CHRIST Curtis Shelburne, Min. 272-4619 S.S. 9:30 am; W.S. 10:30 am; Growth Gr. 1:30 pm; Wed. 7:00 pm</p>	<p><b>LUTHERAN</b> ST. JOHN LUTHERAN Lariat, TX • David Symm, Min. S.S. 10:30 am; W.S. 9:30 am</p> <p><b>METHODIST</b> FIRST UNITED METHODIST 507 W. 2nd St. Spanish Service 8:30; S.S. 9:45; W.S. 11:00 Praise &amp; Prayer 6 PM Pastor Monty Leavell, 272-5517</p> <p><b>LAZBUDDIE METHODIST</b> S.S. 9:30 am; W.S. 10:30 am Pastor Ken Peterson 965-2121</p> <p><b>EL DIVINO SALVADOR U.M.C.</b> 619 E. 5th Street &amp; Ave. G, Muleshoe Javier Careaga, Pastor 272-6888</p> <p><b>PENTECOSTAL</b> UNITED PENTECOSTAL LIGHTHOUSE 207 East Ave. G 1-800-454-6051 S.S. 10 am; Thursday, Bible Study 7 pm</p> <p><b>INTER DENOMINATIONAL</b> NEW COVENANT Plainview Hwy. Steve Claybrook, Pastor W.S. 10 am; Wed. 7 pm</p> <p><b>MULESHOE COWBOY FELLOWSHIP</b> 710 E. American Blvd., Muleshoe Steve Friskup, Minister 272-5199 Service: 7:30 p.m. Thursday</p>
--	---	---

*God Bless!*

If your church has a change of information, please call 272-4536.

**1st BANK** MEMBER FDIC  
202 South First 272-4515

Serve Wholeheartedly, as if you were among the Lord, not men. Ephesians 6:7

**MV ALLEY INC.**  
2601 W. American Blvd. P.O. Box 631 Muleshoe, Texas  
(806) 272-4266 Mobile (806) 946-8763 mvinc@fivearea.com

**MULESHOE ANIMAL CLINIC**  
GENERAL PRACTICE  
**M V S**  
1430 US Hwy. 84 • Muleshoe Office: 272-3061

**McDONALD'S OF MULESHOE**  
1315 W. American Blvd. • 272-3333  
Open at 5:00 a.m. every day! i'm lovin' it

**Lowe's MARKETPLACE**  
401 W. American Blvd. • Muleshoe • 272-4585

**Lazbuddie Feeders, Ltd.**  
"We make your dairy bull calves worth more!"  
Lazbuddie, Texas  
**965-2435**

**HENRY INSURANCE AGENCY** Rama Smalling Agent  
111 W. Avenue B P.O. Box 563 Muleshoe, TX 79347  
888-658-4581 (806) 272-4581 Fax (806) 272-5892

**CENTRAL COMPRESS & WAREHOUSE**  
SUDAN, TEXAS

**PACO FEED YARD, LTD.**  
Commercial Cattle Feeders  
P.O. Box 956, Friona  
265-3281  
Feller Hughs-Mgr.

**Pizza Hut**  
1412 W. American Blvd. Muleshoe • 272-4213  
Open: Sun.-Mon. 11 AM-11 PM  
Lunch Buffet: Sun.-Fri. 11:30 AM-1:30 PM  
Monday Night Buffet: 6-8 PM  
"Gather round the Good Stuff"

**J&S Dairy**  
1260 CR 1038, Muleshoe  
272-7706

**Lial's TORTILLA FACTORY**  
105 E. Ash St., Muleshoe • 272-5772  
Phillipians 4: "I can do all things through Christ who strengthens me."

**TEXAS FARM BUREAU INSURANCE CO.** FARM BUREAU INSURANCE  
1612 W. American Blvd., Muleshoe • 272-4567

**LAW OFFICE OF TINA DAVIS**  
Criminal - Probate - Real Estate - Family Law  
101 S. Main, Muleshoe • 272-7776

**Interim HEALTHCARE** 110 E. Ave. C Muleshoe 272-5549  
www.InterimHealthcare.com  
Annette Orozco • LeAnn Altman • Kristen Meeks, RN-BSN • Myranda Wilhite, RN-BSN • Kay Gray  
Olivia Barrera • Arlene Brucek • Brandi Hamilton • Deena Hamilton • Teila Rutter

# BAILEY COUNTY DEVOTIONAL PAGE

# Obituaries

## Pauline Guinn

A chapel service for Pauline Meek Guinn, 91, of Muleshoe, was held Thursday, Nov. 15, 2007, at Ellis Funeral Home Chapel with Rev. Reydon Stanford officiating.

Burial followed at Memorial Park Cemetery in Enid, Okla. on Friday, Nov. 16, 2007.

Guinn was born July 8, 1916, in Chickasha, Okla. to Edgar and Emma (Rochell) Meek. She died Monday, Nov. 12, 2007, in Muleshoe Area Medical Center.

She married Allen Guinn in Clovis, N.M., on April 18, 1958. He preceded her in death on Aug. 31, 1980.

She was also preceded in death by her parents, a grandson, five sisters and one brother.

Guinn graduated from Phillips University in Enid. She taught the fourth grade at Eugene Fields Elementary School in Clovis for 23 years. She had been a resident of Muleshoe since 1958. She taught at Mary DeShazo in Muleshoe for 20 years. She was active in Teacher Retirement, Meals On Wheels and AARP and was a member of the First United Methodist Church of Muleshoe.

Guinn is survived by a son and his wife — Lex and Ruth Guinn of Houston; two daughters and their husbands — Glenna and Terry Yell of Muleshoe, and Donna and Jerry Smith of Clovis, N.M.; seven grandchildren and nine great-grandchildren.

## Jimmy Bynum

A graveside service for Jimmy Bynum, 67, was held Saturday, Nov. 15, 2007, in Friona Cemetery with Rev. Rick Burton, pastor of Calvary Baptist Church of Friona officiating.

Bynum died Thursday, Nov. 15, 2007, at Northwest Texas Hospital in Amarillo. He was born Jan. 2, 1940, in Vernon, Texas to William and Lorene (Harrell) Bynum. He married Anita Louise (Bowers) Bynum on July 31, 1959 in Muleshoe.

They moved to Friona in 1961 from Muleshoe. He was a farmer and longtime member of the Calvary Baptist Church in Friona. He was a Boy Scout, taught Sunday school for all ages for many years, served as past president of the Brotherhood, was a Royal Ambassador (RA) teacher and deacon of the church for many years.

Bynum was preceded in death by his parents.

Survivors include his wife Anita of the home; two daughters — Denise Bynum Parker of Borger,



JIMMY BYNUM

and Melanie Bynum Burns of Friona; one sister — Margie Bynum of Grand Prairie, Texas; and two grandchildren.

Family suggests memorials to Odyssey Hospice Health Care, 6900 I-40 West, Suite 150, Amarillo, Texas 79106, American Cancer Society, 3915 Bell Street, Amarillo, Texas 79109 or a charity of your choice.

An online guest book may be signed at [www.herefordheritagefh.com](http://www.herefordheritagefh.com).

## Lazbuddie releases second six weeks honor roll

**Ele. "A" Honor Roll**  
Avery Hicks, Devon Pacheco, Andres Solano, Ashlyn Timms, Julie Chavez, Tina Harder, Bernardo Lopez, Ginsyn McGehee, Priscilla Salazar, Kenlea Barnes, Gentry Hicks, Destry Ivy, Ashley Scott, Juan Samarron, Lacey Jesko.

**Ele. "AB" Honor Roll**  
Johnny Guenter, Peter Guenter, Jr. Soto, Micah Vera, Berenice Galvan, Jaida Lazcano, David Guenter, Haldon Ivy, Andrea Lule, Albert Moran, Josephine Samarron.

**JH "A" Honor Roll**  
Ashton Mason, Austin Mason, Jarrod Jesko, Todd Nichols.

**JH "AB" Honor Roll**  
Haley Beasley, Katlyn

Hicks, Shyann Rainey, Jessica Estrada, Karina Galaviz, Anna Harder, Shea Scott, Ian Thompson, Paola Estrada, Jordan Mason, Kylie McGehee, Justin Schacher.

**HS "A" Honor Roll**  
Jordan Hernandez, Chelsee Nichols, Brianna Sanchez, Brittney Schacher, Rochelle Smith.

**HS "AB" Honor Roll**  
Tanner Beasley, Joseline Garcia, Authur Gomez, Amy Howard, Colton Weaver, Katie Chavez, Darin Ivy, Kayle Jesko, Kinzi Schacher, Riley Smith, Ryan Mason, Jacob Schacher, Devlin Thompson, RaJon Thorn, Chase Timms, Mari Beliz, Regina Mata, Dakota Williams.

## Births

### Haylee Toscano

Gabriel and Erika Toscano of Sudan, proudly announce the birth of their first child, a daughter, Haylee Gabriella Raylnn Ivy, Kayle Jesko, Kinzi Schacher, Riley Smith, Ryan Mason, Jacob Schacher, Devlin Thompson, RaJon Thorn, Chase Timms, Mari Beliz, Regina Mata, Dakota Williams.

Haylee weighed five pounds, 10 oz. at birth and was 20 inches long.

## Agundiz joins Austin College Class of 2011

Austin College has officially announced that Jose R. Agundiz, Sudan High graduate and son of Ramiro and Gloria Agundiz, has joined the 1,349-member class of 2011 at the college.

BOOTS Work & Dress SHOES Casual & Athletic CLOTHING Western & Athletic

**GENERAL WILLIAMS**  
SINCE 1963 STORE

1405 West American Blvd.  
Muleshoe, Texas  
806-272-MULE (6853)

Can't get AFLAC at work?  
Call me!

**Aflac** **BRADLEY YOUNG**  
Agent  
An Independent Agent Representing Aflac

806.523.8612 cell  
[bradley\\_young\\_8@hotmail.com](mailto:bradley_young_8@hotmail.com)



## HAPPY HOUR

1/2 PRICE DRINKS  
& SLUSHES\*  
EVERY DAY 2-4 PM

YOUR ULTIMATE DRINK STOP



1633 American Blvd. · 272-3998  
MULESHOE

Includes soft drinks, iced teas, slushes (excluding CreamSlush® Treat) & Limeades only.

## Mule send-off Friday

Mule fans are encouraged to come to the Bailey County Courthouse lawn on Friday, Nov. 23, at 3:15 p.m. to help send the Mules off to their regional title game against the Littlefield Wildcats, at 7 p.m., in Plainview.

Fans should gather on the east (First Street) side of the courthouse.

This Thanksgiving Day, don't let inlaws and football make you run for cover!

Run to

# Carolyn's Christmas Creations

106 E. American Blvd.  
Muleshoe, Texas  
272-5911

Open daily  
Mo.-Sat. 9-7; Sun. 1-6



All Major Credit Cards Accepted

## THANKSGIVING DAY FAMILY AFFAIR AT CAROLYN'S CHRISTMAS CREATIONS THURSDAY, NOVEMBER 22 FROM 1-6 P.M.

Yes, Carolyn's is one of the few stores to open on Thanksgiving day from 1-6 p.m. It's now a tradition! Families come from all around as

Carolyn rolls out the red carpet for her customers on this day. It has become one of her busiest days of the season. A table elegantly displays samples of Carolyn's gourmet foods. A

champagne fountain flows and shoppers are entertained by harpist Faith Lee-Lewis of Lubbock.

Her music soothes the soul and makes for a pleasurable shopping experience. Faith will perform from 2-4 p.m.



# Master Trim 3x10.5

# Sports

## Mules...from page 1

"That did not happen tonight as I felt like this group of kids would respond and respond they did."

"There is no way to anticipate a team muffing four kick offs but it sure helps your momentum. You know something has gone right for you when the JV gets in a playoff game."

"We decided to put in the JV defense tonight and they really did well. It was great of our fans to give them such a great welcome when they entered the game. I just can not say enough about the support we have from our fans and the community as a whole. Muleshoe is a great place to live and it is great to be a Mule."

Wes Wood was fighting for extra yardage on a reception in Eagle territory on the Mules opening drive. W. Wood ran past two defenders and spun to try and pick up more. He was hit in the back, the ball punched out and the Eagles recovered.

Nick Shelton and Tyrell Bidwell pounded the ball 60 yards toward the Mule end zone. Chase Herriman picked up the final two yards and Casey Wood tacked on the point after for a 7-0 lead.

The Eagles chose to squib kick and Elias Alvarado returned the short kick to the Mule 40. Lane Wood blasted through the right side of the line for 16 yards to the Fritch 44. The Mules put three wide receivers tight to the left side.

Clayton was the middle receiver of the three and raced straight down field on the fly pattern. Riley rolled a few steps left while Clayton got behind his defenders. Riley made a perfect toss to Clayton in stride at the Eagle 10. Clayton scampered in for the Mules first score.

The sixty yard drive consumed only 31 seconds. Jorge Rodriguez went eight-for-eight on extra point tries during the evening. His kick tied the game at 7-7.

Jared Mendoza beat his blocker to stop the Eagle run back at their 32. It was three and out for the Eagles as Colton Heinrich blasted the Eagle receiver out of bounds short of a first.

The Eagles punted to the Mule 36 where W. Wood made a running-diving catch. It took the Mules a minute and 33 seconds to travel the 64 yards to pay dirt. Victor Vasquez picked up eight on first down and Elias Alvarado made the grab on a swing pass and spun for the first.

Riley connected with L. Wood on a middle screen as L. Wood headed toward the Fritch sideline. Austin Bamert peeled back for the block that allowed L. Wood to turn the corner for a 34-yard gain.

Vasquez caught a swing pass to the right side and picked his way nine yards to the Eagle 21. The Mules went to the double twin set and Riley took the deep snap. Alvarado ran a post pattern from the left side and Riley's throw was into

a crowd and tipped.

Alvarado kept his eyes on the tumbling ball and made a sliding catch in the end zone. The score gave the Mules a 14-7 lead they would keep for good. It was Alvarado's first of three TD catches in the first half.

"I split the seam in the defense and line gave Garrett (Riley) plenty of time to throw", said Alvarado. "The ball was tipped and I was fortunate to be able to get where the ball came down."

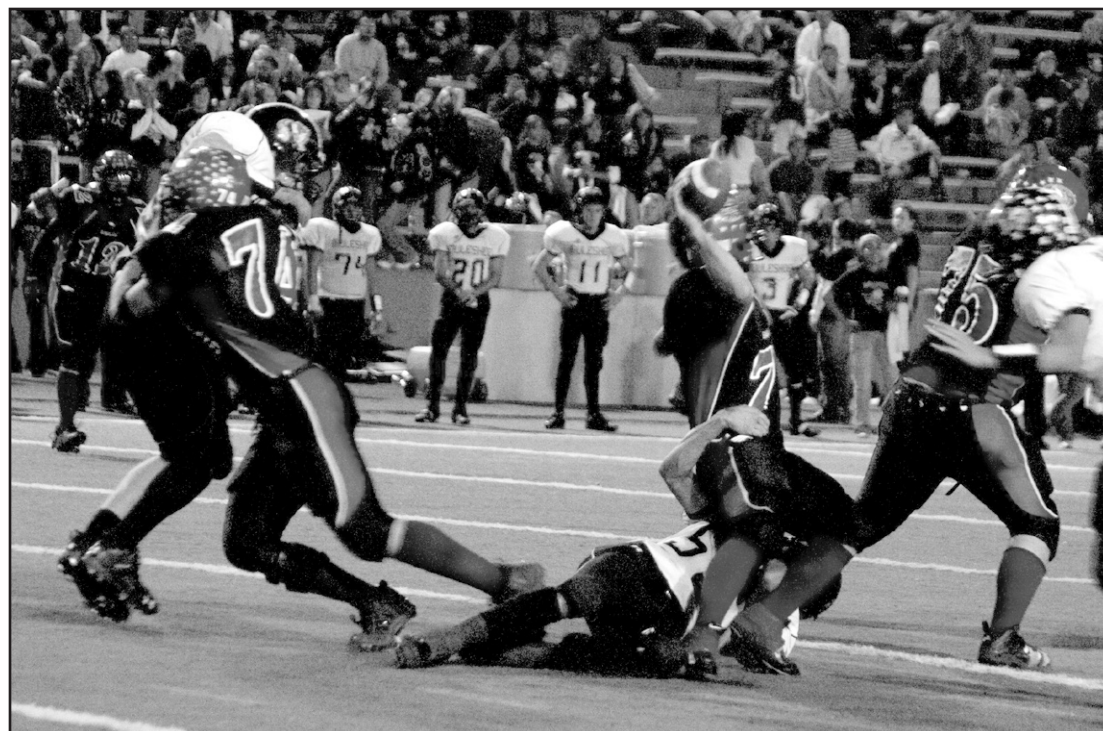
"The second touchdown came on short yardage situations and we ran our 'bread and butter' routes. I was the receiver they did not cover and Garrett made a perfect

Continued on page 7



Using his head, literally — Alex Godinez recovers a fumble and ends up using his noggin for leverage last Friday.

Photos by Stacy Conner



Attack of the sack — Colton Heinrich reaches up to sack the Eagles' quarterback.

Time for new appliances? **Whirlpool** Home Appliances

**WE ARE YOUR HOMETOWN WHIRLPOOL DEALER.**

**McDaniel's** APPLIANCE *We now carry Speed Queen!*

1020 Main Street, Clovis, NM  
505-762-4481 or 800-682-7891

**Photo Makers**

It's That Time Again !!  
Christmas is fast coming upon us so... Book your Family Christmas Portraits "NOW". Get it done early this year.

**Photo Makers**  
1106 W. American Blvd  
Muleshoe, Tx  
806-272-3090  
photomakersonline.com

**SCOREBOARD**

This week, the Mules play: **LITTLEFIELD WILDCATS**

Playoff Schedule — Class 2A  
Division I - Regionals  
Muleshoe vs. Littlefield  
7:00 p.m., Greg Sherwood Memorial Bulldog Stadium, Plainview  
Early vs. Kermit  
TBA

Division II - Area  
Canadian vs. Childress  
2 p.m. Saturday, Nov. 24, Kimbrough Memorial Stadium, Canyon  
Coleman vs. Crane  
7:30 p.m. Friday, Nov. 23, at San Angelo ISD Stadium  
Stratford vs. Idalou  
7 p.m. Friday, Nov. 23, Kimbrough Memorial Stadium, Canyon  
Ballinger vs. Blanco  
2:30 p.m. Friday, Nov. 23, Queen HS

Last Week's Scores  
Tulia 14, Canadian 48  
Memphis 12, Springlake-Earth 8  
Sanford-Fritch 14, Muleshoe 56  
Stratford 21, Bushland 10

**GO MULES!**

**MULESHOE FORD-MERCURY MULE MANIA DEAL OF THE WEEK**

'08 FORD F150 PICKUP ..... **\$16,625**  
Stock #8033 Plus TT&L, W.A.C.

**EASTERN NEW MEXICO PHYSICIANS & SURGEONS, LLC**  
Affiliated with the Surgery Center of Eastern New Mexico

Paul Engstrom, MD Ophthalmology  
Jacob George, MD Orthopaedics  
Stephen Haynes, MD General Surgery  
James Sawyer, MD Family Practice  
Richard Stamm, DPM Podiatry

Connie Lindsey, PA-C Family Practice  
Kent Zieser, DO Internal Medicine  
Shalomi George-Zieser, DO Internal Medicine

Accepting New Patients!  
Walk-Ins Welcome  
Most Insurances Accepted

(575) 763-9800  
2425 W. 21st St. • Clovis, NM

Wheaton Street  
Plains Regional Medical Group  
Plains Regional Medical Center  
Martin Luther King Boulevard  
Albany  
Women's Medical Center  
21st Street

## Support the Boosters Who Support Our Teams, Schools and Community!

**LOWE'S MARKETPLACE**  
401 W. American Blvd., Muleshoe

**BAILEY COUNTY ELECTRIC COOPERATIVE ASSN.**  
305 E. Ave. B, Muleshoe 272-4504

**FIVE AREA TELEPHONE COOPERATIVE**  
302 Uvalde Muleshoe, TX 272-5533

**Irrigation Pumps & Power**  
www.drippi.com  
West Hwy. 84 Muleshoe • 272-5597  
**Zimmatic**

**WESTCARD**  
**Western "66"**  
607 N. 1st St. Muleshoe • 272-4556

**MILK FOR THE SOUL DRINK ORGANIC**  
**BOEHNING DAIRY FARMS**

**MULESHOE ANIMAL CLINIC & MULESHOE VET SUPPLY**  
1430 US HWY. 84, MULESHOE 272-3061 OR 272-4990

**Advanced Lube & Car Wash**  
502 N. 1st Street 806-272-4842

**AGRO DISTRIBUTION, LLC**  
Clovis Hwy. West Muleshoe • 272-4203  
Bruce Bruns, Location Mgr.

**United Supermarkets**  
104 W. 9th St. Muleshoe, Texas 272-3120

Available for any occasion!  
Rent by the hour for affordable fun!  
Have jumper, will travel!  
**ALVARADO PARTY RENTALS (806) 272-5588**

**T.L. Irrigation Systems Dealer**  
**Precure Electric**  
Carroll Precure - Owner  
424 N. 1st • 272-4844  
GENERAL ELECTRICAL CONTRACTING  
Irrigation-Commercial-Industrial-Residential Sales & Services

**minsa**  
Hwy. 84 E. of Muleshoe • 272-5545

**Country Daisy Design**  
Embroidery, Monogramming & More  
By Kelly Heinrich  
272-4430 or Cell 632-8098  
1725 W. Ave. B, Muleshoe

**WE LOVE OUR MULES!**

**HARTLINE HEATING & A/C**  
**Toby Hartline**  
272-7762  
TACLBF# 023739E LI 06547

**Lal's RESTAURANT**  
1010 W. American Blvd. Muleshoe, Texas 272-3294  
"The Original - Since 1957"

# Sports

## Lady Mules lose home opener to Eagles

By Delton Willhite  
Sportswriter

The Lady Mules have gotten off to slow start for their 2007-08 basketball season. They are trying to learn both a new offense and defense under their new coach, Val Acree. The learning curve is still a little steep for the Lady Mules but they had their moments in their home opener Saturday.

The Lubbock Roosevelt Lady Eagles were in the Muleshoe Athletic and Convocation Center Saturday for a noon start. The Lady Eagles are blessed with two players over 6'1" and make it difficult to get an inside shot. The Lady Eagles hung on for a 51-41 win over the Lady Mules.

Sarah Johnson scored all five of the Lady Mule's points in the opening period. She made a running jumper on a fast break to cut the Roosevelt lead

to 5-2. Johnson hit her first trey of the night with 1:45 left in the period. The Lady Mules trailed 12-5 at the quarter break.

Johnson drained a trey early in the second period. Morgan Smith penetrated the Roosevelt zone for a short jumper. Johnson pushed the ball ahead to Smith running on a break for her second deuce of the night.

Johnson slide into the zone for a jumper and the Lady Mules trailed 14-25 at the half.

Smith drove the left side for a lay up early in the third frame. Chi Hernandez drove the baseline and made a reverse lay up. Smith took a charge to force a turn over and Hernandez hit an eight foot jumper. Johnson hit a trey from the corner on an inbound play.

Janae Pyle scored twice in the paint before the period

ended with the Lady Mules down 39-27.

The Lady Mules out scored the Lady Eagles 14-12 in the final eight minutes. Johnson sandwiched a pair of free throws between two 3-pointers. Hernandez added a bucket and two free throws as the game wound down.

Smith drove through the defense for a bucket in the final frame.

Johnson led the Lady Mules with five treys and 18 points. Hernandez and Smith made eight each and Pyle added four.

The Lady Mules opened their season in Sudan and fell to the Hornets 66-25. Hernandez had nine to lead the Lady Mules and Smith made eight. Johnson dropped in one three and five points. Natasia Daniel added two points and BreAnn Baca chipped in one.

The Lady Mules traveled to Idalou and came up just one point short, 54-53, of defeating the Lady Wildcats. Smith was on fire and paced the Lady Mules with 25 points. Johnson dropped in 14, Hernandez and Ashley Grumbles each added six and Ashley Cisneros chipped on two.

The Lady Mules faced one more Lady Cat team before coming home. The Lady Mules fell to Littlefield 51-24.

Hernandez led with eight points and Johnson and Grumbles each added seven. Kelsy Tipps made five points and Smith had a trey for three points. Baca and Pyle each chipped in two.

The Lady Mules hosted the New Deal Lady Lions Tuesday evening but will have to reschedule their appearance at Springlake-Earth against the Lady Wolverines.

## Mules...continued from page 6

throw. Garrett checked out of the play we had called and sent me on a hot route. I got inside my defender and when I crossed the line when the ball arrived."

When ask about stopping Bidwell Alvarado had this to say, "He was hard to get down. When you hit his legs they were like steel and you had to wrap up or he would keep going. Their line was big and strong just like our coaches had told us and they were tough to get away from."

Patrick Precure teed up the ball and launched a high short kick to the Eagle 25. The return man attempted a running catch and the ball went through his arms. Adam Zamora raced down the sideline to recover at the Eagle 29.

Riley rolled left and pitched wide to Lane Wood. L. Wood went 22 yards for the score and a 21-7 Mule lead. The 29-yard drive took 39 seconds.

The Mule CRUNCH defense put on a demonstration in the second period as they held Fritch out of the end zone twice in a seven and half minute span. Heinrich stopped the Eagles on the Mule nine with by grabbing a jersey and sling down Sheldon.

"Tonight was a fun game," said Colton Heinrich. "We got off to a bit of a slow start and we can not allow that to happen again. But once we get going we are a strong team and we can hold that together."

"I really believe we can go a long ways in playoffs. If we can play our game against Littlefield I think we can even the playoff score with them."

Cesar Lopez had the tall task of going against the Eagles' strong 285 pound offensive tackle. "It took me a few plays to figure out how low I had to get to be able to control the big guy, said Lopez.

"We knew their line was big and strong and their running backs were good so we had to stay low, read our keys and get off their blocks. We were able to that most of the game and did not give up any really huge plays."

The Mules went three and out and Riley punted from the Mule two to the Mule 37. Fritch pounded the ball with Bidwell, their 5'9" 215 pound fullback, up to the Mule 25. L. Wood chased down Shelton on a rollout and pulled him down on a third a 12.

A host of Mules put pressure on Shelton and chased him back almost to midfield on what was suppose to be a screen play. Shelton completed the pass well short of a first.

The Mules used 1:05 to travel the 69 yards for their fourth TD. Vasquez got wide left for 33 yards and into the Eagle end of the field. Riley connected with Clayton on a deep slant for 17 to the Eagle 19. L. Wood gained 11 on a pitch wide and Riley kept for five to put the Mules at the Eagle 3.

Riley completed the 3-yard down and out pass to Alvarado for his second TD. The tally extended the Mule advantage to 28-7 with 3:30 left in the half.

Precure's ensuing kick was high and short and for the second time Zamora recovered the mishandled kick by Fritch at

the Eagle 32. A holding penalty scooted the Mules back to the 42.

Riley hit Vasquez over the middle on first down. Vasquez came out of the backfield and for the catch and reached the two before he was pulled down. Riley saw Alvarado should get open on a short slant. Alvarado took the two steps to the end zone and Riley delivered a strike.

There was still 2:39 left in the first half and the Mules leading 35-7.

It was deja vu all over again when Precure booted the ball high and the Eagles fumbled the kick. Vasquez raced down field and headed the ball like a soccer player. Alex Godinez from the Mule junior varsity ran past everyone to recover on the Eagle 17.

L. Wood picked up seven on first down and an incomplete pass made it third and three from the 10. Riley hit Ray Ramirez in the end zone on a slant. The Mules led 42-7 at the intermission.

The Mules began to extinguish the clock by running the ball in the third period and Vasquez made an acrobatic run to score with eight seconds

left in the third period. He scored on a 15-yard spinning scamper to give the Mules a 49-7 advantage going into the final frame.

The Mule's second turn over of the night resulted in a Fritch TD with 7:39 remaining in the game.

Jared Mendoza bounced out side and raced to the pylon for a 13-yard TD. The play capped a 51 yard nine play drive piloted by Wes Wood.

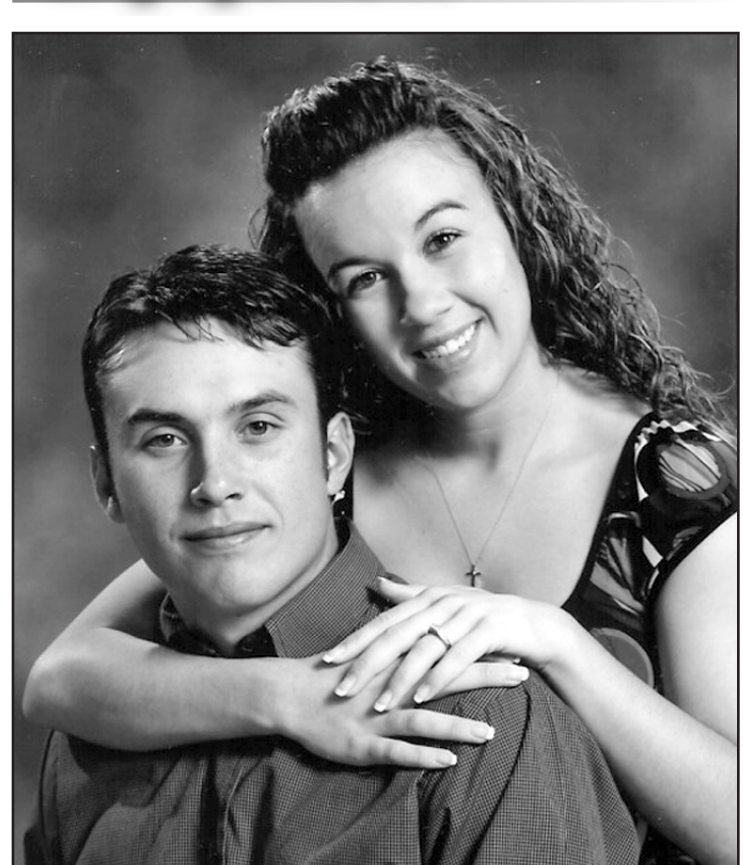
The JV Mules defensive team got a rousing cheer from the Mule fans when they entered the game with just under two-minutes on the clock.

Vasquez led the six Mule rushers with 88 yards. L. Wood rushed for 66, Mendoza picked up 23, and Ramirez ran for 16, W. Wood carried for 11 and Riley carried for 13.

Riley completed 16 of 24 passes for 255 yards and W. Wood completed one for 14. Nine different Mules made receptions. Alvarado made four catches for 28 yards, Clayton had three for 75, Vasquez caught three for 56 and Colby Carpenter made two grabs for 35.

L. Wood, Ramirez, W. Wood,

## Engagement



TRISHA ROBERTSON AND MATTHEW EDWARDS

Kyle and Mandy Whitaker are pleased to announce the engagement of their daughter, Trisha Nicole Robertson, to Matthew Edwards, son of Scotty and Carrie Edwards.

The couple plans to wed Dec. 15, 2007, at 10:00 a.m. at the 16th & D Church of Christ in Muleshoe with a reception to follow at the church.

The bride-elect graduated from Farwell High School and is currently a sophomore at South Plains College.

The prospective groom graduated from Farwell High School and is currently working as an apprentice at Larcon Electric in Lubbock.

**THANK YOU**  
for your fantastic support of the Rebekah/Jennyslipper Thanksgiving Dinner. It will help us do good things for our community. God Bless you and Happy Thanksgiving.

Now Available In Limited Supply  
Frances Stegall's Autobiography  
**"GRASSROOTS: 80 YEARS IN BAILEY COUNTY"**  
Get your copy at: La-Tea-Da Tea Room,  
Muleshoe Chamber of Commerce,  
Art Loft Galleries or Bob Stovall Printing

**Dr. J.W. Haltom**  
Family Dentistry & Orthodontics

For A Limited Time  
**\$50 OFF**  
Crowns and Bridges

Erika Trotter, Amber Garcia, Jessica Haltom & J.W. Haltom

- Emergencies Seen Promptly
- Insurance Accepted
- Patient Financing
- Adults & Children Welcome
- Televisions & Head Phones In Treatment Rooms
- Relaxation Gas

**806-385-6935**  
320 East 8th Street, Littlefield, Texas

Finally a **unanimous decision.**

**FAMILY NIGHT!**  
1/2 price single Sonic Burgers  
5PM-Close every Tuesday

**SONIC**  
America's Drive-In.

1011 Hall · Littlefield  
1633 American · Muleshoe

\*Single Patty Burger, Add-ons Extra. Limited Time Only!

**Park View**  
Nursing Care Center

"A Commitment to Caring"

- Beautifully landscaped facility
- Two fireplaces to add to the "homey" feel of our facility
- Three sun rooms overlooking the park
- Game & activity rooms
- Spacious private & semi-private rooms
- Certified for Skilled Nursing Care

Call Sandy Z. Sandlin  
Administrator

**1100 W. Avenue J, Muleshoe • 272-7578**

**CATARACT SURGERY WITHOUT A HOSPITAL!**

Today most cataracts in New Mexico are removed in surgery centers. Now patients in eastern New Mexico can also get their cataracts removed without the high cost of the hospital!

**Dr. Paul F. Engstrom**  
uses Alcon's most advanced Infinity System for removal of cataracts at the

**SURGERY CENTER OF EASTERN NEW MEXICO**

located at 2421 W. 21st Street, across the street from the hospital.

Call **(575) 763-9800**  
for a consultation with Dr. Paul F. Engstrom or discuss cataract surgery without the hospital with your local eye doctor.

**EASTERN NEW MEXICO**  
**PHYSICIANS & SURGEONS LLC**  
2425 W. 21st Street • Clovis, NM

See Our Ad in **Names Number 8**

**ALVARADO PARTY RENTALS**


**INFLATABLE BOUNCER**  
Safe - Affordable Fun For Kids!  
BEST PRICES AROUND

**272-5588**  
2 Hrs. \$50 - 4 Hrs. \$75 - 6 Hrs. \$100  
8 Hrs. \$125

Birthday Parties • School Functions • Special Events  
**DELIVERY, SETUP & PICKUP**  
SE HABLA ESPAÑOL. EDDIE & RACHEL ALVARADO  
DJ SERVICES ALSO AVAILABLE

2233

**RED WING SHOES**



**The Fair Store**  
120 Main 272-3500

**NOW OPEN! NOW OPEN! NOW OPEN!**

**ADVANCED LUBE & CAR WASH**

**502 N. 1st, Muleshoe**  
OPEN AT 8:30 AM

Need an affordable oil change or detail car wash?  
We pick up and deliver free of charge within the city limits! Call 272-5842 for service!

"Your One Stop Shop" for Oil Changes, Car Washes & Detail, U-Haul Rental, Boxes, Drinks & Snacks!

**Muleshoe Cattle Market**

The Muleshoe Cattle Market is brought to you each week by Muleshoe Livestock Auction, located east of Muleshoe on U.S. 84. Muleshoe Livestock conducts sales every Saturday, beginning with hogs, sheep and goats at 10 a.m. and cattle following at approximately noon.

**REPRESENTATIVE SALES - SAT., NOV. 17, 2007**

799 head of cattle, 173 hogs and 692 sheep and goats for a total of 1,664 livestock sold at the Nov. 17 sale. Mkt. 1-2 higher on stocker cattle 550# and under with good demand. Not enough pairs and bred cows to establish market. Packer cows & bulls steady. Remember NO SALE Nov. 26th for Thanksgiving.

**FOR INFO. ON SALES OR TO CONSIGN CATTLE - 272-4201**

Seller, City	#	Type	Wt.	CWT or PH
Gerald Boehning, Earth	3	Blk. bulls	365 lbs.	at \$120.00
Dale Hart, Friona	4	Red bulls	380 lbs.	at \$120.00
Jim Pat Claunch, Muleshoe	BWF	bull	325 lbs.	at \$143.00
Jim Pat Claunch	8	Blk. str.	483 lbs.	at \$115.00
Jim Pat Claunch	6	Blk. str.	539 lbs.	at \$113.00
Jim Pat Claunch	19	Char. str.	399 lbs.	at \$123.00
Jim Pat Claunch	29	Char. str.	498 lbs.	at \$115.00
White L/C, Lubbock	3	Mxd. str.	435 lbs.	at \$115.00
Jerry Caudill, Lovington	2	Blk. str.	520 lbs.	at \$107.00
Jerry Caudill	4	Blk. str.	688 lbs.	at \$99.50
JCL, Inc., Sudan	4	Blk. str.	575 lbs.	at \$108.00
Hat Ranch, Tatum	6	Blk. str.	582 lbs.	at \$110.50
Hat Ranch	4	Blk. str.	738 lbs.	at \$98.50
White L/C		RWF hfr	370 lbs.	at \$119.00
Jim Pat Claunch	6	Char. hfrs	298 lbs.	at \$124.50
Jim Pat Claunch	26	Char. hfrs	427 lbs.	at \$110.00
Jim Pat Claunch	28	Char. hfrs	489 lbs.	at \$105.00
Jim Pat Claunch	7	Blk. hfrs	499 lbs.	at \$106.00
Jerry Caudill	9	Blk. hfrs	625 lbs.	at \$97.50
Hat Ranch	13	Blk. hfrs	635 lbs.	at \$96.50
Victor Contreras, Earth	3	Mxd. cows P		\$595.00
Hall Bros., Sudan	2	Red cows P7		\$555.00
Timothy Sensessig, Kress		Blk. cow P5		\$600.00
Gerardo Zalazar, Bovina		RWF cow P7		\$590.00
Mike Beauchamp, Bovina		Char. cow	1220 lbs.	at \$46.00
Mike Beauchamp		Blk. cow	1640 lbs.	at \$41.50
Jim Yeagar, Hereford		Blk. cow	1055 lbs.	at \$45.00
D&F Cattle, Littlefield		Blk. cow	1425 lbs.	at \$44.00
D&F Cattle		Red bull	1775 lbs.	at \$60.50
Hall Bros.		Red bull	1755 lbs.	at \$59.50

Advertise in this space for \$9-\$11.25 per week! Call Leah or Bradley for details! **272-4536**

**THE SEWING ROOM**  
Alterations-Dressmaking-Home Decor  
Baby Bedding-Jeans Hemmed  
**778-1829**  
Gail Aukerman  
111 S. 1st St., Muleshoe

**Mules fans**  
Advertise your business here!  
**272-4536**

**Carolyn's Christmas Creations**  
106 E. American Blvd. Muleshoe, Texas 272-5911  
www.visitcarolyns.com  
Open Daily  
*'Tis Always Christmas at Carolyn's!*

I like learning about the ... **Newspaper Fun!** ...lives and history of Native Americans.  
www.newspaperfun.com  
Animills LLC © 2007 V4-N46

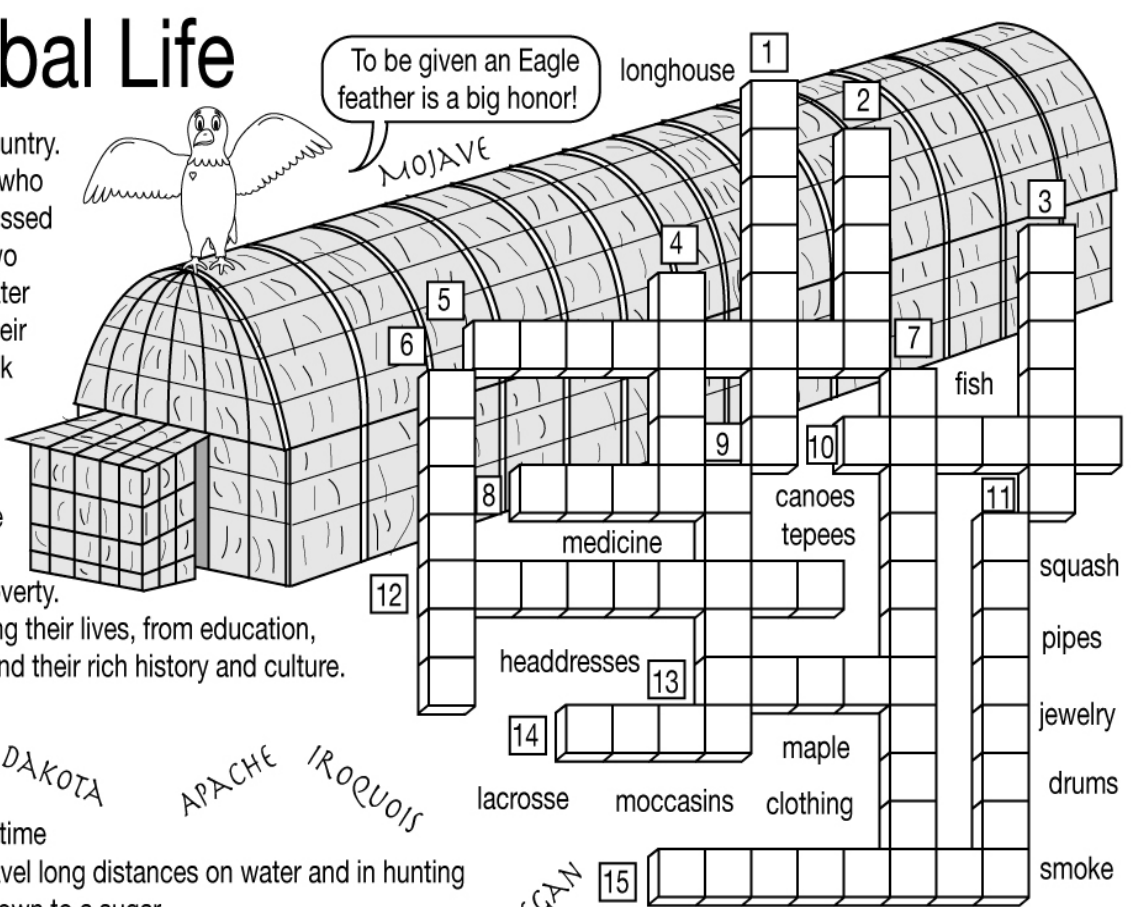
**LOWE'S MARKETPLACE**  
401 W. American Blvd. Muleshoe, Texas 272-4585

**Looking Back at Tribal Life**

Native Americans were the first people to live in this country. They are believed to be descendants of people from Asia who moved around to hunt and gather food. These people crossed into North America on a land bridge that connected the two continents during the Ice Age, but is now covered with water (the Bering Strait). Over time, these people adapted to their new home. They formed larger groups, learned how to talk with one another, farmed and traded. About 500 years ago, European explorers arrived and began to settle the land and form their own governments. There were many conflicts between the North American tribes and the new settlers. During the 1800s, Native Americans were assigned to reservations. Many fell behind and lived in poverty. Today, Native Americans have made strides in improving their lives, from education, to politics to money. They help other Americans understand their rich history and culture.

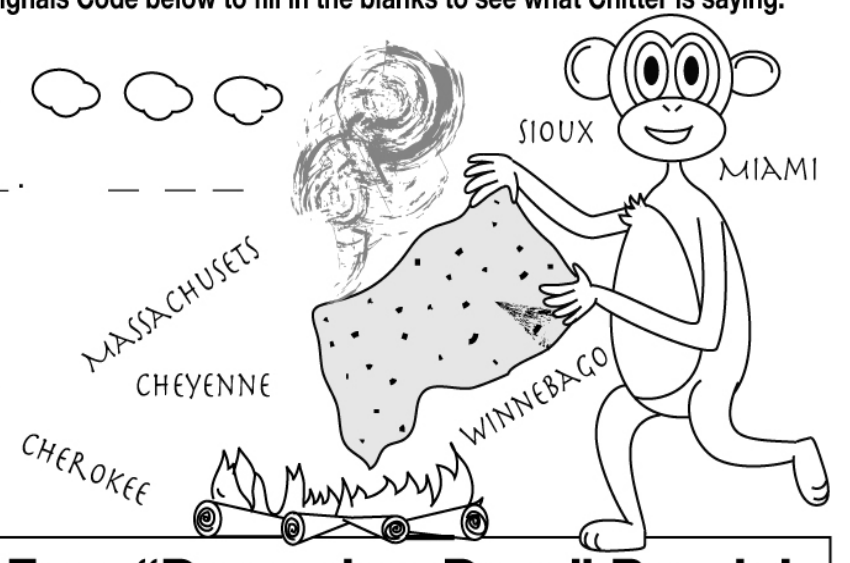
**Read these clues to fill in the puzzle:**

- made from deer and other animal hides
- made from animal skins; used in ceremonies, or at wartime
- birch or other tree bark used to make these; used to travel long distances on water and in hunting
- sap of this tree was drained; hot rocks used to boil it down to a sugar
- soft leather and fur shoe; some with patterns of beads, tribes had their own styles and designs
- leather, ceramic beads, feathers, tortoise shells and copper used for making this
- the most powerful leaders and healers wore these; extra bird feathers would be added for great feats
- used for smoking tobacco in ceremonies; often given as a gesture of peace
- one of the most important grown foods; called the "three sisters": beans, corn and \_\_\_\_\_
- common shelter of the plains; hunting tribes used them; warm in cold winter weather, cool in summer heat
- healed and helped their communities; some used masks to gather help from the spirit world; \_\_\_\_\_ men
- shelter that could hold many families
- signals used between tribes to warn of danger or to let others know all was well
- major source of food from the water, caught by spear, bow and arrow or net
- game played to decide disputes between tribes, used balls and sticks with nets



**BCEC**  
**BAILEY COUNTY ELECTRIC COOPERATIVE ASSOCIATION**  
305 E. Ave. B Muleshoe, Texas 272-4504

**Smoke Signals Code** Native American tribes used smoke signals to "talk" with each other. They built fires, then covered and uncovered them with blankets to make puffs of smoke. The meanings of the signals were agreed upon between the tribes so they were only known to them. The size and number of puffs were the key to the code. **Use the Smoke Signals Code below to fill in the blanks to see what Chitter is saying.**



(Hint: pay attention to the size and number of the smoke puffs.)

☁ = Saturday	☁☁ = Hello
☁☁☁ = Sunday	☁☁☁☁ = All is well
☁☁☁☁☁ = See	☁☁☁☁☁☁☁ = Danger
☁☁☁☁☁☁☁ = You	

**Free "December Days" Puzzle!**  
Join our free reading club: [www.readingclubfun.com](http://www.readingclubfun.com) Play the mini game, read Forest's diary, then go to the puzzle area to print my new **December Days word search puzzle**. Have fun!

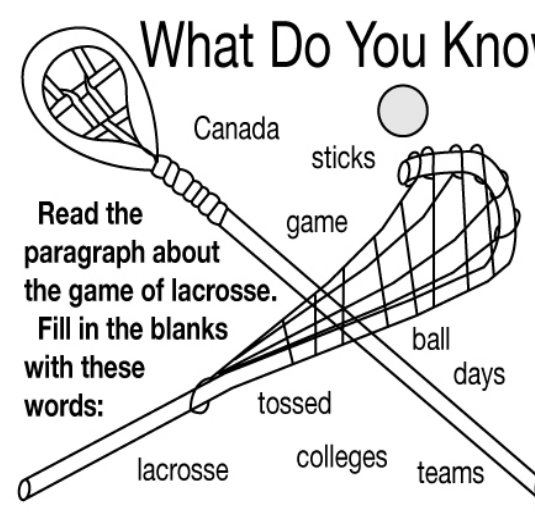
**SHIPMAN'S BODY SHOP, INC.**  
410 N. 1st Street Muleshoe **272-4408**  
• 24 hr. Wrecker Service  
• Complete Collision Repair  
• Glass Work  
Family owned for over 35 years  
Garry Shipman

**FARMERS INSURANCE GROUP**  
**FARMERS LAURIE WINCHELL**  
Insurance Agent  
Call for a free quote:  
**HEALTH • AUTO LIFE • HOME BUSINESS**  
1602 W. American, Muleshoe  
272-7548 • FAX 272-4756

**What Do You Know About Lacrosse?**

Have you ever seen teams on a field playing a 1 \_\_\_\_\_ with sticks that have nets on the ends of them to catch a little 2 \_\_\_\_\_? This game is called lacrosse. It is a game that was first played by **Native Americans**. **Native Americans** played 3 \_\_\_\_\_ to settle disputes or to train for war. 4 \_\_\_\_\_ could have as many as one thousand players, with a playing field miles long! A small deerskin ball was 5 \_\_\_\_\_ into the air and the two sides rushed to catch it in their netted playing 6 \_\_\_\_\_. The goal could be a rock or a tree that the players would hit the ball against. The game often lasted two or three 7 \_\_\_\_\_, from sunrise to sunset. It was a rough game and there were many injuries.

Today, as you can guess, lacrosse is not as punishing as it once was. It is very popular in 8 \_\_\_\_\_ and is played in many high schools and 9 \_\_\_\_\_ in the United States. It is popular along the eastern coast, beloved in the state of Maryland.





# From our table to yours...

**Cranberry Fruit Salad**  
 1 12 oz. bag fresh cranberries  
 1 cup sugar \*  
 1 large orange  
 1 large apple  
 1 cup coarsely chopped walnuts or pecans

Chop cranberries in food processor and add one cup of sugar.

Refrigerate overnight. Add chopped orange, apple, and nuts. Combine well.

\*Because the fruit varies in sweetness, you will want to taste. Small amounts of sugar may be added if needed. Serves around 12

**Marshall Cook  
Muleshoe**



## Happy Thanksgiving!

**APPLE SPICE CAKE**  
 Preparation Time: 15 minutes

Baking Time: 40 to 45 minutes

16 servings

Topping:  
 1 cup Quaker oats (quick or old fashioned, uncooked)

1/2 cup firmly packed brown sugar

1/2 teaspoon ground cinnamon

1/4 cup (1/2 stick) butter, softened

Cake:  
 1 package (18.5 oz.) spice cake mix

1 cup Quaker oats (quick or old fashioned, uncooked)

1 cup (8 oz.) plain low fat yogurt

3 eggs

1/4 cup each: vegetable oil and water

1-1/2 cups finely chopped apples (about 2 medium)

Garnish: Whipped cream (optional)

Heat oven to 350°F. Spray 13 x 9-inch metal baking pan with cooking spray. For topping, combine oats, brown sugar and cinnamon. Cut in butter until mixture is crumbly; set aside. For cake, combine cake mix, oats, yogurt, eggs, oil and water in large bowl. Blend on low speed of electric mixer until moistened; mix at medium speed for 2 minutes. Stir in apples. Pour into pan. Sprinkle topping evenly over batter. Bake 40 to 45 minutes or until wooden pick inserted in center comes out clean. Serve warm or at room temperature with whipped cream, if desired.

**Pumpkin Pecan Cake**  
 1 box (18.25 oz.) spiced cake mix  
 1 small box (3.4 oz.) instant vanilla pudding  
 1 cup canned pumpkin  
 1/2 cup oil  
 1/2 cup water  
 1 tsp. cinnamon  
 3 eggs  
 1/2 cup chopped pecans

Mix ingredients together and pour in greased and floured Bundt pan. Bake at 350\* for 45 minutes or until toothpick comes out clean.

**LeShea Mason  
Lazbuddie**

**My Favorite Chocolate Cake**

1 box (18.25 oz.) devil's food cake mix (no pudding added)

1 small box instant chocolate pudding

1 cup sour cream

4 eggs

1/2 cup warm water

1/2 cup oil

1 1/2 cups chocolate chips

Mix ingredients together and pour in greased and floured Bundt pan. Bake at 350°F for 45- 50 minutes.

**LeShea Mason  
Lazbuddie**

**Pumpkin Cranberry Bread**

3 cups flour

1 tablespoon, plus 2 teaspoons pumpkin pie spice

2 teaspoons baking soda

1 1/2 teaspoons salt

3 cups sugar

1 can (15 oz.) canned pumpkin

4 eggs

1 cup oil

1/2 cup orange juice

1 cup sweetened, dried cranberries

Combine flour, pumpkin pie spice, baking soda and salt in large bowl. Combine sugar, pumpkin, eggs, oil and orange juice. Add pumpkin mixture to flour mixture. Fold in cranberries. Spoon batter into two 9 x 5 inch or three 8 x 4 loaf pans that are greased and floured. Bake for 60-65 minutes for 9 x 5 pans or 55-60 minutes for 8 x 4 pans.

**LeShea Mason  
Lazbuddie**

**Quick Yeast Rolls**  
 PREP TIME-1 hr. 30 min.

COOK TIME-10 min. READY IN-1 hr. 40 min.

Yield: 8 rolls

2 Tbls. shortening

3 Tbls. white sugar

1 cup hot water

1 (.25 ounce) package active dry yeast

1 egg, beaten

1 teaspoon salt

2 1/4 cups all-purpose flour

Preheat oven to 425 degrees F (220 degrees C). Grease 8 muffin cups.

In a large bowl, mix the shortening, sugar, and hot water. Allow to cool until lukewarm, and mix in the yeast until dissolved. Mix in the egg, salt, and flour. Allow the dough to rise until doubled in size.

Divide the dough into the prepared muffin cups, and allow to rise again until doubled in size.

Bake for 10 minutes in the preheated oven, or until a knife inserted in the center of a muffin comes out clean.

**Cherie**

**The Greatest Grilled Turkey**

PREP TIME-30 Min

COOK TIME-3 Hrs

READY IN-3 Hrs 45 Min

Yield: 10 servings

12 pounds whole turkey

1 tablespoon vegetable oil

1 teaspoon Italian seasoning

salt and pepper to taste

Prepare an outdoor grill for indirect medium-high heat.

Rinse turkey and pat dry. Turn wings back to hold neck skin in place. Return legs to tucked position. Brush turkey with oil. Season inside and out with Italian seasonings, salt, and pepper.

Place turkey, breast side up, on a metal grate inside a large roasting pan. Arrange pan on the prepared grill. Grill 2 to 3 hours, to an internal high temperature of 180 degrees F (85 degrees C). Remove turkey from grill and let stand 15 minutes before carving.

**Christine**

Muleshoe, Texas  
272-4203

Our wish for you is that only the best come your way this holiday season!

Happy Thanksgiving!

**Happy Thanksgiving!**

*Yolanda and Ramiro wish to give thanks to all of our customers & friends! For two years, MB Express has been serving the good people of Muleshoe and we look forward to many more years!*

**MB Express**  
 328 Main Street, Muleshoe  
 272-3176

**Give Thanks**  
 ...for all our blessings

*We give thanks today for all we have, including our wonderful customers and friends! Have a happy and blessed Thanksgiving celebration!*

**MULESHOE PEA & BEAN**  
 1680 CR 1044, Muleshoe • 272-5589

Happy Thanksgiving from the Lowe's family to yours. May your blessings be bountiful!

**LOWE'S MARKETPLACE**  
 410 E. Main Street, Earth  
 Stan Lancaster, Manager

**DODD COTTON GIN**

*We have much cause to be thankful this year and your support and patronage are the reason we consider ourselves so blessed. Best wishes to all for a safe and happy Thanksgiving Day celebration!*

**2912 CR 504, MULESHOE • 965-2311**

**O&C**

ERECTION SPRINKLER SERVICE & REPAIRS  
 WELDING AND AUTHORIZED POXY-COAT DEALER

*From our family to yours, a most happy Thanksgiving. We hope your celebration is filled with good friends and warm family fun!*

1584 US HWY. 84, MULESHOE  
 272-5018

Happy Thanksgiving!

**H&R BLOCK**

104 E. Ave. C, Muleshoe  
 272-3332

Tax, Mortgage & Financial Services

*We are so thankful to get to serve a wonderful group of people like the folks in West Texas. God bless!*

We wish everyone a happy Thanksgiving!

Our Calendar Is Filling Up!

**Leal's**

**THE HOLIDAY SEASON IS APPROACHING! Schedule Your Party Now!**

We cater for all occasions and offer a variety of menu options from steak & fajitas to traditional Mexican food. Let us customize your party!

Call Kika at the restaurant to book your party today!

**272-3294**

**We've cooked up a holiday wish just for our customers - May your Thanksgiving be filled with hot food and warm family moments you'll cherish a lifetime! As always, we thank you for choosing to do business with us.**

From your friends at

**IRRIGATION PUMPS & POWER, INC.**  
 West Highway 84, Muleshoe • 272-5597

**Zimmatic**  
 CENTER PIVOTS

# From our table to yours...

## California Peach Charlotte

**Ingredients:**  
3 (15-oz.) cans California Cling Peach slices, well drained (reserve 5 slices for garnish)

8 ounces (2 sticks) unsalted butter, at room temperature

1 cup sugar, preferably superfine

5 tablespoons Amaretto almond liqueur, Grand Marnier, or syrup from the peaches (if using peach syrup, add 1/2 teaspoon almond extract)

1-1/2 cups finely ground almonds (reserve 1 tablespoon for garnish)

2 cups whipping cream

1 tablespoon sugar

1 teaspoon vanilla extract

**Equipment:**  
1 8-1/2" springform pan

Waxed paper and plastic wrap

**Preparation:** Line the bottom of the springform pan with a circle of waxed paper.

Using an electric mixer, cream the butter and superfine sugar together for 4 or 5 minutes, until pale and airy. Add the Amaretto almond liqueur, Grand Marnier or reserved peach syrup and almond extract. Continue to beat for a few more minutes until the sugar has nearly dissolved. Blend in the almonds. Reserve.

Whip the cream with the sugar and vanilla until it just holds very soft peaks. Fold the lightly whipped cream completely into the almond mixture.

Cover the bottom of the springform pan with 1/3 of the almond cream. Arrange half of the peach slices in a sunburst pattern on the almond cream. Cover with another 1/3 of the almond cream. Repeat with another layer of peach slices and cover with the remaining almond cream. Firmly tap the filled pan onto work surface to settle the mixture and remove any air pockets that may have formed. Cover with plastic wrap and refrigerate for at least 5 hours or overnight. The California Peach Charlotte may be prepared a day in advance to this point.

To Serve: Remove the plastic wrap and run a knife around the edge of the pan. Unlatch the springform pan, leaving the ring in place. Place the selected serving plate upside down over the mold and reverse the finished charlotte onto the plate. Remove the ring and the bottom of the pan. Remove the waxed paper. Garnish with reserved peach slices and sprinkle with the reserved ground almonds. Refrigerate until service. For best results, slice with a damp knife.

**Best Mashed Potatoes**  
Yield: 8 servings

1 pound Yukon Gold potatoes

1/2 cup butter

2 cups Parmesan cheese

1 cup chopped fresh chives

1-1/2 cups cream cheese

1/2 medium head garlic, peeled and minced

salt and pepper to taste

Bring a pot of salted water to a boil. Add potatoes; cook until tender but still firm. Drain and return to stove over low heat to dry for 1 to 2 minutes.

Add butter, Parmesan cheese, chives, cream cheese, garlic, salt, and pepper. Use a potato masher to mash until smooth, and serve.

## Minted Yogurt Soup with California Raisins

1 cup California natural and golden raisins

1/2 cup dry sherry

1 tablespoon each honey and balsamic vinegar

2 cups plain low-fat yogurt

1 cup low-fat milk

1 large cucumber; peeled, seeded and chopped

2 hard-cooked eggs, chopped

1/4 cup each scallions and fresh chives, minced

1 teaspoon salt

1/2 teaspoon white pepper

1/2 cup fresh mint, chopped

1 cup walnuts, chopped

Soak raisins in sherry, honey and balsamic vinegar for 20 minutes. In large bowl, combine yogurt, milk, cucumber, eggs, scallions, chives, salt, pepper and mint. Add raisins with liquid and walnuts. Cover and chill thoroughly, at least 3 to 4 hours or overnight. Stir soup and adjust seasonings to taste. Serve in chilled bowls with raisins, walnuts, chives and sprigs of mint as garnish. Serves 6.

**Chocolate Angel Cake**  
1 package (16 oz.) angel food cake mix

1/2 cup unsweetened cocoa

1-1/2 cups plus 2 tablespoons hot fudge topping, divided

2 cups whipped topping or sweetened whipped cream, divided

1 can (20 or 21 oz.) cherry pie filling, divided

Mix dry cake mix ingredients with cocoa. Prepare cake mix according to package directions. Bake in a 10-inch tube pan in a preheated 350° oven as directed on package. Let cool as package directs.

When cake has cooled completely, carefully remove from pan. Cut horizontally in half. Place bottom half, cut side up, on serving plate.

Spread with 3/4 cup fudge topping. (Do not heat fudge topping.) Cover with 1 cup whipped topping, then half of the cherry pie filling.

Place top half of cake over cherries, cut side down. Spread with 3/4 cup fudge topping. Cover with remaining 1 cup whipped topping and cherry pie filling. If you have extra pie filling, put it in the center of

cake. Refrigerate 1 hour. Just before serving, warm remaining 2 tablespoons fudge topping and drizzle over top of cake.

Makes 12 servings.

**Chocolate Angel Cake**  
1 package (16 oz.) angel food cake mix

1/2 cup unsweetened cocoa

1-1/2 cups plus 2 tablespoons hot fudge topping, divided

2 cups whipped topping or sweetened whipped cream, divided

1 can (20 or 21 oz.) cherry pie filling, divided

Mix dry cake mix ingredients with cocoa. Prepare cake mix according to package directions. Bake in a 10-inch tube pan in a preheated 350° oven as directed on package. Let cool as package directs.

When cake has cooled completely, carefully remove from pan. Cut horizontally in half. Place bottom half, cut side up, on serving plate.

Spread with 3/4 cup fudge topping. (Do not heat fudge topping.) Cover with 1 cup whipped topping, then half of the cherry pie filling.

Place top half of cake over cherries, cut side down. Spread with 3/4 cup fudge topping. Cover with remaining 1 cup whipped topping and cherry pie filling. If you have extra pie filling, put it in the center of

cake. Refrigerate 1 hour. Just before serving, warm remaining 2 tablespoons fudge topping and drizzle over top of cake.

Makes 12 servings.

cake. Refrigerate 1 hour. Just before serving, warm remaining 2 tablespoons fudge topping and drizzle over top of cake.

Makes 12 servings.

**Give Thanks**  
...for all our blessings

**Muleshoe Bail Bonds & Tax Service**  
804-A W. American Blvd, 272-3001

**& Advance Lube, Car Wash, Towing & U-Haul Service**  
521 N. 1st Street, 272-4842

From our family to yours...

**Happy Thanksgiving To Everyone!**

Alfredo & Mariann Anzaldua

**Muleshoe Bail Bonds & Tax Service**  
804-A W. American Blvd, 272-3001

**& Advance Lube, Car Wash, Towing & U-Haul Service**  
521 N. 1st Street, 272-4842

From our family to yours...

**Happy Thanksgiving To Everyone!**

Alfredo & Mariann Anzaldua

**Muleshoe Bail Bonds & Tax Service**  
804-A W. American Blvd, 272-3001

**& Advance Lube, Car Wash, Towing & U-Haul Service**  
521 N. 1st Street, 272-4842

From our family to yours...

**Happy Thanksgiving To Everyone!**

Alfredo & Mariann Anzaldua

Have a very Happy Thanksgiving!

From all of us at

**Muleshoe Tire**

107 Main Street, Muleshoe  
272-4594

AS THANKSGIVING ROLLS AROUND AGAIN, WE HAVE JUST ONE HOLIDAY THOUGHT TO SHARE:

*Eat more Leal's Tortilla Chips!*

All kidding aside, we thank our customers for your patronage and want you to know that it continues to be an honor to serve you after all these years. God bless!

**Leal's Tortilla Factory**

Sergio Leal  
107 East Ash, Muleshoe • 272-5772



## The Thanksgiving Story

In 1621, after a hard and devastating first year in the New World, the Pilgrim's fall harvest was very successful and plentiful. There was corn, fruits, vegetables, along with fish which was packed in salt, and meat that was smoke cured over fires. They found that they had enough food to put away for the winter.

The Pilgrims had beaten the odds. They built homes in the wilderness, they raised enough crops to keep them alive during the long coming winter, and they were at peace with their Indian neighbors.

Their governor, William Bradford, proclaimed a day of thanksgiving that was to be shared by all the colonists and the neighboring Native American Indians.

The custom of an annually celebrated thanksgiving, held after the harvest, continued through the years. During the American Revolution (late 1770's), a day of national thanksgiving was suggested by the Continental Congress.

In 1817, New York State adopted Thanksgiving Day as an annual custom. By the middle of the 19th century many other states also celebrated Thanksgiving Day. In 1863, President Abraham Lincoln appointed a national day of thanksgiving. Since then each president has issued a Thanksgiving Day proclamation, usually designating the fourth Thursday of each November as the Thanksgiving holiday.

We give thanks to you, our customers and friends, for a bountiful harvest. Thank you all for your business and support.

**minsA**  
Hwy. East 84, Muleshoe  
272-5545 or 800-852-8291

**NursCare**  
Home Health

We at NursCare are proud to recognize National Home Health & Hospice Month!

We have so much to be thankful for! May your Thanksgiving holiday be filled with grateful hearts and cherished family memories.

803-B West American Blvd.  
Muleshoe, Texas  
272-6884

All of us at

**Muleshoe Animal Clinic & Muleshoe Vet Supply**

send all of you the warmest of holiday wishes. Thank you for allowing us to serve your animal health needs. God bless!

Barry Cowart, D.V.M.  
Chris Larson, D.V.M.  
Josh Lackey, D.V.M.  
Belinda Garten, D.V.M.

Steve Kennedy, D.V.M.  
Dustin Urbantke, D.V.M.  
Cody Garten, D.V.M.  
Matt Wright, D.V.M.  
Kevin Holman, D.V.M.

**MULESHOE VET SUPPLY**

1430 US Hwy. 84, Muleshoe  
272-3061 or 272-4990

# From our table to yours...

## Green Bean & Sausage Casserole

PREP TIME-15 Min  
COOK TIME-40 Min  
READY IN-55 Min  
SERVINGS & SCALING  
Yield: 8 servings  
INGREDIENTS

1 (16 ounce) package pork sausage  
2 (10.75 ounce) cans condensed cream of mushroom soup

1 cup milk  
1 tablespoon soy sauce  
1 clove garlic, minced  
ground black pepper to taste

2 (16 ounce) packages frozen cut green beans  
1 (2.8 ounce) can French-fried onions

Crumble the pork sausage into a large skillet over medium-high heat. Cook and stir until evenly browned. Drain grease, and set aside.

Preheat the oven to 350 degrees F (175 degrees C). Coat a 9x13 inch baking dish with nonstick cooking spray.

In a large bowl, stir together the cream of mushroom soup, milk, soy sauce, garlic, and pepper. Mix in the sausage, then add the green beans, and stir until evenly coated. Pour half of the mixture into the prepared baking dish. Top with half of the fried onions. Spread remaining green bean mixture over the

onions. Bake for 30 minutes in the preheated oven. Remove from the oven, and sprinkle the rest of the fried onions over the top. Return to the oven for 5 to 10 more minutes, or until the onions are toasty, and green beans are cooked to your desired doneness. Let rest 5 minutes before serving.

**Auriel**

## ELEGANT ALMOND CRANBERRY SAUCE

Spread 1/3 cup of blanched whole almonds in shallow pan and place in 350-degree oven to warm for five minutes. Split with paring knife. (They split easily when warm.)

Combine in saucepan 2 cups sugar and 1 cup water. Bring to boil without stirring. Cook this syrup for five minutes over medium heat.

Meanwhile wash 1 lb. raw cranberries. Add to syrup and cook them three to five minutes until they burst and become transparent.

Remove from heat and stir in 1/2 cup apricot jam and 1/4 cup lemon juice. Chill sauce and then add almonds. Chill thoroughly before serving.

Makes about 1 quart. Current packages of cranberries are 12 ounces instead of 1 lb. Adjust all other ingredients accordingly.

(This cranberry sauce is served at every Thanksgiving and Christmas meal in my home.)

**LaVonne McKillip  
Muleshoe**

## Sweet Potato Balls

PREP TIME-20 Min  
COOK TIME-45 Min  
READY IN-1 Hr 5 Min  
Yield: 6 to 8 servings  
INGREDIENTS

3 1/2 cups mashed sweet potatoes  
1/4 cup milk  
1/4 cup orange juice  
2 eggs, beaten  
1 teaspoon vanilla extract

1/2 cup white sugar  
1/2 teaspoon salt  
3 tablespoons butter, softened

1/2 teaspoon ground nutmeg  
1/2 teaspoon ground cinnamon

1/4 cup butter, softened  
3/4 cup packed light brown sugar

1/2 cup all-purpose flour  
3/4 cup chopped pecans

Preheat oven to 350 degrees F (175 degrees C). Grease one 2 quart casserole dish.

In a large bowl, blend together the sweet potatoes, milk, orange juice, eggs, vanilla, sugar, salt, butter, nutmeg and cinnamon. Pour into prepared casserole dish.

Mix together the 1/4 cup butter, brown sugar, flour and pecans; sprinkle over sweet potato mixture.

Bake at 350 degrees F (175 degrees C) for 45 minutes.

**Carolyn**



**ALVARADO PARTY RENTALS**  
**806.272.5588**

*The Alvarado family wishes everyone a safe and happy Thanksgiving holiday!*

*Thank you for your business and support!*

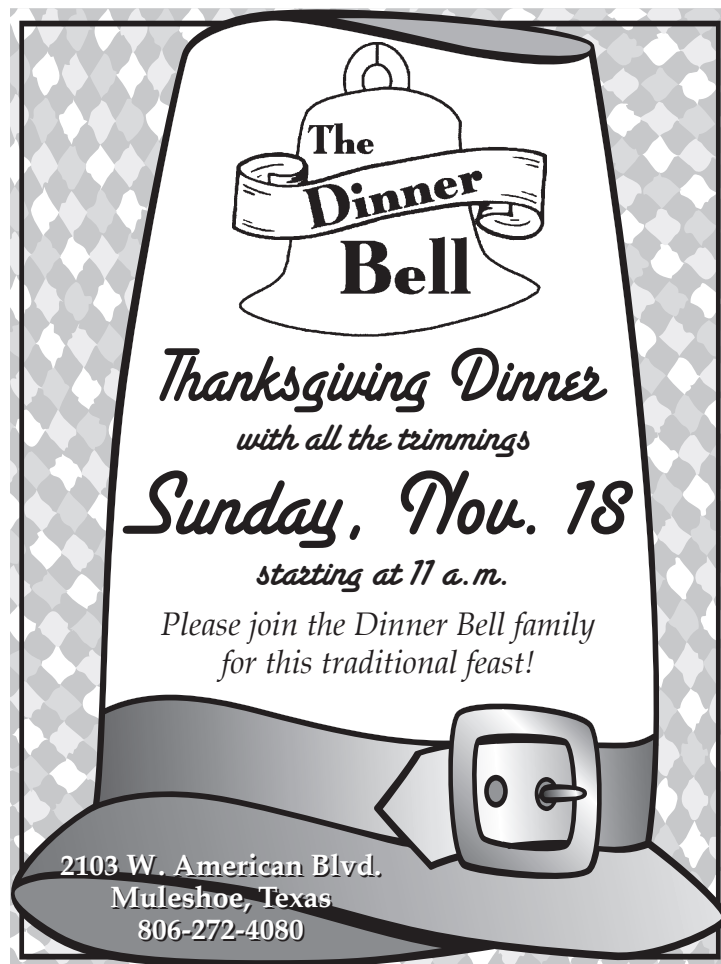


**HAVE YOURSELF A VERY HEALTHY, SAFE & HAPPY THANKSGIVING!**

From All Of Us At...

**BURTON SERVICE CENTER**

803 W. American Blvd.  
272-5330



**The Dinner Bell**

*Thanksgiving Dinner with all the trimmings*

**Sunday, Nov. 18**

*starting at 11 a.m.*

*Please join the Dinner Bell family for this traditional feast!*

2103 W. American Blvd.  
Muleshoe, Texas  
806-272-4080



**Bountiful BLESSINGS TO ONE & ALL**

*We're grateful for your support and wish all of you a very bountiful Thanksgiving!*

**SPARKLE Cleaners WE CARE**

114 E. Ave. C, Muleshoe • 272-3570



*Let Us Give Thanks!*

*A holiday brings family closer together. We are glad to count you as our friends and family! Thank you for the many blessings you have given us throughout the year.*

*Happy Thanksgiving!*

**Bratcher Motor Supply**

107 E. Ave. B, Muleshoe • 272-4288

*Due to a snafu, Curtis' column this week is being reprinted from 2006. He may or may not have a cold this year!*

## Have a Wonderful Thanksgiving!

Generally speaking, even though I really enjoy my daily work, I enjoy holidays a great deal. I like special times when most folks take a much-needed day or two off to enjoy each other, eat too much, and goof off a bit. Taking a little time off on occasion, holidays included, almost always helps us be worth more when we're back on the job. Most holidays also remind us in one way or

grinching right here in the midst of a column about Thanksgiving. But it just seems to be a fact that almost every year at about this time, I end up with a world class cold. Then when we do what most people do at Thanksgiving—stuff not just a turkey but stuff a house full of four times as many folks as the Surgeon General and the fire codes say is healthy, something like trying to cram a full maternity ward into a Volkswagen bug and keep everyone comfortable all through their labor—when we do that, I end up camped out in a corner like Typhoid Mary, sniffing and sneezing, tossing on a blow-up bed buried under spent Kleenex, zombied with antihistamine, shooting up nose spray to stave off suffocation, and hoping just to expire quietly. I confess that the whole mucousy and terminally congested picture sometimes stretches the bonds of gracious gratitude just a tad.

Yes, but we're enjoined by Scripture to "give thanks in all circumstances."

I believe that. I aspire to that. I'm not there yet, but I'm working on it. I really am.


Yes, I'm presently germinated and lit up red-nosed like Rudolph loaded with Nyquil. But the family still seems to want me around for some reason. The germs will soon be vanquished. And one thing piled higher than my Kleenex right now is the pile of blessings with which God has absolutely filled my life.

Yours, too, I'll bet.

So, happy [SNIFF!], Thanksgiving!

**Focus On Faith**

*Curtis Shelburne*



another that our relationships with the people we love are more important than the work we do to make a living, and that the fellow was right who remarked that he'd never seen a tombstone with this epitaph: I WISH I'D SPENT MORE TIME AT THE OFFICE.

As holidays go, among my very favorite is Thanksgiving. It's such a fine holiday based on such a great and noble principle. The whole idea behind giving thanks makes this holiday filled with gratitude marvelously immune to the crass commercialization attacking the great holiday that follows it—unless, I suppose, you happen to be a turkey merchant or cranberry pusher. So I particularly like Thanksgiving—which is why it grieves me that I seem to be allergic to it.

I really don't mean to be such a turkey that I start

Curtis Shelburne is minister of the 16th & D Church of Christ in Muleshoe.

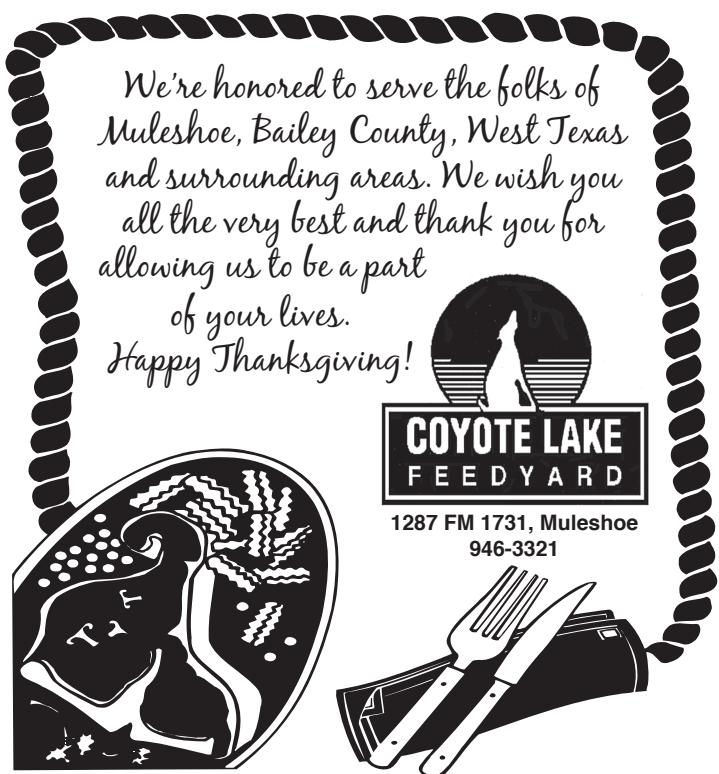


**Panda Chinese Buffet**

1820 W. American Blvd.  
Muleshoe • 272-8999

*We wish everyone a safe, warm holiday and we thank our friends and customers, both new and old, for your business. We look forward to serving you throughout the coming years.*

**We will be closed on Thanksgiving Day, but will be open regular hours on Friday.**



*We're honored to serve the folks of Muleshoe, Bailey County, West Texas and surrounding areas. We wish you all the very best and thank you for allowing us to be a part of your lives.*

*Happy Thanksgiving!*

**COYOTE LAKE FEEDYARD**

1287 FM 1731, Muleshoe  
946-3321



**We'd be real turkeys if we didn't say thanks for reading!**



**McCORMICK SEEDS, INC.**

P.O. Box 590  
Muleshoe, Texas  
TIM MCCORMICK, OWNER

Texas' Largest Distributor of Field Seeds  
Selected and Purchased Direct From the Growers

**A COMPLETE LINE OF FIELD SEEDS**

**800-451-9996**  
**Cell 806-543-7402**

**HAPPY THANKSGIVING!**



*May your Thanksgiving day be relaxing and restful, filled with food, family and fun, and bring only the best to you and yours. Thank you for your continued support.*

**THE FIVE AREA ORGANIZATION**

Five Area Telephone Cooperative, Inc.  
West Plains Telecommunications  
Plateau Wireless Network • Five Area Systems  
Five Area Long Distance • fivearea.com • Five Area Paging

**302 Uvalde - Muleshoe, Texas**  
**806-272-5533 or 1-800-741-6925**  
**fivearea@fivearea.com**

# From our table to yours...

## Brownies

4 oz. cocoa (6 Tablespoons) 1/2 cup  
2/3 cup shortening  
2 cups sugar  
4 beaten eggs  
1 teaspoon vanilla  
1-1/4 cups flour  
1 teaspoon baking powder  
1/2 teaspoon salt  
1 cup chopped pecans

Melt shortening and cocoa together. Remove from heat. Mix sugar and eggs. Add melted shortening and cocoa. Add vanilla. Stir in dry ingredients. Spread in greased and floured 9x13x2 inch pan. Bake 20-25 minutes at 350 degrees.

**Debbie Sain Williams**  
Paducah, Texas

## Sweet Potato Casserole

3 eggs beaten  
3 cups cooked and mashed sweet potatoes  
1/2 cup melted margarine  
1 cup sugar  
1/2 cup milk  
Dash of salt  
1 teaspoon vanilla  
1 cup coconut

Topping:  
1 cup brown sugar  
1/3 cup margarine  
3 Tablespoons flour  
1/3 cup chopped pecans

Mix all ingredients together. Put in buttered casserole dish. Top with topping mixture. Bake at 350 degrees for 25 minutes.

**Rose Sain**  
Muleshoe

## Pecan Pie

3 eggs beaten  
1 cup sugar  
1/2 cup white Karo syrup  
3 Tablespoons melted margarine  
1 teaspoon vinegar  
1 teaspoon vanilla  
1 cup chopped pecans  
1 9-inch pie crust (unbaked)

Mix all ingredients well by hand. Pour in unbaked pie crust. Bake at 350 degrees for 40 minutes.

**Jackie Blaylock**  
Muleshoe

## Tiger Butter Candy

Melt 1 package almond bark with 1 cup of peanut butter. Stir and pour on foil-lined cookie sheet.

Melt 6 ounces of chocolate chip and drizzle over almond bark and peanut butter mixture.

Swirl together. Chill in refrigerator. Break into pieces.

*(Candy needs to be kept in the refrigerator.)*

**Shelley Sain Thornton**  
Claude, Texas

## Easy Giblet Gravy

1 giblets from a turkey  
1/2 teaspoon salt  
1/2 teaspoon ground black pepper  
1 cube chicken bouillon  
1 stalk celery, halved  
1/4 yellow onion  
1 quart water  
2 (14.5 ounce) cans chicken broth  
4 hard-cooked eggs  
2 tablespoons cornstarch  
1/2 cup milk

In a 2 quart saucepan,

simmer the giblets, salt, pepper, bouillon, celery and onion in 1 quart of water for 40 to 50 minutes.

Discard celery, onion and gizzard. Chop liver and neck meat and return to pan. Add chicken broth or if you have a turkey, use drippings (about 1 1/2 cups and 1 can of chicken broth).

Chop eggs and add to broth. Mix cornstarch and milk together and slowly add to broth. Stir well until thickened. Reduce heat to low.

**Suzanne**

## Herb Roasted Turkey with Citrus Glaze

1 15 lb. whole turkey, fresh or frozen (thawed)  
3 large lemons  
2 large limes  
1-1/2 teaspoon salt, divided  
1/2 teaspoon black pepper coarsely ground  
1/4 cup dry white wine (see note)  
1/4 cup packed brown sugar  
Pan gravy  
1 bunch, each fresh sage, marjoram, and thyme, divided

Preheat oven to 325. Remove giblets and neck from turkey; reserve for gravy. Rinse turkey with cold running water and drain well. Blot dry with paper towels.

Peel skin from lemons and limes to make rose garnishes. Reserve in refrigerator. Squeeze enough juice from the lemons and limes to equal 2 tablespoons each. Cut the remaining lemons and

limes in half and place in the turkey cavity. Sprinkle salt in the cavity.

In a small bowl, mix the wine, brown sugar, and citrus juices; reserve for glaze.

Gently loosen skin from the turkey breast without totally detaching the skin and carefully place 1 tablespoon each fresh sage and marjoram under the skin. Replace the skin.

Fold neck skin and fasten to the back with 1 or 2 skewers.

Fold the wings under the back of the turkey. Return legs to tucked position.

Place turkey, breast side up, on a rack in a large shallow (about 2-1/2 inches deep) roasting pan.

Rub turkey with salt, pepper, and 2 to 3 tablespoons of salad oil. Insert oven-safe meat thermometer into the thickest part of the thigh, being careful that the pointed end of the thermometer does not touch the bone.

Roast the turkey in a preheated 325 degree F. oven about 3-3/4 hours.

During the last hour of roasting time, baste with the pan drippings.

During the last 30 minutes, baste with the citrus glaze. Loosely cover with lightweight foil to prevent excessive browning.

Continue to roast until the thermometer registers 180 degrees F. in the thigh, or 170 degrees F. in the breast.

Remove turkey from the oven and allow it to rest for 15-20 minutes before

carving.

Place on a warm large platter and garnish the platter with the remaining fresh herbs and lemon and lime roses.

Prepare lemon and lime roses as follows: with a small sharp knife or vegetable peeler, cut a continuous thin 1-inch strip

of peel. Avoid cutting into the white pith. Roll tightly, skin inside out, and secure with toothpicks. Reserve in a bowl filled with ice water until time for service.

Provides 22 servings at 6 ounces per portion.

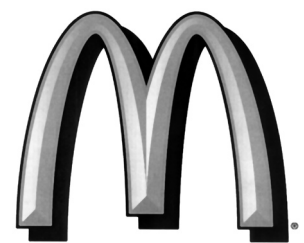
Note: Alcohol-free wine may be substituted for the dry white wine.

# Happy Thanksgiving



Your Muleshoe McDonald's will be open for breakfast on Thanksgiving Day.

We extend our sincere thanks to our customers for your patronage throughout the year and offer this wish to all of you this Thanksgiving holiday... May your celebration be filled with many warm, happy memories of time spent with family and close friends!



1315 W. American Blvd., Muleshoe • 272-3333



Prices Good Thru 12/1/07

Store #34  
312 W. American Blvd.  
Muleshoe, Texas  
272-4862

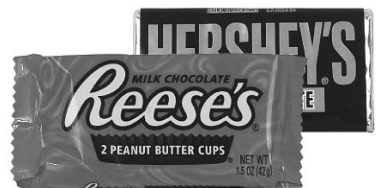
SHURFINE 12 OZ. COTTAGE CHEESE \$1.59

SHURFINE 1/2 PINT WHIPPING CREAM \$1.29

1 FAMOUS BEEF & BEAN BURRITO, CORN DOG AND A 32 OZ. TALLS UP \$2.59

REESE'S PEANUT BUTTER CUP, HERSHEY'S ALMOND, HERSHEY'S MILK CHOCOLATE, HERSHEY'S SPECIAL DARK CHOC., OR PAYDAY HERSHEY'S CANDY BARS REGULAR SIZE

79¢



PURCHASE A 20 OZ. COFFEE OR CAPPUCCINO GET A 50¢ GRANDMA'S COOKIE FREE



ALLSUP'S "MOO" BUY 12 GALLONS OF FRESH ALLSUP'S MILK... GET ONE FREE!

BLUE BUNNY ICE CREAM 56 OZ. OVAL \$3.99



BLUE BUNNY "THE CHAMP!" CONE 89¢ EACH

ASSORTED TOM'S CHIPS REG. \$1.99 2\$3 FOR 3



## MORE SPECIALS

BROWNIE BAKER DANISH ASSORTED FLAVORS EACH	\$1.39
PLAINS EGG NOG QUART	\$1.79
SHURFINE HALF/HALF PINT	89¢
TURKEY DRUM STICK	\$2.99
ALLSUP'S SANDWICH BREAD 89¢ EACH OR	2 FOR \$1.49
ALLSUP'S WHEAT BREAD 99¢ EACH OR	2 FOR \$1.69
FOLGERS COFFEE 13.5 OZ. CTN.	\$2.99
OZARKA 3 WATER 3 LITER BOTTLE	\$1.69
BAR-S BACON 12 OZ. PKG.	\$1.99
NYQUIL LIQUID 6 OZ.	\$4.99
PUFFS TISSUE EACH	\$1.99
SOFT'N GENTLE 4 ROLL	99¢
SO DRI PAPER TOWELS 1 ROLL PKG.	79¢
MARDI GRAS NAPKINS 120 CT.	99¢

# Agricultural News

## More on ethanol and its effect on the cattle industry

By Chris McClure

I had the privilege last week of hearing a number of speakers address some of the issues concerning ethanol and its impact on the beef industry. Much of what I heard was technical in nature – specifically related to the impact of ethanol co-products on cattle nutrition. However, there was much that was general in nature. The thoughts below are capsules of some of that information after it has been distilled through my own thinking.

Ethanol is an explosion into agriculture that is in the process of creating some of the most dramatic change since World War II. It has created a level of fear and uncertainty at all levels of production as well as in industries dependent upon agriculture.

Ethanol is here to stay. There will likely be restructuring as the industry moves beyond

its infancy into a more mature phase. Because they are stainless steel, most new plants have an estimated 85 year life expectancy. Even if the current owner of the plant goes out of business, it will be bought for cents on the dollar and kept in production.

Today, logistical issues are the most important factor slowing its growth. Ethanol plants are not hooked into the national pipeline system. Although most plants are located on rail lines, their product must be shipped to blenders that sometimes are not. Therefore, trucking to blending locations from rail terminals can be an issue.

The large expected corn crop this year is great news for the new plants coming on line. What happens when we have a drought in the Midwest? It has happened before. New corn genetics have mitigated the potential impact, however, high and

volatile corn prices will likely be the norm for many years.

We should expect to see wide variation in the cost of feeding cattle between different regions of the country. Those lots near concentrations of corn and ethanol plants will have an advantage on cost of feed over those feedlots at a distance from corn growing areas. Although ethanol plants are locating near existing feedlots, they will be importing corn. High transportation costs associated with high fuel prices will place areas like the High Plains of Texas at a disadvantage. Feedlots near heavy concentrations of ethanol plants will be able to substitute ethanol co-products for a high percentage of their ration. This will offset to a large extent, the competition for corn. Many will be able to remove corn from their ration altogether and feed

rations consisting primarily of distiller's grains and ground straw or corn stalks.

The cost of feeding variations coupled with high transportation costs will create large price disparities in feeder cattle on a regional basis. We are already seeing large variations in the price of feeder calves between South Texas and the Nebraska Sandhills that is not strictly a function of quality. It is a function of fuel prices, corn prices, and the availability of ethanol co-products. This regional price disparity will continue to be an issue.

With wheat prices remaining above \$8 for the foreseeable future, wheat pasture will be at a premium if available at all. This will further erode the market for beef calves located at great distance from the lower-cost feeding areas such as Nebraska and Iowa. Competition for pasture will increase nationally.

The next few years will see the beef industry – and in particular, the cattle feeding industry – struggling to find a point of equilibrium in the marketplace. Those who are able to adapt and capitalize on the turmoil will succeed. Those who do not make the adjustment will fail. What we have known is in the process of being destroyed by this new behemoth of ethanol. Out of the chaos that it is creating will rise a new and stronger industry as it is re-created in an image that reflects the changes of the new renewable energy economy.

## Putting Farm Bill Resources to Work in Rural America

By Jason Gray

The United States Department of Agriculture is rural America's most significant federal partner. The Farm Bill, which guides policy and investments for USDA is currently being debated in Congress. The call for structural reform is widespread and the important question of how best to direct USDA resources to rural America is scarcely being asked.

USDA resources are terribly misaligned to the needs of low wealth rural counties. Southern Rural Development Initiative analyzed US Census Bureau Consolidated Federal Funds data from 2001-2003 and found that there are significant misalignments in how USDA allocates resources to the nation's 364 rural counties that had over 20 percent poverty rates – the standard definition of a high poverty county. In these poor counties over \$7 billion of USDA agriculture subsidy direct payments were made, while USDA Rural Development grants for the period totaled only \$459 million, a ratio of \$15.65 to \$1. For non-metro counties with majority minority populations, the ratio is \$20.64 to \$1. Most of these are African American majority counties in the South. SRDI estimates that 94-95 percent of the agriculture commodity subsidies in these majority minority counties went to farms with white operators. This is the new plantation economy in wide swaths of the rural south.

The misalignment of USDA funding comes at a high cost – both to rural communities that struggle for a brighter future, and the federal government's fiscal bottom line. In addition to the \$7 billion spent just on the two major agriculture direct payment subsidy programs in counties with over 20 percent poverty rates, there was also over \$5 billion in nutrition grants and direct payments – a per capita rate of \$730 compared to a national per capita rate of \$305. Most of this benefits children, and is an indicator of profound social and economic need in these counties.

It is a deep irony that in the rural South, hunger and high nutrition program spending exists side by side in the very same counties that are receiving billions of dollars of agricultural subsidies that do little to grow and diversify local economies and reduce poverty – the true source of hunger. In the three-year period of funding we studied, for every USDA nutrition program dollar we could trace to rural low wealth counties, \$1.47 was spent on the two largest agricultural direct payment subsidy programs. In contrast, these counties received 9 cents in USDA rural development grants for every nutrition dollar. As bad as this is, it can actually be worse. In 11 counties of the Arkansas Delta, for every nutrition dollar allocated, large rice farm operations received \$4.07 in direct payment commodity subsidies, yet, only 3 cents in USDA rural development grants. Recent Census Bureau data indicates that all of these counties have lost nonfarm employment in the first half of this decade. All but one county has lost population in this decade.

If the total agriculture subsidy direct payments and the rural development grants were lumped together into a block grant program, what are the chances that rural county commissions might adjust the equation a bit to put more in grants to rural development projects that build public facilities, small businesses, and water systems? But this question is hypothetical, of course, because agricultural subsidy dollars flow directly to individual farm operations and bypass local governments. Rice, cotton and sugar commodity crop trade associations want to make sure it stays that way.

Gray is the research and policy director for the Southern Rural Development Initiative.



Photo by Mike Jones

Muleshoe Area Hospital District employees and board members enjoyed an early Thanksgiving meal Nov. 16 as Justin Brozek speaks to the crowd.



**COUNTRY west TEXAS TRADER**

*"Your Best Source For ...  
... Finding Great Values  
... Convenient Shopping  
... Wide Coverage Area"*

**Have your advertising message read by over 50,000 readers.**

The West Texas Country Trader goes into subscriber copies of these ten Panhandle newspapers each week:

Muleshoe Journal	Morton Tribune
Canyon News	Plainview Daily Herald
Olton Enterprise	Tribune (Lubbock)
Idalou Beacon	Free pickup in Tulia & Hale Center

Every United Supermarket in Amarillo

**Your advertisement would be inserted in all ten newspapers for just \$6-\$10 per column inch!**

**Reach New Customers!**

**Increase Your Visibility!**

**Grow Your Business!**


**Get More For Your Money!**



*"Your Best Source For ...  
... Finding Great Values  
... Convenient Shopping  
... Wide Coverage Area"*

Call or Email the Muleshoe Journal today to find out more about this great advertising opportunity! We can help!

**272-4536 or advertising@muleshoejournal.com**



## We mark the spot.

At El Paso Natural Gas (EPNG), we serve energy needs by operating underground natural gas pipelines in this area. Pipelines are the safest mode of transportation today, surpassing highway, rail, air, and water transport. A recognized leader in safety and compliance, EPNG is committed to preventative safety practices. As part of that commitment, we mark all of our pipelines with warning signs that include emergency contact information.

**At any time, if you:**

- Smell a natural gas or petroleum odor
- Detect soil erosion or discolored vegetation near the pipeline
- Hear a hissing sound
- See dust blowing up from the ground
- See a vapor cloud or pool of liquids
- Observe construction or other activity near the pipeline
- Observe bubbles in bodies of water


Please call us immediately at our Gas Control number 1-800-334-8047, or call 911 for emergency services.

## Dig Safely.



Before you begin work near our pipelines, please contact your state One Call center. One Call will inform us of your activity, and we will dispatch a company representative to mark the location of the pipeline in the vicinity at no charge. Your safety is important to El Paso Natural Gas.

**The One Call number for Texas is 1-800-DIG-TESS (1-800-344-8377)**

*El Paso is a gold level sponsor of* 

# Time to "Smokeout," November is lung cancer awareness month

Submitted by **Mandi Seaton, Bailey CEA-FNC**

It is sometimes hard to believe that the most preventable form of cancer is also the leading cause of cancer death in both men and women. The American Cancer Society estimates that there will be a total of 213,380 new cases of lung cancer diagnosed in the United States alone this year. Also, they estimate

that 160,390 Americans will die of lung cancer in 2007. While seeing these numbers may or may not alarm you, it is when a close friend or family member is part of these statistics that we really start to worry. What if one of the 213,380 new cases diagnosed is your brother...what if one is your aunt...what if one is you? Then lung cancer becomes more than just the leading cause of cancer

death. It becomes your reality. The good news is that many of these cases of lung cancer can be prevented by not smoking or quitting smoking. While quitting smoking is much easier said than done, it is possible to greatly reduce your risk of lung cancer by doing so.

The best way to prevent lung cancer is to never start smoking at all. For some of us, it is too late to

decide not to start smoking, but it is never too late to quit. Quitting smoking not only reduces your risk of lung cancer, but it reduces your risk of other cancers, heart attack, and stroke. According to the American Cancer Society, former smokers live longer than continuing smokers. Major health benefits can be seen in people with and without disease who quit smoking. Quitting smoking benefits your wallet as well as your health. With the recent tax increase in January 2007, the price of every pack of cigarettes has gone up a whole dollar. It is easy to see that a dollar per pack can add up very quickly for heavy smokers. If quitting for your own health and your wallet is not enough, consider the health of those around you. Secondhand smoke can raise a non-smoker's risk of cancer, heart disease, and other respiratory problems. Children are more prone to respiratory tract infections, middle ear infections, and

asthma attacks when they are exposed to secondhand smoke. Smoking around children also sets an example for them that smoking is acceptable.

There are plenty of reasons to quit smoking, but it is an extremely difficult thing to do. Fortunately, there are many resources and tools available to help you be successful at quitting. According to the American Cancer Society, there is no one right way to quit, but there are several elements to quitting successfully, including:

- Make the decision to quit.
- Set a quit date, and choose a quit plan.
- Deal with withdrawal symptoms.
- Maintain your status as a non-smoker.

The ACS website (<http://www.cancer.org/docroot/subsite/greatamericans/index.asp>) is just one of many great organizations that would love to help you quit smoking. Another

excellent resource is <http://www.smokefree.gov/>, a website that was developed by the National Cancer Institute, the Centers for Disease Control, and other well known health organizations.

November is Lung Cancer Awareness Month. For more information, contact Mandi Seaton, County Extension Agent – Family and Consumer Sciences, Texas Cooperative Extension, Bailey County, (806) 272-4583.

Source: Courtney J. Schoessow, MPH, Extension Program Specialist B Texas Cooperative Extension, and Meghan Wernicke, October 2007. Texas Cooperative Extension Family and Consumer Sciences website: <http://fcs.tamu.edu>

Educational programs of Texas Cooperative Extension are open to all people without regard to race, color, sex, disability, religion, age, or national origin.



Named as the Muleshoe Chamber of Commerce & Agriculture's November Employee of the Month was Sheryl Altman of Muleshoe Vet Clinic. Pictured left to right are: Joe Ky Shultz, Brandi Angeley, Sheryl Altman, Scott Kline, Tadd Young, Jonathan Light, and Cheryl Puckett.



Named as the Muleshoe Chamber of Commerce & Agriculture's October Business of the Month was the office of David Sudduth CPA. Pictured left to right are: Cheryl Puckett, Claire Sudduth, Judy Davenport, Tadd Young, David Sudduth, Norma Bruce, and Brandi Angeley.



Named as the Muleshoe Chamber of Commerce & Agriculture's October Employee of the Month was Robert Toscano of Fry and Cox. Pictured left to right are: Renda Logsdon, Don Wood, Cheryl Puckett, Brandi Angeley, Tadd Young, Robert Toscano, and Ed Cox.

## More CLASSIFIEDS

Deadline - 5 PM Monday  
272-4536

### FOR SALE

Nice oak table, 70"x42" with two 18" leafs and 6 chairs, \$375. 272-4208 or 806-566-5270. .2ch11-15

ADJUSTABLE BED base and mattress, list \$2500, sell \$1299. NEW, 806-549-3110. .1ch11-22

Dinette set & 4 chairs, solid wood, sturdy. New in box, \$149. 806-549-3110. .1ch11-22

SOLID WOOD complete 6-pc. mahogany bed set. List \$2250. Sacrifice \$799. 806-549-3110. .1ch11-22

Brand new QUEEN orthopedic pillowtop mattress set. NEW. Can del. \$119. 806-549-3110. .1ch11-22

Cal King-KING pillowtop no flip mattress set. Brand new. Sacrifice \$239. 806-549-3110. .1ch11-22

DOUBLE/FULL mattress set, \$95. TWIN mattress set, \$85. MUST SELL by weekend. BOTH NEW. 806-549-3110. .1ch11-22

### LAND FOR SALE

160 acres 1-1/2 mi. north of Progress on CR 133. In CRP, out Oct. 1, 2007. One irrigation well in center. 254-758-2134. .2ch11-22

2004 Chevrolet Suburban. Excellent condition, 31K miles. Call Hal or Linda. Work: 272-5514 or home: 272-3418. .2ch11-8

SACRIFICE LEATHER sofa & matching loveseat. Never used. Kist \$1949. Sell \$749. 806-549-3110. .1ch11-22

CUDDLER RECLINER & 1/2 huge, brand new, microfiber, warranty-compare to Lane \$799. Sell \$449. 806-549-3110. .1ch11-22

CHERRY dining table, chairs, china cabinet, mirror finish, ALL NEW. \$550. 806-549-3110. .1ch11-22

SECTIONAL, leather/microfiber. New in crate, warranty. PLUSH. Retail \$2970, sell \$990. 806-549-3110. .1ch11-22

### FOR RENT

516 W. Ave. E. 2BDRM/1BA, no appliances. \$420/mo., \$375 depo. plus first mo. rent. 210-867-8911. .1fch10-25

3 bedroom, 1-3/4 bath brick home. Single car garage, fenced back yard. For more info, call 806-481-3846. .1fch11-22

### INSTALLERS NEEDED!

We need full-time, hard-working DirecTV satellite installers with strong customer service skills. Excellent wages and medical/dental/vision/401K benefits available. Paid Training for those with no experience. Call 800.411.4374 or go to [www.premiercomm.com](http://www.premiercomm.com) for further info. .4ch11-1

Bovina Feeders is looking for dependable, responsible people to work in feedmill, processing and yard. Competitive wages, 401K program and insurance. Please apply in person or call 806-825-2103. .2ch11-22

**UNDER NEW MANAGEMENT**  
**NOW HIRING**  
**minsa**  
MINSAS HAS SEVERAL POSITIONS AVAILABLE IN OUR PRODUCTION FACILITY. We are looking for hardworking individuals to fill several positions. Apply in person at Minsa or at WorkSource, 201 S. Main, Muleshoe. EOE. TFNch2/23

Jarvis Products Corporation is seeking a second shift mechanic to work on meat machinery tools. Contact number: 806-674-3497 or 860-830-2076. .2ch11-22

Major Tanker Truck Company looking for good qualified drivers who are willing to work with the following benefits: Scheduled Days Off, Nice Equipment, Competitive Mileage Based Pay, Medical Insurance, 401K Plan, Paid Vacation, Quarterly Safety Awards and a **\$4,000 Sign-on Bonus**. Multiple driver positions available, if you are 25 yrs. of age or older, have an excellent driving record with current Class A CDL w/ HazMat/Tanker and 2 yrs. driving experience, we would like to hear from you. Please call Tom Smith @ 1-888-339-0599. SIGN-ON BONUS OFFER ONLY VALID FOR APPLICANTS WHO APPLY WITH THE NEXT 2 WEEKS. .2ch11-22

**UNDER NEW MANAGEMENT**  
**NOW HIRING**  
**minsa**  
MINSAS IS ACCEPTING APPLICATIONS FOR 2 POSITIONS IN THE MAINTENANCE DEPT. Some previous maintenance or welding experience preferred. Apply in person at Minsa or at WorkSource, 201 S. Main, Muleshoe. EOE. TFNch2/23

### HELP WANTED

**Elevator Help Needed** - The AGP Grain Marketing elevators are in need of elevator help for various locations. Applicants must be at least 18 years of age and must pass a pre-employment physical and drug screen. Must be able to work in grain dust. If interested, please pick up applications at the main office in Bovina or call 806-251-1521 local, or toll free at 866-583-7362. .4ch11-22

Farwell Feed Yard is hiring feed truck drivers/yard maintenance help. Applicants must be at least 18 yrs. of age and must pass a pre-employment physical and drug screen. If interested please come by the office of Farwell Feed Yard and pick up an application. .1fch9-20

**ASSISTANT DON**  
Parmer County Community Hospital is seeking candidates for the position of Assistant Director of Nursing. Position requires excellent writing skills, computer skills, and professional interpersonal communication skills. Five years supervisory experience preferred. BSN or working toward BSN also preferred. Competitive wage and benefit package. To schedule an interview, send resume to: PCCH, Human Resources, 1307 N. Cleveland, Friona, TX 79035. .2ch11-15

Experienced cook needed at La-Tea-Da Tues.-Sat., 8:30-2:30. Must know how to cook tea-room type food. Looking for a permanent employee. Applications will be thoroughly verified. Please come by after 2:00 Tues.-Sat. for application, 104 E. American Blvd. No phone calls please. .1fch11-15

Leal's Restaurant seeking FT waitresses. Nights and weekends. Required apply at 1010 W. American Blvd., 2-5 PM. No phone calls please! .2ch11-15

**Teacher Assistant: Sudan (full-time) Department:**  
Head Start Assist in preparation of lesson plans and activities, maintain records; interact with children; maintain a safe, healthy learning environment conducive to learning. High school diploma/GED required. Must be flexible and able to adapt to change in the workplace. Must submit to TB tests, a physical and must pass a regular criminal history checks. Must be willing to take and pass a drug/alcohol test. Must possess and maintain a valid Texas motor vehicle operator's permit and maintain an insurable MVR history. MVR background checks are conducted by the agency. Ability to maintain physical condition and stamina to perform the assigned duties. Continuous standing and walking for most of the 8 hours. Occasional pushing, pulling, bending and lifting of weight over 25 lbs.  
**Contact Information:**  
Applications must be completed to be considered for position. Pick up applications at the Field's Building, 1946 Ave. Q in Lubbock, SPCAA Admin. office, 411 Austin Street in Levelland, or apply online at [www.spcaa.org](http://www.spcaa.org) SPCAA is an EEO employer. .3ch11-15

Full time LVN or RN, first or second shift. Runningwater Draw Care Center, 800 W. 13th Street, Olton, 806-285-2677. .2ch11-15

Now hiring cooks, drivers and managers. Apply at Pizza Hut of Muleshoe, 1412 W. American Blvd. 272-4213. .3ch11-15



Join Our Team!  
**Now hiring for a Maintenance Position**  
Beginning hourly wage \$7.75  
30-40 hours per week; Mon.-Fri.  
Free Meals. Vacation Benefits.  
Free Uniforms.  
\* Gold Card benefits and Insurance available.

Also, hiring for Management and other positions.

APPLY ON-LINE  
[www.mctexas.com/muleshoe](http://www.mctexas.com/muleshoe)

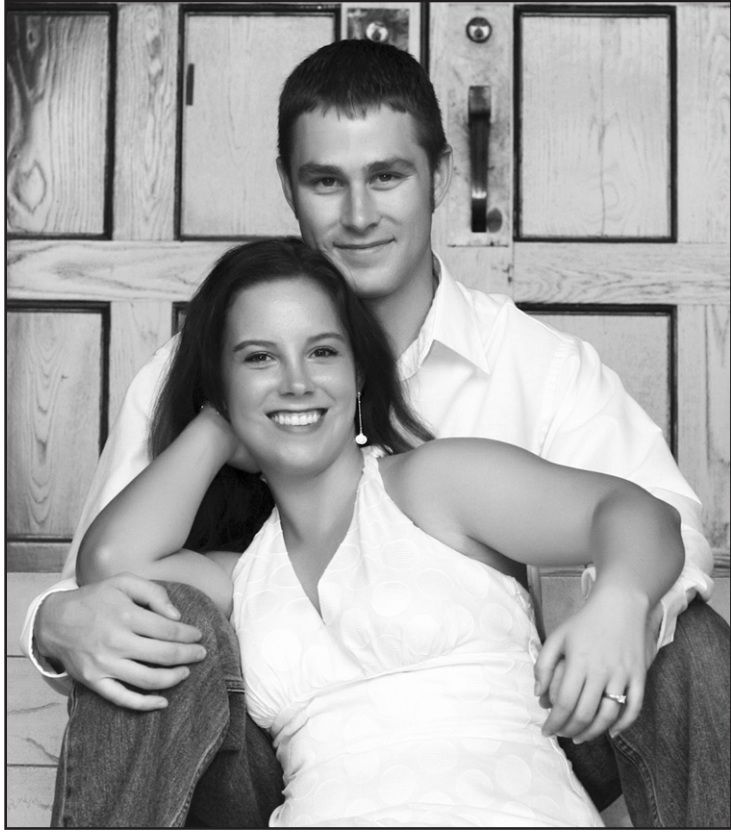
Or call 1-866-YOUR MCD for more information.



**WHY NOT SUBSCRIBE? YOU KNOW YOU WANT TO.**



## Engagements



BETHANY EVINS AND CODY KETRON

### Evins, Ketron engaged

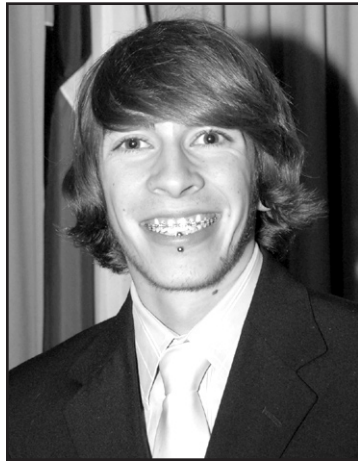
Derrel and Brenda Evins of Dimmitt are pleased to announce the engagement of their daughter, Bethany Elizabeth Evins, to Cody Jared Ketron, son of Rene and Ken Ketron of Seminole.

The couple plan to wed Jan. 5, at First United Methodist Church in Lubbock.

The bride-elect is a 2004 graduate of Seminole High School. She will graduate from the University of North Texas of Denton in May with a degree in International Studies. She is manager and optometric technician for Dr. Doris Chao of Grapevine. Bethany is the granddaughter of Dr. & Mrs. David Wyer and Mr. and Mrs. Buster Evins of Muleshoe.

The prospective groom is a 2002 graduate of Seminole High School and a 2006 graduate of Tarleton State University with a degree in Criminal Justice. He is also a 2007 graduate of North Central Texas Regional Police Academy of Arlington. He is currently employed as a police officer with the Mesquite Police Department.

## Honors



JASON HARTLINE

### SPC inducts Phi Theta Kappa honor students

South Plains College inducted 28 students into the Kappa Mu Chapter of Phi Theta Kappa International Honor Society on Monday, Nov. 12, at 7 p.m. in the Sundown Room.

Among local and area students inducted during the event were Jason Hartline of Muleshoe and Herlinda Lopez of Earth.

Hartline was a featured inductee.

To be eligible for induction, students must attend an institution offering an associate degree program, complete at least 12 hours of coursework, have full citizenship in their country and maintain a grade point average of 3.5 or above.

### Christmas In The Country concert set

The public is once again invited to Trinity Christian Center Church to hear sounds of the season and old country favorites during the eighth annual Christmas In The Country

concert to benefit Muleshoe Meals On Wheels.

The concert will take place Thursday, Dec. 6, at 7:00 p.m. at the Bailey County Coliseum, 2206 W. American Blvd. in Muleshoe.

Doors will open at 6:00 p.m. and admission is free. During the concert, a free-will donation will be taken up.

Refreshments will be served.

**BIG SELECTION!** **HUGE SAVINGS!**

# BIG VALLEY

*Now A Bigger Selection Under The Sun!*

Ford CHRYSLER Dodge Jeep BUICK PONTIAC GMC

**Fall Price REDUCTION**

Stock # ZP109911

**07 TOYOTA 4RUNNER 4x4, 24K!**

**\$450** a month!\*

Stock # ZA333957

**06 SUBARU OUTBACK LEATHER, P/W, P/L, 20K MILES!**

**\$320** a month!\*

Stock # GP268945

**04 CHEVY TAHOE 711, 60K, 4x4, DVD, LOADED!**

**\$399** a month!\*

Stock # ZW170146

**97 LEXUS LX 450 LEATHER & FULL LOADED!**

**\$8,995**00

\*Payments based on 10% down, plus T, T & L for 72 months at 8% on approved credit.

Pictures are used for illustration purposes only and do not represent the actual auto for sale, colors may vary.

**MULESHOE - 1112 West American Blvd.**  
**(806) 272-7777**  
**VISIT OUR CLOVIS & PORTALES STORES!**

# Hartline 6x10