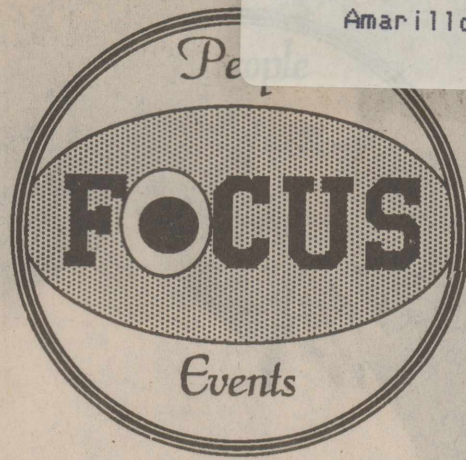


1/1/90
Baze Book Binding
514 W 7th St
Amarillo TX 79101

Amarillo--CCCCC
End Of Amarillo
Amarillo Bag TX 79100
zzxxxxxxxxxxxxx



THE HASKELL FREE PRESS

35¢

VOL. 103--NO. 31

HASKELL, TEXAS 79521, August 3, 1989

16 PAGES-TWO SECTIONS-PLUS TWO INSERTS

Rochester Baptist revival scheduled

The Men's Bible Class of the First Baptist Church of Rochester will sponsor an outside summer revival which begins Sunday and continues through Friday of next week.

Week-day services will begin with a Booster Band for boys and girls of all ages at 7:30 p.m. and the worship service will follow at 8.

Sunday morning services will be in the auditorium at the usual time--Sunday school at 10 and worship at 11. The evening service will be outside, starting at 8.

Guest evangelist will be the Rev. Bert Smith of Fort Worth and song leader will be Cooter Boles of the Sweethome Church in Rule.

Each person in the community is welcome and encouraged to attend the old-fashioned outside meeting.

Two at McMurry on honor roll

Two students from Haskell County are listed on the spring Dean's Honor Roll at McMurry College.

They are Kristi Lyn Wilson Jones of Rule and Randy Joe Phemister of Haskell. A student must maintain a 3.5 grade-point average to qualify for the honor.

Reedy Company plans open house

The Reedy Company will observe its first anniversary in Haskell next Thursday (Aug. 10) with an open house.

Food and drinks will be served throughout the day and prizes will be awarded.

The company, located at 2 North 1st Street, is the Exxon distributor. B. J. Ray is manager.

PC students register Aug. 25

Registration for Paint Creek Schools will be in the school cafeteria from 9 a.m. to 3 p.m. Friday, Aug. 25.

All kindergarten students who have not pre-registered should bring their birth certificates and immunization records. All new students will need their social security numbers.

Early childhood program offered

Haskell ISD and the Haskell-Knox Consortium will offer an early childhood program for children ages 3 and 4.

Last year, there were two-and-a-half-hour morning and afternoon sessions. A speech therapist came two days a week to help with speech and language.

Testing procedures will begin Aug. 7. Parents who contacted the school in May will be called to arrange appointments for testing. Parents who did not contact the school in May should call 864-3920 before Aug. 7.

Shelia Towell gets ACU degree

Shelia Towell was one of 468 students to receive degrees during spring commencement ceremonies at Abilene Christian University.

Towell, a magna cum laude graduate, received a bachelor of business administration degree in general business.

She is the daughter of Mrs. Geretha Franklin of Rule.

Square dancers

The Country Squares of Haskell will host a square dance Saturday, Aug. 5, at 8 p.m. in the Haskell City Park.

The public is invited to participate



Santa visits

Santa Claus (Santa Charles) had some goodies for Anna Rieger as he toured Haskell last week during the 'Christmas in July' promotion.

VA expenditures reach \$708,267

Estimated Veterans Administration expenditures for Haskell County veterans totaled \$708,267 during fiscal year 1988.

The figure includes \$672,289 for compensation and pensions, \$452 for education and vocational rehabilitation and \$35,526 for insurance and indemnities.

Figures were released by Dr. Stephen L. Lemons, Waco VA regional office director.

Statewide, Texas veterans received \$1,091,366,207 as compensation for disabling injuries or diseases incurred while in the armed forces, or as

pensions for wartime veterans with limited incomes. They also received \$90,064,083 for education and vocational rehabilitation benefits.

Another \$101,214,233 went for insurance and indemnity payments, \$96,367,576 for facility construction, and \$688,417,903 for medical services and administrative costs.

"Veterans of Texas have earned these benefits through their military service to our country, and my first priority is to serve them," said Lemons, whose office administers benefit programs for 233,833 veterans in northern Texas.

Gospel singers to perform Sunday

A gospel concert is scheduled Saturday at the First Christian Church of Haskell.

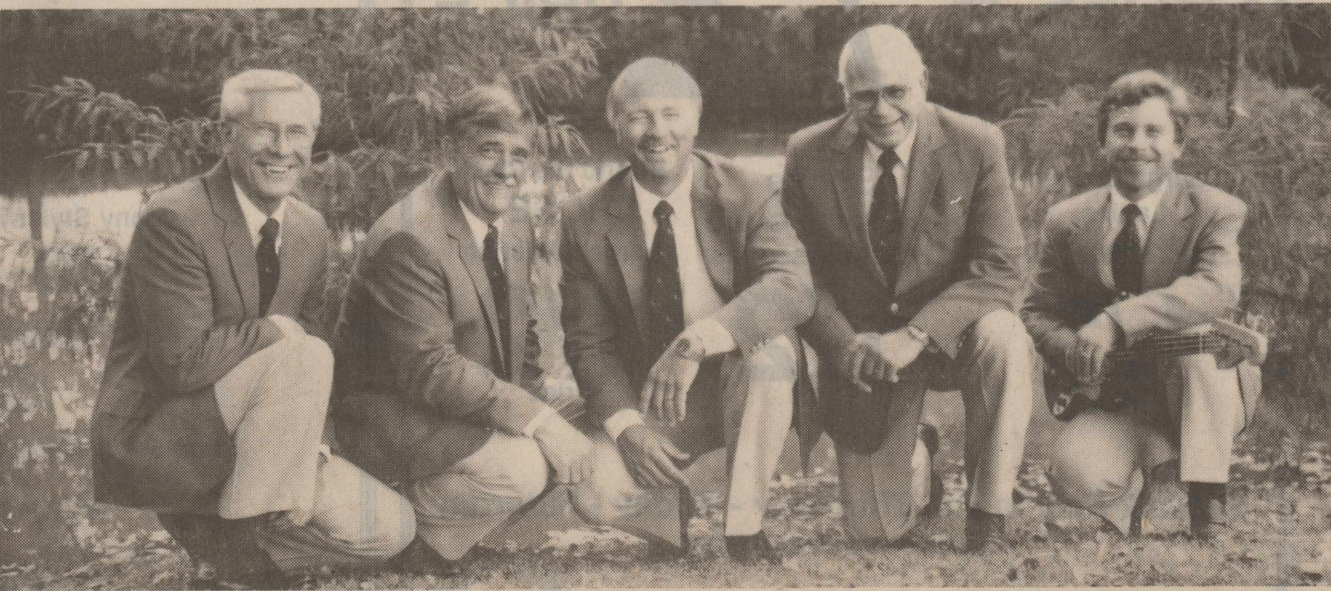
"The Lighthouse Five," a gospel singing group from Lubbock, will present a program of religious music, beginning at 6 p.m.

The public is invited. There will be no admission charge, but a freewill offering will be received to help defray expenses.

Four businessmen make up the "Lighthouse Five." Members of the group are Bob Andrews, lead; Glen Lawson, baritone; Jim Holder, tenor;

and Royce Ivory, bass. Mrs. Charles Carman plays the piano, while Richard Schwalm plays the bass guitar and keyboard. Mrs. Royce Ivory is the sound technician.

Dusty Garrison, minister of the sponsoring church, said he is excited to have this group in Haskell. "They're a great bunch of guys, and we're really lucky to have them here," said Garrison. "They will be singing at the Texas Christian Convention in Wichita Falls on Friday night, and then come here Saturday.



'Lighthouse Five'

Members of the "Lighthouse Five" gospel group which will appear in concert in Haskell Saturday are, from left, Royce Ivory, Jim Holder, Bob Andrews, Glen Lawson and Richard Schwalm.

City seeks grant

A public hearing on uses of a possible \$250,000 community development grant from the Department of Commerce is scheduled Aug. 17 by the Haskell City Council.

The proposal was discussed at a meeting of the City Council last Thursday, at which time the members gave street improvements the No. 1 priority for the usage. Drainage projects, housing rehabilitation and parks and recreation were other needs discussed.

The city will make application after the Aug. 17 meeting, which has been scheduled to obtain citizen input into ideas for city needs.

Under the request, as proposed, Haskell will provide \$27,500 in cash and another \$10,000 in labor to meet the matching-funds requirements.

In other action during last week's meeting, the council:

--Accepted a bid from Ronnie and David Adams for a cash lease on property the city owns at the landfill. The proposal was for three years at \$1,846 per year. The Adams bid was one of two submitted.

--Was briefed by administrator Robert Baker on recent increases in city insurance premiums, due in large part to a major claim by the ambulance service. (The ambulance insurance premium is paid by the city under its blanket insurance policy and the city is then re-imbursed by the ambulance board.) The possibility of obtaining a separate insurance policy for the ambulance service was discussed.

--Adopted an ordinance allowing city employees who served in the military service to pay \$15 for each month of military service and thereby be able to include service time toward

their municipal retirement.

--Rejected an invitation from the Red River Authority of Texas to join a group of other cities in studying the feasibility of constructing a regional landfill. (Councilmen expressed the belief that Haskell's landfill is adequate for now and the foreseeable future.)

--Discussed the budget for next year. The proposed budget contains provisions for increased costs at the

landfill to meet state-mandated requirements, but otherwise, the proposed budget is very similar to last year's.

In his departmental reports, Baker reported that the street project should be completed in about a week, two benches have been ordered for Rice Springs Park. Also ordered are tennis nets and a volleyball net which will be made available for those reserving the park.



'Outstanding squad'

Haskell junior varsity cheerleaders proudly display the trophy they won for being named the "most outstanding" squad at the Hardin-Simmons All-Star Cheerleading Camp in Abilene last week. Team members are, from left, Deanne Wallace, Marsha Moore, Sunny Coleman and Holly Hobgood.

JV cheerleaders 'most outstanding'

Haskell junior varsity cheerleaders were selected the "most outstanding" squad at last week's Hardin-Simmons Cheerleading Camp in Abilene.

In addition, the local group was recognized as the squad which displayed most spirit, and Holly

Hobgood was named a Junior Miss All-Star cheerleader by the camp staff. Girls were judged on spirit, jumps, stunts and overall cheerleading ability.

Members of the squad are Marsha Moore, Sunny Coleman, Deanne Wallace and Holly Hobgood.

Shooting charges filed

Tommy Lee Copelin, 46, of Haskell was charged with attempted murder in connection with a shooting that occurred Thursday night, July 27, in Haskell.

Copelin is being detained in the Haskell County Jail and bond is set for \$25,000.

Beverly Peters Williams, 29, of Haskell was shot during a dispute outside her mother's home, said Haskell County Sheriff Johnny Mills.

Williams reportedly suffered a punctured lung and was listed in stable but serious condition Monday afternoon at Humana Hospital in Abilene.

Registration

Registration for secondary school students in Haskell will take place Thursday, Aug. 17, in the high school library during the following hours:

- Seniors: 9 a.m.
- Juniors: 10 a.m.
- Sophomores: 11 a.m.
- Freshmen: 1 p.m.
- 8th Graders: 2 p.m.
- 7th Graders: 3 p.m.

Golfers

Third annual scramble Aug. 12-13

Haskell Kiwanis Club will host its third annual Three Person Golf Scramble Aug. 12 and 13 at the Haskell Country Club. Tee times are 8:30 a.m. and 1:30 p.m.

Medford Buick-Pontiac-GMC will give away a 1989 Pontiac Sunbird for the first hole-in-one on Hole No. 15 Sunday, August 13, only.

Registration fee is \$150 per team and includes Saturday night supper for two. Prizes will be awarded for the closest to pin and longest drive each day.

For more information contact the Haskell Country Club at (817)864-3400.

Students

Registration set for college classes

Registration for fall semester classes at the Haskell extension center of Western Texas College will be Aug. 22 in the Haskell High School library.

Students will register between 6:30 and 7:30 p.m. and textbooks may be purchased during registration.

Courses on the fall schedule include Criminal Justice 133 and 134, English 131, U.S. History 131,

Government 231 and Human Development 113 (degree planning).

Classes will begin Aug. 30 and end Dec. 7. All classes will meet from 6:30 to 9:20 p.m. one night per week with the exception of the degree planning class.

Information about the Haskell extension center may be obtained by contacting Pat Blakely, center coordinator, at 864-2891.

Bikers

Lions Club 'Pedalfest' Saturday

Haskell Lions Club will present Haskell's first "Pedalfest" this Saturday, Aug. 5, for bike rider enthusiasts.

Four challenging rides will guide participants through historic Haskell County. Distances include 10, 20, 40-mile and 100 K routes.

The first ride begins at 8 a.m., rain or shine, and cyclists will start and end at the Haskell County

Courthouse. All courses will be closed at 2 p.m.

Cyclists may register at The Drug Store in Haskell on Friday, Aug. 4, from 4 - 6 p.m. Registration fee is \$10. Late arrivals may register Saturday, Aug. 5, at the staging area and fee is \$12. Pedalfest t-shirts will be given to the first 10,000 entries.

Riders must obey all traffic laws during their ride and helmets are strongly recommended.



Engaged

Mr. and Mrs. Lonnie Dee Pipkin of Mount Vernon have announced the engagement and forthcoming marriage of their daughter, Della Lyn, to Donald Wayne Haynes. He is the son of Mr. and Mrs. Jim Haynes of Haskell. The bride-to-be is the granddaughter of Mr. and Mrs. Howell Greene of Haskell. The wedding will be at 7 p.m. Aug. 19 at East Side Baptist Church. Friends are invited to attend.

Munday teacher calls it a career

By Joyce B. Greenwood
The Munday Courier
For the first time in 25 years, Alta McGuire will not be welcoming Munday third-grade students when school begins in September.

A teaching career that began 30 years ago in a little school called Ira, just outside of Snyder, came to an end with the close of the 1988-89 school year.

Graduates of Weinert High School, Alta and Floyd McGuire were married just out of high school and were the parents of two sons when they decided that an education is a prerequisite for success. They enrolled in Sul Ross University and earned their degrees there.

After two years in Ira, Mrs. McGuire taught three years in O'Brien before beginning her career in Munday.

Mrs. McGuire has enjoyed her years in teaching. She seems to possess that special quality of love for children that separates the good teachers from mediocre ones.

"Caring about kids makes the difference," she said. "I've always tried to find the good in every child--and it's always there. It was important to me to make each child feel good about himself--to make him or her feel special."

Mrs. McGuire expressed the hope that she has been successful in causing some child to feel that he has self worth and the ability to succeed.

"If I have done that for just one child," she added, "then my years of teaching have been worthwhile."

"Kids are not just a class," she noted. "They are individuals and I always tried to teach to the individual child. Each one, after all, has special needs."

When asked if she would feel a little melancholy when the school bells ring this fall, she replied that she would miss the classroom, but she expects to be very busy.

"I've already said my good-byes," she said. "Now I have so many things

I want to do. I want to travel with my husband, read and do handiwork--all those things I've not had time to do until now."

Alta McGuire lives in Munday with her husband. Her two sons, Steve and Mike, are engaged in farming in the Weinert area and both of her daughters-in-law are teachers.

4-H committee completes plans for activities

Haskell County 4-H Committee finalized plans for the summer countywide 4-H activity at a regular quarterly planning meeting.

The activity will include a softball game, a gun safety program and a hamburger supper at the Haskell City Park.

The committee suggested a gun safety project be conducted on the fifth Mondays during 1989 and 1990. The first meeting will be held in conjunction with the Countywide hamburger supper. The next gun safety meeting will be Oct. 30.

In other business, Sept. 30 was the date set for the County 4-H Awards program and other ideas for future countywide activities were discussed.

The committee will meet again on Aug. 16 at 5:15 p.m. in the County Extension Office Kitchen.

The County 4-H Council met in conjunction with the 4-H committee since its main items of business were the countywide 4-H activity and the 4-H County Awards program.

DID YOU KNOW?

The word "carouse" meaning a drinking bout or merry-making comes from the German "garaus" meaning completely and the use of the term to describe completely emptying a glass after a toast.



Melinda Cray Briggs and Don Alan Pickering

Briggs, Pickering set wedding date

Mr. and Mrs. Thomas E. Briggs of Dallas have announced the engagement of their daughter, Melinda Cray to Don Alan Pickering, son of Mr. and Mrs. Raymond H. Pickering of Lubbock.

The prospective bridegroom is the grandson of Mr. and Mrs. J. M. Pickering and the late Mr. and Mrs. J. L. Toliver Sr. of Haskell.

The couple will wed Saturday, Aug. 19, at 7:30 p.m. in a double-ring ceremony in the Ambiance Blue Room in Lubbock. The Rev. John Cooke of Dallas will perform the ceremony.

Miss Briggs is a graduate of Texas Tech University and is employed by American Greetings.

Pickering is a graduate of Angelo State University and is employed by Reay Bearing Supply, Inc. of Lubbock.

DID YOU KNOW?

In parts of Europe it was once believed putting cumin seeds in bread would keep the wood spirits from stealing it. Probably always worked, too.

Sidewalk Sale

Saturday August 5

Savings You Won't Believe on the Following:

- Tennis Shoes
- Tee Shirts
- Hi Tops - Low Tops
- Shorts
- Running & Youth Shoes
- Socks
- Swim Suits

All Discounted 20% to 60% & MORE



BackPacks \$4.99

CAPS 99¢

SPRING & SUMMER SPORTSWEAR 40% OFF

WHERE WINNERS SHOP CONRAD ROEWES



402 N. 1ST HASKELL 864-3891

LONE STAR TUMBLERS REGISTRATION

Fall registration for Lone Star Tumblers will be held

Thursday, August 24th from 3:00 P.M. to 5:30 P.M.

at the WW Motor Company building.

Classes will be offered for 2 year olds and up in tumbling, trampoline and cheerleading.

For more information call 864-2038.



CASH IN WITH THESE

SUPER BUYS!

SHOES 1/2 PRICE

Large Group Ladies Handbags

1/2 Price

Socks and Select Group Hair Accessories

1/2 Price

Round the Clock HOSE Large Selection

1/2 Price

Sidewalk Sale Inside Thursday - Friday - Saturday All Sales Cash and Final

THE SLIPPER SHOPPE

864-3051 East Side of Square Haskell



The Clothes Closet

"Fashion at Affordable Price" Sizes 6-46

Summer Clearance Continues

50% and Less Sidewalk Sale Inside

10 Ave D • East side of Square • Haskell • 817-864-3781

Sale ... Sale ... Sale Sidewalk Savings - Inside Coolness Saturday, August 5th

Sportswear Separates

A Great Selection Blouses - Tank Tops - Sweaters Skirts - Pants - Culottes \$7. \$10. \$12. \$15

Sportswear Special Group

First Time Reduced Regular & Misses Sizes Early Transeason Special \$15. \$20. \$25 Regular Value to \$60

Dresses

Many Styles That Know No Season

50 to 75% Off

Special Group - First Time Reduced

50% Off

Shop Every Department for Sidewalk Savings

THE Personality SHOPPE

Smart Wear for Women™

Summer's Going

- Many Items were 50% Off Now 60% off
- Special Rack 75% Off

Fall's Coming

*Dalton Trunk Show

Wednesday and Thursday August 9th and 10th

Lane Felker

Haskell, Texas

West Texas Fashion Center

864-2865

AIDS clinic set for Aug. 15

Area health care professionals will learn the latest advances in AIDS in patient care, practical precautions and teaching skills in a seminar at the McMurry Student Center on Tuesday, Aug. 15, in Abilene.

The workshop will feature three guest speakers for the morning sessions and four panels of local experts in the afternoon.

The workshop is open to doctors,

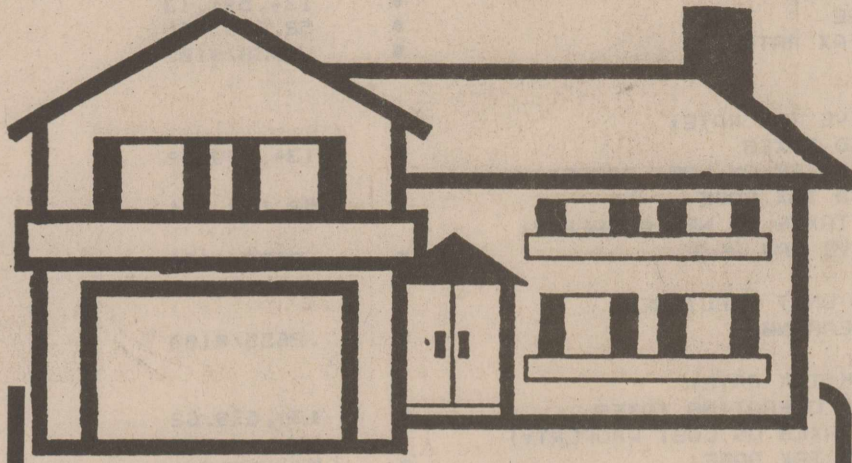
nurses, dentists, physicians' assistants, social workers, counselors, extended care coordinators, nursing home professionals, emergency medical technicians and ministers.

Humana Hospital and Hendrick Medical Center are the workshop sponsors.

For further information, contact Jan DeVoto (915) 691-2413.

DID YOU KNOW?

To a chilled, halved grapefruit add a topping of cooked cranberries and a thin sprinkle of mint leaves.



★ YOUR HOME ★

THE RIGHT HOME - THE RIGHT PRICE - RIGHT NOW!

We're professional builders, helping you decide what kind of home you want. We can draw up your plans, build, paint and wire your new home.

Also Remodeling, Custom Cabinets, Concrete Work

TURNER CONSTRUCTION

DALE TURNER, OWNER
817-658-3165



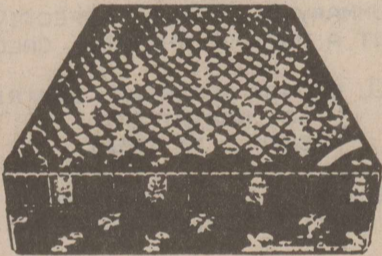
SPECIAL PURCHASE

How Long Have

You Put Off

Buying A

SEALY BED?



• Prices Start at \$99⁵⁰
(each piece)

Now you can buy comfort and durability during this special limited SALE by the makers of the Famous Sealy Posturpedic.



- Designed for Hotels and Motels
- Sealy Quality
- Sealy Comfort
- Sale Prices on all Sizes
- FABRIC PROTECTION AVAILABLE!

"WE WANT TO BE YOUR FURNITURE STORE!"

BOGGS and JOHNSON

East Side of Square • Haskell • (817) 864-2346

"DECISIONS MADE EARLY"



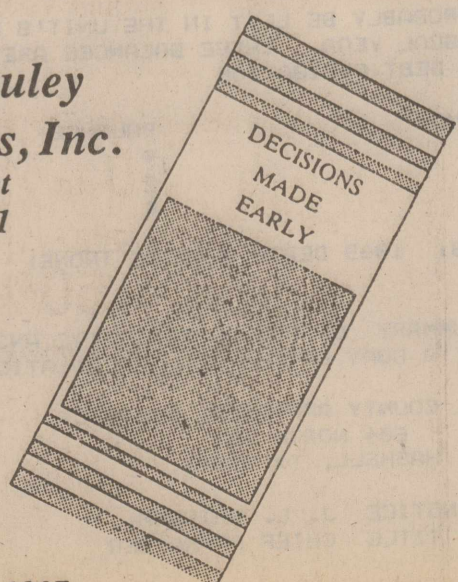
Simply come by or call and we will come by to see you.

Many people plan for what might happen—fire, burglary, injury, and accidents. Now more and more people are planning for what will inevitably happen. It simply makes good sense to prepare for that which we can not avoid.

Pre-need funeral arranging allows one to control the type of service they would prefer, select a means of financing it, freeze the prices at to-days price, and save loved ones the anguish of deciding these matters at a later date. Really it is the loving thing to do for your family.

Holden - McCauley Funeral Directors, Inc.

304 No. 2nd Street
Haskell, Tx. 79521
864-2151



Earning your trust since 1937

McMillin, Cockerell married

Alisse McMillin and Nathan Cockerell were married July 10 at Idalou. Attendants at the private ceremony were Tommy and Jona English.

Parents of the bride are Mary Johnson of Wolforth and the late Truman Moore. The groom's parents are Ruby Cockerell of Rochester and the late Bill Cockerell.

The bride is a graduate of Idalou High School and attended Texas University. The groom graduated from Rochester High School and Texas Tech University.

The couple will make their home in Lubbock.

Young Belgian boy seeing local sights

Philip Spiessens, a 17-year-old student from Temse, Belgium, has spent four weeks of his summer in Haskell through the Lions Club International Youth Exchange program.

He has been a guest in the home of Lions Club member Bob Cass and his wife, Fran. The Cass family has previously hosted Japanese students through this program.

Sightseeing in Dallas and Abilene and meeting many new friends have been highlights of Spiessens' visit.

A high school graduate, he will begin college in the fall where he plans to study economics. Spiessens

is fluent in four languages, Dutch, French, English and German.

He said he enjoys playing tennis, skiing, and swimming in his homeland. He played his first game of baseball while in Haskell and served as lifeguard at a Cub Scout day camp at Camp Tonkawa.

During a recent Lions Club meeting, he presented his views on Americans. He said Americans ate more "hand" foods, such as fried chicken, pizza and tacos, than Belgian people and that "we drive too slow". The speed limit is not enforced in Belgium.

His father, a Lions Club member, owns Filik International, a company that manufactures clothing for Belgium, Germany and the Netherlands. His mother is a first grade teacher and he has one 10-year-old brother named Christoph.

"I am glad my Dad is a member of the Lions Club because it has enabled me to visit in the United States by myself," Spiessens said.



Sharla Jetton

Sharla Jetton gets scholarship from Crawford

Sharla Jetton of Haskell, a sophomore at Hardin-Simmons University, has received the Maurice and Esther Crawford scholarship. This is her second time to receive this award.

Sharla is the daughter of Nelda Jetton and the late Jerry Jetton. Her grandmothers are Opal Rose and Velma Jetton, both of Haskell.

Crawford, a former Haskell resident, and his wife are both graduates of HSU. They are retired and now reside in Wichita Falls.

Among most adults there is almost no difference in eye size. Some appear to have larger eyes because of such factors as position in the skull or prominence of eyebrows.

Retraction...

By K. B. Lane

An apology is extended to all employees of the State Department of Highways and Public Transportation in Haskell.

My editorial, "Street resurfacing creates confusion" found in the July 13 issue of the *Free Press* said, "The highway department personnel waving the orange flags did not provide much help, either. They waved their flags in criss-cross patterns in front of their faces and all around their bodies."

It was not highway department personnel waving orange flags nor were the personnel directly responsible for the seal coating of US 380 and US 277. The work was done by a contractor.

It was not my intention to criticize the individual work of any employee. I was only expressing the lighter side of an event that takes place in everyday life.

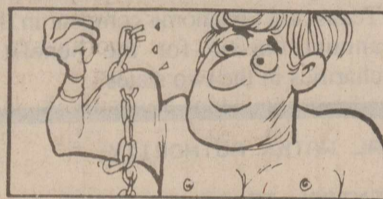
Again, I apologize for any misunderstanding.

Garza ag agent to retire Aug. 31

Syd Conner has seen changes in agriculture, 4-H and educational technology in his 33 years with the Texas Agricultural Extension Service. The Garza County extension agent is retiring, effective Aug. 31.

Conner joined the agency in 1956 as Fort Bend County extension agent for agriculture. In 1959, he moved to Dickens County where he also served as extension agent. Since 1962 he has served as the Garza County extension agent for agriculture.

He and his wife, Lillie, will reside in Post after his retirement.



Houdini was as much an athlete as a magician. He accomplished many of his feats by superb muscle control.

FREE DELIVERY

Nemir Medical, Inc.

All Of Your Medical Equipment Needs



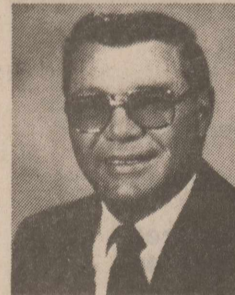
SERVICE RENTALS
SALES REPAIRS

817-864-2258 • 510 N. 2nd
Haskell - Mon.-Sat. 10:00-5:00

WE BILL MEDICARE & OTHER CARRIERS

TAX PLANNING

Written By
James E. Rodgers, CPA



HOW TO BUILD A COLLEGE FUND

As you buy new school clothes and notebooks for your children this fall, you might start thinking about how you are going to meet college expenses in the future.

College costs vary depending on whether the school is public or private, in-state or out. If college is in your children's future, you can't begin thinking about college financing too soon. Some tax-advantaged options you might consider include the following:

- Transfer to your younger children just enough income-producing assets to shift \$1,000 of unearned income annually per child. If this is your child's only income, he or she would pay \$75 of income tax compared to the \$280 you'd pay in the 28% bracket or \$330 in the 33% bracket.

- Purchase low-dividend, high growth stocks for your children under age 14. Because of the low dividends, there will be little income to report. The appreciated stocks can be sold when the child reaches 14 or begins college.

- Starting in 1990 you can purchase Series EE savings bonds and use the proceeds for your child's college education and pay no tax on the bond interest. At \$60,000 of income (joint) or \$40,000 (single), this tax exemption begins to phase out. It is eliminated entirely at \$90,000 of income (joint) or \$55,000 (single).

- If your income is too high to qualify for the tax (college) exemption on Series EE savings bonds, buy the bonds anyway in your child's name. Hold them at least until the child reaches 14. The bond interest can be tax-deferred until the bonds are cashed.

- If you own a business, hire your children to work for you. Your child can earn up to the standard deduction amount tax-free, and your business gets a deduction for the wages you pay.

Sponsored By

JAMES E. RODGERS & COMPANY

Certified Public Accountant
20 Southwest Third Street
Hamlin, Texas

Cut your energy bills with propane.

You can save a lot of energy and money by using propane gas. Compared to electricity, propane is a much more efficient fuel for heating your home, cooking, clothes drying, and water heating.

clothes drying, costs half as much as a home with the same electric features. Propane gas is clearly a cut above the other energy sources — for efficiency, comfort, and economy. Call your nearby propane gas dealer to find out how to cut into your energy expenses.

YOUR DOLLAR GOES FURTHER ON WARRENGAS

Haskell Butane

817-864-2424 Hwy. 277 S. Hours 7:30 am - 5:30 pm 817-864-3915 Haskell

Now This is Protection!

If you want the hide of a Rhino and Armoured Plates too, you can be sure that your money is safe and growing, when you deposit your savings with us. Every dollar (up to \$100,000) is backed by the Federal Deposit Insurance Corporation.

Post Office Box 10
Phone (817) 997-2216
Rule, Texas 79547

the Farmers NATIONAL BANK

Cub scouts enjoy picnic lake outing

Cub Scout Pack 136 held its July pack meeting July 25 at the Anchor on Lake Stamford. About 30 boys and their families enjoyed the old-fashioned picnic. Following the meal, the boys participated in several games, including three-legged races and "carry the egg in the spoon."

Bob Cass, cubmaster, said this was just supposed to be a fun outing for the cub scouts and their families. "Everyone has been so busy this summer, we just wanted to keep the meeting really simple and let the boys have some fun," said Cass. "I think those who were there had a good time."

All boys who have participated in various cub scout camping trips this summer were recognized by the adults who accompanied them.

Lisa Shaw gave a report on the first annual "Mom and Me" overnight camping trip, while Melody Christian, Katie Roysdon and Fran Cass discussed the Cub Scout Day Camp and the activities there. Dusty Garrison talked about the boys who attended Tiger Cub Day Camp. Kenny Kirk gave a report on the week of camp for Webelos 1 boys. Chris Arendall told about the week of Webelos 3 camp and the boys who attended this camp. All camps were at Camp Tonkawa near Buffalo Gap.

A watermelon supper for cub scouts and their families will be held at Haskell City Park Tuesday, Aug. 22, beginning at 6:30 p.m. This will be the final pack meeting of the summer. Boys who have earned awards and badges during the summer

months will be recognized for their accomplishments at this meeting.

Cass announced that boys who are moving into higher levels of scouting can pick up their books from the pack. He also reminded the boys that those who attend all three of the special summer pack activities will be eligible for special awards to be worn on their uniforms.

Officer training classes scheduled

Western Texas College is accepting applications for its fourth Correctional Officer Training class through Aug. 25. The class will begin in September.

Men and women who successfully complete the 120-hour course are eligible for employment with the Texas Department of Corrections. Tuition and fees are \$225, with the full amount payable at registration.

Applicants must pass the TDC's pre-employment test and meet other standards set by the TDC.

Information about the Correctional Officer Training course may be obtained by contacting the WTC Adult Education office at (915) 573-8511.

DID YOU KNOW?

Jerusalem artichokes offer large amounts of calcium, sodium, phosphorus, sulfur, iron, chlorine and magnesium.

Mulligan, Dodson united

Lynn Mulligan became the bride of David Dodson on Wednesday evening, June 21, in the First Christian Church Chapel. Minister Dusty Garrison officiated.

The bride is the daughter of Ned and Wanda Ward of Aspermont. The groom is the son of Leon and Betty Dodson of Haskell.

Maid of honor was Hilee Mulligan, daughter of the bride. Best man was Harvey Campbell of Abilene. Following the wedding, a reception was given by the bride's grandparents, Mr. and Mrs. T. Houston Ward of Aspermont, at Andy's in Stamford.

The couple was honored with a bridal brunch Saturday, July 29, at the home of Mrs. Mike Kloog, hosted by the ladies of the First Christian Church of Haskell.

The bride is employed by Attorney Joseph Thigpen of Haskell. The groom is employed by his father. Mr. and Mrs. David Dodson are making their home in Haskell.

Oil Bowl game set for Saturday

The 1989 Oil Bowl football game will be played Saturday at Memorial Stadium in Wichita Falls. Kickoff is at 8 p.m.

High school football players from Texas and Oklahoma compete in this annual classic for the benefit of charities in the two states.

1989 PROPERTY TAX RATES IN CITY OF HASKELL

THIS NOTICE CONCERNS 1989 PROPERTY TAX RATES FOR CITY OF HASKELL. IT PRESENTS INFORMATION ABOUT THREE TAX RATES. LAST YEAR'S TAX RATE IS THE ACTUAL RATE THE TAXING UNIT USED TO DETERMINE PROPERTY TAXES LAST YEAR. THIS YEAR'S EFFECTIVE TAX RATE WOULD IMPOSE THE SAME TOTAL TAXES AS LAST YEAR IF YOU COMPARE PROPERTIES TAXED IN BOTH YEARS. COMPARE IT TO THE TAX RATE THE TAXING UNIT PROPOSES FOR THIS YEAR. THIS YEAR'S ROLLBACK TAX RATE IS THE HIGHEST TAX RATE THE TAXING UNIT CAN SET BEFORE TAXPAYERS CAN START TAX ROLLBACK PROCEDURES. IN EACH CASE THESE RATES ARE FOUND BY DIVIDING THE TOTAL AMOUNT OF TAXES BY THE TAX BASE (THE TOTAL VALUE OF TAXABLE PROPERTY) WITH ADJUSTMENTS AS REQUIRED BY STATE LAW. THE RATES ARE GIVEN PER \$100 OF PROPERTY VALUE.

LAST YEAR'S TAX RATE:		
LAST YEAR'S OPERATING TAXES	\$	134,591.13
+ LAST YEAR'S DEBT TAXES	\$	0.00
= LAST YEAR'S TOTAL TAXES	\$	134,591.13
- LAST YEAR'S TAX BASE	\$	52,615,765
= LAST YEAR'S TOTAL TAX RATE	\$.2558/\$100

THIS YEAR'S EFFECTIVE TAX RATE:		
LAST YEAR'S ADJUSTED TAXES	\$	134,579.62
(AFTER SUBTRACTING TAXES ON LOST PROPERTY)		
+ THIS YEAR'S ADJUSTED TAX BASE	\$	52,193,911
(AFTER SUBTRACTING TAXES ON NEW PROPERTY)		
= THIS YEAR'S EFFECTIVE TAX RATE	\$.2578/\$100
x 1.03		
= MAXIMUM RATE UNLESS UNIT PUBLISHES NOTICES AND HOLDS HEARINGS	\$.2655/\$100

THIS YEAR'S ROLLBACK TAX RATE:		
LAST YEAR'S ADJUSTED OPERATING TAXES	\$	134,579.62
(AFTER SUBTRACTING TAXES ON LOST PROPERTY)		
+ THIS YEAR'S ADJUSTED TAX BASE	\$	52,193,911
(AFTER SUBTRACTING TAXES ON NEW PROPERTY)		
= THIS YEAR'S EFFECTIVE OPERATING RATE	\$.2578/\$100
x 1.08		
= THIS YEAR'S MAXIMUM OPERATING RATE	\$.2784/\$100
+ THIS YEAR'S DEBT RATE	\$.0000/\$100
= THIS YEAR'S ROLLBACK RATE	\$.2784/\$100

SCHEDULE A: UNENCUMBERED FUND BALANCES

THE FOLLOWING BALANCES WILL PROBABLY BE LEFT IN THE UNIT'S PROPERTY TAX ACCOUNTS AT THE END OF THE FISCAL YEAR. THESE BALANCES ARE NOT ENCUMBERED BY A CORRESPONDING DEBT OBLIGATION

TYPE OF PROPERTY TAX FUND	BALANCE
GENERAL FUND	\$ 50,000.00
	\$
	\$

SCHEDULE B: 1989 DEBTS SERVICE (NONE)

THIS NOTICE CONTAINS A SUMMARY OF ACTUAL EFFECTIVE AND ROLLBACK TAX RATE CALCULATIONS. YOU CAN INSPECT A COPY OF THE FULL CALCULATIONS AT THE:

HASKELL COUNTY APPRAISAL DISTRICT.
604 NORTH 1ST
HASKELL, TX 79521

NAME OF PERSON PREPARING THIS NOTICE J. L. GRISSOM
TITLE CHIEF APPRAISER

DATE PREPARED 28 Jul 1989

1989 PROPERTY TAX RATES IN NORTH CENTRAL TEXAS MUNICIPAL WATER AUTHORITY

THIS NOTICE CONCERNS 1989 PROPERTY TAX RATES FOR NORTH CENTRAL TEXAS MUNICIPAL WATER AUTHORITY. IT PRESENTS INFORMATION ABOUT THREE TAX RATES. LAST YEAR'S TAX RATE IS THE ACTUAL RATE THE TAXING UNIT USED TO DETERMINE PROPERTY TAXES LAST YEAR. THIS YEAR'S EFFECTIVE TAX RATE WOULD IMPOSE THE SAME TOTAL TAXES AS LAST YEAR IF YOU COMPARE PROPERTIES TAXED IN BOTH YEARS. COMPARE IT TO THE TAX RATE THE TAXING UNIT PROPOSES FOR THIS YEAR. THIS YEAR'S ROLLBACK TAX RATE IS THE HIGHEST TAX RATE THE TAXING UNIT CAN SET BEFORE TAXPAYERS CAN START TAX ROLLBACK PROCEDURES. IN EACH CASE THESE RATES ARE FOUND BY DIVIDING THE TOTAL AMOUNT OF TAXES BY THE TAX BASE (THE TOTAL VALUE OF TAXABLE PROPERTY) WITH ADJUSTMENTS AS REQUIRED BY STATE LAW. THE RATES ARE GIVEN PER \$100 OF PROPERTY VALUE.

LAST YEAR'S TAX RATE:		
LAST YEAR'S OPERATING TAXES	\$	0.00
+ LAST YEAR'S DEBT TAXES	\$	132,368.90
= LAST YEAR'S TOTAL TAXES	\$	132,368.90
- LAST YEAR'S TAX BASE	\$	84,743,212
= LAST YEAR'S TOTAL TAX RATE	\$.1562/\$100

THIS YEAR'S EFFECTIVE TAX RATE:		
LAST YEAR'S ADJUSTED TAXES	\$	132,368.90
(AFTER SUBTRACTING TAXES ON LOST PROPERTY AND TAXES TO CORRECT APPRAISAL ROLL ERRORS)		
+ THIS YEAR'S ADJUSTED TAX BASE	\$	83,961,673
(AFTER SUBTRACTING TAXES ON NEW PROPERTY)		
= THIS YEAR'S EFFECTIVE TAX RATE	\$.1576/\$100
x 1.03		
= MAXIMUM RATE UNLESS UNIT PUBLISHES NOTICES AND HOLDS HEARINGS	\$.1623/\$100

THIS YEAR'S ROLLBACK TAX RATE:		
LAST YEAR'S ADJUSTED OPERATING TAXES	\$	0.00
(AFTER SUBTRACTING TAXES ON LOST PROPERTY AND TAXES TO CORRECT APPRAISAL ROLL ERRORS AND ADDING TAXES LOST IN COURT SUITS)		
+ THIS YEAR'S ADJUSTED TAX BASE	\$	83,961,673
(AFTER SUBTRACTING TAXES ON NEW PROPERTY)		
= THIS YEAR'S EFFECTIVE OPERATING RATE	\$.0000/\$100
x 1.08		
= THIS YEAR'S MAXIMUM OPERATING RATE	\$.0000/\$100
+ THIS YEAR'S DEBT RATE	\$.2115/\$100
= THIS YEAR'S ROLLBACK RATE	\$.2115/\$100

SCHEDULE A: UNENCUMBERED FUND BALANCES

THE FOLLOWING BALANCES WILL PROBABLY BE LEFT IN THE UNIT'S PROPERTY TAX ACCOUNTS AT THE END OF THE FISCAL YEAR. THESE BALANCES ARE NOT ENCUMBERED BY A CORRESPONDING DEBT OBLIGATION.

TYPE OF PROPERTY TAX FUND	BALANCE
	\$
	\$
	\$

THE UNIT PLANS TO PAY THE FOLLOWING AMOUNTS FOR LONG-TERM DEBTS THAT ARE SECURED BY PROPERTY TAXES. THESE AMOUNTS WILL BE PAID FROM PROPERTY TAX REVENUES (OR ADDITIONAL SALES TAX REVENUES, IF APPLICABLE).

DESCRIPTION OF DEBT	PRINCIPAL OR CONTRACT PAYMENT TO BE PAID	INTEREST TO BE PAID	OTHER AMOUNTS TO BE PAID	TOTAL PAYMENT
BONDED DEBT	\$ 65,000.00	\$ 120,881.25	\$ 363.82	\$ 186,245.07
TOTAL REQUIRED FOR 1989 DEBT SERVICE			\$ 186,245.07	
- AMOUNT (IF ANY) PAID FROM FUNDS LISTED IN SCHEDULE A			\$ 0.00	
- EXCESS COLLECTIONS LAST YEAR			\$ 7,637.00	
= TOTAL TO BE PAID FROM TAXES IN 1989			\$ 178,608.00	
+ AMOUNT ADDED IN ANTICIPATION THAT THE UNIT WILL COLLECT ONLY 100% OF ITS TAXES IN 1989				
= TOTAL DEBT SERVICE LEVY			\$ 178,608.00	

THIS NOTICE CONTAINS A SUMMARY OF ACTUAL EFFECTIVE AND ROLLBACK TAX RATE CALCULATIONS. YOU CAN INSPECT A COPY OF THE FULL CALCULATIONS AT THE:

HASKELL COUNTY APPRAISAL DISTRICT OR KNOX COUNTY APPRAISAL DISTRICT
604 NORTH 1ST COUNTY COURTHOUSE
HASKELL, TX 79521 BENJAMIN, TX 79505

NAME OF PERSON PREPARING THIS NOTICE J. L. GRISSOM AND OSCAR MANGIS
TITLE CHIEF APPRAISER
DATE PREPARED 25 Jul 1989

1989 PROPERTY TAX RATES IN CITY OF O'BRIEN

THIS NOTICE CONCERNS 1989 PROPERTY TAX RATES FOR CITY OF O'BRIEN. IT PRESENTS INFORMATION ABOUT THREE TAX RATES. LAST YEAR'S TAX RATE IS THE ACTUAL RATE THE TAXING UNIT USED TO DETERMINE PROPERTY TAXES LAST YEAR. THIS YEAR'S EFFECTIVE TAX RATE WOULD IMPOSE THE SAME TOTAL TAXES AS LAST YEAR IF YOU COMPARE PROPERTIES TAXED IN BOTH YEARS. COMPARE IT TO THE TAX RATE THE TAXING UNIT PROPOSES FOR THIS YEAR. THIS YEAR'S ROLLBACK TAX RATE IS THE HIGHEST TAX RATE THE TAXING UNIT CAN SET BEFORE TAXPAYERS CAN START TAX ROLLBACK PROCEDURES. IN EACH CASE THESE RATES ARE FOUND BY DIVIDING THE TOTAL AMOUNT OF TAXES BY THE TAX BASE (THE TOTAL VALUE OF TAXABLE PROPERTY) WITH ADJUSTMENTS AS REQUIRED BY STATE LAW. THE RATES ARE GIVEN PER \$100 OF PROPERTY VALUE.

LAST YEAR'S TAX RATE:		
LAST YEAR'S OPERATING TAXES	\$	7,423.44
+ LAST YEAR'S DEBT TAXES	\$	0.00
= LAST YEAR'S TOTAL TAXES	\$	7,423.44
- LAST YEAR'S TAX BASE	\$	1,863,780
= LAST YEAR'S TOTAL TAX RATE	\$.3983/\$100

THIS YEAR'S EFFECTIVE TAX RATE:		
LAST YEAR'S ADJUSTED TAXES	\$	7,423.44
(AFTER SUBTRACTING TAXES ON LOST PROPERTY)		
+ THIS YEAR'S ADJUSTED TAX BASE	\$	1,886,045
(AFTER SUBTRACTING TAXES ON NEW PROPERTY)		
= THIS YEAR'S EFFECTIVE TAX RATE	\$.3935/\$100
x 1.03		
= MAXIMUM RATE UNLESS UNIT PUBLISHES NOTICES AND HOLDS HEARINGS	\$.4053/\$100

THIS YEAR'S ROLLBACK TAX RATE:		
LAST YEAR'S ADJUSTED OPERATING TAXES	\$	7,423.44
(AFTER SUBTRACTING TAXES ON LOST PROPERTY)		
+ THIS YEAR'S ADJUSTED TAX BASE	\$	1,886,045
(AFTER SUBTRACTING TAXES ON NEW PROPERTY)		
= THIS YEAR'S EFFECTIVE OPERATING RATE	\$.3935/\$100
x 1.08		
= THIS YEAR'S MAXIMUM OPERATING RATE	\$.4250/\$100
+ THIS YEAR'S DEBT RATE	\$.0000/\$100
= THIS YEAR'S ROLLBACK RATE	\$.4250/\$100

SCHEDULE A: UNENCUMBERED FUND BALANCES

THE FOLLOWING BALANCES WILL PROBABLY BE LEFT IN THE UNIT'S PROPERTY TAX ACCOUNTS AT THE END OF THE FISCAL YEAR. THESE BALANCES ARE NOT ENCUMBERED BY A CORRESPONDING DEBT OBLIGATION

TYPE OF PROPERTY TAX FUND	BALANCE
	\$
	\$
	\$

SCHEDULE B: 1989 DEBTS SERVICE (NONE)

THIS NOTICE CONTAINS A SUMMARY OF ACTUAL EFFECTIVE AND ROLLBACK TAX RATE CALCULATIONS. YOU CAN INSPECT A COPY OF THE FULL CALCULATIONS AT THE:

HASKELL COUNTY APPRAISAL DISTRICT.
604 NORTH 1ST
HASKELL, TX 79521

NAME OF PERSON PREPARING THIS NOTICE J. L. GRISSOM
TITLE CHIEF APPRAISER
DATE PREPARED 25 Jul 1989



Horse show winners

Travis Martin and Levi Gholson of Aspermont, members of the Stonewall County 4-H Club, placed third in the team roping category during the Texas State 4-H Horse Show held last week in Abilene.

4-H'ers take trip

Fifteen Haskell County 4-H'ers, four adult leaders, and the County Extension Agent-Home Economics participated in an educational field trip to Abilene July 24.

The group toured the Food Emporium, ate lunch at Crystals, learned about kitchen gadgets at the Table Top Shop, and ended the day with ice cream from Baskin-Robbins.

Those who attended the day's activities were: 4-H'ers Kacy Baitz, Melissa Chapman, Jennifer Comedy, Jessica Comedy, Amanda Crawford, Kim Gilly, Paige Lammert, Brooke McGuire, Dacia Pheister, Jodi

Pope, Mandi Pope, Shannon Sanford, Mary Jane Short and Kaki Stapleton; and 4-H leaders Tami Baitz, Nene Comedy, Sandy Sanford and Christie Stapleton.

This activity was one of the events planned for the countywide 4-H foods and nutrition project group. If you would be interested in joining this group or any other 4-H project group, please contact the County Extension office or the 4-H Club Manager in your community.

Thank you for reading The Haskell Free Press.

Rule studies projects

The City of Rule has made application for a grant from the Texas Parks and Wildlife Commission.

If accepted, the grant must be matched on a 50-50 basis, although the local share may be in cash, in-kind, donations, etc., (or combination). It will take about six months to process the application.

Pending approval of the grant, plans are being made to do extensive landscaping to provide a more attractive environment, especially on the east side of Slim Sorrells Park. (The Rule Veterans Memorial will be sited on the east side of the park.)

Plans also are being made for the installation of a sprinkler system, the burial of overhead power lines, the procurement of playground equipment, flag pole(s) and benches, and the construction of small dressing rooms near the stage.

Hookups (water, sewer, electricity) for recreational vehicles have been repaired. Now out-of-town visitors in RVs may stay at Slim Sorrells Park. The first three nights are free. Each additional night is \$4.

Buying skills to be emphasized

The Home Economics Committee chose its Impact Area for 1990 and decided to emphasize consumer buying skills at a regular quarterly planning meeting.

Home Economics Committee is a subcommittee of the Haskell County Extension Program Council.

The committee also discussed two of its upcoming activities, a series of meetings on "Economic Meals in a Hurry" and the exhibit on Sales it is sponsoring.

The committee will meet again on August 16, at 4 p.m. in the County Extension Office Kitchen.

After Charles Lindbergh made history with the first solo flight across the Atlantic, he came home by ship.

1989 PROPERTY TAX RATES IN WEINERT ISD

THIS NOTICE CONCERNS 1989 PROPERTY TAX RATES FOR WEINERT ISD. IT PRESENTS INFORMATION ABOUT THREE TAX RATES. LAST YEAR'S TAX RATE IS THE ACTUAL RATE THE TAXING UNIT USED TO DETERMINE PROPERTY TAXES LAST YEAR. THIS YEAR'S EFFECTIVE TAX RATE WOULD IMPOSE THE SAME TOTAL TAXES AS LAST YEAR IF YOU COMPARE PROPERTIES TAXED IN BOTH YEARS. COMPARE IT TO THE TAX RATE THE TAXING UNIT PROPOSES FOR THIS YEAR. THIS YEAR'S ROLLBACK TAX RATE IS THE HIGHEST TAX RATE THE TAXING UNIT CAN SET BEFORE TAXPAYERS CAN START TAX ROLLBACK PROCEDURES. IN EACH CASE THESE RATES ARE FOUND BY DIVIDING THE TOTAL AMOUNT OF TAXES BY THE TAX BASE (THE TOTAL VALUE OF TAXABLE PROPERTY) WITH ADJUSTMENTS AS REQUIRED BY STATE LAW. THE RATES ARE GIVEN PER \$100 OF PROPERTY VALUE.

LAST YEAR'S TAX RATE:	
LAST YEAR'S OPERATING TAXES	\$ 224,193.01
+ LAST YEAR'S DEBT TAXES	\$ 0.00
= LAST YEAR'S TOTAL TAXES	\$ 224,193.01
- LAST YEAR'S TAX BASE	\$ 22,645,759
= LAST YEAR'S TOTAL TAX RATE	\$.9900/\$100

THIS YEAR'S EFFECTIVE TAX RATE:	
LAST YEAR'S ADJUSTED TAXES (AFTER SUBTRACTING TAXES ON LOST PROPERTY)	\$ 223,969.37
+ THIS YEAR'S ADJUSTED TAX BASE (AFTER SUBTRACTING TAXES ON NEW PROPERTY)	\$ 23,983,843
= THIS YEAR'S EFFECTIVE TAX RATE	\$.9338/\$100
x 1.03	
= MAXIMUM RATE UNLESS UNIT PUBLISHES NOTICES AND HOLDS HEARINGS	\$.9618/\$100

THIS YEAR'S ROLLBACK TAX RATE:	
LAST YEAR'S ADJUSTED OPERATING TAXES (AFTER SUBTRACTING TAXES ON LOST PROPERTY)	\$ 223,969.37
+ THIS YEAR'S ADJUSTED TAX BASE (AFTER SUBTRACTING TAXES ON NEW PROPERTY)	\$ 23,983,843
= THIS YEAR'S EFFECTIVE OPERATING RATE	\$.9338/\$100
x 1.08	
= THIS YEAR'S MAXIMUM OPERATING RATE	\$ 1.0085/\$100
+ THIS YEAR'S DEBT RATE	\$.0000/\$100
= THIS YEAR'S ROLLBACK RATE	\$ 1.0085/\$100

SCHEDULE A: UNENCUMBERED FUND BALANCES

THE FOLLOWING BALANCES WILL PROBABLY BE LEFT IN THE UNIT'S PROPERTY TAX ACCOUNTS AT THE END OF THE FISCAL YEAR. THESE BALANCES ARE NOT ENCUMBERED BY A CORRESPONDING DEBT OBLIGATION

TYPE OF PROPERTY TAX FUND	BALANCE
OPERATION FUND	\$ 120,000.00
	\$
	\$

SCHEDULE B: 1989 DEBTS SERVICE (NONE)

THIS NOTICE CONTAINS A SUMMARY OF ACTUAL EFFECTIVE AND ROLLBACK TAX RATE CALCULATIONS. YOU CAN INSPECT A COPY OF THE FULL CALCULATIONS AT THE:

HASKELL COUNTY APPRAISAL DISTRICT,
604 NORTH 1ST
HASKELL, TX 79521

NAME OF PERSON PREPARING THIS NOTICE J. L. GRISSOM
TITLE CHIEF APPRAISER
DATE PREPARED 31 Jul 1989

1989 PROPERTY TAX RATES IN WATER DISTRICT #1

THIS NOTICE CONCERNS 1989 PROPERTY TAX RATES FOR WATER DISTRICT #1. IT PRESENTS INFORMATION ABOUT THREE TAX RATES. LAST YEAR'S TAX RATE IS THE ACTUAL RATE THE TAXING UNIT USED TO DETERMINE PROPERTY TAXES LAST YEAR. THIS YEAR'S EFFECTIVE TAX RATE WOULD IMPOSE THE SAME TOTAL TAXES AS LAST YEAR IF YOU COMPARE PROPERTIES TAXED IN BOTH YEARS. COMPARE IT TO THE TAX RATE THE TAXING UNIT PROPOSES FOR THIS YEAR. THIS YEAR'S ROLLBACK TAX RATE IS THE HIGHEST TAX RATE THE TAXING UNIT CAN SET BEFORE TAXPAYERS CAN START TAX ROLLBACK PROCEDURES. IN EACH CASE THESE RATES ARE FOUND BY DIVIDING THE TOTAL AMOUNT OF TAXES BY THE TAX BASE (THE TOTAL VALUE OF TAXABLE PROPERTY) WITH ADJUSTMENTS AS REQUIRED BY STATE LAW. THE RATES ARE GIVEN PER \$100 OF PROPERTY VALUE.

LAST YEAR'S TAX RATE:	
LAST YEAR'S OPERATING TAXES	\$ 7,647.02
+ LAST YEAR'S DEBT TAXES	\$ 0.00
= LAST YEAR'S TOTAL TAXES	\$ 7,647.02
- LAST YEAR'S TAX BASE	\$ 22,037,520
= LAST YEAR'S TOTAL TAX RATE	\$.0347/\$100

THIS YEAR'S EFFECTIVE TAX RATE:	
LAST YEAR'S ADJUSTED TAXES (AFTER SUBTRACTING TAXES ON LOST PROPERTY)	\$ 7,646.50
+ THIS YEAR'S ADJUSTED TAX BASE (AFTER SUBTRACTING TAXES ON NEW PROPERTY)	\$ 23,181,130
= THIS YEAR'S EFFECTIVE TAX RATE	\$.0329/\$100
x 1.03	
= MAXIMUM RATE UNLESS UNIT PUBLISHES NOTICES AND HOLDS HEARINGS	\$.0338/\$100

THIS YEAR'S ROLLBACK TAX RATE:	
LAST YEAR'S ADJUSTED OPERATING TAXES (AFTER SUBTRACTING TAXES ON LOST PROPERTY)	\$ 7,646.50
+ THIS YEAR'S ADJUSTED TAX BASE (AFTER SUBTRACTING TAXES ON NEW PROPERTY)	\$ 23,181,130
= THIS YEAR'S EFFECTIVE OPERATING RATE	\$.0329/\$100
x 1.08	
= THIS YEAR'S MAXIMUM OPERATING RATE	\$.0355/\$100
+ THIS YEAR'S DEBT RATE	\$.0000/\$100
= THIS YEAR'S ROLLBACK RATE	\$.0355/\$100

SCHEDULE A: UNENCUMBERED FUND BALANCES

THE FOLLOWING BALANCES WILL PROBABLY BE LEFT IN THE UNIT'S PROPERTY TAX ACCOUNTS AT THE END OF THE FISCAL YEAR. THESE BALANCES ARE NOT ENCUMBERED BY A CORRESPONDING DEBT OBLIGATION

TYPE OF PROPERTY TAX FUND	BALANCE
	\$
	\$
	\$

SCHEDULE B: 1989 DEBTS SERVICE (NONE)

THIS NOTICE CONTAINS A SUMMARY OF ACTUAL EFFECTIVE AND ROLLBACK TAX RATE CALCULATIONS. YOU CAN INSPECT A COPY OF THE FULL CALCULATIONS AT THE:

HASKELL COUNTY APPRAISAL DISTRICT,
604 NORTH 1ST
HASKELL, TX 79521

NAME OF PERSON PREPARING THIS NOTICE J. L. GRISSOM
TITLE CHIEF APPRAISER
DATE PREPARED 28 Jul 1989

1989 PROPERTY TAX RATES IN CITY OF WEINERT

THIS NOTICE CONCERNS 1989 PROPERTY TAX RATES FOR CITY OF WEINERT. IT PRESENTS INFORMATION ABOUT THREE TAX RATES. LAST YEAR'S TAX RATE IS THE ACTUAL RATE THE TAXING UNIT USED TO DETERMINE PROPERTY TAXES LAST YEAR. THIS YEAR'S EFFECTIVE TAX RATE WOULD IMPOSE THE SAME TOTAL TAXES AS LAST YEAR IF YOU COMPARE PROPERTIES TAXED IN BOTH YEARS. COMPARE IT TO THE TAX RATE THE TAXING UNIT PROPOSES FOR THIS YEAR. THIS YEAR'S ROLLBACK TAX RATE IS THE HIGHEST TAX RATE THE TAXING UNIT CAN SET BEFORE TAXPAYERS CAN START TAX ROLLBACK PROCEDURES. IN EACH CASE THESE RATES ARE FOUND BY DIVIDING THE TOTAL AMOUNT OF TAXES BY THE TAX BASE (THE TOTAL VALUE OF TAXABLE PROPERTY) WITH ADJUSTMENTS AS REQUIRED BY STATE LAW. THE RATES ARE GIVEN PER \$100 OF PROPERTY VALUE.

LAST YEAR'S TAX RATE:	
LAST YEAR'S OPERATING TAXES	\$ 8,152.40
+ LAST YEAR'S DEBT TAXES	\$ 0.00
= LAST YEAR'S TOTAL TAXES	\$ 8,152.40
- LAST YEAR'S TAX BASE	\$ 3,535,300
= LAST YEAR'S TOTAL TAX RATE	\$.2306/\$100

THIS YEAR'S EFFECTIVE TAX RATE:	
LAST YEAR'S ADJUSTED TAXES (AFTER SUBTRACTING TAXES ON LOST PROPERTY)	\$ 8,148.94
+ THIS YEAR'S ADJUSTED TAX BASE (AFTER SUBTRACTING TAXES ON NEW PROPERTY)	\$ 3,517,750
= THIS YEAR'S EFFECTIVE TAX RATE	\$.2316/\$100
x 1.03	
= MAXIMUM RATE UNLESS UNIT PUBLISHES NOTICES AND HOLDS HEARINGS	\$.2385/\$100

THIS YEAR'S ROLLBACK TAX RATE:	
LAST YEAR'S ADJUSTED OPERATING TAXES (AFTER SUBTRACTING TAXES ON LOST PROPERTY)	\$ 8,148.94
+ THIS YEAR'S ADJUSTED TAX BASE (AFTER SUBTRACTING TAXES ON NEW PROPERTY)	\$ 3,517,750
= THIS YEAR'S EFFECTIVE OPERATING RATE	\$.2316/\$100
x 1.08	
= THIS YEAR'S MAXIMUM OPERATING RATE	\$.2501/\$100
+ THIS YEAR'S DEBT RATE	\$.0000/\$100
= THIS YEAR'S ROLLBACK RATE	\$.2501/\$100

SCHEDULE A: UNENCUMBERED FUND BALANCES

THE FOLLOWING BALANCES WILL PROBABLY BE LEFT IN THE UNIT'S PROPERTY TAX ACCOUNTS AT THE END OF THE FISCAL YEAR. THESE BALANCES ARE NOT ENCUMBERED BY A CORRESPONDING DEBT OBLIGATION

TYPE OF PROPERTY TAX FUND	BALANCE
	\$
	\$
	\$

SCHEDULE B: 1989 DEBTS SERVICE (NONE)

THIS NOTICE CONTAINS A SUMMARY OF ACTUAL EFFECTIVE AND ROLLBACK TAX RATE CALCULATIONS. YOU CAN INSPECT A COPY OF THE FULL CALCULATIONS AT THE:

HASKELL COUNTY APPRAISAL DISTRICT,
604 NORTH 1ST
HASKELL, TX 79521

NAME OF PERSON PREPARING THIS NOTICE J. L. GRISSOM
TITLE CHIEF APPRAISER
DATE PREPARED 28 Jul 1989

Paint Creek school supply list given

KINDERGARTEN

Box of 8 regular crayons (first 6 weeks)
 Elmer's school glue (black label), 1 large, 2 small (not Elmer's Glue All)

4 pencils (2 jumbo, 2 standard #2)
 Scissors
 1 coloring book
 1 package 9x12 construction paper (mixed)

1 package manila paper (9x12)
 Tote or book bag (to carry papers)
 1 box Kleenex (large)
 Mat or pallet for nap
 Old shirt or smock for painting
 Supply box.

FIRST GRADE

Big Chief tablet
 2 pencils (#2)
 Crayons (box of 16)
 Eraser
 Handwriting tablet (imaginary line)

Scissors
 Ruler (inches and centimeters)
 Construction paper (mixed 9x12)
 Elmer's School Glue (black label, not Elmer's Glue All)
 Supply box
 Book bag
 Old shirt or smock for painting

SECOND GRADE

Notebook
 Notebook paper
 Construction paper (mixed)
 2 pencils (#2)
 Crayons (16 or more)
 Eraser
 Spiral notebook
 Elmer's School Glue
 2nd grade handwriting tablet (imaginary line)

Pointed scissors
 Ruler (inches and centimeters)
 School box
 Kleenex (large)
 2 folders with pockets
 Plastic cup
 Red ink pen

THIRD GRADE

Pencils (#2)
 Notebook
 Notebook paper
 Crayons
 Pointed scissors
 Ruler (inches and centimeters)
 Elmer's School Glue
 Kleenex (large)
 Construction paper (mixed)
 Supply box
 Medium spiral notebook
 No. 12053 practice tablet (3rd grade)

Eraser
 2 folders with pockets
 Plastic cup
 Red ink pen

FOURTH GRADE

1 box Crayola markers
 Pencils (#2)
 Notebook
 Notebook paper
 Crayons
 Pointed scissors
 Ruler (inches and centimeters)
 Elmer's School Glue
 Kleenex (large)
 Construction paper (mixed)
 Supply box
 Watercolors
 Eraser

6 folders with pockets and brads
 Red Ink pen
 Plastic cup
 Spiral notebook

FIFTH GRADE

Notebook paper
 Construction paper (mixed)
 1 highlighter
 2 pencils (#2)
 2 red pens
 Pointed scissors
 Ruler (inches and centimeters)
 Crayons
 Elmer's School Glue (large)
 Kleenex (large)
 1 package colored markers
 6 folders with pockets and brads (each a different color)

4th, 5th and 6th GRADE
SCIENCE SUPPLIES
 6 folders with brads and pockets
 1 package colored markers
 3 highlighter pens (each a different color)
 1 large box Kleenex

Miller Reservoir due improvements

Miller Creek Reservoir will be the site of an improvement project sponsored by the North Central Municipal Water Authority this fall.

Construction of a four-lane boat ramp, two docks and parking facilities at the reservoir are scheduled to begin around the first of September, with completion date set for November, said Dolan Moore, Water Authority manager.

The project site will be southwest of the dam along the waterfront on

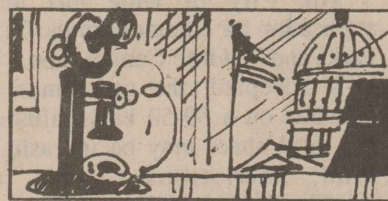
the northwest side of the lake.

Approximately two acres of paved parking which will include spaces for 34 cars with 55 spaces large enough to accommodate a vehicle and boat trailer is outlined in the base plan. Handicapped parking and a 70 ft. walkway extending from the parking area to the docks also will be provided.

The floating docks, 20 feet wide and 24 feet long, will be positioned on each side of a concrete loading

ramp, measuring 60x120 ft.

Seventy-five percent of the funding for the project is provided by the Federal Aid in Sport Fish Restoration Act administered by the Texas Parks and Wildlife Department for the U. S. Department of Interior: Fish & Wildlife Service; and 25 percent is funded by the North Central Texas Municipal Water Authority.



Herbert Hoover was the first U.S. President to have a phone on his desk.

--Market Report--

Haskell Livestock Auction

The market was steady on all classes of cattle, and demand was very good on all stocker calves and feeder cattle at Saturday's sale at Haskell Livestock Auction. The sale was on a run of 1,698 head of cattle.

Cows: fat 45-51.50; cutters 47.50-55.50; canners 38-45.

Bulls: bologna 60-68.50; feeder 75-85; utility 50-57.50.

Steers: 200-300 lbs. 122-152; 300-400 lbs. 111-131; 400-500 lbs. 95-116; 500-600 lbs. 88.50-96.25; 600-700 lbs. 84-93.50; 700-800 lbs. 77.50-88.25; 800 lbs. up 70-78.50.

Heifers: 200-300 lbs. 115-125; 300-400 lbs. 96-112.50; 400-500 lbs. 85-98.50; 500-600 lbs. 78-88; 600 lbs. up 72.50-82.50.

Bred heifers: medium frame 525-625.

Bred cows: young to middle aged 570-715; aged or small 400-550.

Cows with calves: young and middle aged 690-935; small or aged 450-630.

Thank you for reading The Haskell Free Press.

THRIFTWAY

Cumberland
 Stoneware by Hearthside
 at special low prices
 with matching
DECORATED
 Accessory Pieces

5 PIECE PLACE SETTING

\$3.99
 WITH EACH \$10.00 PURCHASE

Plus DECORATED matching accessory pieces in beautiful new shapes...and at money saving low prices.

SHURFINE BOLOGNA

12 OZ PKG

89¢



SHURFINE ALL MEAT FRANKS

12 OZ PKG

79¢



SHURFINE TURKEY HAMS

\$1.49
 LB.

CUT UP PAN READY WHOLE FRYERS
 U.S.D.A. GRADE A PILGRIM'S PRIDE
WHOLE FRYERS
59¢
 LB.

 PILGRIM'S PRIDE
 FRESH YOUNG CHICKEN

SHURFINE GRADE A LARGE EGGS
 DOZEN
59¢

SHURFINE MACARONI & CHEESE DINNERS
 7 1/4 OZ BOXES
6 FOR 99¢

ALL FLAVORS COKES
 6 PK - 12 OZ CAN
99¢
 With Coupon THEREAFTER \$1.39 6 PK
 LIMIT 1 CASE with COUPON
 NO SALES to DEALERS
 COUPON EXPIRATION DATE
 AUGUST 8, 1989

SHURFINE TOMATO KETCHUP
 32 OZ
79¢

SHURFINE 18 OZ PEANUT BUTTER
 SMOOTH OR CRUNCHY
99¢

SHURFINE BATH TISSUE
 8 ROLL PKG
\$1.69

GOLDEN RIPE BANANAS
29¢
 LB.

U.S. NUMBER ONE RUSSET POTATOES
\$1.79
 10 LB. BAG

THOMPSON SEEDLESS GRAPESLB. **69¢**
 TEXAS FRESH GREEN CABBAGELB. **19¢**
 YELLOW OR ZUCCHINI SQUASHLB. **59¢**
 CALIFORNIA ORANGES.....4 LB. BAG **\$1.29**

KLEENEX ASSORTED FACIAL TISSUE
 17.5 CT. BOX
88¢

SHURFINE CHARCOAL BRIQUETS
 10 LB BAG
99¢

SHURFINE ORANGE JUICE
 12 OZ CAN
79¢

Back to School

EMPIRE PENCILS10 PACKS **2/\$1.00**
 BORDENS GLUEALL OR SCHOOL GLUE1/4 OZ BTL. **2/\$1.00**
 BIG CHIEF TABLETS **\$1.19**

NOTEBOOK FILLER PAPER200 CT. **79¢**
 70 COUNT THEME BOOKS **69¢**
 CASTEL BLUE PENS10 PK **79¢**

MEDIUM/LARGE ELASTIC LEG SHURFINE DIAPERS
 32-48 CT. PKG
\$5.49

SHURFINE ASSORTED BISCUITS
 10 CT. CANS
10 FOR \$1.00

TOWER DRIVE-IN
 Hwy 6 Rule, Tx.
 Ph. 997-2124
 Showing
 Fri - Sat - Sun
 August 4, 5, & 6
Indiana Jones
 and the
Last Crusade
 Show Starts at Dark - Rated PG-13

SHURFINE SLICED STRAWBERRIES
 16 OZ PKG
99¢

THRIFTWAY
 WE ACCEPT FOOD STAMPS...WE RESERVE THE RIGHT TO LIMIT
 WE DOUBLE MANUFACTURERS COUPONS
 SEE STORE FOR DETAILS
 STAMFORD, TEXAS
 PHONE 915-773-5701

PRICES EFFECTIVE
 AUG. 2-AUG. 8, 1989

STORE HOURS
 8:00 A.M. TO 9:00 P.M.
 MONDAY - SATURDAY
 10:00 A.M. TO 6:00 P.M. SUNDAY

SHURFINE MARGARINE
 QUARTERS 1 LB BOX
3 FOR \$1.00



To marry

Shara Attebury and Shane Gilliam have announced their engagement and approaching marriage. The wedding will be Aug. 18 in New Deal. The bride-to-be is a graduate of New Deal High School and is employed by Mutual of Omaha in Lubbock. The prospective groom is a graduate of Haskell High School and is employed by Taylor Electric and Bolton Oil Co. of Lubbock. They will make their home in Lubbock.

Cattle seminar to be in Graham

A stocker cattle seminar for area cattlemen is scheduled tonight (Thursday) in Graham.

John Bill Oman, DVM, of Stamford will discuss his health program from the time he picks up the phone to order his cattle until the time they are marketed. Oman runs approximately 3,000 head of stockers each year.

Al Alexander, extension agronomist from Vernon will discuss

the results of a three-year study conducted in the Rolling Plains which was designed to evaluate forage and grain production of wheat varieties.

Oman also will discuss the various marketing options available to a producer and how he determines which marketing option to use.

The seminar will begin at 7:30 in the Agriculture Barn in Graham.

School to offer preparation course

A preparation course for the TEAMS exit test is being offered by Haskell schools.

Beginning today (Thursday), instruction will be given each weeknight evening through Aug. 18. Classes will be from 6 to 9 p.m. in the Ag building.

Students must pass TEAMS in order to graduate from high school.

Cathy Bartley, instructor for the preparation classes, will provide individual instruction for any high school student in need of help.

Students interested in these classes or with questions, may call Billie McKeever at 864-2848.

-Hobby Club-

Fifteen members and four guests were present for the Rochester Hobby Club's meeting on July 18. A delicious salad meal was enjoyed at noon.

The "Grandmother's Diamond Garden" was taken from the frames and is ready for hemming. We plan to finish the "Hexagon" quilt soon in order to start quilting on the "Depot" one.

The club gave \$50 to the Rochester Cemetery fence fund.

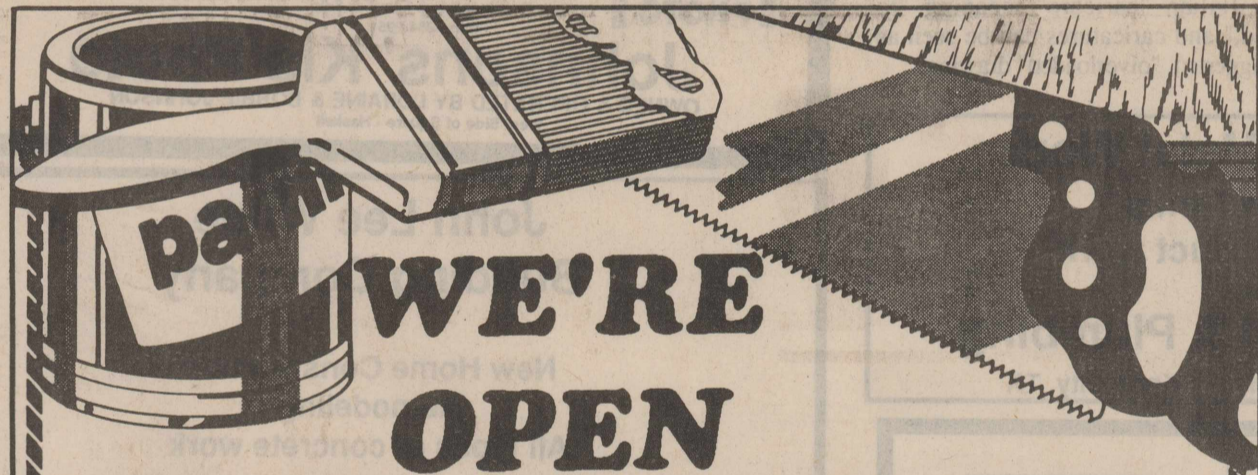
Paint Creek girl gets winning points

Paint Creek's Sharlene Grisham scored the winning points to lead the East to a 63-61 victory over the West in the six-man coaches' girls' all-star basketball game in Stephenville July 22.

Miss Grisham sank two free throws with six seconds remaining to give her team the victory. She also was one of the captains of the East team and contributed 6 points to the East's cause.

A 1989 graduate of Paint Creek High School, she will play basketball next season for the Lady Chaps at Lubbock Christian University.

She is the daughter of Mark and Rose Grisham.



FREE The first 50 men to come into the store will receive a free cap and the first 50 women to come in will receive a free flashlight on Thursday, August 3.

<p>8' Landscape Timbers</p> <p>Compare Quality! Look for the 100% 40 Gals. treated for ground rot.</p> <p>2.99</p>	<p>Brown Jersey Gloves</p> <p>.79</p>	<p>33 Gallon drawstring <small>YOUR CHOICE!</small></p> <p>Trash Bags reg. \$4.69</p> <p>or</p> <p>Palmyra fibre</p> <p>Outdoor Broom 2.97</p> <p>reg. \$5.29</p>
<p>Super-Kote Exterior Latex House Paint</p> <p>Reg. 18.90 Save 6.92</p> <p>SALE PRICE</p> <p>\$11.98</p>	<p>Premium Grade</p> <p>TREATED LATTICE</p> <p>8.88</p> <p>4' x 8' SHEET</p> <p>Perfect for decorating patios, or as a plant screen.</p>	<p>Super-Kote Latex Wall Paint</p> <p>Reg. 12.49 Save 4.51</p> <p>SALE PRICE</p> <p>\$7.98</p>

Higginbotham-Bartlett Company

Quality and Service at the Right Price.

Hwy. 277 N. 773-2746 Mon.-Fri. 8-6 Sat. 8-4

WE'RE OPEN



WAL-MART
ALWAYS THE LOW PRICE ON THE BRANDS YOU TRUST. ALWAYS. SM

BACK TO SCHOOL ZONE

Reg. 4.97

3.97

American Blues™ Binder Ensemble

Includes 3 ring fabric binder with double booster and two 10 1/2 x 8" seventy sheet fabric themebooks.

EVERYDAY

38¢

Themebook 70 Sheets in wide or narrow rule.

EVERYDAY

\$5 Your Choice

Backpacks Or Rollbags

These large backpacks have reinforced padded shoulder straps and heavy zippers for strength and durability. Rollbags feature double top zipper entries. Both available in assorted solid colors, color block prints and camouflage. Nylon.

EVERYDAY

\$2.22

Crayon

- 64 assorted colors
- Non toxic •No. 52-0064

EVERYDAY

\$4.84

Kindermat

- Attractive vinyl cover easily cleaned with soap and water
- Folds for easy storage
- No. KM-100

87¢ Reg. 1.18

SAVE 25%

Plastic Utility Box

Excellent for school use.

1.38 Reg. 1.74

SAVE 20%

Construction Paper

96 Sheets. 9x12" Assorted colored paper.

1.48 Reg. 1.87

SAVE 20%

Sparklers Markers

24 Fine tip watercolors. Non-toxic.

WAL-MART

Prices good August 3-9, 1989

Hours: Mon.-Sat. 9-9, Sun. 1-5

1608 N. Swenson

Stamford, Texas 79553

WAL-MART'S ADVERTISED MERCHANDISE POLICY—It is our intention to have every advertised item in stock. However, if due to unforeseen reasons an item is not in stock, we will, at our discretion, substitute a similar item. We will not issue a Rain Check unless the item is advertised in the current issue of the newspaper. We reserve the right to change prices without notice. All prices are subject to change without notice. © 1989 Wal-Mart Stores, Inc. All rights reserved. Printed in the U.S.A.

--Obituaries--

Oma Mae Herricks

Oma Mae (Bunt) Herricks of Weinert died Friday (July 28) at Stamford Memorial Hospital. She was 75.

Funeral services were Sunday afternoon at Foursquare Church in Weinert with the Rev. Paul Chambers officiating. Burial, under direction of Holden-McCauley Funeral Home, was in Weinert Cemetery.

Pallbearers were Jerry Don Hudgens, Todd Herricks, Bernie Kimmel, Wayne Stout, Shane Stout and Melvin Vojkufka.

Mrs. Herricks was born April 22, 1914, in Hoenwald Tenn. She came to Haskell County March 1, 1925, and had been a resident of Weinert since 1955. She was a member of Foursquare Church in Weinert. She was married Dec. 25, 1934, to Roy Herricks in Haskell. He survives her.

Other survivors include a daughter, Shirley (Mrs. James) Hudgens of Rochester; a son, Rex Herricks of Weinert; six sisters, Lona Linton, Ocie Garrett and Jessie Couch, all of Haskell, Sue Frier of Fullerton, Calif., Feba Stout of Weinert and Jeffie Stapp of Rule; four brothers, Buck Turnbow of Weinert, George Turnbow of Arlington and C. A. (Bud) Turnbow and Bob Turnbow, both of Haskell; and five grandchildren and four great-grandchildren who knew her as their "Mammer." She was preceded in death by a great-granddaughter, Brittany.

Eleanor Blohm

Eleanor Mabel Blohm died Saturday (July 29) at her residence in Haskell. She was 86 years old.

Funeral services were Monday afternoon at Holden-McCauley Funeral Home with the Rev. Martin Jacobson officiating. Burial, under direction of Holden-McCauley, was in Willow Cemetery.

Pallbearers were Paul Brown,

Kenny Watson, Charles Chapman, Jimmy Crawford, Earnest Moeller and Ricky Moeller.

She was born May 15, 1903, in Willis, Texas, and was a member of Memorial Presbyterian Church in San Augustine. She was a past matron of the Order of the Eastern Star.

After finishing college, she taught music in Willis for 13 years, then moved to Amarillo and took up legal work. After working two years as a dictaphone operator, she went to work as deputy clerk in state court and worked there for eight years. In 1949 she was sworn in as deputy clerk of U.S. District Court and traveled with the federal judge for the Western District of Texas to different towns. She retired in 1968 and moved to Haskell. For many years, she played for church services.

She is survived by a sister-in-law, Elaine Blohm of Haskell, and several great-nieces and -nephews, including Ann Lee of Helena, Ark.

Mozelle Cox

Services for Mozelle Cox, 57, of Lubbock were July 20 at University Baptist Church with the Rev. Gene Hawkins, director of missions with Lubbock Baptist Association, officiating. Assisting was the Rev. Bert Smith, Baptist evangelist.

Burial was in the City of Lubbock Cemetery under direction of Sanders Funeral Home.

She died July 18 in South Park Medical Center after a brief illness.

Born in Old Glory where she grew up, she married John B. Cox May 15, 1949, in Rule. She served from 1955 to 1987 on the Home Mission Field under the Southern Baptist Convention Home Mission Board.

She also was active in Woman's Missionary Union and was a member of University Baptist Church where she was a Sunday school teacher.

A son, Johnny Wayne, preceded her in death.

Survivors include her husband;

two sons, Roy Lynn of Omaha, Neb., and Timothy Boyd of Abilene; two daughters, Robin Janelle Ankrom of Falls City, Neb., and Michelle Dawn Cox of Lubbock; three brothers, Jack Davis and J. C. Davis, both of Archer City, and Joe Davis of Granbury; seven sisters, Donaline Story and Ila Mae Weston, both of Lubbock, Doris Simer of Artesia, N.M., Naomi Sleezer of Glendale, Ariz., Manita Lou Rodden of Buena Park, Calif., Glynda Harrington of Phoenix, Ariz., and Phyllis McNeely of Rochester; and six grandchildren.

The family requests memorials to the Annie Armstrong Home Mission, care of University Baptist Church in Lubbock.

T. E. Reeves

T. E. Reeves of Weinert died Saturday (July 29) while on vacation in La Verne, Calif. He was 60 years old.

Funeral services will be today (Thursday) at 2 p.m. at the First Baptist Church in Weinert with Danny Jackson of Lubbock officiating. Burial, under direction of Holden-McCauley Funeral Home, will be in Johnson Memorial Cemetery in Munday.

Pallbearers will be Fred Beard, Kenneth Sanders, Ernest Schwartz, Oman Sanders, Joe Marion and James Edrington.

A semi-retired farmer and rancher, Reeves was born July 25, 1929. He was married to Nelda Alexander on Feb. 9, 1952. She survives him.

Other survivors include a daughter, Nan Reeves of Abilene, and two sisters, Theda Jackson of Goree and Edith Pierson of Kennewick, Wash. His parents and a brother preceded him in death.

The family requests memorials to the Kidney Foundation.

Family plans annual reunion

The fourth annual Kretschmer reunion will be Saturday, Aug. 12, at the Sons of Hermann Lodge located in the Irby community.

Registration is to begin at 3:30 p.m. with a business meeting to follow. A pot luck dinner will be served at 6:30 p.m.

An auction will be held during the meeting. Family members are asked to bring an item suitable for the event.

Blood donors listed

Thirty-two pints of blood were given when the bloodmobile visited Haskell recently.

Donors included: Sammie Ashcraft, Verda R. Calloway, Olen King, Cathy Bartley, Homer Josselet, Jerry Don Klose, Kay Smith, Robert Bartley, LaNita L. Schafer, Melissa Fernandez, Teresa Torres.

LaVonta Ward, Joel Fox, Martha Toliver, Jo Cox, Dusty Garison, Sammy Larned, Bill Swinney, Kristen Grand, Betty Raynes, Brian Burgess, Jack Gilleland, Billie McKeever.

Tami Pannell, Donna K. Spikes, Mike New, Robbie Peiser, Jana Cullers, Wayne Cadenhead, Yuvi Cadenhead, Jill H. Druessedow, Ronnie Bailey and Ray Gardner.

Milestones reached included Catherine Bartley and Robbie Peiser, three gallons, and Dusty Garison and Jack Gilleland, two gallons.

Volunteers assisting in the drive were Cindy Henry, Mildred Robertson, Retha Mullins, Sarah Hodge, Dusty Garison, Martha Toliver, Edna Anderson, Kay Smith, Darlene Walton and Heath Green. A professional volunteer was Tempa Toney.

Wide range of temperatures here during July

Temperatures during the month of July ranged from a low of 64 degrees on July 21 to a high of 110 on July 18, according to Sam Herren, official weather recorder.

Only .36 of an inch of moisture fell during the month, bringing the year's seven-month total to 11.53. Normal for the period is 13.48 inches.

DID YOU KNOW?
The word "caricature" comes from the Italian "caricare" meaning "to load," and caricatures can be seen as exaggerated, "overloaded" drawings.



Win trip

Ben and Sue McGee of McGee's Lumber Yard have won a trip to Hawaii through a promotion by Cameron Wholesale Co. Their company sold 6,000 squares of shingles during a three-month contest period. Making the presentation to the Haskell couple were Rick Griffith, left, and Steve Hoover, right of Abilene.

Scouts see sights

By Blake Henshaw
FORT A. P. HILL, VA. -- Seven Boy Scouts from Haskell have toured Washington, D. C., and Philadelphia, Pa., for four days before arriving at the 12th National Boy Scout Jamboree here Monday.

The Scouts will have an action-packed 10-day Jamboree with many activities and contests along with two major shows, including a special laser light show by Steven Spielberg, Hollywood movie producer.

"We are having fun, but everything is different. The flight was exciting, but we had a lay-over at Pittsburgh, Pa., and a thunderstorm at Washington National made us wait on the plane for an hour. There are many strange things to us Texans in Washington, D. C. For example the street vendors, the many taxis trying to get riders, and the subways, which were real fast and they were clean," Blake Henshaw of Haskell explained.

The Jamboree opening show is Tuesday night and activities have already started in the action areas. Those from Haskell attending the Jamboree are Matt Perry, Brian Brzozowski, Shawn Sanford, Cody Josslet, Mark Jones, Casey Coleman and Henshaw. Assistant Scoutmaster Bill Perry of Troop 1624. Perry is Scoutmaster of Troop 136 in Haskell.

Lee Lane Bud Lane

Lanco Insurance

P. O. Box 558 Haskell 817/864-2629

For a free no obligation quote, clip this ad and check the type of insurance quote desired. Mail in the required information.

<input type="checkbox"/> Major Medical	Age of all Dependents	Deductible 250 - 500 - 1,000
<input type="checkbox"/> 10 Yr. Level Life Insurance	Age	Smoker _____ Non Smoker _____
<input type="checkbox"/> Universal Life	Age	Smoker _____ Non Smoker _____
<input type="checkbox"/> Medicare Supplement	Age	Male _____ Female _____

Name: _____
Address: _____
City, State, Zip: _____

For Your Sheet Metal Work

Water Storage Tanks
All Kinds of metal duct work

See or call:
Guinn Sheet Metal & Plumbing

817-658-3341 L.C. Guinn Knox City, TX

LA-Z-BOY
CHAIR COMPANY

★ LARGER SELECTION
★ BETTER FABRICS
★ LOWER PRICES

KINNEY'S
NORTH SIDE OF THE SQUARE
STAMFORD, TX

One Hour Photo Service offered on Film Developing & Prints
Latest Equipment - Competitive Prices

\$1.00 off
On Processing, per roll with Coupon
Specials Good Thru August 9

Kodak and Fuji Film For Sale
Phone 864-2951

Johnson's Kis Photo

OWNED & OPERATED BY LORAIN & BOBBIE JOHNSON
West Side of Square - Haskell

John Lee Wilde Building Company

New Home Construction
Remodeling
All types of concrete work

422-4650 Munday

Stamford Chiropractic Clinic

915-773-5012

- Neck Pain
- Leg Pain
- Joint Pain
- Back Pain
- Arm Pain
- Headaches

Dr. Stephen Hambright
1511 Columbia, Stamford
-Office hours-
Mon.-Fri. 9-12, 1-5 and Sat. 9-12
We accept Medicare, Medicaid, Workers Comp., Personal Injury and most personal insurance.

Make sure your next loan is easier to pay back ...

A good loan should be one you can manage on your income.

The Land Bank can tailor a payment plan to fit your income patterns and cash flow. The long-term feature of Land Bank loans helps keep your payments manageable.

Federal Land Bank Association of Haskell
Part of the Farm Credit System

Dale Bullinger - President
Telephone 864-2062

DIE HARD

BRUCE Willis

Adventure reaches new heights when terrorists crash a party high above L.A.

Saturday at 8 P.M.
on Channel 2

Harmon Cable Communications

1-800-527-4331

THE BEST TIME ON TV

For all your SIDING needs Contact:

GONZALES CONST.
706 SO. 4TH ST., KNOX CITY, TEXAS 79529
(817) 658-3732

DEALER ALSIDE BUILDING PRODUCTS
NEFRO R. GONZALES - OWNER

JAMES CASTAGNA & JEFF GREGG

Certified Public Accountants

Computerized Tax Returns and Bookkeeping
Auditing, Financial Statements and Estate Work

<p style="text-align: center;">SEYMOUR OFFICE 115 W. McLain Street 817-888-5539 8-6 M-F; 8-5 Sat.</p>	<p style="text-align: center;">HASKELL OFFICE 316 1/2 North First 817-864-3931 10-4 Thursday</p>
--	---

(After Hours by Appointment)

Hassen's Sidewalk Sale Sat. Aug 5th In Haskell

Prison facility offers salvation

(Editor's Note: What benefit does a correctional facility or prison hold for a small community? Many towns in Texas, including a number in this area, have suddenly become interested in such an "industry." The following article from the Houston Chronicle tells of what a prison did for one Texas town.)

By Roy Bragg

EDEN---It was 1984, and this dusty Central Texas town of 1,200 people faced the slow, inevitable death that felled dozens before it.

Oil and agriculture had dried up. Industrial growth had stopped.

Stores closed as customers shifted their shopping to San Angelo, 40 miles northwest. High school graduates left and never returned.

Without jobs to lure them, newcomers stopped coming. The death rate exceeded the birth rate, resulting in a net loss of 35 people a year.

But the downward slide has slowed. Eden, while far from vibrant, is faring better, thanks to 322 undocumented aliens locked in a private federal prison.

The police force has doubled. A new doctor has moved in, as has the town's first dentist. Even the post office has added staff.

Jim Schumann, Ford dealer and former town mayor, said the prison came just in time.

"I'm not much of a forecaster, but I imagine that if we hadn't done what we did (getting the prison to Eden), there's a good possibility that six or seven of our major businesses, including this one right here, would've been gone, Schumann said.

Current Myor Tommy Kelso is more emphatic: "It's been a Godsend."

Leaders in Kyle, a slightly larger city 15 miles from Austin, hope a private prison opening there Tuesday will do the same for them.

The Kyle-Pre-Release Center will house 500 state prison inmates who are within two years of release, said Patrick Cannan, a spokesman for Wackenhut Corrections Corp., the company that runs the facility.

A new Zavala County jail, located just north of Crystal City in South Texas, has had a minimal impact on the town of 7,000, officials there say. Only 38 people work at the jail, compared with 300 at the local school system and 600 at a Del Monte food processing plant.

The \$2.9 million jail, owned by the county but operated by a Houston firm, takes care of more than 200 prisoners from Washington, D. C.'s equivalent of a state prison.

The Zavala County jail and the Eden prison drew little attention until last month when inmate disturbances at each facility spilled their names across Texas newspaper pages.

The Eden prison is a unique three-way deal---the overcrowded U.S. Bureau of Prisons has contracted with the city for jail space, and the town, in turn, has hired prison owner Roy Burnes' company, Eden Detention Center, Inc., to do the work.

The municipal middleman is necessary because the federal prison system isn't allowed to contract with private prisons.

Burnes wanted to get into the prison business in 1983 in nearby Brady, but voters there turned down the idea.

Schumann, the mayor here, heard of the Brady rejection and saw the potential of the prison business.

His town was in a fix. Attempts at luring businesses to the city industrial park had failed, with the only tenant a steel fabrication plant that did uneven business. It still is the only entity at the park.

The Saturday shopping trip, which has been a mainstay of the small downtown area and the weekly social event for all largely rural Concho County, disappeared, meaning a lion's share of town business did likewise.

And the town wasn't just shrinking---it was getting gray, too.

Russell Green, a retired store owner, compiled numbers from school and city records and calculated that only one percent of the city's high school graduates were staying in town. Schumann estimated the town's average citizen was 58 years old.

"This town was dying," current Mayor Kelso said. "There was no doubt about it."

Added Schumann: "We needed something. We were faced with flat-out dying on the vine."

There was opposition, but since the prison opened, it has dwindled. And the gray, warehouse-like building with the maroon awning at the front door has breathed life into this town.

"A prison is the kind of place that needs young workers," Kelso said. "Before, there was no reason for young folks to stick around. You need young people to revive a dying town."

The new doctor joined the old doctor and contracted with the lockup to provide medical services.

Local grocer Dayton Turner provides the commissary service for inmates, about 10 percent of his business.

The city gets nearly \$9,000 a month from its deal, which is above and beyond sales and property tax revenue from the prison and prison employees.

That money helps pay for a bond program that put the entire city on a central sewage system, improved the town water lines and helped drill a much-needed water well.

Two years ago, the Eden Police Department consisted of a night watchman who walked the downtown area and juggled doors to make sure everything was secure.

Thanks to prison money, the department has two full-time officers and a part-time patrolman. Prison money also is paying for a central headquarters for all law enforcement officers in town---police, highway patrol and a sheriff's deputy.

It also houses a 24-hour dispatching service for the entire county. Burnes' company chipped in to buy a teleprinter.

There have been six escapes; all but one of the inmates have been recaptured. No townspeople have been hurt in any of the escapes, Burnes said, since most escapees head out of town immediately.

"I knew there's no great security risk," Schumann said. "The riff-raff that comes through town on those two highways (US 67 and US 87) is a million times worse than the inmates a prison would bring to town."

Kelso said the prison actually provides a sense of security. Dozens of uniformed corrections officers can be seen around town all day and might make a transient think twice about committing a crime.

The Eden experience has been so good for Burnes, he already has two more prisons on the boards---a 300-bed unit in Burnet and a 500-bed facility for Fort Stockton.

The prison has helped, but townspeople, Schumann warns, cannot relax in their efforts to keep Eden going.

"We're not over the hill yet," Schumann said. "The detention center isn't the salvation for Eden, but it is a piece of the puzzle.

"It'll help keep us alive."



Nine million tons of salt are applied to American highways each year for road de-icing.



Retires from ASCS

Verlean Adkins (shown with husband, Wayne) was honored Sunday afternoon with a reception at the First National Bank Community Room. Mrs. Adkins has retired from the Haskell County ASCS office after completing 31 years of service.

WANTED - KIDS

Vacation Bible School Trinity Baptist Church

South Avenue D - Haskell

All Age Children
Pre-School thru High School

August 7th - 11th
9 a.m. til 11:30 p.m.

Bus Pick-Up Available
Call:

864-8088 or 864-8926 or 864-2352

Medicare Supplement Insurance*

Call: BRIAN BURGESS,
Agent
703 North Avenue E.
Haskell, Texas 79521
Off. 864-3250



*Not connected with or endorsed by the U.S. Government or the Federal Medicare Program
State Farm Mutual Automobile Insurance Company
Home Office: Bloomington, Illinois

abcdefghijklmnopqrstuvwxyzabcdefghijklmnopqrstuvwxyzabcdefghijklmnopqrstuvwxyz

Preschool
and
Childcare
Programs
Mon. - Fri.
7:30 a.m.-
5:30 p.m.



Drop-ins
WELCOME
Full
or
Half
Days

New Playground Equipment

Registrations
now being
accepted for
Fall
and
Winter

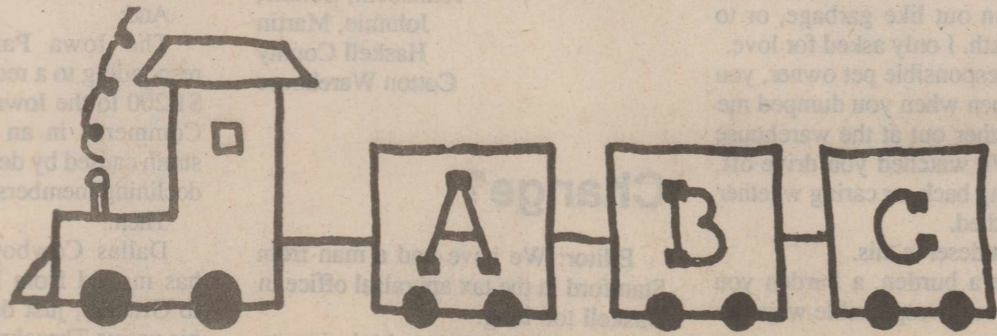
Infant
Care
0 - 17 Months
Mon. - Fri.
7:30 a.m.-
5:30 p.m.



Educational
Curriculum
for
Pre-Schoolers
Everyday

After
School
Childcare
Mon. - Fri.
2:30 p.m.-
5:30 p.m.
Transportation
Provided

Some of the Children at ABC Day Care



DAY CARE

1301 N. Ave. I Haskell Phone 864-8933 State Licensed Laura Tidwell, Director

abcdefghijklmnopqrstuvwxyzabcdefghijklmnopqrstuvwxyz

DOYLE HIGH'S THE DRUG STORE

100 S. AVE. E

OPEN 8:00-6:00

864-2515

"1989-90 School Supply List Available for Haskell Elementary"

Mead®
70 COUNT
THEME BOOK
8" x 10 1/2"
With this coupon and each
\$5.00 purchase your price is

5 FOR 99¢

AZIZA®
Contact Lens
Mascara With
Free Lens Case
Or
Fall Shade Shadow
Eye Liner
Or
Mascara

\$2.99
Your Choice

DESK ORGANIZERS

- Memo Rack
- Stacking Desk Tray
- Pencil Cup
- Desk Organizer
- All in Smoke Color

\$1.88
Your Choice

ENERGIZER®
BATTERIES 2- PACK
CHOOSE FROM
"AAA," "AA," "C," "D."

\$1.49

PLANTERS®
LUNCH BOX
SNACKS

5 FOR \$1
Your Choice

PED'S®
WOMEN'S SOCKS
3-PACK
OR
CHILDREN'S
ANKLETS
3-PACK
Assorted Colors

\$2.99
Your Choice

Elmer's®
School Glue or Glue All 4oz.
or
Rubber Bands
or
School Boxes

2 FOR \$1
Your Choice

Prices Good Thursday, Friday, & Saturday - August 3, 4 & 5.

M SYSTEM

Your FRIEND!

AFFILIATED SUPER MARKETS

Haskell, Texas
Open 7 days a week
Monday-Saturday 7:30 a.m. til 8 p.m. • Sundays 8 a.m. til 7 p.m.

DOUBLE COUPONS 7 DAYS A WEEK!

We will redeem your manufacturers' cents-off coupons for double their face value up to 50¢ when the product is purchased. We will double only one coupon per item. All others redeemed at face value. Limit one coupon per item. Coupon not to exceed value of item. This policy does not include "Free" coupons, cigarette and tobacco, or refund coupons. Offer good for a limited time only. Super value offer from M-System in Haskell.

We Gladly Accept Food Stamps

Prices Good

August 2 thru August 8



QUALIFIED

We reserve the right to limit quantities.

Shop in Your Home Town and Save
on Your Total Bill PLUS Save Your
Home-Town Merchants!

Super Sale



Days



White,
Yellow or Blue
Bathroom Tissue

Charmin
4-Roll Package

87¢

Limit 1 Package with the purchase of \$10.00 or more in groceries.



Oil or
Water Pack
6.5-oz. Can Tuna

Star-Kist
58¢

Limit 2,
Please!

Shurfine
Regular or Fresh Scent
BLEACH 1-Gal.

67¢



All Grinds,
Excluding Decaffeinated

FOLGER'S

Coffee
13-oz. Bag,
Limit 2,
Please

\$1.85



Shurfine
All Varieties

Dog Food

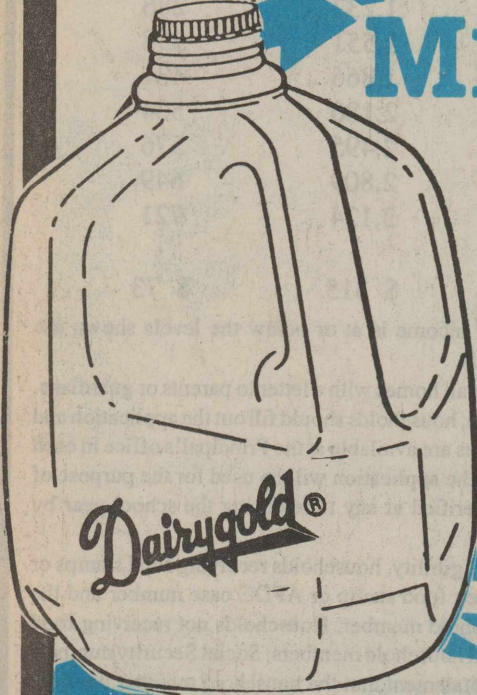


15-oz.
Cans

6 For \$1

MILK
Dairygold
Homogenized,
1-Gallon Jug

\$1.69



Cottage Fries
New
Potato Chips
Thicker Sliced for EXTRA FLAVOR

6.5-oz. to 7-oz.,
All Varieties

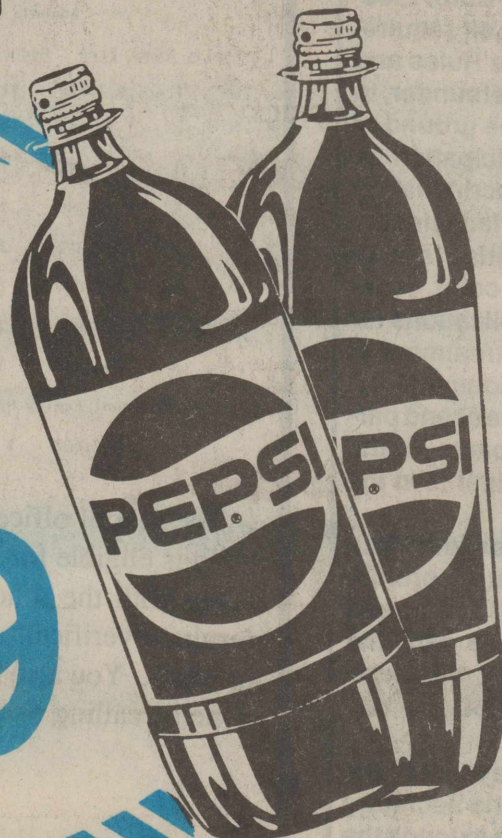
\$1.09



All Varieties

Pepsi
\$1.09

2-Liter
Bottle



- KRAFT MACARONI & CHEESE Dinners...7 1/4-oz. Box **2/\$1**
- POWDERED DETERGENT (40¢-Off Label!) **\$1.39**
- Purex...42-oz. Box **\$1.39**
- SHURFINE Cream Style or Whole Kernel Corn...Golden, 16-oz. **2/89¢**
- VAN CAMP 16-oz. Cans **2/89¢**
- Pork 'n Beans **2/89¢**
- HEINZ TOMATO **\$1.19**
- Ketchup...32-oz. **\$1.49**
- BAMA JELLY OR JAM **\$1.49**
- Grape...32-oz. Jar **\$1.49**
- SHURFINE FROZEN SLICED, 10-oz. **69¢**
- Strawberries **99¢**
- SHURFINE 12-oz. Tub WHIPPED Topping **99¢**

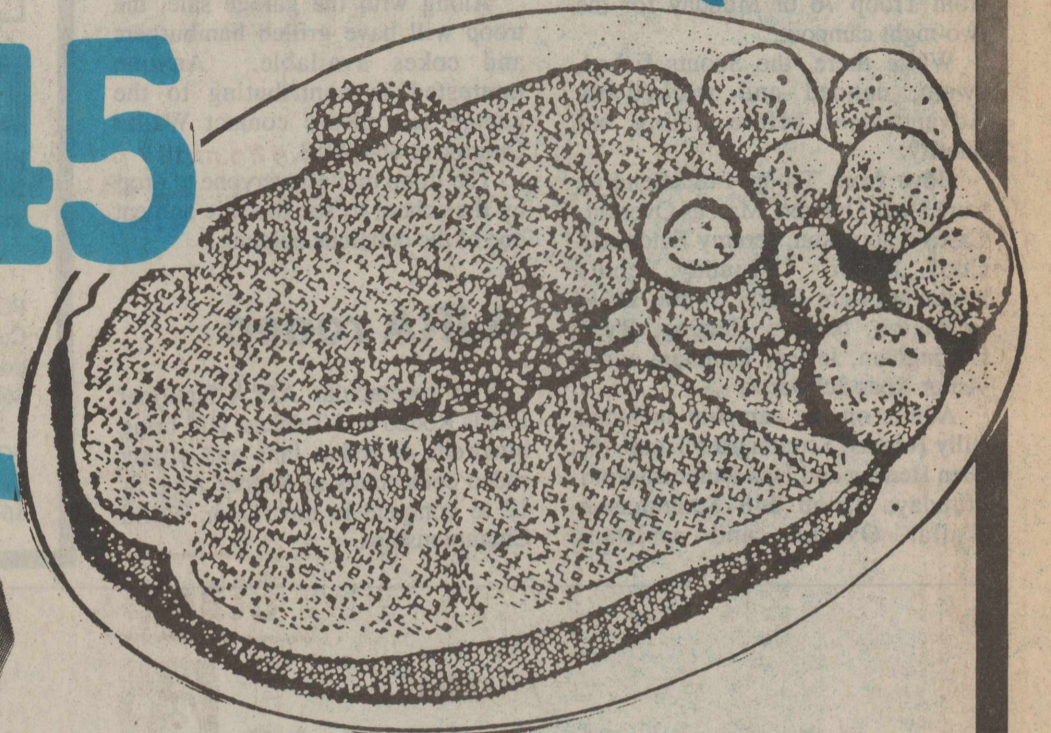


Shurfresh
1-Pound Quarters
Margarine
Limit 2 Packages, Please!

25¢

Full
Cut
Round Steak
Pound

\$1.45



- GREAT STEAK FOR GRILLING
- Sirloin** Lb. **\$2.89**
 - FAVORITE STEAK
 - T-Bone** Lb. **\$3.79**
 - BONELESS STEAK
 - Sirloin Tip** Lb. **\$2.59**
 - TENDER BONELESS ROAST
 - Sirloin Tip** Lb. **\$2.39**
 - BONELESS BEEF
 - Rump Roast** Lb. **\$1.79**
 - KRAFT Colby or Cheddar, 10-oz.
 - 1/2-Moon Cheese** Lb. **\$1.89**



Small,
Lean and Meaty
Spareribs
Pork
Lb. **\$1.29**

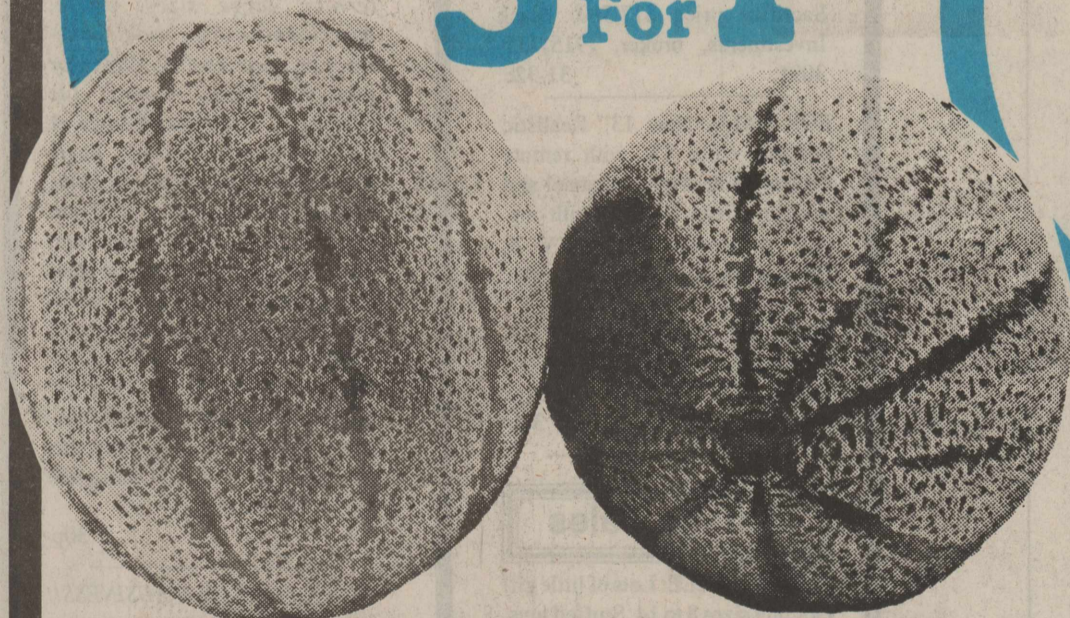
Wilson's
SLICED
BACON

1-Pound Package

\$1.29



Fresh, Home Grown
Cantaloupe
3 For \$1



Thompson Green,
Red Flame or Black Rapier
California Seedless

Grapes
69¢
Lb.



Cello Red Radishes
or Tender Green Onions
Your Choice!

4 For \$1

SOUTHEASTERN FREESTONE
PEACHES
Tree Ripe!
Pound **59¢**

Pick of the Crop Produce!

- KENTUCKY WONDDER (Pound)
- Green Beans** **89¢**
- RED (Pound)
- New Potatoes** **59¢**
- FANCY SWEET
- Ear Corn**.....Each **3/\$1.00**

M SYSTEM



- Health and Beauty Aids!*
- 2.7-oz. Can POWDER
 - DESENEX** **\$2.69**
 - 11-oz. Assorted Shave Cream
 - COLGATE** **79¢**
 - 10-Count Package
 - Bic Shavers** **\$1.25**
 - 2-oz. Wide Stick
 - Secret Stick** **\$2.39**

Super Sale
Days!

Paint Creek scouts have river outing

Paint Creek Boy Scout Troop 148 spent last weekend on the Brazos River near Woodson.

The Scouts hiked into the campsite Friday afternoon and were joined there by Scouts and adults from Troop 76 of Munday for the two-night campout.

While there, the Scouts fished, swam, canoed and worked on Advancement before hiking out Sunday.

Boys from Troop 148 attending were Hans Overton, Marcus Overton, Casey Thompson, Jeremy Futch and Cody Ender. Munday scouts attending were Brady Smith, Doug Edrington, Nathan Herring, Ryan Cottingham, Jeffery Dumnam and a visitor Ross Schwartz.

Adults on the campout included Billy Rogers, Scoutmaster Troop 76; Glen Herring and Jack Dumnam from Munday; Troop 148 Scoutmaster Wallar Overton and assistant

Scoutmaster Kenny Thompson from Paint Creek.

Troop 148 assembled Monday night to organize and collect materials for its garage sale Saturday, Aug. 5, at the Paint Creek School.

Along with the garage sale, the troop will have grilled hamburgers and cokes available. Anyone interested in contributing to the garage sale please contact Wallar Overton at 864-2958.

The troop invites everyone to drop by the school to see the sale and eat one of the delicious burgers.

AJRA rodeo

The spectacular AJRA National Finals Rodeo and Telecast will bring hundreds of rodeo fans and young rodeo contestants to Snyder Aug. 8-12 to compete in the Junior World Championships.

CLASSIFIEDS

NOTICE

The Haskell Free Press reserves the right to edit and/or delete all news stories and locals for length and liability and to refuse to print anything deemed not newsworthy.

For Sale

PRESCRIPTIONS, Cosmetics, Gifts. Shop Johnson Pharmacy where the savings are real. 38tfc

FOR SALE: Radio Shack TRS 80 Color Computer. Excellent condition. Joy sticks, games. Call 864-3682 after 5 p.m. 42dc

FOR SALE: 1981 Mobile Scout 21' travel trailer. Sleeps 8. Clean. 864-2607 or 864-3340. 5tfc

For Sale

FOR SALE: 23' travel trailer. Good condition. Self-contained. Sleeps 6. 864-3244. 22tfc

FOR SALE: Video tapes. Clearing out old movies, big selection. Starting at \$12.99. Hurry in today for first choice. Walling TV & Electronics, Haskell. 31c

JAKE'S Bar-b-q will be at Cecil's Market Saturday. Weather permitting. 31c

FOR SALE: Like new, lift chair. Call 817-997-2380. 26tfc

FOR SALE: Collectors edition Coca-Cola cooler radio, AM/FM radio with cassette player regularly \$119.95, sale only \$109.95. Walling TV & Electronics, Haskell. 31c

For Sale

FOR SALE: Child's bicycle safety seat, \$15.00, excellent condition. Call 864-2023 after 5:30 p.m. 26ls

FOR SALE: 1980 Triumph TR-7 convertible. \$2500.00. 906 N. Av K, after 5 p.m., 864-8926. 28tfc

FOR SALE: Like new 1983 17' weekender travel trailer. One owner. 864-3697. 29-32c

FOR SALE: 1972 Chevrolet Impala. Runs good. Call 864-2736. 31p

FOR SALE: New 100 watt stereo rock system. Regularly \$649.95. Save \$200.00 with sale price \$449.95 at Walling TV & Electronics, Haskell. 31c

FOR SALE: White's Auto rototiller 5 horsepower. \$35. 1706 N Av G 864-2700. 31-32p

FOR SALE: Sears submersible water pump, 1/2 horse, brand new. Changed mind about well. Cheap! Call 997-2163, Rule. 31c

FOR SALE: Clean 1975 Chevrolet Impala car. Automatic, V-8 with a/c. One owner, \$750. See Arvil McFadden 601N Av L or call 864-3885. 31p

FOR SALE: Cookbook collection. Contact Glenna Parker 1411 N Av J or 864-2839. 31p

FOR SALE: Coffee mugs with musical design, keyboard, Nipper clapboard, director mug, musical notes. Texas shaped cutting board at Walling TV and Electronics, Haskell. 31c

WHY PAY MORE? Quality cut & loop carpeting in a choice of colors, professionally installed over thick pad, starting at only \$9.95 per sq. yd. Good selection, great prices. Ask about our cost plus plan for 50 sq. yds. or more. KINNEY's, north side of square, Stamford. 31-34c

RADIO SHACK closeout. Everything 1/2 price. North side of square, Stamford. 31c

FOR SALE: Cassette tapes: Raffi childrens tapes-8 titles, Batman and GhostBusters, golden oldies, bluegrass, rock, country. Purchase 5 or more tapes and get 10% discount. You want it, we've got it-or can get it! Walling TV and Electronics, Haskell. 31c

ESTATE SALE- must sell and move two coned, steel grain bins (18,000 bushel capacity), elevator, truck scales (40,000 lbs.), 12'x24' office building from Rotan, TX. Sacrifice price \$17,500. Black Investments, broker. (915)735-3091. 31-32c

FOR SALE: New 13" Realistic portable color TV with remote control, with display channel and time on screen, \$299.95 with one year warranty. Walling TV & Electronics, Haskell. 31c

FOR SALE: 1985 Ford Escort GT. Excellent condition, low miles. Phone 864-2536, 8-5. Evenings 864-3273. 31c

Garage Sales

GARAGE SALE: Lots of little girl clothing sizes 8 to 14. Stuffed toys, 40 odd pieces of doll clothes, bed spreads, pint fruit jars, lots of odds and ends. Fri. 8-5. Sat. 8 till 2. 317 Addison Dr. in Haskell at Winona's. 31p

GARAGE SALE: Clothing, including formals, shoes, baby items, household items, misc. Fri-Sat. 9-5. Tiffany and Tara Moeller, Throckmorton Hwy, turn right at Church of God, go south 5 blocks, turn right, rock house with many trees. 31p

GARAGE SALE: Sat., Aug. 5, 8-5. Three families. 1200 N Av M. Clothes, cradle, highchair, couch, chair, bicycles, lawn mower. Debi Skiles, Jana Hannsz, Lisa Goss. 31p

GARAGE SALE: 3 families, Fri and Sat 9-5. 600 Sunny Av, Rule. Childrens clothes, sizes 4-5 boys, ladies, 3-9. Womens shoes, childrens shoes, toys, comforters and pillow shams, lots of wood crafts and lots of misc. No early sales. 31p

GARAGE SALE: Fri. & Sat. 908 N 6th, Haskell. Lots of Stuff. 31c

Garage Sale

GARAGE SALE: Saturday only, 9 a.m. to 6 p.m. Aug. 5. 300 Sunny Av, Rule. Everything must go! Two 2 piece hide-a-beds, gas and electric cookstoves, Dearborn heaters, 2 TVs. Lots of jeans, slacks and kids clothes-all sizes. Also dishes, drapes and carpet. 31c

BACK YARD SALE: Friday and Saturday, Aug. 4 & 5, 505 S 6th. 8 a.m. till. Antique dining table, clothes galore, lots of misc., arts and craft items. 31p

GARAGE SALE: dishwasher, chairs, toys, clothes, queen comforter and curtains. Sat. 9-4. 604 N 19th. 31p

GARAGE SALE: Friday, Aug. 4, 8 a.m. Lots of childrens clothes, ladies clothes, bicycle, treadmill walker, toys, misc. household goods. 219 Addison Dr. 31p

2 FAMILY GARAGE SALE: Baby furniture, boys twin bed, childrens clothes, other items. Saturday morning only. 607 N 9th. 31c

YARD SALE: 1 block west of elementary school. 206 S Av I. Friday 4-8 p.m. and Saturday 9-2. 31p

GARAGE SALE: Friday Aug. 4 only. Mattress, springs, oven, glassware, some clothes, lots of misc. 907 N 4th, Haskell. 31c

Jobs Wanted

LOT SHREDDING. Septic tank pumping. Call Tony Williams, 864-3674 anytime. 43tfc

WATER WELL DRILLING. Lic. #1578. House wells, test holes, W. P. Hise. 817-864-3727 day or night. 12tfc

FAST, DEPENDABLE SERVICE on Sears, Kenmore, Whirlpool and many other brands of refrigerators, freezers, washers, and dryers, 864-3545 after 5:30 p.m. or leave message. Ricky Anderson. All work guaranteed. 18tfc

WANT TO HAUL HAY. Square bales. Will mow lawns, haul trash, etc. Call nights 864-3754 or 864-8004. 30-31p

Business Opportunities

OWN YOUR OWN apparel or shoe store, choose from: jeans/sports-wear, ladies, men's, childrens/maternity, large sizes, petite, dancewear/aerobic, bridal, lingerie or accessories store. Add color analysis. Brand names: Liz Claiborne, Healthtex, Bonnie & Bill, St. Michele, Forenza, Bugle Boy, Levi, Camp Beverly Hills, Leslie Faye, Lucia, over 2000 others. Or \$13.99 one price designer, multi tier pricing discount or family shoe store. Retail prices unbelievable for top quality shoes normally priced from \$19 to \$60. Over 250 brands 2600 styles. \$18,900 to \$29,900. Inventory, training, fixtures, airfare, grand opening, etc. Can open 15 days. Mr. Loughlin (612) 888-4228. 30p

!!OWN YOUR OWN BUSINESS!! All top quality. The latest up to date clothing & shoes available. Full figure, misses, junior, and children. Includes fixtures, inventory and training \$14,900 to \$29,900. Call 404-956-0695 The Fashion Image. 27p

DEALERSHIP LOG HOMES. Your complete log home manufacturing company has all of America's finest lines, starting at \$9,675. Great earning potential, will not interfere with present employment. Investment 100% secured by model home. Call Mr. Lamont, toll free 1-800-321-5647. The Original Old-Timer Log Homes and Supply Inc., Rt. 6, 346 Logue Road, Mt. Juliet, TN 37122. 18p

DEALERSHIP LOG HOMES. Your complete log homes manufacturing company has all of America's finest lines, starting at \$9,199. Great earning potential, will not interfere with present employment. Investment 100% secured by model home. Call Mr. Lamont, toll free 1-800-321-5647. The Original Old-Timer Log Homes & Supply, Rt. 6 Box 346 Logue Rd, Mt. Juliet, TN 37122. 11p

Freedom of Choice Checking

Olney Savings offers a variety of checking accounts for a variety of people. And you can have confidence knowing you're doing business with a financial institution that's over 4 billion dollars strong and growing. So check with us. We'll make it worth your while.

Free Checking • Free Checking with Interest • Free Check Club with Interest • Free Market Rate Checking • Free Market Rate Check Club • Free 55+ Checking • Free VIP Checking • Commercial Checking



HASKELL: 518 South Second, 817-864-3179

Member FSLIC, which insures your investment for up to \$100,000. Equal Opportunity Lender.



