

1/1/91
Baze Book Binding
514 W 7th St
Amarillo TX 79101

THE HASKELL FREE PRESS

35¢

VOL. 105--NO. 1

HASKELL, TEXAS 79521, January 3, 1991

8 PAGES



BY WENDELL FAUGHT

I've never seen a poll of America's most disliked foods, but I would presume that broccoli and cauliflower would be somewhere near the top (bottom).

Why, then is it that they so often are served together?

-o-

A sign on a billboard in Fort Worth advertising Roto Rooter: "We're toilet trained."

-o-

Was it really worth \$33,000?

That is Haskell's pro-rated share of the cost of the \$2.5 billion federal census.

-o-

Americans can be forgiven for not knowing if we are ready for war in the Middle East. There seem to be different opinions among the military and the politicians.

As for me, I'm waiting for the return of Vice President Dan Quale, now visiting with the troops in Saudi Arabia.

It was he who said a couple of months ago that "We are ready for any unforeseen event that may or may not occur."

-o-

Texas Monthly has given its "Bum Steer" award for 1990 to Clayton Williams for forgetting to buy the one thing with his \$10 million he needed to assure victory--a muzzle.

-o-

I'm all for baseball, and I pull for the Texas Rangers.

But asking the citizens of Arlington to foot the bill on a multi-million stadium is going a bit too far.

Why should the public subsidize a company which pays million-dollar salaries to its employees?

If Arlington businessmen think the Rangers are so good for their community, let 'em build a stadium.

-o-

Talk about false advertising. How about some curbs on food manufacturers' claims of calories per serving in their products?

That pint of yogurt which announces in big type "Only 95 calories" sounds pretty innocent until you read further.

There may be 95 calories per serving, all right, but read further and you'll learn there are 5 1/3 servings per pint.

-o-

There are 3.5 million Catholics, 2.6 million Southern Baptists and only 800,000 United Methodists in Texas, but nearly half of Texas' seats in the U.S. House of Representatives are held by United Methodists. Twelve of the state's 27-member delegation are United Methodists.

There are four Roman Catholics, three Baptists, three Presbyterians, two Episcopalians, one Christian Scientist, one Lutheran (Charles Stenholm) and one Jew.

But 10 of the 19 Democrats and two of the eight Republicans in the House from Texas are United Methodists.

Among all 535 members of the 102nd Congress, the largest faith group is the Catholic church with 142 members. Then come United Methodists (73), Baptists (59), Episcopalians (59), Presbyterians (51), Jews (41), Lutherans (22), Mormons (13), United Church of Christ (12) and Unitarians (10). Thirty others are listed as "Protestant", 18 belong to "other" denominations and five report no religious affiliation.

-o-

South Korea, in whose defense 50,000 Americans died in the early 50s, is not very gracious.

Farmers there get real angry over imports from this country. A gang beat up a man who was trying to show butchers and hotel workers how to prepare U.S. beef.

Now a big agricultural cooperative has issued a 56-page comic book to schools in which a character says, "Teacher, from now on, I will not eat pizza, hamburgers and imported chocolates."

That's pretty nervey of a country which exports billions in textiles, electronics and automobiles to merica.

-o-

Greyhounds may have the best eyesight of any breed of dog.



\$2,000 winner

D'Anne Melton was winner of the \$2,000 prize at the Dec. 22 drawing in Haskell. Her ticket came from Modern Way.



\$1,000 winner

Roy Medford won \$1,000 in the Christmas drawing in Haskell Dec. 22. His ticket came from The Drug Store.



\$500 winner

Donna Saffel of Rule was winner of \$500 at the Dec. 22 Christmas drawing in Haskell. Her ticket was from M System.



\$500 winner

Jack Daniels won \$500 at the Christmas drawing in Haskell Dec. 22. His ticket was from Sears.

Livestock group schedules annual bean, chili feed

Make plans now to go to the Haskell County Junior Livestock Association's annual bean, chili and combread supper.

The supper will be Tuesday, Jan. 15, in the Haskell High School cafeteria. Serving will be from 5 to 8 p.m.

Tickets will be on sale soon and may be purchased from any livestock association member, from any 4-H livestock feeder or FFA member in Haskell County, or from the County Extension office

at 101 S. Ave. D. in Haskell. Tickets also will be available at the door.

Tickets for the all-you-can-eat meal are \$4 for adults and children 12 and older. Children, age 6-11, will pay \$2 at the door. There will be no charge for children age 5 and under. All takeouts will be \$4 regardless of age.

Proceeds from the supper will be used to help finance the Haskell County Junior Livestock Show which will be held Jan. 25-26.

College students register Tuesday

Registration for spring semester classes at the Haskell extension center of Western Texas College will be Tuesday, Jan. 8, from 6:30 to 7:30 p.m. in the Haskell High School library. Classes will begin Jan. 14.

Courses on the schedule are English 232 (English literature), Government 236 (International Relations), History 132 (U.S. History after 1865), and History 233 (Texas History).

Visa or MasterCard may be used to pay fees. Textbooks will be sold at registration.

Information about the extension center can be obtained by contacting Bill Blakley, coordinator, at 864-2949, or the office of Mike Thornton, director of Extension Services, at 915-573-8511 in Snyder.

Registration for day and evening classes on the WTC Snyder campus will be Jan. 10-11.

Indians, Maidens to meet Hamlin

Haskell basketball teams resume the district 7-2A title chase Friday night when they travel to Hamlin.

The Indians and Maidens were scheduled to play Wylie Tuesday night of this week in non-district games.

Business group meets tonight

Members of the Haskell Business Association will meet at 7 o'clock tonight at the Haskell National Bank Community Room.

All members are invited to the pot-luck meeting.

Christmas trees

The City of Haskell will dispose of all Christmas trees brought to a site across from the softball park in the southeast part of town, east of the City Park.

Lodge to meet Sunday afternoon

Members of the Sons of Hermann Lodge 241 will have their regular meeting at 3:30 p.m. Sunday. A pot luck supper will follow the meeting.

Members and guests are invited to attend.

Farm payments due for grain

Approximately \$1.743 billion in deficiency and 0/92 payments will be made to eligible producers of the 1990 wheat, barley and oats crops.

Barley producers will receive about \$35 million and oats producers about \$8 million.

Payments will be in cash through Agricultural Stabilization and Conservation Service county offices.

Deficiency payments are made under the 1990 wheat, barley and oats programs when the national weighted average market prices received by producers during the first five months of the marketing year (June through October) are below established "target" price levels.

Deficiency payment rates are based upon the difference between the target price for the commodity and the higher of the five-month average market price or the basic loan rate.

Producers who enrolled in the wheat, barley and oats 0/92 programs were guaranteed a

minimum payment rate of 90 cents per bushel for wheat and 26 cents for barley. Oats producers did not receive a guaranteed payment rate. Eligible producers will receive this guaranteed rate less any advance in 0/92 payments they have already received.

-Goodfellows-

Haskell firemen distributed 50 baskets of food and toys for the Goodfellows Dec. 24 to needy families.

Goodfellows is a project of the Haskell Lions Club.

Community Choir	50.00
Previous total	840.00
Total	890.00



Huge crowd

Freezing temperatures failed to hold down the crowd for the Dec. 22 Christmas drawings in Haskell. Haskell merchants gave \$4,000 in merchandise certificates to the four lucky winners.

--Obituaries--

Hassie Couch

Hassie Davis Couch died Dec. 26 at Haskell Memorial Hospital. She was 91.

Funeral services were Friday afternoon (Dec. 28) at the First Baptist Church with Dr. Troy Culpepper and the Rev. Jim Turner officiating. Burial was in Willow Cemetery, directed by Holden-McCauley Funeral Home.

Pallbearers were Dan Griffith, Elbert Johnson, W. R. Hager Jr., Adell Thomas, Don Nanny and Felton Everett.

A retired school teacher and longtime resident of Haskell, Mrs. Couch was born Jan. 23, 1899, in Robertson, Texas. She was an active member of the First Baptist Church. She also was a member of the Magazine Club and the Garden Club and was an honorary member of Beta Chi chapter of Delta Kappa Gamma. She was the widow of the late R. C. Couch Sr., who died Sept. 6, 1969.

Survivors include two stepdaughters, Mary Ogilvie and Sue Baxter, both of Dallas; a stepdaughter-in-law, Jerrene Couch of Haskell; and a niece, Jane Weidenbacher of South Carolina.

Johnnie Carroll

Johnnie Worrell Carroll died Friday, Dec. 21, at Haskell Memorial Hospital. She was 79.

Funeral services were Dec. 23 at the Church of Christ with Dale Huff officiating. Burial, under direction of Holden-McCauley Funeral Home, was in Willow Cemetery.

Pallbearers were Gene Rose, Max McMeans, Albert Roberts, Steve Carroll, Phillip Parker and Dale Carroll.

Mrs. Carroll was born Jan. 12, 1911, in Staff, Texas. She was a longtime resident of Haskell County. She was a sales clerk for 30 years at Wheatley Men's Store and C&B.

She married Leonard (Pete) Carroll in Rule on Sept. 23, 1967. He survives her.

Other survivors include three

daughters, Geraldine Worrell Burke of Abilene, Colita Faye Worrell Whitfield and husband Don of San Angelo, and Barbara Nell Worrell Roberts and husband Bobby Rae of Haskell; a son and daughter-in-law, Joseph M. and Michele Worrell of Slidell, La.; a step-daughter, Doris W. Carroll Wells and husband Layne of Trent; a step-son, James H. Carroll and wife Mary of Houston; a step-son-in-law, J. R. Burkhalter of Throckmorton; a brother, L. Z. Castleberry of Beaumont; seven grandchildren; six step-grandchildren; 10 great-grandchildren; and seven step-great-grandchildren.

She was the widow of Joe Worrell and was also preceded in death by a son-in-law, James Burke; a step-daughter, Dessie Carroll Burkhalter; a brother, Roy Castleberry; and a sister, Tommie Castleberry Reeves.

C. V. Fowler

Funeral services were held Dec. 21 at Pismo Beach, Calif., for C. V. (Carl) Fowler.

He died Dec. 12 at Arroyo Grande, Calif., after a lengthy illness. He was 87 years old.

Mr. Fowler was born Aug. 19, 1903, in Bristol, Texas. He moved with his family to Haskell County in 1914, where he lived until 1934 and moved to California.

He was married Feb. 18, 1942. His wife, Grace, preceded him in death several years ago, as did two brothers and two sisters.

He is survived by a brother, W. E. (Buster) Fowler of Cisco; six sisters, Lucille Carrigan of Poteau, Okla., Sue Scrivner of Fort Worth, Dixie Asher of Haskell, Esther Bushell of Pflugerville, Joyce Kincaid of Orland, Calif., and Jean Cartwright of Abilene; and several nieces and nephews.



Christmas card pretty

Sunday's ice storm left this Christmas card scene on Gladstone Street in Rule.

We would like to express our gratitude for the prayers, food, flowers, and other kindness shown to us during the loss of our darling Mother and Grandmother. The loving care given to her by the doctors and staff at the Haskell Hospital, the comforting words spoken by Rev. Amburn and Rev. Cheatham, and the music and meal provided by the Assembly of God Church will always be remembered.

Thank you,
The Delia Mae Tidrow Family

Cruise in 1991 with a Toliver Tour Group

5 Night Cruise to Cancun/Cozumel - March 24\$826
7 Night Cruise to Alaska - July 27\$1,995

Early Booking by January 5.

Price includes air from DFW and port tax.

Call for more information 1-800-677-2413.

or 817-864-2502/2037

TRAVEL SERVICES
P. O. Box 673, Haskell, TX 79521

GET INTO SHAPE

Join us at ABC 1303 N. Ave. I
864-8933

Mon.-Tues.-Thurs. 6:00 p.m.-7:00 p.m.

\$1.50 a visit or \$15. a month

New Session Starts Jan. 7, 1991

Traditional &
Step Aerobics led
by Kendra Sammons
Toning Class
led by Julie Peel
Special Family Rates



Become certified by the Texas Department of Criminal Justice as a Correctional Officer and qualify for employment at all state prison units in Texas.

Correctional Officer Training

Day Class:
3 wks. 8 - 5
5 days per wk.

Begins Feb. 11, 1991
Ends Mar. 1, 1991
Apply Beginning Dec. 3, 1991
Apply By Jan. 11, 1991

Cost \$225 Total Tuition
(Discounted Housing & Meals Available)

If Certified and hired by the TDCJ, starting salary for Correctional Officers is \$1,519 per mo. Raises every 6 months for first 18 months plus benefits package.

CALL FOR INFORMATION

Western Texas College Continuing Education Division

6200 College Ave. Snyder, Texas 915-573-8511 Ext. 390, 391
Call Toll Free 1-800-658-2767 Ext. 390, 391

Shoe Sale

Now in Progress

Buy One Pair of Shoes
at regular Price and get
another pair for only.....

Paying the Price of the More
Expensive Pair
All Sales Cash and Final

The Slipper Shoppe

864-3051 East Side of Square Haskell



Winter time

This was a scene at Slim Sorrell's Park in Rule Sunday morning following the ice storm which hit the area.

Johnson Pharmacy

will be closed Saturday afternoons
beginning Jan. 5, 1991.

The new store hours will be:

8:00 to 5:30, Mon.-Fri.

8:00 to 1:00 p.m. Sat.

Closed Sunday

Johnson
PRESCRIPTION PHARMACY
418 N. 1st, Haskell • 864-3331, Nights 864-3439

January Clearance

Sale

30-50-70% off

Fashions for the
entire family

Cash sales only • No layaways • No Charges

Family Boutique

Knox City, Texas

January Clearance Sale

Now in Progress

1/2 Price

Coats

A Great Selection

Faux Fur - Wool Blends - Liquid Leather
Short - Full Length - Finger Tip

Designers Coordinates

100% Poly

Beautiful Colors - Limited Selection

Sportswear Separates

Suede Cloth & Liquid Leather
A Great Selection

Career Girl Coordinates

Dressy & Sport Casuals
Sizes 4-14

50 to 70% Off

Sportswear Separates

A Great Group—Odd Styles & Sizes

70% Off & Less

Dresses

A Great Selection

Fabrics that Know No Season
Sizes for All

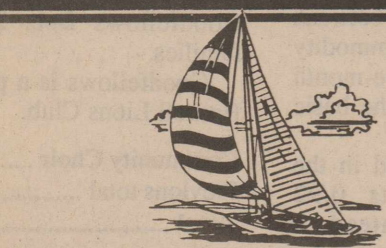
1/3 & 1/2 Off

Accessory Specials

Hose - Bags - Jewelry

THE Personality
SHOPPE All Sales Cash
& Final

"Smart Wear for Women"



The Sale is on at
Lane-Felker

Separates • 1/4 to 1/2 off

Dresses • 1/4 to 1/2 off

Suits • 1/4 to 1/2 off

Party Separates & Dresses
1/4 to 1/2 off

Coats

(1 Group) • 1/4 to 1/2 off

Lane-Felker

"WEST TEXAS' FASHION CENTER"

Haskell, Texas

Phone 864-2966



JAMES CASTAGNA & JEFF GREGG
Certified Public Accountants
 Computerized Tax Returns and Bookkeeping
 Auditing, Financial Statements and Estate Work

SEYMOUR OFFICE HASKELL OFFICE
 115 W. McLain Street 316 1/2 North First
 817-888-5539 817-864-3931
 8-6 M-F; 8-5 Sat. 10-4 Thursday
 (After Hours by Appointment)

Haskell Eye Clinic
 Located at
Haskell Memorial Hospital
 For Appointments Phone
 817-864-2621

Complete Eye Exam
 Contact Lens, Full Optical Service
 Out-Patient Surgery at
 Haskell Hospital
 including
 Cataracts With Implant
 Laser Surgery
 Medicare & Medicaid Accepted

Thomas Labbe', O. D.
 Larry Abernathy, O. D.
 Russell Kuempel, M. D.

We're committed to you.

In this farming community, we're committed to offer the kind of services and personal attention you want and need. When you bank with us, you'll find that we're much more than just a financial institution.

FDIC

Post Office Box 10
 Phone (817) 997-2216
 Rule, Texas 79547

The Farmers NATIONAL BANK

Lisles celebrate Christmas

On Christmas Day, Mrs. Ola Mae Lisle of Rule and her family enjoyed a wonderful day at the Lions Club building. The weather was much better by Christmas Day, warming up from the Arctic blast.

Joe Harold Cloud gave the invocation for the dinner at noon. The serving tables were covered with green and red cloths and other Christmas decorations. The menu was turkey and dressing, vegetables, salads, lots of pies, cakes, candy and snacks for the nibblers.

Those present were: from Rule: Ola Mae Lisle, Emma Jean, Joe B. and Joe Harold Cloud; June White, Helen Pinkard, James and Jo Ruth Lisle; David, Kay, Tara, Ashley and Morgan Lisle; from Lubbock: Jennye Ruth, Brian, Bradley Atkins; Caron, Don, Scott and Angela Thornbury; from Abilene: Alice and Scott White; Kimberly, Carlos, Samantha and Eron Rodriguez; from Denton: Johnny Westbrook; from Stamford: Stephen, Virginia, Stephanie, Carrie and Jennifer Haterius; Mike, Thelia, Jana, Melissa and Jeffrey Lisle; from Haskell: Jimmy, Rhonda and Justin Lisle; from Dallas: Loria and Erick Campbell.

The afternoon was spent by visiting, reading Christmas cards from friends and family who could not be present, and exchange of gifts. The night meal was served at 6 p.m.

HASKELL COUNTY GIN REPORT
 By: Max Stapleton
 County Extension Agent
 December 31, 1990

Haskell:
 Farmers Co-op Gin.....7565
 Haskell Co-op Gin11,217
 Rochester:
 Farmers Co-op Gin.....4909
 Rule:
 Rule Co-op Gin5627
 Denson Gin4800
 O'Brien:
 O'Brien Gin14,050
 Weinert:
 Paymaster Gin5952
 Weinert Gin6013
 Total:.....60,133

Congratulations to our
 Christmas Drawing
 Winners of
 Gift Certificates:
 Dale Huff
 Pattie Middleton

817-864-3891
 402 N. 1st • Haskell
 "Where Winners Shop"

--Social Security--

By M. Glyn Hammons
 District Manager

A recent Supreme Court decision has restricted the situations in which the Social Security Administration can release information without the written consent of the individual. There have always been restrictions on release of confidential information because of the Privacy Act and Federal Regulations on disclosure, but the court decision broadened the restrictions.

Under the new rules, the Social Security Administration will no longer be able to furnish Medicare numbers, entitlement dates or

similar information to private hospitals, medical suppliers, clinics or doctors' offices without written consent of the individual. The consent statement must be directed to the Social Security Administration, must specify what information is to be disclosed, must specify the individual or organization to receive the information, must show a timeframe during which the information is to be disclosed and must be presented to SSA within a reasonable time after it is signed, usually within 60 days.

These restrictions on releasing information also apply to private

sector landlords or private housing management companies, state legislators, and other private organizations or individuals even if they are trying to help someone.

Please feel free to call SSA if you need a sample of the required consent statement or if you have questions. The toll-free number is: 1-800-234-5772.



The windiest city in the US is Great Falls, Montana, where the average wind speed is 13.1 mph. Chicago, the notorious "windy city," actually ranks only 16th among the windiest cities in the US.

Thank you for reading The Haskell Free Press.

Breast Cancer Detection Unit Available to Area Women.

ACCORDING TO THE AMERICAN CANCER SOCIETY, ONE OUT OF TEN WOMEN WILL DEVELOP BREAST CANCER SOMETIME IN HER LIFE TIME. IT IS CURRENTLY ESTIMATED THAT OVER 37,000 WOMEN DIE EACH YEAR AS A RESULT OF BREAST CANCER. NINETY PERCENT OF BREAST CANCERS ARE DIAGNOSED BY WOMEN OR THEIR PHYSICIANS FINDING A LUMP IN THE BREAST. WOMEN WHO ARE DIAGNOSED WITH A LUMP LARGE ENOUGH TO FEEL HAVE A 50 PERCENT FIVE YEAR SURVIVAL RATE. A WOMAN WHO IS DIAGNOSED AS HAVING BREAST CANCER BY MAMMOGRAPHY, BEFORE A LUMP CAN BE FELT, HAS A 97% FIVE YEAR SURVIVAL RATE AND A 90% TEN YEAR SURVIVAL RATE. THE COST IS ONLY \$

A MAMMOGRAM CAN DETECT A CANCER THIS SMALL, • EVEN BEFORE IT CAN BE FELT.

Saturday, January 12th
 Haskell Memorial Hospital
 1 North Avenue N
 Haskell, Texas

Accredited By
 The American College of Radiology

Call 864-2621 for appointment

HASKELL SEARS NATIONAL HOME APPLIANCE SALE!

Hurry...price reduced thru January 18th only!

SUPER BUY
 SAVE \$50
 NOW \$499.99
 \$15 monthly*

(46 R60821)

KENMORE® 18-cubic foot refrigerator

- Adjustable, scratch-resistant DynaWhite shelves
- Door has 3 shelves plus butter storage
- Meat pan and twin crispers so food stays fresh, organized

SHOP AND COMPARE... YOU'LL FIND MORE REASONS THAN EVER TO SHOP AT SEARS!

- 0% FINANCING 'til April** on any SearsCharge purchase of \$200 or more. No billing, no payments, no finance charges 'til April 1991*
- SUPERIOR SERVICE** by a nationwide service fleet of over 14,000 trained technicians
- MONEY-SAVING MAINTENANCE AGREEMENTS** that guarantee service when you need it tomorrow—at the prices we offer today
- CONVENIENT DELIVERY ARRANGEMENTS**
- MORE CREDIT OPTIONS...** among them a SearsCharge PLUS credit plan for low monthly payments, Sears Rapid Credit for same-day credit approval plus the Discover Card
- THE WIDEST PRODUCT ASSORTMENT WE'VE EVER OFFERED** featuring the top names in appliances today: Kenmore, GE, Amana, Tappan, Speed Queen, Jenn-Air and more!
- And as always, "SATISFACTION GUARANTEED OR YOUR MONEY BACK"

TV'S low as \$179.99*
WASHERS low as \$299*
DISHWASHERS low as \$239*
FREEZERS low as \$223*
REFRIGERATORS low as \$324.99*

MICROWAVES low as \$84*
DRYERS low as \$249*
VACS low as \$54*
RANGES low as \$254.99*

LIMITED OFFER • SUPER BUY
 FOR OUR 1ST 30 CUSTOMERS ONLY!
 Cotton throws in patterns and solids
\$1788 each
 That's cut over \$7.00 from our Spring/Summer catalog

SEARS DISCOVER

SEARS MERCHANT STORE
 East Side of Square Haskell

BRAND CENTER
 APPLIANCES • ELECTRONICS

Appliances IN-STOCK for immediate delivery (items not stocked in store may be ordered for delivery)

817-864-2671

Stanes Anniversary Sale

January 3rd - January 12th

25% Off

Control Top Panty Hose
 Saddlefoot - Reinforced Toe - Thigh High

Silk Reflections Hose
 Panty Hose
 Knee High

Reg. \$3.50 to \$6.95
 Now \$2.66 to \$5.21

THE Personality SHOPPE
 "Smart Wear for Women"

--Weinert--

by Myrtle Phemister
As the day dawned on Jan. 1, 1991 we all were given a special gift, a New Year!

We could weep about the tragic things we experienced in 1990; rejoice about the events that brought us joy and happiness; but they are past, and how we use our time in this new year will measure the growth our character made from them.

As you write the resolutions that "tradition" urges you make, be sure to add one to take a quiet time for yourself, to read the Bible, study and pray more than you did in 1990, and you can be assured you will have a Happy New Year!

We saw a beautiful winter scene several days during the latter part of Dec. The ice and snow made for hazardous driving, walking and other outdoor activities but no one in Weinert suffered a mishap, to my knowledge.

We had many, many guests in town, but it was quiet because of the weather, and table games, home movies and ballgames were used to entertain them.

Clyde and Otie Mayfield, Brenda and Kenneth Sanders, Henry and Neta Rueffer, Joey and Janet Frazier, and Ted and Faye Jetton, all celebrated anniversaries during the holidays. Congratulations!

Those having birthdays included Kenneth Sanders, Francis Moeller, Mildred Sanders, Jordan Hacker, Shelia Harbers, Anthony Pena. Happy birthday!

This week we will sing the birthday song to Deanne Brueggeman, Angela Herricks, Henry Rueffer, and Betty Raynes.

Congratulations to Ed and Mary Murphy, Herschel and Myrtle Alexander, Joe and Caron Yates and Hal and Cindy Guess who will celebrate anniversaries.

Moneta Hix continues her stay in Hendricks Hospital as she continues her radiation treatments and physical therapy. Linda and Elmer Adams spent a lot of time at her bedside, and our prayers are for a complete recovery for her.

Faye Brian who is a shut-in needing our calls and prayers as she regains her health and strength.

Our congratulations are extended to Alton and Mildred Sanders as they welcome a new granddaughter, Abby Noel, 7 lbs. 13 oz., 20 inch angel, who came on Dec. 27 to bless the home of Jerry and Joyce Sanders of Merkel. To greet her at Hendricks were sister Amanda, and brother Jeremy, along with grandparents, uncles, etc.

Sympathy is extended to Edy Lou and Arch Mayfield at the sudden death of her grandfather in Perryton on Sat.

He was in his nineties, but was agile enough to join his family as they went caroling on Christmas Eve, and later enjoyed a pizza party with them.

The Mayfields along with Alexia and DeWayne Rimmer, with Adrienne and Elyse, of DeSoto, and Evelyn Ricketts of Dallas were in Weinert to celebrate a late Christmas with their parents, J. A. and Laverne Mayfield when they received the tragic news of his

death. They left immediately for Perryton; the memorial services will be on Tuesday at First Baptist Church in Miami, Tx.

Sympathy is extended to the Jenkins family, at the sudden death of Carl Jenkins of Seminole, an ex-student and resident of Weinert who died from a massive heart attack he suffered on Dec. 22.

Billy Alexander was in town for a visit with his mother, Pearl Alexander, and sister Erlinda and Tiffen Mayfield.

Margie Jordan of Hamilton was in to visit her mother, Francis Mahan, as was several grandchildren including Pam Marshal with Sarah of Vernon and Mr. and Mrs. John Jordan of Allen.

Willie and Ida Farrell have been to Abilene several times to sit with her father, Joe Garrett who is very ill in Humana hospital.

Chris Howeth, an Ag student at Tarleton State in Stephenville spent part of his Christmas break with his grandmother, Lucille Adams.

There were 50 in attendance at the Christmas celebration at the home of Crystella and Bob Raynes, and they were all "family". Two were absent, attending the Munday Mogul State play-off game.

Doris and Jerry Walker had all their family home on Christmas and had a special granddaughter's (their only one) birthday party as Jordan Hacker celebrated hers.

Jerry Don and wife of Stephenville was home for the first time in a long while.

Andrea and Julian Estrada, with Monica, Mollye and Ezequiel joined about 50 of her family for a Christmas dinner held in her mother's home in Haskell, which included Angie and Ruben Castillo and sons of Weinert.

Donnie and Shelia Harbers and children spent a week in Yoakum with their relatives.

Donnie pastors the First Baptist Church and because of the extremely cold weather, canceled Sunday night services.

Mildred Guess had her son, Bill Guess and LeAnn of San Antonio, for several days during the holidays and everyone of her grandchildren were home for Christmas.

Spending the holidays at the Phemister home were their sons, Wayne and Linda of McAllen, and David and Peggy of Ft. Worth and all of their children.

Ann's Cafe overflowed with cheer as all the Griffis family gathered for Christmas Eve and again for Christmas day at her place.

Ann failed to get a count but it was a "bunch".

The Guess family gathered at the Haskell Civic Center for their annual Christmas party with all the original children present except LaVera Hummel of Illinois.

The families of Mabel Derr, Otie Mayfield, LaVerne Mayfield,

Rita Hughes of Munday, H. L. Guess of Weinert, Rebus and Bob Guess of Haskell with four generations in a few of the families were present.

Mr. and Mrs. David Sikes, Andrew and Nathan spent the holidays in Oklahoma and Colorado, where they saw a "bit" of snow and the boys enjoyed some skiing. (They must have brought it home with them!)

Sandra and T Nichols enjoyed a cruise trip during the holidays but were saddened that T's grandfather had to spend the time in the

Lubbock hospital following a stroke, and was unable to accompany the family on the cruise which was a gift from he and his wife. Welcome home, Nichols.

Eddie and Myrnie Sanders spent the holidays in Wichita Falls with their children there.

Mr. and Mrs. Leonard Mahan with Donald were in Mineral Wells for Christmas with their son Len, and daughter Michelle Sadler.

Francis Mahan accompanied them.

Have a nice day!



25 years

Darold and Maxine Roberson were presented with a plaque last month in recognition of 25 years as a Western Auto dealer in Haskell. Making the presentation was Bill Rood, left, territorial sales manager for Western Auto. At right is Conrad Roewe of Haskell, former territorial sales manager. The Robersons opened the Haskell Western Auto in 1965.

--Letters to the Editor--

A man of integrity

Editor: I'd like for the people of Haskell to realize they have a rare thing in their midst: A man of integrity! His name is Wallace Cox, Jr., and his family has owned the local hardware store for many years.

I had the honor of meeting him two years ago when I heard he had land for sale in Rule. I walked in his store and told him I was interested in buying his land. He named a price and I told him I would think about it.

A couple of days later I made a counter offer and he accepted it. We shook hands in that old hardware store and at that point, I told him I would need a few days to arrange the financing. He said, "Look, Wes, you said you wanted the land. I'll give you 30 days to get the money."

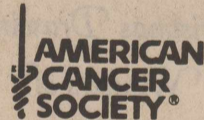
About a week later Wallace told me that someone had heard that I wanted the land and had offered him \$25 an acre more than I had. But, he told them that he'd made a deal with me and was going to give me

ample time to get the money.

Time went by. I didn't know that Wallace was remodeling his house and was counting on the income from the land to pay for it. Over a three or four month period, Wallace never acted upset toward me or pressured me in any way.

Some of you may wonder why this is important to me. My Dad always taught me that you judge a man by his word. When I go home to Rule, I visit with "hometown folks" and hear them complain about the way the world has changed. Wallace Cox, Jr., is what I wish the world was like. When he shakes your hand and gives you his word, he means it. It's a good feeling to know a man like this. I hope my children can remember that their Daddy was a man of integrity.

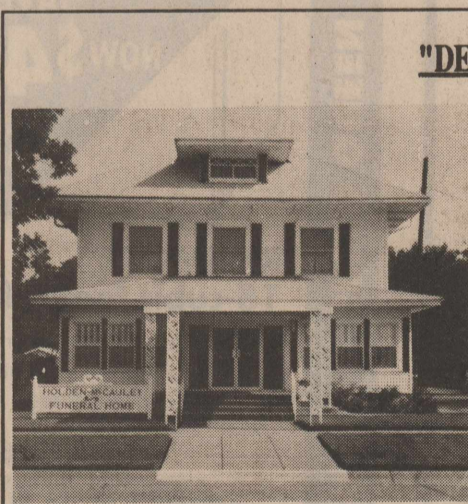
Wes Kitley
Abilene



"DECISIONS MADE EARLY"

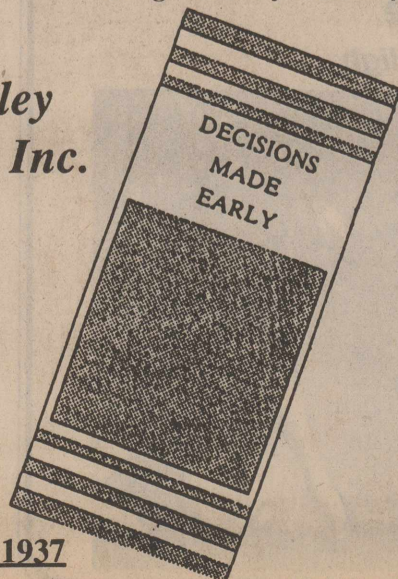
Many people plan for what might happen—fire, burglary, injury, and accidents. Now more and more people are planning for what will inevitably happen. It simply makes good sense to prepare for that which we can not avoid.

Pre-need funeral arranging allows one to control the type of service they would prefer, select a means of financing it, freeze the prices at today's price, and save loved ones the anguish of deciding these matters at a later date. Really it is the loving thing to do for your family.



Simply come by or call and we will come by to see you.

Holden - McCauley
Funeral Directors, Inc.
304 No. 2nd Street
Haskell, Tx. 79521
864-2151



Earning your trust since 1937

--Rule--

by Vicky Anderson

Old Man Winter arrived with a vengeance on schedule, Dec. 21, didn't he? As cold as it got here, it could have been worse, however, as the WCI (wind chill index) in Minot, N.D. was -83 degrees when AIC Kevin Saffel talked to his granny. At any rate, hope that everyone survived the extreme cold weather, which we usually don't get until after Christmas.

Sincerely hope that each of you had a wonderful Christmas.

It was good to see Retith Keahey at services on Sunday, the 23rd. We hope that your treatments become easier, Retith, and stop making you ill. Our prayers are with you through this ordeal.

Pauline Ross had an early Christmas dinner at her home on Dec. 22 with the following relatives in attendance: Glenn and Joyce Bailiff of Center Point; Rebecca Bailiff of San Antonio, Benny and Kathy Bailiff and three children of Midland, Marvel and Linda Bailiff and three children of San Antonio, Tanya Miller and two children of Rule, Ernie and Helen Lancaster, Burleson; Michael Lancaster, Burleson; Perry and Lisa Burnett and two children of Alvarado; Brandi Smythe and son of Ft. Worth, Carlos and Kimberly Rodriguez and two children of Abilene; Joel and Pam Bevel and four children of Rochester; Johnny Ross and son, Kevin, Burleson; and Jeff Cleary, Ft. Worth, and Jay and Kenny Strickland, Rochester.

Forgot to mention in last week's news that the children were quite impressive with their singing of "Tannebaum" in German at the Rule Elementary School's Christmas program on Dec. 19.

On Christmas Day, the Andersons had dinner with a daughter and her family. Later, they visited another daughter. Late that afternoon, Mrs. Anderson went to Hamlin where she visited long-time friend, Lucille Connally. The night was spent with a cousin, Marjory Johnson of Mt. Pleasant, in the home of Mrs. Johnson's sister. The next morning she had coffee and strudel with Trica Mueller, who lives around the corner, also, with Trica's mother, Mildred Smith of Stamford and her sister, Martha Green of Amarillo.

During the Christmas holidays, it was good to see Donna and Steve Saffel and children, Stephen and

Evie Michelle of also. Too, to renew acquaintances with Donna's parents, Barb and Smitty Smith and to meet her grandparents, Alfred and Ellon Gadberry, all of Ft. Phantom lake.

Valetta Mullins of Hamlin took a plane back to San Antonio on Christmas afternoon for a check-up following her recent eye surgery at Wilford Hall on Lackland Air Base. Good luck, and here's hoping that she will get a good report.

Your correspondent "popped" in on the Lisle gathering at the Lions Club in Rule on Christmas Day. There should be a more detailed report of that elsewhere in the newspaper or perhaps it will be in next week's paper.

Best wishes are sent to Audrey Westmoreland, who is in Lubbock at this time taking therapy.

Wes and Linda Kitley and sons, Jonathan and Christopher; also, Danny and Nikki Kitley and son, Luke, from Abilene all visited relatives in Rule over the Christmas holidays.

Spending part of their Christmas holiday with their grandparents, Mr. and Mrs. Melvin Sharp were Shelley, Thad and Danielle Sharp of Snyder, and Chance McClure of Roby. Coming Christmas Day to the Melvin Sharps were Mr. and Mrs. Gary Sharp, Thad, Danielle and Shelley of Snyder, Mr. and Mrs. Jeff McClure and Chance of Roby, also Mr. and Mrs. Randy Sharp and Breanne of Abilene.

Get well wishes are extended to Lou Dell Casey, who is a patient in Stamford Memorial Hospital.

"It takes a good person to give sound advice tactfully, but it takes a great person to accept it graciously." (Rule Reminder, Dec. 23, 1990).

-HOSPITAL-

Medical Patients
Ruby Boggs, Haskell
Felix Arguijo, Haskell
Mabel Witt, Haskell
Sylvia Roberts, Haskell
Guadalupe Nerio, Rochester
Lila Woodson, Haskell
Miguel Yzagurre, Munday
Erma Liles, Weinert

Dismissals
Dorothy Bower, Ruric Wilson,
Flossie Rogers

THE HASKELL FREE PRESS

Established January 1, 1886
PUBLISHED EVERY THURSDAY
401 S. First St
P. O. DRAWER 1058 HASKELL, TEXAS 79521

Don Comedy.....Publisher
Wendell Faught.....Editor
Lisa Shaw.....Business Manager
Alice Ballard.....Production

Second Class Postage Paid Haskell, Texas 79521
(USPS 237-040)


SUBSCRIPTION RATES:

In Haskell and adjoining counties, one year, \$12.00; six months, \$10.00; two years, \$23.00; Elsewhere in Texas, one year, \$15.00; six months, \$13.00; two years, \$29.00; outside Texas, one year, \$17.50; six months, \$15.50, two years, \$34.00.

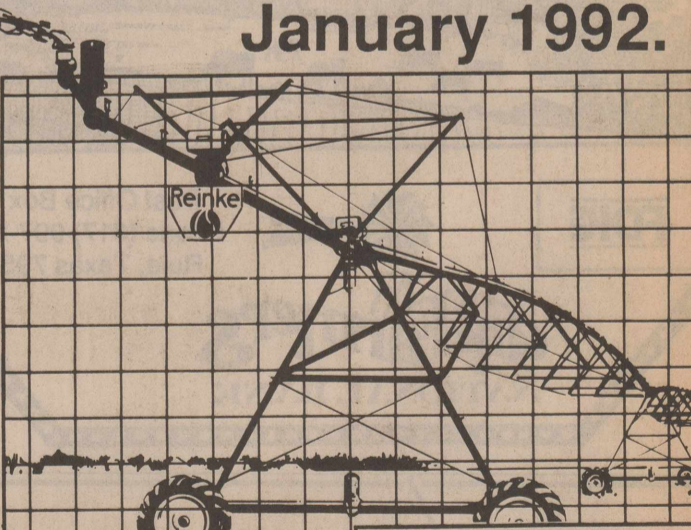
NOTICE TO PUBLIC-Any erroneous reflection upon the character, reputation or standing of any firm, individual or corporation will be gladly corrected upon being called to the attention of the publisher.

POSTMASTER:Send address changes to The Haskell Free Press, P.O. Box 1058, Haskell, TX. 79521-1058.





LEASE NOW! Don't Pay Until January 1992.



REINKE IS FIRST IN LOW RATES

With Reinke's No Down Payment 6-Year Leasing Plan

You can put a dependable Reinke Irrigation System to work for your operation now, get a low implicit rate on your lease and still avoid tying up this year's working capital.


You make no down payment and you pay no security deposit. All you have to do is take delivery of any Reinke Irrigation System and defer your first lease payment until January 1992 or choose the month that best fits your cash flow.

This is a Reinke guaranteed purchase option lease, so don't wait. Come in and let us show you how you can start irrigating. This offer is only good for a limited time, so act now.

Western

Pipe & Pivot Inc.

Rochester, Texas
Phone 743-3559
or 743-3215



© 1990, Reinke Mfg. Co., Inc. 800-70163

M SYSTEM

Your Friendly

SUPERMARKET

Haskell, Texas
 Open 7 days a week
 Monday-Saturday 7:30 a.m. til 8 p.m.
 Sundays 8 a.m. til 7 p.m.

DOUBLE COUPONS 7 DAYS A WEEK!

We will redeem your manufacturers' cents-off coupons for double their face value up to 50¢ when the product is purchased. We will double only one coupon per item. All others redeemed at face value. Limit one coupon per item. Coupon not to exceed value of item. This policy does not include "Free" coupons, cigarette and tobacco, or refund coupons. Offer good for a limited time only. Super value offer from M-System in Haskell.

We Gladly Accept Food Stamps

Prices Good
 Jan. 2-Jan. 6



We reserve the right to limit quantities.

Food budgets make it big... with these values!

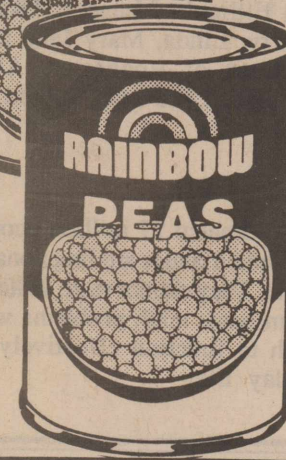


RAINBOW
GREEN BEANS
 15-oz. Cans

3 FOR
99¢



RAINBOW
CORN or PEAS
 16-oz. Cans



2 FOR
79¢



Laundry Detergent, 98-oz. **\$7.59**
Cheer

Auto Drip, Perk, Reg. or Fine **\$2.39**
Folger's...13-oz.

Auto Dishwash Detergent **\$2.39**
Cascade...50-oz.

Dish Diquid Regular or Mountain **\$1.59**
Dawn...22-oz.

175-ct. Assorted Facial Tissues **99¢**
Puffs

14-oz. Can Powdered Cleanser **49¢**
Comet



TV
 Pure
Sugar
 5-Lb. Bag
\$1.69

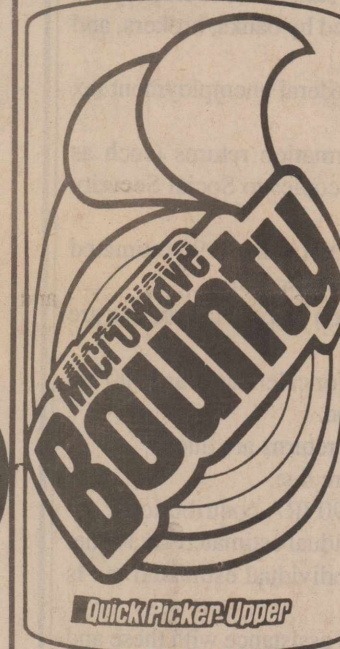


TV
Salad Dressing
 32-oz. Jar
99¢



Coke & 7-up
 2 liter **\$1.09**
 6 pk **\$1.59**

Charmin Bath Tissue
 Yellow/White/Blue
 4 Roll Pack **\$1.19**

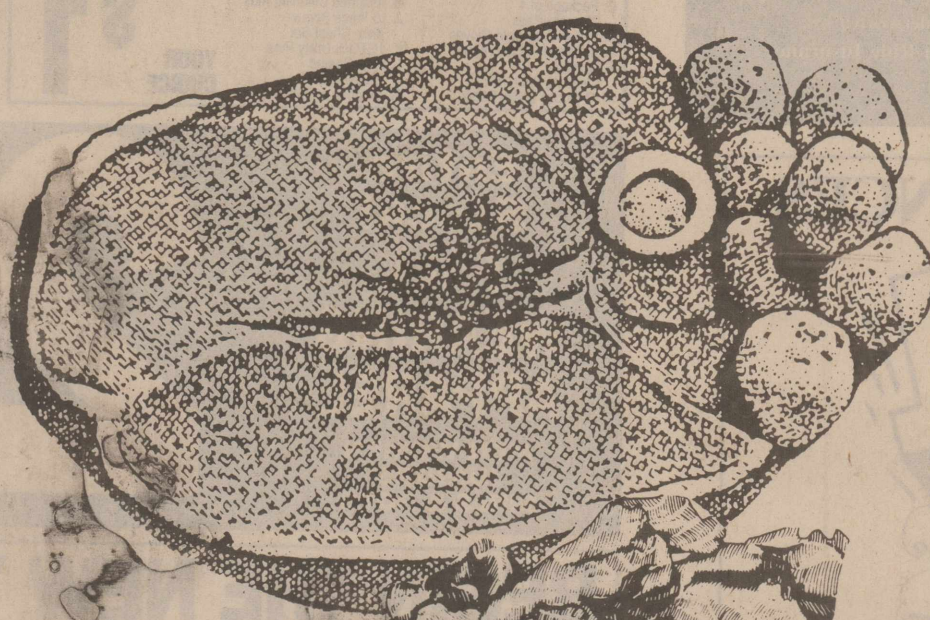


Bounty Paper Towels
 Asst., Jumbo Roll
79¢

TRAY-PAK DRUMSTICKS AND THIGHS FRYER PARTS

49¢ Pound

- BONELESS ROAST Sirloin Tip...Pound **\$2.59**
- BONELESS STEAK Sirloin Tip...Pound **\$2.79**
- BONELESS BEEF Rump Roast...Pound **\$2.19**
- BONELESS ROAST Pikes Peak...Pound **\$2.09**
- BONELESS, TENDER Cube Steaks...Pound **\$2.99**
- SOUTHFRESH NUGGETS CATFISH...Pound **\$1.89**
- WILSON 12-oz. Package Sliced Bacon... **\$1.29**
- WILSON 12-oz. Package Meat Franks... **89¢**



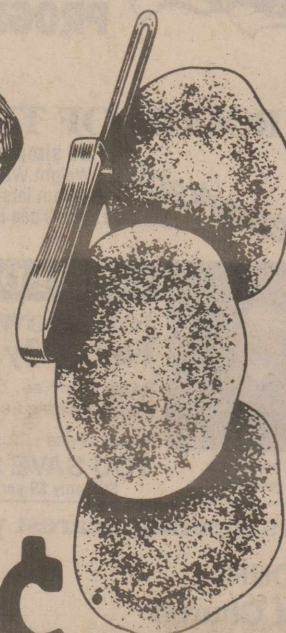
Market Specials for '91!

ROUND STEAK
 Bone In **\$1.79**
 Lb.



Health & Beauty Aids!
 SINUS FORMULA, 32-ct. Pkg. **\$4.49**
Alka-Seltzer Plus
 ALOE & LANOLIN LOTION, 8-oz. Bottle **\$1.99**
Jergen's
 Roll-On Assorted Deodorants, 1.5-oz. **\$1.69**
Lady's Choice
 Black or Blue Ink, Pack of 3 **\$1.69**
Erasermate II **99¢**

California Iceberg
LETTUCE
2.99¢
 For



Farm-Fresh Produce!
POTATOES
 COLORADO RUSSET **\$1.69**
 10-lb. Bag.....
 CALIFORNIA NAVEL Oranges... 2 Lbs. For **99¢**
 RUBY RED Grapefruit... 4 For **99¢**
 CALIFORNIA Tangerines... 2 Lbs. For **99¢**
 FRESH, GREEN Cabbage... 5 Lbs. For **99¢**
 10-oz. Package Fresh SPINACH... Pkg. **89¢**

Couple to celebrate anniversary

Len and Florence Hilliard of Plano will celebrate their 40th wedding anniversary on Jan. 6.

They were married in San Francisco on Jan. 6, 1951. They have four children, Cheryl Murray of Bloomington, Minn., David of Plano, Joseph of Plano and Kelly of Dallas.

They have three grandchildren, Luke and Courtney of Bloomington and Robert Lennis of Plano.

Lennis is a former graduate of Paint Creek High School and lived in the Haskell area for many years. He is employed by DSC Communications Corp. of Plano as an instructor and just recently retired from Sperry Corporation of Minneapolis.

Florence is employed by the Dayton Hudson Corp. of

Minneapolis. The couple plan a seven-day vacation to Las Vegas, Nev., to celebrate the occasion.

Lennis is also an accredited member of International Callerlab as a square dance caller.

Around town

Christmas holiday visitors in the home of E. L. and Bernice Hilliard were Ronald, Edith, Jarred and Jason Hilliard of Odessa; Cory, Patricia, Karen, Laren and Marshall Shaw of Rice; Ken, Nichole and Chessa Hilliard of Lawton, Okla.; and Larry, Linda, Mary Jane and Ross Short of Rochester. Also Ellen Hilliard and Jack Ballard of Abilene.

An estimated 27 million people in the United States are functionally illiterate. They cannot read, write or perform basic math problems well enough to function effectively in everyday life.

Haskell School Menu

Jan. 7-11
BREAKFAST

Monday: Juice or fruit, cereal, buttered toast with jelly, milk.

Tuesday: Juice or fruit, sausage and pancakes on stick, milk.

Wednesday: Juice or fruit, scrambled eggs, toast, milk.

Thursday: Juice or fruit, biscuits with gravy, sausage, milk.

Friday: Juice or fruit, cereal, cinnamon toast, milk.

LUNCH

Elementary School
Monday: Pizza, cole slaw, buttered corn, juicy treats, milk, juice.

Tuesday: Tuna or pimento cheese sandwiches, french fries, pickle spears, pineapple tidbits, milk, juice.

Wednesday: Enchilada casserole, tossed salad, pinto beans, fruit cocktail, milk, juice.

Thursday: Chicken nuggets with gravy, creamed potatoes, green beans, buttered hot rolls, diced pears, milk, juice.

Friday: Hamburgers, tater tots, lettuce and tomatoes, pickles and onions, apple halves, milk, juice.

LUNCH

High School
Monday: Hamburgers or BBQ on bun, tater tots, salad bar, apple crisp.

Tuesday: Hamburgers or chicken nuggets with gravy, french fries, creamed potatoes, salad bar, buttered hot rolls, fruit cocktail.

Wednesday: Hamburgers or taco salad, french fries, refried beans, salad bar, grated cheese, sliced pears.

Thursday: Hamburgers or fish nuggets, french fries, ranch style beans, salad bar, juicy treats.

Friday: Cheeseburgers or BBQ weiners, curly Q's, potato salad, salad bar, buttered hot rolls, banana pudding.

Note: Milk and tea are offered daily.

Menus subject to change.

Rule School Menu

Jan. 3-11

Thursday (Jan. 3): Burrito with taco sauce, taco salad, seasoned corn, milk, cookie.

Friday: Hamburger, buttered buns, french fries with catsup, mustard and mayo, burger salad, milk, brownie.

Monday (Jan. 7): Chapula, corn, salad, milk, cake.

Tuesday: Tacos with cheese, taco sauce, pinto beans, lettuce and tomato salad, cornbread, milk, cookie.

Wednesday: Meat slices, sliced bread, vegetable soup, crackers, mayo and mustard, lettuce, milk, jello.

Thursday: Chicken nuggets with gravy, mashed potatoes, green beans, rolls, milk.

Friday: Hamburger pattie, burger salad, french fries with catsup, milk, mustard and mayo, cookie.

A Designated Driver Makes Sense!

More and more people are wisely asking one member of each party to be the designated driver who does *not* drink at the festivities to make sure everyone can get home safely. Now, the Miller Brewing Company, concerned about its customers, the National Marine Manufacturers Association, The Marine Retailers Association of America and the Foundation for Recreational Boating Safety and Education are asking boaters to do the same. They've asked individuals and businesses involved with boats and boaters to help spread the message that "Designated Drivers Make Sense" by prominently displaying a poster like the one pictured here. With your help, it can make a difference. To order copies of the poster, write Marketing Resources Group, 107 North Virginia Avenue, Winter Park, Florida 32789, or call 407-645-2611.

Dr. William J. Kemp

would like to announce his association with

Dr. Clifford H. Ray.

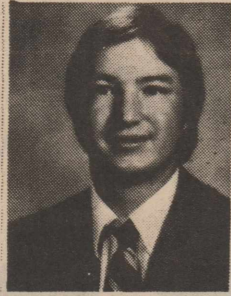
I invite all of my patients to come by and see me at my new location

601 S. 1st.

I am thrilled to be making this move and being associated with Dr. Ray. We will be able to give better emergency service and serve all our patients better. The phone number will continue to be 817-864-2404 for myself. I will be able to have more time in the office and both Dr. Ray and I look forward to serving you in the future.

TAX PLANNING

Written By
Gerald Rodgers CPA



1991 TAX DEADLINES

Save this schedule of important tax deadlines coming the first half of 1991.

• Before April 15 - Apply for social security numbers for any dependents two years or older who you'll be claiming on your 1990 tax return.

• January 15 - Due date for the fourth installment of 1990 estimated tax.

• January 31 - Employers must furnish W-2 statements to employees. 1099 information statements must be furnished by banks, brokers, and other payors.

• January 31 - Employers must file 1990 federal unemployment tax returns and pay any tax due.

• February 28 - Business must file information returns (such as 1099s) with IRS; employers must send W-2 copies to Social Security Administration.

• March 1 - Farmers or fishermen who did not make 1990 estimated tax payments must file tax returns and pay taxes in full.

• March 15 - 1990 calendar year corporation income tax returns are due.

• April 15 - Individual income tax returns for calendar year 1990 are due unless you file for an automatic extension.

• April 15 - 1990 partnership information returns are due.

• April 15 - 1990 annual gift tax returns are due.

• April 15 - Deadline for making your 1990 IRA contributions.

• April 15 - First installment of 1991 individual estimated tax is due.

• June 17 - Second installment of 1991 individual estimated tax is due.

Call our office for more information or for assistance with these and other required tax filings.

RODGERS & COMPANY

Certified Public Accountant
20 Southwest Third Street
Hamlin, Texas

Winners named

Home and yard lighting contest winners at Rule were:

1. Ronnie Andrews, 2. James Marquis, 3. David Guadalcazar.

MAJOR MEDICAL INSURANCE

Paying too much?
Get MY quote.

For costs, benefits, exclusions, limitations and renewal terms contact:

HESS HARTSFIELD

Haskell, TX
864-2665

VERY Competitive Rates.

Underwritten by
Golden Rule Insurance

Form 7756-C

"See me for all your family insurance needs."

BRIAN BURGESS, Agent
705 North Avenue E.
Haskell, Texas 79521
Off. 864-3250

STATE FARM INSURANCE
Like a good neighbor, State Farm is there.
State Farm Insurance Companies
Home Offices
Bloomington, Illinois

PERRYS \$1-\$2-\$3 DOLLAR DAYS SALE

33% OFF REGULAR PRICE SPECIAL ASST. MERCHANDISE

<p>A. Night-Light Bulbs, s/3</p> <p>B. Package of 4 Cleaning Pads</p> <p>C. Latex Household Gloves</p> <p>D. 40 Wooden Clothespins</p> <p>E. Nonstick Cleaning Pads, s/4</p> <p>F. 28-Ounce Spray Bottle</p>	<p>G. Washcloths, s/3</p> <p>H. Assorted Cleaning Aids</p> <p>J. 10-Piece Screw-Diver Chest Set</p> <p>K. 16-Pack Utility Pins</p> <p>L. Vinyl Coated Hangers, s/10</p> <p>M. Dustpan w/Rubber Edge</p>	<p>N. 4-Piece Rubber Scraper Set</p> <p>O. Opaque Measuring Cup</p> <p>P. Set of 2 Paring Knives</p> <p>Q. Set of 4 2-Cup Tumblers</p> <p>R. Set of 5 12-Oz. Tumblers</p>	<p>S. 100-Ct. Flexible Straws</p> <p>T. Oriental Bonbon Dish</p> <p>U. 4-Piece Measuring Cup Set</p> <p>V. Stainless Steel Grater, ass't styles</p> <p>W. Package of 3 Angled Toothbrushes</p>
--	---	---	--

YOUR CHOICE \$1

YOUR CHOICE \$1

Entire Stock! FALL WEARING APPAREL 25% OFF REGULAR RETAIL PRICE

MEN-WOMEN JUNIORS GIRLS & BOYS

BEGIN THE NEW YEAR AND SAVE!

<p>A. Hourglass Vase; Optic, or floral designs.</p> <p>B. Decorative Butterfly</p> <p>C. 28-Pocket Flip Photo Album</p> <p>D. 10-Count Warmer Candles</p> <p>E. 10-Piece Measuring Set</p>	<p>A. Set of 3 Chrome Plated Steel Add-A-Hangers</p> <p>B. Assorted Wooden Hanger Sets; your choice of styles</p>	<p>9 3/4-Inch Nonstick Frying Pan; assorted colors</p>	<p>A. 8-Inch Ceramic Cat; black or white</p> <p>B. Large Glass Ashtray</p>
--	---	--	--

EA. \$2

SET \$2

EA. \$3

EA. \$3

ENTIRE STOCK OF TOYS 25% OFF

Does not include bicycles, tricycles, wagons

ENTIRE STOCK FABRIC 25% OFF REGULAR RETAIL PRICE

WEIGHT WATCHERS® ANNOUNCES THE NEW PERSONAL CHOICE PROGRAM

THE WEIGHT LOSS BREAKTHROUGH OF THE DECADE!

Incredible! Choose the plan to fit the way you live. Imagine...now you get your choice of three food levels based on your lifestyle and weight loss goals. Best of all, you get to choose the level that's best for you.

Remarkable! So simple, it just makes sense. Weight Watchers new Personal Choice Program lets you choose the way that fits your life. You'll see it's the easiest program ever!

Sensational! You'll get all the structure you need. All the flexibility you want. No matter which food level you select you'll be able to enjoy the foods you love and still lose weight.

Unbelievable! Here's a weight loss plan that thinks for you. Got a party, a wedding, a night on the town? Go ahead, enjoy yourself. With our new Personal Choice® Program, you simply move to a different level that week and still keep heading toward your weight loss goal.

LIMITED TIME OFFER
Join Now For Only... **\$10**

Registration Fee\$19.00
Weekly Meeting Fee ...\$ 9.00
Regular Price\$28.00
YOU SAVE \$18.00
Still only \$9 per week!

Come to the Weight Watchers meeting nearest you.

SEYMOUR
First Baptist Church
420 North Washington
Every Monday at 5:30 pm

WEIGHT WATCHERS® Gives You Choices Call Toll Free **1-800-359-3131**

Offer ends February 2, 1991. Offer valid at participating locations (South Texas, West Texas, and Santa Barbara County, CA.) areas 37, 56, 107 only. Offer not valid with any other offer or special rate. Offer valid for new and renewing members only. Offer valid for Traditional Weight Watchers meetings only. Weight Watchers is a trademark of WEIGHT WATCHERS INTERNATIONAL, INC. ©WEIGHT WATCHERS INTERNATIONAL, INC. 1991. All rights reserved.

Shop the Haskell Free Press

CLASSIFIEDS

For Sale

COOK HEATING-Cooling-Plumbing-Ditching service. Electric sewer roofer. Sprinkler systems. For all your heating, cooling and plumbing needs, call 864-2226. 38tfc

PRESCRIPTIONS, Cosmetics, Gifts. Shop Johnson Pharmacy where the savings are real. 38tfc

THE FRAME SHED. Custom picture frames, custom mats, plain or non-glare glass. We do repair work. 409 S. First, use Hayloft entrance, Haskell, 864-2901. 51tfc

For Sale

TELL CITY, double pedestal, solid oak, dining table. Has 1, 17" leaf and extends to 69". Purchased 8 months ago in Abilene. Come see it at Frazier's Appliance and Furniture, Haskell. 46tfc

FOR SALE: V type ripperplow. 13 shank \$4830.00. 11 shank \$4475.00. 9 shank \$3925.00 JD style with dual gauge wheels. Less tires. Stamford Farm Supply. 915-773-3559. 3 blocks west of square. 50-1c

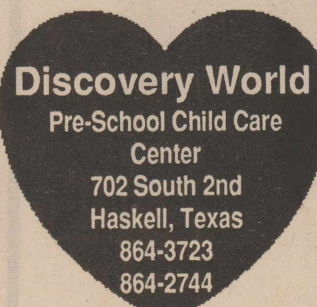
COMPLETE RV PARTS service and repair. Driveshaft repair, power takeoff. Sales and service. Long Horn Trailer and Body Co., Wichita Falls, TX, 1-800-772-0855 or 817-322-5259. 51tfc

SPINET-CONSOLE PIANO. Name brand. Assume payments. See locally. 1-800-343-6494. 1p

NANCY ROBINSON MASTER'S new book Spirits in the Sky is available at the Stamford American. \$39.95. Over 100 rare color photographs of restoration of WWII aircraft. 915-773-3621. 1-4c

Especially For You

All Fashion Jewelry
1/2 Price
Handbags \$2.00
Lee Burson
2 mi. NW Haskell
817-864-3316



Discovery World
Pre-School Child Care Center
702 South 2nd
Haskell, Texas
864-3723
864-2744

Now accepting applications for Pre-school and full-time Childcare.

Drug Store Cafe

In Rule Open
Monday-Friday 5 a.m. to 8 p.m.
Sat. and Sun. 5 a.m. to 1:30 p.m.
-Noon Buffet Daily-
WED. 5-8 P.M. SPECIAL Mexican food
THURS. 5-8 P.M. SPECIAL Catfish
FRI. 5-8 P.M. SPECIAL Hamburgers with french fries & red beans
997-2423

For Sale

FOR SALE: Late model 4020 JD tractor, LP, dual hydraulics; 14' shredder. Both in good condition. Call 997-2394. 1-2c

FOR SALE: Wheat seed. Mustang, Siouxland, Chisholm. Also a 8350 JD drill, used 1 season. Nora oats for sale. Call Tiffen Mayfield. 673-8364. 36tfc

Help Wanted

BERNARD E. GODLEY is now taking applications from persons with previous bookkeeping and tax preparation experience for employment in the Haskell office. Apply in person. 316 N. 1st, Haskell or 117 W. McLain in Seymour. 44tfc

UNDER NEW MANAGEMENT. Experienced serger and single needle operators. United Sewing, Hwy. 380 West. 1p

URGENTLY NEED DEPENDABLE PERSON to work without supervision for Texas oil co. in Haskell area. We train. Write G. O. Dickerson, Pres., SWEPSO, Box 961005, Ft. Worth, TX 76161. 1p

TEAKWOOD MANOR Nursing Home in Stamford has an opening for 3-11 LVN. Please contact Vickie Wilhelm, 915-773-3671. 1-4c

Garage Sales

GIGANTIC GARAGE SALE: 409 S. 1st. Antiques, clothes, dishes. 9 a.m. to 5 p.m. Sat., Jan. 5. Bettye McBroom and friends. 1c

Jobs Wanted

LOT SHREDDING. Septic tank pumping. Call Tony Williams, 864-3674 anytime. 43tfc

WATER WELL DRILLING. Lic. #1578. House wells, test holes, W. P. Hise. 817-864-3727 day or night. 12tfc

FAST, RELIABLE, Guaranteed, service to Haskell, Stamford and Hamlin and surrounding areas for General Electric, Whirlpool, Sears, Kenmore, Kitchenaid, Maytag and most other brands of refrigerators, freezers, dishwashers, washers and dryers and gas and electric ranges. Anderson Appliance Service, Haskell, Texas 817-864-3545. Factory authorized for G.E. and Hotpoint and RCA warranty repairs. 18tfc

HOUSE LEVELING. Floor bracing. Free estimates. References. Call 915-773-5197. Ask for David Lee. 27tfc

Call RODELA PLUMBING for all your Plumbing Service and Repairs, 864-2460 Office or 864-3629 Home. Roto Rooter Service. 4 N. Ave B. 31tfc

Miscellaneous

HOME DECORATORS. Painting-Insulation. Free estimates. Phone 743-3550. Bobby O'Neal. Rochester. 3tfc

Wanted

WANT TO RENT farm and/or pasture land. Jake Dusak, Jr. 864-2841. 52-2p

WANT TO BUY: Old upright Coke machine in good working condition. Call 743-3325 nights. 1c

For Rent

FOR RENT: 1 bedroom furnished duplex, \$200.00 a month. Call 864-8905. 28tfc

FOR RENT OR SALE: 2 bedroom. All carpeted and draperies. Extra nice neighborhood. Call 864-2491. Owner financing available. 45tfc

FOR RENT: 3 bedroom, 2 bath, double wide mobile home. Call 864-3509. 49tfc

FOR RENT: 2 or 3 bedroom house, fenced yard, extra nice neighborhood. Call 864-2491. 50-1p

FOR RENT: Furnished duplex. Call 864-3509. 1tfc

Real Estate

FOR SALE BY OWNER: 1006 N. Av F. Call 864-2258. 47tfc

FOR SALE: REDUCED: Great home for a family with children. 1 block from Elementary school. 3 bedroom, 2 bath, den, kitchen, living room, covered patio, carport, cellar and fenced-in backyard. Hot tub and sprinkler system. 606 S. 6th, 817-864-2718 or 817-864-3915. 27tfc

Apartments For Rent

2 bedroom, 1 bath, carpeted. 700 sq. ft.
Call
Haskell
National Bank
864-2631.

Public Notices

INVITATION TO BID
Bids will be received at the office of the Haskell County Appraisal District until 3:00 p.m., Monday, January 7, 1991 for the depository contract for funds of the Haskell County Appraisal District, for the period of January 10, 1991 through December 31, 1992. The bidding institution must be a banking corporation incorporated under the laws of this state or the United States or a savings and loan association in this state whose deposits are insured by the Federal Savings and Loan Insurance Corporation. To the extent that funds in the depository are not insured by the Federal Deposit Insurance Corporation or the Federal Savings and Loan Insurance Corporation, they shall be secured in the manner provided by law for the security of funds of counties. Sealed bids will be opened at the regular board of directors meeting January 10, 1991 at 7:30 a.m. The Appraisal District reserves the right to accept and/or reject any and all bids.
Haskell County
Appraisal District
By: Jamie Weaver
Deputy Appraiser

52-1c

In Weinert: Beautiful three bedroom, three bath brick home. Large living room with fireplace, formal dining room. Kitchen features custom cabinets, extra large pantry, dishwasher, disposal, etc. Separate utility and sewing room. Large two car garage, fenced in backyard. Well insulated, has thermopane windows throughout and ceiling fans in every room. Built in 1984 on a 100x350 foot lot. House has 3,152 square feet. The most house for the money in Texas! Call Wayne at 817-658-3527. Asking \$65,000. 51tfc

LANCO 864-2629 510 N. 1st FOR SALE

520 acre farm at Mattson. 145 acres pasture.

3 bedroom, 3 bath at 401 N. Av H. Remodeled older home with 4 car carport. Central heat and air.

393 acre farm 7 miles east of Haskell. 212 acres in cropland. 181 acres in pasture. FM road frontage.

FOR RENT STORAGE STALLS

LORAIN JOHNSON, BROKER

Jesse Seets House and business property on Throckmorton Hwy. A good buy.

Clean 2 bedroom, utility room and attached garage. 1100 N. Av L.

3 bedroom, 1 1/2 bath on 2 lots. 1260 sq. ft. Many extras, priced right. 1003 N. 3rd East.

FOR RENT: 2 bedroom apartment.

GREATLY REDUCED: 4 bedroom, 2 bath with large den and large living room, central heat and cool. Located on 17 acres. 2 1/2 miles N.E. of Rule or 8 miles N.W. of Haskell. A great buy.

COMMERCIAL BLDG. in downtown Haskell. 40' front. Carpet, central heat and cool. Building ready to use, \$14,000.00 or best offer.

NICE LAKE HOUSE at Veda's with boat house. A good buy.

FOR SALE: 3 bedroom on large corner lot, large airt., double garage with shop space, fenced yard. Reduced.

TWO WATERFRONT adjoining lots with lake house, large shop and carport. Lakeshore Sites. Reduced.

3 BEDROOM 2 bath, den, living room, patio, well, carport. 145' lot close to elementary school. Reduced.

VEDAS. 2 bedroom double garage, large covered patio. Private boat dock. A beautiful lot.

2 GOOD FARMS in Paini Creek Community. \$425 p.a. Make a reasonable offer.

EXCEPTIONAL Value: 4 bedroom, 2 bath, brick, set in fireplace, fenced yard, storm cellar, 3 ref. units.

FOR RENT OR FOR SALE: Bldg. on Hwy 380 East. Make an offer.

JOHNSON REAL ESTATE 864-2951

RETAIL STORE BUILDINGS FOR SALE

Two well constructed "Hell for Stout", (as my father use to say) stone and brick retail buildings.

66 ft. by 150 ft, built in 1905.

Appraised at \$42,780.00 for both buildings, for sale in late January 1991.

Both for \$20,000.00. (DOES NOT include antique fixtures).

See W. H. Cox, Jr.

Jones Cox & Co.

864-2818 • Haskell, Texas

SELLING HASKELL FOR OVER 25 YEARS

Hartsfield Realty

South Side of Square
864-2665
REALTOR

BUYING OR SELLING A HOME OR BUSINESS? We have skilled realtors to help you in every way from a market analysis to the closing. Over 25 years selling Haskell County.

We have listings for over ten three-bedroom, one four-bedroom and one five-bedroom home ready for occupancy. The following homes are just a few of what we have to offer. Please call us for details!

HASKELL MODERN UP-TO-DATE three bedroom, two bath, brick with family room on three lots. Has central heating and cooling, fireplace, patio and water well and located in northwest section of town. Priced under \$50,000.

PRETTY WITH PRETTY PRICE. Three bedroom, one bath brick with living, kitchen, dining and fenced yard. Has new central heating and cooling. Great location and all under \$30,000.

INVESTMENT PROPERTY. Furnished duplex with one-bedroom on each side, in excellent condition and great location.

RECENTLY REMODELED story and one-half brick three bedroom, one bath, central heat and air on small lot for easy care. Has carport and fenced back yard, large utility room and water well.

GREAT FIRST HOME FOR FAMILY. Loaded with extras. Three-bedroom, two full baths, living-dining and game room. Has water well, fenced yard and water well. Owner anxious and priced to sell. Under \$30,000.

COUNTRY LIVING WITH CITY CONVENIENCES just off Paint Creek Highway. Four bedrooms, three baths, central heating and cooling, brick, with built-in kitchen.

NEW LISTINGS

EASY LIVING in this carefree two-bedroom, two and one-half bath, two-car garage, brick with heavy shake roof, central heating and cooling, fireplace and sprinkler system. What more could you ask for?

Call us about our many other listings. We have homes and businesses available to meet your need and budget.

Hess Hartsfield, Broker 864-2004
Mary Rike 864-2332
Dorothy Hartsfield 864-2069
Esther Conn 658-3904
Pat Speer, GRI 864-2318

Let
Haskell Autoplex
sell your car or truck!
Call Barry Tidrow
817-864-3146
1987 Mercury Marquis, extra clean
1979 GMC pickup, 4x4

50% OFF

A \$100 Savings Bond Costs Just \$50.

It's easy to save with Bonds. You don't need a lot to start saving, and the money you invest will earn competitive interest rates for 30 years—guaranteed. Bonds bought today can even be tax free when used for college. For more information, call 1-800 US BONDS.



A public service of this publication.

Haskell Soil & Water Conservation District

Adoption of conservation tillage and cover crops has come slowly in cotton country but the concept may be eliminated as well as planting a second time in extreme cases.

One method following cotton harvest in fall is to sow the small grain in two rows in each furrow bottom. Tops of beds can be left open for cotton planting in spring. The small grain can be killed in March with Roundup. Herbicide can be worked into a 15-inch band on top of beds for control of weeds.

Conservation tillage isn't magic. The practice can fail, just like conventional tillage. One of the big advantages of conservation tillage come when you are planting early. Wheat residue affords good win protection, which may keep the soil warmer. Cotton tends to come up quicker when it's planted in a cover crop.

Conservation tillage is hard to look at sometimes, but when it's

blowing or raining and you know the cover out there is saving your cotton, you kind of forget your worries about looks.

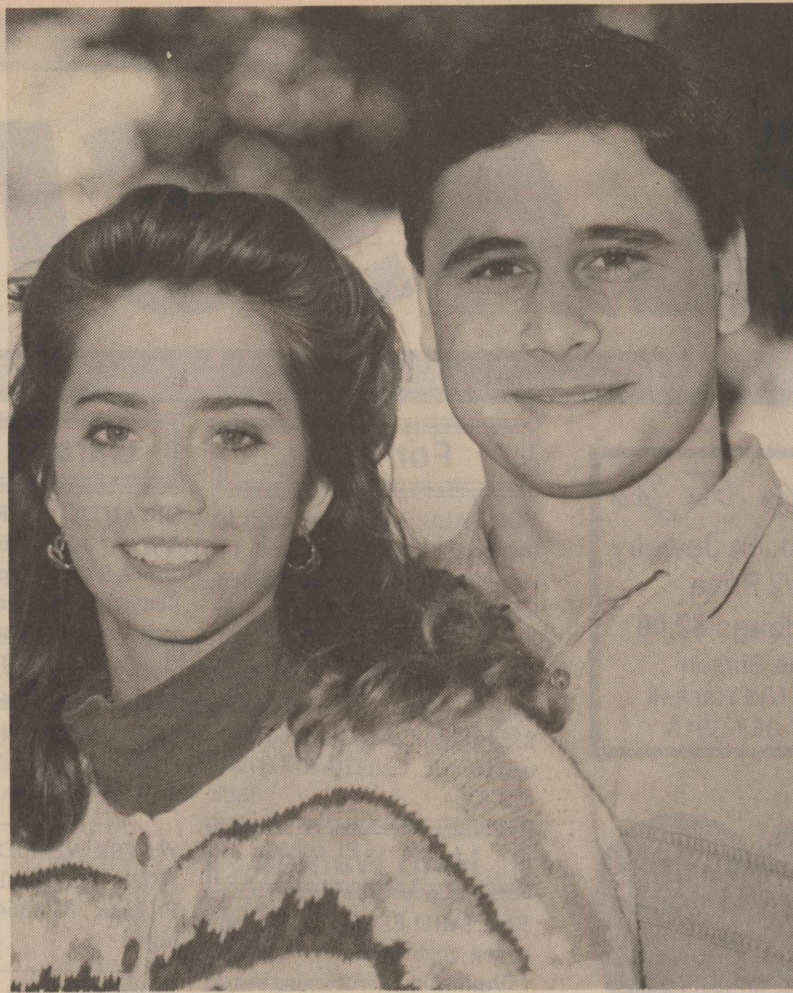
Rule names poster winners

Winners in the children's Christmas poster contest at Rule were:

K-1: 1. Kyle Falkner, 2. Janice Beltran, 3. Jennifer Landreth, honorable mention, Josh Navarette, Trey Kittley, Shane Melton.

2-3: 1. Stephen Kittley, 2. Tony Navarette, 3. Tiffany Ramirez, honorable mention, Stephanie Stephens, Angela Morton, Justin Coker.

4-5-6: 1. Michael Hunt, 2. Michael Hertel, 3. Matthew Ramirez, honorable mention, Sara Kittley, Justin Halliburton.



Trina Fry and Bo Watson

Fry, Watson engagement told

Mr. and Mrs. Keith Fry of Rochester announce the engagement of their daughter, Katrina Kay, to William Kenneth Bo Watson Jr., son of Mr. and Mrs. Kenny Watson of Haskell.

The bride-elect graduated from Knox City-O'Brien High School and is a junior math and history

education major at Angelo State University.

The prospective bridegroom graduated from Haskell High School and is a junior business finance major at Angelo State University.

A May 18 wedding is planned at the First United Methodist Church in Haskell.

-BIRTHS-

Basil and Lisa Murphy of Denton proudly announce the birth of their son, Michael Ross, born Dec. 3, at Denton Community Hospital. He weighed 8 pounds, 10 ounces.

Grandparents are Truman and Sharon Murphy and Mr. and Mrs. Harris of Denton. Great-grandparents are Marie Marr of Haskell and Dale and Margie Dunlap of Lovington, N.M.

Sixty percent of the prison population is illiterate and 85 percent of all juveniles who go before courts are marginally illiterate.

Johnson



Bobbie Johnson
Owner
Photographer

West Side of Square • Haskell



The next generation FARMER

It has never been easy for young people to start farming on their own. Today, just as in the past, young people are turning to their Land Bank Association for financing.

Dependable long-term financing — generation after generation.

That's the Land Bank way.

Federal Land Bank Association of Haskell



Dale Bullinger - Pres.
Telephone 864-2062

Announcing

the association of

Dr. William J. Kemp **Dr. Clifford H. Ray**
817-864-2404 817-864-3485

Beginning January 7, 1991, Dr. Kemp and I will be located in the same office at:

601 South 1st • Haskell

I am very pleased to welcome Dr. Kemp into my office. We both look forward to serving you. It is folks like you who make being in business a pleasure.

I invite you to come by and say Hello anytime.

Clifford H. Ray, D.D.S.

FOR SALE
1000 Shares
First National Bank
Stock
864-2258

Vernon Regional Junior College Spring Session Seymour Learning Center

CLASSES BEGIN: January 10, 1991
REGISTRATION JANUARY 10, SEYMOUR HIGH SCHOOL 6:30 P.M.
PSYCHOLOGY CLASS will begin after registration.

COUSE TITLE	CLASS TIME	DAY	COURSE & SECTION	SEM. HRS.	ROOM	INSTRUCTOR
MATHEMATICS - LECTURE						
STATISTICS*	6:30-9:30	T	X MAT 331.40	3	SHS	Hicks
PSYCHOLOGY						
General Psychology*	6:30-9:30	TH	X PSY 321.40	3	SHS	Staff
VOCATIONAL NURSING - Registration - On Vernon Campus - See Calendar for Times						
Mental Health and Mental Illness						
	11:00-1:00	TH	VN 102.40	1	SEY	Arnold
Nutrition*	11:00-3:00	TH	VN 207.40	2	SEY	Gilbert
Pharmacology II*	12:00-3:00	T	VN 306.40	3	SEY	Arnold
Medical and Surgical Nursing I*						
	8:00-12:00	M	VN 310.40	3	SEY	Arnold
Obstetrics	1:00-4:00	M	VN 311.40	3	SEY	Lewis
Clinical Practicum*	7:00-3:00	WF	VN 410.40	4	SEY	Arnold
LAB-Clinical Practicum*						
	7:00-11:00	TT	---		SEY	Arnold

*See Course Description For Prerequisite. All Seymour classes except Vocational Nursing have a prerequisite of passing scores on the TASP examination. If you have not taken the TASP, you will need to take the VRJC-PT before enrolling. See Testing Information Section for testing dates and times.

FOR FURTHER INFORMATION...CALL 817-552-6291 EXT. 230. IN SEYMOUR CALL BETH ARNOLD 888-5572. Vernon Regional Junior College is an Equal Opportunity Affirmative Action Institution. VRJC selects its students without regard to their race, color, sex, national origin, handicap, or age.

ACUTRIM®
APPETITE SUPPRESSANT

- 16 Hour Steady Control.
- Maximum Strength.
- Late Day Strength.
- 20's.

3.99
YOUR CHOICE

BATHROOM SCALE

7.99
YOUR CHOICE

- Easy-to-read dial.
- Assorted colors.

SWEET'N'LOW®
250 COUNT

Low Calorie sugar substitute

2.79
EACH

Slim-Fast®

- Bars, 10's
- Powder, 15 oz.

3.99
YOUR CHOICE

ULTRA Slim-Fast® **5.99**

BATTERY OPERATED MIXER **7.99**

- Perfect for mixing Slim-Fast®, salad dressing or cocktails.
- Uses 2 "AA" batteries, (not included).
- Convenient, compact size.

100 S. AVE. E **DOYLE HIGH'S THE DRUG STORE** 864-2515
Prices Good January 3rd - January 9th While Supplies Last

Gooch	Market Sliced	\$1.49
Bologna	lb.	
	Select Sliced	69¢
Beef Liver	lb.	
		\$1.89
Round Steak	lb.	
Parade	Light Spread	2.99¢
Oleo	lbs.	
Parade		59¢
Pizza	Each	
Maryland Club	13 oz. Can	\$1.49
Coffee		
Hunts	8 oz. Cans	4.89¢
Tomato Sauce		
		19¢
Green Cabbage	lb.	
		99¢
Dr. Pepper	2 Liter	
Chicken of the Sea	6 1/2 oz. Can	69¢
Tuna		
Texsun Grapefruit	46 oz. Can	\$1.19
Juice		
Vlasic Hamburger Chips	32 oz. Jar	\$1.39
Pickles		
POGUE GROCERY		
-Extra Parking Behind The Store. Home Owned and Operated- Thurs. Fri. Sat. 113 North Avenue E Phone 864-2015 Haskell, Texas Specials		