



Muleshoe Journal

Striving to be your source for local news

75¢

Volume 90, No. 35 www.muleshoejournal.com Muleshoe, Texas August 28, 2014

Muleshoe Football Is Ready For Season

2014 Football Preview

Nineteen years ago Coach David Wood accepted his first head coaching job with the Muleshoe Mules. He planned to stay a few years and move up the Texas high school coaching ladder and eventually have an opportunity to return to Canyon's Randall Raiders as head coach. "I came to Muleshoe planning to leave in

From the Stands

By Delton Wilhite

the beginning," said Coach Wood. "But plans changed as time went along. Thought I had found a coaching job but instead my family and I found a great place to live, raise a family and live."

During those 18 years

the Mules have amassed a record of 152 wins, 61 losses, a Texas State Championship and have made the playoffs 15 straight years. The Mules plan to carve another notch for Coach Wood in 2014 and they would like to make it a

big deep notch.

"We seemed to have picked up right where we left off last season. With 23 of 28 kids coming back from last year the learning curve has not been near as steep. We are not having to explain every

detail of every play so it has been a much easier during two-a-days."

Not only are many of the Mules returning from last year so is the coaching staff. Not one of the football coaches left after last season and are handling the same

responsibilities in 2014.

"We saw a lot of room for improvement during the scrimmages," continued to Wood. "We were pretty plain vanilla against Idalou and opened up a little more in Seminole. We probably will not show some things even Friday night against Levelland."

Mule fans would certainly agree with

Continued on A3



Photograph by Gabby Perez

Commissioners' Court Declines Sheriff's Request

By Larry Thornton
Editor

Bailey County's commissioners court turned down a request from Sheriff Richard Wills for the funds necessary to purchase a new video camera system during Thursday's regular meeting.

According to the sheriff, his deputies are required to use their existing cameras when making a traffic stop or interacting with the public as part of the department's racial profiling documentation.

"Anymore it's crucial that we have video cameras in our cars," the sheriff said.

However, the system with which he would like to replace the current system has more capabilities, and a hefty \$20,720 price tag.

Wills explained that the proposed system

would automatically download the in-car, and body camera, video footage to a server at the Bailey County Law Enforcement Center when a deputy's vehicle arrived at center.

After discussing the issues involved, Precinct 4 Commissioner Juan Chavez



moved to decline the sheriff's request, due to the already tight budget being considered by the court.

Even with the declined request, Wills said there was still a possibility of funding for the cameras, referring to a grant for which the county may qualify from the United States Department of Agriculture.

In other business Thursday, the court:

- Discussed the

Continued on A3

Seminole Wind

Back in 1992, John Anderson released his comeback country and western tune, "Seminole Wind." However, during Thursday's scrimmage with Muleshoe's Mules, the title of the song at least took on an entirely new twist during the above play.

Pictured above, it appears as if an unidentified Mule is the one having "wind problems. Of course, with the contorting going on by both players above, it just may be this particular "wind" is a verb rather than a noun, as the Seminole player twists the Mule to the ground.

BCEC Celebrates 75 Years

By Larry Thornton
Editor

The Bailey County Electric Cooperative kicked off Saturday's annual meeting with food and fun, celebrating the cooperative's 75th year.

Along with the catered meal and musical entertainment, the members and visitors in attendance encountered various venter booths sponsored by local businesses and prize drawings.

Regarding the business conducted at

the meeting, CPA Jack Moss of Bolinger, Segars, Gilbert & Moss reported that the cooperative was in strong financial standing with total assets of \$78,556,072.

The written report distributed to the membership lists the cooperative's plant is valued at \$47,536,596, with other assets and deferred debts totaling \$4,896,942.

Among its listed liabilities are materials and insurance interest, which with other

Continued on A3



Members and employees gather at the 75th annual BCEC meeting on Saturday.

Football Contest Begins This Week

By Rhea Gonzales

Are you ready for Muleshoe Mule Football! The 2014 football season is finally here and so is the Muleshoe Journal Football contest!

This is my fourth year to run the contest and I am looking forward to the camaraderie it brings to so many including myself.

This contest is free to play to anyone over the age of 12. Entries need to be at the Muleshoe Journal by noon on Friday. Sorry, there are no exceptions to

this rule.

There are lots of ways to enter the football contest. You can come by the office and drop off your entry (201 W. ave. C), Monday - Thursday 8:00 a.m. - 5:00 p.m. and Friday 8:00 a.m. - 12:00 p.m., you can send an e-mail to: adsales@muleshoejournal.com (Please indicate Football Contest Entry) with your picks for the winners and for the tie breaker game.

You can send a fax to 806-272-3567 or you can mail your

Continued on A3



MULESHOE STATE BANK

"Where a handshake still means something"

MULESHOE • 272-4561 • 101 W. American Blvd. • FARWELL • 481-9580 • 801 Ave. A



OPINION

Shutting The Pandora's Box Of Travis County

Editorial

To be honest, it's not hard to find a bit of the ridiculous coming out of Travis County, after all it hosts among other things the Texas State Legislature... and what is arguably the most liberal population in the Lone Star State.

But recent events involving Gov. Rick Perry and his indictment alleging abuse of power steps beyond ridiculous and lands smack in the middle of absurdity.

From what we gather from the related news stories it's the citizens of Travis County, and not the governor who should be ashamed by the events in Travis County, after

all they are the ones who have not followed up Dist. Attorney Rosemary Lehmburg's April 2013 DWI arrest with impeachment proceedings.

Even the suggestion that a sitting governor could be charged with "abuse of power" over his use or the threatened use of his power to veto or disapprove a bill either in part or the whole flies in the face of the Texas Constitution.

While Article 4, Sections 14 and 15, of the constitution lists the requirement that

the governor lists his objections to legislation presented for his signature, it does not restrict what those objections may be.

If the elected governor — whether he or she be a Republican, Democrat or Socialist — chooses to disapprove funding for a government agency because its appointed administrator wears a purple hat every third Tuesday of the month... that is the governor's prerogative.

Based upon that listed objection, the combined houses of the state legislature then must decide whether to override that veto with a two-thirds vote.

For a special prosecutor or a Travis

County grand jury to kiss the district attorney's Democratic donkey with the intent of circumventing the state constitution, and by all appearances attempt to derail the governor's future political aspirations, is the true abuse of power.

Undoubtedly this case against the governor will be headed to the supreme court for review. In fact, if there were ever a case deserved judicial review before district court action began, this is it.

Such an indictment as this from Travis County opens a Pandora's box for the state's legislative process that should be slammed shut before a whirlwind of similar allegations and actions escape.

Around Muleshoe...



Announcements from non-profit organizations in the Muleshoe area.

To post an announcement send an email to editor@muleshoejournal.com

Pre-Game Meal

The Muleshoe High School Senior Class will be hosting a pre-game meal on Friday, Aug. 29. They will be serving chopped brisket sandwiches with all the trimmings, baked beans, chips, chocolate chip cake and iced tea.

The meal will be from 5-7 p.m. Deliveries will be from 4:30-6:30 p.m. The number to call for delivery of meals is 272-7305, and the cost of a ticket is \$8.

'Your Call Is Very Important To Us'

"The Nine Circles of Customer Service Hell." That's an article by Jay Steinfield, CEO of Blinds.com, who, with apologies to Dante and his original "nine circles of..." asked the question for phone-holding customers everywhere: "Your customers are the cornerstone of your success. So why offend them?"

I had time to scan the article as I was stuck in Hades in what Steinfield calls the third circle: "Hold, hold, hold."

After three tries, I'd made it past the "never-ending voice mail phone tree" (the first circle) and had my account number ready (second circle: repeat same number three times).

I had my recorder ready. When they said, "This call may be recorded for quality assurance purposes," I'd respond, "It not only might be recorded, Bucko, it IS being recorded. Feel free to record on your end, too."

For the quality of this column, I wanted to record the idiocy.

I was told that the wait time for the next "Customer Service Specialist" would be 6-10 minutes. Wondering if more special specialists would be especially faster, I almost hung up. But my curiosity trumped six minutes of annoying music.

I was thanked for my (nonexistent) patience



Focus On Faith
Curtis Shelburne

and was surprised not to hear the cheery voice give the usual lie: "Your call is very important to us."

No, it's not. If it was, you'd be darn sure a human, and one of your best and happiest and most proficient ones, always answered your company's phone and put your best foot forward. Always. Can't afford to? Really? Can you afford not to?

The company that had me basting on the hook in the third circle is not a real company that has to care about real customers and worry about really going out of business. They're a governmentally-created "authority" crammed full of bureaucrats and minions.

If you have a toll road, somebody has to collect tolls. And some folks have to live and

work where tolls are regularly collected. I'm sorry. And I'm glad I don't.

I got a bill for \$2.86 a few weeks ago. \$1.43 to get on. \$1.43 to get off. I'd not been in that city for months, maybe years. But my license plate (at least) was there for about 10 minutes. Two years ago.

The ancient bill came in an envelope proclaiming, "Prompt Payment Required." Bureaucratic humor? No such thing.

It's what we've come to expect, but it always surprises me. A real business with customers with a real choice would go broke, and a better business would fill its place. But no.

I'm paying the \$2.86. Plus \$10 for being a month slow while I laughed at them for being two years slow.

When I finally did get a human on the line, I just said, "You've got to be kidding." But I felt sorry for her, a really nice kid.

She explained the



Weather Whys: California Hurricanes

Q: You always hear of hurricanes hitting Florida and Texas, but has one ever hit California?

A: The answer is no,

says Brent McRoberts of Texas A&M University. "In at least the last 100 years that we know of, no hurricane has ever hit the California coast," McRoberts explains.

"The reason is that tropical winds generally blow from east to west, meaning that storms that do form off the Pacific Coast get carried away from our West Coast."

"It's not uncommon for storms to turn and hit the Mexican coast, but the water farther north in the Pacific is cold, and those storms tend to weaken quickly. In fact, Hawaii doesn't get many hurricanes, either. The last big one to hit was Iniki in 1992," he says.

Q: So does the West Coast ever get hit by strong wind storms?

A: Yes, but not that

Continued on A3

Put your teeth in training...
...and graduate with honors!

J.W. HALTOM
Family Dentistry & Orthodontics



J.W. Haltom, Jessica Haltom, Amber Garcia, & Hillary Harris

Come in for an Ortho Consult for only \$99!

- Invisalign, the new invisible braces now offered!
- Adults and children welcome!
- Convenient, no interest payment plan!

320 E. 8th St.
385-6935
Mon. - Thurs. 8 to 5
Friday 8 to noon

NOTICE OF GENERAL ELECTION (AVISO DE ELECCION GENERAL)

To the registered voters of the County of Bailey, Texas:
(a los votantes registrados del Condado de Bailey, Texas:

Notice is hereby given that the polling places listed below will be open from 7:00 a.m. to 7:00 p.m., November 4, 2014, for voting in a General Election for State & County Officers.

Notifiquese, por las presente, que las casillas electorales citados abajo se abrirán desde las 7:00 a.m. hasta las 7:00 p.m. el 4 de Noviembre de 2014 para votar en la Elección General para los Oficiales del Estado Y Condado.

On Election Day, voters must vote in their precinct where registered to vote.
El Dia de Eleccion, los votantes deberan votar en su precincto donde estan inscritos para votar.

LOCATION(S) OF POLLING PLACES
(DIRECCION(ES) DE LAS CASILLAS ELECTORALES)

Bailey County Coliseum
Precinct Numbers 1,2,3, & 4

For early voting voter may vote at any of the locations listed below.
(Para votación adelantada los votantes podran votar en cualquiera de las ubicaciones nobradas abajo.)

Early voting begins October 20, 2014 and ends on October 31, 2014
(Votaaar adelantado empieza el 20 de Octubre, 2014 y termina el 31 de Octubre, 2014)

Location for Early Voting Polling Places Include Name of Building and Address
(Ubicacion de las Casillas electorales de votacion adelantado) (Incluir Nombre del Edificio y Direccion)

Bailey County Courthouse
300 South First
Muleshoe, Texas

Days and Hours of Operation
Dias y Horas Habiles

8:30 - 12:00 1:00 - 5:00
Monday - Friday

Extended Hours
Horas Extendidas

Thursday, October 23rd from 12:00 to 1:00
Thursday, October 30th from 5:00 to 6:00
Jueves, 23 de Octubre de las 12:00 a 1:00
Jueves 30 de Octubre de la 5:00 a 6:00

Applications for ballot by mail shall be mailed to:
(Las solicitudes para boletos de votacion adelantada por correo deberan evnarse a:)

Robin Dickerson
(Name of Early Voting Clerk)
(Nombre del Secretario do la Votacion Adelantada)

300 South First, Ste. 200
(Address) (Direccion)

Muleshoe, TX 79347
(City) (Ciudad) (Zip Code) (Codigo Postal)

Applications for ballots by mail must be received no later than the close of business on: October 24, 2014
(Las solicitudes para boletas de votacion adelantada por correo deberan recibirse para el fin de las horas de negocio el 24 de Octubre, 2014)

Issued this the 25th day of August, 2014
(Emitida este dia 25th de Agosto, 2014)

Sherrin Harrison
Signature of County Judge (Firma del Juez del Condado)

Muleshoe Journal USPS 367820

Established Feb. 23, 1924 Published by Panhandle Weeklies, LLC.

Every Thursday at 201 W. Ave. C, P.O. Box 449, Muleshoe, TX 79347.

Periodicals paid at Muleshoe, TX, and at additional mailing offices.

Postmaster: Send address changes to the Muleshoe Journal, P.O. Box 449, Muleshoe, TX 79347.

We are qualified members of the Panhandle Press Association, West Texas Press Association and Texas Press Association

Michael Distelhorst, Publisher

mdistelhorst@hearstmp.com

Larry Thornton, Editor

editor@muleshoejournal.com

Rhea Gonzales Ad Representative

adsales@muleshoejournal.com

Ad Design / Classified Advertising

advertising@muleshoejournal.com

classifieds@muleshoejournal.com

Subscriptions:

By Carrier Yearly — \$27

Bailey County, by mail — \$29

Elsewhere — \$40

By E-mail — \$22

Advertising rate cards on request

Hours are 8 a.m. to 5 p.m., Monday - Thursday, and 8 a.m. to noon on Friday. *Advertisers should check their ad the first day of insertion. The Journal will not be liable for failure to publish an ad or for a typographical error or errors in publications except to the extent of the cost of the ad for the first day of insertion. Adjustment for errors will be limited to the cost of that portion of the ad where the error occurred.



From The Stands... Continued From A1

Coach Wood's statement about holding a few things back. It seems that every season there are some plays and schemes that do not get revealed until the district, then more in the playoffs and in fact during the State Championship game in 2008 there were new plays still coming out in

that game. The Mules have their sights set high again this season and it starts Friday night when the Levelland Lobos visit Benny Douglas Stadium.

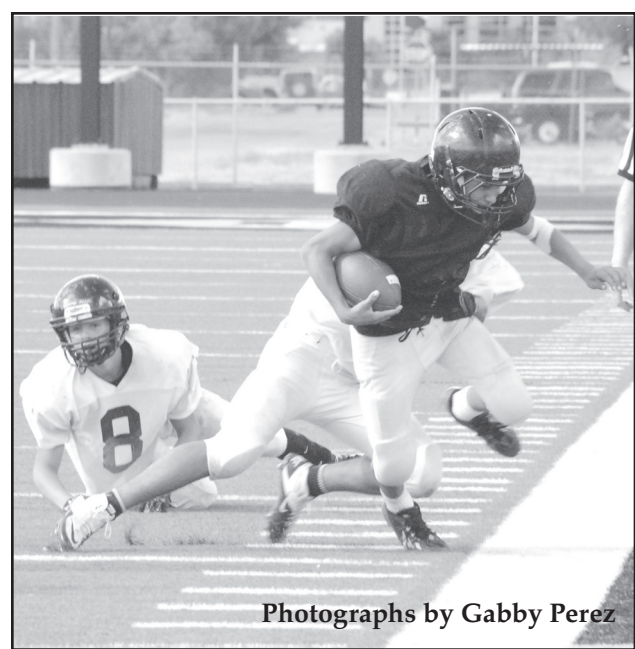
The Lobos have not made the playoffs since 2007 but are looking to change that with the new realignment.

Lobo second year coach, Jared Sanderson, went 5-5 in his first season with the Lobos. With 12 returning starters and 16 returning lettermen the Lobos are looking to move into the post season this year.

"They have size up front and have changed to the Spread Offense," said Wood. "Now

they can spread out the defense and make that size even more effective. Sophomore quarterback, Nick Gerber, appears to be the real deal and he has some talented receivers to pick from."

"The game should be a good one and should tell us a lot about ourselves. The kids are ready to play and they remember the final seconds of last year game."



Photographs by Gabby Perez

Football Contest...

Continued From A1

entry to the Muleshoe Journal, P.O. Box 449, Muleshoe, Tx 79347 (Entries must be postmarked by Thursday) or if we are not here, put it in the black contest entry box on the front of the building by noon Friday. Make sure your name and picks are legible.

Your score for the week will be the amount

of games you guessed correctly.

The person who has the most correct guesses at the end of the

contest will win \$200. So please play every week to increase your chances of winning the grand prize.



BCEC Celebrates 75 Years...

Continued from A1
unlisted items total \$3,288,633.

The amount owed to CFC is \$35,405,758.

This year's report lists the cooperative's total operation income at \$35,670,726, and its expenses at \$33,360,961, for a net margin for 2013 at \$2,309,765.

In his report to the membership, BCEC President David Marricle expressed his appreciation to the cooperative's employees — whom he credited

with much of the organization's success.

"It still comes down to the employees to get the job done," he said specifically, noting that the cooperative's 42 employees had a total of more than 600 years of experience.

"They are the heart and soul of the cooperative," he added.

Adding on to what Evan Autry, the director of Legislative Affairs for Texas Electric Co-ops, said, Marricle reminded

the membership that cooperatives such as BCEC were "born in politics... and we'll die in politics if we choose to sit on the sideline and watch.

Autry and Marricle were explaining the the electric cooperatives were founded through political efforts of rural residents seeking to bring electric service to their areas, and that it is a continual battle to maintain the federal support needed.

"The electric coops

wouldn't exist without politics," Autry said, adding that it was important the elected officials understood they can't ignore either the local cooperatives or the local owner-members of those cooperatives.

Regarding the annual election to the cooperative's board of directors, Greg Welch of Earth (Dist. 3) and Keith Layton of the Bula and Enochs area (Dist. 6) were elected to the board.

Commissioners' Court Takes Action

Continued from A1
number of "out-of-county" prisoners, a total of 47, currently being held in the Muleshoe jail, and noted that the number

of county prisoners was down to 14, the lowest its been for many years.

• During the court's budget workshop, Precinct 1

Commissioner Butch Vandiver and Precinct 2 Commissioner CE Grant discussed the county's road mainenance, noting that they were displeased with the recent "chip and seal" work that had been done on several county roads, comparing the work at one point with that done on Muleshoe streets.

According to the commissioners, the company used this year didn't put down enough gravel down,

allowing the tar to "bleed through."

• Noted, also during discussion of the budget, that the county's delinquent tax payments appeared to be up about \$7,000.

• No one appeared for the public hearing over the county's proposed budget and proposed tax rate increase during Thursday's meeting.

A second hearing is set for Aug. 25, with the formal consideration for approval set for Sept. 8.

Weather Whys...

Continued from A2
often, McRoberts adds.

"What's generally considered to be the worst storm to hit the West Coast was the Columbus Day Storm of 1962," he reports.

"It's believed to be strongest storm to hit the area since the 1880s.

The storm — and it was a storm, not a hurricane — hit Oregon with 130-mile per hour winds, with gusts over 160. Western Washington state also had winds over 90 miles per hour, and Seattle had gusts clocked at over 80 miles per hour," McRoberts explains.

Even in San Francisco, gusts were reported at 60 miles per hour. In less than 12 hours, more than 11 billion board feet of timber

was blown down in Washington, Oregon and California and damage estimates were \$250 million, and this was in 1962 dollars. A lot of West Coast storms are still judged by the Columbus Day Storm of 1962," he says.

Additional Information

According to Bailey County Judge Sherri Harrison the cat caught in the tree at the county courthouse last week was rescued by Reggie Johnson of Xcel Energy, later in the day, using one of the company's bucket trucks.

ENTRY BLANK

Name: _____

Address: _____

Phone: _____

E-mail: _____

CIRCLE YOUR CHOICE OF WINNER

SPRINGLAKE POTATOES & BARRETT PRODUCE

SPRING-LAKE _____
VS.
MORTON _____

McDonald's

Come see us after the game! GO MULES!

McDonald's of Muleshoe
1025 W. American Blvd
806-272-3333
Owner/Operators Steve and Susan Credle
1-866 YOUR MCD

Littlefield _____ VS Snyder _____

MULESHOE JOURNAL FOOTBALL CONTEST

THIS WEEK'S TIE BREAKER

Sponsored by :

Muleshoe Journal

201 West Ave C • PO Box 449
Muleshoe, TX 79347
806-272-4536

Striving to be your source for local news

Muleshoe _____ VS Levelland _____

L&L

Pallet Supply Inc.
Muleshoe / Amarillo, TX
Office 806-272-5041
MONDAY-FRIDAY
8AM - 5PM

Friona vs. Olton

Entries due by 12 PM on Aug. 29th

CIRCLE YOUR CHOICE OF WINNER

MAPLE COOP GIN

Sudan _____ vs. Ralls _____

927-5501 • Maple, Texas
272-4794 • Muleshoe, Texas

EACH WEEK WE'LL PAY 1ST PLACE \$25!!!! GRAND PRIZE WINNER GETS \$200 (AFTER MULESHOE'S LAST REGULAR SEASON GAME!)

FREE TO ENTER! ••••• FREE TO HAVE FUN!

RULES- Circle your choice of the winning team in each of the 5 games sponsored by these local businesses. The entry with the most correct choices will win the weekly \$25 prize. In the event of a tie, the contestant that guesses closest to the combined tiebreaker score will be the week's winner (Example: Muleshoe 21 vs. Friona 7, tiebreaker score is 28). The player with the most correct guesses at the end of the regular season will win the Grand Prize of \$200. So we encourage you to play every week to increase your chance of winning the Grand Prize. Entries may be mailed to the Muleshoe Journal, P.O. Box 449, Muleshoe, Texas 79347, dropped off at the office (201 W. Ave. C) or if we are closed may be left in the black mail box by the front door, faxed to 806-272-3567 or e-mailed to: adsales@muleshoejournal.com. Please indicate FOOTBALL CONTEST ENTRY. Need not have original entry form to mail. Entries for each week's contest must be postmarked by Thursday in order to be in office by **NOON FRIDAY OF THAT WEEK'S GAME. NO EXCEPTIONS!** Muleshoe Journal employees and their families are not eligible to win. Decision of the judges is final. Games not marked will not be counted. Must be at least 12 years old to play. We encourage your support of the businesses that sponsor this contest.

Senior Citizen News

It is that time of the year for your information review and update at the Senior Center.

The Center needs all our folks to come by the Center to review your information that you signed last year. If none of the information has changed, just your signature is needed. If you have a different address, or phone number, contact person, doctor or any of the other information, the Center needs for you to note the changes and sign the new document.

The forms should be ready for your inspection and signature starting Friday, August 29. Come early and avoid the rush.

The Center needs

to get the information changes along with your signature by Friday, September 13. Yes, the Center has to report the turn-out to SPAG on Monday, September 15.

As you read the week's menu, you will notice that there is a Monday Labor Day, September 1, lunch menu. Yes, the Center will be open all day on Labor Day with the normal Center's activities for a Monday. If you have visitors in for the holiday, why not bring them by the Center and show off the place where you can hang out. Tuesday, Sept. 2, will be a Bunko day with the games starting at 10 AM.

Thursday, Sept. 4, the regular weekly Bingo games will start

at 1:30 PM. The games of dominoes and eighty occurs daily. So make your plans and get into the Center's games.

Also, get ready for some great pancakes with all the fixings at the Senior Center. Saturday morning, Sept. 6, is the day of the Senior Center's Pancake Breakfast. The breakfast starts at 7 AM and ends at 11 AM. Of course, to go with the pancakes, there is bacon, sausage and for pancakes, butter, margarine, many types of syrups with drinks of milk, coffee, orange juice. You don't want to miss this Center breakfast. The next Center's breakfast is a long time away, so don't miss this one.

Monday Labor Day,

Sept. 1 - chicken fajita, fried beans, white rice, tossed vegetable salad, French dressing, whole wheat tortillas, ambrosia.

Tuesday, Sept 2 - pork chop, black-eye peas, salad, baked apple cornbread.

Wednesday, Sept 3 - chicken fried steak, mashed potatoes, country gravy, stewed okra, seasoned corn, pumpkin square.

Thursday, Sept 4 - ham & beans, cornbread, spinach, seasoned corn, orange pineapple cup, country apple crisp.

Friday, Sept 5 - fish or chicken strips, Borracho beans, green peas, tossed vegetable salad, French dressing, whole wheat roll, tropical fruit mix.

Wedding Announcements



Gladden, Brewster To Wed

Jayme Gladden and Adam Brewster, along with their parents, would like to announce their upcoming wedding on Saturday, Sept. 13, 2014, at 6 p.m., at the Wooden Spoke Guest Ranch, 5996 CR 2128, Snyder.

The parents of the couple are Alvin and Gail Gladden of Muleshoe, formerly of Morton, and Aubrey and Lois Brewster of Snyder.

Jayme and Adam will reside in Snyder.

Striving To Be Your Source For Local News!

BAILEY COUNTY DEVOTIONAL PAGE

ASSEMBLY OF GOD
FIRST ASSEMBLY OF GOD
 Pastor A. David & Kathryn Snodgrass
 521 South First Street
 272-3017
 S.S. 9:45 am,
 W.S. 10:45 am & 6:00 pm,
 Wed. 7:00 pm
EL BUEN PASTOR
 415 E. Ave. F - 272-5455
 Pastor Ruben Acevedo
 272-4542
 S.S. 9:45 am, W.S. 11 am &
 6 pm; Wed. 7 pm

BAPTIST
CALVARY BAPTIST
 1733 W. Ave. C.
 Rev. Jeff Coffman
FIRST BAPTIST
 220 West Ave. E
 Dr. Stacy Conner
FIRST BAPTIST
 Lazbuddie • 965-2126
PRIMERA IGLESIA
BAUTISTA
 223 E. Ave. E
 Rev. Rosendo Lopez
PRIMITIVE BAPTIST
 621 South First
 Elder Bernard Gowens, Min.
PROGRESS BAPTIST
 Progress, TX
PROGRESS SECOND
BAPTIST
 Arthur Hays, Min. - 1st & 3rd Sundays
RICHLAND HILLS BAPTIST
 Bro. Larry Thornton
 17th & West Ave. D
 S.S. 10 am; W.S. 11 am
 www.rhbc-muleshoe.org

CATHOLIC
IMMACULATE CONCEPTION
CATHOLIC CHURCH
 805 E. Hickory
 Leonard Pahamtang, Min.
EPISCOPAL -
CHARISMATIC
ST. CLEMENTS CHURCH

Serve Wholeheartedly, as if you were serving the Lord, not men. Ephesians 6:7

MULESHOE
MV
ALLEY
INC.
 2601 W. American Blvd.
 P.O. Box 631
 Muleshoe, Texas
 (806) 272-4266
 Mobile (806) 946-8763
 mviinc@fivearea.com

CENTRAL COMPRESS
& WAREHOUSE
SUDAN, TEXAS

Muleshoe Journal
 201 W. Ave. C, Muleshoe
OFFICE: 806.272.4536

Deaf Smith
County Grain, Inc.
 Cliff A. Skiles, Jr.
 Jeb S. Skiles

Muleshoe Journal
 www.muleshoejournal.com

201 W. Ave. C, Muleshoe
OFFICE: 806.272.4536
FAX: 806.272.3567

Song of Solomon 1

I O A K W A G D E G P R U Q L M R H H R R Y M A I
 O V L Z O M K T I M T F O X E P E A N P R V R A T
 U J Z K D D U P S S U W C I D I D I H R B E Q E Y
 G D Y V Y H K L F H L F S W T O L T D M G L S R U
 Z S R R Y B F G A T R R R S V B O A F N Y T Y T C
 W R T S L O R N M A X V T E B M G I E H O V E E O
 E H N A U E H N G D O V S M P G Z X J I W N L Y X
 H E N M O G W R X S S K V Q R F R J R B T Q J R P
 R N W S L G A E I A I U L J G J T A Z S A R R P B
 B N X X P N G A J F C I S Q J J H Q O G X W E Y D
 J A Q G C Z Y N O Q I P W E E C Q F Y S M N P W R
 R B F E T G X T U R U F G K S Q K F C X U C T S D
 K L P R W F W S U O P J V H S E E T M P T U E R E
 R O E J I Y L S J V Y R O X D I U H X P H S K I W
 Q S L O V E X N R Q T A K A I U H N G H S D K U C
 Q S W N U H U M C A R J R V Z J Z H R E K E K U Q
 E O Z H F K O G Z A D E I D L V U B R Q A J A C G
 Q M S S F K G H H S C E V N L D I P E Q R Y K C K
 Z S Y C Y W L P I A H Z C L V A Y N E Y L K G U Q
 K W I Q H F J S L I J E L T I C X Y E E K I Z R K
 S Y T G J G W K N T B C N R F S O P J Y H W B T S
 L Z J N Z C C S W D X C A I L K L N L M A S T A I
 Y H V L W E E D J S P N O T W D N N Y M B R J I C
 N J T F N P G I W P U C Z O S G N X S H Z D D N S
 B V J E R X C D C N L N M P Z J T H K I S S E S V

Solutions on A5

- Kisses
- Love
- Perfume
- Curtains
- Tents of Kedar
- Wine
- Vineyards
- Sheep
- Pharaohs
- chariots
- Young goats
- Jewelry
- Fragrance
- Necklace
- Gold
- Silver
- Myrrh
- Henna
- blossoms
- Doves
- Cedars
- Cypresses

This devotional & directory is made possible by these businesses who encourage all of us to attend worship services.

COMMUNION OF CHRIST
THE REDEEMER
 Hwy. 214 South • 272-5954
 Father Sergio Leal
 Sun. W.S. 10:30 am

CHRISTIAN
TRINITY CHRISTIAN
CENTER
 1723 W. American Blvd.
 272-3877
 Reydon Stanford, Pastor
 Sun. W.S. 10:30 am
CENTRO CRISTIANO
 117 E. Birch St.
 Hermanos Barron
 S.S. 10 a.m.; W.S. 11 a.m. & 6 p.m.; Wed. 7 p.m.

CHURCH OF CHRIST
LARIAT CHURCH OF CHRIST
 Wesley Roach, Min.

S.S. 10 a.m.; W.S. 11 a.m. & 6 p.m.; Wed. 7:30 p.m.

LAZBUDDIE CHURCH OF CHRIST
 Harrol Redwine, Min.
 S.S. 9:30 am; W.S. 10:20 am & 5 pm; Wed. 6 pm

MULESHOE CHURCH OF CHRIST
 22nd & W. American Blvd.
 S.S. 9:30 am; W.S. 10:20 am & 6 pm; Wed. 7:30 pm

16th & AVE. D
CHURCH OF CHRIST
 Curtis Shelburne, Min.
 272-4619

S.S. 9:30 am; W.S. 10:30 am; Growth Gr. 1:30 pm; Wed. 7:00 pm

LUTHERAN
ST. JOHN LUTHERAN
 Lariat, TX • David Symm, Min.

Muleshoe Journal
 201 W. Ave. C, Muleshoe
OFFICE: 806.272.4536

To place your ad here call
 Rhea at the Muleshoe Journal
 806-272-4536

BOEHNING
DAIRY
 690 CR 45, Earth
 "MILK - A PART OF EVERYTHING THAT IS GOOD!"

McDONALD'S
OF MULESHOE
 1315 W. American Blvd. • 272-3333
 Open at 5 AM every day! i'm lovin' it

Pizza Hut
 1412 W. American Blvd.
 Muleshoe • 272-4213
 Open: Sun.-Mon. 11AM-11PM
 Lunch Buffet: Sun.-Fri. 11:30 AM-1:30PM
 Monday Night Buffet: 6-8PM
PIZZA HUT WING STREET
IS HERE!
 "Gather round the Good Stuff"

"THE FIVE AREA TELEPHONE
COOPERATIVE, INC."
 West Plains Telecommunications, Inc.
 Five Area Systems, Inc. • Plateau Wireless
 Five Area Long Distance • Five Area Internet
 302 Uvalde Muleshoe, USA (806) 272-5533

McCORMICK SEEDS, INC.
 400 East Ash • 272-3156
 Muleshoe, Texas
A COMPLETE LINE OF FIELD SEEDS
 Tim McCormick

MULESHOE ANIMAL CLINIC
 GENERAL PRACTICE
MVS
 MULESHOE VET SUPPLY
 1430 US Hwy. 84, Muleshoe Office: 272-3061

WAYNE COPLEY
TRUCKING
 CALICHE, SAND & ROCK PRODUCTS
 P.O. Box 63 (806) 272-3697
 Muleshoe, Texas 79347 Mobile: (806) 946-8072

Julie DeBruin,
 AGENT
 806-272-7548
FARMERS
 INSURANCE
 1602 W. Amer Blvd.
 Muleshoe, TX
 79347

S.S. 10:30 am; W.S. 9:30 am

METHODIST
FIRST UNITED METHODIST
 507 W. 2nd St.
 S.S. 9:45; W.S. 11:00;
 Praise & Prayer 6 pm;
 First Sunday of Month

4 pm Parkview Nursing Home Service
 Mon. 9 am Ladies Bible Stdy;
 Tues. 6 pm Adult Bible Stdy;
 Pastor Mindy McLanahan,
 272-5517

LAZBUDDIE METHODIST
 S.S. 9:30 am; W.S. 10:30 am
 Pastor Ken Peterson
 965-2121

EL DIVINO SALVADOR U.M.C.
 619 E. 5th Street & Ave. G,
 Fernando Sanchez, Pastor
 272-6888

PENTECOSTAL
Iglesia Apostolica de la Fe en Cristo Jesus
 207 East Ave. G
 Sunday 1:30 pm
 Wednesday 7:30 pm

INTER DENOMINATIONAL
NEW COVENANT
 Plainview Hwy.
 Steve Claybrook, Pastor
 W.S. 10 am; Wed. 7 pm

MULESHOE COWBOY
FELLOWSHIP
 710 E. American Blvd.
 Steve Friskup, Minister
 272-5199
 Service: 7:30 p.m. Thursday

If you have changes to
 make to church information,
 please contact the Journal
 at 272-4536.

SHIPMAN'S BODY SHOP, INC.

 410 N. First St. • Muleshoe, TX
 Office: 806-272-4408 • Fax: 806-272-3366 • Night # 806-336-5422

MAPLE COOP GIN
 927-5501
 Maple, Texas

Leal's TORTILLA
FACTORY
 105 E. Ash St., Muleshoe • 272-5772
 Phillipians 4; "I can do all things through
 Christ who strengthens me."

BCEC
BAILEY COUNTY
ELECTRIC
COOPERATIVE
ASSOCIATION
 A Touchstone Energy® Cooperative
 Muleshoe — 272-4504 Morton — 266-8600

To Place Your Ad Here
 Call Rhea At
Muleshoe Journal
 806-272-4536 or
 806-518-4606

Obituaries

Joy Van Keuren

Joy Waneen (Ragsdale) Van Keuren, 82, of Abilene, went to meet her maker after a long illness on Thursday, Aug. 21, 2014. A memorial service will be held at a later date. Arrangements are by North's Funeral Home, 242 Orange St.

Ms. Van Keuren was born on Jan. 25, 1932, in Muleshoe, to David E. and Zora (Shofner) Beller. She graduated from high school in Muleshoe and was a member of the First United Methodist Church.

She married Eddy Mack Ragsdale on June 26, 1949, in Muleshoe. After Mr. Ragsdale's demise in 1985, she married Gene Van Keuren in Lake Tahoe, Nev., where they enjoyed 10 years of marriage.

She was blessed to have many extended cousins, aunts, uncles and other relatives in the Panhandle area. She loved her family dearly and was proud to say she was from Muleshoe.

Throughout her life, Joy Waneen never met a stranger. She was multi-talented and seeming went about her days to make people smile. She led the MHS band as a drum major. She could sing, dance, play musical instruments



and spread so much joy to those who met her... whether as a child or later in life.

She worked as a newspaper journalist, seamstress, taught piano, interior decorator and an insurance and annuity agent. She brought love and kindness to everyone she knew. She enjoyed gardening, cooking, and attending Texas Tech Ladies Raider's basketball team games.

She lived in the towns of Lazbuddie, Bovina, Hub, Friona, Hereford, Levelland and Lubbock, as well as Reno, Nev. In 2006 she moved to Bixby, Okla., to be with her daughter — Rhonda.

In 2010, she moved into the independent retirement community of Prairie Rose in Tulsa, Okla., where she was also a member of the Boston Avenue Methodist Church.

In February of 2014, she relocated to Abilene.

She was preceded in

death by her parents, two husbands, and two granddaughters — Sabrina Turner Coffman and Jennifer Turner.

She is survived by her daughters — Patti McCarty Stevenson and husband John (Skip) of Abilene, Rhonda Ragsdale Reed of Bixby, Okla., and Alesia Ragsdale Turner and husband Larry of Abilene.

Also one sister — Lavelle Gay and husband Pat of Hearne. A cousin — Alva Lee Peeler of Hereford; two grandchildren—Megan Reed of Chesaning, Mich., and Carlin Ragsdale and wife Sherry, along with three great-grandchildren — Davis James Hollenback of Michigan, Shalin and Katherine Ragsdale of Texas.

Her joyous smile and the mischievous twinkle in her eyes will never fade from her loved ones memories.

In lieu of flowers, the family requests donations are made to the Jennifer and Sabrina Turner Coffman Memorial Scholarship fund. Please make checks payable to Citibank, 1100 Andrews Hwy. Midland, Texas 79701.

Online condolences may be made at www.northsfuneralhome.com.

Peggy Ray

Peggy Ray, a lifelong resident of Sudan, left this earthly world in the early morning hours of Tuesday, Aug. 19, 2014. She has gone to join her husband — Jerry; and her parents — Clifton and Mabel Reed; and a host of loving family members who will rejoice in her arrival.

Funeral services were held on Friday, Aug. 22, at Sudan Church of Christ in Sudan. Burial was in the Sudan Cemetery in Sudan.

Arrangements were by Hammons Funeral Home in Littlefield.

"People say there's nothing like a mother's love, and they are right. Our mother was a wonderful person who showed love to everyone she came in contact with. She was caring and beautiful inside and out."

"She loved life, her family, and her friends; and she taught her family to do the same. Most of all, our mother loved God. She raised her daughters to be strong women, just as she was."

"One thing our mother would want us to share with each of you is to tell those you love that you love them every chance you get. You don't know what God has in store next. Rest in peace, our mother, our best friend,



our beautiful angel."

Left to cherish her memories are four daughters — Vickie Williams and husband Pete, Georgia Newcomer and husband Eddie, and Phyllis Lynn, all of Lubbock, and Tanya Bell and husband Brad of Lamesa; her six grandchildren — Jennifer Hiler and husband James

of Sahuarita, Ariz., Candace Hiler and husband Bryan of Lubbock, Stephany Pierce and husband Seth of Port Orchard, Wash., Cooper Bell and wife Hally of Midland, Justin Bell and wife Jackie of Lamesa, and Britt Bell of Norman, Okla.; as well as her seven great-grandchildren — Lynzi and Autumn Hiler, Bryce and Brayden Hiler, and Seth Jon, William, and Alyson Mabel Pierce.

Peggy's family appreciates memorial donations made to New Mexico Christian Children's Home, 1356 N.M. 236, Portales, N.M. 88130.

Sr. Class Pre-Game Meal Set For Friday

The Muleshoe High School Senior Class will be hosting a pre-game meal on Friday, Aug. 29. They will be serving chopped brisket sandwiches with all the trimmings, baked beans, chips, chocolate chip cake and iced tea.

The meal will be from 5-7 p.m. Deliveries will be from 4:30-6:30 p.m. The number to call for delivery of meals is 272-7305, and the cost of a ticket is \$8.

Come to God's shop for a free rotation and balance of your life.

DISCIPLESHIP - 9:45 AM • WORSHIP - 11:00 AM
FIRST UNITED METHODIST CHURCH
507 W. 2ND

Gene Tunnell

Funeral services for Gene "Tiger" Tunnell, 74, of Earth, were held on Monday, Aug. 25, at Muleshoe Cowboy Fellowship with the Rev. Steve Friskup of Muleshoe officiating.

Gene died on Aug. 21, 2014, at his home in Earth. He was born on May 8, 1940, in Amherst to Eldon Oliver and Lois Maxine (Cook) Tunnell.

Gene was a life-long member of the Earth community. He was a member and leader of the Muleshoe Alcoholics Anonymous for 35 years. He was also a lifetime member of the Earth Rodeo Association and an avid bronc rider and fan.

Gene was a self-taught custom saddle craftsman. He was a member of the Muleshoe Cowboy Fellowship.

He was preceded in death by his parents and one brother — Larry Tunnell.

Survivors include a son — Rusty Tunnell and wife Darrisa of



Elk City, Okla.; three daughters — Kassi Bradley and husband Justin of Sunnyside, Lori Davis of Colorado Springs, Colo., and Kerri Gilley and husband, Gary of Amarillo; a brother — Jerry Tunnell of Mineral Wells; 15 grandchildren — Travis Tunnell, Brittney Mireles, Claye Tunnell, Tyler Davis, Kaleigh Davis, Nic Davis, Ashton Cone, Bailee Bradley, Caullen Bradley, Reagan Gilley, Rileigh Gilley, Gaylen Sudderth, Colton Sudderth, Jason Sudderth and Tim Hill; and nine great-grandchildren.

Online condolences can be made at www.ellisfuneralhomes.com.

Song of Solomon 1



Royce Wrinkle

Mr. Royce "Roy" Wrinkle passed away August 20th, at the age of 82.

Royce is survived by his children: Cynthia Ott & husband James Lange of Fredericksburg; Sharon & Phil Miller of Cypress; Gary & Diane Wrinkle of Dripping Springs; 7 grandchildren, & a sister, Lora Belle Brown

of Bront. Graveside service & interment was August 23rd, at Zion Cemetery in Priddy, TX.

Online condolences may be left at www.fredericksburg-funerals.com

Arrangements under the direction of Fredericksburg Funeral Home.

Death Notices

Lynn Love

Morton resident Lynn Love, 93, of Morton died on Aug. 20, 2014, in Morton. She was born on July 8, 1921, in Spur, to Albert and Mabel Phillips. Funeral services were held on Saturday, Aug. 23, followed by burial in Morton Memorial Cemetery.

Thank you for reading the Journal!

Let The Bidding Begin **W & J Auction**
COMMERCIAL/ REAL ESTATE AUCTION
SATURDAY, AUG. 30TH
10:30am • Property 1:00 pm
209 W. GRAND • CLOVIS, NEW MEXICO

Two Levels 2900 Sq Ft Living Space, 50' Frontage, Ref. Ac Top And Bottom, 50' Vacant Lot Behind This Bldg.
Terms : 10% Down Day To Auction , Balance On Closing
Qualified Brooker Karl Campbell Nm #15975

***** NO BUYERS PREMIUM * www.wjauction.com *****
* Terms: Cash, Check, Visa or Mastercard

4205 S Prince Clovis, NM 88101 **W & J Auction, Inc.**
Clovis, NM 679 763 7311 **OUR KNOWLEDGE IS YOUR SECURITY** AUCTIONEERS: Gid Priest and Butch Priest TX LIC # 11177 575-799-1418
Karl Campbell - Qualified Broker 12022

WE'RE AT YOUR Service

Visit the following local businesses for quality service and customer satisfaction!

K & K PHARMACY
Our compounding professionals can formulate medications in specialized delivery systems such as sublingual drops, oral and nasal sprays, lollipops, rectal solutions, suppositories, creams, ointments, polyox bandages, and gels.
We specialize in wound and scar treatments.
Please contact us to discuss your patients' individualized needs.
mixmymeds@gmail.com
1411 W. American Blvd • Muleshoe
272-7511

Jake's Handyman Service
Roofing • Tree Trimming • Dirt Hauling
• Doors & Windows • Yard, Metal Clean-Up
Free Estimates Call
806-437-6197



The Sudan Buzz

Pet Talk: When to Call a Veterinarian

Though our pets may pet may dread the veterinarian, there are many instances when a trip to the local animal hospital or clinic is essential to their health.

Since Fido can't express to you in words when he isn't feeling himself, there are many symptoms you can look out for to help determine if it's time for a vet visit.

"It is most important to remember that everything should be taken within the context of the other signs," said Dr. Jean



Rubanick, veterinary resident instructor at the Texas A&M College of Veterinary Medicine & Biomedical Sciences (CVM).

"Basically, if there are multiple signs, then taking a pet to the vet is indicated."

Some common signs of irregularity may include extreme lethargy, increased respiratory rate, profuse vomiting or diarrhea, anorexia, or

increased drinking and urinating.

While these are most widely recognized as indicators for veterinary attention, some symptoms may be more unique and less recognizable.

"Abnormal circling (not to be confused with the occasional circling of an excited dog), head pressing, seizures, inability to rise, weakness, respiratory distress, changes in the

gum color, and bubbles coming from the nose are some other sign to look out for," said Dr. Rubanick.

If your pet ingests something that poses toxic to animals, whether it is a plant or food, consultation with your veterinarian is vital to the animal's health and safety.

"Eating sago palm, chocolate, lilies, people medication, or anything else unusual should also prompt a call to the veterinarian," said Dr. Rubanick.

Although stomach abnormalities such as

vomiting and diarrhea may be signs of sickness or ingestion of toxins, it is also possible that Fido merely scarfed down his dinner too quickly.

Depending on the pet and their usual behavior, a brief upset stomach may not be much cause for concern.

"Vomiting once or one bout of diarrhea is probably nothing to worry about, as long as the pet is otherwise acting normally," said Dr. Rubanick.

"Likewise, a pet that eats too quickly or drinks a lot of water and then vomits

but continues to act normally afterwards is probably fine."

In general, you should always contact your veterinarian if you notice any symptoms or behavior abnormal for Fido.

From there, your vet will be able tell you if something does not need to be urgently addressed or if you should make an appointment right away.

Whether Fido is just having an off day or he ingested something poisonous, it is always better to be safe than sorry.

Center Can Help Solve Problems

Q. I remember reading that there is an organization at the University of Houston Law Center that helps consumers. Can you please give me its name and tell me how I can contact them? How much do they charge?

A. The organization you are thinking of is the Texas Consumer Complaint Center. The center has helped thousands of consumers resolve their problems and save millions of dollars.

The best way to contact the center is to visit its website, www.texasccc.com, or you can call 877-839-8422.

Ask A Lawyer...

By Richard Alderman

The center does not charge for its services.

Q. I have been having some trouble getting credit. I checked my credit report and found that I have several bad debts from almost six years ago.

Since that time, I have paid all my bills on time and done everything I can to get a good credit rating. What can do to have these old bad debts removed from my credit report?

A. There is probably nothing you can do to

have this information removed. Under the law, if the information is not accurate or complete you can insist that the credit-reporting agency re-investigate and removed the information unless it is substantiated.

On the other hand, if the information is accurate, there is no way to have it removed simply because it is negative. Credit reporting agencies are in the business of reporting information.

All the law requires is that the information they report is accurate and complete, not necessarily favorable.

After seven years, however, the information becomes obsolete and generally will no longer be reported. It sounds like within a short period of time your credit history will again appear very good.

In the meantime, keep paying your bills on time and strengthening your credit report.

Q. I have a question. My daughter recently passed away. She was in her early twenties. Can the companies she owed money to force me to pay?

A. You are responsible for your daughter's debts only if you agreed to pay them. For example, if you co-signed with her. In all other cases, the company must collect from her estate. If there is not enough money to pay her bills, they do

Continued on A8

Slaughter Cattle Numbers Dip

Cattle and calves on feed for slaughter market in Texas feedlots with capacity of 1,000 head or more totaled 2.47 million head on August 1, 2014, down one percent from a year ago.

According to the monthly report released by the Texas Field Office, the estimate was down one percent from the July 1 level.

Producers placed 410,000 head in commercial feedlots during July, down nine percent from a year ago but up 11 percent from June.

Texas commercial feeders marketed 415,000 head during July, down 19 percent from 2013 and down one percent from June.

On August 1, there were 2.19 million head of cattle and calves on feed in the Northern High Plains, 88 percent of the state's total.

The number on feed across the area was up one percent from

last year but down one percent from the July 1 total.

July placements in the Northern High Plains totaled 363,000 head, up 11 percent from the June total.

Marketings were unchanged from last month at 369,000 head.

Cattle and calves on feed for slaughter market in the United States in feedlots with a capacity of 1,000 head or more totaled 9.84 million head on Aug. 1. This inventory was down two percent from

Aug. 1, 2013.

Placements in feedlots during July totaled 1.56 million head, seven percent below July 2013.

July placements of cattle and calves weighing less than 600 pounds totaled 425,000 head; 600-699 pounds totaled 260,000 head; 700-799 pounds totaled 355,000 head; 800 pounds and greater totaled 520,000 head.

Marketings of fed cattle during July totaled 1.79 million head, nine percent below 2013.

SUDAN VETERINARY SERVICES

SvS

CHRIS LARSON D.V.M.

- ◆Specializing in Dairy Medicine◆
- ◆Small Animal & Equine◆
- ◆Same Day Minor Surgery◆
- ◆Farm & House Calls◆
- ◆Climate Controlled Boarding◆
- ◆Services by Appointment Only◆

1704 East Hwy. 84 • Sudan Tx

806-227-2444 806-241-1915

The Muleshoe Journal is looking for a news correspondent for Sudan and Sudan ISD. If you are interested, contact the Muleshoe Journal, 806-272-4536.

KING AG AVIATION, INC.

Specializing in Aerial Spraying - Insecticide, Herbicide & Seeding - Field Scouting Service

Johnny King Home (806) 227-2211
 P.O. Box 189 Fax (806) 946-3659
 Sudan, Texas 79371 Mobile (806) 946-7309
 Business (806) 946-3399 Vernon Office (940) 552-6102

SUDAN ISD

EXCELLENCE

IN

EDUCATION

WWW.SUDANISD.NET

HWY. 303 PHONE: (806) 227-2431
 SUDAN, TX 79371 FAX: (806) 227-2146

COMPOSTED CATTLE MANURE

Paco Feed Yard -- Hub
 Cargill Cattle Feeders -- Bovina
 Bovina Feeders -- Lazbuddie

BRANDON SCHILLING
 Mobile 806-225-7700
 OFFICE 1-800-650-2550

NORTH PLAINS COMPOST, INC.
 PO BOX 789
 BOVINA, TEXAS 79009



CHOOSE TO SHOW YOUR BACK-TO-SCHOOL spirit!

Welcome back, students and teachers!

EST. 1907

FIRST UNITED BANK

Earth | 220 East Main | 257-3451
 Littlefield | 2003 South Hall Ave. | 385-7181
 Sudan | 200 Main | 227-2411

Member FDIC www.firstunited.net

I think I'd like to be a park ranger.

What would you like to do some day?

Newspaper Fun!

www.readingclubfun.com

Animills LLC © 2014 V11-35

Kids: color stuff in!



Working With Animals and Pets

Celebrating Labor Day



I'm just crazy about my job. As a veterinarian I get to work with many different animals. It took a lot of education and hard work to become a vet, but it was worth it! Would you like to have a career working with animals? There are lots of jobs in which you can care for or train animals!

Read the clues below to fill in the puzzle with jobs in which people work with animals:

- pet _____ - cares for your pets and walks them while you're away
- shampoos, trims and shapes fur, and clips animal's nails
- cares for sea life; jumps into tanks to clean them; keeps the water safe
- _____ therapist - helps to get animals up and moving after surgery
- cares for a wide variety of land animals for our entertainment and education; cleans cages; feeds any animals within his or her care
- doctor who specializes in medicine and care for animals
- _____ biologist - works in the lab and on the ocean; names and classifies the animals in the seas
- _____ worker - rescues animals that are sick or abandoned; helps to find them new, loving homes
- helps animals have babies safely; keeps the whole family healthy; sells the babies to people looking for pets
- uses praise and treats to teach animals behaviors
- maintains land for livestock to graze; uses herding dogs to make sure livestock is guided and kept safe
- park _____ - watches over the country's national parks; enforces the laws in the parks; watches for forest fires
- K-9 _____ - trains police dogs to help sniff out trouble



Free Stuff

Print out free puzzles: **Who Am I?, Fun at the Fair, Back to School** word search, reading log and certificate set @ www.readingclubfun.com

CLASSIFIEDS

Deadline is Monday at noon to place a classified ad. Call 272-4536.

LEGAL/PUBLIC NOTICE

Notice is hereby given that the following unit will be offered for sale for the enforcement of storage lien. The sale will be held on Friday, September 6, 2014. 9am til 4pm. Location: J&M Self Storage, 509 W. American Blvd., Muleshoe TX 79347. We reserve the right to refuse any offer or cancel the sale. Unit 16, Andrea C. Pena 902 E. Birch Muleshoe TX 79347
Published in the Muleshoe Journal August 21, 2014, August 28, 2014 and September 4, 2014.

HELP WANTED

Muleshoe I.S.D. is accepting applications for the position of mechanic. You may apply online at www.muleshoeisd.net or by picking up an application at the M.I.S.D Administration

HELP WANTED

office at 514 W. Ave. G, between the hours of 8:00 am and 4:00 pm., Monday thru Friday. Information concerning the position may be obtained by contacting David Gallman 806-272-7329. Muleshoe I.S.D is an equal opportunity employer.

Automotive Technician needed. John Roley's Autocenter in Littlefield, TX, is looking for a full time auto technician. Excellent pay and benefits. Pay Scale depends on experience. Contact David Lookingbill 806-385-6464 or Email: service@johnroleys.com

Come join an awesome team of Nurses! Farwell Care & Rehab Center: Hiring a part time LVN. Benefits available, competitive salary! Contact HR at dparmer@farwellcarecenter.com, or pick up an application at 305 5th St in Farwell Tx. EOE

farwellcarecenter.com, or pick up an application at 305 5th St in Farwell Tx. EOE

Drivers: SIGN-ON BONUS! Great Weekly Pay! Great Medical, Dental, Vision Ins. No-Touch Freight! CDL-A w/2yrs OTR Exp. Call: 877-212-8703

AGP GRAIN MARKETING LLC HELP WANTED - SCALE OPERATOR Needed for our AGP Lazbuddie location to weigh trucks and grade grain. Experience preferred. AGP provides a complete benefit package with

medical, dental, 401K, and paid time off. Fill out an application at either our Lazbuddie or Bovina offices.

FOR RENT

House for Rent- 3 Bedrooms, 1 1/2 Baths, Refrigerator and Stove. 910 South Main. Call 806-729-3646.

HOUSE FOR SALE BY OWNER

For Sale by Owner- 5.865 acres, 3 miles NE of Farwell, MOVE IN READY, 3 year old 2,050 sq.ft. brick house, 3/2.5/ office/oversized double garage,

REAL ESTATE

open floor plan, all electric, central heat, refrigerated air, energy efficient including spray foam insulation, stainless appliances, granite countertops, wood floors, carpet in bedrooms, tile in utility & bathrooms, large covered patio, cedar fence with concrete footing,

MISC.

HAVE A HOUSE TO SELL IN A SMALL TOWN? I pay cash for your house. Call for a free quote today. Keith 806-317-7187.

REAL ESTATE

40x60 insulated barn with 20x60 covered stall. Call for appointment 806-781-7151

Thanks for reading!

REAL ESTATE

Byrd Realty
Ronald Byrd 575-760-1495 Licensed Broker
Crista Bass 806-946-7261 Sales Associate

228 MAIN STREET, MULESHOE, TEXAS
CHECK ALL OF OUR LISTINGS AT
www.byrdrealestate.net

RURAL AREA

- 10 ACRES-4-3.5-2 BRICK HOME, CENT. A&H, SPRINKLER SYSTEM, FENCED YARD, SEPTIC, WORKSHOP, \$235K.
- 1.24 ACRES-3-2 HOME, DETACHED GARAGE, CARPORT, CENT. A&H, OUTBUILDINGS, FENCED YARD, \$140K.
- 1 ACRE-3-2-2 BRICK HOME, CENT. A&H, FIREPLACE, SPRINKLER SYSTEM, 1200 SQ. FT. INSULATED
- 2 STORY, 3-2-1 BRICK HOME, CENT. A&H, WELL, SPRINKLER SYSTEM, STORAGE BUILDING. \$125K.
- 475 ACRES, 5 WELLS, 3 CIRCULAR SPRINKLERS, 2 ADDITIONAL HOMES.

MULESHOE

- NEWLY REMODELED-4-1 BRICK HOME, CENT. A&H, FENCED YARD, \$85K.
- 3-2 BRICK HOME, FIREPLACE, APPLIANCES, CENT. A&H, FENCED YARD, STORAGE BUILDING, \$79K.
- 3-1 HOME, APPLIANCES, DETACHED GARAGE, CARPORT, CORNER LOT, \$48K.
- 3-2-1 BRICK HOME, CENT. A&H, APPLIANCES, FENCED YARD. \$67,900.00.

REAL ESTATE

Vic Coker Land Co.
Agricultural Real Estate
FARM/INVESTMENT

CASTRO AND LAMB COUNTY- 753 ACRES IRRIGATED FARM. ALL CONTIGUOUS, 5 CENTER PIVOT SPRINKLERS, 10 IRRIGATION WELLS, 2 BARN, CATTLE PENS, ON PAVEMENT.

BAILEY COUNTY- 152 ACRES, 2 IRRIGATION WELLS, 1 CENTER PIVOT SPRINKLER, ON PAVEMENT.

PARMER COUNTY- 155 ACRES IRRIGATED FARM, GOOD SOIL, LAYS GOOD, 1 CENTER PIVOT SPRINKLER, 2 IRRIGATION WELLS WITH SUBMERSIBLE PUMPS.

BAILEY COUNTY- WEST CAMP AREA, 320 ACRE DRYLAND FARM, WITH NICE HOME AND METAL SHOP. 3BDR/2BTH HOME WITH FIREPLACE, LOCATED ON PAVEMENT.

BAILEY COUNTY- 160 ACRE IRRIGATED FARM IN WEST CAMP AREA. WITH CENTER PIVOT SPRINKLER, 3 WELLS, LOCATED ON PAVEMENT.

BAILEY COUNTY- 105 ACRE FARM WITH CENTER PIVOT SPRINKLER, 2 WELLS, CATTLE PENS, PARTIALLY FENCED, ON PAVEMENT.

RESIDENTIAL

PARMER COUNTY- NICE HOME ON 34 ACRES, 3 BDR, 2 BTH, BASEMENT, 3 CAR GARAGE, LARGE METAL SHOP, ON PAVEMENT.

MULESHOE- 3 BEDROOM, 1 3/4 BATH, 2 LIVING AREA W/ FIREPLACE, UPDATED NICELY, STORAGE BUILDING, BACK YARD PATIO, GREAT NEIGHBORHOOD.

EARTH- LARGE ROCK HOUSE, 3 BEDROOM, 2 3/4 BATH, FORMAL DINING, LARGE FINISHED BASEMENT, CENTRAL H&A, ON FIVE ACRES.

LAZBUDDIE AREA- 3 BEDROOM, 2 BATH HOME ON 6 ACRES, WITH ONE CAR GARAGE, LOTS OF STORAGE, SEVERAL METAL BARN AND OUT BUILDINGS. WOULD MAKE A GREAT PLACE FOR FFA/4H PROJECTS. MOTIVATED SELLER, PRICE REDUCED!

Vic Coker, Broker Cell 806-946-7242
Barry Coker, Agent Cell 806-787-0917
316 Main Street • Muleshoe, Texas
Office: 806-272-3100 • www.vicoland.com

Edwards REALTORS®
FARM & RANCH RESIDENTIAL COMMERCIAL

Anton
47 Acres - Non Irrigated. Good Flat Acreage, Ready To Sell. 2.5 Miles East Of Anton.
King County - Reduced To \$350,000
320 Acres, Excellent hunting and scenic views. Has Turkey, quail, dove whitetail deer and wild hogs. 2 Trail Homes Included. 3200 CR 352
Lamb-Castro County
320 Acre Farm Now Dry Land. Excellent hunting - Dove, Pheasant & Deer. Located 2 Miles East of Earth On Hwy 70, Then North On Hwy 320 To CR 510 & 630 Intersection.
Springlake / Earth - Commercial
Springlake Feed Yard For Sale - Permitted for 10K Head of Cattle, 5000 Ton Silage. Located on Hwy 70 4 Miles W. Of Earth Texas. JUST REDUCED
Littlefield
Beautiful & Well Maintained - Updates Throughout
3/2/2 125 E. 25th \$139,500
Sudan
1256 Acre Farm/Ranch/CRP w/excellent Mule Deer and Dove hunting, 2 mile border w/excellent native sand hill region in central Lamb County. This area has produced numerous trophy bucks over past decade. Both tracts have center pivot irrigation systems. Ranch consists of 2 tracts, W. tract ~1056 acres with ~550 irrigated acres, 2 center pivots, 486.6 CRP, remainder in grass, 2 pivots w/underground line connecting systems. E. tract ~180 acres with ~135 center pivot irrigated acres, 40 acres CRP.
• Beautiful 1 Yr Old Home On Quiet Street - Close To School. 3/3/2 407 W. Hay \$339,000
• Home W/ 4.4 Acres in Sudan ISD. Corrals, Barn For Horses. 2989 Sq.Ft. 3/2.5 501 Fm 37 \$140,000
• Reduced! Great Floor Plan, Well Maintained Premises & Unique Style. 3/2/2 407 Hwy 303 \$115,000
• Nice Location! 3/1.5/1 406 Wilson St. \$54,000

806.686.6371 Office
MEDwardsREALTORS.com

NIEMAN REALTY

116 E. AVE. C • GEORGE NIEMAN, BROKER • 272-5285 OR 272-5286
CHECK OUR LISTING INFO., PHOTOS, ETC. ON-LINE AT WWW.NIEMANREALTY.COM
HAVE BUYERS! NEED HOME AND LAND LISTINGS!!

HIGH SCHOOL AREA

- 3-1.5-1 carport Home, Cent. A&H, stove thermal windows, "AS IS", MAKE OFFER!! \$47K!!!
- 3-2 1/2 - 2 carport HOME, corner lot, 2301' living area!! \$80K!! REDUCED \$72K!!
- Nice 3-2-2 Home, approx. 1974' lv. area, built-ins, corner lot, workshop/storage, fenced yd. MORE!! REDUCED \$77,900!!!!
- 3-2-2 carport, Brick home, corner lot, approx. 1837' lv. Area, cent. A&H, oven, cooktop, disposal, fans w/ lights, thermal windows, lots of storage, cov. Porch & patio, fenced Yd.!! \$65K!!!
- NICE 3-3-2+1 carport Brick Home, Cent. A&H, built-ins, approx. 3180' lv. Area, office, den, 7 fans w/lights, enclosed porch, coered patio, workshop, fenced Yd.!! MORE!! \$159K!!

RURAL

- NICE 4.8 acre homesites, deed restricted!! \$17,500!!
- HWY 214, Edge of Town-3-1-1+1 Carport Home, .69 acres, Cent. heat, 2 win. Refrig air units, ceiling fans, appliances, furniture, dishes, etc. well, stor. bldg., Much More!!! \$49,500!!!
- STEGALL 3-2-2 Austin Stone Home on 3.67 acres, Cent. A&H, built-ins, gas log FP, approx. 3064' living area , workshop/storage, 24'x36' metal shed, MORE!! \$125K!!
- MAPLE - 3-2.5-2 Brick Home on 2.48 acres, Cent. A&H, built-ins, gas log FP, approx. 2557' lv. area, (garage enclosed), storage unit!! MORE!! \$65K!!
- 15 Rental Units- (1 quadplex & 11 individual units) \$5580 gross income when full!! \$350K!! Make Offer!!

RICHLAND HILLS • PARKRIDGE • HIGHLAND

- Nicely Remodded 3-2-2 Brick Home, cent. A&H, built-ins, approx. 1620' lv. area, new cabinets, granite counter tops, venetian marble in baths, crown molding, fans w/ lights, tile block fence, 12x14 tile block wkshp/storage!! \$125K!!
- NICE 4-4-5-2 Brick Home, Cent. A&H, Built-ins, FP, Fans w/lights, basement, auto. spkrl., fenced yd., cov. patio, Approx. 3084' Lv. Area!! \$180K!! REDUCED \$169,900!!!!
- VERY NICE 3-2.5-2 Brick Home, Cent. A&H, built-ins, FP, approx. 2749' lv. area, lots of storage, nice courtyard & landscaping, workshop/storage/fenced yd., Much More!! Reduced-\$155K!
- 3-2 BDRM. DUPLEX UNITS, TOTAL ELECTRIC!! \$180K!!
- 2-1 Home, wall furnace heat, window evap. air!! \$30,000!!
- CUSTOM BUILT 3-2.5-2 Brick Home on corner lot, 2608' lv. area, built-ins, FP, covered patio w/ grill, fenced yd., auto spkrl., numerous amenities!! \$270 K!!
- VERY NICE 3-2-2 Brick Home, Cent. A&H, Built-ins, FP, thermal windows & doors, approx. 1876' lv. area, workshop/storage, fenced yd.!! \$119,500!!
- NICE 3-2-2+2 carport Home, corner lot, Cent. A&H, built-ins, ceiling fans w/light kits, storm doors, & windows, covered patio, tile block fence, auto. spkrl., workshop/storage, MUCH MORE!! \$135K!!
- NICE REMODELED 3-2-2 BRICK HOME, Cent. A&H, Built-ins, new carpet & tile, & countertops, new paint, approx. 1907' lv. area, cov. porch & patio, fenced yd., workshop/storage!! \$139,500!!

LAND & COMMERCIAL

- Approx. 1080' metal bldg. w/off. & 3 bay garage/ workshop area plus chain link fenced area!! \$39,500!!
- GREAT BUSINESS LOCATION - 13000' Bldg., 7000' paved parking, corner lot, Hwy. 84 & Main. A&H, \$100,000!!! Price Reduced \$60,000!!
- 308 W. 2nd - 2856' bldg. - former Odd Fellows Lodge, PRICED TO SELL!! \$31,500
- 1020 S. Main - 200' x 104' tract w/ 1000' Bldg.!! \$20K!! Price Reduced \$18K!!
- CASTRO CO. / FM 303 - Approx. 445.5 acres, 6 subs, 1 turbine, 2 valley & 1 Zimmatic circle!! \$1950 per acre!!
- NICE 1680' office, Cent. A&H, plus 1120' storage/ workshop w/gar. door + 2 carport!! \$30K!!

WORK YOUR SPIRIT

SONIC DRIVE IN

Now Accepting Applications
SONICDRIVEIN.COM/JOBS

An Explanation of the Iraqi Conflict and the Role of IS.

Violence is escalating in Iraq, and I don't see an end in sight. The situation is unfolding fast, so I want to take a minute to explain the root of the current Iraq conflict and give you the most up-to-date facts on the situation as I received them from the House Armed Services Committee.

The Islamic State (IS), also known as ISIS and ISIL, currently controls the territory from Aleppo, Syria across northern Iraq, and includes territory as close as 20-30 miles outside Baghdad. The Sunni terrorist organization grew out of al-Qaeda in Iraq (AQI), and they share the same global jihadist ideology. Its leader, Abu Bakr al-Baghdadi, joined the Sunni terrorist organization in 2010 after he was released from U.S. custody in 2009. He leads a well-funded and fully-armed operation, collecting from donors in the region, ransoms,

RANDY'S ROUNDUP
UPDATE BY CONGRESSMAN RANDY NEUGEBAUER

tribute from conquered territory, and profits from black market oil sales. The group's weapons are mainly stolen from Assad's military and the Iraqi Security Forces (ISF). Last week, President Obama authorized U.S. air strikes to support ISF and the Kurdish Peshmerga in northern Iraq. We've also been providing assistance directly to the Peshmerga, Kurdish militia forces, in coordination with the Government of Iraq. In response, IS released a propaganda video Tuesday of American journalist and POW James Foley's beheading. They threatened to also

kill journalist Steven Joel Sotloff, whom IS kidnapped about a year ago, if the U.S. continues these air strikes. The Obama Administration has determined this video is authentic, and announced they had previously launched an unsuccessful mission to rescue Foley and other U.S. POWs in Syria.

It's clear that IS is a dangerous and radical group, and that the unrest and violence in the region is far from over. I promise to continue to follow this situation and share periodic updates with you here.

Thanks for reading!

MULESHOE AREA HOSPITAL DISTRICT

Muleshoe Area Hospital District is proud to announce and welcome

Lindsay Johnson, PA-C






She is joining the practice of Muleshoe Family Medicine Clinic, 701 South 1st St. on July 1, 2014 and will work with Bruce D. Purdy, M.D.

Call 806-272-7531 for an appointment


Congratulations to the Muleshoe Mules Athlete of the Week!

CHAMEL REGALADO

Higginbotham Brothers
Serving Texas Communities Since 1881

1516 W. American Blvd
Muleshoe, TX
806-272-3351



Notice of Tax Revenue Increase

The COUNTY OF BAILEY conducted public hearings on August 21, 2014 and August 25, 2014 on a proposal to increase the total tax revenues of the COUNTY OF BAILEY from properties on the tax roll in the preceding year by 3.896104 percent.

The total tax revenue raised last year at last year's tax rate of 0.899500 for each \$100 of taxable value was \$2,954,288.14.

The total tax revenue proposed to be raised this year at the proposed tax rate of 0.960000 for each \$100 of taxable value, excluding tax revenue to be raised from new property added to the tax roll this year, is \$3,062,178.73.

The total tax revenue proposed to be raised this year at the proposed tax rate of 0.960000 for each \$100 of taxable value, including tax revenue to be raised from new property added to the tax roll this year, is \$3,096,380.41.

The Bailey County Commissioners Court is scheduled to vote on the tax rate that will result in that tax increase at a public meeting to be held on September 8, 2014 at

Bailey County Courthouse, Commissioners Court Room, 300 South First Street, Muleshoe, TX 79347 at 10:00 AM

Notice of Proposed Officer Salaries for Fiscal Year 2015 - County of Bailey

Bailey County's fiscal year begins on October 1 and ends on September 30. All County Officers and Employees are paid bi-weekly.

This is a notice of proposed increase for elected officials' salaries to be included in the FY 2015 Budget in accordance with Section §152.013 Local Government Code.

| Elected Officials | 2014 Salary | Proposed 2015 | Increase in Longevity Pay |
|----------------------|-------------|---------------|---------------------------|
| County Judge | \$38,702.21 | \$39,863.28 | \$ 60.00 per year |
| County Clerk | \$34,086.48 | \$35,109.07 | \$ 60.00 per year |
| District Clerk | \$34,086.48 | \$35,109.07 | 0.00 |
| Justice of the Peace | \$28,112.14 | \$28,995.50 | \$ 60.00 per year |
| County Attorney | \$28,113.85 | \$28,956.53 | \$ 60.00 per year |
| County Sheriff | \$43,352.96 | \$44,653.55 | \$ 60.00 per year |
| County Treasurer | \$34,898.06 | \$35,945.00 | \$ 60.00 per year |
| County Tax A/C | \$34,086.48 | \$35,109.07 | \$ 60.00 per year |
| Commissioner Pct #1 | \$20,250.46 | \$20,857.97 | \$ 60.00 per year |
| Commissioner Pct #2 | \$20,250.46 | \$20,867.97 | \$ 60.00 per year |
| Commissioner Pct #3 | \$20,250.46 | \$20,857.97 | 0.00 |
| Commissioner Pct #4 | \$20,250.46 | \$20,857.97 | \$ 60.00 per year |

Ask A Lawyer

Continued from A6
not get paid.

Q. I have a durable power of attorney given to me by my recently deceased mother. Can I still use this to wind up her affairs? It seems like this would be much easier than probating her will.

A. It would be much easier but it can't be done. The authority granted by a power of attorney generally ends upon the death or incompetence of the grantor.

Because this power of attorney was "durable" it would continue even if your mother became incompetent. But even a durable power of attorney terminates at death. Your mother's will now controls the distribution of property after her death.

Q. If you loan someone money and there is no type of legally binding agreement, only verbal, what type of action can be taken to retrieve funds? Am I just out of luck?

A. You seem to think that there is no "legally binding agreement" because there is nothing in writing.

In fact, if you loaned the person money and he agreed to pay you back, you have a "legally binding agreement," even if it is oral. You can file a claim in justice court to collect.

Of course, you will have to prove you loaned the money and he has not paid it back.

Thank you for reading the Journal!

Support the Boosters Who Support Our Teams, Schools and Community!

MULESHOE ANIMAL CLINIC & MULESHOE VET SUPPLY

1430 US Hwy. 84, MULESHOE
272-3061 OR 272-4990

BCEC
A Touchstone Energy Cooperative
BAILEY COUNTY ELECTRIC COOPERATIVE ASSN.
610 E. American Blvd.
Muleshoe • 272-4504

Muleshoe Journal
www.muleshoejournal.com
201 W. Ave. C
272-4536
Striving to be your source for local news!

MICHELIN TIRE & SERVICE TIREWORKS TIRE PROS
Glenn Kahlich • M: 806-344-7034
220 E. American Blvd.
Muleshoe, TX 79347 • 272-4594

"Where Custom Is Attainable"
HR
Hartline Renovations
(806) 946-6652
Micah & Aubrey Rutinard

MCDONALD'S
i'm lovin' it
of Muleshoe
1025 W. American Blvd.
806-272-3333

WE LOVE THE MULES!

FIVE AREA TELEPHONE COOPERATIVE
302 Uvalde
Muleshoe, TX
272-5533

WE LOVE THE LADY MULES!

H&R BLOCK
104 E. Ave C
Muleshoe, TX 79347
272-3332

GOOD LUCK TO THE MULES AND LADY MULES

DURING THE 2014-2015 ATHLETIC SEASON!



Muleshoe Muleshoe VS. Levalland Lobos @ Muleshoe • 7:30 p.m.