

Kid stuff?

By Jennifer Burgess

No. 1

$$\left[\frac{\sqrt{0.0764 + 0.0591}}{-(2.64 + 3.19)} \right]^3 [836 / 835] =$$

No. 2

A parasitic wasp is the smallest insect. It weighs 2.0×10^{-7} ounces. A large cockroach weighs 1.3 grams. What would be the weight in kilograms of an animal that was the same number of times heavier than a 5.0 gram mouse as a cockroach was heavier than the parasitic wasp? (Use 1 gram = 0.0353 ounces.)

No. 3

One printing press can print 5,000 advertising cards in 12 seconds. Another printing press can print the same number of cards in $7 \frac{1}{2}$ seconds. If both presses are used together to print the 5,000 cards, how many seconds will it take them?

New math? Old math? College? High school? Can you solve this in seconds?

Next week, when you read of the success of the elementary and junior high math teams, you will have an idea

of the mathematic concepts they are mastering as they've competed in the TMSCA (Texas Math and Science Coaches' Association) Math and Science Meets from Midland to Azle, and in between, since last October.

Thirty-three 10-13-year-age students have studied and memorized the basic 2+2's, plus the more complicated formulas, such as the surface area of a cylinder. However, as you realize from reading these word problems, memorization of facts is only the beginning tool enabling them to take a timed test of 80 problems.

At the competitions, most of our students take four tests: calculator, number sense, mathematics and science. At some meets, small schools are in one division while larger ones are in another. And though larger schools are able to enter students who specialize in only one test, our Haskell students compete very well with them, and many times score as high. We are able to bring home Sweepstakes trophies, even when there is no division of schools, even when there are 1,500 students participating.

The above problems were taken from some of the calculator tests. On these 30-minute tests, the students use a scientific calculator to solve the "number crunchers," geometric pictures and word problems. (A scientific calculator is not like the ones in our pockets.)

On the number sense test, the student is not allowed to figure anything on paper. All calculation is done mentally and only the answer is written on this 10-minute, 80-problem test. Examples of these problems are:

1. 25 times 53 = _____
2. 14.8 divided by $\frac{2}{3}$ = _____
3. Which is smaller, $\frac{5}{7}$ or $\frac{8}{11}$?
4. 8 is what % more than 5?
5. $27 \frac{1}{2}$ % = _____ (fraction)

The mathematics test allows pencil calculations, but no use of calculators. It is a 50-problem multiple-choice test with a 40-minute time limit. Example problems:

1. A basketball team scored 52 points in a game. The team made four times as many two-point baskets as three-point

baskets and half as many three-point baskets as free throws. How many free throws did the team make?

2. Every 75th person at a baseball game was given a free baseball. Every 100th person was given a free T-shirt. If 1,250 people attended the game, how many people received both prizes? (a) 4, (b) 8, (c) 12, (d) 16, (e) n.o.t.

The science exam tests a student's knowledge of all areas of science. They are allowed one hour on this 50-problem multiple-choice test. Some recent test questions were:

1. What information does velocity tell? (a) displacement and direction, (b) speed and direction, (c) speed only, (d) direction only.
2. Plastics in plant cells contain: (a) nucleus, (b) protoplasm, (c) pigments, (d) cytoplasm.

Our students began working in the fall on calculator and number sense. Bonnie Fouts is the junior high math coach and Paula Everett is the elementary math coach. It has taken hours and hours of serious study for our teams to reach the level of success they've attained this year. Most of the math prac-

tice takes place after or before school hours. The junior high students practiced many mornings at 7:10 before school starts at 8. No deeper dedication in the hearts of coaches or students is found.

For the science competition, our students rely on their normal classroom instruction.

We appreciate the support of the administration and school board for allowing Haskell to be well represented in this academic competition. Parents have done their part and teachers from kindergarten on have gone "above and beyond" equipping these students with knowledge.

As parents, we say thank you to these children who are making sacrifices to bring honor to their school and families, not only by their achievements, but by their conduct. They constantly receive compliments—from the cashiers to the test monitors—for their manners and polite behavior.

If you are interested in seeing a job well done, look no further than the Haskell Elementary and Junior High math teams.

Aggie Muster Tuesday

Former students and friends of Texas A&M University from Haskell, Jones, Stonewall and Knox counties will meet in Rule Tuesday (April 21) for the annual Texas Aggie Muster.

Muster activities will begin at 6:30 p.m. at the Lions Club depot building in Slim Sorrell Park east of Rule with a barbecue dinner immediately following.

The Muster tradition has been held annually since 1883 and is held in conjunction with San Jacinto Day to honor the freedom of Texas and pay homage to all Texas A&M students and former students who have passed on. During the roll call for the absent, a living comrade will answer "here" for each former student whom death has taken from the ranks.

"Muster is more than a ceremony," said this year's Muster chairman, Wallar Overton. "It is a way for Aggies to annually renew their loyalty and unity which constitute the foundation of their friendship for each other and love and devotion for their school."

Reservations for this year's Muster may be made by contacting Wallar Overton, '61, at (817) 864-2958, or Gery Walters, '75, at (817) 864-8127.



Get out the vote

This student group operated a booth during Super 2nd Saturday, encouraging citizens to register and vote in the run-off election. From left, they are Timothy Jordan, Jimmy Huff and Tim York.

Students help get out the vote

Sixth-grade students from Haskell Elementary took their concerns about voting to the streets during Super Second Saturday.

The students passed out 40 voter-registration cards to people who had not previously registered. They also encouraged voters to vote in the April 14 run-off election.

Former Haskell mayor Greg

Melton informed the students earlier this year that an average of only 10 percent of registered voters voted in a city election. These civic-minded students have been studying the importance of being involved in their community through the Civic Achievement Award Program (CAAP).

CAAP, a civic education program from fifth through 8th grades, is an interdisciplinary program conducted by the Close Up Foundation that provides young people with the knowledge and skills necessary to be active, informed citizens. The program was

Microwave school scheduled

Healthful eating often takes a back seat to running errands and meeting deadlines.

When you don't take the time to eat nutritious foods, you're depleting energy reserves needed to keep up with a demanding schedule. Learning to use your microwave oven to its full potential provides you a quick, clean and efficient way to prepare nutritious meals while saving time and energy.

Shirley Deal, Linda Caton and Lisa Hoff, WTU marketing representatives, will be here Tuesday, April 21, to present the WTU Microwave School in the Haskell High School cafeteria, beginning at 7 p.m.

A variety of main dish, vegetable and dessert recipes will be prepared, many of which go from the freezer to the microwave to the table in just a matter of minutes. If you have never used your microwave to blanch fresh vegetables for freezing or to make homemade pickles, these women invite you to come see how easily it can be done. You will then have the opportunity to taste all of the recipes that will be prepared.

Everyone attending will receive a recipe folder and a free gift. Door prizes will be given following each cooking school or your may be the lucky winner of one of the three outdoor electric grills to be given at the completion of all microwave schools.

If you plan to attend, call the WTU office so that comfortable seating will be available for everyone.

City gets big sales tax rebate

The City of Haskell's sales tax rebate check this month was in the amount of \$15,243.94.

The amount represented an increase of 69.62 percent over the \$8,897.28 received last year for the same period, indicating that the city has finally begun to feel the full impact of the half-cent sales tax increase that went into effect Oct. 1. The payment represented taxes collected on February sales and reported to the State Comptroller in March by businesses filing monthly returns.

During the first four months of 1992, the city has now received \$70,746.54. During the same period last year, the city received \$47,250.52. The 49.73-percent increase is in line with the 50-percent increase in the tax rate.

Also receiving checks this month were the cities of Rule (986.47) and O'Brien (626.48).

Rochester and Weinert did not receive checks this month.

So far in 1992, the five cities of Haskell County have received \$81,682.05, compared to \$56,938.96 during the first four months of 1990.

Statewide, sales tax rebates to cities were up 8.8 percent this month.

In neighboring Jones County, the City of Stamford saw a significant decline in sales tax receipts. This month's check of \$22,440.13 was 23.48 percent below last year's check of \$29,325.73 for the same period.

Elected

Valeria Rocha Ramos of Haskell has been elected to membership in Beta Sigma chapter of Sigma Delta Pi, national Spanish honor society, at Hardin-Simmons University.

Fouts re-elected district attorney

John Fouts won a third term as district attorney of the 39th Judicial District Tuesday with a runoff victory over former DA Joseph Thigpen.

Unofficial returns from the district's four counties gave Fouts 1,810 votes to Thigpen's 1,542.

Fouts carried Haskell County where about half of all votes were cast, 1,007 to 633. He also carried

Kent County by a margin of 329 to 268. Thigpen led in Throckmorton County, 457-364, and in Stonewall County, 184-110.

The two Haskell attorneys were the top vote-getters in last month's four-man race in the Democratic primary. Fouts led in the first primary, 1,361-1,300. Two other candidates received 1,842 votes.



Top miler

Freshman Jennifer Comedy took first place in the 1600-meter run at the Rolling Plains Relays Saturday with a time of 6:08.39. She also took second place in the 3200-meter run with a 13:48.47 time.

Anson to host 7-2A track meet

Haskell Indian and Maiden track teams, coming off of good showings in the local track meet last week, will compete this week in the district 7-2A track meet in Anson.

The meet begins at 4 p.m. Thursday with boys shot, girls shot, JV discus, and JV shot.

The 3200-meter finals for girls, boys and junior varsity begin at 5 p.m.

At 6 p.m., the running preliminaries will begin.

Finals in the field events will begin at 11 a.m. Friday and continue into the afternoon.

The running finals begin at 6

p.m.

Eddy Gonzales and Cody Josselet took second places in the Rolling Plains Relays. Gonzales was second in the 400 with a time of 51.80 and Josselet was second in the 200 with a time of 23.80.

Taking third place was the 1600 relay team of Robert Huff, Johnny Rodriguez, Josselet and Gonzales. The time was 3:36.34.

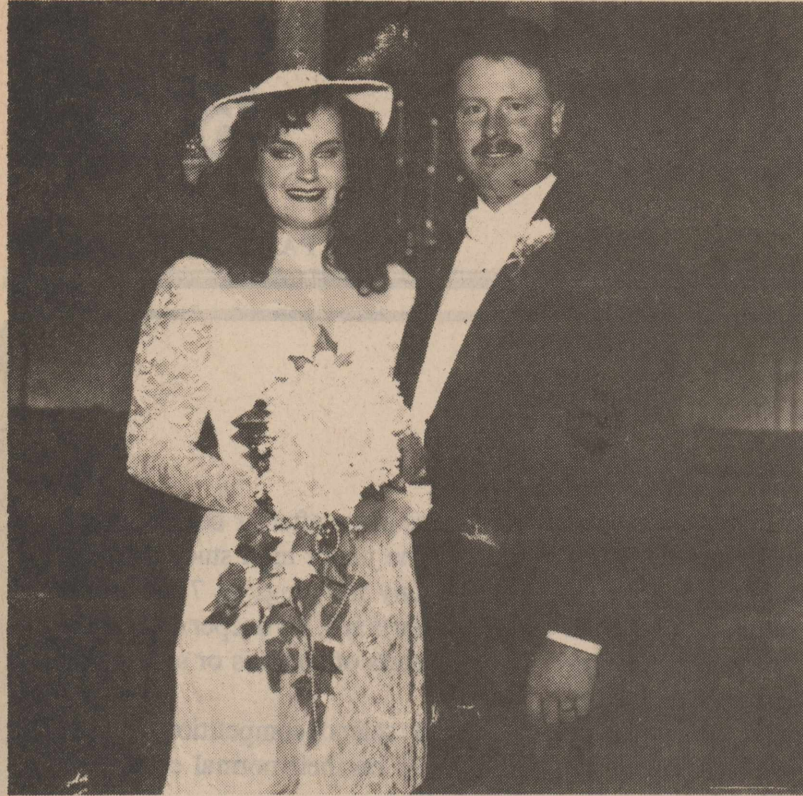
The 400 relay team took a fourth place with a time of 45.70. Running on the team were Robert Johnson, Rodriguez, Gonzales and Josselet.

Huff took two individual



Wins hurdles

Haskell's Shelly Stewart ran a 17.42 in the 100-meter hurdles to take first place in the Rolling Plains Relays Saturday.



Tamra and Don Haggart

Burnett, Haggart wed in Oklahoma

Tamra Earlene Burnett was married to Don Russell Haggart in a western wedding ceremony performed Saturday evening, March 21, at the Canadian Valley Baptist Church in Yukon, Okla. The Rev. James Densman of Hollis, Okla., former pastor of the First Baptist Church in Haskell, officiated.

The bride is the daughter of Charles and Joetta Burnett of Haskell and the only granddaughter of E. H. and Edna Burnett, Beulah McFadin Ross and the late J. P. McFadin, all of Haskell. The bridegroom's parents are David and Fern Haggart and he is the grandson of Ruby Haggart, all of Fisher, Ill.

Barbara Merchant Rhoads of Yukon was pianist and Tammi Pannell of Haskell was soloist.

Given in marriage by her father, the bride wore a traditional gown of white satin and alencon lace overlay. The princess style bodice was trimmed with seed pearls. The

fitted gown fell to ankle length with a flared lace bottom. Her bridal hat was lace overlay with a tulle at the back, flowers and pearls adorned the crown.

The bouquet, designed by the bride and the groom's sister-in-law of Olney, was of white roses with a hint of peach baby breath, pearl roping, turquoise tulle, greenery, white ribbon and lace. A gold pendant watch belonging to her paternal great-grandmother was attached to the bouquet. A diamond dinner ring given to the bride by her maternal grandmother was worn.

Maid of honor was Becky Dalrymple of Stephenville and bridesmaids were Tammi Pannell of Haskell and Debbie Neill of Fort Worth. Flower girl was Teresa Lacey, niece of the bride of Abilene. The bride's attendants wore street length princess dresses of turquoise blue linen, fashioned with a round neck, and short puff sleeves

accented with self fabric bow and seed pearls. Their accessories were a single strand of pearls and earrings to match, a gift from the bride. The flower girl's dress, also of turquoise linen, was styled with a dropped waist, puffed sleeves and pearl trim. A white lace overlay that matched the bride's dress was attached at the waist. To complete her ensemble she wore a white hat with lace, flowers, and seed pearls identical to the bride's. She also wore a pearl necklace, earrings, and bracelet which were a gift from the bride.

The bride's mother designed and constructed all of the bridesmaids' dresses and the complete outfit for the flower girl.

The bridesmaids carried a western style dried flower arrangement with turquoise crepe flowers and peach ribbon streamers, designed by the groom's sister-in-law. The flower girl carried a white basket trimmed with white and peach ribbon from which she dropped peach rose petals as she preceded the bride down the aisle.

John Haggart of Olney, brother of the groom, was best man. Groomsmen were David Haggart of Gibson City, Ill., brother of the groom, and Steve Keiser of Houston. Grant Haggart of Olney, nephew of the groom, was ring bearer.

The groom, his attendants, the bride's father and the ringbearer wore black tux tails, black wranglers, with white tux shirts, turquoise bow ties with western belts and boots.

Chris Lacey of Claremore, Okla., nephew of the bride, and Kyle Haggart nephew of the groom, were candlelighters. They wore black western jeans, white shirts and black western boots.

The bride's mother wore a long-sleeved two-piece dress with a round neckline in shades of turquoise. Her accessories included a silver necklace and earrings, and a dried flower corsage fashioned of the bride's chosen colors of peach and turquoise. The groom's mother wore a two-piece suit, with floral jacket and pleated skirt of shades of peach, beige and turquoise. She also wore a dried flower corsage of peach and turquoise.

Danielle and Sarah Lacey of Claremore, Ok., nieces of the bride, registered guests at the registration table in the foyer of the church. The church was decorated with crepe paper pew bows of peach and turquoise. Three tree candelabra entwined with ivy adorned the front of the church. Baskets of dried flowers, designed and arranged by the bride and her mother and sister-in-law, completed the altar decorations.

A reception was hosted by the bride's parents at the home on Carriage Drive with a sit-down buffet with country western music for background music. Afterwards the bride and bridegroom danced to their favorite song.

The bride and groom cut the wedding cake, made by the groom's mother and decorated by her with southwestern designs as chosen by the bride. The bride and groom toasted the wedding party with champagne.

A rehearsal buffet, hosted by the groom's parents, was held at the future home of the bride and groom

at 11421 Carriage Dr., Yukon.

A bridesmaid brunch was held the morning of the wedding. It was hosted by the bride's mother and sisters-in-law at the bride's future home.

The bride attended Haskell Secondary School, graduating in 1988. She graduated in the summer of 1991 from Tarleton State University with a bachelor of science degree in fashion merchandising. She is employed at Dillard's in the Quail Springs Shopping Mall in Oklahoma City.

The groom attended Fisher School in Fisher, Ill., graduating in 1979. He graduated from Tarleton State University in the summer of 1991 with a bachelor of science degree in animal production. He is employed as warehouse manager for Donnell Ag Products/Pro Vet South in Oklahoma City.

Following a wedding trip to Oklahoma City, the couple are living in their new home in the Scurry Hill addition in Yukon.

Out-of-town guests were from Graham, Olney, Loving, Houston, Nederland, Pilot Point, Fort Worth, Stephenville, Abilene, Stamford, Haskell, Hollis, Okla., Oklahoma City, Claremore, Okla., Fisher, Ill and Gibson City, Ill.

A gift coffee was given Feb. 22 at the First National Bank meeting room for the bride-to-be, hosted by Lou Gilly, Christie Stapleton, Jane Smith, Charlene Dumas, Jamie Weaver, Mollie Moeller, Anita Dabney, Nelda Jetton, Peggy Lane, Delight Jones, Leora Guess, Joy Chapman, Nelda Lane, Sue Miller, Nancy Morales, Lois Howard, Gwen Campbell, Peggy Darden, Debra Bredthauer, Phoi McGuire and Kay Smith.

A lingerie shower was hosted by the bride's classmates at 7 p.m. Feb. 22 in the home of Sue Miller. Hostesses were Tammi Pannell, Leisa Morales, Tiffany Thomas and Kristen Grand.

A money tree party was given in Stephenville on Sunday evening, Feb. 23, by the bride's former college classmates and friends in the home of Becky Dalrymple.

A party was given honoring the bride and groom-to-be in Graham on March 17 by friends and relatives.

Noah Project helps 13 people

The monthly business meeting of Noah Project-North was held April 10 at East Side Baptist Church with Paul Cheatham presiding.

Donna Sue Anders, outreach coordinator, reported that 17 volunteers worked a total of 912 hours during the month of March and assistance was given to 13 people.

New members welcomed were Jerrie Sue Hise, Sheila McMeans and Jennabeth Kimbrough.

Guests attending the meeting were Art Williams and Joe Torres.

American Heart Association
WE'RE FIGHTING FOR YOUR LIFE



To celebrate

Guadalupe and Rosa Alvarez will mark their 50th wedding anniversary with a ceremony Saturday, April 25, at 3 p.m. at Calvary Baptist Church. A reception will follow at the Haskell National Bank community room.

--Obituaries--

Maye M. Forehand

Maye M. (Hawes) Forehand of Haskell died Sunday at Odessa Medical Center. She was 88.

Funeral services were Wednesday morning at the Church of Christ with Dale Huff, minister, officiating. Burial, directed by Holden-McCauley Funeral Home, was in Willow Cemetery. Grandsons served as pallbearers.

Mrs. Forehand was born in Weintert on May 29, 1903, and lived there until 1975 when she moved to Haskell. She was a member of the Church of Christ.

She married C. B. Forehand Jan. 8, 1927, in Benjamin. He died Aug. 28, 1990.

She is survived by a daughter, Dorothea Jean Hix of Odessa; three sons, Grandol Burgess Forehand of Avinger, Curtis Randol Forehand of Bennett, Colo., and Chesley Wayne Forehand of Rochester; four sisters, Velma Wilson of Abilene, Edna LeBouf of Vidor, Texas, Anna Belle Cypert of Graham and Lois Cypert of Knox City; 13 grandchildren; and 22 great-grandchildren.

A. D. Johnson

A. D. (Pete) Johnson died Sunday, April 5, at his home in Hamlin. He was 77.

Graveside services were held

Wednesday afternoon (April 8) at Weinert Cemetery, directed by Holden-McCauley Funeral Home. Dale Huff officiated.

Mr. Johnson was born Aug. 13, 1914, in Little Rock, Ark. He was a retired farmer, ginmer and constable of Weinert and a member of the Church of Christ. He married Virgieline Hembree on Aug. 19, 1938, in Trenton, Texas. She died Dec. 9, 1983.

Survivors include a daughter, Vergie Felton of Anson; three sons, Alvin D. Johnson of Lubbock, Charles Allen Johnson of Hamlin and Roy Gene Johnson of Olympia, Wash.; two half-sisters, Margaret Turner of Abilene and Ivy Johnson of Oklahoma City; a half-brother, Tommy Johnson of Abilene; seven grandchildren; 21 great-grandchildren; and eight great-great-grandchildren.

In addition to his wife, he was preceded in death by a son, Denny Lee, in 1967.

Rike to graduate

James David Rike will graduate with an associate in arts degree from Clarendon College when the college holds its graduation exercises April 24.

Rike is the son of Mr. and Mrs. John S. Rike of Haskell and is a 1990 graduate of Haskell High School.

	Double Prints 12 EXP. ROLL 24 PRINTS \$2.00
	15 EXP. ROLL 30 PRINTS \$3.00
	24 EXP. ROLL 48 PRINTS \$5.00
	36 EXP. ROLL 72 PRINTS \$7.00

	Kodak Film 20% off
	Polaroid T-120 Video Tape \$25.99

Bridal Selections now on display

Regina Gibson
bride-elect of Toby Castellaw

Faye Mullino
bride-elect of Ricky Ulrich

April Isbell
bride-elect of Kevin Baldwin

All Jewelry 20% off	All Easter Items 20% off Regular Price
----------------------------	--

 14" Big Wagon \$377	 12" Dump Truck with 6" pail and shovel \$277
-----------------------------------	--

Secretaries' Day
Wednesday, April 22nd
Show your appreciation for a job well done with a gift from
The Drug Store

- Mugs
- Candy
- Balloons
- Cards

THE DRUG STORE
864-2515 1-800-962-0743

THE Personality SHOPPE

Cordially invites you to join us in Celebrating our 46th Anniversary

Friday, April 17th Only
Refreshments Served
Register for door prizes (need not be present to win)

Spring and Easter Fashions
Prom Time Formals by Mike Benet (as featured in "Seventeen")
Regular and Missy Sportswear
Sweaters, Blouses, Skirts
Dresses, Model's Coats,
Jewelry and Hose

415 S. 1st
Haskell, Texas
817-864-2501

Slipper Shoppe
For Easter
All Dress Shoes
20% off

Many Beautiful Colors to compliment your wardrobe.
"We know you'll like our style"
Prices good Thursday, Friday & Saturday
April 16, 17 & 18

141/2 Avenue D
Haskell, Texas

East Side of Square
817/864-3051

Disabled stickers to change

Recent legislation has changed the Disabled Persons Registration Law, according to D. E. Livengood, veterans county service officer.

The State Department of Highways and Public Transportation will no longer issue disabled persons stickers for license plates after the expiration of the 1993 stickers, including all the special plates.

A disabled person will be required to obtain a disabled persons placard or, if they so choose, a disabled persons license plate, from their local tax assessor-collector office.

The disabled persons (blue) sticker (1X1) on the special license plate will be valid until Dec. 31, 1992. On or before that date, the department will notify all disabled persons, through public awareness programs, as to the date they may be able to obtain the disabled placard from their tax office. It will be some time after June 1992.

As a result of the changes in the law, effective with this renewal, the department will no longer collect a fee for the disabled persons sticker from this office. The special plate renewal will only reflect the special plate fee. Any fees for the disabled placard will be collected by the county tax office.

If you have questions about the change or the renewal fees, call the special plates section of the State Highway Department at (512) 465-7646.



Visit Houston

Paint Creek Gifted and Talented students who visited the NASA Space Center and Astro World this month include, front row from left, Pam McDonald (teacher), Daniel Burleson, Keith Burleson, Scott Stephens, Blayne Davis; second row, Tony Martinez, Amanda Crawford, Leigh Ann Reel, Jim Crawford, Marcus Overton, Matt Jennings, Jodie Reel, Monique Morgan (teacher); third row, Shawn Barbour, Cody Blair, Lolo Martinez, Hans Overton, Wallar Overton (sponsor) and Casey Thompson.

Paint Creek students visit Houston area

By Lolo Martinez, Cody Blair
On Friday, April 3, the Paint Creek Gifted and Talented (PEAK) students traveled to Lyndon B. Johnson Space Center.

The first item on the agenda was a seminar on aerodynamics. Afterward we were taken on a tour of WETF (Weightless Environmental Training Facility) by Jim Poindexter. The facility provides controlled neutral buoyancy in water to simulate the condition of null gravity.

Next we went to the Space Shuttle Trainers. There we saw a full-scale mockup of the space shuttle orbiter and its remote manipulation system.

In the Lunar Sample Building, we saw "moon rocks" brought back during the Apollo program. Finally, we went to Mission Control Center, which houses the flight control rooms from which all manned missions are monitored.

We spent the remainder of the day in Galveston on the beach. It

was a wonderfully wet way to end an interesting day.

By Jodie Reel, Keith Burleson and Blayne Davis
Paint Creek Gifted and Talented (PEAK) students participated in Physics Day at Astro World in Houston on April 4. We made horizontal and vertical accelerometers to help us measure various things (such as "g force") as we rode many of the attractions.

Some of our favorites included: "The Viper", a venomous steel roller coaster which did a 360-degree loop; The XLR-8, a roller coaster which had the cars suspended from the track that runs above the cars instead of below; "Greezed Lightning", a shuttleloop coaster in which the riders are propelled from 0 to 60 mph in 4 seconds, circle the loop, then surge up a near-vertical 70-degree incline, and then repeat the journey...backwards.

We had an exciting time and realized that physics and "phun" really go together.

Club has lesson in calligraphy

Haskell Young Homemakers met March 16 in the home of Kim Markey.

Suzanne Starr demonstrated calligraphy. She showed many different styles of writing, making bookmarks with members' names to keep.

Tammy Anderson won the door prize.

Hostesses Debbie Kennedy, Kim Markey and Tracy Frierson served a delicious array of fresh fruit with marshmallow dip, finger sandwiches, mixed nuts and iced tea.

D'Anne called the business meeting to order. The scholarship committee will be getting the applications ready and Mickey will be checking on the scholarship account. Members discussed their donations for the year. Two worthy causes were discussed, being the park and the Little League park lights. Estimates on these ideas will be discussed at the next meeting and amounts will be set.

Sixth graders...

Continued from page 1

established by Congress and is now sponsored by Burger King Corporation.

Haskell students participating in Saturday's efforts were Stephanie Alsabrook, Charity Anguiano, IV Burson, Katie Camp, Bobby Gonzales, Eric Guadalcazar, Timothy Jordan, Josh New, Breann Peiser and Tim York.

The following students made posters that were used Saturday: Stephanie Alsabrook, Kristy Arellano, Christie Blocker, Andrea Callaway, Amanda Cothron, Marci Elmore, Phillip Huff, Shannon Jordan, Ebony McCulluch, Nisha Patel and Brandon Rodela.

Other sixth-graders have talked to civic leaders, written letters to the editor, and become involved in solutions for civic concerns.

CAAP allows students to learn by doing. It gives them an opportunity to apply what they are learning to make the world better. As a result of the Burger King funding, the Close Up Foundation is able to make CAAP available to 1 million students across the country this year at no cost to schools. The CAAP materials include student resource books, and instructor manual, certificates of achievement, and a motivational videotape.

The Close Up Foundation is a non-profit, non-partisan education organization that encourages citizen involvement in the democratic process through educational programs in government and citizenship.

District meet...

Continued from page 1

fourths, in the 800 (2:07.50) and the 3200 (11:26.44) and Rodriguez was fourth in the 400 (54.77).

Jossette took fifth in the discus (132-11) and Gonzales was sixth in the high jump (5-10).

The Maidens captured two individual first places. Shelly Stewart was first in the 100-meter hurdles (17.42) and Jennifer Comedy was first in the 1600 (6:08.39).

Comedy also took second place in the 3200 (13:48.47) and Daniella Guadalcazar took two seconds, in the shot (35-1) and the discus (103.11).

Heather Hobgood won third in the 400 (1:04.6) and the 400 and 800 relay teams each captured third places with respective times of 53.9 and 1:54.17.

Other Maiden winners included Holly Hobgood, fifth in the 200 (28.68) and Heather Hobgood, sixth in triple jump (31-4 1/2).

Marriage Licenses

Only two marriage licenses were issued last month by the office of County Clerk Rhonda Moeller.

They were issued to: Homer David Everton of Haskell and Charlotte Goode Ashbrook of Rochester.

Benjamin Harold Olivier of Altus, Okla., and Darra Headstream of Elk City, Okla.

Meeting cancelled

The fourth and final meeting in the series, "Developing Capable People", scheduled for tonight (Thursday) has been cancelled.



Roy and Margie Medford

Medford couple celebrates 50th

Roy and Margie Medford celebrated their 50th wedding anniversary Saturday, April 10, with a family luncheon in their home.

The Medfords were married March 28, 1942, in Munday. They began married life in the Paint Creek community where they farmed. They are now retired.

Hosts for the luncheon were their children, Jerry and Linda Jones of Levelland, Roger and Judy Detamore of Stamford and Lonnie and Patricia Decker of Stanton.

Grandchildren attending were Kyle Jones, Rex and Misty Detamore and Jim and Tamara Decker.



Sixty percent of the world's radio programs are in English.

Rawlins Monuments
Granite-Marble-Bronze
Highest Quality
Reasonable Prices

Satisfaction Guaranteed
Delivery within 6 weeks

Price includes:
Lettering and Custom Designs

Cemetery Lettering done
anywhere in the Area

David Davis
Agent

204 N 1st Haskell
864-2607 or 864-3340

See Us Before You Buy!
Pictures and Samples Available

CALL
HESS HARTSFIELD
FOR
MAJOR MEDICAL
HOSPITALIZATION
MEDICARE SUPPLEMENT
CANCER
AND ALL FORMS OF
LIFE INSURANCE
SEE
HESS HARTSFIELD
BEFORE YOU BUY
CALL
817-864-2665
1-800-658-6342
HASKELL
TEXAS

New ClearVoice lets you hear voices clearly. Even in noisy places.

Do you avoid going to restaurants and other crowded places because the noise makes it hard for you to understand what others say?

Now you can hear voices clearly thanks to Beltone's exclusive new ClearVoice hearing aid with background noise filter. ClearVoice is specially designed to filter noise that makes it hard to hear conversation in crowded places.

Find out today if Beltone can help you get more out of life. Call or stop by your Beltone office today for a FREE hearing evaluation.

SPEECH SPEECH

Demonstration of speech mixed with background noise. Speech made clearer with ClearVoice background noise filter.

Call for a **FREE VOICE UNDERSTANDING ASSESSMENT**

Learn exactly how well you can distinguish and understand voices.

Beltone Hearing Aid Center
598 S. Pioneer Dr.
Abilene, Texas 79605
915-695-1133 or 1-800-234-2315

One coupon per person
EXPIRES (6-31-92)

©1991, Beltone Electronics Corporation

Toliver
WHIPS BIG CITY PRICES

1992 TRUCKS

- '92 Short - wide Silverado \$15,499
- 350 - Auto, Loaded # 92-15
- MSRP \$18,075. Rebate \$400. Disc. \$ 2,176
- S - 10 Pick up Tahoe \$9,649
- Air, Two-tone, Tape # 92-122
- MSRP \$11,528. Rebate \$750. Disc. \$1,127
- '92 4 X 4 Ext. Cab Silverado \$16,199
- 350, Auto, Power Windows & Locks # 92-133
- Tape, 1/2 Ton, Best Buy in Big Country
- MSRP \$20,983. Rebate \$400. Disc. \$2,384
- '92 1/2 Ton Ext. Cab Silverado - \$16,199
- 350, Auto, Power Windows & Locks, # 92-155
- MSRP \$18,972. Rebate \$400. Disc. \$2,373
- '92 Ext. Cab Teal (Special Paint)
- 4 In Stock Won't last long.

1992 NEW CARS

- '92 Chev. Caprice \$14,999
- 305, V-8, Rv Wheel Drive, Full Size Sedan # 92-72
- MSRP \$18,283. Rebate \$500. Disc. \$2,784
- New '92 Olds Achieva S Coupe -- \$14,199
- Quad 4 - Aluminum Wheels, Tape #1019
- MSRP \$15,820. Rebate \$500. Disc. \$1,421

USED & PROGRAM VEHICLES

- '90 Ford Probe Nice Car \$8,450
- '82 K-Blazer 4 X 4 Silverado \$4,450
- 71,000 Miles, Automatic
- '89 Ford XLT 1/2 Ton Pick up \$8,950
- '90 Astro-Ext. Conversion \$14,950
- Front & Rear Air, 27,000 Miles

Best Buys in the Big Country

See Gary Latham
Sam Toliver
Before you Buy

Toliver
CHEVROLET - OLDSMOBILE

517 North 1st 817-864-2626 800-588-2626

TT&L not included.

A Smart Way to Put All Your Eggs in One Basket

We know the old saying, but in this case, putting all your eggs in one basket makes perfect sense. That's because hard-working people like you keep us strong and growing. Visit with us at your convenience and see for yourself.

CHECKING
LOANS
INDIVIDUAL RETIREMENT ACCOUNTS
SAVINGS

See Us Today for **YOUR Banking Needs!**

FDIC

The Farmers NATIONAL BANK

Post Office Box 10
Phone (817) 997-2216
Rule, Texas 79547

--Letters to the Editor--

A great track meet

Editor: The Haskell Indian Booster Club wishes to thank the many people who worked so hard at the Rolling Plains Relays Saturday.

A special thanks goes to Danny and Vickie Josselet, Bill and Kay Perry and Elaine Davis for operating the concession stand; to all the workers in the concessions stand and in the track events; and to Bob Earles, Tony Burson, Joey Yates and their cooking crew for the hamburgers.

We also thank the coaching staff and their wives for the many hours they worked to make the track meet so successful.

Thanks also goes to the many track fans who supported this event.
Indian Booster Club
Ronny Tanner, President

Editor: I want to take this opportunity to say thank you to all those who assisted in the first Rolling Plains Relays track meet held Saturday, April 11, at our new track facility.

The track meet was a great success due to your cooperation and work before the meet and during the meet.

Many of the out-of-town coaches, school officials and fans commented on and congratulated the school and community on having a first-class facility and conducting a first-class track meet.

A big thanks also goes to those who volunteered their services but did not work due to the fact that we already had plenty of volunteers lined up to work.

It takes more than 50 volunteers to have a first-class track meet and hopefully in years to come the support and help will continue. If you would like to help in any way for 1993, just call my office and I will get your name on the list.

In 1993, we will be hosting at least one junior high meet, one high school meet, and maybe a regional qualifiers' meet. Also in '93, Haskell will be the host for the district 7-2A track meet.

Once again, thank you. You should be proud of our kids, our school, and our community.

Walter Hargrove
Athletic Director

Editor: Haskell had an event Saturday that had not occurred here in 40 years at least--a high school track meet.

For those of you who have not seen the new facilities they are top notch. Our students have competed in the ensuing years (and many have competed well) without anywhere near adequate facilities; however it was always at other schools' facilities.

We want to thank all those people, present and past board members, coaches, administrators and Indian boosters, who have worked so hard in making the new track a reality at long last. We also wish to thank those former tracksters who gave of themselves to compete in spite of the conditions they had to work with. We enjoyed seeing them compete and thrilled at their successes and look forward to years of watching new individuals excel.

Thanks to all who made it a reality. It was wonderful to see it happening Saturday in Haskell.

Jimmy and Janice Browning

Editor: I would like to thank all the people and businesses who helped to make Haskell's first track meet such a big success.

The Haskell coaching staff, all their athletes and workers are to be commended for a job well done. All the hard work and hours spent in getting ready for this track meet certainly showed last Saturday.

The track looked super and the Booster Club concession stand was a big hit. It was so nice to see the Haskell people, young and old, working together to put on a great track meet.

You Haskell people are the best. Thank you for supporting and giving of your time to the Haskell athletic programs. Our youth of today are Haskell's future tomorrow.

Vickie Josselet
Member
Haskell Booster Club

Beta Chi meeting in Munday

The Beta Chi chapter of Delta Kappa Gamma Society International met April 5 in the First United Methodist Church in Munday.

Melodee Christian, chair person of the Ceremonies committee, presented three ladies for initiation into Beta Chi. Glenda Drinnon, escorted by Leslie Kupatt, Jo Ellen Jenkins, escorted by Vida White, and Betty Kittley, escorted by Jackye Leonard were presented for active membership.

In the absence of the president, Maribeth Williams, Cathy Bartley, with assistance from Dorothy Myers, Ann Therwanger and Margaret Chafin, initiated the ladies into membership. The ceremony ended with members singing the Delta Kappa Gamma song, accompanied by Ellen Rieger at the piano. The new members were welcomed by everyone.

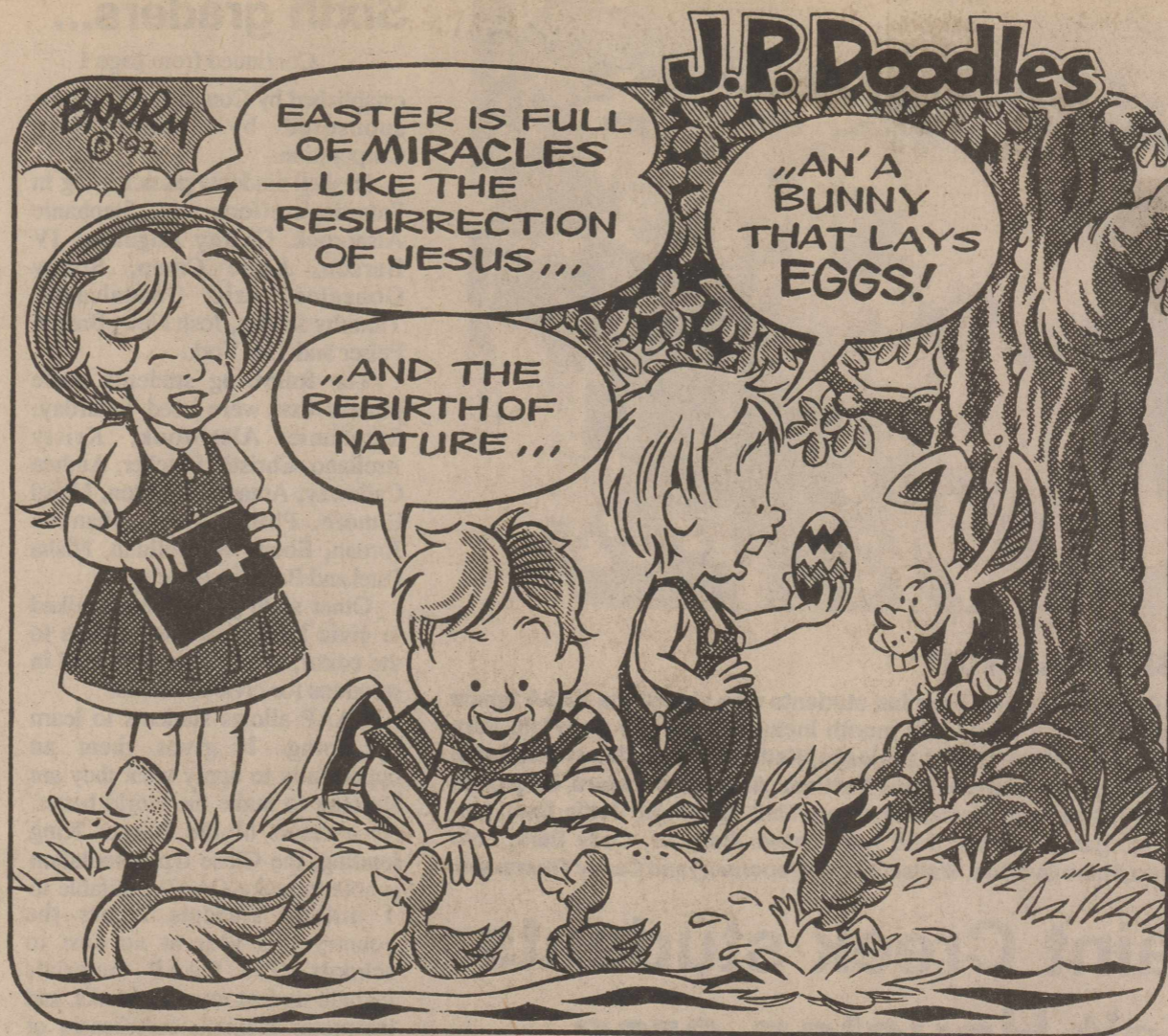
A short business meeting followed.

Leslie Kupatt read a letter from Maribeth Williams thanking Beta Chi for the scholarship last year and requesting another for this summer. Lillian Logan made the motion to give Maribeth the scholarship. The motion was seconded by Marie Ward. All voted in favor.

Gerre Larned then presented the March Red Rose Salute to Jackye Leonard for her outstanding work on the nominating committee. The April Salute was given to Marie Ward, a member of Beta Chi for 46 years.

Marie came forward and related some experiences from her early years of teaching. She told several anecdotes and showed a picture of the school in which she first taught. Marie discussed going to Swenson for an interview and meeting with the trustees, one of which later became her husband. She told of teaching in Sul Ross and San Angelo State universities.

Refreshments were served by the Munday members.



-LETTERS-

World of Work

Editor: Merchants and professional personnel of the Haskell area are being invited to participate in the "World of Work" career day being sponsored by the Haskell schools. This special activity enables students to better understand the job market.

Last year over 30 representatives were present for this special presentation. The students appreciated the efforts of the presenters and learned to understand the fields of work.

The date for the "World of Work" will be May 12 from 9:30 to 11:30 in the high school gym. Businesses and professionals who will participate are asked to call the high school office, 864-2848.

Participants may set up tables and display booklets, give favors, present short video explanations, etc. Any creative presentation will be enjoyed by the students. Please help them to know more about the "World of Work."

Nancy Toliver
Counselor

Grateful visitors

Editor: On April 4 we limped into Haskell with a serious problem in our motor home fuel system. As we arrived we found our very nice city park which met all our needs.

But more than that, we found a real warm welcome from the citizens of your city and offers for assistance from strangers.

On Sunday we walked downtown to find a church and were led to the United Methodist Church. We were warmly welcomed by Rev. Parsley and his parishners and enjoyed the Bible study and the worship service.

On Monday morning we went to Cliff's Garage and again we were helped by courteous and competent people and we were on our way in less than an hour.

Marge and I want to express our deep appreciation for the encouragement and help we received. Thanks to the truck driver who offered any assistance we needed. Thanks to the great folks of the Methodist church and the warm welcome we received. Thanks to Cliff and his assistant for getting our problem fixed quickly. Thanks to the City of Haskell for their lovely city park where we could camp free the first night.

You folks are real Americans and you know how to make people feel at home. Come visit in Minnesota and we shall try to treat you as well.

John and Marge Pratten
Rochester, Minn.

P.S. Enclosed is check for second night camping. We will just guess at a fair price.

(The check, in the amount of \$11, was made out to the City of Haskell.)

Thanks

Editor: I want to thank you so much for the nice writeup in The Free Press. It was so nice and sweet of you to do it and I really appreciate it more than you will ever know.

The Haskell Free Press is part of me. I will always love Haskell. It will always be my home.

Mrs. Pearl Pace
Overton

--From Out of the Past--

From the Files of The Haskell Free Press

**20 Years Ago
April 20, 1972**

An elated Haskell High School coaching staff brought home a victorious Indian track team from the district 7-2A meet Thursday night, winning the meet with 123 1/2 points over Stamford with 106 1/2; Hamlin, 105; Anson, 101; Rotan, 45; and Merkel, 4. Indian performers set three new district records, Eric Whitaker in the 880, Joe Kretschmer in the high jump, and Bob Shea in the shotput.

At the end of the deadline for registering to vote in the May 6 primary election, 4,633 voters had registered in Haskell County.

Top Moon Master, the 2-year-old quarterhorse owned by Royce Adkins, Myron Biard and R. W. Herren won the Texas Futurity Sunday, April 9, at La Bahia Downs in Goliad.

Old timers from near and far from the once thriving communities of Whitman, Pinkerton and Foster will converge on Haskell Saturday night at the American Legion Hall.

Haskell Steak House: Sunday Buffet, all you can eat, drink included, \$1.75. Baked turkey, baked ham, baked prime roast beef, tenderloin trout, fried chicken, chicken fried steak, 3 vegetables, 11 salads, four kinds of desserts.

Eight women employees of Haskell National Bank leave April 22 on a "fun weekend" trip to New Orleans. They include Faye Bledsoe, Pauline Couch, Carolyn Everett, Bettie Wainscott, Geraldine Hise, Inez Mobley, Sheila McMeans and Donna Saffel.

**40 Years Ago
April 17, 1952**

Wm. P. Ratliff of Haskell has been appointed district attorney of the 39th judicial district to fill the vacancy created by the resignation of John H. Banks.

John Kimbrough has announced his candidacy for the office of state representative from the 83rd district.

Six members of Haskell Troop No. 36 were presented with Eagle Scout awards, highest recognized in scouting, at a court of honor Sunday afternoon in the First Methodist Church. Receiving the awards were Jimmy and Abe Turner, James and Ernest Strain, Temple W. Williams and Bobby Neil Smith.

Opening of the Service Steam Laundry in Haskell with the plant in operation Monday, was announced today by Joe Thompson, owner and coperator of the Service Cleaners in Haskell.

Lt. Cecil Gholson of Fort McPherson, Ga., spent last week with his parents, Mr. and Mrs. J. W. Gholson.

Mr. and Mrs. A. W. Hennessee announce the opening of the "Dairy Cream" on South Avenue E across the street east and south of the Assembly of God Church.

Donald R. Clark has graduated from the Aviation Electronics Technician-Electronics School at the U.S. Naval Air Technical Training Center in Memphis, Tenn. He is the son of Mr. and Mrs. W. J. Clark of Haskell.

At Piggly Wiggly: Folger's Coffee, 79 cents pound; Crisco, 3 lb. can, 79c; Wrigley's Gum, 3

pkgs. 10c; Candy Bars, 6 for 25c; Cigarettes, carton, \$1.89.

**60 Years Ago
April 21, 1932**

Miss Mary Emma Whiteker returned Sunday from San Antonio where she visited in the home of an aunt, Mrs. R. E. L. Leiper.

Oliver Farm Machinery Co., through their local dealer, McCollum & Couch, advertise this week they will offer purchasers of new farm equipment a guaranteed price on wheat, corn and cotton.

Mr. and Mrs. Leon Pearsey and daughters and Miss Velma Hambleton visited in Graham during the weekend.

Gene Hunter made a trip to Dallas this week where he purchased new summer stocks for the Courtney Hunt store.

The office of the American Railway Express Company, which has been located in the rear of the Oates Building, was moved this week to the Simmons Building adjacent to the City Hall.

At a meeting of the Haskell County Democratic Executive Committee Saturday, L. D. Ratliff was elected county chairman to succeed H. Weinert, who had resigned. Arthur Merchant was elected Precinct 3 chairman to succeed Mr. Ratliff.

Prof. Joe Meacham and junior class members of the Haskell Band gave a concert Friday evening in the Rochester school auditorium.

**80 Years Ago
April 20, 1912**

The Haskell Produce Company shipped this week nearly a thousand dozen eggs, 507 chickens and 300 pigeons from this point. They also made heavy shipments of butter.

M. M. Cobb and wife of Lueders were visiting Mr. Cobb's parents here Saturday. The Lueders man is manager of the Proctor Horse and Mule Company, with a ranch on the Clear Fork of the Brazos.

E. Meyer lately rented the Weinert Hotel and is now manager of the popular hotel in that city. He also has a feed stable in connection.

On last Sunday a team driven by Capt. W. M. Woods was frightened by a piece of paper blowing along the street and ran away. Capt. Wood and S. A. Hughes were thrown from the buggy and bruised up pretty severely.

H. S. Post of Austin arrived here Tuesday and will spend several days with relatives and friends in this section.

The city marshal has set up his office in the building with Mayor Cahill's office.

Capt. Dick Hunter and Dick Carney of O'Brien were in the city Wednesday.

**90 Years Ago
April 19, 1902**

Wm. Stanfield, one of Marcy's first settlers, will leave this week for the Plains to buy a ranch. He sold his farm near Marcy to J. F. Speck.

Messrs. Booth and Albert English arrived Thursday and we understand are arranging for the permanent return of their mother and family to Haskell.

Miss Lillie Rike left yesterday for Dallas where she will attend the Confederate Reunion and act as one of the maids of honor for Miss

Mattie Morrison of Graham who is sponsor for the Fifth Brigade, Northwest Texas division, U.C.V.

Mr. Pockrus has sold his restaurant business on the northwest corner of the square to Fred Newman, recently from Brownwood.

R. E. Sherrill and A. C. Foster were elected trustees for the school district last week.

Mrs. W. T. Jones and children returned Thursday from Tennessee.

Zed Wadzeck of the Marcy neighborhood had the misfortune to get his elbow knocked out of place last week by his horse falling with him while trying to pen another horse.

Garden Club studies birds

The Haskell Garden Club met Thursday, April 9, at the Haskell National Bank building. Subject of study for the day was "Know Your Birds."

Marion Carlisle, president, presided for a short business meeting.

Roll was answered with naming "birds in my yard." Marion Carlisle gave an interesting talk about the cardinal. Lorene Dewey talked about the blue jay. The purple martin was discussed by Gladys O'Neal. Mona Gibson told about the yellow-throated Western Vireo.

Some beautiful horticulture was displayed. Those who brought it were Marion Carlisle, Juanita Rhea, Nita Bevel and Dee Sprayberry. Mrs. Cox brought plants to be exchanged by the members.

Refreshments were served to the following members:

Marion Carlisle, Juanita Bevel, Helen Cox, Lorene Dewey, Mona Gibson, Linda King, Nettie McCollum, Juanita Rhea, Margie Dorner, Dee Sprayberry, Ernestine Dickson and Gladys O'Neal.

Thank you for reading The Haskell Free Press.



**For Every Act of Violence
There is a Victim**

The Noah Project is a center for victims of domestic violence and trauma.

The Noah Project offers 24 hour emergency shelter - 24 hour crisis line - counseling services - medical assistance emergency transportation - legal advocacy referral to community service agencies outreach services to non-resident clients - community education volunteer recruitment and training.



Call us, we're here to help - 1(800) 444-3551

THE HASKELL FREE PRESS

Established January 1, 1886
PUBLISHED EVERY THURSDAY
401 S. First St
P. O. DRAWER 1058 HASKELL, TEXAS 79521

Don Comedy.....Publisher
Wendell Faught.....Editor
Lisa Shaw.....Business Manager
Mickey Holloway.....Production

Second Class Postage Paid Haskell, Texas 79521

(USPS 237-040)

SUBSCRIPTION RATES:

In Haskell and adjoining counties, one year, \$15.00; six months, \$13.00; two years, \$29.00; Elsewhere in Texas, one year, \$20.00; six months, \$18.00; two years, \$39.00; outside Texas, one year, \$22.50; six months, \$20.50, two years, \$44.00.

NOTICE TO PUBLIC-Any erroneous reflection upon the character, reputation or standing of any firm, individual or corporation will be gladly corrected upon being called to the attention of the publisher.

POSTMASTER: Send address changes to The Haskell Free Press, P.O. Box 1058, Haskell, TX. 79521-1058.



--Sagerton--

by Alice Bredthauer

Mrs. Leo Monse visited in the home of Mrs. John L. Brooks Monday night.

Those who attended the Friendship Club which meets in the Fellowship Hall of Faith Lutheran Church twice a month were Mrs. Leona Schonstedt, Mrs. Andrea Kitley, Dorothy and J. B. Toney, Alvin and Ev Ulmer, Delbert and Joyce LeFevre, Larry LeFevre, G. W. and Ophelia LeFevre, Reece and Francis Clark, Herbert and Christine Stremmel, Mrs. Aline Summers, Patricia and Harlie Baitz of Austin, Anton and Evelyn Teichelman, Rev. Bruce Adamson, Charles and Dorothy Clark and C. E. Stegemoeller.

Those who took Holy Communion at the Fellowship Hall of Faith Lutheran Church were Leo and Minnie Monse, Frieda and Arthur Knipping, and Clarence Stegemoeller. Pastor Bruce Adamson was the pastor who had charge of the service since we don't have a pastor. Doris Lehrmann, Josh and Keli Smith were guests. Doris Lehrmann helped with the refreshments.

Those who attended the community get together which is held the first Tuesday in each month in the Community Center with everyone bringing food included Alvin and Alice Bredthauer, Anton and Evelyn Teichelman, Herbert and Christine Stremmel, Wilma Teichelman, Emma Raphael, Danny Lammert, Joe and Dorothy Clark, J. C. Wendeborn and Margaret, Alvin and Ev Ulmer, Delbert and Joyce LeFevre, Charles and Dorothy Clark, Odene Dudensing, Aline Summers, Pat and Harlie Baitz, Tami, Kacy, and Kami Baitz, G. W. and Ophelia LeFevre, Mrs. Mary Neinast, James Gellner, Reece and Francis Clark, Herbert and Velma Lou Lammert, Clarence Stegemoeller, Michelle Stegemoeller, J. B. and Dorothy Toney.

The men that meet for breakfast Wednesday morning at the Denson Gin last Wednesday morning were Garret Spitzer, Allen Letz, Cliff Gholson, Jack Jones, Alvin Bredthauer, Alvin Ulmer, Reece Clark, Joe Clark, Leon Stegemoeller, Gene Teichelman, Gene Olson, Charles Diers, Fred Baitz, Melvin Baitz, Bill Hertel, Jimmy New, Jimmy Teichelman.

Those who had the women's breakfast last were Mrs. Dorothy Toney, Mrs. Charles Clark, Mrs. Delbert LeFevre, Mrs. Alvin Ulmer, and Mrs. Alice Bredthauer. Those who come from Old Glory were Mrs. Bernice White, Mrs. Hazel Letz and Mrs. Odene Spitzer.

Mrs. Joe Ray Baitz and Harlie Baitz of Austin spent some time in the home of Mrs. Aline Summers.

The women of Faith Lutheran Church will have a salad luncheon April 22 at 11:30 then at 2:30 will go to Rice Springs Care Home to take some refreshments for a party for the people of the home.

Band Boosters meet Tuesday

Members of the Haskell Indian Band Booster Club will meet at 7 p.m. Tuesday, April 21, in the band hall. All parents are encouraged to come and help plan for the spring band activities.

All band fans are cordially invited to attend the band concert contest at the Stamford auditorium on Wednesday, April 22, at 6:30 p.m.

Legion meets Tuesday night

American Legion and Auxiliary members will have their regular meeting Tuesday, April 21.

The meeting will begin at 7:30 p.m. in the Legion Hall.

Easter pageant scheduled

The Kendrick religious pageant, "The Life of Christ," will begin 1992 productions on April 19 with the 28th annual Easter Pageant.

The production is the complete life of Christ from the birth through the resurrection, portrayed by a cast of dedicated Christian people of all walks of life and religious denominations, beginning at 3:30 a.m. and lasting two hours.

The production is non-denominational, with the script being taken word for word from the King James version of the Holy Bible.

Live animals, as the sheep for the shepherds, a donkey for the Mother Mary, a white donkey for the triumphant entry of Jesus, and a camel for the wise men, are used with the cast to make the presentation as near the way it was in Jesus' days on earth as possible.

Texas Monthly magazine in 1980 termed the pageant as the "best outdoor drama in the state of Texas."

Admission is a free will offering, taken at the gate as guests enter the pageant grounds. Free parking and clean restrooms are on the grounds. Overnight camping facilities are also on the grounds, with or without hookups. RV hookups are \$6 per day and advance reservations are a must.

The amphitheater is halfway between Cisco and Eastland on US 80.

For brochures or reservations, contact the Life of Christ Pageant, Route 2, Box 46, Cisco, TX 76437, or phone 817-629-8672.

Bug report now available

For many years, the Fisher, Jones, Kent, Stonewall Pest Management Association and the Haskell, Stonewall Pest Management Association have provided scouting services at reasonable costs.

One source of insect information, not only to producers, but also to agribusiness people, housewives and others, is the weekly newsletter "Bug County Report." This source of pest information is sent to many people throughout the five-county area.

To offset the cost of printing and distribution, interested persons are being asked to subscribe to the newsletter for a minimum donation of \$10 for the 18 to 20 issues during the upcoming season.

Subscriptions should be sent to: Bug County Report, Box 27, Roby, TX 79543

Happenings...

By Lois Redwine

A recent visitors with George and Faye Gray was their son, Lynn, from Grapeland.

Dr. and Mrs. Frank Cadenhead, student guest, Melody Ishikawa and granddaughter, Wendy Cadenhead spent the weekend in Waco with their daughter and family, Diann and Bill Procter, Angela, Leta and Carrie. They celebrated Diann's birthday on Sunday and attended the Chalk Bluff Baptist Church services. Diann sang in the church's Easter musical.

The Western Horizon Chapter of the American Business Women's Association recently sponsored a Junior Miss pageant at ACU. Nichole Cothron of Haskell High School was named the HSU one time scholarship winner. Holly Hobgood also won a scholarship.

Dick Sherrill of Houston visited over the weekend with Iola Henshaw, the Ben Charlie Champans, other relatives and friends.

Gayle Holder of Arlington spent the weekend with her parents, Mr. and Mrs. Joe Holder.

Visiting Saturday with the Elmer Hilliards were their daughter, Patricia Shaw from Roscoe, their granddaughter and great grandsons, Dawn Spiller, Justin, Randy and

Ryan from Franklin and Mr. Hilliard's sister, Ellen Hilliard from Abilene.

Rev. Gregory Medearis of Abilene was guest speaker at the Greater Independent Baptist Church last Sunday. With him, were his wife, Cassandra, their two children and his parents, Mr. and Mrs. Arthur Pierson. Rev. Madearis will fill the pulpit again on Easter Sunday.

Visiting in Haskell were Mr. and Mrs. Billy Yeldell and Mrs. Exie Jackson from Stamford.

Mrs. Margaret Duffy is in Hendrick Medical Center in Abilene.

Mr. and Mrs. L. C. Johnson, Sr., Susie Mae Jackson and Mae Lou Yeldell were in Knox City at the St. Paul Baptist Church for the Community Brotherhood program. Rev. Smith of Weeping Mary church, Anson, was the speaker. L. C. Johnson, Sr. brought the lesson.

Last Sunday afternoon, the Greater Independent Baptist church hosted the Federation of Choirs meeting. Rev. Joe Jackson of Abilene was the narrator. Guests choirs were from Abilene, Hamlin, Anson and Stamford.

The choir of the First Baptist

Church will present the musical, "All Hail King Jesus", directed by Ford Cole, on Sunday evening, April 19 at 6 p.m. at the church. Everyone is invited.

Thanks to all who call or mail me your news. News received by 4 p.m. Monday will appear in that week's paper. News received later will appear the following week. My address is 1100 N. 8th, Haskell, Texas 79521, telephone 817-864-2295.

3-on-3 tourney April 25

The Haskell Youth Basketball Association will sponsor a men's three-on-three basketball tournament in the high school gym on Saturday, April 25.

There will be two divisions: men over 30 years old, and men under 30. Each team will be allowed one substitute. Entry fee is \$30 per team.

Games will be played throughout the day in the double-elimination tournament. Since only half the court will be used for a game, it is possible that two games may be in progress at the same time.

Entry deadline is Wednesday, April 22. For entry information, contact Gary Harris at 864-3608 or Conrad Roewe at 864-3891.

PHARMACY NEWS



By Elbert Johnson, Registered Pharmacist

Exercise to Prevent Osteoporosis: The need for calcium from the teen years through menopause to limit the development of osteoporosis is known, but exercise is just as important. Weightbearing exercise, such as walking and running and weight training help to stimulate new bone formation. However, excessive exercise that causes amenorrhea will result in bone loss because estrogen levels (which comprise the third part of the anti-osteoporosis equation) are reduced so dramatically.

Johnson

Prescription Pharmacy
418 N. 1st, Haskell
864-3331, Nights 864-3439
Free Prescription Delivery

The Haskell Business Association

Presents

Hank Thompson

in Concert

May 9, 1992

Haskell Memorial

Civic Center

9:00 p.m. til midnight



The Hank Thompson Show

with the Brazos Valley Boys

"America's #1 Country & Western Band"

Seating and Dance Floor Available

Tickets: \$7.00 advance • \$10.00 at the door
Children under 12 - \$5.00

Fun & Entertainment for the Entire Family

For further information call 817-864-2870

Tickets are on sale at the following locations:

Experienced Citizen Center - Haskell • Sears Merchant • Bill Wilson Motor Co. • Heads or Tails Western Wear • Sport - About • Aladdin House • Frazier's Appliance & Furniture • Heidenheimer's - Haskell • Slipper Shoppe • F&D Electronics • Lane Felker • Haskell National Bank • Walling T.V. and Elec. • First National Bank - Haskell • Farmers National Bank - Rule • Gene Plunkett • Carolyn Reynolds - District Clerk's Office Court House

FREE BASEBALL

With Each Pair of Nike or Mizuna Baseball Shoe Purchased

We have Little League and Softball Supplies

Free Baseball Offer Good Thru Sat., May 2

Conrad Roewe's Sport-About of Haskell

"Where Winners Shop"

817-864-3891
402 N. 1st.
Haskell, Texas 79521

Shoes
Gloves
Bats
Batting gloves
Uniforms
Caps
Trophies
Balls
Equipment

Johnson

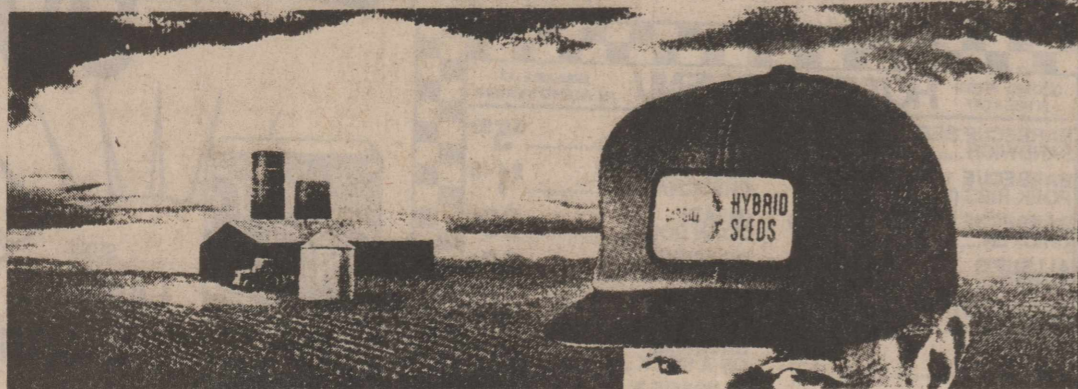
KIS

1-HOUR PHOTO

Bobbie Johnson

Owner
Photographer

West Side of Square • Haskell



GREAT FEED From GREAT SEED

SWEET SIOUX Sorgo x sudangrass
pack more protein, energy, and palatability into feed for greenchop - grazing - hay - haylage

MOR-CANE II Sorgo x sorgo
male sterility can put more sugar into feed that's stacked - baled or used for silage and post-frost grazing

COUNT ON CARGILL!

P.O. Box 5645 Minneapolis, MN 55440
All products subject to CARGILL'S warranty limitations

Brian Bredthauer, dealer
915-773-3904

HEADS OR TAILS

WESTERN WEAR

THIS WEEK'S SPECIAL

APRIL

BOOT SALE

Hunt for the Easter eggs
Hop into a new pair of boots

GET A BASKET FULL OF SAVINGS

864-3320 HASKELL, TEXAS

--Paint Creek--

by Mabel Overton
The newly plowed fields look so pretty, and the wheat is growing its heads off. Most of the wheat in the community is 18 or more inches high. Allen Overton has some wheat up by the highway this side of the railroad that has long green heads on it.

Paint Creek School did not have classes Friday for the teachers to have a work day (not that their five days a week are not work days) but this work day was so that they might go to Carrolton and observe the Carrolton programs and see if Paint Creek would like to implement some of the programs in our school. Returning home, Mrs. Debbie Hobgood, Mrs. Lana Lewis, Christi Byerly, Tammie Wallace, Monique Morgan, Phoi McGuire, Paint Creek teachers and Dr. Ann McLennan from the

Teacher's Training Center, Abilene, Dr. Ann McLennan was driving the Training Center bus. Returning home, as they were entering the interstate highway, two ladies ran the red light and hit them broadside. An ambulance happened to be right behind them, and took them to Harris Hospital.

Mrs. Phoi McGuire was hurt the most. She had a gash across her forehead that required 40 stitches. The others are sore and have bruises. Luckily, they were able to contact Mr. Calk and Kelly Green who were in Ft. Worth, too, and they were in one of the school's cars and Mr. Green's car. So they were able to come home. We are so sorry. I guess one could say they were injured in the line of duty.

The Paint Creek golf team was 6th in Interscholastic League golf tournament at the Jayton Golf

Course last Friday. The Paint Creek team is composed of Roman Morgan, Shawn Barbour, Hans Overton and Rodney Medford.

Mrs. Dora Bergstrom has returned home after visiting her daughters for the past two weeks. She spent most of the time in Denton with Mr. and Mrs. Allen Morris. Mrs. Morris (Wanda) works for the telephone company. They went to Ft. Worth where Dora's other daughter, Joy, her husband Jim Larned and children Erika and Shawn, and they had a family visit.

Mr. and Mrs. Arthur Watson returned home after two weeks in Humana Hospital. Ott is feeling better, and they are so glad to be home.

Mrs. Sue Holcomb and son Monte spent the day with the Watsons. Mrs. Holcomb is from Olney and Monte attends Texas A&M.

John and Ethel Thomas were back in church Sunday after having to miss two Sundays because of John's bad cold. He had a terrible cough, and he has lost some weight, which he shouldn't do.

Rev. James Sinclair led the

Tower Drive-In Theater
Showing this weekend
Friday-Saturday-Sunday
April 17-18-19
Located on Hwy. 6
1/2 mile North of City of Rule.
Ph. 997-2124

BUGSY

WARREN BEATTY
ANNETTE BENING
HARVEY KEITEL
BEN KINGSLEY
JOE MANTEGNA

singing for the Revival at the Central Baptist Church in Stamford.

Rev. James Sinclair and his wife conducted a Church Music School at the Pleasant Valley Church for three nights last week. They had a music school for this church last year, and they were invited to have one again.

Tuesday night at the First Baptist Church at Rule there will be an Association Mission's Fair. The Paint Creek Church will have a booth on Partnership Missions.

Mr. and Mrs. Kenny Buerger are re-doing their rent house. It is the old Bob Simmon's home on the Paint Creek road.

Mrs. John Bray, Jr, underwent double hip surgery two weeks ago and will be unable to direct the Albany Fandangle this summer. The Albany people have asked Bill Overton, Fandangle Assistant Director, to direct this summer's show. Paint Creek people will be interested because Barbara is the wife of John, Jr. Bray who graduated from Paint Creek, and Bill Overton is the son of Gene and Mabel Overton and graduated from Paint Creek.

Perry asks schools to buy Texas foods

Agriculture Commissioner Rick Perry is urging Texas school districts to review their food purchase bid specifications and remove any barriers that discriminate against Texas goods and products.

Perry said that bid specifications that favor other states not only thwart Texas agriculture but hurt the entire Texas economy.

"Although it may be inadvertent, bid specifications used by many Texas school districts actually require that certain commodities be grown outside our state," Perry said in a letter to school board members and other school officials statewide. "Some districts' bid requirements specify, for example, the use of Washington apples, Florida green

peppers or California tomatoes. "Yet, these same products--and many others--are grown right here in Texas in large quantities, of excellent quality and at competitive prices."

In his letter, Perry encouraged school districts to review their bid specifications. "If they are unfairly written," he said, "I urge you to change them so that Texas producers have the same access to our school food service industry as do non-Texas growers."

Texas' public schools spend some \$500 million on food purchases every year. The state's public schools produce 2 million lunches and 600,000 breakfasts daily.

Dillon Greenhouse

Easter Specials

All Tomato & Pepper Plants 5/\$1.00	All 4 inch Bedding Plants 79¢
Hanging Baskets \$6.97	4 inch Geraniums \$1.00

Open 9 to 6 Mon. thru Sat. • Sundays 1 to 5
4 miles East of Knox City • Hwy. 222
817-658-3605

CALL
BRIAN BURGESS,
Agent
705 North Ave. E
Haskell, Texas
79521
Off. 864-3250

HEALTH INSURANCE
to help pay hospital-surgical bills

State Farm Mutual Automobile Insurance Company Home Office Bloomington, Illinois

Miracle Rally
Haskell Memorial Civic Center
Thursday night, April 16th
7:00 p.m.
Pastor Randy Estes
of
Christian Life Church
will be ministering and special singer will be
Tim Archer
of the Dove & Grammy Award winning Archers
He sent his word and healed them, and delivered them from their destructions.
Psalms 107:20

SEARS

18-HP CRAFTSMAN garden tractor with twin-cylinder Industrial/Commercial engine

- 44-in. triple-blade mowing deck
- 6-speeds with dual range plus 2 reverse speeds
- Electric ignition (PG 25593)

\$44 MONTHLY on SearsCharge PLUS*
\$2079 Was \$2379

12.5-HP CRAFTSMAN lawn tractor Industrial/Commercial Gold engine with cast-iron cylinder liner

- 38-in. twin-blade QC deck
- 6-speed transaxle plus reverse
- Electric ignition (PG 25557)

\$22 MONTHLY on SearsCharge PLUS*
\$1049 Was \$1349

CRAFTSMAN LAWN & GARDEN SALE

SAVE \$25 **\$134.99** Was \$159.99

SAVE \$300 ON THESE TRACTORS...WARRANTED 2 YEARS!

CRAFTSMAN front-tine tiller 5 HP with Briggs & Stratton engine
SAVE \$50 **\$314.99** Was \$364.99

3.5 HP CRAFTSMAN side-discharge 20-in. push mower (MR 38009)
SAVE \$40 **\$169.99** Was \$209.99

3.5 HP CRAFTSMAN rear bag 20-in. push mower Catcher included (MR 38309)
\$12 Monthly*

Kenmore® 19.8-cu. ft. side x side includes automatic icemaker

- Frostless refrigerator: adjustable shelves & meat pan, full-width crisper
- 6.5-cu. ft. freezer: 5 interior, 5 door shelves

(AP 59021)
\$20 MONTHLY on SearsCharge PLUS*

2-speed, 9-cycle washer with our best agitator
\$399.99 Was \$459.99 (AP 28721)

8-cycle, 4-temp dryer shuts off automatically at preset drying level
\$299.99 electric Was \$349.99 (AP 68721) Gas \$40 more (AP 78721)

SAVE \$110 ON PAIR!
Kenmore® laundry pair with America's largest usable capacity
Pair **\$20 MONTHLY**

ALLSUP'S

PRICES EFFECTIVE APRIL 12-18, 1992
WHILE SUPPLIES LAST

RULE #91 HASKELL #153

BAR-S MEAT FRANKS 12 OZ. PKG. **69¢**

NAVEL ORANGES 4 LB. BAG **\$1.19**

SAUSAGE, EGG & BISCUIT EACH **79¢**

GREEN CHILI SAUSAGE IN A TORTILLA SAUTEYYA EACH **89¢**

LAY'S® POTATO CHIPS REG. \$1.49 **99¢**

BAR-S SLICED BACON 1 LB. PKG. **99¢**

SURF LAUNDRY DETERGENT 39 OZ. BOX **\$1.99**

HOT FOODS MENU

BARBECUE BEEF SANDWICH.....	99¢	9 PIECE BOX CHICKEN.....	\$5.99
BARBECUE PORK RIBS (LB.).....	\$3.99	BEEF & CHEESE CHIMICHANGA.....	\$1.19
BARBECUE WHOLE CHICKEN.....	\$3.99	(MEAT) CORN DOG.....	69¢
ALLSUP'S BURRITO.....	79¢	DELICIOUS HAMBURGER.....	69¢
BREAKFAST BURRITO.....	99¢	WILSON HOT LINKS.....	99¢
BURRITO BEEF & SALSA.....	\$1.19	SAUSAGE ON A STICK.....	\$1.39
DELICIOUS CHEESEBURGER.....	89¢	SAUSAGE & BISCUIT.....	79¢
CHICKEN FRIED STEAK.....	\$1.59	SAUSAGE, EGG & BISCUIT.....	\$1.09
3 COUNT CHICKEN STRIPS.....	\$1.49	SAUTEYYA SAUSAGE.....	99¢
W/POTATO WEDGES/CHICKEN (2 PC.) BISCUIT.....	\$1.99	4 COUNT STEAK FINGERS.....	\$1.00

CALL IN ORDERS WELCOME CHECK OUR WEEKLY SPECIALS

Shurfine Paper Towels **50¢**

Totino's Frozen Pizza 10.4 oz. **\$1.29**

Shurfine Flour 5# **89¢**

Shurfine Macaroni & Cheese **6/1.00**

Shurfine Dog Food 25# bag **\$4.49**

Ramen Noodle Soup beef/chicken/oriental **4/1.00**

SEARS MORE BRANDS, MORE CHOICES!

BUY NOW...PAY LATER with SearsCharge Deferred Payment Option. Ask for Details.

East Side of Square Haskell, Texas 817-864-2671

9:00 a.m. - 5:30 p.m. M-F
9:00 a.m. - 12:00 noon Sat.

SEARS DISCOVER

--Rule--

by Vicky Anderson

After an absence of almost a month, here I am once again. However, it may well be my last effort as the Andersons no longer live in Rule. Several people have told me they miss my ramblings, so here goes one more time.

Congratulations to the participants in the area One Act Play contests, especially to Rule upon winning district, and to Hamlin and Anson as well. The next competition for Rule will be held at Hardin-Simmons University the 11th, which, of course, will be a thing of the past when this appears in the newspaper. Good luck to all contestants, and may the best play make it to Austin to the state competition.

Thanks to Gerry Spain of Haskell and her daughter, Gayle Maxon of Denton for their nice notes about my comments regarding their late husband and father being a good "boss". In all fairness, I should add that every employer that I ever worked for was a fair one. This includes the doctors at the old Stamford Sanitarium, Wendell Barber of Anson, Ed Suddath and John Martin of Stamford, and last-but certainly not least, two of my sons-in-laws.

Elgin Wright of Rule is now a resident in Rice Springs Nursing Center in room 26. We wish him well.

Cole and Dorothy Alsobrook of Rochester have been in Austin to be with Cole's sister, who is ill.

Vicky Anderson accompanied a

daughter, granddaughter, and the granddaughter's friend to Abilene on Thursday night where they visited with Tori Jenkins, Chris Miller, ACU students, Danny and Luke Kittley.

We feel certain all Rule students and teachers enjoyed their "bad weather day" off from school on Friday, April 10. They will have a four day Easter weekend, too. Hope everyone has a nice Easter.

If I can drum up enough news, will be back next week.

It was good to see Jerri Cox of Haskell on Friday night at Cliff House.

A good visit was enjoyed with Bobbye and Andy Anderson the afternoon of the 10th by Vicky Anderson.

Aren't these Spring mornings wonderful and cool, and such nice, and sunshiny afternoons. Love this weather!

One morning recently friend Mildred Smith of Stamford, and cousins, Marjory Johnson of Mt. Pleasant and Valeta Mullins of Hamlin stopped by the Andersons. However, we only had a few minutes visit as grandson, AIC Kevin Saffel was expecting us to come to Rule. Try it again, ladies, please!

A tip from two people who have been through it--don't move after you are past the age of seventy! It's murder--at least, not much fun--especially if you have lived in the same house twenty years.

My heart congratulations to the cast, crew and director of Rule's one act play "The Rope Dancers", and to Trent High School's cast, crew, cast and director, John Stevens for their win, too, with their play "Of Mice and Men". Jerry Collier, who played "Lennie" (a retarded young man), won Best Actor, which he certainly deserved. Kenna Tanner and Melissa Carreon made the All Star lists and Laurie Boger was on the Honorable Mention list. These two schools will perform at the Regional Contest in two weeks, April 25 again in Abilene. But at this writing, haven't learned if they will be at McMurry or again at Hardin Simmons Campus.

It was wonderful to see so many Rule people at HSU on Saturday. Among those were Maxine Hertenberger and granddaughter, Kelli, Ruth Wilcox, Joy Jones, Alice Jones, Molly Cannon, Debbie and Kenny Tanner, Doris Lehrmann, Norva Smith, Julie Martin, Myrtle and Tom Kutch, Jason Halliburton, Cody Wilson, (both ACU students), Lou Landes, Susie Wilson, Yolanda Herrera, Bobby Robinson (at a distance and many others). As we were leaving the auditorium, it was nice to visit with Frankie and Mike Wilcox, now of Abilene.

Congratulations are in order for Shane LeFevre and Tommy Casey, who won the pole vault, shot put and discus throw, respectively, at the recent UIL event. Statistics were in last week's papers. (Figures have never been my forte, I'm afraid, for I thought that Shane vaulted 143 feet, but one of my daughters laughingly said that must have been either the shot put or discus throw.)

Get well wishes are sent to Delanie Camp, who has been unable to be "out". That is one

sweet lady as all of us who know her will attest.

Certainly was sorry to read of Jasper Wilson's resignation as Coach at Rule High school. We will miss you, Jasper! One of your track stars told me just last week that Jasper Wilson is one of the best high school track coaches in the state of Texas.

A group from the Church of Christ of Rule visited at Rice Springs in Haskell on April 12. This is a monthly visit. Sorry, the names of the group are not available to me right now.

Jim Hackney of Ft. Worth is holding a meeting at the Haskell Church of Christ April 12-15.

Cole and Dorothy Alsobrook of Rochester are home from Austin. Mr. Alsobrook's sister is feeling better. While they were away, one of Cole's brothers-in-law had serious heart surgery. We wish him a speedy recovery, but that is never real speedy, I believe.

Congratulations to 27-A District basketball selectees: Shane LeFevre who was named Most Valuable Player, Greg Teichelman, who made the boys' first team, and to Francis Williams who made the girls' first team.

Food for thought: "If you've ever tempted to give up, just think of Brahm's who took seven long years to compose his famous lullaby. Kept falling asleep at the piano." (Quote from Robert Orben and Used in Willard Tate's Book "Habits of a Loving Heart".)

--School Menu--

April 20-24
BREAKFAST

Monday: No school.
Tuesday: Juice or fruit, pancakes with syrup, milk.
Wednesday: Juice or fruit, breakfast burrito, milk.
Thursday: Juice or fruit, biscuits with gravy, sausage, milk.
Friday: Juice or fruit, cereal, buttered toast with jelly, milk.

LUNCH
Elementary School

Monday: No school.
Tuesday: Chili dogs, french fries, pickle spears, sunshine bars, milk, juice.
Wednesday: Chalupas, grated cheese, lettuce and tomatoes, buttered corn, apple crisp, milk, juice.
Thursday: Oven fried chicken, creamed potatoes, English peas, buttered hot rolls, milk, juice.
Friday: Hamburger, tater tots,

lettuce and tomatoes, pickles and onions, juicy treats, milk, juice.

High School

Monday: No school.
Tuesday: Hamburger or chili dog, french fries, pickle spears, salad bar, sunshine bars.
Wednesday: Hamburger or chalupas, tater tots, grated cheese, salad bar, buttered corn, apple crisp.
Thursday: Hamburger or fried chicken, french fries, creamed potatoes, salad bar, English peas, fruit, buttered hot rolls.
Friday: Hamburger or nachos, french fries, pinto beans, salad bar, combread, juicy treats.

Note: Milk and tea offered daily.

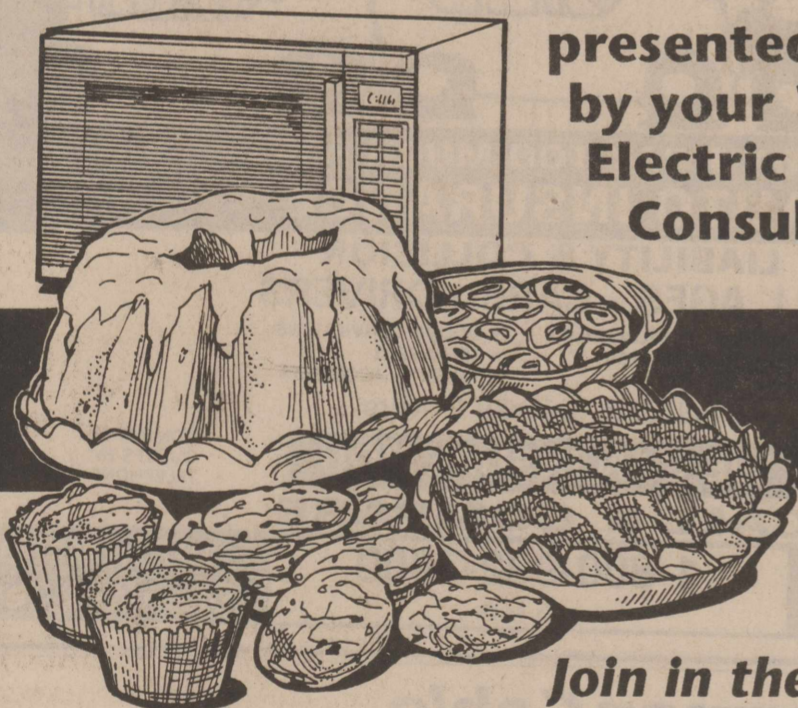
Menus subject to change



Thank you so very much for everything that was done for 7.9, and me during our hospital stay in Abilene and Lubbock. Also for my son, Doug Brown, during his hospital stay. All the cards, calls, visits, food, thoughts and most of all prayers were very much appreciated. A special thank you to God and my children and grandchildren. Thanks to all, Reva & 7.9. Poor

You're invited to the WTU Microwave Oven Cooking School

presented by your WTU Electric Living Consultant.



It's FREE!

Join in the fun!

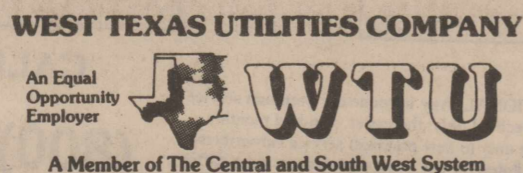
- Learn to use your microwave oven more efficiently.
- Free instructions, refreshments and microwave brochure.

DATE: Tuesday, April 21, 1992

TIME: 7:00 p. m.

LOCATION:

Haskell High School Cafeteria



ACE Hardware

Gallon #15938, #15940 \$9.49

Gallon #15930, #15932 \$6.49

Gallon #15948 \$8.97

225CCA LAWN TRACTOR BATTERY

Dura-Start LIGHT UTILITY

#282576 \$18.99

Plus Texas Battery Sales Fee

IDEAL INSTRUMENTS

50CC PISTOL GRIP SYRINGE

#151479 \$29.99

RAYOVAC

Are your flashlights ready for storm season?

SMART PACK Heavy Duty Batteries

C-6 Pk. Your Choice
D-6 Pk. \$2.44
AA-8 Pk.

GENERAL PURPOSE LANTERN BATTERIES

- Sealed in Steel
- Dependable
- 6 Volts

#380060 \$2.69

MTD THE AMERICAN EDGE

3 1/2 HP 22" WALK-BEHIND MOWER WITH HEIGHT ADJUSTERS

\$129.95

#570064

DURA GREEN 3-TUBE VINYL SPRINKLER HOSE

MID-STATES

25' #520700 \$2.99
50' #520701 \$4.99

25% OFF

25% off our entire stock of quality Ferry-Morse seed!

Choose from a large selection of flower and vegetable seed.

12 HP 1/3 38" CUT, 6 SPEED LAWN TRACTOR

#570095

FREE In-Town Delivery! \$869.00

DURALON TIRES UNBEATABLE VALUE!

POWER CUSTOM STEEL BELTED RADIALS

- *Free Mounting, Computer Spin Balance, and Valve Stem
- *Free Road Hazard Warranty
- *Everyday Low Prices

P155/80R13	\$29.95	P205/75R14	\$39.95
P175/80R13	\$33.49	P215/75R15	\$43.49
P185/75R14	\$36.49	P225/75R15	\$45.95
P195/75R14	\$36.97	P235/75R15	\$48.49

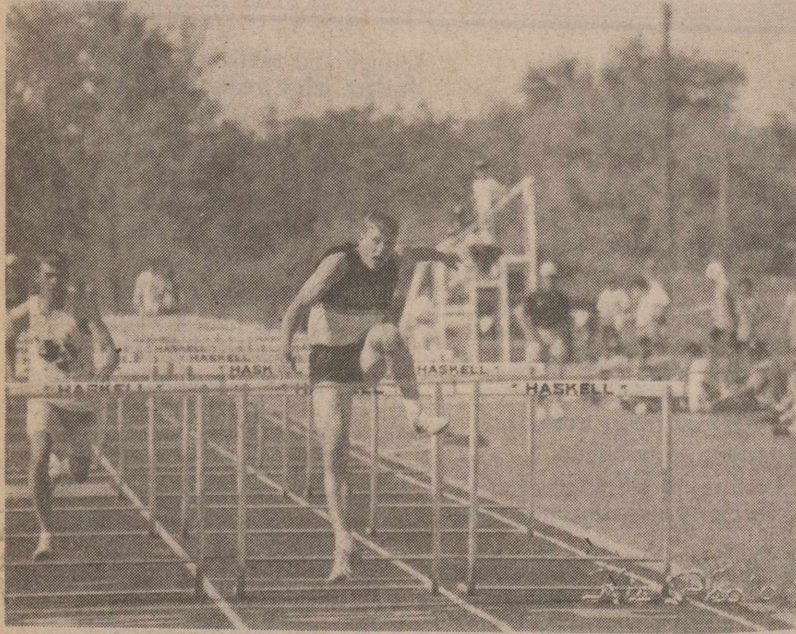
Plus Texas Tire Sales Fee

PRICES GOOD THROUGH APRIL 22, 1992

OSBORNES

VERNON	MUNDAY	STAMFORD
(817) 552-7631	(817) 422-4851	(915) 773-5006
(800) 327-6641	(800) 327-1936	(800) 327-2918

Indians at Rolling Plains Relays



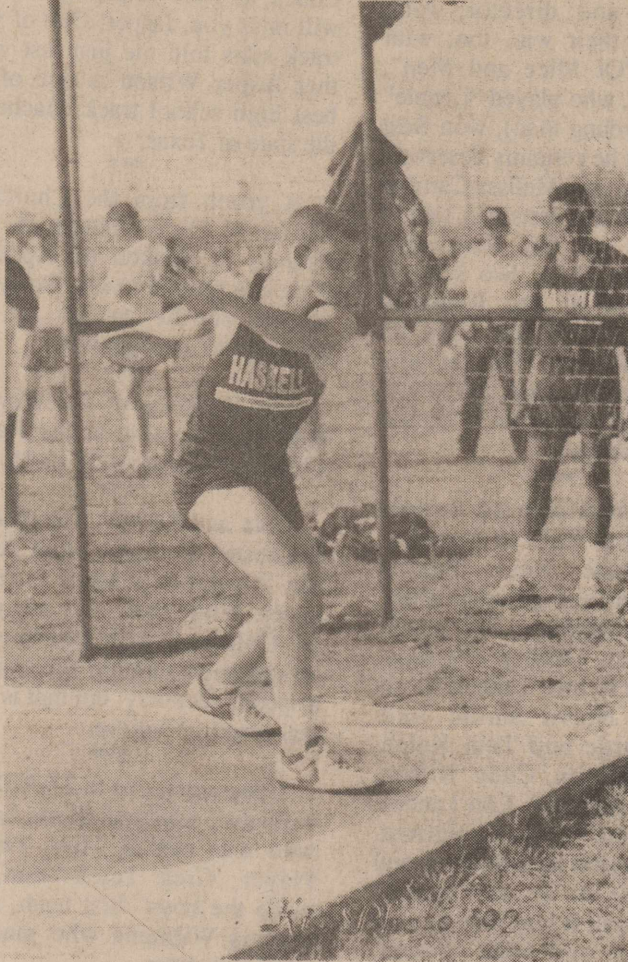
Bucky Harvey, 100 hurdles



Cody Josselet, 200



Quinten Billington, 400



Cody Josselet, discus



Johnny Rodriguez, 400



Kelland Riley, 400 relay

FFA teams win in area

Seven Haskell FFA teams competed in area contests April 4 at Texas Tech University. The dairy cattle team placed seventh in district. The team consisted of Jeremy Andress, Kevin Conner and Shannon Meeks.

Placing second in district was the dairy foods team of Emily SoRelle, Trisha Trevino, Andy Anguiano and Cassie Jones.

The meats team won second and team members were Cindy Henry, Jason Torres, Shawn Jordan and Matt Perry.

The ag mechanics team of Heath McMeans, Kevin Grand and Greg Williams place second in district.

The third-place poultry team included Blake Henshaw, Mart Guess and Brian Brzozowski.

Placing fifth in district was the livestock team of Shana McKenzie, Heather Stewart and Kim Gilly.

Also placing fifth in district was the horse team of Jeremy Jordan, Leon McBee and Stephen Campbell.

Quilt show set

Throckmorton County's second Quilt Show will be Friday and Saturday, April 24-25. Proceeds will go to the American Cancer Society.

The show will be in the Throckmorton youth center. A donation quilt drawing is set for 3 p.m. on Saturday.

Those interested may call 817-5031 or 849-3671 for more information.

JAMES CASTAGNA & JEFF GREGG
Certified Public Accountants
 Computerized Tax Returns and Bookkeeping
 Auditing, Financial Statements and Estate Work

SEYMOUR OFFICE 115 W. McLain Street 817-888-5539 8-6 M-F; 8-5 Sat.	HASKELL OFFICE 316 1/2 North First 817-864-3931 10-4 Tuesday & Thursday (After Hours by Appointment)
---	--

Photos
by
Bobbie
Johnson

TOO MANY ACCIDENTS?

DON'T PAY TOO MUCH FOR AUTO INSURANCE
LIABILITY & COLLISION
ALL AGES - CARS - DRIVERS

- FINANCIAL RESPONSIBILITY
- CANCELLED DRIVERS
- NEW DRIVERS
- LIQUOR CONVICTIONS
- TEENAGERS
- TICKETS - ACCIDENTS

Including unlucky Drivers

WE CAN INSURE YOU
CALL & COMPARE

Upshaw & Upshaw Insurance Agency 1-800-992-7900 107 E. McHarg Stamford, Texas

TOLL FREE

COMPUTER QUOTES BY TELEPHONE

NOW THERE'S A GOOD REASON TO COME TO WORK.

LVNs

Haskell Nursing Center has come a long way thanks to strong leadership and a great team of associates. We are newly recommended for Medicare, 68 bed nursing home with a higher staffing ratio designed to make your job that much easier!

The combined experience of our LVNs is equally impressive. Several of our LVNs have been with us for a long time, and are proud of "their" facility. Positions are currently available on evenings and nights for LVNs. Charge responsibilities for some positions.

There are many other good reasons to work at Haskell Nursing Center including a generous benefits package that will pay 100% of the cost for your RN education. If you are an LVN who needs a good reason to come to work, call or visit our facility today.

We are an equal opportunity employer.

Haskell Nursing Center
 1504 N. 1st
 Haskell, Texas
 817-864-3556
 Cindy Guess, RN DNS

RENTAL & SALES

24-Hour Emergency Service
 •FREE AREA WIDE DELIVERY
 HOME OXYGEN

817-864-2258
 We Care For Your Medical Needs

NEMIR MEDICAL SUPPLY CO.
 510 N. 2nd
 Haskell, Texas

COTTONSEED FOR SALE

Ranger BB-53 - Ranger 64-2
 85 + % Germination - 1988 & 90 Crop Year
 The most vigorous seed you will find for early planting.

Book Now

(806) 998-4935 • 998-4497 • 745-4192

Ranger Seed Company

Tahoka, Texas

H Harmon Cable Communications +

The Disney Channel + **HBO** =

\$\$\$ SUPER \$\$\$ SPRING \$\$\$ SAVINGS

Subscribe to The Disney Channel or HBO by April 30, 1992 and receive **FREE INSTALLATION!**
 (A \$35.00 Savings)

Enjoy The Disney Channel all summer long for \$20 Regular Billing Begins September 1, 1992	Enjoy HBO through July 31, 1992 for \$15 Regular Billing Begins August 1, 1992
---	---

CALL TODAY
(800) 527-4331
 Hurry! This offer ends April 30, 1992

*MONTHLY CABLE TV FEE IS ADDITIONAL. Any introductory premium service subscription offers are good for the time specified only; thereafter, standard monthly premium service fees apply. Offer available only to new premium service subscribers. Premium services offered may not be substituted for any other premium services. Offer may apply only to standard installation on one TV set in wired serviceable areas. Offer may vary. Other restrictions may apply. CALL HARMON CABLE FOR OFFER DETAILS.

Albany boys, girls take top honors in track meet

Albany boys' and girls' teams took first places in the first Rolling Plains Relays run at Haskell's new track Saturday.

The Albany boys rolled up 201 points to win easily over Winters (116), Jim Ned (60), Haskell (51), Rochester (32), Rule (28), Motley County and Jayton (22 each), Anson (14) and Patton Springs (7).

In the girls' division, the Albany girls had 144 points. Jim Ned had 142; Anson, 112; Haskell, 94; Hawley, 26; Jayton, 20; Lueders-Avoca, 14; Motley County, 13; and Paint Creek, 4.

GIRLS

Long Jump: 1. Hudson, Albany, 17 1/2; 2. Bambi Ferguson, Jayton, 16-8 1/2; 3. Nault, Anson, 16-5 1/2; 4. Huber, Anson, 16-4; 5. Buffy Ferguson, Jayton, 16-3; 6. Guffy, Jim Ned, 15-11 3/4.

Shot Put: 1. Kindrick, Jim Ned, 36-5; 2. D. Guadalcazar, Haskell, 35-1; 3. Mayfield, Jim Ned, 33-6 1/2; 4. Jackson, Anson, 31-3; Gillespie, Albany, 29-6; 6. O. Guadalcazar, Haskell, 28-5 1/2.

Discus: 1. Kindrick, Jim Ned, 107.2; 2. D. Guadalcazar, Haskell, 103.11; 3. Thomas, Jim Ned, 85.2; 4. Allyn, Jim Ned, 82.11; 5. Blackwell, Anson, 82.9; 6. Blanch, Motley County, 82.

Triple Jump: 1. Hudson, Albany, 36-7 1/4; 2. Nault, Anson, 34-3 3/4; 3. Graham, Jim Ned, 31-7 3/4; 4. Huber, Anson, 31-7 1/2; Gully, Jim Ned, 31-5; Heather Hobgood, Haskell, 31-4 1/2.

High Jump: 1. Gardner, Albany, 5-7; 2. Buffy Ferguson, Jayton, 5-2; 3. Smith, Hawley, 5-2; 4. Henderson, Albany, 5-0; 5. Addison, Anson, 5-0; 6. Bambi Ferguson, Jayton, 4-10.

3200: 1. Franco, Anson, 13:06.83; 2. Comedy, Haskell, 13:48.47; 3. Marshall, Jim Ned, 14:33.46; 4. Frazier, Lueders-Avoca, 15:02.84; 5. Deen, Hawley, 15:55.33.

400 Relay: 1. Albany, 52.77; 2. Jim Ned, 52.80; 3. Haskell, 53.9; 4. Hawley, 56.61; 5. Paint Creek, 57.47.

800: 1. McLellan, L-A, 2:33.92; 2. Franco, Anson, 2:33.93; 3. Gallaway, Jim Ned, 2:39.55; 4. Beshirs, Motley County, 2:41.11; 5. Nuding, Jayton, 2:41.58; 6. Barbee, Hawley, 2:41.66; 7. Cox, Albany, 2:42.53; 8. Lefevre, Haskell, 2:42.80.

100 Hurdles: 1. Shelly Stewart, Haskell, 17.42; 2. Woodruff, Albany, 17.81; 3. Guffey, Jim Ned, 17.84; 4. New, Anson, 18.38; 5. Cox, Jim Ned, 19.96.

100: 1. Hudson, Albany, 12.27; 2. Nault, Anson, 12.92; 3. Bardin, Jim Ned, 13.48; 4. Guffey, Jim Ned, 13.50; 5. Hutcheson, Jim

Ned, 13.69; 6. Bartee, Albany, 14.08.

800 Relay: 1. Albany, 1:50.96; 2. Jim Ned, 1:52.21; 3. Haskell, 1:54.17.

400: 1. Nault, Anson, 59.19; 2. Jackson, Anson, 1:04.13; 3. Heather Hobgood, Haskell, 1:04.6; 4. Huber, Anson, 1:04.8. 5. Nanny, Haskell, 1:06.45; 6. Anderson, Haskell, 1:06.76.

300 Hurdles: 1. Penn, Albany, 48.14; 2. Woodruff, Albany, 49.64; 3. New, Anson, 51.86; 4. Graham, Jim Ned, 52.01; 5. Cox, Jim Ned, 53.27; 6. Shelly Stewart, Haskell, 53.86.

200: 1. Hudson, Albany, 26.0; 2. Guffey, Jim Ned, 28.39; 3. Huber, Anson, 28.50; 4. Miller, Jim Ned, 28.6; 5. Holly Hobgood, Haskell, 28.68; 6. Handley, Jim Ned, 30.11.

1600: 1. Comedy, Haskell, 6:08.39; 2. Beshirs, Motley County, 6:09.80; 3. Marshall, Jim Ned, 6:25.75; 4. Tajchman, Hawley, 6:29.39; 5. Walker, Anson, 6:29.39; 6. Rogers, Albany, 6:48.66.

1600 Relay: 1. Albany, 4:15.62; 2. Anson, 4:22.07; 3. Haskell, 4:26.15; 4. Jim Ned, 4:32.89; 5. Hawley, 4:53.02.

Team totals: 1. Albany 144; 2. Jim Ned 142; 3. Anson 112; 4. Haskell 94; 5. Hawley 26; 6. Jayton 26; 7. Lueders-Avoca 14; 8. Motley County 13; 9. Paint Creek 4.

VARSITY BOYS

Discus: 1. Thompson, Albany, 148-8; 2. Casey, Rule, 144-7; 3. Lennamon, Albany, 144-6; 4. Rodriguez, Albany, 133-11; 5. Josselet, Haskell, 132-11; 6. Shea, Jim Ned, 127-9.

High Jump: 1. Young, Hawley, 6-8; 2. Melton, Jim Ned, 6-2; 3. Terrell, Albany, 6-2; 4. Esquivel, Winters, 5-10; 5. Newsome, Rule, 5-10; 6. Gonzales, Haskell, 5-10.

3200: 1. Rodriguez, Winters, 10:35.44; 2. Albarado, Winters, 11:21.70; 3. Birkla, Albany, 11:26.42; 4. Huff, Haskell, 11:26.44; 5. Coronado, Albany, 11:57.03; 6. Mulliem, Albany, 11:57.03.

Long Jump: 1. Hudman, Albany, 21-9 1/4; 2. Chapman, Albany, 21-3 3/4; 3. Melton, Jim Ned, 20-5 1/2; 4. Taylor, Motley County, 18-10 3/4; 5. Campbell, Motley County, 18-10 1/4; 6. Bahlman, Winters, 18-9 1/4.

Pole Vault: 1. Boland, Albany, 13-6; 2. Farmer, Albany, 13-0; 3. Hicks, Jim Ned, 11-6; 4. Lefevre, Rule, 11-6; 5. West, Winters, 11-0.

Triple Jump: 1. Chapman, Albany, 44-1 1/2; 2. Melton, Jim Ned, 41-2; 3. Edgar, Albany, 40-6

3/4; 4. White, Patton Springs, 39-1 1/4; 5. Miser, Jayton, 38-1 1/2; 6. Clary, Motley County, 37-8 1/2.

400 Relay: 1. Albany, 44.13; 2. Winters, 44.80; 3. Rochester, 44.84; 4. Haskell, 45.70; 5. Jim Ned, 46.19; 6. Motley County, 46.29.

800: 1. Rodriguez, Winters, 2:01.31; 2. Vaughan, Jim Ned, 2:02.41; 3. Smith, Albany, 2:06.54; 4. Huff, Haskell, 2:07.50; 5. Hudman, Albany, 2:10.49; 6. Reagan, Winters, 2:11.65.

110 Hurdles: 1. Hudman, Albany, 14.75; 2. Edgar, Albany, 16.23; 3. Sloan, Rochester, 17.21; 4. Miser, Jayton, 17.35; 5. Green, Albany, 18.52; 6. Awalt, Winters, 18.98.

100: 1. Roman, Winters, 11.14; 2. Ortiz, Motley County, 11.58; 3. Newsome, Rule, 11.67; 4. Salinas, Jim Ned, 11.75; 5. Alcaraz, Albany, 11.89; 6. Rivera, Jim Ned, 11.92.

Shot Put: 1. Thompson, Albany, 55.9; 2. Casey, Rule, 48.85; 3. Lozano, Anson, 45-0; 4. Roman, Winters, 44-10; 5. Kendall, Motley County, 43.75; 6. Rodriguez, Albany, 43.6.

400: 1. Boland, Albany, 23.47; 2. Josselet, Haskell, 23.80; 3. Knight, Hawley, 23.92; 4. Shelton, Albany, 24.04; 5. Alcaraz, Albany, 24.07; 6. Campbell, Motley County, 24.23.

300 Hurdles: 1. Hudman, Albany, 40.23; 2. Garcia, Anson, 42.22; 3. Hollingsworth, Rochester, 43.51; 4. Green, Albany, 44.01; 5. Edgar, Albany, 45.06; 6. West, Winters, 45.36.

1600: 1. Vaughan, Jim Ned, 4:58.43; 2. Albarado, Winters, 5:05.09; 3. Ibarra, Hawley, 5:09.90; 4. Reagan, Winters, 5:21.68; 5. Birkla, Albany, 5:21.78; 6. Coronado, Albany, 5:24.77.

1600 Relay: 1. Winters, 3:28.95; 2. Albany, 3:34.66; 3. Haskell, 3:36.34; 4. Rochester, 3:43.29; 5. Jim Ned, 3:48.37; 6. Motley County, 3:55.55.

Team totals: 1. Albany 201; 2. Winters 116; 3. Jim Ned 60; 4. Haskell 51; 5. Rochester 32; 6. Rule 22; 7. Motley County 22; 8. Jayton 22; 9. Anson 14; 10. Patton Springs.

JV BOYS

Triple Jump: 1. Rogers, Albany, 36-8 1/4; 2. Thompson, Winters, 36-2; 3. Leech, Albany, 35-2; 4. Salinas, Haskell, 34-4 1/4; 5. Hebel, Albany, 33-5 3/4.

Pole Vault: 1. Farmer, Albany, 11-0; 2. Denton, Albany, 10-0; 3. Turner, Jim Ned, 9-6; 4. McAfee, Jim Ned, 9-6; 5. Guy, Winters, 9-0; 6. Harvey, Haskell, 8-0.

Shot Put: 1. Roman, Winters, 40-8.5; 2. Gilly, Albany, 36-8.5; 3. Lozano, Anson, 36-4.5; 4. Wittenberg, Winters, 36-4.5; 5. Ravenscroft, Jim Ned, 35-1.1; 6. McComas, Albany, 35.5.

Long Jump: 1. Rodriguez, Paint Creek, 20-3/4; 2. Rogers, Albany, 18-6 1/2; 3. Davis, Hawley, 18-4 1/2; 4. Douglas, Anson, 18-2 3/4; 5. Ellis, Albany, 17-4 1/4; 6. Cockerell, Paint Creek, 17-1.

Discus: 1. Picquet, Albany, 108.9; 2. Clendenen, Jim Ned, 102.8; 3. Hart, Winters, 99.5; 4. Ravenscroft, Jim Ned, 92.3; 5. Lozano, Anson, 90.10; 6. Whittenberg, Winters, 89.4.

3200: 1. Ramsey, Jim Ned, 12:04.62; 2. Anderson, Hawley, 12:14.31; 3. Reames, Albany, 12:32.91; 4. Rojas, Haskell, 12:36.29; 5. Brown, Hawley, 13:03.16; 6. Ruff, Albany, 13:15.38.

High Jump: 1. Douglas, Anson, 5-8; 2. Billington, Haskell, 5-6; 3. Kozelsky, Winters, 5-4; 4. Ellis, Albany, 5-0; 5. Farmer, Albany, 5-0; 6. Bailey, Anson, 5-0.

400 Relay: 1. Haskell, 49.08; 2. Jim Ned, 49.46; 3. Albany, 50.09; 4. Winters, 50.17.

800 Run: 1. Alvarado, Motley County, 2:18.01; 2. Scott, Hawley, 2:20.68; 3. Hart, Winters, 2:22.69; 4. Rojas, Haskell, 2:24.05; 5. Thompson, Winters, 2:27.16; 6. Anderson, Hawley, 2:28.16.

110 Hurdles: 1. Ellis, Albany, 18.32; 2. Harvey, Haskell, 18.77; 3. Tatum, Jim Ned, 18.82; 4. Leech, Albany, 19.91.

100: 1. Rodriguez, Paint Creek, 11.99; 2. Rogers, Albany, 12.49; 3. Prew, Jim Ned, 12.63; 4. Cockerell, Paint Creek, 12.73; 5. L. Roman, Winters, 12.75; 6. Bristow, Hawley, 12.78.

400: 1. Billington, Haskell, 56.19; 2. Davis, Hawley, 58.18; 3. Scott, Hawley, 58.79; 4. Thompson, Winters, 1:02.26; 5. Jim Olson, Haskell, 1:02.48; 6. Martin, Haskell, 1:02.90.

300 Hurdles: 1. Ellis, Albany, 44.02; 2. Harvey, Haskell, 45.23; 3. Salinas, Haskell, 46.03; 4. Tatum, Jim Ned, 48.17; 5. Leech, Albany, 48.14; 6. Guy, Winters, 50.62.

200: 1. Rodriguez, Paint Creek, 24.41; 2. Riley, Haskell, 24.74; 3. Davis, Hawley, 25.29; 4. Rogers, Albany, 25.54; 5. Bristow, Hawley, 25.8; 6. Prew, Jim Ned, 26.4.

1600: 1. Brown, Hawley, 5:38.68; 2. Reames, Albany, 5:52.47; 3. Ramsey, Jim Ned, 6:06.90.

1600 Relay: 1. Haskell, 3:50.8; 2. Hawley, 4:03.70; 3. Winters, 4:06.78; 4. Albany, 4:09.68.

Team totals: 1. Albany 144; 2. Haskell 100; 3. Hawley 74; 4. Jim Ned 73; 5. Winters 72; 6. Paint Creek 35; 7. Anson 21; 8. Motley County 10.

Rolling Plains PCA elects 3 directors

Three directors were elected to the board of Rolling Plains Production Credit Association in stockholders' annual meetings held in Childress April 2 and in Stamford April 3.

Garon B. Tidwell of Munday and Dan Henard Jr. of Wellington were re-elected to three-year terms, and Keith Corzine of Sagerton was elected to a one-year term. Other board members are Lance D. Morris of Crosbyton, Dean Turner of Matador and Jack Reese of Abilene.

Leon Burson of Haskell and W. D. "Pee Wee" Smith of Avoca were recognized as 50-year members at Stamford.

Reese gave the board report to the gathering. Earning the highest rating possible by the 10th district regulator for the fourth consecutive year, the association maintains its Tier I designation. The award was based on continued strength in capital, asset quality, management, earnings and liquidity.

During the period 1980 through 1991, Rolling Plains Production

Credit Association loaned over one billion dollars to farmers, ranchers and ag related businesses. Total net loan losses during this period were just over two million dollars, resulting in a loss experience of 18/100 of 1%.

The low loan loss percentage reflects the character and management ability of the Rolling Plains PCA member-borrower.

John Rike, president, informed the audiences that in March 1992 the Advance Conditional Payment Accounts aggregated some \$2,700,000. The present rate being paid to the membership on these accounts is 5.50%, compounded quarterly to yield 5.60%.

Member participation in the Advance Conditional Payment Accounts further benefits borrowers through providing funds to the association at an interest cost savings compared to borrowing from the entity's primary source.

The crowds were entertained by Cindy Nix and Donna Fowler, "Just Friends," who presented a program of music and fun.

USDA seeks comments

The U.S. Department of Agriculture is seeking public comments on whether an acreage reduction program (ARP) for the 1993 wheat crop should be implemented and, if so, whether it should be 0, 5 or some other percent between 0 and 15 percent, said Jerry D. Harris, chairman of the Texas ASC committee.

Any ARP decision must be announced by June 1. CCC is also required to propose options for the wheat program, accompanied by an analysis that includes estimated planted acreage, production, domestic and export use, ending stocks, season average producer price, program participation rate and cost to the federal government.

Details will be in the April 6 Federal Register.

Submit comments by May 1 to: Deputy Administrator, Policy Analysis, USDA/ASCS, Room 3090-S, P.O. Box 2415, Washington, DC 20013.

All comments will be available for public inspection in Room 2744-S of USDA's South building in Washington. A regulatory impact analysis on the 1993 wheat program may be obtained from the above address.

In appreciation I wish to express my gratitude for the many kindnesses evidenced to me and my family in thought and deed during my recent stay in the hospital. For the prayers, visits, cards, flowers and calls.

Sincerely,
Helen Neely

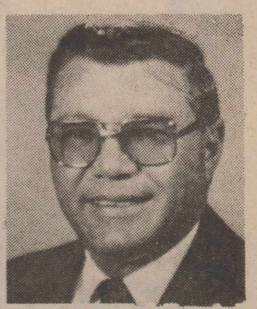
-HOSPITAL-

Medical Patients
Elvis Shipman, Haskell
Paul King, Rochester
Ennis Webb, Rule
Agnes Rike, Haskell

Dismissals
Dorthay Wells, Irman Whitaker,
Bertha Moore, Mildred Robertson,
Elizabeth Russell, Bruce Opsahl,
Jimmy Turner.

TAX PLANNING

Written By
James E. Rodgers, CPA



MANDATORY IRA WITHDRAWALS

Like all good things, the tax deferral opportunities of an Individual Retirement Account (IRA) eventually come to an end. Reaching age 70 1/2 is the event that triggers the beginning of the end. Mandatory withdrawals must begin no later than April 1 of the year following the year in which you reach age 70 1/2 (withdrawals may start as early as age 59 1/2). For example, if you reach age 70 1/2 in 1991, mandatory withdrawals must begin by April 1, 1992.

At age 70 1/2, you have three options: withdrawing the entire balance in your IRA, taking smaller amounts annually over the rest of your life, or taking a large sum plus annual payments. If you elect to take periodic payments from your IRA, you will be subject to the minimum distribution rules.

Calculating the amount of the minimum distribution is quite complex, but it generally works this way: Take the balance in your IRA account at December 31 and divide it by your remaining life expectancy (determined by actuarial tables provided by the IRS). The result is the minimum amount you must withdraw from your IRA each year. For example, if the actuarial tables indicate a remaining life expectancy of 16 years, and your IRA balance is \$62,416, you must withdraw 1/16 or \$3,901 annually. The minimum withdrawal can be adjusted annually.


Distributions must be made each year, beginning in the year you turn 70 1/2. However, the initial distribution can be deferred until April 1 of the following year. If you defer the first distribution, you will be taxed on two distributions in that year.

If you fail to withdraw the minimum distribution each year, you will be assessed a 50 percent penalty.

Call us if you'd like assistance in determining your IRA withdrawals.

RODGERS & COMPANY
Certified Public Accountant
20 Southwest Third Street
Hamlin, Texas

For Your Sheet Metal Work
Water Storage Tanks
All kinds of metal duct work
See or call:
Guinn Sheet Metal & Plumbing
817-658-3341 L.C. Guinn Knox City, TX



A message from the
ABILENE EYE INSTITUTE
&
CATARACT SURGERY CENTER
DEDICATED TO EXCELLENCE

We specialize in cataract surgery with intraocular lens implant and routinely use the small incision phacoemulsification technique. We have 2 modern, fully equipped operating rooms each with its own Zeiss operating microscope and Phacoemulsifier. We also have an observation room so that family and friends may view the surgery while it is happening. Our ambulatory surgery center is State licensed and Medicare approved. We have performed over 3,000 cataract implant operations since 1987. Our doctors accept Medicare Assignment and we think you will find our fees very competitive with most hospitals. Our friendly, dedicated staff is available to answer any of your questions. If you need transportation, we can help.

Robert W. Cameron, M.D., F.A.C.S.
Paul B. Thames, M.D., F.A.C.S.
Vincent J. Priestner, M.D.
Kerry C. Preston, O.D.

2120 Antilley Road, Abilene, TX 79605
3/10 mile west of Humana Hospital
915-695-2020 or 1-800-692-2020



SORGHUM THAT FITS THE WAY YOU FARM

607E
• Greening C and E tolerant
• Excellent plant height uniformity
• Medium early maturity - bronze
• Rapid grain drydown
• Widely adapted

618Y
• Cream grain, stress tolerant
• Medium early - ideal for dryland
• Larger planting seed size - population control
• Head exertion + stalk quality = easy harvest

575
• Cream grain - medium maturity
• Increasing in popularity especially under stressed conditions
• Yields with the best because of comparable maturity
• Sturdy stalk, head exertion, easy harvest

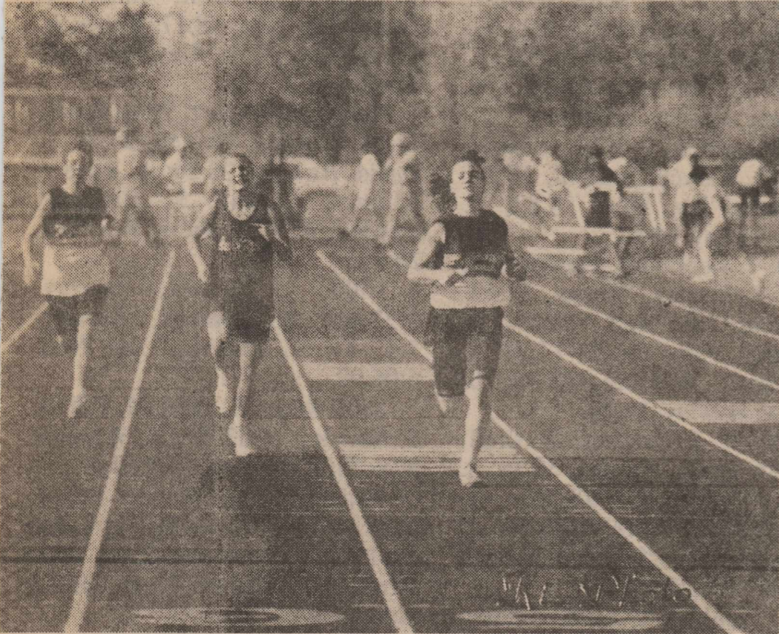
70
• Shorter height, sturdy stalk
• Medium maturity, outstanding yield
• Responds well to irrigation
• Excellent performance - dryland
• Larger planting seed
• Full leaf canopy

Ask about our guarantee!
COUNT ON CARGILL!

P.O. Box 5645 Minneapolis, MN 55440
All products subject to CARGILL'S warranty limitations

Brian Bredthauer, dealer
915-773-3904

Maidens at Rolling Plains Relays



Heather Hobgood, Kelli Nanny, 400



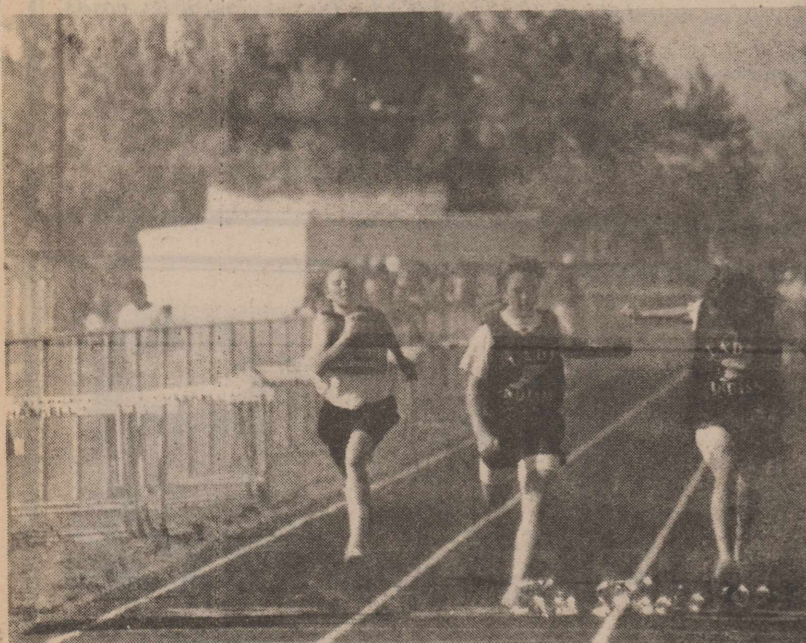
Cathryn Seelke, 400 relay



Daniela Guadalcazar, shot put



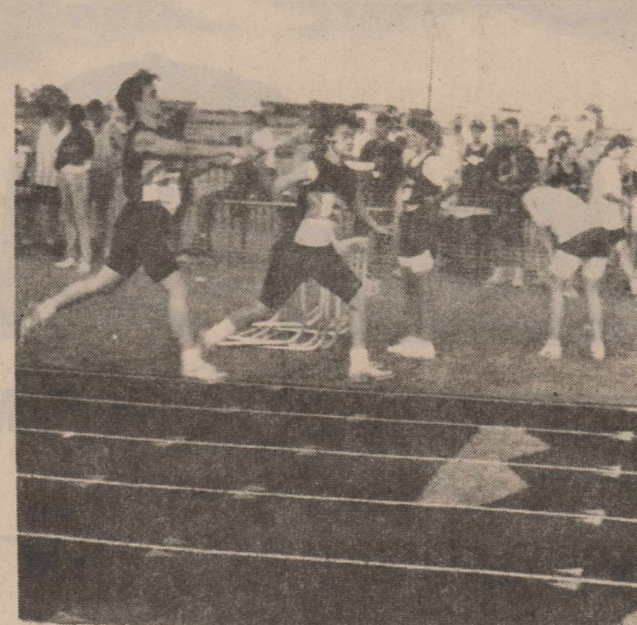
Teresa Diaz, 1600 relay



Micca Jordan, 100



Holly Hobgood, 800 relay



Holly and Heather Hobgood, 1600 relay

Photos by
Bobbie Johnson

WEST TEXAS
GMC
TRUCK TEAM

MEDFORD
Buick-Pontiac-GMC
Haskell, Texas
817-864-2644

Guadalajaras
Mexican & American Food
Open 6 a.m. to 10 p.m.
Grand Opening
Thursday, April 16
1006 S. Ave E • Haskell
(formerly Jim's Steak House)
864-3137

CLASSIFIEDS

NOTICE
The Haskell Free Press reserves the right to edit and/or delete all news stories and locals for length and liability and to refuse to print anything deemed not newsworthy.

NOTICE
The deadline for Classified Advertising is 12 noon on Tuesday.
Haskell Free Press

For Sale

SPRINKLER SYSTEMS by Nanny Plumbing, Inc. License #4160. Call today for free estimate, 817-864-3043. 14-18c

For Sale

COOK & BAILEY SPRINKLER systems. 864-2226. 17fc

FOR SALE: The very best update medicare supplement on the market today. Call Cary Headstream 817-864-3754. 25fc

SEARS in Haskell will honor any Sears ad. East side of square, 864-2671, Haskell. 1fc

FOR SALE: Nice family boat. 16' V-hull, outboard, 90 h.p. Walk-thru VIP. Priced to sell. Call 864-3545 after 6 p.m. 13-16c

QUARTERLY REPORT

JANUARY, FEBRUARY and MARCH 1992

	BALANCE DECEMBER 31 1991	RECEIPTS JAN. FEB. MAR. 1992	DISBURSEMENTS JAN. FEB. MARCH 1992	BALANCE MARCH 31 1992
GENERAL	\$18,245.81	\$544,498.60	\$479,829.70	\$82,914.71
JURY	104.65	10,068.00	5,050.92	5,121.73
OFFICER SALARY	(18,168.72)	150,292.67	104,597.69	27,526.26
LAW LIBRARY	1,026.54	2,790.00	2,432.73	1,383.81
ROAD & BRIDGE #1	82,917.07	202,198.32	189,644.62	95,470.77
ROAD & BRIDGE #2	19,298.03	180,828.51	160,023.97	40,102.57
ROAD & BRIDGE #3	86,926.76	100,618.40	105,395.51	82,149.65
ROAD & BRIDGE #4	72,371.84	42,828.47	24,493.56	90,706.75
LATERAL ROAD #1	200.68	.00	190.04	10.64
LATERAL ROAD #2	3,388.65	.00	3,178.64	136.91
LATERAL ROAD #3	2,861.57	.00	2,495.18	366.39
LATERAL ROAD #4	903.01	.00	878.42	24.59
F M L ROAD # 1	18,896.94	68,157.04	35,249.64	51,804.34
F M L ROAD # 2	4,487.06	39,570.66	21,257.90	22,799.82
F M L ROAD # 3	8,688.92	128,683.61	69,687.75	67,684.78
F M L ROAD # 4	5,592.24	38,946.91	9,533.64	35,005.51
CRIMINAL JUSTICE	10,160.37	2,280.24	2,812.32	9,628.29
LAW ENFORCEMENT	3,290.60	561.86	729.58	3,122.88
VICTIMS OF CRIME	10,188.94	1,980.85	3,041.65	9,128.14
ARREST FEES	9,780.61	1,873.00	887.43	10,766.18
CRIME STOPPERS	53.11	16.00	26.16	42.95
JUD. & COURT PERSONNEL TRAINING	2,240.70	374.57	320.06	2,295.21
VOTER REGISTRATION	52.90	25.00	.00	77.90
39th JUD. DIST. JUV.	2,363.08	7,991.57	4,806.08	5,548.57
PURCHASE OF JUVENILE SERVICE	1,870.00	.00	1,870.00	.00
COUNTY ATTORNEY	5,943.92	1,434.32	659.37	6,718.87
DISTRICT ATTORNEY	360.00	75.00	.00	435.00
T.C.D.R.S.	.00	27,310.88	27,310.88	.00
COUNTY LIBRARY	3,312.80	180.82	418.13	3,075.49
HASKELL COUNTY SCHOOLS FUND	2,134.47	1,158.47	.00	3,292.94
E.C.C. BUILDING	5,736.31	1,452.02	.00	7,188.33
E.C.C. NUTRITION	5,442.72	35,059.32	23,165.54	17,336.50
RIGHT OF WAY FUND	13.23	.11	.00	13.34
HASKELL COUNTY ECON. DEVELOPMENT FUND	2,153.21	24,725.02	11,429.46	15,448.77
GENERAL MONEY MARKET	3,036.64	102,246.13	.00	105,332.77
CAPITOL ACCOUNT	1,503.92	14.04	45.25	1,472.71
SPECIAL JUD. DEST. ADULT PROBATION	29,000.92	22,890.51	30,378.55	21,512.88
STATE GENERAL REVENUE	425.30	741.43	382.77	783.96
COMP. REHAB. FUND	625.00	1,087.50	562.50	1,150.00
GOVERNMENT RECORDS	.00	1,365.00	.00	1,365.00
	\$407,406.70	1,744,324.85	\$1,322,785.64	\$828,945.91

INVESTMENTS OF HASKELL COUNTY

SOCIAL SECURITY FUND
Certificated of deposits \$30722 @6.01%
Dated June 30, 1991 and Maturing June 30, 1992 \$5,964.84

HASKELL NATIONAL BANK
HASKELL, TEXAS
PLEDGES SECURING COUNTY DEPOSITS

U.S. TREASURY NOTES	\$1,000,000.00
U.S. TREASURY NOTES	300,000.00
U.S. TREASURY NOTES	500,000.00
FED. NATL. MTG. ASSN.	100,000.00
	\$1,900,000.00

On April 14, 1992 A.D., the Commissioners Court of Haskell County, Texas met in a regular session, compared and examined the Quarterly report for the quarter ending March 31, 1992 and found to be true and correct.

THE REQUIREMENT OF ARTICLE 394F.C. HAVE BEEN COMPLIED AND A TABULAR STATEMENT HAS BEEN FILED AS REQUIRED.

G. L. Stone
COMMISSIONER PRECINCT # 1

Ronnie Chapman
COMMISSIONER PRECINCT # 2

J. R. Perry
COMMISSIONER PRECINCT # 3

C. A. Linneman
COMMISSIONER PRECINCT # 4

B. O. Peterson
COUNTY JUDGE, HASKELL COUNTY, TEXAS

Rhonda Miller
COUNTY CLERK, HASKELL COUNTY, TEXAS

Mendy Miller in all-state choir

Snyder High School student Mendy Kay Miller performed Feb. 8 with the Texas All-State Choir. Mendy was selected as first chair, first soprano, from the Lubbock area on Jan. 4.

The Texas All-State Choir presentation was part of the 1992 Texas Music Educators Association convention in San Antonio.

Mendy has participated in competitive auditions held this school year across the state at district, region and area levels. She is a private student of Melanie Smith, who is the Snyder Junior High School choir director, and sings under the direction of Bill Lyon, Snyder High School Choir director. Ms. Smith and Mr. Lyon are both members of the Texas Music Educators Association, a 7,500-member group with headquarters in Austin.

This is Mendy's first time to perform as a member of the TMEA All-State group. She is the daughter of Kenny and Sandra Miller of Snyder and the granddaughter of Mr.



Mendy Miller

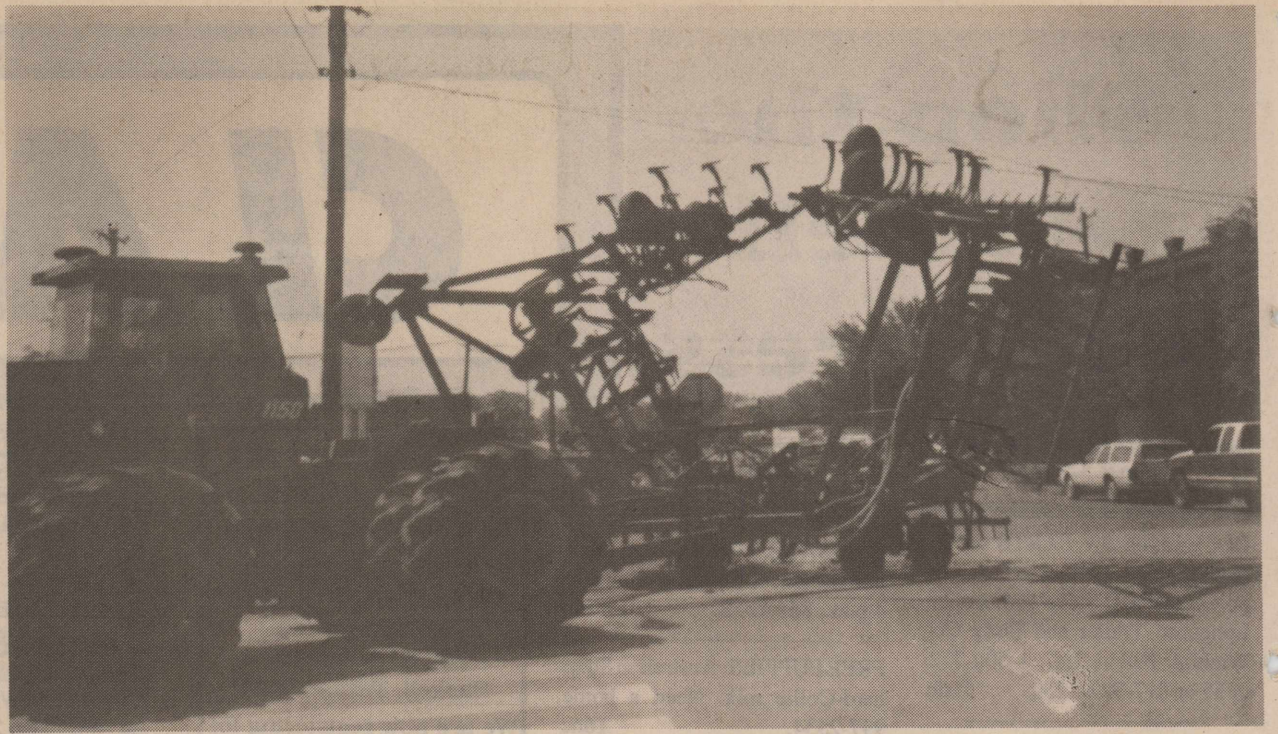
and Mrs. Melvin Miller of Haskell and Mr. and Mrs. Hollis Ward of Hermleigh. She is also active in the First Baptist Church in Snyder.

Disaster payments calculated

A national factor of 50.04 percent will be used to calculate payments to producers who filed claims for crop production losses under provisions of the 1990-91 Disaster Program.

Keith Bjerke, administrator of the U.S. Department of Agriculture's Agricultural Stabilization and Conservation Service, said qualifying producers' payments were calculated by determining the eligible amount of production loss and multiplying it by the applicable rate.

"Because total payments are limited by the \$995 million allocated by Congress, it was necessary to factor this further," Bjerke said. "Producers may calculate their payments at once by using this percentage."



Entangled

This plow, pulled by a tractor, became entangled in a power line as it attempted to go through the South 1st and Avenue E intersection in Haskell Monday afternoon. The rig belonged to Throckmorton Land and Cattle Co.



Disney characters

Providing entertainment for the kids during Super 2nd Saturday were these Disney characters, portrayed by, from left, Susan Jarred, Paul Gibson and Nicole Cothran.

Church to host Passover service

The First Christian Church will observe a special Christian Passover service today (Thursday), beginning at 7 p.m.

Dusty Garison, minister, said this will be the fourth consecutive year the congregation has held this observance.

"The Passover is the single most important event in the entire Old Testament, yet most Christians have very little understanding of its history," Garison said.

"It was during a Passover service that Jesus held the Last Supper with his disciples, and it was then that He instituted the communion service. Because of these connections, we believe that it's important for Christians to have a better understanding of the Passover and its relationship to the New

Testament."

The Passover commemorates the deliverance of the children of Israel from slavery in Egypt. Garison noted that all of the foods used in the service have special significance.

"The lamb we eat is a reminder of the lamb which was slain, and the blood spread on the doorposts," he said. "Bitter herbs are used as an object lesson about life as a slave. Because of the hasty departure, only unleavened bread is used. All of these foods are exactly like those eaten by the Israelites 2500 years ago."

The service is open to the public, but reservations are required due to the limited seating space. Call 864-3550 or 864-2445 for more information.

FISH



Now is the time for Spring Stocking Hybrid Bluegill, Bass, Channel Catfish, Fathead Minnows, Black Crappie.

The Hybrid Bluegill will REACH the weight of 2 1/2 to 3 lbs. We furnish your Hauling Containers. We guarantee live delivery. Supplies - Fish Feeders, Turtle Traps, Liquid Fertilizer, Commercial Fish Cages. Delivery will be Friday April 24, at the times listed for the following towns and locations.

Jayton-Farmers Society #1	8:00-9:00 a.m. 237-9922
Aspermont -D&D Feed & Seed	10:00-11:00 a.m. 989-2994
Knox City-Benjamin Fertilizer	12:00-1:00 p.m. 658-3642
Haskell-Nine Point Grain	2:00-3:00 p.m. 864-2011
Anson-Anson Feed	4:00-5:00 p.m. 823-2871

Call your local Feed Store to place your order or call: 405/777-2202
Toll Free: 1-800-433-2950 FAX # 405-777-2899
Fishery Consultant available.

Special Deliveries on large ponds and lake orders.

Dunn's Fish Farm

P.O. Box 85
Fittstown, Ok. 74842

Now Open



Richardson's True Value

Highway 277 North • 864-8551

Introducing
TRU-TEST Quality
PAINTS



TRU-TEST.

K364 217 F4

16.98

E-Z Kare™ Interior Latex Flat Finish. Colors. Gal.

K368 668 F4

22.98

E-Z Kare™ Interior Latex Semi-Gloss. Colors. Gal.

Come See Us for your

Lawn and Garden, Plumbing, Electrical, Paint, Tool and Hardware Needs!

