

1/1/95
Base Book Binding
514 W 7th St
Amarillo TX 79101-2212

Amarillo--CCCCC
End Of Amarillo
Amarillo Bag TX 79100
ZZXXXXXXXXXXXX

THE HASKELL FREE PRESS

50¢

VOL. 108--NO. 6

HASKELL, TEXAS 79521, February 10, 1994

10 PAGES-ONE SECTION

Indians nearing 7-2A title

The Haskell Indians, all alone in first place in the second half of district 7-2A round robin, can clinch the championship if they can get by their final three opponents.

The Indians were to meet Hamlin there Tuesday, host Stamford Friday and then close out the regular season at Anson next Tuesday.

Haskell brought its record to 4-0 Friday night, coming from behind with a 24-point fourth-quarter outburst to defeat Jim Ned, 50-42. The Indians trailed, 30-26, going into the final period.

Brian Brzozowski led the scoring with 21 points. Jonathan Tatum scored 13.

At Rotan last Tuesday, the Indians won a 78-63 decision over the Yellowhammers. Haskell led 16-12 at the end of the first quarter and 31-25 at halftime before forging ahead 48-38 in the third period. Both teams burned the nets in the final period, the Indians getting 30 and Rotan 25.

Brzozowski again was the top scorer, this time with 27 points. Tatum scored 16, Mart Guess had 15 and Cody Cooley added 12.

Haskell, which tied Stamford for the first-half championship, now stands 20-7 for the season. The Indians have won 10 of their last 11 games.

DISTRICT STANDINGS Second Half

BOYS

	Dist.		Overall	
	W	L	W	L
Haskell	4	0	20	7
Hamlin	3	1	13	10
Stamford	3	1	19	9
Rotan	2	2	17	9
Winters	2	2	13	14
Jim Ned	1	3	15	12
Hawley	1	3	3	23
Anson	0	4	9	17

GIRLS

	W		L	
	W	L	W	L
Jim Ned	5	0	26	1
Winters	4	1	20	7
Stamford	4	1	17	10
Hawley	3	2	11	16
Haskell	2	3	14	11
Hamlin	1	4	11	14
Anson	1	4	10	17
Rotan	0	5	9	18



Slogan winner

Mary Kaigler accepts a \$100 bill from Chamber of Commerce president Andy Gannaway for winning the Chamber's slogan contest.

Haskell Alive!

Yesterday-Today-Tomorrow

Haskell Alive! Yesterday—Today—Tomorrow.

The above, submitted by Mary Kaigler, was chosen last week as the new slogan of the Haskell Chamber of Commerce.

A panel of judges chose Mrs. Kaigler's entry as best among 53 submitted in the Chamber of Commerce's contest to choose a new slogan. Among the entries were several from out of town.

Mrs. Kaigler, who has lived in Haskell since 1985, was presented a \$100 bill for her winning entry.

While admitting that the \$100 prize was an incentive to her entering the contest, Mrs. Kaigler said it also gave her a chance to express her feelings about the community in which she chose to live after retirement.

"Haskell has a rich heritage, it offers a lot of things of real value and I believe it can become a model place," she said in explaining the

thought behind her entry.

Mrs. Kaigler and her husband, Tom, chose to move to Haskell from Austin after their retirement nine years ago. Her husband is a Haskell native, but he left here after graduating from high school.

The Chamber of Commerce will display the slogan on the highway signs at the four entrances to the city, and on other advertisements for the community. A committee headed by Mary Rike is developing new art work to be used on the signs.

Kiwanisfest scheduled Sunday

Serving begins at 11:30 a.m. Sunday at the Kiwanis Club's Valentine's Day Kiwanisfest in the Civic Center. Feeding will continue until 1 p.m.

Advance tickets are \$5 each and may be purchased at Haskell National Bank, First National Bank, Sport-About, The Drug Store, Johnson Pharmacy, Lane-Felker or from any club member. Tickets at the door will be \$5.50.

The Kiwanis Club uses proceeds from the annual event to help finance its youth projects.

District 7-2A undergoes changes

District 7-2A will revert to a six-team district next year by virtue of UIL reclassifications and realignment. It has been an eight-team district for the past four years.

Making up the district for the 1994-95 school year will be Haskell, Stamford, Hamlin, Anson, Hawley and Rotan.

Moving out of the district will be Jim Ned and Winters.

As a result of the re-alignment, the Haskell Indian football schedule next fall will include some new names.

In addition to the games against district opponents, the Indians will meet Munday, Quanah, Knox City, Albany and Baird.

The Munday and Knox City games will be played in Haskell. Athletic director Walter Hargrove said Monday that the locations for the Quanah, Albany and Baird games have not been determined.

He said either the Albany or Baird game will be in Haskell and the other will be away. He said he hopes the Quanah game will be in Quanah, which would give the

Early primary voting to begin next week

Early voting in the Democrat and Republican primaries will get underway next Wednesday, Feb. 16. Early voting will continue through March 4.

Those wishing to vote early by personal appearance may do so at the office of the County Clerk in the Haskell County courthouse.

Democrat and Republican primaries will be held March 8. The Democrat primary will be conducted at the county's regular polling stations. The Republican primary will be held in the community room of the First National Bank in Haskell.

Sharon Mullino, county Democratic chairman, reminds those intending to vote that they must vote in either the Democrat or Republican primary. They must not vote in both. Voters should present their registration cards before voting. The cards will be stamped with the name of primary in which they vote.

Local interest in the Republican primary has been generated by the candidacy of Doyle High for State Senate. The Haskell businessman is opposed by Tom Haywood of Wichita Falls for the Republican nomination to oppose Democrat incumbent Steve Carriker in the general election next fall.

Another local name on the Republican primary ballot is that of Rick Perry, who is seeking a second term as Texas Commissioner of Agriculture. He is unopposed in the primary.

Most local interest, however, is centered around four contested races among Democrats for Haskell County offices, making this one of the most spirited local election campaigns in recent years.

Four candidates are running for County Judge, including incumbent B. O. Roberson and challengers James M. (Stick) Raughton, Jerrell E. (Judo) Johnson and Giles Kemp.

Justice of the Peace Gina Brown, appointed last year to the unexpired term of the late Buck Everett, is a candidate for a full term in that office. She is being opposed by Don Flippin.

Contested races also are being waged in two County Commissioner precincts.

There are three candidates for Commissioner of Precinct 2, including incumbent Ronnie Chapman and challengers James R. (Jimmy) Hannsz and E. L. (Elmer) Adams.

The other contested Commissioner race is in precinct 4 where incumbent C. A. (Bud)

Turnbow is opposed by Don Hisey.

County Clerk Rhonda Moeller, County Treasurer Willie Faye Tidrow and District Clerk Carolyn Reynolds, all Democratic incumbents, are unopposed, as is District Judge Charles Chapman, also a Democrat.

Since there are no Republican

candidates for any of the local offices, winning the Democratic primary is tantamount to election.

In addition to the local races, there are several contested state races in the primaries, highlighted by the race for the Democratic nomination for U.S. Senate.



Field exercise

Teresa Unger explains things to her parents, Gwen and Ervin Unger, during an ROTC training exercise she helped stage in Haskell Saturday.

Tech ROTC unit practices here

Haskell was the site Saturday of a Military Science field training exercise by an ROTC unit from Texas Tech University.

The exercise was performed in a vacant lot near the home of Ervin and Gwen Unger, parents of Teresa Unger, who is a tach officer with the unit.

Sergeant First Class Mirelos

directed the exercise. Teresa, a tach officer, was one of the instructors of the 15 participating students.

From Haskell, the group went to Lueders for another field training exercise.

Teresa is a senior nursing student at Texas Tech. She will be commissioned a second lieutenant in the Army upon her graduation.

Weinert firemen sponsor Country Music Show Saturday

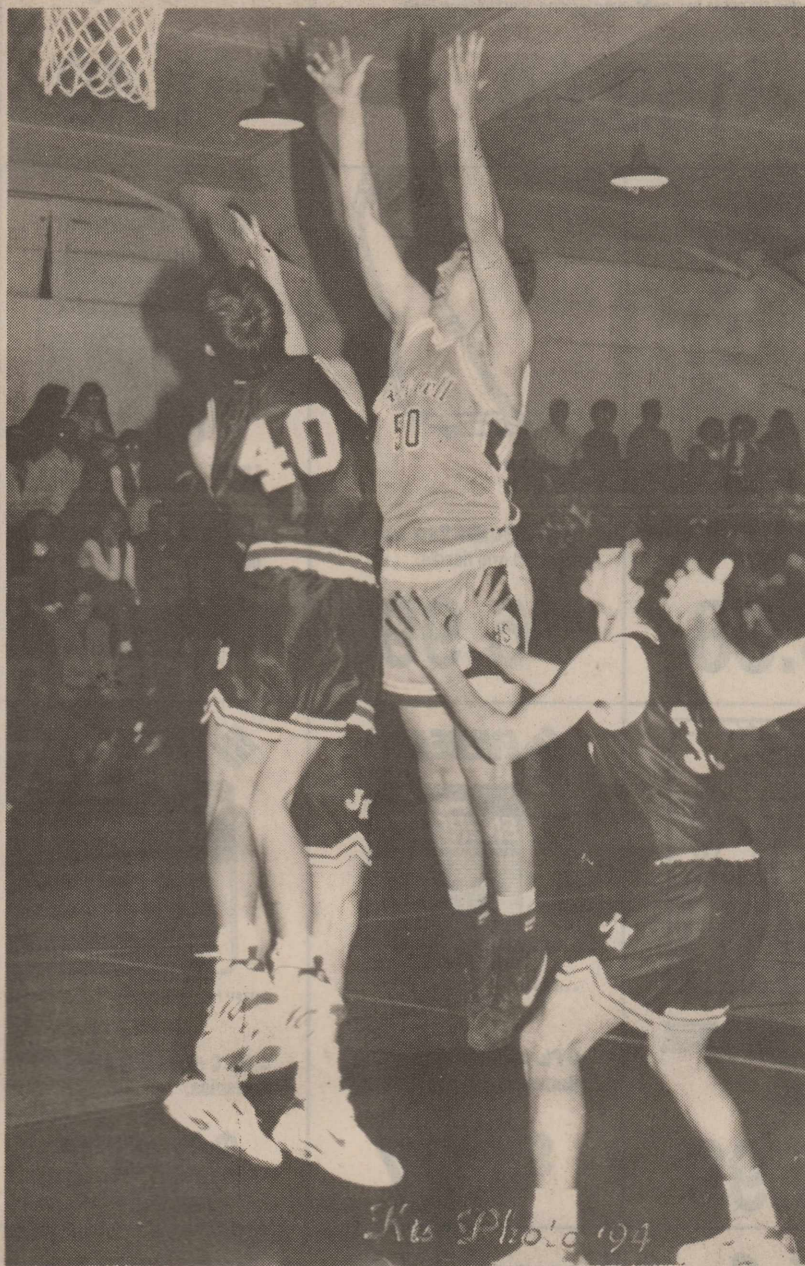
The Weinert Volunteer Fire Department will sponsor the Sheila Helton Country Music Show Saturday night at the Weinert school auditorium. The show begins at 7:30.

The program will be

approximately two hours long and provide entertainment for all ages.

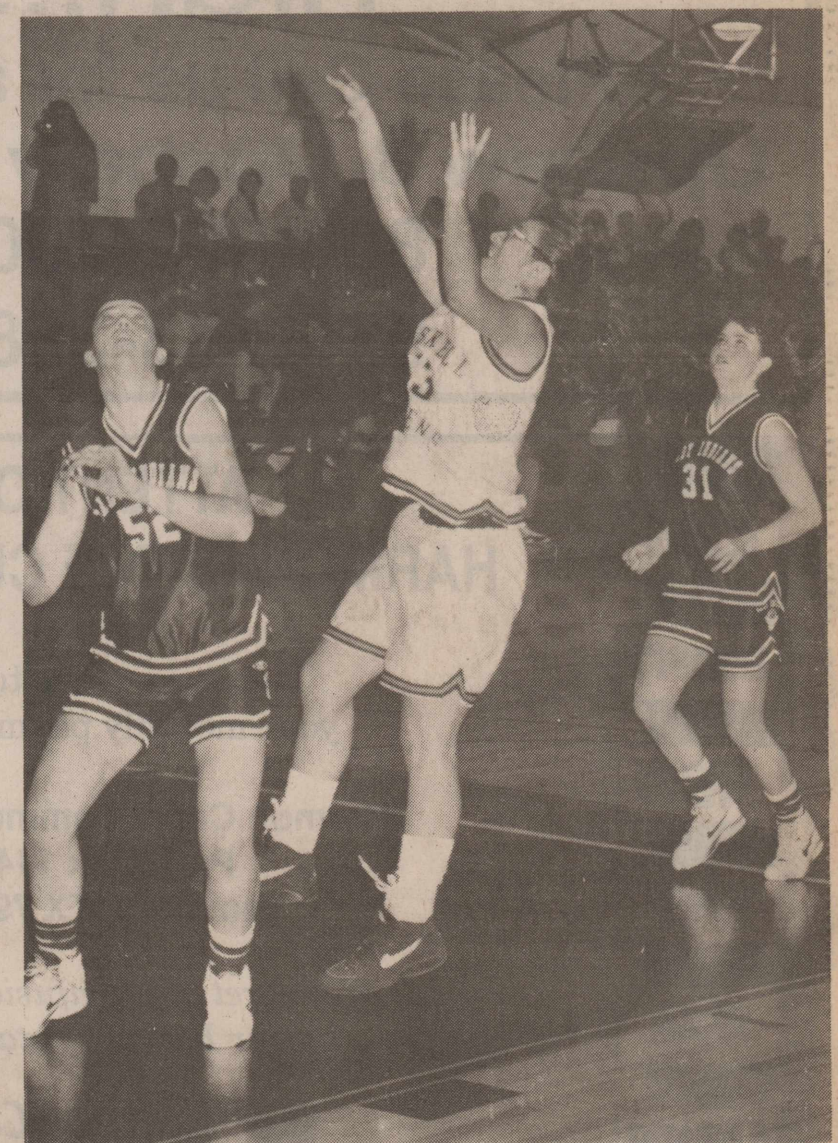
This will be a fund-raiser for the Weinert Volunteer Fire Department.

For more information, call 743-3519 or see Fred Horan.



Scores 21

Brian Brzozowski was the leading scorer with 21 points Friday night as the Indians thumped Jim Ned, 50-42, to remain unbeaten in the second half of district play.



Scores 18

Veronica Gonzales' 18 points led the Maiden scoring Friday night when Haskell lost a heart-breaker to Jim Ned, 64-53.



Concession workers

Working a shift at the concession stand during the recent Haskell County Junior Livestock Show are Kay Smith, Joetta Burnett, Kim Crawford, Ophelia Newsom, Betty Sanders and Dolores Medford.

FCE clubs operate concession stand

The Haskell County Family and Community Education Clubs supply the concession stand each year for the Haskell County Junior Livestock Show.

This is the fund-raising project for the year for the clubs.

All supplies are donated by members and all members take turns working the booth during the two-day show. Coffee, hot chocolate, soft drinks, chips, brownies and Rice Krispie treats are sold each year.

It has been a good time for fellowship while the ladies serve the participants and families and friends who come to watch the young people show their animals.

Kim Crawford and Dolores Medford have been co-chairpersons for this project for several years. They plan supplies and put it all together very well.

They deserve a big "Thank You" from everyone involved. Their hard work makes the concessions and work smoothly year after year.

Haskell School Menu

Feb. 14-18 BREAKFAST

Monday: Juice or fruit, cereal, buttered toast with jelly, milk.

Tuesday: Juice or fruit, scrambled eggs, buttered toast with jelly, milk.

Wednesday: Juice or fruit, sausage and pancake on stick, milk.

Thursday: Juice or fruit, biscuits with gravy, sausage, milk.

Friday: Juice or fruit, cereal, cinnamon toast, milk.

LUNCH Elementary School

Monday: BBQ on bun, french fries, pickle spears, Valentine cake, milk, juice.

Tuesday: Lasagna, pinto beans, cole slaw, sliced pears, buttered hot rolls, milk, juice.

Wednesday: Beef patties with brown gravy, creamed potatoes, carrot sticks, buttered hot rolls, pineapple tidbits, milk, juice.

Thursday: Turkey tetrazzini, English peas, tossed salad, buttered hot rolls, fruit cocktail, milk, juice.

Friday: Hamburger, french fries, hamburger trimmings, apple, milk, juice.

LUNCH High School

Monday: Hamburger or BBQ on bun, tater tots, pickle spears, salad bar, Valentine cake.

Tuesday: Hamburger or lasagna, french fries, pinto beans, salad bar, cole slaw, sliced pears, buttered hot rolls.

Wednesday: Hamburger or beef patties with brown gravy, french fries, creamed potatoes, salad bar, buttered hot rolls, pineapple tidbits.

Thursday: Hamburger or chicken and spaghetti, french fries, English peas, salad bar, buttered hot rolls, fruit cocktail.

Friday: Hamburger or chalupas, french fries, grated cheese, salad bar, buttered corn, apple.

-HOSPITAL-

Medical
 Velma Voss, Knox City
 Rudy Fuentes, Haskell
 Frank Oman, Haskell
 Winifred Hiebert, Haskell
 Berlie Henderson, Haskell
 Walter Fischer, Haskell
Dismissals
 Otis Stone, Margery Hitt,
 Robert Stephenson, Dora
 Brueggeman, Bessie Large, Walter
 Moeller, Louise Finley, Rogue
 Gonzales.

Happenings... by Lois Redwine

Elmer and Bernice Hilliard were in Abilene Tuesday night, Jan. 25 at the Wagon Wheel. The Country Cousins Square Dance Club held their graduating exercises for new square dancers. Leon Ivey of Munday was the square dance caller, Maxine Ivey was the country line dance caller.

On Sunday, Jan. 30, Eloise Burson of Abilene honored her husband, Stewart, with a 75th birthday dinner. Attending were sister, Lois Peckwood and from Haskell, brothers and wives, Leon and Ella Belle Burson and Botch and Doris Burson.

Recently, grandson, Chad Lundy of Canyon spent the night with me. He was enroute to Dallas on business. He also visited his cousin, Flint Nanny and family.

Dr. Frank and Billie Cadenhead and Elbert and Franciene Johnson have returned from Puerto Ordez, Venezuela. They participated in a mission medical clinic sponsored by the Southern Baptist Convention. Others in the group were a dentist and his assistant from Tenn. and a dental technician and her assistant from Florence, Ala. The group served a large number of people. They were assisted by Southern Baptist missionaries, Jim and Jani McDonald and Allen and Kylee Bare who live in Puerto Ordez.

Spending the weekend with Vivian Roberson were her grandson, Steven Drinnon and his sons, Damon and Mitchell from Dallas.

Henrietta Segó and Bessie Evans have returned from a weeks stay in Dallas in the home of Mrs. Segó's daughter and son-in-law, Jane and Bill Bell.

Don't forget the Kiwanisfest on Sunday, Feb. 13 at the Haskell Civic Center. The meal will be served from 11 a.m. to 1 p.m. Proceeds will go to support the club's youth projects.

Two Haskell students were named to the ACU Dean's Honor Roll for the 1993 fall semester. They are Tiffany Kaye Bradford and

Tonya Gail Cypert. A student must have at least a 3.45 grade point average to be included in the honor roll.

Spending Sunday with Mattie English were her son, Dr. Michael Felker and his wife, Liz from Levelland. Felker is chairman of the English Dept. at South Plains College.

The Elmer Hilliards square danced Saturday night in Abilene at the Wagon Wheel with the Key City Squares. Ralph McMullen was the caller.

Spending the weekend with Lois Sherman were her daughter and son-in-law, Bobette and Roger Pierce and their granddaughter, Macy Briggs of Big Spring.

Janice Lauderdale of Irving and Wanda Jackson of Ft. Worth visited last weekend with their mother, Clariss Jones.

Sending Saturday with her parents, Leon and Ella Belle Burson, was Janice Hill of Abilene.

Mr. and Mrs. John A. Mayfield of Weinert spent the weekend in Plainview with their son and daughter-in-law, Arch and Eddie Lou Mayfield. They attended the 50th wedding anniversary celebration of long time friends, Buster and Janie Lovell. They also attended two basketball games, Wayland College's Flying Queens playing St. Edwards College from Ill. and the Pioneers playing Cordian Lutheran College from Austin.

Mae Lou Yeldell, president of

the Greater Independent Baptist Church's WMU expresses thanks to all who helped make the 5th Sunday Mission program a success. Special thanks to Rev. L. C. Johnson, Sr.

Members of the Greater Independent Baptist Church were in Munday, Tuesday night for the Community Brotherhood meeting. Rev. J. M. Smith of Weeping Mary Baptist Church in Anson was the speaker.

Nancy Lewis is again in the hospital in Phoenix, Az. She is the wife of Armistice Lewis and the sister-in-law of Mae Lou Yeldell, Birdie and Susie Jackson.

Mr. and Mrs. Rodney Johnson and baby son, Rodney Jerome of Copperas Cove visited with Rodney's parents, Mr. and Mrs. L. C. Johnson, Jr. and grandfather, Rev. L. C. Johnson, Sr.

Heart Donations

Memorial donations to the Haskell County division of the American Heart Association during January were as follows:

Kathleen Haynes: Keith and Jill Everett, Frank and Bonnie Jircik.

Leroy Hix: Joella Weinert Perkins.

Ivy Jones: Faye Stiewert, Terri and George Martin, Scott and Stacey, Jerry Stiewert.

Jesse Dean: Carolyn and Sonny Reynolds.

Mrs. S. G. Cobb: Iola Everett, Carolyn Everett.

To make a donation to the American Heart Association, contact Melba Lowrance at Haskell National Bank, Box 998.

VOTE
 HELP ELECT
DON HISEY
 Commissioner Precinct #4
 Pd. Pol. Adv. Pd. for by Jack Wilson, Campaign Treas.

Christians:
 Are you tired of Trash TV? There is an alternative! TBN, the most viewed religious network in America, is available at no cost to Harmon Cable or you. TBN has 24 hour Christian programming featuring many denominations. Its format includes worship, variety, music, news, sports and children's programs. To help TBN get on the air please write Harmon Cable, Box 1146, Stamford, TX 79553. Attn: Jeanie; and, encourage others to do the same.
 For more information, call 864-3639 or 864-3536 after 5.

AHAHAH!!!
Your Car Insurance Too HIGH!!!
 Please Call us for a Quote
Upshaw & Upshaw Insurance
 800-992-7900
 915-773-3681

ATTENTION HARMON CABLE CUSTOMERS

Please continue to send your monthly payments to:

Harmon Cable Communications
 P. O. Box 1146
 Stamford, TX 79553

We regret any confusion caused by our February statement.

Harmon Cable Communications
 VALUE YOU CAN SEE 915-773-3391
 OR (800) 527-4331

Richardson's True Value Hardware
 Hwy. 277 N. • Haskell, Texas
 Open All Day Saturday 864-8551

<p>40 lb bag \$1.49</p>	<p>Poulan \$159.99</p>	<p>40 lb bag \$1.49</p>
<p>2-Gal. Sprinkler Can with detachable nozzle. \$2.99</p>	<p>2-Pc. Propane Torch Kit complete with a 14.1-oz. gas cylinder. \$8.88</p>	<p>21-in. Pruning Saw with comfort grip handle. \$6.99</p>
<p>4-Pk. D Alkaline Energizer® Batteries. \$3.57</p>	<p>8-Pk. AA Alkaline Energizer® Batteries. \$4.27</p>	<p>4-Pk. C Alkaline Energizer® Batteries. \$3.57</p>

True Value Hardware For Your Honey

District...

Continued from page 1
in ULL events the next two years.
There will be 240 schools competing in the highest classification--5A, schools with 1600 or more ADM.

Class 4A, made up of schools with ADM between 715 and 1599, will have 188 participants.

Class 3A will have 220 schools with ADM between 295 and 714.

Class 1A includes all schools with an ADM of 144 and below. There will be 124 1A schools competing in 11-man football, another 84 schools in 6-man football and 302 schools with basketball teams.

The 1994 football schedule for the Haskell Indians:

- Sept. 2: Munday here
- Sept. 9: Quanah*
- Sept. 16: Knox City here
- Sept. 23: Albany*
- Sept. 30: Baird*
- Oct. 7: Stamford there
- Oct. 14: Hamlin here
- Oct. 21: Anson there
- Oct. 28: Hawley there
- Nov. 4: Rotan here
- (*Location not determined.)

The Indians also are scheduled for pre-season scrimmages against Roscoe and Jim Ned.

Immunizations to be given here

The Texas Department of Health will hold immunization clinics on the following dates and locations:

- Feb. 17: American Legion Hall,
- Feb. 22: Haskell County courthouse.

Hours will be from 10 a.m. to 3 p.m. on each date.

A parent or legal guardian must accompany minor children. Adult TDs (tetanus-diphtheria) also will be available.

For more information, call 864-2609.

Boy Scout week observed

Haskell Boy Scouts this week are observing National Boy Scout Week, marking the 84th anniversary of the founding of Boy Scouts of America.

The observance began Sunday when Boy Scouts attended services at the First United Methodist Church and Cub Scouts at the First Baptist Church.

The idea for the Boy Scouts of America began in 1909 when William D. Boyce, an American businessman, was lost in a London fog. A young boy's refusal of a tip, saying that he was a Boy Scout, intrigued Boyce. He asked the boy to take him to Lord Baden-Powell, scouting's British founder. As a result of this meeting, the Boy Scouts of America was officially born in 1910.

Through numerous eras of change, scouting has thrived, providing programs that teach citizenship, self reliance, leadership, physical fitness and lifelong values to young people.

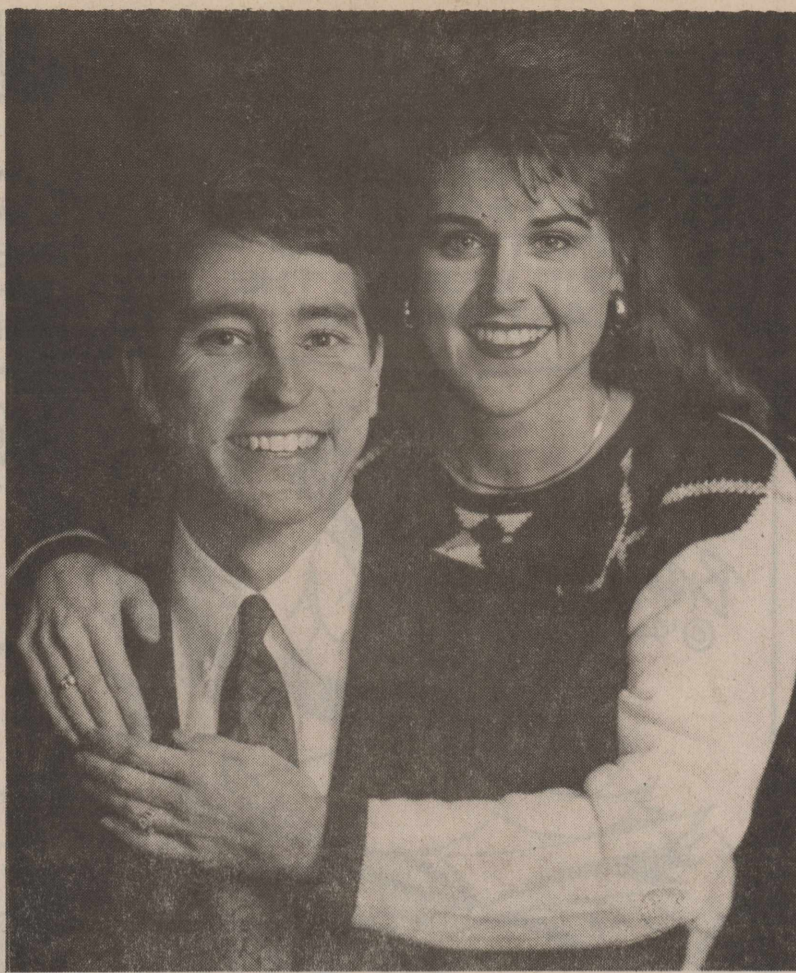
Boy Scout Week allows local scouts and those from all over the country an opportunity to show their respect and dedication to the principles of scouting.

One-act plays coming soon

Coming soon to the Haskell Memorial Civic Center will be "A Night of One-Act Plays."

Participating in the event will be students from Haskell, Paint Creek, Rochester and Rule.

The annual fund-raiser will be March 4.



Julie Roewe and Robert Goodenough

Roewe, Goodenough set wedding date

Mr. and Mrs. Conrad Roewe have announced the engagement and approaching marriage of their daughter, Julie, to Robert Goodenough of Abilene. He is the son of Mrs. Linda Check of Amarillo.

Miss Roewe is a 1987 graduate of Haskell High School. She earned an Associates of Art degree from Western Texas College, a Bachelor of Arts degree from the University of Texas at Arlington and a Master's

of Education degree from Texas Tech University. She is employed at Hardin-Simmons University in Abilene.

The prospective bridegroom is a 1984 graduate of Tascosa High School and earned a BA degree in Telecommunications from Texas Tech University.

The couple will be married June 11 at the First Baptist Church in Haskell.

Flippin candidate for office of JP

Don Flippin (Flip) is a candidate for Justice of the Peace of Haskell County, subject to the Democratic party primary.

Flippin was born in Colorado City, Texas, the son of the late Noel and Linnie Flippin. He graduated from Colorado City High School and earned a Bachelor of Science degree from McMurry University with a minor in political science.

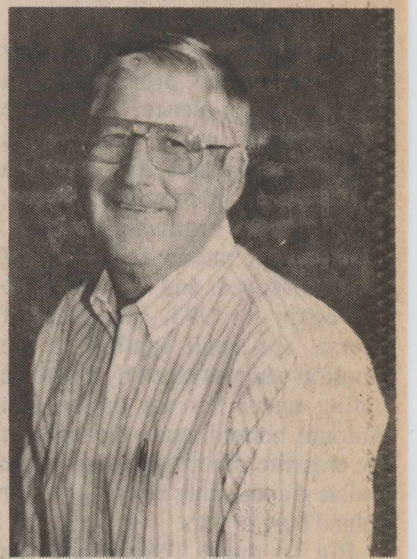
He taught American Government and Economics in the public schools of Texas. He also worked two years at an alternative school with kids on probation.

He is a former teacher, head coach and athletic director in the Haskell schools where he served for three years.

A resident of Haskell County, Flippin is married to Lynda Carver, daughter of the late Cyle and Mildred Carver of O'Brien. They have six children, Mike, Joey and Lisa of Haskell; Vickie of Amarillo; and Kirk and Lane of San Antonio.

He is a retired teacher and now owns and operates a car wash located on East Highway 380. He is a member of the Haskell Chamber of Commerce, American Legion and East Side Baptist Church.

As a candidate for the office of Justice of the Peace of Haskell



Don Flippin

County, Flippin feels that his experience in administrative duties of the public schools and his background in political science and public relations help to establish him as an outstanding candidate for this office. Don Flippin will serve Haskell County honestly, faithfully, and to the best of his ability.

A vote for Don Flippin is appreciated.

(pd. adv.)

Thank you for reading The Haskell Free Press.

BUY ONE GET ONE FREE MATTRESS SALE

An incredible offer that's too good to pass up. Buy a Spring Air mattress set, get another just like it - FREE. Get 2 Spring Air mattress sets for the price of one! If you don't need 2 sets, split a pair with a friend.



These luxurious Spring Air mattress sets feature a 336 coil innerspring unit, triple layers of foam, a high quality damask cover, and steel modular box springs.

Twin set	\$399 and you get one FREE
Full set	\$499 and you get one FREE
Queen set	\$599 and you get one FREE
King set	\$799 and you get one FREE

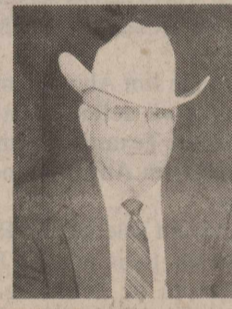
If you don't need 2 of the same size, buy 2 sets of any size and we will average the price:

Queen and Full	\$549
King and Full	\$649
King and Queen	\$699

Quick, free delivery • 30 day comfort guarantee
Free removal of your old bedding
MasterCard, Visa, and Discover

Kinney's

Stamford



It has been a privilege to serve as your County Judge.

Please Re-elect
B.O. Roberson
for another term.

Pd. Pol. Adv. Pd. for by B.O. Roberson, Campaign Treas.

Join Weight Watchers now at

Texas-size savings

8 weeks for only

\$69

Save \$31

Open enrollment for a new 8-week series. Join now and save!



NOW MEETING IN HASKELL

DATE:
8-week session begins
Thursday, February 10 • 5:30 p.m.

PLACE:
First Baptist Church House
205 N. Ave. E
Must have at least 20 members for a Community Group Meeting.

For more information call
1-800-359-3131

Offer valid in participating areas 37, 96, and 107 only. (South Texas and West Texas) © 1993 WEIGHT WATCHERS INTERNATIONAL, INC. All rights reserved.

Sweetheart SALE

Saturday only
Save 20% on
any Valentine Gift Purchased
excluding candy

Choose from our Large Selection of

- ♥ Sterling Silver Jewelry
- ♥ Stuffed Animals
- ♥ Balloons
- ♥ Earrings & Necklaces
- ♥ Watches
- ♥ Most Fragrances
- ♥ Country Items
- ♥ T-Shirts

Sweets for your Sweetie?

Choose from our complete line of delicious candy in heart shaped or plain boxes.

- ♥ All Nut Clusters
- ♥ Ass't'd Chocolates
- ♥ Ass't'd Soft Centers
- ♥ Classic Collection
- ♥ Pecan & Caramel Millionaires
- ♥ Sugar-Free Millionaires

Send Sweet Sentiments
with American Greetings
Valentine Cards
Perfect for friends and family

Children's Valentine Cards 99¢
Reg. \$1.99

Register to win our
Candy Filled Basket
to be given away Saturday.

THE DRUG STORE

Bridal Selections now on display for
Shawn and Corie Jordan
Dara Conner, bride-elect of Chris Conner

Economic growth predicted for Texas

Economic growth in Texas should outpace the rest of the nation in 1994, State Comptroller has predicted.

"In fact, the Texas economy should continue to outperform the U.S. economy through 1996, maintaining the same mild growth pattern we've seen for the last few years," Sharp said.

Details of Texas' economic outlook are presented in the latest issue of *Fiscal Notes*, a monthly publication of the State Comptroller's office.

The *Fiscal Notes* report predicts that the gross state product will increase at a rate of just over 3 percent through 1995--slightly above the U.S. rate--before easing to 2.9 percent in 1996. Employment should grow about 2 percent annually, while personal income should rise about 67.5 percent per year. Some regions of Texas and certain sectors of the economy are expected to fare better than others.

From September 1992 to September 1993, Texas gained about 160,000 new jobs--more than any other state. Like the rest of the nation, Texas added the most jobs in lower-paying fields such as services, government and trade. Unlike the U.S., however, Texas has also begun to experience job growth in manufacturing.

"In the past year, Texas has gained more than 15,000 manufacturing jobs--mainly in apparel industries along the Mexican border, electronics, plastics, food processing and construction-related industries," Sharp said. "The overall growth in

manufacturing is especially impressive, when you consider that during the same period, Texas lost more than 5,000 defense-related manufacturing jobs."

Housing and automobile sales are relatively strong in Texas. Low interest rates sparked a home building boom in some parts of the state and helped create nearly 7,500 construction jobs last year. Low interest rates also pushed Texans into the automobile market. Many drivers are replacing vehicles purchased prior to the mid-1980s economic slump. About a million new cars were sold in Texas in 1993, and annual sales are expected to climb to 1.2 million by 1996.

"New home building boosts employment in lumber and wood products, furniture, appliances and other construction-related industries. New car and truck sales spur growth in metal products, plastics and petrochemicals," Sharp said. "We estimate that every dollar spent on new housing construction in Texas generates another \$2.75 for the rest of the state economy, while every dollar spent at an auto dealer generates another \$1.70."

Unfortunately, Texas' job gains in manufacturing and construction are partly offset by weakness in the energy industry. Oil and gas employment is flat, mainly because of low prices, and because exploration and production are shifting overseas.

"For now, Austin and San Antonio have by far the strongest local economies. Job growth in those cities is running at more than 3 percent per year, led by the electronics industry in Austin and



Derby winners

Local winners in the Double Mountain District Cub Scout Pinewood Derby in Aspermont Saturday included, from left, A. J. Shaw, second place best looking car; Leon Goudeau, second place Bear division; Kendall Mitchell, first place Tiger division and second place sweepstakes race; and Scott Kennedy, first place Wolf division and first place sweepstakes race.

tourism in San Antonio," Sharp said.

"El Paso is seeing a 2-percent job growth, about the same as Dallas. Fort Worth's job growth is running at about 1.5 percent. Houston's job growth has slowed dramatically since the 'boomlet' of 1989-90, dropping from a peak of 6 percent to the current level of less than 1 percent.

"Texas' economic growth will remain ahead of the U.S. as new business is attracted by access to markets and the relatively low cost of doing business. The North American Free Trade Agreement could attract even more business," Sharp said.

"Factors that could have a slight negative impact on the Texas economy in the next three years include health care reform, which could slow the rapid growth of

health services. A major, long-term plunge in oil prices may further weaken the energy sector, but the rest of the state economy would probably feel little fallout. And if the U.S. economic recovery falters, Texas would feel some effect because of the increasingly close relationship between the U.S. and Texas economies," Sharp said.

There are 13 known vitamins, five of which are produced in the body itself--biotin, niacin, pantothenic acid, vitamin D and vitamin K.

Haskell teenager modeling graduate

Cynthia Halliburton recently graduated from Barbizon International Modeling School. Her diploma signifies 60 hours of major modeling.

Graduation was held at the Worthington Hotel in Fort Worth. Graduation consisted of a runway type fashion show. More than 80 girls appeared in five scenes, wearing the latest fashions in front of 400 to 500 guests.

Barbizon, for over a half century, has been training children, women and men to either "be a model, or just look like one."

The curriculum included makeup artistry, skin care, runway techniques, voice and dictation, showmanship, hair and nail care, photo movement, commercials, personality development and fashion workshops.

"The training enriched my life, developed my self-confidence, poise and grace," Cynthia said.

She attended classes in Abilene twice a month and the professional photo shoots in Fort Worth.

"The course was fun and enjoyable, but it was a lot of hard



Cynthia Halliburton

work. I expect to use the knowledge I received from this course to help with my educational expenses," Cynthia said.

Cynthia is a senior at Haskell High School where she is involved in the school newspaper, band, National Honor Society and Quill and Scroll.

She is the daughter of Leland and JoAnn Thane.

If you want to write the President, the address should read: The President, The White House, Washington, D.C. 20500.

Thank you for reading the Haskell Free Press

We want to thank all of our friends who attended our 50th wedding anniversary party. We received so many phone calls and nice cards. It is a pleasure to look back through them and remember all of the good times we have enjoyed with each of you. We really want to thank our children and grandchildren, Kathy Hager of Houston, Tx; Sue and Danny Stewart, Heather and Justin of Haskell, Tx.; Kim and Bobby Howard, Mindy and Rusty of Haskell, Tx.; Stanley and Brenda Hager, Eric, Angela, and Jeremy of Weinert for providing a most memorable event in our lives. Thanks!
Joyce and W. R. Hager, Jr.

Noah committee to meet Friday

Members of the Noah Project-North advisory committee will have their monthly meeting Friday. The meeting will be a noon at East Side Baptist Church.

March 8, 1994

Vote Democratic Primary

★ Gina Brown ★

Haskell County Justice of the Peace

QUALIFICATIONS

Completed Justice of the Peace certified training
Attended schools in advanced court clerk training
Workshop training in 73rd legislative law changes

EXPERIENCE

Presently serving as Haskell County Justice of the Peace since July 1993
Court clerk in Justice of the Peace office in Haskell since 1991
Previous employment as Baylor County Justice of the Peace court clerk

Pd. Pol. Adv. Pd. for by Gina Brown

Valentine's Day Specials

All Mens Colored (Excluding Black) Wrangler Jeans **\$19.95**

All Mens Brushpopper Shirts **\$10.00 off**

All Mens Ladies Blouses and Skirts **\$19.95**

One Rack Ladies Blouses and Skirts Boys Shirts **\$19.95**

Large Group Kids Boots starting at **\$19.95**

Ladies Boots starting at **\$29.95**

Mens Boots starting at **\$39.95**

HEADS OR TAILS WESTERN WEAR
707 S. Ave E • Haskell • 864-3320
Open 9-5:30 Monday - Saturday

ALLSUP'S

ALL TYPES PEPSI-COLA **\$1.99**
6 pack 12 oz. cans

Western Family Ibuprofen 100 tablets **\$1.99**

Folgers All Grinds Coffee 13 oz can **\$1.99**

ALLSUP'S MONEY ORDERS UP TO \$299.00 FOR ONLY **19¢**

ALLSUP'S 1.5 LB. LOAF SANDWICH BREAD 69¢ EACH OR **2\$1** FOR

COMBO OF THE MONTH TYSON GRILLED CHICKEN BREAST SANDWICH & A TALLSUP FOR ONLY **\$1.99**

SAUSAGE, EGG & CHEESE HAM, EGG & CHEESE **BREAKFAST BURRITOS** EACH ONLY **89¢**

Wilson Smoked Turkey Breast 10 oz **\$1.99**

DECKER MEAT FRANKS 12 OZ. PKG. **59¢**

Brawny Paper Towels **99¢**

DECKER MEAT BOLOGNA 12 OZ. PKG. **79¢**

TYSON GRILLED CHICKEN BREAST SANDWICH & A TALLSUP FOR ONLY **\$1.99**

BEEF, CHEESE & GREEN CHILI **ALLSUP'S CHIMICHANGA** EACH FOR ONLY **89¢**

CHEETOS OR FRITOS **GRAB BAGS** REGULAR 69¢ EACH **2\$1** FOR

Shurline Bleach 1 gallon **99¢**

HOMOGENIZED ALLSUP'S MILK ONE GALLON **\$1.99**

DECKER BATHROOM TISSUE 4 ROLL PKG. **\$1.29**

PRICES EFFECTIVE FEBRUARY 6-12, 1994

RULE HASKELL #91 #153



Haskell Elementary School students gathered Feb. 1 to hear a presentation by actress Judith Helton on the life and times of Laura Ingalls Wilder.

Students hear program by actress

Haskell Elementary School was honored last Tuesday (Feb. 1) with performances given by Judith Helton, a professional actress from North Hollywood, Calif.

She portrayed Laura Ingalls Wilder. With permission given to her by Harper Collins Publishing, she has been to many schools, libraries, clubs and museums throughout the country.

Judith dresses up like Laura

Ingalls Wilder and performs a show that includes many interesting and funny stories from LIW's childhood. The stories she retold can be found in *Little House in the Big Woods*, *Little House on the Prairie*, *On the Banks of Plum Creek* and *The Long Winter*. She also told many fascinating facts about the Ingalls family, many of which are not found in LIW's books.

Mrs. Helton brought pictures of Laura's family to share with the groups. Also, she brought a coffee mill, a tin cup and toys that were made during that time. In addition, she showed how a button lamp was made and how straw had to be twined to keep the family warming during the long winter of 1880-81. All of these items are found in the writings of LIW's books.

Judith concluded her show by letting the children hear Pa's fiddle being played. Also, some of the children volunteered to come to the front and Mrs. Helton showed them how to do a dance that was in *Little House in the Big Woods*.

After Mrs. Helton finished her presentation, she spent some extra time with the sixth-grade students, who have been reading Laura Ingalls Wilder's books. Students appreciated the extra time to spend with Mrs. Helton.

Judith answered many questions

from the students. She also told some more stories. The students received a special treat when they got to hear a taped interview of Laura Ingalls Wilder. This is the only known recording of Laura's voice.

Elementary students benefited greatly from Mrs. Helton's presentation as they learned how times were in the 1870s and 1880s, in a fun and exciting history lesson.

4-H club has program on India

A meeting of the Haskell senior 4-H club was held Feb. 6 in the Extension office.

A very special guest, Usha Patel, presented a very informative program on India. An interesting discussion on India followed.

Club members asked questions about life styles, education, religion, dating, marriage, clothes and jewelry.

At the end of the meeting, Usha served authentic Indian food.

-BIRTHS-

Steven, Gina and Kory Foster wish to announce the arrival of Koby James Foster into their family on Feb. 1. He weighed 9 pounds, 3 1/2 ounces and was 21 inches long.

He was welcomed home by his grandparents, Bill and Charlene Dumas and Dolores Foster.

Thank you for reading The Haskell Free Press.

Your Vote and Influence Appreciated

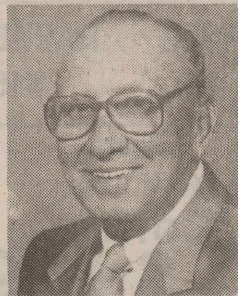
ELECT

Giles M. Kemp

CANDIDATE FOR COUNTY JUDGE

"It's time for a change. If elected, I'll make you a good County Judge."

Pd. Pol. Adv. Pd. for by Giles M. Kemp



DID YOU KNOW?

The black and blue-black inks used today are made from formulas that may date from as early as the second century.

Giles M. Kemp

CANDIDATE FOR COUNTY JUDGE

"It's time for a change. If elected, I'll make you a good County Judge."

Pd. Pol. Adv. Pd. for by Giles M. Kemp



Picture-Perfect Financial Planning

Your family means the world to you. That's why it's so important to plan carefully for the future.

See us today for creative ideas on everything from getting your children through college to preparing for your retirement.

Like so many of your friends and neighbors, you'll feel better with us in the picture.



Post Office Box 10
Phone (817) 997-2216
Rule, Texas 79547

The Farmers NATIONAL BANK

USDA announces signup program

The second Wetlands Reserve Program (WRP) signup will be held Feb. 28 through March 11, according to Grant Buntrock, administrator of the U.S. Department of Agriculture's Agricultural Stabilization and Conservation Service (ASCS).

"Landowners in Texas and other states will have the opportunity to enroll eligible acreage in the WRP," Buntrock said.

The WRP, funded at \$66,675 million to enroll up to 75,000 acres during fiscal year 1994, protects and restores habitat for migratory birds and other wildlife, helps purify water supplies, and helps absorb flood waters.

Last funded in FY 1992 with a limitation of 50,000 acres, landowners on 2,337 farms sought enrollment for over 462,000 acres. Acreage was tentatively accepted for 49,888 acres on 265 farms. This acreage will be restored to 30,868 acres to forested wetlands, 14,105 acres to emergent wetlands, 3,374 acres to scrub-shrub and other types of wetlands and 1,542 acres of riparian area or upland buffers.

About 7,509 acres will directly benefit the recovery of threatened or endangered species. Another 30,085 acres may be utilized by threatened or endangered species or lie within ongoing state or federal wetland restoration and wildlife project areas.

Under the program, permanent easements are purchased from participating landowners of farmed wetlands, prior converted wetlands and riparian areas that link wetlands. Participants agree to accept no more than the fair market value of their land for agriculture use, in return for a lump sum payment and cost-share assistance

for implementing wetland restoration practices. Specified compatible uses are permitted on the restored acreage by the landowner and any successors.

"Many provisions which applied to the first WRP signup held in June 1992 are applicable for this signup," Buntrock said. "However, state ASCS committees will be given greater discretion in selecting wetlands that meet specific state environmental goals, such as flood protection, water quality, migratory birds and wildlife habitat benefits."

Interested landowners should contact their local ASCS office for further information.

Maidens close season Friday

The Haskell Maidens will close out their district 7-2A season against Stamford here Friday night. They were to play Hamlin there Tuesday.

The Maidens lost a heart-breaking 64-53 decision to Jim Ned last Friday after leading by 8 points going into the fourth period against the 25-1 Jim Ned team.

After falling behind 19-11 in the first period, the Maidens scored 22 points to Jim Ned's 6 in the second quarter to take a 33-25 halftime lead. Each team got 14 points in the fourth period.

Veronica Gonzales led the Maiden scoring with 18 points. Betsy McDermitt had 12 and Teresa Diaz scored 11.

Haskell defeated Rotan 45-40 last Tuesday. The Maidens led by 10 points at the three-quarter mark, but Rotan pulled to within 5 in the final frame.

FREE HEARING AID TUNE-UP

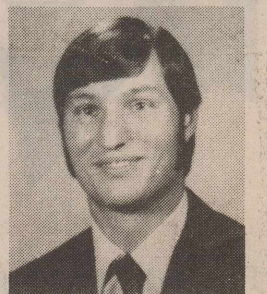
Friday, February 11 • 10:00 a.m. - 1:00 p.m.

Get a FREE 10-point preventive maintenance checkup on your hearing aid. All makes and models, even if it's not a Beltone. Bring this coupon. **FREE HEARING TESTS ALSO AVAILABLE.** Experienced Citizens Center • Haskell

Sponsored by **Beltone** 1-800-234-2315

TAX PLANNING

Written By **Richard Rodgers, CPA**



THE 1994 EARNED INCOME CREDIT

The 1993 tax legislation liberalized the earned income credit (EIC), which is intended to provide an incentive to lower-income workers. The new rules apply to 1994, and you may qualify for the EIC if you fit into any of the categories below.

Who Qualifies for the EIC?

- You have no children and your 1994 income is less than \$9,000. The maximum credit in this case is \$306 with earned income of \$4,000 to \$5,000. The credit is phased out as your earned income approaches \$9,000.

- You have one qualifying child and your 1994 income is less than \$23,753. The maximum credit in this case is \$2,038 with earned income of \$7,750 to \$11,000. The credit is phased out as your earned income approaches \$23,753.

- You have two or more qualifying children and your 1994 income is less than \$25,293. The maximum credit in this case is \$2,527 with earned income of \$8,425 to \$11,000. The credit is phased out as your earned income approaches \$25,293.

If you don't have a qualifying child, you must live in the U. S. for more than half the year, you (or your spouse, if married) must be over 25 but under 65 years old, and you cannot be a dependent on another person's (for example, your parents') tax return.

The EIC Is a Refundable Credit

The EIC is a refundable tax credit, meaning you can file your return and collect the credit even if it exceeds the income tax you owe for the year. You may also be eligible to receive advance payment of the EIC from your employer. That's a pretty good deal. Call our office if you think you might qualify. We can help with the paperwork.

RODGERS & COMPANY

Certified Public Accountant
20 Southwest Third Street
Hamlin, Texas

DQ Treats & Eats

Country Basket*

Four beef steak fingers, fries, country gravy and Texas toast. Six-piece \$2.99.

On Sale at Dairy Queen® January 31- February 20, 1994.

©Reg. TM Am. D.Q. Corp. *Reg. TM Tx. D.Q. On Coin. ®Tx. D.Q. Op. Coun. At participating Dairy Queen stores.

Haskell Cub Scouts
Cubmaster
 Doyle Mitchell
Chartering Rep.
 Marc Robison
Committee Members
 Doyle Mitchell
 Pam Steele
 Ronnie Webb
 Kenneth Blair
 Mary Dewey
 Katy Roysdon
 Bruce Adamson

Den 1 Tigers
Coordinators:
 Kay Smith
 Darrell Smith
 Ronnie Webb

Kendall Mitchell
 Charlie Smith
 Josh Tidrow
 Geoffrey Phemister
 Jeremy Torres
 Brad Blanks
 Nathan Webb
 Tony DelRio
 Woody Oberry

Den 2 Wolf
Den Leaders:
 Lisa Shaw
 Randy Shaw
 Peggy Hairgrove
 Jason Barnes
 Ryan Barnes
 Adam Greenwood
 Ross Hairgrove
 Bradlee Harris
 Scott Kennedy
 A.J. Shaw



BOY SCOUT WEEK Feb. 6-12, 1994

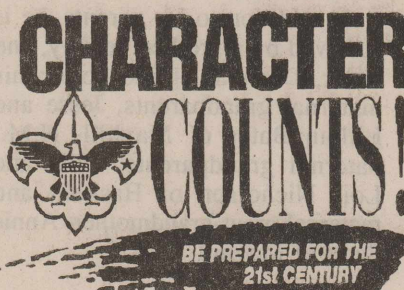
Den 3 Webelos II
Den Leader:
 Leland Terry
Asst. Gery Walters
 Tom Fouts
 Dan Fouts
 Jeff Blanks
 Levi Terry
 John Adamson
 Johnathan Gholson
 Dustin Threet

Den 4 Bears
Den Leader:
 Valiene Bullinger
Asst.
 Birdie Goudeau
 Dorothy Stout
Den Chief:
 Kevin Patton
 Ross Bullinger
 Leon Goudeau
 Jason Biba
 Johnny Stout
 Josh Webb
 Justin Trussell
 Matthew Gholson
 Tulley Thompson

Den 5 Bears
Den Leader:
 DeeAnn Brueggeman
Asst.
 Liz Pharris
Den Chief:
 Dawson Druessedow
 Sam Brueggeman
 Claude Barnes
 Chris Pharris
 Jay Walling
 Trent Richardson
 Omar Payan
 Jesse Jones

Den 6 Webelos I
Den Leader:
 Mike Poteet
Assts.
 Pam Steele
 Donna Cole
 Tyrone Billington
 Loren Cole
 Zach Collins
 Travis Poteet
 Wes Steele

Boy Scouts Troop 136
Scoutmaster
 Paul Brown
Asst. Scoutmasters
 Doyle Mitchell
 Tom Dewey
 Leland Terry
 Kenneth Patton
Scouting Coordinator
 Tom Hairgrove
Committee Chairman
 Kenneth Patton
Secretary-Treasurer
 Mary Dewey
Committee Members
 Bill Perry
 Kay Perry
 Kenneth Patton
 Sid Parsley
 Tom Hairgrove
 Bobby Sanford
 Sandy Sanford
Youth Members
 Justin Arendall
 Matt Arrendall
 Sammy Bagot
 Caleb Brown
 Ethan Brown
 Craig Cunningham
 Tim Dewey
 Dawson Druessedow
 John Mark Hodgkin
 Neil Holmes
 Lucas Jones
 Chris McSmith
 Ben Pace
 Kevin Patton
 Matt Perry
 Josh Roysdon
 Christopher Tatum
 Landon Terry
 Jason Trammell
 Brent Watson



Scouting builds confidence and self-reliance. That's why Scouts go on to become leaders in all walks of life.

Haskell Tire & Appliance Co.
 864-2900 • Haskell

Making good things grow—in nature and in life—is what Scouting is all about. Keep up the good work, Scouts!

Sandy's New Image
 107 S. Ave D • 864-2890

Aside from the recreational activities, Scouts are encouraged to think about their future and explore career opportunities.

M SYSTEM
 AFFILIATED SUPER MARKETS

Scouts learn skills they'll enjoy for a lifetime. We're proud of the contribution Scouting makes to America's youth.

Holden - McCauley
Funeral Home
 Haskell, Texas

"To help others at all times" is an important part of the Scout Oath. Thanks, Scouts, for setting a fine example.

Haskell Butane
 Rex, Camin, Ross and Callen

Scouts from around the world share the satisfaction of meeting new challenges. We support these leaders of tomorrow!

Haskell Free Press
 Since 1886

Learning is always at hand in Scouting, as boys get the chance to take an active part in new and different fields of interest.

BILL WILSON
MOTOR CO.

Scouts of all ages are the pride of our community. We congratulate them on all they do to make our lives better.

Medford
Buick-Pontiac-GMC
 200 N Av E • 864-2644 • Haskell

Scouting opens new worlds of learning and exploration. You're our hope for the future. Scouts, and we salute you!

First National Bank
 of Haskell
 200 S. Ave. E Haskell 864-8555
 The Essence of Quality is Service

Outdoor adventure teaches Scouts the value of teamwork and instills admiration and respect for the environment.

HEADS OR TAILS WESTERN WEAR
 HASKELL, TEXAS

Scouting at any age is an opportunity to experience many things and have a great time, too. We heartily support them.

Steele Machine
 Bill & Pam Steele - Owners
 864-2208

Thanks, Boy Scouting, for putting our young men on the road to becoming compassionate and self-assured adults. Scouting makes a difference in youth.

Conner Nursery & Floral
 864-3121

--Obituaries--

Tom Whittemore

Tom Whittemore, formerly of Rule, died Saturday at his home in Belton. He was 66.

Funeral services were Tuesday afternoon at the Rule Church of Christ with John Greeson officiating. Burial, directed by McCauley-Robison Funeral Home, was in the Rule Cemetery.

Pallbearers were Mike Whittemore, Billy Whittemore, Kevin Whittemore, Kerry Whittemore, Kyle Whittemore and Bob Brown.

Mr. Whittemore, a self-employed truck driver, was a native of Rule, having been born there June 22, 1927. He was a policeman in Odessa for 12 years, including nine years as a sergeant. He was manager for A. Z. Terminal in Venice, La., and Tulsa, Okla., for 12 years and was former owner of Bailey Tank Truck Inc. in Rule for seven years. He was a member of the Church of Christ and a past member of the Odd Fellows.

He married Marguerite McQuinn in Rule on Dec. 25, 1979. She survives him.

Other survivors include three daughters, Doy Lynn Perry of Rule, Karen Marie Smith of Knox City and Tommi Ann Barbee of Rule; two brothers, C. W. Whittemore Jr. of Stamford and Doyle Ray Whittemore of Odessa; and six grandchildren, Shana and Shayne McKenzie of Rule, McKenna Smith of Knox City, Dustin Threet and Joshua Barbee of Rule and Jennifer Corley of Pasadena.

Elvey Parsley

Elvey L. (J. R.) Parsley of Rule died Thursday, Feb. 3 at Haskell Health Care Center. He was 65.

Funeral services were Saturday morning at the First United Methodist Church in Rule with the Rev. Carol Crumpton and John

Greeson officiating. Burial was in Rule Cemetery, directed by McCauley-Robison Funeral Home.

Pallbearers were J. R. Cornelius, Paul Cornelius, Richard Cornelius, Frank Frazier, Claude Frazier and Cecil Perryman.

Mr. Parsley was born March 15, 1928, in Lyman, Okla. He served three and half years in the U.S. Navy, worked for Western Electric in Oklahoma City, and a tank truck business in Purcell, Okla., before moving to Walters, Okla., where he farmed for 20 years. He moved to Rule in December. He married Oleen Branstetter in Walters on Feb. 1, 1975. She died June 16, 1991.

He is survived by his mother, Dollie Bewley of Wichita Falls; a sister, Oleta Cornelius of Rule; and a brother, Alvin D. Parsley of Midwest City.

Toby Nicholson

Graveside services were held Friday at Terry County Memorial Cemetery in Brownfield for Toby Ray Nicholson, infant son of Eddie J. and Donna Bates Nicholson of Brownfield.

He was born Feb. 1 in Lubbock. John Snider of the Andrews Church of Christ officiated and burial was directed by Brownfield Funeral Home.

In addition to his parents, he is survived by a brother, Jeremy, and sister, Deanna, of the home; his maternal grandparents, Jesse and Lillian Bates of Mayhill, N.M.; paternal grandparents, Cliff and Lois Nicholson of Haskell; and maternal great-grandmother, Annie Scott of Mayhill, N.M.

Jennifer Shaver graduates at Tech

Jennifer Kay Shaver of Rochester was among more than 2,000 students who received degrees during fall commencement exercises at Texas Tech University in Lubbock.



Mike and Amy Cline

Cline couple graduate

Mike and Amy (Miller) Cline recently earned degrees from Kansas State University in Manhattan, Kan.

Amy, a 1989 graduate of Snyder High School, received her bachelor of arts degree in English literature in December.

Before transferring to Kansas State, she attended Texas Tech University where she was a member of the Texas Tech University Singers.

She is employed by First International Theaters and the Kansas State Union Bookstore. She plans to pursue a master's degree in library science.

Mike, a 1987 graduate of Snyder High School and a 1991 graduate of Texas Tech, will receive his master of arts degree in geography in March.

A member of Gamma Theta Upsilon Honorary Fraternity, he also served on a community service team in Oswego, Kan. He is employed as the Geographic Information Systems technician at the Environmental Office of Fort Riley, Kan. He plans to pursue a career in community development or regional planning.

Mike's master's thesis was entitled "Small Town Population Change in Northwest Kansas: Causes and Implications for Development Policies."

Amy is the daughter of Mr. and Mrs. Kenny Miller of Snyder. Mike is the son of Gaynel Cline and Mr. and Mrs. John Cline, all of Snyder. Amy also is the granddaughter of Melvin and Juanita Miller

--Library Notes--

By Joan Strickland

A few new books have come into the library recently. A romance or two by Karen Robards and La Vyril Spencer and biographies by John Conley, Chief Mankiller and Michael Jordan.

Also a few more new children and adult books. Another popular book is *Cash for College* and there is a long waiting list for this one. We now have two copies of *Bridges of Madison County* and *Slow Waltz in Cedar Bend* by Waller, so maybe everyone will eventually get to read them now.

We received a new cookbook this week, compliments of Charles Stenholm, published by the U.S. Department of Agriculture.

The library receives a number of publications from Austin. We have *Fiscal Notes* from the Comptroller of Public Accounts, *Texas Insurance Watch*, *Texas Library Advocate*, *Bottom Line and Financial Management*. We also receive *Missing Children* and *The Locator*. These are very interesting reading for those interested in what is happening in Austin, reports on insurance and doctors, finding and locating children and how to locate birth parents.

Also, it is that time of year we all look forward too---Income Tax Time. We have almost all of the forms you might need. We have a book with "hard to find" forms and you can have a copy made for 25 cents. These forms are specifically designed to be copied and are the only copies the IRS will accept. We do have a library Hot Line to the IRS and can order your forms if they are not in the book. It takes 5-15 days for them to arrive. I have a very few 1099s that I've managed to get and also a video tape on how to prepare your taxes. We have a number for Farmers Tax Guides and application for extension forms too.

We have also received books on federal *Financial Aid for College*.

If anyone is interested in any of this information, please feel free to call or ask at the library. We do not have room to put everything out but it is there for the asking.

The Geneological Society is working hard to get things ready for interested persons seeking information on their families. If you are working on this project we can help you get in touch with people who will be more than

happy to help you. Just write or call the library if you are looking for this kind of information.

We have a small selection of books by local authors. I would encourage anyone who has had a book published or is working on a book to please donate a signed copy to your local library. If anyone has copies of the Sherrill or Felker county history books and would like to donate them they would be greatly appreciated. Also, we need county history books of Knox, Throckmorton, Jones, etc.

We are very crowded at the library but we have come so far we can't stop now. Our funds are so very limited that we need everyone's help to keep our library growing. The county can only do so much so I ask that you remember your library when making bequests for loved ones or in wills or any other means possible. It would be wonderful if we could expand someday, but that will take a great deal of money from people who truly love the library and want to see it continue to grow into something we can be even more proud of.

Our circulation continues to increase and new people sign up for library cards daily. We have students from Midwestern, Cisco Junior College, Knox City, Benjamin, Stamford, Hamlin, Paint Creek, Rule and Rochester using our library along with the public and our own students from Haskell. Many people who come in new are greatly surprised at what our library has to offer. If you have not visited the library I encourage you to come by and see what we have for our patrons.

To get a library card, all you need to do is fill out a card with your name, address, phone number and one reference with the same information.

At the present time we do not charge out of county fees or postage on special order books from

Interlibrary Loan. We may have to start doing this in the not too distant future if we can't get more monies donated. I know you may tire of my asking for your help, but it takes everyone working together to make our library successful. If you read and love books as I do you know how important our library is to our community. I'm just asking for your support so we can keep growing and improving.

Our new hours are Monday-Thursday 9:30 a.m. to 5:30 p.m. Friday 9:30 a.m. to 4:30 p.m. Our phone number is 817-864-2747.

Memorials: Thular McGhee, Jessie Dean, Peggy Chapman, Bessie Fouts and C. C. Mathis. Book donations in honor of grandchildren by Marsha Whittemore and books in memory of Caleb Frierson and Rocky Young.

See you at the library.

Four listed on HSU honor rolls

Four students from Haskell are included on the fall semester academic lists at Hardin-Simmons University.

Rebecca Russell was a member of the President's List, made up of students with a 4.0 grade-point average.

Gerald Walters was included on the Dean's List of students with at least a 3.75 grade-point average.

Kathy Futch and Craig Hanson were members of the Honor Roll of students with at least a 3.6 grade-point average.

Laurie Boger on Dean's List

Laurie Elizabeth Boger of Rule qualified for the Dean's List for the fall semester at Texas Tech University.

Students finishing 12 or more hours with a grade-point average of 3.5 to 3.9 qualified for the Dean's List.

PLEASE VOTE FOR

Don Flippin

Justice of the Peace

Haskell County

33 years Teaching • Bachelor of Science Degree
Minor: Political Science, U.S. Economics

P.D., Pol. Adv. P.D. for by Don Flippin, Campaign Treas.

Shower Selections for

Joe Allen and Beth Martin

available at

The Playhouse

817-997-2457

Rule, TX

Allison's Farm Supply

817-997-2632

Rule, TX

Lowest Prices of the Year Sale!

Now is the time to
Get a New Floor for 1994!
Large Selection in Stock!

<p style="text-align: center;">Room Size Roll Ends</p> <p style="text-align: center;">Going Fast! Starting at Carpet only! \$550 sq. yd.</p>	<p style="text-align: center;">New Arrivals of Linoleum starting at \$495 sq. yd.</p>
<p style="text-align: center;">Sculptured Earthtones installed on pad \$1095 sq. yd.</p>	<p style="text-align: center;">Short Plush Carpet installed on pad several colors \$1395 sq. yd.</p>
<p style="text-align: center;">Outdoor Grass Green, Brown, Red/Black, Black Great for boats!</p>	<p style="text-align: center;">Do It Yourself Self-Stick Tile 2 styles 50¢ each</p>

Bring Measurements!

Carpet Express

15 Ave E (West Side of the Square) • Haskell • 817-864-8128

DANCE

at Rhineland

Bareback

of Abilene

9 to 1 **Saturday, Feb. 12** \$5.00

Your many expressions of love, concern and sympathy were so comforting when we lost our dear mother and sister, Bessie Fouts. We are most appreciative for all the prayers offered in our behalf.

Gladys O'Neal and family
Frances Lee and family
Eddy Davis and family
Faye Schnuriger and family

Haskell Country Club

Valentine's Dance

Saturday,
February 12

CANCELLED

Haskell Eye Clinic

VisionCare

ASSOCIATES

Thomas Labbe', O.D.

Russell Kuempel, M.D.

Larry Abernathy, O.D.

-Comprehensive Eye Exams -
-Contact Lens, All Types -
-Complete Optical Service -

OUT PATIENT SURGERY

Including Cataracts with Implants
Laser Surgery - Glaucoma Surgery
Medicare & Medicaid Accepted

For Appointment Call • 817-864-3104
or Call Toll Free 1-800-558-3937
530 S. 2nd • Haskell, TX 79521

THIS IS IT!

Final Reduction

on Fall & Winter Sale Shoes

Just in Time for

Super Second Saturday

and Valentine's Day

Beginning Thursday, February 10

\$9⁹⁰ \$14⁹⁰ \$19⁹⁰ \$24⁹⁰

♥♥♥♥♥♥♥♥♥♥♥♥♥♥♥♥

Boots \$34⁹⁰

For Your Special

Valentine

Ofnah Crystal

Heart-shaped Jewelry Boxes

Choose from a variety of pieces.

The Slipper Shoppe

East Side of Square Haskell 864-3051

Rule students compete in contest

A woman was 3/8 of the way across a bridge when she heard the Wabash Cannonball Express behind her, approaching the bridge at 60 miles per hour. She quickly calculated that she could just save herself by running to either end of the bridge at top speed. What is her top speed in miles per hour?

Seventh- and eighth-grade "mathletes" at Rule Junior High School have been working on this and many other challenging problems for the past several months. Coached by Mitchell Arnold, they are preparing for the Feb. 12 regional Mathcounts contest at McMurry University in Abilene, where 15 teams will compete for trophies and a chance to advance to the state-level contest in Austin on March 5.

The competition is sponsored by the Abilene chapter of the Texas Society of Professional Engineers. Members of TSPE organize the regional and state competitions in Texas each year. They are supported by NationsBank employees who contact schools and work on competition day. In addition to the volunteer support, NationsBank has given \$150,000 to the Texas Mathcounts program over the past three years.

Mathcounts is a popular coaching and competition program for seventh- and eighth-graders. Based on innovative problem-solving methods, enjoyable team-centered practice sessions, and spirited "count down" rounds, Mathcounts has won thousands of fans among teachers, parents and students throughout the 50 states, in four U.S. territories and even overseas in American schools for

children of diplomats and military personnel.

Students who advance to the state contest will compete for scholarships and other prizes, and a chance to represent Texas at the national Mathcounts competition in Washington, D.C., in May.

(The answer to the problem above is 15 miles per hour. A simple way to solve it is by drawing a sketch of the situation. Mark off eight sections on the bridge. We know that the woman can run 3/8 of the bridge in the time it takes the train to reach the beginning of the bridge. So, suppose the woman runs 3/8 of the bridge toward the end of the bridge. She now has only 2/8 or 1/4 of the bridge to travel, while the train must travel the entire length of the bridge. Since the woman and the train will reach the end of the bridge at the same time, and since she will only travel 1/4 the distance that the train will travel, the woman must be traveling at 1/4 the speed of the train. Therefore, the woman's top speed must be 1/4 of 60 mph, or 15 mph.)

V-ball tourney set for March 4-5

Noah Project-North will sponsor a volleyball tournament March 4-5 at the little gym in Haskell.

Entry fee will be \$60 per team and entry deadline is March 1.

For more information, call 864-8934, 3414 or 2551.

A concession stand will be in operation during the tournament.



Scores 13

Jonathan Tatum scored 13 points Friday night as the Indians won their 20th game of the season with a 50-42 victory over Jim Ned.

--Market Report--

Haskell Livestock Auction

Packer cows were \$1 to \$2 higher at the Haskell Livestock Auction Saturday. Packer bulls and stocker calves also were \$1 to \$2 higher and feeder cows were steady.

Saturday's sale was on a run of 764 head of cattle.

Packer cows: canners 41-48; utility 48-56.

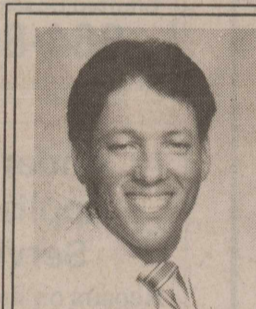
Packer bulls: 60-67.50; feeder bulls 65-75.

Steer calves: 200-400 lbs. 105-130; 400-600 lbs. 85-100; 600-800 lbs. 75-85.

Heifers: 200-400 lbs. 90-110; 400-600 lbs. 75-90; 600-800 lbs. 65-75.

Bred cows: young 600-700; old 350-500.

Pairs: Young 700-900; old 500-600.



VOTE FOR

Jerrell (Judo) E.

Johnson

HASKELL COUNTY JUDGE

I encourage every registered voter in Haskell County to vote.

Pd. Pol. Adv. Pd. for by Franciene Johnson, campaign treasurer

--Sagerton--

by Alice Bredthauer

Those who enjoyed the supper which was held in the Community Center last Tuesday were Dorothy and J. B. Toney, Joe and Dorothy Clark, Alvin and Alice Bredthauer, Mr. and Mrs. G. W. LeFevre, Mrs. Mary Neinst, James Gellner, Charles and Dorothy Clark, Mrs. Odene Dudensing, Herbert Lammert, Clarence Stegemoeller, Jack and Peggy Tabor, Delbert and Joyce LeFevre, Mrs. Aline Summers, Carl Hunt, Brian Lehmann, Ray and Mable Ulmer, Mr. and Mrs. Alvin Ulmer.

Mr. and Mrs. Delbert LeFevre, Mrs. Frances Clark and Larry LeFevre of Rule attended funeral services at the Methodist Church in Wortham, Tx. for Zella LeFevre, who was an aunt of Delbert and Frances Thursday of last week.

We are happy to have a new curtain in the auditorium of the Sagerton Community Center. Thanks to Mr. and Mrs. Alvin Ulmer who went to Waco last week to get the curtain. The curtain was purchased by the community and the homecoming fund. It will now be ready for the Sagerton Hee Haw on March 24, 25 and 26 and the homecoming on May 28 and 29.

Billie Kupatt director for the Hee Haw is putting the final touches to the script and parts will be handed out Feb. 24.

The bi-monthly Friendship Club lunch will be this Thursday, Feb. 10 at the Faith Lutheran Church Fellowship Hall.

Those who went bowling last Thursday from around here were Mr. and Mrs. Fred Teichelman, Mr. and Mrs. Alvin Bredthauer, Herbert Teichelman, and Herbert Rinn.

There really was a nice crowd at the Sons of Hermann Hall Sunday for the meeting and the meal which was stew and chili and sweets.

Mr. and Mrs. Franklin Mrazek visited in the home of Mr. and Mrs. Leo Monse Sunday.

Nontaxable Items for Military

Military subsistence, uniform and quarters allowances, or the value of quarters or subsistence provided in kind to members of the Armed Services are not taxable income. See IRS Publication 3, *Tax Information for Military Personnel*, for details. Call 1-800-829-3676 to order it.

Need Tax Answers?

About 30 million people get their tax questions answered through the IRS toll-free phone number. If you have a question, call the IRS at 1-800-829-1040.

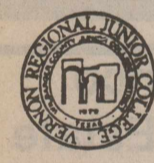
I can't vote in the March election because I live in Knox County, but I own land and farm in Haskell County and pay taxes there.

If I could, I would vote for Elmer Adams for Precinct 2 Commissioner.

Vote for a person who will serve all of Haskell County equally.

Ad Paid for by Thomas Ratliff West

VERNON REGIONAL JUNIOR COLLEGE ANNOUNCES INTERVIEWS/TESTING FOR THE SEYMOUR VOCATIONAL NURSING (LVN) PROGRAM ARE BEING CONDUCTED NOW. TESTS ARE GIVEN MARCH 9 AND APRIL 20, 1994



FOR INFORMATION CALL
VERNON 817-552-6291
Ext. 268
CLASSES START
AUGUST 1994



VRJC IS AN EQUAL OPPORTUNITY/AFFIRMATIVE ACTION INSTITUTION

PARTICIPATING BUSINESSES

APPLIANCES
Haskell Tire & Appliance
Frazier's Appliance
AUTOMOBILE DEALERS
Bill Wilson Motor Co.
Bailey Tolliver Chevrolet & Olds
AUTO SUPPLY
Smitty's Auto
CARPET
Carpet Express
CHILDREN'S SHOPS
The Carousel
CLEANERS
Kay's Cleaners
DEPARTMENT STORES
Hassen's
Heidenheimer's
DRUG STORES
The Drug Store
ELECTRONICS & TV
F & D Electronics
FARM EQUIPMENT
Richardson's Truck & Tractor/TrueValue
FINANCIAL INSTITUTIONS
First National Bank
Haskell National Bank
FLORISTS
Connors Nursery & Floral
FUNERAL HOMES
Holden-McCaulley
FURNITURE STORES
Boggs & Johnsons
GROCERY STORES
M System
Modern Way
INSURANCE
Brian Burgess Insurance
Lanco Insurance
LUMBER STORES
McGee's Lumber
MEDIA
Haskell Free Press
KVRP
MOTELS
Fieldan Inn
PLUMBING
Nanny Plumbing
SHOES
Slipper Shoppe
SPORTING GOODS
Sport-About
WESTERN WEAR
Heads or Tails
WOMEN'S WEAR
Barbara's
Lane-Felker
The Personality Shoppe
Country Daizle

SUPER SATURDAY

in Haskell

February 12, 1994

VALENTINE SAVINGS

Check Haskell merchants for your Valentine's Day gifts!

Valentine's Day
February 14

Don't Forget Your Valentine

Be Mine

Be Mine