

1/1/95
Baze Book Binding
514 W 7th St
Amarillo TX 79101-2212

End Of Amarillo
Amarillo Bag TX 79100

THE HASKELL FREE PRESS

50¢

VOL. 108—NO. 14

HASKELL, TEXAS 79521, April 7, 1994

10 PAGES—ONE SECTION—PLUS ONE INSERT

Haskell Relays Saturday

Hundreds of out-of-town athletes and fans from a wide area will be in Haskell Saturday for the second annual Haskell Relays.

Fifteen varsity girls' teams and 13 varsity boys' teams are entered in the big event which will be run at the Haskell track field.

In addition, about a dozen junior varsity boys' teams will be competing.

Activities get underway with the field events, beginning at 8:30 a.m. The 3200-meter race is scheduled for 10 a.m. and the running preliminaries get started at noon. The running finals begin at 4 p.m.

Varsity girls' teams entered include those from Abilene

Christian, Albany, Anson, Benjamin, Hamlin, Hawley, Jim Ned, Lueders-Avoca, Munday, Paint Creek, Rochester, Rule, Rotan, Stamford and Haskell.

Except for Benjamin and Paint Creek, the same schools will have boys' teams entered. (Paint Creek boys will compete in the JV division.)

And the same schools will have JV teams, except for Lueders-Avoca, Rochester and Rule.

The Haskell Relays will be the last meet for the Haskell Indians and other district 7-2A schools before the district meet which is scheduled for next Thursday, Friday and Saturday in Hamlin.



Completes project

Matt Perry, third from left, was assisted in his service project by fellow scouts Brent Watson, Craig Cunningham, John Mark Hodgkin and Dawson Druessedow.

Perry completes Eagle requirement

Matt Perry, son of Bill and Kay Perry of Haskell, has recently completed his service project requirement for the rank of Eagle Scout.

The Eagle Scout service project was developed to test the scout's leadership and organizational skills, while providing his school, church or community with valuable volunteer service.

Matt's project, a suggestion from the Haskell Volunteer Fire

Department, was to color code each fire hydrant in Haskell according to the size of water main that feeds it. The Fire Department can now tell at a glance how much water each hydrant will provide.

Perry and the scouts of Troop 136 expressed their thanks to Sam Watson and Dave Miller of the City of Haskell and the Haskell Volunteer Fire Department for their ideas, help and support in completing this project.

One-act play advances to area

"The Patchwork Quilt," Haskell Secondary school's one-act play, has advanced to area competition following a performance in district competition at Stamford last Friday.

The play competed against plays from Hamlin, Hawley and Jim Ned. Haskell and Jim Ned are advancing plays. They will compete in area competition at the Stamford High School auditorium at 1 p.m. Saturday.

Winning honors at the district competition were senior Janeen Jordan and junior Kurt McCord with places on honorable mention all-star cast. Junior Christy Cadenhead and freshman Amy McWhorter made all-star cast.

Junior Katy Martin received best actress.

This is the first time in two years for the school to perform a one-act play. It is the first time in more than a decade that Haskell's play has advanced past zone.

Cast members are Mrs. Willis, Katy Martin; Anne, Janeen Jordan; Joe, Wayne Hodgkin; Betty, Emily McWhorter; Molly, Christy Cadenhead; and William, Kurt McCord.

Crew members are Sarah Cothron, Jacy Cypert, Michelle Green, Manuel Ibarra, Chris Meier, Michelle Miller, Aracely Palacios and Regina Tatum.

The play is directed by Vivian
Continued on page 2



Cheerleaders

These girls will be cheerleaders for the 1994-95 school year. Kneeling are junior high cheerleaders Kellie Moeller, Amy Aycock, Angela Aycock, Amye Peel, Misty Henson and J. J. Comedy. Junior varsity cheerleaders are Priscilla Abila, Amy McWhorter, Melanie Alvarez and Stacie Rodriguez. Varsity cheerleaders are Micca Jordan, Rebecca Unger, Felicia Bustamante, Heather Hobgood, Lisa Rodriguez and Heather Guess. Mascot is Ember Josselet.

County voters to decide Judge, Commissioner

Haskell County voters will elect a County Judge and a County Commissioner from Precinct 2 during next Tuesday's Democratic primary runoff election.

County Judge B. O. Roberson is being opposed by James M. (Stick) Raughton. They were the two survivors from the four-man field for the judge's post in the first primary.

In Commissioner Precinct 2, Ronnie Chapman, the incumbent, is opposed by E. L. (Elmer) Adams. They were the two top vote-getters in the first primary.

These are the only two local races in the runoff.

There are, however, runoff contests in state races, on both the Democratic and Republican ballots.

Polls will open at 7 a.m. and

close at 7 p.m. for both Democrat and Republican runoff elections. Democrats will vote in their regular precincts, while all Republicans will vote at the First National Bank.

Voters are reminded that if they voted in the first primary, they must vote in the runoff of the same party.

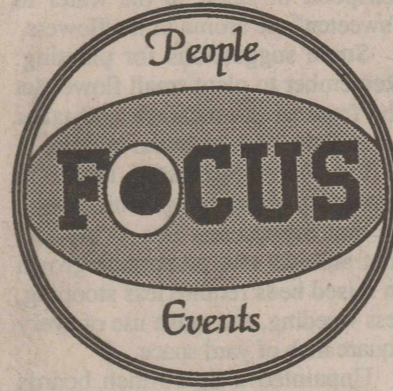
Outside of the local contests, the race drawing most attention is that for the Democratic nomination for the U.S. Senate. Jim Mattox and Richard Fisher are the opposing candidates for the right to meet Kay Bailey Hutchison in the general election in November.

Also in the Democratic runoff, Rene Haas and Raul Gonzalez are candidates for Justice of the Supreme Court, Place 1; and Gene Kelly and Betty Marshall are candidates for Judge of the Court of Criminal Appeals, Place 2.

In the Republican runoff, Patricia (Pat) Lykos and Don Wittig are candidates for Attorney General, and Sam Bayless and Sharon Keller are candidates for Judge of the Court of Criminal Appeals, Place 2.

Early voting

Early voting for the Democratic and Republican runoff elections opened Monday and will continue through Friday.



Who can vote?

County Clerk Rhonda Moeller reports there is some confusion as to who may vote in the Democratic and Republican runoff elections next Tuesday.

She explains it this way:

If you voted in the Democratic primary on March 8, you cannot vote in the Republican runoff.

If you voted in the Republican primary on March 8, you cannot vote in the Democratic runoff.

If you did not vote in either primary on March 8, you may vote in either the Democratic or Republican primary.

Bake sale set for Saturday

Paint Creek sixth-graders will have a bake sale on Super 2nd Saturday in Haskell.

Baked goods will be available in front of Sport-About.

Softball field cleanup today

Haskell Softball Association will sponsor a cleanup of the softball field today (Thursday) at 7 p.m.

Members are encouraged to bring hoes and rakes and help get the field in playing condition.

Call Sam Rodriguez, 864-8919, for information.

Little League forms available

All youngsters interested in playing Little League baseball need to pick up a registration form at Haskell Butane. The form must be turned in by Friday.

Major League tryouts will be Tuesday, April 12, at 6 p.m.

Tryouts for Minor League will be Thursday, April 14, at 6 p.m.

All players must try out, even those who played last year.

Class favorites

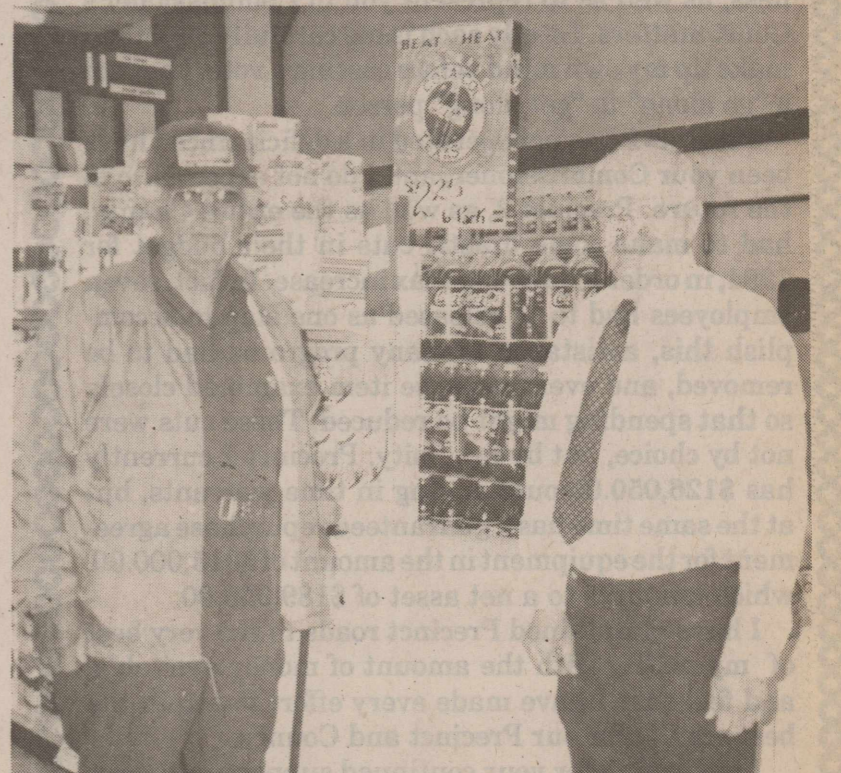
Shannon Meeks and Tara Moeller have been chosen favorites of the Haskell High School junior class.

TEC officer to visit Haskell

A representative of the Texas Employment Commission will be in Haskell next Wednesday (April 13) to assist area veterans seeking employment.

Gerald Clark, a veterans service officer with the TEC, will be in the Veterans Service office in the courthouse from 10 to 11:30 a.m.

Veterans are invited to visit with him. No appointment is necessary.



Wins freezer

W. A. Dutton, left, was winner of the 14.8-foot freezer and food package given away Saturday by Modern Way. At right is Sam Bitner, owner of Modern Way.

Beta chi hears program on PALS

The Beta Chi chapter of Delta Kappa Gamma Society International met March 5 at the First United Methodist Church in Munday. Ellen Rieger, first vice president, welcomed guests in the absence of the president, June Biffle. Mary Martin gave the invocation.

Ellen introduced Alma Grace Richardson, Area XVI coordinator from Wichita Falls, who spoke briefly to the members. Mrs. Richardson shared some key upcoming dates, such as the international convention in Nashville at the end of July and the Aug. 6 area workshop at Midwestern State University. She especially urged members to attend the state convention in Amarillo in June.

This month's program was "Fostering and Creating Constructive Change: Peer Coaching." Christie Stapleton introduced the program presenter, Lou Gilly. Mrs. Gilly, Haskell County extension agent-home economics, and her husband, Duane, ag teacher at Haskell CISD, are coordinators for the Project PALS program in Haskell. They are assisted by Jimmy Lisle, elementary principal; Mrs. Christy Gannaway, counselor; and fourth-grade teachers Mrs. Paula Everett, Mrs. Janie Stone, Mrs. Judy Burson and Mrs. JoNell Trammell.

Project PALS, which originated from a nationwide action force, stands for "Partners in Active Learning Support." It is a monitoring program in which high school students work with fourth-grade students, one on one, in a sustained effort to help them feel better about themselves.

This was begun as a three-year pilot project with selected states participating. Haskell was one of

10 schools picked to be a part of the pilot.

Mrs. Gilly said the program has been in operation for two years and "it has gone ten times better than originally expected."

The FFA and 4-H organizations work together on PALS, and hope to get other schools interested in implementing the program. Students are encouraged to take charge and plan and conduct the activities on their own.

The success of the program can be seen in a number of ways, Mrs. Gilly said. It has built a bridge between the high school and elementary school, it has been very rewarding for the fourth-graders in the program, and high school students who participated have gained respect for the responsibilities teachers and parents have.

Mrs. Gilly share slides showing the Haskell students interacting in PALS activities, and read some students' comments about what the program has meant to them. She ended her presentation by saying that the message they hope to get across to these kids is that any thing worthwhile takes a lot of planning, commitment and hard work.

Following the program, members were treated to refreshments by the hostesses from Munday and Goree. Mrs. Rieger presented Mrs. Gilly with a gift as a token of appreciation.

Mrs. Rieger called the meeting to order. Minutes of the previous meeting were read and approved. Melodee Christian of the nominating committee presented the slate of officers for the next term. Members then voted on officers for the new biennium, and Mrs. Christian reported that these officers were accepted.

--Green Thumb--

By Gladys O'Neal
Haskell Garden Club

April is vine month; plant vines. Plant caladiums and elephant ears where they will not be exposed to hot afternoon sun. Remember, they need watering almost every day during the summer.

Plant castor beans for a screen. Plant a small herb plot. Lilacs need a feeding of superphosphate with a little lime.

I've belonged to Haskell Garden Club for many years now, and I've always found my fellow members eager to share expertise and pass on proven suggestions. Their hints have helped me through many growing seasons. Perhaps some of these "garden gleanings" can do the same for you.

Do you admire marigolds in an arrangement in the house, but find the odor a bit overpowering? Add a teaspoon of sugar to the water to "sweeten" the aroma of the flowers.

Some suggestions for planting: Remember to plant small flowers at the front of the meadow and taller ones at the back or in the middle.

I've been interested lately in gardening above the ground. It may be that my interest lies in the fact that annuals and perennials grown in raised beds require less stooping, less weeding, and make use of every square inch of yard space.

Unpainted 2-by-10-inch boards can frame the beds. Railroad ties, concrete blocks, straw bales, or any other material that will hold the soil in place. It is best not to use pressure-treated lumber—despite manufacturer's claims to the contrary. The chemicals could be taken up by plants located to the edge of the bed.

The size depends solely on your purse and gardening skill. My preference would be to make the beds no wider than four feet so that plants in the middle can be reached without stepping onto the soil. Length can be anything depending on available space. Some people make them 16 feet long. For gardeners with back problems, beds

can be two or three feet high so the gardener need not bend over.

Now for the filling of the bed. Soil composition naturally depends on the plants used in the bed. Wood chips, corn husks, bark materials and leaves are all high in carbon, but when these rot, they use a lot of the nitrogen in the soil; to balance them high-nitrogen materials should be used.

Compost, horse, cow or chicken manure are examples of highly organic, nitrogen rich materials that should represent about 20 percent of the soil mix.

Sand is useful if you intend to grow root crops such as carrot, parsnips, beets and rutabaga, or if you are growing shrubs with a lot of top growth and a small root system. For root crops, use about 25 percent sand, other crops will need less. Vermiculite and perlite are also minerals that may be added. Both ingredients lighten commercial potting soil mixes and need to be present only as traces in garden soil. On the other hand, screened loam is an essential component of the mix, and should comprise the major part of the soil.

For vegetable beds, here's a recipe that can be used. If the bed is 10 inches to a foot high, dig it out to a depth of 18 inches. Dig out the top layer of soil, then remove the second layer. On the bottom of the bed, lay about 6 inches of wood chips. (You can use small branches or twigs, but these take longer to rot down.) On top of the wood chips, place a layer of leaves, about six to eight inches deep. Over the leaves put manure or compost or 6 inches of fresh horse manure. Next comes a one to two inch layer of sand, and a top layer of screened loam.

If the bed is deeper than 10 inches, successive layers of leaves, manure, sand and loam can be added until the correct height is reached. On top of the entire bed, lay 6 to 10 inches of well mixed sand, well-rotted compost and loam. Sometimes it will be as much as

18 inches higher than the wood trim. This poses a slight run-off problem. But within a year it will settle down.

In 5 or 6 years it will be re-built.

Use a soaker to water just below the level of the soil.

I may be a lazy gardener, but this surely sounds good to me.

Three twisters worth \$500

Three twisters in a row means bad news for the weatherman, but it could mean up to \$500 for folks who play "Texas Tornadoough."

Lottery players can safely harness "cyclone power" as they try their luck at the new game with the popular tic-tac-toe play format. The blue and green \$1 tickets are on sale at lottery outlets across the state.

One act play...

Continued from page 1
Sayre.

In the first competition March 29 at zone, the play advanced with Hamlin's play to district competition.

Katy Martin was named best actress, and Janeen Jordan and Amy McWhorter were named to the all-star cast. Kurt McCord and Christy Cadenedh received honorable mention on the all-star cast.

Traffic deaths drop in Texas

Fewer people died in traffic accidents in Texas last year than in any year since 1965.

Traffic accidents in Texas claimed 3,037 lives last year, a decline of .7 percent from the 1992 death toll of 3,057. It was the eighth decline in the past nine years.



The next generation FARMER

It has never been easy for young people to start farming on their own. Today, just as in the past, young people are turning to their Land Bank Association for financing.

Dependable long-term financing — generation after generation.

That's the Land Bank way.

Federal Land Bank Association of Haskell

Dale Bullinger - Pres.
Telephone 864-2062

We would like to thank our friends, love ones, and pastor for their prayers during my surgery. We appreciated all the visits, cards, flowers, and food that was brought in when we got home. God bless all of you.

We love you,
Joe & Juanita Grimes

Chapman Issues Statement

To the Voters of Precinct No. 2:

First, and foremost, let me thank you for the privilege of serving as your Commissioner for the past twelve years, and to assure you that I have had the best interests of Precinct 2 uppermost in my mind on every decision made. The experience I have gained, and the schools I have attended, have qualified me to serve you much more effectively for the next four years than ever before. Decisions that must be made sometimes, aren't always the most popular ones, but I have always tried to do what is best for our Precinct, and the County as a whole.

I have made every effort in the past, and will continue in the future, to be available to discuss any part of County or Precinct business. You have placed your confidence and trust in me to attend to Precinct business, as well as to represent you in Commissioner's Court matters. I study each issue carefully, and then make up my own mind before casting a vote. I am not a "go along" to "get along" person.

Precinct 2 has not operated in a deficit since I have been your Commissioner, and I do not expect it to in the future. Precinct 2, as well as the entire County, had to make some drastic cuts in their budget for 1994, in order to prevent a tax increase. In fact, seven employees had to be released as one step to accomplish this, assistance to many programs had to be removed, and every expense item examined closely so that spending might be reduced. These cuts were not by choice, but by necessity. Precinct 2 currently has \$126,050.00 outstanding in time warrants, but at the same time has a guaranteed repurchase agreement for the equipment in the amount of \$315,000.00, which amounts to a net asset of \$189,950.00.

I have maintained Precinct roads to the very best of my ability with the amount of money available, and feel that I have made every effort to attain the best results for our Precinct and County.

I am asking for your continued support, and vote, in the upcoming April 12 election, and sincerely hope that you will provide me the opportunity to continue my work for Precinct 2, and the County.

Pd. Pol. Adv. Pd. for by Ronnie Chapman



Super 2nd Saturday

Blooming Specials

GET A BASKET FULL OF SAVINGS

EVERY BOOT IN THE STORE ON SALE

ALL OLATHE BOOTS 20% OFF

ALL TONY LAMA LIZARD BOOTS \$125.97

GROUP ALL LEATHER TONY LAMA BOOTS \$49.95

GROUP ALL LEATHER TONY LAMA BOOTS 1/2 PRICE

ALL TONY LAMA BULLHIDE BOOTS \$99.95 INCLUDING TALL TOPS

ALL TONY LAMA CALFSKIN BOOTS \$79.95

ALL WORK BOOTS 20% OFF

GROUP Haredo Ropers \$39.95

CHILDREN'S BOOTS STARTING AT \$19.95

AS ALWAYS SALE MERCHANDISE CAN BE PAID LAYAWAY

HEADS OR TAILS WESTERN WEAR

HWAY 277
HASKELL, TEXAS

OPEN 9:00-5:30 MON - SAT.
PHONE 817/864-3320

Garden Club members attend Snyder meet

The District VIII Texas Garden Club Inc., met at Snyder in the Trinity Methodist Church March 30. Twenty-three clubs were represented. The executive meeting was conducted by Lois Rogers, District VIII director from the Stamford club.

The Haskell Garden Club

received an award with 27 points. They were Appreciation Landscape Challenge, Horticulture Citation, first place President Report, Club Yearbook first place with a grade of 95, Appreciation Contribution to 100 percent President Book for Mona Gibson and also Appreciation award for Contribution to District Scholarship Fund.

Mrs. Gibson gave a report of the accomplishments of the Haskell Club which was very good.

A noon luncheon was in the Martha Ann Women's Club. The speaker was Mrs. Joyce Ewald of El Paso. She showed arrangements made from beautiful flowers and foliage, describing each according to color, shape, form and texture.

Ladies attending from Haskell were Mona Gibson, Lorene Dewey, Juanita Rhea, Leone Pearsay, Marion Carlisle and Gladys O'Neal.

Photos published in The Haskell Free Press are filed by date of publication. If you want to pick up a picture, please let us know when it ran.

Crop insurance deadline April 15

In order to be eligible to receive 1993 disaster benefits, producers should purchase 1994 crop insurance, if the 1993 loss for the commodity for which payments are being sought is greater than 65 percent of the expected production.

Insurance purchased to meet multiple peril crop insurance requirements can be cancelled if it is later determined that crop insurance is not required.

In Texas, the crop insurance sales closing date for some 1994 spring seed crops is April 15.



Takes third

Phillip Huff won third place in singles competition at the district tennis tournament March 26 at ACU.

Weinert native retires from state

James A. Gerick, a native of Weinert, has retired from the Texas Department of Commerce in Austin as an internal auditor.

He is a 1944 graduate of Weinert High School. He graduated from Texas Tech University with a BBA degree in accounting.

His parents, the late Mr. and Mrs. Adolph Gerick, moved from Weinert to Bartlett in 1948.

The bagpipe, Scotland's national musical instrument, was used in an earlier form by the ancient Romans.

PCA stockholders meet next week

Rolling Plains Production Credit Association's 60th annual stockholders meeting will be held Thursday evening, April 7, in Childress and Friday evening, April 8, in Stamford.

At each session, registration and the meal will begin at 6 p.m. and be followed by a brief business session. The City Auditorium will be the site of the Childress meeting and the Stamford session will be in the high school cafeteria.

Drawings will be held from members' registration cards until \$900 is awarded in each session. The harmony and hilarity of Donna Fowler and Cindy Nix as "Just Friends" will be featured entertainment.

One director representing the Spur area will be elected during the business session. Nominees are Lance D. Morris of Crosbyton and Darrell Thomason of Dry Lake near Spur.

Rolling Plains PCA is one of 18 member-owned Production Credit Associations in the 10th district of the Farm Credit System which includes 14 PCAs in Texas, three in New Mexico and one in Louisiana. Collectively, PCAs have approximately 12,500 loans outstanding to the region's agricultural producers. At 1993 year's end the 10th district had some \$830 million in loan volume. Rolling Plains PCA is part of the nationwide Farm Credit System providing over \$50 billion in loans to America's farmers, ranchers and ag-related businesses.

During 1993, Rolling Plains PCA loaned more than \$102 million to approximately 730

Stamford gets new physician

Stamford will be getting a new doctor.

Dr. Wayne Robinson of Irvine, Calif., has accepted an offer from the Stamford Memorial Hospital board and will begin practice in Stamford by June 1.

Hospital gets Administrator

Craig Haterius has been named administrator of the Stamford Memorial Hospital.

He succeeds Don Hopkins who resigned earlier this year.

Public Notice

On February 22, 1994, Southwestern Bell Telephone Company ("Southwestern Bell" or "Company") filed an application with the Public Utility Commission of Texas ("Commission") to restructure the Company's Local Transport and Directory Transport categories of its Switched Access Service. This matter has been assigned to Docket No. 12784. The tariff sheets in Southwestern Bell's application, if approved, will bring the Company's intrastate Access Service Tariff into structural parity with the Company's interstate Tariff No. 73 for Local Transport. Southwestern Bell's companion interstate tariff became effective on January 1, 1994.

The transport rate elements provide for the transmission facilities between the customer's premises and the end office switch(es) where the customer's traffic is switched to originate or terminate the customer's communications.

Southwestern Bell proposes to implement the revised tariffs on a revenue neutral basis. Although the proposed tariff changes will affect all customers subscribing to Switched Access Service, the Local Transport and Directory Transport categories of Southwestern Bell's Switched Access Service is primarily for interexchange carriers. If approved, this application will result in an increase in Southwestern Bell's revenues of approximately \$1682.00 during the first year. Southwestern Bell proposes that the changes be effective on December 1, 1994.

Persons who wish to intervene in or comment upon these proceedings should notify the commission as soon as possible, as an intervention deadline will be imposed. A request to intervene or for further information should be mailed to the Public Utility Commission of Texas, 7800 Shoal Creek Boulevard, Suite 400N, Austin, Texas 78757. Further information may also be obtained by calling the Public Utility Commission's Public Information Office at (512) 458-0256 or (512) 458-0221 for text telephone. The deadline for intervention in the proceeding is May 6, 1994.

Southwestern Bell Telephone

NOTICE

Haskell County Precinct 2 Voters

Well, I can't vote again, but you need to. I know you just did, but this may be a close one. Thanks for your votes for Elmer Adams. They got him in the run-off election.

For those who didn't make it to the polls last time because of illness or what not, please put your mark next to Elmer's name X .

Do it for friends, Tom and Sandra West backing Elmer Adams for Precinct 2 Commissioner.

Pd Pol Adv Pd for by Thomas Ratliff West

IRA 8.25%
•SAFE
•FLEXIBLE
•TIME HONORED
 For Honesty and Dependability
Call Hess Hartsfield
817-864-2665

Serving Our Clients For Over 30 Years

Haskell Eye Clinic
VisionCare
 ASSOCIATES

Thomas Labbe', O.D.
 Russell Kuempel, M.D.
 Larry Abernathy, O.D.
 -Comprehensive Eye Exams -
 -Contact Lens, All Types -
 -Complete Optical Service -

OUT PATIENT SURGERY
 Including Cataracts with Implants
 Laser Surgery - Glaucoma Surgery
 Medicare & Medicaid Accepted

For Appointment Call • 817-864-3104
 or Call Toll Free 1-800-558-3937
 530 S. 2nd • Haskell, TX 79521

Monthly Calendar of Events

APRIL 1994

Haskell Independent School District

SUN	MON	TUE	WED	THU	FRI	SAT	
* Denotes District Games					1 Baseball Clyde There 2 p.m.	2 Jr. Hi Track Meet Haskell 7-8G, 7-8B	
3	*Golf Boys/Girls Abilene Cheerleader 4:00 p.m.	4 Baseball *Jim Ned There 5:00 Tennis (Dist. Tourn.) April 5-8 ACU	5	6	7 End of 5th Six Weeks	8 Baseball *Hamlin Here 5:00 Tennis (Dist.) Finals ACU No School-Bad Weather Day	9 One Act Play Area Contest Stamford 9:30 a.m. HS Track Meet Here JVB, VG, VB Jr. Hi Track Mt-TBA 7-8G, 7-8B
10	*Golf Boys/Girls Abilene HS Band Clinic 7-9 p.m. Begin 6th Six Weeks	11	12 Baseball *Stamford Here 5:00	13	14 Dist. Track Mt. HS April 14-16 Hamlin JVB, VG, VB Jr. Hi Dist. Track Mt. Anson 7-8G, 7-8B	15 No School (Dist. Track Meet) Jr. H. Dist. Track Meet April 15-16 Hamlin 7-8G, 7-8B	16
17	18	19 Baseball *Rotan Here 5:00	20 UIL Sight Reading Concert Hamlin	21	22 Baseball *Winters There 5:00 Regional Qualifier Track, April 22-23	23 TBA Regional Contest ACU Jr.-Sr. Banquet	
24	25	26 Baseball *Anson Here 5:00	27	28	29 Regional Track Meet April 29-30 Abilene	30	

The Friendly

The Essence of Quality is Service

First National Bank - Haskell

200 South Avenue E • 864-8555 • Member FDIC

PIZZA PRO

OF MODERN WAY

TWO LARGE
 DELICIOUS
 PIZZAS

\$15.99

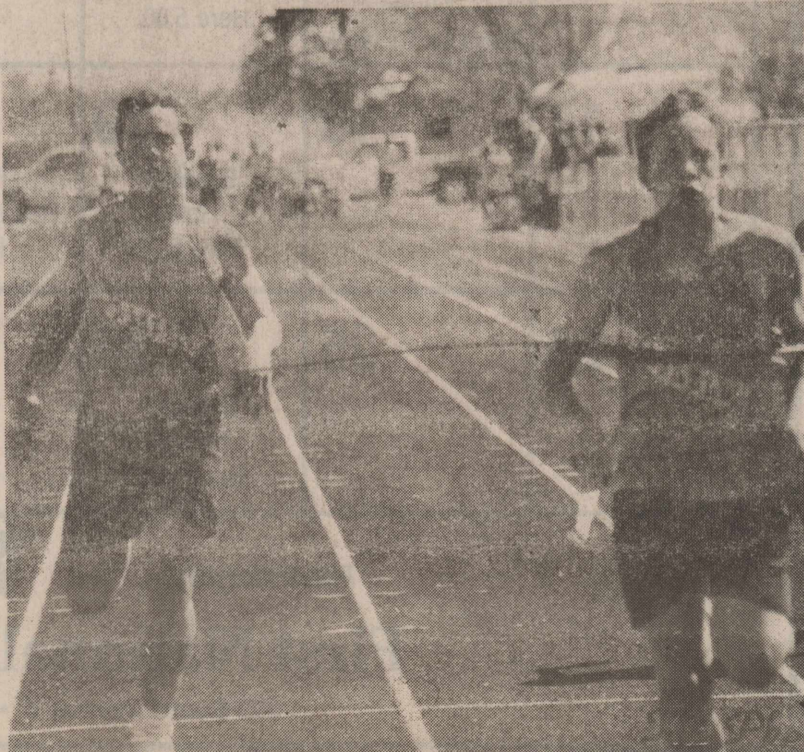
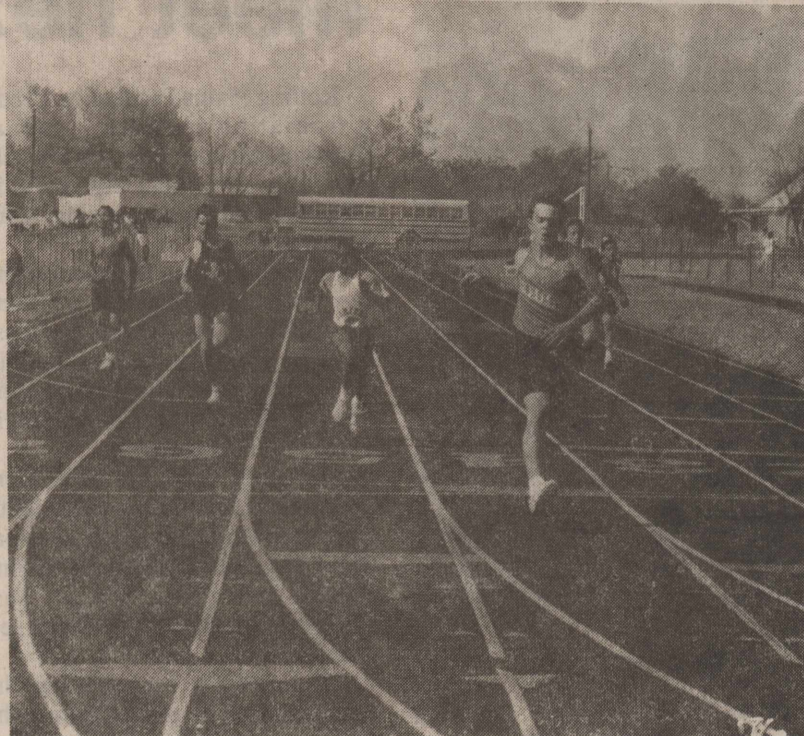
WITH TWO
 TOPPINGS EACH

SPECIAL GOOD THRU SUNDAY, APRIL 10

OPEN TIL 9 P.M. DAILY

864-3976

Haskell Junior Relays



--Letters to the Editor--

Editor: May I discuss landfill with you?

We, the people (of which is our government) are being told we cannot throw our trash in our hole. Now you would think nobody would be very interested in our trash, but they are interested.

Why is that?
If you are in the trash disposal business, you would of course be interested. Our waste has been "classified" by those who study waste as "hazardous waste."

Such ominous trash will really be hard to dispose of, right? Not at all, there's a company in Abilene that is eager to get our trash, for a price, of course. Also the high transporting cost will be paid by the taxpayers, of course.

It seems to me we have been producing hazardous waste for some 100-150 years. We've piled it up, we've burned it, we've buried it. So who got sick from it? What animal died from it? What water supply was ruined from it? Can you prove it? Neither can the EPA.

As I recall, folks two miles from "the dump" were as healthy as those 20 miles from the dump. The idea of a landfill was to turn "hazardous waste" into fertilizer. Isn't that also what cemeteries do? Feed lots? And don't birds fly over our water supply and ducks swim in it, as well as fish? Are the birds and fish wearing diapers. Now there's a real challenge for the EPA.

But our trash is not excrement,

it's trash. Paper, cans, bottles, cardboard, carrot peels, rotten tomatoes, left overs, milk cartons, etc. If left alone, it will turn into fertilizer eventually.

With just a little effort, we could take out the tires, batteries, bottles, cans and plastic and the return to fertilizer would speed up. We'll never know, for the all-powerful EPA says because you will not spend \$1.3 million you can't have a landfill.

These people are appointed by your governor, you know. They are instructed from Washington to come down hard on those who don't or can't respect their judgements. This has resulted in hard judgements for those too small and too poor to fight back. They give us impossible solutions to fabricated problems with no real basis for their fears. "Dig your pit X-number of feet deep." "Don't line your pits." "Line your pits." "Drill test wells to see if water is polluted." "No, it doesn't matter that there is no ground water here, you have to drill wells anyway."

Personally, I've had all of the government I can pay for. If a less expensive one comes along, I'm going to vote for it, and I hope you will too. If a governor candidate ever tells me that he or she is taking back the EPA control of landfills, he or she will get my vote, whatever party.

Gene Long

--Out of the Past--

From the Files of The Haskell Free Press

20 Years Ago
April 4, 1974

C. A. Thomas Jr., Haskell County Commissioner, Precinct 1, turned in his resignation early Friday afternoon.

A serious--and frightening--outbreak of rabies has been reported in Haskell County, centered in Rule, and has all area residents watching their pets and livestock closely.

Jack Bettis of Newport News, Va., has been in Haskell helping his mother, Mrs. L. H. Cooper, move to his home.

Brenda Nanny, daughter of Mr. and Mrs. Don Nanny, has returned to Tech after spending spring break here.

Mrs. Oswald (Alma) Cole was honored with a tea in Fellowship Hall of Rule United Methodist Church March 28. Mrs. Cole is moving to make her home at Haskell.

Roy Trussell, shop foreman of Richardson Truck & Tractor for the past five years, attended International Harvester Service School in Chicago March 24-30.

Air Force Capt. William R. Moore III, a T-38 Talon instructor pilot, has been assigned to Randolph AFB. His wife, Jerre, is the daughter of Mr. and Mrs. R. C. Couch Jr. of Haskell.

Community Easter sunrise services will be held April 14 at the Boy Scout camp north of the Rule. Rev. Jack Key, pastor of the Sweet Home Baptist Church, will bring the message.

A local chapter of the Texas Cowbells was organized in Haskell Monday and the following officers were elected: Melba Howard, president; Mrs. Bob Free, vice president; Joyce Thomas and Dwanna Klose, secretary and treasurer; and Willie Wyatt, representative.

Junior high band students earning a Division I rating at the Cisco Junior College Music Festival March 28 included Sarah Cox, Terri Therwhanger, Kim Campbell, Connie Frierson, Tamara Sorrells, Vickie Hill, Teresa Jenkins, Greg Gideon and Sharon Gray.

30 Years Ago
April 2, 1964

The 1964 Bobcat, yearbook of Rule High School has been dedicated to Mrs. C. W. Dunnam.

Mr. and Mrs. Willis Larned and their daughter, Roxene, of Big Spring visited in the home of his mother, Mrs. May Larned, over the weekend.

Jay I. Nasman of Waco, state president of the Farmers Union, will be a visitor in Haskell next Monday and will address an assembly of county members at the community room of Haskell

National Bank.

Texas A&M University's social highlight of the year, the 30th annual Cotton Pageant and Ball, will be directed and managed by a Haskell senior agronomy major, John R. Gannaway, president of the A&M Student Agronomy Society and general chairman of the event.

Kenneth Carlton, a native of Paint Creek and a mid-term graduate of Midwestern University in Wichita Falls, has received a graduate assistanceship at Oregon State University.

At M System: 10 Hershey bars, 39 cents.

50 Years Ago
March 31, 1944

Mr. and Mrs. J. L. Dilbeck, Billy Alton and Mrs. C. F. Graham visited relatives in Fort Worth the past week.

Mrs. Newt Cole visited relatives in Haskell Sunday afternoon.

Mrs. Lonnie Martin and daughter, Lonnie Lou, and Mrs. F. E. Nauert were Abilene visitors Saturday.

Former County Superintendent Matt N. Graham, who is now connected with the State Department of Education, was a Haskell visitor during the weekend.

Mrs. G. E. Davis attended the annual convention of Women's Society of Christian Service in Vernon last week.

60 Years Ago
March 29, 1934

Mr. and Mrs. Hollis Atkinson are spending a few days in Mineral Wells and Fort Worth.

Mr. and Mrs. H. K. Henry, Mrs. Roy A. Sanders and Mrs. Wm. G. Forgy were in Abilene Saturday.

Mr. and Mrs. Marvin Poteet of Vernon were here with home folks Sunday night.

The parents of our community carried dinner to the school house Friday and enjoyed a good feast to celebrate Easter.

Mrs. Troy Wright and Mrs. Buck Reed were Stamford visitors Thursday.

J. W. Breedlove of Spur was here the first of the week visiting his brother, C. B. Breedlove.

Mr. and Mrs. Arthur Montgomery entertained quite a few friends and relatives Saturday night with a "progressive 42" party in honor of Mr. and Mrs. Winston Deisman.

70 Years Ago
April 4, 1924

Beginning next week, the Haskell Laundry will operate a truck to Spur and intermediate points, J. L. Tubbs, manager, has announced.

The biggest rabbit drive of the season was pulled off last Tuesday in the Weaver community. A large number of hunters took part and between 600 and 700 rabbits were killed.

THE HASKELL FREE PRESS

Established January 1, 1886
PUBLISHED EVERY THURSDAY

401 S. First St.
P. O. DRAWER 1058 HASKELL, TEXAS 79521

Don Comedy.....Publisher
Wendell FaughtEditor
Lisa Shaw.....Business Manager

Second Class Postage Paid Haskell, Texas 79521

(USPS 237-040)

SUBSCRIPTION RATES:

In Haskell and adjoining counties, one year, \$15.00; six months, \$13.00; two years, \$29.00; Elsewhere in Texas, one year, \$20.00; six months, \$18.00; two years, \$39.00; outside Texas, one year, \$22.50; six months, \$20.50, two years, \$44.00.

NOTICE TO PUBLIC: Any erroneous reflection upon the character, reputation or standing of any firm, individual or corporation will be gladly corrected upon being called to the attention of the publisher.

POSTMASTER: Send address changes to The Haskell Free Press, P.O. Box 1058, Haskell, TX. 79521-1058.



Easter breakfast enjoyed

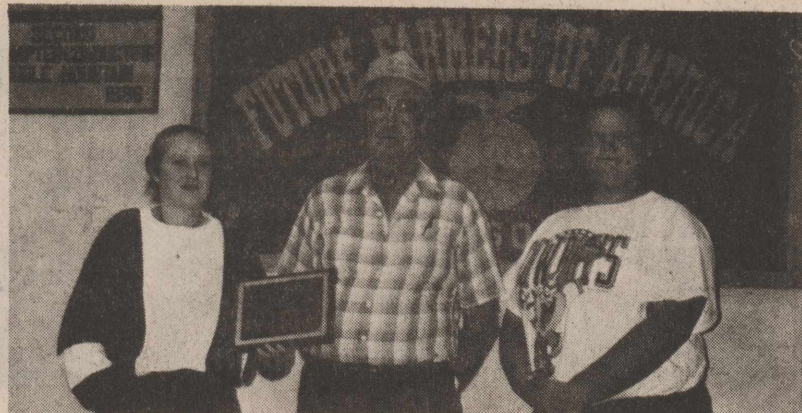
The Fidelis Sunday School class of the First Baptist Church held its annual Easter breakfast last Friday at Kountry Kookin.

The head table was centered with a natural wood cross, surrounded by spring flowers. The cross has been used for a number of years and belongs to Juanita Rhea. Vases on each table held spring flowers from Mrs. Rhea's yard.

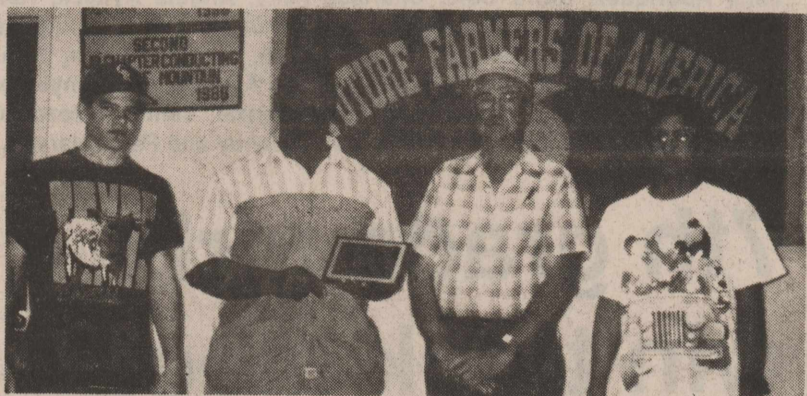
Ethel Lou Shelton gave the opening prayer. Billie Cadenhead, class teacher, spoke on her recent trip to Venezuela.

Class members attending were Ozelle Frierson, Juanita Rhea, Violet Earles, Ethel Lou Shelton, Elizabeth Corum, Pauline Derr, Allene Wheatley, Leone Pearsey, Grace McKelvin, Frances Lane, Vivian Roberson, Lorene Adams, Earmel Bevel, Emma Bland, Clariss Jones, Pearl Walker, Faye Gray, Mattie English, Billie Cadenhead and Lois Redwine.

Special guests were Susie Kreger and Jerrene Couch.



First-place Greenhand range team members, Michelle Green and Neil Holmes with chairman Ken Carman.



Second-place range team of Harrison Druessedow, Deon Walker and Bobby Ortiz with Ken Carman, director.

Haskell teams win in judging event

The annual Haskell SWCD/California Creek SWCD Soil and Grass Judging Contest was held March 22 on the Mitch Hall farm in Jones County.

Following are the results: Greenhand range and plant identification: First place, Haskell (Neal Holmes and Michelle Green); 2nd place, Anson. High point individual Michelle Green.

Range and plant identification: 1st place, Anson; 2nd place, Haskell (Deon Walker, Bobby Ortiz and Harrison Druessedow).

Soils identification: 1st place, Wylie; 2nd place, Anson; 3rd place, Haskell (Carol Thornhill, Michael Salinas, Micca Jordan and Randal Martin).

A hamburger supper was provided by the California Creek SWCD and cooked by Kerry Fortune, ag teacher from Anson. Award plaques were presented to all winners.

Next year's contest will be hosted by the Haskell SWCD and will be in Haskell County.

Fashion Show here Sunday

The public is invited to attend the annual Haskell County 4-H Fashion Show which will be held Sunday at the Haskell National Bank community room. It begins at 3 p.m.

More than 20 creative 4-H'ers will model garments they have constructed this year in their clothing projects. After the fashion show the clothing leaders will be recognized and awards will be presented.

Each participant will receive an individual gift, compliments of the Haskell County Family and Community Education Clubs.

Refreshments will be served by the Eager Housewives FCE Club. There is no admission charge.

Schedule given for commodities

USDA surplus food commodities will be distributed in Haskell County next week.

The schedule: Rochester: Tuesday, April 12, 8 to 9 a.m. at the Rochester Fire Department.

Sagerton: Wednesday, April 13, 10 to 11 a.m. at Faith Lutheran Church.

Rule: Thursday, April 14, 9 to 10 a.m. at Church of Christ Fellowship Hall.

Haskell: Thursday, April 14, 8 to 10 a.m. at Experienced Citizens Center. (age 60 and older from 8 to 9 a.m. and 59 and under from 9 to 10 a.m.)

-Little Dribblers-

3rd 4th BOYS	
Comanche	7 1
Warhoops	7 1
Sioux	5 3
Chiefs	2 5
Tomahawks	2 5
Tejas	0 8

5th & 6th BOYS	
Braves	7 1
Blackhawks	6 2
Mohawks	4 4
Spurs	4 4
Kiowas	2 6
Apaches	1 7

3rd & 4th GIRLS	
Supersonics	8 0
Yo Yo's	5 3
Redhots	5 3
Stars	3 4
Rockets	3 5
Angels	0 8

5th & 6th GIRLS	
Jokers	6 0
Roadrunners	5 1
Maidens	2 4
Robins	2 4
Bandits	0 5

-HOSPITAL-

Medical
Henry Rueffer, Haskell

Dismissals
Elaine Blohm, L. E. Kitchens, Carolyn Flores, Edna Burnett, J. L. Hendrix, Teena Bitner.

Rule marine calls it quits

Marine Staff Sgt. Willie J. Bagley has retired from active duty after 20 years of service. He is the son of Benson H. Bagley of Rule.

Bagley most recent served at the Marine Corps Air Station in Cherry Point, N.C.

He joined the Marine Corps in March 1974.

Police Report

Haskell Police Department activity for March:

- 14 traffic citations
- 5 arrests
- 4 juvenile referrals
- 5 citations for fighting in public
- Calls for service:
 - 8 domestic disturbances
 - 3 criminal mischiefs
 - 3 thefts
 - 17 dog complaints
 - 5 loud music
 - 1 runaway
- Stolen property recovered:
 - 1 CD player
 - 1 cowboy hat.

Students raise money for heart

Rochester students raised \$1,471.05 for the American Heart Association in the annual Jump Rope for Heart last month.

Last year's event raised \$820. Chase DeMerit received a gold medal for raising the most money.

SESAME STREET LIVE
PRESENTS
Lo's Play SCHOOL
APRIL 8-10
TAYLOR COUNTY COLISEUM
FRI. APR. 8
★ 7:00 PM

SAT. APR. 9 10:30 AM
SUN. APR. 10 2:00 PM

★ KTXS FAMILY NIGHT - all seats \$6.50.
★ ABILENE REPORTER NEWS MATINEE

TICKETS: \$9.50; children 2-12 save \$1.50 on full-price.
Discounts may not be combined.

ON SALE at the Coliseum Box Office, Farm & Ranch Western Wear, KOXE in Brownwood & the Dyess Rec Ctr.

INFO. & PHONE CHARGE: 677-4376

© 1992 C.T.W. Jim Henson's Sesame Street Muppets
© 1992 HENSON, Inc. The SESAME STREET LIVE name and logo are trademarks of C.T.W. SESAME STREET LIVE is presented by VEE Corporation in cooperation with C.T.W.

Announcing
Brenner & Associates
4201-A N. 1st St. of Abilene
"Better Hearing Through Professional Hearing Health Care"
will be conducting
FREE HEARING TEST AND HEARING AID TUNE-UP
Friday, April 15
10 a.m. to 1 p.m.
Experienced Citizens Center, Haskell
Will be in Haskell every third Friday.
Greg Brenner, Hearing Specialist
1-800-842-3849

SUPER SPRING SAVINGS

ALLSUP'S

ALLSUP'S SAUSAGE, EGG & BISCUIT FOR ONLY **99¢**

Enjoy **Coke**
ALL TYPES COCA-COLA **\$1.99**

ALLSUP'S 1.5 LB. LOAF SANDWICH BREAD 69¢ EACH OR **2\$1** FOR

Shurfine Granulated Sugar 4 lb bag **\$1.39**

Shurfine Flour 5 lbs. **99¢**

Shurfine 20 lbs. Dog Food **\$4.49**

Folgers All grinds Coffee 13 oz. can **\$1.99**

Shurfine 1 gallon Bleach **99¢**

SHURFINE NATURAL VEGETABLE OIL 48 OZ. **\$1.99**

FITTI DIAPERS 20 LGE & 30 MED. **\$4.49**

SPAM LUNCHEON MEAT 12 OZ. **\$1.99**

SUNNY SANDWICH COOKIES 14 OZ. **99¢**

ALLSUP'S MOTOR OIL SAE ND30WT. **79¢**

6 pack 12 oz. cans **Wavy Lay's**

POTATO CHIPS **WAVY LAY'S** REGULAR \$1.49 SIZE **99¢**

ALLSUP'S BEEF & SALSA BURRITOS FOR ONLY **99¢**

COOKED FOODS SPECIAL OF THE WEEK
ALLSUP'S CORN DOG AND A 20 OZ. NR COKE FOR ONLY **99¢**

PRICES EFFECTIVE
APRIL 3-APRIL 9, 1994
HASKELL #153 RULE #91

ROLLING PLAINS PRODUCTION CREDIT ASSOCIATION

60th ANNUAL STOCKHOLDERS MEETING

THURSDAY EVENING APRIL 7
Stockholders in the Matador and Childress Areas
CITY AUDITORIUM CHILDRESS

FRIDAY EVENING APRIL 8
Stockholders in the Munday, Spur, Stamford and Abilene Areas
HIGH SCHOOL CAFETERIA STAMFORD

★ ★ ★ CASH PRIZES TO BE AWARDED ★ ★ ★

- ★ 6:00 P.M. REGISTRATION AND MEAL
- ★ 7:00 P.M. BUSINESS SESSION
- ★ ELECTION OF ONE DIRECTOR FOR THE SPUR AREA
- ★ ENTERTAINMENT BY "JUST FRIENDS"

SERVING AGRICULTURE FOR GENERATIONS

Production Credit Association



8th grade

The 8th grade girls' track team is composed of, front row from left, Sherita Tidrow, Betty Ruiz, Jessica Martinez, Stephanie Solomon, Andrea Calloway, Todameka Thompson, Marci McSmith; second row, Coach Alan Phillips, Melanie Alvarez, Creora Tatum, Vanessa Miller, Laura Ortiz, Brooke McGuire, Wendy West, Johanna Payne, Wendy Cadenhead and Christy Blocker.

8th grade girls win track meet

Haskell's eighth-grade girls took first place Saturday in the Haskell Junior Relays.

Performers and their placings:
100: 4. Stephanie Solomon, 5. Andrea Calloway, 6. Wendy Cadenhead.
200: 2. Stephanie Solomon, 3. Andrea Calloway, 4. Tiffany Cadenhead.
800: 2. Sherita Tidrow, 4. Jessica Martinez.
1600: 3. Jessica Martinez.
110 hurdles: 3. Melanie Alvarez.
High jump: 3. Vanessa Miller.
Long jump: 1. Brooke McGuire, 2. Ebony McCulloch, 6. Sherita

Tidrow.

Triple jump: 1. Brooke McGuire, 5. Sherita Tidrow.
Discus: 1. Johanna Payne, 2. Wendy West, 3. Marci McSmith.
Shot put: 1. Wendy Cadenhead, 2. Wendy West, 3. Johanna Payne.
400 relay: 3. Calloway, McGuire, Alvarez, McCulloch.
800 relay: 1. Tidrow, Ortiz, Solomon, McCulloch.
1600 relay: 1. Ortiz, McCulloch, McGuire, Tidrow.

Ortiz paces JV team

Bobby Ortiz of the Haskell JV took first places in the pole vault and high jump at the Piper Relays in Hamlin Saturday.

Ortiz pole vaulted 9-0 and high jumped 5-6 to pace the Indian team.

Robert Ortiz took second in the shot put (39-1).

Cody Cooley got a fourth in the 800 and Casey McDaniels a fourth in the high jump.

Other Indians scoring points included Randall Martin, fifth in the 200; Bobby Ortiz, sixth in the 800; and Cooley, sixth in the 400.

Harvey wins 1st at Hamlin

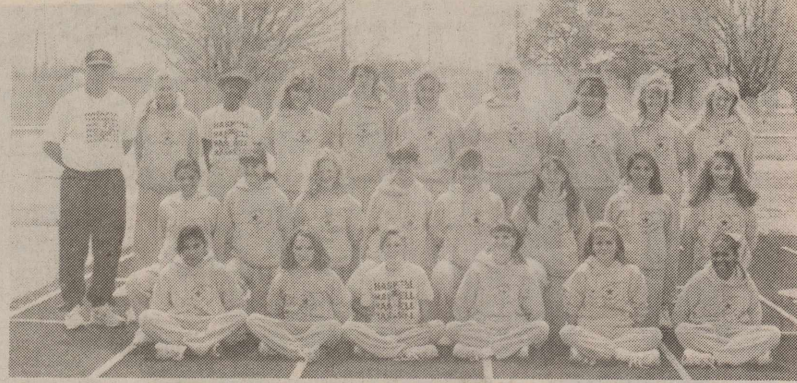
Bucky Harvey ran a 42.3 to take first place in the 300-meter hurdles in the Piper Relays in Hamlin Saturday.

Second places were won by Donnell Hodge in the 400 (54.05), Martin Limones in the shot put (48-6) and Patrick Billington in the discus (135-7).

The Indians' 1600-meter relay team took third place with a time of 3:39.60. The quartet was composed of Hodge, Harvey, Casey Coleman and Billington.

Coleman was fourth in the high jump (5-10), while Billington was sixth in the 400 (55.50) and Michael Salinas sixth in the 300 hurdles (44.63).

Deon Walker took seventh in the shot (43-10) and Richard Collins was seventh in the triple jump (39-9).



7th grade

The 7th grade girls' track team members are, front row from left, Mary Jane Rodriguez, Kerre Cole, Charisse Felty, Angela Aycock, Kellie Moeller, Danyelle Erwin; second row, Rosalinda Gonzales, Amy Aycock, Bree Burgess, J. J. Comedy, Misty Henson, Daisy Cothron, Tiffany Cadenhead, Missy Teague; third row, Coach Alan Phillips, Amye Peel, Tameka Ware, Sarah Gibbs, Shayne McKenzie, Jenny Brzozowski, Mindy Howard, Veronica Fuentes, Sarah Dulaney and Paula Harvey.

7th grade girls win track meet

The Haskell seventh-grade girls took first place in the Haskell Junior Relays Saturday.

Performers and their placings:
100: 1. Tameka Ware, 3. J. J. Comedy, 4. Amy Aycock.
200: 1. Kelli Moeller, 2. Misty Henson.

400: 4. Jenny Brzozowski, 800: 2. Rosalinda Gonzales, 4. Tiffany Cadenhead, 5. Bree Burgess.
1600: 3. Rosalinda Gonzales, 4. Sarah Dulaney.
100 hurdles: 3. Shayne McKenzie, 5. Sarah Dulaney, 6. Missy Teague.

300 hurdles: 2. Sarah Dulaney, 5. Shayne McKenzie.

High jump: 2. Shayne McKenzie, 4. Amye Peel, 6. Sarah Dulaney.

Long jump: 1. Tameka Ware, 5. Misty Henson, 6. J. J. Comedy.

Triple jump: 1. Amye Peel, 3.

Tameka Ware.

Discus: 3. Jenny Brzozowski.

Shot put: 5. Veronica Fuentes,

6. Paula Harvey.

400 relay: 1. Brzozowski,

Moeller, Comedy, Ware.

800 relay: 1. Comedy, Ware,

Henson, Peel.

1600 relay: 1. Moeller,

Cadenhead, Henson, Peel.

Kindergarten students to register

Registration and screening for next year's kindergarten students will be held Monday in the portable building east of the main elementary school building.

Children must be 5 years old on or before Sept. 1 to be eligible for kindergarten for the 1994-95 school year.

Students will be registered at the following times:

Last names beginning with letters A through F at 9 a.m.,

Last names beginning with letters G through L at 10 a.m.,

Last names beginning with M through R at 1 p.m.,

Last names beginning with S through Z at 2 p.m.

Parents are reminded that each student must have a birth certificate, immunization record and Social Security card.

LULAC plans softball tourney

The first annual Haskell County LULAC Softball tournament will be played April 29-30. Entry fee will be \$100 per team.

Call Nick Jimenez, 864-8092, for details.

HHS golf team wins 3rd

The Haskell Indian golf team shot a team total 347 to finish third at the Haskell Invitational Golf Tournament.

The members and their scores were Matt Perry 84, Patrick Middleton 86, Mik Everett 88, Mart Guess 89 and Brian Brzozowski.

Medalists were Tye Barton of Baird with a 75, and Reagan Underwood of Seymour, 81.

Baird took first place with a 320 and Seymour was second at 346, one stroke ahead of the third-place Indians.

Other teams and their scores: Jim Ned 361, Anson 376, Stamford 378, Rotan 389, Throckmorton 399, Munday 414, Jim Ned "B" 450, and Paint Creek 467.

PHARMACY NEWS



By Elbert Johnson, Registered Pharmacist

Reduce Diabetes Risk With Exercise: A study of more than 22,000 male physicians followed for 5 years has shown that exercising at least once a week will reduce the risk of developing non-insulin-dependent diabetes. After factoring out weight loss, men who exercised at least once weekly had a 23% reduction in risk compared with men who exercised less than once weekly. Similar results were shown in a 1991 study of female nurses.

Johnson

Prescription Pharmacy
418 N. 1st, Haskell
864-3331, Nights 864-3439
Free Prescription Delivery

DO YOUR CD'S, SAVINGS, OR PENSION ACCOUNTS EARN 5.85% ????

They can if you will call me!

An IRA can be opened for as little as \$50 a month!



Donna Saffel

Campbell Insurance Agency
Rule, Texas 79547



Bertha McQuinn

817-997-2218

spring specials

Concrete Yard Edging \$175 each	Stepping Stones Round or Square \$275 each	Concrete Bird Baths \$25.00	Water Heaters \$169.95
Potting Soil \$1.70	Cow Manure \$1.70	FERTILIZER 18-7-10 25-3-3 Yard & Garden Weed & Feed \$6.50 \$9.95	
Top Soil \$1.70	Pine Bark Chips \$3.00	Latex Caulk 95¢	3 Tab Shingles \$5.95 bundle

Our Best Latex Paint inside outside
\$10.95 \$12.95



We have these items in stock.
-Corrugated Tin
-Landscape Timbers
-4x8 Treated Lattice
-Chain Link Fencing

McGee's Lumber Yard

105 N. 1st 864-3552
Free Estimates-Free Delivery

3 LIVE STAGE SHOWS!

Let's Play SCHOOL

CTW SESAME STREET LIVE

SAN ANGELO COLISEUM APRIL 19-20

ON SALE NOW!
SAN ANGELO COLISEUM BOX OFFICE

TICKETS: \$9.50. Children 2-12 and under receive \$1.50 off adult ticket. Group discounts available. Discounts may not be combined.
FOR TICKETS: 912-653-9577

©1994 C.T.W. Jim Henson's Sesame Street Muppet Characters. ©1994 HENSON. The SESAME STREET LIVE name and logo are trademarks of C.T.W. SESAME STREET LIVE is presented by VEE Corporation in cooperation with C.T.W.

RE-ELECT RONNIE CHAPMAN

Haskell County Commissioner Precinct 2
Your Commissioner who has saved you **TAX DOLLARS** and will continue to save you **TAX DOLLARS!**

Pd. Pol. Adv. Pd. for by Ronnie Chapman

AHAHAH!!!

Your Car Insurance Too HIGH!!!

Please Call us for a Quote

Upshaw & Upshaw Insurance
800-992-7900
915-773-3681

Applicator course set for April 14

There will be a continuing education training course in Haskell or all licensed and certified pesticide applicators April 14.

Registration will begin at noon at the Haskell Civic Center. Courses will begin promptly at 1 p.m. and will give applicators five hours of CEU credits as prescribed by law, said Max Stapleton, county agricultural extension agent.

Courses will be conducted by extension specialists Emory Boring II, Stan Bevers, Robert Lemon and Ron Gill and Texas Department of Agriculture inspector Billy Henderson. Henderson will discuss what steps applicators must take to comply with the worker protection standards.

Stapleton reminds all applicators that continuing education is a requirement for keeping and renewing pesticide applicator licenses and certificates.

For more information or to pre-register for the training, contact the extension office at 864-2658.

Ruby Turner serves on state committee

Ruby Turner, a member of the Haskell City Council, was in Austin March 28 to attend a meeting of the Legislative Policy Committee on Community and Economic Development. She was appointed to the committee by Fred Guerra, president of the Texas Municipal League (TML).

The purpose of the committee is to be aware of all bills that will be introduced to the 1995 session of the Texas Legislature and now these bills might affect Texas cities.

During the 1993 legislative session, nearly 4,600 bills or significant resolutions were introduced and at least 800 of them would have affected Texas cities in some substantial way. In the end, almost 1,100 of those bills or resolutions passed and were signed into law. Approximately 140 of them impacted cities.

For better or worse, city officials will have to live with all the laws that may be approved by the 1995 legislature. Thus, the League must make every effort to assure that

detrimental bills are defeated and beneficial bills are passed.

The TML approach to the 1995 session will be guided by the principle that spring from a deeply rooted TML legislative policy:

•The League will vigorously oppose any legislation that would erode the authority of Texas cities to govern their own local affairs,

•Cities represent the level of government closest to the people. They bear primary responsibility for provision of capital infrastructure and for ensuring the citizens' health and safety. Thus, cities must be assured of a predictable and sufficient level of revenue and must resist efforts to diminish their revenue.

•The League will oppose the imposition of any state mandates that do not provide for a commensurate level of compensation.

Birthday party for Mrs. Dyches

Gladys Dycher of Rice Springs Care Home celebrated her 93rd birthday March 27.

After opening of gifts, ice cream, coffee and cake were served to Marie Townsend, Anna Lee Cook, Lois Carroll, Ray Webb and Mr. and Mrs. Ennis Webb, all of Rule; Myrtle Townsend of Rochester; Sonja Scruggs of Denver, Colo.; and a granddaughter, Sherry Tilson of San Saba.

Haskell School Menu

April 11-15
BREAKFAST

Monday: Juice or fruit, cereal, cinnamon toast, milk.

Tuesday: Juice or fruit, breakfast burrito, milk.

Wednesday: Juice or fruit, blueberry muffins, milk.

Thursday: Juice or fruit, biscuits with gravy, sausage, milk.

Friday: No school, District track meet.

LUNCH

Elementary School

Monday: Chili dog, french fries, pickle spears, sliced pears, milk, juice.

Tuesday: Salmon patties, pinto beans, cole slaw, buttered cornbread, fruit Jello, milk, juice.

Wednesday: Beef and cheese burrito, buttered corn, tossed salad, banana pudding, milk, juice.

Thursday: Submarine sandwich, french fries, vegetable sticks, juice treats, milk, juice.

Friday: No school.

LUNCH

High School

Monday: Hamburger or chili dog, french fries, pickle spears, salad bar, sliced peaches.

Tuesday: Hamburger or salmon patties, french fries, pinto beans, salad bar, cole slaw, fruit Jello, buttered cornbread.

Wednesday: Hamburger or beef and cheese burrito, french fries, buttered corn, salad bar, banana pudding.

Thursday: Hamburger or submarine sandwich, french fries, vegetable sticks, juice treats.

Friday: No school.

Note: Milk and tea offered daily.



Winners

Winners in the Easter Hat Parade at Rice Springs Care Home were Lucile Knight and Roma Williams with Velma Turner as runnerup.

Indian golfers in good position

The Haskell Indian golf team finds itself in good position after the first round of district play.

Haskell shot a team score of 348 to put itself in second place.

Individual scores were Matt Perry 83, Mik Everett 86, Brian Brzozowski 87, Patrick Middleton 92, and Mart Guess 92.

Team scores: Winters 347, Haskell 348, Hamlin 349, Stamford 368, Jim Ned 370, Anson 377, and Rotan 383.


In the girls' competition, Jennifer Burson shot a 123. She is

the only girl from Haskell competing.

Both boys and girls finish the final round of district at Maxwell Golf Course in Abilene next Monday.

Rule student

Shannon M. Langford of Rule is among students on the President's Honor Roll at Texas State Technical College.



TRUCK DRIVER TRAINING

If you are economically disadvantaged & meet other program requirements, you may qualify for free training through the JTPA Title II Program (EOE)

For more information call
1-800-725-6465

*On campus dormitory
*Tuition protection policy
*Nation's top carriers come to us for drivers

ACTION CAREER TRAINING
Call free!
1-800-725-6465
Rt. 3, Box 41
Merkel, Texas 79536

The family of Hubert Hunt would like to thank each of you who helped us bear our recent loss. Your every expression of concern and comfort is deeply appreciated. The flowers, memorials, cards, and food showed us that you cared, and we thank God for loving family and friends.


IRBY DANCE
Saturday, April 9, 1994

8:00-12:00

Music by:
Texas Rhythm Boys

Members and Invited Guests Welcome

Johnson

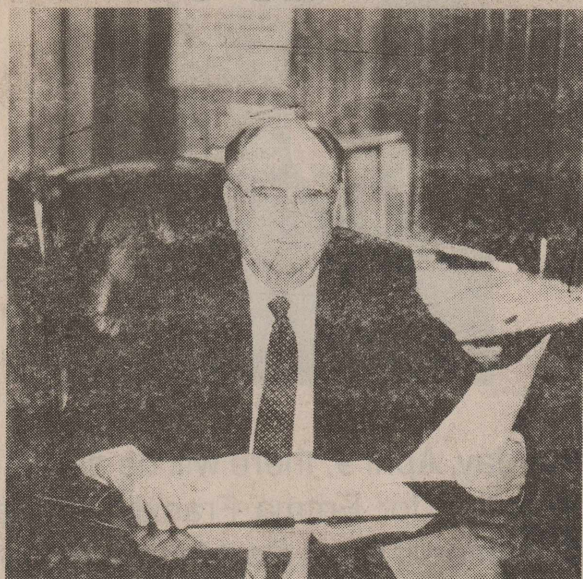


1-HOUR PHOTO

Bobbie Johnson
Owner
Photographer
West Side of Square - Haskell

DANCE
at Rhineland
BAREBACK
of Abilene
Saturday, April 9 \$5.00

9 to 1



Contrary to a rumor circulating in some areas of this county I wish to state positively and definitely that should I be re-elected County Judge, I do not have and never have had any intention of retiring and turning the office over to someone else. It is my desire to serve another full term and I am running on behalf of myself and for no other person. Naming my successor, however and whenever it occurs, is the voters duty and privilege and certainly not mine.

I have not in the past nor will I be

in the future, a party, to anything that is not legal, fair to all concerned and above board. This is my pledge to the voters of this County.

Both sides of my family came to Haskell County before the turn of the century. They were loyal to and served their communities and this county in whatever way possible. They reared their family in this county. We were taught to get our priorities in order, be sober and honest, work hard and contribute to anything that was good and acceptable to all concerned and put back at least as much as you have received. The citizens of this county have been good to me and have allowed me the honor and privilege of serving as County Judge for many years and I have always tried to keep these things uppermost in my mind regardless of whether I am conducting county business or personal matters.

Over the years I have become familiar with every aspect of our county business, and have strived for us to have the best services with the least cost possible. Fair but firm in judicial matters. Whatever time is required to take care of county business is spent, the office of County Judge is not just eight to five. I have taken on week of vacation during the last ten years and whenever a day or two is needed to see after our old folks, grandchildren or other personal matters it is taken also. I have made sure that our county is not short changed on my time.

I am respectfully requesting you to re-elect me to serve one more full term as your County Judge. I am offering a total of twenty two years of on the job training, which should certainly qualify me for the office, I offer whatever time is necessary to fully take care of the duties of the office whether it be eight hours a day or eighteen. I offer continued service with honesty and integrity and county government that is respected throughout the area. This is all I have to offer and I submit these things for your consideration and respectfully request your report to be favorable.

Voting is your constitutional right and duty. Please exercise your right on April 12.

B. O. Roberson

Pol. Adv. Pd. for by B. O. Roberson



SUPER SATURDAY
in Haskell

April 9, 1994

Check Haskell Merchants for in store

Blossoming Good Specials!

Shop Haskell for Great Spring Savings!



Aimee Wood and Jason Martin

Wood, Martin engagement told

Aimee Wood and Jason Martin will be married June 11 at Fielder Road Baptist Church in Arlington.

She is the daughter of Mr. and Mrs. Robert Wood of Arlington and he is the son of Mr. and Mrs. Dean Martin of Monahans.

Miss Wood is a graduate of Martin High School in Arlington and is now attending Hardin-

Simmons University where she will graduate in May 1995 with a degree in elementary education.

The prospective bridegroom graduated from Monahans High School and earned a BA degree in Bible from Hardin-Simmons. He is pastor of Paint Creek Baptist Church.

Happenings...

By Lois Redwine

Attending the Garden Club's District meeting in Snyder on Wednesday, March 30, were Leone Pearsey, Juanita Rhea, Nina Gibson, Gladys O'Neal, Molly Carlisle and Lorene Dewey.

Mr. and Mrs. Jess Leonard spent Easter weekend in Mabank with their son and daughter-in-law, Gene and Patty Leonard, Shelby and Lee.

Spending Easter weekend with Bro. and Mrs. Jim Turner were their daughter, son-in-law and grandchildren, Patti and Roger Cloe, Kelsee and Jayson from Snyder. They attended the First Baptist Church's presentation of "Come to the Table" on Sunday morning.

Bill and Orvetta Muse of Tulsa, Ok. spent the weekend with Mrs. Muse's brother and sister-in-law, George and Faye Gray. On Sunday afternoon, they visited the Gray's daughter and son-in-law, Georgia and Woody Turnbow in Weinert. Also visiting the Turnbows were their son Eric, wife Susan and children from Wichita Falls.

Frances Lee of Wichita Falls spent the weekend with her sister, Gladys O'Neal.

Spending last weekend with Dr. and Mrs. Frank Cadenhead were daughter and family, Diann and Bill Proctor, Angela, Leta and Carrie from Waco, their son and family, J. F. III and Ann Cadenhead, Joshua, Casey and Kati from Vernon and Mrs. Cadenhead's cousin, Cheryl Bailey and her children, Wes, Jon and Anne from Winona, Ms. also, Yuko Hayashi.

Yuko is a young Japanese woman staying with the Baileys and teaching Japanese culture in the Winona elementary schools. On Sunday, in addition to the house guests, daughter and children, Helen Mary Holmes, Neil and Kim and son and family, Dr. Wayne and Yuvi Cadenhead, Jeremy, Christy, Tiffany and Wendy were guests in the Cadenhead home for dinner. They celebrated the Frank Cadenheads 48th wedding anniversary. The family also attended Sunday School and church at the First Baptist Church.

Leone Pearsey spent the weekend in Buffalo Gap with her grandson and family, Glenn and Brenda Casselberry and Hunter.

Visiting last Friday night and Saturday with Clariss Jones were her son and daughter-in-law, Wendel and Peggy Jones from Murchison.

Forrest and Suzane Naylor of Mansfield spent the weekend with her parents and grandmother, Mr. and Mrs. Ervin Frierson and Ozelle Frierson.

Ron and Edith Hilliard of Odessa celebrated their 27th wedding anniversary with a Caribbean cruise on the Crown Princess. Port of departure and return was Port Everglades, Fl.

The E. L. Hilliards were in Abilene at the Wagon Wheel last Wednesday night for square and country line dancing. Leon and Maxine Ivey of Munday were callers.

Spending the weekend with John and LaVerne Mayfield in Weinert were their daughter, Eve-

lyn Mayfield of Dallas and their daughter and family, Alexia and Duane Rimmer, Adrienne, Elyse and Meredith of De Soto. On Sunday afternoon, they attended an Easter egg hunt at the home of Kim and Tommy Bassett, north of Haskell.

Daughter and son-in-law, Charlotte and Vern Foreman and grandsons, Jeff and Justin Stillwell of Odessa spent the weekend at the Foreman Farm in Wayland. Charlotte came over Friday for a short visit. She also visited her son and family, Flint and Lisa Nanny, Trey and Austin.

Wendy Cummings of Abilene spent the weekend with her mother, Neat Bevel. They attended Easter services at the East Side Baptist Church.

Visiting with Susie Mae Jackson last weekend were her daughter, Annie Laura Norman and son, Michael from Anson. They attended the Easter program at the Greater Independent Baptist Church on Sunday.

Visitors in the home of Mr. and Mrs. James Whitaker were their

daughter, Betty Dodkins, her twin sons, Eric and Derrick from Dallas and the twins father, Ernest, from Houston.

Angela Jordan and her mother, Pat Jordan of Stamford visited with Bob and Mac Lou Yeldell.

Willie Lee Thomas had as visitors her grandson, Charles Ervin, great granddaughter, Christina and friend, Beverly, from Dallas.

Visiting with Birdie Benford was son, Rev. F. E. Chenault from Vernon.

The Community Choir was at the Greater Independent Baptist Church last Sunday night.

Foursquare revival set

A four-day revival will begin Sunday at Foursquare Church, 200 S. Ave. F.

Sunday morning services will be at 11 o'clock. Evening services, at 7 o'clock, will continue through Wednesday (April 13).

Services will be held outdoors, weather permitting.

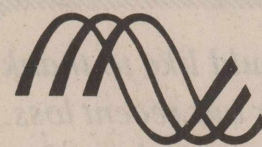
Billy Weaver is the evangelist.

Miracle-Ear®

Listen to What You're Missing

A hearing loss often happens so gradually, you may not even notice it. Call us today and find out what you've been missing.

Walk-Ins Welcome!
Thursday, April 14
11 a.m. - 4 p.m.
Mediplus Home Health
124 S. Swenson
Stamford, Texas



Miracle-Ear®
America's Better Hearing Centers™

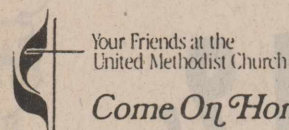
©1991 Dahlberg, Inc.

EASTER



...and everything shall be born anew.

For generations the butterfly has been a symbol of Easter. The ordinary caterpillar, its time among us finished, lies curled in its dark, silent cocoon until, in God's own time, the miracle occurs. The butterfly, loveliest of all creatures, emerges to grace our spring. Easter celebrates the victory of Christ over death and darkness. In God's own time, Jesus Christ emerged from the tomb to grace our lives and share the light of eternity with those who believe in Him and follow His teachings. Springtime. Flowers and trees burst into bloom. The earth-bound caterpillar is transformed into a glorious creature with wings. The graceful butterfly moves among the new blossoms. God gives us a living parable every spring. Come home to the United Methodist Church. New birth. New beginnings.



First United Methodist Church
201 N. Ave. F • Haskell, Texas
817-864-3202

Super Second Saturday

Weekend Special
Blooming Good Sales
Stay Cool in sandals all summer long

\$5⁰⁰ off

All Sandles

We carry these name Brand Sandles:

SAS	Callisto
Soft Spots	Cobbie
Unisa	Dezario
Bass	Old Maine Trotter
Connie	One X

\$5⁰⁰ off

All Keds

Leather and Canvas in New Spring Colors
Prices good April 7th, 8th, and 9th

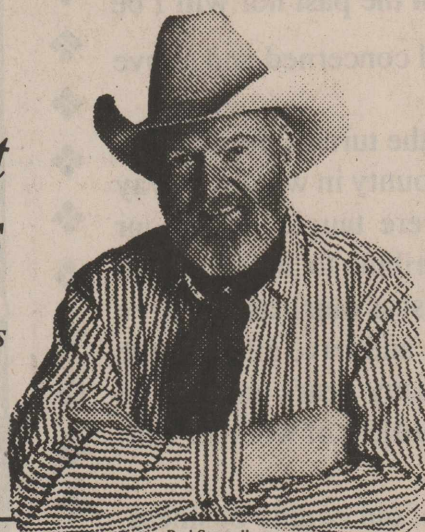
Thursday, Friday, and Saturday • 3 days only

Register for a \$20.00 Gift Certificate • Saturday only

The Slipper Shoppe

East Side of Square Haskell 864-3051

Great Rates on Certificates of Deposit



Red Steagall
Cowboy/Poet, Singer, and AmWest customer

6-Month CD 3.12% Annual Percentage Yield 3.10% Interest Rate	12-Month CD 3.50% Annual Percentage Yield 3.50% Interest Rate
15-Month Texas One-Step CD with a one-time option to increase rate 3.60% Annual Percentage Yield 3.55% Interest Rate	30-Month CD 3.80% Annual Percentage Yield 3.75% Interest Rate

• Monthly Checks Available • \$1,000 Minimum Balance
• Visit an AmWest Representative for more details

Put Your Money on Texas™
AmWest Savings®

HASKELL: 518 South Second, 817-864-8577
ANSON: 1101 East Court Plaza, 915-823-2401

New! Sugar Free Items

- Hard Candies (Asst'd. Flavors)
- Creme Wafers
- Assorted Chocolates
- Country Syrup
- Fudge Sauce
- Fruit Chews

and Fat-Free Brownies

THE DRUG STORE

Did You Know?

Did you know that with a phone from Texas Cellular, you can enjoy the convenience and security of cellular for less than a dollar a day?

Well, now you know.

Other questions? Call Anytime.



TEXAS CELLULAR.

A service of Taylor Telecommunications, Inc.

Albany
500 S. Main
(915) 762-2333

Haskell
512 N. 1st
(817) 864-3269



Sweepstakes winner

The Rule High School math and science team won sweepstakes at the recent state meet in San Antonio. Team members, from left, are Denise Wilson, Michael Murray, Cory Robinson, Allison Pike, Kacy Baitz and Julie Saffel.

Rule team takes sweepstakes honors

The Rule High School math/science team completed its practice season at the Texas Math and Science Coaches Association (TMSCA) state meet in San Antonio Saturday.

The team placed first in team calculator, first in team mathematics, second in team science and second in team number sense.

Rule finished in first place in the sweepstakes competition which totals all the team events.

Team members include Allison Pike, Cory Robinson, Denise Wilson, Kacy Baitz, Julie Saffel and Michael Murray.

Individual winners included: Michael Murray, 9th grade: 4th in number sense, 3rd in calculator, 2nd in math, 1st in science.

Cory Robinson, 10th grade: 2nd in number sense, 1st in calculator, 1st in math, 1st in science, top biology score, top physics score, second chemistry score.

Denise Wilson, 10th grade: 3rd in number sense, 1st in calculator, 2nd in math.

Kacy Baitz, 10th grade: 2nd in calculator, 6th in math.

Allison Pike, 11th grade: 2nd in number sense, 1st in calculator, 3rd in math, 7th in science.

The coach is Jerry Cannon.

--Obituaries--

Anita Dabney

Anita Faye Dabney, formerly of Haskell, died Wednesday, March 30, at her home in Abilene. She was 55.

Funeral services were Friday morning at Elliott-Hamil Chapel of Memories in Abilene with Dr. Bill Bruster officiating. Graveside services were Friday afternoon at Olney Cemetery with Richard Lunsford officiating.

Mrs. Dabney was born in Irving. She graduated from Grand Prairie High School in 1957 and attended American Commercial College. She was employed by Abilene Roofing and Traco Financial and was employed by Am West Savings in Haskell.

She was a member of the First Baptist Church and Sweet Adelines. In Haskell, she was a member of the Extension Homemakers Club and was on the board of directors of the American Cancer Society.

She was the widow of Coy Nelson Payne and Leonard B. Dabney.

She is survived by a son, Randall Ray Payne of Abilene; a sister, Margaret Ann Edwards of Grand Prairie; an aunt, Flora McHugh of Dallas; and a step-grandson, Jay Hancock of Bogata, Texas.

Memorials may be made to Hospice of Abilene, P.O. Box 1922, Abilene, TX 79604.

Nora Kline

Nora Anne Druessedow Kline died Wednesday, March 30, in San Antonio. She was 75.

Funeral services were Monday afternoon at Mt. Olive Lutheran Church in San Antonio, officiated by James E. Sturgis, vicar, and the Rev. Eldor Mickan. Interment was in Mission Burial Park North in

San Antonio.

Mrs. Kline was born in Taylor. She moved with her family to Haskell County when she was three. She graduated from Sagerton High School as valedictorian of her class. She attended Texas Lutheran College in Seguin for two years and then received her bachelor of arts in education from North Texas State.

She married Kenneth W. Kline in Fort Worth on July 11, 1950, and taught school until her son was born in 1956. In 1960, they moved to San Antonio where her husband was stationed with the Air Force. They lived in Alaska from 1962 to 1964 when they returned to San Antonio. She was an active member of Mt. Olive Lutheran Church.

She is survived by her husband, Kenneth W. Kline; a son and daughter-in-law, Andrew S. and Judy Kline; three sisters, Ethel Enloe of Fort Worth and Lilly Peiser and Henrietta Fischer, both of Haskell; a brother, Bobby Dean Druessedow of Abilene; and a grandson, Brooks Booker Kline IV. She was preceded in death by a brother, Henry Druessedow Jr.

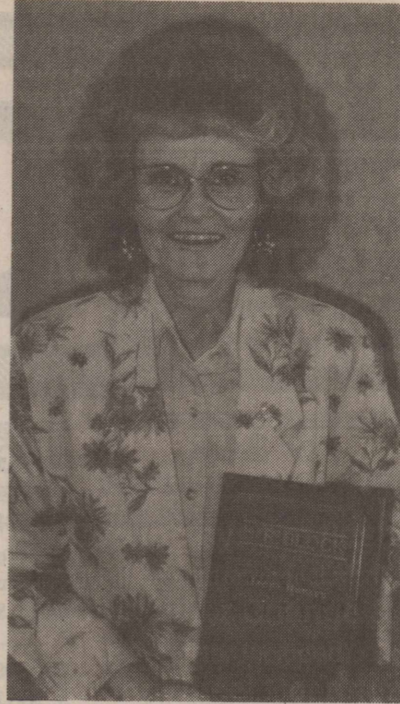
New Tiger Cubs to be registered Tuesday night

Haskell Cub Scout pack 136 will have a rally to register kindergarten students as Tiger Cubs on Tuesday, April 12, at 7 p.m. at the Scout Hut. (The Scout Hut is west of the City Park behind the American Legion building.)

Each boy must be accompanied by a parent in order to register.

All boys who wish to participate in the summer events must be registered.

Tiger Cubs is a program of the Boy Scouts of America in which a boy participates in monthly meetings with a parent as a partner.



Leona Hanson
Employee of the Year

Block employee gets award

Awards for outstanding work were given out at the annual party for H&R Block employees from district satellite offices and the Abilene company office, held March 26 at Lytle Bend Ranch in Abilene.

The satellite region includes Anson, Breckenridge, Brownwood, Coleman, Eastland, Haskell, Hamlin and Sweetwater.

The Outstanding Employee of the Year award was presented to Leona Hanson from the Haskell office. She has been employed for seven years at the H&R Block office owned by Evelyn Cobb.

Hydrogen (63 percent) and oxygen (25.5 percent) are the most common of the 24 elements that are normally part of the human body.

Journalism scholarships available

Applications are being accepted from high school seniors and senior college students for two \$500 journalism scholarships, according to Don Comedy, publisher of The Free Press.

West Texas Press Association will present scholarships to two future journalists whose career goals include working with a community newspaper.

Through the Bob Craig Memorial Scholarship program, named in honor of longtime Hamlin publisher Bob Craig who died in 1981, a graduating high school senior and a college student will be presented \$500 scholarships.

The scholarships will be divided into payments of \$250 per semester for two semesters for each of the two scholarship winners. The winners must be enrolled in at least three hours of college or university journalism courses each semester that the scholarship is awarded.

Each applicant must fill out an application form and write an essay based on the theme, "My Future and Career Plans in Community Journalism."

Applicants, who must be from the West Texas area, may secure forms from the high school journalism department or counselor or the local newspaper.

Applications and essays must be sent to M. Gene Dow, WTPA Scholarship Chairman, P.O. Box 1200, Seminole, TX 79360, and be postmarked on or before June 15, 1994.

Scholarship recipients will be chosen by WTPA directors at the association's annual convention July 21-23 in Wichita Falls.

Thank you for reading The Haskell Free Press.

Dance at Macias Ballroom

Hiway 277 South

Triple Shot

Saturday, April 9

8:30-12:30

The family of Robbie Pitman wishes to extend appreciation to the Doctors, Nurses, and EMS for their care and thoughtfulness shown to our Mother when she was so ill. To all who sent flowers, food, memorials, and cards, we thank you.

May God Bless You,
Anita Medford and Family
Janis Blackburn and Family
Jennabeth Kernahan and Family

TAX PLANNING

Written By
James E. Rodgers, CPA



The Taxing Side of Disasters

Earthquakes, fires, hurricanes, and other disasters annually disrupt the lives of millions, and threaten millions more. Even when they cause no injuries, these disasters can collapse many financial foundations. Yet buried amid the rubble is help; lower taxes.

Qualifying losses. To deduct a disaster loss, the victim must meet certain criteria. First, the loss must be "sudden and unexpected." (An earthquake qualifies, but termite damage does not.) Second, the taxpayer must own or be contractually liable for the loss property. Finally, the loss must be adjusted for insurance or other reimbursement received.

Tax relief. The taxpayer must first determine the amount of the loss for tax purposes. (A special computation is required.) The tax loss qualifies as an itemized deduction to the extent it exceeds 10% of adjusted gross income. (Business losses do not have these restrictions.)

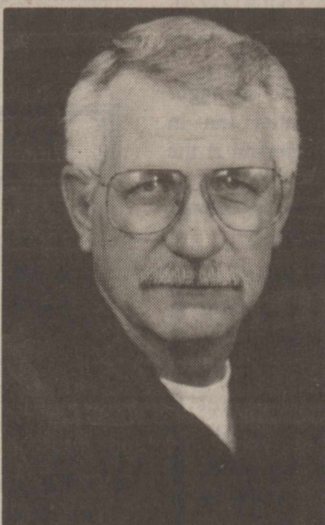
If the loss occurs in a federal disaster area, the taxpayer can file for an immediate refund from the prior year taxes. For example, victims of last year's flood could have obtained an immediate refund from 1992 taxes, though their losses occurred in 1993. To benefit most from the special disaster area rules, the taxpayer must compare the loss's impact on two separate tax returns—the return for the year in which the disaster occurred and the prior year's return.

Recent changes. The 1993 tax law allows more time to replace a personal residence destroyed in a federally declared disaster. Taxpayers who receive an insurance settlement that exceeds the tax basis of the property now have four years to purchase a replacement home (rather than the two years allowed under prior law).

A final note: Even if your loss does not qualify under the "disaster" rules, you may still qualify for a tax break under other provisions of the tax code. Give us a call.

RODGERS & COMPANY

Certified Public Accountant
20 Southwest Third Street
Hamlin, Texas



Elect E. L. (Elmer) Adams

Commissioner
Precinct 2
Haskell County

Your Vote will be Appreciated!

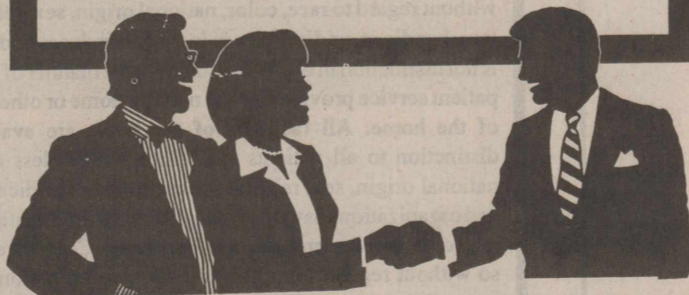
Pd. Pol. Adv. Pd. for by E. L. Adams

Your One Stop For Financial Services

Save time and money when you bank with Farmers National Bank. FNB offers a variety of financial services just for you.

Our aim is to provide fast, efficient, friendly service at reasonable prices, and make the best investment of your time and money.

Let us help you develop the right combination of financial services to best suit your needs. And remember, each depositor's funds are insured up to \$100,000.00 by the Federal Deposit Insurance Corporation.



Post Office Box 10
Phone (817) 997-2216
Rule, Texas 79547



A message from the ABILENE EYE INSTITUTE & CATARACT SURGERY CENTER DEDICATED TO EXCELLENCE

We specialize in cataract surgery with intraocular lens implant and routinely use the small incision phacoemulsification technique. We have 2 modern, fully equipped operating rooms each with its own Zeiss operating microscope and Phacoemulsifier. We also have an observation room so that family and friends may view the surgery while it is happening. Our ambulatory surgery center is State licensed and Medicare approved. We have performed over 3,000 cataract implant operations since 1987. Our doctors accept Medicare Assignment and we think you will find our fees very competitive with most hospitals. Our friendly, dedicated staff is available to answer any of your questions. If you need transportation, we can help.

Robert W. Cameron, M.D., F.A.C.S.
Paul B. Thames, M.D., F.A.C.S.
H. Miller Richert, M.D., F.A.C.S.
Vincent J. Priestner, M.D.
Kerry C. Preston, O.D.

2120 Antilley Road, Abilene, TX 79605
3/10 mile west of Humana Hospital
915-695-2020 or 1-800-692-2020