

1/1/95  
Baze Book Binding  
514 W 7th St  
Amarillo TX 79101-2212

Amarillo--CCCCC  
End Of Amarillo  
Amarillo Bag TX 79100

3

# Thanksgiving

## HASKELL FREE PRESS

50¢

©November 24, 1994 Haskell Free Press, Inc.

HASKELL, TEXAS 79521, November 24, 1994

VOL. 108--NO. 47

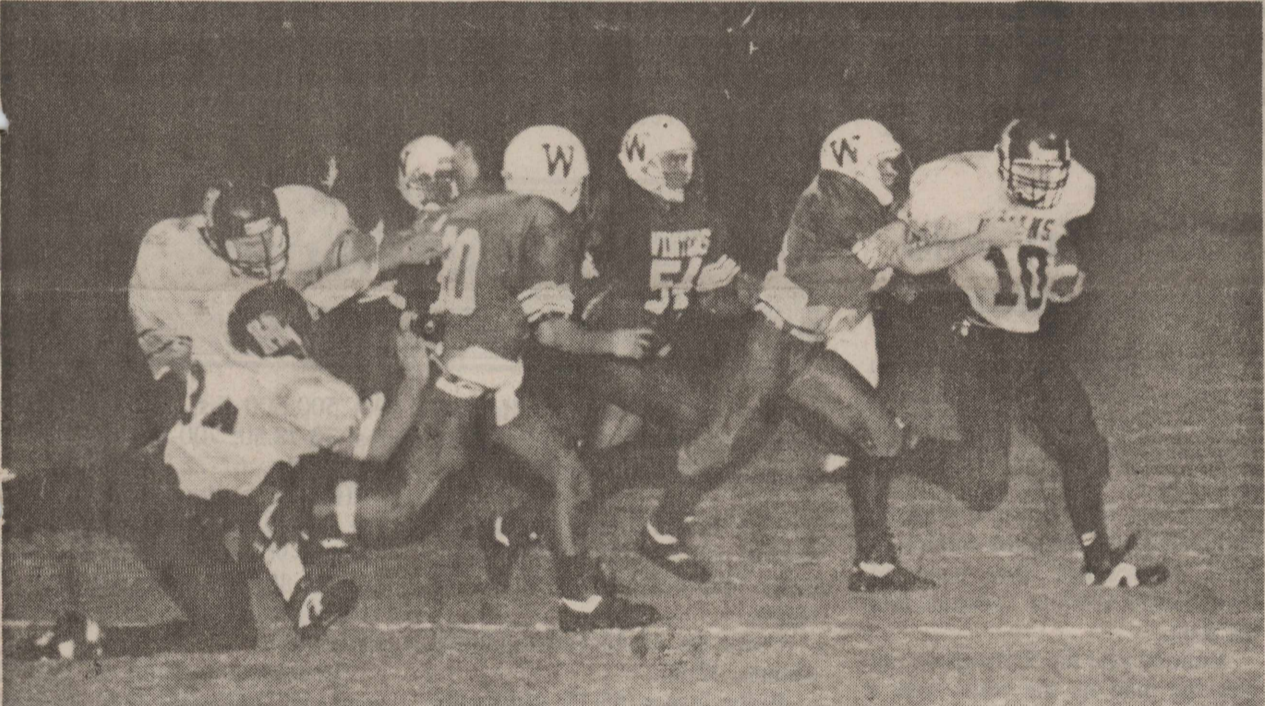
12 PAGES-ONE SECTION



### Salute from the Indians

The game was over, but the 1994 Haskell Indians still hadn't lost their spirit after coming up short in the area playoff game against Winters Friday night in Brownwood. The Indians, the first Haskell team to win

nine games since 1983, were raising their helmets in salute to their fans as the Haskell High School song was played by the band following the game.



### Leading carrier

Casey Larned (10) fought for 64 yards for the Indians in Friday night's loss to Winters in area Class AA playoff competition. Larned was the leading carrier in the

game, getting 17 more yards than the Blizzards could muster in the game on the ground. Winters was forced to go to the air to move the ball against Haskell.

## Mistakes costly as Indians end season

The Haskell Indians fought the powerful Winters Blizzards to a virtual standoff for most of the first half Friday night in the area playoff game played in Brownwood, but Winters' second touchdown with just 34 seconds left in the half set the scene for a 32-0 victory for the Blizzards.

Again Belew did most of the damage in the air, then scored himself on a fourth down run up the middle with only 34 seconds left in the half.

That touchdown put the Indians in a deep hole against the strong Winters defensive unit.

Winters broke the game wide open in the third quarter with two quick defensive plays.

Biddix picked up a fumble and raced 64 yards for the third Winters touchdown. That mistake was followed quickly by a blocked punt

which was returned 25 yards for a score by 270-pound tackle Cody Whittenburg.

The final Winters touchdown came in the fourth quarter with a nine yard pass to Biddix.

GAME STATS		
	Haskell	Winters
First Downs	5	13
Rushing	33-122	32-47
Passing Yards	42	211
Passes	4-12-1	12-21-0
Punts	5-32	5-30
Fumbles lost	2-2	0-0
Penalties	2-20	5-50

### 'My Interest Fair' staged by students

The fourth, fifth and sixth grade gifted/talented classes at Haskell Elementary held a "My Interest Fair" Thursday, Nov. 17.

Students worked with their parents to prepare a display of something in which they had a special interest.

The 31 displays included hunting, sports, dinosaurs, music, doll collections, George Strait, dolphins, Laura Ingalls Wilder, a live insect collection and much

more. Students stood beside their displays and answered questions concerning their displays from the many relatives and friends who stopped by.

Gifted/talented teachers said, "We would like to say a big thank you to the students and their parents for their hard work in making the fair a success. Special thanks also to all who came by to support these young people."

### Blood drive successful

The final Haskell County Bloodmobile of the year was an outstanding success. The longer drive hours and extra professional help provided by the American Red Cross allowed the tremendous turnout of 54 "Holiday Heros" to get in and get out in record time.

The large number of first time Haskell County Red Cross blood donors was most encouraging. Five first time high school donors were Randall Martin, Katy Martin, Nacole Lefevre, Brandi Briles and Tara Moeller. Other first time donors were Dan Cowperthwaite, Geovanny Mayen, Teresa Ryan, Tom Bassett, Linda Thurman, Janis Briggs, Meribel Fernandez, Guadalupe Rivera, Jane Harvey, Missy Harris, Delight Jones, and Leon Jones. These first time donors help to replace long-time donors who have moved away or who are no longer able to give.

One donor joined the eight gallon club, Lester Hutchinson donated his 69th pint. Glenn Brzozowski and Bill Swinney were six gallon club members each with his 54th pint. Five gallon club members are Alice Yates, 43 pints and Brian Burgess, 40 pints. Four gallon club members are Cathy Bartley 35 pints and Mike New 32 pints. Three gallon club members and Donna Cole 28, Jean Kemp 28, Lois Howard 26, Gene Long 24. Two gallon club members are Kim Crawford 23, Linda King 22, Albert Thane 21, Gwen Unger 20, Verda

### ACS committee election delayed

This year's election for positions on the Haskell County Agricultural Stabilization and Conservation (ASC) Committee, which was to be held in December, is being rescheduled to accommodate changes brought on with last month's enactment of the law to

reorganize the U. S. Department of Agriculture (USDA).

According to Glenn Brzozowski, Haskell County ASCS executive director, the change in the election schedule is nationwide and is authorized under regulations issued by USDA. Current members of ASC committees will continue in their posts until the new election is held next fall.

### Child Welfare in need of gifts

The Haskell County Child Welfare Board is now accepting Christmas donations for families and children in need. Donations of money, clothing, and toys are welcome.

Donations may be brought to the Department of Human Services or mailed to the Haskell County Child Welfare Board, P. O. Box 817, Haskell, TX 79521.

The law, which reorganized USDA, created a new agency, the Farm Service Agency, which encompasses all of the commodity support and basic conservation programs of the former Agricultural Stabilization and Conservation Service (ASCS), all of the risk management programs of the Federal Crop Insurance Corporation (FCIC), and the farm lending activities of the Farmers Home Administration (FmHA).

Brzozowski said the new committee system, when fully implemented, will exercise increased responsibilities in its enlarged role.

"Rescheduling the elections on a nationwide basis avoids confusion which could occur from hastily drawn rules and regulations," Brzozowski said, "and will create efficiencies by using funds which would have been spent on this year's election process to be used in training committees in performing their added duties."

### Ham give-away promotion begins

Twenty lucky families will be getting free hams for their Christmas dinner tables.

Twenty Haskell businesses are announcing a 5-week promotion in today's Free Press. It's simple. Just turn to the two-page ad in today's newspaper and follow the simple rules.

Each of the participating businesses will have drawings at noon Dec. 23, and each store will give away a free ham. Registration forms and complete rules may be found in today's Free-Press.

Participating in the program are: Barbara's, The Drug Store, Heads or Tails Western Wear, F&D Electronics, The Carousel, Sue's Flowers-Gifts-Photography, Pedler's Village, Lane-Felker, Sport About, Double A Drive In.

G&G Carpets, Merle Norman, Haskell Tire and Appliance, Boggs and Johnson, Country Daizie, The Sweet Shop, Modern Way, Hassen's, Carpet Express and The Personality/Slipper Shoppe.



### Talent on parade

Fourth, fifth and sixth grade gifted/talented students held a "My Interest Fair" Thursday at Haskell Elementary. Students stood beside their display to answer

questions from the many relatives and friends who stopped by. Each student prepared a display of something in which they had a special interest.

# Bill Hager honored on ninetieth birthday

Walter Richard (Bill) Hager Sr. was honored with a surprise 90th birthday party Sunday by his family.

Born Nov. 15, 1904 Mr. Hager married Bertha C. Mickler Oct. 2, 1921 in Jones County, where they have lived all of their married life. The party was given at their home 12 miles east of Stamford.

A large family dinner prepared by his family included a beautiful birthday cake. Those attending enjoyed visiting and watching how excited "Pappy Bill" and "Mama Hager" were to have most of their family together with them. The couple has five sons and two daughters.

Those attending were W. R. and Joyce Hager Jr. of Weinert and their children, Sue Stewart, Heather and Justin; Kim and Bobby Howard, Mindy and Rusty, all of Haskell; Stanley and Brenda Hager, Eric, Angela and Jeremy of Weinert.

Kathy Hager of Houston was unable to attend but called "Pappy Bill" during his party.

Kay Hager and Krystal of Lueders and David and Leslie were unable to attend; Jay and Joan Hager, Shayla, Ross and Marissa of

Stamford; Merrick and Tiffany Hager and Bailey of Lubbock were unable to attend. These are Jack Hager (deceased) and Pauline Hager Watts' three sons and their families.

Also attending were June (Hager) Neff of Abilene, her daughters, Melanie and Brock Carter, Chad and

Adams and Tricia Garrett, all of Abilene.

Chris and Joyce Hager of Stephenville, his sons were unable to attend, Mark and Janie Hager and Christina; Stacy and Christa Hager and Nicole.

Don and Tanis Hager of Paris, their daughter Letitia of Abilene and her friend, J. T.

Dolly and Sharon Hager of Brownwood were unable to attend, and their children, Doug Hager, Tim and Carol Hager, Cassie, Zachary and Benjamin, all of Brownwood, were also unable to attend. Cindy and Gary Rinehart, Ashley, Angela and Allison, all of Stephenville, were also unable to attend.

Margaret Ruth (Hager) Kiker and family of Denver, Colo., were also not able to attend.

Also attending was "Pappy Bill's" niece, Margie (Mercer) and Zaven Masoomian of Plano.

Including "Pappy Bill" and "Mama Hager" there were 38 who attended the party.

A family spokesman said, "Bill Hager is very loved by all of his family. Everyone would have loved to be able to attend, but we are sure he was in everyone's thoughts. We wish him many happy birthdays with lots of love."



BILL HAGER SR.

## -BIRTHS-

Mr. and Mrs. Bryan Middlebrook of McKinney have announced the birth of their daughter, Haley Nicole, on Saturday, Nov. 19, 1994. She weighed six and one-half pounds and was also welcomed by big brother, Josh.

Grandparents are Mrs. Clarice Hickman of Blue Ridge and Mr. and Mrs. Bill Middlebrook of Haskell.

Bryce Christian Eudy was born Oct. 27, 1994, at 5:46 p.m. at Denton Regional Medical Center in Denton.

The youngster weighed eight pounds, five ounces and was 20 1/2 inches long at birth.

Parents are Shawn and Melissa Eudy of Aubrey. Maternal grandparents are Melba and Jerry Lowrance of Haskell and Les and Sharon Watland of Denton. Paternal grandparents are Shirley Eudy of Amarillo and John Eudy of Amarillo. Maternal great grandparents are Lucille Petty of Winnsboro and Alice Lowrance of Haskell. Paternal great grandparents are John and Charlene Eudy of Amarillo.

## Temporary jails now permanent

What started as a temporary plan to cope with a long hot summer in overcrowded jails has become a permanent asset of 5,700 new jail spaces in 17 counties.

Lt. Gov. Bob Bullock said the permanent gain from the temporary plan represents the best of cooperation between counties and the state.

Bullock said the \$30 million put into the plan by the state "was a refreshing change---funding without mandate or strings."

County officials say the plan saved lives and property.

## Moderation urged in holiday eating

For people who suffer from indigestion during the holidays, relief is spelled m-o-d-e-r-a-t-i-o-n.

"The holidays are a common time for people to get indigestion," said Dr. Alan Buchman, assistant professor of medicine at Baylor College of Medicine in Houston. "You can avoid ruining the festivities by being careful about how, when and what you eat."

Acid indigestion, or heartburn, is often caused by a backflow of stomach acid into the esophagus, a long tube connecting the throat and stomach. Buchman says indigestion can usually be avoided by not eating late night meals, eating at a casual pace, and cutting back on certain foods.

If you eat holiday leftovers late at night, the esophagus cannot clear out the acid before you go to sleep," Buchman said. "When you lie down flat, there is no gravity to help the esophagus force out the acid."

Holiday revelers should keep fatty foods to a minimum, says Buchman, because they may increase the risk of heartburn.

"The fat in creamy sauces and other foods can cause acid build-up," said Buchman, who is also director of nutrition support services at Baylor.

Heartburn signs to watch for may include a burning sensation in the chest or throat, nausea, coughing while eating, and difficult or painful swallowing.

Antacids usually relieve heartburn symptoms, but if they are taken regularly, they can cause constipation or diarrhea.

"Don't put off seeing a doctor if the pain becomes severe," Buchman said. "If the pain is continuous, more pressure than burning or the pain radiates to jaw or arm, seek medical help immediately. You could have ulcers, gallstones or a heart attack."

For a heartburn-free holiday, Buchman recommends the following:

--Eat small meals.  
--Avoid or cut back on caffeine-containing products like cola, coffee, tea, chocolate, mints, aspirin, cigarettes and alcoholic beverages.

--Refrain from wearing tight belts or other restrictive clothing.  
--Do not bend over immediately after eating.

--Wait at least one hour before lying down after eating.

"It's unrealistic to stay away from rich foods during the holidays," Buchman said, "but use common sense and don't overdo it."

## Stenholm seeks house whip post

Congressman Charles Stenholm, one of the most conservative members of the U. S. House of Representatives, has announced his candidacy for Democratic whip in the 104th Congress.

"On November 8th the nation's voters unequivocally told Congress they wanted change, and I believe the Democratic Party must redefine itself if it is going to win back middle America's voters," said Stenholm. "We have dangerously reduced the Big Tent of the Democratic Party to a Pup Tent and a great number of Americans fell left out in the rain."

As the founder and coordinator of the Conservative Democratic Forum (CDF), Stenholm has worked tirelessly to bring a conservative perspective to the Democratic Party.

Stenholm observed that the election results were not only a referendum on the Clinton Administration, but also a message from the electorate that it is time for the Congress to change both the way it does business and the direction in which it is taking the country.

## --Market Report-- Haskell Livestock Auction

The market at the Haskell Livestock Auction was 1,338 head of cattle at its sale Saturday.

The market was steady on stocker and feeder cattle. Packer cows and bulls were \$2 to \$3 higher.

Cows: fat, 37-42; cutters, 38-46; canners, 32-40.

Bulls: feeder, 65-75; utility, 50-58.

Steers: medium and large frame No. 1, 200-300 lbs, 95-110; 300-400 lbs., 85-100; 400-500 lbs., 80-

90; 500-600 lbs, 75-85; 600-700 lbs, 70-78.50; 700-800 lbs, 68-75; 800-up lbs., 62-72.

Heifers: medium and large frame No. 1 200-300 lbs, 85-100; 300-400, 80-90; 400-500, 75-85; 500-600, 72-80; 600 lbs up, 67-75.

Bred heifers: medium frame, 400-500.

Bred cows: young to middle aged, 550-700; aged or small, 400-500.

Cows with calves: medium frame No. 1 young and middle aged, 650-800; small or aged, 400-550.

Through my two recent surgeries I would like to say...  
Hello to all my neighbors and friends  
And to all my families too.  
This message of love, I want to send  
To say how much I thank you.  
Thank you for being there,  
And for all of your prayers too.  
Just knowing that so many care  
Each day, they've pulled me through.  
All the beautiful expressions of love  
The flowers are wonderful to view  
The food is like manna from above  
It seems so small to just say "Thank You".  
Joyce Hager

The Law Firm of Whitten & Young, P.C. is pleased to announce: the opening of its Stamford office  
113 N. Swenson  
Stamford, Texas 79553  
915-773-5777  
and the association of  
Kristen L. Fouts with the Stamford office

**Whitten & Young**  
PROFESSIONAL CORPORATION

## Wild horses may be adopted

Approximately 100 wild mustangs will be arriving at the El Paso County Coliseum for a Bureau of Land Management (BLM) adoption. They will be available for adoption to pre-approved individuals on Nov. 19.

To qualify to adopt up to two horses per year, applicants must have a sturdy corral at least six feet high, transportation, shelter and be able to care for the animals.

Applications packets are available from the Bureau of Land Management, 221 N. Service, Rd., Moore, OK 73160, phone (405) 794-9624, or from a local Soil Conservation Service Office.

**IRBY DANCE**  
Saturday  
Nov. 26, 1994  
8:00-12:00  
Music by:  
**Texas Rhythm Boys**  
Members and Invited Guests Welcome

**BUSINESS AS USUAL**

We will continue to do all your printing needs.

We have all the Haskell Commercial Printing Records.

- Business Cards
- Business Forms
- Envelopes
- Rubber Stamps
- Name Tags
- Dealer Tags

Call us at 864-2686  
**Haskell Free Press**

## FCE clubs have big impact

Learners, teachers, shakers, movers are all descriptive of Family and Community Education clubs in Haskell County and throughout Texas and the nation.

Club members make new friends as they learn about literacy, television and its impact on children, new nutrition research, family economics, community leadership, international issues and

other life skills.

Learning takes place through trained club leaders who re-teach lessons they've learned by attending workshops, on field trips and at district, state and national meetings.

Haskell County members are part of 12,000 members in Texas and 300,000 members nationally. Their goal is strengthening families through continuing education,

leadership development and community service.

This year has been declared the International Year of the Family by the United Nations and clubs have emphasized ways for families to celebrate this year. Recommendations include starting a family journal, celebrating family heritage, visiting a historical landmark, inviting another family for dinner, making a family tree, looking at old family pictures, interviewing older adults to find out about their lives, designing a family flag and sharing special heirloom articles.

Special projects in Haskell County include a scholarship for a 4-H'er, contributing money to three 4-H'ers who participate in state level contests or other deserving trips, and sponsoring a concession stand at the Haskell County Junior Livestock Show.

This week (Oct. 9-15) has been declared Family and Community Education Week. If you want to learn more about local clubs, contact the county FCE chairman, Estalynn Liles, at 864-2029.

Haskell Eye Clinic  
**VisionCare**  
ASSOCIATES

Thomas Labbe', O.D.  
Russell Kuempel, M.D.  
Larry Abernathy, O.D.  
-Comprehensive Eye Exams -  
-Contact Lens, All Types -  
-Complete Optical Service -

OUT PATIENT SURGERY  
Including Cataracts with Implants  
Laser Surgery - Glaucoma Surgery  
Medicare & Medicaid Accepted

For Appointment Call • 817-864-3104  
or Call Toll Free 1-800-558-3937  
530 S. 2nd • Haskell, TX 79521

**Johnson**  
KIS  
1-HOUR PHOTO  
Bobbie Johnson  
Owner  
Photographer  
West Side of Square • Haskell

# Saving wealth takes planning

By Dennis Patterson  
Haskell County Farm Bureau

If you anticipate having more than \$600,000 in assets, there are other steps you can take to reduce your taxable estate in order to pass more of your wealth on your heirs.

1. Establish a by-pass trust. This type of trust provides a mechanism for you to pass assets directly to your heirs without the assets being included in the taxable estate of your spouse.

2. Make Gifts. You can give any number of people a gift up to \$10,000 a year (\$20,000 a year if you make a joint gift with your spouse) without paying tax on your gifts.

3. Consider an irrevocable life insurance trust. You can give your life insurance policy and all control over it to a trust and pay the premiums with "gifts" to the trust. On your death the proceeds of the policy are paid to the trust and are not included in your estate. Your family can draw on the trust's income for life and your beneficiaries can eventually obtain the remainder.

### KNOW YOUR WORTH

Don't assume that your estate is too small for you to be concerned

# PCA sets merger

Rolling Plains Production Credit Association (PCA) has entered into a joint management arrangement with Canadian PCA, a step that is expected to lead to a merger of the two associations by July 31, 1995.

Under an employee sharing agreement between the associations, John Rike, president of Rolling Plains PCA, is now also the president of Canadian PCA.

"For some time, directors of Canadian PCA has been studying alternatives to ensure their association's future viability. The decision to share management between these two Production Credit Associations was made in the best interest of the farmers and ranchers we serve," said Rike. "We look forward to the benefits that an eventual merger should yield for our member-borrowers."

A majority of the stockholders of each PCA must give their approval for a merger to occur.

"By forming one association, we will be able to spread our operating costs over a larger loan volume, keep interest rates low and improve service to borrowers," said Rike.

As of Sept. 30, 1994, the two associations have combined loan volume of \$76 million, total assets of \$88 million and total capital of \$22 million. The capital structure of the combined entity would make it the strongest capitalized PCA in the Tenth Farm Credit District, which includes 18 PCAs in Louisiana, New Mexico and Texas.

Rolling Plains PCA, headquartered in Stamford, has 730 member-borrowers in 19 counties. Canadian PCA serves 225 member-borrowers in six counties.

The farmer-owned Production Credit Associations provide short- and intermediate-term credit to farmers, ranchers and agriculture-related businesses.

# THEN & NOW!

(NAPS)—No longer content to exercise in the confines of modern buildings, Americans are spending more of their free time in the great outdoors. Due to this renewed interest in nature-oriented activities, a greater need for advanced equipment that provides comfort and performance has arisen. Responding to this trend, the footwear industry has scrambled to meet the new needs of a rapidly expanding outdoor-consumer base.

Historically expensive and difficult to break in, the traditional outdoor shoe no longer meets all the varied needs of an increasingly demanding consumer. A few athletic shoe companies have foreseen this trend, and modified sport-specific footwear into outdoor shoes that can handle the rigors of nature.

When looking for an outdoor-oriented shoe, it is important to shop for a shoe that will meet the specific needs of an individual's outdoor activities. Depending upon whether one is a hardcore hiker or simply a nature lover looking for a peaceful walk, a specific shoe type should be selected to fit the wearer's needs. Here are a few features to take into account when purchasing outdoor shoes:

**Weight:** Weight becomes a factor after a long day of hiking, when one is trying to push it to the top of the peak. The heavier a shoe is, the greater the amount of energy needed to move the shoe



through the gait cycle. The buyer must determine how much shoe they need.

**Traction:** When venturing outdoors, there is a good chance that pavement ends and mother nature's own trails begin. Due to this fact, it is important to have a shoe that is designed with an aggressive outsole for enhanced traction. This allows the hiker to have greater confidence in traversing whatever terrain may be ahead.

**Cushioning:** Shock absorption and cushioning provides added comfort on the trail. Athletic footwear manufacturers have addressed this need by incorporating their technological advancements into trail shoes. Crossover technologies, such as the ASICS GEL Cushioning System found in the new GEL-HAVOC, make a smooth transition from the track to the trail.

# Six Flags sets holiday in park

The Tasmanian Devil and Santa Claus share the spotlight at the tenth anniversary edition of Holiday In The Park begins at Six Flags over Texas the day after Thanksgiving.

Taz and Santa are featured in two new musicals specially produced for the anniversary event.

Six Flags Over Texas is "Santa Country", one of the largest holiday celebrations in the state and the place to find Santa Claus and all the trimmings.

A 30-foot tall replica of jolly old St. Nick greets guests as they enter the front entrance mall.

The Six Flags family wishes everyone "Happy Holidays" in the colorful, snow-covered musical finale, "White Christmas Memories," every evening at 10:30 p.m. at the park's entrance mall. This stunning performance also includes an elaborate "snowfall."

Most of Six Flags' rides will be open during the holiday festival and a real snow hill is added for sledding.

Lavish decorations which have become the trademark of the

Holiday In The Park include hundreds of thousands of tiny lights, miles of garland and thousands of colorful bows.

An ornate Christmas star glimmers atop the park's Oil Derrick observation tower, and the Texas Chute Out parachute drop is transformed into a 200-foot tall Christmas tree made up of 7,500 lights.

More than 200 choirs will perform throughout the park during the festivities.

Holiday In The Park begins Nov. 25 and will be open Fridays, Saturdays and Sundays until Dec. 16, when daily operation starts. The celebration continues through New Year's Day, with the exception of Christmas Eve and Christmas Day, when the park will be closed.

Operating hours are 4 p.m. until 11 p.m. until Christmas when the park will open at 2 p.m.

There are even special, low holiday admission prices. Regular admission will be \$16.95 and \$8.95 for children under 48 inches tall and senior citizens age 55 and over. Children age two and under are admitted free.



## Rice Springs Care Home Inc.

... Home Away From Home

Providing Care Thru Medicare - Medicaid - Hospice  
Rehabilitation - Social Services - Activities

Ruth Ann  
Klose  
Administrator

Mary  
Walling  
D.O.N.



**Dr. Wm. J. Kemp, Sr.**

On His Election Of  
**DIRECTOR-AT-LARGE**  
**THE TEXAS HEALTHCARE**  
**ASSOCIATION**



The  
Care Home  
That  
Truly Cares

**Rt. 1 Box 640 • 1302 North First**

**Haskell, Texas**

**817-864-2652**

Great News for

## ARTHRITIS SUFFERERS

Now Available



**Amazing  
DR'S CREAM**

DR'S CREAM - a new dual-action formula developed by a group of Doctors now available to relieve the suffering and nagging pain from Arthritis, Rheumatism, Bursitis and Muscular Aches.

**The Drug Store**

100 S. Ave. E  
Haskell, Texas  
864-2515



# DNA big weapon in war on crime

DALLAS—It may start with a drop of blood, a paint chip, a bullet, a piece of clothing or a single hair. What follows is a high-tech scientific manhunt to track down a criminal.

Using genetic testing, for example, forensic analysts at the Southwestern Institute of Forensic Sciences at the University of Texas Southwestern Medical Center at Dallas were able to tell Dallas police that the chances were 5.5 billion to one that they had arrested the right man for a string of recent rapes in the city.

"With less than 5.5 billion people in the world, it was strong evidence that the police had the right man," said Dr. Irving Stone, associate professor of pathology at UT Southwestern and head of the physical evidence unit at the forensic sciences institute. "The man was prosecuted successfully in five cases, with no eyewitness testimony, based exclusively on our DNA results."

DNA analysts from the institute, experts at DNA profiling, did a genetic test of semen collected as evidence from the victims and compared the DNA extracted from it to the suspect's DNA profile. They found an unmistakable match in the DNA, or deoxyribonucleic acid, which contains the blueprint for a person's genetic makeup.

That case is an example of how crime investigators are meshing science, like DNA profiling, with the art of crime solving. Although

DNA profiling, or genetic testing, recently has come to the forefront as a criminal-investigation and legal tool, it has been used extensively by the institute for several years and has helped solve numerous crimes.

Now the institute is using a new technique of genetic profiling called polymerase chain-reaction testing or PCR, Stone said. The relatively new procedure will help crime investigators by shortening the length of time it takes to perform a DNA test.

Traditionally, DNA testing is done with a technique called restriction fragment-length polymorphism, or RFLP. This older technique, developed in 1985, is more precise but takes an average of four to six weeks to complete. RFLP also requires larger samples of blood, other body fluids or tissue.

PCR allows investigators to get results in a matter of days and can be used to conduct DNA tests on degraded fluid or tissue samples taken from the crime scene, Stone said.

"We frequently get degraded samples from decomposed bodies, and PCR is a good technique to aid in the identification of a body," Stone said.

"Also if a person who is a suspect in a case can be processed by the PCR technique and eliminated as a suspect, then police can redirect their investigation," he said.

In both RFLP and PCR techniques, DNA is extracted from blood, other body fluids and epithelial cells, all of which contain nucleated cells with nucleic acid.

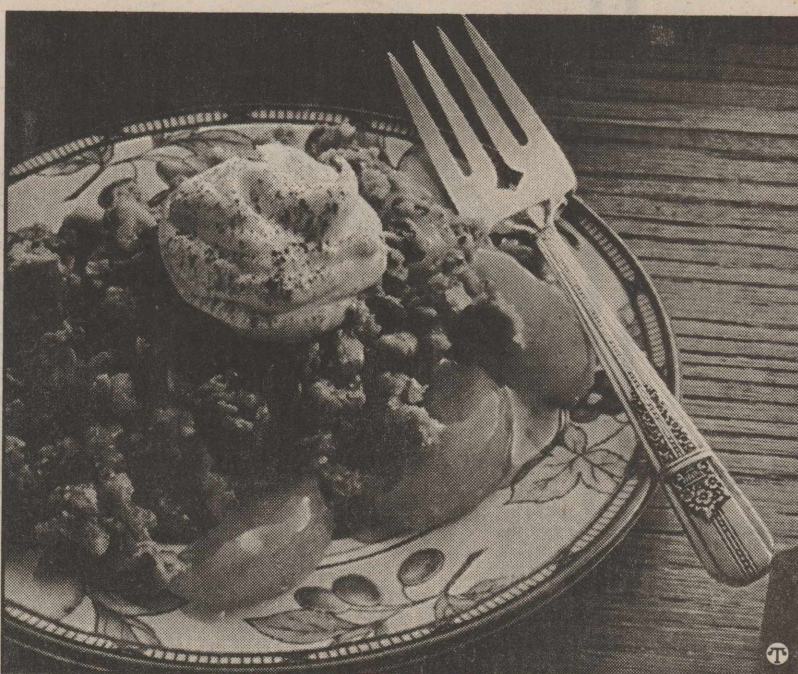
"We have to have nucleated cells in order to perform the tests," Stone said. "Through a series of steps, the end result illustrates a person's genetic makeup as light and dark bands on a piece of film."

Stone added, "If a DNA sample taken from a crime scene matches that of a suspect, then in all probability you've got the person who was at least at the scene of the crime."

The crime lab at the institute is one of about four in the nation in which all of the scientific teams investigating a crime, including the death and crime investigators, are housed in the same building and can interact frequently," Stone said.

"The institute has two functions. In the medical examiner's office, one is the scientific investigation of death, and in the crime lab, the other is the scientific investigation of a crime," he explained.

# Timely Treats— Microwave Apple Crisp



(NAPS)—A major improvement in saving time, money and trouble in the kitchen came in with the microwave oven. There's an increasing number of recipes made just for these high-power ovens. Some can be great accompaniments to your meal.

This recipe for Microwave Apple Crisp offers all the delicious taste of the conventional recipe, yet it's ready in less than half the time. It calls for new Comstock®, Thank You® or Wilderness® More Fruit Apple Pie Filling which has 25 percent more fruit that lets you taste the sweet, fruit flavor every time you bake.

### MICROWAVE APPLE CRISP Total Time: 15 min.

- 1/4 cup (1/2 stick) margarine or butter
- 1/2 cup quick or old-fashioned oats
- 1/4 cup firmly packed brown sugar
- 1/4 cup all-purpose flour
- 1/4 cup chopped walnuts
- 1 can (21 oz.) COMSTOCK®, THANK YOU® or WILDERNESS® More Fruit Apple Pie Filling
- Ice Cream or whipped cream, if desired

Microwave margarine in medium-size bowl or 4-cup measure until melted. Stir in oats, brown sugar, flour and nuts. Microwave on HIGH (100%) 3 to 4 minutes, stirring frequently during last 2 minutes, until crisp and toasted. Pour filling into 9-inch microwave safe pie pan. Microwave on HIGH 3 to 4 minutes, until hot. Sprinkle oat mixture over filling. Serve immediately. Top with ice cream. Makes 6 servings.

# Club told sweetest fruits come from labor

The Brazos West Art Club met Nov. 14 at 7 p.m. in the Haskell National Bank Community Room. The theme for every meeting is "The fruits derived from labor are the sweetest of pleasures".

Kay Franklin, a well known artist, of Graham gave a pastel demonstration. She chose a French scene taken while she was in France. The composition with many flowers was beautiful.

Twelve members were present. Hostesses were Peggy Middlebrook, Laverne Barnett and Gladys O'Neal.

Objectives of the art club are to show the advancement of art and to encourage public interest through group participation and to share

talents. Artists in this area are extended an invitation to come to club meetings on the second Monday of each month. Meetings are held at 7 p.m. in the Community Room.

**Nemir Medical Inc.**

**OLD-FASHIONED SERVICE**

*"By Home Town Folks At A Down Home Price"*

ALL OF YOUR MEDICAL EQUIPMENT NEEDS  
Sales • Service • Rentals • Repairs  
WE BILL MEDICARE & OTHER CARRIERS  
24 Hour Service • Free Area Wide Delivery  
Oxygen Equipment  
Respiratory Therapist On Staff  
510 N. 2nd. • Haskell • 864-2258

Thank You for reading The Free Press

## COUPON

# Country Daizie

Present coupon at time of purchase for a

# 20%

discount storewide

November 25th and 26th only

## Country Daizie

409 S. 1st • Haskell • 864-3781

# Teen scholars can win big

America's National Teen-Ager Scholarship Program, which is celebrating its 24th year as a national scholarship competition, is seeking teenage girls between 13 and 18 years old, to enter the West Texas Scholarship Program and compete for college scholarships and cash prizes worth thousands of dollars.

The West Texas Scholarship Program Finals will be held Sat., May 24 at Wayland Baptist University, Plainview, Texas. Over \$70,000 in scholarships will be awarded on stage during the final program. The Senior and Junior Division award winners will receive college scholarships and a trip to TCU to compete for the Texas State Title.

State winners will receive a trip to the famous Opryland theme park in Nashville, Tenn. in August where they will compete for national prizes, which include a \$10,000 and \$5,000 cash scholarship, trips to Hawaii and tour the United States. Each state award winner will also be eligible to audition for Opryland, USA.

Entrants will be judged on scholastic achievement, leadership abilities, poise, personality and appearance. There is no swimsuit category.

Teenagers wishing to enter the competition should write to Mrs. Terri Marcus-Lager State Director, America's National Teen-Ager, 2557 Meadowlake, Abilene, TX 79602 or call 915-692-4840.

# Skeet Davis presents program on child help

Skeet Dennis presented the program when the Haskell-Jones County Childcare Association met Nov. 14 in Stamford at the home of Cindy Kendrick.

"Appropriate Programs for school age Children" was the theme for the talk.

A pot luck meal was served. All area child care providers are invited to the Dec. 5 meeting to be held in Haskell. For more details those interested should contact Sharon Simpson, association president, at 997-2232.

Childcare providers from Haskell, Rule and Stamford who attended were Laura Adress, Emilia Alvarado, Jeanie Bennett, Shelley Bogle, Denise Dennis, Skeet Dennis, Lois Howard, Cindy Kendrick, Lola Lowe, Nina McClintock, Lesa Meier, Sue Carol Mullen, Sandra Rhea, Sharon Simpson, Melyn Wittenborn and Lynetta Gaines.

## Christmas Open House

Friday, Nov. 25 • 10 a.m. - 7 p.m. • Munday, TX

**Maurine's Country Store**  
Corner of 12th and West Main

**The Homestead**  
Highway 277 South

**Connie's Corner**  
1320 West Main - 2 blocks west of Elementary school

# Thrifty.

Everyone who owns a home of any size in Texas has asked those timeless questions, "How can I lower my home energy bills? How can I lower my taxes?" One answer is propane. Propane is the fiscally correct energy fuel that cooks your food, heats your water, dries your clothes and warms your home. Propane won't waste your hard-earned dollars and it won't pollute our Texas skies. Propane. The clean choice. The clear choice. It can lower your home energy bills. We'll get back to you about those taxes.

**PROPANE**  
THE CLEAR ALTERNATIVE

RAILROAD COMMISSION OF TEXAS  
James E. (Jim) Nugent, Chairman ■ Mary Scott Nabers, Commissioner ■ Barry Williamson, Commissioner  
For more information about propane, call us at 1-800-64-CLEAR

## Santa Knows

Don Comedy • 1-817-256-2000  
Myra Casey • 1-817-256-2010  
Some Restrictions Apply

## There is only "ONE" Place to Shop

Phones Starting at \$59

Toll-Free America

54 Home Counties

**\$50 OFF ANY PHONE**

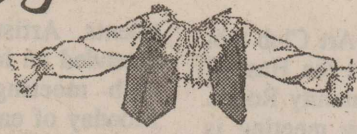
W/This Coupon Expires 12/31/94

Not valid with any other offer.

# CELLULARONE®

304 N. First • 864-8585

YOUR *Holiday Gift Guide*

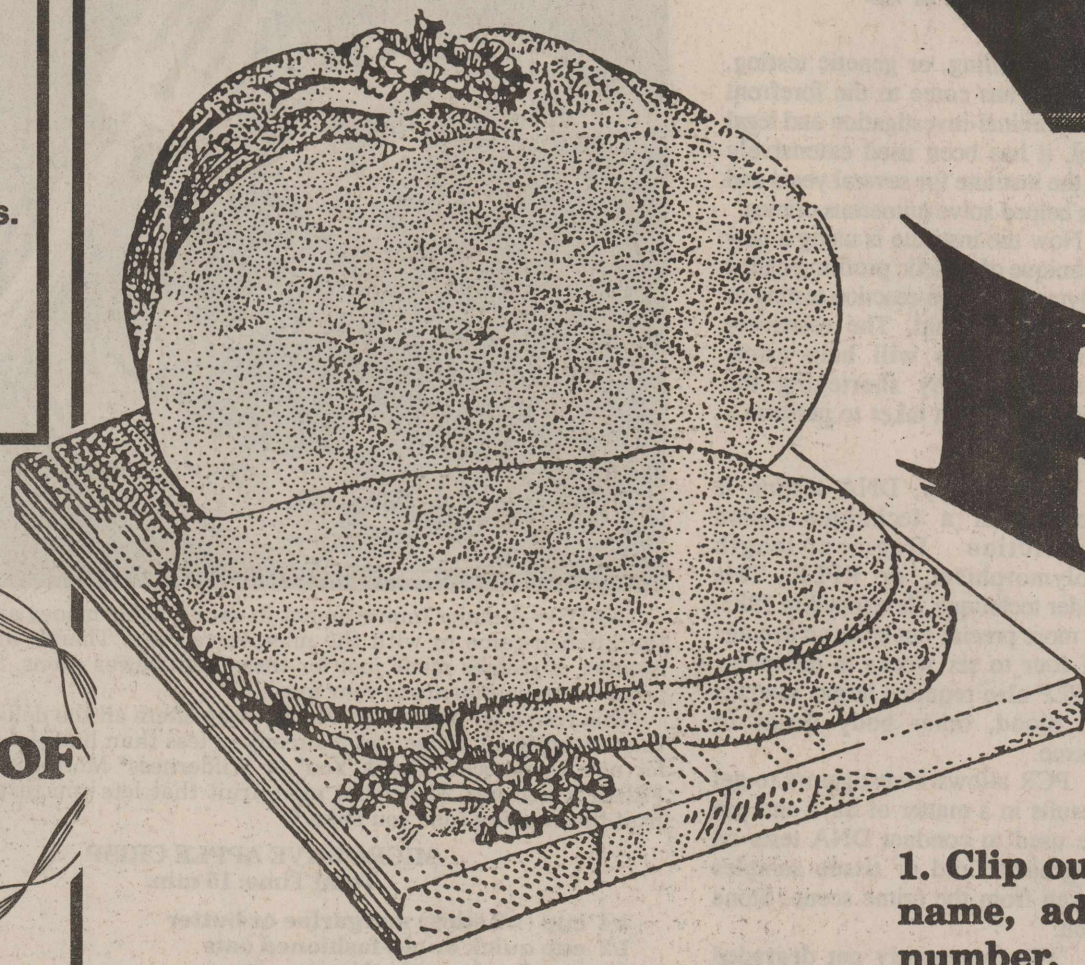


LADIES' VEST  
**\$12<sup>99</sup>**

We have a great assortment of ladies' embellished, valour or beaded vest for your discriminating taste in time for the holidays.  
*Gift Wrapping*

Name \_\_\_\_\_  
Address \_\_\_\_\_  
Phone No. \_\_\_\_\_

**Barbara's**  
416 N. 1st • Haskell • 864-3238



# WILL HAPPEN RULE

1. Clip out the ads, fill in your name, address and telephone number.

2. Deposit each ad in the box at the business listed on the ad. (All entries deposited in the wrong box will be disqualified.)

3. Each store will award one FREE HAM - you need not be

**We'll give you great savings at a FREE HAM when you participate at a participating business.**



**FILL YOUR SLEIGH WITH BUNDLES OF SAVINGS**



**JEWELRY SALE**

Thursday, December 1st

Our wholesale jewelry salesman will have a LARGE SELECTION of costume jewelry

Earrings \$2<sup>00</sup> pair    Fashion Watches \$14<sup>99</sup> and up    Bracelets \$6<sup>99</sup> and up

Name \_\_\_\_\_  
Address \_\_\_\_\_  
Phone No. \_\_\_\_\_

**THE DRUG STORE**  
Haskell • 864-2515



**Backroom Sale**

**\$19<sup>95</sup>**  
or less



**HEADS OR TAILS WESTERN WEAR**

707 South E • Haskell, Texas 79521  
817-864-3320

Name \_\_\_\_\_  
Address \_\_\_\_\_  
Phone No. \_\_\_\_\_



Santa Shops at The Carousel ...

We're not just a Toy Store. We have gifts for all ages.

**TOYS AND COLLECTABLES**



**Carousel**  
TOYS • GIFTS • COLLECTABLES

Name \_\_\_\_\_  
Address \_\_\_\_\_  
Phone No. \_\_\_\_\_



**Peddler's Village**

Crafts, Antiques, Collectables, Clothing & Accessories  
304 South 1st ♥ Haskell  
Mon. - Sat. 10 - 5 ♥ 817-864-2878

Booth Space Available  
2 month & 6 month leases

We would like to thank you all for your support in making our first year a success. We are very grateful to live and work in such a great community.

*Wishing you all a very special Thanksgiving Holiday*

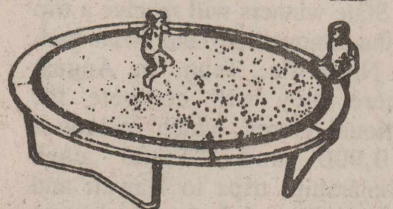
Come by Friday & Saturday and join us for a cup of hot cider while you browse through our unique shop full of Christmas gift and decorating ideas.

Name \_\_\_\_\_  
Address \_\_\_\_\_  
Phone No. \_\_\_\_\_

**Gift Headquarters**

- FREE Weather Cover
- FREE Safety Pads
- FREE Ladder

... with the purchase of **JUMPING TRAMPOLINES**



Cowboy Sweats • T-Shirts

"Where Winners Shop"  402 N. 1st.  
817-864-3891

Name \_\_\_\_\_  
Address \_\_\_\_\_  
Phone No. \_\_\_\_\_

*Christmas Gifting*



**DIGITAL SATELLITE SYSTEM**

- SHARPER PICTURE
- CLEARER SOUND
- GREATER CHOICES
- UP TO 150 CHANNELS OF PROGRAMMING FROM DIRECTV® & USBS®



**F & D Electronics**

512 N. 1st • Haskell, Texas • 864-2536

Name \_\_\_\_\_  
Address \_\_\_\_\_  
Phone No. \_\_\_\_\_

Give a Gift that's Merry and Right.

'Tis the season to give. Do it in style with Teleflora's exclusive bouquets. Beautiful keepsake gifts come with fresh flowers and stay long after the holidays are gone. To send one anywhere, call or visit our shop.



**Teleflora**

*Sue's Flowers Gifts & Photography*

Two Avenue D • Haskell, Texas 79521  
Ph: 817-864-2204 or 800-749-6398

Name \_\_\_\_\_  
Address \_\_\_\_\_  
Phone No. \_\_\_\_\_

*Lane - Felker*

Reduction on Four groups of early Fall Sportswear  
**1/2 off**

Sale runs through December 17  
Ask about our All Weather Jackets lined with Plaid Cotton assorted sizes and colors

Special \$24<sup>00</sup>

Register for a FREE Christmas Sweater to be given away December 3

Name \_\_\_\_\_  
Address \_\_\_\_\_  
Phone No. \_\_\_\_\_

**CATERING for all occasions**



Let us "do" your special affair. We'll relieve you of all arrangement worries and work. Call us at 864-2466.

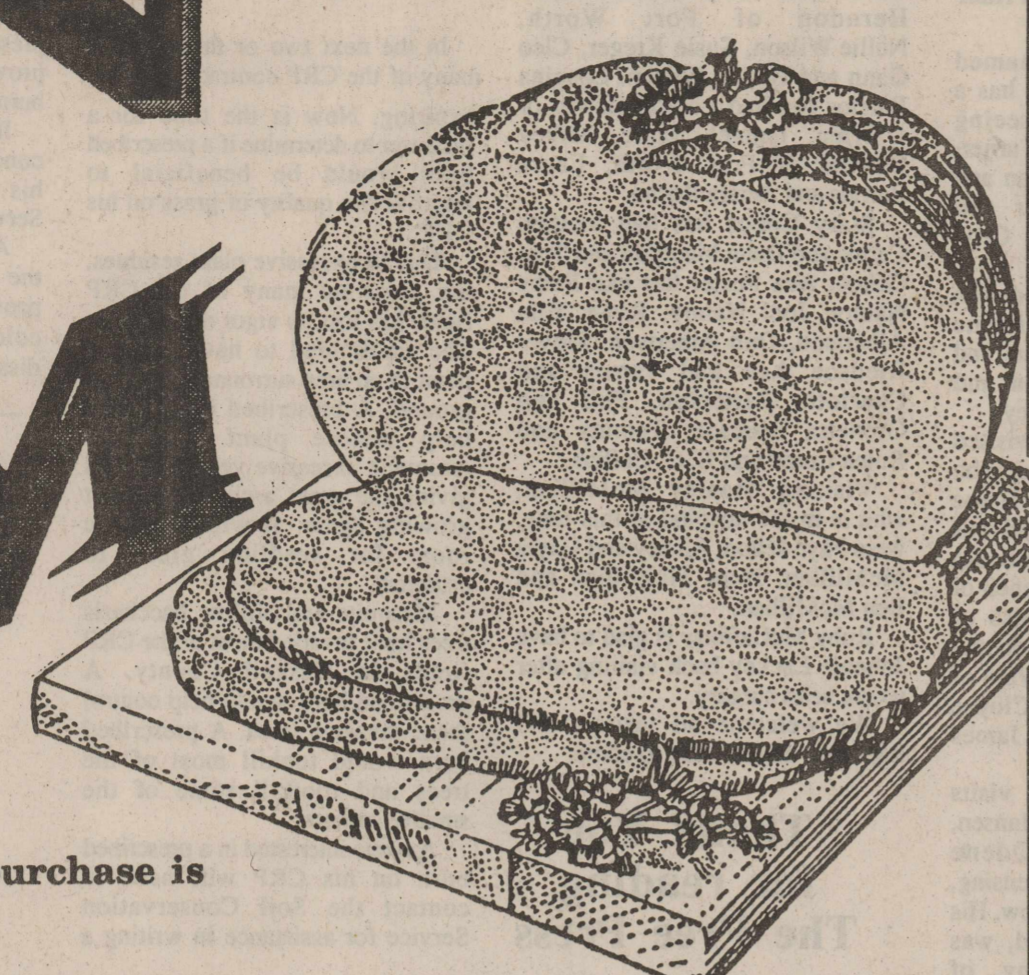
Featuring outstanding service and fine foods temptingly prepared.

**DOUBLE A DRIVE IN**

1103 N. 1st Haskell, Texas

Name \_\_\_\_\_  
Address \_\_\_\_\_  
Phone No. \_\_\_\_\_

# WIN Christmas Prizes



- 1. Present to win, no purchase is necessary.
- 2. Drawing will be held December 23, 1994, at 12 noon.
- 3. Anyone over 16 years of age is eligible to enter (except employees at participating stores and this newspaper.)



... savings and a chance  
... you enter at these  
... businesses!!

### NEW HOLIDAY ARRIVALS

Christmas Vests and Jackets  
Velvet Skirts and Shorts  
Christmas Shoes and Sweatshirts  
Many gift items to choose from

*Free gift wrapping*

Name \_\_\_\_\_ Personality-Slipper Shoppe  
Address \_\_\_\_\_ 413 S. 1st • Haskell  
Phone No. \_\_\_\_\_ 864-2501 • 864-3051

### FILL YOUR SLEIGH WITH BUNDLES OF SAVINGS

### Christmas Guide

Shop Now For Best Selections

**FREE GIFT WRAPPING**  
(Sale items not included)

27 Shopping Days Til Christmas  
Layaway for Christmas

Name \_\_\_\_\_  
Address \_\_\_\_\_  
Phone No. \_\_\_\_\_

**Country Daizie**  
409 S. 1st • 864-3781 • Haskell

A perfect gift for the whole family.

Sales & Installation

- CARPET
- VINYL
- LINOLEUM
- CLEANING SUPPLIES
- TILE
- TURF

Jesse Guadalcazar Jr.  
Res. 864-3577

DUPONT CERTIFIED  
**STAINMASTER** CARPET  
Scotchgard STAIN RELEASE

**G & G Carpets**  
864-3966  
108 N. Ave. D (next to M-System)

Name \_\_\_\_\_  
Address \_\_\_\_\_  
Phone No. \_\_\_\_\_

**GOODYEAR**  
THE BEST TIRES IN THE WORLD HAVE GOODYEAR WRITTEN ALL OVER THEM

Goodyear Tires For Your Car, Light Truck, RV.  
MADE IN AMERICA

**YOUR COMPLETE AUTO SERVICE CENTER**

Famous Lines We Carry

- Appliances
- Dearborn Heaters
- Vacuum Cleaners
- Echo Chain Saws

**Haskell Tire and Appliance Center**

Open 7:30 a.m.-5:30 p.m.  
Monday-Friday  
7:30 - noon on Saturdays  
Lavon Beakley, Owner -Operator  
Kenneth Campbell, Manager

Name \_\_\_\_\_  
Address \_\_\_\_\_  
Phone No. \_\_\_\_\_

**Christmas BAKERY DELIGHTS**

Order Yours Now For Christmas

**Fruit Cakes**

Pumpkin & Banana Bread  
Pecan Pies  
Pumpkin Pies  
Cream Pies

**The Sweet Shop**  
507 N. Ave. E • Haskell, TX.

Name \_\_\_\_\_  
Address \_\_\_\_\_  
Phone No. \_\_\_\_\_

## Gifts

Coupon

Hassen's - Haskell

# 30% off

Take 30% off any one regular priced ladies item in stock.  
Limited to stock on hand,  
No Rain Checks  
Limit One Coupon  
Good Thru Nov. 26th

**HASSEN'S**  
Haskell  
Our 61st year • 1933 - 1994

Name \_\_\_\_\_  
Address \_\_\_\_\_  
Phone No. \_\_\_\_\_

**STOCKING STUFFERS**  
... With Merle Norman/Brushstrokes

The Place for the "Total Woman"

Cosmetics • Hair Salon • Jewelry • Handbags • Nature Scents Candles & Potpourri • Bluebird Collectibles • Gifts • Throws • Baby Items • Greeting Cards by Dayspring • Pictura • Matrix Hair Products

**MERLE NORMAN/BRUSHSTROKES**  
East Side of the Square  
864-8148 • 864-3511

Name \_\_\_\_\_  
Address \_\_\_\_\_  
Phone No. \_\_\_\_\_

**PRE-HOLIDAY SPECIALS**

Lane Chaise Recliner  
Mauve Color - 30% off **\$299<sup>95</sup>**

Ashley Coffee Table  
Southwest Style - 50% off **\$89<sup>50</sup>**

La-Z-Boy Country Blue  
Loveseat - 45% off **\$384<sup>45</sup>**

Four Drawer Chest of Drawers  
Oak Finish - Great Value **\$85<sup>00</sup>**

We Want To Be Your Furniture Store

**Boggs & Johnson**  
East Side of Square • Haskell  
(817) 864-2346

Name \_\_\_\_\_  
Address \_\_\_\_\_  
Phone No. \_\_\_\_\_

# FREE!

2 Liter  
Coca-Cola  
with purchase of  
large two topping  
**PIZZA \$7<sup>99</sup>**  
Extra Toppings 50¢ each

**PIZZA PRO** Modern Way  
IGA  
864-3976  
1202 N. Ave. E • Haskell

Name \_\_\_\_\_  
Address \_\_\_\_\_  
Phone No. \_\_\_\_\_

**BUY NOW FOR CHRISTMAS**

\* NEW CARPET ROLLS \*

Check With Us For Pre-Holiday Savings IN STOCK

- Carpet • Linoleum • Tile
- Also Carpet Cleaning

**Carpet Express**  
30 Years Experience  
15 Ave. E • Haskell, TX 79521

Name \_\_\_\_\_  
Address \_\_\_\_\_  
Phone No. \_\_\_\_\_

## --Rice Springs Care Home--

New faces have helped lighten up RSCH. New faces are Beulah Ross, Pauline Herd, Ada Foster, Alma Merchant and Maggie Dunn. We welcome all of these, plus their families and friends.

Family and friends visiting RSCH since last report include Frances and Wayne Blacklock of Austin, Mr. and Mrs. John Fred Phillips of Abilene, Glenn Merchant and Gene Perry of Big Spring, all with Thelma Atkinson; with Velma Gann and Leola McCollum have been Cleo Gann and Bertha Wilson; with Betty Bruce have been Opal Dunnam, Randolph and Nan Wilson, Betty Berry, Carl Opitz, Milbert and Ladelle Opitz, Emmie and Irvin Overton, who also visited Mabel Witt along with Mabel's nephew and wife, Charles and Cindy Harvey, who are daily plus visitors.

Lillie Lehrmann has enjoyed visits from Doris Lehrmann, Clarey and Helen Lehrmann, Sylvia Tieman, Edgar and Clara Schmidt of Austin, Pearl Schwartz, Adrienne Fouts, Carl and Verneda Opitz, Danny and Lynda Opitz, Jeff and Carol Ann Opitz, Milbert and Ladelle Opitz and Ethel Quade.

Frieda Nehring has daily visits from Dimpel, plus visits from

Hazel Letz, Elva Mae Thigpen, Louis and Adeline Spitzer, Pauline Dick, Marie Kretschmer, Willie Suter, Beunice Vahlenkamp, Barbara Druessedow and Lydia Klose frequently.

Lena Rueffer always enjoys seeing Barbara C. May, Ron Clower, Gay Nell Helweg, Lois Grandy, Lena and Rice Alvis, Ed and Ellen Carien, Ray and Nelda Dippel, Bobby and Barbara Druessedow, Clyde and Ann Williams and Dennis Rueffer, especially when one or all will take her out for a least a few minutes.

Maggie Dunn has enjoyed Gayle O'Berry, Al and Marjory Matak, John and Jean Dunn, all visiting her since she has been admitted.

Mildred Townsend has had visits from Margaret Tanner, Lea May, Betty Berry, Nan and Randolph Wilson. Visiting Erma Marsh have been Peggy Burnett, Rita Hoover, Greg Brenner and her favorite, Dr. McSmith.

Nan and Randolph Wilson and Betty also visited Mary Garner during their weekly Bible study-visit trip. Mattie Lou Cole always enjoys James and Charlotte Patterson, Mae Woodard and Faye Jetton's visits.

Nannie Lou Miller is another

resident who was blessed by visits from Randolph and Nan Wilson, Betty Berry, plus Stephanie Menchae and Pat. Lucy Hunt just sits and waits for visitors. She has been visited by A. D. May, Jim and Lee Cowan, Audrey and Ryan Hunt and Eunice Hunt lately.

Velma Turner, nicknamed "Sunshine" by RSCH staff, has a beautiful smile when seeing visitors Jim and Sammie Turner, A. D. May, Betty Berry, Nan and Randolph Wilson, Palmer and Leola Kelley from Dodge City, Kan.

Mary Glass Carroll visited with Catherine Clifton; Christene Bruton, Wayne Wells, Layne and Doris Wells, Betty Bruton and Cuddles all visited Oleta Bailey.

Christine Bruton also visited Velma Johnson. Cecil Booe, who moved to Munday Nursing Home last week, will be missed and was visited by Willie Floyd, Sondra Davis of Stamford, Bea Mitchell of Munday, Mary Ann Lee also of Munday, Jane Stewart, Marvin and Dean Stiewert, Jeannie R. Wren of Munday, Lillian Hodgkin, Cloyce Mitchell, Munday, Paula, James and Josh James.

Harvey Dudensing had visits from Thelma and Charlie Hansen, Helen Dudensing, Odele Dudensing, Lynn Dale Dudensing, Bobby and Barbara Druessedow. His roommate, Harvie Medford, was visited by Edna Nanny of Arlington, Rebecca Rose Nanny, Zora Medford, Pansy Koenig, Thelma and Charles Hansen, Nevada Hammer, Jerry and Welda Decker, Charles Parkhurst, J. B. Kirby, Jamie Weaver, Johnny Medford, Chorlesee Bates and Sybil Henry.

Several visits by Paula, Christina and Andrew Sammons along with Sue Wright have really lit up Gladys Carruth's days.

Nell Rogers has been uplifted by visits from Mr. and Mrs. Al Alford, Diana Juarez Escalante of Old Mexico, Marvin and Dean Stewart, Lorene Nichols, Dell Anderson and Ioleen Vincent of Lovington, N.M., and of course, her sons nearly daily.

Alma Manger and roommate, Gladys Dyches, have had visits from Marie Townsend and Lorene Boyd. Ocie Garrett has been brighter since Susie Kreger, Sue Frier of Fulberton, Calif., Janoma Rueffer of Bestram, Leta B. Sellers, Jack Sellers, Shirley and James Hudgins have all stopped in to see her.

Vennie Lytle has had visits from Nellie Wilson, Edd and Vennie Massey, John and Denise Halery, Gerald and Johnnie Lytle, Leta Sellers and Sherry Nell.

Jo Marie Barnes has been happy to have Gerald Bird, Frances Bird, Judy Patton and Glenda Gentry visit her during the last few weeks. Taking time out of their days to visit Lena Kreger were Susie Kreger, Connie, Sara, Staci Darden, Minnie Scheets and Frances Scheets, daily visitors, and Deanna Scheets, a granddaughter, who took time to say a quick hi and bye before her wedding.

Lois Rogers has had visits from Francis Crump, Nadine Crump and Jamie Weaver, as well as her

roommate's family who visited her and Tillie Wendeborn. Those included J. C. Wendeborn, Margaret Wendeborn, Wendy Carlton and Ruby Carpenter.

Bea Miller's visitors included James and Mary Carroll, Alice Herndon of Fort Worth, Nellie Wilson, Susie Kreger, Cleo Gann and Bertha Wilson. Longina Barrios has had Loretta Hewitt of O'Brien, Ismael, Janie, Mikey Barrios of Fort Worth, Laura Barrios and Aurara Rocha.

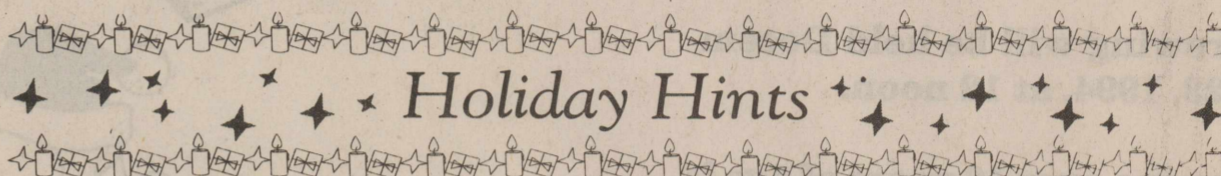
Mary Cobos has had visitors Carlos and Delia Mendoza and Tom Cobos. Ada Foster has had Betsy Nanny, Joel Nanny, Ryan, Ella Albertson, Dub Albertson. Slover Bledsoe has had James and Charlotte Patterson, Phil and Grenetta Bledsoe, Tammy and Bulen Luran and E. C. Collins.

Visiting Stanley McMillian, who is in the hospital at this time, were Faye Jetton, Rickey and Gayla McMillian, Nora McMillian and Ben McMillian.

Ruby McCafferty is glad to have Johnnie Lackey back visiting after recent heart surgery.

We welcome all visitors and hope you all continue to come.

### Thank You for reading The Free Press



### A New Sauce For An Old Turkey

(NAPS)—Everyone loves their holiday traditions, especially their holiday meals. Add a new flair to your favorites with this simple, yet tasty sauce. For example, it may be time to talk turkey to the holiday bird. This scrumptious sauce will add pizzazz to your turkey.

California dates give this sauce its uniqueness. Dates add a special, rich, caramel-like flavor and just the right touch to your favorite meal. Dates are naturally sweet, yet low in calories—only 23 each. They also are a good source of fiber and potassium, yet they are fat, cholesterol and sodium free, making them a nutritious snack as well as a tasty ingredient.

This delicious sauce goes wonderfully with a wide assortment of dishes such as turkey, pork or duck. It can be mixed and matched with main courses and with other foods to create a variety of party menus. By using this simple recipe, you can spend less time in the kitchen and more time enjoying your meals and your guests.

#### HOLIDAY DATE SAUCE

- 1/2 lb. pearl or small (1-inch diameter) onions
- 3 Tablespoons butter
- 1/4 cup sugar
- 3 Tablespoons balsamic vinegar
- 1 cup dry white wine
- 2 whole cloves
- 1/2 teaspoon grated lemon peel
- 1-1/2 cups pitted California dates, coarsely chopped

## Prescribed burning may benefit CRP

In the next two or three years, many of the CRP contracts will be expiring. Now is the time for a producer to determine if a prescribed burn would be beneficial to improve the quality of grass on his CRP.

Due to excessive plant residues, the grass on many of the CRP fields has lost its vigor and quality. The fields tend to have one big plant in an area surrounded by bare ground. A prescribed burn would help restore plant vigor by removing excessive vegetation and giving the grass a chance to start growing again. It will also give room for seedling grass to establish.

Mesquite and willow baccharis trees have invaded most of the CRP fields in Haskell County. A prescribed burn would help control these invasive trees. A prescribed burn would topkill most of the trees and rootkill some of the smaller sprouts.

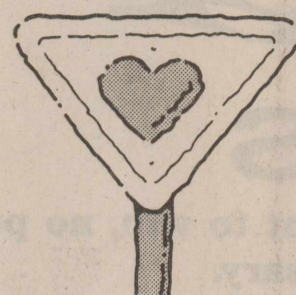
Anyone interested in a prescribed burn on his CRP will need to contact the Soil Conservation Service for assistance in writing a

prescribed burn plan. The SCS also provides assistance on controlled burns if needed.

If a producer has any questions concerning prescribed burning on his CRP, the Soil Conservation Service would be glad to help.

All programs administered by the Soil Conservation Service are provided without regard to race, color, sex, national origin, or disability.

### OBSERVE THE WARNING SIGNS.



Words cannot express our feelings of gratitude to all of our wonderful friends and family who kept us in their thoughts and prayers during this time of our terrible loss. We extend a heartfelt thank you to everyone who brought food or sent flowers. The hard days ahead seem easier to face with the love of our many good friends.

The Oren Howard Family

## Jones-Haskell Eye Clinic

### Dr. Trussell Thane

Appointments Available • Monday through Friday

Dr. Thane is Board certified in the diagnosis and treatment of eye disease. Dr. Thane offers complete evaluation for eyeglasses and contact lenses.

**Frames**  
\$58.00-\$99.00

Your choice of tint \$28.00

**Holiday Special \$25.00**  
(Good through Dec. 31)


Medicare and Medicaid Accepted.

**Contact lenses**  
2 pair daily wear \$159.00

**Holiday Special \$149.00**  
(Good through Dec. 31)

Includes exam, care kit follow-up (Torics for astigmatism and gas permeable slightly higher)

1501 Columbia  
Stamford, Texas  
915-773-2083





**Enjoy the Fruits of Your Labor**

You work hard for your money.  
It's time for your money to work hard for you.

Let our helpful staff work with you to design an investment program that will work best for you. We'll talk to you about the advantages and benefits of money market account, certificates of deposit, IRAs, and other savings and investment programs.

Stop by soon and get ready to enjoy the harvest that will grow from your well-planned investments.

We will close at 1 p.m. Friday, November 25.

Post Office Box 10  
Phone (817) 997-2216  
Rule, Texas 79547

## DANCE

at Rhineland  
**SAGE**  
of Wichita Falls  
**Saturday, Nov. 26**

9 to 1 \$5.00

### HARTSFIELD INSURANCE AGENCY

417 SOUTH 1st • HASKELL, TX

	Yes	No
Homeowners	✓	
Automobile	✓	
Mobile Home	✓	
Boat	✓	
Business	✓	
Farm & Ranch	✓	
Farm Liability	✓	
Life	✓	
Health	✓	

Call or come by the office. I can help you with your insurance needs.

**Bonita "Bo" Tatum**  
South Side of the Square  
817-864-2665


### Pig jackpot at Rochester

Saturday, Dec. 10 has been set as the date for the Rochester Pig Jackpot in Rochester.

Deadline for entries will be Dec. 2. Entries will be limited to 250. Entry forms are available at Allison's Farm Supply and AA Drive In and the entry fee is \$10. Classes for barrows and gilts only include Duroc, Hampshires, Crosses, Chesters/Yorks, OPB.

Weight limits will be 200 pounds with a five pound tolerance. Weigh-ins will be Dec. 9 from 6 to 10 p.m. and Dec. 10 from 7 to 8:30 a.m.

The show begins between 10:30 and 11 a.m.. Show judge will be B. T. Ferguson.



Dear Friends of Jo and The Wilfong Family,

We wish to express our heartfelt gratitude to all of you for the prayers, cards, visits, food, phone calls, flowers, memorials and the many verbal expressions of support.

A very special thanks to Marc and Melisa Robinson for all their kindness and concern shown to us.

Dale Huff and the Church of Christ singers - the message and music was such a blessing to us.

And to the Church of Christ for the love and meal after the service.

Andy & LaQuita  
Blaine & Paula  
Cal & Laurie



# Congratulations

## Haskell Indians

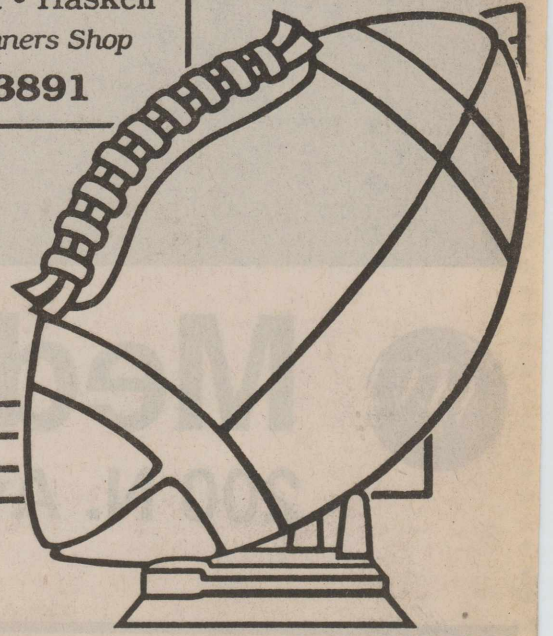
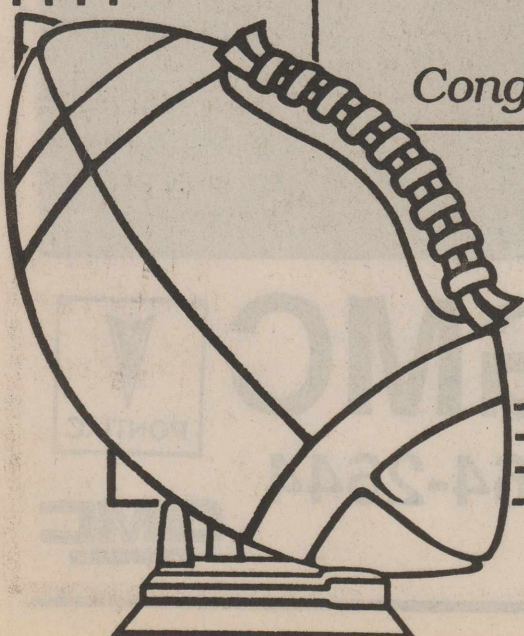
### 1994 Bi-District Champs



1994 Haskell Indians

<b>Rolling Plains Farm Supply</b> Stamford, Texas <b>915-773-2788</b>	 <b>First National Bank of Haskell</b> Member FDIC 200 S. Ave E • Haskell, Texas • 864-8555			<b>Johnson KIS Photo</b> <b>Johnson Real Estate</b> 5 Avenue E • Haskell <b>864-2951</b>
<b>Haskell Save-A-\$</b> Haskell, Texas <b>864-2146</b>	<b>Discovery World</b> Child Care Center <b>864-3723</b>	<b>Carpet Express</b> 15 Ave. E Haskell <b>864-8128</b>	<b>Haskell Butane Co. Inc.</b> Hwy. 277 • Haskell <b>864-2424</b>	<b>Haskell Free Press</b> Serving Haskell County Since 1886 <b>864-2686</b>
<b>Eddie Briles Lindsey's Insurance</b> <b>997-2414</b>	<b>Bill Wilson Motor Co.</b> Way To Go Indians! 864-2611 • 800-749-5576	<b>Rodela Plumbing</b> 110 N. 1st • Haskell <b>864-2460</b>	<b>F &amp; D Electronics/Texas Cellular</b> 512 N. 1st • Haskell <b>864-2536</b>	<b>M-System Super Market</b> 112 N. Ave. D • Haskell <b>864-3033</b>
<b>Larned Sales Center</b> 806 S. Ave. E • Haskell <b>864-2749</b>	<b>The Carousel</b> 415 S. 1st Haskell, Texas <b>864-2069</b>	<b>Medford Buick-Pontiac-GMC</b> 200 N. Ave. E • Haskell <b>864-2644</b>	<b>Sonic Drive In</b> 1402 N. Ave. E Haskell, Texas <b>864-8533</b>	<b>Richardson Case-IH</b> Hwy. 277 N. • Haskell 864-8551 • 800-243-7110
<b>Haskell National Bank</b> 601 N. 1st • Haskell, Texas <b>864-2631</b> Member FDIC Congratulations Indians!		<b>Nemir Medical</b> 510 N. 2nd Haskell, Texas <b>864-2258</b>	<b>The Sweet Shop</b> 507 N. Ave. E Haskell, Texas <b>864-2711</b>	<b>Holden-McCauley Funeral Home</b> Haskell, Texas <b>864-2151</b>
		<b>Personality-Slipper Shoppe</b> 413 S. 1st • Haskell <b>864-2258 or 3051</b>	<b>Fieldan Inn</b> 115 S. Ave. E Haskell, Texas <b>864-2251</b>	<b>Sport-About</b> 402 N. 1st • Haskell Where Winners Shop <b>864-3891</b>

Thanks for a great season!



# Retirees need to keep moving around



Ready to retire? Two experts on aging at Baylor College of Medicine in Houston offer some advice: Keep Moving, and find something you like to do.

"It is almost as if retirement catches some people by surprise," said Susan Shekelle, senior social worker in Baylor's geriatric clinic.

"You cannot just walk up to the door on retirement day and say 'so what now?'"

As a first step, Shekelle suggests finding some enjoyable physical activity.

"A real contributor to aging well is to literally keep moving, physically as well as mentally," she

said. "Find an activity that keeps the muscles in good working order—like walking at a mall or in your neighborhood."

Careful thought as to what will replace work is another essential, says Dr. Naomi Nelson, a psychologist in Baylor's Department of Neurology.

She advises people to look for activities that fill their needs for achievement and accomplishment, not just for something that fills time. "What works for your friends may not be right for you," Nelson said. "Be creative, and look within yourself to find what is best for you."

Activities and hobbies pursued at earlier times in life, Nelson says, may have good ones to pick up again in retirement.

"Be flexible, give yourself permission to try different things and to fail at some things," Nelson said. "You will find out quickly

what you like and dislike."

Acceptance of change also plays a role in positive aging.

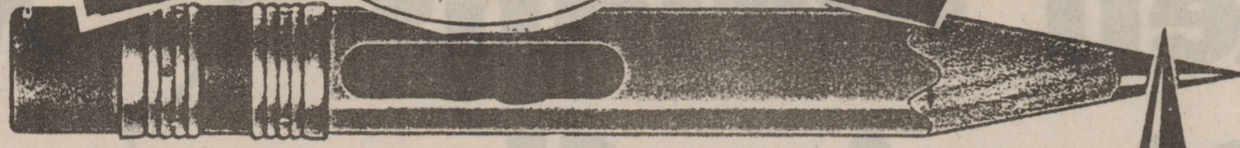
"Perhaps you cannot move as fast, but accept that and then work to do the maximum of what you can," Shekelle said. "Admitting that you need a little help is far different than giving up."

Both Nelson and Shekelle advocate short-term counseling around retirement age. "Talking about the changes in life is helpful," Shekelle said. "And for couples there may be additional relationship changes brought about by having more time together."

Therapy also opens healthy discussions of issues families frequently avoid.

"Most people will at some time have to modify their living situation. Early discussions about housing and medical care issues will alleviate misunderstandings in later years," Shekelle said.

# POW



## Closeout Sale

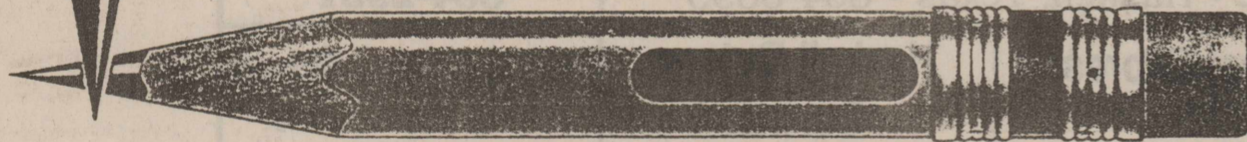
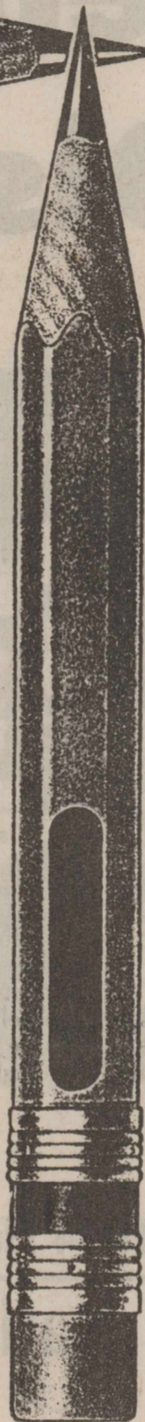
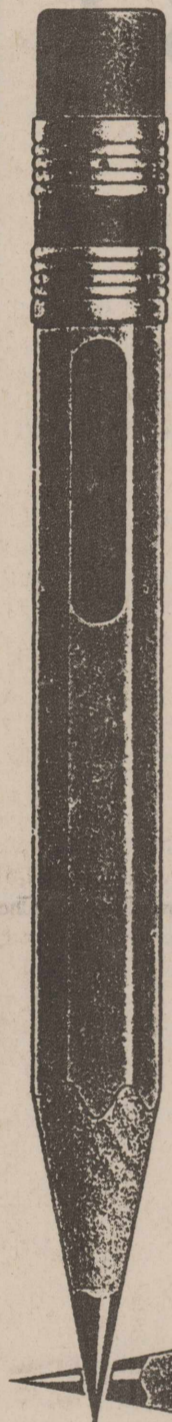
# 15% OFF!

- On all office supply items in stock
- Haskell Free Press is Closing Out its entire stock of office supplies

### SHOP EARLY!

While inventory is complete

## Haskell Free Press



## Travel indicators point to big gains

The number of domestic visitors to Texas during 1993 set a new record of 157 million people, a 9 percent increase over the previous year and well ahead of the national average, according to the just-released Full Year 1993 Report of Texas Travel Trends.

The report was commissioned by

the Texas Department of Commerce Tourism Division.

The 9-percent increase is significant because the number of domestic travelers in the United States rose only 1 percent over the previous year.

Texas solidified its ranking as the second most visited state. California remained first with 258 million visitors and Florida was third with 133 million.

Another important travel indicator, the number of days spent by travelers in Texas, showed an increase of 7 percent, compared to a 4-percent increase for the U.S. as a whole. During 1993, approximately 318 million person-days were spent in Texas.

Leisure travel accounted for 67 percent of all travel to Texas and business travel accounted for 33 percent of travel in Texas. The No. 1 reason for traveling in Texas was to visit friends and relatives, according to the report.

Well over half the travelers in Texas (62.2 percent) were residents of the state.

**Dreamsicles™**




Cherubs and Bunnies, bears and lambs and many other adorable collectible creatures from the studios of artist Kristin Haynes, replicated and hand painted by the artisans at Cast Art Industries. Come see our delightful Christmas selection.

**Bassing Jewelry**  
404 N. 1st • Haskell  
864-2548

### Did you know?

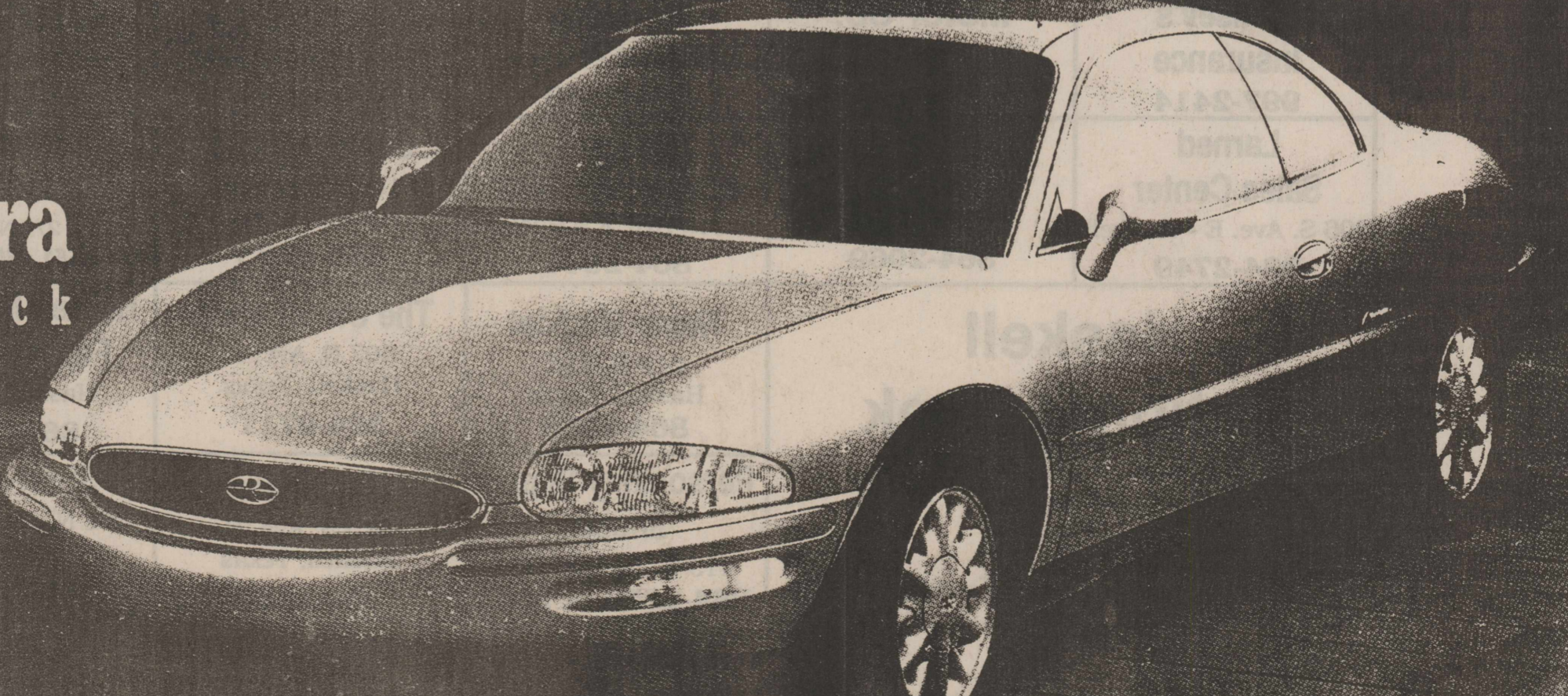
Influenza is a potentially life-threatening, contagious disease that is caused by a virus. When the flu attacks the lungs, the lining of the respiratory tract is damaged. The tissues temporarily become swollen and inflamed, but usually heal within two weeks.


Influenza and pneumonia (the most common complication of the flu) combined are the fourth leading cause of death among all American



## 1995 Riviera

By Buick







# Medford Buick-Pontiac-GMC

200 N. Ave. E

Haskell

We're Ready to DEAL!

Phone 864-2644



# Eight TxDOT workers receive safety awards

Eight Haskell County Maintenance Section employees were among 172 Texas Department of Transportation workers in the Abilene district who recently earned safe driving awards. The Haskell County employees had achieved a combined total of 36 years of safe driving.

Haskell County employees earning awards were Bobby Medford 23 years; Ben Barrera 22 years;

Ricky Martin 19 years; Don Thompson and Bennie Harvey 16 years; Mike Poteet and James McFadden 15 years; and Danny Kierepka 10 years.

The highest award in the Abilene district was presented to Tom Jones, a mechanic in the Jones County Maintenance Section. He had completed 31 years of driving without an accident.

To be eligible for an award, employees must have completed a minimum of four years of accident free driving.

An awards banquet to recognize

the district achievers was held at the Stonewall County Activity Center in Aspermont. There, honorees received a Certificate of Appreciation, or a plaque if their safe driving record was 25 years or more.

The combined total of safe driving years for all district employees was 2446 years.

Presenting the awards were Maribel P. Jaso, Abilene District engineer; Daffney Henry, assistant executive director, Human Resource Management, TxDOT; and Jerral Wyer, occupational safety, TxDOT.



## Safety award winners

Haskell County employees attending the safety awards banquet and their years of safe driving are, standing left to right, Ben Barrera, 22 years; James McFadden, 15 years; Earl Proctor, maintenance supervisor; Don

Thompson, 16 years; Bennie Harvey, 16 years; Erlinda Mayfield, section secretary; and Ricky Martin, 19 years. Kneeling are, from left to right, Mike Poteet, 15 years, and Vernon Session.

## Abe Turner TMCN delegate

Abe Turner has been named voting delegate for Haskell on the Texas Midwest Community Network (TMCN).

Voting delegates met recently to elect officers and learn about the programs and projects for 1995.

A year ago the network was a vision. Community leaders form a number of towns in the Big Country recognized the need for getting towns to work together via a regional organization.

Through partnerships and working together, towns in the region will have a stronger voice in Austin, develop stronger marketing efforts to attract traditional industry and tourism to create jobs, offer information and workshops to community leaders to enhance local efforts, provide opportunities for community representatives to meet and interact about the concerns of their respective towns, and create buying co-ops.

Today, the Texas Midwest Community Network has 26 town memberships (including Haskell) as well as a growing list of support members through business, individuals and associations. The region includes a 20-county area.

Each town membership has one vote on the Network Council. This delegate serves as the information liaison between the organization and the community.

# Christmas project plans take shape

Anyone wanting to place decorations on this year's community Christmas tree is invited to do so.

The Haskell Chamber of Commerce invites the public to participate in the "Haskell County Christmas Celebration" and to help personalize the tree with their own decorations.

The event will take place on the square in Haskell Saturday, Dec. 3. The tree will be decorated between 3 and 6 p.m. and there will be entertainment during those hours.

Santa will be on hand and pictures of children with Santa will be available.

Highlight of the celebration will be the lighting of the tree lights and courthouse lights at 6 p.m.

# Cub Scouts bake sale set Tuesday

The annual Cub Scout bake auction will be held Tuesday night beginning at 7 at Haskell National Bank community room.

"We really need the support of everyone for this fund-raiser," said Doyle Mitchell, cubmaster.

All proceeds will go to fund the local scouting program for approximately 55 boys in the pack.

Before the auction, cakes are judged and awards are presented in

the following categories:

Biggest, smallest, best tasting, worst tasting, ugliest, most unique, tallest, judge's choice, Scout spirit, and biggest flop.

Each cake is made by a Cub Scout and his dad or other adult partner.

"They don't always turn out as intended," Mitchell said in explaining the different judging categories.

## Tour of homes Dec. 4 in Anson

On Sunday Dec. 4, Christmas in Anson Tour of Homes five homes will be beautifully decorated. You will have the opportunity to tour each home at your leisure from 1:30 to 4 p.m. Tickets are \$5 and may be obtained at Anson Chamber of Commerce.

Saturday, Dec. 10 the Lights of Christmas Parade will begin at 6:30 p.m. on Commercial Street. Entry forms are available at the Anson Chamber of Commerce.

Town and country residents and businesses will be participating in the home, yard and storefront decorating contest during the week of Dec. 12.

The Cowboy's Christmas Ball will be held Dec. 15-17. Michael Martin Murphy will be featured entertainment on Friday night, Dec. 18.

In conjunction with the ball, the Larry Chittenden Memorial Cowboy Symposium will be held at the Anson Opera House on Dec. 16 and 17 along with a bit, spur, trappings and western art show.

More information about tickets and events may be obtained by contacting Anson Chamber of Commerce 915-823-3259.

# CALL TEXAS

Texas Cellular has increased your local calling scope to cover the Lone Star State! You can now call anywhere in the State of Texas and you will not be charged a toll charge.

That's right!

Call El Paso, Brownsville, Beaumont, or Dalhart - all you pay is your airtime! Texas Cellular will pick up the tab for your long distance.

No matter what plan you are on, the long distance calls to any point in the State of Texas are FREE.\*

**TEXAS CELLULAR.**

A service of Taylor Telecommunications, Inc.

Call Anytime.

**RoadRoamer**  
CELLULAR NETWORK

\*Applies to home area only. Any calls made while roaming will be charged at roaming rates.

Haskell  
512 N. 1st  
(817) 864-3269

Albany  
500 S. Main  
(915) 762-2333

## HOSPITAL

**Admissions**  
Thelma Boone, Weinert  
Otis Sims, Stamford  
Louise Finley, O'Brien

**Dismissals**  
Leola McCollum, Slover  
Bledsoe, Gus Rueffer, Michael  
Wilburn, Thalassa Torres, Daisy  
Camp, Billy Jack Myers.

Mary, Bennie, and family want to thank all of you for all of the visits, cards, concerns, and prayers during Mary's recent surgery. The surgery has gone well and the recovery is doing fine but slow. Hope to see you all soon.

Sincerely,  
Mary Bassing

**ALLSUP'S**

YOUR *Thanksgiving* SHOPPING HEADQUARTERS

Prices Effective November 20-26, 1994  
HASKELL #153 RULE #91

SAVE ON  
**PEPSI-COLA**  
*Be young. Have fun. Drink Pepsi.*  
**\$1.59**  
6 pack-12 oz. cans

SHURFINE  
**YOUNG TENDER  
TURKEY HENS**  
10-14 LB. AVG.  
**59¢**  
LB.

SHURFINE  
**BLACK  
PEPPER**  
4 OZ. CAN  
**\$1.99**

MADE TO ORDER  
**BBQ BEEF  
SANDWICHES**  
EACH  
**99¢**

PLAIN OR IODIZED  
**SHURFINE  
SALT**  
26 OZ.  
**49¢**

Sausage, Egg  
& Cheese or  
Ham, Egg &  
Cheese

ALLSUP'S  
**BREAKFAST  
BURRITOS**  
FOR ONLY  
**99¢**

ALL VARIETIES  
REGULAR OR WAVY  
**LAY'S® CHIPS**  
\$1.49 SIZE  
**99¢**

ALLSUP'S  
**SANDWICH  
BREAD**  
1.5 LB. LOAF 69¢ EACH OR  
**2 FOR \$1**

COCOA CHIP,  
SUGAR, OR OATMEAL  
**SUNNY  
COOKIES**  
5 OZ. PKG.  
**2 FOR \$1**

DECKER  
**CHOPPED  
HAM**  
10 OZ. PKG.  
**\$1.49**

WHOLE KERNEL  
**SHURFINE  
CORN**  
16 OZ.  
**39¢**

Lipton  
**Tea Bags**  
Family Size - 48 ct.  
**\$2.99**

Shurfine  
**Corn Syrup** 32 fl. oz.  
**99¢**

Fitti  
**Diapers**  
**\$4.99**

**AHAHAH!!!**

**Your Car Insurance Too HIGH!!!**

Please Call us for a Quote

**Upshaw & Upshaw Insurance**

**800-992-7900**

**915-773-3681**