

1/1/96
Baze Book Binding
514 W 7th St
Amarillo TX 79101-2212

Amarillo--CCCCC ZZXXXXXXXXXXXXX
End Of Amarillo
Amarillo Bag TX 79100

Livestock Show Edition Inside

THE HASKELL FREE PRESS

50¢

VOL. 109--NO. 4

©January 26, 1995 Haskell Free Press, Inc.
HASKELL, TEXAS 79521, January 26, 1995

18 PAGES-TWO SECTIONS



STATE SCIENCE OLYMPIAD AT AUSTIN—Fifteen Haskell high school students competed in the State Science Olympiad at the University of Texas in Austin last week. Pictured on the grounds of the State Capitol are from left to right are Mary Kay Watson, Dacia

Phemister, Tonya Burson, Amy Cunningham, Jennifer Comedy, Rick Perry (State Ag. Commissioner), his wife Anita Perry, Christopher Tatum, Matt Blanks, Jace Yates, Michael Salinas and Aaron Earles. The group also attended the Gubernatorial Inauguration.

Students participate in Science Olympiad, attend Inauguration

Fifteen Haskell High School students were at the University of Texas in Austin last week competing in the State Science Olympiad. The competition included events from all fields of science, including biology, chemistry, physics, and geology. Haskell students participated in events such as Nature Quest, Scrambler, Science of Fitness, as well as several Lab competitions. Although final results were unavailable at press time, Haskell students represented their school and community well as they competed with 5A schools from all over the state.

The students earned their positions on the fifteen member team in the local Science Olympiad competition held in November. The competition was open to all Haskell High School students. Senior members of the team were Jennifer Comedy, Amy Cunningham and Michael Salinas. Tonya Burson, Aaron Earles, Christopher Tatum, Carol Thornhill and Jace Yates were the juniors on the team. The six sophomore team members were Matt Blanks, Sarah Cothron, Wendy Dulaney, Lyle Fouts, Dacia

Phemister and Mary Kay Watson. Chris McSmith was the lone freshman on the team. Sponsors for the team were Terry and Susan Blanks and Mike and Jo McGuire.

In addition to the competition on Saturday, the students were able to visit many historical sites in the Austin and San Antonio area. Tours included the Alamo, The Institute of Texas Cultures and the Hemisphere Tower in San Antonio and the LBJ Library, the Capitol, and Innerspace Caverns in Austin. While touring the Capitol, students were allowed to view a joint session of Congress.

Attending the inauguration of George W. Bush as governor of Texas was a special highlight of the four day trip. The Haskell group attended the Inaugural Gala on Monday night which included entertainment by the Oak Ridge Boys and Mark Chestnut. Members of the audience included former President and Mrs. Bush, Gov. and Mrs. George W. Bush, Lt. Gov. and Mrs. Bob Bullock, Ag Commissioner and Mrs. Rick Perry and Mr. and Mrs. Nolan Ryan. The students were among the more than 20,000 in attendance at the inauguration and parade.

Commissioners Court approves equipment purchase

The Commissioners Court approved the purchase of four motorgraders for Precincts 1 and 2 in their Tuesday meeting. Two #140G Caterpillar graders were purchased from DAR Equipment Co. of Dallas, at a cost of \$141,897.00 each for Precinct 1. Two 770BH John Deere graders were purchased from Air Master Equipment Corp. of Abilene, at a cost of \$133,385.00 each. The purchase price of all four machines included rippers and blade extensions.

In other business, a motion was approved to hire Eudora Coleman as a part-time dispatcher-jailer to start working, Wednesday, Jan. 25 at midnight at a salary of \$5 per hour.

Paint Creek school superintendent, Jerry Morgan approached the court on a verbal agreement made with the commissioners six years ago concerning a representative from Paint Creek on the Central

Appraisal District board. Morgan said the agreement made six years ago, was that a representative from each entity would alternate every two years.

The county's representative served two years, then Paint Creek's representative served two years, then the county. Now Paint Creek representatives feel that it is time for their representative to serve two years and wanted to know if the verbal agreement was going to be honored. County Judge B.O. Roberson said that the court has been discussing the matter for a lengthy period of time didn't intend to exclude Paint Creek school district from county representation. "Let me ask this question, until such time as we can bring this before the appraisal board, can Paint Creek live with it?" Judge Roberson asked. He went on to add that he would like for both parties to sit down and discuss the matter and work out a solution satisfactory

to all parties concerned, but that it would stand as it is today with the county's representative on the appraisal board.

A Paint Creek representative said that they felt they were being represented with the county representative but were disappointed that the commissioners court was not going to honor the verbal agreement.

The court approved a motion to allow the Historical Commission and Genealogical Society to place showcases on the first floor hallway of the courthouse to display historical items from Haskell County.

Judge Roberson told the court that Conley and Company of Abilene will be performing the A-128 Audit on the Haskell County Nutrition Fund, required of the county to be in compliance for the years '90 and '91 at the Senior Nutrition program. Roberson said that Conley had told him that they can do the audits for much less than originally stated, so he will ask Conley about a price for doing the audit for the years '92, '93 and '94.

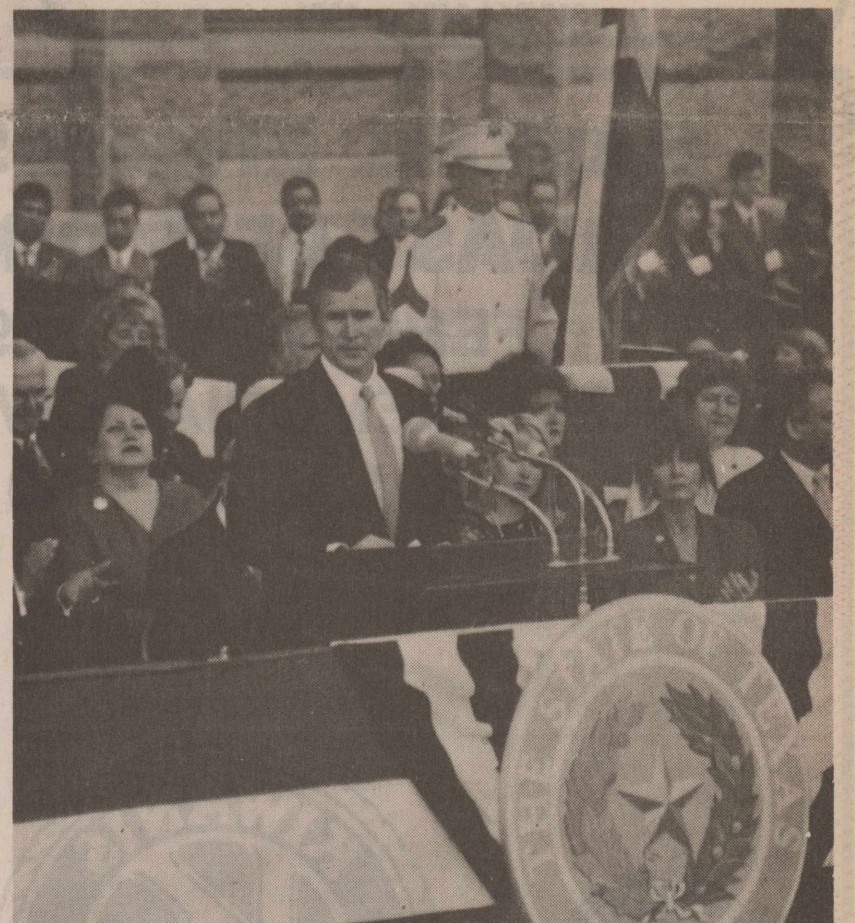
A service contract for 1995 from the West Central Texas Council of

Governments Area Agency on Aging was approved by the court.

In other items on the agenda, bids were approved to sell two county vehicles, a 1988 1/2-ton Ford pickup and a 1967 model Jeep. The pickup was sold to Howard Sheets of Haskell for \$2,150 and the Jeep was sold to B&B Automotive of Haskell for \$258.

Judge Roberson presented the court with an agreement from the state on new computer equipment that has been installed in the Tax Assessors office for registration and titles of motor vehicles. The equipment will be tied in with Austin to speed up time for receiving titles and other information. The state has installed the equipment and will pay maintenance for at least five years. The court accepted the agreement and authorized the judge and tax assessor's office to execute the agreement.

The court agreed to a special called meeting some time the week of Feb. 6, to settle the controversy with Paint Creek over the Appraisal District representative. The next regular Commissioners Court meeting will be Monday, Feb. 13.



NEW GOVERNOR TAKES THE REINS—Haskell students attend the inauguration of new governor George W. Bush in Austin 1st week. Photos by Dan Comedy

Junior High and High School band members named to District Band

By Michael Copeland
Band Director

On Saturday, Jan. 21, 22 junior high and 11 high school band members auditioned for the Region II South Zone District Band. The students spent about two months preparing the audition music. The audition music consisted of etudes and an excerpt from music that each band will play on a concert Saturday, Jan. 28, at Hardin-Simmons University in Abilene.

Lee Christian, and 8th grader, was selected for the junior band in the Alto Saxophone section. Four Haskell high school students were named to the high school band:

Jacy Cypert, sophomore, clarinet section; Katy Martin, senior, french horn section; Philip Huff, freshman, trombone section; and Kaki Stapleton, freshman, mallet percussion section.

The high school band will be under the direction of Dr. Gary Hill, conductor of the wind ensemble at the University of Missouri at Kansas City Conservatory. The junior band will be directed by Harold Floyd of Monahans High School. The concert begins at 7 p.m. For further information, contact Michael Copeland at Haskell High School before Friday.

Reporter-News Article misquotes School Board figure on park project

A news article in the Saturday, Jan. 21, edition of the *Abilene Reporter-News* reported that the Haskell school board had voted, at their Thursday night meeting, to begin a joint program with the city in helping pay for park improvements and provide half of the \$343,000 project. According to the article, the other half will be a grant from the Texas Department of Parks and Wildlife.

Haskell school administration office, this report was incorrect. The school district will provide \$40,000 for the installation of the lighting and sprinkler system at the park project which will include a new Little League field, Pony League field, a covered pavilion and basketball court.

A clarification of the article was issued in the Tuesday edition of the *Reporter-News*.

Junior Livestock Show Friday and Saturday

The annual Haskell County Junior Livestock Show and Premium Sale will be held Friday and Saturday, Jan. 27 and 28, at the show barn on the fair grounds. Weigh in is scheduled for Thursday afternoon at 4 p.m. The Premium Sale is at 1 p.m. on Saturday.

| Division | Superintendents | Judges |
|--------------------|-----------------|-----------------|
| Rabbit and Poultry | James Bevel | Charles Finley |
| Swine | Rod Townsend | Stanley Young |
| Sheep | Kirk High | Steve Sturtz |
| Cattle | Dale Bullinger | Richard Spencer |
| | | Doyle High |
| Rabbit and Poultry | | |
| Swine | | |
| Sheep | | |
| Cattle | | |
| Auctioneer | | |

Premium Sale to be at 1 p.m. on Saturday

The sales committee of the Haskell County Junior Livestock Show Association would like to remind interested businesses and individuals that the Premium Sale will begin at 1 p.m. on Saturday, Jan. 28, at the show barn on the fair grounds.

All bidders will need a buyer number, which is assigned by the sales committee. A list of buyer numbers will be available for buyers who have participated in prior years. If this will be your first year of participation as a buyer, you will need to be assigned a number before the sale begins.

Add-on bids will be accepted prior to the sale again this year. Those wishing to make add-on bids prior to the sale can place those bids with the sales committee on Saturday morning from 9 to 11:30 a.m. at the show barn.

A list of exhibitors making the

sale will be available at approximately 8:30 a.m. at the show barn. The business or individual along with the amount of the add-on bid will be announced when the animal sells just prior to the auctioneer accepting add-on bids from the buyers in attendance.

Anyone with questions, can contact Randy Hise at Haskell National Bank.

No school Fri. & Mon.

Haskell school students will be dismissed from classes on Thursday afternoon, Jan. 26, at their regular times, with no classes Friday and Monday, Jan. 27 and 30. Classes will resume at their regular scheduled times on Tuesday, Jan. 31.

**Be Sure You
Attend and
Support the**



IT'S SHOW TIME!



**Annual
Haskell County
Jr. Livestock Show**
Thursday, Friday & Saturday
January 26 - 27 - 28

held at the
**Haskell County
Show Barn**
at the Fairgrounds in Haskell

~ Premium Sale ~
at Haskell County Show Barn
Saturday afternoon - 1:00 p.m.

*We extend a warm and hearty
welcome to the visitors attending
Haskell County's Annual
Junior Livestock Show and Sale!*

The youth representing the 4-H and FFA
Clubs of Haskell County are very enthusiastic
about this year's show, and thank you for
supporting them as they build for the future.



| Show Schedule | |
|-------------------|--|
| Thursday, Jan. 26 | 4 p.m. Weigh Barrows & Lambs. Measure Steers. |
| Friday, Jan. 27 | 8 a.m. Lamb, Poultry and Rabbit Show |
| Friday, Jan. 27 | 11 a.m. Barrow Show |
| Saturday, Jan. 28 | 8 a.m. Steer Show Heifer Show to begin right after Steer Show. |
| Sat., Jan. 28 | 1:00 p.m. PREMIUM SALE! |



The following firms and businesses salute the boys and girls of the
Haskell County FFA and 4-H Clubs for their participation in this annual event!

| | | | | |
|--|--|--|--|---|
| Country Daizie 409 S. 1st Haskell, Texas 817-864-3781 <i>"90's fashions for the 90's woman"</i> | Medford Buick - Pontiac - GMC Inc. 200 N. Av E • Haskell 817-864-2644 | Rodela Plumbing 110 N. 1st St. Haskell 864-2460 | Kay's Cleaners 516 N. 1st Haskell 864-3344 | F&D Electronics Texas Cellular 512 N. 1st Haskell 864-2536 • 864-3269 |
| Hanson Paint and Body <i>Professional Auto Body Repair</i> Bobby Hanson 207 S. First - Haskell Phone 817-864-3631 | Haskell Save A \$ CONOCO <i>HOTTEST BRAND GOING</i> Serving you 24 hours Delivery or on site 202 N 1st • 817-864-2146 | McGee's Lumber Yard 105 N. 1st Haskell 864-3552 | Discovery World Child Care Center Director - Vickie Josselet 702 S. Second Haskell • 864-3723 | Personality - Slipper Shoppe South Side of Square • Haskell 864-3051 or 864-2501 |
| Pogue's Meat Processing Glenn & Jo Pogue 1305 S. 1st. • Haskell 817-864-3388 | Bailey Toliver Chevrolet - Oldsmobile <i>"We Salute 4-H & FFA"</i> 517 N. 1st. Haskell Phone 864-2626 | Weinert Gin Company <i>"We Appreciate Your Business"</i> Weinert Phone 817-673-8280 | Rolling Plains Farm Supply Stamford, Texas 915-773-2788 | Holden-McCauley Funeral Home 304 N. 2nd Haskell 817-864-2151 |
| B & B Automotive 201 N. 1st Haskell 817-864-2688 | Steele Machine Bill & Pam Steele, Owners Hwy 380 East - Haskell 864-2208 | Double A Drive Inn Deena & Donald Cunningham 1103 North First - Haskell 817-864-2466 <i>Let Us Serve You!</i> | GONNER NURSERY & FLORAL CO. <i>A World of Flowers</i> 505 N. Ave. H • Haskell 817-864-3121 | Sandy's New Image 107 S. Ave. D Haskell 817-864-2890 |
| Eddie's Welding 210 N. 1st East 864-2315 | Federal Land Bank Association of Haskell Dale Bullinger - President Telephone 864-8565 <i>Part of the Farm Credit system</i> | Richardson's Hwy 277 North - Haskell Phone 817-864-8551 1-800-243-7110 | Larned's Sales Center 806 S. Ave. E • Haskell 817-864-2749 | Haskell Tire and Appliance 206 S. Ave. E • Haskell, Texas 864-2900 |

Haskell Co. Jr. Livestock Show – Present & Past

Editor's Note: This story was compiled from information given by Steve Barbour, Max Stapleton and back issues of the Free Press. The pictures were donated by Max Stapleton and other people in the community, a few came out of the Free Press files.

The Haskell County Junior Livestock Show Association was formed in 1969 by Max Stapleton and Clifford Thomas and the first show was held on Saturday, January 18, 1969.

Barry Hobbs of Rule 4-H showed the Grand Champion Fat Steer, the Grand Champion Overall Steer and the Reserve Champion in the breeding cattle division. Reserve Champion Fat Steer honors went to

Cindy Thomas of Haskell 4-H. Sam Powell of Haskell FFA showed the Reserve Champion Overall Steer and Grand Champion Commercial Steer.

Grand Champion Barrow was shown by Susan Lewis and Reserve Champion went to Judy Therwhanger. Grand Champion Breeding Swine went to Clarence Dukatnik and Reserve Champion Breeding Swine went to Carroll Dudensing of Rule.

Grand Champion Broilers went to Kenneth Anderson of Rule and Reserve Champion Broilers were shown by Santos Navarrete also of Rule.

The Youth Livestock Sale was held at the Haskell Livestock

Auction. 30 animals were sold for a total of \$5,382.60. James Powell, auctioneer, stopped the regular cow sale and exhibitors led their livestock through the ring.

The original facilities were two old horse barns at the same location as today. Donations were gathered to put a top across both barns and the horse stalls were taken out and pens installed. The first show was held outside.

Some of the original board members were: C.A. Thomas, W.R. Hager, Andy Wilfong, J.D. Kupatt, Tom Kutch, Max Stapleton, Cecil Lewis, Watt Allison and John Therwanger.

According to an article in the Haskell Free Press Jan. 5, 1967

edition, the first county wide show was to be held on Saturday, Jan. 14. A Haskell County Youth Livestock Show association had been formed in the fall of '66 with C.A. Thomas Jr. as president. The association's purpose was to promote agricultural interest for the youth of the county. Then in an article in the Jan. 19, 1967 edition of the paper, it was reported that a large number of entries were judged in the show, with swine dominating the show. However, there was no mention of a premium sale.

Steve Barbour is the present

President of the association and Joey Thomas is the Vice-President. There are 40 to 45 board members.

The association has two fundraisers, a hamburger supper and the concession stands at the livestock show, to raise funds for improvements on the facilities and for the Premium Sale. Also three percent of each bid goes back into the association. Add-on money is donated by local and area businesses and individuals prior to the sale. The add-on money can be added onto a bid during the sale by a buyer who is in attendance or prior to the sale and announced by the

auctioneer when the animal sells.

The shows and the association have continued to approve from that first show in '69. In present day shows, there are approximately 200 head of hogs. In years past the most steers at the show was 150 and 100 plus sheep.

This year's show begins at 8 a.m., Friday, Jan. 27 with the Sheep, Rabbit and Poultry Judging. The Swine Judging follows at 11 a.m. The Cattle Judging begins at 8 a.m., Saturday, Jan. 28 with the Premium Show at 1 p.m. Weigh in and classification is scheduled for 4 p.m. Thursday, Jan. 26.

AIR-AG-INC.
817-658-3744




Family Owned • Family Flown
For All Your Wheat
Spraying Needs
Two Airplanes For Fast Service



Lori Lane

Welcome
to the
Haskell Livestock Show
January 26-27-28



4-H

FEA

Rule Co-op Gin & Elevator
301 Adams - Rule - 997-2421
John Pike, Manager

It's Coming
February 2nd
Watch for it!

STOCK SHOW SPECIAL

25%-50% off
original prices

- 25%-50% OFF: Ladies Jeans
- 25%-50% OFF: Ladies Blouses & Vests
- 25%-50% OFF: Ladies Skirts & Dresses
- 25%-50% OFF: Selected Hats
- 25%-50% OFF: Selected Accessories
- 25%-50% OFF: Children's Apparel
- 25%-50% OFF: Men's Shirts
- 25%-50% OFF: Selected Men's Pants
- 25%-50% OFF: David James Jackets

HEADS OR TAILS
WESTERN WEAR

Boot & Shoe Repair
Handmade Belts & Chaps

Store Hours
9 to 5:30
Mon.-Sat.

707 South Avenue E - Haskell, Texas



Maggie Brzozowski

Support the
Haskell Co. Jr. Livestock Show
Premium Sale Saturday 1 P.M.

Stamford Electric Cooperative
Salutes the young Men and Women
involved in feeding a hungry world.



Attend the
Haskell County
Junior
Livestock Show
January
26 - 27 - 28

Good Luck and Best Wishes From Your Friends At

Stamford Electric Cooperative



Kaitland Frierson



Learning to do,
Doing to learn,
Earning to live,
Living to serve.

Healthy Stock!

That's what we're proud of! And that includes our pride in the members of our local chapter of the FFA and 4-H. Congratulations and good luck to all during the Haskell County Junior Livestock Show January 26 - 27 - 28

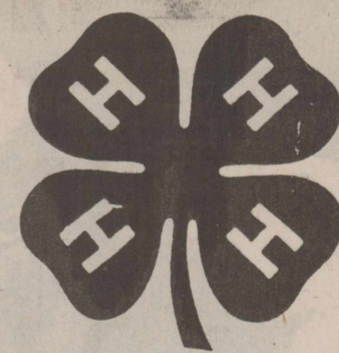


That's the
Spirit
of Community Pride!



First National Bank-Haskell

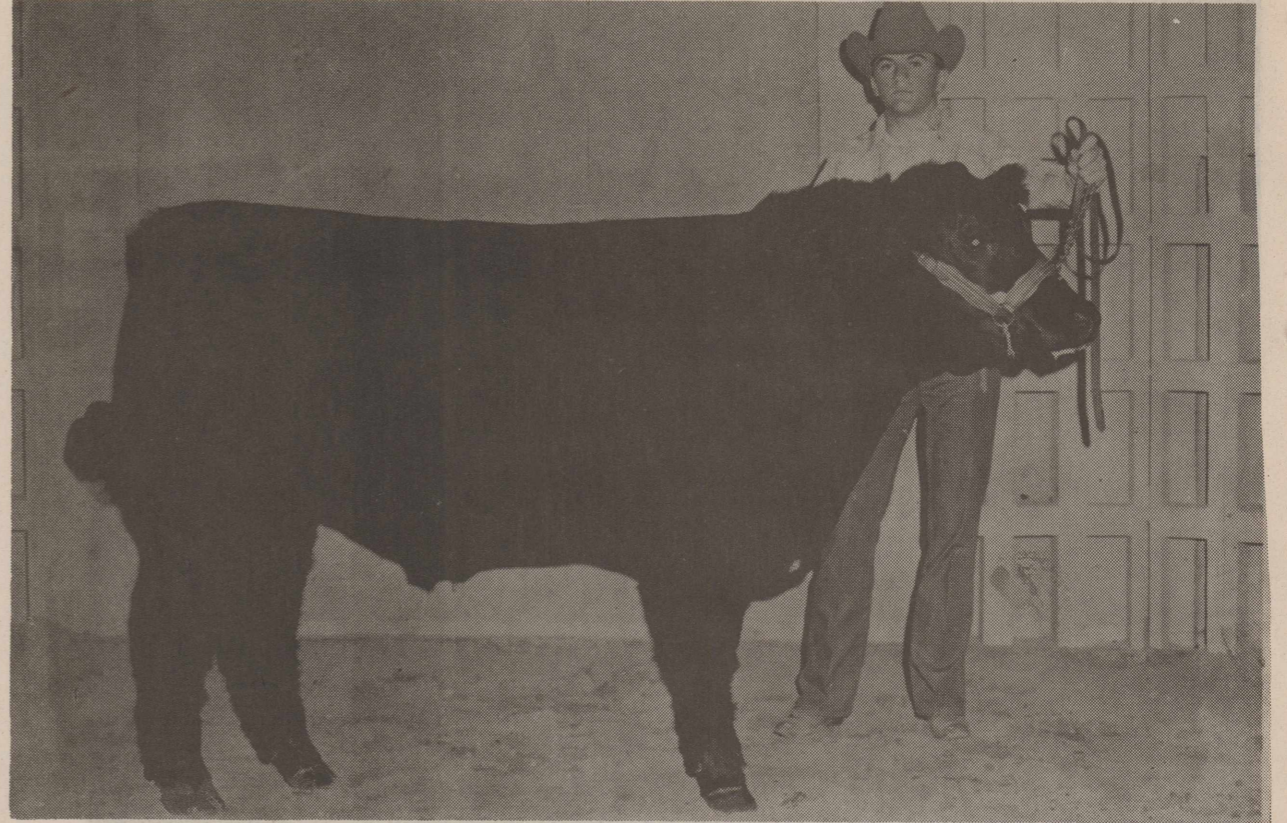
200 S. Ave. E Member FDIC 864-8555



**We Need
Your Help!**

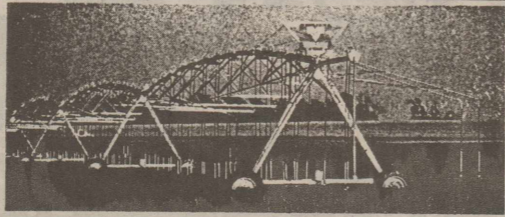
We urge each of you to attend this year's annual Haskell County Junior Livestock Show and Premium Sale. More than 200 young people need your Help and Support. Help them make this The Best Show Ever!

Premium Sale
Saturday, January 28th
1:00 P.M.



Rod Townsend

9.9%



Valley Time CD

(or)

Finance Program

- Lock in price and delivery
- Lock in interest* savings
- Earn 9% APR on your Valley system investment until February 15, 1995
- 10% down payment

- Lock in price and delivery
- 9.9% fixed APR
- Low down payment
- 1st annual payment in 12 months
- 7 year retail sales contract
- No prepayment penalty

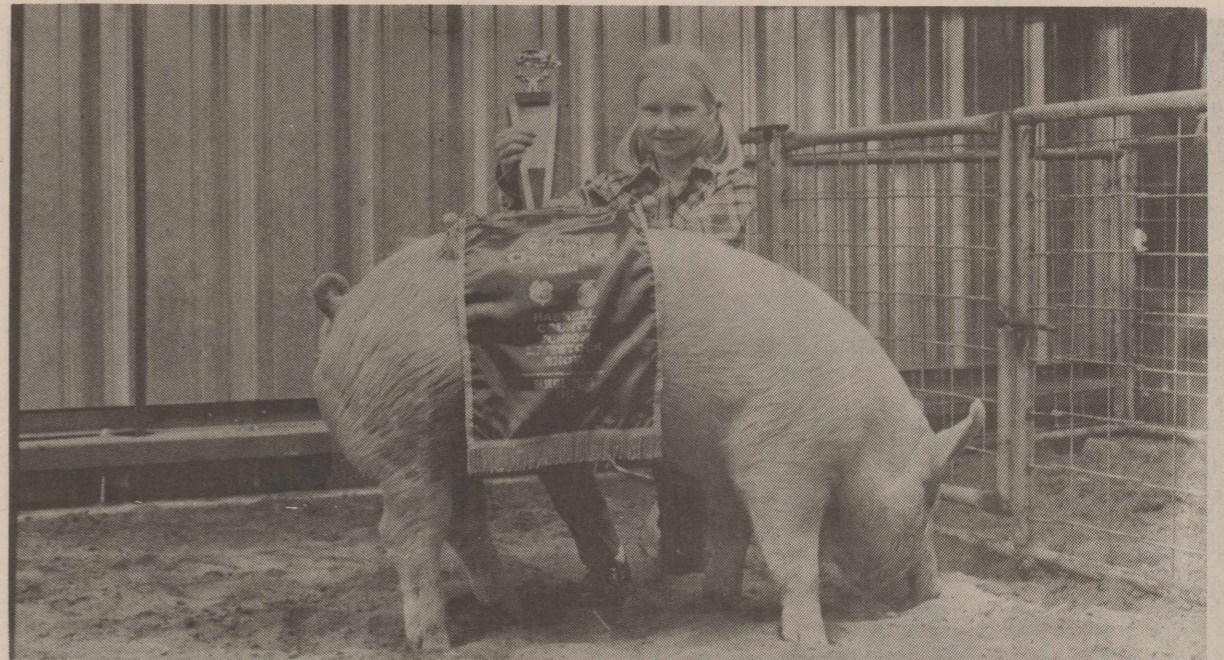
Delayed Delivery Available.

Hurry and See Your Valley Dealer for Complete Details Today!
Offer Ends February 15th.



Jack Leonard Irrigation & Water Services

6799 Anson Hwy • Abilene • 915-673-6778
Toll Free • 800-685-PUMP
Nights • 915-695-2798



Terri Therwhanger

LIVESTOCK SHOW AND SALE

Thursday - Friday - Saturday
January 26th - 27th - 28th



Chambray Bartley

Attend The Haskell Livestock Show



January 26-27-28

Sale Begins
At 1:00 p.m.
Saturday



Haskell Butane

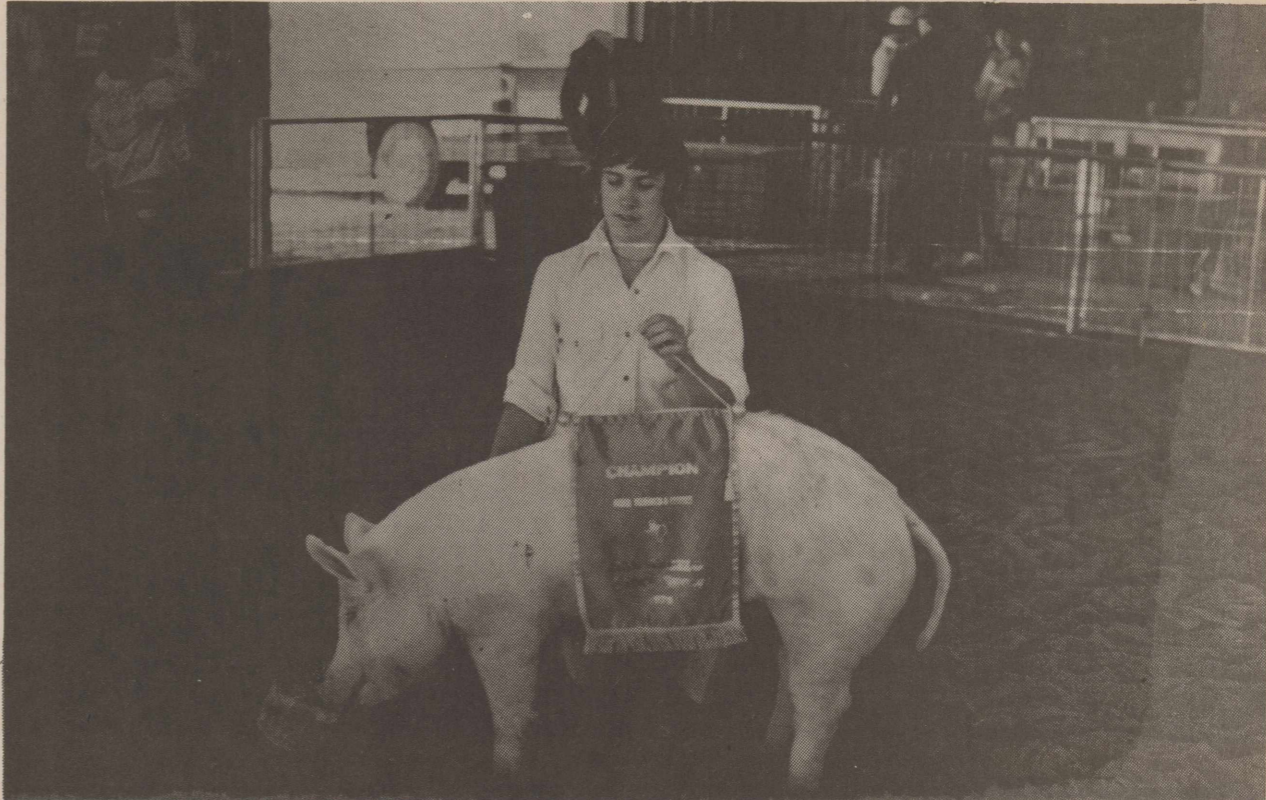
Stamford Hwy. Hours 7:30 am - 5:30 pm
(817) 864-2424 Nights (817) 864-3915

Haskell Livestock Auction

Phone 817-864-2624
Stamford Highway - Haskell



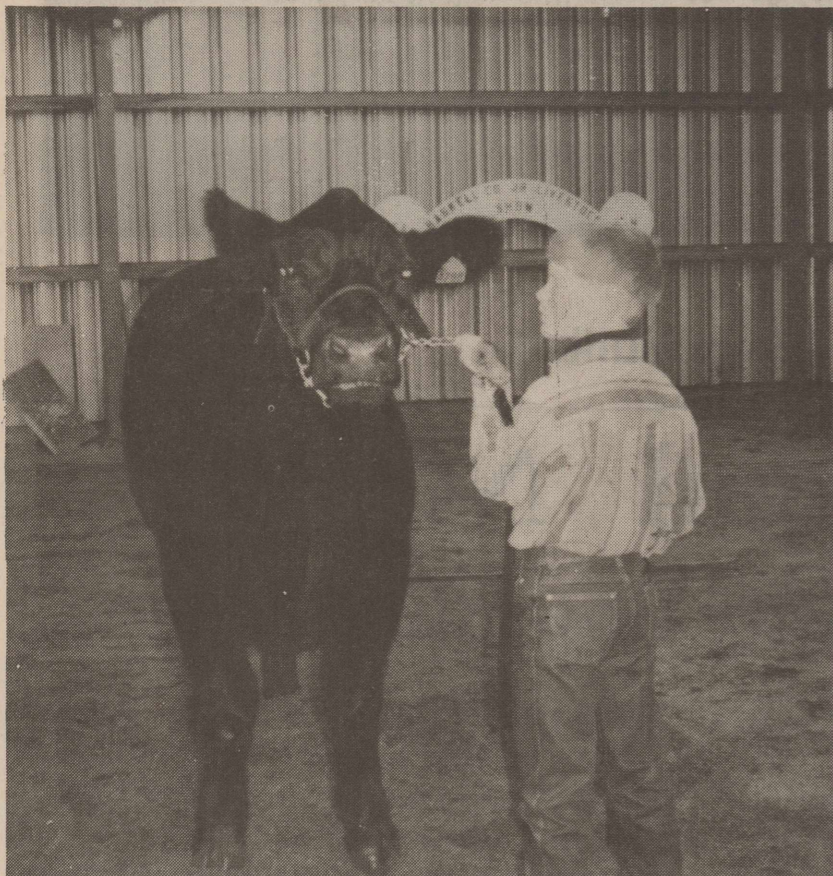
Jonathan Allison



Russ Lewis



Brittany Bartley



Rusty Howard



Mindy Howard

WHAT'S GOOD FOR OUR YOUTH
IS
Good for You
SM and Haskell County too!

We salute the participants in the Haskell County Junior Livestock Show for their dedication and good sportsmanship.

Our motto - "Banking on the future since 1890," has withstood the test of time.

It is through our encouragement and support that we can ensure a future deserving of today's youth.

To the friends and families who give of their time and energy to work with our youth, we salute you.

**Our Young Folks
Deserve Your Support**



Also



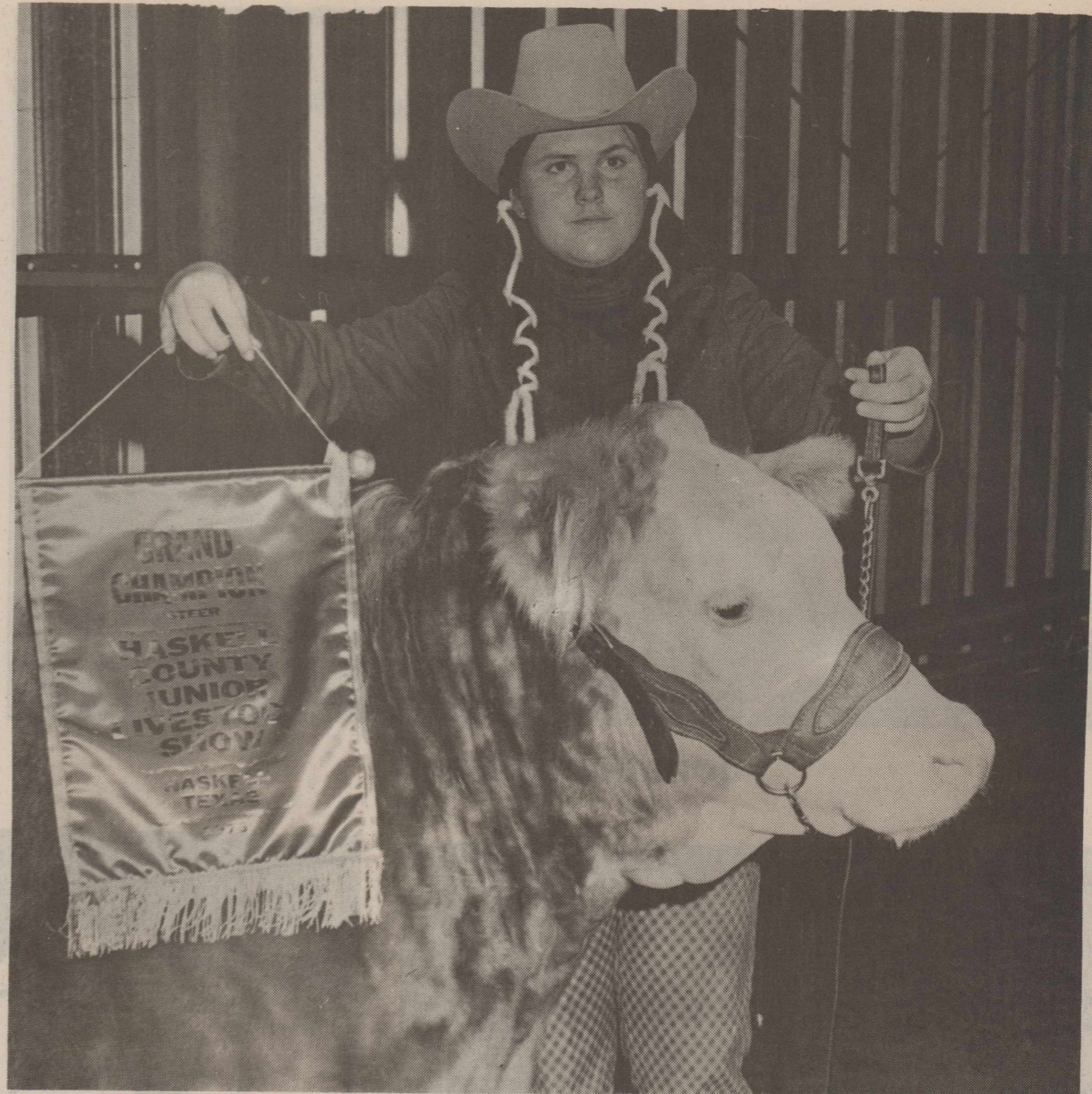
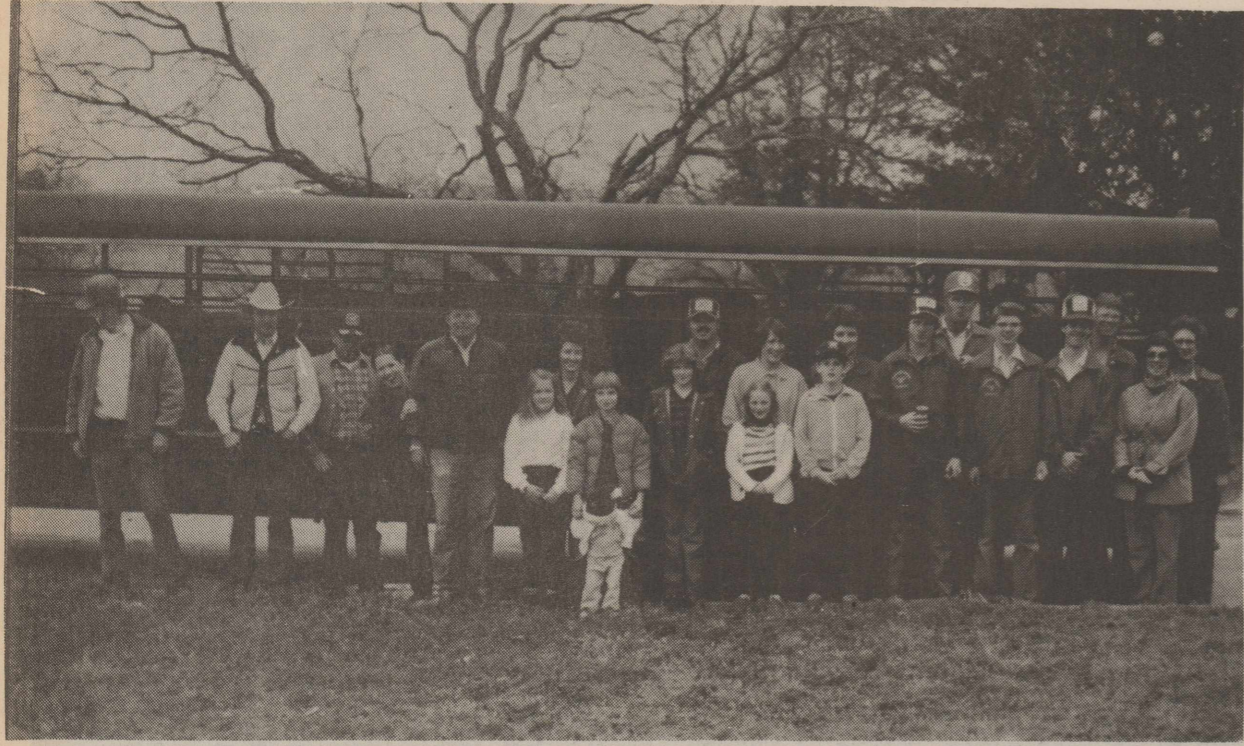
Haskell National Bank

601 N. 1st

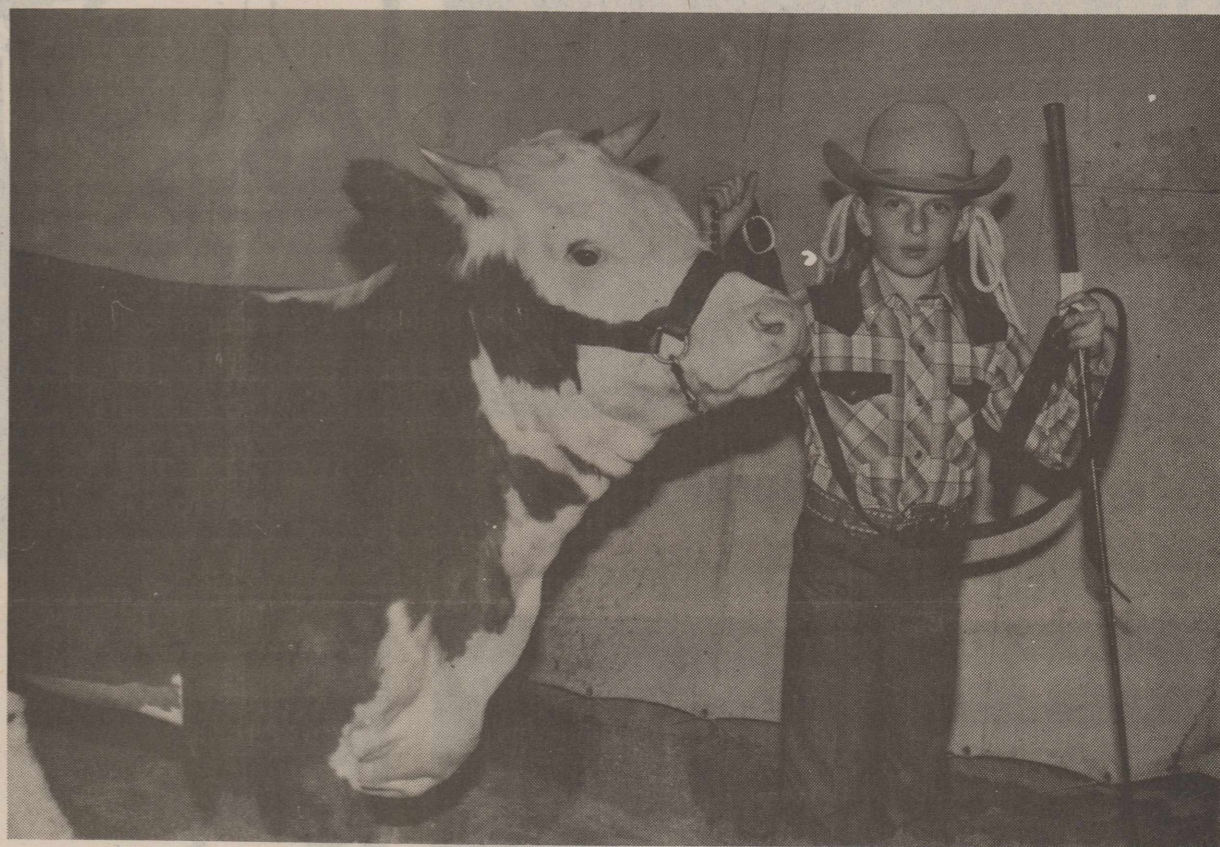
Member FDIC

864-2631


"Banking on the Future Since 1890"



Kim Hager



Faye Mullino

We
 Congratulate
 You...

We salute 4-H and FFA for
 service to the youth
 of Haskell County.



Here's hoping this show & sale
 is your best ever.



January 26-27-28

M SYSTEM
 Your FRIENDLY
 AFFILIATED
 SUPER MARKETS

Haskell, Texas

It's
 Coming
 Feb.
 2nd

Watch
 for
 it!

Rolling Plains Production Credit Association Says 200 Youngsters Need Your Support

That's how many Haskell County Youths have entered this year's show - 300 head of livestock have been entered.

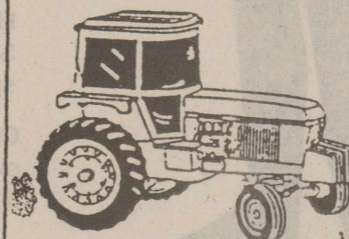
We urge you to attend this year's show. If you haven't been contacted for a contribution to the premium sale, Saturday at 1:00 p.m. call Max Stapleton at 864-2658, Duane Gilly or James Bevel at 864-3310, or Steve Barbour at 864-2753. Good kids need support too! ... and these kids and their families are some of the cream of the crop. Come out Thursday, Friday and Saturday, January 26-27-28.



PART OF THE FARM CREDIT SYSTEM

Offices in Abilene, Munday, Stamford, Matador, Spur and Childress

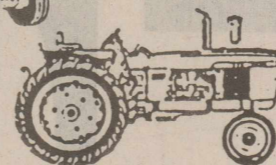
Overhaul NOW!! and Save Costly Downtime Later....



Jan. 15
 1995
 thru

Many people think if a tractor does not use oil that it is not worn out. **Not so!** Any tractor with more than 8000 hrs. stands a chance of damaging a crankshaft, head, or even worse damaging the block. Repairs then become 2 to 3 times higher than a basic overhaul.

Apr. 15
 1995



Engine Overhaul Includes:

- Inspection of rods and crankshaft
- Replace pistons, liners, rod bearings, main bearing, and rod bolts
- Grind valves and seats
- Knurl valve guides
- Magnetic inspection of cylinder head
- Check injector spray pattern
- Replace engine filter and oil, fuel filters, and all air filters
- Replace antifreeze and coolant conditioner

Additional labor, parts, or machine work will be billed at regular prices.



JOHN DEERE overhaul kits have a warranty for **12 months** or **1500 hours** if installed by a qualified JOHN DEERE dealer.

FREE
 cleanup and wax

TRACTORS INCLUDED

| | | | |
|----------------|------------|---------------|------------|
| 4020 pre-'69 | \$ 2084.01 | 4440 | \$ 2820.91 |
| 4020 after '69 | \$ 2042.25 | 46-4840 | \$ 2814.05 |
| 4230 | \$ 2260.80 | 4450 | \$ 3114.58 |
| 4430 | \$ 2344.37 | 46-4850 | \$ 3112.55 |
| 4630 | \$ 2393.99 | MFWD Tractors | |
| 4240 | \$ 2759.58 | ADD \$70.00 | |

Contact Landon and sign up as soon as possible

Rolling Plains Farm Supply

Stamford, Texas

800-460-0788 or 915-773-2788





Tammy Herricks

**It's Coming
February 2nd**
Watch for it!

Welcome
to the
Haskell Livestock Show



Thursday - Friday - Saturday
January 26th - 27th - 28th

Bill Wilson Motor Co.

"Where You Get Service After The Sale"
209 S. Ave. E • Haskell • 864-2611

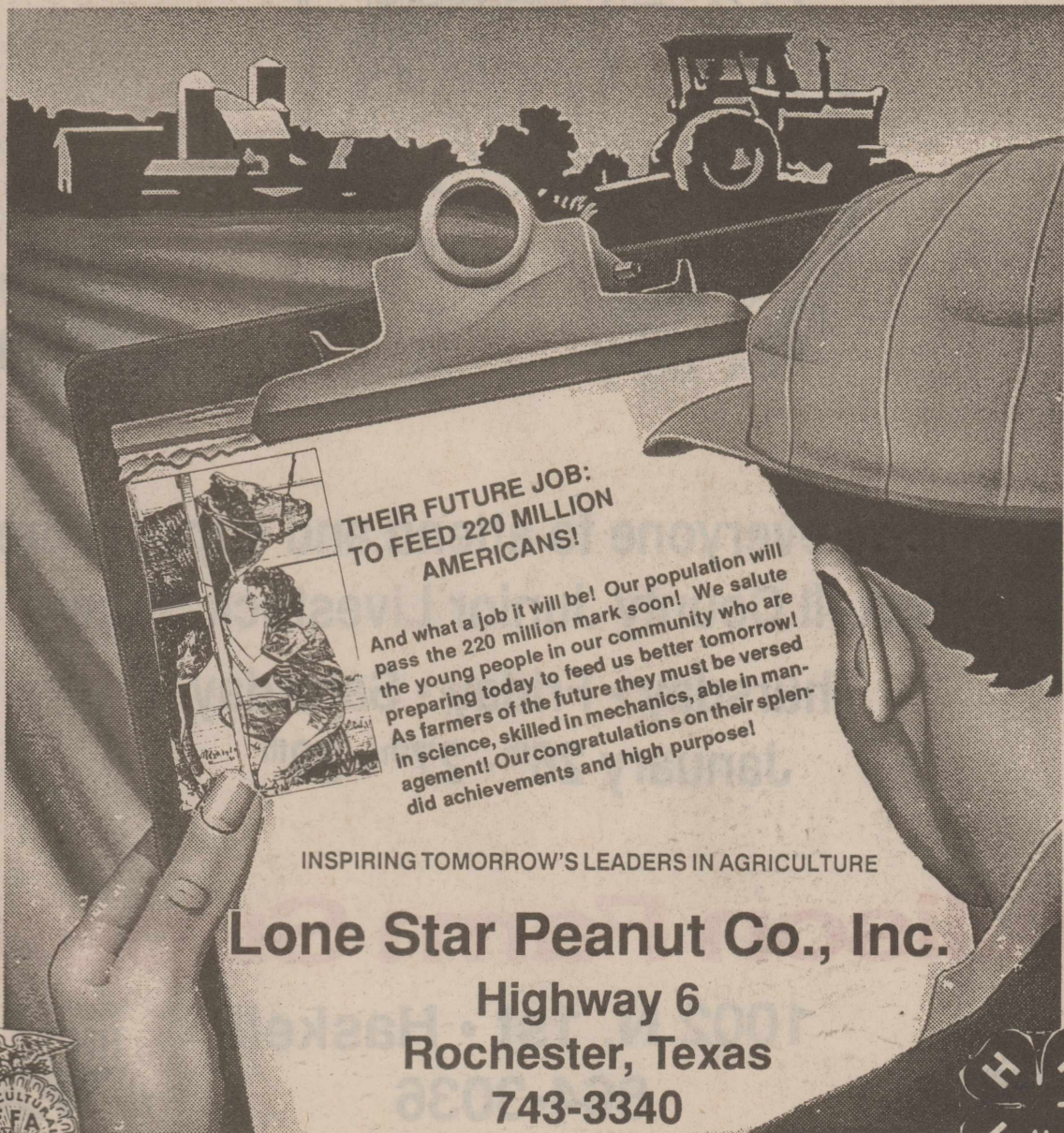
Support the
Haskell Co. Jr. Livestock Show
Friday & Saturday Jan. 27-28
Premium Sale Saturday 1 P.M.

**ATTEND THE HASKELL
COUNTY JUNIOR LIVESTOCK SHOW**

January 26 - 27 - 28

Thursday - Friday - Saturday

Sale Begins At 1:00 Saturday



**THEIR FUTURE JOB:
TO FEED 220 MILLION
AMERICANS!**

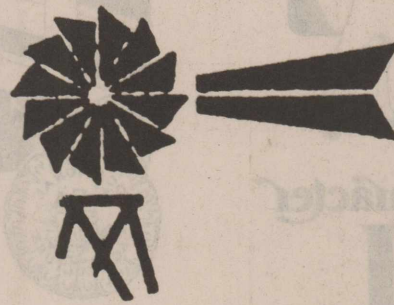
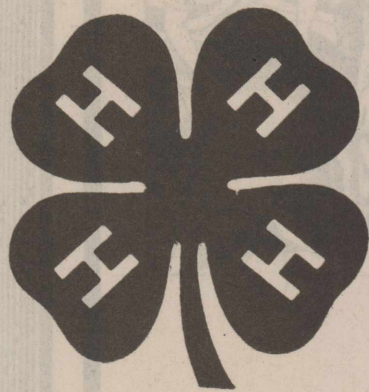
And what a job it will be! Our population will pass the 220 million mark soon! We salute the young people in our community who are preparing today to feed us better tomorrow! As farmers of the future they must be versed in science, skilled in mechanics, able in management! Our congratulations on their splendid achievements and high purpose!

INSPIRING TOMORROW'S LEADERS IN AGRICULTURE

Lone Star Peanut Co., Inc.

Highway 6
Rochester, Texas
743-3340

Three Big
Reasons why the
Haskell County
Junior Livestock
Show is so
Successful:

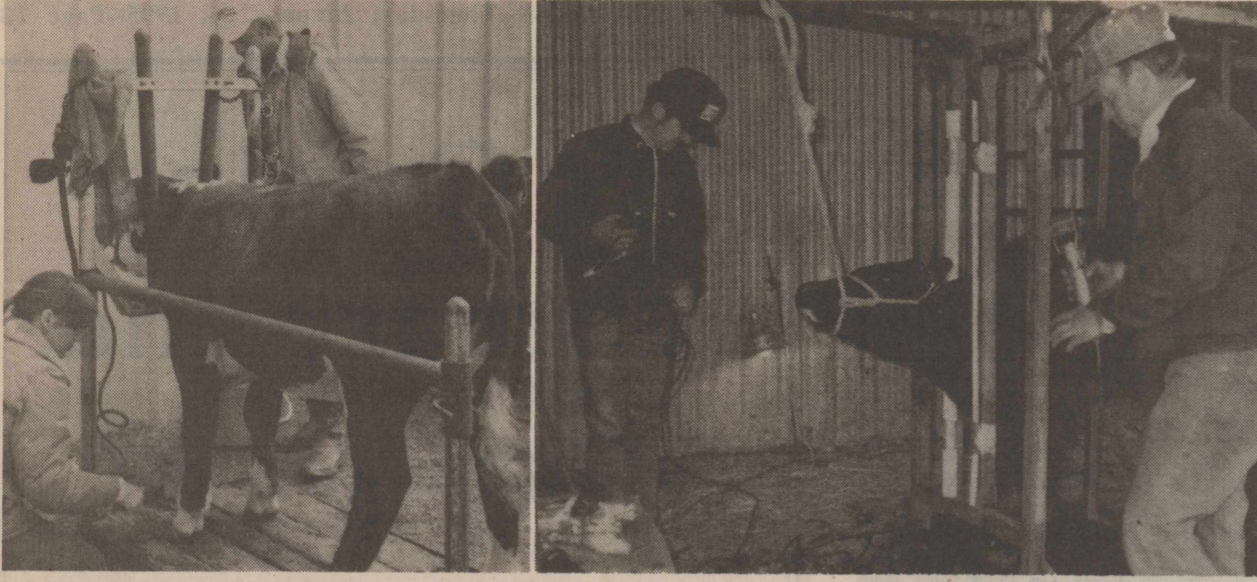


We at Farmers National Bank in Rule take great pride in having played an active role for many years in making the Haskell County Junior Livestock Show one of the best such shows in Texas. It is rewarding to work with these young people and the many adults who make this a great show.

Post Office Box 10
Phone (817) 997-2216
Rule, Texas 79547

Each depositor insured to \$100,000
FDIC
Federal Deposit Insurance Corporation


The Farmers
NATIONAL BANK



**Hard work, Long hours
and lots of Love!**

These three ingredients are what the Haskell County Junior Livestock Show, all its participants and sponsors are made of.

We applaud your outstanding accomplishments and urge everyone to support this year's show and sale.



January
26-27-28



Smitty's

204 N. 1st Haskell
864-2607

*Support
the
Haskell
Co. Jr.
Livestock
Show*

Fri. & Sat.
Jan. 27-28

*Premium
Sale*

Sat. 1 p.m.



Melissa Roberson and Co. Judge B. O. Roberson



Stanley Hager and W. R. Hager

**Welcome to the
Livestock Show**



Building Character
with
4H



Thursday - Friday - Saturday
January 26th - 27th - 28th

**For Youth
. For America**

**Now Available For Area Cotton Growers
Cotton Buying Service**

As Well As
Telecot

Haskell Co-op Gin Company

North Avenue B East • Haskell

**We think of you as the agricultural
leaders of tomorrow ... we applaud
you for the work you do today.**



**We urge everyone to attend and support the
Haskell County Junior Livestock Show**

**Thursday - Friday - Saturday
January 26th - 27th - 28th**

Allison Farm Supply

1002 N. 1st • Haskell
864-3036

