

Two new businesses open in Haskell this week

The Haskell Free Press

VOL. 110-NO. 32, AUGUST 8, 1996

"The People's Choice"

10 PAGES-ONE SECTION-50 CENTS

Calendar

Noah Project meeting

The Noah Project-North Advisory Committee will hold their monthly meeting, Friday, Aug. 9, at noon at the East Side Baptist Church. It will be a covered dish luncheon. Please plan to attend.

Youth Association Fashion Show/Lunch

Haskell Youth Football/Cheerleader's 2nd annual Fashion Show/Salad Luncheon, Sat., Aug. 10, at 11:30 a.m. at the Haskell Civic Center. Tickets are \$5 and are available at Country Daizie, Heads or Tails or any youth cheerleader. For further information, contact Cindy at 864-3067.

Amer. Legion dance

The American Legion, Smith Alvis Post 854 at Rochester, will host their monthly dance on Friday, Aug. 9 from 8 p to 11 p.m. BYOB. Herman Hearn and the "Yellow Jackets" will provide country music. Admission will be \$5 per person. Members and invited guests come and join the fun.

McCaulley musical

The McCaulley Recreational Development Cooperation will host its monthly musical on Friday, Aug. 9, at 6:30 p.m. in the Community Center. There is no admission charge. Alcoholic beverages are not allowed. A concession stand will be open. For more information, call 915-962-5441.

Anson 42 Tournament

The Anson Chamber of Commerce is sponsoring the Second Annual "42" Tournament Saturday, Aug. 24, at the Jones Co. Extension building, 831 23rd St. Coffee, homemade muffins and juice will be served from 8 to 8:45 a.m. with Round Robin beginning at 9 a.m. Presentation of cash awards will be at 5:30 p.m. Fee is \$25 per couple. Deadline for entering is Aug. 16. Call Anson Chamber at 915-823-3259.

Immunization clinic

The Texas Dept. of Health in Stamford has scheduled an immunizations clinic at the Throckmorton Youth Center on Aug. 12 from 10 a.m. to noon and 1 to 3 p.m. and at the Haskell American Legion Hall on Aug. 15 from 10 a.m. to noon and 1 to 3 p.m. Fees for the immunizations are based on household size and income. In most cases there is little or no cost. Bring child's shot record, social security number and medicaid number if receiving medicaid.

Business Breakfast

A Business Opportunity Breakfast will be held Aug. 19, at the Towne Crier Steakhouse, 818 E. Highway 80 in Abilene, beginning at 7 a.m. Focus topic, "How We Created a Market for Our Product," will be presented by Ed and Doris Jackson, REO International, Inc. For further information, contact Ann Hulett at 915-670-0300 or Kathy Hawkins at 915-672-8544.

Social Security representative date

A Social Security representative will be at the Haskell City Hall Annex on Thursday, Sept. 5, at 9:30 a.m. For further information, call Social Security at 1-800-772-1213 from 7 a.m. to 7 p.m. any weekday.

Index

ObituariesPage 2
Around TownPage 3
Out of the PastPage 4
Sagerton NewsPage 7
ClassifiedsPage 9

State auditor's savings report causes concern among school district administrators and state comptroller

There has been some concern among school district administrators throughout the state including Haskell CISD Superintendent Bob Pheil, concerning the state auditor's savings report released in July.

The report, titled "1995 Savings Profile System for Texas School Districts," was given to school districts, lawmakers, the legislative Budget Board and the Texas Education Agency in early July.

"This information should be beneficial to school districts," said Joey Lozano, spokesman for the Texas Education Agency. "It will cause some officials to look at some areas of expenditures and how they compare to other districts."

"It should help them realize some cost savings," he said. "Certainly anything that would help school districts save money on costs needed to run their operations would be looked at by the schools."

The report focuses on costs outside the classroom, non-instructional expenses, that are reported to the Public Education Information Management System. Auditors took data school districts reported to TEA, analyzed the numbers and compile the report.

The report said that state auditors had found \$470 million that could be trimmed from Texas' 1,055 public school districts including \$198,313 in the Haskell CISD; \$68,535 in Paint Creek ISD; \$47,804 in Rule ISD; and \$23,494 in Rochester ISD.

The report said the potential savings were pinpointed by comparing non-instructional costs in each district with a group of 25 similar districts. Above-average costs are potential savings.

State Comptroller John Sharp counts himself among those unhappy with the state auditor's savings report for area schools.

Since the report was released in July, Sharp sent a letter distancing himself from it to the superintendent of each district targeted for potential savings.

In the letter to Haskell CISD Superintendent Bob Pheil, dated July 26, 1996, Sharp states...

"Like you, I have just received my copy of the 1995 Savings Profile System for Texas School Districts, put out by the Office of the State Auditor. This report distresses me because it perpetuates numerous misconceptions about both you and me.

"First, I want to make sure you understand that the State Auditor does not work for me, he works for the Legislature. As I go around the state speaking to people, I am constantly asked why I would put out a report like this, and my regular reply is, "I don't." My office does school performance reviews—these reviews take months of laborious research and on-site reviews of an individual school district's operations, and are not based strictly on reported data and peer group averages.

"This leads me to my next point, which is the fact that I believe the process the State Auditor uses is unfair and flawed. Comparing the water bills of a district in West Texas to those of a district in East Texas just isn't fair. It's also unfair to compare co-curricular travel expenses for a district like Alpine to that of a district like Dallas. When you understand that Alpine is a hundred

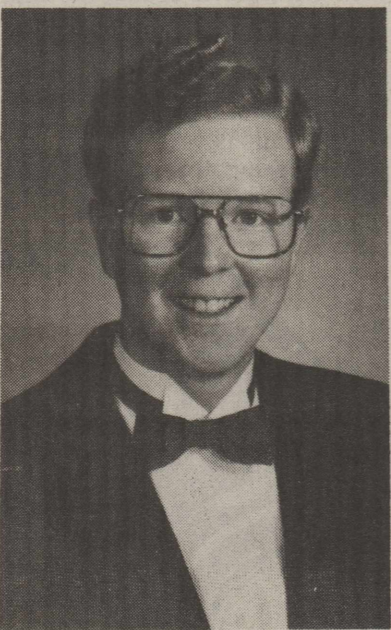
miles from anywhere. Claiming potential savings based on the averages, without an intense review of the policies and practices of a district and a thorough understanding of the local environment just incites the public and does little to improve district operations.

"My Texas School Performance Review (TSPR) refuses to conduct this kind of audit! Our work has shown that all school districts are not identical, which is why my TSPR staff conducts extensive interviews of community leaders, school district staff and school board members, in addition to using standard auditing techniques, to identify financial areas having the greatest potential for return. In some cases, we spend as many as six weeks on site, gathering information and talking to people. I believe we need to understand the expectations of the community and the school district's environment before we can make the appropriate recommendations for change.

"Since 1991, we have come up with nearly 2,000 ways to improve the effectiveness of 21 public school districts. I'm happy to report that the 16 districts that have had a full year or more to implement the recommendations have chosen to implement 87 percent of these recommendations. They report that they have already realized almost \$40 million in savings to date. This tells me that together we're doing something right!

"I'm not responsible for Mr. Alvin's report and frankly I'm glad I'm not. I'd like to thank those of you that have called or written to share your concerns with me."

Three Rule High graduates have been awarded Texas UIL scholarships



CORY ROBINSON

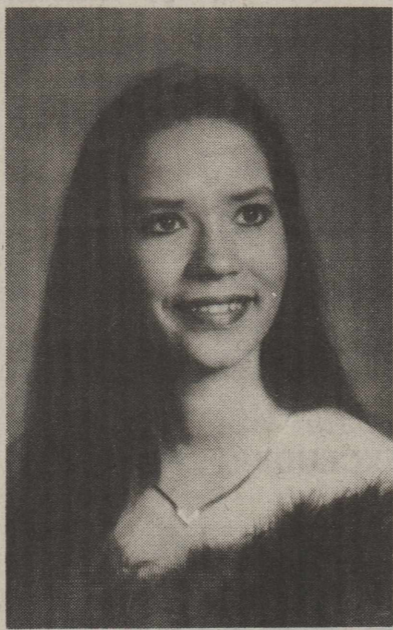
Three Rule High School 1996 graduates, Cory Robinson, Denise Wilson and Kacy Baitz, have been awarded Texas UIL Scholarships.

Robinson received a Moody Foundation Scholarship in the amount of \$4,000, payable \$500 each semester for four years.

This year the Moody Foundations awarded a total of three grants to students who have participated in the UIL Academic State Meet Contest and who have compiled an outstanding record of academic and extracurricular achievement.

Robinson placed first in calculator applications, math, science, team number sense and team computer science at the 1996 UIL Academic State Meet. He ranked first in his graduating class and was a member of the Beta Club, FFA, school newspaper staff and the golf team.

Robinson plans to attend Abilene Christian University and



DENISE WILSON

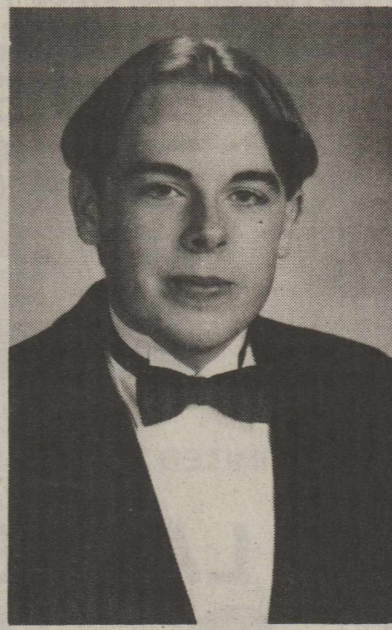
major in Engineering Physics.

Denise Wilson has been awarded a Nelda C. and H.J. Luther Stark Foundation Scholarship in the amount of \$12,560, payable \$1,570 each semester for four years.

This year the Stark Foundation awarded 22 grants to students who placed first, second or third at the UIL Academic State Meet in calculator applications, math, number sense, ready writing or science. Recipients must rank in the top 25 percent of their graduating class.

Wilson placed first in team calculator applications, team computer science, team math and team number sense at the 1996 UIL Academic State Meet. She also participated in UIL one-act play, accounting and basketball. She ranked second in her graduating class and was a member of the Beta Club, FHA and the school newspaper staff.

She plans to attend Texas A&M



KACY BAITZ

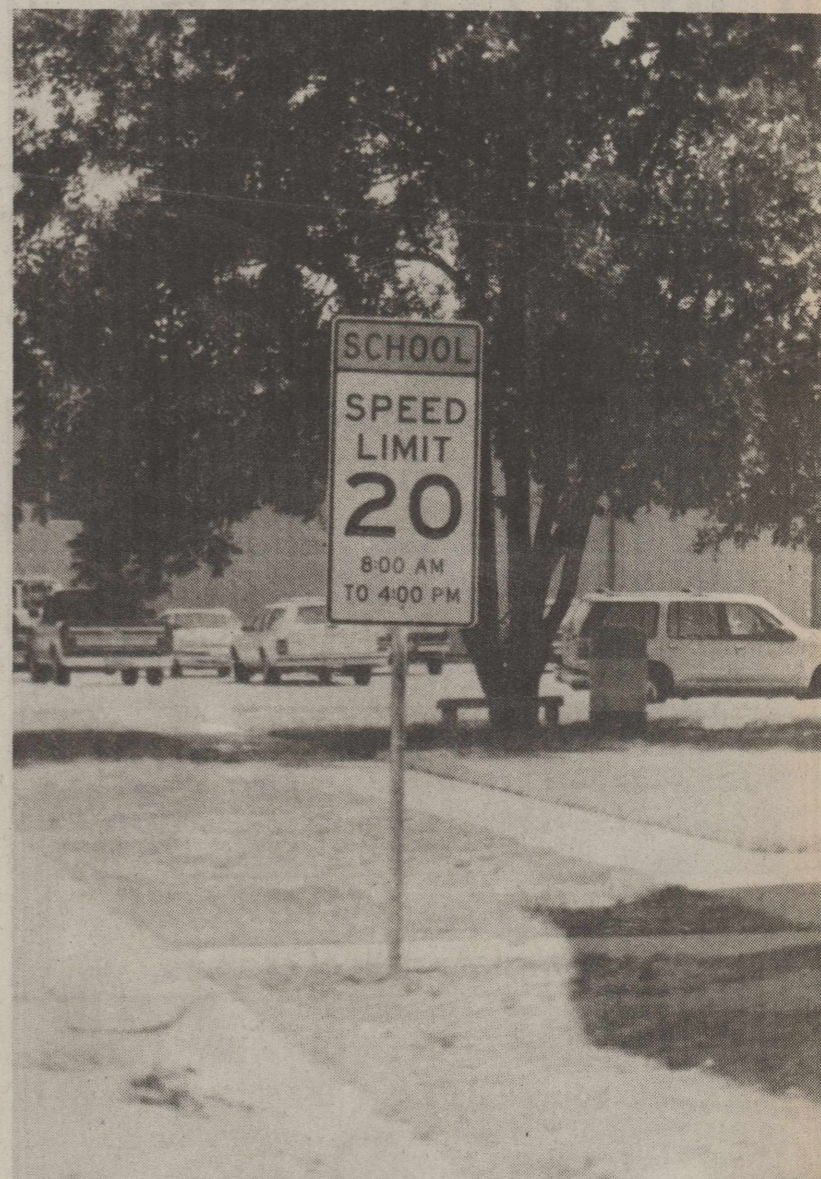
University and major in Business Administration.

Kacy Baitz was awarded a Southwest Emblem Co. Scholarship in the amount of \$1,000, payable \$500 each semester for the first year.

This year the Southwest Emblem Co. awarded a total of 11 grants to students who have participated in the UIL Academic State Meet and who compiled an outstanding record of academic extracurricular achievement.

Baitz placed first in 1996 and second in 1995 in team computer science at the UIL Academic State Meet. He also participated in UIL one-act play, computer applications, editorial writing and news writing. Baitz was co-editor of the school newspaper and yearbook and a member of the Beta Club and FFA.

He plans to attend Baylor University and major in Pre-medicine.



NEW SPEED LIMIT SIGNS—The City of Haskell has posted new speed limit signs on Ave. D and 6th and 7th streets around the High School, to remind drivers that the speed limit is also 20 miles per hour on those streets as well as Ave. E during school hours.

Drivers should begin thinking about safety of our school children

Texas Dept. of Public Safety officials are asking all drivers to begin thinking about the safety of our school children as the beginning of a new school year commences. This time of year presents safety problems for both the school children and the driver. Many youngsters are attending school for the first time and others may be going to different schools where they are unfamiliar with the traffic conditions.

Another problem is that during the summer vacation some drivers have gotten out of the habit of being alert for both school zones and school buses. The Dept. of Public Safety urges everyone to remember to slow down for those school zones and to remember that

state law requires drivers on the same roadway as a school bus that is stopped to load or unload students, to stop until the bus driver has turned off the flashing red lights.

This time of year also brings on that Friday Night Fever, the high school football games. Not only on Friday nights but also during the weekdays, people will be traveling to those football games. Let's be especially watchful for that traffic as they travel to and from the games.

Let's all work together to make this a safe school year for our children both during and after school hours.

Submitted by Texas Dept. of Public Safety.

District 3 Representative

Johnson attends TSHL orientation session

Franciene Johnson of Haskell, the Texas Silver Haired Legislature Representative for District 3, has just returned from an orientation session in Jester Hall at the University of Texas in Austin, held July 29 through Aug. 2.

She was sworn in by the Assistant Secretary of State and was presented a Certificate of Commission. The orientation session was for the purpose of electing officers, making committee assignments and getting an overview of the TSHL.

According to Johnson, there are 116 members of the Texas Silver Haired Legislature with the state being divided into areas. Each area is divided into four districts with four members per district. District 3 comprises eight counties including, Haskell, Knox, Stonewall, Kent, Scurry, Fisher, Nolan and Mitchell.

The TSHL, which represents one-fourth of the population of Texas, was created by the Texas Legislature to take advantage of the knowledge and expertise of senior citizens.

Johnson was elected Chairman of the Utilities and Natural Resources Committee. Each committee will take resolutions to the Legislative Session of the tenth anniversary of the TSHL, which meets Sept. 9-13. The resolutions will be discussed, with some being selected to be presented at the 1996 Texas Legislative Session.

TSHL members will then attend the 1996 Legislative Session and recommend the resolutions that were selected. Johnson said that 80 percent of resolutions that have been recommended by the TSHL have gone on to pass the Texas Legislature and become law.

Some of the speakers at the orientation session included State Attorney General, Dan Morales, Dr. Mike McKinney, Commissioner of Health and Human Services; and other representatives of state agencies. They discussed anticipated legislation of the Texas Legislature such as utility deregulation, public education, human services block grants and initiatives and referendums.

For Your Sheet Metal Work
Water Storage Tanks
All Kinds of Metal Duct Work
 See or call:
Guinn Sheet Metal & Plumbing
 817-658-3341 L.C. Guinn Knox City, TX

PIZZA

<p>2 LARGE THIN CRUST PIZZA UNLIMITED TOPPINGS \$13.99 Pan Pizza \$1 extra Expires August 31, 1996</p>	<p>2 MEDIUM THIN CRUST PIZZA UNLIMITED TOPPINGS \$11.99 Pan Pizza \$1 extra Expires August 31, 1996</p>
---	--

Roma Pizza
 864-8525

Haskell Eye Clinic
VisionCare ASSOCIATES

Thomas Labbe', O.D.
 Russell Kuempel, M.D.

Comprehensive Eye Exams -
 Contact Lens - Over 500 Frames To Choose From -

Save \$50.00
 on complete pair of glasses

OUT PATIENT SURGERY
 Including Cataracts with Implants
 "RK" Radial Keratotomy - Glaucoma Surgery
 Medicare & Medicaid Accepted

For Appointment Call • 817-864-3104
 530 S. 2nd • Haskell, TX 79521

Paint Creek I.S.D. Lunch Guidelines

The Paint Creek Independent School District today announced its policy for free and reduced price meals for children unable to pay the full price of meals served under the national school lunch program. Paint Creek I.S.D. has a copy of the policy, which may be reviewed by any interested party.

The following household size and income criteria will be used for determining eligibility:

**National School Lunch and Child Nutrition Programs
 1996-97 Income Eligibility Guidelines**

Family Size	Annually:		Monthly:		Weekly:	
	Free	Reduced Price	Free	Reduced Price	Free	Reduced Price
1	\$10,062	\$14,319	\$839	\$1,194	\$194	\$276
2	13,468	19,166	1,123	1,598	259	369
3	16,874	24,013	1,407	2,002	325	462
4	20,280	28,860	1,690	2,405	390	555
5	23,686	33,707	1,974	2,809	456	649
6	27,092	38,554	2,258	3,213	521	742
7	30,498	43,401	2,542	3,617	587	835
8	33,904	48,248	2,826	4,021	652	928
9	37,310	53,095	3,110	4,425	718	1,022
10	40,716	57,942	3,394	4,829	784	1,116
11	44,122	62,789	3,678	5,233	850	1,210
12	47,528	67,636	3,962	5,637	916	1,304

Each Additional Family Member
 +\$3,406 +\$4,847 +\$284 +\$404 +\$66 +\$94

Children from households whose income is at or below the levels shown are eligible for free or reduced price meals.

Application forms are being sent to all homes with a letter to parents or guardians. To apply for free or reduced price meals, households should fill out the application and return it to the school. Additional copies are available at the Superintendent's office. The information provided on the application will be used for the purpose of determining eligibility and may be verified at any time during the school year by school or other program officials.

For school officials to determine eligibility, households receiving food stamps or AFDC must list the child's name, their food stamp or AFDC case number and the signature and name of an adult household member. Households not receiving food stamps or AFDC must list: names of all household members; Social Security number of the primary wage earner; total household income and the amount and source of the income received by each household member; and the signature of an adult household member certifying that the information provided is correct.

Applications may be submitted at any time during the year. Under the provisions of the free and reduced price policy Paint Creek ISD will review applications and determine eligibility. Parents or guardians dissatisfied with the ruling of the official may wish to discuss the decision with the determining official on the informal basis. Parents wishing to make a formal appeal may make a request either orally or in writing to Paint Creek ISD, Larry Shackelford, Rt. 2 Box 190, Haskell, Texas, 79521 or telephone at 817-864-2471 for a hearing on the decision.

Households that list a food stamp or AFDC case number must report when the household no longer receives these benefits. Other households approved for benefits are required to report increases in household income of over \$50. per month or \$600. per year and decreases in household size. Also, if a household member becomes unemployed or if the household size increases the household should contact the school. Such changes may make the children of the household eligible for benefits if the household's income falls at or below levels shown above.

In certain cases foster children are also eligible for school meal benefits. If a household wishes to apply for benefits for foster children living with them, the household should contact the school for more information.

The information provided by the household is confidential and will be used only for purposes of determining eligibility and verifying data.

In the operation of child feeding program administered by the U.S. Department of Agriculture, no child will be discriminated against because of race, color, sex, national origin, age or handicap. If any member of a household believes they have been discriminated against, they should write immediately to the Secretary of Agriculture, Washington, D.C. 20250.

Obituaries

D.R. "Ned" Green

PAINT CREEK—Services were held for lifelong Haskell County resident, D.R. "Ned" Green, 81, of Paint Creek on Thursday, Aug. 1, at the Paint Creek Baptist Church with Rev. Jimmy Griffith and Rev. Alfred Altum officiating. Burial was in Howard Cemetery under the direction of Holden-McCauley Funeral Directors. Music was provided by Phyllis Coleman and Kenny Thompson.

worked all of his life as a farmer. He was a member of the Paint Creek Baptist Church.

He was preceded in death by one brother, Walter Green and one sister, Zelica Grand.

He is survived by his wife, Jessie Fay, of Paint Creek; two sons, Donnie Raymond Green of Paint Creek and David Joe Green and wife, Melanie, of Moore, Okla.; two brothers, L.O. Green of Paint Creek and Aubrey Green of Breckenridge; one sister, Audrey English of Rochester; four grandchildren; and three great-grandchildren.

Pallbearers were Billie Green, Larry John Edwards, Joshua Green, Jodie Edwards, Corey Trautvetter and Tommy English.

Harrold L. Adkisson

O'BRIEN—Services were held for Harrold L. Adkisson, 65, of O'Brien on Wednesday, Aug. 7 at the First Baptist Church of O'Brien with Rev. George Yarger and Lethel Jones officiating. Burial was in Willow Cemetery in Haskell under the direction of Smith Funeral Home of Knox City.

mother, Betty Adkisson of Munday; two sons, George Adkisson of West Columbia and David Adkisson of Rochester; four daughters, Gwen Wright of Abilene, Sharon Sinclair of Wichita Falls, Brenda Wilson of Lubbock and Nancy Roberson of Haskell; three brothers, J.H. Adkisson of Goree, Durwood Adkisson of Agra, Okla. and Jerald Adkisson of Brownwood; two sisters, Ruby Bailey of Levelland and Ruth Holloway of Blessing; 15 grandchildren and two great-grandchildren.

Pallbearers were Donnie Bowles, Alan Holmes, Rocky Mongrain, James Manning, Joe Godsey and Dan Godsey.

Honorary pallbearers were Billie Joe Large, Grady Holmes, Alex Godsey and Dwight Gothard.

Memorials may be made to the O'Brien Baptist Church.

Betty Bruce

Graveside services were held for Betty Bruce, 76, of Haskell on Wednesday, Aug. 7, at the Willow Cemetery with Rev. Worth Mayes officiating under the direction of Holden-McCauley Funeral Directors.

Technician for 20 years. She had lived in Haskell for the last five years.

She is survived by five daughters, Linda Adams of Weinert, Patricia Boling of Indianapolis, In., Theresa Sweeney of Aurora, Colo., Mary Robinson and Beverly Richardson, both of Wichita Falls; one son, Bob Bruce of Eldorado; one sister, Dean Allred of Clyde; 14 grandchildren and 12 great-grandchildren.

Irene Miller Wood

Graveside services for Irene Miller Wood, 77, of Albuquerque, N.M. and formerly of Haskell, will be held Saturday, Aug. 10, at Willow Cemetery with Minister Frank Summers officiating and under the direction of Holden-McCauley Funeral Directors.

resident of Haskell, where she worked for many years as a beauty operator. She was a Baptist.

She is survived by one daughter, Rita McClelland of Albuquerque; two grandchildren, Kelly and Allen McClelland of Albuquerque; and three sisters, Gladys Spurlin of Midland, Amrion Atkinson and Vira Seigal, both of Denver, Colo. She was the sister-in-law of Garland Wood and Joan Dulaney of Haskell.

The family requests memorials to the Arthritis Foundation, or to the donor's favorite charity.

Edna Burnett

Services were held for longtime Haskell resident, Edna Burnett, 85, on Monday, Aug. 5, at the First Baptist Church with Rev. Jim Turner officiating. Burial was in Willow Cemetery under the direction of Holden-McCauley Funeral Directors.

Colorado City.

She is survived by her husband of 65 years, Elbert H. Burnett of Haskell; one daughter, Dolores Foster of Haskell; one son and daughter-in-law, Charles and Joetta Burnett of Haskell; one brother, Ewing Wilson of Colorado City; one sister, Eula Smith of Walnut Ridge, Ark.; five grandchildren and ten great-grandchildren.

Pallbearers were Craig Foster, Steven Foster, Ray Burnett, Tim Lacey, Don Haggart and Randell Lacey.

The family requests memorials be sent to donor's favorite charity or the Haskell Cemetery Association, 801 N. Ave. G, Haskell, TX 79521.



Lillian Mauldin Powell

RULE—Services were held for Lillian Mauldin Powell, 92, of Rule on Thursday, Aug. 1, at the First Baptist Church of Rule, with Rev. J.R. Williams and Rev. Stewart Farrell officiating. Burial was in the Rule Cemetery under the direction of McCauley-Robison Funeral Directors.

Mrs. Powell died Tuesday, July 30, in the Haskell Memorial Hospital. She was born Nov. 6, 1903 in Park Springs. She married Miles Leonard Powell on Feb. 5, 1938 in Anson. She was a homemaker and a member of the First Baptist Church in Rule.

She was preceded in death by six siblings, Lindel Mauldin, Leland Mauldin, Lois Martin, Lucille Martin, Lolan Mauldin and Loretta Mauldin.

She is survived by her husband Leonard Powell of Rule; one daughter, Joyce Fern Callahan of Corinth, Miss.; one son, Eugene Rhoads of Rule; two step-sons, Miles Owen Powell of Odessa and Irvin Powell of Phoenix, Ariz.; 20 grandchildren; 39 great-grandchildren; and 18 great-great-grandchildren.

Pallbearers were Leonard Rhoads, Mike Rhoads, Eddie Briles, Wes Kitley, Derrell Sorrells and Malcolm Herttenberger.

The distance is nothing; it is only the first step that is difficult.

—Mme. Du Deffand

MAKE A BUNDLE

CALL 864-2686
SELL THOSE UNWANTED ITEMS

The Haskell Free Press

Montague Co. Jubilee, September 14

The Montague County Jubilee will be Saturday, Sept. 14, around the historic County Courthouse in Montague. All area residents, businesses and organizations are

encouraged to enter the multitude of events and activities available.

Food and craft vendors; BBQ cook-off; carnival booths; the Best Art Show in north Texas; quilt show; bocce ball; pancake breakfast; sand lot volley ball; business exhibits; heritage demonstrations; pie baking and pickle making contest; poker run and motorcycle games; 42 tournament; and fish fry supper.

There will be entertainment all day long on two stages and a dance under the stars of north Texas.

The highlight of the day will be when the Pony Express riders descend on the county seat from surrounding communities and towns. Special Pony Express cards are available for purchase.

Contact Barbara Holeman 817-2831 at P.O. Box 112 for specifics on each activity.

PIZZA PRO
 of Modern Way
 UNLIMITED TOPPINGS EXCLUDING CHEESE
PIZZA PRO
LARGE PIZZA
2 For \$13.99

REGULAR OR DIET
DR. PEPPER
PEPSI, 7-UP
2 \$6.00
 12 oz 6 pack

REGULAR OR DIET
DR. PEPPER, PEPSI, 7-UP 3 liter **\$1.69**

PRICES GOOD THRU SAT., AUG. 10
CALL IN ORDERS
PHONE 864-3976

We Focus on YOU!
We Focus on YOU!

Our financial professionals have answers to your questions, solutions to your problems and advice you can use. Let us put our expertise to work for you.

We deliver friendly, convenient service. Stop by any time. We have what it takes to make banking a snap!

FDIC

The Farmers NATIONAL BANK

P.O. Box 10
 Rule, Texas 79547
 (817) 997-2216

LIFESTYLES

Carriage Flower Shop opens

The Carriage Flower Shop, located on the east side of the square, held its grand opening Monday, Aug. 5. The shop is owned and operated by Betty Sorrells of Rule and Connie Cothron of Haskell.

The shop will offer both fresh and silk flower floral arrangements, gift items and floral decorations for weddings and other gatherings or occasions.

Sorrells said that she found the Carriage logo in a book and liked it, and then she went to Memphis and saw a bigger cut of it and decided that she had to have it for the name of their shop.

The shop is open from 8:30 a.m. to 5:30 p.m., Monday through Friday and 8:30 a.m. to noon on Saturday. The ladies invite everyone to come in and shop, place an order, or just drop by for a visit.



FLOWER SHOP GRAND OPENING—The Carriage Flower Shop held its Grand Opening, Monday. The shop, owned and operated by Betty Sorrells of Rule and Connie Cothron of Haskell, offers a selection of fresh and silk flower arrangements as well as wedding flowers and decorations.

Cultural Arts Retreat

By Lou Gilly

Haskell Co. Ext. Agent Family and Community Education (FCE) Club members will meet together Aug. 14-15, at the Texas 4-H Center at Lake Brownwood for a Cultural Arts Retreat.

The overnight retreat will feature educational workshops, activities and leadership. Attending from Haskell Co. will be Lennie Ruth Blankenship, Joetta Burnett, Jane Smith and Alice Yates. Lou Gilly, County Extension Agent-FCS will accompany the county group. Virginia Helton, FCE District Director from Weatherford in Parker Co., is coordinator for the event. FCE Club members and County Extension Agents in Knox, Palo Pinto, Parker, Stephens, Wise and Young Counties will be hosting the event.

The purpose of organized FCE Clubs is to improve family living, develop leadership skills and to improve human rights. Texas Association for Family and Community Education is a part of the National Association for Family and Community Education, Country Women's Council and the Associated Country Women of the World. They are the largest organization of women in the world.

For more details, contact your County Extension Agent. Family and Community Education Clubs are sponsored by the Texas Agricultural Extension Service, an arm of the Texas A&M University System.

Educational programs of the Texas Agricultural Extension Service are open to all citizens without regard to race, color, sex, disability, age or national origin.

Around Town

By Joyce Hawkins

Visiting with Estelle Breeden this past week was sister-in-law, Mattie Barrington of Throckmorton. She had lunch with Estelle at the E.C.C.

Those attending the Baxter reunion at Fort Belnap over the weekend were Betty Stocks, Evelyn Wright, Gean Blair, Eric Blair and Cathy, Nathan and Ann Blair and girls, and Gary and Vickie Hawkins.

Those attending the Carroll reunion from this area were Mr. and Mrs. Casey Reed and children and Pete Carroll of Haskell, Mr. and Mrs. Dale Carroll and Doug of Weinert and Taylor Therwanger of Perrin. The reunion was held at Lake Texoma.

Lorene Allen of Denver, Colo. visited her sister Vera Berry from Aug. 1, until Aug. 7. Lorene went with Vera to the E.C.C. for lunch each day while here, seeing lots of old friends.

Jennie Collins had a reading of her MRI in Dallas on Aug. 7. She has high hopes all will be okay. Jennie's sister, Patsy Gray from the Fort Worth area has been visiting with Jennie and E.C. and had lunch with them at the E.C.C.

The 29th Sayles-Center Point reunion was held Aug. 3 and 4, at the Haskell National Bank Community Room. All attending enjoyed visiting and reminiscing, and a delicious meal on Sunday.

Students in the News

The A Honor Roll and Distinguished Student list for the Spring 1996 semester has been released at Tarleton State University.

Students listed on the A Honor Roll must have a 4.0 grade point ratio on the 4.0 system and be taking a minimum of 12 hours.

Distinguished Students include freshmen and sophomore students who have a minimum GPR of 3.25 with no grade lower than C, juniors and seniors who have a minimum GPR of 3.50 with no grade lower than C and are in good standing.

The following students from this area were on the Distinguished Student list: Nathan C. Callaway and Kim Gilly from Haskell; Mikeana Jeffrey from Rule; and Christy Mathis from Sagerton.

Tori Miller of Rule received a Bachelor of Science degree in Elementary Education during August commencement at Abilene Christian University. She is the daughter of Mr. and Mrs. Ronnie Jenkins.

Students in the News

Joel Robert Campbell of Rule, Lisa Fay Whitaker of Stamford, Danny Lee Guerrero and Adelia Alvear of Stamford

Ramon Romero Salazar and Molly Mercedes Estrada of Weinert, Hernandez Contreras Enrique of Sagerton, Rose Marie Galvan of Ballenger

Roger Lee Roewe of Haskell, Jennifer Elizabeth Haterius of Stamford

Daniel Montes and Tanya Lou Tears of Knox City, Christopher Lee Elias and Lori Ann Bailiff of Haskell, Robert Matthew Munsell of Stephenville, Stacy Michelle Martin of Haskell, Paulo Alvarado Flores and Stephanie Lan Franco of Rule, Abel Gallegos Hernandez and Christine Salazar of Haskell, Corey Allen Breckel and Heather Brooke Hobgood of Haskell

FOR SENIOR AMERICANS

★ MEDICARE SUPPLEMENTS ★

Several Plans at Competitive Rates. Open Enrollment Period. 6 Months Prior to Age 65.

LONG TERM CARE. HOME HEALTH CARE.

★ MAJOR MEDICAL ★

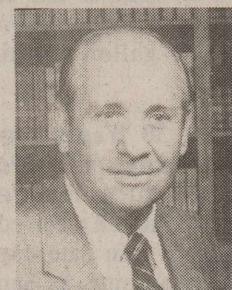
Several Plans Available. Written Individually with Group Rates.

FINAL EXPENSE BENEFITS

Plan Now So Your Family Will Not Be Burdened Later.

ANNUITIES

Tax Benefits. Competitive Interest. Monthly Income You Cannot Out Live. Does Not Go Through Probate. Great for IRA Rollovers.



Hess Hartsfield
417 S. 1st
817-864-2665
817-864-2004

Shake it Up!

BURGER & SHAKE SPECIAL

\$1.99

PLUS TAX

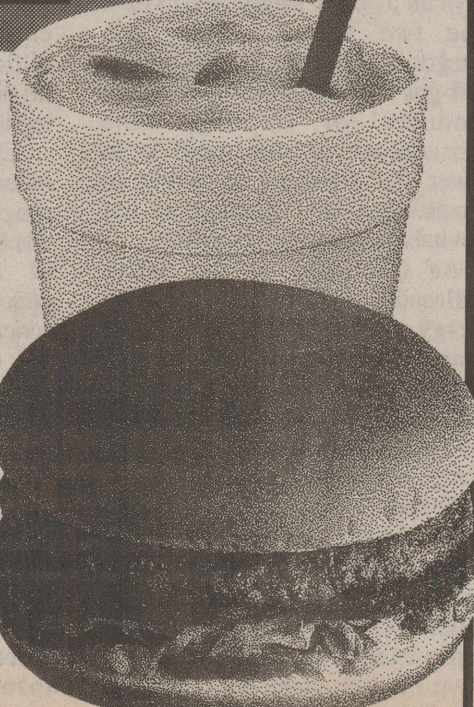
No. 1 or No. 2 Single Patty Burger and Regular Shake

- Chocolate
- Vanilla
- Strawberry
- Banana
- Pineapple

Offer good August 1-31, 1996. Not valid with any other offer.

SONIC

No Waiting
Call In Orders
864-8533



BACK TO SCHOOL

SHOPPING LIST

- ✓ 70 Ct. Spirals **2 for \$1.00**
- ✓ 10 Ct. #2 Pencils **39¢**
- ✓ Bic 10 pk. Round Stic Pens **89¢**
- ✓ Super Value Calculator **\$2.99**
- ✓ Pocket & Prong Folder **4 for \$1.00**
- ✓ Pocket Only Folder **7 for \$1.00**
- ✓ 96 Ct. Assorted Construction Paper **\$1.39**
- ✓ Fine Tip Expo Markers **\$2.99**
- ✓ 2 Pk. Red Checking Pencils **75¢**
- ✓ Prang Water Colors **\$1.59**
- ✓ Assorted Erasers **2 for \$1.00**
- ✓ 150 Ct. Wide or College Rule Paper **each 75¢**

SPORTS VALUE PACK

contains

- 1-3 Ring Binder *Shaquille O'Neal*
- 1-60 Ct. Spiral *Ken Griffey*
- 1-Portfolio *Grant Hill*
- 1-Memo Pad *Emmitt Smith*
- Troy Aikman*

EARRINGS

Over 150 Selected Pairs
Buy One Pair at Regular Price Get A.....
Second Pair of Equal or Lesser Value for only

\$1.00



"Your Family Drug Store"

NEW Axid AR 12 Count



Now Just \$4.74

ZANTAC 75 4 ct.



4 Ct. \$1.99
10 Ct. \$4.39
20 Ct. \$6.99

NEOSPORIN Plus Maximum Strength .5 oz. Ointment or Cream



Your Choice: \$3.69

Benadryl Kapsels 36 ct.



Just: \$3.49

THE DRUG STORE

Mon.-Fri. 8-6
Sat. 8-5
Sundays & Holidays 8:30-9:30

Haskell, Texas
1-800-962-0743
817-864-2673

THIS IS IT!!

Final Reduction
On Spring and Summer Sale Shoes
\$9.90 \$14.90 \$19.90 \$24.90

Handbags **1/2 off & 1/3 off**
Select Group

60% OFF
Summer Dresses

1/2 PRICE Summer Sportswear

New Sale Merchandise Added

40% OFF
Personality-Slipper Shoppe

817/864-2501 • 864-3051

South Side of Square

Haskell, Texas

OPINION

State Capital



HIGHLIGHTS

By Lyndell Williams & Ed Sterling
TEXAS PRESS ASSOCIATION

AUSTIN — Lower homeowner and renter insurance rates take effect Oct. 1, after a ruling last week by Texas Insurance Commissioner Elton Bomer.

Bomer ruled Central Texans should not have to pay for bad storms in North Texas through higher insurance rates.

"It's not right for homeowners in (Central Texas) to pay for hail storms in Dallas, just as it wouldn't be fair for homeowners in Dallas or Fort Worth to pay for hurricanes along the coast," Bomer said.

For the purpose of computing insurance rates, the Dallas-Fort Worth area had been lumped with Central, South and West Texas, the *Austin American-Statesman* reported. As a result of this "lumping together" policyholders in those three regions subsidized the insurance premiums of those who live in Dallas-Fort Worth.

Bomer separated the single rating territory into two, and therefore, Central, South and West Texas residents will feel less impact when the \$1.1 billion in insurance losses from the May 1995 Dallas-Fort Worth hail storm are figured into the new rates.

While insurers backed Bomer's decision, some consumer groups did not, saying that basing insurance rates on large territories helps prevent rate shock to any one geographical area.

The new rates will show a suggested 4.3 to 4.8 percent decrease for homeowners and a 26.7 to 30 percent decrease for renters.

Meanwhile, Bomer formally banned a billing practice that prompted a \$100 million class-action lawsuit against two insurance companies.

In adopting new rules aimed at Allstate and Farmers insurance groups, Bomer said the insurers may round their bills to the nearest dollar only once before sending them to customers.

Both companies have been rounding bills twice, a practice that critics claim has provided the firms with a \$100 million windfall.

Crackdown on Dirty Money

Texas Attorney General Dan Morales said his office will provide banks with updated information and training to help detect drug money laundering schemes.

Up to 80 percent of the cocaine entering the U.S. each year crosses the Texas-Mexico border and an estimated \$35 billion in illegal drug money is laundered in Texas each year, Morales told the Associated Press.

Christopher Williston of the Independent Bankers Association of Texas pledged that community banks would work to battle the money laundering, and Gregory Crane, president of Broadway Na-

tional Bank and chairman of the Texas Bankers Association, said he knew of no bank presidents who would knowingly launder money.

"My office and the Texas banking community have pledged to work closely with each other and with other law enforcement agencies to keep the dirty money out of the state," Morales said.

His office's financial crime division has access to U.S. Treasury information on money transactions and has been studying suspicious money transfers.

Colonia Aid Falls Short

Colonias along the Texas-Mexico border desperately need basic services that most Texans take for granted.

State, federal and private sources have contributed \$750 million to a water and sewage plan, but to get the job done, it will take a billion dollars to provide water and sewage services to those 1,500 substandard subdivisions.

At an Austin conference last week, state officials and colonia residents discussed ways to come up with the \$250 million that is still needed.

Dan Torrez, who coordinates colonia projects for the state attorney general's office, said a way to make up the difference would be to call a bond election, but added, "The question is whether there is the political will in the mid-1990s to approve something like that—the consensus is probably not."

Meanwhile, organizers are working on recommendations, such as asking private foundations to help, creating a board to guide public and private projects and seeking designation as a "federal empowerment zone" for the border area to help raise money.

Judges Eye Congressional Maps

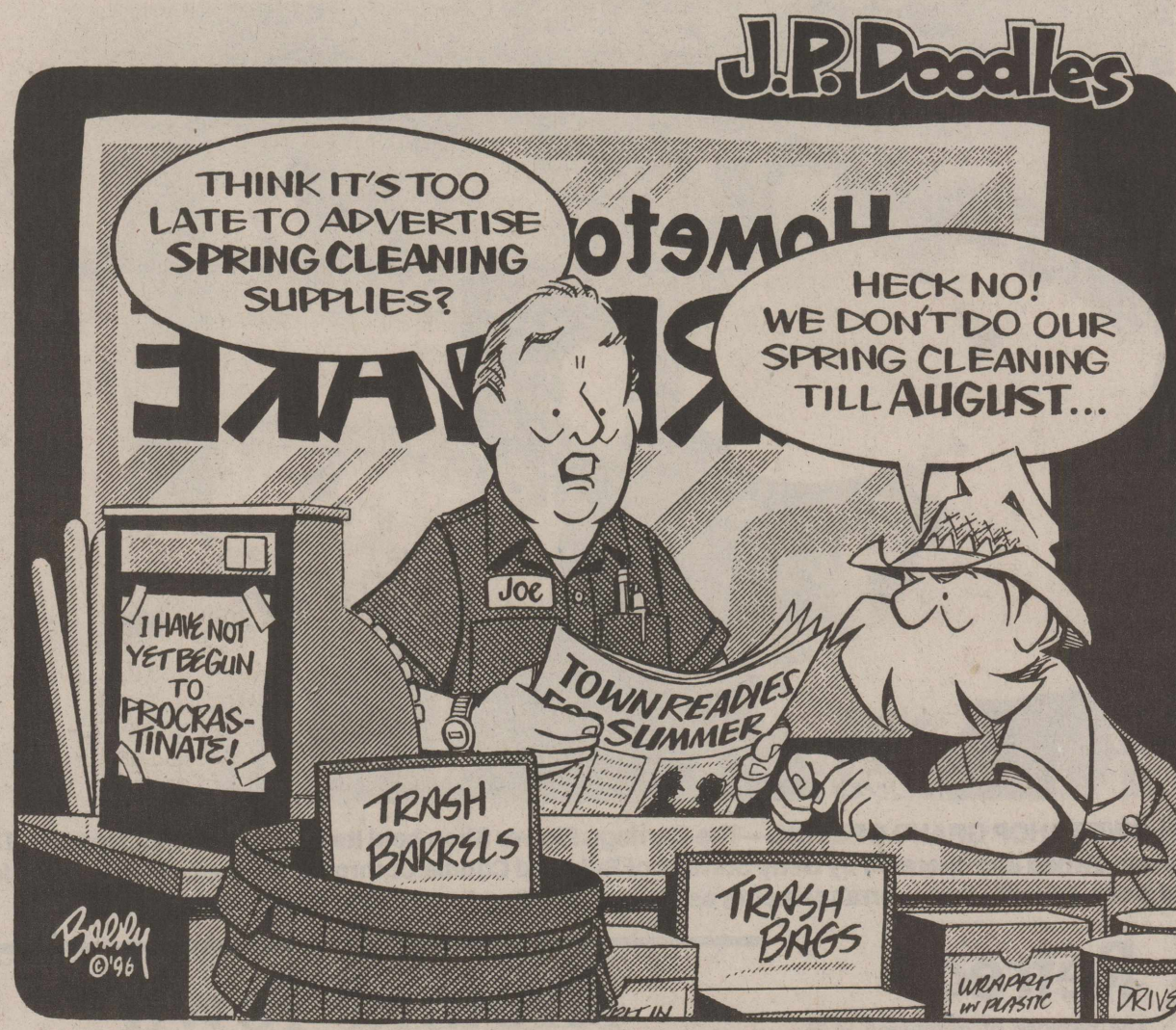
A three-judge federal panel in Houston has received congressional redistricting maps from Democratic defendants, Republican plaintiffs and others in three predominantly minority districts in Dallas and Houston.

The U.S. Supreme Court in June upheld the Houston court's ruling declaring the districts unconstitutional because race was the main factor in their creation.

The judges will decide by Aug. 8 whether they will void the March congressional primaries and order special elections in re-mapped districts.

Other Capital Highlights

■ The U.S. Taxpayers Party has gathered the 43,962 required signatures to earn a spot on the November general election ballot in Texas, following a ruling by Texas Secretary of State Tony Garza. The party wants political commentator Pat Buchanan as its presidential nominee.



From Out of the Past

From the files of The Haskell Free Press

20 Years Aug. 5, 1976

The winds came and then came the rain. High winds left the Farm and Ranch Supply damaged in its wake Monday afternoon, however along with the wind there followed some rain of varied amounts throughout Haskell Co. Reports ranged from a sprinkle to a downpour depending where you happened to be. On checking with Pete Beecher of NCTMWA he reported that there was no noticeable rain in an area that would affect the Miller Creek Lake.

M System Super Market was advertising: Grade A Fryers, 39 cents a lb.; Imperial Pure Cane Sugar, 5 lb. bag for 99 cents; Crisco Shortening, 3 lb. can for \$1.29; Fresh Sweet Corn, 8 ears for \$1; Pet Milk, 3 tall cans for 89 cents; and Kountry Fresh Sweet Milk, a gallon plastic jug for \$1.59.

30 Years Ago Aug. 11, 1966

After three long months of drought, Haskell received more than an inch of rain Saturday night and Sunday morning, as Sam Herren's official government gauge revealed 1.05 inches. Only .51 of an inch fell here in July; .46 in June and .27 of an inch in May. The last good rains fell here in April when almost 10 inches was gauged during that month.

Bobby Watson, son of Mr. and

Mrs. Robert N. Watson, and Bill Perry, son of Mr. and Mrs. Howard Perry, of Haskell, will be playing in the 17th Annual Greenbelt Bowl at the All-Star football classic in Childress on Aug. 13.

Marsha Shaver, 17-year-old daughter of Mr. and Mrs. R.A. Shaver, Jr. of Rochester, was crowned Miss Hey-Day before a packed house at the Texas Theatre Tuesday evening.

60 Years Ago Aug. 6, 1936

Haskell Co. has received \$1,242,500.17 in rental and benefit payments in the three years since the creation of the Agricultural Adjustment Administration, it has been announced by H.P. Drought, state director of the National Emergency Council.

A motorcade of at least 100 persons from Haskell, Rule and Rochester, will visit Fort Worth and the Frontier Centennial Friday, Aug. 14, designated as Haskell and Throckmorton day at the West Texas Chamber of Commerce exhibit building.

Mr. and Mrs. J.J. Tucker, owner of the Style Shoppe, are in Dallas this week purchasing new fall merchandise for their store.

70 Years Ago Aug. 5, 1926

Fred E. Owens, who taught the Midway school the past term, has just been named agent for Haskell County by the Southland Life Insurance Co. of Dallas and will

take up his work at once.

Dennis P. Ratliff, local attorney and member of the law firm of Ratliff and Ratliff, who was tendered the office of County Attorney of Haskell Co. to fill the vacancy caused by the resignation of Clyde Grissom, stated this week that he could not accept the office and has so advised the Commissioners Court. Mr. Ratliff stated that to accept the place tendered him would necessitate his sacrificing a number of things which course he did not believe would be to his best interest. Mr. Ratliff is an able young attorney, and his friends regret that he was unable to accept the position offered him.

90 Years Ago Aug. 11, 1906

Mr. and Mrs. R.P. Simmons, Mr. Kyle Simmons and family and Messrs. Mark Whitman and Frank Simmons and their wives spent a few days this week on the river fishing and hunting, but owing to the frequent rains their experience was a rather damp one.

Mr. W.T. McDaniel fired up the other day and ran his new gin outfit several hours to get everything smoothed out and in good running order. He will run it again today and gin four bales of old cotton which he has on hand.

Mr. W.T. Jones, public weigher in the Haskell precinct, has appointed Hugh Williams his deputy at Rule.

Creating paychecks and jobs for Texans

By Carole Keeton Rylander
Chairman, Texas Railroad
Commission

The Texas oil and gas industry continues to play a vital role in our state's economy (employing 293,000 Texans) and will do so for many, many decades to come. The choice we face is either to engage in a bold effort to increase oil and gas production or shrink from that challenge.

If we succeed, we can reverse the decline in the Texas jobs base. The typical job created in Texas today pays an average of \$389.59 a week, while the typical job being lost pays an average salary of \$731.54. The two highest paying job categories in decline are those in oil and gas extraction and petroleum products (or refining). The consequence of this trend is to lower the standard of living in Texas. But this decline is not inevitable and can be reversed.

As Chairman of the Texas Railroad Commission—our state energy agency—I am working to remove disincentives to exploration and production, and pursue policies that create more paychecks and jobs for Texans and establish America's energy independence.

Texans enjoy good schools, good roads and exemplary universities, without a state income tax, because of the billions and billions of dollars spent recovering, transporting and processing our Texas oil and natural gas. I want to keep it that way—without a state

income tax. Keeping the rig count up is essential because it means severance taxes to our state, ad valorem taxes to our schools and paychecks and jobs for Texans.

This requires a proactive, energetic, forward-looking energy agency fully accountable to the people of Texas. The Commission is the catalyst to usher in a new era of productivity in the oil patch.

I am leading the charge to abolish the \$17 billion a year U.S. Department of Energy and to turn over its power and grant-making authority to the states. Unlike the Railroad Commission which is involved with all key aspects of energy—from drilling permits to oilfield clean-up—the DOE has no mission, no impact and no legitimate future.

Election-year gimmicks that reduce accountability endanger our progress. Governor Bush does not want the Commission in the hands of an appointed, unelected, unaccountable bureaucrat. I fully concur. The top ten state salaries go not to elected officials but to political appointees who earn an average of just under \$150,000 a year—nearly twice the salary of one Railroad Commissioner.

The new politics demand authentic leadership and courage. I will continue fighting to bring our state's energy regulatory policy into the 21st Century so that the next generation of Texans can enjoy unsurpassed opportunity and paychecks and jobs.

I came to the Commission two years ago with the simple philosophy that the oil and gas industry needs from government what we all need—less, not more: less mandates, less taxation and less regulation.

Today, the Commission represents only thirteen one-hundredths of one percent (.0013) of the entire state budget but oversees an industry that pumped over \$52 billion—one out of every nine dollars—into our state's economy last year alone.

That was made possible because for the first time in 105 years we completely reorganized and reengineered the agency. Staff size is down by 12 percent and we're taking \$11 million less from taxpayers' pockets this budget over the one adopted before I came to the Commission.

This April, I launched the first substantive overhaul of energy regulatory policy in 60 years. This plan to partially de-regulate oil production will save taxpayers \$300,000 and the industry \$40 million a year in reduced costs, if fully implemented. That \$40 million, instead of being plowed into paperwork, regulations and red tape could keep the rig count up and improve the economics of the oil and gas industry.

I proposed Texas Energy Awareness Month (to begin this September) to highlight the importance of energy to our state and to foster energy education in our schools.

Legal Matters

By Atty. Gen. Dan Morales

EMPLOYER NEW HIRE PROGRAM

NO PARENT HAS the right to turn his or her back on a child. But many do, leaving Texas taxpayers with millions of dollars a year in welfare payments for families living on the edge of poverty.

The Child Support Division of the Office of the Attorney General currently has about 750,000 active child support cases, affecting more than 2 million Texas children who need our help.

With cooperation from many employers across the state, many child support obligations are met through withholding from employees' paychecks. The support and assistance we receive from employers is invaluable. In fact, wage withholding brought in 60 percent of all child support collections last year.

Employer New Hire Reporting program

In 1993, the Texas Legislature gave employers a greater opportunity to help collect child support with the creation of the Employer New Hire Reporting program.

This voluntary program, enacted by the Texas Legislature in

1993, provides a means by which employers can report pertinent information about new hires and rehires. With the assistance of Texas businesses, our office can more easily locate non-custodial parents who owe child support.

In 1995, the Legislature expanded the law. Today, the Texas Work Force Commission, the Workers' Compensation Commission, and the Department of Human Services pool their resources to create a unified database. Because of their work and information exchanges, we are not only increasing child support collections but also cutting down on the incidence of fraud in the welfare, workers' compensation and unemployment programs.

How to help

Every month thousands of Texas children fail to receive adequate financial support from their parents. But with the participation of businesses in the Employer New Hire Reporting program, employers can make a difference in the lives of these children.

Organizations as large as AT&T and Marriott are involved, as are thousands of smaller businesses.

And it is easy to participate. As an employer, all you have to do is send us an existing employer report, a copy of the employee's W-4 form or return a form supplied by my office. This can be done electronically or by mail.

What you can do

As a consumer, you can help by asking the businesses you patronize to join the Employer New Hire Reporting program. If they are not part of the program, please encourage them to do so. About 1,200 Texas businesses are involved in the program, but we always need more businesses to help us collect child support.

One agency cannot do the job alone. We need a collaborative effort to ensure that children receive the child support they need. Success relies on a partnership with the community, businesses, educational institutions, community organizations, and individuals must unite to help the children.

For more information

For more information about the Employer New Hire Reporting program, employers can call (512) 482-9136 or reach us by fax at (800) 732-5015.

The Haskell Free Press

Established January 1, 1886
PUBLISHED EVERY THURSDAY
401 S. First St.
P. O. DRAWER 1058 HASKELL, TEXAS 79521

John McDougall Publisher
Joyce Jones Editor
Lisa Shaw Business Manager
Doris McDougall Production

Periodical Paid Haskell, Texas 79521
(USPS 237-040)

SUBSCRIPTION RATES:
Haskell County, one year, \$20.00.
Outside of Haskell County, one year, \$28.00.

NOTICE TO PUBLIC—Any erroneous reflection upon the character, reputation or standing of any firm, individual or corporation will be gladly corrected upon being called to the attention of the publisher.
POSTMASTER: Send address changes to The Haskell Free Press, P.O. Box 1058, Haskell, TX, 79521-1058.

MEMBER
**TEXAS PRESS
ASSOCIATION**
1996

Don't Miss Out

Subscribe Today!

864-2686

The Haskell Free Press

Rep. Finnell appointed to committee

State Rep. Charles Finnell (D) of Holliday was appointed Chairman of the House Agriculture and Livestock Subcommittee on Fire Ants.

Fire ants, which invaded Texas in the 1950's have steadily spread across the state causing approximately \$90 million in damage a year in crops, electrical equipment, medical care costs for humans and animals, and for chemicals.

A committee hearing is scheduled for 10 a.m. Wednesday, Aug. 7, in the Capitol Extension, Room E2.010. The committee will monitor the progress of the Fire Ants Research and Management Account Advisory Committee in the development of a plan to combat the control of fire ant infestation.

For further information regarding this matter, contact Amelia Martin at 512-463-0650.

Cisco Jr. Coll. registration

All freshmen attending the Cisco Jr. College campus who are not pre-registered and who have not been assigned a faculty advisor are to report to the Harrell Fine Arts Auditorium at 9 a.m., Wednesday, Aug. 21.

Returning sophomores who have not pre-registered, should see their assigned advisors on Aug. 21 or 22. Sophomore transfers who need assistance should check with the counselor.

Registration will be from 6 to 8 p.m. Thursday, Aug. 22, in the Harrell Fine Arts Building. This time is designated for students registering for night classes and for returning students only.

Regular registration on Friday, Aug. 23, is the time designated for freshman registration. Registration is assigned by the first letter of your last name for day registration on Friday, Aug. 23.

M, Mc, N and O: 9-10 a.m.

A, B, C and D: 10-11 a.m.

I, J, K and L: 11 a.m.-noon

T, U, V, W, X, Y and Z: noon to 1 p.m.

P, Q, R and S: 1-2 p.m.

E, F, G and H: 2-3 p.m.

It should be noted that first-time entering college students are subject to a state required placement testing program (TASP) prior to registration. For full information concerning testing arrangements and who is subject to the state requirements, call the counselor's office at 817-442-2567 in Cisco.

Dormitories will open at 2 p.m. on Aug. 20. The cafeteria will open at 5 p.m. on Aug. 20. Classes will begin Aug. 26.

Collection of scrap tires

This week, the Texas Natural Resource Conservation Commission (TNRCC) awarded a contract to Quality Tire Recycling Co. for the collection of scrap tires from businesses in Northwest Texas. Collection will begin this week.

The contract is designed to ensure reliable collection throughout Finnell's vast 13-county 68th House District, and is expected to remove the backlog of scrap tires at businesses within a month. Rep. Finnell was among rural legislators who urged that temporary storage sites be set up in West Texas to speed up the process.

Among the counties to be served by Quality Tire Recycling Co. are:

Archer, Baylor, Clay, Cottle, Foard, Hardeman, Haskell, Jack, Montague, Throckmorton, Wichita, Wilbarger and Young.

Northwest Texas businesses may request tire collection from the contractor but are not required to use the service if collection is already being provided.

The waste tire recycling program began April of 1992 and has resulted in the cleanup of more than 600 illegal tire dumps across the state.

The address and telephone number for Quality Tire Recycling Co. is as follows:

Quality Tire Recycling Co., 12300 Zavalla, Houston, TX 77085, phone 713-729-9959.

For further information, contact Terry Hadley of the Texas Natural Resource Conservation Commission at 512-239-5000.

Food for thought

As loving parents, one way we can honor our children and build value into their lives is to help them see the positive gain in troubled times. Whether we like it or not, before they leave our homes, our sons or daughters may experience moments or even days of doubt, discouragement, loneliness, disappointment or depression.

They may be betrayed by a friend, fail to get into the college or the profession of their choice, be

dumped later in life by a spouse, or perhaps experience the disabling results of experimenting with drugs or alcohol. And with each painful experience their child suffers, Mom and Dad feel the aftershocks in their hearts.

It is certainly not wrong to avoid pain when we can. But it is wrong to deny problems, ignore them or try to explain them away. One of the all-time great truths is that life is difficult and often unfair.

The better we are at seeing

through trials to what they can produce in our lives and our children's lives, the better able we'll be to provide calmness, assurance and genuine love, righteousness and perseverance to those who are willing to be trained by them.

The very things we fear might happen to our children can make them stronger people, depending on their response and our response to their difficulties.

Submitted by Sam Bitner.

Trouble is a part of your life, and if you don't share it, you don't give the person who loves you a chance to love you enough.
—Dinah Shore

Happy Birthday
Jesse DeLosSantos
Birthday Party/Dance
August 10 ~ 7 p.m. ~ American Legion
Friends & Family Welcome

This Week's Devotional Message: A RECESSION CAN TEACH LESSONS IN BASIC VALUES



Nearly every nation occasionally suffers a period of economic downturn called a recession. It can come from a variety of combination of causes, including a war or even a threat of war, or an international energy crisis. It can also be started by irresponsible talk, causing people to be fearful of spending their money, even for the things they need.

This results in the loss of jobs and tax revenues, as well as general financial chaos. The remedy is to adopt a wise spending program, but otherwise ignore the "gloom and doom" prophets. Also, attend your House of Worship. The good times always return eventually, and meanwhile, some priceless lessons in basic values have been learned through faith, in counting our blessings.

ATTEND CHURCH THIS SUNDAY

HASKELL
East Side Baptist Church
David Page, pastor
Sun. Morn. 9:45 a.m., 10:55 a.m. 6 p.m.;
Wed. 7 p.m.
600 N. 1st East, Haskell
Christian Church
Frank Summers, preacher
Sun. Morn. 9:45 a.m., 10:45 a.m., 6 p.m.;
Wed. 7 p.m.
107 N. Ave. F, Haskell
Church of God
Eric Clark, pastor • 864-2021
Sun. 9:45 a.m., 11 a.m., 6 p.m., Wed. 7:00 p.m.
East Hwy 380, Haskell
Trinity Lutheran Church
Jeff Zell, pastor
Sun. Morn. 8:00 a.m., Sunday School to follow
Hwy 380 East, Haskell
Iglesia Bautista El Calvario
Raul Tirado, pastor
Sun. Morn. 9:45 a.m., 10:45 a.m., 6 p.m.;
Wed. 7 p.m.
607 S. 7th, Haskell
First United Methodist Church
Sidney Parsley, pastor
Sun. Morn. 9:45 a.m., 10:50 a.m. 6 p.m.;
Wed. 6 p.m.
201 N. Ave. F, Haskell
First Assembly of God
Rev. J.C. Amburn
Sun. Morn. 9:45 a.m., 10:45 a.m., 6 p.m.;
Wed. 7 p.m.
1500 N. Ave. E, Haskell
St. George Catholic Church
Father Michael Melcher
Sat. Mass 7:15 p.m.; Sun. Morn. 9:00 a.m.
901 N. 16th, Haskell

Church of Christ
Dale Huff, minister
Sun. Morn. 9:30 a.m., 10:30 a.m., 6 p.m.;
Wed. 7:30 p.m.
510 N. Ave. E, Haskell
First Presbyterian Church
Jasper McClellan, pastor
Sun. Morn. 9:45 a.m., 11:00 a.m.
306 N. Ave. E, Haskell
Trinity Baptist Church
Rev. Kenneth Blair
Sun. Morn. 10 a.m., 11 a.m., 6:30 p.m.;
Wed. 7:30 p.
401 S. Ave. D, Haskell
Hopewell Baptist Church
John Lewis, pastor
Sun. Morn. 9:30 a.m., 11:00 a.m.; Wed. 7 p.m.
908 N. Ave. A, Haskell
Greater Independent Baptist Church
Rev. Camellia Wade, pastor
Sunday Morn. 9:30 a.m., 11:00 a.m., 6:30 p.m.;
Wednesday 7 p.m.
301 N. 3rd St., Haskell
New Covenant Foursquare
Freddy Perez, pastor
Sun. Morn. 10 a.m., 11:00 a.m., 6:30 p.m.;
Wed. 7 p.m.
200 S. Ave. F, Haskell
Mission Revival Center
Rev. William Hodge
Sun. Morn. 10 a.m., 11 a.m., 6 p.m.;
Tues. 6 p.m.
1600 N. Ave. B, Haskell
First Baptist Church
Jim Turner, pastor
Sun. Morn. 9:45 a.m., 10:55 a.m., 6 p.m.;
Wed. 7 p.m.
301 N. Ave. E, Haskell

WEINERT
First Baptist Church
Werth Mayes, pastor
Sun. Morn. 10:00 a.m., 11:00 a.m., 6 p.m.;
Wed. 7 p.m.
Weinert
Weinert Methodist Church
Rev. James Patterson
Sun. Morn. 9:45 a.m.
Weinert
Weinert Foursquare Church
Rev. Joyce Goossen and Rev. Diane Crownover
Sun. Morn. 10 a.m., 11 a.m. Wed. 7 p.m.
Weinert
ROCHESTER
Church of Christ
Jim Pratt, minister
Sun. Morn. 9:45 a.m., 10:45 a.m., 6 p.m.;
Wed. 6 p.m.
West on Main Street, Rochester
First Baptist Church
Rev. Troy Culpepper
Sun. 11:00 a.m., 6 p.m.;
Wed. 7:00 p.m.
500 Main, Rochester
Union Chapel Baptist Church
Rev. Andrew
Sun. Morn. 9:45 a.m., 10:45 a.m., 6 p.m.;
Wed. 7 p.m.
Rochester
Faith Chapel of Rochester
Katherine Byrd, minister
Sun. Morn. 10 a.m., 11 a.m., 7 p.m.
Hwy 6, Rochester
First United Methodist Church
Dolan Brinson, pastor
Sun. Morn. 10:00 a.m., 11:00 a.m.
Rochester

SAGERTON
Sagerton Methodist Church
Carol Krumpston, pastor
Sun. Morn. 9:30 a.m.
Sagerton
Faith Lutheran Church
Jeff Zell, pastor
Sun. Morn. 9:15 a.m., 10:30 a.m.; Wed. 7 p.m.
Sagerton
RULE
First Baptist Church
Stewart Farrell, pastor
Sun. Morn. 9:45 a.m., 11:00 a.m., 6 p.m.;
Wed. 7 p.m.
1001 Union Ave., Rule
Primitive Baptist Church
Dale Turner Jr., pastor
First & Third Sundays 10 a.m.
Corner of 8th & Robins, Rule
Church of Christ
John Greeson, minister
Sun. Morn. 9:45 a.m., 10:40 a.m., 6 p.m.;
Wed. 7 p.m.
811 Union, Rule
New Life Baptist Mission
Jesus Herrera
Sun. Morn. 10:00 a.m., 11:00 a.m.
Elm Street-Hwy 380 E, Rule
Sweet Home Baptist Church
Matt Herrington, pastor
Sun. Morn. 10:00 a.m., 11:00 a.m., 6 p.m.;
Wed. 7 p.m.
Gladstone Ave., Rule
West Bethal Baptist Church
Rev. Robert Sweet
Sun. Morn. 10:00 a.m., 11:00 a.m., 8 p.m.;
Wed. 7:30 p.m.
300 Sunny Ave., Rule

PAINT CREEK
Paint Creek Baptist Church
Sun. Morn. 10:00 a.m., 11:00 a.m., 6 p.m.
Paint Creek

Sonic Drive-In
1402 N. Ave. E
864-8533
Managers: Leon & Carolyn Herring

First National Bank of Haskell
200 S. Ave. E • 817-864-8555
Member FDIC

The Sweet Shop
507 N. Ave. E • 864-2711
Hebrews 10:25 - "Not forsaking the assembling of ourselves together"

Haskell Tire & Appliance Center, Inc.
206 South Avenue E
864-2900

Rule Co-op Gin & Elevator
301 Adams • Rule • 997-2421

The Carpet Express
15 S. Ave. E • 864-8128

Wal-Mart
1608 N. Swenson
Stamford, Texas
915-773-2775

Steele Machine
Hwy. 280 • 864-2208

Modern Way Food Store
1202 N. Ave. E • 864-3763

Jay's Tire Center
506 N. 1st East • 864-2908
"See You In Church"

Smitty's Auto Parts
204 N. 1st St. • 864-2607

Rice Springs Care Home, Inc.
1302 N. 1st • 864-2652
Medicare • Medicaid • Therapy
Ruth Ann Klose
Committed To Excellence In Service

Farmers Gin Co.
P. O. Box 250 • Rochester
743-3527

HANSON PAINT & BODY SHOP
207 S. 1st • 864-3631
Professional Auto Body Repair
Glass Installation
24 HOUR WRECKER SERVICE

HASKELL SAVE-A-DOLLAR INC.
204 N. 1st • 817-864-2146
Servicing your gasoline and diesel fuel needs
24 HOURS A DAY

B & B Automotive & Parts
201 N. 1st • 864-2688

Bill Wilson Motor Co.
864-2611
FORD
MERCURY
LINCOLN
"Come See The New Team"

Personality Slipper Shoppe
413 S. 1st (South Side of Square)
864-2501 and 864-3051
"One Stop Shopping"

McGee's Lumber Yard
105 N. 1st

The Farmers National Bank of Rule
P. O. Box 10 • 817-997-2216
Member FDIC

Haskell Healthcare Center
Sandra Givens, Adm. • 864-8537

Sport About of Haskell
864-3891 • *"Where Winners Shop"*

Haskell Free Press
"The People's Choice"
401 S. First • Haskell
817-864-2686
Serving Haskell County Since 1886

A NEW SEASON A NEW BEGINNING

"We were really concerned about finding the right place for Mom. She needed help daily but wanted to stay in a homestyle setting. In your facility we found the answer to both . . . the help Mom needs with a touch of home. It's a great new beginning for this season in her life."



Chisholm House
LICENSED ASSISTED LIVING

CHISHOLM HOUSE

Licensed Assisted Living

.The perfect home for every season.

Quality, Individualized Services

- 24-hour, specially trained staff
- Housekeeping, laundry, 3 meals daily
- Assistance with personal care needs
- Assistance with medications

Safe, Homelike Surroundings

- Private apartments
- Emergency call system
- Wheelchair, walker accessible
- Personal choice of doctor
- Pets Welcome

OPENING SOON!

Call (915) 670-0961 for more information or to schedule a personal tour
1450 E. North 10th Street • Abilene, TX 79601

GRAND REOPENING—The Cake Garden has its Grand Reopening on Monday. The cake bakery moved into its new location at 14 Avenue D on the East Side of the Square. Nora Casianov is standing next to one of the bridal cake displays, that the shop offers to its customers.



Fire Dept. recruiting members

The Haskell Volunteer Fire Department has openings for new members. The objective of this organization is for the preservation and protection of property and lives from and during such fires or emergencies as may occur within the corporate limits of the City of Haskell and the County.

This organization of very dedicated men and women meet on Monday nights for meetings and drills.

The duties of a volunteer fireman shall require time to respond upon any fire call, grass fire, wreck, or any other emergency.

See any member for an application and a copy of our by-laws, or contact Joe Cortez—Fire Chief or Danny Stocks—Secretary.

Fisher Co. rodeo

The 52nd Annual Fisher Co. Fair and Rodeo will be held Aug. 8-10 in Roby. Fair exhibits have been moved from the fairgrounds to the Courthouse Annex to coincide with all-day festivities on Aug. 10.

Rodeo performances begin at 8 p.m. each night at the rodeo arena. TNT Rodeo Co. of Anson will produce the rodeo. Rodeo tickets are \$4 for adults and \$3 for students. Queens candidates will be presented at each rodeo performance. Queens will be crowned at the Saturday night performance.

The parade will be at 10 a.m. Saturday through downtown Roby. Everyone is welcome to have an entry in the parade. Parade marshals will be Roby Mayor Cecil King and Rotan Mayor Dr. Jerry Marshall.

Double Mountain Motorsports Association will sponsor a Car Show at the First Baptist Church parking lot, one block west of the Courthouse.

Fair exhibits will be open to the public for viewing at the annex from 1 to 5 p.m. Friday and 9 a.m. to 2 p.m. Saturday. Rodeo dances will be Friday and Saturday night at the Fisher Co. Show Barn. Cow Jazz will perform. A youth dance will be held Thursday night at the Courthouse square. KEAN D.J.'s will be on hand to play the music.

YOU are invited to an OPEN HOUSE!

August 13th



10AM to 12 noon

THE HEALTH CENTER

Home Health Services

1 Avenue E
On the Square
Haskell

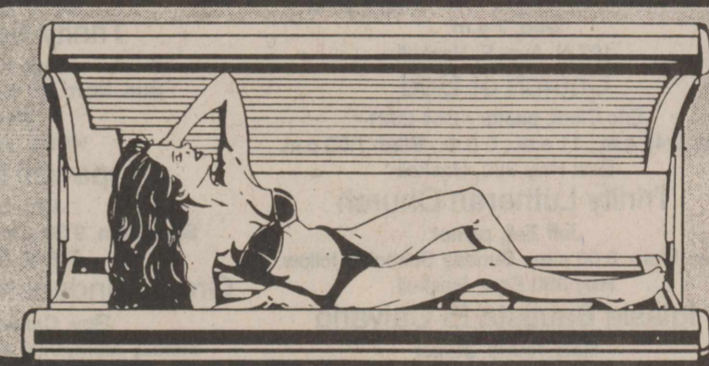
TANNING SPECIAL

Regular Prices \$4⁰⁰ Visit \$25⁰⁰ Month

Seeking Refunds on Exercises? Call 864-6104

BRASCOTT'S TANNING & FITNESS

307 N. Ave. B PHONE 864-6104 Haskell, Texas



GO For The Gold

At Texas Cellular, we're celebrating the Olympics by keeping our customers on the winners' stand with championship cellular service featuring

- ↑ Gold medal deals on state-of-the-art phones!
- ↑ Competitive rate plans all the way to Lone Star!
- ↑ Olympic-sized coverage that lets you go the distance!

For peak performance that surpasses its own world-class standards year after year, reach for the star . . . and join your home team, Texas Cellular.

TEXAS CELLULAR.

A service of Taylor Telecommunications, Inc.
Haskell 512 North 1st (817) 864-3269
Albany 500 South Main (915) 762-2333
Certain Restrictions Apply.

Call Anytime.

1996 PROPERTY TAX RATES IN HASKELL COUNTY

This notice concerns 1996 property tax rates for Haskell County. It presents information about three tax rates. Last year's tax rate is the actual rate the taxing unit used to determine property taxes last year. This year's effective tax rate would impose the same total taxes as last year if you compare properties taxes in both years. This year's rollback tax rate is the highest tax rate the taxing unit can set before taxpayers can start tax rollback procedures. In each case these rates are found by dividing the total amount of taxes by the tax base (the total value of taxable property) with adjustments as required by state law. The rates are given per \$100 property value.

	General Fund	Farm to Market/ Flood Control Fund	Special Road/ Bridge Fund
LAST YEAR'S TAX RATE:			
Last year's operating taxes	\$ 838,491.84	\$ 268,856.03	\$ 217,883.18
Last year's debt taxes	\$ 0.00	\$ 0.00	\$ 0.00
Last year's total taxes	\$ 838,491.84	\$ 268,856.03	\$ 217,883.18
Last year's tax base	\$ 200,884,564	\$ 197,978,504	\$ 210,922,705
Last year's total tax rate	\$ 0.4174/\$100	\$ 0.1358/\$100	\$ 0.1033/\$100

THIS YEAR'S EFFECTIVE TAX RATE:			
Last year's adjusted taxes (after subtracting taxes on lost property)	\$ 834,788.81	\$ 267,571.70	\$ 217,183.28
This year's adjusted tax base (after subtracting value of new property)	\$ 202,422,979	\$ 199,516,309	\$ 211,978,985
This year's effective tax rate for each fund	\$ 0.4123/\$100	\$ 0.1341/\$100	\$ 0.1024/\$100
Total Effective Tax Rate	\$ 0.6488/\$100		
1.03 = maximum rate unless unit published and holds hearings	\$ 0.6682/\$100		

THIS YEAR'S ROLL BACK TAX RATE:			
Last year's adjusted operating taxes (after subtracting taxes on lost property and including taxes for state criminal justice mandate.)	\$ 838,588.81	\$ 267,571.70	\$ 217,183.28
This year's adjusted tax base	\$ 202,422,979	\$ 199,516,309	\$ 211,978,985
This year's effective operating rate	\$ 0.4142/\$100	\$ 0.1341/\$100	\$ 0.1024/\$100
1.08 - This year's maximum operating rate	\$ 0.4473/\$100	\$ 0.1448/\$100	\$ 0.1105/\$100
This year's debt rate	\$ 0.0000/\$100	\$ 0.0000/\$100	\$ 0.0000/\$100
This year's rollback rate for each fund	\$ 0.4473/\$100	\$ 0.1448/\$100	\$ 0.1105/\$100
This year's total rollback rate	\$ 0.7026/\$100		

SCHEDULE A - UNENCUMBERED FUND BALANCES

The following estimated balances will be left in the unit's property tax accounts at the end of the fiscal year. These balances are not encumbered by a corresponding debt obligation.

Type of Property Tax Fund	Balance
General	\$ 125,000.00
R & B Special & FML Special	\$ 294,000.00

SCHEDULE B - 1996 DEBT SERVICE: NONE

SCHEDULE C - EXPECTED REVENUE FROM ADDITIONAL SALES TAX: NONE

SCHEDULE D - STATE CRIMINAL JUSTICE MANDATE

The Haskell County Treasurer certifies that Haskell County has spent \$3,800 in the previous 12 months beginning July 1, 1995, for the maintenance and operations cost of keeping inmates sentenced to the Texas Department of Criminal Justice. Haskell County Sheriff has provided information on these costs, minus the state revenues received for reimbursement of such costs.

SCHEDULE E - TRANSFER OF DEPARTMENT, FUNCTION OR ACTIVITY: NONE

This notice contains a summary of actual effective and rollback tax rates' calculations. You can inspect a copy of the full calculations at HASKELL COUNTY APPRAISAL DISTRICT, 604 North First Street, Haskell, Texas.

Name of person preparing this notice: Jamie Weaver Title: Chief Appraiser Date prepared: 08/01/96

VALUE YOU CAN SEE • HARMON CABLE • VALUE YOU CAN SEE • HARMON CABLE • VALUE YOU CAN SEE • HARMON CABLE • VALUE YOU CAN SEE • HARMON CABLE • VALUE YOU CAN SEE • HARMON CABLE

Harmon Cable Communications

RELY ON US TO PROVIDE YOU WITH THE MOST INNOVATIVE PROGRAMMING CHOICES AVAILABLE ON CABLE TODAY!

CALL & ORDER TODAY!
1-800-527-4331

VALUE YOU CAN SEE • HARMON CABLE • VALUE YOU CAN SEE • HARMON CABLE • VALUE YOU CAN SEE • HARMON CABLE • VALUE YOU CAN SEE • HARMON CABLE

Police Report



A LOT OF WATERMELON—Ocie Caruth of Haskell shows off a 35 pound melon that he grew in his home garden.

The Haskell Police Department was kept busy during the month of July with a lot of police activity going on in the city.

Twenty adult arrests were made and included: one—aggravated sexual assault arrest; two—aggravated assault arrests; one—unlawful carrying a weapon arrest; three—D.W.I.'s; and three—public intoxication arrests.

Ten juvenile referrals were handled by the police department, including: two—burglaries of a building; one—aggravate assault; three—shoplift theft; and two—curfew violations.

Offenses for the month included: one—sexual assault; two—assaults; one—burglary of habitation; three—thefts; and nine—criminal mischiefs.

On 6-29-96 at about 10 p.m., KVRP Radio Station was burglarized. On 7-1-96, two juveniles, 14-years-old, were taken into custody for burglary of a building. Haskell Police Dept. recovered 89 compact discs and returned to complainant.

On 7-5-96 at 1:15 a.m., Daniel Perez, 23-years, was arrested for aggravated sexual assault. Complainant and arrestee are not from Haskell.

On 7-6-96 at about 11:30 p.m., Officer Morgan stopped arrestee McCrary for speeding. Officer Morgan discovered subject had local warrants and found one .380 caliber Lorcin automatic handgun incident to arrest.

On 7-17-96 at about 11:30 p.m., complainant Jeane Pardo, 17-years, was assaulted with a wooden bat. Complainant received two

lacerations on head and treated at Haskell Memorial Hospital emergency room. Two adult females were arrested for aggravated assault and one juvenile female referred to the juvenile probation department.

On 7-21-96 the Haskell Police Dept. seized one Smith and Wesson 357 handgun.

For YOUR INSURANCE Needs

For Health, IRA, Annuity, Auto, Home or Life Insurance, call today.

HELPING YOU is what we do best. **SANDY FOREHAND**
817-864-2647
817-864-3504

Texas Farm Bureau Mutual Insurance Co.
Texas Farm Bureau Underwriters
Southern Farm Bureau Casualty Insurance Co.
Southern Farm Bureau Life Insurance Co.

508 N. 1st
817-864-2647
817-864-3504

FARM BUREAU INSURANCE

NOTICE OF REGULAR ANNUAL MEETING OF MEMBERS of the B-K ELECTRIC COOPERATIVE, INC. Seymour, Texas

A Regular Annual Meeting of the members of the above Cooperative will be held in the old High School Auditorium at Seymour, Texas at 8:00 o'clock p.m. on Friday the 9th of August, 1996 to take action upon the following:

1. Report of Officers, Directors and Committees.
2. The election of two (2) Directors of the Cooperative.
3. The transaction of all other business which may come before the meeting, or any adjournment or adjournments thereof.

Dated this 29th day of July, 1996

s/GREG HERTEL, Sec'y

Sagerton News

By Dorothy M. Clark

Whet!! It's Hot!! We've all been trying to stay inside to avoid heat strokes. Temperatures continue to soar and fields and pastures are becoming parched. This is the report for all areas around and citizens continue to pray for rain.

Upcoming events for the week of Aug. 11 include Family Night at Faith Lutheran at 6 p.m. on the 11th, and Youth meeting at the parsonage at 7. Faith Circle meeting at 2:30 p.m. on Tuesday, the 13th, Elders meeting at the church of Wednesday night at 7:30 p.m. with church council meeting at 8 p.m. The Friendship Club meets at noon on Thursday the 15th and the men's breakfast will be at 7 a.m. on Friday morning the 16th.

Mrs. M.Y. Benton who celebrated her 94th birthday on Sunday was honored at a family dinner in Abilene on Saturday by her children, Dorothy and Charles Clark of Sagerton, Yater Jr. and Mildred Benton of Ft. Worth and Armittie and Eldon Cook of Big Spring. Congratulations to Mrs. Benton and we wish her a healthy year ahead.

Mr. and Mrs. Alvin Bredthauer were in Caldwell recently to attend the funeral of Alvin's sister-in-law.

Recent visitors in the Charles and Dorothy Clark home included Bob and Tommie Jo Clark of Abilene, Judson Clark of Lubbock, Laura Woods of Slaton, Mr. and Mrs. Trey Woods of Slaton and Kyle and Jenifer Clark who were on their way to their new home in Los Angeles, Calif.

Geneva Vahlenkamp of Denton and grandsons, Matthew and James Ettredge of Denton visited with Leo and Minnie Monse.

Leo Monse, Sr. received his 50-year pin from the Sons of Hermann Lodge of Old Glory. It was presented to him by Buenice Vahlenkamp.

Descendants of the late J.F. and Emma Schaake gathered at the Community Center Saturday for a reunion. Those in attendance included Marvin and Verlene Stegemoeller of Rochester, Willie and Verna Raphael of Abilene, Katherine and Andrew Raphael of Arlington, Lillie Mae Reed of Roby, Erna and Walter Schaake of Stamford, Emma Raphael of Stamford, Jon and Rene McAden of Abilene, Daniel Turner of Rule and J.B. and Dorothy Toney, Bruce, Michelle, Tarah and Clay Toney, Frieda Knipling and Leon and Mae Stegemoeller, all of Sagerton.

Don and Patsy Bivins of Valley View spent the weekend in the home of Joe and Dorothy Clark visiting with their children, Tom and Emmalee of Rule. Tom is recuperating from injuries he received when a truss beam fell across his legs at a jobsite in Rule. He received a broken right leg and cartilage and ligament damage to his left knee. He is slowly improving and expresses his thanks to everyone for remembering him with calls, cards, goodies and prayers.

The Delbert LeFevres enjoyed their annual family reunion at Lake Brownwood last weekend. Family members present were Kent, Kathy and Kit LeFevre of Tuscola, Brian and Vonda Bailey and Linda Pierce of Wylie, Russ and Brad Bailey of

McKinney, Eric and Laressa Earthman, Larry, Susan and Shane LeFevre of Rule, Holly Hobgood of Lubbock, Jill, Ken, Tully, Cade and Kinsey Brown and Delbert and Joyce LeFevre of Sagerton.

Jones-Haskell Eye Clinic Dr. Trussell Thane

Appointments Available • Monday through Friday

Dr. Thane is Board certified in the diagnosis and treatment of eye disease. Dr. Thane offers complete evaluation for eyeglasses and contact lenses.

2 pair of clear daily wear \$159⁰⁰ contact lenses

Disposable lens packages and contacts to change your eye color available.

Medicare and Medicaid Accepted.

1501 Columbia Stamford, Texas 915-773-2083

12-oz.

Cool New Flavors!

Cappuccino HEATH

FUDGE OREO

MINT m&m

Now the DQ® Blizzard® Flavor Treat and Breeze® Frozen Yogurt Treat come in three new taste sensations: Fudge Oreo, Mint M&M and Cappuccino Heath! Try these and all your favorite flavors at Dairy Queen® now for only 99¢ each. Hurry, offer ends soon!

On Sale Now August 5-25, 1996.



® Reg. TM Am. D.O. Corp. © Tx. D.Q. Op. Coun. At participating Dairy Queen® stores.

CONOCO

*** UNDER NEW MANAGEMENT ***

OIL CHANGE/LUBE FILTERS (Air-Fuel)

BATTERIES FLATS FULL-SELF SERVICE

—ICE AND ACCESSORIES—

AFTER HOURS LARRY BARBEE 864-3765

NORTHSIDE CONOCO

201 NORTH AVE. E • 864-8014 • HASKELL, TEXAS

NOTICE OF 1996 PROPERTY TAX RATES

This notice concerns 1996 property tax rates for the following school districts: Haskell I.S.D. and Paint Creek I.S.D. It presents information about three tax rates. Last year's tax rate is the actual rate the school district used to determine property taxes last year. This year's effective tax rate would impose the same total taxes as last year if you compare properties taxed in both years. This year's rollback tax rate is the highest tax rate the school district can set before it must hold a rollback election. In each case these rates are found by dividing the total amount of taxes and state funds by the tax base (the total value of taxable property) with adjustments as required by state law. The rates are given per \$100 property value.

	Haskell Cisd	Paint Creek ISD
LAST YEAR'S TAX RATE:		
Last year's operating taxes	\$ 1,054,408.78	\$ 476,177.56
Last year's debt taxes	\$ 0.00	\$ 0.00
Last year's total taxes	\$ 1,054,408.78	\$ 476,177.56
Last year's tax base	\$ 86,888,856	\$ 35,433,067
Last year's total tax rate	\$ 1.2653/\$100	\$ 1.3500/\$100

	Haskell Cisd	Paint Creek ISD
THIS YEAR'S EFFECTIVE TAX RATE:		
Last year's adjusted taxes (after subtracting taxes on lost property)	\$ 988,321.55	\$ 472,203.57
This year's adjusted tax base (after subtracting value of new property)	\$ 80,418,200	\$ 36,182,415
This year's effective tax rate	\$ 1.2289/\$100	\$ 1.3050/\$100
1.03 = maximum rate unless the school district publishes notices and holds hearings	\$ 1.2657/\$100	\$ 1.3441/\$100

	Haskell Cisd	Paint Creek ISD
THIS YEAR'S ROLLBACK RATE:		
Last year's adjusted operating taxes	\$ 988,321.55	\$ 472,203.57
This year's adjusted tax base	\$ 80,418,200	\$ 36,182,415
This year's local maintenance and operating rate	\$ 1.2289/\$100	\$ 1.3050/\$100
Student enrollment adjustment	1.0026	1.0000
This year's adjusted maintenance and operating rate	\$ 1.2320/\$100	\$ 1.3050/\$100
\$0.08 cents = this year's maximum operating rate	\$ 1.3120/\$100	\$ 1.3850/\$100
This year's debt rate	\$ 0.0000/\$100	\$ 0.0000/\$100
Rate to recoup loss certified by commissioner of education	\$ 0.0000/\$100	\$ 0.0000/\$100
Additional rate for pollution control	\$ 0.0000/\$100	\$ 0.0000/\$100
This year's rollback rate	\$ 1.3120/\$100	\$ 1.3850/\$100

SCHEDULE A - UNENCUMBERED FUND BALANCES

The following estimated balances will be left in the unit's property tax accounts at the end of the fiscal year. These balances are not encumbered by a corresponding debt obligation.

Type of Property Tax Fund	Balance
Haskell ISD: General	\$ 1,820,044.00
Cafeteria	\$ 113,051.00
Paint Creek ISD: General	\$ 18,461.13
CD's	\$ 80,481.30

SCHEDULE B - 1996 DEBT SERVICE: NONE

SCHEDULE C - EXPECTED REVENUE FROM ADDITIONAL SALES TAX: NONE

SCHEDULE D - STATE CRIMINAL JUSTICE MANDATE

SCHEDULE E - TRANSFER OF DEPARTMENT, FUNCTION OR ACTIVITY: NONE

This notice contains a summary of actual effective and rollback tax rates' calculations. You can inspect a copy of the full calculations at HASKELL COUNTY APPRAISAL DISTRICT, 604 North First Street, Haskell, Texas.

Name of person preparing this notice: Jamie Weaver Title: Chief Appraiser Date prepared: 08/01/96

Cattle Market Report

The market at the Haskell Livestock Auction was on a run of 595 head of cattle at its sale on Saturday, Aug. 3, according to Gary Tate, reporter. All classes of cattle were \$1 to \$2 higher.

Cows: fat, .29-.35; cutters, .27-.36; canners, .26-.33.

Bulls: bologna, .36-.43; feeder, .43-.56; utility, .26-.37.

Steers: medium and large frame No. 1, 200-300 lbs., .55-.71; 300-400 lbs., .62-.70; 400-500 lbs., .53-.66; 500-600 lbs., .55-.65; 600-700 lbs., .53-.64; 700-800

lbs., .58-.63; 800-up lbs., .49-.63.

Heifers: medium and large fame No. 1, 200-300 lbs., .46-.58; 300-400 lbs., .52-.60; 400-500 lbs., .46-.55; 500-600 lbs., .47-.57; 600-up lbs., .55-.58.

Bred Heifers: medium frame, \$250-\$350.

Bred Cows: young to middle aged, \$300-\$400; aged or small, \$200-\$300.

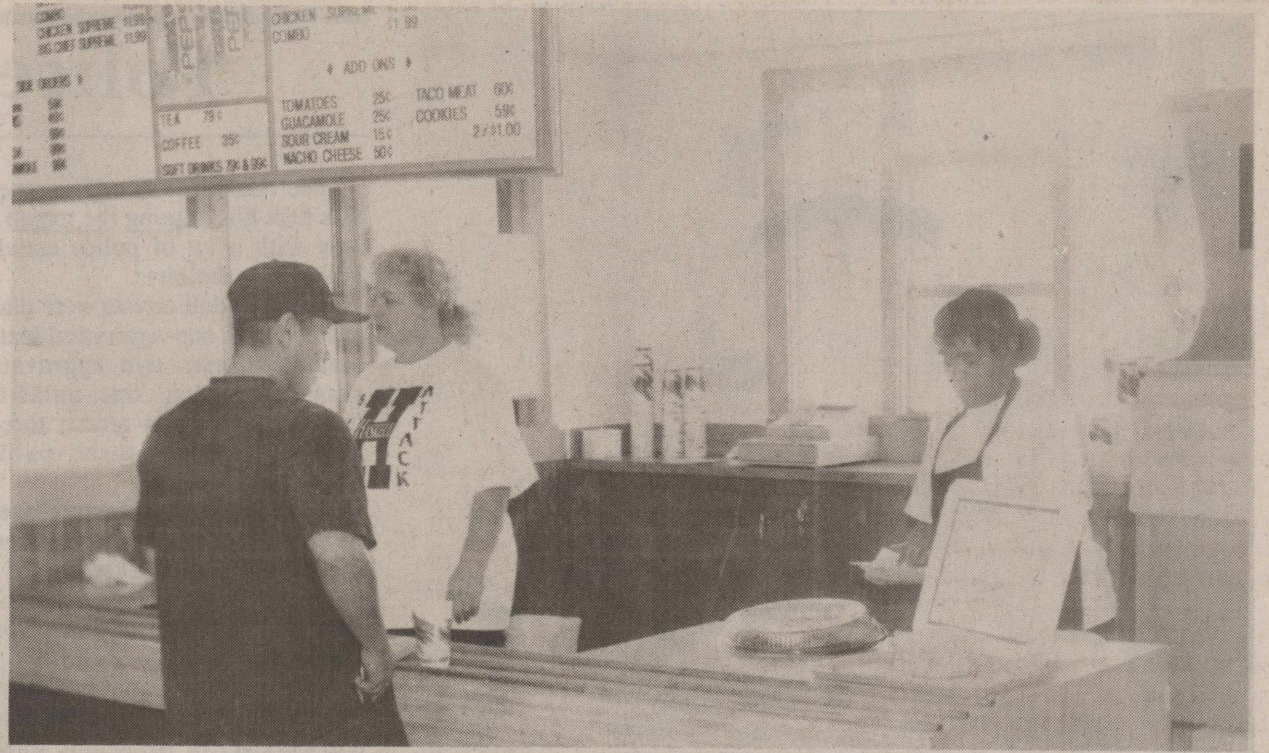
Cows with calves: medium frame No. 1 young and middle aged, \$480-\$600; small or aged, \$300-\$450.

Hospital

Admissions

Pauline Bush, Rule
Ethel Earles, Haskell
Wanda Stocks, Haskell
Henrietta Ray, Haskell
Frieda Knippling, Sagerton
Joel Torres, Haskell
G. A. Roberts, Old Glory
Willie Geer, Rule
Leo Monse, Sagerton
I. V. Clayton, Haskell
Mary Cabrera, Munday

It takes a long time to become young. —Pablo Picasso



GRAND OPENING—TeePee Taco had their Grand Opening in Haskell on Monday and reported a booming business during the lunch hour. The youth oriented restaurant features fast food Mexican food, tacos, burritos and nachos.

My daughter wanted to know who handles our auto insurance.



No problem ... I'll just call my agent at
Farm Bureau Insurance.
817-864-2647

If I have a problem, he's always there. And, I can count on him to provide the insurance coverage I need for my family at competitive rates.

Then it hit me ... she gets her drivers license next month!



Texas Farm Bureau Mutual Insurance Co.
Texas Farm Bureau Underwriters
Southern Farm Bureau Casualty Insurance Co.
Southern Farm Bureau Life Insurance Co.
966TXA9D

EDC News

Monty Montgomery

As most of you know Anthony's is coming to town. The Grand Opening will be Saturday, Sept. 7. I wanted to use this article to explain the benefits of having a company like Anthony's come to Haskell.

Our tax base has been declining the past few years and without

business growth, we as individual taxpayers will have to make up the short fall in lost tax revenues. With this in mind, it has been the mission of the Development Corp. of Haskell, Inc. (DCOH) to do everything in its power to eliminate this scenario from occurring.

This is why Anthony's was

recruited to Haskell, as are other retail and manufacturing companies being asked to locate or relocate here, so that they can provide desperately needed jobs and tax revenues to **OUR** city.

The Anthony's store on the square is the first component of a long range plan to breathe new life into the downtown business area. With the Anthony's store coming to Haskell, it will help the DCOH in recruiting other businesses to town. This is because Anthony's is a well known and respected chain, which does a thorough analysis of a market to be sure they will be successful before they commit to it.

The DCOH has already had inquiries from other companies about coming to Haskell based on having Anthony's locating here.

By having other retail businesses locate here, we are in a sense creating a "cluster effect," that has been so successful in malls around the country and restaurant rows in the Metroplex.

Haskell has a marketing area of twelve counties, with a population base of 51,000 people. A large part of these folks are already shopping here. By adding more retail businesses we are giving these people a reason to spend more money in Haskell and we will also attract people who may have not shopped here before.

This all adds up to increased consumer traffic and increased sales for all of our existing businesses.

In closing, I would like to add there will be many new and exciting changes coming in the near future for Haskell, I appreciate all the continued support I have received from the community and I would like to remind you to **Shop Haskell First!!!**

Cancer Soc. memorials

American Cancer Society memorials include the following:

In memory of James A. Lisle Jr.—La Rease Bear, Jeff and Staci Robertson, Mrs. Leona Schonerstedt, Mr. and Mrs. Mike Rhoads and family, Clem and Shirley Rhoads, David and Denise White, Howard and Bobbie Brass, Mary Townsend, Mr. and Mrs. Gordon L. Wood, Mr. and Mrs. F.A. Ulmer, E.L. & Venice Elmore, Mrs. H. Birger Haterius, Mr. and Mrs. R.C. Cobb, Ava Lee and Bobby White and family, Stella A. Hewett;

Also Mr. and Mrs. Donald L. Scargall, Sam, Julie and Shelton Toliver, Dan and Caron Thornberry, Mr. and Mrs. Rayberne L. Oliver, Faye B. Bledsoe, Earmal Bevel, Jerene Couch, Margaret M. Jones, Ann Nickell, Dorothy Glover, Margaret G. Ratliff, Mr. and Mrs. Bobby Boyles, Ken and Nelda Lane, Joel and Pam Bevel, Jana Manske, Mr. and Mrs. Brad Lakey, Leon and Letha Newton and Golda Colbert.

In memory of Green—American Legion Post No. 584 at Rochester.

In memory of Martha Elizabeth Rose—Leland and Joe Ann Thane, John and Cynthia Halliburton, Fritz Steinfath, Margaret Ratliff, Randall and Billie McNiece, Edith and Richard Davis, Jim and Juanita Beauchamp, Ferrell and Jane Coston and Wayne and Dorothy Wells.

In memory of Gregg Holland—E.L. and Venice Elmore.

In Memory of Lena Petrich—Mr. and Mrs. Clarence Goebel and Bobby Roberts.

Did You Know CELLULARONE®

Has the Only Voice Mail with NO CHARGE For Messages Left or Retrieved?

817-864-8585 • 1-800-687-8888 ~ 304 N. 1ST • HASKELL, TEXAS

MARK CASEY
817-256-2283

DON COMEDY
817-256-2000

JOHN GODSEY
658-3606

NOTICE OF 1996 PROPERTY TAX RATES

This notice concerns 1995 property tax rates for the following taxing units: City of Haskell; City of Weinert; North Central Texas Municipal Water Authority; Haskell County Water Supply District #1; Haskell Memorial Hospital District. It presents information about three tax rates. Last year's tax rate is the actual rate the taxing unit used to determine property taxes last year. This year's effective tax rate would impose the same total taxes as last year if you compare properties taxed in both years. This year's rollback tax rate is the highest tax rate the taxing unit can set before taxpayers can start tax rollback procedures. In each case these rates are found by dividing the total amount of taxes by the tax base (the total value of taxable property) with adjustments are required by state law. The rates are given per \$100 of property value.

	City of Haskell	City of Weinert	Nor. Central Tx. Municipal Wtr. Authority	Haskell Co. Wtr. Supply District #1	Haskell Memorial Hospital. Dist.
LAST YEAR'S TAX RATE:					
Last year's operating taxes	\$ 130,160.50	\$ 9,847.00	\$ 0.00	\$ 7,639.87	\$ 690,305.42
Last year's debt taxes	\$ 0.00	\$ 0.00	\$ 173,146.69	\$ 0.00	\$ 0.00
Last year's total taxes	\$ 130,160.50	\$ 9,847.00	\$ 173,146.69	\$ 7,639.87	\$ 690,305.42
Last year's tax base	\$ 48,549,181	\$ 3,548,552	\$ 86,790,321	\$ 20,104,312	\$ 202,198,638
Last year's total tax rate	\$ 0.2681/\$100	\$ 0.2775/\$100	\$ 0.1995/\$100	\$ 0.0380/\$100	\$ 0.3414/\$100
THIS YEAR'S EFFECTIVE TAX RATE:					
Last year's adjusted taxes	\$ 129,446.04	\$ 9,787.99	\$ 172,401.71	\$ 7,613.99	\$ 687,997.30
(after subtracting taxes on lost property)					
This year's adjusted tax base	\$ 48,765,831	\$ 3,235,169	\$ 90,533,311	\$ 18,741,229	\$ 202,979,074
(after subtracting value of new property)					
= This year's effective tax rate	\$ 0.2654/\$100	\$ 0.3025/\$100	\$ 0.1904/\$100	\$ 0.0406/\$100	\$ 0.3389/\$100
x 1.03 = maximum rate unless unit publishes notices and holds hearings	\$ 0.2733/\$100	\$ 0.3115/\$100	\$ 0.1961/\$100	\$ 0.0418/\$100	\$ 0.3490/\$100
THIS YEAR'S ROLLBACK TAX RATE:					
Last year's adjusted operating taxes	\$ 203,435.04	\$ 9,787.99	\$ 0.00	\$ 7,613.99	\$ 687,997.30
(after subtracting taxes on lost property and adjusting for transferred functions)					
This year's adjusted tax base	\$ 48,765,831	\$ 3,235,169	\$ 90,533,311	\$ 18,741,229	\$ 202,979,074
= This year's effective operating rate	\$ 0.4171/\$100	\$ 0.3025/\$100	\$ 0.0000/\$100	\$ 0.0406/\$100	\$ 0.3389/\$100
x 1.08 = This year's maximum operating rate	\$ 0.4504/\$100	\$ 0.3267/\$100	\$ 0.0000/\$100	\$ 0.0438/\$100	\$ 0.3660/\$100
+ This year's debt rate	\$ 0.0000/\$100	\$ 0.0000/\$100	\$ 0.2095/\$100	\$ 0.0000/\$100	\$ 0.0000/\$100
= This year's rollback rate	\$ 0.4504/\$100	\$ 0.3267/\$100	\$ 0.2095/\$100	\$ 0.0438/\$100	\$ 0.3660/\$100
- Sales tax adjustment rate - City of Haskell	\$ 0.1512/\$100				
= Rollback tax rate	\$ 0.2992/\$100				

SCHEDULE A - UNENCUMBERED FUND BALANCES

The following estimated balances will be left in the unit's property tax accounts at the end of the fiscal year. These balances are not encumbered by a corresponding debt obligation.

Type of Property Tax Fund	City of Haskell	City of Weinert	N.C.T.M.W.A.	Hask. Co. Wtr. #1	Hask. Mem. Hosp. Dist.
City of Haskell	\$ 20,000.00				
City of Weinert		\$ 0.00			
N.C.T.M.W.A.			\$ 0.00		
Hask. Co. Wtr. #1				\$ 6,000.00	
Hask. Mem. Hosp. Dist.					\$ 0.00

SCHEDULE B - 1996 DEBT SERVICE:

The unit plans to pay the following amounts for long-term debt that are secured by property taxes. These amounts will be paid from property tax revenues.

Taxing Units	Principal Or Contract Payment To Be Paid	Interest To Be Paid	Other Amt. To Be Paid	Total Required For 1996 Debt Service	Amt. Paid From Funds Listed In Schedule "A"	Excess Collections Last Year	Total To Be Paid From 1996 Taxes	Amount Added In Anticipation That The Unit Will Collect The Following Percentage Of Its Taxes In 1996	Total Debt Levy
City of Haskell				0.00					0
City of Weinert				0.00					0
N.C.T.M.W.A.	\$90,000.00	\$86,500.00	\$400.00	\$176,900.00	\$0.00	\$0.00	\$176,900.00	93.00%	\$13,315.00
Hask. Co. Wtr. #1				0.00					0
Hask. Mem. Hosp. Dist.				0.00					0

SCHEDULE C - EXPECTED REVENUE FROM ADDITIONAL SALES TAX

CITY OF HASKELL: In calculating its effective and rollback tax rates, the unit estimated that it will receive \$73,989.00 in additional sales and use tax revenues.

SCHEDULE D - (Not Applicable)
SCHEDULE E - (Not Applicable)

This notice contains a summary of actual effective and rollback tax rates' calculations. You can inspect a copy of the full calculations at HASKELL COUNTY APPRAISAL DISTRICT, 604 North First Street, Haskell, Texas.

Name of person preparing this notice: Jamie Weaver Title: Chief Appraiser Date prepared: 08/01/96



Shop the Haskell Free Press CLASSIFIEDS

864-2686

864-2686

For Sale

FOR SALE: 1995 Coleman pop-up camper. Inquire at Cecil's Country Meat Market and Grocery. 864-2511. 24tc

FOR SALE: Early maturing bearded wheat seed. Also beardless wheat seed. Combine run and in bulk, any amount. Call 817-673-8364. 32tc

CONSOLE/SPINET PIANO for sale. Take on small payments. See locally. 1-800-343-6494. 32p

FOR SALE: Vito clarinet. 8 piece drum set. 864-3788. 32-33c

FOR SALE: 1-LX188 John Deere mower with 17 hp engine, 44 inch mulching deck, water cooled, with warranty. Priced to sell. 1 Propane fryer on wheels with small and medium baskets and tank (complete). Call Ed Walling 864-3845. 32c

Wanted

CASH PAID for old lever action Winchester rifles, Colt pistols and most other guns and western memorabilia. A. C. Richardson at store Hwy. 277 N. 12tc

STRAIGHT-STITCH and serger industrial commercial machine wanted. Contact 1-806-894-7954 or 864-3781. 32c

RN/LVN Charge Nurse \$1000 Sign On Bonus Looking for some RELIEF from this heat!
Join our team of nurses working full time on our night shift, or relief positions. Competitive wages and benefits in addition to our great sign on bonus! Call 864-8537 or apply at Haskell HCC, 1504 N. 1st St., Haskell. EOE. 31-32c

Miscellaneous

HOME DECORATORS. Painting, Insulation, Remodeling, water and air filtration systems. Call Bobby O'Neal 817-743-3550. 30tc

PIANO LESSONS: Sara Hodgkin 864-2031. 32-35p

Jobs Wanted

HOUSE LEVELING. Floor bracing. Free estimates. References. Call 915-675-6369 anytime. David Lee. 19tc

CHILD CARE: This home is registered with the Texas Dept. of Protective & Regulatory Services. 2 meals and a snack. 817-864-6127. 31-35c

NEED WALLPAPER HUNG? Reasonable rates, call Scott Engle at 817-864-8151. 32-33p

WILL DO BABYSITTING in my home. \$5 a day. Monday thru Friday. Call 864-6104. 32-33p

Cars For Sale

FOR SALE: Black 1982 SWB Chevy customized pickup. Nice and clean. Call 817-864-2744. 31-33c

Garage Sales

GARAGE SALE: 1403 N. Ave. K. Sat., Aug. 10, 8 a.m. to 3 p.m. Lots of nice ladies winter clothes, household items, misc. 32p

GARAGE SALE: Little bit of everything. 809 Washington St., Rochester. 8 to noon. 32c

CARPOR SALE: Fri. Aug. 9, 9 a.m. to 5 p.m. 807 N. 8th. Small men's clothing, shoes, belts, ties and hat. 32p

BIG BIG CARPORT SALE: Fri. & Sat. Aug 9 & 10. Lots of out of town stuff. Cookbooks, quilts and tops, costume jewelry, handwork, records and players, set of dishes, exercise stuff, furniture, pictures, collectibles, kitchen and household misc. Some childrens clothes. 901 N. Ave. E. 32p

2 FAMILY GARAGE SALE: 106 N. 3rd. Sat. 8 to 5. Set of wheels, clothes, dishes. 32p

YARD SALE: Fri. & Sat. 8-3. 1401 N. Ave. G. Children's and adult clothes, toys. 32p

Estate Sales

ESTATE SALE: 906 N. 2nd St. Sat., Aug. 10. 8-6. 32p

For Rent

FOR RENT: 906 N. Ave. E. 2 bedroom, 1 bath house. 864-3708 or 864-3762. 32c

FOR SALE OR LEASE: 2 bedroom, 1 bath, 202 N. 6th. HUD accepted. 864-2238. 31tc

FOR RENT: 5 1/2 miles northwest of Haskell. 2 bedroom, 1 1/2 bath, large utility, country home with lots of shade. 864-3944 days or 864-2372 after 5 p.m. 32p

FOR RENT: 907 N. Ave. E. 3 bedroom, 1 bath. 864-3708 or 864-3762. 32c

FOR RENT: 1 bedroom apartment, CH/A, carport, washer/dryer connections. Call 864-2787. 32p

Real Estate

NICE BRICK 2 bedroom, 1 1/2 bath. Large LDR, bonus room, \$42,500. 1303 N. Ave. F. 915-735-2380. 25tc

HOUSE FOR SALE: 3 bedroom, 1 bath, large kitchen/dining area, large living room. On corner lot. 606 S. Ave. G. Phone 817-864-6102 or 817-864-2837. 29-32p

HOUSE FOR SALE: Rochester. 2 big barns, stables, corrals. Grey house on corner, 1 1/2 miles west of Rochester. 3000 sq. ft., fireplace. Reduced from \$65,000.00 now \$58,000.00. \$25,000 owner finance, \$33,000 down. 743-3289. 30-32c

WANT TO BUY: Farm land in the Weinert area. Bruton 214-622-5028. 30-33p

HOUSE FOR SALE: 3 bedroom, 1 full bath, central heat and cool, fenced yard, fully remodeled. Priced to sell. For appointment call Ed Walling 864-3845. 32c

Help Wanted

R.A.S. TRUCKING, INC. is needing qualified drivers with CDL to drive nice late model conventional equipment. Call John 1-800-772-0925. 29-32c

CNAs NEEDED for a relief position on our night shift. CNA trainees needed part time on our evening and day shift. Call 864-8537 or apply at Haskell HCC, 1504 N. 1st St., Haskell, EOE. 31-32c

LVN Position now available at Brazos Valley Care Home, Knox City, Texas for LVN. Excellent salary and benefits with flexible scheduling. Please apply in person at 605 South Avenue F, Knox City, Texas. 31tc

Public Notices

NOTICE OF APPLICATION FOR AMENDMENT TO THE ZONING ORDINANCE
A request has been received from Jesse Sheets by Mimie Sheets to change the following described property: Lot number 12 Block Outlot 12 address 503 North 1st East other description Brown & Roberts from single family zoning district to special purpose zoning district. The applicant proposes to use the property for mobile home if rezoning is achieved. The planning and zoning commission of the City of Haskell, Texas, will hold a public hearing pursuant to this request on August 27, 1996 at 1:30 p.m. in City Hall Council Room. 32c

Frances Arend Real Estate & Insurance

Northside 3 bedroom, 1 bath frame, carpet, garage and patio.

Northside 2 bedroom, 1 bath stucco, furnace, 1 car garage.

FOR RENT: Downtown partly furnished upstairs apt.: 3 bedroom, 1 bath, carpet, heat pump.

Need Listings.

See me for Health, Life, Burial, Long Term Care, Medicare Supplements, Annuities. 408 North First 817-864-3880 32c

POL CALENDAR

The Haskell Free Press is authorized to make the following announcement for the political office in Haskell County, subject to the action of the 1996 Primaries.

Unless otherwise specified the candidates listed paid for the announcement, and have designated themselves as campaign treasurer.

All political advertising, announcements, and printing is cash in advance.

U. S. Congress 17th Dist. Charles W. Stenholm (Pd. by the Stenholm for Congress Committee)

State Representative 68th Dist. Charles Finnell

(Pd. by Committee For Responsible Representation, P. O. Box 639, Holliday, TX 76366)

County Judge David C. Davis

Sheriff John L. Mills

Tax Assessor-Collector Bobby Guffey Collins

Commissioner Precinct 3 Kenny Thompson

Duke Ray Pendergraft

J & B Storage

Located on Jim Strain Road. Please call 817-864-2629 for your storage needs. Office location: 510 N. 1st St. Haskell, Texas 5tc

Dodson Concrete Construction

Commercial - Residential David Dodson 704 N. Ave. F • Haskell 817-864-2038 Over 20 Years in the Business FREE ESTIMATES 18tc

We would like to express our gratitude for all the acts of kindness shown at the loss of our wife, mother, and grandmother, Lillian Powell. The food was wonderful, the flowers were beautiful, and the cards, calls, prayers and visits all helped us through a most trying time. Your love and support will always be remembered.

M. L. Powell family
Eugene Rhoads family

NOW OPEN

"A Home Away from Home for the Elderly"

- LOCATED AT- LAKE STAMFORD AT VEDA'S CAMP

ENROLLED BY THE TEXAS DEPT. OF HUMAN SERVICES TO PROVIDE ADULT 24 HOUR SUPPORTED CARE

Contact SHIRLEY MICKLER 817-864-2726

HAPPY BIRTHDAY!

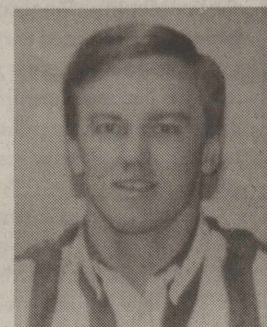
Dora Carruth Holley

Born 8-8-1908 88 Years Old

We love you, Sisters & Brothers

Allstate You're in good hands.

Put your life in our hands.



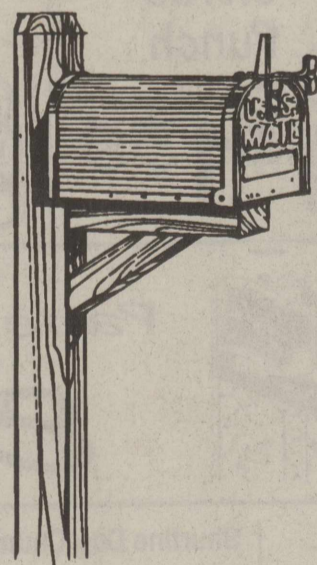
Hartsfield Insurance Agency 417 S. 1st St. Haskell, TX 79521 817-864-2665

© 1996 Allstate Life Insurance Company, Northbrook, Illinois.

For life insurance - Being in good hands is the only place to be:

CLASSIFIED ADS SELL!

Like what you're reading?



We'll send it to you each week for just \$20 a year. (in Haskell County)

Yearly Subscription Rates \$20 a year in county \$28 out-of-county

Name _____
Address _____
City _____ State _____ Zip _____

Clip and Mail Coupon, Along with Check or Money Order to:

The Haskell Free Press P. O. Box 1058, 401 S. First, Haskell, TX 79521

WE'VE GOT IT!

ACCO FEEDS RICHARDSON'S Hwy. 277 N. • Haskell • Open All Day Saturdays 817-864-8551

SMALL ENGINE REPAIR •MOWERS •TILLERS BRIGGS-STRATTON HASKELL MARINE 864-3944 107 N. 1ST

H-PRO LIVESTOCK MINERALS 864-2955 Formulated for Haskell Co. Harvey's Feed Seed & Chemical 307 S. Ave. E • Haskell, Texas 32-36c

WEDDING EQUIPMENT RENTALS 15 Yr. Experienced Designer •Funerals •Weddings •Silk Plants •Invitations •Balloon Bouquet Free Delivery 1-800-742-4575 864-3121 CONNER NURSERY & FLORAL COMPANY 505 N. Ave. H Haskell

West Texas Rehabilitation Center's MOBILE AUDIOLOGY/HEARING LAB will be in HASKELL

for its REGULAR Monthly Visit Thursday, August 15 9 a.m. to 4 p.m. Haskell Memorial Hospital - West Parking Lot

Receive \$100 off any new Hearing Aid with this ad.

For appointment call toll free 1-800-460-5485

Cowgirls, to be a part of the Rehab Ranch Roundup

Cowgirls...they can blend the rough and tough necessary characteristics of the hardest working "cowboy" with the charm and gentleness of a woman.

In a predominantly all-male Texas Ranch Roundup, these two women are a growing point of interest. They will inspire you and delight you with their skills and knowledge of the ranching business. You might say they lead a double life—getting "muddy" with the ranch crew then turning around to gently remind the "boys" of their nurturing character. There are no special breaks for a woman on a ranch. R.A. Brown Ranch's Josie Smith and Moorhouse Ranch's Jody Moorhouse are energetic and compassionate, yet rugged and daring.

Josie Smith, the second-born of four girls, grew up in Abilene. For the last 16 years she has lived and worked in Throckmorton on the R.A. Brown Ranch. Though she grew up "a little city girl" and rode her first horse "just for fun" at age 16, Josie is a natural at her job as ranch hand. Her ranch responsibilities include taking care of the mares, breaking colts and working on a microscope with embryo transfers. Josie will be the first to tell you that the work is hard, but "she loves it."

"Sometimes we put in 12 to 16 hours a day, in all types of weather. We get to see so much in nature that no one else ever gets to see," Smith admits that her previous career as a licensed beautician did not satisfy her need to be outdoors with nature. Joining the ranch crew has provided that chance to work in the environment she loves.

Beside her demanding ranch duties, Josie finds time for a soft-spirited appreciation for photography. Smith's inspiration behind her award-winning photography comes from her friend, George Self, Quarter Horse foreman of the R.A. Brown Ranch. "George is the most honest, natural cowboy," she said. "He's got the old-timey values instilled in him; he doesn't pretend to be someone he's not. George is just one of the ranching traditions; just a simple man."

Smith uses Self as a model for her photography. It is no surprise that her photography earned a nomination for the prestigious "National Cowgirl of the Year" award. It was Self who wanted her recognized. Josie's humble heart and artistic expression team together to create the beautiful work she displays through her photography and through her life.

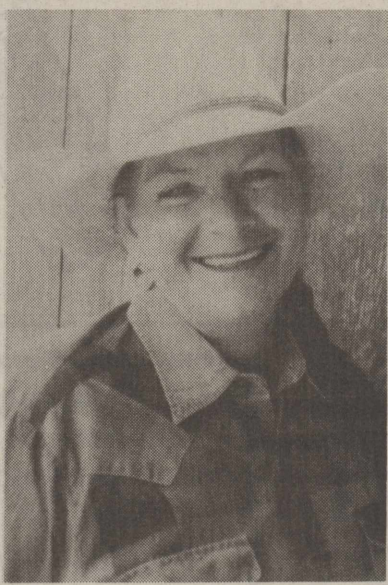
Jody Moorhouse, the sole "cowgirl" of the Moorhouse Ranch Co. roundup team, grew up on the Moorhouse Ranch in Benjamin. A rich ranching heritage of memories and experiences have paved a certain path for the next Moorhouse generation. Twenty years have proved enough time to explain the cowgirl side of this young woman. Once an avid high school athlete, Jody continues to maintain her athletic capabilities through "cowboying" on the Moorhouse Ranch. Her main ranch duties include branding calves and also breaking colts, of which she has been a part since she was 13 years old.

With a smile, Jody recalls the winter that she was responsible for feeding the dogie calves. "We had 20 calves to feed by bottle each morning," said Moorhouse. "I'll never forget having to put on those coveralls to go outside to their pen and mix the 'awful smelling' formula in the freezing weather."

"My favorite season on the ranch is Spring," she said. "Everything greens up and usually we get rain," she said. "Not this year...but usually," she continued lightheartedly.

As an infant, Jody was carried on a horse, and it wasn't long until she had a horse of her own to ride. At age three, Jody was riding solo on her new friend, "Blue." She recalls with fondness this gentle, yet powerful companion. "Blue taught me how to ride," she said. "He was a good babysitter, but he'd sure jump in front of a cow. He was sure enough a cow horse."

Jody has been a part of the Ranch Roundup from the very start in 1981. She was a part of the talent competition, and now for the past several years, has also competed in the arena. Though she is the only female in the arena this year, she is not the only female to ever compete. Her late mother, Sue, was a part of the Moorhouse Ranch roundup team, several years ago. Again this year, Jody will follow her example, performing in the team penning and team branding events.



JOSIE SMITH



JODY MOORHOUSE

Family ties run deep in the Moorhouse family. Jody remembers with affection her late grandfather and her "hero" J.C. "Togo" Moorhouse. "When I was seven years old, I began 'working' cattle," she said. "Being that age, I just got put with someone so I didn't get lost in the pasture, and that someone was my grandfather. He was always telling me stories and was so full of memories about the land and cattle. He taught me a lot while we worked."

"My grandfather just started with nothing and he made a ranch. He went through the Depression and instilled in us strong family values," she continued. "I know I will always have an active role in the ranch."

Jody said that the biggest reward on the ranch is getting up early to ride all day, and then looking back at all that has been accomplished. "We take care of a lot in just one day," she said. "We can look back and say, hey, we got the job done. It's so gratifying to be able to really 'feel' a job well done. At the end of the day, it's all worth it."

When asked if she has ever done

anything crazy, she smiles and said, "It would have to be bronc riding last year at the Seymour Cowboy Reunion. It was the longest 'eight seconds' of my life—an adrenaline rush—but a lot of fun." The only woman entered in the competition, Jody tied for third place honors.

Josie Smith and Jody Moorhouse are in the minority of women when it comes to "cowboying" as a lifestyle. They each have managed to balance their interests and abilities in such a way that each can always be counted on to live up to the "real" cowboy image—and yet, no one ever forgets that they are women.

And while they are different from each other, one can identify common features about the two. Their love for nature and the land is a common bond that pulls each of them toward ranching. Each displays characteristics that seem to have come straight from their unique lifestyle. There is an appreciation for tradition that borders on reverence, a sense of humor that spills from simple everyday circumstances and a quiet dedication to personal fulfillment.

Haskell CISD Lunch Guidelines

The Haskell Consolidated Independent School District today announced its policy for free and reduced price meals for children unable to pay the full price of meals served under the National School Lunch Program. Each school and the office of the Haskell CISD has a copy of the policy, which may be reviewed by any interested party.

The following household size and income criteria will be used for determining eligibility:

National School Lunch and Child Nutrition Programs 1996-97 Income Eligibility Guidelines

Family Size	Annually:		Monthly:		Weekly:	
	Free	Reduced Price	Free	Reduced Price	Free	Reduced Price
1	\$10,062	\$14,319	\$839	\$1,194	\$194	\$276
2	13,468	19,166	1,123	1,598	259	369
3	16,874	24,013	1,407	2,002	325	462
4	20,280	28,860	1,690	2,405	390	555
5	23,686	33,707	1,974	2,809	456	649
6	27,092	38,554	2,258	3,213	521	742
7	30,498	43,401	2,542	3,617	587	835
8	33,904	48,248	2,826	4,021	652	928
9	37,310	53,095	3,110	4,425	718	1,022
10	40,716	57,942	3,394	4,829	784	1,116
11	44,122	62,789	3,678	5,233	850	1,210
12	47,528	67,636	3,962	5,637	916	1,304
Each Additional Family Member						
	+3,406	+\$4,847	+\$284	+\$404	+\$66	+\$94

Children from households whose income is at or below the levels shown are eligible for free or reduced price meals.

Application forms are being sent to all homes with a letter to parents or guardians. To apply for free or reduced price meals, households should fill out the application and return it to the school. Additional copies are available at the Principal's office in each school. The information provided on the application will be used for the purpose of determining eligibility and may be verified at any time during the school year by school or other program officials.

For school officials to determine eligibility, households receiving food stamps or AFDC must list the child's name, their food stamp or AFDC case number and the signature and name of an adult household member. Households not receiving food stamps or AFDC must list: names of all household members; Social Security numbers of all adult household members or a statement that the household member does not possess one; total household income and the amount and source of the income received by each household member; and the signature of an adult household member certifying that the information provided is correct.

Applications may be submitted at any time during the year.

Under the provisions of the free and reduced price policy Haskell CISD will review applications and determine eligibility. Parents or guardians dissatisfied with the ruling of the official may wish to discuss the decision with the determining official on the informal basis. Parents wishing to make a formal appeal may make a request either orally or in writing to Haskell CISD, P. O. Box 937, Haskell, Texas, 79521 or telephone at 817-864-2602 for a hearing on the decision.

Households that list a food stamp or AFDC case number must report when the household no longer receives these benefits. Other households approved for benefits are required to report increases in household income of over \$50. per month or \$600. per year and decreases in household size. Also, if a household member becomes unemployed or if the household size increases the household should contact the school. Such changes may make the children of the household eligible for benefits if the household's income falls at or below levels shown above.

In certain cases foster children are also eligible for school meals benefits. If a household wishes to apply for benefits for foster children living with them, the household should contact the school for more information.

The information provided by the household is confidential and will be used only for purposes of determining eligibility and verifying data.

In the operation of child feeding program administered by the U.S. Department of Agriculture, no child will be discriminated against because of race, color, sex, national origin, age or handicap. If any member of a household believes they have been discriminated against, they should write immediately to the Secretary of Agriculture, Washington, D.C. 20250.

Josie and Jody will be part of two of the nine ranches competing in the Texas Ranch Roundup on Aug. 16 and 17. About 17,000 spectators will marvel at the cowboys and these two "cowgirls." Held at the Mounted Patrol Arena, on FM 369, in Wichita Falls, evening performances start at 7:30 p.m. Talent and cookin' contests, starting at 10 a.m., offer a fun-filled Saturday.

For tickets, call Cash A Check 817-691-1723.

Editor's Note: This article was written by Brooke Ross of the North Texas Rehabilitation Center and Budweiser Texas Ranch Roundup in Wichita Falls.

**Don't Miss Out
Subscribe Today!
864-2686
The Haskell Free Press**

INSURANCE ASSURANCE

Independent Insurance Agent

Your One Stop Insurance Agent



**Home - IRA - Farm
Crop Insurance
Hospitalization
Commercial
Cancer
Annuity
Life - Auto**

**Don Welch
dba
LANCO INSURANCE CO.**

Helen Templeton, Joyce Ramirez, Cherie Hutchinson

P.O. Box 558
Haskell, Texas 79521
510 North 1st
817-864-2629

WIN THIS COOL '96 FORD XLT PICK-UP AT ALLSUP'S



NO PURCHASE NECESSARY!
REGISTER AT ANY ALLSUP'S STORE
THROUGH AUGUST 17, 1996

CHECK OUT the FIREWORKS at ALLSUP'S

 12 oz. cans 6 Pack \$1.99 Coca-Cola	COMBO MEAL Piping Hot Link, Potato Wedges & Tallsup \$1.99	 HORMEL Vienna Sausage 5 OZ. CAN 2 FOR 99¢
 THORN APPLE VALLEY Chopped Ham 10 OZ. PKG. \$1.09		

ALLWAYS a LOW PRICE on

 SAVE ON Tide Ultra 33 LOAD BOX \$5.99	 SHURFINE Citrus Punch 64 OZ. BTL. \$1.39	 SAVE ON Wesson Oil 48 OZ. BTL. \$2.99
You'll find all this and more at your Allsup's store		
HASKELL #153 RULE #91		
Shurfine Bleach gal. \$1.09	Tomato Sauce Shurfine 25¢	Shurfine Dog Chunks or any style 20 lb. \$4.69
Solo Party Cups 16 oz \$1.49		

Instantly Win up to \$1,000

or other great cash prizes & free products!

Get a Free Game Ticket With Every **HONCHO** 44 oz. Fountain Drink Purchase!



ALLSUP'S
Always

LOW PRICES, GREAT PRODUCTS 24 HOURS A DAY

Take this coupon to any Strebeck location. If you purchase a new vehicle before August 31, 1996, you will receive \$50.00 worth of free gasoline courtesy of ALLSUP'S.

\$50.00 WORTH OF GASOLINE FREE !!!

PRICES EFFECTIVE AUGUST 4-10, 1996 OFFER GOOD WHILE SUPPLIES LAST