

1/1/99  
Baze Book Binding  
514 W 7th St  
Amarillo TX 79101-2212

Amarillo--33333 zzxxxxxxxxxxxx  
AMARILLO TX 791

### Basketball games

**Haskell**  
JV-VBG vs Seymour  
Fri., 4 p.m. at Haskell  
JV-VBG vs Holliday  
Tues., 4 p.m. at Holliday  
\*\*\*\*\*

Haskell 7th, 8th & 9th  
Haskell vs. Archer City  
Mon., 4:30 p.m.  
Girls Here, Boys There  
\*\*\*\*\*

**Paint Creek**  
Fri., OPEN  
P. C. vs Throckmorton  
Tues., 6:00 at Paint Creek  
\*\*\*\*\*

Paint Creek Junior High  
Paint Creek vs. Rochester  
Fri., 6:00 at Rochester

### Calendar

#### Lodge meeting

The Sons of Hermann Lodge meeting will be held Sun., Feb. 1 at the Irby Hall. The meeting begins at 3 p.m. The hall opens at 2 p.m. The meal will be Mexican food.

#### Rule Chamber

The Rule Chamber of Commerce banquet will be held Tues., March 3 at 7 p.m. at the Rule School Cafeteria. Tickets are \$7.50 in advance or 8 at the door. Rusty Hudelson and the South Plains students will present the entertainment. Tickets are available at Rule City Hall or from any Chamber member.

#### Tamale sale

The St. George Catholic Church will hold a tamale sale Fri., Sat., and Sun., Jan. 30-31 and Feb. 1 to benefit the church. Orders may be placed by calling 864-2545 or 864-8092.

#### Rule Lions benefit

The Rule Lion's Club will present Rusty Hudelson and the 'Knights of the West' Feb. 20 at the Rule School Auditorium at 7 p.m. Tickets are \$6. Advance tickets may be purchased at Rule City Hall. Contact Malcolm Hertenberger at 997-2324 or 997-2214 for more information. A concession stand will open at 6:15 p.m.

#### Social Security

A representative from the Social Security Administration will be in Haskell at the City Hall annex Thurs., Feb. 5 at 9:30 a.m.

#### Partners for Children

Partners for Children will hold a meeting Feb. 3 at the Elementary School at 7 p.m. Topic for the meeting is Mount St. Anger: Stemming the Flow concerning parents who are dealing with an angry youngster. Free babysitting is available by calling the Elementary School. Transportation is being provided for those needing a ride by calling Cindy McCulloch's office at 864-8007. Calls must be made by 1 p.m. on the day of the meeting.

#### Rule Chamber

The Rule Chamber of Commerce meets the first Tuesday of each month at noon in the Rule School Library.

#### Rule City Council

The Rule City Council will meet in regular session Tues., Feb. 3 at 7 p.m. in the Rule City Hall. Community members are welcome to attend.

#### Round Robin

#### Revival

The Haskell Ministerial Alliance has set Feb. 15-19 for the Round Robin Revival. Sunday services will begin at 6 p.m. Services on Monday through Thursday will begin at 7 p.m.

### Index

Obituaries .....Page 2  
Around Town .....Page 3  
Out of the Past .....Page 4  
School menus .....Page 6  
Sagerton News .....Page 9  
Classifieds .....Page 10-11

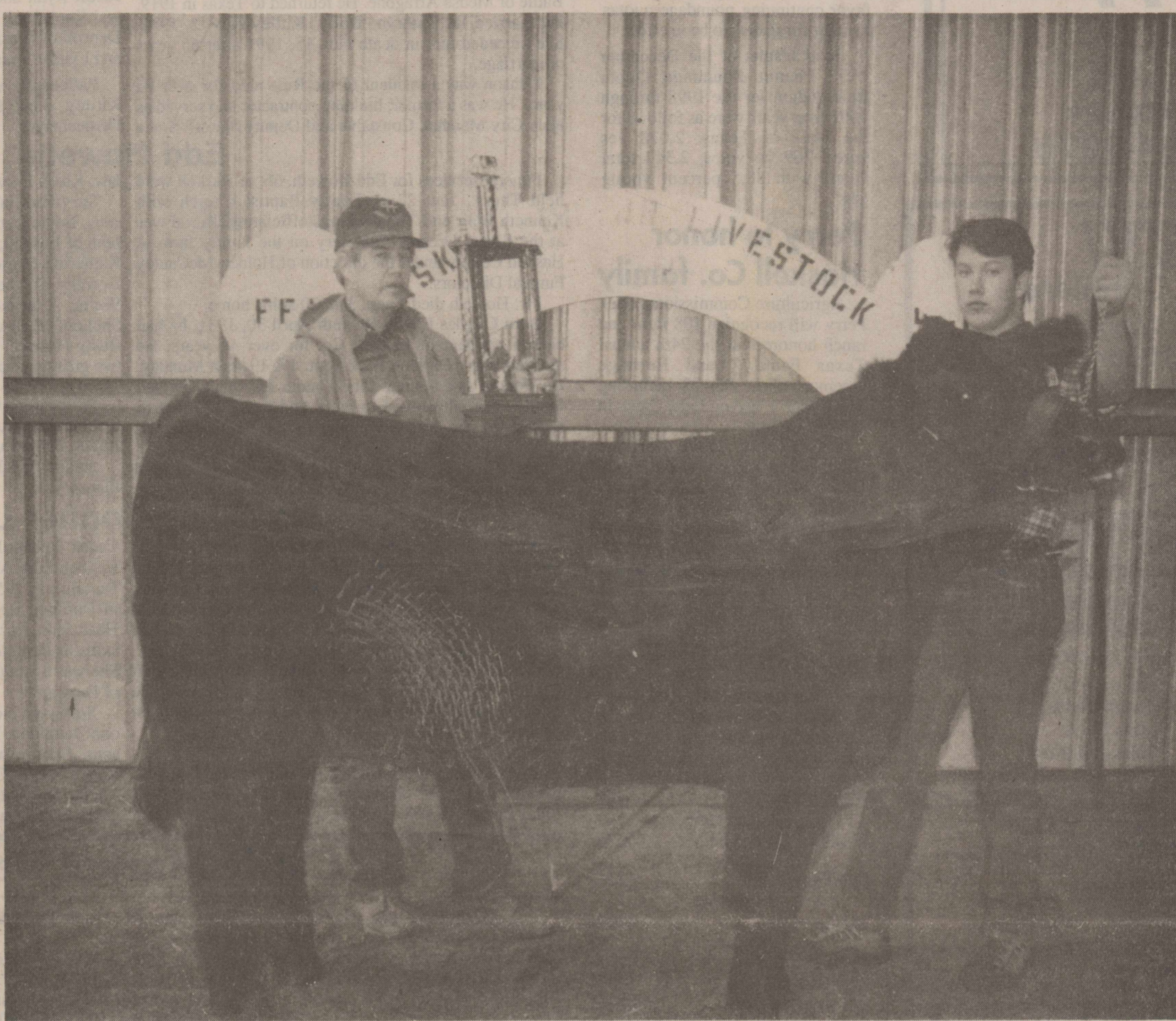
## Jr. Livestock Show and Sale this weekend

# The Haskell Free Press

VOL. 112--NO. 5, ©JANUARY 29, 1998

"The People's Choice"

12 PAGES--ONE SECTION--50 CENTS



GRAND WINNER--Ben Pace with the 1997 Haskell County Junior Livestock Show's Grand Champion Steer.

## Jr. Livestock Show set Jan. 29-30

The annual Haskell County Junior Livestock Show will be held this Fri., Jan. 30 and Sat., Jan. 31 at the Haskell County Show Barn at the fairgrounds, Haskell, Co. 4-H'ers will be exhibiting their livestock projects.

The arrival time for entries of Steers, Heifers, Lambs and Swine is Thurs., Jan 29 by 4:00 p.m. For Poultry and Rabbit entries, arrival time is Fri., Jan. 30 by 7:30 p.m.

Show schedule times are: 8:00 a.m. Fri., Jan. 30 for Lambs followed by Swine at 10:00 a.m., 8:00 a.m. for Poultry and Rabbits and 3:00 p.m. for Steers followed by Heifers.

Judge for the Lambs and Swine will be Lynn Walling of Howard College. Richard Spencer of Roby will judge Steers and Heifers. Poultry and Rabbits will be judged by Randy Gilliam of Abilene Wylie.

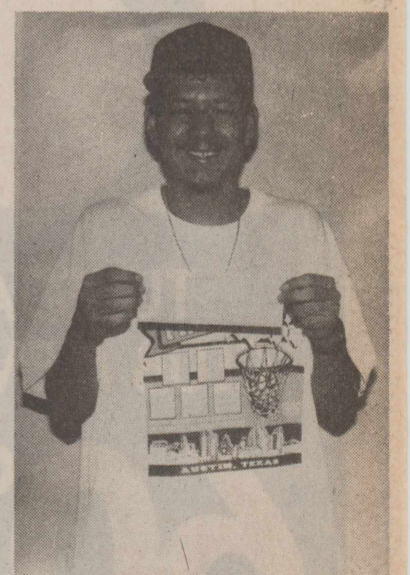
Sale date for the livestock entries is Sat. Jan. 31, beginning at 11:00 a.m. All prebids must be in by 9:00 a.m. on that day.

Auctioneers for the sale will be Rex Ford and Mike Fouts.

## FCE Clubs to sponsor concessions

During the Haskell County Junior Livestock Show and sale the Haskell County FCE (Family-Community Education Council) will sponsor a concession stand. They will be serving brisket sandwiches.

Proceeds from the concession stand are used by the Council to furnish a 4-H Scholarship to a deserving Haskell County student; to assist with 4-H Food and Fashion Show individual awards and to help send qualifying students to the show.



## Macias wins Super Bowl Contest

Winners of the Super Bowl XXXII contest sponsored by the Haskell Free Press were announced Monday.

Frankie Macias won \$75.00 first place for the only correct guess of Denver 31, Green Bay 24.

In second place with the earliest, next closest guess of Broncos 28, Packers 24, Eva Lowe of Abilene won \$37.50.

A total of 240 entries were submitted to the contest this year.

## Referendum vote delayed til March 11

A referendum whether a boll weevil eradication program should continue in the Rolling Plains Central Boll Weevil Eradication Zone has been delayed until March 11. The delay will satisfy a legal requirement for publicly posting the notice of the referendum.

The original referendum was scheduled for Feb. 27. The March 11 referendum will also elect a board member to represent the Rolling Plains Central zone on the statewide board of directors for the Texas Boll Weevil Eradication Foundation Inc.

Cotton producers who farm in the zone and who have grown cotton for at least seven years may place their names on the March 11 ballot for the board member position. Those wishing to be placed on the ballot must fill out a nomination form and have it postmarked by Feb. 8 to the Texas Department of Agriculture at P.O.

Box 12847, Austin, Texas, 78711 or fax the form to (512) 463-1104.

Nomination forms are available at local county extension service offices; the Texas Department of Agriculture in Austin at (800) 835-5832 or (512) 463-7593; and the Texas Boll Weevil Eradication Foundation office in Abilene at (800) 687-1212 or (915) 672-2800.

Changes in the law made by the 75th Legislature require a retention referendum be held allowing eligible voters to confirm they want to continue a boll weevil program in the zone.

Growers in the Rolling Plains Central Zone initially approved a boll weevil eradication program Dec. 1, 1994 and maximum assessment of \$10 per land acre to fund it. The assessment rate will continue at that level.

Unlike establishment referenda where two-thirds of all voters must approve a proposition, a majority

of those returning ballots will determine whether an eradication program will continue. The Texas Department of Agriculture will mail ballots to all eligible voters in the zone by Feb. 18.

The March 11 referendum for the zone was established by new legislation that corrects a constitutional problem found by the Texas Supreme Court with the statewide boll weevil eradication program. Under the new statute, the Texas Boll Weevil Eradication Foundation continues to carry out the program. However, TDA takes on additional responsibilities that include setting new elections on assessments and eradication programs in regional zones and

appointing advisory committees for each zone.

Counties in the Rolling Plains Central Eradication Zone are: Baylor, Callahan, Comanche, Eastland, Erath, Fisher, Haskell Jones, Knox Mitchell, Nolan, Palo Pinto, Scurry, Shackelford, Stephens, Stonewall, Throckmorton, Young and parts of Archer, Borden, Brown and Taylor.

The Foundation has scheduled grower meetings to discuss current eradication program status and answer questions regarding the upcoming election. Local meetings are scheduled Feb. 2, 6 p.m., in Haskell at the High School; and Feb. 4, 6 a.m., in Sagerton at the Sagerton Gin.

## TNRCC issues fine to Rochester business

Issuing a default petroleum storage tank enforcement order against Producers Grain and Supply of Rochester Inc., the Texas Natural Resource Conservation Commission has fined the association \$366,650.00 for failure to address contamination caused by leaking storage tanks.

According to TNRCC documents, one of three petroleum storage tanks on the cooperative's property in Rochester was found in 1990 to have leaked, contaminating the soil and underlying groundwater with gasoline.

Although the TNRCC installed monitoring wells and discovered gasoline floating in the Seymour Aquifer formation beneath the cooperative, no impact on the Rochester municipal well is expected to result from the contamination. The tanks are within 450 feet of a water well that serves the city of Rochester.

Rochester City Manager, Danny Bass said there is no problem with the water system there. "This

started about eight years ago", he said. "The state has come in and run tests. There's no contamination with our water system."

The Producers Grain and Supply closed down about a year ago. The state agency states that despite repeated attempts by the TNRCC to get them to deal with the contamination, the cooperative has not responded.

After finding in Aug., 1997 that groundwater monitoring wells it installed had been destroyed, the TNRCC installed new ones. The effort to correct the problem of groundwater contamination is ongoing.

The petroleum storage tanks in question are out of service. However, in addition to the fine, the TNRCC order requires the cooperative to either permanently remove them from service or bring them into compliance with all environmental regulations which apply.

## School issues policy on assignments

One of the goals of Haskell CISD is to make sure that graduates are equipped to become productive citizens. According to the Secretary's Commission on Necessary Skills (SCANS) report the skills and competencies needed include foundation skills. They are: Basic—reading, writing, mathematics, speaking and listening; Thinking—the ability to think creatively, make decisions, solve problems, learn and reason; Personal—a sense of responsibility, self-esteem, sociability, self management and integrity.

In an effort to help students develop more responsibility and self-management, Jim Rumage, Secondary Principal said it is important that the school make them understand that completing

and turning in assignments is their job. If they choose not to do required work they are choosing to suffer the consequences. Starting with the second semester, when students fail to turn in work, the following procedure will be in effect:

1. The first time work is not turned in = 1 day of assignment to detention hall, (D-Hall).
2. The second time work is not turned in = Lunch ACE, (Alternative Center Education), an in-school suspension.
3. The third offense = 2 days ACE.
4. The fourth offense = 3 days ACE.
5. The fifth offense = 1 day ACE + 3 days of AEP, (Alternative Education Program) a suspension to the Weinert campus.

FOR NEWS ITEMS OR TO SUBSCRIBE, CALL 864-2686





of Modern Way

SINGLE TOPPING PIZZA PRO  
**LARGE PIZZA**  
**\$6.99**

OPEN 'TIL 9 P.M.  
CALL IN ORDERS  
PHONE 864-3976



**HEY!**  
Little Dribblers  
Be A Winner -  
Come To Sport-About  
for all  
Your Basketball Needs

**FREE!**  
Little Dribbler  
T-shirt with each pair of  
basketball shoes purchased

**Basketball Checklist**

- Shorts
- Sweats
- Goals
- Shoes
- Team Color Socks
- Sweat Bands
- Knee Pads
- Balls -all sizes

**Reebok** **NIKE**

**I KNOW WHAT I LIKE**

Where Winners Shop

Sport-About of Haskell 940-864-3891  
402 N. 1st

### Peanut quota voting results reported

Glenn R. Brzozowski, CED of the Haskell County FSA Office, was notified that the final results of a referendum held in December, determined that peanut producers have approved poundage quotas for the 1998 through 2002 crops, according to Keith Kelly, Administrator of the U. S. Department of Agriculture's Farm Service Agency.

Of 8,680 votes cast, 8,228 or 94.8 percent, were in favor of quotas for the next five years. Two-thirds of the voting producers must favor continuing poundage quotas in order for quotas to be in effect.

Final results of the December 1997 Peanut Poundage Quota Referendum for the 1998 through 2002 crop years were as follows for the State of Texas: 2,078 yes votes, 269 no votes, 2,347 total votes, with 88.5 percent voting yes.

### Perry to honor Haskell Co. family

Agriculture Commissioner Rick Perry will recognize 108 farm and ranch honorees at the 24th annual Texas Family Land Heritage ceremony Fri., Jan 23 including The Cybert Place on Lake Creek in Haskell County.

The Family Land Heritage Program, sponsored by the Texas Department of Agriculture, honors families whose farms and ranches have been in continuous production for 100 years or more.

### Haskell Co. Gin Report

January 24, 1998 Haskell	
Farmers Co-op Gin	7132
Haskell Co-op Gin	15,050
<b>O'Brien</b>	
O'Brien Gin	14,222
<b>Rochester</b>	
Rochester Co-op Gin	2675
<b>Rule</b>	
Rule Co-op Gin	6145
<b>Sagerton</b>	
Sagerton Gin	3500
<b>Weinert</b>	
Paymaster Gin	4799
Weinert Gin	5503
<b>Total Bales</b>	<b>59,026</b>

## Obituaries

### Raymond Keilam Denson

Funeral services for Raymond Keilam Denson, 98, of Midland were held Thurs., Jan. 22 at First Baptist Church in Rule with Rev. Scott Hensley officiating. Holden-McCauley Funeral Directors were in charge of the services.

Mr. Denson died Tues., Jan. 20 at Parks Methodist Retirement Village in Midland.

Born Oct. 5, 1899 in Haskell Co., he was the son of Rufus Samuel and Mary Emma 'Mamie' Davis Denson. In 1918 he enlisted in the U. S. Army at Camp Bowie near Fort Worth. He served as a Wagoner in the Supply Co. of the 143rd Infantry of the AEF. In France his unit kept in close contact with the front line delivering food and ammunition to the troops. He saw action in the Battle of Meuse Arragone. He returned to Texas in 1919. He married Ila Kathryn 'Dolly' Kittley Nov. 2, 1925. She preceded him in death Feb. 15, 1991 after 65 years of marriage.

Denson was a resident of the Rule area for over 90 years. He was a farmer, building contractor and served as Rule City Marshal, Constable and Deputy Sheriff. Since

1990 he has made his home in Midland with his daughter, Billie Jean and her husband, James B. Henry. He was a member of the Rule First Baptist Church.

Survivors include his daughter and son-in-law, Billie Jean and James B. Henry of Midland; one son, Raymond K. (Sonny) Denson of Midland; six grandchildren, Kathy Henry Sterne of Spring, Judy Henry Johnson of Amarillo, Deborah Kay Denson Edwards of Lubbock, Karen Denise Denson Green of Dallas, Jeffrey Ray Denson of Idalou, and Larry Keith Denson of Lubbock; seven great grandchildren, David James Sterne of Sugarland, Jonathan Louise Sterne of Spring, Matthew Brent Johnson and Ashley Nichole Johnson of Amarillo, Justin Ryan and Michael James Edwards of Lubbock, and Kayli Ruth Denson of Lubbock; one brother, D. R. Denson of Frazier Park, Calif.; and nephews, Lynwood and Lyndle Denson of California.

Pallbearers were Pete Kittley, Bobby Kittley, Jack Kittley, Jack Davis, James Simpson and Malcolm Hertenberger.

### Edd Howeth

Funeral services for Edd Howeth, 66, of Haskell were held Thurs., Jan. 22 at Trinity Baptist Church with Kenneth Blair and Tim Jennings officiating. Burial was at the Sweet Dreams Cemetery on the family farm in Haskell County under the direction of Holden-McCauley Funeral Directors.

Mr. Howeth died Tues., Jan. 20 at his home. Born Charles Edwin Howeth April 30, 1931, he had been a resident of Haskell Co. for over 40 years. He married Patsy Darlene Peek Sept. 17, 1949 in Munday. He worked as a butcher for 35 years. He was a devoted family man who loved to work and never adjusted to retirement. He was a member of the Trinity Baptist Church.

He was preceded in death by one brother, Lloyd Howeth; one sister, Francis Cleveland; and a daughter-in-

law, Karen Howeth.

Survivors include his wife, Patsy, of Haskell; two sons, Eddie Lynn Howeth and Bobbie Charles Howeth, both of Haskell; two daughters, Patricia Pearl Payne and Katherine Marie Howeth, both of Haskell; two sisters, Dorothy Tincer and Viola Salisbury, both of Mineral Wells; 8 grandchildren, Milissa Stanford, Monica Shelton, Meranda Grand, Colin Howeth, Robbie Payne, Rusty Howeth, Cooter Payne and Bucky Howeth; and two great grandchildren, Brett and McKenzie Shelton.

Pallbearers were Danny Kierepka, Colin Howeth, Robbie Payne, Cooter Payne, Rusty Howeth, Gene Butler, Barry Shaw and Kendall Medford.

Honorary pallbearers were Glenn Merchant and Gene Flannery.

### Geraldine Conner Lam

Memorial services for Geraldine Conner, 77, of Durango, Colo. were held Mon., Jan. 19 at First United Methodist Church in Durango with Rev. Rick Calhoun and Myron Darmour officiating. The body was cremated. Burial services will be held in the Conner family plot in Willow Cemetery in Haskell Sat., Jan. 31 at 10 a.m. with Rev. Shane Brue, pastor, First United Methodist Church, Haskell, officiating. Following the service, the family will be at the Fellowship Hall of the Methodist Church for visitation.

Mrs. Lam died Fri., Jan. 16. Born May 3, 1920 in Haskell, she was the daughter of Mr. and Mrs. Charlie Conner. She was a 1937 graduate of Haskell High School and graduated from

Texas Technological College in 1941. She married Raybon Lam Aug. 12, 1940 in Haskell. They moved to Durango in 1953. She taught at Riverview Elementary in Durango for many years and worked as a regional Head Start teacher. Later, she taught reading and basic skills at the Intercultural Center at Fort Lewis College. She was a member of the First United Methodist Church of Durango.

Survivors include her husband, Raybon, of Durango; one daughter, Elizabeth Dellit of Craig, Colo.; four sons, Conner of Southlake, Warren of Denver, Colo., Roger of Fort Collins, Colo., and David of Ann Arbor, Mich.; one sister, Jean Buford of Weatherford; seven grandchildren and one great-granddaughter.

## Cattle Market Report

The market at the Haskell Livestock Auction was on a run of 1256 head of cattle at its sale on Saturday, January 24, according to Gary Tate, reporter.

An active demand was reported good on all classes. Cows are \$1 to \$2 better. Stockers are up \$2 to \$3 higher. Feeder cattle are steady to \$1 higher.

Cows: fat, .36-.42; cutters, .35-.40; canners, .20-.26.  
Bulls: bologna, .46-.51; feeder, .65-.72; utility, .40-.45.  
Steers: medium and large frame No. 1 200-300 lbs., .95-1.18; 300-400 lbs., .90-1.10; 400-500 lbs., .85-.95; 500-600 lbs., .80-.93; 600-700 lbs., .74-.84; 700-800 lbs., .72-.80; 800-up lbs., .67-.75.  
Heifers: medium and large frame No. 1 200-300 lbs., .85-.95; 300-400 lbs., .82-.92; 400-500 lbs., .78-.85; 500-600 lbs., .73-.85; 600-up lbs., .62-.75.  
Bred Heifers: medium frame, 450-550.  
Bred Cows: young to middle aged, 550-680; aged or small, 450-525.  
Cows with calves: medium frame No. 1 young and middle aged, 650-850; small or aged; 500-650.

### CLUB 55 TURNS 50 ON FEBRUARY 3!



TUESDAY, FEBRUARY 3  
CLUB MEMBERS SAVE UP TO

**60% OFF**

ALL CLEARANCE ITEMS  
WITH AN EXTRA 20% OFF

PLUS! SAVE 20%  
ON ALL REGULAR-PRICE  
AND SALE PURCHASES.

\*Excludes cosmetics, fragrances, Levi's® 501® jeans, JNCO® jeans and designer collections.

**BEALLS**

If you're  
50 or older  
and not  
already  
a member,  
join today!  
Bring valid  
proof of age  
to Customer  
Service and  
Club 50 Plus  
savings  
are yours.



## Heart Of Values Sale



Valentine Cards  
For Children, 50-52 Count  
Assorted Designs

**99¢**



Brach's  
Conversation  
Hearts

10 oz. Bag, 1.59 Value

**69¢**



Valentine  
Barbie  
Doll  
By Mattel  
14.99 Value

**9.99**



Musical  
Plush Frog  
10-inch  
12.99 Value

**8.88**



Valentine Cut Out  
Decorations  
Assorted Designs  
59¢ Each Value

**4/\$1**



Valentine  
Shaky Blues  
Dancing  
Musical Plush  
16.99 Value

**9.99**

Prices Good Thurs., Fri., Sat., Jan. 29-30-31

## THE DRUG STORE

Hours: 8-6 M-F; 8-5 Sat.; Sundays & Holidays 8:30-9:30  
940-864-2673

FOR SA tractor. C 2718.

FOR SA members Call 864-

FOR SA Nice anti sound bo Nanny 8t or call aft

DESIGN ized phot ment card paid for b Flowers a east come

COMPUT ems, \$4( instruction: 915-773-2

FOR SA or suitabl nently. Bc nas. \$25.0 See B. J. 864-8112.

FOR SA in truck btronic cros leave mes:

FOR SA range, air conditione sage.

FOR SA 940-997-2

STAMPOL shop for Utilities pe or 940-997 small woo sale.

92 piece ware. "Co Not a chip \$1200. C 677-5283

WE'V

RICH Hwy. 277 N. 14

"If you ch some time, catch either thing you before they ued end tab values \$200 at \$69 to \$1 in Stamford

POL The H authorized ing anno political County, su 1998 P Unless the candid the annou designated campaign! All pe and annou advance. State Repr Ch (Pd. by Co Ric (Pd. by th Nancy Dist. Jud Charl Dis Pe Lynn Co Dav Gary (Pd. by Ann E Coun Willie Co Rhonda Justic G Wall Commiss Ronn Tiffen Commiss C. A. (



## Students visit Rotary Club

Senior class president, Amanda Cothron, daughter of Joe and Connie Cothron, is also student council secretary. Her other school activities include being a member of the National Honor Society and secretary of the Clean State Organization.

Spending time with her family and friends, cooking and church activities are among her hobbies.

Special recognitions for her have been named to Who's Who Among American High School Students, the Quill and Scroll, elected Most Dependable by the senior class, and acting as photographer to both the yearbook and War Whoop staffs.

After high school, she plans to major in Elementary Education at West Texas A&M in Canyon.

Anna Rieger, daughter of Donnie and Ellen Rieger, is active as the Haskell High School mascot, president of the National Honor Society and plays in the Haskell Indian Band.

She is involved in the activities of the First Baptist Church where she is a member. One of her favorite hobbies is spending time with her friends.

Anna is on the A Honor Roll, was the Junior Class Favorite, and was voted the Most Outgoing Senior.

Her future plans include attending Texas Tech University and majoring in nursing.

Shannon Jordan, daughter of Mike and Deanna Jordan, is active in twirling, tennis, F.F.A. and the National Honor Society.

A member of the First United Methodist Church, her hobbies are twirling and reading.

Shannon has received recognition in the National Honor Society, honor roll and state twirling competition four years in a row.

After high school she plans to attend Howard Payne University to get a degree in education, becoming an elementary teacher.



AT DEDICATION—On hand to officially dedicate the Calvary Baptist Church activity building were: left to right, Dr. Wayne Cadenhead, First Baptist Missions Chairman; Bob Aycock, Building Committee Chairman; Pastor Jim Turner of First Baptist Church and Interim Pastor Vergil Smith of Calvary Baptist.

## Calvary Baptist Church dedicates activity building

On Sunday, Jan. 18, over 100 people attended the dedication of the newly completed activity building of Calvary Baptist Church, a local mission of First Baptist Church of Haskell.

Seeing the need for a fellowship meeting place, Vergil Smith, whose interim pastor ministry for the church began 18 months ago,

inspired the people of Calvary Baptist Church and the First Baptist Church to build the facility.

Dr. Wayne Cadenhead is First Baptist's Missions Chairman, and Bob Aycock is Building Committee Chairman. Jim Turner is Pastor of First Baptist and Vergil Smith is Calvary Baptist Interim Pastor.

## Commission plans to assist Friends of Library

Under the direction of County Judge David Davis, the Haskell County Historical Commission carries the charge of establishing, coordinating and implementing an organized plan to preserve the rich history of the county.

During the Jan. 19 meeting of the Commission the members continued their plans for assisting the Friends of the Library in the fundraising for construction of a new state-of-the-art Haskell County Library and Historical Museum. Such events as a domino and bridge tournament, a quilt show and historical parade are planned.

At the meeting, Judge Davis reported that Haskell County will be well represented in the Texas Association of Counties historical library in Austin. All books of a historical nature written about the county and county communities will be a permanent part of the

state library.

New officers elected to serve the Commission until 1999 are: Chairman Jim Hollingsworth of Jud, Co-Chairman Wanda Ham of Haskell, Treasurer Marguerite Gauntt of Rochester and Secretary Margo Troyer of Rule.

## Historical Society to meet Feb. 2

Nineteen members and guests of the Haskell County Historical and Genealogy Society met Jan. 5, in the community room of the First National Bank. County Judge David Davis and the Historical Commission reported on future plans for the County.

The society's next meeting will be Feb. 2 with County Librarian Joan Strickland presenting the program.

## Homespun Club discusses joys of grandparenting

FCE Homespun Club met in the Extension Office kitchen Thurs., Jan. 15.

Delores Medford gave the program on "Keeping the Grand in Grandparenting." The role Grandparents play in the lives of grandchildren is very important. Many take on the duties of either full or part-time parenting.

Plans were made for the concession stand at the Junior Livestock Show Jan. 30-31. This is the fund raiser for the Haskell County FCE clubs. The FCE

gives a 4-H scholarship, helps with the 4-H Food Show, 4-H Clothing Show, and helps pay on the expense of three delegates to attend state conferences.

District 3 meeting was discussed. This meeting which consists of 25 counties will be held in Haskell Civic Center April 16.

Members present were Joetta Burnett, Delores Medford, Lennie Blankenship, Jane Smith, Coletta Whitfield, Betty Hooks, Mildred Robertson, Lena Tidwell and new member Sharon Lefevre.

## Around Town

By Joyce Hawkins

Clayton, Meshelle Pannel and children, Lorin and Brittney, of Throckmorton visited parents Mr. and Mrs. Charles Blair and Wilda Pannel on Saturday.

Ranee Garcia of Ranger, spent the weekend with his mom, Paula Garcia.

It was good to see our own Betsy McDermott Coleman being one of the officials for the Junior Varsity Basketball games on Friday

night. Congratulations for a job well done, Betsy.

Spending Saturday night with Paula Garcia was her brother, Florentino Salas, and two of his grandchildren of Olney.

Helen and Alvin White of Breckenridge and Mattie and Noel Abbott of Arlington spent two days and nights visiting sisters, Dora Hallie, Callie Moore and Nellie Bird.

## Hobby Club offers defensive driving course

The Sagerton Hobby Club will sponsor a Defensive Drivers Course in the Sagerton Community Center Feb. 9 and 10, from 1 p.m. till 5 p.m.

The course will be taught by Owen Aikin of Rochester. The course is a classroom refresher course for drivers 50 years old and over, but any adult driver is welcome to take the course. The cost is \$8. per person. After completing the course, a student will be eligible for a 10 percent discount on his or her insurance.

For more information and registration call Joyce LeFevre, (940) 997-2103 or Wilma Tiechelman, (915) 773-2869.

## Reception to honor Olson

Stamford Electric Cooperative, Inc. is inviting the friends, relatives and business associates of Frances Olson to a reception honoring her on her retirement from the cooperative.

The party will be held Fri., Jan. 30, at the Bunk House on the Stamford Rodeo Grounds

**Nemir Medical Inc.**  
**OLD-FASHIONED SERVICE**  
 "BY HOME TOWN FOLKS AT A DOWN HOME PRICE"  
 ALL OF YOUR MEDICAL EQUIPMENT NEEDS  
 Sales • Service • Rentals • Repairs  
 WE BILL MEDICARE & OTHER CARRIERS  
 • 24 Hour Service  
 • Free Area Wide Delivery  
 • Oxygen Equipment  
 • Respiratory Therapist On Staff  
 510 N. 2nd • Haskell • 864-2258

For **YOUR** INSURANCE Needs

For Health, IRA, Annuity, Auto, Home or Life Insurance, call today.

HELPING YOU is what we do best.

SANDY FOREHAND  
 508 N. 1st  
 940-864-2647  
 940-864-3504

Texas Farm Bureau Mutual Insurance Co.  
 Texas Farm Bureau Underwriters  
 Southern Farm Bureau Casualty Insurance Co.  
 Southern Farm Bureau Life Insurance Co.

**FARM BUREAU INSURANCE**

## Brown Bag Special

ONLY **\$4.99** PLUS TAX

- 2 No. 1 or No. 2 Sonic Burgers
- 2 Large French Fries
- 2 Medium Drinks

**SONIC**

Offer good January 1-31, 1998. Not valid with any other offer. Only at participating drive-ins.  
 ©1998 America's Drive-In Trust.  
 Sonic, Fountain Favorites, & Brown Bag Special are trademarks of America's Drive-In Trust.

NO WAITING  
 CALL IN ORDERS **864-8533**



Your VOTE is Appreciated!

KEEP  
**GINA BROWN**  
 JUSTICE OF THE PEACE  
 \*QUALIFIED\*  
 \*EXPERIENCED\*  
 \*DEPENDABLE\*

Subject to DEMOCRATIC PRIMARY MARCH 10, 1998.  
 Early voting begins FEBRUARY 23, 1998.  
 Pd. pol. adv. pd. for by Gina Brown, Treasurer

## Sale Shoes

NOW REDUCED TO

# 1/2 Price

## Winter Clothes Sale

### 40%-50%-75% OFF

Greater Reductions on Already Reduced.  
 Dresses, Separates, Sweaters, Coats & More  
**Personality-Slipper Shoppe**  
 South Side of Square Haskell, Texas  
 940-864-2501 • 864-3051

*Our goal is to provide a gentle and caring atmosphere for the special needs of women.*

**Fellow American College of Obstetrics & Gynecology**  
 "SPECIALIST IN LAPAROSCOPIC & LASER SURGERY"  
 • TUBAL RECONSTRUCTION  
 • ULTRASOUND  
 • INFERTILITY & NATURAL CHILDBIRTH

**JAMES E. CAWLEY, M.D.P.A.**  
**1-800-821-2341**  
 820 Montgomery • Graham, TX  
 TELEPHONE ANSWERED 24 HOURS  
 Offices in Graham, Jacksboro, Breckenridge, Olney and Throckmorton

# RODEO style

## Wrangler SALE!

# 19.99 & 24.99

## JEANS FOR MEN

Wrangler® puts the zest in west with it's cowboy jeans and shirts in an array of colors. BMWZ Cowboy cut jeans & 936 Slim Fit Boot Cut jeans.  
 Indigo, reg. 22.00, SALE 19.99.  
 Black, reg. 28.00, SALE 24.99.  
 Available at Selected Stores.  
 Men's Clothing.

www.beallsstores.com

CHARGE IT! GET 10% OFF ALL DAY WHEN YOU OPEN A NEW STORE ACCOUNT. Exclusions may apply. Subject to credit approval.

# BEALLS

We're all about you!



# OPINION

## State Capital



### HIGHLIGHTS

By Lyndell Williams & Ed Sterling  
TEXAS PRESS ASSOCIATION

Third-grade students who fail the reading section of the Texas Assessment of Academic Skills test would move into "appropriate instruction to advance" and barred from promotion under a proposal by Gov. George W. Bush.

Such a program, Bush said at a news conference last week, would be devised by local school officials and funded by a \$32 million program approved by the 1997 Legislature. Bush also wants to bar promotion for fifth- and eighth-graders who fail any portion of TAAS.

"I think it would be incredibly cost-effective for the state," Bush said of the proposal. "Any time you solve a problem before it gets too late, you save taxpayers money. But I am willing to spend the money to get the problem solved."

The 81,000-members Texas State Teachers Association, however, does not support Bush's proposal.

Annette Cootes, TSTA spokeswoman, said that offering students who fail a second chance to pass would make Bush's plan more acceptable.

#### Bush Leads in Finances

Campaign finance reports filed last week show that Republican Gov. Bush is maintaining a big lead over gubernatorial challenger Garry Mauro, who is running unopposed in the March Democratic primary.

Bush, who had a 50 percentage point lead in a recent Texas Poll, raised almost \$8 million in the last six months of 1997, while Mauro, who entered the race in November, took in about \$800,000.

"Governor Bush's support comes from every part of Texas, from Republicans, Democrats and Independents," Karen Hughes, the governor's spokeswoman told the *Austin American-Statesman*. "And," she added, "it's a clear sign that the people of Texas appreciate the job he is doing as their governor."

Hughes said Bush's Finance report shows the governor has about \$12 million in his re-election campaign chest.

Last week, Mauro said he had spent about half of the \$800,000 he had raised, but that he was "going to spend my money a lot better than (Gov. Bush) is going to spend his money."

#### Sex Education Law Clarified

The State Board of Education does not have the authority to adopt required curriculum or textbooks for sex education, but it can adopt guidelines for such classes and books, Attorney General Dan Morales has ruled.

In a legal opinion released last week, Morales said state law leaves it up to local school boards to determine what, if anything, will be taught about human sexuality, sexually transmitted diseases and HIV.

Education Commissioner Mike Moses and Jack Christie, president of the State Board of Education asked Morales for a ruling after the state board adopted a health curriculum that included sex education.

Debbie Graves Ratcliffe, agency spokeswoman, said Christie and Moses wanted the law regarding the state board and local boards' powers clarified.

#### Taxes Rebates Up 12 Percent

Texas Comptroller John Sharp last week delivered a total of \$155.7 million in monthly sales tax payments to 1,090 Texas cities and 118 counties.

We're beginning another promising year," Sharp said. "Sales tax rebates to cities and counties are 12 percent higher in January than those for the first month of last year."

#### Other Capital Highlights

•More than 50,000 Texas students enrolled in low-scoring schools will be eligible to transfer to better campuses this fall under the state's school choice law. The Texas Education Agency has released a list of 575 campuses where students have the right to transfer out next school year. The list represents 8.4 percent of 16,875 campuses in the state.

•The U. S. Supreme Court refused to revive a lawsuit seeking to make certain that Texas voter who are blind or otherwise disabled get to cast a secret ballot. The court let stand a federal appeals ruling that said state officials have no legal duty to make sure local election practices comply with a federal law barring discrimination against disabled people.

•The State Board for Educator Certification last week backed off a plan requiring current teachers with lifetime certificates to renew their state certification every five years to keep their certificates active. Board Chairman Jim Nelson, said the board still intends to require those who later enter the profession to be subject to renewal requirements.

•Texas upland cotton production for 1997 is expected to total 5.3 million bales, 22 percent above 1996, according to figures released by Texas Agricultural Statistics Service. The harvest is practically complete, however, some modules remain to be ginned on the Plains, State Statistician Dennis Findley reported.



## From Out of the Past

From the files of The Haskell Free Press

#### 10 Years Ago

**January 28, 1988**  
Haskell Girl Scouts have adopted the first two miles of U.S. 380 west of Haskell. The third-grade Brownie troop 401 spent Monday afternoon picking up litter.

Dr. Frank C. Spencer, son of Mrs. Lillian Spencer of Haskell, was elected to serve on the board of the American College of Surgeons.

#### 20 Years Ago

**January 26, 1978**  
Haskell County Attorney Charles Chapman was admitted to practice in Federal Court.

The market at Haskell Livestock Auction had a run of 678 cattle and 174 hogs at their sale.

On sale this week at J.R.B. is Tide detergent for \$1.29 and Miracle Whip salad dressing for \$99.

#### 30 Years Ago

**January 25, 1968**  
Five days and nights of continued rain, brought smiles to

farmers, businessmen and ranchers. The wettest month of January was recorded this week.

Royce Adkins has announced his candidacy for re-election for District Attorney, 39th Judicial District.

Tommy Jo Anders, senior at Rule High, placed first in the Betty Crocker Homemaker Contest.

#### 40 Years Ago

**January 30, 1958**  
Robert Wagner and Natalie Wood took a coffee break at the Texas Cafe while driving through on their honeymoon.

Haskell's Kindergarten class visited the busy offices of the U.S. Post Office and the Haskell Free Press.

A U.S. Flag, was given to the Cub Scout Pack of Haskell by the local post of the American Legion.

#### 50 Years Ago

**January 29, 1948**  
Two Haskell 4-H club boys will exhibit their animals in the Fort

Worth Show. Ray Sims will show two calves and Gerald Hanson will show one.

Guest speaker, J.L. Harper, spoke at the South Ward PTA meeting under the direction of Mrs. David Strickland.

Modern Way store has repainted the interior and added new fixtures. It is located on the southwest corner of the square.

#### 80 Years Ago

**February 2, 1918**  
Effective this week, Haskell business houses will close at 6 p.m. except on Saturdays and first Mondays.

J.W. Nanny of the Post community was in town. He reports a heavy snow in his section, which he believes will revive winter grain.

County Judge A.J. Smith said that payment was received for the 1918 interest due on the Haskell County School land.

## Legal Matters

By Attorney General Dan Morales

Certain swindlers are called "con" artists because they gain their victims' confidence by telling or acting out a story. Unfortunately, many cons target the elderly because of their trusting nature.

Seniors may be ashamed or embarrassed to report being victimized by fraud, fearing that they should not have been so gullible. The truth is that con artists are skilled professionals. Unless properly warned, even the wildest Texan can be duped.

Here at the Office of the Attorney General, we have heard about all kinds of underhanded confidence schemes. We want you to hear about them too, so you'll be prepared. Two of the most commonly reported confidence games are the "pigeon drop" and the "bank examiner."

#### The pigeon drop

The "pigeon drop" typically involves two or three people working together. Suppose a pleasant-looking person, perhaps an older woman, strikes up a conversation with you in a public place. Then another stranger, who does not appear to know the first person, asks if either of you has lost a package, which he has found. You both say no.

The first stranger suggests opening the parcel to see if it contains information about the owner. The package is full of cash, and may contain some sort of "clue" that the money was stolen

or lost by drug dealers. One of the strangers recommends that the three of you seek the advice of his attorney.

The attorney (who is just another conspirator) says that after 90 days the three of you can keep the found money if no one has claimed it. He suggests that you divide the money immediately. But he advises that each of you should leave a substantial cash deposit as a guarantee that you will not begin to spend the found money until 90 days have elapsed.

Naturally, the two swindlers agree to do as the third swindler suggests. Forewarned is forearmed, and you will not fall for this scheme. But many people do fall for it. The victim withdraws the agreed deposit from his or her savings and leaves it as security in exchange for a share of the lost money. Unfortunately, the victim's share of the cash turns out to be an envelope filled with cut-up newspaper.

#### Bank examiner

The "bank examiner" swindle usually starts with a telephone call to a prospective victim from a person posing as an FBI agent, police officer, or bank official. This person claims to be investigating a local bank teller suspected of stealing money from depositors. The phony investigator asks the victim to assist by withdrawing a large sum of cash from the bank, making sure that

the withdrawal is handled by the suspected teller.

When the victim returns home with the money, the phony examiner makes a show of recording serial numbers and takes the withdrawn money away for "laboratory analysis," promising to return it in a few days. The victim is given a "receipt" for the money, but never sees or hears from the crooks again.

#### How to avoid being victimized

Be wary of entering into any financial dealings with strangers you meet on the street or who contact you in your home. You should be suspicious of anyone asking you to withdraw cash for any reason whatsoever.

The FBI, banking institutions, and police departments would never ask you to use your own money in any type of investigation. Police officers do not remove valuables from your home to record serial numbers.

If you are the victim of a swindle or con games, call the police. Be sure to write down the detective's name and telephone number. Con artists sometimes call victims back, impersonating police officers. For more information about fraud against the elderly, you can also call our Consumer Education and Elder Outreach Division, at (800) 806-2092, or visit the Web site of the Office of the Attorney General at <http://www.oag.state.tx.us>.

## Hospital

**Admissions**  
Nina Dunnam, Haskell  
Greg Zeissel, Munday  
**Dismissals**  
Linnie Hickman, Silvestre  
Ozuna, Claude Edwards, Drucilla  
Morton, James Crawford, Harrison  
Boles, Imogene Freshour, Iva Lee  
Gipson, Cordie Hicks, Nell Estes



## From The Inside Out

By Mary Kaigler

Lyla Mary Isbell is hanging up her apron.

For more than 41 years, working in food services in Haskell County, she has fed both the younger and older generation. She spent 31 years as head dietician for Paint Creek School children, and last Friday, Jan. 23, she ended ten and a half years as chief of kitchen operations cooking for senior citizens at Haskell Experienced Citizen's Center.

If it were not for complications following her back surgery on Oct. 23, the energetic, competent lady says she would still be there doing the thing she enjoys; preparing food. Doctors said she could return to work if she didn't lift anything heavier than 25 pounds, and she carefully adhered to that. But on Dec. 23, after being off for two months, her plans to resume her working routine were side tracked by a sciatic nerve problem which continues to persist.

Although she has always dreaded retirement, the 76 year old has a practical, positive attitude toward it now that it is a reality for her. Saying that she never learned to sew or do handwork like her mother did to spend her time, (choosing to cook instead when growing up), she added that she likes to read, likes people and that being involved with her grandchildren's activities gives her lots of pleasure. (With granddaughter J. J. Comedy on the varsity basketball team at Haskell High, Lyla Mary never misses a game if possible). Volunteer work at the hospital is something she'd like to do after she's taken some 'coasting' time to let the doctors find the cause of her sciatic nerve problem.

Always supportive of the 4-H activities and programs, she enjoys having the group come to her house each Christmas during their caroling evening. She always prepares a variety of goodies for them to enjoy. The custom started about five or six years ago when granddaughter Jennifer Comedy (now attending Texas A&M University) volunteered her for it. In appreciation, the 4-H Club has added several special Santa Claus figures to the large collection of 20 or more that Lyla Mary has assembled over a number of years.

Raised in Jones County, Lyla Mary Mickler married Allen (Jiggs) Isbell of Paint Creek. Widowed in 1981, she continued to live in Paint Creek until 1987 when she bought her home in Haskell.

A member of the Haskell First United Methodist Church and the Hazel Weaver Bible Class, she often helps with funeral dinners and special church dinners.

She has three children, Janice Dutton, Nene Comedy and Danny Isbell, and eight grandchildren of whom she is 'grandmother' proud. Fondly called "TaTa" by them and others, Lyla Mary is a special lady in the hearts of many; known, loved and well respected for her down-to-earth, consistent "giving" attitude.

Like the advertising motto about Sarah Lee, (another well known 'cook'), one can say with assurance that, "Nobody doesn't like Lyla Mary." The famous sweet cinnamon rolls that she made to sell for the ECC helped raise \$10,000.00 for the Center's building and operating fund. It was largely what helped it get through this last year of operation there.

Though retired, there is little doubt that Lyla Mary will stay busy. Even now she is concerned about the needed future fund raisers planned to help the Center stay afloat. When asked by her replacement at the Center, "Now tell me, just how do you make that good cobbler?" Lyla Mary assured her that the first time they serve it on the menu, she'll be there to show them how to make it.

So, maybe she'll put that apron back on occasionally. After all, she's got us all hooked on those sweet rolls, and we'll be needing a 'fix' now and then.

\*\*\*\*\*

**Thought for the week:**  
Your freedom to choose a positive attitude is the one treasure God will let no one take from you!

## The Haskell Free Press

Established January 1, 1886  
PUBLISHED EVERY THURSDAY  
401 S. First St  
P. O. BOX 555 HASKELL, TEXAS 79521

John McDougal .....Publisher  
Lisa Shaw .....Business Manager  
Mary Kaigler .....Staff Writer  
Doris McDougal .....Production  
Bill Blankenship .....Staff Photographer

Periodical Paid Haskell, Texas 79521  
(USPS 237-040)

#### SUBSCRIPTION RATES:

Haskell county, one year, \$20.00.  
Outside of Haskell County, one year, \$28.00.

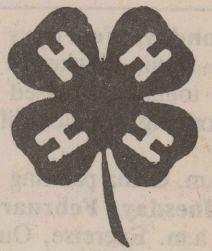
NOTICE TO PUBLIC—Any erroneous reflection upon the character, reputation or standing of any firm, individual or corporation will be gladly corrected upon being called to the attention of the publisher.  
POSTMASTER: Send address changes to The Haskell Free Press, P.O. Box 555, Haskell, TX. 79521-0555.







# IT'S SHOW TIME!



Be Sure You Attend and Support the Annual

## Haskell County Junior Livestock Show

Thurs., Fri. & Sat. Jan. 29-30-31

Haskell County  
Show Barn  
at the Fairgrounds

We extend a warm  
and hearty welcome to the  
visitors attending  
Haskell County's Annual  
Junior Livestock Show  
and Sale!



~ Premium Sale ~  
Saturday 11 a.m.  
at the Show Barn

The youth representing  
the 4-H and FFA Clubs of  
Haskell County are very  
enthusiastic about this  
year's show, and thank  
you for supporting them  
as they build  
for the future.



Learning to do; Doing to learn...  
Earning to live; Living to serve

### SHOW SCHEDULE

<b>THURS., JAN. 29</b> by 4 p.m. Arrival of Steers, Heifers Lambs, Swine	<b>FRI., JAN. 30</b> by 7:30 a.m. Arrival of Poultry & Rabbits 8 a.m. Lamb, Poultry & Rabbit Show 10 a.m. Swine Show 3 p.m. Steer Show followed by Heifer Show	<b>SAT., JAN. 31</b> 9 a.m. Pre-bid Deadline 11 a.m. PREMIUM SALE
--	--	---

Building Character  
with 4H

The following firms and businesses salute the boys and girls of the Haskell County FFA and 4-H Clubs for their participation in this annual event!

<b>Dennis Patterson</b> Agency Manager Haskell County Farm Bureau 864-2647	<b>Modern Way IGA</b> Food & Fuel Your One Stop Shop 1202 N. Ave. E • Haskell 864-3763	<b>Richardson's</b> Case IH & TrueValue 864-8551 • Haskell	<b>Kay's Cleaners</b> 516 N. 1st St. Haskell	<b>F &amp; D Electronics</b> Texas Cellular 512 N. 1st St. • Haskell 864-2536 864-3269
<b>Hanson Paint and Body</b> Professional Auto Body Repair Bobby Hanson 207 S. First • Haskell 864-3631	<b>WALK-A-BOUT BOOTS</b> Shoes & Saddle Repairs East Side of Square Haskell 864-6173	<b>McGee's Lumber Yard</b> 105 N. 1st St. • Haskell 864-3552	<b>Nanny Plumbing</b> Haskell 864-3043	<b>Personality-Slipper Shoppe</b> South Side of Square • Haskell 864-3051 or 864-2501
<b>Pogue's Meat Processing</b> Glenn & Jo Pogue 1305 S. 1st St. • Haskell 864-3388	<b>Bailey Toliver</b> Chevrolet – Oldsmobile "We Salute 4-H & FFA" 517 N. 1st St. • Haskell 864-2626	<b>Weinert Gin Company</b> "We Appreciate Your Business" Weinert 673-8280	<b>Haskell Healthcare Center</b> Sandra Givens, Administrator 864-8537	<b>Holden-McCauley Funeral Home</b> 304 N. 2nd • Haskell 864-2151
<b>Rice Springs Care Home</b> 1302 N. 1st St. • Haskell 864-2652	<b>Steele Machine</b> Bill & Pam Steele, Owners Hwy. 380 East • Haskell 864-2208	<b>Double A Drive Inn</b> Deena & Donald Cunningham 1103 N. 1st St. • Haskell 864-2466 Let Us Serve You!	<b>Haskell Tire &amp; Appliance</b> 209 S. Ave. E. • Haskell 864-2900	<b>Medford Buick – Pontiac – GMC, Inc.</b> 200 N. Ave. E. • Haskell 864-2644
<b>Cecil's Country Meat Market &amp; Grocery</b> East Hwy. 277 • Haskell 864-2511	<b>Home State Bank</b> Member FDIC 1-800-343-3511 410 Carruthers Rochester 940-743-3511 610 Columbia Stamford 915-773-2122	<b>Jay's Tire Center</b> 506 N. 1st East • Haskell 864-2908	<b>Larned's Sales Center</b> 806 S. Ave. E • Haskell 817-864-2749	<b>Matlock &amp; Associates</b> 510 S. Second St. • Haskell 864-3050



### ECC Calendar and Menu

**Monday, February 2**  
Lunch—Ham, blackeyed peas, okra and tomatoes, tossed salad, peaches/topping, cookie, milk, tea, or coffee  
1:00 p.m. China painting  
**Wednesday, February 4**  
10:30 a.m. Exercise, Outreach Health Service  
11:45 a.m. Kevin Hamilton, Throckmorton Special Care  
Lunch—Spaghetti, meat sauce, green beans, apple/carrot salad, apricot jello, garlic bread, milk, tea or coffee

**Friday, February 6**  
Lunch—Meat loaf, new potatoes, mixed vegetables, cabbage slaw, cherry cobbler, milk, tea or coffee  
All over 60 are invited to come and eat. Call 864-3875 for transportation to the center or for home delivered lunches for the sick or disabled.

### Haskell School Menu

**Feb. 2-6**  
**Breakfast**  
Juice or fruit and milk are served daily on the breakfast menu.  
**Monday:** Cereal, cinnamon toast  
**Tuesday:** Breakfast burrito  
**Wednesday:** Pancakes with syrup  
**Thursday:** Biscuits/gravy, sausage  
**Friday:** Cereal, buttered toast with jelly

**Lunch**  
A choice of baked potato with choice of topping or a salad bar are offered daily at the High School.

Milk and juice are served daily at the Elementary School  
**Monday:** Steak on bun, french fries, pickle spears, fruit cobbler  
**Tuesday:** Pizza, tossed salad, corn on cob, shape ups  
**Wednesday:** Frito bag, pinto beans, cornbread, peanut butter/crackers, diced pears  
**Thursday:** Sliced turkey with gravy, creamed potatoes, seasoned green beans, hot rolls, sliced pineapples  
**Friday:** Hamburgers, curly fries, hamburger trimmings, brownies

### Head Start Menu

**Feb. 2-6**  
Milk served daily with breakfast. Menus subject to change without notice.  
**Breakfast**  
**Monday:** Cherrios, banana  
**Tuesday:** Sausage biscuit, peaches  
**Wednesday:** French toast sticks w/syrup, pear halves  
**Thursday:** Oatmeal, strawberries  
**Friday:** Rice Krispies, orange slices

**Lunch**  
Milk served daily with lunch.  
**Monday:** Hamburger on bun, tater tots, apple sauce  
**Tuesday:** Baked ham slice, carrots coins, roll

**Wednesday:** Ravioli, string cheese, green beans, apricots  
**Thursday:** Steak fingers, smashed potatoes, broccoli, slice bread  
**Friday:** Chicken salad sandwich, zucchini sticks, apple slices

**Snacks**  
**Monday:** Ritz crackers, orange juice  
**Tuesday:** Apple wedges, slice cheese, milk  
**Wednesday:** Vanilla wafers, orange juice  
**Thursday:** Fruit cocktail, milk  
**Friday:** Pig in blanket, apple juice

### Paint Creek School Menu

**February 2-6**  
**Breakfast**  
Milk and juice are served daily.  
**Monday:** Toast  
**Tuesday:** Biscuits/gravy  
**Wednesday:** Cereal  
**Thursday:** Cinnamon toast  
**Friday:** Donuts

**Lunch**  
Milk is served daily.  
**Monday:** Chicken nuggets, gravy, rolls, scalloped potatoes, peaches  
**Tuesday:** Burritos, cheese, beans, salad, spice cake  
**Wednesday:** Pizza, vegetable sticks, fried squash, Rice Krispie bars  
**Thursday:** Hot dogs, chili, cheese, relish, onions, tator tots, pears  
**Friday:** BBQ on bun, fries, pickles, pork and beans, ice cream

### Basketball scores

**GIRLS**  
Archer City 60, Haskell 41  
Scoring by quarters: 6, 5, 14, 16.  
Individual Scoring: Gray 10, McKenzie 12, Comedy 4, Alvarez 2, Tidrow 4, Burgess 5, Rodela 2, Bartley 2.  
JV Score: Archer City 48, Haskell 28.  
**Haskell 46, Electra 43**  
Scoring by quarter: 18, 7, 11, 10.  
Individual Scoring: Gray 9, Alvarez 6, Burgess 2, McKenzie 29.  
Records: Haskell 12-11, 3-2.  
JV Score: Haskell 24, Electra 23.  
**Rule 76, Paint Creek 56**  
Scoring by quarter: Rule, 19, 15, 18, 14. Paint Creek, 16, 3, 18, 19.  
Individual Scoring: Rule, Hisey 5, Lehrmann 16, Wilson 23, Stegemoeller 8, Allison 9, Ramirez 4, McDuff 12. Paint Creek, Medford 4, Strickland 4, Isbell 25, Walton 4, Salinas 4, Waters 13.  
**Throckmorton 86, Paint Creek 42**  
Scoring by quarter: 9, 11, 11, 11.  
Individual Scoring: Salinas 18, Isbell 12, Waters 8, Medford 2, Walton 2.  
**BOYS**  
**Haskell 64, Electra 38**  
Scoring by quarter: 11, 17, 17, 19.  
Individual Scoring: Spells 12, McGuire 4, Nichols 2, Briles 14, Ortiz 13, Cheyne 14, Everett 3, Steele 2.  
Records: Haskell 13-9, 4-0.  
JV Score: Haskell 62, Electra 37.  
**Paint Creek 63, Rule 56 (OT)**  
Scoring by quarter: 13, 18, 17, 8.  
Individual Scoring: Paint Creek, Lamb 8, Martinez 14, Goss 5, Davis 9, Hearn 11, Reel 16. Rule, Smith 3, Hisey 10, J. Hertel 4, Lehrmann 231, Sotels 8, M. Hertel 10.  
Records: Rule 1-1, Paint Creek 13-7, 1-1.  
**Throckmorton 61, Paint Creek 56**  
Scoring by quarter: 14, 14, 14, 14.  
Individual Scoring: Reel 20, Davis 13, Lamb 9, Martinez 8, Goss 2, Hearn 2, Shackelford 2.  
Records: Paint Creek 12-7, 0-1.  
JV Score: Throckmorton 85, Paint Creek 17.

### Haskell County Quarterly Report October, November, December 1997

	BEGINNING BALANCE	RECEIPTS	AVAILABLE AMOUNT	LESS DISBURSEMENT	END OF MONTH BALANCE
GENERAL	\$ 95,561.62	\$ 266,961.70	\$ 362,523.32	\$ 266,596.81	\$ 95,926.51
GENERAL MONEY MARKET	\$ 1,665.66	\$ 17.99	\$ 1,683.65	\$ -	\$ 1,683.65
JURY	\$ 4,516.94	\$ 10,060.00	\$ 14,576.94	\$ 5,610.06	\$ 8,966.88
LAW LIBRARY	\$ 434.78	\$ 3,790.00	\$ 4,224.78	\$ 3,120.76	\$ 1,104.02
LATERAL ROAD 1	\$ 91.98	\$ 7,491.91	\$ 7,583.89	\$ 2,279.09	\$ 5,304.80
LATERAL ROAD 2	\$ 269.18	\$ 7,491.91	\$ 7,761.09	\$ 5,442.58	\$ 2,318.51
LATERAL ROAD 3	\$ 120.81	\$ 7,491.91	\$ 7,612.72	\$ 3,231.81	\$ 4,380.91
LATERAL ROAD 4	\$ 143.80	\$ 7,491.91	\$ 7,635.71	\$ 7,183.07	\$ 452.64
FAM LATERAL ROAD 1	\$ 173,577.49	\$ 41,314.23	\$ 215,211.72	\$ 181,254.48	\$ 33,957.24
ROAD & BRIDGE 2	\$ 83,453.17	\$ 171,829.99	\$ 255,283.16	\$ 46,233.00	\$ 209,050.16
ROAD & BRIDGE 3	\$ 100,163.08	\$ 310,838.98	\$ 411,002.06	\$ 121,897.51	\$ 289,104.55
ROAD & BRIDGE 4	\$ 85,411.13	\$ 162,310.96	\$ 247,722.09	\$ 21,599.69	\$ 226,122.40
FAM LATERAL ROAD 1	\$ 14,191.38	\$ 25,416.10	\$ 39,607.48	\$ 17,267.67	\$ 22,339.81
FAM LATERAL ROAD 2	\$ 28,707.75	\$ 15,438.12	\$ 44,145.87	\$ 11,515.36	\$ 32,630.51
FAM LATERAL ROAD 3	\$ 36,133.77	\$ 15,600.50	\$ 51,734.27	\$ 11,484.28	\$ 40,249.99
FAM LATERAL ROAD 4	\$ 22,501.43	\$ 12,231.54	\$ 34,732.97	\$ 7,765.67	\$ 26,967.30
CRIMINAL JUSTICE	\$ 4,886.72	\$ 6,532.72	\$ 11,419.44	\$ 1,131.19	\$ 10,288.25
LAW ENFORCEMENT OFFICER	\$ 2,165.86	\$ 411.52	\$ 2,577.38	\$ 700.93	\$ 1,876.45
COMP VICTIMS OF CRIME	\$ 7,287.49	\$ 5,023.93	\$ 12,311.42	\$ 3,160.99	\$ 9,150.43
ARREST FEE	\$ 11,026.53	\$ 3,436.29	\$ 14,462.82	\$ 684.44	\$ 13,778.38
JUD/PERSONNEL TRAINING	\$ 1,003.57	\$ 333.86	\$ 1,337.43	\$ 208.45	\$ 1,128.98
CRIME STOPPERS	\$ 127.74	\$ 24.00	\$ 151.74	\$ 22.07	\$ 129.67
STATE GEN REVENUE	\$ 1,853.63	\$ 304.66	\$ 2,158.29	\$ 507.09	\$ 1,651.20
COMP REHABILITATION	\$ 2,630.24	\$ 470.00	\$ 3,100.24	\$ 751.50	\$ 2,348.74
BREATH ALCOHOL	\$ 46.80	\$ 120.00	\$ 166.80	\$ 46.80	\$ 120.00
911	\$ -	\$ 189.98	\$ 189.98	\$ 219.98	\$ (30.00)
SECURITY FUND	\$ 11,371.68	\$ 846.03	\$ 12,217.71	\$ -	\$ 12,217.71
SEIZURE FUND	\$ 4,442.73	\$ 81.96	\$ 4,524.69	\$ 65.00	\$ 4,459.69
COUNTY ATTORNEY	\$ 5,072.73	\$ 1,470.59	\$ 6,543.32	\$ 3,449.60	\$ 3,093.72
DISTRICT ATTORNEY	\$ 135.00	\$ -	\$ 135.00	\$ -	\$ 135.00
MANAGEMENT PRESERVATION	\$ 4,546.57	\$ 378.18	\$ 4,924.75	\$ -	\$ 4,924.75
PERMANENT SCHOOL	\$ 2,203.30	\$ 1,681.70	\$ 3,885.00	\$ 7,203.30	\$ 1,681.70
COUNTY LIBRARY	\$ 9,247.90	\$ 544.60	\$ 9,792.50	\$ 343.09	\$ 9,449.41
ECC NUTRITION	\$ 0.56	\$ 21,669.42	\$ 21,669.98	\$ 21,287.44	\$ 382.54
ECC BUILDING	\$ 3,375.05	\$ 2,157.01	\$ 5,532.06	\$ 6,137.73	\$ 3,394.33
ECONOMIC DEVELOPMENT	\$ 42,243.11	\$ 11,008.10	\$ 53,251.21	\$ -	\$ 53,251.21
RECORDS MANAGEMENT	\$ 15,045.25	\$ 2,579.55	\$ 17,624.80	\$ 639.45	\$ 16,985.35
TOTAL	\$ 789,016.43	\$ 1,125,191.79	\$ 1,914,208.22	\$ 762,044.93	\$ 1,152,163.29

INVESTMENTS:  
SOCIAL SECURITY C.D. NO. 34113 \$ 8,301.41  
GENERAL FUND C.D. - 5.3% @ 180 DAYS NO. 34279 \$ 100,000.00

TOTAL INVESTMENTS FOR HASKELL COUNTY \$ 108,301.41

TOTAL CASH ASSETS FOR HASKELL COUNTY \$ 1,260,464.70  
*Willie Faye Tidrow*  
County Treasurer & Investment Officer

On January 12, 1998 the Commissioners' Court of Haskell County met in regular session and compared the Quarterly Report of Willie Faye Tidrow, County Treasurer, for the quarter ending December 31, 1997 and found the same correct and respective amounts to have been paid out during the quarter.

*Barry Davis*  
COUNTY JUDGE - pro tem  
*Billy Wayne Heister*  
BILLY WAYNE HEISTER  
COMMISSIONER PREC.#1  
*Rhonda Moeller*  
RHONDA MOELLER  
COUNTY CLERK  
*Kenny Thompson*  
KENNY THOMPSON  
COMMISSIONER PREC.#3  
*Ronnie Chapman*  
RONNIE CHAPMAN  
COMMISSIONER PREC.#2  
*C.A. Turnbow*  
C.A. TURNBOW  
COMMISSIONER PREC.#4

We Congratulate You...

We salute 4-H and FFA for service to the youth of Haskell County.

Here's hoping this show and sale is your best ever.

January 29-30-31




Haskell, Texas

### Jones-Haskell Eye Clinic

## Dr. Trussell Thane

Appointments Available • Monday through Friday

Dr. Thane is Board certified in the diagnosis and treatment of eye disease. Dr. Thane offers complete evaluation for eyeglasses and contact lenses.

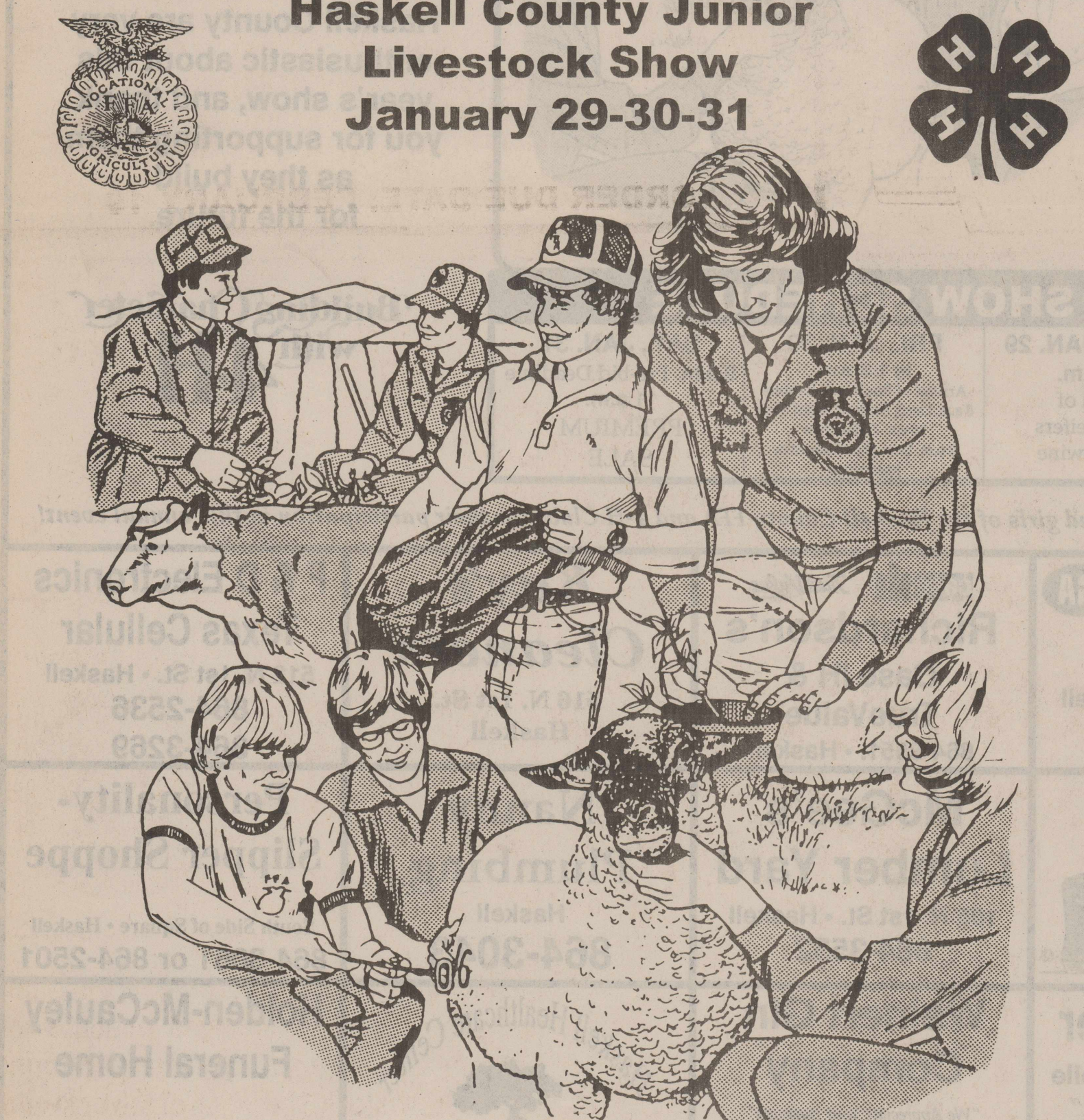
2 pair of clear daily wear \$159<sup>00</sup> contact lenses

Disposable lens packages and contacts to change your eye color available.

MEDICARE, MEDICAID AND FIRSTCARE ACCEPTED.

1501 Columbia Stamford, Texas 915-773-2083

### Haskell County Junior Livestock Show January 29-30-31



### EXPERIENCE IS STILL THE BEST TEACHER

The Future Farmers of America and the 4-H programs develop young people with classroom knowledge which could be applicable to a learning-by-doing. Students learn from others who have more experience but, in the end they do it themselves. Experience is still the best teacher.



## First National Bank

200 S. Ave. E Member FDIC 864-8555 Haskell, Texas



## Smith, Hisey, Miller, Baitz show top animals at Rule show

January is Livestock Show month in Haskell County, with the 1998 Rule Livestock Show held last Sat. and the Haskell County Livestock Show coming up this Sat.

At the Rule show, Keli Smith took top marks and recognition for the Duroc pig she showed in the Grand Champion Market Hog division.

The reserve grand pig with a Spot was shown by Michelle

Stegemoeller from among several top-placing animals she showed for the day.

Jenny Hisey showed the Grand Champion Market Lamb, and Benny Bundy had the reserve grand lamb.

Top broilers in the poultry show belonged to Makenzie Miller, and Kami Baitz had the winning rabbits.

Keith Rowan is the Rule agriscience teacher.

Wayne Ivey, Coahoma High agriscience teacher was judge for the Rule show. Other results for the day were as follows:

**Poultry Division**  
Pen of broilers: 1. and Champion broilers, Makenzie Miller; 2. and Reserve Champion, Kelsey Miller.

**Rabbit Division**  
Breeding rabbits: 1. Kami Baitz; 2. Kami Baitz; and 3. Kami Baitz.  
Champion Breeding Rabbits  
Kami Baitz

Reserve Champion Breeding Rabbits  
Kami Baitz

**Market Lamb Division**  
Fine wool: 1. and Champion, Lucas Hisey.

Medium wool: 1. and Champion, Jenny Hisey; and 2. and Reserve Champion, Benny Bundy.

Grand Champion Market Lamb  
Jenny Hisey

Reserve Grand Champion Market Lamb  
Benny Bundy

Lamb Showmanship  
Benny Bundy

Market Swine Division  
Yorkshires: 1. Tiffany Ramirez; 2. Jennifer Lehrmann; 3. Michelle Stegemoeller.

Spots: 1. Michelle Stegemoeller, 2. Michelle Stegemoeller, 3. Kortney Kupatt.

Champion Other Pure Breeds (York and Spots)  
Michelle Stegemoeller, with a spot.

Reserve Champion OPB  
Michelle Stegemoeller, with spot  
Lightweight Hampshires: 1. Kyla Jones; 2. Kortney Kupatt; 3. Brian Lehrmann.

Heavyweight Hampshires: 1. Mike Casey; 2. Brian Lehrmann; 3. Joanna Lehrmann.

Champion Hampshire  
Kyla Jones

Reserve Champion Hampshire  
Mike Casey

Lightweight Duroc: 1. Jennifer Murray, 2. Jacob Manske, 3. Kortney Kupatt.

Mediumweight Duroc: 1. Keli Smith; 2. Richie Culpepper, 3. Brady Standefer.

Heavyweight Duroc: 1. M'Lynn Lehrmann, 2. Trey Kittley, 3. Mike Casey.

Champion Duroc  
Keli Smith

Reserved Champion Duroc  
Jennifer Murray

Lightweight crossbreds: 1. Michelle Stegemoeller, 2. Jennifer Lehrmann, 3. Jeffrey Murray.

Heavyweight crossbreds: 1. Grant Hisey, 2. Keli Smith, 3. Kyla Jones.

Champion Crossbred  
Michelle Stegemoeller

Reserve Champion Crossbred  
Grant Hisey

Grand Champion Market Hog  
Keli Smith with Duroc pig

Reserve Grand Champion Market Hog  
Michelle Stegemoeller, with OPB, her Spot pig

Senior Swine Showmanship  
Brian Lehrmann

Junior Swine Showmanship  
Kyla Jones

Pee-Wee Showmanship  
Kaylee Jones

## Hogan renews membership

Elicia Sloan Hogan, DVM of Haskell, recently renewed her membership in the Texas Academy of Veterinary Practice, an organization of veterinarians who must maintain a high level of continuing education.

Members of the Academy, a non-profit organization within the Texas Veterinary Medical Association, strive to stay on the cutting edge of veterinary medicine by continuing their professional education during their careers.

While licensed Texas veterinarians are required by law to get at least 15 hours of continuing education annually, Academy members must acquire at least 50 hours.

**\$22<sup>99</sup>**

Muffler at

*Nootens*

Supreme Unicam

817-864-3696  
305 S. Ave E • Haskell

MasterCard VISA

"My Business Is Exhausting"

**Fast, Friendly Service**

## Attend the Haskell Livestock Show

**January 29-30-31**

**Sale Begins At 11:00 a.m. Saturday**

### Haskell Butane Co., Inc.

Stamford Hwy. Hours 7:30 a.m. to 5:30 p.m.  
940-864-2424 Nights 940-864-3915

## Haskell Soil and Water Conservation District Windbreak Order

Available Trees

Bareroot Seedlings:	Size	Price
Russian Olive	18"	1.00
Desert Willow	18"	1.00
Red Oak	18"	1.00
Green Ash	18"	1.00
Catalpa	18"	1.00
Bur Oak	18"	1.00
<b>Evergreens (Tube Pack)</b>		
Afghanistan Pine	12"	2.00
Red Cedar	12"	2.00
Afghanistan Pine	24"	5.60

Due to variables in weather conditions and care required by planter, no guarantee of livability is made.

CALL THE  
**Haskell Soil and Water Conservation District**  
WITH YOUR ORDER AND AVAILABILITY INFORMATION.  
Phone 940-864-8516 or 864-2010

**ORDER DUE DATE: FEBRUARY 19**

# Welcome to the Livestock Show

**Building Character with 4H**

**Thursday, Friday, Saturday  
January 29<sup>TH</sup>, 30<sup>TH</sup>, 31<sup>ST</sup>**

**For Youth . . . . .  
. . . . . For America**

Now Available For Area Cotton Growers  
Cotton Buying Service  
As Well As  
Telecot

**Haskell Co-op Gin Company**  
North Avenue B East • Haskell

### Three Big Reasons why the Haskell County Junior Livestock Show is so Successful:

We at Farmers National Bank in Rule take great pride in having played an active role for many years in making the Haskell County Junior Livestock Show one of the best such shows in Texas. It is rewarding to work with these young people and the many adults who make this a great show.

P. O. Box 10  
Phone (940) 997-2216  
Rule, Texas 79547

Each depositor insured to \$100,000

Federal Deposit Insurance Corporation

**The Farmers**  
NATIONAL BANK



### Student in the news

Hardin-Simmons University, Abilene, announces that Haskell residents Leigh Reel, of Paint Creek has made the President's List and Nelda Rogers, of Haskell has

made the Dean's List for the fall 1997 semester.

Students named to the President's List must take at least 12 semester hours and complete all

courses with a perfect 4.0 grade point average. The Dean's List requires at least a 3.75 average on all courses taken with a minimum of 12 semester hours.

Value You Can See Value You Can See Value You Can See Value You Can See

**Harmon Cable Communications**

# PRESENTS

DON'T MISS THE ULTIMATE DAYTIME DRAMA

THE XVIII  
**OLYMPIC WINTER GAMES**

50 HOURS OF EXCLUSIVE CABLE COVERAGE



1998  
NAGANO

FEBRUARY 7-21



Call & Order Today!  
800-527-4331

Value You Can See Value You Can See Value You Can See Value You Can See

## Rolling Plains Production Credit Association Says 180 Youngsters Need Your Support

That's how many Haskell County youths have entered this year's show — 265 head of livestock have been entered.

We urge you to attend this year's show. If you haven't been contacted for a contribution to the premium sale, Saturday at 11:00 a.m., call Duane Gilly or James Bevel at 864-3310, or Joey Kimbrough at 864-2249. Good kids need support too! . . .and these kids and their families are some of the cream of the crop.

Come out Thursday, Friday and Saturday, January 29-30-31.



PART OF THE FARM CREDIT SYSTEM

Offices in Abilene, Munday, Stamford, Matador, Spur and Childress

## Silver-Haired Legislature candidates needed

Texans 60 years of age and older have an opportunity to become a representative from this region to the Texas Silver-Haired Legislature (TSHL) beginning Jan. 1, 1998.

These legislators work with the

Texas Legislature on senior issues which may become law. If you are a person 60 or older and a registered voter, you may file as a candidate for election in the the TSHL Jan. 1, 1998 through Feb. 28, 1998.

One legislator is selected from each of the four districts within the WCTCOG region. The districts are as follows: District one includes Jones and Taylor counties; District two includes Runnels, Coleman, Brown and Comanche counties; District three includes Knox, Haskell, Stonewall, Kent, Scurry, Fisher, Mitchell and Nolan Counties; District four includes Shackelford, Stephens, Callahan, Eastland counties. Terms are for two years and TSHL members pay their own expenses.

Even those who don't choose to run are encouraged to vote in the elections. Elections for TSHL representative will be held May 26, 1998, at your local senior center. For more information or filing forms, contact Jena Price, Director of the West Central Texas Council of Governments Area Agency on Aging at 915/ 672-8544 or 1-800-928-2262.

### In the service

Air Force Maj. Gary C. Baccus has arrived for duty at the Pentagon, Washington, D. C.

In addition, he has been selected for promotion in the U. S. Air Force to the rank of lieutenant colonel.

Baccus is a program element manager assigned to Headquarters U. S. Air Force Reconnaissance and Surveillance Directorate.

He is the grandson of Hope Josselot of Haskell.

His parents are Clinton and Brenda Baccus of Mansfield.

The major's wife, Kim, is the daughter of Jean Hale of Austin.

Baccus graduated in 1980 from Abilene Christian University, and received a master's degree in 1996 from Embry-Riddle Aeronautical University, Daytona, Fla.

### McCaulley musical

The McCaulley Recreational Corporation will host a 5th Saturday musical on Sat., Jan. 31 from 7 to 10 p.m. in the community center. Special guest is the Glory Bound Gospel Group. No admission is charged. A concession stand will be open. Alcoholic beverages are not permitted. For information, call 915-962-5441.

## VRJC sets Spring registration

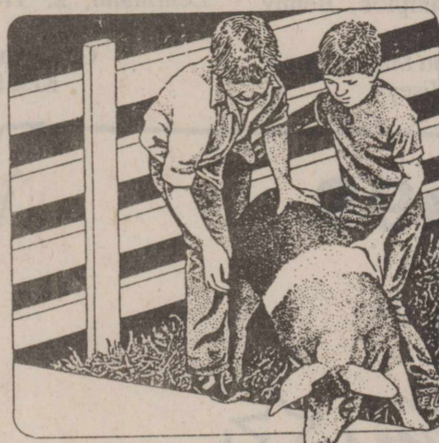
Registration for the 1998 Spring semester at Vernon Regional Junior College in Wichita Falls is scheduled Thurs., Feb. 12 at VRJC Century City Center, 4105 Maplewood in Wichita Falls. Students may register at the following times according to their last name. A-C will register from 10:30 - 11:45 a.m.; D-I, 11:45-1:00 p.m.; J-R, 3:00-4:15 p.m.; S-Z, 4:15-6:00

p.m. Students may register anytime after their letter has passed.

Registration is for the Century City Center, Skills Training Center, and Sheppard Learning Center. Classes are 11-weeks in length and begin Feb. 18. They end on May 12. Call (940) 696-8752 for more information or check the VRJC website at <http://vrjc.cc.tx.us> for the schedule.

## Welcome

to the  
**Haskell County Junior Livestock Show**



Thurs., Fri., Sat., Jan. 29<sup>th</sup> - 30<sup>th</sup> - 31<sup>st</sup>  
"Providing Sales & Service for Over 50 Years"

**Bill Wilson**  
MOTOR COMPANY  
**FORD MERCURY**  
HASKELL TEXAS

209 S. Ave. E • Haskell • 864-2611

Haskell County Stock Show  
Thurs., Fri., Sat., Jan. 29-30-31  
WHAT'S GOOD FOR OUR YOUTH  
IS  
**Good for You**  
and Haskell County too!

We salute the participants in the Haskell County Junior Livestock Show for their dedication and good sportsmanship.

Our motto - "Banking on the future since 1890," has withstood the test of time.

It is through our encouragement and support that we can ensure a future deserving of today's youth.

To the friends and families who give of their time and energy to work with our youth, we salute you.

## Haskell National Bank

601 N. 1st

Member FDIC

864-2631

"Banking on the Future Since 1890"



# Sagerton News

By Dorothy M. Clark

We rarely see historical events happening around here these days, but one is occurring right before our very eyes. It brings sadness to the hearts of us old-timers, but is noted as part of progress. Who, but an old-timer can wonder if it is progress when a railroad is dismantled and moved away? Freight hauling eighteen-wheelers and improved highways have taken over moving farm commodities to markets. We remember our grandparents who were so excited when the railroad came to town, bringing a new, faster way to ship produce and farm products and even provided a new fast means of transportation to adjoining cities. Nevertheless, this form of progress is what's happening here now, and we thought it worth mentioning for former residents.

The first railroad came to Sagerton in the early 1900's, The Orient, hauling both freight and passengers. Everyone remembers the diesel powered engine that pulled the passenger train, The Doodle Bug, as it was called, North, to Rule and other towns farther on. Soon after, another railroad was built, coming from Stamford and going West toward Old Glory, Aspermont and other towns. This was a steam-powered train owned by MKT and was known as the Katy Railroad. This was a freight line, but as a child growing up at Old Glory, we school children sometimes took an excursion on the train, riding from Old Glory to Aspermont and then being picked up by the school bus and returning to school. This was the only train ride that many of us have ever taken. We called the engine, "Old Molly" and in my memories, I can still hear the lonesome sounding whistle as Old Molly crossed the road near our farm. Sagerton was the first town in Haskell County with two railroads, with a unique situation occurring with the crossing of the two lines about a mile south of town. Not many towns could boast of this fact. Progress, history, signs of the times....whatever you choose to call it, Sagerton no longer has a railroad.

District basketball games are going strong now and we've witnessed very exciting games thus far. The first game was with

Rochester with the Rule teams winning both games. Leads were exchanged during both games, keeping spectators on the edges of our seats. The next encounter was with Paint Creek. The girls won and the boys were defeated in overtime. Both games were real "heart-stoppers" and we congratulate the students for working so hard. Rochester, Rule, Paint Creek and Throckmorton are in the basketball district and should provide us with some real exciting games.

Frances Clark's home was the scene of a belated Christmas celebration when all her children and grandchildren were there last weekend. Clark Don, Mary, Emma and Iris Terrell of Boerne, Glenda and Pete Bryan of San Antonio and Kay, Chelsea and Bryan Tonnar of Sherman met to enjoy the gift exchange and "Grandma's cooking."

The Hobby Club attended the Quilt Show at Munday recently. Margaret Wendeborn and Peggy Tabor had some of their quilts on display at the show. Club members and a guest going were Margie Hertel, Christine Stremmel, Wilma Teichelman, Leona Letz, Jo and Dave Brown.

The Hobby Club will be sponsoring a Defensive Driving Course in February. People interested in attending should contact Joyce LeFevre or Wilma Teichelman for more details.

Two local students placed in the Jones County Stock show held in Anson last week. Josh Freeman from the Stamford FFA won Breed Champion with his Chester and Paige Lammert won Reserve Breed Champion with her Spot. She is also a member of the Stamford FFA.

The Rule Livestock Show was held this past Saturday with the following local students participating and winning the following: Champion and Reserve Champion breeding rabbit, Kami Baitz; Market swine Division; Yorkshire, 2. Jennifer Lehrmann, 3. Michelle Stegemoeller; Spot, 1 and 2. Michelle Stegemoeller, 3. Kortney Kupatt; Champion OPB—Champion and Reserve Champion with a Spot, Michelle Stegemoeller. Lightweight

Hampshire, 2. Kortney Kupatt, 3. Brian Lehrmann; Heavyweight Hampshire, 2. Brian Lehrmann, 3. Joanna Lehrmann; Lightweight Duroc, 2. Jacob Manske, 3. Kortney Kupatt; Mediumweight Duroc, 2. Richie Culpepper, 3. Brady Standefer; Heavyweight Duroc, 1. M'Lynn Lehrmann; Lightweight Crossbred, 1. Michelle Stegemoeller, 2. Jennifer Lehrmann. Champion Crossbred, Michelle Stegemoeller. Reserve Grand Champion Market Hog, Michelle Stegemoeller with OPB, her Spot pig; Senior Swine Showmanship, Brian Lehrmann. Congratulations to all our hard working youth.

## Marriage Licenses

Marriage licenses issued in December by Rhonda Moeller, Haskell Co. Clerk include:

Ted Russell Hart of Plano and Judy Nell Ingram of Aspermont. Lesley Harold West and Carlena Hammonds, both of Lueders.

Stephen Randell Logsdon and Julee Virsha Patterson, both of Sweetwater.

Johnny Everett Wilson and Patsy Posey Wilson, both of Knox City.

Kenneth Wade Smith and Sharon Jean Sonnamaker, both of Haskell.

Michael Anthony Salas and Christine C. Saucedo, both of Rochester.

Felipe DeJesus Carranza and Maria Guadalupe Emiliano Cortinas, both of Rochester.

**Hard Work,  
Long Hours  
and Lots of Love!**



These three ingredients are what the Haskell County Junior Livestock Show, all its participants and sponsors are made of. We applaud your outstanding accomplishments and urge everyone to support this year's show and sale.

**January 29-30-31**

**Smitty's Auto Supply**

204 N. 1st • Haskell • 864-2607

## Welcome to the Haskell Livestock Show

**January 29-30-31**



**Rule Co-op Gin  
& Elevator**

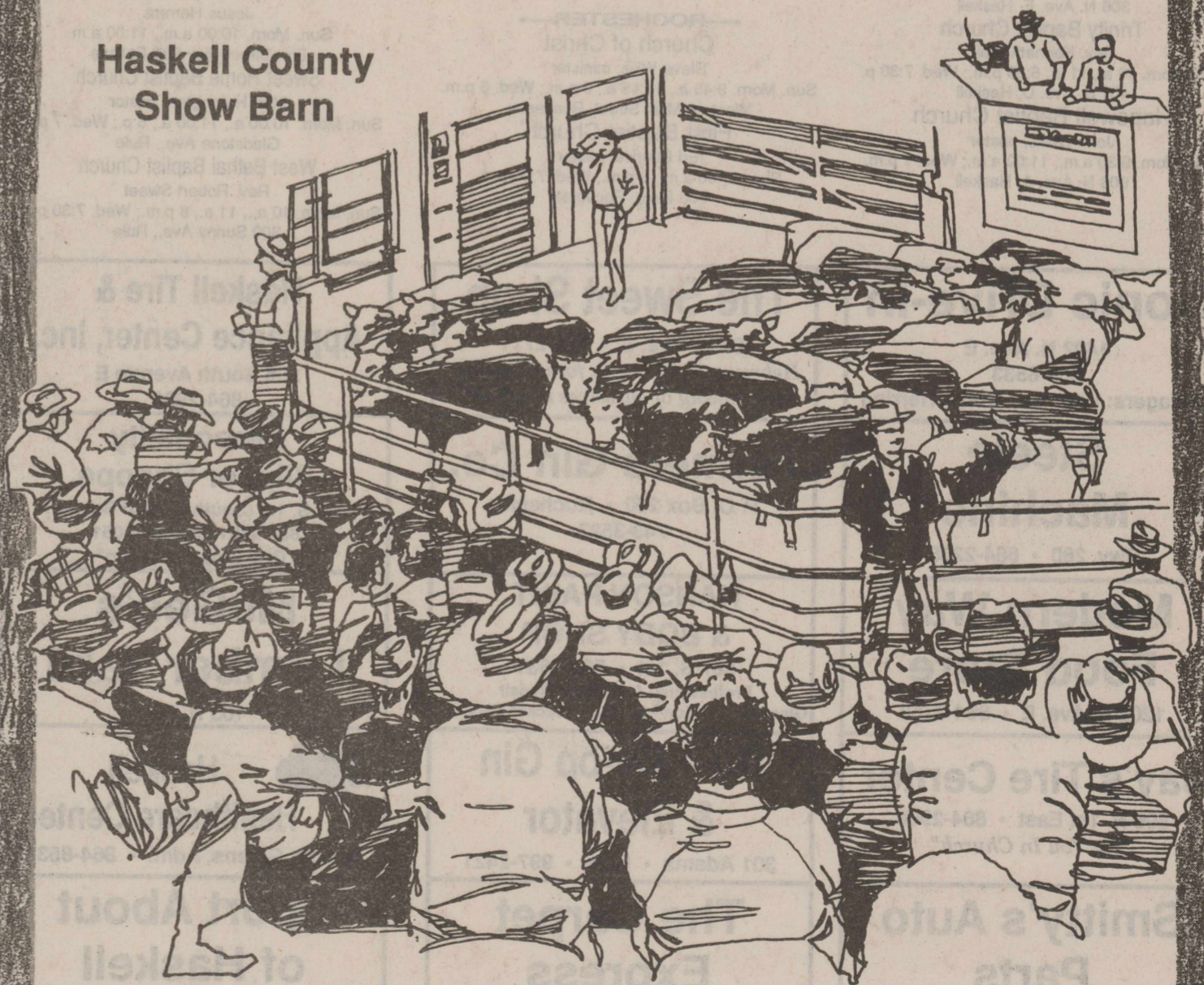
301 Adams - Rule - 997-2421  
Harvey Croft, Manager



## JR. LIVESTOCK SHOW & SALE

**Thursday - Friday - Saturday  
January 29<sup>th</sup> - 30<sup>th</sup> - 31<sup>st</sup>**

Haskell County  
Show Barn



## Haskell Livestock Auction

Phone 940-864-2624  
Stamford Highway - Haskell

### Vernon Regional Junior College at Wichita Falls 1998 Spring Semester

Register for

Cosmetology • Computer Aided Graphics  
Office Technology • Electronics  
Criminal Justice • Legal Assisting  
Welding • Machining  
Manufacturing

Classes  
Begin  
February 18

Registration Date  
Thur., February 12  
10 a.m. - 6 p.m.  
4105 Maplewood

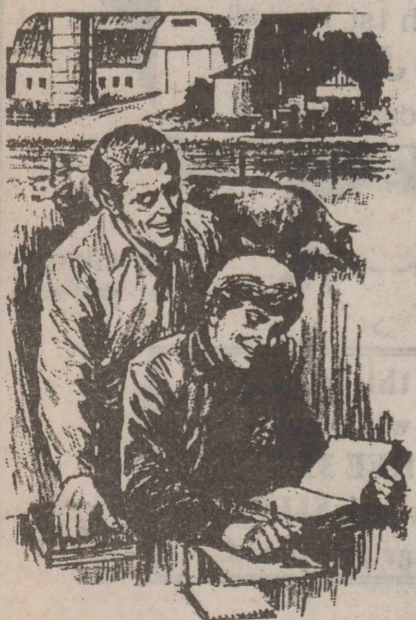
FMI: Call (940) 696-8752 or 766-3369

See schedule on VRJC website: [www.vrjc.cc.tx.us](http://www.vrjc.cc.tx.us)



### Stamford Electric Cooperative

Salutes the young Men and Women  
involved in feeding a hungry world.



Attend the  
Haskell County  
Junior  
Livestock Show  
January  
29-30-31

Good Luck and Best Wishes  
from Your Friends at

**Stamford Electric  
Cooperative**



**ONE STOP INSURANCE AGENT**  
 We Can Cover Everything  
 Just like covering your house



IRA, Farm, Crop Insurance,  
 Hospitalization,  
 Commercial, Cancer,  
 Annuity, Life, Auto  
**DON WELCH**  
 dba  
**LANCO INSURANCE COMPANY**  
 510 N. 1st      Haskell, Texas      864-2629

# CLASSIFIEDS

## Public Notices

**RAILROAD COMMISSION OF TEXAS OFFICE OF GENERAL COUNSEL**  
 Oil and Gas Docket  
 No. 7B-0218376  
 IN RE: Conservation and Prevention of Waste of Crude Petroleum and Natural Gas in the State of Texas  
 Austin, Texas  
 January 22, 1998

**NOTICE OF HEARING ON THE APPLICATION OF BRIDWELL OIL COMPANY TO CONSIDER UNITIZATION AND SECONDARY RECOVERY AUTHORITY FOR THE RULE WEST UNIT RULE WEST (STRAWN) FIELD HASKELL COUNTY, TEXAS**  
 Notice is hereby given to the public and to all interested persons that under the legal authority and jurisdiction of Title 3, Oil and Gas, Subtitles A, B, and

C of the Texas Natural Resources Code, Chapters 26, 27 and 29 of the Texas Water Code, and TEX. GOV'T CODE ANN. art. §§ 2001 et seq. (1998), the Railroad Commission of Texas will hold a hearing on February 26, 1998, at 9:00 a.m. at the William B. Travis State Office Building, 1701 N. Congress Avenue, Austin, Texas. This hearing will be conducted in conformity with the TEX. GOV'T CODE ANN. art. §§ 2001 et seq. (1998). For room assignment, on the date of the hearing please check the bulletin board in the 1st Floor lobby. Persons planning to attend this hearing are urged to contact the applicant (see service list) immediately prior to the hearing date to be sure that the hearing will proceed on the scheduled date.

This hearing will be held to consider the application of Bridwell Oil Company for unitization and secondary recovery authority for the Rule West Unit, Rule West (Strawn) Field, Haskell County, Texas. As of this filing, approximately 98.5% of the royalty interests have executed the unit agreement, and 97.5% of the working interests have executed the unit agreement and operating agreement.

If you have questions regarding this application, please contact the Applicant's representative, Lloyd Muennink, at (512) 478-6623. If you have any questions regarding the hearing procedure, please contact the Railroad Commission, Office of General Counsel, at (512) 463-6848.

IF A CONTINUATION IS NECESSARY, this hearing will proceed at the William B. Travis State Office Building, Austin, Texas, and, to the extent possible, on subsequent working days. The room number and exact time of the continuation will be announced on the record in this proceeding and recorded with Docket Services, Office of General Counsel, Railroad Commission of Texas.

PURSUANT TO SAID HEARING, the Commission will enter such rules,

regulations, and orders as in its judgment the evidence presented may justify.

ANY REQUEST FOR POSTPONEMENT of this hearing must be received no later than five (5) working days prior to the scheduled date shown above. Copies of such request must be forwarded to all parties shown on the service list.

TO APPEAR IN SUPPORT OF OR IN OPPOSITION TO THIS PROCEEDING, a party other than the applicant must file with Docket Services, Office of General Counsel, at least five (5) working days in advance of the hearing date, a notice of intent to appear.

IF ANY PARTY DESIRES A WRITTEN TRANSCRIPT of the hearing, that party should notify the Court Reporter's office at (512) 463-6926, at least five (5) working days in advance of the hearing date. If a written transcript is requested, the commission may assess the cost of the transcript to one or more parties. Unless any party requests a written transcript, the record will be made by audio tape recording.

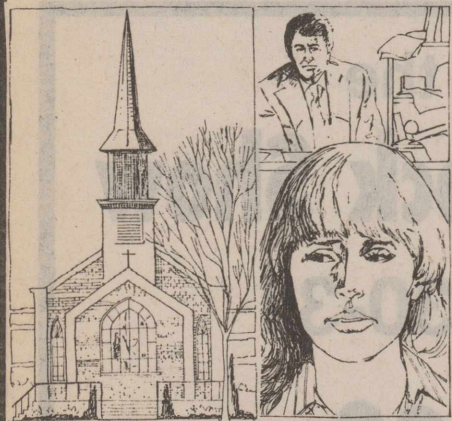
ANY INDIVIDUAL WITH A DISABILITY who needs auxiliary aids and services in order to have an equal opportunity to effectively communicate and participate in this hearing must request such aids or services at least two weeks prior to the scheduled hearing by notifying the Personnel office of the Railroad Commission of Texas by mail at P. O. Box 12967, Austin, Texas 78711-2967, or by telephone at (512) 463-7327 or TDD No. (512) 463-7284.

All exhibits filed as a part of the record in this cause must be submitted in duplicate. Data in Commission records may be incorporated by reference, but the reference must be specific, and if it includes exhibits filed in prior proceedings before the commission, a copy of such exhibit properly identified shall be submitted for this record.

This hearing requires notice by publication.

## This Week's Devotional Message:

FAITH HELPS YOU PUT YOUR HOUSE AND YOUR LIFE IN ORDER



If you are like a lot of us, you are hard-working, generous, kind-hearted, and in fact, virtually the whole list of Boy Scout attributes; but you have never learned the secret of being organized. You can quickly turn your house or office into a state of chaos, because you try to do too many jobs at once; and since you can't bear to throw anything away, you never have enough storage space. Moreover, you overload

your circuits because you are too public-spirited to say no to any worthy cause; and so you are too busy to serve any of them properly. Nevertheless, take the time to attend your House of Worship, for it will help you bring neatness and order into your life. There are only so many hours in the day, and you should let the Lord show you how to make the most of them. After all, He arranged the workings of the whole universe, so He can easily do the same for you.

### ATTEND CHURCH THIS SUNDAY

#### HASKELL

**East Side Baptist Church**  
 David Page, pastor  
 Sun. 8:30 a.m., 9:45 a.m., 11 a.m., 6 p.m.; Wed. 7 p.m.  
 600 N. 1st East, Haskell

**Christian Church**  
 Dusty Garrison, minister  
 Sun. Morn. 9:45 a.m., 10:45 a.m., 6 p.m.; Wed. 7 p.m.  
 107 N. Ave. F, Haskell

**Church of God**  
 Eric Clark, pastor • 864-2021  
 Sun. 9:45 a.m., 11 a.m., 6 p.m., Wed. 7:00 p.m.  
 East Hwy 380, Haskell

**Trinity Lutheran Church**  
 Gary Bruns, pastor  
 Sunday School 9:30 a.m., Worship 10:30  
 Hwy 380 East, Haskell

**Iglesia Bautista El Calvario**  
 Vergil Smith, interim pastor  
 Sun. Morn. 9:45 a.m., 10:45 a.m., 6 p.m.; Wed. 7 p.m.  
 607 S. 7th, Haskell

**First United Methodist Church**  
 Shane Brue, pastor  
 Sun. Morn. 9:45 a.m., 10:50 a.m., 6 p.m.; Wed. 6 p.m.  
 201 N. Ave. F, Haskell

**First Assembly of God**  
 Rev. J.C. Amburn  
 Sun. Morn. 9:45 a.m., 10:45 a.m., 6 p.m.; Wed. 7 p.m.  
 1500 N. Ave. E, Haskell

**St. George Catholic Church**  
 Father Michael Melcher  
 Sat. Mass 7:15 p.m.; Sun. Morn. 9:00 a.m.  
 901 N. 16th, Haskell

**Church of Christ**  
 Dale Huff, minister  
 Sun. Morn. 9:30 a.m., 10:30 a.m., 6 p.m.; Wed. 7:30 p.m.  
 510 N. Ave. E, Haskell

**First Presbyterian Church**  
 Jasper McClellan, pastor  
 Sun. Morn. 9:45 a.m., 11:00 a.m.  
 306 N. Ave. E, Haskell

**Trinity Baptist Church**  
 Rev. Kenneth Blair  
 Sun. Morn. 10 a.m., 11 a.m., 6:30 p.m.; Wed. 7:30 p.m.  
 401 S. Ave. D, Haskell

**Hopewell Baptist Church**  
 John Lewis, pastor  
 Sun. Morn. 9:30 a.m., 11:00 a.m.; Wed. 7 p.m.  
 908 N. Ave. A, Haskell

#### Greater Independent Baptist Church

Rev. Camellia Wade, pastor  
 Sun. Morn. 9:30 a.m., 11:00 a.m., 6:30 p.m.; Wed. 7 p.m.  
 301 N. 3rd St., Haskell

#### New Covenant Foursquare

Freddy Perez, pastor  
 Sun. Morn. 10 a.m., 11:00 a.m., 6:30 p.m.; Wed. 7 p.m.  
 200 S. Ave. F, Haskell

#### Mission Revival Center

Rev. William Hodge  
 Sun. Morn. 10 a.m., 11 a.m., 6 p.m.; Tues. 6 p.m.  
 1600 N. Ave. B, Haskell

#### First Baptist Church

Jim Turner, pastor  
 Sun. Morn. 9:45 a.m., 10:55 a.m., 6 p.m.; Wed. 7 p.m.  
 301 N. Ave. E, Haskell

#### Church in the Park

Rev. Tim and Suzann Townsend  
 Sun. Morn. 10:30 a.m. Wed. 7 p.m.  
 Gazebo or Pavillion

#### PAINT CREEK

#### Paint Creek Baptist Church

Sun. Morn. 10:00 a.m., 11:00 a.m., 6 p.m.  
 Paint Creek

#### WEINERT

#### First Baptist Church

Joel Rister, pastor  
 Sun. Morn. 10:00 a.m., 11:00 a.m., 6 p.m.; Wed. 7 p.m.  
 Weinert

#### Weinert Methodist Church

Rev. James Patterson  
 Sun. Morn. 9:45 a.m.  
 Weinert

#### Weinert Foursquare Church

Rev. Joyce Goossen and Rev. Diane Crownover  
 Sun. Morn. 10 a.m., 11 a.m. Wed. 7 p.m.  
 Weinert

#### ROCHESTER

#### Church of Christ

Steve Willis, minister  
 Sun. Morn. 9:45 a.m., 10:45 a.m., 6 p.m.; Wed. 6 p.m.  
 West on Main Street, Rochester

#### First Baptist Church

Ed Buerkle, pastor  
 Sun. 11:00 a.m., 6 p.m.; Wed. 7:00 p.m.  
 500 Main, Rochester

#### Union Chapel Baptist Church

Rev. Andrew  
 Sun. Morn. 9:45 a.m., 10:45 a.m., 6 p.m.; Wed. 7 p.m.  
 Rochester

#### Faith Chapel of Rochester

Katherine Byrd, minister  
 Sun. Morn. 10 a.m., 11 a.m., 7 p.m.  
 Hwy 6, Rochester

#### First United Methodist Church

Dolan Brinson, pastor  
 Sun. Morn. 10:00 a.m., 11:00 a.m.  
 Rochester

#### SAGERTON

#### Sagerton Methodist Church

Daniel Ramey, pastor  
 Sun. Morn. 9:30 a.m.  
 Sagerton

#### Faith Lutheran Church

Jeff Zell, pastor  
 Sun. Morn. 9:15 a.m., 10:30 a.m.; Wed. 7 p.m.  
 Sagerton

#### RULE

#### First Baptist Church

Scott Hensley, pastor  
 Sun. Morn. 9:45 a.m., 11:00 a.m., 6 p.m.; Wed. 7 p.m.  
 1001 Union Ave., Rule

#### Primitive Baptist Church

Dale Turner Jr., pastor  
 First & Third Sundays 10 a.m.  
 Corner of 8th & Robins, Rule

#### Church of Christ

John Greeson, minister  
 Sun. Morn. 9:45 a.m., 10:40 a.m., 6 p.m.; Wed. 7 p.m.  
 811 Union, Rule

#### First United Methodist Church

Daniel Ramey, pastor  
 Sun. Morn. 10:50 a.m., 6 p.m.  
 1000 Union Ave., Rule

#### New Life Baptist Mission

Jesus Herrera  
 Sun. Morn. 10:00 a.m., 11:00 a.m.  
 Elm Street/Hwy 380 E, Rule

#### Sweet Home Baptist Church

Matt Herrington, pastor  
 Sun. Morn. 10:00 a.m., 11:00 a.m., 6 p.m.; Wed. 7 p.m.  
 Gladstone Ave., Rule

#### West Bethal Baptist Church

Rev. Robert Sweet  
 Sun. Morn. 10 a.m., 11 a.m., 8 p.m.; Wed. 7:30 p.m.  
 300 Sunny Ave., Rule

### NOTICE

COPIER SERVICE

Letter Each 25¢      Legal Each 35¢

FAX SERVICE

\$2.00 Per Page

**The Haskell Free Press**

401 South 1st      864-2686

**NOW IS THE TIME!**  
 ... to start thinking of your Fall and Winter Heating Needs. New Install or Maintenance on your present system



Excellent Prices on  
 New Systems Available

**EXPERT INSTALLATION**



Phone 864-3755

**Decker AC & Refrigeration**

1 - 10x13 (Wall Photo)  
 1 - 8x10  
 2 - 5x7  
 2 - 3x5  
 16 - King Size Wallets  
 8 - Regular Size Wallets

**30** Color Photos

99¢ Deposit  
 \$11.00 Due at Pick up (plus tax)

**\$11.99**

AT  
**Sport-About**  
 402 North 1st, Haskell  
**Sat., Jan. 31**  
 Photo Hours: 9:30-5

Group charge 99¢ per person

During this promotion you will receive 4 FREE 3X5's with each \$11.99 package purchased.



**Shugar's inc.**

### Sonic Drive-In

1402 N. Ave. E  
 864-8533  
 Managers: Leon & Carolyn Herring

### Steele Machine

Hwy. 280 • 864-2208

### Modern Way Food Store

1202 N. Ave. E • 864-3763

### Jay's Tire Center

506 N. 1st East • 864-2908  
 "See You In Church"

### Smitty's Auto Parts

204 N. 1st St. • 864-2607

### Rice Springs Care Home, Inc.

1302 N. 1st • 864-2652  
 Medicare • Medicaid • Therapy

Committed To Excellence  
 In Service

### The Sweet Shop

507 N. Ave. E • 864-2711  
 Hebrews 10:25 - "Not forsaking the assembling of ourselves together"

### Farmers Gin Co.

P. O. Box 250 • Rochester  
 743-3527

### HANSON PAINT & BODY SHOP

207 S. 1st • 864-3631  
 Professional Auto Body Repair  
 Glass Installation • 24 Hour Wrecker Service

### Rule Co-op Gin & Elevator

301 Adams • Rule • 997-2421

### The Carpet Express

15 S. Ave. E • 864-8128

Attend Church This Sunday

### Haskell Tire & Appliance Center, Inc.

206 South Avenue E  
 864-2900

### Personality Slipper Shoppe

413 S. 1st (South Side of Square)  
 864-2501 and 864-3051  
 "One Stop Shopping"

### McGee's Lumber Yard

105 N. 1st

### Haskell Healthcare Center

Sandra Givens, Adm. • 864-8537

### Sport About of Haskell

864-3891 • "Where Winners Shop"

### The Haskell Free Press

read by more people in Haskell County than any other print media.



Stu  
 Seni  
 Cotro  
 Connie  
 council  
 activiti  
 on the l  
 secreta  
 Organiz  
 Speri  
 and fri  
 activiti  
 Spec  
 been b  
 Among  
 Studen  
 elected  
 su. Ior  
 photog  
 and Wa  
 Aft  
 major i  
 West T  
 Ann  
 Donnie  
 as the  
 mascot  
 Honor  
 Haskell  
 Ho  
 joy  
 FCE  
 the E:  
 Thurs.,  
 Del  
 prograr  
 Grand  
 Grandp  
 grandc  
 Many l  
 full or j  
 Plar  
 conces  
 Livest  
 is the  
 County  
 Clay  
 childre  
 Throck  
 and M  
 Pannel  
 Ran  
 the we  
 Garcia.  
 It v  
 Betsy  
 one of  
 Varsity  
 Hol  
 offe  
 driv  
 The  
 spons  
 Cours  
 Comm  
 from 1  
 The  
 Owen  
 course  
 course  
 over,  
 welco  
 cost i  
 compl  
 will b  
 discou  
 For  
 regist  
 (940)  
 Tieche  
 Rec  
 hor  
 Sta  
 Inc. is  
 and b  
 Olson  
 on h  
 Coope  
 The  
 30, a  
 Stamp  
 ALL O  
 Sale  
 WE I  
 • F  
 510



# Shop The Haskell Free Press CLASSIFIEDS

864-2686

ALL DEADLINES MONDAY 5 P.M.

864-2686

### For Sale

FOR SALE: 930 Case propane tractor. Call Rex, 864-2424 or 864-2718. 5-8c

FOR SALE: Haskell Country Club membership and golf cart shed. Call 864-2208 or 864-3770. 2-5c

FOR SALE: Large aquarium, \$50. Nice antique piano with excellent sound board, to give away. Joel Nanny 864-3521, leave message or call after 5 p.m. 2tfc

DESIGN YOUR OWN personalized photo graduation announcement cards. 10% off if ordered and paid for before March 31st. Sue's Flowers and Photography, southeast corner square. 940-864-2204. 3-10c

COMPUTERS: Used 486 systems, \$400; 386, \$300. Repair, instruction. Steve Lievengood, 915-773-2616. \$45/hour. 3-6p

FOR SALE: 2 telephones with bag or suitable for mounting permanently. Both have outside antennas. \$25.00 each or two for \$45.00. See B. J. Ray or call 86-2959 or 864-8112. 4-5p

FOR SALE: Two 15" subwoofers in truck box, 300 watt amp, electronic crossover. \$300. 864-2023, leave message. 4tfc

FOR SALE: Refrigerator, electric range, air compressor, 110v air conditioner. 864-6108, leave message. 5c

FOR SALE: 30"x25" safe. Call 940-997-2561. 5p

STAMFORD: 3 station beauty shop for sale. Reasonable rent. Utilities paid. Call 915-773-2231 or 940-997-2568. Blue couch and small wooden rocking chair also for sale. 5p

92 piece Noritake china dinnerware, "Colburn" pattern #6107. Not a chip or a blemish. New at \$1200. Call Wallace at 915-677-5283 or 940-864-2957. 5-7c

**WE'VE GOT IT!**  
**ACCO FEEDS**  
**RICHARDSON'S**  
Hwy. 277 N. • Haskell • Open All Day Saturdays  
940-864-8551

"If you chase 2 rabbits at the same time, you probably won't catch either one." Here's something you may want to catch before they hop away; discontinued end tables and coffee tables, values \$200 to \$300. Out they go at \$69 to \$89. Kinney Furniture in Stamford. 5c

**POL CALENDAR**  
The Haskell Free Press is authorized to make the following announcement for the political office in Haskell County, subject to the action of 1998 Primaries. Unless otherwise specified the candidates listed paid for the announcement, and have designated themselves as campaign treasurer. All political advertising and announcements are cash in advance.

- State Representative 68th Dist.  
Charles Finnell  
(Pd. by Committee For Responsible Representation)  
Rick Hardcastle  
(Pd. by the Hardcastle Campaign, Nancy Hardcastle, Texas)  
Dist. Judge, 39th Jud. Dist.  
Charles L. Chapman  
District Clerk  
Penny Young  
Lynn Ward Dodson  
County Judge  
David C. Davis  
Gary D. Druesedow  
(Pd. by Ann Druesedow, campaign, Texas)  
County Treasurer  
Willie Faye Tidrow  
County Clerk  
Rhonda (Hewitt) Moeller  
Justice of the Peace  
Gina Brown  
Waller H. Overton  
Commissioner Precinct 2  
Ronnie Chapman  
Tiffen Ray Mayfield  
Commissioner Precinct 4  
C. A. (Bud) Turnbow

### For Sale

TO GIVE AWAY: Yellow lab dog. 1408 N. Ave. L. 864-2366. 5p

GENERATOR FOR SALE: Honda EX3300S, OHV/Electronic ignition, oil alert. 120v/240v. If interested call, 940-864-8032. 5p

### Wanted

CASH PAID for old lever action Winchester rifles, Colt pistols and most other guns and western memorabilia. A. C. Richardson at store Hwy. 277 N. 12tfc

SUPPLEMENTAL INCOME: Local person(s) needed to screen host families and supervise high school foreign exchange students. For more information, call 1-800-SIBLING, or Donna at 817-261-5771. 4-5p

### Jobs Wanted

HOUSE LEVELING. Floor bracing. Free estimates. References. Call 915-675-6369 anytime. David Lee. 19tfc

CARPENTER WORK, exterior and interior painting, cabinetry, drywall, general carpentry and concrete work. 25 years experience. Mike Hickman, 658-3246 or 658-3941, Knox City. 51tfc

DON'T BE FOOLED by fast talking aluminum, steel and vinyl siding companies. Siding covers what paint preserves. On the other hand, masonite siding and a professional paint job can enhance and preserve your home. Call the professionals. Myers Paint and General Contracting. 864-2256. 5p

"These are trying times." It seems like a lot of people are trying to get away with something that isn't right and something they should not be doing. No hanky-panky at Kinney Furniture in Stamford. Just good values, small town service, and quick free delivery. Open almost anytime by calling 800-256-2232. 5c

### Cars For Sale

FOR SALE: 1987 Suburban \$3500; 1989 Olds Cutlass \$1995; lake house, Veda's Camp. 940-864-2087. 5c

GOOD BUY: Very economical 1993 4 door Chevrolet Lumina. Excellent condition, one owner. 27,600 miles. 864-2112. 5p

### Miscellaneous

HOME DECORATORS. Painting, Insulation, Remodeling, water and air filtration systems. Call Bobby O'Neal 940-743-3550. 30tfc

FINALLY, health insurance for the self-employed at affordable rates. 1-888-464-1731. 46-5p

### Real Estate

FARM FOR SALE: Farm. 247 acres dryland. 10 miles west of Haskell (Helweg farm). Kay 972-378-0098. 1tfc

FOR SALE: 2 bedroom, 1 bath. Big storage, utility room, big living room. \$14,500.00. 864-2145. 3-6p

FOR SALE: 154 acres. 5 miles west Haskell. All cultivation. Good productivity. 940-864-3476. 3-14p

HOUSE FOR SALE by owner with rental in back. 504 S. 8th St. \$14,000. Call for information and appointment to see. 417-756-7622. 4tfc

FOR SALE: 3 bedroom, 2 bath, wood frame house. Covered patio, carport, fenced backyard, store room, guard light. Call 864-3297. 5c

**EXPERT AUTO WORK**  
REASONABLE RATES  
  
See us for all your auto mechanic needs. 20 years experience. We do it right the first time.  
117 North Ave. E • Haskell, TX

### Real Estate

HOUSE FOR SALE IN MUNDAY: Nice, large 3 bedroom, brick, 2 baths, utility room-office, lots of cabinets, closets and storage. CH/A. Ceiling fans. Pecan trees. Water well. Double garage. Good neighborhood. 940-864-3790. 5-6p

FOR SALE: 3 bedroom house, 1 1/2 bath in Knox City. Big den. Garage and carport. \$13,000.00. 658-6195. 5-6c

FOR SALE: 20 acres of land. 14 acres 20 year old 'Indian' variety pecan trees Barn, pipe corral, 2 water wells. 2 1/2 miles southeast of Rule. Call 940-997-2561. 5p

FOR SALE: 200 acre farm. 4 miles southwest of Rule. \$500 per acre. Call 254-968-7115. 5p

### For Rent

FOR SALE OR RENT: Rock home, 502 N. Ave. E. 2 bedroom, 1 bath, 2 car garage, storage, gas log fireplace. \$17,900. Call 817-477-5763. 2tfc

FOR RENT: 1107 N. 10th. Nice 2 bedroom apartment. Central air. Covered parking. 864-3762. 5c

FOR RENT: 906 N. Ave. E. 2 bedroom house. 864-3762. 5c

FOR RENT: 2 bedroom lake cabin. \$270 month. Days 864-8555; after 5 p.m., 864-3799.4-5p

### -INCOME TAX-

Get an instant refund that last for years!  
For details see **Boggs and Johnson Furniture**  
... Hey, it's your money!  
5-9c

### Help Wanted

HOME TYPISTS, PC users needed. \$45,000 income potential. Call 1-800-513-4343 Ext. B-2094. 5-8p

PART-TIME A.M. merchandising position with major greeting card company. Haskell-Stamford area. Approximately 12 hours per week. Call 1-817-656-5962. 4-5c

NOW ACCEPTING APPLICATIONS for sales and computer accounting position. Apply in person at Kinney Furniture in Stamford. 5c

THE TEXAS AGRICULTURAL Experiment Station is accepting applications for a Technician I position. The position requires a B.S. degree in agriculture with associated background and skills. Work location will be the Munday Research Station. A complete position description and application can be obtained from the Munday office during regular office hours. Contact David Bordovsky at 940-852-5125 for further information. The Texas Agricultural Experiment Station is an Equal Opportunity Employer. 5-6c

"After middle age we are more concerned with how long our car will last instead of how fast it will go." You won't feel so old if you get a good night's rest on a Spring Air mattress set from Kinney Furniture in Stamford. 5c

**Dodson Concrete Construction**  
Commercial - Residential  
**David Dodson**  
704 N. Ave. F • Haskell  
**940-864-2038**  
Over 20 Years in the Business  
FREE ESTIMATES  
18tfc

### FOR SALE VA ACQUIRED PROPERTY

100 N. 3rd St., Haskell, TX 79521  
PM#49-49-2-0513325  
\$31,500. Terms, 3 Br, 1 3/4 bath, S.R. 2, LBP, IS  
February 9. 3:30 p.m. Closing date for receipt of offer.  
Listed Exclusively with:  
**Estes Real Estate**  
116 Oak St. • Clyde, TX 79510  
Broker: Word Estes  
915-893-4771  
5c

3 BEDROOM, 2 bath, rock home with CH/A. Large bedrooms, fireplace. Fenced yard.  
3 BEDROOM, 2 bath brick on 100 acre farm, just outside Haskell city limits. Basement, garage, fenced backyard, barn and many extras.  
PRICE REDUCED: 2 or 3 bedroom, 1 1/2 bath, large dining and living room, brick with C/A, covered patio, fenced backyard, water well, shop/garage. In great location.  
Brick 3 bedroom, 1 bath. Large fenced backyard with shop. Attached garage, water well. Great location.  
Large commercial building on west side of square.  
WE HAVE RENT HOUSES AVAILABLE.  
NEED NEW LISTINGS!

**JOHNSON REAL ESTATE**  
5 AVE. E • HASKELL, 864-2951  
LORAIN JOHNSON, BROKER TIM JOHNSON, AGENT

### UNITED STATES POSTAL SERVICE

EMPLOYMENT OPPORTUNITY WITH THE U. S. POSTAL SERVICE  
REMOTE ENCODING CENTER IN ABILENE, TEXAS

Now accepting applications for **DATA CONVERSION OPERATORS**  
January 15th through February 15th, 1998  
The following is a list of requirements and information individuals need to consider if they are going to apply for employment:  
AGE: 18 at the time of appointment OR a high school graduate.  
CITIZENSHIP: All applicants must be citizens of or allegiance to the United States OR have been granted permanent resident alien status in the United States. Verification is required.  
HOURLY WAGE: \$10.69 per hour  
SKILLS REQUIRED FOR PRE-SCREENING: All applicants will be required to take a written examination and keyboard qualification test. APPLICATIONS WILL BE AVAILABLE AFTER JAN. 15TH AT Main Post Office: 341 Pine St., Abilene, TX; Southern Hills Post Office: 2501 Buffalo Gap Rd., Abilene, TX; Texas Workforce Commission: 826 Hickory, Abilene, TX; Abilene Industrial Foundation 1-800-299-0005. Local Area Post Offices: Albany, Anson, Baird, Big Lake, Buffalo Gap, Clyde, Cross Plains, Hamlin, Haskell, Hawley, Lawn, Merkel, Ovalo, San Angelo, Stamford, Sweetwater, Trent, Tuscola, Tye and Winters.  
APPLICATIONS MUST BE POSTMARKED BY FEB. 15TH, 1998.  
DRUG TESTING/PHYSICAL: Will be conducted for those selected for employment.  
USPS IS AN EQUAL OPPORTUNITY EMPLOYER 4-5c

We would like to thank everyone at the Haskell Hospital, Rice Springs Care Home and Haskell Clinic for their loving care of our loved one, Bobby Anders, during his illness. Your thoughtfulness was greatly appreciated. God bless you all.  
May Anders  
Henson children  
Donnie and Kayle Anders and family

## J & B Storage

Located on Jim Strain Road.

Please call

**940-864-2629**

for your storage needs. Office location:  
510 N. 1st St., Haskell, Texas  
35tfc

## Tribbey Real Estate & Custom Homes

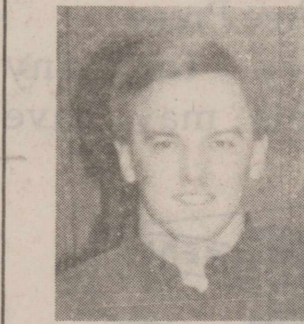
1501 N. Ave. H. 3 bedroom, 1 bath. CH/A. \$1500.00 down to qualified buyer.  
New energy efficient home in Addison. 1607 Derrick Drive. 3 bedroom, 2 bath. Reduced.  
2 story 3 bedroom, 2.5 bath. Large game room. Lots of extras. Shown by appointment only. 310 Bonnie Lane.  
90'x140' building lots in Addison Addition. Financing available.  
Vacant corner lot. 801 N. Ave. E.  
864-2238 • 864-3301 • 4 Ave. D  
Trades Welcome!

**WTC** Continuing Education Division - EMS Program  
**EMT-Paramedic Completion Courses**  
Western Texas College Campus, Snyder  
February 24-August 31, 1998  
Hamlin Fire Department, Hamlin  
March 2-August 31, 1998  
Pre-Registration Deadline - Thursday, Feb. 19, 1998  
"Plan to register early as class spaces are limited!"  
For More Information call  
915-573-8511 x390

West Texas Rehabilitation Center's  
**MOBILE AUDIOLOGY/HEARING LAB**  
will be in  
**HASKELL**  
for its REGULAR Monthly Visit  
**Thursday, February 5**  
at the  
**HASKELL MEMORIAL HOSPITAL**  
WEST PARKING LOT  
Receive \$100 off any new Hearing Aid with this ad.  
To schedule an appointment, call toll free  
**1-800-460-5485**

**Allstate**  
You're in good hands.

Put your life in our hands.



**Haskell County Insurance Agency**  
417 S. 1st St.  
Haskell, TX 79521  
940-864-2665

For life insurance —  
Being in good hands is the only place to be.





HASKELL 72, ARCHER CITY 54—Indian T. Nichols (22) drives base line to help win the Jan. 20 game. Photo by Bill Blankenship

## Spring Fling set April 20-24

by Lou Gilly  
Haskell Co. Extension Agent

Experience spring and nature at it's best this year "Deep in the Heart of Texas". That's what folks 50 and over will be doing at the Texas 4-H Center on Lake Brownwood when adults will enjoy the annual Spring Fling during April says Lou Gilly, County Extension Agent-Family and Consumer Sciences.

Sponsored by the Texas Agricultural Extension Service, Spring Fling is offered for men and women alike to enjoy the wonderful activities offered during the week of April 20-24, 1998.

Opportunities include "hands-on" learning centers where one can learn leather working, oil painting, woodworking, stained glass and other exciting projects. Educational programs on topics such as

horticulture, photography, nutrition, finances, and other current interests are a popular highlight.

Boat rides (weather permitting) and fishing on Lake Brownwood add popularity to your stay. Lighted tennis courts, horseshoes, billiards, volleyball, shuffleboard, dominoes, and card and table games are all popular activities.

A special "Under the Sea" theme featuring a costume contest will provide a festive atmosphere to the event.

Spring Fling '98! Are you 50 or older? Then it's for you! Each week is limited to 165 participants at a nominal fee. Get away and learn to make the most of the best years of your life. Call the Haskell Co. Extension office today at (940) 864-2546.

## Green Thumb

By Gladys O'Neal

If the frosty days of January have you been itching to garden again, take heart. Not only can you plan your spring flowerbeds now, but you can start seed indoors to get the neighborhood's first blooms.

Why sow seeds, when you can just wait and buy finished plants from a garden center? First, you will save money by growing your own. Second, you have a much wider range of colors, sizes and species from which to choose.

Whether we're working in the garden or relaxing on the patio, the beauty of flowering shrubs and blooming plants with the sound of singing birds and splashing water, is great therapy.

Now for a few tips of the month. Instead of using pebbles for drainage in flowerpots, use small pieces of expanding foam, such as those used as packing material for shipping. Just place a handful in the bottom of the pot or mix in with the soil. The pieces will help to loosen the soil, which gives air to the roots, which is good for the plants.

Lets give the birds a wildlife buffet with a little flair this winter. I love to feed and water the birds. So many different kinds will come to be fed.

Edible garlands are nice to make for the birds. Good food choices are orange and apple wedges, cranberries, peanuts in the shell and popcorn.

Pinecones make attractive natural ornaments. Put peanut butter on them and roll them in sunflower seeds or other bird seeds. The birds will appreciate your efforts. Take your Christmas tree and it in the backyard and put different foods on the limbs.

I love the bird as well as my plants and flowers. Take wooden circles and spread peanut butter on them and sprinkle with birdseed. You can place them near the birds watering place and reuse them many times.

January is an ideal month to spread sheep or barnyard manure over your beds which have not been spaded. Add a sprinkling of super-phosphate. Fork the bed deeply and leave to settle and absorb moisture. It will then be ready for your gladiolus corms or stem roots.

If you are planting rose bushes, dig a hole 18 to 20 inches deep and build a dirt cone with a radius of at least 8 to 10 inches at the top of the cone. It should be exactly the shape of an ice-cream cone. Separate the roots very gently and spread them over the top of the cone; they will have room to spread and get air. Then spread dirt very carefully over the entire top of the cone and be sure the cone will not topple over.

If you want to place your

poinssettia in the soil, I'll tell you what I read, and I shall wish you luck.

Cut it back in the spring and keep it in a sunny place until summer when it can first be moved to a cool, dark spot (a garage or sunporch). Then repot and move outdoors in the fall. When the temperature begins to drop, bring it indoors and start a schedule of 6 to 8 hours of daylight followed by at least 14 hours of darkness. Then by

the holidays you should have color. It will put on a brave display during the darkest days of the year. It will have colors that synchronize so perfectly with holiday season.

A lot of concern has been shown by those bracts or leaves surrounding the blooms. They may be pink, white or yellow.

Now for an unusual tip for annuals. Give them a soaking but not a cold! Aim at their toes not their nose and don't sprinkle their

clothes. Cute isn't it? It can be applied well to geraniums. Never spray their leaves or (clothes).

The best indoor insect repellent for house plants is pieces of moth ball crystals applied directly on the soil.

Happy new year and God's blessing. "Don't pull tomorrow's clouds over today's sunshine." Be thankful and happy.

### FRIDAY THRU SUNDAY WINTER CLEARANCE!

SAVINGS UP TO  
**60% OFF**

WHEN YOU TAKE AN  
**EXTRA 25% OFF**  
ALL PERMANENTLY REDUCED  
MERCHANDISE STOREWIDE!

EXTRA 25% OFF ALREADY REDUCED MISSES' & JUNIORS' SPORTSWEAR

EXTRA 25% OFF ALREADY REDUCED MISSES' & JUNIORS' DRESSES

EXTRA 25% OFF ALREADY REDUCED PETITES' & WOMEN'S SPORTSWEAR

EXTRA 25% OFF ALREADY REDUCED ACCESSORIES & SHOES

EXTRA 25% OFF ALREADY REDUCED MEN'S CLOTHING & SPORTSWEAR

EXTRA 25% OFF ALREADY REDUCED CHILDREN'S CLOTHING

www.beallsstores.com

CHARGE IT!  
GET 10% OFF  
ALL DAY  
WHEN YOU OPEN A NEW STORE ACCOUNT.  
Exclusions may apply. Subject to credit approval.

**BEALLS**  
We're all about you!

### DAVIS AND WARDLAW OIL COMP., INC.

is pleased to announce its expansion into the Haskell area with their recent purchase of Lone Star Unlimited.

We are looking forward to meeting all existing customers and eagerly encourage all new business.

Davis and Wardlaw has every intention of supporting the Haskell economy and becoming involved in the community.

We look forward to serving you with a full line of Fina and Texaco products, diesel, gasoline, varsol and kerosene.

Our office at Two North First in Haskell is open Monday thru Friday, 7 a.m. to 6 p.m. and Sat. 7 a.m. to noon.

Box 216  
Haskell  
940-864-2959  
1-800-777-0241



Owners  
Phil Davis &  
Brent Wardlaw  
Larry Gilliam, Mgr.

## NOTICE

### M-System Customers

If you do not receive the M-System Grocery circular in your Haskell Free Press, you may pick one up at M-System Grocery Store or at the Haskell Free Press.

We are sorry for any inconvenience this may have caused you.



**HASKELL**

### Monthly Calendar of Events

## FEBRUARY 1998

### Haskell Independent School District

SUN	MON	TUE	WED	THU	FRI	SAT
1 Senior Supper Church of Christ HHS	2 TX Boll Weevil Supper HHS Cafeteria 5 p.m. Archer City 7-8-9 Boys There Girls Here 5 p.m.	3 PPE Mount St. Anger Holiday There B-G JV & V 4 p.m.	4	5	6 Archer City Here B-G JV & V 4 p.m.	7 UIL Vocal Events at McMurry
8	9 Electra 7-8-9 Boys There Girls There 5 p.m.	10 PPE Treats for your sweet cookie exchange Elementary Spotlight Photos	11	12 Texas Music Educators Assn. Convention	13 Olney Here G JV & V 6 p.m.	14
15	16	17	18	19	20	21
22	23	24 PPE Feelings and Emotions	25	26	27 Tentative Game Baseball Anson Here 4:30	28 UIL Solo Ensemble HSU, Abilene HS & JH

The Friendly

That's the Spirit of Community Pride



**First National Bank**

200 South Avenue E • 864-8555 • Member FDIC