



# KVRP now has new frequency

After almost twenty years at 95.5, KVRP FM in Haskell switched its frequency to 97.1. This comes as part of a move which involves some 24 stations in Texas and 12 in Oklahoma which are either changing frequencies or being downgraded. The end result will be one or more new frequencies in the Metroplex.

To Subscribe,  
Call 940-864-2686

In order to make the change, a tower crew of three from Burkburnett took the antenna down from the 512 foot tower four miles west of Haskell. The antenna was then rebuilt and upgraded to be tuned to 97.1. As repairs were made Mon. night and Tues. to the transmitter by two engineers from Dallas, the transmitter was changed to the new frequency. By Thurs., Aug. 17, the operation was complete and KVRP was 100% of power at 97.1.

# STOREWIDE ANNIVERSARY SALE!

CONTINUES

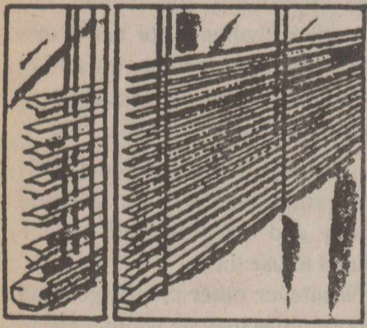
at

"We Want To Be Your Furniture Store!"  
**BOGGS & JOHNSON**



East Side of Square • Haskell, Texas • 864-2346

## Custom Mini Blinds



Custom measuring and installation  
all included in one price!

Free estimates

1" Aluminum Blinds available in these colors:  
Vanilla, Fawn, Adobe, White, Alabaster, Grey, Black and Bronze

Custom vertical blinds available!

No need to drive out of town ~  
Custom blinds are available right here in Haskell!

## Big Country Blinds

East Highway 380 ~ 5 North 1st ~ Haskell  
864-2692 or 800-269-2692

# Kids need to be fit

In this age of computers, cable television and high-tech toys, simple play and physical activity seem to be all but forgotten.

"Children should be physically active almost every day," said Dr. Pat Vehrs, director of the Wellness Center at Texas Children's Hospital in Houston. "Walking, hiking, jumping rope, running, playing ball, bicycling, skating and swimming are great ways to stay fit. Structured activities such as soccer and gymnastics can be added as time and resources permit."

Very recreational activities and use the proper equipment. Do not force children into a particular sport or activity. Instead, help them find physical activities that they enjoy and in which they can succeed. Keep activities fun, interesting and appropriate for the child's age.

Set a good example by joining your child and being physically active yourself.

# Herbal supplements not for kids

Don't assume herbal supplements are safe alternatives to prescription medications, especially in children.

"Supplements are largely unregulated and untested," said Dr. Kathleen Motil, a pediatrician with the USDA/ARS Children's Nutrition Research Center at Baylor College of Medicine in Houston. "Some might provide benefit, but very few have been tested in children to determine their safety and value."

Although "natural," herbal supplements should be used with caution. "Some herbal supplements have physiologically active compounds that can have serious negative side effects when too much is consumed," Motil said. "And, we may not know how much is too much for children until they become ill."

Herbal supplements can also amplify or reduce the effectiveness of prescription medications.

"Parents who are open with their child's physician about herbal use can avoid potential interactions between supplements and a child's prescription medications," she said.

# Weekend warriors

A good stretching program can help keep 'weekend warriors' in the game.

"Stretching should be part of any sporting activity," said Dr. Lon Castle, a sports medicine specialist with Baylor College of Medicine in Houston. "It's important to stretch between 15 and 20 minutes and target the hamstrings, groin, thighs, biceps and shoulders. Also, a slow jog or bike ride will help get the blood flowing to the heart."

There is no data that shows stretching prevents muscle injuries. However, not stretching can cause injuries to the tendons, especially the Achilles tendon. Castle says holding each stretch between five and ten seconds will help you avoid these types of injuries.

# Obituaries

## Freddie Lee Ballard

Graveside services for Freddie Lee Ballard, 90, of Haskell were held Mon., Aug. 21 at Willow Cemetery in Haskell with Rev. Luther Hollowell officiating. Services were under the direction of Holden-McCauley Funeral Directors.

Mrs. Ballard died Fri., Aug. 18 at an Abilene hospital. Born Aug. 3, 1910 in Winters, she married A. T. Ballard Sept. 15, 1925 in Winters. He preceded her in death May 29, 1972. She was a housewife and a member of the First Baptist Church in Haskell.

She was preceded in death by two sisters, two brothers and her parents.

Survivors include one son and daughter-in-law, Tommy and Marianne Ballard of Haskell; one brother, E. W. Bridwell of Sarasota, Florida; one sister, Stella Moore of Winters; one granddaughter, Dee Galle of Haskell; and three great grandsons, Justin, Sam and Will of Haskell.

Memorials may be made to the American Heart Association. PD. NOTICE

## Marticia 'Tish' McDonald

Funeral services for Marticia 'Tish' McDonald, 76, of Abilene were held Fri., Aug. 18 in Elliott-Hamil Chapel of Memories in Abilene with Rev. Curtis Cadenhead officiating. Burial was in Willow Cemetery in Haskell.

Mrs. McDonald died Wed., Aug. 16 at an Abilene hospital.

Born in Dallas, she graduated from Haskell High School and moved from Haskell to Abilene in 1967. She had worked for Dr. David Pugh for 26 years and retired as his office manager. She was a member of St. James United Methodist Church.

Survivors include one son and daughter-in-law, Scott and Christina McDonald of Abilene; a daughter and son-in-law, Cene and Doyle Sisco of Ovalo; four grandchildren, Matthew Sisco of Carrollton, Shelly Sisco of College Station, Megan and McKenna McDonald, both of Abilene.

Memorials may be made to the American Cancer Society, P. O. Box 41, Abilene, Texas 79604; or St. James United Methodist Church, 3100 Barrow, Abilene, Texas 79605. PD. NOTICE

# Don't let sugar sneak into your diet

by Lou Gilly

Haskell Co. Extension Agent Sugars are carbohydrates. Dietary carbohydrates also include the complex carbohydrates starch and fiber. During digestion all carbohydrates except fiber breaks down into sugars. Sugars and starches occur naturally in many foods that also supply other nutrients. Examples of these foods include milk, fruits, some vegetables, breads, cereals and grains. Americans eat sugars in many forms and most people like their taste. Some sugars are used as natural preservatives, thickeners and baking aids in foods; they are often added to foods during processing and preparation or when they are eaten. The body cannot tell the difference between naturally occurring and added sugars because they are identical chemically.

Sugar comes in many forms

including: sucrose, glucose, dextrose, fructose, corn syrups, or corn sweeteners. Look for these words on labels if you want to moderate your consumption of sweeteners. Many of us waste calories on highly sweetened foods that don't have many vitamins, minerals or protein. Many of these foods are located at the top of the Food Guide Pyramid.

Scientific evidence indicates that diets high in sugars do not cause hyperactivity or diabetes. The most common type of diabetes occurs in overweight adults. Avoiding sugars alone will not correct overweight. To lose weight reduce the total amount of calories from the food you eat and increase your level of physical activity.

For very active people with high calorie needs, sugars can be an additional source of energy. However, because maintaining a

nutritious diet and a healthy weight is very important, sugars should be used in moderation by most healthy people and sparingly by people with low calorie needs.

On a food label, sugars include brown sugar, fructose, honey, maltose, corn sweetener, fruit juice (concentrate), invert sugar, molasses, corn syrup, glucose (dextrose), lactose, raw sugar, syrup, table sugar (sucrose) and high-fructose corn syrup. (A food is likely to be high in sugars if one of the above terms appears first or second in the ingredients list, or if several of them are listed.)

Food containing sugar substitutes may not always be lower in calories than similar products that contain sugars. Unless you reduce the total calories you eat, the use of sugar substitutes will not cause you to lose weight.

# Grilling may be hazardous to your health

Can grilling be hazardous to your health?

When we think of dangers associated with grilling, fire and lighter fluid come to mind. But scientists with the American Institute for Cancer Research say there are other health risks from grilling.

Grilling meat over high heat can produce potentially cancer-causing chemicals. The danger is greatest when fat from the cooking meat drips onto the coals, which then

releases dangerous chemicals that are absorbed by the meat. That doesn't mean you have to stop grilling. But you may want to find ways to reduce your risk when you do grill.

First of all, grilled fruits and vegetables don't contain the cancer-causing chemicals and they have the added bonus of containing cancer-fighting chemicals. Try some fresh corn on the cob or zucchini on the grill. Second, reduce the exposure of your meat to the grill.

Doctors at UT Southwestern say you can pre-cook your meat in the microwave or on the stove, then just put it on the grill long enough to get that grilled flavor. Marinating food also helps prevent the cancer-causing chemicals from forming.

When you're cooking food on the grill, use tongs rather than a fork to turn it. When meat is punctured by a fork, it drips juice on the coals, which releases those dangerous chemicals.

# Job stress may create problems elsewhere

Job stress is a fact of life, whether you work in the corporate world or on a fast-moving assembly line. That stress can make the job itself much harder to do.

"Moderate stress in many cases increases productivity and can be pleasant for some people," says Dr. John Herman, associate professor of psychiatry at UT Southwestern Medical Center at Dallas. "But higher levels of stress can interfere with your ability to perform your job; is rarely pleasurable and can lead to emotional and physical problems."

While most people are familiar

with such stress-related symptoms as headaches, stomach aches and back-and-neck problems, they may not connect emotional problems with job-related stress. Some of these might be decreased job satisfaction, abrasiveness, making constant excuses, erratic job performance, unpredictable behavior, moodiness, decreased communication, being late to work or an increase in sick time.

If you spot these signals in a co-worker's behavior, try suggesting they seek help from a physician or therapist before the situation worsens. If they won't

listen, talk to a family member. And don't forget to check on yourself every once in a while.

# Rollover convincer demonstrates seat belt importance

by Lou Gilly

Haskell Co. Extension Agent A seventeen year old student rolled his car last February, but managed to escape with few injuries, thanks to his seatbelt. Jeremy Haynes describes his experience as "a roller coaster gone bad."

Family and consumer science Extension agent Linda Mock says it's important for everyone to wear a safety belt regardless of their age. Mock and other Extension agents offer educational programs about passenger safety as part of a plan to encourage safe driving.

The passenger safety project provides education and interactive activities focusing on occupant protection issues. The hallmark of the project is the "Rollover Convincer." It's a pickup cab mounted on a trailer with an adult and child dummy inside. The exhibit shows what happens if the dummies are restrained during a simulated rollover. The dummies are then unbuckled and rolled again to show the danger of driving without restraints.

More than half a million people have viewed the "rollover convincer" in Texas. It can be seen at health fairs, schools and child safety seat checkup events and Extension agent programs targeted at passenger safety.

# Meet us at the Haskell Dairy Queen



Christian Owned and Christian Operated!

WEDNESDAY CHURCH NIGHT SPECIAL

4 Pc. Steak \$1.99  
Finger Basket



5-9 P.M. ONLY!

Senior Citizens get half price for all regular priced items all day every Tuesday.

Phone in Orders Welcome! Call 864-3732 and we will have it ready for you!

Breakfast served 9 a.m. to 11:00 a.m.  
Open 9 a.m. until 9 p.m. daily  
FRI. HOME FOOTBALL GAMES OPEN TIL 10 P.M.

Thursday Only!  
Buy Any Taco Salad or Order of 3 Tacos  
Get FREE Medium Soft Drink

Try our Catfish Basket  
\$4.99 Every Day!



# Jones-Haskell



## Eye Clinic

Dr. Trussell Thane, O.D.

Appointments Available • Monday through Friday

Dr. Thane provides comprehensive eye care including the diagnosis and treatment of eye disease.  
Dr. Thane offers complete evaluation for eyeglasses and contact lenses.

2 pair of clear daily wear \$159.00 contact lenses

Disposable lens packages and contacts to change your eye color available.

MEDICARE, MEDICAID AND FIRSTCARE ACCEPTED.

1501 Columbia Stamford, Texas 915-773-2083



STACEY RECHNER - COREY L. MILLS

## Rechner, Mills to wed November 11

Stacy Rechner of Katy and Corey L. Mills of Houston have announced their engagement to be married Nov. 11, at the Epiphany of the Lord in Katy.

The bride-elect is the daughter of Mr. and Mrs. Stephen P. Rechner of Katy. She is a 1993 graduate of Mentor Ohio High School. She graduated from the University of Houston with a Bachelor of Science in psychology, and is employed at

MCEA in Houston.

The prospective bridegroom is the son of Mr. and Mrs. Johnny Mills of Haskell. He graduated from Haskell High School in 1989 and from Howard Payne University with a Bachelor of Science degree in psychology and political science. He earned a J.D. degree from South Texas College of Law. He is in private practice in the Law Office of Corey L. Mills in Houston.

## Tom Bassett speaks to Homespun Club

Haskell Police Chief Tom Bassett was the guest speaker at the August meeting of the Homespun FCE Club. Giving an overview of the programs which are presently active in the city and county, Chief Bassett said that much interaction between the law enforcers and the people appears to have resulted in a safer and more manageable environment for everyone.

Showing comparisons between previous year's activity on the police records and this year's activity, he stated that crime, criminal mischief, violence and related activities are down quite effectively, all to the betterment of the community.

With a truancy program, a curfew for those age sixteen and under and an open-door policy between law enforcement and Haskell public schools, better understanding and trust has developed between students and law enforcement.

A question and answer period followed Bassett's presentation.

During a business meeting opened by Coleta Whitfield, roll-call was answered by the twelve

members telling, "the most useless thing in my purse."

In an election of officers for 2000-2001, all current officers were re-elected with the exception of secretary/treasurer. Flossie Bates was named to fill the vacancy left due to the health of the present secretary/treasurer.

Members planning to go to the state meeting in Odessa are to meet at 1502 North Ave. F., Tues., Sept. 12, ready to leave Haskell at 7:00 a.m.

### Student in the News

Degrees were presented to more than 200 students during Angelo State University's commencement exercises Fri., Aug. 11, on the ASU campus.

Included is Joy LeeAnn Mueller, M. Ed., of Haskell.

All deadlines are 5 p.m. Monday



MR. AND MRS. JERRY SLAVEN

## Davis, Slaven wed in San Angelo

Jennifer Anne Davis and Jerry Wayne Slaven, both of San Angelo, were married May 26 in the historic Cactus Hotel in San Angelo. Jerry Clark, Associate Pastor of Glen Meadows Baptist Church officiated.

The bride is the daughter of Joe and Jennabeth Kimbrough of Haskell and Douglas Davis of Austin. Her grandmother is Loudell Davis of Abilene.

The bridegroom is the son of Paul and Carlie Slaven of Fairmount, Indiana.

The ceremony was held on the mezzanine floor before the grand staircase leading to the open balcony and ballroom. Mounds of tulle held by double wicker hearts covered with white roses, greenery and white doves, dropped twenty-two feet from the balcony on each side of the staircase. Large pots of white roses and pink and white wisteria flanked the staircase along with two large ficus trees covered with twinkling lights.

Escorted to the altar by her parents, the bride wore an original ivory satin ballroom length gown embroidered with sequins and seed pearls covering the bodice and cascading below the waistline. Sequins, seed pearls and bows cascaded down the back and accented the hem of the gown. She carried a bouquet of spring flowers.

Maid of honor was Dr. Lisa

Franklin of Corpus Christi. Best man was Marcus Hererra of San Angelo.

Ring bearer was three-year-old Taylor Buchanan of Munday.

Flower girl was two month old Hannah Leigh Davis of Lubbock. Escorted by her father, Doug Davis, she was carried on a pillow surrounded by rose petals in a large wicker basket.

Ushers were Vincent Melone of San Antonio and Shane Buchanan of Haskell.

Following the ceremony, the bridal party ascended the staircase to the reception on the balcony, where large serpentine tables were laid with finger food. A dance was held in the Grand ballroom.

The couple left May 27 for a Royal Caribbean Cruise, with stops in St. Martin, St. Thomas, St. Maarten, and Nassau, Bahamas.

A rehearsal dinner was held May 25 at Enrique's Restaurant in San Angelo.

The couple resides in San Angelo where the groom is a systems analyst for the Federal Aviation Administration. The bride is a registered nurse in the Emergency Department of San Angelo Community Center.

To Subscribe, Call 940-864-2686

## Parents need to learn CPR

Cardiopulmonary resuscitation is a proven life-saving technique, but many parents still have not learned it.

"CPR is an easy course and there are many studies that demonstrate it saves lives," said Dr. Paul Sirbaugh, assistant professor of pediatrics at Baylor College of Medicine.

Sirbaugh recently conducted a study on "bystander CPR use" in

which he looked at the cases of 300 children who had lost a pulse. Of those, 25 percent received bystander CPR before emergency medical services arrived. Only 14 percent who lost a pulse in the home received bystander CPR from family members.

"These are not good numbers," said Sirbaugh, adding that CPR courses are readily available in most communities.

### Births

Douglas and Leigh Anne Davis of Lubbock proudly announce the arrival of their "little princess," Hannah Leigh, born April 19 at 4:28 p.m. at Methodist Hospital in Lubbock. She weighed 7 lbs., 14 oz. and was 20" long.

Grandparents are Glynn and

Sidney Gregg of Lubbock, Joe and Jennabeth Kimbrough of Haskell and Douglas Davis of Austin.

Great grandmother is Loudell Davis of Abilene and great grandparents are the late Arlos and Hazel Weaver of Haskell.

## This Is It!

Our Final Reductions on Spring and Summer Sale Shoes

(Values to \$80.00)

\$9<sup>90</sup> \$14<sup>90</sup> \$19<sup>90</sup> \$24<sup>90</sup>

UP TO 75% OFF Spring & Summer Sale Clothes

Brighton Handbag Trade-In Event

August 21 ~ September 3

Trade in your old handbag towards the purchase of a new Brighton Handbag and receive

\$50<sup>00</sup> off

Personality-Slipper Shoppe

940/864-2501 • 864-3051

South Side of Square

Haskell, Texas

## COLLEGE STUDENTS!

THE DRUG STORE has the College Essentials.

- \*Health & Beauty Supplies
- \*School Supplies
- \*Prepaid Phone Cards
- \*Cameras and Film
- \*Alarm Clocks

DON'T FORGET YOUR PRESCRIPTION MEDICATIONS!!

Call our Pharmacy for refills. We'll mail your prescription the day you call. We have a Texas Toll-Free Number 1-800-962-0743

College is your home away from home and The Drug Store is as close as your phone.

MOMS and DADS

Use our Pack & Mail department to ship care packages from home by UPS or US Mail.

THE DRUG STORE

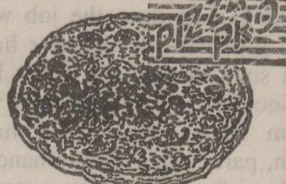
940-864-2673 1-800-962-0743

**PIZZA PRO**

of Modern Way

LARGE PIZZA UNLIMITED TOPPINGS EXCLUDES CHEESE

2 FOR \$14<sup>99</sup>



EXTRA LARGE PIZZA TWO TOPPINGS

2 FOR \$17<sup>99</sup>

You Always Get More Pizza for Less Money at Pizza Pro!

## Burger & Cream Pie Shake

No. 1 or No. 2 Sonic Burger with any Cream Pie Shake\*

\*Any regular size shake

SONIC America's Drive-In.

No Waiting Call In Orders

864-8533



ONLY \$2<sup>99</sup> PLUS TAX

Offer good August 1-31, 2000. Not valid with any other offer. Only at participating Drive-Ins. ©2000 America's Drive-In-Trust. Sonic, America's Drive-In and the Double Delta design are trademarks of America's Drive-In-Trust.

# OPINION

## From Out of the Past

From the files of The Haskell Free Press

10 Years Ago  
August 23, 1990

The Indian Booster Club held its first meeting and elected Charles Gibson as president.

Randy Hise of Haskell was among 30 Texas residents who attended a graduate banking school this summer at the University of Colorado in Boulder.

Cheering the Haskell Indians to victory this year will be Heidi Mullen, Corie Brzozowski, Tiffany Williams, Amanda Diaz, Daniela Guadaluca and Becky Cline.

20 Years Ago  
August 21, 1980

The U. S. Postal Service is seeking a suitable site upon which to build a new main post office at Haskell, Postmaster Joseph V. Alves said.

Twirlers for Haskell High School are Rochie Reddell, Kim Griffith, Sharla Drinnon, Tonya Roberts and Vicki Wallace. The twirlers received a Division 1 at summer band camp.

The East Side Baptist Ruth Sunday School Class met for their social and salad supper. The hostesses were Birdie Fischer, Mable Mullins and Eula Daniels.

Jack, Joy and Glenda Chapman, Virgil, Evelyn and Myrtle Cobb, all of Haskell attended the Cobb reunion in Lake Powell, Utah.

30 Years Ago  
August 20, 1970

Terry Chapman, son of Mr. and Mrs. Jack Chapman, is the recipient of the annual Jaycee Citizenship Award.

The drive for funds to purchase a rural fire truck continues. Total to date is \$2,765.00.

Two-a-day practice sessions for the Haskell Indians have begun and Coach Sonny Everett says that as a whole the team is not in too good shape and that they have some hard work ahead of them before the season's opener.

Wayne Cadenhead, who recently returned from a trip to Malawi, Central Africa, showed colorful, educational and interesting slides of that county at the noon meeting of the Lions.

40 Years Ago  
August 25, 1960

Charlotte Redwine will enter the Fisher County Rodeo. She is a member of the Haskell County Sheriff's posse.

The Rev. M. D. Rexrode, pastor of the First Baptist Church of Haskell, has been named a member of a committee to nominate trustees for Hardin-Simmons University, Abilene.

An estimated 3,000 guests were served at the free barbecue given by Bradberry's Super Save Market, new food store in Haskell.

50 Years Ago  
August 24, 1950

Jarrin' John Kimbrough of Haskell, A&M All-American fullback in 1939-40, was named to the Helms Hall College Football Hall of Fame. Kimbrough is the first Texan chosen for this honor and takes his place among such other grid immortals as Red Grange, George Gipp, Bronco Nagurski and Ernie Nevers.

W. P. McCollum, Haskell High School principal, was among the group of 130 who received Masters degrees from Hardin-Simmons University in Abilene. McCollum received the Master of Arts degree.

J. P. Rudd is the new school superintendent at Rule.

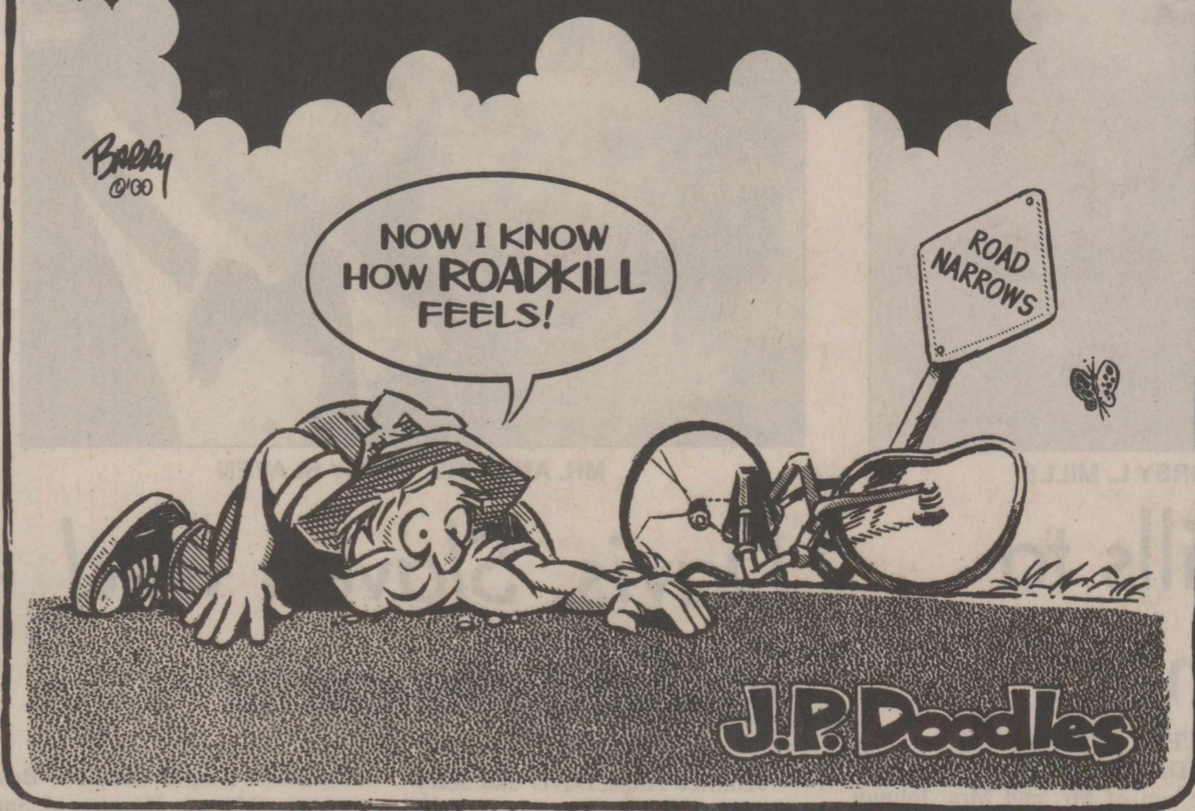
90 Years Ago  
August 20, 1910

The new iron fencing for the cemetery has arrived and is now being placed around the property.

H. G. Lancaster and C. McDonald have opened up the old Wigwam stand.

The Haskell Bottling Works sold 166 cases of soda water to Moser & Miller of Rule.

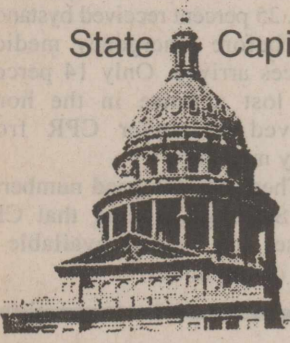
## BIKE PATHS PREVENT ACCIDENTS



## HIGHLIGHTS

By Ed Sterling  
TEXAS PRESS ASSOCIATION

### State Capital



AUSTIN — Texas residents have begun to receive notification by post card when high-risk sex offenders move into their neighborhoods.

The new program, implemented by the Texas Department of Public Safety, gives residents more information about recently convicted sex offenders deemed most likely to re-offend.

The program affects only offenders convicted on or after Jan. 1, 2000, who have been designated Risk Level 1 under guidelines set by the Texas Department of Criminal Justice.

Post-card notifications supplement those already required by law, such as notices that must be published in newspapers in both English and Spanish.

The first mailing of post cards, which went out last week, involved about 30 offenders and nearly 16,000 pieces of mail.

Post cards containing information about the sex offender, including a photograph, name, age, address and offense, were mailed to neighbors within a three-block radius in subdivisions and a one-mile radius in rural areas.

"The Legislature has given the people of Texas another tool to protect themselves from potentially dangerous people," said DPS Director Col. Thomas A. Davis Jr.

The post-card program came about through legislation authored by State Sen. Mike Jackson, R-La Porte, and sponsored by State Reps. Ray Allen, R-Grand Prairie, and Pat Haggerty, R-El Paso.

Shoppers Took 'Holiday' Seriously  
Texas' second annual "sales tax holiday" appears to have been even more successful than last year, state Comptroller Carole Keeton Rylander said last week.

"Judging by media accounts and an informal survey of shopping mall managers, families across Texas headed for malls and department stores in droves to stock up on back-to-school clothes for the kids, and clothes for Mom and Dad, too," she said.

At stores offering layaway plans, shoppers responded positively to an administrative change Rylander made this year: eligible items placed in layaway during the sales tax holiday can be taken out later without having to pay sales tax.

"This change enables hard-

working families with limited budgets to pay for their purchases a little bit at a time and still receive the tax break," she said.

Rylander predicted shoppers would save at least \$34 million in state and local sales taxes during the three-day shopping spree, Aug. 4-6.

The actual amount of tax saved will not be known until late October, Rylander said.

Mall managers statewide reported crowds and sales up to three times higher than a typical August weekend. Some reported more

shoppers than the day after Thanksgiving, the traditional start of the Christmas shopping season.

### DNA Testing Confirms Verdict

Gov. George W. Bush last week said the results of new DNA tests confirm a jury's verdict that Ricky Nolen McGinn is guilty of raping and murdering his step-daughter in 1993.

Bush said he recommended a reprieve of execution for McGinn because it was important that biological evidence be tested to help determine the defendant's guilt or innocence of the rape charge.

"The district court action [Aug. 15] also demonstrates the safeguards present in our system," Bush said.

McGinn's June 1 execution date was postponed and has been rescheduled to Sept. 27.

### Other Highlights

• Texas public schools set a performance record last week when 167 school districts earned an "exemplary" rating from the state, the highest accountability rating possible from the Texas Education Agency. Also, 435 districts earned "recognized," 434 earned "acceptable" and five earned academically "unacceptable" ratings.

• Texas Insurance Commissioner Jose Montemayor ordered private passenger auto insurance benchmark rate reductions averaging 1.3 percent statewide, making 2000 the third year in a row of an overall benchmark rate cut. The new rates will take effect Nov. 1.

• The Texas Education Agency is awarding \$100,000 to the Texas Troops for Teachers program to help military personnel who recently separated from service to pay for teacher certification programs and to enter the teaching profession.



## From The Inside Out

By Mary Kaigler

As people reach retirement age, their risk of being victims of crime declines. However, older Americans are particularly vulnerable to certain types of crime such as con games, purse snatchers, and pickpockets. Although they are victimized at rates lower than other age groups, the results are often worse, because a minor crime can cause major physical, emotional, or financial trauma to an older person. And fear of crime isolates older people and makes them feel helpless.

In spite of repeated warnings by the police and in the media, the old pigeon "drop con game" was successful time after time in the neighborhood of the store in Austin where I worked as a decorating consultant, just a few blocks from the state Capitol. Usually, it was older people coming from and going in to the nearby bank who were victimized.

Brazen and fast-talking, a couple of women even followed a senior citizen into the store one afternoon, and except for the quick interception of our young assistant store manager, who suggested calling the police, they would have soon coerced the little lady into accompanying them to the bank to withdraw her life's savings.

More than a few older customers called in to tell us they had given cash up front to fast-talking "house painters" they did not know who quoted a low price for their services

and said they would go to Sherwin-Williams to purchase the needed supplies and be back to start the job the next day. One such fellow even talked one older couple into giving him the money to buy an extension ladder to reach their two story house. Needless to say, they never showed up at the store, nor did their trusting victims ever see them again.

As an older American there are effective steps you can take to reduce your crime risk. They involve being alert, aware, and involved.

BE ALERT to your surroundings when out and about; take common sense precautions.

\*Go with friends or family, not alone.

\*Project the message that you're calm, confident, and know where you're going.

\*Don't carry large amounts of cash. Only carry the cash or credit cards that you need.

\*Carry a purse close to your body, not dangling by the straps.

Put a wallet in an inside suit coat or front pants pocket.

\*Use direct deposit for Social Security and other pension checks.

\*Know the neighborhood where you live. Check out the locations of police and fire stations, churches and libraries, public telephones, hospitals, and restaurants or stores that are open late.

\*Trust your instincts. If someone or something makes you

uneasy, avoid the person or leave.

BE AWARE of home security: \*Install good locks on doors and windows. Use them!

\*Ask for photo identification from service or delivery people before letting them in. If you're the least bit uneasy, call the company to verify.

\*Don't hide house keys in mailboxes, planters, or under doormats--burglars know all the tricks. Instead, give an extra key to a neighbor you trust.

\*Make sure your address number is clear, large, and well lighted so police and other emergency vehicles can find your home quickly.

\*Help the neighborhood stay in good shape. Dark alleys, broken street lights, abandoned cars, vacant buildings, graffiti, litter, and trash attracts crime. Work with neighbors and the local government to organize community clean up days.

### GET INVOLVED:

\*Report any crime or suspicious activities to law enforcement. Volunteer as a tutor for young children, mentor for teens, citizens patroller, victim advocate, block grandparent, office aide in the police or fire department, newsletter writer, escort for people with disabilities.

\*Join a Neighborhood, Apartment, or Office Watch to look out for each other and help the police.

## Germ killing soaps may lead to development of super-germs

Will germ-killing soaps rid our lives of bacteria or just make the bacteria stronger?

If you've walked down the aisles in the grocery store lately, you may have noticed a new wave of germ-killing products. Now you can buy bath soap, dish soap and even laundry detergent that contain anti-bacterial ingredients. Even

hand lotion and mouthwash contain germ fighters. Are these products they key to keeping your family healthy?

The American Medical Association isn't sure. At a recent conference, the group called for more review of these products. Its concern is that not only are these products not necessarily more

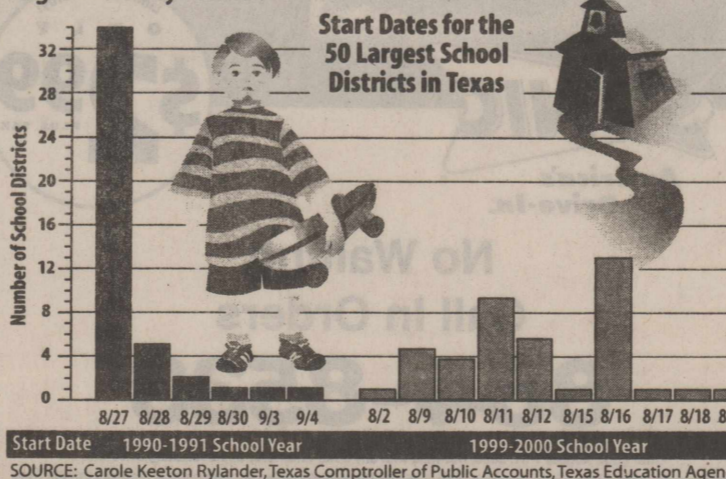
effective than other soaps, but they also may help lead to the development of so-called super germs. Overuse of antibiotics has possibly led to the creation of strains of bacteria that are resistant to the drugs used to fight them and doctors worry that too many anti-bacterial products will make matters worse. More research will have to be done to determine the exact impact of anti-bacterial products.

Doctors at UT Southwestern say ordinary soap does the job when used properly. Scrub your hands with soap thoroughly for at least 30 seconds, then rinse well with warm water. Wash your hands often, particularly before handling food or after visiting the restroom. When washing clothes or dishes, use the warmest water possible.

## Keeping an Eye on Texas

### The Shrinking Summer

The days of summer are shrinking for most teachers and school-age children in Texas. In 1990, most schools started classes on Aug. 27, as compared to 1999-2000 when most schools started on Aug. 16. The earliest start date in 1990-91 was Aug. 27, in 1999-2000 it was Aug. 2 — 25 days earlier.



SOURCE: Carole Keeton Rylander, Texas Comptroller of Public Accounts, Texas Education Agency

To Subscribe, Call 940-864-2686

## The Haskell Free Press

Established January 1, 1886  
PUBLISHED EVERY THURSDAY  
401 S. First St

P. O. BOX 555 HASKELL, TEXAS 79521

John McDougal ..... Publisher  
Lisa Shaw ..... Business Manager  
Mary Kaigler ..... Editor  
Doris McDougal ..... Production  
Bill Blankenship ..... Staff Photographer

Periodical Paid Haskell, Texas 79521  
(USPS 237-040)

### SUBSCRIPTION RATES:

Haskell County, one year, \$20.00.  
Outside of Haskell County, one year, \$28.00.

NOTICE TO PUBLIC-Any erroneous reflection upon the character, reputation or standing of any firm, individual or corporation will be gladly corrected upon being called to the attention of the publisher.  
POSTMASTER: Send address changes to The Haskell Free Press, P.O. Box 555, Haskell, TX. 79521-0555.



This issue mailed Wed., August 23, 2000

## Letters to the Editor

Dear Editor:  
I read with pride the letter of apology Dr. Wayne Cadenhead wrote concerning the misstated lab results which caused problems for the reputation of two young men. Seldom do we see in our society today such honor of righting a wrong or correcting a misjustice.  
I was thrilled to read Dr. Wayne's letter for it is evident

Haskell is still producing citizens who possess admirable qualities. Dr. Frank and Billie have indeed succeeded in raising a son with principles. Thank you Haskell for providing a good place to raise children who are an asset to our society and possess the courage to act honorably. What a blessing!  
Gayle Spain Maxson  
Denton



MR. AND MRS. VERNON MAHLER

## Mahlers celebrate 50<sup>th</sup> anniversary

Vernon and Reba Mahler were honored with a 50th wedding anniversary reception at the Philadelphian Club House in Rule Aug. 12. They were married Aug. 17, 1950 in Olney. The reception was hosted by their daughter Teresa Cornelius. They moved from Olney to Rule in 1953 and have lived there since.

Vernon was born in Olney and attended school there. He served 3 years in the U. S. Navy, worked for Republic Supply Co. 16 years and owned and operated Mahler Supply Co. in Rule 22 years

before retiring in 1990. He is a member of the Rule First United Methodist Church and a Mason.

Reba was born in Childress. She grew up in Elbert and attended school in Elbert and Throckmorton. She retired from Rule ISD in 1991 where she worked as an instructional aide in special education for 25 years. She is a member of the Rule First United Methodist Church.

The couple has one daughter, two grandchildren and one great grandchild.



MR. AND MRS. DARWIN SLADE

## Couple honored on wedding anniversary

Darwin Lytle and Mamie Ethelyn Sanders Slade of Eager, Arizona were honored on their 50th wedding anniversary, with a reception Aug. 12 at the LDS Church Amity Building in Eager. The couple was married Aug. 11, 1950 at the Foursquare Church in Wickenburg, Arizona.

The daughter of the late Jack and Sallie Sanders of Weinert. Ethelyn Sanders graduated from Weinert High School in 1949. Darwin Slade is a retired teacher and coach who was inducted into the Arizona Coaches Hall of Fame.

The reception was hosted by the couple's four sons, Alan, Stephen, Everett and David, and their families, all of Eager, and their daughter, Paula Ann Kreamer of Chandler, Arizona. They have twelve grandchildren and twenty great-grandchildren, most of whom were present at the celebration.

Among those attending were Darwin's brother, Elwin and wife, Alice Slade, of Tucson; many nieces and nephews and Ethelyn's aunt, Melba Kim and cousin June Parr of Phoenix.

Traveling from Texas were Ethelyn's brothers and sisters; Lona Mac Phelps of Haskell; Travis and Wilma Sanders of Coleman; Andy and Marlene Sanders of Cross Plains; Martha Maupin of Odessa; B. D. and Marie Kirkland of Fort Worth; Walter and Sue Cox of Omaha; Jacky and Sandra, Rex and Jaelyn Sanders of Aledo; Ricky, Shana and Shambry Sanders of Weatherford; Rocky and Marsha Sanders of Abilene, and a friend, Janice Maddox of Daingerfield.

A Mexican dinner in the park was served for all family members by the couple's children on Friday

All deadlines are 5 p.m. on Monday.

## Eric Guadalcazar sent to Kosovo



ERIC GUADALCAZAR

Eric Walon Guadalcazar, son of Daniel and Lupe Guadalcazar of Haskell, left Aug. 18, for a six month tour of duty in Kosovo.

Guadalcazar joined the Army June 6, 1998, taking his fifteen weeks basic training in Fort Benning,

Georgia. On Sept. 25, 1998, he graduated from there as a PFC.

Returning to Haskell on a ten day leave, he married Michele Moreno of Stamford on Sept 27, 1998, and the couple left two weeks later for Fort Campbell, Kentucky, where he was assigned to Unit 101 Screaming Eagles.

In July this year Guadalcazar made the rank of E4.

## Hospital

**Admissions**  
Thelma Henson, Haskell  
Lynn Jackson, Munday  
Julia Gibson, Haskell  
Allen Davis, Rule

**Dismissals**  
Maria Garcia, Leo  
Hengstenberg, Montie  
Floyene Holder, Muse.

## Around Town

By Joyce Hawkins

Faye Gray has returned after being gone two weeks. She spent one week in Midland with her son and wife, Lee and Polly. Then to Weatherford to spend a week with her sisters, Pauline and Billie. They had a good time visiting and reminiscing.

Visiting Mr. and Mrs. Arvil

McFadden on Saturday were his brother and wife, C. W. and Lisa McFadden of Bryson.

The Squares held their regular monthly dance at the Wagon Wheel in Tye on Saturday night. Bernice Hilliard attended. Kelly Dowell was the caller.

## Don't let minor cuts and scrapes become major

Cuts and scrapes are inevitable—especially for growing children exploring new domains.

"When your child has an accident, first assess the wound to see how serious it is," said Dr. Joan Shook, chief of emergency medicine at Texas Children's Hospital in Houston. "If the wound is large, deep or has a jagged edge, apply pressure for 10 minutes with a clean towel or bandage and take your child to the nearest medical facility."

For smaller wounds, stop the bleeding by applying direct pressure with a clean towel or piece of gauze. Once the bleeding stops, clean the area by washing gently with mild soap and water, removing dirt and debris. Rinse with clean water. Dry the area with a clean cloth or allow to air dry before applying an antiseptic ointment and sterile bandage. Change the bandage daily.

Contact a physician if the wound becomes tender or red, or if you notice drainage or pus.

Regarding the building of the prison/jail in our county, let us ask ourselves if that is the only possibility for our future prosperity, and remember that simply because other choices have not been offered, does not mean they do not exist.

For example: How many of you have driven the streets of the few towns that remain in our county lately? It's depressing! There are derelict houses and empty lots covered with weeds, trash and junk that have been eyesores for years. There are good houses standing empty. Why not take what we already have and turn it from a detriment into an asset? Why not "recycle" our towns and benefit everyone in the county, instead of mainly money-lenders and 125 prison employees who may or may not live in this county?

With the 11 million dollars the county is talking about spending on a prison/jail they could buy almost every decent vacant house and empty lot in this county. Jobs could be created by employing a pool of local workmen (who are hard to find) to tear them down, repair and maintain them, or the owners could offer them for sale to the city or county. The wood, brick and salvageable junk could be sold and the properties listed for sale in newspapers and on the Internet to the millions of baby-boomer-retirees at a very moderate price and everyone would profit. Most folks in this nation have no idea there's a place where city lots are available for a few hundred dollars and decent homes can be bought for as little as \$10,000-\$20,000 or custom built for \$40 a sq. ft.

We have something very special to offer retirees: inexpensive land, inexpensive housing and quiet, law-abiding communities. Let's get everyone involved including teachers, clubs and churches and build a sense of pride and responsibility in our communities. Folks would be willing to buy municipal bonds if they knew it involved a project that increased the value of their property, added to city and county income, and brought in quiet, law-abiding citizens at the same time.

Forty years ago, Phoenix had a small trailer park for retirees. They now have a Mayo Clinic built from retiree income.

Hadn't we rather share our precious water with responsible retirees who will conserve and use it to beautify our communities and spend our monies advertising our county as a model for the nation and a mecca for retirees than spend it advertising for spaces in a prison for felons?

Surely there are city/county/state and government resources that would help a community that wanted to set an example for the rest of the nation. The only thing that's stopping us is a belief that we have no choices and an offer of creative alternatives.

Zora Mathis

Pd. for by Zora Mathis

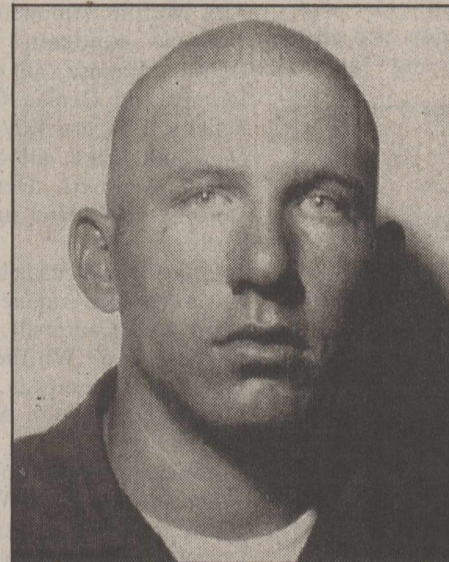
night and a breakfast there on Saturday morning. The families were invited to the White Mountain ranch of friends Mike and Jeanie Udall for a chuck wagon lunch.

At the afternoon reception, Walter Cox led a prayer, and Kerry Francis sang, "Look at Us Now". Lona Mac Phelps told of Ethelyn's life, and Richard Slade read letter from Darwin's brother Lavar Slade of Florida, and sister, Dorene of Phoenix, who were unable to attend. Each of the couple's children was presented with a CD and tape of forty songs Darwin had sung through the years. A video of the couple's life together was shown and given to them by their children.

A three tiered white and gold wedding cake and white sheet cake were served from a table laid with gold lame and white lace cloths and featuring a picture of the couple and gold candlesticks holding floating roses. Gold punch was served from a crystal bowl.

Tree Removals  
Lawn Mowing  
Drake 864-2183  
204 S. Ave. L

Lordy, Lordy, could this be Shorty?  
(Wolf, that is!)



Military or Convict?!!  
Happy 51st!!

From Your Loving Brothers & Sisters

An important message from your new telephone company

## Your New Telephone Company. Your New Neighbor.

As of September 1, VALOR Telecom

is the new local telephone company for the following communities:

ABERNATHY	CRAWFORD	HEDLEY	MENTONE	SANFORD
ADRIAN	CROCKETT	HEMPHILL	MERKEL	SEAGRAVES
AMHERST	CROSBYTON	HIGGINS	MIAMI	SEYMOUR
ANDREWS	CROSS PLAINS	HILLTOP LAKES	MILAM	SHALLOWATER
ANNONA	CUSHING	HOLLIDAY	MILFORD	SIERRA BLANCA
ANTON	DAINGERFIELD	HOOKS	MOBETTIE	SIMMS
ASPERMONT	DALHART	HUBBARD	MORAN	SLOCUM
AVALON	DARROUZETT	HUGHES SPRINGS	MORGAN	SMYER
AVERY	DAWSON	HUNTINGTON	MORTON	SPADE
AVINGER	DEKALB	HURLWOOD	MOUNT CALM	SPEARMAN
BAGWELL	DENVER CITY	IDALOU	MUNDAY	STRATFORD
BAIRD	DEPORT	IMPERIAL	NAPLES	STREETMAN
BALMORHEA	DETROIT	IOLA	NAZARETH	SUNDOWN
BECKVILLE	DIMMITT	IRENE	NEGLEY	SUNRAY
BEDIAS	DODSON	JOAQUIN	NEW BOSTON	TAHOKA
BENJAMIN	DOUGLASSVILLE	KAMAY	NEWTON	TENAHA
BLACKWELL	DUMAS	KARNACK	NORMANGEE	TEXARKANA*
BLOOMING GROVE	ELKHART	KENNARD	NORTH ZULCH	THROCKMORTON
BOGATA	ESTELLINE	KNOX CITY	OAKWOOD	TORNILLO
BON WIER	FABENS	LAKEVIEW	ORLA	TOYAH
BOOKER	FAIRFIELD	LAMESA	PANHANDLE	TRENT
BOVINA	FAIRMOUNT	LEONA	PECOS	TRINITY
BOYS RANCH	FOLLETT	LEVELLAND	PENNINGTON	TULIA
BROADDUS	FORSAN	LIPSCOMB	PERRYTON	UNCERTAIN
BRONSON	FORT HANCOCK	LINDEN	PETERSBURG	VALENTINE
BROWNFIELD	FRANKEL CITY	LITTLEFIELD	PINELAND	VAN HORN
BUFFALO	FRANKLIN	LONE STAR	POST	VEGA
BURKEVILLE	FRIONA	LORAIN	PURDON	WALNUT SPRINGS
BURLINGTON	FRITCH	LORENZO	PUTNAM	WEINERT
BYNUM	FROST	LOTT	RALLS	WELLINGTON
CACTUS	GARY	LOVELADY	REDWATER	WHEELER
CENTERVILLE	GLEN ROSE	MALONE	REKLAW	WHITE DEER
CHANNING	GOREE	MARIETTA	RICHLAND	WHITEFACE
CHILTON	GRAPELAND	MARQUEZ	RIESEL	WHITHARRAL
CLARENDON	GROOM	MAUD	RISING STAR	WHITNEY
CLARKSVILLE	GROVETON	MAY	ROCHESTER	WILDORADO
CLAUDE	HAPPY	McNARY	ROGERS	WILSON
CLYDE	HART	MEADOW	ROPEVILLE	WOLFFORTH
COLMESNEIL	HARTLEY	MEGARGEL	ROSEBUD	ZAVALLA
COYANOSA	HASKELL	MEMPHIS	RULE	

\*Texarkana includes Texas and Arkansas customers



For Customer Service dial 811  
For Repairs dial 611

Outside VALOR Telecom service area dial (toll free) 1-877-520-5220

Serving Texas With Pride™

www.valortelecom.com

# 90 attend W. J. Mullins annual family reunion

Descendants of the late W. J. and Bettie Mullins attended the third annual reunion of the Mullins cousins held at the American Legion Hall in Haskell recently. Approximately 90 guests attended. Co-chairpersons were Kristen Grand and Kay Smith, both of Haskell, great great granddaughters of Will and Bettie Mullins, who came to Haskell to farm in the early 1900's. The Mullins' farms were eight miles north of Haskell. Will Mullins originally farmed in Robertson County in southeast Texas. His grandfather, Ezekiel Mullins, was part of the original Robertson Colony that had a land grant to settle in Texas.

The oldest attending descendants at the reunion were twins Maple Thomas of Haskell and Weldon Smith of Pasadena, grandchildren of Will and Bettie Mullins. Youngest relative attending was Felicity Gentry of Abilene, great great granddaughter. Traveling from New York City was Michael Smith, great grandson, who came the longest distance.

Fay Campbell, granddaughter, of Floydada was mistress of ceremonies. Gaylon Amonett, grandson, of Lubbock was auctioneer for the crafts and gifts donated. Oldest living family

member is Mrs. Lora Mae Mullins, Haskell, daughter-in-law of Will and Bettie Mullins. Her husband was the late George Mullins of Haskell.

Attending descendants of the late Nettie Mullins Smith: Maple and John Thomas, Kristen and Chris Grand and children, Kay and Darrell Smith and children, Gwen Campbell, all of Haskell; John and Sue Holcombe, Olney; Weldon Smith and Michelle Smith, all of Pasadena; Donnie and Sharon Smith, Abilene; Shirley and Jim Reed, Azle; and Michael Smith, New York.

Attending descendants of the late Margaret Mullins Davis Hood: Juanita Davis, Munday; Rodney and Peggy Hamon, Leaday; Carolyn and J. B. Griffin, James and Pam Griffin and Kendyl, Mike, Phyllis, Stephen and Robin Ricker, all of Abilene; Mildred Offutt and Judy and R. W. Anderson, all of Weinert.

Attending descendants of the late Cevilla Mullins Smith: Nevada Cotton, James Cotton, Wilmer Smith, Teresa and Wilma, all of Milano.

Attending descendants of the late Alta Mullins Amonett: Roy and Omitea Amonett, Keith and Derinda Hannsz, all of Haskell; Jeremy and Denise Gentry and Felicity, J. R. and Kay Rodriguez, Dara and Erika, all of Abilene; Eldon Amonett, Denver City; Dorothy Strickland and Dakota, Rochester.

Attending descendants of the late Jessie Mullins Amonett: Fay and Arvil Lee Campbell, Floydada; Arvilla and Whitney James, Marjorie Reynolds, Ranessa Massey and Gaylon Amonett, all of Lubbock.

Attending descendants of the late Alma Mullins Pack: Wallace and Millie Pack, San Angelo; and Rudene Smethers, Houston.

Attending descendants of the late Louise Mullins Strickland: Pat Nicholson, Lubbock; Betty and Byron Lake, Rogers, Ark.

Attending descendants of the late George Mullins: G. W. and Bess Mullins, San Antonio; Jim and Delorise McMillen, Gainesville, Fla.; Manuel Mullins, Olney; Robbie Curry, Hobbs, N. M.; and Shana Parker, Spur.

Attending descendants of the late Johnnie Mullins: J. W. Mullins, Barbara and Frank Clarkson, all of Lubbock; Norma Dale and Dalton Linton, John and Jennifer Linton, all of Midland.

Special guests were: Milbert and Ladelle Opitz, Betsy and Jodi Langford, all of Haskell; J. C. and Lois McDonald of Eastland; and Holman and Dolly Mullins, Alvarado.

The fourth annual Mullins cousins reunion will be held the summer of 2001 in Haskell at the Haskell National Bank Community Room with Kay Smith, Kristen Grand and Betsy Langford co-chairing the food and location committees.

## Savings bonds can help with education

The Treasury Department offers a way to make paying for higher education a little less painful, according to Lou Gilly, County Extension Agent for Family and Consumer Sciences with the Texas Agricultural Extension Service in Haskell County.

While earnings from U. S. Savings Bonds are exempt from state and local taxes, you still have to report them for federal taxes. However, if you use savings bond proceeds to pay for qualified higher education expenses, you can exclude that interest from your federal income tax, too.

Here are the guidelines for taking advantage of this feature.

First, the education tax exclusion applies to I Bonds and Series EE savings bonds bought

### Paradise Ice

Now serving over 50 flavors of shaved ice.  
Open Mon.-Fri. 3-9 p.m.  
Sat. 1-9 p.m.; Sun. 1-6 p.m.  
Located at 700 S. Ave. F

All proceeds go to benefit Haskell Foursquare Church

Well, school has been underway for a week now and students are beginning new schedules. College students are either at their new homes or will be going there soon. And as usual, the weather continues to be hot and dry.

Rally day was observed for the Sunday School at Faith Lutheran as all classes resumed after a short vacation. Pastor Leaf will be instructing the new confirmation class during the Sunday School hour. The local branch of AAL served cinnamon rolls, juice and coffee for all before classes began. This was an added treat and everyone thanks them for the nice surprise.

The monthly community supper was held at the center last Mon. night with Charles and Dorothy Clark, Jacky and Peggy Tabor and Margaret hosting a sandwich and watermelon supper. The supper for Sept. will be held on the second Mon. night because of the Labor Day holiday. Ladies of the community are asked to bring desserts. The hosts for the Sept. meeting will be Ken and Jill Brown, Mike and Cheryl Hertel and Kraig and Leslie Kupatt. Present for the supper were: Alvin and Alice Bredthauer, Wilma Teichelman,

Tommy Wilson, Odene Dudensing, G. W. and Ophelia LeFevre, Mary Neinast, Corene Lowack, J. J. Gellner, Clancy and Helen Lehrmann, David and Leona Letz, J. B. and Dorothy Toney, Steve, M'Lynn and Joanna Lehrmann, Lynn, Renee, Abby, Emery, Molly and Jenny Dudensing, Mike, Cheryl, Kristin and Andrew Hertel, Jill, Ken, Kinsey, Tully and Cade Brown, Danny, Helen and Brittany Lammert, Vanessa, Jacob, Joshua and Michael Perez, Delbert and Joyce LeFevre, Billie Kupatt and Joe and Dorothy Clark.

Alvin and Ev Ulmer have returned home from a trip to Colorado where they visited their daughter, Jana and Keith Whitaker. Their daughter-in-law, Mary Ulmer, accompanied them.

The daughters of Minnie Monse attended the 16th Brand reunion at Orange Grove recently. Those attending were Doris Lehrmann of Rule, Isabell Mrazek of Aspermont, Bubba Mrazek of New Braunfels, Geneva and Virgil Vahlenkamp of Denton and their grandsons from Colorado. There were 63 family members attending the reunion and everyone enjoyed the time together. There were some cousins there that the Monse daughters had not seen since coming to Sagerton. Doris and Isabel stayed with Isabel's granddaughter in Cibola and on Fri.

night they spent the night with Mrs. Monse's youngest and only sister. They also visited with Isabell's sisters-in-law in Robstown and Driscoll. They returned home Mon. after leaving Rule on Thurs. They reported that it was dry everywhere they went. Like everyone would say, there's no place like home.

The Friendship Club met Thurs. noon at Faith Lutheran Church for its regular monthly noon meal and fellowship. The birthday song was sung for Frances Clark, Gladys Vahlenkamp and Ed Fouts and the anniversary song was sung for J. B. and Dorothy Toney. Those enjoying the day together were Herbert and Gladys Vahlenkamp, J. B. and Dorothy Toney, Odene Dudensing, Delbert and Joyce LeFevre, Frances Clark, Joe and Dorothy Clark, Alvin and Ev Ulmer, Ed Fouts, Lagry LeFevre, Pastor Tommy Wilson and Don Comedy.

Alvin and Alice Bredthauer were in Brownwood Sat. for the 60th wedding anniversary for a cousin's of Alice's, Bill and Hanna Lippe. The ceremony was held at Grace Lutheran Church. Following the service in the church a reception was held in the fellowship hall. The Bredthauers enjoyed visiting with a former Sagerton resident, Emory Muehlbradt.

## Haskell School Menu

### Aug. 28-Sept. 1 Breakfast

Juice and milk are served daily on the breakfast menu.

**Monday:** Breakfast on a stick  
**Tuesday:** Breakfast burrito  
**Wednesday:** Elem. Pigs in a blanket; Sec: Breakfast pockets  
**Thursday:** Sausage/biscuit  
**Friday:** 1/2 peanut butter and jelly sandwich, fresh apple

**Lunch**  
A choice of baked potato with choice of topping or a salad bar is offered daily at the Secondary campus. Ala-carte line offered daily Secondary only. Snack bar Wednesday only-Secondary. Milk and assorted drinks are served daily

at the Secondary campus. Milk and juice are served daily at the Elementary School.

**Monday:** Chicken on a bun, lettuce/tomatoes, pickle spears, banana cake

**Tuesday:** Enchiladas, refried beans, tortilla chips, garden salad, sliced peaches

**Wednesday:** Chicken spaghetti, fried squash, green beans, hot rolls, ice cream

**Thursday:** Cheeseburger, lettuce/tomato, French fries, orange wedges

**Friday:** Chicken fried steak w/cream gravy, garden salad, hot rolls, gelatin w/fruit cocktail and topping

## Paint Creek School Menu

### Aug. 28-Sept. 1 Breakfast

Milk and juice are served daily. Cereal is offered daily.

**Monday:** Honey buns  
**Tuesday:** Waffles  
**Wednesday:** Bacon & eggs  
**Thursday:** Cereal  
**Friday:** Sausage on a stick

**Lunch**  
Milk and tea are served daily.  
**Monday:** Chili dog, cheese tots,

Jello  
**Tuesday:** Chicken strips, gravy, creamed potatoes, biscuits, peach cobbler

**Wednesday:** German sausage, beans, potato salad, cornbread, applesauce

**Thursday:** Hamburgers, chips, lettuce, tomatoes, cheese, pickles, brownies

**Friday:** Hoagie sandwiches, pears, ice cream

## ECC Calendar and Menu

### Mon., Aug. 28

Lunch-Chicken enchilada, Spanish rice, refried beans, tossed salad, Jello, bread, milk, tea or coffee

### Wed., Aug. 30


Outreach Health Service blood pressure check  
Lunch-Pizza, English peas, lettuce and tomato salad, refrigerator cheese dessert, milk, tea or coffee

### Fri., Sept. 1

Lunch-Beef brisket, BBQ sauce, potato salad, mixed vegetables, onions, fruit cobbler, bread, milk, tea or coffee

Announcements begin at 11:45 a.m. followed by lunch.

All over 60 are invited to come and eat. Call 864-3875 for transportation to the center or for home delivered lunches for the sick or disabled.



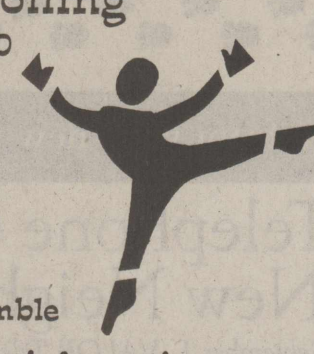
Like what you're reading?  
Call 940-864-2686 to subscribe.

## Tumble Factory

Now Enrolling  
REGISTRATION 2000  
Tues., Aug. 29  
5:00 - 6:00 p.m.

Classes available:  
All boys class  
4 yrs. and up  
Advanced cheer and tumble

Call today for more information  
Deanne Morgan 864-3786



Residents of Haskell County,

We have all heard so many pros and cons on the subject of the regional jail facility being built in our area, and while it is not my character to voice my opinions publicly, I feel compelled to do so concerning this issue.

The letter from the retired couple in Jud in the last issue of the Free Press really set me off . . . I don't know who told them this county was supposed to be some sort of exclusive retirement resort area, totally detached from the real world, but as a citizen having spent most of my adult life in Haskell, I have always felt that the attitude of the Haskell communities was a desire to offer something to ALL types of people.

I don't think I understand the real root of all the controversy, is it because the idea of a "prison" in our area conjures up fears for our safety, or is it that any idea of change is too hard for some people to accept? I tend to believe the latter.

How can we forget about the families in our county that want to keep their children in a "small town" school and those that realize the benefits of raising a family in a community such as ours? What about parents that are unable to obtain suitable employment (those who do not work via the Internet as do the couple from Jud)? They are being forced to relocate.

I can remember the Haskell city square when it was buzzing with successful businesses, one could find just about anything here, now with the empty storefronts and dwindling prosperity, we have to go out of town to buy what we need. How far gone do we have to get before the realization sets in that we need some kind of progress for our county?

My husband, W. L., and I love this community, it is "coming home" for him after almost 30 years of military service. Even though we were both in Haskell on a temporary basis when we met a few years ago, after deciding to marry, we chose to stay and make Haskell our home. Even though my husband is technically "retired", we both have many years left for earning potential, and he has already sacrificed his qualifications for employment, just for the sake of staying in Haskell, in the hopes of economic improvement on the horizon.

Even though Haskell will always be our "home" . . . my sons were born here, a major part of their school years spent in Haskell schools, my daughter graduated high school here, we have family and friends here . . . but despite the strong ties we feel to this community, I have to say, in all honesty, that if the economic situation continues to regress in our area, we will certainly have to seriously consider moving to a town with something more to offer.

We are concerned about the generations to follow, our children and grandchildren cannot realistically have a future in Haskell as it stands today. We feel, in our family, that given a choice, it should not be this way . . . and isn't that what we are being given . . . a choice? How can we close the door to opportunity?

Respectfully,

Karen Wolf (and Lt. Col. W. L. Wolf, USMC Ret.)

Pd. for by Karen Wolf and Lt. Col. W. L. Wolf, USMC Ret.

## Sagerton News

By Dorothy M. Clark

### Take Advantage of the VARIABLES

Invest with the names you know and trust.

**SOUTHERN FARM BUREAU LIFE NOW OFFERS T. ROWE PRICE AND FIDELITY INVESTMENT OPTIONS!**

A Variable Annuity contract from Southern Farm Bureau Life offers quality investment choices. Choose from T. Rowe Price or Fidelity funding options. Call today for a free insurance and investment review and develop a strategy that fits your individual needs.

Kenny Tanner 864-2647

**FARM BUREAU LIFE**

Southern Farm Bureau Life Insurance Company  
Jackson, Mississippi

Securities products and services offered through: Southern Farm Bureau Fund Distributor, Inc., 1401 Livingston Lane, Jackson, MS 39215, 601-981-7422 Southern Farm Bureau Life Insurance Company, Jackson, MS

For more information, obtain a prospectus from your registered representative. You should carefully read the prospectus before investing in the Variable Annuity contract. The value of the Variable Annuity subaccounts will fluctuate, and when redeemed, your contract may be worth more or less than your original investment.

® Fidelity Investments is a registered trademark of FMR Corporation.  
© FBL 2000 289

## Get Connected . . .

Local Internet Access  
Local Tech Support  
Free Software  
Multiple Free E-mail Accounts  
Free Home page  
No set-up fee  
Unlimited Access

\$19.95 per month or \$16.95 per month if paid annually

## West Texas Internet

Locally Owned and Operated  
864.8124 • www.westex.net • administrator@westex.net  
Haskell

# CLASSIFIEDS

## Public Notices

TO ALL QUALIFIED ELECTORS OF HASKELL COUNTY, TEXAS  
 NOTICE OF ELECTION AUTHORIZING ISSUANCE OF BONDS AND LEVYING OF TAX THEREFOR  
 ORDER CALLING AN ELECTION FOR THE AUTHORIZATION TO ISSUE GENERAL OBLIGATION BONDS AND LEVYING OF A TAX IN PAYMENT THEREFOR; PROVIDING FOR THE CONDUCT OF SAID ELECTION; AND MAKING OTHER PROVISIONS RELATED THERETO

WHEREAS, the Commissioners' Court of Haskell County, Texas deems it necessary and advisable to call an election in accordance with Chapter 1251, Texas Government Code and, the general and special election laws of the State of Texas.

NOW, THEREFORE, BE IT ORDERED BY THE COMMISSIONERS' COURT OF HASKELL COUNTY, TEXAS THAT:

Section 1: An election shall be held within the boundaries of Haskell County, Texas on the 12th day of September, 2000, which date is not less than fifteen (15) nor more than thirty (30) days from the date of this Order for the purpose of submitting to the qualified electors residing therein the following proposition:

### PROPOSITION

"Shall the Commissioners' Court of Haskell County, Texas be authorized to issue general obligation bonds of Haskell County, Texas in the principal amount of \$5,600,000, to provide funds for constructing and equipping a jail, including land therefor, for the joint use of, and ownership by Haskell County, Texas and the City of Haskell, Texas, such bonds to be issued in one or more series or issues, to mature serially or otherwise not more than forty (40) years from the date of issuance, and to be issued and sold at any price or prices and bear interest at any rate or rates (not to exceed the maximum rate allowed by law) that shall be determined within the discretion of the Commissioners' Court of Haskell County, Texas; and to levy annually an ad valorem tax on all taxable property within Haskell County, Texas, in an amount sufficient to pay the annual interest on said general obligation bonds and to provide a sinking fund to redeem the bonds at maturity for said general obligation bonds not to exceed \$.80 on each \$100.00 valuation of taxable property in any one year?"

Section 2: Paper ballots shall be used in said election and said official ballots shall be prepared in accordance with the Texas Election Code, so as to permit qualified electors to vote "FOR" or "AGAINST" the aforesaid proposition which shall be set forth in substantially the following form:

### PROPOSITION

"The issuance of \$5,600,000 of

general obligation bonds for constructing and equipping a jail and levying of tax and payment thereof."

The word "FOR" and beneath it the word "AGAINST" shall be made to appear below the proposition and on the left of the words "FOR" and "AGAINST" each elector shall place an "X" in the square beside the statement indicating the way he or she wishes to vote.

Section 3: For purposes of conducting the election, (in accordance with Section 43.002, Texas Election Code) pursuant to recommendation of the County Clerk, Haskell County is divided into ten (10) election precincts, such election precincts, respective polling places and the election officers (each of which meeting the general eligibility requirements of Section 32.051, Texas Election Code) appointed being as follows:

Precinct Number 1. Polling Place: Catholic Church Activity Center, North 16th, Haskell, Texas. Election Officers: Randy Bowers/Flora Pace.

Precinct Number 2. Polling Place: Assembly of God Church, North Ave. E, Haskell, Texas. Election Officers: Paul Hudspeth/Bobby Howard.

Precinct Number 3. Polling Place: Extension Building, South Ave. D, Haskell, Texas. Election Officers: Grace Thomas/Glen Merchant.

Precinct Number 4. Polling Place: Experienced Citizens Center, South First Street, Haskell, Texas. Election Officers: Emily Medford/Ruby Turner.

Precinct Number 5. Polling Place: High School Gym, Rule, Texas. Election Officers: Pat Kittle/June White.

Precinct Number 6. Polling Place: Fire Department, Rochester, Texas. Election Officers: Susan Turner/Ruby Cockerell.

Precinct Number 7. Polling Place: City Hall, O'Brien, Texas. Election Officers: Mary Ann Palma/Audie Johnston.

Precinct Number 8. Polling Place: Weinert School Building, Weinert, Texas. Election Officers: Joyce Hager/Joyce Robertson.

Precinct Number 9. Polling Place: School Library, Paint Creek, Haskell County. Election Officers: David Lee Brown/Wallar Overton.

Precinct Number 10. Polling Place: Community Room, Sagerton, Texas. Election Officers: Renee Dudensing/Joe Clark.

Early voting ballots shall be counted by a canvassing board and the following persons are appointed to said board to wit:

Brian Burgess, Presiding Judge; Frances Bowen, Alternate Presiding Judge.

That each of the Presiding Judges herein appointed shall appoint not less than two (2) nor more than seven (7) clerks to serve and assist in holding said election provided that if the Presiding Judge of each polling place actually serves, the alternate Presiding Judge shall be one of the clerks.

On election day, except as provided in Section 41.032 Texas Election Code, the polls shall be open

from 7:00 a.m. to 7:00 p.m.

Section 4: That early voting for this election shall be conducted by personal appearance and by mail or other lawful means. There shall be one early voting place to wit: the office of the County Clerk, Haskell County Courthouse, One Ave. D, Haskell, Texas; and Rhonda Moeller, the County Clerk of Haskell County, Texas, is the early voting clerk for early voting. Deputy Clerks for early voting are hereby designated to be Frances Silba and Lesa Meier. In accordance with Section 85.001, Texas Election Code, the hours hereby established for early voting by personal appearance shall be on August 28, 2000 through September 8, 2000 from 8:00 a.m. to 5:00 p.m. (which are the hours that the County Clerk's main business office is regularly open for business) on each day except Saturdays, Sundays and official state holidays. Early voting by mail shall be to the above address.

Section 5: All qualified electors residing within the boundaries of Haskell County, Texas shall be permitted to vote at said election. The holding and conduct of said election shall be in accordance with the Texas Election Code, and applicable general laws and laws regarding county elections. In accordance with Section 1251.003 Texas Government Code and Section 4.003 Texas Election Code. Notice of this election shall be given to all qualified electors in Haskell County, Texas in the following manner:

A notice composed of the words "TO ALL QUALIFIED ELECTORS OF HASKELL COUNTY, TEXAS - NOTICE OF ELECTION AUTHORIZING ISSUANCE OF BONDS AND LEVYING OF TAX THEREFOR" followed by a copy of this Order shall be posted not later than the 21st day before election day in three public places in Haskell County, Texas, and on the bulletin board used for

posting notices of Commissioners' Court meetings and in each election precinct and in the County Courthouse and published in a newspaper of general circulation in Haskell County, Texas and meeting the requirements of Section 4.003(a)(1)(A) or (B) Texas Election Code once a week on the same day in each of two successive weeks, the first publication to be not less than fourteen (14) days before the date of the election.

Section 7: In compliance with Chapter 272 of the Texas Election Code, all election materials will be printed in English and Spanish, including election materials used for early voting.

Section 8: The Commissioners' Court of Haskell County, Texas hereby finds and declares that the holding of this election on a date other than a uniform election date is set forth in Section 41.001 Texas Election Code is in the public interest.

Section 9: If for any reason any

section, paragraph, subdivision, clause, phrase, word, or provision of this Order, or the application thereof, shall be held invalid or unconstitutional by final judgment of a court of competent jurisdiction it shall not affect any other section, paragraph, subdivision, clause, phrase, word, or provision of this Order, or the application thereof to other circumstances, for it is the definite intent of the Commissioners' Court that every section, paragraph, subdivision, clause, phrase, word, or provision hereof be given full force and effect for its purpose and the Commissioners' Court declares that this Order would have been enacted without such invalid provision.

PASSED AND ADOPTED this 14th day of August, 2000.  
 County of Haskell, Texas  
 David C. Davis  
 County Judge  
 Attest:  
 Rhonda Moeller  
 County Clerk

## This Week's Devotional Message:



THE FAMILY STRUCTURE REMAINS THE BEST HUMAN RELATIONSHIP

Many households are quite diversified these days in the lifestyles and interests of the members, as well as in the biological sense because of step-children and half-brothers and sisters living under one roof. Indeed, many families find it hard to remember the last time they all had dinner together. Some of this is unavoidable, as in the case of a father who must travel on business or a mother involved in committee work for a worthy

cause. However, the family members should make an effort to be together whenever possible, to discuss problems or just to have some kind of fun that spans the generation gap. Moreover, they should attend their House of Worship regularly, for this will help to cement the bonds. The family circle should be an unbroken one; a center of love and a haven of refuge from the outside world.

## ATTEND CHURCH THIS SUNDAY

### HASKELL

#### East Side Baptist Church

David Page, pastor  
 Sun. 8:30 a.m., 9:45 a.m., 11 a.m., 6 p.; Wed. 7 p.m.

#### Christian Church

Dusty Garrison, minister  
 Sun. Morn. 9:45 a., 10:45 a., 6 p.m.; Wed. 7 p.m.

#### Church of God

Eric Clark, pastor • 864-2021  
 Sun. 9:45 a.m., 11 a.m., 6 p.m., Wed. 7:00 p.m.

#### Trinity Lutheran Church

Gary Bruns, pastor  
 Sunday School 9:30 a.m., Worship 10:30

#### Iglesia Bautista El Calvario

Sun. Morn. 9:45 a., 10:45 a.m., 5 p.m.; Wed. 7 p.m.

#### First United Methodist Church

Shane Brue, pastor  
 Sun. Morn. 9:45 a.m., 10:50 a.m. 6 p.m.; Wed. 6 p.m.

#### First Assembly of God

Rev. J.C. Amburn  
 Sun. Morn. 9:45 a., 10:45 a.m., 6 p.m.; Wed. 7 p.m.

#### St. George Catholic Church

Father Michael Melcher  
 Sat. Mass 7:15 p.m.; Sun. Morn. 9:00 a.m.

#### Church of Christ

Brett Anderson, minister  
 Sun. Morn. 9:30 a., 10:30 a., 6 p.m.; Wed. 7:30 p.m.

#### First Presbyterian Church

Luther S. Hollowell, II, pastor  
 Sun. Morn. 9:45 a.m., 11:00 a.m.

#### Trinity Baptist Church

Rev. Kenneth Blair  
 Sun. Morn. 10 a., 11 a., 6:30 p.m.; Wed. 7:30 p.

#### Hopewell Baptist Church

John Lewis, pastor  
 Sun. Morn. 9:30 a.m., 11:00 a.m.; Wed. 7 p.m.

#### Greater Independent Baptist Church

Bobby Ray Wade, pastor  
 Sun. Morn. 9:30 a., 11:00 a., 6:30 p.; Wed. 7 p.

#### New Covenant Foursquare

Bill and Renee Glass, pastors  
 Sun. Morn. 10:00 a.m., 11:00 a.m.

#### Mission Revival Center

Rev. William Hodge  
 Sun. Morn. 10 a.m., 11 a.m., 6 p.m.; Tues. 6 p.m.

#### First Baptist Church

Kevin Hall, pastor  
 Sun. Morn. 9:45 a., 10:55 a., 6 p.m.; Wed. 7 p.m.

#### Church in the Park

Rev. Tim and Suzann Townsend  
 Sun. Morn. 10:30 a.m. Wed. 7 p.m.

#### PAINT CREEK

#### Paint Creek Baptist Church

Sun. Morn. 10:00 a.m., 11:00 a.m., 6 p.m.

#### WEINERT

#### First Baptist Church

Chris Powell, pastor  
 Sun. Morn. 10 a.m., 11 a.m., Wed. 7 p.m.

#### Weinert Foursquare Church

Rev. Robert Harrison  
 Sun. Morn. 10 a.m., 11 a.m. Wed. 7 p.m.

#### ROCHESTER

#### Church of Christ

Steve Willis, minister  
 Sun. Morn. 9:45 a., 10:45 a., 6 p.m.; Wed. 6 p.m.

#### First Baptist Church

Troy Culpepper, pastor  
 Sun. 11:00 a.m., 6 p.m.; Wed. 7:00 p.m.

#### Union Chapel Baptist Church

Rev. Clarence Walker  
 Sun. Morn. 9:45 a., 10:45 a., 6 p.m.; Wed. 7 p.m.

#### Faith Chapel of Rochester

Katherine Byrd, minister  
 Sun. Morn. 10 a.m., 11 a.m., 7 p.m.

#### First United Methodist Church

Doan Brinson, pastor  
 Sun. Morn. 10:00 a.m., 11:00 a.m.

#### SAGERTON

#### Sagerton Methodist Church

Tommy Wilson, pastor  
 Sun. Morn. 9:30 a.m.

#### Faith Lutheran Church

Stan Leaf, pastor  
 Sun. Morn. 9:15 a.m., 10:30 a.m.; Wed. 7 p.m.

#### RULE

#### First Baptist Church

Scott Hensley, pastor  
 Sun. Morn. 9:45 a., 11:00 a., 6 p.m.; Wed. 7 p.m.

#### Primitive Baptist Church

Dale Turner Jr., pastor  
 First & Third Sundays 10 a.m.

#### Church of Christ

John Greeson, minister  
 Sun. Morn. 9:45 a., 10:40 a., 6 p.m.; Wed. 7 p.m.

#### First United Methodist Church

Shane Brue, pastor  
 Sun. Morn. Worship 9 a.m.

#### New Life Baptist Mission

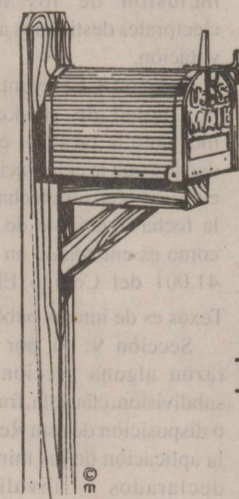
Jesus Herrera  
 Sun. Morn. 10:00 a.m., 11:00 a.m.

#### Sweet Home Baptist Church

Vergil Smith, pastor  
 Sun. Morn. 10:00 a., 11:00 a., 6 p.; Wed. 7 p.m.

#### West Bethal Baptist Church

Rev. Robert Sweet  
 Sun. Morn. 10 a., 11 a., 8 p.m.; Wed. 7:30 p.m.



Like what you're reading?

We'll send it to you each week for just \$20 a year. (in Haskell County)

Name \_\_\_\_\_  
 Address \_\_\_\_\_  
 City \_\_\_\_\_ State \_\_\_\_\_ Zip \_\_\_\_\_

Clip and Mail Coupon, Along with Check or Money Order to:

**The Haskell Free Press**

P. O. Box 555, 401 S. First, Haskell, TX 79521  
 Yearly Subscription Rates

\$20 a year in county • \$28 out-of-county

### Sonic Drive-In

1402 N. Ave. E  
 864-8533  
 Managers: Leon & Carolyn Herring

### Steele Machine

Hwy. 280 • 864-2208

### Modern Way Food Store

1202 N. Ave. E • 864-3763

### Jay's Tire Center

506 N. 1st East • 864-2908  
 "See You In Church"

### Smitty's Auto Parts

204 N. 1st St. • 864-2607

### HANSON PAINT & BODY SHOP

207 S. 1st • 864-3631  
 Professional Auto Body Repair  
 Glass Installation • 24 Hour Wrecker Service

### Rule Co-op Gin & Elevator

301 Adams • Rule • 997-2421

### Attend Church This Sunday

### Rice Springs Care Home, Inc.

1302 N. 1st • 864-2652  
 Medicare • Medicaid • Therapy

Committed To Excellence In Service

### Personality Slipper Shoppe

413 S. 1st (South Side of Square)  
 864-2501 and 864-3051  
 "One Stop Shopping"

### McGee's Lumber Yard

105 N. 1st

### The Haskell Free Press

"The People's Choice"  
 401 S. First • Haskell  
 940-864-2686

Serving Haskell County Since 1886

### Sport About of Haskell

864-3891 • "Where Winners Shop"

# CLASSIFIEDS

A TODOS LOS ELECTORES DEL CONDADO DE HASKELL, TEXAS: AVISO DE ELECCIONES PARA AUTORIZAR LA EMISION DE BONOS Y EXACCION DEL IMPUESTO CORRESPONDIENTE ORDEN QUE CONVOCA A ELECCIONES PARA OBTENER LA AUTORIZACION DE EMITIR BONOS DE LA DEUDA GENERAL Y EXIGIR UN IMPUESTO EN PAGO POR LOS MISMOS: DISPONE LA CONDUCCION DE DICHAS ELECCIONES; E INTRODUCE OTRAS DISPOSICIONES RELACIONADAS CON LAS MISMAS.

CONSIDERANDO que el Tribunal de Comisarios del Condado de Haskell, Texas juzga necesario y aconsejable convocar a elecciones de conformidad con el Capitulo 1251 del Código del Gobierno de Texas y con las leyes electorales generales y especiales del Estado de Texas.

AHORORA, POR LO TANTO, CONSIDERESE ORDENADO POR EL TRIBUNAL DE COMISARIOS DEL CONDADO DE HASKELL, TEXAS QUE:

Sección 1: Se celebrarán elecciones dentro de los límites del Condado de Haskell, Texas el día 12 de septiembre de 2000, fecha esta posterior a la de esta Orden por no menos de quince (15) días y por no más de (30) días, a fin de presentar ante los electores cualificados allí residentes la siguiente proposición:

**PROPOSICION**

Debe ser autorizado el Tribunal de Comisarios del Condado de Haskell, Texas a emitir bonos de la deuda general del Condado de Haskell, Texas por la cantidad principal de \$5.600.000, a fin de proveer fondos para la construcción y equipamiento de una cárcel, incluyendo el terreno que ésta ocupe, para ser propiedad del Condado de Haskell, Texas, y ser usada conjuntamente por dicho condado y la Ciudad de Haskell, Texas, bonos estos a ser emitidos en una o más series o emisiones, que vencerán en serie o de lo contrario no más de cuarenta (40) años después de la fecha de su emisión, y para ser emitidos y vendidos a cualquier precio o precios y rendir interés a cualquier tasa o tasas (no mayor de la tasa máxima permitida por la ley) que será fijada según la discreción del Tribunal de Comisarios del Condado de Haskell, Texas, y para exigir anualmente un impuesto ad valorem sobre toda la propiedad imponible dentro del Condado de Haskell, Texas en una suma suficiente para pagar el interés anual sobre dichos bonos de la deuda general y proveer un fondo de amortización para redimir dichos bonos de la deuda general en su correspondiente fecha de vencimiento que no sobrepase la cantidad de \$0,80 por cada valuación de \$100,00 de propiedad imponible en cualquier lapso de un año?

Sección 2: Se usarán boletas de papel en dichas elecciones y dichas boletas oficiales serán preparadas de conformidad con el Código Electoral de Texas, de modo de permitir que los electores cualificados voten "A FAVOR" o "EN CONTRA" de la proposición antedicha que será enunciada sustancialmente de la siguiente forma:

**PROPOSICION**

"La emisión de \$5.600.000 en bonos de deuda general para la construcción y equipamiento de una cárcel y la exacción de un impuesto y el pago del mismo". Se hará aparecer el término "A FAVOR", a continuación del mismo, el término "EN CONTRA" debajo de la proposición, y a la izquierda de los términos, "A FAVOR" y "EN CONTRA" cada elector deberá marcar con una "X" la casilla al lado del enunciado que indica la manera en que desea votar.

Sección 3: Para fines de la conducción de las elecciones (de conformidad con la Sección 43.002 del Código Electoral de Texas), en virtud de la recomendación del Secretario del Condado, el Condado de Haskell se ha dividido en diez

(10) distritos electorales, siendo dichos distritos electorales, los respectivos centros electorales y los funcionarios electorales (cada uno de ellos en cumplimiento de los requisitos de elegibilidad generales de la Sección 32.051 del Código Electoral de Texas) designados como se indica a continuación:

Número Del Distrito 1. Centro Electoral: Centro de Actividades de la Iglesia Católica, 16° Norte, Haskell, Texas. Funcionarios Electorales: Randy Bowers/Flora Pace.

Número Del Distrito 2. Centro Electoral: Iglesia Asamblea de Dios, Av. Norte Este, Haskell, Texas. Funcionarios Electorales: Paul Hudspeth/Bobby Howard.

Número Del Distrito 3. Centro Electoral: Edificio Extensión, Av. D Sur, Haskell, Texas. Funcionarios Electorales: Grace Thomas/Glen Merchant.

Número Del Distrito 4. Centro Electoral: Centro de Ciudadanos Expertos, Calle Primera Sur, Haskell, Texas. Funcionarios Electorales: Emily Medford/Ruby Turner.

Número Del Distrito 5. Centro Electoral: Centro Electoral: Gimnasio de la Escuela Secundaria, Rule, Texas. Funcionarios Electorales: Pat Kittley/June White.

Número Del Distrito 6. Centro Electoral: Cuerpo de Bomberos, Rochester, Texas. Funcionarios Electorales: Susan Turner/Ruby Cockerell.

Número Del Distrito 7. Centro Electoral: Ayuntamiento, O'Brien, Texas. Funcionarios Electorales: Mary Ann Palma/Audie Johnston.

Número Del Distrito 8. Centro Electoral: Edificio de la Escuela, Weinert, Texas. Funcionarios Electorales: Joyce Hager/Joyce Robertson.

Número Del Distrito 9. Centro Electoral: Biblioteca Escolar, Paint Creek, Condado de Haskell, Texas. Funcionarios Electorales: David Lee Brown/Wallar Overton.

Número Del Distrito 10. Centro Electoral: Salón de la Comunidad, Sagerton, Texas. Funcionarios Electorales: Renee Dudensing/Joel Clark.

Las primeras boletas electorales serán contadas por una junta de escrutinio y se asignarán a dicha junta las siguientes personas en calidad de testigos:

Brian Burgess, Juez Presidente. Frances Bowen, Juez Presidente Alterno.

Que cada uno de los Jueces Presidentes designados mediante la presente deberá designar no menos de dos (2) ni más de siete (7) secretarios para prestar servicio y tomar parte en la celebración de dichas elecciones a condición de que si el Juez Presidente de cada centro electoral en efecto presta sus servicios, el Juez Presidente Alterno se desempeñará como secretario.

El día de las elecciones, exceptuando lo dispuesto en la Sección 41.032 del Código Electoral de Texas, las urnas permanecerán abiertas de 7:00 a.m. a 7:00 p.m.

Sección 4. Esa primera votación de estas elecciones será efectuada por comparecencia física y por correo o por otros medios lícitos. Habrá un único primer centro electoral, a saber: la oficina del Secretario del Condado, Palacio de Justicia del Condado de Haskell, Av. Uno D. Haskell, Texas; y Rhonda Moeller, la Secretaria del Condado de Haskell, Texas, es la secretaria de la primera votación. Mediante la presente se designa que los subsecretarios de la primera votación son Frances Silba y Lesa Meier. De conformidad con la Sección 85.001 del Código Electoral de Texas, el horario establecido mediante la presente para la primera votación por comparecencia física durante el lapso comprendido entre el 28 de agosto de 2000 y el 8 de septiembre de 2000 será de 8:00 a.m. a 5:00 p.m. (que coincide con el horario en que regularmente está abierta al público la oficina del Secretario del Condado) todos los días, excepto los sábados, domingos y fiestas oficiales del Estado. La primera votación por correo se dirigirá a la dirección antes mencionada.

Sección 5: Se les deberá permitir a todos los electores cualificados que residen dentro de los límites del Condado de Haskell, Texas votar en dichas elecciones. La celebración y conducción de dichas elecciones deberán estar en conformidad con el Código Electoral de Texas y demás leyes generales pertinentes y leyes relativas a las elecciones del condado. De conformidad con la Sección 1251.003 del Código del Gobierno de Texas y la Sección 4.003 del Código Electoral de Texas. Se les dará aviso de estas elecciones a todos los electores cualificados en el Condado de Haskell, Texas de la siguiente forma:

Un aviso cuyo texto reza "A TODOS LOS ELECTORES DEL CONDADO DE HASKELL, TEXAS: AVISO DE ELECCIONES PARA AUTORIZAR LA EMISION DE BONOS Y EXACCION DEL IMPUESTO CORRESPONDIENTE" seguido de una copia de esta Orden será publicado a más tardar el 21° día anterior a las elecciones en tres sitios públicos del Condado de Haskell, Texas y en el tablero de anuncios utilizado para publicar avisos del Tribunal de Comisarios y en cada centro electoral y en el Palacio de Justicia del Condado, y será anunciado en un periódico de circulación general en el Condado de Haskell, Texas y en cumplimiento de los requisitos de la Sección 4.003 (a)(1)(A) o (B) del Código Electoral de Texas una vez a la semana, el mismo día, durante dos semanas consecutivas, tomando lugar la primera publicación no menos de catorce (14) días antes de la fecha de las elecciones.

Sección 7: De conformidad con el Capitulo 272 del Código Electoral de Texas, todos los materiales electorales se imprimirán en los idiomas inglés y español, con inclusión de los materiales electorales destinados a la primera votación.

Sección 8: El Tribunal de Comisarios del Condado de Haskell, Texas mediante la presente encuentra y declara que la celebración de estas elecciones en otra fecha que no sea la fecha invariable de elecciones como es enunciado en la Sección 41.001 del Código Electoral de Texas es de interés público.

Sección 9: Si por cualquier razón alguna sección, párrafo, subdivisión, cláusula, frase, palabra o disposición de esta Orden o la aplicación de los mismos fueran declarados inválidos o inconstitucionales por el juicio final de un tribunal de jurisdicción competente, éste no afectará ninguna otra sección, párrafo, subdivisión, cláusula, frase, palabra o disposición de esta Orden o la aplicación de los mismos a otras circunstancias, porque es la intención precisa del Tribunal de Comisarios que se les conceda a todas las secciones, párrafos, subdivisiones, cláusulas, frases, palabras y disposiciones de la presente Orden plena validez y efecto para su finalidad, y el Tribunal de Comisarios declara que esta Orden habría sido promulgada entonces sin incluir la disposición en cuestión.

**APROBADA Y ADOPTADA este 14th día de August de 2000. CONDADO DE HASKELL, TEXAS**

David C. Davis  
Juez del Condado  
Da fe:  
Rhonda Moeller  
Secretaria del Condado  
34-35c

**PUBLIC NOTICE**

The Haskell County Appraisal District will be accepting sealed bids on 23 properties. 7 in Haskell, 6 in O'Brien, 4 in Rochester, 5 in Rule and 1 in Sagerton. Information about these properties is available at the Haskell County Appraisal District at 604 N. 1st in Haskell, Texas. (940) 864-3805. Sealed bid information packets are available at the Appraisal District Office. Sealed bids will be opened at the September 14th Board of Directors Meeting at 7:30 a.m. Bids need to be at the Appraisal Office by 4:00 p.m. September 13, 2000. The Board of Directors of the Haskell County Appraisal District, has the right to accept and/or reject any and/or all bids. 33-34c

**NOTICE**

Pursuant to Section 152.905 of the Local Government Code of the State of Texas, a public hearing will be held to set the annual compensation of the Official Court Reporter of the 39th Judicial District, at Haskell, Texas, in the District Courtroom on September 15, 2000, at 10:00 a.m. 34c

**NOTICE**

Haskell County Commissioner's Court will accept sealed bids until 10:00 a.m. on September 11, 2000 at the office of the County Judge in the Haskell County Courthouse, Haskell, Texas to replace the roofs on the Haskell County Courthouse and the Haskell County Library. Specifications may be obtained from the office of the County Judge. Haskell County reserves the right to accept or reject any or all bids.

David C. Davis  
County Judge 34-35c

**TO ALL QUALIFIED ELECTORS OF HASKELL COUNTY, TEXAS - NOTICE OF ELECTION AUTHORIZING ISSUANCE OF BONDS AND LEVYING OF TAX THEREFOR RESOLUTION CALLING AN ELECTION FOR THE AUTHORIZATION TO ISSUE GENERAL OBLIGATION BONDS AND LEVYING OF A TAX IN PAYMENT THEREFORE: PROVIDING FOR THE CONDUCT OF SAID ELECTION; AND MAKING OTHER PROVISIONS RELATED THERETO**

WHEREAS, the City Council of the City of Haskell, Texas deems it necessary and advisable to call an election in accordance with Chapter 1251, Texas Government Code and, the general and special election laws of the State of Texas. NOW, THEREFORE, BE IT RESOLVED BY THE CITY COUNCIL OF THE CITY OF HASKELL, TEXAS THAT:

Section 1: An election shall be held within the boundaries of Haskell County, Texas on the 12th day of September, 2000, which date is not less than fifteen (15) nor more than thirty (30) days from the date of this Resolution for the purpose of submitting to the qualified electors residing therein the following propositions:

**PROPOSICION**

"Shall the City Council of the City of Haskell, Texas be authorized to issue general obligation bonds of the City of Haskell, Texas in the principal amount of \$4,700,000, to provide funds for constructing and equipping a jail, including land therefor, for the joint use of, and ownership by Haskell County, Texas and the City of Haskell, Texas, such bonds to be issued in one or more series or issues, to mature serially or otherwise not more than forty (40) years from the date of issuance, and to be issued and sold at any price or prices and bear interest at any rate or rates (not to exceed maximum rate allowed by law) that shall be determined within the discretion of the City Council of Haskell County, Texas; and to levy annually an ad valorem tax on all taxable property within the City of Haskell, Texas in an amount sufficient to pay the annual interest on said general obligation bonds and to provide a sinking fund to redeem bonds at maturity for said general obligation bonds not to exceed \$1.50 on each \$100.00 valuation of taxable property in any one year?"

Section 2: Paper ballots shall be used in said election and said official ballots shall be prepared in accordance with the Texas Election Code, so as to permit qualified electors to vote "FOR" or "AGAINST" the aforesaid propositions which shall be set forth in substantially the following form:

**PROPOSICION**

"The issuance of \$4,700,000 of general obligation bonds for constructing and equipping a jail and levying of a tax and payment thereof". The word "FOR" and beneath it the word "AGAINST" shall be made to appear below each proposition and on the left of the words "FOR" and "AGAINST" and each elector shall place an "X" in the square beside the statement indicating the way he or she wishes to vote.

Section 3: For purposes of conducting the election, the City of Haskell, Texas is divided into one (1) election precincts, such election precincts, respective polling places and the election officers (each of which meeting the general eligibility requirements of Section 32.051, Texas Election Code) appointed being as follows:

Precinct Numbers 1. Polling Place: 301 South First Street, Haskell, Texas. Election Officers: Becky Howeth/Charles Swinson.

Early voting ballots shall be counted by a canvassing board and the following persons are appointed to said board to wit: Becky Howeth, Presiding Judge. Charles Swinson, Alternate Presiding Judge.

That each of the Presiding

Judges herein appointed shall appoint not less than two (2) nor more than seven (7) clerks to serve and assist in holding said election provided that if the Presiding Judge of each polling place actually serves, the alternate Presiding Judge shall be one of the clerks.

On election day, except as provided in Section 41.032, Texas Election Code, the polls shall be open from 7:00 a.m. to 7:00 p.m.

Section 4: That early voting for this election shall be conducted by personal appearance and by mail or other lawful means. There shall be one early voting place, to wit: the office of the City Secretary of the City of Haskell, Texas at the City Hall of Haskell, Texas, 301 South First Street, Haskell, Texas; and Ann Young, the City Secretary of the City of Haskell, Texas, is the early voting clerk for early voting. Deputy Clerks for early voting are hereby designated to be Louetta Davis, Linda St. John, and Sam Watson. In accordance with Section 85.001, Texas Election Code, the hours hereby established for early voting by personal appearance shall be on August 28, 2000 through September 8, 2000 from 8:00 a.m. to 5:00 p.m. (which are the hours that the City Secretary's main business office is regularly open for business) on each day except Saturdays, Sundays and official state holidays. Early voting by mail shall be to the above address.

Section 5: All qualified electors residing within the boundaries of the City of Haskell, Texas shall be permitted to vote at said election. The holding and conduct of said election shall be in accordance with the Texas Election Code, and applicable general laws regarding municipal elections. In accordance with Section 1251.003, Texas Government Code and Section 4.003 Texas Election Code, notice of this election shall be given to all qualified electors in the City of Haskell, Texas in the following manner:

A notice composed of the words "TO ALL QUALIFIED ELECTORS OF HASKELL COUNTY, TEXAS-NOTICE OF ELECTION AUTHORIZING ISSUANCE OF BONDS AND LEVYING OF TAX THEREFOR" followed by a copy of this Order shall be posted not later than the 21st day before election day in three public places in the City of Haskell, Texas and on the bulletin board used for posting notices of City Council meetings and in each election precinct and in the City Hall and published in a newspaper of general circulation in the City of Haskell, Texas and meeting the requirements of Section 4.003 (a)(1)(A) or (B) Texas Election Code once a week on the same day in each of two successive weeks, the first publication to be not less than fourteen (14) days before the date of the election.

Section 7: In compliance with Chapter 272 of the Texas Election Code, all election materials will be printed in English and Spanish, including election materials used for early voting.

Section 8: The City Council of the City of Haskell, Texas hereby finds and declares that the holding of this election on a date other than a uniform election date is set forth in Section 41.001, Texas Election Code is in the public interest.

Section 9: If for any reason any section, paragraph, subdivision, clause, phrase, word, or provision of this Resolution or the application thereof shall be held invalid or unconstitutional by final judgment of a court of competent jurisdiction, it shall not affect any other section, paragraph, subdivision, clause, phrase, words, or provision of this Resolution, or the application thereof to other circumstances, for it is the definite intent of the City Council that every section, paragraph, subdivision, clause, phrase, words, or provision hereof be given full force and effect for its purpose, and the City Council declares that this Resolution would have been enacted without such invalid provision.

PASSED AND ADOPTED this 14th day of August, 2000. CITY OF HASKELL, TEXAS Ken Lane, Mayor

Attest: Ann Young, City Secretary

A TODOS LOS ELECTORES DEL CONDADO DE HASKELL, TEXAS: AVISO DE ELECCIONES PARA AUTORIZAR LA EMISION DE BONOS Y EXACCION DEL IMPUESTO CORRESPONDIENTE RESOLUCION QUE CONVOCA A ELECCIONES PARA OBTENER LA AUTORIZACION DE EMITIR BONOS DE LA DEUDA GENERAL Y EXIGIR UN IMPUESTO EN PAGO POR

LOS MISMOS: DISPONE LA CONDUCCION DE DICHAS ELECCIONES; Y ESTABLECE OTRAS DISPOSICIONES RELACIONADAS CON LAS MISMAS.

CONSIDERANDO que el Ayuntamiento de la Ciudad de Haskell, Texas, juzga necesario y aconsejable convocar a elecciones de conformidad con el Capitulo 1251 del Código del Gobierno de Texas y con las leyes electorales generales y especiales del Estado de Texas.

AHORORA, POR LO TANTO, CONSIDERESE RESUELTO POR EL AYUNTAMIENTO DE LA CIUDAD DE HASKELL, TEXAS QUE:

Sección 1: Se celebrarán elecciones dentro de los límites del Condado de Haskell, Texas el día 12 de septiembre de 2000, fecha esta posterior a la de esta Resolución por no menos de quince (15) días y por no más de (30) días, a fin de presentar ante los electores cualificados allí residentes las siguientes proposiciones:

**PROPOSICION**

Debe ser autorizado el Ayuntamiento de la Ciudad de Haskell, Texas a emitir bonos de la deuda general de la Ciudad de Haskell, Texas por la cantidad principal de \$4.700.000, a fin de proveer fondos para la construcción y equipamiento de una cárcel, incluyendo el terreno que ésta ocupe, para ser propiedad del Condado de Haskell, Texas y ser usada conjuntamente por dicho condado y la Ciudad de Haskell, Texas, bonos esto a ser emitidos en una o más series o emisiones y que vencerán en serie o de lo contrario no más de cuarenta (40) años después de la fecha de su emisión, y para ser emitidos y vendidos a cualquier precio o precios y rendir interés a cualquier tasa o tasas (no mayor de la tasa máxima permitida por la ley) que será fijada según la discreción del Ayuntamiento del Condado de Haskell, Texas, y para exigir anualmente un impuesto ad valorem sobre toda la propiedad imponible dentro de la Ciudad de Haskell, Texas en una suma suficiente para pagar el interés anual sobre dichos bonos de la deuda general y proveer un fondo de amortización para redimir dichos bonos de la deuda general en su correspondiente fecha de vencimiento que no sobrepase la cantidad de \$1,50 por cada valuación de \$100,00 de propiedad imponible en cualquier lapso de un año?

Sección 2: Se usarán boletas de papel en dichas elecciones y dichas boletas oficiales serán preparadas de conformidad con el Código Electoral de Texas, de modo de permitir que los electores cualificados voten "A FAVOR" o "EN CONTRA" de las proposiciones antedichas que serán enunciadas sustancialmente de la siguiente forma:

**PROPOSICION**

"La emisión de \$4.700.000 en bonos de la deuda general para la construcción y equipamiento de una cárcel y la imposición de un impuesto y el pago del mismo".

Se hará aparecer el término "A FAVOR", y a continuación del mismo, el término "EN CONTRA" debajo de cada proposición, y a la izquierda de los términos "A FAVOR" y "EN CONTRA" cada elector deberá marcar con una "X" la casilla al lado del enunciado que indica la manera en que desea votar.

Sección 3: Para fines de la conducción de las elecciones, la Ciudad de Haskell, Texas se ha dividido en un (1) distrito electoral, siendo dicho distrito electoral, los respectivos centros electorales y los funcionarios electorales (cada uno de ellos en cumplimiento de los requisitos de elegibilidad generales de la Sección 32.051 del Código Electoral de Texas) designados como se indica a continuación:

Número Del Distrito 1. Centro Electoral: 301 Calle Primera Sur, Haskell, Texas. Funcionarios Electorales: Becky Howeth/Ruby Holt.

Las primeras boletas electorales serán contadas por una junta de escrutinio y se asignarán a dicha junta las siguientes personas en calidad de testigos:

Becky Howeth, Juez Presidente Charles Swinson, Juez Presidente Alterno.

Que cada uno de los Jueces Presidentes designados mediante la presente deberá designar no menos de dos (2) ni más de siete (7) secretarios para prestar servicio y tomar parte en la celebración de dichas elecciones a condición de que si el Juez Presidente de cada centro electoral en efecto presta sus servicios, el Juez Presidente Alterno se desempeñará como secretario.

El día de las elecciones, exceptuando lo dispuesto en la Sección 41.032 del Código Elec-

toral de Texas, las urnas permanecerán abiertas de 7:00 a.m. a 7:00 p.m.

Sección 4: Esa primera votación de estas elecciones será efectuada por comparecencia física y por correo o por otros medios lícitos. Habrá un único primer centro electoral, a saber: la oficina de la Secretaría Municipal de la Ciudad de Haskell, Texas en el Ayuntamiento de Haskell, Texas, 301 Calle Primera Sur, Haskell, Texas, y Ann Young, la Secretaria Municipal de la Ciudad de Haskell, Texas es la secretaria de la primera votación. Mediante la presente se designa que los subsecretarios de la primera votación son Louetta Davis, Linda St. John y Sam Watson. De conformidad con la Sección 85.001 del Código Electoral de Texas, el horario establecido mediante la presente para la primera votación por comparecencia física durante el lapso comprendido entre el 28 de agosto de 2000 y el 8 de septiembre de 2000 será de 8:00 a.m. a 5:00 p.m. (que coincide con el horario en que regularmente está abierta al público la oficina de la Secretaría Municipal) todos los días, excepto los sábados, domingos y fiestas oficiales del Estado. La primera votación por correo se dirigirá a la dirección antes mencionada.

Sección 5: Se les deberá permitir a todos los electores cualificados que residen dentro de los límites de la Ciudad de Haskell, Texas votar en dichas elecciones. La celebración y conducción de dichas elecciones deberán estar en conformidad con el Código Electoral de Texas y demás leyes generales pertinentes y leyes relativas a las elecciones municipales. De conformidad con la Sección 1251.003 del Código del Gobierno de Texas y la Sección 4.003 del Código Electoral de Texas, se les dará aviso de estas elecciones a todos los electores cualificados en la Ciudad de Haskell, Texas de la siguiente forma:

Un aviso cuyo texto reza "A TODOS LOS ELECTORES DEL CONDADO DE HASKELL, TEXAS: AVISO DE ELECCIONES PARA AUTORIZAR LA EMISION DE BONOS Y IMPOSICION DEL IMPUESTO CORRESPONDIENTE" seguido de una copia de esta Resolución será publicado a más tardar el 21° día antes de las elecciones en tres sitios públicos de la Ciudad de Haskell, Texas y en el tablero de anuncios utilizado para publicar avisos de las reuniones del Ayuntamiento y en cada centro electoral y en el Ayuntamiento, y será anunciado en un periódico de circulación general en la Ciudad de Haskell, Texas y en cumplimiento de los requisitos de la Sección 4.003(a)(1)(A) o (B) del Código Electoral de Texas una vez a la semana, el mismo día, durante dos semanas consecutivas, tomando lugar la primera publicación no menos de catorce (14) días antes de la fecha de las elecciones.

Sección 7: De conformidad con el Capitulo 272 del Código Electoral de Texas, todos los materiales electorales se imprimirán en los idiomas inglés y español, con inclusión de los materiales electorales destinados a la primera votación.

Sección 8: El Ayuntamiento de la Ciudad de Haskell, Texas mediante la presente encuentra y declara que la celebración de estas elecciones en otra fecha que no sea la fecha invariable de elecciones como es enunciado en la Sección 41.001 del Código Electoral de Texas es de interés público.

Sección 9: Si por cualquier razón alguna sección, párrafo, subdivisión, cláusula, frase, palabra o disposición de esta Resolución o la aplicación de los mismos fueran declarados inválidos o inconstitucionales por el juicio final de un tribunal de jurisdicción competente, éste no afectará ninguna otra sección, párrafo, subdivisión, cláusula, frase, palabra o disposición de esta Resolución ni la aplicación de los mismos a otras circunstancias, porque es la intención precisa del Ayuntamiento que se les conceda a todas las secciones, párrafos, subdivisiones, cláusulas, frases, palabras y disposiciones de la presente Resolución plena validez y efecto para su finalidad, y el Ayuntamiento declara que esta Resolución habría sido entonces promulgada sin incluir la disposición inválida en cuestión.

**APROBADA Y ADOPTADA este 14th día de August de 2000. CIUDAD DE HASKELL, TEXAS**

Ken Lane, Alcalde  
Da fe:  
Ann Young  
Secretaria Municipal 34-35c

**The Haskell Free Press**  
read by more people in Haskell County than any other print media.



# Shop The Haskell Free Press CLASSIFIEDS

864-2686

ALL DEADLINES MONDAY 5 P.M.

864-2686

### For Sale

NEW HUNTING and fishing license now available. Hunting, reloading supplies. Sport-About of Haskell. 33-35c

BIG SCREEN TV for sale. Take on small payments. Good credit required. 1-800-398-3970.34-35p

FOR SALE: 2 heaters. One is Dearborn. 864-5448 after 2 p.m. 34p

FOR SALE: Broyhill red and white sofa. \$325 firm. Call Sue Bingham 864-3774 or if no answer Cecil 864-2511. 34-35c

FREE TO GOOD home: 5 year old female dachshund. 864-5448 after 2 p.m. 34p

FOR SALE: Used dryer. \$50 cash. Smitty's Feed & Seed, 107 N. 1st East. 34p

FOR SALE: Full/queen headboard and matching dresser. 864-3526. 34p

FOR SALE: Silver King trumpet. Good condition. Call 864-3890. 34c

FOR SALE: Magic-Rest 2 fully adjustable electric massage beds; solid oak dining table, 2 leaves and 6 chairs; Solo-Flex body builder with attachments. 940-864-3757. 34-35p

### Cars For Sale

1985 LINCOLN MARK VII sedan, 2 door, low mileage. Call 915-773-3555 Mon., Aug. 28-Sat., Sept. 2. 34-35c

### Garage Sales

STAMFORD-HUGE INSIDE sale: Sat., Aug. 26, 8 a.m. North side of square, 113 E. McHarg. Home and office furniture/equipment, desks, computers, electronics, glassware, household goods, appliances, p/u tool box, lawn mower. Dealers welcome. 34p

ESTATE SALE: Sat., Sept. 2, 1106 E. Reynolds St., Stamford. 9 a.m. to 5 p.m. Everything must be sold. 34-35c

**\$500 Move In.**  
Owner financed.  
Call Brendan  
915-721-2101 26fc

**\$199**  
MONTH  
CLEAN SWEEP  
SALE!  
2000 Model  
16 Wide  
Palm Harbor  
1-888-939-7256  
ONLY 3  
HOMES  
LEFT!  
10% Down, 9.25% APR, 360 Mos.  
www.palmharbor.com

### Help Wanted

EMPLOYMENT IN YOUR own home—pay no income tax. Helen Farabee Regional MHMR Centers is seeking people to contract with who would like to be Foster Care Parents for adult individuals with developmental disabilities. Salary is determined by level of care needed for each individual. Pay is tax-free. Training will be provided through Helen Farabee Regional MHMR Centers. If you are interested in applying, please call 940-550-0157 or 940-550-0153. 33-36c

POSITIONS AVAILABLE at Rice Springs Care Center for housekeepers and dietary help. Contact Kathie Stocks for information. 864-2652. 34-35c

PERSONAL CARE attendants needed in Haskell area. ASAP. Call 1-800-671-2369. 34c

ROCHESTER ISD in Haskell County has an immediate opening for a 1/2 time Band Director/Music Teacher. Contract would be for 187 days in the afternoon. Salary range from \$16 to \$20 K. Please contact Steven Self, Superintendent at 940-743-3441 for more information. Rochester ISD is an equal opportunity employer. 34-35c

ADULT COMMUNITY SUPERVISION/JUVENILE PROBATION OFFICER

The 39th Judicial District Community Supervision/Juvenile Probation Department has one opening for this position. Applicants must possess a minimum of a bachelor's degree from college or university accredited by an accrediting agency recognized by the Texas Higher Education Coordinating Board and meet other related statutory and position requirements. Complete job description and application may be obtained in person or by writing to 39th Judicial District CSCD—Courthouse, 1 Avenue D, Haskell, TX 79521. Closing date is September 6, 2000 at 5 p.m. EOE. 34-35c

### Wanted

CASH PAID for old lever action Winchester rifles. Colt pistols and most other guns and western memorabilia. A. C. Richardson at store Hwy. 277 N. 12tfc

### Jobs Wanted

HOUSE LEVELING. Floor bracing, slab, pier and beam. Insurance claims, free estimates. References. No payment until work satisfactorily completed. David Lee & Company, 915-675-6369 50tfc

CHILD CARE: Registered home. Meals, snacks, 2 openings. 200 N. 3rd. 864-6127. 32-34p

CHILD CARE: Two openings, registered home, snacks and meals. 864-6127. 200 N. 3rd St. 34p

### For Rent

FOR RENT: 507 N. Ave. G, 3 bedroom, 2 bath house. 864-3762. 34c

FOR RENT: Available Sept. 1. Nice 2 bedroom apartment. Fireplace, china cabinet. 1107 N. 10th. 864-3762. 34c

FOR RENT: House, 2 bedroom, fenced yard. 402 N. 4th behind Sav-M. 864-6127. HUD welcome. 34p

HOUSE FOR RENT: 1100 N. Ave. E, 3 bedrooms, 1 bath, living and dining room. Central air & heat. \$325 month. 1-800-588-3937 days. 940-549-7168 nights. 34tfc

The only time a woman wishes that she were a year older is when she is expecting a baby. Lots of new sofas and sleepers at the best prices in the Big County at Kinney Furniture in Stamford. Prices start at \$399. Open Monday to Friday 9 to 5 and Saturday 9 to 4. Closed Sundays. Shop us before you buy. 34c

### Real Estate

FOR SALE: 2 bath, 2 bedroom, brick, corner lot. 706 N. Ave. G, Pecan, pear trees. Garage with storage, privacy fence, nice yard. CH/A, dishwasher. Nice home. Will consider offer, trade, financing. Come look! 864-3785. 32tfc

I'M MAD at banks who don't give real estate loans because of bad credit, problems or new employment. I do, call L. D. Kirk, Homeland Mortgages 254-947-4475. 34p

FOR SALE: Lake house at Veda's Camp. 940-864-2087. 34-37c

HOUSE FOR SALE by owner: 1107 N. 5th St. 3 bedrooms, 2 baths, carport, water well. Call or come by after 6 p.m. 940-864-5180. 34-37p

FOR SALE or lease rent to purchase by owner: 2 bedroom, 1 bath, large garage, fenced backyard. 940-864-5128. 34-35p

**CUTE LITTLE HOUSE**  
Very affordable. Call  
915-673-7353 41tfc

BlueCross BlueShield of Texas  
Individual Health Products  
Keeping Texans in a Healthy State  
**Hess Hartsfield**  
864-2665 41tfc

**Dodson Concrete Construction**  
Commercial—Residential  
**David Dodson**  
704 N. Ave. F • Haskell  
940-864-2038  
Over 20 Years in the Business  
FREE ESTIMATES 18tfc

**FOR SALE**  
**RIKE**  
Real Estate  
864-2411  
864-2332  
Mary Rike, Broker 411 1/2 South First St.  
Serving Haskell, Knox, Jones, Stonewall, and Rolling Plains Counties  
411 1/2 South First Street  
Box No. 853  
Haskell, TX 79521  
(940) 864-2411 (940) 864-2332  
FAX (940) 864-3686  
Mary Rike, Broker  
mrrike@westnet

**"PEOPLE WHO DON'T HAVE AN AGENT-WHO TAKES CARE OF THEM?"**

CALL ME FOR A FREE PROTECTION REVIEW.

**Haskell County Insurance Agency**  
417 S. 1st St.  
Haskell, TX 79521  
940-864-2665

**Allstate.**  
You're in good hands.

### Miscellaneous

SECURITY FINANCE now looking for 1000 new customers. No credit, no problem. Loans from \$100 to \$467. Phone applications welcome. Call 915-773-3081. 32tfc

**Abandoned Home.**  
Take over payments  
915-725-4133 26tfc

It's so dry the Baptists are sprinkling, the Methodists are using a damp sponge, and the Presbyterians are giving rain checks. PICK-A-PAIR SALE. Right now get 2 great La-Z-Boy recliners for one low price at Kinney Furniture in Stamford. Prices start at \$549 for 2 of these comfortable, long lasting chairs. Quick free delivery and personal service since 1932. 34c

**Computer Solutions!**  
Sales, Service & Troubleshooting  
  
Home/Business/Government  
940-864-2964 27tfc

**32' WIDE PROTOTYPE**  
2001 Palm Harbor  
FREE Upgrade  
Kitchen Package  
**\$329/mo.**  
1-888-939-7256  
**LIMITED FACTORY OFFER!**  
10% Down, 6.75% APR, 360 Mos.  
www.palmharbor.com

**Guadalcazar Roofing**  
Daniel or Lupe  
940-864-5009  
Free Estimates.  
All Types. 32-34c

If you don't learn to laugh at trouble, you won't have anything to laugh at when you're old. Don't you deserve a more comfortable bed and maybe a larger one? Kinney Furniture in Stamford has special prices on 8 different models of Spring Air mattress sets in all sizes. Nobody beats our prices. Quick free delivery and free disposal of your old bedding. 34c

It is with a humble heart once again I thank each of you for donating blood on my behalf. To the Rotary Club, Bro. Dusty Garison, hospital staff, KVRP and all that helped with this drive, I thank you. My family thanks you. May God bless.  
Flora Pace

**DANCE**  
at Rhineland  
**K-MAC**  
9 to 1 Sat., August 26 \$5.00

Words cannot begin to say what we feel in our hearts during our tragic loss of Justin. For all the acts of kindness shown us at Cook Childrens Hospital and later. For the visits, phone calls, food, flowers and donation we thank you. A special appreciation for Dennis Duke and Jana English. Your words will always be dear to our hearts.  
Justin Wade Baty Family

**All America Construction & Roofing**  
Commercial & Residential Roofing Specialists  
Insured  
Local References Available  
Free Estimates  
Call Barry or Gaston Tidrow  
940-864-3408

We, the family of Carolyn Sue Dunlap Wilborn, wish to say thank you to the family and friends that called, came by, sent flowers, sent cards, brought food, said prayers, and attended the services for Carolyn.

Special thanks to Rev. Kenneth Blair for the uplifting services, and to the ladies of Trinity Baptist Church for the delicious meal. To Dr. McSmith, Jamie, their wonderful staff, and to the nurses at Haskell Hospital for the care and compassion they gave Carolyn during her illness. Additional thanks to Sherry at MHMR for listening and talking to Carolyn as she endured her illness. We also, want to thank the Haskell EMS staff, and finally the staff of Holden-McCauley Funeral Directors for their compassion and gentleness during this difficult time.

Carolyn was very brave and courageous during her illness, and never complained about what had to be done. We will love and miss her until we see her again in Heaven.

Thelma Dunlap  
Katie and Issac Zino  
Shirley (Dunlap) and Jeff Parker  
James (Cookie) and Judy Dunlap  
Anita and Shady Dunlap  
Shalin (Parker) and Dewaine White  
Craig Dunlap

**WE'VE GOT IT!**  
**ACCO FEEDS**  
RICHARDSON'S  
Hwy. 277 N. • Haskell • Open All Day Saturdays  
940-864-8551

**EXPERT AUTO WORK**  
REASONABLE RATES  
  
See us for all your auto mechanic needs.  
20 years experience. We do it right the first time.  
117 North Ave. E • Haskell

**RENTERS WANTED!**  
Huge 3+2  
With Carport  
**\$750**  
DEPOSIT!  
**\$395**  
MONTH!  
Call immediately!  
1-888-939-7256

\*\*\*\*\*  
SELLING HASKELL FOR OVER 25 YEARS  
\*\*\*\*\*  
**Hartsfield Realty**  
South Side of Square  
864-2665  
See us first for your real estate needs.  
Hess Hartsfield, Broker 864-2004  
Chan Guess, Agent 864-6142  
Esther Conn, Agent 658-3904  
\*\*\*\*\*

**Need A ROOF?**  
Atlas 30 year Shingles Now in Stock!  
Call Ben McGee  
After 6 p.m.: 864-3431  
Lumber Yard: 864-3552  
Mobile: 864-4555

**Beautyrest**  
Do You Sleep With A Partner?  
DOES YOUR PARTNER:  
•Toss & Turn  
•Elbow and Kick  
•Check On The Kids  
•Go To The Bathroom  
•Take Medicine  
In The Middle Of The Night?  
DID YOU KNOW?  
•Your Partner Tosses & Turns 40-60 Times Per Night  
•70% Of The Time Your Partner Moves, You Move.  
•You Both Get 20% Less Deep Sleep.  
•Deep Sleep Loss Affects Mood, Memory, Concentration, Productivity, And Creativity.  
**BOGGS & JOHNSON FURNITURE**  
864-2346  
East Side Square • Haskell

# County FSA election set

The election of a County Committee person will be conducted in December, 2000, for Local Administrative Area (LAA) 2. The LAA-2 area includes towns of Haskell, Rule, Sagerton and Stamford areas going to approximately 2 miles north of Rule to 3 miles north of Haskell for the North line to 3 miles east of Haskell to 1/2 miles west of the Paint Creek School.

In an effort to assure that producers are adequately and timely informed about election procedures, outreach activities have begun. The Committee is actively seeking minority, female and producers from under-represented groups for nomination.

Eligible voters have the right to nominate candidate(s) of their

choice by petition. Blank petitions (FSA-669A) may be obtained at the Haskell County FSA Office and nominations will be received through Oct. 30, 2000.

Person nominated should be currently engaged in the operation of a farm or ranch and be well qualified for committee work. A producer is eligible to be a County FSA Committee member if he/she lives in the LAA and is an eligible voter. A copy of the eligible voter's list may be requested at the local office. County FSA Committee members may not hold positions in certain farm and commodity organizations, if these positions pose a conflict of interest with FSA duties. These positions include functional offices such as president, vice president, secretary

and positions on boards or executive committees.

The duties of the County FSA Committee member include:

- informing producers of the purpose and provisions of the FSA programs
- keeping the State FSA Committee informed of LAA conditions
- recommending needed changes in farm programs
- participating in county meetings as necessary
- performing other duties as assigned by the State FSA Committee

Additional information of eligibility to hold office may be obtained at the Haskell County FSA Office, 506 South Second, or by calling 940-864-2617.

# Rural recycling event set Aug. 29 in Munday

The Texas Natural Resource Conservation Commission (TNRCC) is offering rural Texans the opportunity to dispose of empty plastic pesticide containers, used motor oil, oil filters and lead acid batteries free of charge.

Empty plastic pesticide containers must be clean, triple-rinsed or high-pressure rinsed to be accepted. No hazardous waste or tires will be accepted. Oil filters will not be accepted from businesses and oil filters recycling is limited to two barrels per participant. The TNRCC reserves the right to refuse this service to businesses.

Collection days across the state have been extremely successful. In

34 cleanups this year 2,521 participants recycled 37,692 empty pesticide containers, 37,692 gallons of used motor oil, 55,035 used oil filters and 3,565 used lead acid batteries.

A collection will be held Tues., Aug. 29 at the Farmers Grain Co-Op in Munday from 8 a.m. to noon. At the corner of Hwy 277 & Hwy 222, turn south on Hwy. 277 and go 2 blocks to the Co-Op.

Texas Country Cleanup is co-sponsored by the TNRCC's Small Businesses and Environmental Assistance Division, Texas Agricultural Extension Service, Texas Department of Agriculture and USAg Recycling.

For more information about the collection program, contact your local county extension agent.

# The Haskell Free Press

read by more people in Haskell County than any other print media.



# Hank the Cowdog coming to Haskell Elementary

Haskell Elementary. Students will have a treat Tues., Aug 29, when John R. Erickson, author of *Hank the Cowdog* comes to town to perform at the school. In making the announcement, Betsy McManamon, school librarian, said that in addition to performances for students during the day, Erickson will perform for the public at 7:00 that evening in the elementary cafeteria, following Back to School Night.

"Hank the Cowdog in Concert" is a 60 minute program of innocent fun and wholesome family entertainment. Through songs and readings, Erickson brings life to the characters from his award-winning *Hank the Cowdog* series of books and audio books.

A fifth generation Texan, Erickson was raised in the small Panhandle town of Perryton. He has a degree from the University of Texas, studied two years at Harvard Divinity School, leaving there just three hours short of a master's degree in theology. In 1967 he married Kristine Dykema and spent fifteen years writing in the early morning hours and working at odd jobs, including eight years as a ranch cowboy. After receiving

many rejection slips for his writing, he started his own publishing company in his garage and self-published the first ten *Hank the Cowdog* stories.

The Cowdog is now a nationally-known character, and the books and tapes have sold in the millions. Hank appeared in a thirty-minute animated episode on CBS Storybreak, and the stories on tape were named the best children's audio books of 1993 by the American Audiobook Sellers Association.

With an established reputation as a speaker and performer, Erickson has appeared at conventions, conferences, and banquets in seventeen states and provinces; been a keynote speaker at conventions attended by librarians, teachers of English, reading special education and drama; and has spoken at the Library of Congress, the Institute of Texas Cultures, the Houston Children's Museums, and the Witte Museum in San Antonio.

Since he began performing his work in schools in 1984, he has left a trail of the books in hundreds of communities, and has appeared before more than 1.75 million people.

Recently, *Hank the Cowdog*

books have found a new home at Penguin Putnam, the nation's largest publisher of children's books. Rights have also been purchased by Nickelodeon to produce an animated movie.

Erickson was born in Midland, in 1943. He now lives on his ranch in Perryton with his wife and son, Mark, where he ranches and continues to write books in the *Hank the Cowdog* series as well as non-fiction western books and a syndicated column.

# Cattle Market Report

The market at the Haskell Livestock Auction was on a run of 980 head of cattle at its sale on Sat., Aug. 19, according to Gary Tate, reporter.

Packer cows \$1-\$2 higher. Bred cows and pairs \$2-\$5 lower; 3-400 calves \$2 to \$3 lower. Feeder cattle fully steady.

Cows: fat, .40-.47; cutters, .36-.48; canners, .30-.34.

Bulls: bologna, .45-.52; feeder, .72-.82; utility, 42-.45.

Steers: medium and large frame No. 1 200-300 lbs., 1.20-1.45; 300-400 lbs., 1.08-1.28; 400-500 lbs., .97-1.20; 500-600 lbs., .88-.98; 600-700 lbs., .85-.95; 700-800 lbs., .82-.88; 800-up lbs., .72-.85.

Heifers: medium and large frame No. 1 200-300 lbs., 1.05-1.20; 300-400 lbs., .88-1.08; 400-500 lbs., .85-.98; 500-600 lbs., .80-.94; 600-up lbs., .58-.85.

Bred Heifers: medium frame, 500-625.

Bred Cows: young to middle aged, 575-700; aged or small, 475-575.

Cows with calves: medium frame No. 1 young and middle aged, 650-850; aged or small, 575-725.

All deadlines are 5 p.m. on Monday.

**BERNARD E. GODLEY, INC.**  
**TAX SERVICE & BOOKKEEPING**  
 Computerized • Tax Returns & Bookkeeping  
 98 Hill Drive • Seymour, Texas  
**940-889-8809**  
 Office Hours: 9 to 12 and 2 to 5 Monday - Friday

**LIFE HOSPITALIZATION ANNUITY IRA CANCER**

**HOME AUTO FARM CROP INSURANCE COMMERCIAL**

**LANCO INSURANCE**  
 DON • SHIRLEY • CHERIE - Agents

12 AVE. D  
 P. O. BOX 585 HASKELL, TX 79521  
 WORK 940-864-2629  
 1-800-687-3761

# NOTICE OF PUBLIC MEETING TO DISCUSS BUDGET AND PROPOSED TAX RATE

The Paint Creek ISD will hold a public meeting at 6:30 p.m. in the Paint Creek School Library on September 11, 2000.

The purpose of this meeting is to discuss the school district's budget that will determine the tax rate that will be adopted. Public participation in the discussion is invited.

The tax rate that is ultimately adopted at this meeting or at a separate meeting at a later date may not exceed the proposed rate shown below unless the district publishes a revised notice containing the same information and comparisons set out below and holds another public meeting to discuss the revised notice.

**Comparison of Proposed Rates with Last Year's Rates**

	Maintenance & Operations	Interest & Sinking Fund *	Total	Local Revenue Per Student	State Revenue Per Student
Last Year's Rate	\$1.3600	\$0.000	\$1.36	\$3,474.50	\$4,528.50
Rate to Maintain Same Level of Maintenance & Operations Revenue & Pay Debt Service	\$1.357	\$0.000	\$1.357	\$3,474.50	\$4,528.50
Proposed Rate	\$1.40	\$0.000	\$1.40	\$3,584.62	\$4,829.12

\*The Interest & Sinking Fund tax revenue is used to pay for bonded indebtedness on construction, equipment, or both. The bonds, and the tax rate necessary to pay those bonds, were approved by the voters of this district.

**Comparison of Proposed Levy with Last Year's Levy on Average Residence**

	Last Year	This Year
Average Market Value of Residences	\$19,469.00	\$19,077.00
Average Taxable Value of Residences	\$4,469.00	\$4,077.00
Last Year's Rate Versus Proposed Rate per \$100 Value	\$1.3600	\$1.400
Taxes Due on Average Residence	\$60.78	\$57.07
Increase (Decrease) in Taxes		\$(3.71)

Under state law, the dollar amount of school taxes imposed on the resided homestead of a person 65 years of age or older or of the surviving spouse of such a person, if the surviving spouse was 55 years of age or older when the person died, may not be increased above the amount paid in the first year after the person turned 65, regardless of changes in tax rate or property value.

**Notice of Rollback Rate:** The highest tax rate the district can adopt before requiring voter approval at an election is \$1.4156. This election will be automatically held if the district adopts a rate in excess of the rollback rate of \$1.4156.

**Fund Balances**

The following estimated balances will remain at the end of the current fiscal year and are not encumbered with or by a corresponding debt obligation, less estimated funds necessary for operating the district before receipt of the first state aid payment.

Maintenance and Operations Fund Balance(s)	\$405,000
Interest & Sinking Fund Balance(s)	\$0

**NEW LOWER RATES**

**GAB MORE FOR LESS!**

Got alot to say? We believe that it's your cell phone and your mouth, so you should talk all you want!

Other cellular companies charge a fortune for gabbin' alot, (except for on the weekends after the sun goes down.)

But with Texas Cellular you can talk 'til the cows come home...that's every day, all day and night for the same great low rate!

Sign up today and keep your tongue-a-waggin'!

**1st 2 INCOMING MINUTES FREE**

Certain restrictions apply. See agent for details.

**We Take Care Of Our Neighbors.**

**TEXAS CELLULAR**  
 A service of Taylor Telecommunications, Inc.

9796 N. I-20 • MERKEL, TX • 79536  
 915-928-3200

For More Information, Call Us at 800-424-7182 or Contact Your Local Texas Cellular Agent.

**IN HASKELL:**  
 Haskell Tire & Appliance  
 206 S. Avenue E  
 940-864-3269

**IN ALBANY:**  
 Albany Communications  
 500 S. Main Street  
 915-762-2333

VOL  
 Foot  
 Pri  
 at Pai  
 Rule  
 Thur  
 at  
 Cale  
 Early  
 Deadl  
 of The H  
 Thurs., A  
 Free Pre  
 Mon., Se  
 Day.  
 Play  
 Hask  
 sponsor  
 Aug. 26  
 include t  
 Footb  
 Hask  
 for last y  
 holders  
 25. Tick  
 public A  
 each. Fi  
 year's sc  
 Old C  
 The C  
 held Sat  
 nity Cen  
 little cor  
 will ope  
 will star  
 's chargi  
 call 940  
 Paint  
 The I  
 will hol  
 night Tu  
 cafeteria  
 Revis  
 The  
 will be i  
 through  
 Studder  
 Philippi  
 revival.  
 p.m. on  
 weeknig  
 Pain  
 Pain  
 2001 w  
 delivere  
 who is  
 just nee  
 cooked  
 later us  
 \$10; t  
 choices  
 King R  
 enchila  
 Rolls a  
 with ev  
 6158 fe  
 benefit  
 Pain  
 Pain  
 Dept. m  
 onatio  
 set on I  
 sale wil  
 Donate  
 Aug. 27  
 Lewis a  
 Deb Jef  
 donate  
 tion.  
 Rule  
 The  
 ice crea  
 scrimm  
 join the  
 Smith o  
 Inde  
 Obituari  
 Out of th  
 Around  
 Sagerto  
 Menus  
 Classifie