

1/1/04
Baze Book Binding
514 W 7th St
Amarillo TX 79101-2212

Amarillo--33333 zzzxxxxxxxxxxxxx
AMARILLO TX 791

Support your hometown merchants

The Haskell Free Press

VOL. 117-NO. 3, ©JANUARY 16, 2003

"The People's Choice"

8 PAGES-ONE SECTION-50 CENTS

Basketball

Haskell
Haskell Jr. High Tourney
Thurs.-Sat., Jan. 16-18

JVG, VG-B vs Hawley
Fri., Jan. 17, 4 p.m.
at Hawley

JVG-B, VG-B vs Cisco
Tues., Jan. 21, 4 p.m.
at Haskell

Paint Creek
Paint Creek vs Jayton
Fri., Jan. 17, 5 p.m.
at Paint Creek

Paint Creek JH
ACJH Tourney
Sat., Jan. 18 at Abilene

Paint Creek JH vs Guthrie
Mon., Jan. 20, 5:30 p.m.
at Paint Creek

Paint Creek vs Aspermont
Tues., Jan. 21, 6:30 p.m.
at Aspermont

Calendar

Food distribution

The Haskell County Ministerial Alliance Food Distribution Center will distribute food Sat., Jan. 18 from 10 a.m. til 11:30 a.m. at 1303 N. Ave. I in Haskell. Volunteers are needed.

Immunizations

The Texas Dept. of Health in Stamford will hold an immunization clinic Thurs., Jan. 23 at the Haskell National Bank Community Room from 1 to 4 p.m. Lisa McConnell and Ann Trombley of the Arlington Texas Dept. of Health will have a display and information about birth defects for the public from 1 to 3 p.m. For more information call 915-773-5681.

Sr. 4-H Club

The Haskell Sr. 4-H Club will meet Sun., Jan. 19 at 3 p.m. at the Haskell Healthcare Center. They will have a program and refreshments.

Jr. 4-H Club

The Haskell Jr. 4-H Club will meet Mon., Jan. 20 from 5:45 to 6:45 p.m. in the Haskell National Bank Community Room. Richard Trueblood of Rochester will visit the club and talk about his work as an animator/cartoonist.

Library Board

The Friends of the Haskell County Library Board will meet Mon., Jan. 20 at 7 p.m. at the Library.

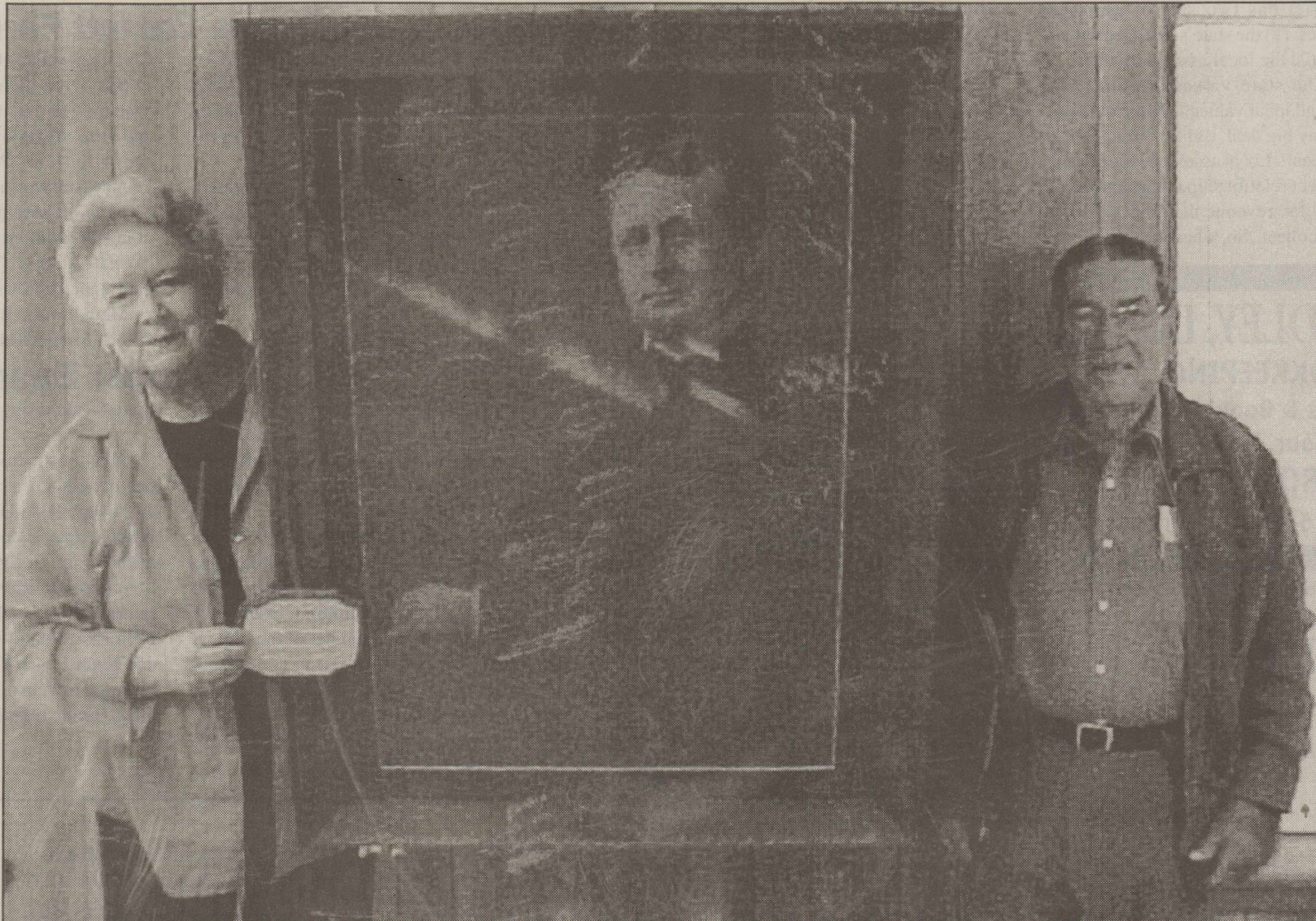
Gospel music

Desert Reign, a country gospel music group, will be in ministry at Trinity Baptist Church, 114 S. Ave. D, Haskell Sun., Jan. 26 at 6:30 p.m. The public is invited.

Index

ObituariesPage 2
Around TownPage 3
MenusPage 3
Out of the PastPage 4
ClassifiedsPage 7

Historic picture returned to Rule community



MR. RULE RETURNS—Jocie Appell of Calhoun, Missouri, helps to hang the restored 1904 photograph of her grandfather, W. A. Rule, for whom the city of Rule was named. Also helping during the

Chamber of Commerce ceremony at the Philadelphian Club, was Doc Jones of Rule, right, grandson of the original founder of Rule. The photo had been stored for years in a closet at the clubhouse.

By Mary Kaigler

A picture of the man for whom the City of Rule was named has been returned to the city and now hangs in a prominent place in the Philadelphian Club.

The photograph was taken in 1904 of W. A. (William Ashley) Rule, to be hung in the Missouri Building of the St. Louis World's Fair. Stored in a closet in the Philadelphian Club in Rule, it was found and taken for restoring by Mr. Rule's granddaughter, Jocie Appell of Calhoun, Missouri, who was 6 years old when her grandfather died in 1934.

Mrs. Appell and her husband, Allan, had the photograph cleaned and the painted frame refinished to reveal a beautiful tiger oak wooden frame. The couple was in Rule Friday to return the historic photograph to the city during a simple ceremony.

Land for the city of Rule was through a grant from the Kansas City, Mexico and Orient Railroad and it was named for W. A. Rule, who was Treasurer and Director of the Railroad. The grant was recorded on Dec. 31, 1905. The name Rule is of Scottish origin.

Also on hand for the ceremony Friday was Doc Jones of Rule, grandson of the late Jesse L. Jones, original founder of Rule.

Coming to this area as a young man, Jesse Jones met and married Hallie Mildred Martin. He grazed large herds of cattle and sheep as far west as Spur. When Haskell County was organized, he was made its first county clerk. Around 1904, Jones was cashier of the Haskell National Bank. At that time, the Orient Railway Company of Kansas City, Missouri made a survey through the western part of the county. This crossed 200 acres of land Jones had bought from J. E. Cloud. The Orient Townside Company purchased the land and it was surveyed into lots for a town on the new railroad. Jones had made this transaction through his friend, W. A. Rule, Vice-President of Commercial National Bank of Kansas City. So he named the town in honor of this man whose portrait again hangs in the Rule Philadelphian Clubhouse.

Haskell Sonic has perfect rating

By Mary Kaigler

Leon and Carolyn Herring, who have operated the Haskell Sonic since 1997, recently received a

perfect score from the National Sanitation Foundation (NSF) independent auditing firm. Required twice a year by their parent company,

the store summary, which is more stringent than is required by the State Health and Safety Code, is comprised of seven testing areas: Engagement Data, Cook, Heat/Hold Temperature, Operational Procedure, General Food Safety, Employee Hygiene, Pest Control and Information. All were passed with a perfect score, which is rare according to the person giving the test. The local store has consistently been in the 97, 98% bracket. However, this is the first 100 percent rating they have had, and the 1st received in their group of Sonic stores in this area.

Each Sonic is required to have at least one person who is certified in Food Protection Management after attending and passing the Texas Health and Safety Code classes, and

who must be recertified every three years by the Texas Department of Health Retail Foods Division. Leon, who is certified, said that all of the employees they hire must continue to learn through training videos and tests. A chart is kept on each local employee's progress to be sure their cooking and hygiene practices are acceptable.

The Herrings came to Texas in 1975 and operated the Sonic in Sweetwater for eleven years. Their two sons grew up there. Going back to Georgia, they traveled extensively, opening up new Sonic stores across a wide area. But, having come through here a number of times, when the opportunity came up to operate the store here, they readily

continued on page 2

Fund set up for city decorations

Haskell City Manager, Sam Watson announced Monday that a fund has been set up to purchase new Christmas decorations for the city, to replace the aging, somewhat weathered displays now used.

Initiating the fund, which will be open to donations from the entire community, the Progressive Study Club presented a \$400.00 check to the City, hoping to spark interest in the project.

Watson estimated that new decorations to be displayed on approximately 33 street corner light poles, will cost a minimum of \$10,000.

Other organizations and individuals wishing to assist the rejuvenation of the downtown 'look' of Christmas may send donations to the City of Haskell Decorations Fund at P. O. Box 1003 or bring them to

continued on page 2

Boosters chartering bus to inaugural parade

The Haskell Band Booster Club is planning to sponsor a chartered bus to Austin to see the Haskell High School Band march in the Governor's Inaugural Parade down Congress Ave., Tues., Jan 21.

The day trip bus will leave Haskell early that morning, returning in the late evening. Band parents and anyone wishing to attend the event are urged to join the group. The cost

to ride the bus will be between \$40.00 to \$50.00 per person, depending on how many ride the bus. Forty-seven riders are needed to charter the bus.

Those wishing to make the bus trip should contact Wanda Proctor at 864-3164 by Thurs., Jan. 16.

The parade is scheduled to begin at 2:30 p.m., although the band has to be in the staging area at 11:00 a.m.

Paint Creek Supt. indicted

Larry Shackelford, the superintendent of Paint Creek ISD for six years before his retirement in 2002, was recently indicted by the Haskell County grand jury on charges of misappropriating public funds.

An investigation was begun last year by the Paint Creek school board after discrepancies were discovered in the budget. The findings were turned over to the Haskell County

district attorney's office by the school board.

Although District Attorney Mike Fouts declined to comment on the details, it was reported that amounts between \$20,000 and \$100,000 were involved. Arraignment could come within the next three weeks, the district attorney said.

Prior to coming to Paint Creek, Shackelford was the principal of Wylie High School.



SCORING FOR SONIC—Leon and Carolyn Herring, operators of Haskell's Sonic Drive-in, received a perfect score in recent testing by the National Sanitation Foundation, becoming the first in their group of Sonics to make 100%.

FOR NEWS ITEMS OR TO SUBSCRIBE, CALL 864-2686

Haskell CISD Comments

by **Eddie Bland**
Superintendent

Do you ever wonder where school districts get their money? This is a really good question. Hopefully, the following paragraphs will help to explain the basics of the current school finance system, and how it affects Haskell CISD.

First, Texas school districts receive revenue from three primary sources: (1) state funded revenue, (2) local school tax collections, and (3) federal funding for special programs. Haskell CISD receives approximately 74% of our operating revenue from the state, 21% from local tax collections, and 5% from federal funds.

You can see Haskell CISD depends on state funding as our main source of revenue. There are numerous variables used to determine the amount of state revenue our school district will receive. However, the two primary factors affecting the flow of money to our district are: (1) the number of students attending the district and (2) the total assessed value of taxable

property within the school district. Our district submits attendance records to the Texas Education Agency. This attendance data is used in the formula that determines how much state revenue we will receive. In Haskell CISD every time a student is present we earn approximately \$33.00 in state revenue. Therefore, not only does a student have to be present to actually learn, he/she has to be present to earn state revenue for the district.

The second factor determining the amount of state revenue our district will receive is the total assessed value of taxable property within the school district. Now if you are not already a little confused, then this part of the explanation should do the trick. Each district has two sets of assessed values: (1) the state's assessed values and (2) the local assessed values.

The state values are one year behind local values. This should not be any big deal, right? Wrong, it is a big deal! Local assessed values have a direct relationship to the amount of local tax revenue the school district will collect. So, when the cumulative

total of all assessed values in the district decline, then the local tax revenue to the district also declines.

However, the state's assessed values have an indirect relationship with how much state revenue our district earns. What does that mean? If our state assessed values go down, then our district earns more state revenue, and if our state assessed values go up, then our district earns less state revenue.

So what is the point here? Well, part of the funding equation is dependent on the amount of local tax revenue our district collects. The state determines a minimum local tax collection effort that is required for each district to be eligible for all of their state money. This required amount will change every year based on the previous year's collections and assessed values.

The state uses last year's assessed values, while local school taxes are collected on the current year's assessed values. When local values decline, our district will generate less local tax revenue. The state has determined our minimum required local tax collections based on the previous year's values. The state formula determining how much state revenue our district will receive is based on our district collecting more local tax revenue than is really possible. That is where we are this year, and we are not alone. There are numerous school districts across the state facing the same dilemma.

If we do not meet this minimum effort, then the state withholds state funds from our district. This amount will be different for each district, for Haskell CISD the state withholds approximately \$3.00 for every \$1.00 that we are short reaching the minimum local effort. So, if our local collections are \$50,000 below the minimum required local tax effort, then the district would also lose another \$150,000 in state revenue. We could have as much as a \$200,000 revenue loss for this school year.

When you hear school people and politicians discussing declining enrollment and declining property values in rural school districts, maybe this information will help you to better understand what they are talking about. Understanding what politicians are talking about, now that is a scary thought!

All deadlines
5 p.m.
Monday

Obituaries

R. W. (Gob) Raynes Sr.

Funeral services for R. W. (Gob) Raynes, Sr., 89, of Weinert were held Thurs., Jan. 9 at First Baptist Church in Weinert with Rev. Donnie Harber and Rev. Steve Peace officiating. Burial was in Weinert Cemetery under the direction of McCauley-Smith Funeral Home in Munday.

Mr. Raynes died Tues., Jan. 7 at his home in Weinert. Born in Buffalo Gap, he was one of eleven children born to Mike and Mary Raynes. The family moved to Aspermont when he was six years old and traveled by covered wagon to settle in Bomarton when he was nine years old. He attended school in Bomarton and Goree through the ninth grade. He then went to work to help support the family. Bob met Crystella Wiggins in Iraan in 1936 and they were married Feb. 11, 1938. They moved to Weinert in 1943 and began farming. He continued to farm until 1975. He also managed the Kimball Grain Elevator in Weinert for 15 years. While working and raising a family, Bob also coached football and basketball at Weinert High School in 1943. He loved all sports and

supported and encouraged all the youth in Weinert for many years.

He was preceded in death by his parents, four brothers and three sisters.

Survivors include his wife, Crystella Raynes of Weinert; and six children: Roberta (Pinky) and husband, Frank Jenkins of Haskell, Bobby Raynes and wife, Betty of Weinert, Mary Nell and husband, Donald Coltharp of Seymour, Patsy Lee and husband, George Shawver of Holliday, Dorothy and husband, Bill Jetton of Brownwood, and Delores and husband, Ronnie Stewart of Munday; two adopted children: Patsy Hutchinson and Freddie Wiggins; fourteen grandchildren; thirty great grandchildren; and three sisters, Loyce Robinson of Decatur, Christene Roberts and Lou Muntzert, both of Seminole.

Pallbearers were Danny Stewart, Mike Stewart, Shane Stout, Tiffen Mayfield, Donald Griffis and Bobby Jenkins. PD. NOTICE

Ida Mattie Garrett Farrel

Funeral services for Ida Mattie Garrett Farrel, 84, of Weinert were held Sat., Jan. 11 at East Side Baptist Church in Haskell with Dr. J. P. Price and Aaron Carpenter officiating. Burial was in Willow Cemetery under the direction of Holden-McCauley Funeral Home.

Mrs. Farrel died Thurs., Jan. 8 at her home in Weinert. Born July 2, 1918 in Lueders, she was the daughter of Cleve Land and Ruthie Bryant Garrett. She married Willie Woodrow Farrel June 10, 1937 in Munday. She was a homemaker, a member of East Side Baptist Church in Haskell and Chapter 892 Order of Eastern Star.

She was preceded in death by her grandson,

Ellis Alexander Bean

Funeral services for Ellis Alexander Bean, 81, of Stamford were held Fri., Jan. 10 at First Baptist Church in Stamford with Rev. Calvin Gray and Rev. Steve Russell officiating. Burial was in Rockdale Cemetery under the direction of Tankersley Funeral Home.

Mr. Bean died Tues., Jan. 7 in Stamford.

Born May 30, 1921 in Haskell County, he was the son of Joseph and Josephine Bean. He married Billie Welsh March 7, 1941 in Anson. He was a lifetime resident of the area, a farmer and rancher and member of the Baptist Church. He was a member of the American Legion and the Veterans of Foreign Wars. He was in the infantry in World War II in George Patton's 3rd Army.

He was preceded in death by his parents; one daughter,

Christopher Farrel, and her parents.

Survivors include her husband of 66 years, Willie Woodrow Farrel of Weinert; two sons, Billy Wayne Farrel and wife, Beverly of Elgin and Cleveland D. Farrel, Sr. and wife, Jo of Porter; grandchildren, Carla Williams, Penney Ainsworth, David Farrel, Carrie Harrison, Kelley Sikes and Cleveland D. Farrel, Jr. (Bubba); nine great grandchildren; brothers, Frank E. Garrett of Las Vegas, Nevada, Alton C. (Tab) Garrett of Abilene; Harvy Weldon Garrett of Andrews; and sister Maxine Boling of Weinert.

Memorials may be made to East Side Baptist Church, 600 N. First E, Haskell, Texas 79521. PD. NOTICE

Linda Witkowski; and one infant son, Johnnie Ellis.

Survivors include his wife, Billie Bean of Stamford; one daughter, Patricia Smith of Stephenville; one son and daughter-in-law, Lance Stacey and Laura Bean of Joshua; one sister, Ruby Ek Dahl of Lueders; seven grandsons, Craig Smith and Ernie Smith, both of Stephenville, Monty Smith of Charlotte, N.C., Brian Smith of Comanche, Michael Witkowski of Bellevue, Nebraska, Jason Witkowski of Hurricane, West Virginia and Ryan Bean of Garland; one granddaughter, Stacey Nakagai of Carrollton; 10 great grandchildren, 10 step great grandchildren and one great great granddaughter. PD. NOTICE

Sonic

continued from page 1
accepted. "We are so glad to get back to Texas, and having a good feeling about Haskell made the job easier," they said.

Soon after moving here, the Herrings found their church home, The First Assembly of God, where they are active members. Carolyn also enjoys singing with the Friends of Faith singing group.

Being a secretary, Carolyn had never worked in food services before

going to work with Sonic. But, both of the Herrings say they have never stopped loving the work or being where they are. "It's especially great in Haskell," they agreed, "where all of the restaurant people in town are friends and work together, eat at each other's establishments and are glad when the other does well. It is good for the town to have a variety of places to eat."

"We love it here, and even when we retire some day, we plan to stay

right here," they said. Having their children and grandchildren in Texas also helps them to make this decision. Their son Chris runs the Sonic in Burkburnett, and son Blaze is the High School Principal in McLean. Both sons have two children.

There is no doubt that the Herrings take a great deal of pride in their work, and are understandably pleased with the rating their establishment has received. We congratulate them.

Decorations

continued from page 1
the City Hall.

Watson said that from time to time, a list of donations or memorials made to the fund will be published.

In a bit of historical perspective about the currently used decorations,

an interesting article printed in the Nov. 23, 1978, edition of the *Free Press*, announced the lighting of the city's new decorations.

"These 48 beautiful new decorations are a result of much work, effort, time and a lot of money generously given by the city and county governments, businesses, organizations and individuals in Haskell," the article said. Cost of those new decorations, was \$8,260.00, with an additional \$1,000.00 needed for the installations.

Spearheaded and started in May

1978 by the Haskell County Jaycees, Jaycee-ettes and the Trade Committee of the Chamber of Commerce, a campaign goal was set at \$8,500.00. After one week, the newspaper records show that the fund had already reached \$1,771.00. In just a few months, by the time to order the decorations, the goal had been met.

Now, after twenty-five years, it seems appropriate that the community again get behind and support another project for purchasing new Christmas decorations for our city.

To Subscribe,
Call
940-864-2686

Haskell Soil and Water Conservation District Windbreak Order

Available Trees

Bare rooted Seedlings:	Size	Price
Russian Olive	18"	1.00
Green Ash	18"	1.00
Desert Willow	18"	1.00
Lacebark Elm	18"	1.00
Shumard Red Oak	18"	1.00
Flameleaf Sumac	18"	1.00
Honeysuckle (Bush)	18"	1.00

Evergreens (Tube Pack):	Size	Price
Afghanistan Pine	12"	2.00
Red Cedar	12"	2.00

Wildlife Packets:

QUAIL: Russian Olive, Aromatic Sumac, Nanking Cherry, Plum
DEER: Flameleaf Sumac, Hackberry, Mulberry, Soapberry
TURKEY: Aromatic Sumac, Bur Oak, Hackberry, Honeysuckle
SQUIRREL: Walnut, Osage Orange, Shumard Red Oak, Bur Oak

4 Species: 25 Each Species = 100 Per Packet 50.00

Due to variables in weather conditions and care required by planter, no guarantee of livability is made.

Trees are for homesite, field, windbreaks and screen and wildlife plantings.

Trees are produced by Texas Forest Service

ORDER DUE DATE: FEBRUARY 10, 2003

CALL THE

Haskell Soil and Water Conservation District
WITH YOUR ORDER AND AVAILABILITY INFORMATION.
Phone 940-864-8516 Ext. 4

Outreach Home Health

Yesterday, Today & Tomorrow

Providing Professional Services to Haskell residents
and the surrounding area for over 20 years

- ❖ Skilled Nursing
- ❖ Home Health Aides
- ❖ Medical Social Worker
- ❖ Physical, Occupational & Speech Therapy



940-864-8581

#1 Avenue E
(West Side of Square)
Haskell, Texas 79521

ECC Calendar and Menu

Mon., Jan. 20
Lunch—Mesquite broiled chicken breast, creamy mashed potatoes, harvard beets, buttered corn, yeast rolls, apple crisp, milk, tea, or coffee

Wed., Jan. 22
11:00 a.m. Outreach Health Services blood pressure check
Lunch—Meatballs/mushroom gravy, cheese potatoes, green beans, onions/pickles, cornbread.

Mississippi mud cake, milk, tea, or coffee

Fri., Jan. 24
Lunch—Hamburgers/cheeseburgers, lettuce/tomatoes/pickles, mayo/mustard/ketchup, chips, pinto beans, cherry cobbler, milk, tea, or coffee

Announcements begin at 11:45 a.m. followed by lunch.

Around Town

By Joyce Hawkins

Hyrum and Jean Richards spent last weekend in Eldorado visiting with friends, Mickey and Merta Rathbone.

Joyce DeLay of Coleman visited last week with Hyrum and Jean Richards.

Kip and Kaye Derrick of Fort Worth, daughter of Fannie Mae Barton, visited with her over the weekend. They did some tree trimming and yard work while here.

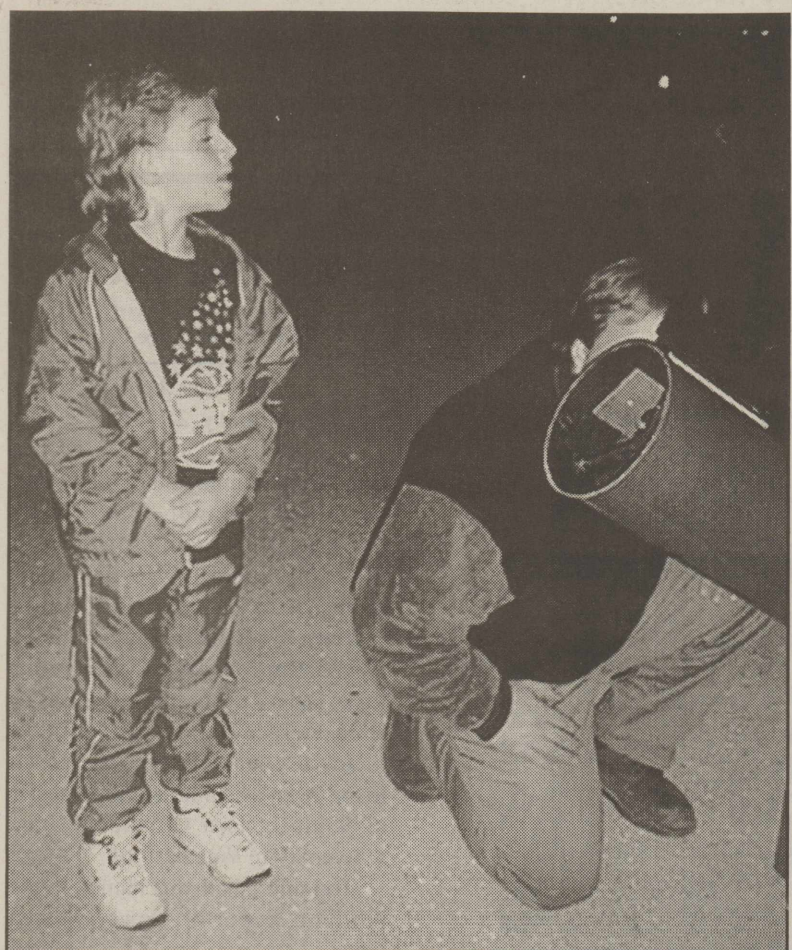
The Key City Square Club of Tyler held their monthly square dance. Bernice Hilliard attended.

Visiting with Bernice Hilliard over the weekend was daughter, Pat Shaw of near Texarkana.



Valentine's Merchandise
Arriving daily!

inside Good Times ~ Haskell ~ Phone 864-6133



SPACED OUT—Haskell fifth grader Aaron Waggoner and his dad, Randy Waggoner, enjoy the far reaches of the night sky during the "Family Night Under the Stars" at Haskell Elementary science teacher Paula Everett's home Tues., Jan. 7.

Kids 'spaced out' in science study

Haskell fifth graders and their families recently spent a 'spaced-out' evening staring into space; outer space.

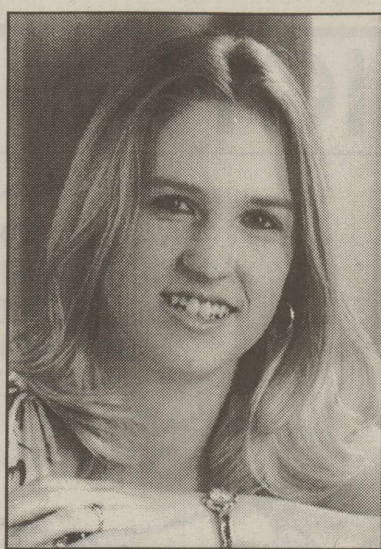
Tues., Jan. 7, the class and their families were invited to the home of Paula Everett, Haskell Elementary Science teacher, for "Family Night Under the Stars." The event was the culmination of a study unit on Optics.

Tour guide to the skies for the evening was Betty Stennett, Science Specialist with the Texas Rural School Initiative. She brought along two large reflective telescopes through which everyone could view various planets and stars. Some of the children brought along their own telescopes and binoculars for

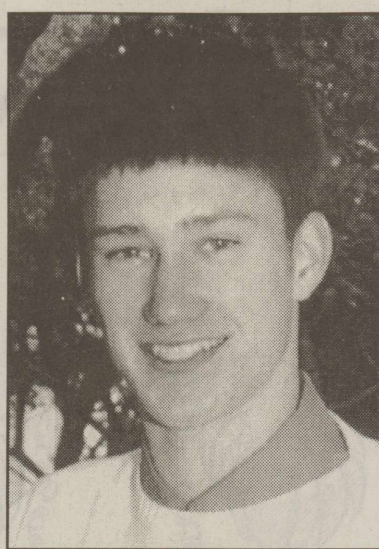
viewing the night skies. All of the children brought along the star charts they had reviewed earlier in class, and enjoyed spotting some of the constellations they had learned about.

Approximately 50 people attended the fun event. Science teacher, Paula Everett, said she is looking forward to having more events such as this one in the future.

"We are planning several Family Science Nights to be held at the school's Science Lab later this semester. This is a great way for families to spend some quality time together and learn something in the process," she said.



JILL WATSON



RYAN BURGESS

Students visit Rotary Club

Jill Watson is the daughter of Sam and JoAnn Watson of Haskell.

She attends Trinity Lutheran Church.

In school she is active as a four-year member of the High School Band, color guard, yearbook and Quill and Scroll and the Spanish Club.

Special awards and recognitions she has received are: 3-year honor student; Presidential Award for Educational Excellence, 2 years; Band Honors, 2 years.

Her favorite leisure-time activity is spending time with family and friends.

Her future plans after finishing high school include getting married in the summer and hopefully,

attending Angelo State College.

Ryan Burgess is the son of Brian and Jennifer Burgess of Haskell.

He attends Haskell First Baptist Church.

In school he is active in football, basketball and the FFA.

His special recognitions include being named 1st team All District Defensive End, and winning 9th place in the National FFA Range Contest.

Among his favorite pastimes are reading, playing sports and singing.

His future plans after finishing high school include attending college, possibly Texas A&M University, getting a job and a wife.

Thelma Dunlap enjoys birthday

Recently honored in her home with a party on her 82nd birthday, Jan. 24, Thelma Dunlap of Haskell entertained international guests from Germany and Israel, as well as about 30 other people who came by.

The party was hosted by her children, son James (Cookie) Dunlap and wife, Judy and daughter Shirley Parker and husband Jeff, all of Haskell, and daughter Anita Dunlap and granddaughter, Shady Blue of Germany.

Granddaughter Katy and Isaac Zeno and baby Caroline of Houston, who recently moved from Israel were accompanied by a surprise guest couple, Isaac's parents from Israel

who visited over the Christmas holidays.

Having the reputation in her family of one who thinks "the more the merrier," Thelma Dunlap enjoyed having the surprise international guests during their stay here. Although the couple spoke no English, the lady made friends with everyone through the international language of good food by making fresh homemade donuts that everyone enjoyed and even took home with them after the party, she said.

Dunlap is the widow of Haskell native, Gene Dunlap.

Student in the News

The Dean's List for the 2002 Fall Semester has been announced at Angelo State University in San

Angelo.

To be eligible for the Dean's List, students must be enrolled full-time and maintain a 3.25 grade point average on a 4.0 scale.

The honorees, along with their majors, include: Katy Maxine McDaniel, journalism, of Haskell.

Hospital

Admissions

Domingo Tejada, Haskell
Alice Larned, Haskell
Josefina Castaneda, Rule

Dismissals

Dora Holly, Alma Mendoza, Travis Emerson, E.O. Reed, Lavoid Roberson, Dewayne Meier, Opal Poland, Willie Adress, Doris Martin

**Don't Miss Out
Subscribe Today!
864-2686
The Haskell Free Press**

Haskell School Menu

January 20-24

Breakfast

Juice and milk are served daily on the breakfast menu.

Monday: Pigs in a blanket

Tuesday: Waffle sticks

Wednesday: Cereal, graham crackers

Thursday: Donut

Friday: No school

Lunch

Milk and iced tea are served daily at the Secondary campus. Milk is served daily at the Elementary School. Secondary campus: Choice of entree or baked potato with cheese

and ham.

Monday: Popcorn chicken/gravy, mashed potatoes, corn, hot roll, sunshine bars

Tuesday: Corndogs, tater tots, macaroni and cheese, garden salad, peaches

Wednesday: Chicken fajitas/cheese, bell pepper/onions, sour cream/salsa/chips, garden salad, strawberry shortcake

Thursday: Hamburger, lettuce/tomato/pickle, French fries, ice cream

Friday: No school

Don't starve after holidays

Often, after holiday overeating, we tend to starve ourselves in January to lose those extra pounds. However, that's exactly what not to do, says Lona Sandon, assistant professor of clinical nutrition at UT Southwestern Medical Center at Dallas.

"The body needs food every day," she says. "If you put on a few extra pounds over the holidays, they're probably fat. Starving yourself leads to losing muscle mass in addition to body fat, which results in a slower metabolism."

To get back on track, Sandon

suggests the following:

Stock your pantry with healthier options such as fresh fruits and vegetables, low-fat yogurt and milk, lean meats, dry cereal, and almonds or walnuts for snacking.

Take gift baskets of cheeses and chocolates and cookies to the office to share.

Keep a food journal, making food choices tangible actions, not just thoughts.

Set one or two initial goals, such as switching from 2 percent to 1 percent milk.



YOU WON'T BE HUNGRY.

YOU WON'T BE BORED.

YOU WON'T BE THE SAME.

Winning Points is a plan you can stick with till you reach your goal. You can eat the foods you love, stay satisfied, and still lose weight.

Now at Weight Watchers—get "In the Groove"—your cool guide to getting **free** started, when you join.

SARAH, DUCHESS OF YORK, AT WEIGHT GOAL SINCE 1997.

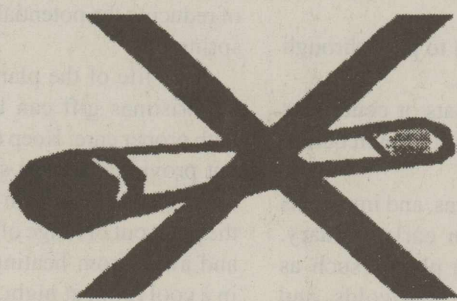
JOIN MEETINGS NOW FOR ONLY \$15!
1 800 651 6000 WEIGHTWATCHERS.COM

WeightWatchers®
real food. real life. real results.

Void where prohibited. Offer ends February 1, 2003. ©2003 Weight Watchers International, Inc. Owner of the WEIGHT WATCHERS trademark. All rights reserved. Offer valid in participating locations only in AL, FL, GA, OK, TX, NC and SC. Fee for subsequent weeks \$11-\$12 depending on geography. Not valid for Corporate Solutions (On Site Meetings) or online services.

ATTENTION

Are You Finally Ready to Quit??



If so, call us and see how we can help!

THE DRUG STORE

Haskell 864-2673

2 COOL! BROWN BAG SPECIAL

2 SONIC BURGERS

(NO. 1 OR NO. 2 SINGLE PATTY)

2 LARGE TATER TOTS

(OR FRIES)

2 MEDIUM DRINKS

ONLY
\$5.99
PLUS TAX

SONIC
America's Drive-In

SONIC
America's Drive-In

No Waiting Call In Orders

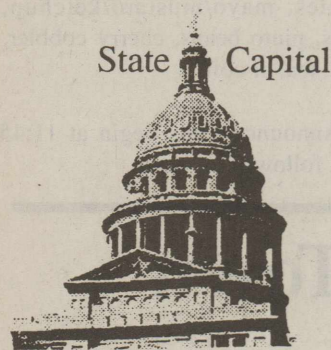
864-8533

Limited Time Only!

Offer good January 1-31, 2003. Not valid with any other offer. Only at participating Drive-Ins. ©2003 America's Drive-In Trust.

OPINION

TEXAS PRESS ASSOCIATION



State Capital

HIGHLIGHTS

By Mike Cox

Governors' inaugurations share colorful history

AUSTIN—When East Texan George T. Wood took the oath of office as Texas' second governor in 1847, he refused to wear socks for the occasion. No matter that it was December, he just didn't like socks.

So far as we know, Gov. Rick Perry will be wearing socks when he is sworn in starting at noon Jan. 21 on the south steps of the Capitol.

Following the formalities of beginning his first full term as governor, Perry and the other dignitaries and guests on hand will ease over to a barbecue on the Capitol grounds.

At 2:30 p.m. the inaugural parade rolls down Congress Avenue. The final event of the day is a 7:30 p.m. inaugural ball at the Austin Convention Center.

This year's events follow recent traditions, but traditions evolve.

Newspaper editor turned politician James S. Hogg was the first governor inaugurated at the present Capitol, which was dedicated in 1888. Following a 35-minute ceremony, the crowd that came to see the first native-born Texas governor sworn in was treated to a fireworks display shot from the roof of the new state house.

In 1927, Dan Moody, who at 33 still holds the distinction of being Texas' youngest chief executive, was the first governor to have an outdoor inauguration.

The most ostentatious inaugural event in Austin was the 1939 party thrown by radio entertainer turned governor W. Lee O'Daniel. His supporters filled 60,000 seats in Memorial Stadium to see him take the oath that transformed him from salesman to governor.

For more on the coming inauguration and past swearing in ceremonies, check the 2003 Texas Inauguration web site, www.texasinaugural.com.

Taxes our taxes...
In a legislative year when the state desperately needs money and lawmakers desperately don't want to institute any new taxes, watch out for tax increases that don't look like new taxes.

Introduced early on in the bill filing period were bills aimed at increasing the cigarette tax. But one watcher of the Legislature predicts there will be moves to eliminate some of the exemptions in the sales tax law, the sales tax being the state's revenue work horse. Nothing filed yet, however.

Seeing red...
Not every matter up for consideration this session involves huge sums of money.

Back again this year is a bill that would allow municipalities to install automated cameras to catch drivers who run red lights. This is how it would work: A camera gets an image of a vehicle disregarding a stop light.

Soon, a citation goes out in the mail to the registered owner of the vehicle. The fine could be up to \$75.

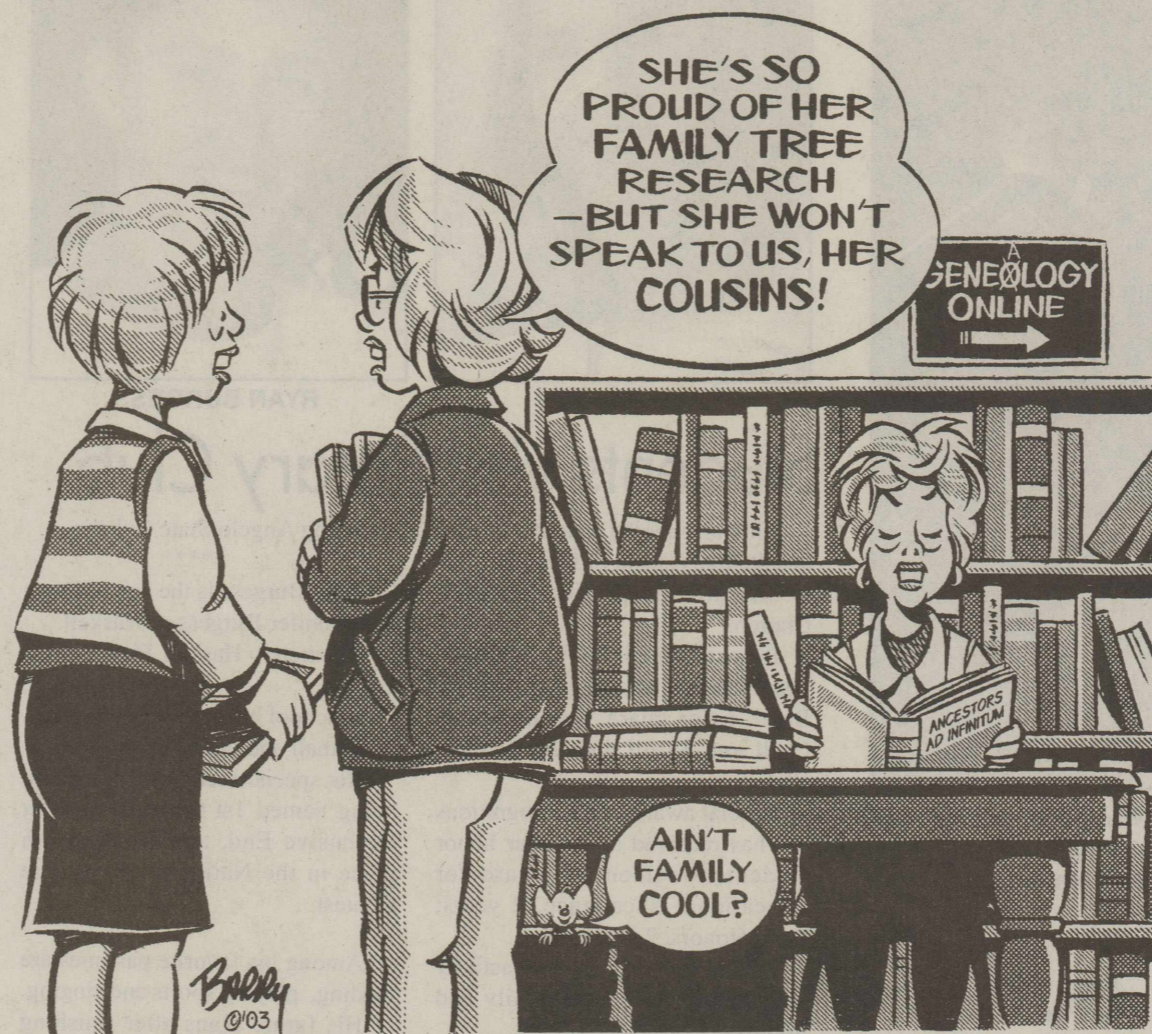
A "photo finish" red light violation, unlike a ticket from a police officer, would be a civil penalty, not a criminal offense. Run a light in front of a peace officer and you'll still get a ticket that goes on your driving record as a criminal offense.

No one who has driven in a city of any size at all would question that the running of red lights is a major traffic problem in Texas, but whether cities should enforce the law by semi-stealth methods has been controversial and promises to be so again.

A similar bill died in the 77th Legislature by two tie votes in the House, 59-59 the first time, and 71-71 the second try.

This year's effort, House Bill 200, will be carried by Rep. Leo Berman, R-Tyler, who was co-sponsor of the bill two years ago.

The arguments for and against the bill boil down to safety versus Big Brother fears.



From The Inside Out

By Mary Kaigler

Who is this Mystery Reader?

I was born in Temple. I have been married 48 years, and have two children.

I attended school at Temple High School, Temple Junior College and the University of Texas.

No one knows that I won a gold watch for being selected as the outstanding freshman at Temple Jr. College. (It was the Harvey Golding Award.)

My favorite TV show is "West Wing."

My favorite type of music is gospel. My favorite song is "Just a Closer Walk With Thee."

I like to play 84 and bridge, read, travel, do needlework, sing harmony, and teach Sunday School.

The last book I read was *Red Rabbit*, by Tom Clancy. I am now reading *The Jansen Directive*, by Robert Ludlum.

My favorite place in Texas is Austin. My favorite vacation spot in the world is Florida, visiting nephews and their families.

My best quality is planning ahead to get things done. My worst quality is impatience.

I hate it when people make promises and don't keep them.

My greatest personal accomplishment, after having my children, is being named the Outstanding Citizen of the Year.

For me, the best thing about Haskell is my lifelong friends, and the quiet but active life-style.

Watch next week for the identity

of this reader.

Update

Last week's Mystery Reader, Kay Wiseman Cheatham of Southlake, who grew up in Haskell, the daughter of Bill and Helen Coleman Wiseman, could very easily be called one of the world's most consistent volunteers.

Living in Houston, where she met her husband, through the years her son and daughter were growing up, she was a full-time mom, staying busy volunteering her time to participate in all of their activities. Working with PTA, being a room mother and Scout leader, she also volunteered time as troop organizer for the whole Smiling Pines District.

Near and dear to her heart is the various work she has done in volunteering. After her children grew up, she enjoyed owning and operating a stationary and gift shop in Old Town Spring for several years. Later, she volunteered working with the Houston Northwest Chamber of Commerce, helping to compile and publish the chamber's quarterly magazine.

Then, wanting to give back something for all that life has brought her, she began volunteering at a hospital, where she spent twelve years working in the gift shop operated by a nonprofit group which gave the proceeds for scholarships to area high school and college residents who were training and studying in some aspect of the medical profession. She is very

proud to say that one year the group gave \$148,000 in such scholarships. She is on the executive board with the hospital group and is responsible for entering new members.

Having spent thousands of hours volunteering, one of her favorite things in volunteer work with the hospital has been in being instrumental in helping with the patients in-house advocacy programs, especially for children.

Recently, she was asked (volunteered?) by her grandson's 1st grade teacher to help the class with a book it is writing and illustrating this semester, and will have published in hard cover on the subject of "21st Century Authors."

As one might guess, Kay's favorite things to do are the times spent with her children and grandchildren.

The Cheatham's daughter and family live in Keller. Their son lives in Scottsdale, Arizona.

"No matter where I live, Haskell will always be home to me," Kay said. "I'll always have a warm feeling for it my heart."

A Thought for the Week

"The grand essentials of happiness in this life are something to do, something to love and something to hope for," said writer Joseph Addison.

As the Beatles said, "In the end, the love you take, is equal to the love you make."

Garden checklist for January

by Brandon Anderson
Haskell Co. Extension Agent

•Now is an excellent time to transplant mature or established trees and shrubs while they are dormant.

•Make flower and vegetable garden plans now before the rush of spring planting. Time spent in armchair gardening before the fireplace will pay off in improved plant selection.

Besides, it is fun to page through the garden catalogs.

•Sow seeds in flats or containers to get a jump on plant growth before hot weather arrives.

Petunias, begonias, and impatiens should be sown in early January. Warm temperature plants, such as tomatoes, peppers, marigolds, and periwinkles, should be sown in late January or early February.

•Apply a light application of fertilizer to established pansy plantings. Use one-half pound of ammonium sulfate per 100 square feet of bed area. Repeat the application every 4 to 6 weeks, depending on rainfall. Dried blood meal is also an excellent source of fertilizer for pansies.

•Prepare beds and garden area for spring planting.

•Select and order gladiolus corms

for February/March planting. Plant at two-week intervals to prolong flowering period.

•Check junipers and other narrow-leaf evergreens for bagworm pouches. The insect eggs overwinter in the pouch, and start the cycle again by emerging in the spring to begin feeding on the foliage. Hand removal and burning of the pouches are ways of reducing the potential damage next spring.

•The life of the plant received as a Christmas gift can be prolonged with proper care. Keep the soil moist, but provide drainage so that excess moisture can flow from the pot. Keep the plant out of range of heating ducts and away from heating units. Keep in a cool room at night, preferably at 60 to 65 degrees F.

•Don't fertilize newly set out trees or shrubs until after they have started to grow, and then only very lightly the first year.

•When buying plants, the biggest is not always the best, especially when dealing with bare root plants. The medium to small sizes (4 to 6 feet) are usually faster to become established and more effective in the landscape than the large sizes.

•Hold off on pruning bush roses until February or early March. Use

good shears that will make clean cuts. Remove dead, dying, and weak canes. Leave 4 to 8 healthy canes, and remove approximately one-half of the top growth and height of the plant.

•Now is an excellent time to select and plant container-grown roses to fill in those bare spots in your rose garden.

•When pruning shrubs, first prune out any dead or damaged branches; then thin out by removing about one-third of the canes or stems at ground level, removing the oldest canes only; and last shape the rest of the plant, but do not cut everything back to the same height.

•Water foliage plants as well as other containerized plants only when needed and not by the calendar.

•Climbing roses should be trained but not pruned. Weave long canes through openings in trellises or arbors and tie them with jute twine or plastic/wire plant ties. Securing canes now prevents damage from winter winds, and contributes toward a more refined look to the garden when roses are blooming. Wait until after the spring flowering period to prune climbing or once-blooming shrub roses.

From Out of the Past

From the files of
The Haskell Free Press

10 Years Ago
January, 21 1993

The Haskell City Council has considered banning smoking in city buildings. Mayor Pat Henry instructed City Administrator Scott Wall to prepare a "No Smoking" ordinance for council action.

1989 graduate of Haskell High School, Penny Peden has been named to the Dean's list for the fall semester at Texas Tech University.

Joyce Lynn McKeever was named to the Dean's list for the fall semester at Southwestern Oklahoma State University in Weatherford.

Tommie Isbell was named to the Abilene Reporter News all-area team.

20 Years Ago
January 20, 1983

Tickets for the 1983 Haskell Chamber of Commerce banquet went on sale.

The freshman basketball team beat Stamford 46-14. Leading the winning effort was Kelly Strickland with 12 and Sammy Baker with 8.

Varsity boys traveled to Munday to take on unbeaten district rival Munday Moguls. When the final buzzer sounded, the Indians remained the only unbeaten team in district, with a 58-54 win. Jamey Davis led the Indians with 25 points.

Paint Creek Junior High girls won the Haskell 8th grade tourney by defeating Rochester, Weinert, Haskell, Aspermont and Rochester.

30 Years Ago
January 18, 1973

Total assets of Haskell County's two banks increased more than \$3,852,000.00 during the 1972 business year.

J.B. Gipson, manager of Bill Wilson Ford Motor Company, has won a Ford sales contest. The prize was an all-expense paid trip to the Superbowl.

Rev. Robert L. Grawley, pastor of Haskell Foursquare Gospel Church, had announced a revival.

40 Years Ago
January 17, 1963

Business population of Haskell County in January, 1962, went up three percent.

Bobby Dale Tatum, a former Haskell boy who now makes his home at Cal Farley's nationally famous Boys' Ranch, has been named a member of the Ranch's Junior Staff, which is the highest honor a boy can receive.

Daniel Riley Griffith, of Haskell, was chosen as a candidate for a bachelor's degree in agricultural education in graduation exercises at Texas A&M College.

The Baptist brotherhood of the First Baptist Church in Weinert, had a special supper in the community building. Rev. L.D. Regeon, pastor of the East Side Baptist Church, was the special speaker.

50 Years Ago
January 15, 1953

C.C. Johnson, owner and operator of the Arrowhead Courts, was elected 1953 President of the West Central Texas District 4 Motor Court Association, at the annual business meeting of the organization.

Members of the First Methodist Church gathered an estimated 1,000 pounds of clothing for shipment to war-stricken and destitute people of Korea. This will be sent overseas to Methodist missionaries in Korea who will supervise distribution to the needy.

C.O. Holt was named as Chief Engineer of the West Texas Utilities Company's Paint Creek generating Station southeast of Haskell.

O.B. Welsh is the new president of the Texas City Chamber of Commerce for 1953.

100 Years Ago
January 15, 1903

A party of 500 colonists are going from Oklahoma to old Mexico, where they will settle on land purchased for 25 cents an acre.

W.R. Chapman, a lawyer of Anson, was in town being up on a visit to his brother's at Marcy.

G.A. Lambeth had sold his place, 320 acres near Cliff, to a man from Jones county for a little better than \$10 an acre.

Letters to the Editor

Dear Editor,
The Experienced Senior Citizen's Center, would like to express their sincere thanks to the "Haskell Elementary Third Grade Singing Group," who surprised our center with a wonderful Christmas

program. The children sang several spirited Christmas songs, which we enjoyed so much. Special thanks to their teachers, Melodee Christian, Donna Waggoner, and Principal Jimmy Lisle.

What a talented group of singers you are, and thanks so much for thinking of us. We look forward to having you again in the near future, we hope.

Sincerely,
Jennabeth Kimbrough
Director, ECC

To Subscribe,
Call
940-864-2686

The Haskell Free Press

Established January 1, 1886
PUBLISHED EVERY THURSDAY
420 North First Street

P. O. BOX 555 HASKELL, TEXAS 79521

John McDougal Publisher
Lisa Shaw Business Manager
Mary Kaigler Editor
Doris McDougal Production
Bill Blankenship Staff Photographer

Periodical Paid Haskell, Texas 79521
(USPS 237-040)

SUBSCRIPTION RATES:

Haskell County, one year, \$20.00.
Outside of Haskell County, one year, \$28.00.

NOTICE TO PUBLIC: Any erroneous reflection upon the character, reputation or standing of any firm, individual or corporation will be gladly corrected upon being called to the attention of the publisher.
POSTMASTER: Send address changes to The Haskell Free Press, P.O. Box 555, Haskell, TX, 79521-0555.



This issue mailed Wed., Jan. 15, 2003



GOOD LUCK, INDIANS and MAIDENS



HASKELL INDIANS: from left, Coach Mark Adams, Osiel Garcia, Melvin Garcia, Kendall Mitchell, Ross Hairgrove, Josh Webb, Ryan Burgess, Eddie Loyd, Bobby Loyd, Leon Goudeau, Angel Pena, Coach Toby Villa. Center: Larry Trevino.

Photos by KIS Photo



INDIANS

Fri., Jan. 17 • 4 p.m.
JV & Varsity Boys vs Hawley
at Hawley

Tues., Jan. 21 • 4 p.m.
JV & Varsity Boys vs Cisco
at Haskell



MAIDENS

Fri., Jan. 17 • 4 p.m.
JV & Varsity Girls vs Hawley
at Hawley

Tues., Jan. 21 • 4 p.m.
JV & Varsity Girls vs Cisco
at Haskell



HASKELL MAIDENS: From left, Coach David Middleton, Coach Shawna Faircloth, Brittany Lindsey, Monica Buerger, Whitney Hise, Calina Kendall, Katie McKnight, Lynzie Harlan, Brittany Bird, Mandy Adams, Whitney Wallace, Brittany Rutkowski, Shanee Mays, Consuelo Gonzales

This Page Sponsored By The Following Indian and Maiden Boosters

Personality-Slipper Shoppe

Haskell Free Press

Brian Burgess State Farm Insurance

Haskell County Insurance Agency

Haskell National Bank

Double A Drive Inn

Hanson Paint and Body

McGee's Lumber Yard

Bill Wilson Motor Co.

Modern Way Food & Fuel

Johnson KIS Photo

First National Bank

Rice Springs Care Home

Haskell Tire & Appliance

Matlock & Associates

Haskell County Gin

Haskell Save-A-\$

Medford Buick-Pontiac-GMC

Larned Sales Center

Haskell Co-Op Gin

Flatlands



To Subscribe, Call 940-864-2686

GONZALES CARPET CLEANING
 Carpet Cleaning • Upholstery Cleaning
 Emergency Water Extraction • Expert Floor Care
 Waxing Polishing & Cleaning

Residential & Commercial
 (915) 773-2667 • (915) 773-2258

Robert Gonzales
 P.O. Box 929
 Stamford, TX
 79553

Jones-Haskell Eye Clinic
Dr. Trussell Thane, O.D.
 Therapeutic Optometrist

Appointments Available • Monday through Friday

Dr. Thane provides comprehensive eye care including the diagnosis and treatment of eye disease. Dr. Thane offers complete evaluation for eyeglasses and contact lenses.

Various contact lens packages available.

MEDICARE, MEDICAID, BLUE CROSS AND BLUE SHIELD AND FIRSTCARE ACCEPTED.

1501 Columbia
 Stamford, Texas
 915-773-2083

Desert Reign to perform

A concert by Desert Reign will be presented at the Trinity Baptist Church at 114 S. Ave. D, Haskell, Sun., Jan 26.

Honored by the Country Gospel Music Association as Vocal Group and Band of the Year for four consecutive years, the group consists of R. C. Reynolds, lead guitar, Sam Horn, bass guitar, Buddy Banks, drums and Lori Reynolds, pedal steel and dobro. Their style presents

country sound with a gospel message, accomplished through original songs, like "The Ride" and "Subject to Change," as well as old favorites such as "Turn Your Radio On."

There is no admission charge for the concert. Sharing their talents to offer hope and encouragement for this time, the group comes on a free will offering basis.

Open to the public, the concert will begin at 6:30 p.m.

Cattle Market Report

The market at the Haskell Livestock Auction was on a run of 525 head of cattle at its sale on Mon., Jan. 13, according to Gary Tate, reporter. 59 sellers and 32 buyers attended.

Demand was good on all classes. Packers and feeders steady, stockers \$1 to \$2 higher.

Cows: fat, .30-.36; cutters, .32-.39; canners, .20-.28.

Bulls: bologna, .40-.49; feeders, .65-.75; utility, .38-.44.

Steers: medium and large frame No. 1 200-300 lbs., 1.05-1.30; 300-400 lbs., .95-1.08; 400-500 lbs., .88-

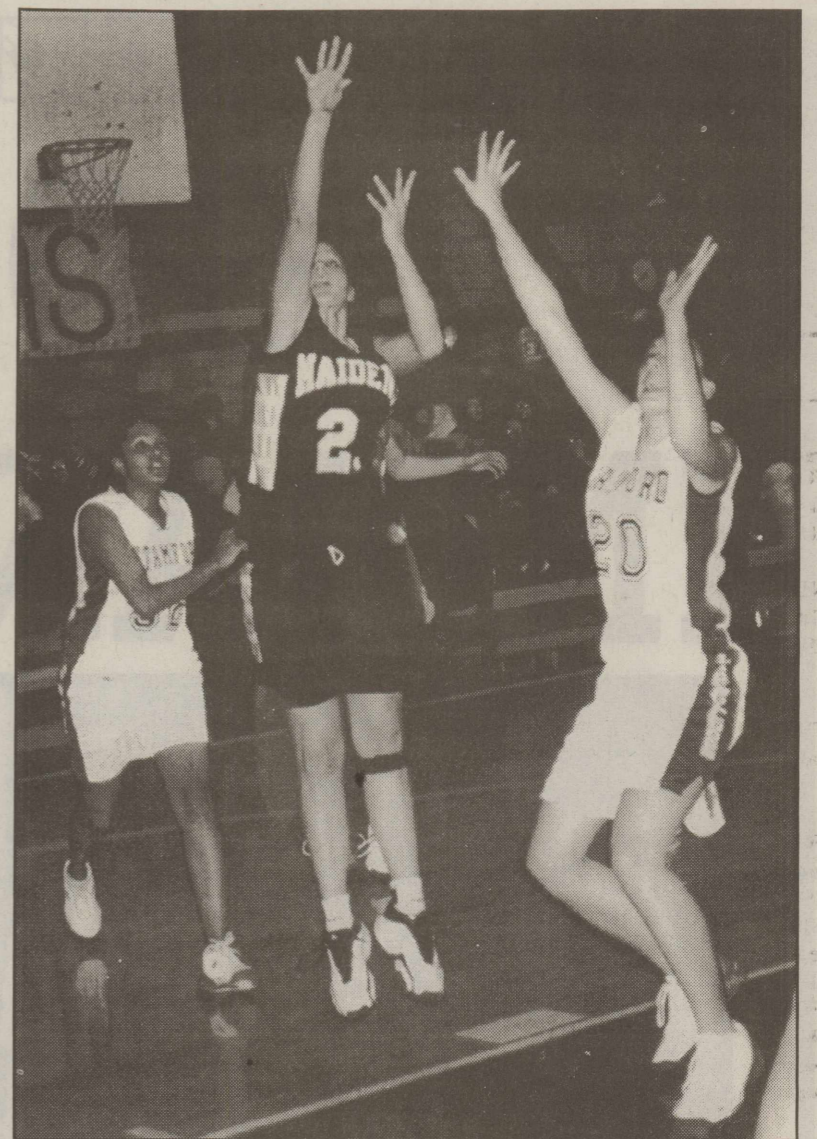
1.00; 500-600 lbs., .80-.92; 600-700 lbs., .75-.83; 700-800 lbs., .72-.78; 800-up lbs., .67-.77.

Heifers: medium and large frame No. 1 200-300 lbs., .90-1.15; 300-400 lbs., .85-1.00; 400-500 lbs., .78-.90; 500-600 lbs., .74-.84; 600-up lbs., .65-.76.

Bred heifers medium frame, 450-575.

Bred Cows: young to middle aged, 625-725; aged or small, 425-600.

Cows with calves: medium frame No. 1 young and middle aged, 775-925; aged or small, 575-675.



REACHING UP—Haskell Maiden, Monica Buerger (21) goes up on her toes in the Jan. 7 game with Stamford. Photo by Bill Blankenship



LAYING ONE IN—Haskell's Josh Webb (4), scores for the Indians in their winning game with Stamford, Jan. 7. Photo by Bill Blankenship

This Week's Devotional Message:



FAITH REVEALS THE UNLIMITED FACETS OF LOVE

To many of us, the word "love" usually signifies romantic adventure, happy marriage or the care and anxiety of a parent; but while all of these are good examples of it, they by no means tell the whole story. Love is an act of kindness for one's neighbor; an anonymous donation to a worthy cause; food and supplies sent to starving native children or the victims of a disaster; a regular visit to the sick, the elderly or the lonely of any age; and so on indefinitely. Whatever form it takes, the main ingredients of love are thoughtfulness and unselfishness, and you will find the recipe for it at the church of your choice. It will be served with a generous portion of happiness for you as well as for the recipients of it.

ATTEND CHURCH THIS SUNDAY

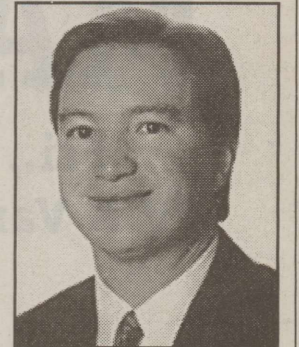
- ← HASKELL →
- East Side Baptist Church**
 David Page, pastor
 Sun. 8:30 a.m., 9:45 a.m., 11 a.m., 6 p.; Wed. 7 p.m.
 600 N. 1st East, Haskell
- Christian Church**
 Dusty Garison, minister
 Sun. Morn. 9:45 a., 10:45 a., 6 p.m.; Wed. 7 p.m.
 107 N. Ave. F, Haskell
- New Vision Family Worship Center**
 James Rincker, pastor • 864-5438
 Sun. 9:45 a.m., 11 a.m., 6 p.m., Wed. 7:00 p.m.
 East Hwy 380, Haskell
- Trinity Lutheran Church**
 Gary Bruns, pastor
 Sunday School 9:30 a.m., Worship 10:30
 Hwy 380 East, Haskell
- Iglesia Bautista El Calvario**
 Art Flores, Interim pastor
 Sun. Morn. 9:45 a., 10:45 a.m., 5 p.m.; Wed. 7 p.m.
 607 S. 7th, Haskell
- First United Methodist Church**
 Allen Brooks, pastor
 Sun. Morn. 9:45 a.m., 10:50 a.m. 6 p.m.; Wed. 6 p.m.
 201 N. Ave. F, Haskell
- First Assembly of God**
 Rev. J.C. Amburn
 Sun. Morn. 9:45 a., 10:45 a.m., 6 p.m.; Wed. 7 p.m.
 1500 N. Ave. E, Haskell
- St. George Catholic Church**
 Father Michael Melcher
 Sat. Mass 7:15 p.m.; Sun. Morn. 9:00 a.m.
 901 N. 16th, Haskell
- Church of Christ**
 Brett Anderson, minister
 Sun. Morn. 9:30 a., 10:30 a., 6 p.m.; Wed. 7:30 p.m.
 510 N. Ave. E, Haskell
- First Presbyterian Church**
 Steve Beatty, pastor
 Sun. Morn. 9:30 a.m.
 306 N. Ave. E, Haskell
- Trinity Baptist Church**
 Tony Grand, pastor
 Sun. Morn. 10 a., 11 a., 6:30 p.m.; Wed. 6:30 p.
 401 S. Ave. D, Haskell
- Hopewell Baptist Church**
 John Lewis, pastor
 Sun. Morn. 9:30 a.m., 11:00 a.m.; Wed. 7 p.m.
 908 N. Ave. A, Haskell

- Greater Independent Baptist Church**
 Sun. Morn. 9:30 a., 11:00 a., 6:30 p.; Wed. 7 p.
 301 N. 3rd St., Haskell
- New Covenant Foursquare**
 Bill and Renee Glass, pastors
 Sun. Morn. 10 a.m., 11 a.m., 6:30 p.m.; Wed. 7 p.
 200 S. Ave. F, Haskell
- Mission Revival Center**
 Rev. William Hodge
 Sun. Morn. 10 a.m., 11 a.m., 6 p.m.; Tues. 6 p.m.
 1600 N. Ave. B, Haskell
- First Baptist Church**
 Kevin Hall, pastor
 Sun. Morn. 9:45 a., 10:55 a., 6 p.m.; Wed. 7 p.m.
 301 N. Ave. E, Haskell
- Church in the Park**
 Rev. Tim and Suzann Townsend
 Sun. Morn. 10:30 a.m. Wed. 7 p.m.
 Gazebo or Pavilion
- ← PAINT CREEK →
- Paint Creek Baptist Church**
 Sun. Morn. 10:00 a.m., 11:00 a.m., 6 p.m.
 Paint Creek
- ← WEINERT →
- First Baptist Church**
 Chris Powell, pastor
 Sun. Morn. 10 a.m., 11 a.m., Wed. 7 p.m.
 Weinert
- Weinert Foursquare Church**
 Rev. Robert Harrison
 Sun. Morn. 10 a.m., 11 a.m. Wed. 7 p.m.
 Weinert
- ← ROCHESTER →
- Church of Christ**
 Steve Willis, minister
 Sun. Morn. 9:45 a., 10:45 a., 6 p.m.; Wed. 6 p.m.
 West on Main Street, Rochester
- First Baptist Church**
 Jackie Brem, pastor
 Sun. 11:00 a.m., 6 p.m.; Wed. 7:00 p.m.
 500 Main, Rochester
- Union Chapel Baptist Church**
 Rev. Clarence Walker
 Sun. Morn. 9:45 a., 10:45 a., 6 p.m.; Wed. 7 p.m.
 Rochester
- ← O'BRIEN →
- O'Brien Baptist Church**
 Kyle Gullledge, pastor
 Sun. 9:45 a., 11 a., 5 p., 6 p. Wed. 6 p.m.
 O'Brien

- Faith Chapel of Rochester**
 Katherine Byrd, minister
 Sun. Morn. 10 a.m., 11 a.m., 7 p.m.
 Hwy 6, Rochester
- First United Methodist Church**
 Dolan Brinson, pastor
 Sun. Morn. 10:00 a.m., 11:00 a.m.
 Rochester
- ← SAGERTON →
- Sagerton Methodist Church**
 Melissa Bemis, pastor
 Sun. Morn. 9:30 a.m.
 Sagerton
- Faith Lutheran Church**
 Deborah Nissen, pastor
 Sun. Morn. 9:15 a.m., 10:30 a.m.; Wed. 7 p.m.
 Sagerton
- ← RULE →
- First Baptist Church**
 Josh Stowe, pastor
 Sun. Morn. 9:45 a., 11:00 a., 5 p.m.; Wed. 7 p.m.
 1001 Union Ave., Rule
- Primitive Baptist Church**
 Dale Turner Jr., pastor
 First & Third Sundays 10 a.m.
 Corner of 8th & Robins, Rule
- Church of Christ**
 John Greeson, minister
 Sun. Morn. 9:45 a., 10:40 a., 6 p.m.; Wed. 7 p.m.
 811 Union, Rule
- First United Methodist Church**
 Tommy Wilson, pastor
 Sun. Morn. Worship 10 a.m.
 1000 Union Ave., Rule
- Primera Iglesia Bautista**
 Alfa y Omega
 Manuel Marin, pastor
 Sun. Morn. 10 a., 11:00 a., 5 p.m.; Wed. 6 p.m.
 500 Elm Street, Rule
- Sweet Home Baptist Church**
 Bill Trice, pastor
 Sun. Morn. 10:00 a., 11:00 a., 6 p.; Wed. 7 p.m.
 Gladstone Ave., Rule
- West Bethal Baptist Church**
 Rev. Robert Sweet
 Sun. Morn. 10 a., 11 a., 8 p.m.; Wed. 7:30 p.m.
 300 Sunny Ave., Rule

TAX PLANNING

Written By
Gerald Rodgers, CPA



IRON OUT THE NANNY TAX WRINKLES

Did you pay a baby sitter, maid, or someone else to work in your home during 2002? If so, you may owe the "nanny tax." The nanny tax if nothing more than three federal employment taxes (social security, Medicare, and federal unemployment tax) that employers must pay on the wages of certain household workers. If you employed a domestic worker in 2002, here's what you need to do.

Determine the worker's status. Is the worker your employee or an independent contractor? The nanny tax only applies to your employees. A worker is generally considered to be your employee if you directly supervise the work and you supply the tools or supplies necessary to do the job. If your worker came from an agency or runs his or her own business, the nanny tax may not apply. Employees can include baby sitters, nannies, housekeepers, gardeners, health aides, and other household workers.

Find out whether your employee meets an exception. The nanny tax doesn't apply to wages paid to your spouse, your child under 21, or an employee under age 18 whose main occupation is not household employment.

Add up the wages paid to each employee. If you paid any employee \$1,300 or more during 2002, you owe social security and Medicare taxes. (The wage threshold is \$1,400 for 2003.) Also, if you paid all your domestic help \$1,000 or more in any calendar quarter, you owe federal unemployment tax. State employment taxes may also apply.

Find out what forms you need to file and when. If you paid a domestic employee \$1,300 or more in 2002, you need to send your employee a W-2 form by January 31, 2003. The nanny tax is reported on Schedule H of your federal income tax return, due by April 15, 2003.

Complying with the nanny tax rules is not optional. The rules are complex and confusing. For more details and assistance with "ironing out" the nanny tax wrinkles, please call us.

RODGERS & COMPANY

Certified Public Accountant
 20 Southwest Third Street
 Hamlin, Texas • 915-576-2356

Sonic Drive-In

1402 N. Ave. E
 864-8533
 Managers: Leon & Carolyn Herring

Steele Machine

Hwy. 280 • 864-2208

Modern Way Food Store

1202 N. Ave. E • 864-3763

Smitty's Auto Parts

107 N. 1st East • 864-2607

HANSON PAINT & BODY SHOP

207 S. 1st • 864-3631
 Professional Auto Body Repair
 Glass Installation • 24 Hour Wrecker Service

Rule Co-op Gin & Elevator

301 Adams • Rule • 997-2421

Rice Springs Care Home, Inc.

1302 N. 1st • 864-2652

Medicare • Medicaid • Therapy

Committed To Excellence
 In Service

Personality Slipper Shoppe

413 S. 1st (South Side of Square)
 864-2501 and 864-3051
 "One Stop Shopping"

McGee's Lumber Yard

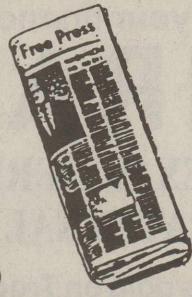
105 N. 1st

The Haskell Free Press

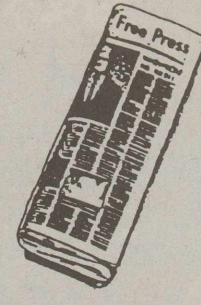
"The People's Choice"
 401 S. First • Haskell • 940-864-2686
 Serving Haskell County Since 1886

Sport About of Haskell

864-3891 • "Where Winners Shop"



Shop The Haskell Free Press CLASSIFIEDS



864-2686

ALL DEADLINES MONDAY 5 P.M.

864-2686

For Sale

FOR SALE: Used GE electric dryer. Good condition. \$100. 864-2023. 11stfc

NEED MARY KAY? Inventory Close-out! Call for prices. 864-2915. Please leave message. 2-5p

TWO EXCELLENT BULLS for sale. Call 864-2704 or 864-5854. 2-5c

FOR SALE: Chrome grill guard with fog and driving lights for 1988-98 Chevy/GMC pickup. \$100. 940-864-2023 after 5 p.m. or leave message. 31stfc

FOR SALE: 1998 Yamaha Wolverine 350 "4 wheeler." Nearly new, low mileage. Call 940-864-2960. 3p

MESQUITE FIREWOOD for sale: \$75 cord. Call Mel 940-997-2372. 3c

FOR SALE: Upright Whirlpool freezer. 15.9 cu. ft. Call 940-864-2309. 3-4p

Garage Sales

GIGANTIC INSIDE SALE in Rule at the Philadelphia Clubhouse Sat. only, from 8 to 10 a.m. Knick-knacks, all sizes clothing, lots more. Will have Mexican plates and burritos for sale. 3p

MOVING SALE: Oak dining table, 1 leaf; microwave cart, full bed, bunk beds, tool boxes, 1997 Ford F-150. 658-1088. 3c

Jobs Wanted

WILL DO HOME, private care. References. Dovie Lipham. 940-989-2668. 51-2p

WILL DO BABYSITTING in my home. Meals provided. Call Jacy (Cypert) West. 864-5361. 2-3p

I WILL DO CHILD CARE in my home. Neoma Kirby. 864-3459. 2-3c

Miscellaneous

A, D & T REFINISHING. Your resurfacing experts. Bath tubs, ceramic tile, countertops, appliances. For information call 940-422-5458. 2-9p

CUSTOM FRAMING. Country Friends and Frames, 101 N. Swenson, Stamford. 915-773-2661. Complete framing needs. Closed Mondays. 3c

NOTICE
The Haskell Free Press reserves the right to edit and/or delete all news stories and locals for length and liability and to refuse to print anything deemed not newsworthy.

The only thing which is constant in life is change. We've been in business for 70 years and the "Never Turn" mattresses from Spring Air is the biggest change and the greatest improvement we have ever seen in the bedding we sell. Kinney Furniture in Stamford has all sizes in stock at close-out prices on discontinued models. 3c

HELEN FARABEE REGIONAL MHMR CENTERS HAS THE FOLLOWING JOB VACANCIES IN HASKELL:
One full time position. Social Service Worker I/Caseworker III Position #372. Pay Rate \$9.93-\$13.79/hr. DOQ. Bachelor/Master's degree required. With benefits package
Texas Workforce Commission Office
*Unless otherwise noted, shifts are generally M-F 8-5 or as needed to meet program needs.
Application on line
www.helenfarabee.org
EEO/ADA Employer 3c

Real Estate

FOR SALE: Brick home. Smoke-free. 3 bedroom, 1 bath. Attached garage. CH/A. Corner lot 150x132. Storm cellar, water well. Price reduced. Call 940-864-2264. 40tfc

FARM FOR SALE: 370 acres (Lillian Spencer) with excellent yields north of Haskell on CR 118 with approximately 7 ac. pasture, and stock tank. Rike Real Estate, 940-864-2411 or 940-864-2332 or mrike@westex.net. 33tfc

FOR SALE: 3 bedroom, 2 bath, 2 living areas, dining, C/A, 2 car garage, 2 storage buildings. Call Bridget at Haskell County Realty 864-2665. 52tfc

RENT TO OWN: 3 bedroom, 1 bath. Call 256-1400. 50tfc

HOUSE FOR SALE: 3 bedroom, 1 bath, CH/A. North edge of Stamford. \$40,000. Call 915-773-2429. 2-4c

FOR SALE: 80 acre farm. Good water. Good older house, H/A, 3-2. Double carport. 940-743-3305. 3-6c

I'M MAD at banks who don't give house loans because of bad credit, problems or new employment. I do. Call L. D. Kirk, Homeland Mortgages 254-947-4475. 3p

FOR SALE: 165 acres, 2 miles northeast of Rule, all row crop, with allotments, receiving PFC or DP payments. \$400 acre. Negotiable. 936-560-0575. 3-6p

ONE YEAR LEASE, rent to purchase: 2 bedroom, 1 bath. Large garage or storage. CH/A. Fenced yard. Call 940-864-5128. 3c

HOME FOR SALE south of Rule: Brick three bedroom, two bath, fireplace, CH/A, metal roof. Large barn and 40 acres. Rike Real Estate, 940-864-2411 or www.rikerealestate.com. 3-5c

Help Wanted

CERTIFIED NURSE AIDE position available for dependable person. Please apply in person at Brazos Valley Care Home, 605 S. Ave. F, Knox City. 44tfc

WANTED: Service technician for local tractor dealership. Health, retirement and vacation benefits included. Call 940-422-4534. 50tfc

Dodson Concrete Construction
Commercial - Residential
David Dodson
704 N. Ave. F • Haskell
940-864-2038
Over 20 Years in the Business
FREE ESTIMATES 18tfc

Help Wanted

MANAGER position available at Munday DQ. Looking for friendly, customer service leader. Above average base pay for above average person with bonus incentive. Holiday and vacation pay. Smoke and drug free work environment. Drug test and background check required. Call District Manager, Garlan Cunningham 940-328-2566. 3-6c

NOW TAKING APPLICATIONS for all positions at Sonic Drive In, Haskell. Apply in person. 25tfc

PART RN needed for weekend coverage. Apply in person at Teakwood Manor, 1003 Columbia St., Stamford. 33tfc

LICENSED NURSE. Flexible opening available in stable long-term care facility. Benefits with insurance and 401k option. Fax resume to administrator, 940-658-5068. 2tfc

PERSONAL CARE attendant needed for part-time job. 24 hours a week. 5-day work schedule. Monday through Friday. Call Billie or Priscilla at 915-823-4378. 2-3c

MANAGER TRAINEE and assistant manager positions available at local and surrounding Richeson DQs. Above average pay for friendly, responsible, customer service leaders. Smoke and drug free working environment. Drug test and background checks required. Call Garlan Cunningham, 940-328-2566. 3-6c

SERVICE TECHNICIAN needed. Apply in person to Tra at Bill Wilson Motor Co, 209 S. Ave. E, Haskell. 3c

Public Notices

BANK DEPOSITORY BID CITY OF HASKELL
Notice is hereby given that the governing body of the City of Haskell subject to the provisions of Article 2559 through Article 2566a, Revised Civil Statutes of Texas, as amended, will receive applications from any interested banking institution within the City of Haskell to serve as prime depository of the City of Haskell and maintain custody of the funds of the City for a period of two years from March 1, 2003 through February 28, 2005. Any applications shall be delivered to the City Administrator's office by 2:00 p.m. on February 7, 2003, in the City Hall, and will be opened and

RULE OWNER FINANCED
Cozy 2 bedroom. Nice yard with trees. Low down, low monthly payments.
Call Jim at 915-518-8128 or Teri at 915-660-2122 11c

publicly read at 3:00 p.m. on February 7, 2003. The City Council will consider the sealed proposals for designation of depository on February 10, 2003. All proposals will be considered valid for a period of thirty days unless otherwise indicated on the proposal form. The City reserves the right to accept or reject any or all bids. 3-4c

NOTICE OF APPLICATION FOR FLUID INJECTION WELL PERMIT

Kendrick Oil and Gas Company, P. O. Box 5529, Abilene, Texas 79608 has applied to the Railroad Commission of Texas for a permit to inject fluid into a formation which is productive of oil and gas.

The applicant proposes to inject fluid into the Flippen Sand, T. G. Hendrick Est., Well Number 6013. The proposed injection well is located 18 miles ENE from Stamford, in the Turkey Hill, N. Field, in Haskell County, Texas. Fluid will be injected into strata in the subsurface depth interval from 1546 to 1558 feet.

LEGAL AUTHORITY: Chapter 27 of the Texas Water Code, as amended, Title 3 of the Texas Natural Resources Code, as amended, and the Statewide Rules of the Oil and Gas Division of the Railroad Commission of Texas.

Requests for a public hearing from persons who can show they are adversely affected, or requests for further information concerning any aspect of the application should be submitted in writing, within fifteen days of publication, to the Underground Injection Control Section, Oil and Gas Division, Railroad Commission of Texas, Drawer 12967, Capitol Station, Austin, Texas 78711 (Telephone 512/463-6792). 3p

Public Notices

NOTICE OF APPLICATION FOR FLUID INJECTION WELL PERMIT

Kendrick Oil and Gas Company, P. O. Box 5529, Abilene, Texas 79608 has applied to the Railroad Commission of Texas for a permit to inject fluid into a formation which is productive of oil and gas.

The applicant proposes to inject fluid into the Flippen Sand, S. G. Cobb, Well Number 1. The proposed injection well is located 18 miles southeast of Haskell, in the P. S. Kendrick (Flippen Sand) Field, in Haskell County, Texas. Fluid will be injected into strata in the subsurface depth interval from 1549 to 1555 feet.

LEGAL AUTHORITY: Chapter 27 of the Texas Water Code, as amended, Title 3 of the Texas Natural Resources Code, as amended, and the Statewide Rules of the Oil and Gas Division of the Railroad Commission of Texas.

Requests for a public hearing from persons who can show they are adversely affected, or requests for further information concerning any aspect of the application should be submitted in writing, within fifteen days of publication, to the Underground Injection Control Section, Oil and Gas Division, Railroad Commission of Texas, Drawer 12967, Capitol Station, Austin, Texas 78711 (Telephone 512/463-6792). 3p

The man who makes no mistakes, does not usually make anything. We have lots of La-Z-Boy recliners at the best prices in the Big Country. Kinney Furniture in Stamford still offers easy terms, free out of town delivery, and small town personal service. 3c

OWNER FINANCED COUNTRY HOME
1 acre with trees. 3 bedroom, 2 bath, central A/C and Htg. Easy terms, damaged credit O.K.
Call Jim at 915-518-8128 or Teri at 915-660-2122 47tfc

EXPERT AUTO WORK
REASONABLE RATES
See us for all your auto mechanic needs. 20 years experience. We do it right the first time.
305 South Ave. E • Haskell

FOR SALE RIKE REAL ESTATE
NEW LISTINGS
1606 N. AVE. E. Hardwood Floors, new heating and cooling, plus many amenities in this immaculate home. 3-2 1/2-2, brick, automatic sprinkler and well.
607 S. 6TH. Large brick, 3-2-2 plus den, kitchen with breakfast area, living-dining, C/H/A, lots of storage and all on corner lot.
1206 N. AVE. G. 3-2-carport, living-dining, den, panel heat and window A/C.
1801 N. AVE. E. 3-3, Americana decor, glassed in porch, large den-dining, well, sprinkler, beautiful yard. REDUCED.
902 N. 6TH. Brick 1 1/2 story, three bedroom, 2 1/2 bath, living, den C/H/A, shop, well.
1301 N. AVE. L. 3-2-1, living-den, C/H/A, well, beautiful corner lot.
SOUTHEAST HASKELL. 20 ac. with barns, pen, water well. Good home site.
411 1/2 South First Street Box No. 853 Haskell, TX 79521 (940) 864-2411 (940) 864-2332 FAX (940) 864-3686 Mary Rike, Broker John Rike, Agent mrike@westex.net

NOTICE TO CONTRACTORS OF PROPOSED TEXAS HIGHWAY IMPROVEMENT CONTRACTS
Sealed proposals for highway improvement contracts will be received by the Texas Department of Transportation (TxDOT) until the date(s) shown below, and then publicly read.
District: Amarillo
Contract 6093-85-001 for REST AREA ENHANCEMENT AND MNTC, OPERATION, REPAIR IN in GRAY County, etc. will be opened on February 4, 2003 at 11:00 a.m. at the State Office for an estimate of \$6,013,498.40.
Plans and specifications are available for inspection, along with bidding proposals, and applications for the TxDOT Prequalified Contractor's list, at the applicable State and/or District Offices listed below. Bidders must submit prequalification information to TxDOT at least 10 days prior to the bid date to be eligible to bid on a project. Prequalification materials may be requested from the State Office listed below. Plans for the above contract(s) are available from TxDOT's website at www.dot.state.tx.us and from reproduction companies at the expense of the contractor.
NPO: 8586
State Office: Construction Division, 200 E. Riverside Dr., Austin, Texas 78704. Phone 512-416-2540.
District Office(s): Amarillo District, District Engineer, 5715 Canyon Dr., Amarillo, Texas 79105-2708. Phone 806-356-3283.
Minimum wage rates are set out in bidding documents and the rates will be part of the contract. TxDOT ensures that bidders will not be discriminated against on the grounds of race, color, sex, or national origin. 2-3c

NOTICE TO CONTRACTORS OF PROPOSED TEXAS HIGHWAY IMPROVEMENT CONTRACTS
Sealed proposals for highway improvement contracts will be received by the Texas Department of Transportation (TxDOT) until the date(s) shown below, and then publicly read.
CONSTRUCTION/MAINTENANCE CONTRACT(S)
District: Amarillo
Contract 6093-85-001 for REST AREA MAINT, OPER, REPAIR AND ENHANCEMENT in GRAY County, etc. will be opened on February 4, 2003 at 11:00 a.m. at the State Office for an estimate of \$7,316,873.12.
Plans and specifications are available for inspection, along with bidding proposals, and applications for the TxDOT Prequalified Contractor's list, at the applicable State and/or District Offices listed below. Bidders must submit prequalification information to TxDOT at least 10 days prior to the bid date to be eligible to bid on a project. Prequalification materials may be requested from the State Office listed below. Plans for the above contract(s) are available from TxDOT's website at www.dot.state.tx.us and from reproduction companies at the expense of the contractor.
NPO: 8699
State Office: Construction Division, 200 E. Riverside Dr., Austin, Texas 78704. Phone 512-416-2540.
District Office(s): Amarillo District, District Engineer, 5715 Canyon Dr., Amarillo, Texas 79105-2708. Phone 806-356-3283.
Minimum wage rates are set out in bidding documents and the rates will be part of the contract. TxDOT ensures that bidders will not be discriminated against on the grounds of race, color, sex, or national origin. 3-4c

For Rent

701 ROBINS. Rule: 3 bedroom brick house. Den, central heat/air. Carport. \$350 mo. References. 997-9505. 3-4p

FOR SALE

Lake Stamford. 20 acres. Shoreline, highway frontage. City water. Will divide. **915-773-3863** 51-4p

To the Entire Community of Haskell:
Words cannot express our appreciation and gratitude for all the kindness and generosity you have shown in our time of sorrow. We are truly blessed to be part of such a fine community. Levi was a special young man. He will truly be missed by everyone whose life he touched in some special way. Though this is a sad time he has accomplished something special that will live forever, he brought an entire community together. So rather than send thank you cards to everyone, the Hodge family has decided to send our appreciation message to the entire community. God bless each and everyone of you.
The Family of Levi Hodge

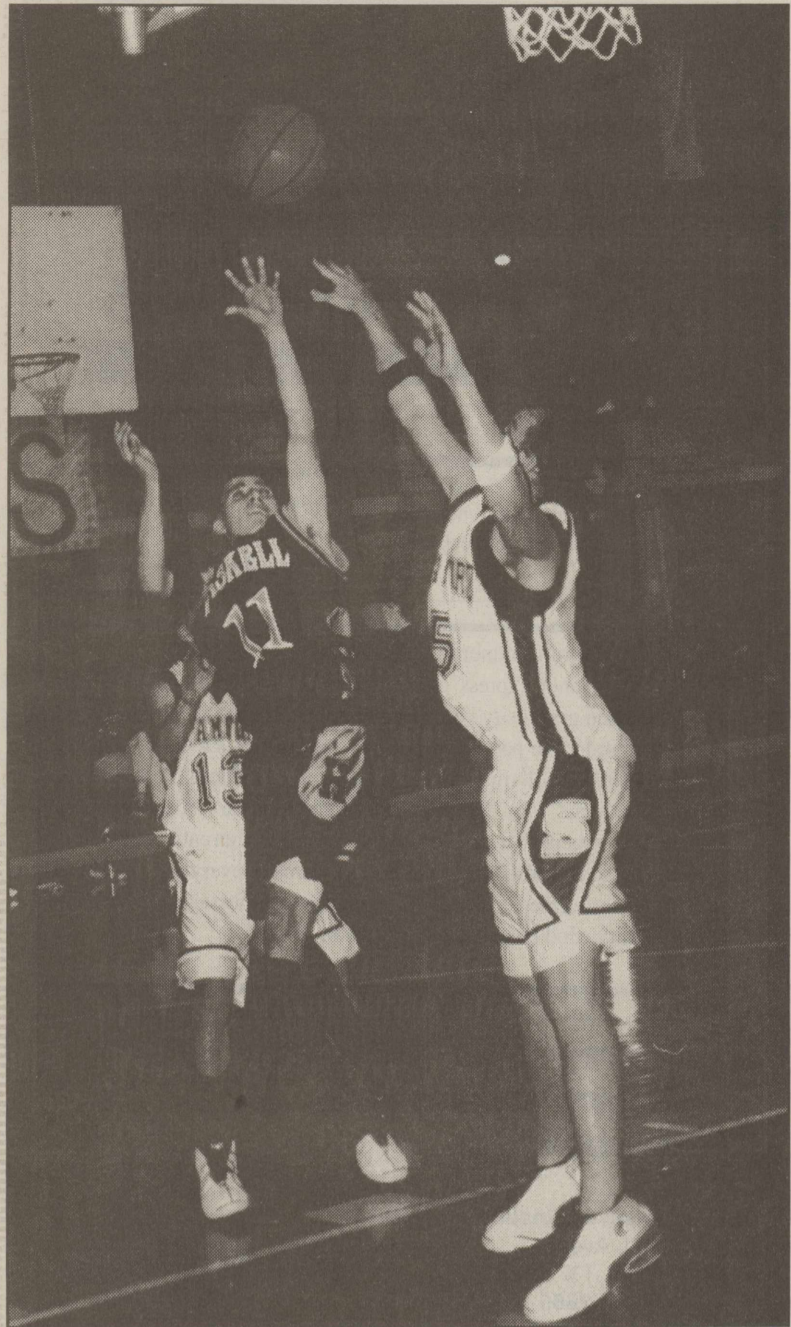
Marry your policies. Honeymoon with the savings.
Haskell Co. Insurance Agency
103 N. Ave. E Haskell, TX 79521 940-864-2665
Allstate. You're in good hands.
Allstate Insurance Company, Allstate Property and Casualty Insurance Company, Home Office: Northbrook, Illinois. Discounts offered only with select companies. Subject to qualifications. ©2002 Allstate Insurance Company.

West Texas Appliance Parts & Service
formerly WTU Appliance Service
Factory Authorized Service For GE - Amana - Whirlpool - Frigidaire - Maytag - Crosley and Most Other Major Household Appliances and Room Air Conditioners
Visa - Mastercard - AMX - Discovery
Tel 804 Walnut Abilene, TX 79601 915-672-2500 Toll Free 866-725-2500 Fax 915-672-2892

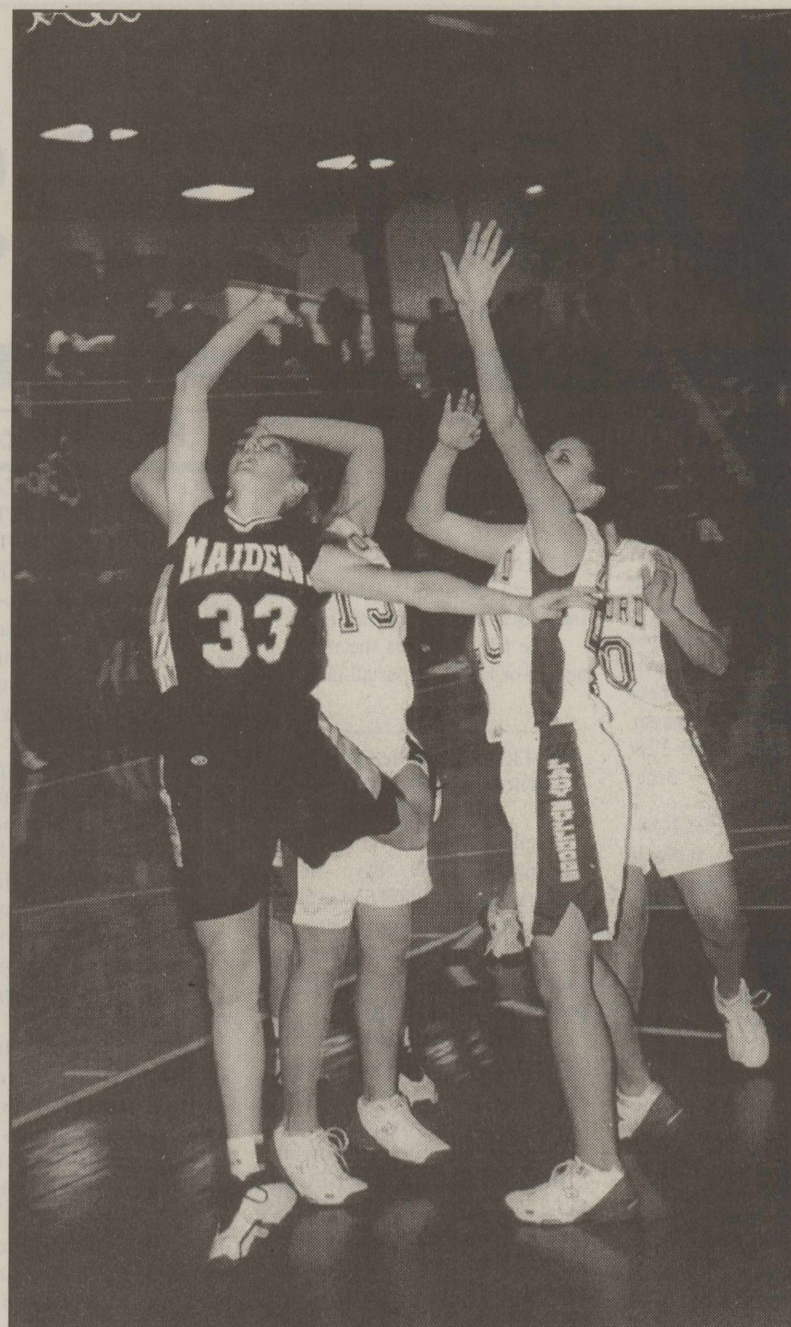
ROUSTABOUTS WINCH TRUCKS WELDERS BACKHOES DUMPTRUCKS
LANGFORD ROUSTABOUT SERVICE
SCOTT LANGFORD
Mobile: (940) 256-0535 Home: (940) 864-2565 East 380 • Haskell, Texas

The Hard Way.
FOR SALE BUY ME FOR SALE BUY ME FOR SALE BUY ME
Sure, you can stand in the street in the middle of a major intersection every day for a week with an item you want to sell, put a couple of huge signs on it, and hope someone takes you up on the offer. It might just get the job done. Or you might just end up looking foolish.

The Easy Way.
For Sale:
Or, you can place a Classified Ad with us and have people from all over the area clamoring to take your unwanted items off your hands for a handsome profit. Quickly and easily. And for a very small investment. So what are you waiting for? Call now!
The Haskell Free Press
P. O. Box 555 420 N. First Street Haskell, Texas 79521
Serving Haskell County for over 100 years



FLYING ANGEL—Haskell Indian, Angel Pena (11), flies to make a basket in the Indians' 88-44 win over Stamford. Photo by Bill Blankenship



UP AGAINST STAMFORD—Haskell Maiden, Lynzie Harlan (33) works in a crowd in the Jan. 7 game. Photo by Bill Blankenship

Farm Bill overhauls peanut program

As part of USDA's ongoing implementation of the 2002 Farm Bill, USDA announced that peanut producers can designate their base acreage and yield information to a farm or farms between Jan. 6, and March 31, 2003.

"The new farm bill contained a historic overhaul of the peanut

program," said Administrator James R. Little, USDA Farm Service Agency (FSA). "This is the only opportunity peanut producers have to designate their peanut bases and yields. It is vitally important that producers visit their USDA Service Centers and complete this important task."

The total peanut acreage and yields designated to a farm will be used for the purpose of issuing 2003 through 2007 direct and, if applicable, counter-cyclical payments. FSA has begun notifying peanut producers of these important dates by means of a "Designation of Average Acreage and Yield Notification Letter."

The 2002 Farm Bill significantly changed the peanut program by replacing the quota system that was established in the 1930s with direct and counter-cyclical payments for

eligible peanut producers.

The Direct and Counter-cyclical Program provides payments to producers on farms having bases for peanut and other commodities for 2002 through 2007 crop years. Direct payments are issued regardless of market prices. Counter-cyclical payments, however, are made only when a commodity's effective price is below its target price.

For more information on this or other USDA programs, contact your local USDA Service Center or FSA county office.

Area basketball scores

Boys

Aspermont 65, Rochester 18
Scoring for Rochester: Saucedo 8, McGhee 6, Self 4.

Rule 66, Paint Creek 53
Scoring for Rule: Stephens 22, Kittley 17, Standefer 11, Brown 7, Smith 5, Turner 2.

Scoring for Paint Creek: Medford 25, Lowrance 13, Cisneros 5, Biba 4, Hobbs 2.

Rule 71, Rochester 48
Scoring for Rule: Stephens 25, Kittley 17, Standefer 8, Smith 7, Fuentes 6, Brown 4, Turner 4.

Scoring for Rochester: McGhee 21, Saucedo 17, Earle 6, Self 2, Reyna 2.

Haskell 53, Eula 36
Scoring for Haskell: Burgess 16, Goudeau 14, Webb 10, Loyd 7, M. Garcia 2, O. Garcia 2, Blanks 2.
JV score: Haskell 50, Eula 38.

Girls

Aspermont 49, Rochester 21
Scoring for Rochester: Byrd 11, Brown 6, Turner 4.

Rule 76, Paint Creek 40
Scoring for Rule: T. Lisle 30, M. Lehrmann 18, Smith 8, Brown 6, Marquis 5, Davis 3, Dudensing 3, A. Lisle 2, J. Lehrmann 1.

Scoring for Paint Creek: Brzozowski 10, Gonzalez 10, K. Daniel 6, Reel 5, Thomasson 4, Isbell 3, A. Daniel 2.

JV score: Rule def. Paint Creek

Stamford 43, Haskell 38
Scoring for Haskell: Burger 10, Kendall 8, Harlan 7, Hise 4, Bird 4, Rutkowski 3, Lindsey 2, Wallace 1.
JV score: Haskell 29, Stamford 15.

Rule 57, Rochester 31
Scoring for Rule: T. Lisle 16, Dudensing 15, M. Lehrmann 11, Smith 6, Brown 5, Marquis 2, J. Lehrmann 2.

Scoring for Rochester: Byrd 13, Brown 7, Sanchez 4, Turner 4, Ramos 3.

Eula 36, Haskell 31
Scoring for Haskell: Bird 8, Kendall 6, Hise 4, Wallace 4, Rutkowski 3, Buerger 3, Gonzalez 1, Lindsey 1, McKnight 1.
JV score: Haskell 24, Eula 20.

Jr. Livestock Show to be held Jan. 23-25

Next weekend, Jan. 23-25, will be a busy time at the Haskell County Show Barn as county youngsters show their stock at the Haskell County Jr. Livestock Show and Sale.

Always a popular event, show time schedules are Friday at 8:00 a.m. for poultry and rabbits, followed by swine. Judging for steers will begin at 3:00 p.m., followed by judging for heifers.

The sale will begin at 11:00 on Saturday morning, with Mike Fouts as auctioneer.

County Judge, David Davis and Haskell County Commissioners will serve BBQ sandwiches both Friday and Saturday. Members of the County Extension Education Association (EEA), will have a concession stand offering drinks, chips and snacks.

At last year's show, 126 young

participants entered their animals. The sale brought a record amount of \$74,206.

Haskell Co. Gin Report

January 13, 2003

Haskell

Haskell Co-op Gin 10,347
Haskell County Gin 4,845

O'Brien

O'Brien Gin 16,199

Rule

Rule Co-op Gin 6,521
Sagerton Gin 3,300

Weinert

Griff's Gin 3,296
Weinert Gin 6,873

Total Bales 51,381

MAKE TRACKS TO ABILENE TO SEE THE WHITE TIGERS



Now through January 18
Haskell County residents will receive Half-Price Admission

WHITE TIGERS

Abilene Zoo

Off Loop 322 and Highway 36 in Nelson Park
Open Daily 9 - 4:30 (915) 676-6085

Must present I.D. to receive half-price admission.

Reach your financial goals with an **IRA** or an annuity from **TEXAS HERMANN SONS FRATERNAL INSURANCE**

Competitive rates paid on Traditional IRAs, ROTH IRAs and Annuities.

Call today for information on life insurance and fraternal benefits for the entire family.

1-877-HERMANN • 1-800-234-4124

Area Lodges and Agents:

Haskell #241: Eunice Koehler - 940-864-2134
Elna Weise - 940-864-3564

Abilene #50: Robert I. Boyd - 915-793-9594

Old Glory #228: Beunice Vahlenkamp - 940-989-3609

Serving Texas Families Since 1890

Order of the Sons of Hermann in Texas, San Antonio
www.texashermannsons.org

HERMANN SONS
HSFI
FRATERNAL INSURANCE

Channel Catfish, Bass, Hybrid Bluegill, Fathead Minnows, Koi, Crappie and Triploid Grass Carp are now available for Pond and Lake Stocking. Permit and one week notice required for Triploid Grass Carp purchase.

- We furnish your hauling containers!
- Live Delivery Guaranteed!
- Discounts/Special Deliveries on large orders!
- Turtle Traps, Fish Feeders, Fish Traps
- Liquid Pond Fertilizer and Gift Certificates

Delivery will be **Friday, Jan. 24**, at the times listed for the following towns and locations.

Sweetwater - Feed & Supply	(915) 235-4955	8:00-9:00 a.m.
Abilene - Acco Feeds	(915) 676-3302	10:00-11:00 a.m.
Anson - Farmers Co-op Gin	(915) 823-3122	12:00-1:00 p.m.
Haskell - Richardson's	(940) 864-8551	2:00-3:00 p.m.
Knox City - Benjamin Fertilizer	(940) 658-3642	4:00-5:00 p.m.

To place your order or for more information, call one of our Aquatic Consultants, local dealer, or email sales@dunnfishfarm.com.

Dunn's
Fish Farms of Arkansas, Inc.

PO Box 1010, Monroe, AR 72108
www.dunnfishfarm.com

Offices located in Oklahoma and Arkansas! Mon-Fri. 7 a.m.-8 p.m. Sat. 8 a.m.-6 p.m. CST
Phone 1-800-433-2950 ~ Fax 1-870-589-2029 www.dunnfishfarm.com

STAR STOP
706 N. 1st • Haskell • 864-2062

Corn Dogs 2/\$1

Bean & Chili Burritos 2/\$1

Deli Fried Pies 2/\$1

Hawaiian Punch, Big Red, A & W Root Beer, A & W Creme Soda, Sunkist Orange, Welch's Grape 20 oz.

Buy 1 Get 1 FREE

Market

Shop Locally
Spend Locally
Bank Locally

It pays to deal with your home-town stores—and this "home-town" bank.

First National Bank Haskell
200 South Avenue E Haskell, Texas 79521
940-864-8555

FDIC Other Convenient Locations to Serve You:
First National Bank Munday - Stamford - Rochester

\$500 REWARD

For information resulting in arrest, conviction and return of Honda Foreman 450, 4 wheel drive, "four wheeler." Olive green in color.

If you have any information on this 4 wheeler, please call 864-2466 or 864-2792.